

Rockland County Profile 2017

A collection of recent demographic, social and economic data

Compiled by

Jan Vink

Cornell Program on Applied Demographics



Cornell University



Program
on Applied
Demographics

CORNELL POPULATION CENTER

This profile is a part of a set of profiles generated for each county in New York State. The profiles were developed and generated by the Cornell Program on Applied Demographics. The work is sponsored by the New York State Data Center in the New York State Department of Labor.

Cornell Program on Applied Demographics:

The Program on Applied Demographics (PAD) brings skills in demographics, economics, statistics, data gathering and data analysis together to provide a variety of organizations with data, information and advice. PAD is located in the Department of Policy Analysis and Management within the College of Human Ecology at Cornell University. PAD is also affiliated with the Cornell Institute for Social and Economic Research and the Cornell Population Center.

For more information: <http://pad.human.cornell.edu/>

New York State Data Center:

The New York State Data Center (NYSDC) is located in the Division of Research and Statistics within the New York State Department of Labor. The State Data Center operates as part of a nationwide effort to improve public access to data provided by the U.S. Census Bureau. The U.S. Census Bureau collects and tabulates data on a multitude of subjects such as population, social, economic and housing demographics, labor force data, health care, migration and transportation. These data play a critical role in understanding our local and larger surrounding communities. Census data also influence state and federal funding, aid decision making in the legislative process, and determine each state's number of congressional seats. As the lead agency in New York for the SDC program, the New York State Data Center helps users navigate through the multitude of surveys and products provided by the U.S. Census Bureau.

For more information: <https://labor.ny.gov/nys-data-center/>

All profiles are freely downloadable as PDF documents on the PAD website:

<http://pad.human.cornell.edu/profiles/index.cfm>

This profile is an update from the County Profile produced in 2013. The 2013 profile also contained information on agriculture related items and can be found at <https://pad.human.cornell.edu/profiles/2013/Rockland.pdf>

Contents

1 Reference Maps (towns and places as defined in 2010)3

2 Population density and Urban Areas Map5

3 Total Population6

 3.1 Historic and projected6

 3.2 Change since previous Census6

 3.3 Annual population estimates7

 3.4 Sub County population change 2010-20158

 3.5 Sub County population change 2010-20158

4 Components of population change9

 4.1 Vital Statistics9

 4.2 Migration 10

5 Population by age 11

 5.1 Historic and projected population pyramids 11

 5.2 Selected age groups 12

 5.3 Median age 13

6 Race 14

 6.1 Total and household population by race 14

 6.2 Race composition by age 14

7 Housing units 15

 7.1 Characteristics 15

 7.2 Historical data on number of housing units and occupancy status 16

 7.3 Building Permits 2000-2015 16

8 Education 17

 8.1 Enrollment by level of school 17

 8.2 Enrollment by age 17

 8.3 Percentage age 18-24 enrolled in college 17

 8.4 Educational attainment 18

9 Language spoken at home 18

10 Labor Force Characteristics 19

 10.1 Labor force, employment and unemployment 19

 10.2 Annual unemployment rate 20

 10.3 Employment and number of jobs 20

 10.4 Class of worker 21

11 Household Income 22

 11.1 Income Distribution 22

 11.2 Median household income: Trends over time 23

12 Poverty 23

 12.1 Family Income to Poverty Ratio 23

 12.2 Poverty: Trends over time: Count 24

 12.3 Poverty: Trends over time: Rate 24

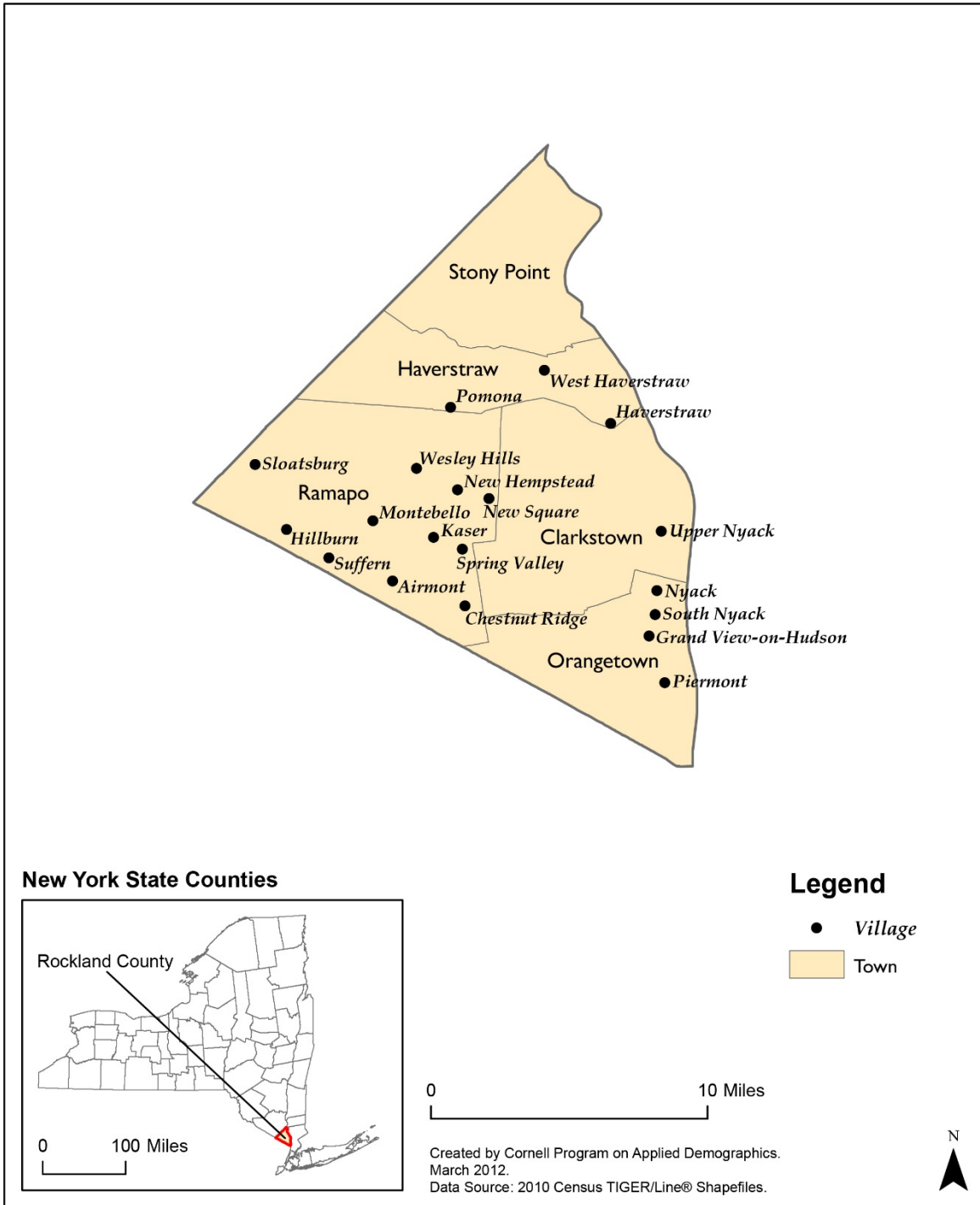
 12.4 Poverty characteristics 25

13 Glossary 26

14 References 29

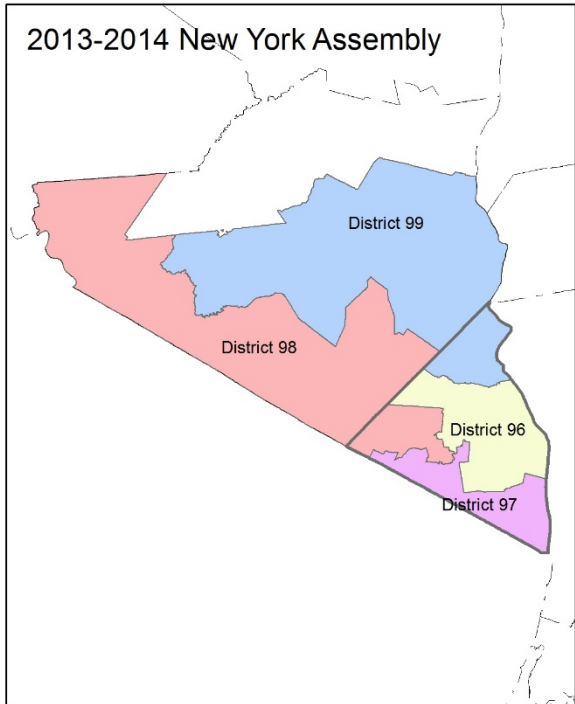
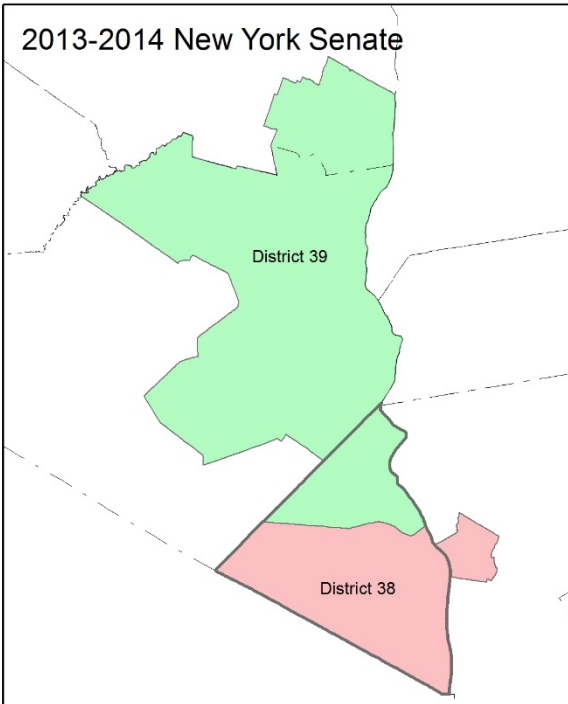
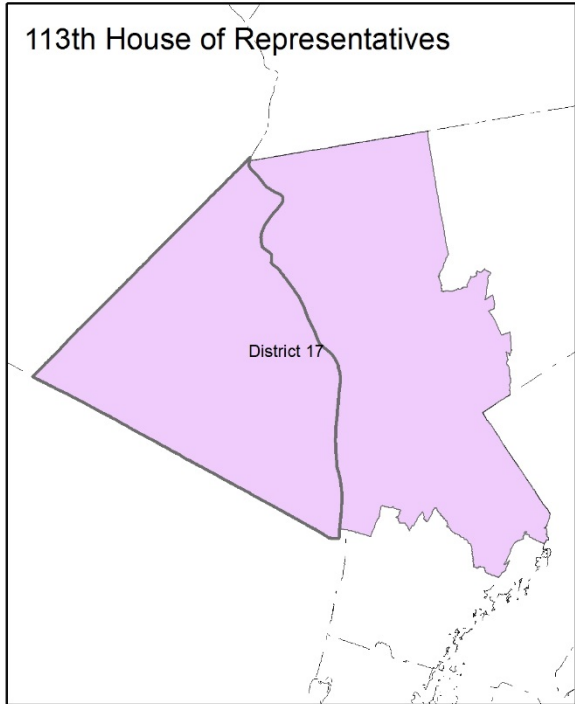
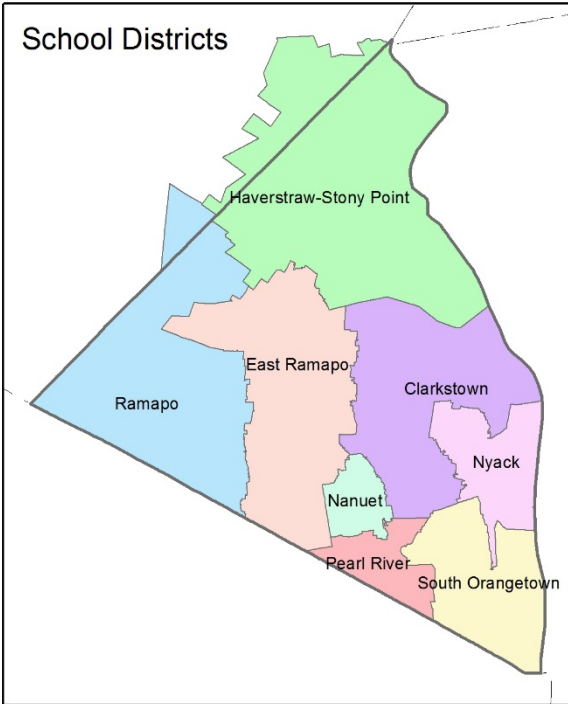
1 Reference Maps (towns and places as defined in 2010)

Rockland County, NY
Towns, Cities, Indian Reservations, and Incorporated Villages

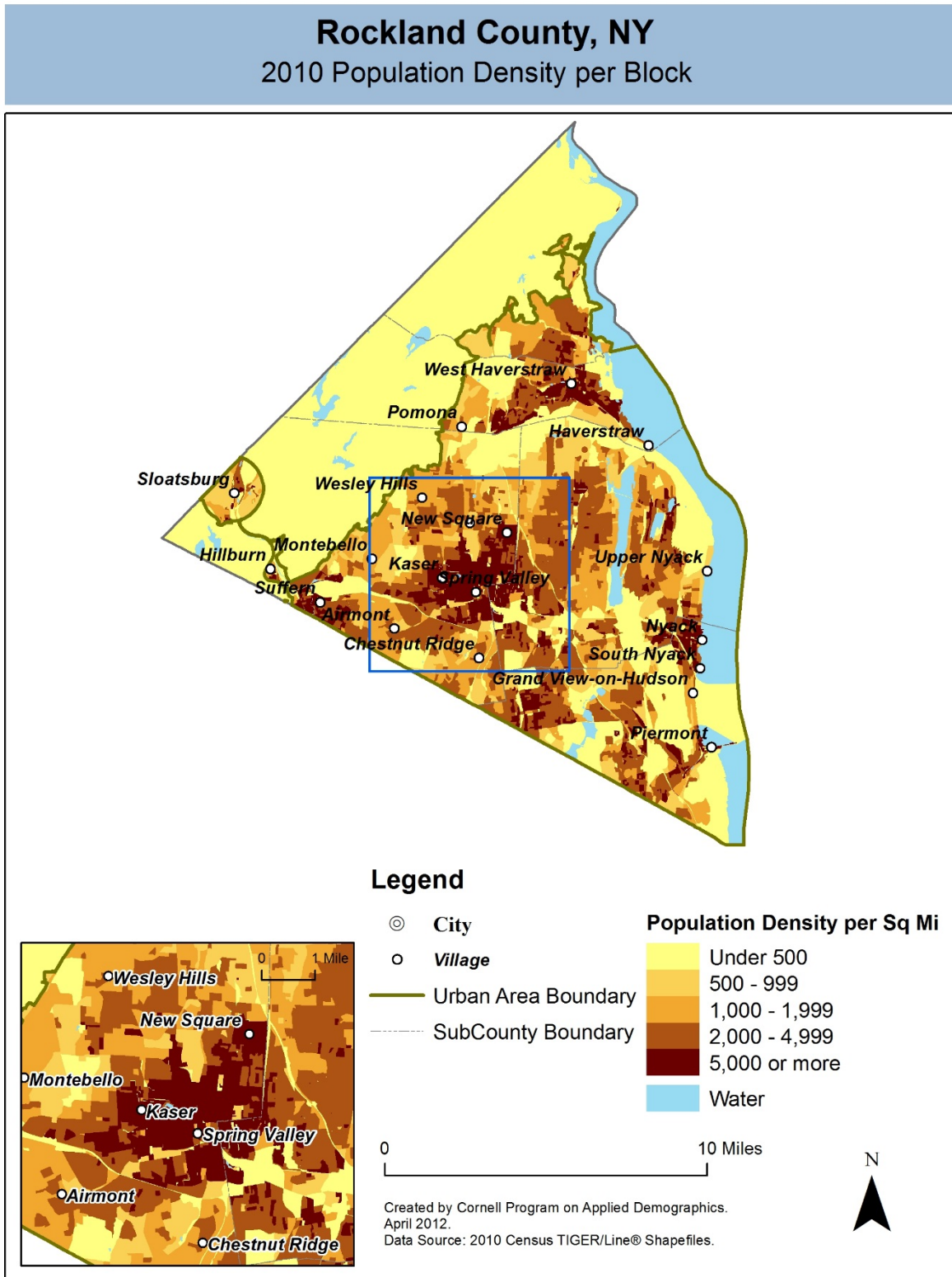


Rockland County, NY

Overlap with School and Political Districts



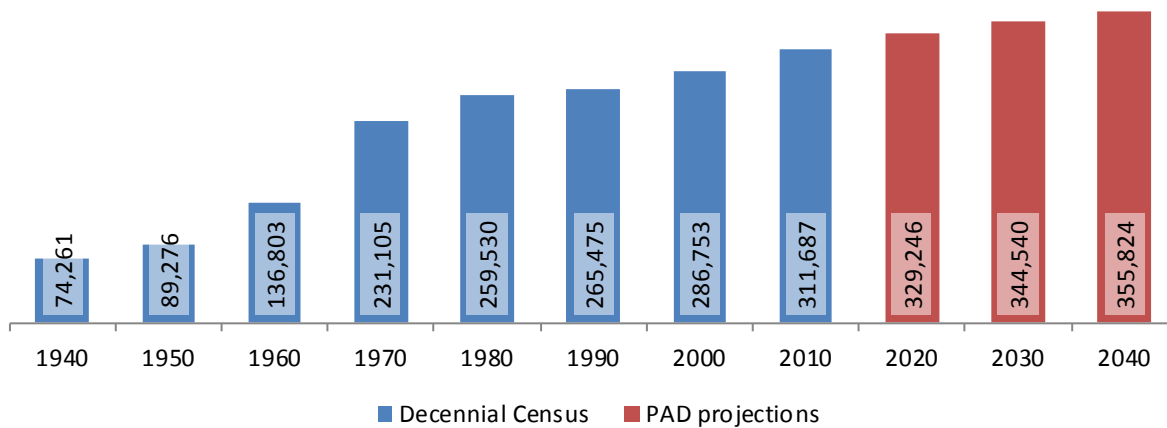
2 Population density and Urban Areas Map



3 Total Population

3.1 Historic and projected

Total population, Rockland County, 1940-2040



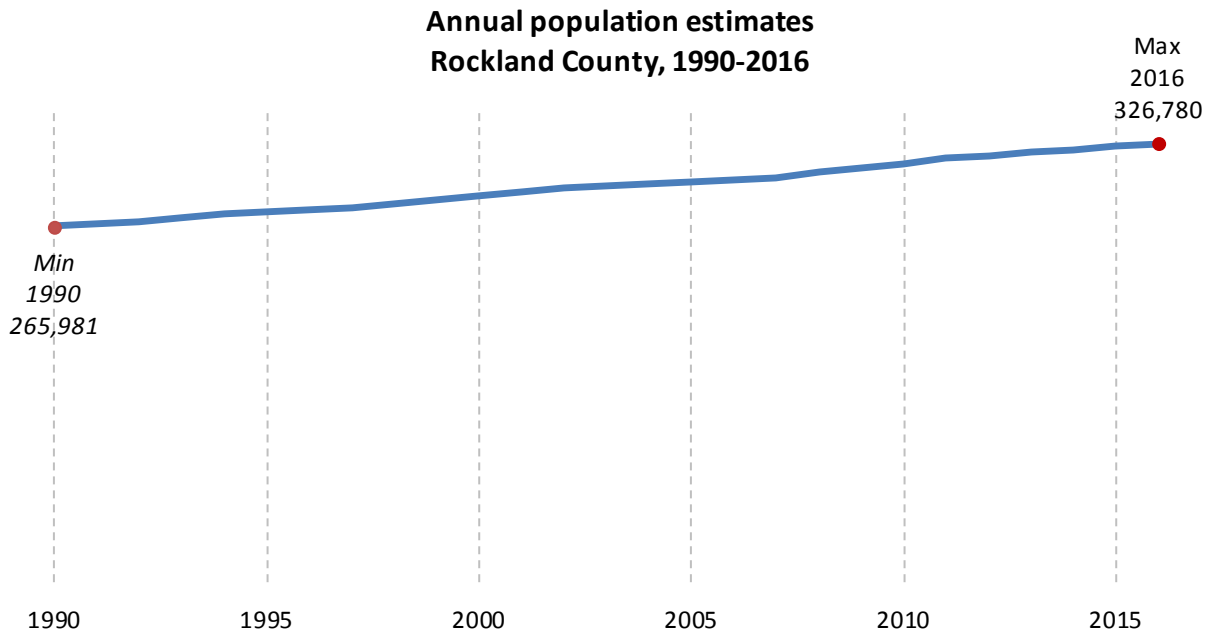
Source: 1940-2010 Decennial Census and projections by Cornell Program on Applied Demographics

3.2 Change since previous Census

	Total population	Change	
		Number	Percent
Decennial Census	1940	74,261	
	1950	89,276	15,015 20.2%
	1960	136,803	47,527 53.2%
	1970	231,105	94,302 68.9%
	1980	259,530	28,425 12.3%
	1990	265,475	5,945 2.3%
	2000	286,753	21,278 8.0%
	2010	311,687	24,934 8.7%
PAD projections	2020	329,246	17,559 5.6%
	2030	344,540	15,294 4.6%
	2040	355,824	11,284 3.3%

Source: 1940-2010 Decennial Census and projections by Cornell Program on Applied Demographics

3.3 Annual population estimates



Source: U.S. Census Bureau population estimates (1990-1999 and 2000-2009 intercensal and vintage 2016 postcensal)

3.4 Sub County population change 2010-2015

	Total Population		Difference	
	2000	2010	Count	%
New York State	18,976,821 *	19,378,102	401,281	2.1%
Rockland County	286,753	311,687	24,934	8.7%
Towns				
Clark	82,082	84,187	2,105	2.6%
Haverstraw	33,811	36,634	2,823	8.3%
Orang	47,711	49,212	1,501	3.1%
Ramapo	108,905	126,595	17,690	16.2%
Stony Point	14,244	15,059	815	5.7%

* Original counts revised through Count Question Resolution Program (CQR)

Source: U.S. Census Bureau intercensal population estimates 2000-2010

3.5 Sub County population change 2010-2015

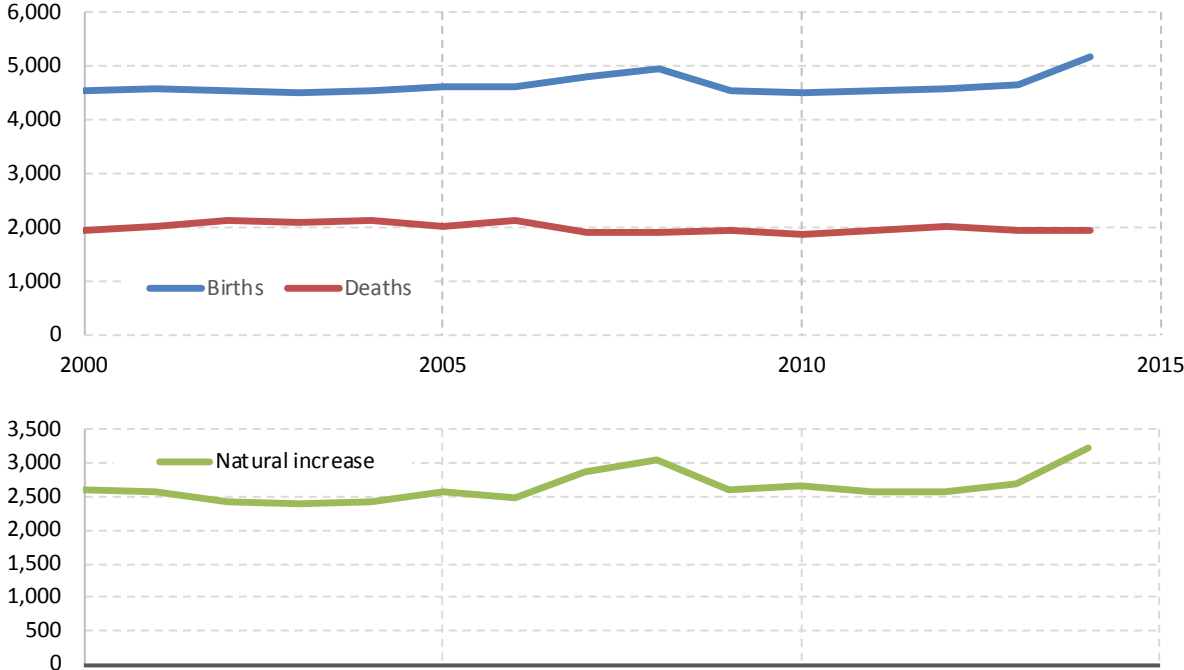
	Total Population		Difference	
	2010 base	2015	Count	%
New York State	19,378,087	19,795,791	417,704	2.2%
Rockland County	311,687	326,037	14,350	4.6%
Towns				
Clark	84,187	87,210	3,023	3.6%
Haverstraw	36,634	37,578	944	2.6%
Orang	49,212	50,479	1,267	2.6%
Ramapo	126,595	135,257	8,662	6.8%
Stony Point	15,059	15,513	454	3.0%

Source: U.S. Census Bureau population estimates 2010-2015

4 Components of population change

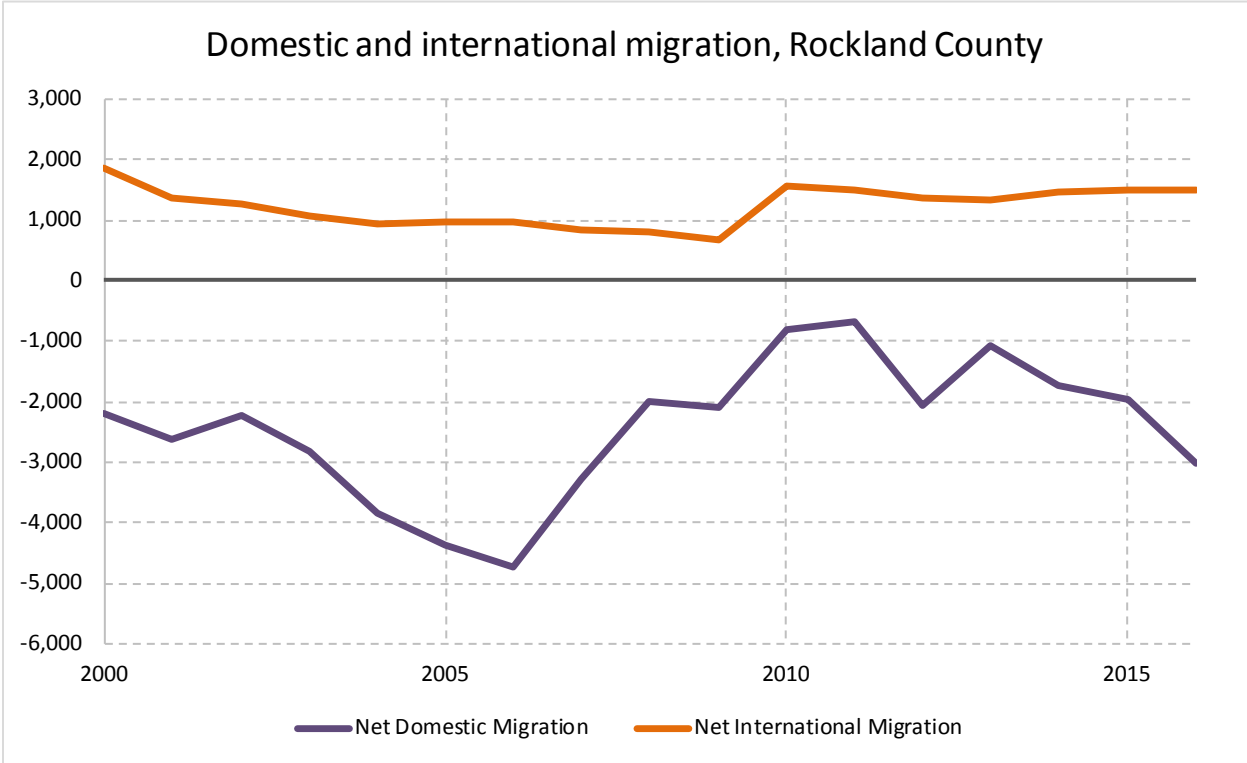
4.1 Vital Statistics

Vital Statistics, Rockland County



Source: New York State Department of Health

4.2 Migration

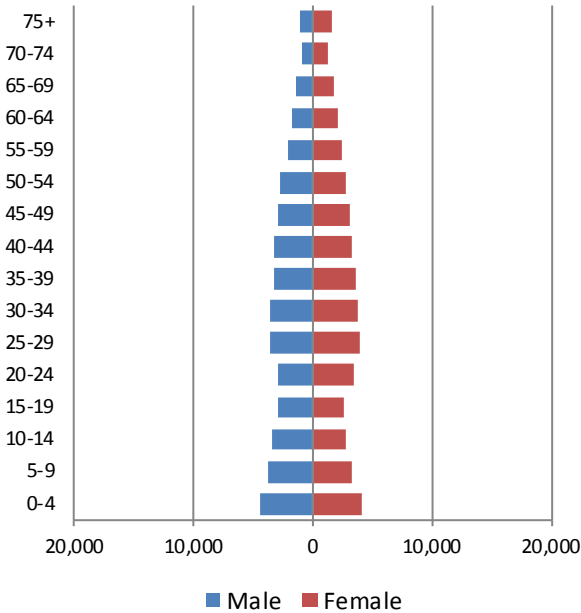


Source: Census Bureau population estimates (V2010 and V2016)

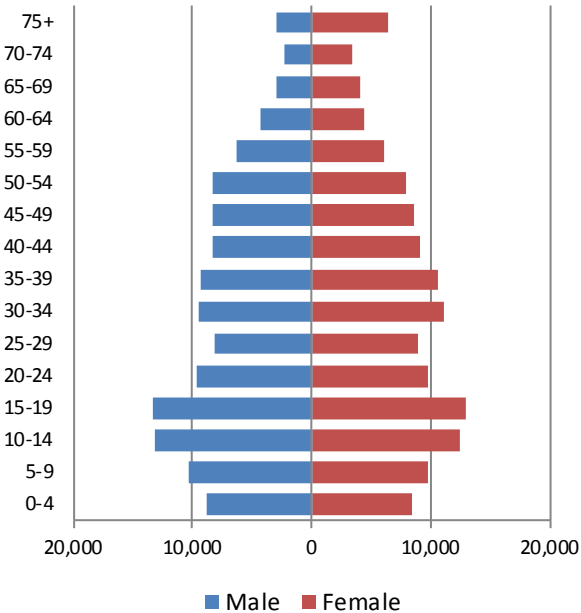
5 Population by age

5.1 Historic and projected population pyramids

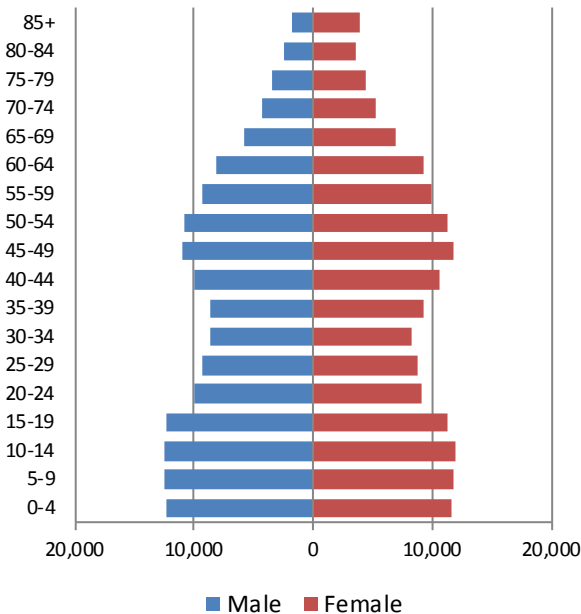
1950 Population Pyramid, Rockland County



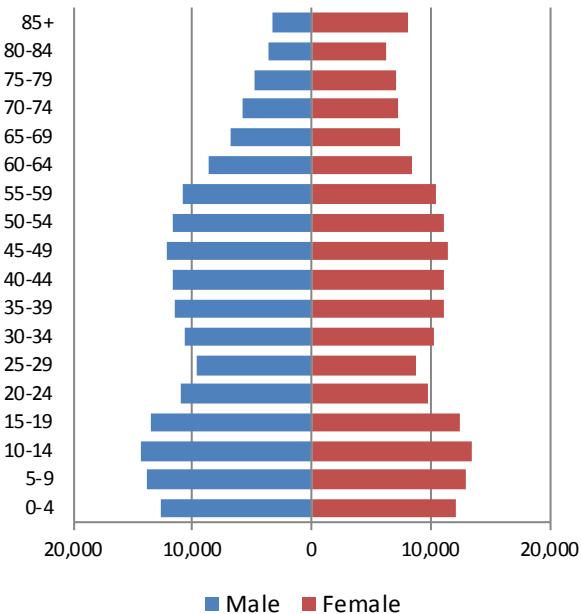
1980 Population Pyramid, Rockland County



2010 Population Pyramid, Rockland County



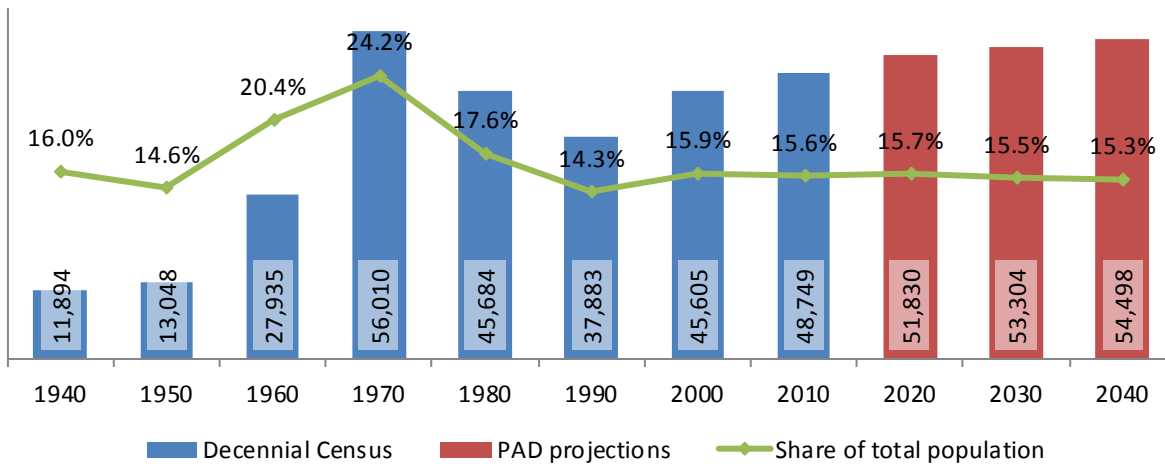
2040 Population Pyramid, Rockland County



Source: 1950, 1980, 2010 Decennial Census and projections by Cornell Program on Applied Demographics

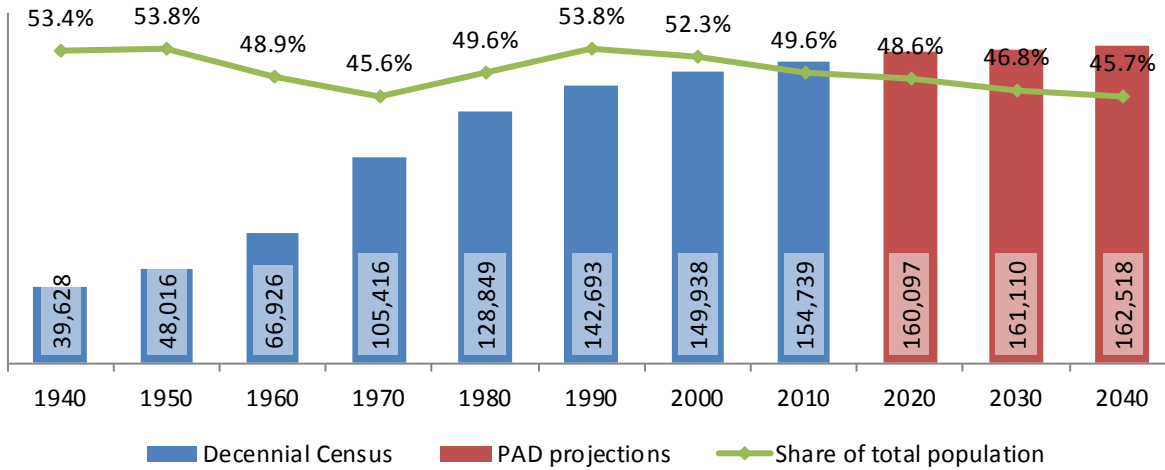
5.2 Selected age groups

Population age 5-14, Rockland County, 1940-2040



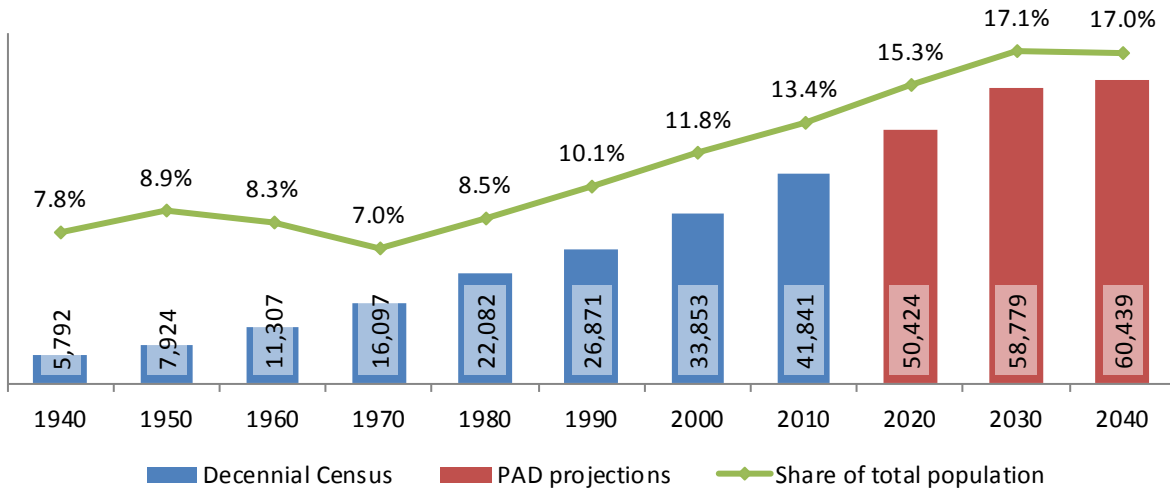
Source: 1940-2010 Decennial Census and projections by Cornell Program on Applied Demographics

Population age 25-64, Rockland County, 1940-2040



Source: 1940-2010 Decennial Census and projections by Cornell Program on Applied Demographics

Population age 65 and over, Rockland County, 1940-2040



Source: 1940-2010 Decennial Census and projections by Cornell Program on Applied Demographics

5.3 Median age

Rockland County New York State

Median age

2000	36.2	35.9
2010	36.7	38.0
2015	36.2	38.3

Source: 2000, 2010 Decennial Census, 2015 Population Estimates

6 Race

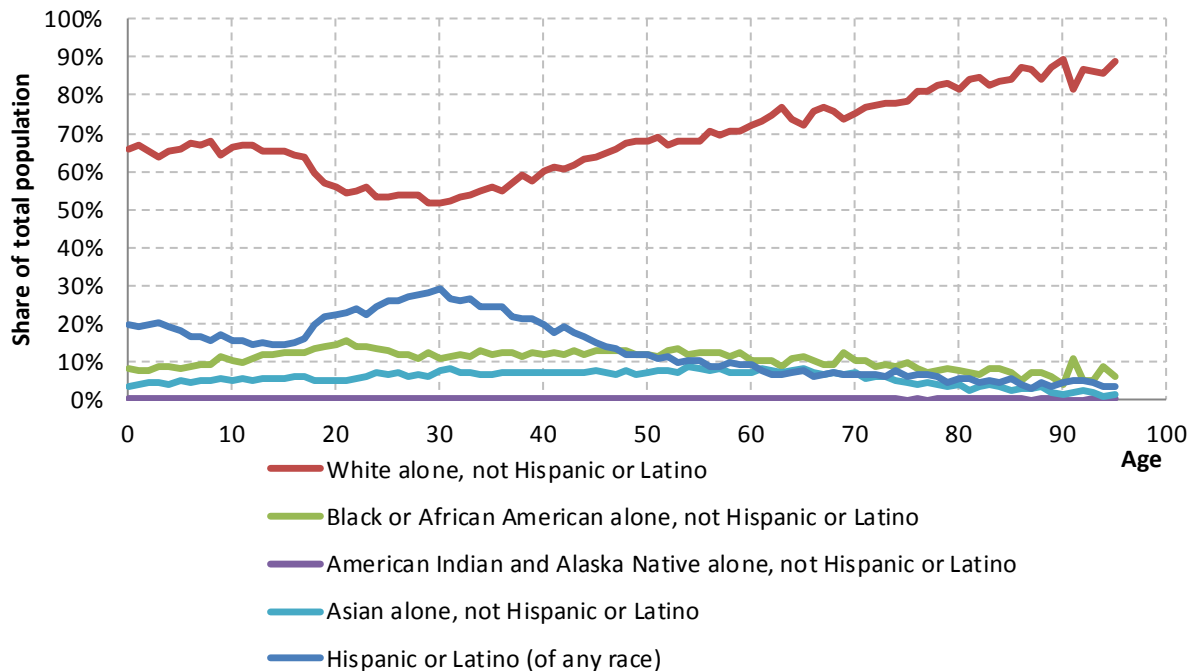
6.1 Total and household population by race

	Total		In households		In Group Quarters
	Count	Percentage	Count	Percentage	Count
Total population	311,687	100%	304,504	100%	7,183
Not Hispanic or Latino					
One race					
White	203,670	65.3%	199,073	65.4%	4,597
Black or African American	34,623	11.1%	33,403	11.0%	1,220
American Indian and Alaska Native	487	0.2%	473	0.2%	14
Asian	19,099	6.1%	18,883	6.2%	216
Native Hawaiian and Other Pacific Islander	43	0.0%	-	-	-
Some other race	609	0.2%	600	0.2%	9
Two or more races	4,373	1.4%	4,274	1.4%	99
Hispanic or Latino (of any race)	48,783	15.7%	47,755	15.7%	1,028

Source: 2010 Decennial Census

6.2 Race composition by age

Race composition by age, Rockland County



Source: 2010 Decennial Census

7 Housing units

7.1 Characteristics

HOUSING OCCUPANCY	COUNT		PERCENTAGE	
	Estimate	Margin of error	Estimate	Margin of error
Total housing units	104,442	± 227	100.0%	
Occupied housing units	98,806	± 519	94.6%	± 0.5
Vacant housing units	5,636	± 489	5.4%	± 0.5
YEAR STRUCTURE BUILT				
Total housing units	104,442	± 227	100.0%	
Built 2014 or later	60	± 64	0.1%	± 0.1
Built 2010 to 2013	1,218	± 242	1.2%	± 0.2
Built 2000 to 2009	8,211	± 524	7.9%	± 0.5
Built 1990 to 1999	8,953	± 580	8.6%	± 0.6
Built 1980 to 1989	11,340	± 588	10.9%	± 0.6
Built 1970 to 1979	19,509	± 653	18.7%	± 0.6
Built 1960 to 1969	23,383	± 877	22.4%	± 0.8
Built 1950 to 1959	14,478	± 664	13.9%	± 0.6
Built 1940 to 1949	3,718	± 367	3.6%	± 0.4
Built 1939 or earlier	13,572	± 586	13.0%	± 0.6
HOUSING TENURE				
Occupied housing units	98,806	± 519	100.0%	
Owner-occupied	68,107	± 782	68.9%	± 0.7
Renter-occupied	30,699	± 761	31.1%	± 0.7
HOUSE HEATING FUEL				
Occupied housing units	98,806	± 519	100.0%	
Utility gas	85,000	± 698	86.0%	± 0.6
Bottled, tank, or LP gas	949	± 189	1.0%	± 0.2
Electricity	8,469	± 573	8.6%	± 0.6
Fuel oil, kerosene, etc.	3,453	± 335	3.5%	± 0.3
Coal or coke	17	± 27	0.0%	± 0.1
Wood	298	± 93	0.3%	± 0.1
Solar energy	10	± 16	0.0%	± 0.1
Other fuel	337	± 131	0.3%	± 0.1
No fuel used	273	± 91	0.3%	± 0.1
VALUE				
Owner-occupied units	68,107	± 782	100.0%	
Less than \$50,000	1,575	± 213	2.3%	± 0.3
\$50,000 to \$99,999	1,286	± 214	1.9%	± 0.3
\$100,000 to \$149,999	1,234	± 207	1.8%	± 0.3
\$150,000 to \$199,999	2,089	± 279	3.1%	± 0.4
\$200,000 to \$299,999	8,010	± 510	11.8%	± 0.7
\$300,000 to \$499,999	33,155	± 893	48.7%	± 1.0
\$500,000 to \$999,999	18,969	± 700	27.9%	± 1.0
\$1,000,000 or more	1,789	± 245	2.6%	± 0.4
Median (dollars)	419,100	± 4,649		

Source: 2011-2015 American Community Survey

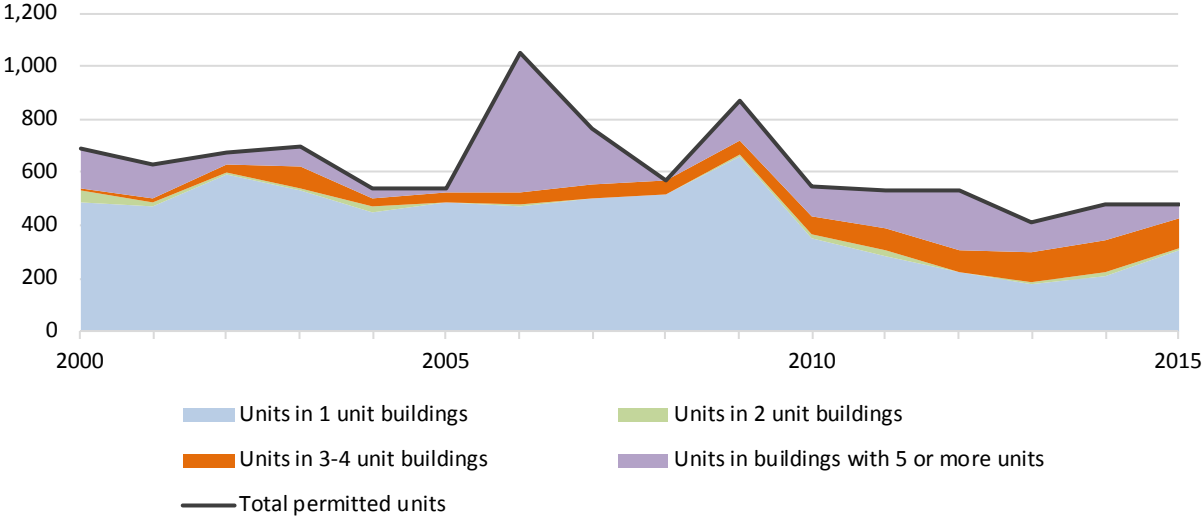
7.2 Historical data on number of housing units and occupancy status

Year	Number of Housing Units	Change since previous Census	Occupied	Occupancy rate	Vacant
1970	62,401		60,359	96.7%	2,042
1980	80,171	28.5%	77,905	97.2%	2,266
1990	88,264	10.1%	84,874	96.2%	3,390
2000	94,973	7.6%	92,675	97.6%	2,298
2010	104,057	9.6%	99,242	95.4%	4,815

Source: 1970-2010 Decennial Census

7.3 Building Permits 2000-2015

Building permits by number of permitted units in building, Rockland County



Source: Census Bureau Building Permits Survey

8 Education

8.1 Enrollment by level of school

	Estimate	Margin of error
Total enrolled in school	95,405	± 928
Nursery school, preschool	6,624	± 447
Kindergarten to 12th grade	66,975	± 536
Kindergarten	5,592	± 427
Elementary: grade 1 to grade 4	20,393	± 683
Elementary: grade 5 to grade 8	19,436	± 721
High school: grade 9 to grade 12	21,554	± 509
College, undergraduate	17,101	± 696
Graduate, professional school	4,705	± 429

Source: 2011-2015 American Community Survey

8.2 Enrollment by age

	Estimate	Margin of error
3 and 4 years	65.4%	± 3.2
5 to 9 years	97.9%	± 0.7
10 to 14 years	98.4%	± 0.6
15 to 17 years	98.1%	± 0.7
18 and 19 years	77.9%	± 3.0
20 to 24 years	46.6%	± 2.3
25 to 34 years	12.6%	± 1.3
35 years and over	2.4%	± 0.2

Source: 2011-2015 American Community Survey

8.3 Percentage age 18-24 enrolled in college

	Estimate	Margin of error
Population 18 to 24 years	29,848	± 64
Enrolled in college or graduate school	45.0%	± 1.7
Males 18 to 24 years	15,330	± 50
Enrolled in college or graduate school	42.1%	± 2.6
Females 18 to 24 years	14,518	± 31
Enrolled in college or graduate school	48.1%	± 2.7

Source: 2011-2015 American Community Survey

8.4 Educational attainment

	COUNT		PERCENTAGE	
	Estimate	Margin of error	Estimate	Margin of error
Population 25 years and over	201,901	± 71	100%	
EDUCATIONAL ATTAINMENT				
Less than 9th grade	11,496	± 909	5.7%	± 0.5
9th to 12th grade, no diploma	14,108	± 753	7.0%	± 0.4
High school graduate (includes equivalency)	46,380	± 1,309	23.0%	± 0.6
Some college, no degree	32,786	± 1,101	16.2%	± 0.5
Associate's degree	15,729	± 787	7.8%	± 0.4
Bachelor's degree	44,876	± 1,188	22.2%	± 0.6
Graduate or professional degree	36,526	± 989	18.1%	± 0.5
Percent high school graduate or higher			87.3%	± 0.5
Percent bachelor's degree or higher			40.3%	± 0.7

Source: 2011-2015 American Community Survey

9 Language spoken at home

	COUNT		PERCENTAGE		SPEAK ENGLISH LESS THAN "VERY WELL"	
	Estimate	Margin of error	Estimate	Margin of error	Estimate	Margin of error
Population 5 years and over	296,706	± 39	100%			
LANGUAGE SPOKEN AT HOME						
English only	184,854	± 2,243	62.3%	± 0.8		
Language other than English	111,852	± 2,239	37.7%	± 0.8	49,406	± 1,495
Spanish	38,597	± 953	13.0%	± 0.3	18,153	± 928
Other Indo-European languages	55,952	± 1,717	18.9%	± 0.6	25,170	± 1,071
Asian and Pacific Islander languages	12,020	± 616	4.1%	± 0.2	4,605	± 433
Other languages	5,283	± 929	1.8%	± 0.3	1,478	± 468

Source: 2011-2015 American Community Survey

10 Labor Force Characteristics

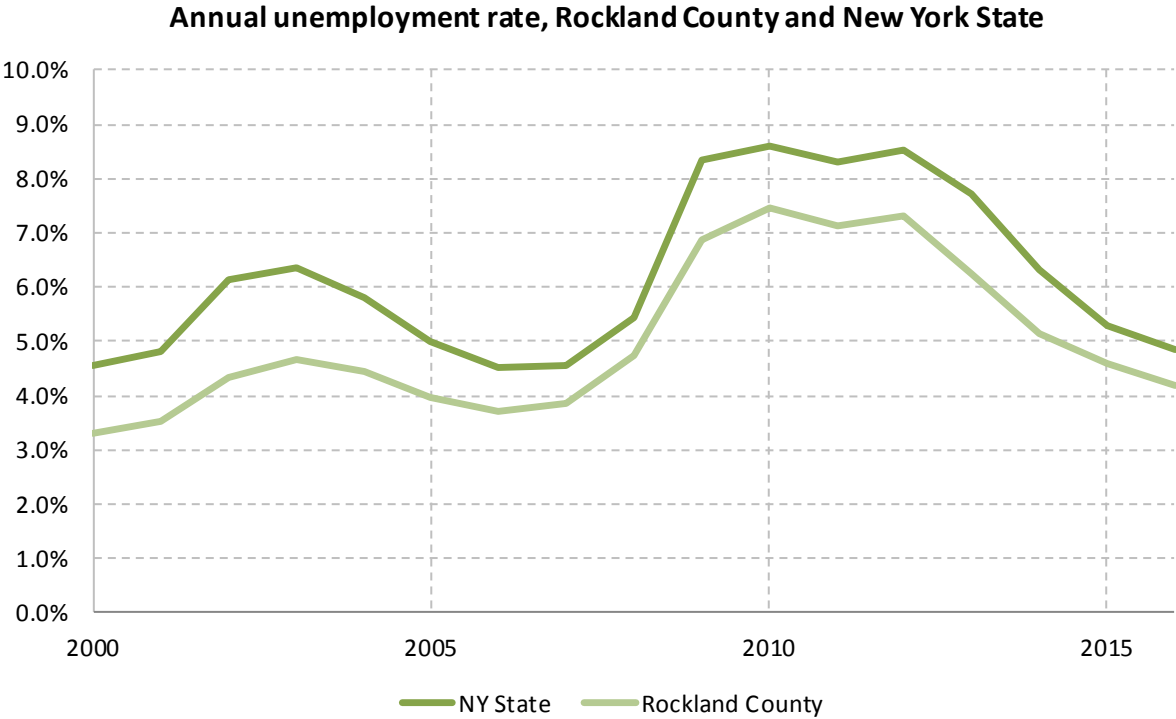
10.1 Labor force, employment and unemployment

	TOTAL		IN LABOR FORCE		EMPLOYED		UNEMPLOYMENT RATE	
	Estimate	Margin of error	Estimate	Margin of error	Estimate	Margin of error	Estimate	Margin of error
Population 16 years and over	241,889	± 384	65.6%	± 0.5	60.4%	± 0.5	7.9%	± 0.5
AGE								
16 to 19 years	18,903	± 381	33.0%	± 2.0	24.0%	± 1.8	27.3%	± 4.3
20 to 24 years	21,085	± 62	72.7%	± 2.4	62.6%	± 2.6	13.6%	± 2.0
25 to 29 years	18,690	± 62	82.5%	± 2.1	73.9%	± 2.5	10.0%	± 2.0
30 to 34 years	17,935	± 96	82.6%	± 1.8	76.6%	± 2.1	7.1%	± 1.5
35 to 44 years	36,648	± 40	84.3%	± 1.2	79.1%	± 1.5	6.1%	± 1.0
45 to 54 years	44,060	± 69	83.7%	± 1.1	79.1%	± 1.2	5.5%	± 0.9
55 to 59 years	20,520	± 661	81.8%	± 1.7	77.1%	± 1.6	5.7%	± 1.0
60 to 64 years	17,625	± 662	68.0%	± 2.5	64.3%	± 2.5	5.4%	± 1.5
65 to 74 years	25,247	± 31	33.6%	± 1.9	31.6%	± 1.8	5.9%	± 1.5
75 years and over	21,176	± 24	9.1%	± 1.2	8.3%	± 1.1	9.2%	± 4.3
RACE AND HISPANIC OR LATINO ORIGIN								
White alone	170,180	± 951	62.9%	± 0.6	58.4%	± 0.7	6.9%	± 0.6
Black or African American alone	31,545	± 643	71.4%	± 1.8	62.5%	± 2.0	12.2%	± 1.8
American Indian and Alaska Native alone	593	± 151	59.4%	± 19.6	54.6%	± 19.3	8.0%	± 7.3
Asian alone	16,480	± 409	67.4%	± 1.8	64.2%	± 1.8	4.6%	± 1.1
Two or more races	4,714	± 657	73.2%	± 3.6	67.9%	± 3.5	7.3%	± 2.3
Hispanic or Latino origin (of any race)	38,603	± 163	73.7%	± 1.7	65.9%	± 1.8	10.5%	± 1.2
White alone, not Hispanic or Latino	153,907	± 341	62.1%	± 0.6	58.0%	± 0.7	6.6%	± 0.5
SEX								
Population 20 to 64 years	176,563	± 45	80.5%	± 0.7	74.6%	± 0.7	7.2%	± 0.5
Male	87,370	± 29	86.5%	± 0.8	79.5%	± 0.8	7.9%	± 0.7
Female	89,193	± 38	74.6%	± 0.9	69.9%	± 1.0	6.4%	± 0.7
With own children under 18 years	37,150	± 835	73.9%	± 1.4	69.8%	± 1.5	5.5%	± 0.9
EDUCATIONAL ATTAINMENT								
Population 25 to 64 years	155,478	± 80	81.5%	± 0.6	76.3%	± 0.7	6.4%	± 0.5
Less than high school graduate	18,219	± 1,013	66.2%	± 2.8	59.3%	± 3.0	10.5%	± 2.4
High school graduate (includes equivalency)	33,011	± 1,246	75.4%	± 1.3	69.2%	± 1.5	8.0%	± 1.3
Some college or associate's degree	39,051	± 1,079	83.1%	± 1.4	76.7%	± 1.4	7.7%	± 1.0
Bachelor's degree or higher	65,197	± 1,184	88.0%	± 0.8	84.3%	± 0.9	4.1%	± 0.5

Table formula: **LABOR FORCE** = # EMPLOYED + # UNEMPLOYED
 % IN LABOR FORCE = LABOR FORCE / TOTAL * 100%
 % EMPLOYED = # EMPLOYED / TOTAL * 100%
 UNEMPLOYMENT RATE = # UNEMPLOYED / LABOR FORCE * 100%

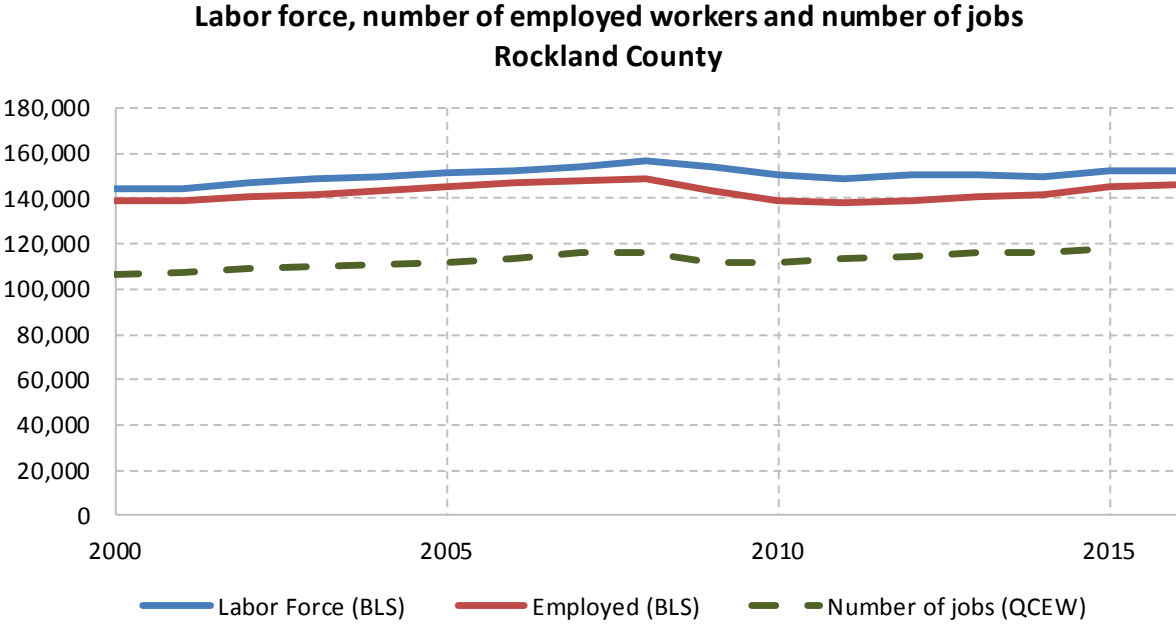
Source: 2011-2015 American Community Survey

10.2 Annual unemployment rate



Source: Bureau Labor Statistics (BLS)

10.3 Employment and number of jobs



Source: Bureau Labor Statistics (BLS) and NY Department of Labor - Quarterly Census of Employment and Wages (QCEW) – annual averages

10.4 Class of worker

		Total	%Male	%Female
Civilian employed population 16 years and over	Estimate	146,049	52.5%	47.5%
	<i>Margin of error</i>	$\pm 1,304$	± 0.4	± 0.4
Private for-profit wage and salary workers:	Estimate	96,393	55.8%	44.2%
	<i>Margin of error</i>	$\pm 1,424$	± 0.7	± 0.7
Employee of private company workers	Estimate	89,066	54.1%	45.9%
	<i>Margin of error</i>	$\pm 1,503$	± 0.7	± 0.7
Self-employed in own incorporated business workers	Estimate	7,327	76.4%	23.6%
	<i>Margin of error</i>	± 490	± 2.7	± 2.7
Private not-for-profit wage and salary workers	Estimate	17,886	41.7%	58.3%
	<i>Margin of error</i>	± 920	± 2.3	± 2.3
Local government workers	Estimate	14,627	46.6%	53.4%
	<i>Margin of error</i>	± 834	± 2.5	± 2.5
State government workers	Estimate	7,190	42.9%	57.1%
	<i>Margin of error</i>	± 502	± 3.8	± 3.8
Federal government workers	Estimate	1,442	64.1%	35.9%
	<i>Margin of error</i>	± 300	± 8.0	± 8.0
Self-employed in own not incorporated business workers and unpaid family workers	Estimate	8,511	53.2%	46.8%
	<i>Margin of error</i>	± 650	± 3.7	± 3.7

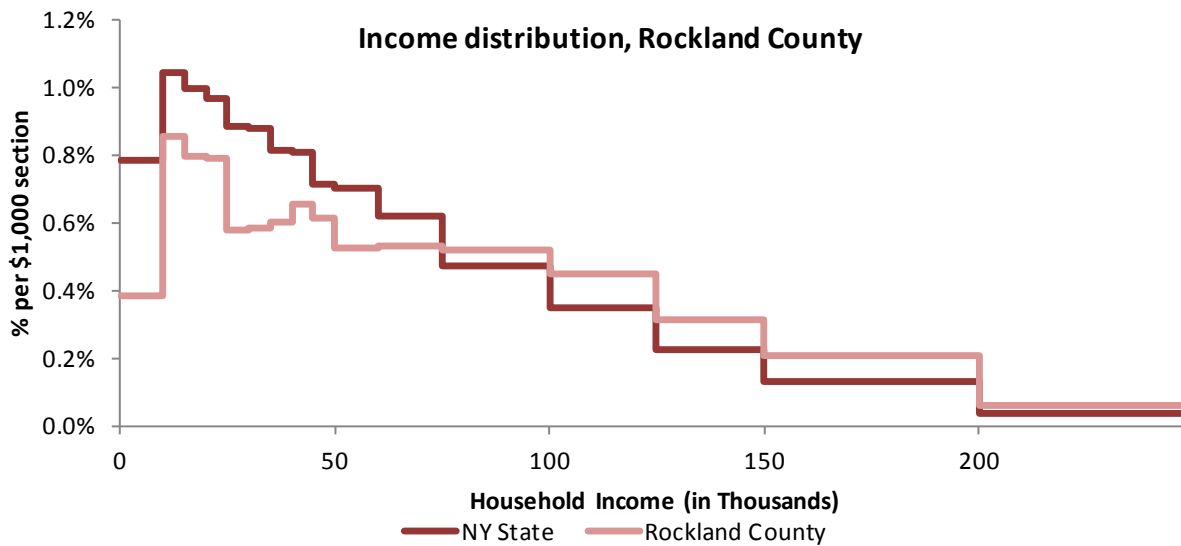
Source: 2011-2015 American Community Survey

11 Household Income

11.1 Income Distribution

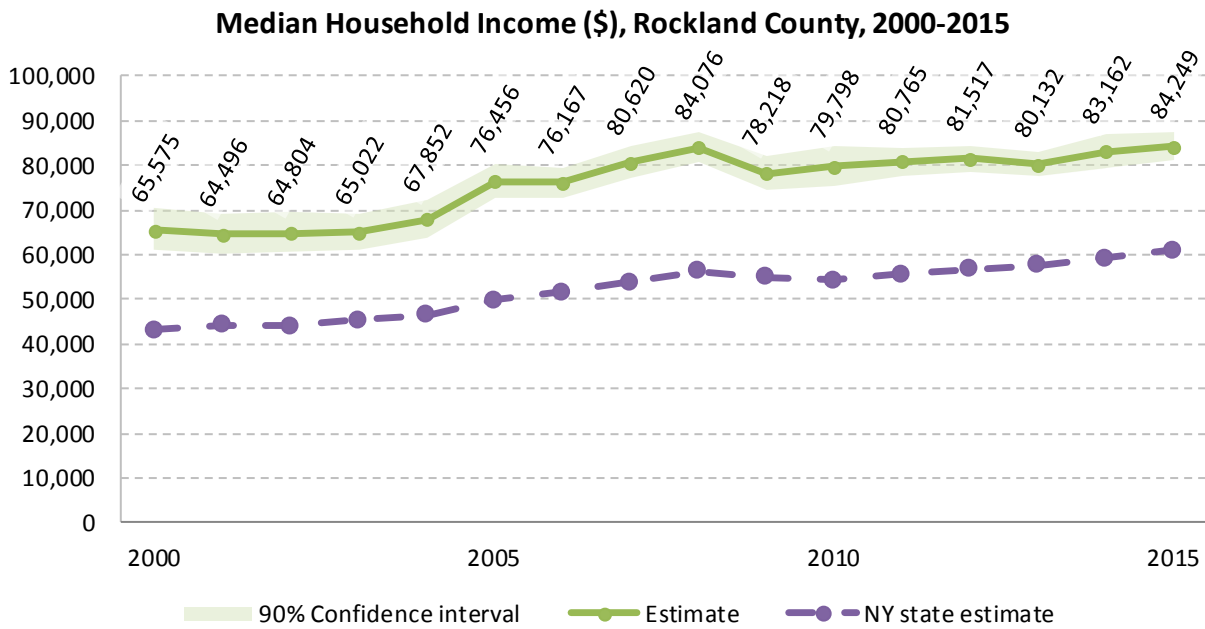
	Estimate	Margin of error	Interval width (in \$1,000)	Est. per \$1,000 section
Total:	98,806	± 519		
Less than \$10,000	3,804	± 403	10	380.4
\$10,000 to \$14,999	4,229	± 396	5	845.8
\$15,000 to \$19,999	3,944	± 422	5	788.8
\$20,000 to \$24,999	3,917	± 434	5	783.4
\$25,000 to \$29,999	2,856	± 366	5	571.2
\$30,000 to \$34,999	2,881	± 369	5	576.2
\$35,000 to \$39,999	2,966	± 350	5	593.2
\$40,000 to \$44,999	3,251	± 342	5	650.2
\$45,000 to \$49,999	3,036	± 337	5	607.2
\$50,000 to \$59,999	5,177	± 450	10	517.7
\$60,000 to \$74,999	7,880	± 612	15	525.3
\$75,000 to \$99,999	12,888	± 573	25	515.5
\$100,000 to \$124,999	11,142	± 593	25	445.7
\$125,000 to \$149,999	7,746	± 533	25	309.8
\$150,000 to \$199,999	10,434	± 567	50	208.7
\$200,000 or more	12,655	± 613	-	-

Source: 2011-2015 American Community Survey



Source: 2011-2015 American Community Survey

11.2 Median household income: Trends over time



Source: Small Area Income and Poverty Estimates (SAIPE)

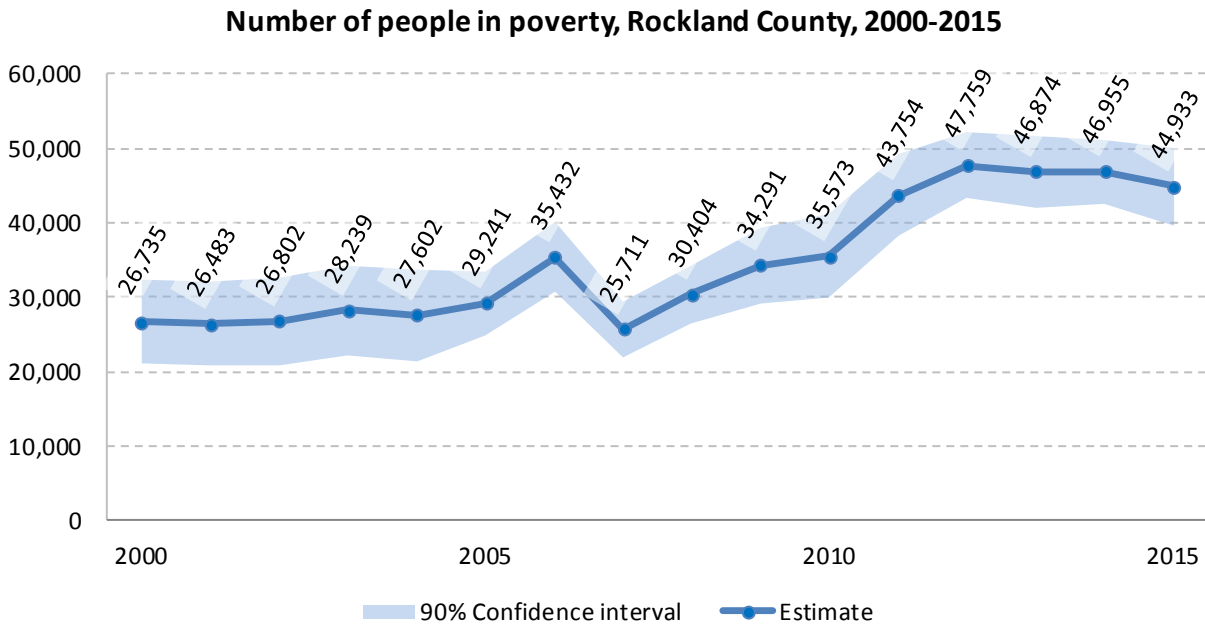
12 Poverty

12.1 Family Income to Poverty Ratio

	TOTAL		PERCENT OF ALL	
	Estimate	Margin of error	Estimate	Margin of error
All families	74,774	± 799		
ALL FAMILIES WITH INCOME:				
Below 50 percent of poverty level	3,033	± 288	4.1%	± 0.4
Below 100 percent of poverty level	7,714	± 450	10.3%	± 0.6
Below 125 percent of poverty level	9,976	± 521	13.3%	± 0.7
Below 150 percent of poverty level	11,837	± 559	15.8%	± 0.7
Below 185 percent of poverty level	14,518	± 641	19.4%	± 0.8
Below 200 percent of poverty level	15,897	± 642	21.3%	± 0.8
Below 300 percent of poverty level	23,243	± 802	31.1%	± 1.0
Below 400 percent of poverty level	30,624	± 859	41.0%	± 1.1
Below 500 percent of poverty level	38,645	± 925	51.7%	± 1.1

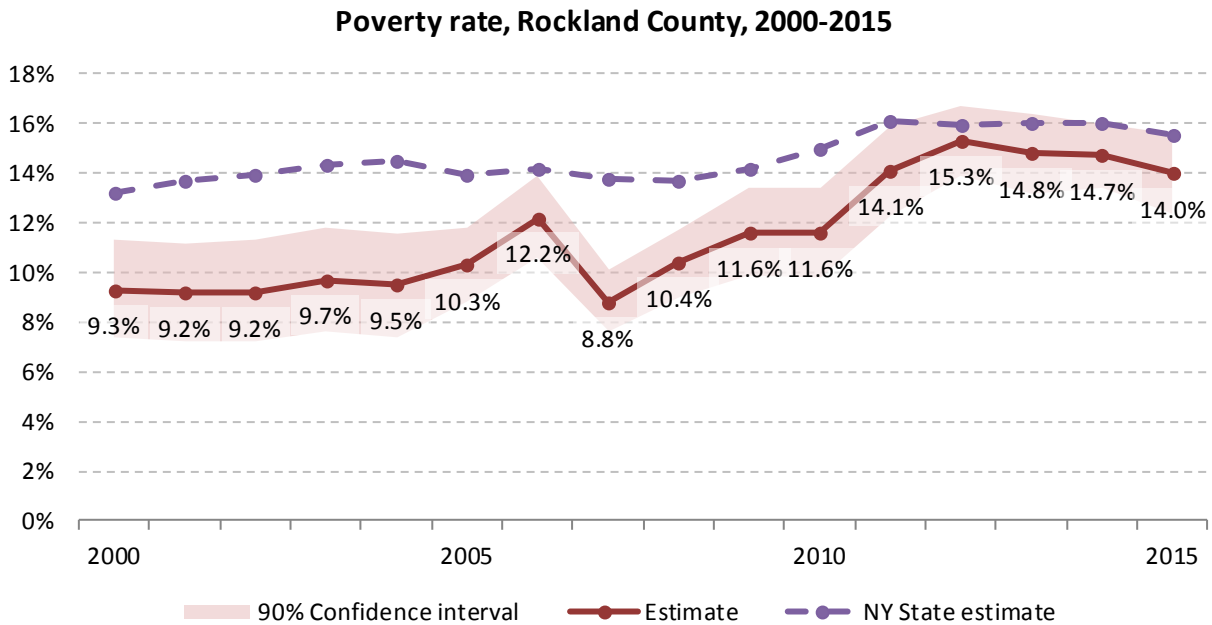
Source: 2011-2015 American Community Survey

12.2 Poverty: Trends over time: Count



Source: Small Area Income and Poverty Estimates (SAIPE)

12.3 Poverty: Trends over time: Rate



Source: Small Area Income and Poverty Estimates (SAIPE)

12.4 Poverty characteristics

	TOTAL		BELOW POVERTY LEVEL		PERCENT BELOW POVERTY LEVEL	
	Estimate	Margin of error	Estimate	Margin of error	Estimate	Margin of error
Population for whom poverty status is determined	315,877	± 483	46,118	± 2,267	14.6%	± 0.7
AGE						
Under 18 years	88,220	± 252	22,171	± 1,459	25.1%	± 1.6
Under 5 years	23,764	± 120	7,885	± 640	33.2%	± 2.7
5 to 17 years	64,456	± 198	14,286	± 1,029	22.2%	± 1.6
18 to 34 years	64,472	± 274	10,575	± 660	16.4%	± 1.0
35 to 64 years	118,177	± 209	10,437	± 761	8.8%	± 0.6
65 years and over	45,008	± 201	2,935	± 395	6.5%	± 0.9
SEX						
Male	154,975	± 292	21,825	± 1,213	14.1%	± 0.8
Female	160,902	± 304	24,293	± 1,309	15.1%	± 0.8
RACE AND HISPANIC OR LATINO ORIGIN						
White alone	224,082	± 1,329	34,414	± 2,093	15.4%	± 0.9
Black or African American alone	38,824	± 835	3,547	± 580	9.1%	± 1.5
American Indian and Alaska Native alone	682	± 203	92	± 85	13.5%	± 12.4
Asian alone	19,718	± 509	705	± 258	3.6%	± 1.3
Hispanic or Latino origin (of any race)	52,878	± 167	10,635	± 1,095	20.1%	± 2.1
White alone, not Hispanic or Latino	202,027	± 380	30,943	± 1,922	15.3%	± 0.9
EDUCATIONAL ATTAINMENT						
Population 25 years and over	199,483	± 334	19,444	± 987	9.7%	± 0.5
Less than high school graduate	24,770	± 1,048	6,107	± 566	24.7%	± 2.1
High school graduate (includes equivalency)	45,553	± 1,314	6,764	± 538	14.8%	± 1.2
Some college, associate's degree	48,210	± 1,191	3,804	± 491	7.9%	± 1.0
Bachelor's degree or higher	80,950	± 1,454	2,769	± 348	3.4%	± 0.4
EMPLOYMENT STATUS						
Civilian labor force 16 years and over	157,853	± 1,289	11,919	± 721	7.6%	± 0.5
Employed	145,433	± 1,294	9,740	± 620	6.7%	± 0.4
Male	76,413	± 748	5,396	± 405	7.1%	± 0.5
Female	69,020	± 987	4,344	± 422	6.3%	± 0.6
Unemployed	12,420	± 751	2,179	± 348	17.5%	± 2.6
Male	7,098	± 538	1,058	± 203	14.9%	± 2.9
Female	5,322	± 525	1,121	± 238	21.1%	± 4.0
WORK EXPERIENCE IN THE PAST 12 MONTHS						
Population 16 years and over	69,020	± 987	4,344	± 422	6.3%	± 0.6
Worked full-time, year-round	12,420	± 751	2,179	± 348	17.5%	± 2.6
Worked part-time or part-year	7,098	± 538	1,058	± 203	14.9%	± 2.9
Did not work	5,322	± 525	1,121	± 238	21.1%	± 4.0

Source: 2011-2015 American Community Survey

13 Glossary

American Community Survey (ACS) - The American Community Survey is an ongoing survey of the population that provides data every year on a variety of social and economic characteristics—age, sex, race, family and relationships, income and benefits, health insurance, education, veteran status, disabilities, where you work and how you get there, where you live and how much you pay for some essentials. The ACS replaced the information previously gathered by what was known as the “long form” of the decennial censuses. The ACS provides communities, companies and other institutions with current information they need to plan investments and services. Information from the survey generates data that help determine how more than \$400 billion in federal and state funds are distributed each year. Every estimate presented in the American Community Survey, as in other surveys, has an uncertainty associated with it. Often the magnitude of that uncertainty is expressed as the Margin of Error.

Confidence Interval (CI) - indication of the degree of uncertainty about a sample estimates. Confidence intervals have been traditionally reported at the 90, 95 and 99 percent levels. A 90 percent confidence interval can be interpreted, for example, roughly as providing 90 percent certainty that the interval defined by the upper and lower bounds contain the true value of the characteristic. If a Margin of Error is given, the lower bound of the confidence interval is equal to the estimate minus the Margin of Error and the upper bound is equal to the estimate plus the Margin of Error. (See further, Margin of Error definition below.)

County subdivision or Minor Civil Division (MCD) - The Census Bureau geography for primary administrative units below the county level in New York is collectively referred to as county subdivisions or minor civil divisions. These include towns, cities and Indian Reservations.

Decennial Census - the Census of the population and housing taken every 10 years in the United States, at the start of each decade, since 1790.

Employed – either “at work” or “with a job, but not at work”.

Group Quarters Population - all U.S. residents who live in group living facilities including correctional institutions, juvenile facilities, skilled nursing facilities, college residence halls, military barracks, group homes, and workers' dormitories.

Household Population - all U.S. residents who live in housing units such as single family homes, townhouses, apartments, and mobile homes.

Intercensal Population Estimates - estimates produced for the years between two decennial censuses when both the beginning and ending populations are known. They are produced once a decade by adjusting the existing time series of postcensal estimates for the entire decade to smooth the transition from one decennial census count to the next. They differ from the postcensal estimates that are released annually because the difference between the April 1 postcensal estimate and April 1 census count for the end of the decade is redistributed across the estimates for that decade. For dates when both postcensal and intercensal estimates are available, intercensal estimates are preferred.

Labor Force - consists of people classified as employed or unemployed.

Margin of Error (MOE) - a measure of the precision of an estimate at a given level of confidence. The confidence level of a margin of error indicates the likelihood that the difference between the population value (which you

would get if you could measure the whole population instead of a sample) and the estimate is less than or equal to the margin of error. The range from the estimate minus the margin of error to the estimate plus the margin of error is called the confidence interval. All ACS estimates are published with their margins of error at the 90 percent confidence level. Margins of error are useful in assessing the reliability of estimates and whether differences between estimates are significant.

Numeric Population Change - difference between the population of an area at the beginning and end of a time period. It is computed by taking the difference between the population at one point in time (t_1) and some future time (t_2).

Percent Population Change - difference between the population of an area at the beginning and end of a time period, expressed as a percentage of the beginning population. It is computed by dividing the population change ($t_2 - t_1$) by t_1 and multiplying the result by 100.

Population Estimates - The calculated number of people living in an area as of a specified point in time, usually July 1st. The estimated population is calculated using a component of change model that incorporates information on natural increase (births, deaths) and net migration (net domestic migration, net international migration) that has occurred in an area since the latest decennial census. A procedure for estimating the current population using a procedure involving a "base population" value at time $t - 1$, adding to that the births during the interval $t - 1$ to t , subtracting the deaths during that interval $t - 1$ to t , and then adding the net domestic and net international migration that occurred during that interval.

Population Density - Total number of people per areal unit like a square mile or square kilometer.

Population Pyramids - A graphical way of portraying a population's age and sex composition at a given slice in time. The first horizontal bar, constituting the base of the graph, is the youngest age group (typically 0-4) with the number of males in that age group on the left and the number of females in that age group on the right. On top of that age group is another horizontal bar for the next age group (e.g. 5-9) and so forth with the top bar typically for those aged 75 and over. In a population with lots of births and deaths, the shape typically forms a pyramid with a broad base and a narrow top. It is one of the most basic ways to understand population change over time as well as between different geographic units of a similar status (e.g. counties).

Postcensal Estimates - estimates produced for the years after a decennial census when only the beginning population is known. They are produced and revised each year, targeted to July 1 of that year.

Projection - estimated population at some future time based on assumptions about births, deaths, migration, and ages.

Race/Ethnicity - the Census Bureau collects racial data in accordance with guidelines provided by the U.S. Office of Management and Budget (OMB), and these data are based on self-identification. The racial categories included in the census questionnaire generally reflect a social definition of race recognized in this country and not an attempt to define race biologically, anthropologically, or genetically. In addition, it is recognized that the categories of the race item include racial and national origin or sociocultural groups. People may choose to report more than one race to indicate their racial mixture, such as "American Indian" and "White." People who identify their origin as Hispanic, Latino, or Spanish may be of any race. OMB requires five minimum categories: White, Black or African American, American Indian or Alaska Native, Asian, and Native Hawaiian or Other Pacific Islander. Hispanics may be classified as white or black. So we generally separate them out as an ethnic group first.

Unemployed – Not employed, but actively looking for work and available to accept a job.

Unemployment rate – Fraction of the Labor Force that is unemployed.

Urban Area – A densely settled area with at least 2,500 people. If the total number of people is less than 50,000 the Census Bureau calls it an Urban Cluster, otherwise an Urbanized Area.

Vintage - each year, the U.S. Census Bureau produces and publishes estimates of the population for each state and county, as well as the nation as a whole. These are called “vintages.” In producing these vintages, the Bureau utilizes administrative data from a number of sources to estimate 1) the change in population since the most recent decennial census, and 2) the population for each year since the most recent decennial census. With each annual release of population estimates (vintage), the entire time series of estimates beginning on April 1, 2010 is revised and updated.

Vital Statistics - quantitative data concerning a population, such as the number of births, marriages, and deaths.

14 References

Rockland County homepage: <https://rocklandgov.com/>

At Cornell:

- Program on Applied Demographics (PAD)
URL: <http://pad.human.cornell.edu/>
 - More county trends: <https://pad.human.cornell.edu/counties/trends1geo.cfm?geo=87>
- Community and Regional Development Institute (CaRDI)
URL: <https://cardi.cals.cornell.edu/>
- Cornell Cooperative Extensions (CCE)
Home page: <http://www.cce.cornell.edu>
 - Rockland local office: <http://rocklandcce.org/>

Data sources and background information:

- New York State Data Center
 - <https://labor.ny.gov/nys-data-center/index.shtm>
- U.S. Census Bureau - general
 - QuickFacts: <https://www.census.gov/quickfacts/table/PST045216/36,36087>
 - American FactFinder: <http://factfinder.census.gov/>
- U.S. Census Bureau - population
 - Decennial Census
 - Background: <https://www.census.gov/2010census/>
 - Demographic Profile: http://factfinder2.census.gov/bkmk/table/1.0/en/DEC/10_SF1/SF1DP1/0500000US36087
 - American Community Survey (ACS)
 - Background: <https://www.census.gov/programs-surveys/acs/>
 - Social Data Profile: http://factfinder2.census.gov/bkmk/table/1.0/en/ACS/15_5YR/DP02/0500000US36087
 - Economic Data Profile: http://factfinder2.census.gov/bkmk/table/1.0/en/ACS/15_5YR/DP03/0500000US36087
 - Housing Data Profile: http://factfinder2.census.gov/bkmk/table/1.0/en/ACS/15_5YR/DP04/0500000US36087
 - Demographics Data Profile: http://factfinder2.census.gov/bkmk/table/1.0/en/ACS/15_5YR/DP05/0500000US36087
 - Population estimates:
 - General: <https://www.census.gov/programs-surveys/popest.html>
 - Explorer: <https://www.census.gov/censusexplorer/censusexplorer-popest.html>
- U.S. Census Bureau – Small Area Income & Poverty Estimates (SAIPE)
 - <http://www.census.gov/did/www/saipe/>
- U.S. Census Bureau - Public Use Quarterly Workforce Indicators (QWI) – annual averages
 - <https://qwiexplorer.ces.census.gov/static/explore.html>
- U.S. Census Bureau – Building Permits Survey
 - <https://www.census.gov/construction/bps/>

- Bureau Labor Statistics (BLS)
 - Local Area Unemployment Statistics: <http://www.bls.gov/lau/>
 - Quarterly Census of Employment and Wages (QCEW): <https://www.bls.gov/cew/data.htm>
- NY Department of Labor -
 - Labor statistics: <https://labor.ny.gov/stats/index.shtm>
 - Quarterly Census of Employment and Wages (QCEW): <https://labor.ny.gov/stats/LSQCEW.shtm>
- NY State Department of Health
 - Vital Statistics: https://www.health.ny.gov/statistics/vital_statistics/
- Bureau of Economic Analysis (BEA) – Local Area Personal Income and Employment: <http://bea.gov/iTable/iTable.cfm?ReqID=70&step=1>

Alternative sites for data retrieval:

- The Nelson A. Rockefeller Institute of Government – New York State Statistical Yearbooks http://www.rockinst.org/nys_statistics/
- Headwaters Economics: Economic Profile System – Human Dimensions Toolkit <http://headwaterseconomics.org/tools/eps-hdt>
- National Historical Geographic Information System (NHGIS) <https://www.nhgis.org/>
- Social Explorer <http://www.socialexplorer.com/pub/home/home.aspx>
- Stats America <http://www.statsamerica.org/Default.aspx>
- Missouri Census Data Center <http://mcdc.missouri.edu/>
- DataFerret <http://dataferrett.census.gov/>
- Investigative Reporters and Editors (IRE) Census project <http://census.ire.org/>