

Queens County Profile 2017

A collection of recent demographic, social and economic data

Compiled by

Jan Vink

Cornell Program on Applied Demographics



Cornell University



Program
on Applied
Demographics

CORNELL POPULATION CENTER

This profile is a part of a set of profiles generated for each county in New York State. The profiles were developed and generated by the Cornell Program on Applied Demographics. The work is sponsored by the New York State Data Center in the New York State Department of Labor.

Cornell Program on Applied Demographics:

The Program on Applied Demographics (PAD) brings skills in demographics, economics, statistics, data gathering and data analysis together to provide a variety of organizations with data, information and advice. PAD is located in the Department of Policy Analysis and Management within the College of Human Ecology at Cornell University. PAD is also affiliated with the Cornell Institute for Social and Economic Research and the Cornell Population Center.

For more information: <http://pad.human.cornell.edu/>

New York State Data Center:

The New York State Data Center (NYSDC) is located in the Division of Research and Statistics within the New York State Department of Labor. The State Data Center operates as part of a nationwide effort to improve public access to data provided by the U.S. Census Bureau. The U.S. Census Bureau collects and tabulates data on a multitude of subjects such as population, social, economic and housing demographics, labor force data, health care, migration and transportation. These data play a critical role in understanding our local and larger surrounding communities. Census data also influence state and federal funding, aid decision making in the legislative process, and determine each state's number of congressional seats. As the lead agency in New York for the SDC program, the New York State Data Center helps users navigate through the multitude of surveys and products provided by the U.S. Census Bureau.

For more information: <https://labor.ny.gov/nys-data-center/>

All profiles are freely downloadable as PDF documents on the PAD website:

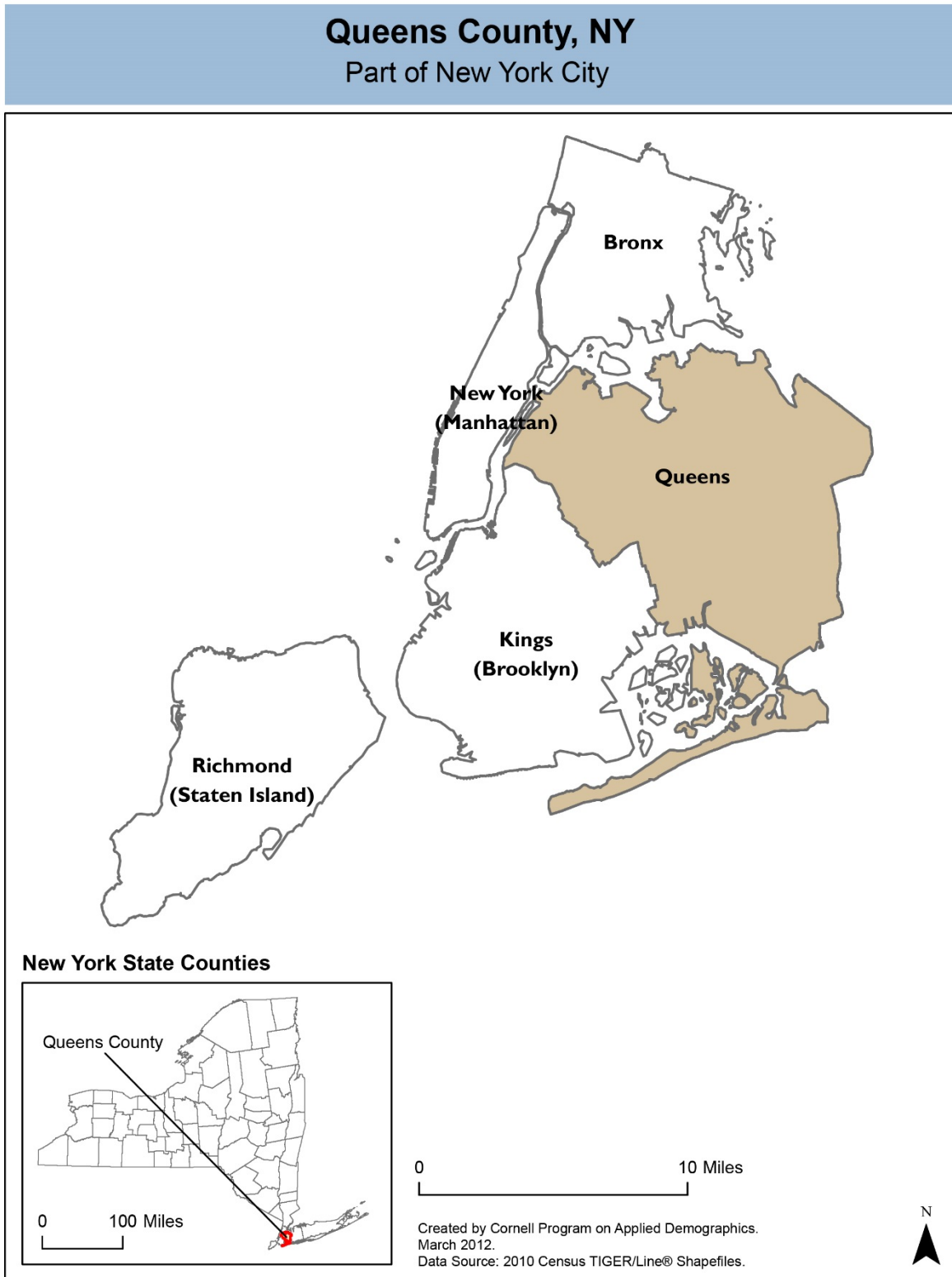
<http://pad.human.cornell.edu/profiles/index.cfm>

This profile is an update from the County Profile produced in 2013. The 2013 profile also contained information on agriculture related items and can be found at <https://pad.human.cornell.edu/profiles/2013/Queens.pdf>

Contents

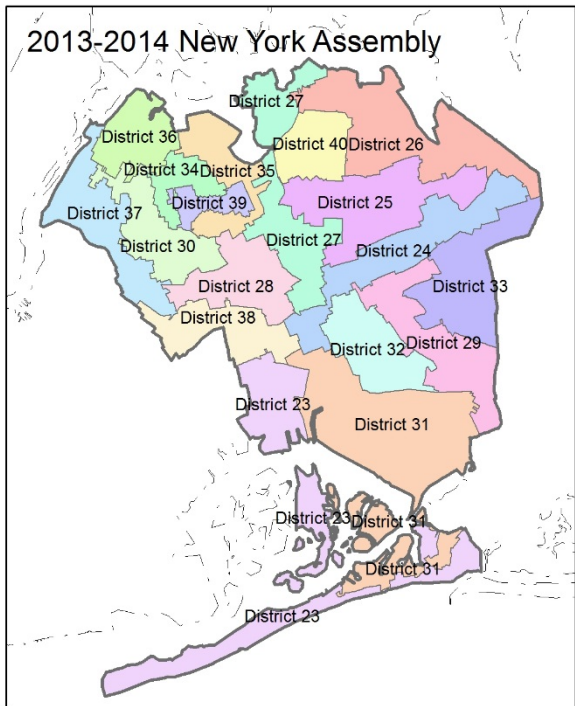
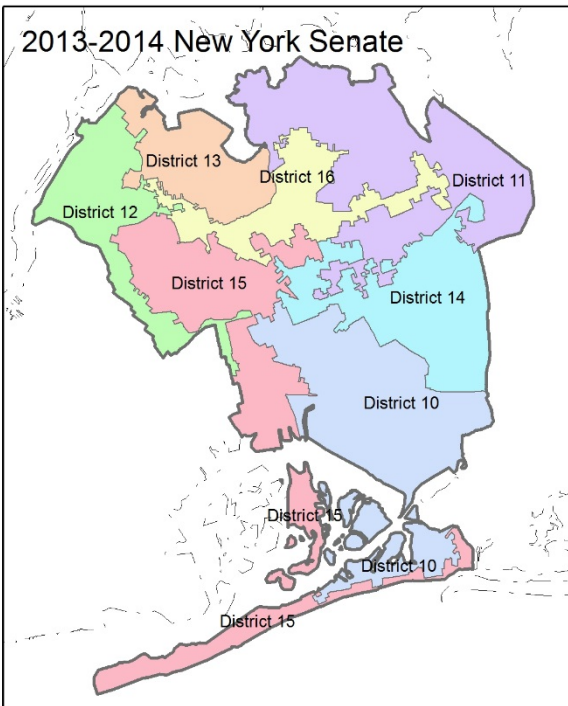
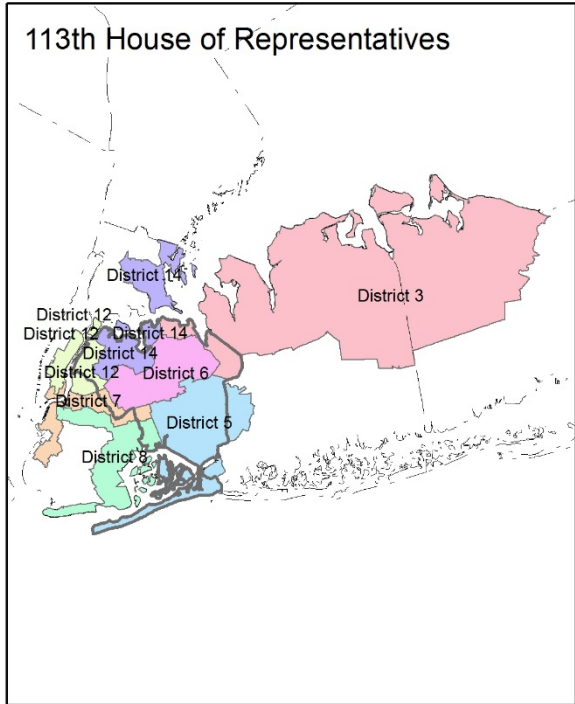
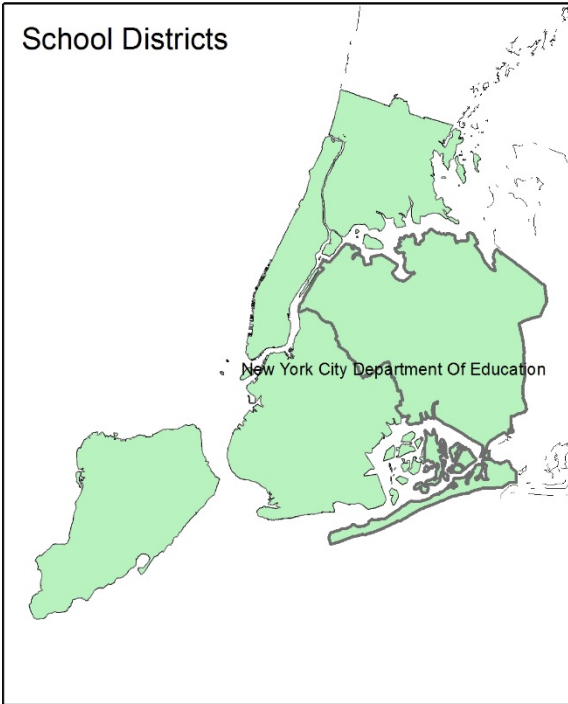
1	Reference Maps (towns and places as defined in 2010)	3
2	Population density and Urban Areas Map	5
3	Total Population	6
3.1	Historic and projected	6
3.2	Change since previous Census	6
3.3	Annual population estimates	7
3.4	New York City population change 2010-2016	8
3.5	New York City population change 2010-2016	8
4	Components of population change	9
4.1	Vital Statistics	9
4.2	Migration	10
5	Population by age	11
5.1	Historic and projected population pyramids	11
5.2	Selected age groups	12
5.3	Median age	13
6	Race	14
6.1	Total and household population by race	14
6.2	Race composition by age	14
7	Housing units	15
7.1	Characteristics	15
7.2	Historical data on number of housing units and occupancy status	16
7.3	Building Permits 2000-2015	16
8	Education	17
8.1	Enrollment by level of school	17
8.2	Enrollment by age	17
8.3	Percentage age 18-24 enrolled in college	17
8.4	Educational attainment	18
9	Language spoken at home	18
10	Labor Force Characteristics	19
10.1	Labor force, employment and unemployment	19
10.2	Annual unemployment rate	20
10.3	Employment and number of jobs	20
10.4	Class of worker	21
11	Household Income	22
11.1	Income Distribution	22
11.2	Median household income: Trends over time	23
12	Poverty	23
12.1	Family Income to Poverty Ratio	23
12.2	Poverty: Trends over time: Count	24
12.3	Poverty: Trends over time: Rate	24
12.4	Poverty characteristics	25
13	Glossary	26
14	References	29

1 Reference Maps (towns and places as defined in 2010)

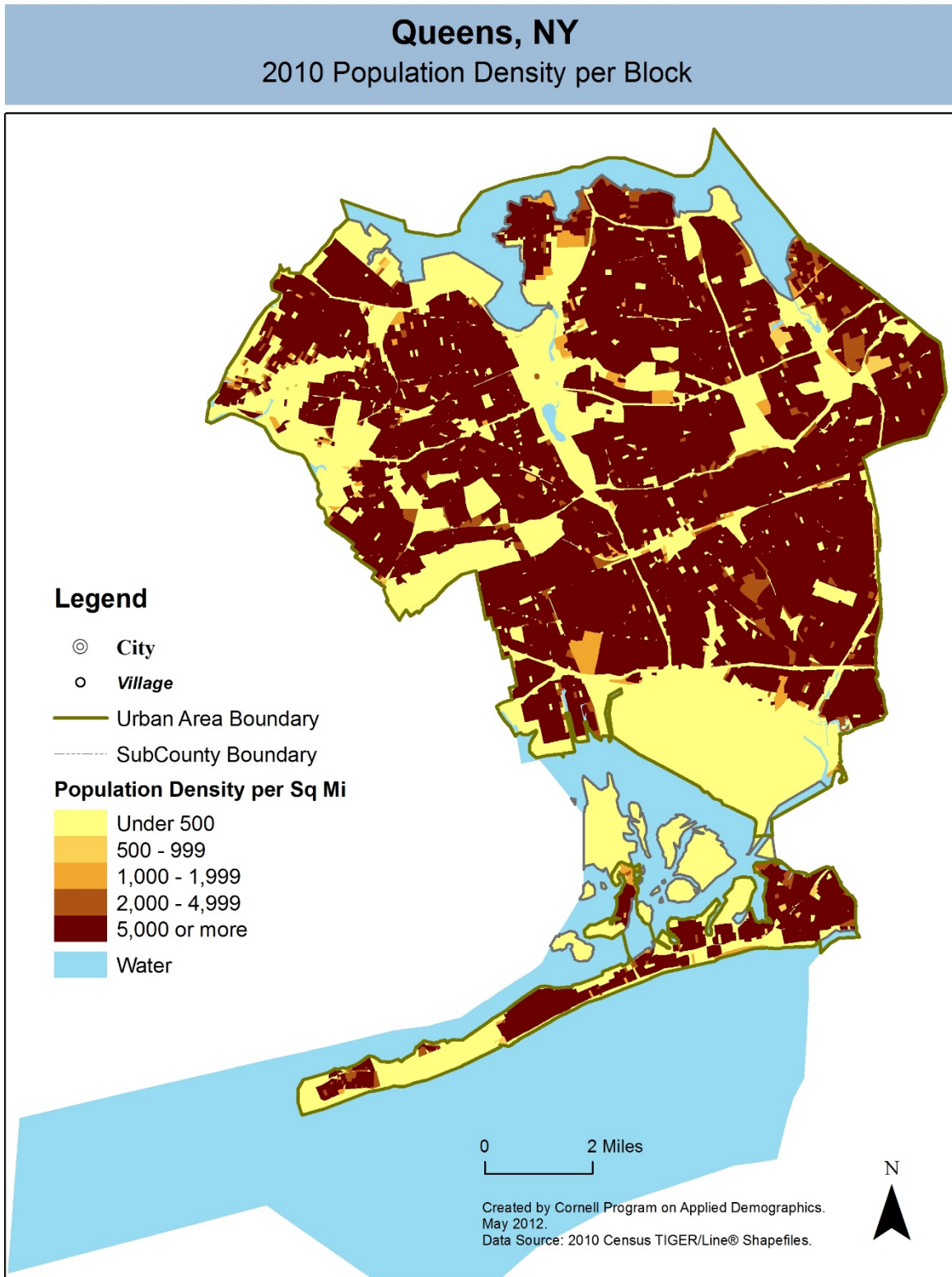


Queens County, NY

Overlap with School and Political Districts



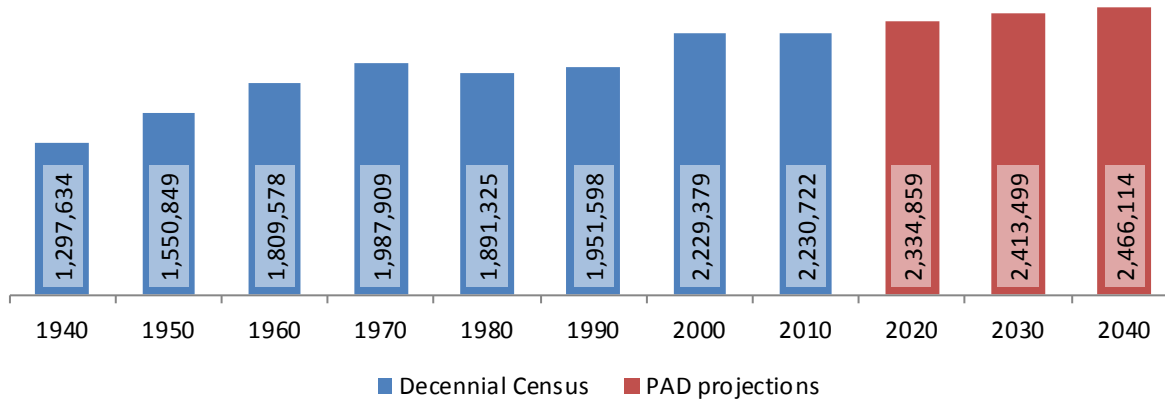
2 Population density and Urban Areas Map



3 Total Population

3.1 Historic and projected

Total population, Queens County, 1940-2040



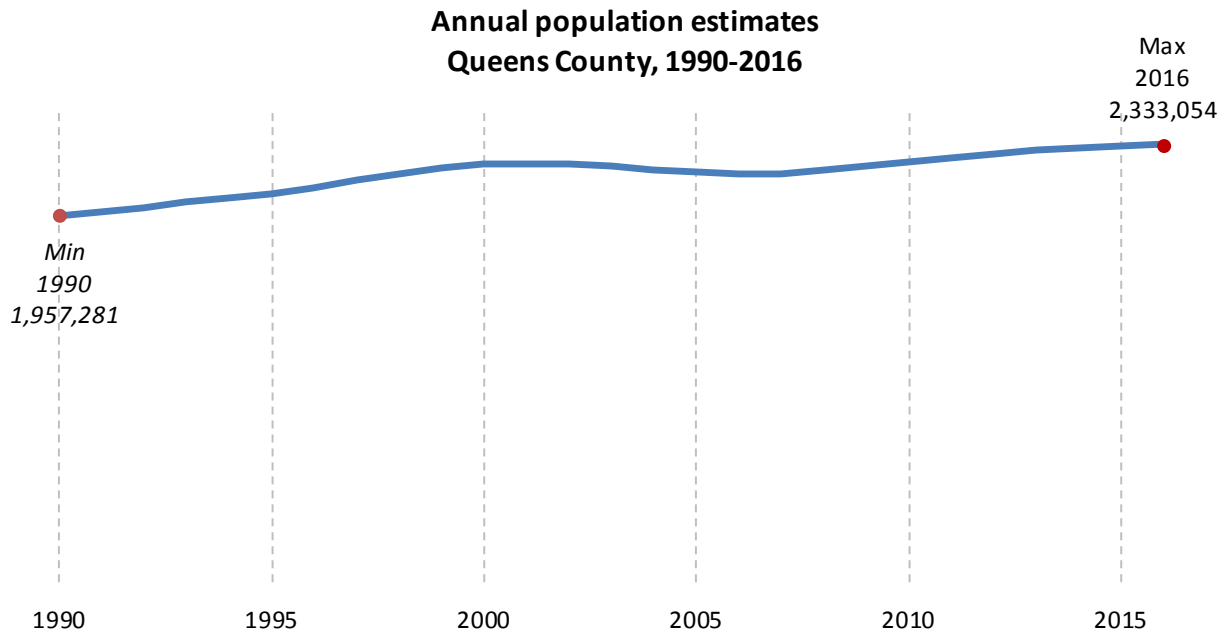
Source: 1940-2010 Decennial Census and projections by Cornell Program on Applied Demographics

3.2 Change since previous Census

	Total population	Change	
		Number	Percent
Decennial Census	1940	1,297,634	
	1950	1,550,849	253,215 19.5%
	1960	1,809,578	258,729 16.7%
	1970	1,987,909	178,331 9.9%
	1980	1,891,325	-96,584 -4.9%
	1990	1,951,598	60,273 3.2%
	2000	2,229,379	277,781 14.2%
	2010	2,230,722	1,343 0.1%
PAD projections	2020	2,334,859	104,137 4.7%
	2030	2,413,499	78,640 3.4%
	2040	2,466,114	52,615 2.2%

Source: 1940-2010 Decennial Census and projections by Cornell Program on Applied Demographics

3.3 Annual population estimates



Source: U.S. Census Bureau population estimates (1990-1999 and 2000-2009 intercensal and vintage 2016 postcensal)

3.4 New York City population change 2010-2016

	Total Population		Difference	
	2000	2010	Count	%
New York State	18,976,457 *	19,378,102	401,645	2.1%
New York City	8,008,278 *	8,175,133	166,855	2.1%
Counties (Boroughs)				
Bronx	1,332,650	1,385,108	52,458	3.9%
Kings (Brooklyn)	2,465,525 *	2,504,700	39,175	1.6%
New York (Manhattan)	1,537,372 *	1,585,873	48,501	3.2%
Queens	2,229,379	2,230,722	1,343	0.1%
Richmond (Staten Island)	443,728	468,730	25,002	5.6%

* Original counts revised through Count Question Resolution Program (CQR)

Source: U.S. Census Bureau intercensal population estimates 2000-2010

3.5 New York City population change 2010-2016

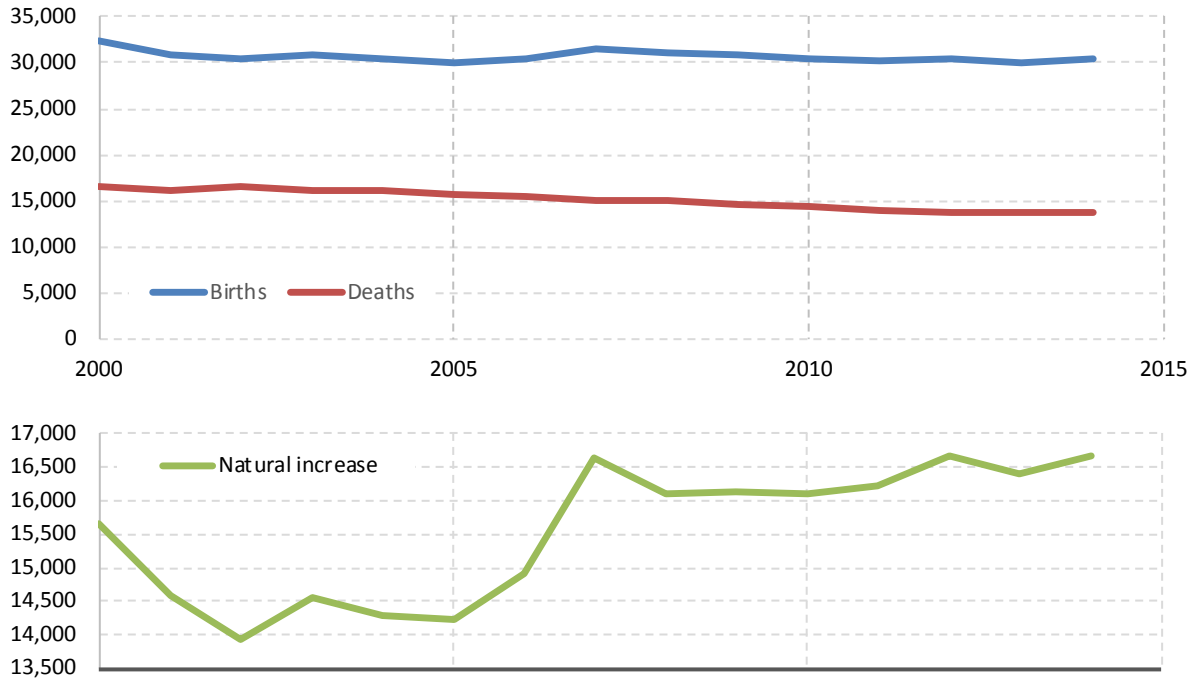
	Total Population		Difference	
	2010 base	2016	Count	%
New York State	19,378,087	19,795,791	417,704	2.2%
New York City	8,174,962	8,537,673	362,711	4.4%
Counties (Boroughs)				
Bronx	1,385,107	1,455,720	70,613	5.1%
Kings (Brooklyn)	2,504,706	2,629,150	124,444	5.0%
New York (Manhattan)	1,585,874	1,643,734	57,860	3.6%
Queens	2,230,545	2,333,054	102,509	4.6%
Richmond (Staten Island)	468,730	476,015	7,285	1.6%

Source: U.S. Census Bureau population estimates 2010-2015

4 Components of population change

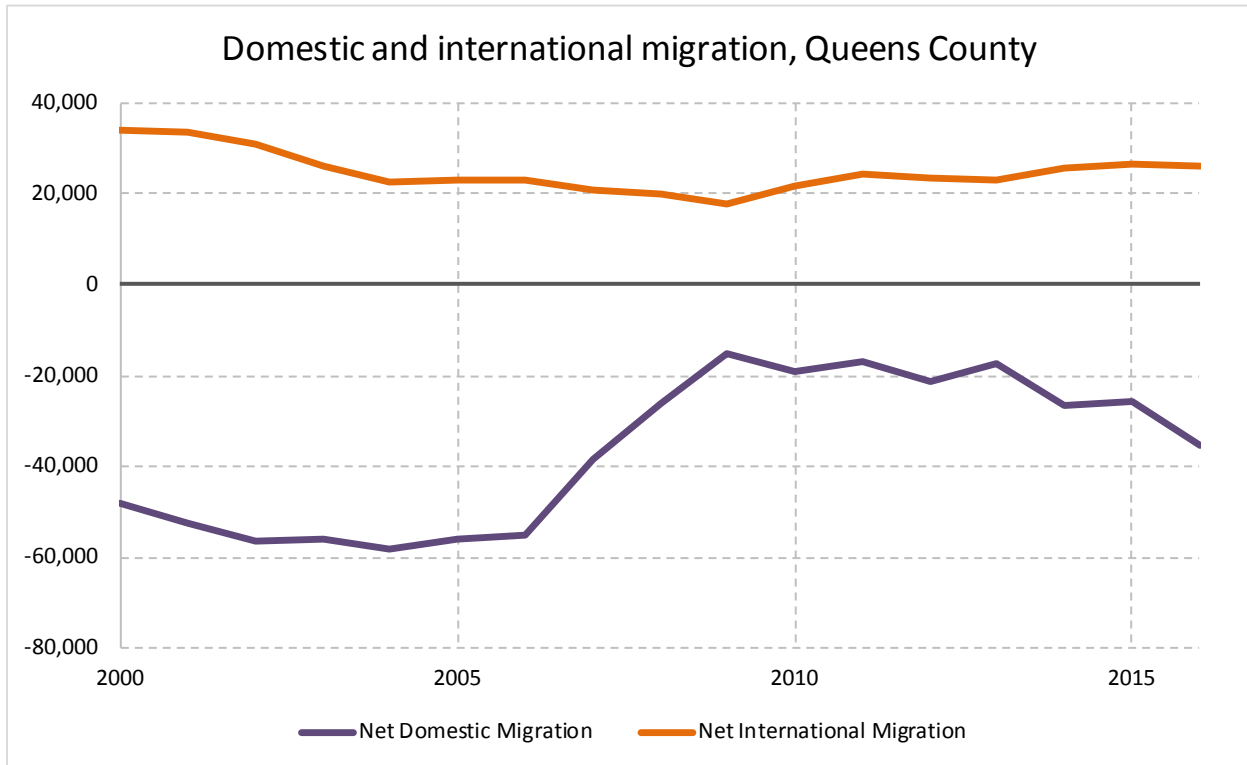
4.1 Vital Statistics

Vital Statistics, Queens County



Source: New York State Department of Health

4.2 Migration

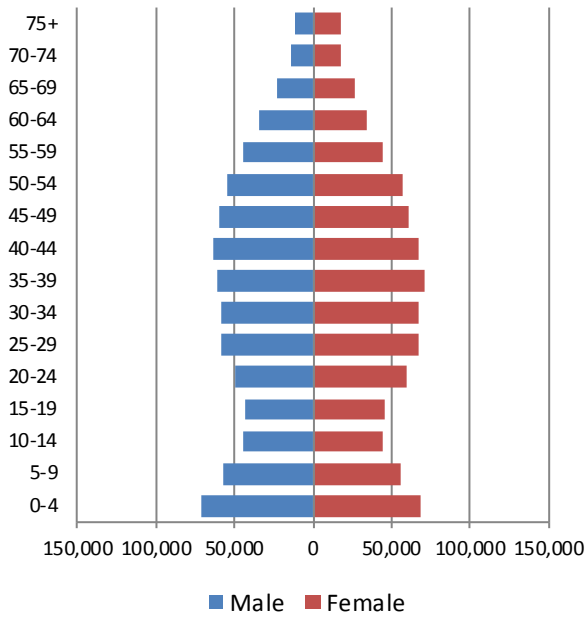


Source: Census Bureau population estimates (V2010 and V2016)

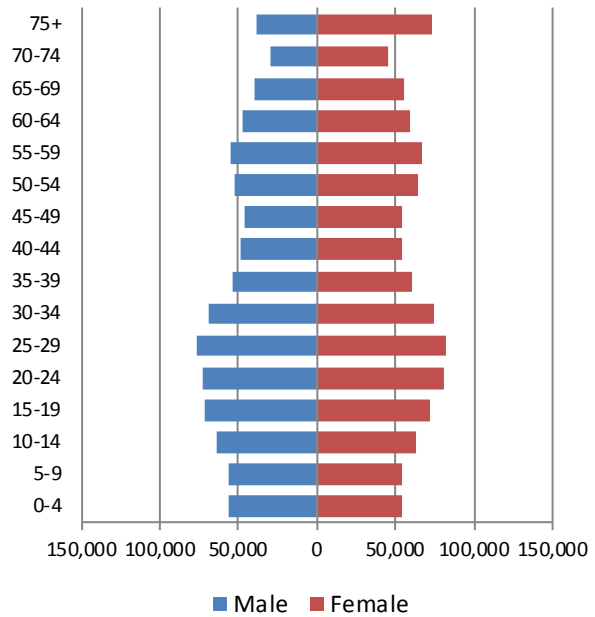
5 Population by age

5.1 Historic and projected population pyramids

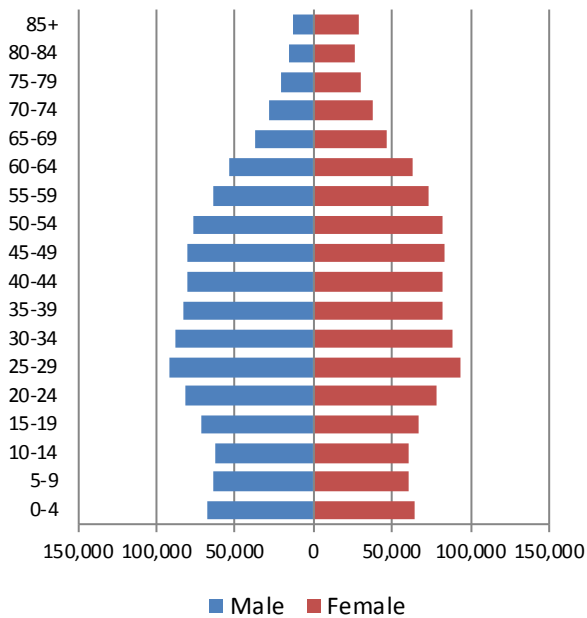
1950 Population Pyramid, Queens County



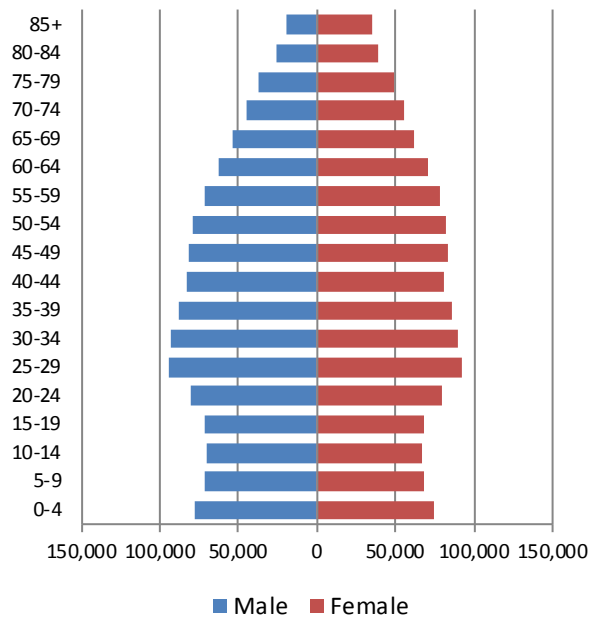
1980 Population Pyramid, Queens County



2010 Population Pyramid, Queens County



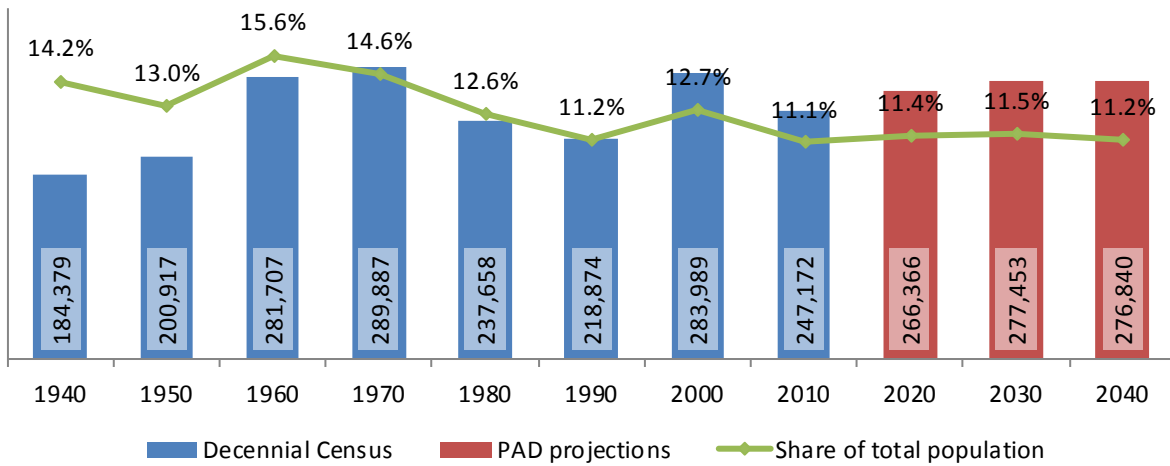
2040 Population Pyramid, Queens County



Source: 1950, 1980, 2010 Decennial Census and projections by Cornell Program on Applied Demographics

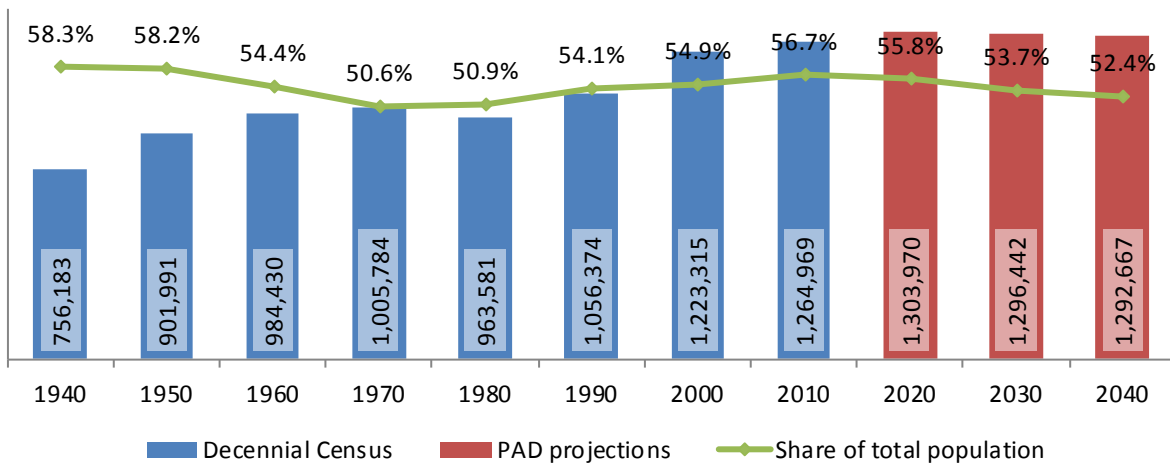
5.2 Selected age groups

Population age 5-14, Queens County, 1940-2040



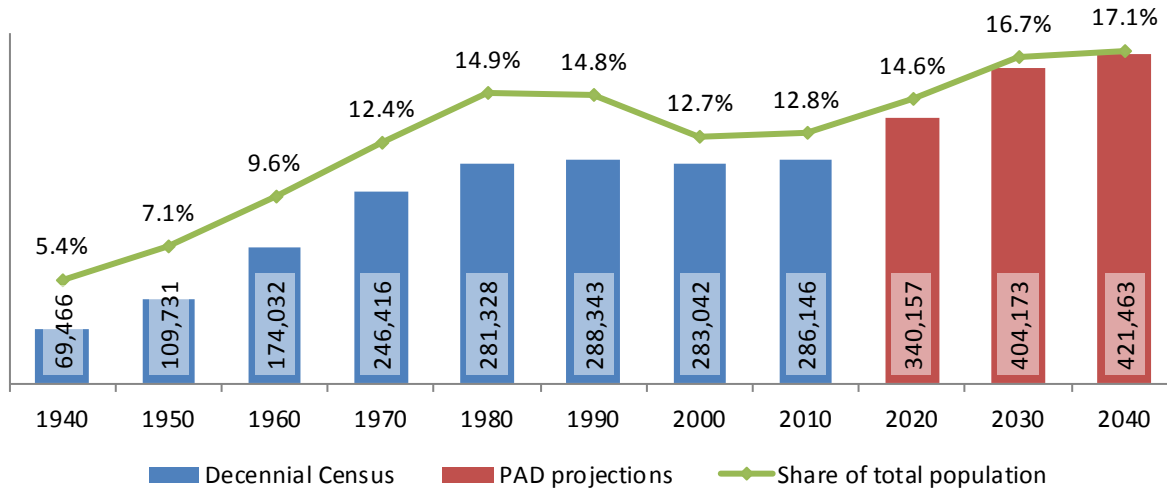
Source: 1940-2010 Decennial Census and projections by Cornell Program on Applied Demographics

Population age 25-64, Queens County, 1940-2040



Source: 1940-2010 Decennial Census and projections by Cornell Program on Applied Demographics

Population age 65 and over, Queens County, 1940-2040



Source: 1940-2010 Decennial Census and projections by Cornell Program on Applied Demographics

5.3 Median age

	Queens County	New York State
Median age		
2000	35.4	35.9
2010	37.2	38.0
2015	38.1	38.3

Source: 2000, 2010 Decennial Census, 2015 Population Estimates

6 Race

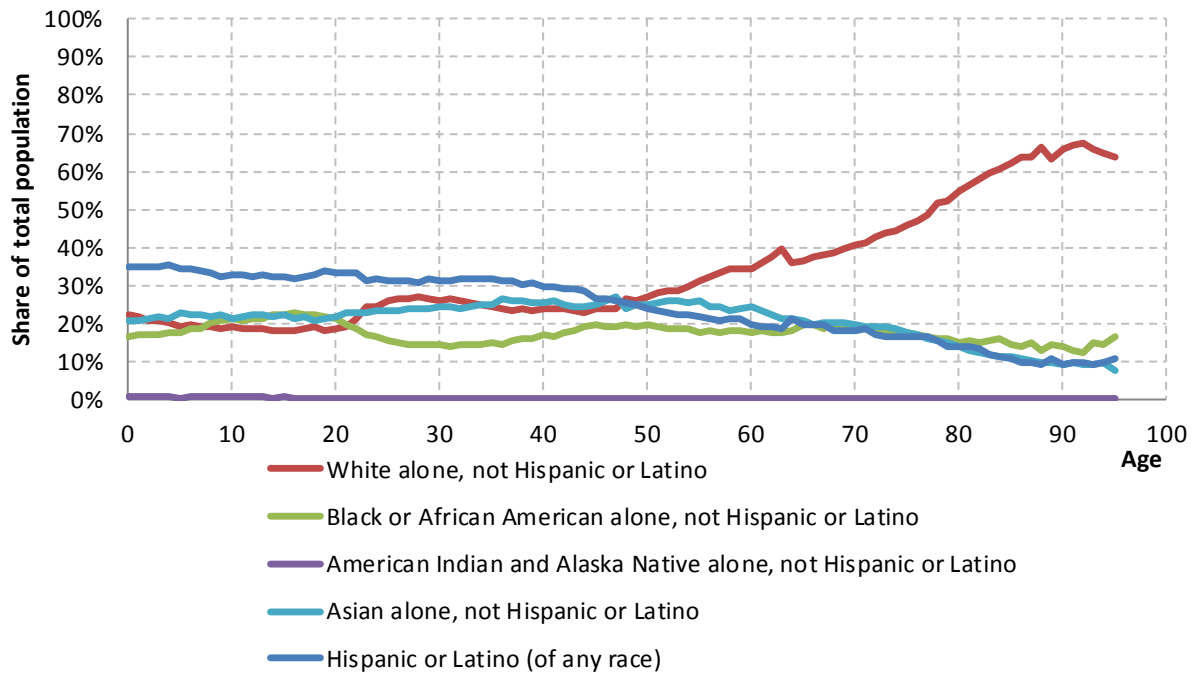
6.1 Total and household population by race

	Total		In households		In Group Quarters
	Count	Percentage	Count	Percentage	Count
Total population	2,230,722	100%	2,202,722	100%	28,000
Not Hispanic or Latino					
One race					
White	616,727	27.6%	604,926	27.5%	11,801
Black or African American	395,881	17.7%	386,844	17.6%	9,037
American Indian and Alaska Native	6,490	0.3%	6,431	0.3%	59
Asian	508,334	22.8%	506,329	23.0%	2,005
Native Hawaiian and Other Pacific Islander	1,094	0.0%	968	0.0%	126
Some other race	32,339	1.4%	32,208	1.5%	131
Two or more races	56,107	2.5%	55,816	2.5%	291
Hispanic or Latino (of any race)	613,750	27.5%	609,200	27.7%	4,550

Source: 2010 Decennial Census

6.2 Race composition by age

Race composition by age, Queens County



Source: 2010 Decennial Census

7 Housing units

7.1 Characteristics

HOUSING OCCUPANCY	COUNT		PERCENTAGE	
	Estimate	Margin of error	Estimate	Margin of error
Total housing units	844,189	± 457	100.0%	
Occupied housing units	780,644	± 1,886	92.5%	± 0.2
Vacant housing units	63,545	± 1,866	7.5%	± 0.2
YEAR STRUCTURE BUILT				
Total housing units	844,189	± 457	100.0%	
Built 2014 or later	143	± 62	0.0%	± 0.1
Built 2010 to 2013	5,040	± 439	0.6%	± 0.1
Built 2000 to 2009	45,371	± 1,221	5.4%	± 0.1
Built 1990 to 1999	23,706	± 978	2.8%	± 0.1
Built 1980 to 1989	30,039	± 1,175	3.6%	± 0.1
Built 1970 to 1979	49,218	± 1,383	5.8%	± 0.2
Built 1960 to 1969	115,745	± 2,392	13.7%	± 0.3
Built 1950 to 1959	178,397	± 2,817	21.1%	± 0.3
Built 1940 to 1949	139,409	± 2,651	16.5%	± 0.3
Built 1939 or earlier	257,121	± 2,123	30.5%	± 0.3
HOUSING TENURE				
Occupied housing units	780,644	± 1,886	100.0%	
Owner-occupied	340,561	± 2,787	43.6%	± 0.3
Renter-occupied	440,083	± 2,831	56.4%	± 0.3
HOUSE HEATING FUEL				
Occupied housing units	780,644	± 1,886	100.0%	
Utility gas	557,263	± 2,945	71.4%	± 0.3
Bottled, tank, or LP gas	15,408	± 737	2.0%	± 0.1
Electricity	47,922	± 1,613	6.1%	± 0.2
Fuel oil, kerosene, etc.	146,324	± 2,268	18.7%	± 0.3
Coal or coke	437	± 131	0.1%	± 0.1
Wood	678	± 168	0.1%	± 0.1
Solar energy	166	± 86	0.0%	± 0.1
Other fuel	6,099	± 422	0.8%	± 0.1
No fuel used	6,347	± 513	0.8%	± 0.1
VALUE				
Owner-occupied units	340,561	± 2,787	100.0%	
Less than \$50,000	8,920	± 549	2.6%	± 0.2
\$50,000 to \$99,999	5,230	± 386	1.5%	± 0.1
\$100,000 to \$149,999	10,137	± 763	3.0%	± 0.2
\$150,000 to \$199,999	17,244	± 987	5.1%	± 0.3
\$200,000 to \$299,999	42,009	± 1,288	12.3%	± 0.4
\$300,000 to \$499,999	117,289	± 1,822	34.4%	± 0.5
\$500,000 to \$999,999	128,991	± 1,787	37.9%	± 0.4
\$1,000,000 or more	10,741	± 573	3.2%	± 0.2
Median (dollars)	450,300	± 2,200		

Source: 2011-2015 American Community Survey

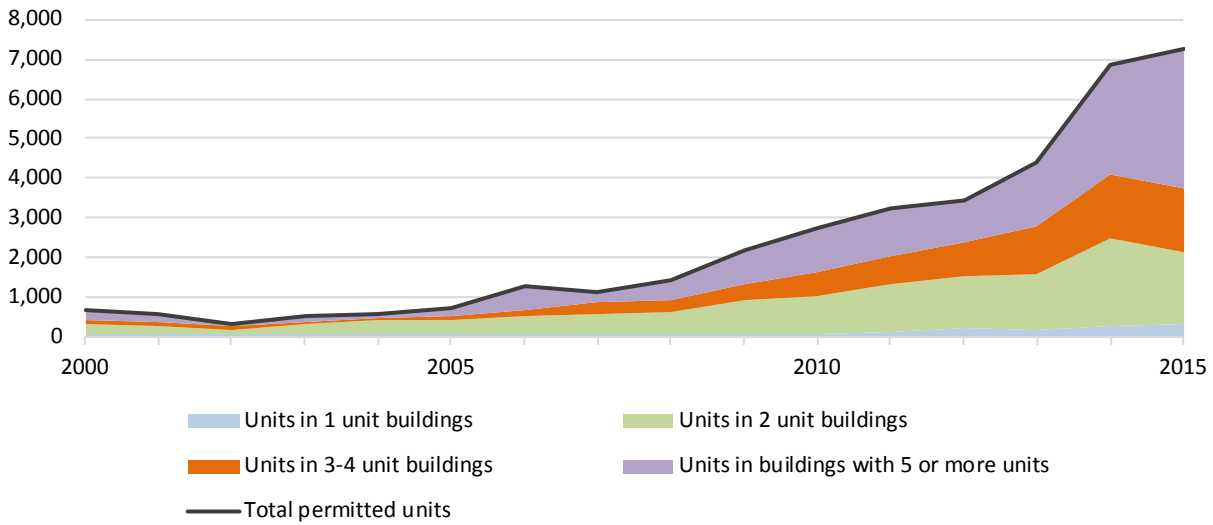
7.2 Historical data on number of housing units and occupancy status

Year	Number of Housing Units	Change since previous Census	Occupied	Occupancy rate	Vacant
1970	708,419		690,056	97.4%	18,363
1980	740,129	4.5%	711,940	96.2%	28,189
1990	752,690	1.7%	720,149	95.7%	32,541
2000	817,250	8.6%	782,664	95.8%	34,586
2010	835,127	2.2%	780,117	93.4%	55,010

Source: 1970-2010 Decennial Census

7.3 Building Permits 2000-2015

Building permits by number of permitted units in building, Queens County



Source: Census Bureau Building Permits Survey

8 Education

8.1 Enrollment by level of school

	Estimate	Margin of error
Total enrolled in school	552,109	± 2,957
Nursery school, preschool	33,871	± 1,273
Kindergarten to 12th grade	336,876	± 1,199
Kindergarten	28,536	± 1,114
Elementary: grade 1 to grade 4	101,045	± 1,544
Elementary: grade 5 to grade 8	99,900	± 1,518
High school: grade 9 to grade 12	107,395	± 1,477
College, undergraduate	144,036	± 2,413
Graduate, professional school	37,326	± 1,439

Source: 2011-2015 American Community Survey

8.2 Enrollment by age

	Estimate	Margin of error
3 and 4 years	56.1%	± 1.6
5 to 9 years	97.8%	± 0.3
10 to 14 years	98.8%	± 0.3
15 to 17 years	97.1%	± 0.4
18 and 19 years	80.3%	± 1.4
20 to 24 years	49.1%	± 1.0
25 to 34 years	13.0%	± 0.4
35 years and over	2.4%	± 0.1

Source: 2011-2015 American Community Survey

8.3 Percentage age 18-24 enrolled in college

	Estimate	Margin of error
Population 18 to 24 years	210,593	± 180
Enrolled in college or graduate school	49.5%	± 0.9
Males 18 to 24 years	106,307	± 185
Enrolled in college or graduate school	46.8%	± 1.3
Females 18 to 24 years	104,286	± 88
Enrolled in college or graduate school	52.2%	± 1.0

Source: 2011-2015 American Community Survey

8.4 Educational attainment

	COUNT		PERCENTAGE	
	Estimate	Margin of error	Estimate	Margin of error
Population 25 years and over	1,619,173	± 96	100%	
EDUCATIONAL ATTAINMENT				
Less than 9th grade	173,583	± 3,267	10.7%	± 0.2
9th to 12th grade, no diploma	143,466	± 2,736	8.9%	± 0.2
High school graduate (includes equivalency)	442,208	± 4,107	27.3%	± 0.3
Some college, no degree	241,246	± 2,811	14.9%	± 0.2
Associate's degree	125,693	± 2,455	7.8%	± 0.2
Bachelor's degree	313,071	± 3,853	19.3%	± 0.2
Graduate or professional degree	179,906	± 2,975	11.1%	± 0.2
Percent high school graduate or higher			80.4%	± 0.2
Percent bachelor's degree or higher			30.4%	± 0.3

Source: 2011-2015 American Community Survey

9 Language spoken at home

	COUNT		PERCENTAGE		SPEAK ENGLISH LESS THAN "VERY WELL"	
	Estimate	Margin of error	Estimate	Margin of error	Estimate	Margin of error
Population 5 years and over	2,157,441	± 200	100%			
LANGUAGE SPOKEN AT HOME						
English only	941,888	± 6,287	43.7%	± 0.3		
Language other than English	1,215,553	± 6,273	56.3%	± 0.3	621,462	± 4,931
Spanish	515,900	± 3,123	23.9%	± 0.1	259,893	± 3,701
Other Indo-European languages	350,526	± 6,064	16.2%	± 0.3	149,645	± 3,248
Asian and Pacific Islander languages	308,897	± 4,762	14.3%	± 0.2	199,426	± 4,051
Other languages	40,230	± 2,428	1.9%	± 0.1	12,498	± 1,189

Source: 2011-2015 American Community Survey

10 Labor Force Characteristics

10.1 Labor force, employment and unemployment

	TOTAL		IN LABOR FORCE		EMPLOYED		UNEMPLOYMENT RATE	
	Estimate	Margin of error	Estimate	Margin of error	Estimate	Margin of error	Estimate	Margin of error
Population 16 years and over	1,881,607	± 817	64.2%	± 0.2	58.7%	± 0.2	8.6%	± 0.2
AGE								
16 to 19 years	101,211	± 803	23.3%	± 0.8	15.1%	± 0.6	35.1%	± 2.1
20 to 24 years	161,223	± 191	64.3%	± 0.9	53.7%	± 0.9	16.4%	± 0.8
25 to 29 years	190,162	± 94	81.7%	± 0.6	74.1%	± 0.7	9.2%	± 0.6
30 to 34 years	184,070	± 170	82.8%	± 0.6	76.5%	± 0.7	7.6%	± 0.5
35 to 44 years	329,986	± 234	83.2%	± 0.4	77.4%	± 0.4	6.9%	± 0.3
45 to 54 years	327,182	± 209	81.2%	± 0.4	75.7%	± 0.5	6.8%	± 0.4
55 to 59 years	151,446	± 1,792	73.7%	± 0.8	68.8%	± 0.8	6.6%	± 0.4
60 to 64 years	128,424	± 1,802	57.9%	± 1.0	53.9%	± 1.0	6.8%	± 0.7
65 to 74 years	168,136	± 168	24.4%	± 0.7	22.8%	± 0.6	6.5%	± 0.8
75 years and over	139,767	± 145	4.9%	± 0.4	4.6%	± 0.3	5.5%	± 1.7
RACE AND HISPANIC OR LATINO ORIGIN								
White alone	789,678	± 4,841	62.9%	± 0.3	58.4%	± 0.3	7.1%	± 0.3
Black or African American alone	343,410	± 1,930	66.1%	± 0.5	57.8%	± 0.5	12.4%	± 0.5
American Indian and Alaska Native alone	6,862	± 867	65.8%	± 4.6	57.4%	± 5.2	12.7%	± 3.8
Asian alone	466,132	± 1,786	62.6%	± 0.5	57.9%	± 0.5	7.5%	± 0.4
Two or more races	55,938	± 2,893	65.7%	± 1.4	58.8%	± 1.5	10.2%	± 1.1
Hispanic or Latino origin (of any race)	499,276	± 492	67.7%	± 0.4	62.2%	± 0.4	8.1%	± 0.3
White alone, not Hispanic or Latino	518,675	± 839	61.0%	± 0.4	56.6%	± 0.4	7.1%	± 0.3
SEX								
Population 20 to 64 years	1,472,493	± 275	77.2%	± 0.3	71.0%	± 0.3	8.1%	± 0.2
Male	722,117	± 186	84.2%	± 0.3	77.4%	± 0.3	8.0%	± 0.3
Female	750,376	± 223	70.6%	± 0.4	64.7%	± 0.4	8.3%	± 0.3
With own children under 18 years	235,714	± 2,371	68.4%	± 0.6	62.5%	± 0.6	8.6%	± 0.5
EDUCATIONAL ATTAINMENT								
Population 25 to 64 years	1,311,270	± 194	78.8%	± 0.3	73.1%	± 0.3	7.3%	± 0.2
Less than high school graduate	221,634	± 3,373	66.5%	± 0.7	60.7%	± 0.7	8.7%	± 0.5
High school graduate (includes equivalency)	344,382	± 3,873	75.7%	± 0.5	69.5%	± 0.5	8.2%	± 0.4
Some college or associate's degree	317,169	± 3,496	80.4%	± 0.5	73.9%	± 0.6	8.0%	± 0.4
Bachelor's degree or higher	428,085	± 3,961	86.6%	± 0.4	81.8%	± 0.4	5.5%	± 0.2

Table formula: **LABOR FORCE** = # EMPLOYED + # UNEMPLOYED
 % IN LABOR FORCE = LABOR FORCE / TOTAL * 100%
 % EMPLOYED = # EMPLOYED / TOTAL * 100%
 UNEMPLOYMENT RATE = # UNEMPLOYED / LABOR FORCE * 100%

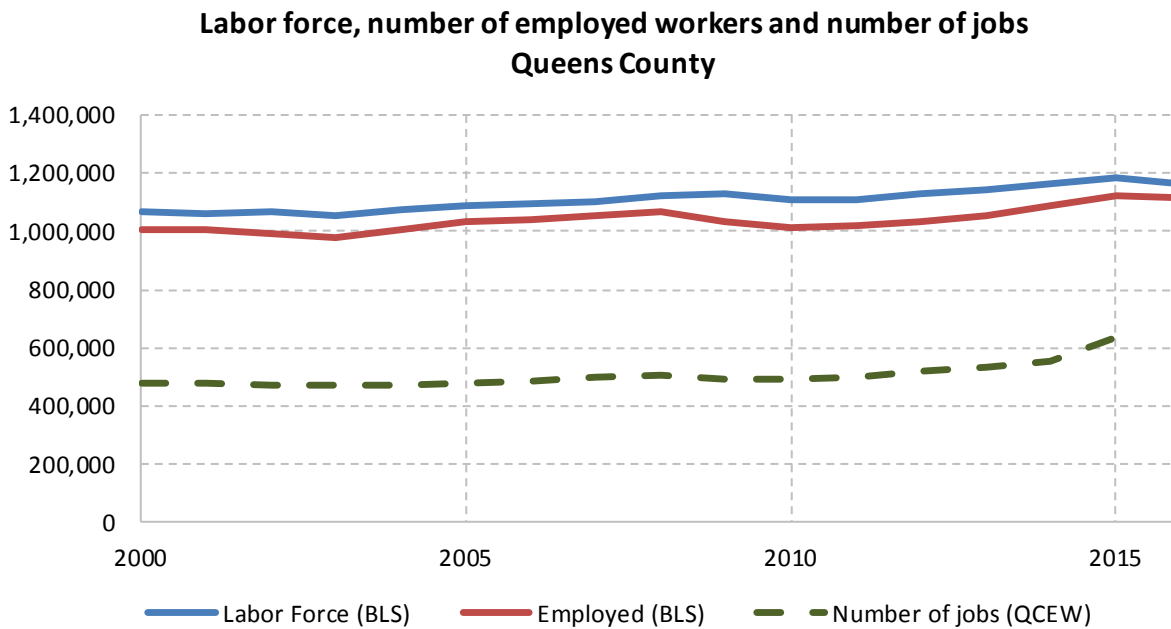
Source: 2011-2015 American Community Survey

10.2 Annual unemployment rate



Source: Bureau Labor Statistics (BLS)

10.3 Employment and number of jobs



Source: Bureau Labor Statistics (BLS) and NY Department of Labor - Quarterly Census of Employment and Wages (QCEW) – annual averages

10.4 Class of worker

		Total	%Male	%Female
Civilian employed population 16 years and over	Estimate	1,104,930	53.4%	46.6%
	<i>Margin of error</i>	$\pm 3,936$	± 0.2	± 0.2
Private for-profit wage and salary workers:	Estimate	798,360	55.5%	44.5%
	<i>Margin of error</i>	$\pm 4,625$	± 0.2	± 0.2
Employee of private company workers	Estimate	760,019	54.7%	45.3%
	<i>Margin of error</i>	$\pm 4,675$	± 0.3	± 0.3
Self-employed in own incorporated business workers	Estimate	38,341	71.5%	28.5%
	<i>Margin of error</i>	$\pm 1,116$	± 1.3	± 1.3
Private not-for-profit wage and salary workers	Estimate	84,257	38.2%	61.8%
	<i>Margin of error</i>	$\pm 2,016$	± 1.1	± 1.1
Local government workers	Estimate	105,396	45.1%	54.9%
	<i>Margin of error</i>	$\pm 2,181$	± 1.0	± 1.0
State government workers	Estimate	22,991	51.0%	49.0%
	<i>Margin of error</i>	$\pm 1,030$	± 1.9	± 1.9
Federal government workers	Estimate	21,426	55.8%	44.2%
	<i>Margin of error</i>	$\pm 1,152$	± 2.3	± 2.3
Self-employed in own not incorporated business workers and unpaid family workers	Estimate	72,500	60.3%	39.7%
	<i>Margin of error</i>	$\pm 1,763$	± 1.3	± 1.3

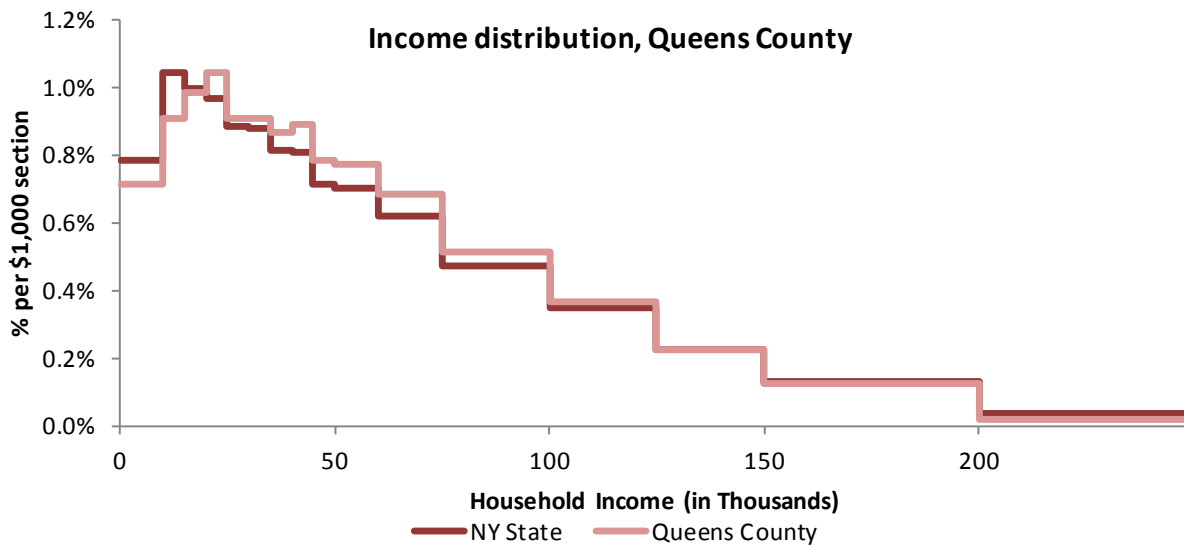
Source: 2011-2015 American Community Survey

11 Household Income

11.1 Income Distribution

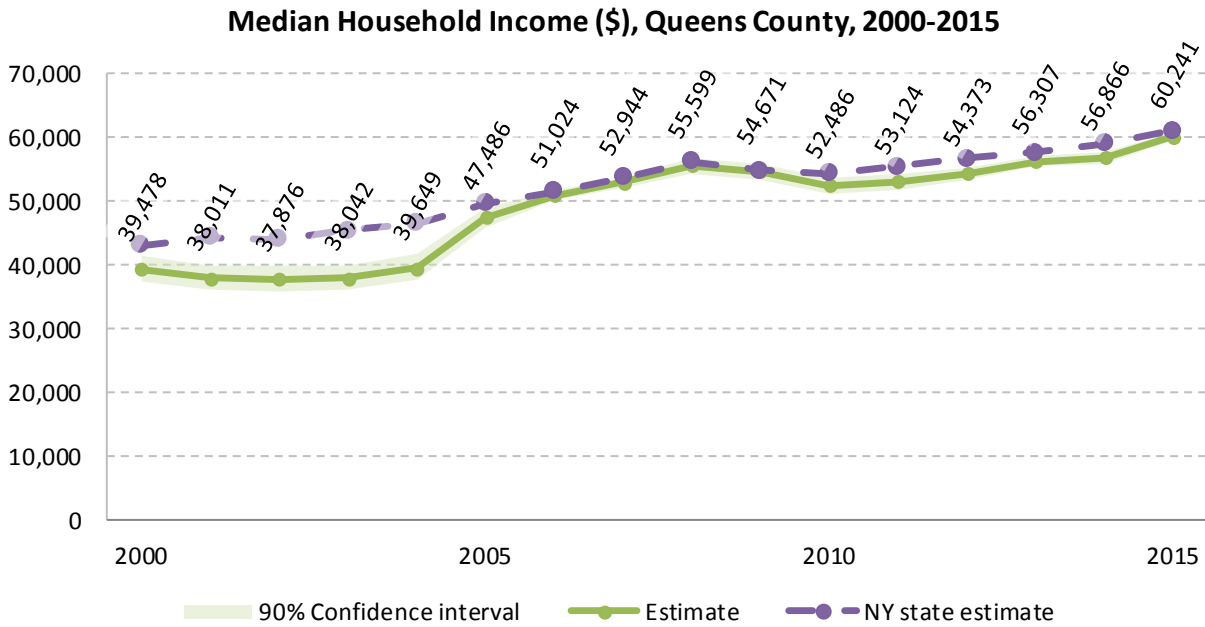
	Estimate	Margin of error	Interval width (in \$1,000)	Est. per \$1,000 section
Total:	780,644	± 1,886		
Less than \$10,000	55,878	± 1,489	10	5,587.8
\$10,000 to \$14,999	35,526	± 1,179	5	7,105.2
\$15,000 to \$19,999	38,476	± 1,319	5	7,695.2
\$20,000 to \$24,999	40,708	± 1,268	5	8,141.6
\$25,000 to \$29,999	35,440	± 1,171	5	7,088.0
\$30,000 to \$34,999	35,462	± 1,148	5	7,092.4
\$35,000 to \$39,999	33,849	± 1,258	5	6,769.8
\$40,000 to \$44,999	34,738	± 1,212	5	6,947.6
\$45,000 to \$49,999	30,614	± 1,260	5	6,122.8
\$50,000 to \$59,999	60,457	± 1,711	10	6,045.7
\$60,000 to \$74,999	79,885	± 1,725	15	5,325.7
\$75,000 to \$99,999	100,799	± 2,076	25	4,032.0
\$100,000 to \$124,999	71,514	± 1,670	25	2,860.6
\$125,000 to \$149,999	43,887	± 1,135	25	1,755.5
\$150,000 to \$199,999	48,489	± 1,261	50	969.8
\$200,000 or more	34,922	± 1,118	-	-

Source: 2011-2015 American Community Survey



Source: 2011-2015 American Community Survey

11.2 Median household income: Trends over time



Source: Small Area Income and Poverty Estimates (SAIPE)

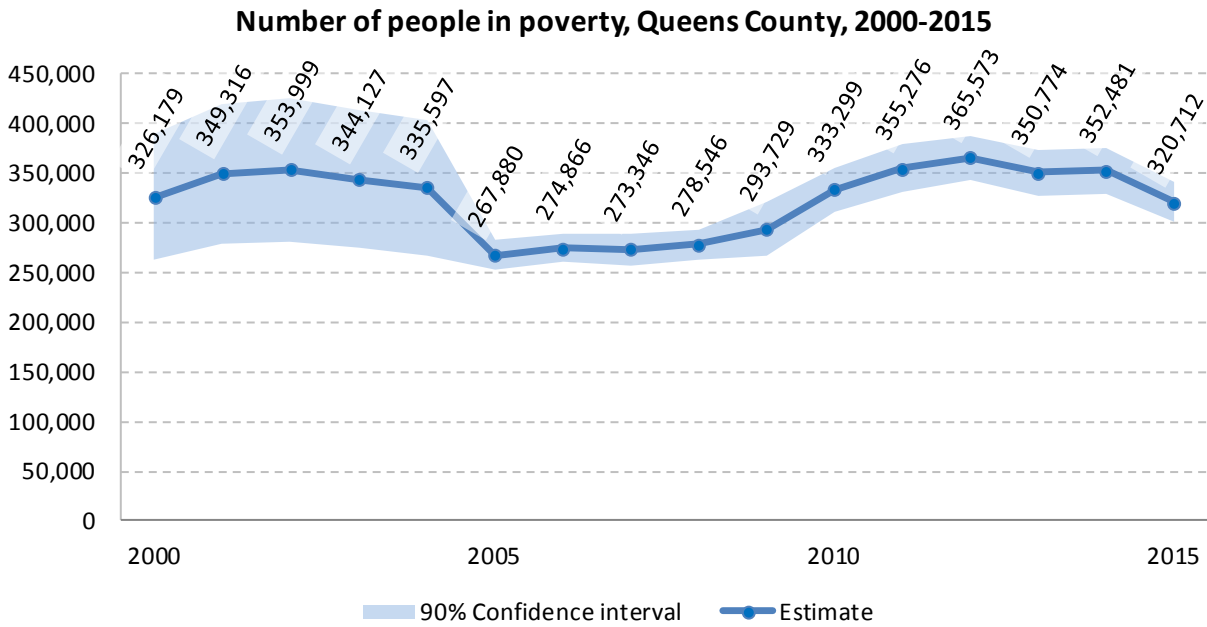
12 Poverty

12.1 Family Income to Poverty Ratio

	TOTAL		PERCENT OF ALL	
	Estimate	Margin of error	Estimate	Margin of error
All families	527,200	± 3,020		
ALL FAMILIES WITH INCOME:				
Below 50 percent of poverty level	22,460	± 1,027	4.3%	± 0.2
Below 100 percent of poverty level	64,402	± 1,614	12.2%	± 0.3
Below 125 percent of poverty level	89,297	± 1,790	16.9%	± 0.3
Below 150 percent of poverty level	115,916	± 1,932	22.0%	± 0.3
Below 185 percent of poverty level	150,911	± 2,267	28.6%	± 0.4
Below 200 percent of poverty level	164,804	± 2,372	31.3%	± 0.4
Below 300 percent of poverty level	250,735	± 2,390	47.6%	± 0.4
Below 400 percent of poverty level	321,551	± 2,804	61.0%	± 0.4
Below 500 percent of poverty level	377,862	± 2,768	71.7%	± 0.3

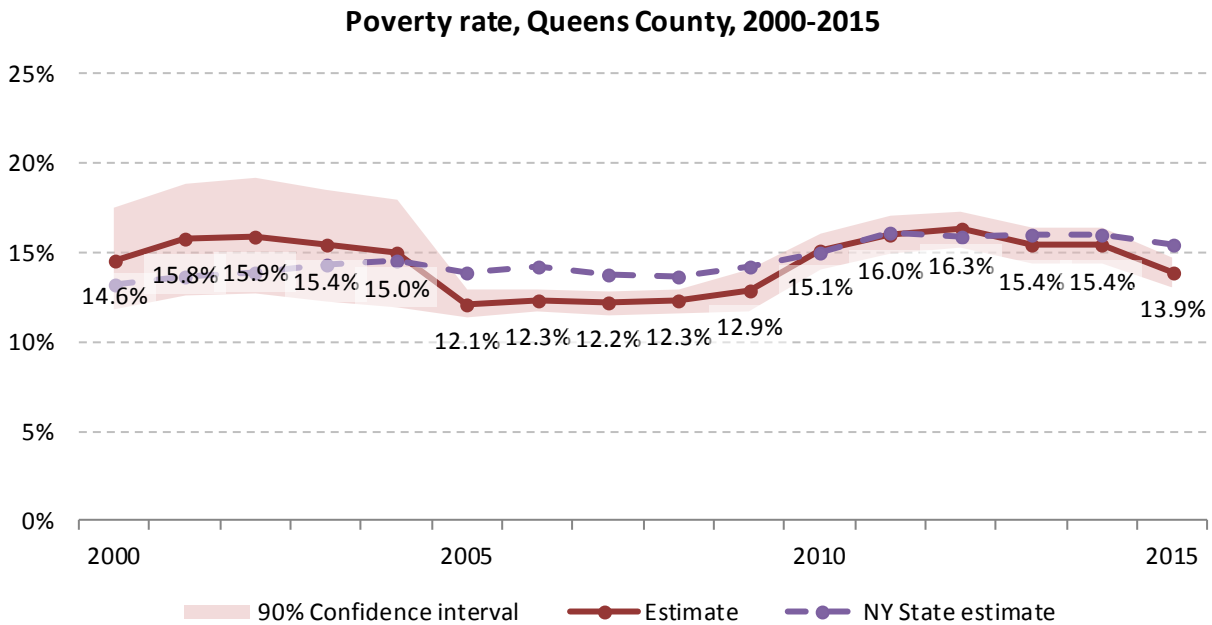
Source: 2011-2015 American Community Survey

12.2 Poverty: Trends over time: Count



Source: Small Area Income and Poverty Estimates (SAIPE)

12.3 Poverty: Trends over time: Rate



Source: Small Area Income and Poverty Estimates (SAIPE)

12.4 Poverty characteristics

	TOTAL		BELOW POVERTY LEVEL		PERCENT BELOW POVERTY LEVEL	
	Estimate	Margin of error	Estimate	Margin of error	Estimate	Margin of error
Population for whom poverty status is determined	2,275,823	± 1,332	343,834	± 6,824	15.1%	± 0.3
AGE						
Under 18 years	463,862	± 951	94,998	± 3,405	20.5%	± 0.7
Under 5 years	140,808	± 639	26,850	± 1,387	19.1%	± 1.0
5 to 17 years	323,054	± 609	68,148	± 2,564	21.1%	± 0.8
18 to 34 years	580,136	± 543	89,967	± 2,656	15.5%	± 0.5
35 to 64 years	933,815	± 472	117,543	± 2,760	12.6%	± 0.3
65 years and over	298,010	± 672	41,326	± 1,381	13.9%	± 0.5
SEX						
Male	1,103,535	± 795	148,985	± 3,762	13.5%	± 0.3
Female	1,172,288	± 920	194,849	± 3,827	16.6%	± 0.3
RACE AND HISPANIC OR LATINO ORIGIN						
White alone	934,244	± 6,558	120,107	± 3,798	12.9%	± 0.4
Black or African American alone	417,995	± 2,495	58,603	± 3,017	14.0%	± 0.7
American Indian and Alaska Native alone	8,661	± 1,033	1,350	± 312	15.6%	± 3.3
Asian alone	558,609	± 2,354	98,360	± 3,321	17.6%	± 0.6
Hispanic or Latino origin (of any race)	636,450	± 776	121,339	± 3,859	19.1%	± 0.6
White alone, not Hispanic or Latino	592,418	± 1,082	57,087	± 1,954	9.6%	± 0.3
EDUCATIONAL ATTAINMENT						
Population 25 years and over	1,605,551	± 786	208,829	± 3,822	13.0%	± 0.2
Less than high school graduate	311,573	± 3,712	70,425	± 2,359	22.6%	± 0.7
High school graduate (includes equivalency)	437,759	± 4,117	64,819	± 2,098	14.8%	± 0.5
Some college, associate's degree	364,853	± 3,731	39,653	± 1,572	10.9%	± 0.4
Bachelor's degree or higher	491,366	± 4,463	33,932	± 1,237	6.9%	± 0.2
EMPLOYMENT STATUS						
Civilian labor force 16 years and over	1,207,002	± 4,073	106,528	± 2,762	8.8%	± 0.2
Employed	1,103,948	± 3,922	78,369	± 1,992	7.1%	± 0.2
Male	590,010	± 2,493	39,301	± 1,309	6.7%	± 0.2
Female	513,938	± 3,090	39,068	± 1,553	7.6%	± 0.3
Unemployed	103,054	± 2,593	28,159	± 1,446	27.3%	± 1.2
Male	54,521	± 1,564	13,273	± 916	24.3%	± 1.6
Female	48,533	± 1,682	14,886	± 927	30.7%	± 1.6
WORK EXPERIENCE IN THE PAST 12 MONTHS						
Population 16 years and over	513,938	± 3,090	39,068	± 1,553	7.6%	± 0.3
Worked full-time, year-round	103,054	± 2,593	28,159	± 1,446	27.3%	± 1.2
Worked part-time or part-year	54,521	± 1,564	13,273	± 916	24.3%	± 1.6
Did not work	48,533	± 1,682	14,886	± 927	30.7%	± 1.6

Source: 2011-2015 American Community Survey

13 Glossary

American Community Survey (ACS) - The American Community Survey is an ongoing survey of the population that provides data every year on a variety of social and economic characteristics—age, sex, race, family and relationships, income and benefits, health insurance, education, veteran status, disabilities, where you work and how you get there, where you live and how much you pay for some essentials. The ACS replaced the information previously gathered by what was known as the “long form” of the decennial censuses. The ACS provides communities, companies and other institutions with current information they need to plan investments and services. Information from the survey generates data that help determine how more than \$400 billion in federal and state funds are distributed each year. Every estimate presented in the American Community Survey, as in other surveys, has an uncertainty associated with it. Often the magnitude of that uncertainty is expressed as the Margin of Error.

Confidence Interval (CI) - indication of the degree of uncertainty about a sample estimates. Confidence intervals have been traditionally reported at the 90, 95 and 99 percent levels. A 90 percent confidence interval can be interpreted, for example, roughly as providing 90 percent certainty that the interval defined by the upper and lower bounds contain the true value of the characteristic. If a Margin of Error is given, the lower bound of the confidence interval is equal to the estimate minus the Margin of Error and the upper bound is equal to the estimate plus the Margin of Error. (See further, Margin of Error definition below.)

County subdivision or Minor Civil Division (MCD) - The Census Bureau geography for primary administrative units below the county level in New York is collectively referred to as county subdivisions or minor civil divisions. These include towns, cities and Indian Reservations.

Decennial Census - the Census of the population and housing taken every 10 years in the United States, at the start of each decade, since 1790.

Employed – either “at work” or “with a job, but not at work”.

Group Quarters Population - all U.S. residents who live in group living facilities including correctional institutions, juvenile facilities, skilled nursing facilities, college residence halls, military barracks, group homes, and workers' dormitories.

Household Population - all U.S. residents who live in housing units such as single family homes, townhouses, apartments, and mobile homes.

Intercensal Population Estimates - estimates produced for the years between two decennial censuses when both the beginning and ending populations are known. They are produced once a decade by adjusting the existing time series of postcensal estimates for the entire decade to smooth the transition from one decennial census count to the next. They differ from the postcensal estimates that are released annually because the difference between the April 1 postcensal estimate and April 1 census count for the end of the decade is redistributed across the estimates for that decade. For dates when both postcensal and intercensal estimates are available, intercensal estimates are preferred.

Labor Force - consists of people classified as employed or unemployed.

Margin of Error (MOE) - a measure of the precision of an estimate at a given level of confidence. The confidence level of a margin of error indicates the likelihood that the difference between the population value (which you

would get if you could measure the whole population instead of a sample) and the estimate is less than or equal to the margin of error. The range from the estimate minus the margin of error to the estimate plus the margin of error is called the confidence interval. All ACS estimates are published with their margins of error at the 90 percent confidence level. Margins of error are useful in assessing the reliability of estimates and whether differences between estimates are significant.

Numeric Population Change - difference between the population of an area at the beginning and end of a time period. It is computed by taking the difference between the population at one point in time (t_1) and some future time (t_2).

Percent Population Change - difference between the population of an area at the beginning and end of a time period, expressed as a percentage of the beginning population. It is computed by dividing the population change ($t_2 - t_1$) by t_1 and multiplying the result by 100.

Population Estimates - The calculated number of people living in an area as of a specified point in time, usually July 1st. The estimated population is calculated using a component of change model that incorporates information on natural increase (births, deaths) and net migration (net domestic migration, net international migration) that has occurred in an area since the latest decennial census. A procedure for estimating the current population using a procedure involving a "base population" value at time $t - 1$, adding to that the births during the interval $t - 1$ to t , subtracting the deaths during that interval $t - 1$ to t , and then adding the net domestic and net international migration that occurred during that interval.

Population Density - Total number of people per areal unit like a square mile or square kilometer.

Population Pyramids - A graphical way of portraying a population's age and sex composition at a given slice in time. The first horizontal bar, constituting the base of the graph, is the youngest age group (typically 0-4) with the number of males in that age group on the left and the number of females in that age group on the right. On top of that age group is another horizontal bar for the next age group (e.g. 5-9) and so forth with the top bar typically for those aged 75 and over. In a population with lots of births and deaths, the shape typically forms a pyramid with a broad base and a narrow top. It is one of the most basic ways to understand population change over time as well as between different geographic units of a similar status (e.g. counties).

Postcensal Estimates - estimates produced for the years after a decennial census when only the beginning population is known. They are produced and revised each year, targeted to July 1 of that year.

Projection - estimated population at some future time based on assumptions about births, deaths, migration, and ages.

Race/Ethnicity - the Census Bureau collects racial data in accordance with guidelines provided by the U.S. Office of Management and Budget (OMB), and these data are based on self-identification. The racial categories included in the census questionnaire generally reflect a social definition of race recognized in this country and not an attempt to define race biologically, anthropologically, or genetically. In addition, it is recognized that the categories of the race item include racial and national origin or sociocultural groups. People may choose to report more than one race to indicate their racial mixture, such as "American Indian" and "White." People who identify their origin as Hispanic, Latino, or Spanish may be of any race. OMB requires five minimum categories: White, Black or African American, American Indian or Alaska Native, Asian, and Native Hawaiian or Other Pacific Islander. Hispanics may be classified as white or black. So we generally separate them out as an ethnic group first.

Unemployed – Not employed, but actively looking for work and available to accept a job.

Unemployment rate – Fraction of the Labor Force that is unemployed.

Urban Area – A densely settled area with at least 2,500 people. If the total number of people is less than 50,000 the Census Bureau calls it an Urban Cluster, otherwise an Urbanized Area.

Vintage - each year, the U.S. Census Bureau produces and publishes estimates of the population for each state and county, as well as the nation as a whole. These are called “vintages.” In producing these vintages, the Bureau utilizes administrative data from a number of sources to estimate 1) the change in population since the most recent decennial census, and 2) the population for each year since the most recent decennial census. With each annual release of population estimates (vintage), the entire time series of estimates beginning on April 1, 2010 is revised and updated.

Vital Statistics - quantitative data concerning a population, such as the number of births, marriages, and deaths.

14 References

Queens County homepage: <http://www1.nyc.gov/>

At Cornell:

- Program on Applied Demographics (PAD)
URL: <http://pad.human.cornell.edu/>
 - More county trends: <https://pad.human.cornell.edu/counties/trends1geo.cfm?geo=81>
- Community and Regional Development Institute (CaRDI)
URL: <https://cardi.cals.cornell.edu/>
- Cornell Cooperative Extensions (CCE)
Home page: <http://www.cce.cornell.edu>
 - New York City local office: <http://nyc.cce.cornell.edu/>

Data sources and background information:

- New York State Data Center
 - <https://labor.ny.gov/nys-data-center/index.shtm>
- U.S. Census Bureau - general
 - QuickFacts: <https://www.census.gov/quickfacts/table/PST045216/36,36081>
 - American FactFinder: <http://factfinder.census.gov/>
- U.S. Census Bureau - population
 - Decennial Census
 - Background: <https://www.census.gov/2010census/>
 - Demographic Profile: http://factfinder2.census.gov/bkmk/table/1.0/en/DEC/10_SF1/SF1DP1/0500000US36081
 - American Community Survey (ACS)
 - Background: <https://www.census.gov/programs-surveys/acs/>
 - Social Data Profile: http://factfinder2.census.gov/bkmk/table/1.0/en/ACS/15_5YR/DP02/0500000US36081
 - Economic Data Profile: http://factfinder2.census.gov/bkmk/table/1.0/en/ACS/15_5YR/DP03/0500000US36081
 - Housing Data Profile: http://factfinder2.census.gov/bkmk/table/1.0/en/ACS/15_5YR/DP04/0500000US36081
 - Demographics Data Profile: http://factfinder2.census.gov/bkmk/table/1.0/en/ACS/15_5YR/DP05/0500000US36081
 - Population estimates:
 - General: <https://www.census.gov/programs-surveys/popest.html>
 - Explorer: <https://www.census.gov/censusexplorer/censusexplorer-popest.html>
- U.S. Census Bureau – Small Area Income & Poverty Estimates (SAIPE)
 - <http://www.census.gov/did/www/saipe/>
- U.S. Census Bureau - Public Use Quarterly Workforce Indicators (QWI) – annual averages
 - <https://qwiexplorer.ces.census.gov/static/explore.html>
- U.S. Census Bureau – Building Permits Survey
 - <https://www.census.gov/construction/bps/>

- Bureau Labor Statistics (BLS)
 - Local Area Unemployment Statistics: <http://www.bls.gov/lau/>
 - Quarterly Census of Employment and Wages (QCEW): <https://www.bls.gov/cew/data.htm>
- NY Department of Labor -
 - Labor statistics: <https://labor.ny.gov/stats/index.shtm>
 - Quarterly Census of Employment and Wages (QCEW): <https://labor.ny.gov/stats/LSQCEW.shtm>
- NY State Department of Health
 - Vital Statistics: https://www.health.ny.gov/statistics/vital_statistics/
- Bureau of Economic Analysis (BEA) – Local Area Personal Income and Employment: <http://bea.gov/iTable/iTable.cfm?ReqID=70&step=1>

Alternative sites for data retrieval:

- The Nelson A. Rockefeller Institute of Government – New York State Statistical Yearbooks http://www.rockinst.org/nys_statistics/
- Headwaters Economics: Economic Profile System – Human Dimensions Toolkit <http://headwaterseconomics.org/tools/eps-hdt>
- National Historical Geographic Information System (NHGIS) <https://www.nhgis.org/>
- Social Explorer <http://www.socialexplorer.com/pub/home/home.aspx>
- Stats America <http://www.statsamerica.org/Default.aspx>
- Missouri Census Data Center <http://mcdc.missouri.edu/>
- DataFerret <http://dataferrett.census.gov/>
- Investigative Reporters and Editors (IRE) Census project <http://census.ire.org/>