

# Putnam County Profile 2017

*A collection of recent demographic, social and economic data*

Compiled by

Jan Vink

Cornell Program on Applied Demographics



Cornell University



Program  
on Applied  
Demographics

CORNELL POPULATION CENTER

This profile is a part of a set of profiles generated for each county in New York State. The profiles were developed and generated by the Cornell Program on Applied Demographics. The work is sponsored by the New York State Data Center in the New York State Department of Labor.

Cornell Program on Applied Demographics:

The Program on Applied Demographics (PAD) brings skills in demographics, economics, statistics, data gathering and data analysis together to provide a variety of organizations with data, information and advice. PAD is located in the Department of Policy Analysis and Management within the College of Human Ecology at Cornell University. PAD is also affiliated with the Cornell Institute for Social and Economic Research and the Cornell Population Center.

For more information: <http://pad.human.cornell.edu/>

New York State Data Center:

The New York State Data Center (NYSDC) is located in the Division of Research and Statistics within the New York State Department of Labor. The State Data Center operates as part of a nationwide effort to improve public access to data provided by the U.S. Census Bureau. The U.S. Census Bureau collects and tabulates data on a multitude of subjects such as population, social, economic and housing demographics, labor force data, health care, migration and transportation. These data play a critical role in understanding our local and larger surrounding communities. Census data also influence state and federal funding, aid decision making in the legislative process, and determine each state's number of congressional seats. As the lead agency in New York for the SDC program, the New York State Data Center helps users navigate through the multitude of surveys and products provided by the U.S. Census Bureau.

For more information: <https://labor.ny.gov/nys-data-center/>

All profiles are freely downloadable as PDF documents on the PAD website:

<http://pad.human.cornell.edu/profiles/index.cfm>

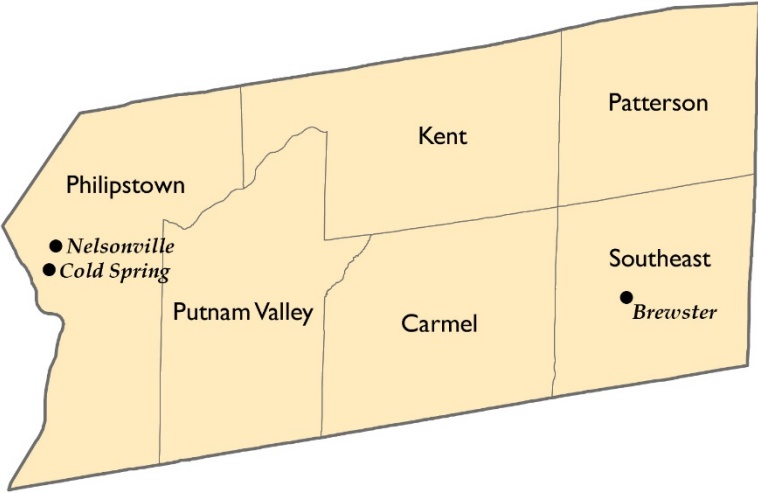
This profile is an update from the County Profile produced in 2013. The 2013 profile also contained information on agriculture related items and can be found at <https://pad.human.cornell.edu/profiles/2013/Putnam.pdf>

## Contents

1	Reference Maps (towns and places as defined in 2010)	3
2	Population density and Urban Areas Map	5
3	Total Population	6
3.1	Historic and projected	6
3.2	Change since previous Census	6
3.3	Annual population estimates	7
3.4	Sub County population change 2010-2015	8
3.5	Sub County population change 2010-2015	8
4	Components of population change	9
4.1	Vital Statistics	9
4.2	Migration	10
5	Population by age	11
5.1	Historic and projected population pyramids	11
5.2	Selected age groups	12
5.3	Median age	13
6	Race	14
6.1	Total and household population by race	14
6.2	Race composition by age	14
7	Housing units	15
7.1	Characteristics	15
7.2	Historical data on number of housing units and occupancy status	16
7.3	Building Permits 2000-2015	16
8	Education	17
8.1	Enrollment by level of school	17
8.2	Enrollment by age	17
8.3	Percentage age 18-24 enrolled in college	17
8.4	Educational attainment	18
9	Language spoken at home	18
10	Labor Force Characteristics	19
10.1	Labor force, employment and unemployment	19
10.2	Annual unemployment rate	20
10.3	Employment and number of jobs	20
10.4	Class of worker	21
11	Household Income	22
11.1	Income Distribution	22
11.2	Median household income: Trends over time	23
12	Poverty	23
12.1	Family Income to Poverty Ratio	23
12.2	Poverty: Trends over time: Count	24
12.3	Poverty: Trends over time: Rate	24
12.4	Poverty characteristics	25
13	Glossary	26
14	References	29

1 Reference Maps (towns and places as defined in 2010)

**Putnam County, NY**  
Towns, Cities, Indian Reservations, and Incorporated Villages



**New York State Counties**



**Legend**

- Village
- Town

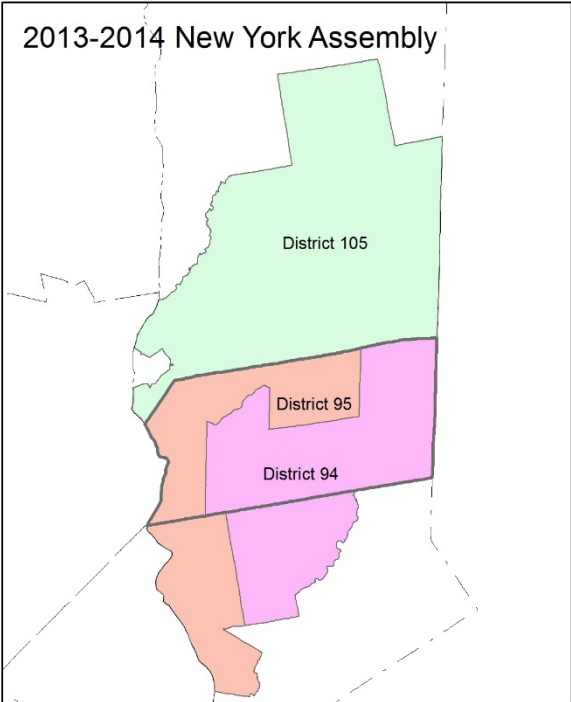
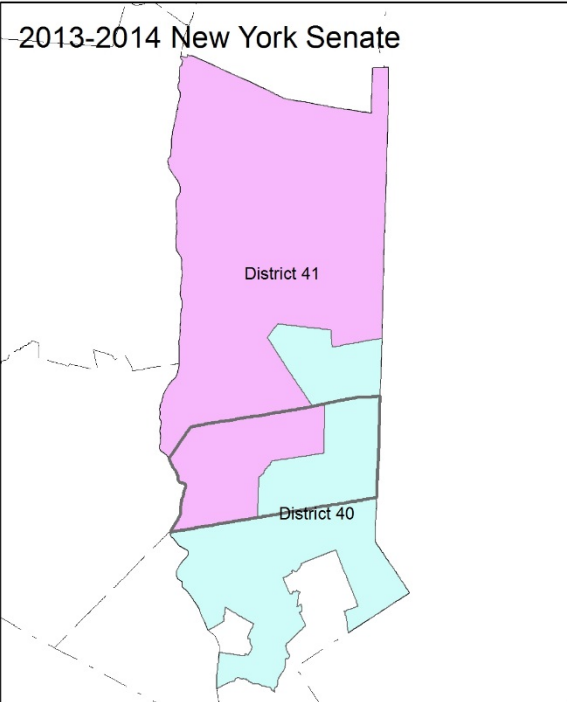
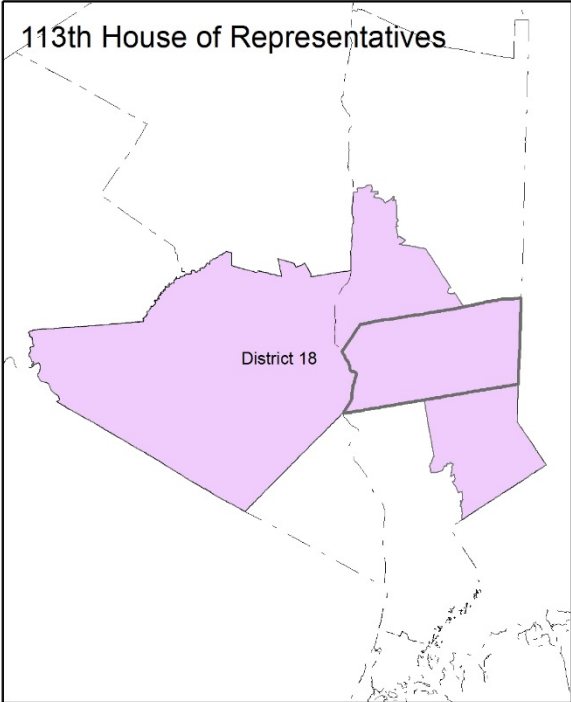


Created by Cornell Program on Applied Demographics.  
March 2012.  
Data Source: 2010 Census TIGER/Line® Shapefiles.

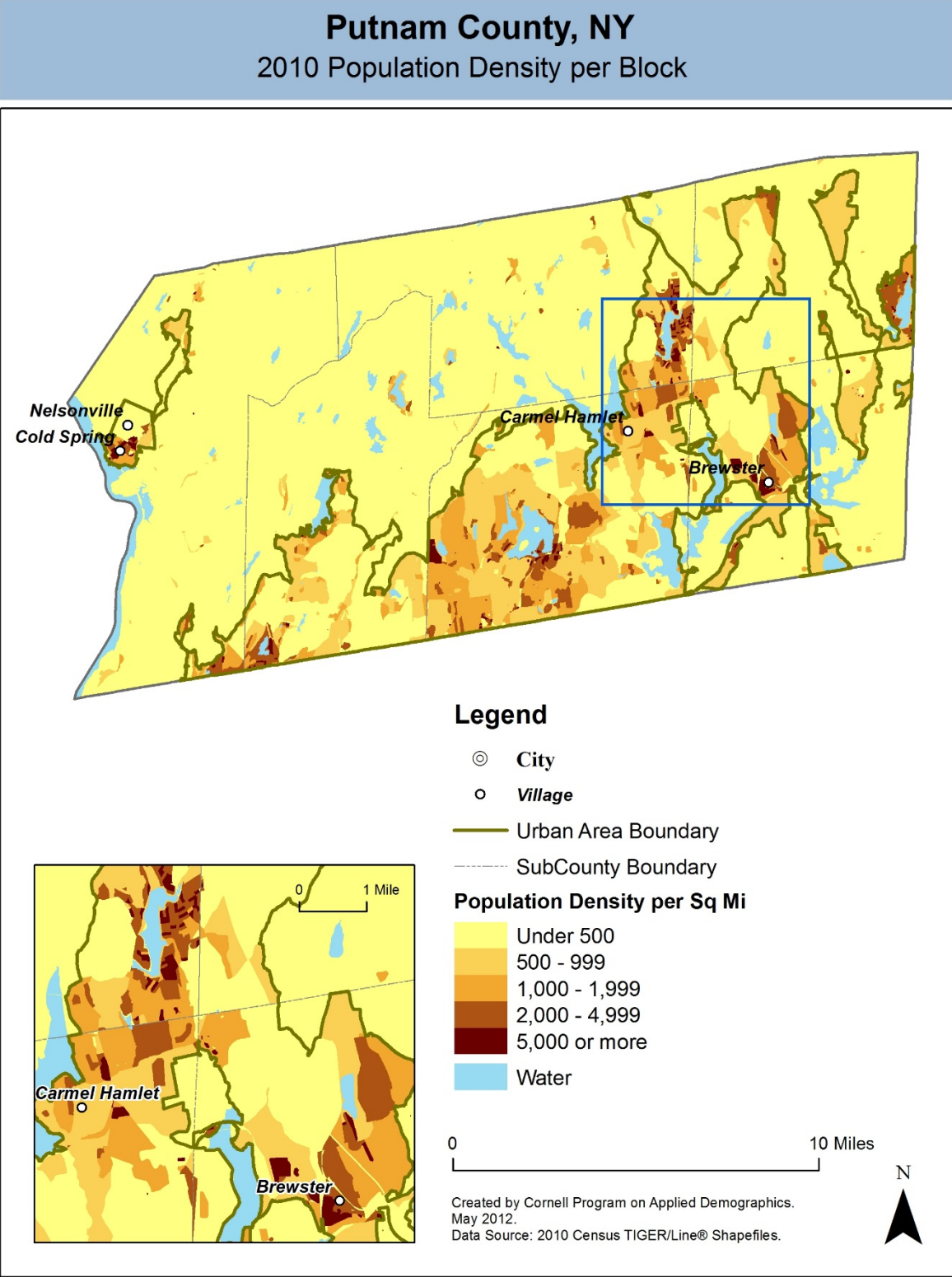


# Putnam County, NY

## Overlap with School and Political Districts



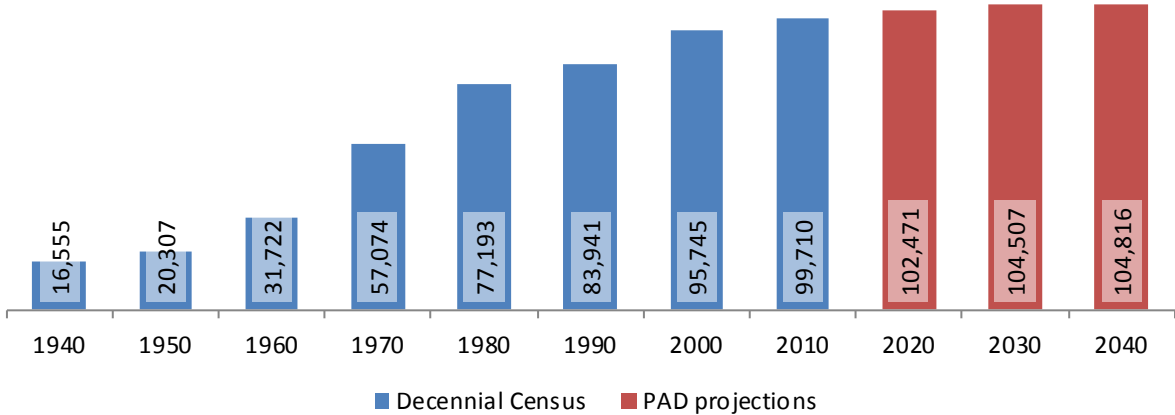
2 Population density and Urban Areas Map



**3 Total Population**

**3.1 Historic and projected**

**Total population, Putnam County, 1940-2040**



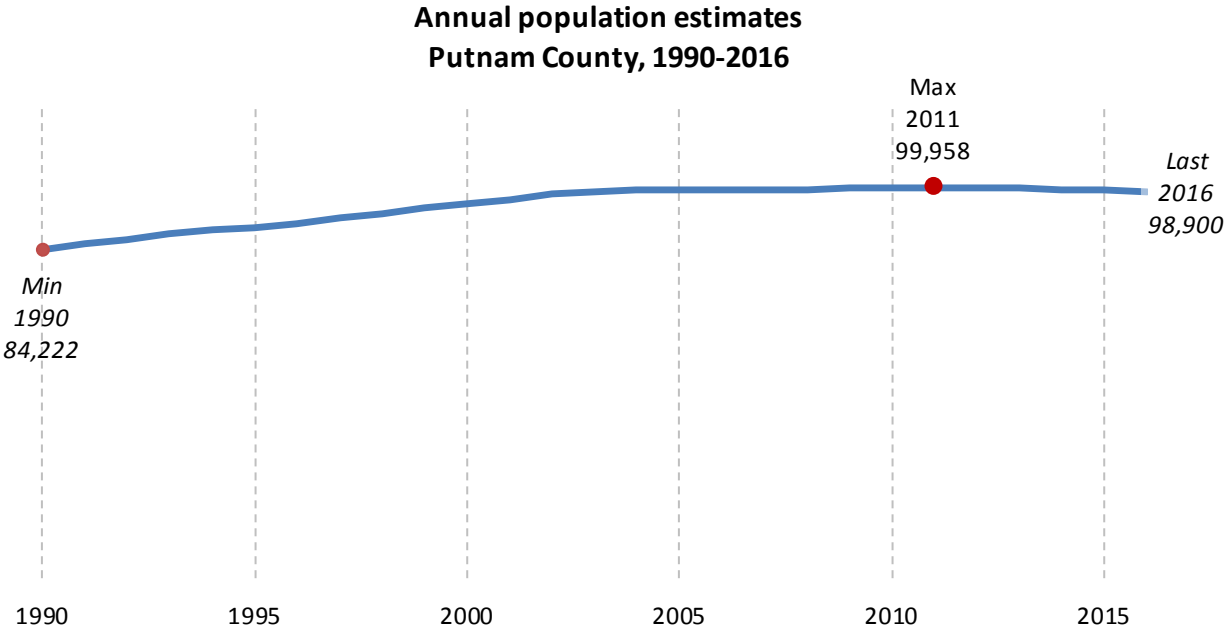
Source: 1940-2010 Decennial Census and projections by Cornell Program on Applied Demographics

**3.2 Change since previous Census**

	Year	Total population	Change	
			Number	Percent
Decennial Census	1940	16,555		
	1950	20,307	3,752	22.7%
	1960	31,722	11,415	56.2%
	1970	57,074	25,352	79.9%
	1980	77,193	20,119	35.3%
	1990	83,941	6,748	8.7%
	2000	95,745	11,804	14.1%
	2010	99,710	3,965	4.1%
PAD projections	2020	102,471	2,761	2.8%
	2030	104,507	2,036	2.0%
	2040	104,816	309	0.3%

Source: 1940-2010 Decennial Census and projections by Cornell Program on Applied Demographics

3.3 Annual population estimates



Source: U.S. Census Bureau population estimates (1990-1999 and 2000-2009 intercensal and vintage 2016 postcensal)



### 3.4 Sub County population change 2010-2015

	Total Population		Difference	
	2000	2010	Count	%
New York State	18,976,821 *	19,378,102	401,281	2.1%
Putnam County	95,745	99,710	3,965	4.1%
<b>Towns</b>				
Carmel	33,006	34,305	1,299	3.9%
Kent	14,009	13,507	-502	-3.6%
Patterson	11,306	12,023	717	6.3%
Philip	9,422	9,662	240	2.5%
Putnam Valley	10,686	11,809	1,123	10.5%
Southeast	17,316	18,404	1,088	6.3%

\* Original counts revised through Count Question Resolution Program (CQR)

Source: U.S. Census Bureau intercensal population estimates 2000-2010

### 3.5 Sub County population change 2010-2015

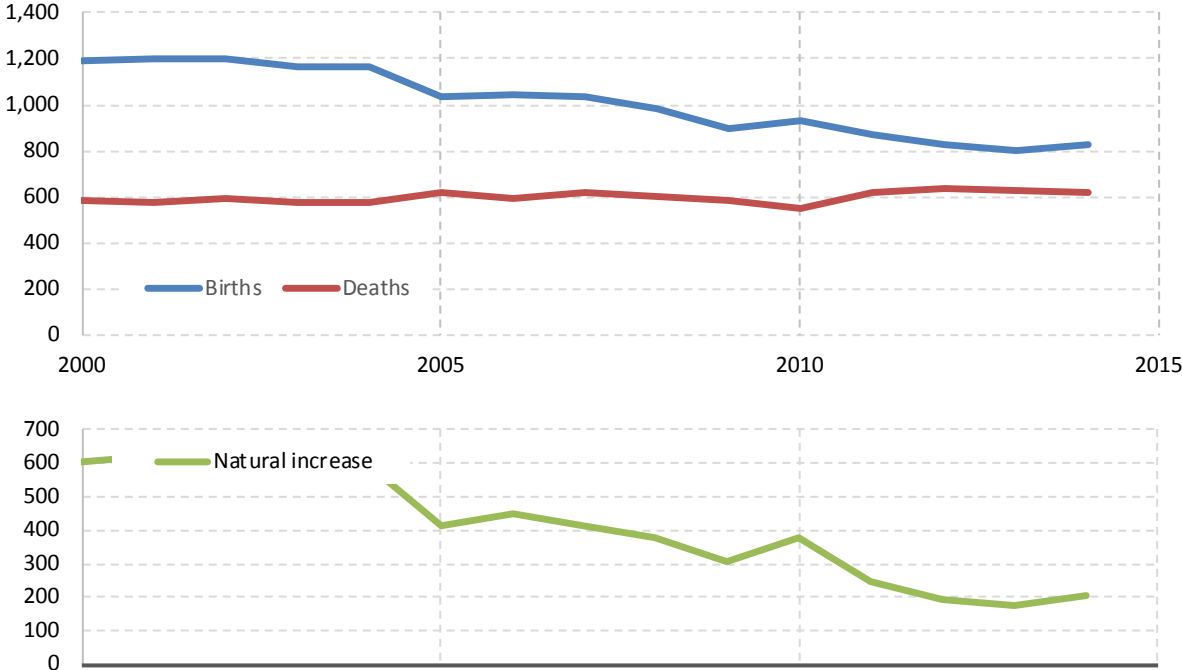
	Total Population		Difference	
	2010 base	2015	Count	%
New York State	19,378,087	19,795,791	417,704	2.2%
Putnam County	99,750	99,042	-708	-0.7%
<b>Towns</b>				
Carmel	34,305	34,348	43	0.1%
Kent	13,533	13,318	-215	-1.6%
Patterson	12,035	11,973	-62	-0.5%
Philip	9,664	9,702	38	0.4%
Putnam Valley	11,809	11,660	-149	-1.3%
Southeast	18,404	18,041	-363	-2.0%

Source: U.S. Census Bureau population estimates 2010-2015

**4 Components of population change**

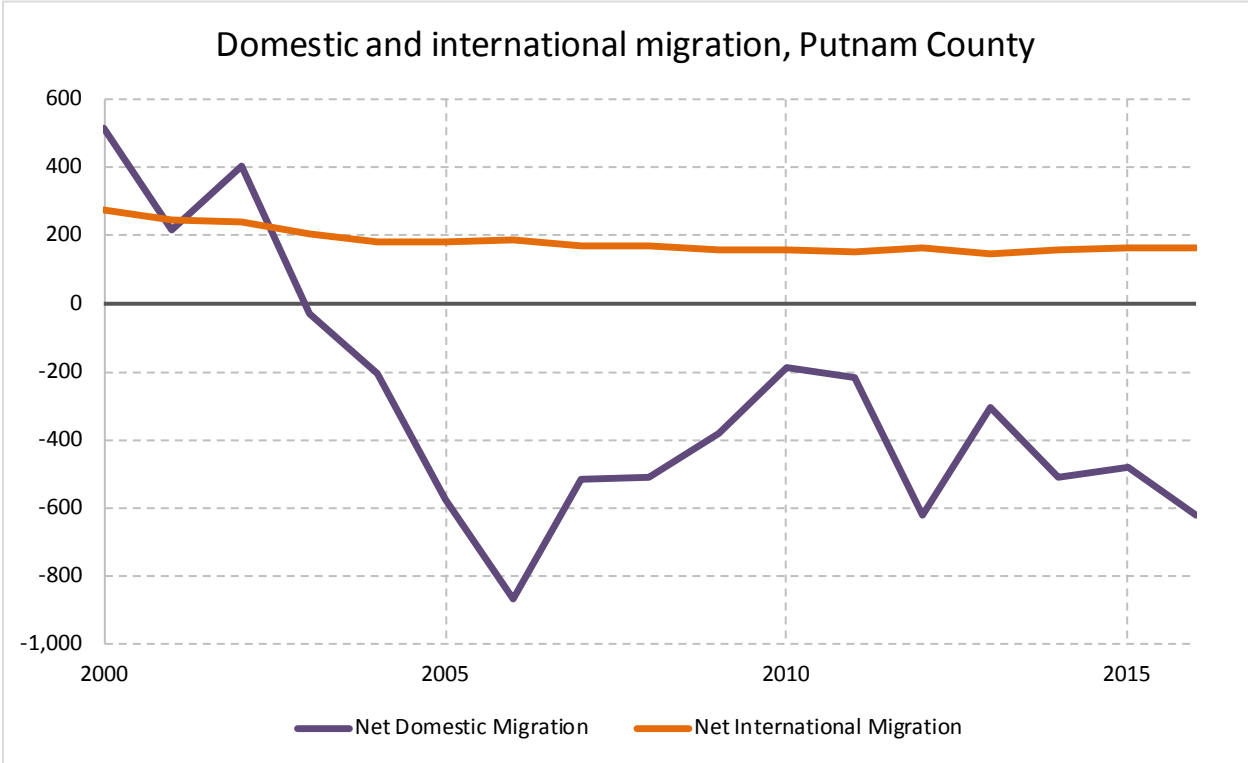
**4.1 Vital Statistics**

Vital Statistics, Putnam County



Source: New York State Department of Health

4.2 Migration

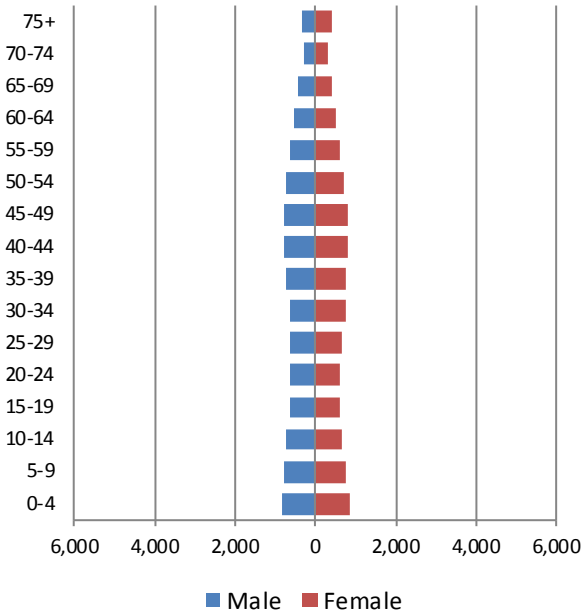


Source: Census Bureau population estimates (V2010 and V2016)

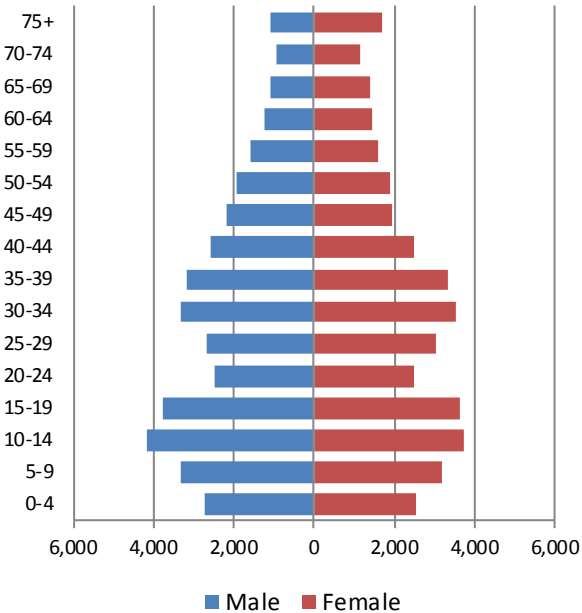
**5 Population by age**

**5.1 Historic and projected population pyramids**

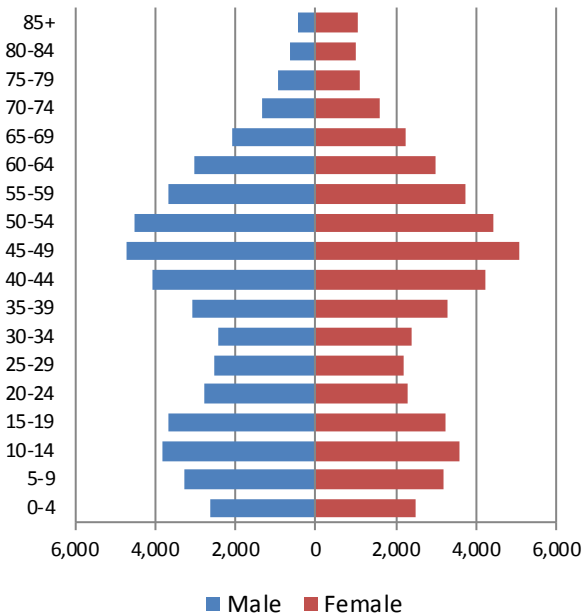
**1950 Population Pyramid, Putnam County**



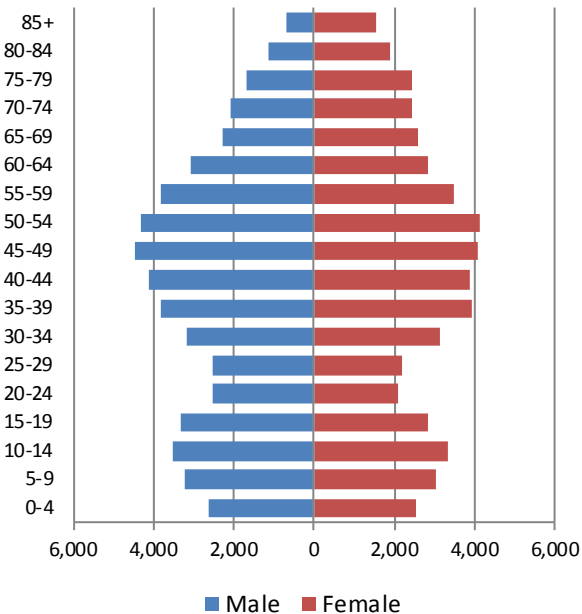
**1980 Population Pyramid, Putnam County**



**2010 Population Pyramid, Putnam County**

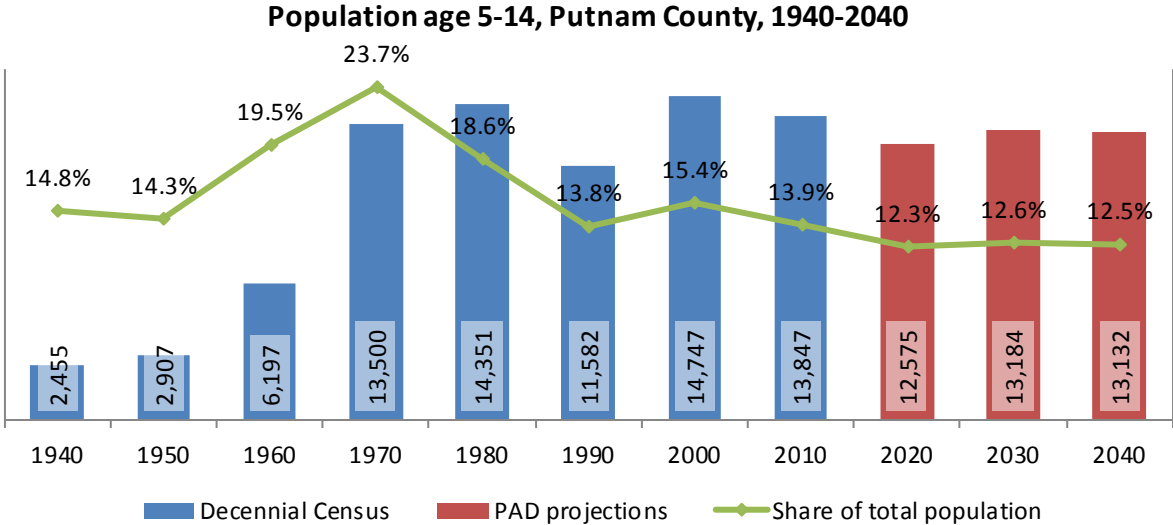


**2040 Population Pyramid, Putnam County**

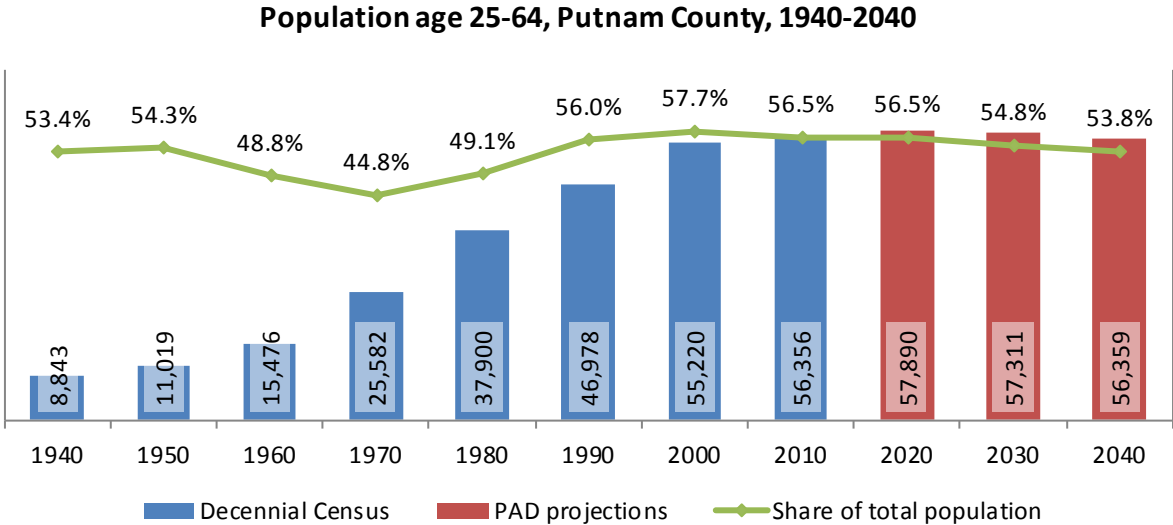


Source: 1950, 1980, 2010 Decennial Census and projections by Cornell Program on Applied Demographics

5.2 Selected age groups

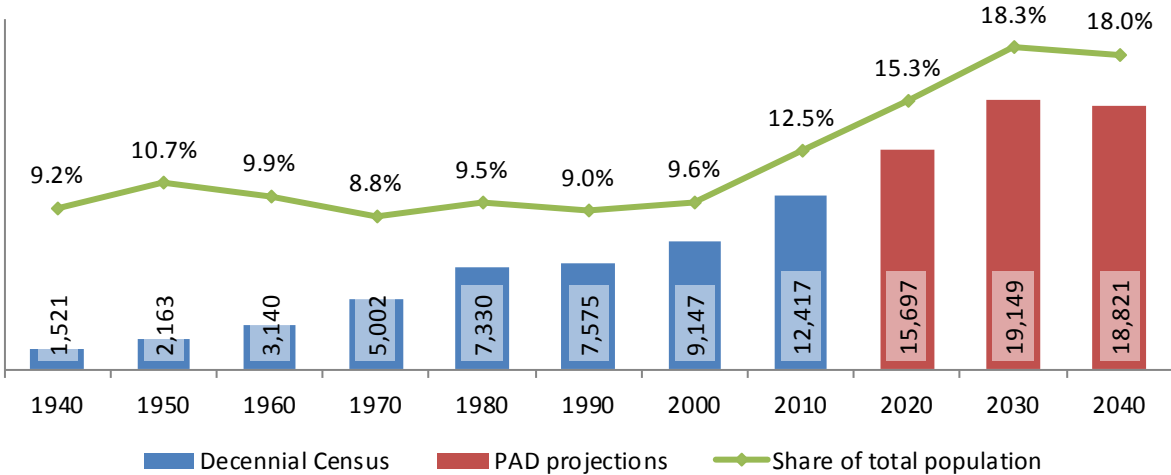


Source: 1940-2010 Decennial Census and projections by Cornell Program on Applied Demographics



Source: 1940-2010 Decennial Census and projections by Cornell Program on Applied Demographics

**Population age 65 and over, Putnam County, 1940-2040**



Source: 1940-2010 Decennial Census and projections by Cornell Program on Applied Demographics

**5.3 Median age**

	Putnam County	New York State
<b>Median age</b>		
2000	37.4	35.9
2010	41.9	38.0
2015	43.7	38.3

Source: 2000, 2010 Decennial Census, 2015 Population Estimates

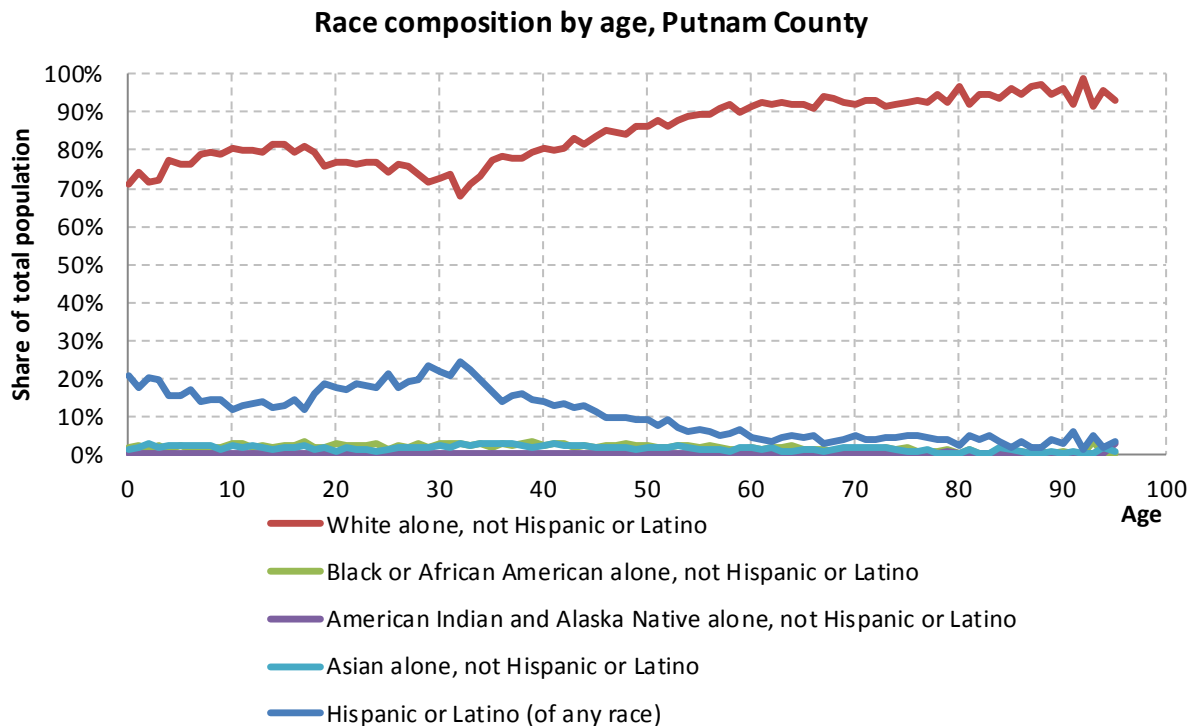
## 6 Race

### 6.1 Total and household population by race

	Total		In households		In Group Quarters
	Count	Percentage	Count	Percentage	Count
<b>Total population</b>	99,710	100%	97,118	100%	2,592
Not Hispanic or Latino					
One race					
White	82,709	82.9%	80,879	83.3%	1,830
Black or African American	2,047	2.1%	1,726	1.8%	321
American Indian and Alaska Native	121	0.1%	117	0.1%	4
Asian	1,832	1.8%	1,766	1.8%	66
Native Hawaiian and Other Pacific Islander	14	0.0%	-	-	-
Some other race	171	0.2%	168	0.2%	3
Two or more races	1,155	1.2%	1,126	1.2%	29
Hispanic or Latino (of any race)	11,661	11.7%	11,322	11.7%	339

Source: 2010 Decennial Census

### 6.2 Race composition by age



Source: 2010 Decennial Census

## 7 Housing units

### 7.1 Characteristics

HOUSING OCCUPANCY	COUNT		PERCENTAGE	
	Estimate	Margin of error	Estimate	Margin of error
<b>Total housing units</b>	38,289	± 199	100.0%	
Occupied housing units	34,090	± 464	89.0%	± 1.1
Vacant housing units	4,199	± 430	11.0%	± 1.1
<b>YEAR STRUCTURE BUILT</b>				
<b>Total housing units</b>	38,289	± 199	100.0%	
Built 2014 or later	0	± 27	0.0%	± 0.1
Built 2010 to 2013	320	± 119	0.8%	± 0.3
Built 2000 to 2009	2,864	± 312	7.5%	± 0.8
Built 1990 to 1999	3,746	± 399	9.8%	± 1.0
Built 1980 to 1989	5,096	± 430	13.3%	± 1.1
Built 1970 to 1979	6,100	± 462	15.9%	± 1.2
Built 1960 to 1969	5,457	± 482	14.3%	± 1.2
Built 1950 to 1959	5,077	± 453	13.3%	± 1.2
Built 1940 to 1949	3,051	± 361	8.0%	± 0.9
Built 1939 or earlier	6,578	± 549	17.2%	± 1.4
<b>HOUSING TENURE</b>				
<b>Occupied housing units</b>	34,090	± 464	100.0%	
Owner-occupied	27,946	± 515	82.0%	± 1.3
Renter-occupied	6,144	± 461	18.0%	± 1.3
<b>HOUSE HEATING FUEL</b>				
<b>Occupied housing units</b>	34,090	± 464	100.0%	
Utility gas	2,241	± 290	6.6%	± 0.8
Bottled, tank, or LP gas	1,347	± 254	4.0%	± 0.7
Electricity	6,914	± 430	20.3%	± 1.2
Fuel oil, kerosene, etc.	21,955	± 613	64.4%	± 1.5
Coal or coke	35	± 29	0.1%	± 0.1
Wood	1,123	± 205	3.3%	± 0.6
Solar energy	0	± 27	0.0%	± 0.1
Other fuel	438	± 133	1.3%	± 0.4
No fuel used	37	± 37	0.1%	± 0.1
<b>VALUE</b>				
<b>Owner-occupied units</b>	27,946	± 515	100.0%	
Less than \$50,000	525	± 125	1.9%	± 0.4
\$50,000 to \$99,999	361	± 108	1.3%	± 0.4
\$100,000 to \$149,999	642	± 160	2.3%	± 0.6
\$150,000 to \$199,999	1,390	± 240	5.0%	± 0.8
\$200,000 to \$299,999	6,490	± 438	23.2%	± 1.5
\$300,000 to \$499,999	12,930	± 552	46.3%	± 1.8
\$500,000 to \$999,999	5,139	± 435	18.4%	± 1.5
\$1,000,000 or more	469	± 115	1.7%	± 0.4
Median (dollars)	354,900	± 4,983		

Source: 2011-2015 American Community Survey



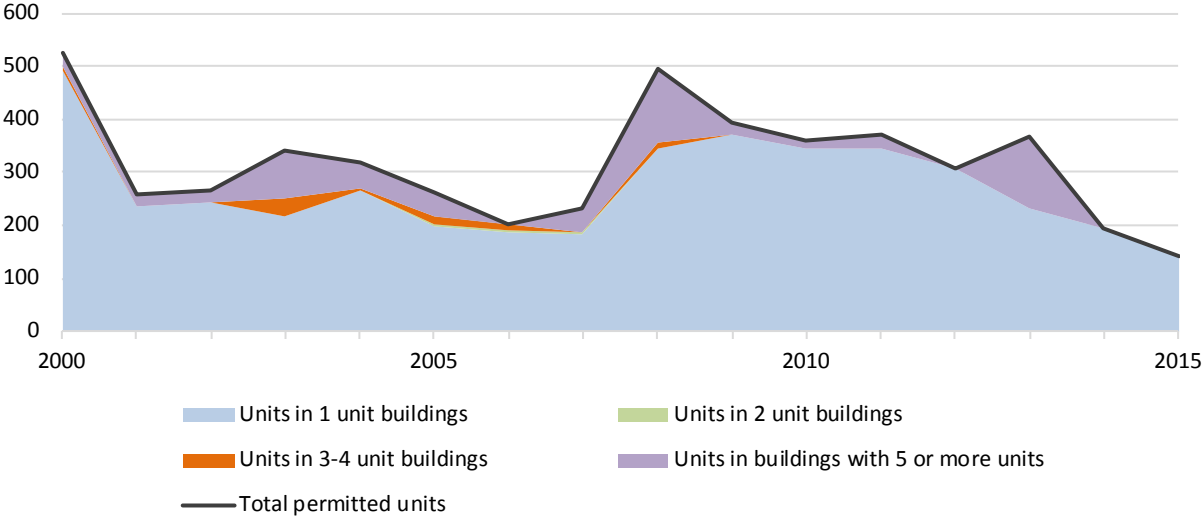
**7.2 Historical data on number of housing units and occupancy status**

Year	Number of Housing Units	Change since previous Census	Occupied	Occupancy rate	Vacant
1970	22,326		15,995	71.6%	6,331
1980	27,867	24.8%	24,368	87.4%	3,499
1990	31,898	14.5%	28,094	88.1%	3,804
2000	35,030	9.8%	32,703	93.4%	2,327
2010	38,224	9.1%	35,041	91.7%	3,183

Source: 1970-2010 Decennial Census

**7.3 Building Permits 2000-2015**

Building permits by number of permitted units in building, Putnam County



Source: Census Bureau Building Permits Survey

## 8 Education

### 8.1 Enrollment by level of school

	Estimate	Margin of error
<b>Total enrolled in school</b>	25,002	± 479
Nursery school, preschool	1,436	± 205
Kindergarten to 12th grade	17,494	± 219
Kindergarten	1,207	± 198
Elementary: grade 1 to grade 4	4,717	± 287
Elementary: grade 5 to grade 8	5,307	± 297
High school: grade 9 to grade 12	6,263	± 292
College, undergraduate	4,612	± 352
Graduate, professional school	1,460	± 274

Source: 2011-2015 American Community Survey

### 8.2 Enrollment by age

	Estimate	Margin of error
3 and 4 years	69.7%	± 7.5
5 to 9 years	97.0%	± 1.4
10 to 14 years	99.0%	± 0.8
15 to 17 years	98.8%	± 0.9
18 and 19 years	83.2%	± 4.6
20 to 24 years	45.1%	± 5.1
25 to 34 years	8.3%	± 1.8
35 years and over	2.2%	± 0.4

Source: 2011-2015 American Community Survey

### 8.3 Percentage age 18-24 enrolled in college

	Estimate	Margin of error
Population 18 to 24 years	8,086	± 114
Enrolled in college or graduate school	48.3%	± 3.8
Males 18 to 24 years	4,388	± 71
Enrolled in college or graduate school	42.2%	± 4.3
Females 18 to 24 years	3,698	± 77
Enrolled in college or graduate school	55.7%	± 6.9

Source: 2011-2015 American Community Survey

## 8.4 Educational attainment

	COUNT		PERCENTAGE	
	Estimate	Margin of error	Estimate	Margin of error
<b>Population 25 years and over</b>	69,527	± 121	100%	
<b>EDUCATIONAL ATTAINMENT</b>				
Less than 9th grade	2,580	± 373	3.7%	± 0.5
9th to 12th grade, no diploma	2,727	± 320	3.9%	± 0.5
High school graduate (includes equivalency)	19,011	± 879	27.3%	± 1.3
Some college, no degree	12,564	± 620	18.1%	± 0.9
Associate's degree	6,316	± 436	9.1%	± 0.6
Bachelor's degree	15,145	± 669	21.8%	± 1.0
Graduate or professional degree	11,184	± 615	16.1%	± 0.9
Percent high school graduate or higher			92.4%	± 0.7
Percent bachelor's degree or higher			37.9%	± 1.1

Source: 2011-2015 American Community Survey

## 9 Language spoken at home

	COUNT		PERCENTAGE		SPEAK ENGLISH LESS THAN "VERY WELL"	
	Estimate	Margin of error	Estimate	Margin of error	Estimate	Margin of error
<b>Population 5 years and over</b>	94,932	± 41	100%			
<b>LANGUAGE SPOKEN AT HOME</b>						
English only	76,937	± 1,427	81.0%	± 1.5		
Language other than English	17,995	± 1,421	19.0%	± 1.5	6,368	± 791
Spanish	8,420	± 621	8.9%	± 0.7	3,292	± 535
Other Indo-European languages	7,585	± 1,176	8.0%	± 1.2	2,209	± 467
Asian and Pacific Islander languages	1,550	± 292	1.6%	± 0.3	723	± 282
Other languages	440	± 183	0.5%	± 0.2	144	± 67

Source: 2011-2015 American Community Survey

## 10 Labor Force Characteristics

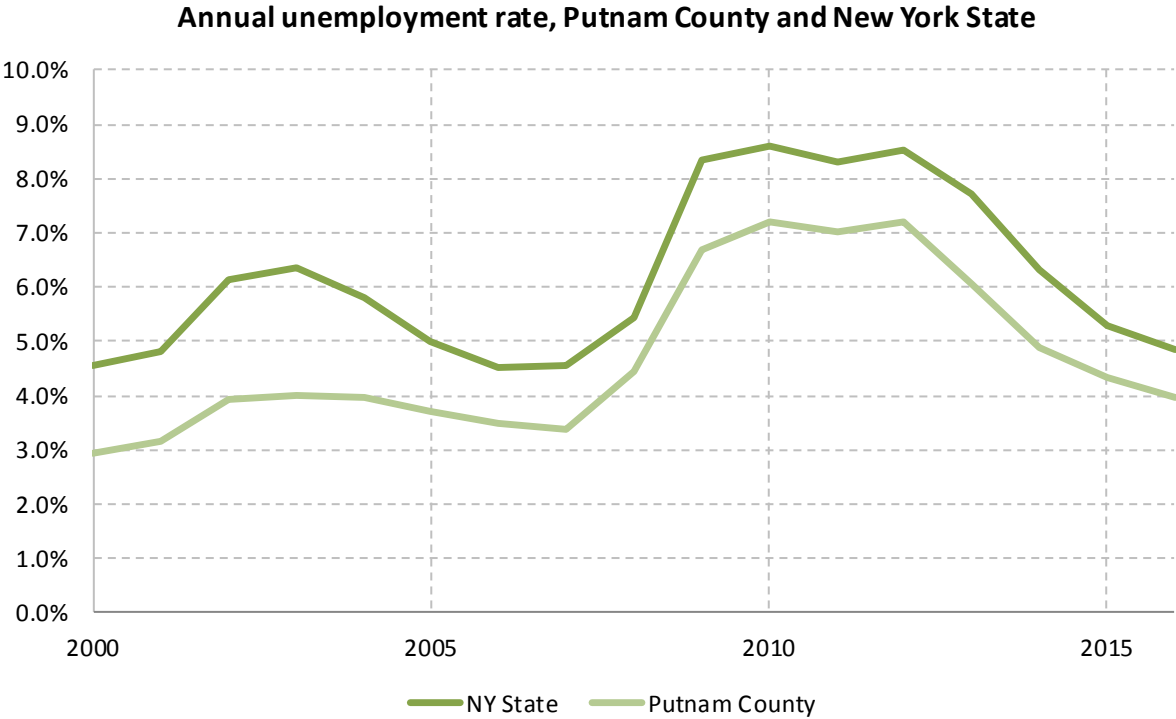
### 10.1 Labor force, employment and unemployment

	TOTAL		IN LABOR FORCE		EMPLOYED		UNEMPLOYMENT RATE	
	Estimate	Margin of error	Estimate	Margin of error	Estimate	Margin of error	Estimate	Margin of error
<b>Population 16 years and over</b>	80,497	± 230	68.6%	± 1.0	63.9%	± 1.0	6.8%	± 0.8
<b>AGE</b>								
16 to 19 years	5,380	± 268	41.3%	± 4.2	33.5%	± 4.3	19.0%	± 6.2
20 to 24 years	5,590	± 133	81.1%	± 3.8	70.8%	± 4.1	12.7%	± 4.0
25 to 29 years	4,954	± 101	84.7%	± 3.9	76.6%	± 4.3	9.1%	± 3.2
30 to 34 years	4,963	± 157	84.7%	± 2.9	79.5%	± 3.9	6.0%	± 2.8
35 to 44 years	12,875	± 171	83.3%	± 2.4	78.4%	± 2.9	5.8%	± 1.6
45 to 54 years	18,178	± 76	86.1%	± 1.9	81.5%	± 1.8	5.4%	± 1.2
55 to 59 years	8,117	± 396	80.2%	± 3.0	76.4%	± 3.3	4.7%	± 1.7
60 to 64 years	6,423	± 385	63.4%	± 3.8	60.4%	± 3.8	4.7%	± 2.0
65 to 74 years	8,611	± 155	31.6%	± 3.2	30.0%	± 3.0	5.1%	± 2.4
75 years and over	5,406	± 89	6.7%	± 2.1	6.2%	± 2.0	6.7%	± 7.6
<b>RACE AND HISPANIC OR LATINO ORIGIN</b>								
White alone	73,151	± 485	68.4%	± 1.1	63.8%	± 1.1	6.7%	± 0.9
Black or African American alone	1,931	± 132	59.8%	± 7.2	54.7%	± 7.7	8.5%	± 6.2
American Indian and Alaska Native alone	344	± 219	82.3%	± 14.0	61.0%	± 17.6	25.8%	± 22.1
Asian alone	1,839	± 78	66.2%	± 8.4	65.1%	± 8.8	1.7%	± 2.2
Two or more races	1,258	± 265	80.4%	± 6.5	67.9%	± 8.3	15.5%	± 7.3
Hispanic or Latino origin (of any race)	9,435	± 95	68.9%	± 2.7	63.8%	± 3.0	7.5%	± 2.2
White alone, not Hispanic or Latino	66,510	± 264	68.7%	± 1.1	64.0%	± 1.1	6.7%	± 0.9
<b>SEX</b>								
<b>Population 20 to 64 years</b>	61,100	± 198	81.6%	± 1.2	76.4%	± 1.2	6.4%	± 0.9
Male	30,784	± 186	85.3%	± 1.4	79.5%	± 1.7	6.7%	± 1.2
Female	30,316	± 140	78.0%	± 1.6	73.3%	± 1.6	5.9%	± 1.3
With own children under 18 years	11,298	± 408	77.2%	± 2.7	74.1%	± 2.7	4.0%	± 1.3
<b>EDUCATIONAL ATTAINMENT</b>								
<b>Population 25 to 64 years</b>	55,510	± 185	81.7%	± 1.2	77.0%	± 1.3	5.7%	± 0.8
Less than high school graduate	3,354	± 434	61.6%	± 6.2	56.0%	± 6.1	9.1%	± 3.9
High school graduate (includes equivalency)	13,885	± 753	73.1%	± 2.9	68.2%	± 2.9	6.7%	± 1.8
Some college or associate's degree	15,907	± 679	84.4%	± 2.2	78.0%	± 2.5	7.5%	± 1.6
Bachelor's degree or higher	22,364	± 705	88.1%	± 1.4	84.9%	± 1.6	3.6%	± 0.9

Table formula:      **LABOR FORCE** = # EMPLOYED + # UNEMPLOYED  
                           **% IN LABOR FORCE** = LABOR FORCE / TOTAL \* 100%  
                           **% EMPLOYED** = # EMPLOYED / TOTAL \* 100%  
                           **UNEMPLOYMENT RATE** = # UNEMPLOYED / LABOR FORCE \* 100%

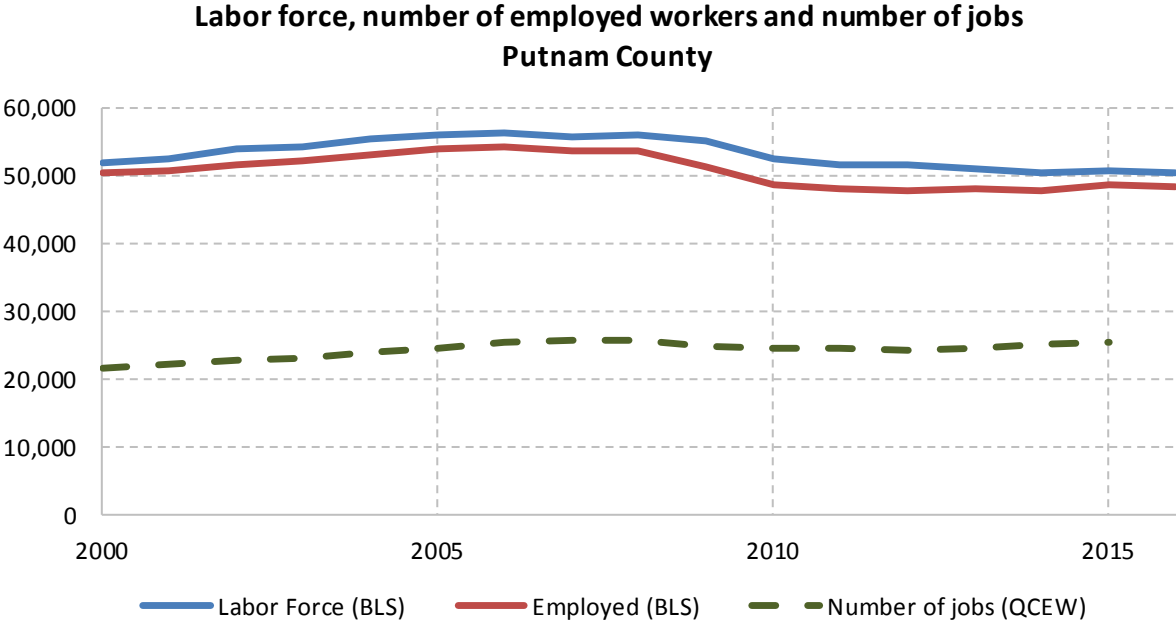
Source: 2011-2015 American Community Survey

10.2 Annual unemployment rate



Source: Bureau Labor Statistics (BLS)

10.3 Employment and number of jobs



Source: Bureau Labor Statistics (BLS) and NY Department of Labor - Quarterly Census of Employment and Wages (QCEW) – annual averages

## 10.4 Class of worker

		<b>Total</b>	<b>%Male</b>	<b>%Female</b>
Civilian employed population 16 years and over	Estimate	51,412	52.7%	47.3%
	<i>Margin of error</i>	$\pm 811$	$\pm 0.8$	$\pm 0.8$
Private for-profit wage and salary workers:	Estimate	34,616	54.0%	46.0%
	<i>Margin of error</i>	$\pm 989$	$\pm 1.2$	$\pm 1.2$
Employee of private company workers	Estimate	32,313	53.1%	46.9%
	<i>Margin of error</i>	$\pm 974$	$\pm 1.3$	$\pm 1.3$
Self-employed in own incorporated business workers	Estimate	2,303	66.4%	33.6%
	<i>Margin of error</i>	$\pm 302$	$\pm 6.0$	$\pm 6.0$
Private not-for-profit wage and salary workers	Estimate	4,452	33.8%	66.2%
	<i>Margin of error</i>	$\pm 455$	$\pm 4.5$	$\pm 4.5$
Local government workers	Estimate	6,462	51.4%	48.6%
	<i>Margin of error</i>	$\pm 488$	$\pm 4.5$	$\pm 4.5$
State government workers	Estimate	1,959	53.6%	46.4%
	<i>Margin of error</i>	$\pm 284$	$\pm 7.8$	$\pm 7.8$
Federal government workers	Estimate	634	55.2%	44.8%
	<i>Margin of error</i>	$\pm 144$	$\pm 11.7$	$\pm 11.7$
Self-employed in own not incorporated business workers and unpaid family workers	Estimate	3,289	66.3%	33.7%
	<i>Margin of error</i>	$\pm 403$	$\pm 5.5$	$\pm 5.5$

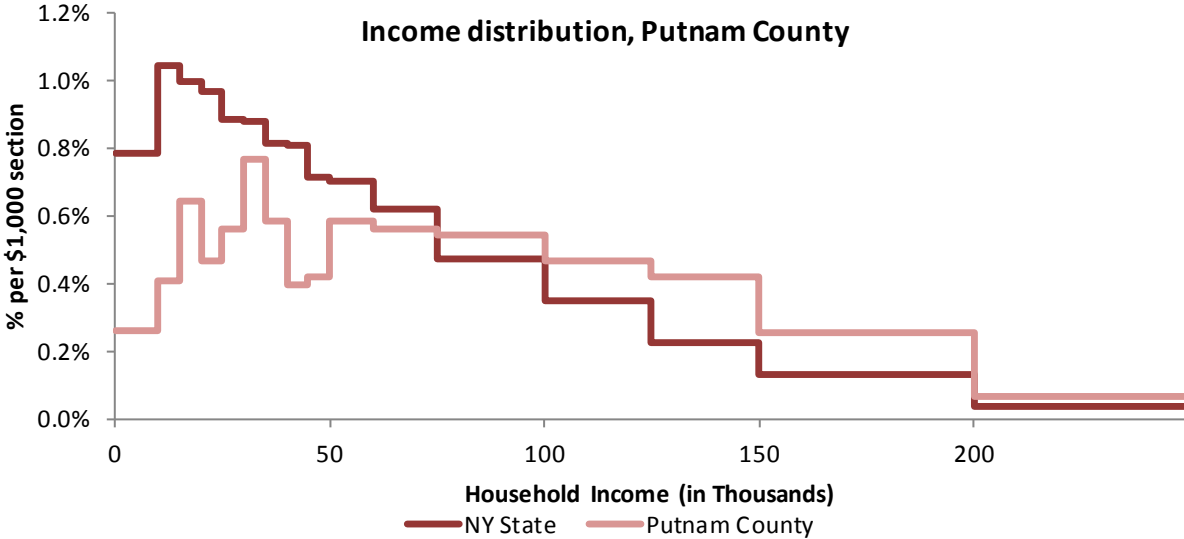
Source: 2011-2015 American Community Survey

**11 Household Income**

**11.1 Income Distribution**

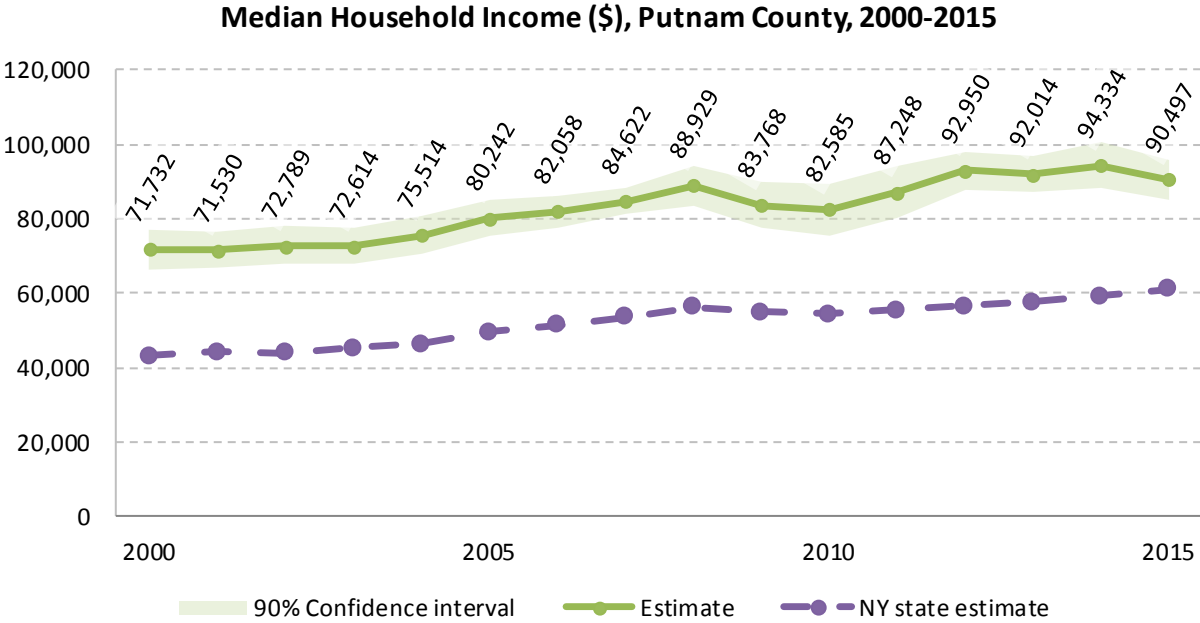
	Estimate	Margin of error	Interval width (in \$1,000)	Est. per \$1,000 section
<b>Total:</b>	34,090	± 464		
Less than \$10,000	897	± 190	10	89.7
\$10,000 to \$14,999	694	± 212	5	138.8
\$15,000 to \$19,999	1,093	± 210	5	218.6
\$20,000 to \$24,999	793	± 218	5	158.6
\$25,000 to \$29,999	956	± 223	5	191.2
\$30,000 to \$34,999	1,310	± 243	5	262.0
\$35,000 to \$39,999	1,001	± 178	5	200.2
\$40,000 to \$44,999	678	± 155	5	135.6
\$45,000 to \$49,999	713	± 183	5	142.6
\$50,000 to \$59,999	1,988	± 265	10	198.8
\$60,000 to \$74,999	2,859	± 337	15	190.6
\$75,000 to \$99,999	4,642	± 369	25	185.7
\$100,000 to \$124,999	3,971	± 390	25	158.8
\$125,000 to \$149,999	3,558	± 369	25	142.3
\$150,000 to \$199,999	4,318	± 389	50	86.4
\$200,000 or more	4,619	± 350	-	-

Source: 2011-2015 American Community Survey



Source: 2011-2015 American Community Survey

11.2 Median household income: Trends over time



Source: Small Area Income and Poverty Estimates (SAIPE)

12 Poverty

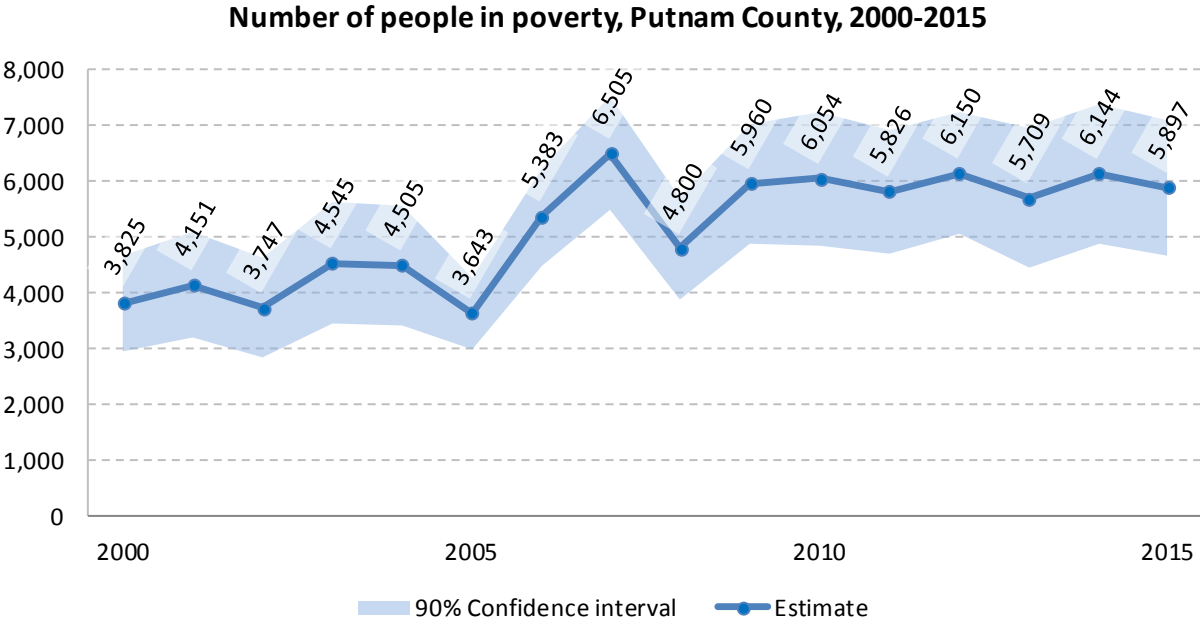
12.1 Family Income to Poverty Ratio

	TOTAL		PERCENT OF ALL	
	Estimate	Margin of error	Estimate	Margin of error
<b>All families</b>	25,937	± 499		
<b>ALL FAMILIES WITH INCOME:</b>				
Below 50 percent of poverty level	233	± 92	0.9%	± 0.4
<b>Below 100 percent of poverty level</b>	767	± 173	<b>3.0%</b>	<b>± 0.7</b>
Below 125 percent of poverty level	1,108	± 202	4.3%	± 0.8
Below 150 percent of poverty level	1,642	± 223	6.3%	± 0.9
Below 185 percent of poverty level	2,129	± 245	8.2%	± 0.9
Below 200 percent of poverty level	2,628	± 266	10.1%	± 1.0
Below 300 percent of poverty level	5,002	± 390	19.3%	± 1.5
Below 400 percent of poverty level	7,953	± 447	30.7%	± 1.6
Below 500 percent of poverty level	10,965	± 525	42.3%	± 1.9

Source: 2011-2015 American Community Survey

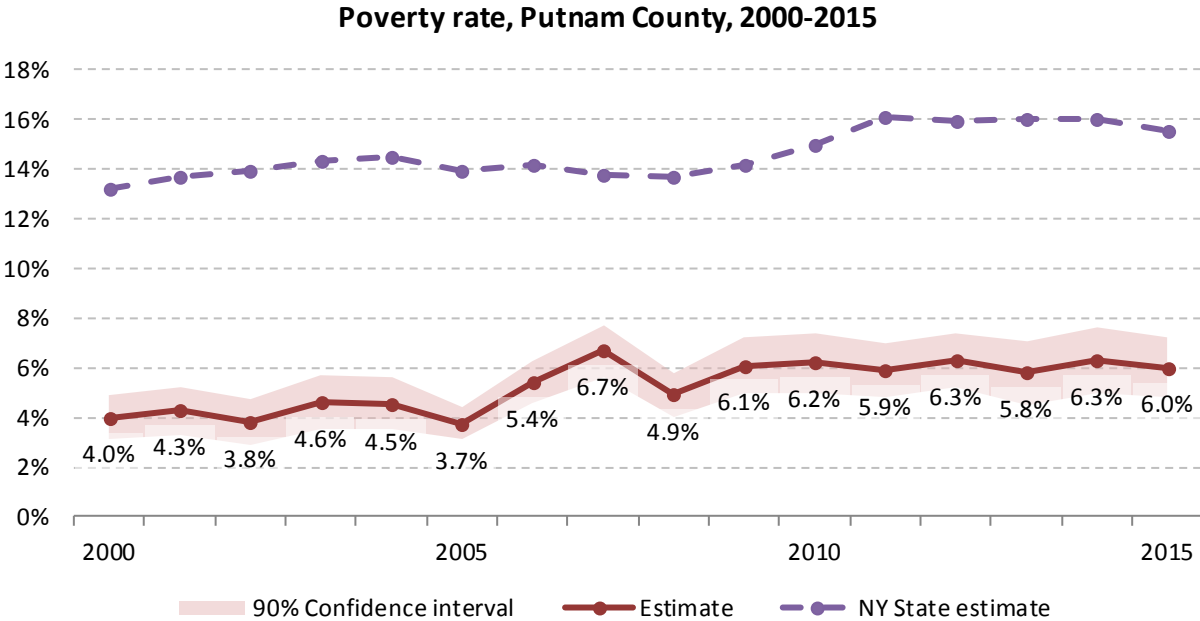


12.2 Poverty: Trends over time: Count



Source: Small Area Income and Poverty Estimates (SAIPE)

12.3 Poverty: Trends over time: Rate



Source: Small Area Income and Poverty Estimates (SAIPE)

## 12.4 Poverty characteristics

	TOTAL		BELOW POVERTY LEVEL		PERCENT BELOW POVERTY LEVEL	
	Estimate	Margin of error	Estimate	Margin of error	Estimate	Margin of error
<b>Population for whom poverty status is determined</b>	98,228	± 333	5,212	± 739	5.3%	± 0.8
<b>AGE</b>						
Under 18 years	21,711	± 92	1,052	± 263	4.8%	± 1.2
Under 5 years	4,523	± 58	228	± 130	5.0%	± 2.9
5 to 17 years	17,188	± 96	824	± 208	4.8%	± 1.2
18 to 34 years	17,642	± 198	1,381	± 311	7.8%	± 1.8
35 to 64 years	45,077	± 279	2,222	± 364	4.9%	± 0.8
65 years and over	13,798	± 194	557	± 160	4.0%	± 1.2
<b>SEX</b>						
Male	48,901	± 282	2,693	± 477	5.5%	± 1.0
Female	49,327	± 258	2,519	± 452	5.1%	± 0.9
<b>RACE AND HISPANIC OR LATINO ORIGIN</b>						
White alone	88,718	± 636	3,989	± 624	4.5%	± 0.7
Black or African American alone	2,040	± 201	237	± 112	11.6%	± 5.5
American Indian and Alaska Native alone	495	± 387	43	± 43	8.7%	± 12.3
Asian alone	2,294	± 175	166	± 102	7.2%	± 4.5
Hispanic or Latino origin (of any race)	12,404	± 132	1,868	± 552	15.1%	± 4.4
White alone, not Hispanic or Latino	80,027	± 275	2,854	± 431	3.6%	± 0.5
<b>EDUCATIONAL ATTAINMENT</b>						
<b>Population 25 years and over</b>	68,616	± 306	3,568	± 522	5.2%	± 0.8
Less than high school graduate	5,118	± 514	526	± 180	10.3%	± 3.4
High school graduate (includes equivalency)	18,495	± 856	1,605	± 387	8.7%	± 2.1
Some college, associate's degree	18,751	± 742	879	± 213	4.7%	± 1.1
Bachelor's degree or higher	26,252	± 776	558	± 186	2.1%	± 0.7
<b>EMPLOYMENT STATUS</b>						
<b>Civilian labor force 16 years and over</b>	55,103	± 776	1,759	± 357	3.2%	± 0.6
Employed	51,359	± 809	1,263	± 276	2.5%	± 0.5
Male	27,082	± 624	731	± 215	2.7%	± 0.8
Female	24,277	± 547	532	± 156	2.2%	± 0.6
Unemployed	3,744	± 478	496	± 165	13.2%	± 3.9
Male	2,132	± 352	266	± 128	12.5%	± 5.3
Female	1,612	± 333	230	± 115	14.3%	± 5.8
<b>WORK EXPERIENCE IN THE PAST 12 MONTHS</b>						
<b>Population 16 years and over</b>	24,277	± 547	532	± 156	2.2%	± 0.6
Worked full-time, year-round	3,744	± 478	496	± 165	13.2%	± 3.9
Worked part-time or part-year	2,132	± 352	266	± 128	12.5%	± 5.3
Did not work	1,612	± 333	230	± 115	14.3%	± 5.8

Source: 2011-2015 American Community Survey

## 13 Glossary

**American Community Survey (ACS)** - The American Community Survey is an ongoing survey of the population that provides data every year on a variety of social and economic characteristics—age, sex, race, family and relationships, income and benefits, health insurance, education, veteran status, disabilities, where you work and how you get there, where you live and how much you pay for some essentials. The ACS replaced the information previously gathered by what was known as the “long form” of the decennial censuses. The ACS provides communities, companies and other institutions with current information they need to plan investments and services. Information from the survey generates data that help determine how more than \$400 billion in federal and state funds are distributed each year. Every estimate presented in the American Community Survey, as in other surveys, has an uncertainty associated with it. Often the magnitude of that uncertainty is expressed as the Margin of Error.

**Confidence Interval (CI)** - indication of the degree of uncertainty about a sample estimates. Confidence intervals have been traditionally reported at the 90, 95 and 99 percent levels. A 90 percent confidence interval can be interpreted, for example, roughly as providing 90 percent certainty that the interval defined by the upper and lower bounds contain the true value of the characteristic. If a Margin of Error is given, the lower bound of the confidence interval is equal to the estimate minus the Margin of Error and the upper bound is equal to the estimate plus the Margin of Error. (See further, Margin of Error definition below.)

**County subdivision or Minor Civil Division (MCD)** - The Census Bureau geography for primary administrative units below the county level in New York is collectively referred to as county subdivisions or minor civil divisions. These include towns, cities and Indian Reservations.

**Decennial Census** - the Census of the population and housing taken every 10 years in the United States, at the start of each decade, since 1790.

**Employed** – either “at work” or “with a job, but not at work”.

**Group Quarters Population** - all U.S. residents who live in group living facilities including correctional institutions, juvenile facilities, skilled nursing facilities, college residence halls, military barracks, group homes, and workers' dormitories.

**Household Population** - all U.S. residents who live in housing units such as single family homes, townhouses, apartments, and mobile homes.

**Intercensal Population Estimates** - estimates produced for the years between two decennial censuses when both the beginning and ending populations are known. They are produced once a decade by adjusting the existing time series of postcensal estimates for the entire decade to smooth the transition from one decennial census count to the next. They differ from the postcensal estimates that are released annually because the difference between the April 1 postcensal estimate and April 1 census count for the end of the decade is redistributed across the estimates for that decade. For dates when both postcensal and intercensal estimates are available, intercensal estimates are preferred.

**Labor Force** - consists of people classified as employed or unemployed.

**Margin of Error (MOE)** - a measure of the precision of an estimate at a given level of confidence. The confidence level of a margin of error indicates the likelihood that the difference between the population value (which you

would get if you could measure the whole population instead of a sample) and the estimate is less than or equal to the margin of error. The range from the estimate minus the margin of error to the estimate plus the margin of error is called the confidence interval. All ACS estimates are published with their margins of error at the 90 percent confidence level. Margins of error are useful in assessing the reliability of estimates and whether differences between estimates are significant.

**Numeric Population Change** - difference between the population of an area at the beginning and end of a time period. It is computed by taking the difference between the population at one point in time ( $t_1$ ) and some future time ( $t_2$ ).

**Percent Population Change** - difference between the population of an area at the beginning and end of a time period, expressed as a percentage of the beginning population. It is computed by dividing the population change ( $t_2 - t_1$ ) by  $t_1$  and multiplying the result by 100.

**Population Estimates** - The calculated number of people living in an area as of a specified point in time, usually July 1st. The estimated population is calculated using a component of change model that incorporates information on natural increase (births, deaths) and net migration (net domestic migration, net international migration) that has occurred in an area since the latest decennial census. A procedure for estimating the current population using a procedure involving a "base population" value at time  $t - 1$ , adding to that the births during the interval  $t - 1$  to  $t$ , subtracting the deaths during that interval  $t - 1$  to  $t$ , and then adding the net domestic and net international migration that occurred during that interval.

**Population Density** - Total number of people per areal unit like a square mile or square kilometer.

**Population Pyramids** - A graphical way of portraying a population's age and sex composition at a given slice in time. The first horizontal bar, constituting the base of the graph, is the youngest age group (typically 0-4) with the number of males in that age group on the left and the number of females in that age group on the right. On top of that age group is another horizontal bar for the next age group (e.g. 5-9) and so forth with the top bar typically for those aged 75 and over. In a population with lots of births and deaths, the shape typically forms a pyramid with a broad base and a narrow top. It is one of the most basic ways to understand population change over time as well as between different geographic units of a similar status (e.g. counties).

**Postcensal Estimates** - estimates produced for the years after a decennial census when only the beginning population is known. They are produced and revised each year, targeted to July 1 of that year.

**Projection** - estimated population at some future time based on assumptions about births, deaths, migration, and ages.

**Race/Ethnicity** - the Census Bureau collects racial data in accordance with guidelines provided by the U.S. Office of Management and Budget (OMB), and these data are based on self-identification. The racial categories included in the census questionnaire generally reflect a social definition of race recognized in this country and not an attempt to define race biologically, anthropologically, or genetically. In addition, it is recognized that the categories of the race item include racial and national origin or sociocultural groups. People may choose to report more than one race to indicate their racial mixture, such as "American Indian" and "White." People who identify their origin as Hispanic, Latino, or Spanish may be of any race. OMB requires five minimum categories: White, Black or African American, American Indian or Alaska Native, Asian, and Native Hawaiian or Other Pacific Islander. Hispanics may be classified as white or black. So we generally separate them out as an ethnic group first.

**Unemployed** – Not employed, but actively looking for work and available to accept a job.

**Unemployment rate** – Fraction of the Labor Force that is unemployed.

**Urban Area** – A densely settled area with at least 2,500 people. If the total number of people is less than 50,000 the Census Bureau calls it an Urban Cluster, otherwise an Urbanized Area.

**Vintage** - each year, the U.S. Census Bureau produces and publishes estimates of the population for each state and county, as well as the nation as a whole. These are called “vintages.” In producing these vintages, the Bureau utilizes administrative data from a number of sources to estimate 1) the change in population since the most recent decennial census, and 2) the population for each year since the most recent decennial census. With each annual release of population estimates (vintage), the entire time series of estimates beginning on April 1, 2010 is revised and updated.

**Vital Statistics** - quantitative data concerning a population, such as the number of births, marriages, and deaths.

## 14 References

Putnam County homepage: <http://www.putnamcountyny.com/>

At Cornell:

- Program on Applied Demographics (PAD)  
URL: <http://pad.human.cornell.edu/>
  - More county trends: <https://pad.human.cornell.edu/counties/trends1geo.cfm?geo=79>
- Community and Regional Development Institute (CaRDI)  
URL: <https://cardi.cals.cornell.edu/>
- Cornell Cooperative Extensions (CCE)  
Home page: <http://www.cce.cornell.edu>
  - Putnam local office: <http://putnam.cce.cornell.edu/>

Data sources and background information:

- New York State Data Center
  - <https://labor.ny.gov/nys-data-center/index.shtm>
- U.S. Census Bureau - general
  - QuickFacts: <https://www.census.gov/quickfacts/table/PST045216/36,36079>
  - American FactFinder: <http://factfinder.census.gov/>
- U.S. Census Bureau - population
  - Decennial Census
    - Background: <https://www.census.gov/2010census/>
    - Demographic Profile: [http://factfinder2.census.gov/bkmk/table/1.0/en/DEC/10\\_SF1/SF1DP1/0500000US36079](http://factfinder2.census.gov/bkmk/table/1.0/en/DEC/10_SF1/SF1DP1/0500000US36079)
  - American Community Survey (ACS)
    - Background: <https://www.census.gov/programs-surveys/acs/>
    - Social Data Profile: [http://factfinder2.census.gov/bkmk/table/1.0/en/ACS/15\\_5YR/DP02/0500000US36079](http://factfinder2.census.gov/bkmk/table/1.0/en/ACS/15_5YR/DP02/0500000US36079)
    - Economic Data Profile: [http://factfinder2.census.gov/bkmk/table/1.0/en/ACS/15\\_5YR/DP03/0500000US36079](http://factfinder2.census.gov/bkmk/table/1.0/en/ACS/15_5YR/DP03/0500000US36079)
    - Housing Data Profile: [http://factfinder2.census.gov/bkmk/table/1.0/en/ACS/15\\_5YR/DP04/0500000US36079](http://factfinder2.census.gov/bkmk/table/1.0/en/ACS/15_5YR/DP04/0500000US36079)
    - Demographics Data Profile: [http://factfinder2.census.gov/bkmk/table/1.0/en/ACS/15\\_5YR/DP05/0500000US36079](http://factfinder2.census.gov/bkmk/table/1.0/en/ACS/15_5YR/DP05/0500000US36079)
  - Population estimates:
    - General: <https://www.census.gov/programs-surveys/popest.html>
    - Explorer: <https://www.census.gov/censusexplorer/censusexplorer-popest.html>
- U.S. Census Bureau – Small Area Income & Poverty Estimates (SAIPE)
  - <http://www.census.gov/did/www/saipe/>
- U.S. Census Bureau - Public Use Quarterly Workforce Indicators (QWI) – annual averages
  - <https://qwiexplorer.ces.census.gov/static/explore.html>
- U.S. Census Bureau – Building Permits Survey
  - <https://www.census.gov/construction/bps/>

- Bureau Labor Statistics (BLS)
  - Local Area Unemployment Statistics: <http://www.bls.gov/lau/>
  - Quarterly Census of Employment and Wages (QCEW): <https://www.bls.gov/cew/data.htm>
- NY Department of Labor -
  - Labor statistics: <https://labor.ny.gov/stats/index.shtm>
  - Quarterly Census of Employment and Wages (QCEW): <https://labor.ny.gov/stats/LSQCEW.shtm>
- NY State Department of Health
  - Vital Statistics: [https://www.health.ny.gov/statistics/vital\\_statistics/](https://www.health.ny.gov/statistics/vital_statistics/)
- Bureau of Economic Analysis (BEA) – Local Area Personal Income and Employment: <http://bea.gov/iTable/iTable.cfm?ReqID=70&step=1>

Alternative sites for data retrieval:

- The Nelson A. Rockefeller Institute of Government – New York State Statistical Yearbooks [http://www.rockinst.org/nys\\_statistics/](http://www.rockinst.org/nys_statistics/)
- Headwaters Economics: Economic Profile System – Human Dimensions Toolkit <http://headwaterseconomics.org/tools/eps-hdt>
- National Historical Geographic Information System (NHGIS) <https://www.nhgis.org/>
- Social Explorer <http://www.socialexplorer.com/pub/home/home.aspx>
- Stats America <http://www.statsamerica.org/Default.aspx>
- Missouri Census Data Center <http://mcdc.missouri.edu/>
- DataFerret <http://dataferrett.census.gov/>
- Investigative Reporters and Editors (IRE) Census project <http://census.ire.org/>