

Fulton County Profile 2017

A collection of recent demographic, social and economic data

Compiled by

Jan Vink

Cornell Program on Applied Demographics



Cornell University



Program
on Applied
Demographics

CORNELL POPULATION CENTER

This profile is a part of a set of profiles generated for each county in New York State. The profiles were developed and generated by the Cornell Program on Applied Demographics. The work is sponsored by the New York State Data Center in the New York State Department of Labor.

Cornell Program on Applied Demographics:

The Program on Applied Demographics (PAD) brings skills in demographics, economics, statistics, data gathering and data analysis together to provide a variety of organizations with data, information and advice. PAD is located in the Department of Policy Analysis and Management within the College of Human Ecology at Cornell University. PAD is also affiliated with the Cornell Institute for Social and Economic Research and the Cornell Population Center.

For more information: <http://pad.human.cornell.edu/>

New York State Data Center:

The New York State Data Center (NYSDC) is located in the Division of Research and Statistics within the New York State Department of Labor. The State Data Center operates as part of a nationwide effort to improve public access to data provided by the U.S. Census Bureau. The U.S. Census Bureau collects and tabulates data on a multitude of subjects such as population, social, economic and housing demographics, labor force data, health care, migration and transportation. These data play a critical role in understanding our local and larger surrounding communities. Census data also influence state and federal funding, aid decision making in the legislative process, and determine each state's number of congressional seats. As the lead agency in New York for the SDC program, the New York State Data Center helps users navigate through the multitude of surveys and products provided by the U.S. Census Bureau.

For more information: <https://labor.ny.gov/nys-data-center/>

All profiles are freely downloadable as PDF documents on the PAD website:

<http://pad.human.cornell.edu/profiles/index.cfm>

This profile is an update from the County Profile produced in 2013. The 2013 profile also contained information on agriculture related items and can be found at <https://pad.human.cornell.edu/profiles/2013/Fulton.pdf>

Contents

1 Reference Maps (towns and places as defined in 2010)3

2 Population density and Urban Areas Map5

3 Total Population6

 3.1 Historic and projected6

 3.2 Change since previous Census6

 3.3 Annual population estimates7

 3.4 Sub County population change 2010-20158

 3.5 Sub County population change 2010-20158

4 Components of population change9

 4.1 Vital Statistics9

 4.2 Migration 10

5 Population by age 11

 5.1 Historic and projected population pyramids 11

 5.2 Selected age groups 12

 5.3 Median age 13

6 Race 14

 6.1 Total and household population by race 14

 6.2 Race composition by age 14

7 Housing units 15

 7.1 Characteristics 15

 7.2 Historical data on number of housing units and occupancy status 16

 7.3 Building Permits 2000-2015 16

8 Education 17

 8.1 Enrollment by level of school 17

 8.2 Enrollment by age 17

 8.3 Percentage age 18-24 enrolled in college 17

 8.4 Educational attainment 18

9 Language spoken at home 18

10 Labor Force Characteristics 19

 10.1 Labor force, employment and unemployment 19

 10.2 Annual unemployment rate 20

 10.3 Employment and number of jobs 20

 10.4 Class of worker 21

11 Household Income 22

 11.1 Income Distribution 22

 11.2 Median household income: Trends over time 23

12 Poverty 23

 12.1 Family Income to Poverty Ratio 23

 12.2 Poverty: Trends over time: Count 24

 12.3 Poverty: Trends over time: Rate 24

 12.4 Poverty characteristics 25

13 Glossary 26

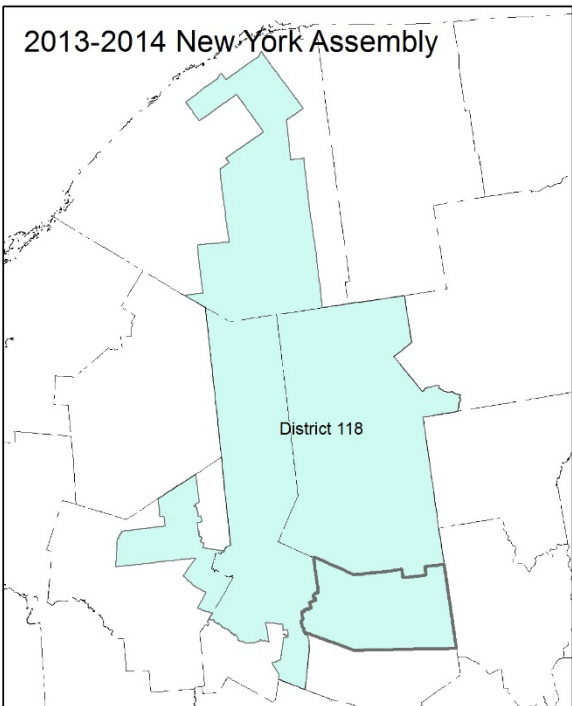
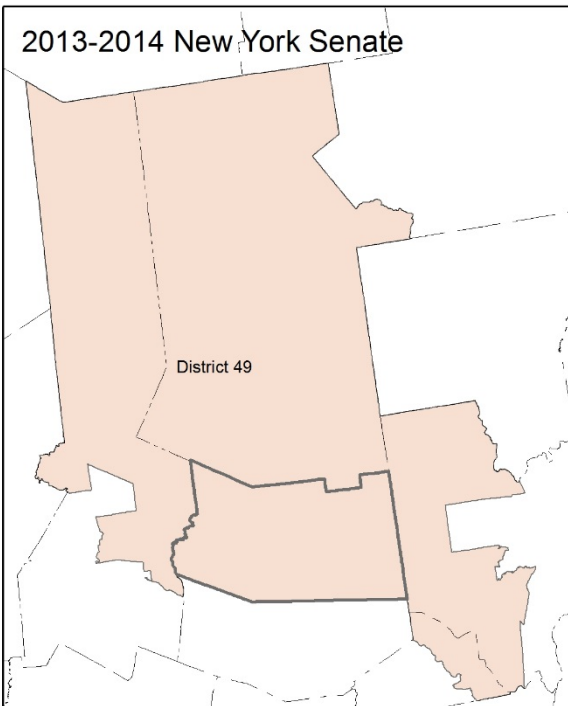
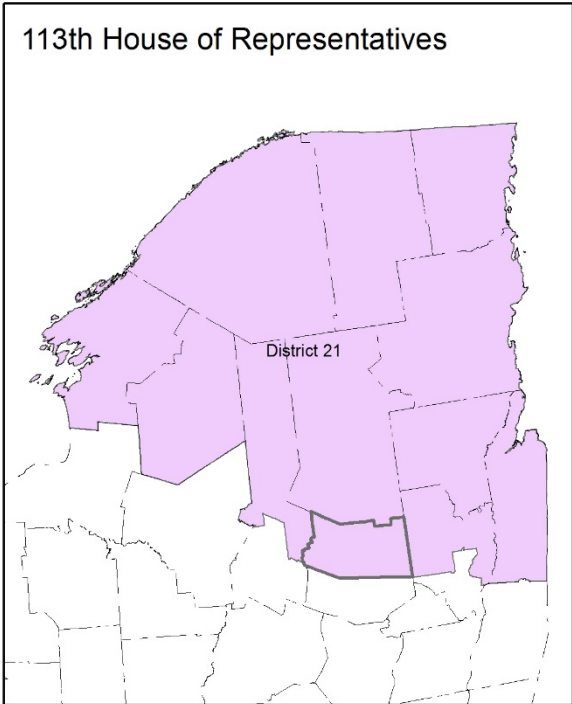
14 References 29

1 Reference Maps (towns and places as defined in 2010)

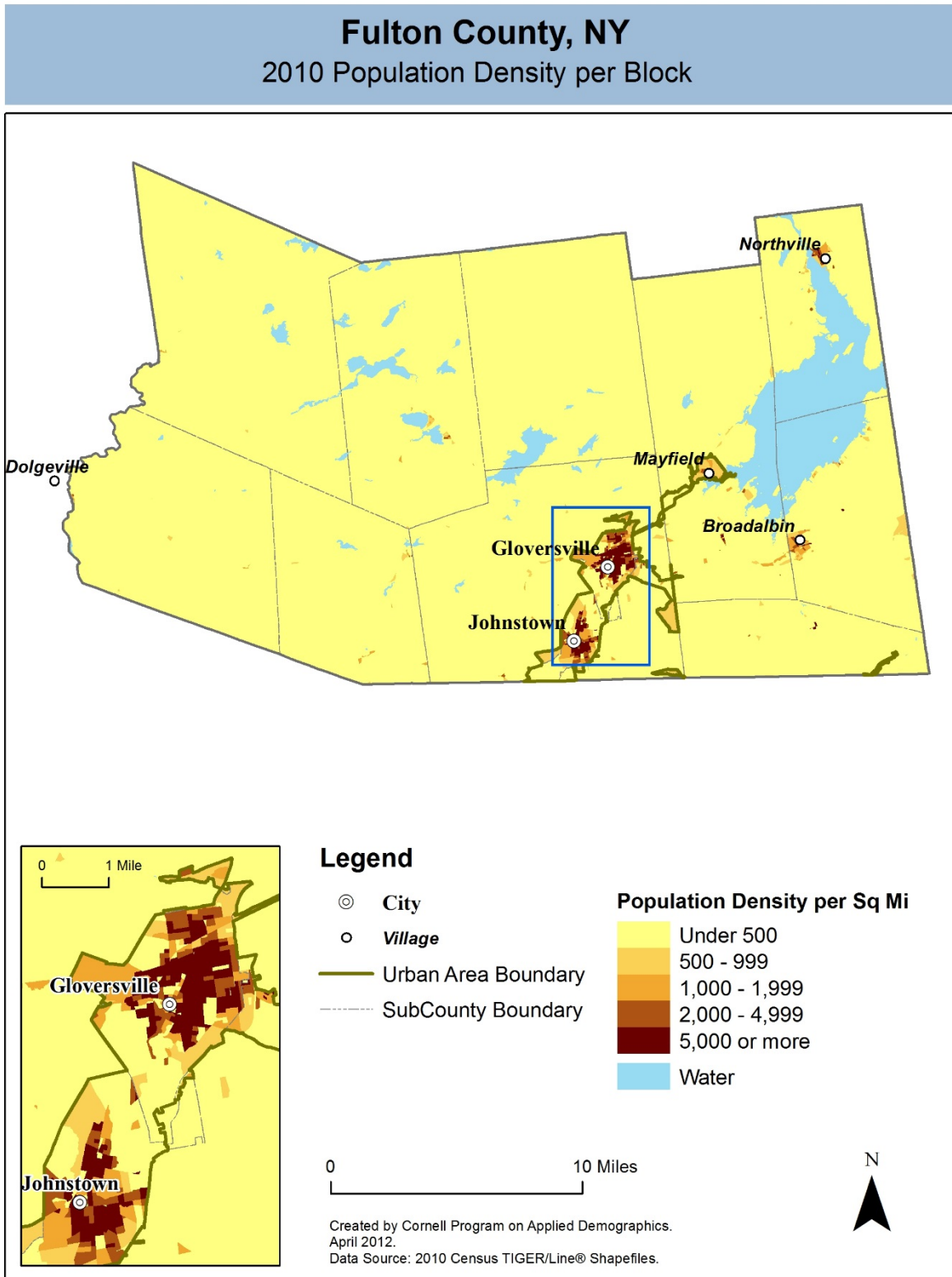


Fulton County, NY

Overlap with School and Political Districts



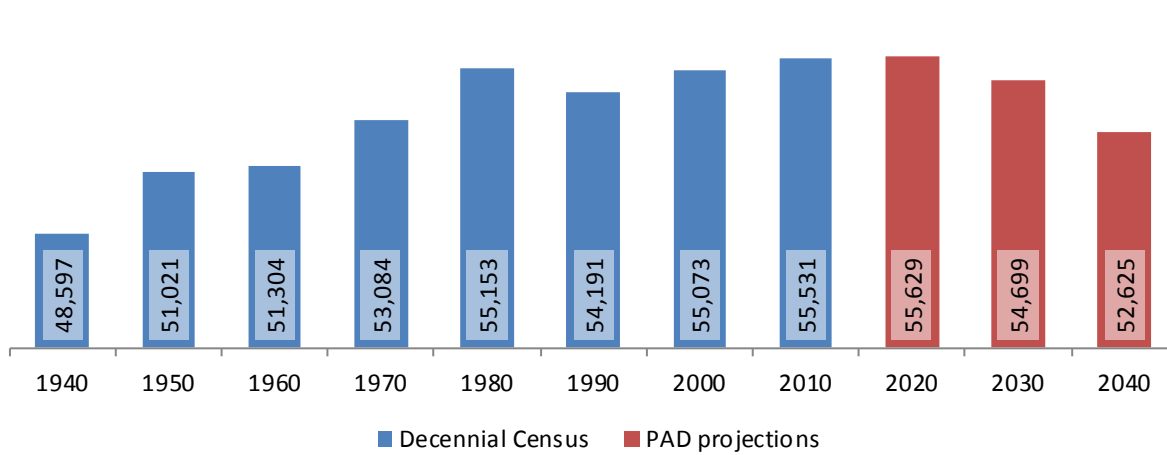
2 Population density and Urban Areas Map



3 Total Population

3.1 Historic and projected

Total population, Fulton County, 1940-2040



Source: 1940-2010 Decennial Census and projections by Cornell Program on Applied Demographics

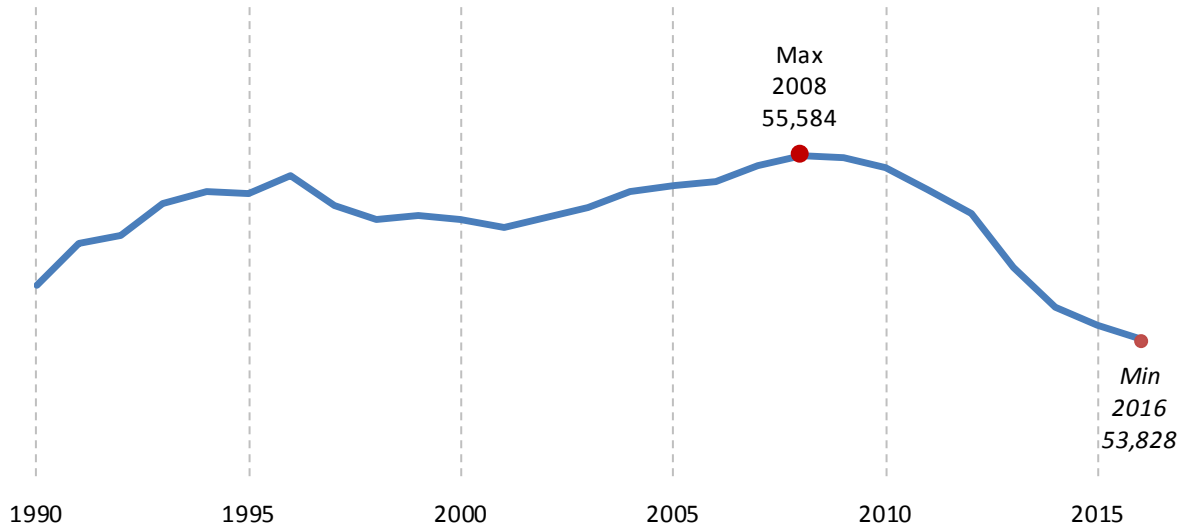
3.2 Change since previous Census

	Total population	Change	
		Number	Percent
Decennial Census	1940	48,597	
	1950	51,021	2,424 5.0%
	1960	51,304	283 0.6%
	1970	53,084	1,780 3.5%
	1980	55,153	2,069 3.9%
	1990	54,191	-962 -1.7%
	2000	55,073	882 1.6%
	2010	55,531	458 0.8%
PAD projections	2020	55,629	98 0.2%
	2030	54,699	-930 -1.7%
	2040	52,625	-2,074 -3.8%

Source: 1940-2010 Decennial Census and projections by Cornell Program on Applied Demographics

3.3 Annual population estimates

**Annual population estimates
Fulton County, 1990-2016**



Source: U.S. Census Bureau population estimates (1990-1999 and 2000-2009 intercensal and vintage 2016 postcensal)

3.4 Sub County population change 2010-2015

	Total Population		Difference	
	2000	2010	Count	%
New York State	18,976,821 *	19,378,102	401,281	2.1%
Fulton County	55,073	55,531	458	0.8%
Cities				
Gloversville	15,413	15,665	252	1.6%
Johnstown	8,610 *	8,743	133	1.5%
Towns				
Bleecker	573	533	-40	-7.0%
Broadalbin	5,066	5,260	194	3.8%
Caroga	1,407	1,205	-202	-14.4%
Ephratah	1,693	1,682	-11	-0.6%
John	7,067 *	7,098	31	0.4%
Mayfield	6,432	6,495	63	1.0%
Northampton	2,760	2,670	-90	-3.3%
Oppenheim	1,774	1,924	150	8.5%
Perth	3,638	3,646	8	0.2%
Stratford	640	610	-30	-4.7%

* Original counts revised through Count Question Resolution Program (CQR)

Source: U.S. Census Bureau intercensal population estimates 2000-2010

3.5 Sub County population change 2010-2015

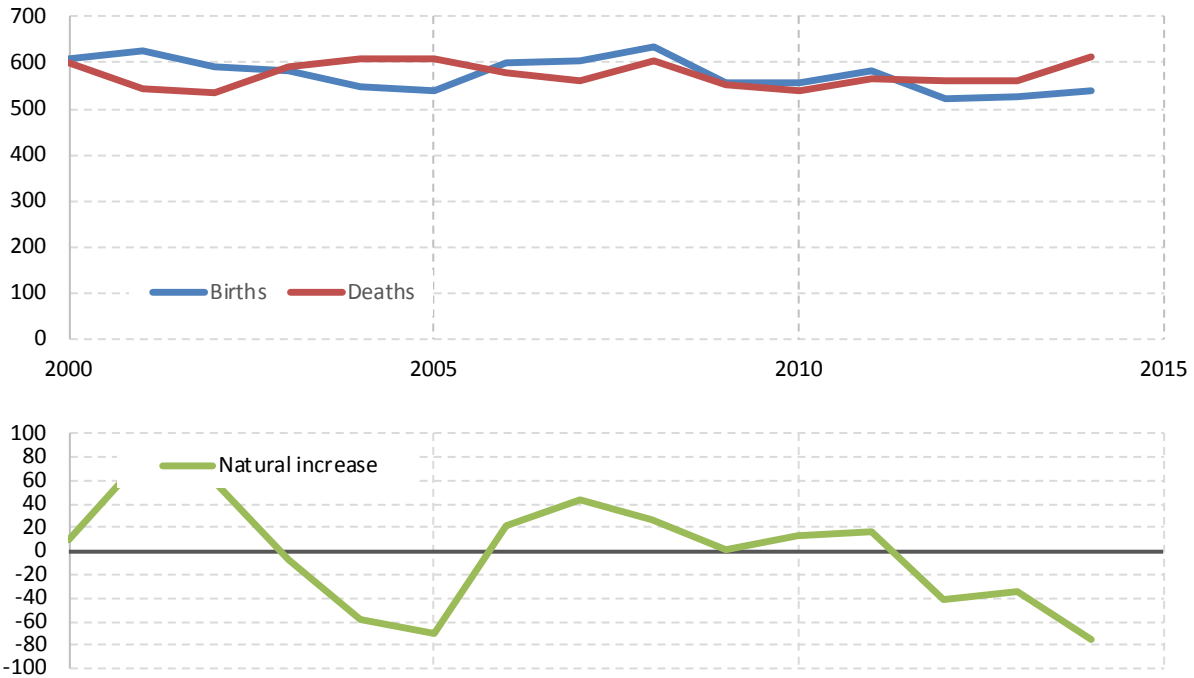
	Total Population		Difference	
	2010 base	2015	Count	%
New York State	19,378,087	19,795,791	417,704	2.2%
Fulton County	55,524	53,992	-1,532	-2.8%
Cities				
Gloversville	15,640	15,023	-617	-3.9%
Johnstown	8,657	8,345	-312	-3.6%
Towns				
Bleecker	533	511	-22	-4.1%
Broadalbin	5,260	5,161	-99	-1.9%
Caroga	1,205	1,163	-42	-3.5%
Ephratah	1,680	1,610	-70	-4.2%
John	7,209	7,359	150	2.1%
Mayfield	6,495	6,285	-210	-3.2%
Northampton	2,665	2,585	-80	-3.0%
Oppenheim	1,924	1,867	-57	-3.0%
Perth	3,646	3,494	-152	-4.2%
Stratford	610	589	-21	-3.4%

Source: U.S. Census Bureau population estimates 2010-2015

4 Components of population change

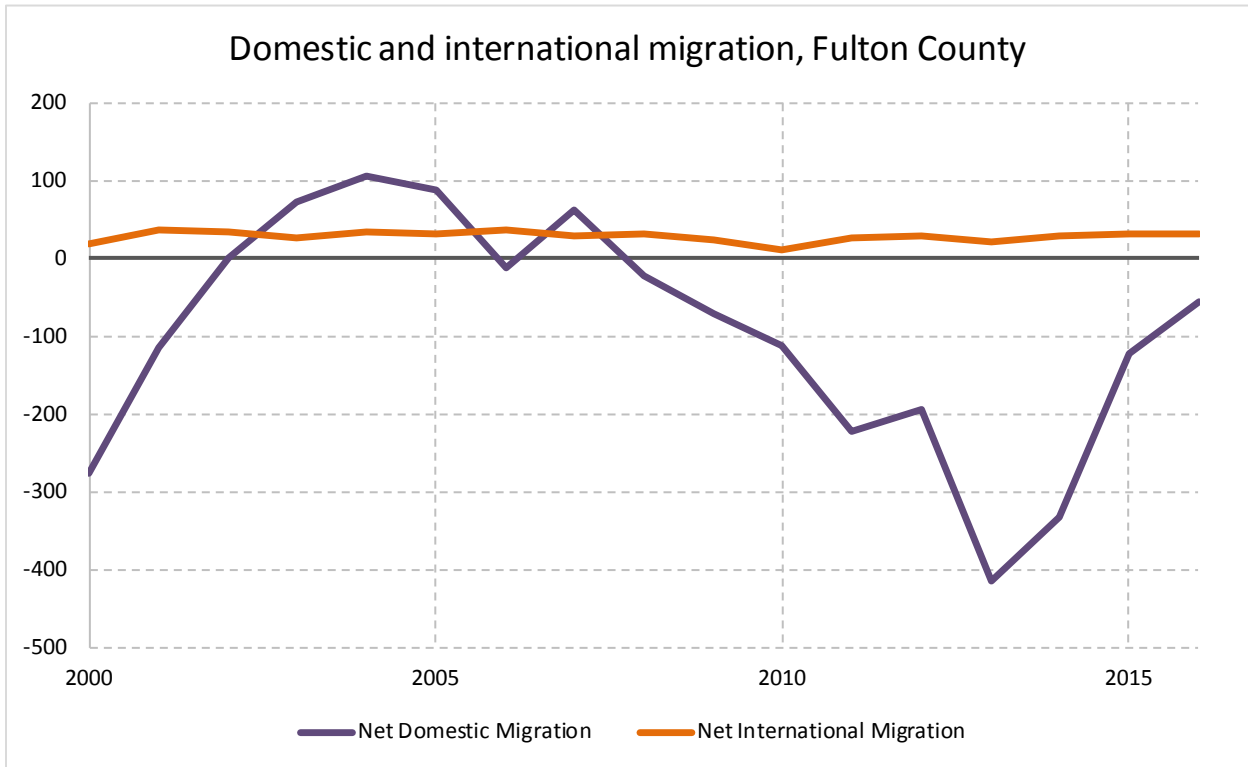
4.1 Vital Statistics

Vital Statistics, Fulton County



Source: New York State Department of Health

4.2 Migration

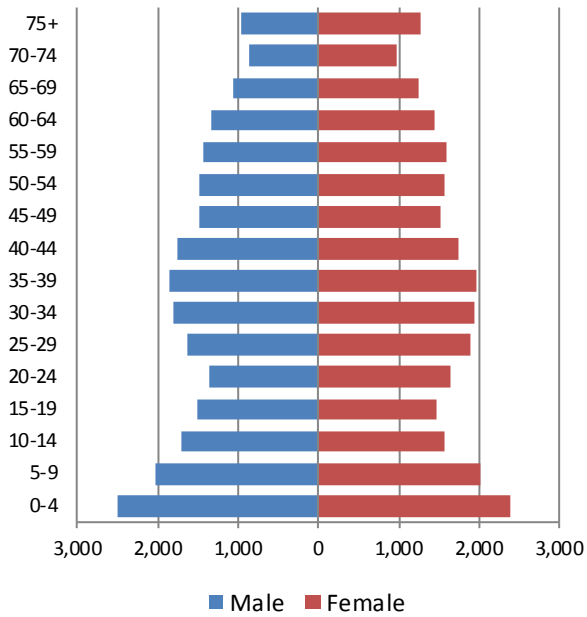


Source: Census Bureau population estimates (V2010 and V2016)

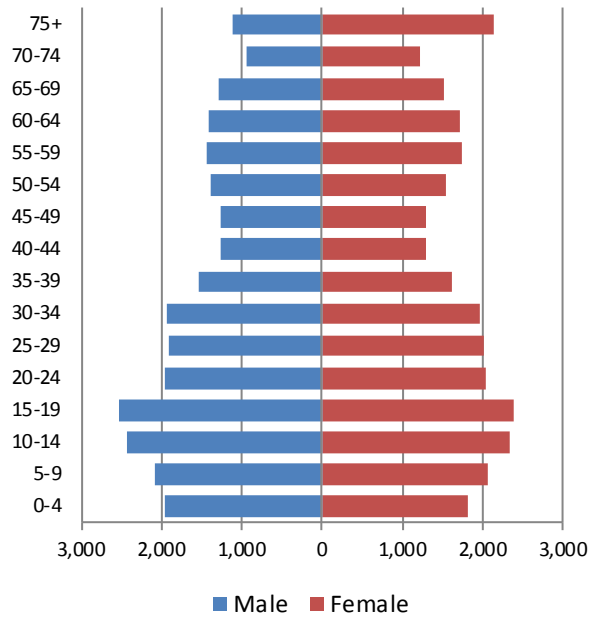
5 Population by age

5.1 Historic and projected population pyramids

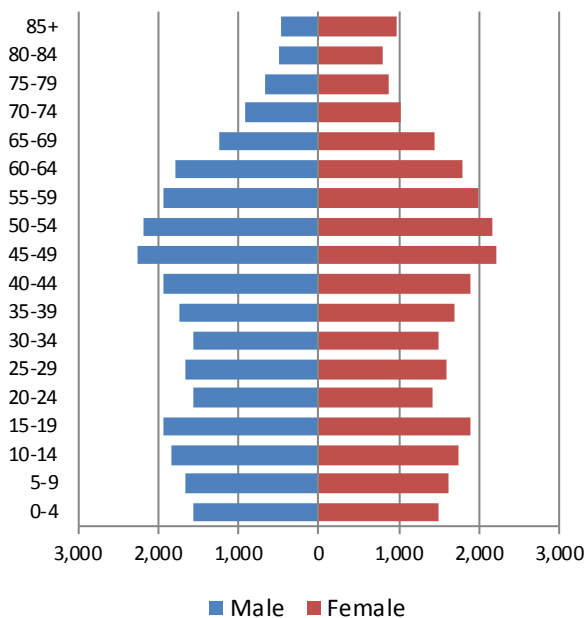
1950 Population Pyramid, Fulton County



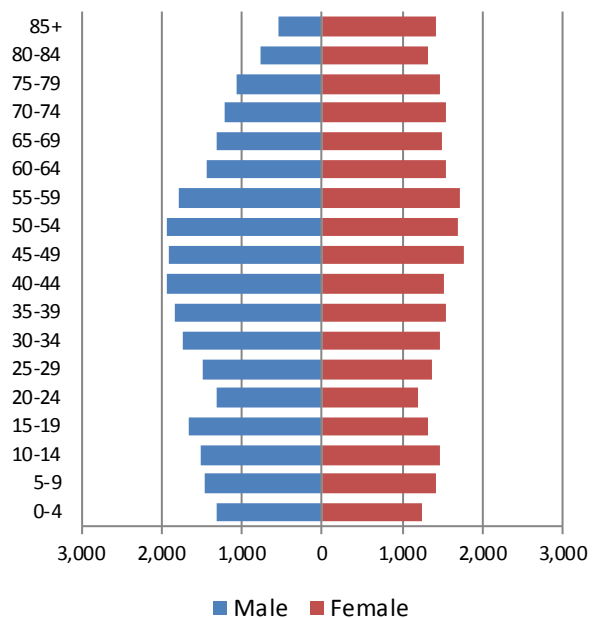
1980 Population Pyramid, Fulton County



2010 Population Pyramid, Fulton County

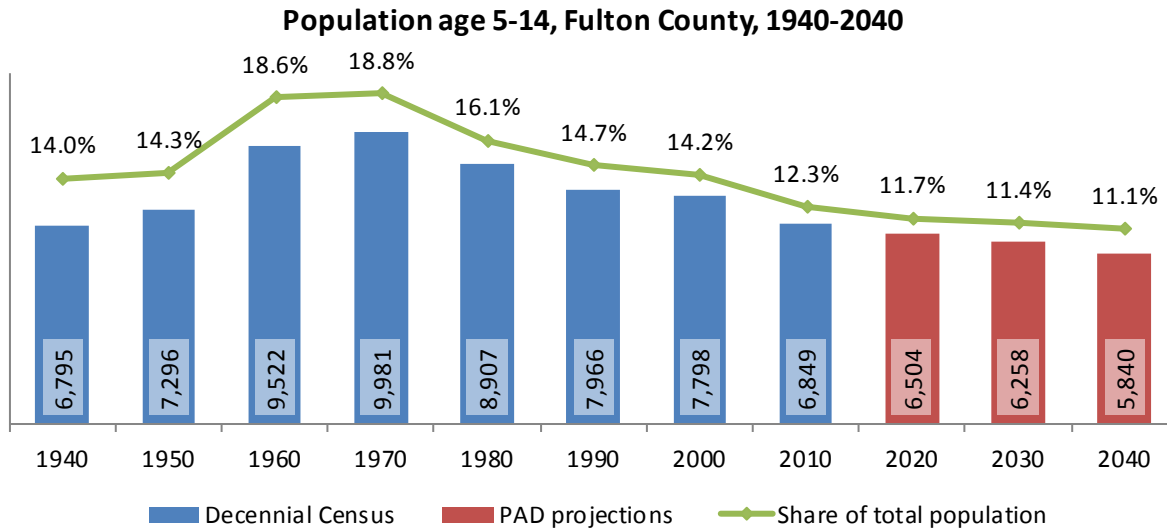


2040 Population Pyramid, Fulton County

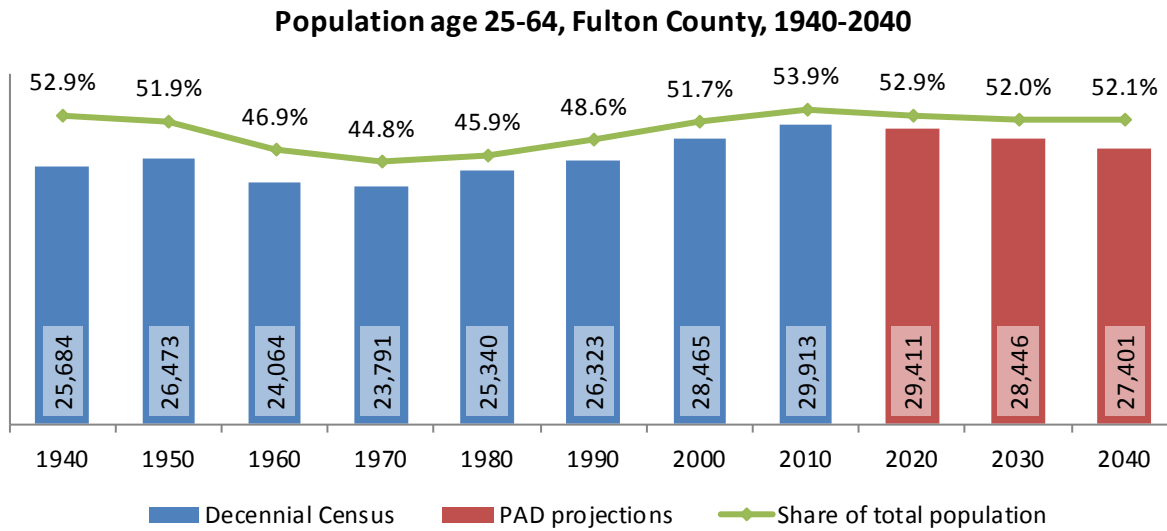


Source: 1950, 1980, 2010 Decennial Census and projections by Cornell Program on Applied Demographics

5.2 Selected age groups

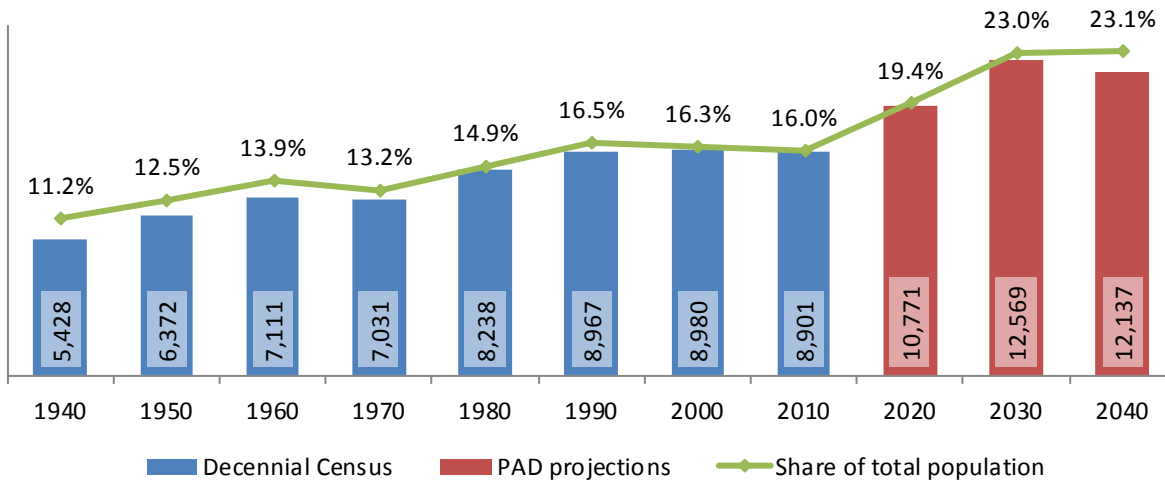


Source: 1940-2010 Decennial Census and projections by Cornell Program on Applied Demographics



Source: 1940-2010 Decennial Census and projections by Cornell Program on Applied Demographics

Population age 65 and over, Fulton County, 1940-2040



Source: 1940-2010 Decennial Census and projections by Cornell Program on Applied Demographics

5.3 Median age

	Fulton County	New York State
Median age		
2000	38.6	35.9
2010	41.8	38.0
2015	43.6	38.3

Source: 2000, 2010 Decennial Census, 2015 Population Estimates

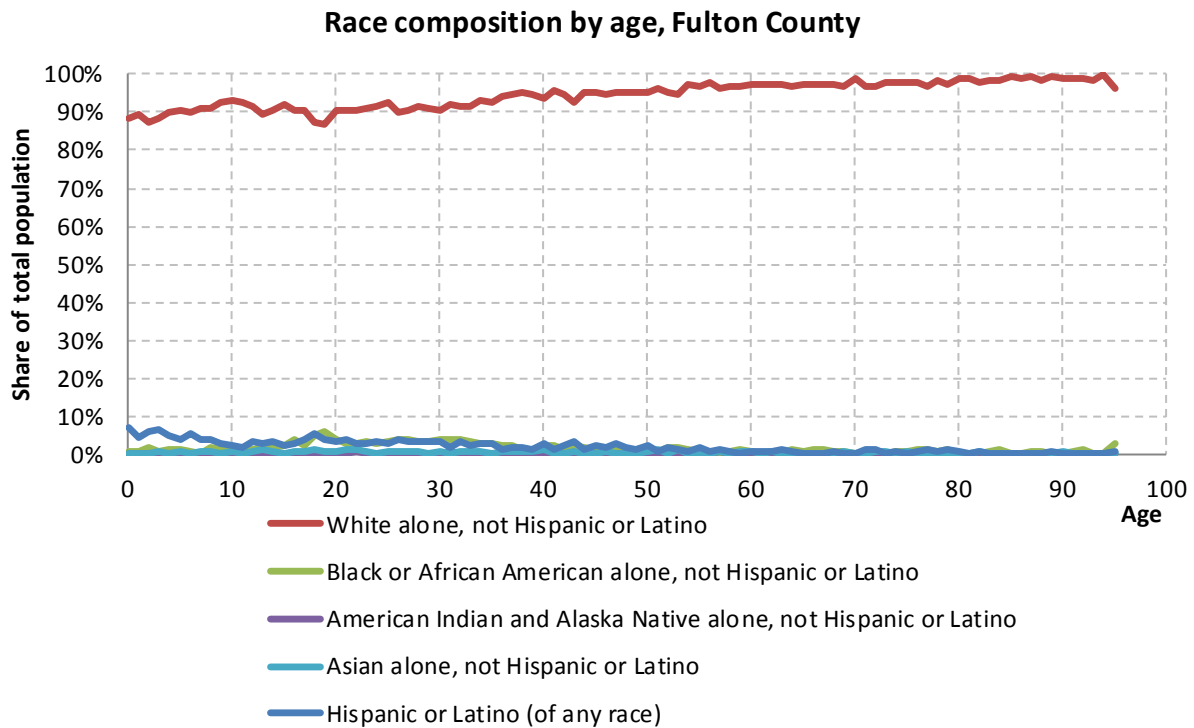
6 Race

6.1 Total and household population by race

	Total		In households		In Group Quarters
	Count	Percentage	Count	Percentage	Count
Total population	55,531	100%	54,057	100%	1,474
Not Hispanic or Latino					
One race					
White	52,110	93.8%	51,113	94.6%	997
Black or African American	981	1.8%	652	1.2%	329
American Indian and Alaska Native	104	0.2%	98	0.2%	6
Asian	320	0.6%	317	0.6%	3
Native Hawaiian and Other Pacific Islander	11	0.0%	-	-	-
Some other race	55	0.1%	-	-	-
Two or more races	687	1.2%	684	1.3%	3
Hispanic or Latino (of any race)	1,263	2.3%	1,131	2.1%	132

Source: 2010 Decennial Census

6.2 Race composition by age



Source: 2010 Decennial Census

7 Housing units

7.1 Characteristics

HOUSING OCCUPANCY	COUNT		PERCENTAGE	
	Estimate	Margin of error	Estimate	Margin of error
Total housing units	28,617	± 96	100.0%	
Occupied housing units	22,281	± 420	77.9%	± 1.4
Vacant housing units	6,336	± 404	22.1%	± 1.4
YEAR STRUCTURE BUILT				
Total housing units	28,617	± 96	100.0%	
Built 2014 or later	0	± 27	0.0%	± 0.1
Built 2010 to 2013	185	± 99	0.6%	± 0.3
Built 2000 to 2009	1,918	± 293	6.7%	± 1.0
Built 1990 to 1999	2,399	± 269	8.4%	± 0.9
Built 1980 to 1989	2,486	± 319	8.7%	± 1.1
Built 1970 to 1979	2,711	± 265	9.5%	± 0.9
Built 1960 to 1969	2,395	± 268	8.4%	± 0.9
Built 1950 to 1959	2,912	± 339	10.2%	± 1.2
Built 1940 to 1949	2,833	± 338	9.9%	± 1.2
Built 1939 or earlier	10,778	± 507	37.7%	± 1.8
HOUSING TENURE				
Occupied housing units	22,281	± 420	100.0%	
Owner-occupied	15,684	± 386	70.4%	± 1.7
Renter-occupied	6,597	± 441	29.6%	± 1.7
HOUSE HEATING FUEL				
Occupied housing units	22,281	± 420	100.0%	
Utility gas	9,119	± 409	40.9%	± 1.8
Bottled, tank, or LP gas	1,872	± 234	8.4%	± 1.0
Electricity	1,888	± 340	8.5%	± 1.5
Fuel oil, kerosene, etc.	6,457	± 353	29.0%	± 1.6
Coal or coke	81	± 40	0.4%	± 0.2
Wood	2,229	± 245	10.0%	± 1.1
Solar energy	24	± 30	0.1%	± 0.1
Other fuel	582	± 120	2.6%	± 0.5
No fuel used	29	± 24	0.1%	± 0.1
VALUE				
Owner-occupied units	15,684	± 386	100.0%	
Less than \$50,000	2,221	± 240	14.2%	± 1.5
\$50,000 to \$99,999	4,974	± 355	31.7%	± 2.1
\$100,000 to \$149,999	3,339	± 326	21.3%	± 2.0
\$150,000 to \$199,999	2,151	± 242	13.7%	± 1.6
\$200,000 to \$299,999	1,886	± 243	12.0%	± 1.5
\$300,000 to \$499,999	790	± 173	5.0%	± 1.1
\$500,000 to \$999,999	264	± 100	1.7%	± 0.6
\$1,000,000 or more	59	± 32	0.4%	± 0.2
Median (dollars)	108,200	± 4,119		

Source: 2011-2015 American Community Survey

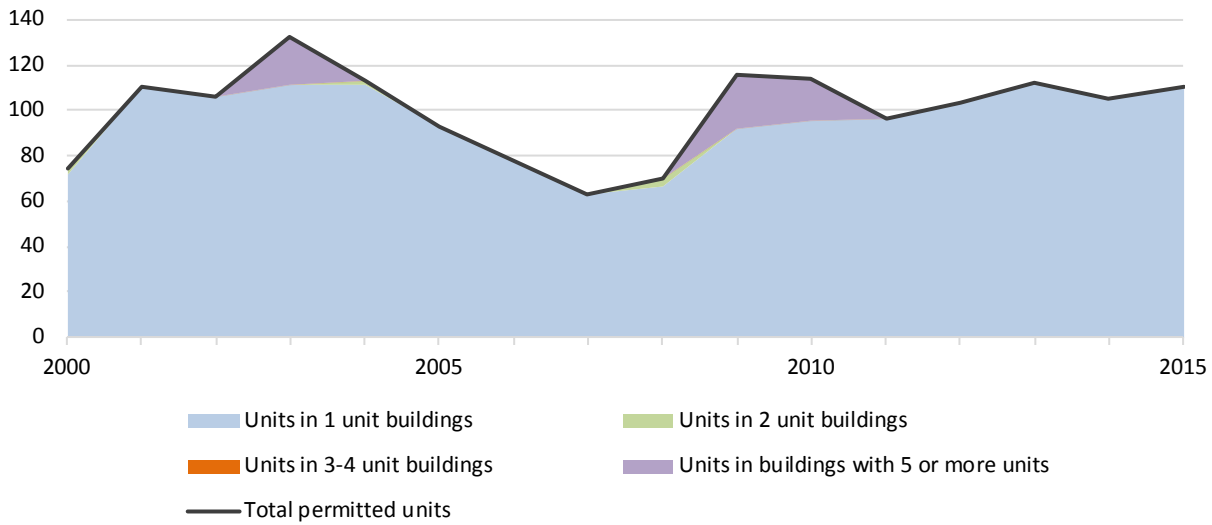
7.2 Historical data on number of housing units and occupancy status

Year	Number of Housing Units	Change since previous Census	Occupied	Occupancy rate	Vacant
1970	21,977		17,618	80.2%	4,359
1980	25,507	16.1%	20,259	79.4%	5,248
1990	26,260	3.0%	20,995	80.0%	5,265
2000	27,787	5.8%	21,884	78.8%	5,903
2010	28,562	2.8%	22,554	79.0%	6,008

Source: 1970-2010 Decennial Census

7.3 Building Permits 2000-2015

Building permits by number of permitted units in building, Fulton County



Source: Census Bureau Building Permits Survey

8 Education

8.1 Enrollment by level of school

	Estimate	Margin of error
Total enrolled in school	11,514	± 375
Nursery school, preschool	802	± 187
Kindergarten to 12th grade	8,439	± 228
Kindergarten	493	± 138
Elementary: grade 1 to grade 4	2,587	± 278
Elementary: grade 5 to grade 8	2,736	± 269
High school: grade 9 to grade 12	2,623	± 192
College, undergraduate	1,926	± 282
Graduate, professional school	347	± 140

Source: 2011-2015 American Community Survey

8.2 Enrollment by age

	Estimate	Margin of error
3 and 4 years	48.7%	± 9.4
5 to 9 years	95.1%	± 2.1
10 to 14 years	95.1%	± 3.2
15 to 17 years	94.2%	± 2.9
18 and 19 years	71.3%	± 11.4
20 to 24 years	19.3%	± 5.3
25 to 34 years	6.8%	± 2.0
35 years and over	2.1%	± 0.5

Source: 2011-2015 American Community Survey

8.3 Percentage age 18-24 enrolled in college

	Estimate	Margin of error
Population 18 to 24 years	4,344	± 94
Enrolled in college or graduate school	25.2%	± 4.8
Males 18 to 24 years	2,316	± 67
Enrolled in college or graduate school	23.4%	± 6.7
Females 18 to 24 years	2,028	± 62
Enrolled in college or graduate school	27.3%	± 6.0

Source: 2011-2015 American Community Survey

8.4 Educational attainment

	COUNT		PERCENTAGE	
	Estimate	Margin of error	Estimate	Margin of error
Population 25 years and over	38,780	± 89	100%	
EDUCATIONAL ATTAINMENT				
Less than 9th grade	1,467	± 260	3.8%	± 0.7
9th to 12th grade, no diploma	3,946	± 372	10.2%	± 1.0
High school graduate (includes equivalency)	14,937	± 723	38.5%	± 1.9
Some college, no degree	7,287	± 478	18.8%	± 1.2
Associate's degree	4,845	± 467	12.5%	± 1.2
Bachelor's degree	3,388	± 349	8.7%	± 0.9
Graduate or professional degree	2,910	± 336	7.5%	± 0.9
Percent high school graduate or higher			86.0%	± 1.1
Percent bachelor's degree or higher			16.2%	± 1.3

Source: 2011-2015 American Community Survey

9 Language spoken at home

	COUNT		PERCENTAGE		SPEAK ENGLISH LESS THAN "VERY WELL"	
	Estimate	Margin of error	Estimate	Margin of error	Estimate	Margin of error
Population 5 years and over	51,811	± 22	100%			
LANGUAGE SPOKEN AT HOME						
English only	49,616	± 480	95.8%	± 0.9		
Language other than English	2,195	± 479	4.2%	± 0.9	701	± 281
Spanish	691	± 172	1.3%	± 0.3	136	± 71
Other Indo-European languages	1,183	± 417	2.3%	± 0.8	421	± 271
Asian and Pacific Islander languages	278	± 140	0.5%	± 0.3	130	± 43
Other languages	43	± 38	0.1%	± 0.1	14	± 23

Source: 2011-2015 American Community Survey

10 Labor Force Characteristics

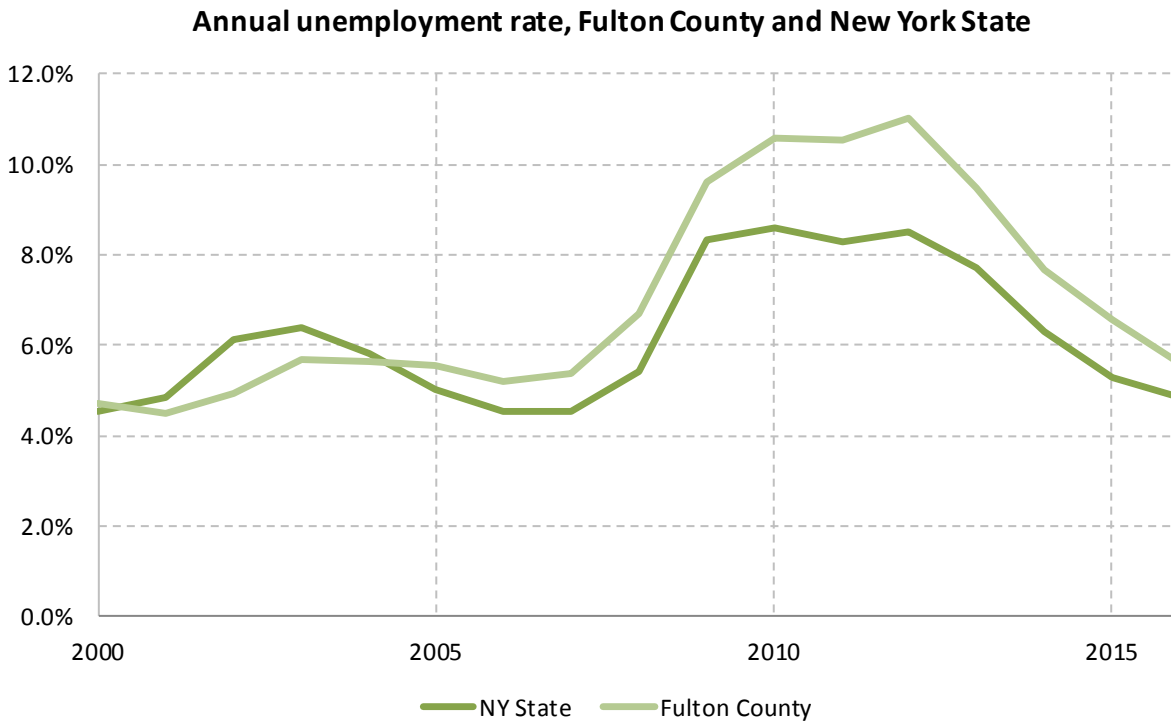
10.1 Labor force, employment and unemployment

	TOTAL		IN LABOR FORCE		EMPLOYED		UNEMPLOYMENT RATE	
	Estimate	Margin of error	Estimate	Margin of error	Estimate	Margin of error	Estimate	Margin of error
Population 16 years and over	44,465	± 165	59.8%	± 1.1	54.2%	± 1.3	9.3%	± 1.1
AGE								
16 to 19 years	2,655	± 199	35.5%	± 6.8	25.2%	± 5.9	29.1%	± 8.9
20 to 24 years	3,030	± 60	75.7%	± 5.5	62.0%	± 6.6	18.2%	± 5.4
25 to 29 years	3,067	± 104	80.5%	± 4.3	69.4%	± 6.0	13.7%	± 5.4
30 to 34 years	3,336	± 126	78.3%	± 5.3	71.9%	± 5.2	8.2%	± 3.7
35 to 44 years	6,636	± 118	78.1%	± 3.0	70.6%	± 3.5	9.3%	± 3.0
45 to 54 years	8,505	± 147	81.3%	± 2.4	76.7%	± 2.9	5.7%	± 2.1
55 to 59 years	4,146	± 228	74.9%	± 4.2	70.1%	± 4.6	6.4%	± 2.6
60 to 64 years	3,616	± 241	46.1%	± 4.4	44.2%	± 4.4	4.0%	± 1.9
65 to 74 years	5,208	± 64	23.5%	± 3.0	22.3%	± 3.0	5.4%	± 3.1
75 years and over	4,266	± 37	4.6%	± 1.9	4.0%	± 1.7	14.6%	± 16.6
RACE AND HISPANIC OR LATINO ORIGIN								
White alone	42,530	± 184	60.3%	± 1.0	54.8%	± 1.2	9.2%	± 1.1
Black or African American alone	687	± 113	40.8%	± 16.0	34.6%	± 13.9	15.0%	± 12.6
American Indian and Alaska Native alone	71	± 40	70.4%	± 25.4	70.4%	± 25.4	0.0%	± 40.3
Asian alone	298	± 47	54.4%	± 11.0	45.3%	± 15.0	16.7%	± 17.9
Two or more races	527	± 140	62.2%	± 14.3	58.6%	± 13.9	5.8%	± 5.3
Hispanic or Latino origin (of any race)	977	± 47	50.4%	± 9.8	43.7%	± 10.8	13.2%	± 11.8
White alone, not Hispanic or Latino	41,899	± 139	60.3%	± 1.1	54.7%	± 1.2	9.2%	± 1.1
SEX								
Population 20 to 64 years	32,336	± 112	75.0%	± 1.3	68.4%	± 1.6	8.7%	± 1.2
Male	16,263	± 85	78.0%	± 1.8	70.1%	± 2.0	10.1%	± 1.6
Female	16,073	± 82	71.9%	± 1.8	66.7%	± 2.1	7.3%	± 1.7
With own children under 18 years	5,373	± 325	77.6%	± 3.6	72.1%	± 3.8	7.0%	± 2.4
EDUCATIONAL ATTAINMENT								
Population 25 to 64 years	29,306	± 103	74.9%	± 1.5	69.1%	± 1.6	7.7%	± 1.2
Less than high school graduate	3,779	± 420	57.3%	± 6.4	47.8%	± 5.9	16.7%	± 5.5
High school graduate (includes equivalency)	10,715	± 643	71.9%	± 2.5	66.2%	± 2.7	7.9%	± 1.9
Some college or associate's degree	10,168	± 543	80.3%	± 2.5	73.9%	± 3.0	7.9%	± 2.3
Bachelor's degree or higher	4,644	± 503	84.3%	± 2.7	82.5%	± 2.8	2.2%	± 1.2

Table formula: **LABOR FORCE** = # EMPLOYED + # UNEMPLOYED
 % IN LABOR FORCE = LABOR FORCE / TOTAL * 100%
 % EMPLOYED = # EMPLOYED / TOTAL * 100%
 UNEMPLOYMENT RATE = # UNEMPLOYED / LABOR FORCE * 100%

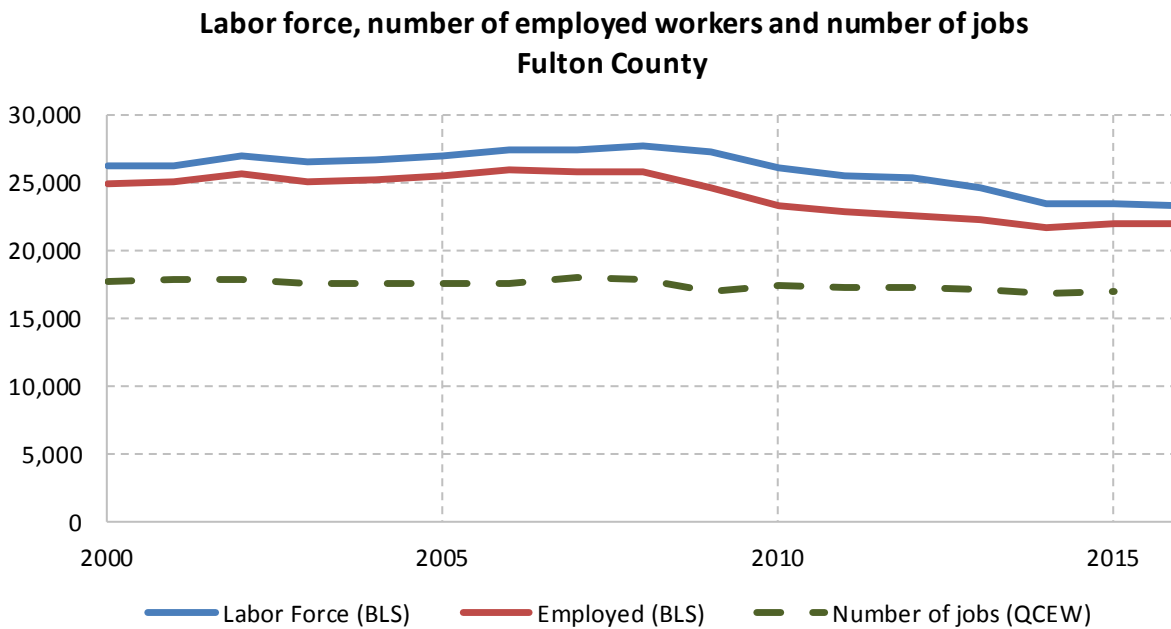
Source: 2011-2015 American Community Survey

10.2 Annual unemployment rate



Source: Bureau Labor Statistics (BLS)

10.3 Employment and number of jobs



Source: Bureau Labor Statistics (BLS) and NY Department of Labor - Quarterly Census of Employment and Wages (QCEW) – annual averages

10.4 Class of worker

		Total	%Male	%Female
Civilian employed population 16 years and over	Estimate	24,116	51.8%	48.2%
	<i>Margin of error</i>	± 554	± 0.9	± 0.9
Private for-profit wage and salary workers:	Estimate	16,210	57.9%	42.1%
	<i>Margin of error</i>	± 653	± 1.8	± 1.8
Employee of private company workers	Estimate	15,587	57.2%	42.8%
	<i>Margin of error</i>	± 674	± 1.8	± 1.8
Self-employed in own incorporated business workers	Estimate	623	75.1%	24.9%
	<i>Margin of error</i>	± 159	± 9.6	± 9.6
Private not-for-profit wage and salary workers	Estimate	2,845	26.7%	73.3%
	<i>Margin of error</i>	± 348	± 4.8	± 4.8
Local government workers	Estimate	2,133	42.0%	58.0%
	<i>Margin of error</i>	± 243	± 5.1	± 5.1
State government workers	Estimate	1,475	38.6%	61.4%
	<i>Margin of error</i>	± 227	± 7.2	± 7.2
Federal government workers	Estimate	307	62.9%	37.1%
	<i>Margin of error</i>	± 116	± 18.1	± 18.1
Self-employed in own not incorporated business workers and unpaid family workers	Estimate	1,146	61.2%	38.8%
	<i>Margin of error</i>	± 279	± 8.5	± 8.5

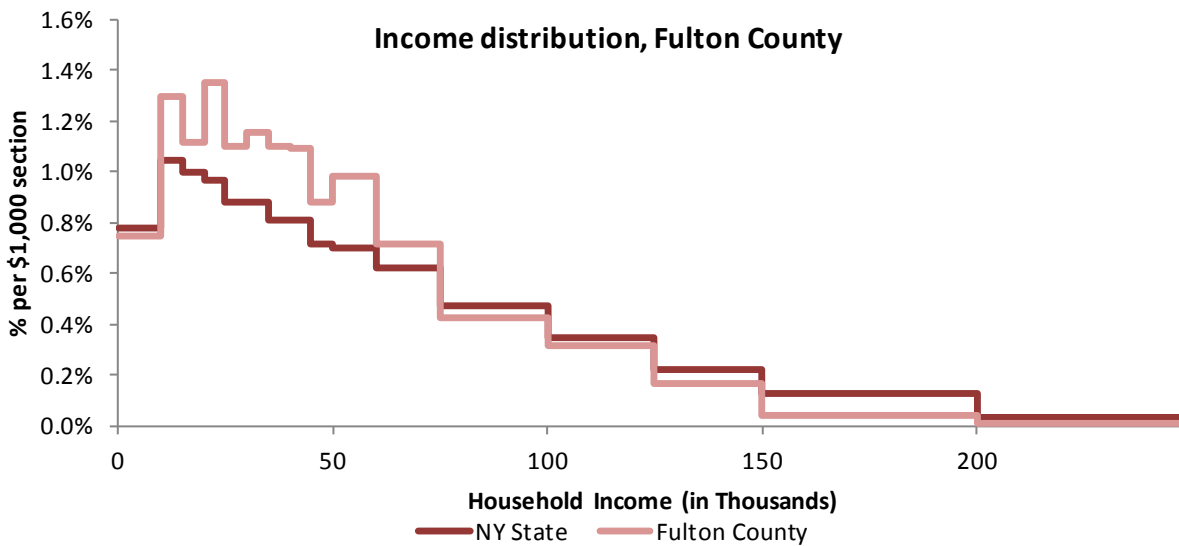
Source: 2011-2015 American Community Survey

11 Household Income

11.1 Income Distribution

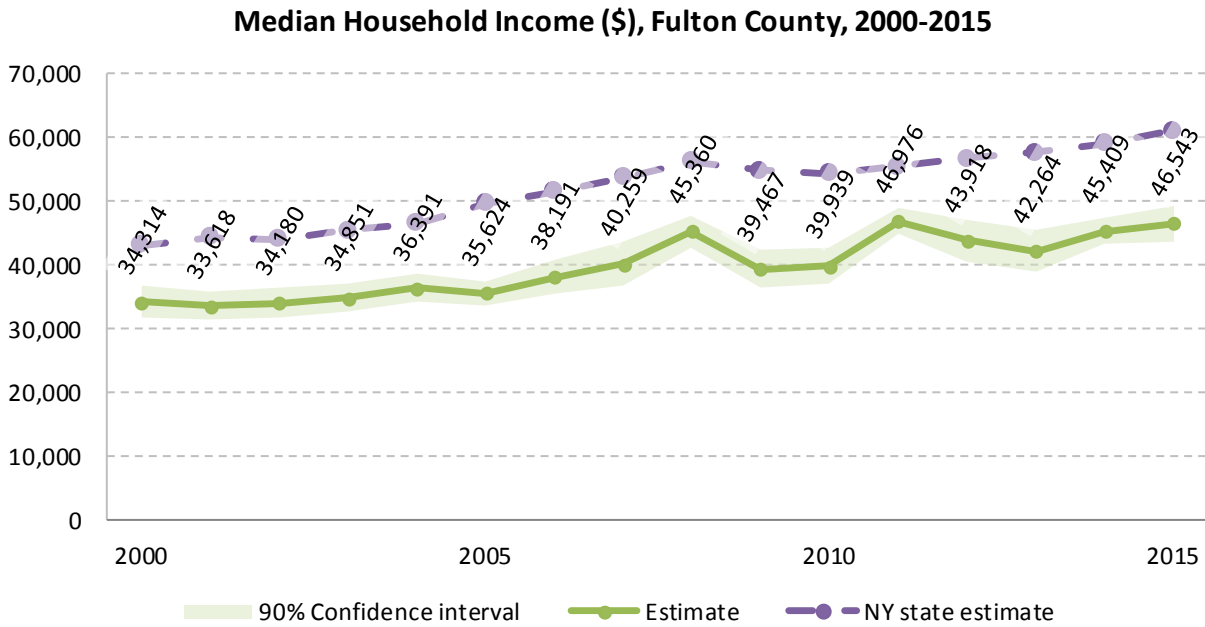
	Estimate	Margin of error	Interval width (in \$1,000)	Est. per \$1,000 section
Total:	22,281	± 420		
Less than \$10,000	1,662	± 249	10	166.2
\$10,000 to \$14,999	1,446	± 250	5	289.2
\$15,000 to \$19,999	1,244	± 216	5	248.8
\$20,000 to \$24,999	1,504	± 278	5	300.8
\$25,000 to \$29,999	1,226	± 225	5	245.2
\$30,000 to \$34,999	1,290	± 242	5	258.0
\$35,000 to \$39,999	1,226	± 179	5	245.2
\$40,000 to \$44,999	1,218	± 214	5	243.6
\$45,000 to \$49,999	983	± 177	5	196.6
\$50,000 to \$59,999	2,190	± 287	10	219.0
\$60,000 to \$74,999	2,402	± 270	15	160.1
\$75,000 to \$99,999	2,368	± 258	25	94.7
\$100,000 to \$124,999	1,747	± 274	25	69.9
\$125,000 to \$149,999	919	± 205	25	36.8
\$150,000 to \$199,999	452	± 127	50	9.0
\$200,000 or more	404	± 121	-	-

Source: 2011-2015 American Community Survey



Source: 2011-2015 American Community Survey

11.2 Median household income: Trends over time



Source: Small Area Income and Poverty Estimates (SAIPE)

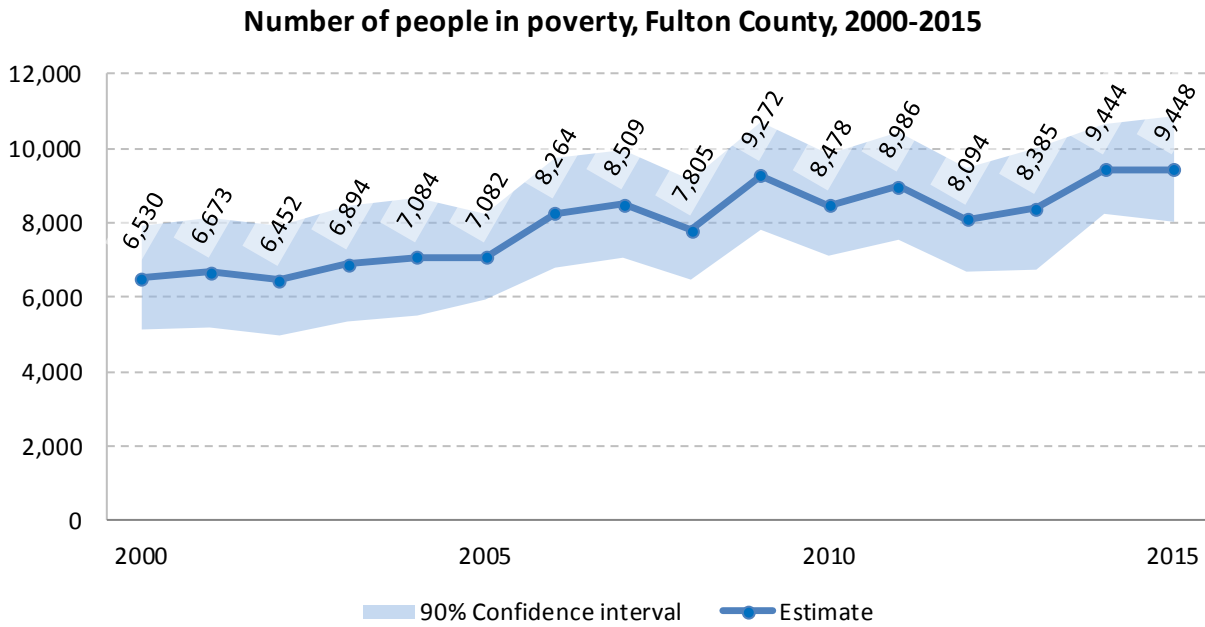
12 Poverty

12.1 Family Income to Poverty Ratio

	TOTAL		PERCENT OF ALL	
	Estimate	Margin of error	Estimate	Margin of error
All families	14,261	± 490		
ALL FAMILIES WITH INCOME:				
Below 50 percent of poverty level	643	± 167	4.5%	± 1.2
Below 100 percent of poverty level	1,776	± 231	12.5%	± 1.6
Below 125 percent of poverty level	2,423	± 287	17.0%	± 1.9
Below 150 percent of poverty level	2,973	± 327	20.8%	± 2.2
Below 185 percent of poverty level	3,981	± 392	27.9%	± 2.6
Below 200 percent of poverty level	4,395	± 416	30.8%	± 2.7
Below 300 percent of poverty level	7,018	± 452	49.2%	± 2.7
Below 400 percent of poverty level	9,139	± 449	64.1%	± 2.3
Below 500 percent of poverty level	10,832	± 492	76.0%	± 2.3

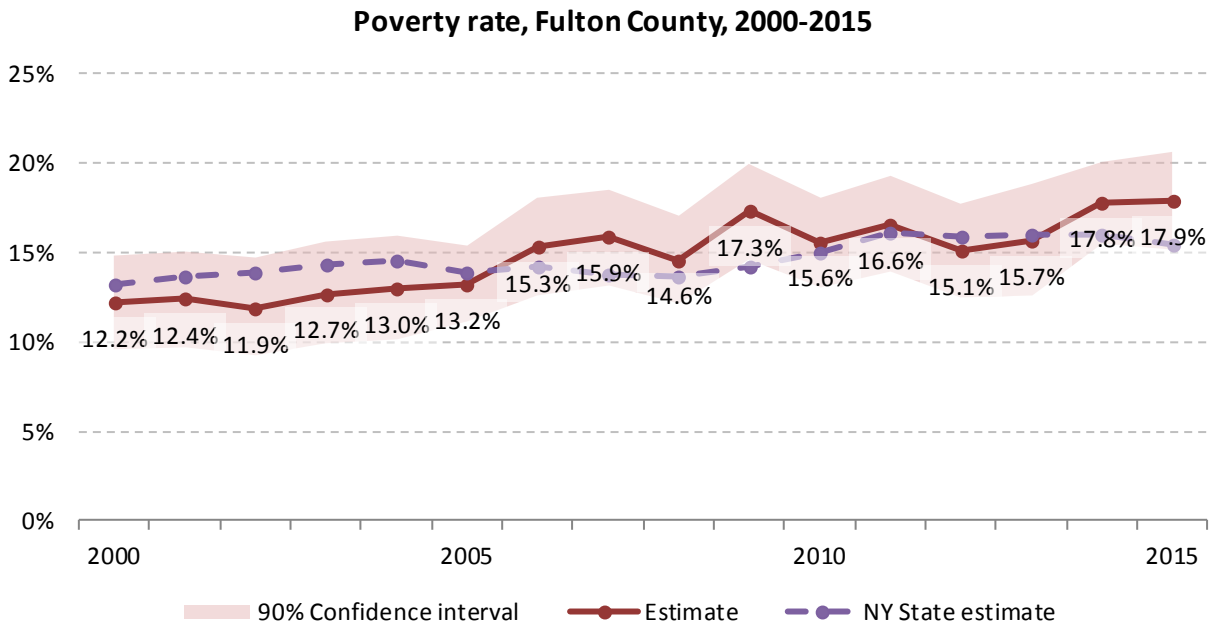
Source: 2011-2015 American Community Survey

12.2 Poverty: Trends over time: Count



Source: Small Area Income and Poverty Estimates (SAIPE)

12.3 Poverty: Trends over time: Rate



Source: Small Area Income and Poverty Estimates (SAIPE)

12.4 Poverty characteristics

	TOTAL		BELOW POVERTY LEVEL		PERCENT BELOW POVERTY LEVEL	
	Estimate	Margin of error	Estimate	Margin of error	Estimate	Margin of error
Population for whom poverty status is determined	53,298	± 289	9,100	± 829	17.1%	± 1.6
AGE						
Under 18 years	10,931	± 215	2,651	± 372	24.3%	± 3.4
Under 5 years	2,697	± 69	624	± 170	23.1%	± 6.5
5 to 17 years	8,234	± 175	2,027	± 294	24.6%	± 3.6
18 to 34 years	10,485	± 142	2,569	± 367	24.5%	± 3.5
35 to 64 years	22,728	± 141	3,105	± 381	13.7%	± 1.7
65 years and over	9,154	± 136	775	± 187	8.5%	± 2.0
SEX						
Male	26,425	± 173	4,176	± 416	15.8%	± 1.6
Female	26,873	± 218	4,924	± 580	18.3%	± 2.1
RACE AND HISPANIC OR LATINO ORIGIN						
White alone	51,006	± 338	8,255	± 764	16.2%	± 1.5
Black or African American alone	702	± 174	273	± 131	38.9%	± 19.9
American Indian and Alaska Native alone	77	± 45	20	± 18	26.0%	± 21.7
Asian alone	338	± 71	53	± 43	15.7%	± 12.0
Hispanic or Latino origin (of any race)	1,273	± 92	510	± 208	40.1%	± 16.3
White alone, not Hispanic or Latino	50,059	± 285	7,925	± 771	15.8%	± 1.6
EDUCATIONAL ATTAINMENT						
Population 25 years and over	38,086	± 172	5,255	± 439	13.8%	± 1.1
Less than high school graduate	5,166	± 439	1,515	± 279	29.3%	± 4.7
High school graduate (includes equivalency)	14,611	± 720	2,246	± 299	15.4%	± 2.0
Some college, associate's degree	12,067	± 584	1,317	± 265	10.9%	± 2.1
Bachelor's degree or higher	6,242	± 524	177	± 60	2.8%	± 1.0
EMPLOYMENT STATUS						
Civilian labor force 16 years and over	26,598	± 476	2,823	± 382	10.6%	± 1.4
Employed	24,116	± 554	1,719	± 291	7.1%	± 1.2
Male	12,495	± 327	775	± 199	6.2%	± 1.6
Female	11,621	± 376	944	± 206	8.1%	± 1.8
Unemployed	2,482	± 300	1,104	± 247	44.5%	± 7.2
Male	1,504	± 231	558	± 139	37.1%	± 7.1
Female	978	± 201	546	± 183	55.8%	± 11.8
WORK EXPERIENCE IN THE PAST 12 MONTHS						
Population 16 years and over	11,621	± 376	944	± 206	8.1%	± 1.8
Worked full-time, year-round	2,482	± 300	1,104	± 247	44.5%	± 7.2
Worked part-time or part-year	1,504	± 231	558	± 139	37.1%	± 7.1
Did not work	978	± 201	546	± 183	55.8%	± 11.8

Source: 2011-2015 American Community Survey

13 Glossary

American Community Survey (ACS) - The American Community Survey is an ongoing survey of the population that provides data every year on a variety of social and economic characteristics—age, sex, race, family and relationships, income and benefits, health insurance, education, veteran status, disabilities, where you work and how you get there, where you live and how much you pay for some essentials. The ACS replaced the information previously gathered by what was known as the “long form” of the decennial censuses. The ACS provides communities, companies and other institutions with current information they need to plan investments and services. Information from the survey generates data that help determine how more than \$400 billion in federal and state funds are distributed each year. Every estimate presented in the American Community Survey, as in other surveys, has an uncertainty associated with it. Often the magnitude of that uncertainty is expressed as the Margin of Error.

Confidence Interval (CI) - indication of the degree of uncertainty about a sample estimates. Confidence intervals have been traditionally reported at the 90, 95 and 99 percent levels. A 90 percent confidence interval can be interpreted, for example, roughly as providing 90 percent certainty that the interval defined by the upper and lower bounds contain the true value of the characteristic. If a Margin of Error is given, the lower bound of the confidence interval is equal to the estimate minus the Margin of Error and the upper bound is equal to the estimate plus the Margin of Error. (See further, Margin of Error definition below.)

County subdivision or Minor Civil Division (MCD) - The Census Bureau geography for primary administrative units below the county level in New York is collectively referred to as county subdivisions or minor civil divisions. These include towns, cities and Indian Reservations.

Decennial Census - the Census of the population and housing taken every 10 years in the United States, at the start of each decade, since 1790.

Employed – either “at work” or “with a job, but not at work”.

Group Quarters Population - all U.S. residents who live in group living facilities including correctional institutions, juvenile facilities, skilled nursing facilities, college residence halls, military barracks, group homes, and workers' dormitories.

Household Population - all U.S. residents who live in housing units such as single family homes, townhouses, apartments, and mobile homes.

Intercensal Population Estimates - estimates produced for the years between two decennial censuses when both the beginning and ending populations are known. They are produced once a decade by adjusting the existing time series of postcensal estimates for the entire decade to smooth the transition from one decennial census count to the next. They differ from the postcensal estimates that are released annually because the difference between the April 1 postcensal estimate and April 1 census count for the end of the decade is redistributed across the estimates for that decade. For dates when both postcensal and intercensal estimates are available, intercensal estimates are preferred.

Labor Force - consists of people classified as employed or unemployed.

Margin of Error (MOE) - a measure of the precision of an estimate at a given level of confidence. The confidence level of a margin of error indicates the likelihood that the difference between the population value (which you

would get if you could measure the whole population instead of a sample) and the estimate is less than or equal to the margin of error. The range from the estimate minus the margin of error to the estimate plus the margin of error is called the confidence interval. All ACS estimates are published with their margins of error at the 90 percent confidence level. Margins of error are useful in assessing the reliability of estimates and whether differences between estimates are significant.

Numeric Population Change - difference between the population of an area at the beginning and end of a time period. It is computed by taking the difference between the population at one point in time (t_1) and some future time (t_2).

Percent Population Change - difference between the population of an area at the beginning and end of a time period, expressed as a percentage of the beginning population. It is computed by dividing the population change ($t_2 - t_1$) by t_1 and multiplying the result by 100.

Population Estimates - The calculated number of people living in an area as of a specified point in time, usually July 1st. The estimated population is calculated using a component of change model that incorporates information on natural increase (births, deaths) and net migration (net domestic migration, net international migration) that has occurred in an area since the latest decennial census. A procedure for estimating the current population using a procedure involving a "base population" value at time $t - 1$, adding to that the births during the interval $t - 1$ to t , subtracting the deaths during that interval $t - 1$ to t , and then adding the net domestic and net international migration that occurred during that interval.

Population Density - Total number of people per areal unit like a square mile or square kilometer.

Population Pyramids - A graphical way of portraying a population's age and sex composition at a given slice in time. The first horizontal bar, constituting the base of the graph, is the youngest age group (typically 0-4) with the number of males in that age group on the left and the number of females in that age group on the right. On top of that age group is another horizontal bar for the next age group (e.g. 5-9) and so forth with the top bar typically for those aged 75 and over. In a population with lots of births and deaths, the shape typically forms a pyramid with a broad base and a narrow top. It is one of the most basic ways to understand population change over time as well as between different geographic units of a similar status (e.g. counties).

Postcensal Estimates - estimates produced for the years after a decennial census when only the beginning population is known. They are produced and revised each year, targeted to July 1 of that year.

Projection - estimated population at some future time based on assumptions about births, deaths, migration, and ages.

Race/Ethnicity - the Census Bureau collects racial data in accordance with guidelines provided by the U.S. Office of Management and Budget (OMB), and these data are based on self-identification. The racial categories included in the census questionnaire generally reflect a social definition of race recognized in this country and not an attempt to define race biologically, anthropologically, or genetically. In addition, it is recognized that the categories of the race item include racial and national origin or sociocultural groups. People may choose to report more than one race to indicate their racial mixture, such as "American Indian" and "White." People who identify their origin as Hispanic, Latino, or Spanish may be of any race. OMB requires five minimum categories: White, Black or African American, American Indian or Alaska Native, Asian, and Native Hawaiian or Other Pacific Islander. Hispanics may be classified as white or black. So we generally separate them out as an ethnic group first.

Unemployed – Not employed, but actively looking for work and available to accept a job.

Unemployment rate – Fraction of the Labor Force that is unemployed.

Urban Area – A densely settled area with at least 2,500 people. If the total number of people is less than 50,000 the Census Bureau calls it an Urban Cluster, otherwise an Urbanized Area.

Vintage - each year, the U.S. Census Bureau produces and publishes estimates of the population for each state and county, as well as the nation as a whole. These are called “vintages.” In producing these vintages, the Bureau utilizes administrative data from a number of sources to estimate 1) the change in population since the most recent decennial census, and 2) the population for each year since the most recent decennial census. With each annual release of population estimates (vintage), the entire time series of estimates beginning on April 1, 2010 is revised and updated.

Vital Statistics - quantitative data concerning a population, such as the number of births, marriages, and deaths.

14 References

Fulton County homepage: <http://www.fultoncountyny.gov/>

At Cornell:

- Program on Applied Demographics (PAD)
URL: <http://pad.human.cornell.edu/>
 - More county trends: <https://pad.human.cornell.edu/counties/trends1geo.cfm?geo=35>
- Community and Regional Development Institute (CaRDI)
URL: <https://cardi.cals.cornell.edu/>
- Cornell Cooperative Extensions (CCE)
Home page: <http://www.cce.cornell.edu>
 - Fulton/Montgomery local office: <http://www.ccefm.com/>

Data sources and background information:

- New York State Data Center
 - <https://labor.ny.gov/nys-data-center/index.shtm>
- U.S. Census Bureau - general
 - QuickFacts: <https://www.census.gov/quickfacts/table/PST045216/36,36035>
 - American FactFinder: <http://factfinder.census.gov/>
- U.S. Census Bureau - population
 - Decennial Census
 - Background: <https://www.census.gov/2010census/>
 - Demographic Profile: http://factfinder2.census.gov/bkmk/table/1.0/en/DEC/10_SF1/SF1DP1/0500000US36035
 - American Community Survey (ACS)
 - Background: <https://www.census.gov/programs-surveys/acs/>
 - Social Data Profile: http://factfinder2.census.gov/bkmk/table/1.0/en/ACS/15_5YR/DP02/0500000US36035
 - Economic Data Profile: http://factfinder2.census.gov/bkmk/table/1.0/en/ACS/15_5YR/DP03/0500000US36035
 - Housing Data Profile: http://factfinder2.census.gov/bkmk/table/1.0/en/ACS/15_5YR/DP04/0500000US36035
 - Demographics Data Profile: http://factfinder2.census.gov/bkmk/table/1.0/en/ACS/15_5YR/DP05/0500000US36035
 - Population estimates:
 - General: <https://www.census.gov/programs-surveys/popest.html>
 - Explorer: <https://www.census.gov/censusexplorer/censusexplorer-popest.html>
- U.S. Census Bureau – Small Area Income & Poverty Estimates (SAIPE)
 - <http://www.census.gov/did/www/saipe/>
- U.S. Census Bureau - Public Use Quarterly Workforce Indicators (QWI) – annual averages
 - <https://qwiexplorer.ces.census.gov/static/explore.html>
- U.S. Census Bureau – Building Permits Survey
 - <https://www.census.gov/construction/bps/>

- Bureau Labor Statistics (BLS)
 - Local Area Unemployment Statistics: <http://www.bls.gov/lau/>
 - Quarterly Census of Employment and Wages (QCEW): <https://www.bls.gov/cew/data.htm>
- NY Department of Labor -
 - Labor statistics: <https://labor.ny.gov/stats/index.shtm>
 - Quarterly Census of Employment and Wages (QCEW): <https://labor.ny.gov/stats/LSQCEW.shtm>
- NY State Department of Health
 - Vital Statistics: https://www.health.ny.gov/statistics/vital_statistics/
- Bureau of Economic Analysis (BEA) – Local Area Personal Income and Employment: <http://bea.gov/iTable/iTable.cfm?ReqID=70&step=1>

Alternative sites for data retrieval:

- The Nelson A. Rockefeller Institute of Government – New York State Statistical Yearbooks http://www.rockinst.org/nys_statistics/
- Headwaters Economics: Economic Profile System – Human Dimensions Toolkit <http://headwaterseconomics.org/tools/eps-hdt>
- National Historical Geographic Information System (NHGIS) <https://www.nhgis.org/>
- Social Explorer <http://www.socialexplorer.com/pub/home/home.aspx>
- Stats America <http://www.statsamerica.org/Default.aspx>
- Missouri Census Data Center <http://mcdc.missouri.edu/>
- DataFerret <http://dataferrett.census.gov/>
- Investigative Reporters and Editors (IRE) Census project <http://census.ire.org/>