

# Erie

## County Profile

### 2017

*A collection of recent demographic, social and economic data*

Compiled by

Jan Vink

Cornell Program on Applied Demographics



Cornell University



Program  
on Applied  
Demographics

CORNELL POPULATION CENTER

This profile is a part of a set of profiles generated for each county in New York State. The profiles were developed and generated by the Cornell Program on Applied Demographics. The work is sponsored by the New York State Data Center in the New York State Department of Labor.

Cornell Program on Applied Demographics:

The Program on Applied Demographics (PAD) brings skills in demographics, economics, statistics, data gathering and data analysis together to provide a variety of organizations with data, information and advice. PAD is located in the Department of Policy Analysis and Management within the College of Human Ecology at Cornell University. PAD is also affiliated with the Cornell Institute for Social and Economic Research and the Cornell Population Center.

For more information: <http://pad.human.cornell.edu/>

New York State Data Center:

The New York State Data Center (NYSDC) is located in the Division of Research and Statistics within the New York State Department of Labor. The State Data Center operates as part of a nationwide effort to improve public access to data provided by the U.S. Census Bureau. The U.S. Census Bureau collects and tabulates data on a multitude of subjects such as population, social, economic and housing demographics, labor force data, health care, migration and transportation. These data play a critical role in understanding our local and larger surrounding communities. Census data also influence state and federal funding, aid decision making in the legislative process, and determine each state's number of congressional seats. As the lead agency in New York for the SDC program, the New York State Data Center helps users navigate through the multitude of surveys and products provided by the U.S. Census Bureau.

For more information: <https://labor.ny.gov/nys-data-center/>

All profiles are freely downloadable as PDF documents on the PAD website:

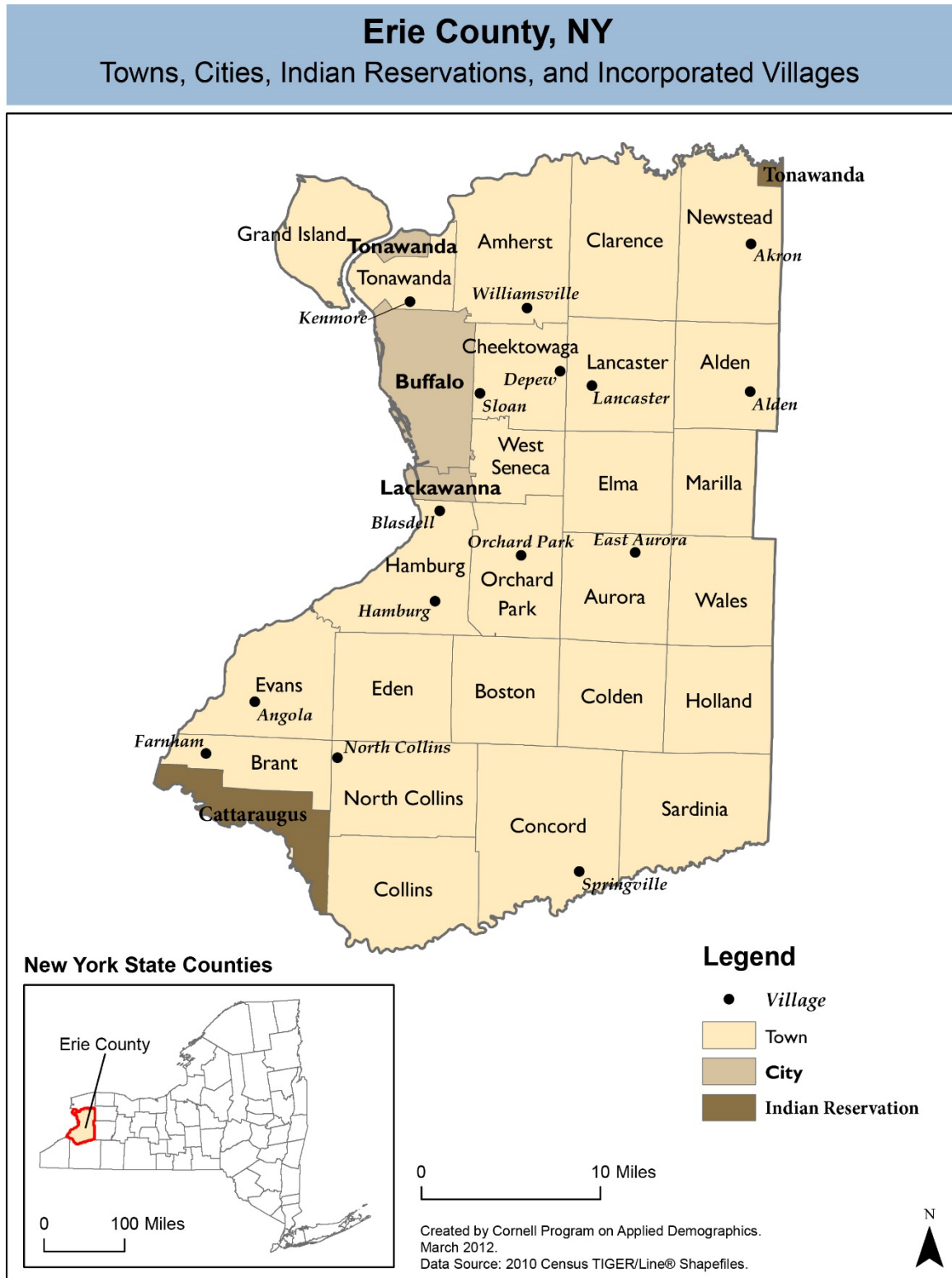
<http://pad.human.cornell.edu/profiles/index.cfm>

This profile is an update from the County Profile produced in 2013. The 2013 profile also contained information on agriculture related items and can be found at <https://pad.human.cornell.edu/profiles/2013/Erie.pdf>

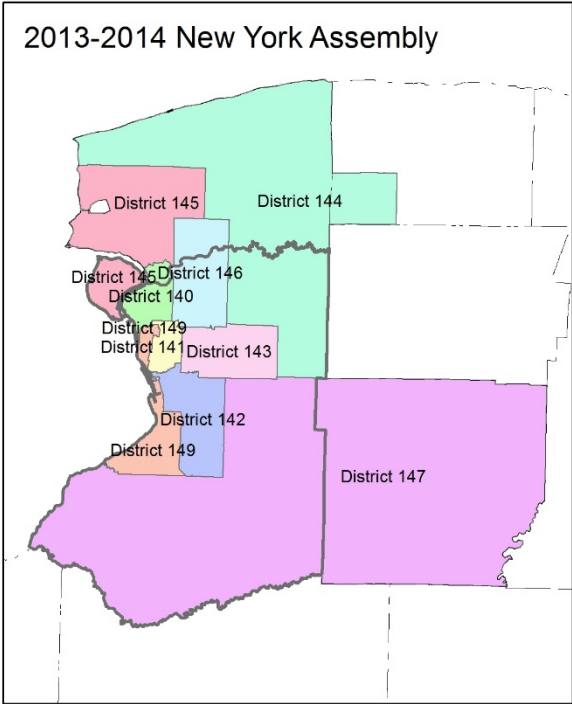
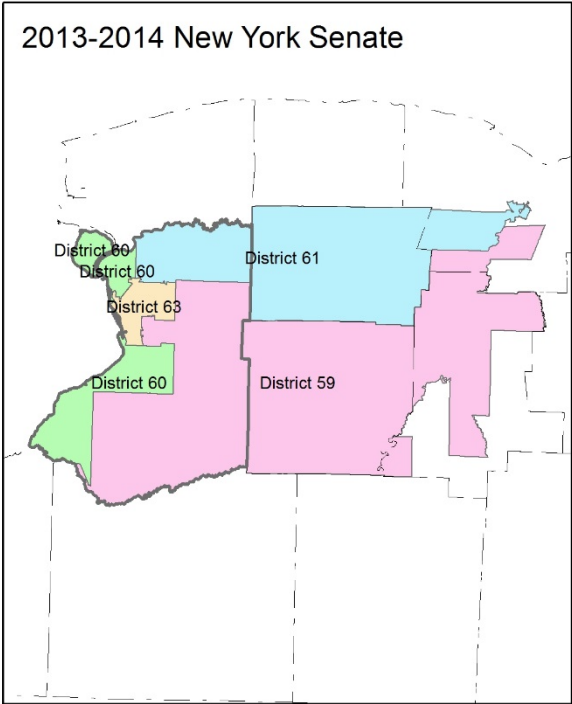
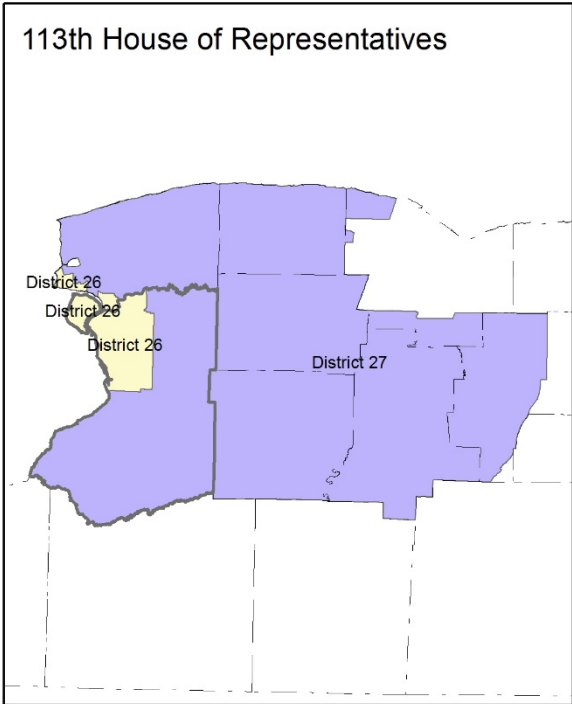
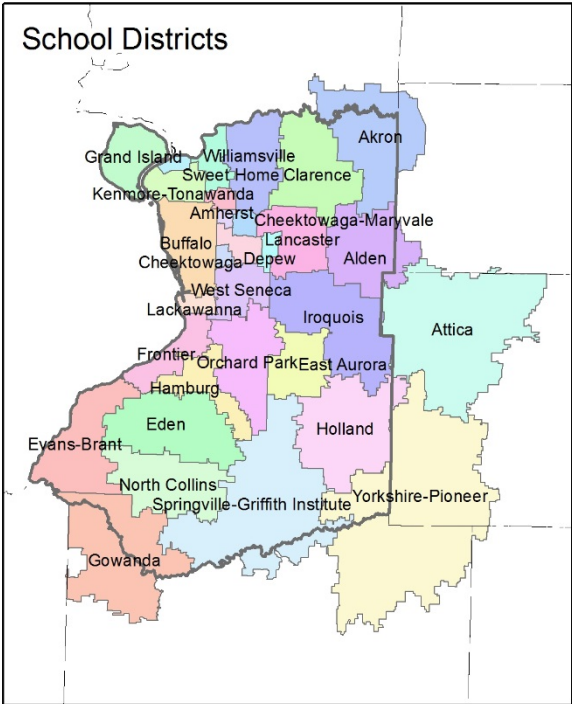
## Contents

1	Reference Maps (towns and places as defined in 2010)	3
2	Population density and Urban Areas Map	5
3	Total Population	6
3.1	Historic and projected	6
3.2	Change since previous Census	6
3.3	Annual population estimates	7
3.4	Sub County population change 2010-2015	8
3.5	Sub County population change 2010-2015	9
4	Components of population change	10
4.1	Vital Statistics	10
4.2	Migration	11
5	Population by age	12
5.1	Historic and projected population pyramids	12
5.2	Selected age groups	13
5.3	Median age	14
6	Race	15
6.1	Total and household population by race	15
6.2	Race composition by age	15
7	Housing units	16
7.1	Characteristics	16
7.2	Historical data on number of housing units and occupancy status	17
7.3	Building Permits 2000-2015	17
8	Education	18
8.1	Enrollment by level of school	18
8.2	Enrollment by age	18
8.3	Percentage age 18-24 enrolled in college	18
8.4	Educational attainment	19
9	Language spoken at home	19
10	Labor Force Characteristics	20
10.1	Labor force, employment and unemployment	20
10.2	Annual unemployment rate	21
10.3	Employment and number of jobs	21
10.4	Class of worker	22
11	Household Income	23
11.1	Income Distribution	23
11.2	Median household income: Trends over time	24
12	Poverty	24
12.1	Family Income to Poverty Ratio	24
12.2	Poverty: Trends over time: Count	25
12.3	Poverty: Trends over time: Rate	25
12.4	Poverty characteristics	26
13	Glossary	27
14	References	30

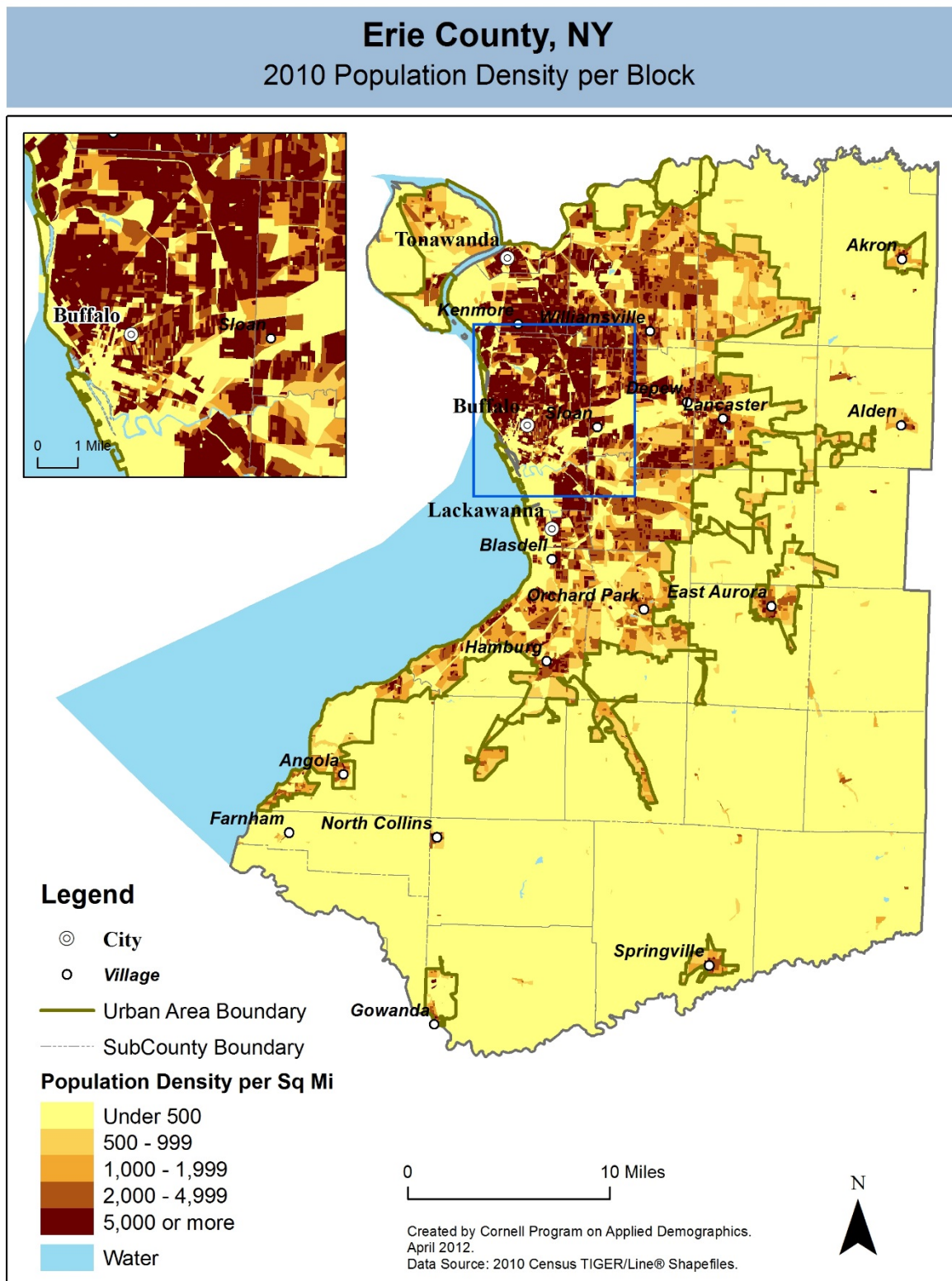
## 1 Reference Maps (towns and places as defined in 2010)



**Erie County, NY**  
Overlap with School and Political Districts



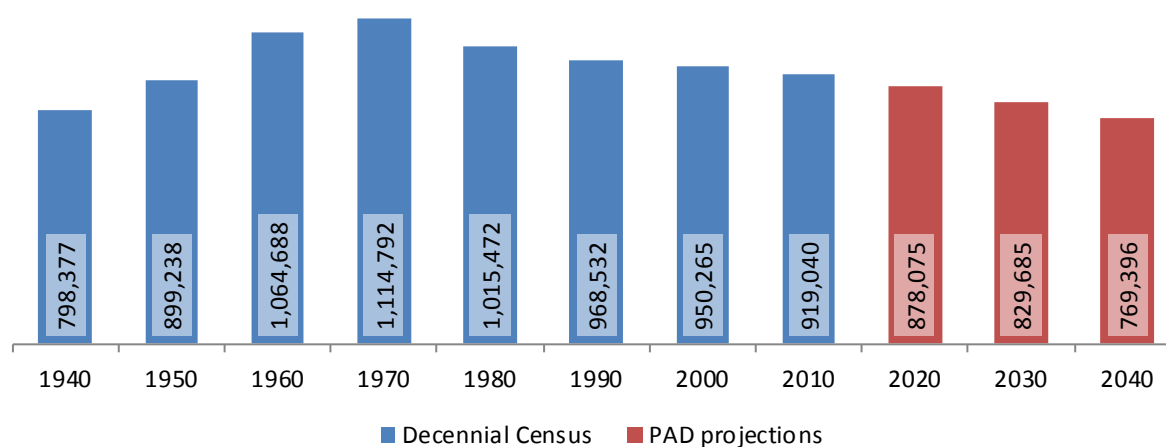
## 2 Population density and Urban Areas Map



### 3 Total Population

#### 3.1 Historic and projected

Total population, Erie County, 1940-2040



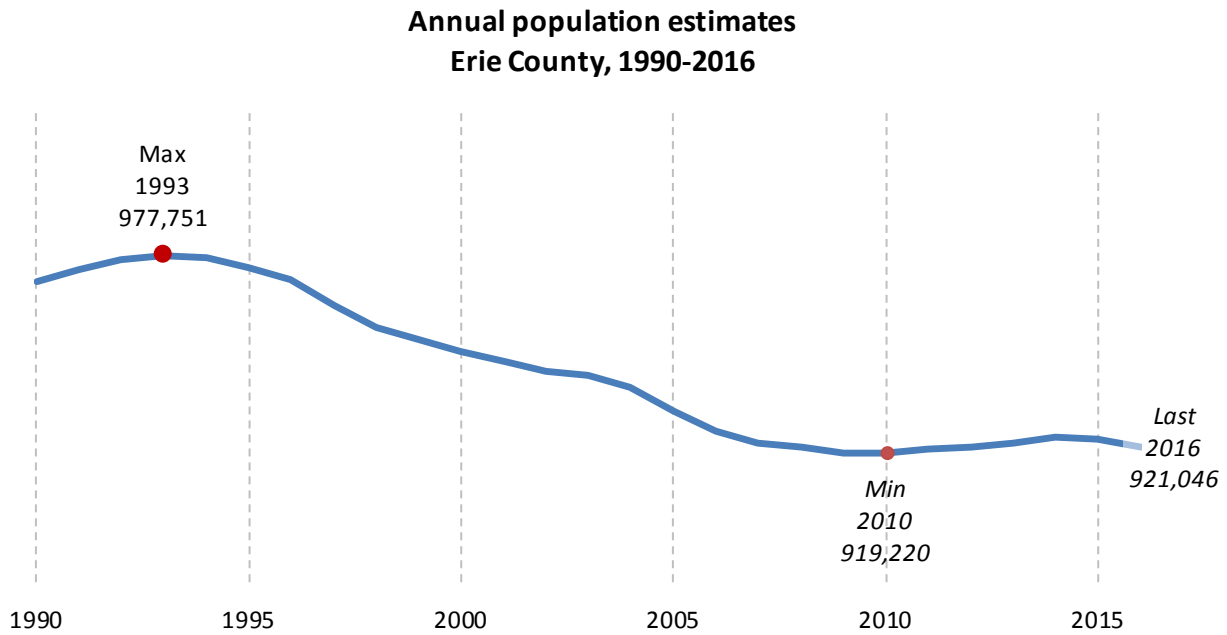
Source: 1940-2010 Decennial Census and projections by Cornell Program on Applied Demographics

#### 3.2 Change since previous Census

		Total population	Change	
			Number	Percent
Decennial Census	1940	798,377		
	1950	899,238	100,861	12.6%
	1960	1,064,688	165,450	18.4%
	1970	1,114,792	50,104	4.7%
	1980	1,015,472	-99,320	-8.9%
	1990	968,532	-46,940	-4.6%
	2000	950,265	-18,267	-1.9%
	2010	919,040	-31,225	-3.3%
PAD projec- tions	2020	878,075	-40,965	-4.5%
	2030	829,685	-48,390	-5.5%
	2040	769,396	-60,289	-7.3%

Source: 1940-2010 Decennial Census and projections by Cornell Program on Applied Demographics

### 3.3 Annual population estimates



Source: U.S. Census Bureau population estimates (1990-1999 and 2000-2009 intercensal and vintage 2016 postcensal)



### 3.4 Sub County population change 2010-2015

	Total Population		Difference	
	2000	2010	Count	%
New York State	18,976,821 *	19,378,102	401,281	2.1%
Erie County	950,265	919,040	-31,225	-3.3%
<b>Cities</b>				
Buffalo	292,648	261,310	-31,338	-10.7%
Lackawanna	19,064	18,141	-923	-4.8%
Tonawanda	16,136	15,130	-1,006	-6.2%
<b>Towns</b>				
Alden	10,470	10,865	395	3.8%
Amherst	116,510	122,366	5,856	5.0%
Aurora	13,996	13,782	-214	-1.5%
Boston	7,897	8,023	126	1.6%
Brant	1,906	2,065	159	8.3%
Cheektowaga	94,019	88,226	-5,793	-6.2%
Clarence	26,123	30,673	4,550	17.4%
Colden	3,323	3,265	-58	-1.7%
Collins	8,307	6,601	-1,706	-20.5%
Concord	8,526	8,494	-32	-0.4%
Eden	8,076	7,688	-388	-4.8%
Elma	11,304	11,317	13	0.1%
Evans	17,594	16,356	-1,238	-7.0%
Grand Island	18,621	20,374	1,753	9.4%
Hamburg	56,259	56,936	677	1.2%
Holland	3,603	3,401	-202	-5.6%
Lancaster	39,019	41,604	2,585	6.6%
Marilla	5,709	5,327	-382	-6.7%
Newstead	8,404	8,594	190	2.3%
North Collins	3,376	3,523	147	4.4%
Orchard Park	27,637	29,054	1,417	5.1%
Sardinia	2,692	2,775	83	3.1%
Tonawanda	78,155	73,567	-4,588	-5.9%
Wales	2,960	3,005	45	1.5%
West Seneca	45,920	44,711	-1,209	-2.6%
<b>Reservations</b>				
Cattaraugus	2,001	1,833	-168	-8.4%
Tonawanda	10	34	24	240.0%

\* Original counts revised through Count Question Resolution Program (CQR)

Source: U.S. Census Bureau intercensal population estimates 2000-2010

### 3.5 Sub County population change 2010-2015

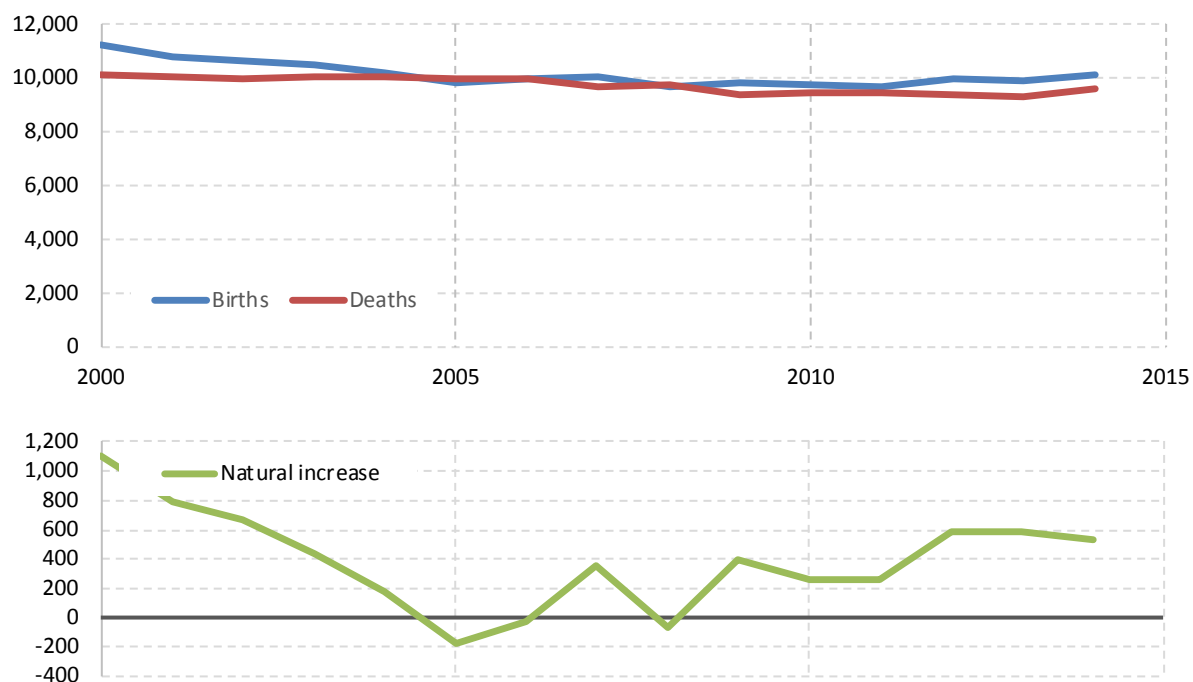
	Total Population		Difference	
	2010 base	2015	Count	%
New York State	19,378,087	19,795,791	417,704	2.2%
Erie County	919,064	922,578	3,514	0.4%
<b>Cities</b>				
Buffalo	261,325	258,071	-3,254	-1.2%
Lackawanna	18,141	17,965	-176	-1.0%
Tonawanda	15,130	14,907	-223	-1.5%
<b>Towns</b>				
Alden	10,865	10,094	-771	-7.1%
Amherst	122,366	125,109	2,743	2.2%
Aurora	13,782	13,819	37	0.3%
Boston	8,023	8,049	26	0.3%
Brant	2,065	2,064	-1	0.0%
Cheektowaga	88,226	87,514	-712	-0.8%
Clarence	30,673	32,254	1,581	5.2%
Colden	3,265	3,293	28	0.9%
Collins	6,596	6,601	5	0.1%
Concord	8,494	8,547	53	0.6%
Eden	7,688	7,674	-14	-0.2%
Elma	11,317	11,766	449	4.0%
Evans	16,356	16,254	-102	-0.6%
Grand Island	20,374	20,813	439	2.2%
Hamburg	56,936	58,022	1,086	1.9%
Holland	3,401	3,387	-14	-0.4%
Lancaster	41,617	43,007	1,390	3.3%
Marilla	5,327	5,365	38	0.7%
Newstead	8,605	8,654	49	0.6%
North Collins	3,523	3,514	-9	-0.3%
Orchard Park	29,054	29,613	559	1.9%
Sardinia	2,775	2,793	18	0.6%
Tonawanda	73,567	72,937	-630	-0.9%
Wales	3,005	3,034	29	1.0%
West Seneca	44,696	45,575	879	2.0%
<b>Reservations</b>				
Cattaraugus	1,838	1,849	11	0.6%
Tonawanda	34	34	0	0.0%

Source: U.S. Census Bureau population estimates 2010-2015

## 4 Components of population change

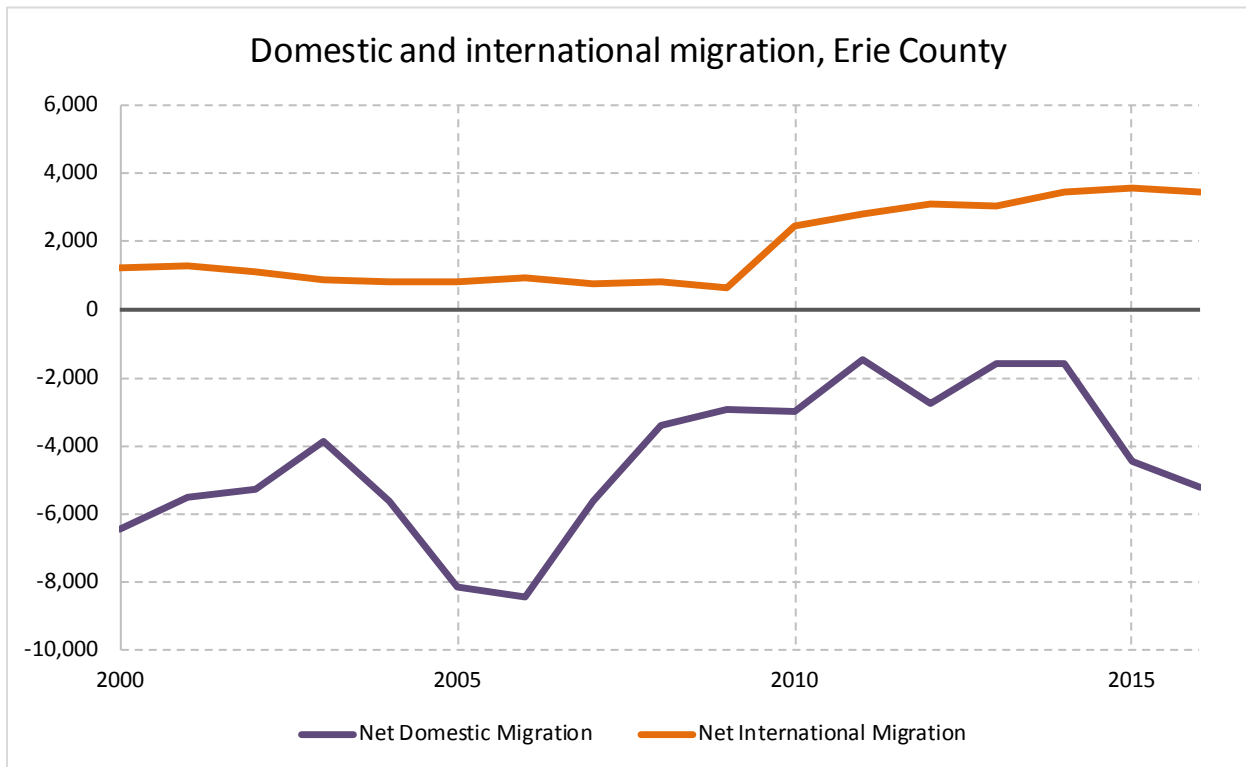
### 4.1 Vital Statistics

Vital Statistics, Erie County



Source: New York State Department of Health

## 4.2 Migration

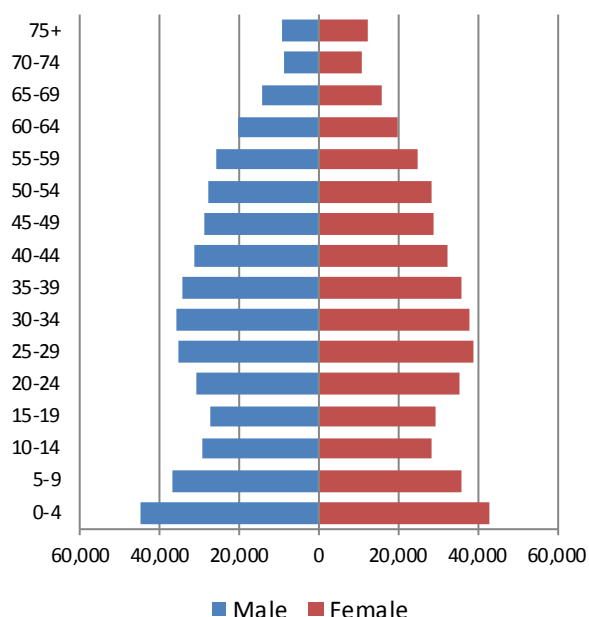


Source: Census Bureau population estimates (V2010 and V2016)

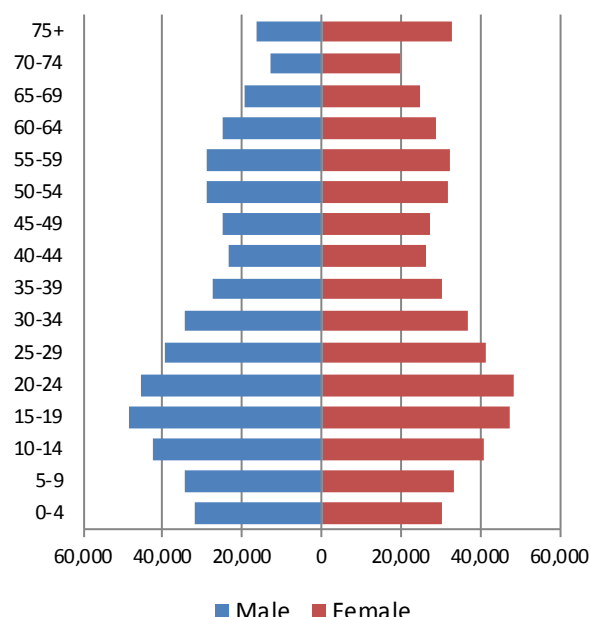
## 5 Population by age

### 5.1 Historic and projected population pyramids

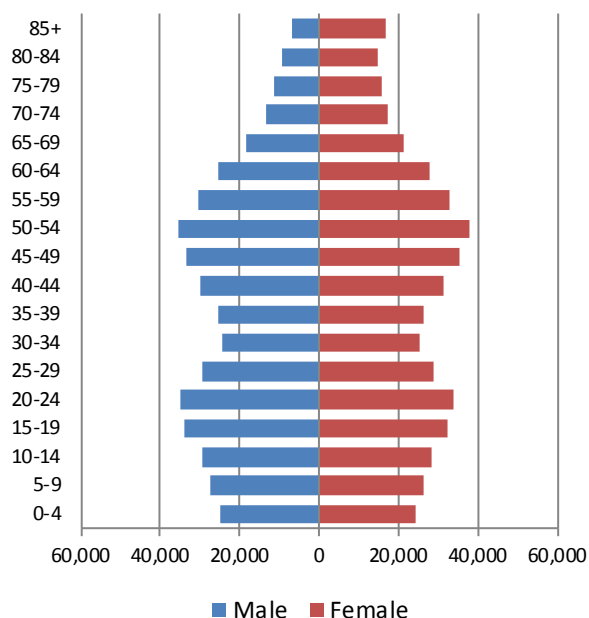
**1950 Population Pyramid, Erie County**



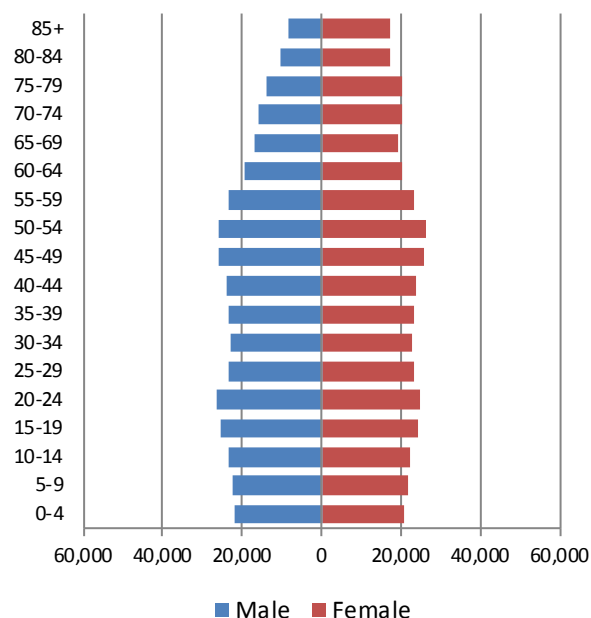
**1980 Population Pyramid, Erie County**



**2010 Population Pyramid, Erie County**



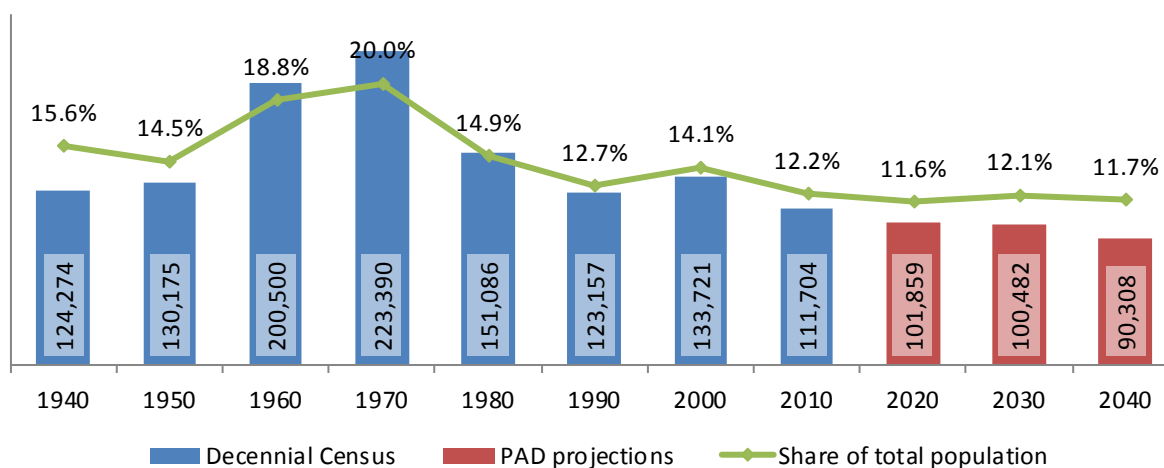
**2040 Population Pyramid, Erie County**



Source: 1950, 1980, 2010 Decennial Census and projections by Cornell Program on Applied Demographics

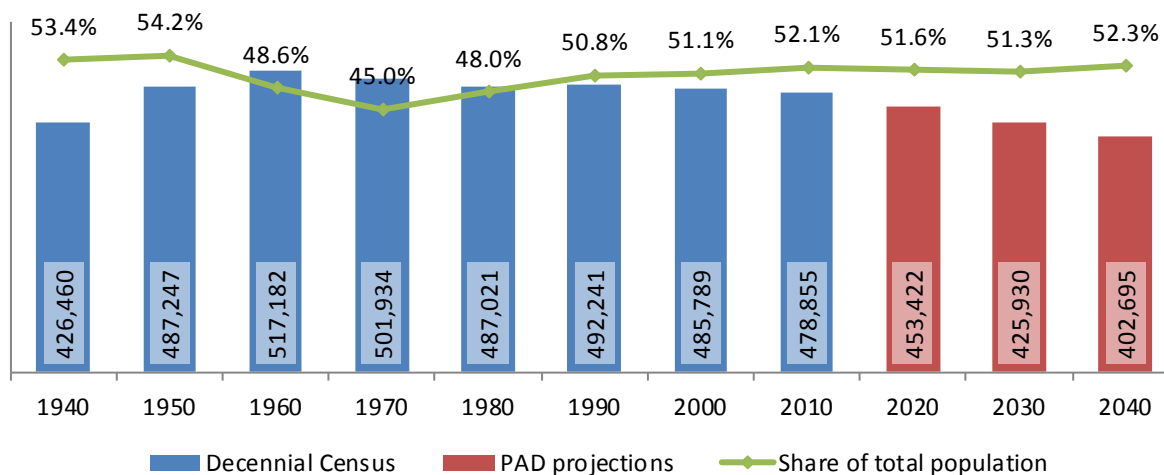
## 5.2 Selected age groups

**Population age 5-14, Erie County, 1940-2040**



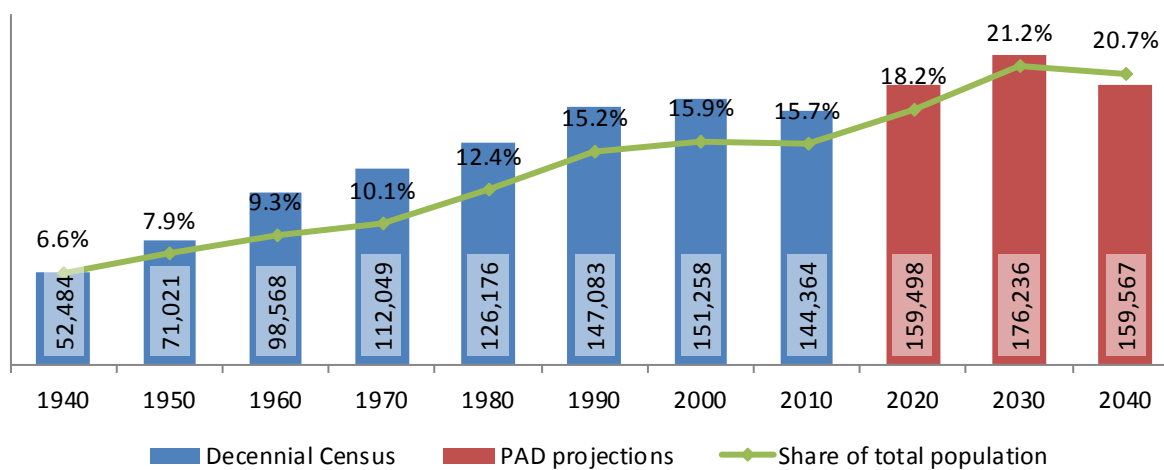
Source: 1940-2010 Decennial Census and projections by Cornell Program on Applied Demographics

**Population age 25-64, Erie County, 1940-2040**



Source: 1940-2010 Decennial Census and projections by Cornell Program on Applied Demographics

### Population age 65 and over, Erie County, 1940-2040



Source: 1940-2010 Decennial Census and projections by Cornell Program on Applied Demographics

### 5.3 Median age

	Erie County	New York State
<b>Median age</b>		
2000	38.0	35.9
2010	40.4	38.0
2015	40.3	38.3

Source: 2000, 2010 Decennial Census, 2015 Population Estimates

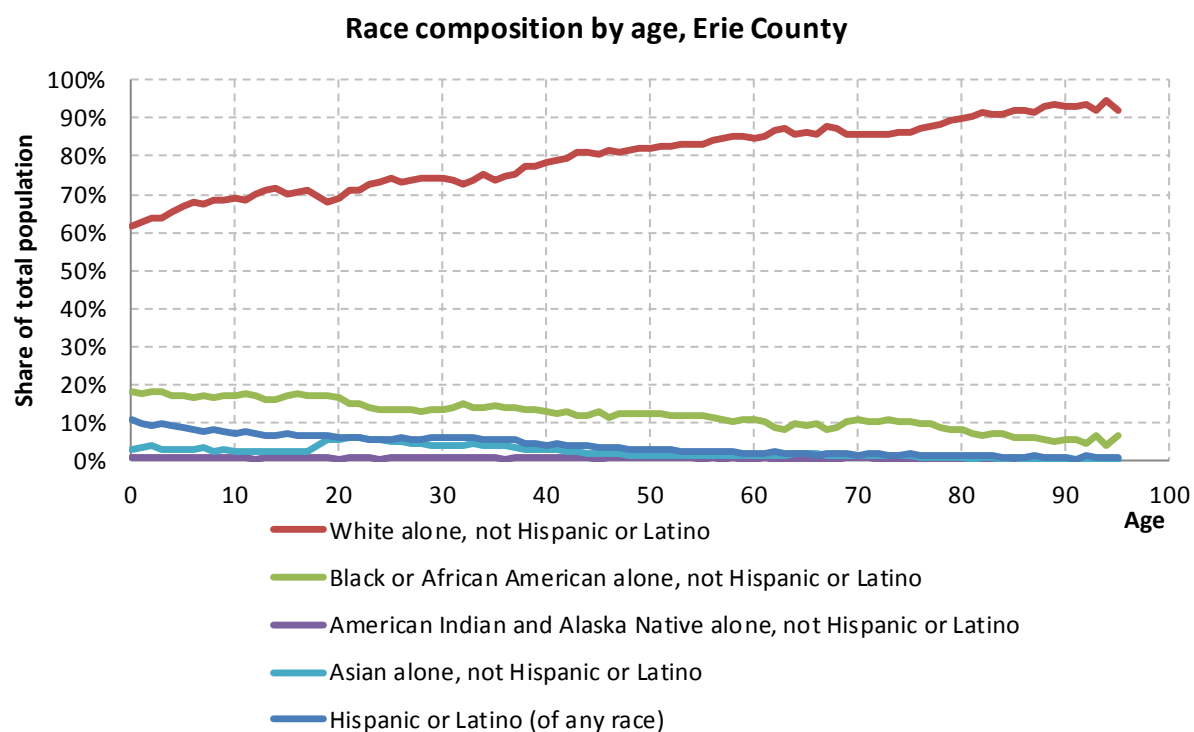
## 6 Race

### 6.1 Total and household population by race

	Total		In households		In Group Quarters
	Count	Percentage	Count	Percentage	Count
<b>Total population</b>	919,040	100%	890,653	100%	28,387
Not Hispanic or Latino					
One race					
White	714,156	77.7%	695,972	78.1%	18,184
Black or African American	119,916	13.0%	114,056	12.8%	5,860
American Indian and Alaska Native	5,199	0.6%	5,057	0.6%	142
Asian	23,621	2.6%	21,692	2.4%	1,929
Native Hawaiian and Other Pacific Islander	165	0.0%	155	0.0%	10
Some other race	1,023	0.1%	913	0.1%	110
Two or more races	13,229	1.4%	12,879	1.4%	350
Hispanic or Latino (of any race)	41,731	4.5%	39,929	4.5%	1,802

Source: 2010 Decennial Census

### 6.2 Race composition by age



Source: 2010 Decennial Census



## 7 Housing units

### 7.1 Characteristics

	COUNT		PERCENTAGE	
	Estimate	Margin of error	Estimate	Margin of error
<b>HOUSING OCCUPANCY</b>				
<b>Total housing units</b>	420,782	± 441	100.0%	
Occupied housing units	382,846	± 1,462	91.0%	± 0.3
Vacant housing units	37,936	± 1,344	9.0%	± 0.3
<b>YEAR STRUCTURE BUILT</b>				
<b>Total housing units</b>	420,782	± 441	100.0%	
Built 2014 or later	274	± 102	0.1%	± 0.1
Built 2010 to 2013	3,166	± 393	0.8%	± 0.1
Built 2000 to 2009	21,004	± 852	5.0%	± 0.2
Built 1990 to 1999	27,819	± 1,033	6.6%	± 0.2
Built 1980 to 1989	26,477	± 1,113	6.3%	± 0.3
Built 1970 to 1979	43,555	± 1,176	10.4%	± 0.3
Built 1960 to 1969	48,735	± 1,206	11.6%	± 0.3
Built 1950 to 1959	76,025	± 1,547	18.1%	± 0.4
Built 1940 to 1949	38,073	± 1,234	9.0%	± 0.3
Built 1939 or earlier	135,654	± 1,710	32.2%	± 0.4
<b>HOUSING TENURE</b>				
<b>Occupied housing units</b>	382,846	± 1,462	100.0%	
Owner-occupied	248,889	± 1,626	65.0%	± 0.4
Renter-occupied	133,957	± 1,611	35.0%	± 0.4
<b>HOUSE HEATING FUEL</b>				
<b>Occupied housing units</b>	382,846	± 1,462	100.0%	
Utility gas	340,669	± 1,549	89.0%	± 0.3
Bottled, tank, or LP gas	6,715	± 465	1.8%	± 0.1
Electricity	23,333	± 844	6.1%	± 0.2
Fuel oil, kerosene, etc.	6,239	± 469	1.6%	± 0.1
Coal or coke	224	± 76	0.1%	± 0.1
Wood	3,119	± 293	0.8%	± 0.1
Solar energy	25	± 35	0.0%	± 0.1
Other fuel	1,446	± 254	0.4%	± 0.1
No fuel used	1,076	± 187	0.3%	± 0.1
<b>VALUE</b>				
<b>Owner-occupied units</b>	248,889	± 1,626	100.0%	
Less than \$50,000	24,546	± 803	9.9%	± 0.3
\$50,000 to \$99,999	57,035	± 1,281	22.9%	± 0.5
\$100,000 to \$149,999	65,680	± 1,468	26.4%	± 0.5
\$150,000 to \$199,999	42,423	± 1,181	17.0%	± 0.5
\$200,000 to \$299,999	37,136	± 960	14.9%	± 0.4
\$300,000 to \$499,999	16,939	± 756	6.8%	± 0.3
\$500,000 to \$999,999	4,267	± 401	1.7%	± 0.2
\$1,000,000 or more	863	± 200	0.3%	± 0.1
Median (dollars)	130,000	± 1,216		

Source: 2011-2015 American Community Survey

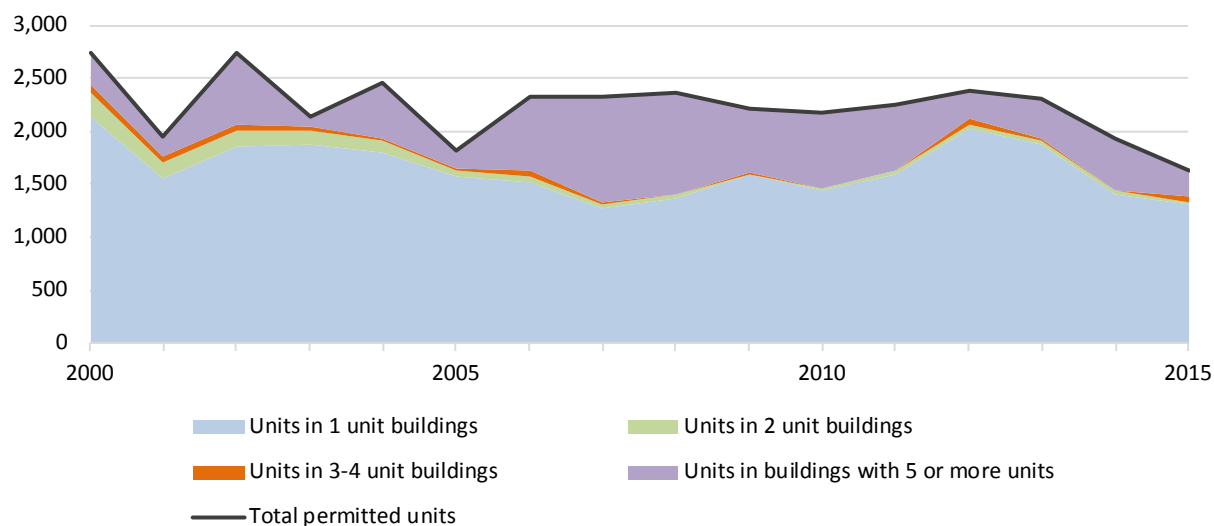
## 7.2 Historical data on number of housing units and occupancy status

Year	Number of Housing Units	Change since previous Census	Occupied	Occupancy rate	Vacant
1970	360,893		346,374	96.0%	14,519
1980	389,038	7.8%	365,217	93.9%	23,821
1990	402,131	3.4%	376,994	93.7%	25,137
2000	415,868	3.4%	380,873	91.6%	34,995
2010	419,974	1.0%	383,164	91.2%	36,810

Source: 1970-2010 Decennial Census

## 7.3 Building Permits 2000-2015

Building permits by number of permitted units in building, Erie County



Source: Census Bureau Building Permits Survey

## 8 Education

### 8.1 Enrollment by level of school

	Estimate	Margin of error
<b>Total enrolled in school</b>	230,431	± 1,823
Nursery school, preschool	12,049	± 724
Kindergarten to 12th grade	144,482	± 802
Kindergarten	10,387	± 710
Elementary: grade 1 to grade 4	40,984	± 1,228
Elementary: grade 5 to grade 8	45,268	± 1,144
High school: grade 9 to grade 12	47,843	± 857
College, undergraduate	58,852	± 1,351
Graduate, professional school	15,048	± 875

Source: 2011-2015 American Community Survey

### 8.2 Enrollment by age

	Estimate	Margin of error
3 and 4 years	53.8%	± 2.7
5 to 9 years	97.0%	± 0.6
10 to 14 years	98.8%	± 0.3
15 to 17 years	97.5%	± 0.6
18 and 19 years	79.2%	± 1.8
20 to 24 years	47.4%	± 1.4
25 to 34 years	13.6%	± 0.8
35 years and over	2.0%	± 0.1

Source: 2011-2015 American Community Survey

### 8.3 Percentage age 18-24 enrolled in college

	Estimate	Margin of error
Population 18 to 24 years	94,752	± 35
Enrolled in college or graduate school	50.2%	± 1.2
Males 18 to 24 years	48,016	± 34
Enrolled in college or graduate school	47.0%	± 1.7
Females 18 to 24 years	46,736	± 8
Enrolled in college or graduate school	53.4%	± 1.7

Source: 2011-2015 American Community Survey

## 8.4 Educational attainment

	COUNT		PERCENTAGE	
	Estimate	Margin of error	Estimate	Margin of error
<b>Population 25 years and over</b>	634,345	± 32	100%	
<b>EDUCATIONAL ATTAINMENT</b>				
Less than 9th grade	19,711	± 912	3.1%	± 0.1
9th to 12th grade, no diploma	40,950	± 1,354	6.5%	± 0.2
High school graduate (includes equivalency)	179,855	± 2,383	28.4%	± 0.4
Some college, no degree	119,354	± 2,311	18.8%	± 0.4
Associate's degree	74,147	± 1,744	11.7%	± 0.3
Bachelor's degree	109,985	± 1,919	17.3%	± 0.3
Graduate or professional degree	90,343	± 1,666	14.2%	± 0.3
Percent high school graduate or higher			90.4%	± 0.3
Percent bachelor's degree or higher			31.6%	± 0.4

Source: 2011-2015 American Community Survey

## 9 Language spoken at home

	COUNT		PERCENTAGE		SPEAK ENGLISH LESS THAN "VERY WELL"	
	Estimate	Margin of error	Estimate	Margin of error	Estimate	Margin of error
<b>Population 5 years and over</b>	872,040	± 23	100%			
<b>LANGUAGE SPOKEN AT HOME</b>						
English only	783,594	± 2,319	89.9%	± 0.3		
Language other than English	88,446	± 2,316	10.1%	± 0.3	30,023	± 1,526
Spanish	28,675	± 1,265	3.3%	± 0.1	8,364	± 726
Other Indo-European languages	33,243	± 1,775	3.8%	± 0.2	10,073	± 923
Asian and Pacific Islander languages	16,625	± 1,084	1.9%	± 0.1	7,230	± 707
Other languages	9,903	± 1,248	1.1%	± 0.1	4,356	± 758

Source: 2011-2015 American Community Survey

## 10 Labor Force Characteristics

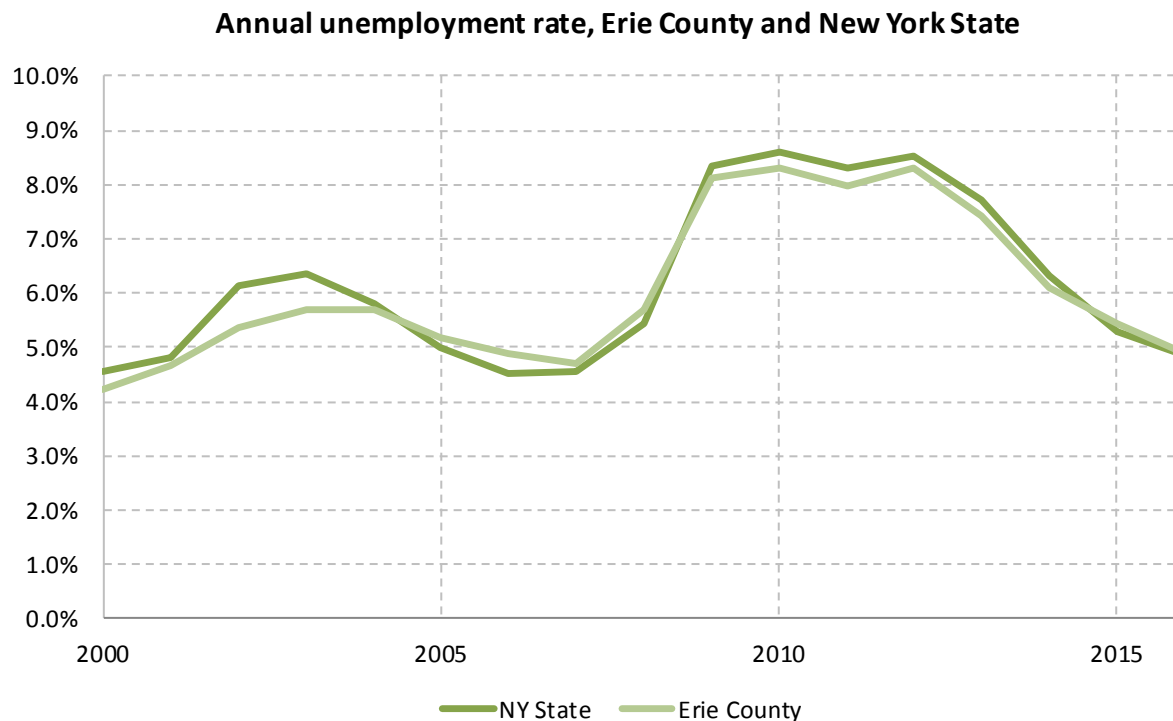
### 10.1 Labor force, employment and unemployment

	TOTAL		IN LABOR FORCE		EMPLOYED		UNEMPLOYMENT RATE	
	Estimate	Margin of error	Estimate	Margin of error	Estimate	Margin of error	Estimate	Margin of error
<b>Population 16 years and over</b>	753,286	± 528	63.1%	± 0.3	58.6%	± 0.3	7.0%	± 0.2
<b>AGE</b>								
16 to 19 years	50,353	± 522	43.7%	± 1.5	35.2%	± 1.3	19.4%	± 1.9
20 to 24 years	68,588	± 74	74.7%	± 1.2	67.0%	± 1.3	10.1%	± 0.9
25 to 29 years	65,121	± 34	84.2%	± 1.1	77.3%	± 1.2	8.0%	± 0.8
30 to 34 years	55,176	± 19	83.6%	± 1.0	78.1%	± 1.1	6.5%	± 0.8
35 to 44 years	104,838	± 30	83.2%	± 0.7	78.1%	± 0.8	6.0%	± 0.6
45 to 54 years	133,454	± 17	80.7%	± 0.7	76.4%	± 0.7	5.3%	± 0.4
55 to 59 years	69,906	± 1,046	73.2%	± 1.1	69.7%	± 1.1	4.8%	± 0.6
60 to 64 years	56,109	± 1,044	54.6%	± 1.3	52.0%	± 1.3	4.8%	± 0.7
65 to 74 years	77,800	± 27	25.1%	± 0.8	23.5%	± 0.8	6.5%	± 0.9
75 years and over	71,941	± 20	6.3%	± 0.5	5.9%	± 0.4	5.5%	± 2.0
<b>RACE AND HISPANIC OR LATINO ORIGIN</b>								
White alone	608,664	± 993	64.9%	± 0.3	61.1%	± 0.3	5.7%	± 0.2
Black or African American alone	92,975	± 727	56.1%	± 0.9	47.5%	± 1.1	15.1%	± 1.2
American Indian and Alaska Native alone	3,325	± 318	51.7%	± 4.3	45.3%	± 4.3	11.7%	± 3.9
Asian alone	22,654	± 354	52.3%	± 2.2	49.7%	± 2.2	4.9%	± 1.4
Two or more races	11,153	± 788	60.5%	± 2.8	52.5%	± 2.9	13.3%	± 2.6
Hispanic or Latino origin (of any race)	30,888	± 141	58.7%	± 2.0	51.9%	± 2.0	11.7%	± 1.9
White alone, not Hispanic or Latino	595,587	± 490	64.9%	± 0.3	61.2%	± 0.3	5.6%	± 0.2
<b>SEX</b>								
<b>Population 20 to 64 years</b>	553,192	± 88	77.5%	± 0.4	72.5%	± 0.4	6.4%	± 0.2
Male	271,886	± 87	80.5%	± 0.5	74.8%	± 0.5	7.0%	± 0.4
Female	281,306	± 29	74.6%	± 0.6	70.3%	± 0.6	5.8%	± 0.3
With own children under 18 years	93,989	± 1,412	76.0%	± 0.9	71.2%	± 0.9	6.4%	± 0.6
<b>EDUCATIONAL ATTAINMENT</b>								
<b>Population 25 to 64 years</b>	484,604	± 47	77.9%	± 0.4	73.3%	± 0.4	5.9%	± 0.2
Less than high school graduate	34,943	± 1,479	50.4%	± 2.0	42.9%	± 1.9	14.9%	± 1.8
High school graduate (includes equivalency)	123,499	± 2,257	72.2%	± 0.9	66.4%	± 0.9	8.0%	± 0.6
Some college or associate's degree	159,128	± 2,486	78.9%	± 0.7	74.1%	± 0.7	6.1%	± 0.5
Bachelor's degree or higher	167,034	± 2,424	86.9%	± 0.5	83.9%	± 0.6	3.4%	± 0.3

Table formula: **LABOR FORCE** = # EMPLOYED + # UNEMPLOYED  
**% IN LABOR FORCE** = LABOR FORCE / TOTAL \* 100%  
**% EMPLOYED** = # EMPLOYED / TOTAL \* 100%  
**UNEMPLOYMENT RATE** = # UNEMPLOYED / LABOR FORCE \* 100%

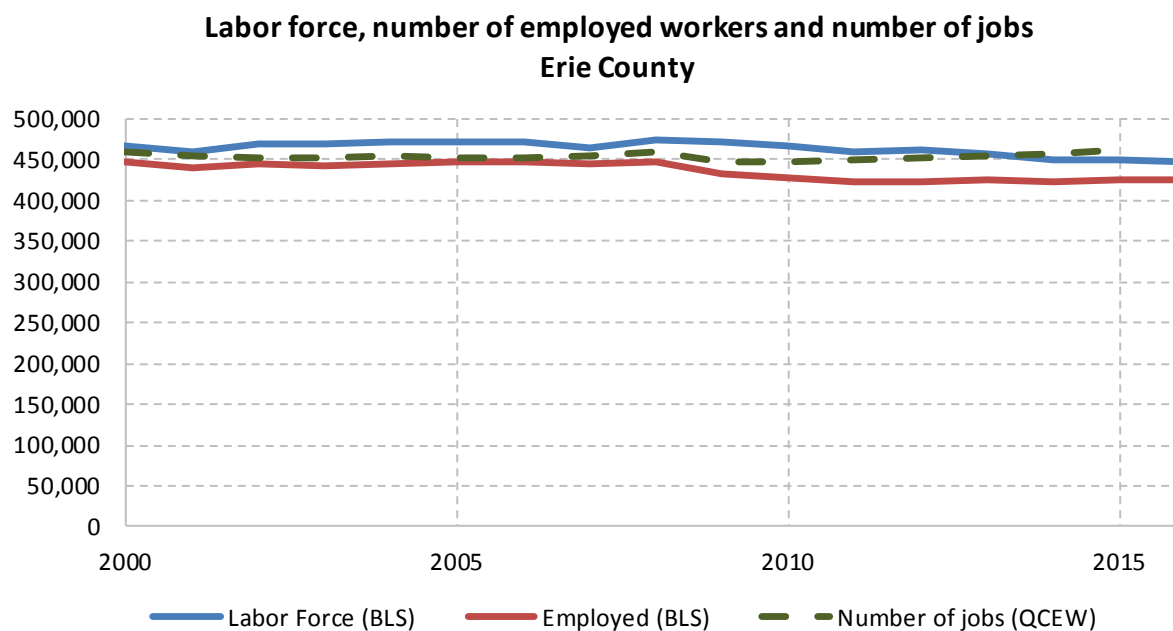
Source: 2011-2015 American Community Survey

## 10.2 Annual unemployment rate



Source: Bureau Labor Statistics (BLS)

## 10.3 Employment and number of jobs



Source: Bureau Labor Statistics (BLS) and NY Department of Labor - Quarterly Census of Employment and Wages (QCEW) – annual averages

## 10.4 Class of worker

		<b>Total</b>	<b>%Male</b>	<b>%Female</b>
Civilian employed population 16 years and over	Estimate	441,369	50.6%	49.4%
	<i>Margin of error</i>	$\pm 2,441$	$\pm 0.3$	$\pm 0.3$
Private for-profit wage and salary workers:	Estimate	301,866	53.8%	46.2%
	<i>Margin of error</i>	$\pm 2,767$	$\pm 0.5$	$\pm 0.5$
Employee of private company workers	Estimate	290,439	53.0%	47.0%
	<i>Margin of error</i>	$\pm 2,821$	$\pm 0.5$	$\pm 0.5$
Self-employed in own incorporated business workers	Estimate	11,427	75.3%	24.7%
	<i>Margin of error</i>	$\pm 738$	$\pm 2.3$	$\pm 2.3$
Private not-for-profit wage and salary workers	Estimate	47,573	32.9%	67.1%
	<i>Margin of error</i>	$\pm 1,999$	$\pm 1.4$	$\pm 1.4$
Local government workers	Estimate	36,040	42.5%	57.5%
	<i>Margin of error</i>	$\pm 1,208$	$\pm 1.7$	$\pm 1.7$
State government workers	Estimate	28,287	47.8%	52.2%
	<i>Margin of error</i>	$\pm 1,022$	$\pm 2.0$	$\pm 2.0$
Federal government workers	Estimate	9,811	55.3%	44.7%
	<i>Margin of error</i>	$\pm 576$	$\pm 3.1$	$\pm 3.1$
Self-employed in own not incorporated business workers and unpaid family workers	Estimate	17,792	60.9%	39.1%
	<i>Margin of error</i>	$\pm 806$	$\pm 2.5$	$\pm 2.5$

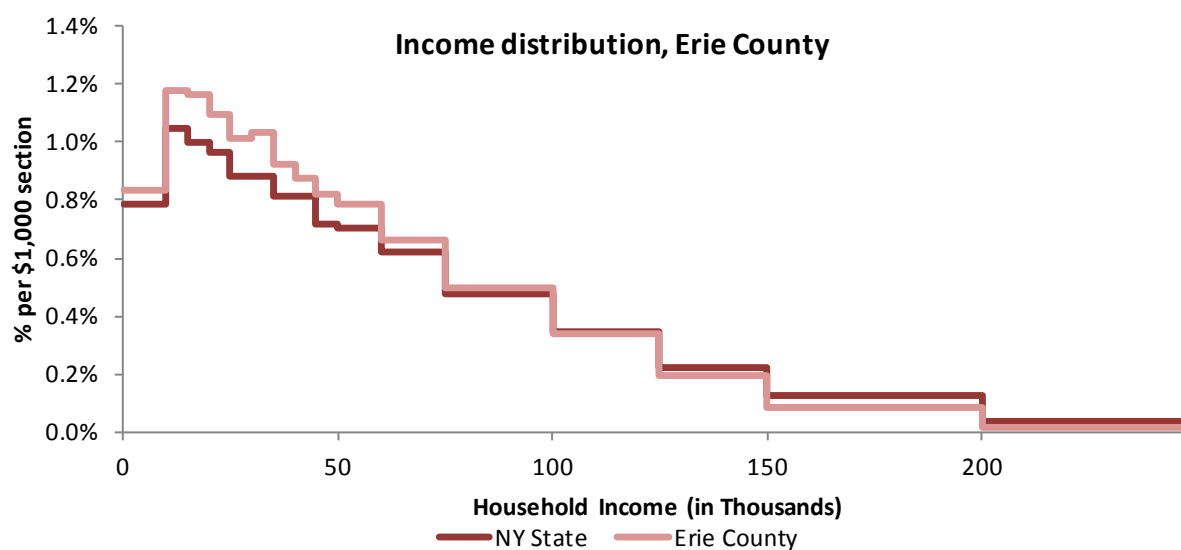
Source: 2011-2015 American Community Survey

## 11 Household Income

### 11.1 Income Distribution

	Estimate	Margin of error	Interval width (in \$1,000)	Est. per \$1,000 section
<b>Total:</b>	382,846	± 1,462		
Less than \$10,000	31,827	± 1,208	10	3,182.7
\$10,000 to \$14,999	22,467	± 969	5	4,493.4
\$15,000 to \$19,999	22,231	± 804	5	4,446.2
\$20,000 to \$24,999	20,936	± 814	5	4,187.2
\$25,000 to \$29,999	19,362	± 919	5	3,872.4
\$30,000 to \$34,999	19,763	± 870	5	3,952.6
\$35,000 to \$39,999	17,723	± 896	5	3,544.6
\$40,000 to \$44,999	16,778	± 804	5	3,355.6
\$45,000 to \$49,999	15,672	± 763	5	3,134.4
\$50,000 to \$59,999	29,956	± 1,115	10	2,995.6
\$60,000 to \$74,999	38,142	± 1,186	15	2,542.8
\$75,000 to \$99,999	47,827	± 1,304	25	1,913.1
\$100,000 to \$124,999	32,496	± 1,056	25	1,299.8
\$125,000 to \$149,999	18,596	± 927	25	743.8
\$150,000 to \$199,999	16,517	± 737	50	330.3
\$200,000 or more	12,553	± 681	-	-

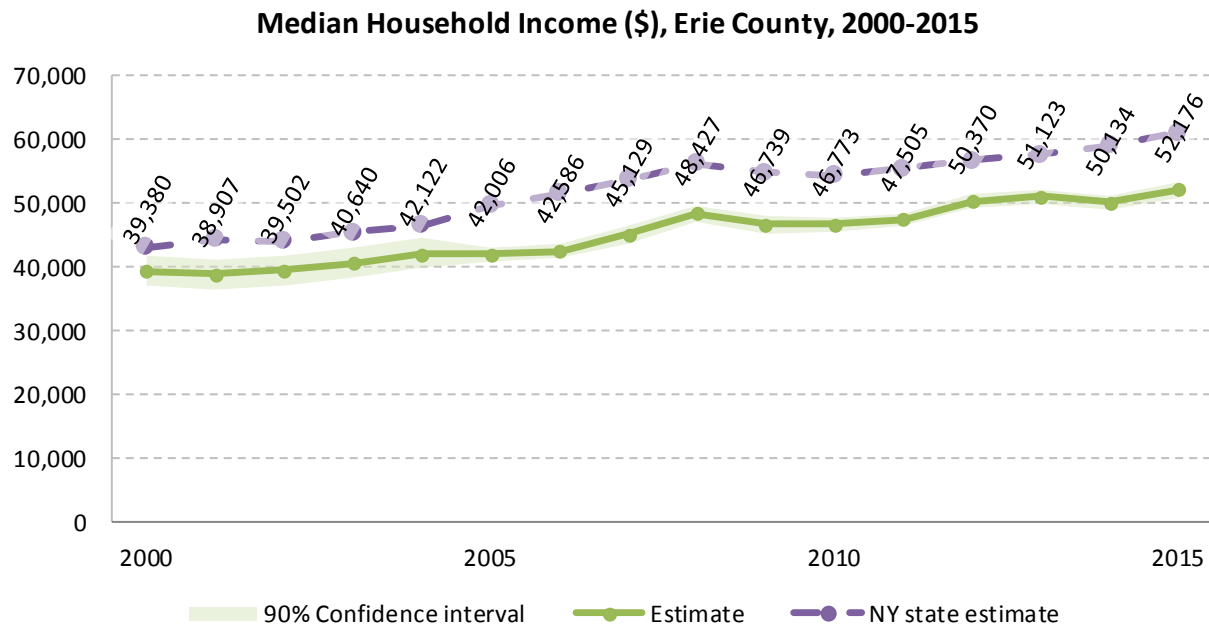
Source: 2011-2015 American Community Survey



Source: 2011-2015 American Community Survey



## 11.2 Median household income: Trends over time



Source: Small Area Income and Poverty Estimates (SAIPE)

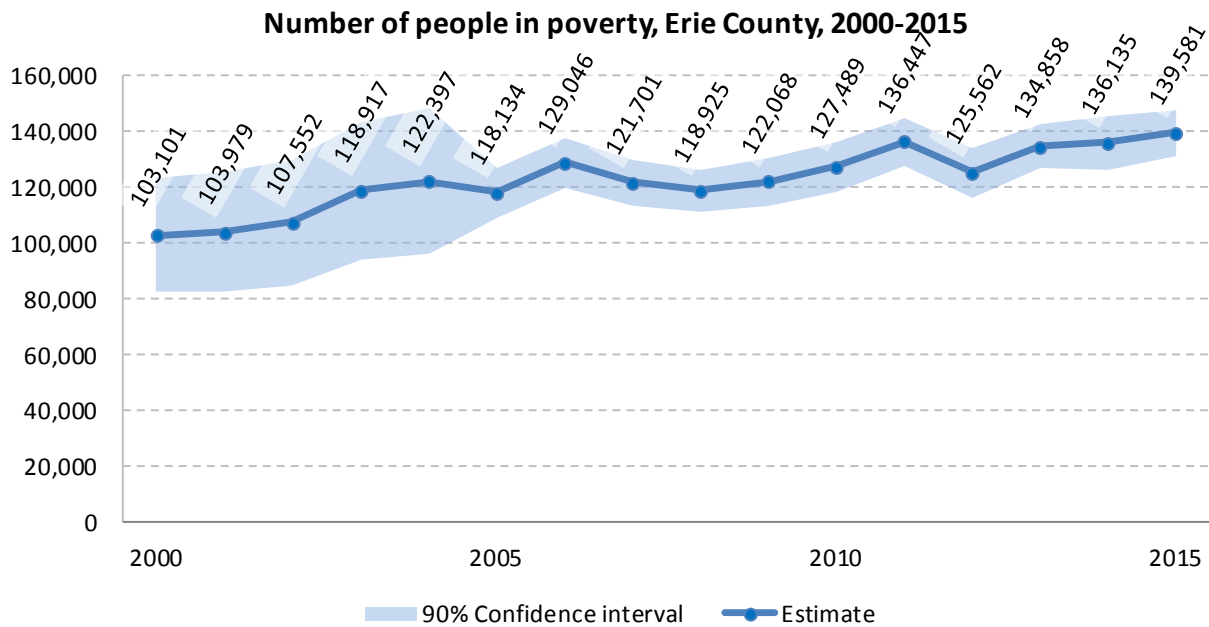
## 12 Poverty

### 12.1 Family Income to Poverty Ratio

	TOTAL		PERCENT OF ALL	
	Estimate	Margin of error	Estimate	Margin of error
<b>All families</b>	229,957	± 1,977		
<b>ALL FAMILIES WITH INCOME:</b>				
Below 50 percent of poverty level	11,601	± 683	5.0%	± 0.3
<b>Below 100 percent of poverty level</b>	25,129	± 996	<b>10.9%</b>	<b>± 0.4</b>
Below 125 percent of poverty level	32,211	± 1,139	14.0%	± 0.5
Below 150 percent of poverty level	39,539	± 1,214	17.2%	± 0.5
Below 185 percent of poverty level	50,841	± 1,309	22.1%	± 0.5
Below 200 percent of poverty level	55,792	± 1,307	24.3%	± 0.5
Below 300 percent of poverty level	90,978	± 1,674	39.6%	± 0.6
Below 400 percent of poverty level	126,946	± 1,890	55.2%	± 0.7
Below 500 percent of poverty level	156,973	± 1,976	68.3%	± 0.6

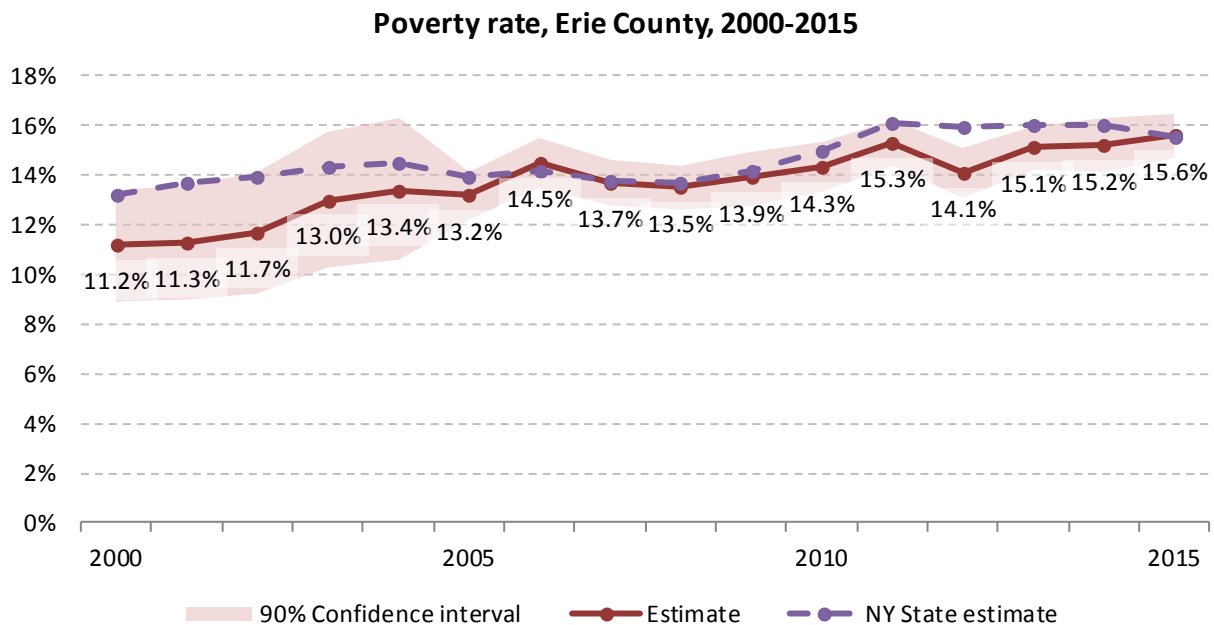
Source: 2011-2015 American Community Survey

## 12.2 Poverty: Trends over time: Count



Source: Small Area Income and Poverty Estimates (SAIPE)

## 12.3 Poverty: Trends over time: Rate



Source: Small Area Income and Poverty Estimates (SAIPE)

## 12.4 Poverty characteristics

	TOTAL		BELOW POVERTY LEVEL		PERCENT BELOW POVERTY LEVEL	
	Estimate	Margin of error	Estimate	Margin of error	Estimate	Margin of error
<b>Population for whom poverty status is determined</b>	895,449	± 998	134,715	± 2,958	15.0%	± 0.3
<b>AGE</b>						
Under 18 years	189,496	± 360	43,713	± 1,430	23.1%	± 0.8
Under 5 years	48,965	± 207	13,304	± 704	27.2%	± 1.4
5 to 17 years	140,531	± 336	30,409	± 1,245	21.6%	± 0.9
18 to 34 years	200,457	± 763	38,865	± 1,516	19.4%	± 0.8
35 to 64 years	360,932	± 357	39,978	± 1,323	11.1%	± 0.4
65 years and over	144,564	± 506	12,159	± 580	8.4%	± 0.4
<b>SEX</b>						
Male	431,409	± 757	59,086	± 2,092	13.7%	± 0.5
Female	464,040	± 673	75,629	± 1,906	16.3%	± 0.4
<b>RACE AND HISPANIC OR LATINO ORIGIN</b>						
White alone	708,668	± 1,401	66,877	± 2,017	9.4%	± 0.3
Black or African American alone	117,554	± 1,104	42,908	± 1,944	36.5%	± 1.6
American Indian and Alaska Native alone	4,039	± 420	1,005	± 245	24.9%	± 5.5
Asian alone	26,450	± 619	8,483	± 892	32.1%	± 3.2
Hispanic or Latino origin (of any race)	43,394	± 314	16,575	± 1,121	38.2%	± 2.6
White alone, not Hispanic or Latino	690,420	± 926	61,564	± 2,085	8.9%	± 0.3
<b>EDUCATIONAL ATTAINMENT</b>						
<b>Population 25 years and over</b>	623,772	± 695	71,223	± 1,801	11.4%	± 0.3
Less than high school graduate	57,683	± 1,692	17,561	± 1,142	30.4%	± 1.6
High school graduate (includes equivalency)	175,657	± 2,359	22,792	± 938	13.0%	± 0.5
Some college, associate's degree	191,168	± 2,763	21,605	± 1,050	11.3%	± 0.5
Bachelor's degree or higher	199,264	± 2,531	9,265	± 745	4.6%	± 0.4
<b>EMPLOYMENT STATUS</b>						
<b>Civilian labor force 16 years and over</b>	470,344	± 2,373	37,858	± 1,295	8.0%	± 0.3
Employed	437,633	± 2,476	27,750	± 1,129	6.3%	± 0.3
Male	221,729	± 1,715	11,484	± 764	5.2%	± 0.3
Female	215,904	± 1,822	16,266	± 825	7.5%	± 0.4
Unemployed	32,711	± 1,093	10,108	± 622	30.9%	± 1.4
Male	18,030	± 846	4,897	± 469	27.2%	± 2.2
Female	14,681	± 664	5,211	± 448	35.5%	± 2.5
<b>WORK EXPERIENCE IN THE PAST 12 MONTHS</b>						
<b>Population 16 years and over</b>	215,904	± 1,822	16,266	± 825	7.5%	± 0.4
Worked full-time, year-round	32,711	± 1,093	10,108	± 622	30.9%	± 1.4
Worked part-time or part-year	18,030	± 846	4,897	± 469	27.2%	± 2.2
Did not work	14,681	± 664	5,211	± 448	35.5%	± 2.5

Source: 2011-2015 American Community Survey

## 13 Glossary

**American Community Survey (ACS)** - The American Community Survey is an ongoing survey of the population that provides data every year on a variety of social and economic characteristics—age, sex, race, family and relationships, income and benefits, health insurance, education, veteran status, disabilities, where you work and how you get there, where you live and how much you pay for some essentials. The ACS replaced the information previously gathered by what was known as the “long form” of the decennial censuses. The ACS provides communities, companies and other institutions with current information they need to plan investments and services. Information from the survey generates data that help determine how more than \$400 billion in federal and state funds are distributed each year. Every estimate presented in the American Community Survey, as in other surveys, has an uncertainty associated with it. Often the magnitude of that uncertainty is expressed as the Margin of Error.

**Confidence Interval (CI)** - indication of the degree of uncertainty about a sample estimates. Confidence intervals have been traditionally reported at the 90, 95 and 99 percent levels. A 90 percent confidence interval can be interpreted, for example, roughly as providing 90 percent certainty that the interval defined by the upper and lower bounds contain the true value of the characteristic. If a Margin of Error is given, the lower bound of the confidence interval is equal to the estimate minus the Margin of Error and the upper bound is equal to the estimate plus the Margin of Error. (See further, Margin of Error definition below.)

**County subdivision or Minor Civil Division (MCD)** - The Census Bureau geography for primary administrative units below the county level in New York is collectively referred to as county subdivisions or minor civil divisions. These include towns, cities and Indian Reservations.

**Decennial Census** - the Census of the population and housing taken every 10 years in the United States, at the start of each decade, since 1790.

**Employed** – either “at work” or “with a job, but not at work”.

**Group Quarters Population** - all U.S. residents who live in group living facilities including correctional institutions, juvenile facilities, skilled nursing facilities, college residence halls, military barracks, group homes, and workers' dormitories.

**Household Population** - all U.S. residents who live in housing units such as single family homes, townhouses, apartments, and mobile homes.

**Intercensal Population Estimates** - estimates produced for the years between two decennial censuses when both the beginning and ending populations are known. They are produced once a decade by adjusting the existing time series of postcensal estimates for the entire decade to smooth the transition from one decennial census count to the next. They differ from the postcensal estimates that are released annually because the difference between the April 1 postcensal estimate and April 1 census count for the end of the decade is redistributed across the estimates for that decade. For dates when both postcensal and intercensal estimates are available, intercensal estimates are preferred.

**Labor Force** - consists of people classified as employed or unemployed.

**Margin of Error (MOE)** - a measure of the precision of an estimate at a given level of confidence. The confidence level of a margin of error indicates the likelihood that the difference between the population value (which you

would get if you could measure the whole population instead of a sample) and the estimate is less than or equal to the margin of error. The range from the estimate minus the margin of error to the estimate plus the margin of error is called the confidence interval. All ACS estimates are published with their margins of error at the 90 percent confidence level. Margins of error are useful in assessing the reliability of estimates and whether differences between estimates are significant.

**Numeric Population Change** - difference between the population of an area at the beginning and end of a time period. It is computed by taking the difference between the population at one point in time ( $t_1$ ) and some future time ( $t_2$ ).

**Percent Population Change** - difference between the population of an area at the beginning and end of a time period, expressed as a percentage of the beginning population. It is computed by dividing the population change ( $t_2 - t_1$ ) by  $t_1$  and multiplying the result by 100.

**Population Estimates** - The calculated number of people living in an area as of a specified point in time, usually July 1st. The estimated population is calculated using a component of change model that incorporates information on natural increase (births, deaths) and net migration (net domestic migration, net international migration) that has occurred in an area since the latest decennial census. A procedure for estimating the current population using a procedure involving a “base population” value at time  $t - 1$ , adding to that the births during the interval  $t - 1$  to  $t$ , subtracting the deaths during that interval  $t - 1$  to  $t$ , and then adding the net domestic and net international migration that occurred during that interval.

**Population Density** - Total number of people per areal unit like a square mile or square kilometer.

**Population Pyramids** - A graphical way of portraying a population’s age and sex composition at a given slice in time. The first horizontal bar, constituting the base of the graph, is the youngest age group (typically 0-4) with the number of males in that age group on the left and the number of females in that age group on the right. On top of that age group is another horizontal bar for the next age group (e.g. 5-9) and so forth with the top bar typically for those aged 75 and over. In a population with lots of births and deaths, the shape typically forms a pyramid with a broad base and a narrow top. It is one of the most basic ways to understand population change over time as well as between different geographic units of a similar status (e.g. counties).

**Postcensal Estimates** - estimates produced for the years after a decennial census when only the beginning population is known. They are produced and revised each year, targeted to July 1 of that year.

**Projection** - estimated population at some future time based on assumptions about births, deaths, migration, and ages.

**Race/Ethnicity** - the Census Bureau collects racial data in accordance with guidelines provided by the U.S. Office of Management and Budget (OMB), and these data are based on self-identification. The racial categories included in the census questionnaire generally reflect a social definition of race recognized in this country and not an attempt to define race biologically, anthropologically, or genetically. In addition, it is recognized that the categories of the race item include racial and national origin or sociocultural groups. People may choose to report more than one race to indicate their racial mixture, such as “American Indian” and “White.” People who identify their origin as Hispanic, Latino, or Spanish may be of any race. OMB requires five minimum categories: White, Black or African American, American Indian or Alaska Native, Asian, and Native Hawaiian or Other Pacific Islander. Hispanics may be classified as white or black. So we generally separate them out as an ethnic group first.

**Unemployed** – Not employed, but actively looking for work and available to accept a job.

**Unemployment rate** – Fraction of the Labor Force that is unemployed.

**Urban Area** – A densely settled area with at least 2,500 people. If the total number of people is less than 50,000 the Census Bureau calls it an Urban Cluster, otherwise an Urbanized Area.

**Vintage** - each year, the U.S. Census Bureau produces and publishes estimates of the population for each state and county, as well as the nation as a whole. These are called “vintages.” In producing these vintages, the Bureau utilizes administrative data from a number of sources to estimate 1) the change in population since the most recent decennial census, and 2) the population for each year since the most recent decennial census. With each annual release of population estimates (vintage), the entire time series of estimates beginning on April 1, 2010 is revised and updated.

**Vital Statistics** - quantitative data concerning a population, such as the number of births, marriages, and deaths.

## 14 References

Erie County homepage: <http://www2.erie.gov/>

At Cornell:

- Program on Applied Demographics (PAD)  
URL: <http://pad.human.cornell.edu/>
  - More county trends: <https://pad.human.cornell.edu/counties/trends1geo.cfm?geo=29>
- Community and Regional Development Institute (CaRDI)  
URL: <https://cardi.cals.cornell.edu/>
- Cornell Cooperative Extensions (CCE)  
Home page: <http://www.cce.cornell.edu>
  - Erie local office: <http://erie.cce.cornell.edu/>

Data sources and background information:

- New York State Data Center
  - <https://labor.ny.gov/nys-data-center/index.shtm>
- U.S. Census Bureau - general
  - QuickFacts: <https://www.census.gov/quickfacts/table/PST045216/36,36029>
  - American FactFinder: <http://factfinder.census.gov/>
- U.S. Census Bureau - population
  - Decennial Census
    - Background: <https://www.census.gov/2010census/>
    - Demographic Profile: [http://factfinder2.census.gov/bkmk/table/1.0/en/DEC/10\\_SF1/SF1DP1/0500000US36029](http://factfinder2.census.gov/bkmk/table/1.0/en/DEC/10_SF1/SF1DP1/0500000US36029)
  - American Community Survey (ACS)
    - Background: <https://www.census.gov/programs-surveys/acs/>
    - Social Data Profile: [http://factfinder2.census.gov/bkmk/table/1.0/en/ACS/15\\_5YR/DP02/0500000US36029](http://factfinder2.census.gov/bkmk/table/1.0/en/ACS/15_5YR/DP02/0500000US36029)
    - Economic Data Profile: [http://factfinder2.census.gov/bkmk/table/1.0/en/ACS/15\\_5YR/DP03/0500000US36029](http://factfinder2.census.gov/bkmk/table/1.0/en/ACS/15_5YR/DP03/0500000US36029)
    - Housing Data Profile: [http://factfinder2.census.gov/bkmk/table/1.0/en/ACS/15\\_5YR/DP04/0500000US36029](http://factfinder2.census.gov/bkmk/table/1.0/en/ACS/15_5YR/DP04/0500000US36029)
    - Demographics Data Profile: [http://factfinder2.census.gov/bkmk/table/1.0/en/ACS/15\\_5YR/DP05/0500000US36029](http://factfinder2.census.gov/bkmk/table/1.0/en/ACS/15_5YR/DP05/0500000US36029)
  - Population estimates:
    - General: <https://www.census.gov/programs-surveys/popest.html>
    - Explorer: <https://www.census.gov/censusexplorer/censusexplorer-popest.html>
- U.S. Census Bureau – Small Area Income & Poverty Estimates (SAIPE)
  - <http://www.census.gov/did/www/saipe/>
- U.S. Census Bureau - Public Use Quarterly Workforce Indicators (QWI) – annual averages
  - <https://qwiexplorer.ces.census.gov/static/explore.html>
- U.S. Census Bureau – Building Permits Survey
  - <https://www.census.gov/construction/bps/>

- Bureau Labor Statistics (BLS)
  - Local Area Unemployment Statistics: <http://www.bls.gov/lau/>
  - Quarterly Census of Employment and Wages (QCEW): <https://www.bls.gov/cew/data.htm>
- NY Department of Labor -
  - Labor statistics: <https://labor.ny.gov/stats/index.shtm>
  - Quarterly Census of Employment and Wages (QCEW): <https://labor.ny.gov/stats/LSQCEW.shtm>
- NY State Department of Health
  - Vital Statistics: [https://www.health.ny.gov/statistics/vital\\_statistics/](https://www.health.ny.gov/statistics/vital_statistics/)
- Bureau of Economic Analysis (BEA) – Local Area Personal Income and Employment: <http://bea.gov/iTable/iTable.cfm?ReqID=70&step=1>

Alternative sites for data retrieval:

- The Nelson A. Rockefeller Institute of Government – New York State Statistical Yearbooks [http://www.rockinst.org/nys\\_statistics/](http://www.rockinst.org/nys_statistics/)
- Headwaters Economics: Economic Profile System – Human Dimensions Toolkit <http://headwaterseconomics.org/tools/eps-hdt>
- National Historical Geographic Information System (NHGIS) <https://www.nhgis.org/>
- Social Explorer <http://www.socialexplorer.com/pub/home/home.aspx>
- Stats America <http://www.statsamerica.org/Default.aspx>
- Missouri Census Data Center <http://mcdc.missouri.edu/>
- DataFerret <http://dataferrett.census.gov/>
- Investigative Reporters and Editors (IRE) Census project <http://census.ire.org/>