

Dutchess County Profile 2017

A collection of recent demographic, social and economic data

Compiled by

Jan Vink

Cornell Program on Applied Demographics



Cornell University



Program
on Applied
Demographics

CORNELL POPULATION CENTER

This profile is a part of a set of profiles generated for each county in New York State. The profiles were developed and generated by the Cornell Program on Applied Demographics. The work is sponsored by the New York State Data Center in the New York State Department of Labor.

Cornell Program on Applied Demographics:

The Program on Applied Demographics (PAD) brings skills in demographics, economics, statistics, data gathering and data analysis together to provide a variety of organizations with data, information and advice. PAD is located in the Department of Policy Analysis and Management within the College of Human Ecology at Cornell University. PAD is also affiliated with the Cornell Institute for Social and Economic Research and the Cornell Population Center.

For more information: <http://pad.human.cornell.edu/>

New York State Data Center:

The New York State Data Center (NYSDC) is located in the Division of Research and Statistics within the New York State Department of Labor. The State Data Center operates as part of a nationwide effort to improve public access to data provided by the U.S. Census Bureau. The U.S. Census Bureau collects and tabulates data on a multitude of subjects such as population, social, economic and housing demographics, labor force data, health care, migration and transportation. These data play a critical role in understanding our local and larger surrounding communities. Census data also influence state and federal funding, aid decision making in the legislative process, and determine each state's number of congressional seats. As the lead agency in New York for the SDC program, the New York State Data Center helps users navigate through the multitude of surveys and products provided by the U.S. Census Bureau.

For more information: <https://labor.ny.gov/nys-data-center/>

All profiles are freely downloadable as PDF documents on the PAD website:

<http://pad.human.cornell.edu/profiles/index.cfm>

This profile is an update from the County Profile produced in 2013. The 2013 profile also contained information on agriculture related items and can be found at <https://pad.human.cornell.edu/profiles/2013/Dutchess.pdf>

Contents

1 Reference Maps (towns and places as defined in 2010)3

2 Population density and Urban Areas Map5

3 Total Population6

 3.1 Historic and projected6

 3.2 Change since previous Census6

 3.3 Annual population estimates7

 3.4 Sub County population change 2010-20158

 3.5 Sub County population change 2010-20159

4 Components of population change 10

 4.1 Vital Statistics 10

 4.2 Migration 11

5 Population by age 12

 5.1 Historic and projected population pyramids 12

 5.2 Selected age groups 13

 5.3 Median age 14

6 Race 15

 6.1 Total and household population by race 15

 6.2 Race composition by age 15

7 Housing units 16

 7.1 Characteristics 16

 7.2 Historical data on number of housing units and occupancy status 17

 7.3 Building Permits 2000-2015 17

8 Education 18

 8.1 Enrollment by level of school 18

 8.2 Enrollment by age 18

 8.3 Percentage age 18-24 enrolled in college 18

 8.4 Educational attainment 19

9 Language spoken at home 19

10 Labor Force Characteristics 20

 10.1 Labor force, employment and unemployment 20

 10.2 Annual unemployment rate 21

 10.3 Employment and number of jobs 21

 10.4 Class of worker 22

11 Household Income 23

 11.1 Income Distribution 23

 11.2 Median household income: Trends over time 24

12 Poverty 24

 12.1 Family Income to Poverty Ratio 24

 12.2 Poverty: Trends over time: Count 25

 12.3 Poverty: Trends over time: Rate 25

 12.4 Poverty characteristics 26

13 Glossary 27

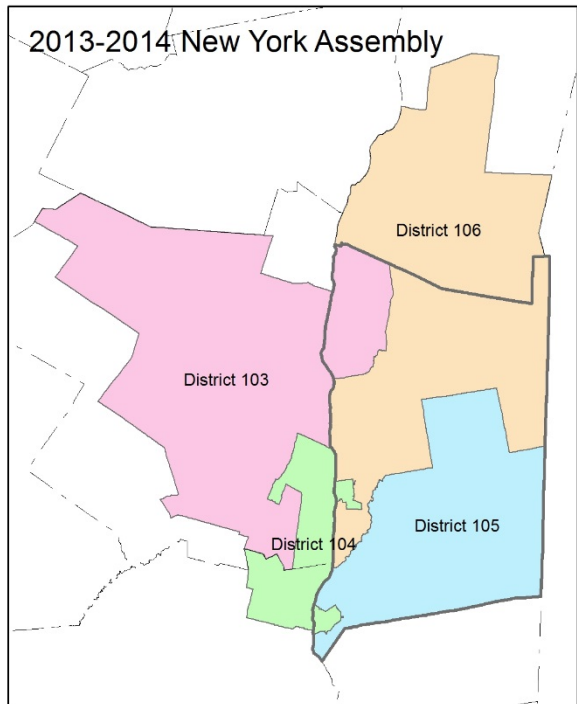
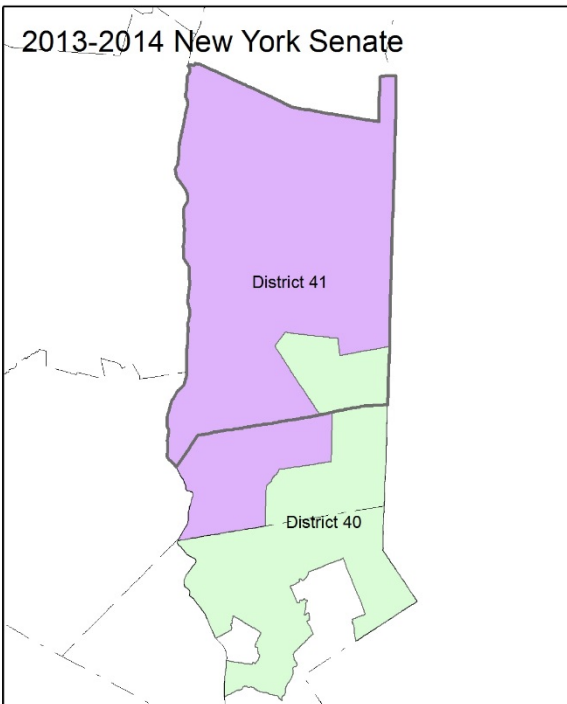
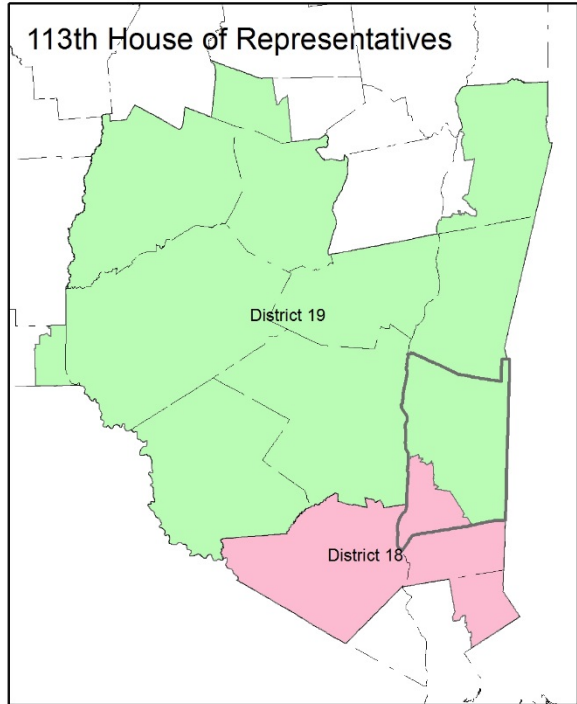
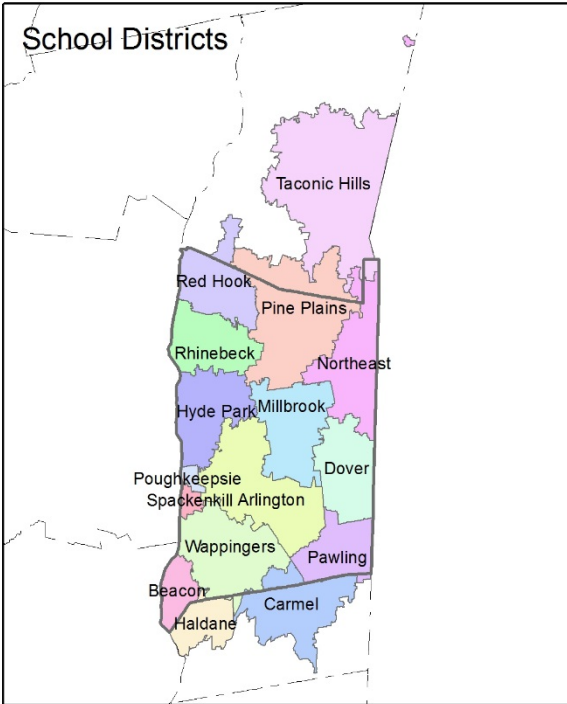
14 References 30

1 Reference Maps (towns and places as defined in 2010)

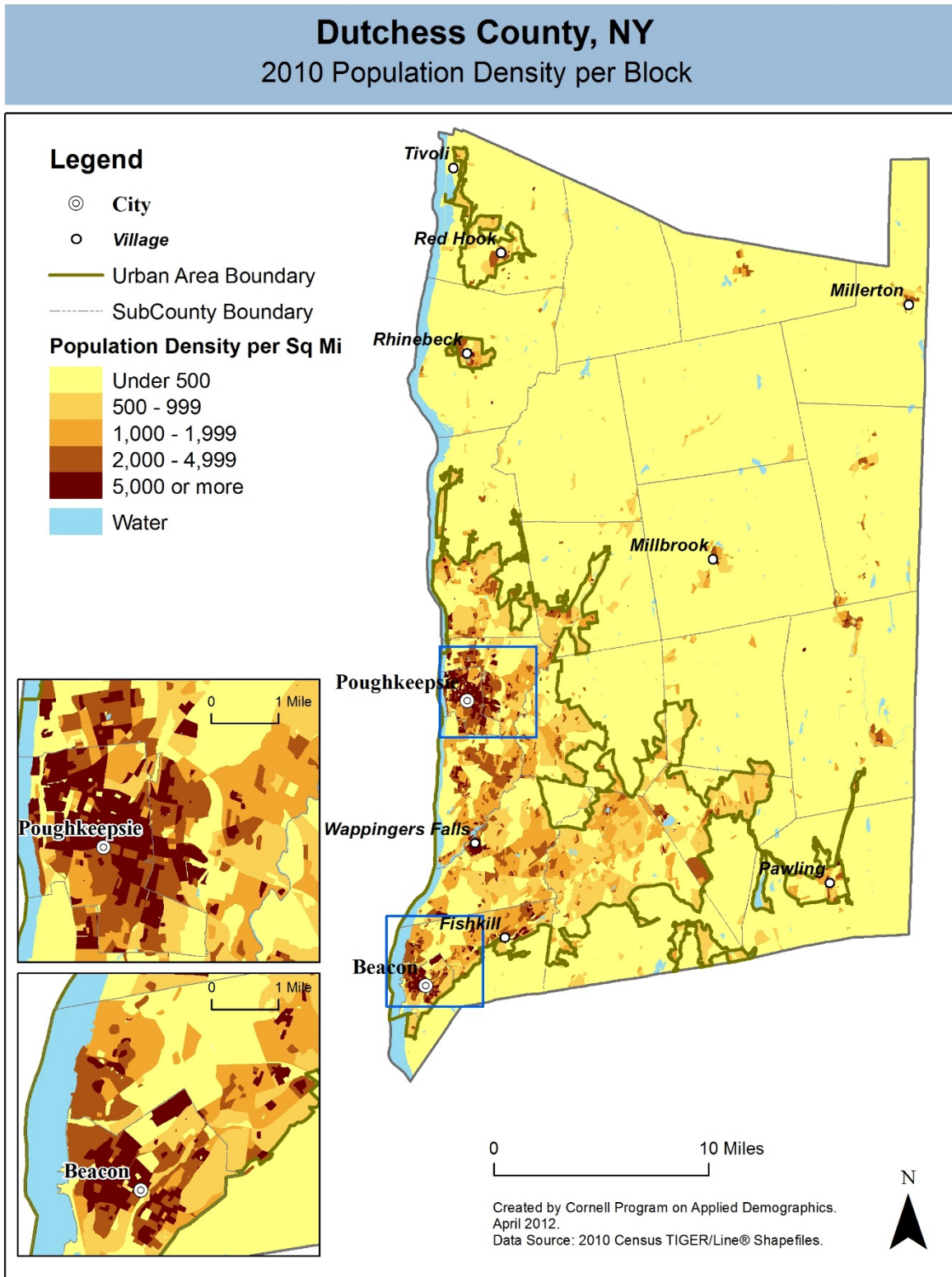


Dutchess County, NY

Overlap with School and Political Districts



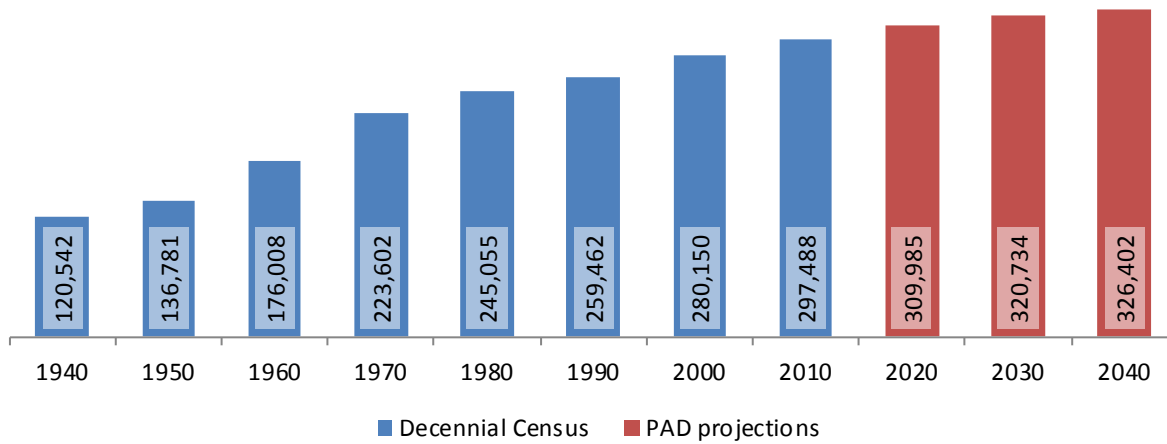
2 Population density and Urban Areas Map



3 Total Population

3.1 Historic and projected

Total population, Dutchess County, 1940-2040



Source: 1940-2010 Decennial Census and projections by Cornell Program on Applied Demographics

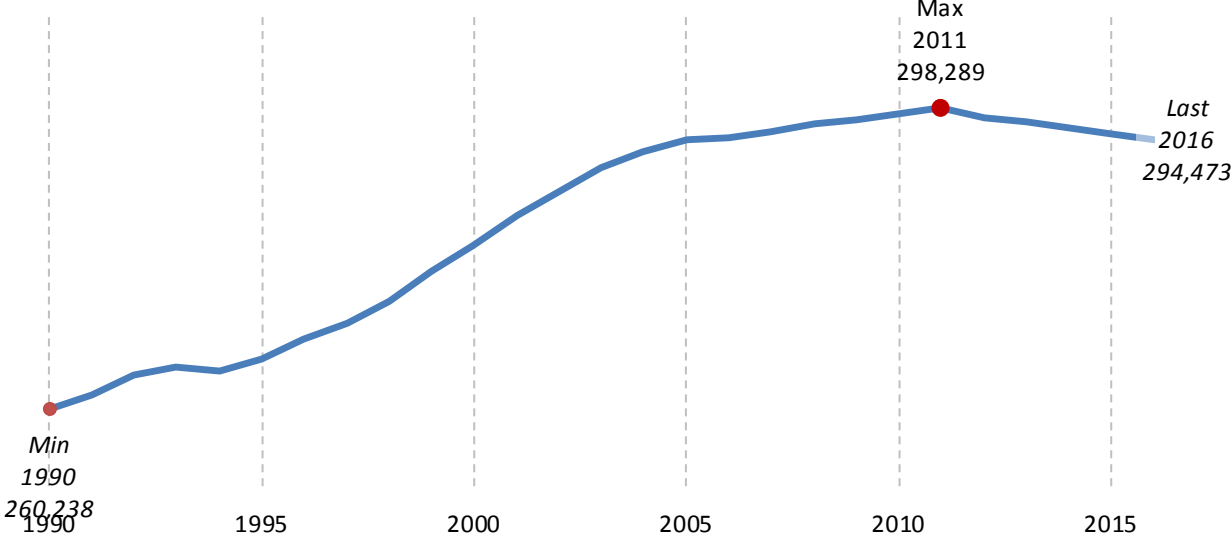
3.2 Change since previous Census

	Total population	Change	
		Number	Percent
Decennial Census	1940	120,542	
	1950	136,781	16,239 13.5%
	1960	176,008	39,227 28.7%
	1970	223,602	47,594 27.0%
	1980	245,055	21,453 9.6%
	1990	259,462	14,407 5.9%
	2000	280,150	20,688 8.0%
	2010	297,488	17,338 6.2%
PAD projections	2020	309,985	12,497 4.2%
	2030	320,734	10,749 3.5%
	2040	326,402	5,668 1.8%

Source: 1940-2010 Decennial Census and projections by Cornell Program on Applied Demographics

3.3 Annual population estimates

Annual population estimates
Dutchess County, 1990-2016



Source: U.S. Census Bureau population estimates (1990-1999 and 2000-2009 intercensal and vintage 2016 postcensal)

3.4 Sub County population change 2010-2015

	Total Population		Difference	
	2000	2010	Count	%
New York State	18,976,821 *	19,378,102	401,281	2.1%
Dutchess County	280,150	297,488	17,338	6.2%
Cities				
Beacon	14,810 *	15,541	731	4.9%
Poughkeepsie	29,871	31,045 *	1,174	3.9%
Towns				
Amenia	4,048	4,436	388	9.6%
Beekman	13,655 *	14,621	966	7.1%
Clinton	4,010	4,312	302	7.5%
Dover	8,565	8,699	134	1.6%
East Fishkill	25,589	29,029	3,440	13.4%
Fishkill	19,256 *	22,107	2,851	14.8%
Hyde Park	20,851	21,571	720	3.5%
La Grange	14,928	15,730	802	5.4%
Milan	2,356 *	2,370	14	0.6%
North East	3,002	3,031	29	1.0%
Pawling	7,521	8,463	942	12.5%
Pine Plains	2,569	2,473	-96	-3.7%
Pleasant Valley	9,066	9,672	606	6.7%
Poughkeepsie	42,777	45,032 *	2,255	5.3%
Red Hook	10,408	11,319	911	8.8%
Rhinebeck	7,762	7,548	-214	-2.8%
Stanford	3,544	3,823	279	7.9%
Union Vale	4,546	4,877	331	7.3%
Wappinger	26,274	27,048	774	2.9%
Washington	4,742	4,741	-1	0.0%

* Original counts revised through Count Question Resolution Program (CQR)

Source: U.S. Census Bureau intercensal population estimates 2000-2010

3.5 Sub County population change 2010-2015

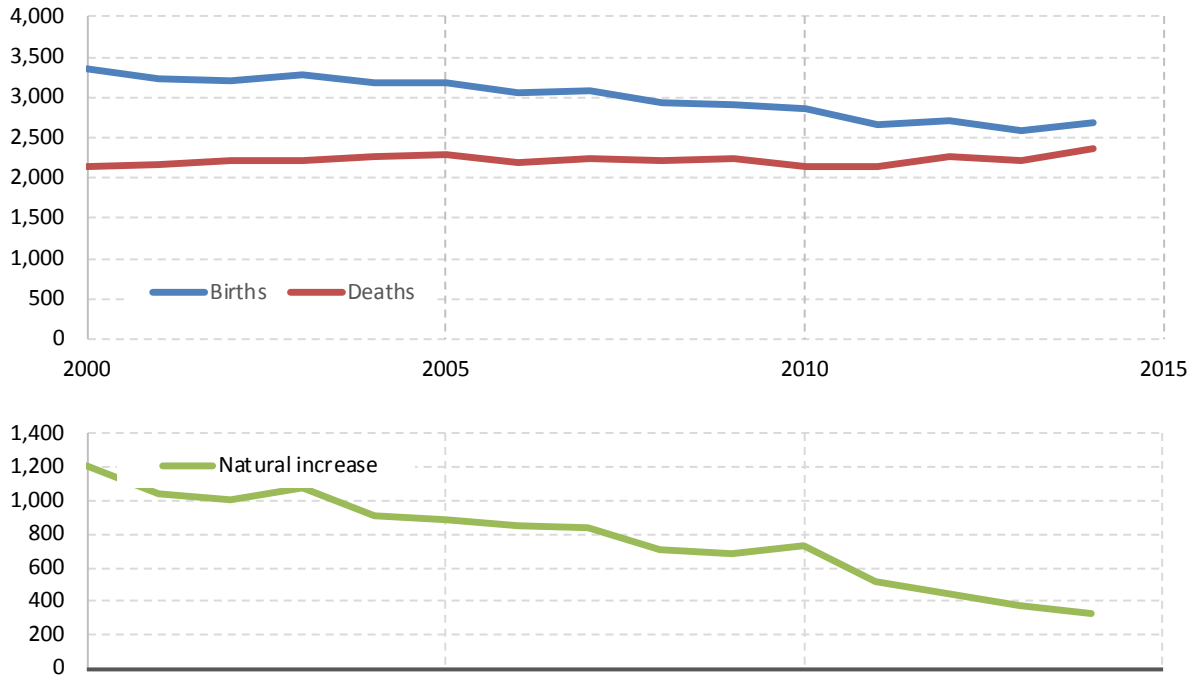
	Total Population		Difference	
	2010 base	2015	Count	%
New York State	19,378,087	19,795,791	417,704	2.2%
Dutchess County	297,448	295,754	-1,694	-0.6%
Cities				
Beacon	14,604	14,347	-257	-1.8%
Poughkeepsie	30,900	30,371	-529	-1.7%
Towns				
Amenia	4,436	4,284	-152	-3.4%
Beekman	14,587	14,455	-132	-0.9%
Clinton	4,308	4,263	-45	-1.0%
Dover	8,703	8,494	-209	-2.4%
East Fishkill	29,033	29,276	243	0.8%
Fishkill	23,003	23,626	623	2.7%
Hyde Park	21,581	21,214	-367	-1.7%
La Grange	15,721	15,705	-16	-0.1%
Milan	2,367	2,351	-16	-0.7%
North East	3,033	2,987	-46	-1.5%
Pawling	8,447	8,337	-110	-1.3%
Pine Plains	2,473	2,442	-31	-1.3%
Pleasant Valley	9,677	9,826	149	1.5%
Poughkeepsie	45,170	44,452	-718	-1.6%
Red Hook	11,319	11,239	-80	-0.7%
Rhinebeck	7,557	7,811	254	3.4%
Stanford	3,817	3,786	-31	-0.8%
Union Vale	4,863	4,834	-29	-0.6%
Wappinger	27,111	26,980	-131	-0.5%
Washington	4,738	4,674	-64	-1.4%

Source: U.S. Census Bureau population estimates 2010-2015

4 Components of population change

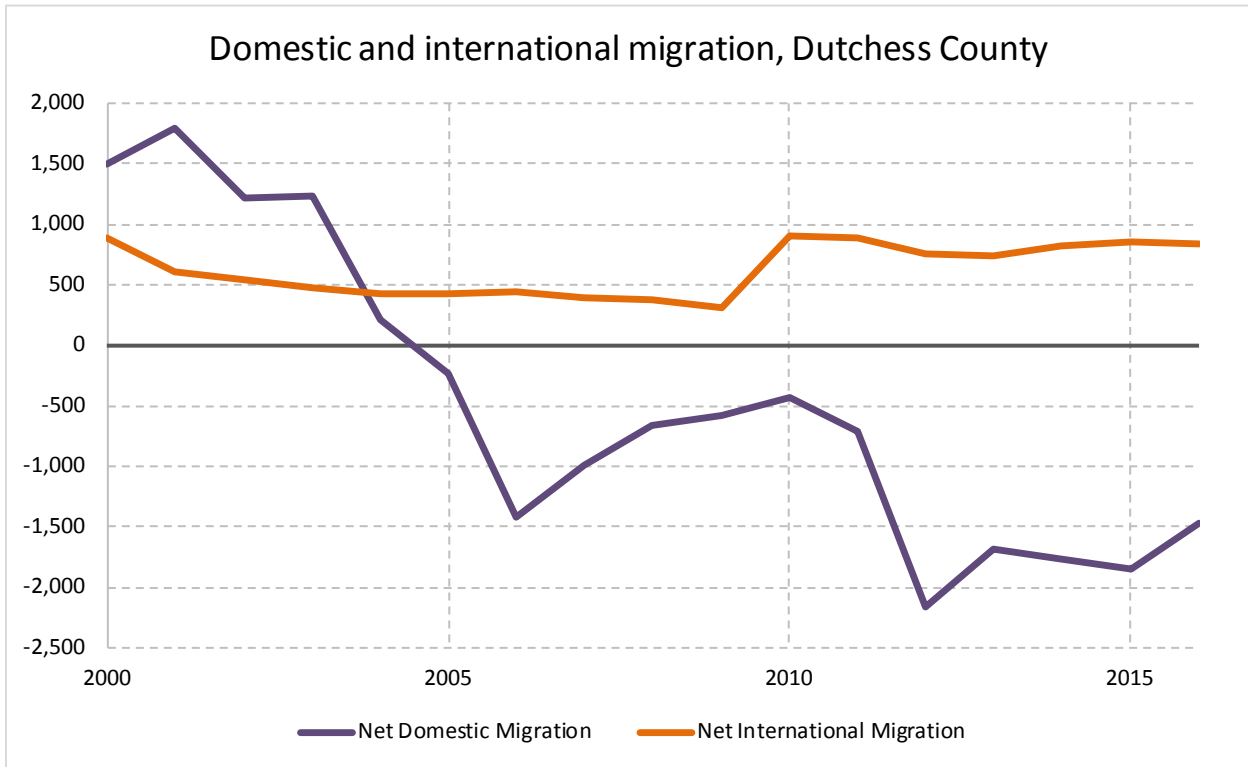
4.1 Vital Statistics

Vital Statistics, Dutchess County



Source: New York State Department of Health

4.2 Migration

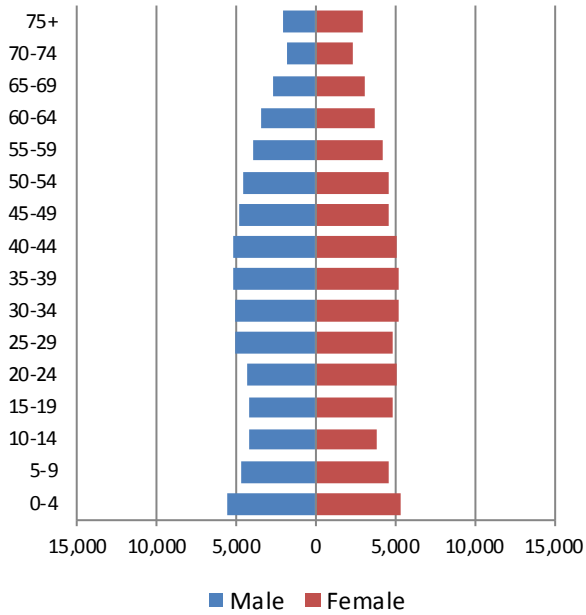


Source: Census Bureau population estimates (V2010 and V2016)

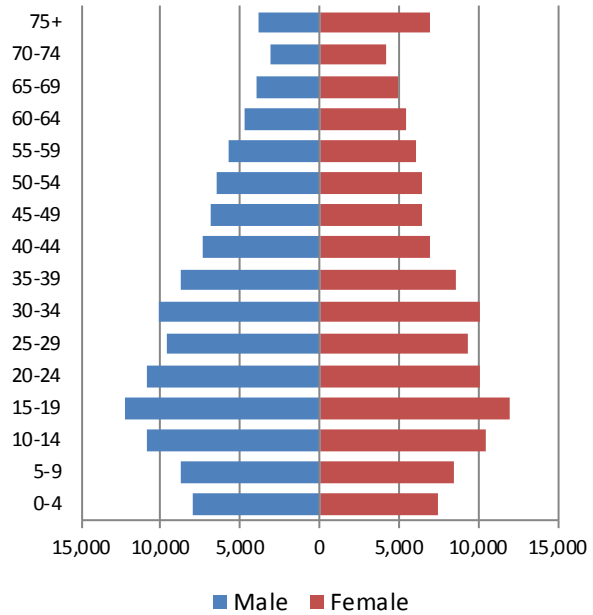
5 Population by age

5.1 Historic and projected population pyramids

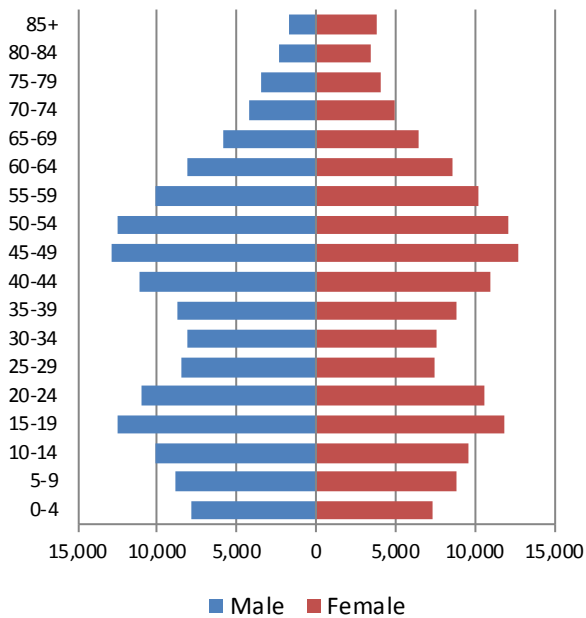
1950 Population Pyramid, Dutchess County



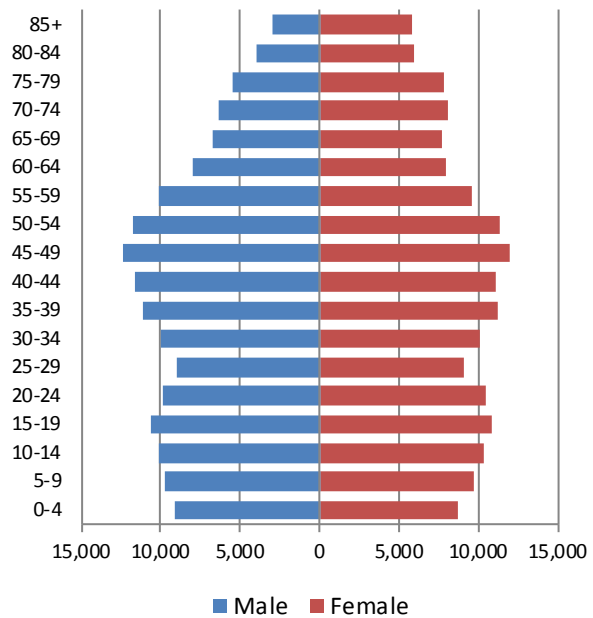
1980 Population Pyramid, Dutchess County



2010 Population Pyramid, Dutchess County



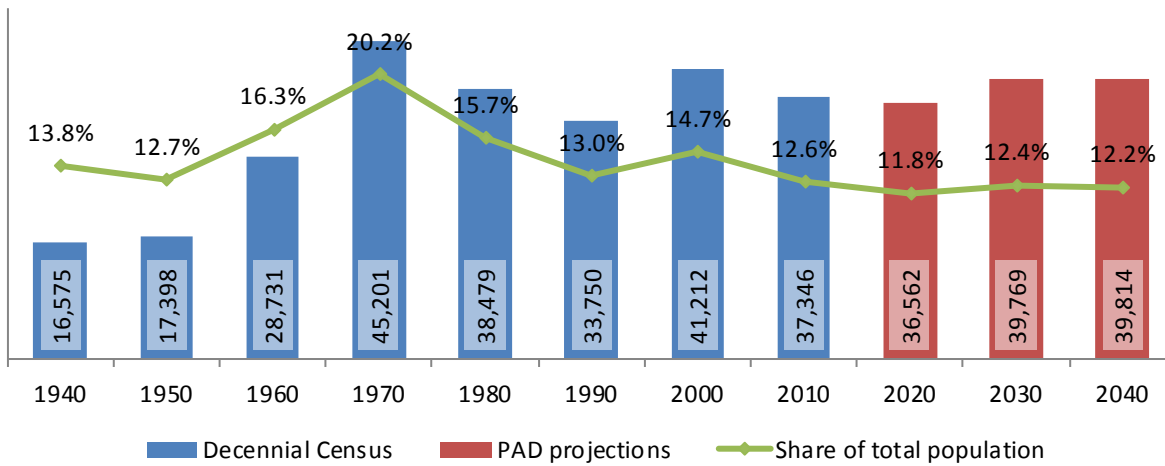
2040 Population Pyramid, Dutchess County



Source: 1950, 1980, 2010 Decennial Census and projections by Cornell Program on Applied Demographics

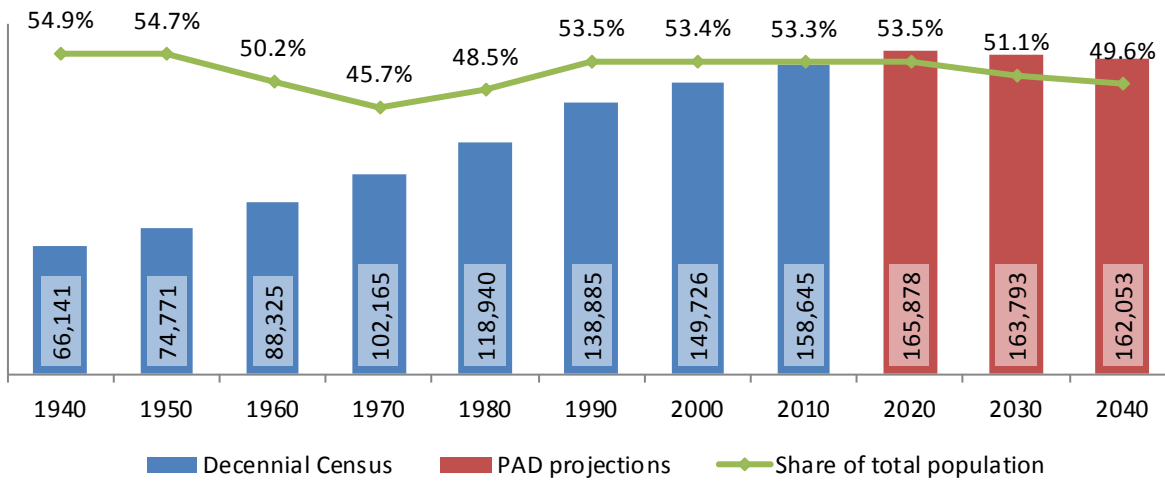
5.2 Selected age groups

Population age 5-14, Dutchess County, 1940-2040



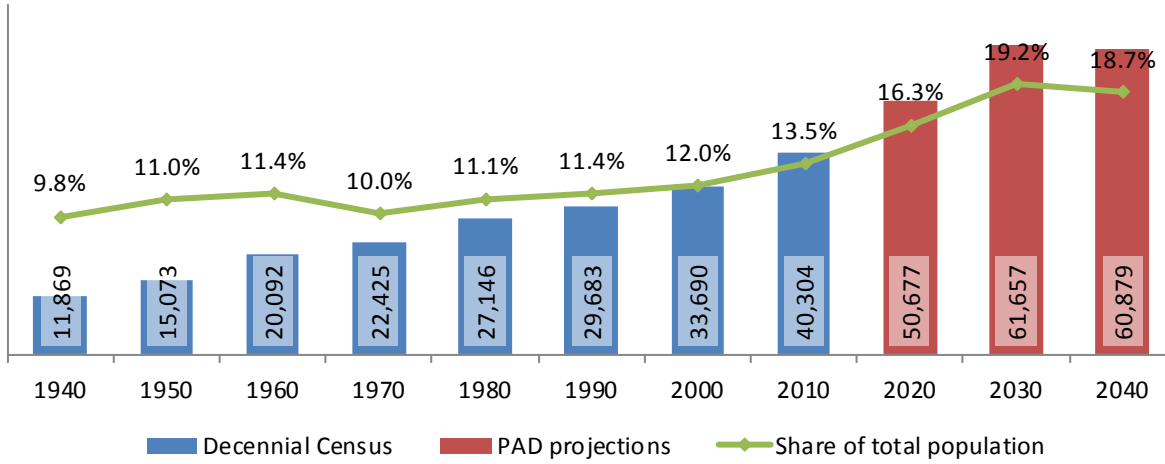
Source: 1940-2010 Decennial Census and projections by Cornell Program on Applied Demographics

Population age 25-64, Dutchess County, 1940-2040



Source: 1940-2010 Decennial Census and projections by Cornell Program on Applied Demographics

Population age 65 and over, Dutchess County, 1940-2040



Source: 1940-2010 Decennial Census and projections by Cornell Program on Applied Demographics

5.3 Median age

Dutchess County New York State

Median age

2000	36.7	35.9
2010	40.2	38.0
2015	41.8	38.3

Source: 2000, 2010 Decennial Census, 2015 Population Estimates

6 Race

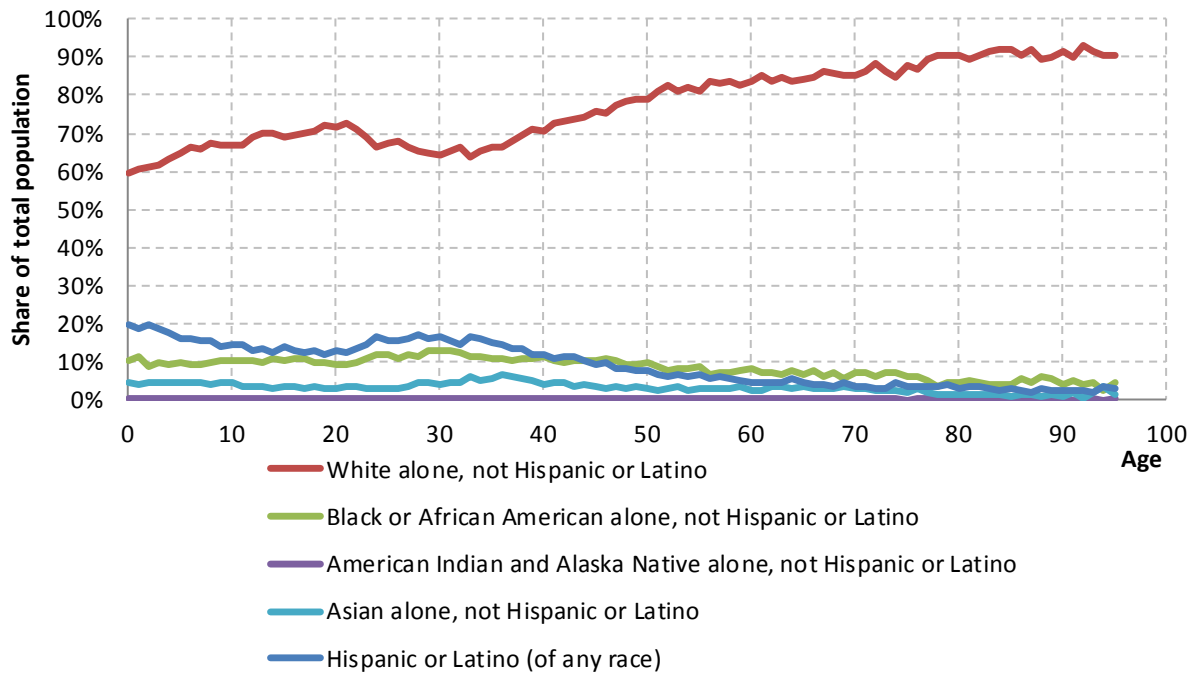
6.1 Total and household population by race

	Total		In households		In Group Quarters
	Count	Percentage	Count	Percentage	Count
Total population	297,488	100%	277,523	100%	19,965
Not Hispanic or Latino					
One race					
White	221,812	74.6%	209,686	75.6%	12,126
Black or African American	27,395	9.2%	23,202	8.4%	4,193
American Indian and Alaska Native	465	0.2%	429	0.2%	36
Asian	10,330	3.5%	9,666	3.5%	664
Native Hawaiian and Other Pacific Islander	80	0.0%	-	-	-
Some other race	725	0.2%	568	0.2%	157
Two or more races	5,414	1.8%	5,067	1.8%	347
Hispanic or Latino (of any race)	31,267	10.5%	28,832	10.4%	2,435

Source: 2010 Decennial Census

6.2 Race composition by age

Race composition by age, Dutchess County



Source: 2010 Decennial Census

7 Housing units

7.1 Characteristics

	COUNT		PERCENTAGE	
	Estimate	Margin of error	Estimate	Margin of error
HOUSING OCCUPANCY				
Total housing units	118,996	± 304	100.0%	
Occupied housing units	106,771	± 812	89.7%	± 0.6
Vacant housing units	12,225	± 738	10.3%	± 0.6
YEAR STRUCTURE BUILT				
Total housing units	118,996	± 304	100.0%	
Built 2014 or later	69	± 69	0.1%	± 0.1
Built 2010 to 2013	790	± 189	0.7%	± 0.2
Built 2000 to 2009	12,621	± 665	10.6%	± 0.6
Built 1990 to 1999	10,654	± 573	9.0%	± 0.5
Built 1980 to 1989	16,621	± 709	14.0%	± 0.6
Built 1970 to 1979	18,287	± 1,013	15.4%	± 0.8
Built 1960 to 1969	16,595	± 703	13.9%	± 0.6
Built 1950 to 1959	15,665	± 704	13.2%	± 0.6
Built 1940 to 1949	6,067	± 480	5.1%	± 0.4
Built 1939 or earlier	21,627	± 871	18.2%	± 0.7
HOUSING TENURE				
Occupied housing units	106,771	± 812	100.0%	
Owner-occupied	73,727	± 955	69.1%	± 0.8
Renter-occupied	33,044	± 864	30.9%	± 0.8
HOUSE HEATING FUEL				
Occupied housing units	106,771	± 812	100.0%	
Utility gas	27,657	± 794	25.9%	± 0.7
Bottled, tank, or LP gas	4,845	± 435	4.5%	± 0.4
Electricity	14,793	± 609	13.9%	± 0.6
Fuel oil, kerosene, etc.	54,472	± 996	51.0%	± 0.8
Coal or coke	143	± 70	0.1%	± 0.1
Wood	3,476	± 300	3.3%	± 0.3
Solar energy	133	± 65	0.1%	± 0.1
Other fuel	945	± 172	0.9%	± 0.2
No fuel used	307	± 94	0.3%	± 0.1
VALUE				
Owner-occupied units	73,727	± 955	100.0%	
Less than \$50,000	3,089	± 306	4.2%	± 0.4
\$50,000 to \$99,999	2,214	± 323	3.0%	± 0.4
\$100,000 to \$149,999	3,183	± 315	4.3%	± 0.4
\$150,000 to \$199,999	8,403	± 522	11.4%	± 0.7
\$200,000 to \$299,999	26,629	± 877	36.1%	± 1.1
\$300,000 to \$499,999	23,207	± 807	31.5%	± 1.0
\$500,000 to \$999,999	5,853	± 484	7.9%	± 0.6
\$1,000,000 or more	1,149	± 169	1.6%	± 0.2
Median (dollars)	275,600	± 2,460		

Source: 2011-2015 American Community Survey

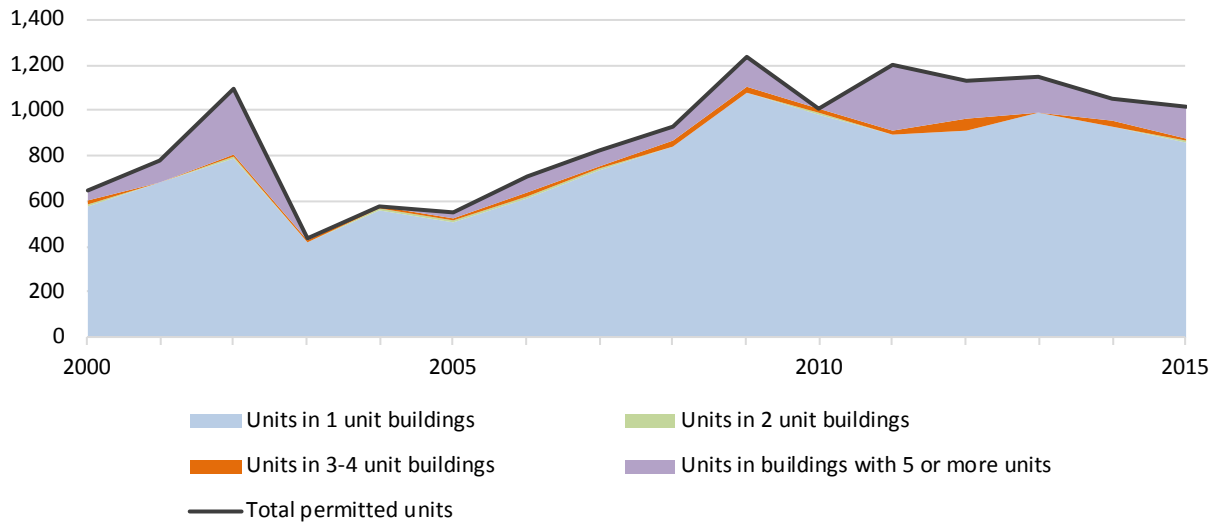
7.2 Historical data on number of housing units and occupancy status

Year	Number of Housing Units	Change since previous Census	Occupied	Occupancy rate	Vacant
1970	69,126		62,495	90.4%	6,631
1980	86,852	25.6%	80,642	92.8%	6,210
1990	97,632	12.4%	89,567	91.7%	8,065
2000	106,103	8.7%	99,536	93.8%	6,567
2010	118,638	11.8%	107,965	91.0%	10,673

Source: 1970-2010 Decennial Census

7.3 Building Permits 2000-2015

Building permits by number of permitted units in building, Dutchess County



Source: Census Bureau Building Permits Survey

8 Education

8.1 Enrollment by level of school

	Estimate	Margin of error
Total enrolled in school	80,083	± 1,131
Nursery school, preschool	4,084	± 337
Kindergarten to 12th grade	48,146	± 403
Kindergarten	2,951	± 289
Elementary: grade 1 to grade 4	12,963	± 576
Elementary: grade 5 to grade 8	15,079	± 599
High school: grade 9 to grade 12	17,153	± 477
College, undergraduate	24,188	± 943
Graduate, professional school	3,665	± 420

Source: 2011-2015 American Community Survey

8.2 Enrollment by age

	Estimate	Margin of error
3 and 4 years	54.9%	± 4.1
5 to 9 years	97.3%	± 0.7
10 to 14 years	99.2%	± 0.4
15 to 17 years	97.5%	± 1.0
18 and 19 years	86.4%	± 2.6
20 to 24 years	52.6%	± 2.8
25 to 34 years	13.1%	± 1.4
35 years and over	2.9%	± 0.3

Source: 2011-2015 American Community Survey

8.3 Percentage age 18-24 enrolled in college

	Estimate	Margin of error
Population 18 to 24 years	33,531	± 47
Enrolled in college or graduate school	56.7%	± 2.2
Males 18 to 24 years	16,916	± 33
Enrolled in college or graduate school	49.9%	± 3.0
Females 18 to 24 years	16,615	± 31
Enrolled in college or graduate school	63.7%	± 2.7

Source: 2011-2015 American Community Survey

8.4 Educational attainment

	COUNT		PERCENTAGE	
	Estimate	Margin of error	Estimate	Margin of error
Population 25 years and over	202,121	± 47	100%	
EDUCATIONAL ATTAINMENT				
Less than 9th grade	7,273	± 550	3.6%	± 0.3
9th to 12th grade, no diploma	13,089	± 824	6.5%	± 0.4
High school graduate (includes equivalency)	54,487	± 1,382	27.0%	± 0.7
Some college, no degree	40,008	± 1,394	19.8%	± 0.7
Associate's degree	19,719	± 866	9.8%	± 0.4
Bachelor's degree	37,018	± 1,216	18.3%	± 0.6
Graduate or professional degree	30,527	± 1,017	15.1%	± 0.5
Percent high school graduate or higher			89.9%	± 0.5
Percent bachelor's degree or higher			33.4%	± 0.7

Source: 2011-2015 American Community Survey

9 Language spoken at home

	COUNT		PERCENTAGE		SPEAK ENGLISH LESS THAN "VERY WELL"	
	Estimate	Margin of error	Estimate	Margin of error	Estimate	Margin of error
Population 5 years and over	282,602	± 39	100%			
LANGUAGE SPOKEN AT HOME						
English only	238,047	± 1,799	84.2%	± 0.6		
Language other than English	44,555	± 1,797	15.8%	± 0.6	14,971	± 1,126
Spanish	22,901	± 1,048	8.1%	± 0.4	8,216	± 755
Other Indo-European languages	12,825	± 1,230	4.5%	± 0.4	3,290	± 579
Asian and Pacific Islander languages	6,075	± 578	2.1%	± 0.2	2,722	± 457
Other languages	2,754	± 626	1.0%	± 0.2	743	± 320

Source: 2011-2015 American Community Survey

10 Labor Force Characteristics

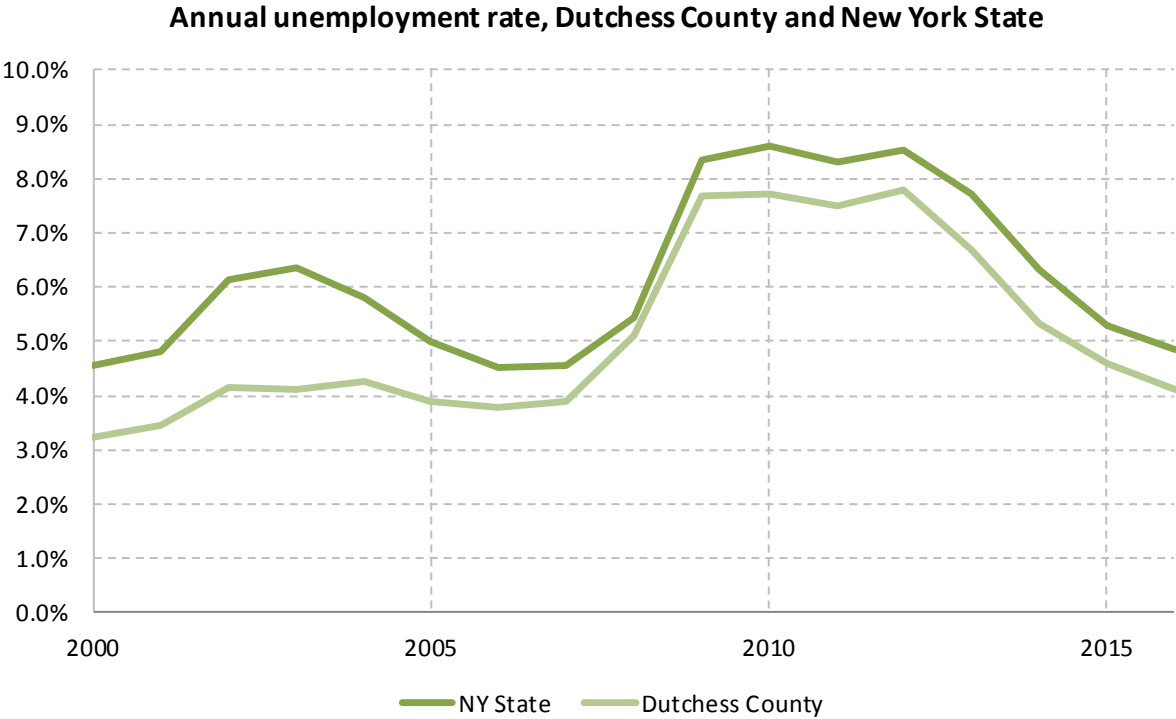
10.1 Labor force, employment and unemployment

	TOTAL		IN LABOR FORCE		EMPLOYED		UNEMPLOYMENT RATE	
	Estimate	Margin of error	Estimate	Margin of error	Estimate	Margin of error	Estimate	Margin of error
Population 16 years and over	244,232	± 320	64.5%	± 0.6	58.9%	± 0.6	8.7%	± 0.5
AGE								
16 to 19 years	19,391	± 347	40.1%	± 2.1	30.0%	± 2.0	25.3%	± 3.1
20 to 24 years	22,720	± 131	73.5%	± 2.1	62.0%	± 2.3	15.6%	± 2.1
25 to 29 years	16,600	± 33	84.4%	± 1.9	75.1%	± 2.7	10.7%	± 2.4
30 to 34 years	16,192	± 44	83.4%	± 2.0	75.0%	± 2.3	10.0%	± 1.7
35 to 44 years	36,074	± 50	82.2%	± 1.3	77.1%	± 1.5	6.1%	± 0.9
45 to 54 years	48,402	± 50	82.3%	± 1.1	77.4%	± 1.2	5.9%	± 0.9
55 to 59 years	21,964	± 702	75.2%	± 2.0	71.2%	± 1.9	5.3%	± 1.1
60 to 64 years	18,487	± 701	58.6%	± 2.5	55.2%	± 2.6	5.8%	± 1.4
65 to 74 years	24,533	± 28	30.1%	± 1.6	28.3%	± 1.6	6.0%	± 1.6
75 years and over	19,869	± 45	7.1%	± 0.9	6.3%	± 0.8	10.9%	± 4.9
RACE AND HISPANIC OR LATINO ORIGIN								
White alone	195,595	± 797	64.7%	± 0.6	59.6%	± 0.7	7.8%	± 0.5
Black or African American alone	24,259	± 562	61.0%	± 2.0	51.4%	± 2.1	15.7%	± 2.3
American Indian and Alaska Native alone	886	± 310	49.3%	± 10.1	48.9%	± 10.2	0.9%	± 2.0
Asian alone	9,197	± 254	66.8%	± 2.7	63.1%	± 3.0	5.6%	± 2.0
Two or more races	5,098	± 567	62.9%	± 5.6	53.5%	± 4.9	15.0%	± 4.0
Hispanic or Latino origin (of any race)	24,477	± 156	67.3%	± 2.2	60.2%	± 2.2	10.6%	± 1.7
White alone, not Hispanic or Latino	183,213	± 304	64.5%	± 0.6	59.5%	± 0.7	7.7%	± 0.5
SEX								
Population 20 to 64 years	180,439	± 145	78.2%	± 0.7	71.9%	± 0.8	7.9%	± 0.5
Male	91,350	± 99	81.4%	± 0.9	74.4%	± 1.0	8.4%	± 0.8
Female	89,089	± 111	74.9%	± 1.0	69.4%	± 1.1	7.3%	± 0.6
With own children under 18 years	30,455	± 740	76.7%	± 1.7	71.2%	± 1.8	7.1%	± 1.2
EDUCATIONAL ATTAINMENT								
Population 25 to 64 years	157,719	± 69	78.8%	± 0.7	73.4%	± 0.8	6.8%	± 0.6
Less than high school graduate	13,107	± 904	58.1%	± 2.6	50.4%	± 2.7	13.2%	± 2.7
High school graduate (includes equivalency)	39,826	± 1,220	75.0%	± 1.4	67.9%	± 1.5	9.4%	± 1.2
Some college or associate's degree	49,677	± 1,442	79.5%	± 1.2	73.4%	± 1.4	7.6%	± 1.0
Bachelor's degree or higher	55,109	± 1,296	86.0%	± 0.9	82.8%	± 1.0	3.6%	± 0.5

Table formula: **LABOR FORCE** = # EMPLOYED + # UNEMPLOYED
 % IN LABOR FORCE = LABOR FORCE / TOTAL * 100%
 % EMPLOYED = # EMPLOYED / TOTAL * 100%
 UNEMPLOYMENT RATE = # UNEMPLOYED / LABOR FORCE * 100%

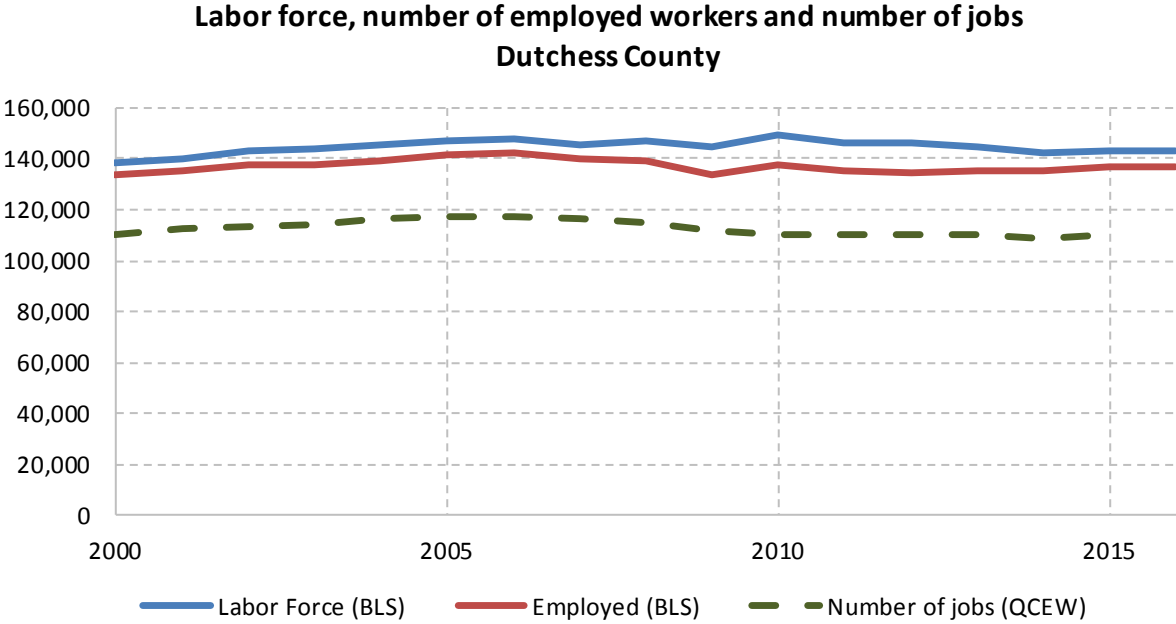
Source: 2011-2015 American Community Survey

10.2 Annual unemployment rate



Source: Bureau Labor Statistics (BLS)

10.3 Employment and number of jobs



Source: Bureau Labor Statistics (BLS) and NY Department of Labor - Quarterly Census of Employment and Wages (QCEW) – annual averages

10.4 Class of worker

		Total	%Male	%Female
Civilian employed population 16 years and over	Estimate	143,829	52.2%	47.8%
	<i>Margin of error</i>	$\pm 1,531$	± 0.4	± 0.4
Private for-profit wage and salary workers:	Estimate	94,745	55.7%	44.3%
	<i>Margin of error</i>	$\pm 1,522$	± 0.8	± 0.8
Employee of private company workers	Estimate	88,897	54.7%	45.3%
	<i>Margin of error</i>	$\pm 1,461$	± 0.8	± 0.8
Self-employed in own incorporated business workers	Estimate	5,848	70.1%	29.9%
	<i>Margin of error</i>	± 568	± 3.3	± 3.3
Private not-for-profit wage and salary workers	Estimate	16,352	35.3%	64.7%
	<i>Margin of error</i>	± 791	± 2.4	± 2.4
Local government workers	Estimate	13,854	47.6%	52.4%
	<i>Margin of error</i>	± 791	± 2.4	± 2.4
State government workers	Estimate	7,924	51.0%	49.0%
	<i>Margin of error</i>	± 623	± 3.9	± 3.9
Federal government workers	Estimate	2,445	53.6%	46.4%
	<i>Margin of error</i>	± 308	± 5.8	± 5.8
Self-employed in own not incorporated business workers and unpaid family workers	Estimate	8,509	54.6%	45.4%
	<i>Margin of error</i>	± 609	± 2.8	± 2.8

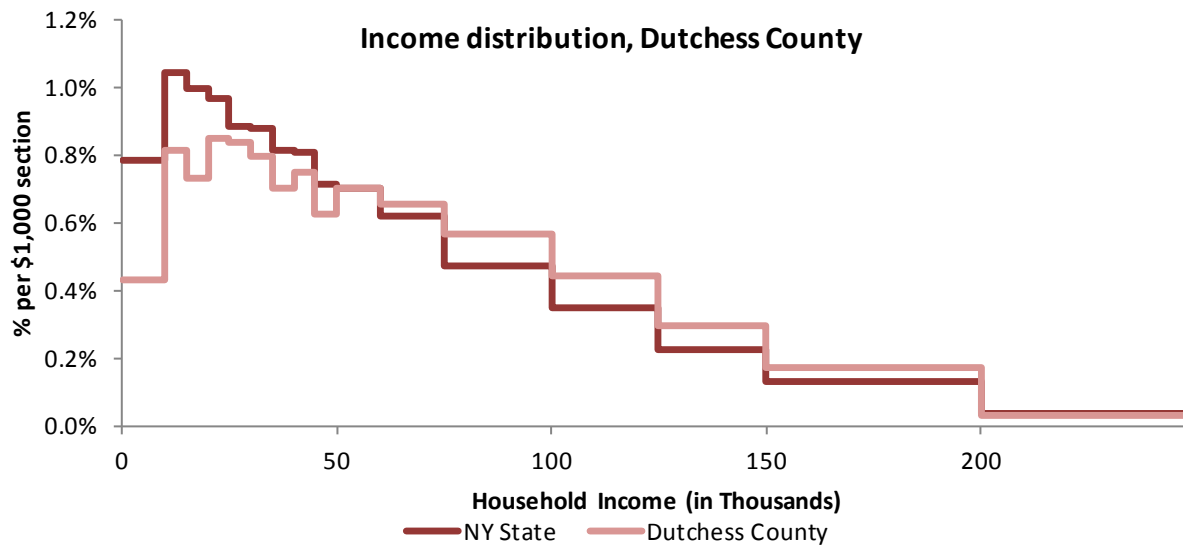
Source: 2011-2015 American Community Survey

11 Household Income

11.1 Income Distribution

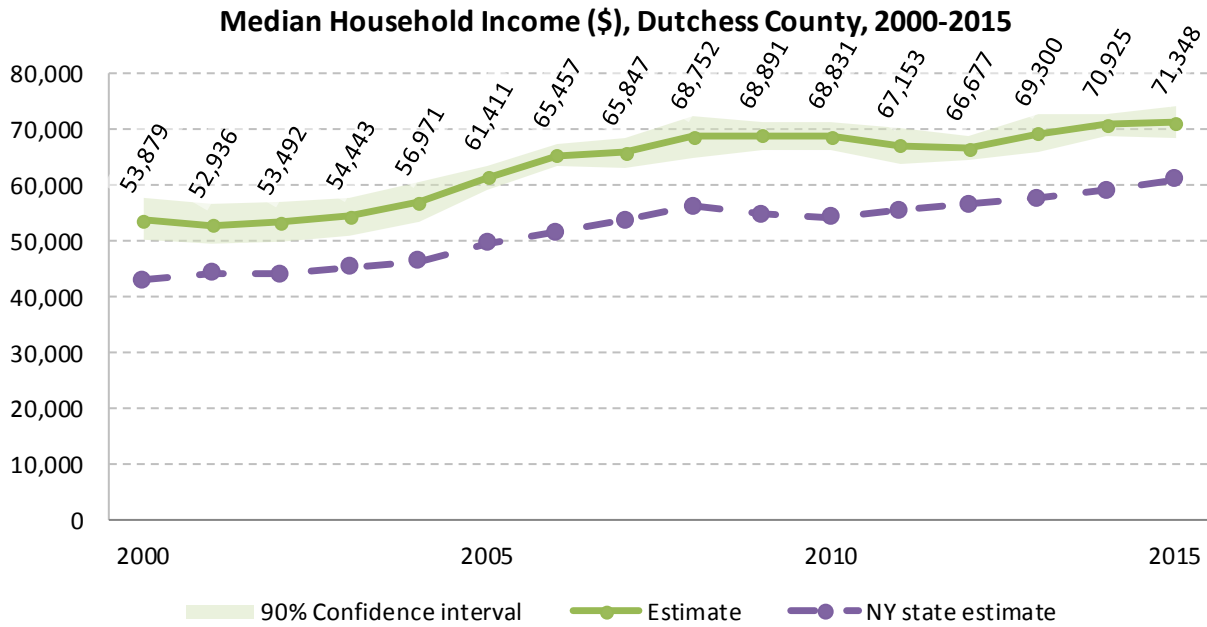
	Estimate	Margin of error	Interval width (in \$1,000)	Est. per \$1,000 section
Total:	106,771	± 812		
Less than \$10,000	4,615	± 458	10	461.5
\$10,000 to \$14,999	4,353	± 468	5	870.6
\$15,000 to \$19,999	3,904	± 347	5	780.8
\$20,000 to \$24,999	4,537	± 488	5	907.4
\$25,000 to \$29,999	4,469	± 376	5	893.8
\$30,000 to \$34,999	4,267	± 434	5	853.4
\$35,000 to \$39,999	3,737	± 343	5	747.4
\$40,000 to \$44,999	4,012	± 381	5	802.4
\$45,000 to \$49,999	3,355	± 298	5	671.0
\$50,000 to \$59,999	7,505	± 510	10	750.5
\$60,000 to \$74,999	10,530	± 597	15	702.0
\$75,000 to \$99,999	15,112	± 698	25	604.5
\$100,000 to \$124,999	11,830	± 641	25	473.2
\$125,000 to \$149,999	7,907	± 592	25	316.3
\$150,000 to \$199,999	9,359	± 512	50	187.2
\$200,000 or more	7,279	± 450	-	-

Source: 2011-2015 American Community Survey



Source: 2011-2015 American Community Survey

11.2 Median household income: Trends over time



Source: Small Area Income and Poverty Estimates (SAIPE)

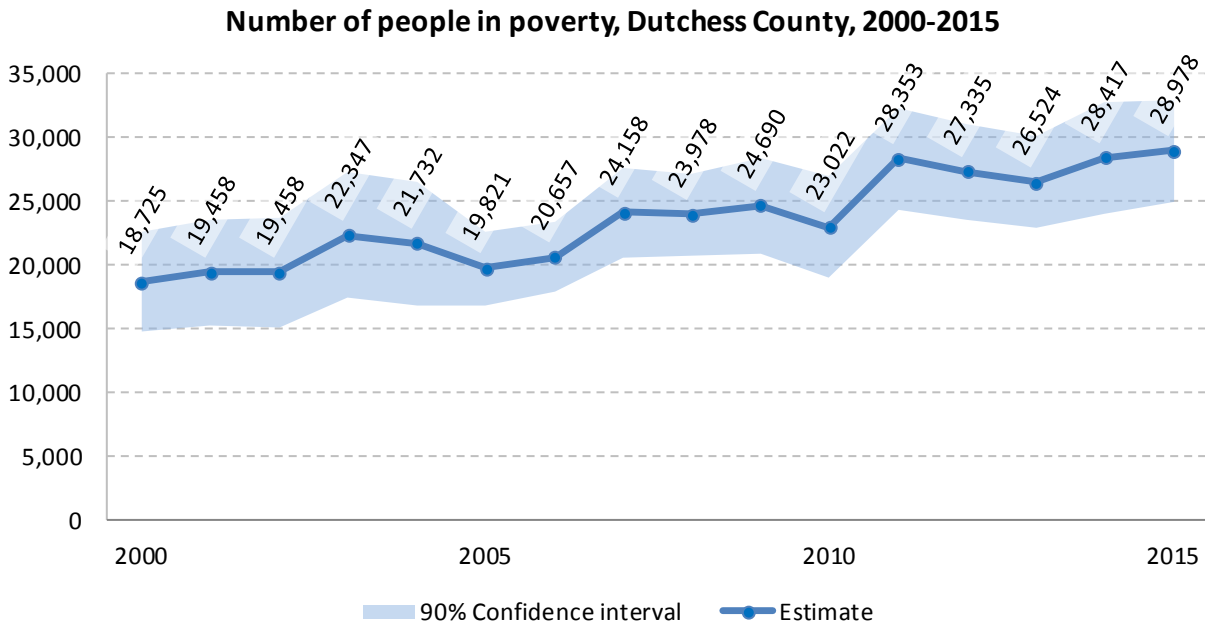
12 Poverty

12.1 Family Income to Poverty Ratio

	TOTAL		PERCENT OF ALL	
	Estimate	Margin of error	Estimate	Margin of error
All families	72,024	± 1,010		
ALL FAMILIES WITH INCOME:				
Below 50 percent of poverty level	1,757	± 328	2.4%	± 0.5
Below 100 percent of poverty level	4,311	± 445	6.0%	± 0.6
Below 125 percent of poverty level	6,168	± 501	8.6%	± 0.7
Below 150 percent of poverty level	8,400	± 651	11.7%	± 0.9
Below 185 percent of poverty level	10,852	± 683	15.1%	± 0.9
Below 200 percent of poverty level	12,016	± 697	16.7%	± 0.9
Below 300 percent of poverty level	20,609	± 848	28.6%	± 1.1
Below 400 percent of poverty level	30,707	± 919	42.6%	± 1.1
Below 500 percent of poverty level	39,869	± 863	55.4%	± 0.9

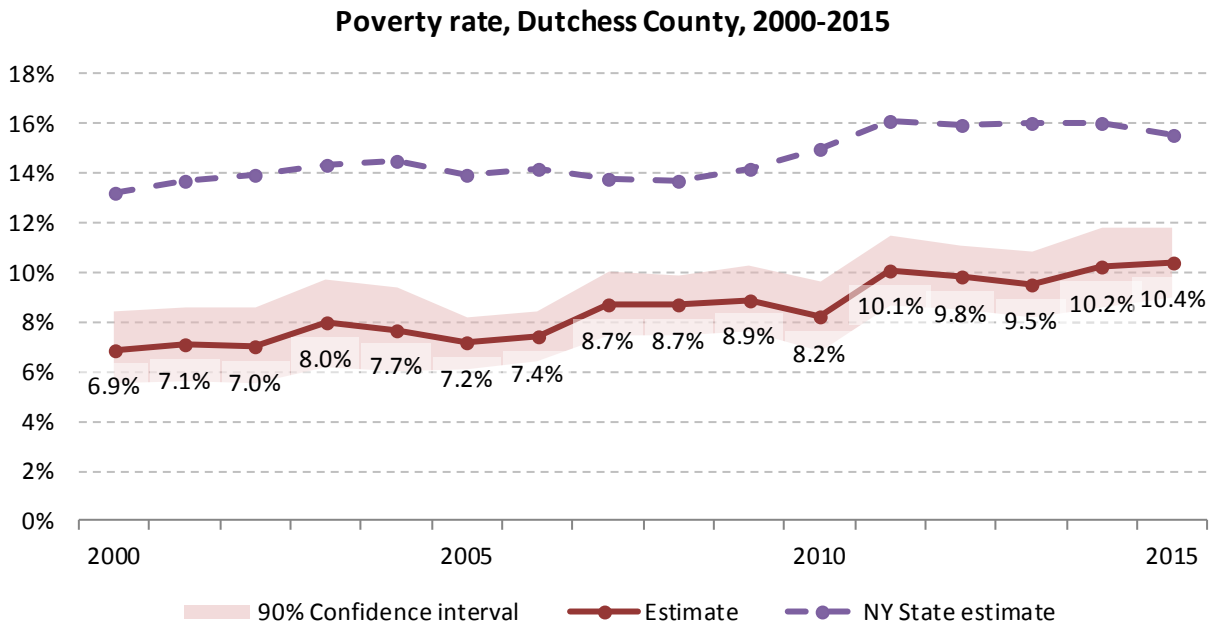
Source: 2011-2015 American Community Survey

12.2 Poverty: Trends over time: Count



Source: Small Area Income and Poverty Estimates (SAIPE)

12.3 Poverty: Trends over time: Rate



Source: Small Area Income and Poverty Estimates (SAIPE)

12.4 Poverty characteristics

	TOTAL		BELOW POVERTY LEVEL		PERCENT BELOW POVERTY LEVEL	
	Estimate	Margin of error	Estimate	Margin of error	Estimate	Margin of error
Population for whom poverty status is determined	280,620	± 722	26,229	± 1,834	9.3%	± 0.7
AGE						
Under 18 years	60,047	± 306	7,056	± 795	11.8%	± 1.3
Under 5 years	14,092	± 152	1,778	± 326	12.6%	± 2.3
5 to 17 years	45,955	± 283	5,278	± 651	11.5%	± 1.4
18 to 34 years	56,507	± 548	6,973	± 755	12.3%	± 1.3
35 to 64 years	121,520	± 340	9,951	± 737	8.2%	± 0.6
65 years and over	42,546	± 285	2,249	± 275	5.3%	± 0.6
SEX						
Male	138,310	± 577	11,831	± 975	8.6%	± 0.7
Female	142,310	± 532	14,398	± 1,100	10.1%	± 0.8
RACE AND HISPANIC OR LATINO ORIGIN						
White alone	223,038	± 1,246	16,796	± 1,316	7.5%	± 0.6
Black or African American alone	26,662	± 772	5,085	± 642	19.1%	± 2.3
American Indian and Alaska Native alone	1,014	± 363	215	± 122	21.2%	± 13.1
Asian alone	10,715	± 308	960	± 470	9.0%	± 4.4
Hispanic or Latino origin (of any race)	31,020	± 266	5,133	± 857	16.5%	± 2.8
White alone, not Hispanic or Latino	207,317	± 593	14,449	± 1,090	7.0%	± 0.5
EDUCATIONAL ATTAINMENT						
Population 25 years and over	195,491	± 444	15,110	± 978	7.7%	± 0.5
Less than high school graduate	18,366	± 970	4,087	± 556	22.3%	± 2.8
High school graduate (includes equivalency)	51,909	± 1,383	5,108	± 544	9.8%	± 1.0
Some college, associate's degree	58,161	± 1,492	4,157	± 435	7.1%	± 0.8
Bachelor's degree or higher	67,055	± 1,359	1,758	± 287	2.6%	± 0.4
EMPLOYMENT STATUS						
Civilian labor force 16 years and over	153,721	± 1,346	9,518	± 926	6.2%	± 0.6
Employed	140,270	± 1,473	6,691	± 817	4.8%	± 0.6
Male	73,860	± 955	3,313	± 532	4.5%	± 0.7
Female	66,410	± 983	3,378	± 398	5.1%	± 0.6
Unemployed	13,451	± 743	2,827	± 395	21.0%	± 2.9
Male	7,595	± 593	1,545	± 299	20.3%	± 3.6
Female	5,856	± 460	1,282	± 235	21.9%	± 4.0
WORK EXPERIENCE IN THE PAST 12 MONTHS						
Population 16 years and over	66,410	± 983	3,378	± 398	5.1%	± 0.6
Worked full-time, year-round	13,451	± 743	2,827	± 395	21.0%	± 2.9
Worked part-time or part-year	7,595	± 593	1,545	± 299	20.3%	± 3.6
Did not work	5,856	± 460	1,282	± 235	21.9%	± 4.0

Source: 2011-2015 American Community Survey

13 Glossary

American Community Survey (ACS) - The American Community Survey is an ongoing survey of the population that provides data every year on a variety of social and economic characteristics—age, sex, race, family and relationships, income and benefits, health insurance, education, veteran status, disabilities, where you work and how you get there, where you live and how much you pay for some essentials. The ACS replaced the information previously gathered by what was known as the “long form” of the decennial censuses. The ACS provides communities, companies and other institutions with current information they need to plan investments and services. Information from the survey generates data that help determine how more than \$400 billion in federal and state funds are distributed each year. Every estimate presented in the American Community Survey, as in other surveys, has an uncertainty associated with it. Often the magnitude of that uncertainty is expressed as the Margin of Error.

Confidence Interval (CI) - indication of the degree of uncertainty about a sample estimates. Confidence intervals have been traditionally reported at the 90, 95 and 99 percent levels. A 90 percent confidence interval can be interpreted, for example, roughly as providing 90 percent certainty that the interval defined by the upper and lower bounds contain the true value of the characteristic. If a Margin of Error is given, the lower bound of the confidence interval is equal to the estimate minus the Margin of Error and the upper bound is equal to the estimate plus the Margin of Error. (See further, Margin of Error definition below.)

County subdivision or Minor Civil Division (MCD) - The Census Bureau geography for primary administrative units below the county level in New York is collectively referred to as county subdivisions or minor civil divisions. These include towns, cities and Indian Reservations.

Decennial Census - the Census of the population and housing taken every 10 years in the United States, at the start of each decade, since 1790.

Employed – either “at work” or “with a job, but not at work”.

Group Quarters Population - all U.S. residents who live in group living facilities including correctional institutions, juvenile facilities, skilled nursing facilities, college residence halls, military barracks, group homes, and workers' dormitories.

Household Population - all U.S. residents who live in housing units such as single family homes, townhouses, apartments, and mobile homes.

Intercensal Population Estimates - estimates produced for the years between two decennial censuses when both the beginning and ending populations are known. They are produced once a decade by adjusting the existing time series of postcensal estimates for the entire decade to smooth the transition from one decennial census count to the next. They differ from the postcensal estimates that are released annually because the difference between the April 1 postcensal estimate and April 1 census count for the end of the decade is redistributed across the estimates for that decade. For dates when both postcensal and intercensal estimates are available, intercensal estimates are preferred.

Labor Force - consists of people classified as employed or unemployed.

Margin of Error (MOE) - a measure of the precision of an estimate at a given level of confidence. The confidence level of a margin of error indicates the likelihood that the difference between the population value (which you

would get if you could measure the whole population instead of a sample) and the estimate is less than or equal to the margin of error. The range from the estimate minus the margin of error to the estimate plus the margin of error is called the confidence interval. All ACS estimates are published with their margins of error at the 90 percent confidence level. Margins of error are useful in assessing the reliability of estimates and whether differences between estimates are significant.

Numeric Population Change - difference between the population of an area at the beginning and end of a time period. It is computed by taking the difference between the population at one point in time (t_1) and some future time (t_2).

Percent Population Change - difference between the population of an area at the beginning and end of a time period, expressed as a percentage of the beginning population. It is computed by dividing the population change ($t_2 - t_1$) by t_1 and multiplying the result by 100.

Population Estimates - The calculated number of people living in an area as of a specified point in time, usually July 1st. The estimated population is calculated using a component of change model that incorporates information on natural increase (births, deaths) and net migration (net domestic migration, net international migration) that has occurred in an area since the latest decennial census. A procedure for estimating the current population using a procedure involving a "base population" value at time $t - 1$, adding to that the births during the interval $t - 1$ to t , subtracting the deaths during that interval $t - 1$ to t , and then adding the net domestic and net international migration that occurred during that interval.

Population Density - Total number of people per areal unit like a square mile or square kilometer.

Population Pyramids - A graphical way of portraying a population's age and sex composition at a given slice in time. The first horizontal bar, constituting the base of the graph, is the youngest age group (typically 0-4) with the number of males in that age group on the left and the number of females in that age group on the right. On top of that age group is another horizontal bar for the next age group (e.g. 5-9) and so forth with the top bar typically for those aged 75 and over. In a population with lots of births and deaths, the shape typically forms a pyramid with a broad base and a narrow top. It is one of the most basic ways to understand population change over time as well as between different geographic units of a similar status (e.g. counties).

Postcensal Estimates - estimates produced for the years after a decennial census when only the beginning population is known. They are produced and revised each year, targeted to July 1 of that year.

Projection - estimated population at some future time based on assumptions about births, deaths, migration, and ages.

Race/Ethnicity - the Census Bureau collects racial data in accordance with guidelines provided by the U.S. Office of Management and Budget (OMB), and these data are based on self-identification. The racial categories included in the census questionnaire generally reflect a social definition of race recognized in this country and not an attempt to define race biologically, anthropologically, or genetically. In addition, it is recognized that the categories of the race item include racial and national origin or sociocultural groups. People may choose to report more than one race to indicate their racial mixture, such as "American Indian" and "White." People who identify their origin as Hispanic, Latino, or Spanish may be of any race. OMB requires five minimum categories: White, Black or African American, American Indian or Alaska Native, Asian, and Native Hawaiian or Other Pacific Islander. Hispanics may be classified as white or black. So we generally separate them out as an ethnic group first.

Unemployed – Not employed, but actively looking for work and available to accept a job.

Unemployment rate – Fraction of the Labor Force that is unemployed.

Urban Area – A densely settled area with at least 2,500 people. If the total number of people is less than 50,000 the Census Bureau calls it an Urban Cluster, otherwise an Urbanized Area.

Vintage - each year, the U.S. Census Bureau produces and publishes estimates of the population for each state and county, as well as the nation as a whole. These are called “vintages.” In producing these vintages, the Bureau utilizes administrative data from a number of sources to estimate 1) the change in population since the most recent decennial census, and 2) the population for each year since the most recent decennial census. With each annual release of population estimates (vintage), the entire time series of estimates beginning on April 1, 2010 is revised and updated.

Vital Statistics - quantitative data concerning a population, such as the number of births, marriages, and deaths.

14 References

Dutchess County homepage: <http://www.co.dutchess.ny.us/>

At Cornell:

- Program on Applied Demographics (PAD)
URL: <http://pad.human.cornell.edu/>
 - More county trends: <https://pad.human.cornell.edu/counties/trends1geo.cfm?geo=27>
- Community and Regional Development Institute (CaRDI)
URL: <https://cardi.cals.cornell.edu/>
- Cornell Cooperative Extensions (CCE)
Home page: <http://www.cce.cornell.edu>
 - Dutchess local office: <http://www.ccedutchess.org/>

Data sources and background information:

- New York State Data Center
 - <https://labor.ny.gov/nys-data-center/index.shtm>
- U.S. Census Bureau - general
 - QuickFacts: <https://www.census.gov/quickfacts/table/PST045216/36,36027>
 - American FactFinder: <http://factfinder.census.gov/>
- U.S. Census Bureau - population
 - Decennial Census
 - Background: <https://www.census.gov/2010census/>
 - Demographic Profile: http://factfinder2.census.gov/bkmk/table/1.0/en/DEC/10_SF1/SF1DP1/0500000US36027
 - American Community Survey (ACS)
 - Background: <https://www.census.gov/programs-surveys/acs/>
 - Social Data Profile: http://factfinder2.census.gov/bkmk/table/1.0/en/ACS/15_5YR/DP02/0500000US36027
 - Economic Data Profile: http://factfinder2.census.gov/bkmk/table/1.0/en/ACS/15_5YR/DP03/0500000US36027
 - Housing Data Profile: http://factfinder2.census.gov/bkmk/table/1.0/en/ACS/15_5YR/DP04/0500000US36027
 - Demographics Data Profile: http://factfinder2.census.gov/bkmk/table/1.0/en/ACS/15_5YR/DP05/0500000US36027
 - Population estimates:
 - General: <https://www.census.gov/programs-surveys/popest.html>
 - Explorer: <https://www.census.gov/censusexplorer/censusexplorer-popest.html>
- U.S. Census Bureau – Small Area Income & Poverty Estimates (SAIPE)
 - <http://www.census.gov/did/www/saipe/>
- U.S. Census Bureau - Public Use Quarterly Workforce Indicators (QWI) – annual averages
 - <https://qwiexplorer.ces.census.gov/static/explore.html>
- U.S. Census Bureau – Building Permits Survey
 - <https://www.census.gov/construction/bps/>

- Bureau Labor Statistics (BLS)
 - Local Area Unemployment Statistics: <http://www.bls.gov/lau/>
 - Quarterly Census of Employment and Wages (QCEW): <https://www.bls.gov/cew/data.htm>
- NY Department of Labor -
 - Labor statistics: <https://labor.ny.gov/stats/index.shtm>
 - Quarterly Census of Employment and Wages (QCEW): <https://labor.ny.gov/stats/LSQCEW.shtm>
- NY State Department of Health
 - Vital Statistics: https://www.health.ny.gov/statistics/vital_statistics/
- Bureau of Economic Analysis (BEA) – Local Area Personal Income and Employment: <http://bea.gov/iTable/iTable.cfm?ReqID=70&step=1>

Alternative sites for data retrieval:

- The Nelson A. Rockefeller Institute of Government – New York State Statistical Yearbooks http://www.rockinst.org/nys_statistics/
- Headwaters Economics: Economic Profile System – Human Dimensions Toolkit <http://headwaterseconomics.org/tools/eps-hdt>
- National Historical Geographic Information System (NHGIS) <https://www.nhgis.org/>
- Social Explorer <http://www.socialexplorer.com/pub/home/home.aspx>
- Stats America <http://www.statsamerica.org/Default.aspx>
- Missouri Census Data Center <http://mcdc.missouri.edu/>
- DataFerret <http://dataferrett.census.gov/>
- Investigative Reporters and Editors (IRE) Census project <http://census.ire.org/>