

# Chenango County Profile 2017

*A collection of recent demographic, social and economic data*

Compiled by

Jan Vink

Cornell Program on Applied Demographics



Cornell University



Program  
on Applied  
Demographics

CORNELL POPULATION CENTER

This profile is a part of a set of profiles generated for each county in New York State. The profiles were developed and generated by the Cornell Program on Applied Demographics. The work is sponsored by the New York State Data Center in the New York State Department of Labor.

Cornell Program on Applied Demographics:

The Program on Applied Demographics (PAD) brings skills in demographics, economics, statistics, data gathering and data analysis together to provide a variety of organizations with data, information and advice. PAD is located in the Department of Policy Analysis and Management within the College of Human Ecology at Cornell University. PAD is also affiliated with the Cornell Institute for Social and Economic Research and the Cornell Population Center.

For more information: <http://pad.human.cornell.edu/>

New York State Data Center:

The New York State Data Center (NYSDC) is located in the Division of Research and Statistics within the New York State Department of Labor. The State Data Center operates as part of a nationwide effort to improve public access to data provided by the U.S. Census Bureau. The U.S. Census Bureau collects and tabulates data on a multitude of subjects such as population, social, economic and housing demographics, labor force data, health care, migration and transportation. These data play a critical role in understanding our local and larger surrounding communities. Census data also influence state and federal funding, aid decision making in the legislative process, and determine each state's number of congressional seats. As the lead agency in New York for the SDC program, the New York State Data Center helps users navigate through the multitude of surveys and products provided by the U.S. Census Bureau.

For more information: <https://labor.ny.gov/nys-data-center/>

All profiles are freely downloadable as PDF documents on the PAD website:

<http://pad.human.cornell.edu/profiles/index.cfm>

This profile is an update from the County Profile produced in 2013. The 2013 profile also contained information on agriculture related items and can be found at <https://pad.human.cornell.edu/profiles/2013/Chenango.pdf>

## Contents

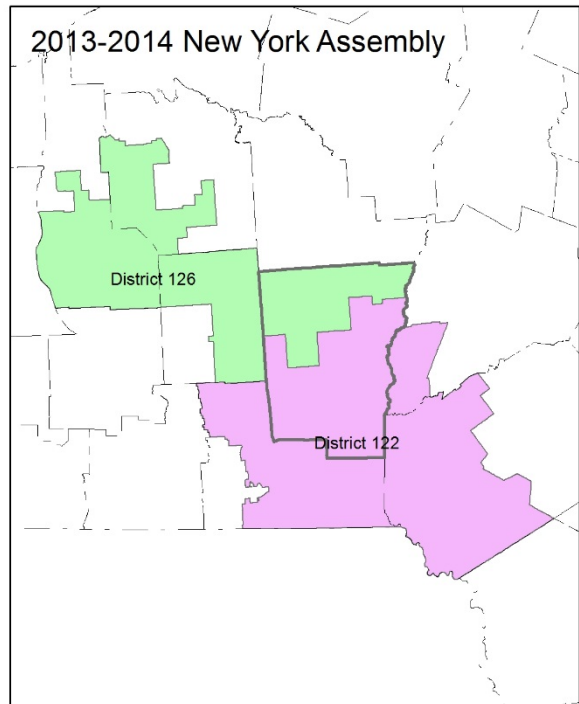
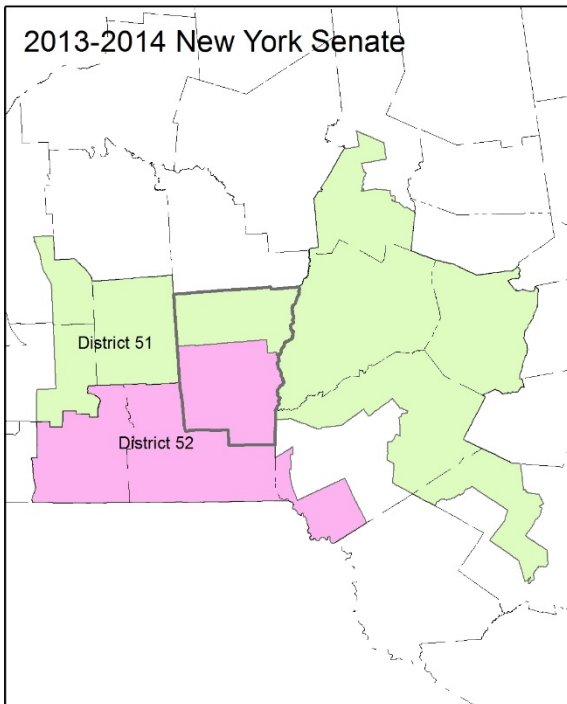
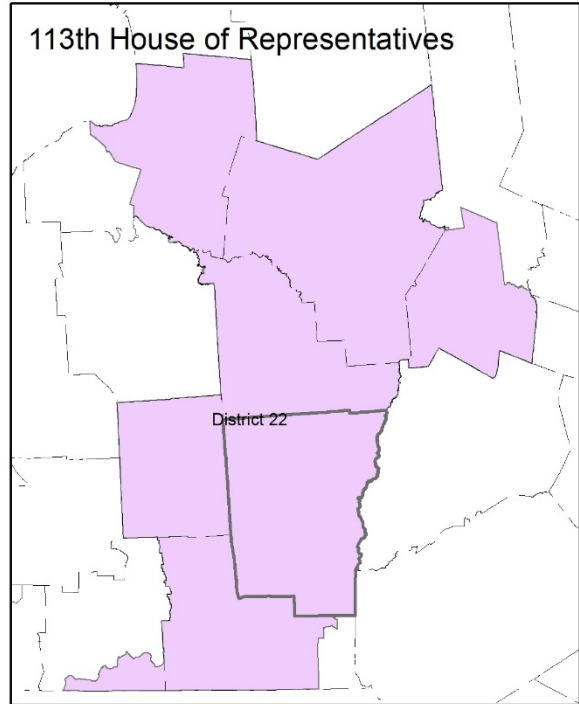
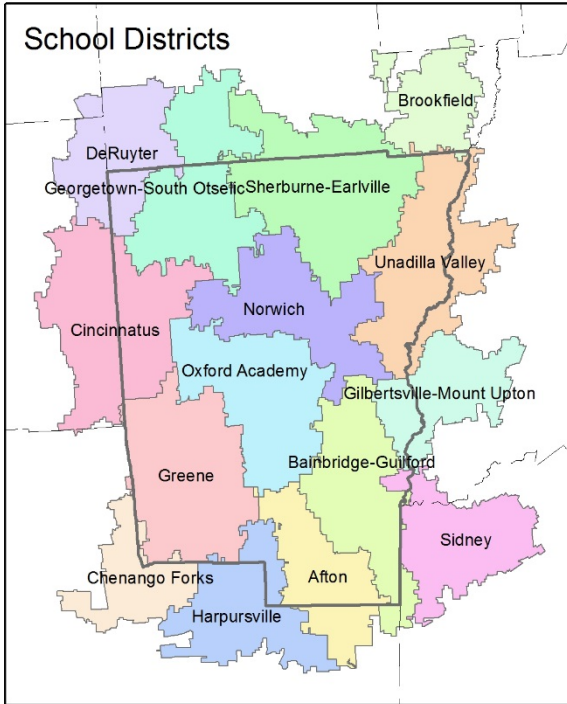
1	Reference Maps (towns and places as defined in 2010)	3
2	Population density and Urban Areas Map	5
3	Total Population	6
3.1	Historic and projected	6
3.2	Change since previous Census	6
3.3	Annual population estimates	7
3.4	Sub County population change 2010-2015	8
3.5	Sub County population change 2010-2015	9
4	Components of population change	10
4.1	Vital Statistics	10
4.2	Migration	11
5	Population by age	12
5.1	Historic and projected population pyramids	12
5.2	Selected age groups	13
5.3	Median age	14
6	Race	15
6.1	Total and household population by race	15
6.2	Race composition by age	15
7	Housing units	16
7.1	Characteristics	16
7.2	Historical data on number of housing units and occupancy status	17
7.3	Building Permits 2000-2015	17
8	Education	18
8.1	Enrollment by level of school	18
8.2	Enrollment by age	18
8.3	Percentage age 18-24 enrolled in college	18
8.4	Educational attainment	19
9	Language spoken at home	19
10	Labor Force Characteristics	20
10.1	Labor force, employment and unemployment	20
10.2	Annual unemployment rate	21
10.3	Employment and number of jobs	21
10.4	Class of worker	22
11	Household Income	23
11.1	Income Distribution	23
11.2	Median household income: Trends over time	24
12	Poverty	24
12.1	Family Income to Poverty Ratio	24
12.2	Poverty: Trends over time: Count	25
12.3	Poverty: Trends over time: Rate	25
12.4	Poverty characteristics	26
13	Glossary	27
14	References	30

1 Reference Maps (towns and places as defined in 2010)

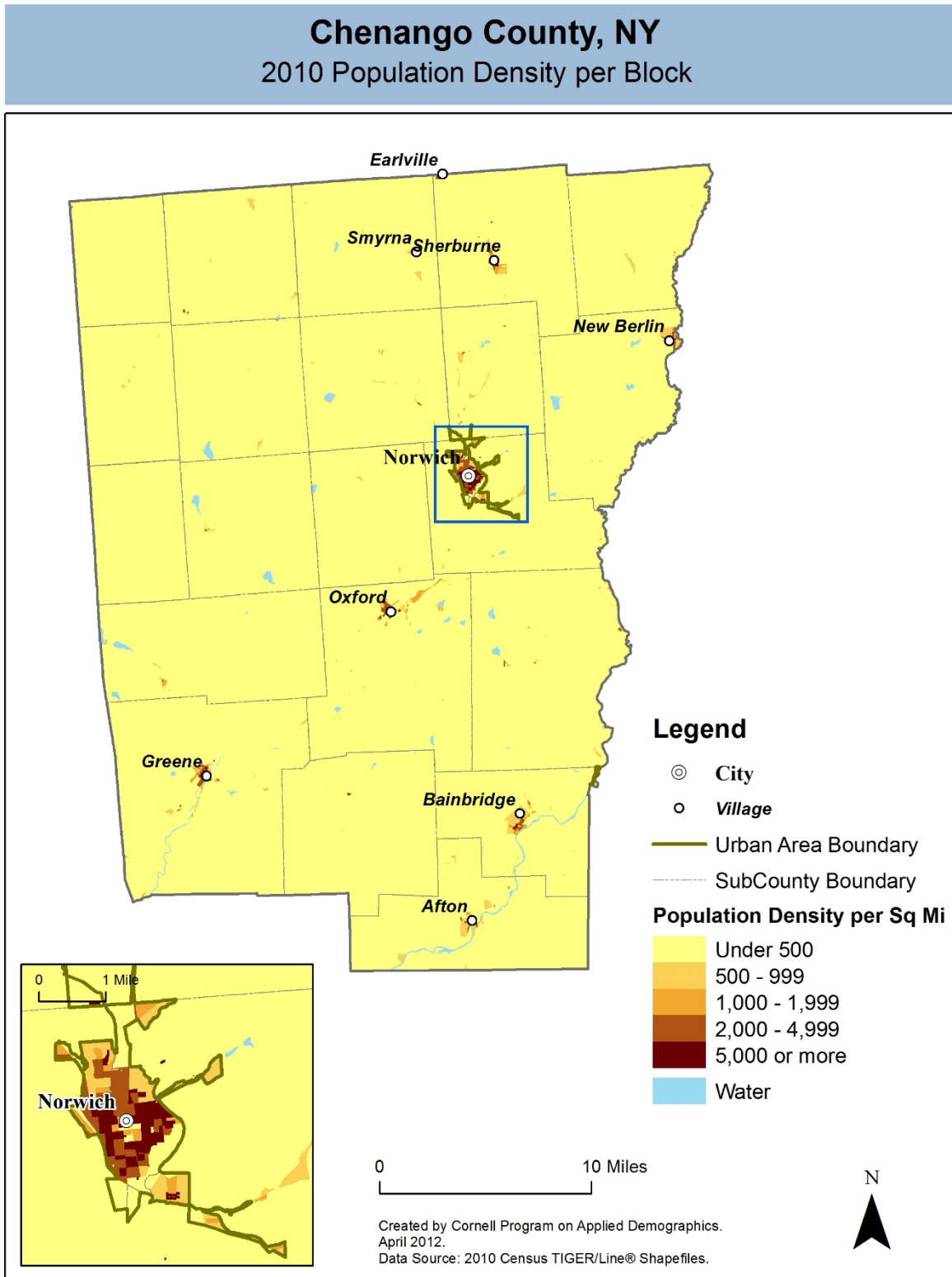


## Chenango County, NY

### Overlap with School and Political Districts



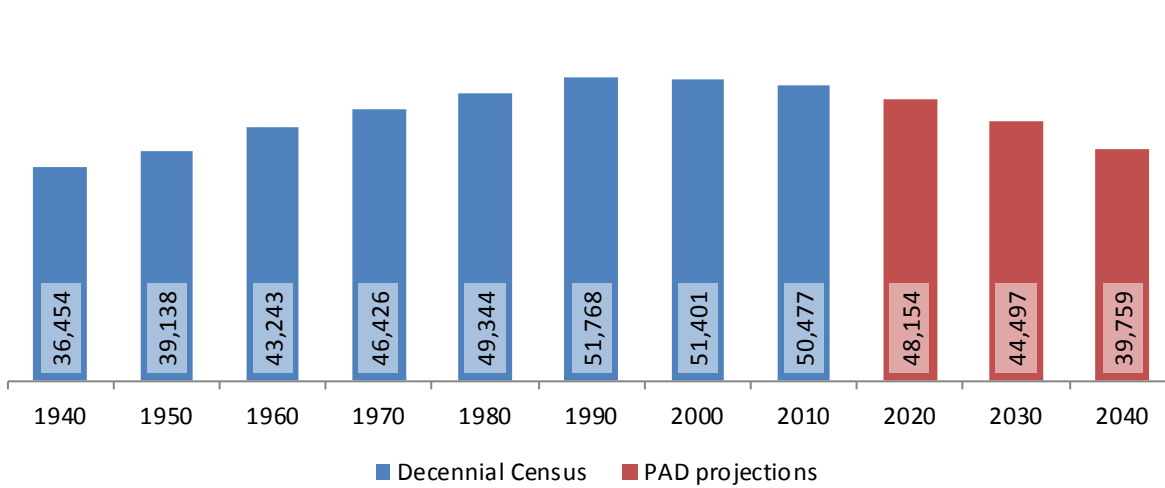
2 Population density and Urban Areas Map



### 3 Total Population

#### 3.1 Historic and projected

Total population, Chenango County, 1940-2040



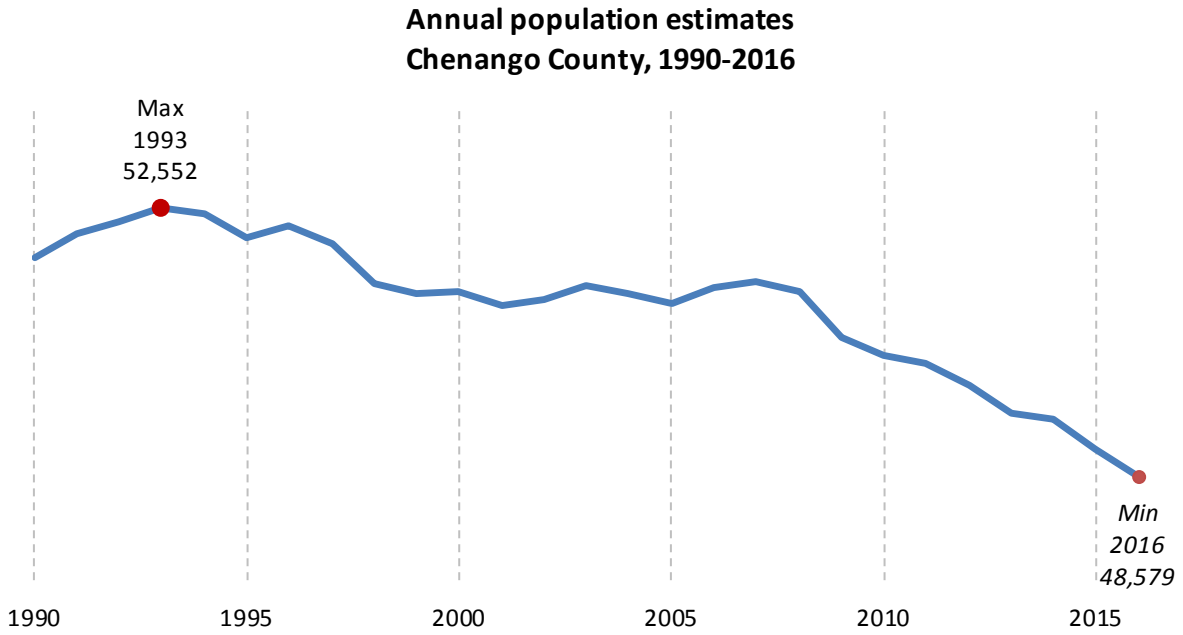
Source: 1940-2010 Decennial Census and projections by Cornell Program on Applied Demographics

#### 3.2 Change since previous Census

	Year	Total population	Change	
			Number	Percent
Decennial Census	1940	36,454		
	1950	39,138	2,684	7.4%
	1960	43,243	4,105	10.5%
	1970	46,426	3,183	7.4%
	1980	49,344	2,918	6.3%
	1990	51,768	2,424	4.9%
	2000	51,401	-367	-0.7%
	2010	50,477	-924	-1.8%
PAD projections	2020	48,154	-2,323	-4.6%
	2030	44,497	-3,657	-7.6%
	2040	39,759	-4,738	-10.6%

Source: 1940-2010 Decennial Census and projections by Cornell Program on Applied Demographics

### 3.3 Annual population estimates



Source: U.S. Census Bureau population estimates (1990-1999 and 2000-2009 intercensal and vintage 2016 postcensal)

### 3.4 Sub County population change 2010-2015

	Total Population		Difference	
	2000	2010	Count	%
New York State	18,976,821 *	19,378,102	401,281	2.1%
Chenango County	51,401	50,477	-924	-1.8%
<b>Cities</b>				
Norwich	7,355	7,190	-165	-2.2%
<b>Towns</b>				
Afton	2,977	2,851	-126	-4.2%
Bainbridge	3,401	3,308	-93	-2.7%
Columbus	931	975	44	4.7%
Coventry	1,589	1,655	66	4.2%
German	378	370	-8	-2.1%
Greene	5,729	5,604	-125	-2.2%
Guilford	3,046	2,922	-124	-4.1%
Lincklaen	416	396	-20	-4.8%
McDonough	870	886	16	1.8%
New Berlin	2,803	2,682	-121	-4.3%
North Norwich	1,966	1,783	-183	-9.3%
Norwich	3,836	3,998	162	4.2%
Otselic	1,001	1,054	53	5.3%
Oxford	3,992	3,901	-91	-2.3%
Pharsalia	542	593	51	9.4%
Pitcher	848	803	-45	-5.3%
Plymouth	2,049	1,804	-245	-12.0%
Preston	928	1,044	116	12.5%
Sherburne	3,979	4,048	69	1.7%
Smithville	1,347	1,330	-17	-1.3%
Smyrna	1,418	1,280	-138	-9.7%

\* Original counts revised through Count Question Resolution Program (CQR)

Source: U.S. Census Bureau intercensal population estimates 2000-2010

### 3.5 Sub County population change 2010-2015

	Total Population		Difference	
	2010 base	2015	Count	%
New York State	19,378,087	19,795,791	417,704	2.2%
Chenango County	50,478	48,844	-1,634	-3.2%
<b>Cities</b>				
Norwich	7,190	6,968	-222	-3.1%
<b>Towns</b>				
Afton	2,857	2,782	-75	-2.6%
Bainbridge	3,308	3,224	-84	-2.5%
Columbus	975	947	-28	-2.9%
Coventry	1,649	1,603	-46	-2.8%
German	370	360	-10	-2.7%
Greene	5,604	5,328	-276	-4.9%
Guilford	2,924	2,844	-80	-2.7%
Lincklaen	396	386	-10	-2.5%
McDonough	886	861	-25	-2.8%
New Berlin	2,682	2,538	-144	-5.4%
North Norwich	1,783	1,735	-48	-2.7%
Norwich	3,998	3,837	-161	-4.0%
Otselic	1,054	1,024	-30	-2.8%
Oxford	3,899	3,811	-88	-2.3%
Pharsalia	593	577	-16	-2.7%
Pitcher	803	781	-22	-2.7%
Plymouth	1,804	1,759	-45	-2.5%
Preston	1,044	1,015	-29	-2.8%
Sherburne	4,049	3,928	-121	-3.0%
Smithville	1,330	1,292	-38	-2.9%
Smyrna	1,280	1,244	-36	-2.8%

Source: U.S. Census Bureau population estimates 2010-2015

## 4 Components of population change

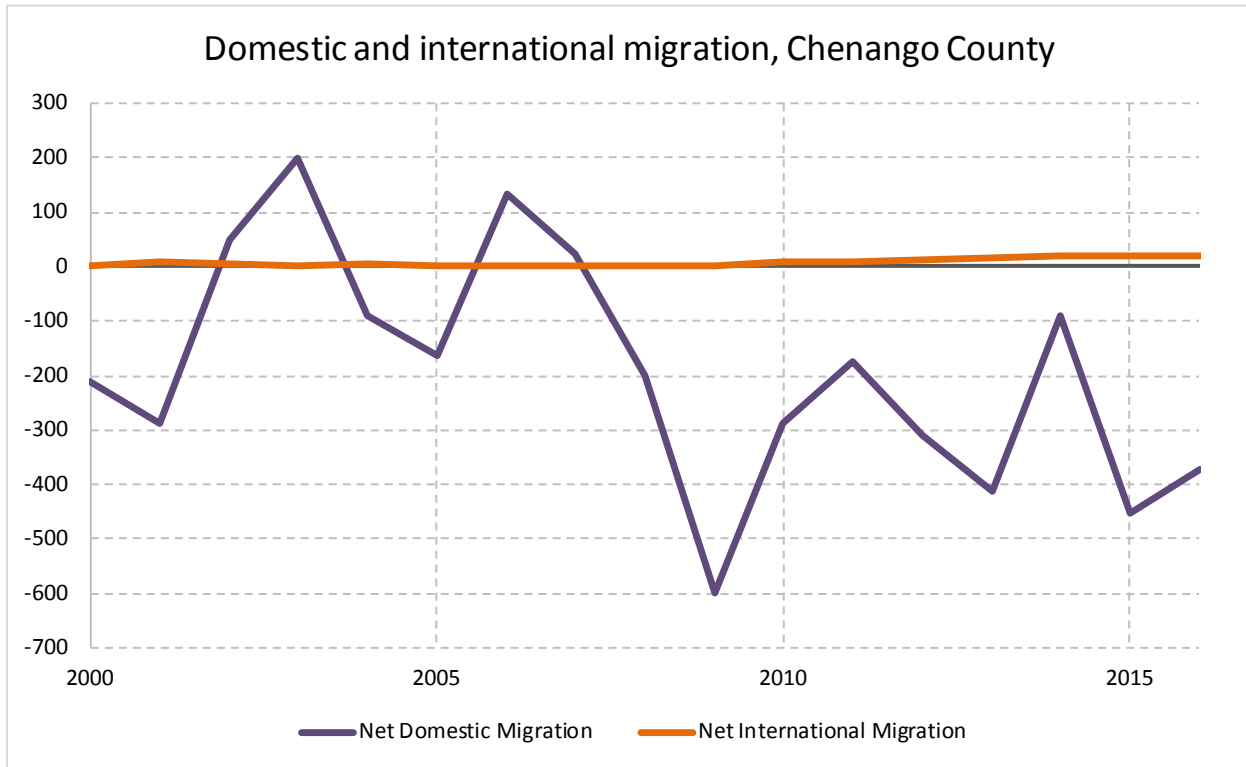
### 4.1 Vital Statistics

Vital Statistics, Chenango County



Source: New York State Department of Health

## 4.2 Migration

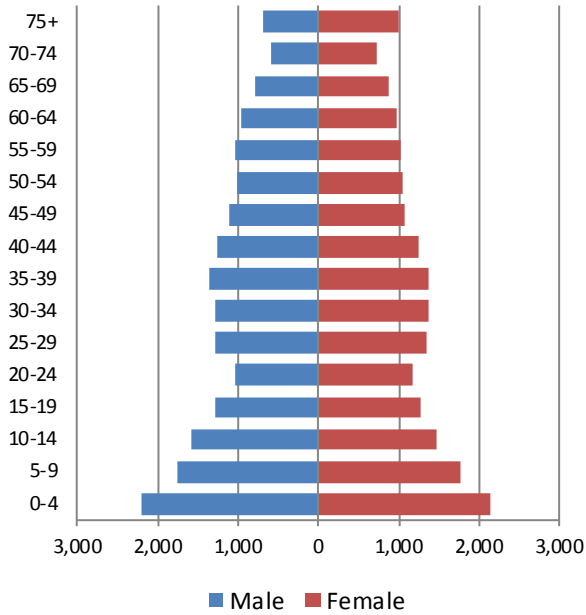


Source: Census Bureau population estimates (V2010 and V2016)

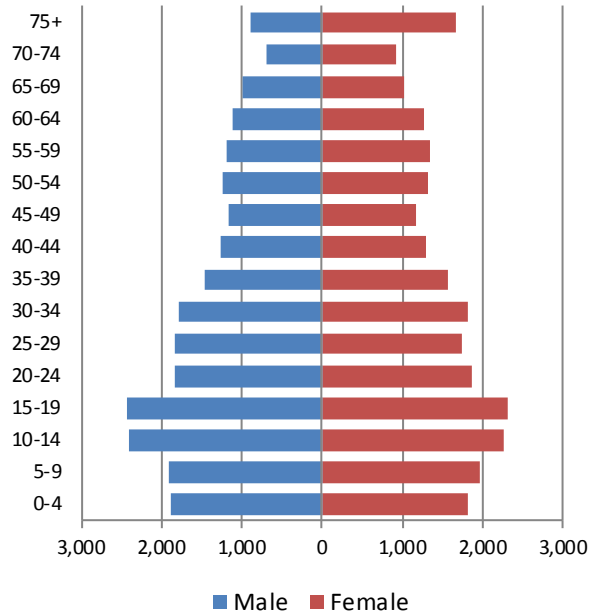
## 5 Population by age

### 5.1 Historic and projected population pyramids

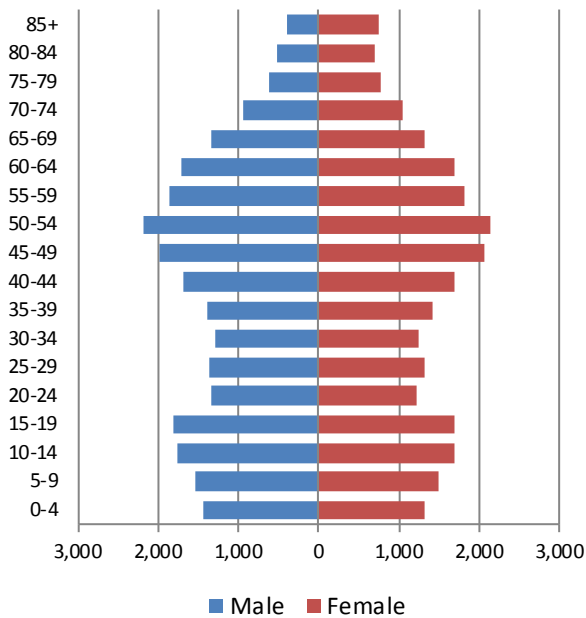
1950 Population Pyramid, Chenango County



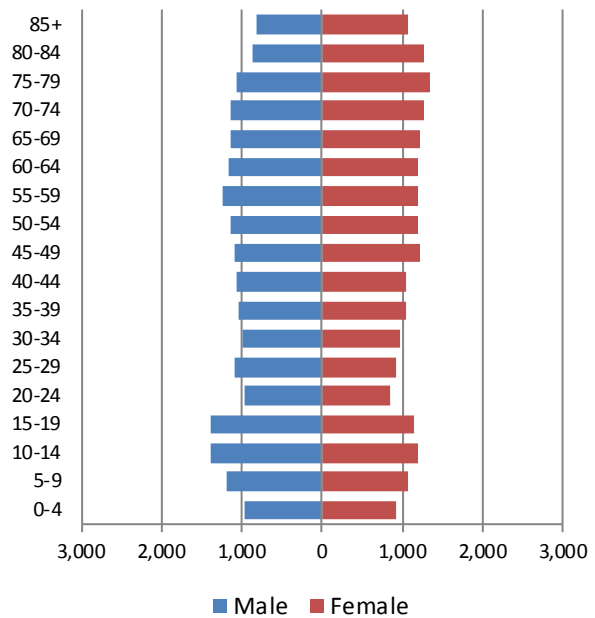
1980 Population Pyramid, Chenango County



2010 Population Pyramid, Chenango County



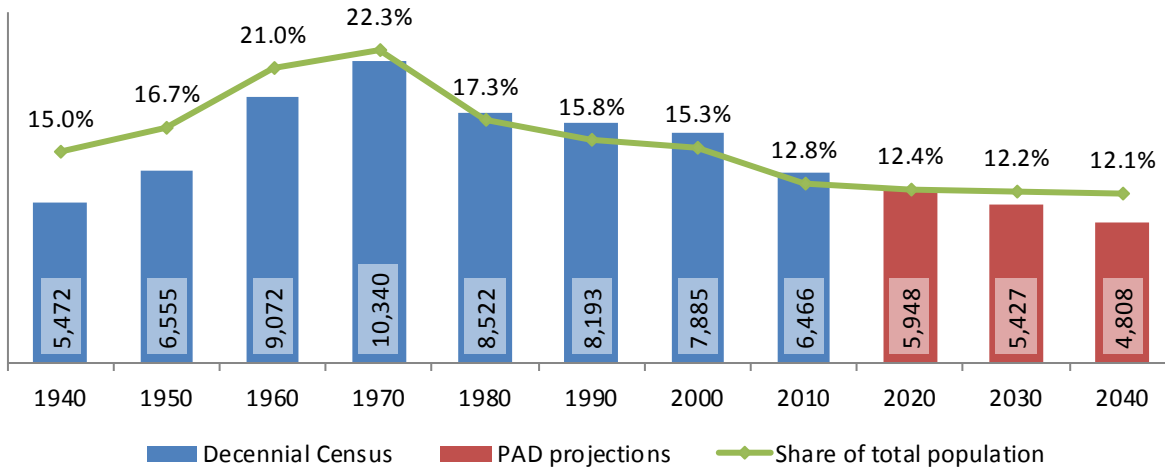
2040 Population Pyramid, Chenango County



Source: 1950, 1980, 2010 Decennial Census and projections by Cornell Program on Applied Demographics

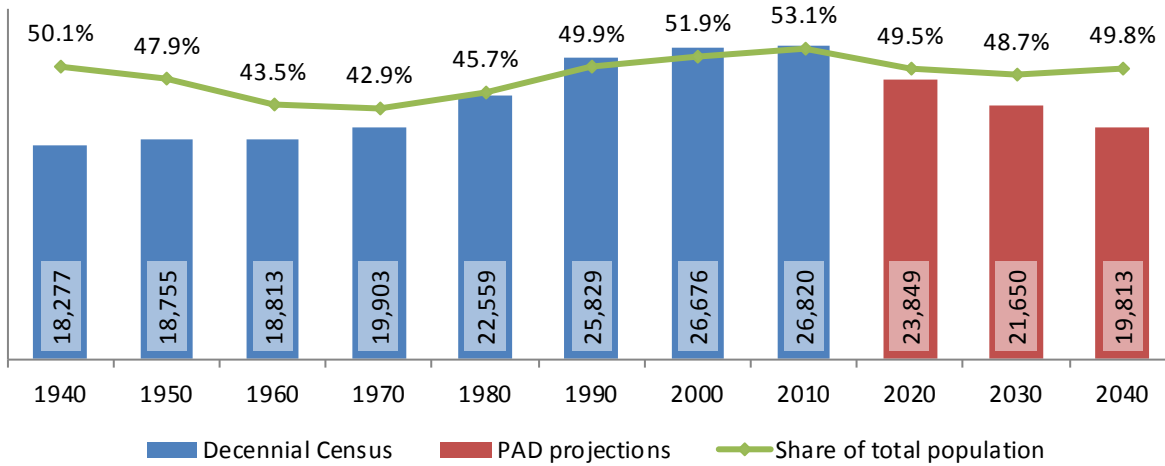
5.2 Selected age groups

Population age 5-14, Chenango County, 1940-2040



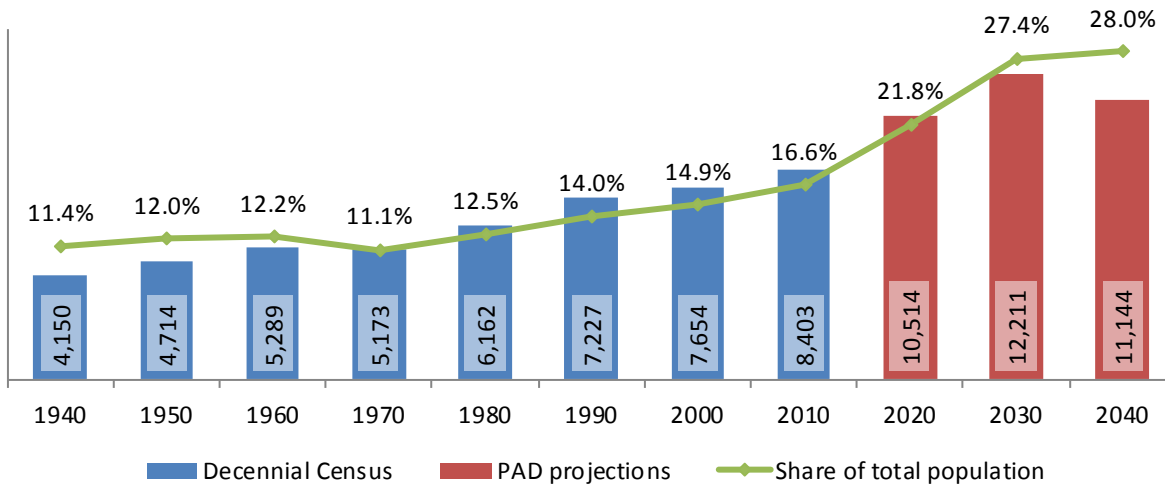
Source: 1940-2010 Decennial Census and projections by Cornell Program on Applied Demographics

Population age 25-64, Chenango County, 1940-2040



Source: 1940-2010 Decennial Census and projections by Cornell Program on Applied Demographics

**Population age 65 and over, Chenango County, 1940-2040**



Source: 1940-2010 Decennial Census and projections by Cornell Program on Applied Demographics

**5.3 Median age**

	Chenango County	New York State
<b>Median age</b>		
2000	38.4	35.9
2010	42.9	38.0
2015	44.5	38.3

Source: 2000, 2010 Decennial Census, 2015 Population Estimates

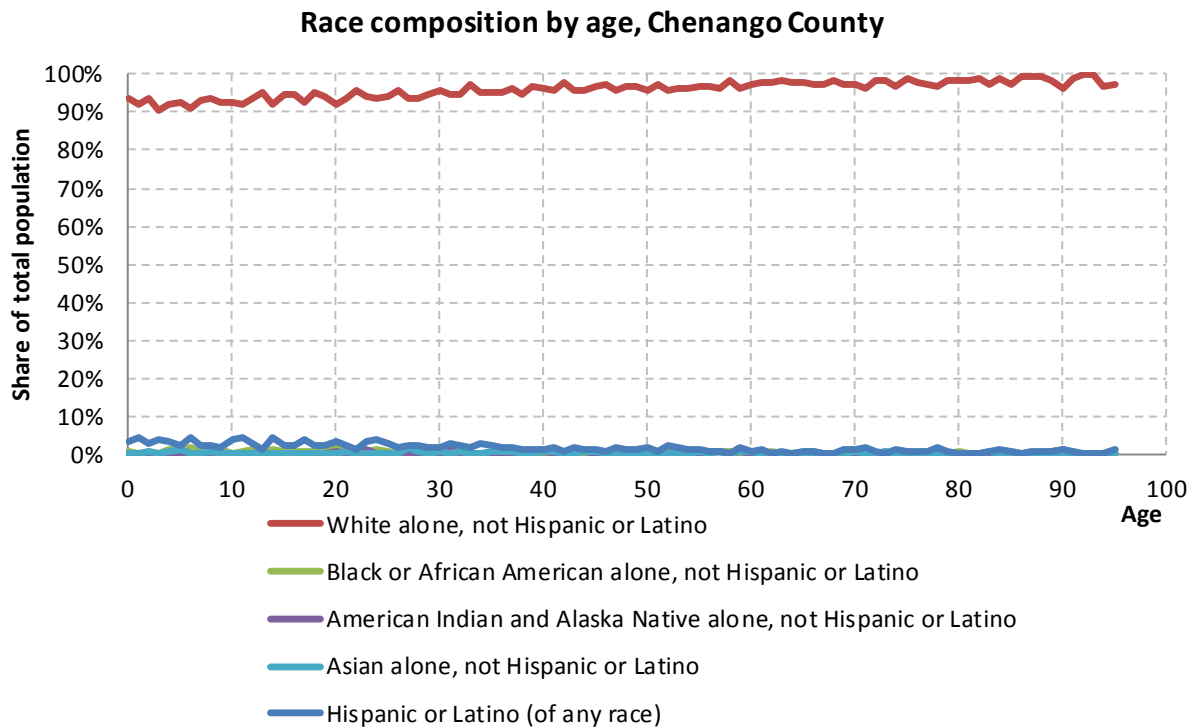
## 6 Race

### 6.1 Total and household population by race

	Total		In households		In Group Quarters
	Count	Percentage	Count	Percentage	Count
<b>Total population</b>	50,477	100%	49,681	100%	796
Not Hispanic or Latino					
One race					
White	48,265	95.6%	47,534	95.7%	731
Black or African American	323	0.6%	275	0.6%	48
American Indian and Alaska Native	151	0.3%	150	0.3%	1
Asian	200	0.4%	194	0.4%	6
Native Hawaiian and Other Pacific Islander	4	0.0%	-	-	-
Some other race	30	0.1%	-	-	-
Two or more races	575	1.1%	573	1.2%	2
Hispanic or Latino (of any race)	929	1.8%	921	1.9%	8

Source: 2010 Decennial Census

### 6.2 Race composition by age



Source: 2010 Decennial Census

## 7 Housing units

### 7.1 Characteristics

HOUSING OCCUPANCY	COUNT		PERCENTAGE	
	Estimate	Margin of error	Estimate	Margin of error
<b>Total housing units</b>	24,742	± 82	100.0%	
Occupied housing units	19,641	± 343	79.4%	± 1.3
Vacant housing units	5,101	± 331	20.6%	± 1.3
<b>YEAR STRUCTURE BUILT</b>				
<b>Total housing units</b>	24,742	± 82	100.0%	
Built 2014 or later	0	± 24	0.0%	± 0.1
Built 2010 to 2013	275	± 89	1.1%	± 0.4
Built 2000 to 2009	1,908	± 245	7.7%	± 1.0
Built 1990 to 1999	2,358	± 244	9.5%	± 1.0
Built 1980 to 1989	2,896	± 256	11.7%	± 1.0
Built 1970 to 1979	3,550	± 301	14.3%	± 1.2
Built 1960 to 1969	2,041	± 184	8.2%	± 0.7
Built 1950 to 1959	1,789	± 208	7.2%	± 0.8
Built 1940 to 1949	956	± 171	3.9%	± 0.7
Built 1939 or earlier	8,969	± 349	36.3%	± 1.4
<b>HOUSING TENURE</b>				
<b>Occupied housing units</b>	19,641	± 343	100.0%	
Owner-occupied	14,785	± 423	75.3%	± 1.9
Renter-occupied	4,856	± 388	24.7%	± 1.9
<b>HOUSE HEATING FUEL</b>				
<b>Occupied housing units</b>	19,641	± 343	100.0%	
Utility gas	2,956	± 232	15.1%	± 1.2
Bottled, tank, or LP gas	2,875	± 216	14.6%	± 1.1
Electricity	3,156	± 236	16.1%	± 1.2
Fuel oil, kerosene, etc.	6,686	± 340	34.0%	± 1.6
Coal or coke	511	± 126	2.6%	± 0.6
Wood	3,017	± 248	15.4%	± 1.2
Solar energy	0	± 24	0.0%	± 0.2
Other fuel	408	± 102	2.1%	± 0.5
No fuel used	32	± 19	0.2%	± 0.1
<b>VALUE</b>				
<b>Owner-occupied units</b>	14,785	± 423	100.0%	
Less than \$50,000	2,963	± 306	20.0%	± 1.8
\$50,000 to \$99,999	5,141	± 328	34.8%	± 2.1
\$100,000 to \$149,999	3,280	± 273	22.2%	± 1.7
\$150,000 to \$199,999	1,588	± 177	10.7%	± 1.2
\$200,000 to \$299,999	1,089	± 149	7.4%	± 1.0
\$300,000 to \$499,999	481	± 107	3.3%	± 0.7
\$500,000 to \$999,999	213	± 85	1.4%	± 0.6
\$1,000,000 or more	30	± 32	0.2%	± 0.2
Median (dollars)	91,700	± 3,379		

Source: 2011-2015 American Community Survey

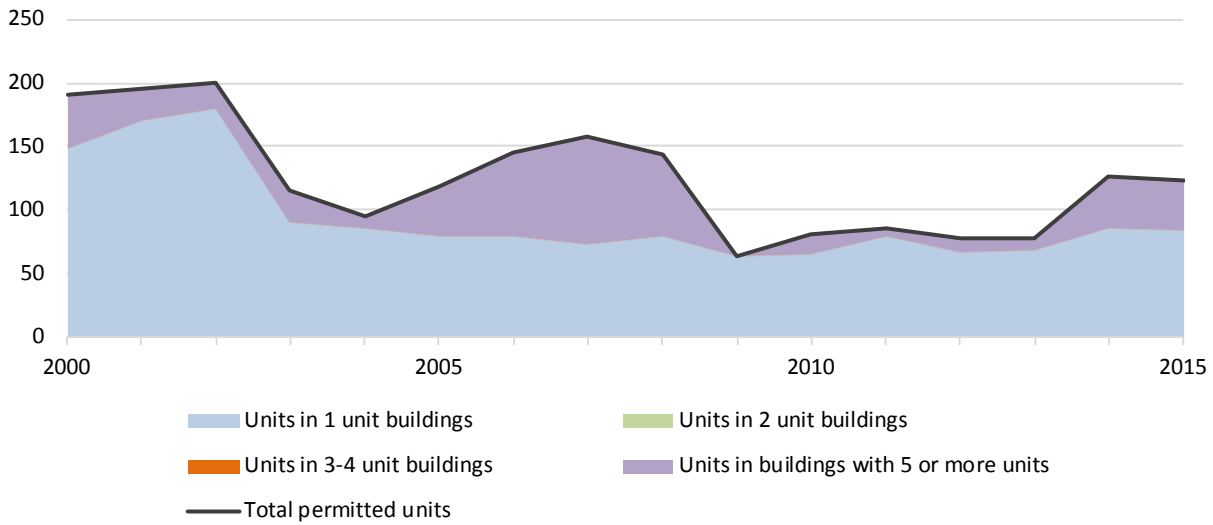
## 7.2 Historical data on number of housing units and occupancy status

Year	Number of Housing Units	Change since previous Census	Occupied	Occupancy rate	Vacant
1970	15,427		13,839	89.7%	1,588
1980	18,864	22.3%	16,858	89.4%	2,006
1990	22,164	17.5%	19,141	86.4%	3,023
2000	23,890	7.8%	19,926	83.4%	3,964
2010	24,710	3.4%	20,436	82.7%	4,274

Source: 1970-2010 Decennial Census

## 7.3 Building Permits 2000-2015

Building permits by number of permitted units in building, Chenango County



Source: Census Bureau Building Permits Survey

## 8 Education

### 8.1 Enrollment by level of school

	Estimate	Margin of error
<b>Total enrolled in school</b>	10,845	± 308
Nursery school, preschool	563	± 135
Kindergarten to 12th grade	8,283	± 160
Kindergarten	542	± 123
Elementary: grade 1 to grade 4	2,282	± 174
Elementary: grade 5 to grade 8	2,582	± 169
High school: grade 9 to grade 12	2,877	± 151
College, undergraduate	1,673	± 270
Graduate, professional school	326	± 120

Source: 2011-2015 American Community Survey

### 8.2 Enrollment by age

	Estimate	Margin of error
3 and 4 years	48.0%	± 9.3
5 to 9 years	97.1%	± 1.4
10 to 14 years	98.2%	± 1.3
15 to 17 years	93.0%	± 4.6
18 and 19 years	72.1%	± 6.3
20 to 24 years	27.3%	± 5.0
25 to 34 years	8.6%	± 2.7
35 years and over	1.7%	± 0.5

Source: 2011-2015 American Community Survey

### 8.3 Percentage age 18-24 enrolled in college

	Estimate	Margin of error
Population 18 to 24 years	4,003	± 59
Enrolled in college or graduate school	26.3%	± 4.2
Males 18 to 24 years	2,090	± 55
Enrolled in college or graduate school	20.9%	± 4.4
Females 18 to 24 years	1,913	± 39
Enrolled in college or graduate school	32.1%	± 6.7

Source: 2011-2015 American Community Survey

## 8.4 Educational attainment

	COUNT		PERCENTAGE	
	Estimate	Margin of error	Estimate	Margin of error
<b>Population 25 years and over</b>	34,918	± 74	100%	
<b>EDUCATIONAL ATTAINMENT</b>				
Less than 9th grade	1,249	± 200	3.6%	± 0.6
9th to 12th grade, no diploma	3,218	± 278	9.2%	± 0.8
High school graduate (includes equivalency)	13,675	± 482	39.2%	± 1.4
Some college, no degree	6,736	± 356	19.3%	± 1.0
Associate's degree	3,952	± 309	11.3%	± 0.9
Bachelor's degree	3,315	± 298	9.5%	± 0.9
Graduate or professional degree	2,773	± 320	7.9%	± 0.9
Percent high school graduate or higher			87.2%	± 1.0
Percent bachelor's degree or higher			17.4%	± 1.2

Source: 2011-2015 American Community Survey

## 9 Language spoken at home

	COUNT		PERCENTAGE		SPEAK ENGLISH LESS THAN "VERY WELL"	
	Estimate	Margin of error	Estimate	Margin of error	Estimate	Margin of error
<b>Population 5 years and over</b>	46,989	± 31	100%			
<b>LANGUAGE SPOKEN AT HOME</b>						
English only	45,479	± 234	96.8%	± 0.5		
Language other than English	1,510	± 229	3.2%	± 0.5	533	± 158
Spanish	693	± 132	1.5%	± 0.3	330	± 119
Other Indo-European languages	674	± 179	1.4%	± 0.4	165	± 80
Asian and Pacific Islander languages	97	± 43	0.2%	± 0.1	38	± 33
Other languages	46	± 43	0.1%	± 0.1	0	± 24

Source: 2011-2015 American Community Survey

## 10 Labor Force Characteristics

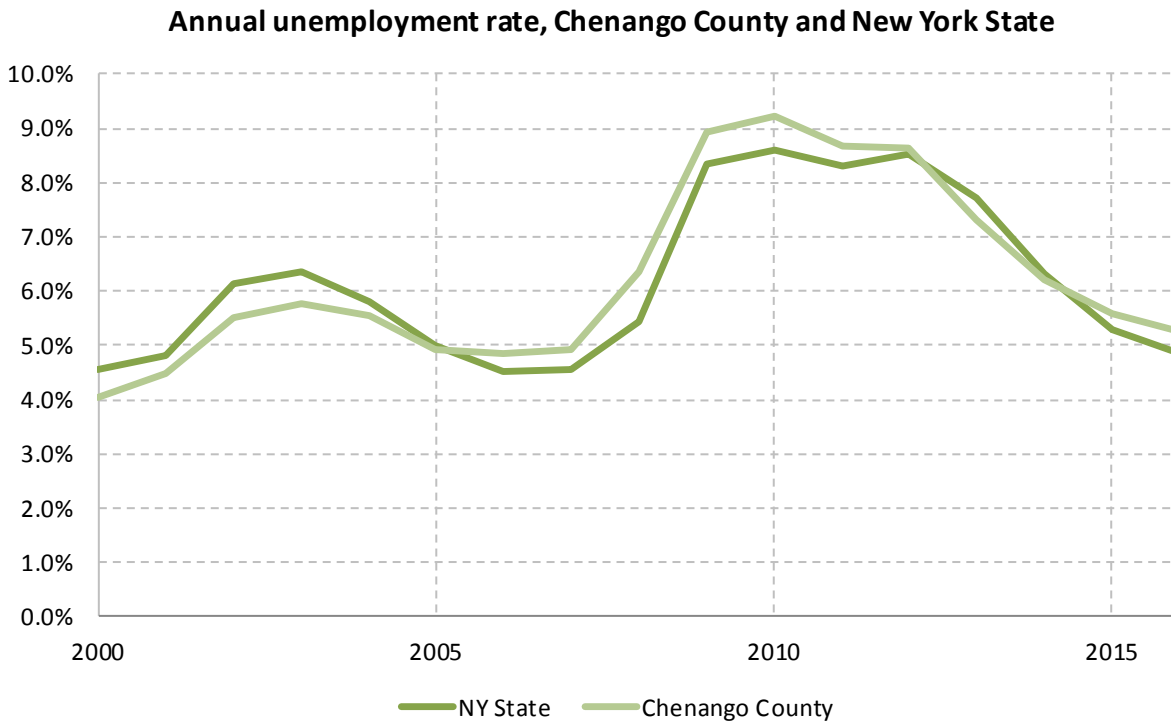
### 10.1 Labor force, employment and unemployment

	TOTAL		IN LABOR FORCE		EMPLOYED		UNEMPLOYMENT RATE	
	Estimate	Margin of error	Estimate	Margin of error	Estimate	Margin of error	Estimate	Margin of error
<b>Population 16 years and over</b>	40,359	± 117	57.8%	± 1.3	53.6%	± 1.4	7.1%	± 1.0
<b>AGE</b>								
16 to 19 years	2,551	± 130	34.7%	± 5.2	27.8%	± 4.6	19.8%	± 5.6
20 to 24 years	2,890	± 49	78.8%	± 3.8	68.1%	± 4.6	13.3%	± 3.4
25 to 29 years	2,600	± 69	77.7%	± 4.7	69.4%	± 5.5	10.5%	± 3.9
30 to 34 years	2,629	± 78	80.5%	± 4.6	75.0%	± 5.3	6.7%	± 3.2
35 to 44 years	5,649	± 63	78.9%	± 3.6	73.9%	± 4.0	6.2%	± 1.9
45 to 54 years	7,574	± 62	76.7%	± 2.7	73.1%	± 2.6	4.5%	± 1.3
55 to 59 years	4,223	± 238	67.6%	± 5.0	63.6%	± 5.1	5.9%	± 2.0
60 to 64 years	3,175	± 226	50.0%	± 4.9	48.2%	± 4.7	3.5%	± 1.9
65 to 74 years	5,172	± 43	21.5%	± 2.6	20.9%	± 2.6	2.8%	± 1.9
75 years and over	3,896	± 36	5.5%	± 1.6	5.0%	± 1.5	10.2%	± 8.2
<b>RACE AND HISPANIC OR LATINO ORIGIN</b>								
White alone	39,035	± 133	57.7%	± 1.3	53.6%	± 1.4	7.0%	± 1.0
Black or African American alone	359	± 50	39.8%	± 14.3	39.8%	± 14.3	0.0%	± 18.8
American Indian and Alaska Native alone	131	± 47	56.5%	± 17.2	38.2%	± 17.7	32.4%	± 26.5
Asian alone	239	± 55	76.6%	± 11.4	74.1%	± 11.9	3.3%	± 5.6
Two or more races	406	± 114	62.8%	± 11.0	57.6%	± 11.1	8.2%	± 8.0
Hispanic or Latino origin (of any race)	730	± 21	65.6%	± 7.0	58.8%	± 8.7	10.4%	± 8.6
White alone, not Hispanic or Latino	38,564	± 104	57.7%	± 1.3	53.6%	± 1.4	6.9%	± 1.0
<b>SEX</b>								
<b>Population 20 to 64 years</b>	28,740	± 80	73.5%	± 1.5	68.4%	± 1.6	6.7%	± 1.0
Male	14,415	± 77	76.3%	± 1.8	70.7%	± 1.9	7.0%	± 1.3
Female	14,325	± 59	70.7%	± 2.4	66.2%	± 2.4	6.4%	± 1.3
With own children under 18 years	4,694	± 246	72.9%	± 4.0	68.3%	± 4.1	6.3%	± 2.2
<b>EDUCATIONAL ATTAINMENT</b>								
<b>Population 25 to 64 years</b>	25,850	± 79	72.9%	± 1.6	68.5%	± 1.7	5.9%	± 1.0
Less than high school graduate	2,570	± 280	43.1%	± 5.2	37.3%	± 5.0	13.4%	± 5.8
High school graduate (includes equivalency)	9,816	± 381	70.9%	± 2.9	65.6%	± 3.2	7.5%	± 1.9
Some college or associate's degree	8,635	± 394	78.3%	± 2.6	74.3%	± 2.6	4.8%	± 1.4
Bachelor's degree or higher	4,829	± 410	83.0%	± 2.5	80.6%	± 2.9	3.0%	± 1.4

Table formula: **LABOR FORCE** = # EMPLOYED + # UNEMPLOYED  
**% IN LABOR FORCE** = LABOR FORCE / TOTAL \* 100%  
**% EMPLOYED** = # EMPLOYED / TOTAL \* 100%  
**UNEMPLOYMENT RATE** = # UNEMPLOYED / LABOR FORCE \* 100%

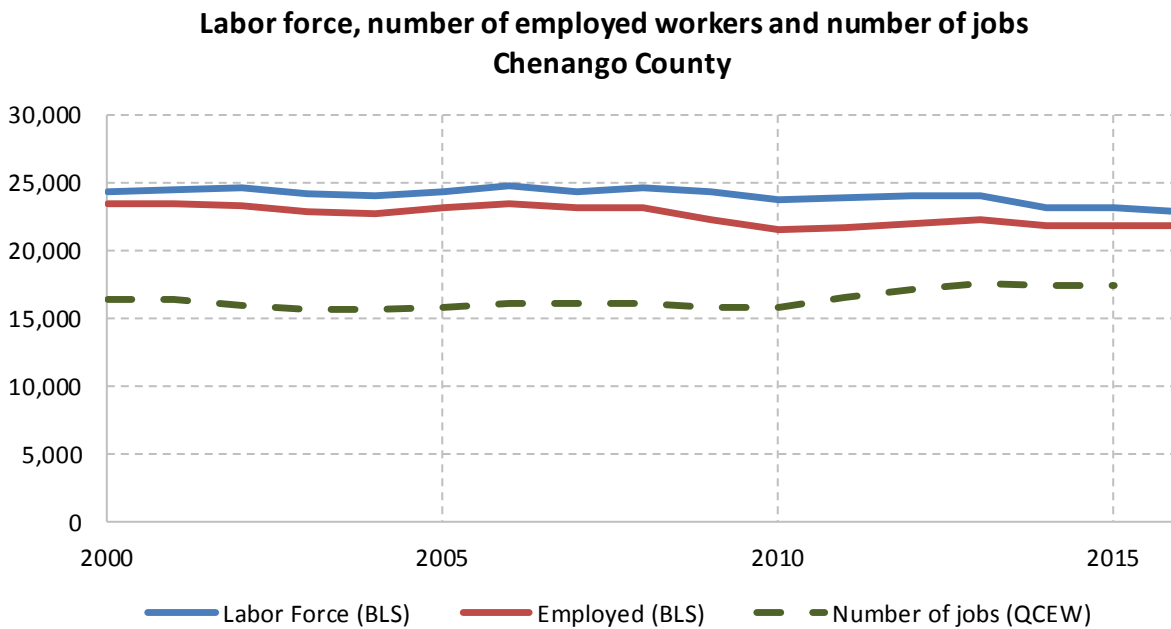
Source: 2011-2015 American Community Survey

### 10.2 Annual unemployment rate



Source: Bureau Labor Statistics (BLS)

### 10.3 Employment and number of jobs



Source: Bureau Labor Statistics (BLS) and NY Department of Labor - Quarterly Census of Employment and Wages (QCEW) – annual averages

## 10.4 Class of worker

		<b>Total</b>	<b>%Male</b>	<b>%Female</b>
Civilian employed population 16 years and over	Estimate	21,652	52.0%	48.0%
	<i>Margin of error</i>	$\pm 554$	$\pm 1.0$	$\pm 1.0$
Private for-profit wage and salary workers:	Estimate	13,301	56.1%	43.9%
	<i>Margin of error</i>	$\pm 569$	$\pm 1.5$	$\pm 1.5$
Employee of private company workers	Estimate	12,909	55.2%	44.8%
	<i>Margin of error</i>	$\pm 565$	$\pm 1.5$	$\pm 1.5$
Self-employed in own incorporated business workers	Estimate	392	87.2%	12.8%
	<i>Margin of error</i>	$\pm 92$	$\pm 6.2$	$\pm 6.2$
Private not-for-profit wage and salary workers	Estimate	1,895	28.8%	71.2%
	<i>Margin of error</i>	$\pm 211$	$\pm 4.3$	$\pm 4.3$
Local government workers	Estimate	2,522	43.2%	56.8%
	<i>Margin of error</i>	$\pm 292$	$\pm 4.6$	$\pm 4.6$
State government workers	Estimate	1,853	40.4%	59.6%
	<i>Margin of error</i>	$\pm 241$	$\pm 5.5$	$\pm 5.5$
Federal government workers	Estimate	251	53.0%	47.0%
	<i>Margin of error</i>	$\pm 79$	$\pm 14.1$	$\pm 14.1$
Self-employed in own not incorporated business workers and unpaid family workers	Estimate	1,830	69.2%	30.8%
	<i>Margin of error</i>	$\pm 280$	$\pm 5.3$	$\pm 5.3$

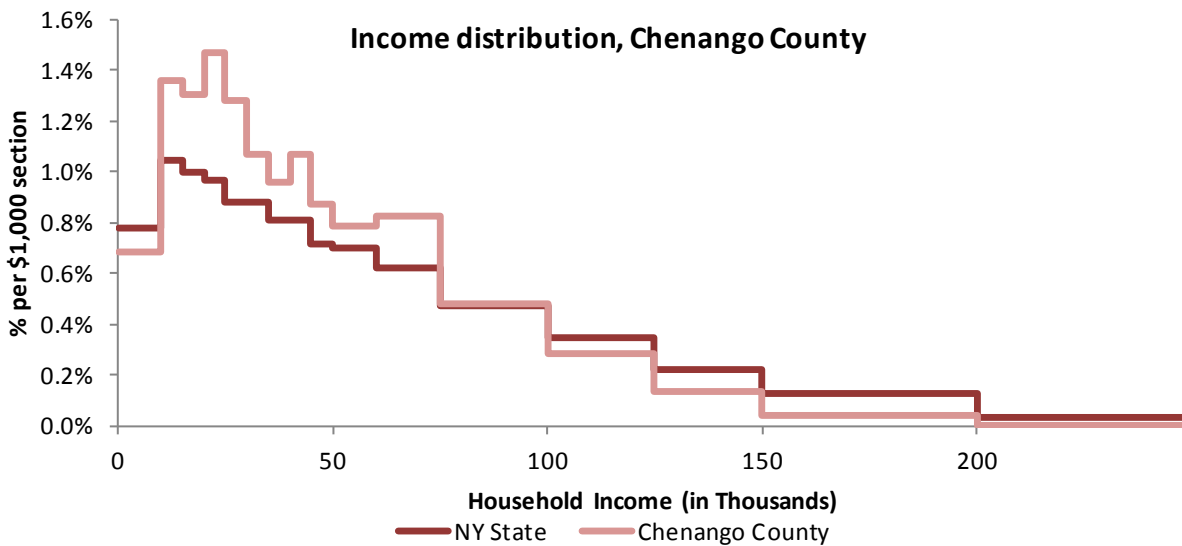
Source: 2011-2015 American Community Survey

## 11 Household Income

### 11.1 Income Distribution

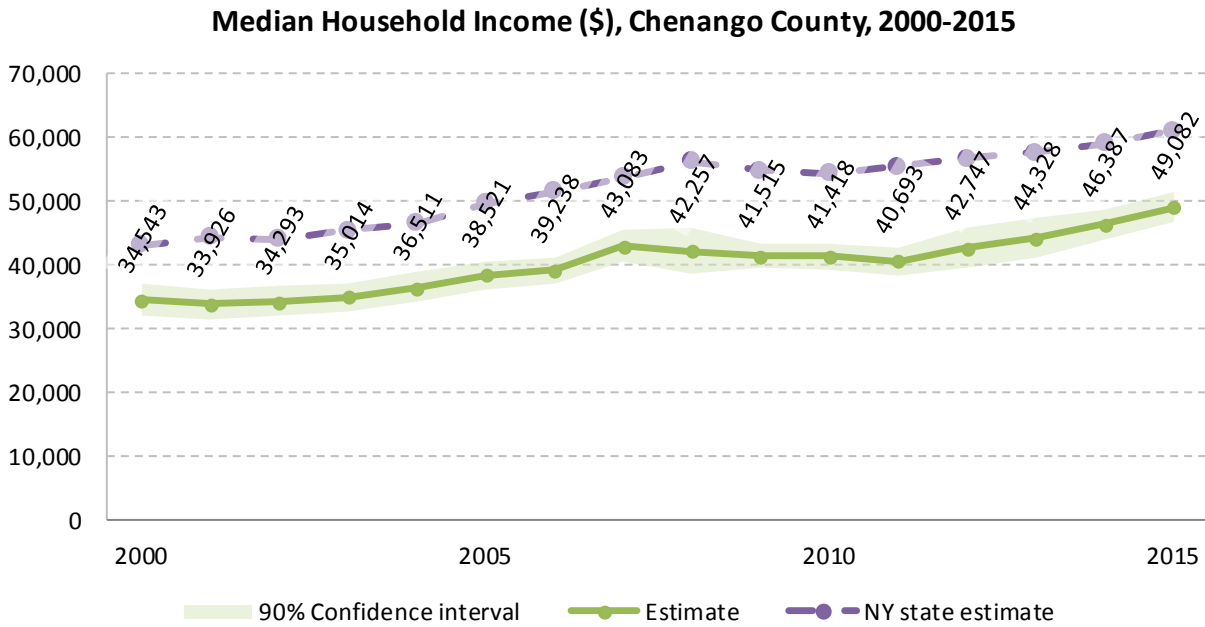
	Estimate	Margin of error	Interval width (in \$1,000)	Est. per \$1,000 section
<b>Total:</b>	19,641	± 343		
Less than \$10,000	1,340	± 200	10	134.0
\$10,000 to \$14,999	1,337	± 195	5	267.4
\$15,000 to \$19,999	1,281	± 154	5	256.2
\$20,000 to \$24,999	1,445	± 177	5	289.0
\$25,000 to \$29,999	1,259	± 187	5	251.8
\$30,000 to \$34,999	1,053	± 154	5	210.6
\$35,000 to \$39,999	942	± 148	5	188.4
\$40,000 to \$44,999	1,054	± 157	5	210.8
\$45,000 to \$49,999	855	± 135	5	171.0
\$50,000 to \$59,999	1,552	± 177	10	155.2
\$60,000 to \$74,999	2,441	± 254	15	162.7
\$75,000 to \$99,999	2,377	± 239	25	95.1
\$100,000 to \$124,999	1,388	± 191	25	55.5
\$125,000 to \$149,999	669	± 141	25	26.8
\$150,000 to \$199,999	437	± 72	50	8.7
\$200,000 or more	211	± 66	-	-

Source: 2011-2015 American Community Survey



Source: 2011-2015 American Community Survey

## 11.2 Median household income: Trends over time



Source: Small Area Income and Poverty Estimates (SAIPE)

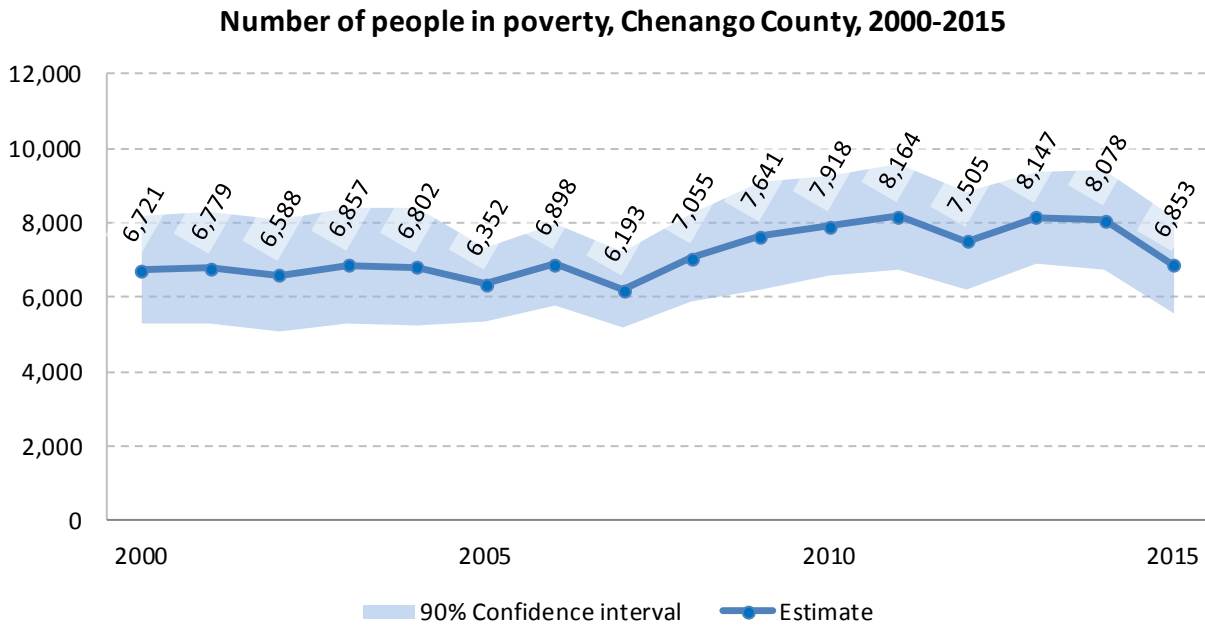
## 12 Poverty

### 12.1 Family Income to Poverty Ratio

	TOTAL		PERCENT OF ALL	
	Estimate	Margin of error	Estimate	Margin of error
<b>All families</b>	12,634	± 356		
<b>ALL FAMILIES WITH INCOME:</b>				
Below 50 percent of poverty level	440	± 103	3.5%	± 0.8
<b>Below 100 percent of poverty level</b>	1,364	± 191	<b>10.8%</b>	<b>± 1.5</b>
Below 125 percent of poverty level	1,883	± 216	14.9%	± 1.7
Below 150 percent of poverty level	2,503	± 242	19.8%	± 1.8
Below 185 percent of poverty level	3,490	± 281	27.6%	± 2.1
Below 200 percent of poverty level	3,849	± 299	30.5%	± 2.2
Below 300 percent of poverty level	6,131	± 311	48.5%	± 2.0
Below 400 percent of poverty level	8,291	± 358	65.6%	± 2.1
Below 500 percent of poverty level	9,912	± 352	78.5%	± 1.7

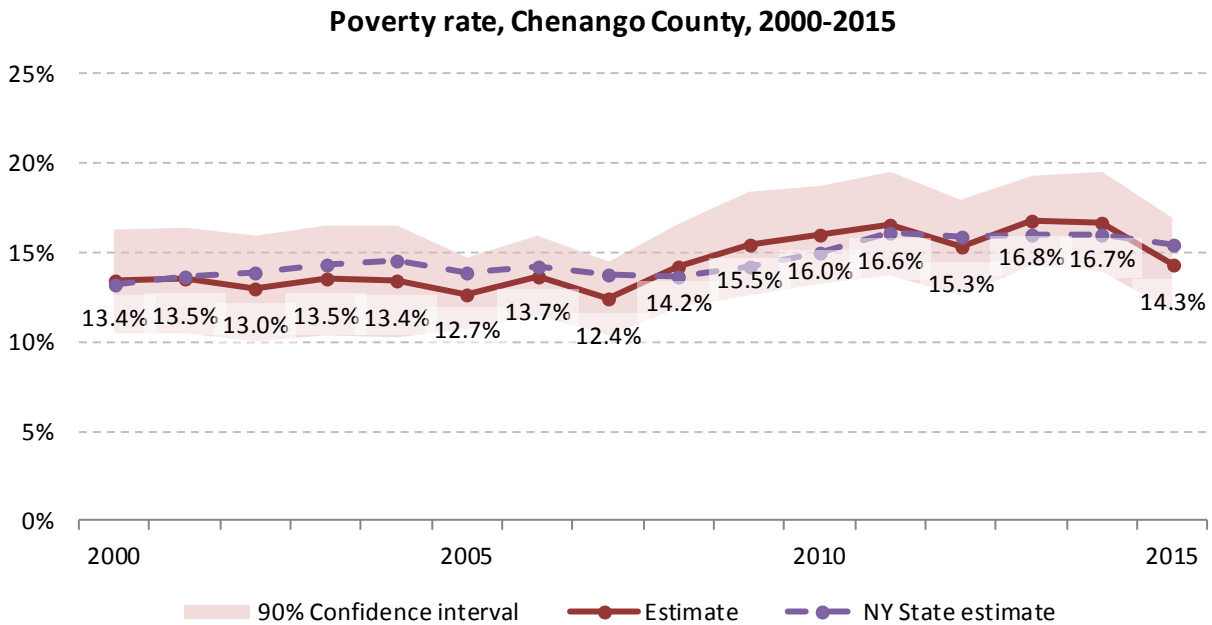
Source: 2011-2015 American Community Survey

12.2 Poverty: Trends over time: Count



Source: Small Area Income and Poverty Estimates (SAIPE)

12.3 Poverty: Trends over time: Rate



Source: Small Area Income and Poverty Estimates (SAIPE)

## 12.4 Poverty characteristics

	TOTAL		BELOW POVERTY LEVEL		PERCENT BELOW POVERTY LEVEL	
	Estimate	Margin of error	Estimate	Margin of error	Estimate	Margin of error
<b>Population for whom poverty status is determined</b>	48,794	± 163	7,741	± 800	15.9%	± 1.6
<b>AGE</b>						
Under 18 years	10,376	± 120	2,447	± 398	23.6%	± 3.8
Under 5 years	2,541	± 38	709	± 148	27.9%	± 5.9
5 to 17 years	7,835	± 130	1,738	± 313	22.2%	± 4.0
18 to 34 years	9,112	± 94	1,833	± 280	20.1%	± 3.0
35 to 64 years	20,567	± 78	2,854	± 321	13.9%	± 1.6
65 years and over	8,739	± 106	607	± 145	6.9%	± 1.6
<b>SEX</b>						
Male	24,348	± 118	3,403	± 441	14.0%	± 1.8
Female	24,446	± 142	4,338	± 442	17.7%	± 1.8
<b>RACE AND HISPANIC OR LATINO ORIGIN</b>						
White alone	47,009	± 184	7,197	± 748	15.3%	± 1.6
Black or African American alone	366	± 86	148	± 90	40.4%	± 20.5
American Indian and Alaska Native alone	134	± 48	36	± 32	26.9%	± 25.6
Asian alone	265	± 57	33	± 29	12.5%	± 11.0
Hispanic or Latino origin (of any race)	989	± 30	229	± 134	23.2%	± 13.5
White alone, not Hispanic or Latino	46,414	± 173	7,106	± 744	15.3%	± 1.6
<b>EDUCATIONAL ATTAINMENT</b>						
<b>Population 25 years and over</b>	34,468	± 149	4,350	± 433	12.6%	± 1.3
Less than high school graduate	4,330	± 340	1,101	± 176	25.4%	± 3.6
High school graduate (includes equivalency)	13,451	± 498	2,031	± 308	15.1%	± 2.2
Some college, associate's degree	10,642	± 432	945	± 177	8.9%	± 1.6
Bachelor's degree or higher	6,045	± 431	273	± 72	4.5%	± 1.2
<b>EMPLOYMENT STATUS</b>						
<b>Civilian labor force 16 years and over</b>	23,297	± 527	1,887	± 258	8.1%	± 1.1
Employed	21,652	± 554	1,387	± 217	6.4%	± 1.0
Male	11,249	± 320	547	± 116	4.9%	± 1.0
Female	10,403	± 377	840	± 152	8.1%	± 1.5
Unemployed	1,645	± 233	500	± 129	30.4%	± 6.5
Male	905	± 161	213	± 70	23.5%	± 7.2
Female	740	± 147	287	± 100	38.8%	± 10.2
<b>WORK EXPERIENCE IN THE PAST 12 MONTHS</b>						
<b>Population 16 years and over</b>	10,403	± 377	840	± 152	8.1%	± 1.5
Worked full-time, year-round	1,645	± 233	500	± 129	30.4%	± 6.5
Worked part-time or part-year	905	± 161	213	± 70	23.5%	± 7.2
Did not work	740	± 147	287	± 100	38.8%	± 10.2

Source: 2011-2015 American Community Survey

## 13 Glossary

**American Community Survey (ACS)** - The American Community Survey is an ongoing survey of the population that provides data every year on a variety of social and economic characteristics—age, sex, race, family and relationships, income and benefits, health insurance, education, veteran status, disabilities, where you work and how you get there, where you live and how much you pay for some essentials. The ACS replaced the information previously gathered by what was known as the “long form” of the decennial censuses. The ACS provides communities, companies and other institutions with current information they need to plan investments and services. Information from the survey generates data that help determine how more than \$400 billion in federal and state funds are distributed each year. Every estimate presented in the American Community Survey, as in other surveys, has an uncertainty associated with it. Often the magnitude of that uncertainty is expressed as the Margin of Error.

**Confidence Interval (CI)** - indication of the degree of uncertainty about a sample estimates. Confidence intervals have been traditionally reported at the 90, 95 and 99 percent levels. A 90 percent confidence interval can be interpreted, for example, roughly as providing 90 percent certainty that the interval defined by the upper and lower bounds contain the true value of the characteristic. If a Margin of Error is given, the lower bound of the confidence interval is equal to the estimate minus the Margin of Error and the upper bound is equal to the estimate plus the Margin of Error. (See further, Margin of Error definition below.)

**County subdivision or Minor Civil Division (MCD)** - The Census Bureau geography for primary administrative units below the county level in New York is collectively referred to as county subdivisions or minor civil divisions. These include towns, cities and Indian Reservations.

**Decennial Census** - the Census of the population and housing taken every 10 years in the United States, at the start of each decade, since 1790.

**Employed** – either “at work” or “with a job, but not at work”.

**Group Quarters Population** - all U.S. residents who live in group living facilities including correctional institutions, juvenile facilities, skilled nursing facilities, college residence halls, military barracks, group homes, and workers' dormitories.

**Household Population** - all U.S. residents who live in housing units such as single family homes, townhouses, apartments, and mobile homes.

**Intercensal Population Estimates** - estimates produced for the years between two decennial censuses when both the beginning and ending populations are known. They are produced once a decade by adjusting the existing time series of postcensal estimates for the entire decade to smooth the transition from one decennial census count to the next. They differ from the postcensal estimates that are released annually because the difference between the April 1 postcensal estimate and April 1 census count for the end of the decade is redistributed across the estimates for that decade. For dates when both postcensal and intercensal estimates are available, intercensal estimates are preferred.

**Labor Force** - consists of people classified as employed or unemployed.

**Margin of Error (MOE)** - a measure of the precision of an estimate at a given level of confidence. The confidence level of a margin of error indicates the likelihood that the difference between the population value (which you

would get if you could measure the whole population instead of a sample) and the estimate is less than or equal to the margin of error. The range from the estimate minus the margin of error to the estimate plus the margin of error is called the confidence interval. All ACS estimates are published with their margins of error at the 90 percent confidence level. Margins of error are useful in assessing the reliability of estimates and whether differences between estimates are significant.

**Numeric Population Change** - difference between the population of an area at the beginning and end of a time period. It is computed by taking the difference between the population at one point in time ( $t_1$ ) and some future time ( $t_2$ ).

**Percent Population Change** - difference between the population of an area at the beginning and end of a time period, expressed as a percentage of the beginning population. It is computed by dividing the population change ( $t_2 - t_1$ ) by  $t_1$  and multiplying the result by 100.

**Population Estimates** - The calculated number of people living in an area as of a specified point in time, usually July 1st. The estimated population is calculated using a component of change model that incorporates information on natural increase (births, deaths) and net migration (net domestic migration, net international migration) that has occurred in an area since the latest decennial census. A procedure for estimating the current population using a procedure involving a "base population" value at time  $t-1$ , adding to that the births during the interval  $t-1$  to  $t$ , subtracting the deaths during that interval  $t-1$  to  $t$ , and then adding the net domestic and net international migration that occurred during that interval.

**Population Density** - Total number of people per areal unit like a square mile or square kilometer.

**Population Pyramids** - A graphical way of portraying a population's age and sex composition at a given slice in time. The first horizontal bar, constituting the base of the graph, is the youngest age group (typically 0-4) with the number of males in that age group on the left and the number of females in that age group on the right. On top of that age group is another horizontal bar for the next age group (e.g. 5-9) and so forth with the top bar typically for those aged 75 and over. In a population with lots of births and deaths, the shape typically forms a pyramid with a broad base and a narrow top. It is one of the most basic ways to understand population change over time as well as between different geographic units of a similar status (e.g. counties).

**Postcensal Estimates** - estimates produced for the years after a decennial census when only the beginning population is known. They are produced and revised each year, targeted to July 1 of that year.

**Projection** - estimated population at some future time based on assumptions about births, deaths, migration, and ages.

**Race/Ethnicity** - the Census Bureau collects racial data in accordance with guidelines provided by the U.S. Office of Management and Budget (OMB), and these data are based on self-identification. The racial categories included in the census questionnaire generally reflect a social definition of race recognized in this country and not an attempt to define race biologically, anthropologically, or genetically. In addition, it is recognized that the categories of the race item include racial and national origin or sociocultural groups. People may choose to report more than one race to indicate their racial mixture, such as "American Indian" and "White." People who identify their origin as Hispanic, Latino, or Spanish may be of any race. OMB requires five minimum categories: White, Black or African American, American Indian or Alaska Native, Asian, and Native Hawaiian or Other Pacific Islander. Hispanics may be classified as white or black. So we generally separate them out as an ethnic group first.

**Unemployed** – Not employed, but actively looking for work and available to accept a job.

**Unemployment rate** – Fraction of the Labor Force that is unemployed.

**Urban Area** – A densely settled area with at least 2,500 people. If the total number of people is less than 50,000 the Census Bureau calls it an Urban Cluster, otherwise an Urbanized Area.

**Vintage** - each year, the U.S. Census Bureau produces and publishes estimates of the population for each state and county, as well as the nation as a whole. These are called “vintages.” In producing these vintages, the Bureau utilizes administrative data from a number of sources to estimate 1) the change in population since the most recent decennial census, and 2) the population for each year since the most recent decennial census. With each annual release of population estimates (vintage), the entire time series of estimates beginning on April 1, 2010 is revised and updated.

**Vital Statistics** - quantitative data concerning a population, such as the number of births, marriages, and deaths.

## 14 References

Chenango County homepage: <https://www.co.chenango.ny.us/>

At Cornell:

- Program on Applied Demographics (PAD)  
URL: <http://pad.human.cornell.edu/>
  - More county trends: <https://pad.human.cornell.edu/counties/trends1geo.cfm?geo=17>
- Community and Regional Development Institute (CaRDI)  
URL: <https://cardi.cals.cornell.edu/>
- Cornell Cooperative Extensions (CCE)  
Home page: <http://www.cce.cornell.edu>
  - Chenango local office: <http://ccechenango99.squarespace.com/>

Data sources and background information:

- New York State Data Center
  - <https://labor.ny.gov/nys-data-center/index.shtm>
- U.S. Census Bureau - general
  - QuickFacts: <https://www.census.gov/quickfacts/table/PST045216/36,36017>
  - American FactFinder: <http://factfinder.census.gov/>
- U.S. Census Bureau - population
  - Decennial Census
    - Background: <https://www.census.gov/2010census/>
    - Demographic Profile: [http://factfinder2.census.gov/bkmk/table/1.0/en/DEC/10\\_SF1/SF1DP1/0500000US36017](http://factfinder2.census.gov/bkmk/table/1.0/en/DEC/10_SF1/SF1DP1/0500000US36017)
  - American Community Survey (ACS)
    - Background: <https://www.census.gov/programs-surveys/acs/>
    - Social Data Profile: [http://factfinder2.census.gov/bkmk/table/1.0/en/ACS/15\\_5YR/DP02/0500000US36017](http://factfinder2.census.gov/bkmk/table/1.0/en/ACS/15_5YR/DP02/0500000US36017)
    - Economic Data Profile: [http://factfinder2.census.gov/bkmk/table/1.0/en/ACS/15\\_5YR/DP03/0500000US36017](http://factfinder2.census.gov/bkmk/table/1.0/en/ACS/15_5YR/DP03/0500000US36017)
    - Housing Data Profile: [http://factfinder2.census.gov/bkmk/table/1.0/en/ACS/15\\_5YR/DP04/0500000US36017](http://factfinder2.census.gov/bkmk/table/1.0/en/ACS/15_5YR/DP04/0500000US36017)
    - Demographics Data Profile: [http://factfinder2.census.gov/bkmk/table/1.0/en/ACS/15\\_5YR/DP05/0500000US36017](http://factfinder2.census.gov/bkmk/table/1.0/en/ACS/15_5YR/DP05/0500000US36017)
  - Population estimates:
    - General: <https://www.census.gov/programs-surveys/popest.html>
    - Explorer: <https://www.census.gov/censusexplorer/censusexplorer-popest.html>
- U.S. Census Bureau – Small Area Income & Poverty Estimates (SAIPE)
  - <http://www.census.gov/did/www/saipe/>
- U.S. Census Bureau - Public Use Quarterly Workforce Indicators (QWI) – annual averages
  - <https://qwiexplorer.ces.census.gov/static/explore.html>
- U.S. Census Bureau – Building Permits Survey
  - <https://www.census.gov/construction/bps/>

- Bureau Labor Statistics (BLS)
  - Local Area Unemployment Statistics: <http://www.bls.gov/lau/>
  - Quarterly Census of Employment and Wages (QCEW): <https://www.bls.gov/cew/data.htm>
- NY Department of Labor -
  - Labor statistics: <https://labor.ny.gov/stats/index.shtm>
  - Quarterly Census of Employment and Wages (QCEW): <https://labor.ny.gov/stats/LSQCEW.shtm>
- NY State Department of Health
  - Vital Statistics: [https://www.health.ny.gov/statistics/vital\\_statistics/](https://www.health.ny.gov/statistics/vital_statistics/)
- Bureau of Economic Analysis (BEA) – Local Area Personal Income and Employment: <http://bea.gov/iTable/iTable.cfm?ReqID=70&step=1>

Alternative sites for data retrieval:

- The Nelson A. Rockefeller Institute of Government – New York State Statistical Yearbooks [http://www.rockinst.org/nys\\_statistics/](http://www.rockinst.org/nys_statistics/)
- Headwaters Economics: Economic Profile System – Human Dimensions Toolkit <http://headwaterseconomics.org/tools/eps-hdt>
- National Historical Geographic Information System (NHGIS) <https://www.nhgis.org/>
- Social Explorer <http://www.socialexplorer.com/pub/home/home.aspx>
- Stats America <http://www.statsamerica.org/Default.aspx>
- Missouri Census Data Center <http://mcdc.missouri.edu/>
- DataFerret <http://dataferrett.census.gov/>
- Investigative Reporters and Editors (IRE) Census project <http://census.ire.org/>