

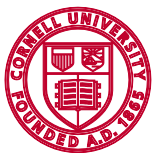
# Cattaraugus County Profile 2017

*A collection of recent demographic, social and economic data*

Compiled by

Jan Vink

Cornell Program on Applied Demographics



Cornell University



Program  
on Applied  
Demographics  
CORNELL POPULATION CENTER

This profile is a part of a set of profiles generated for each county in New York State. The profiles were developed and generated by the Cornell Program on Applied Demographics. The work is sponsored by the New York State Data Center in the New York State Department of Labor.

Cornell Program on Applied Demographics:

The Program on Applied Demographics (PAD) brings skills in demographics, economics, statistics, data gathering and data analysis together to provide a variety of organizations with data, information and advice. PAD is located in the Department of Policy Analysis and Management within the College of Human Ecology at Cornell University. PAD is also affiliated with the Cornell Institute for Social and Economic Research and the Cornell Population Center.

For more information: <http://pad.human.cornell.edu/>

New York State Data Center:

The New York State Data Center (NYSDC) is located in the Division of Research and Statistics within the New York State Department of Labor. The State Data Center operates as part of a nationwide effort to improve public access to data provided by the U.S. Census Bureau. The U.S. Census Bureau collects and tabulates data on a multitude of subjects such as population, social, economic and housing demographics, labor force data, health care, migration and transportation. These data play a critical role in understanding our local and larger surrounding communities. Census data also influence state and federal funding, aid decision making in the legislative process, and determine each state's number of congressional seats. As the lead agency in New York for the SDC program, the New York State Data Center helps users navigate through the multitude of surveys and products provided by the U.S. Census Bureau.

For more information: <https://labor.ny.gov/nys-data-center/>

All profiles are freely downloadable as PDF documents on the PAD website:

<http://pad.human.cornell.edu/profiles/index.cfm>

This profile is an update from the County Profile produced in 2013. The 2013 profile also contained information on agriculture related items and can be found at <https://pad.human.cornell.edu/profiles/2013/Cattaraugus.pdf>

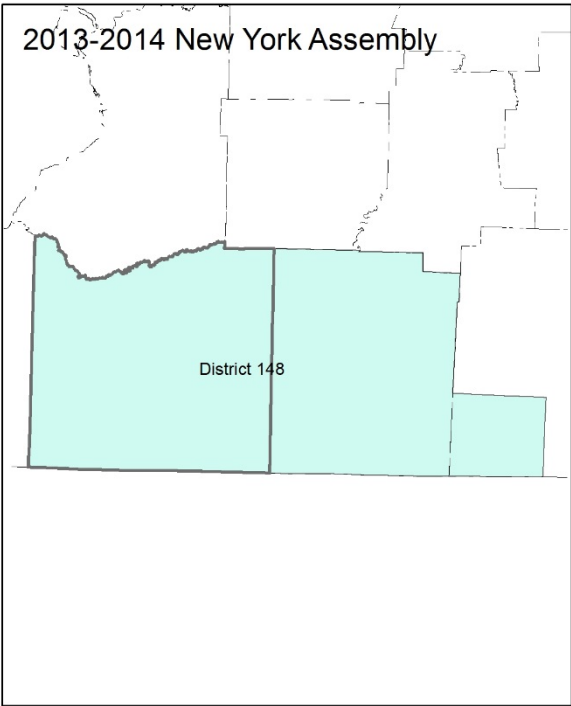
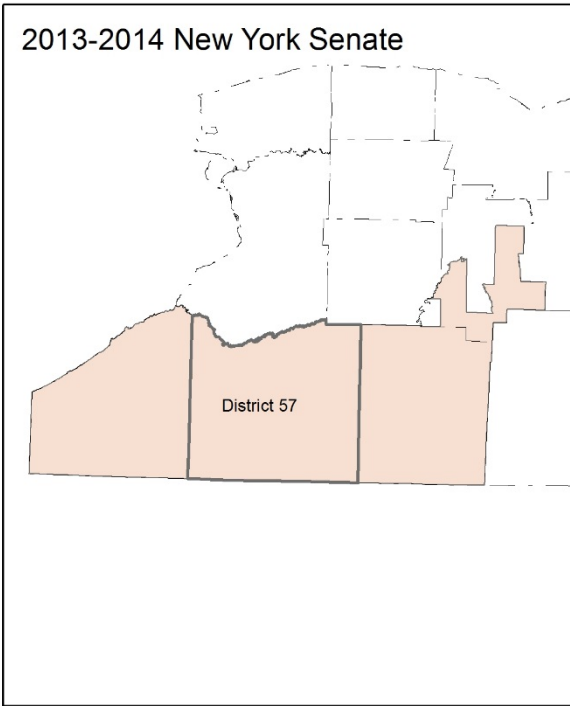
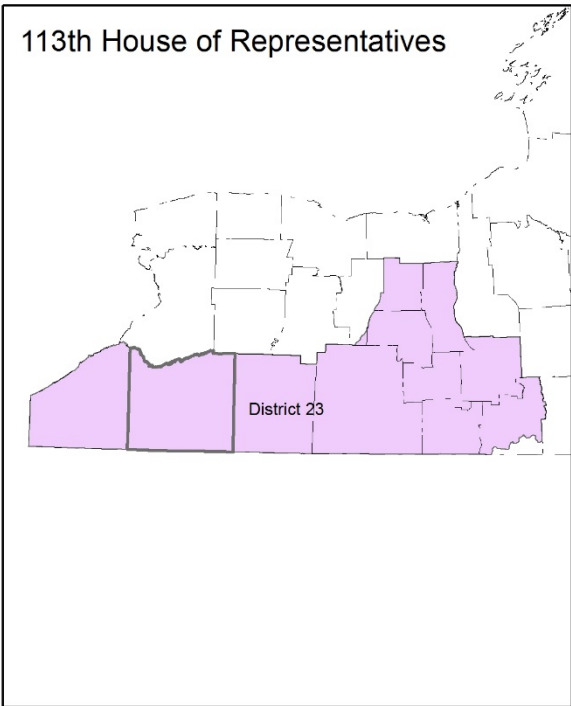
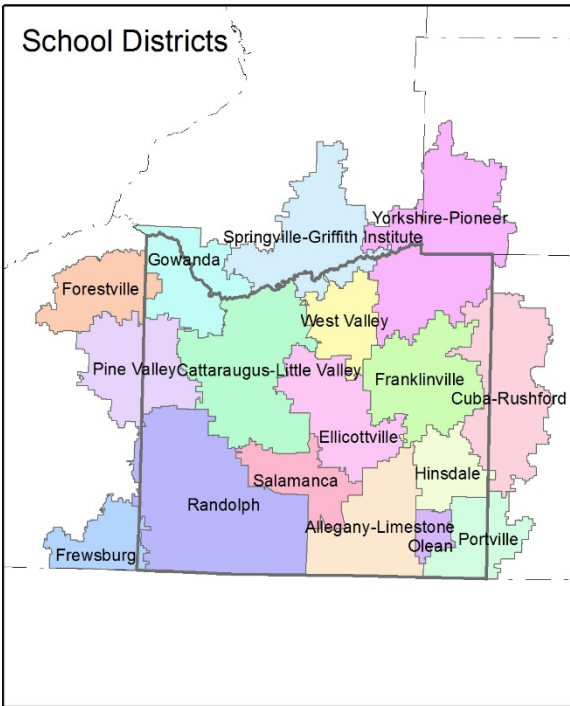
## Contents

1	Reference Maps (towns and places as defined in 2010)	3
2	Population density and Urban Areas Map	5
3	Total Population	6
3.1	Historic and projected	6
3.2	Change since previous Census	6
3.3	Annual population estimates	7
3.4	Sub County population change 2010-2015	8
3.5	Sub County population change 2010-2015	9
4	Components of population change	10
4.1	Vital Statistics	10
4.2	Migration	11
5	Population by age	12
5.1	Historic and projected population pyramids	12
5.2	Selected age groups	13
5.3	Median age	14
6	Race	15
6.1	Total and household population by race	15
6.2	Race composition by age	15
7	Housing units	16
7.1	Characteristics	16
7.2	Historical data on number of housing units and occupancy status	17
7.3	Building Permits 2000-2015	17
8	Education	18
8.1	Enrollment by level of school	18
8.2	Enrollment by age	18
8.3	Percentage age 18-24 enrolled in college	18
8.4	Educational attainment	19
9	Language spoken at home	19
10	Labor Force Characteristics	20
10.1	Labor force, employment and unemployment	20
10.2	Annual unemployment rate	21
10.3	Employment and number of jobs	21
10.4	Class of worker	22
11	Household Income	23
11.1	Income Distribution	23
11.2	Median household income: Trends over time	24
12	Poverty	24
12.1	Family Income to Poverty Ratio	24
12.2	Poverty: Trends over time: Count	25
12.3	Poverty: Trends over time: Rate	25
12.4	Poverty characteristics	26
13	Glossary	27
14	References	30

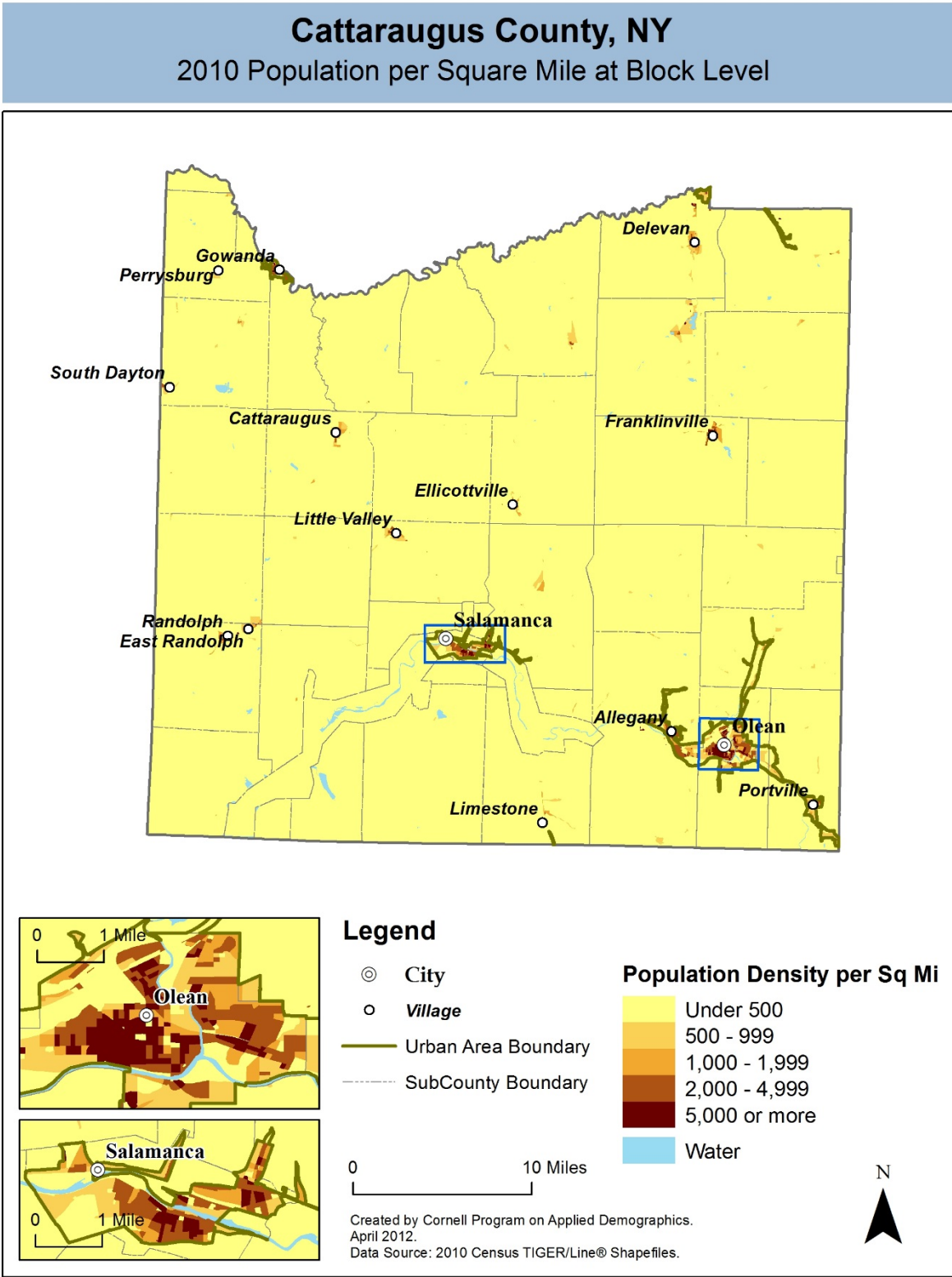
1 Reference Maps (towns and places as defined in 2010)



**Cattaraugus County, NY**  
Overlap with School and Political Districts



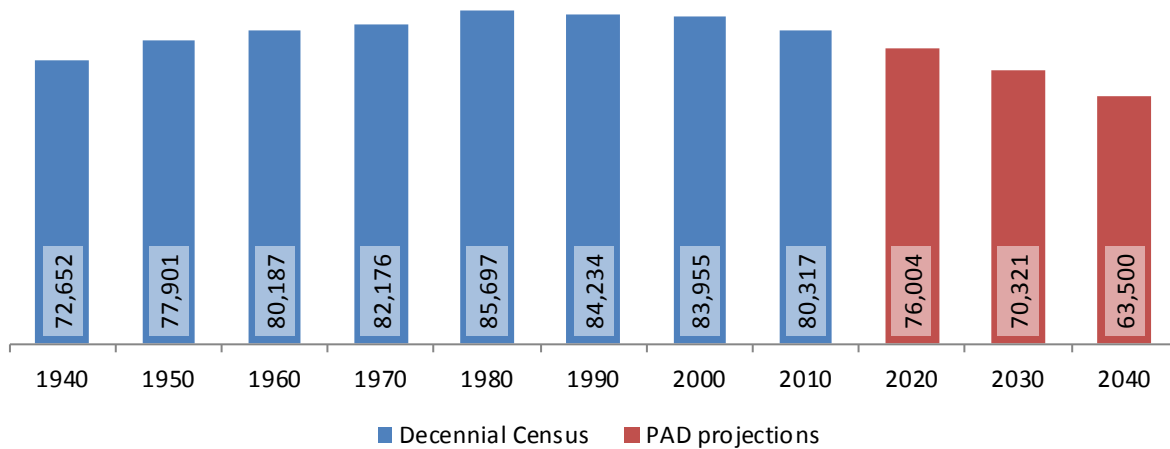
2 Population density and Urban Areas Map



### 3 Total Population

#### 3.1 Historic and projected

Total population, Cattaraugus County, 1940-2040



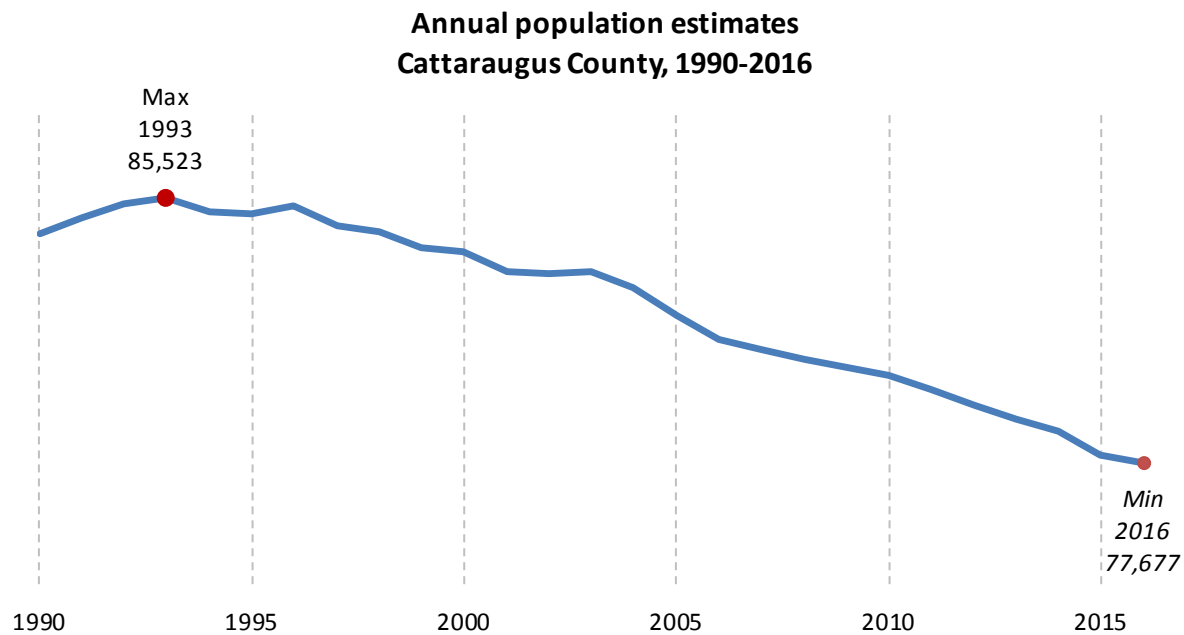
Source: 1940-2010 Decennial Census and projections by Cornell Program on Applied Demographics

#### 3.2 Change since previous Census

		Total population	Change	
			Number	Percent
Decennial Census	1940	72,652		
	1950	77,901	5,249	7.2%
	1960	80,187	2,286	2.9%
	1970	82,176	1,989	2.5%
	1980	85,697	3,521	4.3%
	1990	84,234	-1,463	-1.7%
	2000	83,955	-279	-0.3%
	2010	80,317	-3,638	-4.3%
PAD projec- tions	2020	76,004	-4,313	-5.4%
	2030	70,321	-5,683	-7.5%
	2040	63,500	-6,821	-9.7%

Source: 1940-2010 Decennial Census and projections by Cornell Program on Applied Demographics

3.3 Annual population estimates



Source: U.S. Census Bureau population estimates (1990-1999 and 2000-2009 intercensal and vintage 2016 postcensal)



### 3.4 Sub County population change 2010-2015

	Total Population		Difference	
	2000	2010	Count	%
New York State	18,976,821 *	19,378,102	401,281	2.1%
Cattaraugus County	83,955	80,317	-3,638	-4.3%
<b>Cities</b>				
Olean	15,347	14,452	-895	-5.8%
Salamanca	6,097	5,815	-282	-4.6%
<b>Towns</b>				
Allegany	8,230	8,004	-226	-2.7%
Ashford	2,223	2,132	-91	-4.1%
Carrollton	1,410	1,297	-113	-8.0%
Coldspring	751	663	-88	-11.7%
Conewango	1,732	1,857	125	7.2%
Dayton	1,945	1,886	-59	-3.0%
East Otto	1,105	1,062	-43	-3.9%
Ellicottville	1,738	1,598	-140	-8.1%
Farmersville	1,028	1,090	62	6.0%
Franklinville	3,128	2,990	-138	-4.4%
Freedom	2,493	2,405	-88	-3.5%
Great Valley	2,145	1,974	-171	-8.0%
Hinsdale	2,270	2,168	-102	-4.5%
Humphrey	721	687	-34	-4.7%
Ischua	895	859	-36	-4.0%
Leon	1,380	1,365	-15	-1.1%
Little Valley	1,788	1,740	-48	-2.7%
Lyndon	661	707	46	7.0%
Machias	2,482	2,375	-107	-4.3%
Mansfield	800	808	8	1.0%
Napoli	1,159	1,248	89	7.7%
New Albion	2,068	1,972	-96	-4.6%
Olean	2,029	1,963	-66	-3.3%
Otto	831	808	-23	-2.8%
Perrysburg	1,771	1,626	-145	-8.2%
Persia	2,512	2,404	-108	-4.3%
Portville	3,952	3,730	-222	-5.6%
Randolph	2,681	2,602	-79	-2.9%
Red House	38	38	0	0.0%
Salamanca	544	481	-63	-11.6%
South Valley	302	264	-38	-12.6%
Yorkshire	4,210	3,913	-297	-7.1%
<b>Reservations</b>				
Allegany	1,099	1,020	-79	-7.2%
Cattaraugus	388	314	-74	-19.1%
Oil Springs	2	0	-2	-100.0%

\* Original counts revised through Count Question Resolution Program (CQR)

Source: U.S. Census Bureau intercensal population estimates 2000-2010

### 3.5 Sub County population change 2010-2015

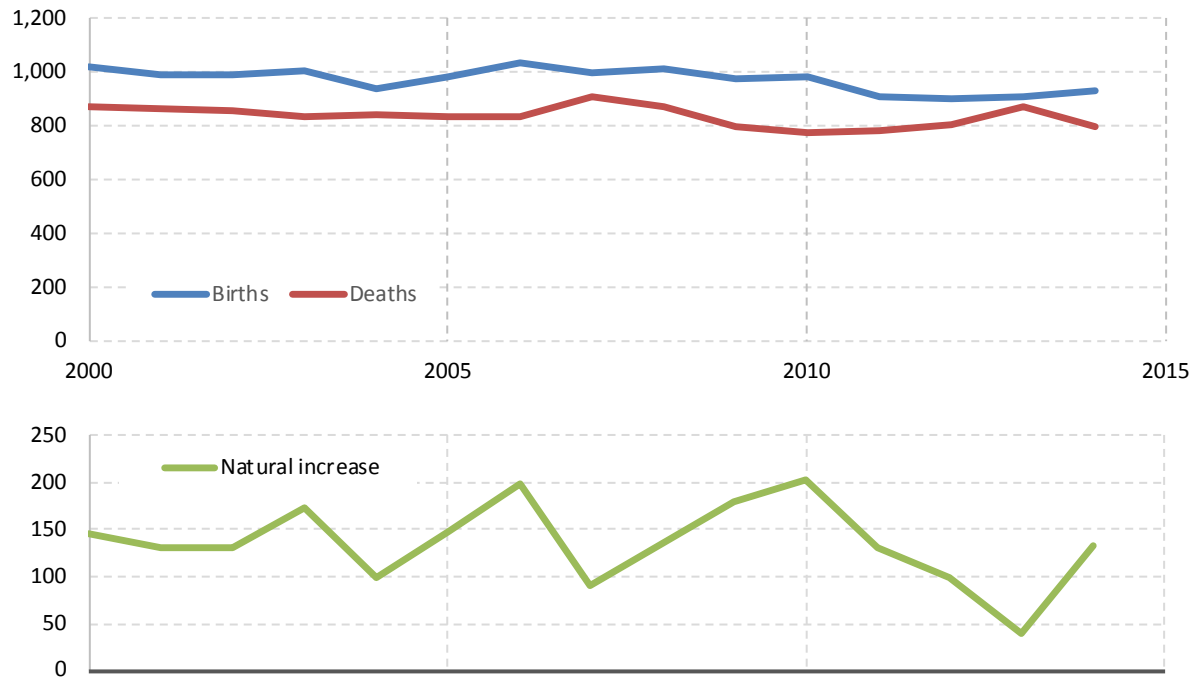
	Total Population		Difference	
	2010 base	2015	Count	%
New York State	19,378,087	19,795,791	417,704	2.2%
Cattaraugus County	80,354	77,922	-2,432	-3.0%
<b>Cities</b>				
Olean	14,426	13,870	-556	-3.9%
Salamanca	5,813	5,586	-227	-3.9%
<b>Towns</b>				
Allegany	7,996	7,691	-305	-3.8%
Ashford	2,138	2,084	-54	-2.5%
Carrollton	1,292	1,241	-51	-3.9%
Coldspring	667	649	-18	-2.7%
Conewango	1,882	1,845	-37	-2.0%
Dayton	1,886	1,832	-54	-2.9%
East Otto	1,048	1,054	6	0.6%
Ellicottville	1,599	1,598	-1	-0.1%
Farmersville	1,097	1,072	-25	-2.3%
Franklinville	2,983	2,885	-98	-3.3%
Freedom	2,407	2,335	-72	-3.0%
Great Valley	2,011	1,970	-41	-2.0%
Hinsdale	2,189	2,100	-89	-4.1%
Humphrey	684	660	-24	-3.5%
Ischua	860	827	-33	-3.8%
Leon	1,356	1,323	-33	-2.4%
Little Valley	1,737	1,683	-54	-3.1%
Lyndon	707	683	-24	-3.4%
Machias	2,373	2,317	-56	-2.4%
Mansfield	817	827	10	1.2%
Napoli	1,246	1,293	47	3.8%
New Albion	1,971	1,911	-60	-3.0%
Olean	1,982	1,926	-56	-2.8%
Otto	809	783	-26	-3.2%
Perrysburg	1,625	1,592	-33	-2.0%
Persia	2,417	2,324	-93	-3.8%
Portville	3,742	3,615	-127	-3.4%
Randolph	2,588	2,521	-67	-2.6%
Red House	33	35	2	6.1%
Salamanca	469	450	-19	-4.1%
South Valley	263	262	-1	-0.4%
Yorkshire	3,921	3,786	-135	-3.4%
<b>Reservations</b>				
Allegany	1,006	986	-20	-2.0%
Cattaraugus	314	306	-8	-2.5%
Oil Springs	0	0	0	-

Source: U.S. Census Bureau population estimates 2010-2015

## 4 Components of population change

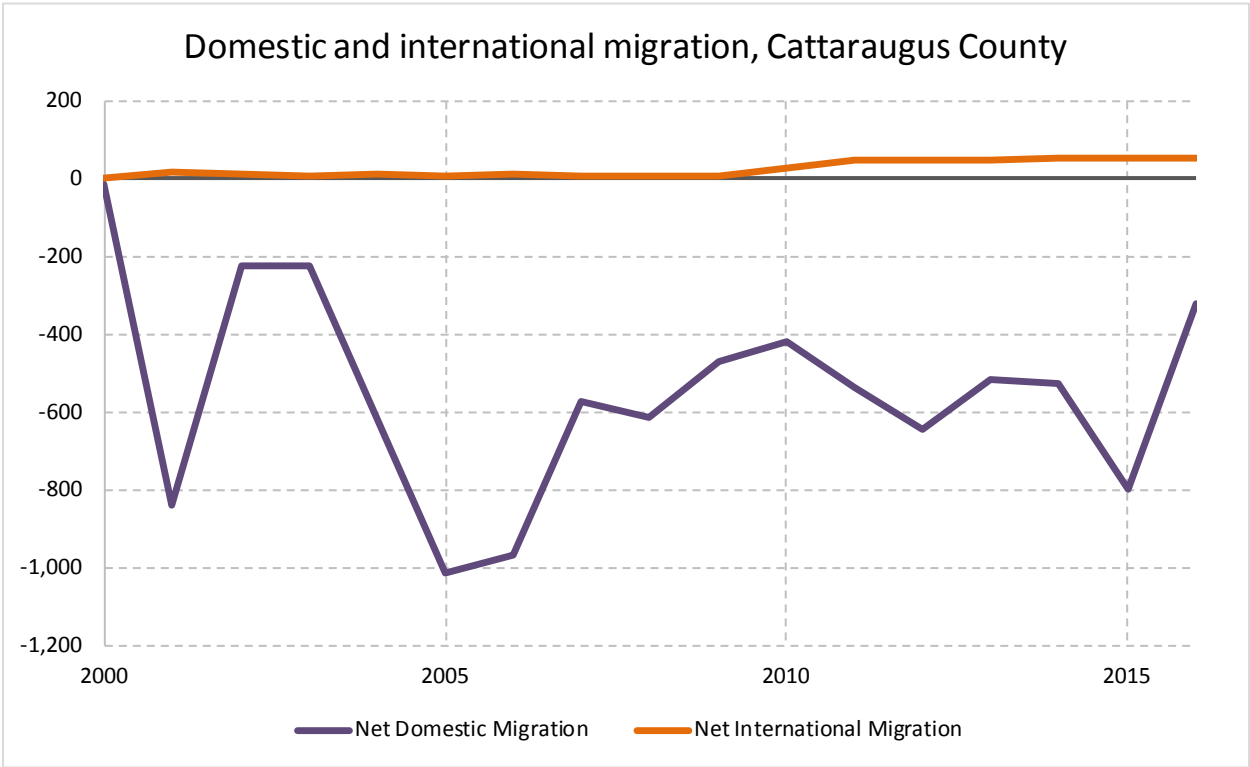
### 4.1 Vital Statistics

Vital Statistics, Cattaraugus County



Source: New York State Department of Health

4.2 Migration

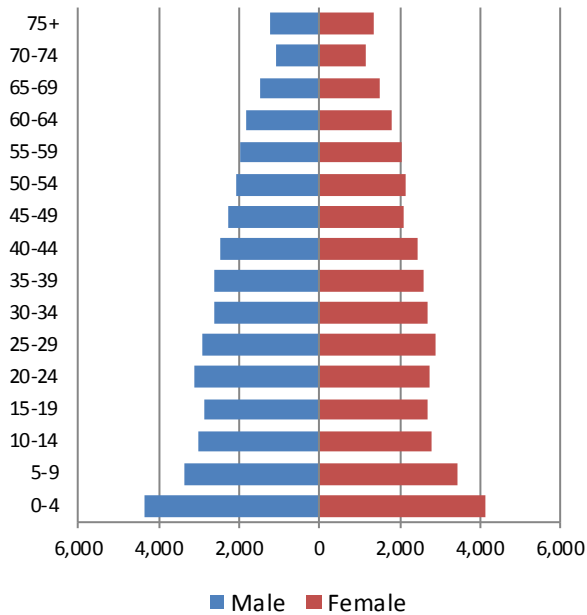


Source: Census Bureau population estimates (V2010 and V2016)

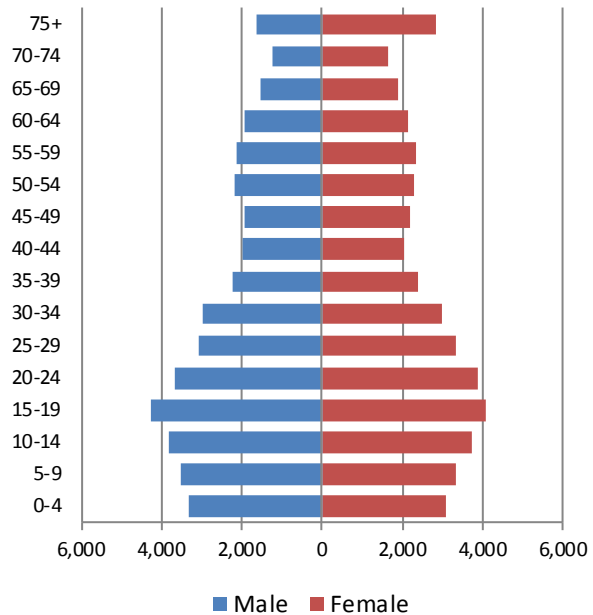
## 5 Population by age

### 5.1 Historic and projected population pyramids

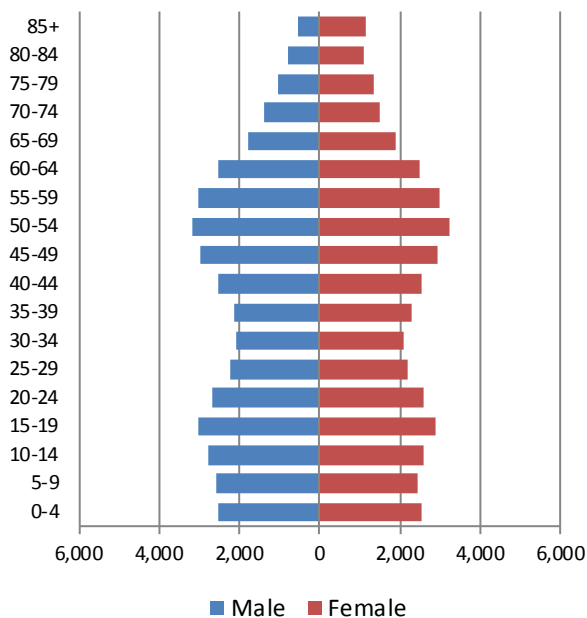
**1950 Population Pyramid,  
Cattaraugus County**



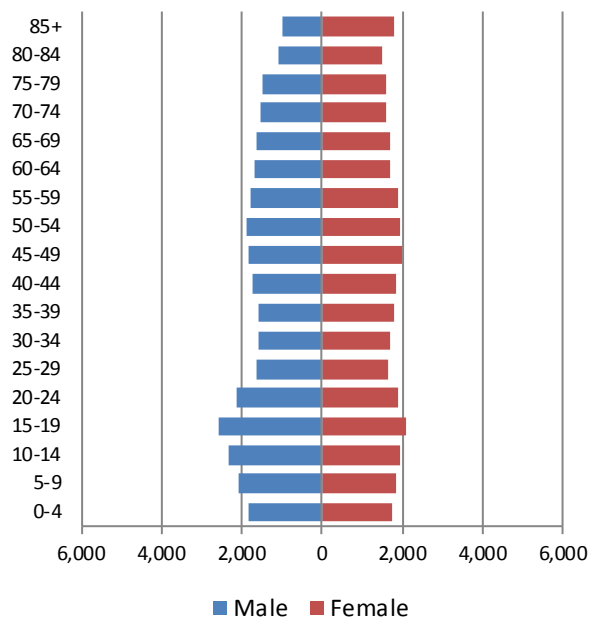
**1980 Population Pyramid,  
Cattaraugus County**



**2010 Population Pyramid,  
Cattaraugus County**



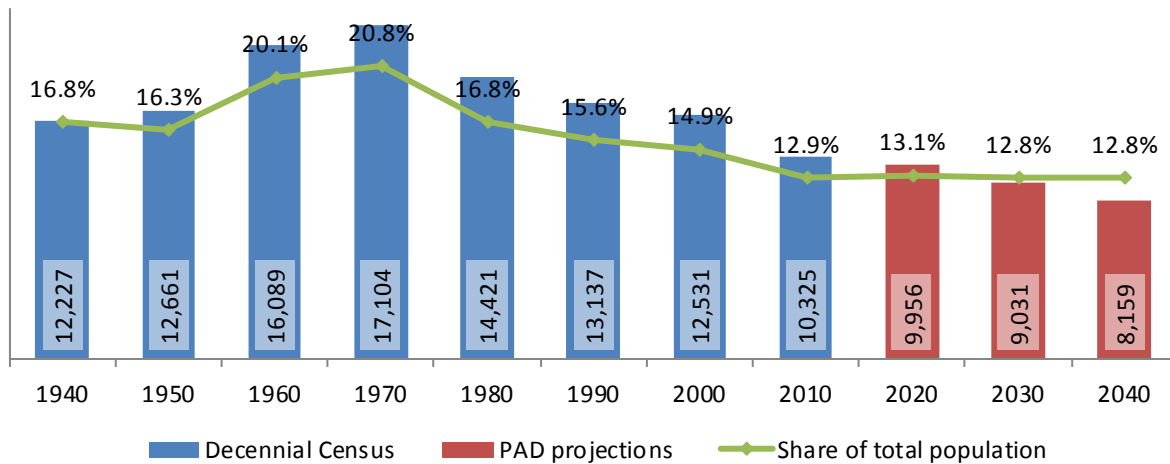
**2040 Population Pyramid,  
Cattaraugus County**



Source: 1950, 1980, 2010 Decennial Census and projections by Cornell Program on Applied Demographics

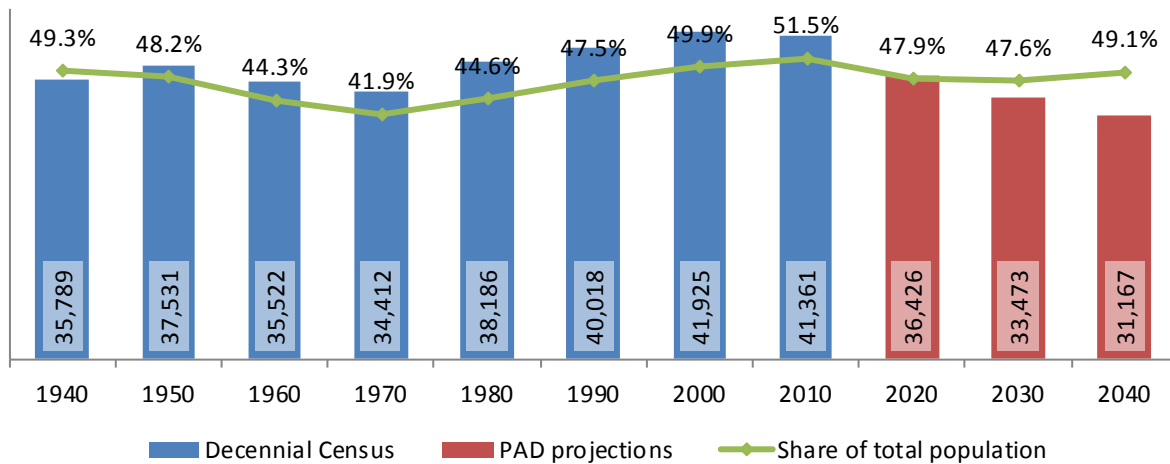
## 5.2 Selected age groups

**Population age 5-14, Cattaraugus County, 1940-2040**



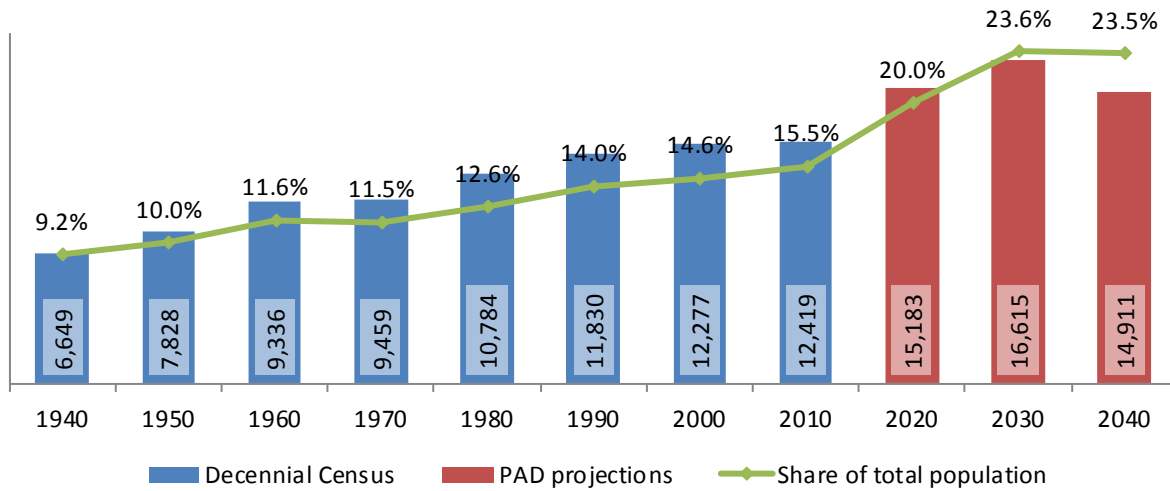
Source: 1940-2010 Decennial Census and projections by Cornell Program on Applied Demographics

**Population age 25-64, Cattaraugus County, 1940-2040**



Source: 1940-2010 Decennial Census and projections by Cornell Program on Applied Demographics

### Population age 65 and over, Cattaraugus County, 1940-2040



Source: 1940-2010 Decennial Census and projections by Cornell Program on Applied Demographics

### 5.3 Median age

	Cattaraugus County	New York State
<b>Median age</b>		
2000	37.4	35.9
2010	40.7	38.0
2015	41.7	38.3

Source: 2000, 2010 Decennial Census, 2015 Population Estimates

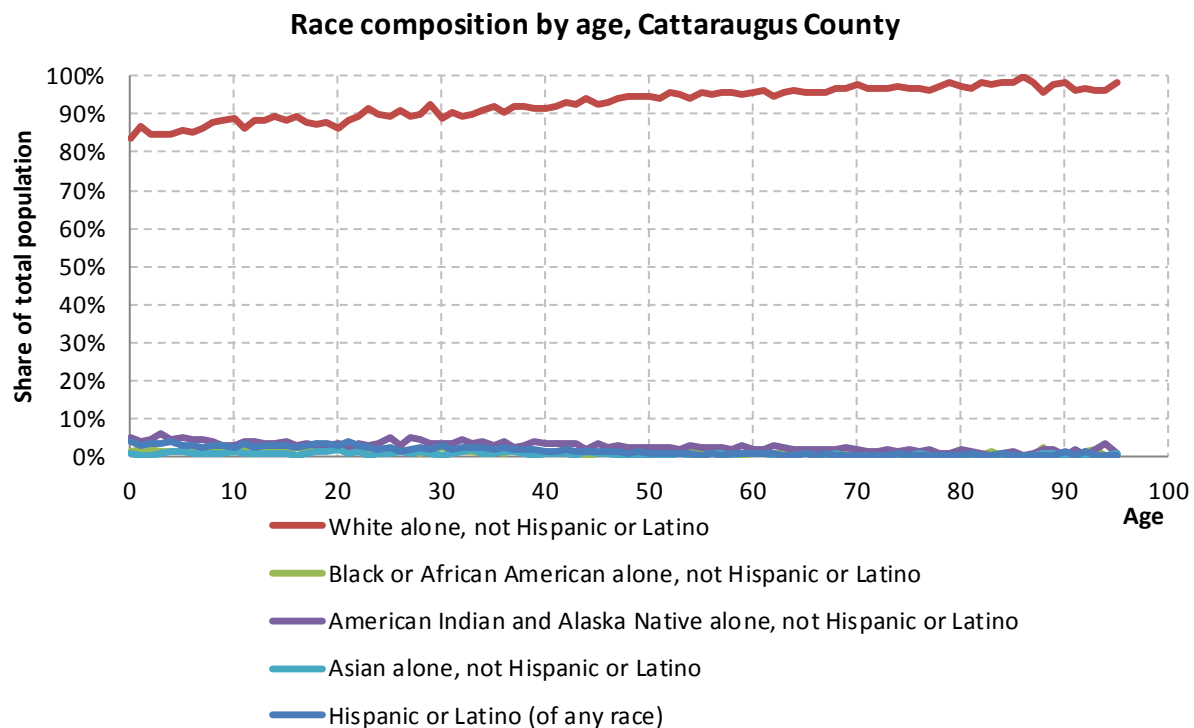
## 6 Race

### 6.1 Total and household population by race

	Total		In households		In Group Quarters
	Count	Percentage	Count	Percentage	Count
<b>Total population</b>	80,317	100%	77,638	100%	2,679
Not Hispanic or Latino					
One race					
White	73,849	91.9%	71,552	92.2%	2,297
Black or African American	966	1.2%	803	1.0%	163
American Indian and Alaska Native	2,361	2.9%	2,322	3.0%	39
Asian	524	0.7%	468	0.6%	56
Native Hawaiian and Other Pacific Islander	14	0.0%	-	-	-
Some other race	36	0.0%	-	-	-
Two or more races	1,222	1.5%	1,199	1.5%	23
Hispanic or Latino (of any race)	1,345	1.7%	1,245	1.6%	100

Source: 2010 Decennial Census

### 6.2 Race composition by age



Source: 2010 Decennial Census



## 7 Housing units

### 7.1 Characteristics

	COUNT		PERCENTAGE	
	Estimate	Margin of error	Estimate	Margin of error
<b>HOUSING OCCUPANCY</b>				
<b>Total housing units</b>	41,034	± 171	100.0%	
Occupied housing units	31,635	± 382	77.1%	± 1.0
Vacant housing units	9,399	± 405	22.9%	± 1.0
<b>YEAR STRUCTURE BUILT</b>				
<b>Total housing units</b>	41,034	± 171	100.0%	
Built 2014 or later	21	± 14	0.1%	± 0.1
Built 2010 to 2013	235	± 64	0.6%	± 0.2
Built 2000 to 2009	2,758	± 229	6.7%	± 0.6
Built 1990 to 1999	4,477	± 298	10.9%	± 0.7
Built 1980 to 1989	4,482	± 280	10.9%	± 0.7
Built 1970 to 1979	5,021	± 364	12.2%	± 0.9
Built 1960 to 1969	2,828	± 268	6.9%	± 0.7
Built 1950 to 1959	3,510	± 314	8.6%	± 0.8
Built 1940 to 1949	2,496	± 284	6.1%	± 0.7
Built 1939 or earlier	15,206	± 468	37.1%	± 1.1
<b>HOUSING TENURE</b>				
<b>Occupied housing units</b>	31,635	± 382	100.0%	
Owner-occupied	22,560	± 342	71.3%	± 1.0
Renter-occupied	9,075	± 375	28.7%	± 1.0
<b>HOUSE HEATING FUEL</b>				
<b>Occupied housing units</b>	31,635	± 382	100.0%	
Utility gas	16,469	± 396	52.1%	± 1.0
Bottled, tank, or LP gas	3,809	± 243	12.0%	± 0.8
Electricity	4,088	± 275	12.9%	± 0.8
Fuel oil, kerosene, etc.	2,497	± 180	7.9%	± 0.6
Coal or coke	415	± 80	1.3%	± 0.3
Wood	3,690	± 212	11.7%	± 0.7
Solar energy	5	± 6	0.0%	± 0.1
Other fuel	589	± 100	1.9%	± 0.3
No fuel used	73	± 30	0.2%	± 0.1
<b>VALUE</b>				
<b>Owner-occupied units</b>	22,560	± 342	100.0%	
Less than \$50,000	4,394	± 278	19.5%	± 1.1
\$50,000 to \$99,999	9,402	± 321	41.7%	± 1.4
\$100,000 to \$149,999	4,161	± 251	18.4%	± 1.1
\$150,000 to \$199,999	2,242	± 183	9.9%	± 0.8
\$200,000 to \$299,999	1,499	± 140	6.6%	± 0.6
\$300,000 to \$499,999	581	± 118	2.6%	± 0.5
\$500,000 to \$999,999	234	± 70	1.0%	± 0.3
\$1,000,000 or more	47	± 22	0.2%	± 0.1
Median (dollars)	84,600	± 1,324		

Source: 2011-2015 American Community Survey

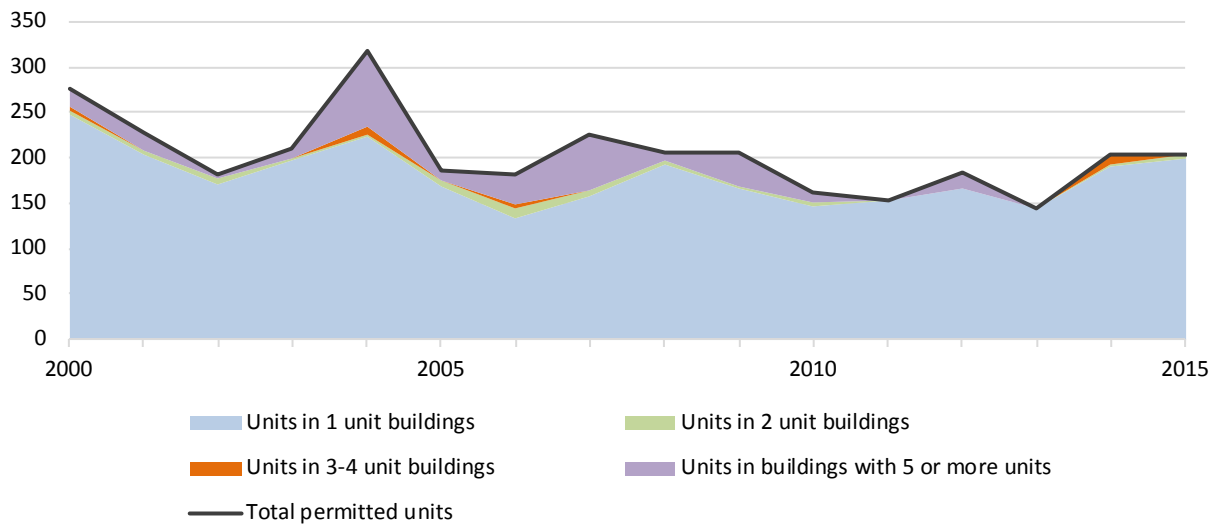
## 7.2 Historical data on number of housing units and occupancy status

Year	Number of Housing Units	Change since previous Census	Occupied	Occupancy rate	Vacant
1970	28,601		24,878	87.0%	3,723
1980	34,851	21.9%	29,280	84.0%	5,571
1990	36,839	5.7%	30,456	82.7%	6,383
2000	39,839	8.1%	32,023	80.4%	7,816
2010	41,111	3.2%	32,263	78.5%	8,848

Source: 1970-2010 Decennial Census

## 7.3 Building Permits 2000-2015

Building permits by number of permitted units in building,  
Cattaraugus County



Source: Census Bureau Building Permits Survey

## 8 Education

### 8.1 Enrollment by level of school

	Estimate	Margin of error
<b>Total enrolled in school</b>	18,417	± 387
Nursery school, preschool	997	± 157
Kindergarten to 12th grade	13,216	± 241
Kindergarten	986	± 166
Elementary: grade 1 to grade 4	3,890	± 187
Elementary: grade 5 to grade 8	4,102	± 249
High school: grade 9 to grade 12	4,238	± 225
College, undergraduate	3,737	± 272
Graduate, professional school	467	± 116

Source: 2011-2015 American Community Survey

### 8.2 Enrollment by age

	Estimate	Margin of error
3 and 4 years	43.9%	± 6.5
5 to 9 years	96.1%	± 1.3
10 to 14 years	96.6%	± 1.7
15 to 17 years	92.9%	± 2.8
18 and 19 years	72.5%	± 4.9
20 to 24 years	37.2%	± 3.9
25 to 34 years	6.3%	± 1.4
35 years and over	1.5%	± 0.3

Source: 2011-2015 American Community Survey

### 8.3 Percentage age 18-24 enrolled in college

	Estimate	Margin of error
Population 18 to 24 years	7,483	± 63
Enrolled in college or graduate school	40.4%	± 3.0
Males 18 to 24 years	3,793	± 33
Enrolled in college or graduate school	31.2%	± 3.9
Females 18 to 24 years	3,690	± 53
Enrolled in college or graduate school	49.8%	± 4.7

Source: 2011-2015 American Community Survey

## 8.4 Educational attainment

	COUNT		PERCENTAGE	
	Estimate	Margin of error	Estimate	Margin of error
<b>Population 25 years and over</b>	53,408	± 62	100%	
<b>EDUCATIONAL ATTAINMENT</b>				
Less than 9th grade	2,358	± 331	4.4%	± 0.6
9th to 12th grade, no diploma	4,128	± 295	7.7%	± 0.6
High school graduate (includes equivalency)	21,869	± 628	40.9%	± 1.2
Some college, no degree	9,377	± 396	17.6%	± 0.7
Associate's degree	6,177	± 335	11.6%	± 0.6
Bachelor's degree	5,503	± 319	10.3%	± 0.6
Graduate or professional degree	3,996	± 311	7.5%	± 0.6
Percent high school graduate or higher			87.9%	± 0.8
Percent bachelor's degree or higher			17.8%	± 0.9

Source: 2011-2015 American Community Survey

## 9 Language spoken at home

	COUNT		PERCENTAGE		SPEAK ENGLISH LESS THAN "VERY WELL"	
	Estimate	Margin of error	Estimate	Margin of error	Estimate	Margin of error
<b>Population 5 years and over</b>	74,265	± 25	100%			
<b>LANGUAGE SPOKEN AT HOME</b>						
English only	70,471	± 380	94.9%	± 0.5		
Language other than English	3,794	± 378	5.1%	± 0.5	1,475	± 214
Spanish	851	± 136	1.1%	± 0.2	250	± 78
Other Indo-European languages	2,145	± 344	2.9%	± 0.5	927	± 205
Asian and Pacific Islander languages	360	± 94	0.5%	± 0.1	234	± 74
Other languages	438	± 113	0.6%	± 0.2	64	± 31

Source: 2011-2015 American Community Survey

## 10 Labor Force Characteristics

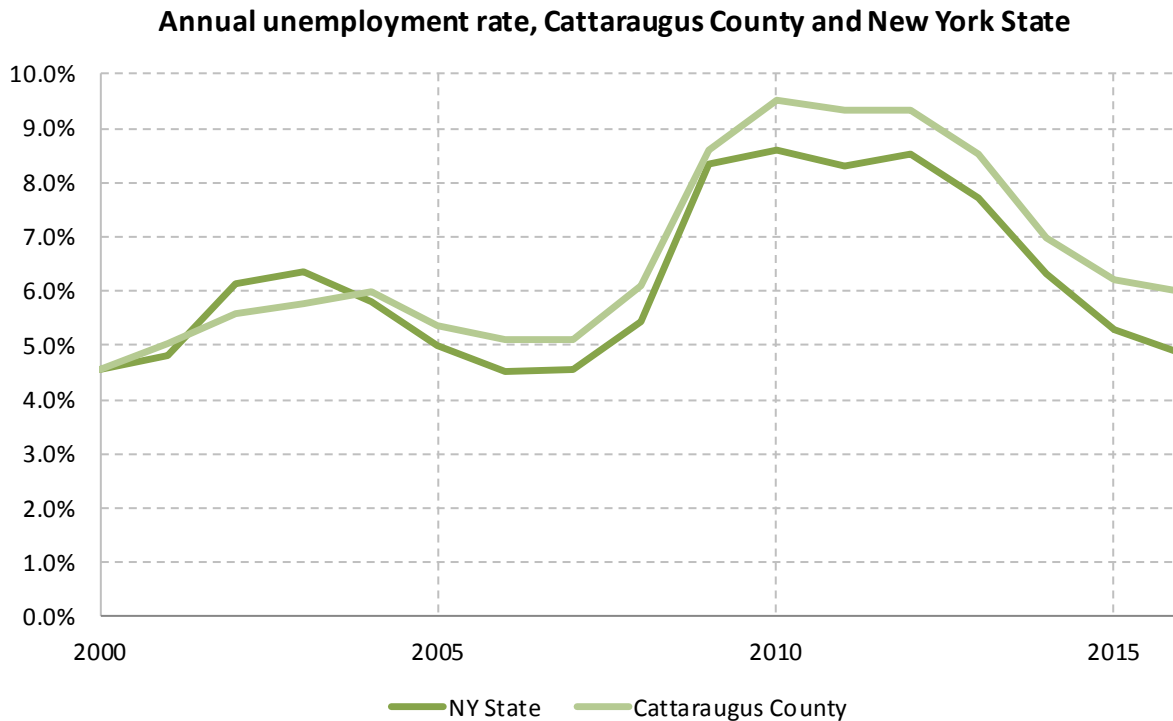
### 10.1 Labor force, employment and unemployment

	TOTAL		IN LABOR FORCE		EMPLOYED		UNEMPLOYMENT RATE	
	Estimate	Margin of error	Estimate	Margin of error	Estimate	Margin of error	Estimate	Margin of error
<b>Population 16 years and over</b>	63,058	± 145	59.3%	± 0.9	54.3%	± 0.9	8.2%	± 0.7
<b>AGE</b>								
16 to 19 years	4,529	± 162	37.2%	± 3.5	28.3%	± 3.4	23.8%	± 4.6
20 to 24 years	5,121	± 75	70.4%	± 3.6	60.3%	± 3.8	14.3%	± 2.8
25 to 29 years	4,297	± 49	81.5%	± 3.6	72.1%	± 3.8	11.4%	± 2.9
30 to 34 years	4,310	± 92	79.5%	± 5.0	73.0%	± 4.9	7.7%	± 2.6
35 to 44 years	8,818	± 96	83.0%	± 2.0	77.5%	± 2.1	6.6%	± 1.4
45 to 54 years	11,348	± 111	78.1%	± 1.9	73.9%	± 1.9	5.4%	± 1.1
55 to 59 years	5,874	± 273	70.6%	± 2.3	65.9%	± 2.5	6.7%	± 1.6
60 to 64 years	5,634	± 269	52.0%	± 3.2	48.7%	± 3.0	6.4%	± 2.1
65 to 74 years	7,277	± 45	21.4%	± 2.1	20.6%	± 2.1	3.7%	± 1.7
75 years and over	5,850	± 42	5.5%	± 1.2	5.3%	± 1.2	4.3%	± 4.5
<b>RACE AND HISPANIC OR LATINO ORIGIN</b>								
White alone	58,998	± 123	59.4%	± 1.0	54.6%	± 0.9	7.9%	± 0.7
Black or African American alone	861	± 96	59.3%	± 9.4	55.2%	± 10.3	7.0%	± 6.3
American Indian and Alaska Native alone	1,523	± 91	59.8%	± 4.2	49.5%	± 4.2	17.1%	± 4.4
Asian alone	499	± 32	69.7%	± 8.2	64.3%	± 9.4	7.8%	± 6.7
Two or more races	923	± 164	49.1%	± 8.9	41.3%	± 8.6	15.9%	± 8.3
Hispanic or Latino origin (of any race)	948	± 23	53.4%	± 6.3	47.4%	± 7.1	11.3%	± 8.5
White alone, not Hispanic or Latino	58,435	± 107	59.4%	± 1.0	54.6%	± 0.9	7.9%	± 0.7
<b>SEX</b>								
<b>Population 20 to 64 years</b>	45,402	± 86	74.4%	± 1.2	68.7%	± 1.1	7.7%	± 0.7
Male	22,740	± 61	78.1%	± 1.7	71.5%	± 1.7	8.3%	± 1.1
Female	22,662	± 66	70.7%	± 1.5	65.8%	± 1.4	7.0%	± 0.9
With own children under 18 years	7,403	± 272	73.1%	± 2.4	68.4%	± 2.4	6.5%	± 1.6
<b>EDUCATIONAL ATTAINMENT</b>								
<b>Population 25 to 64 years</b>	40,281	± 75	75.0%	± 1.2	69.7%	± 1.1	6.9%	± 0.7
Less than high school graduate	4,061	± 343	52.9%	± 4.7	46.2%	± 4.7	12.7%	± 4.3
High school graduate (includes equivalency)	15,855	± 537	73.3%	± 1.7	67.4%	± 1.8	8.0%	± 1.3
Some college or associate's degree	12,832	± 408	77.9%	± 1.7	72.8%	± 1.7	6.5%	± 1.2
Bachelor's degree or higher	7,533	± 401	85.4%	± 1.7	82.0%	± 1.9	3.8%	± 1.2

Table formula: **LABOR FORCE** = # EMPLOYED + # UNEMPLOYED  
**% IN LABOR FORCE** = LABOR FORCE / TOTAL \* 100%  
**% EMPLOYED** = # EMPLOYED / TOTAL \* 100%  
**UNEMPLOYMENT RATE** = # UNEMPLOYED / LABOR FORCE \* 100%

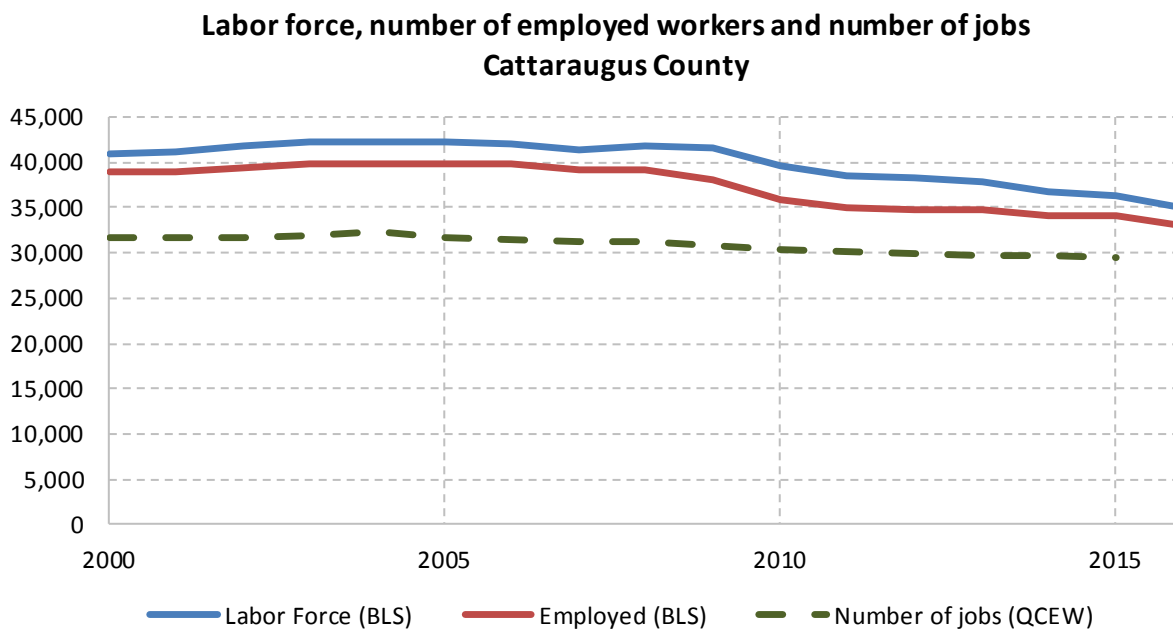
Source: 2011-2015 American Community Survey

## 10.2 Annual unemployment rate



Source: Bureau Labor Statistics (BLS)

## 10.3 Employment and number of jobs



Source: Bureau Labor Statistics (BLS) and NY Department of Labor - Quarterly Census of Employment and Wages (QCEW) – annual averages

## 10.4 Class of worker

		<b>Total</b>	<b>%Male</b>	<b>%Female</b>
Civilian employed population 16 years and over	Estimate	34,265	52.1%	47.9%
	<i>Margin of error</i>	$\pm 555$	$\pm 0.8$	$\pm 0.8$
Private for-profit wage and salary workers:	Estimate	21,635	57.0%	43.0%
	<i>Margin of error</i>	$\pm 620$	$\pm 1.2$	$\pm 1.2$
Employee of private company workers	Estimate	20,571	56.1%	43.9%
	<i>Margin of error</i>	$\pm 609$	$\pm 1.3$	$\pm 1.3$
Self-employed in own incorporated business workers	Estimate	1,064	74.2%	25.8%
	<i>Margin of error</i>	$\pm 220$	$\pm 5.7$	$\pm 5.7$
Private not-for-profit wage and salary workers	Estimate	3,671	30.3%	69.7%
	<i>Margin of error</i>	$\pm 295$	$\pm 3.1$	$\pm 3.1$
Local government workers	Estimate	3,803	44.4%	55.6%
	<i>Margin of error</i>	$\pm 269$	$\pm 3.9$	$\pm 3.9$
State government workers	Estimate	2,407	42.8%	57.2%
	<i>Margin of error</i>	$\pm 228$	$\pm 3.7$	$\pm 3.7$
Federal government workers	Estimate	572	43.5%	56.5%
	<i>Margin of error</i>	$\pm 121$	$\pm 9.0$	$\pm 9.0$
Self-employed in own not incorporated business workers and unpaid family workers	Estimate	2,177	65.6%	34.4%
	<i>Margin of error</i>	$\pm 198$	$\pm 4.2$	$\pm 4.2$

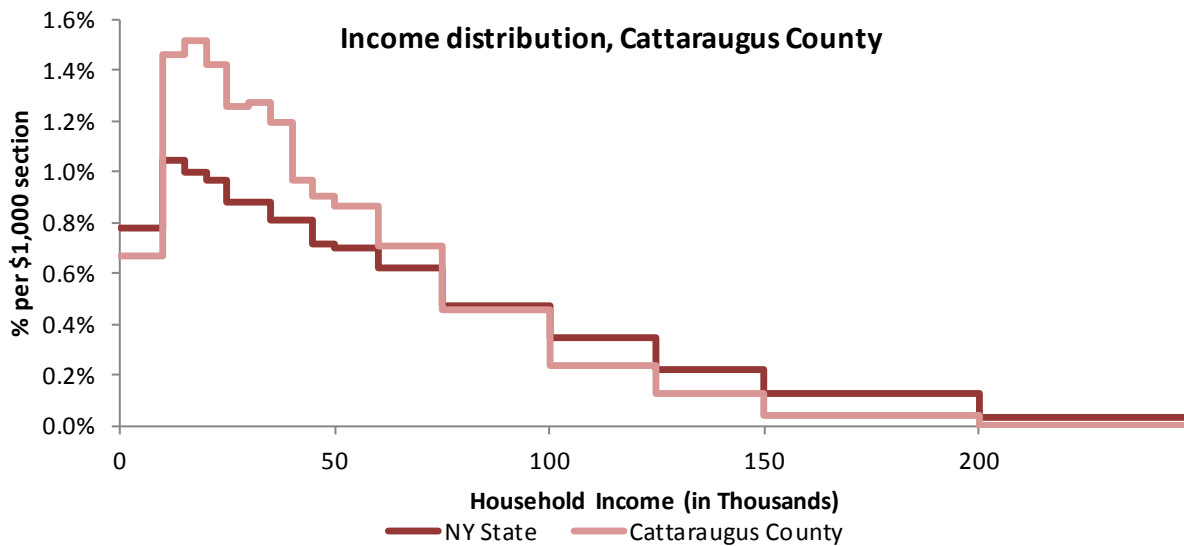
Source: 2011-2015 American Community Survey

## 11 Household Income

### 11.1 Income Distribution

	Estimate	Margin of error	Interval width (in \$1,000)	Est. per \$1,000 section
<b>Total:</b>	31,635	± 382		
Less than \$10,000	2,126	± 188	10	212.6
\$10,000 to \$14,999	2,310	± 241	5	462.0
\$15,000 to \$19,999	2,399	± 250	5	479.8
\$20,000 to \$24,999	2,251	± 219	5	450.2
\$25,000 to \$29,999	1,988	± 234	5	397.6
\$30,000 to \$34,999	2,015	± 214	5	403.0
\$35,000 to \$39,999	1,896	± 235	5	379.2
\$40,000 to \$44,999	1,532	± 202	5	306.4
\$45,000 to \$49,999	1,430	± 172	5	286.0
\$50,000 to \$59,999	2,741	± 212	10	274.1
\$60,000 to \$74,999	3,374	± 221	15	224.9
\$75,000 to \$99,999	3,617	± 245	25	144.7
\$100,000 to \$124,999	1,865	± 160	25	74.6
\$125,000 to \$149,999	1,017	± 149	25	40.7
\$150,000 to \$199,999	636	± 108	50	12.7
\$200,000 or more	438	± 86	-	-

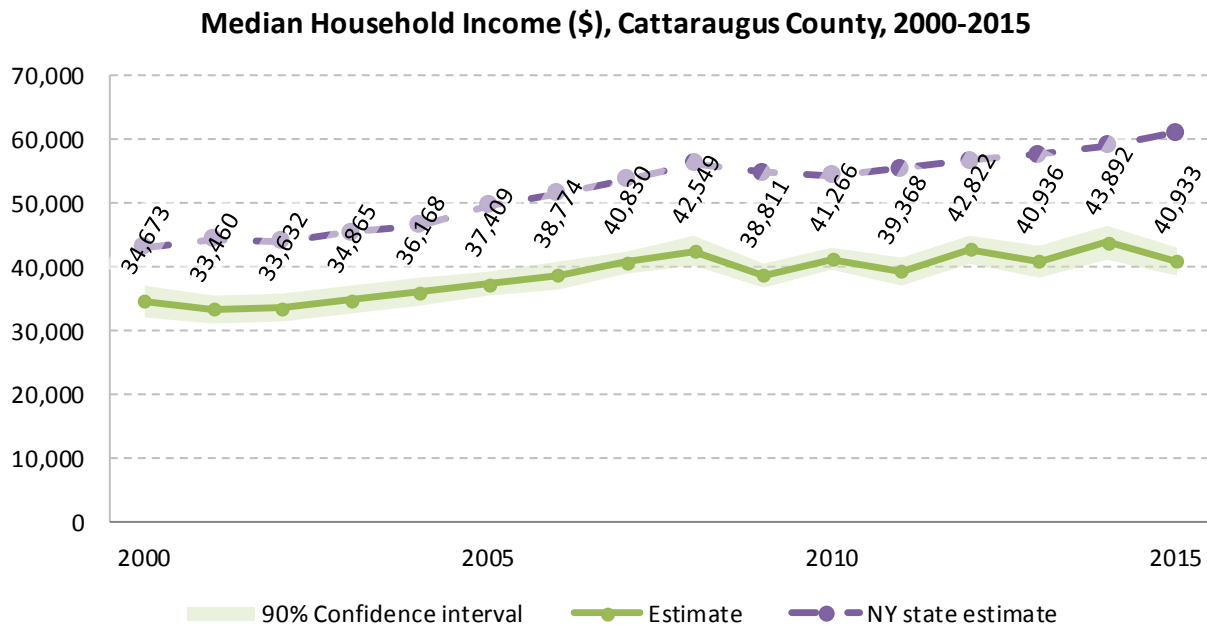
Source: 2011-2015 American Community Survey



Source: 2011-2015 American Community Survey



## 11.2 Median household income: Trends over time



Source: Small Area Income and Poverty Estimates (SAIPE)

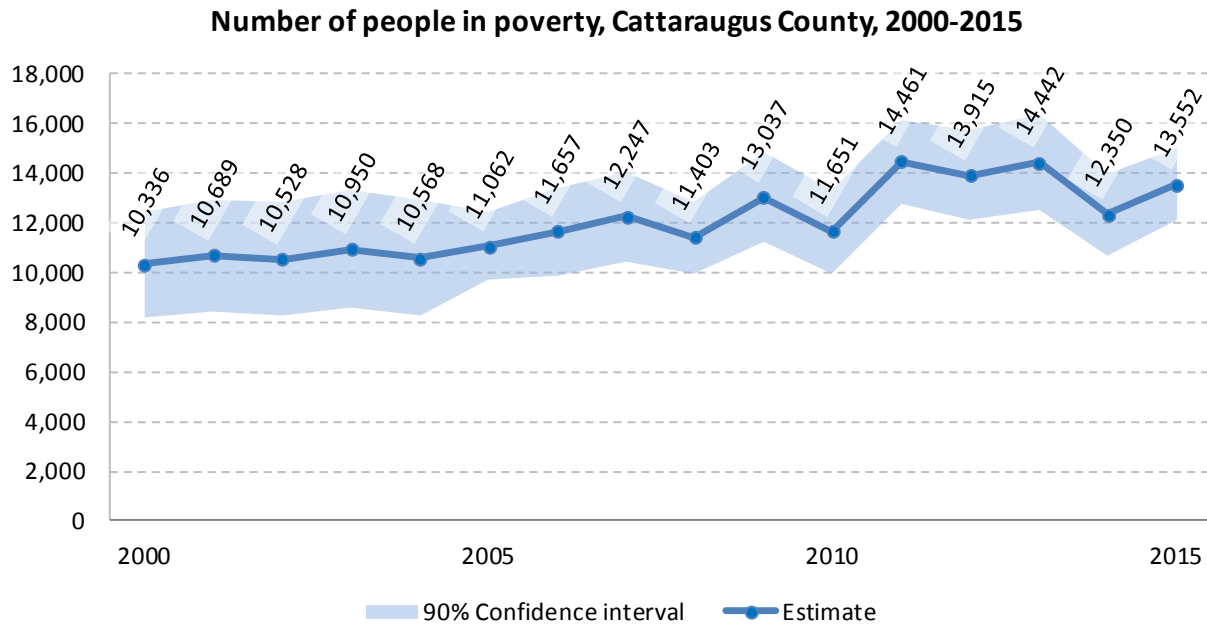
## 12 Poverty

### 12.1 Family Income to Poverty Ratio

	TOTAL		PERCENT OF ALL	
	Estimate	Margin of error	Estimate	Margin of error
<b>All families</b>	20,025	± 394		
<b>ALL FAMILIES WITH INCOME:</b>				
Below 50 percent of poverty level	826	± 117	4.1%	± 0.6
<b>Below 100 percent of poverty level</b>	2,478	± 200	<b>12.4%</b>	<b>± 1.0</b>
Below 125 percent of poverty level	3,490	± 236	17.4%	± 1.1
Below 150 percent of poverty level	4,471	± 278	22.3%	± 1.3
Below 185 percent of poverty level	5,766	± 307	28.8%	± 1.4
Below 200 percent of poverty level	6,525	± 327	32.6%	± 1.5
Below 300 percent of poverty level	10,197	± 349	50.9%	± 1.4
Below 400 percent of poverty level	13,546	± 391	67.6%	± 1.4
Below 500 percent of poverty level	15,866	± 437	79.2%	± 1.5

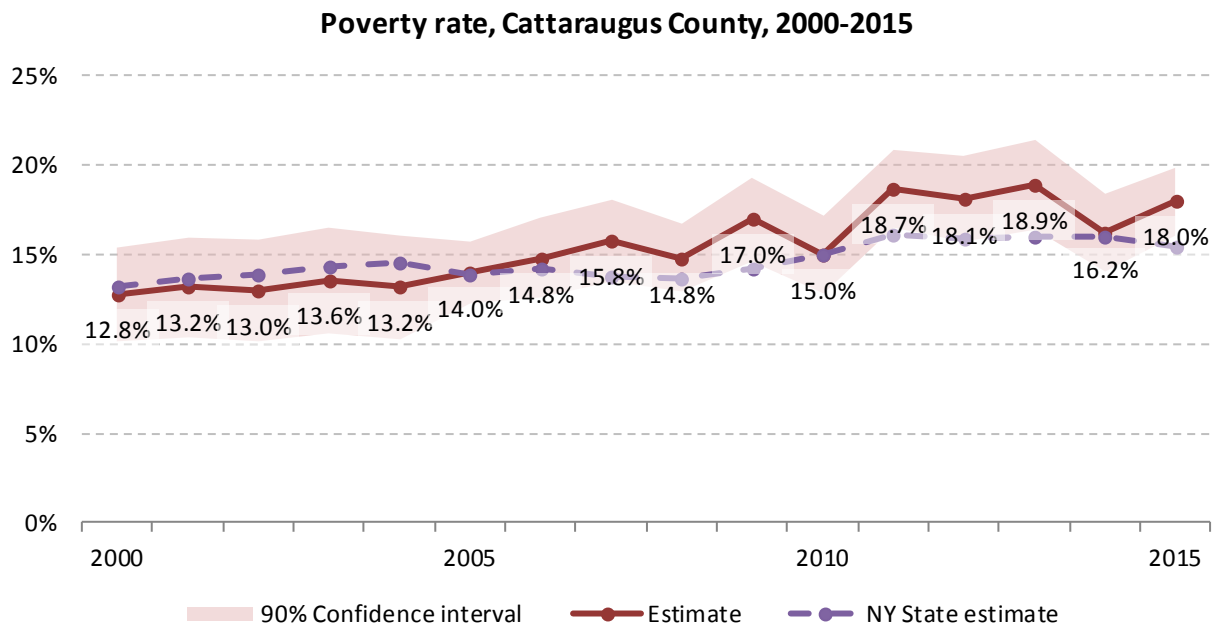
Source: 2011-2015 American Community Survey

## 12.2 Poverty: Trends over time: Count



Source: Small Area Income and Poverty Estimates (SAIPE)

## 12.3 Poverty: Trends over time: Rate



Source: Small Area Income and Poverty Estimates (SAIPE)

## 12.4 Poverty characteristics

	TOTAL		BELOW POVERTY LEVEL		PERCENT BELOW POVERTY LEVEL	
	Estimate	Margin of error	Estimate	Margin of error	Estimate	Margin of error
<b>Population for whom poverty status is determined</b>	76,421	± 325	13,954	± 841	18.3%	± 1.1
<b>AGE</b>						
Under 18 years	17,569	± 118	4,866	± 481	27.7%	± 2.8
Under 5 years	4,611	± 56	1,445	± 173	31.3%	± 3.8
5 to 17 years	12,958	± 108	3,421	± 390	26.4%	± 3.0
18 to 34 years	14,558	± 233	3,726	± 351	25.6%	± 2.4
35 to 64 years	31,590	± 105	4,106	± 336	13.0%	± 1.1
65 years and over	12,704	± 176	1,256	± 152	9.9%	± 1.2
<b>SEX</b>						
Male	37,880	± 195	6,444	± 460	17.0%	± 1.2
Female	38,541	± 244	7,510	± 496	19.5%	± 1.3
<b>RACE AND HISPANIC OR LATINO ORIGIN</b>						
White alone	70,741	± 320	12,298	± 811	17.4%	± 1.2
Black or African American alone	1,065	± 177	250	± 126	23.5%	± 11.4
American Indian and Alaska Native alone	2,186	± 132	798	± 153	36.5%	± 6.1
Asian alone	596	± 75	102	± 59	17.1%	± 9.7
Hispanic or Latino origin (of any race)	1,282	± 77	355	± 110	27.7%	± 8.3
White alone, not Hispanic or Latino	69,978	± 294	12,082	± 787	17.3%	± 1.1
<b>EDUCATIONAL ATTAINMENT</b>						
<b>Population 25 years and over</b>	52,812	± 205	7,314	± 443	13.8%	± 0.8
Less than high school graduate	6,322	± 403	1,933	± 313	30.6%	± 4.0
High school graduate (includes equivalency)	21,607	± 639	3,117	± 302	14.4%	± 1.3
Some college, associate's degree	15,449	± 469	1,795	± 205	11.6%	± 1.3
Bachelor's degree or higher	9,434	± 452	469	± 105	5.0%	± 1.0
<b>EMPLOYMENT STATUS</b>						
<b>Civilian labor force 16 years and over</b>	36,872	± 582	3,965	± 304	10.8%	± 0.8
Employed	33,830	± 565	2,837	± 256	8.4%	± 0.8
Male	17,689	± 426	1,300	± 191	7.3%	± 1.1
Female	16,141	± 345	1,537	± 178	9.5%	± 1.1
Unemployed	3,042	± 261	1,128	± 173	37.1%	± 4.2
Male	1,743	± 192	628	± 103	36.0%	± 5.1
Female	1,299	± 162	500	± 118	38.5%	± 6.7
<b>WORK EXPERIENCE IN THE PAST 12 MONTHS</b>						
<b>Population 16 years and over</b>	16,141	± 345	1,537	± 178	9.5%	± 1.1
Worked full-time, year-round	3,042	± 261	1,128	± 173	37.1%	± 4.2
Worked part-time or part-year	1,743	± 192	628	± 103	36.0%	± 5.1
Did not work	1,299	± 162	500	± 118	38.5%	± 6.7

Source: 2011-2015 American Community Survey

## 13 Glossary

**American Community Survey (ACS)** - The American Community Survey is an ongoing survey of the population that provides data every year on a variety of social and economic characteristics—age, sex, race, family and relationships, income and benefits, health insurance, education, veteran status, disabilities, where you work and how you get there, where you live and how much you pay for some essentials. The ACS replaced the information previously gathered by what was known as the “long form” of the decennial censuses. The ACS provides communities, companies and other institutions with current information they need to plan investments and services. Information from the survey generates data that help determine how more than \$400 billion in federal and state funds are distributed each year. Every estimate presented in the American Community Survey, as in other surveys, has an uncertainty associated with it. Often the magnitude of that uncertainty is expressed as the Margin of Error.

**Confidence Interval (CI)** - indication of the degree of uncertainty about a sample estimates. Confidence intervals have been traditionally reported at the 90, 95 and 99 percent levels. A 90 percent confidence interval can be interpreted, for example, roughly as providing 90 percent certainty that the interval defined by the upper and lower bounds contain the true value of the characteristic. If a Margin of Error is given, the lower bound of the confidence interval is equal to the estimate minus the Margin of Error and the upper bound is equal to the estimate plus the Margin of Error. (See further, Margin of Error definition below.)

**County subdivision or Minor Civil Division (MCD)** - The Census Bureau geography for primary administrative units below the county level in New York is collectively referred to as county subdivisions or minor civil divisions. These include towns, cities and Indian Reservations.

**Decennial Census** - the Census of the population and housing taken every 10 years in the United States, at the start of each decade, since 1790.

**Employed** – either “at work” or “with a job, but not at work”.

**Group Quarters Population** - all U.S. residents who live in group living facilities including correctional institutions, juvenile facilities, skilled nursing facilities, college residence halls, military barracks, group homes, and workers' dormitories.

**Household Population** - all U.S. residents who live in housing units such as single family homes, townhouses, apartments, and mobile homes.

**Intercensal Population Estimates** - estimates produced for the years between two decennial censuses when both the beginning and ending populations are known. They are produced once a decade by adjusting the existing time series of postcensal estimates for the entire decade to smooth the transition from one decennial census count to the next. They differ from the postcensal estimates that are released annually because the difference between the April 1 postcensal estimate and April 1 census count for the end of the decade is redistributed across the estimates for that decade. For dates when both postcensal and intercensal estimates are available, intercensal estimates are preferred.

**Labor Force** - consists of people classified as employed or unemployed.

**Margin of Error (MOE)** - a measure of the precision of an estimate at a given level of confidence. The confidence level of a margin of error indicates the likelihood that the difference between the population value (which you

would get if you could measure the whole population instead of a sample) and the estimate is less than or equal to the margin of error. The range from the estimate minus the margin of error to the estimate plus the margin of error is called the confidence interval. All ACS estimates are published with their margins of error at the 90 percent confidence level. Margins of error are useful in assessing the reliability of estimates and whether differences between estimates are significant.

**Numeric Population Change** - difference between the population of an area at the beginning and end of a time period. It is computed by taking the difference between the population at one point in time ( $t_1$ ) and some future time ( $t_2$ ).

**Percent Population Change** - difference between the population of an area at the beginning and end of a time period, expressed as a percentage of the beginning population. It is computed by dividing the population change ( $t_2 - t_1$ ) by  $t_1$  and multiplying the result by 100.

**Population Estimates** - The calculated number of people living in an area as of a specified point in time, usually July 1st. The estimated population is calculated using a component of change model that incorporates information on natural increase (births, deaths) and net migration (net domestic migration, net international migration) that has occurred in an area since the latest decennial census. A procedure for estimating the current population using a procedure involving a "base population" value at time  $t - 1$ , adding to that the births during the interval  $t - 1$  to  $t$ , subtracting the deaths during that interval  $t - 1$  to  $t$ , and then adding the net domestic and net international migration that occurred during that interval.

**Population Density** - Total number of people per areal unit like a square mile or square kilometer.

**Population Pyramids** - A graphical way of portraying a population's age and sex composition at a given slice in time. The first horizontal bar, constituting the base of the graph, is the youngest age group (typically 0-4) with the number of males in that age group on the left and the number of females in that age group on the right. On top of that age group is another horizontal bar for the next age group (e.g. 5-9) and so forth with the top bar typically for those aged 75 and over. In a population with lots of births and deaths, the shape typically forms a pyramid with a broad base and a narrow top. It is one of the most basic ways to understand population change over time as well as between different geographic units of a similar status (e.g. counties).

**Postcensal Estimates** - estimates produced for the years after a decennial census when only the beginning population is known. They are produced and revised each year, targeted to July 1 of that year.

**Projection** - estimated population at some future time based on assumptions about births, deaths, migration, and ages.

**Race/Ethnicity** - the Census Bureau collects racial data in accordance with guidelines provided by the U.S. Office of Management and Budget (OMB), and these data are based on self-identification. The racial categories included in the census questionnaire generally reflect a social definition of race recognized in this country and not an attempt to define race biologically, anthropologically, or genetically. In addition, it is recognized that the categories of the race item include racial and national origin or sociocultural groups. People may choose to report more than one race to indicate their racial mixture, such as "American Indian" and "White." People who identify their origin as Hispanic, Latino, or Spanish may be of any race. OMB requires five minimum categories: White, Black or African American, American Indian or Alaska Native, Asian, and Native Hawaiian or Other Pacific Islander. Hispanics may be classified as white or black. So we generally separate them out as an ethnic group first.

**Unemployed** – Not employed, but actively looking for work and available to accept a job.

**Unemployment rate** – Fraction of the Labor Force that is unemployed.

**Urban Area** – A densely settled area with at least 2,500 people. If the total number of people is less than 50,000 the Census Bureau calls it an Urban Cluster, otherwise an Urbanized Area.

**Vintage** - each year, the U.S. Census Bureau produces and publishes estimates of the population for each state and county, as well as the nation as a whole. These are called “vintages.” In producing these vintages, the Bureau utilizes administrative data from a number of sources to estimate 1) the change in population since the most recent decennial census, and 2) the population for each year since the most recent decennial census. With each annual release of population estimates (vintage), the entire time series of estimates beginning on April 1, 2010 is revised and updated.

**Vital Statistics** - quantitative data concerning a population, such as the number of births, marriages, and deaths.

## 14 References

Cattaraugus County homepage: <http://www.cattco.org/>

At Cornell:

- Program on Applied Demographics (PAD)  
URL: <http://pad.human.cornell.edu/>
  - More county trends: <https://pad.human.cornell.edu/counties/trends1geo.cfm?geo=9>
- Community and Regional Development Institute (CaRDI)  
URL: <https://cardi.cals.cornell.edu/>
- Cornell Cooperative Extensions (CCE)  
Home page: <http://www.cce.cornell.edu>
  - Allegany/Cattaraugus local office: <http://cce.cornell.edu/cattaraugus>

Data sources and background information:

- New York State Data Center
  - <https://labor.ny.gov/nys-data-center/index.shtm>
- U.S. Census Bureau - general
  - QuickFacts: <https://www.census.gov/quickfacts/table/PST045216/36,36009>
  - American FactFinder: <http://factfinder.census.gov/>
- U.S. Census Bureau - population
  - Decennial Census
    - Background: <https://www.census.gov/2010census/>
    - Demographic Profile: [http://factfinder2.census.gov/bkmk/table/1.0/en/DEC/10\\_SF1/SF1DP1/0500000US360099](http://factfinder2.census.gov/bkmk/table/1.0/en/DEC/10_SF1/SF1DP1/0500000US360099)
  - American Community Survey (ACS)
    - Background: <https://www.census.gov/programs-surveys/acs/>
    - Social Data Profile: [http://factfinder2.census.gov/bkmk/table/1.0/en/ACS/15\\_5YR/DP02/0500000US360099](http://factfinder2.census.gov/bkmk/table/1.0/en/ACS/15_5YR/DP02/0500000US360099)
    - Economic Data Profile: [http://factfinder2.census.gov/bkmk/table/1.0/en/ACS/15\\_5YR/DP03/0500000US360099](http://factfinder2.census.gov/bkmk/table/1.0/en/ACS/15_5YR/DP03/0500000US360099)
    - Housing Data Profile: [http://factfinder2.census.gov/bkmk/table/1.0/en/ACS/15\\_5YR/DP04/0500000US360099](http://factfinder2.census.gov/bkmk/table/1.0/en/ACS/15_5YR/DP04/0500000US360099)
    - Demographics Data Profile: [http://factfinder2.census.gov/bkmk/table/1.0/en/ACS/15\\_5YR/DP05/0500000US360099](http://factfinder2.census.gov/bkmk/table/1.0/en/ACS/15_5YR/DP05/0500000US360099)
  - Population estimates:
    - General: <https://www.census.gov/programs-surveys/popest.html>
    - Explorer: <https://www.census.gov/censusexplorer/censusexplorer-popest.html>
- U.S. Census Bureau – Small Area Income & Poverty Estimates (SAIPE)
  - <http://www.census.gov/did/www/saipe/>
- U.S. Census Bureau - Public Use Quarterly Workforce Indicators (QWI) – annual averages
  - <https://qwiexplorer.ces.census.gov/static/explore.html>
- U.S. Census Bureau – Building Permits Survey
  - <https://www.census.gov/construction/bps/>

- Bureau Labor Statistics (BLS)
  - Local Area Unemployment Statistics: <http://www.bls.gov/lau/>
  - Quarterly Census of Employment and Wages (QCEW): <https://www.bls.gov/cew/data.htm>
- NY Department of Labor -
  - Labor statistics: <https://labor.ny.gov/stats/index.shtm>
  - Quarterly Census of Employment and Wages (QCEW): <https://labor.ny.gov/stats/LSQCEW.shtm>
- NY State Department of Health
  - Vital Statistics: [https://www.health.ny.gov/statistics/vital\\_statistics/](https://www.health.ny.gov/statistics/vital_statistics/)
- Bureau of Economic Analysis (BEA) – Local Area Personal Income and Employment: <http://bea.gov/iTable/iTable.cfm?ReqID=70&step=1>

Alternative sites for data retrieval:

- The Nelson A. Rockefeller Institute of Government – New York State Statistical Yearbooks [http://www.rockinst.org/nys\\_statistics/](http://www.rockinst.org/nys_statistics/)
- Headwaters Economics: Economic Profile System – Human Dimensions Toolkit <http://headwaterseconomics.org/tools/eps-hdt>
- National Historical Geographic Information System (NHGIS) <https://www.nhgis.org/>
- Social Explorer <http://www.socialexplorer.com/pub/home/home.aspx>
- Stats America <http://www.statsamerica.org/Default.aspx>
- Missouri Census Data Center <http://mcdc.missouri.edu/>
- DataFerret <http://dataferrett.census.gov/>
- Investigative Reporters and Editors (IRE) Census project <http://census.ire.org/>