

Allegany County Profile

2017

A collection of recent demographic, social and economic data

Compiled by

Jan Vink

Cornell Program on Applied Demographics



Cornell University



**Program
on Applied
Demographics**

CORNELL POPULATION CENTER

This profile is a part of a set of profiles generated for each county in New York State. The profiles were developed and generated by the Cornell Program on Applied Demographics. The work is sponsored by the New York State Data Center in the New York State Department of Labor.

Cornell Program on Applied Demographics:

The Program on Applied Demographics (PAD) brings skills in demographics, economics, statistics, data gathering and data analysis together to provide a variety of organizations with data, information and advice. PAD is located in the Department of Policy Analysis and Management within the College of Human Ecology at Cornell University. PAD is also affiliated with the Cornell Institute for Social and Economic Research and the Cornell Population Center.

For more information: <http://pad.human.cornell.edu/>

New York State Data Center:

The New York State Data Center (NYSDC) is located in the Division of Research and Statistics within the New York State Department of Labor. The State Data Center operates as part of a nationwide effort to improve public access to data provided by the U.S. Census Bureau. The U.S. Census Bureau collects and tabulates data on a multitude of subjects such as population, social, economic and housing demographics, labor force data, health care, migration and transportation. These data play a critical role in understanding our local and larger surrounding communities. Census data also influence state and federal funding, aid decision making in the legislative process, and determine each state's number of congressional seats. As the lead agency in New York for the SDC program, the New York State Data Center helps users navigate through the multitude of surveys and products provided by the U.S. Census Bureau.

For more information: <https://labor.ny.gov/nys-data-center/>

All profiles are freely downloadable as PDF documents on the PAD website:

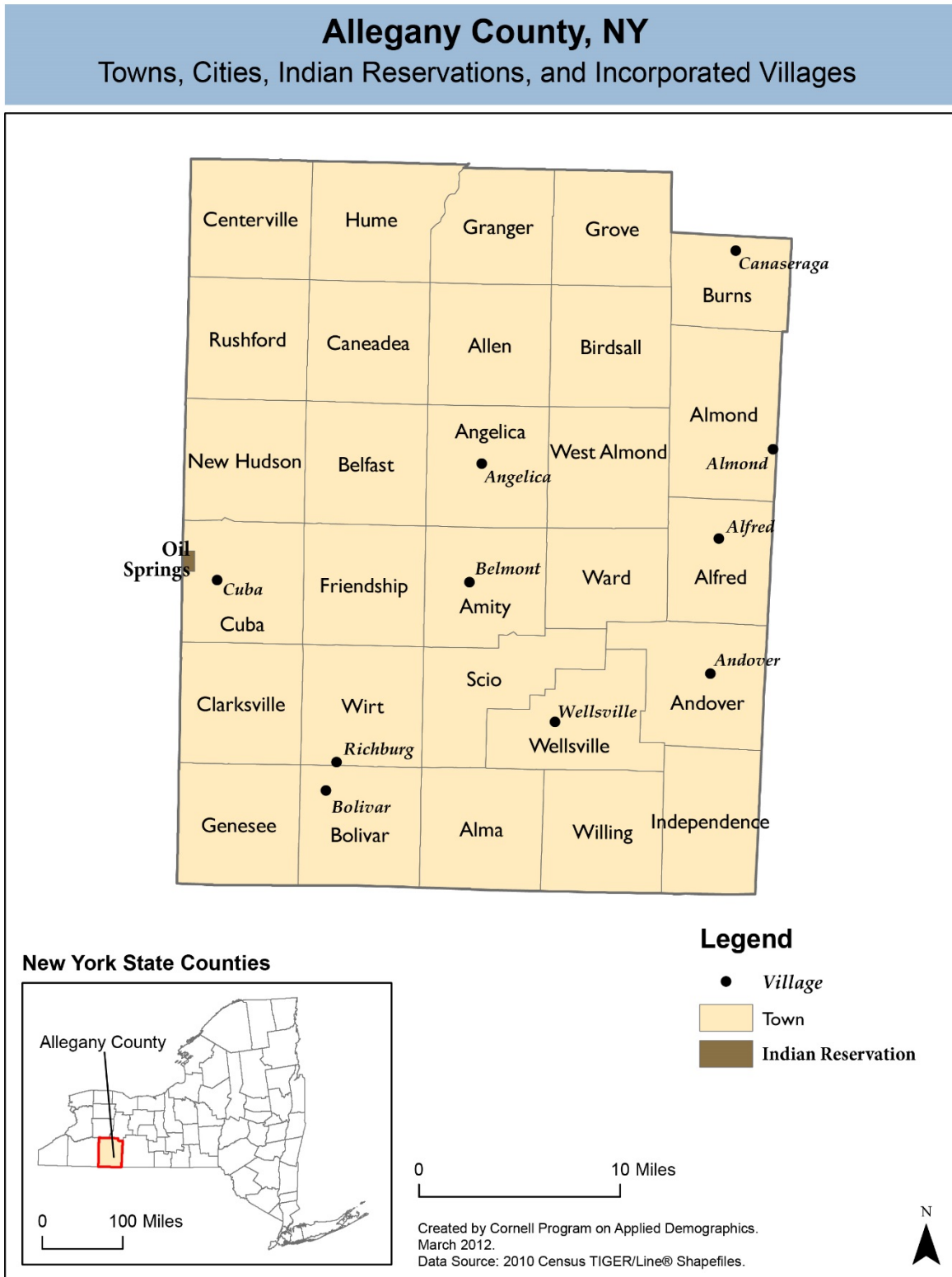
<http://pad.human.cornell.edu/profiles/index.cfm>

This profile is an update from the County Profile produced in 2013. The 2013 profile also contained information on agriculture related items and can be found at <https://pad.human.cornell.edu/profiles/2013/Allegany.pdf>

Contents

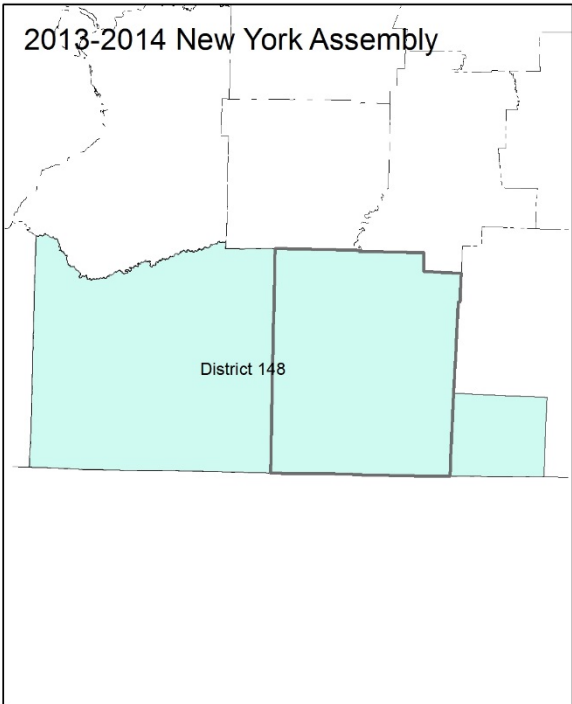
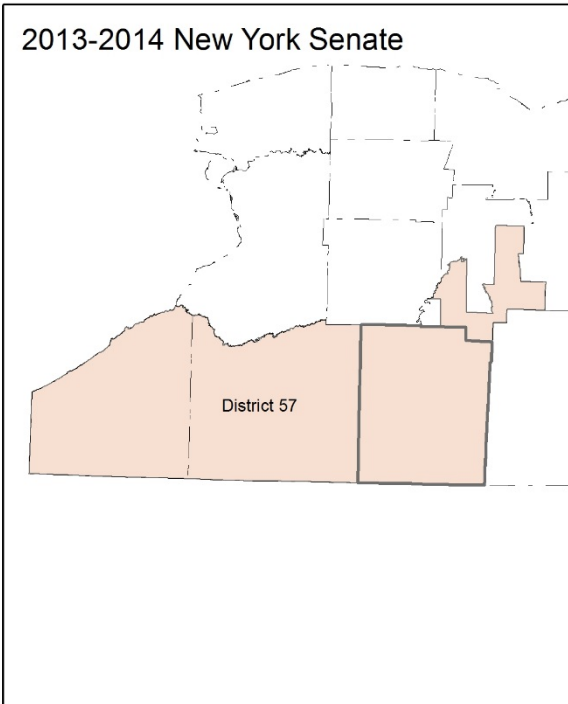
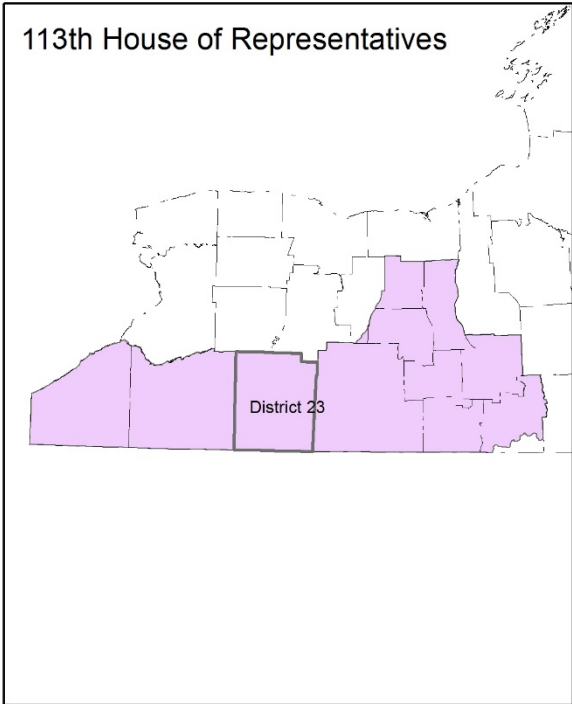
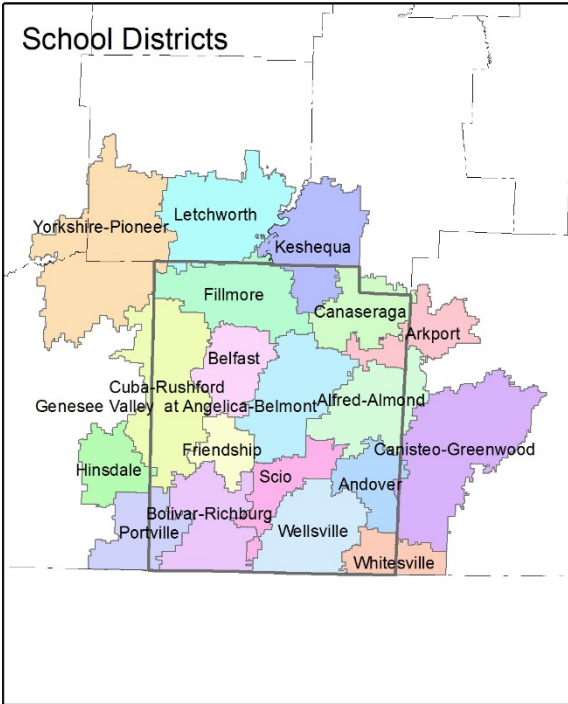
1	Reference Maps (towns and places as defined in 2010)	3
2	Population density and Urban Areas Map	5
3	Total Population	6
3.1	Historic and projected	6
3.2	Change since previous Census	6
3.3	Annual population estimates	7
3.4	Sub County population change 2010-2015	8
3.5	Sub County population change 2010-2015	9
4	Components of population change	10
4.1	Vital Statistics	10
4.2	Migration	11
5	Population by age	12
5.1	Historic and projected population pyramids	12
5.2	Selected age groups	13
5.3	Median age	14
6	Race	15
6.1	Total and household population by race	15
6.2	Race composition by age	15
7	Housing units	16
7.1	Characteristics	16
7.2	Historical data on number of housing units and occupancy status	17
7.3	Building Permits 2000-2015	17
8	Education	18
8.1	Enrollment by level of school	18
8.2	Enrollment by age	18
8.3	Percentage age 18-24 enrolled in college	18
8.4	Educational attainment	19
9	Language spoken at home	19
10	Labor Force Characteristics	20
10.1	Labor force, employment and unemployment	20
10.2	Annual unemployment rate	21
10.3	Employment and number of jobs	21
10.4	Class of worker	22
11	Household Income	23
11.1	Income Distribution	23
11.2	Median household income: Trends over time	24
12	Poverty	24
12.1	Family Income to Poverty Ratio	24
12.2	Poverty: Trends over time: Count	25
12.3	Poverty: Trends over time: Rate	25
12.4	Poverty characteristics	26
13	Glossary	27
14	References	30

1 Reference Maps (towns and places as defined in 2010)

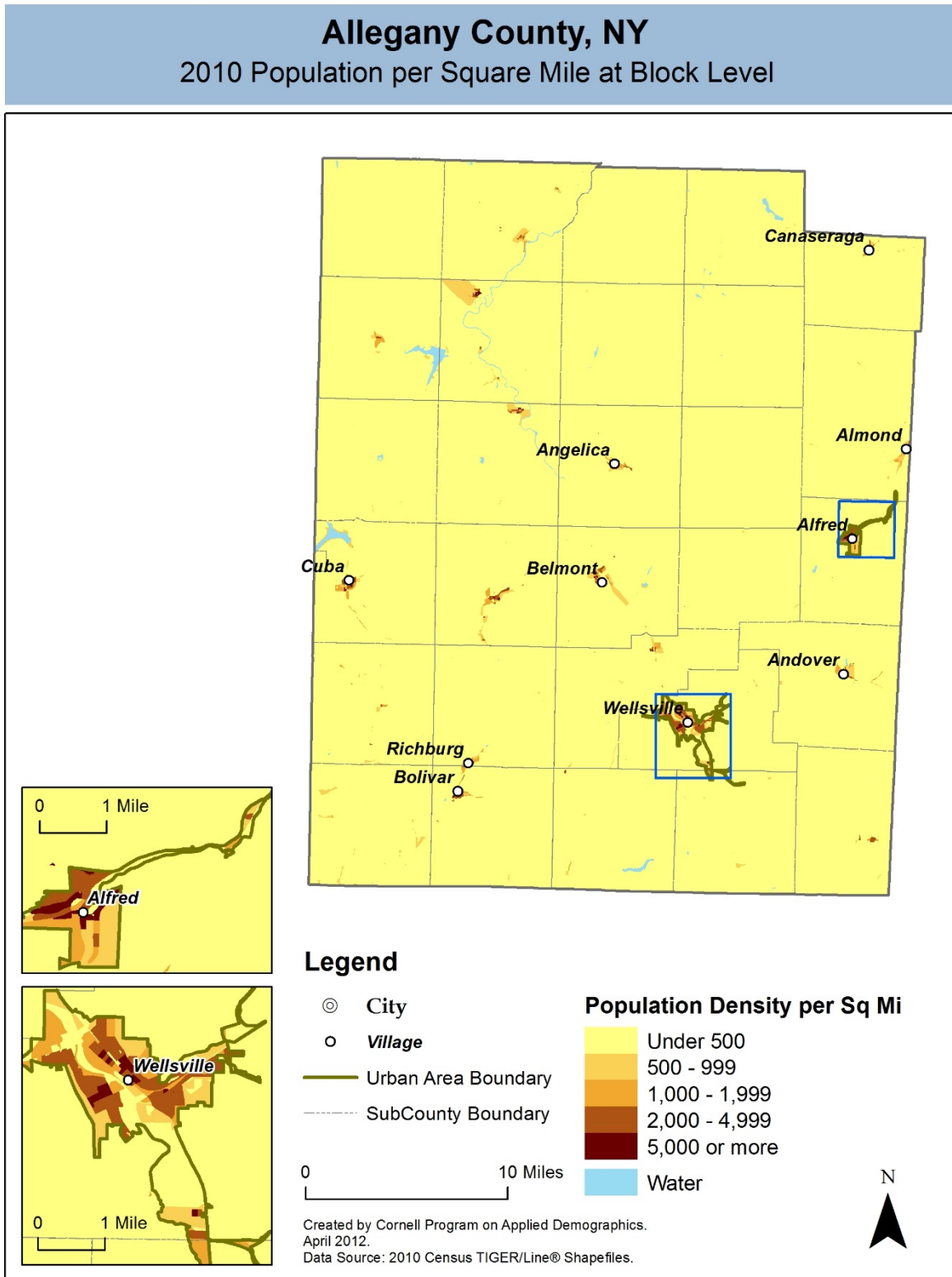


Allegheny County, NY

Overlap with School and Political Districts



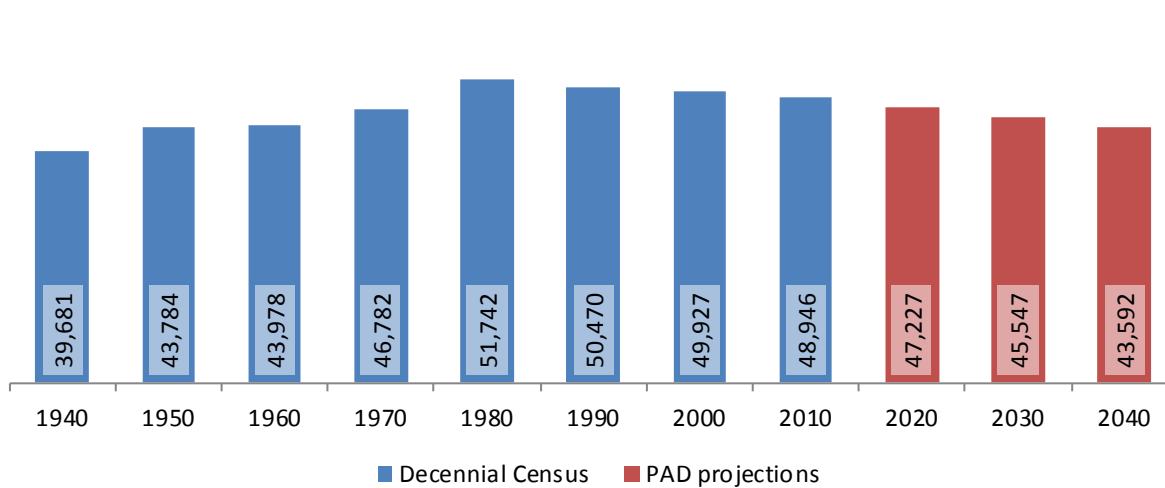
2 Population density and Urban Areas Map



3 Total Population

3.1 Historic and projected

Total population, Allegany County, 1940-2040



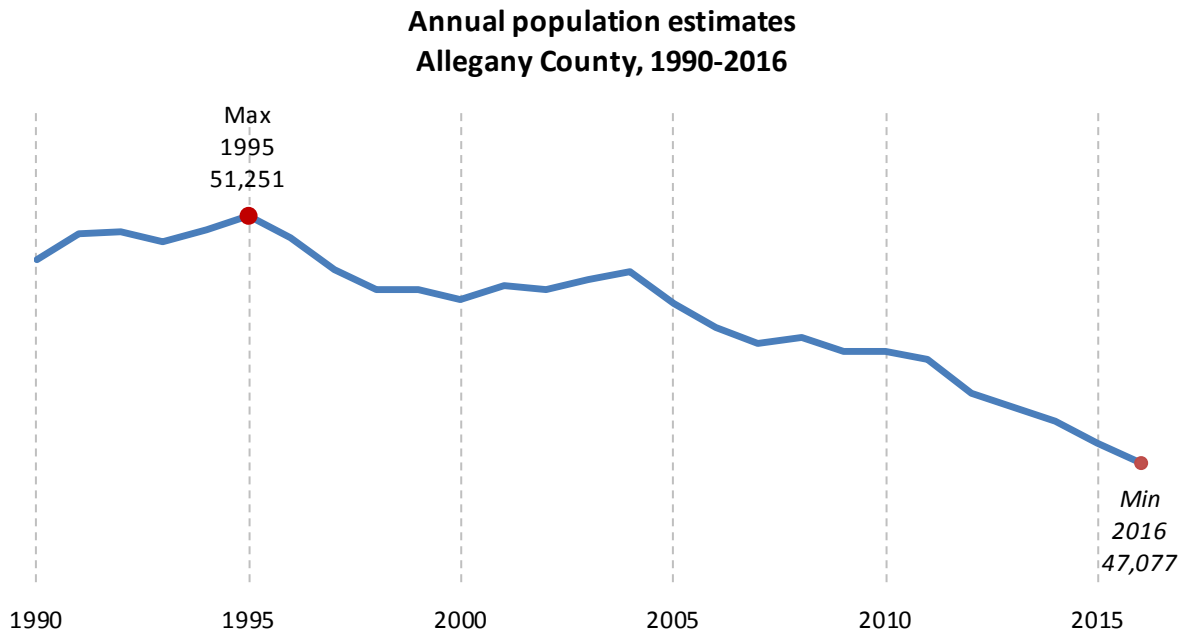
Source: 1940-2010 Decennial Census and projections by Cornell Program on Applied Demographics

3.2 Change since previous Census

	Total population	Change	
		Number	Percent
Decennial Census	1940	39,681	
	1950	43,784	4,103 10.3%
	1960	43,978	194 0.4%
	1970	46,782	2,804 6.4%
	1980	51,742	4,960 10.6%
	1990	50,470	-1,272 -2.5%
	2000	49,927	-543 -1.1%
	2010	48,946	-981 -2.0%
PAD projections	2020	47,227	-1,719 -3.5%
	2030	45,547	-1,680 -3.6%
	2040	43,592	-1,955 -4.3%

Source: 1940-2010 Decennial Census and projections by Cornell Program on Applied Demographics

3.3 Annual population estimates



Source: U.S. Census Bureau population estimates (1990-1999 and 2000-2009 intercensal and vintage 2016 postcensal)

3.4 Sub County population change 2010-2015

	Total Population		Difference	
	2000	2010	Count	%
New York State	18,976,821 *	19,378,102	401,281	2.1%
Allegany County	49,927	48,946	-981	-2.0%
Towns				
Alfred	5,140	5,237	97	1.9%
Allen	462	448	-14	-3.0%
Alma	847	842	-5	-0.6%
Almond	1,604	1,633	29	1.8%
Amity	2,245	2,308	63	2.8%
Andover	1,945	1,830	-115	-5.9%
Angelica	1,411	1,403	-8	-0.6%
Belfast	1,714	1,663	-51	-3.0%
Birdsall	268	221	-47	-17.5%
Bolivar	2,223	2,189	-34	-1.5%
Burns	1,248	1,180	-68	-5.4%
Caneadea	2,694	2,542	-152	-5.6%
Centerville	762	822	60	7.9%
Clarksville	1,146	1,161	15	1.3%
Cuba	3,392	3,243	-149	-4.4%
Friendship	1,927	2,004	77	4.0%
Genesee	1,803	1,693	-110	-6.1%
Granger	577	538	-39	-6.8%
Grove	533	548	15	2.8%
Hume	1,987	2,071	84	4.2%
Independence	1,074	1,167	93	8.7%
New Hudson	736	781	45	6.1%
Rushford	1,259	1,150	-109	-8.7%
Scio	1,914	1,833	-81	-4.2%
Ward	390	368	-22	-5.6%
Wellsville	7,678	7,397	-281	-3.7%
West Almond	353	334	-19	-5.4%
Willing	1,371	1,228	-143	-10.4%
Wirt	1,215	1,111	-104	-8.6%
Reservations				
Oil Springs	9	1	-8	-88.9%

* Original counts revised through Count Question Resolution Program (CQR)

Source: U.S. Census Bureau intercensal population estimates 2000-2010

3.5 Sub County population change 2010-2015

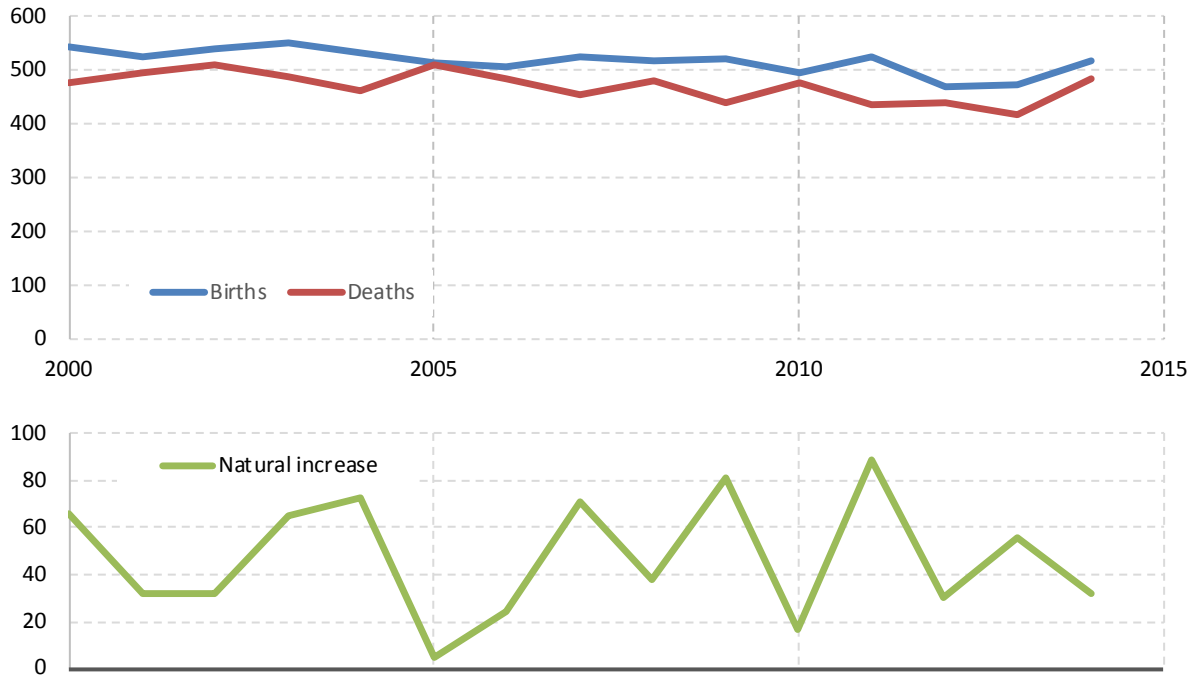
	Total Population		Difference	
	2010 base	2015	Count	%
New York State	19,378,087	19,795,791	417,704	2.2%
Allegany County	48,923	47,462	-1,461	-3.0%
Towns				
Alfred	5,238	5,093	-145	-2.8%
Allen	448	443	-5	-1.1%
Alma	842	847	5	0.6%
Almond	1,633	1,571	-62	-3.8%
Amity	2,308	2,226	-82	-3.6%
Andover	1,829	1,769	-60	-3.3%
Angelica	1,403	1,369	-34	-2.4%
Belfast	1,665	1,623	-42	-2.5%
Birdsall	221	225	4	1.8%
Bolivar	2,189	2,106	-83	-3.8%
Burns	1,176	1,132	-44	-3.7%
Caneadea	2,540	2,341	-199	-7.8%
Centerville	820	812	-8	-1.0%
Clarksville	1,161	1,118	-43	-3.7%
Cuba	3,233	3,167	-66	-2.0%
Friendship	2,004	1,929	-75	-3.7%
Genesee	1,691	1,646	-45	-2.7%
Granger	538	523	-15	-2.8%
Grove	548	535	-13	-2.4%
Hume	2,071	2,036	-35	-1.7%
Independence	1,167	1,167	0	0.0%
New Hudson	781	770	-11	-1.4%
Rushford	1,150	1,131	-19	-1.7%
Scio	1,833	1,768	-65	-3.5%
Ward	368	358	-10	-2.7%
Wellsville	7,397	7,160	-237	-3.2%
West Almond	331	327	-4	-1.2%
Willing	1,228	1,194	-34	-2.8%
Wirt	1,109	1,075	-34	-3.1%
Reservations				
Oil Springs	1	1	0	0.0%

Source: U.S. Census Bureau population estimates 2010-2015

4 Components of population change

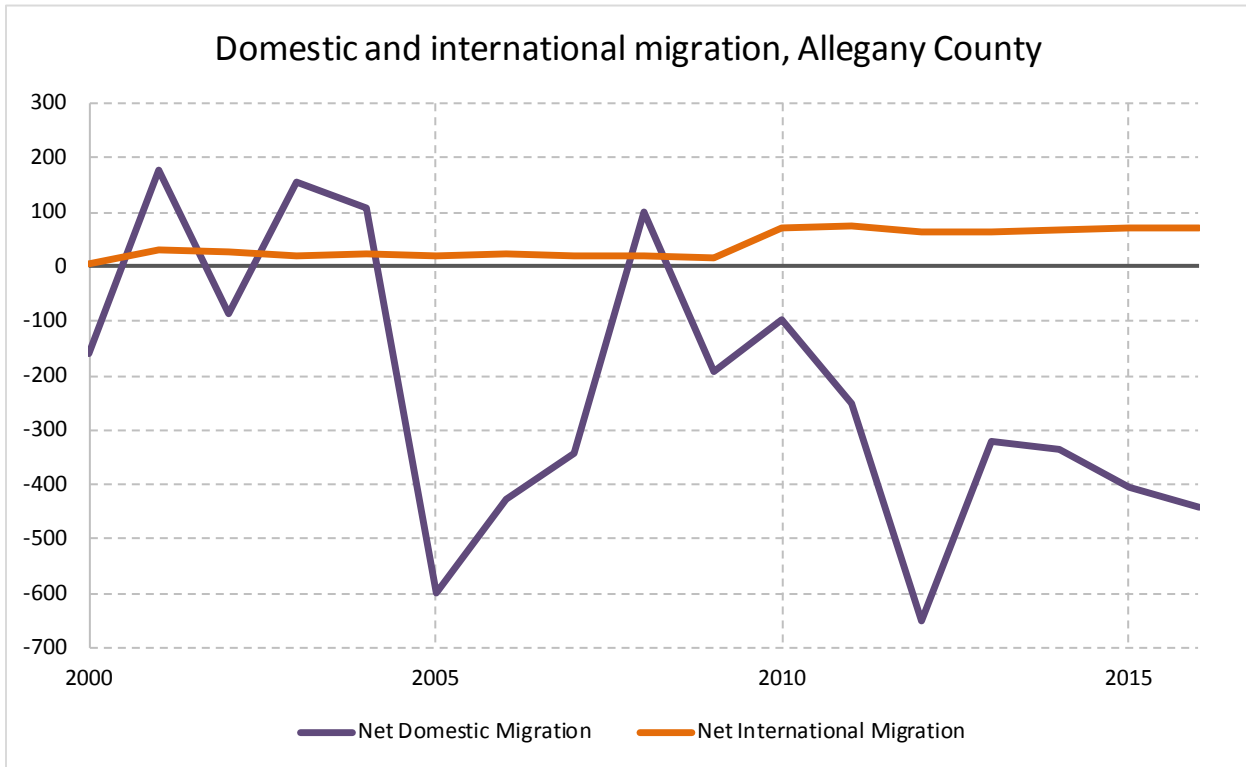
4.1 Vital Statistics

Vital Statistics, Allegheny County



Source: New York State Department of Health

4.2 Migration

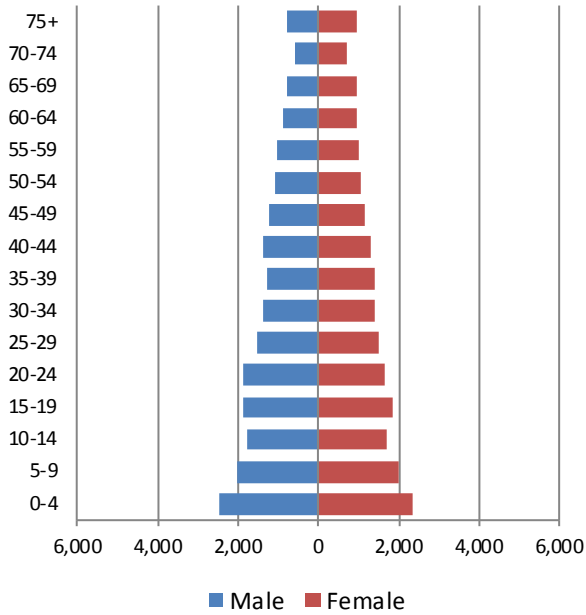


Source: Census Bureau population estimates (V2010 and V2016)

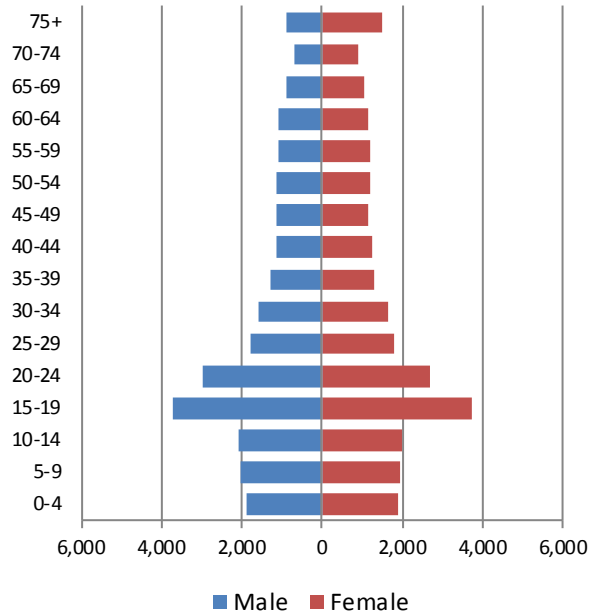
5 Population by age

5.1 Historic and projected population pyramids

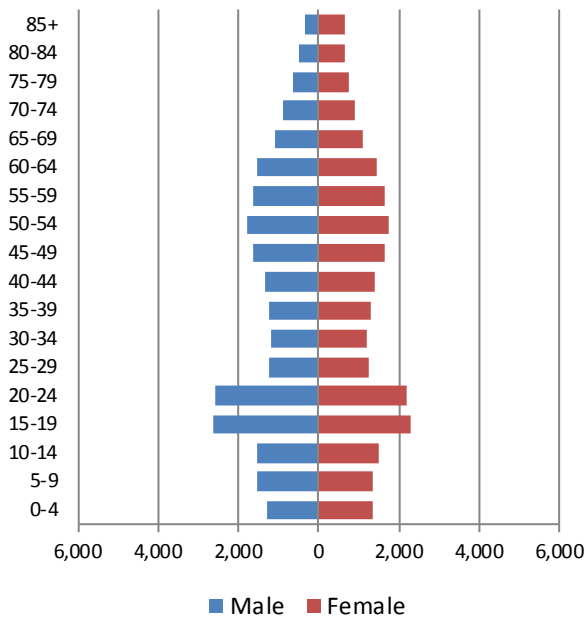
1950 Population Pyramid, Allegany County



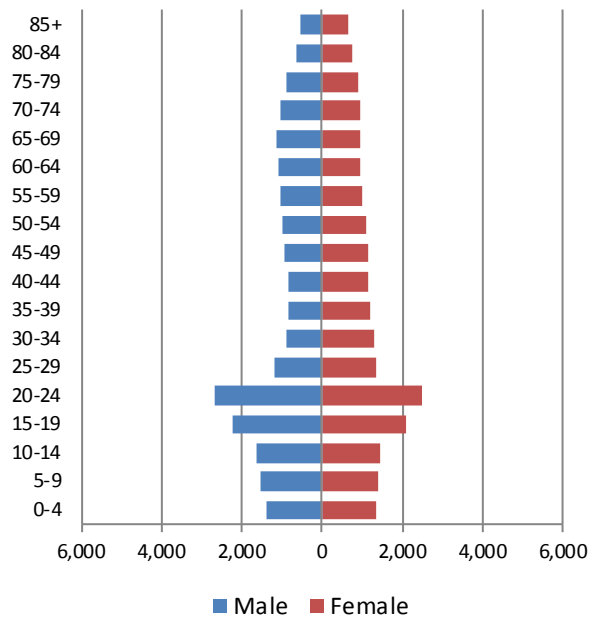
1980 Population Pyramid, Allegany County



2010 Population Pyramid, Allegany County



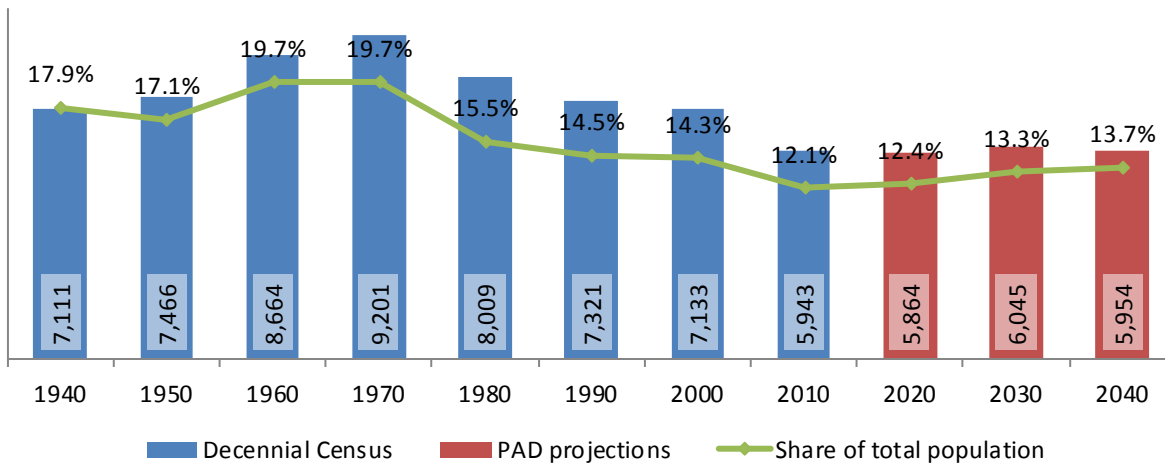
2040 Population Pyramid, Allegany County



Source: 1950, 1980, 2010 Decennial Census and projections by Cornell Program on Applied Demographics

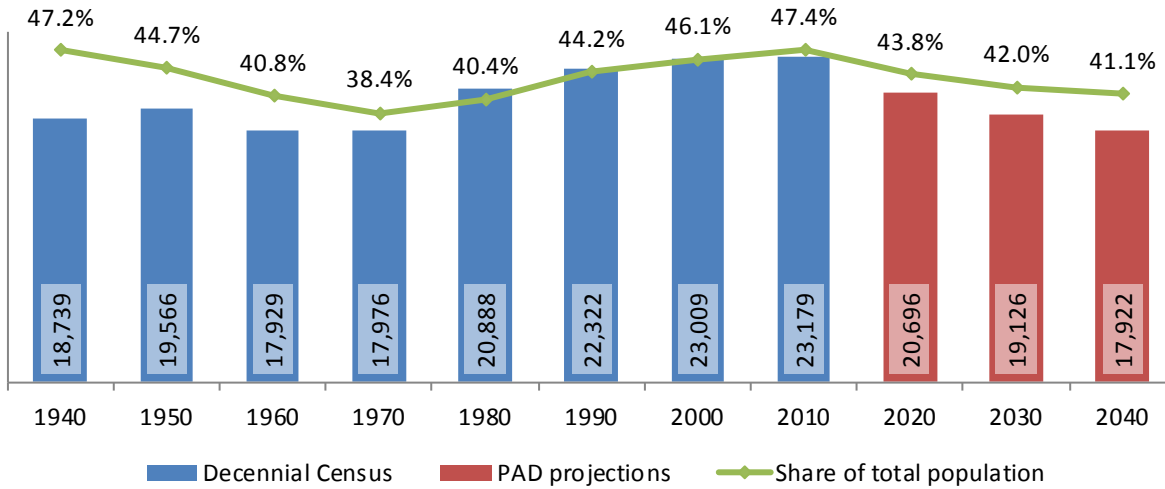
5.2 Selected age groups

Population age 5-14, Allegany County, 1940-2040



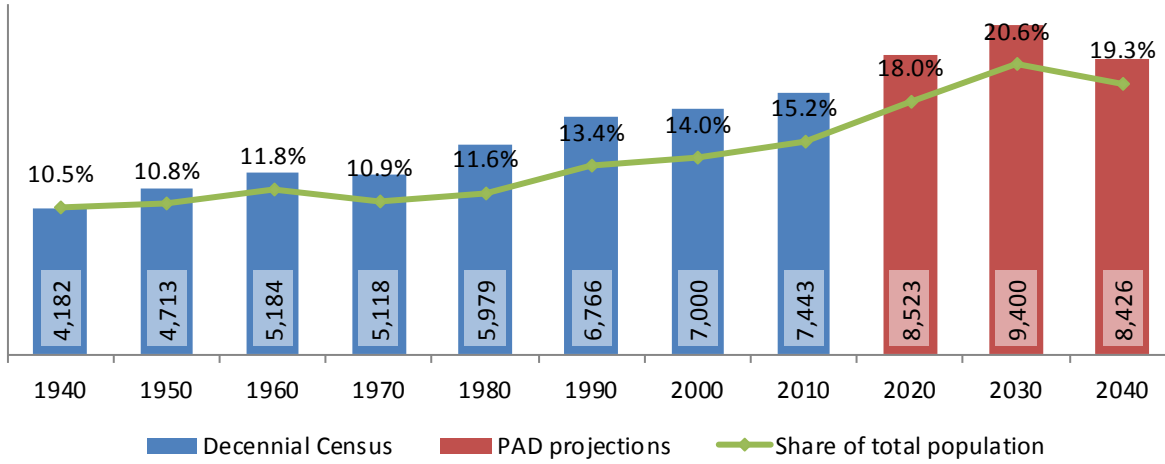
Source: 1940-2010 Decennial Census and projections by Cornell Program on Applied Demographics

Population age 25-64, Allegany County, 1940-2040



Source: 1940-2010 Decennial Census and projections by Cornell Program on Applied Demographics

Population age 65 and over, Allegany County, 1940-2040



Source: 1940-2010 Decennial Census and projections by Cornell Program on Applied Demographics

5.3 Median age

Allegany County New York State

Median age

2000	35.0	35.9
2010	37.8	38.0
2015	39.1	38.3

Source: 2000, 2010 Decennial Census, 2015 Population Estimates

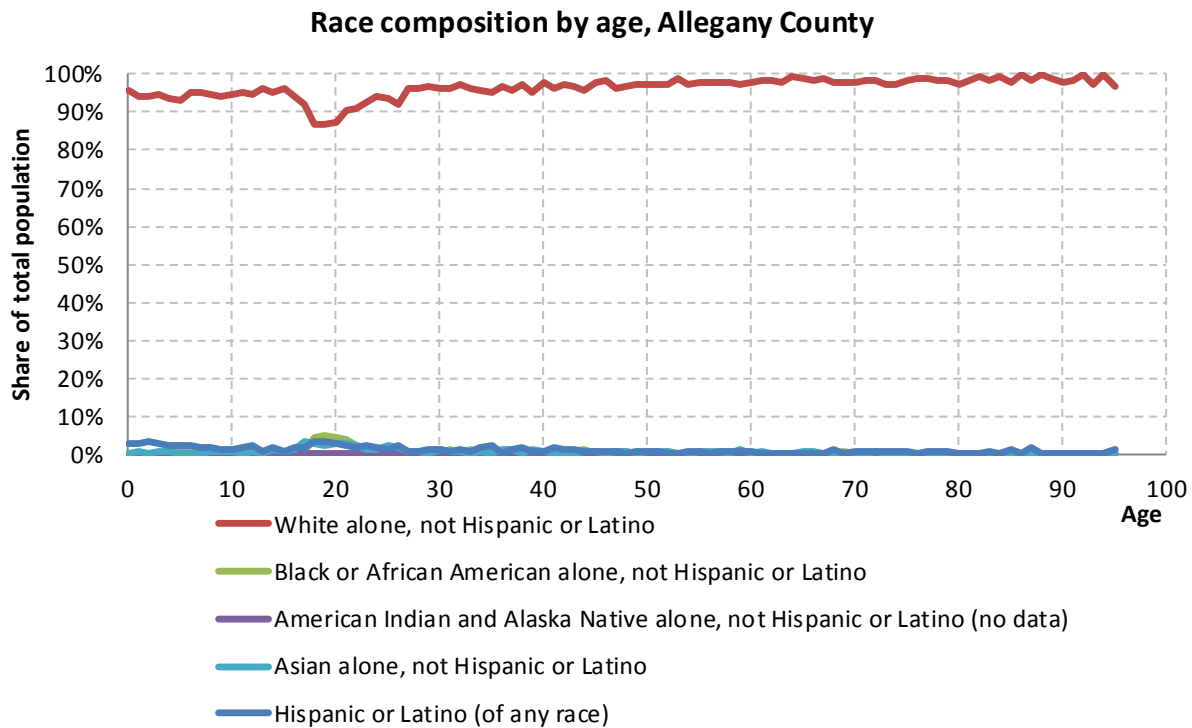
6 Race

6.1 Total and household population by race

	Total		In households		In Group Quarters
	Count	Percentage	Count	Percentage	Count
Total population	48,946	100%	44,362	100%	4,584
Not Hispanic or Latino					
One race					
White	46,701	95.4%	42,900	96.7%	3,801
Black or African American	494	1.0%	186	0.4%	308
American Indian and Alaska Native	97	0.2%	-	-	-
Asian	451	0.9%	270	0.6%	181
Native Hawaiian and Other Pacific Islander	7	0.0%	-	-	-
Some other race	30	0.1%	-	-	-
Two or more races	496	1.0%	411	0.9%	85
Hispanic or Latino (of any race)	670	1.4%	479	1.1%	191

Source: 2010 Decennial Census

6.2 Race composition by age



Source: 2010 Decennial Census

7 Housing units

7.1 Characteristics

	COUNT		PERCENTAGE	
	Estimate	Margin of error	Estimate	Margin of error
HOUSING OCCUPANCY				
Total housing units	26,024	± 184	100.0%	
Occupied housing units	18,285	± 286	70.3%	± 1.0
Vacant housing units	7,739	± 251	29.7%	± 1.0
YEAR STRUCTURE BUILT				
Total housing units	26,024	± 184	100.0%	
Built 2014 or later	19	± 18	0.1%	± 0.1
Built 2010 to 2013	115	± 34	0.4%	± 0.1
Built 2000 to 2009	2,036	± 189	7.8%	± 0.7
Built 1990 to 1999	2,823	± 208	10.8%	± 0.8
Built 1980 to 1989	2,914	± 213	11.2%	± 0.8
Built 1970 to 1979	3,734	± 244	14.3%	± 0.9
Built 1960 to 1969	2,122	± 194	8.2%	± 0.7
Built 1950 to 1959	2,018	± 189	7.8%	± 0.7
Built 1940 to 1949	1,368	± 144	5.3%	± 0.6
Built 1939 or earlier	8,875	± 336	34.1%	± 1.2
HOUSING TENURE				
Occupied housing units	18,285	± 286	100.0%	
Owner-occupied	13,373	± 273	73.1%	± 1.3
Renter-occupied	4,912	± 259	26.9%	± 1.3
HOUSE HEATING FUEL				
Occupied housing units	18,285	± 286	100.0%	
Utility gas	10,026	± 292	54.8%	± 1.3
Bottled, tank, or LP gas	1,902	± 137	10.4%	± 0.7
Electricity	1,632	± 167	8.9%	± 0.9
Fuel oil, kerosene, etc.	1,149	± 130	6.3%	± 0.7
Coal or coke	608	± 95	3.3%	± 0.5
Wood	2,652	± 165	14.5%	± 0.9
Solar energy	0	± 24	0.0%	± 0.2
Other fuel	266	± 91	1.5%	± 0.5
No fuel used	50	± 34	0.3%	± 0.2
VALUE				
Owner-occupied units	13,373	± 273	100.0%	
Less than \$50,000	3,876	± 204	29.0%	± 1.4
\$50,000 to \$99,999	5,762	± 219	43.1%	± 1.4
\$100,000 to \$149,999	1,772	± 157	13.3%	± 1.1
\$150,000 to \$199,999	972	± 115	7.3%	± 0.9
\$200,000 to \$299,999	629	± 95	4.7%	± 0.7
\$300,000 to \$499,999	245	± 55	1.8%	± 0.4
\$500,000 to \$999,999	86	± 50	0.6%	± 0.4
\$1,000,000 or more	31	± 22	0.2%	± 0.2
Median (dollars)	70,300	± 1,746		

Source: 2011-2015 American Community Survey

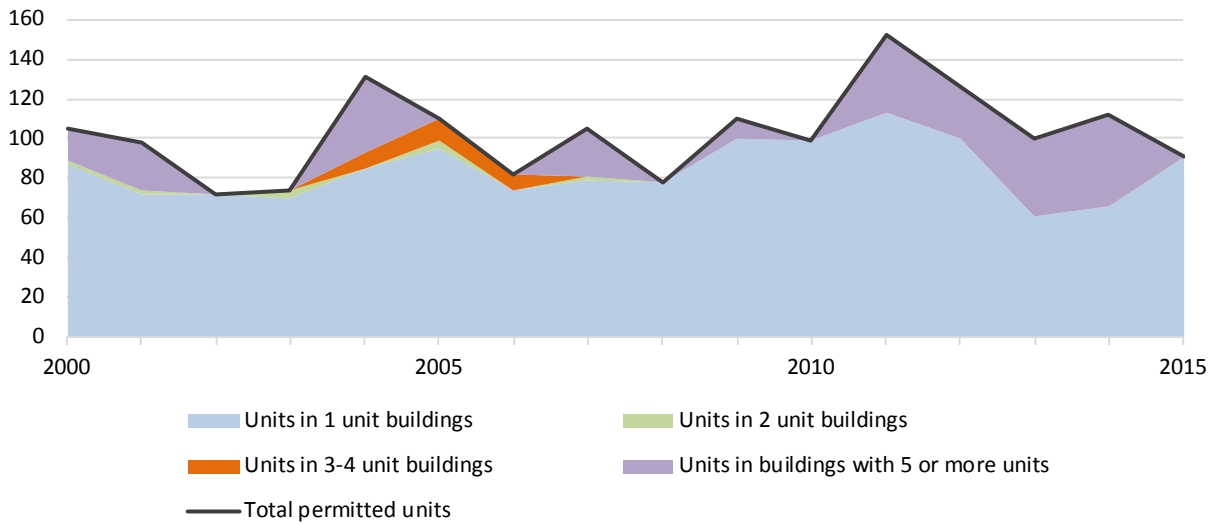
7.2 Historical data on number of housing units and occupancy status

Year	Number of Housing Units	Change since previous Census	Occupied	Occupancy rate	Vacant
1970	16,327		13,437	82.3%	2,890
1980	20,737	27.0%	16,505	79.6%	4,232
1990	21,951	5.9%	17,011	77.5%	4,940
2000	24,505	11.6%	18,009	73.5%	6,496
2010	26,140	6.7%	18,208	69.7%	7,932

Source: 1970-2010 Decennial Census

7.3 Building Permits 2000-2015

Building permits by number of permitted units in building, Allegany County



Source: Census Bureau Building Permits Survey

8 Education

8.1 Enrollment by level of school

	Estimate	Margin of error
Total enrolled in school	14,308	± 338
Nursery school, preschool	700	± 97
Kindergarten to 12th grade	7,173	± 152
Kindergarten	411	± 77
Elementary: grade 1 to grade 4	2,428	± 152
Elementary: grade 5 to grade 8	2,166	± 149
High school: grade 9 to grade 12	2,168	± 171
College, undergraduate	5,932	± 361
Graduate, professional school	503	± 109

Source: 2011-2015 American Community Survey

8.2 Enrollment by age

	Estimate	Margin of error
3 and 4 years	48.4%	± 5.8
5 to 9 years	94.2%	± 1.9
10 to 14 years	98.4%	± 0.8
15 to 17 years	92.3%	± 2.8
18 and 19 years	90.3%	± 4.2
20 to 24 years	63.0%	± 4.1
25 to 34 years	12.1%	± 2.1
35 years and over	1.7%	± 0.2

Source: 2011-2015 American Community Survey

8.3 Percentage age 18-24 enrolled in college

	Estimate	Margin of error
Population 18 to 24 years	7,461	± 105
Enrolled in college or graduate school	70.5%	± 4.0
Males 18 to 24 years	4,032	± 105
Enrolled in college or graduate school	66.2%	± 5.7
Females 18 to 24 years	3,429	± 87
Enrolled in college or graduate school	75.6%	± 5.7

Source: 2011-2015 American Community Survey

8.4 Educational attainment

	COUNT		PERCENTAGE	
	Estimate	Margin of error	Estimate	Margin of error
Population 25 years and over	30,568	± 104	100%	
EDUCATIONAL ATTAINMENT				
Less than 9th grade	1,035	± 132	3.4%	± 0.4
9th to 12th grade, no diploma	2,455	± 218	8.0%	± 0.7
High school graduate (includes equivalency)	11,837	± 348	38.7%	± 1.1
Some college, no degree	5,147	± 264	16.8%	± 0.9
Associate's degree	3,976	± 249	13.0%	± 0.8
Bachelor's degree	3,006	± 208	9.8%	± 0.7
Graduate or professional degree	3,112	± 277	10.2%	± 0.9
Percent high school graduate or higher			88.6%	± 0.9
Percent bachelor's degree or higher			20.0%	± 1.1

Source: 2011-2015 American Community Survey

9 Language spoken at home

	COUNT		PERCENTAGE		SPEAK ENGLISH LESS THAN "VERY WELL"	
	Estimate	Margin of error	Estimate	Margin of error	Estimate	Margin of error
Population 5 years and over	45,569	± 40	100%			
LANGUAGE SPOKEN AT HOME						
English only	43,242	± 314	94.9%	± 0.7		
Language other than English	2,327	± 310	5.1%	± 0.7	608	± 150
Spanish	615	± 119	1.3%	± 0.3	47	± 28
Other Indo-European languages	1,267	± 242	2.8%	± 0.5	375	± 129
Asian and Pacific Islander languages	321	± 73	0.7%	± 0.2	177	± 55
Other languages	124	± 62	0.3%	± 0.1	9	± 13

Source: 2011-2015 American Community Survey

10 Labor Force Characteristics

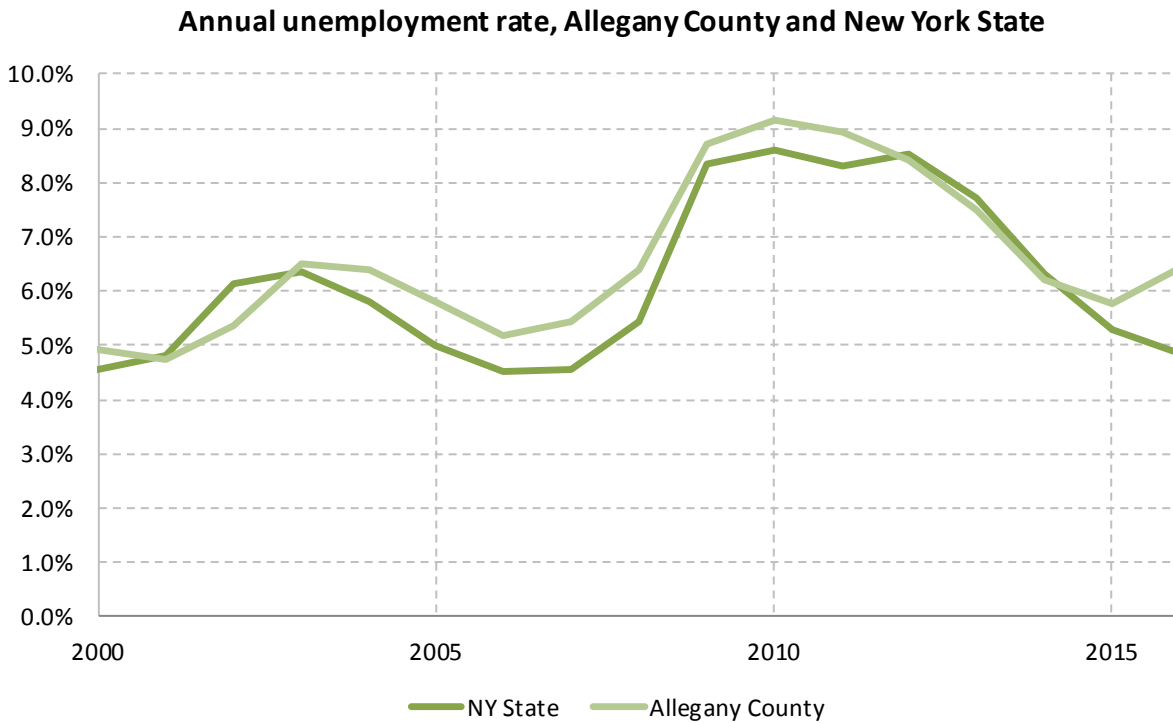
10.1 Labor force, employment and unemployment

	TOTAL		IN LABOR FORCE		EMPLOYED		UNEMPLOYMENT RATE	
	Estimate	Margin of error	Estimate	Margin of error	Estimate	Margin of error	Estimate	Margin of error
Population 16 years and over	39,423	± 95	57.0%	± 1.0	51.8%	± 1.0	9.2%	± 0.8
AGE								
16 to 19 years	4,360	± 147	33.1%	± 3.3	25.2%	± 2.9	23.7%	± 4.9
20 to 24 years	4,495	± 86	68.8%	± 4.0	58.6%	± 4.2	14.8%	± 3.1
25 to 29 years	2,516	± 59	80.4%	± 3.8	69.0%	± 4.3	14.1%	± 3.5
30 to 34 years	2,414	± 37	80.3%	± 3.3	70.8%	± 3.7	11.9%	± 3.0
35 to 44 years	4,874	± 48	78.4%	± 3.0	72.2%	± 3.2	7.9%	± 2.0
45 to 54 years	6,292	± 71	79.1%	± 2.1	76.0%	± 2.1	3.9%	± 0.9
55 to 59 years	3,332	± 159	70.0%	± 3.2	67.0%	± 3.4	4.3%	± 1.5
60 to 64 years	3,270	± 155	52.8%	± 3.3	50.0%	± 3.3	5.3%	± 2.2
65 to 74 years	4,340	± 30	21.3%	± 2.6	20.3%	± 2.5	5.0%	± 2.3
75 years and over	3,530	± 30	5.5%	± 1.1	5.2%	± 1.1	5.2%	± 4.1
RACE AND HISPANIC OR LATINO ORIGIN								
White alone	37,679	± 96	57.1%	± 1.0	52.0%	± 1.0	9.0%	± 0.8
Black or African American alone	620	± 61	50.6%	± 10.6	42.7%	± 12.1	15.6%	± 11.8
American Indian and Alaska Native alone	126	± 33	65.1%	± 17.3	52.4%	± 20.3	19.5%	± 20.6
Asian alone	545	± 62	55.6%	± 10.7	51.9%	± 10.9	6.6%	± 8.2
Two or more races	249	± 65	49.4%	± 15.8	36.1%	± 12.4	26.8%	± 16.1
Hispanic or Latino origin (of any race)	551	± 44	65.9%	± 10.0	58.8%	± 11.1	10.7%	± 7.7
White alone, not Hispanic or Latino	37,412	± 66	57.0%	± 1.0	51.9%	± 1.0	9.0%	± 0.8
SEX								
Population 20 to 64 years	27,193	± 121	73.2%	± 1.1	67.1%	± 1.3	8.3%	± 0.9
Male	13,792	± 97	76.7%	± 1.6	68.6%	± 1.8	10.5%	± 1.4
Female	13,401	± 76	69.6%	± 1.5	65.5%	± 1.6	5.9%	± 1.0
With own children under 18 years	4,433	± 184	72.4%	± 2.9	67.3%	± 2.8	7.1%	± 1.9
EDUCATIONAL ATTAINMENT								
Population 25 to 64 years	22,698	± 99	74.1%	± 1.3	68.8%	± 1.3	7.1%	± 0.8
Less than high school graduate	2,295	± 243	52.7%	± 4.7	44.1%	± 4.2	16.3%	± 4.3
High school graduate (includes equivalency)	8,418	± 373	70.6%	± 2.1	65.5%	± 2.3	7.3%	± 1.5
Some college or associate's degree	7,355	± 331	78.8%	± 2.3	73.9%	± 2.1	6.2%	± 1.4
Bachelor's degree or higher	4,630	± 313	83.6%	± 2.0	78.9%	± 2.2	5.5%	± 1.5

Table formula: **LABOR FORCE** = # EMPLOYED + # UNEMPLOYED
 % IN LABOR FORCE = LABOR FORCE / TOTAL * 100%
 % EMPLOYED = # EMPLOYED / TOTAL * 100%
 UNEMPLOYMENT RATE = # UNEMPLOYED / LABOR FORCE * 100%

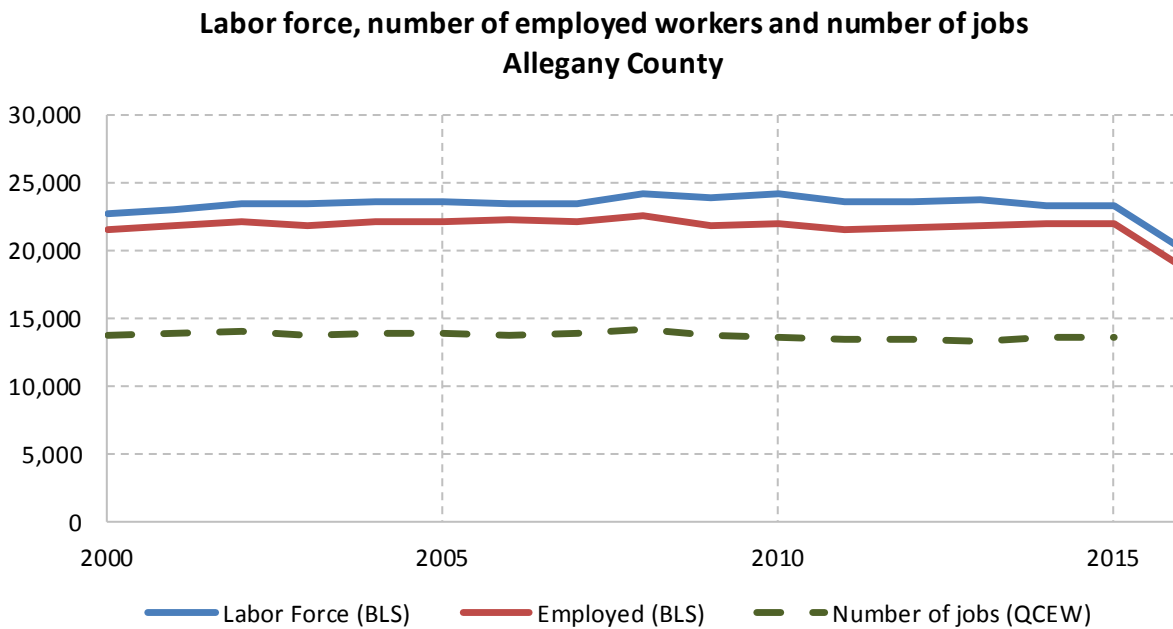
Source: 2011-2015 American Community Survey

10.2 Annual unemployment rate



Source: Bureau Labor Statistics (BLS)

10.3 Employment and number of jobs



Source: Bureau Labor Statistics (BLS) and NY Department of Labor - Quarterly Census of Employment and Wages (QCEW) – annual averages

10.4 Class of worker

		Total	%Male	%Female
Civilian employed population 16 years and over	Estimate	20,410	52.1%	47.9%
	<i>Margin of error</i>	± 379	± 1.0	± 1.0
Private for-profit wage and salary workers:	Estimate	11,826	57.6%	42.4%
	<i>Margin of error</i>	± 356	± 1.6	± 1.6
Employee of private company workers	Estimate	11,403	57.2%	42.8%
	<i>Margin of error</i>	± 356	± 1.6	± 1.6
Self-employed in own incorporated business workers	Estimate	423	68.3%	31.7%
	<i>Margin of error</i>	± 78	± 7.2	± 7.2
Private not-for-profit wage and salary workers	Estimate	3,256	34.1%	65.9%
	<i>Margin of error</i>	± 278	± 3.5	± 3.5
Local government workers	Estimate	1,746	43.9%	56.1%
	<i>Margin of error</i>	± 163	± 4.5	± 4.5
State government workers	Estimate	1,778	48.0%	52.0%
	<i>Margin of error</i>	± 174	± 5.1	± 5.1
Federal government workers	Estimate	310	61.6%	38.4%
	<i>Margin of error</i>	± 97	± 10.9	± 10.9
Self-employed in own not incorporated business workers and unpaid family workers	Estimate	1,494	60.7%	39.3%
	<i>Margin of error</i>	± 170	± 4.7	± 4.7

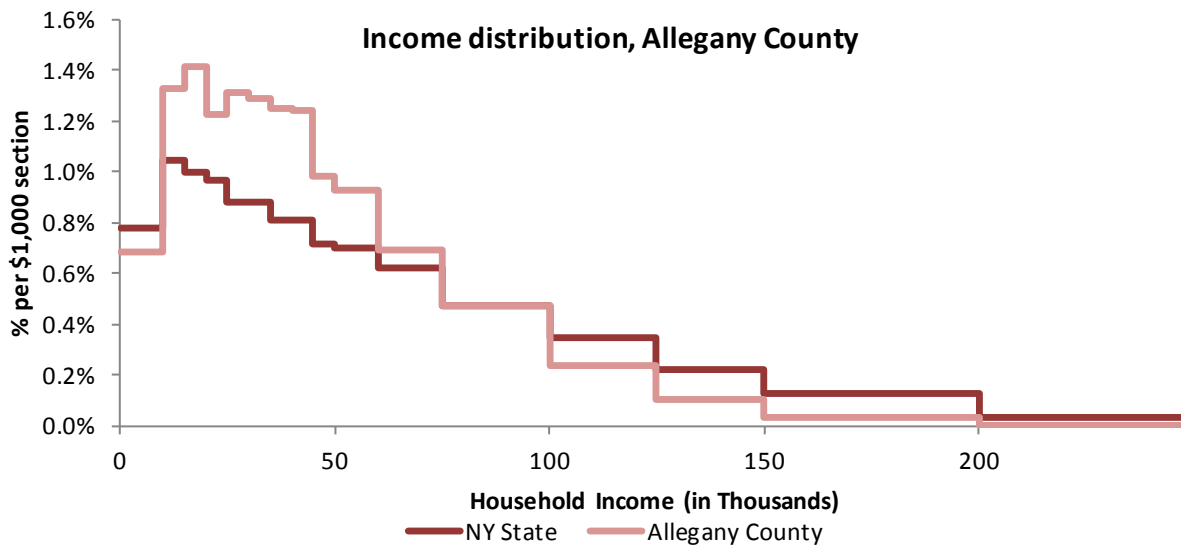
Source: 2011-2015 American Community Survey

11 Household Income

11.1 Income Distribution

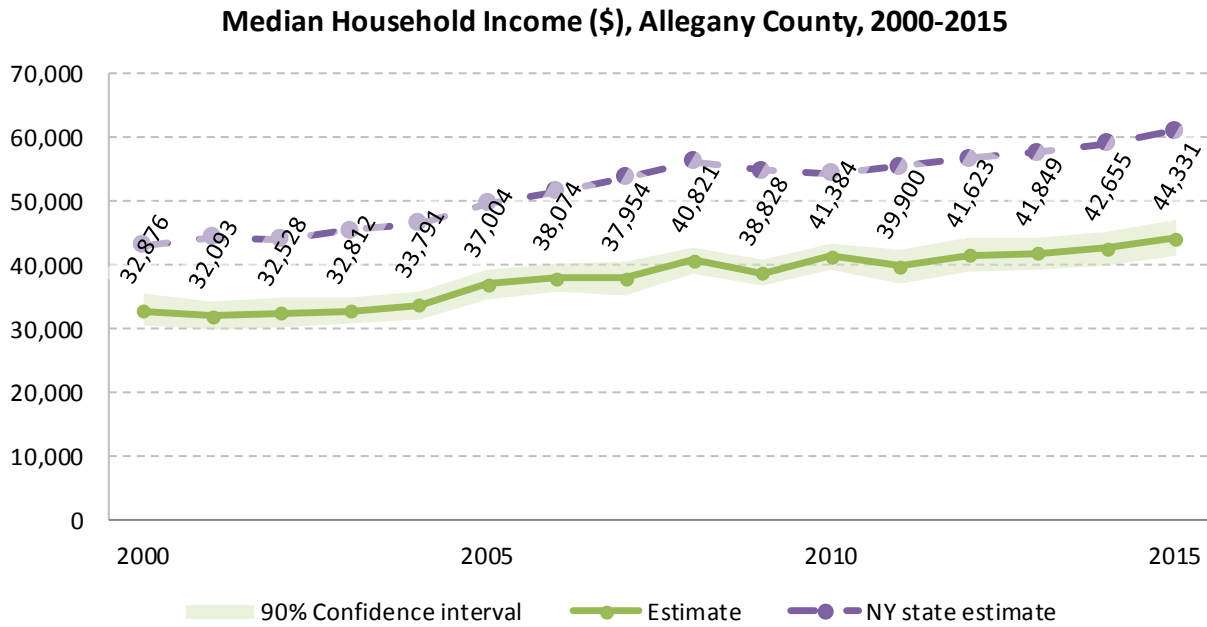
	Estimate	Margin of error	Interval width (in \$1,000)	Est. per \$1,000 section
Total:	18,285	± 286		
Less than \$10,000	1,261	± 148	10	126.1
\$10,000 to \$14,999	1,215	± 131	5	243.0
\$15,000 to \$19,999	1,294	± 152	5	258.8
\$20,000 to \$24,999	1,125	± 128	5	225.0
\$25,000 to \$29,999	1,201	± 138	5	240.2
\$30,000 to \$34,999	1,180	± 145	5	236.0
\$35,000 to \$39,999	1,142	± 128	5	228.4
\$40,000 to \$44,999	1,139	± 166	5	227.8
\$45,000 to \$49,999	900	± 99	5	180.0
\$50,000 to \$59,999	1,701	± 153	10	170.1
\$60,000 to \$74,999	1,907	± 172	15	127.1
\$75,000 to \$99,999	2,150	± 178	25	86.0
\$100,000 to \$124,999	1,096	± 130	25	43.8
\$125,000 to \$149,999	465	± 83	25	18.6
\$150,000 to \$199,999	323	± 56	50	6.5
\$200,000 or more	186	± 52	-	-

Source: 2011-2015 American Community Survey



Source: 2011-2015 American Community Survey

11.2 Median household income: Trends over time



Source: Small Area Income and Poverty Estimates (SAIPE)

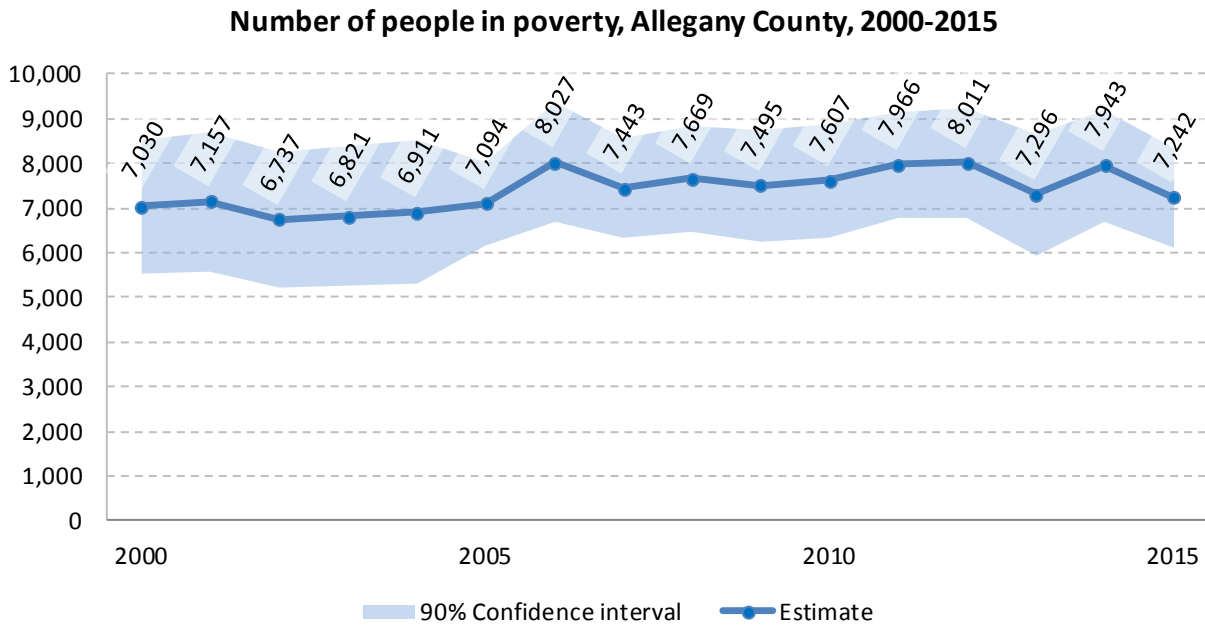
12 Poverty

12.1 Family Income to Poverty Ratio

	TOTAL		PERCENT OF ALL	
	Estimate	Margin of error	Estimate	Margin of error
All families	11,838	± 260		
ALL FAMILIES WITH INCOME:				
Below 50 percent of poverty level	529	± 95	4.5%	± 0.8
Below 100 percent of poverty level	1,456	± 157	12.3%	± 1.3
Below 125 percent of poverty level	2,043	± 198	17.3%	± 1.6
Below 150 percent of poverty level	2,538	± 226	21.4%	± 1.9
Below 185 percent of poverty level	3,353	± 232	28.3%	± 1.9
Below 200 percent of poverty level	3,747	± 235	31.7%	± 1.9
Below 300 percent of poverty level	6,216	± 268	52.5%	± 1.9
Below 400 percent of poverty level	8,250	± 265	69.7%	± 1.6
Below 500 percent of poverty level	9,582	± 275	80.9%	± 1.5

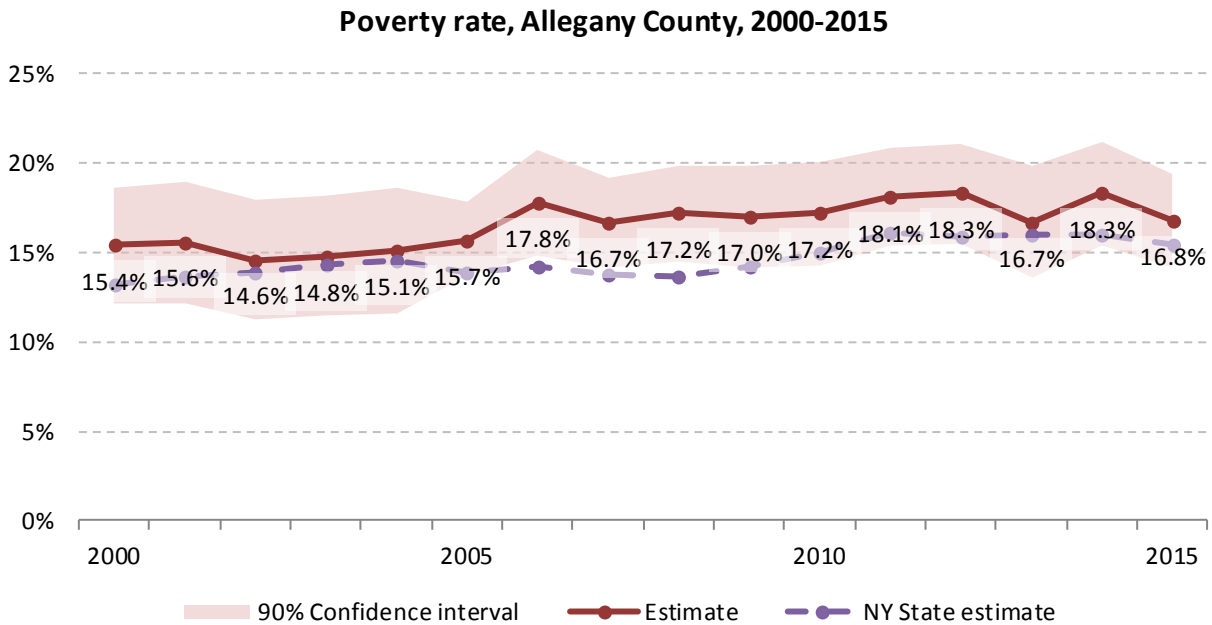
Source: 2011-2015 American Community Survey

12.2 Poverty: Trends over time: Count



Source: Small Area Income and Poverty Estimates (SAIPE)

12.3 Poverty: Trends over time: Rate



Source: Small Area Income and Poverty Estimates (SAIPE)

12.4 Poverty characteristics

	TOTAL		BELOW POVERTY LEVEL		PERCENT BELOW POVERTY LEVEL	
	Estimate	Margin of error	Estimate	Margin of error	Estimate	Margin of error
Population for whom poverty status is determined	43,104	± 428	7,285	± 577	16.9%	± 1.3
AGE						
Under 18 years	9,706	± 90	2,439	± 309	25.1%	± 3.2
Under 5 years	2,480	± 42	817	± 134	32.9%	± 5.2
5 to 17 years	7,226	± 83	1,622	± 224	22.4%	± 3.1
18 to 34 years	8,148	± 399	2,144	± 253	26.3%	± 2.5
35 to 64 years	17,697	± 96	2,159	± 212	12.2%	± 1.2
65 years and over	7,553	± 104	543	± 94	7.2%	± 1.3
SEX						
Male	21,810	± 274	3,424	± 282	15.7%	± 1.3
Female	21,294	± 289	3,861	± 367	18.1%	± 1.7
RACE AND HISPANIC OR LATINO ORIGIN						
White alone	41,964	± 400	7,085	± 558	16.9%	± 1.3
Black or African American alone	143	± 98	71	± 59	49.7%	± 37.6
American Indian and Alaska Native alone	134	± 35	8	± 8	6.0%	± 6.2
Asian alone	406	± 77	39	± 28	9.6%	± 6.7
Hispanic or Latino origin (of any race)	439	± 87	182	± 75	41.5%	± 14.7
White alone, not Hispanic or Latino	41,607	± 379	6,915	± 543	16.6%	± 1.3
EDUCATIONAL ATTAINMENT						
Population 25 years and over	30,117	± 162	3,803	± 284	12.6%	± 0.9
Less than high school graduate	3,385	± 278	897	± 152	26.5%	± 3.8
High school graduate (includes equivalency)	11,587	± 361	1,723	± 192	14.9%	± 1.6
Some college, associate's degree	9,061	± 328	945	± 138	10.4%	± 1.4
Bachelor's degree or higher	6,084	± 349	238	± 65	3.9%	± 1.0
EMPLOYMENT STATUS						
Civilian labor force 16 years and over	20,485	± 448	2,161	± 199	10.5%	± 0.9
Employed	18,687	± 415	1,604	± 171	8.6%	± 0.9
Male	9,937	± 286	739	± 108	7.4%	± 1.0
Female	8,750	± 287	865	± 110	9.9%	± 1.2
Unemployed	1,798	± 192	557	± 105	31.0%	± 4.6
Male	1,203	± 150	359	± 81	29.8%	± 5.5
Female	595	± 102	198	± 59	33.3%	± 7.7
WORK EXPERIENCE IN THE PAST 12 MONTHS						
Population 16 years and over	8,750	± 287	865	± 110	9.9%	± 1.2
Worked full-time, year-round	1,798	± 192	557	± 105	31.0%	± 4.6
Worked part-time or part-year	1,203	± 150	359	± 81	29.8%	± 5.5
Did not work	595	± 102	198	± 59	33.3%	± 7.7

Source: 2011-2015 American Community Survey

13 Glossary

American Community Survey (ACS) - The American Community Survey is an ongoing survey of the population that provides data every year on a variety of social and economic characteristics—age, sex, race, family and relationships, income and benefits, health insurance, education, veteran status, disabilities, where you work and how you get there, where you live and how much you pay for some essentials. The ACS replaced the information previously gathered by what was known as the “long form” of the decennial censuses. The ACS provides communities, companies and other institutions with current information they need to plan investments and services. Information from the survey generates data that help determine how more than \$400 billion in federal and state funds are distributed each year. Every estimate presented in the American Community Survey, as in other surveys, has an uncertainty associated with it. Often the magnitude of that uncertainty is expressed as the Margin of Error.

Confidence Interval (CI) - indication of the degree of uncertainty about a sample estimates. Confidence intervals have been traditionally reported at the 90, 95 and 99 percent levels. A 90 percent confidence interval can be interpreted, for example, roughly as providing 90 percent certainty that the interval defined by the upper and lower bounds contain the true value of the characteristic. If a Margin of Error is given, the lower bound of the confidence interval is equal to the estimate minus the Margin of Error and the upper bound is equal to the estimate plus the Margin of Error. (See further, Margin of Error definition below.)

County subdivision or Minor Civil Division (MCD) - The Census Bureau geography for primary administrative units below the county level in New York is collectively referred to as county subdivisions or minor civil divisions. These include towns, cities and Indian Reservations.

Decennial Census - the Census of the population and housing taken every 10 years in the United States, at the start of each decade, since 1790.

Employed – either “at work” or “with a job, but not at work”.

Group Quarters Population - all U.S. residents who live in group living facilities including correctional institutions, juvenile facilities, skilled nursing facilities, college residence halls, military barracks, group homes, and workers' dormitories.

Household Population - all U.S. residents who live in housing units such as single family homes, townhouses, apartments, and mobile homes.

Intercensal Population Estimates - estimates produced for the years between two decennial censuses when both the beginning and ending populations are known. They are produced once a decade by adjusting the existing time series of postcensal estimates for the entire decade to smooth the transition from one decennial census count to the next. They differ from the postcensal estimates that are released annually because the difference between the April 1 postcensal estimate and April 1 census count for the end of the decade is redistributed across the estimates for that decade. For dates when both postcensal and intercensal estimates are available, intercensal estimates are preferred.

Labor Force - consists of people classified as employed or unemployed.

Margin of Error (MOE) - a measure of the precision of an estimate at a given level of confidence. The confidence level of a margin of error indicates the likelihood that the difference between the population value (which you

would get if you could measure the whole population instead of a sample) and the estimate is less than or equal to the margin of error. The range from the estimate minus the margin of error to the estimate plus the margin of error is called the confidence interval. All ACS estimates are published with their margins of error at the 90 percent confidence level. Margins of error are useful in assessing the reliability of estimates and whether differences between estimates are significant.

Numeric Population Change - difference between the population of an area at the beginning and end of a time period. It is computed by taking the difference between the population at one point in time (t_1) and some future time (t_2).

Percent Population Change - difference between the population of an area at the beginning and end of a time period, expressed as a percentage of the beginning population. It is computed by dividing the population change ($t_2 - t_1$) by t_1 and multiplying the result by 100.

Population Estimates - The calculated number of people living in an area as of a specified point in time, usually July 1st. The estimated population is calculated using a component of change model that incorporates information on natural increase (births, deaths) and net migration (net domestic migration, net international migration) that has occurred in an area since the latest decennial census. A procedure for estimating the current population using a procedure involving a "base population" value at time $t - 1$, adding to that the births during the interval $t - 1$ to t , subtracting the deaths during that interval $t - 1$ to t , and then adding the net domestic and net international migration that occurred during that interval.

Population Density - Total number of people per areal unit like a square mile or square kilometer.

Population Pyramids - A graphical way of portraying a population's age and sex composition at a given slice in time. The first horizontal bar, constituting the base of the graph, is the youngest age group (typically 0-4) with the number of males in that age group on the left and the number of females in that age group on the right. On top of that age group is another horizontal bar for the next age group (e.g. 5-9) and so forth with the top bar typically for those aged 75 and over. In a population with lots of births and deaths, the shape typically forms a pyramid with a broad base and a narrow top. It is one of the most basic ways to understand population change over time as well as between different geographic units of a similar status (e.g. counties).

Postcensal Estimates - estimates produced for the years after a decennial census when only the beginning population is known. They are produced and revised each year, targeted to July 1 of that year.

Projection - estimated population at some future time based on assumptions about births, deaths, migration, and ages.

Race/Ethnicity - the Census Bureau collects racial data in accordance with guidelines provided by the U.S. Office of Management and Budget (OMB), and these data are based on self-identification. The racial categories included in the census questionnaire generally reflect a social definition of race recognized in this country and not an attempt to define race biologically, anthropologically, or genetically. In addition, it is recognized that the categories of the race item include racial and national origin or sociocultural groups. People may choose to report more than one race to indicate their racial mixture, such as "American Indian" and "White." People who identify their origin as Hispanic, Latino, or Spanish may be of any race. OMB requires five minimum categories: White, Black or African American, American Indian or Alaska Native, Asian, and Native Hawaiian or Other Pacific Islander. Hispanics may be classified as white or black. So we generally separate them out as an ethnic group first.

Unemployed – Not employed, but actively looking for work and available to accept a job.

Unemployment rate – Fraction of the Labor Force that is unemployed.

Urban Area – A densely settled area with at least 2,500 people. If the total number of people is less than 50,000 the Census Bureau calls it an Urban Cluster, otherwise an Urbanized Area.

Vintage - each year, the U.S. Census Bureau produces and publishes estimates of the population for each state and county, as well as the nation as a whole. These are called “vintages.” In producing these vintages, the Bureau utilizes administrative data from a number of sources to estimate 1) the change in population since the most recent decennial census, and 2) the population for each year since the most recent decennial census. With each annual release of population estimates (vintage), the entire time series of estimates beginning on April 1, 2010 is revised and updated.

Vital Statistics - quantitative data concerning a population, such as the number of births, marriages, and deaths.

14 References

Allegany County homepage: <http://www.alleganyco.com/>

At Cornell:

- Program on Applied Demographics (PAD)
URL: <http://pad.human.cornell.edu/>
 - More county trends: <https://pad.human.cornell.edu/counties/trends1geo.cfm?geo=3>
- Community and Regional Development Institute (CaRDI)
URL: <https://cardi.cals.cornell.edu/>
- Cornell Cooperative Extensions (CCE)
Home page: <http://www.cce.cornell.edu>
 - Allegany/Cattaraugus local office: <http://cce.cornell.edu/allegany>

Data sources and background information:

- New York State Data Center
 - <https://labor.ny.gov/nys-data-center/index.shtm>
- U.S. Census Bureau - general
 - QuickFacts: <https://www.census.gov/quickfacts/table/PST045216/36,36003>
 - American FactFinder: <http://factfinder.census.gov/>
- U.S. Census Bureau - population
 - Decennial Census
 - Background: <https://www.census.gov/2010census/>
 - Demographic Profile: http://factfinder2.census.gov/bkmk/table/1.0/en/DEC/10_SF1/SF1DP1/0500000US36003
 - American Community Survey (ACS)
 - Background: <https://www.census.gov/programs-surveys/acs/>
 - Social Data Profile: http://factfinder2.census.gov/bkmk/table/1.0/en/ACS/15_5YR/DP02/0500000US36003
 - Economic Data Profile: http://factfinder2.census.gov/bkmk/table/1.0/en/ACS/15_5YR/DP03/0500000US36003
 - Housing Data Profile: http://factfinder2.census.gov/bkmk/table/1.0/en/ACS/15_5YR/DP04/0500000US36003
 - Demographics Data Profile: http://factfinder2.census.gov/bkmk/table/1.0/en/ACS/15_5YR/DP05/0500000US36003
 - Population estimates:
 - General: <https://www.census.gov/programs-surveys/popest.html>
 - Explorer: <https://www.census.gov/censusexplorer/censusexplorer-popest.html>
- U.S. Census Bureau – Small Area Income & Poverty Estimates (SAIPE)
 - <http://www.census.gov/did/www/saipe/>
- U.S. Census Bureau - Public Use Quarterly Workforce Indicators (QWI) – annual averages
 - <https://qwiexplorer.ces.census.gov/static/explore.html>
- U.S. Census Bureau – Building Permits Survey
 - <https://www.census.gov/construction/bps/>

- Bureau Labor Statistics (BLS)
 - Local Area Unemployment Statistics: <http://www.bls.gov/lau/>
 - Quarterly Census of Employment and Wages (QCEW): <https://www.bls.gov/cew/data.htm>
- NY Department of Labor -
 - Labor statistics: <https://labor.ny.gov/stats/index.shtm>
 - Quarterly Census of Employment and Wages (QCEW): <https://labor.ny.gov/stats/LSQCEW.shtm>
- NY State Department of Health
 - Vital Statistics: https://www.health.ny.gov/statistics/vital_statistics/
- Bureau of Economic Analysis (BEA) – Local Area Personal Income and Employment: <http://bea.gov/iTable/iTable.cfm?ReqID=70&step=1>

Alternative sites for data retrieval:

- The Nelson A. Rockefeller Institute of Government – New York State Statistical Yearbooks http://www.rockinst.org/nys_statistics/
- Headwaters Economics: Economic Profile System – Human Dimensions Toolkit <http://headwaterseconomics.org/tools/eps-hdt>
- National Historical Geographic Information System (NHGIS) <https://www.nhgis.org/>
- Social Explorer <http://www.socialexplorer.com/pub/home/home.aspx>
- Stats America <http://www.statsamerica.org/Default.aspx>
- Missouri Census Data Center <http://mcdc.missouri.edu/>
- DataFerret <http://dataferrett.census.gov/>
- Investigative Reporters and Editors (IRE) Census project <http://census.ire.org/>