

Albany County Profile 2017

A collection of recent demographic, social and economic data

Compiled by

Jan Vink

Cornell Program on Applied Demographics



Cornell University



Program
on Applied
Demographics

CORNELL POPULATION CENTER

This profile is a part of a set of profiles generated for each county in New York State. The profiles were developed and generated by the Cornell Program on Applied Demographics. The work is sponsored by the New York State Data Center in the New York State Department of Labor.

Cornell Program on Applied Demographics:

The Program on Applied Demographics (PAD) brings skills in demographics, economics, statistics, data gathering and data analysis together to provide a variety of organizations with data, information and advice. PAD is located in the Department of Policy Analysis and Management within the College of Human Ecology at Cornell University. PAD is also affiliated with the Cornell Institute for Social and Economic Research and the Cornell Population Center.

For more information: <http://pad.human.cornell.edu/>

New York State Data Center:

The New York State Data Center (NYSDC) is located in the Division of Research and Statistics within the New York State Department of Labor. The State Data Center operates as part of a nationwide effort to improve public access to data provided by the U.S. Census Bureau. The U.S. Census Bureau collects and tabulates data on a multitude of subjects such as population, social, economic and housing demographics, labor force data, health care, migration and transportation. These data play a critical role in understanding our local and larger surrounding communities. Census data also influence state and federal funding, aid decision making in the legislative process, and determine each state's number of congressional seats. As the lead agency in New York for the SDC program, the New York State Data Center helps users navigate through the multitude of surveys and products provided by the U.S. Census Bureau.

For more information: <https://labor.ny.gov/nys-data-center/>

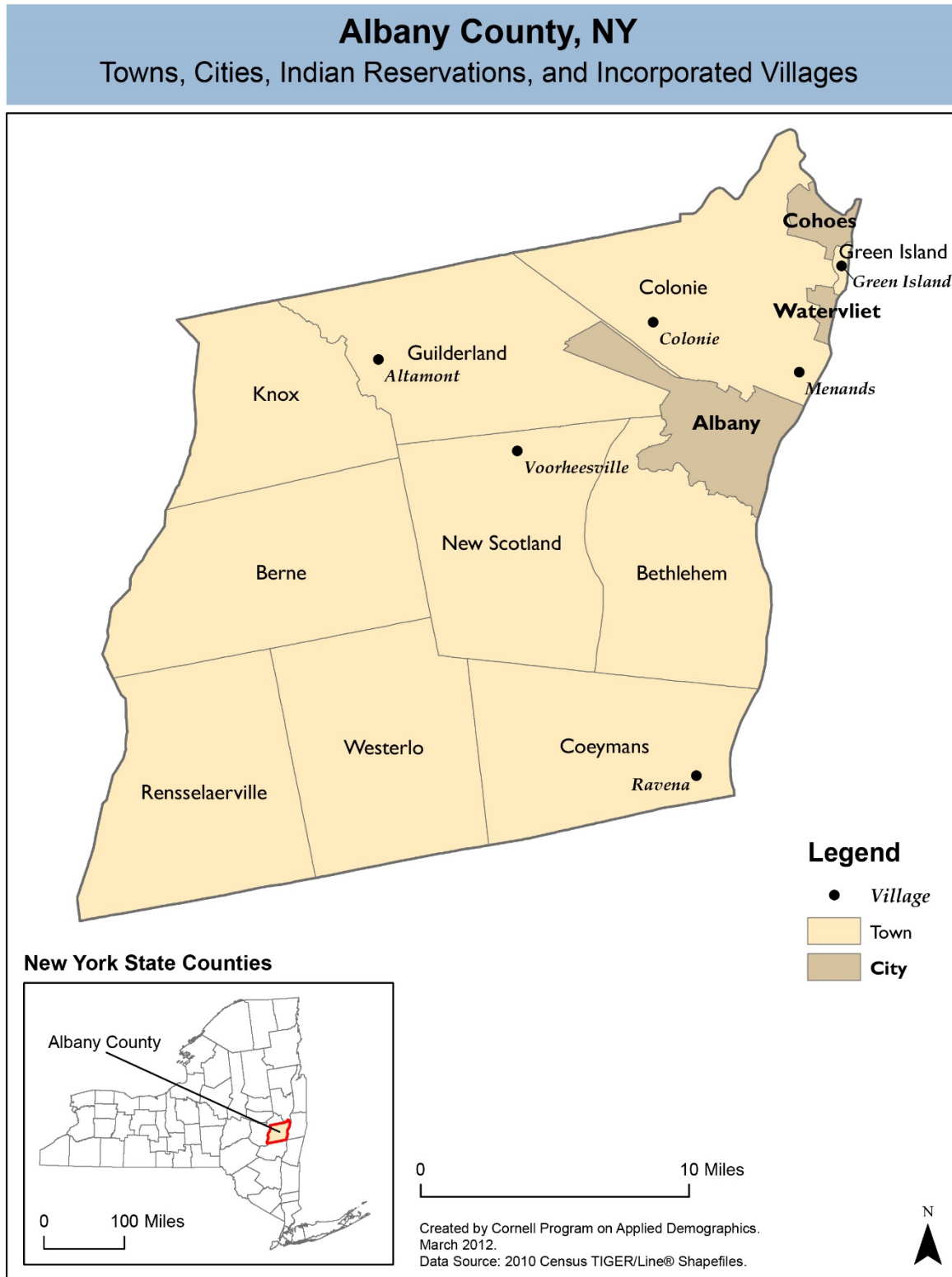
All profiles are freely downloadable as PDF documents on the PAD website:

<http://pad.human.cornell.edu/profiles/index.cfm>

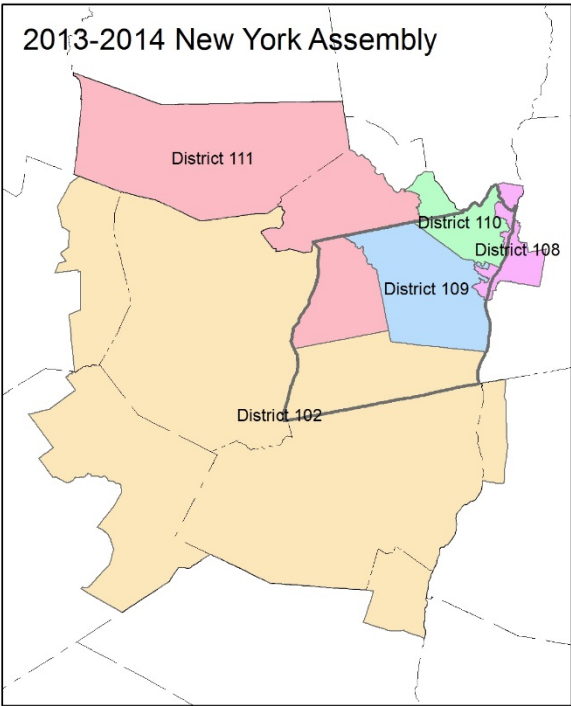
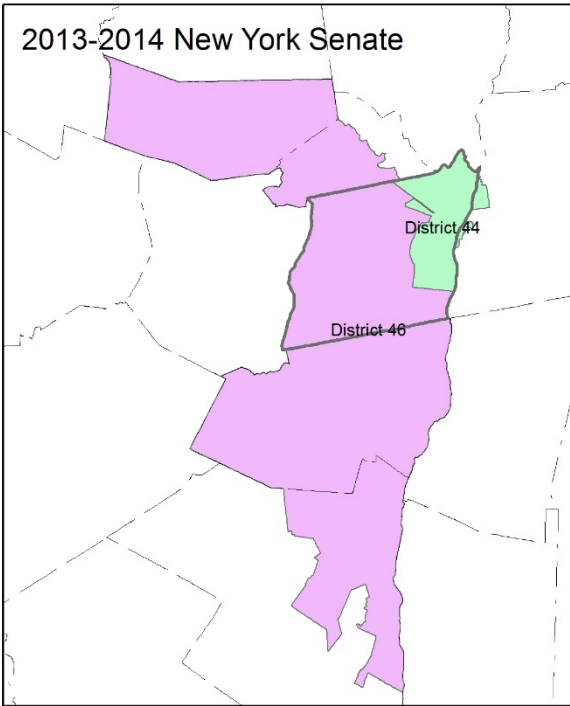
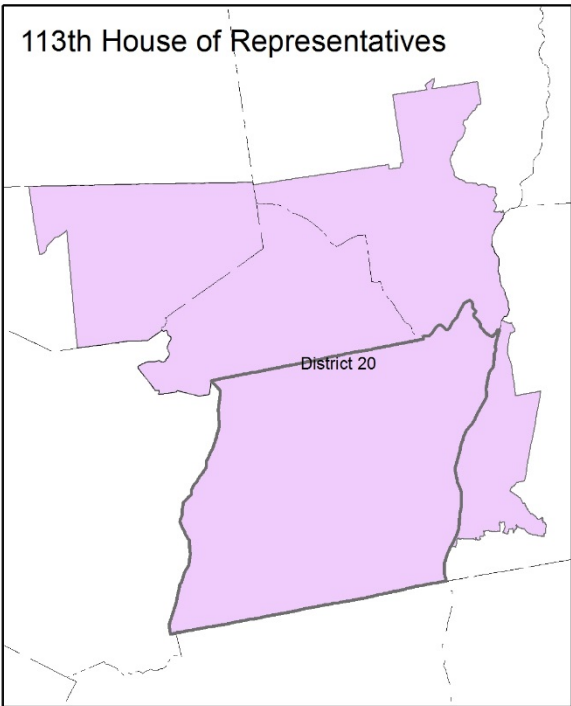
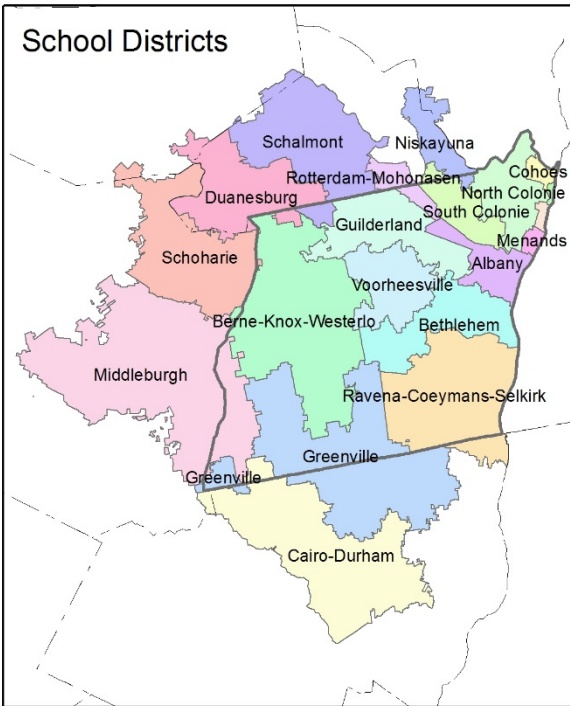
This profile is an update from the County Profile produced in 2013. The 2013 profile also contained information on agriculture related items and can be found at <https://pad.human.cornell.edu/profiles/2013/Albany.pdf>

Contents

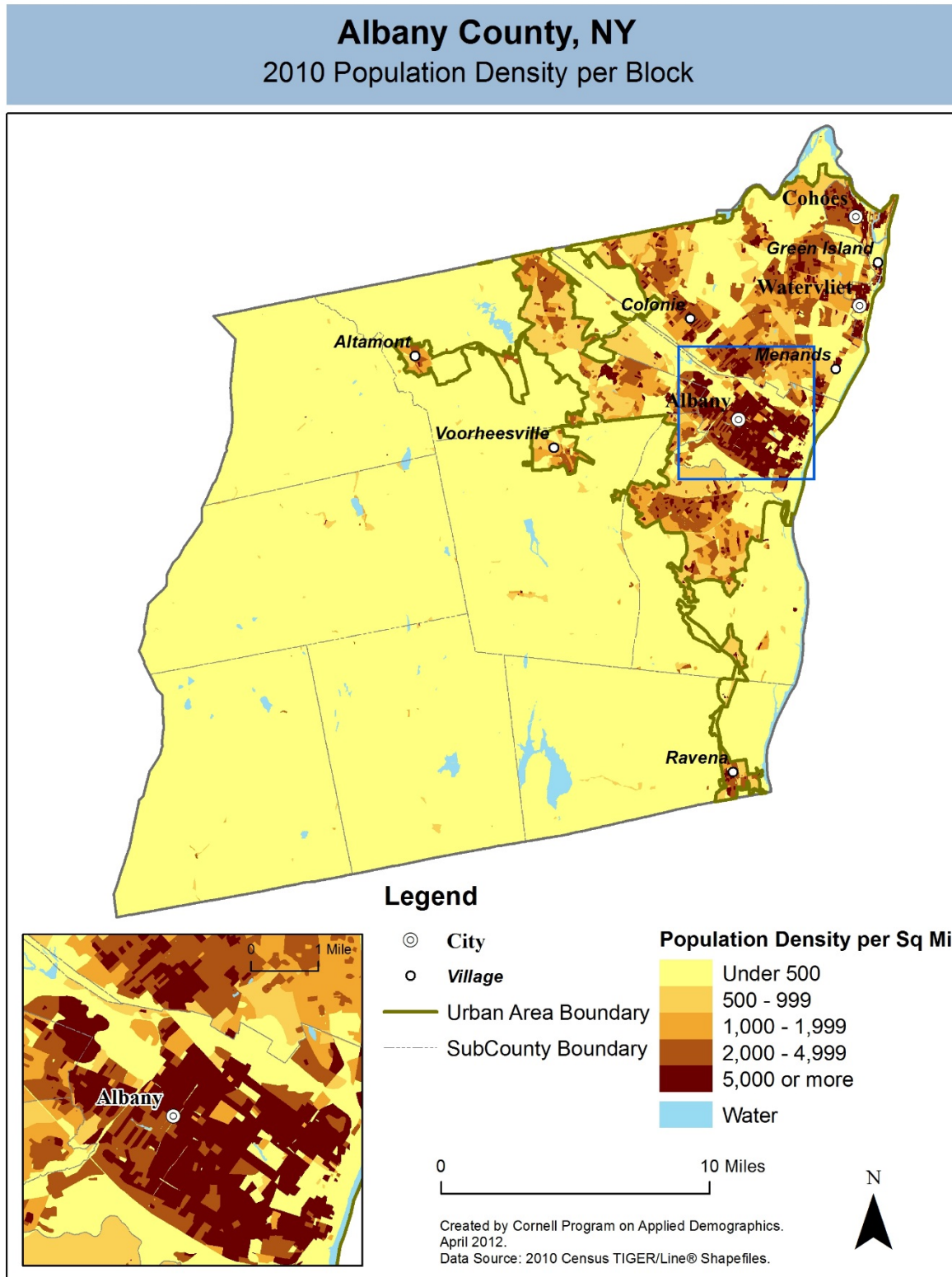
1	Reference Maps (towns and places as defined in 2010)	3
2	Population density and Urban Areas Map	5
3	Total Population	6
3.1	Historic and projected	6
3.2	Change since previous Census	6
3.3	Annual population estimates	7
3.4	Sub County population change 2010-2015	8
3.5	Sub County population change 2010-2015	8
4	Components of population change	9
4.1	Vital Statistics	9
4.2	Migration	10
5	Population by age	11
5.1	Historic and projected population pyramids	11
5.2	Selected age groups	12
5.3	Median age	13
6	Race	14
6.1	Total and household population by race	14
6.2	Race composition by age	14
7	Housing units	15
7.1	Characteristics	15
7.2	Historical data on number of housing units and occupancy status	16
7.3	Building Permits 2000-2015	16
8	Education	17
8.1	Enrollment by level of school	17
8.2	Enrollment by age	17
8.3	Percentage age 18-24 enrolled in college	17
8.4	Educational attainment	18
9	Language spoken at home	18
10	Labor Force Characteristics	19
10.1	Labor force, employment and unemployment	19
10.2	Annual unemployment rate	20
10.3	Employment and number of jobs	20
10.4	Class of worker	21
11	Household Income	22
11.1	Income Distribution	22
11.2	Median household income: Trends over time	23
12	Poverty	23
12.1	Family Income to Poverty Ratio	23
12.2	Poverty: Trends over time: Count	24
12.3	Poverty: Trends over time: Rate	24
12.4	Poverty characteristics	25
13	Glossary	26
14	References	29

1 Reference Maps (towns and places as defined in 2010)

Albany County, NY
Overlap with School and Political Districts



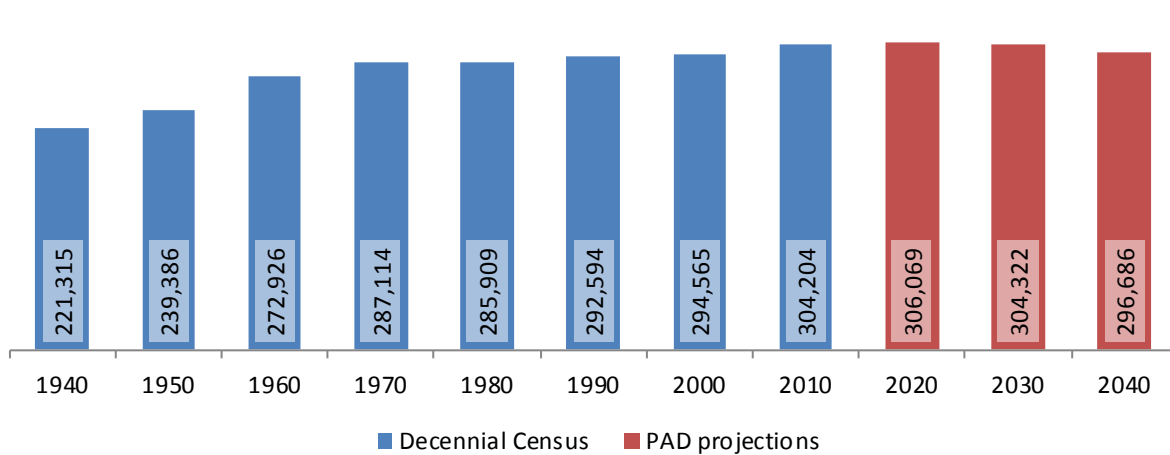
2 Population density and Urban Areas Map



3 Total Population

3.1 Historic and projected

Total population, Albany County, 1940-2040



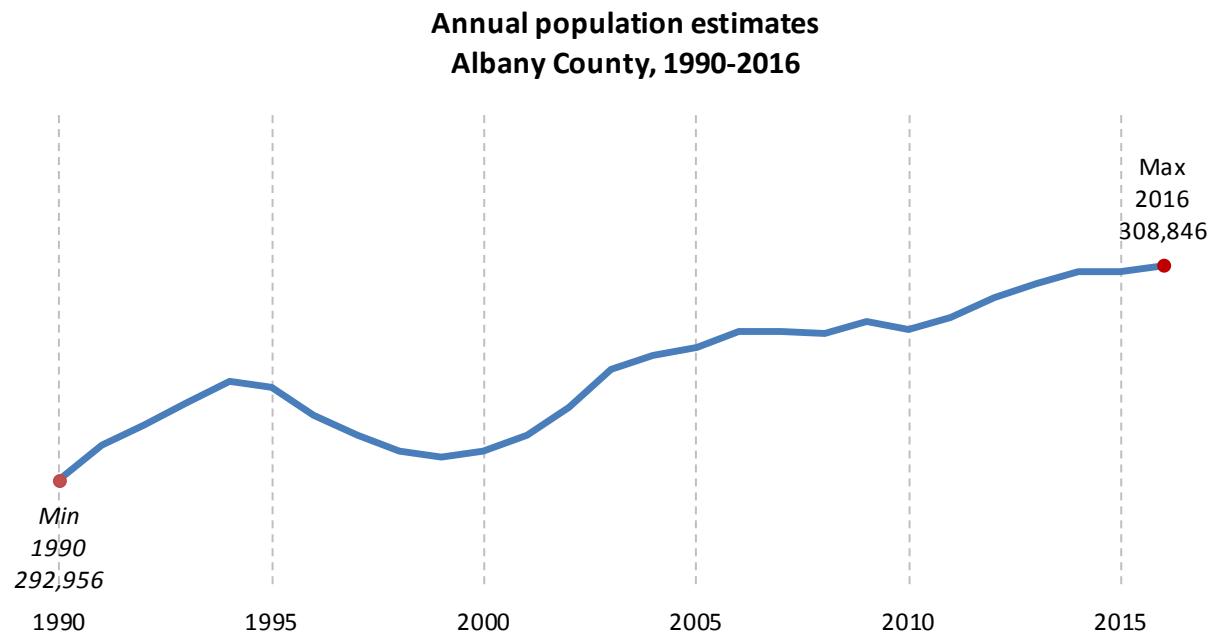
Source: 1940-2010 Decennial Census and projections by Cornell Program on Applied Demographics

3.2 Change since previous Census

		Total population	Change	
			Number	Percent
Decennial Census	1940	221,315		
	1950	239,386	18,071	8.2%
	1960	272,926	33,540	14.0%
	1970	287,114	14,188	5.2%
	1980	285,909	-1,205	-0.4%
	1990	292,594	6,685	2.3%
	2000	294,565	1,971	0.7%
	2010	304,204	9,639	3.3%
PAD projec- tions	2020	306,069	1,865	0.6%
	2030	304,322	-1,747	-0.6%
	2040	296,686	-7,636	-2.5%

Source: 1940-2010 Decennial Census and projections by Cornell Program on Applied Demographics

3.3 Annual population estimates



Source: U.S. Census Bureau population estimates (1990-1999 and 2000-2009 intercensal and vintage 2016 postcensal)

3.4 Sub County population change 2010-2015

	Total Population		Difference	
	2000	2010	Count	%
New York State	18,976,821 *	19,378,102	401,281	2.1%
Albany County	294,565	304,204	9,639	3.3%
Cities				
Albany	94,301 *	97,856	3,555	3.8%
Cohoes	15,521	16,168	647	4.2%
Watervliet	10,207	10,254	47	0.5%
Towns				
Berne	2,846	2,794	-52	-1.8%
Bethlehem	31,304	33,656	2,352	7.5%
Coeymans	8,151	7,418	-733	-9.0%
Colonie	79,258	81,591	2,333	2.9%
Green Island	2,278	2,620	342	15.0%
Guilderland	34,045 *	35,303	1,258	3.7%
Knox	2,647	2,692	45	1.7%
New Scotland	8,626	8,648	22	0.3%
Rensselaerville	1,915	1,843	-72	-3.8%
Westerlo	3,466	3,361	-105	-3.0%

* Original counts revised through Count Question Resolution Program (CQR)

Source: U.S. Census Bureau intercensal population estimates 2000-2010

3.5 Sub County population change 2010-2015

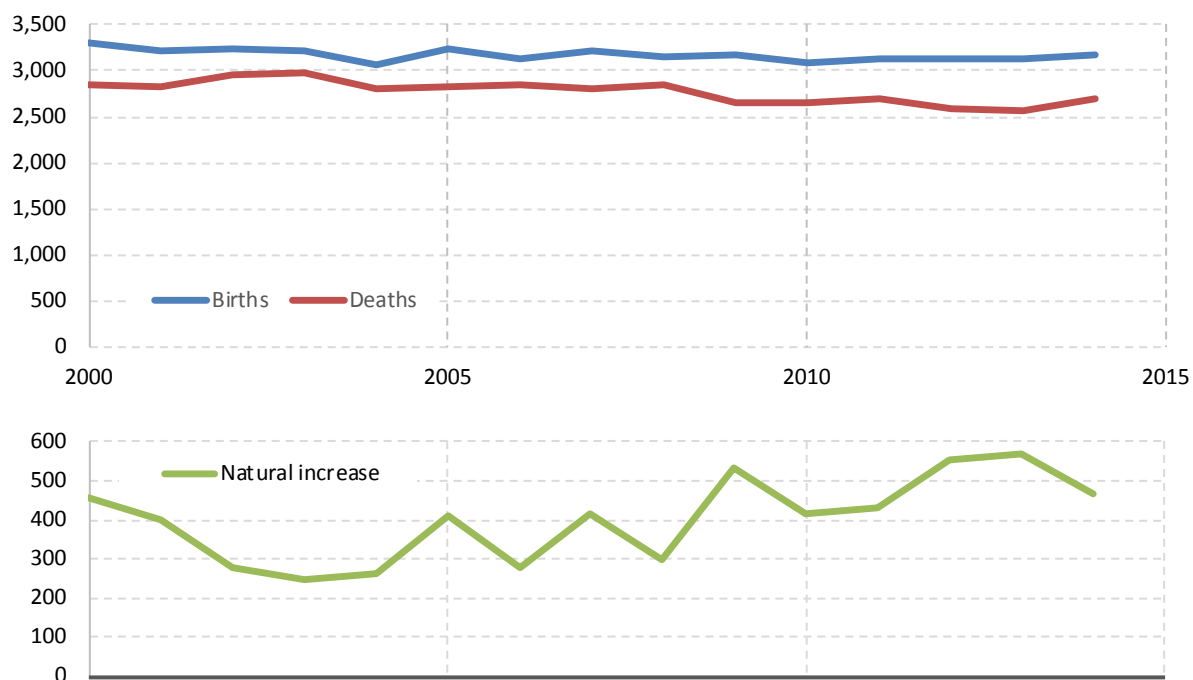
	Total Population		Difference	
	2010 base	2015	Count	%
New York State	19,378,087	19,795,791	417,704	2.2%
Albany County	304,208	309,381	5,173	1.7%
Cities				
Albany	97,840	98,469	629	0.6%
Cohoes	16,167	16,538	371	2.3%
Watervliet	10,254	10,214	-40	-0.4%
Towns				
Berne	2,794	2,824	30	1.1%
Bethlehem	33,678	34,898	1,220	3.6%
Coeymans	7,413	7,417	4	0.1%
Colonie	81,602	83,661	2,059	2.5%
Green Island	2,620	2,612	-8	-0.3%
Guilderland	35,295	35,985	690	2.0%
Knox	2,692	2,729	37	1.4%
New Scotland	8,647	8,798	151	1.7%
Rensselaerville	1,844	1,851	7	0.4%
Westerlo	3,362	3,385	23	0.7%

Source: U.S. Census Bureau population estimates 2010-2015

4 Components of population change

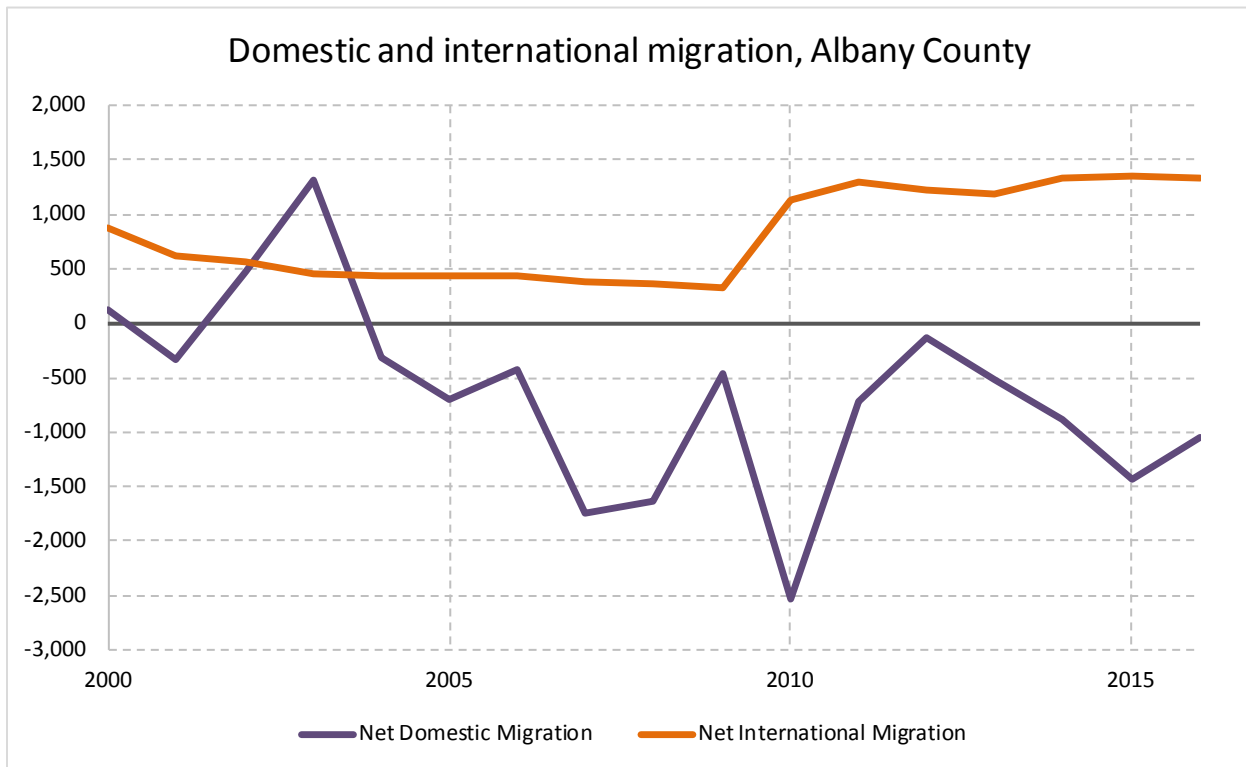
4.1 Vital Statistics

Vital Statistics, Albany County



Source: New York State Department of Health

4.2 Migration

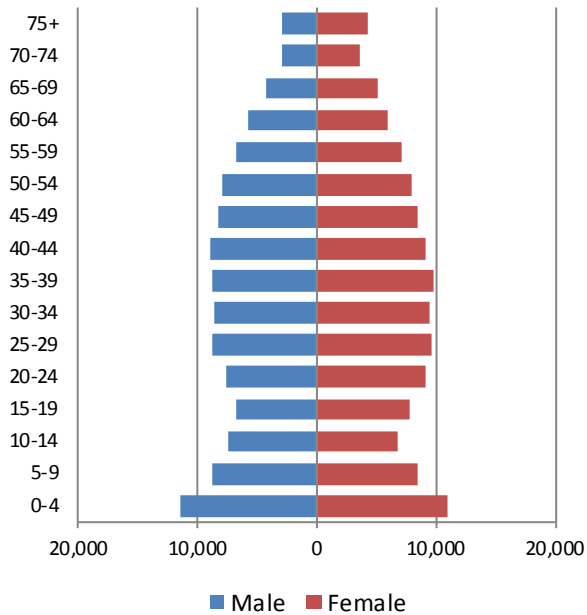


Source: Census Bureau population estimates (V2010 and V2016)

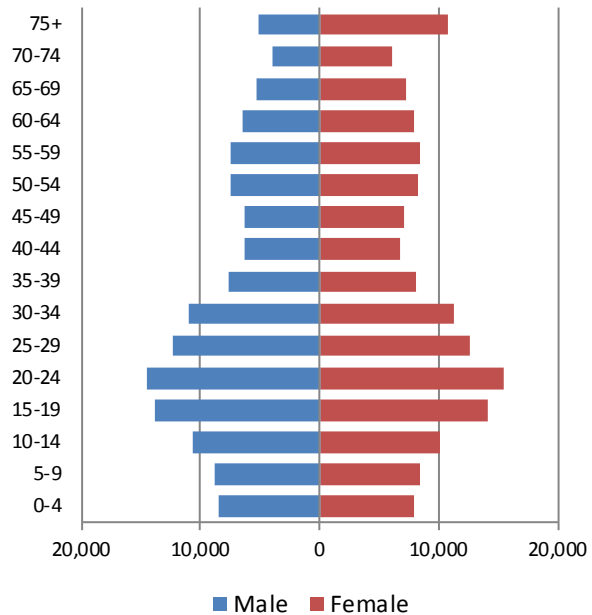
5 Population by age

5.1 Historic and projected population pyramids

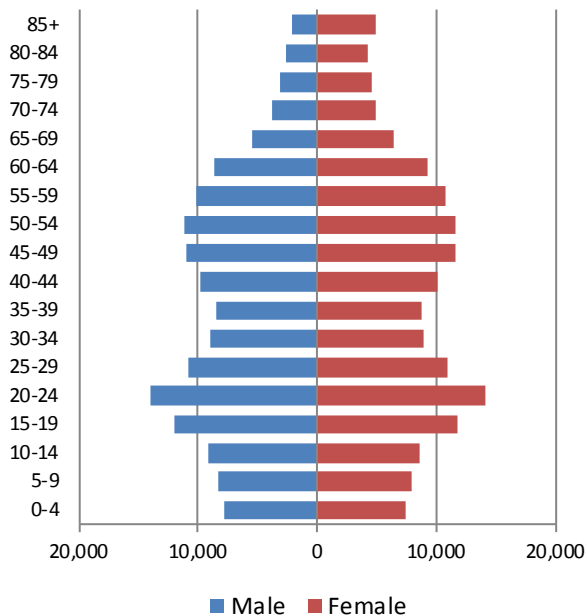
1950 Population Pyramid, Albany County



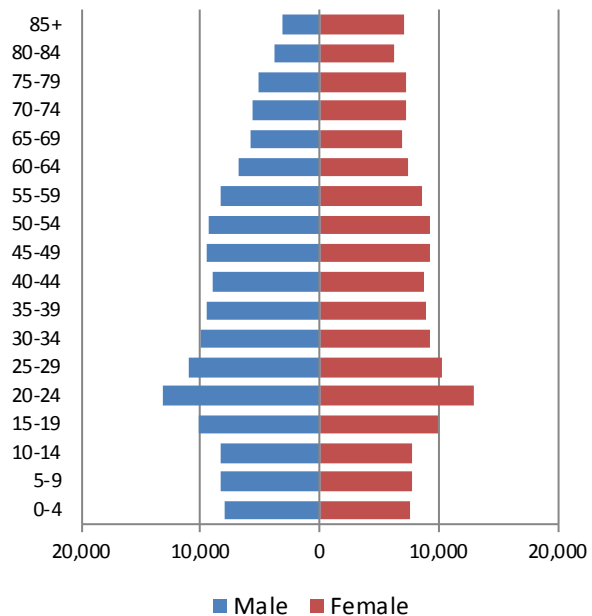
1980 Population Pyramid, Albany County



2010 Population Pyramid, Albany County



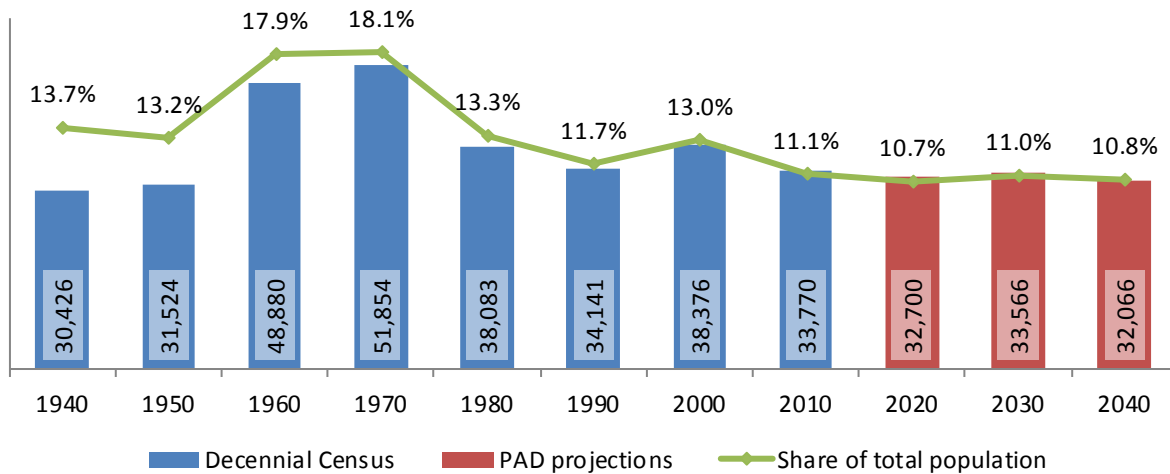
2040 Population Pyramid, Albany County



Source: 1950, 1980, 2010 Decennial Census and projections by Cornell Program on Applied Demographics

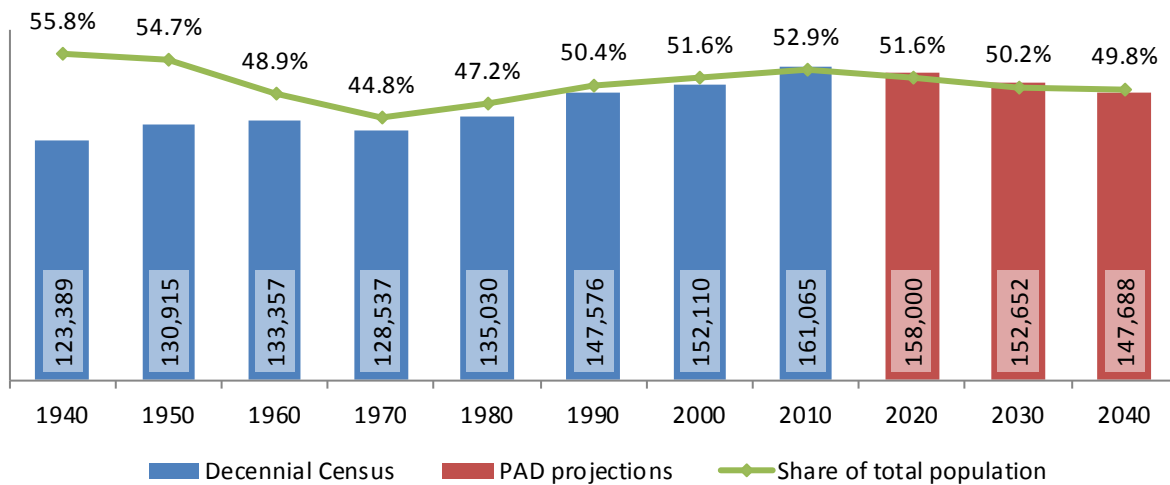
5.2 Selected age groups

Population age 5-14, Albany County, 1940-2040



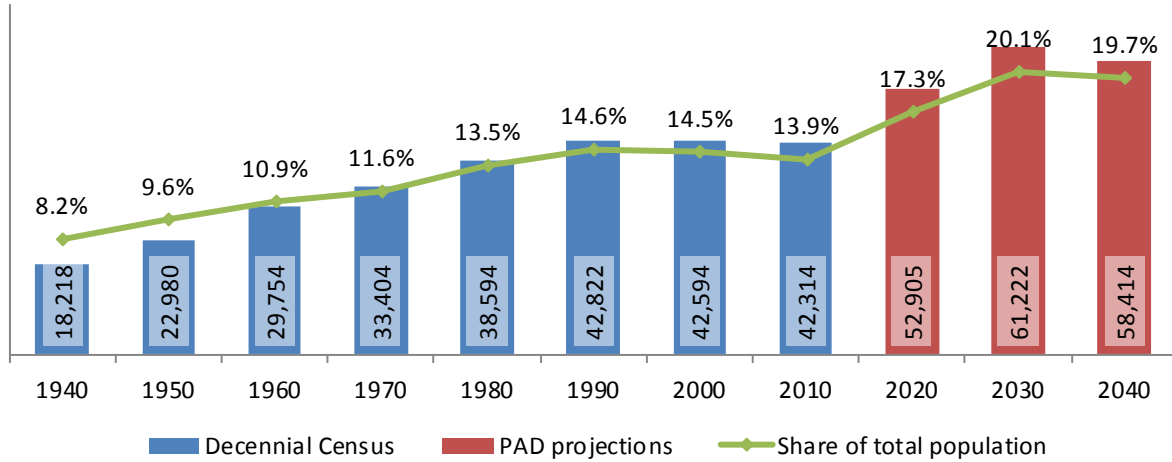
Source: 1940-2010 Decennial Census and projections by Cornell Program on Applied Demographics

Population age 25-64, Albany County, 1940-2040



Source: 1940-2010 Decennial Census and projections by Cornell Program on Applied Demographics

Population age 65 and over, Albany County, 1940-2040



Source: 1940-2010 Decennial Census and projections by Cornell Program on Applied Demographics

5.3 Median age

	Albany County	New York State
Median age		
2000	36.8	35.9
2010	38.5	38.0
2015	37.7	38.3

Source: 2000, 2010 Decennial Census, 2015 Population Estimates

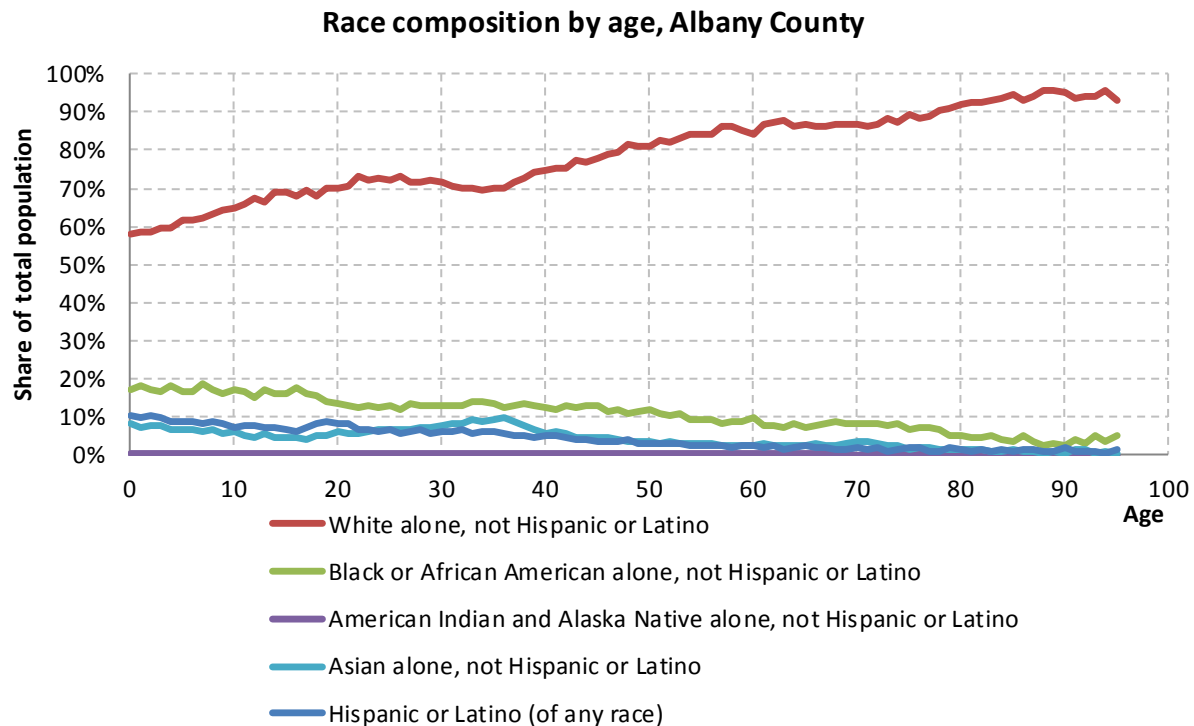
6 Race

6.1 Total and household population by race

	Total		In households		In Group Quarters
	Count	Percentage	Count	Percentage	Count
Total population	304,204	100%	287,180	100%	17,024
Not Hispanic or Latino					
One race					
White	231,152	76.0%	219,237	76.3%	11,915
Black or African American	36,396	12.0%	33,904	11.8%	2,492
American Indian and Alaska Native	453	0.1%	431	0.2%	22
Asian	14,500	4.8%	13,715	4.8%	785
Native Hawaiian and Other Pacific Islander	88	0.0%	-	-	-
Some other race	569	0.2%	542	0.2%	27
Two or more races	6,129	2.0%	5,824	2.0%	305
Hispanic or Latino (of any race)	14,917	4.9%	13,455	4.7%	1,462

Source: 2010 Decennial Census

6.2 Race composition by age



Source: 2010 Decennial Census

7 Housing units

7.1 Characteristics

	COUNT		PERCENTAGE	
	Estimate	Margin of error	Estimate	Margin of error
HOUSING OCCUPANCY				
Total housing units	138,081	± 387	100.0%	
Occupied housing units	123,451	± 880	89.4%	± 0.5
Vacant housing units	14,630	± 732	10.6%	± 0.5
YEAR STRUCTURE BUILT				
Total housing units	138,081	± 387	100.0%	
Built 2014 or later	97	± 57	0.1%	± 0.1
Built 2010 to 2013	1,097	± 228	0.8%	± 0.2
Built 2000 to 2009	8,640	± 594	6.3%	± 0.4
Built 1990 to 1999	10,926	± 650	7.9%	± 0.5
Built 1980 to 1989	13,051	± 659	9.5%	± 0.5
Built 1970 to 1979	17,191	± 729	12.4%	± 0.5
Built 1960 to 1969	15,251	± 747	11.0%	± 0.5
Built 1950 to 1959	17,251	± 677	12.5%	± 0.5
Built 1940 to 1949	9,474	± 680	6.9%	± 0.5
Built 1939 or earlier	45,103	± 904	32.7%	± 0.7
HOUSING TENURE				
Occupied housing units	123,451	± 880	100.0%	
Owner-occupied	72,000	± 1,045	58.3%	± 0.8
Renter-occupied	51,451	± 1,192	41.7%	± 0.8
HOUSE HEATING FUEL				
Occupied housing units	123,451	± 880	100.0%	
Utility gas	85,457	± 1,115	69.2%	± 0.8
Bottled, tank, or LP gas	2,759	± 302	2.2%	± 0.2
Electricity	19,894	± 936	16.1%	± 0.7
Fuel oil, kerosene, etc.	11,975	± 634	9.7%	± 0.5
Coal or coke	45	± 25	0.0%	± 0.1
Wood	2,099	± 225	1.7%	± 0.2
Solar energy	59	± 54	0.0%	± 0.1
Other fuel	729	± 149	0.6%	± 0.1
No fuel used	434	± 114	0.4%	± 0.1
VALUE				
Owner-occupied units	72,000	± 1,045	100.0%	
Less than \$50,000	2,784	± 309	3.9%	± 0.4
\$50,000 to \$99,999	4,443	± 431	6.2%	± 0.6
\$100,000 to \$149,999	9,313	± 548	12.9%	± 0.8
\$150,000 to \$199,999	17,133	± 728	23.8%	± 0.9
\$200,000 to \$299,999	22,827	± 837	31.7%	± 1.0
\$300,000 to \$499,999	12,808	± 604	17.8%	± 0.8
\$500,000 to \$999,999	2,297	± 344	3.2%	± 0.5
\$1,000,000 or more	395	± 116	0.5%	± 0.2
Median (dollars)	208,400	± 2,572		

Source: 2011-2015 American Community Survey

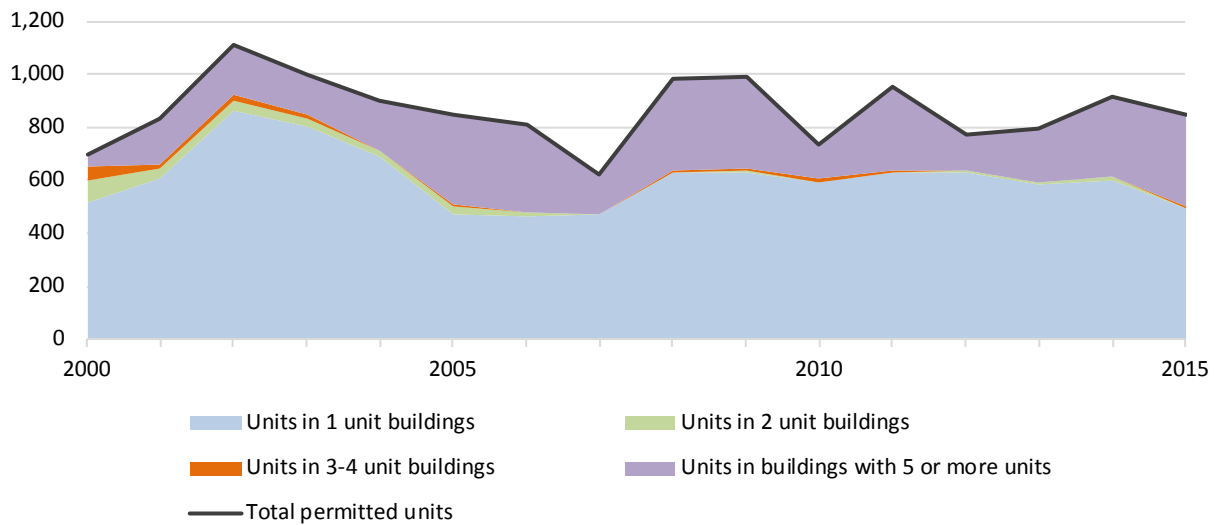
7.2 Historical data on number of housing units and occupancy status

Year	Number of Housing Units	Change since previous Census	Occupied	Occupancy rate	Vacant
1970	98,412		94,004	95.5%	4,408
1980	115,733	17.6%	106,589	92.1%	9,144
1990	124,255	7.4%	115,824	93.2%	8,431
2000	129,972	4.6%	120,512	92.7%	9,460
2010	137,739	6.0%	126,251	91.7%	11,488

Source: 1970-2010 Decennial Census

7.3 Building Permits 2000-2015

Building permits by number of permitted units in building,
Albany County



Source: Census Bureau Building Permits Survey

8 Education

8.1 Enrollment by level of school

	Estimate	Margin of error
Total enrolled in school	84,463	± 1,329
Nursery school, preschool	3,948	± 404
Kindergarten to 12th grade	44,076	± 414
Kindergarten	2,523	± 352
Elementary: grade 1 to grade 4	12,971	± 638
Elementary: grade 5 to grade 8	13,700	± 569
High school: grade 9 to grade 12	14,882	± 515
College, undergraduate	29,016	± 1,221
Graduate, professional school	7,423	± 712

Source: 2011-2015 American Community Survey

8.2 Enrollment by age

	Estimate	Margin of error
3 and 4 years	53.5%	± 5.0
5 to 9 years	97.2%	± 0.8
10 to 14 years	98.8%	± 0.6
15 to 17 years	97.1%	± 1.0
18 and 19 years	88.1%	± 2.5
20 to 24 years	54.1%	± 2.7
25 to 34 years	15.1%	± 1.1
35 years and over	2.4%	± 0.2

Source: 2011-2015 American Community Survey

8.3 Percentage age 18-24 enrolled in college

	Estimate	Margin of error
Population 18 to 24 years	44,478	± 80
Enrolled in college or graduate school	59.4%	± 2.3
Males 18 to 24 years	21,960	± 75
Enrolled in college or graduate school	54.8%	± 3.2
Females 18 to 24 years	22,518	± 41
Enrolled in college or graduate school	63.9%	± 2.8

Source: 2011-2015 American Community Survey

8.4 Educational attainment

	COUNT		PERCENTAGE	
	Estimate	Margin of error	Estimate	Margin of error
Population 25 years and over	204,024	± 80	100%	
EDUCATIONAL ATTAINMENT				
Less than 9th grade	4,979	± 487	2.4%	± 0.2
9th to 12th grade, no diploma	9,778	± 698	4.8%	± 0.3
High school graduate (includes equivalency)	54,012	± 1,359	26.5%	± 0.7
Some college, no degree	33,904	± 1,112	16.6%	± 0.5
Associate's degree	22,667	± 990	11.1%	± 0.5
Bachelor's degree	41,084	± 1,200	20.1%	± 0.6
Graduate or professional degree	37,600	± 1,200	18.4%	± 0.6
Percent high school graduate or higher			92.8%	± 0.4
Percent bachelor's degree or higher			38.6%	± 0.7

Source: 2011-2015 American Community Survey

9 Language spoken at home

	COUNT		PERCENTAGE		SPEAK ENGLISH LESS THAN "VERY WELL"	
	Estimate	Margin of error	Estimate	Margin of error	Estimate	Margin of error
Population 5 years and over	292,102	± 25	100%			
LANGUAGE SPOKEN AT HOME						
English only	257,721	± 1,422	88.2%	± 0.5		
Language other than English	34,381	± 1,425	11.8%	± 0.5	11,274	± 847
Spanish	9,091	± 686	3.1%	± 0.2	2,043	± 281
Other Indo-European languages	14,132	± 1,239	4.8%	± 0.4	4,184	± 610
Asian and Pacific Islander languages	8,841	± 699	3.0%	± 0.2	4,454	± 593
Other languages	2,317	± 601	0.8%	± 0.2	593	± 236

Source: 2011-2015 American Community Survey

10 Labor Force Characteristics

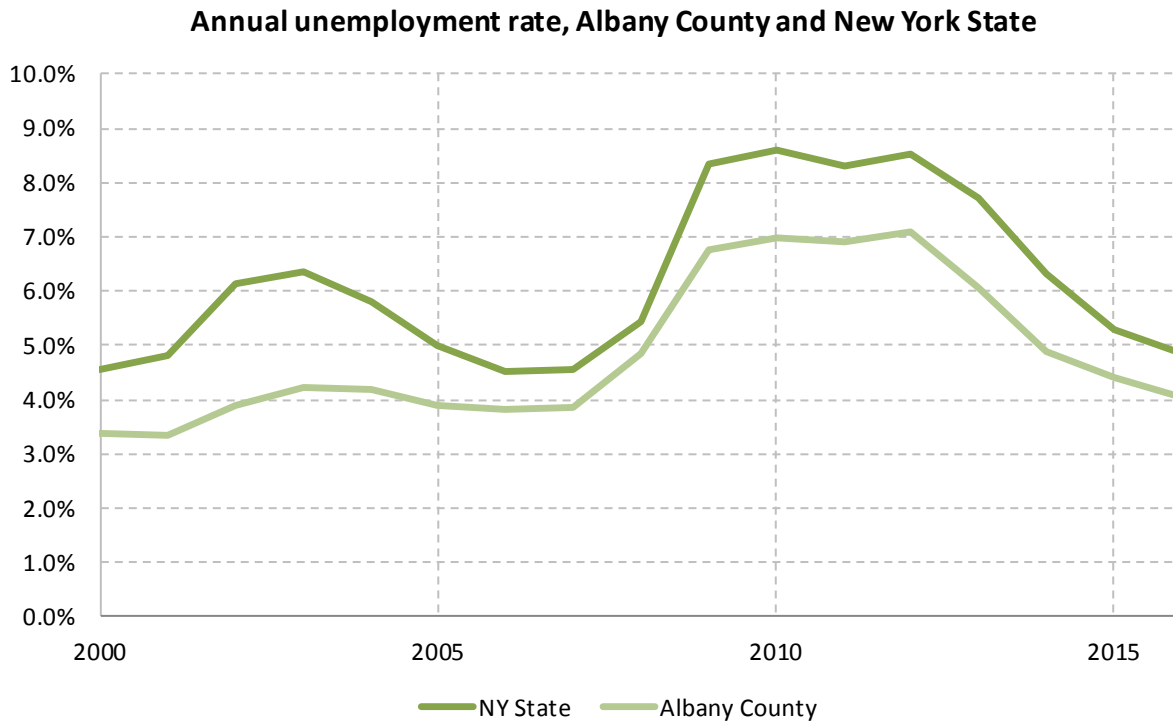
10.1 Labor force, employment and unemployment

	TOTAL		IN LABOR FORCE		EMPLOYED		UNEMPLOYMENT RATE	
	Estimate	Margin of error	Estimate	Margin of error	Estimate	Margin of error	Estimate	Margin of error
Population 16 years and over	255,718	± 342	64.9%	± 0.5	60.7%	± 0.6	6.4%	± 0.5
AGE								
16 to 19 years	20,378	± 404	36.3%	± 2.4	29.7%	± 2.2	18.3%	± 3.2
20 to 24 years	31,316	± 242	71.4%	± 1.9	64.0%	± 2.2	10.4%	± 1.7
25 to 29 years	20,378	± 56	86.9%	± 1.8	79.4%	± 2.2	8.4%	± 1.6
30 to 34 years	19,585	± 39	86.3%	± 1.7	81.4%	± 1.8	5.1%	± 1.1
35 to 44 years	35,118	± 67	86.6%	± 1.5	82.6%	± 1.5	4.4%	± 0.8
45 to 54 years	42,790	± 43	85.5%	± 1.2	81.6%	± 1.4	4.5%	± 0.7
55 to 59 years	21,819	± 709	76.1%	± 1.8	72.5%	± 2.0	4.7%	± 1.2
60 to 64 years	18,669	± 702	54.3%	± 2.2	52.3%	± 2.2	3.8%	± 1.2
65 to 74 years	24,132	± 75	26.8%	± 1.8	25.4%	± 1.7	5.4%	± 2.0
75 years and over	21,533	± 79	6.4%	± 1.1	6.2%	± 1.0	3.4%	± 3.0
RACE AND HISPANIC OR LATINO ORIGIN								
White alone	203,417	± 512	65.6%	± 0.6	61.9%	± 0.7	5.5%	± 0.4
Black or African American alone	29,888	± 458	63.7%	± 2.1	56.4%	± 2.1	11.4%	± 2.0
American Indian and Alaska Native alone	357	± 105	49.9%	± 13.8	49.9%	± 13.8	0.0%	± 15.5
Asian alone	13,584	± 300	57.8%	± 3.0	53.2%	± 3.2	7.9%	± 2.7
Two or more races	4,972	± 538	69.0%	± 5.4	61.0%	± 5.4	10.7%	± 3.9
Hispanic or Latino origin (of any race)	12,099	± 103	68.7%	± 3.3	61.5%	± 3.1	9.8%	± 2.2
White alone, not Hispanic or Latino	196,763	± 247	65.4%	± 0.6	61.9%	± 0.7	5.3%	± 0.4
SEX								
Population 20 to 64 years	189,675	± 241	79.5%	± 0.6	74.7%	± 0.7	5.8%	± 0.5
Male	93,209	± 144	82.1%	± 0.9	76.7%	± 1.0	6.3%	± 0.7
Female	96,466	± 196	77.0%	± 0.9	72.8%	± 1.0	5.4%	± 0.6
With own children under 18 years	27,214	± 734	80.3%	± 1.8	76.2%	± 2.0	5.1%	± 1.1
EDUCATIONAL ATTAINMENT								
Population 25 to 64 years	158,359	± 97	81.1%	± 0.6	76.8%	± 0.7	5.1%	± 0.5
Less than high school graduate	9,251	± 668	55.7%	± 2.8	44.1%	± 2.9	20.8%	± 4.3
High school graduate (includes equivalency)	37,279	± 1,217	74.7%	± 1.7	69.4%	± 1.7	7.0%	± 1.0
Some college or associate's degree	47,123	± 1,231	81.7%	± 1.2	77.0%	± 1.4	5.5%	± 0.9
Bachelor's degree or higher	64,706	± 1,337	87.9%	± 0.7	85.7%	± 0.8	2.4%	± 0.4

Table formula: **LABOR FORCE** = # EMPLOYED + # UNEMPLOYED
% IN LABOR FORCE = LABOR FORCE / TOTAL * 100%
% EMPLOYED = # EMPLOYED / TOTAL * 100%
UNEMPLOYMENT RATE = # UNEMPLOYED / LABOR FORCE * 100%

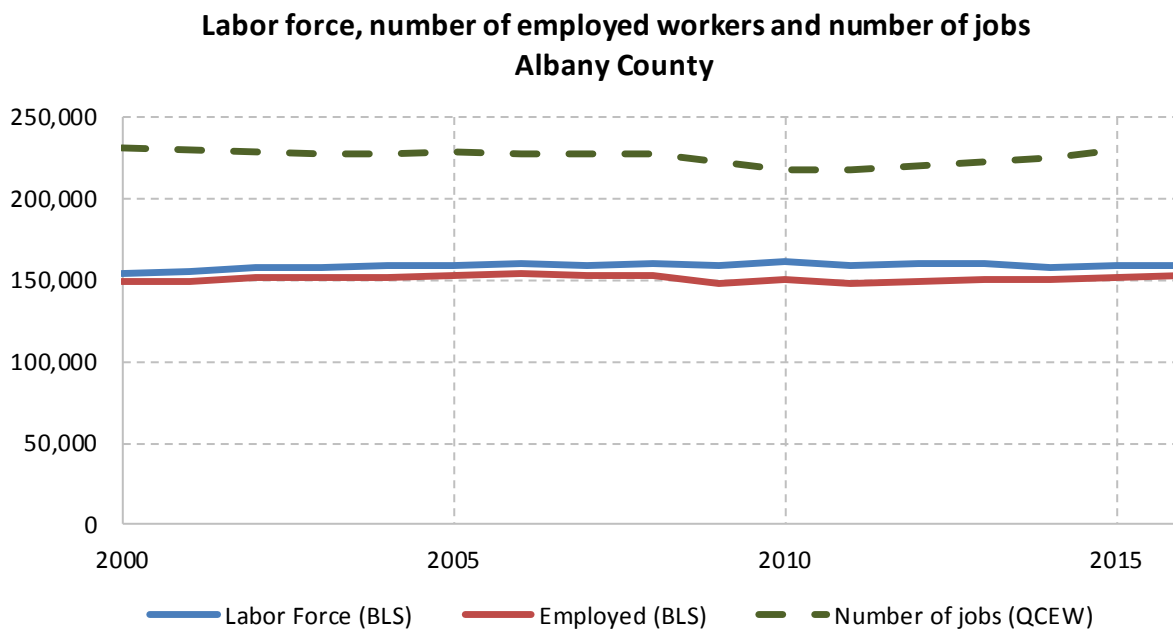
Source: 2011-2015 American Community Survey

10.2 Annual unemployment rate



Source: Bureau Labor Statistics (BLS)

10.3 Employment and number of jobs



Source: Bureau Labor Statistics (BLS) and NY Department of Labor - Quarterly Census of Employment and Wages (QCEW) – annual averages

10.4 Class of worker

		Total	%Male	%Female
Civilian employed population 16 years and over	Estimate	155,200	50.4%	49.6%
	<i>Margin of error</i>	$\pm 1,620$	± 0.5	± 0.5
Private for-profit wage and salary workers:	Estimate	89,394	54.5%	45.5%
	<i>Margin of error</i>	$\pm 1,777$	± 0.9	± 0.9
Employee of private company workers	Estimate	85,686	53.7%	46.3%
	<i>Margin of error</i>	$\pm 1,806$	± 0.9	± 0.9
Self-employed in own incorporated business workers	Estimate	3,708	72.5%	27.5%
	<i>Margin of error</i>	± 395	± 4.5	± 4.5
Private not-for-profit wage and salary workers	Estimate	20,601	36.8%	63.2%
	<i>Margin of error</i>	$\pm 1,162$	± 2.0	± 2.0
Local government workers	Estimate	12,914	45.4%	54.6%
	<i>Margin of error</i>	± 729	± 3.1	± 3.1
State government workers	Estimate	22,776	45.0%	55.0%
	<i>Margin of error</i>	± 871	± 2.0	± 2.0
Federal government workers	Estimate	3,162	61.3%	38.7%
	<i>Margin of error</i>	± 453	± 5.6	± 5.6
Self-employed in own not incorporated business workers and unpaid family workers	Estimate	6,353	61.8%	38.2%
	<i>Margin of error</i>	± 478	± 3.2	± 3.2

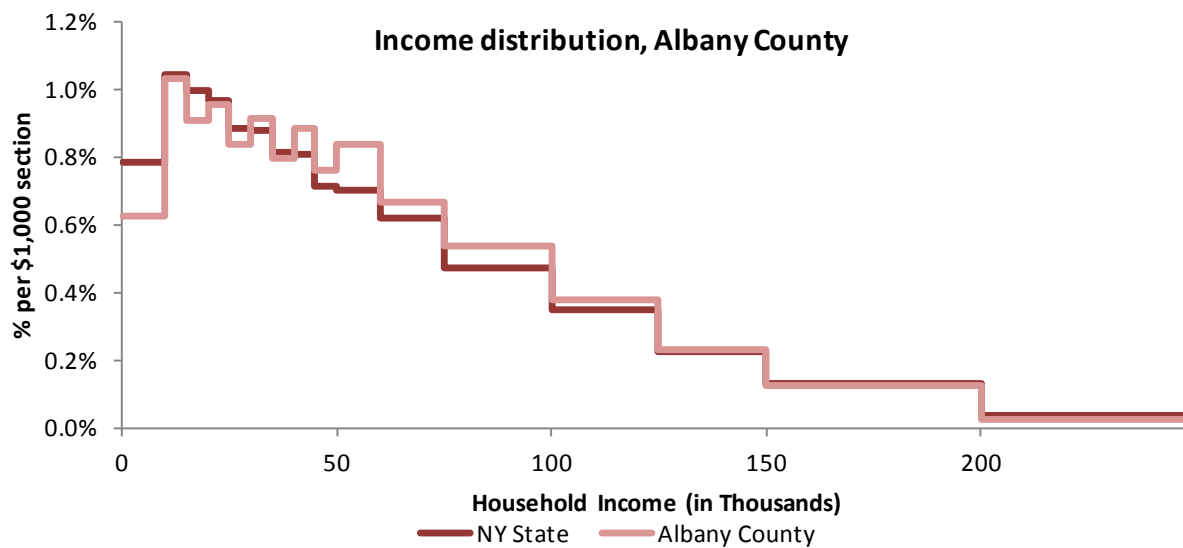
Source: 2011-2015 American Community Survey

11 Household Income

11.1 Income Distribution

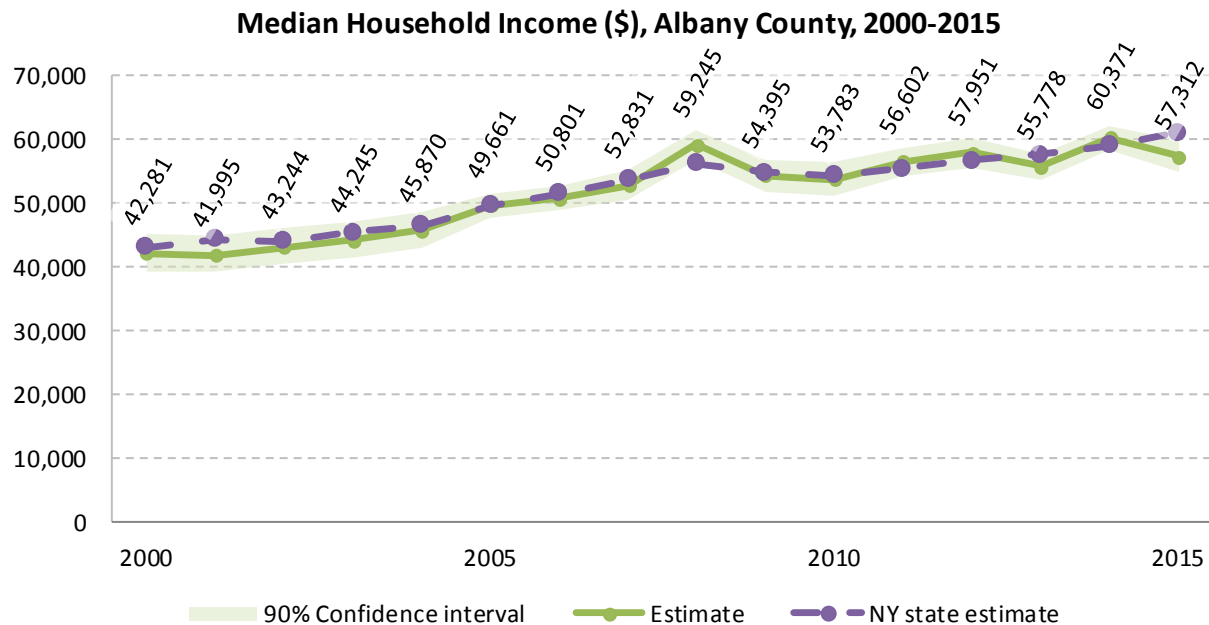
	Estimate	Margin of error	Interval width (in \$1,000)	Est. per \$1,000 section
Total:	123,451	± 880		
Less than \$10,000	7,727	± 528	10	772.7
\$10,000 to \$14,999	6,381	± 561	5	1,276.2
\$15,000 to \$19,999	5,597	± 528	5	1,119.4
\$20,000 to \$24,999	5,912	± 527	5	1,182.4
\$25,000 to \$29,999	5,157	± 497	5	1,031.4
\$30,000 to \$34,999	5,629	± 548	5	1,125.8
\$35,000 to \$39,999	4,918	± 492	5	983.6
\$40,000 to \$44,999	5,476	± 536	5	1,095.2
\$45,000 to \$49,999	4,689	± 441	5	937.8
\$50,000 to \$59,999	10,326	± 696	10	1,032.6
\$60,000 to \$74,999	12,409	± 807	15	827.3
\$75,000 to \$99,999	16,520	± 751	25	660.8
\$100,000 to \$124,999	11,694	± 695	25	467.8
\$125,000 to \$149,999	7,131	± 476	25	285.2
\$150,000 to \$199,999	7,937	± 598	50	158.7
\$200,000 or more	5,948	± 484	-	-

Source: 2011-2015 American Community Survey



Source: 2011-2015 American Community Survey

11.2 Median household income: Trends over time



Source: Small Area Income and Poverty Estimates (SAIPE)

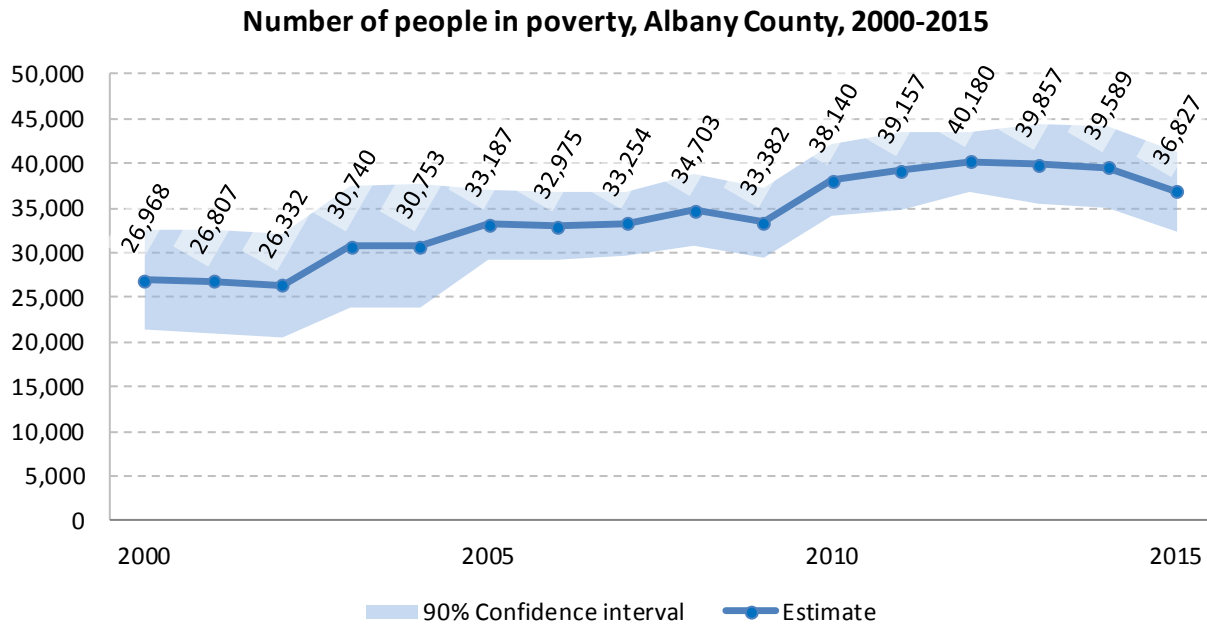
12 Poverty

12.1 Family Income to Poverty Ratio

	TOTAL		PERCENT OF ALL	
	Estimate	Margin of error	Estimate	Margin of error
All families	67,890	± 1,091		
ALL FAMILIES WITH INCOME:				
Below 50 percent of poverty level	2,105	± 320	3.1%	± 0.5
Below 100 percent of poverty level	5,454	± 497	8.0%	± 0.7
Below 125 percent of poverty level	7,195	± 568	10.6%	± 0.8
Below 150 percent of poverty level	9,130	± 660	13.4%	± 0.9
Below 185 percent of poverty level	11,334	± 689	16.7%	± 1.0
Below 200 percent of poverty level	12,591	± 715	18.5%	± 1.0
Below 300 percent of poverty level	20,575	± 863	30.3%	± 1.2
Below 400 percent of poverty level	29,689	± 933	43.7%	± 1.2
Below 500 percent of poverty level	38,569	± 917	56.8%	± 1.0

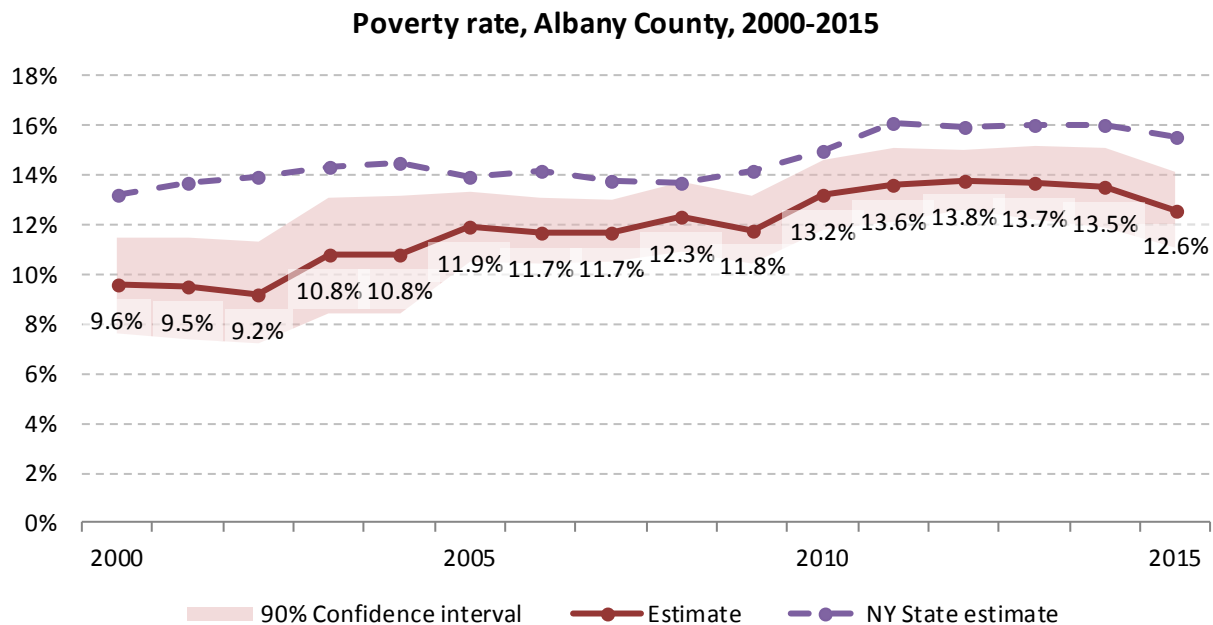
Source: 2011-2015 American Community Survey

12.2 Poverty: Trends over time: Count



Source: Small Area Income and Poverty Estimates (SAIPE)

12.3 Poverty: Trends over time: Rate



Source: Small Area Income and Poverty Estimates (SAIPE)

12.4 Poverty characteristics

	TOTAL		BELOW POVERTY LEVEL		PERCENT BELOW POVERTY LEVEL	
	Estimate	Margin of error	Estimate	Margin of error	Estimate	Margin of error
Population for whom poverty status is determined	291,838	± 823	39,349	± 1,811	13.5%	± 0.6
AGE						
Under 18 years	57,843	± 266	9,905	± 965	17.1%	± 1.7
Under 5 years	15,208	± 89	3,124	± 442	20.5%	± 2.9
5 to 17 years	42,635	± 257	6,781	± 829	15.9%	± 1.9
18 to 34 years	72,670	± 799	15,043	± 963	20.7%	± 1.3
35 to 64 years	117,899	± 143	11,080	± 798	9.4%	± 0.7
65 years and over	43,426	± 388	3,321	± 403	7.6%	± 0.9
SEX						
Male	141,550	± 526	17,368	± 1,004	12.3%	± 0.7
Female	150,288	± 492	21,981	± 1,204	14.6%	± 0.8
RACE AND HISPANIC OR LATINO ORIGIN						
White alone	225,197	± 1,109	21,028	± 1,274	9.3%	± 0.6
Black or African American alone	36,545	± 939	10,083	± 1,082	27.6%	± 2.9
American Indian and Alaska Native alone	411	± 123	107	± 65	26.0%	± 14.0
Asian alone	16,554	± 400	3,982	± 793	24.1%	± 4.5
Hispanic or Latino origin (of any race)	15,667	± 199	4,372	± 707	27.9%	± 4.5
White alone, not Hispanic or Latino	216,948	± 650	19,320	± 1,235	8.9%	± 0.6
EDUCATIONAL ATTAINMENT						
Population 25 years and over	201,048	± 430	19,917	± 952	9.9%	± 0.5
Less than high school graduate	14,281	± 751	4,408	± 437	30.9%	± 2.8
High school graduate (includes equivalency)	52,603	± 1,341	7,305	± 764	13.9%	± 1.3
Some college, associate's degree	55,951	± 1,344	4,595	± 461	8.2%	± 0.8
Bachelor's degree or higher	78,213	± 1,418	3,609	± 436	4.6%	± 0.5
EMPLOYMENT STATUS						
Civilian labor force 16 years and over	162,692	± 1,435	13,749	± 1,061	8.5%	± 0.6
Employed	152,612	± 1,625	10,591	± 839	6.9%	± 0.5
Male	77,243	± 1,100	4,653	± 468	6.0%	± 0.6
Female	75,369	± 1,099	5,938	± 611	7.9%	± 0.8
Unemployed	10,080	± 764	3,158	± 525	31.3%	± 4.0
Male	5,360	± 552	1,368	± 311	25.5%	± 4.8
Female	4,720	± 502	1,790	± 324	37.9%	± 5.0
WORK EXPERIENCE IN THE PAST 12 MONTHS						
Population 16 years and over	75,369	± 1,099	5,938	± 611	7.9%	± 0.8
Worked full-time, year-round	10,080	± 764	3,158	± 525	31.3%	± 4.0
Worked part-time or part-year	5,360	± 552	1,368	± 311	25.5%	± 4.8
Did not work	4,720	± 502	1,790	± 324	37.9%	± 5.0

Source: 2011-2015 American Community Survey

13 Glossary

American Community Survey (ACS) - The American Community Survey is an ongoing survey of the population that provides data every year on a variety of social and economic characteristics—age, sex, race, family and relationships, income and benefits, health insurance, education, veteran status, disabilities, where you work and how you get there, where you live and how much you pay for some essentials. The ACS replaced the information previously gathered by what was known as the “long form” of the decennial censuses. The ACS provides communities, companies and other institutions with current information they need to plan investments and services. Information from the survey generates data that help determine how more than \$400 billion in federal and state funds are distributed each year. Every estimate presented in the American Community Survey, as in other surveys, has an uncertainty associated with it. Often the magnitude of that uncertainty is expressed as the Margin of Error.

Confidence Interval (CI) - indication of the degree of uncertainty about a sample estimates. Confidence intervals have been traditionally reported at the 90, 95 and 99 percent levels. A 90 percent confidence interval can be interpreted, for example, roughly as providing 90 percent certainty that the interval defined by the upper and lower bounds contain the true value of the characteristic. If a Margin of Error is given, the lower bound of the confidence interval is equal to the estimate minus the Margin of Error and the upper bound is equal to the estimate plus the Margin of Error. (See further, Margin of Error definition below.)

County subdivision or Minor Civil Division (MCD) - The Census Bureau geography for primary administrative units below the county level in New York is collectively referred to as county subdivisions or minor civil divisions. These include towns, cities and Indian Reservations.

Decennial Census - the Census of the population and housing taken every 10 years in the United States, at the start of each decade, since 1790.

Employed – either “at work” or “with a job, but not at work”.

Group Quarters Population - all U.S. residents who live in group living facilities including correctional institutions, juvenile facilities, skilled nursing facilities, college residence halls, military barracks, group homes, and workers' dormitories.

Household Population - all U.S. residents who live in housing units such as single family homes, townhouses, apartments, and mobile homes.

Intercensal Population Estimates - estimates produced for the years between two decennial censuses when both the beginning and ending populations are known. They are produced once a decade by adjusting the existing time series of postcensal estimates for the entire decade to smooth the transition from one decennial census count to the next. They differ from the postcensal estimates that are released annually because the difference between the April 1 postcensal estimate and April 1 census count for the end of the decade is redistributed across the estimates for that decade. For dates when both postcensal and intercensal estimates are available, intercensal estimates are preferred.

Labor Force - consists of people classified as employed or unemployed.

Margin of Error (MOE) - a measure of the precision of an estimate at a given level of confidence. The confidence level of a margin of error indicates the likelihood that the difference between the population value (which you

would get if you could measure the whole population instead of a sample) and the estimate is less than or equal to the margin of error. The range from the estimate minus the margin of error to the estimate plus the margin of error is called the confidence interval. All ACS estimates are published with their margins of error at the 90 percent confidence level. Margins of error are useful in assessing the reliability of estimates and whether differences between estimates are significant.

Numeric Population Change - difference between the population of an area at the beginning and end of a time period. It is computed by taking the difference between the population at one point in time (t_1) and some future time (t_2).

Percent Population Change - difference between the population of an area at the beginning and end of a time period, expressed as a percentage of the beginning population. It is computed by dividing the population change ($t_2 - t_1$) by t_1 and multiplying the result by 100.

Population Estimates - The calculated number of people living in an area as of a specified point in time, usually July 1st. The estimated population is calculated using a component of change model that incorporates information on natural increase (births, deaths) and net migration (net domestic migration, net international migration) that has occurred in an area since the latest decennial census. A procedure for estimating the current population using a procedure involving a "base population" value at time $t - 1$, adding to that the births during the interval $t - 1$ to t , subtracting the deaths during that interval $t - 1$ to t , and then adding the net domestic and net international migration that occurred during that interval.

Population Density - Total number of people per areal unit like a square mile or square kilometer.

Population Pyramids - A graphical way of portraying a population's age and sex composition at a given slice in time. The first horizontal bar, constituting the base of the graph, is the youngest age group (typically 0-4) with the number of males in that age group on the left and the number of females in that age group on the right. On top of that age group is another horizontal bar for the next age group (e.g. 5-9) and so forth with the top bar typically for those aged 75 and over. In a population with lots of births and deaths, the shape typically forms a pyramid with a broad base and a narrow top. It is one of the most basic ways to understand population change over time as well as between different geographic units of a similar status (e.g. counties).

Postcensal Estimates - estimates produced for the years after a decennial census when only the beginning population is known. They are produced and revised each year, targeted to July 1 of that year.

Projection - estimated population at some future time based on assumptions about births, deaths, migration, and ages.

Race/Ethnicity - the Census Bureau collects racial data in accordance with guidelines provided by the U.S. Office of Management and Budget (OMB), and these data are based on self-identification. The racial categories included in the census questionnaire generally reflect a social definition of race recognized in this country and not an attempt to define race biologically, anthropologically, or genetically. In addition, it is recognized that the categories of the race item include racial and national origin or sociocultural groups. People may choose to report more than one race to indicate their racial mixture, such as "American Indian" and "White." People who identify their origin as Hispanic, Latino, or Spanish may be of any race. OMB requires five minimum categories: White, Black or African American, American Indian or Alaska Native, Asian, and Native Hawaiian or Other Pacific Islander. Hispanics may be classified as white or black. So we generally separate them out as an ethnic group first.

Unemployed – Not employed, but actively looking for work and available to accept a job.

Unemployment rate – Fraction of the Labor Force that is unemployed.

Urban Area – A densely settled area with at least 2,500 people. If the total number of people is less than 50,000 the Census Bureau calls it an Urban Cluster, otherwise an Urbanized Area.

Vintage - each year, the U.S. Census Bureau produces and publishes estimates of the population for each state and county, as well as the nation as a whole. These are called “vintages.” In producing these vintages, the Bureau utilizes administrative data from a number of sources to estimate 1) the change in population since the most recent decennial census, and 2) the population for each year since the most recent decennial census. With each annual release of population estimates (vintage), the entire time series of estimates beginning on April 1, 2010 is revised and updated.

Vital Statistics - quantitative data concerning a population, such as the number of births, marriages, and deaths.

14 References

Albany County homepage: <http://www.albanycounty.com/>

At Cornell:

- Program on Applied Demographics (PAD)
URL: <http://pad.human.cornell.edu/>
 - More county trends: <https://pad.human.cornell.edu/counties/trends1geo.cfm?geo=1>
- Community and Regional Development Institute (CaRDI)
URL: <https://cardi.cals.cornell.edu/>
- Cornell Cooperative Extensions (CCE)
Home page: <http://www.cce.cornell.edu>
 - Albany local office: <http://www.ccealbany.com/>

Data sources and background information:

- New York State Data Center
 - <https://labor.ny.gov/nys-data-center/index.shtm>
- U.S. Census Bureau - general
 - QuickFacts: <https://www.census.gov/quickfacts/table/PST045216/36,36001>
 - American FactFinder: <http://factfinder.census.gov/>
- U.S. Census Bureau - population
 - Decennial Census
 - Background: <https://www.census.gov/2010census/>
 - Demographic Profile: http://factfinder2.census.gov/bkmk/table/1.0/en/DEC/10_SF1/SF1DP1/0500000US36001
 - American Community Survey (ACS)
 - Background: <https://www.census.gov/programs-surveys/acs/>
 - Social Data Profile: http://factfinder2.census.gov/bkmk/table/1.0/en/ACS/15_5YR/DP02/0500000US36001
 - Economic Data Profile: http://factfinder2.census.gov/bkmk/table/1.0/en/ACS/15_5YR/DP03/0500000US36001
 - Housing Data Profile: http://factfinder2.census.gov/bkmk/table/1.0/en/ACS/15_5YR/DP04/0500000US36001
 - Demographics Data Profile: http://factfinder2.census.gov/bkmk/table/1.0/en/ACS/15_5YR/DP05/0500000US36001
 - Population estimates:
 - General: <https://www.census.gov/programs-surveys/popest.html>
 - Explorer: <https://www.census.gov/censusexplorer/censusexplorer-popest.html>
- U.S. Census Bureau – Small Area Income & Poverty Estimates (SAIPE)
 - <http://www.census.gov/did/www/saipe/>
- U.S. Census Bureau - Public Use Quarterly Workforce Indicators (QWI) – annual averages
 - <https://qwiexplorer.ces.census.gov/static/explore.html>
- U.S. Census Bureau – Building Permits Survey
 - <https://www.census.gov/construction/bps/>

- Bureau Labor Statistics (BLS)
 - Local Area Unemployment Statistics: <http://www.bls.gov/lau/>
 - Quarterly Census of Employment and Wages (QCEW): <https://www.bls.gov/cew/data.htm>
- NY Department of Labor -
 - Labor statistics: <https://labor.ny.gov/stats/index.shtm>
 - Quarterly Census of Employment and Wages (QCEW): <https://labor.ny.gov/stats/LSQCEW.shtm>
- NY State Department of Health
 - Vital Statistics: https://www.health.ny.gov/statistics/vital_statistics/
- Bureau of Economic Analysis (BEA) – Local Area Personal Income and Employment: <http://bea.gov/iTable/iTable.cfm?ReqID=70&step=1>

Alternative sites for data retrieval:

- The Nelson A. Rockefeller Institute of Government – New York State Statistical Yearbooks http://www.rockinst.org/nys_statistics/
- Headwaters Economics: Economic Profile System – Human Dimensions Toolkit <http://headwaterseconomics.org/tools/eps-hdt>
- National Historical Geographic Information System (NHGIS) <https://www.nhgis.org/>
- Social Explorer <http://www.socialexplorer.com/pub/home/home.aspx>
- Stats America <http://www.statsamerica.org/Default.aspx>
- Missouri Census Data Center <http://mcdc.missouri.edu/>
- DataFerret <http://dataferrett.census.gov/>
- Investigative Reporters and Editors (IRE) Census project <http://census.ire.org/>