

Yates

County Profile

2013

A collection of recent demographic, social, economic and agricultural data

Compiled by Jan Vink

Assisted by Joe Francis, Sutee Anantsuksomsri, Nij Tontisirin, Johannes Plambeck



Cornell University
Cooperative Extension



This profile is a part of a set of profiles generated for each county in New York State. The profiles were developed and generated by the Cornell Program on Applied Demographics. The work is sponsored by Cornell Cooperative Extension and promoted with webinars and workshops in coordination with the Community & Regional Development Institute.

Cornell Program on Applied Demographics:

The Program on Applied Demographics (PAD) brings skills in demographics, economics, statistics, data gathering and data analysis together to provide a variety of organizations with data, information and advice.

For more information: <http://pad.human.cornell.edu/>

Cornell Cooperative Extension:

Cornell Cooperative Extension (CCE) puts knowledge to work in pursuit of economic vitality, ecological sustainability and social well-being. We bring local experience and research based solutions together, helping New York State families and communities thrive in our rapidly changing world.

For more information: <http://cce.cornell.edu/>

Community & Regional Development Institute:

The Community & Regional Development Institute (CaRDI) supports informed decision making for residents and communities in New York State through applied research and education.

For more information: <http://cardi.cornell.edu/>

All profiles are freely downloadable as PDF documents on the PAD website:

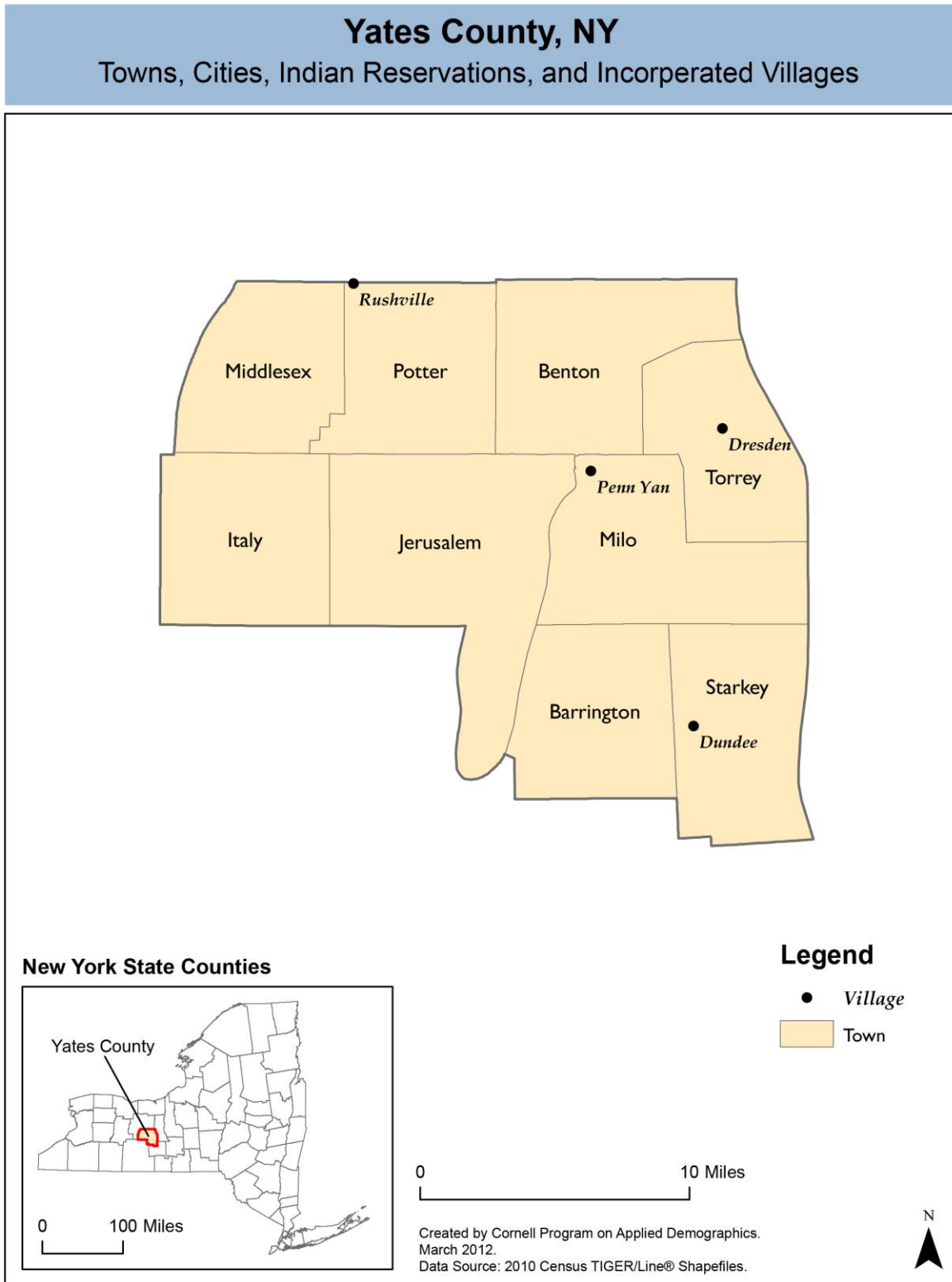
<http://pad.human.cornell.edu/profiles/index.cfm>

Contents

Contents	2
1 Reference Maps	4
2 Population density and Urban Areas Map	6
3 Total Population	7
3.1 Historic and projected	7
3.2 Change since previous Census	7
3.3 Annual population estimates	8
3.4 Percentage sub county change 2000-2010	9
4 Population by age	11
4.1 Historic and projected population pyramids	11
4.2 Selected age groups	12
4.3 Median age: comparison between areas	14
5 Race	15
5.1 Total and household population by race	15
5.2 Race composition by age	15
6 Housing units	16
6.1 Characteristics	16
6.2 Historical data on number of housing units and occupancy status	17
7 Education	18
7.1 Enrollment by level of school	18
7.2 Enrollment by age	18
7.3 Percentage age 18-24 enrolled in college	18
7.4 Educational attainment	19
8 Language spoken at home	19
9 Labor Force Characteristics	20
9.1 Labor force, employment and unemployment	20
9.2 Annual unemployment rate	21
9.3 Monthly unemployment rate	21
9.4 Employment and number of jobs	22
9.5 Class of worker	22
9.6 Jobs by industry sector	23
10 Household Income	24
10.1 Distribution	24
10.2 Median household income: Trends over time	25
10.3 Median household income: Comparison between areas	26
11 Poverty	27
11.1 Poverty characteristics	27
11.2 Poverty: Trends over time: Count	28
11.3 Poverty: Trends over time: Rate	28
11.4 Poverty rate: comparison between areas	29
12 Agriculture	30
12.1 Number of farms and land in farms	30
12.2 Farm Operator Characteristics	30

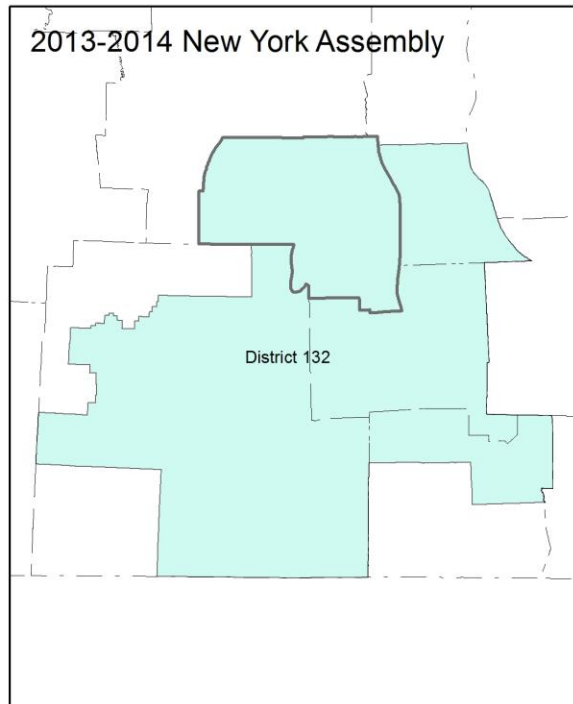
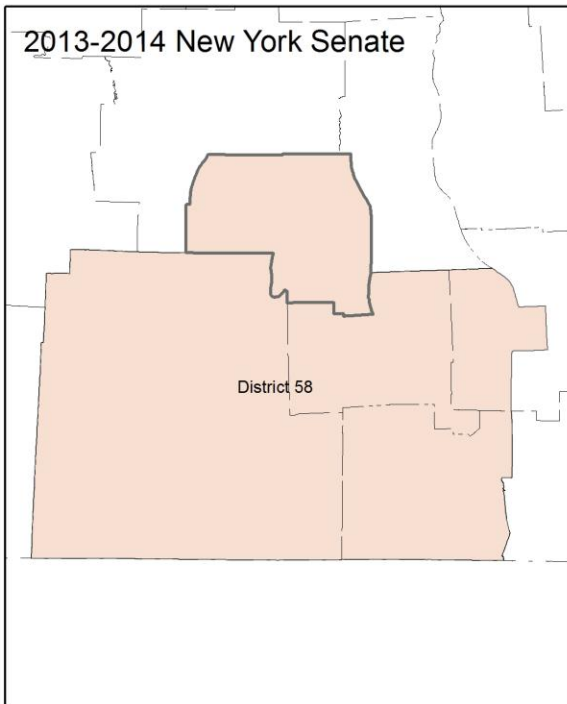
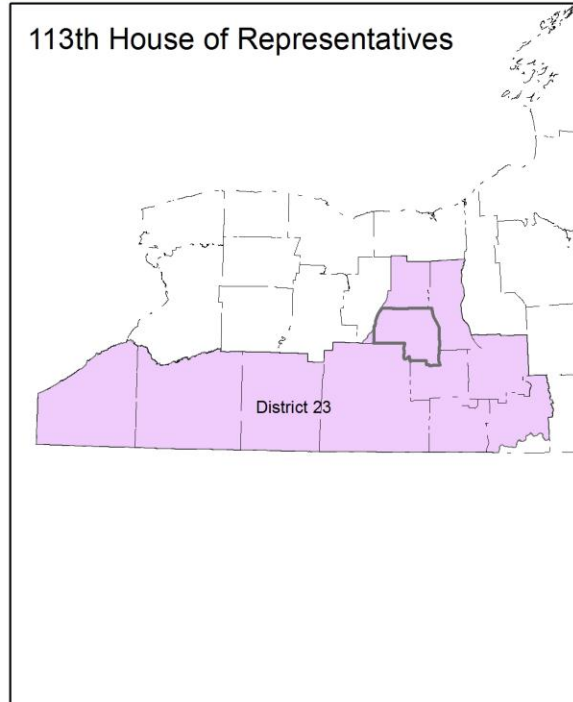
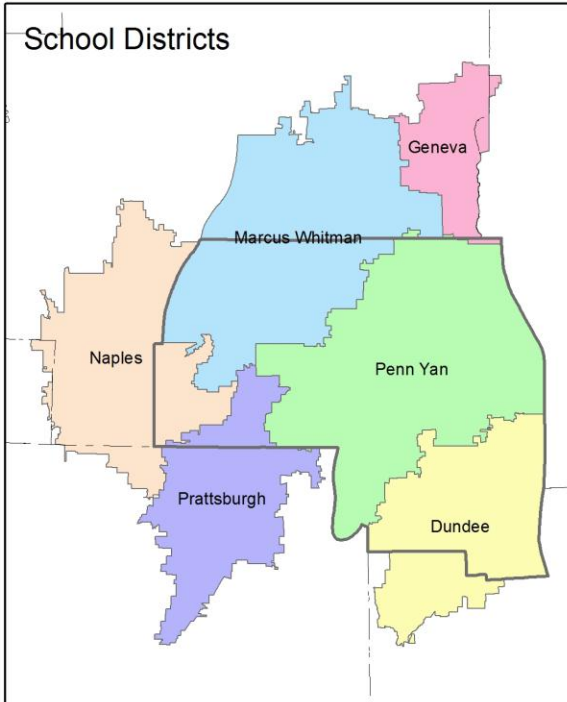
12.3 Map of type of crop 31
12.4 Estimated acreage by crop 32
13 Climate 33
14 Glossary..... 34
15 References 37

1 Reference Maps

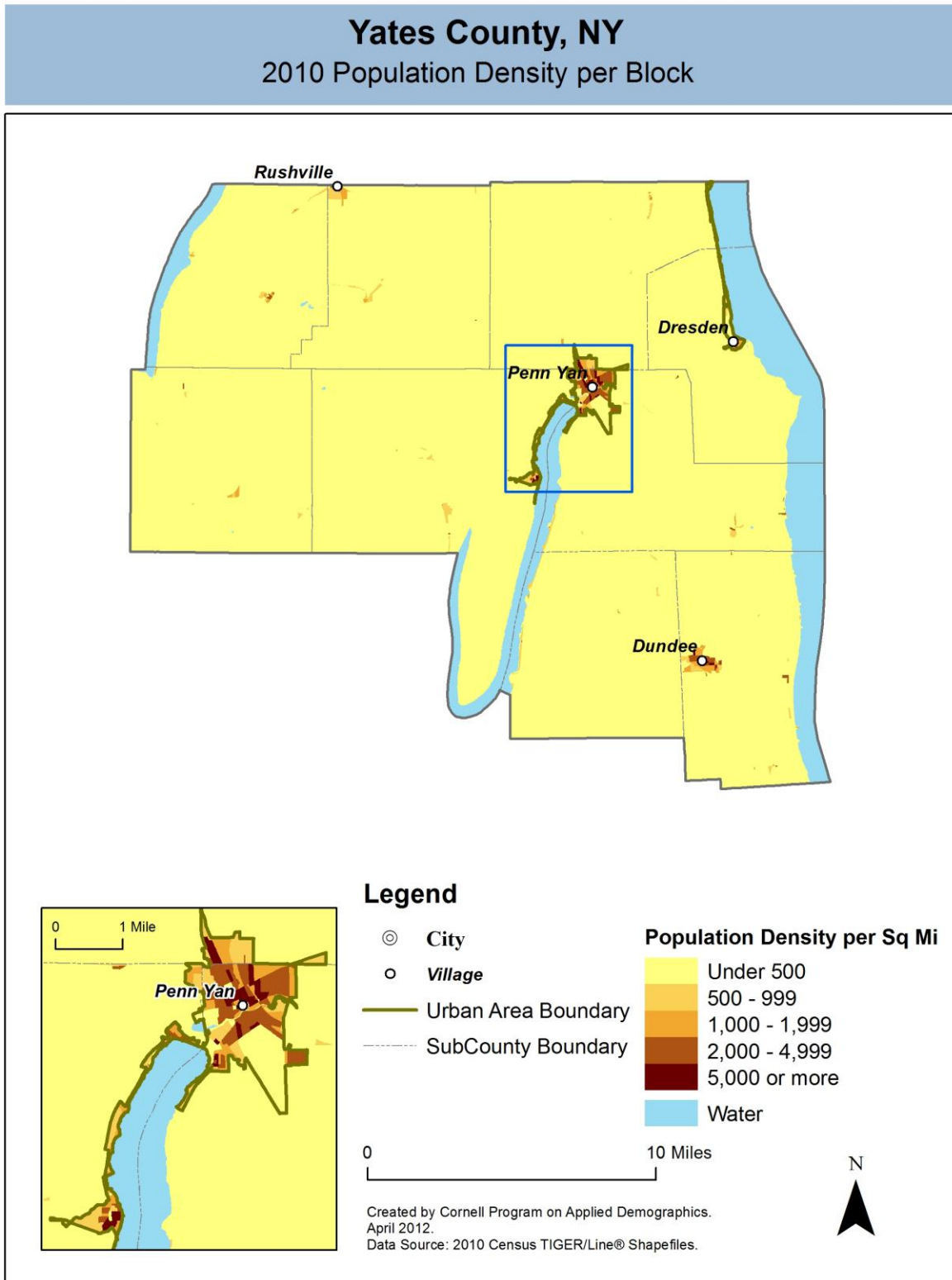


Yates County, NY

Overlap with School and Political Districts



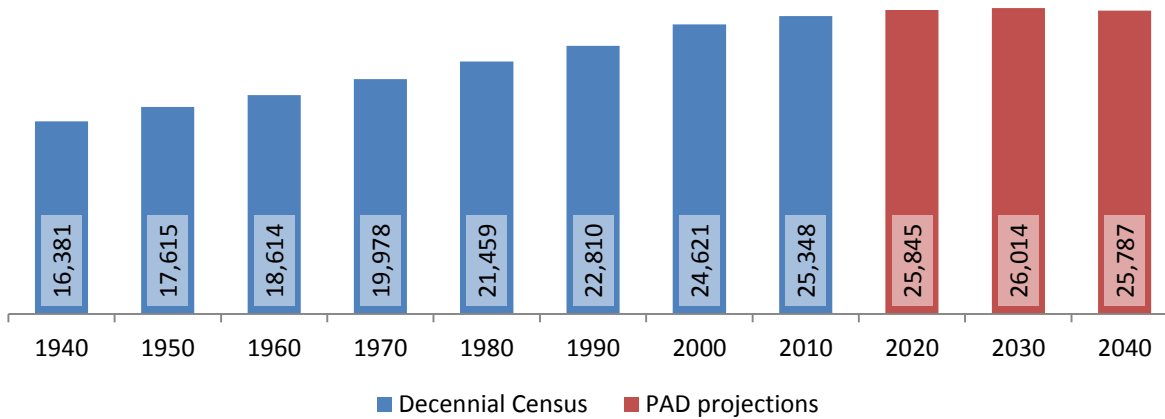
2 Population density and Urban Areas Map



3 Total Population

3.1 Historic and projected

Total population, Yates County, 1940-2040



Source: 1940-2010 Decennial Census and projections by Cornell Program on Applied Demographics

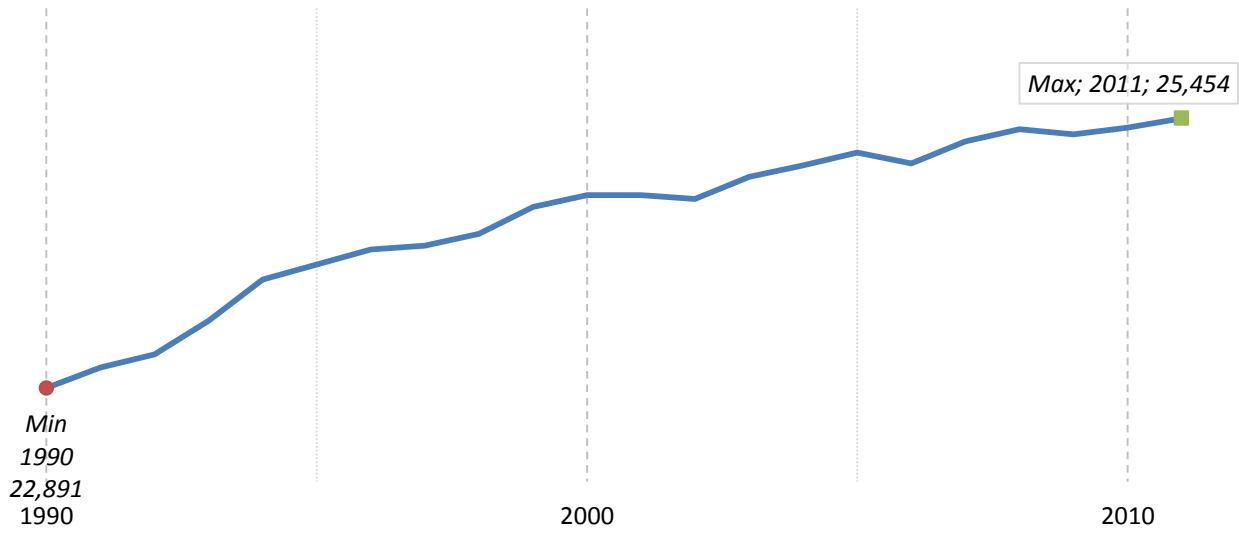
3.2 Change since previous Census

	Year	Total population	Change	
			Number	Percent
Decennial Census	1940	16,381		
	1950	17,615	1,234	7.5%
	1960	18,614	999	5.7%
	1970	19,978	1,364	7.3%
	1980	21,459	1,481	7.4%
	1990	22,810	1,351	6.3%
	2000	24,621	1,811	7.9%
	2010	25,348	727	3.0%
PAD projections	2020	25,845	497	2.0%
	2030	26,014	169	0.7%
	2040	25,787	-227	-0.9%

Source: 1940-2010 Decennial Census and projections by Cornell Program on Applied Demographics

3.3 Annual population estimates

**Annual population estimates
Yates County, 1990-2011**



Source: U.S. Census Bureau population estimates (1990-1999 and 2000-2009 intercensal and vintage 2011 postcensal)

3.4 Percentage sub county change 2000-2010

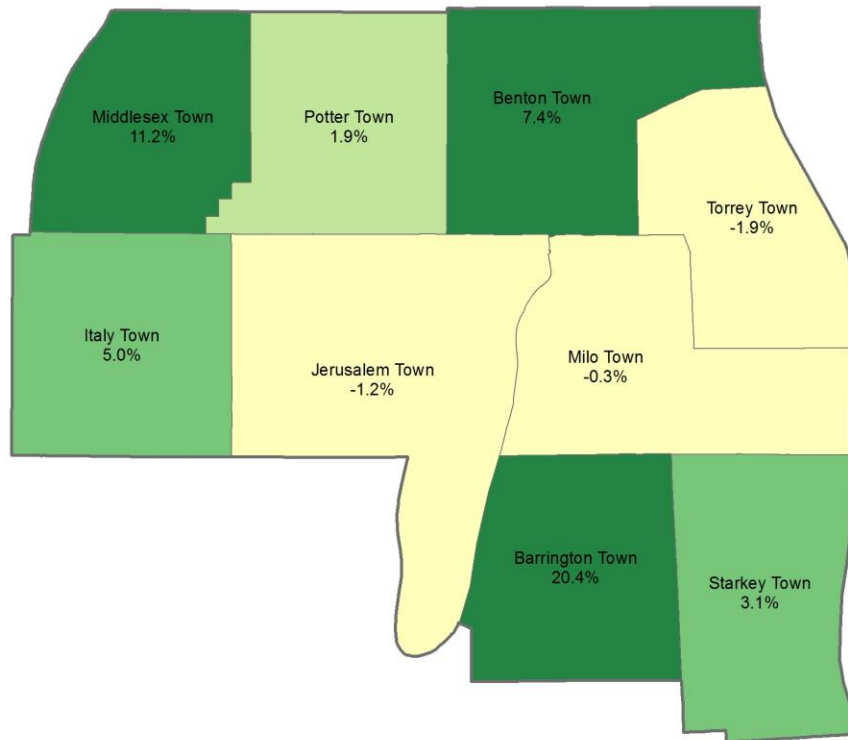
	Total Population		Difference	
	2000	2010	Count	%
New York State	18,976,821 *	19,378,102	401,281	2.1%
Yates County	24,621	25,348	727	3.0%
Towns				
Barrington	1,396	1,681	285	20.4%
Benton	2,640	2,836	196	7.4%
Italy	1,087	1,141	54	5.0%
Jerusalem	4,525	4,469	-56	-1.2%
Middlesex	1,345	1,495	150	11.2%
Milo	7,026	7,006	-20	-0.3%
Potter	1,830	1,865	35	1.9%
Starkey	3,465	3,573	108	3.1%
Torrey	1,307	1,282	-25	-1.9%

* Original counts revised through Count Question Resolution Program (CQR)

Source: U.S. Census Bureau intercensal population estimates 2000-2010

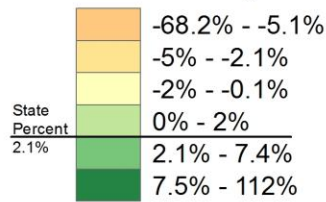
Yates County, NY

County Subdivision, Percent Change in Population 2000-2010



Legend

Percent Change



0 10 Miles

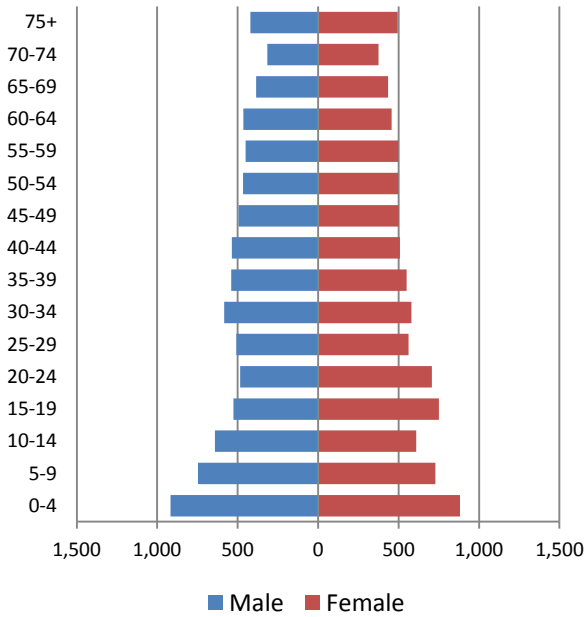
Created by Cornell Program on Applied Demographics.
 May 2012.
 Data Source: 2010 Census TIGER/Line® Shapefiles.



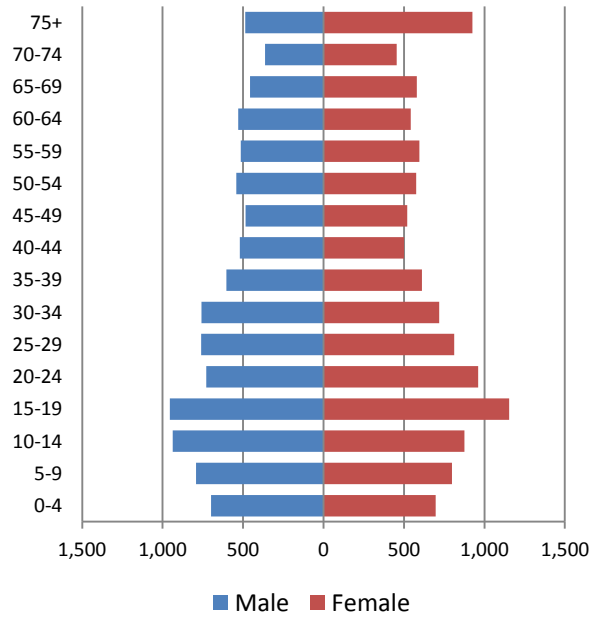
4 Population by age

4.1 Historic and projected population pyramids

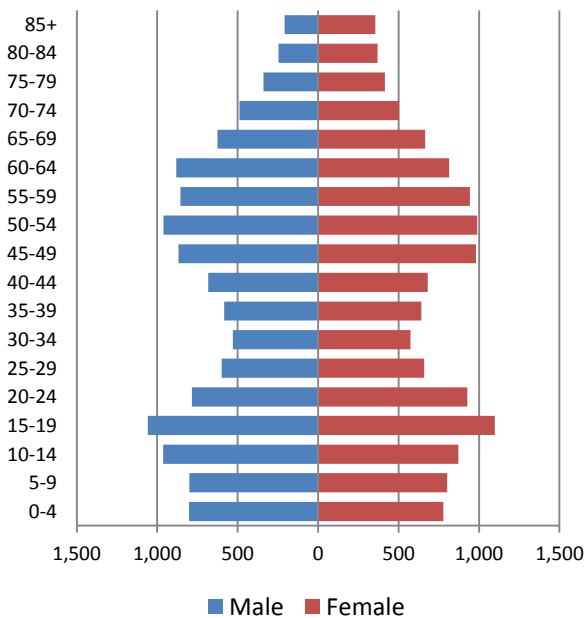
1950 Population Pyramid, Yates County



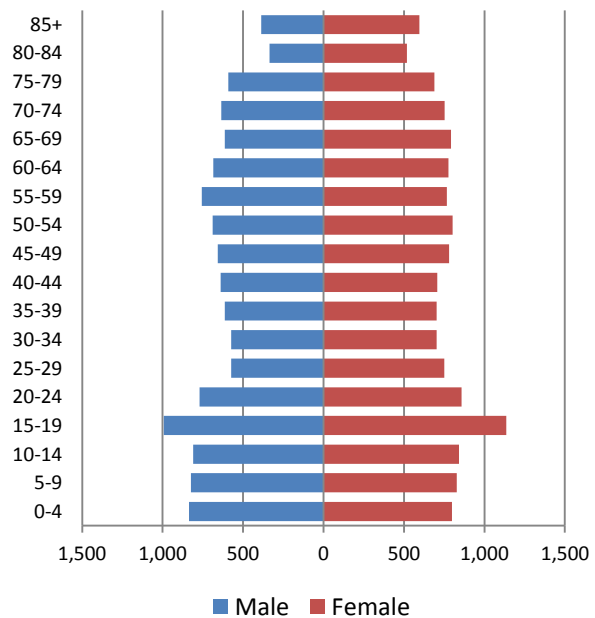
1980 Population Pyramid, Yates County



2010 Population Pyramid, Yates County



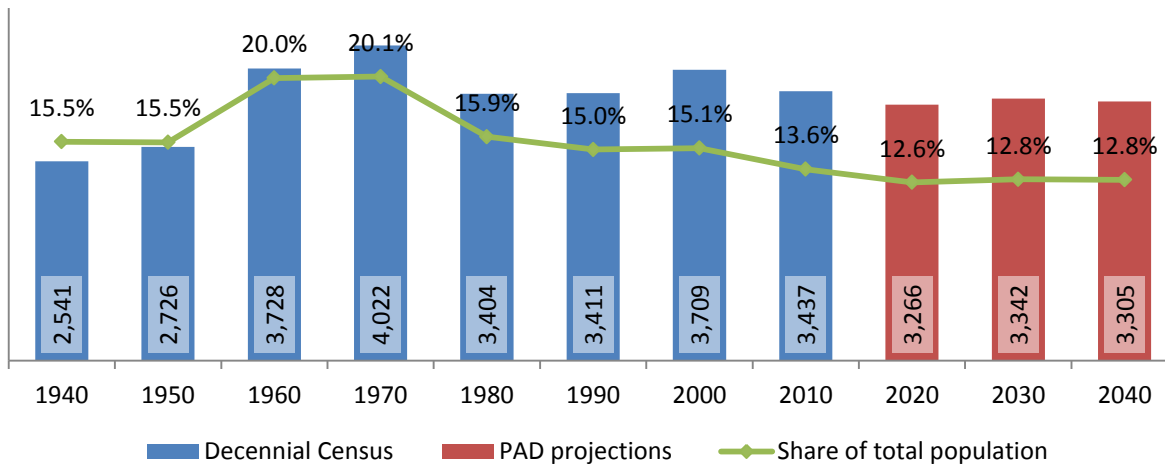
2040 Population Pyramid, Yates County



Source: 1950, 1980, 2010 Decennial Census and projections by Cornell Program on Applied Demographics

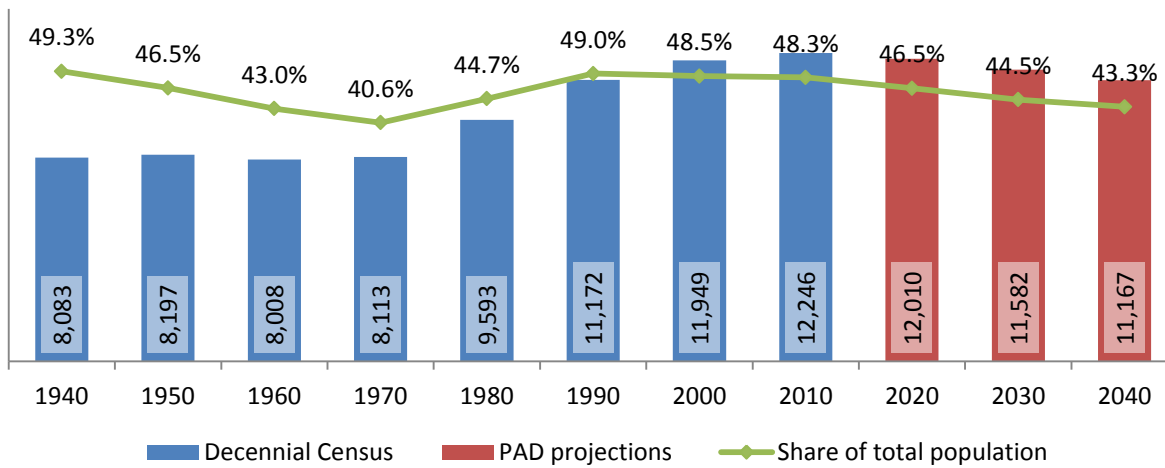
4.2 Selected age groups

Population age 5-14, Yates County, 1940-2040



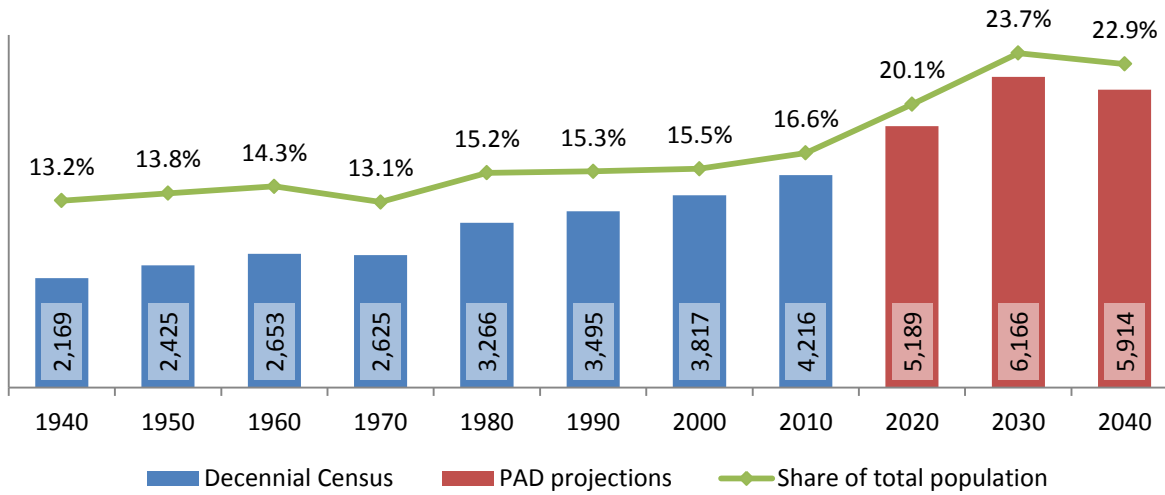
Source: 1940-2010 Decennial Census and projections by Cornell Program on Applied Demographics

Population age 25-64, Yates County, 1940-2040



Source: 1940-2010 Decennial Census and projections by Cornell Program on Applied Demographics

Population age 65 and over, Yates County, 1940-2040



Source: 1940-2010 Decennial Census and projections by Cornell Program on Applied Demographics

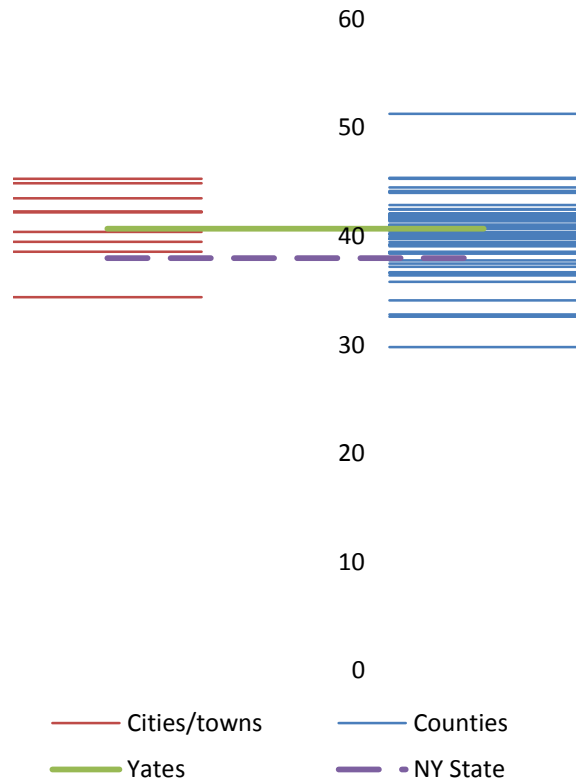
4.3 Median age: comparison between areas

	Median Age
New York State	38.0
Yates County	40.7

Towns

Barrington town	39.5
Benton town	42.2
Italy town	44.9
Jerusalem town	42.3
Middlesex town	45.3
Milo town	40.4
Potter town	34.4
Starkey town	38.6
Torrey town	43.5

Median age comparison within county (left) and between counties (right)



Source: 2010 Decennial Census

5 Race

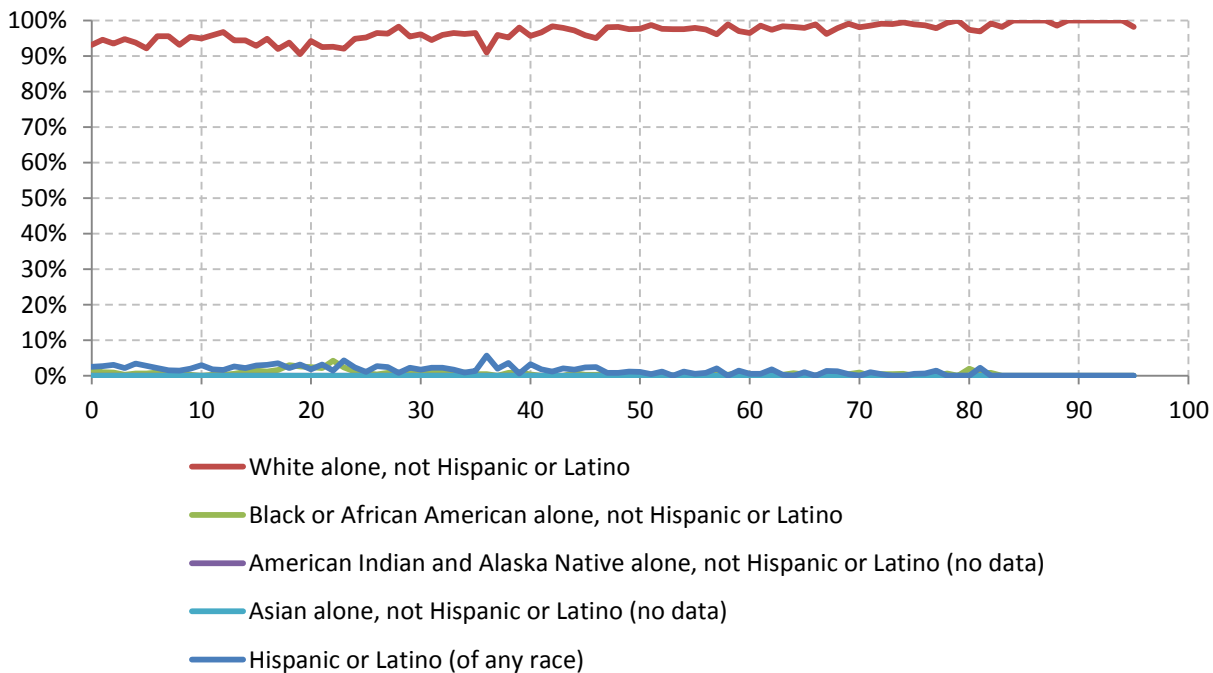
5.1 Total and household population by race

	Total		In households		In Group Quarters
	Count	Percentage	Count	Percentage	Count
Total population	25,348	100%	24,061	100%	1,287
Not Hispanic or Latino					
One race					
White	24,371	96.1%	23,235	96.6%	1,136
Black or African American	196	0.8%	116	0.5%	80
American Indian and Alaska Native	35	0.1%	-	-	-
Asian	96	0.4%	-	-	-
Native Hawaiian and Other Pacific Islander	1	0.0%	-	-	-
Some other race	13	0.1%	-	-	-
Two or more races	215	0.8%	202	0.8%	13
Hispanic or Latino (of any race)	421	1.7%	384	1.6%	37

Source: 2010 Decennial Census

5.2 Race composition by age

Race composition by age, Yates County



Source: 2010 Decennial Census

6 Housing units

6.1 Characteristics

HOUSING OCCUPANCY	COUNT		PERCENTAGE	
	Estimate	Margin of error	Estimate	Margin of error
Total housing units	13,423	± 122	100.0%	
Occupied housing units	9,552	± 272	71.2%	± 1.9
Vacant housing units	3,871	± 248	28.8%	± 1.9
YEAR STRUCTURE BUILT				
Total housing units	13,423	± 122	100.0%	
Built 2005 or later	468	± 124	3.5%	± 0.9
Built 2000 to 2004	742	± 129	5.5%	± 1.0
Built 1990 to 1999	1,471	± 218	11.0%	± 1.6
Built 1980 to 1989	1,717	± 245	12.8%	± 1.8
Built 1970 to 1979	1,516	± 175	11.3%	± 1.3
Built 1960 to 1969	943	± 149	7.0%	± 1.1
Built 1950 to 1959	1,036	± 197	7.7%	± 1.5
Built 1940 to 1949	469	± 120	3.5%	± 0.9
Built 1939 or earlier	5,061	± 305	37.7%	± 2.3
HOUSING TENURE				
Occupied housing units	9,552	± 272	100.0%	
Owner-occupied	7,391	± 264	77.4%	± 2.1
Renter-occupied	2,161	± 222	22.6%	± 2.1
HOUSE HEATING FUEL				
Occupied housing units	9,552	± 272	100.0%	
Utility gas	2,715	± 203	28.4%	± 2.0
Bottled, tank, or LP gas	2,337	± 265	24.5%	± 2.6
Electricity	1,490	± 185	15.6%	± 1.9
Fuel oil, kerosene, etc.	1,477	± 170	15.5%	± 1.8
Coal or coke	270	± 96	2.8%	± 1.0
Wood	1,126	± 129	11.8%	± 1.3
Solar energy	0	± 89	0.0%	± 0.3
Other fuel	114	± 67	1.2%	± 0.7
No fuel used	23	± 17	0.2%	± 0.2
VALUE				
Owner-occupied units	7,391	± 264	100.0%	
Less than \$50,000	637	± 93	8.6%	± 1.3
\$50,000 to \$99,999	2,334	± 192	31.6%	± 2.4
\$100,000 to \$149,999	1,669	± 176	22.6%	± 2.2
\$150,000 to \$199,999	837	± 150	11.3%	± 2.0
\$200,000 to \$299,999	732	± 132	9.9%	± 1.8
\$300,000 to \$499,999	680	± 125	9.2%	± 1.6
\$500,000 to \$999,999	396	± 96	5.4%	± 1.3
\$1,000,000 or more	106	± 56	1.4%	± 0.7
Median (dollars)	117,000	± 3,721		

Source: 2007-2011 American Community Survey

6.2 Historical data on number of housing units and occupancy status

Year	Number of Housing Units	Change since previous Census	Occupied	Occupancy rate	Vacant
1970	8,472		6,052	71.4%	2,420
1980	10,762	27.0%	7,713	71.7%	3,049
1990	11,629	8.1%	8,419	72.4%	3,210
2000	12,064	3.7%	9,029	74.8%	3,035
2010	13,491	11.8%	9,517	70.5%	3,974

Source: 1970-2010 Decennial Census

7 Education

7.1 Enrollment by level of school

	Estimate	Margin of error
Total enrolled in school	6,177	± 304
Nursery school, preschool	217	± 71
Kindergarten	279	± 78
Elementary: grade 1 to grade 4	1,380	± 115
Elementary: grade 5 to grade 8	1,460	± 140
High school: grade 9 to grade 12	1,214	± 125
College, undergraduate	1,454	± 267
Graduate, professional school	173	± 78

Source: 2007-2011 American Community Survey

7.2 Enrollment by age

	Estimate	Margin of error
3 and 4 years	33.1%	± 8.8
5 to 9 years	87.8%	± 4.0
10 to 14 years	98.0%	± 1.1
15 to 17 years	85.0%	± 5.6
18 and 19 years	66.1%	± 10.6
20 to 24 years	40.0%	± 10.4
25 to 34 years	8.8%	± 2.9
35 years and over	1.4%	± 0.5

Source: 2007-2011 American Community Survey

7.3 Percentage age 18-24 enrolled in college

	Estimate	Margin of error
Population 18 to 24 years	2,704	± 71
Enrolled in college or graduate school	45.8%	± 8.3
Males 18 to 24 years	1,280	± 66
Enrolled in college or graduate school	38.5%	± 9.2
Females 18 to 24 years	1,424	± 26
Enrolled in college or graduate school	52.4%	± 10.9

Source: 2007-2011 American Community Survey

7.4 Educational attainment

	COUNT		PERCENTAGE	
	Estimate	Margin of error	Estimate	Margin of error
Population 25 years and over	16,428	± 81	100%	
EDUCATIONAL ATTAINMENT				
Less than 9th grade	1,239	± 240	7.5%	± 1.5
9th to 12th grade, no diploma	1,295	± 189	7.9%	± 1.2
High school graduate (includes equivalency)	6,078	± 323	37.0%	± 2.0
Some college, no degree	2,468	± 245	15.0%	± 1.5
Associate's degree	1,510	± 166	9.2%	± 1.0
Bachelor's degree	1,921	± 228	11.7%	± 1.4
Graduate or professional degree	1,917	± 273	11.7%	± 1.7
Percent high school graduate or higher			84.6%	± 1.7
Percent bachelor's degree or higher			23.4%	± 1.8

Source: 2007-2011 American Community Survey

8 Language spoken at home

	COUNT		PERCENTAGE		SPEAK ENGLISH LESS THAN "VERY WELL"	
	Estimate	Margin of error	Estimate	Margin of error	Estimate	Margin of error
Population 5 years and over	23,814	± 30	100%			
LANGUAGE SPOKEN AT HOME						
English only	21,430	± 386	90.0%	± 1.6		
Language other than English	2,384	± 383	10.0%	± 1.6	968	± 259
Spanish	340	± 74	1.4%	± 0.3	149	± 61
Other Indo-European languages	1,943	± 389	8.2%	± 1.6	747	± 250
Asian and Pacific Islander languages	72	± 28	0.3%	± 0.1	49	± 22
Other languages	29	± 34	0.1%	± 0.1	23	± 32

Source: 2007-2011 American Community Survey

9 Labor Force Characteristics

9.1 Labor force, employment and unemployment

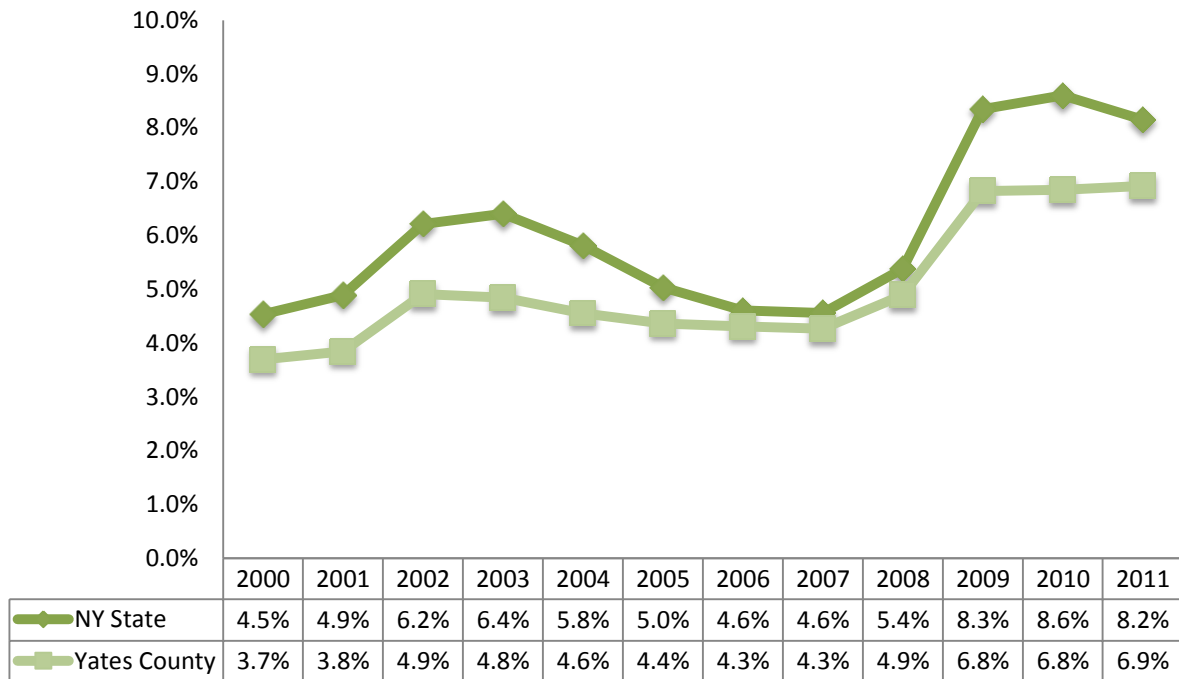
	TOTAL		IN LABOR FORCE		EMPLOYED		UNEMPLOYMENT RATE	
	Estimate	Margin of error	Estimate	Margin of error	Estimate	Margin of error	Estimate	Margin of error
Population 16 years and over	19,893	± 87	61.1%	± 1.6	58.0%	± 1.6	4.9%	± 0.8
AGE								
16 to 19 years	1,713	± 88	46.6%	± 6.6	42.7%	± 6.7	8.4%	± 4.9
20 to 24 years	1,752	± 66	71.3%	± 5.5	65.4%	± 6.0	8.2%	± 3.5
25 to 44 years	5,064	± 59	83.0%	± 2.6	78.3%	± 2.8	5.5%	± 1.9
45 to 54 years	3,717	± 35	85.0%	± 3.3	81.9%	± 3.5	3.7%	± 1.5
55 to 64 years	3,452	± 53	62.1%	± 3.7	59.8%	± 4.0	3.6%	± 1.8
65 to 74 years	2,250	± 38	23.0%	± 4.5	23.0%	± 4.5	0.0%	± 6.1
75 years and over	1,945	± 32	3.8%	± 2.2	3.8%	± 2.2	0.0%	± 34.1
RACE AND HISPANIC OR LATINO ORIGIN								
One race	19,747	± 108	60.9%	± 1.6	57.9%	± 1.6	4.8%	± 0.8
White	19,401	± 92	61.3%	± 1.6	58.4%	± 1.6	4.8%	± 0.8
Black or African American	174	± 52	17.2%	± 16.5	17.2%	± 16.5	0.0%	± 54.1
American Indian and Alaska Native	71	± 30	60.6%	± 28.1	45.1%	± 28.3	0.0%	± 52.4
Asian	62	± 18	80.6%	± 22.4	80.6%	± 22.4	0.0%	± 41.9
Pacific Islander	3	± 6	0.0%	± 100.0	0.0%	± 100.0	-	**
Some other race	36	± 43	19.4%	± 35.4	0.0%	± 49.4	100.0%	± 100.0
Two or more races	146	± 69	82.9%	± 15.9	71.9%	± 25.4	13.2%	± 19.3
Hispanic or Latino origin (of any race)	262	± 4	65.3%	± 17.9	59.2%	± 18.6	9.4%	± 9.6
White alone, not Hispanic or Latino	19,250	± 76	61.3%	± 1.6	58.3%	± 1.6	4.8%	± 0.9
SEX								
Population 20 to 64 years	13,985	± 73	76.9%	± 1.9	73.1%	± 1.9	4.9%	± 0.9
Male	6,841	± 61	81.3%	± 2.0	78.0%	± 2.1	3.9%	± 1.0
Female	7,144	± 37	72.7%	± 3.2	68.4%	± 3.4	5.9%	± 1.7
With own children under 6 years	1,241	± 184	60.0%	± 6.7	52.6%	± 7.8	12.2%	± 7.8
EDUCATIONAL ATTAINMENT								
Population 25 to 64 years	12,233	± 84	77.7%	± 1.9	74.2%	± 1.9	4.5%	± 1.0
Less than high school graduate	1,698	± 248	54.7%	± 5.5	53.1%	± 5.5	2.8%	± 2.5
High school graduate (includes equivalency)	4,604	± 318	80.9%	± 3.3	77.3%	± 3.3	4.5%	± 1.6
Some college or associate's degree	3,181	± 282	80.0%	± 4.6	75.7%	± 4.3	5.5%	± 2.0
Bachelor's degree or higher	2,750	± 257	84.0%	± 3.6	80.3%	± 3.7	4.0%	± 1.9

Table formula: **LABOR FORCE** = # EMPLOYED + # UNEMPLOYED
 % IN LABOR FORCE = LABOR FORCE / TOTAL * 100%
 % EMPLOYED = # EMPLOYED / TOTAL * 100%
 UNEMPLOYMENT RATE = # UNEMPLOYED / LABOR FORCE * 100%

Source: 2007-2011 American Community Survey

9.2 Annual unemployment rate

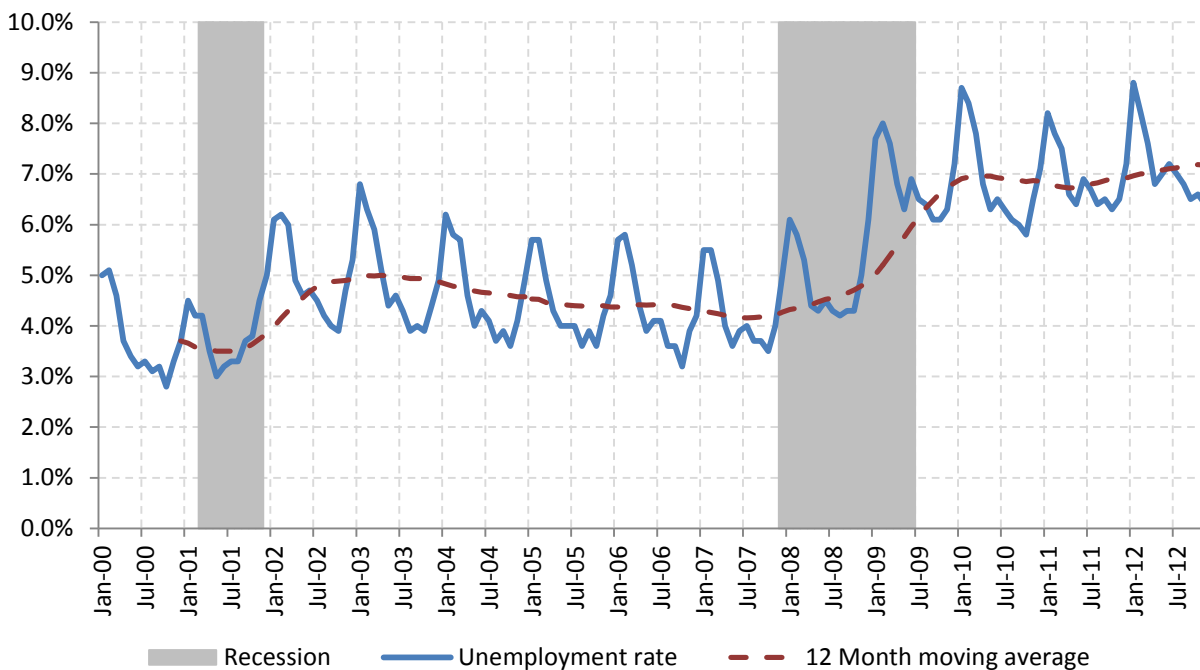
Annual unemployment rate, Yates County and New York State



Source: Bureau Labor Statistics (BLS)

9.3 Monthly unemployment rate

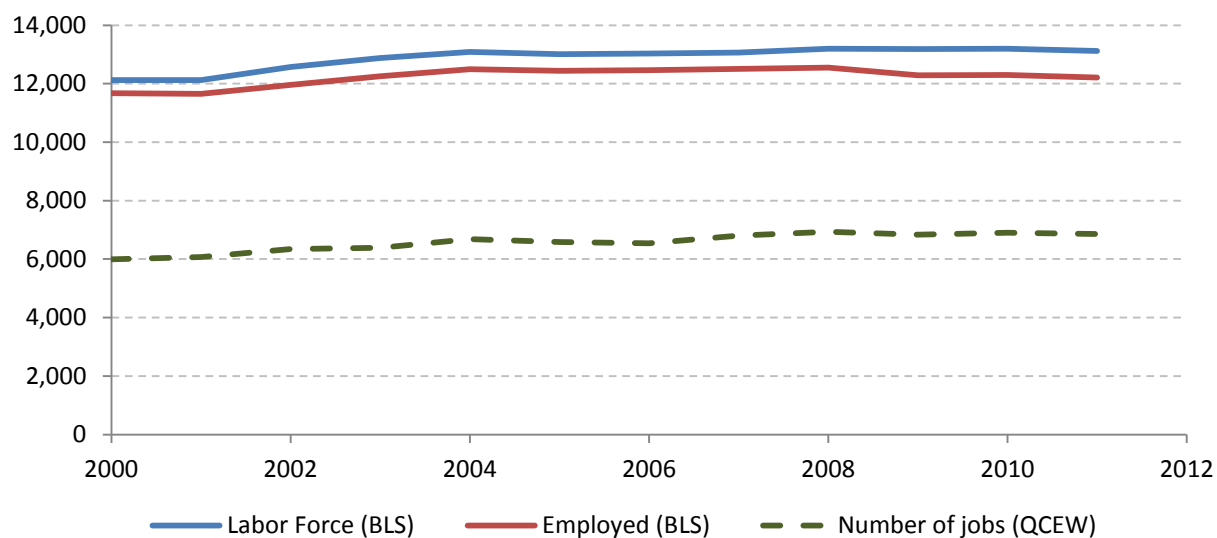
Monthly unemployment rate, Yates County



Source: Bureau Labor Statistics (BLS)

9.4 Employment and number of jobs

**Labor force, number of employed workers and number of jobs
Yates County**



Source: Bureau Labor Statistics (BLS) and NY Department of Labor - Quarterly Census of Employment and Wages (QCEW) – annual averages

9.5 Class of worker

		Median earnings (\$)					
		Total	%Male	%Female	Total	Male	Female
Civilian employed population 16 years and over	Estimate	11,541	52.0%	48.0%	28,546	33,214	22,114
	Margin of error	± 323	± 1.5	± 1.5	± 1,932	± 2,385	± 1,274
Private for-profit wage and salary workers:	Estimate	6,600	57.6%	42.4%	26,875	32,802	19,375
	Margin of error	± 370	± 2.7	± 2.7	± 1,827	± 2,056	± 3,943
Employee of private company workers	Estimate	6,327	56.9%	43.1%	26,291	32,246	18,891
	Margin of error	± 374	± 2.7	± 2.7	± 1,980	± 1,881	± 4,097
Self-employed in own incorporated business workers	Estimate	273	75.1%	24.9%	42,083	49,583	31,250
	Margin of error	± 72	± 8.2	± 8.2	± 15,748	± 17,300	± 11,935
Private not-for-profit wage and salary workers	Estimate	1,363	29.2%	70.8%	31,369	33,000	28,491
	Margin of error	± 211	± 6.0	± 6.0	± 4,211	± 7,513	± 8,898
Local government workers	Estimate	1,275	34.9%	65.1%	36,337	44,414	31,716
	Margin of error	± 177	± 6.4	± 6.4	± 1,818	± 5,328	± 5,276
State government workers	Estimate	437	29.7%	70.3%	44,840	46,818	42,989
	Margin of error	± 95	± 8.9	± 8.9	± 2,620	± 4,833	± 7,747
Federal government workers	Estimate	227	31.3%	68.7%	39,250	42,589	39,167
	Margin of error	± 92	± 14.7	± 14.7	± 10,971	± 37,597	± 9,964
Self-employed in own not incorporated business workers and unpaid family workers	Estimate	1,639	70.3%	29.7%	18,774	24,659	12,930
	Margin of error	± 222	± 5.3	± 5.3	± 4,957	± 9,061	± 3,636

Source: 2007-2011 American Community Survey

9.6 Jobs by industry sector

	Yates County			NY state
	2011	Change since 2006	% of total	% of total
All NAICS Sectors	6,548	-0.8%	100.0%	100.0%
Agriculture, Forestry, Fishing and Hunting	207	30.2%	3.2%	0.3%
Mining, Quarrying, and Oil and Gas Extraction	NA	NA	NA	0.1%
Utilities	NA	NA	NA	0.5%
Construction	257	-6.5%	3.9%	3.5%
Manufacturing	1,006	-6.2%	15.4%	5.5%
Wholesale Trade	149	63.7%	2.3%	4.0%
Retail Trade	640	-1.7%	9.8%	10.5%
Transportation and Warehousing	205	31.4%	3.1%	3.4%
Information	50	0.0%	0.8%	3.3%
Finance and Insurance	104	-12.6%	1.6%	6.0%
Real Estate and Rental and Leasing	108	-2.7%	1.6%	2.3%
Professional, Scientific, and Technical Services	112	-13.8%	1.7%	6.9%
Management of Companies and Enterprises	NA	NA	NA	1.6%
Administrative and Support and Waste Management and Remediation Services	61	-58.5%	0.9%	5.2%
Educational Services	1,210	4.4%	18.5%	10.8%
Health Care and Social Assistance	1,063	-0.7%	16.2%	17.0%
Arts, Entertainment, and Recreation	49	8.9%	0.7%	1.9%
Accommodation and Food Services	513	2.4%	7.8%	7.3%
Other Services (except Public Administration)	279	4.9%	4.3%	3.9%
Public Administration	494	-7.3%	7.5%	5.8%

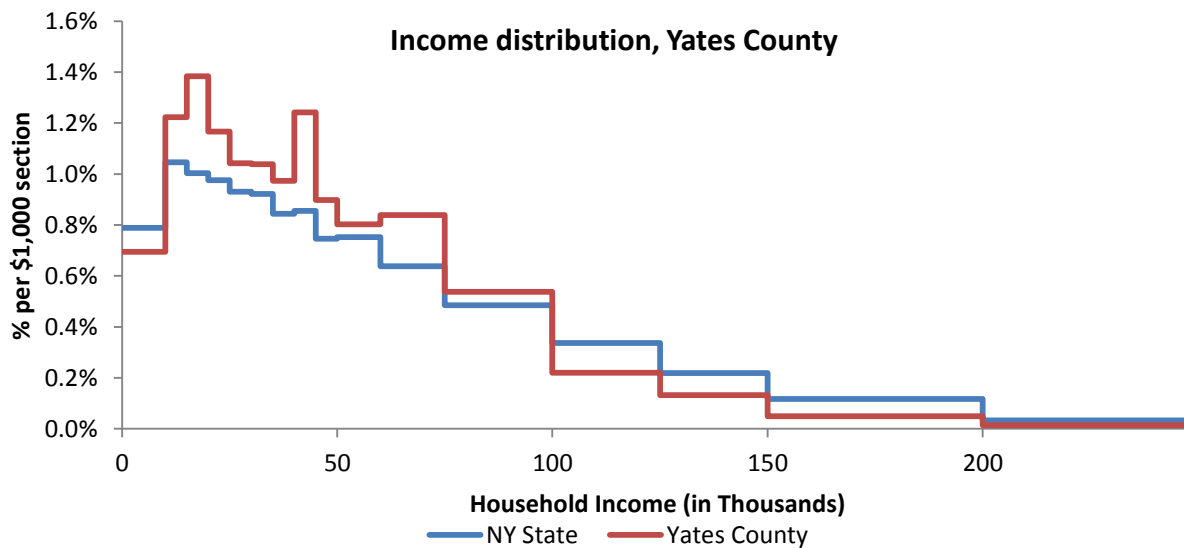
Source: U.S. Census Bureau - Public Use Quarterly Workforce Indicators (QWI) – annual averages

10 Household Income

10.1 Distribution

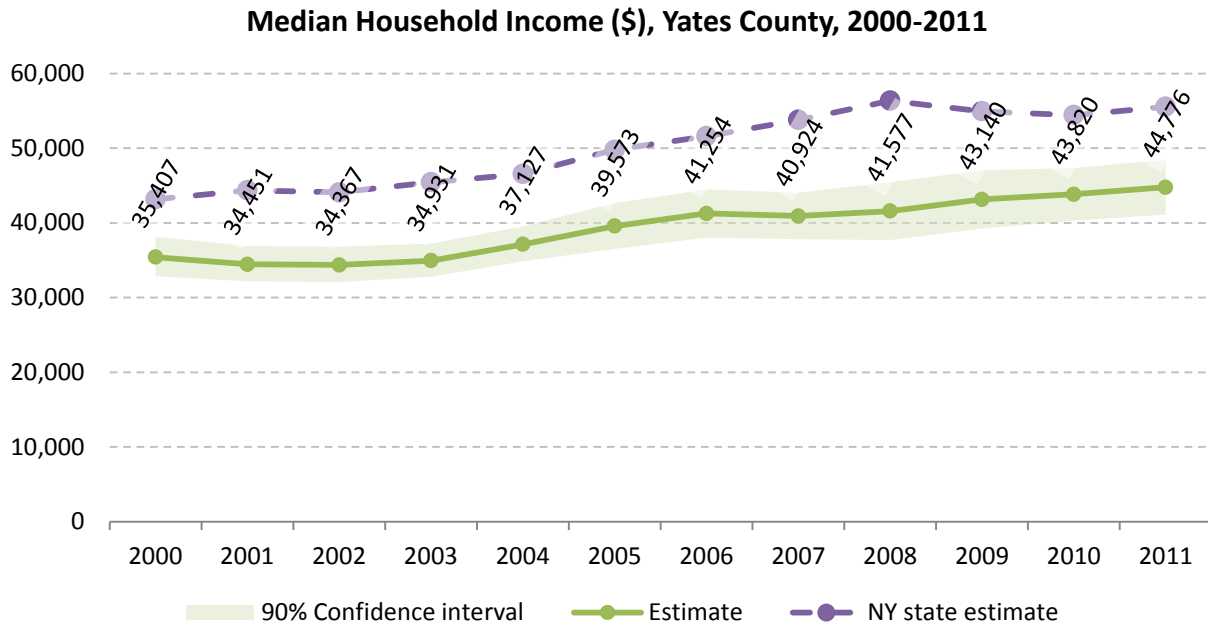
	Estimate	Margin of error	Interval width (in \$1,000)	Est. per \$1,000 section
Total:	9,552	± 272		
Less than \$10,000	664	± 141	10	66.4
\$10,000 to \$14,999	584	± 133	5	116.8
\$15,000 to \$19,999	661	± 129	5	132.2
\$20,000 to \$24,999	557	± 135	5	111.4
\$25,000 to \$29,999	498	± 110	5	99.6
\$30,000 to \$34,999	496	± 121	5	99.2
\$35,000 to \$39,999	465	± 90	5	93.0
\$40,000 to \$44,999	593	± 119	5	118.6
\$45,000 to \$49,999	429	± 96	5	85.8
\$50,000 to \$59,999	767	± 137	10	76.7
\$60,000 to \$74,999	1,202	± 185	15	80.1
\$75,000 to \$99,999	1,285	± 222	25	51.4
\$100,000 to \$124,999	525	± 96	25	21.0
\$125,000 to \$149,999	316	± 102	25	12.6
\$150,000 to \$199,999	234	± 78	50	4.7
\$200,000 or more	276	± 84	-	-

Source: 2007-2011 American Community Survey



Source: 2007-2011 American Community Survey

10.2 Median household income: Trends over time

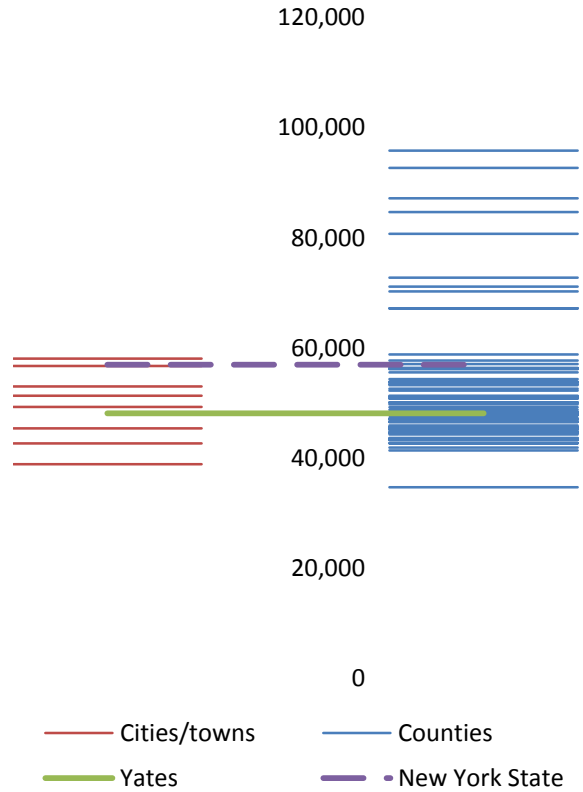


Source: Small Area Income and Poverty Estimates (SAIPE)

10.3 Median household income: Comparison between areas

MEDIAN HOUSEHOLD INCOME (\$)		
	Estimate	Margin of error
New York State	56,951	± 190
Yates County	48,125	± 2,673
Towns		
Barrington	53,015	± 8,878
Benton	49,291	± 7,346
Italy	45,417	± 7,576
Jerusalem	58,065	± 8,812
Middlesex	58,063	± 4,576
Milo	38,882	± 6,169
Potter	42,708	± 7,252
Starkey	51,364	± 7,467
Torrey	56,761	± 7,633

Median household income comparison within county (left) and between counties (right)



Source: 2007-2011 American Community Survey

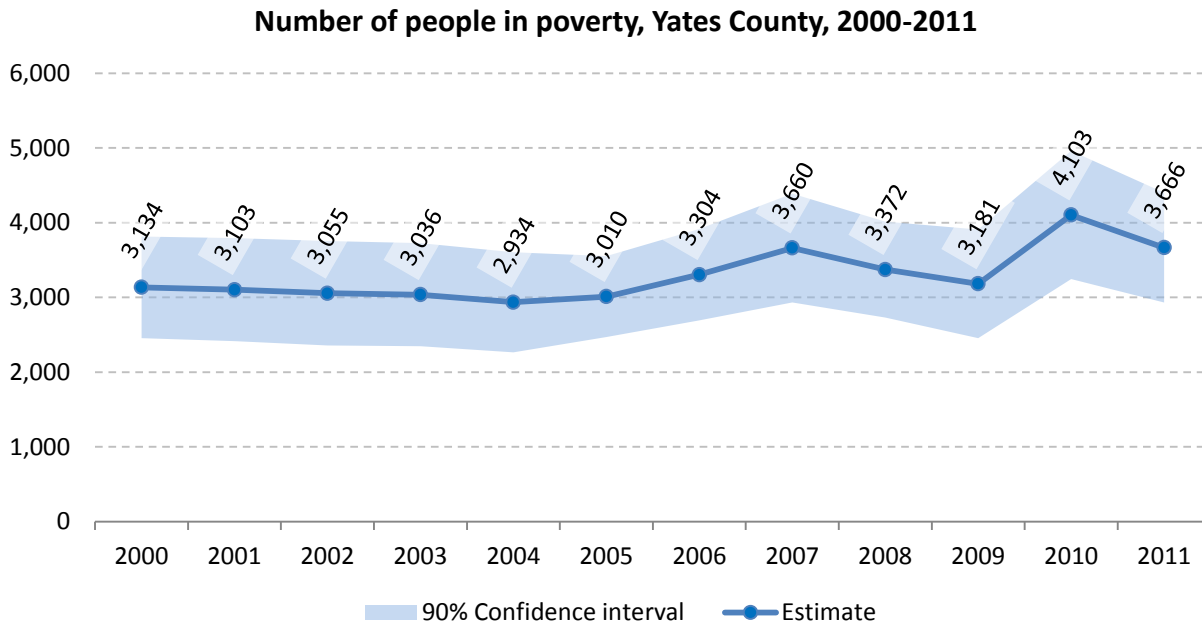
11 Poverty

11.1 Poverty characteristics

	TOTAL		BELOW POVERTY LEVEL		PERCENT BELOW POVERTY LEVEL	
	Estimate	Margin of error	Estimate	Margin of error	Estimate	Margin of error
Population for whom poverty status is determined	24,057	± 281	3,714	± 539	15.4%	± 2.2
AGE						
Under 18 years	6,138	± 54	1,457	± 310	23.7%	± 5.0
Related children under 18 years	6,105	± 55	1,424	± 306	23.3%	± 5.0
18 to 64 years	13,995	± 248	1,942	± 273	13.9%	± 1.9
65 years and over	3,924	± 117	315	± 86	8.0%	± 2.2
SEX						
Male	11,824	± 126	1,809	± 340	15.3%	± 2.9
Female	12,233	± 225	1,905	± 265	15.6%	± 2.2
RACE AND HISPANIC OR LATINO ORIGIN						
One race	23,892	± 269	3,672	± 542	15.4%	± 2.3
White	23,554	± 256	3,553	± 537	15.1%	± 2.3
Black or African American	149	± 89	86	± 54	57.7%	± 29.1
American Indian and Alaska Native	67	± 30	3	± 6	4.5%	± 9.7
Asian	98	± 19	6	± 10	6.1%	± 10.7
Hispanic or Latino origin (of any race)	363	± 38	51	± 46	14.0%	± 12.8
White alone, not Hispanic or Latino	23,307	± 248	3,529	± 540	15.1%	± 2.3
EDUCATIONAL ATTAINMENT						
Population 25 years and over	16,023	± 129	1,843	± 262	11.5%	± 1.6
Less than high school graduate	2,357	± 273	586	± 152	24.9%	± 5.4
High school graduate (includes equivalency)	5,994	± 328	759	± 168	12.7%	± 2.8
Some college, associate's degree	3,908	± 280	348	± 95	8.9%	± 2.4
Bachelor's degree or higher	3,764	± 298	150	± 71	4.0%	± 1.9
EMPLOYMENT STATUS						
Civilian labor force 16 years and over	11,647	± 329	1,023	± 188	8.8%	± 1.6
Employed	11,070	± 322	827	± 173	7.5%	± 1.6
Male	5,869	± 204	473	± 124	8.1%	± 2.1
Female	5,201	± 270	354	± 100	6.8%	± 1.9
Unemployed	577	± 101	196	± 73	34.0%	± 10.4
Male	239	± 63	62	± 38	25.9%	± 13.9
Female	338	± 87	134	± 63	39.6%	± 14.8
WORK EXPERIENCE IN THE PAST 12 MONTHS						
Population 16 years and over	18,680	± 291	2,421	± 322	13.0%	± 1.7
Worked full-time, year-round	7,400	± 310	359	± 101	4.9%	± 1.4
Worked part-time or part-year	4,961	± 334	730	± 137	14.7%	± 2.7
Did not work	6,319	± 301	1,332	± 207	21.1%	± 3.1

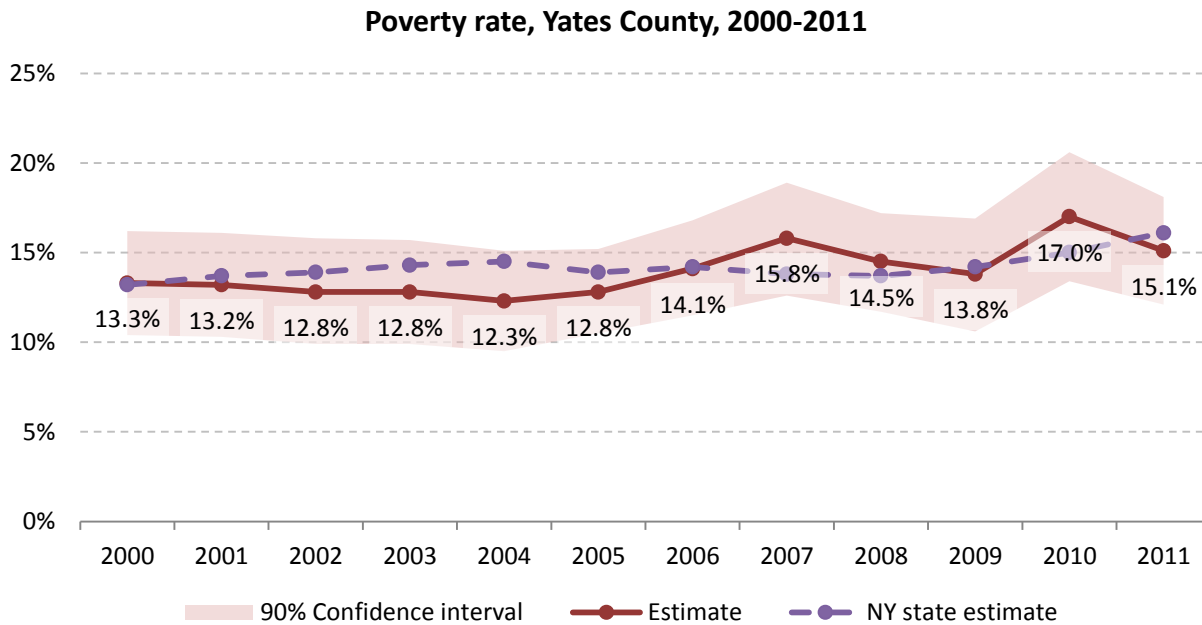
Source: 2007-2011 American Community Survey

11.2 Poverty: Trends over time: Count



Source: Small Area Income and Poverty Estimates (SAIPE)

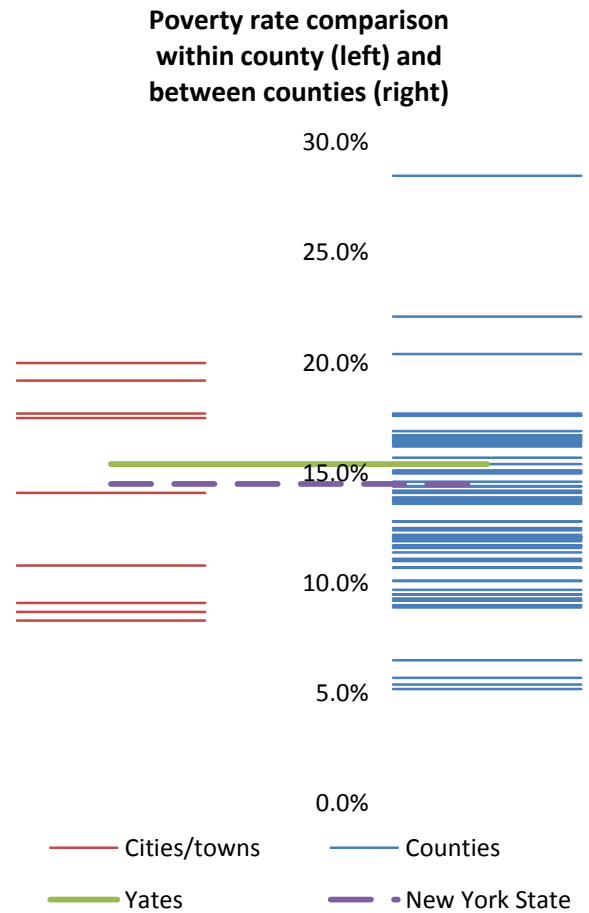
11.3 Poverty: Trends over time: Rate



Source: Small Area Income and Poverty Estimates (SAIPE)

11.4 Poverty rate: comparison between areas

Poverty Rate - All people		
	Estimate	Margin of error
New York State	14.5%	± 0.1
Yates County	15.4%	± 2.2
Towns		
Barrington	8.7%	± 5.4
Benton	8.3%	± 5.9
Italy	17.5%	± 6.2
Jerusalem	14.1%	± 8.3
Middlesex	9.1%	± 5.0
Milo	20.0%	± 4.3
Potter	19.2%	± 7.5
Starkey	17.7%	± 7.8
Torrey	10.8%	± 6.7

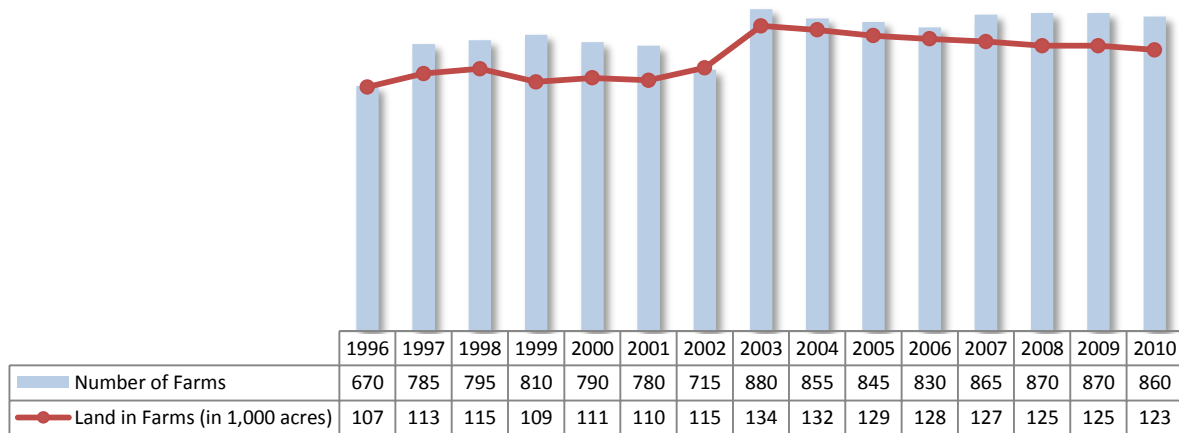


Source: 2007-2011 American Community Survey

12 Agriculture

12.1 Number of farms and land in farms

Yates County, 1996-2010



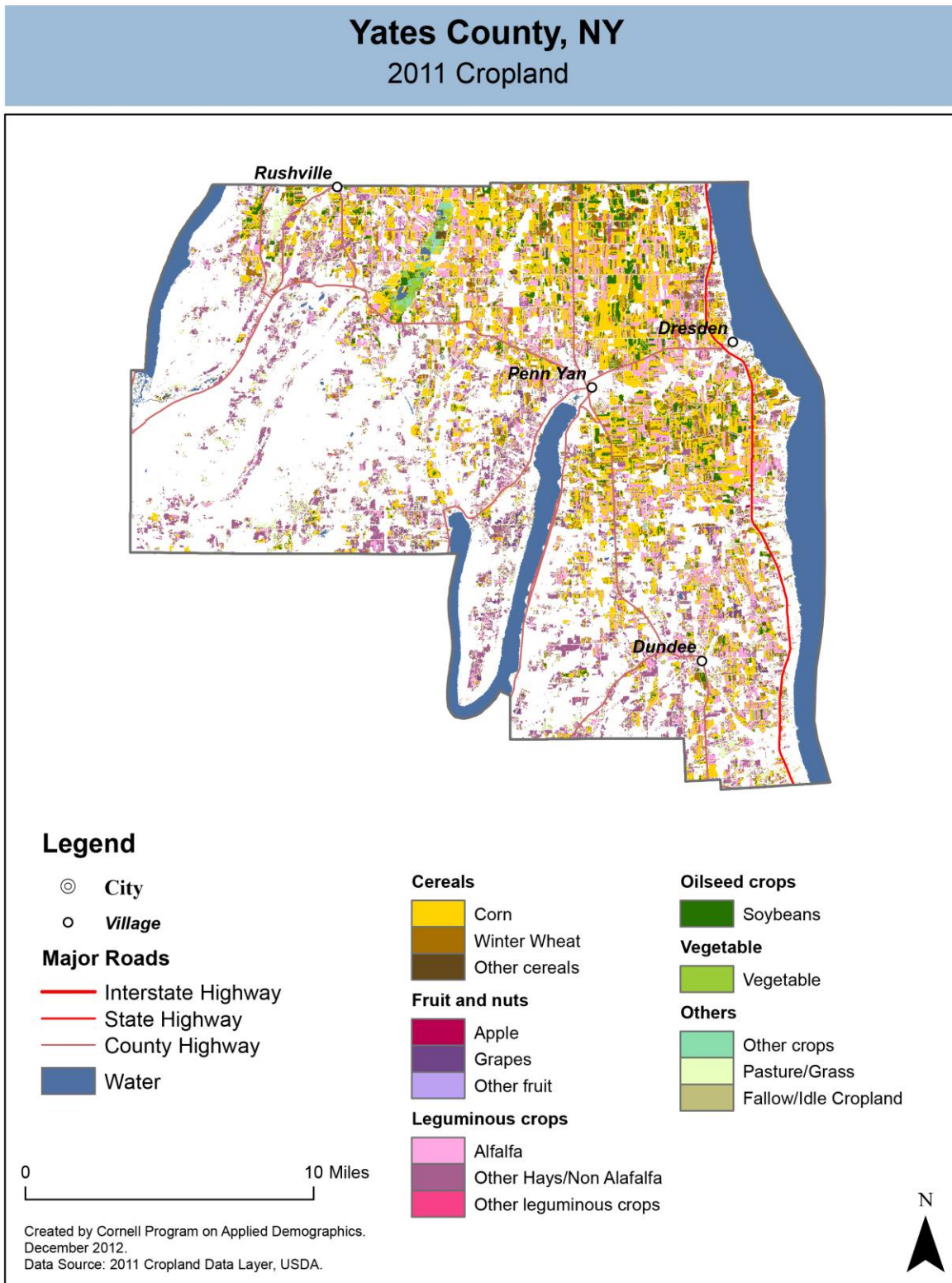
Source: National Agricultural Statistics Service – Annual Statistical bulletin

12.2 Farm Operator Characteristics

	Principal Operator		
	Total	Male	Female
Number of farms	864	766	98
Average size of farm (acres)	146	153	92
PRIMARY OCCUPATION			
Farming	553	518	35
Other	311	248	63
AGE			
Under 45	319	290	29
45 to 64 years	411	362	49
65 years and over	134	114	20
Average age (years)	49.9	49.5	53
YEARS ON PRESENT FARM			
Less than 3 years	47	38	9
3 to 4 years	53	43	10
5 to 9 years	159	143	16
10 years or more	605	542	63

Source: 2007 Agricultural Census

12.3 Map of type of crop

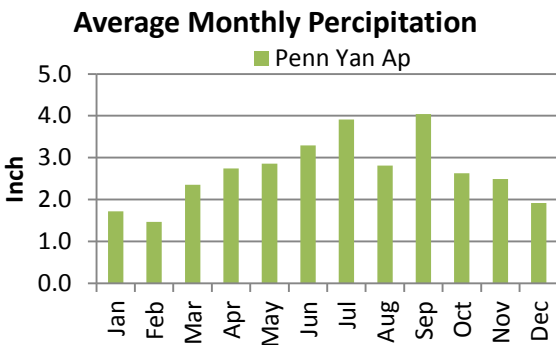
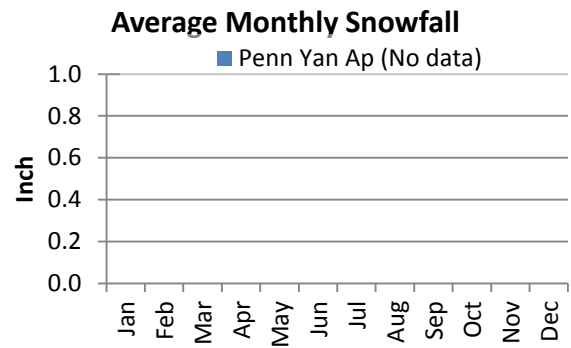
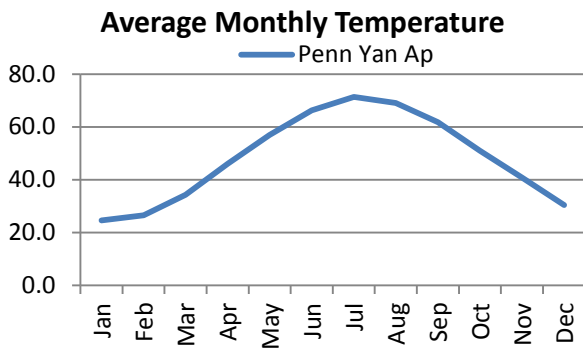
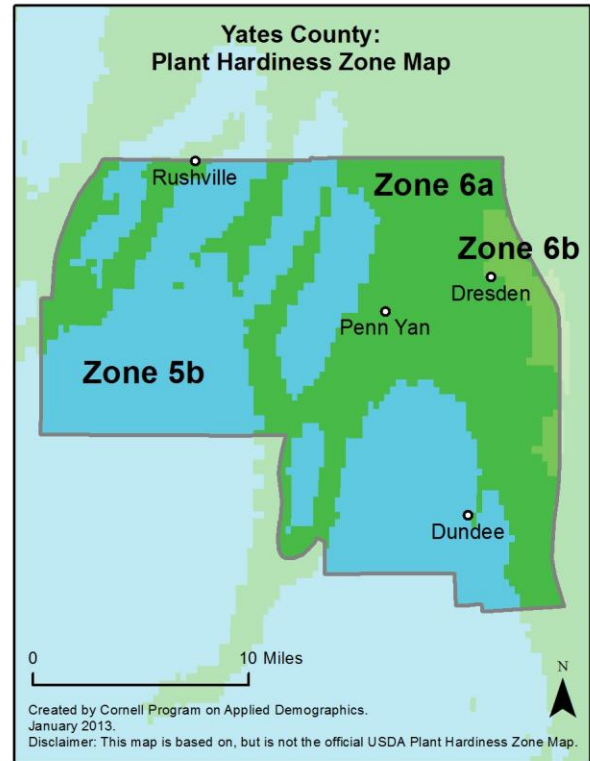
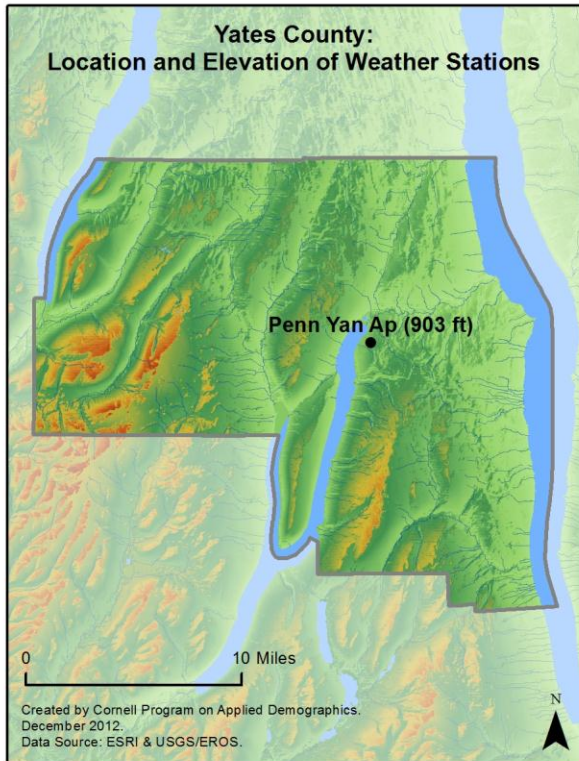


12.4 Estimated acreage by crop

	Acreage	%		Acreage	%
Cereals			Fruit and nuts		
Barley	48	0.0%	Apples	141	0.1%
Corn	29,451	29.7%	Apricots	4.4	0.0%
Millet	-		Blueberries	-	
Oats	577	0.6%	Cherries	0.2	0.0%
Rye	146	0.1%	Cranberries	-	
Sorghum	1.1	0.0%	Grapes	1,702	1.7%
Speltz	105	0.1%	Nectarines	-	
Spring Wheat	16	0.0%	Peaches	-	
Sweet Corn	534	0.5%	Plums	-	
Triticale	29	0.0%	Prunes	-	
Winter Wheat	4,838	4.9%	Strawberries	3.8	0.0%
Dbl Crop WinWht/Corn	0.7	0.0%	Walnuts	-	
Leguminous crops			Beverage and spice crops		
Alfalfa	17,135	17.3%	Herbs	-	
Other Hay/Non Alfalfa	20,145	20.3%	Peppers	-	
Dry Beans	798	0.8%	Trees		
Peas	-		Christmas Trees	70	0.1%
Vetch	-		Other Tree Crops	-	
Oilseed crops			Other crops		
Soybeans	7,012	7.1%	Tobacco	-	
Sunflower	4.2	0.0%	Misc Veggies & Fruits	3.3	0.0%
Sugar crops			Clover/Wildflowers	207	0.2%
Sugarbeets	-		Sod/Grass Seed	4.4	0.0%
Root/tuber crops with high starch or inulin content			Switchgrass	-	
Potatoes	437	0.4%	Dbl Crop Soybeans/Oats	-	
Vegetables and melons			Dbl Crop WinWht/Soybeans	-	
Asparagus	-		Other Crops	26	0.0%
Broccoli	-		Pasture/Grass		
Cabbage	417	0.4%	Fallow/Idle Cropland		
Carrots	283	0.3%	11,652 11.7%		
Eggplants	-		3,099 3.1%		
Onions	271	0.3%			
Pumpkins	44	0.0%			
Squash	1.3	0.0%			
Tomatoes	-				
Turnips	-				

Source: National Agricultural Statistics Service - Cropland Data Layer 2011

13 Climate



Average length of freeze-free season

	Last day of frost	First day of frost	Season length
Penn Yan Ap	Not available		

Source: NOAA, Northeast Regional Climate Center at Cornell University. Averages 1981-2010

14 Glossary

American Community Survey (ACS) - The American Community Survey is an ongoing survey of the population that provides data every year on a variety of social and economic characteristics—age, sex, race, family and relationships, income and benefits, health insurance, education, veteran status, disabilities, where you work and how you get there, where you live and how much you pay for some essentials. The ACS replaced the information previously gathered by what was known as the “long form” of the decennial censuses. The ACS provides communities, companies and other institutions with current information they need to plan investments and services. Information from the survey generates data that help determine how more than \$400 billion in federal and state funds are distributed each year. Every estimate presented in the American Community Survey, as in other surveys, has an uncertainty associated with it. Often the magnitude of that uncertainty is expressed as the Margin of Error.

Confidence Interval (CI) - indication of the degree of uncertainty about a sample estimates. Confidence intervals have been traditionally reported at the 90, 95 and 99 percent levels. A 90 percent confidence interval can be interpreted, for example, roughly as providing 90 percent certainty that the interval defined by the upper and lower bounds contain the true value of the characteristic. If a Margin of Error is given, the lower bound of the confidence interval is equal to the estimate minus the Margin of Error and the upper bound is equal to the estimate plus the Margin of Error. (See further, Margin of Error definition below.)

County subdivision or Minor Civil Division (MCD) - The Census Bureau geography for primary administrative units below the county level in New York is collectively referred to as county subdivisions or minor civil divisions. These include towns, cities and Indian Reservations.

Decennial Census - the Census of the population and housing taken every 10 years in the United States, at the start of each decade, since 1790.

Employed – either “at work” or “with a job, but not at work”.

Group Quarters Population - all U.S. residents who live in group living facilities including correctional institutions, juvenile facilities, skilled nursing facilities, college residence halls, military barracks, group homes, and workers' dormitories.

Household Population - all U.S. residents who live in housing units such as single family homes, townhouses, apartments, and mobile homes.

Intercensal Population Estimates - estimates produced for the years between two decennial censuses when both the beginning and ending populations are known. They are produced once a decade by adjusting the existing time series of postcensal estimates for the entire decade to smooth the transition from one decennial census count to the next. They differ from the postcensal estimates that are released annually because the difference between the April 1 postcensal estimate and April 1 census count for the end of the decade is redistributed across the estimates for that decade. For dates when both postcensal and intercensal estimates are available, intercensal estimates are preferred.

Labor Force - consists of people classified as employed or unemployed.

Margin of Error (MOE) - a measure of the precision of an estimate at a given level of confidence. The confidence level of a margin of error indicates the likelihood that the difference between the population value (which you

would get if you could measure the whole population instead of a sample) and the estimate is less than or equal to the margin of error. The range from the estimate minus the margin of error to the estimate plus the margin of error is called the confidence interval. All ACS estimates are published with their margins of error at the 90 percent confidence level. Margins of error are useful in assessing the reliability of estimates and whether differences between estimates are significant.

NAICS - The North American Industry Classification System or NAICS is used by business and government to classify business establishments according to type of economic activity (process of production).

Numeric Population Change - difference between the population of an area at the beginning and end of a time period. It is computed by taking the difference between the population at one point in time (t1) and some future time (t2).

Percent Population Change - difference between the population of an area at the beginning and end of a time period, expressed as a percentage of the beginning population. It is computed by dividing the population change (t2 - t1) by t1 and multiplying the result by 100.

Population Estimates - The calculated number of people living in an area as of a specified point in time, usually July 1st. The estimated population is calculated using a component of change model that incorporates information on natural increase (births, deaths) and net migration (net domestic migration, net international migration) that has occurred in an area since the latest decennial census. A procedure for estimating the current population using a procedure involving a "base population" value at time t -1, adding to that the births during the interval t-1 to t, subtracting the deaths during that interval t-1 to t, and then adding the net domestic and net international migration that occurred during that interval.

Population Density - Total number of people per areal unit like a square mile or square kilometer.

Population Pyramids - A graphical way of portraying a population's age and sex composition at a given slice in time. The first horizontal bar, constituting the base of the graph, is the youngest age group (typically 0-4) with the number of males in that age group on the left and the number of females in that age group on the right. On top of that age group is another horizontal bar for the next age group (e.g. 5-9) and so forth with the top bar typically for those aged 75 and over. In a population with lots of births and deaths, the shape typically forms a pyramid with a broad base and a narrow top. It is one of the most basic ways to understand population change over time as well as between different geographic units of a similar status (e.g. counties).

Postcensal Estimates - estimates produced for the years after a decennial census when only the beginning population is known. They are produced and revised each year, targeted to July 1 of that year.

Projection - estimated population at some future time based on assumptions about births, deaths, migration, and ages.

Race/Ethnicity - the Census Bureau collects racial data in accordance with guidelines provided by the U.S. Office of Management and Budget (OMB), and these data are based on self-identification. The racial categories included in the census questionnaire generally reflect a social definition of race recognized in this country and not an attempt to define race biologically, anthropologically, or genetically. In addition, it is recognized that the categories of the race item include racial and national origin or sociocultural groups. People may choose to report more than one race to indicate their racial mixture, such as "American Indian" and "White." People who identify their origin as Hispanic, Latino, or Spanish may be of any race. OMB requires five minimum categories: White, Black or African American, American Indian or Alaska Native, Asian, and Native Hawaiian or Other Pacific

Islander. Hispanics may be classified as white or black. So we generally separate them out as an ethnic group first.

Unemployed – Not employed, but actively looking for work and available to accept a job.

Unemployment rate – Fraction of the Labor Force that is unemployed.

Urban Area – A densely settled area with at least 2,500 people. If the total number of people is less than 50,000 the Census Bureau calls it an Urban Cluster, otherwise an Urbanized Area.

Vintage - each year, the U.S. Census Bureau produces and publishes estimates of the population for each state and county, as well as the nation as a whole. These are called “vintages.” In producing these vintages, the Bureau utilizes administrative data from a number of sources to estimate 1) the change in population since the most recent decennial census, and 2) the population for each year since the most recent decennial census. With each annual release of population estimates (vintage), the entire time series of estimates beginning on April 1, 2010 is revised and updated.

15 References

Yates County homepage: <http://www.yatescounty.org/>

At Cornell:

- Cornell Cooperative Extensions (CCE)
Home page: <http://www.cce.cornell.edu>
 - Yates local office: <http://counties.cce.cornell.edu/yates/>
- Program on Applied Demographics (PAD)
URL: <http://pad.human.cornell.edu/>
- Community and Regional Development Institute (CaRDI)
URL: <http://devsoc.cals.cornell.edu/cals/devsoc/outreach/cardi/index.cfm>

Data sources and background information:

- U.S. Census Bureau - general
 - QuickFacts: <http://quickfacts.census.gov/qfd/states/36/36123.html>
 - QuickLinks: <http://quickfacts.census.gov/qfd/states/36/36123lk.html>
 - American FactFinder: <http://factfinder2.census.gov>
- U.S. Census Bureau - population
 - Decennial Census
 - Background: <http://2010.census.gov/2010census/>
 - Demographic Profile: http://factfinder2.census.gov/bkmk/table/1.0/en/DEC/10_SF1/SF1DP1/0500000US361233
 - American Community Survey (ACS)
 - Background: <http://www.census.gov/acs/www/>
 - Social Data Profile: http://factfinder2.census.gov/bkmk/table/1.0/en/ACS/10_5YR/DP02/0500000US36123
 - Economic Data Profile: http://factfinder2.census.gov/bkmk/table/1.0/en/ACS/10_5YR/DP03/0500000US36123
 - Housing Data Profile: http://factfinder2.census.gov/bkmk/table/1.0/en/ACS/10_5YR/DP04/0500000US36123
 - Demographics Data Profile: http://factfinder2.census.gov/bkmk/table/1.0/en/ACS/10_5YR/DP05/0500000US36123
 - Population estimates: <http://www.census.gov/popest/estimates.html>
- U.S. Census Bureau – Small Area Income & Poverty Estimates (SAIPE)
 - <http://www.census.gov/did/www/saipe/>
- U.S. Census Bureau - Public Use Quarterly Workforce Indicators (QWI) – annual averages
 - <http://www2.vrdc.cornell.edu/news/data/qwi-public-use-data/>
- Bureau Labor Statistics (BLS) – Local Area Unemployment Statistics: <http://www.bls.gov/lau/>
- NY Department of Labor -
 - Labor statistics: <http://www.labor.ny.gov/stats/>
 - Quarterly Census of Employment and Wages (QCEW): <http://www.labor.ny.gov/stats/lsqcew.shtm>
- Bureau of Economic Analysis (BEA) – Local Area Personal Income and Employment: <http://bea.gov/iTable/iTable.cfm?ReqID=70&step=1>

- USDA Census of Agriculture
 - 2007
 - Home page: <http://www.agcensus.usda.gov/Publications/2007/index.php>
 - County profile: http://www.agcensus.usda.gov/Publications/2007/Online_Highlights/County_Profiles/New_York/cp36123.pdf
 - Race, Ethnicity and Gender Profiles: http://www.agcensus.usda.gov/Publications/2007/Online_Highlights/Race_Ethnicity_and_Gender_Profiles/New_York/cpd36123.pdf
- USDA National Agricultural Statistics Service (NASS)
 - Home page: <http://www.nass.usda.gov/index.asp>
 - New York Statistical Bulletins: http://www.nass.usda.gov/Statistics_by_State/New_York/Publications/Annual_Statistical_Bulletin/
 - Cropland Data Layer – CropScape: <http://nassgeodata.gmu.edu/CropScape/>
- USDA Agricultural Research Service – Plant Hardness Zone Map: <http://planthardiness.ars.usda.gov/PHZMWeb/>
- NOAA, Northeast Regional Climate Center at Cornell University
 - Home page: <http://www.nrcc.cornell.edu/index.html>

Alternative sites for data retrieval:

- The Nelson A. Rockefeller Institute of Government – New York State Statistical Yearbooks http://www.rockinst.org/nys_statistics/
- Headwaters Economics: Economic Profile System – Human Dimensions Toolkit <http://headwaterseconomics.org/tools/eps-hdt>
- National Historical Geographic Information System (NHGIS) <https://www.nhgis.org/>
- Social Explorer <http://www.socialexplorer.com/pub/home/home.aspx>
- Missouri Census Data Center <http://mcdc.missouri.edu/>
- DataFerret <http://dataferrett.census.gov/>
- Investigative Reporters and Editors (IRE) Census project <http://census.ire.org/>