

# Wyoming County Profile 2013

*A collection of recent demographic, social, economic and agricultural data*

Compiled by Jan Vink

Assisted by Joe Francis, Sutee Anantsuksomsri, Nij Tontisirin, Johannes Plambeck



**Cornell University**  
Cooperative Extension



This profile is a part of a set of profiles generated for each county in New York State. The profiles were developed and generated by the Cornell Program on Applied Demographics. The work is sponsored by Cornell Cooperative Extension and promoted with webinars and workshops in coordination with the Community & Regional Development Institute.

Cornell Program on Applied Demographics:

The Program on Applied Demographics (PAD) brings skills in demographics, economics, statistics, data gathering and data analysis together to provide a variety of organizations with data, information and advice.

For more information: <http://pad.human.cornell.edu/>

Cornell Cooperative Extension:

Cornell Cooperative Extension (CCE) puts knowledge to work in pursuit of economic vitality, ecological sustainability and social well-being. We bring local experience and research based solutions together, helping New York State families and communities thrive in our rapidly changing world.

For more information: <http://cce.cornell.edu/>

Community & Regional Development Institute:

The Community & Regional Development Institute (CaRDI) supports informed decision making for residents and communities in New York State through applied research and education.

For more information: <http://cardi.cornell.edu/>

All profiles are freely downloadable as PDF documents on the PAD website:

<http://pad.human.cornell.edu/profiles/index.cfm>

## Contents

Contents .....	2
1 Reference Maps .....	4
2 Population density and Urban Areas Map .....	6
3 Total Population .....	7
3.1 Historic and projected .....	7
3.2 Change since previous Census .....	7
3.3 Annual population estimates .....	8
3.4 Percentage sub county change 2000-2010 .....	9
4 Population by age .....	11
4.1 Historic and projected population pyramids .....	11
4.2 Selected age groups .....	12
4.3 Median age: comparison between areas .....	14
5 Race .....	15
5.1 Total and household population by race .....	15
5.2 Race composition by age .....	15
6 Housing units .....	16
6.1 Characteristics .....	16
6.2 Historical data on number of housing units and occupancy status .....	17
7 Education .....	18
7.1 Enrollment by level of school .....	18
7.2 Enrollment by age .....	18
7.3 Percentage age 18-24 enrolled in college .....	18
7.4 Educational attainment .....	19
8 Language spoken at home .....	19
9 Labor Force Characteristics .....	20
9.1 Labor force, employment and unemployment .....	20
9.2 Annual unemployment rate .....	21
9.3 Monthly unemployment rate .....	21
9.4 Employment and number of jobs .....	22
9.5 Class of worker .....	22
9.6 Jobs by industry sector .....	23
10 Household Income .....	24
10.1 Distribution .....	24
10.2 Median household income: Trends over time .....	25
10.3 Median household income: Comparison between areas .....	26
11 Poverty .....	27
11.1 Poverty characteristics .....	27
11.2 Poverty: Trends over time: Count .....	28
11.3 Poverty: Trends over time: Rate .....	28
11.4 Poverty rate: comparison between areas .....	29
12 Agriculture .....	30
12.1 Number of farms and land in farms .....	30
12.2 Farm Operator Characteristics .....	30

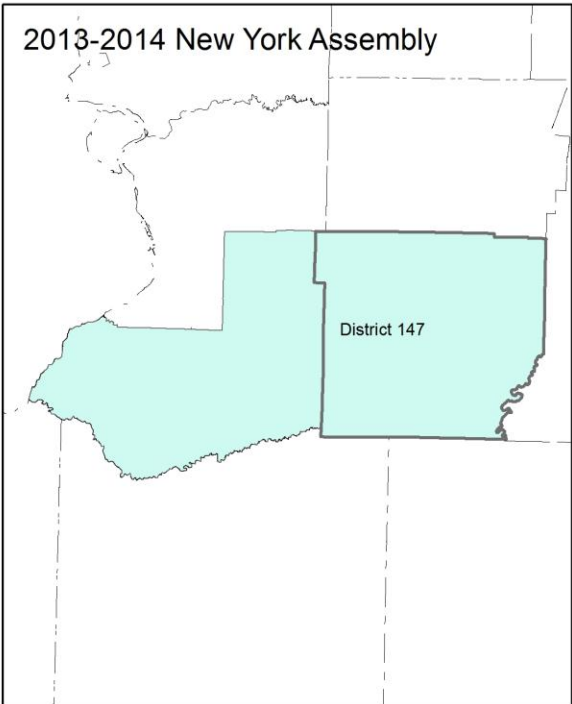
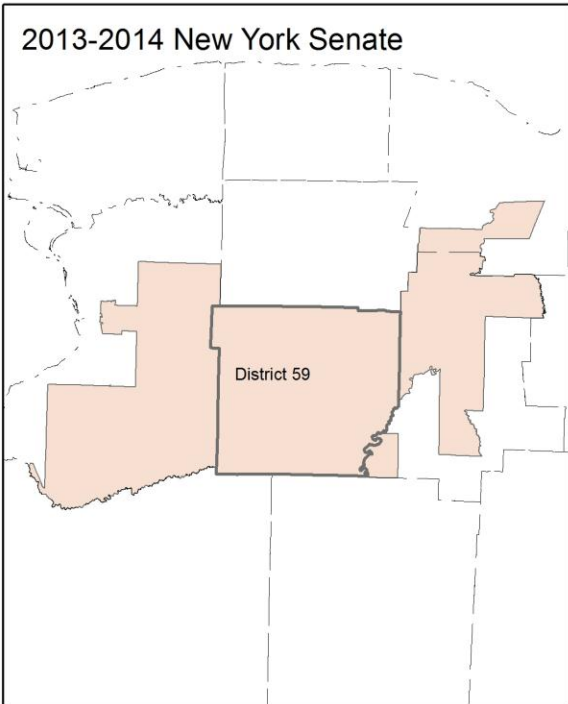
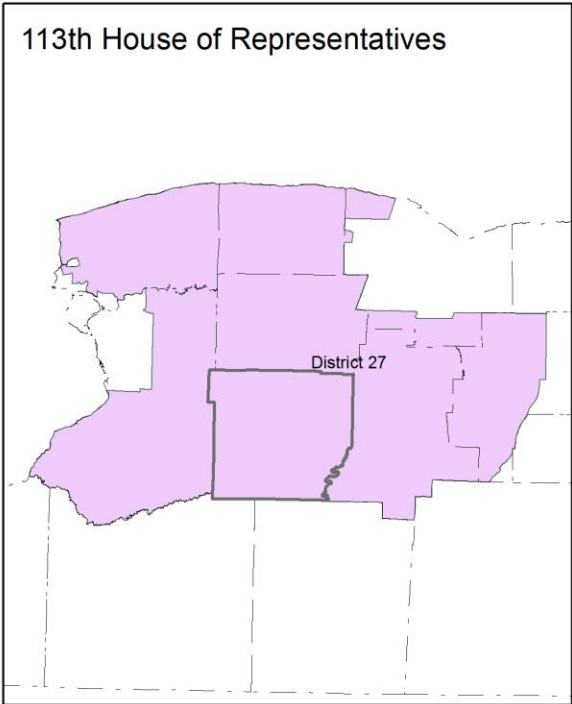
12.3 Map of type of crop ..... 31  
12.4 Estimated acreage by crop ..... 32  
13 Climate ..... 33  
14 Glossary..... 34  
15 References ..... 37

1 Reference Maps

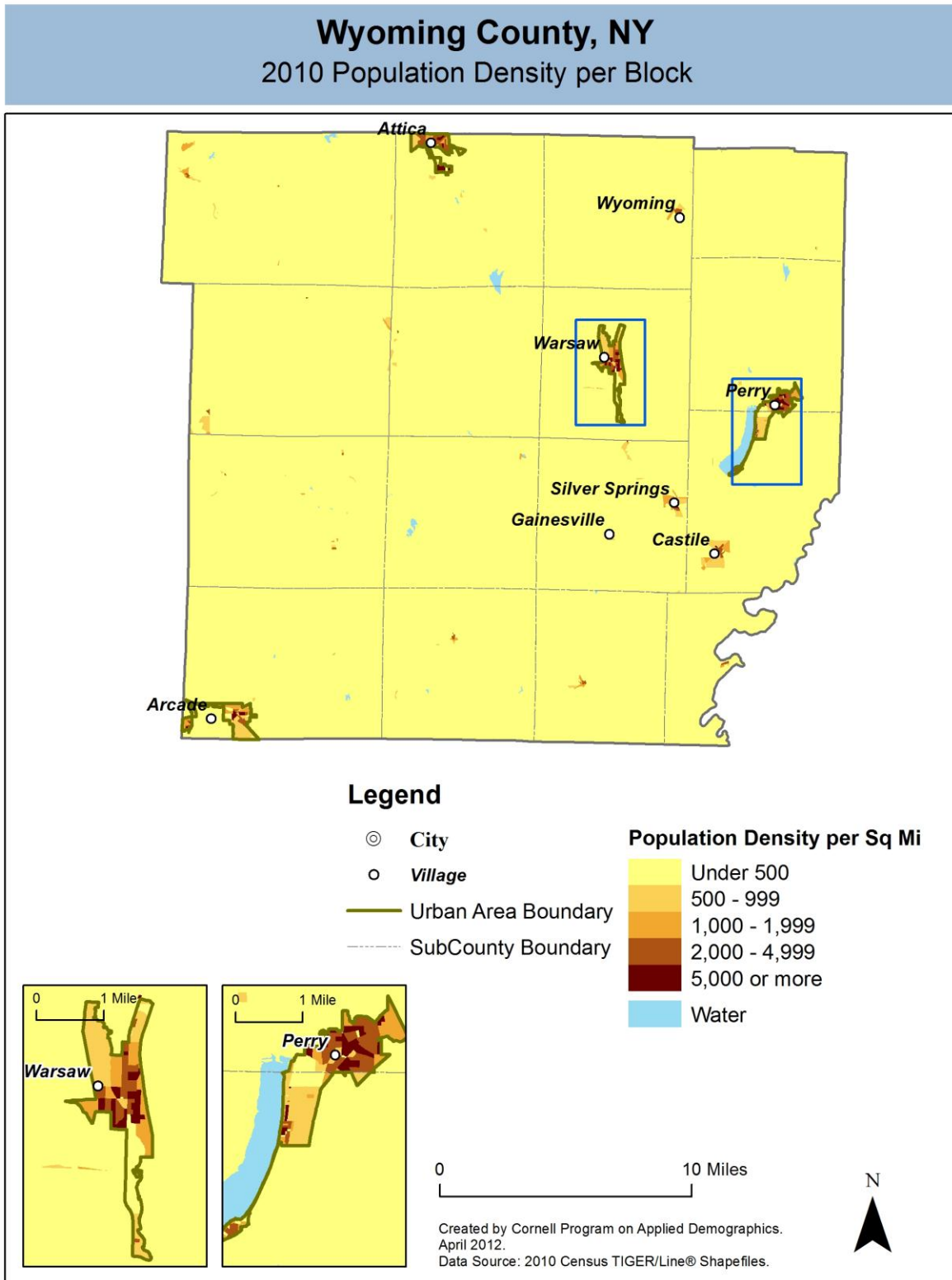


## Wyoming County, NY

### Overlap with School and Political Districts



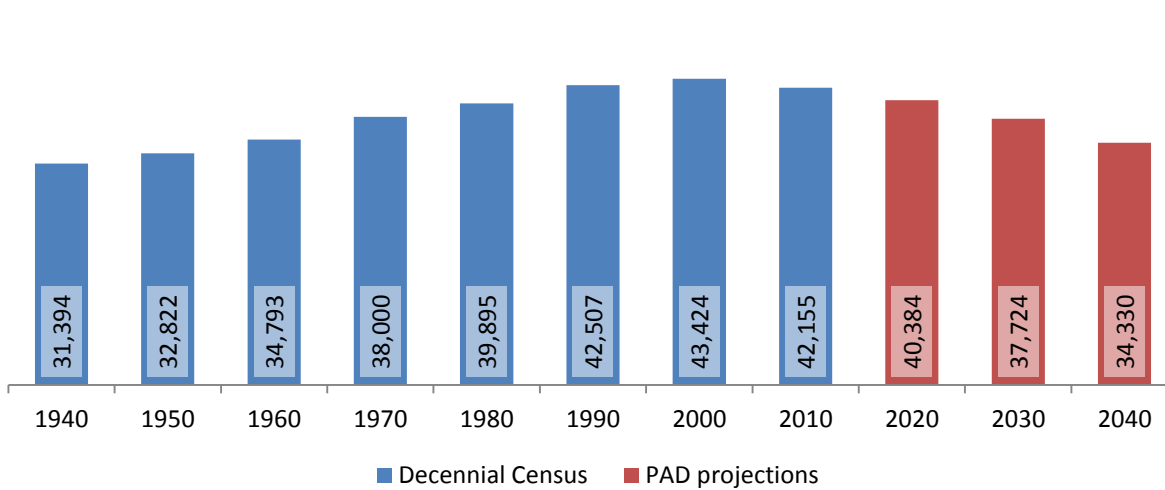
2 Population density and Urban Areas Map



### 3 Total Population

#### 3.1 Historic and projected

Total population, Wyoming County, 1940-2040



Source: 1940-2010 Decennial Census and projections by Cornell Program on Applied Demographics

#### 3.2 Change since previous Census

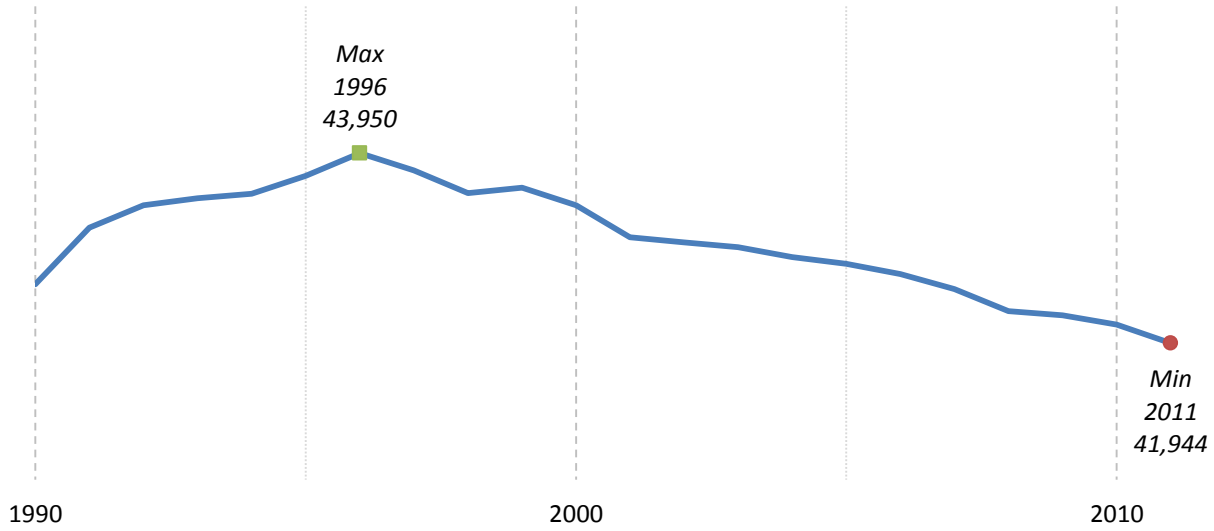
	Total population	Change	
		Number	Percent
Decennial Census	1940	31,394	
	1950	32,822	1,428 4.5%
	1960	34,793	1,971 6.0%
	1970	38,000	3,207 9.2%
	1980	39,895	1,895 5.0%
	1990	42,507	2,612 6.5%
	2000	43,424	917 2.2%
	2010	42,155	-1,269 -2.9%
PAD projections	2020	40,384	-1,771 -4.2%
	2030	37,724	-2,660 -6.6%
	2040	34,330	-3,394 -9.0%

Source: 1940-2010 Decennial Census and projections by Cornell Program on Applied Demographics



### 3.3 Annual population estimates

**Annual population estimates  
Wyoming County, 1990-2011**



Source: U.S. Census Bureau population estimates (1990-1999 and 2000-2009 intercensal and vintage 2011 postcensal)

### 3.4 Percentage sub county change 2000-2010

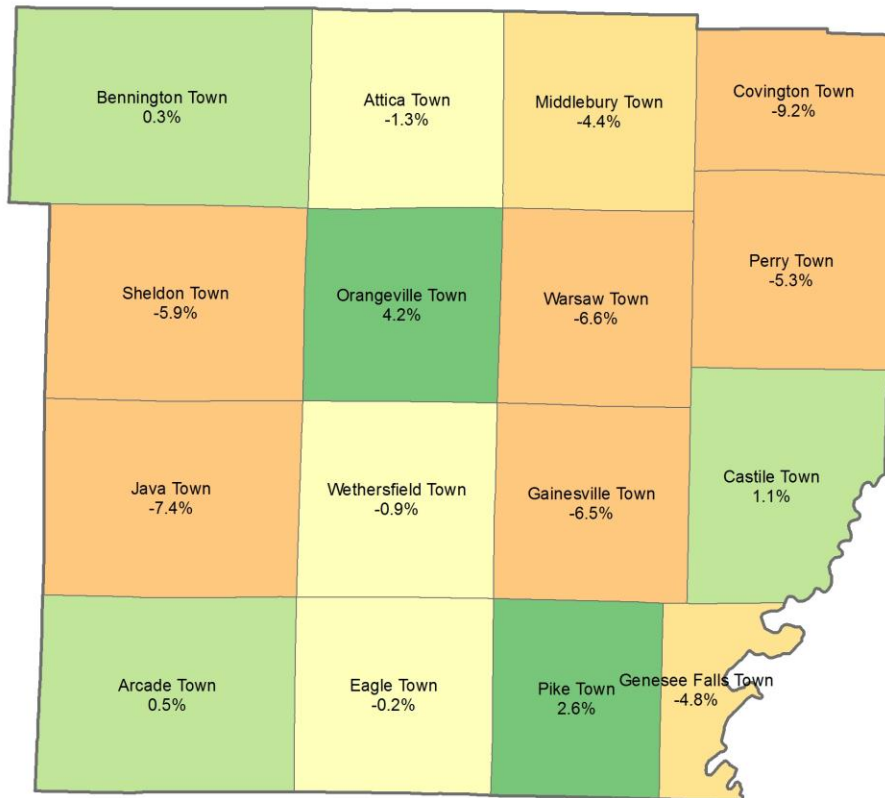
	Total Population		Difference	
	2000	2010	Count	%
New York State	18,976,821 *	19,378,102	401,281	2.1%
Wyoming County	43,424	42,155	-1,269	-2.9%
<b>Towns</b>				
Arcade	4,184	4,205	21	0.5%
Attica	7,806 *	7,702	-104	-1.3%
Bennington	3,349	3,359	10	0.3%
Castile	2,873	2,906	33	1.1%
Covington	1,357	1,232	-125	-9.2%
Eagle	1,194	1,192	-2	-0.2%
Gainesville	2,333	2,182	-151	-6.5%
Genesee Falls	460	438	-22	-4.8%
Java	2,222	2,057	-165	-7.4%
Middlebury	1,508	1,441	-67	-4.4%
Orangeville	1,301	1,355	54	4.2%
Perry	4,876 *	4,616	-260	-5.3%
Pike	1,086	1,114	28	2.6%
Sheldon	2,561	2,409	-152	-5.9%
Warsaw	5,423	5,064	-359	-6.6%
Wethersfield	891	883	-8	-0.9%

\* Original counts revised through Count Question Resolution Program (CQR)

Source: U.S. Census Bureau intercensal population estimates 2000-2010

## Wyoming County, NY

### County Subdivision, Percent Change in Population 2000-2010



### Legend

#### Percent Change



0 10 Miles

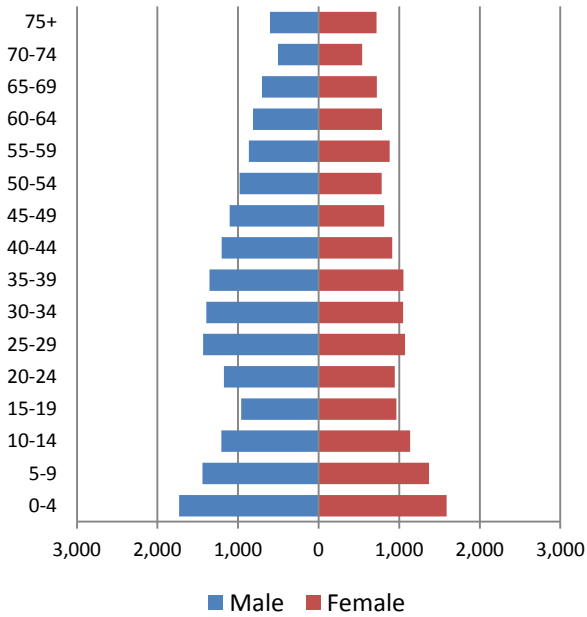
Created by Cornell Program on Applied Demographics.  
 January 2013.  
 Data Source: 2010 Census TIGER/Line® Shapefiles.



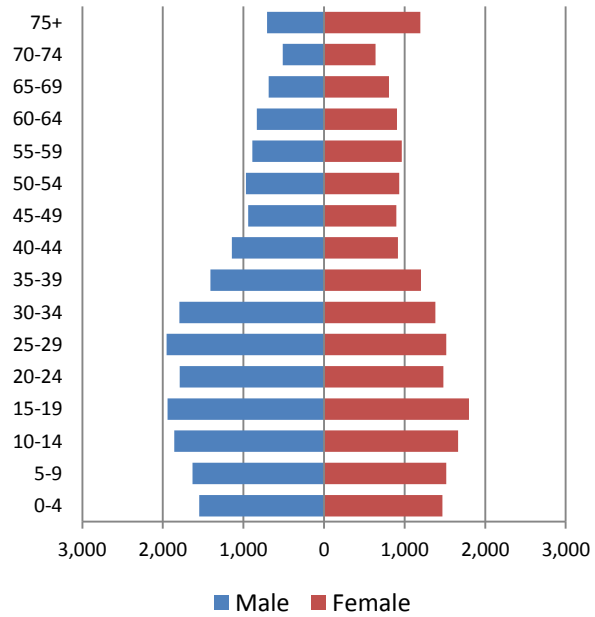
## 4 Population by age

### 4.1 Historic and projected population pyramids

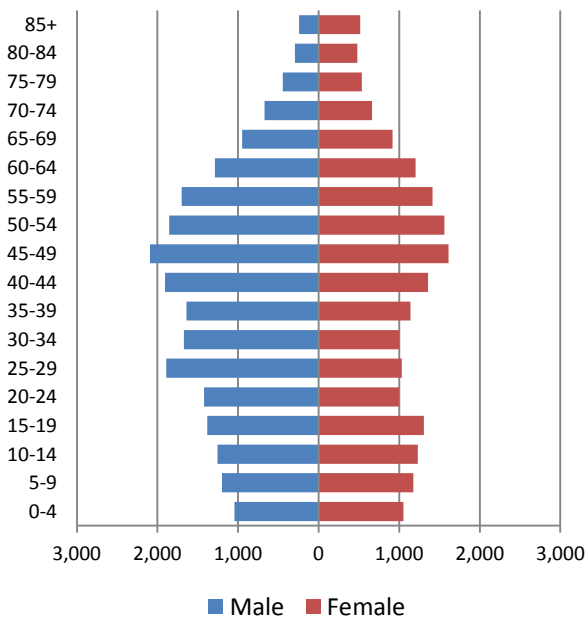
1950 Population Pyramid, Wyoming County



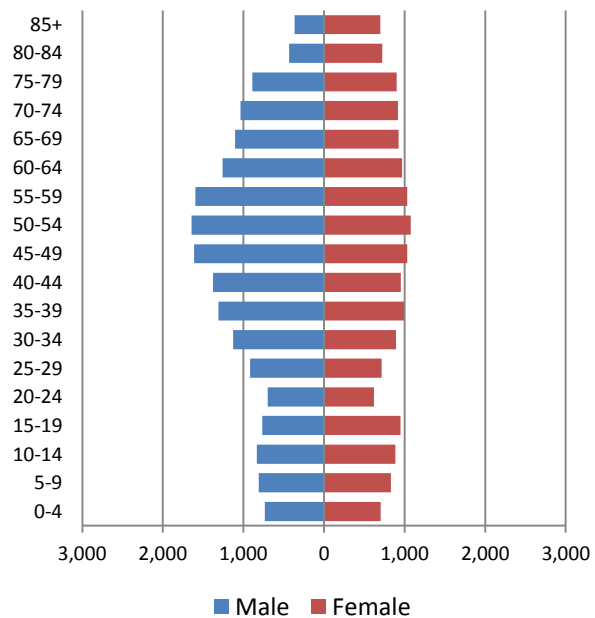
1980 Population Pyramid, Wyoming County



2010 Population Pyramid, Wyoming County



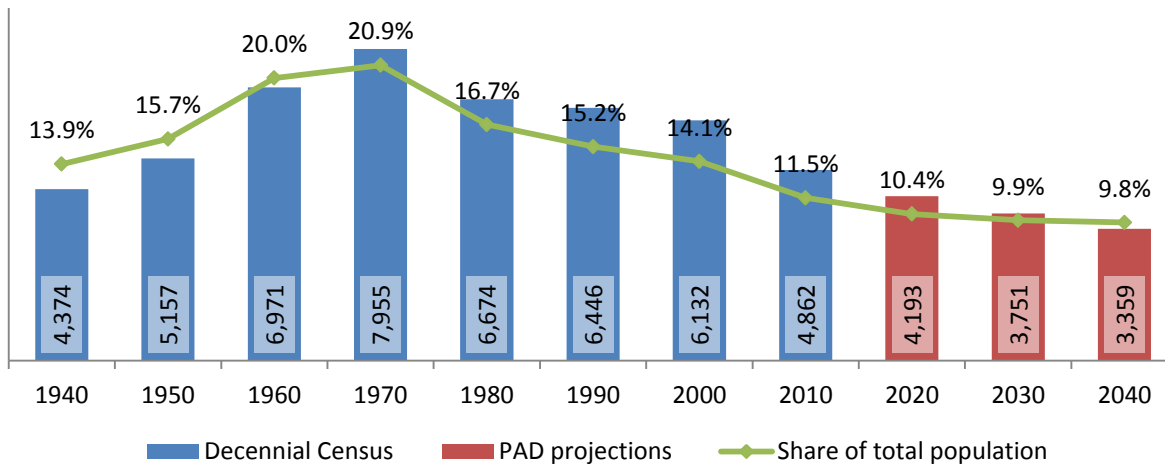
2040 Population Pyramid, Wyoming County



Source: 1950, 1980, 2010 Decennial Census and projections by Cornell Program on Applied Demographics

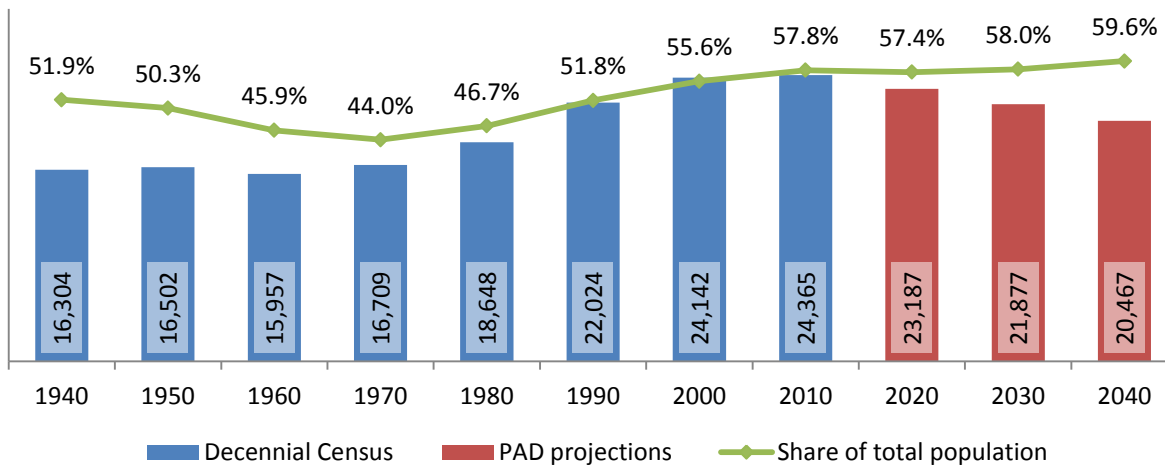
## 4.2 Selected age groups

### Population age 5-14, Wyoming County, 1940-2040



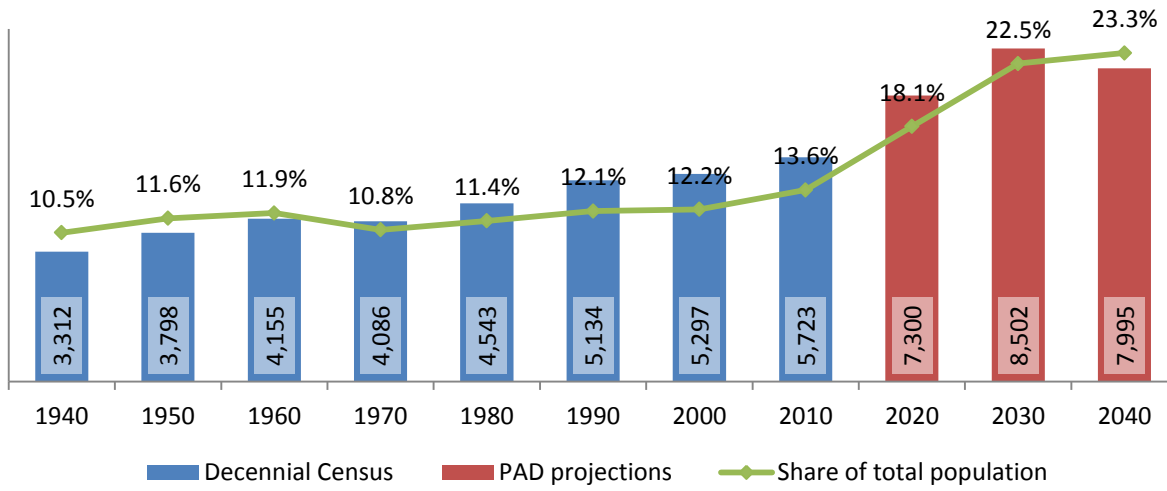
Source: 1940-2010 Decennial Census and projections by Cornell Program on Applied Demographics

### Population age 25-64, Wyoming County, 1940-2040



Source: 1940-2010 Decennial Census and projections by Cornell Program on Applied Demographics

**Population age 65 and over, Wyoming County, 1940-2040**



Source: 1940-2010 Decennial Census and projections by Cornell Program on Applied Demographics

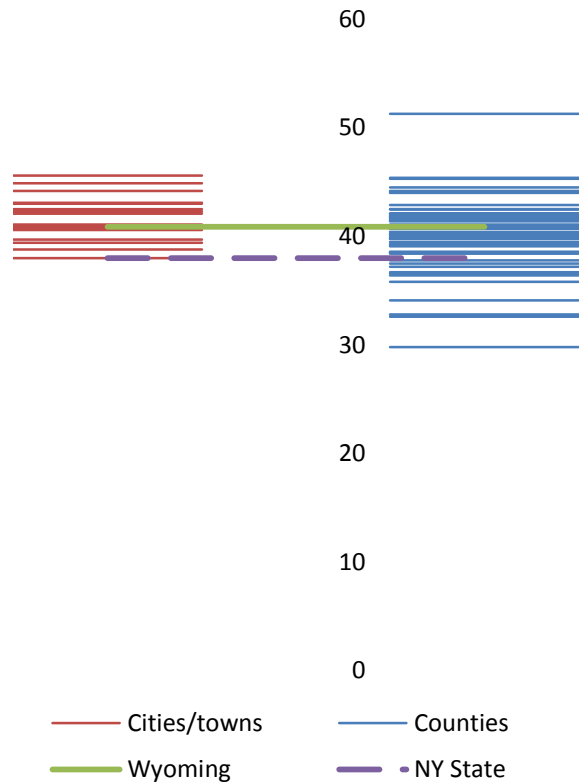
### 4.3 Median age: comparison between areas

	Median Age
New York State	38.0
Wyoming County	40.9

**Towns**

Arcade town	40.6
Attica town	38.0
Bennington town	45.6
Castile town	42.5
Covington town	40.9
Eagle town	40.7
Gainesville town	42.3
Genesee Falls town	44.9
Java town	41.1
Middlebury town	43.0
Orangeville town	44.2
Perry town	39.4
Pike town	38.8
Sheldon town	43.1
Warsaw town	42.1
Wethersfield town	39.7

**Median age comparison within county (left) and between counties (right)**



Source: 2010 Decennial Census

## 5 Race

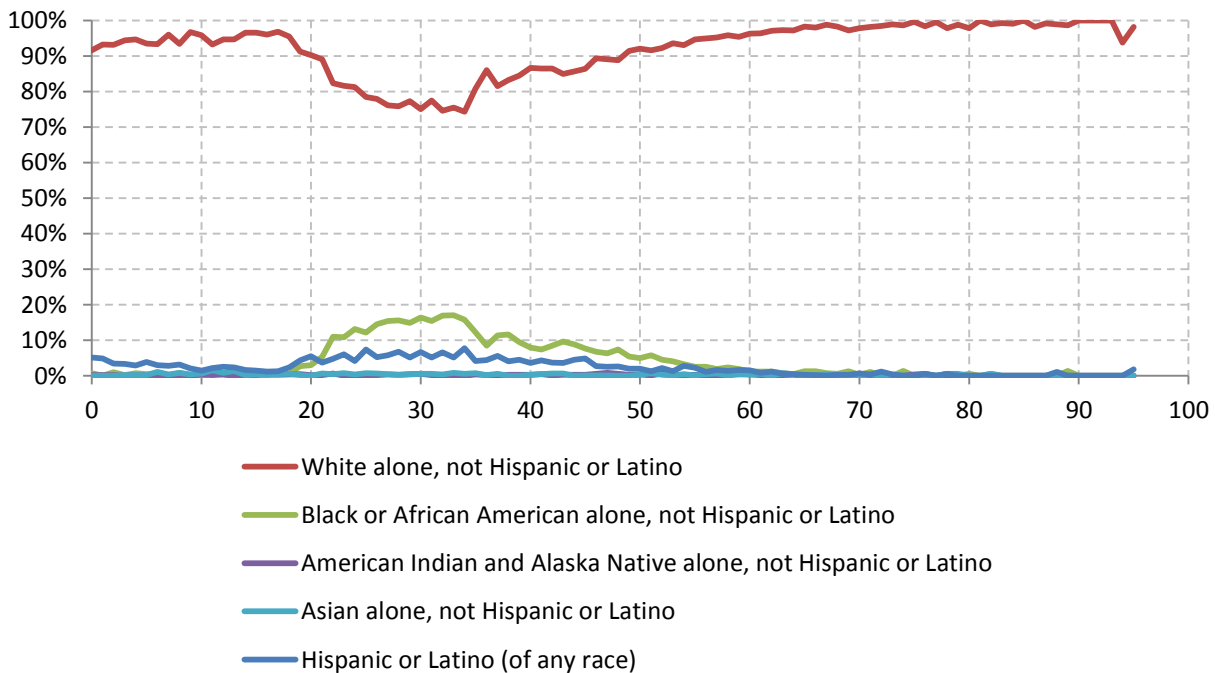
### 5.1 Total and household population by race

	Total		In households		In Group Quarters
	Count	Percentage	Count	Percentage	Count
<b>Total population</b>	42,155	100%	38,194	100%	3,961
Not Hispanic or Latino					
One race					
White	38,042	90.2%	36,938	96.7%	1,104
Black or African American	2,233	5.3%	88	0.2%	2,145
American Indian and Alaska Native	103	0.2%	77	0.2%	26
Asian	156	0.4%	143	0.4%	13
Native Hawaiian and Other Pacific Islander	7	0.0%	-	-	-
Some other race	80	0.2%	-	-	-
Two or more races	290	0.7%	288	0.8%	2
Hispanic or Latino (of any race)	1,244	3.0%	642	1.7%	602

Source: 2010 Decennial Census

### 5.2 Race composition by age

Race composition by age, Wyoming County



Source: 2010 Decennial Census



## 6 Housing units

### 6.1 Characteristics

HOUSING OCCUPANCY	COUNT		PERCENTAGE	
	Estimate	Margin of error	Estimate	Margin of error
<b>Total housing units</b>	17,920	± 190	100.0%	
Occupied housing units	15,549	± 342	86.8%	± 1.4
Vacant housing units	2,371	± 253	13.2%	± 1.4
<b>YEAR STRUCTURE BUILT</b>				
<b>Total housing units</b>	17,920	± 190	100.0%	
Built 2005 or later	319	± 109	1.8%	± 0.6
Built 2000 to 2004	634	± 133	3.5%	± 0.7
Built 1990 to 1999	1,680	± 247	9.4%	± 1.4
Built 1980 to 1989	1,555	± 187	8.7%	± 1.0
Built 1970 to 1979	2,169	± 210	12.1%	± 1.1
Built 1960 to 1969	1,164	± 175	6.5%	± 1.0
Built 1950 to 1959	1,144	± 174	6.4%	± 1.0
Built 1940 to 1949	796	± 134	4.4%	± 0.8
Built 1939 or earlier	8,459	± 298	47.2%	± 1.6
<b>HOUSING TENURE</b>				
<b>Occupied housing units</b>	15,549	± 342	100.0%	
Owner-occupied	11,785	± 312	75.8%	± 1.7
Renter-occupied	3,764	± 307	24.2%	± 1.7
<b>HOUSE HEATING FUEL</b>				
<b>Occupied housing units</b>	15,549	± 342	100.0%	
Utility gas	7,114	± 314	45.8%	± 1.7
Bottled, tank, or LP gas	1,820	± 187	11.7%	± 1.2
Electricity	2,234	± 213	14.4%	± 1.3
Fuel oil, kerosene, etc.	1,936	± 173	12.5%	± 1.1
Coal or coke	390	± 98	2.5%	± 0.6
Wood	1,772	± 173	11.4%	± 1.1
Solar energy	0	± 89	0.0%	± 0.2
Other fuel	266	± 75	1.7%	± 0.5
No fuel used	17	± 17	0.1%	± 0.1
<b>VALUE</b>				
<b>Owner-occupied units</b>	11,785	± 312	100.0%	
Less than \$50,000	1,319	± 171	11.2%	± 1.4
\$50,000 to \$99,999	4,721	± 272	40.1%	± 2.2
\$100,000 to \$149,999	2,980	± 227	25.3%	± 1.8
\$150,000 to \$199,999	1,499	± 171	12.7%	± 1.4
\$200,000 to \$299,999	820	± 118	7.0%	± 0.9
\$300,000 to \$499,999	308	± 112	2.6%	± 0.9
\$500,000 to \$999,999	95	± 46	0.8%	± 0.4
\$1,000,000 or more	43	± 32	0.4%	± 0.3
Median (dollars)	98,700	± 2,160		

Source: 2007-2011 American Community Survey

**6.2 Historical data on number of housing units and occupancy status**

Year	Number of Housing Units	Change since previous Census	Occupied	Occupancy rate	Vacant
1970	12,882		10,610	82.4%	2,272
1980	15,083	17.1%	12,771	84.7%	2,312
1990	15,848	5.1%	13,897	87.7%	1,951
2000	16,940	6.9%	14,906	88.0%	2,034
2010	17,970	6.1%	15,501	86.3%	2,469

Source: 1970-2010 Decennial Census

## 7 Education

### 7.1 Enrollment by level of school

	Estimate	Margin of error
<b>Total enrolled in school</b>	9,020	± 230
Nursery school, preschool	672	± 115
Kindergarten	474	± 99
Elementary: grade 1 to grade 4	2,060	± 202
Elementary: grade 5 to grade 8	1,860	± 170
High school: grade 9 to grade 12	2,521	± 189
College, undergraduate	1,269	± 152
Graduate, professional school	164	± 56

Source: 2007-2011 American Community Survey

### 7.2 Enrollment by age

	Estimate	Margin of error
3 and 4 years	54.8%	± 9.2
5 to 9 years	94.2%	± 3.0
10 to 14 years	98.6%	± 1.4
15 to 17 years	97.3%	± 2.0
18 and 19 years	66.4%	± 8.0
20 to 24 years	22.7%	± 4.9
25 to 34 years	5.2%	± 1.6
35 years and over	2.0%	± 0.6

Source: 2007-2011 American Community Survey

### 7.3 Percentage age 18-24 enrolled in college

	Estimate	Margin of error
Population 18 to 24 years	3,394	± 183
Enrolled in college or graduate school	22.7%	± 4.0
Males 18 to 24 years	1,948	± 188
Enrolled in college or graduate school	16.5%	± 4.8
Females 18 to 24 years	1,446	± 50
Enrolled in college or graduate school	31.2%	± 6.2

Source: 2007-2011 American Community Survey

## 7.4 Educational attainment

	COUNT		PERCENTAGE	
	Estimate	Margin of error	Estimate	Margin of error
<b>Population 25 years and over</b>	29,983	± 183	100%	
<b>EDUCATIONAL ATTAINMENT</b>				
Less than 9th grade	1,230	± 243	4.1%	± 0.8
9th to 12th grade, no diploma	2,909	± 340	9.7%	± 1.1
High school graduate (includes equivalency)	12,470	± 524	41.6%	± 1.8
Some college, no degree	5,389	± 337	18.0%	± 1.1
Associate's degree	3,610	± 303	12.0%	± 1.0
Bachelor's degree	2,794	± 307	9.3%	± 1.0
Graduate or professional degree	1,581	± 189	5.3%	± 0.6
Percent high school graduate or higher			86.2%	± 1.4
Percent bachelor's degree or higher			14.6%	± 1.2

Source: 2007-2011 American Community Survey

## 8 Language spoken at home

	COUNT		PERCENTAGE		SPEAK ENGLISH LESS THAN "VERY WELL"	
	Estimate	Margin of error	Estimate	Margin of error	Estimate	Margin of error
<b>Population 5 years and over</b>	40,135	± 40	100%			
<b>LANGUAGE SPOKEN AT HOME</b>						
English only	37,881	± 216	94.4%	± 0.5		
Language other than English	2,254	± 217	5.6%	± 0.5	715	± 183
Spanish	1,369	± 159	3.4%	± 0.4	430	± 139
Other Indo-European languages	698	± 172	1.7%	± 0.4	195	± 115
Asian and Pacific Islander languages	88	± 41	0.2%	± 0.1	42	± 45
Other languages	99	± 71	0.2%	± 0.2	48	± 53

Source: 2007-2011 American Community Survey

## 9 Labor Force Characteristics

### 9.1 Labor force, employment and unemployment

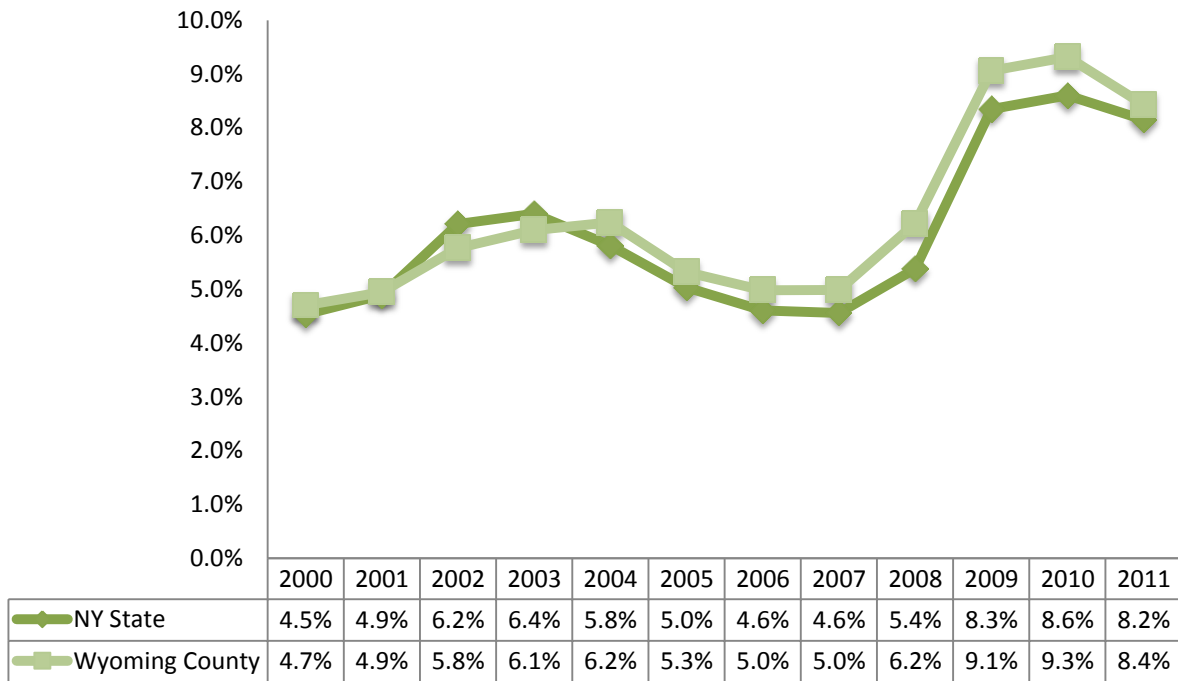
	TOTAL		IN LABOR FORCE		EMPLOYED		UNEMPLOYMENT RATE	
	Estimate	Margin of error	Estimate	Margin of error	Estimate	Margin of error	Estimate	Margin of error
<b>Population 16 years and over</b>	34,486	± 133	58.3%	± 1.5	54.2%	± 1.5	6.8%	± 0.9
<b>AGE</b>								
16 to 19 years	2,097	± 170	42.7%	± 4.9	34.7%	± 4.8	18.9%	± 6.9
20 to 24 years	2,406	± 119	72.0%	± 5.3	60.5%	± 5.4	15.3%	± 5.6
25 to 44 years	11,653	± 219	69.3%	± 2.4	64.9%	± 2.3	6.1%	± 1.5
45 to 54 years	7,145	± 159	74.8%	± 3.1	72.1%	± 3.1	3.6%	± 1.4
55 to 64 years	5,401	± 61	61.2%	± 3.8	57.3%	± 3.6	6.3%	± 2.4
65 to 74 years	3,228	± 110	19.7%	± 3.9	18.5%	± 3.7	6.4%	± 4.1
75 years and over	2,556	± 45	4.5%	± 1.7	4.5%	± 1.7	0.0%	± 24.1
<b>RACE AND HISPANIC OR LATINO ORIGIN</b>								
One race	34,232	± 184	58.4%	± 1.6	54.4%	± 1.5	6.7%	± 0.9
White	31,249	± 203	63.0%	± 1.3	58.8%	± 1.4	6.5%	± 0.9
Black or African American	2,355	± 107	5.8%	± 7.1	4.3%	± 5.6	25.0%	± 31.2
American Indian and Alaska Native	135	± 71	18.5%	± 15.7	17.0%	± 15.2	8.0%	± 15.4
Asian	134	± 15	54.5%	± 30.8	44.8%	± 30.7	17.8%	± 19.2
Pacific Islander	5	± 9	0.0%	± 100.0	0.0%	± 100.0	-	**
Some other race	354	± 157	18.6%	± 18.5	13.0%	± 15.1	30.3%	± 29.7
Two or more races	254	± 129	45.3%	± 23.2	34.3%	± 19.3	24.3%	± 29.4
Hispanic or Latino origin (of any race)	1,047	± 72	7.5%	± 10.4	7.4%	± 10.2	2.5%	± 4.6
White alone, not Hispanic or Latino	30,718	± 142	63.9%	± 1.3	59.6%	± 1.3	6.5%	± 0.9
<b>SEX</b>								
<b>Population 20 to 64 years</b>	26,605	± 110	69.4%	± 1.8	64.9%	± 1.7	6.3%	± 0.9
Male	15,361	± 143	65.3%	± 2.6	60.4%	± 2.3	7.2%	± 1.6
Female	11,244	± 92	74.9%	± 2.1	71.0%	± 2.4	5.2%	± 1.2
With own children under 6 years	1,776	± 192	69.0%	± 6.3	62.8%	± 6.3	8.9%	± 3.9
<b>EDUCATIONAL ATTAINMENT</b>								
<b>Population 25 to 64 years</b>	24,199	± 154	69.1%	± 1.8	65.3%	± 1.7	5.3%	± 0.7
Less than high school graduate	2,790	± 402	38.7%	± 7.6	33.7%	± 6.5	13.0%	± 5.8
High school graduate (includes equivalency)	9,844	± 502	66.6%	± 3.0	62.9%	± 2.8	5.5%	± 1.5
Some college or associate's degree	7,873	± 351	75.5%	± 3.4	72.1%	± 3.2	4.3%	± 1.2
Bachelor's degree or higher	3,692	± 329	84.8%	± 2.9	81.1%	± 3.2	4.3%	± 1.9

Table formula:           **LABOR FORCE** = # EMPLOYED + # UNEMPLOYED  
                               **% IN LABOR FORCE** = LABOR FORCE / TOTAL \* 100%  
                               **% EMPLOYED** = # EMPLOYED / TOTAL \* 100%  
                               **UNEMPLOYMENT RATE** = # UNEMPLOYED / LABOR FORCE \* 100%

Source: 2007-2011 American Community Survey

## 9.2 Annual unemployment rate

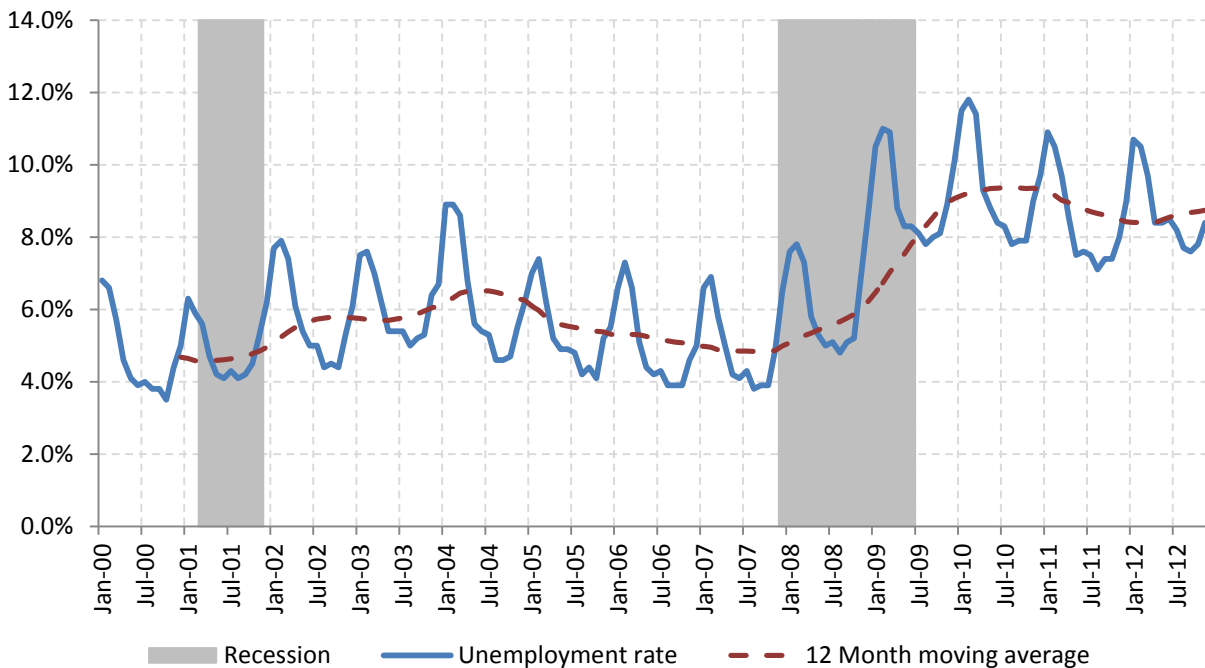
Annual unemployment rate, Wyoming County and New York State



Source: Bureau Labor Statistics (BLS)

## 9.3 Monthly unemployment rate

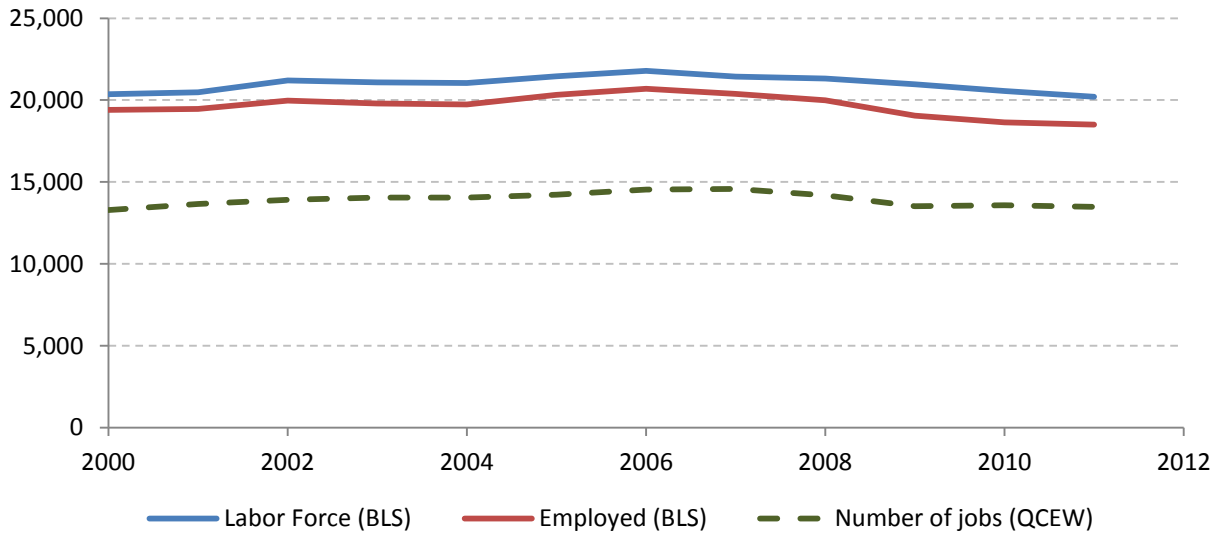
Monthly unemployment rate, Wyoming County



Source: Bureau Labor Statistics (BLS)

## 9.4 Employment and number of jobs

**Labor force, number of employed workers and number of jobs  
Wyoming County**



Source: Bureau Labor Statistics (BLS) and NY Department of Labor - Quarterly Census of Employment and Wages (QCEW) – annual averages

## 9.5 Class of worker

		Median earnings (\$)					
		Total	%Male	%Female	Total	Male	Female
Civilian employed population 16 years and over	Estimate	18,703	53.6%	46.4%	31,573	37,664	24,673
	Margin of error	± 498	± 0.9	± 0.9	± 826	± 1,609	± 1,952
Private for-profit wage and salary workers:	Estimate	11,848	58.7%	41.3%	30,231	36,845	21,587
	Margin of error	± 376	± 1.7	± 1.7	± 1,508	± 1,310	± 1,181
Employee of private company workers	Estimate	11,215	57.9%	42.1%	30,141	37,051	21,468
	Margin of error	± 395	± 1.7	± 1.7	± 1,796	± 1,507	± 1,200
Self-employed in own incorporated business workers	Estimate	633	73.5%	26.5%	33,438	31,625	37,222
	Margin of error	± 157	± 6.2	± 6.2	± 9,782	± 8,994	± 41,294
Private not-for-profit wage and salary workers	Estimate	1,433	33.6%	66.4%	30,429	41,982	25,048
	Margin of error	± 203	± 7.0	± 7.0	± 4,180	± 7,616	± 6,049
Local government workers	Estimate	1,918	28.8%	71.2%	34,651	39,572	32,080
	Margin of error	± 204	± 4.8	± 4.8	± 3,547	± 3,104	± 2,496
State government workers	Estimate	1,662	54.3%	45.7%	47,311	57,434	40,172
	Margin of error	± 198	± 4.8	± 4.8	± 2,817	± 7,111	± 2,182
Federal government workers	Estimate	290	47.2%	52.8%	35,938	35,046	40,208
	Margin of error	± 78	± 16.1	± 16.1	± 4,790	± 6,563	± 9,874
Self-employed in own not incorporated business workers and unpaid family workers	Estimate	1,552	64.2%	35.8%	18,279	22,359	10,250
	Margin of error	± 204	± 5.4	± 5.4	± 2,088	± 5,332	± 3,297

Source: 2007-2011 American Community Survey

## 9.6 Jobs by industry sector

	Wyoming County			NY state
	2011	Change since 2006	% of total	% of total
<b>All NAICS Sectors</b>	13,926	-8.6%	100.0%	100.0%
Agriculture, Forestry, Fishing and Hunting	784	10.0%	5.6%	0.3%
Mining, Quarrying, and Oil and Gas Extraction	NA	NA	NA	0.1%
Utilities	10	NA	0.1%	0.5%
Construction	345	-22.3%	2.5%	3.5%
Manufacturing	1,969	-21.8%	14.1%	5.5%
Wholesale Trade	208	-17.1%	1.5%	4.0%
Retail Trade	1,464	-8.3%	10.5%	10.5%
Transportation and Warehousing	536	11.0%	3.8%	3.4%
Information	86	-7.5%	0.6%	3.3%
Finance and Insurance	222	-31.9%	1.6%	6.0%
Real Estate and Rental and Leasing	86	-33.3%	0.6%	2.3%
Professional, Scientific, and Technical Services	307	25.8%	2.2%	6.9%
Management of Companies and Enterprises	184	-28.7%	1.3%	1.6%
Administrative and Support and Waste Management and Remediation Services	1,140	-24.9%	8.2%	5.2%
Educational Services	1,176	5.0%	8.4%	10.8%
Health Care and Social Assistance	1,323	-1.3%	9.5%	17.0%
Arts, Entertainment, and Recreation	397	14.1%	2.9%	1.9%
Accommodation and Food Services	820	5.3%	5.9%	7.3%
Other Services (except Public Administration)	431	-3.8%	3.1%	3.9%
Public Administration	2,430	-7.4%	17.4%	5.8%

Source: U.S. Census Bureau - Public Use Quarterly Workforce Indicators (QWI) – annual averages

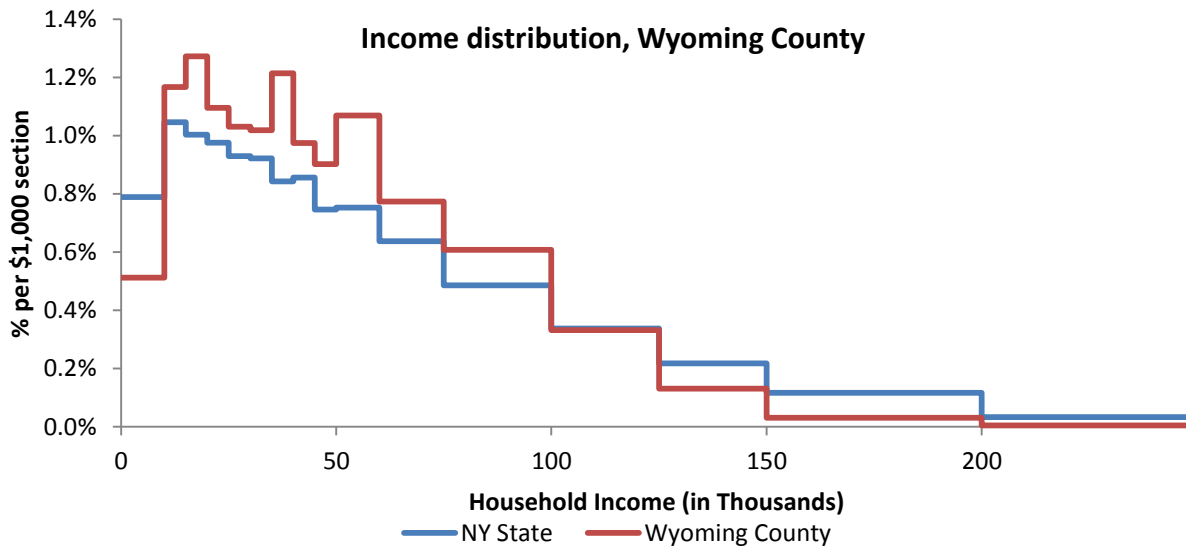


## 10 Household Income

### 10.1 Distribution

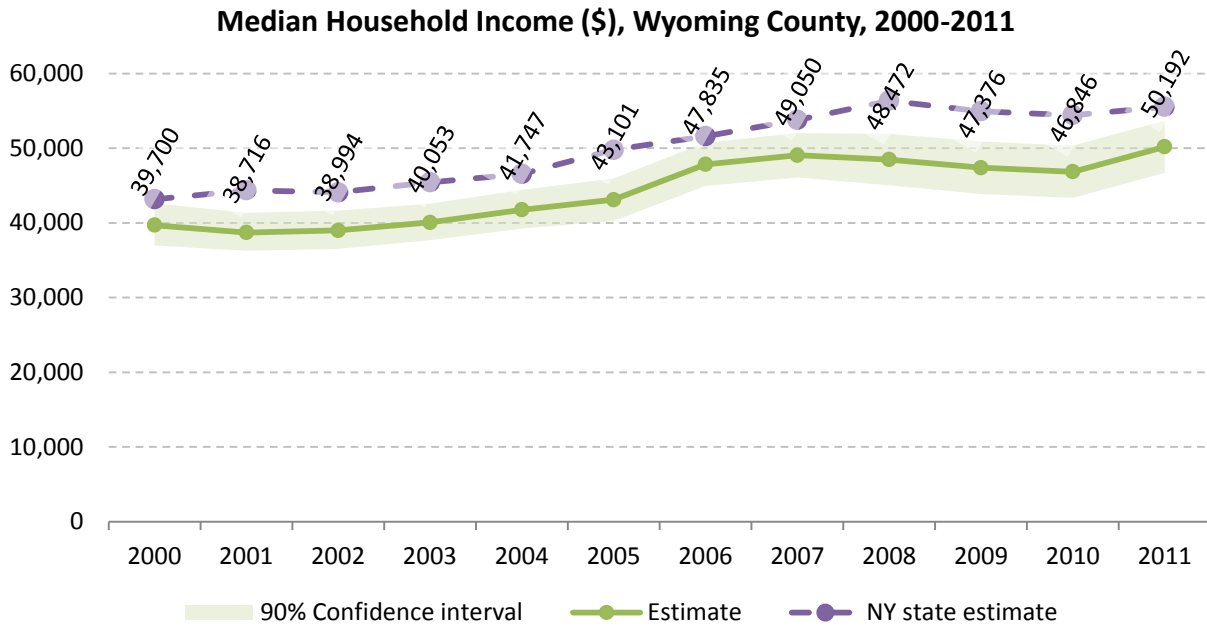
	Estimate	Margin of error	Interval width (in \$1,000)	Est. per \$1,000 section
<b>Total:</b>	15,549	± 342		
Less than \$10,000	796	± 149	10	79.6
\$10,000 to \$14,999	907	± 197	5	181.4
\$15,000 to \$19,999	989	± 157	5	197.8
\$20,000 to \$24,999	852	± 160	5	170.4
\$25,000 to \$29,999	801	± 125	5	160.2
\$30,000 to \$34,999	792	± 163	5	158.4
\$35,000 to \$39,999	944	± 156	5	188.8
\$40,000 to \$44,999	758	± 132	5	151.6
\$45,000 to \$49,999	701	± 125	5	140.2
\$50,000 to \$59,999	1,662	± 211	10	166.2
\$60,000 to \$74,999	1,805	± 235	15	120.3
\$75,000 to \$99,999	2,362	± 283	25	94.5
\$100,000 to \$124,999	1,289	± 176	25	51.6
\$125,000 to \$149,999	510	± 111	25	20.4
\$150,000 to \$199,999	243	± 83	50	4.9
\$200,000 or more	138	± 54	-	-

Source: 2007-2011 American Community Survey



Source: 2007-2011 American Community Survey

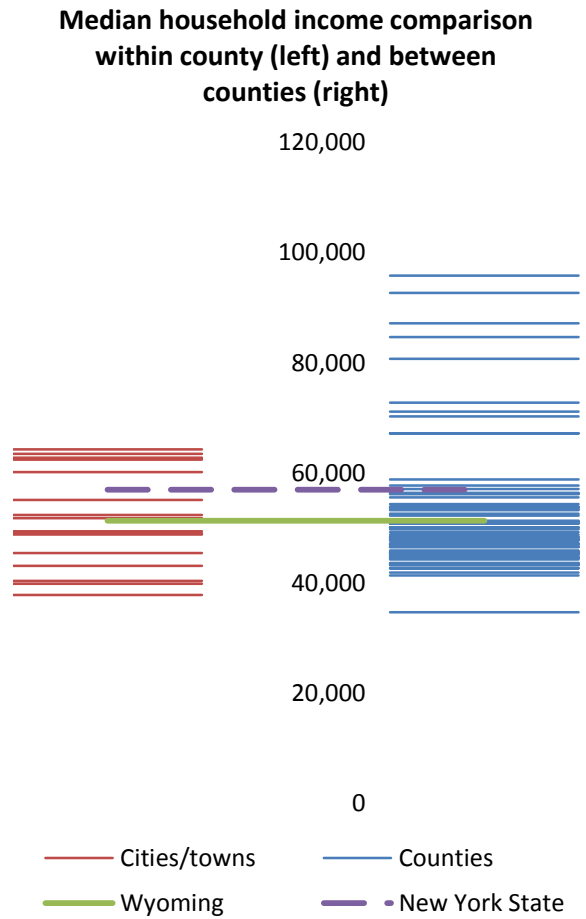
10.2 Median household income: Trends over time



Source: Small Area Income and Poverty Estimates (SAIPE)

**10.3 Median household income: Comparison between areas**

MEDIAN HOUSEHOLD INCOME (\$)		
	Estimate	Margin of error
New York State	56,951	± 190
Wyoming County	51,312	± 1,815
<b>Towns</b>		
Arcade	45,489	± 6,732
Attica	55,094	± 4,954
Bennington	64,321	± 6,469
Castile	52,386	± 4,460
Covington	62,788	± 11,342
Eagle	37,833	± 4,524
Gainesville	49,417	± 6,868
Genesee Falls	39,911	± 11,121
Java	63,482	± 8,268
Middlebury	60,197	± 5,503
Orangeville	62,438	± 6,967
Perry	40,438	± 11,937
Pike	48,824	± 9,474
Sheldon	49,000	± 8,162
Warsaw	43,154	± 7,255
Wethersfield	51,806	± 10,930



Source: 2007-2011 American Community Survey

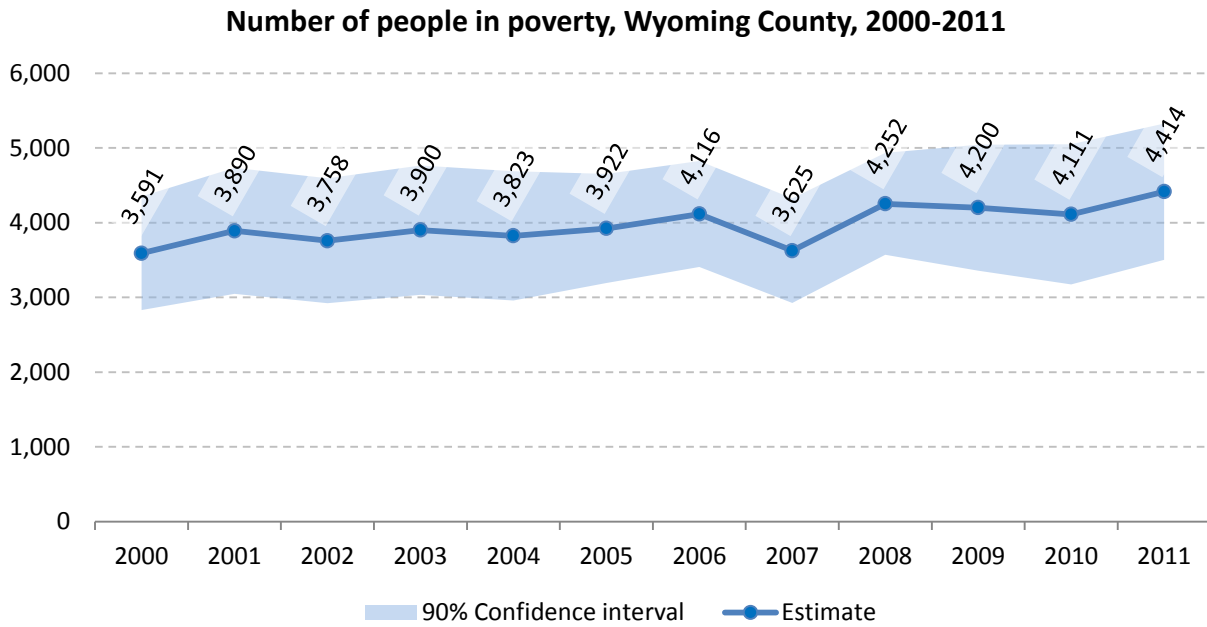
## 11 Poverty

### 11.1 Poverty characteristics

	TOTAL		BELOW POVERTY LEVEL		PERCENT BELOW POVERTY LEVEL	
	Estimate	Margin of error	Estimate	Margin of error	Estimate	Margin of error
<b>Population for whom poverty status is determined</b>	37,978	± 451	3,837	± 486	10.1%	± 1.3
<b>AGE</b>						
Under 18 years	8,589	± 136	1,212	± 210	14.1%	± 2.5
Related children under 18 years	8,514	± 169	1,147	± 219	13.5%	± 2.5
18 to 64 years	23,918	± 401	2,329	± 326	9.7%	± 1.3
65 years and over	5,471	± 105	296	± 97	5.4%	± 1.8
<b>SEX</b>						
Male	19,105	± 332	1,823	± 301	9.5%	± 1.5
Female	18,873	± 180	2,014	± 276	10.7%	± 1.5
<b>RACE AND HISPANIC OR LATINO ORIGIN</b>						
One race	37,672	± 423	3,723	± 486	9.9%	± 1.3
White	37,074	± 258	3,525	± 467	9.5%	± 1.3
Black or African American	222	± 213	65	± 64	29.3%	± 25.5
American Indian and Alaska Native	56	± 27	0	± 89	0.0%	± 39.6
Asian	147	± 49	32	± 30	21.8%	± 18.2
Hispanic or Latino origin (of any race)	366	± 174	157	± 92	42.9%	± 12.3
White alone, not Hispanic or Latino	36,830	± 211	3,467	± 456	9.4%	± 1.2
<b>EDUCATIONAL ATTAINMENT</b>						
<b>Population 25 years and over</b>	26,394	± 394	2,180	± 294	8.3%	± 1.1
Less than high school graduate	3,000	± 314	518	± 157	17.3%	± 4.7
High school graduate (includes equivalency)	10,640	± 436	868	± 139	8.2%	± 1.3
Some college, associate's degree	8,437	± 385	626	± 136	7.4%	± 1.6
Bachelor's degree or higher	4,317	± 364	168	± 82	3.9%	± 1.8
<b>EMPLOYMENT STATUS</b>						
<b>Civilian labor force 16 years and over</b>	20,068	± 535	1,323	± 256	6.6%	± 1.2
Employed	18,703	± 498	977	± 187	5.2%	± 1.0
Male	10,027	± 328	445	± 115	4.4%	± 1.1
Female	8,676	± 281	532	± 126	6.1%	± 1.4
Unemployed	1,365	± 194	346	± 128	25.3%	± 7.7
Male	823	± 166	194	± 133	23.6%	± 13.2
Female	542	± 119	152	± 76	28.0%	± 11.9
<b>WORK EXPERIENCE IN THE PAST 12 MONTHS</b>						
<b>Population 16 years and over</b>	30,498	± 474	2,692	± 350	8.8%	± 1.1
Worked full-time, year-round	13,135	± 472	284	± 97	2.2%	± 0.7
Worked part-time or part-year	7,972	± 395	1,033	± 237	13.0%	± 2.8
Did not work	9,391	± 408	1,375	± 224	14.6%	± 2.3

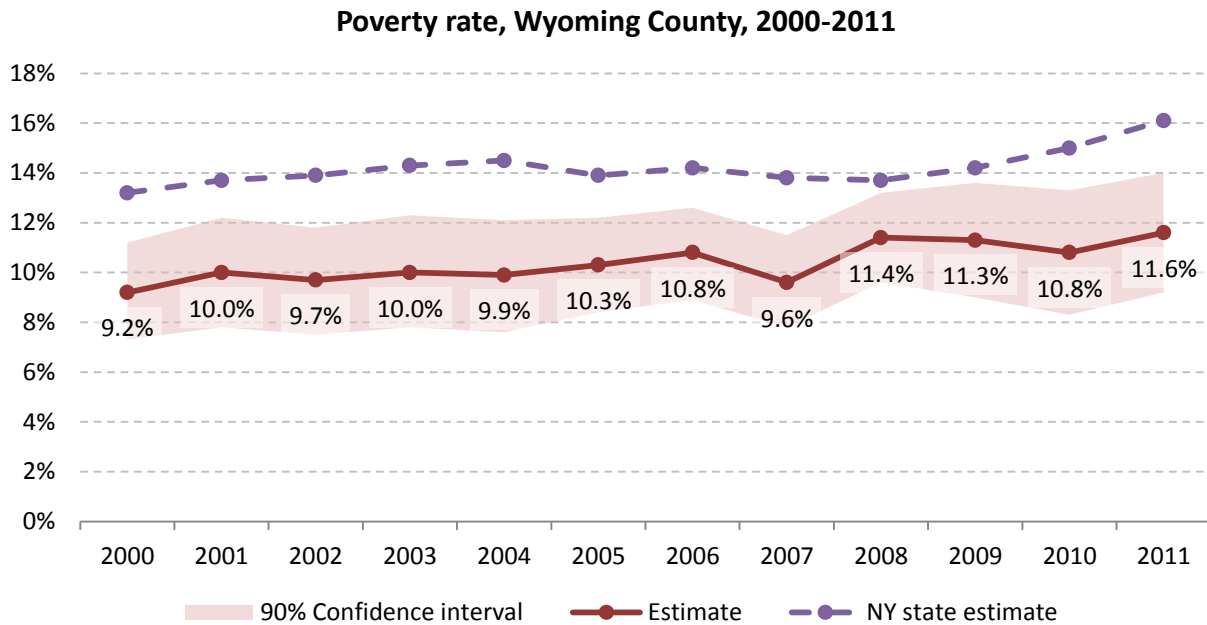
Source: 2007-2011 American Community Survey

### 11.2 Poverty: Trends over time: Count



Source: Small Area Income and Poverty Estimates (SAIPE)

### 11.3 Poverty: Trends over time: Rate

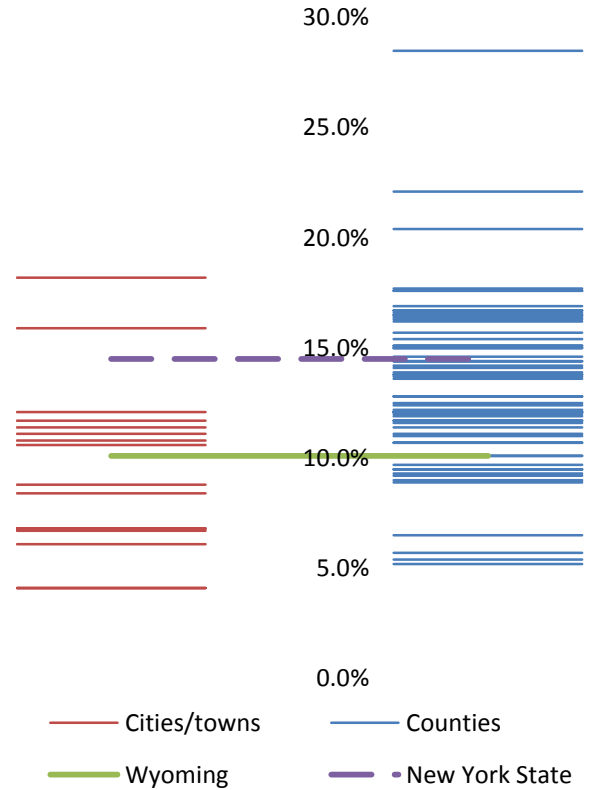


Source: Small Area Income and Poverty Estimates (SAIPE)

### 11.4 Poverty rate: comparison between areas

	Poverty Rate - All people	
	Estimate	Margin of error
New York State	14.5%	± 0.1
Wyoming County	10.1%	± 1.3
<b>Towns</b>		
Arcade	10.8%	± 3.8
Attica	11.1%	± 4.2
Bennington	6.1%	± 3.8
Castile	12.1%	± 4.0
Covington	6.7%	± 4.8
Eagle	11.4%	± 5.7
Gainesville	8.4%	± 3.5
Genesee Falls	6.8%	± 4.8
Java	4.1%	± 2.2
Middlebury	8.8%	± 3.8
Orangeville	4.1%	± 2.5
Perry	15.9%	± 7.3
Pike	18.2%	± 8.9
Sheldon	6.8%	± 3.5
Warsaw	10.6%	± 3.6
Wethersfield	11.7%	± 5.9

Poverty rate comparison within county (left) and between counties (right)

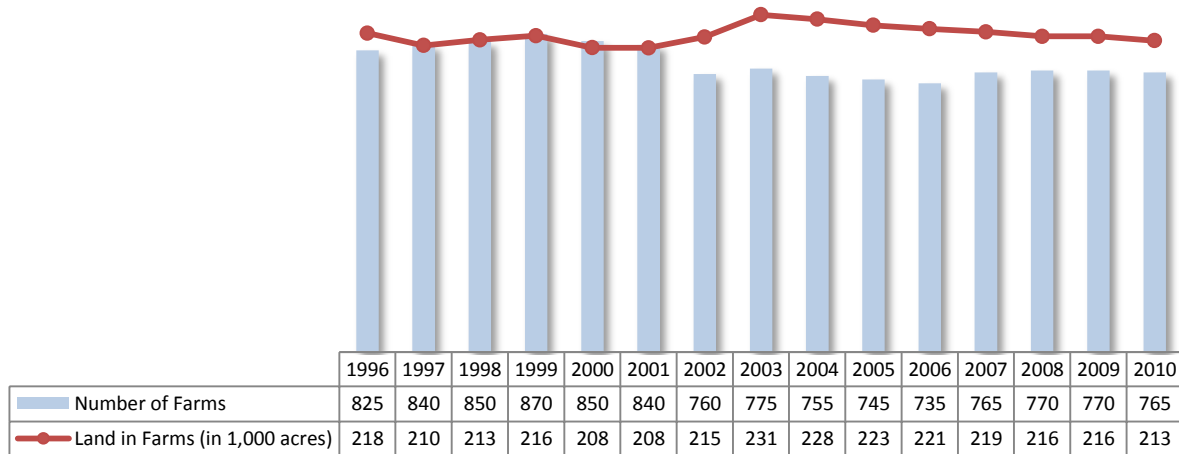


Source: 2007-2011 American Community Survey

## 12 Agriculture

### 12.1 Number of farms and land in farms

Wyoming County, 1996-2010



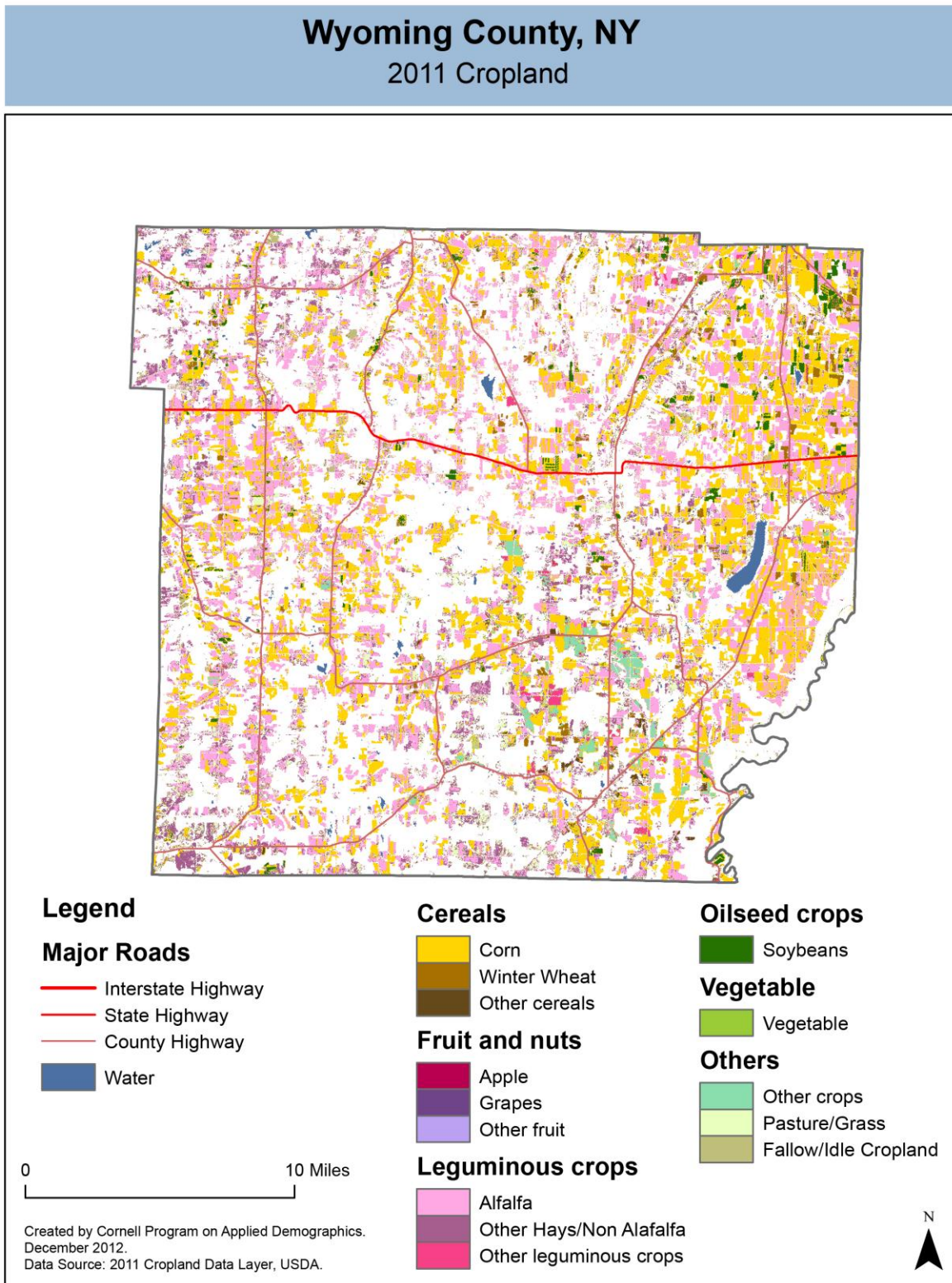
Source: National Agricultural Statistics Service – Annual Statistical bulletin

### 12.2 Farm Operator Characteristics

	Principal Operator		
	Total	Male	Female
<b>Number of farms</b>	761	671	90
Average size of farm (acres)	287	317	62
PRIMARY OCCUPATION			
Farming	449	400	49
Other	312	271	41
AGE			
Under 45	170	145	25
45 to 64 years	439	383	56
65 years and over	152	143	9
Average age (years)	54.2	54.7	50
YEARS ON PRESENT FARM			
Less than 3 years	23	23	0
3 to 4 years	38	28	10
5 to 9 years	97	80	17
10 years or more	603	540	63

Source: 2007 Agricultural Census

12.3 Map of type of crop



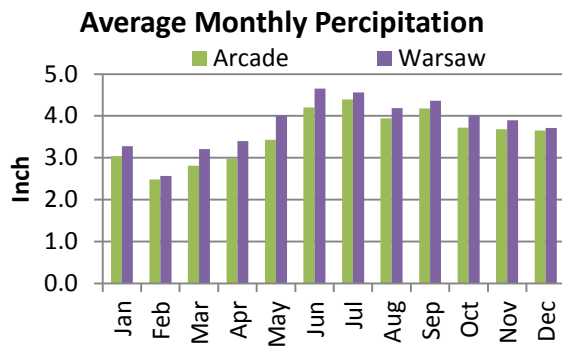
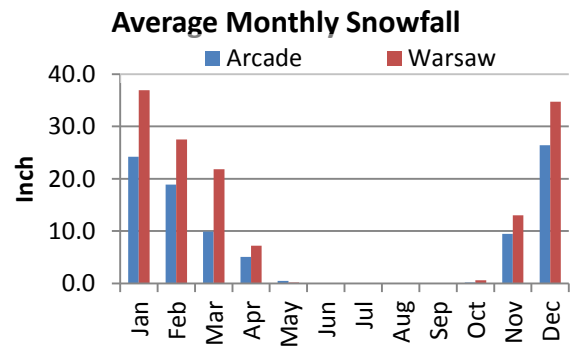
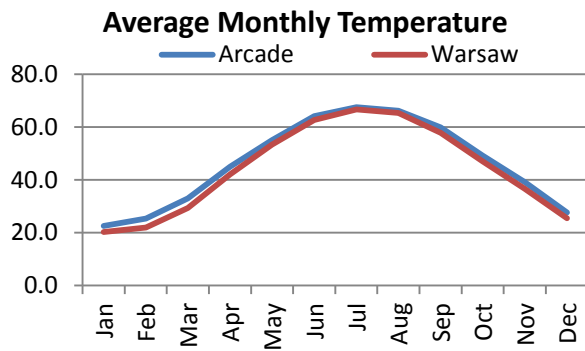
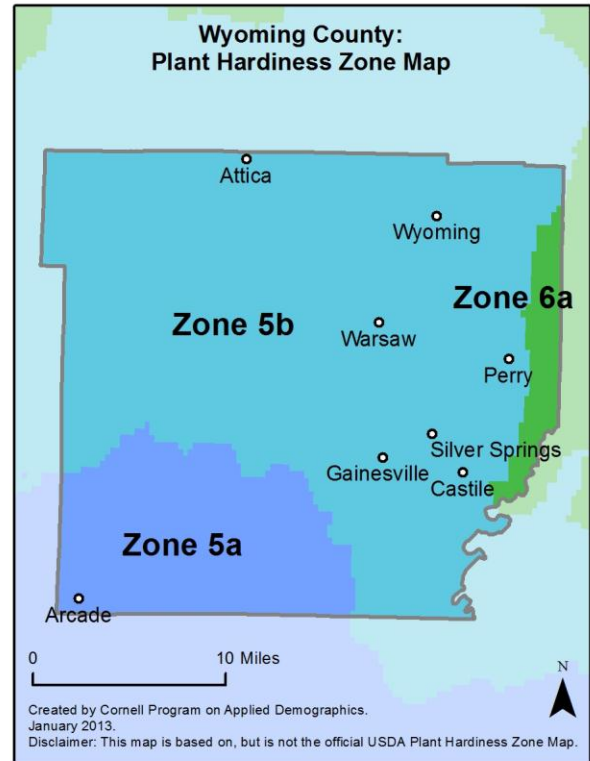
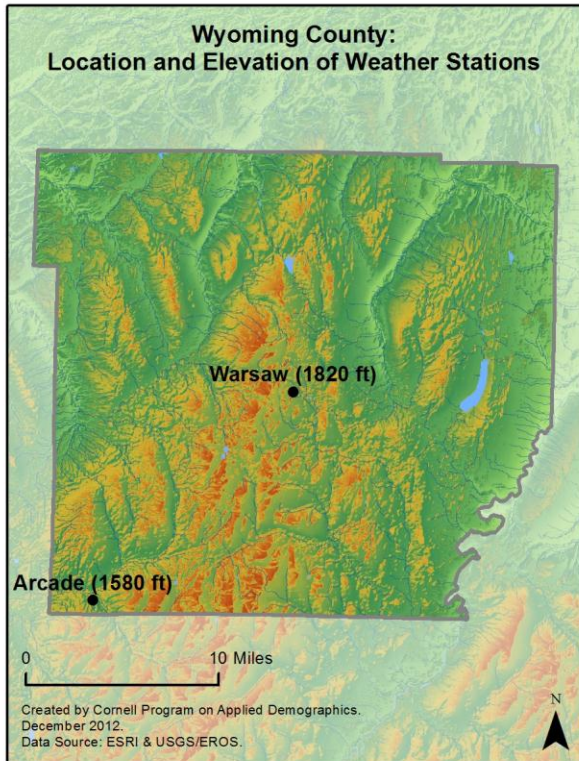


## 12.4 Estimated acreage by crop

	Acreage	%		Acreage	%
<b>Cereals</b>			<b>Fruit and nuts</b>		
Barley	46	0.0%	Apples	42	0.0%
Corn	59,820	33.9%	Apricots	-	
Millet	-		Blueberries	-	
Oats	693	0.4%	Cherries	0.9	0.0%
Rye	50	0.0%	Cranberries	-	
Sorghum	98	0.1%	Grapes	2.9	0.0%
Speltz	16	0.0%	Nectarines	-	
Spring Wheat	-		Peaches	-	
Sweet Corn	51	0.0%	Plums	-	
Triticale	14	0.0%	Prunes	-	
Winter Wheat	3,361	1.9%	Strawberries	0.2	0.0%
Dbl Crop WinWht/Corn	4.7	0.0%	Walnuts	-	
<b>Leguminous crops</b>			<b>Beverage and spice crops</b>		
Alfalfa	62,632	35.5%	Herbs	-	
Other Hay/Non Alfalfa	21,719	12.3%	Peppers	-	
Dry Beans	1,062	0.6%	<b>Trees</b>		
Peas	534	0.3%	Christmas Trees	13	0.0%
Vetch	-		Other Tree Crops	-	
<b>Oilseed crops</b>			<b>Other crops</b>		
Soybeans	4,340	2.5%	Tobacco	-	
Sunflower	-		Misc Veggies & Fruits	17	0.0%
<b>Sugar crops</b>			Clover/Wildflowers	92	0.1%
Sugarbeets	51	0.0%	Sod/Grass Seed	1.1	0.0%
<b>Root/tuber crops with high starch or inulin content</b>			Switchgrass	-	
Potatoes	2,900	1.6%	Dbl Crop Soybeans/Oats	-	
<b>Vegetables and melons</b>			Dbl Crop WinWht/Soybeans	-	
Asparagus	-		Other Crops	26	0.0%
Broccoli	-		<b>Pasture/Grass</b>		
Cabbage	13	0.0%	<b>Fallow/Idle Cropland</b>		
Carrots	0.4	0.0%	15,859 9.0%		
Eggplants	-		3,015 1.7%		
Onions	6	0.0%			
Pumpkins	-				
Squash	15	0.0%			
Tomatoes	-				
Turnips	-				

Source: National Agricultural Statistics Service - Cropland Data Layer 2011

13 Climate



**Average length of freeze-free season**

	Last day of frost	First day of frost	Season length
Arcade	Not available		
Warsaw	Not available		

Source: NOAA, Northeast Regional Climate Center at Cornell University. Averages 1981-2010

## 14 Glossary

**American Community Survey (ACS)** - The American Community Survey is an ongoing survey of the population that provides data every year on a variety of social and economic characteristics—age, sex, race, family and relationships, income and benefits, health insurance, education, veteran status, disabilities, where you work and how you get there, where you live and how much you pay for some essentials. The ACS replaced the information previously gathered by what was known as the “long form” of the decennial censuses. The ACS provides communities, companies and other institutions with current information they need to plan investments and services. Information from the survey generates data that help determine how more than \$400 billion in federal and state funds are distributed each year. Every estimate presented in the American Community Survey, as in other surveys, has an uncertainty associated with it. Often the magnitude of that uncertainty is expressed as the Margin of Error.

**Confidence Interval (CI)** - indication of the degree of uncertainty about a sample estimates. Confidence intervals have been traditionally reported at the 90, 95 and 99 percent levels. A 90 percent confidence interval can be interpreted, for example, roughly as providing 90 percent certainty that the interval defined by the upper and lower bounds contain the true value of the characteristic. If a Margin of Error is given, the lower bound of the confidence interval is equal to the estimate minus the Margin of Error and the upper bound is equal to the estimate plus the Margin of Error. (See further, Margin of Error definition below.)

**County subdivision or Minor Civil Division (MCD)** - The Census Bureau geography for primary administrative units below the county level in New York is collectively referred to as county subdivisions or minor civil divisions. These include towns, cities and Indian Reservations.

**Decennial Census** - the Census of the population and housing taken every 10 years in the United States, at the start of each decade, since 1790.

**Employed** – either “at work” or “with a job, but not at work”.

**Group Quarters Population** - all U.S. residents who live in group living facilities including correctional institutions, juvenile facilities, skilled nursing facilities, college residence halls, military barracks, group homes, and workers' dormitories.

**Household Population** - all U.S. residents who live in housing units such as single family homes, townhouses, apartments, and mobile homes.

**Intercensal Population Estimates** - estimates produced for the years between two decennial censuses when both the beginning and ending populations are known. They are produced once a decade by adjusting the existing time series of postcensal estimates for the entire decade to smooth the transition from one decennial census count to the next. They differ from the postcensal estimates that are released annually because the difference between the April 1 postcensal estimate and April 1 census count for the end of the decade is redistributed across the estimates for that decade. For dates when both postcensal and intercensal estimates are available, intercensal estimates are preferred.

**Labor Force** - consists of people classified as employed or unemployed.

**Margin of Error (MOE)** - a measure of the precision of an estimate at a given level of confidence. The confidence level of a margin of error indicates the likelihood that the difference between the population value (which you

would get if you could measure the whole population instead of a sample) and the estimate is less than or equal to the margin of error. The range from the estimate minus the margin of error to the estimate plus the margin of error is called the confidence interval. All ACS estimates are published with their margins of error at the 90 percent confidence level. Margins of error are useful in assessing the reliability of estimates and whether differences between estimates are significant.

**NAICS** - The North American Industry Classification System or NAICS is used by business and government to classify business establishments according to type of economic activity (process of production).

**Numeric Population Change** - difference between the population of an area at the beginning and end of a time period. It is computed by taking the difference between the population at one point in time (t1) and some future time (t2).

**Percent Population Change** - difference between the population of an area at the beginning and end of a time period, expressed as a percentage of the beginning population. It is computed by dividing the population change (t2 - t1) by t1 and multiplying the result by 100.

**Population Estimates** - The calculated number of people living in an area as of a specified point in time, usually July 1st. The estimated population is calculated using a component of change model that incorporates information on natural increase (births, deaths) and net migration (net domestic migration, net international migration) that has occurred in an area since the latest decennial census. A procedure for estimating the current population using a procedure involving a "base population" value at time t -1, adding to that the births during the interval t-1 to t, subtracting the deaths during that interval t-1 to t, and then adding the net domestic and net international migration that occurred during that interval.

**Population Density** - Total number of people per areal unit like a square mile or square kilometer.

**Population Pyramids** - A graphical way of portraying a population's age and sex composition at a given slice in time. The first horizontal bar, constituting the base of the graph, is the youngest age group (typically 0-4) with the number of males in that age group on the left and the number of females in that age group on the right. On top of that age group is another horizontal bar for the next age group (e.g. 5-9) and so forth with the top bar typically for those aged 75 and over. In a population with lots of births and deaths, the shape typically forms a pyramid with a broad base and a narrow top. It is one of the most basic ways to understand population change over time as well as between different geographic units of a similar status (e.g. counties).

**Postcensal Estimates** - estimates produced for the years after a decennial census when only the beginning population is known. They are produced and revised each year, targeted to July 1 of that year.

**Projection** - estimated population at some future time based on assumptions about births, deaths, migration, and ages.

**Race/Ethnicity** - the Census Bureau collects racial data in accordance with guidelines provided by the U.S. Office of Management and Budget (OMB), and these data are based on self-identification. The racial categories included in the census questionnaire generally reflect a social definition of race recognized in this country and not an attempt to define race biologically, anthropologically, or genetically. In addition, it is recognized that the categories of the race item include racial and national origin or sociocultural groups. People may choose to report more than one race to indicate their racial mixture, such as "American Indian" and "White." People who identify their origin as Hispanic, Latino, or Spanish may be of any race. OMB requires five minimum categories: White, Black or African American, American Indian or Alaska Native, Asian, and Native Hawaiian or Other Pacific

Islander. Hispanics may be classified as white or black. So we generally separate them out as an ethnic group first.

**Unemployed** – Not employed, but actively looking for work and available to accept a job.

**Unemployment rate** – Fraction of the Labor Force that is unemployed.

**Urban Area** – A densely settled area with at least 2,500 people. If the total number of people is less than 50,000 the Census Bureau calls it an Urban Cluster, otherwise an Urbanized Area.

**Vintage** - each year, the U.S. Census Bureau produces and publishes estimates of the population for each state and county, as well as the nation as a whole. These are called “vintages.” In producing these vintages, the Bureau utilizes administrative data from a number of sources to estimate 1) the change in population since the most recent decennial census, and 2) the population for each year since the most recent decennial census. With each annual release of population estimates (vintage), the entire time series of estimates beginning on April 1, 2010 is revised and updated.

## 15 References

Wyoming County homepage: <http://www.wyomingco.net/>

At Cornell:

- Cornell Cooperative Extensions (CCE)  
Home page: <http://www.cce.cornell.edu>
  - Wyoming local office: <http://counties.cce.cornell.edu/wyoming/>
- Program on Applied Demographics (PAD)  
URL: <http://pad.human.cornell.edu/>
- Community and Regional Development Institute (CaRDI)  
URL: <http://devsoc.cals.cornell.edu/cals/devsoc/outreach/cardi/index.cfm>

Data sources and background information:

- U.S. Census Bureau - general
  - QuickFacts: <http://quickfacts.census.gov/qfd/states/36/36121.html>
  - QuickLinks: <http://quickfacts.census.gov/qfd/states/36/36121lk.html>
  - American FactFinder: <http://factfinder2.census.gov>
- U.S. Census Bureau - population
  - Decennial Census
    - Background: <http://2010.census.gov/2010census/>
    - Demographic Profile: [http://factfinder2.census.gov/bkmk/table/1.0/en/DEC/10\\_SF1/SF1DP1/0500000US36121\\_1](http://factfinder2.census.gov/bkmk/table/1.0/en/DEC/10_SF1/SF1DP1/0500000US36121_1)
  - American Community Survey (ACS)
    - Background: <http://www.census.gov/acs/www/>
    - Social Data Profile: [http://factfinder2.census.gov/bkmk/table/1.0/en/ACS/10\\_5YR/DP02/0500000US36121](http://factfinder2.census.gov/bkmk/table/1.0/en/ACS/10_5YR/DP02/0500000US36121)
    - Economic Data Profile: [http://factfinder2.census.gov/bkmk/table/1.0/en/ACS/10\\_5YR/DP03/0500000US36121](http://factfinder2.census.gov/bkmk/table/1.0/en/ACS/10_5YR/DP03/0500000US36121)
    - Housing Data Profile: [http://factfinder2.census.gov/bkmk/table/1.0/en/ACS/10\\_5YR/DP04/0500000US36121](http://factfinder2.census.gov/bkmk/table/1.0/en/ACS/10_5YR/DP04/0500000US36121)
    - Demographics Data Profile: [http://factfinder2.census.gov/bkmk/table/1.0/en/ACS/10\\_5YR/DP05/0500000US36121](http://factfinder2.census.gov/bkmk/table/1.0/en/ACS/10_5YR/DP05/0500000US36121)
  - Population estimates: <http://www.census.gov/popest/estimates.html>
- U.S. Census Bureau – Small Area Income & Poverty Estimates (SAIPE)
  - <http://www.census.gov/did/www/saipe/>
- U.S. Census Bureau - Public Use Quarterly Workforce Indicators (QWI) – annual averages
  - <http://www2.vrdc.cornell.edu/news/data/qwi-public-use-data/>
- Bureau Labor Statistics (BLS) – Local Area Unemployment Statistics: <http://www.bls.gov/lau/>
- NY Department of Labor -
  - Labor statistics: <http://www.labor.ny.gov/stats/>
  - Quarterly Census of Employment and Wages (QCEW): <http://www.labor.ny.gov/stats/lsqcew.shtm>
- Bureau of Economic Analysis (BEA) – Local Area Personal Income and Employment: <http://bea.gov/iTable/iTable.cfm?ReqID=70&step=1>

- USDA Census of Agriculture
  - 2007
    - Home page: <http://www.agcensus.usda.gov/Publications/2007/index.php>
    - County profile: [http://www.agcensus.usda.gov/Publications/2007/Online\\_Highlights/County\\_Profiles/New\\_York/cp36121.pdf](http://www.agcensus.usda.gov/Publications/2007/Online_Highlights/County_Profiles/New_York/cp36121.pdf)
    - Race, Ethnicity and Gender Profiles: [http://www.agcensus.usda.gov/Publications/2007/Online\\_Highlights/Race\\_Ethnicity\\_and\\_Gender\\_Profiles/New\\_York/cpd36121.pdf](http://www.agcensus.usda.gov/Publications/2007/Online_Highlights/Race_Ethnicity_and_Gender_Profiles/New_York/cpd36121.pdf)
- USDA National Agricultural Statistics Service (NASS)
  - Home page: <http://www.nass.usda.gov/index.asp>
  - New York Statistical Bulletins: [http://www.nass.usda.gov/Statistics\\_by\\_State/New\\_York/Publications/Annual\\_Statistical\\_Bulletin/](http://www.nass.usda.gov/Statistics_by_State/New_York/Publications/Annual_Statistical_Bulletin/)
  - Cropland Data Layer – CropScape: <http://nassgeodata.gmu.edu/CropScape/>
- USDA Agricultural Research Service – Plant Hardness Zone Map: <http://planthardiness.ars.usda.gov/PHZMWeb/>
- NOAA, Northeast Regional Climate Center at Cornell University
  - Home page: <http://www.nrcc.cornell.edu/index.html>

Alternative sites for data retrieval:

- The Nelson A. Rockefeller Institute of Government – New York State Statistical Yearbooks [http://www.rockinst.org/nys\\_statistics/](http://www.rockinst.org/nys_statistics/)
- Headwaters Economics: Economic Profile System – Human Dimensions Toolkit <http://headwaterseconomics.org/tools/eps-hdt>
- National Historical Geographic Information System (NHGIS) <https://www.nhgis.org/>
- Social Explorer <http://www.socialexplorer.com/pub/home/home.aspx>
- Missouri Census Data Center <http://mcdc.missouri.edu/>
- DataFerret <http://dataferrett.census.gov/>
- Investigative Reporters and Editors (IRE) Census project <http://census.ire.org/>