

Westchester County Profile 2013

A collection of recent demographic, social, economic and agricultural data

Compiled by Jan Vink

Assisted by Joe Francis, Sutee Anantsuksomsri, Nij Tontisirin, Johannes Plambeck



Cornell University
Cooperative Extension



This profile is a part of a set of profiles generated for each county in New York State. The profiles were developed and generated by the Cornell Program on Applied Demographics. The work is sponsored by Cornell Cooperative Extension and promoted with webinars and workshops in coordination with the Community & Regional Development Institute.

Cornell Program on Applied Demographics:

The Program on Applied Demographics (PAD) brings skills in demographics, economics, statistics, data gathering and data analysis together to provide a variety of organizations with data, information and advice.

For more information: <http://pad.human.cornell.edu/>

Cornell Cooperative Extension:

Cornell Cooperative Extension (CCE) puts knowledge to work in pursuit of economic vitality, ecological sustainability and social well-being. We bring local experience and research based solutions together, helping New York State families and communities thrive in our rapidly changing world.

For more information: <http://cce.cornell.edu/>

Community & Regional Development Institute:

The Community & Regional Development Institute (CaRDI) supports informed decision making for residents and communities in New York State through applied research and education.

For more information: <http://cardi.cornell.edu/>

All profiles are freely downloadable as PDF documents on the PAD website:

<http://pad.human.cornell.edu/profiles/index.cfm>

Contents

Contents	2
1 Reference Maps	4
2 Population density and Urban Areas Map	6
3 Total Population	7
3.1 Historic and projected	7
3.2 Change since previous Census	7
3.3 Annual population estimates	8
3.4 Percentage sub county change 2000-2010	9
4 Population by age	11
4.1 Historic and projected population pyramids	11
4.2 Selected age groups	12
4.3 Median age: comparison between areas	14
5 Race	15
5.1 Total and household population by race	15
5.2 Race composition by age	15
6 Housing units	16
6.1 Characteristics	16
6.2 Historical data on number of housing units and occupancy status	17
7 Education	18
7.1 Enrollment by level of school	18
7.2 Enrollment by age	18
7.3 Percentage age 18-24 enrolled in college	18
7.4 Educational attainment	19
8 Language spoken at home	19
9 Labor Force Characteristics	20
9.1 Labor force, employment and unemployment	20
9.2 Annual unemployment rate	21
9.3 Monthly unemployment rate	21
9.4 Employment and number of jobs	22
9.5 Class of worker	22
9.6 Jobs by industry sector	23
10 Household Income	24
10.1 Distribution	24
10.2 Median household income: Trends over time	25
10.3 Median household income: Comparison between areas	26
11 Poverty	27
11.1 Poverty characteristics	27
11.2 Poverty: Trends over time: Count	28
11.3 Poverty: Trends over time: Rate	28
11.4 Poverty rate: comparison between areas	29
12 Agriculture	30
12.1 Number of farms and land in farms	30
12.2 Farm Operator Characteristics	30

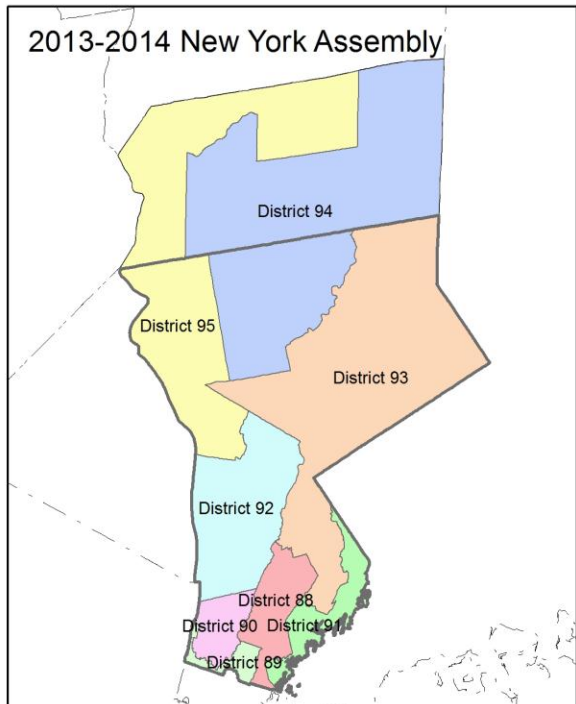
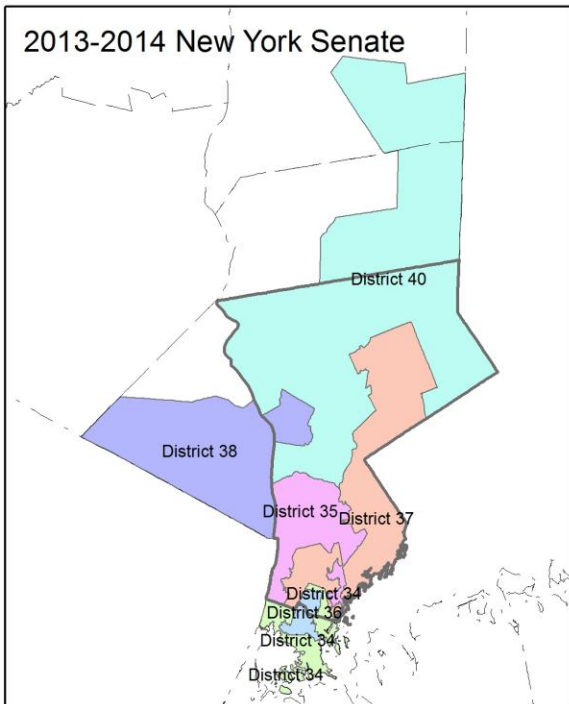
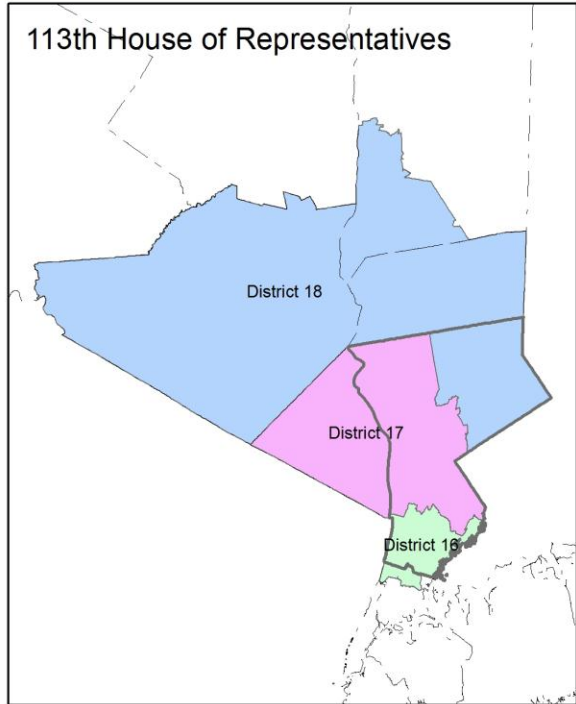
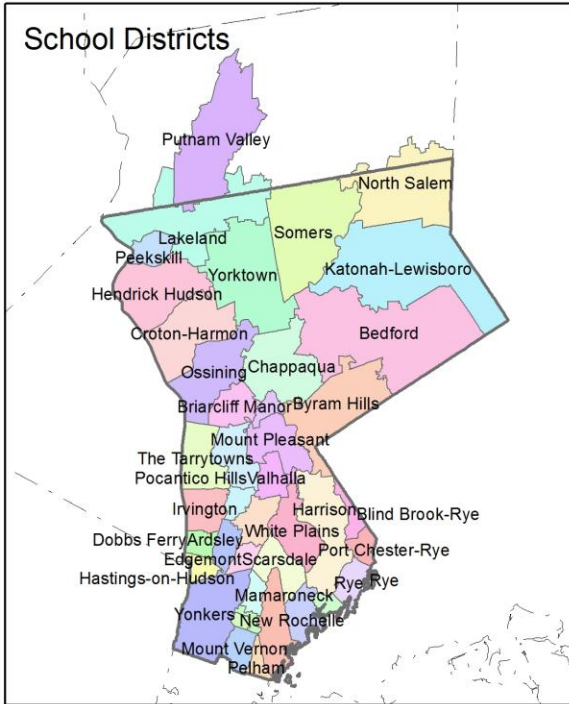
12.3 Map of type of crop 31
12.4 Estimated acreage by crop 32
13 Climate 33
14 Glossary..... 34
15 References 37

1 Reference Maps

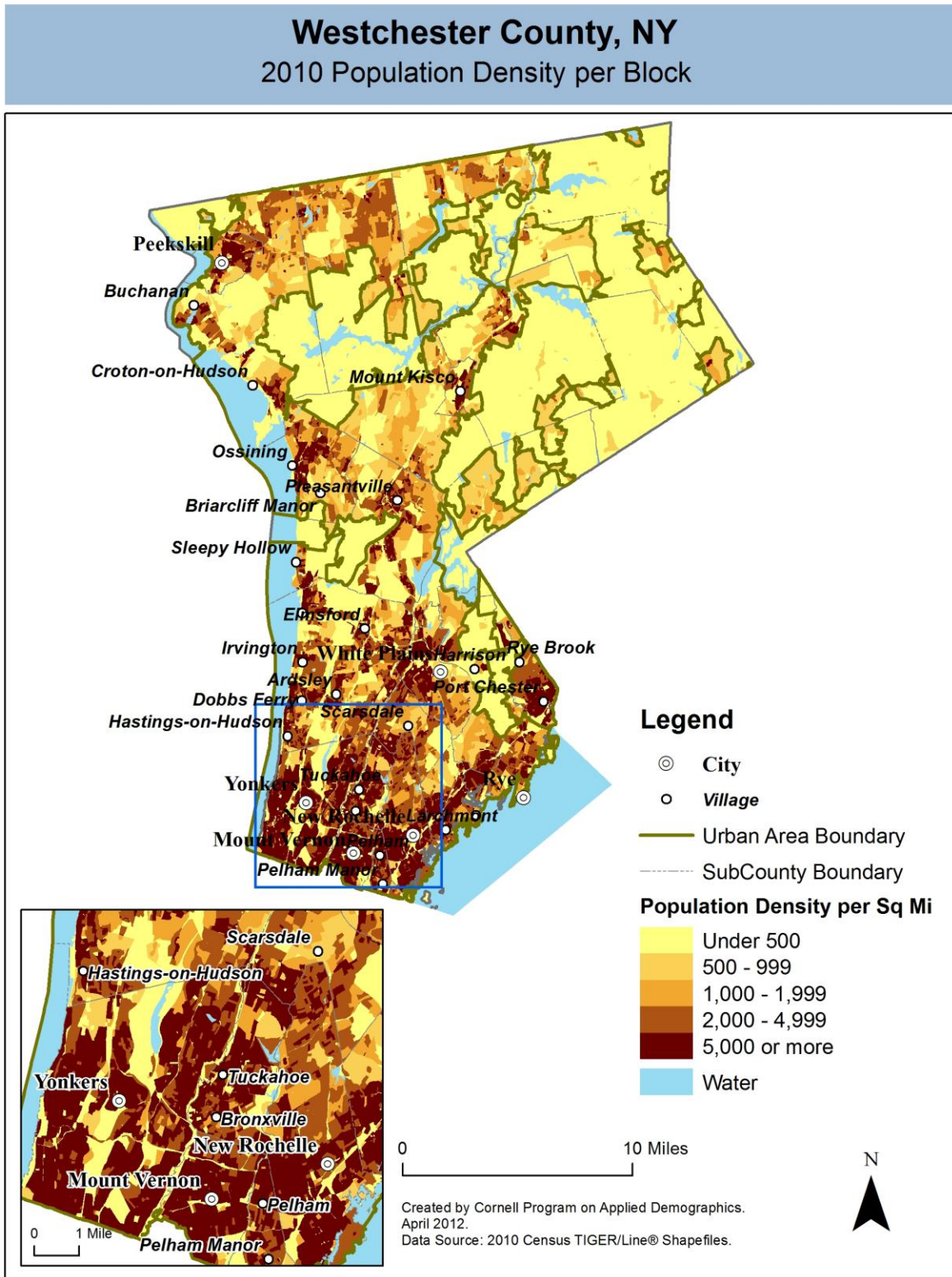


Westchester County, NY

Overlap with School and Political Districts



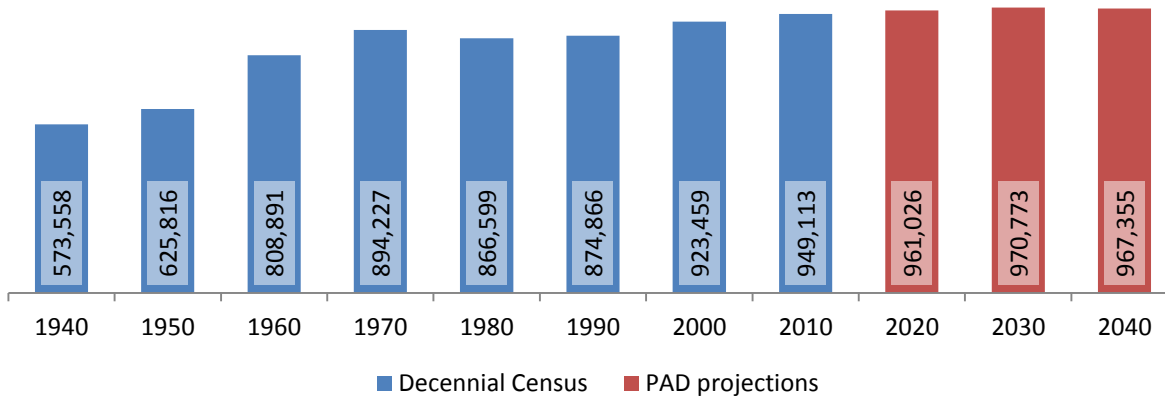
2 Population density and Urban Areas Map



3 Total Population

3.1 Historic and projected

Total population, Westchester County, 1940-2040



Source: 1940-2010 Decennial Census and projections by Cornell Program on Applied Demographics

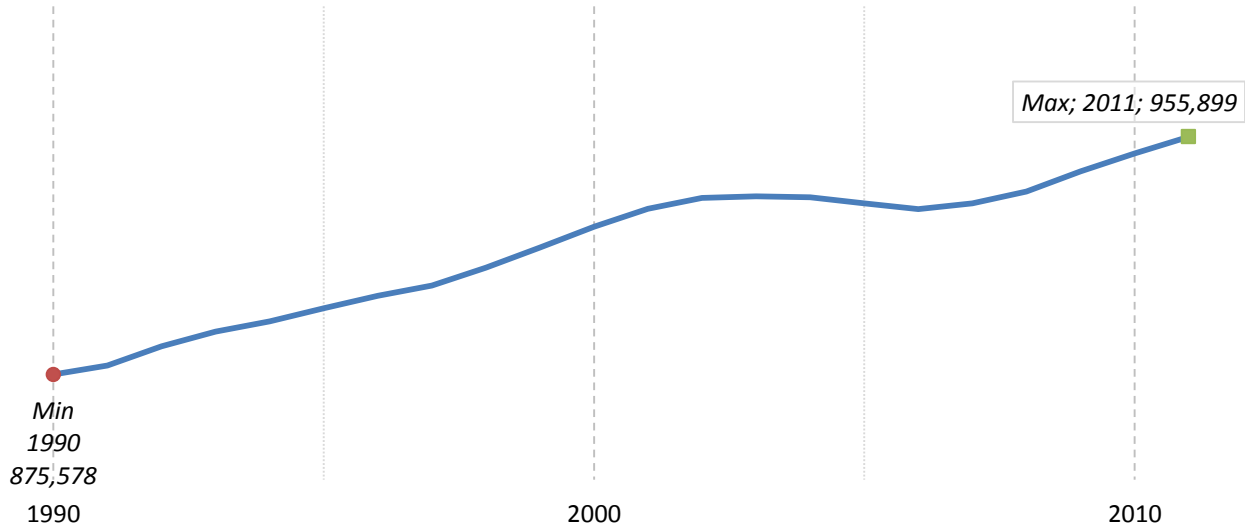
3.2 Change since previous Census

	Total population	Change	
		Number	Percent
Decennial Census	1940	573,558	
	1950	625,816	52,258 9.1%
	1960	808,891	183,075 29.3%
	1970	894,227	85,336 10.5%
	1980	866,599	-27,628 -3.1%
	1990	874,866	8,267 1.0%
	2000	923,459	48,593 5.6%
	2010	949,113	25,654 2.8%
PAD projections	2020	961,026	11,913 1.3%
	2030	970,773	9,747 1.0%
	2040	967,355	-3,418 -0.4%

Source: 1940-2010 Decennial Census and projections by Cornell Program on Applied Demographics

3.3 Annual population estimates

**Annual population estimates
Westchester County, 1990-2011**



Source: U.S. Census Bureau population estimates (1990-1999 and 2000-2009 intercensal and vintage 2011 postcensal)

3.4 Percentage sub county change 2000-2010

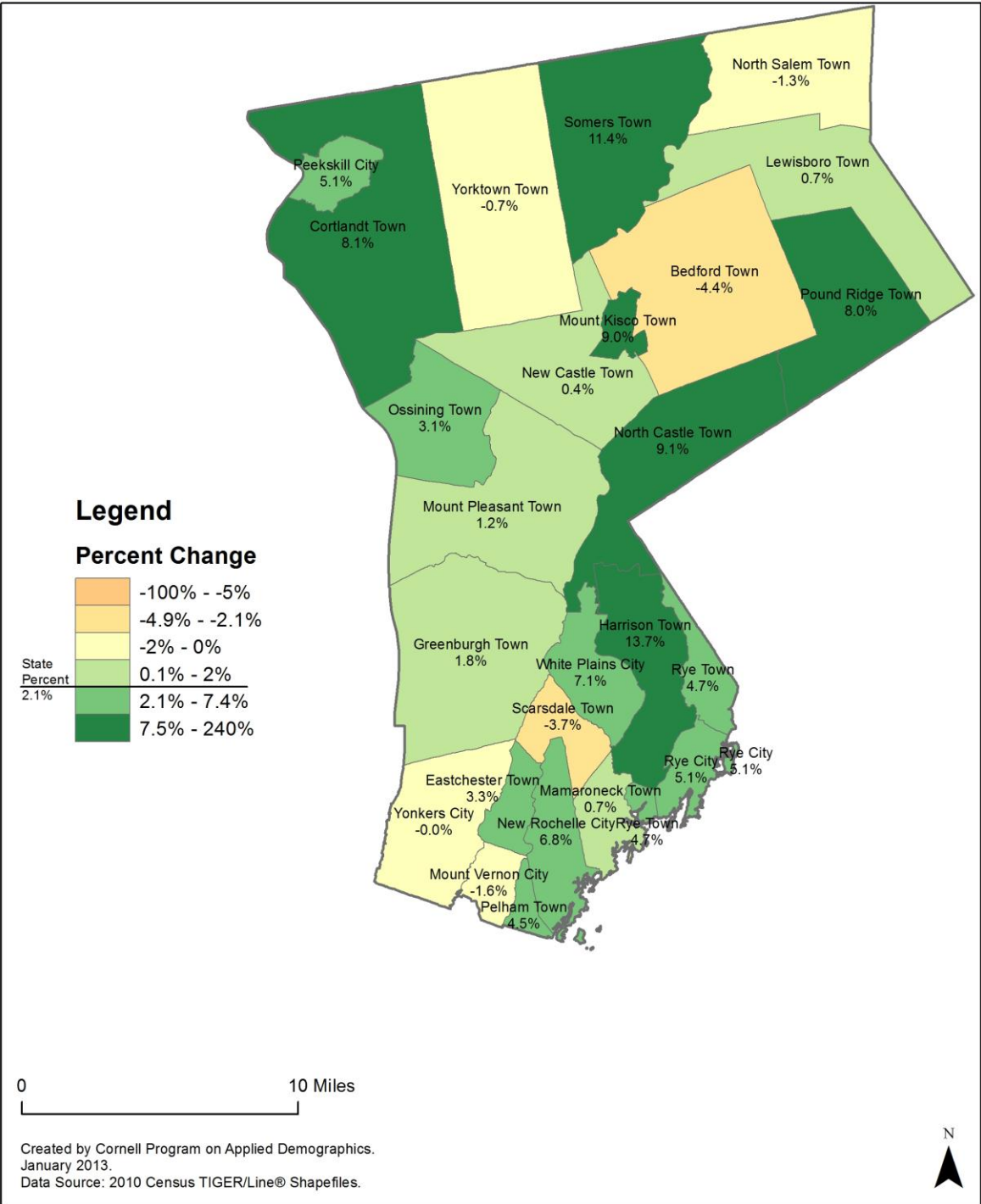
	Total Population		Difference	
	2000	2010	Count	%
New York State	18,976,821 *	19,378,102	401,281	2.1%
Westchester County	923,459	949,113	25,654	2.8%
Cities				
Mount Vernon	68,381	67,292	-1,089	-1.6%
New Rochelle	72,182	77,062	4,880	6.8%
Peekskill	22,441	23,583	1,142	5.1%
Rye	14,955	15,720	765	5.1%
White Plains	53,077	56,853	3,776	7.1%
Yonkers	196,019 *	195,976	-43	0.0%
Towns				
Bedford	18,133	17,335	-798	-4.4%
Cortlandt	38,467	41,592	3,125	8.1%
Eastchester	31,318	32,363	1,045	3.3%
Greenburgh	86,831 *	88,400	1,569	1.8%
Harrison	24,154	27,472	3,318	13.7%
Lewisboro	12,324	12,411	87	0.7%
Mamaroneck	28,967	29,156	189	0.7%
Mount Kisco	9,983	10,877	894	9.0%
Mount Pleasant	43,221	43,724	503	1.2%
New Castle	17,491	17,569	78	0.4%
North Castle	10,849	11,841	992	9.1%
North Salem	5,173	5,104	-69	-1.3%
Ossining	36,534	37,674	1,140	3.1%
Pelham	11,866	12,396	530	4.5%
Pound Ridge	4,726	5,104	378	8.0%
Rye	43,880	45,928	2,048	4.7%
Scarsdale	17,823	17,166	-657	-3.7%
Somers	18,346	20,434	2,088	11.4%
Yor	36,318	36,081	-237	-0.7%

* Original counts revised through Count Question Resolution Program (CQR)

Source: U.S. Census Bureau intercensal population estimates 2000-2010

Westchester County, NY

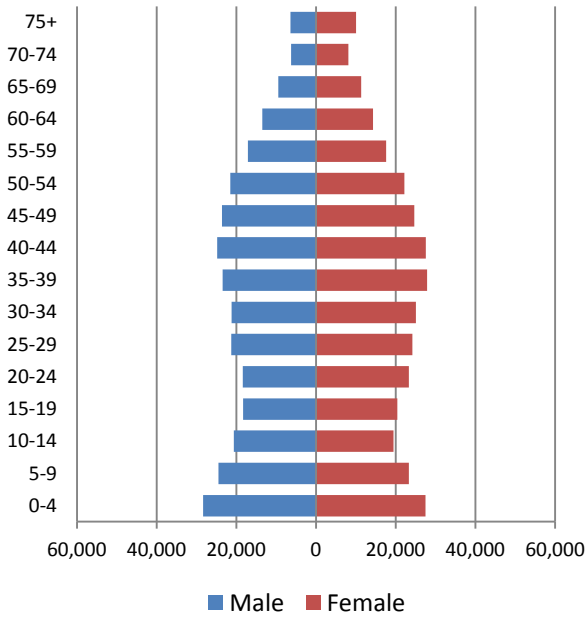
County Subdivision, Percent Change in Population 2000-2010



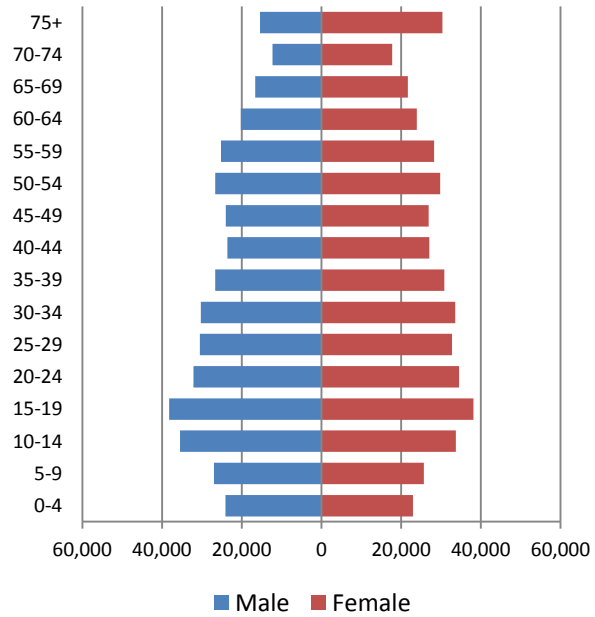
4 Population by age

4.1 Historic and projected population pyramids

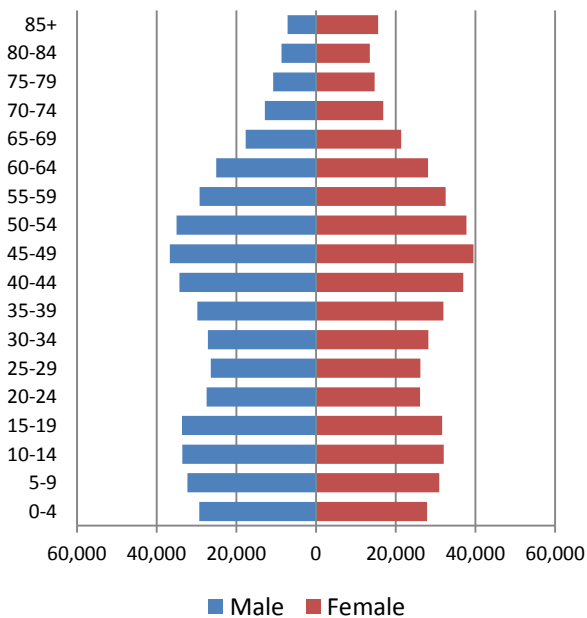
**1950 Population Pyramid,
Westchester County**



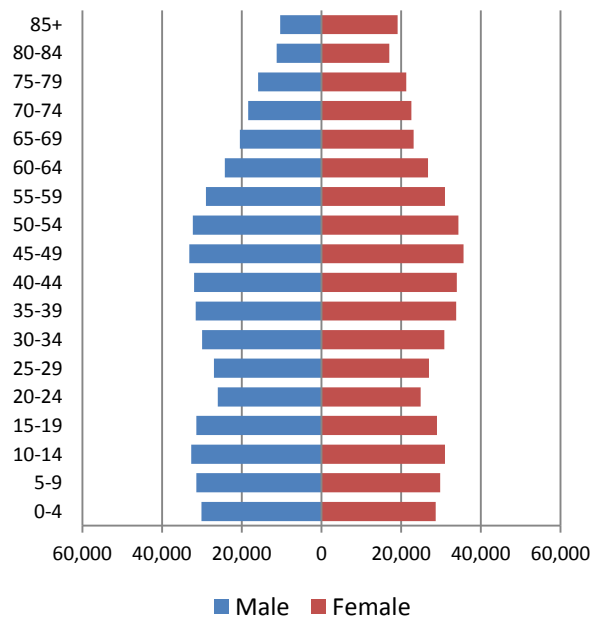
**1980 Population Pyramid,
Westchester County**



**2010 Population Pyramid,
Westchester County**

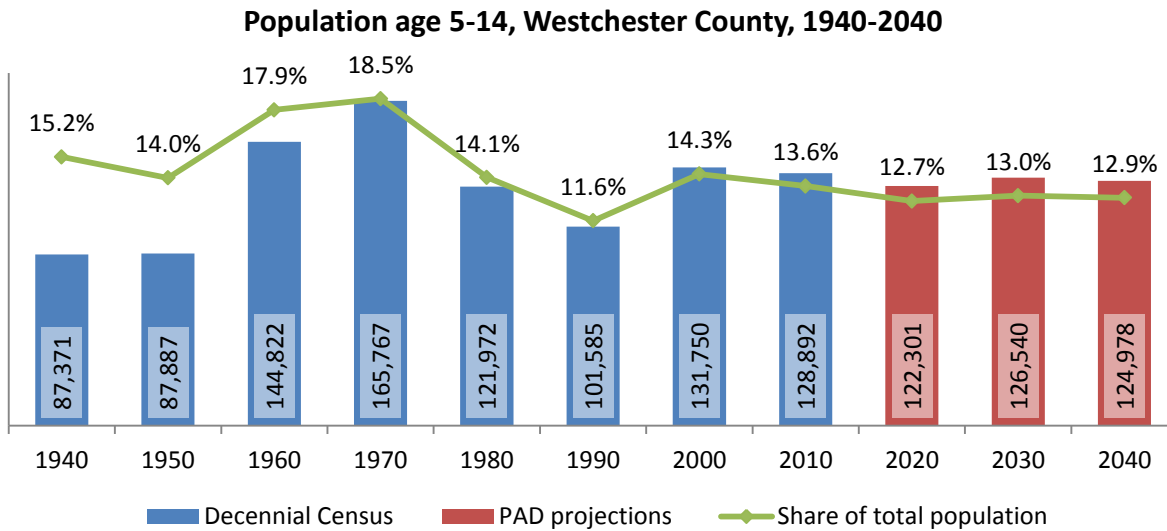


**2040 Population Pyramid,
Westchester County**

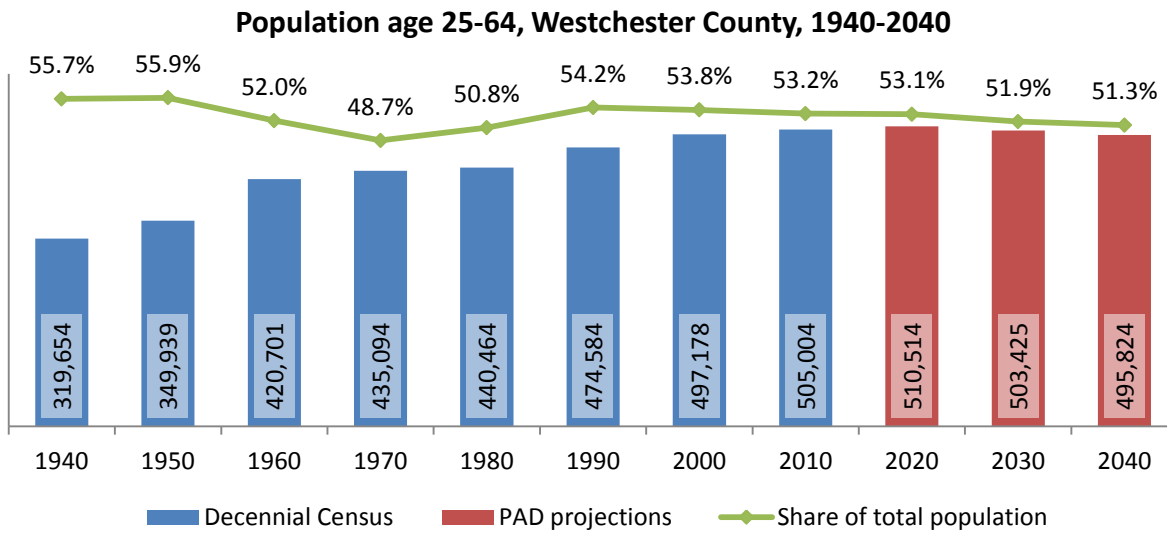


Source: 1950, 1980, 2010 Decennial Census and projections by Cornell Program on Applied Demographics

4.2 Selected age groups

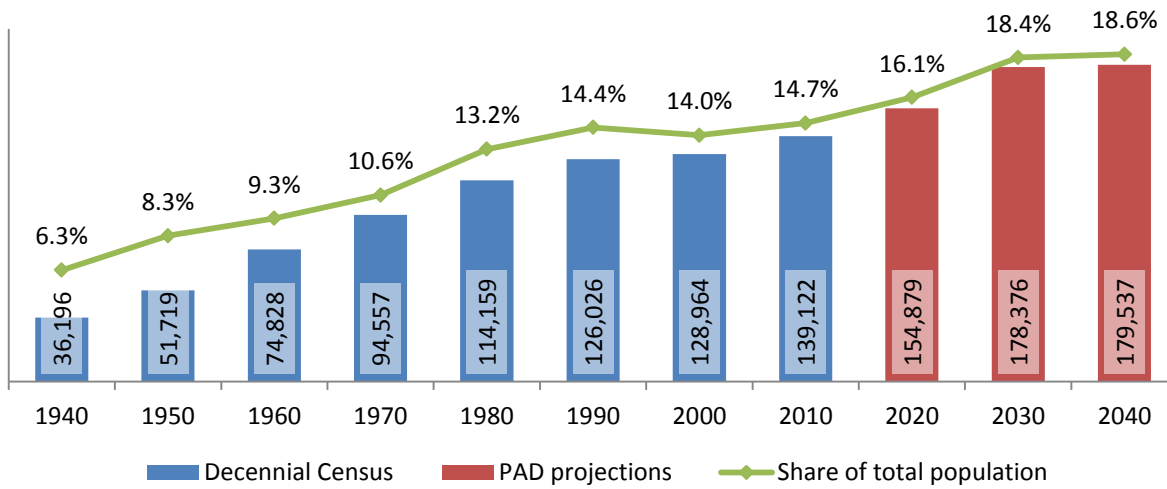


Source: 1940-2010 Decennial Census and projections by Cornell Program on Applied Demographics



Source: 1940-2010 Decennial Census and projections by Cornell Program on Applied Demographics

Population age 65 and over, Westchester County, 1940-2040



Source: 1940-2010 Decennial Census and projections by Cornell Program on Applied Demographics

4.3 Median age: comparison between areas

	Median Age
New York State	38.0
Westchester County	40.0

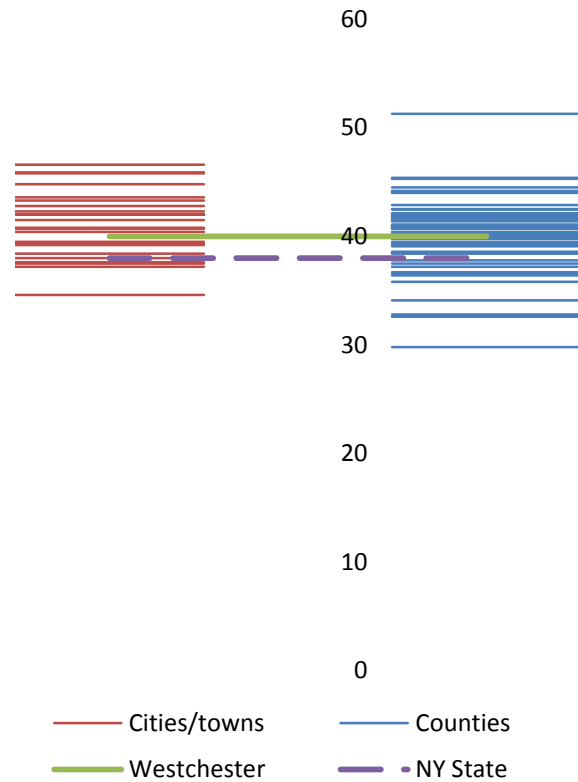
Cities

Mount Vernon city	38.4
New Rochelle city	38.4
Peekskill city	37.5
Rye city	40.8
White Plains city	39.2
Yonkers city	37.6

Towns

Bedford town	41.5
Cortlandt town	43.3
Eastchester town	42.0
Greenburgh town	42.8
Harrison town	34.6
Lewisboro town	44.8
Mamaroneck town	40.7
Mount Kisco town	38.0
Mount Pleasant town	39.5
New Castle town	42.3
North Castle town	42.0
North Salem town	45.8
Ossining town	39.3
Pelham town	40.4
Pound Ridge town	45.9
Rye town	37.2
Scarsdale town	42.0
Somers town	46.6
Yorktown town	43.6

Median age comparison within county (left) and between counties (right)



Source: 2010 Decennial Census

5 Race

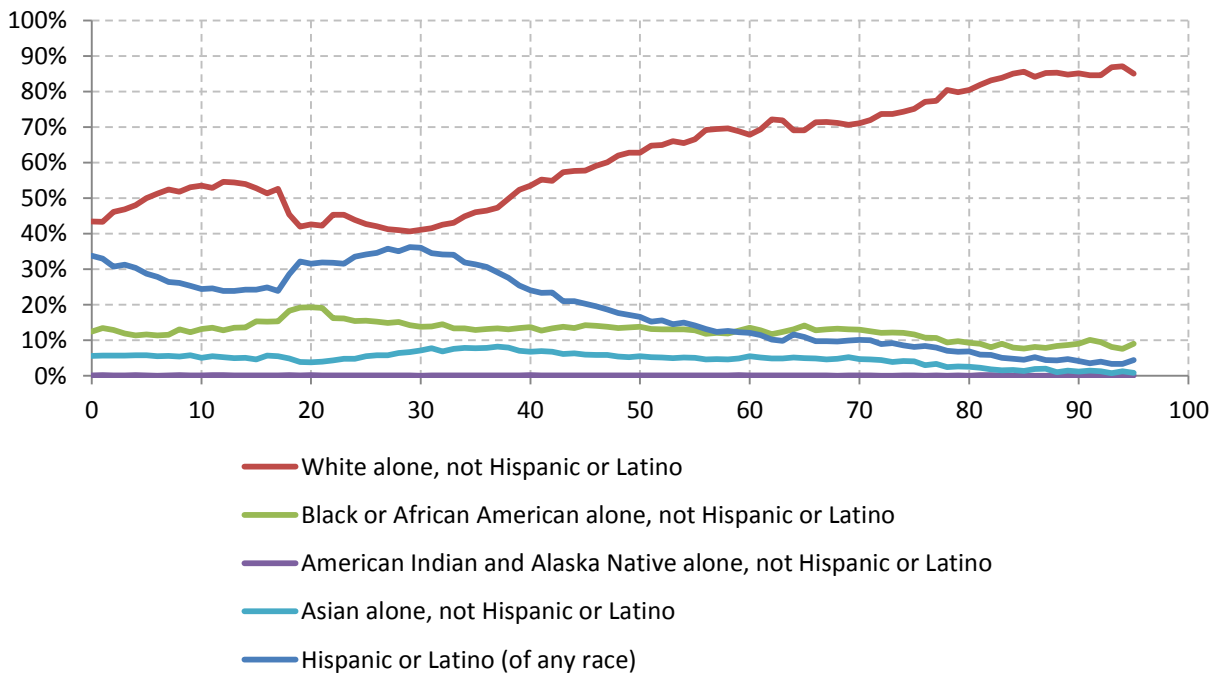
5.1 Total and household population by race

	Total		In households		In Group Quarters
	Count	Percentage	Count	Percentage	Count
Total population	949,113	100%	920,409	100%	28,704
Not Hispanic or Latino					
One race					
White	544,563	57.4%	529,241	57.5%	15,322
Black or African American	126,585	13.3%	119,225	13.0%	7,360
American Indian and Alaska Native	1,141	0.1%	1,103	0.1%	38
Asian	51,123	5.4%	50,076	5.4%	1,047
Native Hawaiian and Other Pacific Islander	218	0.0%	197	0.0%	21
Some other race	3,757	0.4%	3,663	0.4%	94
Two or more races	14,694	1.5%	14,282	1.6%	412
Hispanic or Latino (of any race)	207,032	21.8%	202,622	22.0%	4,410

Source: 2010 Decennial Census

5.2 Race composition by age

Race composition by age, Westchester County



Source: 2010 Decennial Census

6 Housing units

6.1 Characteristics

HOUSING OCCUPANCY	COUNT		PERCENTAGE	
	Estimate	Margin of error	Estimate	Margin of error
Total housing units	369,753	± 933	100.0%	
Occupied housing units	345,908	± 1,649	93.6%	± 0.4
Vacant housing units	23,845	± 1,326	6.4%	± 0.4
YEAR STRUCTURE BUILT				
Total housing units	369,753	± 933	100.0%	
Built 2005 or later	6,245	± 478	1.7%	± 0.1
Built 2000 to 2004	11,086	± 735	3.0%	± 0.2
Built 1990 to 1999	17,494	± 827	4.7%	± 0.2
Built 1980 to 1989	28,127	± 893	7.6%	± 0.2
Built 1970 to 1979	32,979	± 1,251	8.9%	± 0.3
Built 1960 to 1969	50,841	± 1,474	13.7%	± 0.4
Built 1950 to 1959	72,952	± 1,506	19.7%	± 0.4
Built 1940 to 1949	34,846	± 1,168	9.4%	± 0.3
Built 1939 or earlier	115,183	± 1,646	31.2%	± 0.5
HOUSING TENURE				
Occupied housing units	345,908	± 1,649	100.0%	
Owner-occupied	214,765	± 1,692	62.1%	± 0.4
Renter-occupied	131,143	± 1,718	37.9%	± 0.4
HOUSE HEATING FUEL				
Occupied housing units	345,908	± 1,649	100.0%	
Utility gas	150,961	± 2,088	43.6%	± 0.5
Bottled, tank, or LP gas	4,900	± 443	1.4%	± 0.1
Electricity	27,993	± 974	8.1%	± 0.3
Fuel oil, kerosene, etc.	158,239	± 2,015	45.7%	± 0.6
Coal or coke	264	± 112	0.1%	± 0.1
Wood	1,097	± 212	0.3%	± 0.1
Solar energy	30	± 19	0.0%	± 0.1
Other fuel	1,716	± 269	0.5%	± 0.1
No fuel used	708	± 141	0.2%	± 0.1
VALUE				
Owner-occupied units	214,765	± 1,692	100.0%	
Less than \$50,000	1,862	± 263	0.9%	± 0.1
\$50,000 to \$99,999	4,071	± 480	1.9%	± 0.2
\$100,000 to \$149,999	6,682	± 537	3.1%	± 0.3
\$150,000 to \$199,999	8,828	± 541	4.1%	± 0.2
\$200,000 to \$299,999	18,312	± 788	8.5%	± 0.4
\$300,000 to \$499,999	55,741	± 1,377	26.0%	± 0.6
\$500,000 to \$999,999	90,553	± 1,626	42.2%	± 0.7
\$1,000,000 or more	28,716	± 865	13.4%	± 0.4
Median (dollars)	547,000	± 4,957		

Source: 2007-2011 American Community Survey

6.2 Historical data on number of housing units and occupancy status

Year	Number of Housing Units	Change since previous Census	Occupied	Occupancy rate	Vacant
1970	291,459		282,629	97.0%	8,830
1980	316,658	8.6%	307,450	97.1%	9,208
1990	336,727	6.3%	320,030	95.0%	16,697
2000	349,445	3.8%	337,142	96.5%	12,303
2010	370,821	6.1%	347,232	93.6%	23,589

Source: 1970-2010 Decennial Census

7 Education

7.1 Enrollment by level of school

	Estimate	Margin of error
Total enrolled in school	249,870	± 2,274
Nursery school, preschool	17,436	± 809
Kindergarten	12,063	± 745
Elementary: grade 1 to grade 4	50,931	± 1,181
Elementary: grade 5 to grade 8	53,102	± 1,100
High school: grade 9 to grade 12	56,532	± 986
College, undergraduate	45,600	± 1,595
Graduate, professional school	14,206	± 975

Source: 2007-2011 American Community Survey

7.2 Enrollment by age

	Estimate	Margin of error
3 and 4 years	67.5%	± 2.2
5 to 9 years	98.1%	± 0.4
10 to 14 years	98.9%	± 0.3
15 to 17 years	96.8%	± 0.7
18 and 19 years	79.3%	± 2.1
20 to 24 years	44.3%	± 2.0
25 to 34 years	11.8%	± 0.7
35 years and over	2.3%	± 0.2

Source: 2007-2011 American Community Survey

7.3 Percentage age 18-24 enrolled in college

	Estimate	Margin of error
Population 18 to 24 years	76,213	± 101
Enrolled in college or graduate school	47.1%	± 1.7
Males 18 to 24 years	38,881	± 80
Enrolled in college or graduate school	41.9%	± 2.2
Females 18 to 24 years	37,332	± 58
Enrolled in college or graduate school	52.4%	± 2.1

Source: 2007-2011 American Community Survey

7.4 Educational attainment

	COUNT		PERCENTAGE	
	Estimate	Margin of error	Estimate	Margin of error
Population 25 years and over	640,046	± 101	100%	
EDUCATIONAL ATTAINMENT				
Less than 9th grade	43,213	± 2,014	6.8%	± 0.3
9th to 12th grade, no diploma	38,007	± 1,487	5.9%	± 0.2
High school graduate (includes equivalency)	143,631	± 2,376	22.4%	± 0.4
Some college, no degree	91,218	± 1,826	14.3%	± 0.3
Associate's degree	39,017	± 1,285	6.1%	± 0.2
Bachelor's degree	144,100	± 2,284	22.5%	± 0.4
Graduate or professional degree	140,860	± 2,160	22.0%	± 0.3
Percent high school graduate or higher			87.3%	± 0.4
Percent bachelor's degree or higher			44.5%	± 0.4

Source: 2007-2011 American Community Survey

8 Language spoken at home

	COUNT		PERCENTAGE		SPEAK ENGLISH LESS THAN "VERY WELL"	
	Estimate	Margin of error	Estimate	Margin of error	Estimate	Margin of error
Population 5 years and over	886,790	± *****	100%			
LANGUAGE SPOKEN AT HOME						
English only	606,985	± 3,785	68.4%	± 0.4		
Language other than English	279,805	± 3,784	31.6%	± 0.4	111,457	± 2,638
Spanish	160,456	± 1,991	18.1%	± 0.2	76,474	± 2,055
Other Indo-European languages	81,057	± 3,003	9.1%	± 0.3	22,409	± 1,314
Asian and Pacific Islander languages	26,739	± 1,043	3.0%	± 0.1	9,957	± 829
Other languages	11,553	± 1,253	1.3%	± 0.1	2,617	± 486

Source: 2007-2011 American Community Survey

9 Labor Force Characteristics

9.1 Labor force, employment and unemployment

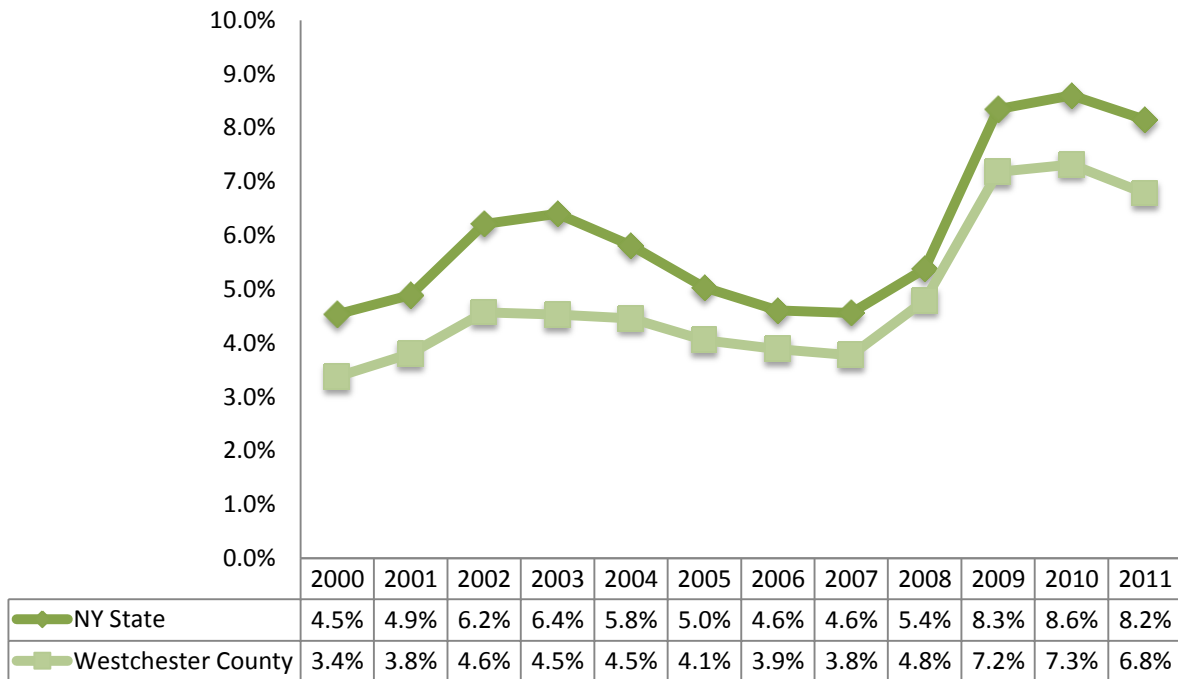
	TOTAL		IN LABOR FORCE		EMPLOYED		UNEMPLOYMENT RATE	
	Estimate	Margin of error	Estimate	Margin of error	Estimate	Margin of error	Estimate	Margin of error
Population 16 years and over	743,829	± 645	65.8%	± 0.4	61.0%	± 0.4	7.2%	± 0.3
AGE								
16 to 19 years	51,320	± 655	32.0%	± 1.6	23.3%	± 1.4	27.0%	± 2.4
20 to 24 years	52,463	± 66	70.0%	± 1.6	59.1%	± 1.6	15.6%	± 1.5
25 to 44 years	243,021	± 120	83.1%	± 0.7	77.8%	± 0.7	6.3%	± 0.4
45 to 54 years	147,260	± 66	83.9%	± 0.6	79.5%	± 0.6	5.1%	± 0.4
55 to 64 years	112,491	± ****	72.5%	± 0.9	68.5%	± 0.9	5.5%	± 0.5
65 to 74 years	67,180	± 42	34.7%	± 1.2	32.9%	± 1.3	5.3%	± 0.9
75 years and over	70,094	± 42	8.5%	± 0.6	8.2%	± 0.6	3.7%	± 1.5
RACE AND HISPANIC OR LATINO ORIGIN								
One race	729,513	± 1,383	65.7%	± 0.4	61.0%	± 0.4	7.2%	± 0.3
White	510,920	± 2,365	64.1%	± 0.4	60.2%	± 0.4	6.1%	± 0.3
Black or African American	106,715	± 1,151	65.7%	± 1.3	58.1%	± 1.4	11.5%	± 1.0
American Indian and Alaska Native	1,100	± 194	67.2%	± 10.4	62.0%	± 10.9	7.7%	± 6.3
Asian	40,538	± 481	69.3%	± 1.2	65.4%	± 1.2	5.5%	± 0.8
Pacific Islander	135	± 95	47.4%	± 33.3	47.4%	± 33.3	0.0%	± 37.0
Some other race	70,105	± 2,858	75.7%	± 1.3	68.8%	± 1.5	9.0%	± 1.3
Two or more races	14,316	± 1,173	67.8%	± 2.7	62.9%	± 2.9	7.1%	± 1.9
Hispanic or Latino origin (of any race)	147,306	± 333	72.3%	± 0.9	66.3%	± 1.0	8.3%	± 0.7
White alone, not Hispanic or Latino	445,185	± 540	63.3%	± 0.4	59.6%	± 0.4	5.8%	± 0.3
SEX								
Population 20 to 64 years	555,235	± 62	79.9%	± 0.5	74.6%	± 0.5	6.6%	± 0.3
Male	269,196	± 54	86.8%	± 0.6	81.0%	± 0.6	6.6%	± 0.4
Female	286,039	± 28	73.4%	± 0.6	68.6%	± 0.7	6.6%	± 0.4
With own children under 6 years	47,688	± 1,147	61.9%	± 1.7	57.2%	± 1.6	7.5%	± 1.2
EDUCATIONAL ATTAINMENT								
Population 25 to 64 years	502,772	± 102	80.9%	± 0.5	76.2%	± 0.5	5.8%	± 0.3
Less than high school graduate	54,818	± 2,402	69.5%	± 2.3	64.0%	± 2.3	7.9%	± 1.0
High school graduate (includes equivalency)	100,344	± 2,211	76.3%	± 1.0	70.9%	± 1.1	7.0%	± 0.6
Some college or associate's degree	107,672	± 1,957	82.1%	± 1.0	75.9%	± 1.2	7.5%	± 0.6
Bachelor's degree or higher	239,938	± 2,620	85.0%	± 0.5	81.4%	± 0.6	4.2%	± 0.3

Table formula: **LABOR FORCE** = # EMPLOYED + # UNEMPLOYED
 % IN LABOR FORCE = LABOR FORCE / TOTAL * 100%
 % EMPLOYED = # EMPLOYED / TOTAL * 100%
 UNEMPLOYMENT RATE = # UNEMPLOYED / LABOR FORCE * 100%

Source: 2007-2011 American Community Survey

9.2 Annual unemployment rate

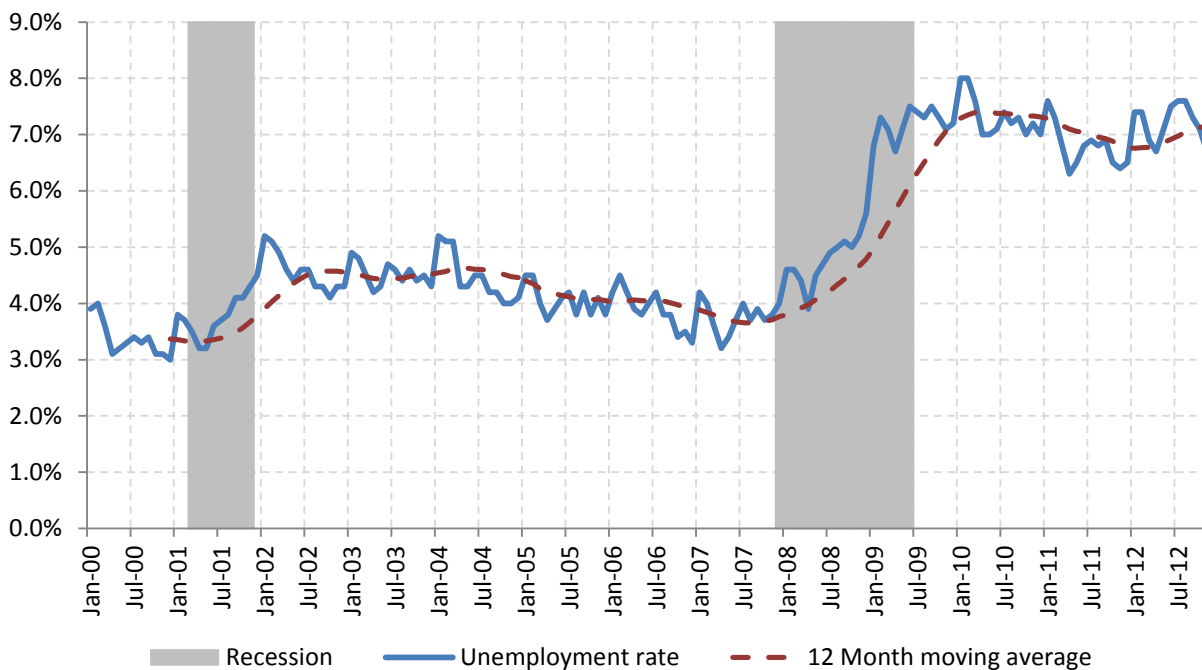
Annual unemployment rate, Westchester County and New York State



Source: Bureau Labor Statistics (BLS)

9.3 Monthly unemployment rate

Monthly unemployment rate, Westchester County



Source: Bureau Labor Statistics (BLS)

9.4 Employment and number of jobs

**Labor force, number of employed workers and number of jobs
Westchester County**



Source: Bureau Labor Statistics (BLS) and NY Department of Labor - Quarterly Census of Employment and Wages (QCEW) – annual averages

9.5 Class of worker

					Median earnings (\$)		
		Total	%Male	%Female	Total	Male	Female
Civilian employed population 16 years and over	Estimate	454,005	52.5%	47.5%	47,365	55,508	40,186
	Margin of error	± 2,821	± 0.3	± 0.3	± 783	± 881	± 646
Private for-profit wage and salary workers:	Estimate	308,175	56.6%	43.4%	45,111	53,646	36,930
	Margin of error	± 3,479	± 0.5	± 0.5	± 883	± 1,159	± 769
Employee of private company workers	Estimate	284,447	55.3%	44.7%	43,402	51,689	36,514
	Margin of error	± 3,648	± 0.5	± 0.5	± 837	± 819	± 770
Self-employed in own incorporated business workers	Estimate	23,728	73.1%	26.9%	70,251	82,395	50,201
	Margin of error	± 953	± 1.9	± 1.9	± 4,337	± 4,402	± 5,817
Private not-for-profit wage and salary workers	Estimate	45,841	36.6%	63.4%	49,294	59,515	44,876
	Margin of error	± 1,756	± 1.3	± 1.3	± 2,069	± 4,401	± 1,490
Local government workers	Estimate	50,689	40.6%	59.4%	58,858	66,166	51,907
	Margin of error	± 1,715	± 1.4	± 1.4	± 2,530	± 1,473	± 1,721
State government workers	Estimate	10,736	42.4%	57.6%	61,938	73,043	54,689
	Margin of error	± 713	± 3.6	± 3.6	± 2,703	± 6,818	± 4,694
Federal government workers	Estimate	6,945	62.0%	38.0%	56,888	59,247	53,697
	Margin of error	± 577	± 4.2	± 4.2	± 1,894	± 2,936	± 2,806
Self-employed in own not incorporated business workers and unpaid family workers	Estimate	31,619	56.2%	43.8%	30,691	42,617	20,159
	Margin of error	± 1,250	± 1.9	± 1.9	± 1,578	± 3,816	± 1,550

Source: 2007-2011 American Community Survey

9.6 Jobs by industry sector

	Westchester County			NY state
	2011	Change since 2006	% of total	% of total
All NAICS Sectors	386,881	-2.3%	100.0%	100.0%
Agriculture, Forestry, Fishing and Hunting	364	-16.7%	0.1%	0.3%
Mining, Quarrying, and Oil and Gas Extraction	4	-63.6%	0.0%	0.1%
Utilities	3,368	-6.2%	0.9%	0.5%
Construction	20,974	-15.3%	5.4%	3.5%
Manufacturing	13,641	-21.7%	3.5%	5.5%
Wholesale Trade	15,124	-16.3%	3.9%	4.0%
Retail Trade	47,292	-0.3%	12.2%	10.5%
Transportation and Warehousing	11,119	-5.9%	2.9%	3.4%
Information	9,364	-24.0%	2.4%	3.3%
Finance and Insurance	17,345	-16.9%	4.5%	6.0%
Real Estate and Rental and Leasing	9,338	-7.4%	2.4%	2.3%
Professional, Scientific, and Technical Services	24,533	-0.9%	6.3%	6.9%
Management of Companies and Enterprises	9,609	0.3%	2.5%	1.6%
Administrative and Support and Waste Management and Remediation Services	20,620	-1.8%	5.3%	5.2%
Educational Services	46,273	5.8%	12.0%	10.8%
Health Care and Social Assistance	65,173	7.8%	16.8%	17.0%
Arts, Entertainment, and Recreation	8,762	5.6%	2.3%	1.9%
Accommodation and Food Services	23,640	17.4%	6.1%	7.3%
Other Services (except Public Administration)	19,325	4.6%	5.0%	3.9%
Public Administration	21,013	-7.2%	5.4%	5.8%

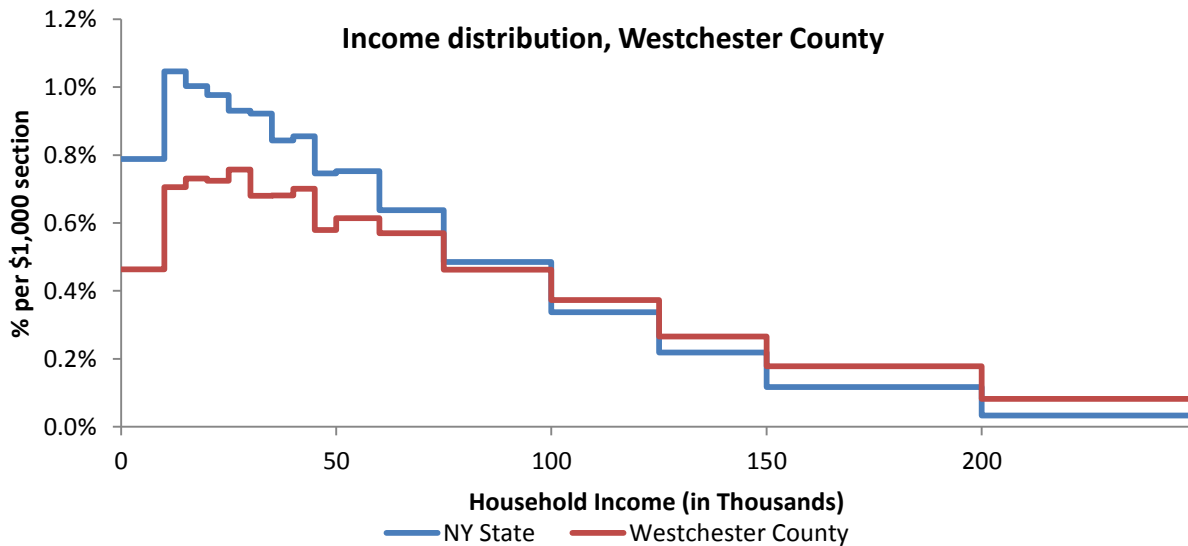
Source: U.S. Census Bureau - Public Use Quarterly Workforce Indicators (QWI) – annual averages

10 Household Income

10.1 Distribution

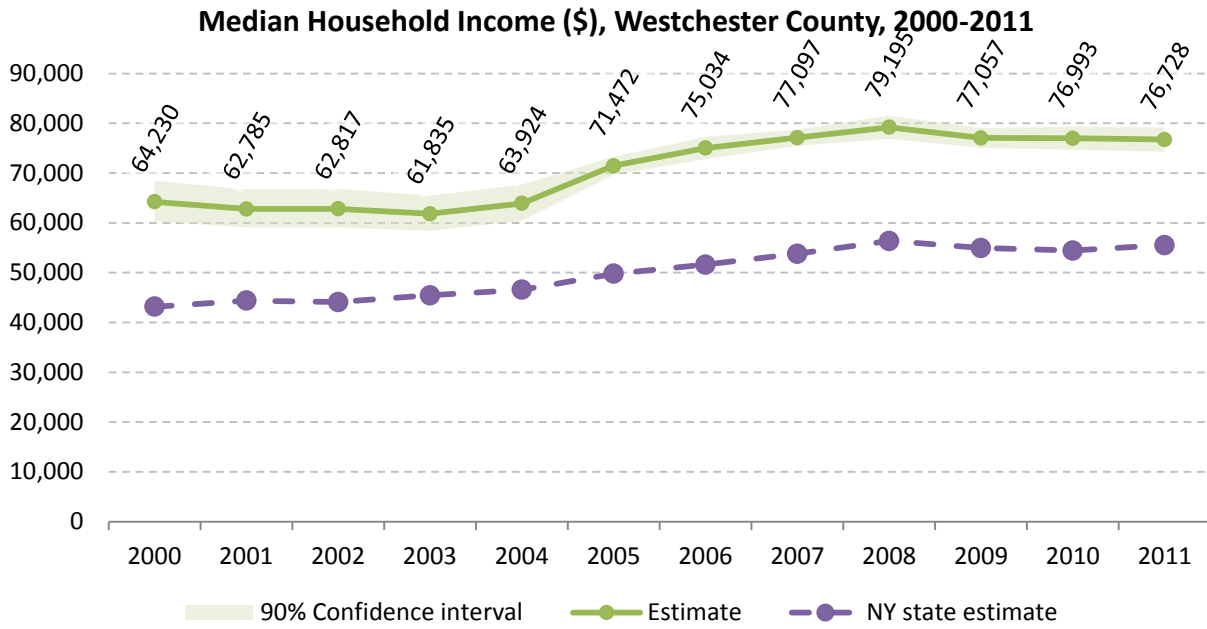
	Estimate	Margin of error	Interval width (in \$1,000)	Est. per \$1,000 section
Total:	345,908	± 1,649		
Less than \$10,000	16,042	± 872	10	1,604.2
\$10,000 to \$14,999	12,199	± 785	5	2,439.8
\$15,000 to \$19,999	12,633	± 710	5	2,526.6
\$20,000 to \$24,999	12,524	± 717	5	2,504.8
\$25,000 to \$29,999	13,094	± 718	5	2,618.8
\$30,000 to \$34,999	11,767	± 801	5	2,353.4
\$35,000 to \$39,999	11,775	± 746	5	2,355.0
\$40,000 to \$44,999	12,127	± 857	5	2,425.4
\$45,000 to \$49,999	10,025	± 719	5	2,005.0
\$50,000 to \$59,999	21,227	± 947	10	2,122.7
\$60,000 to \$74,999	29,578	± 1,201	15	1,971.9
\$75,000 to \$99,999	40,032	± 1,344	25	1,601.3
\$100,000 to \$124,999	32,223	± 1,185	25	1,288.9
\$125,000 to \$149,999	22,953	± 1,014	25	918.1
\$150,000 to \$199,999	30,857	± 958	50	617.1
\$200,000 or more	56,852	± 1,402	-	-

Source: 2007-2011 American Community Survey



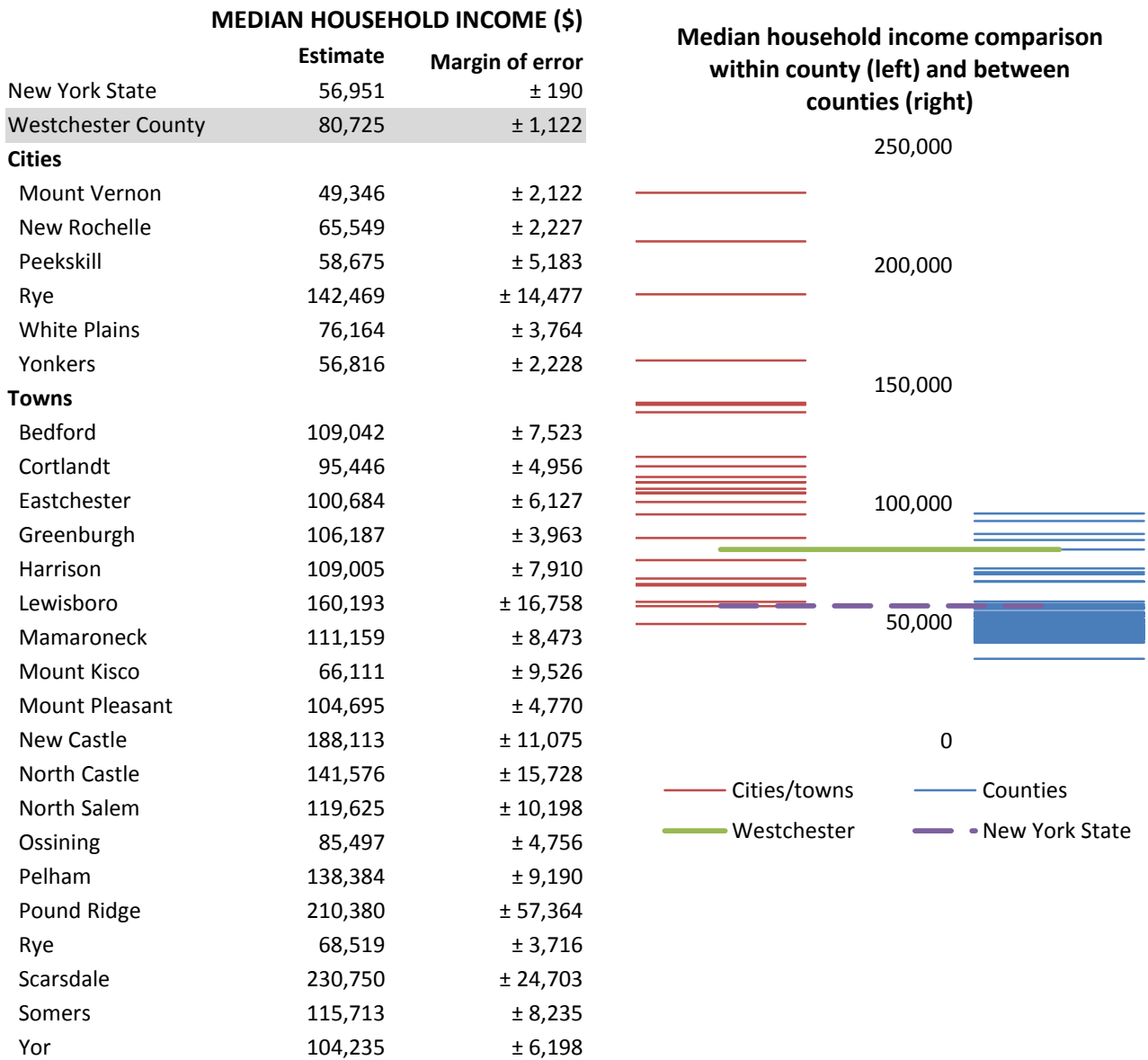
Source: 2007-2011 American Community Survey

10.2 Median household income: Trends over time



Source: Small Area Income and Poverty Estimates (SAIPE)

10.3 Median household income: Comparison between areas



Source: 2007-2011 American Community Survey

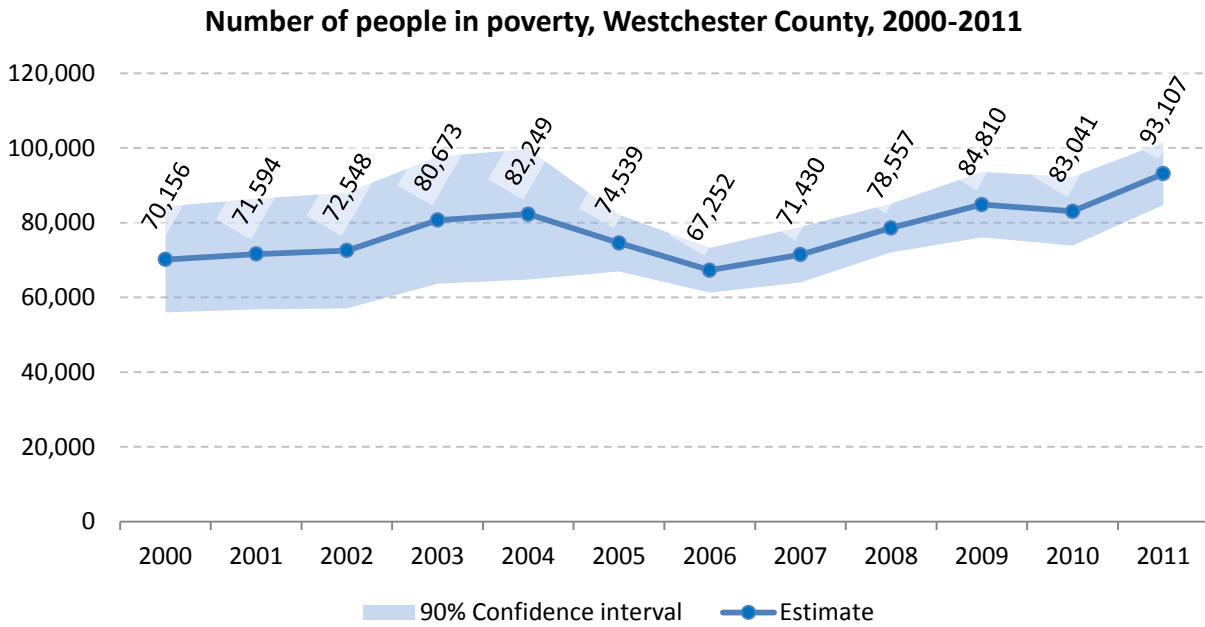
11 Poverty

11.1 Poverty characteristics

	TOTAL		BELOW POVERTY LEVEL		PERCENT BELOW POVERTY LEVEL	
	Estimate	Margin of error	Estimate	Margin of error	Estimate	Margin of error
Population for whom poverty status is determined	922,297	± 2,283	82,019	± 3,269	8.9%	± 0.4
AGE						
Under 18 years	224,716	± 552	25,823	± 1,624	11.5%	± 0.7
Related children under 18 years	224,210	± 577	25,346	± 1,600	11.3%	± 0.7
18 to 64 years	566,068	± 2,063	46,849	± 2,045	8.3%	± 0.4
65 years and over	131,513	± 514	9,347	± 805	7.1%	± 0.6
SEX						
Male	443,811	± 1,877	35,186	± 1,860	7.9%	± 0.4
Female	478,486	± 1,120	46,833	± 2,087	9.8%	± 0.4
RACE AND HISPANIC OR LATINO ORIGIN						
One race	897,918	± 2,472	79,182	± 3,252	8.8%	± 0.4
White	626,159	± 3,189	35,469	± 2,190	5.7%	± 0.3
Black or African American	128,866	± 1,989	20,160	± 1,519	15.6%	± 1.2
American Indian and Alaska Native	1,209	± 288	184	± 133	15.2%	± 10.0
Asian	50,429	± 762	3,342	± 748	6.6%	± 1.5
Hispanic or Latino origin (of any race)	195,948	± 655	37,413	± 2,683	19.1%	± 1.4
White alone, not Hispanic or Latino	538,186	± 1,146	21,554	± 1,344	4.0%	± 0.2
EDUCATIONAL ATTAINMENT						
Population 25 years and over	628,781	± 1,555	45,779	± 1,799	7.3%	± 0.3
Less than high school graduate	77,102	± 2,242	16,074	± 1,218	20.8%	± 1.4
High school graduate (includes equivalency)	139,670	± 2,413	14,229	± 893	10.2%	± 0.6
Some college, associate's degree	128,428	± 2,049	8,736	± 657	6.8%	± 0.5
Bachelor's degree or higher	283,581	± 2,716	6,740	± 658	2.4%	± 0.2
EMPLOYMENT STATUS						
Civilian labor force 16 years and over	486,090	± 3,077	25,102	± 1,630	5.2%	± 0.3
Employed	451,511	± 2,939	18,501	± 1,279	4.1%	± 0.3
Male	237,796	± 1,823	8,682	± 842	3.7%	± 0.4
Female	213,715	± 2,194	9,819	± 823	4.6%	± 0.4
Unemployed	34,579	± 1,347	6,601	± 659	19.1%	± 1.6
Male	18,569	± 955	3,137	± 391	16.9%	± 2.0
Female	16,010	± 853	3,464	± 480	21.6%	± 2.6
WORK EXPERIENCE IN THE PAST 12 MONTHS						
Population 16 years and over	724,468	± 2,352	59,011	± 2,237	8.1%	± 0.3
Worked full-time, year-round	320,270	± 2,686	5,102	± 638	1.6%	± 0.2
Worked part-time or part-year	174,828	± 2,734	18,157	± 1,211	10.4%	± 0.7
Did not work	229,370	± 2,694	35,752	± 1,565	15.6%	± 0.6

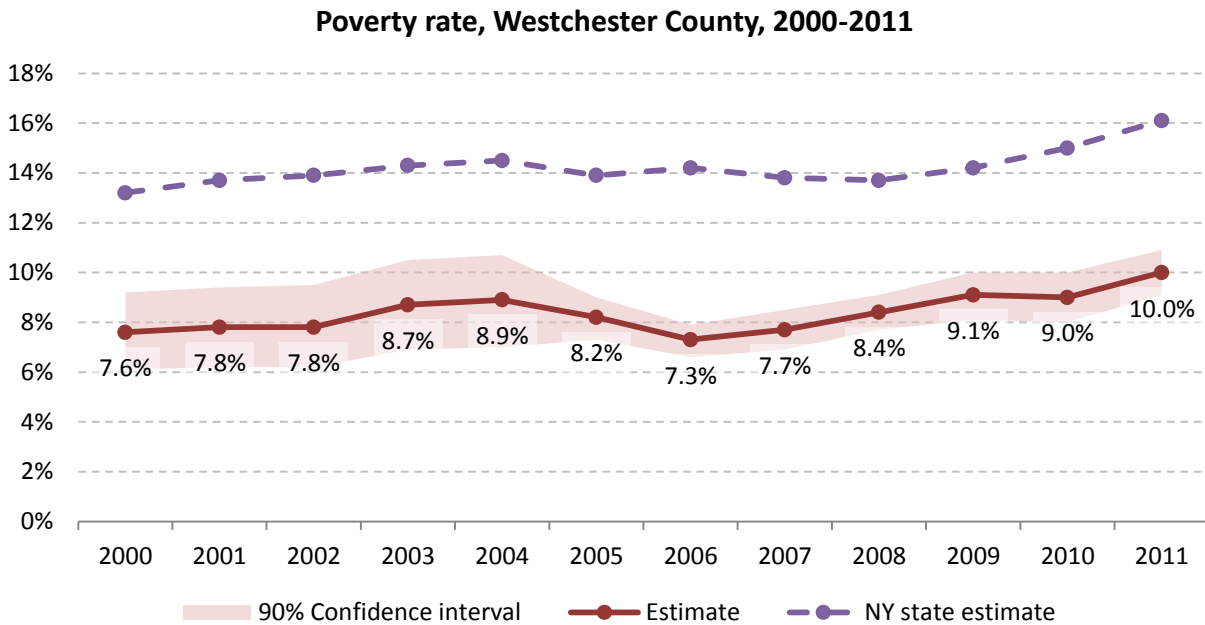
Source: 2007-2011 American Community Survey

11.2 Poverty: Trends over time: Count



Source: Small Area Income and Poverty Estimates (SAIPE)

11.3 Poverty: Trends over time: Rate



Source: Small Area Income and Poverty Estimates (SAIPE)

11.4 Poverty rate: comparison between areas

	Poverty Rate - All people	
	Estimate	Margin of error
New York State	14.5%	± 0.1
Westchester County	8.9%	± 0.4

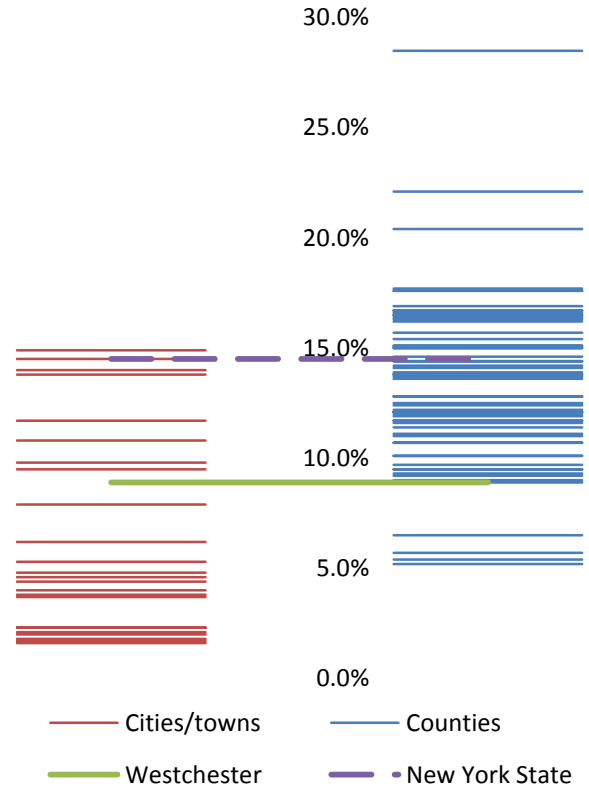
Cities

Mount Vernon	14.0%	± 1.7
New Rochelle	11.7%	± 1.5
Peekskill	14.5%	± 3.4
Rye	2.3%	± 1.1
White Plains	9.5%	± 1.3
Yonkers	14.9%	± 1.2

Towns

Bedford	7.9%	± 3.1
Cortlandt	4.6%	± 1.0
Eastchester	3.7%	± 1.1
Greenburgh	3.8%	± 0.8
Harrison	5.3%	± 1.4
Lewisboro	2.3%	± 1.3
Mamaroneck	4.8%	± 1.5
Mount Kisco	9.8%	± 3.9
Mount Pleasant	6.2%	± 1.5
New Castle	1.8%	± 1.1
North Castle	4.4%	± 2.3
North Salem	2.1%	± 2.1
Ossining	13.8%	± 2.9
Pelham	2.0%	± 1.0
Pound Ridge	4.0%	± 2.6
Rye	10.8%	± 2.3
Scarsdale	2.3%	± 1.1
Somers	1.7%	± 0.8
Yor	1.6%	± 0.6

Poverty rate comparison within county (left) and between counties (right)

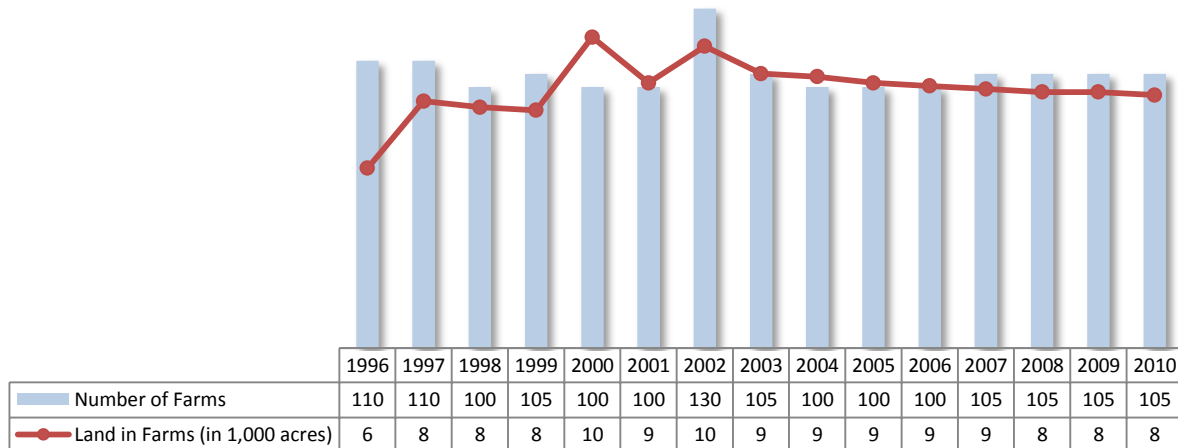


Source: 2007-2011 American Community Survey

12 Agriculture

12.1 Number of farms and land in farms

Westchester County, 1996-2010



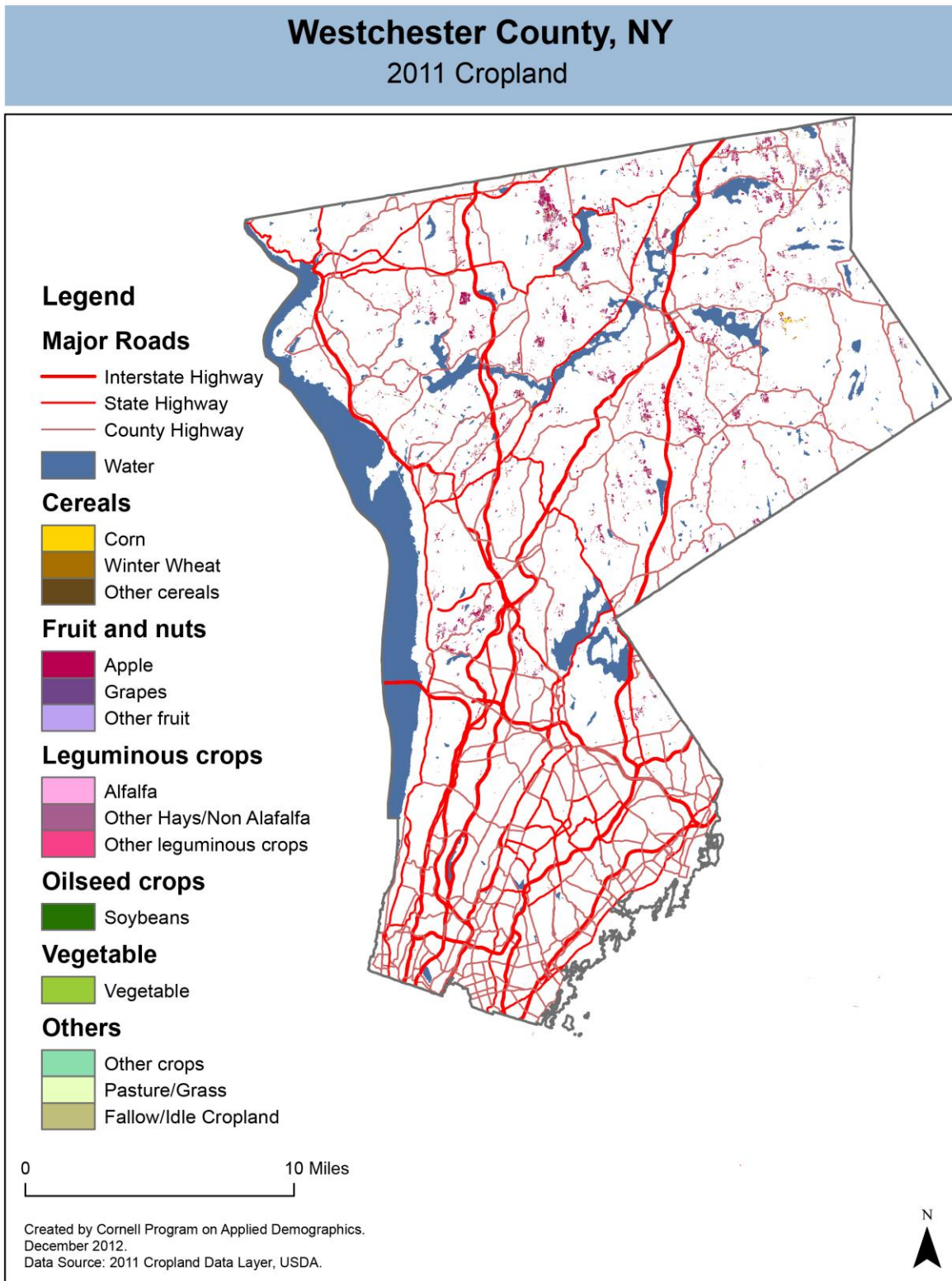
Source: National Agricultural Statistics Service – Annual Statistical bulletin

12.2 Farm Operator Characteristics

	Principal Operator		
	Total	Male	Female
Number of farms	106	73	33
Average size of farm (acres)	80	76	91
PRIMARY OCCUPATION			
Farming	46	27	19
Other	60	46	14
AGE			
Under 45	22	12	10
45 to 64 years	55	37	18
65 years and over	29	24	5
Average age (years)	56.8	59.0	52
YEARS ON PRESENT FARM			
Less than 3 years	7	7	0
3 to 4 years	7	3	4
5 to 9 years	24	9	15
10 years or more	68	54	14

Source: 2007 Agricultural Census

12.3 Map of type of crop

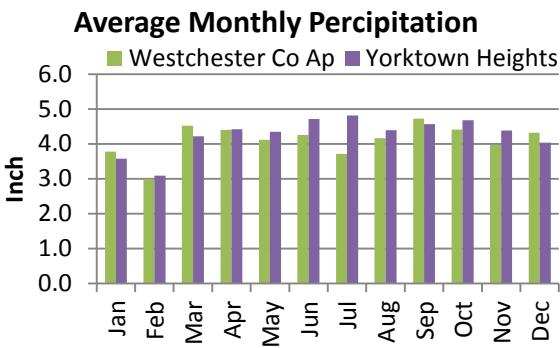
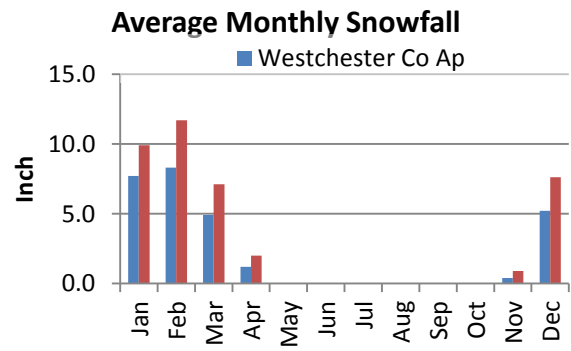
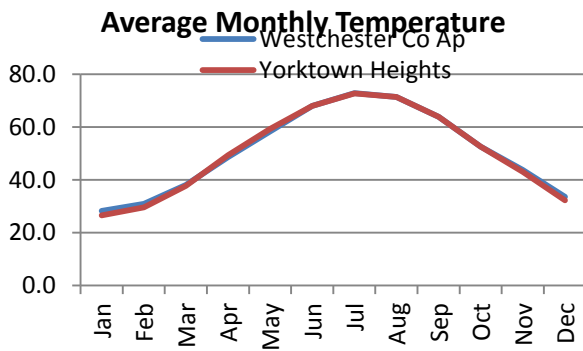
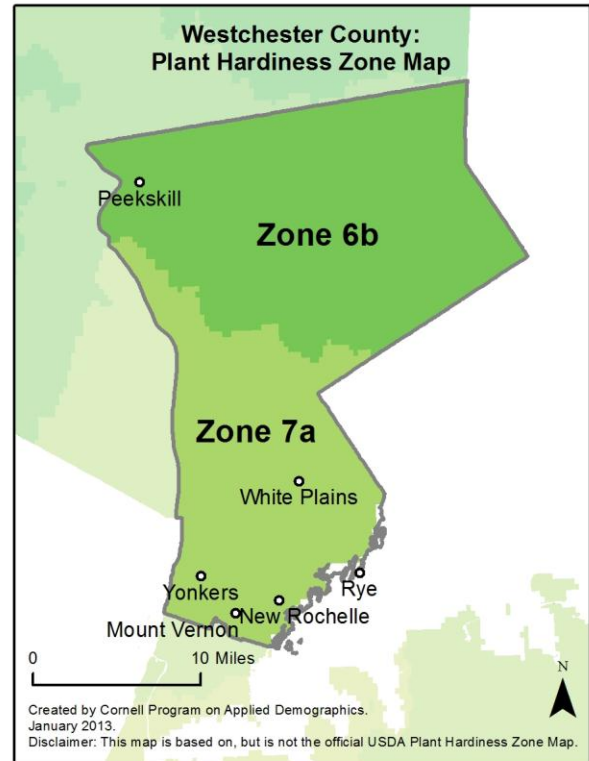
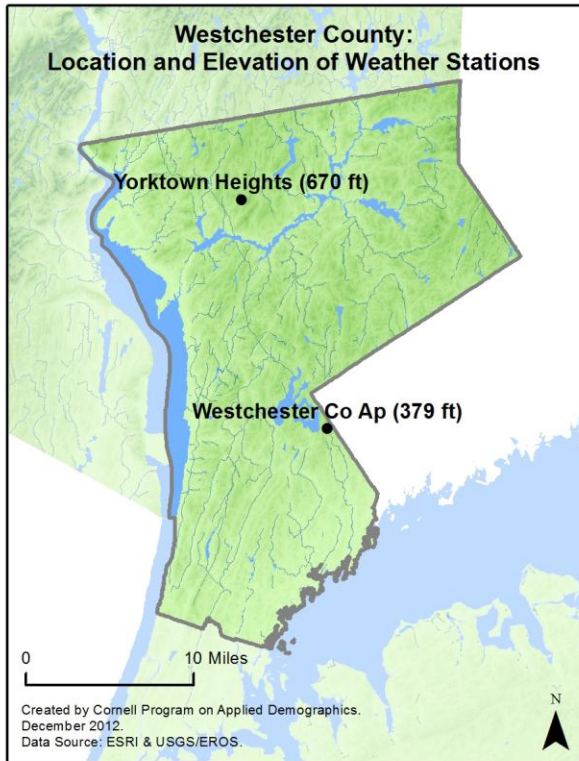


12.4 Estimated acreage by crop

	Acreage	%		Acreage	%
Cereals			Fruit and nuts		
Barley	-		Apples	2,431	39.6%
Corn	221	3.6%	Apricots	-	
Millet	-		Blueberries	-	
Oats	18	0.3%	Cherries	0.7	0.0%
Rye	3.6	0.1%	Cranberries	-	
Sorghum	-		Grapes	0.2	0.0%
Speltz	-		Nectarines	-	
Spring Wheat	-		Peaches	0.4	0.0%
Sweet Corn	3.3	0.1%	Plums	0.9	0.0%
Triticale	-		Prunes	-	
Winter Wheat	1.1	0.0%	Strawberries	-	
DbI Crop WinWht/Corn	-		Walnuts	-	
Leguminous crops			Beverage and spice crops		
Alfalfa	300	4.9%	Herbs	-	
Other Hay/Non Alfalfa	2,353	38.3%	Peppers	-	
Dry Beans	0.4	0.0%	Trees		
Peas	-		Christmas Trees	-	
Vetch	17	0.3%	Other Tree Crops	25	0.4%
Oilseed crops			Other crops		
Soybeans	5	0.1%	Tobacco	-	
Sunflower	-		Misc Veggies & Fruits	-	
Sugar crops			Clover/Wildflowers	-	
Sugarbeets	-		Sod/Grass Seed	-	
Root/tuber crops with high starch or inulin content			Switchgrass	-	
Potatoes	-		DbI Crop Soybeans/Oats	-	
Vegetables and melons			DbI Crop WinWht/Soybeans	-	
Asparagus	-		Other Crops	0.2	0.0%
Broccoli	-		Pasture/Grass		
Cabbage	-		Fallow/Idle Cropland		
Carrots	-		347 5.6%		
Eggplants	-				
Onions	1.6	0.0%			
Pumpkins	-				
Squash	-				
Tomatoes	-				
Turnips	-				

Source: National Agricultural Statistics Service - Cropland Data Layer 2011

13 Climate



Average length of freeze-free season

	Last day of frost	First day of frost	Season length
Westchester Co Ap	April 17	October 26	191
Yorktown Heights	April 14	October 22	191

Source: NOAA, Northeast Regional Climate Center at Cornell University. Averages 1981-2010

14 Glossary

American Community Survey (ACS) - The American Community Survey is an ongoing survey of the population that provides data every year on a variety of social and economic characteristics—age, sex, race, family and relationships, income and benefits, health insurance, education, veteran status, disabilities, where you work and how you get there, where you live and how much you pay for some essentials. The ACS replaced the information previously gathered by what was known as the “long form” of the decennial censuses. The ACS provides communities, companies and other institutions with current information they need to plan investments and services. Information from the survey generates data that help determine how more than \$400 billion in federal and state funds are distributed each year. Every estimate presented in the American Community Survey, as in other surveys, has an uncertainty associated with it. Often the magnitude of that uncertainty is expressed as the Margin of Error.

Confidence Interval (CI) - indication of the degree of uncertainty about a sample estimates. Confidence intervals have been traditionally reported at the 90, 95 and 99 percent levels. A 90 percent confidence interval can be interpreted, for example, roughly as providing 90 percent certainty that the interval defined by the upper and lower bounds contain the true value of the characteristic. If a Margin of Error is given, the lower bound of the confidence interval is equal to the estimate minus the Margin of Error and the upper bound is equal to the estimate plus the Margin of Error. (See further, Margin of Error definition below.)

County subdivision or Minor Civil Division (MCD) - The Census Bureau geography for primary administrative units below the county level in New York is collectively referred to as county subdivisions or minor civil divisions. These include towns, cities and Indian Reservations.

Decennial Census - the Census of the population and housing taken every 10 years in the United States, at the start of each decade, since 1790.

Employed – either “at work” or “with a job, but not at work”.

Group Quarters Population - all U.S. residents who live in group living facilities including correctional institutions, juvenile facilities, skilled nursing facilities, college residence halls, military barracks, group homes, and workers' dormitories.

Household Population - all U.S. residents who live in housing units such as single family homes, townhouses, apartments, and mobile homes.

Intercensal Population Estimates - estimates produced for the years between two decennial censuses when both the beginning and ending populations are known. They are produced once a decade by adjusting the existing time series of postcensal estimates for the entire decade to smooth the transition from one decennial census count to the next. They differ from the postcensal estimates that are released annually because the difference between the April 1 postcensal estimate and April 1 census count for the end of the decade is redistributed across the estimates for that decade. For dates when both postcensal and intercensal estimates are available, intercensal estimates are preferred.

Labor Force - consists of people classified as employed or unemployed.

Margin of Error (MOE) - a measure of the precision of an estimate at a given level of confidence. The confidence level of a margin of error indicates the likelihood that the difference between the population value (which you

would get if you could measure the whole population instead of a sample) and the estimate is less than or equal to the margin of error. The range from the estimate minus the margin of error to the estimate plus the margin of error is called the confidence interval. All ACS estimates are published with their margins of error at the 90 percent confidence level. Margins of error are useful in assessing the reliability of estimates and whether differences between estimates are significant.

NAICS - The North American Industry Classification System or NAICS is used by business and government to classify business establishments according to type of economic activity (process of production).

Numeric Population Change - difference between the population of an area at the beginning and end of a time period. It is computed by taking the difference between the population at one point in time (t1) and some future time (t2).

Percent Population Change - difference between the population of an area at the beginning and end of a time period, expressed as a percentage of the beginning population. It is computed by dividing the population change (t2 - t1) by t1 and multiplying the result by 100.

Population Estimates - The calculated number of people living in an area as of a specified point in time, usually July 1st. The estimated population is calculated using a component of change model that incorporates information on natural increase (births, deaths) and net migration (net domestic migration, net international migration) that has occurred in an area since the latest decennial census. A procedure for estimating the current population using a procedure involving a "base population" value at time t -1, adding to that the births during the interval t-1 to t, subtracting the deaths during that interval t-1 to t, and then adding the net domestic and net international migration that occurred during that interval.

Population Density - Total number of people per areal unit like a square mile or square kilometer.

Population Pyramids - A graphical way of portraying a population's age and sex composition at a given slice in time. The first horizontal bar, constituting the base of the graph, is the youngest age group (typically 0-4) with the number of males in that age group on the left and the number of females in that age group on the right. On top of that age group is another horizontal bar for the next age group (e.g. 5-9) and so forth with the top bar typically for those aged 75 and over. In a population with lots of births and deaths, the shape typically forms a pyramid with a broad base and a narrow top. It is one of the most basic ways to understand population change over time as well as between different geographic units of a similar status (e.g. counties).

Postcensal Estimates - estimates produced for the years after a decennial census when only the beginning population is known. They are produced and revised each year, targeted to July 1 of that year.

Projection - estimated population at some future time based on assumptions about births, deaths, migration, and ages.

Race/Ethnicity - the Census Bureau collects racial data in accordance with guidelines provided by the U.S. Office of Management and Budget (OMB), and these data are based on self-identification. The racial categories included in the census questionnaire generally reflect a social definition of race recognized in this country and not an attempt to define race biologically, anthropologically, or genetically. In addition, it is recognized that the categories of the race item include racial and national origin or sociocultural groups. People may choose to report more than one race to indicate their racial mixture, such as "American Indian" and "White." People who identify their origin as Hispanic, Latino, or Spanish may be of any race. OMB requires five minimum categories: White, Black or African American, American Indian or Alaska Native, Asian, and Native Hawaiian or Other Pacific

Islander. Hispanics may be classified as white or black. So we generally separate them out as an ethnic group first.

Unemployed – Not employed, but actively looking for work and available to accept a job.

Unemployment rate – Fraction of the Labor Force that is unemployed.

Urban Area – A densely settled area with at least 2,500 people. If the total number of people is less than 50,000 the Census Bureau calls it an Urban Cluster, otherwise an Urbanized Area.

Vintage - each year, the U.S. Census Bureau produces and publishes estimates of the population for each state and county, as well as the nation as a whole. These are called “vintages.” In producing these vintages, the Bureau utilizes administrative data from a number of sources to estimate 1) the change in population since the most recent decennial census, and 2) the population for each year since the most recent decennial census. With each annual release of population estimates (vintage), the entire time series of estimates beginning on April 1, 2010 is revised and updated.

15 References

Westchester County homepage: <http://www3.westchestergov.com/>

At Cornell:

- Cornell Cooperative Extensions (CCE)
Home page: <http://www.cce.cornell.edu>
 - Westchester local office: <http://counties.cce.cornell.edu/westchester/>
- Program on Applied Demographics (PAD)
URL: <http://pad.human.cornell.edu/>
- Community and Regional Development Institute (CaRDI)
URL: <http://devsoc.cals.cornell.edu/cals/devsoc/outreach/cardi/index.cfm>

Data sources and background information:

- U.S. Census Bureau - general
 - QuickFacts: <http://quickfacts.census.gov/qfd/states/36/36119.html>
 - QuickLinks: <http://quickfacts.census.gov/qfd/states/36/36119lk.html>
 - American FactFinder: <http://factfinder2.census.gov>
- U.S. Census Bureau - population
 - Decennial Census
 - Background: <http://2010.census.gov/2010census/>
 - Demographic Profile: http://factfinder2.census.gov/bkmk/table/1.0/en/DEC/10_SF1/SF1DP1/0500000US36119
 - American Community Survey (ACS)
 - Background: <http://www.census.gov/acs/www/>
 - Social Data Profile: http://factfinder2.census.gov/bkmk/table/1.0/en/ACS/10_5YR/DP02/0500000US36119
 - Economic Data Profile: http://factfinder2.census.gov/bkmk/table/1.0/en/ACS/10_5YR/DP03/0500000US36119
 - Housing Data Profile: http://factfinder2.census.gov/bkmk/table/1.0/en/ACS/10_5YR/DP04/0500000US36119
 - Demographics Data Profile: http://factfinder2.census.gov/bkmk/table/1.0/en/ACS/10_5YR/DP05/0500000US36119
 - Population estimates: <http://www.census.gov/popest/estimates.html>
- U.S. Census Bureau – Small Area Income & Poverty Estimates (SAIPE)
 - <http://www.census.gov/did/www/saipe/>
- U.S. Census Bureau - Public Use Quarterly Workforce Indicators (QWI) – annual averages
 - <http://www2.vrdc.cornell.edu/news/data/qwi-public-use-data/>
- Bureau Labor Statistics (BLS) – Local Area Unemployment Statistics: <http://www.bls.gov/lau/>
- NY Department of Labor -
 - Labor statistics: <http://www.labor.ny.gov/stats/>
 - Quarterly Census of Employment and Wages (QCEW): <http://www.labor.ny.gov/stats/lsqcew.shtm>
- Bureau of Economic Analysis (BEA) – Local Area Personal Income and Employment: <http://bea.gov/iTable/iTable.cfm?ReqID=70&step=1>

- USDA Census of Agriculture
 - 2007
 - Home page: <http://www.agcensus.usda.gov/Publications/2007/index.php>
 - County profile: http://www.agcensus.usda.gov/Publications/2007/Online_Highlights/County_Profiles/New_York/cp36119.pdf
 - Race, Ethnicity and Gender Profiles: http://www.agcensus.usda.gov/Publications/2007/Online_Highlights/Race_Ethnicity_and_Gender_Profiles/New_York/cpd36119.pdf
- USDA National Agricultural Statistics Service (NASS)
 - Home page: <http://www.nass.usda.gov/index.asp>
 - New York Statistical Bulletins: http://www.nass.usda.gov/Statistics_by_State/New_York/Publications/Annual_Statistical_Bulletin/
 - Cropland Data Layer – CropScape: <http://nassgeodata.gmu.edu/CropScape/>
- USDA Agricultural Research Service – Plant Hardness Zone Map: <http://planthardiness.ars.usda.gov/PHZMWeb/>
- NOAA, Northeast Regional Climate Center at Cornell University
 - Home page: <http://www.nrcc.cornell.edu/index.html>

Alternative sites for data retrieval:

- The Nelson A. Rockefeller Institute of Government – New York State Statistical Yearbooks http://www.rockinst.org/nys_statistics/
- Headwaters Economics: Economic Profile System – Human Dimensions Toolkit <http://headwaterseconomics.org/tools/eps-hdt>
- National Historical Geographic Information System (NHGIS) <https://www.nhgis.org/>
- Social Explorer <http://www.socialexplorer.com/pub/home/home.aspx>
- Missouri Census Data Center <http://mcdc.missouri.edu/>
- DataFerret <http://dataferrett.census.gov/>
- Investigative Reporters and Editors (IRE) Census project <http://census.ire.org/>