

Ulster County Profile 2013

A collection of recent demographic, social, economic and agricultural data

Compiled by Jan Vink

Assisted by Joe Francis, Sutee Anantsuksomsri, Nij Tontisirin, Johannes Plambeck



Cornell University
Cooperative Extension



This profile is a part of a set of profiles generated for each county in New York State. The profiles were developed and generated by the Cornell Program on Applied Demographics. The work is sponsored by Cornell Cooperative Extension and promoted with webinars and workshops in coordination with the Community & Regional Development Institute.

Cornell Program on Applied Demographics:

The Program on Applied Demographics (PAD) brings skills in demographics, economics, statistics, data gathering and data analysis together to provide a variety of organizations with data, information and advice.

For more information: <http://pad.human.cornell.edu/>

Cornell Cooperative Extension:

Cornell Cooperative Extension (CCE) puts knowledge to work in pursuit of economic vitality, ecological sustainability and social well-being. We bring local experience and research based solutions together, helping New York State families and communities thrive in our rapidly changing world.

For more information: <http://cce.cornell.edu/>

Community & Regional Development Institute:

The Community & Regional Development Institute (CaRDI) supports informed decision making for residents and communities in New York State through applied research and education.

For more information: <http://cardi.cornell.edu/>

All profiles are freely downloadable as PDF documents on the PAD website:

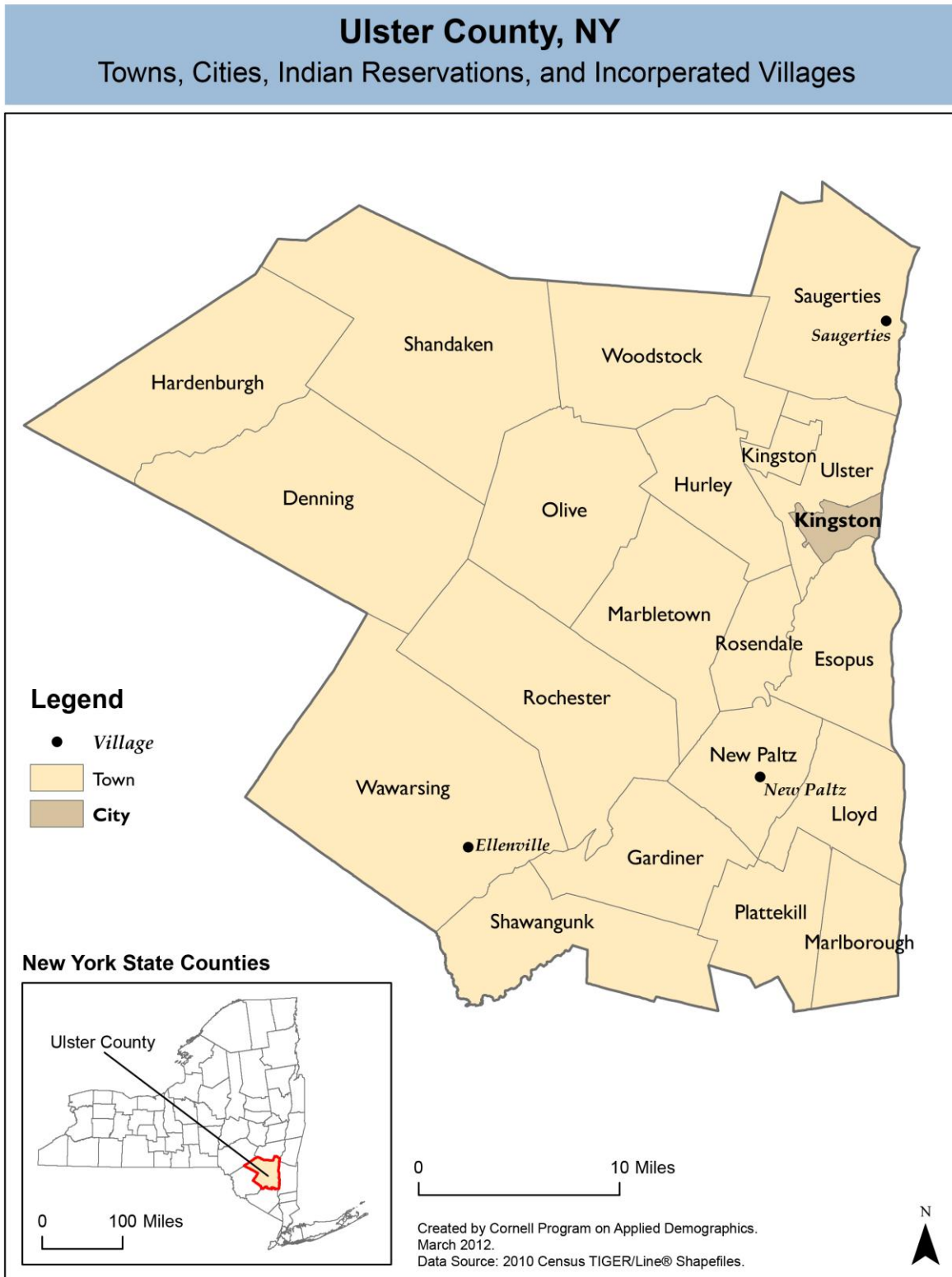
<http://pad.human.cornell.edu/profiles/index.cfm>

Contents

Contents	2
1 Reference Maps	4
2 Population density and Urban Areas Map	6
3 Total Population	7
3.1 Historic and projected	7
3.2 Change since previous Census	7
3.3 Annual population estimates	8
3.4 Percentage sub county change 2000-2010	9
4 Population by age	11
4.1 Historic and projected population pyramids	11
4.2 Selected age groups	12
4.3 Median age: comparison between areas	14
5 Race	15
5.1 Total and household population by race	15
5.2 Race composition by age	15
6 Housing units	16
6.1 Characteristics	16
6.2 Historical data on number of housing units and occupancy status	17
7 Education	18
7.1 Enrollment by level of school	18
7.2 Enrollment by age	18
7.3 Percentage age 18-24 enrolled in college	18
7.4 Educational attainment	19
8 Language spoken at home	19
9 Labor Force Characteristics	20
9.1 Labor force, employment and unemployment	20
9.2 Annual unemployment rate	21
9.3 Monthly unemployment rate	21
9.4 Employment and number of jobs	22
9.5 Class of worker	22
9.6 Jobs by industry sector	23
10 Household Income	24
10.1 Distribution	24
10.2 Median household income: Trends over time	25
10.3 Median household income: Comparison between areas	26
11 Poverty	27
11.1 Poverty characteristics	27
11.2 Poverty: Trends over time: Count	28
11.3 Poverty: Trends over time: Rate	28
11.4 Poverty rate: comparison between areas	29
12 Agriculture	30
12.1 Number of farms and land in farms	30
12.2 Farm Operator Characteristics	30

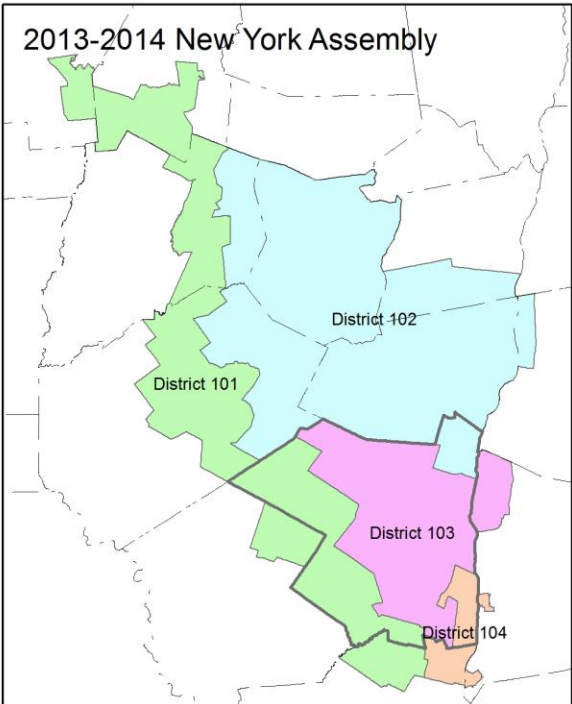
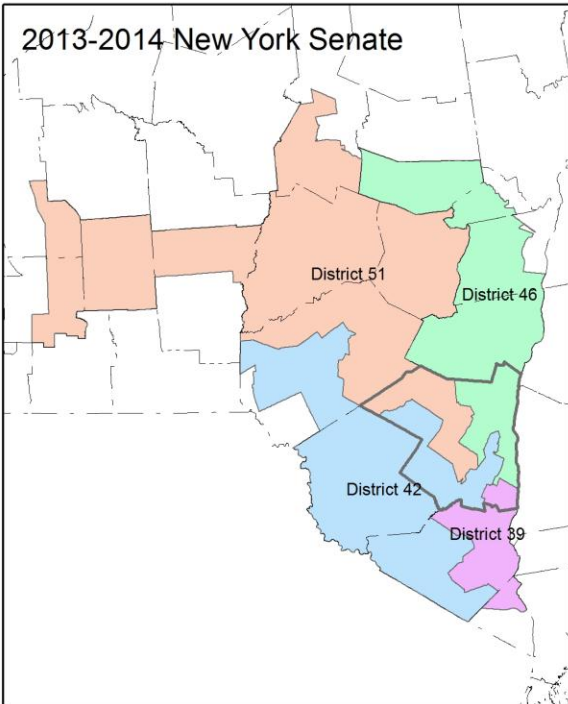
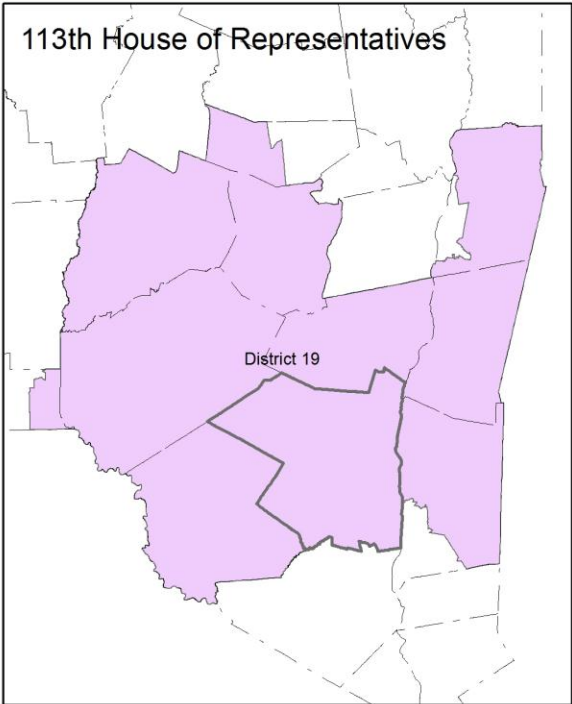
12.3 Map of type of crop 31
12.4 Estimated acreage by crop 32
13 Climate 33
14 Glossary..... 34
15 References 37

1 Reference Maps

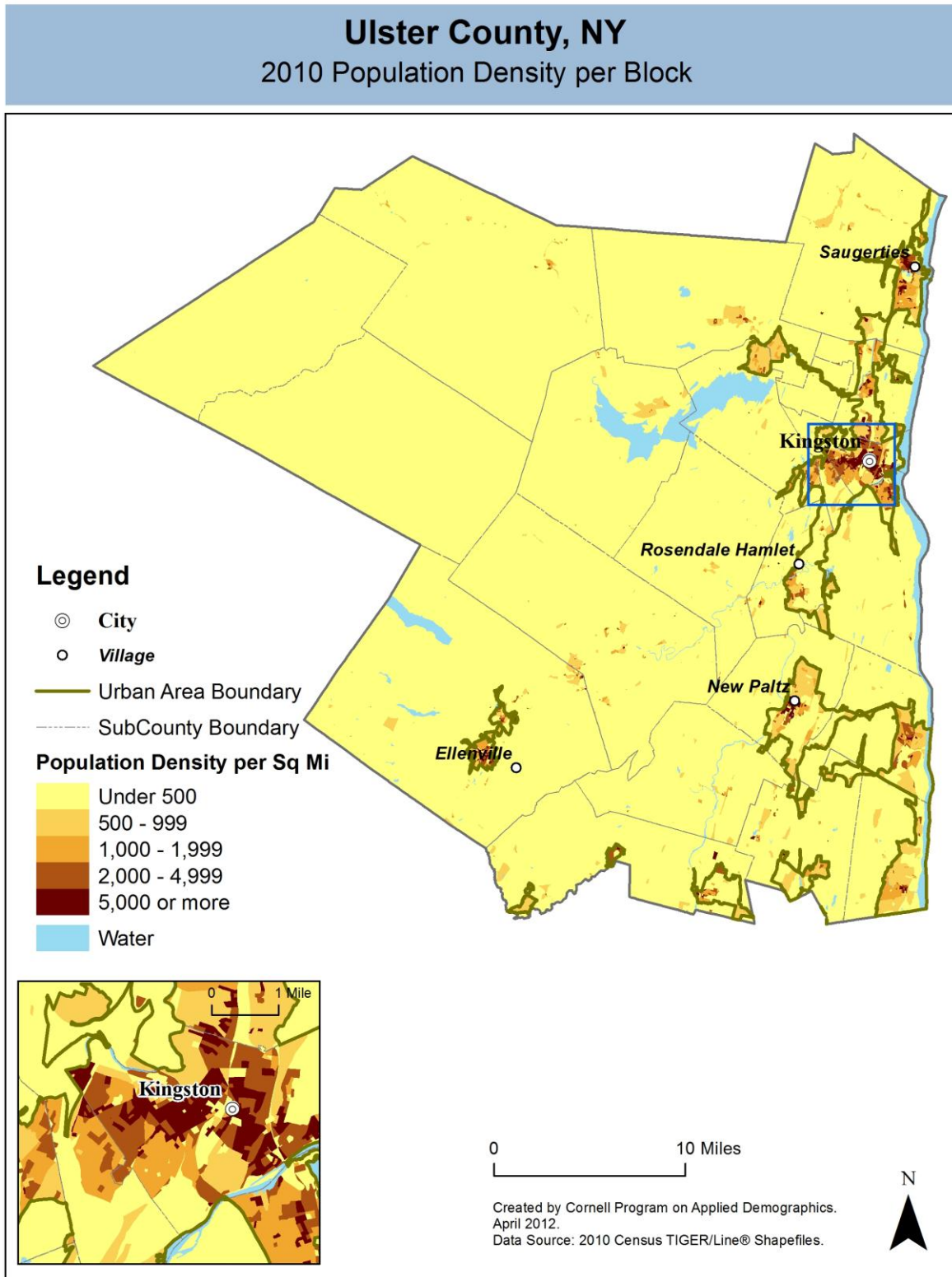


Ulster County, NY

Overlap with School and Political Districts



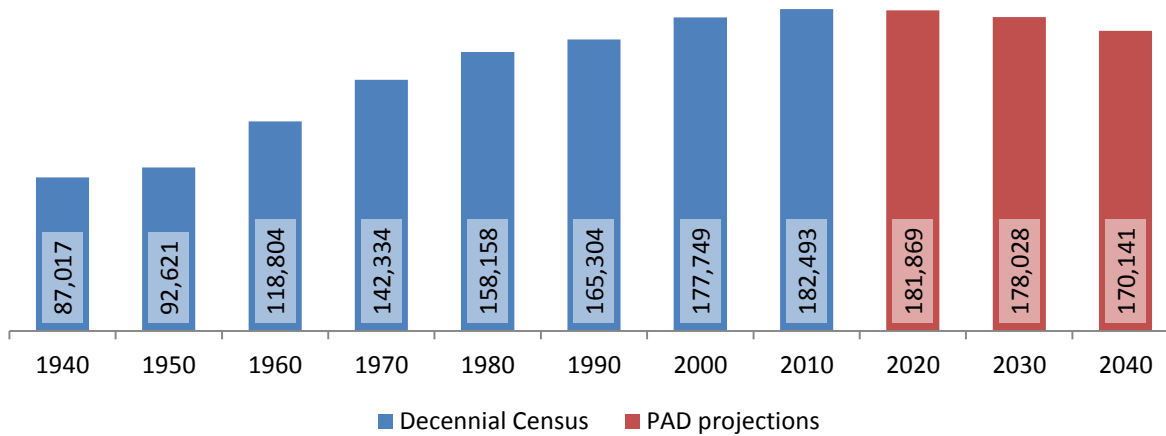
2 Population density and Urban Areas Map



3 Total Population

3.1 Historic and projected

Total population, Ulster County, 1940-2040



Source: 1940-2010 Decennial Census and projections by Cornell Program on Applied Demographics

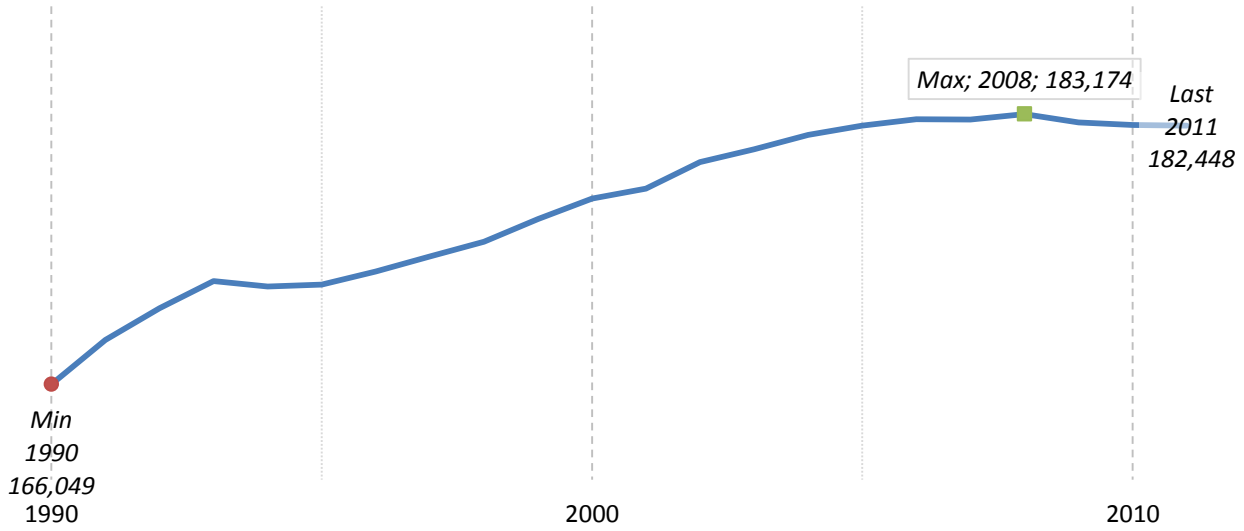
3.2 Change since previous Census

	Total population	Change	
		Number	Percent
Decennial Census	1940	87,017	
	1950	92,621	5,604 6.4%
	1960	118,804	26,183 28.3%
	1970	142,334	23,530 19.8%
	1980	158,158	15,824 11.1%
	1990	165,304	7,146 4.5%
	2000	177,749	12,445 7.5%
	2010	182,493	4,744 2.7%
PAD projections	2020	181,869	-624 -0.3%
	2030	178,028	-3,841 -2.1%
	2040	170,141	-7,887 -4.4%

Source: 1940-2010 Decennial Census and projections by Cornell Program on Applied Demographics

3.3 Annual population estimates

Annual population estimates
Ulster County, 1990-2011



Source: U.S. Census Bureau population estimates (1990-1999 and 2000-2009 intercensal and vintage 2011 postcensal)

3.4 Percentage sub county change 2000-2010

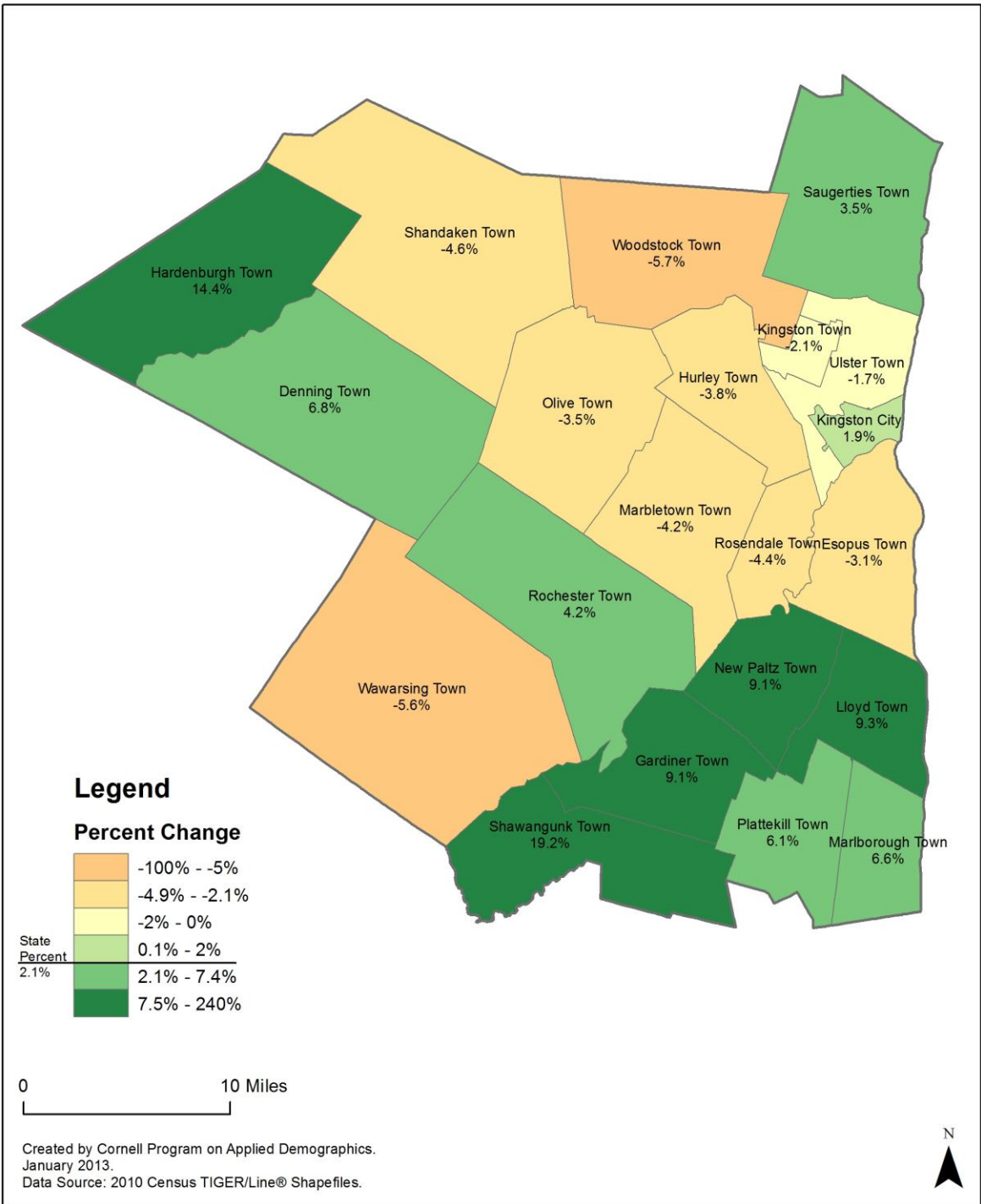
	Total Population		Difference	
	2000	2010	Count	%
New York State	18,976,821 *	19,378,102	401,281	2.1%
Ulster County	177,749	182,493	4,744	2.7%
Cities				
Kingston	23,456	23,893	437	1.9%
Towns				
Denning	516	551	35	6.8%
Esopus	9,331	9,041	-290	-3.1%
Gardiner	5,238	5,713	475	9.1%
Hardenburgh	208	238	30	14.4%
Hurley	6,564	6,314	-250	-3.8%
Kingston	908	889	-19	-2.1%
Lloyd	9,941	10,863	922	9.3%
Marbl	5,854	5,607	-247	-4.2%
Marlborough	8,263	8,808	545	6.6%
New Paltz	12,830	14,003	1,173	9.1%
Olive	4,579	4,419	-160	-3.5%
Plattekill	9,892	10,499	607	6.1%
Rochester	7,018	7,313	295	4.2%
Rosendale	6,352	6,075	-277	-4.4%
Saugerties	18,821 *	19,482	661	3.5%
Shandaken	3,235	3,085	-150	-4.6%
Shawangunk	12,022	14,332	2,310	19.2%
Ulster	12,544	12,327	-217	-1.7%
Wawarsing	13,936 *	13,157	-779	-5.6%
Woodstock	6,241	5,884	-357	-5.7%

* Original counts revised through Count Question Resolution Program (CQR)

Source: U.S. Census Bureau intercensal population estimates 2000-2010

Ulster County, NY

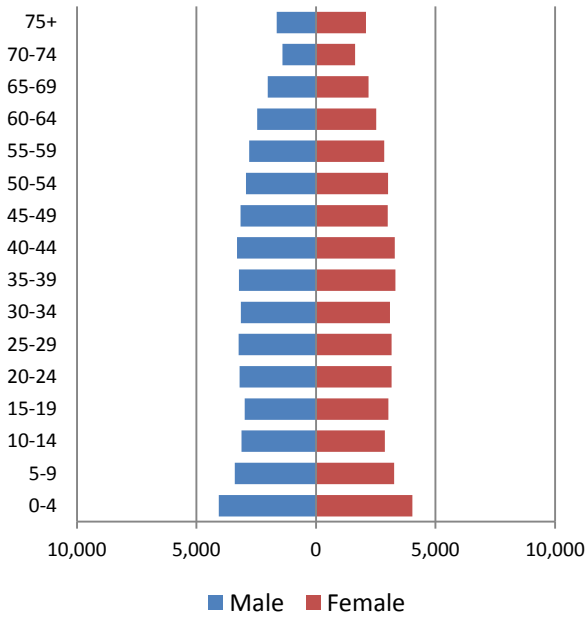
County Subdivision, Percent Change in Population 2000-2010



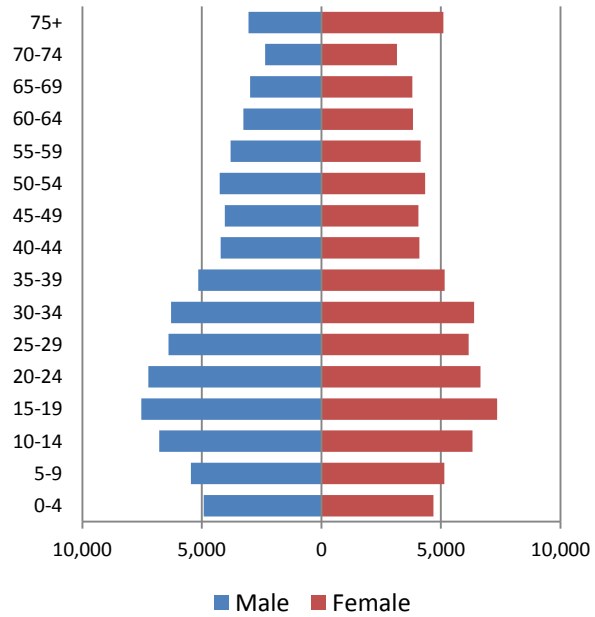
4 Population by age

4.1 Historic and projected population pyramids

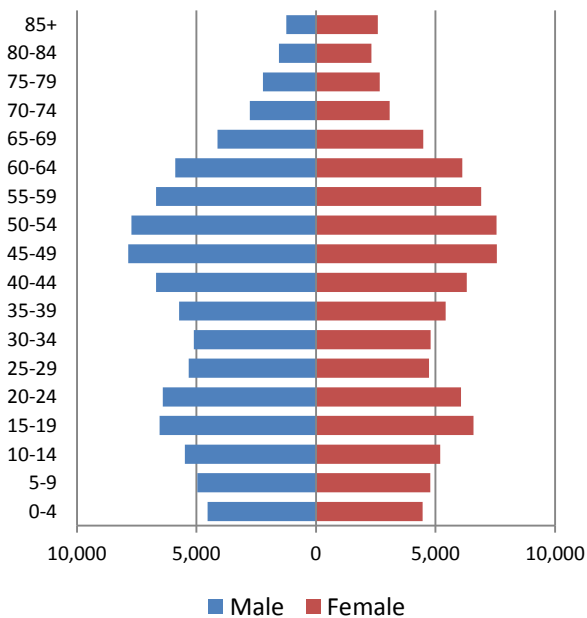
1950 Population Pyramid, Ulster County



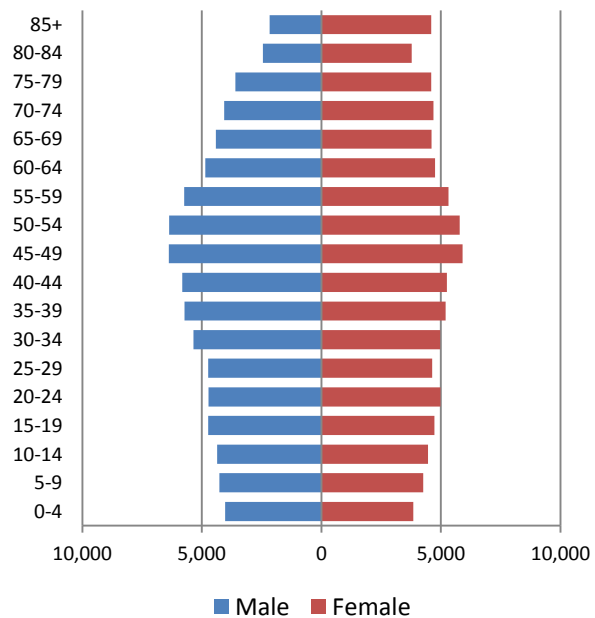
1980 Population Pyramid, Ulster County



2010 Population Pyramid, Ulster County



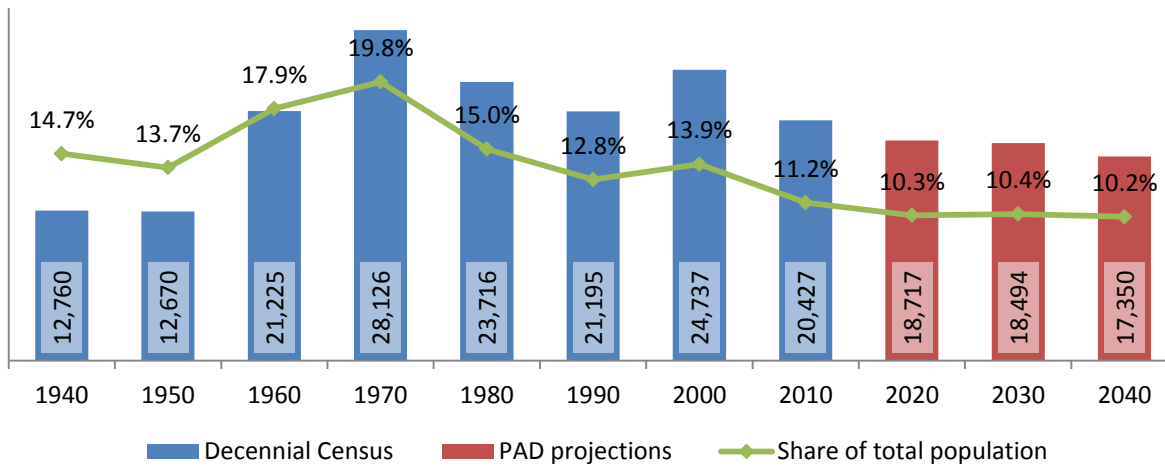
2040 Population Pyramid, Ulster County



Source: 1950, 1980, 2010 Decennial Census and projections by Cornell Program on Applied Demographics

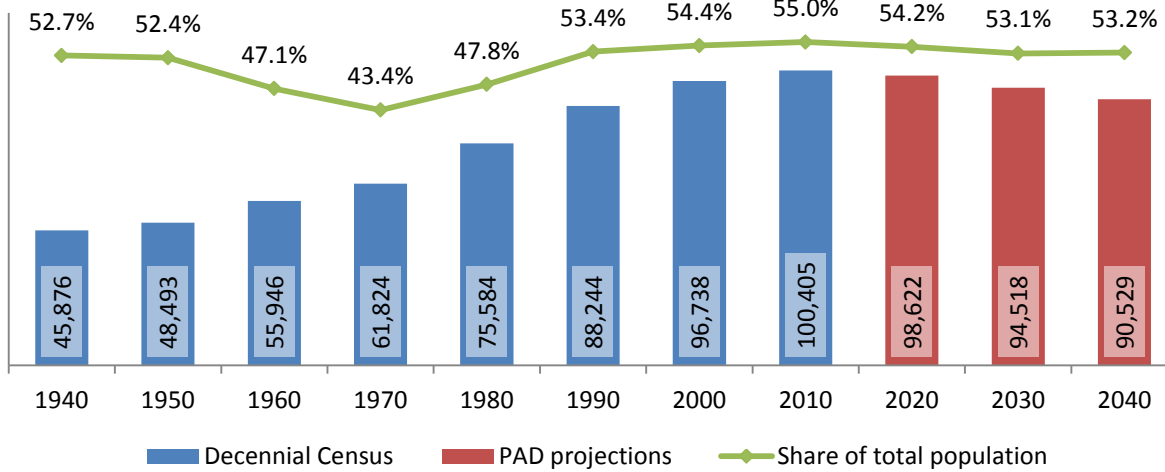
4.2 Selected age groups

Population age 5-14, Ulster County, 1940-2040



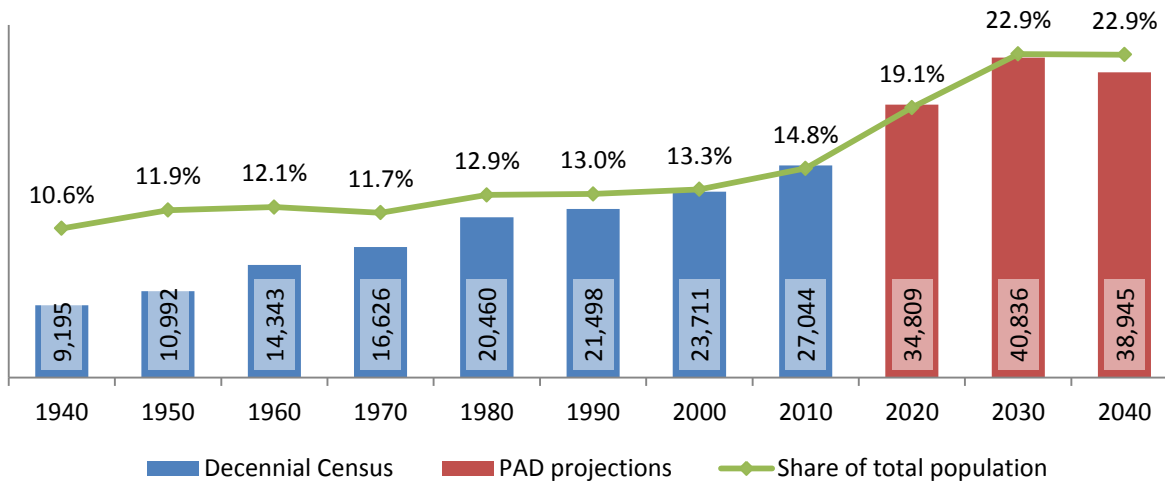
Source: 1940-2010 Decennial Census and projections by Cornell Program on Applied Demographics

Population age 25-64, Ulster County, 1940-2040



Source: 1940-2010 Decennial Census and projections by Cornell Program on Applied Demographics

Population age 65 and over, Ulster County, 1940-2040

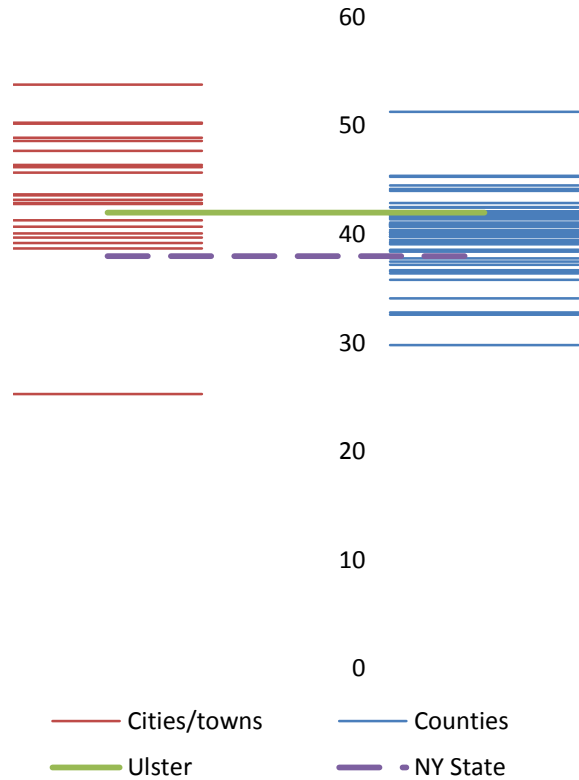


Source: 1940-2010 Decennial Census and projections by Cornell Program on Applied Demographics

4.3 Median age: comparison between areas

	Median Age
New York State	38.0
Ulster County	42.0
Cities	
Kingston city	39.2
Towns	
Denning town	46.2
Esopus town	43.6
Gardiner town	43.2
Hardenburgh town	50.3
Hurley town	48.6
Kingston town	46.4
Lloyd town	40.7
Marbletown town	47.7
Marlborough town	41.3
New Paltz town	25.3
Olive town	48.9
Plattekill town	39.7
Rochester town	42.9
Rosendale town	42.8
Saugerties town	43.7
Shandaken town	50.2
Shawangunk town	38.7
Ulster town	45.7
Wawarsing town	40.1
Woodstock town	53.8

Median age comparison within county (left) and between counties (right)



Source: 2010 Decennial Census

5 Race

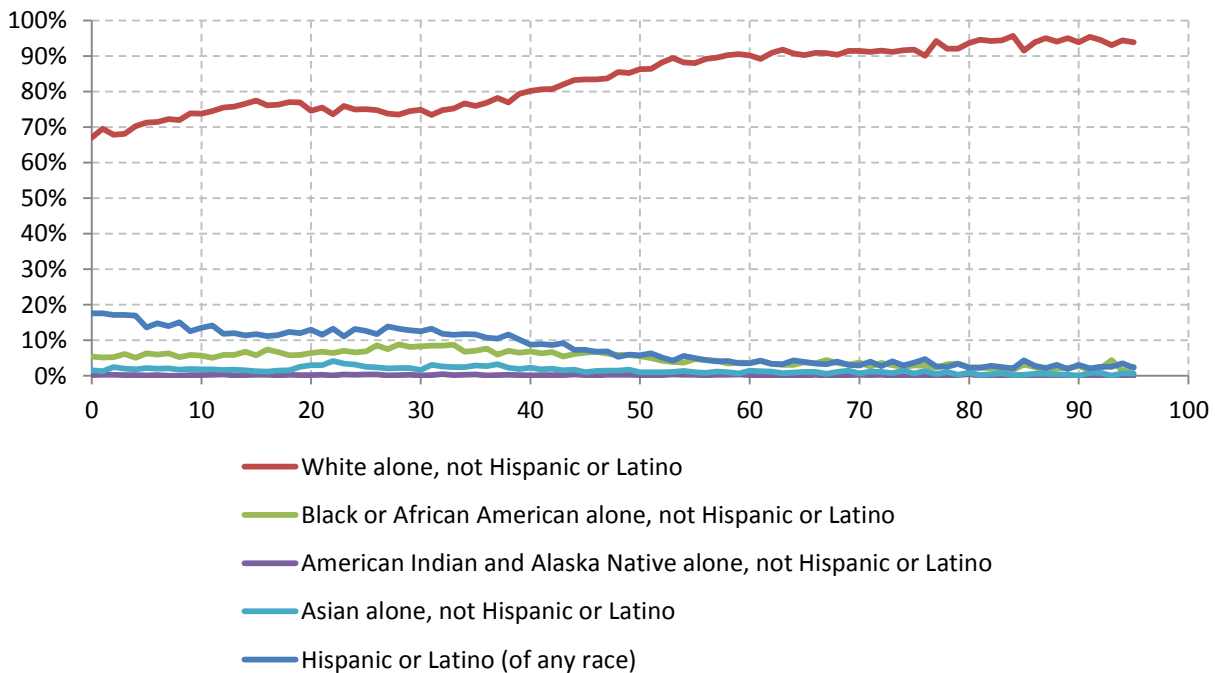
5.1 Total and household population by race

	Total		In households		In Group Quarters
	Count	Percentage	Count	Percentage	Count
Total population	182,493	100%	170,720	100%	11,773
Not Hispanic or Latino					
One race					
White	149,099	81.7%	142,229	83.3%	6,870
Black or African American	9,982	5.5%	7,389	4.3%	2,593
American Indian and Alaska Native	414	0.2%	390	0.2%	24
Asian	3,060	1.7%	2,689	1.6%	371
Native Hawaiian and Other Pacific Islander	29	0.0%	-	-	-
Some other race	344	0.2%	292	0.2%	52
Two or more races	3,656	2.0%	3,500	2.1%	156
Hispanic or Latino (of any race)	15,909	8.7%	14,204	8.3%	1,705

Source: 2010 Decennial Census

5.2 Race composition by age

Race composition by age, Ulster County



Source: 2010 Decennial Census

6 Housing units

6.1 Characteristics

HOUSING OCCUPANCY	COUNT		PERCENTAGE	
	Estimate	Margin of error	Estimate	Margin of error
Total housing units	83,330	± 631	100.0%	
Occupied housing units	70,034	± 862	84.0%	± 0.7
Vacant housing units	13,296	± 616	16.0%	± 0.7
YEAR STRUCTURE BUILT				
Total housing units	83,330	± 631	100.0%	
Built 2005 or later	2,741	± 353	3.3%	± 0.4
Built 2000 to 2004	4,082	± 435	4.9%	± 0.5
Built 1990 to 1999	7,002	± 588	8.4%	± 0.7
Built 1980 to 1989	10,178	± 630	12.2%	± 0.8
Built 1970 to 1979	10,070	± 616	12.1%	± 0.7
Built 1960 to 1969	9,498	± 641	11.4%	± 0.8
Built 1950 to 1959	10,434	± 663	12.5%	± 0.8
Built 1940 to 1949	5,438	± 502	6.5%	± 0.6
Built 1939 or earlier	23,887	± 757	28.7%	± 0.9
HOUSING TENURE				
Occupied housing units	70,034	± 862	100.0%	
Owner-occupied	48,518	± 715	69.3%	± 1.1
Renter-occupied	21,516	± 889	30.7%	± 1.1
HOUSE HEATING FUEL				
Occupied housing units	70,034	± 862	100.0%	
Utility gas	13,080	± 643	18.7%	± 0.9
Bottled, tank, or LP gas	5,464	± 439	7.8%	± 0.6
Electricity	7,147	± 565	10.2%	± 0.8
Fuel oil, kerosene, etc.	39,804	± 897	56.8%	± 1.2
Coal or coke	153	± 62	0.2%	± 0.1
Wood	3,765	± 386	5.4%	± 0.6
Solar energy	53	± 55	0.1%	± 0.1
Other fuel	476	± 126	0.7%	± 0.2
No fuel used	92	± 54	0.1%	± 0.1
VALUE				
Owner-occupied units	48,518	± 715	100.0%	
Less than \$50,000	2,177	± 289	4.5%	± 0.6
\$50,000 to \$99,999	2,109	± 289	4.3%	± 0.6
\$100,000 to \$149,999	3,915	± 383	8.1%	± 0.8
\$150,000 to \$199,999	7,803	± 512	16.1%	± 1.0
\$200,000 to \$299,999	16,745	± 728	34.5%	± 1.4
\$300,000 to \$499,999	11,429	± 642	23.6%	± 1.3
\$500,000 to \$999,999	3,694	± 366	7.6%	± 0.8
\$1,000,000 or more	646	± 151	1.3%	± 0.3
Median (dollars)	242,500	± 3,536		

Source: 2007-2011 American Community Survey

6.2 Historical data on number of housing units and occupancy status

Year	Number of Housing Units	Change since previous Census	Occupied	Occupancy rate	Vacant
1970	55,739		43,533	78.1%	12,206
1980	69,280	24.3%	55,862	80.6%	13,418
1990	71,716	3.5%	60,807	84.8%	10,909
2000	77,656	8.3%	67,499	86.9%	10,157
2010	83,638	7.7%	71,049	84.9%	12,589

Source: 1970-2010 Decennial Census

7 Education

7.1 Enrollment by level of school

	Estimate	Margin of error
Total enrolled in school	44,559	± 879
Nursery school, preschool	2,070	± 333
Kindergarten	2,435	± 319
Elementary: grade 1 to grade 4	7,850	± 488
Elementary: grade 5 to grade 8	8,790	± 534
High school: grade 9 to grade 12	9,695	± 387
College, undergraduate	11,442	± 811
Graduate, professional school	2,277	± 333

Source: 2007-2011 American Community Survey

7.2 Enrollment by age

	Estimate	Margin of error
3 and 4 years	53.3%	± 6.9
5 to 9 years	97.2%	± 1.1
10 to 14 years	99.1%	± 0.5
15 to 17 years	95.8%	± 1.8
18 and 19 years	77.6%	± 4.6
20 to 24 years	47.8%	± 4.2
25 to 34 years	11.7%	± 1.7
35 years and over	2.2%	± 0.3

Source: 2007-2011 American Community Survey

7.3 Percentage age 18-24 enrolled in college

	Estimate	Margin of error
Population 18 to 24 years	18,165	± 122
Enrolled in college or graduate school	49.9%	± 3.4
Males 18 to 24 years	9,177	± 77
Enrolled in college or graduate school	41.1%	± 4.9
Females 18 to 24 years	8,988	± 85
Enrolled in college or graduate school	59.0%	± 4.3

Source: 2007-2011 American Community Survey

7.4 Educational attainment

	COUNT		PERCENTAGE	
	Estimate	Margin of error	Estimate	Margin of error
Population 25 years and over	127,118	± 122	100%	
EDUCATIONAL ATTAINMENT				
Less than 9th grade	4,592	± 493	3.6%	± 0.4
9th to 12th grade, no diploma	10,765	± 743	8.5%	± 0.6
High school graduate (includes equivalency)	37,372	± 1,017	29.4%	± 0.8
Some college, no degree	24,836	± 1,032	19.5%	± 0.8
Associate's degree	12,318	± 786	9.7%	± 0.6
Bachelor's degree	19,841	± 1,015	15.6%	± 0.8
Graduate or professional degree	17,394	± 938	13.7%	± 0.7
Percent high school graduate or higher			87.9%	± 0.7
Percent bachelor's degree or higher			29.3%	± 1.1

Source: 2007-2011 American Community Survey

8 Language spoken at home

	COUNT		PERCENTAGE		SPEAK ENGLISH LESS THAN "VERY WELL"	
	Estimate	Margin of error	Estimate	Margin of error	Estimate	Margin of error
Population 5 years and over	173,688	± 55	100%			
LANGUAGE SPOKEN AT HOME						
English only	153,854	± 928	88.6%	± 0.5		
Language other than English	19,834	± 918	11.4%	± 0.5	6,331	± 679
Spanish	10,579	± 734	6.1%	± 0.4	3,700	± 534
Other Indo-European languages	6,669	± 624	3.8%	± 0.4	1,559	± 284
Asian and Pacific Islander languages	1,962	± 251	1.1%	± 0.1	929	± 195
Other languages	624	± 192	0.4%	± 0.1	143	± 76

Source: 2007-2011 American Community Survey

9 Labor Force Characteristics

9.1 Labor force, employment and unemployment

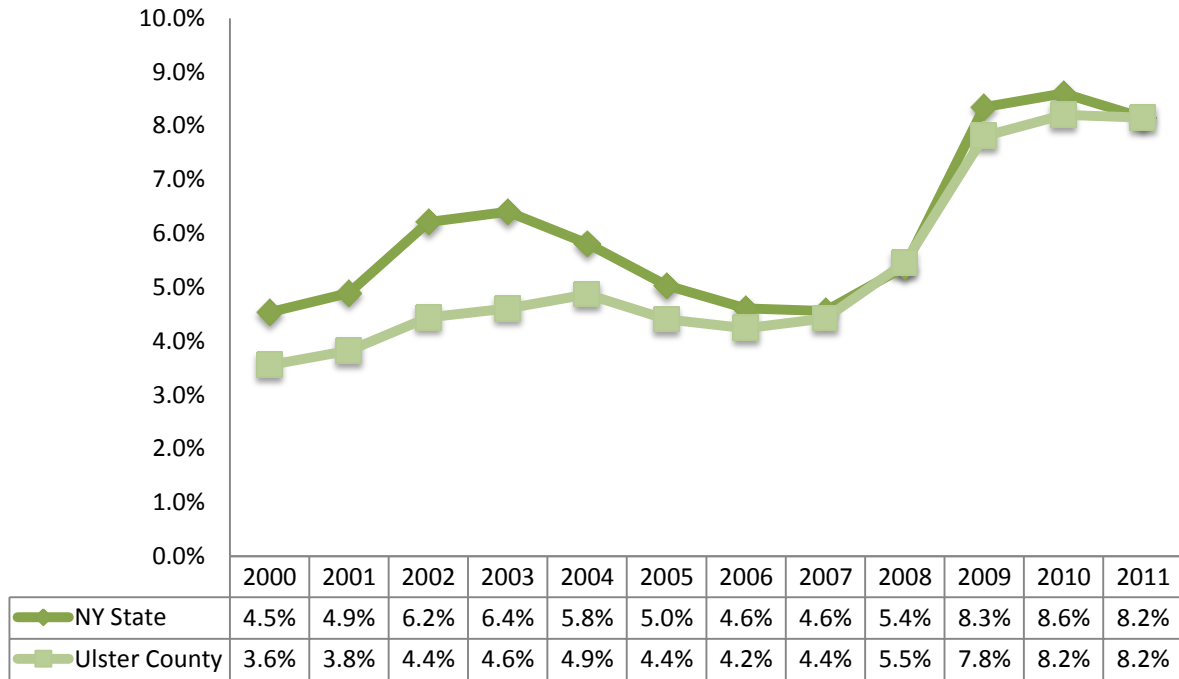
	TOTAL		IN LABOR FORCE		EMPLOYED		UNEMPLOYMENT RATE	
	Estimate	Margin of error	Estimate	Margin of error	Estimate	Margin of error	Estimate	Margin of error
Population 16 years and over	150,339	± 283	64.3%	± 1.0	59.2%	± 1.0	7.8%	± 0.7
AGE								
16 to 19 years	10,831	± 407	49.3%	± 3.3	38.4%	± 3.7	22.1%	± 5.0
20 to 24 years	12,390	± 242	69.2%	± 3.1	59.6%	± 3.4	13.9%	± 2.9
25 to 44 years	45,126	± 158	79.0%	± 2.0	73.2%	± 2.0	6.9%	± 1.2
45 to 54 years	30,392	± 73	82.6%	± 1.7	78.3%	± 1.8	5.1%	± 0.8
55 to 64 years	24,956	± 83	67.4%	± 2.1	63.1%	± 2.2	6.3%	± 1.4
65 to 74 years	14,031	± 157	29.5%	± 2.4	27.5%	± 2.2	7.0%	± 2.2
75 years and over	12,613	± 168	7.7%	± 1.6	7.5%	± 1.6	2.6%	± 2.3
RACE AND HISPANIC OR LATINO ORIGIN								
One race	147,592	± 474	64.4%	± 1.0	59.4%	± 1.0	7.6%	± 0.7
White	133,803	± 525	65.5%	± 1.1	60.6%	± 1.1	7.4%	± 0.7
Black or African American	8,589	± 326	50.0%	± 4.5	44.5%	± 4.2	11.0%	± 3.4
American Indian and Alaska Native	420	± 162	80.7%	± 12.0	75.2%	± 11.5	6.8%	± 6.5
Asian	2,549	± 148	53.6%	± 6.5	48.1%	± 6.9	10.3%	± 4.8
Pacific Islander	15	± 24	0.0%	± 76.6	0.0%	± 76.6	-	**
Some other race	2,216	± 371	60.5%	± 6.9	58.3%	± 7.5	3.7%	± 3.6
Two or more races	2,747	± 342	57.6%	± 7.3	45.9%	± 7.2	20.3%	± 8.7
Hispanic or Latino origin (of any race)	11,148	± 101	62.2%	± 3.6	57.4%	± 3.6	7.6%	± 2.2
White alone, not Hispanic or Latino	126,072	± 260	65.5%	± 1.0	60.6%	± 1.1	7.4%	± 0.8
SEX								
Population 20 to 64 years	112,864	± 238	76.3%	± 1.3	70.9%	± 1.3	7.0%	± 0.7
Male	57,278	± 152	78.1%	± 1.8	71.9%	± 1.7	7.7%	± 0.9
Female	55,586	± 142	74.5%	± 1.4	69.8%	± 1.5	6.2%	± 1.0
With own children under 6 years	7,715	± 525	69.2%	± 3.7	64.2%	± 3.6	6.9%	± 2.8
EDUCATIONAL ATTAINMENT								
Population 25 to 64 years	100,474	± 155	77.2%	± 1.2	72.3%	± 1.2	6.2%	± 0.7
Less than high school graduate	9,955	± 803	55.6%	± 4.0	45.7%	± 4.0	17.7%	± 4.3
High school graduate (includes equivalency)	27,433	± 930	72.5%	± 2.6	67.6%	± 2.5	6.6%	± 1.3
Some college or associate's degree	32,264	± 1,270	80.5%	± 1.7	75.6%	± 1.7	5.6%	± 1.1
Bachelor's degree or higher	30,822	± 1,334	84.9%	± 1.3	81.5%	± 1.5	4.0%	± 0.9

Table formula: **LABOR FORCE** = # EMPLOYED + # UNEMPLOYED
 % IN LABOR FORCE = LABOR FORCE / TOTAL * 100%
 % EMPLOYED = # EMPLOYED / TOTAL * 100%
 UNEMPLOYMENT RATE = # UNEMPLOYED / LABOR FORCE * 100%

Source: 2007-2011 American Community Survey

9.2 Annual unemployment rate

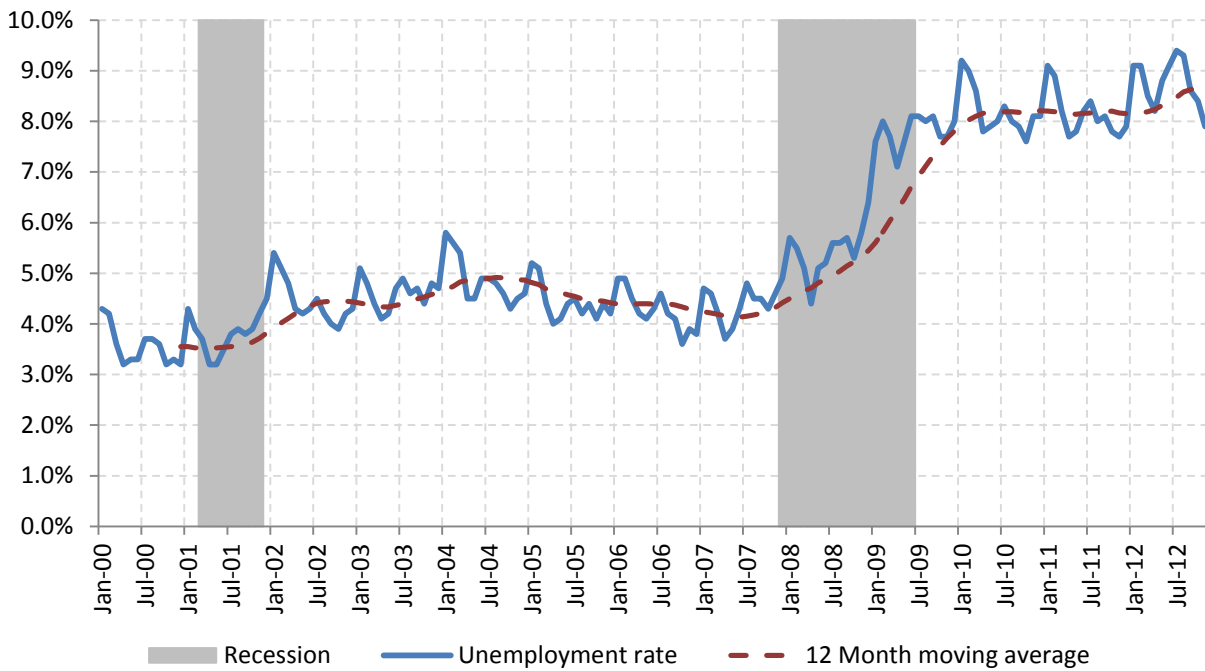
Annual unemployment rate, Ulster County and New York State



Source: Bureau Labor Statistics (BLS)

9.3 Monthly unemployment rate

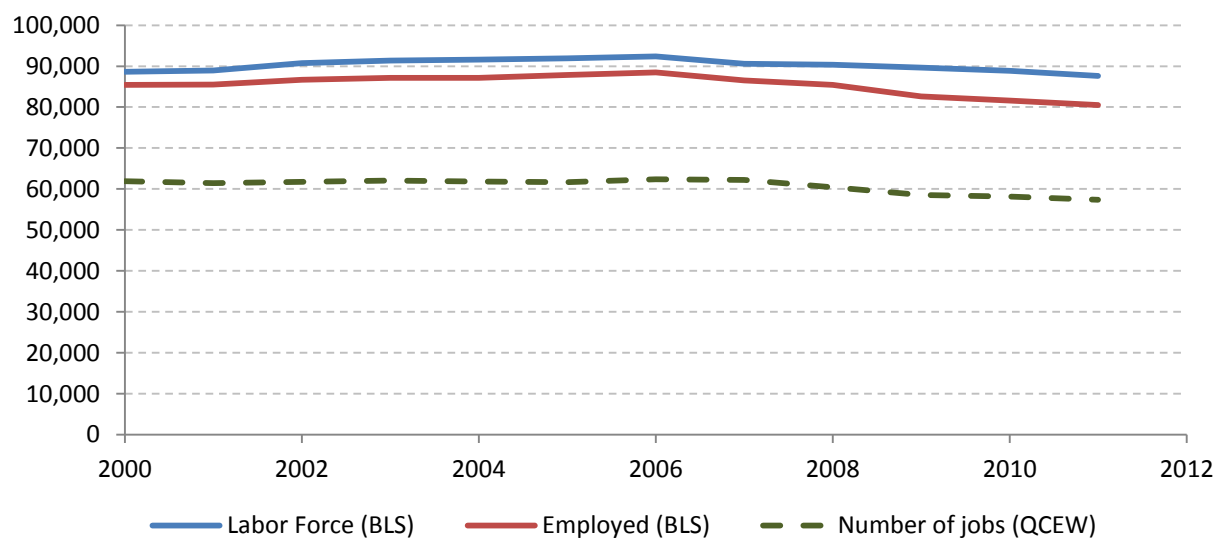
Monthly unemployment rate, Ulster County



Source: Bureau Labor Statistics (BLS)

9.4 Employment and number of jobs

**Labor force, number of employed workers and number of jobs
Ulster County**



Source: Bureau Labor Statistics (BLS) and NY Department of Labor - Quarterly Census of Employment and Wages (QCEW) – annual averages

9.5 Class of worker

		Median earnings (\$)					
		Total	%Male	%Female	Total	Male	Female
Civilian employed population 16 years and over	Estimate	88,944	51.4%	48.6%	34,833	42,123	29,246
	Margin of error	± 1,545	± 0.7	± 0.7	± 787	± 1,221	± 1,230
Private for-profit wage and salary workers:	Estimate	54,164	54.2%	45.8%	32,252	39,456	25,249
	Margin of error	± 1,441	± 1.3	± 1.3	± 780	± 1,478	± 1,251
Employee of private company workers	Estimate	49,829	52.6%	47.4%	31,302	38,182	24,857
	Margin of error	± 1,340	± 1.4	± 1.4	± 822	± 1,798	± 1,416
Self-employed in own incorporated business workers	Estimate	4,335	72.3%	27.7%	48,245	49,255	45,750
	Margin of error	± 435	± 4.6	± 4.6	± 4,743	± 4,986	± 11,285
Private not-for-profit wage and salary workers	Estimate	9,352	36.6%	63.4%	31,435	33,385	30,888
	Margin of error	± 833	± 4.0	± 4.0	± 1,628	± 6,176	± 1,376
Local government workers	Estimate	10,621	43.2%	56.8%	47,826	54,167	41,306
	Margin of error	± 791	± 2.8	± 2.8	± 2,181	± 3,019	± 3,421
State government workers	Estimate	6,326	53.2%	46.8%	54,268	59,237	46,881
	Margin of error	± 590	± 4.5	± 4.5	± 2,999	± 4,548	± 6,716
Federal government workers	Estimate	1,303	59.5%	40.5%	53,806	54,988	50,833
	Margin of error	± 254	± 7.6	± 7.6	± 2,073	± 8,429	± 9,392
Self-employed in own not incorporated business workers and unpaid family workers	Estimate	7,178	58.1%	41.9%	22,181	25,282	16,705
	Margin of error	± 586	± 4.0	± 4.0	± 1,445	± 2,064	± 3,192

Source: 2007-2011 American Community Survey

9.6 Jobs by industry sector

	Ulster County			NY state
	2011	Change since 2006	% of total	% of total
All NAICS Sectors	56,310	-4.7%	100.0%	100.0%
Agriculture, Forestry, Fishing and Hunting	877	2.8%	1.6%	0.3%
Mining, Quarrying, and Oil and Gas Extraction	105	-37.1%	0.2%	0.1%
Utilities	183	-5.7%	0.3%	0.5%
Construction	1,987	-25.0%	3.5%	3.5%
Manufacturing	3,696	-21.3%	6.6%	5.5%
Wholesale Trade	1,550	-8.2%	2.8%	4.0%
Retail Trade	7,942	-5.1%	14.1%	10.5%
Transportation and Warehousing	1,788	-8.8%	3.2%	3.4%
Information	761	-20.8%	1.4%	3.3%
Finance and Insurance	1,315	-28.7%	2.3%	6.0%
Real Estate and Rental and Leasing	776	0.4%	1.4%	2.3%
Professional, Scientific, and Technical Services	1,471	-4.0%	2.6%	6.9%
Management of Companies and Enterprises	391	-14.3%	0.7%	1.6%
Administrative and Support and Waste Management and Remediation Services	3,567	5.1%	6.3%	5.2%
Educational Services	7,045	-5.9%	12.5%	10.8%
Health Care and Social Assistance	8,941	3.7%	15.9%	17.0%
Arts, Entertainment, and Recreation	746	9.9%	1.3%	1.9%
Accommodation and Food Services	5,941	1.3%	10.6%	7.3%
Other Services (except Public Administration)	1,876	-9.2%	3.3%	3.9%
Public Administration	5,353	10.2%	9.5%	5.8%

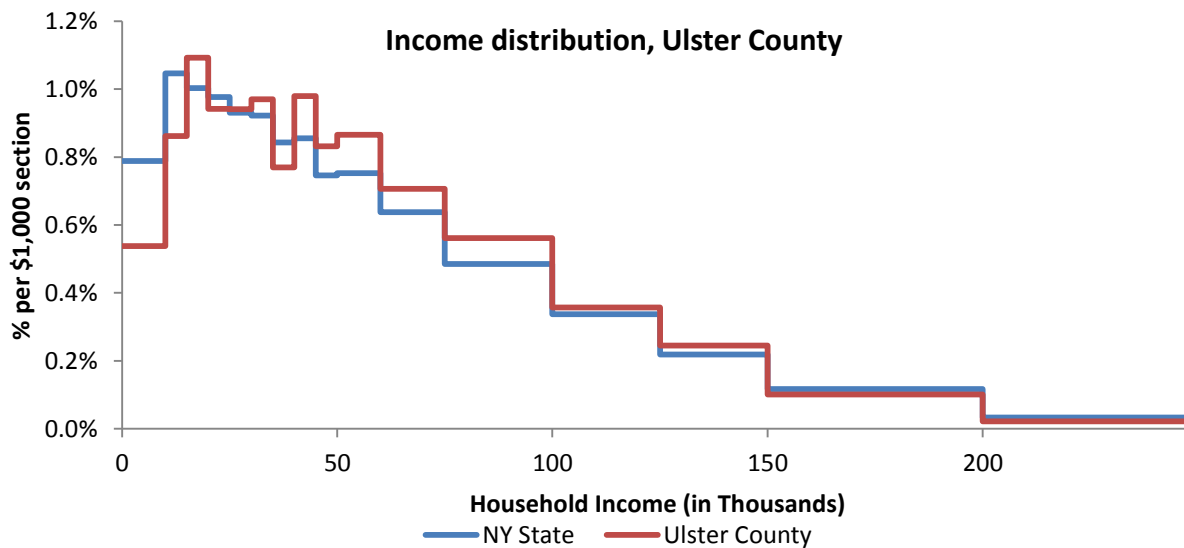
Source: U.S. Census Bureau - Public Use Quarterly Workforce Indicators (QWI) – annual averages

10 Household Income

10.1 Distribution

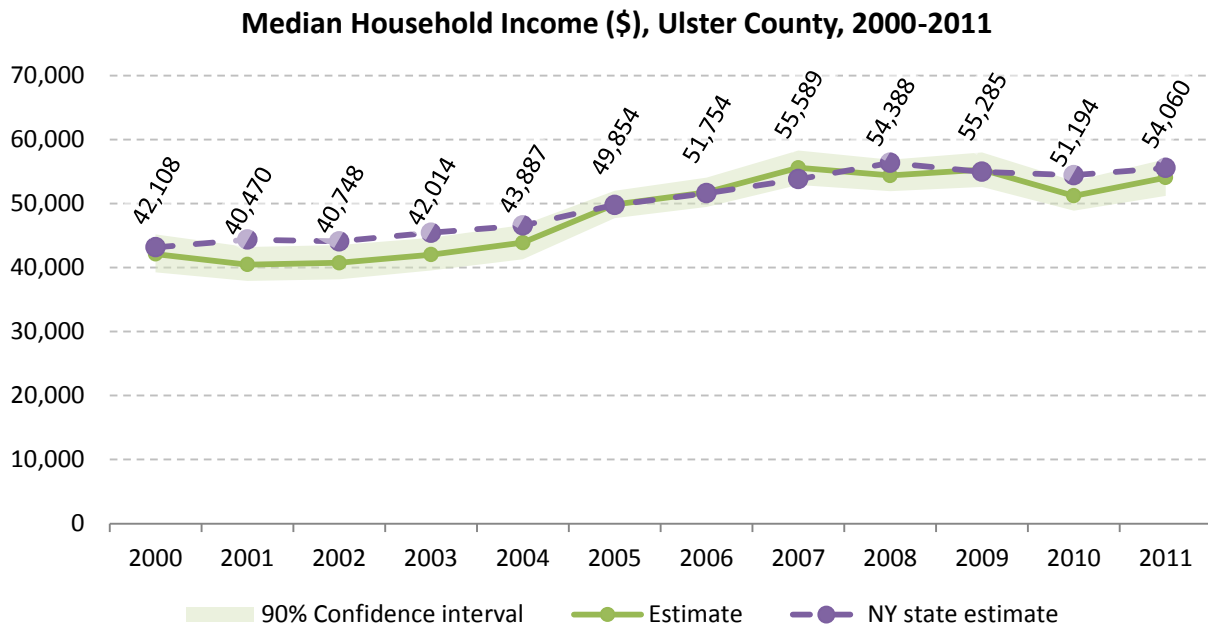
	Estimate	Margin of error	Interval width (in \$1,000)	Est. per \$1,000 section
Total:	70,034	± 862		
Less than \$10,000	3,765	± 443	10	376.5
\$10,000 to \$14,999	3,017	± 329	5	603.4
\$15,000 to \$19,999	3,824	± 469	5	764.8
\$20,000 to \$24,999	3,299	± 410	5	659.8
\$25,000 to \$29,999	3,296	± 409	5	659.2
\$30,000 to \$34,999	3,397	± 455	5	679.4
\$35,000 to \$39,999	2,694	± 307	5	538.8
\$40,000 to \$44,999	3,429	± 379	5	685.8
\$45,000 to \$49,999	2,911	± 340	5	582.2
\$50,000 to \$59,999	6,059	± 480	10	605.9
\$60,000 to \$74,999	7,418	± 598	15	494.5
\$75,000 to \$99,999	9,834	± 669	25	393.4
\$100,000 to \$124,999	6,256	± 531	25	250.2
\$125,000 to \$149,999	4,294	± 439	25	171.8
\$150,000 to \$199,999	3,523	± 349	50	70.5
\$200,000 or more	3,018	± 299	-	-

Source: 2007-2011 American Community Survey



Source: 2007-2011 American Community Survey

10.2 Median household income: Trends over time

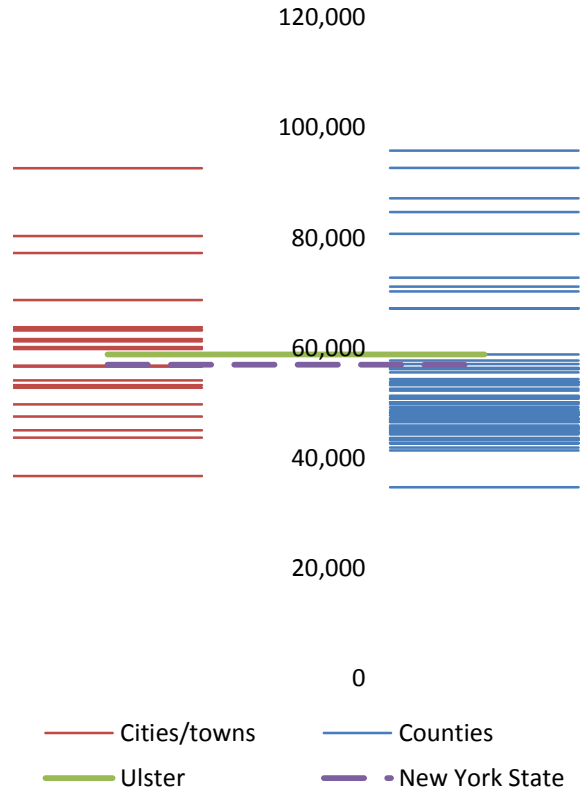


Source: Small Area Income and Poverty Estimates (SAIPE)

10.3 Median household income: Comparison between areas

	MEDIAN HOUSEHOLD INCOME (\$)	
	Estimate	Margin of error
New York State	56,951	± 190
Ulster County	58,808	± 1,621
Cities		
Kingston	45,037	± 2,479
Towns		
Denning	52,778	± 14,426
Esopus	68,705	± 5,678
Gardiner	92,628	± 9,981
Hardenburgh	36,731	± 8,347
Hurley	63,347	± 9,216
Kingston	49,760	± 10,406
Lloyd	59,847	± 10,399
Marbl	77,229	± 14,635
Marlborough	63,181	± 4,842
New Paltz	61,229	± 4,808
Olive	54,145	± 8,525
Plattekill	60,151	± 5,763
Rochester	61,598	± 6,605
Rosendale	56,601	± 4,264
Saugerties	56,829	± 3,330
Shandaken	43,750	± 12,252
Shawangunk	80,308	± 5,272
Ulster	53,263	± 3,282
Wawarsing	47,580	± 6,785
Woodstock	63,750	± 6,921

Median household income comparison within county (left) and between counties (right)



Source: 2007-2011 American Community Survey

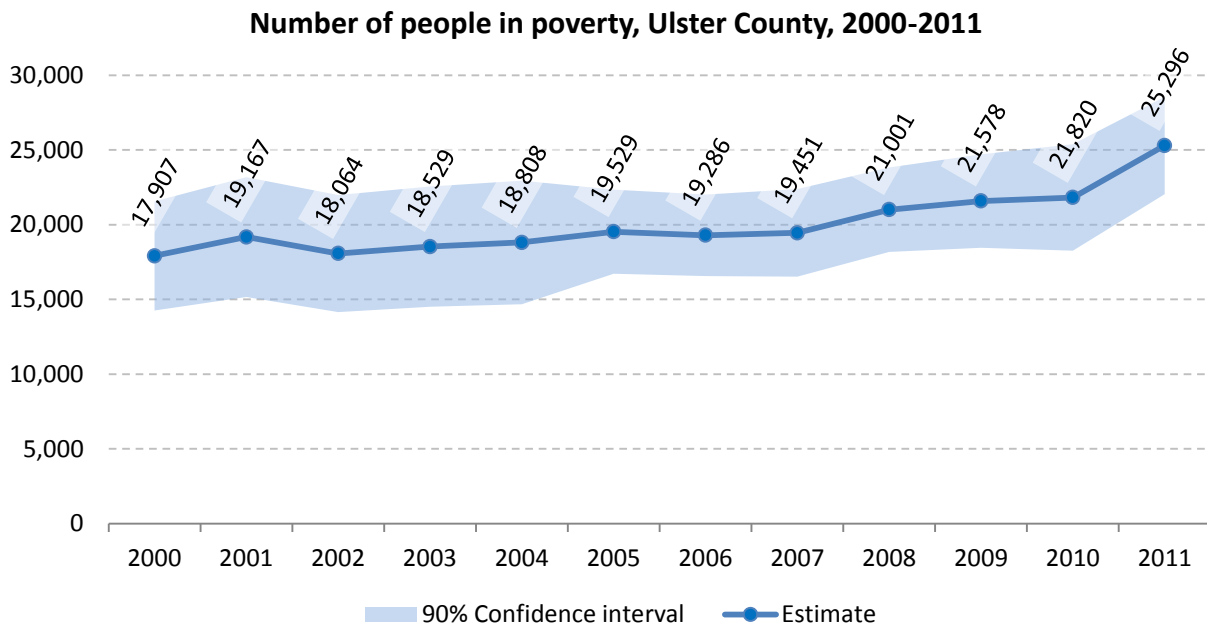
11 Poverty

11.1 Poverty characteristics

	TOTAL		BELOW POVERTY LEVEL		PERCENT BELOW POVERTY LEVEL	
	Estimate	Margin of error	Estimate	Margin of error	Estimate	Margin of error
Population for whom poverty status is determined	175,217	± 612	21,262	± 1,963	12.1%	± 1.1
AGE						
Under 18 years	36,454	± 305	5,682	± 676	15.6%	± 1.8
Related children under 18 years	36,110	± 342	5,359	± 678	14.8%	± 1.8
18 to 64 years	113,345	± 541	13,803	± 1,453	12.2%	± 1.3
65 years and over	25,418	± 324	1,777	± 304	7.0%	± 1.2
SEX						
Male	86,070	± 473	9,829	± 1,229	11.4%	± 1.4
Female	89,147	± 384	11,433	± 1,012	12.8%	± 1.1
RACE AND HISPANIC OR LATINO ORIGIN						
One race	170,816	± 759	20,298	± 1,960	11.9%	± 1.1
White	156,288	± 778	17,197	± 1,835	11.0%	± 1.2
Black or African American	8,341	± 577	1,902	± 511	22.8%	± 5.6
American Indian and Alaska Native	420	± 169	53	± 57	12.6%	± 14.2
Asian	2,942	± 238	501	± 206	17.0%	± 6.7
Hispanic or Latino origin (of any race)	14,197	± 218	2,857	± 565	20.1%	± 4.0
White alone, not Hispanic or Latino	146,316	± 441	15,387	± 1,673	10.5%	± 1.1
EDUCATIONAL ATTAINMENT						
Population 25 years and over	122,903	± 442	11,710	± 1,250	9.5%	± 1.0
Less than high school graduate	14,109	± 873	2,948	± 405	20.9%	± 2.5
High school graduate (includes equivalency)	35,514	± 1,044	4,230	± 824	11.9%	± 2.3
Some college, associate's degree	36,298	± 1,298	2,908	± 403	8.0%	± 1.1
Bachelor's degree or higher	36,982	± 1,383	1,624	± 321	4.4%	± 0.8
EMPLOYMENT STATUS						
Civilian labor force 16 years and over	95,600	± 1,512	6,664	± 664	7.0%	± 0.7
Employed	88,235	± 1,561	4,825	± 502	5.5%	± 0.6
Male	45,405	± 1,073	1,920	± 290	4.2%	± 0.6
Female	42,830	± 969	2,905	± 413	6.8%	± 0.9
Unemployed	7,365	± 722	1,839	± 410	25.0%	± 4.9
Male	4,246	± 495	1,001	± 285	23.6%	± 6.1
Female	3,119	± 435	838	± 231	26.9%	± 6.1
WORK EXPERIENCE IN THE PAST 12 MONTHS						
Population 16 years and over	143,656	± 639	16,312	± 1,673	11.4%	± 1.2
Worked full-time, year-round	57,562	± 1,477	933	± 282	1.6%	± 0.5
Worked part-time or part-year	42,697	± 1,199	5,936	± 624	13.9%	± 1.4
Did not work	43,397	± 1,481	9,443	± 1,312	21.8%	± 2.5

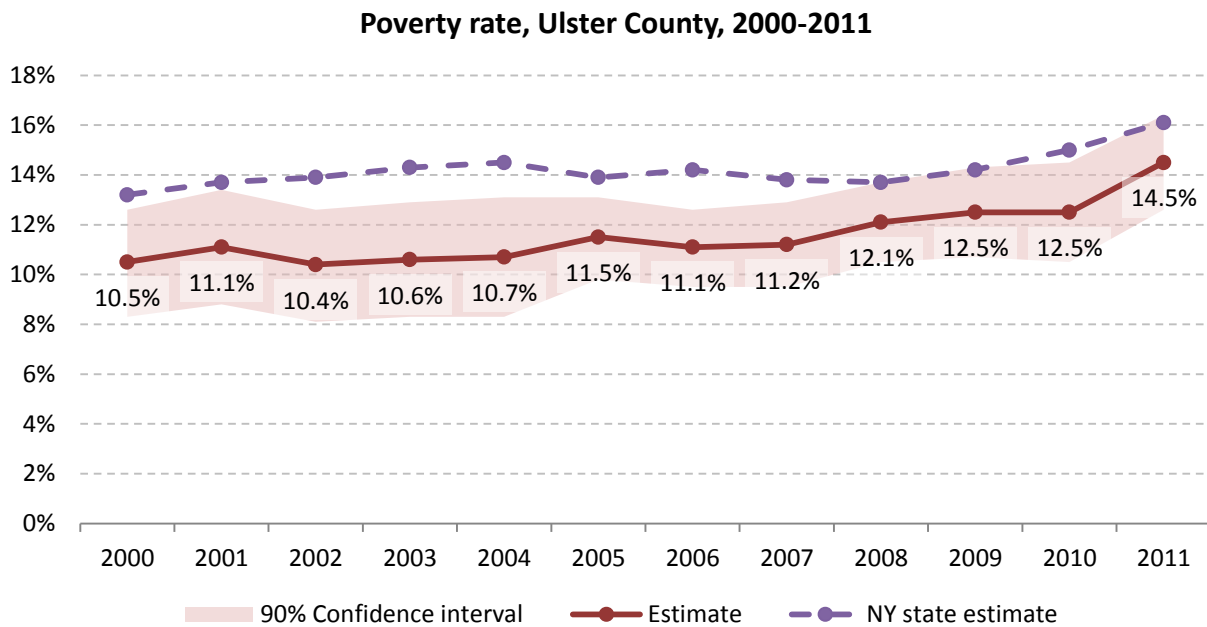
Source: 2007-2011 American Community Survey

11.2 Poverty: Trends over time: Count



Source: Small Area Income and Poverty Estimates (SAIPE)

11.3 Poverty: Trends over time: Rate

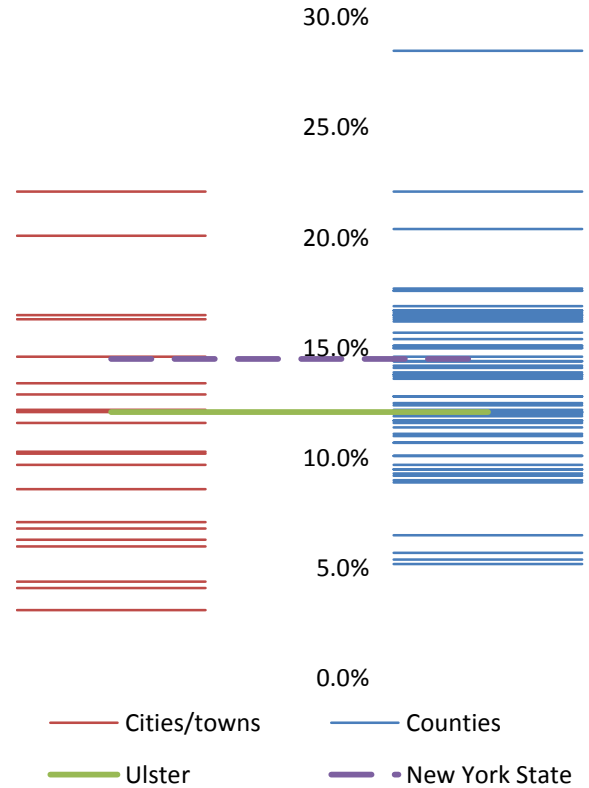


Source: Small Area Income and Poverty Estimates (SAIPE)

11.4 Poverty rate: comparison between areas

Poverty Rate - All people		
	Estimate	Margin of error
New York State	14.5%	± 0.1
Ulster County	12.1%	± 1.1
Cities		
Kingston	16.5%	± 2.6
Towns		
Denning	14.6%	± 7.4
Esopus	6.3%	± 2.2
Gardiner	3.1%	± 2.0
Hardenburgh	7.1%	± 6.3
Hurley	4.1%	± 2.1
Kingston	6.0%	± 3.7
Lloyd	11.6%	± 3.7
Marbl	4.4%	± 2.4
Marlborough	12.2%	± 4.1
New Paltz	22.1%	± 4.0
Olive	12.9%	± 6.5
Plattekill	9.7%	± 3.2
Rochester	12.1%	± 4.7
Rosendale	6.8%	± 3.0
Saugerties	8.6%	± 2.4
Shandaken	13.4%	± 4.2
Shawangunk	16.3%	± 9.1
Ulster	10.2%	± 3.5
Wawarsing	20.1%	± 4.5
Woodstock	10.3%	± 4.0

Poverty rate comparison within county (left) and between counties (right)

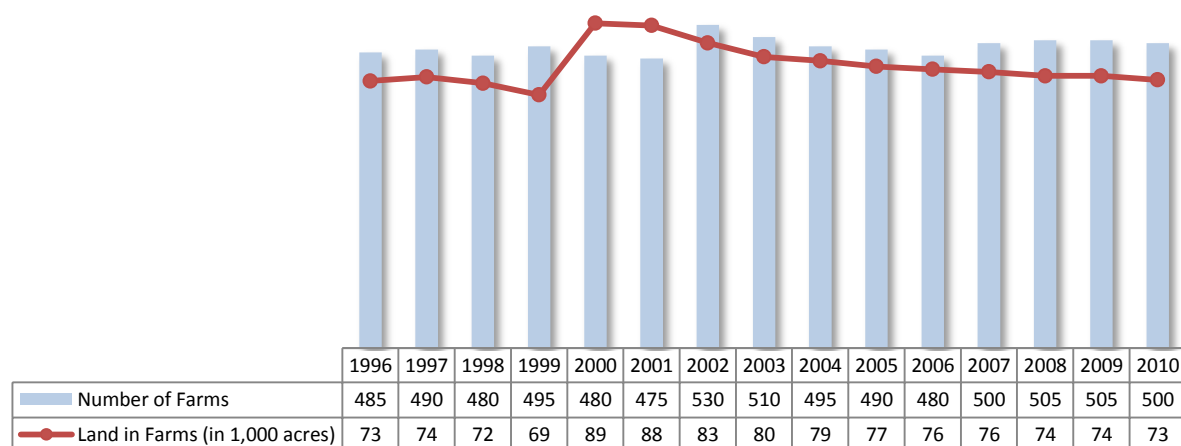


Source: 2007-2011 American Community Survey

12 Agriculture

12.1 Number of farms and land in farms

Ulster County, 1996-2010



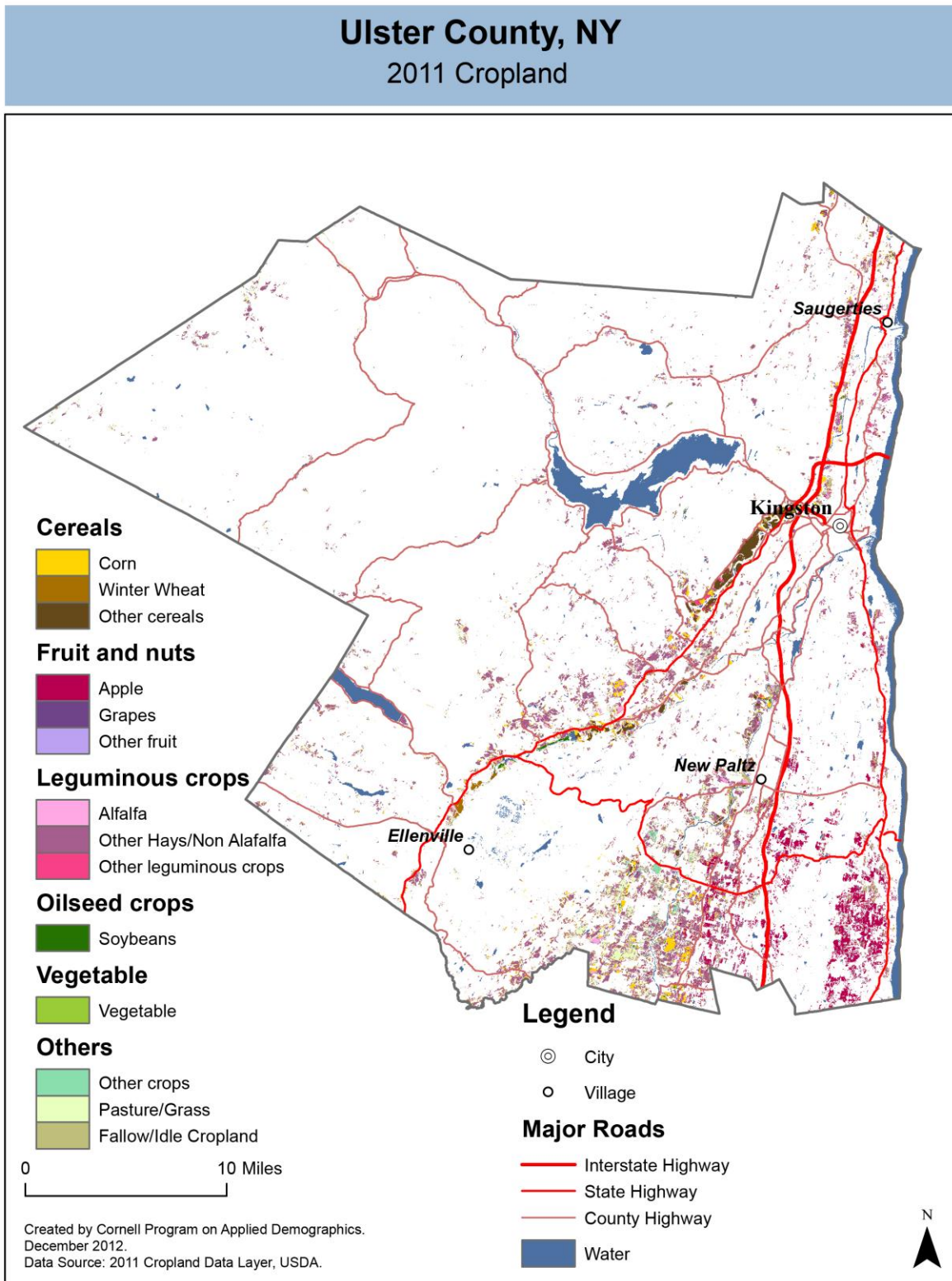
Source: National Agricultural Statistics Service – Annual Statistical bulletin

12.2 Farm Operator Characteristics

	Principal Operator		
	Total	Male	Female
Number of farms	501	377	124
Average size of farm (acres)	150	178	65
PRIMARY OCCUPATION			
Farming	286	210	76
Other	215	167	48
AGE			
Under 45	76	46	30
45 to 64 years	260	194	66
65 years and over	165	137	28
Average age (years)	58.4	59.5	55
YEARS ON PRESENT FARM			
Less than 3 years	14	10	4
3 to 4 years	26	14	12
5 to 9 years	74	56	18
10 years or more	387	297	90

Source: 2007 Agricultural Census

12.3 Map of type of crop

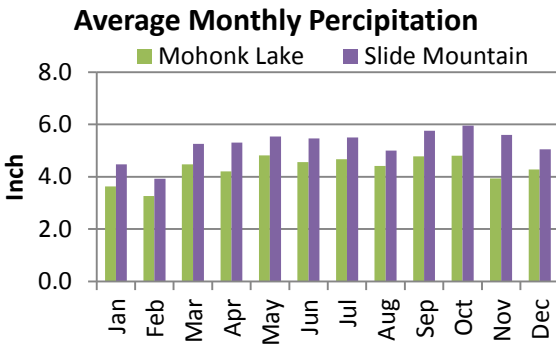
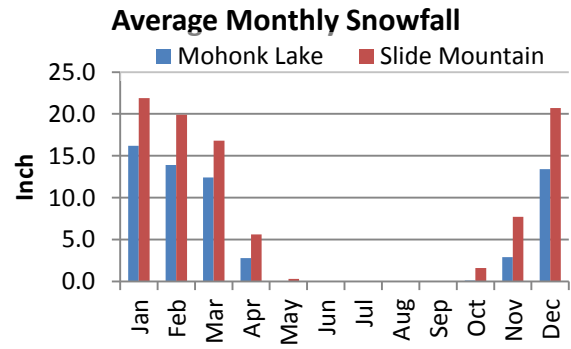
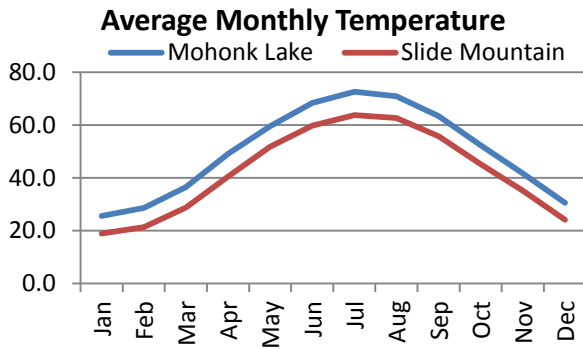
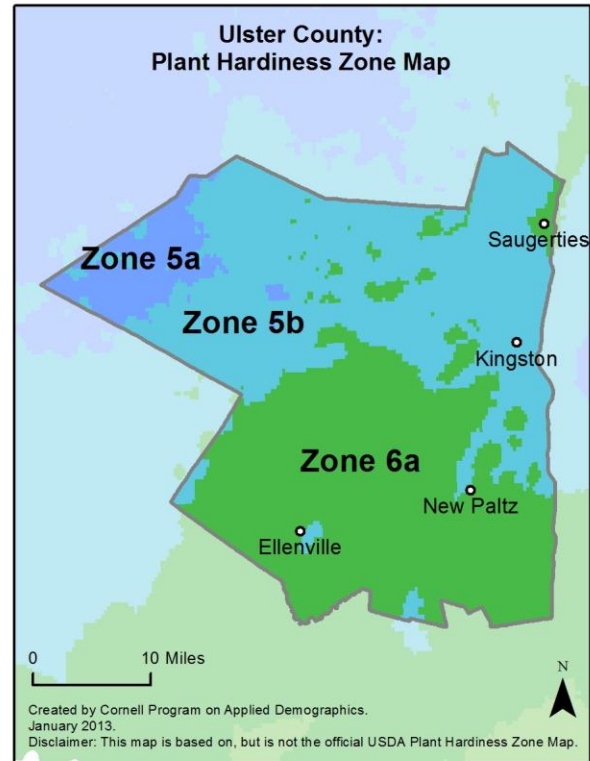
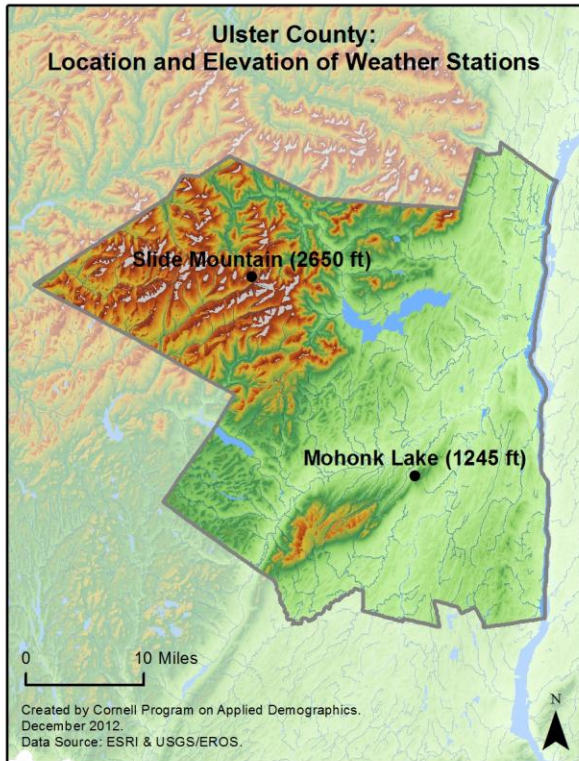


12.4 Estimated acreage by crop

	Acreage	%		Acreage	%
Cereals			Fruit and nuts		
Barley	0.4	0.0%	Apples	8,249	15.2%
Corn	4,958	9.1%	Apricots	-	
Millet	-		Blueberries	-	
Oats	53	0.1%	Cherries	0.9	0.0%
Rye	82	0.2%	Cranberries	-	
Sorghum	18	0.0%	Grapes	36	0.1%
Speltz	-		Nectarines	0.4	0.0%
Spring Wheat	-		Peaches	3.8	0.0%
Sweet Corn	2,372	4.4%	Plums	3.6	0.0%
Triticale	0.4	0.0%	Prunes	-	
Winter Wheat	340	0.6%	Strawberries	-	
Dbl Crop WinWht/Corn	-		Walnuts	-	
Leguminous crops			Beverage and spice crops		
Alfalfa	2,266	4.2%	Herbs	-	
Other Hay/Non Alfalfa	24,510	45.2%	Peppers	-	
Dry Beans	192	0.4%	Trees		
Peas	-		Christmas Trees	7	0.0%
Vetch	158	0.3%	Other Tree Crops	29	0.1%
Oilseed crops			Other crops		
Soybeans	323	0.6%	Tobacco	-	
Sunflower	-		Misc Veggies & Fruits	-	
Sugar crops			Clover/Wildflowers	5	0.0%
Sugarbeets	-		Sod/Grass Seed	-	
Root/tuber crops with high starch or inulin content			Switchgrass	-	
Potatoes	3.1	0.0%	Dbl Crop Soybeans/Oats	-	
Vegetables and melons			Dbl Crop WinWht/Soybeans	-	
Asparagus	-		Other Crops	743	1.4%
Broccoli	-		Pasture/Grass	5,363	9.9%
Cabbage	-		Fallow/Idle Cropland	4,466	8.2%
Carrots	-				
Eggplants	-				
Onions	12	0.0%			
Pumpkins	2.2	0.0%			
Squash	11	0.0%			
Tomatoes	-				
Turnips	-				

Source: National Agricultural Statistics Service - Cropland Data Layer 2011

13 Climate



Average length of freeze-free season

	Last day of frost	First day of frost	Season length
Mohonk Lake	April 23	October 22	181
Slide Mountain	May 16	October 1	138

Source: NOAA, Northeast Regional Climate Center at Cornell University. Averages 1981-2010

14 Glossary

American Community Survey (ACS) - The American Community Survey is an ongoing survey of the population that provides data every year on a variety of social and economic characteristics—age, sex, race, family and relationships, income and benefits, health insurance, education, veteran status, disabilities, where you work and how you get there, where you live and how much you pay for some essentials. The ACS replaced the information previously gathered by what was known as the “long form” of the decennial censuses. The ACS provides communities, companies and other institutions with current information they need to plan investments and services. Information from the survey generates data that help determine how more than \$400 billion in federal and state funds are distributed each year. Every estimate presented in the American Community Survey, as in other surveys, has an uncertainty associated with it. Often the magnitude of that uncertainty is expressed as the Margin of Error.

Confidence Interval (CI) - indication of the degree of uncertainty about a sample estimates. Confidence intervals have been traditionally reported at the 90, 95 and 99 percent levels. A 90 percent confidence interval can be interpreted, for example, roughly as providing 90 percent certainty that the interval defined by the upper and lower bounds contain the true value of the characteristic. If a Margin of Error is given, the lower bound of the confidence interval is equal to the estimate minus the Margin of Error and the upper bound is equal to the estimate plus the Margin of Error. (See further, Margin of Error definition below.)

County subdivision or Minor Civil Division (MCD) - The Census Bureau geography for primary administrative units below the county level in New York is collectively referred to as county subdivisions or minor civil divisions. These include towns, cities and Indian Reservations.

Decennial Census - the Census of the population and housing taken every 10 years in the United States, at the start of each decade, since 1790.

Employed – either “at work” or “with a job, but not at work”.

Group Quarters Population - all U.S. residents who live in group living facilities including correctional institutions, juvenile facilities, skilled nursing facilities, college residence halls, military barracks, group homes, and workers' dormitories.

Household Population - all U.S. residents who live in housing units such as single family homes, townhouses, apartments, and mobile homes.

Intercensal Population Estimates - estimates produced for the years between two decennial censuses when both the beginning and ending populations are known. They are produced once a decade by adjusting the existing time series of postcensal estimates for the entire decade to smooth the transition from one decennial census count to the next. They differ from the postcensal estimates that are released annually because the difference between the April 1 postcensal estimate and April 1 census count for the end of the decade is redistributed across the estimates for that decade. For dates when both postcensal and intercensal estimates are available, intercensal estimates are preferred.

Labor Force - consists of people classified as employed or unemployed.

Margin of Error (MOE) - a measure of the precision of an estimate at a given level of confidence. The confidence level of a margin of error indicates the likelihood that the difference between the population value (which you

would get if you could measure the whole population instead of a sample) and the estimate is less than or equal to the margin of error. The range from the estimate minus the margin of error to the estimate plus the margin of error is called the confidence interval. All ACS estimates are published with their margins of error at the 90 percent confidence level. Margins of error are useful in assessing the reliability of estimates and whether differences between estimates are significant.

NAICS - The North American Industry Classification System or NAICS is used by business and government to classify business establishments according to type of economic activity (process of production).

Numeric Population Change - difference between the population of an area at the beginning and end of a time period. It is computed by taking the difference between the population at one point in time (t1) and some future time (t2).

Percent Population Change - difference between the population of an area at the beginning and end of a time period, expressed as a percentage of the beginning population. It is computed by dividing the population change (t2 - t1) by t1 and multiplying the result by 100.

Population Estimates - The calculated number of people living in an area as of a specified point in time, usually July 1st. The estimated population is calculated using a component of change model that incorporates information on natural increase (births, deaths) and net migration (net domestic migration, net international migration) that has occurred in an area since the latest decennial census. A procedure for estimating the current population using a procedure involving a "base population" value at time t -1, adding to that the births during the interval t-1 to t, subtracting the deaths during that interval t-1 to t, and then adding the net domestic and net international migration that occurred during that interval.

Population Density - Total number of people per areal unit like a square mile or square kilometer.

Population Pyramids - A graphical way of portraying a population's age and sex composition at a given slice in time. The first horizontal bar, constituting the base of the graph, is the youngest age group (typically 0-4) with the number of males in that age group on the left and the number of females in that age group on the right. On top of that age group is another horizontal bar for the next age group (e.g. 5-9) and so forth with the top bar typically for those aged 75 and over. In a population with lots of births and deaths, the shape typically forms a pyramid with a broad base and a narrow top. It is one of the most basic ways to understand population change over time as well as between different geographic units of a similar status (e.g. counties).

Postcensal Estimates - estimates produced for the years after a decennial census when only the beginning population is known. They are produced and revised each year, targeted to July 1 of that year.

Projection - estimated population at some future time based on assumptions about births, deaths, migration, and ages.

Race/Ethnicity - the Census Bureau collects racial data in accordance with guidelines provided by the U.S. Office of Management and Budget (OMB), and these data are based on self-identification. The racial categories included in the census questionnaire generally reflect a social definition of race recognized in this country and not an attempt to define race biologically, anthropologically, or genetically. In addition, it is recognized that the categories of the race item include racial and national origin or sociocultural groups. People may choose to report more than one race to indicate their racial mixture, such as "American Indian" and "White." People who identify their origin as Hispanic, Latino, or Spanish may be of any race. OMB requires five minimum categories: White, Black or African American, American Indian or Alaska Native, Asian, and Native Hawaiian or Other Pacific

Islander. Hispanics may be classified as white or black. So we generally separate them out as an ethnic group first.

Unemployed – Not employed, but actively looking for work and available to accept a job.

Unemployment rate – Fraction of the Labor Force that is unemployed.

Urban Area – A densely settled area with at least 2,500 people. If the total number of people is less than 50,000 the Census Bureau calls it an Urban Cluster, otherwise an Urbanized Area.

Vintage - each year, the U.S. Census Bureau produces and publishes estimates of the population for each state and county, as well as the nation as a whole. These are called “vintages.” In producing these vintages, the Bureau utilizes administrative data from a number of sources to estimate 1) the change in population since the most recent decennial census, and 2) the population for each year since the most recent decennial census. With each annual release of population estimates (vintage), the entire time series of estimates beginning on April 1, 2010 is revised and updated.

15 References

Ulster County homepage: <http://www.co.ulster.ny.us/>

At Cornell:

- Cornell Cooperative Extensions (CCE)
Home page: <http://www.cce.cornell.edu>
 - Ulster local office: <http://www.cceulster.org/>
- Program on Applied Demographics (PAD)
URL: <http://pad.human.cornell.edu/>
- Community and Regional Development Institute (CaRDI)
URL: <http://devsoc.cals.cornell.edu/cals/devsoc/outreach/cardi/index.cfm>

Data sources and background information:

- U.S. Census Bureau - general
 - QuickFacts: <http://quickfacts.census.gov/qfd/states/36/36111.html>
 - QuickLinks: <http://quickfacts.census.gov/qfd/states/36/36111lk.html>
 - American FactFinder: <http://factfinder2.census.gov>
- U.S. Census Bureau - population
 - Decennial Census
 - Background: <http://2010.census.gov/2010census/>
 - Demographic Profile: http://factfinder2.census.gov/bkmk/table/1.0/en/DEC/10_SF1/SF1DP1/0500000US36111_1
 - American Community Survey (ACS)
 - Background: <http://www.census.gov/acs/www/>
 - Social Data Profile: http://factfinder2.census.gov/bkmk/table/1.0/en/ACS/10_5YR/DP02/0500000US36111
 - Economic Data Profile: http://factfinder2.census.gov/bkmk/table/1.0/en/ACS/10_5YR/DP03/0500000US36111
 - Housing Data Profile: http://factfinder2.census.gov/bkmk/table/1.0/en/ACS/10_5YR/DP04/0500000US36111
 - Demographics Data Profile: http://factfinder2.census.gov/bkmk/table/1.0/en/ACS/10_5YR/DP05/0500000US36111
 - Population estimates: <http://www.census.gov/popest/estimates.html>
- U.S. Census Bureau – Small Area Income & Poverty Estimates (SAIPE)
 - <http://www.census.gov/did/www/saipe/>
- U.S. Census Bureau - Public Use Quarterly Workforce Indicators (QWI) – annual averages
 - <http://www2.vrdc.cornell.edu/news/data/qwi-public-use-data/>
- Bureau Labor Statistics (BLS) – Local Area Unemployment Statistics: <http://www.bls.gov/lau/>
- NY Department of Labor -
 - Labor statistics: <http://www.labor.ny.gov/stats/>
 - Quarterly Census of Employment and Wages (QCEW): <http://www.labor.ny.gov/stats/lsqcew.shtm>
- Bureau of Economic Analysis (BEA) – Local Area Personal Income and Employment: <http://bea.gov/iTable/iTable.cfm?ReqID=70&step=1>

- USDA Census of Agriculture
 - 2007
 - Home page: <http://www.agcensus.usda.gov/Publications/2007/index.php>
 - County profile: http://www.agcensus.usda.gov/Publications/2007/Online_Highlights/County_Profiles/New_York/cp36111.pdf
 - Race, Ethnicity and Gender Profiles: http://www.agcensus.usda.gov/Publications/2007/Online_Highlights/Race_Ethnicity_and_Gender_Profiles/New_York/cpd36111.pdf
- USDA National Agricultural Statistics Service (NASS)
 - Home page: <http://www.nass.usda.gov/index.asp>
 - New York Statistical Bulletins: http://www.nass.usda.gov/Statistics_by_State/New_York/Publications/Annual_Statistical_Bulletin/
 - Cropland Data Layer – CropScape: <http://nassgeodata.gmu.edu/CropScape/>
- USDA Agricultural Research Service – Plant Hardness Zone Map: <http://planthardiness.ars.usda.gov/PHZMWeb/>
- NOAA, Northeast Regional Climate Center at Cornell University
 - Home page: <http://www.nrcc.cornell.edu/index.html>

Alternative sites for data retrieval:

- The Nelson A. Rockefeller Institute of Government – New York State Statistical Yearbooks http://www.rockinst.org/nys_statistics/
- Headwaters Economics: Economic Profile System – Human Dimensions Toolkit <http://headwaterseconomics.org/tools/eps-hdt>
- National Historical Geographic Information System (NHGIS) <https://www.nhgis.org/>
- Social Explorer <http://www.socialexplorer.com/pub/home/home.aspx>
- Missouri Census Data Center <http://mcdc.missouri.edu/>
- DataFerret <http://dataferrett.census.gov/>
- Investigative Reporters and Editors (IRE) Census project <http://census.ire.org/>