

# Tompkins County Profile 2013

*A collection of recent demographic, social, economic and agricultural data*

Compiled by Jan Vink

Assisted by Joe Francis, Sutee Anantsuksomsri, Nij Tontisirin, Johannes Plambeck



**Cornell University**  
Cooperative Extension



This profile is a part of a set of profiles generated for each county in New York State. The profiles were developed and generated by the Cornell Program on Applied Demographics. The work is sponsored by Cornell Cooperative Extension and promoted with webinars and workshops in coordination with the Community & Regional Development Institute.

Cornell Program on Applied Demographics:

The Program on Applied Demographics (PAD) brings skills in demographics, economics, statistics, data gathering and data analysis together to provide a variety of organizations with data, information and advice.

For more information: <http://pad.human.cornell.edu/>

Cornell Cooperative Extension:

Cornell Cooperative Extension (CCE) puts knowledge to work in pursuit of economic vitality, ecological sustainability and social well-being. We bring local experience and research based solutions together, helping New York State families and communities thrive in our rapidly changing world.

For more information: <http://cce.cornell.edu/>

Community & Regional Development Institute:

The Community & Regional Development Institute (CaRDI) supports informed decision making for residents and communities in New York State through applied research and education.

For more information: <http://cardi.cornell.edu/>

All profiles are freely downloadable as PDF documents on the PAD website:

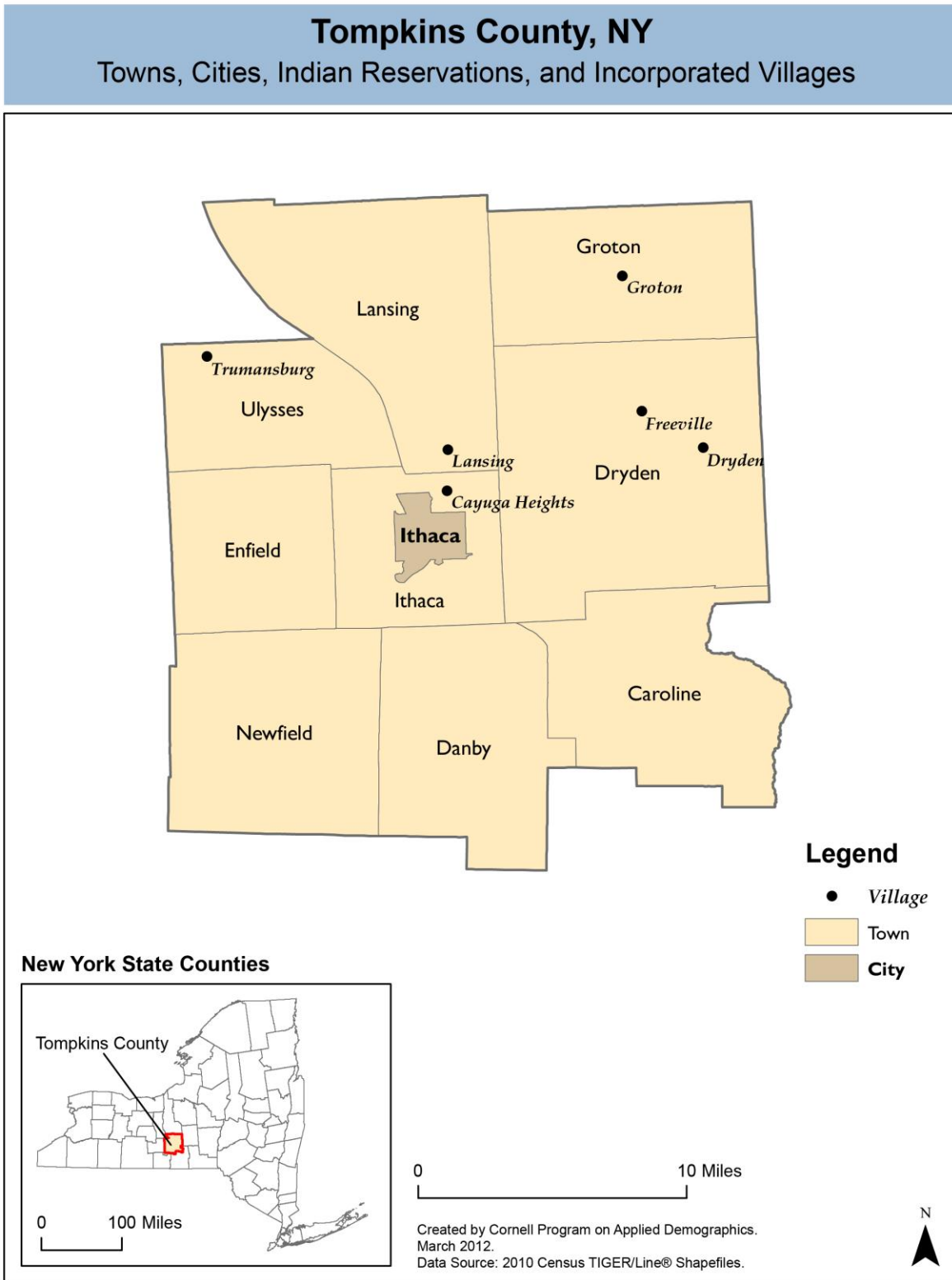
<http://pad.human.cornell.edu/profiles/index.cfm>

## Contents

Contents .....	2
1 Reference Maps .....	4
2 Population density and Urban Areas Map .....	6
3 Total Population .....	7
3.1 Historic and projected .....	7
3.2 Change since previous Census .....	7
3.3 Annual population estimates .....	8
3.4 Percentage sub county change 2000-2010 .....	9
4 Population by age .....	11
4.1 Historic and projected population pyramids .....	11
4.2 Selected age groups .....	12
4.3 Median age: comparison between areas .....	14
5 Race .....	15
5.1 Total and household population by race .....	15
5.2 Race composition by age .....	15
6 Housing units .....	16
6.1 Characteristics .....	16
6.2 Historical data on number of housing units and occupancy status .....	17
7 Education .....	18
7.1 Enrollment by level of school .....	18
7.2 Enrollment by age .....	18
7.3 Percentage age 18-24 enrolled in college .....	18
7.4 Educational attainment .....	19
8 Language spoken at home .....	19
9 Labor Force Characteristics .....	20
9.1 Labor force, employment and unemployment .....	20
9.2 Annual unemployment rate .....	21
9.3 Monthly unemployment rate .....	21
9.4 Employment and number of jobs .....	22
9.5 Class of worker .....	22
9.6 Jobs by industry sector .....	23
10 Household Income .....	24
10.1 Distribution .....	24
10.2 Median household income: Trends over time .....	25
10.3 Median household income: Comparison between areas .....	26
11 Poverty .....	27
11.1 Poverty characteristics .....	27
11.2 Poverty: Trends over time: Count .....	28
11.3 Poverty: Trends over time: Rate .....	28
11.4 Poverty rate: comparison between areas .....	29
12 Agriculture .....	30
12.1 Number of farms and land in farms .....	30
12.2 Farm Operator Characteristics .....	30

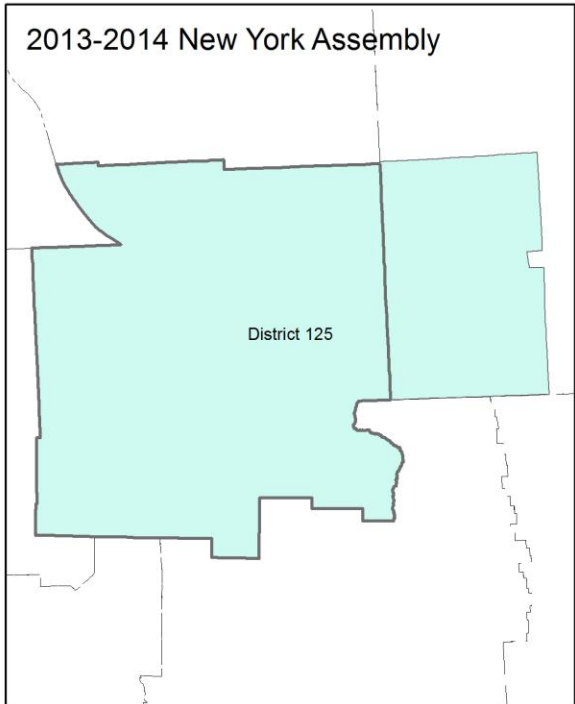
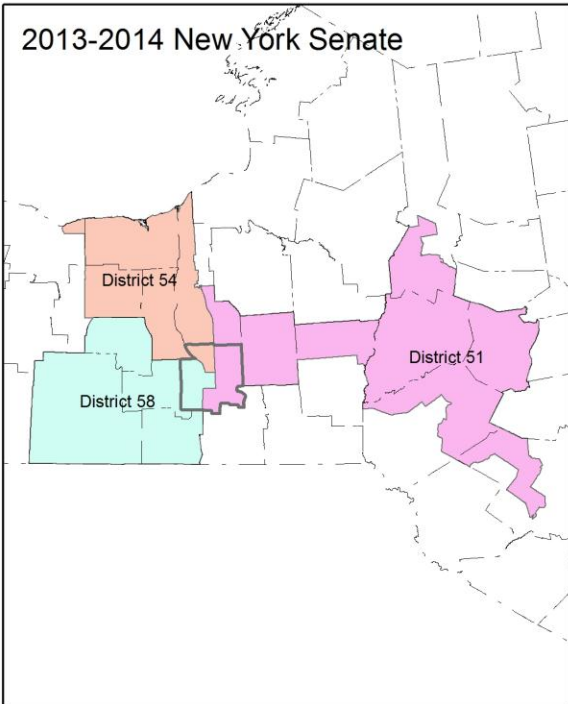
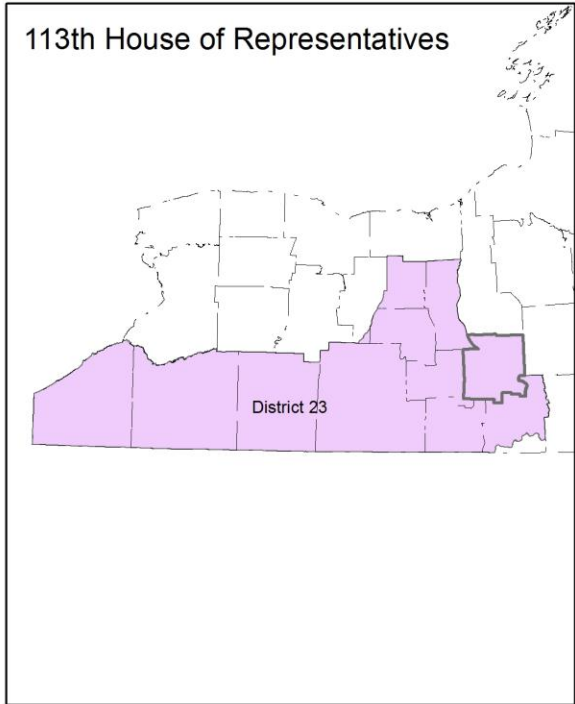
12.3 Map of type of crop ..... 31  
12.4 Estimated acreage by crop ..... 32  
13 Climate ..... 33  
14 Glossary..... 34  
15 References ..... 37

1 Reference Maps

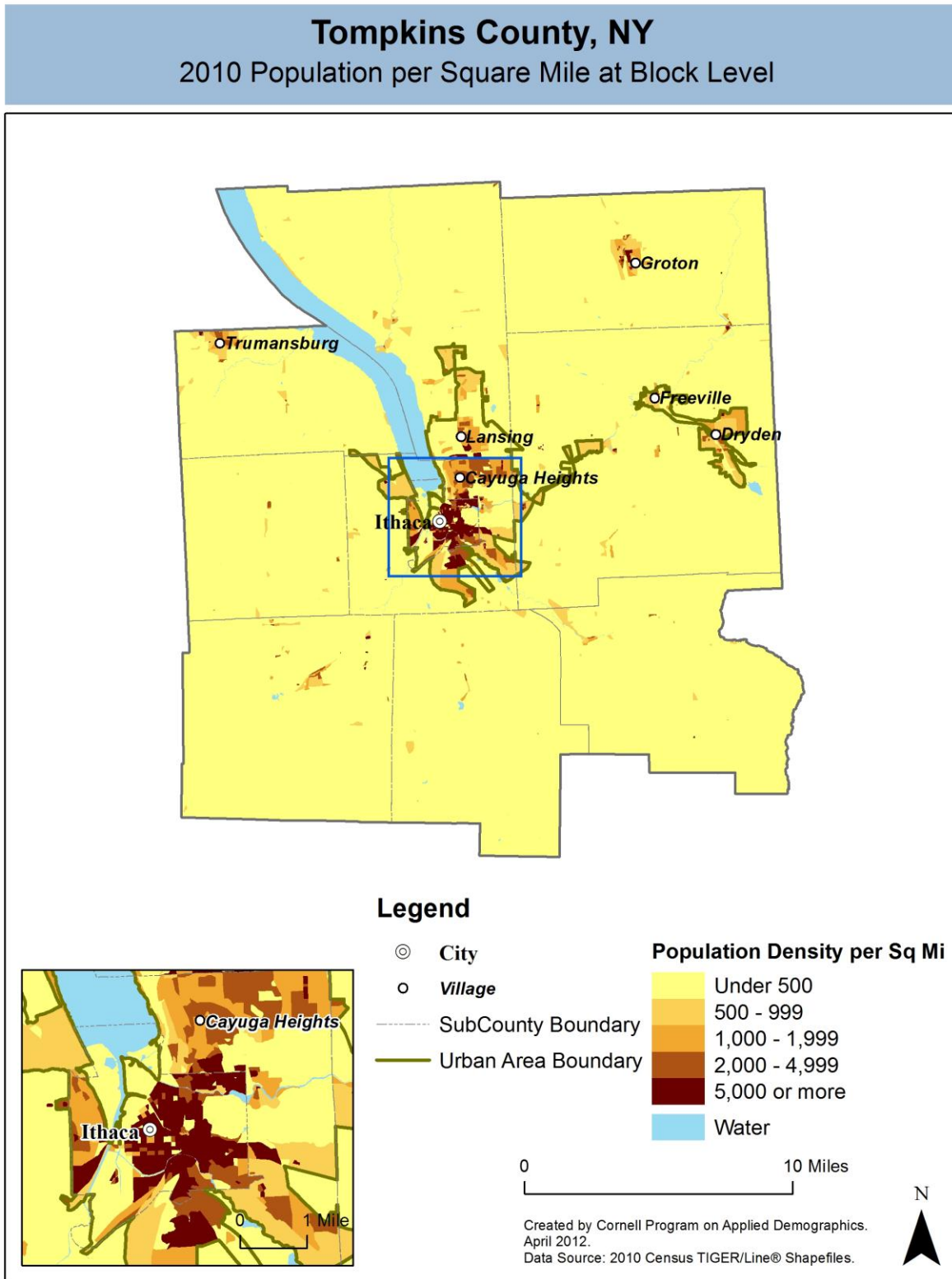


## Tompkins County, NY

### Overlap with School and Political Districts



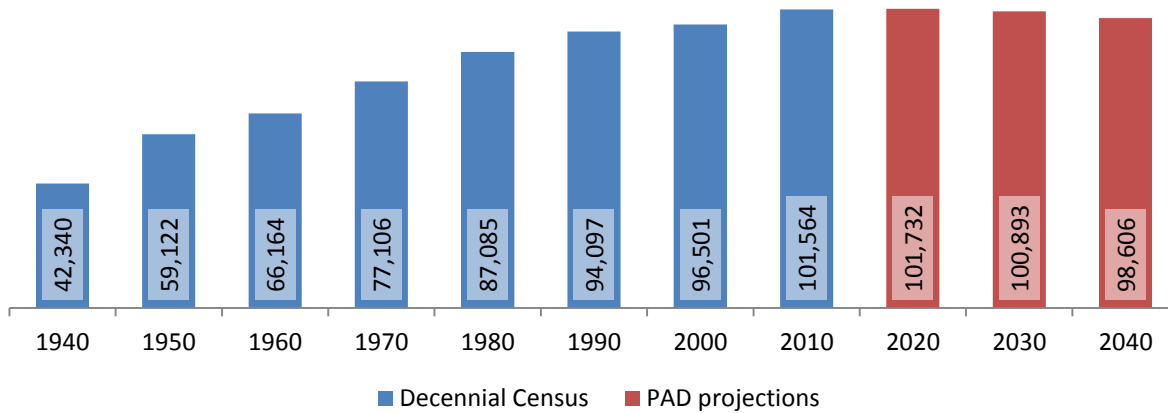
2 Population density and Urban Areas Map



### 3 Total Population

#### 3.1 Historic and projected

Total population, Tompkins County, 1940-2040



Source: 1940-2010 Decennial Census and projections by Cornell Program on Applied Demographics

#### 3.2 Change since previous Census

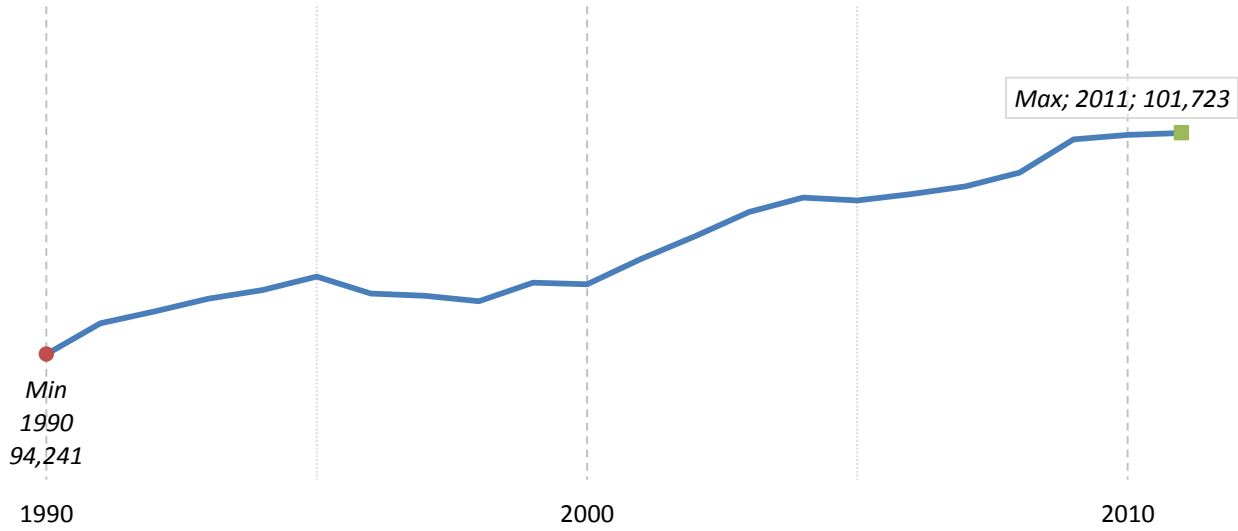
	Year	Total population	Change	
			Number	Percent
Decennial Census	1940	42,340		
	1950	59,122	16,782	39.6%
	1960	66,164	7,042	11.9%
	1970	77,106	10,942	16.5%
	1980	87,085	9,979	12.9%
	1990	94,097	7,012	8.1%
	2000	96,501	2,404	2.6%
	2010	101,564	5,063	5.2%
PAD projections	2020	101,732	168	0.2%
	2030	100,893	-839	-0.8%
	2040	98,606	-2,287	-2.3%

Source: 1940-2010 Decennial Census and projections by Cornell Program on Applied Demographics



### 3.3 Annual population estimates

Annual population estimates  
Tompkins County, 1990-2011



Source: U.S. Census Bureau population estimates (1990-1999 and 2000-2009 intercensal and vintage 2011 postcensal)

### 3.4 Percentage sub county change 2000-2010

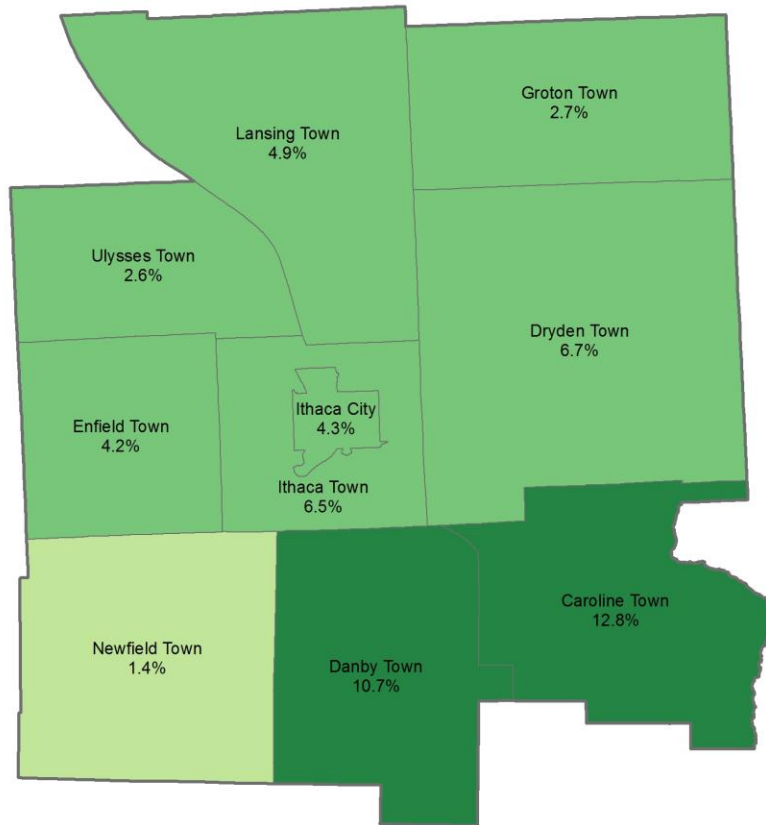
	Total Population		Difference	
	2000	2010	Count	%
New York State	18,976,821 *	19,378,102	401,281	2.1%
Tompkins County	96,501	101,564	5,063	5.2%
<b>Cities</b>				
Ithaca	28,775 *	30,014	1,239	4.3%
<b>Towns</b>				
Caroline	2,910	3,282	372	12.8%
Danby	3,007	3,329	322	10.7%
Dryden	13,532	14,435	903	6.7%
Enfield	3,369	3,512	143	4.2%
Groton	5,794	5,950	156	2.7%
Ithaca	18,710 *	19,930	1,220	6.5%
Lansing	10,521	11,033	512	4.9%
Newfield	5,108	5,179	71	1.4%
Ulysses	4,775	4,900	125	2.6%

\* Original counts revised through Count Question Resolution Program (CQR)

Source: U.S. Census Bureau intercensal population estimates 2000-2010

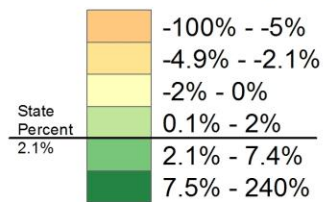
## Tompkins County, NY

### County Subdivision, Percent Change in Population 2000-2010



### Legend

#### Percent Change



0 10 Miles

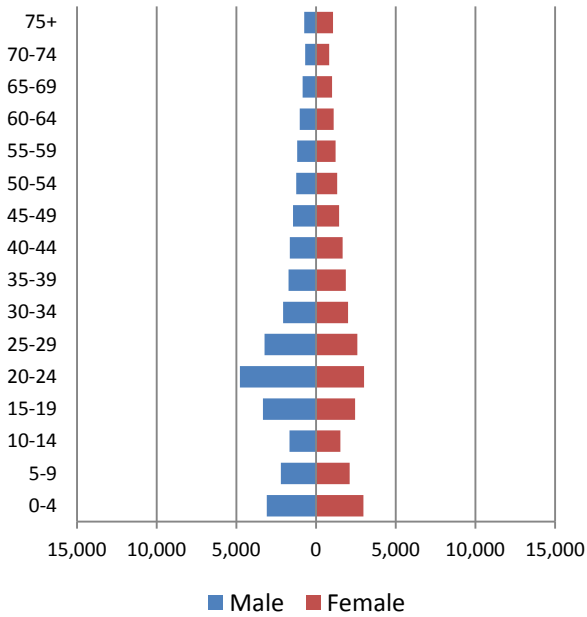
Created by Cornell Program on Applied Demographics.  
January 2013.  
Data Source: 2010 Census TIGER/Line® Shapefiles,  
Census 2000 & 2010.



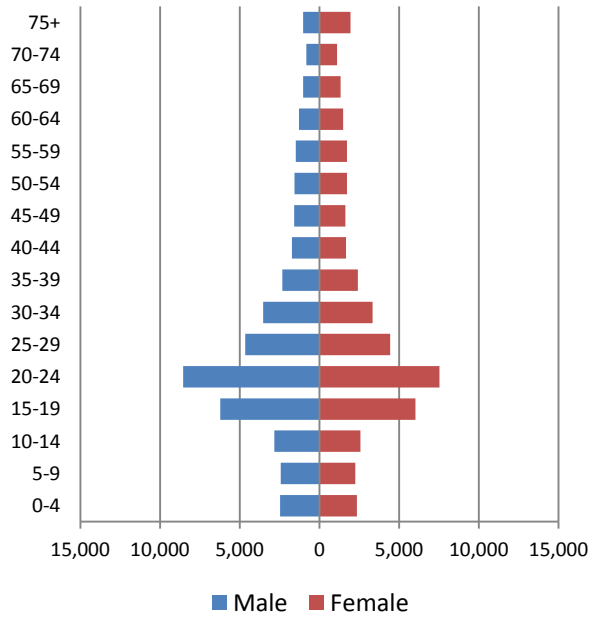
## 4 Population by age

### 4.1 Historic and projected population pyramids

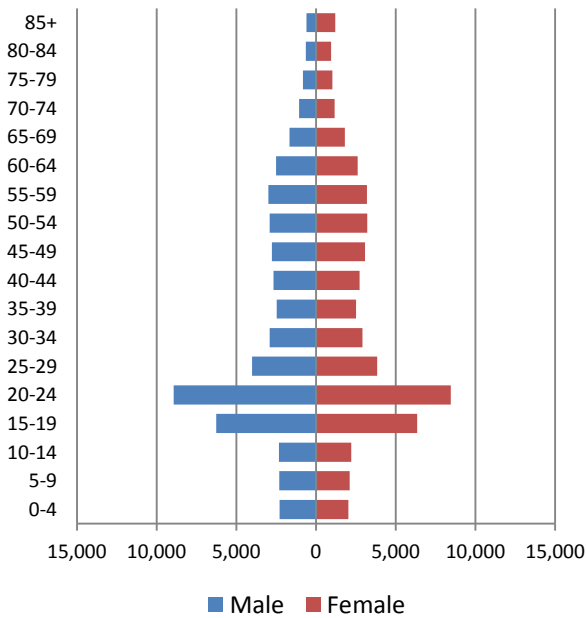
1950 Population Pyramid, Tompkins County



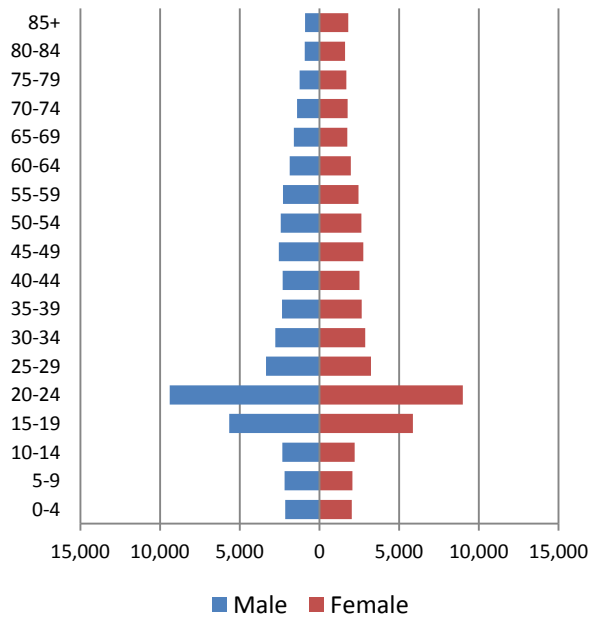
1980 Population Pyramid, Tompkins County



2010 Population Pyramid, Tompkins County



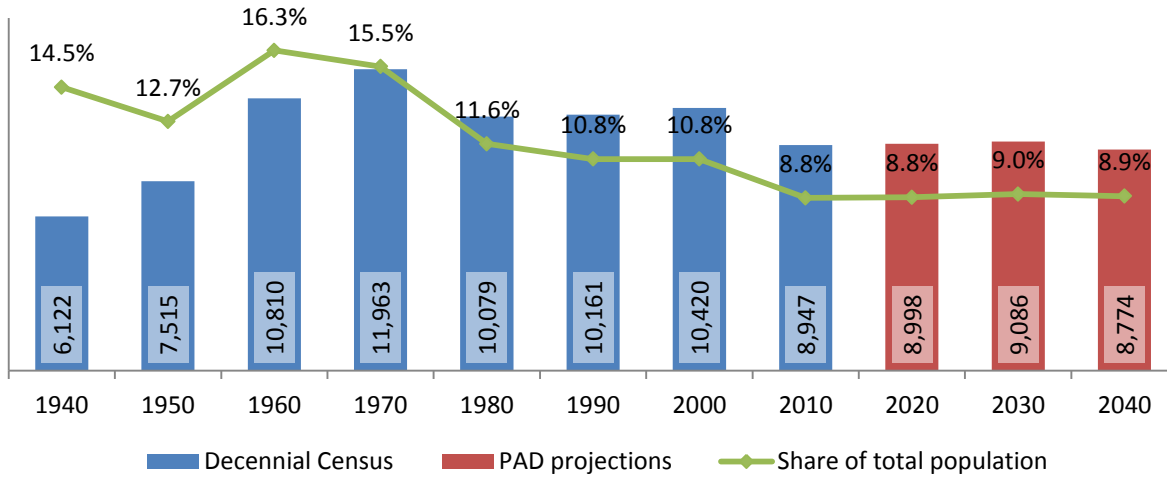
2040 Population Pyramid, Tompkins County



Source: 1950, 1980, 2010 Decennial Census and projections by Cornell Program on Applied Demographics

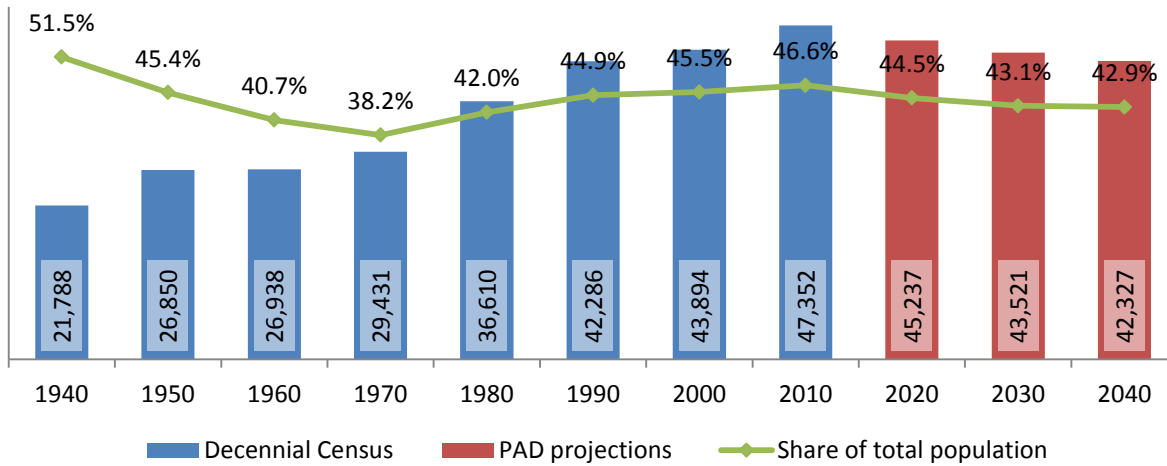
## 4.2 Selected age groups

**Population age 5-14, Tompkins County, 1940-2040**



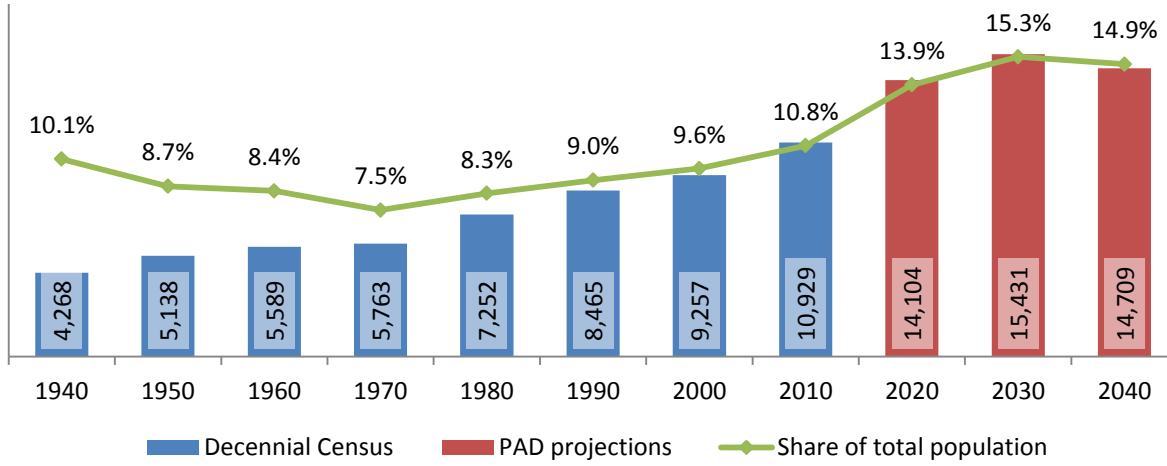
Source: 1940-2010 Decennial Census and projections by Cornell Program on Applied Demographics

**Population age 25-64, Tompkins County, 1940-2040**



Source: 1940-2010 Decennial Census and projections by Cornell Program on Applied Demographics

**Population age 65 and over, Tompkins County, 1940-2040**

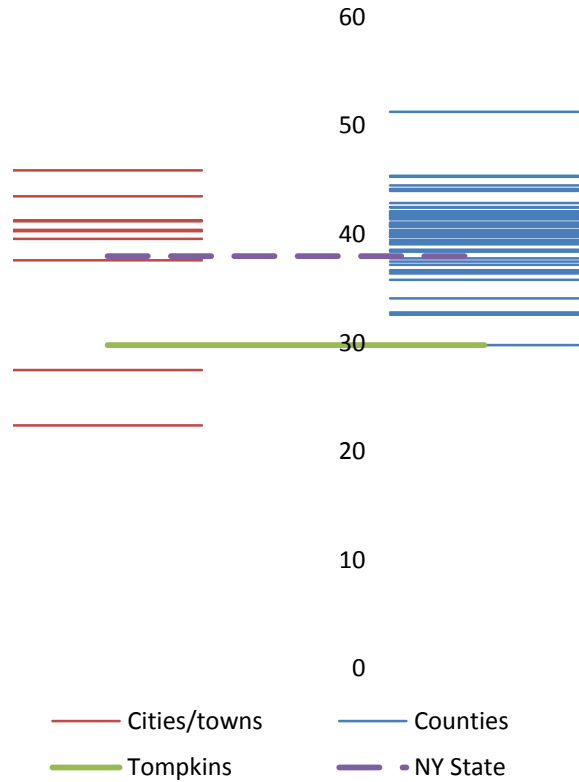


Source: 1940-2010 Decennial Census and projections by Cornell Program on Applied Demographics

### 4.3 Median age: comparison between areas

	Median Age
New York State	38.0
Tompkins County	29.8
<b>Cities</b>	
Ithaca city	22.4
<b>Towns</b>	
Caroline town	40.3
Danby town	43.5
Dryden town	37.6
Enfield town	41.2
Groton town	41.3
Ithaca town	27.5
Lansing town	39.6
Newfield town	40.4
Ulysses town	45.9

Median age comparison within county (left) and between counties (right)



Source: 2010 Decennial Census

## 5 Race

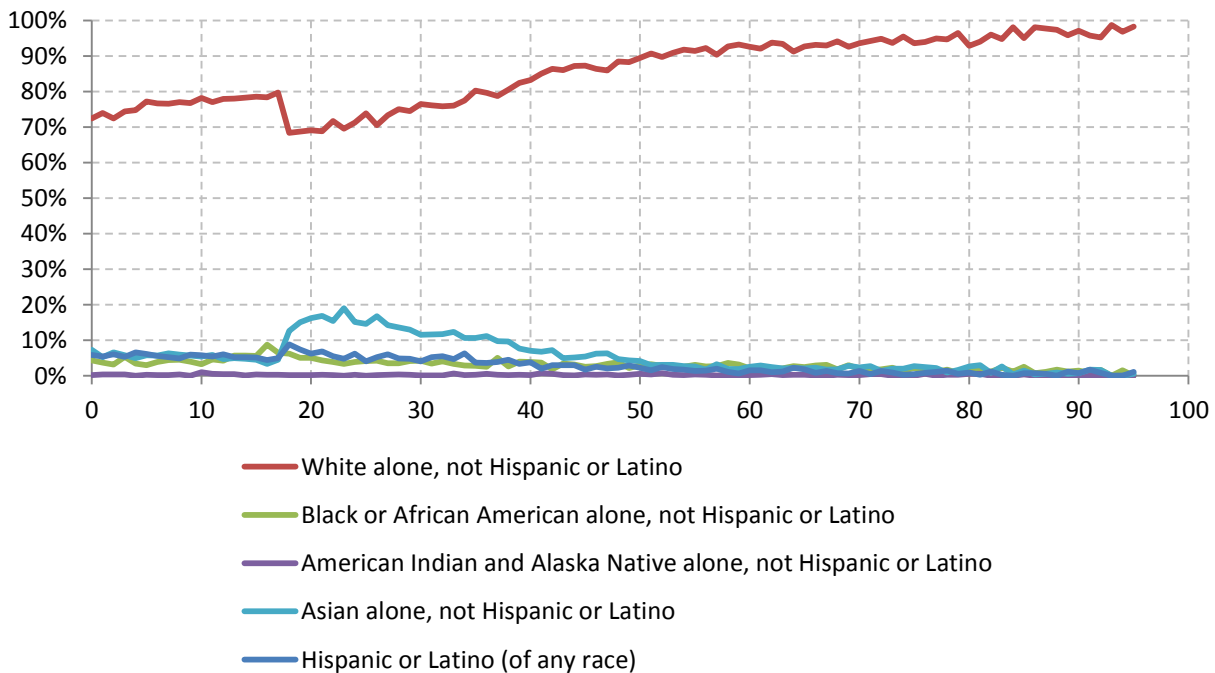
### 5.1 Total and household population by race

	Total		In households		In Group Quarters
	Count	Percentage	Count	Percentage	Count
<b>Total population</b>	101,564	100%	88,332	100%	13,232
Not Hispanic or Latino					
One race					
White	81,490	80.2%	72,530	82.1%	8,960
Black or African American	3,773	3.7%	2,977	3.4%	796
American Indian and Alaska Native	270	0.3%	234	0.3%	36
Asian	8,680	8.5%	6,696	7.6%	1,984
Native Hawaiian and Other Pacific Islander	40	0.0%	-	-	-
Some other race	231	0.2%	196	0.2%	35
Two or more races	2,816	2.8%	2,384	2.7%	432
Hispanic or Latino (of any race)	4,264	4.2%	3,278	3.7%	986

Source: 2010 Decennial Census

### 5.2 Race composition by age

Race composition by age, Tompkins County



Source: 2010 Decennial Census



## 6 Housing units

### 6.1 Characteristics

HOUSING OCCUPANCY	COUNT		PERCENTAGE	
	Estimate	Margin of error	Estimate	Margin of error
<b>Total housing units</b>	41,528	± 496	100.0%	
Occupied housing units	38,531	± 674	92.8%	± 1.0
Vacant housing units	2,997	± 401	7.2%	± 1.0
<b>YEAR STRUCTURE BUILT</b>				
<b>Total housing units</b>	41,528	± 496	100.0%	
Built 2005 or later	1,148	± 247	2.8%	± 0.6
Built 2000 to 2004	2,048	± 318	4.9%	± 0.8
Built 1990 to 1999	5,187	± 554	12.5%	± 1.3
Built 1980 to 1989	5,374	± 417	12.9%	± 1.0
Built 1970 to 1979	6,855	± 548	16.5%	± 1.3
Built 1960 to 1969	3,789	± 428	9.1%	± 1.0
Built 1950 to 1959	3,473	± 377	8.4%	± 0.9
Built 1940 to 1949	1,867	± 325	4.5%	± 0.8
Built 1939 or earlier	11,787	± 629	28.4%	± 1.5
<b>HOUSING TENURE</b>				
<b>Occupied housing units</b>	38,531	± 674	100.0%	
Owner-occupied	21,305	± 502	55.3%	± 1.5
Renter-occupied	17,226	± 790	44.7%	± 1.5
<b>HOUSE HEATING FUEL</b>				
<b>Occupied housing units</b>	38,531	± 674	100.0%	
Utility gas	18,910	± 646	49.1%	± 1.4
Bottled, tank, or LP gas	4,152	± 388	10.8%	± 1.0
Electricity	7,342	± 577	19.1%	± 1.3
Fuel oil, kerosene, etc.	4,770	± 403	12.4%	± 1.1
Coal or coke	632	± 148	1.6%	± 0.4
Wood	2,215	± 239	5.7%	± 0.6
Solar energy	14	± 17	0.0%	± 0.1
Other fuel	367	± 126	1.0%	± 0.3
No fuel used	129	± 90	0.3%	± 0.2
<b>VALUE</b>				
<b>Owner-occupied units</b>	21,305	± 502	100.0%	
Less than \$50,000	1,667	± 253	7.8%	± 1.2
\$50,000 to \$99,999	2,690	± 322	12.6%	± 1.5
\$100,000 to \$149,999	4,518	± 390	21.2%	± 1.8
\$150,000 to \$199,999	4,339	± 357	20.4%	± 1.7
\$200,000 to \$299,999	4,742	± 372	22.3%	± 1.6
\$300,000 to \$499,999	2,641	± 295	12.4%	± 1.4
\$500,000 to \$999,999	591	± 150	2.8%	± 0.7
\$1,000,000 or more	117	± 69	0.5%	± 0.3
Median (dollars)	165,900	± 3,553		

Source: 2007-2011 American Community Survey

**6.2 Historical data on number of housing units and occupancy status**

Year	Number of Housing Units	Change since previous Census	Occupied	Occupancy rate	Vacant
1970	24,069		22,614	94.0%	1,455
1980	31,006	28.8%	29,548	95.3%	1,458
1990	35,338	14.0%	33,338	94.3%	2,000
2000	38,625	9.3%	36,420	94.3%	2,205
2010	41,674	7.9%	38,967	93.5%	2,707

*Source: 1970-2010 Decennial Census*

## 7 Education

### 7.1 Enrollment by level of school

	Estimate	Margin of error
<b>Total enrolled in school</b>	42,374	± 695
Nursery school, preschool	1,126	± 171
Kindergarten	731	± 155
Elementary: grade 1 to grade 4	3,615	± 273
Elementary: grade 5 to grade 8	3,416	± 301
High school: grade 9 to grade 12	4,299	± 335
College, undergraduate	21,483	± 961
Graduate, professional school	7,704	± 722

Source: 2007-2011 American Community Survey

### 7.2 Enrollment by age

	Estimate	Margin of error
3 and 4 years	54.1%	± 6.4
5 to 9 years	96.0%	± 2.3
10 to 14 years	97.6%	± 1.5
15 to 17 years	99.0%	± 0.8
18 and 19 years	97.5%	± 1.4
20 to 24 years	79.9%	± 3.1
25 to 34 years	34.2%	± 3.1
35 years and over	3.1%	± 0.5

Source: 2007-2011 American Community Survey

### 7.3 Percentage age 18-24 enrolled in college

	Estimate	Margin of error
Population 18 to 24 years	27,531	± 238
Enrolled in college or graduate school	84.6%	± 2.6
Males 18 to 24 years	13,986	± 73
Enrolled in college or graduate school	82.9%	± 4.1
Females 18 to 24 years	13,545	± 225
Enrolled in college or graduate school	86.3%	± 2.8

Source: 2007-2011 American Community Survey

## 7.4 Educational attainment

	COUNT		PERCENTAGE	
	Estimate	Margin of error	Estimate	Margin of error
<b>Population 25 years and over</b>	56,996	± 258	100%	
<b>EDUCATIONAL ATTAINMENT</b>				
Less than 9th grade	964	± 224	1.7%	± 0.4
9th to 12th grade, no diploma	3,257	± 363	5.7%	± 0.6
High school graduate (includes equivalency)	11,872	± 681	20.8%	± 1.2
Some college, no degree	8,139	± 609	14.3%	± 1.1
Associate's degree	4,353	± 441	7.6%	± 0.8
Bachelor's degree	11,854	± 568	20.8%	± 1.0
Graduate or professional degree	16,557	± 726	29.0%	± 1.3
Percent high school graduate or higher			92.6%	± 0.8
Percent bachelor's degree or higher			49.8%	± 1.5

Source: 2007-2011 American Community Survey

## 8 Language spoken at home

	COUNT		PERCENTAGE		SPEAK ENGLISH LESS THAN "VERY WELL"	
	Estimate	Margin of error	Estimate	Margin of error	Estimate	Margin of error
<b>Population 5 years and over</b>	96,709	± 92	100%			
<b>LANGUAGE SPOKEN AT HOME</b>						
English only	81,226	± 900	84.0%	± 0.9		
Language other than English	15,483	± 898	16.0%	± 0.9	4,123	± 531
Spanish	2,881	± 350	3.0%	± 0.4	427	± 133
Other Indo-European languages	5,082	± 689	5.3%	± 0.7	852	± 234
Asian and Pacific Islander languages	6,911	± 430	7.1%	± 0.4	2,714	± 394
Other languages	609	± 195	0.6%	± 0.2	130	± 79

Source: 2007-2011 American Community Survey

## 9 Labor Force Characteristics

### 9.1 Labor force, employment and unemployment

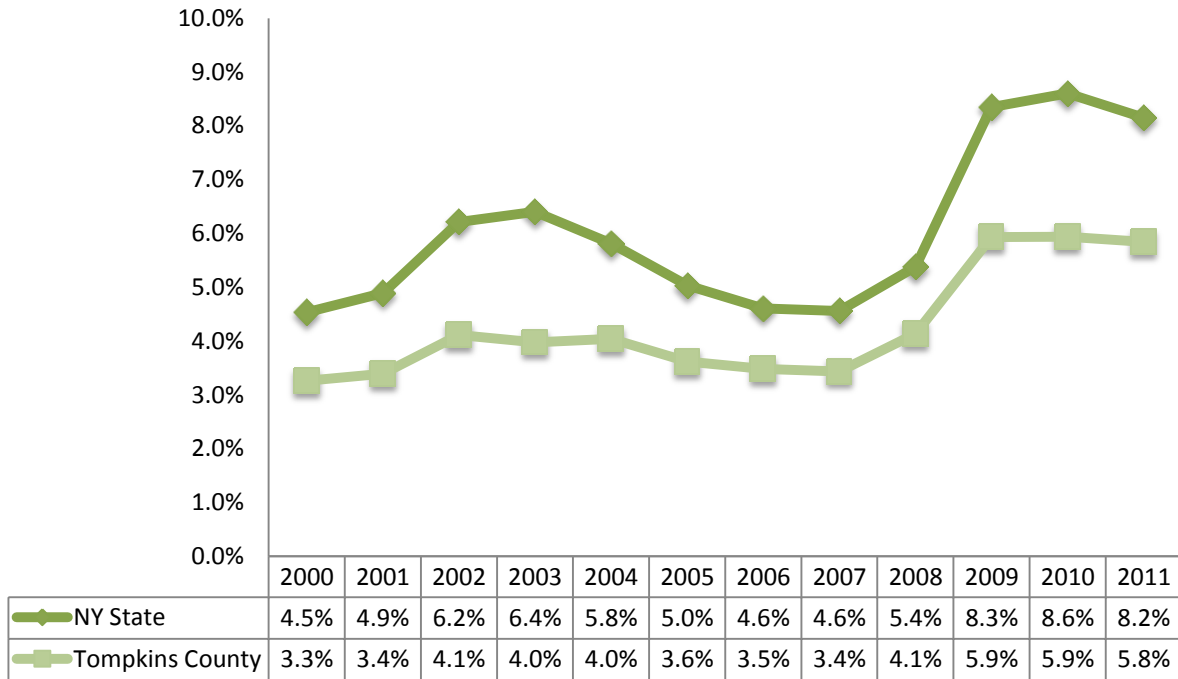
	TOTAL		IN LABOR FORCE		EMPLOYED		UNEMPLOYMENT RATE	
	Estimate	Margin of error	Estimate	Margin of error	Estimate	Margin of error	Estimate	Margin of error
<b>Population 16 years and over</b>	86,815	± 168	61.5%	± 1.3	58.0%	± 1.3	5.6%	± 0.8
<b>AGE</b>								
16 to 19 years	12,385	± 667	33.5%	± 3.8	27.2%	± 3.7	18.8%	± 4.4
20 to 24 years	17,434	± 662	59.7%	± 4.2	56.3%	± 4.2	5.7%	± 1.9
25 to 44 years	23,488	± 356	80.3%	± 1.9	76.2%	± 2.0	4.9%	± 1.0
45 to 54 years	11,904	± 195	85.5%	± 2.0	82.6%	± 2.3	3.4%	± 1.5
55 to 64 years	10,787	± 119	71.4%	± 2.6	68.6%	± 2.7	3.9%	± 1.5
65 to 74 years	5,593	± 138	31.5%	± 4.2	30.2%	± 4.2	4.0%	± 2.8
75 years and over	5,224	± 81	6.2%	± 2.0	6.2%	± 2.0	0.0%	± 9.6
<b>RACE AND HISPANIC OR LATINO ORIGIN</b>								
One race	85,347	± 303	61.4%	± 1.3	58.0%	± 1.3	5.5%	± 0.7
White	72,240	± 234	63.7%	± 1.3	60.1%	± 1.3	5.5%	± 0.7
Black or African American	3,284	± 182	54.4%	± 7.4	49.1%	± 7.3	8.0%	± 4.2
American Indian and Alaska Native	240	± 115	70.0%	± 22.2	64.6%	± 23.1	7.7%	± 12.0
Asian	8,550	± 182	45.6%	± 5.2	43.8%	± 5.2	3.9%	± 2.4
Pacific Islander	55	± 43	43.6%	± 43.9	43.6%	± 43.9	0.0%	± 60.5
Some other race	978	± 213	56.3%	± 13.5	53.5%	± 13.4	5.1%	± 5.2
Two or more races	1,468	± 287	64.4%	± 12.8	55.8%	± 11.2	13.4%	± 9.1
Hispanic or Latino origin (of any race)	3,470	± 38	63.1%	± 6.2	58.9%	± 6.5	6.6%	± 3.6
White alone, not Hispanic or Latino	69,934	± 162	63.7%	± 1.2	60.2%	± 1.3	5.5%	± 0.7
<b>SEX</b>								
<b>Population 20 to 64 years</b>	63,613	± 681	74.1%	± 1.5	70.6%	± 1.5	4.6%	± 0.7
Male	32,436	± 288	77.2%	± 2.0	73.3%	± 2.1	5.0%	± 1.1
Female	31,177	± 601	70.9%	± 2.1	67.9%	± 2.1	4.1%	± 0.9
With own children under 6 years	3,295	± 306	65.5%	± 5.8	61.7%	± 6.3	5.8%	± 3.4
<b>EDUCATIONAL ATTAINMENT</b>								
<b>Population 25 to 64 years</b>	46,179	± 285	79.6%	± 1.2	76.1%	± 1.3	4.3%	± 0.7
Less than high school graduate	2,843	± 447	66.8%	± 6.1	57.2%	± 7.5	14.3%	± 6.9
High school graduate (includes equivalency)	8,392	± 518	76.7%	± 3.0	72.4%	± 3.6	5.6%	± 2.2
Some college or associate's degree	10,754	± 675	82.4%	± 2.4	77.6%	± 2.7	5.7%	± 1.7
Bachelor's degree or higher	24,190	± 764	80.8%	± 1.6	78.9%	± 1.7	2.2%	± 0.7

Table formula:           **LABOR FORCE** = # EMPLOYED + # UNEMPLOYED  
                               **% IN LABOR FORCE** = LABOR FORCE / TOTAL \* 100%  
                               **% EMPLOYED** = # EMPLOYED / TOTAL \* 100%  
                               **UNEMPLOYMENT RATE** = # UNEMPLOYED / LABOR FORCE \* 100%

Source: 2007-2011 American Community Survey

## 9.2 Annual unemployment rate

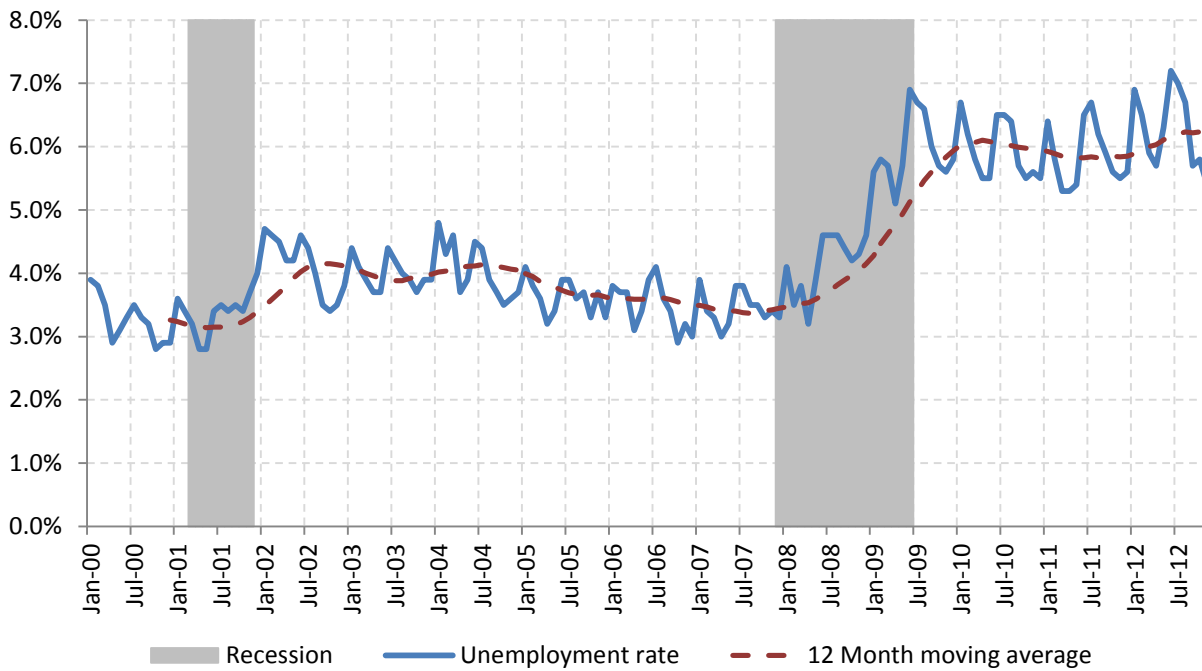
Annual unemployment rate, Tompkins County and New York State



Source: Bureau Labor Statistics (BLS)

## 9.3 Monthly unemployment rate

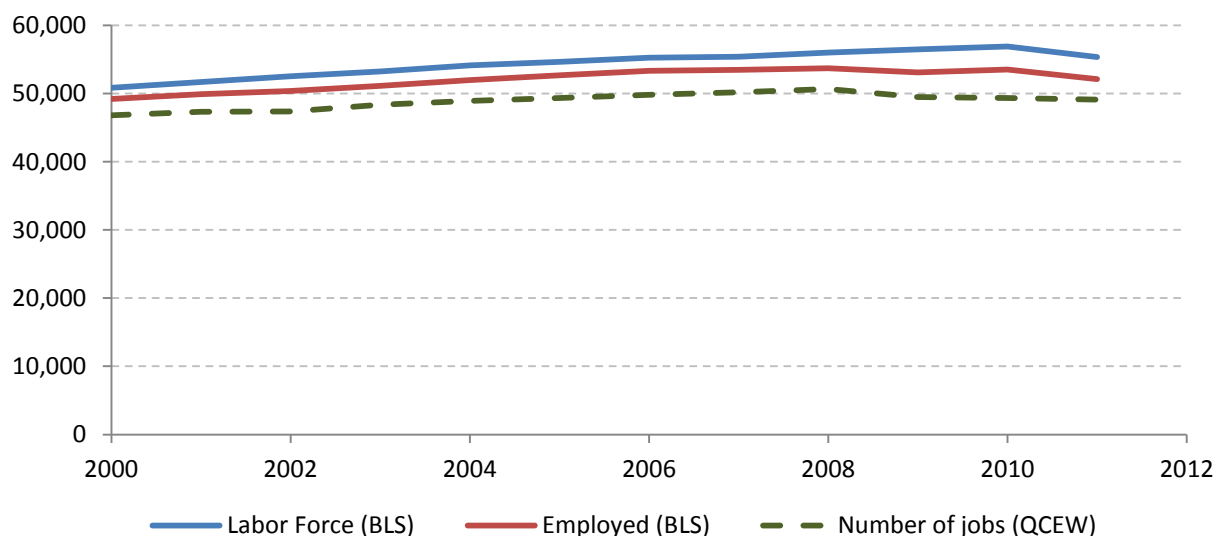
Monthly unemployment rate, Tompkins County



Source: Bureau Labor Statistics (BLS)

## 9.4 Employment and number of jobs

**Labor force, number of employed workers and number of jobs  
Tompkins County**



Source: Bureau Labor Statistics (BLS) and NY Department of Labor - Quarterly Census of Employment and Wages (QCEW) – annual averages

## 9.5 Class of worker

		Median earnings (\$)					
		Total	%Male	%Female	Total	Male	Female
Civilian employed population 16 years and over	Estimate	50,316	52.4%	47.6%	29,257	32,133	25,493
	Margin of error	± 1,143	± 1.0	± 1.0	± 1,241	± 1,261	± 1,588
Private for-profit wage and salary workers:	Estimate	25,954	55.0%	45.0%	25,781	31,250	19,948
	Margin of error	± 969	± 1.7	± 1.7	± 1,435	± 1,464	± 2,180
Employee of private company workers	Estimate	25,015	54.6%	45.4%	25,042	30,619	19,334
	Margin of error	± 960	± 1.8	± 1.8	± 1,593	± 1,519	± 2,357
Self-employed in own incorporated business workers	Estimate	939	65.6%	34.4%	53,012	57,813	41,713
	Margin of error	± 175	± 8.8	± 8.8	± 8,026	± 25,784	± 9,225
Private not-for-profit wage and salary workers	Estimate	13,575	50.0%	50.0%	31,950	33,558	30,774
	Margin of error	± 749	± 2.7	± 2.7	± 2,361	± 4,891	± 3,039
Local government workers	Estimate	3,254	44.5%	55.5%	36,746	35,506	39,899
	Margin of error	± 344	± 5.3	± 5.3	± 3,088	± 6,388	± 5,900
State government workers	Estimate	2,957	41.0%	59.0%	43,062	47,250	41,462
	Margin of error	± 378	± 4.9	± 4.9	± 2,245	± 6,210	± 2,244
Federal government workers	Estimate	611	53.8%	46.2%	40,393	52,781	22,635
	Margin of error	± 147	± 13.3	± 13.3	± 16,916	± 4,924	± 26,836
Self-employed in own not incorporated business workers and unpaid family workers	Estimate	3,965	58.0%	42.0%	21,965	26,976	18,142
	Margin of error	± 425	± 4.6	± 4.6	± 4,052	± 3,542	± 3,014

Source: 2007-2011 American Community Survey

## 9.6 Jobs by industry sector

	Tompkins County			NY state
	2011	Change since 2006	% of total	% of total
<b>All NAICS Sectors</b>	49,497	-2.5%	100.0%	100.0%
Agriculture, Forestry, Fishing and Hunting	450	-4.5%	0.9%	0.3%
Mining, Quarrying, and Oil and Gas Extraction	342	-6.8%	0.7%	0.1%
Utilities	203	-31.4%	0.4%	0.5%
Construction	803	-8.0%	1.6%	3.5%
Manufacturing	3,513	15.7%	7.1%	5.5%
Wholesale Trade	598	-4.8%	1.2%	4.0%
Retail Trade	4,164	0.3%	8.4%	10.5%
Transportation and Warehousing	777	-0.5%	1.6%	3.4%
Information	513	-2.3%	1.0%	3.3%
Finance and Insurance	998	5.4%	2.0%	6.0%
Real Estate and Rental and Leasing	543	-10.1%	1.1%	2.3%
Professional, Scientific, and Technical Services	2,390	19.2%	4.8%	6.9%
Management of Companies and Enterprises	78	160.0%	0.2%	1.6%
Administrative and Support and Waste Management and Remediation Services	812	-13.2%	1.6%	5.2%
Educational Services	20,500	-11.7%	41.4%	10.8%
Health Care and Social Assistance	5,597	10.7%	11.3%	17.0%
Arts, Entertainment, and Recreation	651	-11.5%	1.3%	1.9%
Accommodation and Food Services	3,872	11.5%	7.8%	7.3%
Other Services (except Public Administration)	1,373	11.1%	2.8%	3.9%
Public Administration	1,322	-5.9%	2.7%	5.8%

Source: U.S. Census Bureau - Public Use Quarterly Workforce Indicators (QWI) – annual averages

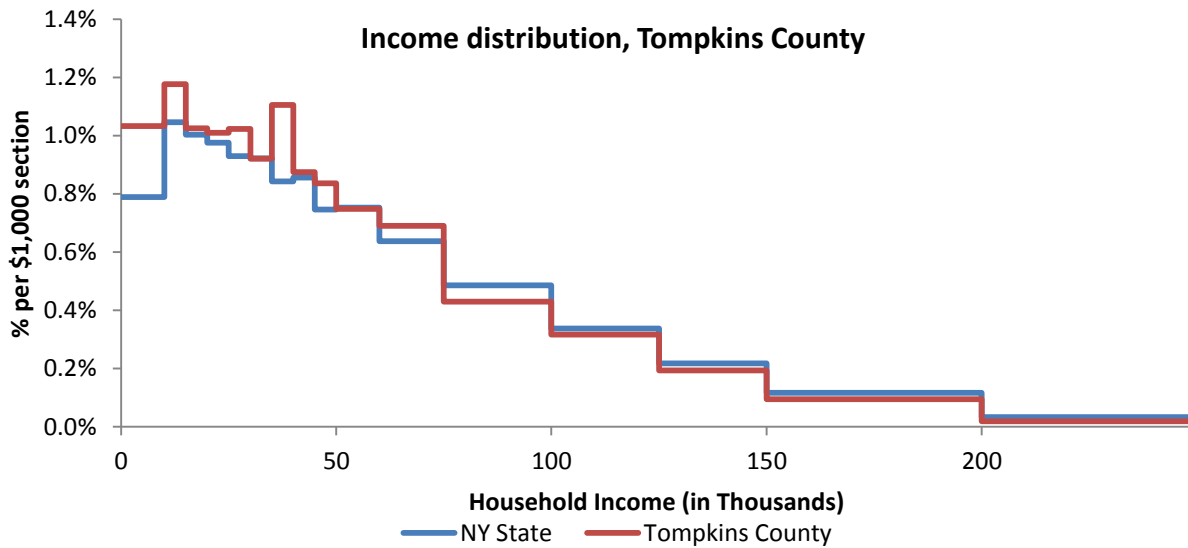


## 10 Household Income

### 10.1 Distribution

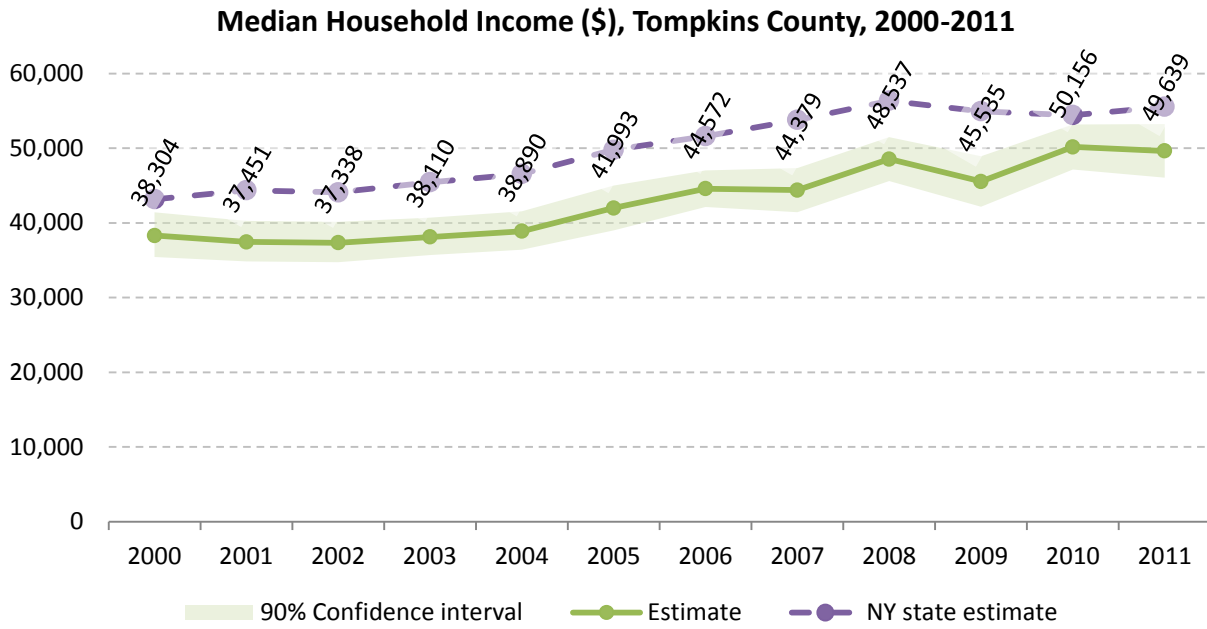
	Estimate	Margin of error	Interval width (in \$1,000)	Est. per \$1,000 section
<b>Total:</b>	38,531	± 674		
Less than \$10,000	3,979	± 445	10	397.9
\$10,000 to \$14,999	2,266	± 333	5	453.2
\$15,000 to \$19,999	1,975	± 249	5	395.0
\$20,000 to \$24,999	1,946	± 260	5	389.2
\$25,000 to \$29,999	1,970	± 322	5	394.0
\$30,000 to \$34,999	1,773	± 314	5	354.6
\$35,000 to \$39,999	2,129	± 295	5	425.8
\$40,000 to \$44,999	1,686	± 262	5	337.2
\$45,000 to \$49,999	1,611	± 226	5	322.2
\$50,000 to \$59,999	2,883	± 390	10	288.3
\$60,000 to \$74,999	3,987	± 452	15	265.8
\$75,000 to \$99,999	4,139	± 315	25	165.6
\$100,000 to \$124,999	3,048	± 321	25	121.9
\$125,000 to \$149,999	1,868	± 256	25	74.7
\$150,000 to \$199,999	1,835	± 250	50	36.7
\$200,000 or more	1,436	± 187	-	-

Source: 2007-2011 American Community Survey



Source: 2007-2011 American Community Survey

10.2 Median household income: Trends over time

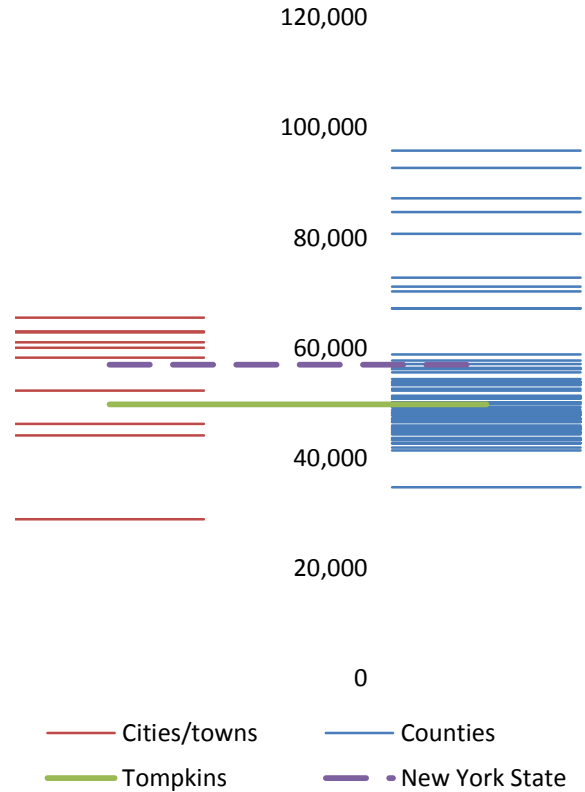


Source: Small Area Income and Poverty Estimates (SAIPE)

### 10.3 Median household income: Comparison between areas

	MEDIAN HOUSEHOLD INCOME (\$)	
	Estimate	Margin of error
New York State	56,951	± 190
Tompkins County	49,789	± 1,885
<b>Cities</b>		
Ithaca	28,940	± 2,950
<b>Towns</b>		
Caroline	62,854	± 14,856
Danby	58,269	± 14,551
Dryden	63,039	± 3,858
Enfield	46,220	± 5,942
Groton	52,275	± 5,409
Ithaca	60,029	± 7,817
Lansing	65,490	± 4,669
Newfield	44,157	± 4,282
Ulysses	61,023	± 9,206

Median household income comparison within county (left) and between counties (right)



Source: 2007-2011 American Community Survey

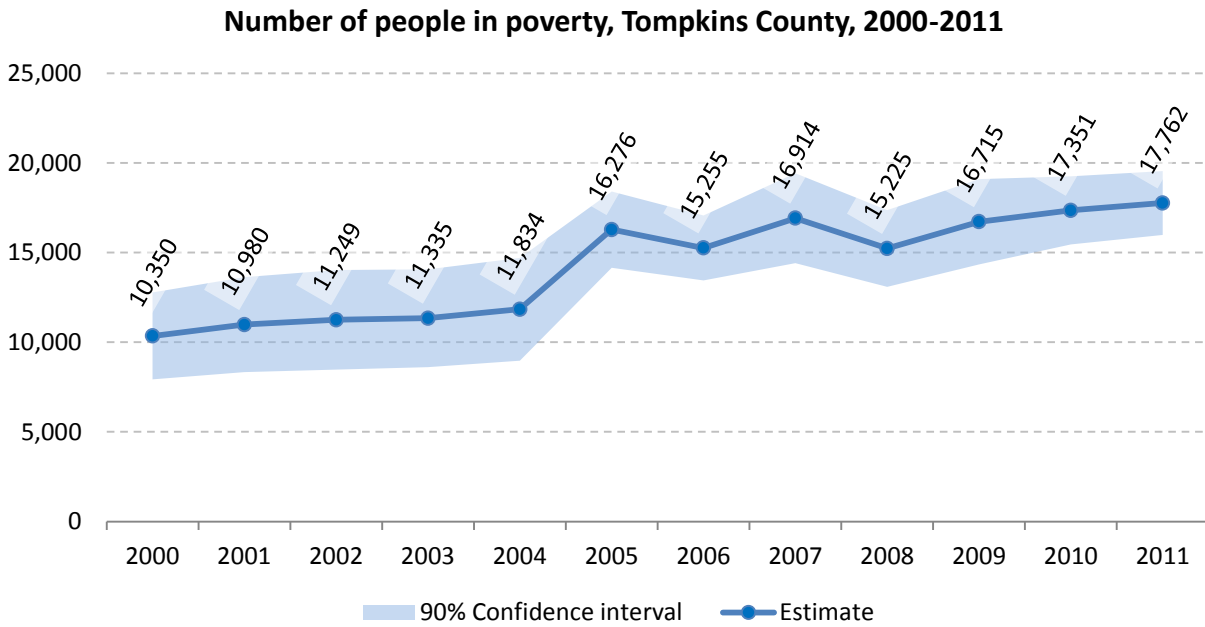
## 11 Poverty

### 11.1 Poverty characteristics

	TOTAL		BELOW POVERTY LEVEL		PERCENT BELOW POVERTY LEVEL	
	Estimate	Margin of error	Estimate	Margin of error	Estimate	Margin of error
<b>Population for whom poverty status is determined</b>	87,562	± 1,116	17,829	± 1,300	20.4%	± 1.4
<b>AGE</b>						
Under 18 years	15,724	± 297	2,547	± 502	16.2%	± 3.2
Related children under 18 years	15,576	± 381	2,411	± 481	15.5%	± 3.1
18 to 64 years	61,419	± 1,186	14,717	± 1,034	24.0%	± 1.5
65 years and over	10,419	± 175	565	± 152	5.4%	± 1.4
<b>SEX</b>						
Male	43,701	± 743	8,866	± 819	20.3%	± 1.8
Female	43,861	± 691	8,963	± 841	20.4%	± 1.8
<b>RACE AND HISPANIC OR LATINO ORIGIN</b>						
One race	85,289	± 1,113	17,361	± 1,240	20.4%	± 1.4
White	73,321	± 1,062	12,058	± 1,044	16.4%	± 1.3
Black or African American	3,266	± 358	1,496	± 373	45.8%	± 10.1
American Indian and Alaska Native	308	± 161	129	± 104	41.9%	± 25.4
Asian	7,720	± 350	3,553	± 495	46.0%	± 5.6
Hispanic or Latino origin (of any race)	3,379	± 238	1,125	± 268	33.3%	± 7.1
White alone, not Hispanic or Latino	71,067	± 1,031	11,338	± 996	16.0%	± 1.3
<b>EDUCATIONAL ATTAINMENT</b>						
<b>Population 25 years and over</b>	56,435	± 289	5,647	± 601	10.0%	± 1.1
Less than high school graduate	4,136	± 467	935	± 262	22.6%	± 5.7
High school graduate (includes equivalency)	11,654	± 673	1,247	± 206	10.7%	± 1.8
Some college, associate's degree	12,414	± 737	1,234	± 263	9.9%	± 2.1
Bachelor's degree or higher	28,231	± 857	2,231	± 350	7.9%	± 1.2
<b>EMPLOYMENT STATUS</b>						
<b>Civilian labor force 16 years and over</b>	48,210	± 1,304	6,324	± 825	13.1%	± 1.5
Employed	45,769	± 1,258	5,652	± 773	12.3%	± 1.5
Male	24,210	± 839	2,993	± 544	12.4%	± 2.1
Female	21,559	± 826	2,659	± 498	12.3%	± 2.1
Unemployed	2,441	± 383	672	± 217	27.5%	± 7.9
Male	1,415	± 281	414	± 188	29.3%	± 11.1
Female	1,026	± 225	258	± 110	25.1%	± 10.1
<b>WORK EXPERIENCE IN THE PAST 12 MONTHS</b>						
<b>Population 16 years and over</b>	73,806	± 1,133	15,606	± 1,070	21.1%	± 1.3
Worked full-time, year-round	27,662	± 751	654	± 193	2.4%	± 0.7
Worked part-time or part-year	26,188	± 1,309	8,767	± 816	33.5%	± 2.5
Did not work	19,956	± 947	6,185	± 819	31.0%	± 3.2

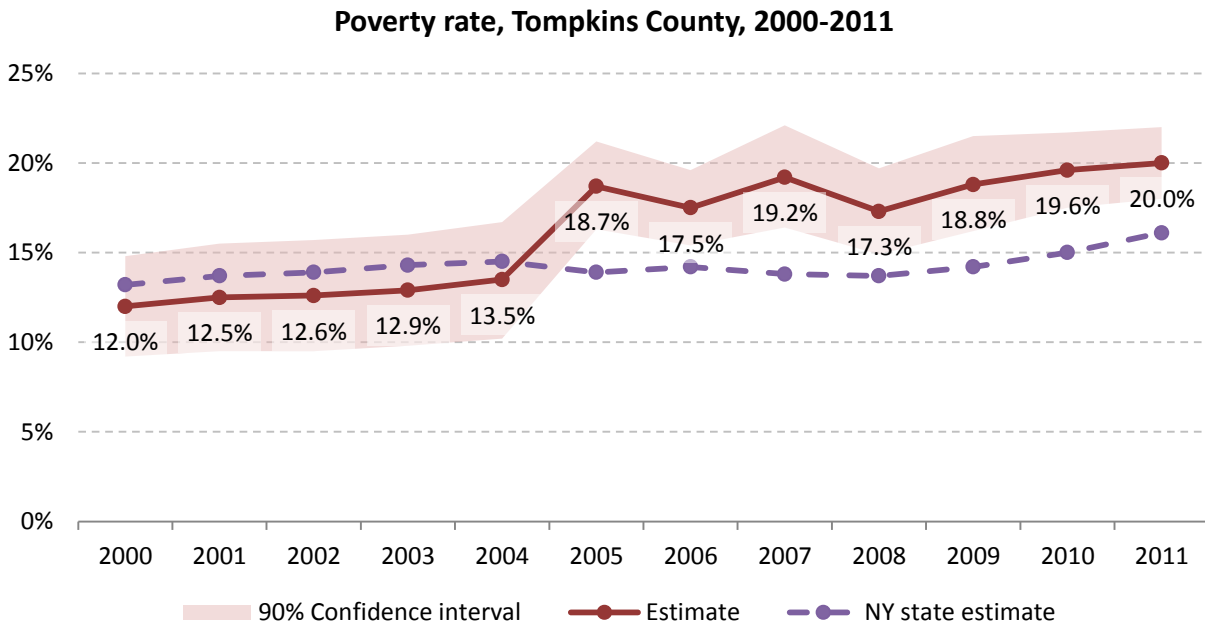
Source: 2007-2011 American Community Survey

### 11.2 Poverty: Trends over time: Count



Source: Small Area Income and Poverty Estimates (SAIPE)

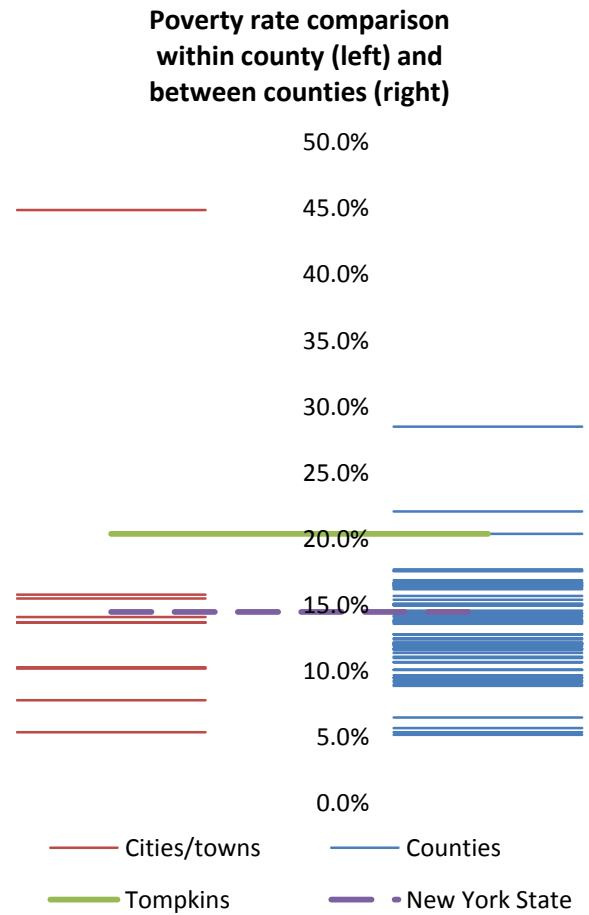
### 11.3 Poverty: Trends over time: Rate



Source: Small Area Income and Poverty Estimates (SAIPE)

**11.4 Poverty rate: comparison between areas**

Poverty Rate - All people		
	Estimate	Margin of error
New York State	14.5%	± 0.1
Tompkins County	20.4%	± 1.4
<b>Cities</b>		
Ithaca	44.9%	± 3.2
<b>Towns</b>		
Caroline	5.4%	± 5.0
Danby	10.2%	± 5.6
Dryden	10.3%	± 2.6
Enfield	15.8%	± 7.1
Groton	13.7%	± 6.4
Ithaca	15.5%	± 3.5
Lansing	7.8%	± 3.4
Newfield	14.1%	± 7.3
Ulysses	13.7%	± 5.4

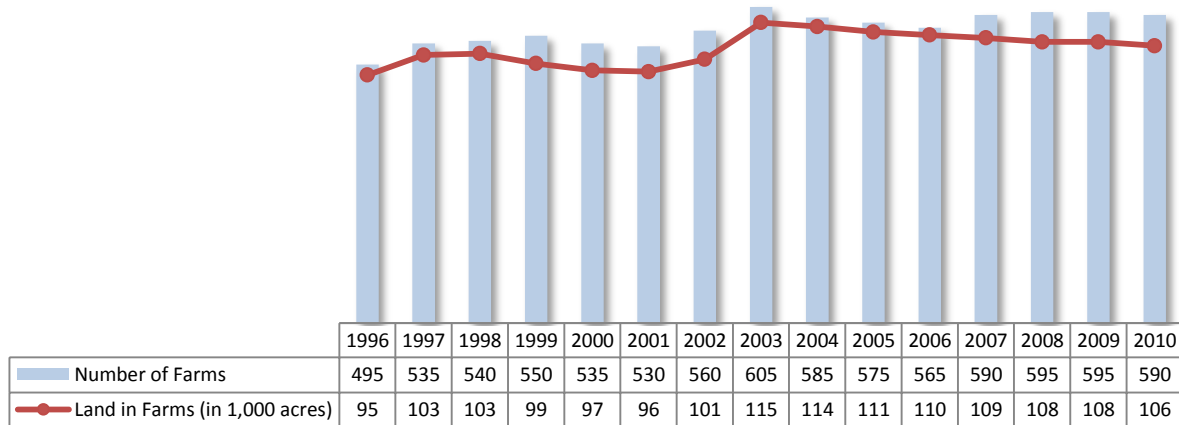


Source: 2007-2011 American Community Survey

## 12 Agriculture

### 12.1 Number of farms and land in farms

Tompkins County, 1996-2010



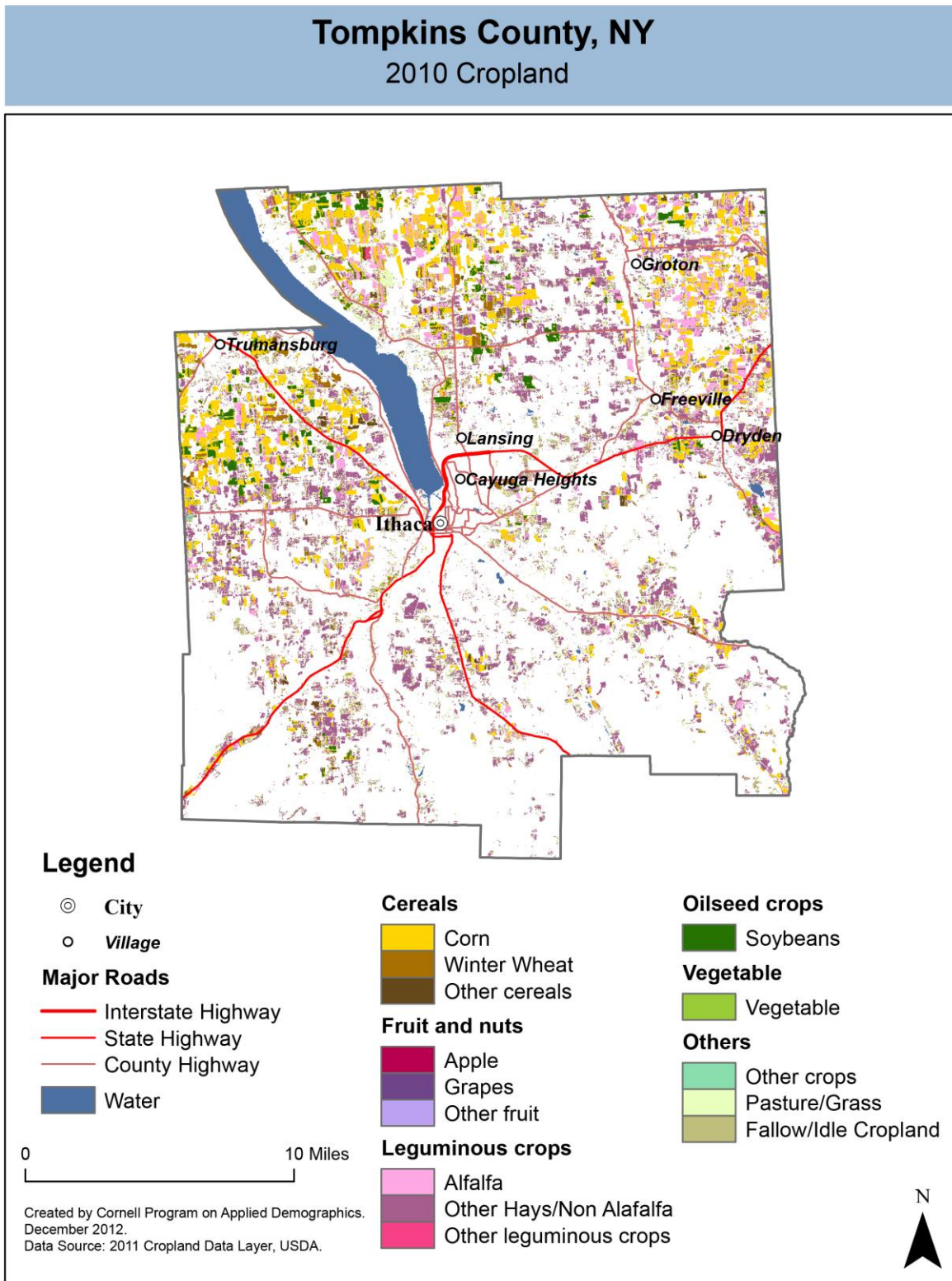
Source: National Agricultural Statistics Service – Annual Statistical bulletin

### 12.2 Farm Operator Characteristics

	Principal Operator		
	Total	Male	Female
<b>Number of farms</b>	588	413	175
Average size of farm (acres)	185	235	67
PRIMARY OCCUPATION			
Farming	270	205	65
Other	318	208	110
AGE			
Under 45	129	91	38
45 to 64 years	313	195	118
65 years and over	146	127	19
Average age (years)	55.4	56.9	52
YEARS ON PRESENT FARM			
Less than 3 years	24	9	15
3 to 4 years	29	16	13
5 to 9 years	111	70	41
10 years or more	424	318	106

Source: 2007 Agricultural Census

12.3 Map of type of crop



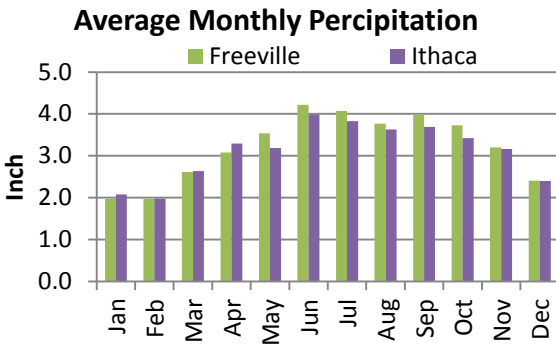
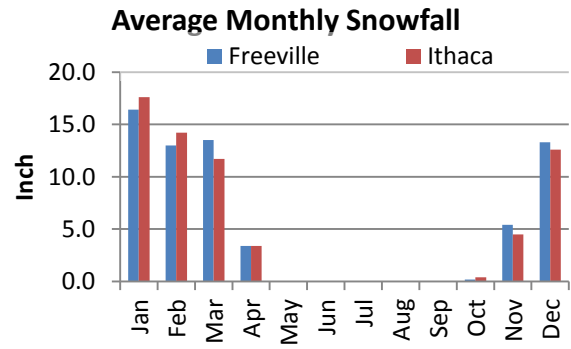
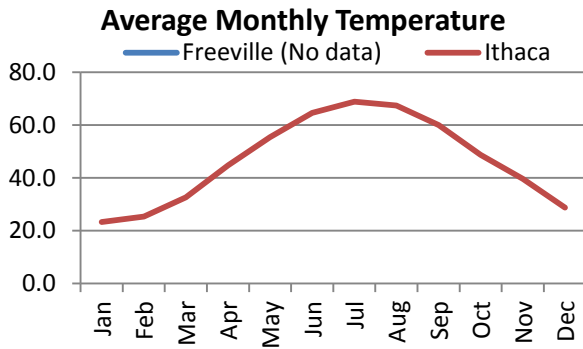
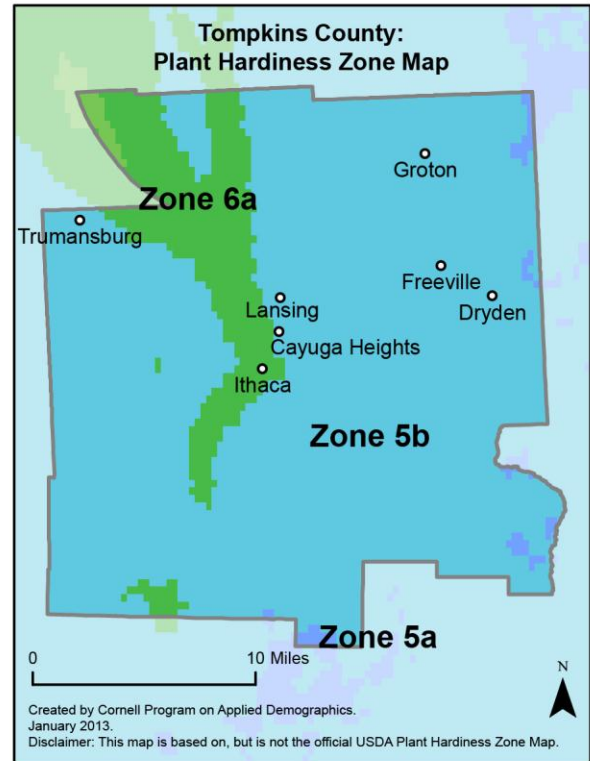
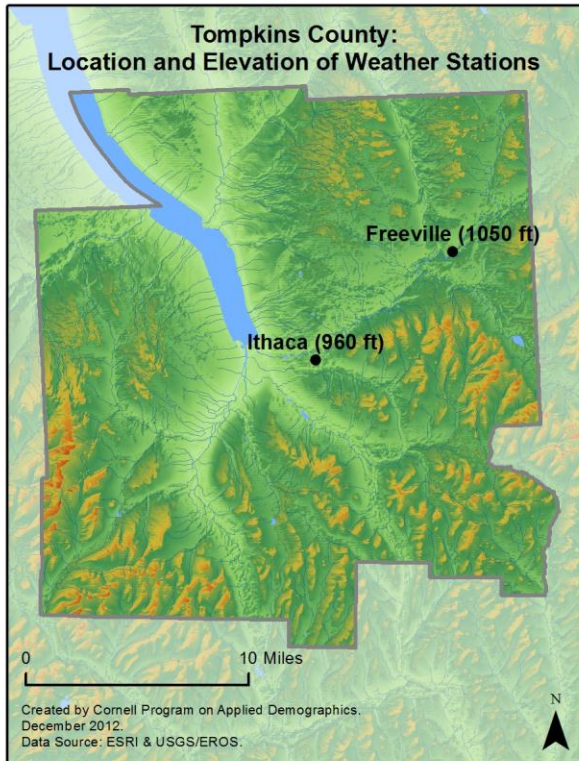


## 12.4 Estimated acreage by crop

	Acreage	%		Acreage	%
<b>Cereals</b>			<b>Fruit and nuts</b>		
Barley	140	0.2%	Apples	10	0.0%
Corn	19,131	21.6%	Apricots	0.2	0.0%
Millet	-		Blueberries	0.4	0.0%
Oats	1,024	1.2%	Cherries	1.3	0.0%
Rye	187	0.2%	Cranberries	-	
Sorghum	9	0.0%	Grapes	51	0.1%
Speltz	7	0.0%	Nectarines	-	
Spring Wheat	24	0.0%	Peaches	-	
Sweet Corn	226	0.3%	Plums	0.2	0.0%
Triticale	47	0.1%	Prunes	-	
Winter Wheat	1,740	2.0%	Strawberries	1.1	0.0%
Dbl Crop WinWht/Corn	-		Walnuts	-	
<b>Leguminous crops</b>			<b>Beverage and spice crops</b>		
Alfalfa	9,630	10.9%	Herbs	-	
Other Hay/Non Alfalfa	32,422	36.6%	Peppers	-	
Dry Beans	184	0.2%	<b>Trees</b>		
Peas	-		Christmas Trees	11	0.0%
Vetch	-		Other Tree Crops	-	
<b>Oilseed crops</b>			<b>Other crops</b>		
Soybeans	4,359	4.9%	Tobacco	-	
Sunflower	24	0.0%	Misc Veggies & Fruits	3.3	0.0%
<b>Sugar crops</b>			Clover/Wildflowers	68	0.1%
Sugarbeets	-		Sod/Grass Seed	-	
<b>Root/tuber crops with high starch or inulin content</b>			Switchgrass	-	
Potatoes	66	0.1%	Dbl Crop Soybeans/Oats	-	
<b>Vegetables and melons</b>			Dbl Crop WinWht/Soybeans	-	
Asparagus	-		Other Crops	67	0.1%
Broccoli	-		<b>Pasture/Grass</b>		
Cabbage	0.9	0.0%	<b>Fallow/Idle Cropland</b>		
Carrots	2.2	0.0%		14,131	16.0%
Eggplants	0.4	0.0%		4,939	5.6%
Onions	4.2	0.0%			
Pumpkins	23	0.0%			
Squash	7	0.0%			
Tomatoes	-				
Turnips	-				

Source: National Agricultural Statistics Service - Cropland Data Layer 2011

13 Climate



**Average length of freeze-free season**

	Last day of frost	First day of frost	Season length
Freeville	Not available		
Ithaca	May 15	October 5	141

Source: NOAA, Northeast Regional Climate Center at Cornell University. Averages 1981-2010

## 14 Glossary

**American Community Survey (ACS)** - The American Community Survey is an ongoing survey of the population that provides data every year on a variety of social and economic characteristics—age, sex, race, family and relationships, income and benefits, health insurance, education, veteran status, disabilities, where you work and how you get there, where you live and how much you pay for some essentials. The ACS replaced the information previously gathered by what was known as the “long form” of the decennial censuses. The ACS provides communities, companies and other institutions with current information they need to plan investments and services. Information from the survey generates data that help determine how more than \$400 billion in federal and state funds are distributed each year. Every estimate presented in the American Community Survey, as in other surveys, has an uncertainty associated with it. Often the magnitude of that uncertainty is expressed as the Margin of Error.

**Confidence Interval (CI)** - indication of the degree of uncertainty about a sample estimates. Confidence intervals have been traditionally reported at the 90, 95 and 99 percent levels. A 90 percent confidence interval can be interpreted, for example, roughly as providing 90 percent certainty that the interval defined by the upper and lower bounds contain the true value of the characteristic. If a Margin of Error is given, the lower bound of the confidence interval is equal to the estimate minus the Margin of Error and the upper bound is equal to the estimate plus the Margin of Error. (See further, Margin of Error definition below.)

**County subdivision or Minor Civil Division (MCD)** - The Census Bureau geography for primary administrative units below the county level in New York is collectively referred to as county subdivisions or minor civil divisions. These include towns, cities and Indian Reservations.

**Decennial Census** - the Census of the population and housing taken every 10 years in the United States, at the start of each decade, since 1790.

**Employed** – either “at work” or “with a job, but not at work”.

**Group Quarters Population** - all U.S. residents who live in group living facilities including correctional institutions, juvenile facilities, skilled nursing facilities, college residence halls, military barracks, group homes, and workers' dormitories.

**Household Population** - all U.S. residents who live in housing units such as single family homes, townhouses, apartments, and mobile homes.

**Intercensal Population Estimates** - estimates produced for the years between two decennial censuses when both the beginning and ending populations are known. They are produced once a decade by adjusting the existing time series of postcensal estimates for the entire decade to smooth the transition from one decennial census count to the next. They differ from the postcensal estimates that are released annually because the difference between the April 1 postcensal estimate and April 1 census count for the end of the decade is redistributed across the estimates for that decade. For dates when both postcensal and intercensal estimates are available, intercensal estimates are preferred.

**Labor Force** - consists of people classified as employed or unemployed.

**Margin of Error (MOE)** - a measure of the precision of an estimate at a given level of confidence. The confidence level of a margin of error indicates the likelihood that the difference between the population value (which you

would get if you could measure the whole population instead of a sample) and the estimate is less than or equal to the margin of error. The range from the estimate minus the margin of error to the estimate plus the margin of error is called the confidence interval. All ACS estimates are published with their margins of error at the 90 percent confidence level. Margins of error are useful in assessing the reliability of estimates and whether differences between estimates are significant.

**NAICS** - The North American Industry Classification System or NAICS is used by business and government to classify business establishments according to type of economic activity (process of production).

**Numeric Population Change** - difference between the population of an area at the beginning and end of a time period. It is computed by taking the difference between the population at one point in time (t1) and some future time (t2).

**Percent Population Change** - difference between the population of an area at the beginning and end of a time period, expressed as a percentage of the beginning population. It is computed by dividing the population change (t2 - t1) by t1 and multiplying the result by 100.

**Population Estimates** - The calculated number of people living in an area as of a specified point in time, usually July 1st. The estimated population is calculated using a component of change model that incorporates information on natural increase (births, deaths) and net migration (net domestic migration, net international migration) that has occurred in an area since the latest decennial census. A procedure for estimating the current population using a procedure involving a "base population" value at time t -1, adding to that the births during the interval t-1 to t, subtracting the deaths during that interval t-1 to t, and then adding the net domestic and net international migration that occurred during that interval.

**Population Density** - Total number of people per areal unit like a square mile or square kilometer.

**Population Pyramids** - A graphical way of portraying a population's age and sex composition at a given slice in time. The first horizontal bar, constituting the base of the graph, is the youngest age group (typically 0-4) with the number of males in that age group on the left and the number of females in that age group on the right. On top of that age group is another horizontal bar for the next age group (e.g. 5-9) and so forth with the top bar typically for those aged 75 and over. In a population with lots of births and deaths, the shape typically forms a pyramid with a broad base and a narrow top. It is one of the most basic ways to understand population change over time as well as between different geographic units of a similar status (e.g. counties).

**Postcensal Estimates** - estimates produced for the years after a decennial census when only the beginning population is known. They are produced and revised each year, targeted to July 1 of that year.

**Projection** - estimated population at some future time based on assumptions about births, deaths, migration, and ages.

**Race/Ethnicity** - the Census Bureau collects racial data in accordance with guidelines provided by the U.S. Office of Management and Budget (OMB), and these data are based on self-identification. The racial categories included in the census questionnaire generally reflect a social definition of race recognized in this country and not an attempt to define race biologically, anthropologically, or genetically. In addition, it is recognized that the categories of the race item include racial and national origin or sociocultural groups. People may choose to report more than one race to indicate their racial mixture, such as "American Indian" and "White." People who identify their origin as Hispanic, Latino, or Spanish may be of any race. OMB requires five minimum categories: White, Black or African American, American Indian or Alaska Native, Asian, and Native Hawaiian or Other Pacific

Islander. Hispanics may be classified as white or black. So we generally separate them out as an ethnic group first.

**Unemployed** – Not employed, but actively looking for work and available to accept a job.

**Unemployment rate** – Fraction of the Labor Force that is unemployed.

**Urban Area** – A densely settled area with at least 2,500 people. If the total number of people is less than 50,000 the Census Bureau calls it an Urban Cluster, otherwise an Urbanized Area.

**Vintage** - each year, the U.S. Census Bureau produces and publishes estimates of the population for each state and county, as well as the nation as a whole. These are called “vintages.” In producing these vintages, the Bureau utilizes administrative data from a number of sources to estimate 1) the change in population since the most recent decennial census, and 2) the population for each year since the most recent decennial census. With each annual release of population estimates (vintage), the entire time series of estimates beginning on April 1, 2010 is revised and updated.

## 15 References

Tompkins County homepage: <http://www.tompkins-co.org/>

At Cornell:

- Cornell Cooperative Extensions (CCE)  
Home page: <http://www.cce.cornell.edu>
  - Tompkins local office: <http://ccetompkins.org/>
- Program on Applied Demographics (PAD)  
URL: <http://pad.human.cornell.edu/>
- Community and Regional Development Institute (CaRDI)  
URL: <http://devsoc.cals.cornell.edu/cals/devsoc/outreach/cardi/index.cfm>

Data sources and background information:

- U.S. Census Bureau - general
  - QuickFacts: <http://quickfacts.census.gov/qfd/states/36/36109.html>
  - QuickLinks: <http://quickfacts.census.gov/qfd/states/36/36109lk.html>
  - American FactFinder: <http://factfinder2.census.gov>
- U.S. Census Bureau - population
  - Decennial Census
    - Background: <http://2010.census.gov/2010census/>
    - Demographic Profile: [http://factfinder2.census.gov/bkmk/table/1.0/en/DEC/10\\_SF1/SF1DP1/0500000US36109](http://factfinder2.census.gov/bkmk/table/1.0/en/DEC/10_SF1/SF1DP1/0500000US36109)
  - American Community Survey (ACS)
    - Background: <http://www.census.gov/acs/www/>
    - Social Data Profile: [http://factfinder2.census.gov/bkmk/table/1.0/en/ACS/10\\_5YR/DP02/0500000US36109](http://factfinder2.census.gov/bkmk/table/1.0/en/ACS/10_5YR/DP02/0500000US36109)
    - Economic Data Profile: [http://factfinder2.census.gov/bkmk/table/1.0/en/ACS/10\\_5YR/DP03/0500000US36109](http://factfinder2.census.gov/bkmk/table/1.0/en/ACS/10_5YR/DP03/0500000US36109)
    - Housing Data Profile: [http://factfinder2.census.gov/bkmk/table/1.0/en/ACS/10\\_5YR/DP04/0500000US36109](http://factfinder2.census.gov/bkmk/table/1.0/en/ACS/10_5YR/DP04/0500000US36109)
    - Demographics Data Profile: [http://factfinder2.census.gov/bkmk/table/1.0/en/ACS/10\\_5YR/DP05/0500000US36109](http://factfinder2.census.gov/bkmk/table/1.0/en/ACS/10_5YR/DP05/0500000US36109)
  - Population estimates: <http://www.census.gov/popest/estimates.html>
- U.S. Census Bureau – Small Area Income & Poverty Estimates (SAIPE)
  - <http://www.census.gov/did/www/saipe/>
- U.S. Census Bureau - Public Use Quarterly Workforce Indicators (QWI) – annual averages
  - <http://www2.vrdc.cornell.edu/news/data/qwi-public-use-data/>
- Bureau Labor Statistics (BLS) – Local Area Unemployment Statistics: <http://www.bls.gov/lau/>
- NY Department of Labor -
  - Labor statistics: <http://www.labor.ny.gov/stats/>
  - Quarterly Census of Employment and Wages (QCEW): <http://www.labor.ny.gov/stats/lsqcew.shtm>
- Bureau of Economic Analysis (BEA) – Local Area Personal Income and Employment: <http://bea.gov/iTable/iTable.cfm?ReqID=70&step=1>

- USDA Census of Agriculture
  - 2007
    - Home page: <http://www.agcensus.usda.gov/Publications/2007/index.php>
    - County profile: [http://www.agcensus.usda.gov/Publications/2007/Online\\_Highlights/County\\_Profiles/New\\_York/cp36109.pdf](http://www.agcensus.usda.gov/Publications/2007/Online_Highlights/County_Profiles/New_York/cp36109.pdf)
    - Race, Ethnicity and Gender Profiles: [http://www.agcensus.usda.gov/Publications/2007/Online\\_Highlights/Race\\_Ethnicity\\_and\\_Gender\\_Profiles/New\\_York/cpd36109.pdf](http://www.agcensus.usda.gov/Publications/2007/Online_Highlights/Race_Ethnicity_and_Gender_Profiles/New_York/cpd36109.pdf)
- USDA National Agricultural Statistics Service (NASS)
  - Home page: <http://www.nass.usda.gov/index.asp>
  - New York Statistical Bulletins: [http://www.nass.usda.gov/Statistics\\_by\\_State/New\\_York/Publications/Annual\\_Statistical\\_Bulletin/](http://www.nass.usda.gov/Statistics_by_State/New_York/Publications/Annual_Statistical_Bulletin/)
  - Cropland Data Layer – CropScape: <http://nassgeodata.gmu.edu/CropScape/>
- USDA Agricultural Research Service – Plant Hardness Zone Map: <http://planthardiness.ars.usda.gov/PHZMWeb/>
- NOAA, Northeast Regional Climate Center at Cornell University
  - Home page: <http://www.nrcc.cornell.edu/index.html>

Alternative sites for data retrieval:

- The Nelson A. Rockefeller Institute of Government – New York State Statistical Yearbooks [http://www.rockinst.org/nys\\_statistics/](http://www.rockinst.org/nys_statistics/)
- Headwaters Economics: Economic Profile System – Human Dimensions Toolkit <http://headwaterseconomics.org/tools/eps-hdt>
- National Historical Geographic Information System (NHGIS) <https://www.nhgis.org/>
- Social Explorer <http://www.socialexplorer.com/pub/home/home.aspx>
- Missouri Census Data Center <http://mcdc.missouri.edu/>
- DataFerret <http://dataferrett.census.gov/>
- Investigative Reporters and Editors (IRE) Census project <http://census.ire.org/>