

Tioga County Profile 2013

A collection of recent demographic, social, economic and agricultural data

Compiled by Jan Vink

Assisted by Joe Francis, Sutee Anantsuksomsri, Nij Tontisirin, Johannes Plambeck



Cornell University
Cooperative Extension



This profile is a part of a set of profiles generated for each county in New York State. The profiles were developed and generated by the Cornell Program on Applied Demographics. The work is sponsored by Cornell Cooperative Extension and promoted with webinars and workshops in coordination with the Community & Regional Development Institute.

Cornell Program on Applied Demographics:

The Program on Applied Demographics (PAD) brings skills in demographics, economics, statistics, data gathering and data analysis together to provide a variety of organizations with data, information and advice.

For more information: <http://pad.human.cornell.edu/>

Cornell Cooperative Extension:

Cornell Cooperative Extension (CCE) puts knowledge to work in pursuit of economic vitality, ecological sustainability and social well-being. We bring local experience and research based solutions together, helping New York State families and communities thrive in our rapidly changing world.

For more information: <http://cce.cornell.edu/>

Community & Regional Development Institute:

The Community & Regional Development Institute (CaRDI) supports informed decision making for residents and communities in New York State through applied research and education.

For more information: <http://cardi.cornell.edu/>

All profiles are freely downloadable as PDF documents on the PAD website:

<http://pad.human.cornell.edu/profiles/index.cfm>

Contents

Contents	2
1 Reference Maps	4
2 Population density and Urban Areas Map	6
3 Total Population	7
3.1 Historic and projected	7
3.2 Change since previous Census	7
3.3 Annual population estimates	8
3.4 Percentage sub county change 2000-2010	9
4 Population by age	11
4.1 Historic and projected population pyramids	11
4.2 Selected age groups	12
4.3 Median age: comparison between areas	14
5 Race	15
5.1 Total and household population by race	15
5.2 Race composition by age	15
6 Housing units	16
6.1 Characteristics	16
6.2 Historical data on number of housing units and occupancy status	17
7 Education	18
7.1 Enrollment by level of school	18
7.2 Enrollment by age	18
7.3 Percentage age 18-24 enrolled in college	18
7.4 Educational attainment	19
8 Language spoken at home	19
9 Labor Force Characteristics	20
9.1 Labor force, employment and unemployment	20
9.2 Annual unemployment rate	21
9.3 Monthly unemployment rate	21
9.4 Employment and number of jobs	22
9.5 Class of worker	22
9.6 Jobs by industry sector	23
10 Household Income	24
10.1 Distribution	24
10.2 Median household income: Trends over time	25
10.3 Median household income: Comparison between areas	26
11 Poverty	27
11.1 Poverty characteristics	27
11.2 Poverty: Trends over time: Count	28
11.3 Poverty: Trends over time: Rate	28
11.4 Poverty rate: comparison between areas	29
12 Agriculture	30
12.1 Number of farms and land in farms	30
12.2 Farm Operator Characteristics	30

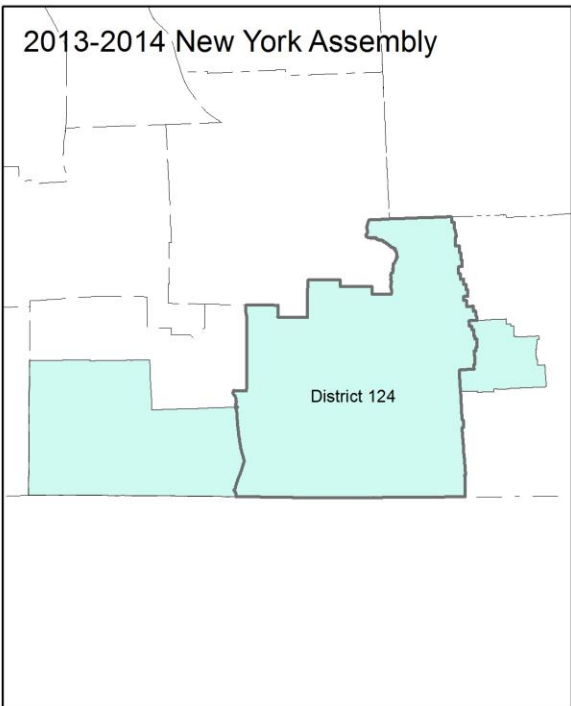
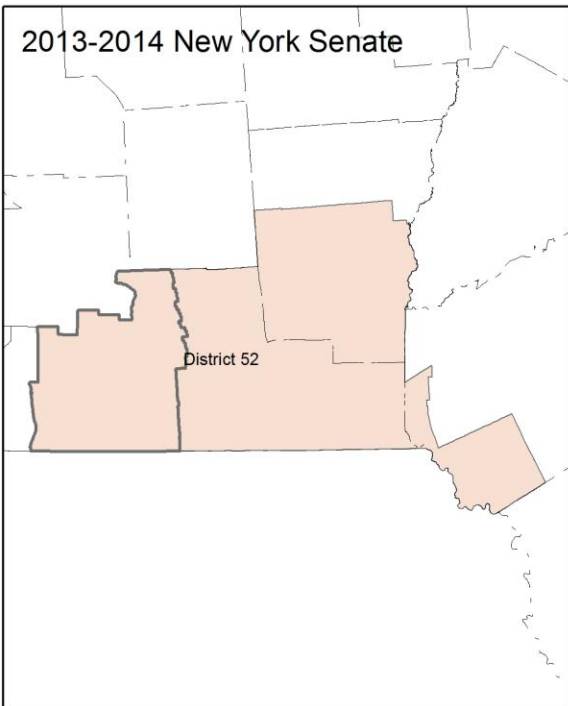
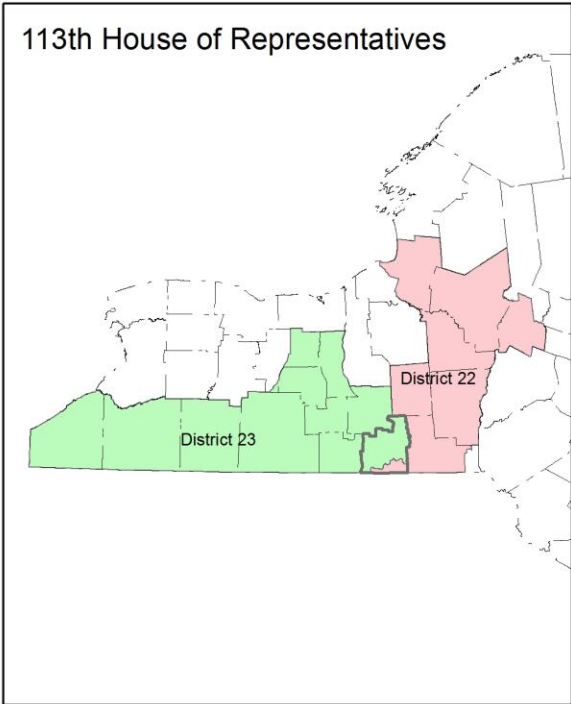
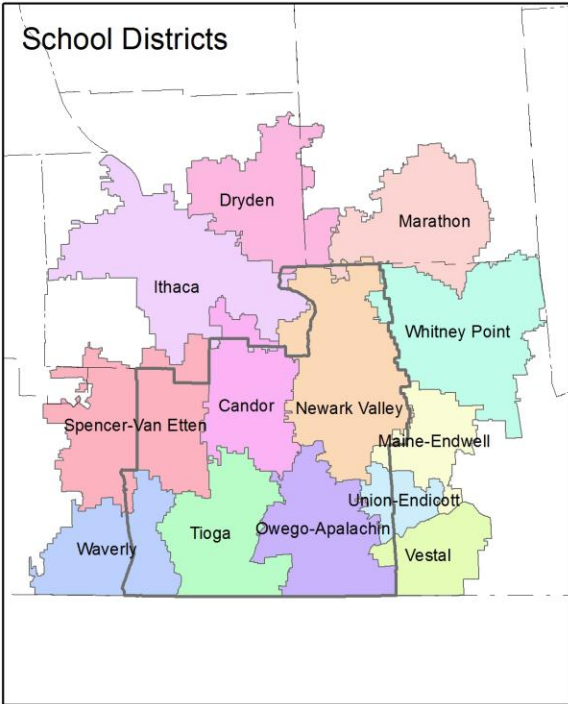
12.3 Map of type of crop 31
12.4 Estimated acreage by crop 32
13 Climate 33
14 Glossary..... 34
15 References 37

1 Reference Maps

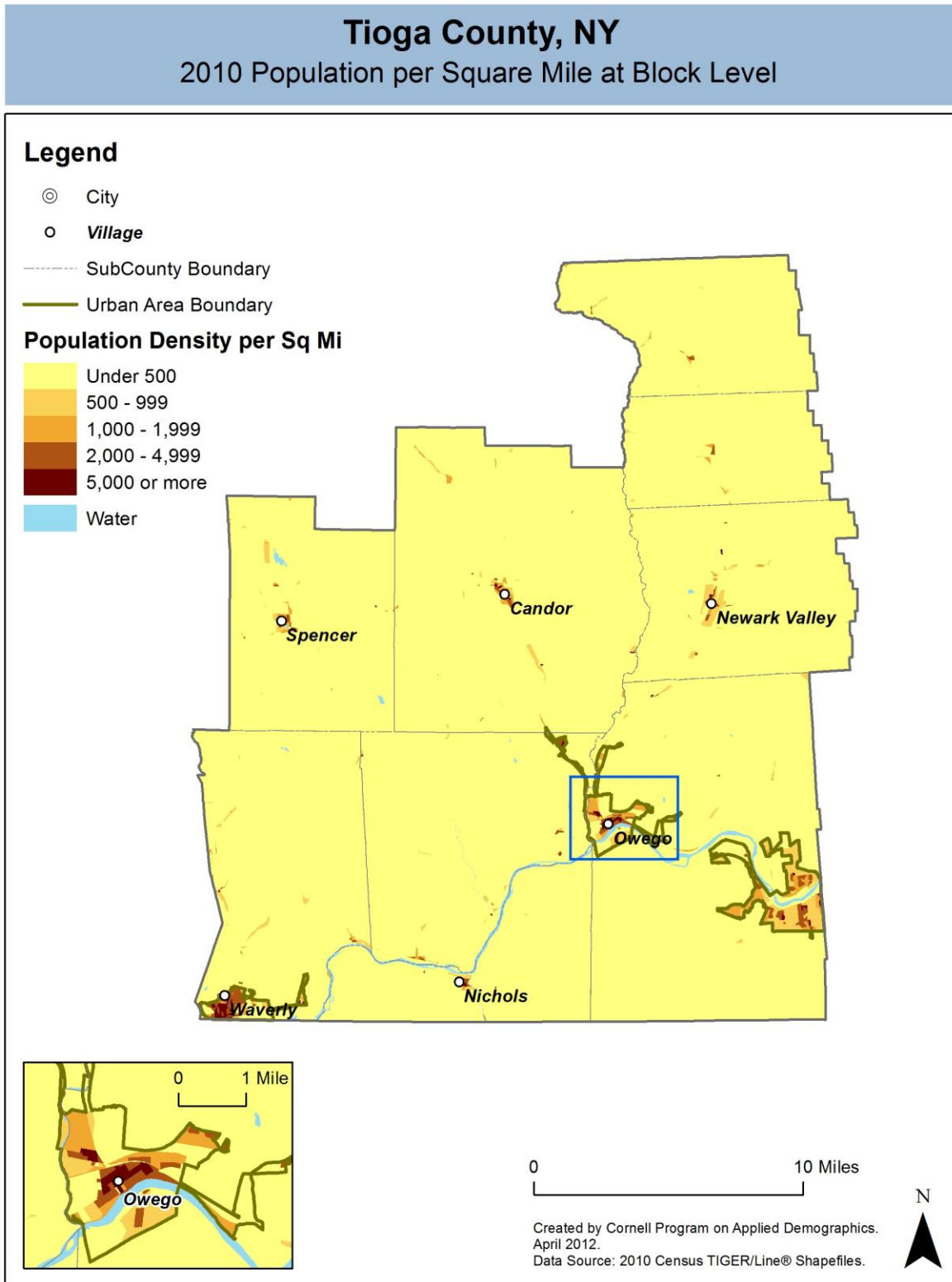


Tioga County, NY

Overlap with School and Political Districts



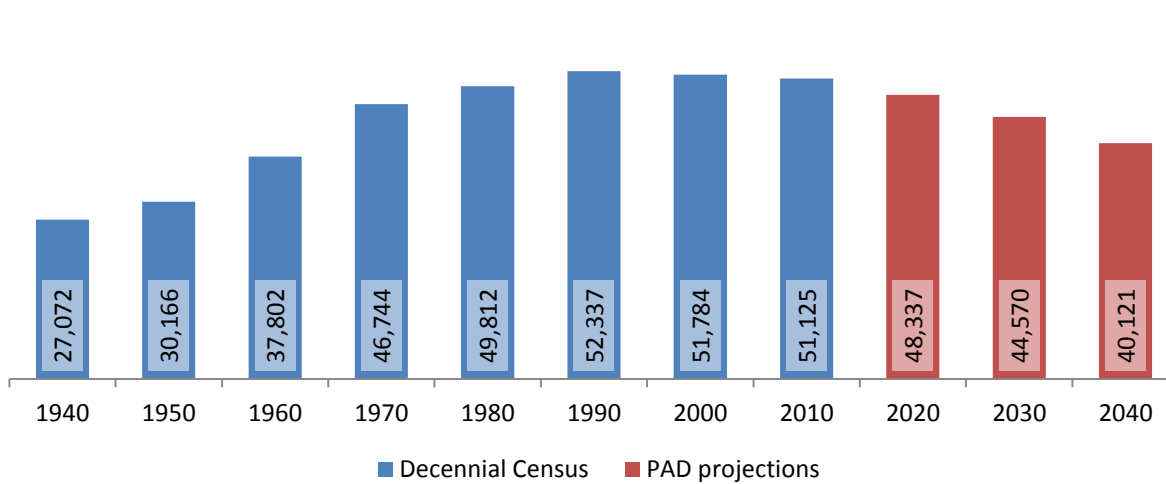
2 Population density and Urban Areas Map



3 Total Population

3.1 Historic and projected

Total population, Tioga County, 1940-2040



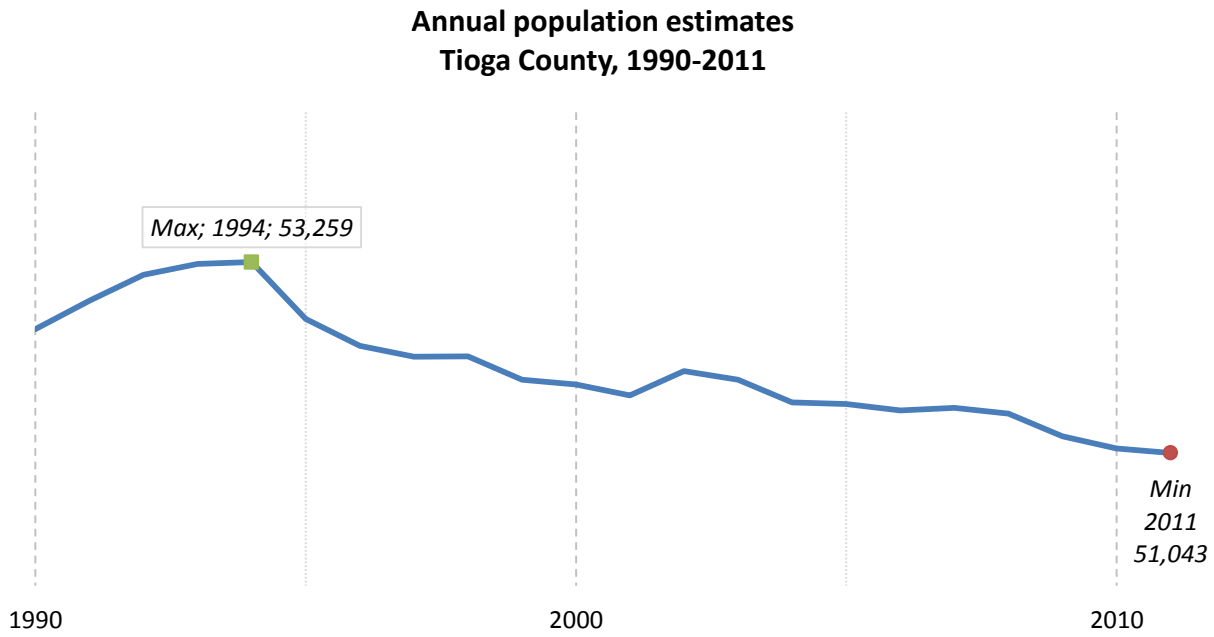
Source: 1940-2010 Decennial Census and projections by Cornell Program on Applied Demographics

3.2 Change since previous Census

	Year	Total population	Change	
			Number	Percent
Decennial Census	1940	27,072		
	1950	30,166	3,094	11.4%
	1960	37,802	7,636	25.3%
	1970	46,744	8,942	23.7%
	1980	49,812	3,068	6.6%
	1990	52,337	2,525	5.1%
	2000	51,784	-553	-1.1%
	2010	51,125	-659	-1.3%
PAD projections	2020	48,337	-2,788	-5.5%
	2030	44,570	-3,767	-7.8%
	2040	40,121	-4,449	-10.0%

Source: 1940-2010 Decennial Census and projections by Cornell Program on Applied Demographics

3.3 Annual population estimates



Source: U.S. Census Bureau population estimates (1990-1999 and 2000-2009 intercensal and vintage 2011 postcensal)

3.4 Percentage sub county change 2000-2010

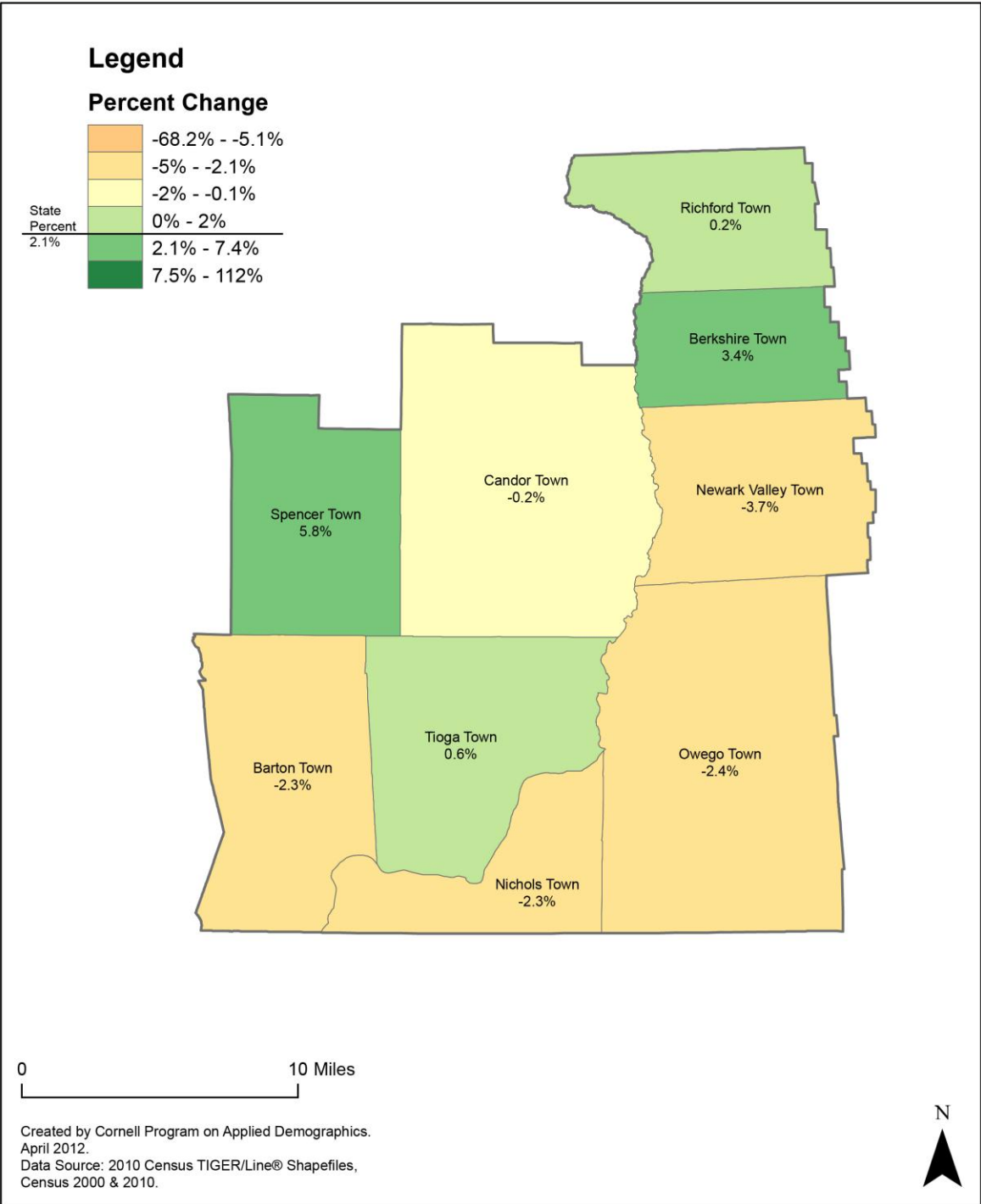
	Total Population		Difference	
	2000	2010	Count	%
New York State	18,976,821 *	19,378,102	401,281	2.1%
Tioga County	51,784	51,125	-659	-1.3%
Towns				
Barton	9,066	8,858	-208	-2.3%
Berkshire	1,366	1,412	46	3.4%
Candor	5,317	5,305	-12	-0.2%
Newark Valley	4,097	3,946	-151	-3.7%
Nichols	2,584	2,525	-59	-2.3%
Owego	20,365	19,883	-482	-2.4%
Richford	1,170	1,172	2	0.2%
Spencer	2,979	3,153	174	5.8%
Tioga	4,840	4,871	31	0.6%

* Original counts revised through Count Question Resolution Program (CQR)

Source: U.S. Census Bureau intercensal population estimates 2000-2010

Tioga County, NY

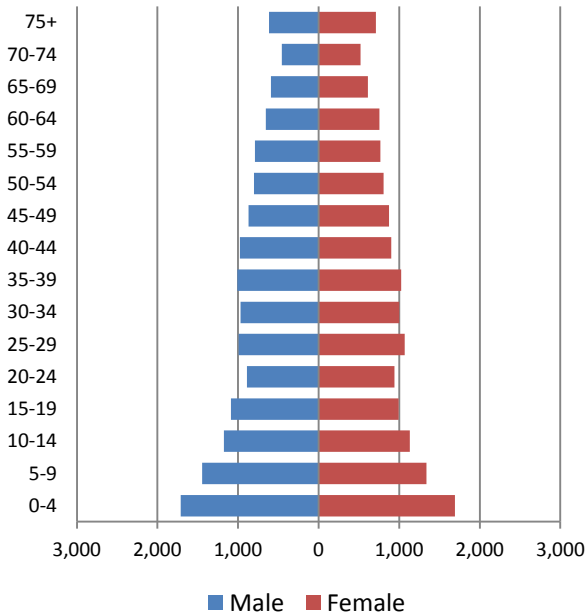
County Subdivision, Percent Change in Population 2000-2010



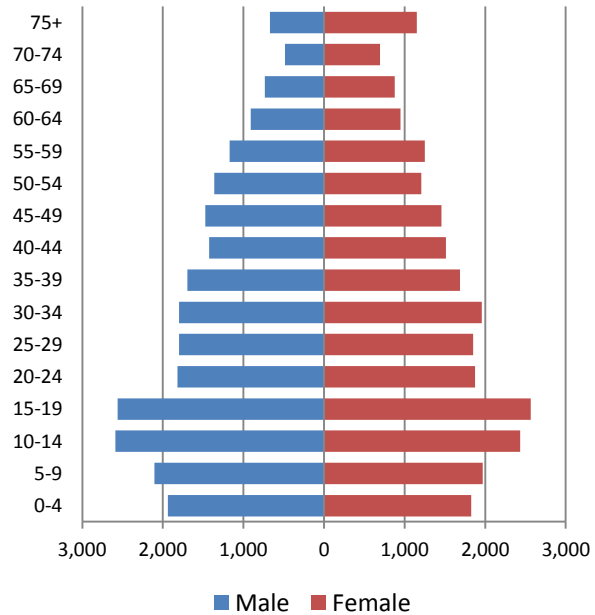
4 Population by age

4.1 Historic and projected population pyramids

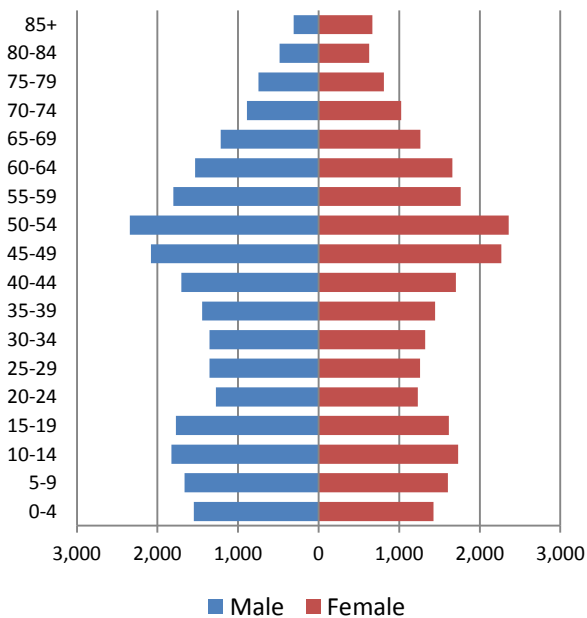
1950 Population Pyramid, Tioga County



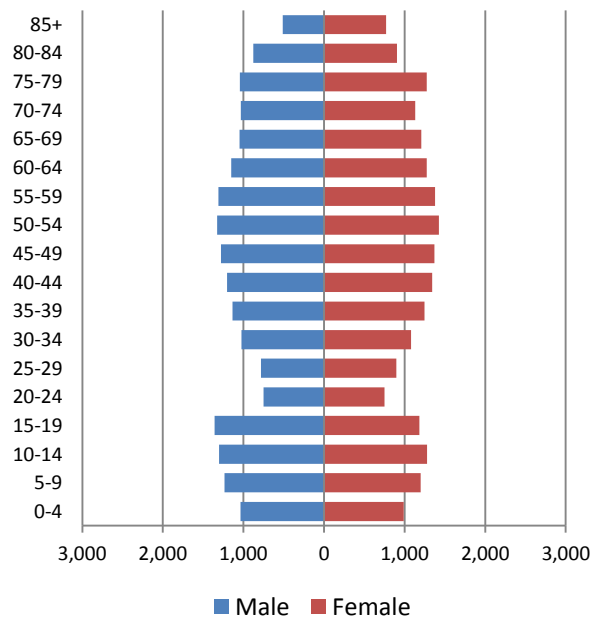
1980 Population Pyramid, Tioga County



2010 Population Pyramid, Tioga County



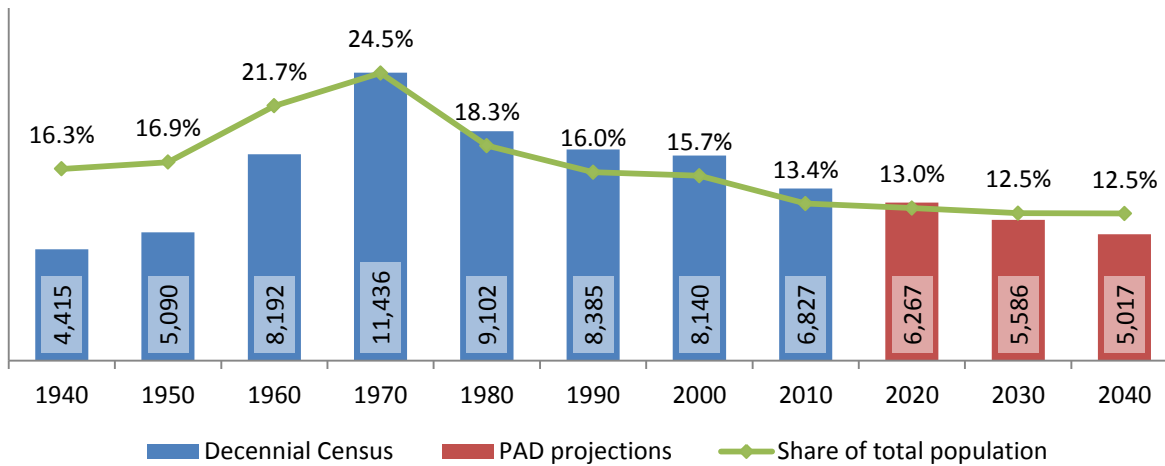
2040 Population Pyramid, Tioga County



Source: 1950, 1980, 2010 Decennial Census and projections by Cornell Program on Applied Demographics

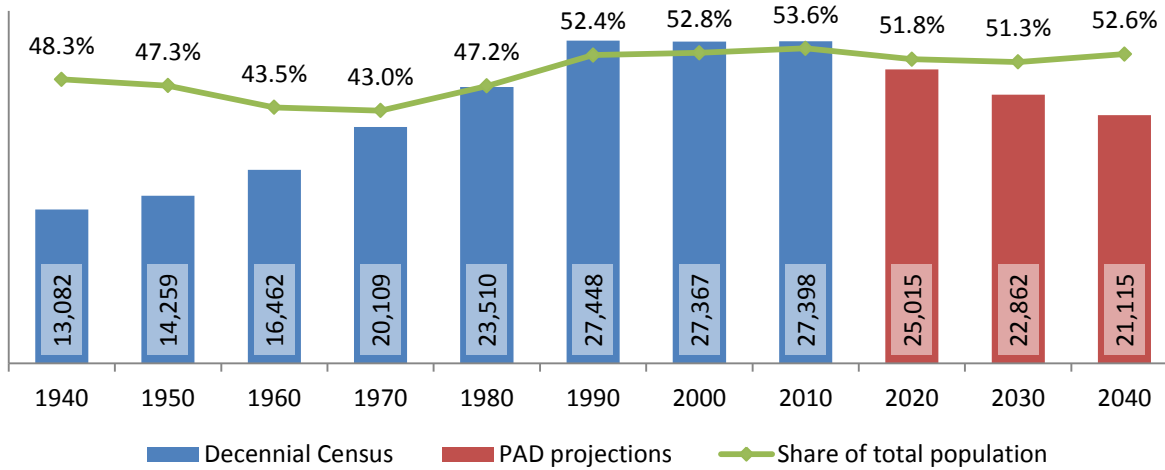
4.2 Selected age groups

Population age 5-14, Tioga County, 1940-2040



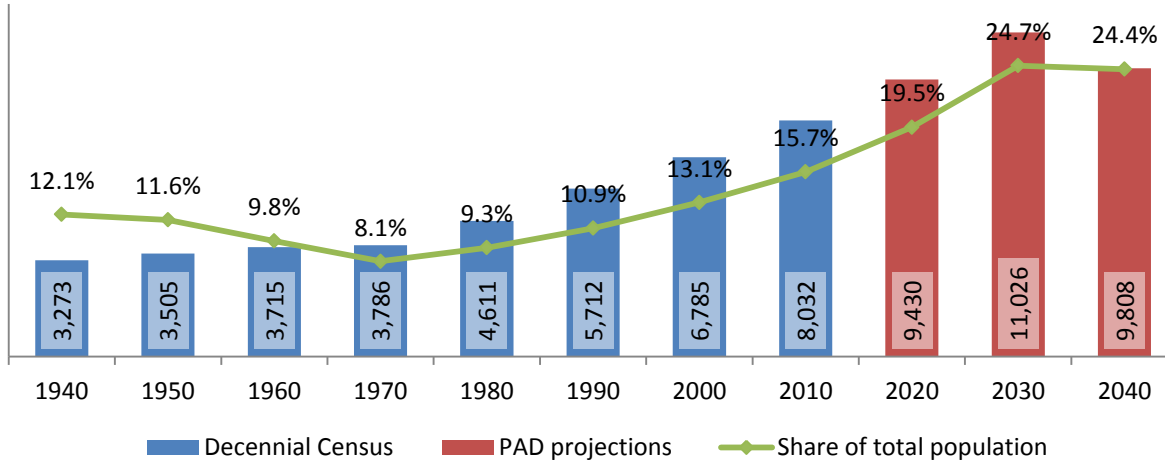
Source: 1940-2010 Decennial Census and projections by Cornell Program on Applied Demographics

Population age 25-64, Tioga County, 1940-2040



Source: 1940-2010 Decennial Census and projections by Cornell Program on Applied Demographics

Population age 65 and over, Tioga County, 1940-2040

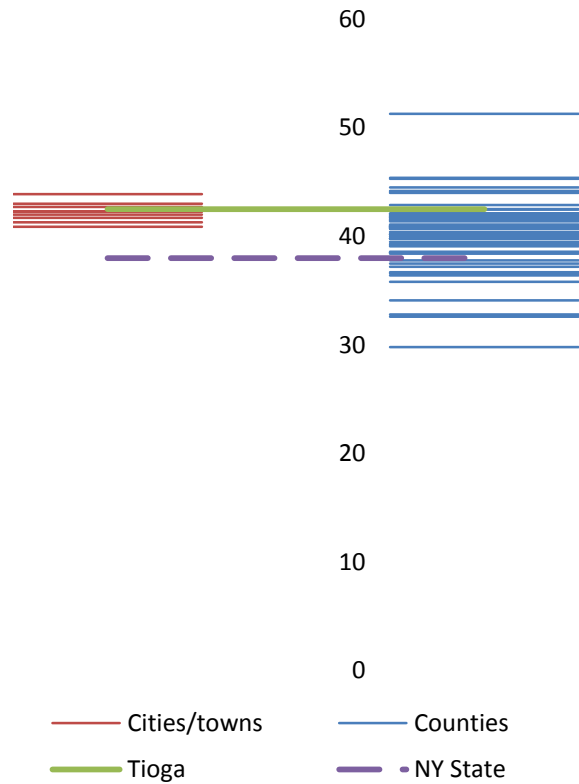


Source: 1940-2010 Decennial Census and projections by Cornell Program on Applied Demographics

4.3 Median age: comparison between areas

	Median Age
New York State	38.0
Tioga County	42.5
Towns	
Barton town	40.9
Berkshire town	42.0
Candor town	41.7
Newark Valley town	42.3
Nichols town	43.0
Owego town	43.9
Richford town	42.7
Spencer town	41.3
Tioga town	42.3

Median age comparison within county (left) and between counties (right)



Source: 2010 Decennial Census

5 Race

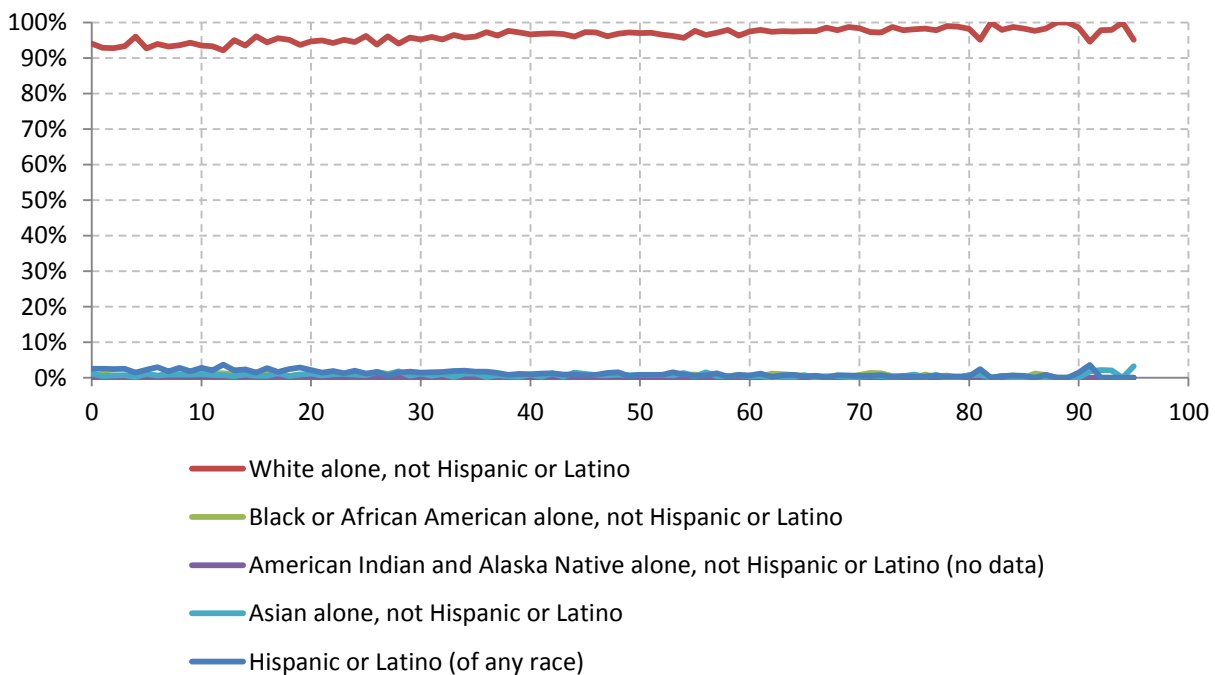
5.1 Total and household population by race

	Total		In households		In Group Quarters
	Count	Percentage	Count	Percentage	Count
Total population	51,125	100%	50,602	100%	523
Not Hispanic or Latino					
One race					
White	49,105	96.0%	48,609	96.1%	496
Black or African American	349	0.7%	332	0.7%	17
American Indian and Alaska Native	73	0.1%	-	-	-
Asian	371	0.7%	370	0.7%	1
Native Hawaiian and Other Pacific Islander	12	0.0%	-	-	-
Some other race	26	0.1%	-	-	-
Two or more races	495	1.0%	494	1.0%	1
Hispanic or Latino (of any race)	694	1.4%	689	1.4%	5

Source: 2010 Decennial Census

5.2 Race composition by age

Race composition by age, Tioga County



Source: 2010 Decennial Census

6 Housing units

6.1 Characteristics

HOUSING OCCUPANCY	COUNT		PERCENTAGE	
	Estimate	Margin of error	Estimate	Margin of error
Total housing units	22,181	± 95	100.0%	
Occupied housing units	20,458	± 284	92.2%	± 1.2
Vacant housing units	1,723	± 268	7.8%	± 1.2
YEAR STRUCTURE BUILT				
Total housing units	22,181	± 95	100.0%	
Built 2005 or later	698	± 188	3.1%	± 0.8
Built 2000 to 2004	1,173	± 227	5.3%	± 1.0
Built 1990 to 1999	1,681	± 199	7.6%	± 0.9
Built 1980 to 1989	2,665	± 314	12.0%	± 1.4
Built 1970 to 1979	3,273	± 316	14.8%	± 1.4
Built 1960 to 1969	2,359	± 252	10.6%	± 1.1
Built 1950 to 1959	2,419	± 285	10.9%	± 1.3
Built 1940 to 1949	843	± 194	3.8%	± 0.9
Built 1939 or earlier	7,070	± 424	31.9%	± 1.9
HOUSING TENURE				
Occupied housing units	20,458	± 284	100.0%	
Owner-occupied	16,202	± 382	79.2%	± 1.8
Renter-occupied	4,256	± 377	20.8%	± 1.8
HOUSE HEATING FUEL				
Occupied housing units	20,458	± 284	100.0%	
Utility gas	5,931	± 336	29.0%	± 1.6
Bottled, tank, or LP gas	2,087	± 250	10.2%	± 1.2
Electricity	1,888	± 270	9.2%	± 1.3
Fuel oil, kerosene, etc.	7,601	± 405	37.2%	± 1.9
Coal or coke	890	± 170	4.4%	± 0.8
Wood	1,985	± 265	9.7%	± 1.3
Solar energy	0	± 89	0.0%	± 0.2
Other fuel	76	± 43	0.4%	± 0.2
No fuel used	0	± 89	0.0%	± 0.2
VALUE				
Owner-occupied units	16,202	± 382	100.0%	
Less than \$50,000	2,080	± 227	12.8%	± 1.3
\$50,000 to \$99,999	5,503	± 351	34.0%	± 2.0
\$100,000 to \$149,999	4,012	± 339	24.8%	± 2.1
\$150,000 to \$199,999	2,524	± 269	15.6%	± 1.6
\$200,000 to \$299,999	1,421	± 209	8.8%	± 1.3
\$300,000 to \$499,999	459	± 134	2.8%	± 0.8
\$500,000 to \$999,999	180	± 85	1.1%	± 0.5
\$1,000,000 or more	23	± 23	0.1%	± 0.1
Median (dollars)	105,600	± 3,660		

Source: 2007-2011 American Community Survey

6.2 Historical data on number of housing units and occupancy status

Year	Number of Housing Units	Change since previous Census	Occupied	Occupancy rate	Vacant
1970	14,161		13,375	94.4%	786
1980	17,987	27.0%	16,520	91.8%	1,467
1990	20,254	12.6%	18,838	93.0%	1,416
2000	21,410	5.7%	19,725	92.1%	1,685
2010	22,203	3.7%	20,350	91.7%	1,853

Source: 1970-2010 Decennial Census

7 Education

7.1 Enrollment by level of school

	Estimate	Margin of error
Total enrolled in school	12,570	± 302
Nursery school, preschool	815	± 149
Kindergarten	522	± 146
Elementary: grade 1 to grade 4	2,622	± 234
Elementary: grade 5 to grade 8	2,892	± 178
High school: grade 9 to grade 12	3,186	± 218
College, undergraduate	2,081	± 247
Graduate, professional school	452	± 129

Source: 2007-2011 American Community Survey

7.2 Enrollment by age

	Estimate	Margin of error
3 and 4 years	56.5%	± 7.7
5 to 9 years	96.7%	± 2.1
10 to 14 years	98.2%	± 1.5
15 to 17 years	98.2%	± 1.6
18 and 19 years	72.9%	± 9.5
20 to 24 years	31.0%	± 6.5
25 to 34 years	11.0%	± 3.0
35 years and over	2.1%	± 0.5

Source: 2007-2011 American Community Survey

7.3 Percentage age 18-24 enrolled in college

	Estimate	Margin of error
Population 18 to 24 years	3,879	± 57
Enrolled in college or graduate school	32.9%	± 5.2
Males 18 to 24 years	1,999	± 46
Enrolled in college or graduate school	30.6%	± 6.3
Females 18 to 24 years	1,880	± 49
Enrolled in college or graduate school	35.4%	± 7.7

Source: 2007-2011 American Community Survey

7.4 Educational attainment

	COUNT		PERCENTAGE	
	Estimate	Margin of error	Estimate	Margin of error
Population 25 years and over	35,265	± 58	100%	
EDUCATIONAL ATTAINMENT				
Less than 9th grade	732	± 140	2.1%	± 0.4
9th to 12th grade, no diploma	2,626	± 297	7.4%	± 0.8
High school graduate (includes equivalency)	13,733	± 589	38.9%	± 1.7
Some college, no degree	6,098	± 396	17.3%	± 1.1
Associate's degree	4,161	± 349	11.8%	± 1.0
Bachelor's degree	4,587	± 369	13.0%	± 1.0
Graduate or professional degree	3,328	± 401	9.4%	± 1.1
Percent high school graduate or higher			90.5%	± 0.9
Percent bachelor's degree or higher			22.4%	± 1.6

Source: 2007-2011 American Community Survey

8 Language spoken at home

	COUNT		PERCENTAGE		SPEAK ENGLISH LESS THAN "VERY WELL"	
	Estimate	Margin of error	Estimate	Margin of error	Estimate	Margin of error
Population 5 years and over	48,321	± 52	100%			
LANGUAGE SPOKEN AT HOME						
English only	46,808	± 271	96.9%	± 0.6		
Language other than English	1,513	± 288	3.1%	± 0.6	455	± 143
Spanish	517	± 156	1.1%	± 0.3	136	± 62
Other Indo-European languages	835	± 242	1.7%	± 0.5	260	± 118
Asian and Pacific Islander languages	108	± 54	0.2%	± 0.1	59	± 51
Other languages	53	± 56	0.1%	± 0.1	0	± 89

Source: 2007-2011 American Community Survey

9 Labor Force Characteristics

9.1 Labor force, employment and unemployment

	TOTAL		IN LABOR FORCE		EMPLOYED		UNEMPLOYMENT RATE	
	Estimate	Margin of error	Estimate	Margin of error	Estimate	Margin of error	Estimate	Margin of error
Population 16 years and over	40,726	± 139	66.2%	± 1.3	61.1%	± 1.5	7.6%	± 1.2
AGE								
16 to 19 years	2,868	± 157	44.8%	± 6.5	35.1%	± 6.3	21.5%	± 6.8
20 to 24 years	2,593	± 50	75.6%	± 5.4	59.8%	± 6.2	20.4%	± 6.6
25 to 44 years	11,730	± 75	86.0%	± 2.2	80.9%	± 2.4	5.8%	± 1.4
45 to 54 years	8,953	± 67	88.4%	± 2.1	83.7%	± 2.9	5.3%	± 1.8
55 to 64 years	6,667	± 54	68.9%	± 3.7	65.0%	± 3.6	5.7%	± 1.9
65 to 74 years	4,336	± 50	19.3%	± 3.3	17.7%	± 3.4	8.1%	± 9.5
75 years and over	3,579	± 33	7.7%	± 3.1	6.7%	± 2.8	12.7%	± 11.9
RACE AND HISPANIC OR LATINO ORIGIN								
One race	40,305	± 139	66.3%	± 1.3	61.2%	± 1.5	7.5%	± 1.2
White	39,613	± 163	66.4%	± 1.3	61.3%	± 1.5	7.6%	± 1.2
Black or African American	251	± 58	41.4%	± 19.0	39.0%	± 17.3	5.8%	± 10.5
American Indian and Alaska Native	103	± 47	52.4%	± 36.4	52.4%	± 36.4	0.0%	± 40.4
Asian	218	± 91	72.9%	± 18.7	68.8%	± 18.9	5.7%	± 9.3
Pacific Islander	4	± 9	100.0%	± 100.0	100.0%	± 100.0	0.0%	± 100.0
Some other race	116	± 104	72.4%	± 19.4	62.9%	± 20.3	13.1%	± 12.9
Two or more races	421	± 122	56.8%	± 10.9	49.9%	± 10.7	12.1%	± 13.4
Hispanic or Latino origin (of any race)	465	± 32	67.5%	± 14.1	62.8%	± 14.6	7.0%	± 7.7
White alone, not Hispanic or Latino	39,299	± 152	66.4%	± 1.3	61.3%	± 1.6	7.5%	± 1.2
SEX								
Population 20 to 64 years	29,943	± 79	82.0%	± 1.4	76.3%	± 1.7	6.8%	± 1.1
Male	14,882	± 91	85.9%	± 1.8	80.2%	± 2.1	6.4%	± 1.4
Female	15,061	± 94	78.2%	± 2.1	72.6%	± 2.4	7.2%	± 1.8
With own children under 6 years	2,187	± 272	77.1%	± 6.0	70.1%	± 6.4	9.1%	± 5.2
EDUCATIONAL ATTAINMENT								
Population 25 to 64 years	27,350	± 74	82.6%	± 1.5	77.9%	± 1.8	5.6%	± 1.1
Less than high school graduate	1,968	± 252	60.1%	± 6.4	53.6%	± 6.9	10.8%	± 5.5
High school graduate (includes equivalency)	10,085	± 489	82.4%	± 2.4	76.3%	± 3.0	7.5%	± 2.4
Some college or associate's degree	8,559	± 469	84.0%	± 2.5	80.7%	± 2.7	3.9%	± 1.3
Bachelor's degree or higher	6,738	± 475	87.8%	± 2.2	84.0%	± 2.6	4.0%	± 1.6

Table formula: **LABOR FORCE** = # EMPLOYED + # UNEMPLOYED
 % IN LABOR FORCE = LABOR FORCE / TOTAL * 100%
 % EMPLOYED = # EMPLOYED / TOTAL * 100%
 UNEMPLOYMENT RATE = # UNEMPLOYED / LABOR FORCE * 100%

Source: 2007-2011 American Community Survey

9.2 Annual unemployment rate

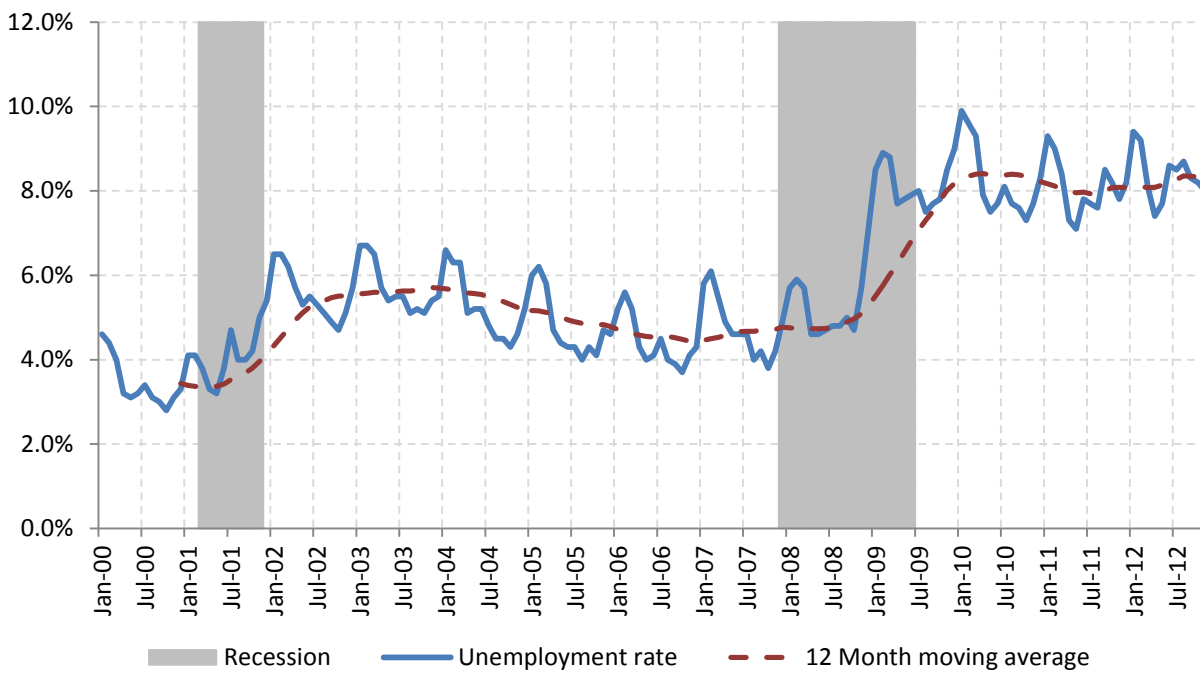
Annual unemployment rate, Tioga County and New York State



Source: Bureau Labor Statistics (BLS)

9.3 Monthly unemployment rate

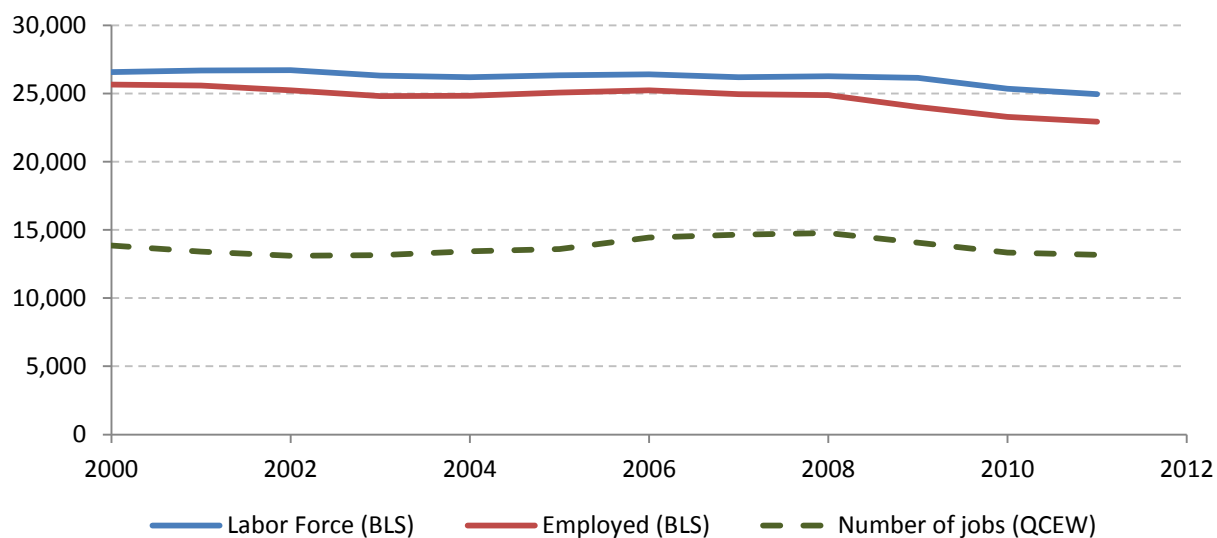
Monthly unemployment rate, Tioga County



Source: Bureau Labor Statistics (BLS)

9.4 Employment and number of jobs

**Labor force, number of employed workers and number of jobs
Tioga County**



Source: Bureau Labor Statistics (BLS) and NY Department of Labor - Quarterly Census of Employment and Wages (QCEW) – annual averages

9.5 Class of worker

		Median earnings (\$)					
		Total	%Male	%Female	Total	Male	Female
Civilian employed population 16 years and over	Estimate	24,878	52.9%	47.1%	31,136	36,917	25,541
	Margin of error	± 605	± 1.0	± 1.0	± 750	± 1,582	± 1,345
Private for-profit wage and salary workers:	Estimate	16,492	58.2%	41.8%	31,074	37,461	23,875
	Margin of error	± 593	± 1.9	± 1.9	± 769	± 2,590	± 1,822
Employee of private company workers	Estimate	16,039	57.8%	42.2%	30,935	37,302	23,899
	Margin of error	± 582	± 2.0	± 2.0	± 746	± 2,340	± 1,846
Self-employed in own incorporated business workers	Estimate	453	70.6%	29.4%	42,882	44,097	18,542
	Margin of error	± 125	± 16.0	± 16.0	± 15,611	± 7,841	± 42,857
Private not-for-profit wage and salary workers	Estimate	2,574	32.4%	67.6%	27,319	36,469	25,413
	Margin of error	± 280	± 5.5	± 5.5	± 4,688	± 12,351	± 2,822
Local government workers	Estimate	2,238	37.1%	62.9%	33,908	41,533	30,391
	Margin of error	± 260	± 5.9	± 5.9	± 4,691	± 4,071	± 3,285
State government workers	Estimate	1,586	46.7%	53.3%	40,859	41,797	40,547
	Margin of error	± 255	± 7.5	± 7.5	± 4,568	± 9,116	± 5,819
Federal government workers	Estimate	289	45.0%	55.0%	50,651	48,611	52,148
	Margin of error	± 111	± 13.8	± 13.8	± 3,587	± 19,188	± 13,539
Self-employed in own not incorporated business workers and unpaid family workers	Estimate	1,699	60.1%	39.9%	17,515	20,052	12,104
	Margin of error	± 339	± 7.3	± 7.3	± 4,825	± 6,341	± 3,937

Source: 2007-2011 American Community Survey

9.6 Jobs by industry sector

	Tioga County			NY state
	2011	Change since 2006	% of total	% of total
All NAICS Sectors	13,465	-3.2%	100.0%	100.0%
Agriculture, Forestry, Fishing and Hunting	49	-2.0%	0.4%	0.3%
Mining, Quarrying, and Oil and Gas Extraction	82	331.6%	0.6%	0.1%
Utilities	NA	NA	NA	0.5%
Construction	472	7.8%	3.5%	3.5%
Manufacturing	4,172	-26.4%	31.0%	5.5%
Wholesale Trade	583	41.2%	4.3%	4.0%
Retail Trade	1,460	23.5%	10.8%	10.5%
Transportation and Warehousing	509	45.0%	3.8%	3.4%
Information	99	41.4%	0.7%	3.3%
Finance and Insurance	206	-1.9%	1.5%	6.0%
Real Estate and Rental and Leasing	43	-15.7%	0.3%	2.3%
Professional, Scientific, and Technical Services	341	-34.7%	2.5%	6.9%
Management of Companies and Enterprises	7	-81.1%	0.1%	1.6%
Administrative and Support and Waste Management and Remediation Services	419	25.8%	3.1%	5.2%
Educational Services	1,488	5.5%	11.1%	10.8%
Health Care and Social Assistance	1,027	24.0%	7.6%	17.0%
Arts, Entertainment, and Recreation	455	30.0%	3.4%	1.9%
Accommodation and Food Services	817	14.9%	6.1%	7.3%
Other Services (except Public Administration)	301	2.7%	2.2%	3.9%
Public Administration	930	-4.8%	6.9%	5.8%

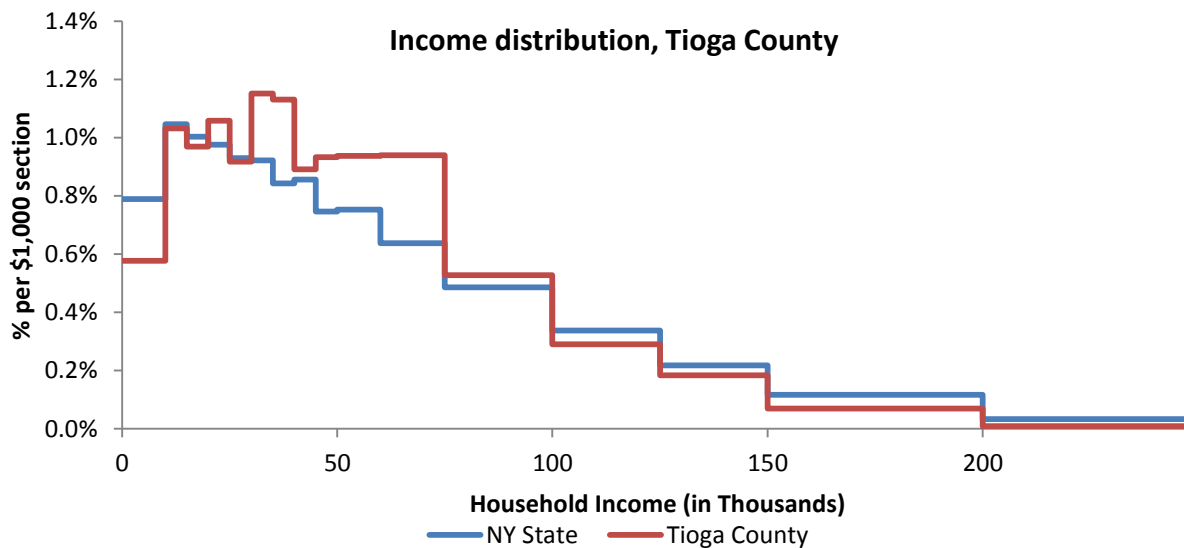
Source: U.S. Census Bureau - Public Use Quarterly Workforce Indicators (QWI) – annual averages

10 Household Income

10.1 Distribution

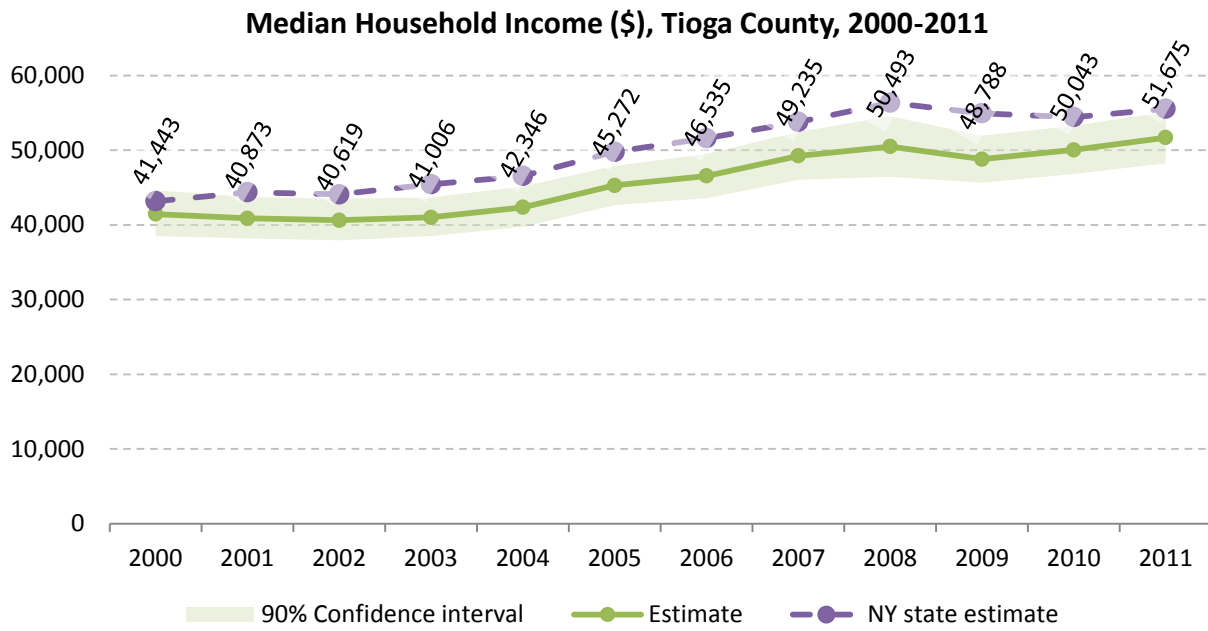
	Estimate	Margin of error	Interval width (in \$1,000)	Est. per \$1,000 section
Total:	20,458	± 284		
Less than \$10,000	1,181	± 181	10	118.1
\$10,000 to \$14,999	1,055	± 178	5	211.0
\$15,000 to \$19,999	991	± 197	5	198.2
\$20,000 to \$24,999	1,082	± 199	5	216.4
\$25,000 to \$29,999	938	± 184	5	187.6
\$30,000 to \$34,999	1,178	± 209	5	235.6
\$35,000 to \$39,999	1,157	± 255	5	231.4
\$40,000 to \$44,999	912	± 165	5	182.4
\$45,000 to \$49,999	954	± 192	5	190.8
\$50,000 to \$59,999	1,917	± 274	10	191.7
\$60,000 to \$74,999	2,882	± 299	15	192.1
\$75,000 to \$99,999	2,698	± 268	25	107.9
\$100,000 to \$124,999	1,487	± 228	25	59.5
\$125,000 to \$149,999	940	± 186	25	37.6
\$150,000 to \$199,999	713	± 165	50	14.3
\$200,000 or more	373	± 108	-	-

Source: 2007-2011 American Community Survey



Source: 2007-2011 American Community Survey

10.2 Median household income: Trends over time

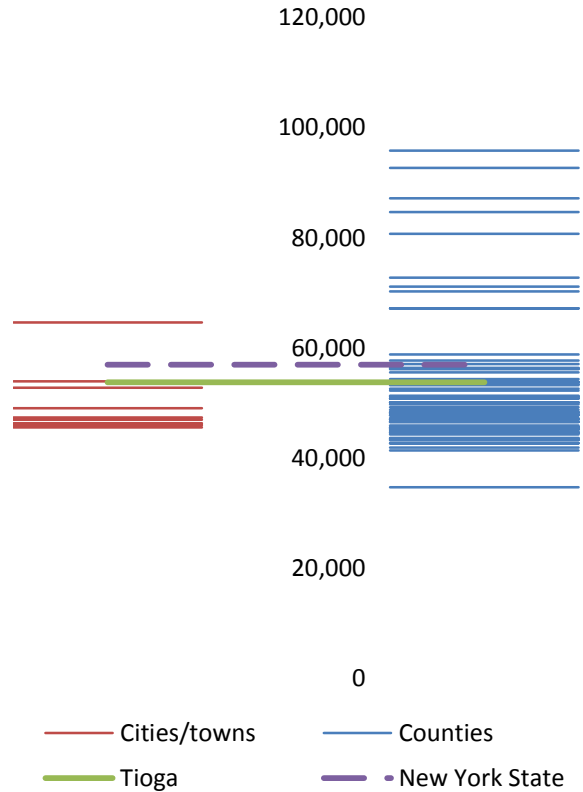


Source: Small Area Income and Poverty Estimates (SAIPE)

10.3 Median household income: Comparison between areas

MEDIAN HOUSEHOLD INCOME (\$)		
	Estimate	Margin of error
New York State	56,951	± 190
Tioga County	53,789	± 1,773
Towns		
Barton	45,604	± 5,392
Berkshire	47,381	± 5,548
Candor	53,977	± 3,755
Newark Valley	49,079	± 12,991
Nichols	47,009	± 6,443
Owego	64,618	± 2,381
Richford	46,000	± 12,259
Spencer	52,783	± 6,175
Tioga	46,360	± 9,377

Median household income comparison within county (left) and between counties (right)



Source: 2007-2011 American Community Survey

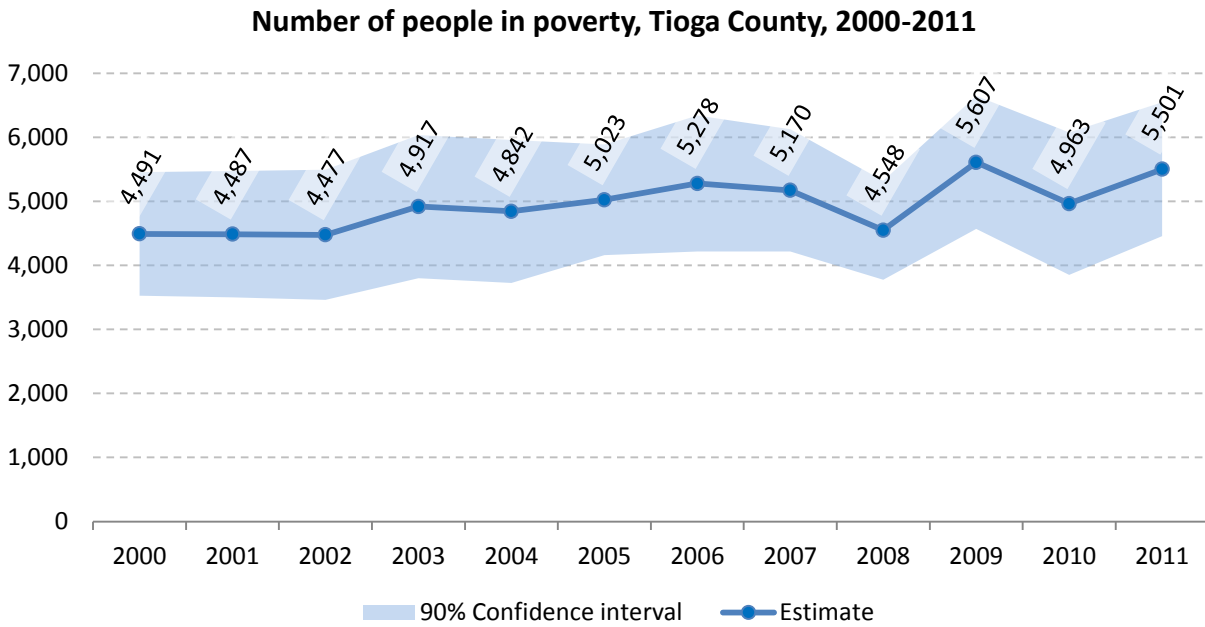
11 Poverty

11.1 Poverty characteristics

	TOTAL		BELOW POVERTY LEVEL		PERCENT BELOW POVERTY LEVEL	
	Estimate	Margin of error	Estimate	Margin of error	Estimate	Margin of error
Population for whom poverty status is determined	50,795	± 187	4,803	± 557	9.5%	± 1.1
AGE						
Under 18 years	11,958	± 94	1,433	± 282	12.0%	± 2.3
Related children under 18 years	11,870	± 131	1,345	± 282	11.3%	± 2.3
18 to 64 years	31,145	± 67	2,818	± 341	9.0%	± 1.1
65 years and over	7,692	± 154	552	± 135	7.2%	± 1.7
SEX						
Male	25,164	± 119	1,991	± 287	7.9%	± 1.1
Female	25,631	± 201	2,812	± 354	11.0%	± 1.4
RACE AND HISPANIC OR LATINO ORIGIN						
One race	50,057	± 257	4,575	± 547	9.1%	± 1.1
White	49,302	± 231	4,523	± 547	9.2%	± 1.1
Black or African American	311	± 101	38	± 68	12.2%	± 22.1
American Indian and Alaska Native	102	± 47	3	± 5	2.9%	± 5.8
Asian	211	± 114	5	± 12	2.4%	± 6.1
Hispanic or Latino origin (of any race)	713	± 17	204	± 108	28.6%	± 15.2
White alone, not Hispanic or Latino	48,798	± 208	4,326	± 530	8.9%	± 1.1
EDUCATIONAL ATTAINMENT						
Population 25 years and over	34,994	± 168	2,588	± 308	7.4%	± 0.9
Less than high school graduate	3,295	± 334	659	± 158	20.0%	± 4.1
High school graduate (includes equivalency)	13,573	± 577	1,313	± 211	9.7%	± 1.5
Some college, associate's degree	10,215	± 509	449	± 114	4.4%	± 1.1
Bachelor's degree or higher	7,911	± 552	167	± 82	2.1%	± 1.0
EMPLOYMENT STATUS						
Civilian labor force 16 years and over	26,920	± 508	1,535	± 285	5.7%	± 1.0
Employed	24,878	± 605	1,169	± 231	4.7%	± 0.9
Male	13,150	± 375	564	± 130	4.3%	± 1.0
Female	11,728	± 391	605	± 163	5.2%	± 1.3
Unemployed	2,042	± 310	366	± 155	17.9%	± 6.6
Male	1,099	± 214	145	± 62	13.2%	± 5.5
Female	943	± 214	221	± 127	23.4%	± 11.4
WORK EXPERIENCE IN THE PAST 12 MONTHS						
Population 16 years and over	40,409	± 207	3,558	± 361	8.8%	± 0.9
Worked full-time, year-round	17,119	± 519	276	± 84	1.6%	± 0.5
Worked part-time or part-year	10,804	± 568	1,297	± 261	12.0%	± 2.2
Did not work	12,486	± 459	1,985	± 250	15.9%	± 1.8

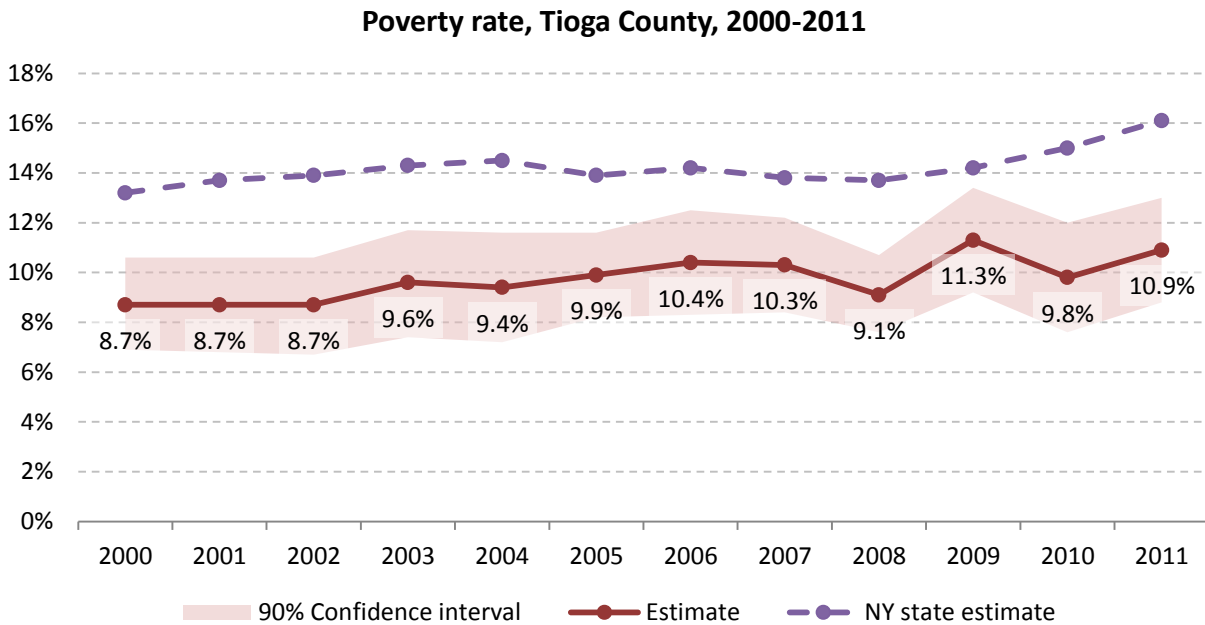
Source: 2007-2011 American Community Survey

11.2 Poverty: Trends over time: Count



Source: Small Area Income and Poverty Estimates (SAIPE)

11.3 Poverty: Trends over time: Rate



Source: Small Area Income and Poverty Estimates (SAIPE)

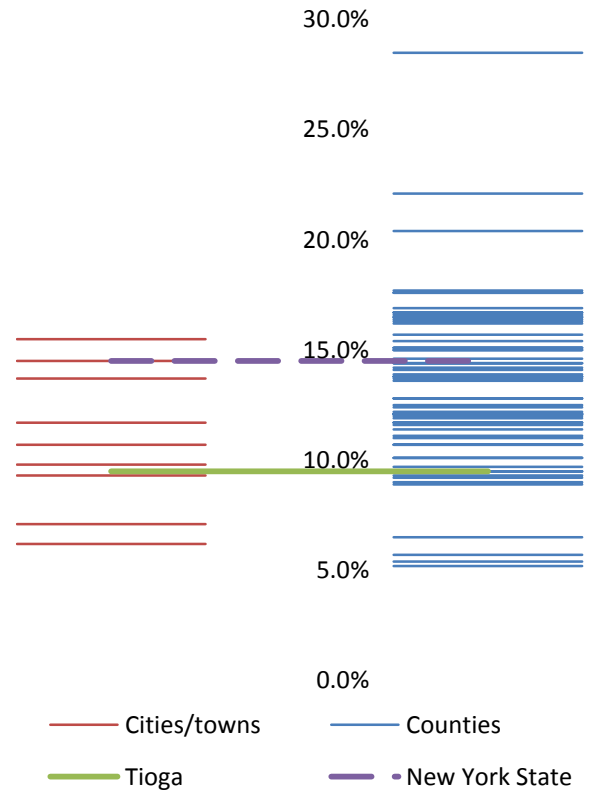
11.4 Poverty rate: comparison between areas

Poverty Rate - All people		
	Estimate	Margin of error
New York State	14.5%	± 0.1
Tioga County	9.5%	± 1.1

Towns

Barton	14.5%	± 3.1
Berkshire	13.7%	± 6.3
Candor	9.3%	± 3.7
Newark Valley	11.7%	± 6.3
Nichols	9.8%	± 3.6
Owego	6.2%	± 1.7
Richford	15.5%	± 8.3
Spencer	7.1%	± 2.5
Tioga	10.7%	± 4.6

Poverty rate comparison within county (left) and between counties (right)

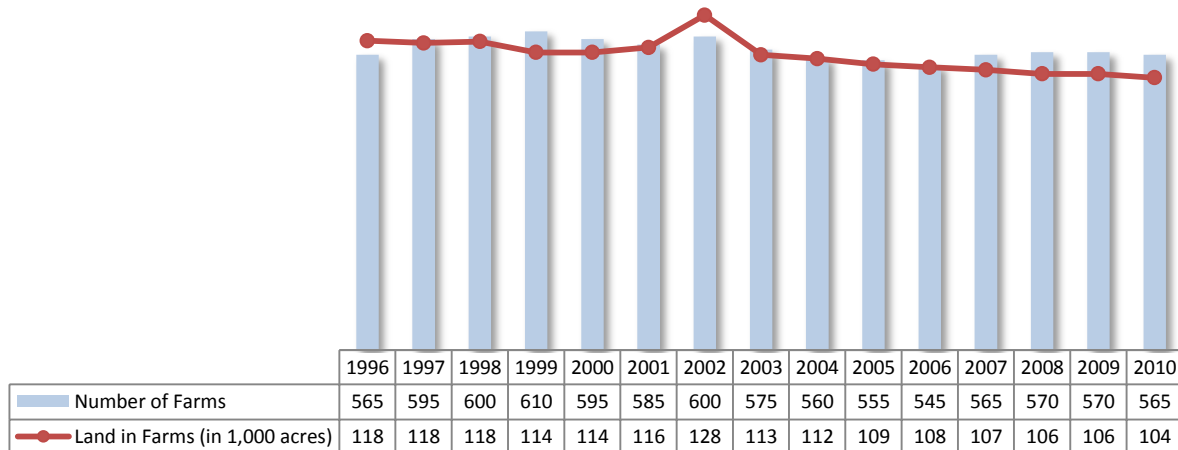


Source: 2007-2011 American Community Survey

12 Agriculture

12.1 Number of farms and land in farms

Tioga County, 1996-2010



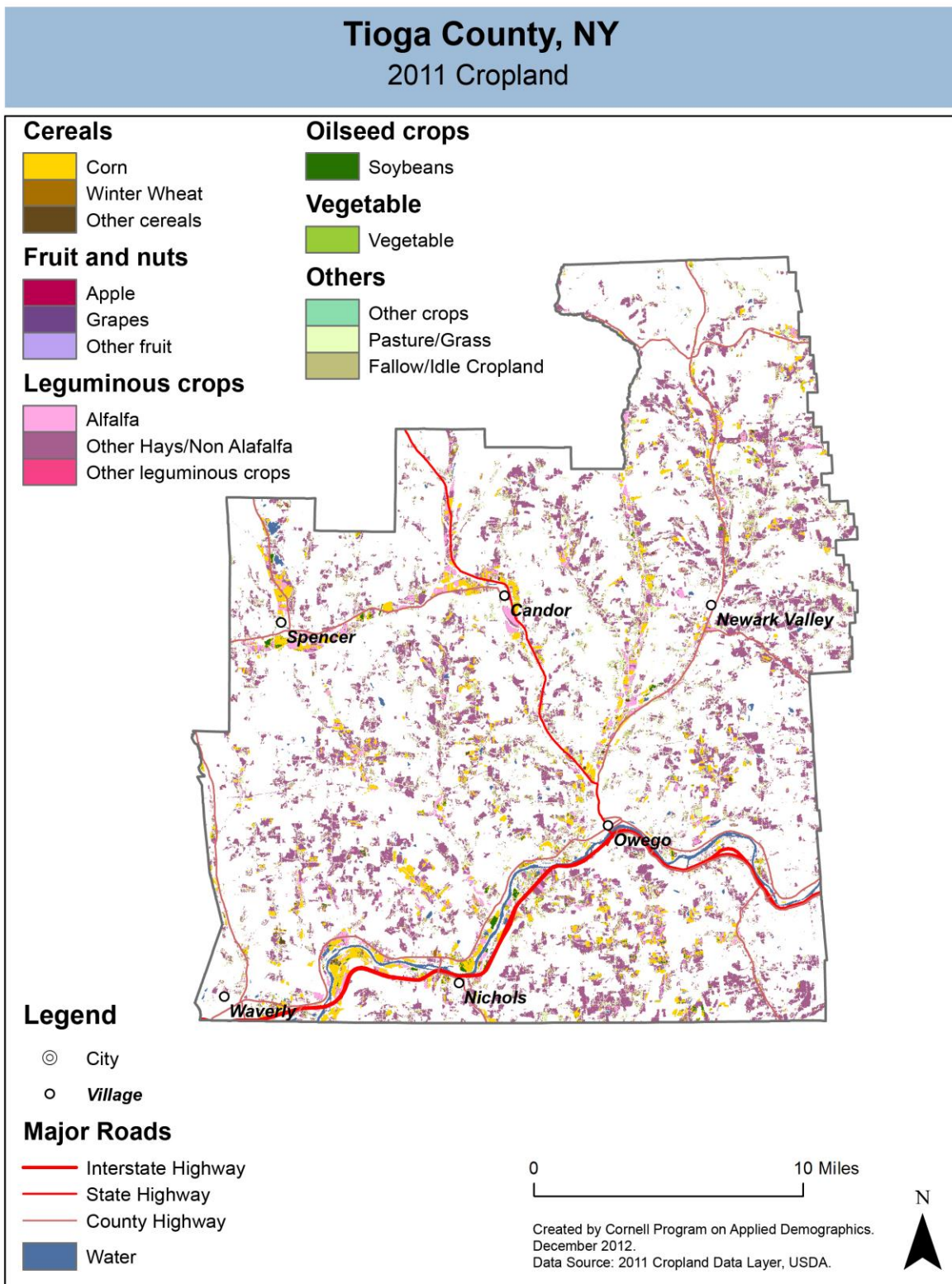
Source: National Agricultural Statistics Service – Annual Statistical bulletin

12.2 Farm Operator Characteristics

	Principal Operator		
	Total	Male	Female
Number of farms	565	452	113
Average size of farm (acres)	189	211	101
PRIMARY OCCUPATION			
Farming	246	215	31
Other	319	237	82
AGE			
Under 45	96	67	29
45 to 64 years	286	222	64
65 years and over	183	163	20
Average age (years)	58.5	59.6	54
YEARS ON PRESENT FARM			
Less than 3 years	23	19	4
3 to 4 years	30	18	12
5 to 9 years	71	49	22
10 years or more	441	366	75

Source: 2007 Agricultural Census

12.3 Map of type of crop

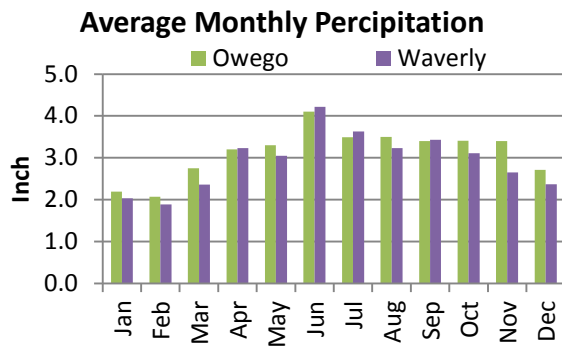
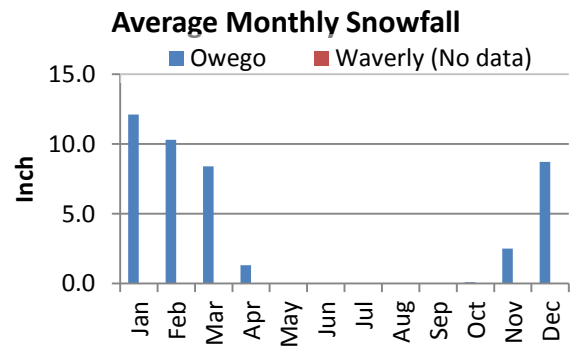
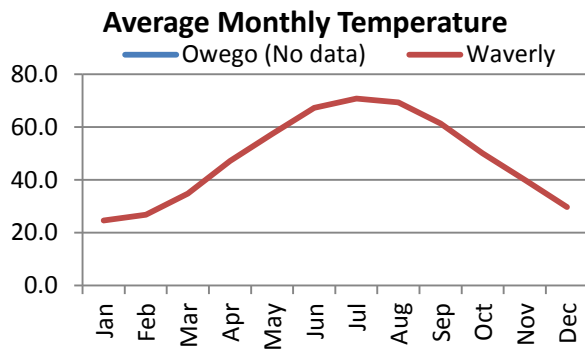
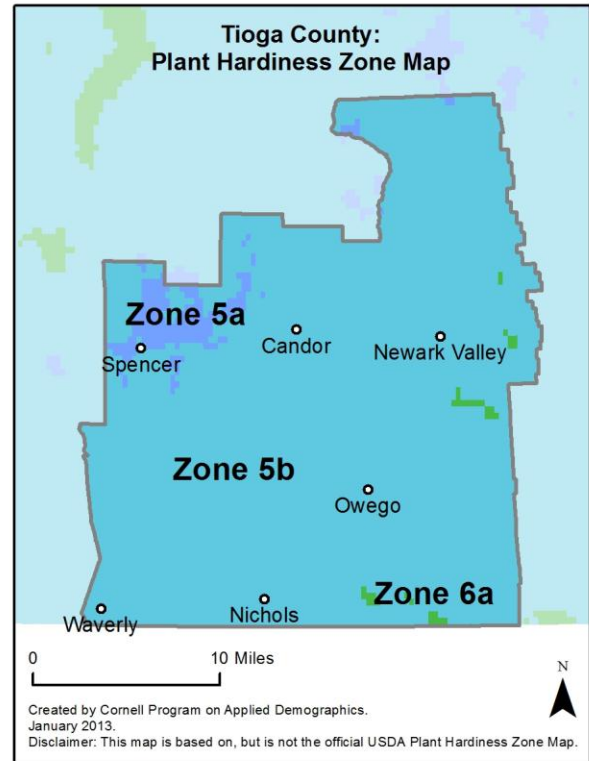
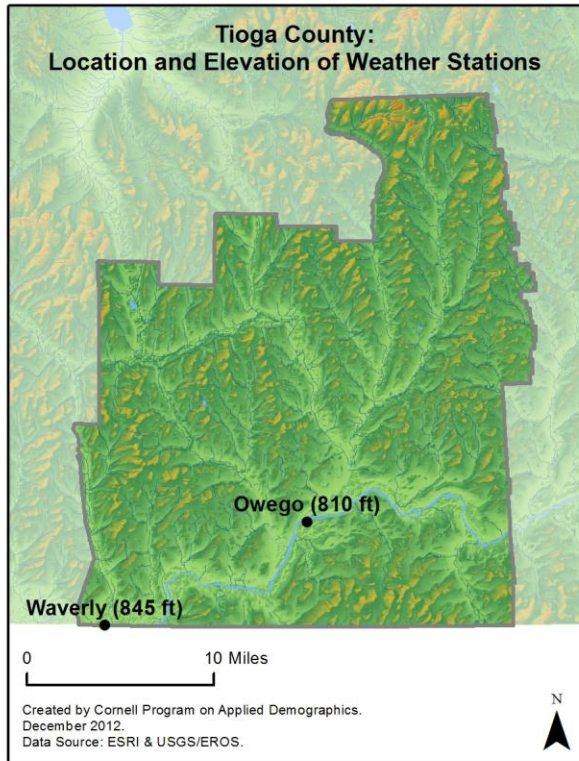


12.4 Estimated acreage by crop

	Acreage	%		Acreage	%
Cereals			Fruit and nuts		
Barley	36	0.0%	Apples	5	0.0%
Corn	9,143	11.5%	Apricots	-	
Millet	-		Blueberries	-	
Oats	190	0.2%	Cherries	0.2	0.0%
Rye	61	0.1%	Cranberries	-	
Sorghum	13	0.0%	Grapes	23	0.0%
Speltz	1.3	0.0%	Nectarines	-	
Spring Wheat	1.3	0.0%	Peaches	-	
Sweet Corn	41	0.1%	Plums	-	
Triticale	9	0.0%	Prunes	-	
Winter Wheat	239	0.3%	Strawberries	0.9	0.0%
Dbl Crop WinWht/Corn	-		Walnuts	-	
Leguminous crops			Beverage and spice crops		
Alfalfa	6,646	8.4%	Herbs	-	
Other Hay/Non Alfalfa	44,034	55.5%	Peppers	-	
Dry Beans	85	0.1%	Trees		
Peas	-		Christmas Trees	10	0.0%
Vetch	-		Other Tree Crops	-	
Oilseed crops			Other crops		
Soybeans	1,049	1.3%	Tobacco	-	
Sunflower	25	0.0%	Misc Veggies & Fruits	-	
Sugar crops			Clover/Wildflowers	81	0.1%
Sugarbeets	-		Sod/Grass Seed	-	
Root/tuber crops with high starch or inulin content			Switchgrass	-	
Potatoes	14	0.0%	Dbl Crop Soybeans/Oats	-	
Vegetables and melons			Dbl Crop WinWht/Soybeans	-	
Asparagus	-		Other Crops	5	0.0%
Broccoli	-		Pasture/Grass		
Cabbage	1.3	0.0%	Fallow/Idle Cropland		
Carrots	3.1	0.0%	14,908 18.8%		
Eggplants	0.4	0.0%	2,705 3.4%		
Onions	5	0.0%			
Pumpkins	6	0.0%			
Squash	5	0.0%			
Tomatoes	-				
Turnips	-				

Source: National Agricultural Statistics Service - Cropland Data Layer 2011

13 Climate



Average length of freeze-free season

	Last day of frost	First day of frost	Season length
Owego	Not available		
Waverly	May 11	October 7	148

Source: NOAA, Northeast Regional Climate Center at Cornell University. Averages 1981-2010

14 Glossary

American Community Survey (ACS) - The American Community Survey is an ongoing survey of the population that provides data every year on a variety of social and economic characteristics—age, sex, race, family and relationships, income and benefits, health insurance, education, veteran status, disabilities, where you work and how you get there, where you live and how much you pay for some essentials. The ACS replaced the information previously gathered by what was known as the “long form” of the decennial censuses. The ACS provides communities, companies and other institutions with current information they need to plan investments and services. Information from the survey generates data that help determine how more than \$400 billion in federal and state funds are distributed each year. Every estimate presented in the American Community Survey, as in other surveys, has an uncertainty associated with it. Often the magnitude of that uncertainty is expressed as the Margin of Error.

Confidence Interval (CI) - indication of the degree of uncertainty about a sample estimates. Confidence intervals have been traditionally reported at the 90, 95 and 99 percent levels. A 90 percent confidence interval can be interpreted, for example, roughly as providing 90 percent certainty that the interval defined by the upper and lower bounds contain the true value of the characteristic. If a Margin of Error is given, the lower bound of the confidence interval is equal to the estimate minus the Margin of Error and the upper bound is equal to the estimate plus the Margin of Error. (See further, Margin of Error definition below.)

County subdivision or Minor Civil Division (MCD) - The Census Bureau geography for primary administrative units below the county level in New York is collectively referred to as county subdivisions or minor civil divisions. These include towns, cities and Indian Reservations.

Decennial Census - the Census of the population and housing taken every 10 years in the United States, at the start of each decade, since 1790.

Employed – either “at work” or “with a job, but not at work”.

Group Quarters Population - all U.S. residents who live in group living facilities including correctional institutions, juvenile facilities, skilled nursing facilities, college residence halls, military barracks, group homes, and workers' dormitories.

Household Population - all U.S. residents who live in housing units such as single family homes, townhouses, apartments, and mobile homes.

Intercensal Population Estimates - estimates produced for the years between two decennial censuses when both the beginning and ending populations are known. They are produced once a decade by adjusting the existing time series of postcensal estimates for the entire decade to smooth the transition from one decennial census count to the next. They differ from the postcensal estimates that are released annually because the difference between the April 1 postcensal estimate and April 1 census count for the end of the decade is redistributed across the estimates for that decade. For dates when both postcensal and intercensal estimates are available, intercensal estimates are preferred.

Labor Force - consists of people classified as employed or unemployed.

Margin of Error (MOE) - a measure of the precision of an estimate at a given level of confidence. The confidence level of a margin of error indicates the likelihood that the difference between the population value (which you

would get if you could measure the whole population instead of a sample) and the estimate is less than or equal to the margin of error. The range from the estimate minus the margin of error to the estimate plus the margin of error is called the confidence interval. All ACS estimates are published with their margins of error at the 90 percent confidence level. Margins of error are useful in assessing the reliability of estimates and whether differences between estimates are significant.

NAICS - The North American Industry Classification System or NAICS is used by business and government to classify business establishments according to type of economic activity (process of production).

Numeric Population Change - difference between the population of an area at the beginning and end of a time period. It is computed by taking the difference between the population at one point in time (t1) and some future time (t2).

Percent Population Change - difference between the population of an area at the beginning and end of a time period, expressed as a percentage of the beginning population. It is computed by dividing the population change (t2 - t1) by t1 and multiplying the result by 100.

Population Estimates - The calculated number of people living in an area as of a specified point in time, usually July 1st. The estimated population is calculated using a component of change model that incorporates information on natural increase (births, deaths) and net migration (net domestic migration, net international migration) that has occurred in an area since the latest decennial census. A procedure for estimating the current population using a procedure involving a "base population" value at time t -1, adding to that the births during the interval t-1 to t, subtracting the deaths during that interval t-1 to t, and then adding the net domestic and net international migration that occurred during that interval.

Population Density - Total number of people per areal unit like a square mile or square kilometer.

Population Pyramids - A graphical way of portraying a population's age and sex composition at a given slice in time. The first horizontal bar, constituting the base of the graph, is the youngest age group (typically 0-4) with the number of males in that age group on the left and the number of females in that age group on the right. On top of that age group is another horizontal bar for the next age group (e.g. 5-9) and so forth with the top bar typically for those aged 75 and over. In a population with lots of births and deaths, the shape typically forms a pyramid with a broad base and a narrow top. It is one of the most basic ways to understand population change over time as well as between different geographic units of a similar status (e.g. counties).

Postcensal Estimates - estimates produced for the years after a decennial census when only the beginning population is known. They are produced and revised each year, targeted to July 1 of that year.

Projection - estimated population at some future time based on assumptions about births, deaths, migration, and ages.

Race/Ethnicity - the Census Bureau collects racial data in accordance with guidelines provided by the U.S. Office of Management and Budget (OMB), and these data are based on self-identification. The racial categories included in the census questionnaire generally reflect a social definition of race recognized in this country and not an attempt to define race biologically, anthropologically, or genetically. In addition, it is recognized that the categories of the race item include racial and national origin or sociocultural groups. People may choose to report more than one race to indicate their racial mixture, such as "American Indian" and "White." People who identify their origin as Hispanic, Latino, or Spanish may be of any race. OMB requires five minimum categories: White, Black or African American, American Indian or Alaska Native, Asian, and Native Hawaiian or Other Pacific

Islander. Hispanics may be classified as white or black. So we generally separate them out as an ethnic group first.

Unemployed – Not employed, but actively looking for work and available to accept a job.

Unemployment rate – Fraction of the Labor Force that is unemployed.

Urban Area – A densely settled area with at least 2,500 people. If the total number of people is less than 50,000 the Census Bureau calls it an Urban Cluster, otherwise an Urbanized Area.

Vintage - each year, the U.S. Census Bureau produces and publishes estimates of the population for each state and county, as well as the nation as a whole. These are called “vintages.” In producing these vintages, the Bureau utilizes administrative data from a number of sources to estimate 1) the change in population since the most recent decennial census, and 2) the population for each year since the most recent decennial census. With each annual release of population estimates (vintage), the entire time series of estimates beginning on April 1, 2010 is revised and updated.

15 References

Tioga County homepage: <http://www.tiogacountyny.com/>

At Cornell:

- Cornell Cooperative Extensions (CCE)
Home page: <http://www.cce.cornell.edu>
 - Tioga local office: <http://blogs.cce.cornell.edu/tioga/>
- Program on Applied Demographics (PAD)
URL: <http://pad.human.cornell.edu/>
- Community and Regional Development Institute (CaRDI)
URL: <http://devsoc.cals.cornell.edu/cals/devsoc/outreach/cardi/index.cfm>

Data sources and background information:

- U.S. Census Bureau - general
 - QuickFacts: <http://quickfacts.census.gov/qfd/states/36/36107.html>
 - QuickLinks: <http://quickfacts.census.gov/qfd/states/36/36107lk.html>
 - American FactFinder: <http://factfinder2.census.gov>
- U.S. Census Bureau - population
 - Decennial Census
 - Background: <http://2010.census.gov/2010census/>
 - Demographic Profile: http://factfinder2.census.gov/bkmk/table/1.0/en/DEC/10_SF1/SF1DP1/0500000US36107
 - American Community Survey (ACS)
 - Background: <http://www.census.gov/acs/www/>
 - Social Data Profile: http://factfinder2.census.gov/bkmk/table/1.0/en/ACS/10_5YR/DP02/0500000US36107
 - Economic Data Profile: http://factfinder2.census.gov/bkmk/table/1.0/en/ACS/10_5YR/DP03/0500000US36107
 - Housing Data Profile: http://factfinder2.census.gov/bkmk/table/1.0/en/ACS/10_5YR/DP04/0500000US36107
 - Demographics Data Profile: http://factfinder2.census.gov/bkmk/table/1.0/en/ACS/10_5YR/DP05/0500000US36107
 - Population estimates: <http://www.census.gov/popest/estimates.html>
- U.S. Census Bureau – Small Area Income & Poverty Estimates (SAIPE)
 - <http://www.census.gov/did/www/saipe/>
- U.S. Census Bureau - Public Use Quarterly Workforce Indicators (QWI) – annual averages
 - <http://www2.vrdc.cornell.edu/news/data/qwi-public-use-data/>
- Bureau Labor Statistics (BLS) – Local Area Unemployment Statistics: <http://www.bls.gov/lau/>
- NY Department of Labor -
 - Labor statistics: <http://www.labor.ny.gov/stats/>
 - Quarterly Census of Employment and Wages (QCEW): <http://www.labor.ny.gov/stats/lsqcew.shtm>
- Bureau of Economic Analysis (BEA) – Local Area Personal Income and Employment: <http://bea.gov/iTable/iTable.cfm?ReqID=70&step=1>

- USDA Census of Agriculture
 - 2007
 - Home page: <http://www.agcensus.usda.gov/Publications/2007/index.php>
 - County profile: http://www.agcensus.usda.gov/Publications/2007/Online_Highlights/County_Profiles/New_York/cp36107.pdf
 - Race, Ethnicity and Gender Profiles: http://www.agcensus.usda.gov/Publications/2007/Online_Highlights/Race_Ethnicity_and_Gender_Profiles/New_York/cpd36107.pdf
- USDA National Agricultural Statistics Service (NASS)
 - Home page: <http://www.nass.usda.gov/index.asp>
 - New York Statistical Bulletins: http://www.nass.usda.gov/Statistics_by_State/New_York/Publications/Annual_Statistical_Bulletin/
 - Cropland Data Layer – CropScape: <http://nassgeodata.gmu.edu/CropScape/>
- USDA Agricultural Research Service – Plant Hardness Zone Map: <http://planthardiness.ars.usda.gov/PHZMWeb/>
- NOAA, Northeast Regional Climate Center at Cornell University
 - Home page: <http://www.nrcc.cornell.edu/index.html>

Alternative sites for data retrieval:

- The Nelson A. Rockefeller Institute of Government – New York State Statistical Yearbooks http://www.rockinst.org/nys_statistics/
- Headwaters Economics: Economic Profile System – Human Dimensions Toolkit <http://headwaterseconomics.org/tools/eps-hdt>
- National Historical Geographic Information System (NHGIS) <https://www.nhgis.org/>
- Social Explorer <http://www.socialexplorer.com/pub/home/home.aspx>
- Missouri Census Data Center <http://mcdc.missouri.edu/>
- DataFerret <http://dataferrett.census.gov/>
- Investigative Reporters and Editors (IRE) Census project <http://census.ire.org/>