

Steuben County Profile 2013

A collection of recent demographic, social, economic and agricultural data

Compiled by Jan Vink

Assisted by Joe Francis, Sutee Anantsuksomsri, Nij Tontisirin, Johannes Plambeck



Cornell University
Cooperative Extension



This profile is a part of a set of profiles generated for each county in New York State. The profiles were developed and generated by the Cornell Program on Applied Demographics. The work is sponsored by Cornell Cooperative Extension and promoted with webinars and workshops in coordination with the Community & Regional Development Institute.

Cornell Program on Applied Demographics:

The Program on Applied Demographics (PAD) brings skills in demographics, economics, statistics, data gathering and data analysis together to provide a variety of organizations with data, information and advice.

For more information: <http://pad.human.cornell.edu/>

Cornell Cooperative Extension:

Cornell Cooperative Extension (CCE) puts knowledge to work in pursuit of economic vitality, ecological sustainability and social well-being. We bring local experience and research based solutions together, helping New York State families and communities thrive in our rapidly changing world.

For more information: <http://cce.cornell.edu/>

Community & Regional Development Institute:

The Community & Regional Development Institute (CaRDI) supports informed decision making for residents and communities in New York State through applied research and education.

For more information: <http://cardi.cornell.edu/>

All profiles are freely downloadable as PDF documents on the PAD website:

<http://pad.human.cornell.edu/profiles/index.cfm>

Contents

Contents	2
1 Reference Maps	4
2 Population density and Urban Areas Map	6
3 Total Population	7
3.1 Historic and projected	7
3.2 Change since previous Census	7
3.3 Annual population estimates	8
3.4 Percentage sub county change 2000-2010	9
4 Population by age	11
4.1 Historic and projected population pyramids	11
4.2 Selected age groups	12
4.3 Median age: comparison between areas	14
5 Race	15
5.1 Total and household population by race	15
5.2 Race composition by age	15
6 Housing units	16
6.1 Characteristics	16
6.2 Historical data on number of housing units and occupancy status	17
7 Education	18
7.1 Enrollment by level of school	18
7.2 Enrollment by age	18
7.3 Percentage age 18-24 enrolled in college	18
7.4 Educational attainment	19
8 Language spoken at home	19
9 Labor Force Characteristics	20
9.1 Labor force, employment and unemployment	20
9.2 Annual unemployment rate	21
9.3 Monthly unemployment rate	21
9.4 Employment and number of jobs	22
9.5 Class of worker	22
9.6 Jobs by industry sector	23
10 Household Income	24
10.1 Distribution	24
10.2 Median household income: Trends over time	25
10.3 Median household income: Comparison between areas	26
11 Poverty	27
11.1 Poverty characteristics	27
11.2 Poverty: Trends over time: Count	28
11.3 Poverty: Trends over time: Rate	28
11.4 Poverty rate: comparison between areas	29
12 Agriculture	30
12.1 Number of farms and land in farms	30
12.2 Farm Operator Characteristics	30

12.3 Map of type of crop 31

12.4 Estimated acreage by crop 32

13 Climate 33

14 Glossary..... 34

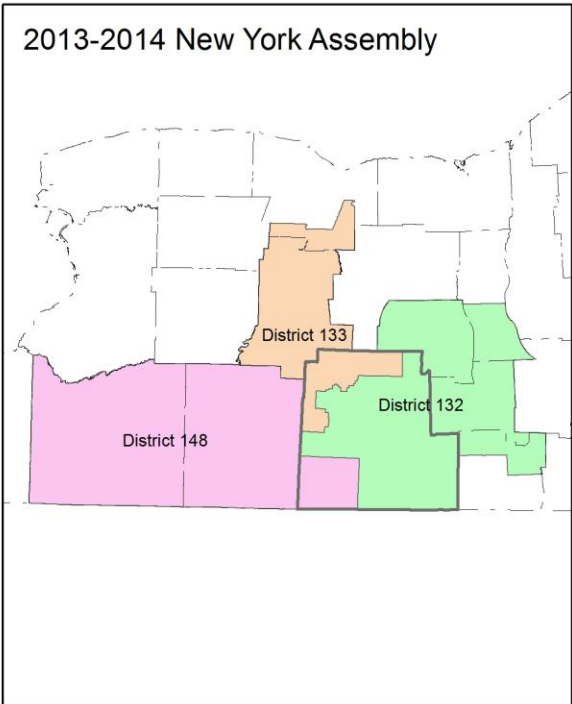
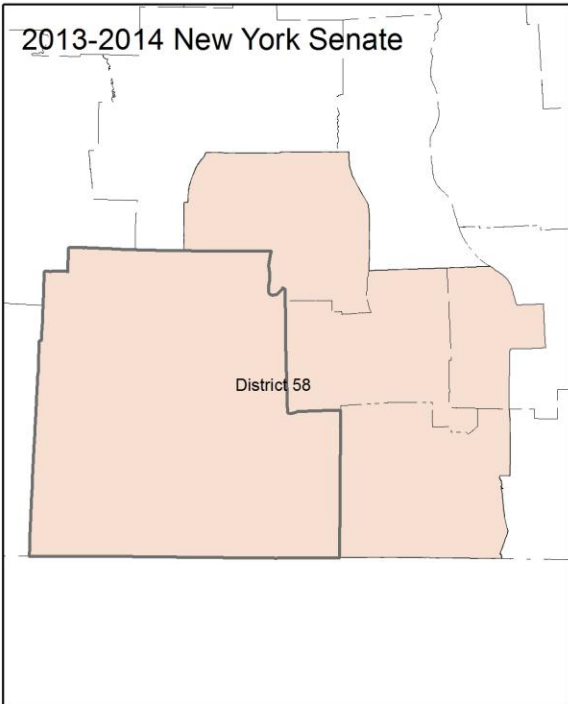
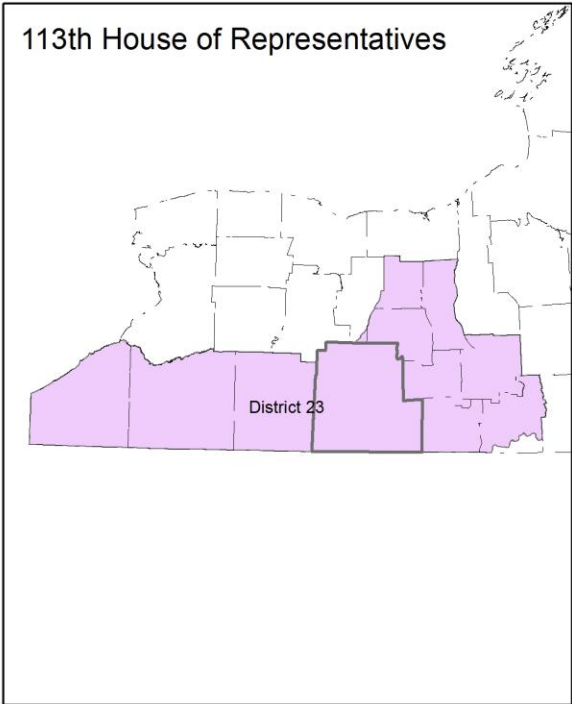
15 References 37

1 Reference Maps

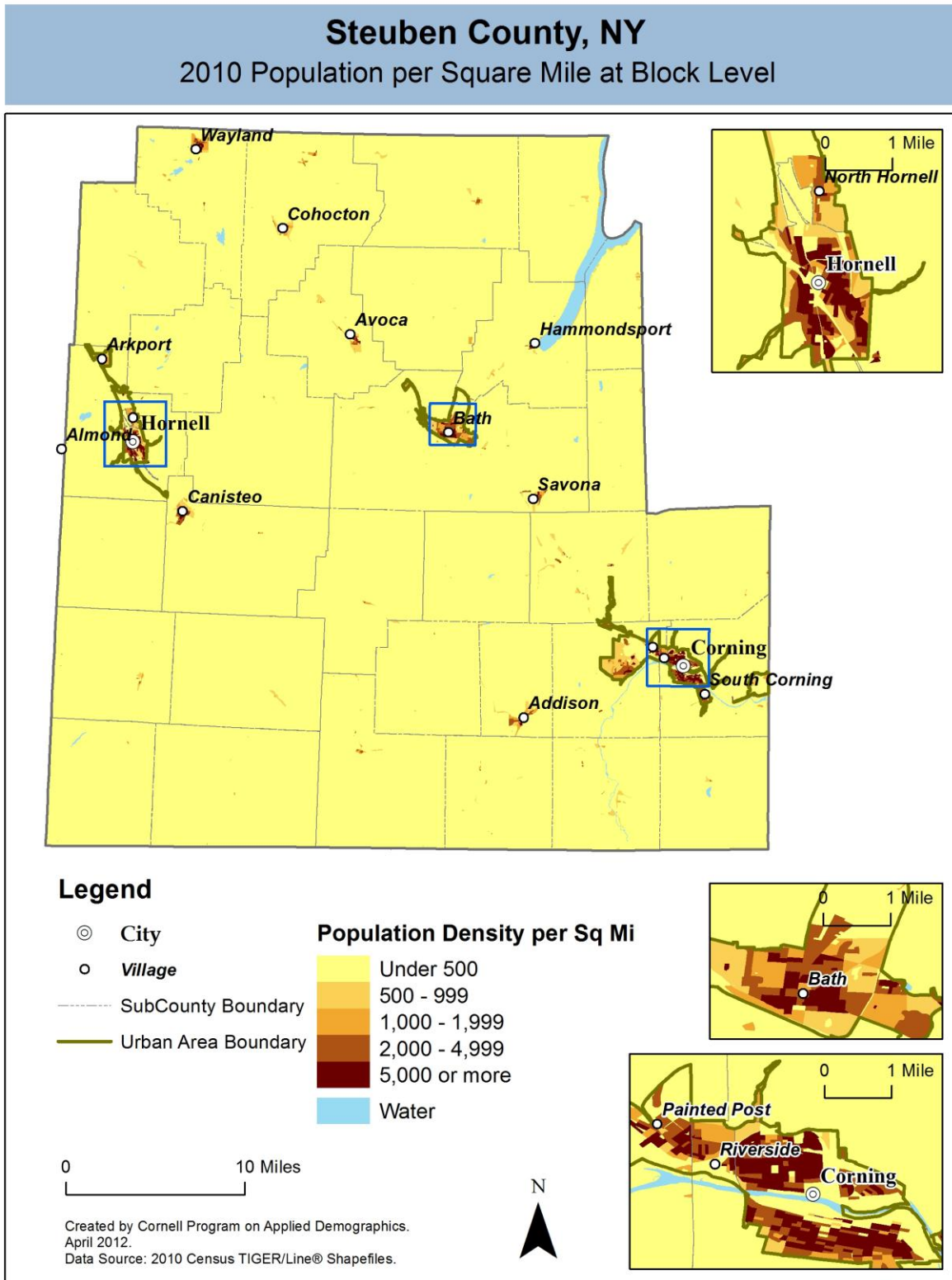


Steuben County, NY

Overlap with School and Political Districts



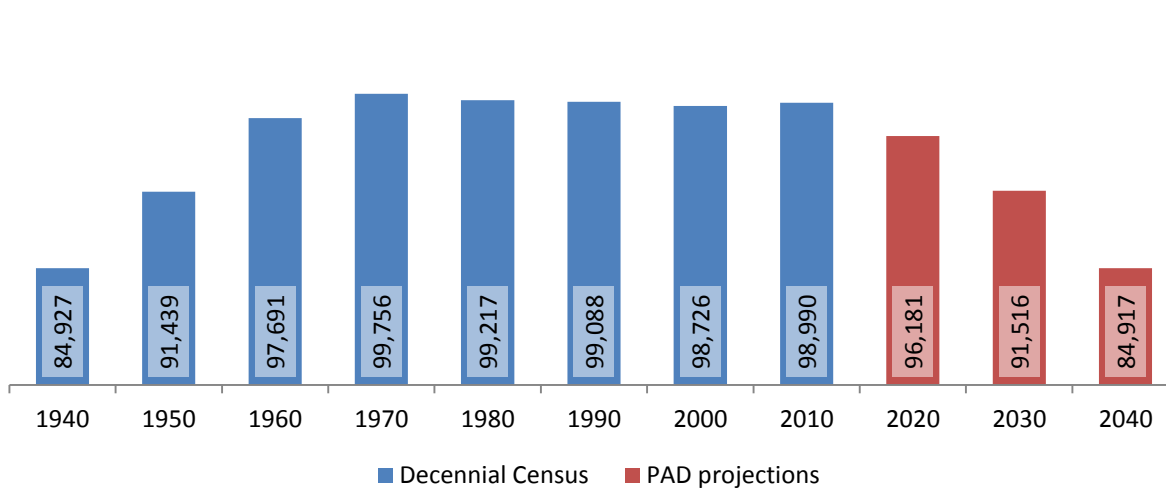
2 Population density and Urban Areas Map



3 Total Population

3.1 Historic and projected

Total population, Steuben County, 1940-2040



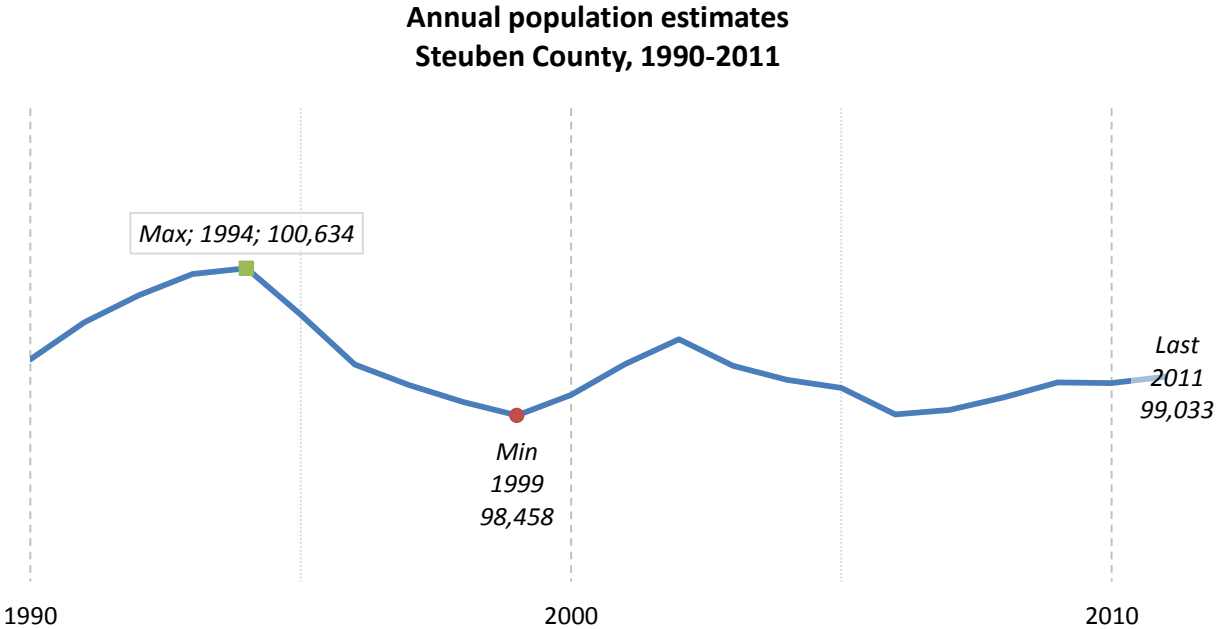
Source: 1940-2010 Decennial Census and projections by Cornell Program on Applied Demographics

3.2 Change since previous Census

	Total population	Change	
		Number	Percent
Decennial Census	1940	84,927	
	1950	91,439	6,512 7.7%
	1960	97,691	6,252 6.8%
	1970	99,756	2,065 2.1%
	1980	99,217	-539 -0.5%
	1990	99,088	-129 -0.1%
	2000	98,726	-362 -0.4%
	2010	98,990	264 0.3%
PAD projections	2020	96,181	-2,809 -2.8%
	2030	91,516	-4,665 -4.9%
	2040	84,917	-6,599 -7.2%

Source: 1940-2010 Decennial Census and projections by Cornell Program on Applied Demographics

3.3 Annual population estimates



Source: U.S. Census Bureau population estimates (1990-1999 and 2000-2009 intercensal and vintage 2011 postcensal)

3.4 Percentage sub county change 2000-2010

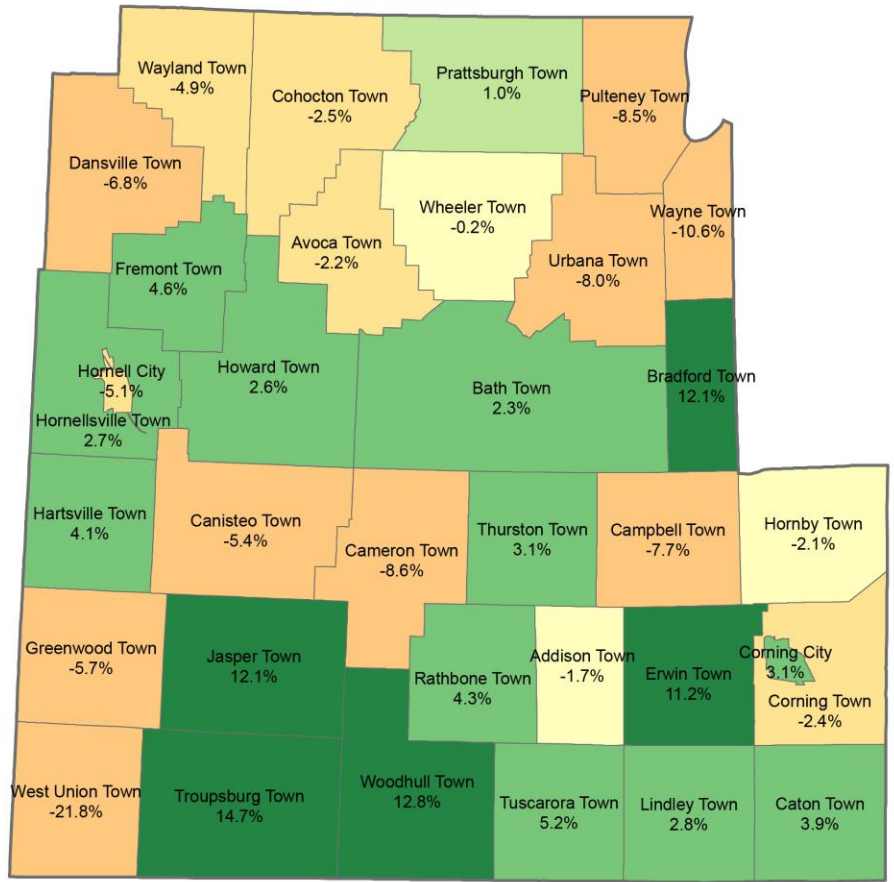
	Total Population		Difference	
	2000	2010	Count	%
New York State	18,976,821 *	19,378,102	401,281	2.1%
Steuben County	98,726	98,990	264	0.3%
Cities				
Corning	10,842	11,183	341	3.1%
Hornell	9,019	8,563	-456	-5.1%
Towns				
Addison	2,640	2,595	-45	-1.7%
Avoca	2,314	2,264	-50	-2.2%
Bath	12,097	12,379	282	2.3%
Bradford	763	855	92	12.1%
Cameron	1,034	945	-89	-8.6%
Campbell	3,691	3,406	-285	-7.7%
Canisteo	3,583	3,391	-192	-5.4%
Caton	2,097	2,179	82	3.9%
Cohocton	2,626	2,561	-65	-2.5%
Corning	6,426	6,270	-156	-2.4%
Dansville	1,977	1,842	-135	-6.8%
Erwin	7,227	8,037	810	11.2%
Fremont	964	1,008	44	4.6%
Greenwood	849	801	-48	-5.7%
Hartsville	585	609	24	4.1%
Hornby	1,742	1,706	-36	-2.1%
Hornellsville	4,042	4,151	109	2.7%
Howard	1,430	1,467	37	2.6%
Jasper	1,270	1,424	154	12.1%
Lindley	1,913	1,967	54	2.8%
Prattsburgh	2,064	2,085	21	1.0%
Pulteney	1,405	1,285	-120	-8.5%
Rathbone	1,080	1,126	46	4.3%
Thurston	1,309	1,350	41	3.1%
Troupsburg	1,126	1,291	165	14.7%
Tuscarora	1,400	1,473	73	5.2%
Urbana	2,546	2,343	-203	-8.0%
Wayland	4,314	4,102	-212	-4.9%
Wayne	1,165	1,041	-124	-10.6%
West Union	399	312	-87	-21.8%
Wheeler	1,263	1,260	-3	-0.2%
Woodhull	1,524	1,719	195	12.8%

* Original counts revised through Count Question Resolution Program (CQR)

Source: U.S. Census Bureau intercensal population estimates 2000-2010

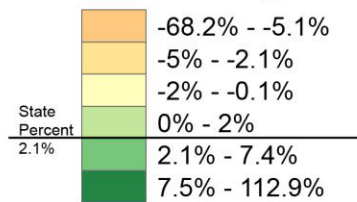
Steuben County, NY

County Subdivision, Percent Change in Population 2000-2010



Legend

Percent Change



0 10 Miles

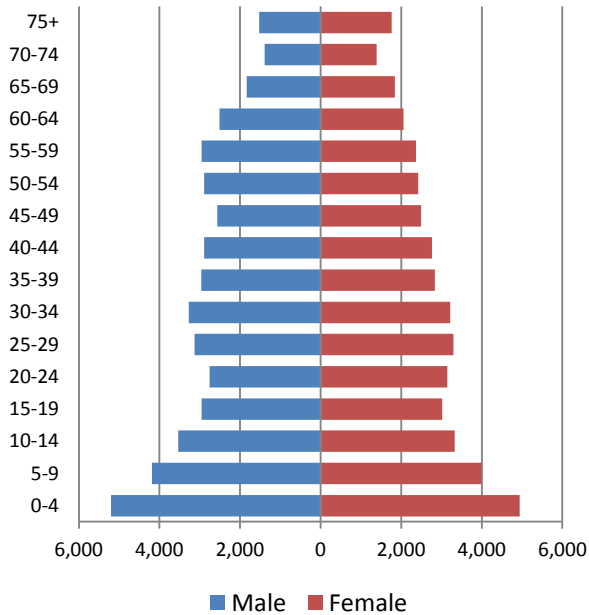
Created by Cornell Program on Applied Demographics.
 April 2012.
 Data Source: 2010 Census TIGER/Line® Shapefiles.



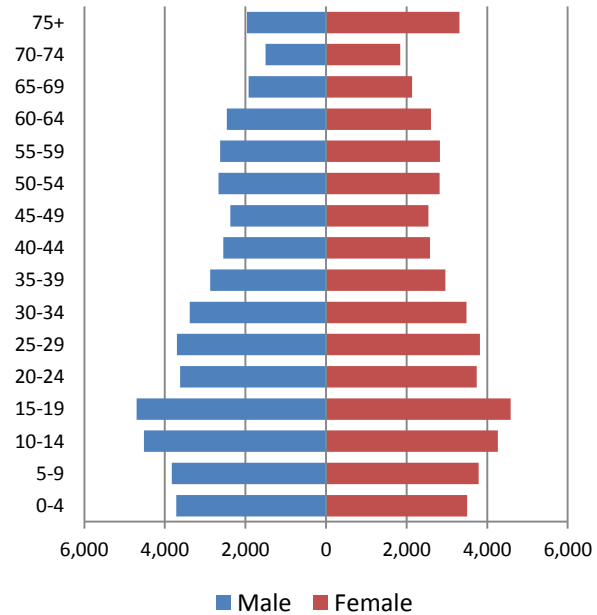
4 Population by age

4.1 Historic and projected population pyramids

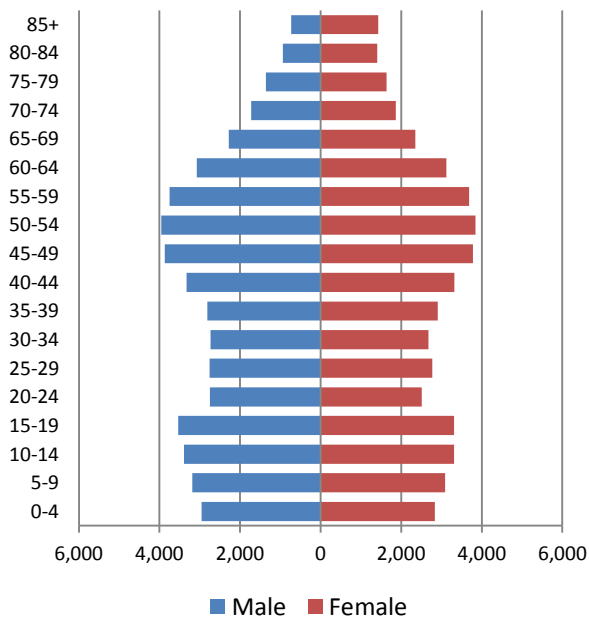
1950 Population Pyramid, Steuben County



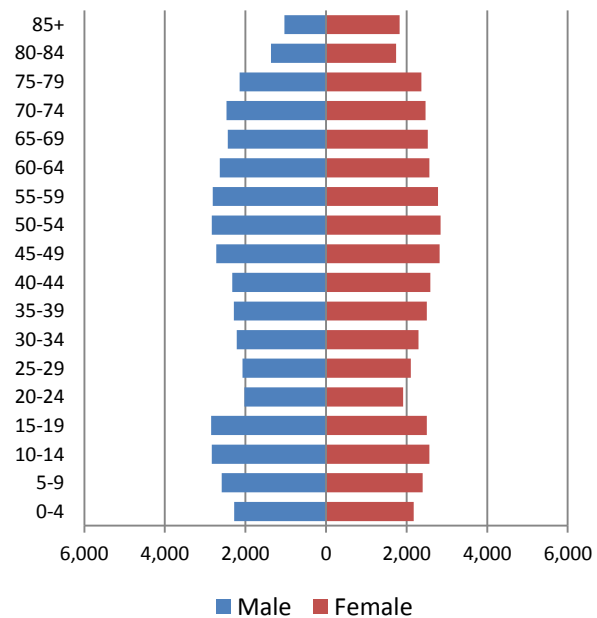
1980 Population Pyramid, Steuben County



2010 Population Pyramid, Steuben County



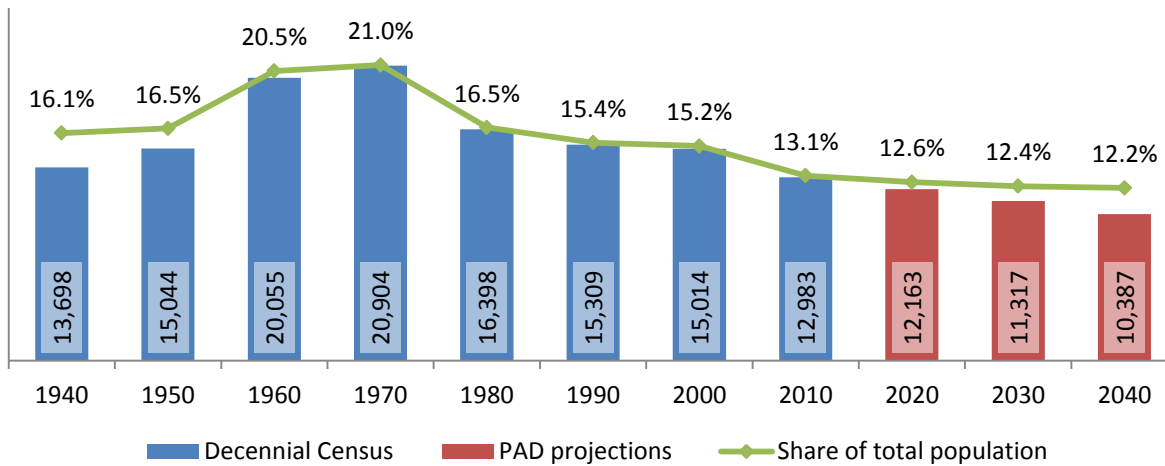
2040 Population Pyramid, Steuben County



Source: 1950, 1980, 2010 Decennial Census and projections by Cornell Program on Applied Demographics

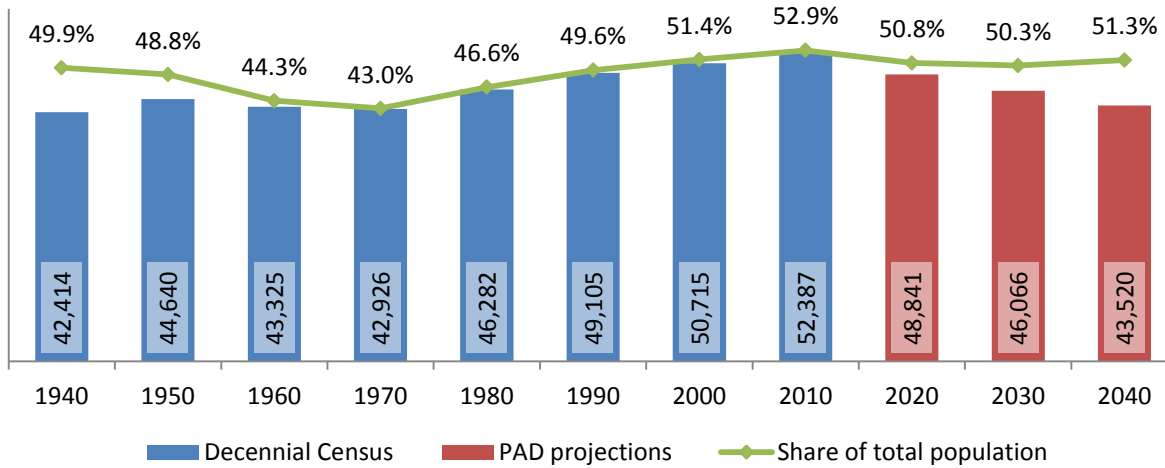
4.2 Selected age groups

Population age 5-14, Steuben County, 1940-2040



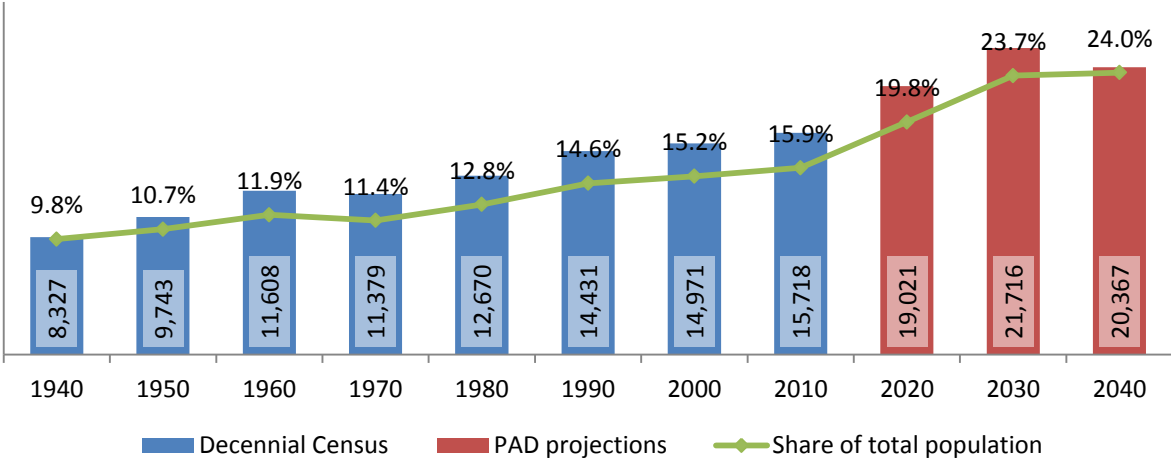
Source: 1940-2010 Decennial Census and projections by Cornell Program on Applied Demographics

Population age 25-64, Steuben County, 1940-2040



Source: 1940-2010 Decennial Census and projections by Cornell Program on Applied Demographics

Population age 65 and over, Steuben County, 1940-2040

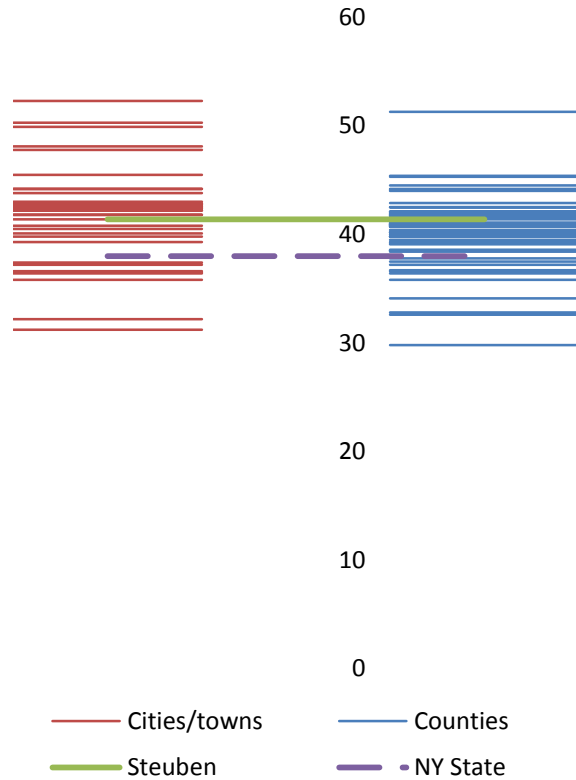


Source: 1940-2010 Decennial Census and projections by Cornell Program on Applied Demographics

4.3 Median age: comparison between areas

	Median Age
New York State	38.0
Steuben County	41.4
Cities	
Corning city	36.5
Hornell city	36.6
Towns	
Addison town	37.2
Avoca town	40.8
Bath town	43.8
Bradford town	39.3
Cameron town	40.1
Campbell town	43.0
Canisteo town	42.2
Caton town	42.8
Cohocton town	41.4
Corning town	42.7
Dansville town	44.2
Erwin town	42.5
Fremont town	44.2
Greenwood town	41.8
Hartsville town	45.5
Hornby town	42.8
Hornellsville town	48.1
Howard town	42.2
Jasper town	32.2
Lindley town	39.8
Prattsburgh town	42.4
Pulteney town	49.9
Rathbone town	35.8
Thurston town	41.8
Troupsburg town	31.2
Tuscarora town	36.4
Urbana town	50.3
Wayland town	42.6
Wayne town	52.3
West Union town	47.8
Wheeler town	40.5
Woodhull town	37.4

Median age comparison within county (left) and between counties (right)



Source: 2010 Decennial Census

5 Race

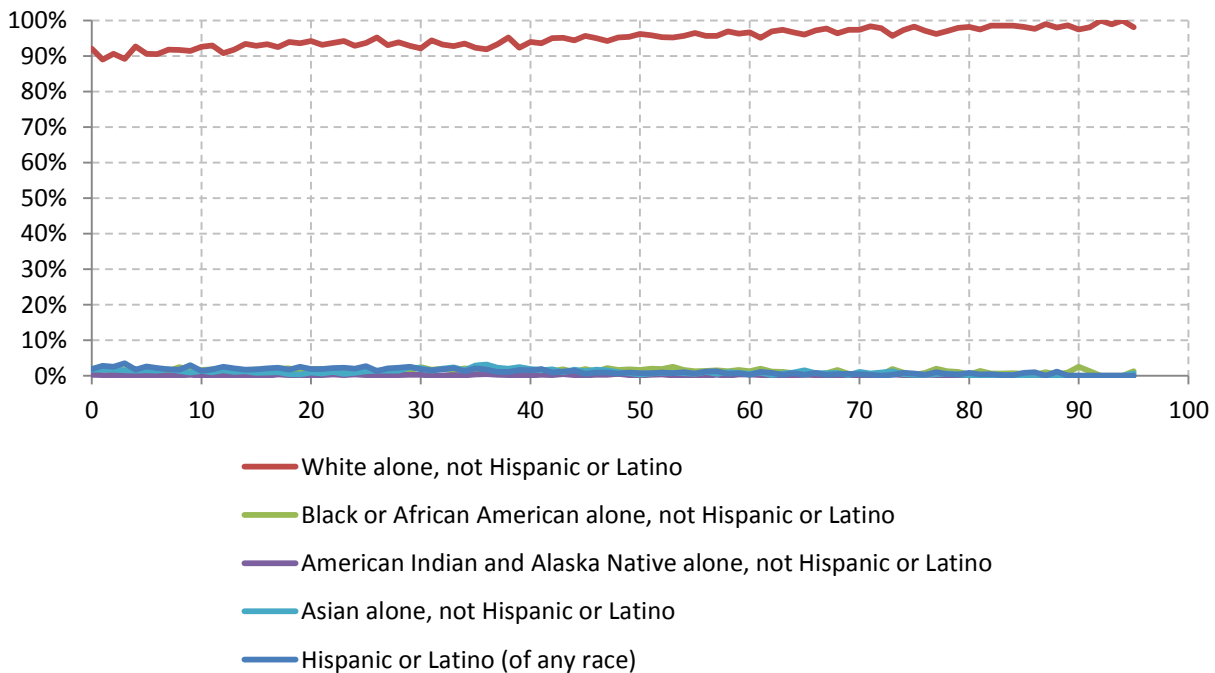
5.1 Total and household population by race

	Total		In households		In Group Quarters
	Count	Percentage	Count	Percentage	Count
Total population	98,990	100%	97,407	100%	1,583
Not Hispanic or Latino					
One race					
White	93,476	94.4%	92,090	94.5%	1,386
Black or African American	1,487	1.5%	1,339	1.4%	148
American Indian and Alaska Native	193	0.2%	187	0.2%	6
Asian	1,151	1.2%	1,150	1.2%	1
Native Hawaiian and Other Pacific Islander	14	0.0%	-	-	-
Some other race	66	0.1%	-	-	-
Two or more races	1,232	1.2%	1,227	1.3%	5
Hispanic or Latino (of any race)	1,371	1.4%	1,337	1.4%	34

Source: 2010 Decennial Census

5.2 Race composition by age

Race composition by age, Steuben County



Source: 2010 Decennial Census

6 Housing units

6.1 Characteristics

HOUSING OCCUPANCY	COUNT		PERCENTAGE	
	Estimate	Margin of error	Estimate	Margin of error
Total housing units	48,748	± 150	100.0%	
Occupied housing units	41,101	± 499	84.3%	± 1.0
Vacant housing units	7,647	± 480	15.7%	± 1.0
YEAR STRUCTURE BUILT				
Total housing units	48,748	± 150	100.0%	
Built 2005 or later	777	± 136	1.6%	± 0.3
Built 2000 to 2004	1,889	± 216	3.9%	± 0.4
Built 1990 to 1999	5,092	± 322	10.4%	± 0.7
Built 1980 to 1989	4,858	± 376	10.0%	± 0.8
Built 1970 to 1979	6,599	± 381	13.5%	± 0.8
Built 1960 to 1969	3,674	± 308	7.5%	± 0.6
Built 1950 to 1959	4,562	± 352	9.4%	± 0.7
Built 1940 to 1949	2,602	± 272	5.3%	± 0.6
Built 1939 or earlier	18,695	± 537	38.4%	± 1.1
HOUSING TENURE				
Occupied housing units	41,101	± 499	100.0%	
Owner-occupied	29,482	± 497	71.7%	± 1.1
Renter-occupied	11,619	± 490	28.3%	± 1.1
HOUSE HEATING FUEL				
Occupied housing units	41,101	± 499	100.0%	
Utility gas	21,774	± 545	53.0%	± 1.1
Bottled, tank, or LP gas	4,716	± 318	11.5%	± 0.7
Electricity	4,122	± 302	10.0%	± 0.7
Fuel oil, kerosene, etc.	3,811	± 269	9.3%	± 0.7
Coal or coke	1,864	± 188	4.5%	± 0.5
Wood	4,150	± 265	10.1%	± 0.6
Solar energy	0	± 89	0.0%	± 0.1
Other fuel	565	± 122	1.4%	± 0.3
No fuel used	99	± 47	0.2%	± 0.1
VALUE				
Owner-occupied units	29,482	± 497	100.0%	
Less than \$50,000	5,570	± 342	18.9%	± 1.1
\$50,000 to \$99,999	12,916	± 445	43.8%	± 1.2
\$100,000 to \$149,999	4,848	± 291	16.4%	± 1.0
\$150,000 to \$199,999	2,835	± 260	9.6%	± 0.9
\$200,000 to \$299,999	1,966	± 199	6.7%	± 0.7
\$300,000 to \$499,999	950	± 148	3.2%	± 0.5
\$500,000 to \$999,999	335	± 79	1.1%	± 0.3
\$1,000,000 or more	62	± 25	0.2%	± 0.1
Median (dollars)	84,200	± 1,234		

Source: 2007-2011 American Community Survey

6.2 Historical data on number of housing units and occupancy status

Year	Number of Housing Units	Change since previous Census	Occupied	Occupancy rate	Vacant
1970	34,502		30,751	89.1%	3,751
1980	40,520	17.4%	35,150	86.7%	5,370
1990	43,019	6.2%	37,299	86.7%	5,720
2000	46,132	7.2%	39,071	84.7%	7,061
2010	48,875	5.9%	40,344	82.5%	8,531

Source: 1970-2010 Decennial Census

7 Education

7.1 Enrollment by level of school

	Estimate	Margin of error
Total enrolled in school	23,400	± 470
Nursery school, preschool	1,214	± 149
Kindergarten	1,127	± 159
Elementary: grade 1 to grade 4	5,189	± 302
Elementary: grade 5 to grade 8	5,473	± 320
High school: grade 9 to grade 12	6,258	± 312
College, undergraduate	3,497	± 280
Graduate, professional school	642	± 139

Source: 2007-2011 American Community Survey

7.2 Enrollment by age

	Estimate	Margin of error
3 and 4 years	40.1%	± 5.2
5 to 9 years	95.0%	± 1.7
10 to 14 years	98.1%	± 0.9
15 to 17 years	94.6%	± 2.5
18 and 19 years	64.9%	± 6.6
20 to 24 years	28.3%	± 4.1
25 to 34 years	9.4%	± 1.8
35 years and over	2.3%	± 0.3

Source: 2007-2011 American Community Survey

7.3 Percentage age 18-24 enrolled in college

	Estimate	Margin of error
Population 18 to 24 years	7,718	± 114
Enrolled in college or graduate school	26.5%	± 3.1
Males 18 to 24 years	4,069	± 66
Enrolled in college or graduate school	22.2%	± 3.4
Females 18 to 24 years	3,649	± 80
Enrolled in college or graduate school	31.3%	± 4.8

Source: 2007-2011 American Community Survey

7.4 Educational attainment

	COUNT		PERCENTAGE	
	Estimate	Margin of error	Estimate	Margin of error
Population 25 years and over	67,646	± 99	100%	
EDUCATIONAL ATTAINMENT				
Less than 9th grade	2,894	± 282	4.3%	± 0.4
9th to 12th grade, no diploma	5,663	± 437	8.4%	± 0.6
High school graduate (includes equivalency)	24,641	± 731	36.4%	± 1.1
Some college, no degree	12,259	± 486	18.1%	± 0.7
Associate's degree	8,944	± 394	13.2%	± 0.6
Bachelor's degree	6,853	± 406	10.1%	± 0.6
Graduate or professional degree	6,392	± 408	9.4%	± 0.6
Percent high school graduate or higher			87.4%	± 0.8
Percent bachelor's degree or higher			19.6%	± 0.7

Source: 2007-2011 American Community Survey

8 Language spoken at home

	COUNT		PERCENTAGE		SPEAK ENGLISH LESS THAN "VERY WELL"	
	Estimate	Margin of error	Estimate	Margin of error	Estimate	Margin of error
Population 5 years and over	93,073	± 58	100%			
LANGUAGE SPOKEN AT HOME						
English only	88,653	± 418	95.3%	± 0.5		
Language other than English	4,420	± 422	4.7%	± 0.5	1,088	± 214
Spanish	1,187	± 185	1.3%	± 0.2	304	± 89
Other Indo-European languages	2,388	± 369	2.6%	± 0.4	534	± 154
Asian and Pacific Islander languages	711	± 193	0.8%	± 0.2	243	± 133
Other languages	134	± 95	0.1%	± 0.1	7	± 9

Source: 2007-2011 American Community Survey

9 Labor Force Characteristics

9.1 Labor force, employment and unemployment

	TOTAL		IN LABOR FORCE		EMPLOYED		UNEMPLOYMENT RATE	
	Estimate	Margin of error	Estimate	Margin of error	Estimate	Margin of error	Estimate	Margin of error
Population 16 years and over	78,421	± 153	60.5%	± 0.9	55.0%	± 1.0	8.9%	± 0.8
AGE								
16 to 19 years	5,462	± 190	39.3%	± 4.2	28.5%	± 3.9	27.6%	± 4.9
20 to 24 years	5,313	± 89	77.7%	± 4.3	64.2%	± 4.7	16.4%	± 4.1
25 to 44 years	23,337	± 165	83.8%	± 1.2	76.4%	± 1.7	8.5%	± 1.1
45 to 54 years	15,588	± 141	77.5%	± 1.8	72.6%	± 1.9	6.3%	± 1.4
55 to 64 years	13,279	± 92	57.6%	± 2.3	54.1%	± 2.5	6.1%	± 1.4
65 to 74 years	8,069	± 62	18.2%	± 1.9	17.5%	± 1.9	3.7%	± 1.9
75 years and over	7,373	± 75	5.2%	± 1.2	5.1%	± 1.2	2.6%	± 2.4
RACE AND HISPANIC OR LATINO ORIGIN								
One race	77,987	± 174	60.5%	± 0.9	55.0%	± 1.0	8.9%	± 0.9
White	75,283	± 177	60.7%	± 0.9	55.2%	± 1.0	8.8%	± 0.9
Black or African American	1,293	± 95	52.4%	± 11.9	40.8%	± 10.0	22.1%	± 9.3
American Indian and Alaska Native	214	± 86	53.3%	± 16.0	49.1%	± 16.2	7.9%	± 11.5
Asian	918	± 38	64.2%	± 7.4	63.9%	± 7.4	0.3%	± 0.7
Pacific Islander	0	± 89	-	**	-	**	-	**
Some other race	279	± 85	54.1%	± 23.0	54.1%	± 23.0	0.0%	± 19.2
Two or more races	434	± 126	43.8%	± 11.1	37.3%	± 11.7	14.3%	± 12.7
Hispanic or Latino origin (of any race)	923	± 24	57.5%	± 11.5	50.1%	± 10.8	13.0%	± 9.3
White alone, not Hispanic or Latino	74,753	± 142	60.7%	± 0.9	55.2%	± 1.0	8.9%	± 0.9
SEX								
Population 20 to 64 years	57,517	± 146	75.5%	± 1.0	69.1%	± 1.2	8.2%	± 0.9
Male	28,952	± 119	79.1%	± 1.4	71.5%	± 1.5	9.3%	± 1.1
Female	28,565	± 65	71.8%	± 1.5	66.7%	± 1.7	7.0%	± 1.1
With own children under 6 years	4,464	± 313	72.5%	± 3.3	69.1%	± 3.4	4.3%	± 1.5
EDUCATIONAL ATTAINMENT								
Population 25 to 64 years	52,204	± 141	75.2%	± 0.9	69.6%	± 1.1	7.4%	± 0.8
Less than high school graduate	4,739	± 420	53.2%	± 3.9	42.7%	± 3.7	19.6%	± 5.5
High school graduate (includes equivalency)	18,277	± 633	73.5%	± 1.6	66.8%	± 1.9	9.1%	± 1.3
Some college or associate's degree	18,026	± 570	77.6%	± 1.6	72.3%	± 1.9	6.5%	± 1.2
Bachelor's degree or higher	11,162	± 465	83.6%	± 1.8	81.2%	± 2.0	2.9%	± 1.2

Table formula: **LABOR FORCE** = # EMPLOYED + # UNEMPLOYED
 % IN LABOR FORCE = LABOR FORCE / TOTAL * 100%
 % EMPLOYED = # EMPLOYED / TOTAL * 100%
 UNEMPLOYMENT RATE = # UNEMPLOYED / LABOR FORCE * 100%

Source: 2007-2011 American Community Survey

9.2 Annual unemployment rate

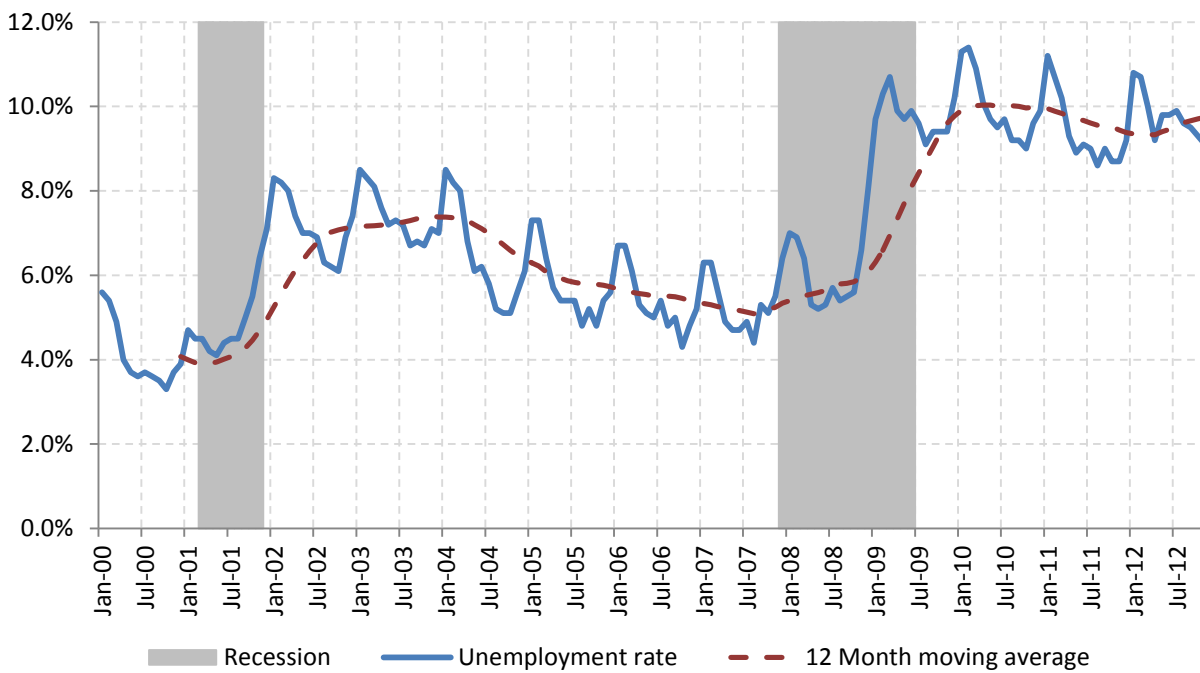
Annual unemployment rate, Steuben County and New York State



Source: Bureau Labor Statistics (BLS)

9.3 Monthly unemployment rate

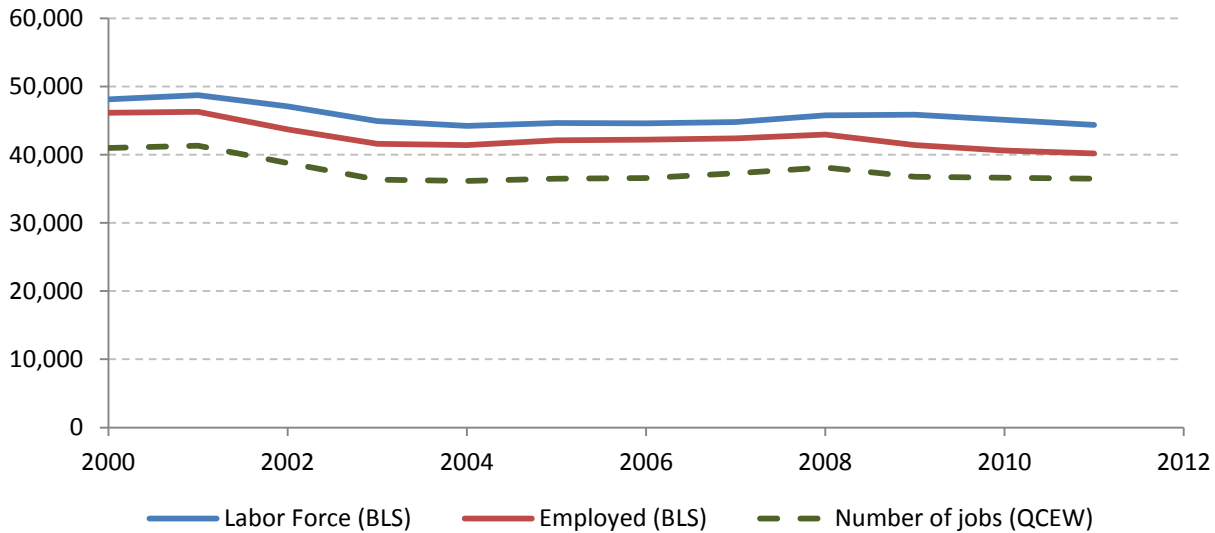
Monthly unemployment rate, Steuben County



Source: Bureau Labor Statistics (BLS)

9.4 Employment and number of jobs

**Labor force, number of employed workers and number of jobs
Steuben County**



Source: Bureau Labor Statistics (BLS) and NY Department of Labor - Quarterly Census of Employment and Wages (QCEW) – annual averages

9.5 Class of worker

		Median earnings (\$)					
		Total	%Male	%Female	Total	Male	Female
Civilian employed population 16 years and over	Estimate	43,093	52.3%	47.7%	31,698	37,374	25,650
	Margin of error	± 755	± 0.8	± 0.8	± 774	± 1,104	± 863
Private for-profit wage and salary workers:	Estimate	26,811	57.8%	42.2%	31,234	37,370	23,568
	Margin of error	± 692	± 1.3	± 1.3	± 973	± 1,166	± 1,513
Employee of private company workers	Estimate	25,862	57.1%	42.9%	31,015	37,189	23,539
	Margin of error	± 660	± 1.3	± 1.3	± 986	± 1,136	± 1,529
Self-employed in own incorporated business workers	Estimate	949	75.9%	24.1%	37,969	43,611	24,659
	Margin of error	± 176	± 5.5	± 5.5	± 5,477	± 5,123	± 11,298
Private not-for-profit wage and salary workers	Estimate	4,563	27.9%	72.1%	27,853	35,886	25,736
	Margin of error	± 365	± 3.0	± 3.0	± 2,723	± 5,283	± 2,267
Local government workers	Estimate	4,607	38.9%	61.1%	38,960	41,777	35,275
	Margin of error	± 336	± 3.1	± 3.1	± 2,673	± 1,161	± 2,807
State government workers	Estimate	2,403	45.9%	54.1%	41,698	45,802	39,409
	Margin of error	± 230	± 4.5	± 4.5	± 2,211	± 3,986	± 2,889
Federal government workers	Estimate	1,019	50.6%	49.4%	45,302	46,685	39,554
	Margin of error	± 156	± 6.9	± 6.9	± 4,212	± 3,356	± 7,646
Self-employed in own not incorporated business workers and unpaid family workers	Estimate	3,690	64.0%	36.0%	18,863	23,071	10,783
	Margin of error	± 389	± 3.6	± 3.6	± 1,757	± 3,037	± 2,316

Source: 2007-2011 American Community Survey

9.6 Jobs by industry sector

	Steuben County			NY state
	2011	Change since 2006	% of total	% of total
All NAICS Sectors	36,276	-2.2%	100.0%	100.0%
Agriculture, Forestry, Fishing and Hunting	348	46.8%	1.0%	0.3%
Mining, Quarrying, and Oil and Gas Extraction	118	45.7%	0.3%	0.1%
Utilities	169	-16.7%	0.5%	0.5%
Construction	649	-0.8%	1.8%	3.5%
Manufacturing	5,823	-14.7%	16.1%	5.5%
Wholesale Trade	402	1.8%	1.1%	4.0%
Retail Trade	3,448	-5.3%	9.5%	10.5%
Transportation and Warehousing	755	19.3%	2.1%	3.4%
Information	372	-8.4%	1.0%	3.3%
Finance and Insurance	979	2.1%	2.7%	6.0%
Real Estate and Rental and Leasing	245	2.9%	0.7%	2.3%
Professional, Scientific, and Technical Services	3,531	1.3%	9.7%	6.9%
Management of Companies and Enterprises	1,198	-2.2%	3.3%	1.6%
Administrative and Support and Waste Management and Remediation Services	1,935	17.8%	5.3%	5.2%
Educational Services	4,658	-4.4%	12.8%	10.8%
Health Care and Social Assistance	5,084	3.7%	14.0%	17.0%
Arts, Entertainment, and Recreation	475	32.7%	1.3%	1.9%
Accommodation and Food Services	2,426	10.4%	6.7%	7.3%
Other Services (except Public Administration)	1,240	1.7%	3.4%	3.9%
Public Administration	2,425	-16.9%	6.7%	5.8%

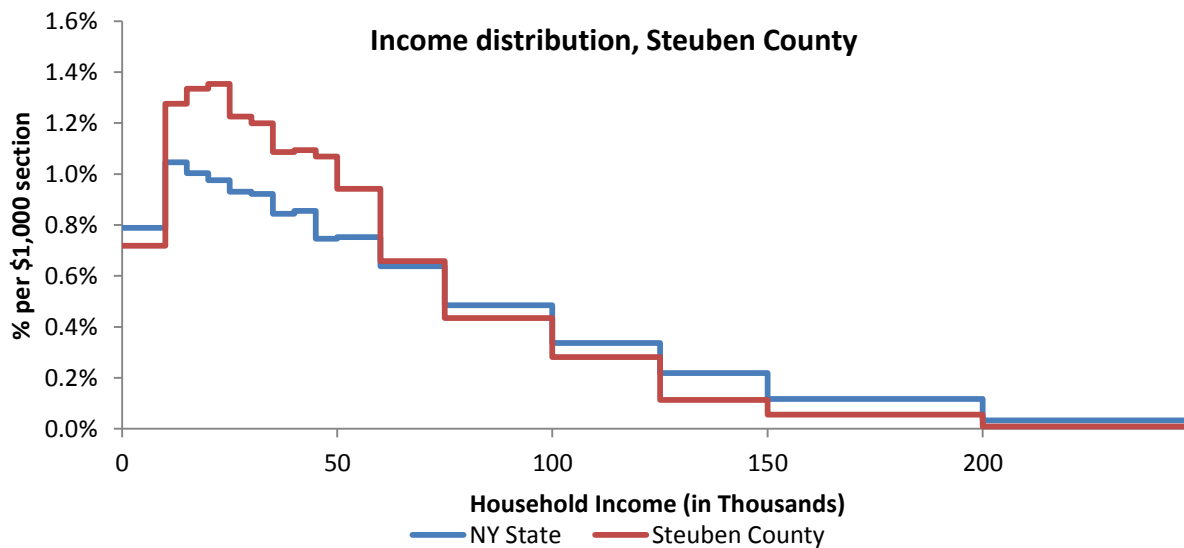
Source: U.S. Census Bureau - Public Use Quarterly Workforce Indicators (QWI) – annual averages

10 Household Income

10.1 Distribution

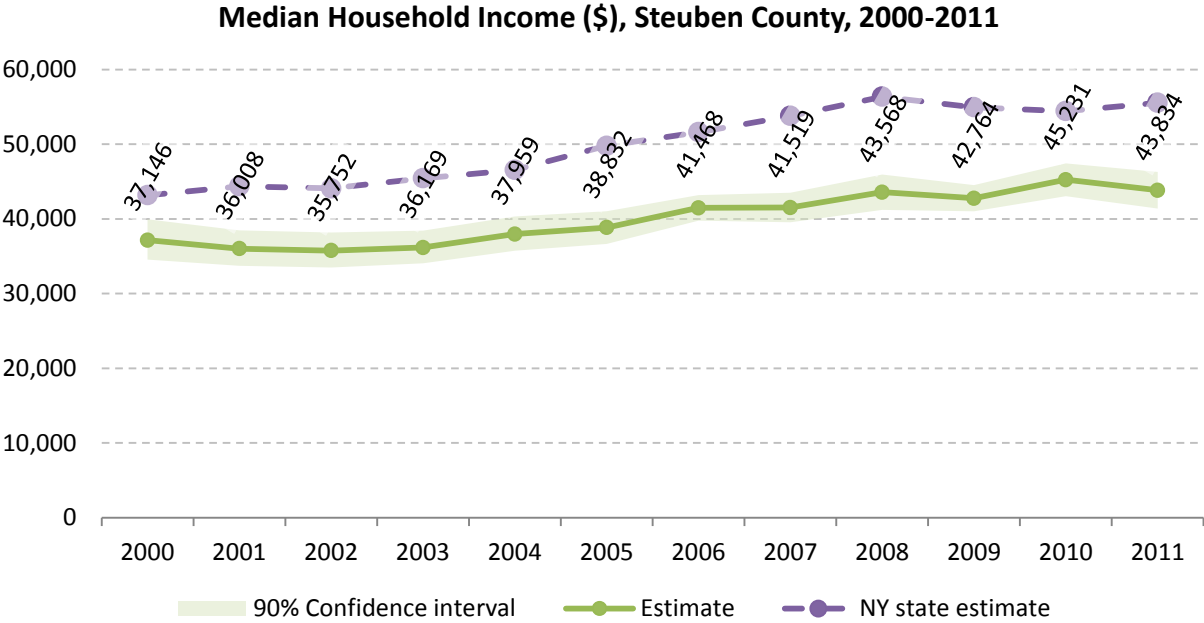
	Estimate	Margin of error	Interval width (in \$1,000)	Est. per \$1,000 section
Total:	41,101	± 499		
Less than \$10,000	2,955	± 333	10	295.5
\$10,000 to \$14,999	2,623	± 292	5	524.6
\$15,000 to \$19,999	2,744	± 278	5	548.8
\$20,000 to \$24,999	2,782	± 255	5	556.4
\$25,000 to \$29,999	2,518	± 281	5	503.6
\$30,000 to \$34,999	2,464	± 269	5	492.8
\$35,000 to \$39,999	2,231	± 282	5	446.2
\$40,000 to \$44,999	2,247	± 232	5	449.4
\$45,000 to \$49,999	2,196	± 230	5	439.2
\$50,000 to \$59,999	3,873	± 314	10	387.3
\$60,000 to \$74,999	4,058	± 278	15	270.5
\$75,000 to \$99,999	4,460	± 293	25	178.4
\$100,000 to \$124,999	2,891	± 270	25	115.6
\$125,000 to \$149,999	1,165	± 166	25	46.6
\$150,000 to \$199,999	1,154	± 151	50	23.1
\$200,000 or more	740	± 146	-	-

Source: 2007-2011 American Community Survey



Source: 2007-2011 American Community Survey

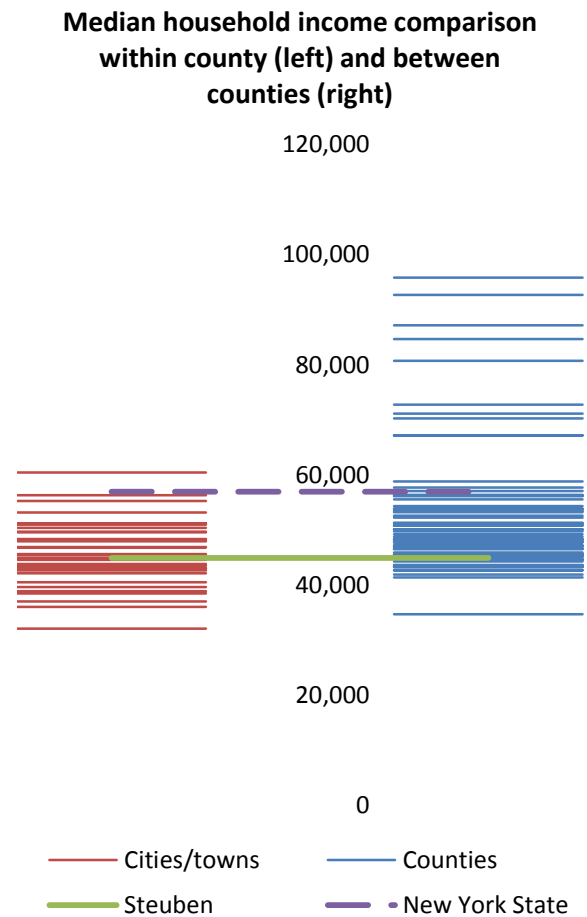
10.2 Median household income: Trends over time



Source: Small Area Income and Poverty Estimates (SAIPE)

10.3 Median household income: Comparison between areas

	MEDIAN HOUSEHOLD INCOME (\$)	
	Estimate	Margin of error
New York State	56,951	± 190
Steuben County	44,967	± 908
Cities		
Corning	38,920	± 3,702
Hornell	36,038	± 3,835
Towns		
Addison	47,969	± 9,240
Avoca	46,892	± 5,385
Bath	40,514	± 2,772
Bradford	43,542	± 6,135
Cameron	32,135	± 5,415
Campbell	43,077	± 10,209
Canisteo	48,389	± 4,582
Caton	56,336	± 6,948
Cohocton	51,206	± 2,818
Corning	53,185	± 4,750
Dansville	49,583	± 7,225
Erwin	50,383	± 6,052
Fremont	46,932	± 7,496
Greenwood	38,519	± 3,341
Hartsville	45,667	± 10,358
Hornby	51,250	± 9,265
Hornellsville	43,842	± 4,389
Howard	48,229	± 10,041
Jasper	44,861	± 5,009
Lindley	43,071	± 5,438
Prattsburgh	44,643	± 12,457
Pulteney	49,688	± 7,450
Rathbone	44,583	± 10,483
Thurston	55,313	± 7,679
Troupsburg	37,065	± 5,067
Tuscarora	42,941	± 4,211
Urbana	51,000	± 7,986
Wayland	42,679	± 4,297
Wayne	60,469	± 16,392
West Union	39,688	± 10,427
Wheeler	45,438	± 4,658
Woodhull	42,179	± 4,757



Source: 2007-2011 American Community Survey

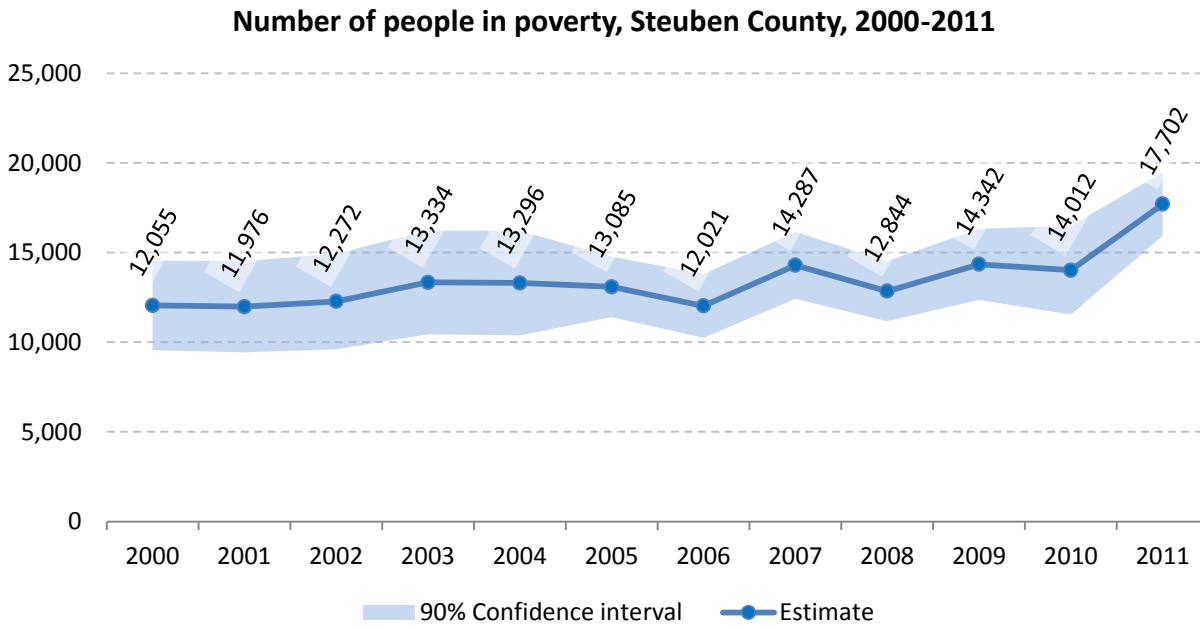
11 Poverty

11.1 Poverty characteristics

	TOTAL		BELOW POVERTY LEVEL		PERCENT BELOW POVERTY LEVEL	
	Estimate	Margin of error	Estimate	Margin of error	Estimate	Margin of error
Population for whom poverty status is determined	97,311	± 316	14,629	± 1,186	15.0%	± 1.2
AGE						
Under 18 years	23,015	± 167	4,767	± 603	20.7%	± 2.6
Related children under 18 years	22,856	± 187	4,622	± 594	20.2%	± 2.6
18 to 64 years	59,457	± 188	8,597	± 628	14.5%	± 1.1
65 years and over	14,839	± 211	1,265	± 195	8.5%	± 1.3
SEX						
Male	48,104	± 311	6,816	± 658	14.2%	± 1.4
Female	49,207	± 185	7,813	± 710	15.9%	± 1.4
RACE AND HISPANIC OR LATINO ORIGIN						
One race	96,598	± 349	14,492	± 1,177	15.0%	± 1.2
White	93,080	± 311	13,715	± 1,123	14.7%	± 1.2
Black or African American	1,509	± 231	374	± 147	24.8%	± 10.8
American Indian and Alaska Native	265	± 107	105	± 83	39.6%	± 21.1
Asian	1,266	± 50	151	± 104	11.9%	± 8.3
Hispanic or Latino origin (of any race)	1,285	± 57	453	± 146	35.3%	± 11.2
White alone, not Hispanic or Latino	92,353	± 261	13,475	± 1,113	14.6%	± 1.2
EDUCATIONAL ATTAINMENT						
Population 25 years and over	66,659	± 279	7,961	± 569	11.9%	± 0.8
Less than high school graduate	8,083	± 507	2,095	± 279	25.9%	± 2.9
High school graduate (includes equivalency)	24,320	± 705	3,237	± 345	13.3%	± 1.3
Some college, associate's degree	21,063	± 608	2,321	± 280	11.0%	± 1.3
Bachelor's degree or higher	13,193	± 484	308	± 124	2.3%	± 0.9
EMPLOYMENT STATUS						
Civilian labor force 16 years and over	47,315	± 683	4,251	± 444	9.0%	± 0.9
Employed	43,093	± 755	3,050	± 328	7.1%	± 0.8
Male	22,540	± 502	1,398	± 240	6.2%	± 1.0
Female	20,553	± 526	1,652	± 207	8.0%	± 1.0
Unemployed	4,222	± 403	1,201	± 278	28.4%	± 5.5
Male	2,505	± 255	662	± 180	26.4%	± 6.2
Female	1,717	± 236	539	± 155	31.4%	± 7.4
WORK EXPERIENCE IN THE PAST 12 MONTHS						
Population 16 years and over	77,343	± 327	10,260	± 725	13.3%	± 0.9
Worked full-time, year-round	29,466	± 735	833	± 176	2.8%	± 0.6
Worked part-time or part-year	19,745	± 642	3,233	± 344	16.4%	± 1.7
Did not work	28,132	± 691	6,194	± 524	22.0%	± 1.6

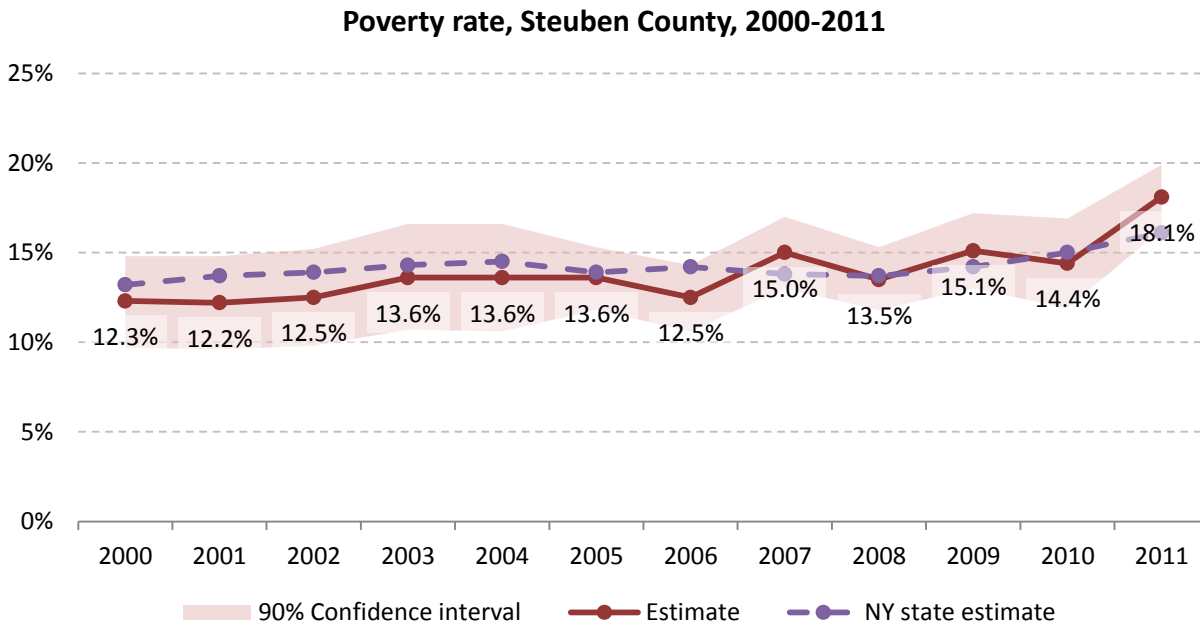
Source: 2007-2011 American Community Survey

11.2 Poverty: Trends over time: Count



Source: Small Area Income and Poverty Estimates (SAIPE)

11.3 Poverty: Trends over time: Rate



Source: Small Area Income and Poverty Estimates (SAIPE)

11.4 Poverty rate: comparison between areas

	Poverty Rate - All people	
	Estimate	Margin of error
New York State	14.5%	± 0.1
Steuben County	15.0%	± 1.2

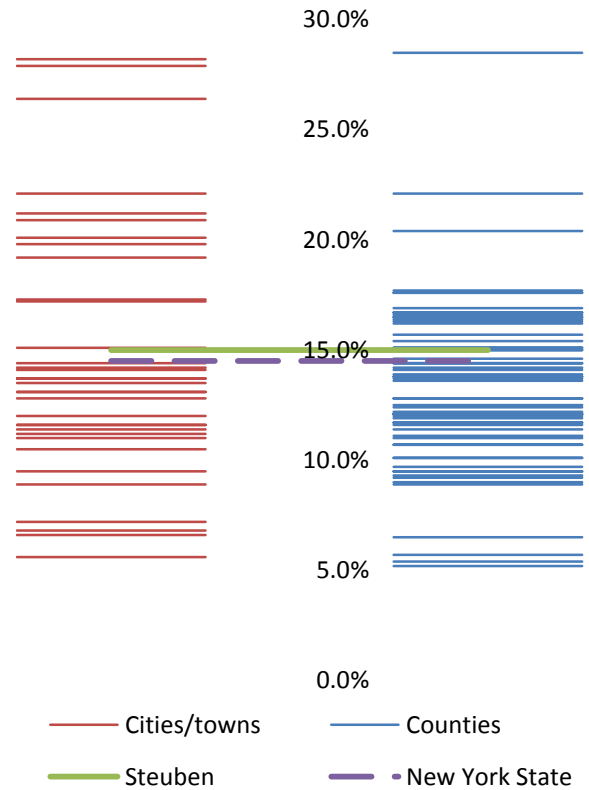
Cities

Corning	20.1%	± 4.1
Hornell	19.8%	± 4.6

Towns

Addison	13.5%	± 5.0
Avoca	17.3%	± 8.1
Bath	14.4%	± 3.1
Bradford	28.2%	± 14.4
Cameron	21.2%	± 8.8
Campbell	11.6%	± 5.9
Canisteo	12.0%	± 4.3
Caton	5.6%	± 2.3
Cohocton	13.7%	± 6.9
Corning	13.7%	± 5.6
Dansville	11.0%	± 4.8
Erwin	11.4%	± 3.9
Fremont	7.2%	± 4.3
Greenwood	8.9%	± 4.3
Hartsville	11.6%	± 6.1
Hornby	10.5%	± 3.9
Hornellsville	9.5%	± 4.4
Howard	13.1%	± 8.9
Jasper	22.1%	± 8.3
Lindley	13.1%	± 5.4
Prattsburgh	17.2%	± 5.2
Pulteney	15.1%	± 6.8
Rathbone	19.2%	± 7.0
Thurston	11.2%	± 3.9
Troupsburg	26.4%	± 11.3
Tuscarora	20.9%	± 7.7
Urbana	6.6%	± 3.4
Wayland	14.2%	± 5.7
Wayne	6.8%	± 3.7
West Union	12.8%	± 6.5
Wheeler	14.1%	± 6.2
Woodhull	27.9%	± 11.4

Poverty rate comparison within county (left) and between counties (right)

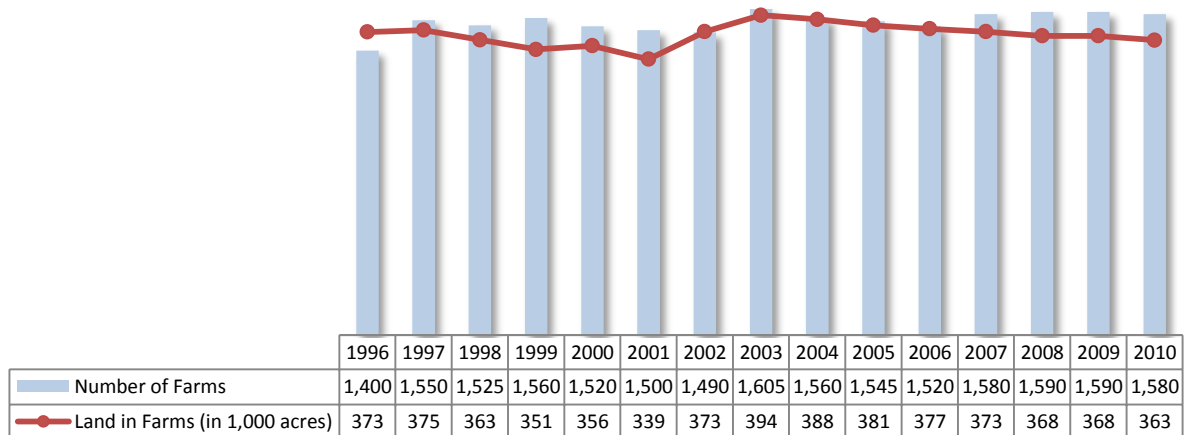


Source: 2007-2011 American Community Survey

12 Agriculture

12.1 Number of farms and land in farms

Steuben County, 1996-2010



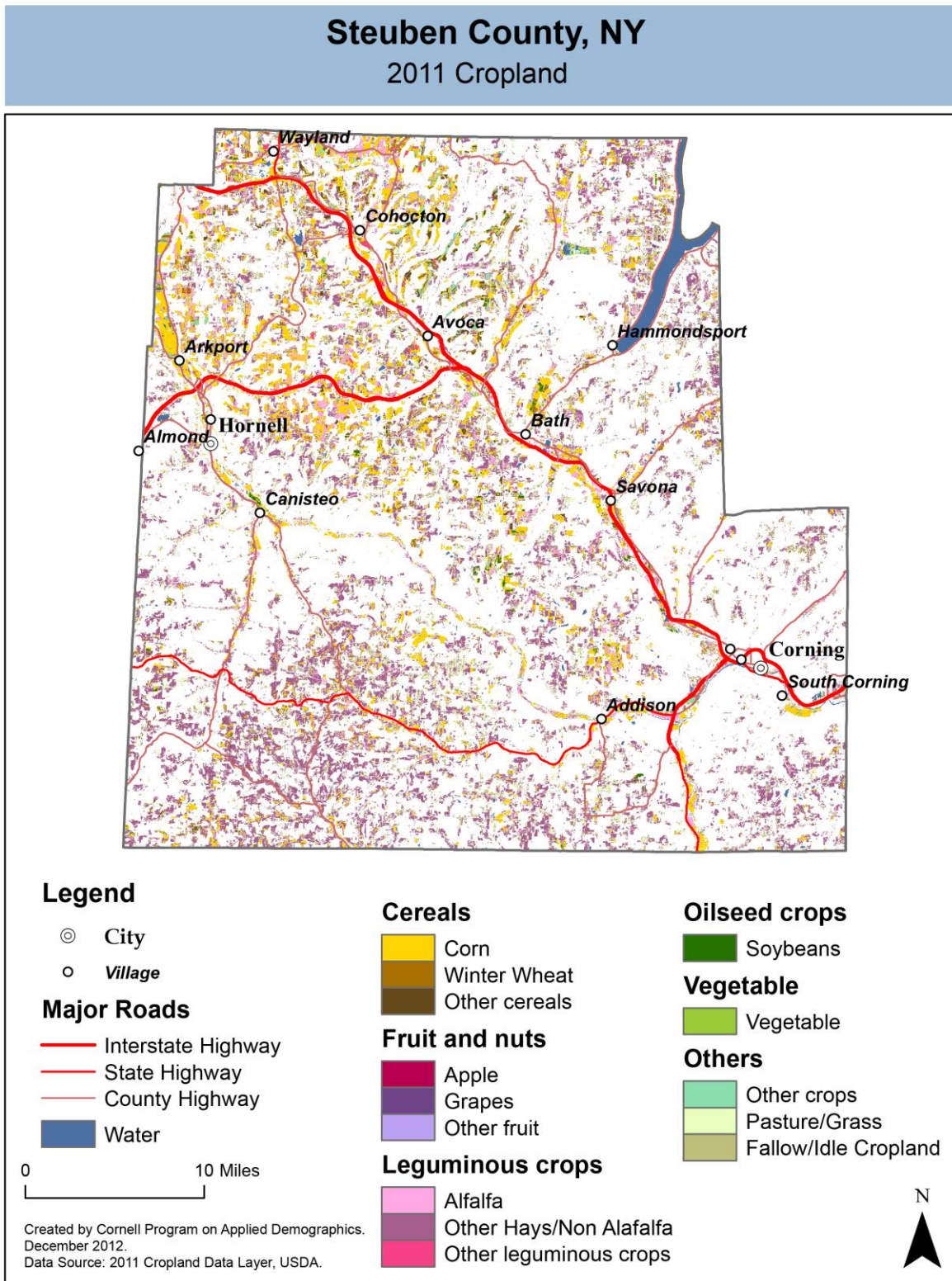
Source: National Agricultural Statistics Service – Annual Statistical bulletin

12.2 Farm Operator Characteristics

	Principal Operator		
	Total	Male	Female
Number of farms	1,578	1,388	190
Average size of farm (acres)	236	254	102
PRIMARY OCCUPATION			
Farming	772	671	101
Other	806	717	89
AGE			
Under 45	267	234	33
45 to 64 years	875	762	113
65 years and over	436	392	44
Average age (years)	56.8	57.0	56
YEARS ON PRESENT FARM			
Less than 3 years	60	45	15
3 to 4 years	82	71	11
5 to 9 years	226	181	45
10 years or more	1,210	1,091	119

Source: 2007 Agricultural Census

12.3 Map of type of crop

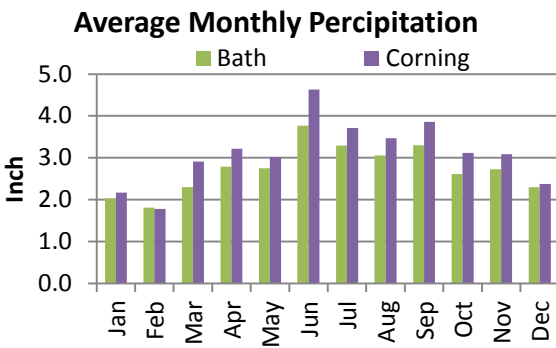
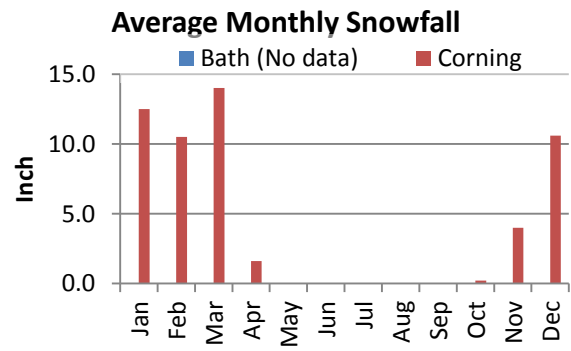
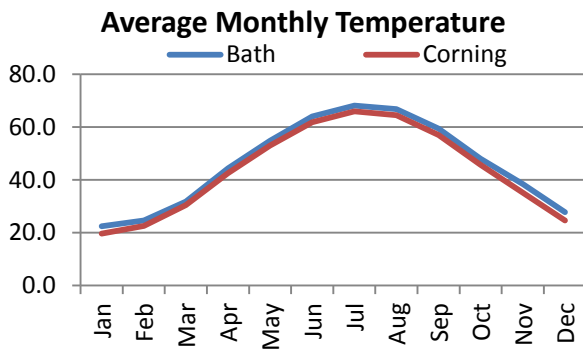
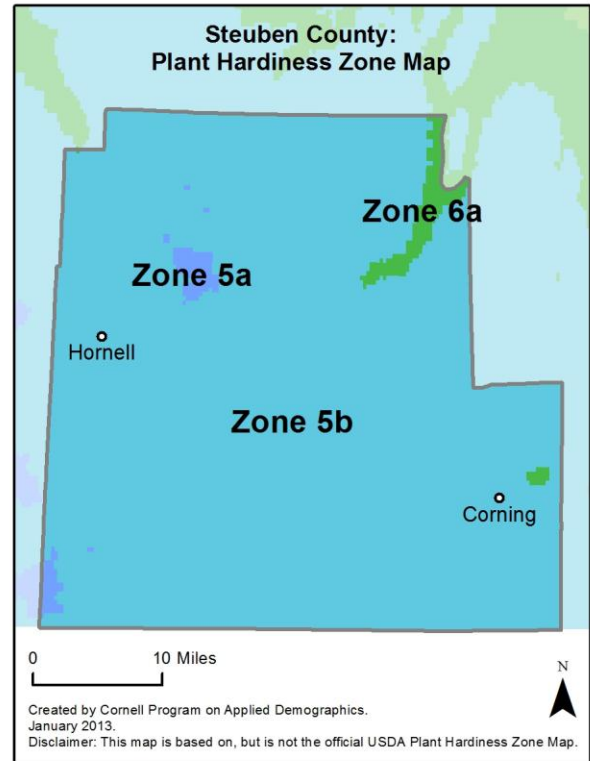
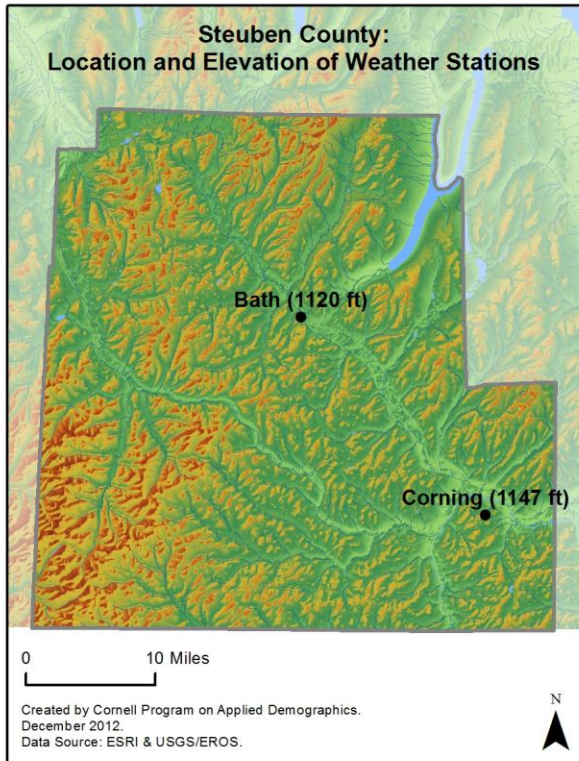


12.4 Estimated acreage by crop

	Acreage	%		Acreage	%
Cereals			Fruit and nuts		
Barley	154	0.1%	Apples	16	0.0%
Corn	48,882	19.1%	Apricots	0.2	0.0%
Millet	-		Blueberries	-	
Oats	3,747	1.5%	Cherries	-	
Rye	566	0.2%	Cranberries	-	
Sorghum	6	0.0%	Grapes	770	0.3%
Speltz	16	0.0%	Nectarines	-	
Spring Wheat	17	0.0%	Peaches	-	
Sweet Corn	35	0.0%	Plums	-	
Triticale	13	0.0%	Prunes	-	
Winter Wheat	3,009	1.2%	Strawberries	0.2	0.0%
Dbl Crop WinWht/Corn	0.7	0.0%	Walnuts	-	
Leguminous crops			Beverage and spice crops		
Alfalfa	20,536	8.0%	Herbs	-	
Other Hay/Non Alfalfa	112,096	43.8%	Peppers	1.3	0.0%
Dry Beans	1,735	0.7%	Trees		
Peas	8	0.0%	Christmas Trees	477	0.2%
Vetch	-		Other Tree Crops	-	
Oilseed crops			Other crops		
Soybeans	3,099	1.2%	Tobacco	-	
Sunflower	0.9	0.0%	Misc Veggies & Fruits	-	
Sugar crops			Clover/Wildflowers	2,049	0.8%
Sugarbeets	0.2	0.0%	Sod/Grass Seed	2.2	0.0%
Root/tuber crops with high starch or inulin content			Switchgrass	-	
Potatoes	1,913	0.7%	Dbl Crop Soybeans/Oats	-	
Vegetables and melons			Dbl Crop WinWht/Soybeans	-	
Asparagus	-		Other Crops	51	0.0%
Broccoli	-		Pasture/Grass		
Cabbage	23	0.0%	Fallow/Idle Cropland		
Carrots	62	0.0%	46,850 18.3%		
Eggplants	0.2	0.0%	10,034 3.9%		
Onions	26	0.0%			
Pumpkins	15	0.0%			
Squash	1.3	0.0%			
Tomatoes	-				
Turnips	-				

Source: National Agricultural Statistics Service - Cropland Data Layer 2011

13 Climate



Average length of freeze-free season

	Last day of frost	First day of frost	Season length
Bath	May 18	September 29	133
Corning	Not available		

Source: NOAA, Northeast Regional Climate Center at Cornell University. Averages 1981-2010

14 Glossary

American Community Survey (ACS) - The American Community Survey is an ongoing survey of the population that provides data every year on a variety of social and economic characteristics—age, sex, race, family and relationships, income and benefits, health insurance, education, veteran status, disabilities, where you work and how you get there, where you live and how much you pay for some essentials. The ACS replaced the information previously gathered by what was known as the “long form” of the decennial censuses. The ACS provides communities, companies and other institutions with current information they need to plan investments and services. Information from the survey generates data that help determine how more than \$400 billion in federal and state funds are distributed each year. Every estimate presented in the American Community Survey, as in other surveys, has an uncertainty associated with it. Often the magnitude of that uncertainty is expressed as the Margin of Error.

Confidence Interval (CI) - indication of the degree of uncertainty about a sample estimates. Confidence intervals have been traditionally reported at the 90, 95 and 99 percent levels. A 90 percent confidence interval can be interpreted, for example, roughly as providing 90 percent certainty that the interval defined by the upper and lower bounds contain the true value of the characteristic. If a Margin of Error is given, the lower bound of the confidence interval is equal to the estimate minus the Margin of Error and the upper bound is equal to the estimate plus the Margin of Error. (See further, Margin of Error definition below.)

County subdivision or Minor Civil Division (MCD) - The Census Bureau geography for primary administrative units below the county level in New York is collectively referred to as county subdivisions or minor civil divisions. These include towns, cities and Indian Reservations.

Decennial Census - the Census of the population and housing taken every 10 years in the United States, at the start of each decade, since 1790.

Employed – either “at work” or “with a job, but not at work”.

Group Quarters Population - all U.S. residents who live in group living facilities including correctional institutions, juvenile facilities, skilled nursing facilities, college residence halls, military barracks, group homes, and workers' dormitories.

Household Population - all U.S. residents who live in housing units such as single family homes, townhouses, apartments, and mobile homes.

Intercensal Population Estimates - estimates produced for the years between two decennial censuses when both the beginning and ending populations are known. They are produced once a decade by adjusting the existing time series of postcensal estimates for the entire decade to smooth the transition from one decennial census count to the next. They differ from the postcensal estimates that are released annually because the difference between the April 1 postcensal estimate and April 1 census count for the end of the decade is redistributed across the estimates for that decade. For dates when both postcensal and intercensal estimates are available, intercensal estimates are preferred.

Labor Force - consists of people classified as employed or unemployed.

Margin of Error (MOE) - a measure of the precision of an estimate at a given level of confidence. The confidence level of a margin of error indicates the likelihood that the difference between the population value (which you

would get if you could measure the whole population instead of a sample) and the estimate is less than or equal to the margin of error. The range from the estimate minus the margin of error to the estimate plus the margin of error is called the confidence interval. All ACS estimates are published with their margins of error at the 90 percent confidence level. Margins of error are useful in assessing the reliability of estimates and whether differences between estimates are significant.

NAICS - The North American Industry Classification System or NAICS is used by business and government to classify business establishments according to type of economic activity (process of production).

Numeric Population Change - difference between the population of an area at the beginning and end of a time period. It is computed by taking the difference between the population at one point in time (t1) and some future time (t2).

Percent Population Change - difference between the population of an area at the beginning and end of a time period, expressed as a percentage of the beginning population. It is computed by dividing the population change (t2 - t1) by t1 and multiplying the result by 100.

Population Estimates - The calculated number of people living in an area as of a specified point in time, usually July 1st. The estimated population is calculated using a component of change model that incorporates information on natural increase (births, deaths) and net migration (net domestic migration, net international migration) that has occurred in an area since the latest decennial census. A procedure for estimating the current population using a procedure involving a "base population" value at time t -1, adding to that the births during the interval t-1 to t, subtracting the deaths during that interval t-1 to t, and then adding the net domestic and net international migration that occurred during that interval.

Population Density - Total number of people per areal unit like a square mile or square kilometer.

Population Pyramids - A graphical way of portraying a population's age and sex composition at a given slice in time. The first horizontal bar, constituting the base of the graph, is the youngest age group (typically 0-4) with the number of males in that age group on the left and the number of females in that age group on the right. On top of that age group is another horizontal bar for the next age group (e.g. 5-9) and so forth with the top bar typically for those aged 75 and over. In a population with lots of births and deaths, the shape typically forms a pyramid with a broad base and a narrow top. It is one of the most basic ways to understand population change over time as well as between different geographic units of a similar status (e.g. counties).

Postcensal Estimates - estimates produced for the years after a decennial census when only the beginning population is known. They are produced and revised each year, targeted to July 1 of that year.

Projection - estimated population at some future time based on assumptions about births, deaths, migration, and ages.

Race/Ethnicity - the Census Bureau collects racial data in accordance with guidelines provided by the U.S. Office of Management and Budget (OMB), and these data are based on self-identification. The racial categories included in the census questionnaire generally reflect a social definition of race recognized in this country and not an attempt to define race biologically, anthropologically, or genetically. In addition, it is recognized that the categories of the race item include racial and national origin or sociocultural groups. People may choose to report more than one race to indicate their racial mixture, such as "American Indian" and "White." People who identify their origin as Hispanic, Latino, or Spanish may be of any race. OMB requires five minimum categories: White, Black or African American, American Indian or Alaska Native, Asian, and Native Hawaiian or Other Pacific

Islander. Hispanics may be classified as white or black. So we generally separate them out as an ethnic group first.

Unemployed – Not employed, but actively looking for work and available to accept a job.

Unemployment rate – Fraction of the Labor Force that is unemployed.

Urban Area – A densely settled area with at least 2,500 people. If the total number of people is less than 50,000 the Census Bureau calls it an Urban Cluster, otherwise an Urbanized Area.

Vintage - each year, the U.S. Census Bureau produces and publishes estimates of the population for each state and county, as well as the nation as a whole. These are called “vintages.” In producing these vintages, the Bureau utilizes administrative data from a number of sources to estimate 1) the change in population since the most recent decennial census, and 2) the population for each year since the most recent decennial census. With each annual release of population estimates (vintage), the entire time series of estimates beginning on April 1, 2010 is revised and updated.

15 References

Steuben County homepage: <http://www.steubencony.org/>

At Cornell:

- Cornell Cooperative Extensions (CCE)
Home page: <http://www.cce.cornell.edu>
 - Steuben local office: <http://www.putknowledgetowork.com/>
- Program on Applied Demographics (PAD)
URL: <http://pad.human.cornell.edu/>
- Community and Regional Development Institute (CaRDI)
URL: <http://devsoc.cals.cornell.edu/cals/devsoc/outreach/cardi/index.cfm>

Data sources and background information:

- U.S. Census Bureau - general
 - QuickFacts: <http://quickfacts.census.gov/qfd/states/36/36101.html>
 - QuickLinks: <http://quickfacts.census.gov/qfd/states/36/36101lk.html>
 - American FactFinder: <http://factfinder2.census.gov>
- U.S. Census Bureau - population
 - Decennial Census
 - Background: <http://2010.census.gov/2010census/>
 - Demographic Profile: http://factfinder2.census.gov/bkmk/table/1.0/en/DEC/10_SF1/SF1DP1/0500000US36101
 - American Community Survey (ACS)
 - Background: <http://www.census.gov/acs/www/>
 - Social Data Profile: http://factfinder2.census.gov/bkmk/table/1.0/en/ACS/10_5YR/DP02/0500000US36101
 - Economic Data Profile: http://factfinder2.census.gov/bkmk/table/1.0/en/ACS/10_5YR/DP03/0500000US36101
 - Housing Data Profile: http://factfinder2.census.gov/bkmk/table/1.0/en/ACS/10_5YR/DP04/0500000US36101
 - Demographics Data Profile: http://factfinder2.census.gov/bkmk/table/1.0/en/ACS/10_5YR/DP05/0500000US36101
 - Population estimates: <http://www.census.gov/popest/estimates.html>
- U.S. Census Bureau – Small Area Income & Poverty Estimates (SAIPE)
 - <http://www.census.gov/did/www/saipe/>
- U.S. Census Bureau - Public Use Quarterly Workforce Indicators (QWI) – annual averages
 - <http://www2.vrdc.cornell.edu/news/data/qwi-public-use-data/>
- Bureau Labor Statistics (BLS) – Local Area Unemployment Statistics: <http://www.bls.gov/lau/>
- NY Department of Labor -
 - Labor statistics: <http://www.labor.ny.gov/stats/>
 - Quarterly Census of Employment and Wages (QCEW): <http://www.labor.ny.gov/stats/lsqcew.shtm>
- Bureau of Economic Analysis (BEA) – Local Area Personal Income and Employment: <http://bea.gov/iTable/iTable.cfm?ReqID=70&step=1>

- USDA Census of Agriculture
 - 2007
 - Home page: <http://www.agcensus.usda.gov/Publications/2007/index.php>
 - County profile: http://www.agcensus.usda.gov/Publications/2007/Online_Highlights/County_Profiles/New_York/cp36101.pdf
 - Race, Ethnicity and Gender Profiles: http://www.agcensus.usda.gov/Publications/2007/Online_Highlights/Race_Ethnicity_and_Gender_Profiles/New_York/cpd36101.pdf
- USDA National Agricultural Statistics Service (NASS)
 - Home page: <http://www.nass.usda.gov/index.asp>
 - New York Statistical Bulletins: http://www.nass.usda.gov/Statistics_by_State/New_York/Publications/Annual_Statistical_Bulletin/
 - Cropland Data Layer – CropScape: <http://nassgeodata.gmu.edu/CropScape/>
- USDA Agricultural Research Service – Plant Hardness Zone Map: <http://planthardiness.ars.usda.gov/PHZMWeb/>
- NOAA, Northeast Regional Climate Center at Cornell University
 - Home page: <http://www.nrcc.cornell.edu/index.html>

Alternative sites for data retrieval:

- The Nelson A. Rockefeller Institute of Government – New York State Statistical Yearbooks http://www.rockinst.org/nys_statistics/
- Headwaters Economics: Economic Profile System – Human Dimensions Toolkit <http://headwaterseconomics.org/tools/eps-hdt>
- National Historical Geographic Information System (NHGIS) <https://www.nhgis.org/>
- Social Explorer <http://www.socialexplorer.com/pub/home/home.aspx>
- Missouri Census Data Center <http://mcdc.missouri.edu/>
- DataFerret <http://dataferrett.census.gov/>
- Investigative Reporters and Editors (IRE) Census project <http://census.ire.org/>