

# Schenectady County Profile 2013

*A collection of recent demographic, social, economic and agricultural data*

Compiled by Jan Vink

Assisted by Joe Francis, Sutee Anantsuksomsri, Nij Tontisirin, Johannes Plambeck



**Cornell University**  
Cooperative Extension



This profile is a part of a set of profiles generated for each county in New York State. The profiles were developed and generated by the Cornell Program on Applied Demographics. The work is sponsored by Cornell Cooperative Extension and promoted with webinars and workshops in coordination with the Community & Regional Development Institute.

Cornell Program on Applied Demographics:

The Program on Applied Demographics (PAD) brings skills in demographics, economics, statistics, data gathering and data analysis together to provide a variety of organizations with data, information and advice.

For more information: <http://pad.human.cornell.edu/>

Cornell Cooperative Extension:

Cornell Cooperative Extension (CCE) puts knowledge to work in pursuit of economic vitality, ecological sustainability and social well-being. We bring local experience and research based solutions together, helping New York State families and communities thrive in our rapidly changing world.

For more information: <http://cce.cornell.edu/>

Community & Regional Development Institute:

The Community & Regional Development Institute (CaRDI) supports informed decision making for residents and communities in New York State through applied research and education.

For more information: <http://cardi.cornell.edu/>

All profiles are freely downloadable as PDF documents on the PAD website:

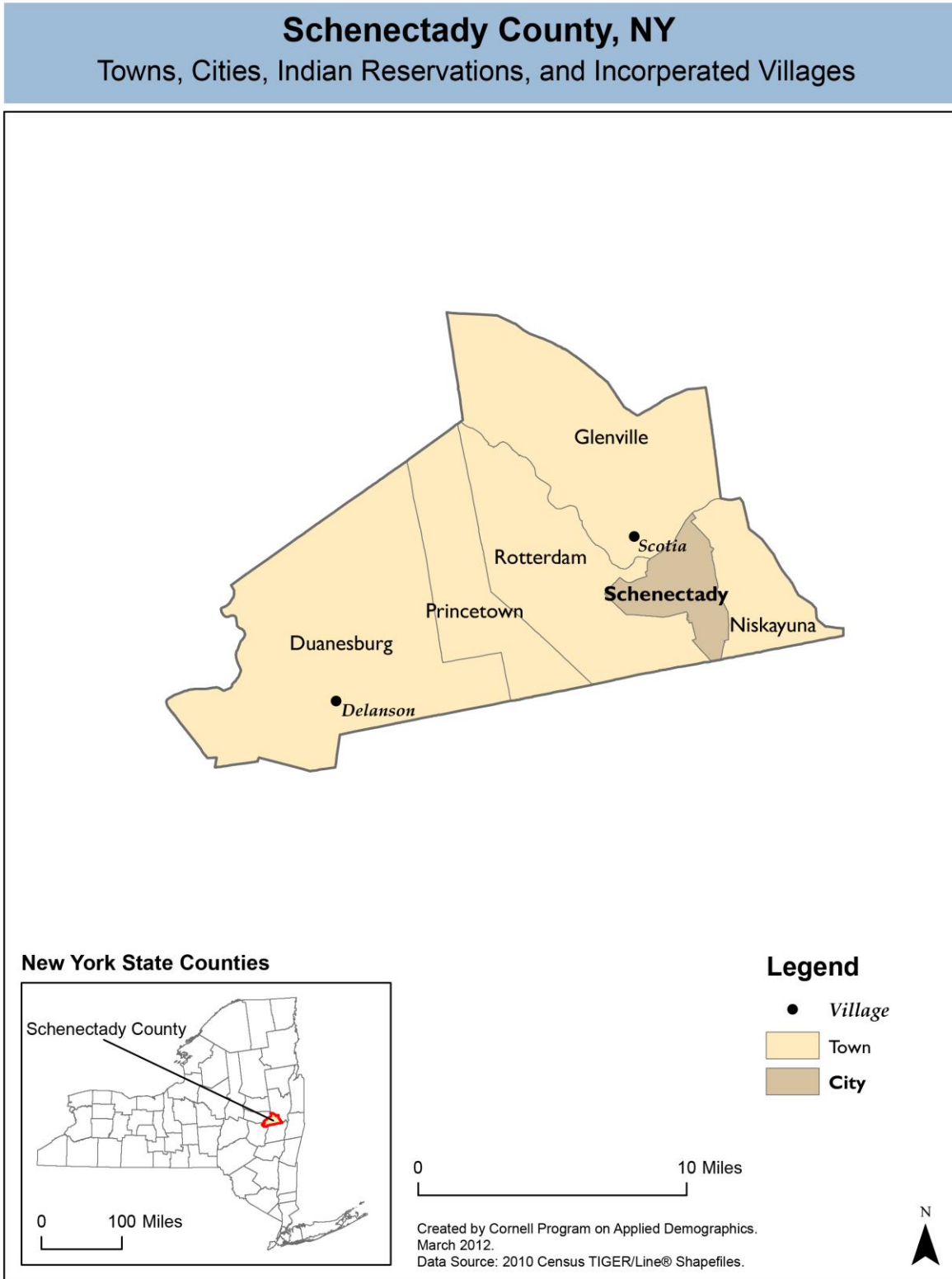
<http://pad.human.cornell.edu/profiles/index.cfm>

## Contents

Contents .....	2
1 Reference Maps .....	4
2 Population density and Urban Areas Map .....	6
3 Total Population .....	7
3.1 Historic and projected .....	7
3.2 Change since previous Census .....	7
3.3 Annual population estimates .....	8
3.4 Percentage sub county change 2000-2010 .....	9
4 Population by age .....	11
4.1 Historic and projected population pyramids .....	11
4.2 Selected age groups .....	12
4.3 Median age: comparison between areas .....	14
5 Race .....	15
5.1 Total and household population by race .....	15
5.2 Race composition by age .....	15
6 Housing units .....	16
6.1 Characteristics .....	16
6.2 Historical data on number of housing units and occupancy status .....	17
7 Education .....	18
7.1 Enrollment by level of school .....	18
7.2 Enrollment by age .....	18
7.3 Percentage age 18-24 enrolled in college .....	18
7.4 Educational attainment .....	19
8 Language spoken at home .....	19
9 Labor Force Characteristics .....	20
9.1 Labor force, employment and unemployment .....	20
9.2 Annual unemployment rate .....	21
9.3 Monthly unemployment rate .....	21
9.4 Employment and number of jobs .....	22
9.5 Class of worker .....	22
9.6 Jobs by industry sector .....	23
10 Household Income .....	24
10.1 Distribution .....	24
10.2 Median household income: Trends over time .....	25
10.3 Median household income: Comparison between areas .....	26
11 Poverty .....	27
11.1 Poverty characteristics .....	27
11.2 Poverty: Trends over time: Count .....	28
11.3 Poverty: Trends over time: Rate .....	28
11.4 Poverty rate: comparison between areas .....	29
12 Agriculture .....	30
12.1 Number of farms and land in farms .....	30
12.2 Farm Operator Characteristics .....	30

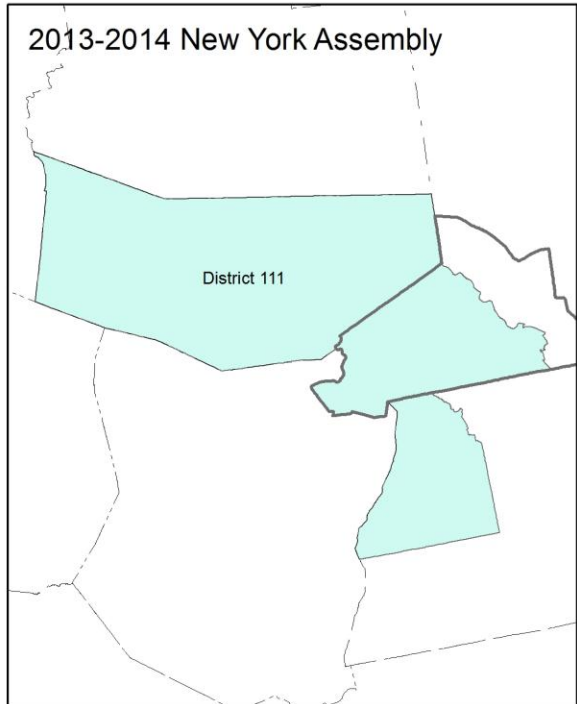
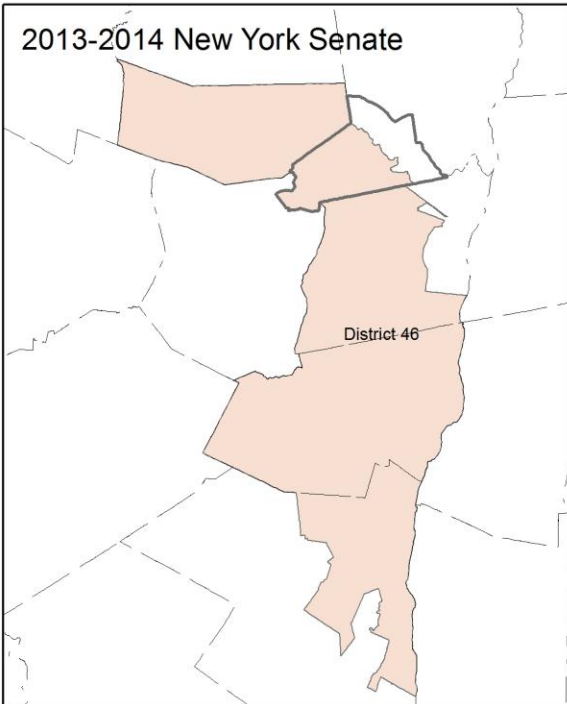
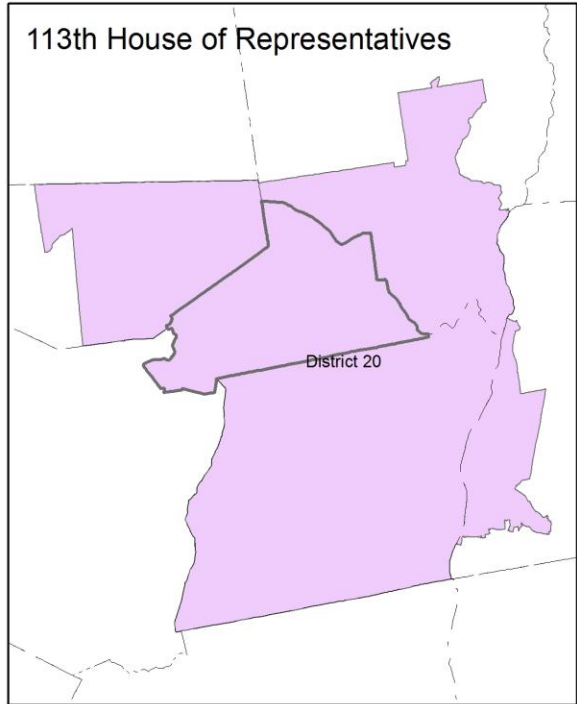
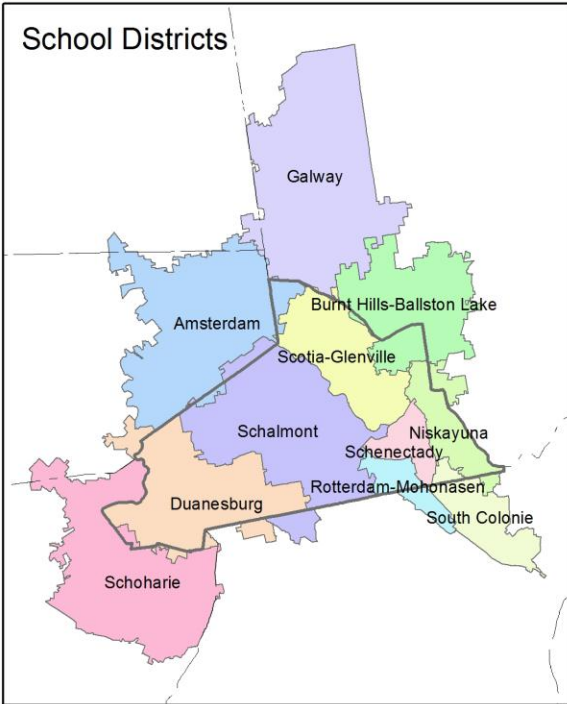
12.3 Map of type of crop ..... 31  
12.4 Estimated acreage by crop ..... 32  
13 Climate ..... 33  
14 Glossary..... 34  
15 References ..... 37

1 Reference Maps

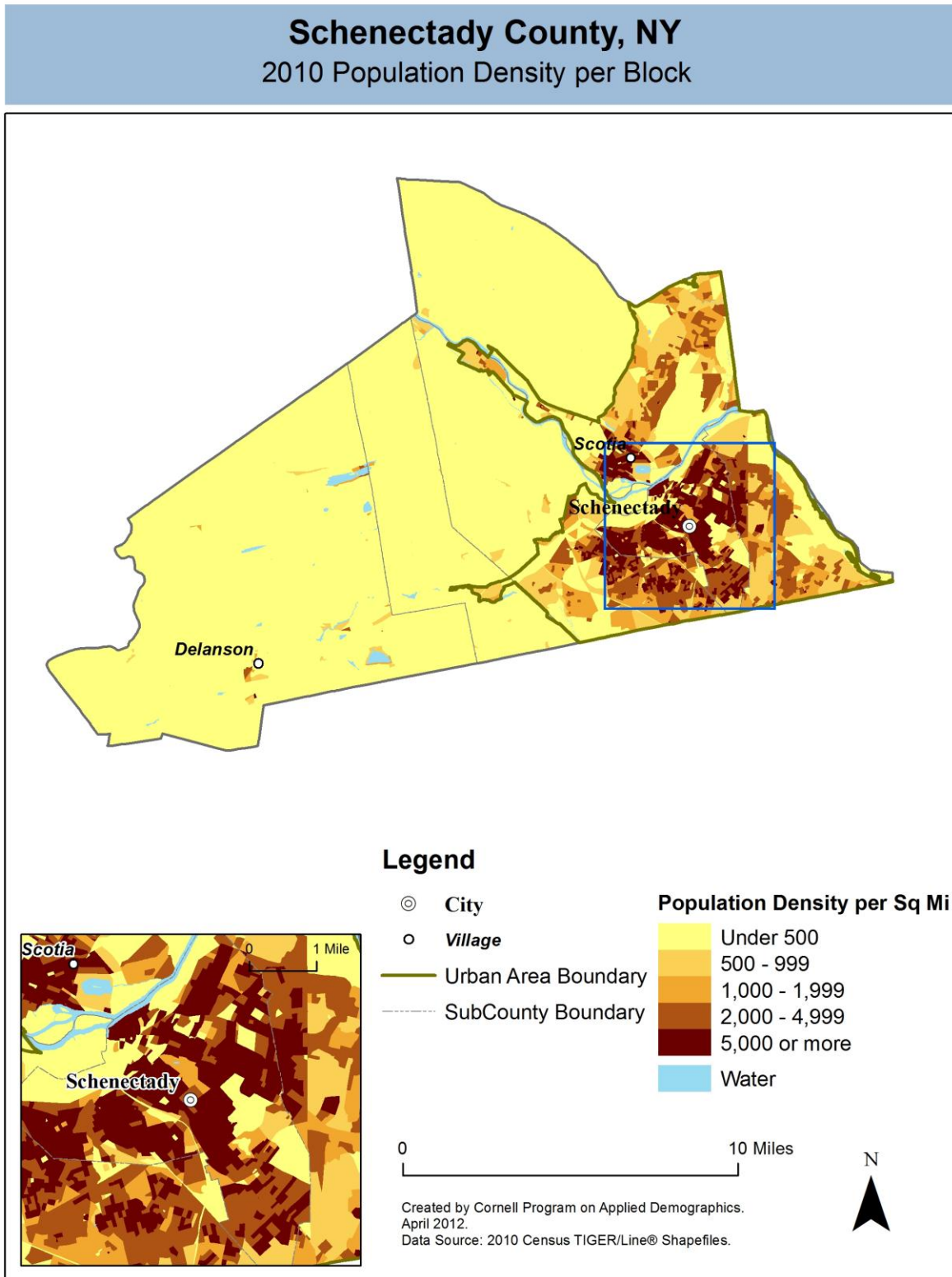


## Schenectady County, NY

### Overlap with School and Political Districts



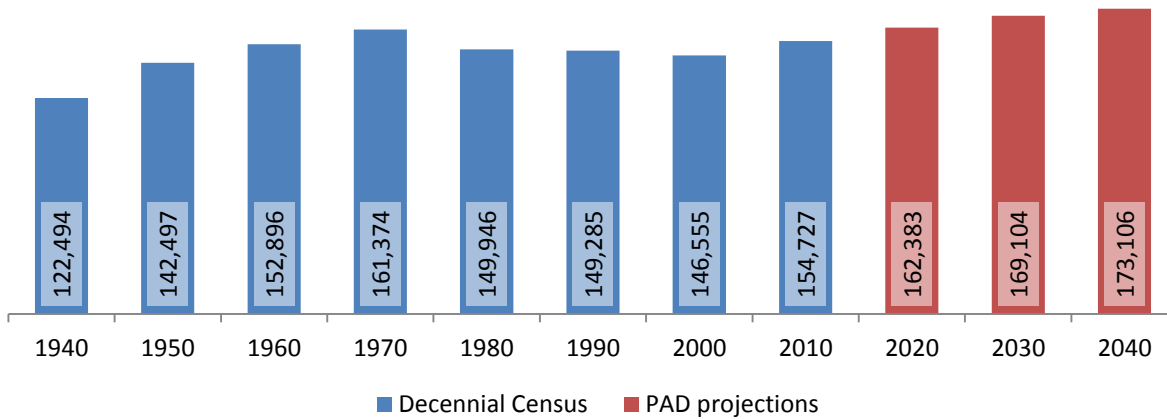
2 Population density and Urban Areas Map



### 3 Total Population

#### 3.1 Historic and projected

Total population, Schenectady County, 1940-2040



Source: 1940-2010 Decennial Census and projections by Cornell Program on Applied Demographics

#### 3.2 Change since previous Census

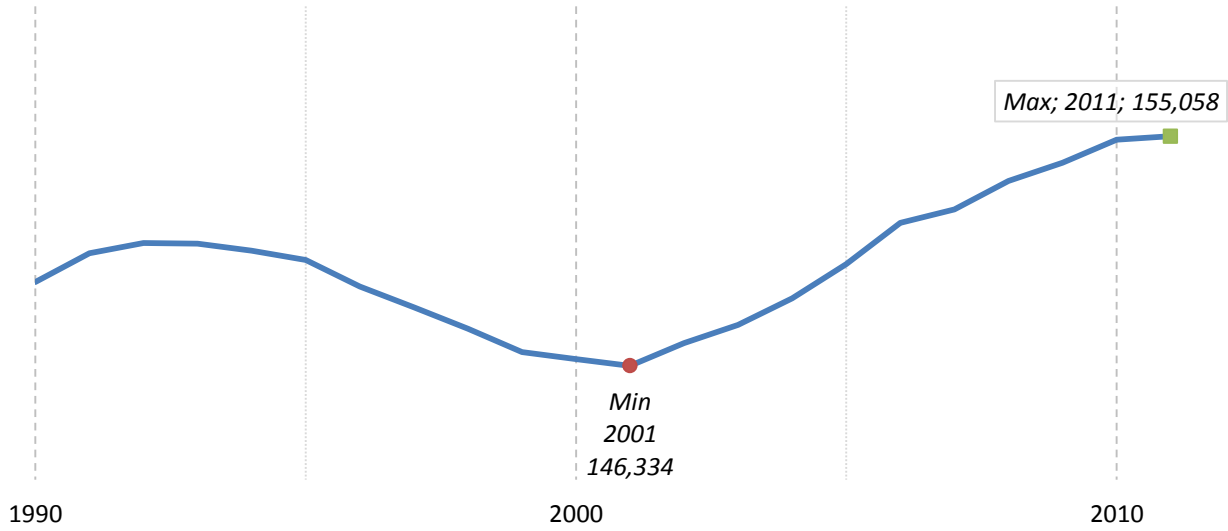
	Total population	Change	
		Number	Percent
Decennial Census	1940	122,494	
	1950	142,497	20,003 16.3%
	1960	152,896	10,399 7.3%
	1970	161,374	8,478 5.5%
	1980	149,946	-11,428 -7.1%
	1990	149,285	-661 -0.4%
	2000	146,555	-2,730 -1.8%
	2010	154,727	8,172 5.6%
PAD projections	2020	162,383	7,656 4.9%
	2030	169,104	6,721 4.1%
	2040	173,106	4,002 2.4%

Source: 1940-2010 Decennial Census and projections by Cornell Program on Applied Demographics



### 3.3 Annual population estimates

**Annual population estimates  
Schenectady County, 1990-2011**



Source: U.S. Census Bureau population estimates (1990-1999 and 2000-2009 intercensal and vintage 2011 postcensal)

### 3.4 Percentage sub county change 2000-2010

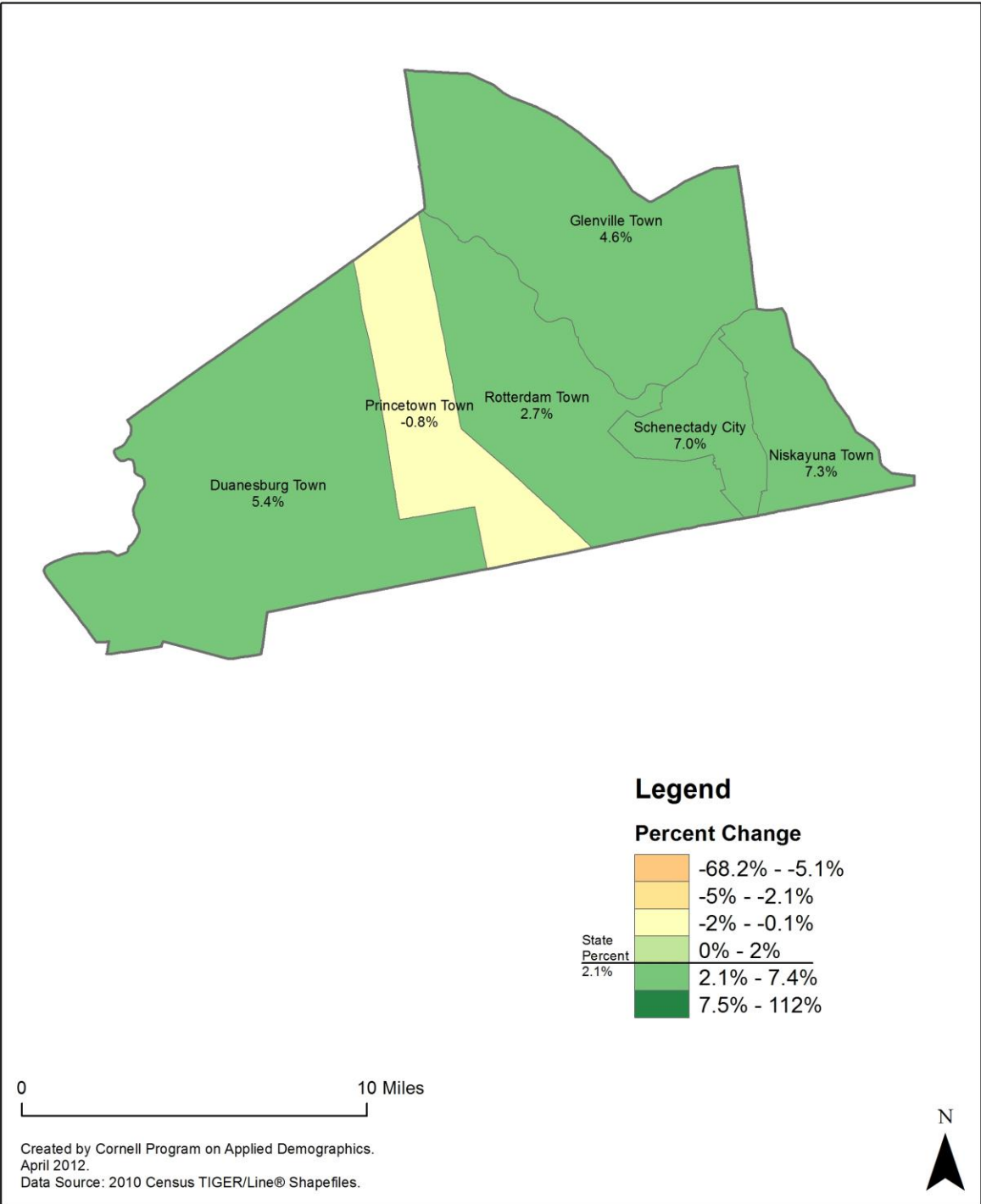
	Total Population		Difference	
	2000	2010	Count	%
New York State	18,976,821 *	19,378,102	401,281	2.1%
Schenectady County	146,555	154,727	8,172	5.6%
<b>Cities</b>				
Schenectady	61,821	66,135	4,314	7.0%
<b>Towns</b>				
Duanesburg	5,808	6,122	314	5.4%
Glenville	28,183	29,480	1,297	4.6%
Niskayuna	20,295	21,781	1,486	7.3%
Princ	2,132	2,115	-17	-0.8%
Rotterdam	28,316	29,094	778	2.7%

\* Original counts revised through Count Question Resolution Program (CQR)

Source: U.S. Census Bureau intercensal population estimates 2000-2010

## Schenectady County, NY

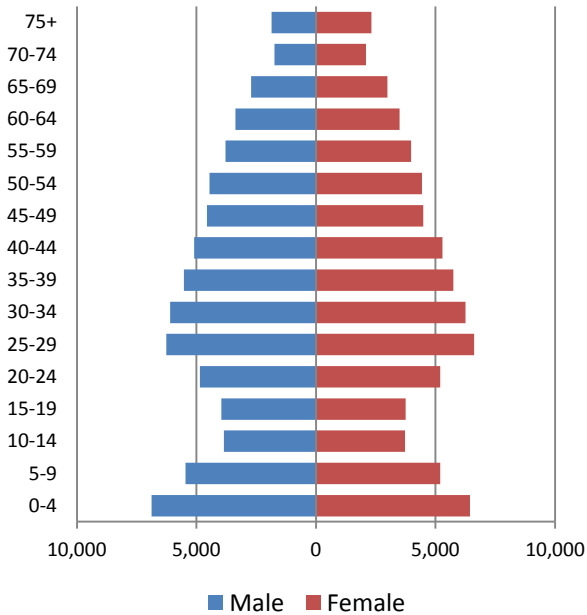
### County Subdivision, Percent Change in Population 2000-2010



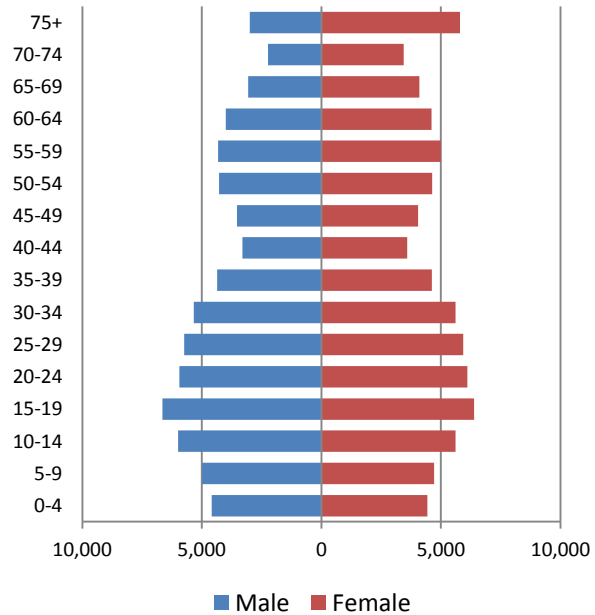
## 4 Population by age

### 4.1 Historic and projected population pyramids

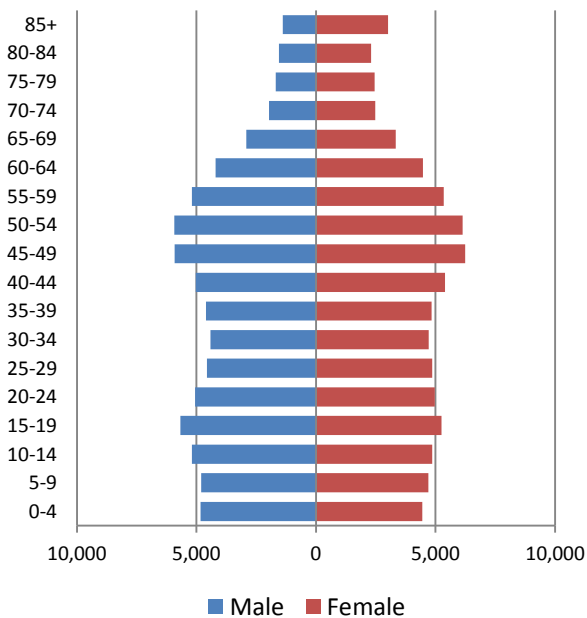
**1950 Population Pyramid,  
Schenectady County**



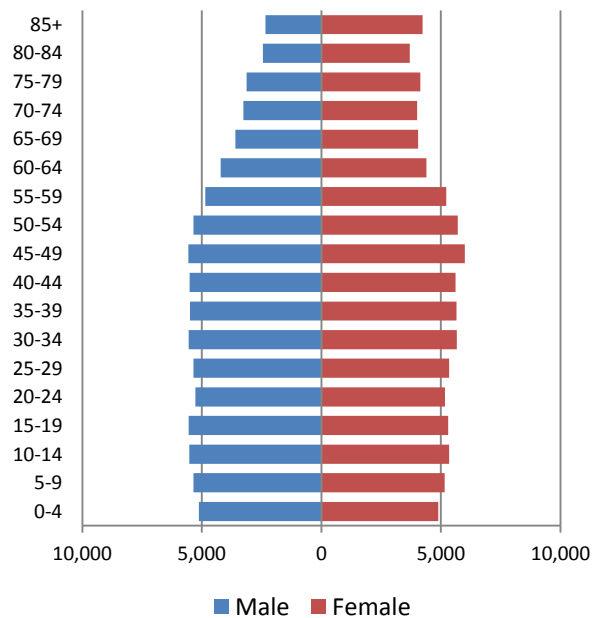
**1980 Population Pyramid,  
Schenectady County**



**2010 Population Pyramid,  
Schenectady County**

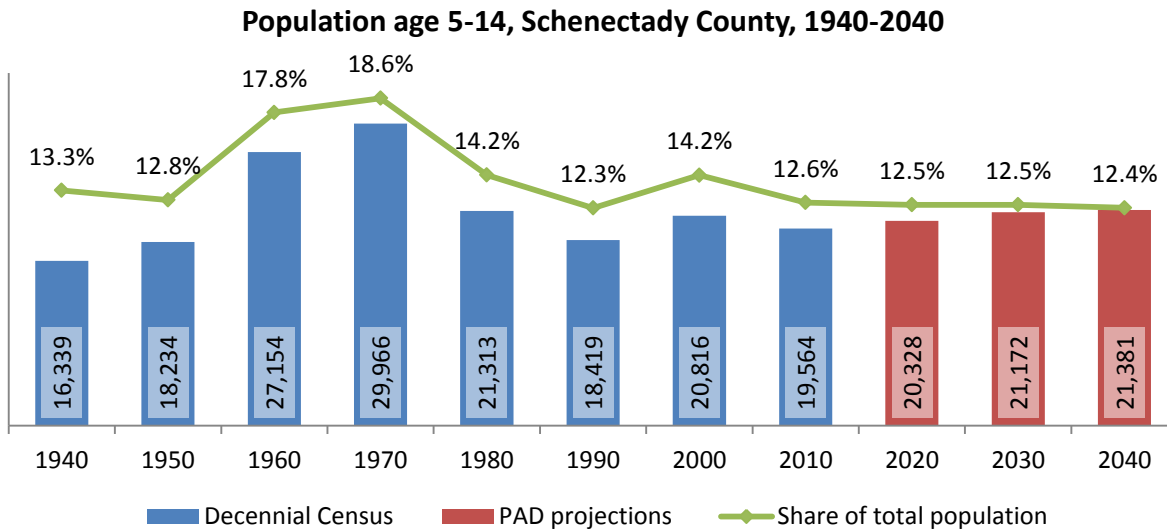


**2040 Population Pyramid,  
Schenectady County**

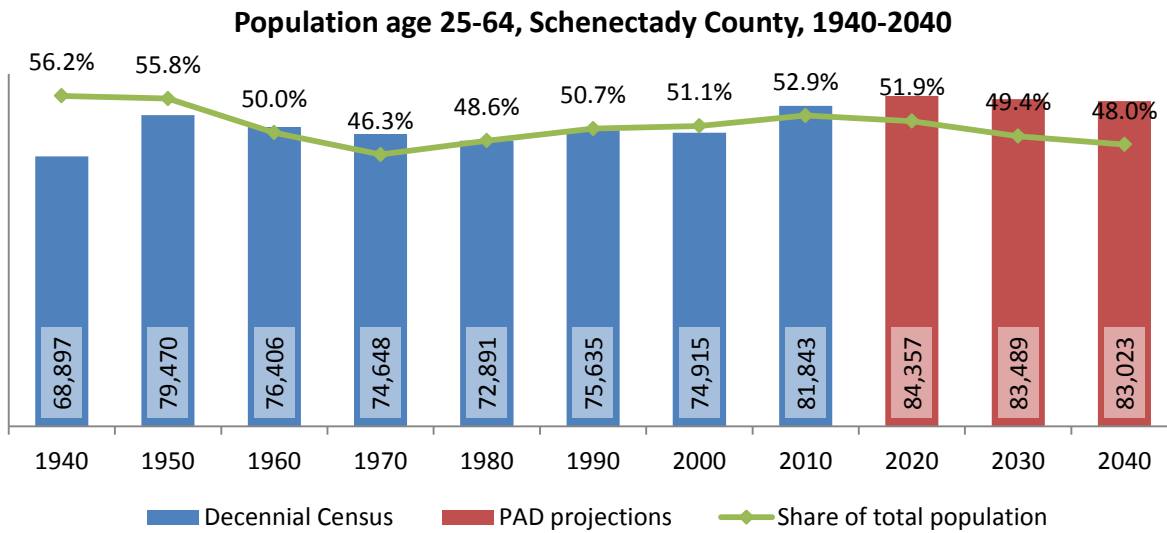


Source: 1950, 1980, 2010 Decennial Census and projections by Cornell Program on Applied Demographics

## 4.2 Selected age groups

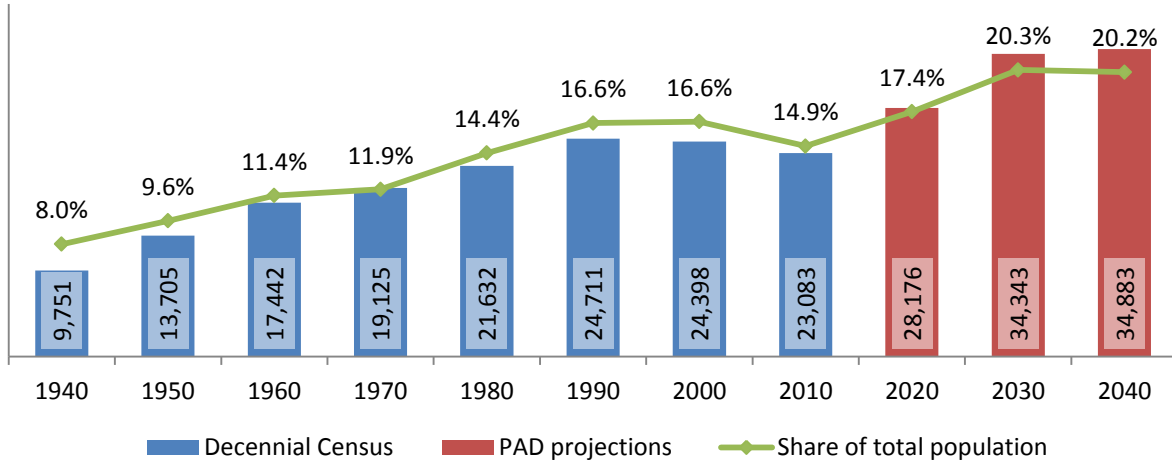


Source: 1940-2010 Decennial Census and projections by Cornell Program on Applied Demographics



Source: 1940-2010 Decennial Census and projections by Cornell Program on Applied Demographics

**Population age 65 and over, Schenectady County, 1940-2040**

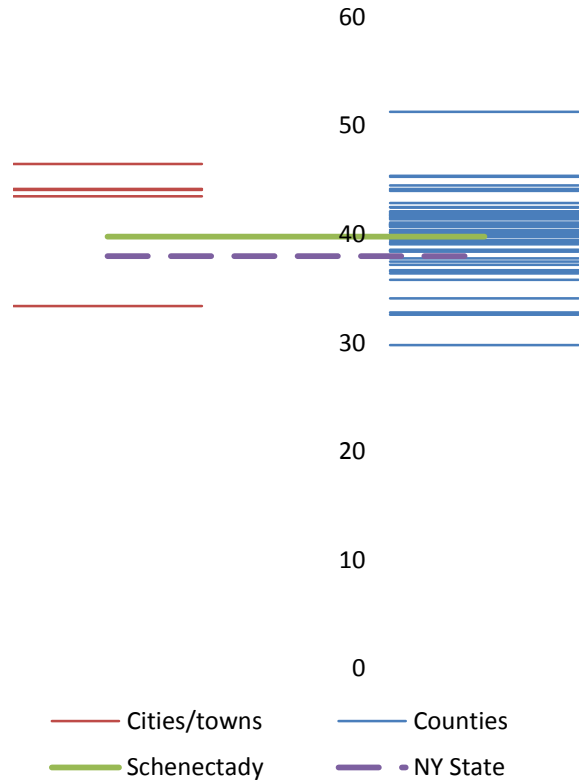


Source: 1940-2010 Decennial Census and projections by Cornell Program on Applied Demographics

### 4.3 Median age: comparison between areas

	Median Age
New York State	38.0
Schenectady County	39.8
<b>Cities</b>	
Schenectady city	33.4
<b>Towns</b>	
Duanesburg town	44.1
Glenville town	44.2
Niskayuna town	44.2
Princetown town	46.5
Rotterdam town	43.5

Median age comparison within county (left) and between counties (right)



Source: 2010 Decennial Census

## 5 Race

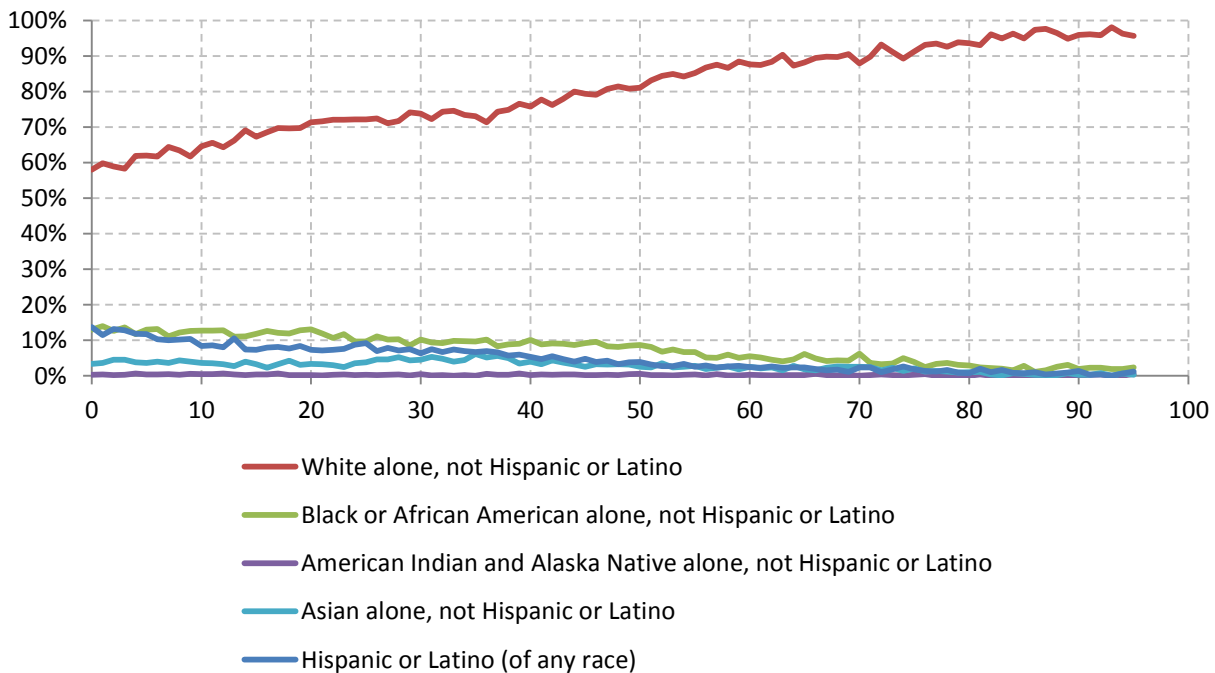
### 5.1 Total and household population by race

	Total		In households		In Group Quarters
	Count	Percentage	Count	Percentage	Count
<b>Total population</b>	154,727	100%	150,293	100%	4,434
Not Hispanic or Latino					
One race					
White	119,409	77.2%	116,073	77.2%	3,336
Black or African American	13,528	8.7%	12,883	8.6%	645
American Indian and Alaska Native	445	0.3%	440	0.3%	5
Asian	4,917	3.2%	4,786	3.2%	131
Native Hawaiian and Other Pacific Islander	81	0.1%	-	-	-
Some other race	2,708	1.8%	2,694	1.8%	14
Two or more races	4,812	3.1%	4,752	3.2%	60
Hispanic or Latino (of any race)	8,827	5.7%	8,585	5.7%	242

Source: 2010 Decennial Census

### 5.2 Race composition by age

Race composition by age, Schenectady County



Source: 2010 Decennial Census



## 6 Housing units

### 6.1 Characteristics

HOUSING OCCUPANCY	COUNT		PERCENTAGE	
	Estimate	Margin of error	Estimate	Margin of error
<b>Total housing units</b>	67,992	± 266	100.0%	
Occupied housing units	58,203	± 631	85.6%	± 0.9
Vacant housing units	9,789	± 639	14.4%	± 0.9
<b>YEAR STRUCTURE BUILT</b>				
<b>Total housing units</b>	67,992	± 266	100.0%	
Built 2005 or later	1,388	± 205	2.0%	± 0.3
Built 2000 to 2004	2,369	± 322	3.5%	± 0.5
Built 1990 to 1999	4,111	± 373	6.0%	± 0.6
Built 1980 to 1989	4,071	± 341	6.0%	± 0.5
Built 1970 to 1979	6,333	± 539	9.3%	± 0.8
Built 1960 to 1969	5,794	± 466	8.5%	± 0.7
Built 1950 to 1959	10,278	± 585	15.1%	± 0.9
Built 1940 to 1949	6,719	± 415	9.9%	± 0.6
Built 1939 or earlier	26,929	± 728	39.6%	± 1.1
<b>HOUSING TENURE</b>				
<b>Occupied housing units</b>	58,203	± 631	100.0%	
Owner-occupied	39,587	± 709	68.0%	± 1.1
Renter-occupied	18,616	± 720	32.0%	± 1.1
<b>HOUSE HEATING FUEL</b>				
<b>Occupied housing units</b>	58,203	± 631	100.0%	
Utility gas	42,554	± 677	73.1%	± 0.8
Bottled, tank, or LP gas	1,562	± 205	2.7%	± 0.4
Electricity	6,161	± 419	10.6%	± 0.7
Fuel oil, kerosene, etc.	6,880	± 420	11.8%	± 0.7
Coal or coke	34	± 41	0.1%	± 0.1
Wood	766	± 165	1.3%	± 0.3
Solar energy	13	± 20	0.0%	± 0.1
Other fuel	174	± 70	0.3%	± 0.1
No fuel used	59	± 45	0.1%	± 0.1
<b>VALUE</b>				
<b>Owner-occupied units</b>	39,587	± 709	100.0%	
Less than \$50,000	1,126	± 181	2.8%	± 0.5
\$50,000 to \$99,999	5,537	± 442	14.0%	± 1.1
\$100,000 to \$149,999	9,487	± 545	24.0%	± 1.3
\$150,000 to \$199,999	9,728	± 532	24.6%	± 1.2
\$200,000 to \$299,999	8,540	± 429	21.6%	± 1.0
\$300,000 to \$499,999	4,199	± 274	10.6%	± 0.7
\$500,000 to \$999,999	710	± 155	1.8%	± 0.4
\$1,000,000 or more	260	± 104	0.7%	± 0.3
Median (dollars)	165,000	± 2,295		

Source: 2007-2011 American Community Survey

**6.2 Historical data on number of housing units and occupancy status**

Year	Number of Housing Units	Change since previous Census	Occupied	Occupancy rate	Vacant
1970	55,586		53,472	96.2%	2,114
1980	59,540	7.1%	56,168	94.3%	3,372
1990	62,769	5.4%	59,181	94.3%	3,588
2000	65,032	3.6%	59,684	91.8%	5,348
2010	68,196	4.9%	62,886	92.2%	5,310

Source: 1970-2010 Decennial Census

## 7 Education

### 7.1 Enrollment by level of school

	Estimate	Margin of error
<b>Total enrolled in school</b>	38,600	± 701
Nursery school, preschool	1,935	± 298
Kindergarten	1,972	± 256
Elementary: grade 1 to grade 4	7,403	± 456
Elementary: grade 5 to grade 8	8,483	± 465
High school: grade 9 to grade 12	8,351	± 330
College, undergraduate	9,022	± 538
Graduate, professional school	1,434	± 269

Source: 2007-2011 American Community Survey

### 7.2 Enrollment by age

	Estimate	Margin of error
3 and 4 years	47.7%	± 6.0
5 to 9 years	93.6%	± 1.9
10 to 14 years	98.1%	± 0.9
15 to 17 years	96.1%	± 1.6
18 and 19 years	79.8%	± 5.1
20 to 24 years	44.7%	± 3.1
25 to 34 years	10.0%	± 1.8
35 years and over	2.0%	± 0.3

Source: 2007-2011 American Community Survey

### 7.3 Percentage age 18-24 enrolled in college

	Estimate	Margin of error
Population 18 to 24 years	14,099	± 216
Enrolled in college or graduate school	48.5%	± 2.9
Males 18 to 24 years	7,171	± 211
Enrolled in college or graduate school	42.4%	± 4.5
Females 18 to 24 years	6,928	± 54
Enrolled in college or graduate school	54.9%	± 3.6

Source: 2007-2011 American Community Survey

## 7.4 Educational attainment

	COUNT		PERCENTAGE	
	Estimate	Margin of error	Estimate	Margin of error
<b>Population 25 years and over</b>	104,305	± 217	100%	
<b>EDUCATIONAL ATTAINMENT</b>				
Less than 9th grade	3,444	± 414	3.3%	± 0.4
9th to 12th grade, no diploma	6,876	± 556	6.6%	± 0.5
High school graduate (includes equivalency)	33,138	± 1,145	31.8%	± 1.1
Some college, no degree	18,526	± 830	17.8%	± 0.8
Associate's degree	12,309	± 684	11.8%	± 0.7
Bachelor's degree	16,389	± 785	15.7%	± 0.8
Graduate or professional degree	13,623	± 716	13.1%	± 0.7
Percent high school graduate or higher			90.1%	± 0.7
Percent bachelor's degree or higher			28.8%	± 1.0

Source: 2007-2011 American Community Survey

## 8 Language spoken at home

	COUNT		PERCENTAGE		SPEAK ENGLISH LESS THAN "VERY WELL"	
	Estimate	Margin of error	Estimate	Margin of error	Estimate	Margin of error
<b>Population 5 years and over</b>	144,956	± 267	100%			
<b>LANGUAGE SPOKEN AT HOME</b>						
English only	131,078	± 963	90.4%	± 0.7		
Language other than English	13,878	± 949	9.6%	± 0.7	4,738	± 604
Spanish	5,506	± 486	3.8%	± 0.3	1,898	± 386
Other Indo-European languages	5,405	± 674	3.7%	± 0.5	1,879	± 320
Asian and Pacific Islander languages	2,432	± 423	1.7%	± 0.3	812	± 256
Other languages	535	± 233	0.4%	± 0.2	149	± 120

Source: 2007-2011 American Community Survey

## 9 Labor Force Characteristics

### 9.1 Labor force, employment and unemployment

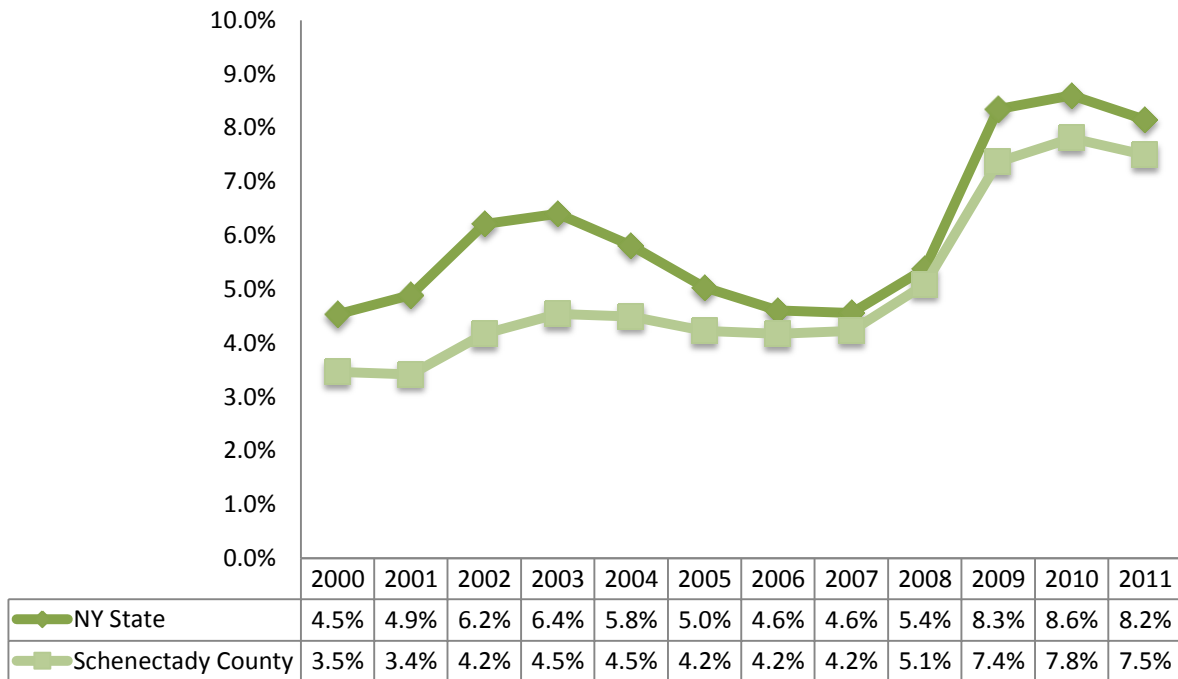
	TOTAL		IN LABOR FORCE		EMPLOYED		UNEMPLOYMENT RATE	
	Estimate	Margin of error	Estimate	Margin of error	Estimate	Margin of error	Estimate	Margin of error
<b>Population 16 years and over</b>	122,842	± 214	64.7%	± 0.7	60.2%	± 0.8	6.7%	± 0.6
<b>AGE</b>								
16 to 19 years	8,785	± 276	45.5%	± 3.7	35.9%	± 3.6	20.9%	± 4.7
20 to 24 years	9,752	± 169	73.6%	± 3.2	65.2%	± 3.4	10.6%	± 2.5
25 to 44 years	38,754	± 244	85.6%	± 1.1	79.3%	± 1.4	6.8%	± 1.0
45 to 54 years	23,767	± 124	83.3%	± 1.5	79.6%	± 1.5	4.4%	± 0.8
55 to 64 years	18,733	± 76	65.2%	± 2.0	63.0%	± 2.0	3.5%	± 1.1
65 to 74 years	10,559	± 121	23.6%	± 2.5	22.1%	± 2.4	6.6%	± 2.8
75 years and over	12,492	± 103	5.2%	± 1.1	5.0%	± 1.1	3.8%	± 3.9
<b>RACE AND HISPANIC OR LATINO ORIGIN</b>								
One race	120,928	± 367	64.6%	± 0.7	60.2%	± 0.8	6.6%	± 0.6
White	102,773	± 570	64.6%	± 0.7	60.7%	± 0.8	5.6%	± 0.6
Black or African American	10,395	± 428	64.8%	± 4.1	55.4%	± 4.0	14.6%	± 3.1
American Indian and Alaska Native	488	± 107	59.2%	± 10.8	47.1%	± 12.5	20.4%	± 17.6
Asian	4,232	± 226	64.4%	± 5.0	60.9%	± 5.1	5.5%	± 2.9
Pacific Islander	86	± 89	53.5%	± 27.7	53.5%	± 27.7	0.0%	± 43.7
Some other race	2,954	± 607	67.7%	± 6.1	61.1%	± 6.8	9.7%	± 5.0
Two or more races	1,914	± 303	70.0%	± 7.2	60.0%	± 8.1	14.3%	± 8.6
Hispanic or Latino origin (of any race)	5,455	± 56	66.8%	± 3.7	56.8%	± 4.2	14.2%	± 4.6
White alone, not Hispanic or Latino	99,568	± 404	64.6%	± 0.8	60.9%	± 0.8	5.4%	± 0.6
<b>SEX</b>								
<b>Population 20 to 64 years</b>	91,006	± 185	79.5%	± 0.8	74.5%	± 0.9	6.0%	± 0.6
Male	44,463	± 175	83.3%	± 1.2	76.9%	± 1.4	7.2%	± 1.0
Female	46,543	± 86	75.9%	± 1.2	72.3%	± 1.3	4.7%	± 0.8
With own children under 6 years	6,400	± 388	68.5%	± 4.1	63.6%	± 4.0	7.2%	± 2.2
<b>EDUCATIONAL ATTAINMENT</b>								
<b>Population 25 to 64 years</b>	81,254	± 211	80.2%	± 0.9	75.7%	± 0.9	5.4%	± 0.7
Less than high school graduate	6,435	± 571	59.9%	± 4.7	50.0%	± 5.0	16.5%	± 4.2
High school graduate (includes equivalency)	23,611	± 1,079	75.9%	± 1.9	70.1%	± 2.0	7.7%	± 1.4
Some college or associate's degree	26,095	± 940	83.1%	± 1.4	78.7%	± 1.6	4.7%	± 1.0
Bachelor's degree or higher	25,113	± 963	86.5%	± 1.3	84.3%	± 1.4	2.3%	± 0.6

Table formula:           **LABOR FORCE** = # EMPLOYED + # UNEMPLOYED  
                               **% IN LABOR FORCE** = LABOR FORCE / TOTAL \* 100%  
                               **% EMPLOYED** = # EMPLOYED / TOTAL \* 100%  
                               **UNEMPLOYMENT RATE** = # UNEMPLOYED / LABOR FORCE \* 100%

Source: 2007-2011 American Community Survey

## 9.2 Annual unemployment rate

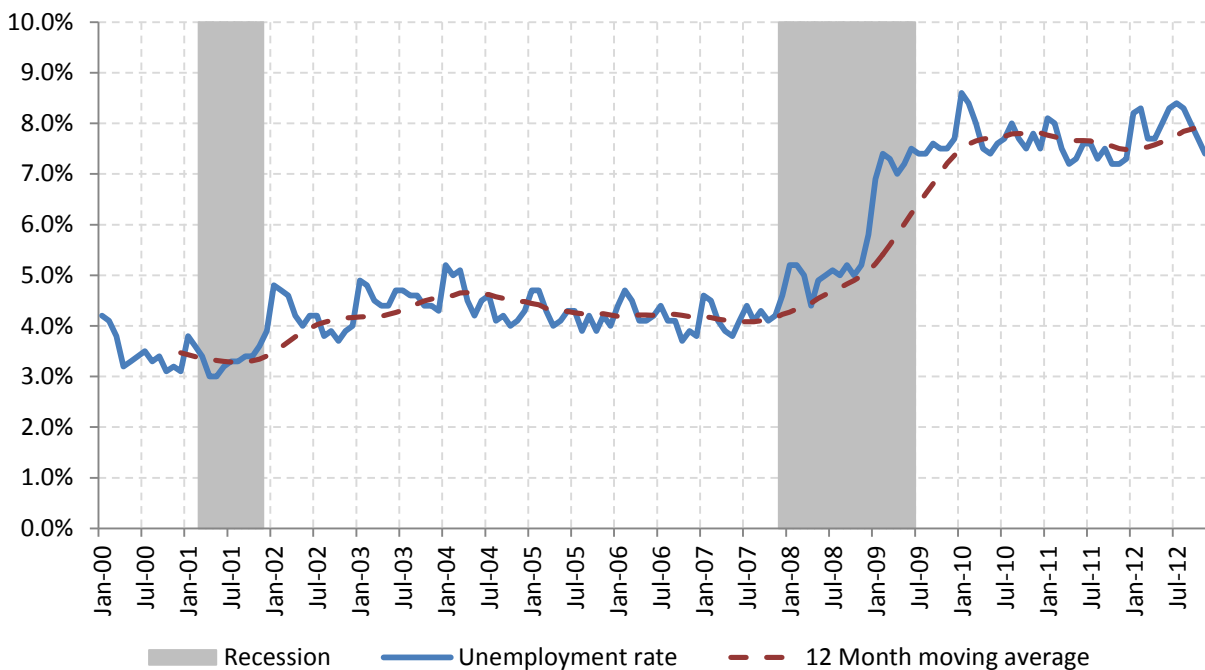
Annual unemployment rate, Schenectady County and New York State



Source: Bureau Labor Statistics (BLS)

## 9.3 Monthly unemployment rate

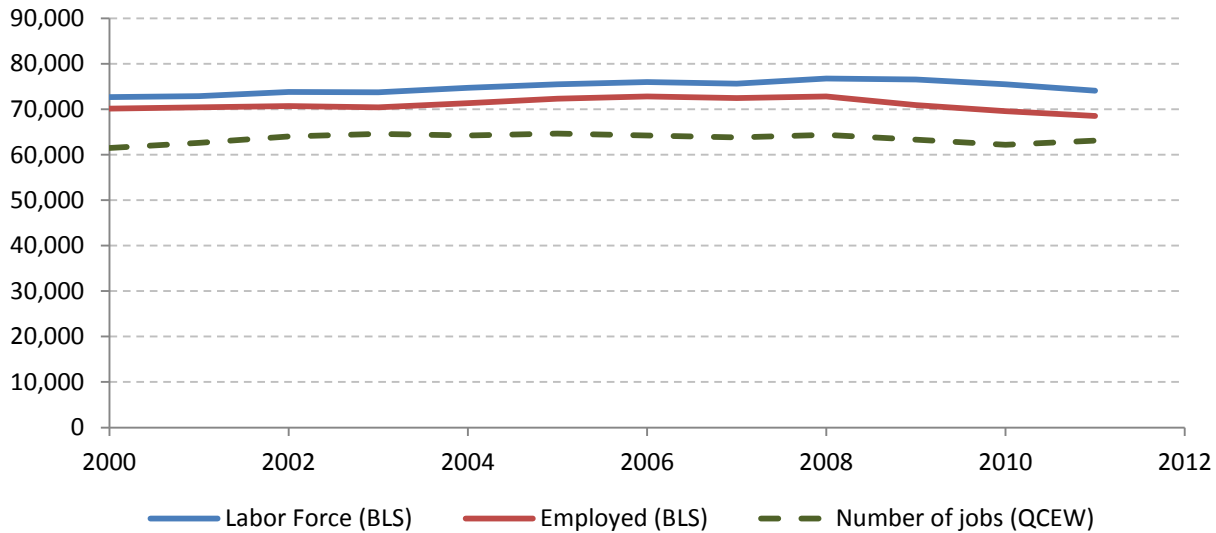
Monthly unemployment rate, Schenectady County



Source: Bureau Labor Statistics (BLS)

## 9.4 Employment and number of jobs

**Labor force, number of employed workers and number of jobs  
Schenectady County**



Source: Bureau Labor Statistics (BLS) and NY Department of Labor - Quarterly Census of Employment and Wages (QCEW) – annual averages

## 9.5 Class of worker

					Median earnings (\$)		
		Total	%Male	%Female	Total	Male	Female
Civilian employed population 16 years and over	Estimate	73,941	50.5%	49.5%	35,137	41,301	29,506
	Margin of error	± 1,005	± 0.7	± 0.7	± 898	± 1,203	± 1,234
Private for-profit wage and salary workers:	Estimate	47,060	55.5%	44.5%	31,663	38,133	25,743
	Margin of error	± 1,154	± 1.2	± 1.2	± 921	± 1,903	± 888
Employee of private company workers	Estimate	45,712	54.9%	45.1%	31,354	37,821	25,610
	Margin of error	± 1,159	± 1.2	± 1.2	± 897	± 1,778	± 885
Self-employed in own incorporated business workers	Estimate	1,348	75.7%	24.3%	50,552	51,149	47,625
	Margin of error	± 220	± 6.8	± 6.8	± 7,241	± 7,986	± 12,614
Private not-for-profit wage and salary workers	Estimate	8,211	28.7%	71.3%	36,306	46,731	33,345
	Margin of error	± 538	± 3.1	± 3.1	± 1,937	± 5,648	± 3,171
Local government workers	Estimate	6,247	43.5%	56.5%	41,810	47,445	36,478
	Margin of error	± 516	± 3.2	± 3.2	± 2,837	± 6,190	± 2,690
State government workers	Estimate	7,284	43.9%	56.1%	51,458	61,250	44,571
	Margin of error	± 512	± 3.2	± 3.2	± 2,490	± 3,527	± 3,008
Federal government workers	Estimate	1,321	57.7%	42.3%	56,399	61,404	52,523
	Margin of error	± 225	± 9.4	± 9.4	± 1,976	± 5,203	± 4,884
Self-employed in own not incorporated business workers and unpaid family workers	Estimate	3,818	57.3%	42.7%	21,754	26,676	14,663
	Margin of error	± 521	± 4.3	± 4.3	± 1,852	± 3,406	± 4,074

Source: 2007-2011 American Community Survey

## 9.6 Jobs by industry sector

	Schenectady County			NY state
	2011	Change since 2006	% of total	% of total
<b>All NAICS Sectors</b>	62,890	-2.6%	100.0%	100.0%
Agriculture, Forestry, Fishing and Hunting	40	-20.0%	0.1%	0.3%
Mining, Quarrying, and Oil and Gas Extraction	138	-6.8%	0.2%	0.1%
Utilities	124	19.2%	0.2%	0.5%
Construction	1,883	-13.8%	3.0%	3.5%
Manufacturing	5,622	-9.0%	8.9%	5.5%
Wholesale Trade	1,412	-16.0%	2.2%	4.0%
Retail Trade	7,020	-13.3%	11.2%	10.5%
Transportation and Warehousing	2,362	14.7%	3.8%	3.4%
Information	1,301	16.6%	2.1%	3.3%
Finance and Insurance	1,889	1.5%	3.0%	6.0%
Real Estate and Rental and Leasing	407	-13.2%	0.6%	2.3%
Professional, Scientific, and Technical Services	6,908	-4.5%	11.0%	6.9%
Management of Companies and Enterprises	1,419	-18.3%	2.3%	1.6%
Administrative and Support and Waste Management and Remediation Services	1,955	-4.2%	3.1%	5.2%
Educational Services	6,525	-2.9%	10.4%	10.8%
Health Care and Social Assistance	14,196	5.4%	22.6%	17.0%
Arts, Entertainment, and Recreation	734	76.4%	1.2%	1.9%
Accommodation and Food Services	3,819	16.4%	6.1%	7.3%
Other Services (except Public Administration)	1,737	-22.6%	2.8%	3.9%
Public Administration	3,400	-1.2%	5.4%	5.8%

Source: U.S. Census Bureau - Public Use Quarterly Workforce Indicators (QWI) – annual averages

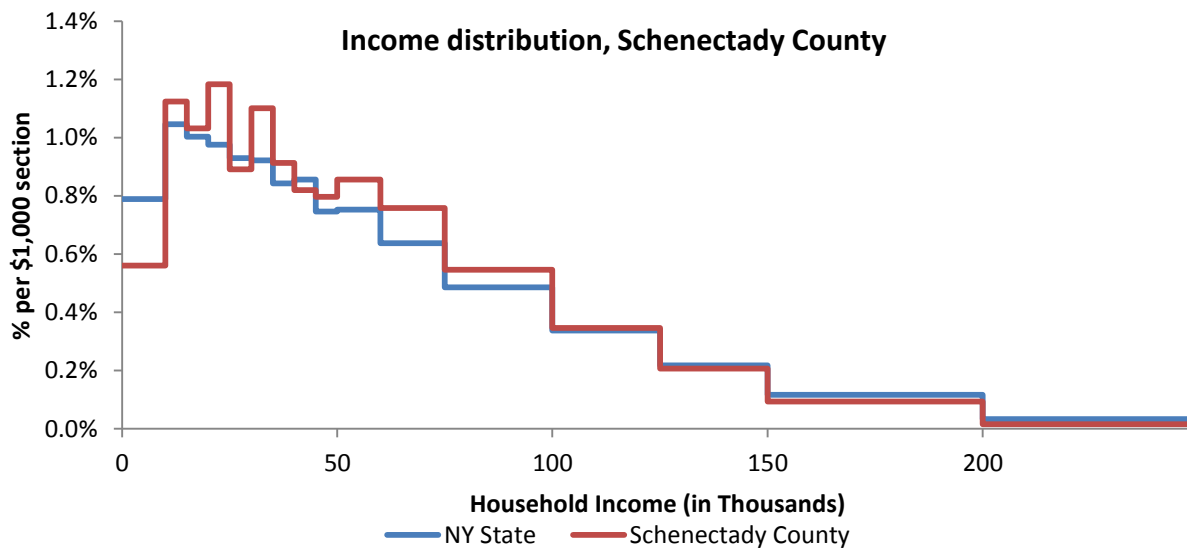


## 10 Household Income

### 10.1 Distribution

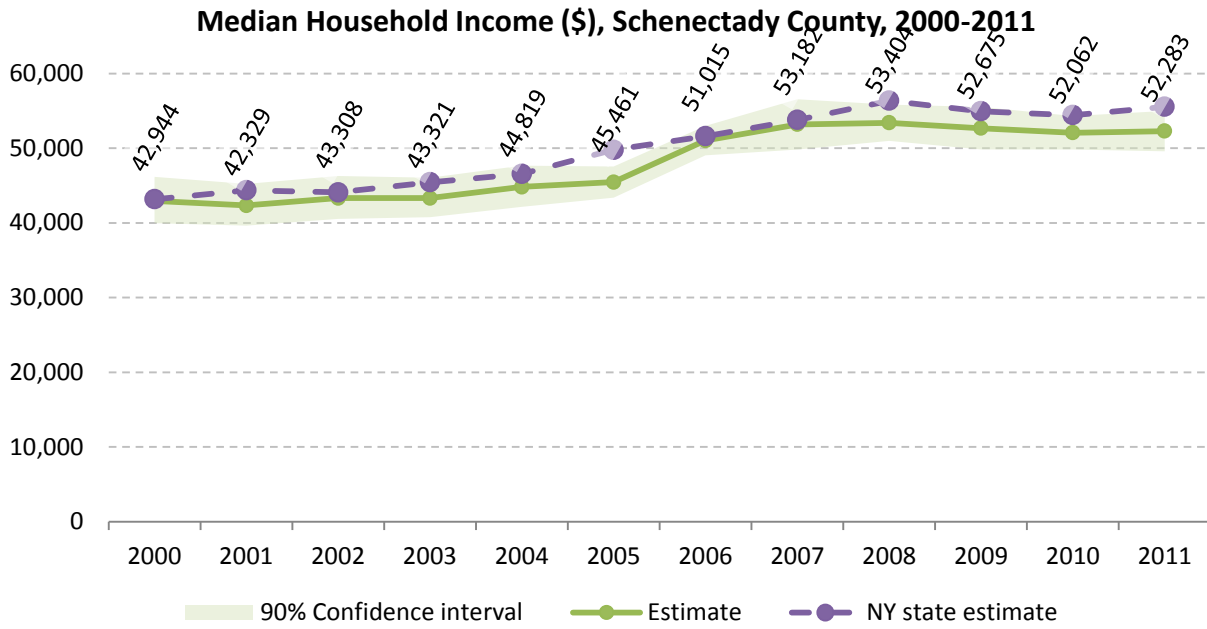
	Estimate	Margin of error	Interval width (in \$1,000)	Est. per \$1,000 section
<b>Total:</b>	58,203	± 631		
Less than \$10,000	3,263	± 349	10	326.3
\$10,000 to \$14,999	3,270	± 405	5	654.0
\$15,000 to \$19,999	3,004	± 320	5	600.8
\$20,000 to \$24,999	3,445	± 336	5	689.0
\$25,000 to \$29,999	2,594	± 318	5	518.8
\$30,000 to \$34,999	3,204	± 364	5	640.8
\$35,000 to \$39,999	2,656	± 329	5	531.2
\$40,000 to \$44,999	2,387	± 293	5	477.4
\$45,000 to \$49,999	2,318	± 321	5	463.6
\$50,000 to \$59,999	4,982	± 419	10	498.2
\$60,000 to \$74,999	6,617	± 424	15	441.1
\$75,000 to \$99,999	7,947	± 445	25	317.9
\$100,000 to \$124,999	5,044	± 357	25	201.8
\$125,000 to \$149,999	3,006	± 328	25	120.2
\$150,000 to \$199,999	2,709	± 318	50	54.2
\$200,000 or more	1,757	± 227	-	-

Source: 2007-2011 American Community Survey



Source: 2007-2011 American Community Survey

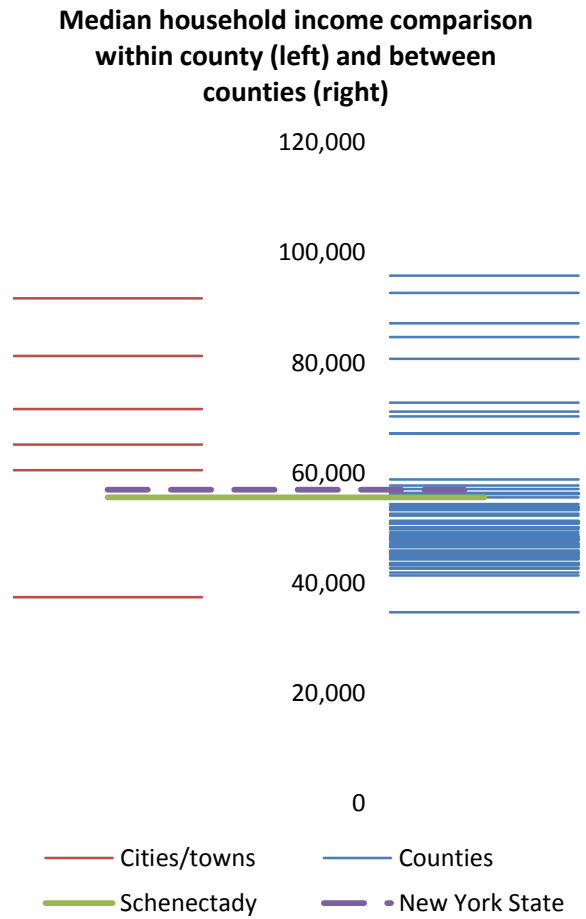
10.2 Median household income: Trends over time



Source: Small Area Income and Poverty Estimates (SAIPE)

**10.3 Median household income: Comparison between areas**

MEDIAN HOUSEHOLD INCOME (\$)		
	Estimate	Margin of error
New York State	56,951	± 190
Schenectady County	55,587	± 1,298
<b>Cities</b>		
Schenectady	37,436	± 1,679
<b>Towns</b>		
Duanesburg	81,284	± 10,927
Glenville	65,159	± 2,268
Niskayuna	91,722	± 3,924
Princ	71,625	± 17,982
Rotterdam	60,507	± 2,140



Source: 2007-2011 American Community Survey

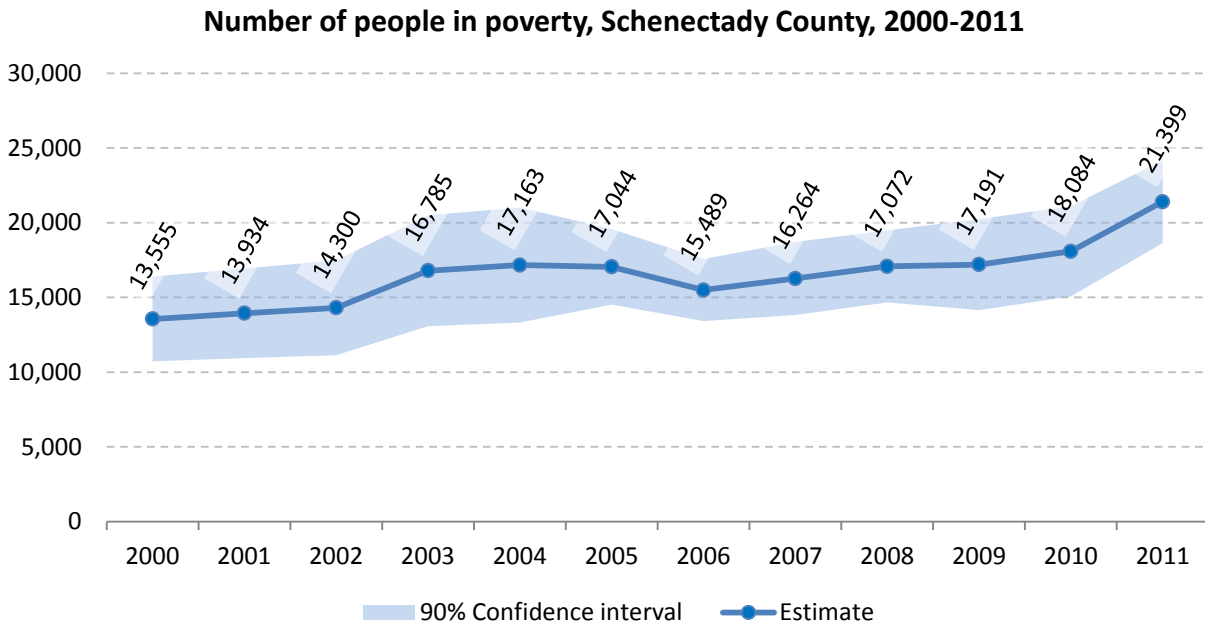
## 11 Poverty

### 11.1 Poverty characteristics

	TOTAL		BELOW POVERTY LEVEL		PERCENT BELOW POVERTY LEVEL	
	Estimate	Margin of error	Estimate	Margin of error	Estimate	Margin of error
<b>Population for whom poverty status is determined</b>	149,883	± 642	17,914	± 1,321	12.0%	± 0.9
<b>AGE</b>						
Under 18 years	35,014	± 165	6,591	± 714	18.8%	± 2.0
Related children under 18 years	34,928	± 171	6,505	± 715	18.6%	± 2.0
18 to 64 years	92,731	± 567	9,777	± 830	10.5%	± 0.9
65 years and over	22,138	± 228	1,546	± 254	7.0%	± 1.1
<b>SEX</b>						
Male	72,894	± 448	8,323	± 790	11.4%	± 1.1
Female	76,989	± 414	9,591	± 773	12.5%	± 1.0
<b>RACE AND HISPANIC OR LATINO ORIGIN</b>						
One race	146,191	± 756	16,979	± 1,249	11.6%	± 0.8
White	121,213	± 950	10,363	± 1,071	8.5%	± 0.9
Black or African American	14,392	± 773	4,305	± 692	29.9%	± 4.4
American Indian and Alaska Native	655	± 103	201	± 101	30.7%	± 14.7
Asian	5,424	± 365	793	± 301	14.6%	± 5.4
Hispanic or Latino origin (of any race)	8,066	± 190	3,023	± 479	37.5%	± 5.9
White alone, not Hispanic or Latino	116,533	± 682	8,669	± 892	7.4%	± 0.8
<b>EDUCATIONAL ATTAINMENT</b>						
<b>Population 25 years and over</b>	103,058	± 355	9,421	± 727	9.1%	± 0.7
Less than high school graduate	9,858	± 725	2,755	± 436	27.9%	± 3.6
High school graduate (includes equivalency)	32,713	± 1,157	3,870	± 443	11.8%	± 1.3
Some college, associate's degree	30,673	± 988	2,176	± 275	7.1%	± 0.9
Bachelor's degree or higher	29,814	± 1,035	620	± 176	2.1%	± 0.6
<b>EMPLOYMENT STATUS</b>						
<b>Civilian labor force 16 years and over</b>	78,377	± 944	5,033	± 659	6.4%	± 0.8
Employed	73,177	± 1,012	3,457	± 505	4.7%	± 0.7
Male	37,113	± 701	1,556	± 354	4.2%	± 0.9
Female	36,064	± 726	1,901	± 355	5.3%	± 1.0
Unemployed	5,200	± 502	1,576	± 307	30.3%	± 5.0
Male	3,238	± 413	1,023	± 254	31.6%	± 6.0
Female	1,962	± 296	553	± 167	28.2%	± 7.7
<b>WORK EXPERIENCE IN THE PAST 12 MONTHS</b>						
<b>Population 16 years and over</b>	119,167	± 665	11,898	± 899	10.0%	± 0.7
Worked full-time, year-round	51,775	± 1,043	1,019	± 293	2.0%	± 0.6
Worked part-time or part-year	29,604	± 1,027	3,640	± 591	12.3%	± 1.8
Did not work	37,788	± 946	7,239	± 636	19.2%	± 1.5

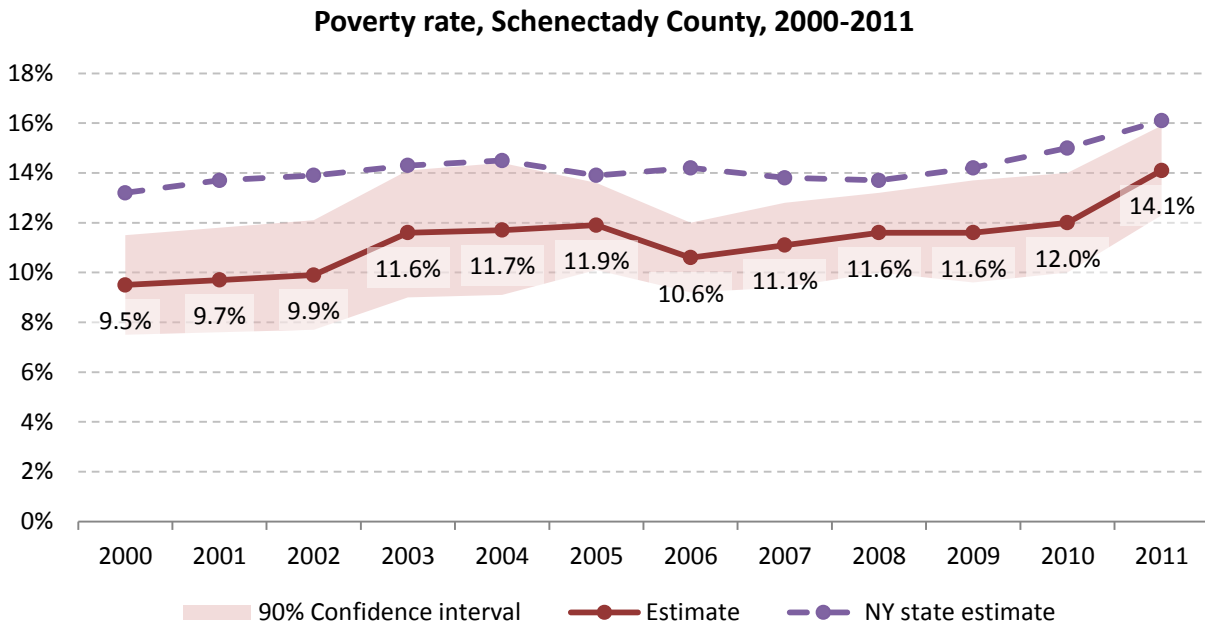
Source: 2007-2011 American Community Survey

### 11.2 Poverty: Trends over time: Count



Source: Small Area Income and Poverty Estimates (SAIPE)

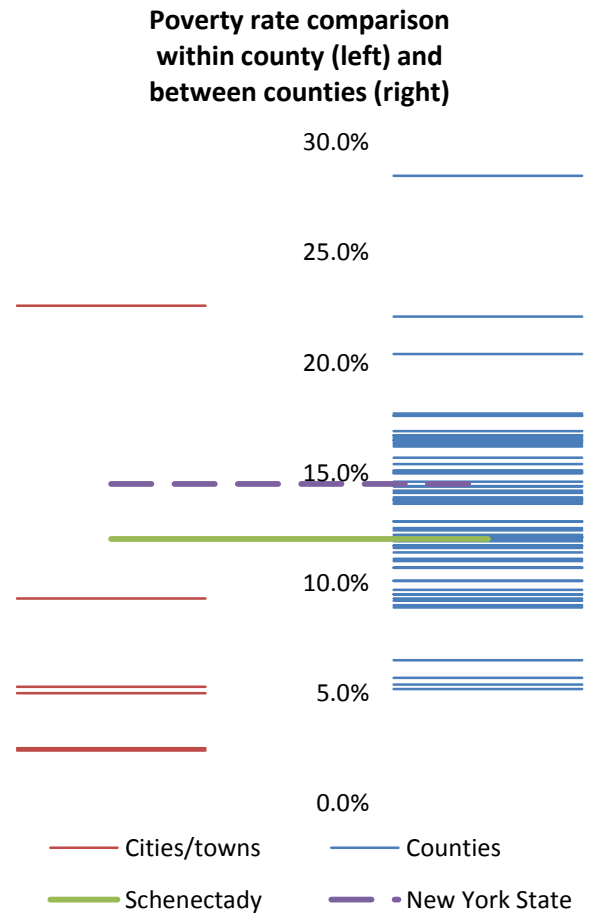
### 11.3 Poverty: Trends over time: Rate



Source: Small Area Income and Poverty Estimates (SAIPE)

### 11.4 Poverty rate: comparison between areas

Poverty Rate - All people		
	Estimate	Margin of error
New York State	14.5%	± 0.1
Schenectady County	12.0%	± 0.9
<b>Cities</b>		
Schenectady	22.6%	± 1.9
<b>Towns</b>		
Duanesburg	2.4%	± 1.6
Glenville	5.0%	± 1.1
Niskayuna	2.5%	± 1.0
Princ	9.3%	± 5.4
Rotterdam	5.3%	± 1.4

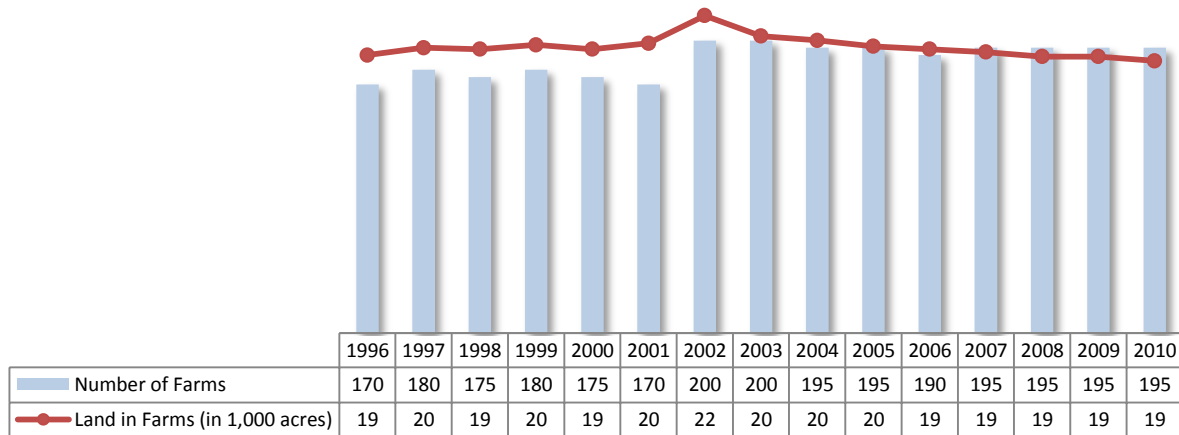


Source: 2007-2011 American Community Survey

## 12 Agriculture

### 12.1 Number of farms and land in farms

Schenectady County, 1996-2010



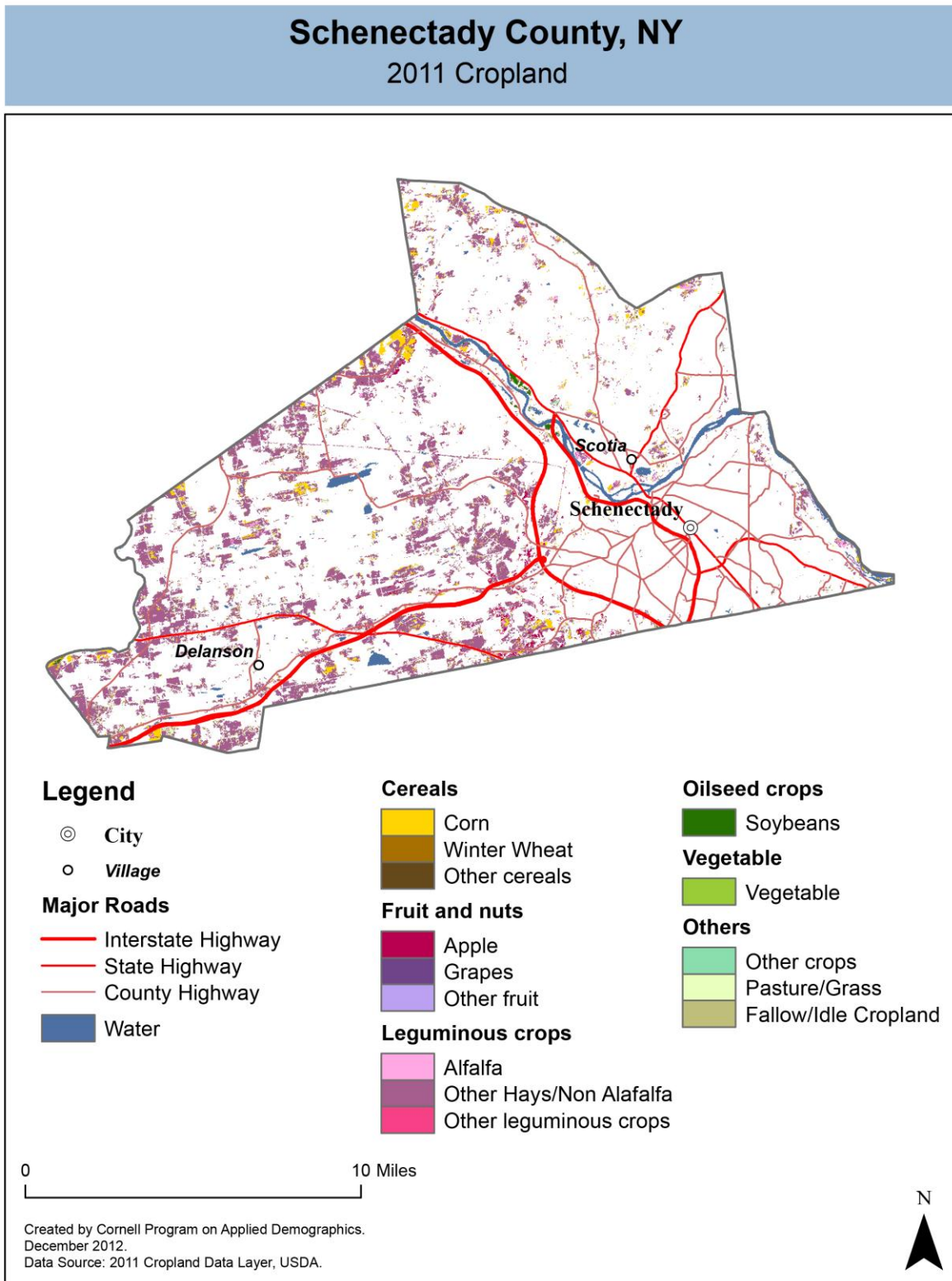
Source: National Agricultural Statistics Service – Annual Statistical bulletin

### 12.2 Farm Operator Characteristics

	Principal Operator		
	Total	Male	Female
<b>Number of farms</b>	194	139	55
Average size of farm (acres)	99	103	88
PRIMARY OCCUPATION			
Farming	98	69	29
Other	96	70	26
AGE			
Under 45	17	13	4
45 to 64 years	118	82	36
65 years and over	59	44	15
Average age (years)	59.2	59.8	58
YEARS ON PRESENT FARM			
Less than 3 years	2	2	0
3 to 4 years	7	4	3
5 to 9 years	32	19	13
10 years or more	153	114	39

Source: 2007 Agricultural Census

12.3 Map of type of crop



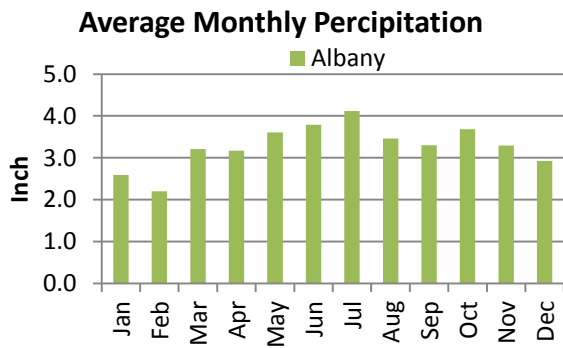
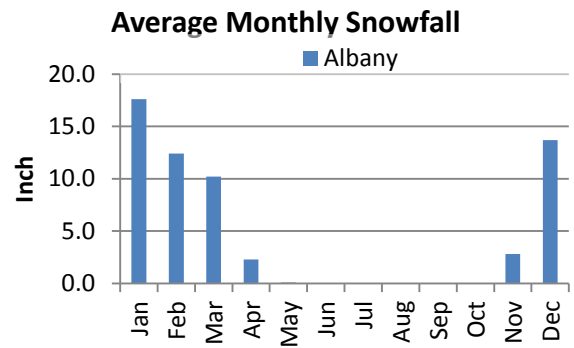
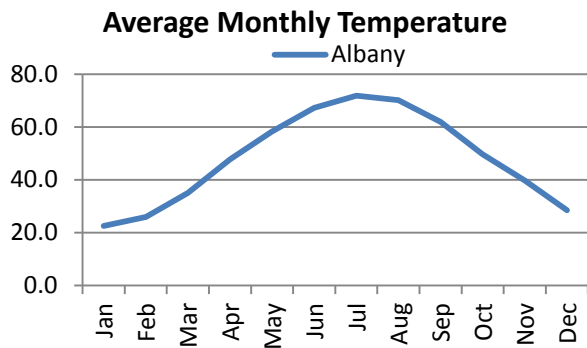
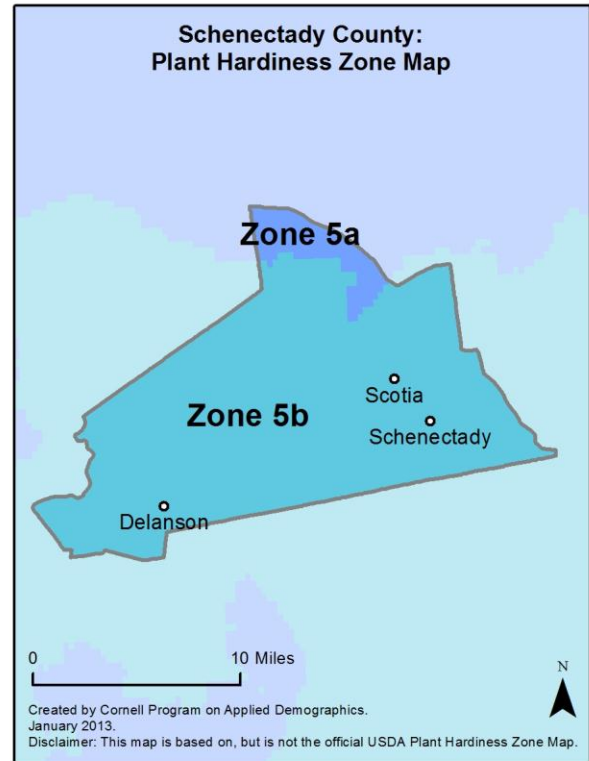
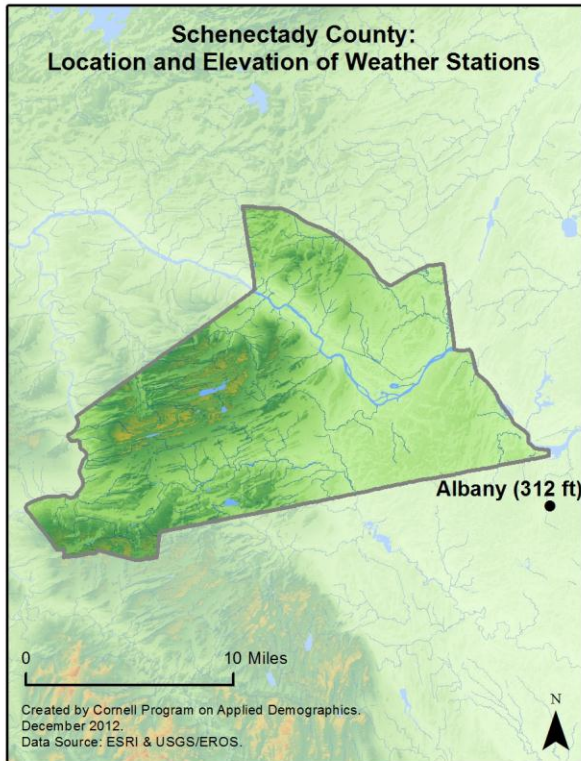


## 12.4 Estimated acreage by crop

	Acreage	%		Acreage	%
<b>Cereals</b>			<b>Fruit and nuts</b>		
Barley	1.1	0.0%	Apples	591	2.8%
Corn	1,745	8.3%	Apricots	-	
Millet	-		Blueberries	-	
Oats	4.7	0.0%	Cherries	-	
Rye	18	0.1%	Cranberries	-	
Sorghum	-		Grapes	0.7	0.0%
Speltz	-		Nectarines	-	
Spring Wheat	0.2	0.0%	Peaches	-	
Sweet Corn	14	0.1%	Plums	-	
Triticale	-		Prunes	-	
Winter Wheat	2.4	0.0%	Strawberries	-	
Dbl Crop WinWht/Corn	-		Walnuts	-	
<b>Leguminous crops</b>			<b>Beverage and spice crops</b>		
Alfalfa	850	4.0%	Herbs	-	
Other Hay/Non Alfalfa	15,470	73.5%	Peppers	-	
Dry Beans	0.2	0.0%	<b>Trees</b>		
Peas	-		Christmas Trees	1.8	0.0%
Vetch	-		Other Tree Crops	-	
<b>Oilseed crops</b>			<b>Other crops</b>		
Soybeans	115	0.5%	Tobacco	-	
Sunflower	-		Misc Veggies & Fruits	-	
<b>Sugar crops</b>			Clover/Wildflowers	-	
Sugarbeets	-		Sod/Grass Seed	-	
<b>Root/tuber crops with high starch or inulin content</b>			Switchgrass	-	
Potatoes	0.2	0.0%	Dbl Crop Soybeans/Oats	-	
<b>Vegetables and melons</b>			Dbl Crop WinWht/Soybeans	-	
Asparagus	-		Other Crops	25	0.1%
Broccoli	-		<b>Pasture/Grass</b>		
Cabbage	-		<b>Fallow/Idle Cropland</b>		
Carrots	-			937	4.5%
Eggplants	-				
Onions	1.1	0.0%			
Pumpkins	-				
Squash	0.2	0.0%			
Tomatoes	-				
Turnips	-				

Source: National Agricultural Statistics Service - Cropland Data Layer 2011

13 Climate



**Average length of freeze-free season**

	Last day of frost	First day of frost	Season length
Albany	May 3	October 8	157

Source: NOAA, Northeast Regional Climate Center at Cornell University. Averages 1981-2010

## 14 Glossary

**American Community Survey (ACS)** - The American Community Survey is an ongoing survey of the population that provides data every year on a variety of social and economic characteristics—age, sex, race, family and relationships, income and benefits, health insurance, education, veteran status, disabilities, where you work and how you get there, where you live and how much you pay for some essentials. The ACS replaced the information previously gathered by what was known as the “long form” of the decennial censuses. The ACS provides communities, companies and other institutions with current information they need to plan investments and services. Information from the survey generates data that help determine how more than \$400 billion in federal and state funds are distributed each year. Every estimate presented in the American Community Survey, as in other surveys, has an uncertainty associated with it. Often the magnitude of that uncertainty is expressed as the Margin of Error.

**Confidence Interval (CI)** - indication of the degree of uncertainty about a sample estimates. Confidence intervals have been traditionally reported at the 90, 95 and 99 percent levels. A 90 percent confidence interval can be interpreted, for example, roughly as providing 90 percent certainty that the interval defined by the upper and lower bounds contain the true value of the characteristic. If a Margin of Error is given, the lower bound of the confidence interval is equal to the estimate minus the Margin of Error and the upper bound is equal to the estimate plus the Margin of Error. (See further, Margin of Error definition below.)

**County subdivision or Minor Civil Division (MCD)** - The Census Bureau geography for primary administrative units below the county level in New York is collectively referred to as county subdivisions or minor civil divisions. These include towns, cities and Indian Reservations.

**Decennial Census** - the Census of the population and housing taken every 10 years in the United States, at the start of each decade, since 1790.

**Employed** – either “at work” or “with a job, but not at work”.

**Group Quarters Population** - all U.S. residents who live in group living facilities including correctional institutions, juvenile facilities, skilled nursing facilities, college residence halls, military barracks, group homes, and workers' dormitories.

**Household Population** - all U.S. residents who live in housing units such as single family homes, townhouses, apartments, and mobile homes.

**Intercensal Population Estimates** - estimates produced for the years between two decennial censuses when both the beginning and ending populations are known. They are produced once a decade by adjusting the existing time series of postcensal estimates for the entire decade to smooth the transition from one decennial census count to the next. They differ from the postcensal estimates that are released annually because the difference between the April 1 postcensal estimate and April 1 census count for the end of the decade is redistributed across the estimates for that decade. For dates when both postcensal and intercensal estimates are available, intercensal estimates are preferred.

**Labor Force** - consists of people classified as employed or unemployed.

**Margin of Error (MOE)** - a measure of the precision of an estimate at a given level of confidence. The confidence level of a margin of error indicates the likelihood that the difference between the population value (which you

would get if you could measure the whole population instead of a sample) and the estimate is less than or equal to the margin of error. The range from the estimate minus the margin of error to the estimate plus the margin of error is called the confidence interval. All ACS estimates are published with their margins of error at the 90 percent confidence level. Margins of error are useful in assessing the reliability of estimates and whether differences between estimates are significant.

**NAICS** - The North American Industry Classification System or NAICS is used by business and government to classify business establishments according to type of economic activity (process of production).

**Numeric Population Change** - difference between the population of an area at the beginning and end of a time period. It is computed by taking the difference between the population at one point in time (t1) and some future time (t2).

**Percent Population Change** - difference between the population of an area at the beginning and end of a time period, expressed as a percentage of the beginning population. It is computed by dividing the population change (t2 - t1) by t1 and multiplying the result by 100.

**Population Estimates** - The calculated number of people living in an area as of a specified point in time, usually July 1st. The estimated population is calculated using a component of change model that incorporates information on natural increase (births, deaths) and net migration (net domestic migration, net international migration) that has occurred in an area since the latest decennial census. A procedure for estimating the current population using a procedure involving a "base population" value at time t -1, adding to that the births during the interval t-1 to t, subtracting the deaths during that interval t-1 to t, and then adding the net domestic and net international migration that occurred during that interval.

**Population Density** - Total number of people per areal unit like a square mile or square kilometer.

**Population Pyramids** - A graphical way of portraying a population's age and sex composition at a given slice in time. The first horizontal bar, constituting the base of the graph, is the youngest age group (typically 0-4) with the number of males in that age group on the left and the number of females in that age group on the right. On top of that age group is another horizontal bar for the next age group (e.g. 5-9) and so forth with the top bar typically for those aged 75 and over. In a population with lots of births and deaths, the shape typically forms a pyramid with a broad base and a narrow top. It is one of the most basic ways to understand population change over time as well as between different geographic units of a similar status (e.g. counties).

**Postcensal Estimates** - estimates produced for the years after a decennial census when only the beginning population is known. They are produced and revised each year, targeted to July 1 of that year.

**Projection** - estimated population at some future time based on assumptions about births, deaths, migration, and ages.

**Race/Ethnicity** - the Census Bureau collects racial data in accordance with guidelines provided by the U.S. Office of Management and Budget (OMB), and these data are based on self-identification. The racial categories included in the census questionnaire generally reflect a social definition of race recognized in this country and not an attempt to define race biologically, anthropologically, or genetically. In addition, it is recognized that the categories of the race item include racial and national origin or sociocultural groups. People may choose to report more than one race to indicate their racial mixture, such as "American Indian" and "White." People who identify their origin as Hispanic, Latino, or Spanish may be of any race. OMB requires five minimum categories: White, Black or African American, American Indian or Alaska Native, Asian, and Native Hawaiian or Other Pacific

Islander. Hispanics may be classified as white or black. So we generally separate them out as an ethnic group first.

**Unemployed** – Not employed, but actively looking for work and available to accept a job.

**Unemployment rate** – Fraction of the Labor Force that is unemployed.

**Urban Area** – A densely settled area with at least 2,500 people. If the total number of people is less than 50,000 the Census Bureau calls it an Urban Cluster, otherwise an Urbanized Area.

**Vintage** - each year, the U.S. Census Bureau produces and publishes estimates of the population for each state and county, as well as the nation as a whole. These are called “vintages.” In producing these vintages, the Bureau utilizes administrative data from a number of sources to estimate 1) the change in population since the most recent decennial census, and 2) the population for each year since the most recent decennial census. With each annual release of population estimates (vintage), the entire time series of estimates beginning on April 1, 2010 is revised and updated.

## 15 References

Schenectady County homepage: <http://www.schenectadycounty.com/>

At Cornell:

- Cornell Cooperative Extensions (CCE)  
Home page: <http://www.cce.cornell.edu>
  - Schenectady local office: <http://counties.cce.cornell.edu/schenectady/>
- Program on Applied Demographics (PAD)  
URL: <http://pad.human.cornell.edu/>
- Community and Regional Development Institute (CaRDI)  
URL: <http://devsoc.cals.cornell.edu/cals/devsoc/outreach/cardi/index.cfm>

Data sources and background information:

- U.S. Census Bureau - general
  - QuickFacts: <http://quickfacts.census.gov/qfd/states/36/36093.html>
  - QuickLinks: <http://quickfacts.census.gov/qfd/states/36/36093lk.html>
  - American FactFinder: <http://factfinder2.census.gov>
- U.S. Census Bureau - population
  - Decennial Census
    - Background: <http://2010.census.gov/2010census/>
    - Demographic Profile: [http://factfinder2.census.gov/bkmk/table/1.0/en/DEC/10\\_SF1/SF1DP1/0500000US36093](http://factfinder2.census.gov/bkmk/table/1.0/en/DEC/10_SF1/SF1DP1/0500000US36093)
  - American Community Survey (ACS)
    - Background: <http://www.census.gov/acs/www/>
    - Social Data Profile: [http://factfinder2.census.gov/bkmk/table/1.0/en/ACS/10\\_5YR/DP02/0500000US36093](http://factfinder2.census.gov/bkmk/table/1.0/en/ACS/10_5YR/DP02/0500000US36093)
    - Economic Data Profile: [http://factfinder2.census.gov/bkmk/table/1.0/en/ACS/10\\_5YR/DP03/0500000US36093](http://factfinder2.census.gov/bkmk/table/1.0/en/ACS/10_5YR/DP03/0500000US36093)
    - Housing Data Profile: [http://factfinder2.census.gov/bkmk/table/1.0/en/ACS/10\\_5YR/DP04/0500000US36093](http://factfinder2.census.gov/bkmk/table/1.0/en/ACS/10_5YR/DP04/0500000US36093)
    - Demographics Data Profile: [http://factfinder2.census.gov/bkmk/table/1.0/en/ACS/10\\_5YR/DP05/0500000US36093](http://factfinder2.census.gov/bkmk/table/1.0/en/ACS/10_5YR/DP05/0500000US36093)
  - Population estimates: <http://www.census.gov/popest/estimates.html>
- U.S. Census Bureau – Small Area Income & Poverty Estimates (SAIPE)
  - <http://www.census.gov/did/www/saipe/>
- U.S. Census Bureau - Public Use Quarterly Workforce Indicators (QWI) – annual averages
  - <http://www2.vrdc.cornell.edu/news/data/qwi-public-use-data/>
- Bureau Labor Statistics (BLS) – Local Area Unemployment Statistics: <http://www.bls.gov/lau/>
- NY Department of Labor -
  - Labor statistics: <http://www.labor.ny.gov/stats/>
  - Quarterly Census of Employment and Wages (QCEW): <http://www.labor.ny.gov/stats/lsqcew.shtm>
- Bureau of Economic Analysis (BEA) – Local Area Personal Income and Employment: <http://bea.gov/iTable/iTable.cfm?ReqID=70&step=1>

- USDA Census of Agriculture
  - 2007
    - Home page: <http://www.agcensus.usda.gov/Publications/2007/index.php>
    - County profile: [http://www.agcensus.usda.gov/Publications/2007/Online\\_Highlights/County\\_Profiles/New\\_York/cp36093.pdf](http://www.agcensus.usda.gov/Publications/2007/Online_Highlights/County_Profiles/New_York/cp36093.pdf)
    - Race, Ethnicity and Gender Profiles: [http://www.agcensus.usda.gov/Publications/2007/Online\\_Highlights/Race\\_Ethnicity\\_and\\_Gender\\_Profiles/New\\_York/cpd36093.pdf](http://www.agcensus.usda.gov/Publications/2007/Online_Highlights/Race_Ethnicity_and_Gender_Profiles/New_York/cpd36093.pdf)
- USDA National Agricultural Statistics Service (NASS)
  - Home page: <http://www.nass.usda.gov/index.asp>
  - New York Statistical Bulletins: [http://www.nass.usda.gov/Statistics\\_by\\_State/New\\_York/Publications/Annual\\_Statistical\\_Bulletin/](http://www.nass.usda.gov/Statistics_by_State/New_York/Publications/Annual_Statistical_Bulletin/)
  - Cropland Data Layer – CropScape: <http://nassgeodata.gmu.edu/CropScape/>
- USDA Agricultural Research Service – Plant Hardness Zone Map: <http://planthardiness.ars.usda.gov/PHZMWeb/>
- NOAA, Northeast Regional Climate Center at Cornell University
  - Home page: <http://www.nrcc.cornell.edu/index.html>

Alternative sites for data retrieval:

- The Nelson A. Rockefeller Institute of Government – New York State Statistical Yearbooks [http://www.rockinst.org/nys\\_statistics/](http://www.rockinst.org/nys_statistics/)
- Headwaters Economics: Economic Profile System – Human Dimensions Toolkit <http://headwaterseconomics.org/tools/eps-hdt>
- National Historical Geographic Information System (NHGIS) <https://www.nhgis.org/>
- Social Explorer <http://www.socialexplorer.com/pub/home/home.aspx>
- Missouri Census Data Center <http://mcdc.missouri.edu/>
- DataFerret <http://dataferrett.census.gov/>
- Investigative Reporters and Editors (IRE) Census project <http://census.ire.org/>