

Rockland County Profile 2013

A collection of recent demographic, social, economic and agricultural data

Compiled by Jan Vink

Assisted by Joe Francis, Sutee Anantsuksomsri, Nij Tontisirin, Johannes Plambeck



Cornell University
Cooperative Extension



This profile is a part of a set of profiles generated for each county in New York State. The profiles were developed and generated by the Cornell Program on Applied Demographics. The work is sponsored by Cornell Cooperative Extension and promoted with webinars and workshops in coordination with the Community & Regional Development Institute.

Cornell Program on Applied Demographics:

The Program on Applied Demographics (PAD) brings skills in demographics, economics, statistics, data gathering and data analysis together to provide a variety of organizations with data, information and advice.

For more information: <http://pad.human.cornell.edu/>

Cornell Cooperative Extension:

Cornell Cooperative Extension (CCE) puts knowledge to work in pursuit of economic vitality, ecological sustainability and social well-being. We bring local experience and research based solutions together, helping New York State families and communities thrive in our rapidly changing world.

For more information: <http://cce.cornell.edu/>

Community & Regional Development Institute:

The Community & Regional Development Institute (CaRDI) supports informed decision making for residents and communities in New York State through applied research and education.

For more information: <http://cardi.cornell.edu/>

All profiles are freely downloadable as PDF documents on the PAD website:

<http://pad.human.cornell.edu/profiles/index.cfm>

Contents

Contents2

1 Reference Maps4

2 Population density and Urban Areas Map6

3 Total Population7

 3.1 Historic and projected7

 3.2 Change since previous Census7

 3.3 Annual population estimates8

 3.4 Percentage sub county change 2000-20109

4 Population by age 11

 4.1 Historic and projected population pyramids 11

 4.2 Selected age groups 12

 4.3 Median age: comparison between areas 14

5 Race 15

 5.1 Total and household population by race 15

 5.2 Race composition by age 15

6 Housing units 16

 6.1 Characteristics 16

 6.2 Historical data on number of housing units and occupancy status 17

7 Education 18

 7.1 Enrollment by level of school 18

 7.2 Enrollment by age 18

 7.3 Percentage age 18-24 enrolled in college 18

 7.4 Educational attainment 19

8 Language spoken at home 19

9 Labor Force Characteristics 20

 9.1 Labor force, employment and unemployment 20

 9.2 Annual unemployment rate 21

 9.3 Monthly unemployment rate 21

 9.4 Employment and number of jobs 22

 9.5 Class of worker 22

 9.6 Jobs by industry sector 23

10 Household Income 24

 10.1 Distribution 24

 10.2 Median household income: Trends over time 25

 10.3 Median household income: Comparison between areas 26

11 Poverty 27

 11.1 Poverty characteristics 27

 11.2 Poverty: Trends over time: Count 28

 11.3 Poverty: Trends over time: Rate 28

 11.4 Poverty rate: comparison between areas 29

12 Agriculture 30

 12.1 Number of farms and land in farms 30

 12.2 Farm Operator Characteristics 30

12.3 Map of type of crop 31

12.4 Estimated acreage by crop 32

13 Climate 33

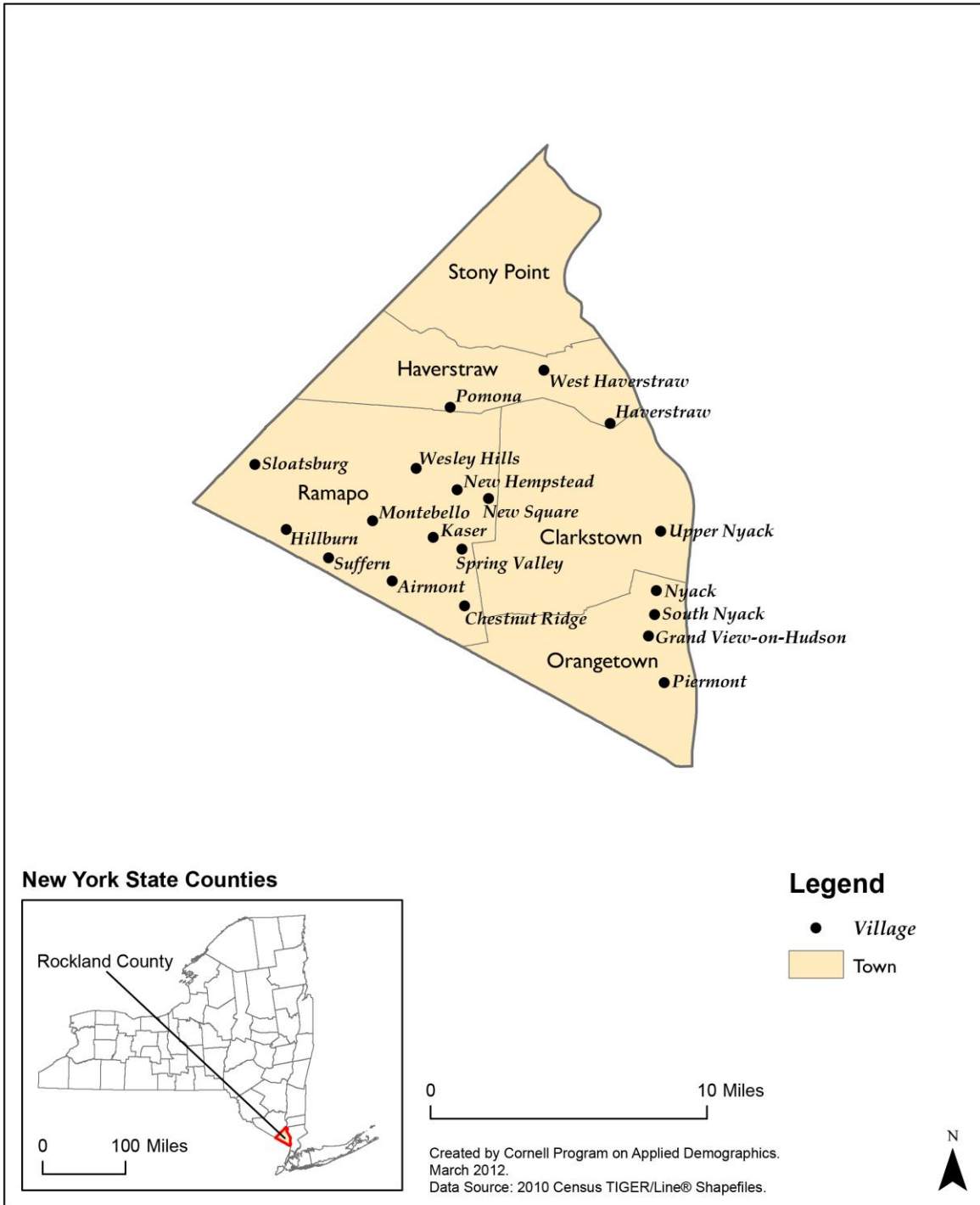
14 Glossary..... 34

15 References 37

1 Reference Maps

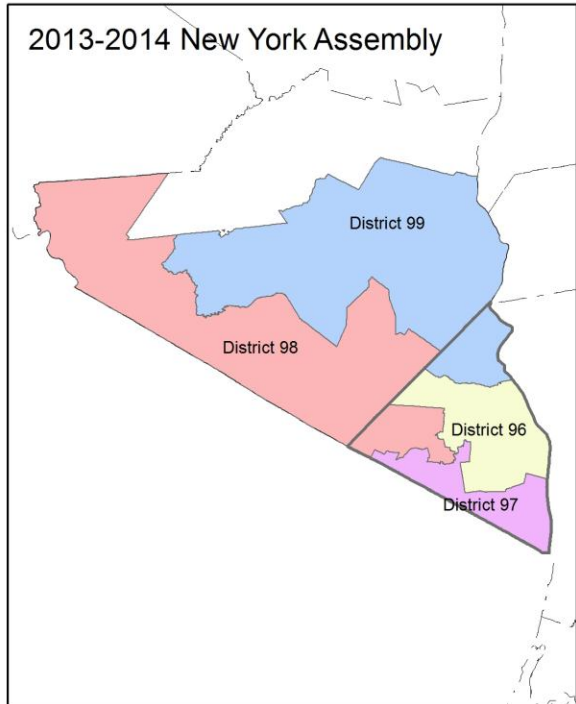
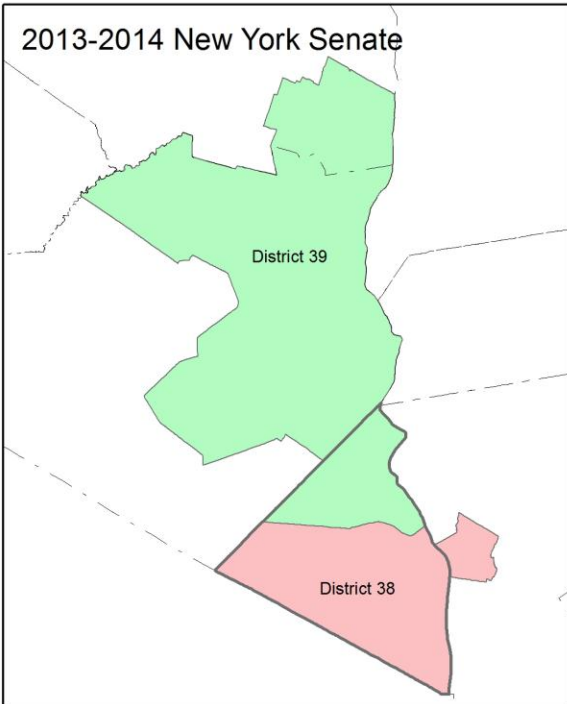
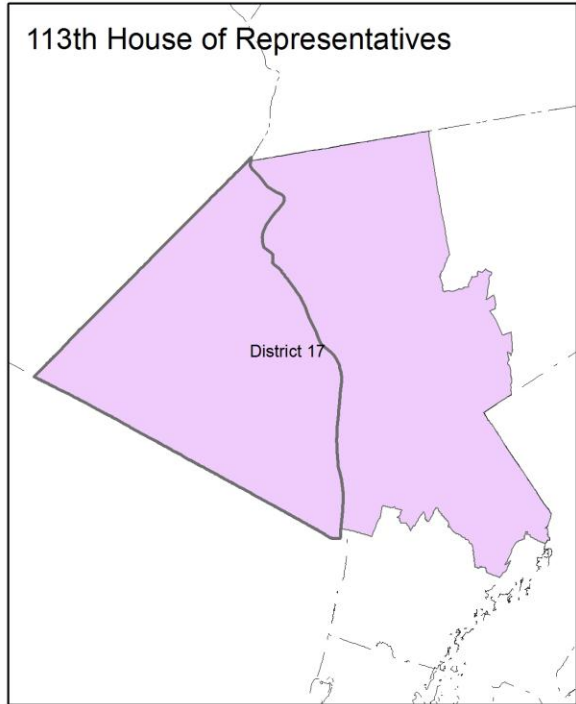
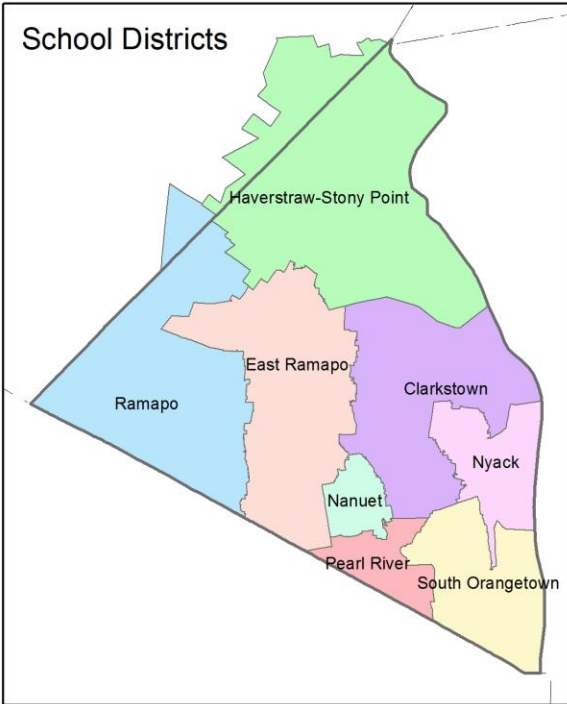
Rockland County, NY

Towns, Cities, Indian Reservations, and Incorporated Villages

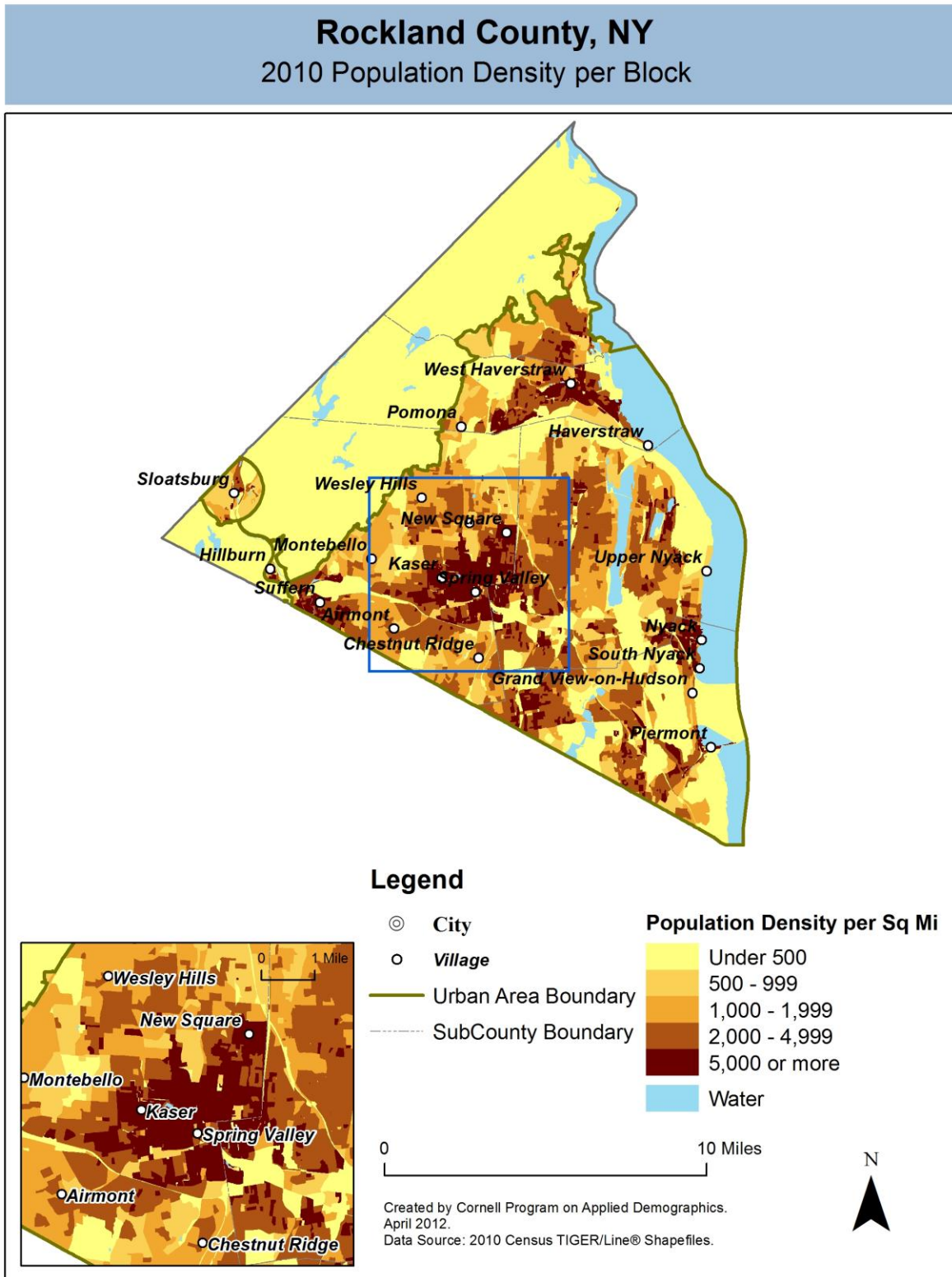


Rockland County, NY

Overlap with School and Political Districts



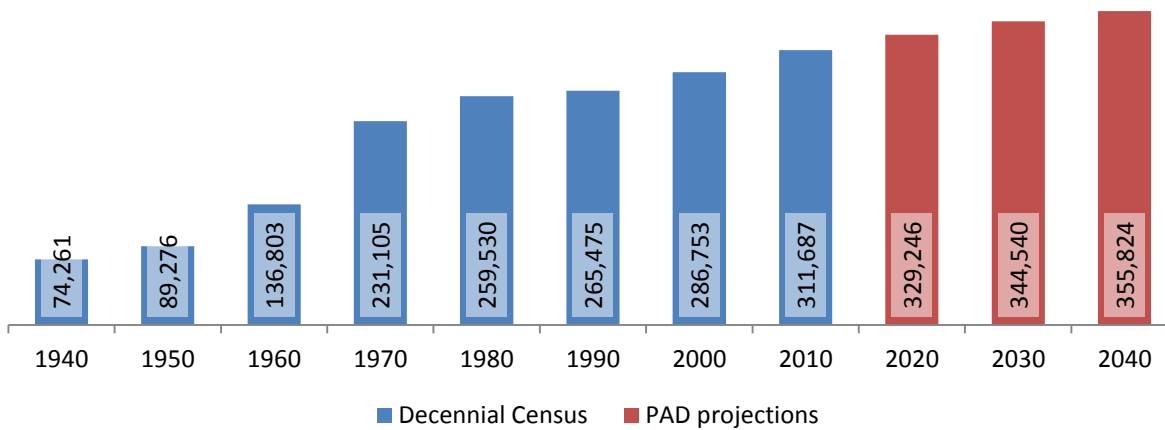
2 Population density and Urban Areas Map



3 Total Population

3.1 Historic and projected

Total population, Rockland County, 1940-2040



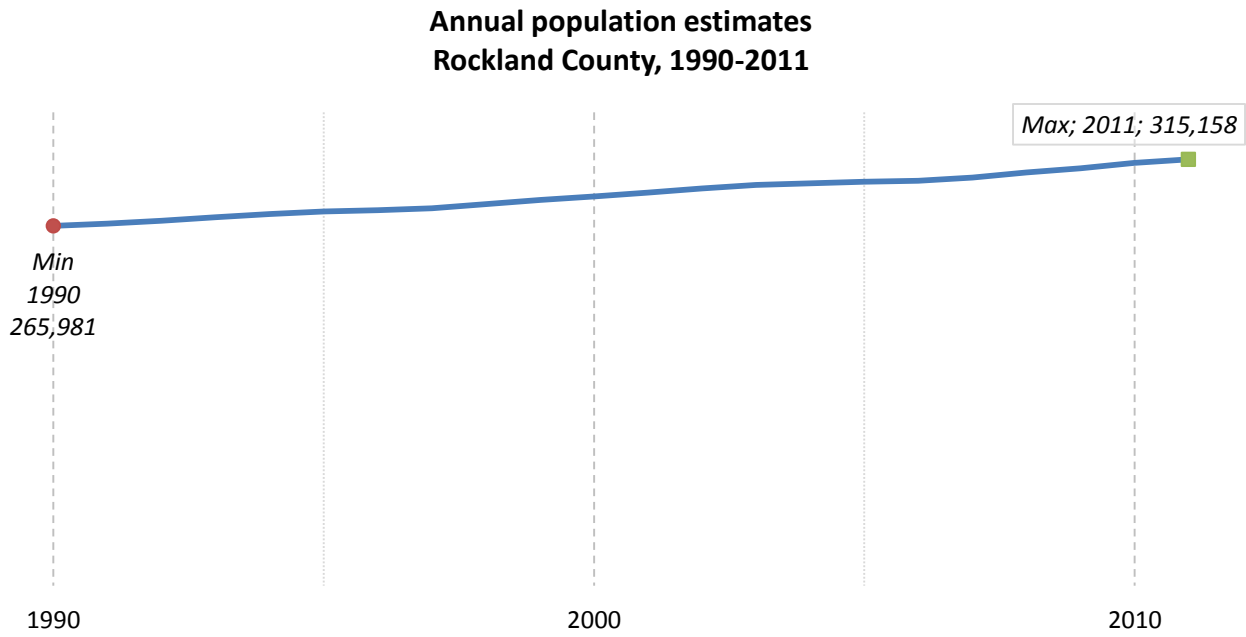
Source: 1940-2010 Decennial Census and projections by Cornell Program on Applied Demographics

3.2 Change since previous Census

	Total population	Change	
		Number	Percent
Decennial Census	1940	74,261	
	1950	89,276	15,015 20.2%
	1960	136,803	47,527 53.2%
	1970	231,105	94,302 68.9%
	1980	259,530	28,425 12.3%
	1990	265,475	5,945 2.3%
	2000	286,753	21,278 8.0%
	2010	311,687	24,934 8.7%
PAD projections	2020	329,246	17,559 5.6%
	2030	344,540	15,294 4.6%
	2040	355,824	11,284 3.3%

Source: 1940-2010 Decennial Census and projections by Cornell Program on Applied Demographics

3.3 Annual population estimates



Source: U.S. Census Bureau population estimates (1990-1999 and 2000-2009 intercensal and vintage 2011 postcensal)

3.4 Percentage sub county change 2000-2010

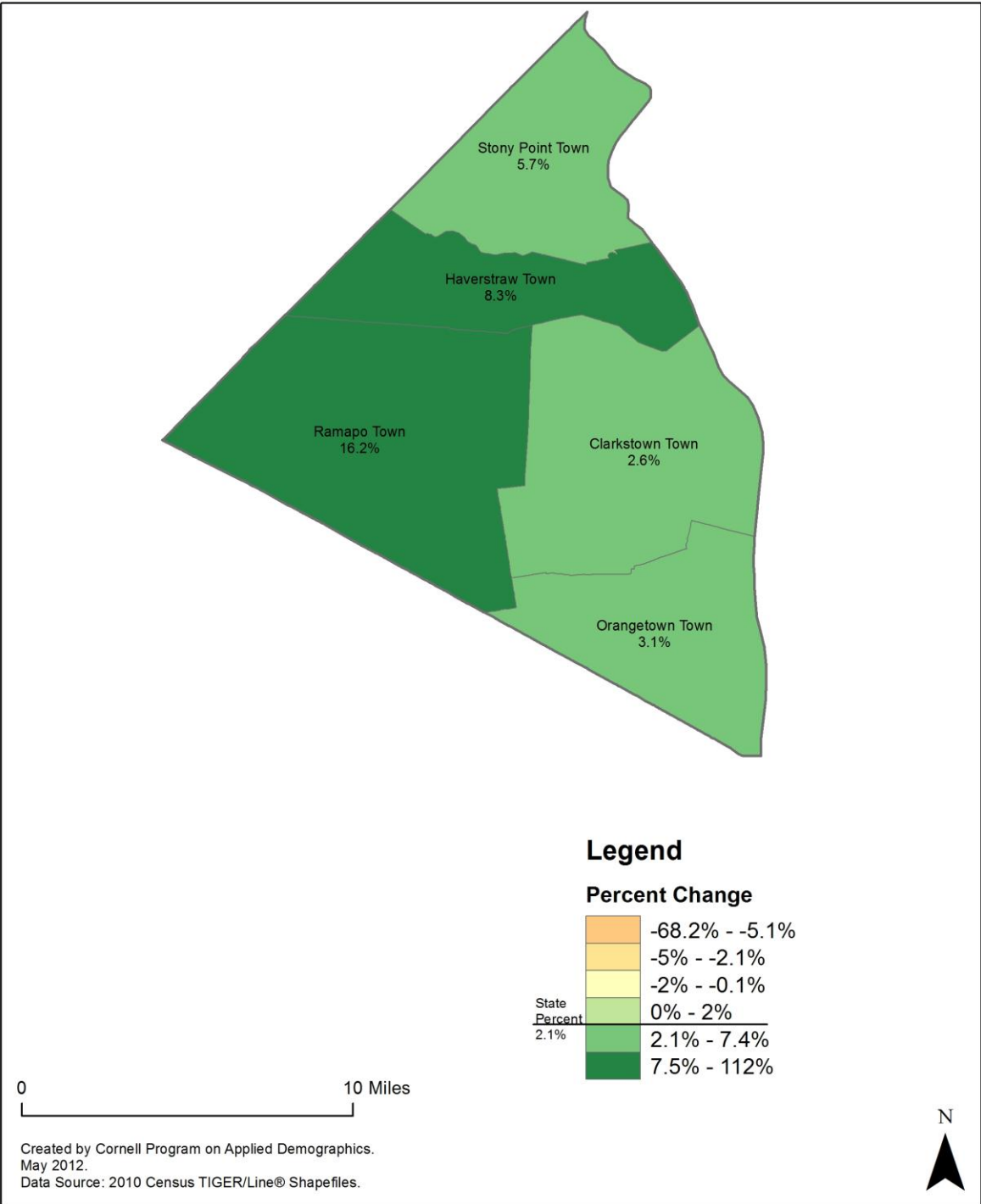
	Total Population		Difference	
	2000	2010	Count	%
New York State	18,976,821 *	19,378,102	401,281	2.1%
Rockland County	286,753	311,687	24,934	8.7%
Towns				
Clark	82,082	84,187	2,105	2.6%
Haverstraw	33,811	36,634	2,823	8.3%
Orang	47,711	49,212	1,501	3.1%
Ramapo	108,905	126,595	17,690	16.2%
Stony Point	14,244	15,059	815	5.7%

* Original counts revised through Count Question Resolution Program (CQR)

Source: U.S. Census Bureau intercensal population estimates 2000-2010

Rockland County, NY

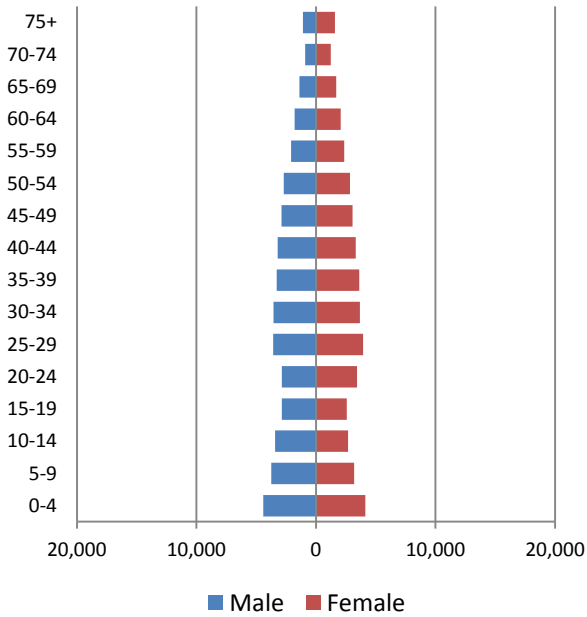
County Subdivision, Percent Change in Population 2000-2010



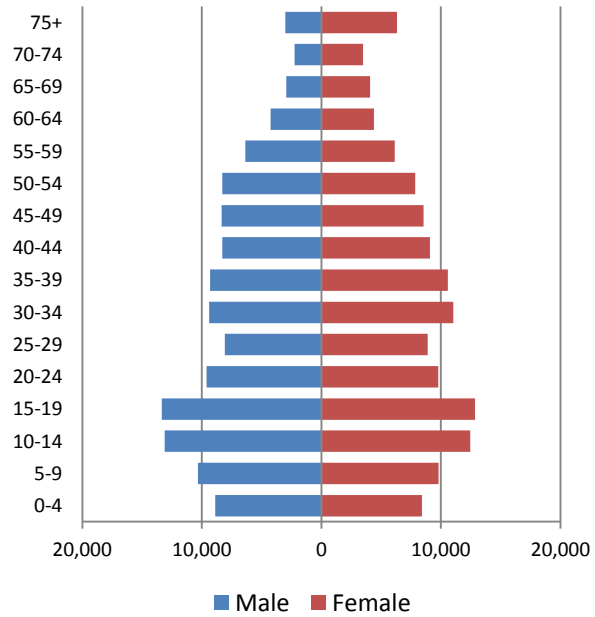
4 Population by age

4.1 Historic and projected population pyramids

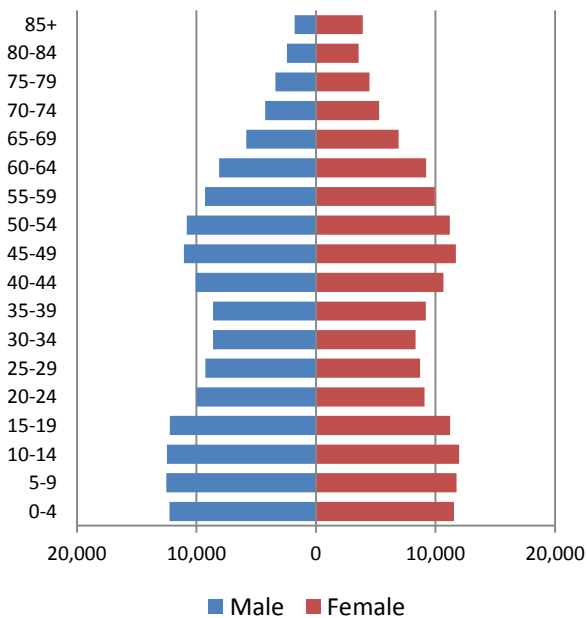
1950 Population Pyramid, Rockland County



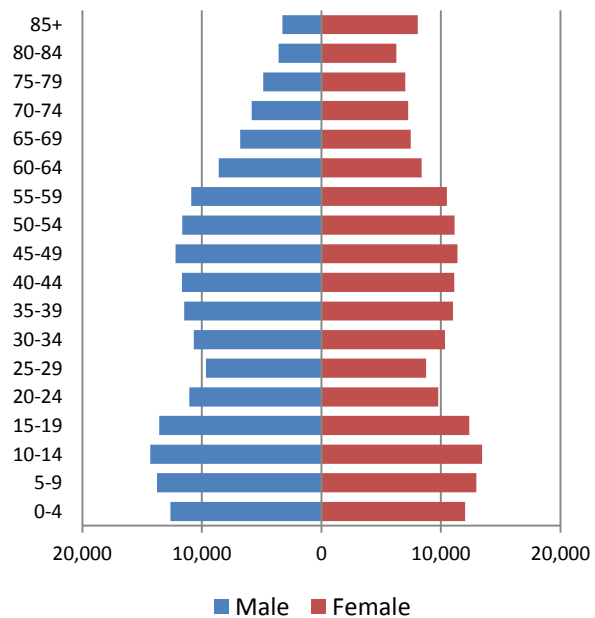
1980 Population Pyramid, Rockland County



2010 Population Pyramid, Rockland County



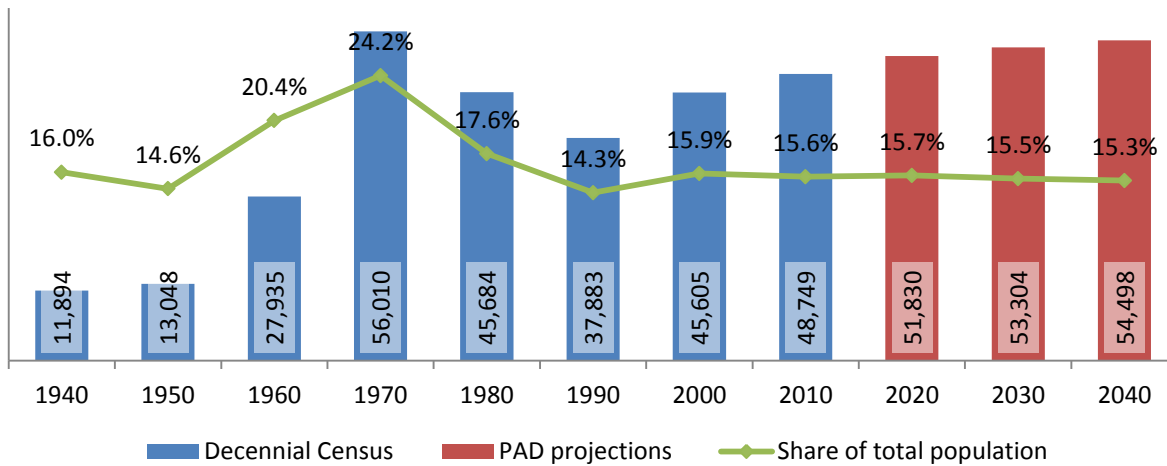
2040 Population Pyramid, Rockland County



Source: 1950, 1980, 2010 Decennial Census and projections by Cornell Program on Applied Demographics

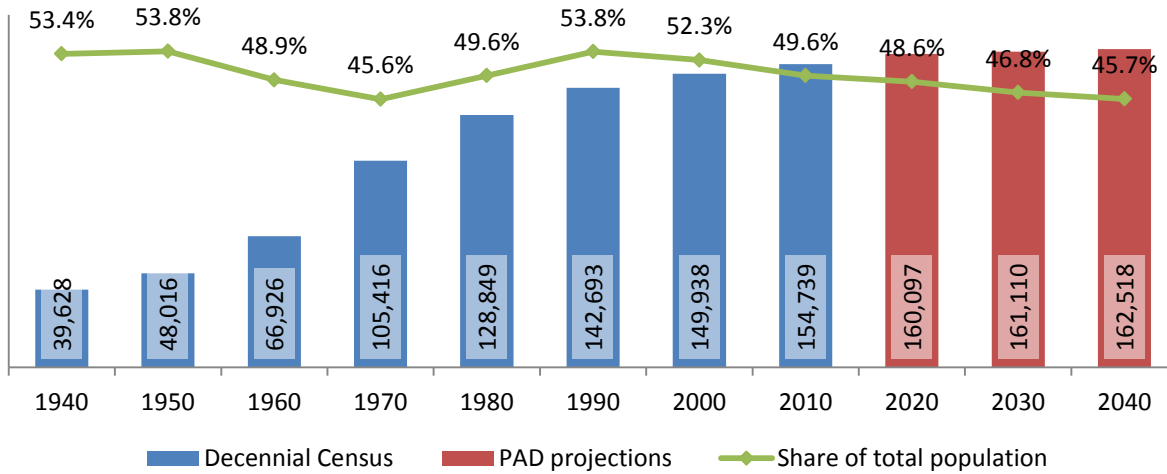
4.2 Selected age groups

Population age 5-14, Rockland County, 1940-2040



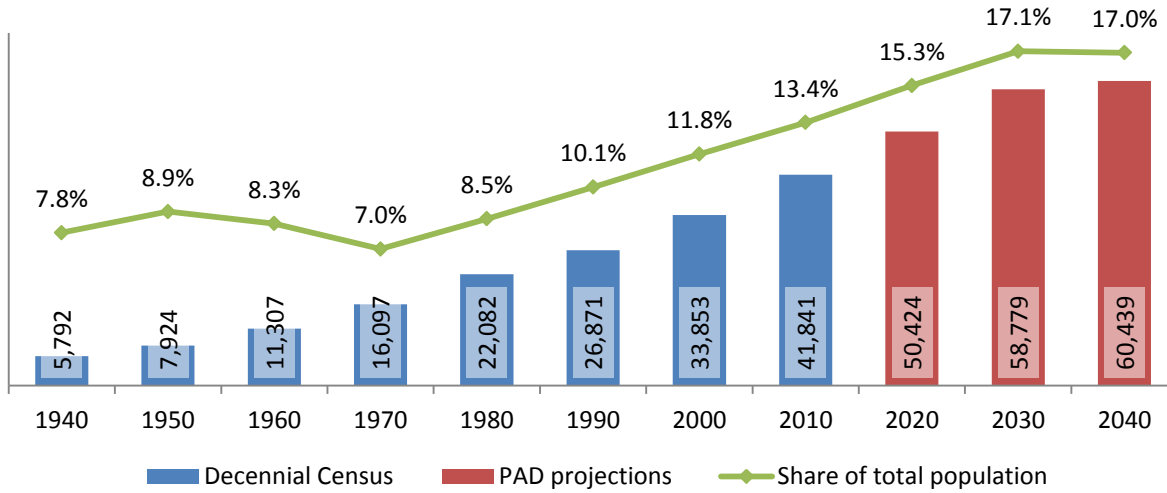
Source: 1940-2010 Decennial Census and projections by Cornell Program on Applied Demographics

Population age 25-64, Rockland County, 1940-2040



Source: 1940-2010 Decennial Census and projections by Cornell Program on Applied Demographics

Population age 65 and over, Rockland County, 1940-2040



Source: 1940-2010 Decennial Census and projections by Cornell Program on Applied Demographics

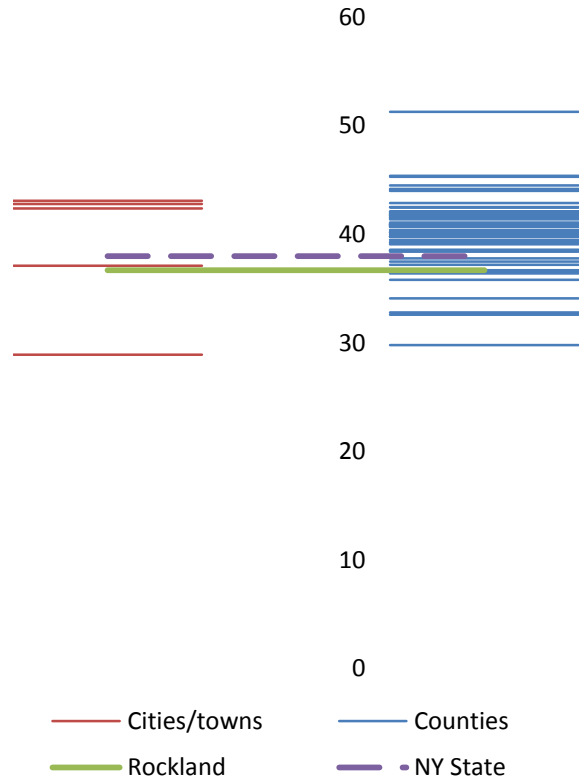
4.3 Median age: comparison between areas

	Median Age
New York State	38.0
Rockland County	36.7

Towns

Clarkstown town	42.8
Haverstraw town	37.1
Orangetown town	42.4
Ramapo town	28.9
Stony Point town	43.1

Median age comparison within county (left) and between counties (right)



Source: 2010 Decennial Census

5 Race

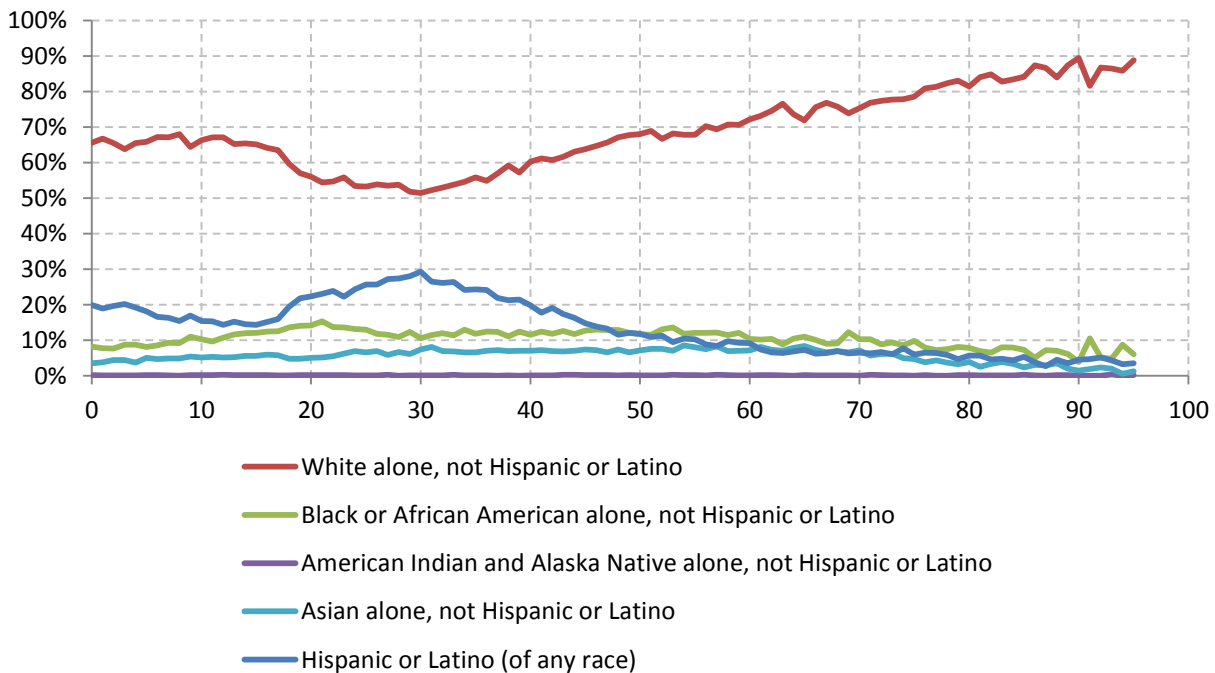
5.1 Total and household population by race

	Total		In households		In Group Quarters
	Count	Percentage	Count	Percentage	Count
Total population	311,687	100%	304,504	100%	7,183
Not Hispanic or Latino					
One race					
White	203,670	65.3%	199,073	65.4%	4,597
Black or African American	34,623	11.1%	33,403	11.0%	1,220
American Indian and Alaska Native	487	0.2%	473	0.2%	14
Asian	19,099	6.1%	18,883	6.2%	216
Native Hawaiian and Other Pacific Islander	43	0.0%	-	-	-
Some other race	609	0.2%	600	0.2%	9
Two or more races	4,373	1.4%	4,274	1.4%	99
Hispanic or Latino (of any race)	48,783	15.7%	47,755	15.7%	1,028

Source: 2010 Decennial Census

5.2 Race composition by age

Race composition by age, Rockland County



Source: 2010 Decennial Census

6 Housing units

6.1 Characteristics

HOUSING OCCUPANCY	COUNT		PERCENTAGE	
	Estimate	Margin of error	Estimate	Margin of error
Total housing units	103,392	± 322	100.0%	
Occupied housing units	98,106	± 634	94.9%	± 0.5
Vacant housing units	5,286	± 530	5.1%	± 0.5
YEAR STRUCTURE BUILT				
Total housing units	103,392	± 322	100.0%	
Built 2005 or later	2,553	± 330	2.5%	± 0.3
Built 2000 to 2004	4,079	± 390	3.9%	± 0.4
Built 1990 to 1999	10,488	± 600	10.1%	± 0.6
Built 1980 to 1989	11,348	± 591	11.0%	± 0.6
Built 1970 to 1979	19,167	± 799	18.5%	± 0.8
Built 1960 to 1969	22,957	± 879	22.2%	± 0.8
Built 1950 to 1959	14,901	± 729	14.4%	± 0.7
Built 1940 to 1949	4,511	± 471	4.4%	± 0.5
Built 1939 or earlier	13,388	± 656	12.9%	± 0.6
HOUSING TENURE				
Occupied housing units	98,106	± 634	100.0%	
Owner-occupied	69,289	± 843	70.6%	± 0.8
Renter-occupied	28,817	± 806	29.4%	± 0.8
HOUSE HEATING FUEL				
Occupied housing units	98,106	± 634	100.0%	
Utility gas	86,459	± 911	88.1%	± 0.7
Bottled, tank, or LP gas	847	± 225	0.9%	± 0.2
Electricity	6,617	± 587	6.7%	± 0.6
Fuel oil, kerosene, etc.	3,486	± 390	3.6%	± 0.4
Coal or coke	30	± 37	0.0%	± 0.1
Wood	253	± 99	0.3%	± 0.1
Solar energy	10	± 16	0.0%	± 0.1
Other fuel	171	± 84	0.2%	± 0.1
No fuel used	233	± 98	0.2%	± 0.1
VALUE				
Owner-occupied units	69,289	± 843	100.0%	
Less than \$50,000	1,028	± 221	1.5%	± 0.3
\$50,000 to \$99,999	1,007	± 225	1.5%	± 0.3
\$100,000 to \$149,999	842	± 189	1.2%	± 0.3
\$150,000 to \$199,999	1,296	± 223	1.9%	± 0.3
\$200,000 to \$299,999	6,210	± 443	9.0%	± 0.6
\$300,000 to \$499,999	30,424	± 822	43.9%	± 1.1
\$500,000 to \$999,999	26,295	± 801	37.9%	± 1.1
\$1,000,000 or more	2,187	± 271	3.2%	± 0.4
Median (dollars)	465,100	± 3,784		

Source: 2007-2011 American Community Survey

6.2 Historical data on number of housing units and occupancy status

Year	Number of Housing Units	Change since previous Census	Occupied	Occupancy rate	Vacant
1970	62,401		60,359	96.7%	2,042
1980	80,171	28.5%	77,905	97.2%	2,266
1990	88,264	10.1%	84,874	96.2%	3,390
2000	94,973	7.6%	92,675	97.6%	2,298
2010	104,057	9.6%	99,242	95.4%	4,815

Source: 1970-2010 Decennial Census

7 Education

7.1 Enrollment by level of school

	Estimate	Margin of error
Total enrolled in school	90,803	± 1,035
Nursery school, preschool	6,022	± 515
Kindergarten	5,646	± 436
Elementary: grade 1 to grade 4	18,658	± 716
Elementary: grade 5 to grade 8	18,914	± 707
High school: grade 9 to grade 12	21,046	± 545
College, undergraduate	15,720	± 705
Graduate, professional school	4,797	± 505

Source: 2007-2011 American Community Survey

7.2 Enrollment by age

	Estimate	Margin of error
3 and 4 years	62.5%	± 3.5
5 to 9 years	98.0%	± 0.6
10 to 14 years	98.2%	± 0.7
15 to 17 years	97.0%	± 1.1
18 and 19 years	77.5%	± 3.7
20 to 24 years	41.9%	± 2.5
25 to 34 years	12.6%	± 1.6
35 years and over	2.6%	± 0.3

Source: 2007-2011 American Community Survey

7.3 Percentage age 18-24 enrolled in college

	Estimate	Margin of error
Population 18 to 24 years	27,272	± 50
Enrolled in college or graduate school	44.0%	± 2.0
Males 18 to 24 years	14,287	± 30
Enrolled in college or graduate school	41.0%	± 3.2
Females 18 to 24 years	12,985	± 36
Enrolled in college or graduate school	47.3%	± 2.8

Source: 2007-2011 American Community Survey

7.4 Educational attainment

	COUNT		PERCENTAGE	
	Estimate	Margin of error	Estimate	Margin of error
Population 25 years and over	194,790	± 50	100%	
EDUCATIONAL ATTAINMENT				
Less than 9th grade	11,429	± 902	5.9%	± 0.5
9th to 12th grade, no diploma	12,185	± 836	6.3%	± 0.4
High school graduate (includes equivalency)	46,401	± 1,384	23.8%	± 0.7
Some college, no degree	30,953	± 973	15.9%	± 0.5
Associate's degree	14,330	± 897	7.4%	± 0.5
Bachelor's degree	44,342	± 1,162	22.8%	± 0.6
Graduate or professional degree	35,150	± 1,198	18.0%	± 0.6
Percent high school graduate or higher			87.9%	± 0.5
Percent bachelor's degree or higher			40.8%	± 0.7

Source: 2007-2011 American Community Survey

8 Language spoken at home

	COUNT		PERCENTAGE		SPEAK ENGLISH LESS THAN "VERY WELL"	
	Estimate	Margin of error	Estimate	Margin of error	Estimate	Margin of error
Population 5 years and over	285,175	± 48	100%			
LANGUAGE SPOKEN AT HOME						
English only	181,863	± 2,459	63.8%	± 0.9		
Language other than English	103,312	± 2,468	36.2%	± 0.9	44,452	± 1,745
Spanish	36,485	± 1,289	12.8%	± 0.5	17,515	± 1,217
Other Indo-European languages	49,481	± 2,119	17.4%	± 0.7	20,960	± 1,233
Asian and Pacific Islander languages	11,739	± 840	4.1%	± 0.3	4,433	± 583
Other languages	5,607	± 927	2.0%	± 0.3	1,544	± 460

Source: 2007-2011 American Community Survey

9 Labor Force Characteristics

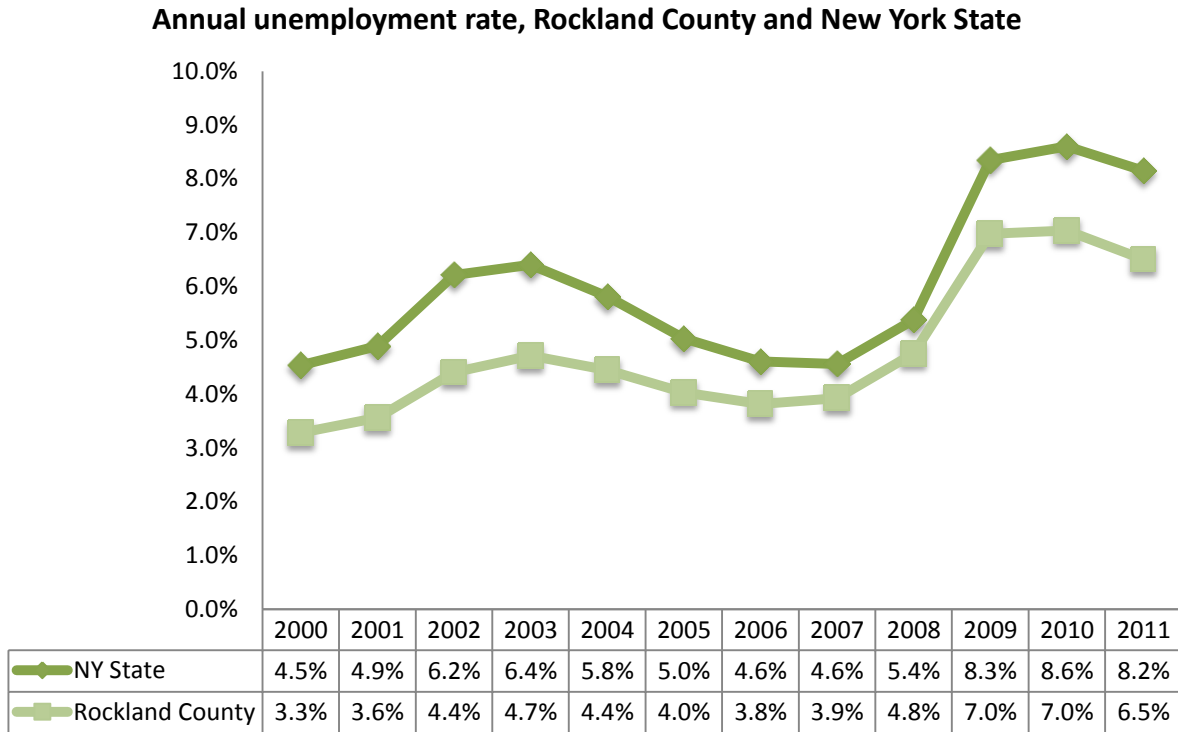
9.1 Labor force, employment and unemployment

	TOTAL		IN LABOR FORCE		EMPLOYED		UNEMPLOYMENT RATE	
	Estimate	Margin of error	Estimate	Margin of error	Estimate	Margin of error	Estimate	Margin of error
Population 16 years and over	232,039	± 395	65.6%	± 0.6	61.3%	± 0.7	6.5%	± 0.5
AGE								
16 to 19 years	18,374	± 396	31.9%	± 2.4	24.5%	± 2.2	23.3%	± 4.6
20 to 24 years	18,875	± 45	71.8%	± 2.5	64.7%	± 2.7	9.8%	± 1.9
25 to 44 years	73,486	± 59	82.5%	± 1.0	77.7%	± 1.2	5.7%	± 0.9
45 to 54 years	44,200	± 74	84.8%	± 1.2	80.6%	± 1.3	4.9%	± 0.8
55 to 64 years	36,071	± 60	70.9%	± 1.7	67.2%	± 1.7	5.2%	± 1.0
65 to 74 years	21,724	± 35	34.8%	± 2.4	32.7%	± 2.3	6.0%	± 1.7
75 years and over	19,309	± 32	8.1%	± 1.2	7.7%	± 1.1	5.6%	± 3.7
RACE AND HISPANIC OR LATINO ORIGIN								
One race	229,265	± 607	65.5%	± 0.6	61.2%	± 0.7	6.5%	± 0.5
White	170,357	± 1,131	63.4%	± 0.7	59.6%	± 0.7	5.9%	± 0.5
Black or African American	28,944	± 555	69.5%	± 2.1	64.1%	± 2.3	7.6%	± 1.3
American Indian and Alaska Native	643	± 140	65.6%	± 10.3	58.9%	± 9.8	10.2%	± 10.7
Asian	15,833	± 256	70.9%	± 2.1	67.1%	± 2.2	5.3%	± 1.7
Pacific Islander	231	± 314	74.9%	± 13.6	74.9%	± 13.6	0.0%	± 17.0
Some other race	13,257	± 1,141	78.2%	± 3.6	68.8%	± 4.5	11.9%	± 3.4
Two or more races	2,774	± 450	72.2%	± 5.4	67.3%	± 6.1	6.7%	± 4.1
Hispanic or Latino origin (of any race)	34,239	± 136	72.5%	± 1.9	65.8%	± 2.2	9.2%	± 1.9
White alone, not Hispanic or Latino	152,212	± 343	62.8%	± 0.7	59.3%	± 0.7	5.7%	± 0.5
SEX								
Population 20 to 64 years	172,632	± 29	79.5%	± 0.7	74.8%	± 0.8	5.8%	± 0.5
Male	85,073	± 29	85.7%	± 0.8	80.0%	± 1.0	6.6%	± 0.7
Female	87,559	± 5	73.4%	± 1.1	69.8%	± 1.1	5.0%	± 0.5
With own children under 6 years	16,703	± 809	65.3%	± 2.6	63.2%	± 2.6	3.2%	± 1.1
EDUCATIONAL ATTAINMENT								
Population 25 to 64 years	153,757	± 50	80.4%	± 0.7	76.1%	± 0.7	5.4%	± 0.5
Less than high school graduate	16,348	± 921	65.3%	± 2.7	59.9%	± 3.0	8.2%	± 2.4
High school graduate (includes equivalency)	33,129	± 1,241	73.2%	± 1.5	68.6%	± 1.5	6.2%	± 1.2
Some college or associate's degree	37,691	± 1,076	83.3%	± 1.6	77.2%	± 1.6	7.3%	± 1.1
Bachelor's degree or higher	66,589	± 1,345	86.1%	± 0.8	83.1%	± 1.0	3.5%	± 0.5

Table formula: **LABOR FORCE** = # EMPLOYED + # UNEMPLOYED
 % IN LABOR FORCE = LABOR FORCE / TOTAL * 100%
 % EMPLOYED = # EMPLOYED / TOTAL * 100%
 UNEMPLOYMENT RATE = # UNEMPLOYED / LABOR FORCE * 100%

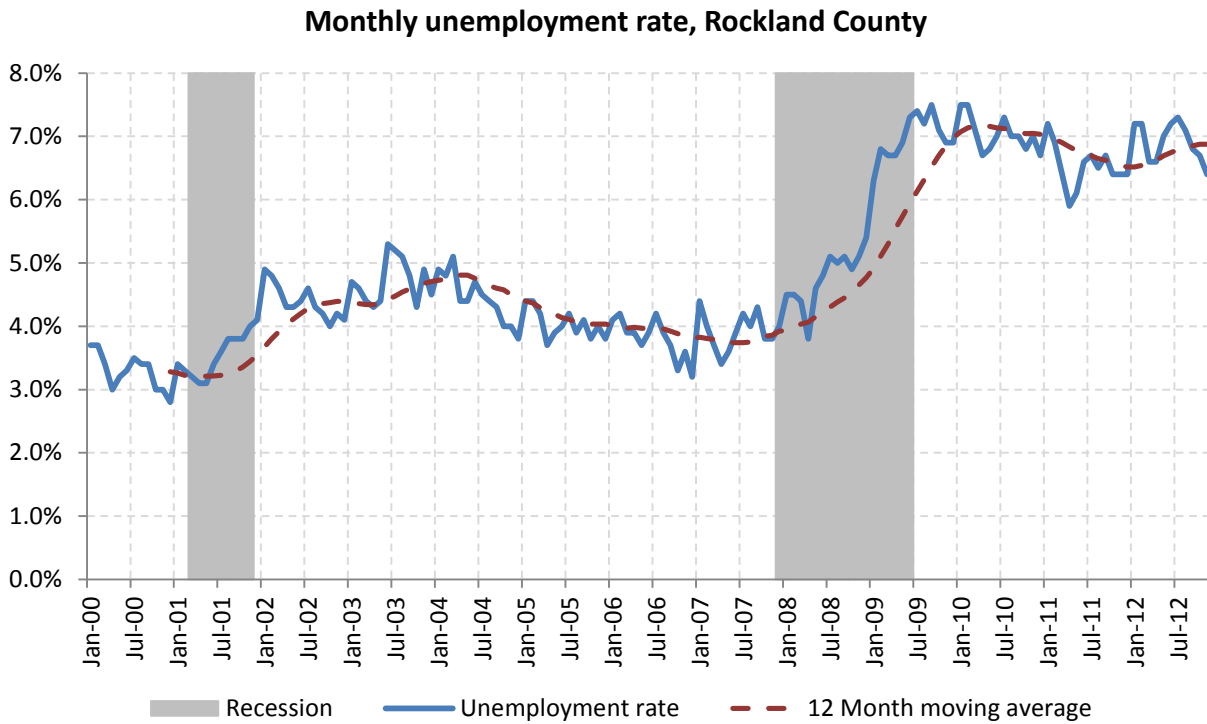
Source: 2007-2011 American Community Survey

9.2 Annual unemployment rate



Source: Bureau Labor Statistics (BLS)

9.3 Monthly unemployment rate



Source: Bureau Labor Statistics (BLS)

9.4 Employment and number of jobs

**Labor force, number of employed workers and number of jobs
Rockland County**



Source: Bureau Labor Statistics (BLS) and NY Department of Labor - Quarterly Census of Employment and Wages (QCEW) – annual averages

9.5 Class of worker

					Median earnings (\$)		
		Total	%Male	%Female	Total	Male	Female
Civilian employed population 16 years and over	Estimate	142,289	52.6%	47.4%	43,598	51,766	37,122
	Margin of error	± 1,502	± 0.4	± 0.4	± 1,265	± 1,075	± 1,166
Private for-profit wage and salary workers:	Estimate	91,214	56.4%	43.6%	41,433	50,435	33,298
	Margin of error	± 1,900	± 0.8	± 0.8	± 800	± 1,393	± 1,238
Employee of private company workers	Estimate	83,954	54.7%	45.3%	40,297	47,444	33,038
	Margin of error	± 1,814	± 0.8	± 0.8	± 840	± 2,325	± 1,240
Self-employed in own incorporated business workers	Estimate	7,260	76.8%	23.2%	57,500	68,852	40,185
	Margin of error	± 539	± 3.1	± 3.1	± 7,177	± 8,855	± 4,673
Private not-for-profit wage and salary workers	Estimate	17,414	40.5%	59.5%	38,436	40,570	37,564
	Margin of error	± 970	± 2.4	± 2.4	± 2,659	± 5,711	± 2,677
Local government workers	Estimate	17,987	44.5%	55.5%	59,321	72,706	52,998
	Margin of error	± 918	± 2.2	± 2.2	± 2,387	± 6,348	± 1,612
State government workers	Estimate	5,461	41.7%	58.3%	55,445	56,315	55,074
	Margin of error	± 415	± 3.8	± 3.8	± 3,077	± 6,755	± 3,500
Federal government workers	Estimate	1,520	61.6%	38.4%	55,802	62,756	52,365
	Margin of error	± 240	± 8.2	± 8.2	± 9,919	± 15,030	± 9,303
Self-employed in own not incorporated business workers and unpaid family workers	Estimate	8,693	58.6%	41.4%	28,575	40,124	16,985
	Margin of error	± 713	± 3.9	± 3.9	± 4,308	± 4,234	± 1,902

Source: 2007-2011 American Community Survey

9.6 Jobs by industry sector

	Rockland County			NY state
	2011	Change since 2006	% of total	% of total
All NAICS Sectors	111,178	-1.0%	100.0%	100.0%
Agriculture, Forestry, Fishing and Hunting	39	-61.8%	0.0%	0.3%
Mining, Quarrying, and Oil and Gas Extraction	191	-61.0%	0.2%	0.1%
Utilities	1,283	22.3%	1.2%	0.5%
Construction	4,894	-9.2%	4.4%	3.5%
Manufacturing	9,734	-19.1%	8.8%	5.5%
Wholesale Trade	4,722	-22.2%	4.2%	4.0%
Retail Trade	13,369	4.8%	12.0%	10.5%
Transportation and Warehousing	2,766	6.7%	2.5%	3.4%
Information	3,048	0.2%	2.7%	3.3%
Finance and Insurance	2,277	-14.8%	2.0%	6.0%
Real Estate and Rental and Leasing	1,478	-11.3%	1.3%	2.3%
Professional, Scientific, and Technical Services	5,505	1.2%	5.0%	6.9%
Management of Companies and Enterprises	960	-31.4%	0.9%	1.6%
Administrative and Support and Waste Management and Remediation Services	4,738	-0.6%	4.3%	5.2%
Educational Services	12,007	-11.5%	10.8%	10.8%
Health Care and Social Assistance	24,709	9.2%	22.2%	17.0%
Arts, Entertainment, and Recreation	1,726	9.2%	1.6%	1.9%
Accommodation and Food Services	7,467	20.1%	6.7%	7.3%
Other Services (except Public Administration)	4,788	18.9%	4.3%	3.9%
Public Administration	5,479	13.4%	4.9%	5.8%

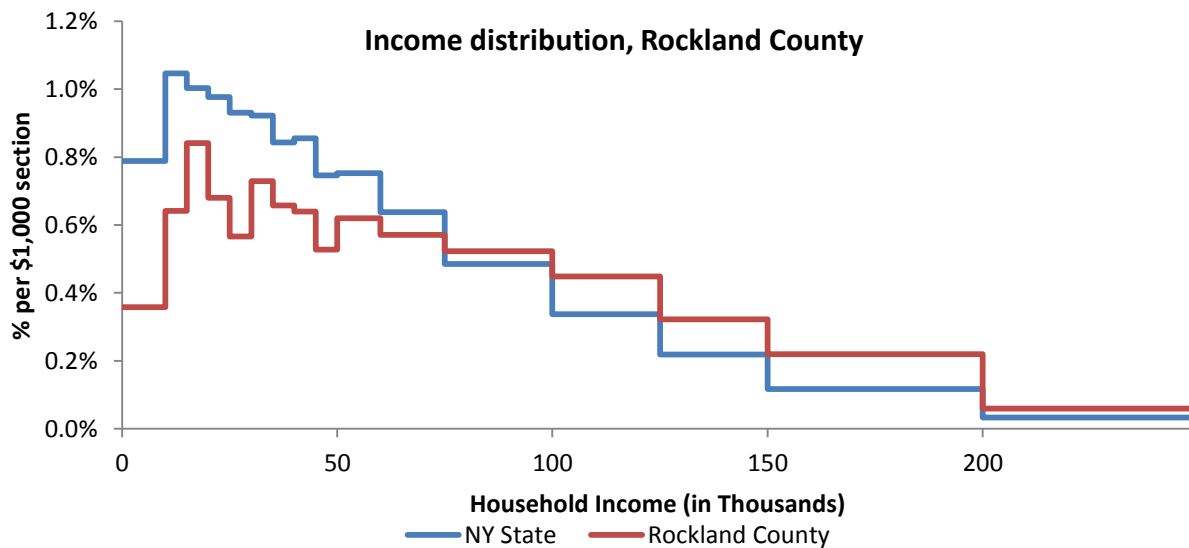
Source: U.S. Census Bureau - Public Use Quarterly Workforce Indicators (QWI) – annual averages

10 Household Income

10.1 Distribution

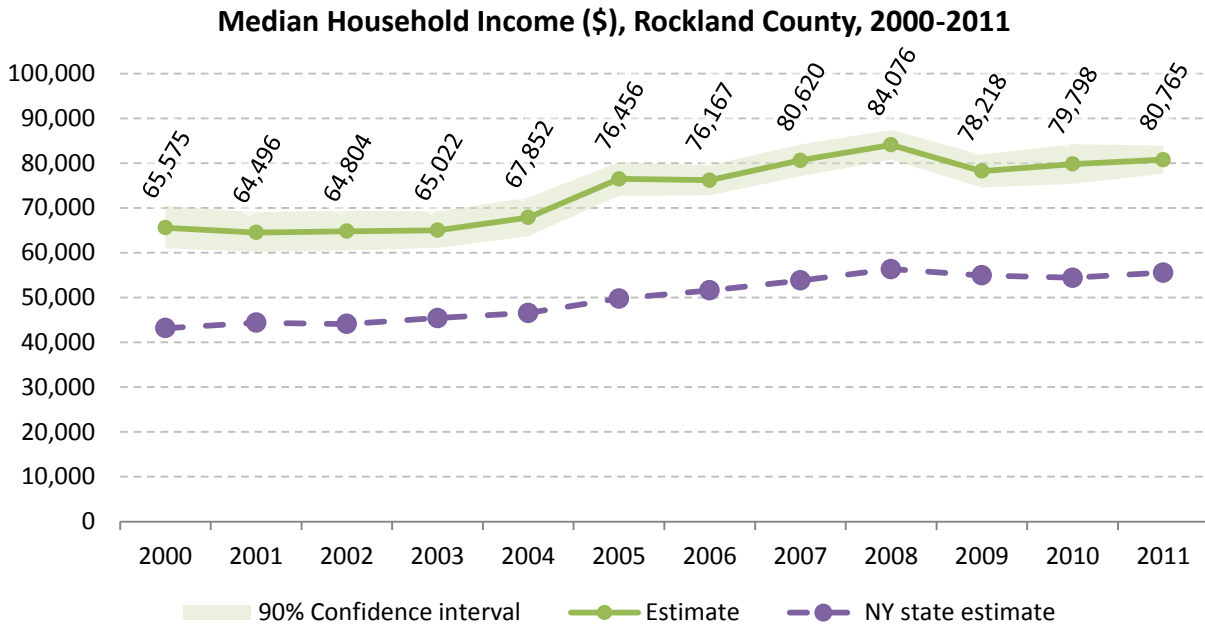
	Estimate	Margin of error	Interval width (in \$1,000)	Est. per \$1,000 section
Total:	98,106	± 634		
Less than \$10,000	3,516	± 487	10	351.6
\$10,000 to \$14,999	3,148	± 380	5	629.6
\$15,000 to \$19,999	4,127	± 445	5	825.4
\$20,000 to \$24,999	3,334	± 370	5	666.8
\$25,000 to \$29,999	2,779	± 415	5	555.8
\$30,000 to \$34,999	3,578	± 497	5	715.6
\$35,000 to \$39,999	3,226	± 392	5	645.2
\$40,000 to \$44,999	3,136	± 405	5	627.2
\$45,000 to \$49,999	2,586	± 306	5	517.2
\$50,000 to \$59,999	6,083	± 696	10	608.3
\$60,000 to \$74,999	8,395	± 603	15	559.7
\$75,000 to \$99,999	12,817	± 697	25	512.7
\$100,000 to \$124,999	11,008	± 599	25	440.3
\$125,000 to \$149,999	7,911	± 517	25	316.4
\$150,000 to \$199,999	10,757	± 613	50	215.1
\$200,000 or more	11,705	± 574	-	-

Source: 2007-2011 American Community Survey



Source: 2007-2011 American Community Survey

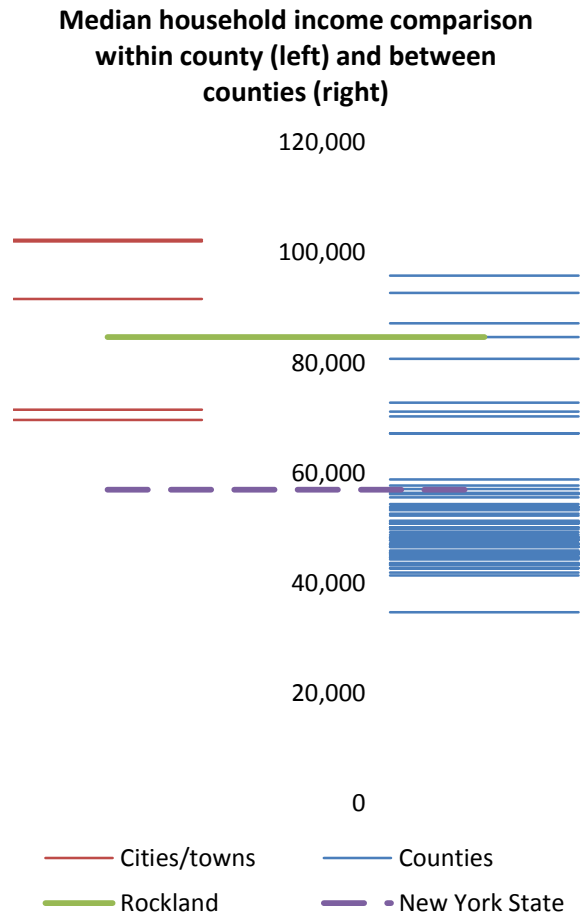
10.2 Median household income: Trends over time



Source: Small Area Income and Poverty Estimates (SAIPE)

10.3 Median household income: Comparison between areas

MEDIAN HOUSEHOLD INCOME (\$)		
	Estimate	Margin of error
New York State	56,951	± 190
Rockland County	84,661	± 2,052
Towns		
Clark	102,065	± 3,159
Haverstraw	71,519	± 7,661
Orang	91,618	± 5,381
Ramapo	69,635	± 3,321
Stony Point	102,326	± 6,951



Source: 2007-2011 American Community Survey

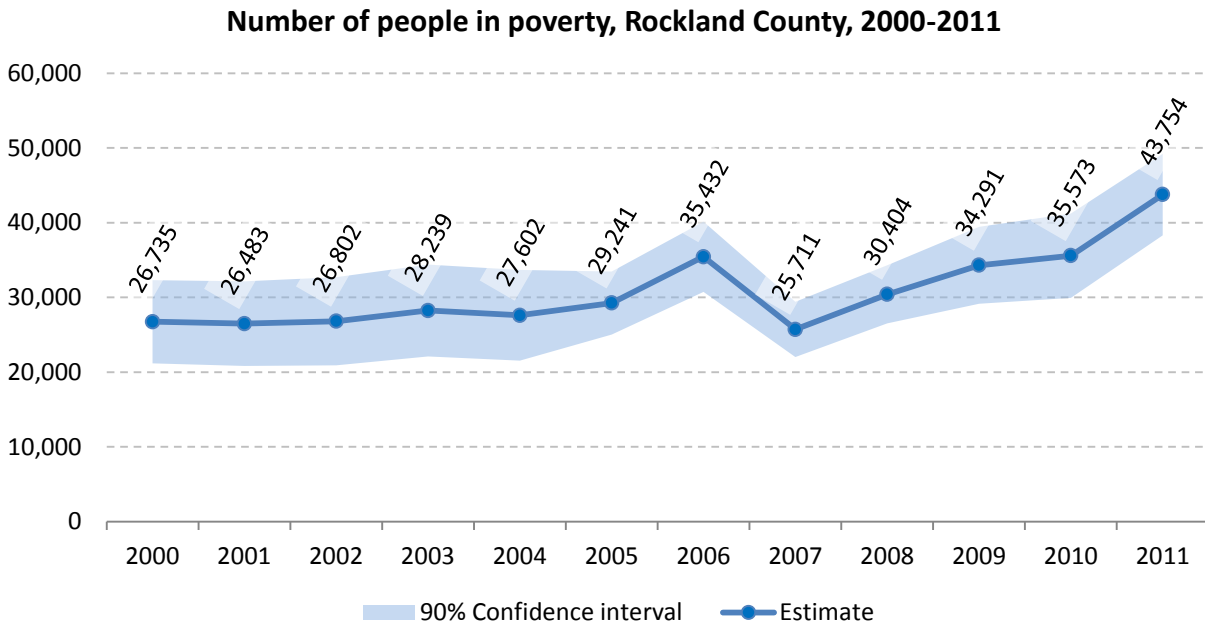
11 Poverty

11.1 Poverty characteristics

	TOTAL		BELOW POVERTY LEVEL		PERCENT BELOW POVERTY LEVEL	
	Estimate	Margin of error	Estimate	Margin of error	Estimate	Margin of error
Population for whom poverty status is determined	303,556	± 779	35,077	± 2,472	11.6%	± 0.8
AGE						
Under 18 years	85,746	± 238	15,749	± 1,409	18.4%	± 1.6
Related children under 18 years	85,360	± 299	15,437	± 1,406	18.1%	± 1.6
18 to 64 years	178,172	± 576	16,327	± 1,288	9.2%	± 0.7
65 years and over	39,638	± 415	3,001	± 465	7.6%	± 1.2
SEX						
Male	149,149	± 401	16,884	± 1,380	11.3%	± 0.9
Female	154,407	± 559	18,193	± 1,352	11.8%	± 0.9
RACE AND HISPANIC OR LATINO ORIGIN						
One race	299,562	± 1,024	34,716	± 2,473	11.6%	± 0.8
White	223,581	± 1,606	25,949	± 2,095	11.6%	± 1.0
Black or African American	36,520	± 759	4,421	± 943	12.1%	± 2.5
American Indian and Alaska Native	774	± 166	87	± 95	11.2%	± 10.9
Asian	19,876	± 316	612	± 239	3.1%	± 1.2
Hispanic or Latino origin (of any race)	45,815	± 241	6,993	± 1,213	15.3%	± 2.7
White alone, not Hispanic or Latino	200,099	± 661	22,931	± 2,016	11.5%	± 1.0
EDUCATIONAL ATTAINMENT						
Population 25 years and over	192,026	± 673	15,528	± 1,234	8.1%	± 0.6
Less than high school graduate	22,857	± 1,089	5,040	± 664	22.1%	± 2.7
High school graduate (includes equivalency)	45,345	± 1,439	5,646	± 596	12.5%	± 1.2
Some college, associate's degree	44,778	± 1,105	2,660	± 467	5.9%	± 1.0
Bachelor's degree or higher	79,046	± 1,401	2,182	± 418	2.8%	± 0.5
EMPLOYMENT STATUS						
Civilian labor force 16 years and over	151,086	± 1,461	8,527	± 860	5.6%	± 0.6
Employed	141,489	± 1,552	6,820	± 696	4.8%	± 0.5
Male	74,543	± 956	3,769	± 421	5.1%	± 0.6
Female	66,946	± 1,075	3,051	± 407	4.6%	± 0.6
Unemployed	9,597	± 815	1,707	± 322	17.8%	± 2.9
Male	5,633	± 597	939	± 212	16.7%	± 3.4
Female	3,964	± 366	768	± 207	19.4%	± 4.6
WORK EXPERIENCE IN THE PAST 12 MONTHS						
Population 16 years and over	227,582	± 845	20,940	± 1,559	9.2%	± 0.7
Worked full-time, year-round	99,001	± 1,456	2,204	± 361	2.2%	± 0.4
Worked part-time or part-year	57,066	± 1,481	5,761	± 647	10.1%	± 1.1
Did not work	71,515	± 1,509	12,975	± 1,084	18.1%	± 1.4

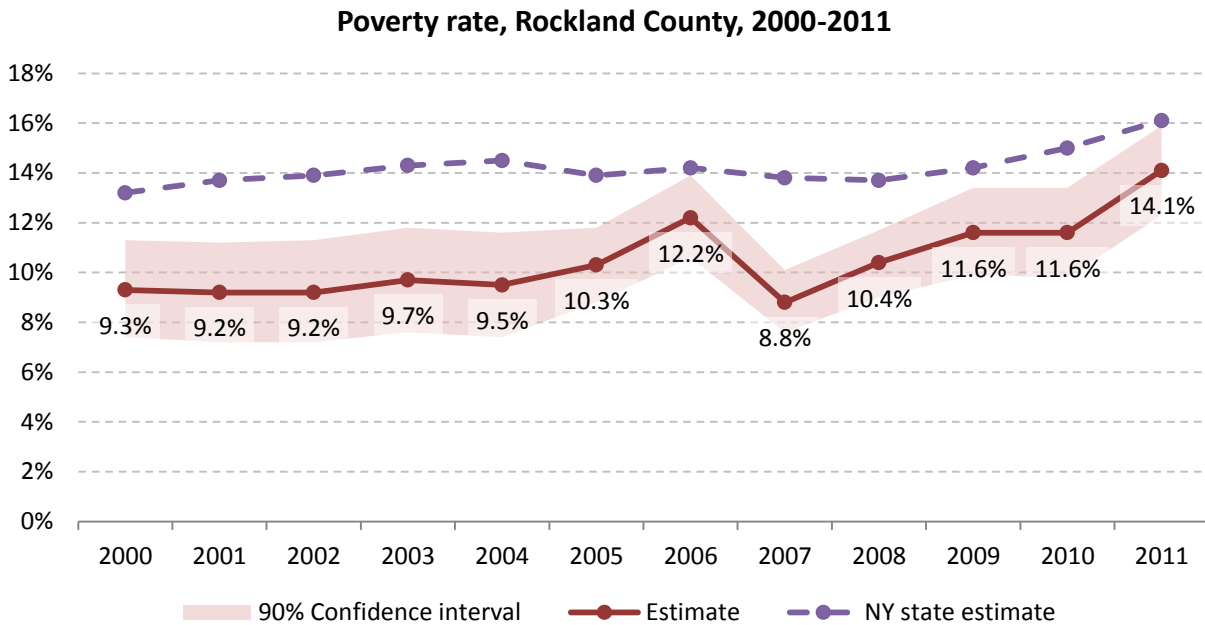
Source: 2007-2011 American Community Survey

11.2 Poverty: Trends over time: Count



Source: Small Area Income and Poverty Estimates (SAIPE)

11.3 Poverty: Trends over time: Rate

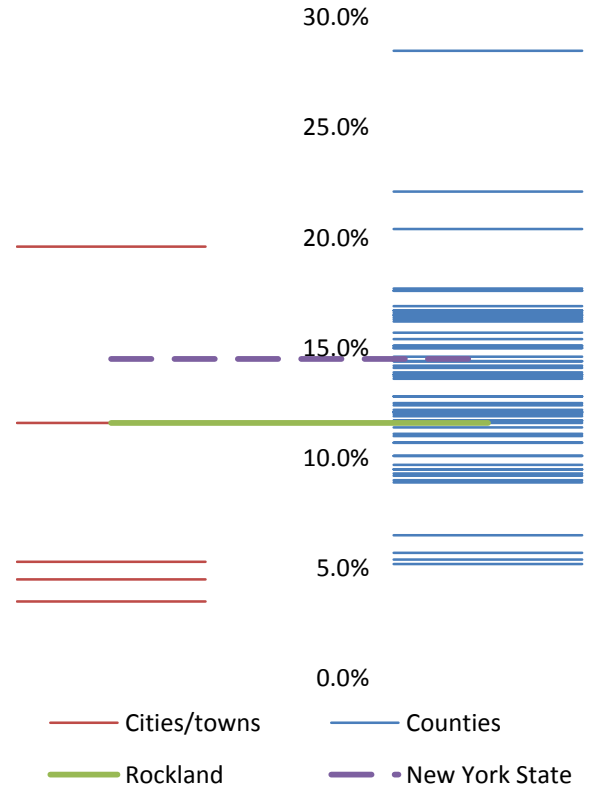


Source: Small Area Income and Poverty Estimates (SAIPE)

11.4 Poverty rate: comparison between areas

Poverty Rate - All people		
	Estimate	Margin of error
New York State	14.5%	± 0.1
Rockland County	11.6%	± 0.8
Towns		
Clark	4.5%	± 0.8
Haverstraw	11.6%	± 2.4
Orang	5.3%	± 1.5
Ramapo	19.6%	± 1.7
Stony Point	3.5%	± 1.5

Poverty rate comparison within county (left) and between counties (right)

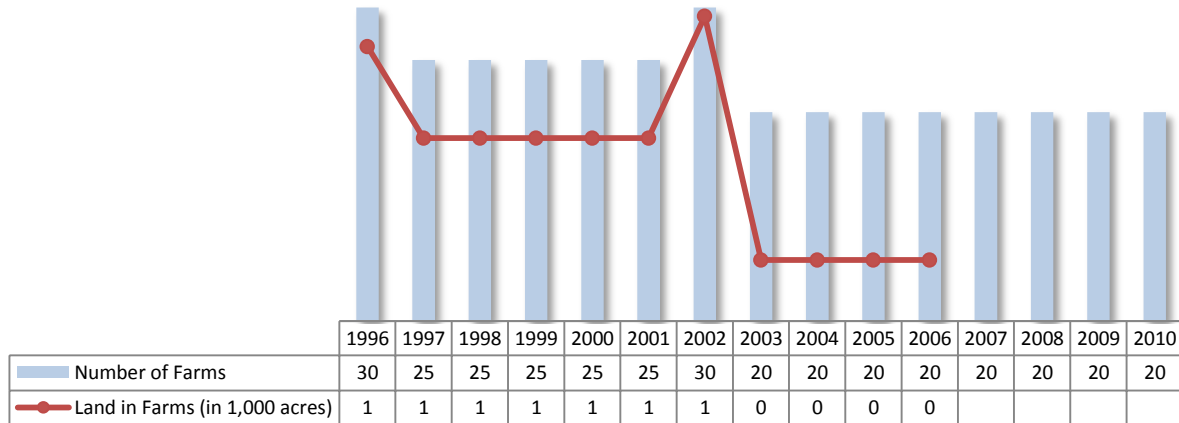


Source: 2007-2011 American Community Survey

12 Agriculture

12.1 Number of farms and land in farms

Rockland County, 1996-2010



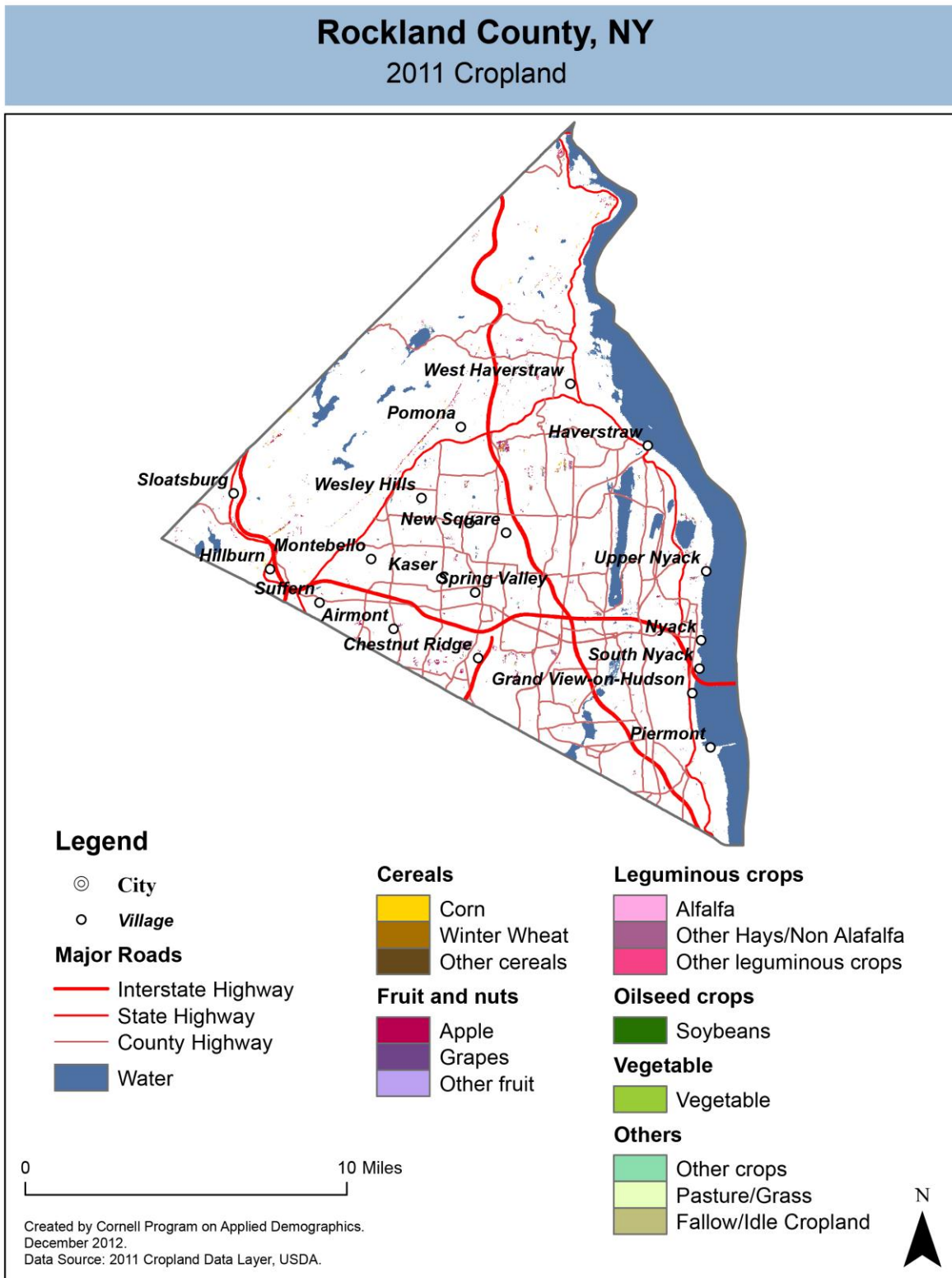
Source: National Agricultural Statistics Service – Annual Statistical bulletin

12.2 Farm Operator Characteristics

	Principal Operator		
	Total	Male	Female
Number of farms	21	17	4
Average size of farm (acres)	10	13	-
PRIMARY OCCUPATION			
Farming	9	-	-
Other	12	-	-
AGE			
Under 45	0	-	-
45 to 64 years	11	-	-
65 years and over	10	-	-
Average age (years)	61	-	-
YEARS ON PRESENT FARM			
Less than 3 years	1	-	-
3 to 4 years	0	-	-
5 to 9 years	5	-	-
10 years or more	15	-	-

Source: 2007 Agricultural Census

12.3 Map of type of crop

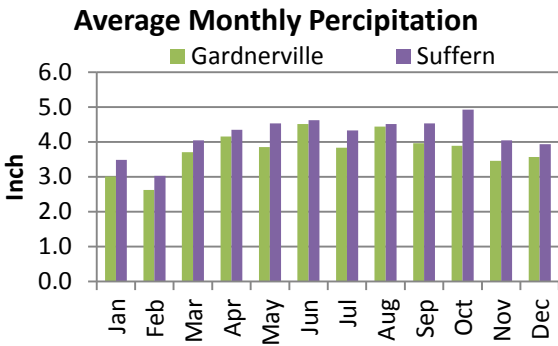
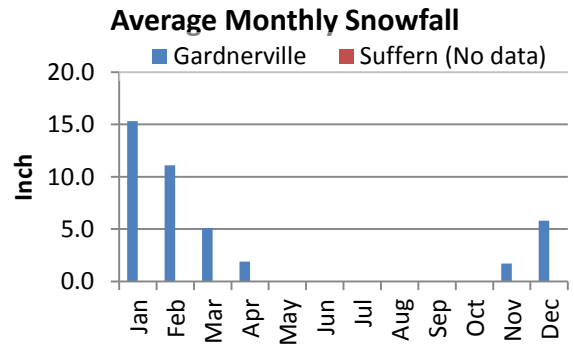
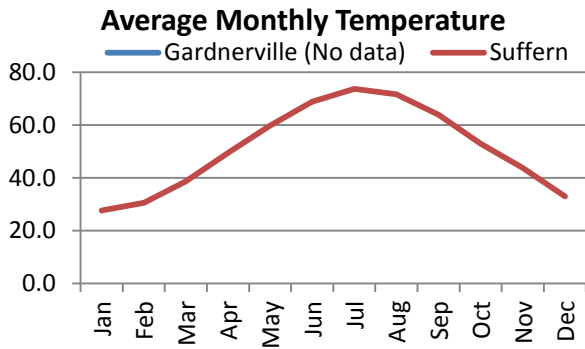
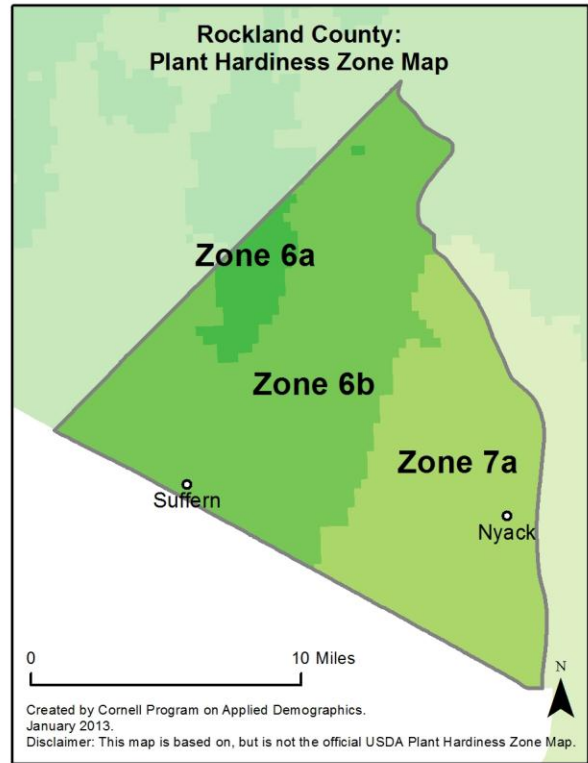
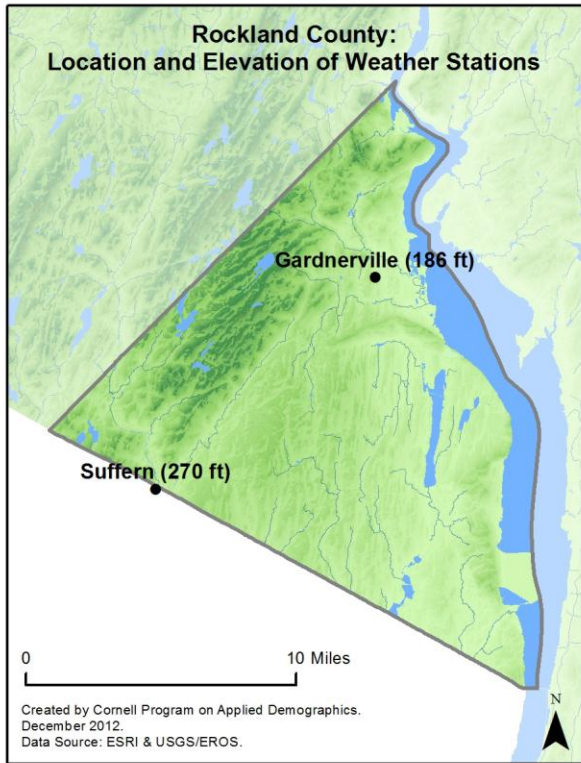


12.4 Estimated acreage by crop

	Acreage	%		Acreage	%
Cereals			Fruit and nuts		
Barley	-		Apples	246	27.3%
Corn	87	9.7%	Apricots	-	
Millet	-		Blueberries	-	
Oats	3.1	0.3%	Cherries	-	
Rye	1.8	0.2%	Cranberries	-	
Sorghum	-		Grapes	-	
Speltz	-		Nectarines	-	
Spring Wheat	-		Peaches	1.8	0.2%
Sweet Corn	1.1	0.1%	Plums	0.4	0.0%
Triticale	0.2	0.0%	Prunes	-	
Winter Wheat	0.9	0.1%	Strawberries	-	
Dbl Crop WinWht/Corn	-		Walnuts	-	
Leguminous crops			Beverage and spice crops		
Alfalfa	45	5.0%	Herbs	-	
Other Hay/Non Alfalfa	348	38.7%	Peppers	-	
Dry Beans	-		Trees		
Peas	-		Christmas Trees	-	
Vetch	19	2.1%	Other Tree Crops	13	1.5%
Oilseed crops			Other crops		
Soybeans	4.2	0.5%	Tobacco	-	
Sunflower	-		Misc Veggies & Fruits	-	
Sugar crops			Clover/Wildflowers	-	
Sugarbeets	-		Sod/Grass Seed	-	
Root/tuber crops with high starch or inulin content			Switchgrass	-	
Potatoes	-		Dbl Crop Soybeans/Oats	-	
Vegetables and melons			Dbl Crop WinWht/Soybeans	-	
Asparagus	-		Other Crops	-	
Broccoli	-		Pasture/Grass	21	2.3%
Cabbage	-		Fallow/Idle Cropland	105	11.7%
Carrots	-				
Eggplants	-				
Onions	1.6	0.2%			
Pumpkins	0.7	0.1%			
Squash	-				
Tomatoes	-				
Turnips	-				

Source: National Agricultural Statistics Service - Cropland Data Layer 2011

13 Climate



Average length of freeze-free season

	Last day of frost	First day of frost	Season length
Gardnerville	Not available		
Suffern	Not available		

Source: NOAA, Northeast Regional Climate Center at Cornell University. Averages 1981-2010

14 Glossary

American Community Survey (ACS) - The American Community Survey is an ongoing survey of the population that provides data every year on a variety of social and economic characteristics—age, sex, race, family and relationships, income and benefits, health insurance, education, veteran status, disabilities, where you work and how you get there, where you live and how much you pay for some essentials. The ACS replaced the information previously gathered by what was known as the “long form” of the decennial censuses. The ACS provides communities, companies and other institutions with current information they need to plan investments and services. Information from the survey generates data that help determine how more than \$400 billion in federal and state funds are distributed each year. Every estimate presented in the American Community Survey, as in other surveys, has an uncertainty associated with it. Often the magnitude of that uncertainty is expressed as the Margin of Error.

Confidence Interval (CI) - indication of the degree of uncertainty about a sample estimates. Confidence intervals have been traditionally reported at the 90, 95 and 99 percent levels. A 90 percent confidence interval can be interpreted, for example, roughly as providing 90 percent certainty that the interval defined by the upper and lower bounds contain the true value of the characteristic. If a Margin of Error is given, the lower bound of the confidence interval is equal to the estimate minus the Margin of Error and the upper bound is equal to the estimate plus the Margin of Error. (See further, Margin of Error definition below.)

County subdivision or Minor Civil Division (MCD) - The Census Bureau geography for primary administrative units below the county level in New York is collectively referred to as county subdivisions or minor civil divisions. These include towns, cities and Indian Reservations.

Decennial Census - the Census of the population and housing taken every 10 years in the United States, at the start of each decade, since 1790.

Employed – either “at work” or “with a job, but not at work”.

Group Quarters Population - all U.S. residents who live in group living facilities including correctional institutions, juvenile facilities, skilled nursing facilities, college residence halls, military barracks, group homes, and workers' dormitories.

Household Population - all U.S. residents who live in housing units such as single family homes, townhouses, apartments, and mobile homes.

Intercensal Population Estimates - estimates produced for the years between two decennial censuses when both the beginning and ending populations are known. They are produced once a decade by adjusting the existing time series of postcensal estimates for the entire decade to smooth the transition from one decennial census count to the next. They differ from the postcensal estimates that are released annually because the difference between the April 1 postcensal estimate and April 1 census count for the end of the decade is redistributed across the estimates for that decade. For dates when both postcensal and intercensal estimates are available, intercensal estimates are preferred.

Labor Force - consists of people classified as employed or unemployed.

Margin of Error (MOE) - a measure of the precision of an estimate at a given level of confidence. The confidence level of a margin of error indicates the likelihood that the difference between the population value (which you

would get if you could measure the whole population instead of a sample) and the estimate is less than or equal to the margin of error. The range from the estimate minus the margin of error to the estimate plus the margin of error is called the confidence interval. All ACS estimates are published with their margins of error at the 90 percent confidence level. Margins of error are useful in assessing the reliability of estimates and whether differences between estimates are significant.

NAICS - The North American Industry Classification System or NAICS is used by business and government to classify business establishments according to type of economic activity (process of production).

Numeric Population Change - difference between the population of an area at the beginning and end of a time period. It is computed by taking the difference between the population at one point in time (t1) and some future time (t2).

Percent Population Change - difference between the population of an area at the beginning and end of a time period, expressed as a percentage of the beginning population. It is computed by dividing the population change (t2 - t1) by t1 and multiplying the result by 100.

Population Estimates - The calculated number of people living in an area as of a specified point in time, usually July 1st. The estimated population is calculated using a component of change model that incorporates information on natural increase (births, deaths) and net migration (net domestic migration, net international migration) that has occurred in an area since the latest decennial census. A procedure for estimating the current population using a procedure involving a "base population" value at time t -1, adding to that the births during the interval t-1 to t, subtracting the deaths during that interval t-1 to t, and then adding the net domestic and net international migration that occurred during that interval.

Population Density - Total number of people per areal unit like a square mile or square kilometer.

Population Pyramids - A graphical way of portraying a population's age and sex composition at a given slice in time. The first horizontal bar, constituting the base of the graph, is the youngest age group (typically 0-4) with the number of males in that age group on the left and the number of females in that age group on the right. On top of that age group is another horizontal bar for the next age group (e.g. 5-9) and so forth with the top bar typically for those aged 75 and over. In a population with lots of births and deaths, the shape typically forms a pyramid with a broad base and a narrow top. It is one of the most basic ways to understand population change over time as well as between different geographic units of a similar status (e.g. counties).

Postcensal Estimates - estimates produced for the years after a decennial census when only the beginning population is known. They are produced and revised each year, targeted to July 1 of that year.

Projection - estimated population at some future time based on assumptions about births, deaths, migration, and ages.

Race/Ethnicity - the Census Bureau collects racial data in accordance with guidelines provided by the U.S. Office of Management and Budget (OMB), and these data are based on self-identification. The racial categories included in the census questionnaire generally reflect a social definition of race recognized in this country and not an attempt to define race biologically, anthropologically, or genetically. In addition, it is recognized that the categories of the race item include racial and national origin or sociocultural groups. People may choose to report more than one race to indicate their racial mixture, such as "American Indian" and "White." People who identify their origin as Hispanic, Latino, or Spanish may be of any race. OMB requires five minimum categories: White, Black or African American, American Indian or Alaska Native, Asian, and Native Hawaiian or Other Pacific

Islander. Hispanics may be classified as white or black. So we generally separate them out as an ethnic group first.

Unemployed – Not employed, but actively looking for work and available to accept a job.

Unemployment rate – Fraction of the Labor Force that is unemployed.

Urban Area – A densely settled area with at least 2,500 people. If the total number of people is less than 50,000 the Census Bureau calls it an Urban Cluster, otherwise an Urbanized Area.

Vintage - each year, the U.S. Census Bureau produces and publishes estimates of the population for each state and county, as well as the nation as a whole. These are called “vintages.” In producing these vintages, the Bureau utilizes administrative data from a number of sources to estimate 1) the change in population since the most recent decennial census, and 2) the population for each year since the most recent decennial census. With each annual release of population estimates (vintage), the entire time series of estimates beginning on April 1, 2010 is revised and updated.

15 References

Rockland County homepage: <https://rocklandgov.com/>

At Cornell:

- Cornell Cooperative Extensions (CCE)
Home page: <http://www.cce.cornell.edu>
 - Rockland local office: <http://rocklandcce.org/>
- Program on Applied Demographics (PAD)
URL: <http://pad.human.cornell.edu/>
- Community and Regional Development Institute (CaRDI)
URL: <http://devsoc.cals.cornell.edu/cals/devsoc/outreach/cardi/index.cfm>

Data sources and background information:

- U.S. Census Bureau - general
 - QuickFacts: <http://quickfacts.census.gov/qfd/states/36/36087.html>
 - QuickLinks: <http://quickfacts.census.gov/qfd/states/36/36087lk.html>
 - American FactFinder: <http://factfinder2.census.gov>
- U.S. Census Bureau - population
 - Decennial Census
 - Background: <http://2010.census.gov/2010census/>
 - Demographic Profile: http://factfinder2.census.gov/bkmk/table/1.0/en/DEC/10_SF1/SF1DP1/0500000US36087
 - American Community Survey (ACS)
 - Background: <http://www.census.gov/acs/www/>
 - Social Data Profile: http://factfinder2.census.gov/bkmk/table/1.0/en/ACS/10_5YR/DP02/0500000US36087
 - Economic Data Profile: http://factfinder2.census.gov/bkmk/table/1.0/en/ACS/10_5YR/DP03/0500000US36087
 - Housing Data Profile: http://factfinder2.census.gov/bkmk/table/1.0/en/ACS/10_5YR/DP04/0500000US36087
 - Demographics Data Profile: http://factfinder2.census.gov/bkmk/table/1.0/en/ACS/10_5YR/DP05/0500000US36087
 - Population estimates: <http://www.census.gov/popest/estimates.html>
- U.S. Census Bureau – Small Area Income & Poverty Estimates (SAIPE)
 - <http://www.census.gov/did/www/saipe/>
- U.S. Census Bureau - Public Use Quarterly Workforce Indicators (QWI) – annual averages
 - <http://www2.vrdc.cornell.edu/news/data/qwi-public-use-data/>
- Bureau Labor Statistics (BLS) – Local Area Unemployment Statistics: <http://www.bls.gov/lau/>
- NY Department of Labor -
 - Labor statistics: <http://www.labor.ny.gov/stats/>
 - Quarterly Census of Employment and Wages (QCEW): <http://www.labor.ny.gov/stats/lsqcew.shtm>
- Bureau of Economic Analysis (BEA) – Local Area Personal Income and Employment: <http://bea.gov/iTable/iTable.cfm?ReqID=70&step=1>

- USDA Census of Agriculture
 - 2007
 - Home page: <http://www.agcensus.usda.gov/Publications/2007/index.php>
 - County profile: http://www.agcensus.usda.gov/Publications/2007/Online_Highlights/County_Profiles/New_York/cp36087.pdf
 - Race, Ethnicity and Gender Profiles: http://www.agcensus.usda.gov/Publications/2007/Online_Highlights/Race_Ethnicity_and_Gender_Profiles/New_York/cpd36087.pdf
- USDA National Agricultural Statistics Service (NASS)
 - Home page: <http://www.nass.usda.gov/index.asp>
 - New York Statistical Bulletins: http://www.nass.usda.gov/Statistics_by_State/New_York/Publications/Annual_Statistical_Bulletin/
 - Cropland Data Layer – CropScape: <http://nassgeodata.gmu.edu/CropScape/>
- USDA Agricultural Research Service – Plant Hardness Zone Map: <http://planthardiness.ars.usda.gov/PHZMWeb/>
- NOAA, Northeast Regional Climate Center at Cornell University
 - Home page: <http://www.nrcc.cornell.edu/index.html>

Alternative sites for data retrieval:

- The Nelson A. Rockefeller Institute of Government – New York State Statistical Yearbooks http://www.rockinst.org/nys_statistics/
- Headwaters Economics: Economic Profile System – Human Dimensions Toolkit <http://headwaterseconomics.org/tools/eps-hdt>
- National Historical Geographic Information System (NHGIS) <https://www.nhgis.org/>
- Social Explorer <http://www.socialexplorer.com/pub/home/home.aspx>
- Missouri Census Data Center <http://mcdc.missouri.edu/>
- DataFerret <http://dataferrett.census.gov/>
- Investigative Reporters and Editors (IRE) Census project <http://census.ire.org/>