

# Putnam County Profile 2013

*A collection of recent demographic, social, economic and agricultural data*

Compiled by Jan Vink

Assisted by Joe Francis, Sutee Anantsuksomsri, Nij Tontisirin, Johannes Plambeck



**Cornell University**  
Cooperative Extension



This profile is a part of a set of profiles generated for each county in New York State. The profiles were developed and generated by the Cornell Program on Applied Demographics. The work is sponsored by Cornell Cooperative Extension and promoted with webinars and workshops in coordination with the Community & Regional Development Institute.

Cornell Program on Applied Demographics:

The Program on Applied Demographics (PAD) brings skills in demographics, economics, statistics, data gathering and data analysis together to provide a variety of organizations with data, information and advice.

For more information: <http://pad.human.cornell.edu/>

Cornell Cooperative Extension:

Cornell Cooperative Extension (CCE) puts knowledge to work in pursuit of economic vitality, ecological sustainability and social well-being. We bring local experience and research based solutions together, helping New York State families and communities thrive in our rapidly changing world.

For more information: <http://cce.cornell.edu/>

Community & Regional Development Institute:

The Community & Regional Development Institute (CaRDI) supports informed decision making for residents and communities in New York State through applied research and education.

For more information: <http://cardi.cornell.edu/>

All profiles are freely downloadable as PDF documents on the PAD website:

<http://pad.human.cornell.edu/profiles/index.cfm>

## Contents

Contents .....	2
1 Reference Maps .....	4
2 Population density and Urban Areas Map .....	6
3 Total Population .....	7
3.1 Historic and projected .....	7
3.2 Change since previous Census .....	7
3.3 Annual population estimates .....	8
3.4 Percentage sub county change 2000-2010 .....	9
4 Population by age .....	11
4.1 Historic and projected population pyramids .....	11
4.2 Selected age groups .....	12
4.3 Median age: comparison between areas .....	14
5 Race .....	15
5.1 Total and household population by race .....	15
5.2 Race composition by age .....	15
6 Housing units .....	16
6.1 Characteristics .....	16
6.2 Historical data on number of housing units and occupancy status .....	17
7 Education .....	18
7.1 Enrollment by level of school .....	18
7.2 Enrollment by age .....	18
7.3 Percentage age 18-24 enrolled in college .....	18
7.4 Educational attainment .....	19
8 Language spoken at home .....	19
9 Labor Force Characteristics .....	20
9.1 Labor force, employment and unemployment .....	20
9.2 Annual unemployment rate .....	21
9.3 Monthly unemployment rate .....	21
9.4 Employment and number of jobs .....	22
9.5 Class of worker .....	22
9.6 Jobs by industry sector .....	23
10 Household Income .....	24
10.1 Distribution .....	24
10.2 Median household income: Trends over time .....	25
10.3 Median household income: Comparison between areas .....	26
11 Poverty .....	27
11.1 Poverty characteristics .....	27
11.2 Poverty: Trends over time: Count .....	28
11.3 Poverty: Trends over time: Rate .....	28
11.4 Poverty rate: comparison between areas .....	29
12 Agriculture .....	30
12.1 Number of farms and land in farms .....	30
12.2 Farm Operator Characteristics .....	30

12.3 Map of type of crop ..... 31

12.4 Estimated acreage by crop ..... 32

13 Climate ..... 33

14 Glossary..... 34

15 References ..... 37

1 Reference Maps

### Putnam County, NY

Towns, Cities, Indian Reservations, and Incorporated Villages



New York State Counties



Legend

- Village
- Town

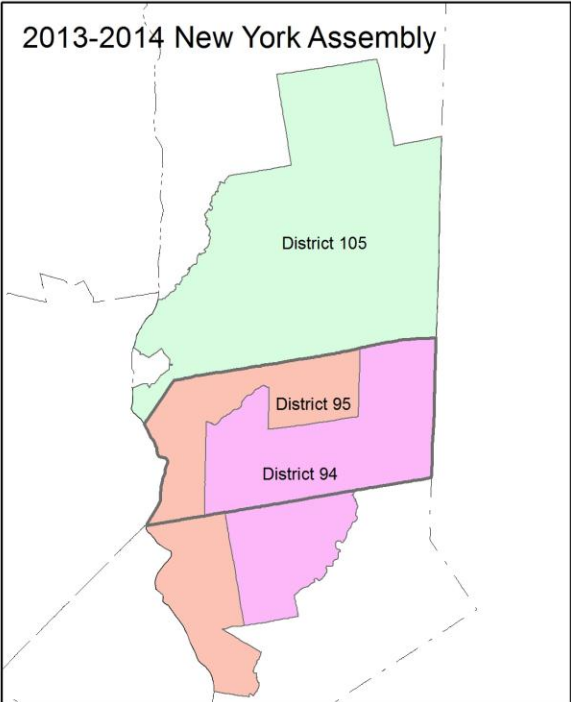
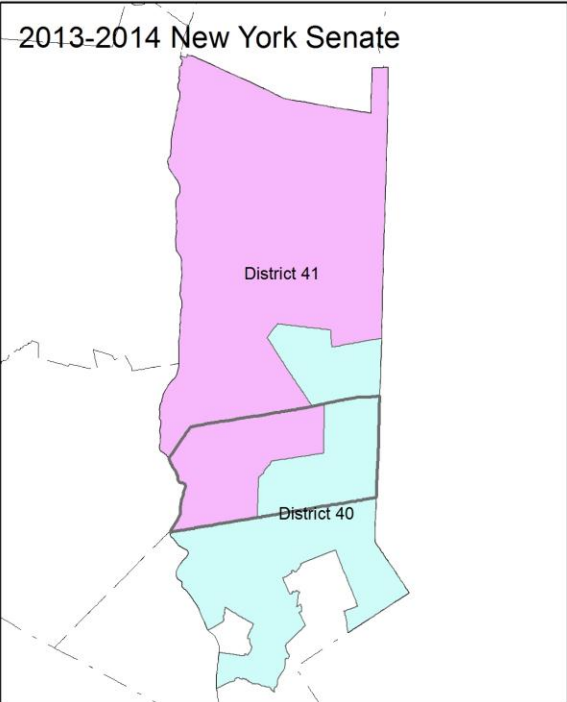
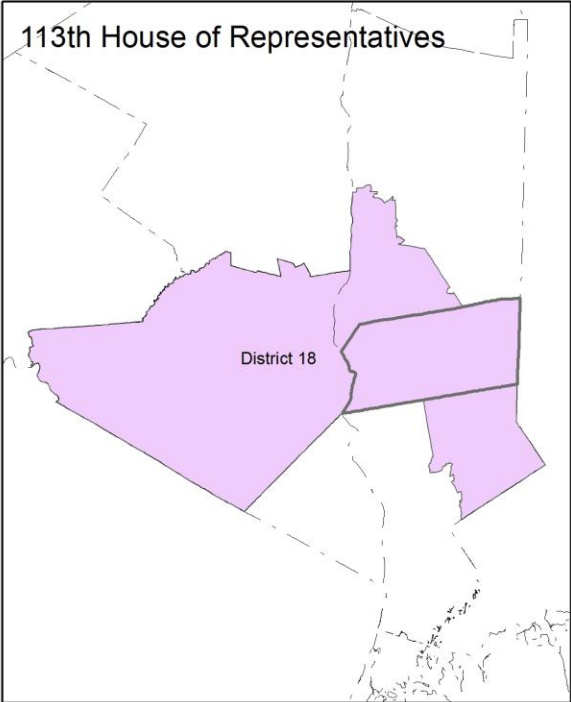


Created by Cornell Program on Applied Demographics.  
March 2012.  
Data Source: 2010 Census TIGER/Line® Shapefiles.

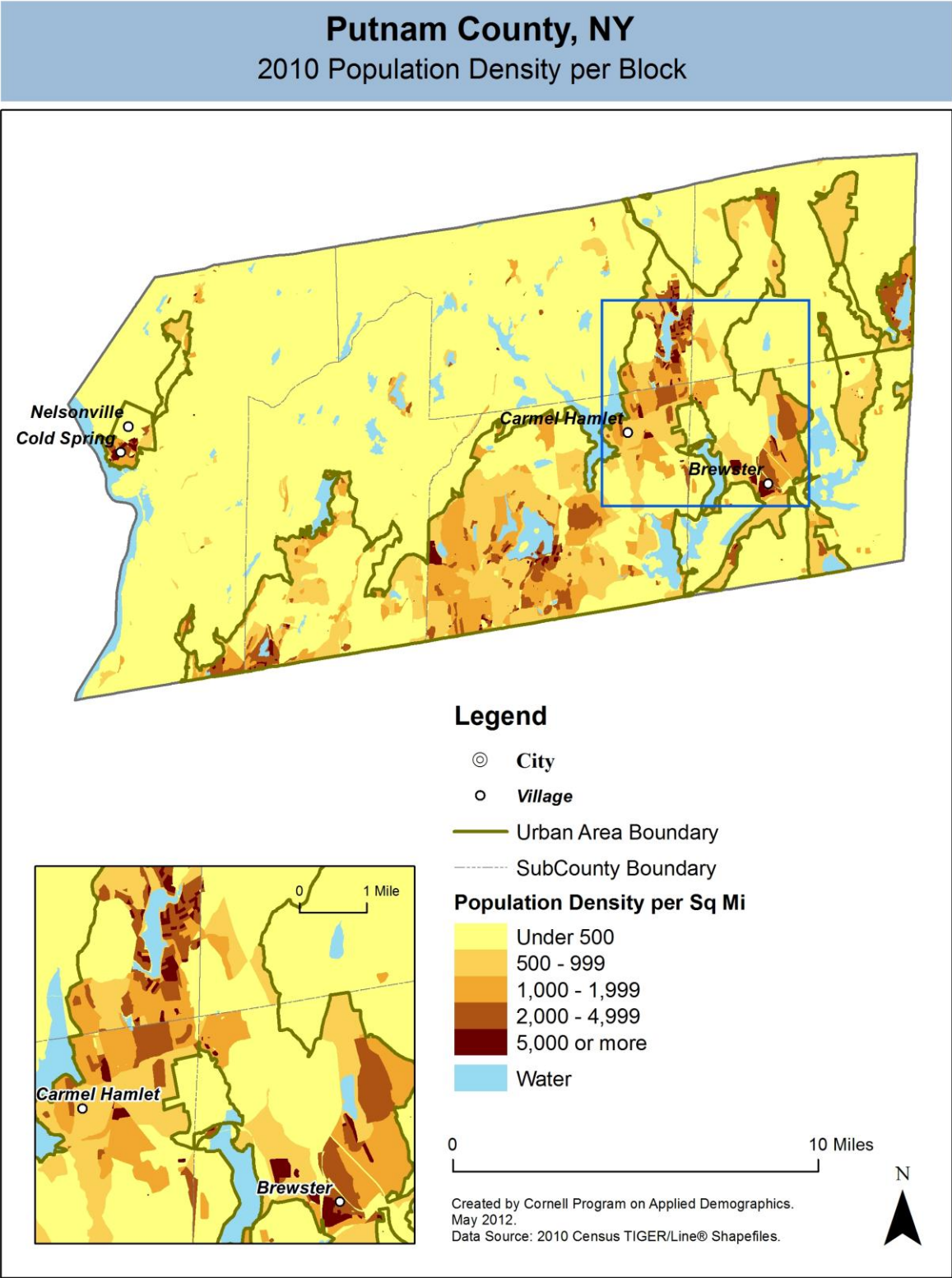


# Putnam County, NY

## Overlap with School and Political Districts



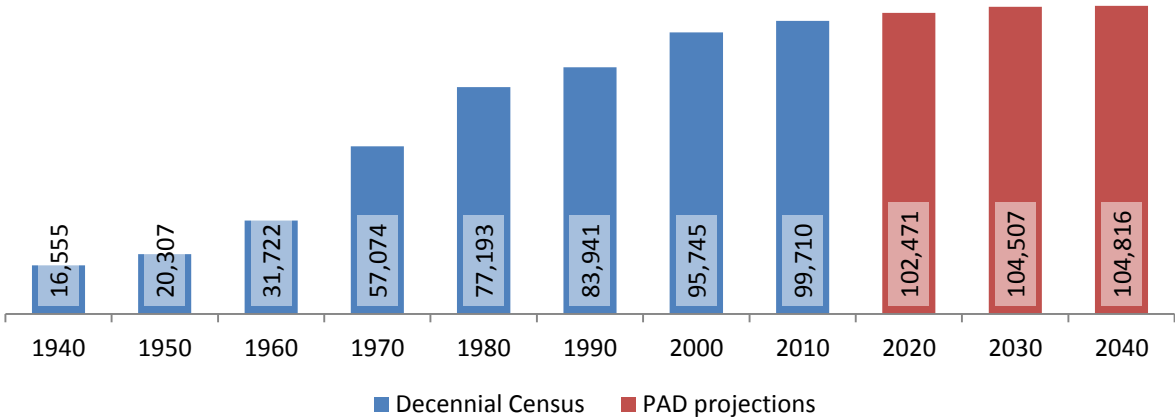
2 Population density and Urban Areas Map



**3 Total Population**

**3.1 Historic and projected**

**Total population, Putnam County, 1940-2040**



Source: 1940-2010 Decennial Census and projections by Cornell Program on Applied Demographics

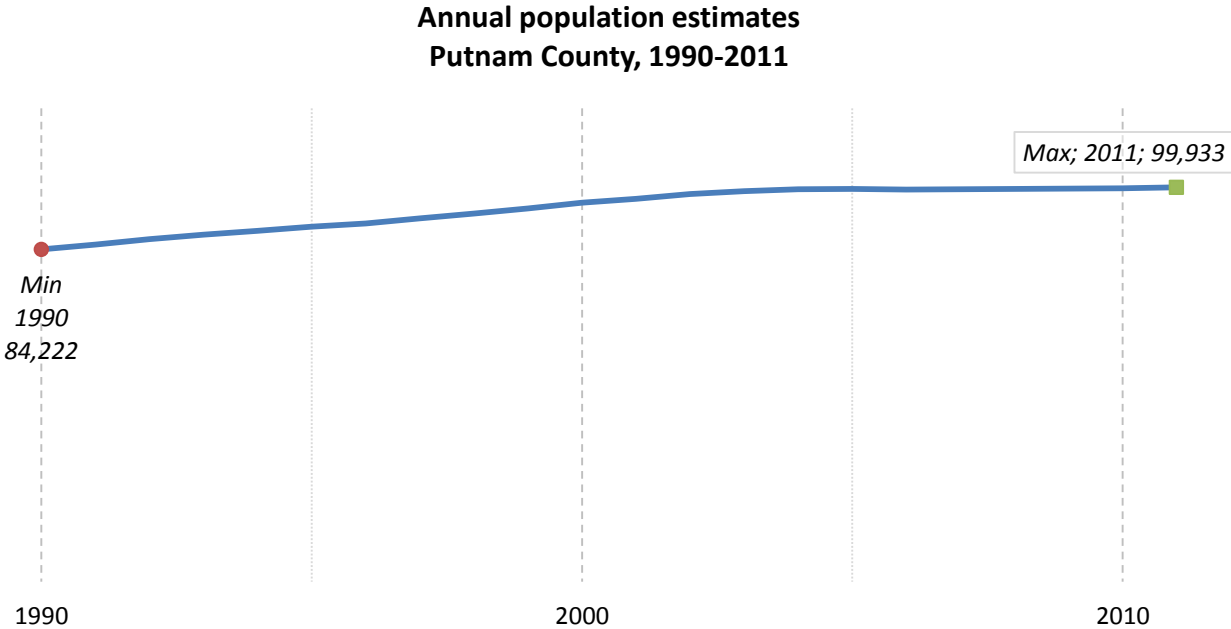
**3.2 Change since previous Census**

		Total population	Change	
			Number	Percent
Decennial Census	1940	16,555		
	1950	20,307	3,752	22.7%
	1960	31,722	11,415	56.2%
	1970	57,074	25,352	79.9%
	1980	77,193	20,119	35.3%
	1990	83,941	6,748	8.7%
	2000	95,745	11,804	14.1%
	2010	99,710	3,965	4.1%
PAD projections	2020	102,471	2,761	2.8%
	2030	104,507	2,036	2.0%
	2040	104,816	309	0.3%

Source: 1940-2010 Decennial Census and projections by Cornell Program on Applied Demographics



3.3 Annual population estimates



Source: U.S. Census Bureau population estimates (1990-1999 and 2000-2009 intercensal and vintage 2011 postcensal)

**3.4 Percentage sub county change 2000-2010**

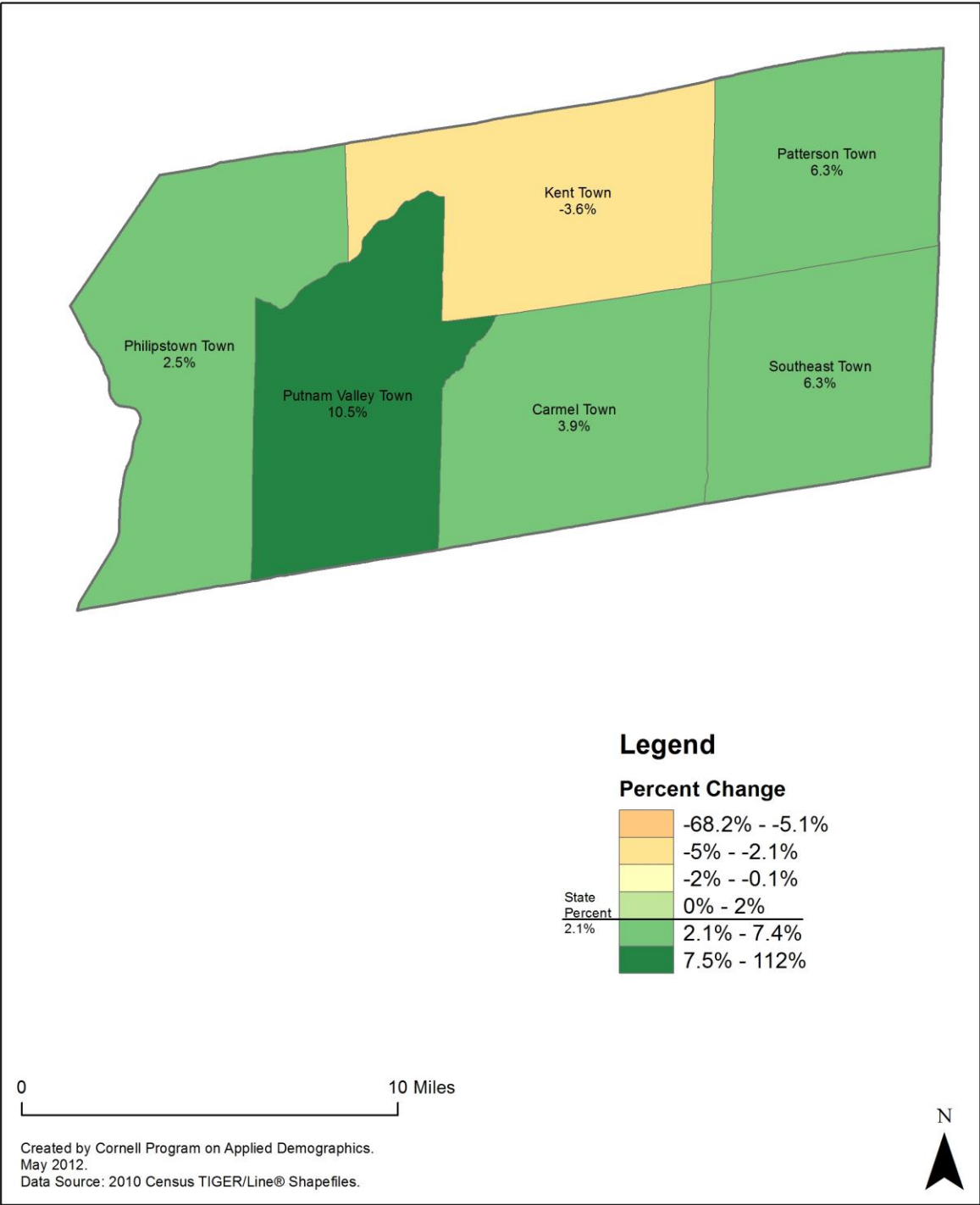
	Total Population		Difference	
	2000	2010	Count	%
New York State	18,976,821 *	19,378,102	401,281	2.1%
Putnam County	95,745	99,710	3,965	4.1%
<b>Towns</b>				
Carmel	33,006	34,305	1,299	3.9%
Kent	14,009	13,507	-502	-3.6%
Patterson	11,306	12,023	717	6.3%
Philip	9,422	9,662	240	2.5%
Putnam Valley	10,686	11,809	1,123	10.5%
Southeast	17,316	18,404	1,088	6.3%

\* Original counts revised through Count Question Resolution Program (CQR)

Source: U.S. Census Bureau intercensal population estimates 2000-2010

# Putnam County, NY

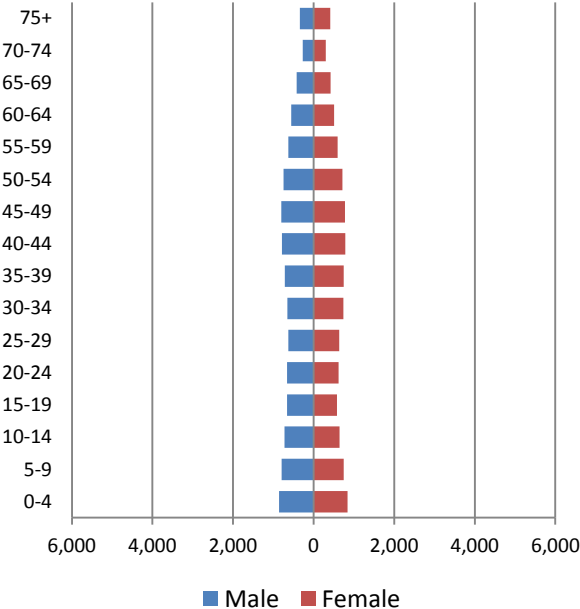
## County Subdivision, Percent Change in Population 2000-2010



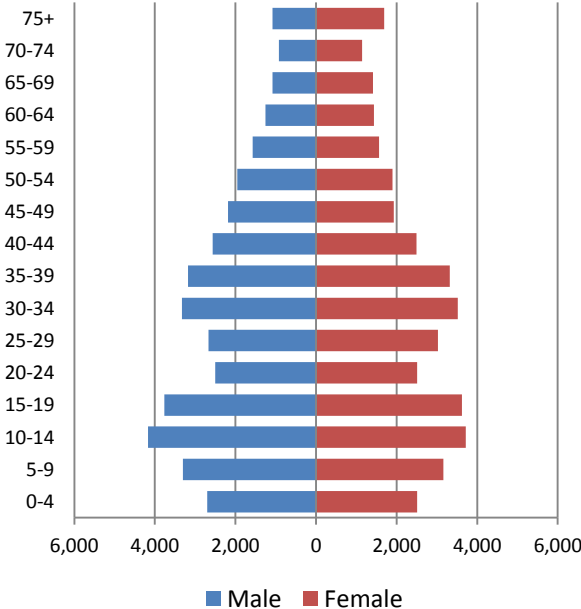
**4 Population by age**

**4.1 Historic and projected population pyramids**

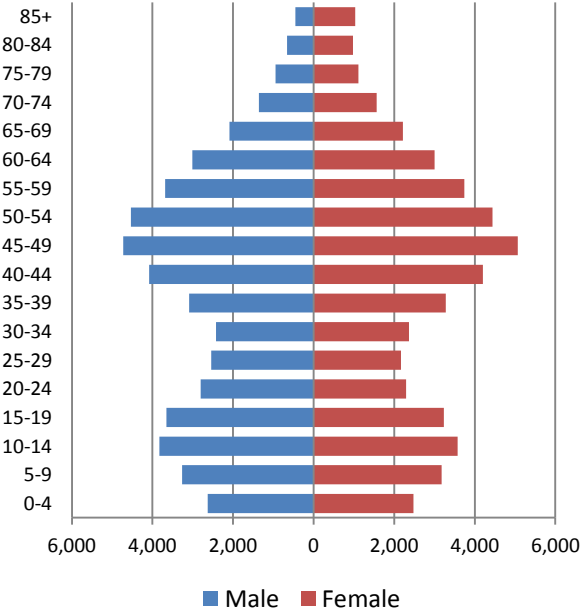
**1950 Population Pyramid, Putnam County**



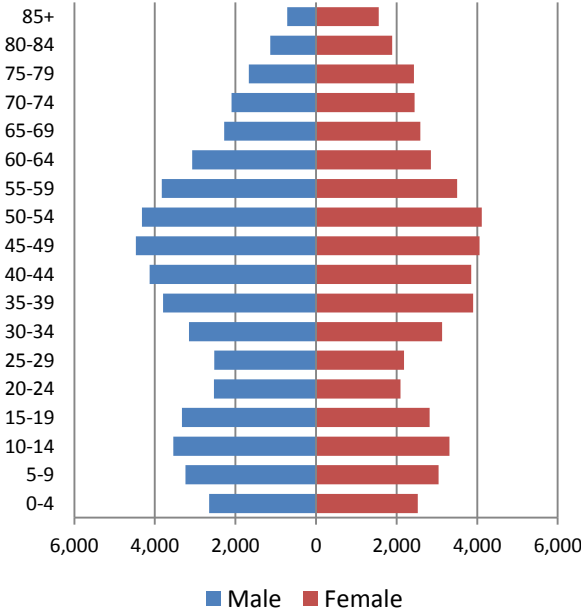
**1980 Population Pyramid, Putnam County**



**2010 Population Pyramid, Putnam County**

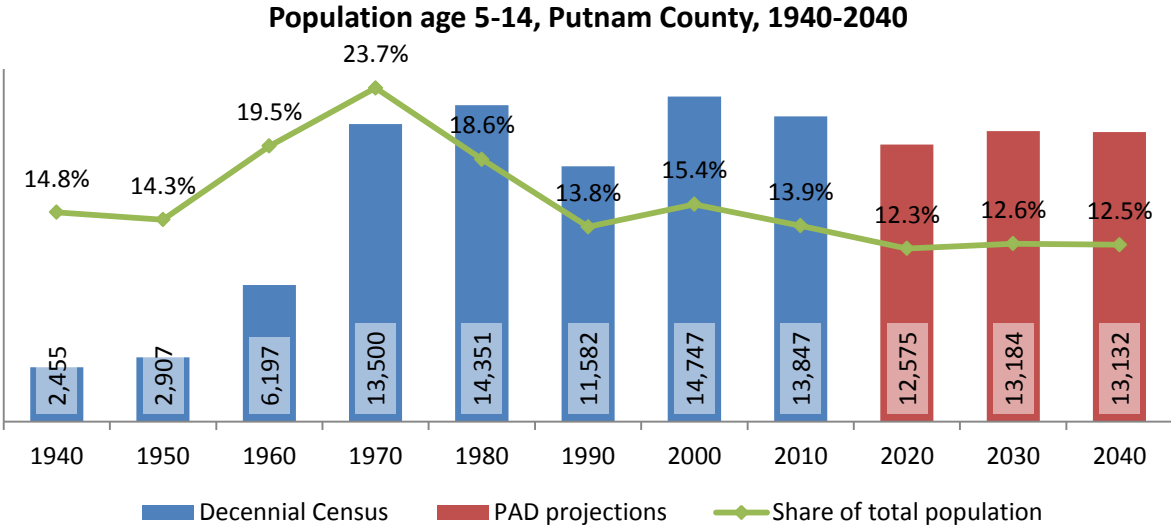


**2040 Population Pyramid, Putnam County**

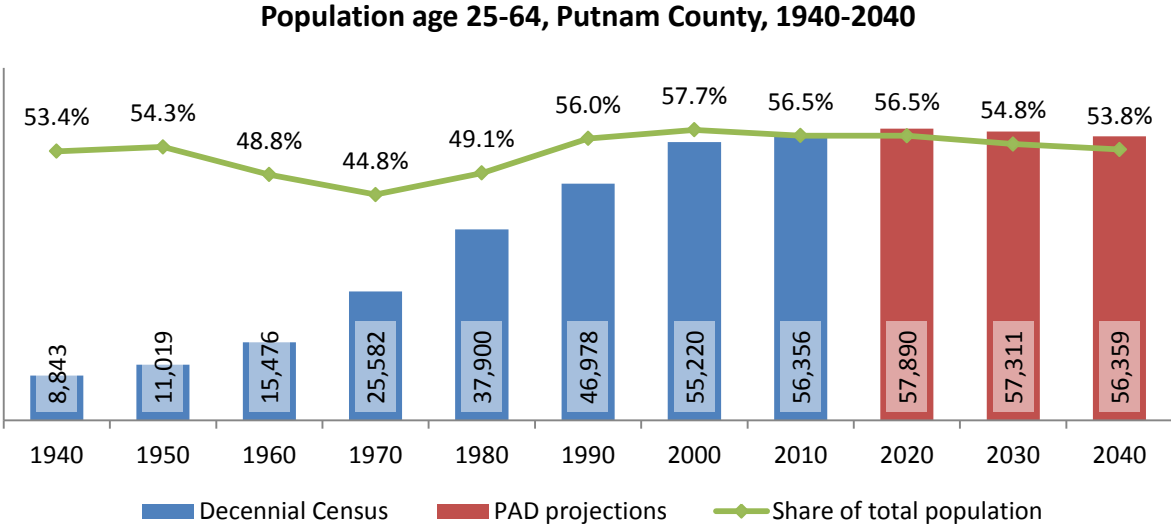


Source: 1950, 1980, 2010 Decennial Census and projections by Cornell Program on Applied Demographics

4.2 Selected age groups

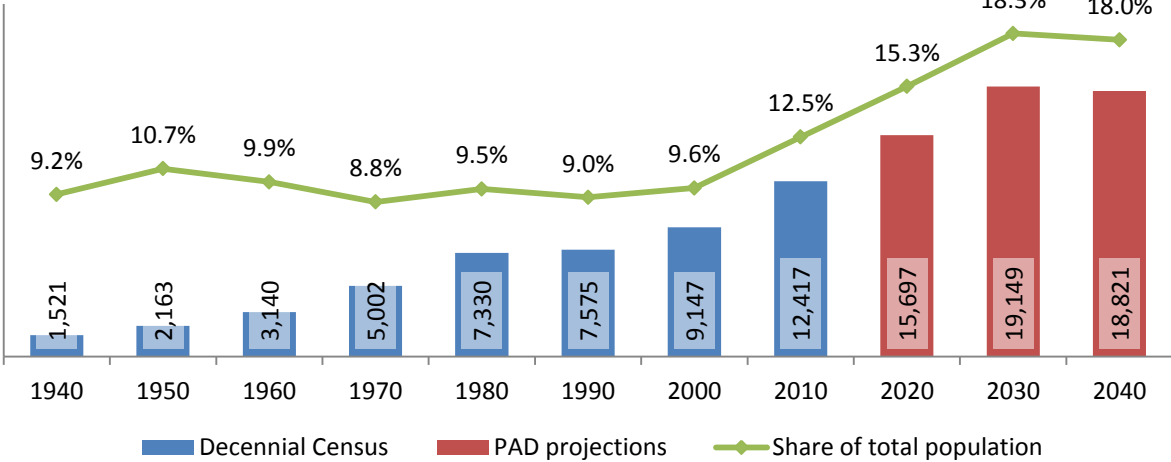


Source: 1940-2010 Decennial Census and projections by Cornell Program on Applied Demographics



Source: 1940-2010 Decennial Census and projections by Cornell Program on Applied Demographics

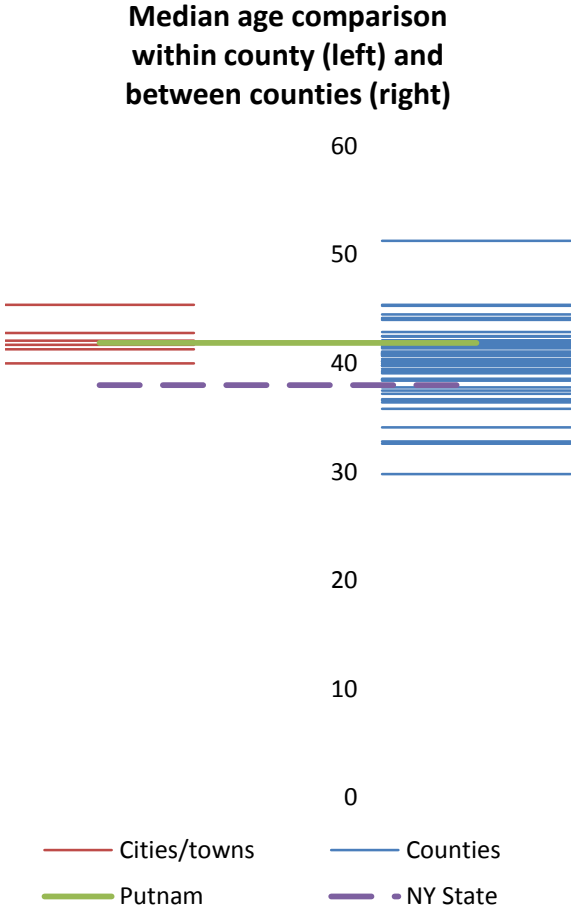
### Population age 65 and over, Putnam County, 1940-2040



Source: 1940-2010 Decennial Census and projections by Cornell Program on Applied Demographics

4.3 Median age: comparison between areas

	Median Age
New York State	38.0
Putnam County	41.9
<b>Towns</b>	
Carmel town	41.3
Kent town	42.8
Patterson town	40.0
Philipstown town	45.4
Putnam Valley town	42.1
Southeast town	41.7



Source: 2010 Decennial Census

**5 Race**

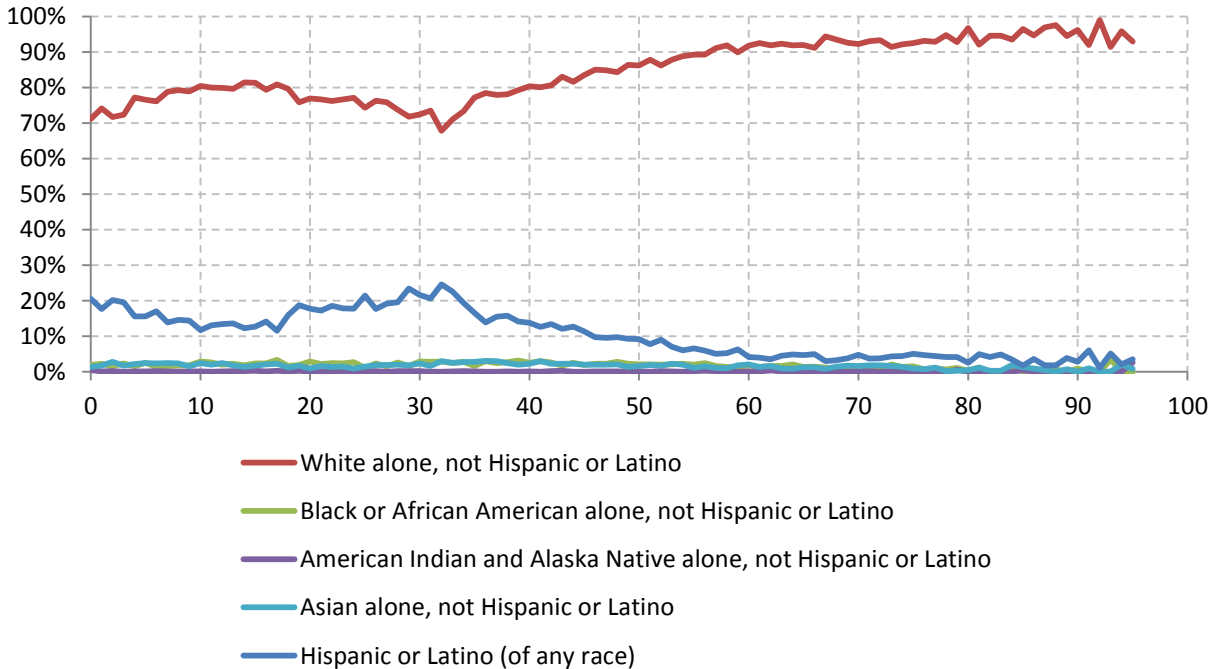
**5.1 Total and household population by race**

	Total		In households		In Group Quarters
	Count	Percentage	Count	Percentage	Count
<b>Total population</b>	99,710	100%	97,118	100%	2,592
Not Hispanic or Latino					
One race					
White	82,709	82.9%	80,879	83.3%	1,830
Black or African American	2,047	2.1%	1,726	1.8%	321
American Indian and Alaska Native	121	0.1%	117	0.1%	4
Asian	1,832	1.8%	1,766	1.8%	66
Native Hawaiian and Other Pacific Islander	14	0.0%	-	-	-
Some other race	171	0.2%	168	0.2%	3
Two or more races	1,155	1.2%	1,126	1.2%	29
Hispanic or Latino (of any race)	11,661	11.7%	11,322	11.7%	339

Source: 2010 Decennial Census

**5.2 Race composition by age**

**Race composition by age, Putnam County**



Source: 2010 Decennial Census



## 6 Housing units

### 6.1 Characteristics

HOUSING OCCUPANCY	COUNT		PERCENTAGE	
	Estimate	Margin of error	Estimate	Margin of error
<b>Total housing units</b>	38,073	± 207	100.0%	
Occupied housing units	34,998	± 445	91.9%	± 1.2
Vacant housing units	3,075	± 457	8.1%	± 1.2
<b>YEAR STRUCTURE BUILT</b>				
<b>Total housing units</b>	38,073	± 207	100.0%	
Built 2005 or later	642	± 141	1.7%	± 0.4
Built 2000 to 2004	2,350	± 341	6.2%	± 0.9
Built 1990 to 1999	3,487	± 355	9.2%	± 0.9
Built 1980 to 1989	5,377	± 424	14.1%	± 1.1
Built 1970 to 1979	5,758	± 465	15.1%	± 1.2
Built 1960 to 1969	5,703	± 405	15.0%	± 1.1
Built 1950 to 1959	5,157	± 430	13.5%	± 1.1
Built 1940 to 1949	3,090	± 362	8.1%	± 0.9
Built 1939 or earlier	6,509	± 500	17.1%	± 1.3
<b>HOUSING TENURE</b>				
<b>Occupied housing units</b>	34,998	± 445	100.0%	
Owner-occupied	29,202	± 533	83.4%	± 1.3
Renter-occupied	5,796	± 491	16.6%	± 1.3
<b>HOUSE HEATING FUEL</b>				
<b>Occupied housing units</b>	34,998	± 445	100.0%	
Utility gas	2,522	± 308	7.2%	± 0.9
Bottled, tank, or LP gas	1,346	± 240	3.8%	± 0.7
Electricity	6,479	± 556	18.5%	± 1.6
Fuel oil, kerosene, etc.	23,558	± 666	67.3%	± 1.7
Coal or coke	65	± 73	0.2%	± 0.2
Wood	720	± 209	2.1%	± 0.6
Solar energy	0	± 89	0.0%	± 0.1
Other fuel	265	± 136	0.8%	± 0.4
No fuel used	43	± 43	0.1%	± 0.1
<b>VALUE</b>				
<b>Owner-occupied units</b>	29,202	± 533	100.0%	
Less than \$50,000	347	± 121	1.2%	± 0.4
\$50,000 to \$99,999	394	± 144	1.3%	± 0.5
\$100,000 to \$149,999	469	± 139	1.6%	± 0.5
\$150,000 to \$199,999	747	± 170	2.6%	± 0.6
\$200,000 to \$299,999	4,412	± 389	15.1%	± 1.3
\$300,000 to \$499,999	13,713	± 647	47.0%	± 1.8
\$500,000 to \$999,999	7,933	± 480	27.2%	± 1.7
\$1,000,000 or more	1,187	± 214	4.1%	± 0.7
Median (dollars)	406,000	± 9,711		

Source: 2007-2011 American Community Survey

**6.2 Historical data on number of housing units and occupancy status**

Year	Number of Housing Units	Change since previous Census	Occupied	Occupancy rate	Vacant
1970	22,326		15,995	71.6%	6,331
1980	27,867	24.8%	24,368	87.4%	3,499
1990	31,898	14.5%	28,094	88.1%	3,804
2000	35,030	9.8%	32,703	93.4%	2,327
2010	38,224	9.1%	35,041	91.7%	3,183

Source: 1970-2010 Decennial Census

## 7 Education

### 7.1 Enrollment by level of school

	Estimate	Margin of error
<b>Total enrolled in school</b>	26,504	± 540
Nursery school, preschool	1,888	± 251
Kindergarten	1,200	± 202
Elementary: grade 1 to grade 4	5,143	± 414
Elementary: grade 5 to grade 8	6,163	± 419
High school: grade 9 to grade 12	6,567	± 314
College, undergraduate	4,279	± 413
Graduate, professional school	1,264	± 251

Source: 2007-2011 American Community Survey

### 7.2 Enrollment by age

	Estimate	Margin of error
3 and 4 years	70.8%	± 6.1
5 to 9 years	98.1%	± 0.8
10 to 14 years	98.8%	± 0.4
15 to 17 years	98.2%	± 1.1
18 and 19 years	80.1%	± 6.0
20 to 24 years	45.2%	± 5.0
25 to 34 years	10.1%	± 2.4
35 years and over	2.1%	± 0.4

Source: 2007-2011 American Community Survey

### 7.3 Percentage age 18-24 enrolled in college

	Estimate	Margin of error
Population 18 to 24 years	7,190	± 113
Enrolled in college or graduate school	46.6%	± 4.6
Males 18 to 24 years	3,918	± 65
Enrolled in college or graduate school	42.3%	± 5.9
Females 18 to 24 years	3,272	± 85
Enrolled in college or graduate school	51.8%	± 6.8

Source: 2007-2011 American Community Survey

## 7.4 Educational attainment

	COUNT		PERCENTAGE	
	Estimate	Margin of error	Estimate	Margin of error
<b>Population 25 years and over</b>	68,472	± 108	100%	
<b>EDUCATIONAL ATTAINMENT</b>				
Less than 9th grade	1,695	± 336	2.5%	± 0.5
9th to 12th grade, no diploma	3,049	± 387	4.5%	± 0.6
High school graduate (includes equivalency)	19,332	± 913	28.2%	± 1.3
Some college, no degree	12,826	± 776	18.7%	± 1.1
Associate's degree	5,471	± 537	8.0%	± 0.8
Bachelor's degree	14,609	± 849	21.3%	± 1.2
Graduate or professional degree	11,490	± 753	16.8%	± 1.1
Percent high school graduate or higher			93.1%	± 0.8
Percent bachelor's degree or higher			38.1%	± 1.6

Source: 2007-2011 American Community Survey

## 8 Language spoken at home

	COUNT		PERCENTAGE		SPEAK ENGLISH LESS THAN "VERY WELL"	
	Estimate	Margin of error	Estimate	Margin of error	Estimate	Margin of error
<b>Population 5 years and over</b>	94,625	± 47	100%			
<b>LANGUAGE SPOKEN AT HOME</b>						
English only	79,197	± 1,100	83.7%	± 1.2		
Language other than English	15,428	± 1,093	16.3%	± 1.2	4,747	± 643
Spanish	7,223	± 606	7.6%	± 0.6	2,695	± 467
Other Indo-European languages	6,804	± 857	7.2%	± 0.9	1,647	± 337
Asian and Pacific Islander languages	1,114	± 235	1.2%	± 0.2	373	± 183
Other languages	287	± 144	0.3%	± 0.2	32	± 34

Source: 2007-2011 American Community Survey

## 9 Labor Force Characteristics

### 9.1 Labor force, employment and unemployment

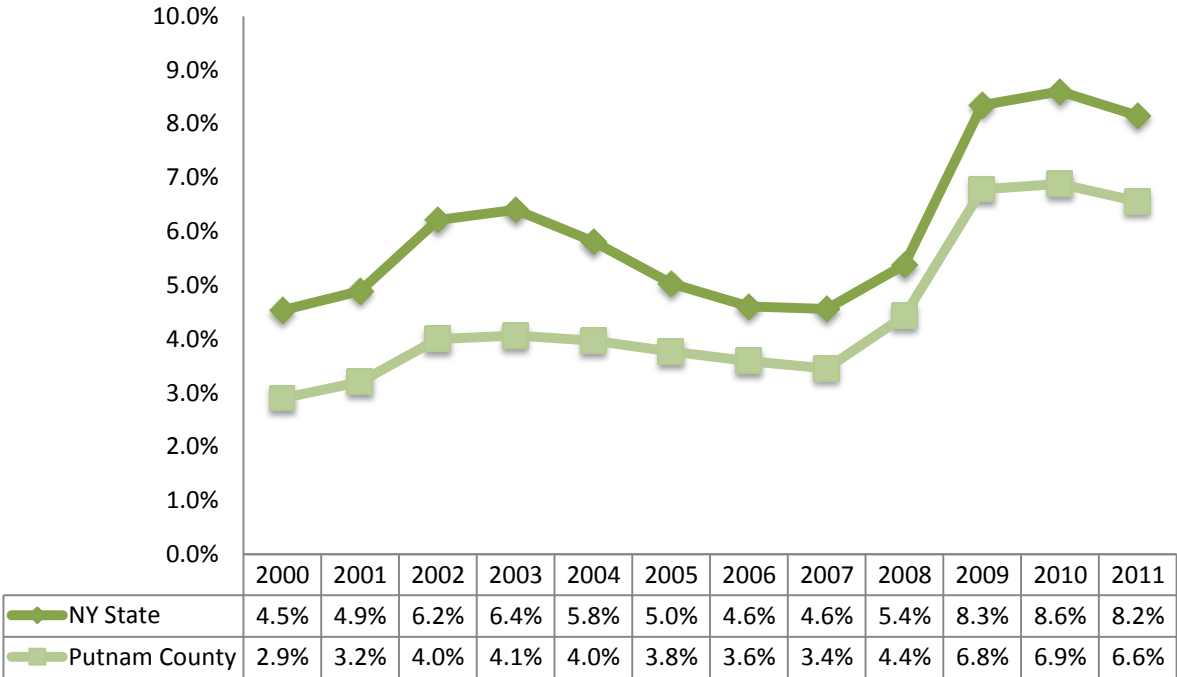
	TOTAL		IN LABOR FORCE		EMPLOYED		UNEMPLOYMENT RATE	
	Estimate	Margin of error	Estimate	Margin of error	Estimate	Margin of error	Estimate	Margin of error
<b>Population 16 years and over</b>	78,988	± 244	68.4%	± 1.1	64.1%	± 1.0	6.3%	± 0.8
<b>AGE</b>								
16 to 19 years	5,600	± 265	42.1%	± 4.9	33.0%	± 4.3	21.6%	± 5.4
20 to 24 years	4,916	± 128	74.3%	± 4.4	62.6%	± 5.1	15.6%	± 4.2
25 to 44 years	25,057	± 193	82.3%	± 1.8	77.7%	± 2.0	5.6%	± 1.3
45 to 54 years	18,293	± 157	86.3%	± 1.8	82.8%	± 1.8	3.9%	± 1.0
55 to 64 years	13,118	± 91	69.7%	± 2.5	66.1%	± 2.4	5.2%	± 1.4
65 to 74 years	6,899	± 128	28.5%	± 3.2	27.5%	± 3.2	3.6%	± 2.2
75 years and over	5,105	± 75	9.8%	± 2.9	9.5%	± 2.9	2.4%	± 3.9
<b>RACE AND HISPANIC OR LATINO ORIGIN</b>								
One race	77,730	± 328	68.5%	± 1.1	64.2%	± 1.1	6.2%	± 0.8
White	71,472	± 505	68.6%	± 1.2	64.2%	± 1.1	6.3%	± 0.8
Black or African American	1,666	± 169	68.2%	± 7.8	65.8%	± 8.1	2.5%	± 2.8
American Indian and Alaska Native	23	± 25	100.0%	± 61.8	100.0%	± 61.8	0.0%	± 61.8
Asian	1,435	± 88	66.2%	± 8.6	65.1%	± 8.1	1.7%	± 2.6
Pacific Islander	0	± 89	-	**	-	**	-	**
Some other race	3,134	± 457	68.2%	± 7.1	62.7%	± 6.4	8.0%	± 4.5
Two or more races	1,258	± 233	62.3%	± 8.5	54.5%	± 8.5	12.5%	± 6.4
Hispanic or Latino origin (of any race)	8,288	± 67	69.7%	± 3.0	65.2%	± 3.2	6.2%	± 2.3
White alone, not Hispanic or Latino	66,723	± 265	68.3%	± 1.2	63.9%	± 1.2	6.4%	± 0.9
<b>SEX</b>								
<b>Population 20 to 64 years</b>	61,384	± 127	80.2%	± 1.2	75.6%	± 1.1	5.7%	± 0.8
Male	30,824	± 119	84.8%	± 1.5	80.0%	± 1.6	5.6%	± 1.0
Female	30,560	± 148	75.5%	± 1.6	71.1%	± 1.7	5.9%	± 1.1
With own children under 6 years	4,452	± 360	68.5%	± 4.2	63.9%	± 4.2	6.8%	± 2.7
<b>EDUCATIONAL ATTAINMENT</b>								
<b>Population 25 to 64 years</b>	56,468	± 144	80.7%	± 1.2	76.7%	± 1.2	4.9%	± 0.8
Less than high school graduate	2,909	± 437	67.2%	± 6.5	62.0%	± 6.4	7.8%	± 4.5
High school graduate (includes equivalency)	14,556	± 804	73.1%	± 2.7	69.2%	± 2.7	5.4%	± 1.5
Some college or associate's degree	15,955	± 933	79.9%	± 2.3	76.1%	± 2.3	4.8%	± 1.4
Bachelor's degree or higher	23,048	± 1,035	87.7%	± 1.3	83.7%	± 1.6	4.5%	± 0.9

Table formula:           **LABOR FORCE** = # EMPLOYED + # UNEMPLOYED  
                              **% IN LABOR FORCE** = LABOR FORCE / TOTAL \* 100%  
                              **% EMPLOYED** = # EMPLOYED / TOTAL \* 100%  
                              **UNEMPLOYMENT RATE** = # UNEMPLOYED / LABOR FORCE \* 100%

Source: 2007-2011 American Community Survey

9.2 Annual unemployment rate

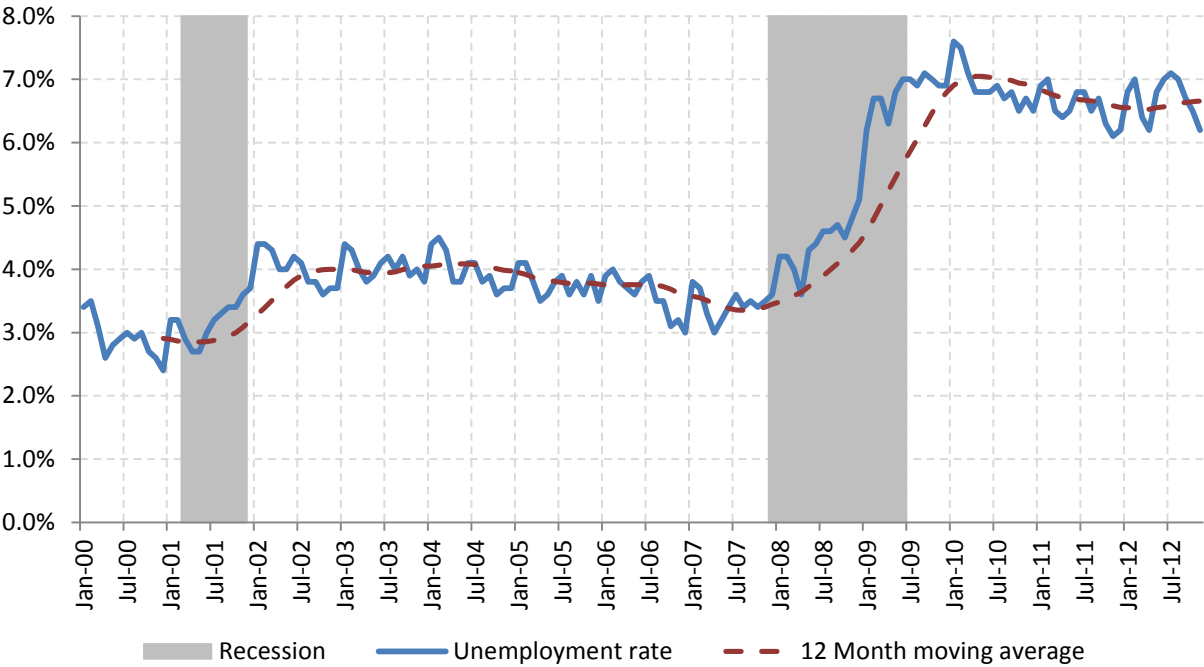
Annual unemployment rate, Putnam County and New York State



Source: Bureau Labor Statistics (BLS)

9.3 Monthly unemployment rate

Monthly unemployment rate, Putnam County



Source: Bureau Labor Statistics (BLS)

## 9.4 Employment and number of jobs

**Labor force, number of employed workers and number of jobs  
Putnam County**



Source: Bureau Labor Statistics (BLS) and NY Department of Labor - Quarterly Census of Employment and Wages (QCEW) – annual averages

## 9.5 Class of worker

		Median earnings (\$)					
		Total	%Male	%Female	Total	Male	Female
Civilian employed population 16 years and over	Estimate	50,615	53.5%	46.5%	48,832	59,677	40,040
	Margin of error	± 824	± 0.8	± 0.8	± 1,940	± 3,173	± 2,280
Private for-profit wage and salary workers:	Estimate	32,539	55.5%	44.5%	47,568	57,586	36,419
	Margin of error	± 1,081	± 1.5	± 1.5	± 2,645	± 3,829	± 2,127
Employee of private company workers	Estimate	29,390	53.1%	46.9%	45,919	56,763	36,250
	Margin of error	± 1,020	± 1.5	± 1.5	± 2,896	± 4,559	± 2,299
Self-employed in own incorporated business workers	Estimate	3,149	77.5%	22.5%	57,178	63,325	38,426
	Margin of error	± 374	± 5.5	± 5.5	± 10,797	± 9,533	± 15,585
Private not-for-profit wage and salary workers	Estimate	4,915	35.4%	64.6%	43,484	47,804	40,069
	Margin of error	± 432	± 4.6	± 4.6	± 4,825	± 3,865	± 4,002
Local government workers	Estimate	7,592	51.9%	48.1%	65,524	83,490	47,027
	Margin of error	± 534	± 3.8	± 3.8	± 4,350	± 4,698	± 2,869
State government workers	Estimate	1,641	55.1%	44.9%	60,292	65,035	58,650
	Margin of error	± 268	± 9.3	± 9.3	± 6,268	± 14,023	± 7,631
Federal government workers	Estimate	630	66.3%	33.7%	54,000	55,682	52,237
	Margin of error	± 167	± 10.6	± 10.6	± 7,217	± 9,581	± 33,319
Self-employed in own not incorporated business workers and unpaid family workers	Estimate	3,298	61.2%	38.8%	30,197	32,345	25,611
	Margin of error	± 405	± 5.5	± 5.5	± 4,878	± 8,503	± 4,559

Source: 2007-2011 American Community Survey

## 9.6 Jobs by industry sector

	Putnam County			NY state
	2011	Change since 2006	% of total	% of total
<b>All NAICS Sectors</b>	23,977	-5.5%	100.0%	100.0%
Agriculture, Forestry, Fishing and Hunting	44	-15.4%	0.2%	0.3%
Mining, Quarrying, and Oil and Gas Extraction	NA	NA	NA	0.1%
Utilities	103	-10.4%	0.4%	0.5%
Construction	1,855	-30.5%	7.7%	3.5%
Manufacturing	1,357	-19.0%	5.7%	5.5%
Wholesale Trade	976	5.2%	4.1%	4.0%
Retail Trade	2,597	6.9%	10.8%	10.5%
Transportation and Warehousing	543	-14.4%	2.3%	3.4%
Information	467	-47.2%	1.9%	3.3%
Finance and Insurance	751	-10.0%	3.1%	6.0%
Real Estate and Rental and Leasing	203	-14.7%	0.8%	2.3%
Professional, Scientific, and Technical Services	1,175	-6.3%	4.9%	6.9%
Management of Companies and Enterprises	NA	NA	NA	1.6%
Administrative and Support and Waste Management and Remediation Services	1,087	-2.4%	4.5%	5.2%
Educational Services	3,741	5.5%	15.6%	10.8%
Health Care and Social Assistance	4,161	-0.6%	17.4%	17.0%
Arts, Entertainment, and Recreation	731	0.0%	3.0%	1.9%
Accommodation and Food Services	1,487	22.2%	6.2%	7.3%
Other Services (except Public Administration)	1,175	-7.2%	4.9%	3.9%
Public Administration	1,503	-5.2%	6.3%	5.8%

Source: U.S. Census Bureau - Public Use Quarterly Workforce Indicators (QWI) – annual averages

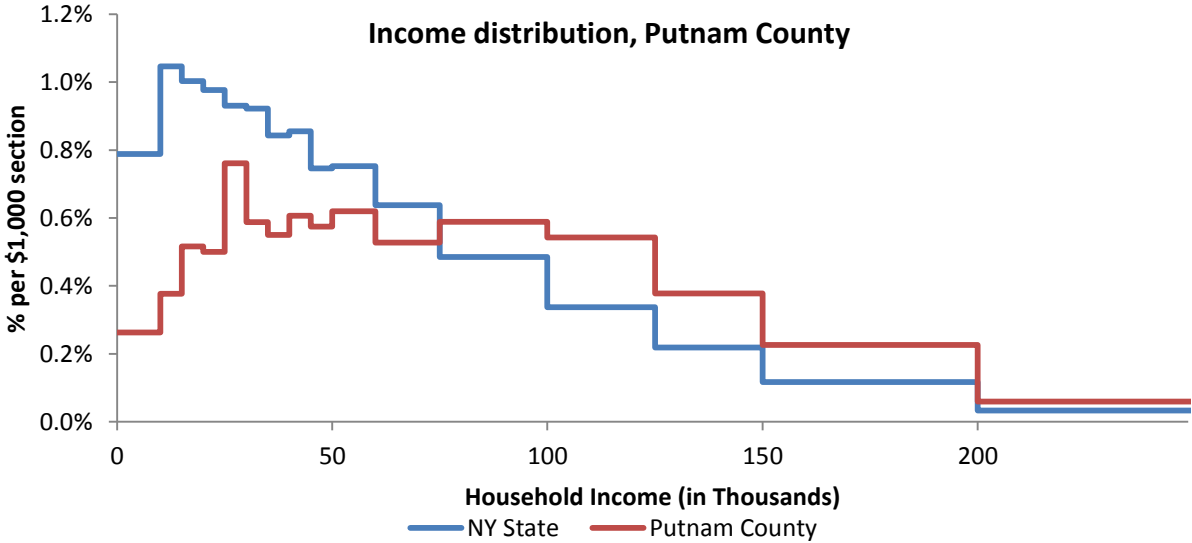


**10 Household Income**

**10.1 Distribution**

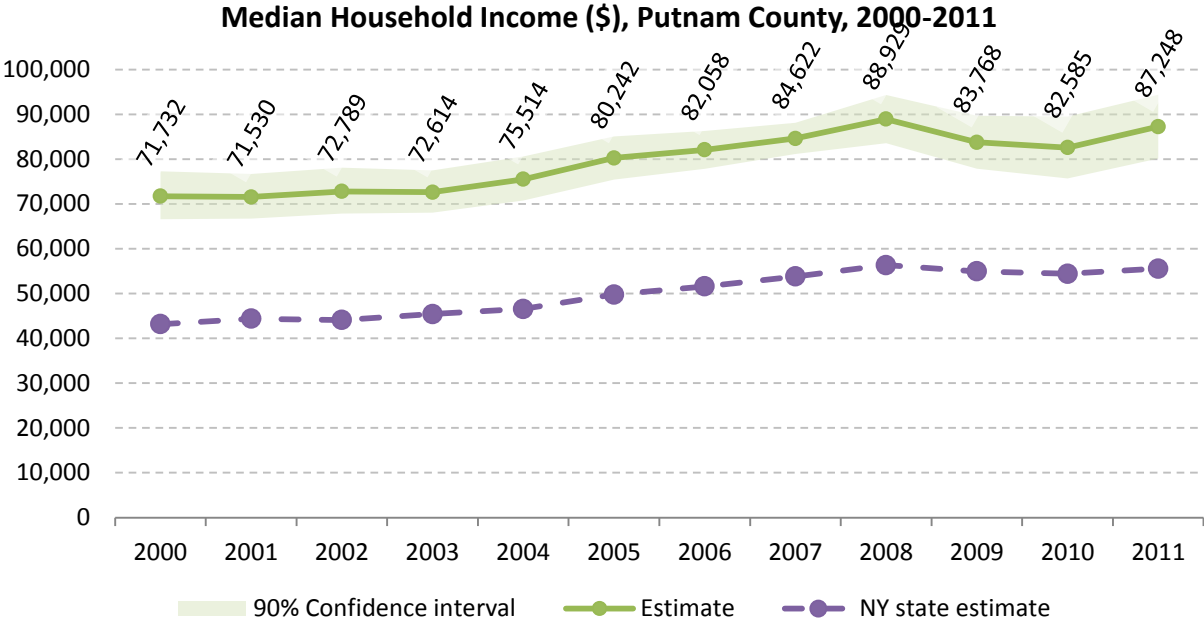
	Estimate	Margin of error	Interval width (in \$1,000)	Est. per \$1,000 section
<b>Total:</b>	34,998	± 445		
Less than \$10,000	920	± 193	10	92.0
\$10,000 to \$14,999	660	± 182	5	132.0
\$15,000 to \$19,999	903	± 220	5	180.6
\$20,000 to \$24,999	876	± 170	5	175.2
\$25,000 to \$29,999	1,331	± 239	5	266.2
\$30,000 to \$34,999	1,029	± 234	5	205.8
\$35,000 to \$39,999	962	± 209	5	192.4
\$40,000 to \$44,999	1,061	± 250	5	212.2
\$45,000 to \$49,999	1,006	± 178	5	201.2
\$50,000 to \$59,999	2,168	± 330	10	216.8
\$60,000 to \$74,999	2,767	± 305	15	184.5
\$75,000 to \$99,999	5,149	± 387	25	206.0
\$100,000 to \$124,999	4,744	± 449	25	189.8
\$125,000 to \$149,999	3,302	± 312	25	132.1
\$150,000 to \$199,999	3,961	± 369	50	79.2
\$200,000 or more	4,159	± 318	-	-

Source: 2007-2011 American Community Survey



Source: 2007-2011 American Community Survey

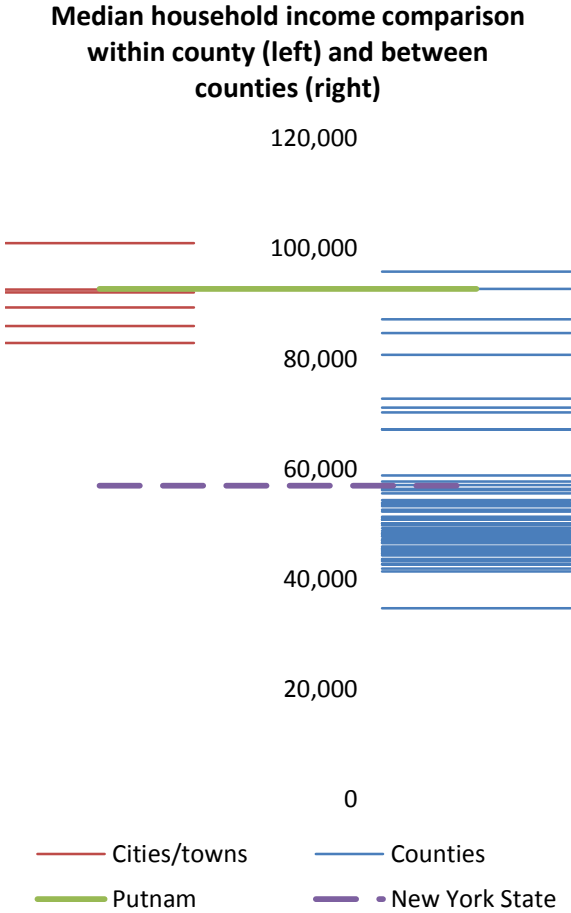
10.2 Median household income: Trends over time



Source: Small Area Income and Poverty Estimates (SAIPE)

**10.3 Median household income: Comparison between areas**

MEDIAN HOUSEHOLD INCOME (\$)		
	Estimate	Margin of error
New York State	56,951	± 190
Putnam County	92,711	± 2,815
<b>Towns</b>		
Carmel	101,022	± 4,968
Kent	89,338	± 6,990
Patterson	85,986	± 10,702
Philip	82,896	± 7,216
Putnam Valley	92,589	± 8,758
Southeast	92,083	± 8,081



Source: 2007-2011 American Community Survey

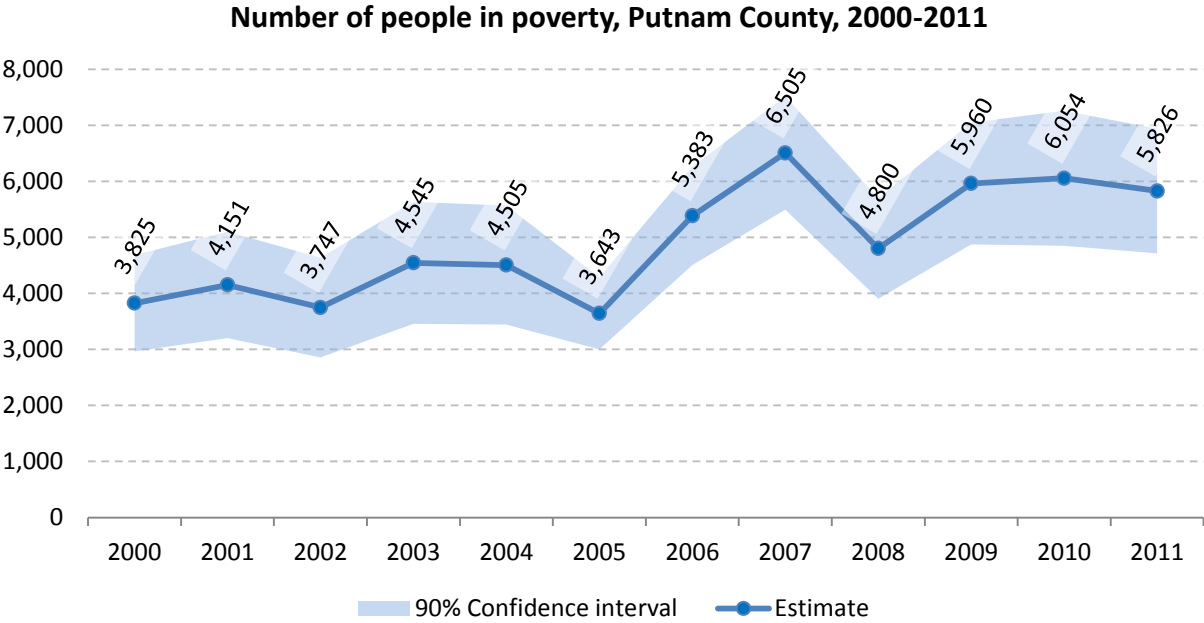
## 11 Poverty

### 11.1 Poverty characteristics

	TOTAL		BELOW POVERTY LEVEL		PERCENT BELOW POVERTY LEVEL	
	Estimate	Margin of error	Estimate	Margin of error	Estimate	Margin of error
<b>Population for whom poverty status is determined</b>	98,581	± 375	5,346	± 758	5.4%	± 0.8
<b>AGE</b>						
Under 18 years	23,775	± 141	1,304	± 413	5.5%	± 1.7
Related children under 18 years	23,767	± 142	1,296	± 413	5.5%	± 1.7
18 to 64 years	62,949	± 343	3,252	± 480	5.2%	± 0.8
65 years and over	11,857	± 139	790	± 221	6.7%	± 1.9
<b>SEX</b>						
Male	49,076	± 253	2,725	± 481	5.6%	± 1.0
Female	49,505	± 253	2,621	± 449	5.3%	± 0.9
<b>RACE AND HISPANIC OR LATINO ORIGIN</b>						
One race	96,232	± 524	5,180	± 754	5.4%	± 0.8
White	88,629	± 675	3,955	± 613	4.5%	± 0.7
Black or African American	1,800	± 294	190	± 121	10.6%	± 6.6
American Indian and Alaska Native	23	± 25	14	± 17	60.9%	± 43.3
Asian	1,777	± 205	255	± 170	14.4%	± 9.0
Hispanic or Latino origin (of any race)	11,005	± 102	1,286	± 343	11.7%	± 3.1
White alone, not Hispanic or Latino	82,420	± 286	3,516	± 569	4.3%	± 0.7
<b>EDUCATIONAL ATTAINMENT</b>						
<b>Population 25 years and over</b>	67,911	± 261	3,649	± 489	5.4%	± 0.7
Less than high school graduate	4,623	± 530	600	± 215	13.0%	± 4.3
High school graduate (includes equivalency)	19,114	± 905	1,700	± 347	8.9%	± 1.7
Some college, associate's degree	18,163	± 975	600	± 173	3.3%	± 0.9
Bachelor's degree or higher	26,011	± 1,072	749	± 207	2.9%	± 0.8
<b>EMPLOYMENT STATUS</b>						
<b>Civilian labor force 16 years and over</b>	53,891	± 910	1,366	± 311	2.5%	± 0.6
Employed	50,492	± 836	1,067	± 267	2.1%	± 0.5
Male	26,996	± 534	561	± 191	2.1%	± 0.7
Female	23,496	± 598	506	± 141	2.2%	± 0.6
Unemployed	3,399	± 439	299	± 131	8.8%	± 3.7
Male	1,783	± 277	106	± 86	5.9%	± 4.5
Female	1,616	± 290	193	± 107	11.9%	± 6.5
<b>WORK EXPERIENCE IN THE PAST 12 MONTHS</b>						
<b>Population 16 years and over</b>	78,115	± 422	4,187	± 551	5.4%	± 0.7
Worked full-time, year-round	35,122	± 843	274	± 110	0.8%	± 0.3
Worked part-time or part-year	20,977	± 862	1,158	± 281	5.5%	± 1.3
Did not work	22,016	± 816	2,755	± 515	12.5%	± 2.3

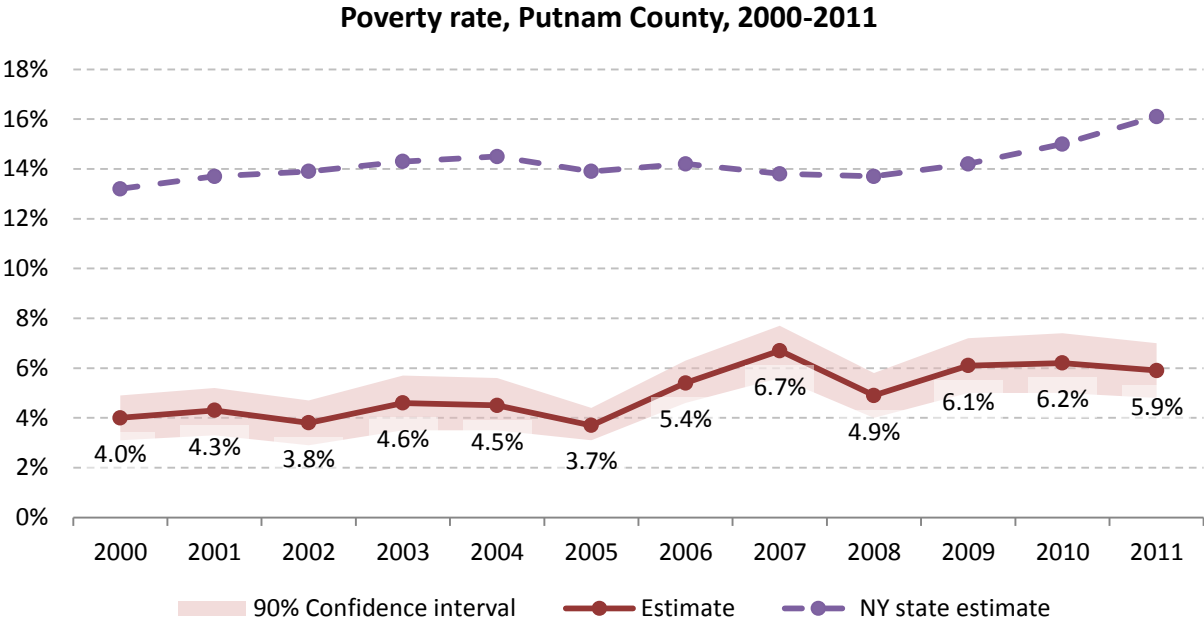
Source: 2007-2011 American Community Survey

11.2 Poverty: Trends over time: Count



Source: Small Area Income and Poverty Estimates (SAIPE)

11.3 Poverty: Trends over time: Rate

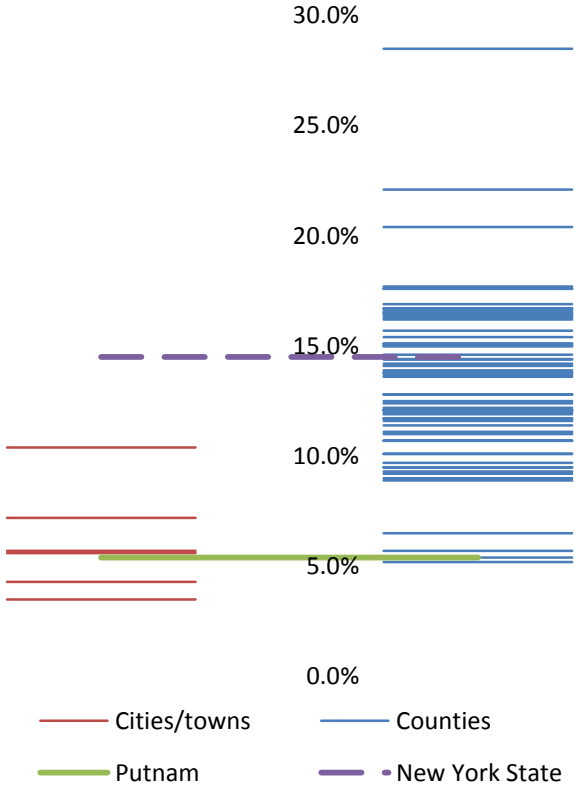


Source: Small Area Income and Poverty Estimates (SAIPE)

11.4 Poverty rate: comparison between areas

Poverty Rate - All people		
	Estimate	Margin of error
New York State	14.5%	± 0.1
Putnam County	5.4%	± 0.8
<b>Towns</b>		
Carmel	3.5%	± 1.4
Kent	4.3%	± 2.3
Patterson	10.4%	± 3.9
Philip	7.2%	± 2.7
Putnam Valley	5.7%	± 3.3
Southeast	5.6%	± 1.8

Poverty rate comparison within county (left) and between counties (right)

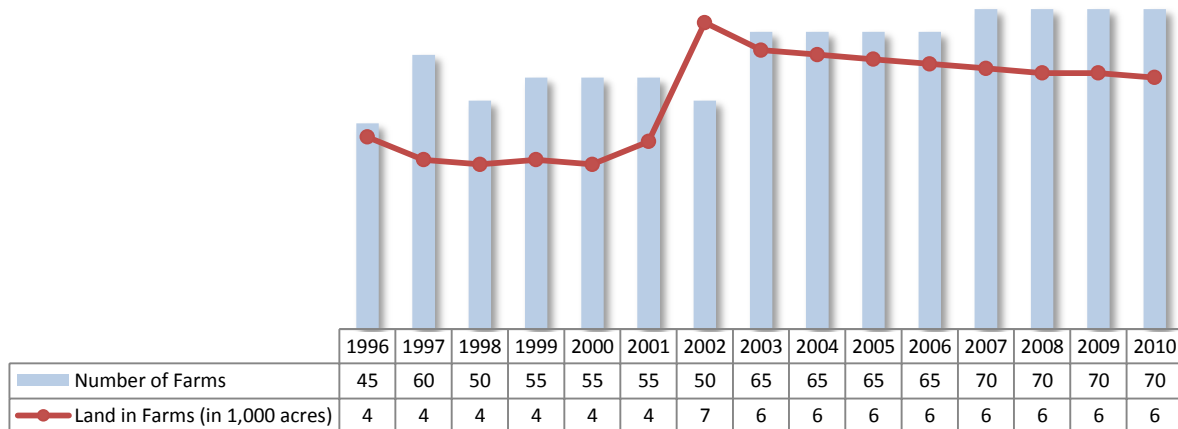


Source: 2007-2011 American Community Survey

## 12 Agriculture

### 12.1 Number of farms and land in farms

Putnam County, 1996-2010



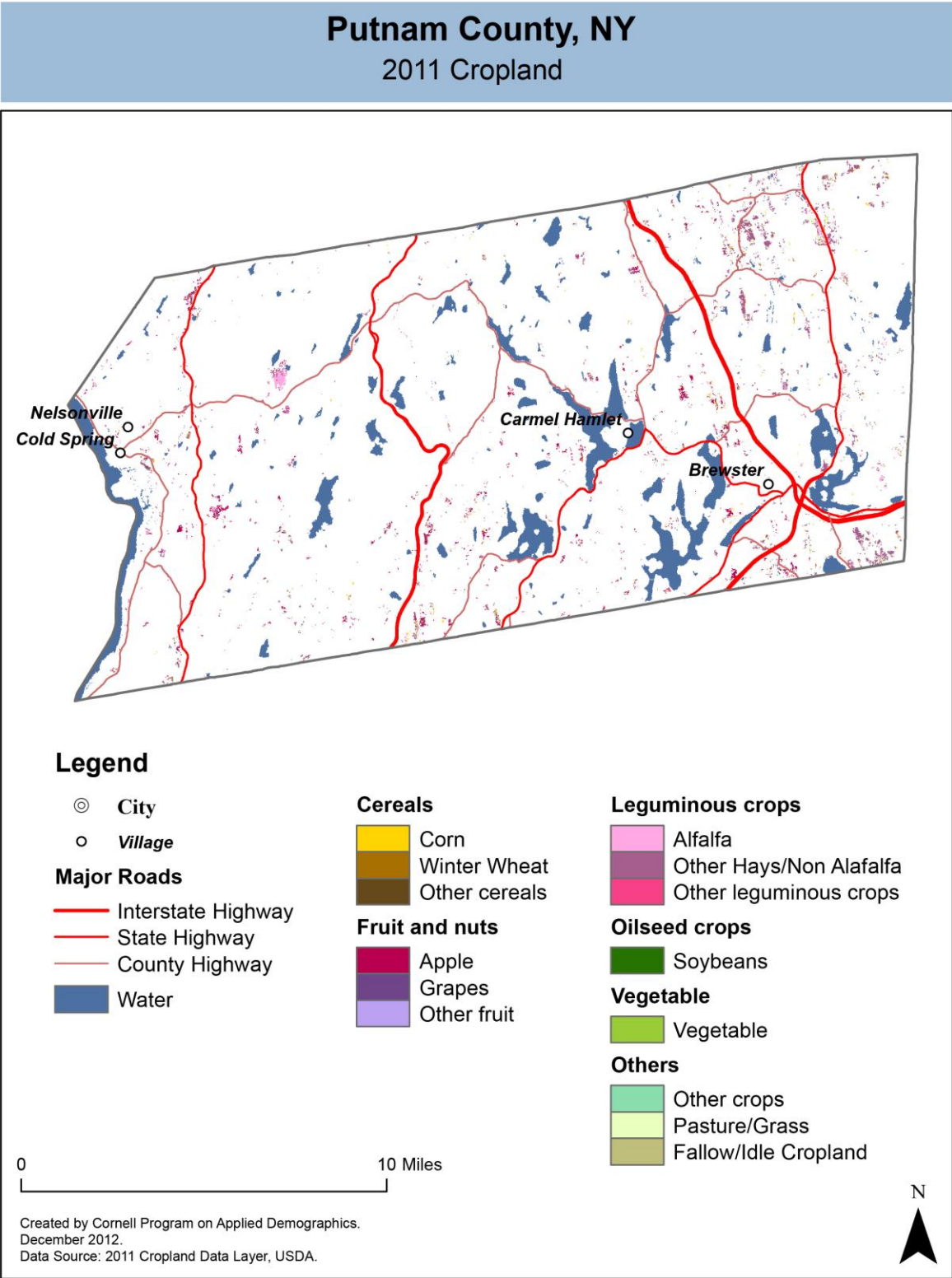
Source: National Agricultural Statistics Service – Annual Statistical bulletin

### 12.2 Farm Operator Characteristics

	Principal Operator		
	Total	Male	Female
<b>Number of farms</b>	72	39	33
Average size of farm (acres)	78	112	38
PRIMARY OCCUPATION			
Farming	35	13	22
Other	37	26	11
AGE			
Under 45	9	0	9
45 to 64 years	48	31	17
65 years and over	15	8	7
Average age (years)	54.9	58.3	51
YEARS ON PRESENT FARM			
Less than 3 years	6	2	4
3 to 4 years	0	0	0
5 to 9 years	20	6	14
10 years or more	46	31	15

Source: 2007 Agricultural Census

12.3 Map of type of crop



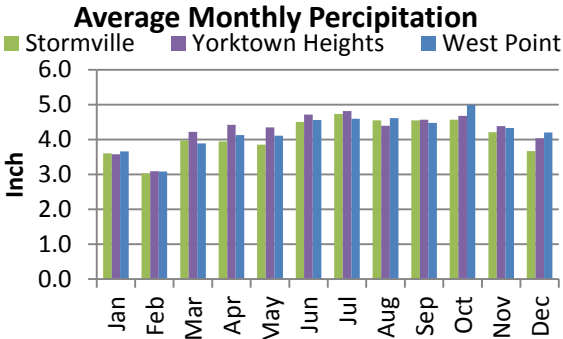
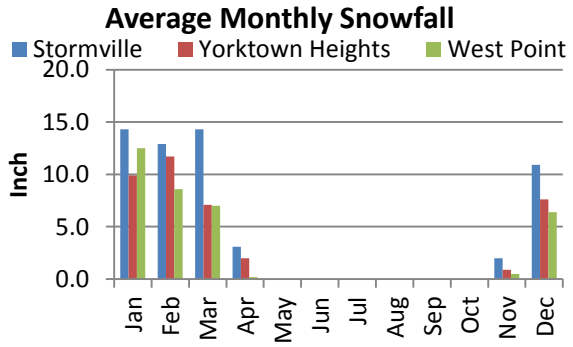
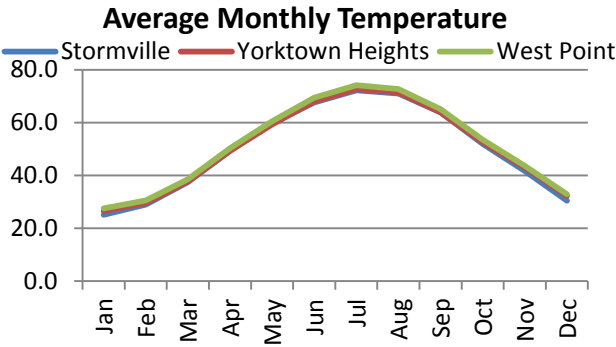
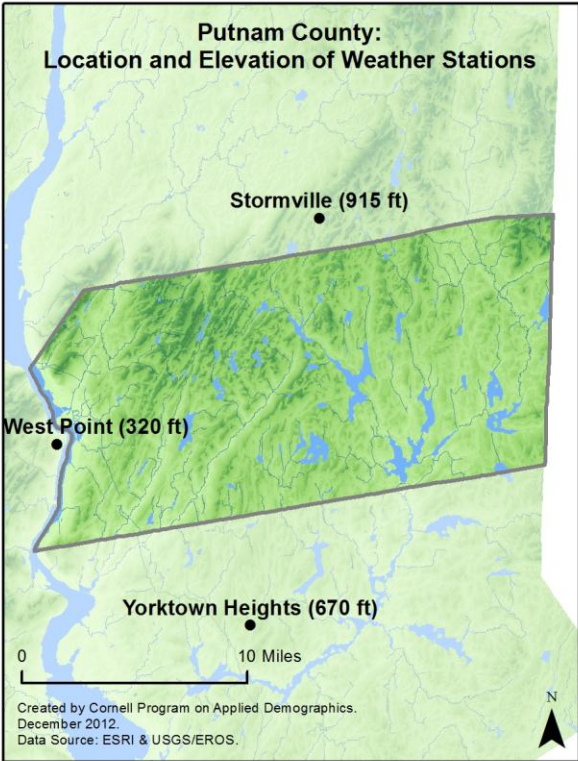


## 12.4 Estimated acreage by crop

	Acreage	%		Acreage	%
<b>Cereals</b>			<b>Fruit and nuts</b>		
Barley	-		Apples	636	21.0%
Corn	149	4.9%	Apricots	-	
Millet	-		Blueberries	-	
Oats	6	0.2%	Cherries	0.2	0.0%
Rye	4.0	0.1%	Cranberries	-	
Sorghum	-		Grapes	-	
Speltz	-		Nectarines	-	
Spring Wheat	-		Peaches	-	
Sweet Corn	0.7	0.0%	Plums	2.0	0.1%
Triticale	-		Prunes	-	
Winter Wheat	0.2	0.0%	Strawberries	-	
Dbl Crop WinWht/Corn	-		Walnuts	-	
<b>Leguminous crops</b>			<b>Beverage and spice crops</b>		
Alfalfa	391	12.9%	Herbs	-	
Other Hay/Non Alfalfa	1,384	45.8%	Peppers	-	
Dry Beans	-		<b>Trees</b>		
Peas	-		Christmas Trees	-	
Vetch	11	0.4%	Other Tree Crops	6	0.2%
<b>Oilseed crops</b>			<b>Other crops</b>		
Soybeans	0.7	0.0%	Tobacco	-	
Sunflower	-		Misc Veggies & Fruits	-	
<b>Sugar crops</b>			Clover/Wildflowers	-	
Sugarbeets	-		Sod/Grass Seed	-	
<b>Root/tuber crops with high starch or inulin content</b>			Switchgrass	-	
Potatoes	-		Dbl Crop Soybeans/Oats	-	
<b>Vegetables and melons</b>			Dbl Crop WinWht/Soybeans	-	
Asparagus	-		Other Crops	-	
Broccoli	-		<b>Pasture/Grass</b>	259	8.6%
Cabbage	-		<b>Fallow/Idle Cropland</b>	173	5.7%
Carrots	-				
Eggplants	-				
Onions	-				
Pumpkins	-				
Squash	-				
Tomatoes	-				
Turnips	-				

Source: National Agricultural Statistics Service - Cropland Data Layer 2011

13 Climate



**Average length of freeze-free season**

	Last day of frost	First day of frost	Season length
Stormville	Not available		
Yorktown Heights	April 14	October 22	191
West Point	April 14	October 30	199

Source: NOAA, Northeast Regional Climate Center at Cornell University. Averages 1981-2010

## 14 Glossary

**American Community Survey (ACS)** - The American Community Survey is an ongoing survey of the population that provides data every year on a variety of social and economic characteristics—age, sex, race, family and relationships, income and benefits, health insurance, education, veteran status, disabilities, where you work and how you get there, where you live and how much you pay for some essentials. The ACS replaced the information previously gathered by what was known as the “long form” of the decennial censuses. The ACS provides communities, companies and other institutions with current information they need to plan investments and services. Information from the survey generates data that help determine how more than \$400 billion in federal and state funds are distributed each year. Every estimate presented in the American Community Survey, as in other surveys, has an uncertainty associated with it. Often the magnitude of that uncertainty is expressed as the Margin of Error.

**Confidence Interval (CI)** - indication of the degree of uncertainty about a sample estimates. Confidence intervals have been traditionally reported at the 90, 95 and 99 percent levels. A 90 percent confidence interval can be interpreted, for example, roughly as providing 90 percent certainty that the interval defined by the upper and lower bounds contain the true value of the characteristic. If a Margin of Error is given, the lower bound of the confidence interval is equal to the estimate minus the Margin of Error and the upper bound is equal to the estimate plus the Margin of Error. (See further, Margin of Error definition below.)

**County subdivision or Minor Civil Division (MCD)** - The Census Bureau geography for primary administrative units below the county level in New York is collectively referred to as county subdivisions or minor civil divisions. These include towns, cities and Indian Reservations.

**Decennial Census** - the Census of the population and housing taken every 10 years in the United States, at the start of each decade, since 1790.

**Employed** – either “at work” or “with a job, but not at work”.

**Group Quarters Population** - all U.S. residents who live in group living facilities including correctional institutions, juvenile facilities, skilled nursing facilities, college residence halls, military barracks, group homes, and workers' dormitories.

**Household Population** - all U.S. residents who live in housing units such as single family homes, townhouses, apartments, and mobile homes.

**Intercensal Population Estimates** - estimates produced for the years between two decennial censuses when both the beginning and ending populations are known. They are produced once a decade by adjusting the existing time series of postcensal estimates for the entire decade to smooth the transition from one decennial census count to the next. They differ from the postcensal estimates that are released annually because the difference between the April 1 postcensal estimate and April 1 census count for the end of the decade is redistributed across the estimates for that decade. For dates when both postcensal and intercensal estimates are available, intercensal estimates are preferred.

**Labor Force** - consists of people classified as employed or unemployed.

**Margin of Error (MOE)** - a measure of the precision of an estimate at a given level of confidence. The confidence level of a margin of error indicates the likelihood that the difference between the population value (which you

would get if you could measure the whole population instead of a sample) and the estimate is less than or equal to the margin of error. The range from the estimate minus the margin of error to the estimate plus the margin of error is called the confidence interval. All ACS estimates are published with their margins of error at the 90 percent confidence level. Margins of error are useful in assessing the reliability of estimates and whether differences between estimates are significant.

**NAICS** - The North American Industry Classification System or NAICS is used by business and government to classify business establishments according to type of economic activity (process of production).

**Numeric Population Change** - difference between the population of an area at the beginning and end of a time period. It is computed by taking the difference between the population at one point in time (t1) and some future time (t2).

**Percent Population Change** - difference between the population of an area at the beginning and end of a time period, expressed as a percentage of the beginning population. It is computed by dividing the population change (t2 - t1) by t1 and multiplying the result by 100.

**Population Estimates** - The calculated number of people living in an area as of a specified point in time, usually July 1st. The estimated population is calculated using a component of change model that incorporates information on natural increase (births, deaths) and net migration (net domestic migration, net international migration) that has occurred in an area since the latest decennial census. A procedure for estimating the current population using a procedure involving a "base population" value at time t -1, adding to that the births during the interval t-1 to t, subtracting the deaths during that interval t-1 to t, and then adding the net domestic and net international migration that occurred during that interval.

**Population Density** - Total number of people per areal unit like a square mile or square kilometer.

**Population Pyramids** - A graphical way of portraying a population's age and sex composition at a given slice in time. The first horizontal bar, constituting the base of the graph, is the youngest age group (typically 0-4) with the number of males in that age group on the left and the number of females in that age group on the right. On top of that age group is another horizontal bar for the next age group (e.g. 5-9) and so forth with the top bar typically for those aged 75 and over. In a population with lots of births and deaths, the shape typically forms a pyramid with a broad base and a narrow top. It is one of the most basic ways to understand population change over time as well as between different geographic units of a similar status (e.g. counties).

**Postcensal Estimates** - estimates produced for the years after a decennial census when only the beginning population is known. They are produced and revised each year, targeted to July 1 of that year.

**Projection** - estimated population at some future time based on assumptions about births, deaths, migration, and ages.

**Race/Ethnicity** - the Census Bureau collects racial data in accordance with guidelines provided by the U.S. Office of Management and Budget (OMB), and these data are based on self-identification. The racial categories included in the census questionnaire generally reflect a social definition of race recognized in this country and not an attempt to define race biologically, anthropologically, or genetically. In addition, it is recognized that the categories of the race item include racial and national origin or sociocultural groups. People may choose to report more than one race to indicate their racial mixture, such as "American Indian" and "White." People who identify their origin as Hispanic, Latino, or Spanish may be of any race. OMB requires five minimum categories: White, Black or African American, American Indian or Alaska Native, Asian, and Native Hawaiian or Other Pacific

Islander. Hispanics may be classified as white or black. So we generally separate them out as an ethnic group first.

**Unemployed** – Not employed, but actively looking for work and available to accept a job.

**Unemployment rate** – Fraction of the Labor Force that is unemployed.

**Urban Area** – A densely settled area with at least 2,500 people. If the total number of people is less than 50,000 the Census Bureau calls it an Urban Cluster, otherwise an Urbanized Area.

**Vintage** - each year, the U.S. Census Bureau produces and publishes estimates of the population for each state and county, as well as the nation as a whole. These are called “vintages.” In producing these vintages, the Bureau utilizes administrative data from a number of sources to estimate 1) the change in population since the most recent decennial census, and 2) the population for each year since the most recent decennial census. With each annual release of population estimates (vintage), the entire time series of estimates beginning on April 1, 2010 is revised and updated.

## 15 References

Putnam County homepage: <http://www.putnamcountyny.com/>

At Cornell:

- Cornell Cooperative Extensions (CCE)  
Home page: <http://www.cce.cornell.edu>
  - Putnam local office: <http://counties.cce.cornell.edu/putnam/>
- Program on Applied Demographics (PAD)  
URL: <http://pad.human.cornell.edu/>
- Community and Regional Development Institute (CaRDI)  
URL: <http://devsoc.cals.cornell.edu/cals/devsoc/outreach/cardi/index.cfm>

Data sources and background information:

- U.S. Census Bureau - general
  - QuickFacts: <http://quickfacts.census.gov/qfd/states/36/36079.html>
  - QuickLinks: <http://quickfacts.census.gov/qfd/states/36/36079lk.html>
  - American FactFinder: <http://factfinder2.census.gov>
- U.S. Census Bureau - population
  - Decennial Census
    - Background: <http://2010.census.gov/2010census/>
    - Demographic Profile: [http://factfinder2.census.gov/bkmk/table/1.0/en/DEC/10\\_SF1/SF1DP1/0500000US360799](http://factfinder2.census.gov/bkmk/table/1.0/en/DEC/10_SF1/SF1DP1/0500000US360799)
  - American Community Survey (ACS)
    - Background: <http://www.census.gov/acs/www/>
    - Social Data Profile: [http://factfinder2.census.gov/bkmk/table/1.0/en/ACS/10\\_5YR/DP02/0500000US36079](http://factfinder2.census.gov/bkmk/table/1.0/en/ACS/10_5YR/DP02/0500000US36079)
    - Economic Data Profile: [http://factfinder2.census.gov/bkmk/table/1.0/en/ACS/10\\_5YR/DP03/0500000US36079](http://factfinder2.census.gov/bkmk/table/1.0/en/ACS/10_5YR/DP03/0500000US36079)
    - Housing Data Profile: [http://factfinder2.census.gov/bkmk/table/1.0/en/ACS/10\\_5YR/DP04/0500000US36079](http://factfinder2.census.gov/bkmk/table/1.0/en/ACS/10_5YR/DP04/0500000US36079)
    - Demographics Data Profile: [http://factfinder2.census.gov/bkmk/table/1.0/en/ACS/10\\_5YR/DP05/0500000US36079](http://factfinder2.census.gov/bkmk/table/1.0/en/ACS/10_5YR/DP05/0500000US36079)
  - Population estimates: <http://www.census.gov/popest/estimates.html>
- U.S. Census Bureau – Small Area Income & Poverty Estimates (SAIPE)
  - <http://www.census.gov/did/www/saipe/>
- U.S. Census Bureau - Public Use Quarterly Workforce Indicators (QWI) – annual averages
  - <http://www2.vrdc.cornell.edu/news/data/qwi-public-use-data/>
- Bureau Labor Statistics (BLS) – Local Area Unemployment Statistics: <http://www.bls.gov/lau/>
- NY Department of Labor -
  - Labor statistics: <http://www.labor.ny.gov/stats/>
  - Quarterly Census of Employment and Wages (QCEW): <http://www.labor.ny.gov/stats/lsqcew.shtm>
- Bureau of Economic Analysis (BEA) – Local Area Personal Income and Employment: <http://bea.gov/iTable/iTable.cfm?ReqID=70&step=1>

- USDA Census of Agriculture
  - 2007
    - Home page: <http://www.agcensus.usda.gov/Publications/2007/index.php>
    - County profile: [http://www.agcensus.usda.gov/Publications/2007/Online\\_Highlights/County\\_Profiles/New\\_York/cp36079.pdf](http://www.agcensus.usda.gov/Publications/2007/Online_Highlights/County_Profiles/New_York/cp36079.pdf)
    - Race, Ethnicity and Gender Profiles: [http://www.agcensus.usda.gov/Publications/2007/Online\\_Highlights/Race\\_Ethnicity\\_and\\_Gender\\_Profiles/New\\_York/cpd36079.pdf](http://www.agcensus.usda.gov/Publications/2007/Online_Highlights/Race_Ethnicity_and_Gender_Profiles/New_York/cpd36079.pdf)
- USDA National Agricultural Statistics Service (NASS)
  - Home page: <http://www.nass.usda.gov/index.asp>
  - New York Statistical Bulletins: [http://www.nass.usda.gov/Statistics\\_by\\_State/New\\_York/Publications/Annual\\_Statistical\\_Bulletin/](http://www.nass.usda.gov/Statistics_by_State/New_York/Publications/Annual_Statistical_Bulletin/)
  - Cropland Data Layer – CropScape: <http://nassgeodata.gmu.edu/CropScape/>
- USDA Agricultural Research Service – Plant Hardness Zone Map: <http://planthardiness.ars.usda.gov/PHZMWeb/>
- NOAA, Northeast Regional Climate Center at Cornell University
  - Home page: <http://www.nrcc.cornell.edu/index.html>

Alternative sites for data retrieval:

- The Nelson A. Rockefeller Institute of Government – New York State Statistical Yearbooks [http://www.rockinst.org/nys\\_statistics/](http://www.rockinst.org/nys_statistics/)
- Headwaters Economics: Economic Profile System – Human Dimensions Toolkit <http://headwaterseconomics.org/tools/eps-hdt>
- National Historical Geographic Information System (NHGIS) <https://www.nhgis.org/>
- Social Explorer <http://www.socialexplorer.com/pub/home/home.aspx>
- Missouri Census Data Center <http://mcdc.missouri.edu/>
- DataFerret <http://dataferrett.census.gov/>
- Investigative Reporters and Editors (IRE) Census project <http://census.ire.org/>