

Otsego County Profile 2013

A collection of recent demographic, social, economic and agricultural data

Compiled by Jan Vink

Assisted by Joe Francis, Sutee Anantsuksomsri, Nij Tontisirin, Johannes Plambeck



Cornell University
Cooperative Extension



This profile is a part of a set of profiles generated for each county in New York State. The profiles were developed and generated by the Cornell Program on Applied Demographics. The work is sponsored by Cornell Cooperative Extension and promoted with webinars and workshops in coordination with the Community & Regional Development Institute.

Cornell Program on Applied Demographics:

The Program on Applied Demographics (PAD) brings skills in demographics, economics, statistics, data gathering and data analysis together to provide a variety of organizations with data, information and advice.

For more information: <http://pad.human.cornell.edu/>

Cornell Cooperative Extension:

Cornell Cooperative Extension (CCE) puts knowledge to work in pursuit of economic vitality, ecological sustainability and social well-being. We bring local experience and research based solutions together, helping New York State families and communities thrive in our rapidly changing world.

For more information: <http://cce.cornell.edu/>

Community & Regional Development Institute:

The Community & Regional Development Institute (CaRDI) supports informed decision making for residents and communities in New York State through applied research and education.

For more information: <http://cardi.cornell.edu/>

All profiles are freely downloadable as PDF documents on the PAD website:

<http://pad.human.cornell.edu/profiles/index.cfm>

Contents

Contents2

1 Reference Maps4

2 Population density and Urban Areas Map6

3 Total Population7

 3.1 Historic and projected7

 3.2 Change since previous Census7

 3.3 Annual population estimates8

 3.4 Percentage sub county change 2000-20109

4 Population by age 11

 4.1 Historic and projected population pyramids 11

 4.2 Selected age groups 12

 4.3 Median age: comparison between areas 14

5 Race 15

 5.1 Total and household population by race 15

 5.2 Race composition by age 15

6 Housing units 16

 6.1 Characteristics 16

 6.2 Historical data on number of housing units and occupancy status 17

7 Education 18

 7.1 Enrollment by level of school 18

 7.2 Enrollment by age 18

 7.3 Percentage age 18-24 enrolled in college 18

 7.4 Educational attainment 19

8 Language spoken at home 19

9 Labor Force Characteristics 20

 9.1 Labor force, employment and unemployment 20

 9.2 Annual unemployment rate 21

 9.3 Monthly unemployment rate 21

 9.4 Employment and number of jobs 22

 9.5 Class of worker 22

 9.6 Jobs by industry sector 23

10 Household Income 24

 10.1 Distribution 24

 10.2 Median household income: Trends over time 25

 10.3 Median household income: Comparison between areas 26

11 Poverty 27

 11.1 Poverty characteristics 27

 11.2 Poverty: Trends over time: Count 28

 11.3 Poverty: Trends over time: Rate 28

 11.4 Poverty rate: comparison between areas 29

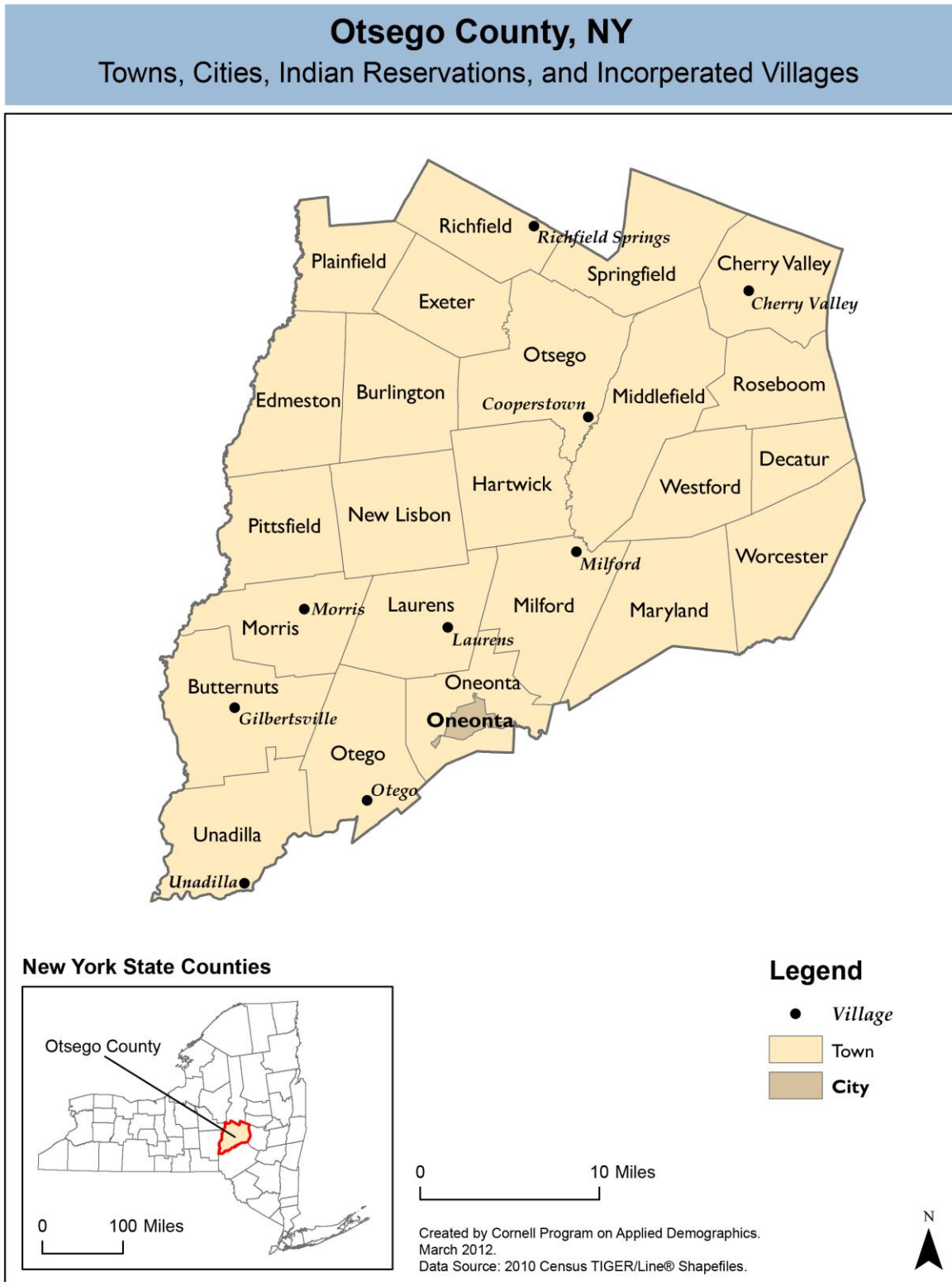
12 Agriculture 30

 12.1 Number of farms and land in farms 30

 12.2 Farm Operator Characteristics 30

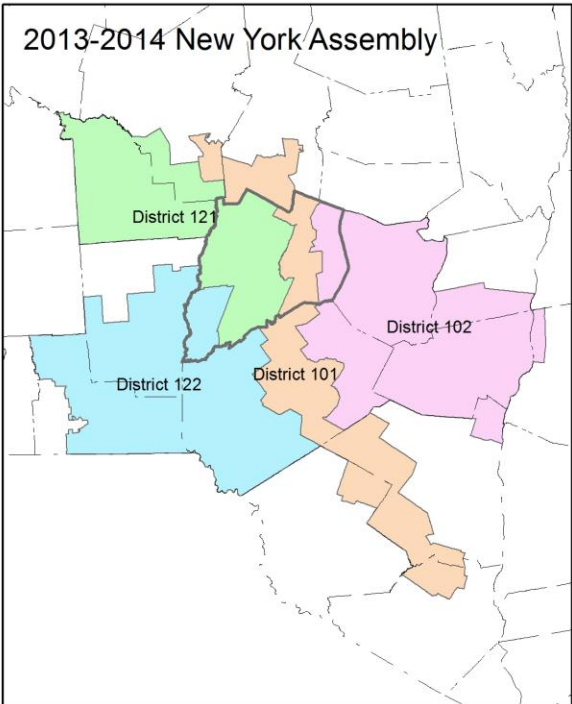
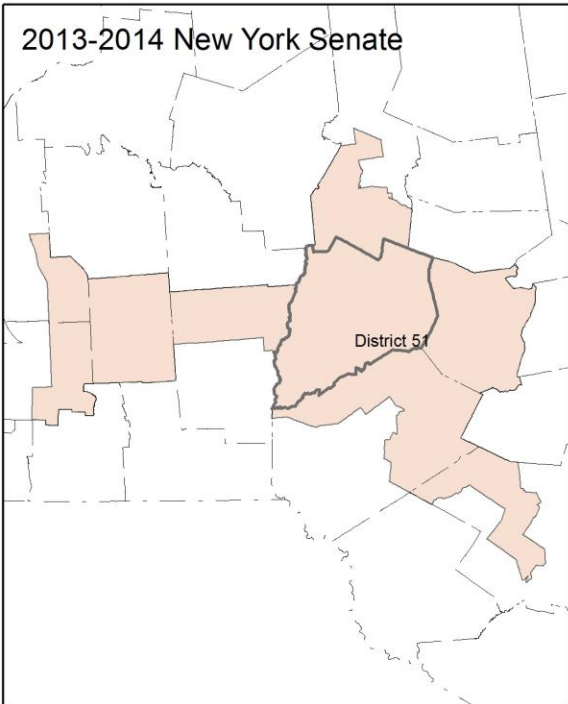
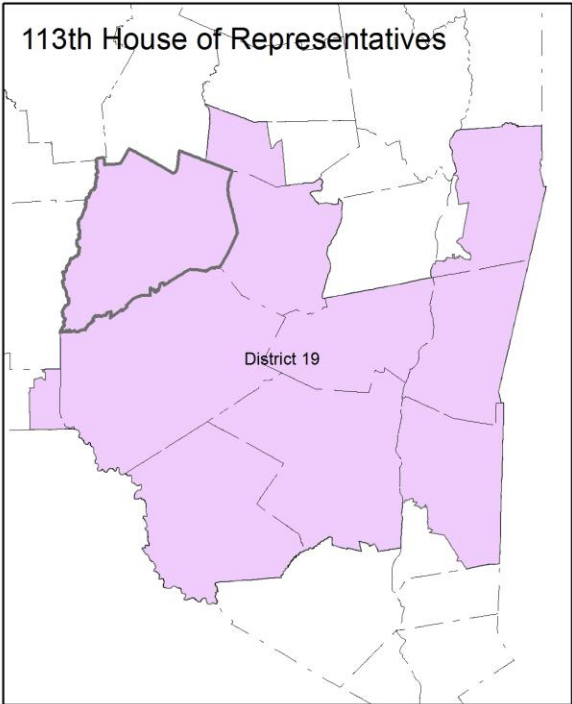
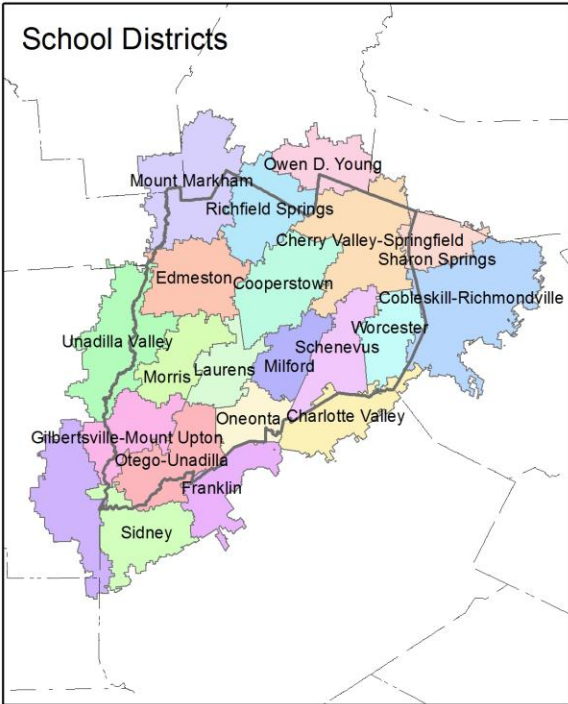
12.3 Map of type of crop 31
12.4 Estimated acreage by crop 32
13 Climate 33
14 Glossary..... 34
15 References 37

1 Reference Maps

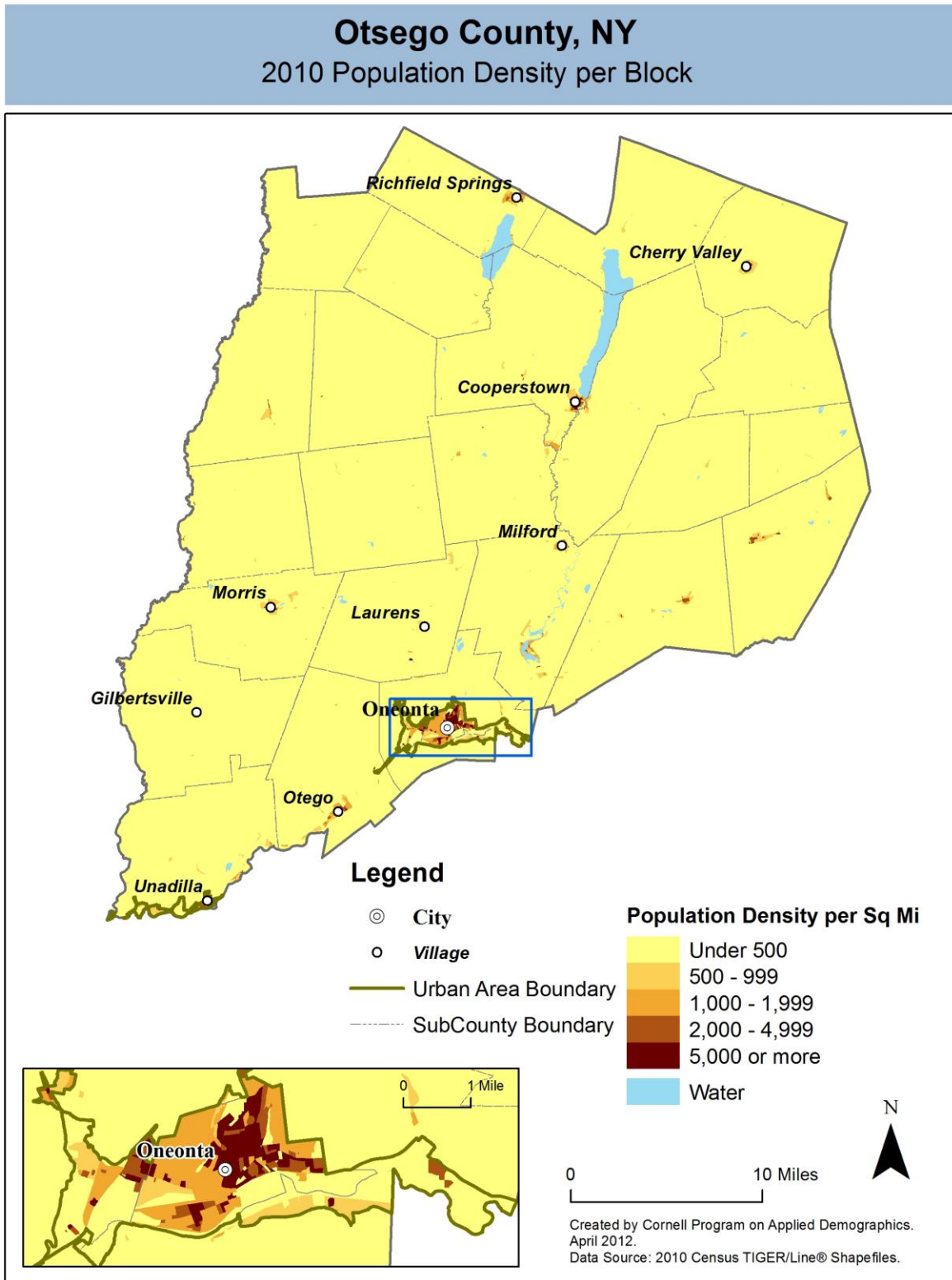


Otsego County, NY

Overlap with School and Political Districts



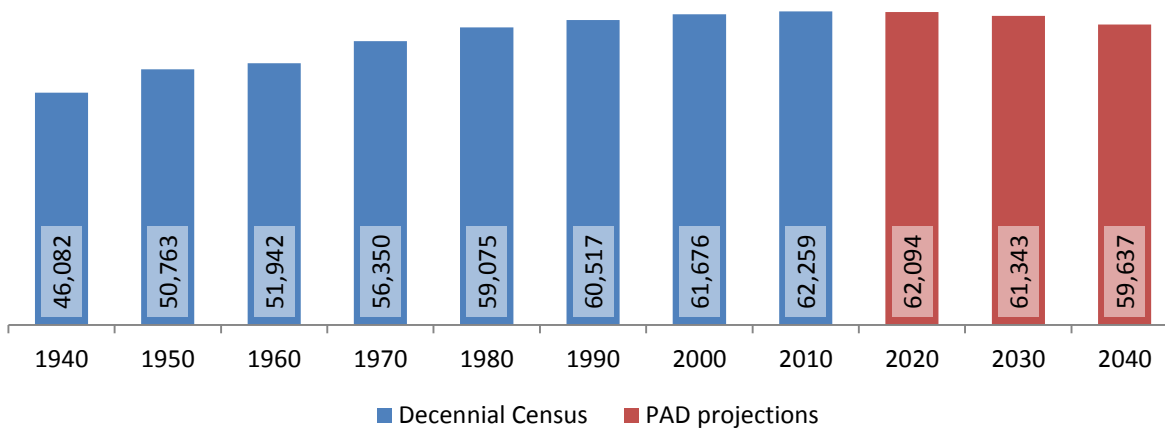
2 Population density and Urban Areas Map



3 Total Population

3.1 Historic and projected

Total population, Otsego County, 1940-2040



Source: 1940-2010 Decennial Census and projections by Cornell Program on Applied Demographics

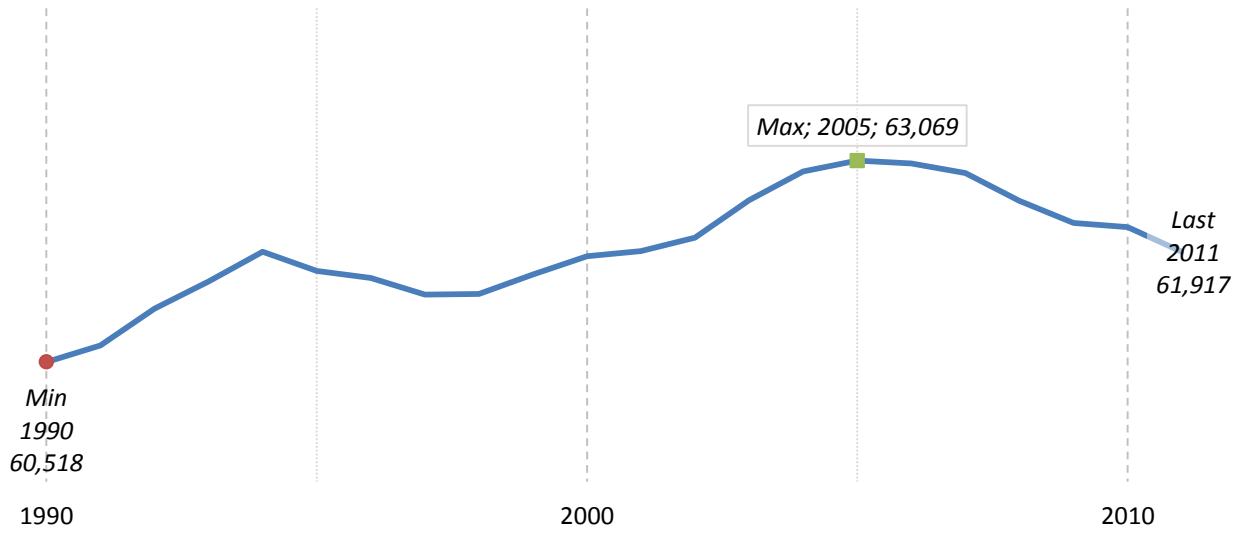
3.2 Change since previous Census

	Total population	Change	
		Number	Percent
Decennial Census	1940	46,082	
	1950	50,763	4,681 10.2%
	1960	51,942	1,179 2.3%
	1970	56,350	4,408 8.5%
	1980	59,075	2,725 4.8%
	1990	60,517	1,442 2.4%
	2000	61,676	1,159 1.9%
	2010	62,259	583 0.9%
PAD projections	2020	62,094	-165 -0.3%
	2030	61,343	-751 -1.2%
	2040	59,637	-1,706 -2.8%

Source: 1940-2010 Decennial Census and projections by Cornell Program on Applied Demographics

3.3 Annual population estimates

**Annual population estimates
Otsego County, 1990-2011**



Source: U.S. Census Bureau population estimates (1990-1999 and 2000-2009 intercensal and vintage 2011 postcensal)

3.4 Percentage sub county change 2000-2010

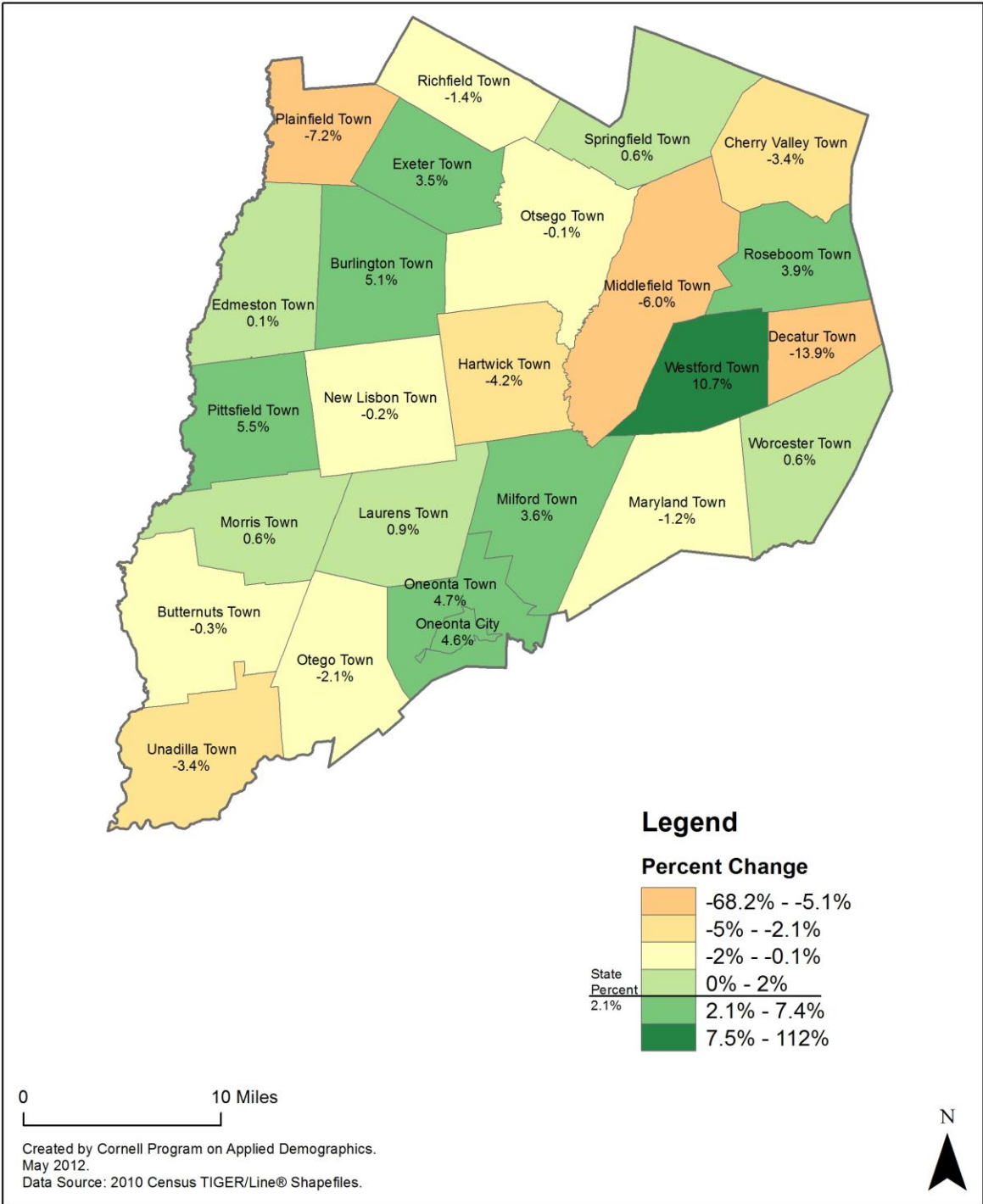
	Total Population		Difference	
	2000	2010	Count	%
New York State	18,976,821 *	19,378,102	401,281	2.1%
Otsego County	61,676	62,259	583	0.9%
Cities				
Oneonta	13,292	13,901	609	4.6%
Towns				
Burlington	1,085	1,140	55	5.1%
Butternuts	1,792	1,786	-6	-0.3%
Cherry Valley	1,266	1,223	-43	-3.4%
Decatur	410	353	-57	-13.9%
Edmeston	1,824	1,826	2	0.1%
Exeter	954	987	33	3.5%
Hartwick	2,203	2,110	-93	-4.2%
Laurens	2,402	2,424	22	0.9%
Maryland	1,920	1,897	-23	-1.2%
Middlefield	2,249	2,114	-135	-6.0%
Milford	2,938	3,044	106	3.6%
Morris	1,867	1,878	11	0.6%
New Lisbon	1,116	1,114	-2	-0.2%
Oneonta	4,994	5,229	235	4.7%
Otego	3,183	3,115	-68	-2.1%
Otsego	3,904	3,900	-4	-0.1%
Pittsfield	1,295	1,366	71	5.5%
Plainfield	986	915	-71	-7.2%
Richfield	2,423	2,388	-35	-1.4%
Roseboom	684	711	27	3.9%
Springfield	1,350	1,358	8	0.6%
Unadilla	4,548	4,392	-156	-3.4%
Westford	784	868	84	10.7%
Worcester	2,207	2,220	13	0.6%

* Original counts revised through Count Question Resolution Program (CQR)

Source: U.S. Census Bureau intercensal population estimates 2000-2010

Otsego County, NY

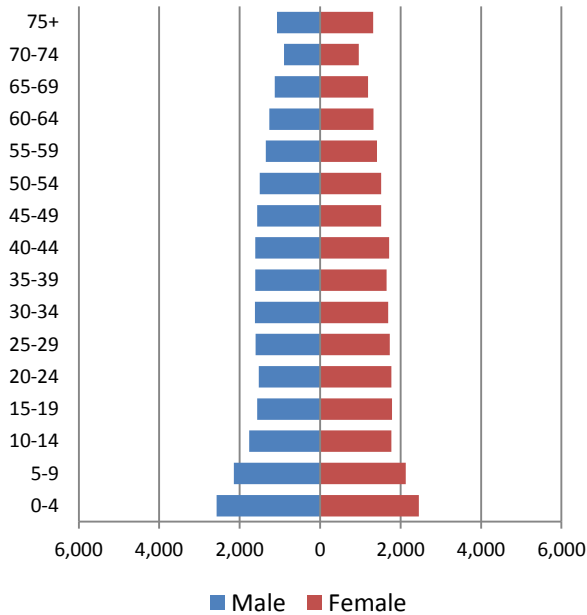
County Subdivision, Percent Change in Population 2000-2010



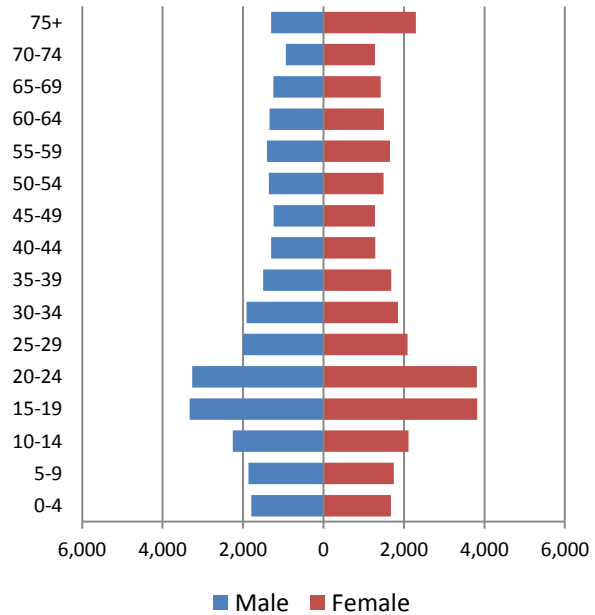
4 Population by age

4.1 Historic and projected population pyramids

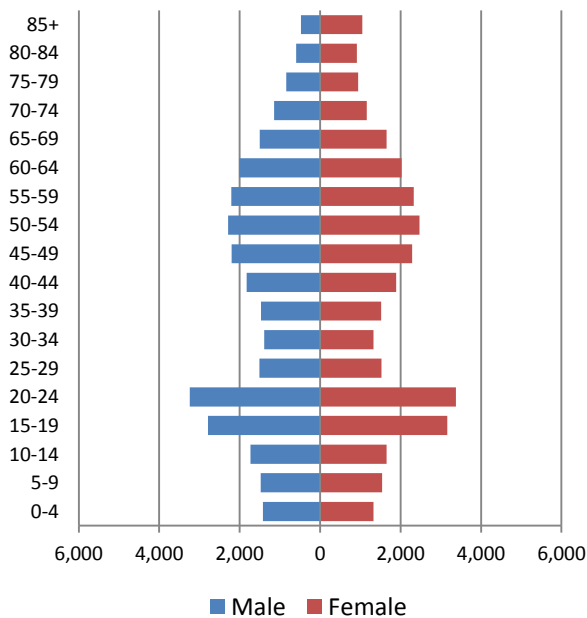
1950 Population Pyramid, Otsego County



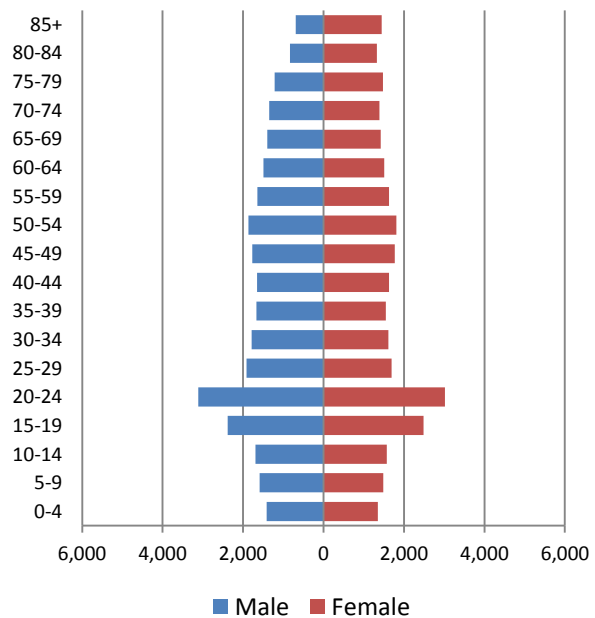
1980 Population Pyramid, Otsego County



2010 Population Pyramid, Otsego County

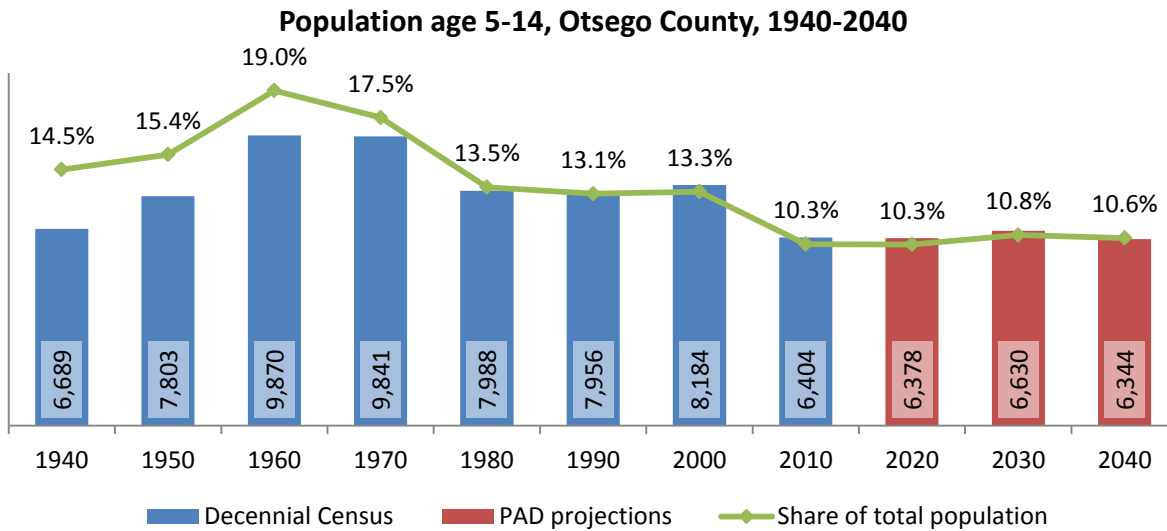


2040 Population Pyramid, Otsego County

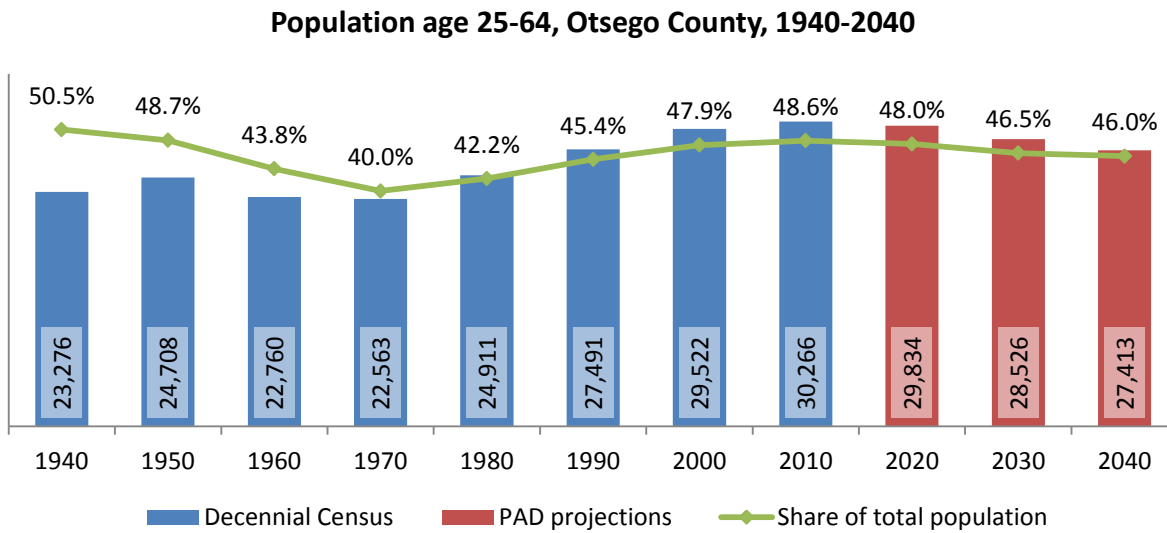


Source: 1950, 1980, 2010 Decennial Census and projections by Cornell Program on Applied Demographics

4.2 Selected age groups

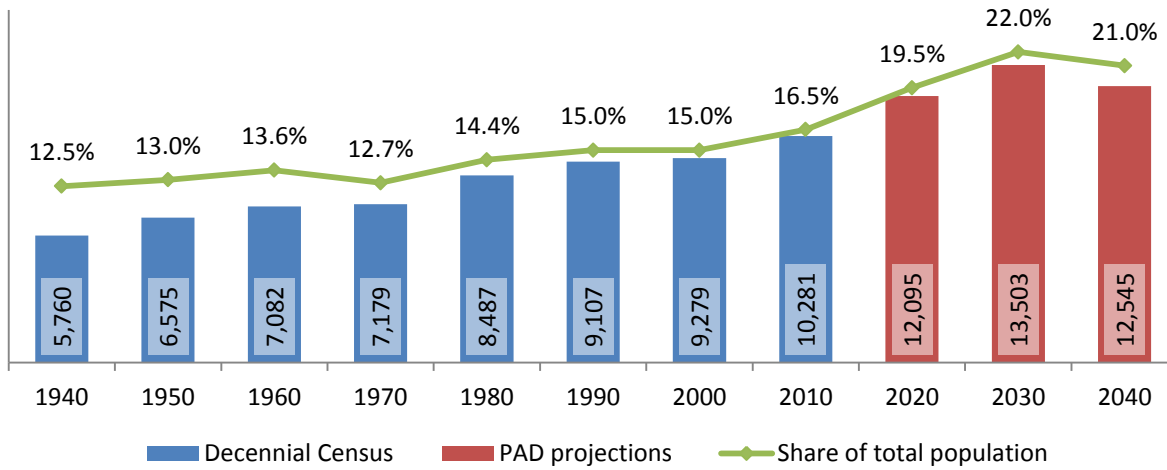


Source: 1940-2010 Decennial Census and projections by Cornell Program on Applied Demographics



Source: 1940-2010 Decennial Census and projections by Cornell Program on Applied Demographics

Population age 65 and over, Otsego County, 1940-2040



Source: 1940-2010 Decennial Census and projections by Cornell Program on Applied Demographics

4.3 Median age: comparison between areas

	Median Age
New York State	38.0
Otsego County	40.9

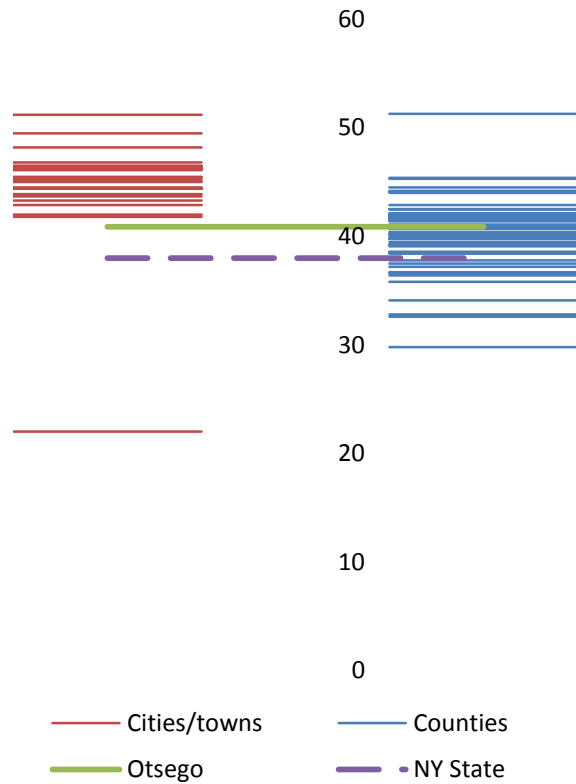
Cities

Oneonta city	22.0
--------------	------

Towns

Burlington town	44.4
Butternuts town	48.2
Cherry Valley town	46.1
Decatur town	51.2
Edmeston town	42.0
Exeter town	43.9
Hartwick town	43.3
Laurens town	46.5
Maryland town	45.4
Middlefield town	46.2
Milford town	46.3
Morris town	45.0
New Lisbon town	45.5
Oneonta town	44.4
Otego town	42.9
Otsego town	49.5
Pittsfield town	44.4
Plainfield town	41.8
Richfield town	46.4
Roseboom town	46.5
Springfield town	46.8
Unadilla town	44.5
Westford town	43.7
Worcester town	45.2

Median age comparison within county (left) and between counties (right)



Source: 2010 Decennial Census

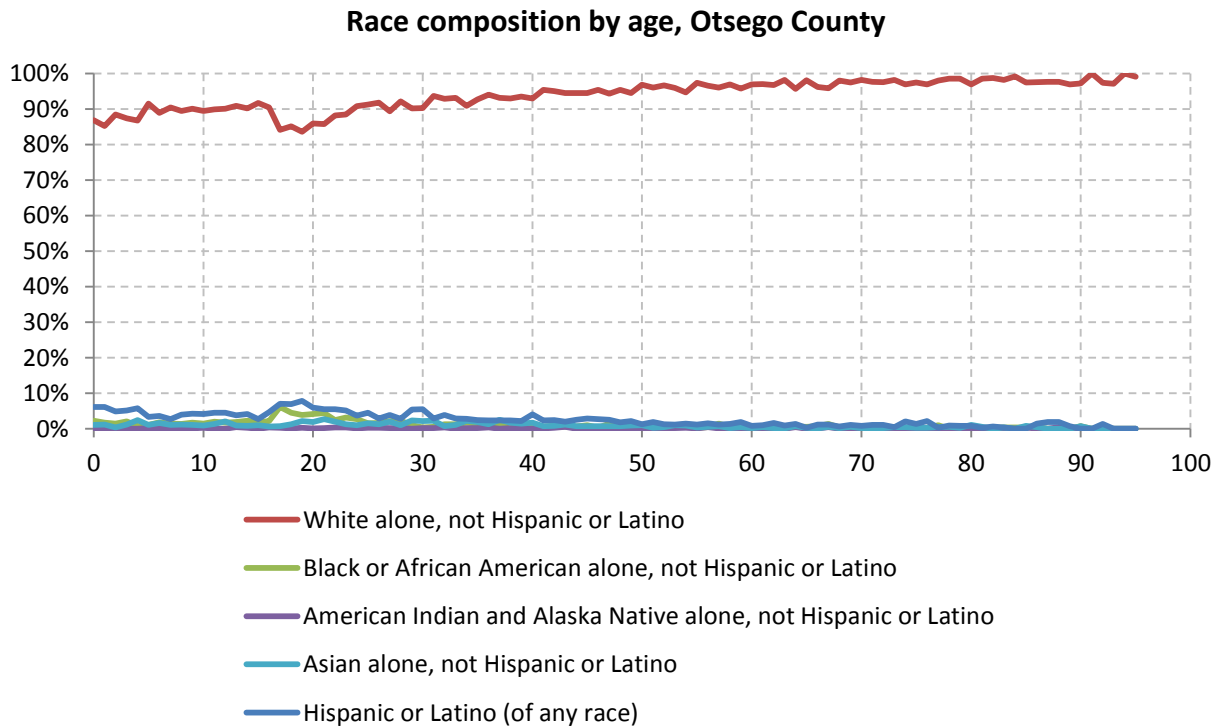
5 Race

5.1 Total and household population by race

	Total		In households		In Group Quarters
	Count	Percentage	Count	Percentage	Count
Total population	62,259	100%	56,939	100%	5,320
Not Hispanic or Latino					
One race					
White	57,734	92.7%	53,490	93.9%	4,244
Black or African American	958	1.5%	575	1.0%	383
American Indian and Alaska Native	103	0.2%	91	0.2%	12
Asian	660	1.1%	522	0.9%	138
Native Hawaiian and Other Pacific Islander	16	0.0%	-	-	-
Some other race	42	0.1%	-	-	-
Two or more races	825	1.3%	728	1.3%	97
Hispanic or Latino (of any race)	1,921	3.1%	1,488	2.6%	433

Source: 2010 Decennial Census

5.2 Race composition by age



Source: 2010 Decennial Census

6 Housing units

6.1 Characteristics

HOUSING OCCUPANCY	COUNT		PERCENTAGE	
	Estimate	Margin of error	Estimate	Margin of error
Total housing units	30,739	± 251	100.0%	
Occupied housing units	24,713	± 478	80.4%	± 1.3
Vacant housing units	6,026	± 379	19.6%	± 1.3
YEAR STRUCTURE BUILT				
Total housing units	30,739	± 251	100.0%	
Built 2005 or later	708	± 151	2.3%	± 0.5
Built 2000 to 2004	1,477	± 224	4.8%	± 0.7
Built 1990 to 1999	3,720	± 344	12.1%	± 1.1
Built 1980 to 1989	3,246	± 297	10.6%	± 1.0
Built 1970 to 1979	3,591	± 322	11.7%	± 1.1
Built 1960 to 1969	1,827	± 244	5.9%	± 0.8
Built 1950 to 1959	1,799	± 232	5.9%	± 0.8
Built 1940 to 1949	1,316	± 188	4.3%	± 0.6
Built 1939 or earlier	13,055	± 519	42.5%	± 1.6
HOUSING TENURE				
Occupied housing units	24,713	± 478	100.0%	
Owner-occupied	17,858	± 330	72.3%	± 1.3
Renter-occupied	6,855	± 416	27.7%	± 1.3
HOUSE HEATING FUEL				
Occupied housing units	24,713	± 478	100.0%	
Utility gas	3,973	± 370	16.1%	± 1.4
Bottled, tank, or LP gas	3,523	± 327	14.3%	± 1.3
Electricity	2,595	± 320	10.5%	± 1.2
Fuel oil, kerosene, etc.	10,982	± 429	44.4%	± 1.7
Coal or coke	120	± 40	0.5%	± 0.2
Wood	3,245	± 263	13.1%	± 1.1
Solar energy	0	± 89	0.0%	± 0.1
Other fuel	242	± 76	1.0%	± 0.3
No fuel used	33	± 25	0.1%	± 0.1
VALUE				
Owner-occupied units	17,858	± 330	100.0%	
Less than \$50,000	1,998	± 204	11.2%	± 1.1
\$50,000 to \$99,999	4,411	± 303	24.7%	± 1.7
\$100,000 to \$149,999	3,742	± 268	21.0%	± 1.5
\$150,000 to \$199,999	2,928	± 229	16.4%	± 1.3
\$200,000 to \$299,999	2,543	± 260	14.2%	± 1.4
\$300,000 to \$499,999	1,501	± 189	8.4%	± 1.0
\$500,000 to \$999,999	617	± 152	3.5%	± 0.8
\$1,000,000 or more	118	± 73	0.7%	± 0.4
Median (dollars)	131,100	± 4,509		

Source: 2007-2011 American Community Survey

6.2 Historical data on number of housing units and occupancy status

Year	Number of Housing Units	Change since previous Census	Occupied	Occupancy rate	Vacant
1970	19,684		16,785	85.3%	2,899
1980	23,877	21.3%	20,228	84.7%	3,649
1990	26,385	10.5%	21,725	82.3%	4,660
2000	28,481	7.9%	23,291	81.8%	5,190
2010	30,777	8.1%	24,620	80.0%	6,157

Source: 1970-2010 Decennial Census

7 Education

7.1 Enrollment by level of school

	Estimate	Margin of error
Total enrolled in school	17,853	± 440
Nursery school, preschool	686	± 136
Kindergarten	778	± 167
Elementary: grade 1 to grade 4	2,664	± 200
Elementary: grade 5 to grade 8	2,547	± 174
High school: grade 9 to grade 12	3,458	± 256
College, undergraduate	7,231	± 486
Graduate, professional school	489	± 103

Source: 2007-2011 American Community Survey

7.2 Enrollment by age

	Estimate	Margin of error
3 and 4 years	56.2%	± 7.6
5 to 9 years	97.0%	± 1.4
10 to 14 years	99.0%	± 1.0
15 to 17 years	96.3%	± 3.6
18 and 19 years	84.1%	± 4.5
20 to 24 years	64.1%	± 4.7
25 to 34 years	6.7%	± 2.1
35 years and over	1.7%	± 0.4

Source: 2007-2011 American Community Survey

7.3 Percentage age 18-24 enrolled in college

	Estimate	Margin of error
Population 18 to 24 years	10,460	± 163
Enrolled in college or graduate school	65.3%	± 4.3
Males 18 to 24 years	4,954	± 148
Enrolled in college or graduate school	60.7%	± 5.9
Females 18 to 24 years	5,506	± 144
Enrolled in college or graduate school	69.4%	± 4.9

Source: 2007-2011 American Community Survey

7.4 Educational attainment

	COUNT		PERCENTAGE	
	Estimate	Margin of error	Estimate	Margin of error
Population 25 years and over	40,092	± 163	100%	
EDUCATIONAL ATTAINMENT				
Less than 9th grade	1,469	± 271	3.7%	± 0.7
9th to 12th grade, no diploma	3,233	± 321	8.1%	± 0.8
High school graduate (includes equivalency)	13,879	± 611	34.6%	± 1.5
Some college, no degree	6,942	± 458	17.3%	± 1.1
Associate's degree	4,074	± 326	10.2%	± 0.8
Bachelor's degree	5,903	± 371	14.7%	± 0.9
Graduate or professional degree	4,592	± 391	11.5%	± 1.0
Percent high school graduate or higher			88.3%	± 1.1
Percent bachelor's degree or higher			26.2%	± 1.4

Source: 2007-2011 American Community Survey

8 Language spoken at home

	COUNT		PERCENTAGE		SPEAK ENGLISH LESS THAN "VERY WELL"	
	Estimate	Margin of error	Estimate	Margin of error	Estimate	Margin of error
Population 5 years and over	59,640	± 44	100%			
LANGUAGE SPOKEN AT HOME						
English only	55,759	± 323	93.5%	± 0.5		
Language other than English	3,881	± 321	6.5%	± 0.5	1,048	± 184
Spanish	1,576	± 230	2.6%	± 0.4	402	± 135
Other Indo-European languages	1,702	± 293	2.9%	± 0.5	265	± 97
Asian and Pacific Islander languages	490	± 144	0.8%	± 0.2	333	± 98
Other languages	113	± 67	0.2%	± 0.1	48	± 49

Source: 2007-2011 American Community Survey

9 Labor Force Characteristics

9.1 Labor force, employment and unemployment

	TOTAL		IN LABOR FORCE		EMPLOYED		UNEMPLOYMENT RATE	
	Estimate	Margin of error	Estimate	Margin of error	Estimate	Margin of error	Estimate	Margin of error
Population 16 years and over	52,445	± 150	61.0%	± 1.0	56.1%	± 1.2	7.9%	± 0.8
AGE								
16 to 19 years	5,567	± 262	39.0%	± 5.1	29.6%	± 5.0	24.0%	± 6.8
20 to 24 years	6,786	± 164	63.3%	± 4.7	55.9%	± 4.5	11.6%	± 2.9
25 to 44 years	12,412	± 153	86.0%	± 1.6	80.1%	± 1.9	6.8%	± 1.3
45 to 54 years	9,129	± 85	86.4%	± 1.7	81.0%	± 2.1	6.1%	± 1.3
55 to 64 years	8,389	± 75	64.3%	± 2.5	61.1%	± 2.5	5.0%	± 1.4
65 to 74 years	5,272	± 43	24.3%	± 3.1	23.6%	± 3.1	2.7%	± 2.1
75 years and over	4,890	± 59	5.7%	± 1.7	5.7%	± 1.7	0.0%	± 11.0
RACE AND HISPANIC OR LATINO ORIGIN								
One race	51,730	± 274	60.9%	± 1.0	56.3%	± 1.2	7.6%	± 0.8
White	49,905	± 252	61.5%	± 1.0	56.8%	± 1.1	7.6%	± 0.8
Black or African American	959	± 100	36.2%	± 13.6	31.5%	± 13.6	13.0%	± 15.9
American Indian and Alaska Native	46	± 23	84.8%	± 17.6	73.9%	± 23.2	12.8%	± 20.3
Asian	534	± 76	57.3%	± 18.7	54.3%	± 18.3	5.2%	± 4.8
Pacific Islander	0	± 89	-	**	-	**	-	**
Some other race	286	± 140	42.3%	± 21.2	39.2%	± 21.7	7.4%	± 13.6
Two or more races	715	± 269	63.4%	± 14.7	45.9%	± 8.9	27.6%	± 12.8
Hispanic or Latino origin (of any race)	1,516	± 51	51.2%	± 10.0	42.8%	± 9.5	16.4%	± 11.2
White alone, not Hispanic or Latino	48,953	± 99	61.6%	± 1.0	57.0%	± 1.1	7.5%	± 0.8
SEX								
Population 20 to 64 years	36,716	± 199	76.9%	± 1.4	71.5%	± 1.4	7.0%	± 0.7
Male	17,915	± 115	78.7%	± 1.7	72.3%	± 1.9	8.1%	± 1.2
Female	18,801	± 168	75.2%	± 1.9	70.8%	± 2.0	5.9%	± 1.0
With own children under 6 years	2,218	± 229	79.3%	± 4.2	74.7%	± 4.4	5.9%	± 2.5
EDUCATIONAL ATTAINMENT								
Population 25 to 64 years	29,930	± 162	80.0%	± 1.1	75.1%	± 1.3	6.2%	± 0.8
Less than high school graduate	2,881	± 361	58.5%	± 4.7	51.2%	± 5.5	12.5%	± 4.8
High school graduate (includes equivalency)	9,760	± 501	79.2%	± 2.1	73.2%	± 2.0	7.7%	± 1.4
Some college or associate's degree	9,019	± 502	82.2%	± 2.1	76.9%	± 2.4	6.5%	± 1.5
Bachelor's degree or higher	8,270	± 468	86.1%	± 2.1	83.7%	± 2.3	2.8%	± 0.9

Table formula: **LABOR FORCE** = # EMPLOYED + # UNEMPLOYED
 % IN LABOR FORCE = LABOR FORCE / TOTAL * 100%
 % EMPLOYED = # EMPLOYED / TOTAL * 100%
 UNEMPLOYMENT RATE = # UNEMPLOYED / LABOR FORCE * 100%

Source: 2007-2011 American Community Survey

9.2 Annual unemployment rate

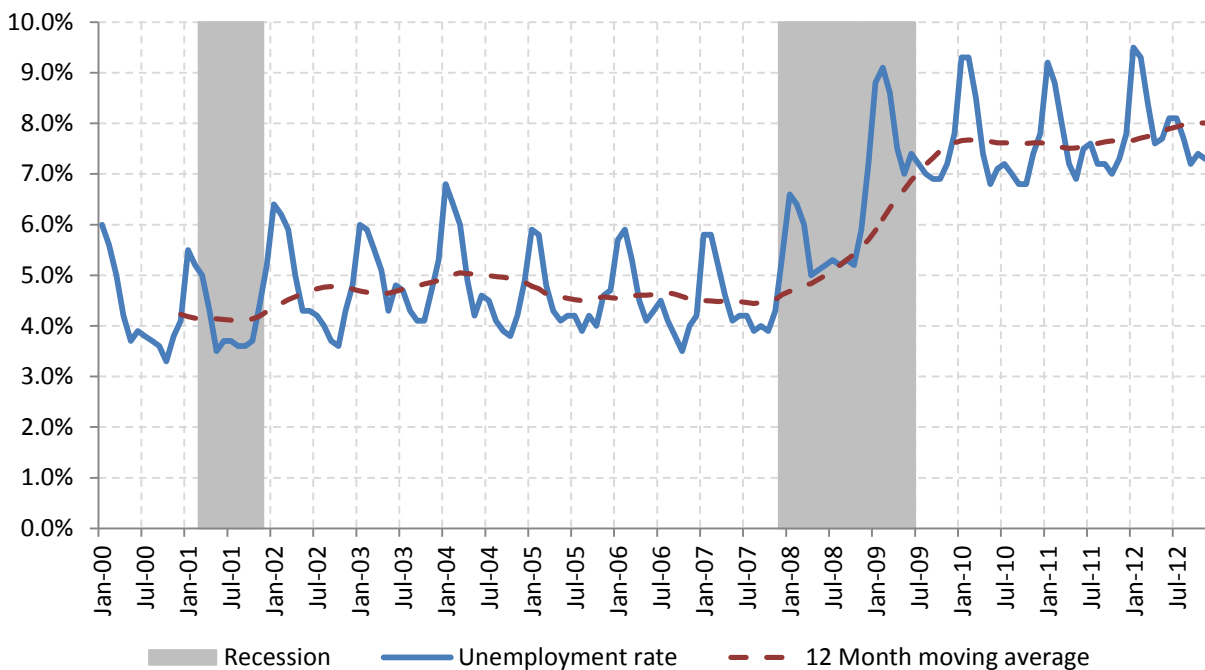
Annual unemployment rate, Otsego County and New York State



Source: Bureau Labor Statistics (BLS)

9.3 Monthly unemployment rate

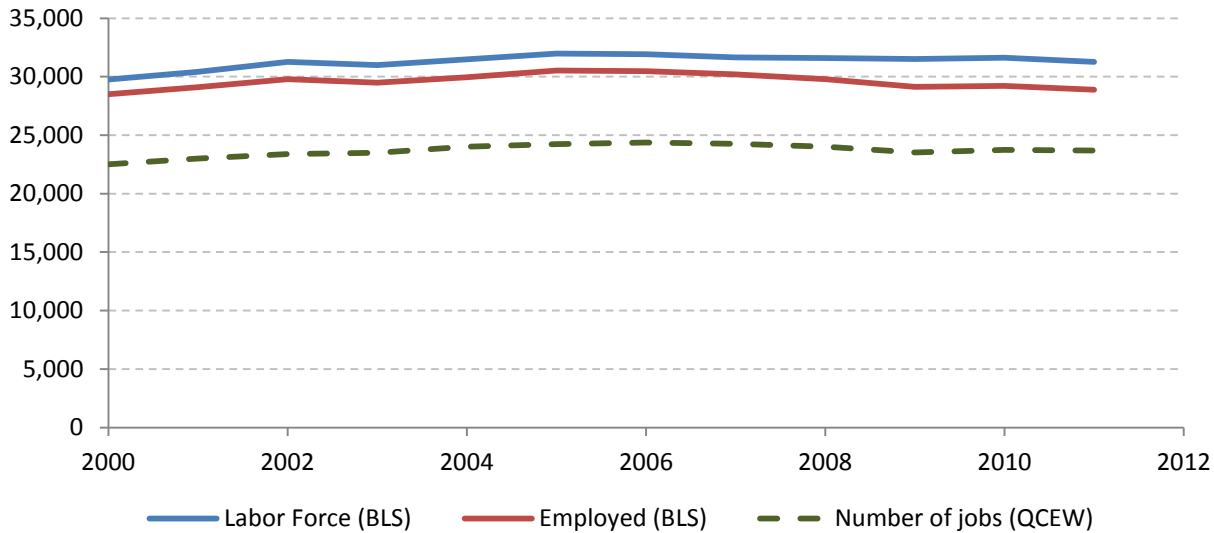
Monthly unemployment rate, Otsego County



Source: Bureau Labor Statistics (BLS)

9.4 Employment and number of jobs

**Labor force, number of employed workers and number of jobs
Otsego County**



Source: Bureau Labor Statistics (BLS) and NY Department of Labor - Quarterly Census of Employment and Wages (QCEW) – annual averages

9.5 Class of worker

		Median earnings (\$)					
		Total	%Male	%Female	Total	Male	Female
Civilian employed population 16 years and over	Estimate	29,435	48.9%	51.1%	26,723	31,044	22,809
	Margin of error	± 591	± 0.9	± 0.9	± 832	± 991	± 1,132
Private for-profit wage and salary workers:	Estimate	15,953	51.9%	48.1%	25,079	30,429	20,724
	Margin of error	± 549	± 1.5	± 1.5	± 1,109	± 1,290	± 966
Employee of private company workers	Estimate	15,478	51.0%	49.0%	24,693	30,163	20,720
	Margin of error	± 552	± 1.6	± 1.6	± 1,254	± 1,508	± 995
Self-employed in own incorporated business workers	Estimate	475	79.8%	20.2%	39,375	51,369	21,250
	Margin of error	± 114	± 7.3	± 7.3	± 26,779	± 30,322	± 32,836
Private not-for-profit wage and salary workers	Estimate	5,025	33.8%	66.2%	28,609	32,652	26,994
	Margin of error	± 360	± 3.3	± 3.3	± 1,863	± 3,895	± 1,919
Local government workers	Estimate	2,785	41.7%	58.3%	32,340	33,320	31,362
	Margin of error	± 291	± 4.5	± 4.5	± 3,286	± 2,870	± 6,219
State government workers	Estimate	2,365	46.7%	53.3%	40,099	46,815	36,919
	Margin of error	± 288	± 5.6	± 5.6	± 3,979	± 8,101	± 5,748
Federal government workers	Estimate	436	55.7%	44.3%	39,063	36,450	45,536
	Margin of error	± 141	± 14.7	± 14.7	± 15,066	± 27,836	± 10,908
Self-employed in own not incorporated business workers and unpaid family workers	Estimate	2,871	66.8%	33.2%	18,800	21,311	14,754
	Margin of error	± 246	± 4.3	± 4.3	± 2,141	± 2,542	± 3,003

Source: 2007-2011 American Community Survey

9.6 Jobs by industry sector

	Otsego County			NY state
	2011	Change since 2006	% of total	% of total
All NAICS Sectors	23,144	-0.1%	100.0%	100.0%
Agriculture, Forestry, Fishing and Hunting	95	-3.1%	0.4%	0.3%
Mining, Quarrying, and Oil and Gas Extraction	32	-13.5%	0.1%	0.1%
Utilities	223	-11.5%	1.0%	0.5%
Construction	503	-9.5%	2.2%	3.5%
Manufacturing	959	-6.7%	4.1%	5.5%
Wholesale Trade	375	-18.1%	1.6%	4.0%
Retail Trade	2,733	-11.2%	11.8%	10.5%
Transportation and Warehousing	188	-12.6%	0.8%	3.4%
Information	737	7.4%	3.2%	3.3%
Finance and Insurance	1,109	-1.1%	4.8%	6.0%
Real Estate and Rental and Leasing	221	41.7%	1.0%	2.3%
Professional, Scientific, and Technical Services	530	7.3%	2.3%	6.9%
Management of Companies and Enterprises	158	-47.7%	0.7%	1.6%
Administrative and Support and Waste Management and Remediation Services	682	100.6%	2.9%	5.2%
Educational Services	3,740	-4.8%	16.2%	10.8%
Health Care and Social Assistance	5,566	12.6%	24.0%	17.0%
Arts, Entertainment, and Recreation	671	-1.9%	2.9%	1.9%
Accommodation and Food Services	2,380	1.6%	10.3%	7.3%
Other Services (except Public Administration)	675	-15.4%	2.9%	3.9%
Public Administration	1,570	-5.3%	6.8%	5.8%

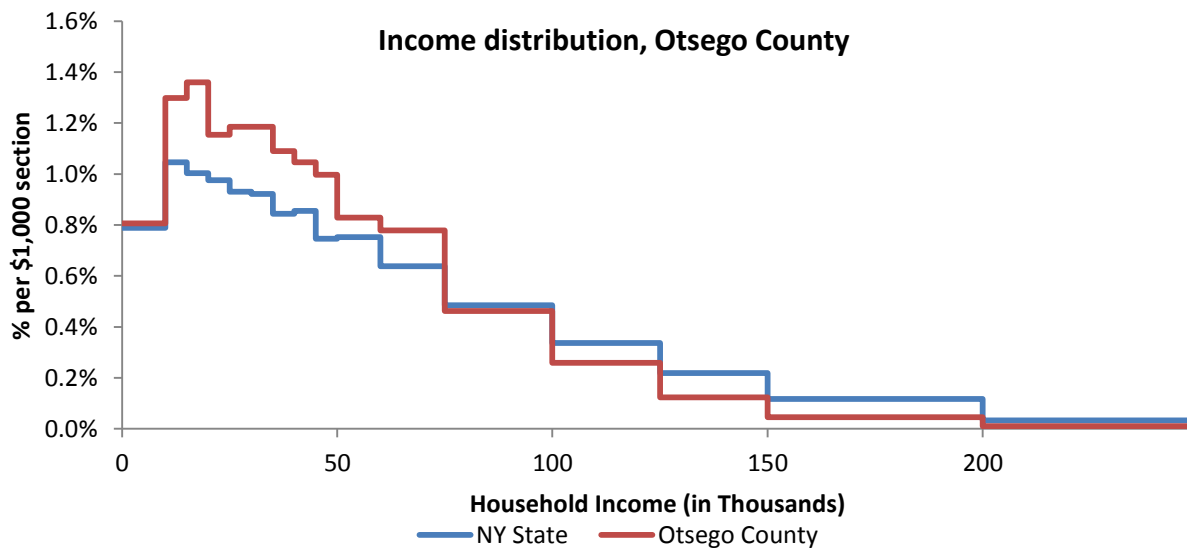
Source: U.S. Census Bureau - Public Use Quarterly Workforce Indicators (QWI) – annual averages

10 Household Income

10.1 Distribution

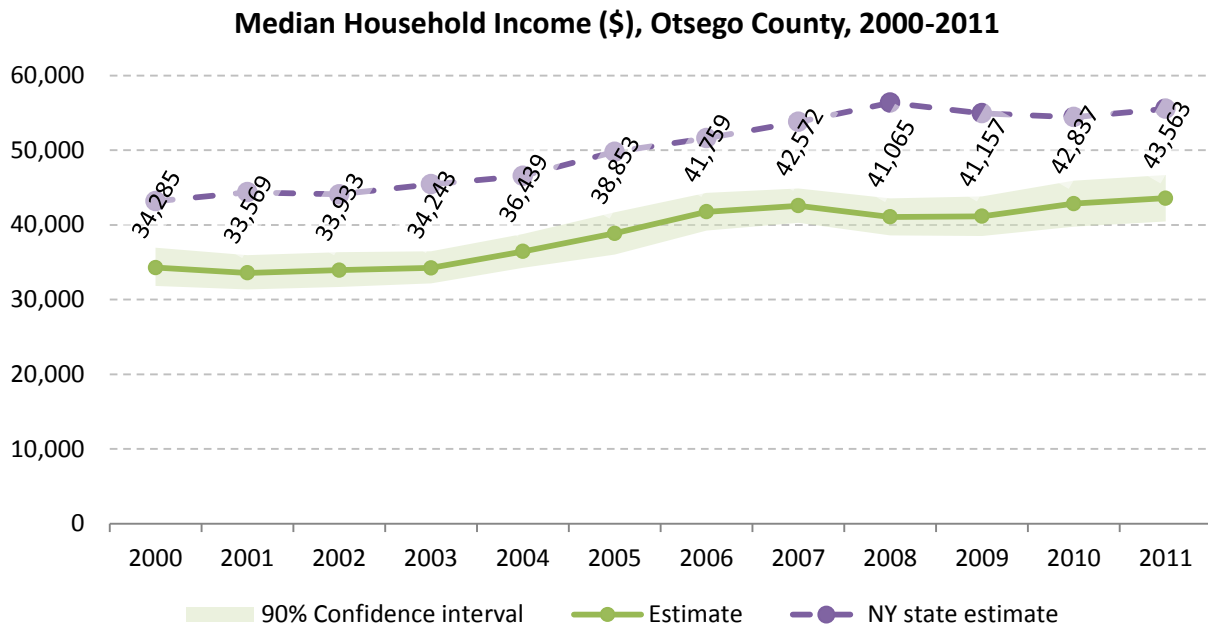
	Estimate	Margin of error	Interval width (in \$1,000)	Est. per \$1,000 section
Total:	24,713	± 478		
Less than \$10,000	1,991	± 259	10	199.1
\$10,000 to \$14,999	1,605	± 268	5	321.0
\$15,000 to \$19,999	1,680	± 241	5	336.0
\$20,000 to \$24,999	1,426	± 218	5	285.2
\$25,000 to \$29,999	1,465	± 179	5	293.0
\$30,000 to \$34,999	1,464	± 204	5	292.8
\$35,000 to \$39,999	1,347	± 183	5	269.4
\$40,000 to \$44,999	1,292	± 191	5	258.4
\$45,000 to \$49,999	1,232	± 160	5	246.4
\$50,000 to \$59,999	2,048	± 246	10	204.8
\$60,000 to \$74,999	2,888	± 297	15	192.5
\$75,000 to \$99,999	2,855	± 223	25	114.2
\$100,000 to \$124,999	1,603	± 193	25	64.1
\$125,000 to \$149,999	762	± 144	25	30.5
\$150,000 to \$199,999	563	± 124	50	11.3
\$200,000 or more	492	± 105	-	-

Source: 2007-2011 American Community Survey



Source: 2007-2011 American Community Survey

10.2 Median household income: Trends over time

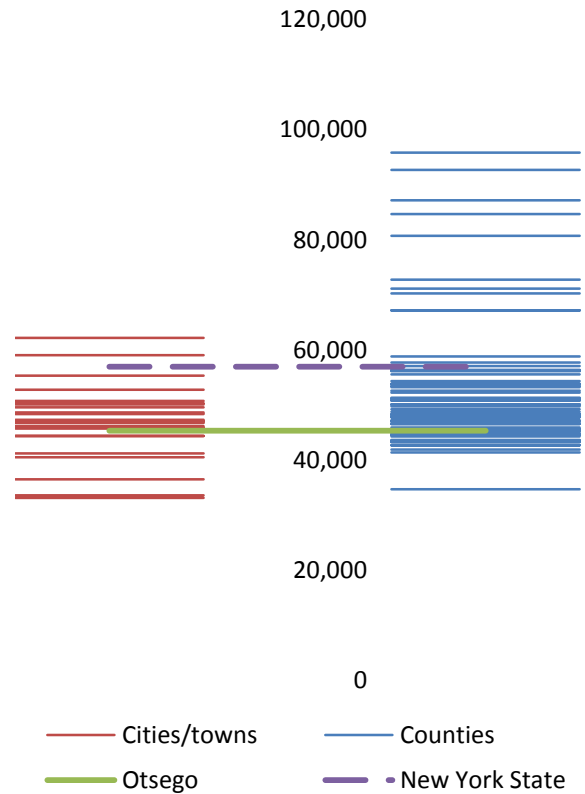


Source: Small Area Income and Poverty Estimates (SAIPE)

10.3 Median household income: Comparison between areas

	MEDIAN HOUSEHOLD INCOME (\$)	
	Estimate	Margin of error
New York State	56,951	± 190
Otsego County	45,334	± 1,497
Cities		
Oneonta	33,620	± 5,899
Towns		
Burlington	59,083	± 5,848
Butternuts	49,615	± 7,701
Cherry Valley	44,375	± 10,874
Decatur	36,548	± 3,743
Edmeston	47,109	± 7,135
Exeter	41,250	± 8,468
Hartwick	47,059	± 14,202
Laurens	45,750	± 7,927
Maryland	45,900	± 5,191
Middlefield	62,212	± 9,947
Milford	46,750	± 6,176
Morris	46,151	± 3,113
New Lisbon	48,375	± 7,196
Oneonta	55,347	± 9,857
Otego	50,102	± 8,487
Otsego	52,782	± 7,275
Pittsfield	44,402	± 6,032
Plainfield	50,368	± 5,894
Richfield	33,170	± 7,904
Roseboom	48,676	± 10,568
Springfield	50,764	± 7,423
Unadilla	40,538	± 4,525
Westford	47,321	± 14,176
Worcester	47,112	± 7,398

Median household income comparison within county (left) and between counties (right)



Source: 2007-2011 American Community Survey

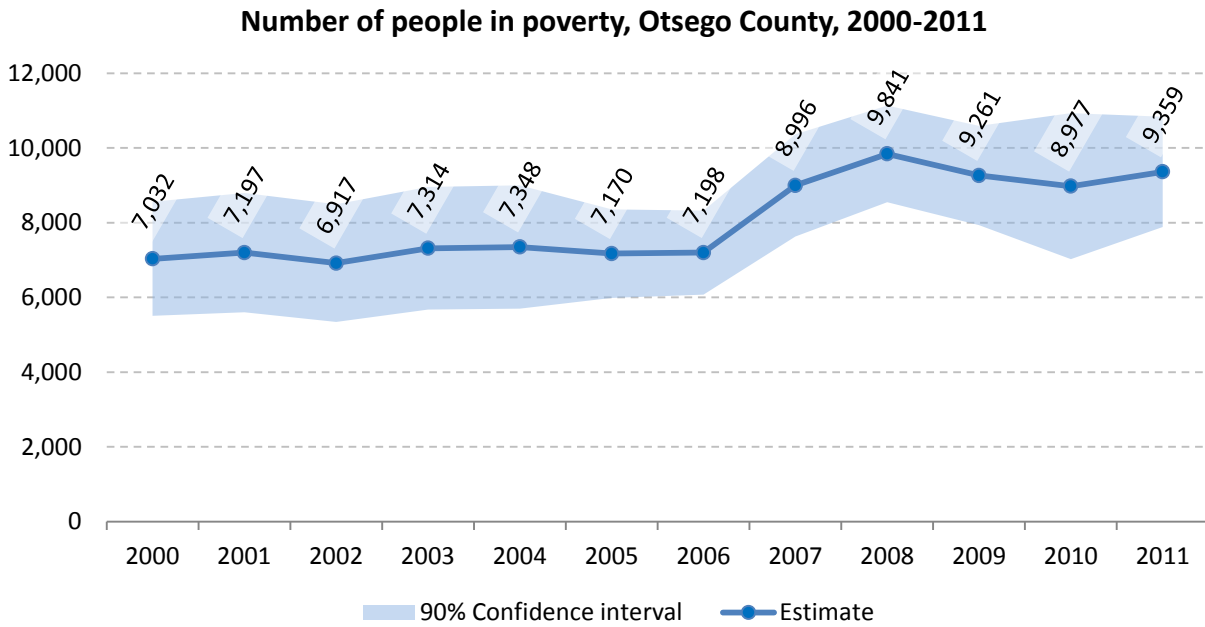
11 Poverty

11.1 Poverty characteristics

	TOTAL		BELOW POVERTY LEVEL		PERCENT BELOW POVERTY LEVEL	
	Estimate	Margin of error	Estimate	Margin of error	Estimate	Margin of error
Population for whom poverty status is determined	58,228	± 534	9,528	± 716	16.4%	± 1.2
AGE						
Under 18 years	11,622	± 89	2,300	± 326	19.8%	± 2.8
Related children under 18 years	11,322	± 159	2,036	± 316	18.0%	± 2.8
18 to 64 years	36,809	± 499	6,436	± 501	17.5%	± 1.3
65 years and over	9,797	± 140	792	± 108	8.1%	± 1.1
SEX						
Male	28,334	± 370	4,578	± 437	16.2%	± 1.5
Female	29,894	± 356	4,950	± 486	16.6%	± 1.6
RACE AND HISPANIC OR LATINO ORIGIN						
One race	57,377	± 562	9,347	± 725	16.3%	± 1.2
White	55,523	± 563	8,467	± 697	15.2%	± 1.2
Black or African American	843	± 136	536	± 161	63.6%	± 17.9
American Indian and Alaska Native	43	± 22	1	± 2	2.3%	± 5.1
Asian	628	± 113	195	± 93	31.1%	± 16.4
Hispanic or Latino origin (of any race)	1,575	± 162	451	± 122	28.6%	± 7.6
White alone, not Hispanic or Latino	54,580	± 454	8,259	± 665	15.1%	± 1.2
EDUCATIONAL ATTAINMENT						
Population 25 years and over	39,562	± 243	4,062	± 340	10.3%	± 0.9
Less than high school graduate	4,522	± 406	1,089	± 175	24.1%	± 3.5
High school graduate (includes equivalency)	13,735	± 615	1,698	± 217	12.4%	± 1.6
Some college, associate's degree	10,884	± 572	946	± 183	8.7%	± 1.6
Bachelor's degree or higher	10,421	± 559	329	± 95	3.2%	± 0.9
EMPLOYMENT STATUS						
Civilian labor force 16 years and over	30,642	± 563	3,534	± 397	11.5%	± 1.2
Employed	28,221	± 601	2,662	± 364	9.4%	± 1.2
Male	14,051	± 401	1,329	± 235	9.5%	± 1.6
Female	14,170	± 427	1,333	± 247	9.4%	± 1.7
Unemployed	2,421	± 234	872	± 165	36.0%	± 5.1
Male	1,372	± 188	396	± 120	28.9%	± 7.2
Female	1,049	± 197	476	± 146	45.4%	± 9.3
WORK EXPERIENCE IN THE PAST 12 MONTHS						
Population 16 years and over	48,474	± 565	7,702	± 613	15.9%	± 1.2
Worked full-time, year-round	17,988	± 493	479	± 105	2.7%	± 0.6
Worked part-time or part-year	15,127	± 668	4,023	± 432	26.6%	± 2.4
Did not work	15,359	± 497	3,200	± 392	20.8%	± 2.2

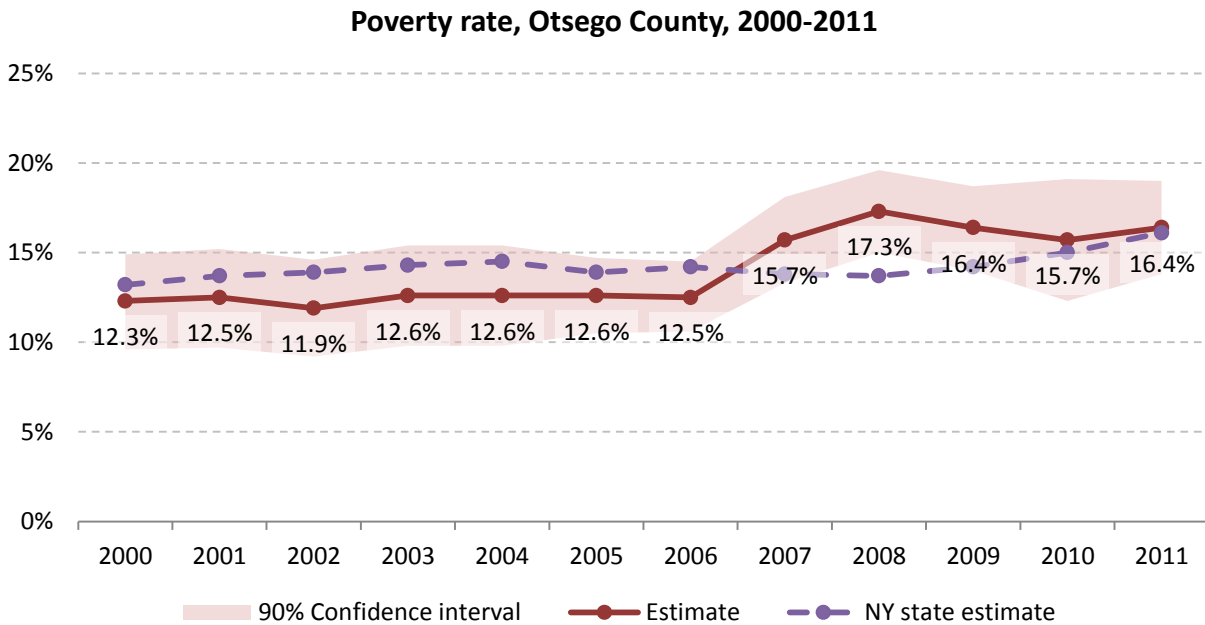
Source: 2007-2011 American Community Survey

11.2 Poverty: Trends over time: Count



Source: Small Area Income and Poverty Estimates (SAIPE)

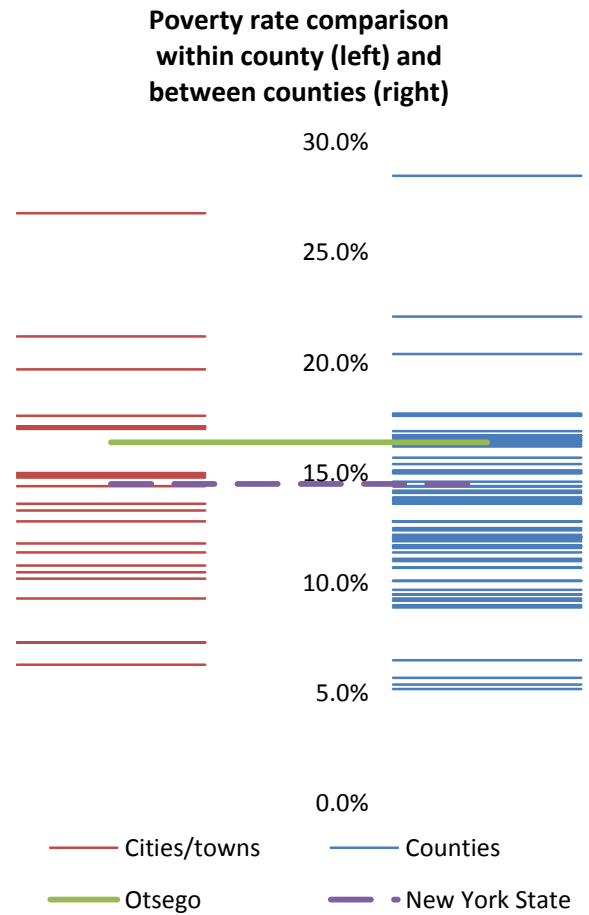
11.3 Poverty: Trends over time: Rate



Source: Small Area Income and Poverty Estimates (SAIPE)

11.4 Poverty rate: comparison between areas

Poverty Rate - All people		
	Estimate	Margin of error
New York State	14.5%	± 0.1
Otsego County	16.4%	± 1.2
Cities		
Oneonta	26.8%	± 3.3
Towns		
Burlington	9.3%	± 5.0
Butternuts	11.4%	± 3.9
Cherry Valley	10.2%	± 5.4
Decatur	14.9%	± 7.1
Edmeston	17.1%	± 6.8
Exeter	15.0%	± 5.4
Hartwick	17.1%	± 7.8
Laurens	19.7%	± 6.1
Maryland	7.3%	± 2.7
Middlefield	7.3%	± 4.1
Milford	17.6%	± 6.1
Morris	10.8%	± 5.6
New Lisbon	7.3%	± 3.6
Oneonta	21.2%	± 7.0
Otego	12.8%	± 6.1
Otsego	14.4%	± 7.0
Pittsfield	17.0%	± 6.7
Plainfield	17.0%	± 7.2
Richfield	13.3%	± 4.3
Roseboom	6.3%	± 3.7
Springfield	14.8%	± 6.4
Unadilla	10.5%	± 3.5
Westford	11.8%	± 5.1
Worcester	13.6%	± 9.1

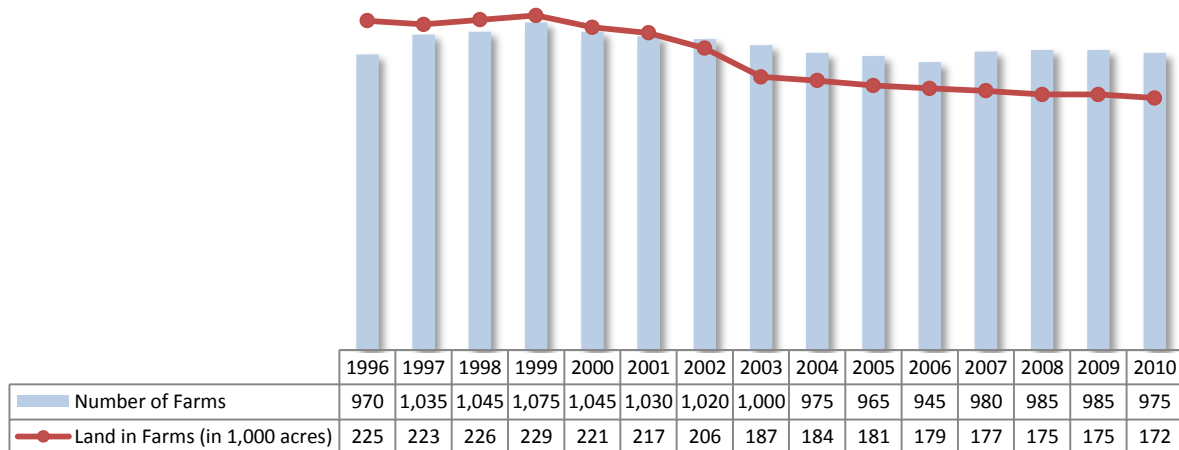


Source: 2007-2011 American Community Survey

12 Agriculture

12.1 Number of farms and land in farms

Otsego County, 1996-2010



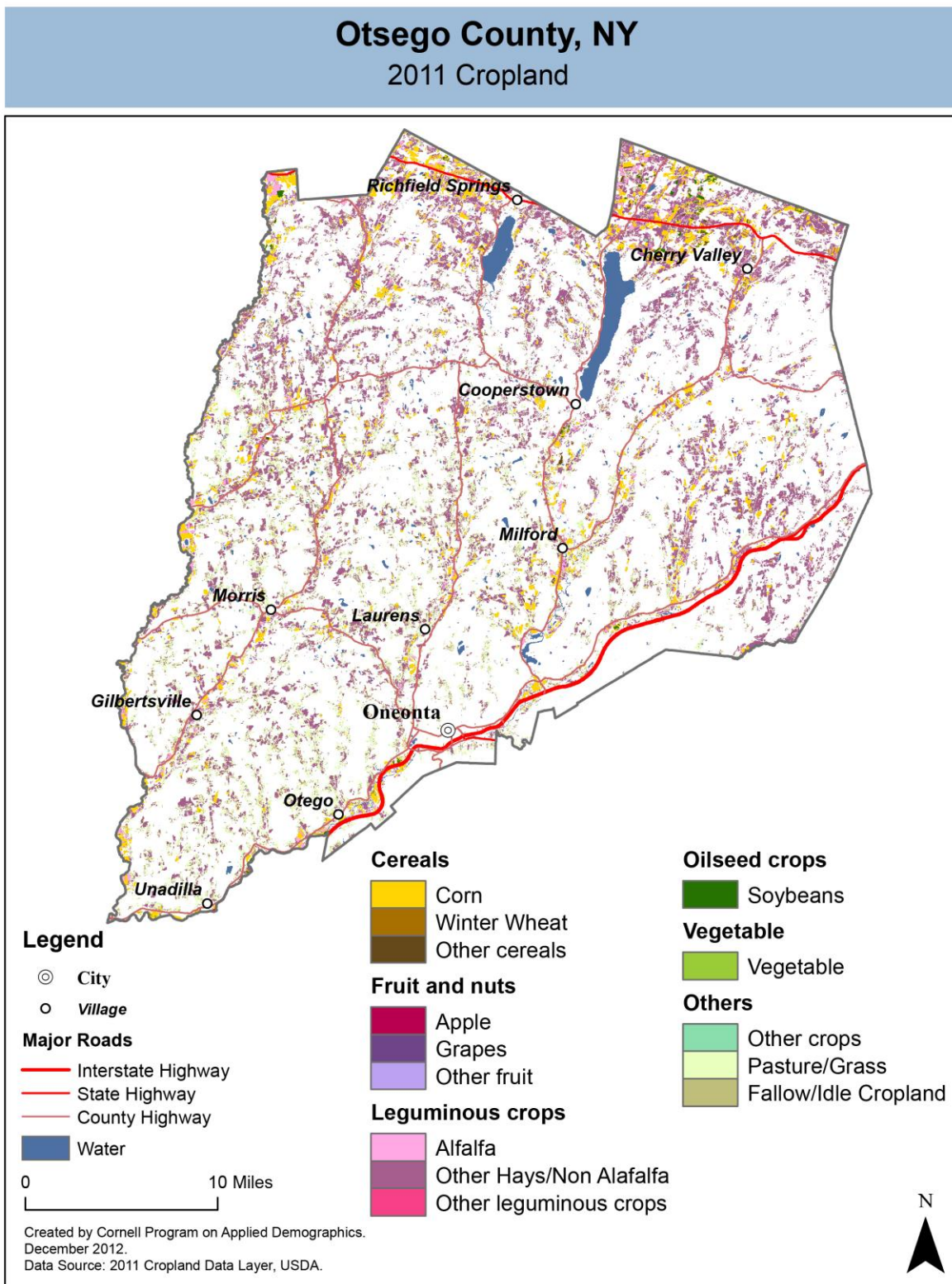
Source: National Agricultural Statistics Service – Annual Statistical bulletin

12.2 Farm Operator Characteristics

	Principal Operator		
	Total	Male	Female
Number of farms	980	788	192
Average size of farm (acres)	180	200	100
PRIMARY OCCUPATION			
Farming	538	449	89
Other	442	339	103
AGE			
Under 45	120	91	29
45 to 64 years	564	426	138
65 years and over	296	271	25
Average age (years)	58.3	59.3	54
YEARS ON PRESENT FARM			
Less than 3 years	27	21	6
3 to 4 years	65	41	24
5 to 9 years	143	107	36
10 years or more	745	619	126

Source: 2007 Agricultural Census

12.3 Map of type of crop

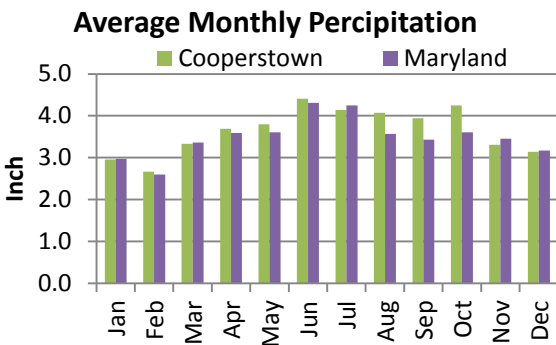
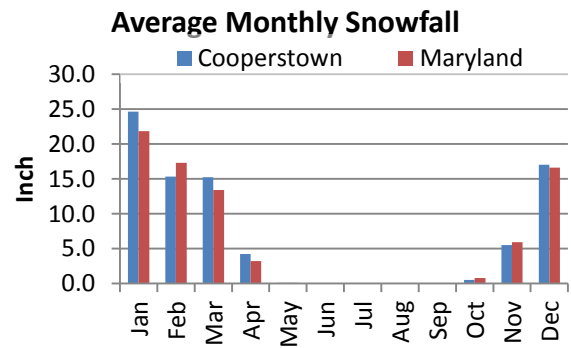
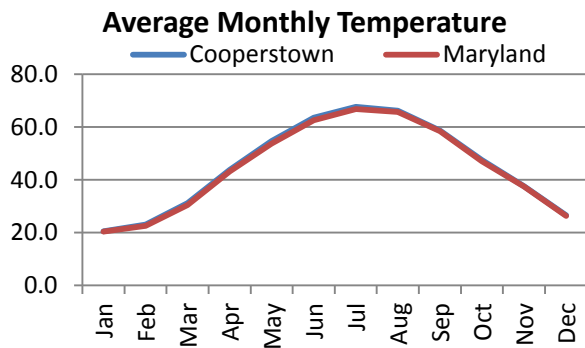
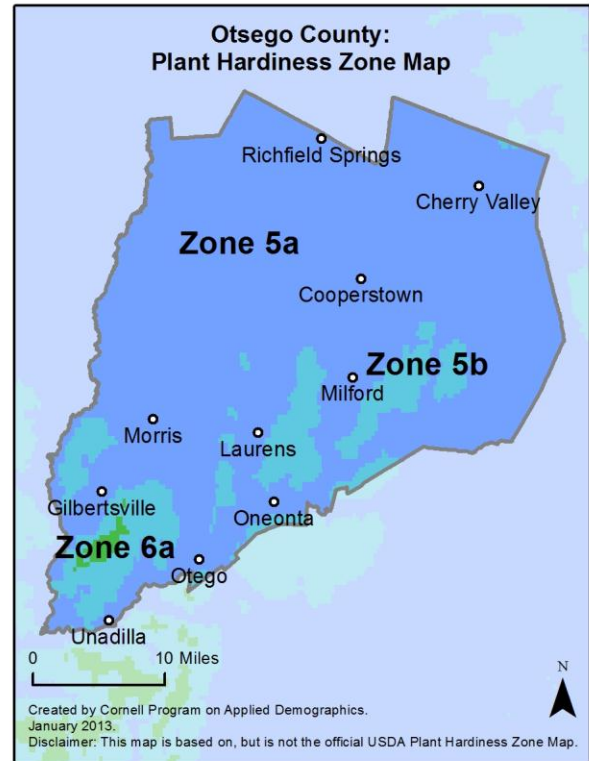
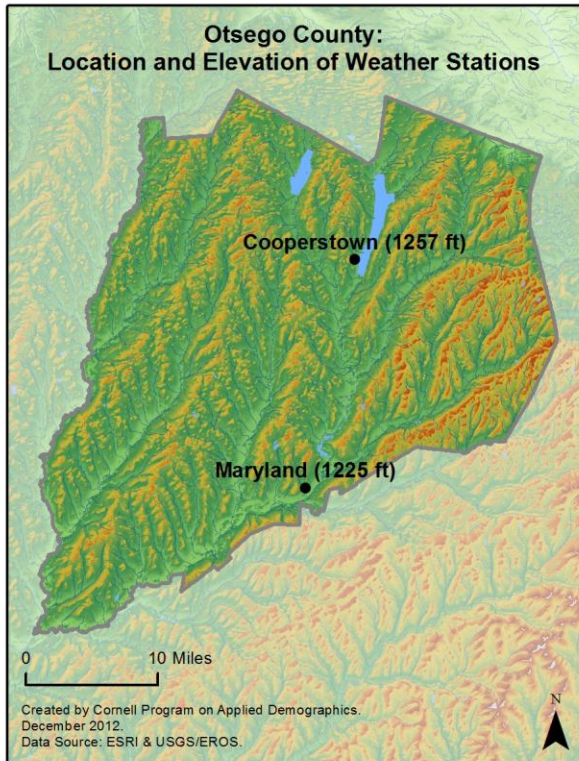


12.4 Estimated acreage by crop

	Acreage	%		Acreage	%
Cereals			Fruit and nuts		
Barley	57	0.0%	Apples	4.2	0.0%
Corn	21,169	12.1%	Apricots	-	
Millet	-		Blueberries	-	
Oats	582	0.3%	Cherries	-	
Rye	251	0.1%	Cranberries	-	
Sorghum	7	0.0%	Grapes	0.7	0.0%
Speltz	2.9	0.0%	Nectarines	-	
Spring Wheat	0.7	0.0%	Peaches	-	
Sweet Corn	4.7	0.0%	Plums	-	
Triticale	229	0.1%	Prunes	-	
Winter Wheat	22	0.0%	Strawberries	0.2	0.0%
Dbl Crop WinWht/Corn	-		Walnuts	-	
Leguminous crops			Beverage and spice crops		
Alfalfa	6,843	3.9%	Herbs	-	
Other Hay/Non Alfalfa	86,190	49.3%	Peppers	-	
Dry Beans	29	0.0%	Trees		
Peas	-		Christmas Trees	-	
Vetch	-		Other Tree Crops	-	
Oilseed crops			Other crops		
Soybeans	938	0.5%	Tobacco	-	
Sunflower	3.1	0.0%	Misc Veggies & Fruits	-	
Sugar crops			Clover/Wildflowers	54	0.0%
Sugarbeets	-		Sod/Grass Seed	37	0.0%
Root/tuber crops with high starch or inulin content			Switchgrass	-	
Potatoes	1.6	0.0%	Dbl Crop Soybeans/Oats	-	
Vegetables and melons			Dbl Crop WinWht/Soybeans	-	
Asparagus	-		Other Crops	1.6	0.0%
Broccoli	-		Pasture/Grass		
Cabbage	-		Fallow/Idle Cropland		
Carrots	-		53,714 30.7%		
Eggplants	-		4,595 2.6%		
Onions	3.1	0.0%			
Pumpkins	0.2	0.0%			
Squash	0.2	0.0%			
Tomatoes	-				
Turnips	-				

Source: National Agricultural Statistics Service - Cropland Data Layer 2011

13 Climate



Average length of freeze-free season

	Last day of frost	First day of frost	Season length
Cooperstown	May 18	September 30	134
Maryland	May 17	October 2	137

Source: NOAA, Northeast Regional Climate Center at Cornell University. Averages 1981-2010

14 Glossary

American Community Survey (ACS) - The American Community Survey is an ongoing survey of the population that provides data every year on a variety of social and economic characteristics—age, sex, race, family and relationships, income and benefits, health insurance, education, veteran status, disabilities, where you work and how you get there, where you live and how much you pay for some essentials. The ACS replaced the information previously gathered by what was known as the “long form” of the decennial censuses. The ACS provides communities, companies and other institutions with current information they need to plan investments and services. Information from the survey generates data that help determine how more than \$400 billion in federal and state funds are distributed each year. Every estimate presented in the American Community Survey, as in other surveys, has an uncertainty associated with it. Often the magnitude of that uncertainty is expressed as the Margin of Error.

Confidence Interval (CI) - indication of the degree of uncertainty about a sample estimates. Confidence intervals have been traditionally reported at the 90, 95 and 99 percent levels. A 90 percent confidence interval can be interpreted, for example, roughly as providing 90 percent certainty that the interval defined by the upper and lower bounds contain the true value of the characteristic. If a Margin of Error is given, the lower bound of the confidence interval is equal to the estimate minus the Margin of Error and the upper bound is equal to the estimate plus the Margin of Error. (See further, Margin of Error definition below.)

County subdivision or Minor Civil Division (MCD) - The Census Bureau geography for primary administrative units below the county level in New York is collectively referred to as county subdivisions or minor civil divisions. These include towns, cities and Indian Reservations.

Decennial Census - the Census of the population and housing taken every 10 years in the United States, at the start of each decade, since 1790.

Employed – either “at work” or “with a job, but not at work”.

Group Quarters Population - all U.S. residents who live in group living facilities including correctional institutions, juvenile facilities, skilled nursing facilities, college residence halls, military barracks, group homes, and workers' dormitories.

Household Population - all U.S. residents who live in housing units such as single family homes, townhouses, apartments, and mobile homes.

Intercensal Population Estimates - estimates produced for the years between two decennial censuses when both the beginning and ending populations are known. They are produced once a decade by adjusting the existing time series of postcensal estimates for the entire decade to smooth the transition from one decennial census count to the next. They differ from the postcensal estimates that are released annually because the difference between the April 1 postcensal estimate and April 1 census count for the end of the decade is redistributed across the estimates for that decade. For dates when both postcensal and intercensal estimates are available, intercensal estimates are preferred.

Labor Force - consists of people classified as employed or unemployed.

Margin of Error (MOE) - a measure of the precision of an estimate at a given level of confidence. The confidence level of a margin of error indicates the likelihood that the difference between the population value (which you

would get if you could measure the whole population instead of a sample) and the estimate is less than or equal to the margin of error. The range from the estimate minus the margin of error to the estimate plus the margin of error is called the confidence interval. All ACS estimates are published with their margins of error at the 90 percent confidence level. Margins of error are useful in assessing the reliability of estimates and whether differences between estimates are significant.

NAICS - The North American Industry Classification System or NAICS is used by business and government to classify business establishments according to type of economic activity (process of production).

Numeric Population Change - difference between the population of an area at the beginning and end of a time period. It is computed by taking the difference between the population at one point in time (t_1) and some future time (t_2).

Percent Population Change - difference between the population of an area at the beginning and end of a time period, expressed as a percentage of the beginning population. It is computed by dividing the population change ($t_2 - t_1$) by t_1 and multiplying the result by 100.

Population Estimates - The calculated number of people living in an area as of a specified point in time, usually July 1st. The estimated population is calculated using a component of change model that incorporates information on natural increase (births, deaths) and net migration (net domestic migration, net international migration) that has occurred in an area since the latest decennial census. A procedure for estimating the current population using a procedure involving a "base population" value at time $t - 1$, adding to that the births during the interval $t - 1$ to t , subtracting the deaths during that interval $t - 1$ to t , and then adding the net domestic and net international migration that occurred during that interval.

Population Density - Total number of people per areal unit like a square mile or square kilometer.

Population Pyramids - A graphical way of portraying a population's age and sex composition at a given slice in time. The first horizontal bar, constituting the base of the graph, is the youngest age group (typically 0-4) with the number of males in that age group on the left and the number of females in that age group on the right. On top of that age group is another horizontal bar for the next age group (e.g. 5-9) and so forth with the top bar typically for those aged 75 and over. In a population with lots of births and deaths, the shape typically forms a pyramid with a broad base and a narrow top. It is one of the most basic ways to understand population change over time as well as between different geographic units of a similar status (e.g. counties).

Postcensal Estimates - estimates produced for the years after a decennial census when only the beginning population is known. They are produced and revised each year, targeted to July 1 of that year.

Projection - estimated population at some future time based on assumptions about births, deaths, migration, and ages.

Race/Ethnicity - the Census Bureau collects racial data in accordance with guidelines provided by the U.S. Office of Management and Budget (OMB), and these data are based on self-identification. The racial categories included in the census questionnaire generally reflect a social definition of race recognized in this country and not an attempt to define race biologically, anthropologically, or genetically. In addition, it is recognized that the categories of the race item include racial and national origin or sociocultural groups. People may choose to report more than one race to indicate their racial mixture, such as "American Indian" and "White." People who identify their origin as Hispanic, Latino, or Spanish may be of any race. OMB requires five minimum categories: White, Black or African American, American Indian or Alaska Native, Asian, and Native Hawaiian or Other Pacific

Islander. Hispanics may be classified as white or black. So we generally separate them out as an ethnic group first.

Unemployed – Not employed, but actively looking for work and available to accept a job.

Unemployment rate – Fraction of the Labor Force that is unemployed.

Urban Area – A densely settled area with at least 2,500 people. If the total number of people is less than 50,000 the Census Bureau calls it an Urban Cluster, otherwise an Urbanized Area.

Vintage - each year, the U.S. Census Bureau produces and publishes estimates of the population for each state and county, as well as the nation as a whole. These are called “vintages.” In producing these vintages, the Bureau utilizes administrative data from a number of sources to estimate 1) the change in population since the most recent decennial census, and 2) the population for each year since the most recent decennial census. With each annual release of population estimates (vintage), the entire time series of estimates beginning on April 1, 2010 is revised and updated.

15 References

Otsego County homepage: <http://www.otsegocounty.com/>

At Cornell:

- Cornell Cooperative Extensions (CCE)
Home page: <http://www.cce.cornell.edu>
 - Schoharie/Otsego local office: <http://cceschoharie.org/>
- Program on Applied Demographics (PAD)
URL: <http://pad.human.cornell.edu/>
- Community and Regional Development Institute (CaRDI)
URL: <http://devsoc.cals.cornell.edu/cals/devsoc/outreach/cardi/index.cfm>

Data sources and background information:

- U.S. Census Bureau - general
 - QuickFacts: <http://quickfacts.census.gov/qfd/states/36/36077.html>
 - QuickLinks: <http://quickfacts.census.gov/qfd/states/36/36077lk.html>
 - American FactFinder: <http://factfinder2.census.gov>
- U.S. Census Bureau - population
 - Decennial Census
 - Background: <http://2010.census.gov/2010census/>
 - Demographic Profile: http://factfinder2.census.gov/bkmk/table/1.0/en/DEC/10_SF1/SF1DP1/0500000US36077
 - American Community Survey (ACS)
 - Background: <http://www.census.gov/acs/www/>
 - Social Data Profile: http://factfinder2.census.gov/bkmk/table/1.0/en/ACS/10_5YR/DP02/0500000US36077
 - Economic Data Profile: http://factfinder2.census.gov/bkmk/table/1.0/en/ACS/10_5YR/DP03/0500000US36077
 - Housing Data Profile: http://factfinder2.census.gov/bkmk/table/1.0/en/ACS/10_5YR/DP04/0500000US36077
 - Demographics Data Profile: http://factfinder2.census.gov/bkmk/table/1.0/en/ACS/10_5YR/DP05/0500000US36077
 - Population estimates: <http://www.census.gov/popest/estimates.html>
- U.S. Census Bureau – Small Area Income & Poverty Estimates (SAIPE)
 - <http://www.census.gov/did/www/saipe/>
- U.S. Census Bureau - Public Use Quarterly Workforce Indicators (QWI) – annual averages
 - <http://www2.vrdc.cornell.edu/news/data/qwi-public-use-data/>
- Bureau Labor Statistics (BLS) – Local Area Unemployment Statistics: <http://www.bls.gov/lau/>
- NY Department of Labor -
 - Labor statistics: <http://www.labor.ny.gov/stats/>
 - Quarterly Census of Employment and Wages (QCEW): <http://www.labor.ny.gov/stats/lsqcew.shtm>
- Bureau of Economic Analysis (BEA) – Local Area Personal Income and Employment: <http://bea.gov/iTable/iTable.cfm?ReqID=70&step=1>

- USDA Census of Agriculture
 - 2007
 - Home page: <http://www.agcensus.usda.gov/Publications/2007/index.php>
 - County profile: http://www.agcensus.usda.gov/Publications/2007/Online_Highlights/County_Profiles/New_York/cp36077.pdf
 - Race, Ethnicity and Gender Profiles: http://www.agcensus.usda.gov/Publications/2007/Online_Highlights/Race_Ethnicity_and_Gender_Profiles/New_York/cpd36077.pdf
- USDA National Agricultural Statistics Service (NASS)
 - Home page: <http://www.nass.usda.gov/index.asp>
 - New York Statistical Bulletins: http://www.nass.usda.gov/Statistics_by_State/New_York/Publications/Annual_Statistical_Bulletin/
 - Cropland Data Layer – CropScape: <http://nassgeodata.gmu.edu/CropScape/>
- USDA Agricultural Research Service – Plant Hardness Zone Map: <http://planthardiness.ars.usda.gov/PHZMWeb/>
- NOAA, Northeast Regional Climate Center at Cornell University
 - Home page: <http://www.nrcc.cornell.edu/index.html>

Alternative sites for data retrieval:

- The Nelson A. Rockefeller Institute of Government – New York State Statistical Yearbooks http://www.rockinst.org/nys_statistics/
- Headwaters Economics: Economic Profile System – Human Dimensions Toolkit <http://headwaterseconomics.org/tools/eps-hdt>
- National Historical Geographic Information System (NHGIS) <https://www.nhgis.org/>
- Social Explorer <http://www.socialexplorer.com/pub/home/home.aspx>
- Missouri Census Data Center <http://mcdc.missouri.edu/>
- DataFerret <http://dataferrett.census.gov/>
- Investigative Reporters and Editors (IRE) Census project <http://census.ire.org/>