

Oneida County Profile 2013

A collection of recent demographic, social, economic and agricultural data

Compiled by Jan Vink

Assisted by Joe Francis, Sutee Anantsuksomsri, Nij Tontisirin, Johannes Plambeck



Cornell University
Cooperative Extension



This profile is a part of a set of profiles generated for each county in New York State. The profiles were developed and generated by the Cornell Program on Applied Demographics. The work is sponsored by Cornell Cooperative Extension and promoted with webinars and workshops in coordination with the Community & Regional Development Institute.

Cornell Program on Applied Demographics:

The Program on Applied Demographics (PAD) brings skills in demographics, economics, statistics, data gathering and data analysis together to provide a variety of organizations with data, information and advice.

For more information: <http://pad.human.cornell.edu/>

Cornell Cooperative Extension:

Cornell Cooperative Extension (CCE) puts knowledge to work in pursuit of economic vitality, ecological sustainability and social well-being. We bring local experience and research based solutions together, helping New York State families and communities thrive in our rapidly changing world.

For more information: <http://cce.cornell.edu/>

Community & Regional Development Institute:

The Community & Regional Development Institute (CaRDI) supports informed decision making for residents and communities in New York State through applied research and education.

For more information: <http://cardi.cornell.edu/>

All profiles are freely downloadable as PDF documents on the PAD website:

<http://pad.human.cornell.edu/profiles/index.cfm>

Contents

Contents2

1 Reference Maps4

2 Population density and Urban Areas Map6

3 Total Population7

 3.1 Historic and projected7

 3.2 Change since previous Census7

 3.3 Annual population estimates8

 3.4 Percentage sub county change 2000-20109

4 Population by age 11

 4.1 Historic and projected population pyramids 11

 4.2 Selected age groups 12

 4.3 Median age: comparison between areas 14

5 Race 15

 5.1 Total and household population by race 15

 5.2 Race composition by age 15

6 Housing units 16

 6.1 Characteristics 16

 6.2 Historical data on number of housing units and occupancy status 17

7 Education 18

 7.1 Enrollment by level of school 18

 7.2 Enrollment by age 18

 7.3 Percentage age 18-24 enrolled in college 18

 7.4 Educational attainment 19

8 Language spoken at home 19

9 Labor Force Characteristics 20

 9.1 Labor force, employment and unemployment 20

 9.2 Annual unemployment rate 21

 9.3 Monthly unemployment rate 21

 9.4 Employment and number of jobs 22

 9.5 Class of worker 22

 9.6 Jobs by industry sector 23

10 Household Income 24

 10.1 Distribution 24

 10.2 Median household income: Trends over time 25

 10.3 Median household income: Comparison between areas 26

11 Poverty 27

 11.1 Poverty characteristics 27

 11.2 Poverty: Trends over time: Count 28

 11.3 Poverty: Trends over time: Rate 28

 11.4 Poverty rate: comparison between areas 29

12 Agriculture 30

 12.1 Number of farms and land in farms 30

 12.2 Farm Operator Characteristics 30

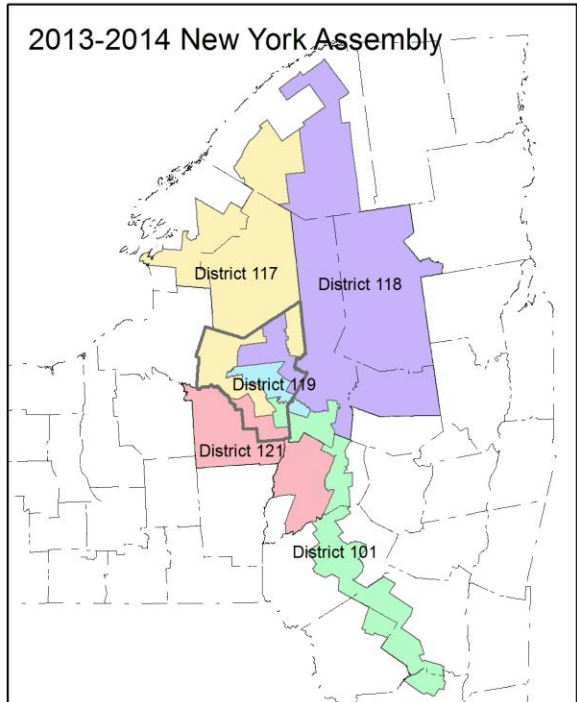
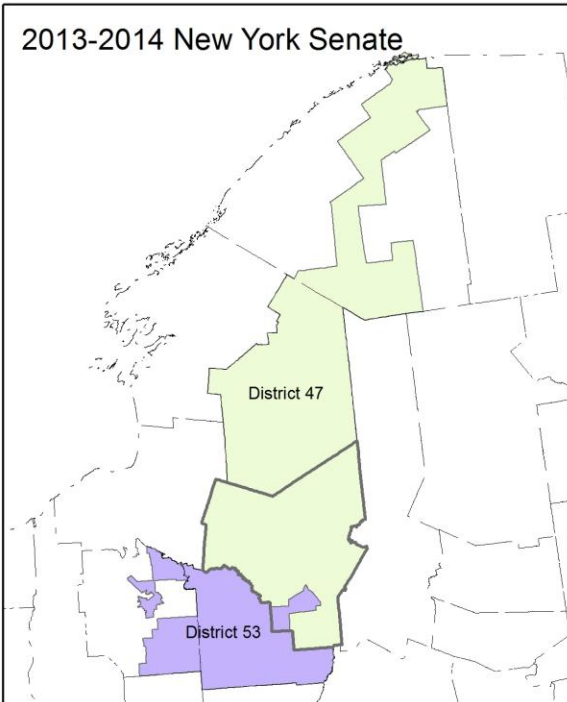
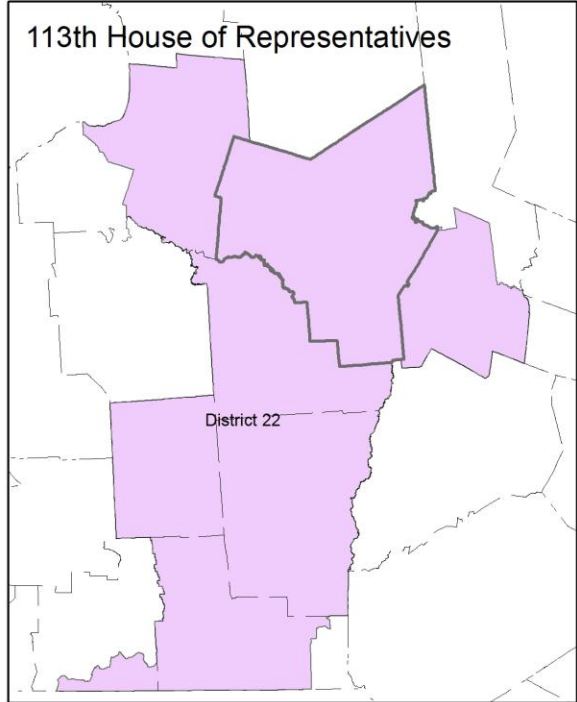
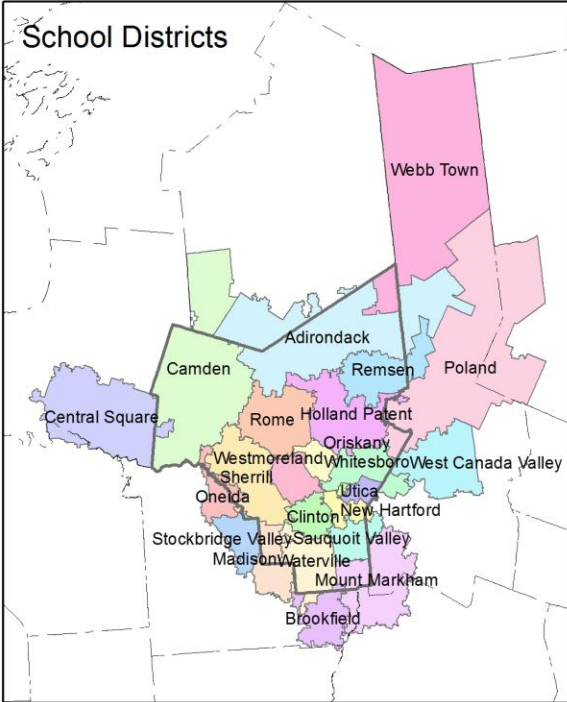
12.3 Map of type of crop 31
12.4 Estimated acreage by crop 32
13 Climate 33
14 Glossary..... 34
15 References 37

1 Reference Maps

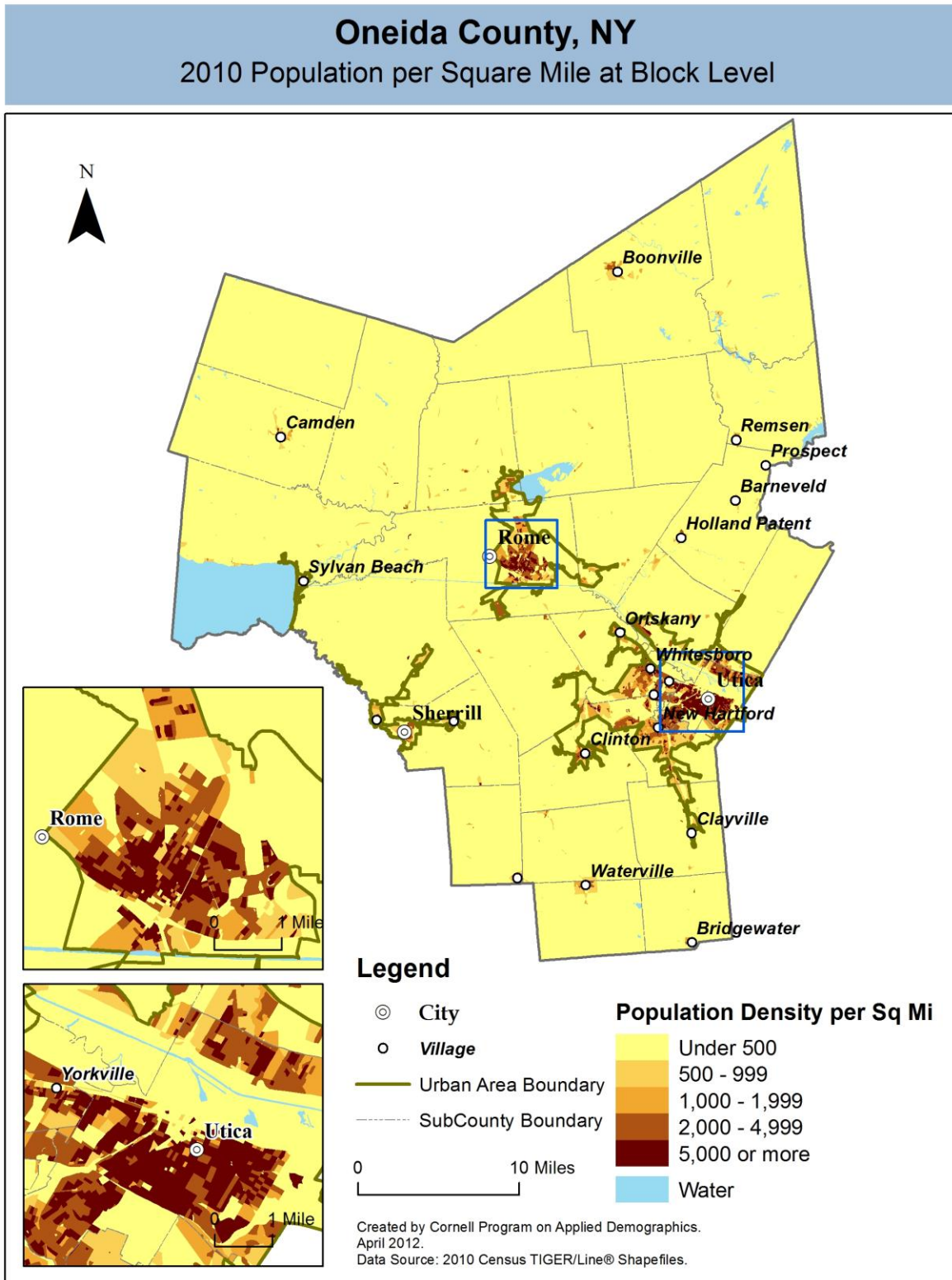


Oneida County, NY

Overlap with School and Political Districts



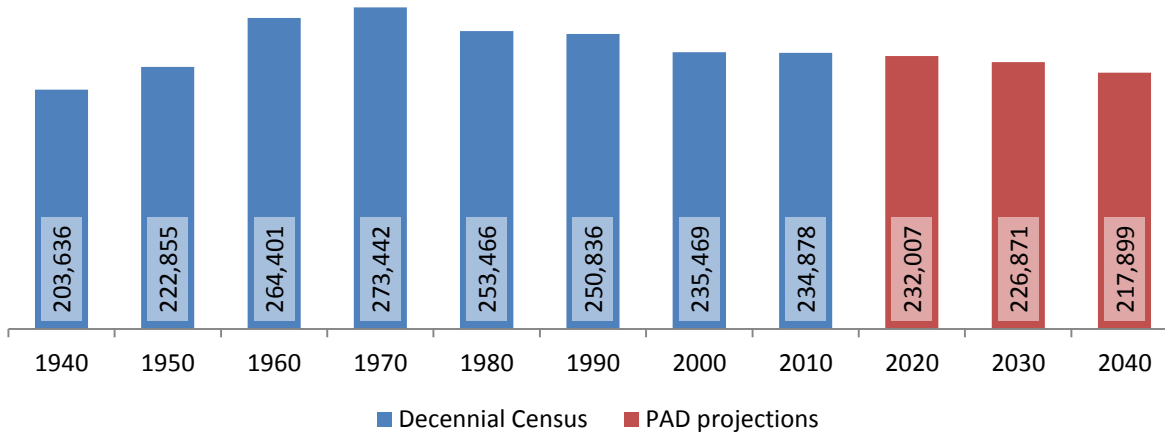
2 Population density and Urban Areas Map



3 Total Population

3.1 Historic and projected

Total population, Oneida County, 1940-2040



Source: 1940-2010 Decennial Census and projections by Cornell Program on Applied Demographics

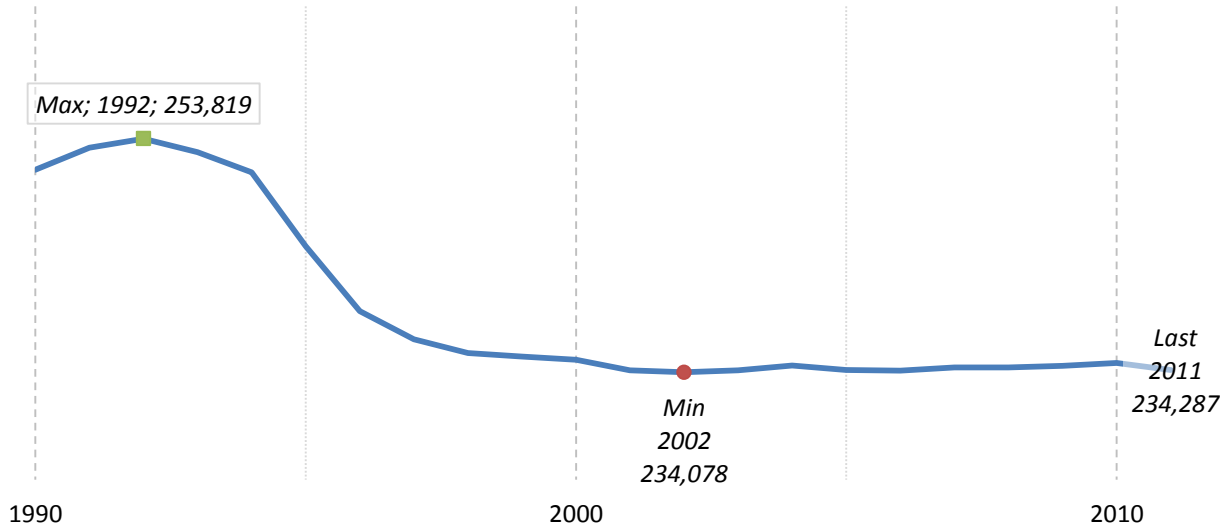
3.2 Change since previous Census

	Total population	Change	
		Number	Percent
Decennial Census	1940	203,636	
	1950	222,855	19,219 9.4%
	1960	264,401	41,546 18.6%
	1970	273,442	9,041 3.4%
	1980	253,466	-19,976 -7.3%
	1990	250,836	-2,630 -1.0%
	2000	235,469	-15,367 -6.1%
	2010	234,878	-591 -0.3%
PAD projections	2020	232,007	-2,871 -1.2%
	2030	226,871	-5,136 -2.2%
	2040	217,899	-8,972 -4.0%

Source: 1940-2010 Decennial Census and projections by Cornell Program on Applied Demographics

3.3 Annual population estimates

**Annual population estimates
Oneida County, 1990-2011**



Source: U.S. Census Bureau population estimates (1990-1999 and 2000-2009 intercensal and vintage 2011 postcensal)

3.4 Percentage sub county change 2000-2010

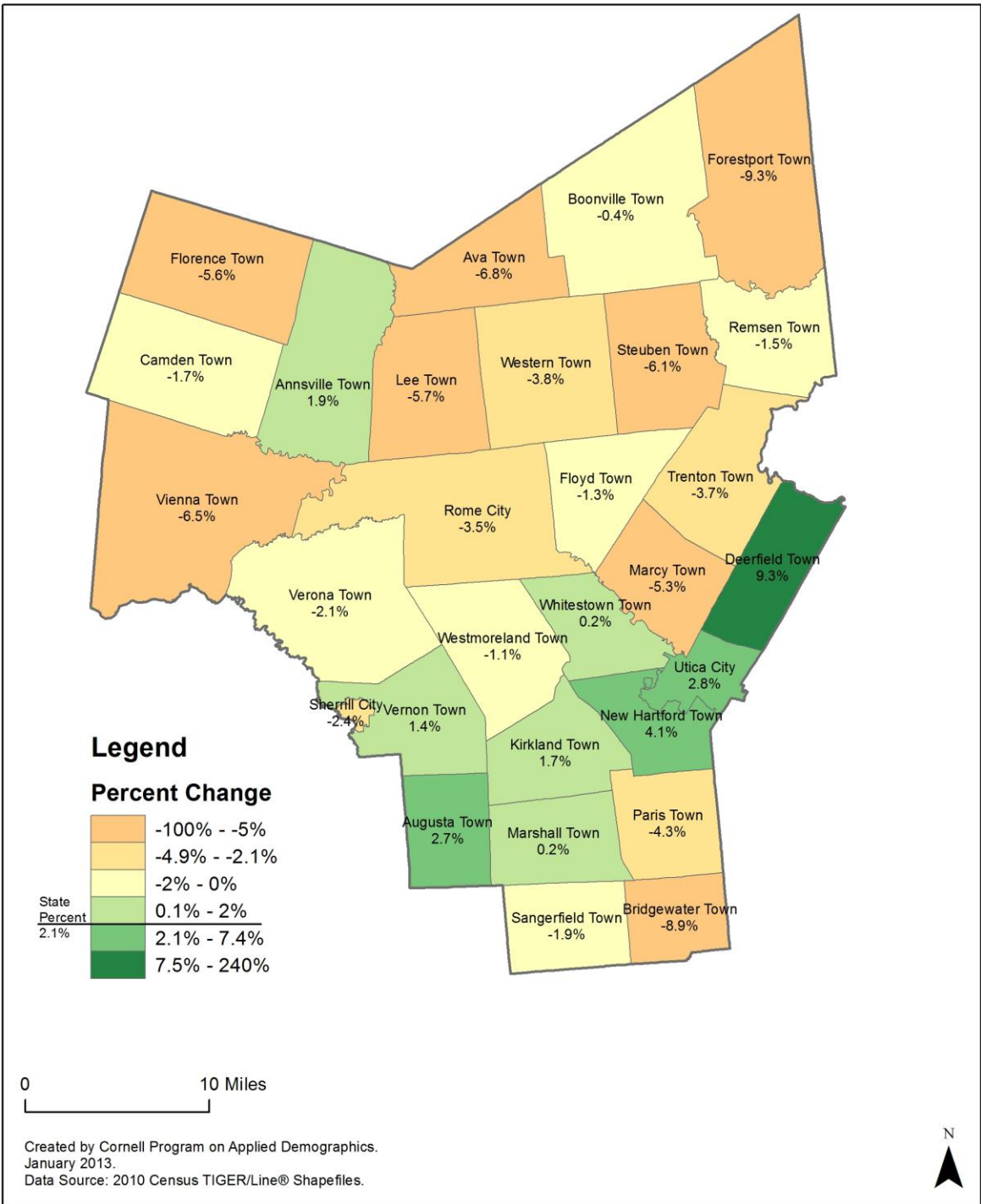
	Total Population		Difference	
	2000	2010	Count	%
New York State	18,976,821 *	19,378,102	401,281	2.1%
Oneida County	235,459 *	234,878	-581	-0.2%
Cities				
Rome	34,950	33,725	-1,225	-3.5%
Sherrill	3,147	3,071	-76	-2.4%
Utica	60,523 *	62,235	1,712	2.8%
Towns				
Annsville	2,956	3,012	56	1.9%
Augusta	1,966	2,020	54	2.7%
Ava	725	676	-49	-6.8%
Boonville	4,572	4,555	-17	-0.4%
Bridgewater	1,671	1,522	-149	-8.9%
Camden	5,018 *	4,934	-84	-1.7%
Deerfield	3,909 *	4,273	364	9.3%
Florence	1,086	1,025	-61	-5.6%
Floyd	3,869	3,819	-50	-1.3%
Forestport	1,692	1,535	-157	-9.3%
Kirkland	10,138	10,315	177	1.7%
Lee	6,875	6,486	-389	-5.7%
Marcy	9,481 *	8,982	-499	-5.3%
Marshall	2,127	2,131	4	0.2%
New Hartford	21,285 *	22,166	881	4.1%
Paris	4,609	4,411	-198	-4.3%
Remsen	1,958	1,929	-29	-1.5%
Sangerfield	2,610	2,561	-49	-1.9%
Steuben	1,172	1,100	-72	-6.1%
Trenton	4,670	4,498	-172	-3.7%
Vernon	5,335	5,408	73	1.4%
Verona	6,425	6,293	-132	-2.1%
Vienna	5,819	5,440	-379	-6.5%
Western	2,029	1,951	-78	-3.8%
Westmoreland	6,207	6,138	-69	-1.1%
White	18,635	18,667	32	0.2%

* Original counts revised through Count Question Resolution Program (CQR)

Source: U.S. Census Bureau intercensal population estimates 2000-2010

Oneida County, NY

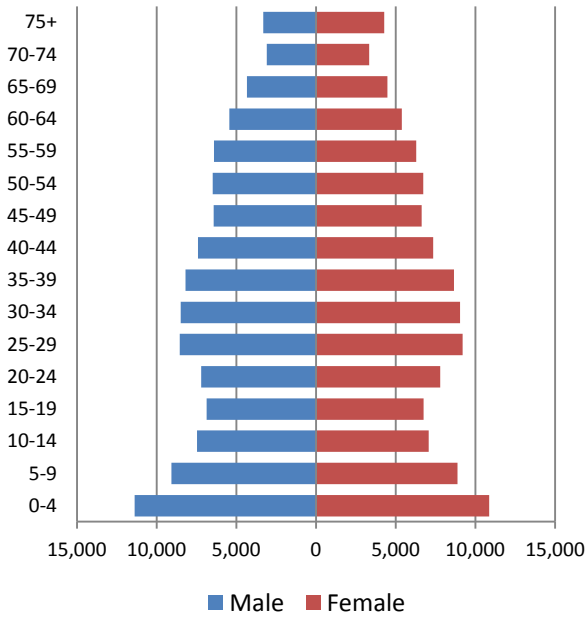
County Subdivision, Percent Change in Population 2000-2010



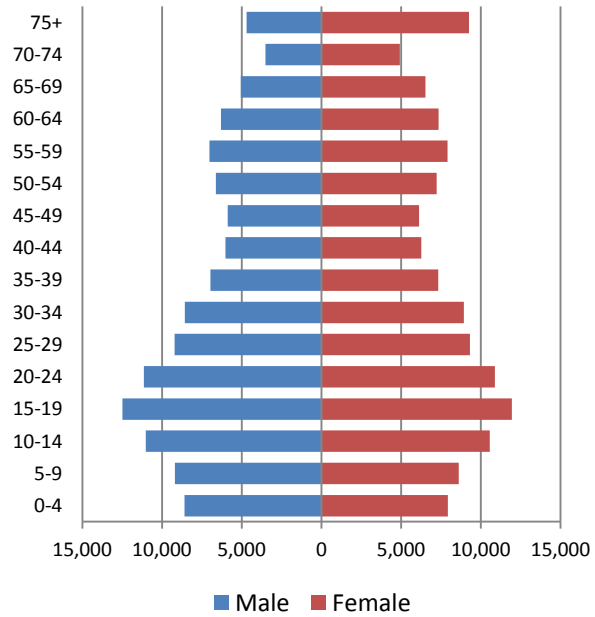
4 Population by age

4.1 Historic and projected population pyramids

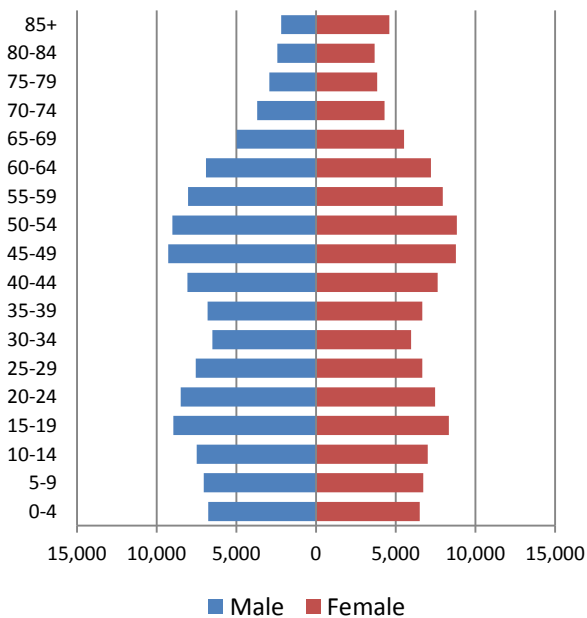
1950 Population Pyramid, Oneida County



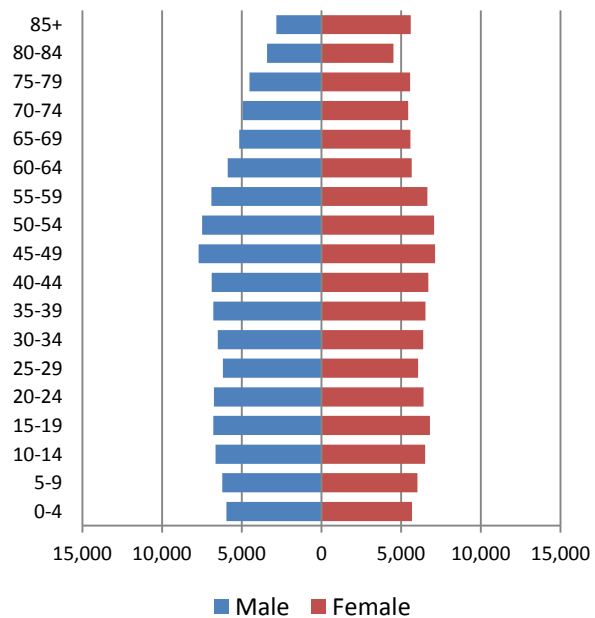
1980 Population Pyramid, Oneida County



2010 Population Pyramid, Oneida County



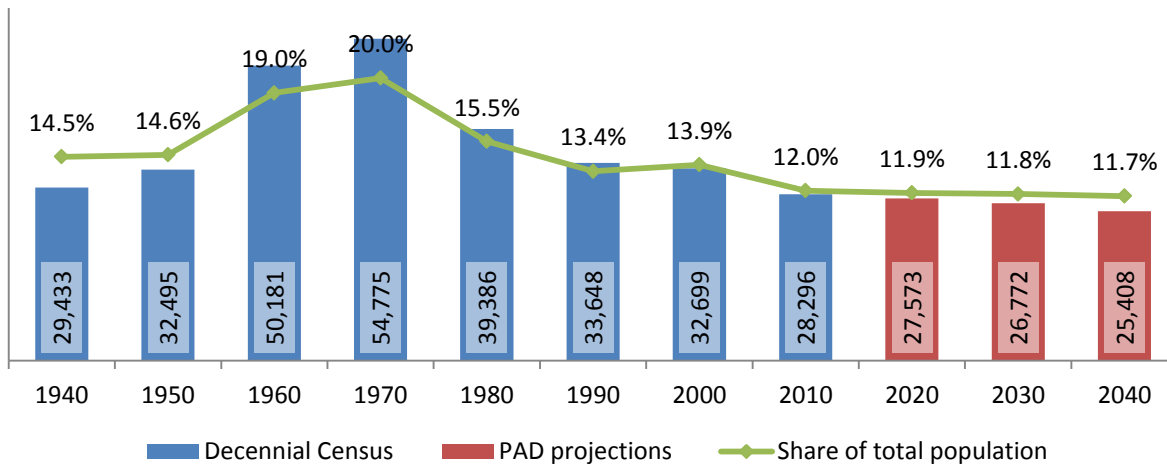
2040 Population Pyramid, Oneida County



Source: 1950, 1980, 2010 Decennial Census and projections by Cornell Program on Applied Demographics

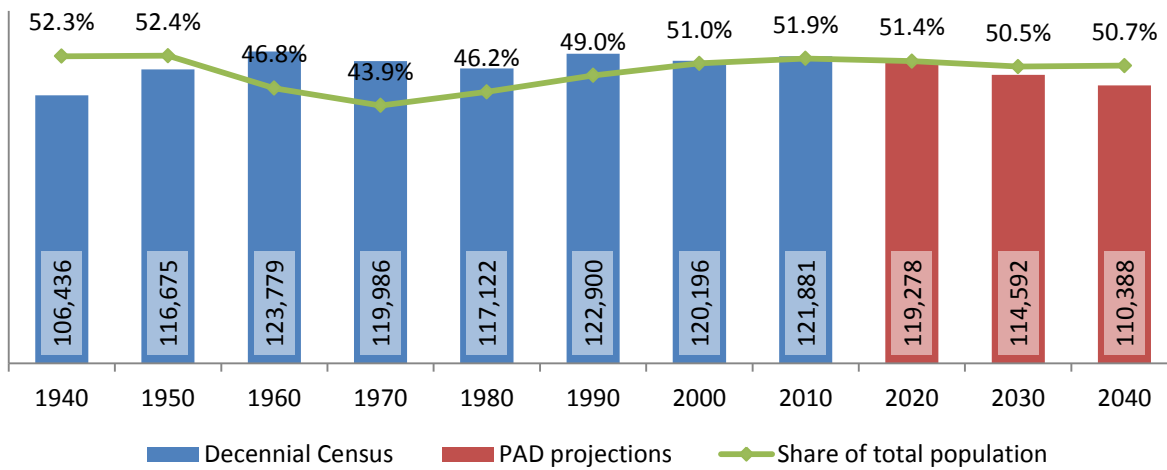
4.2 Selected age groups

Population age 5-14, Oneida County, 1940-2040



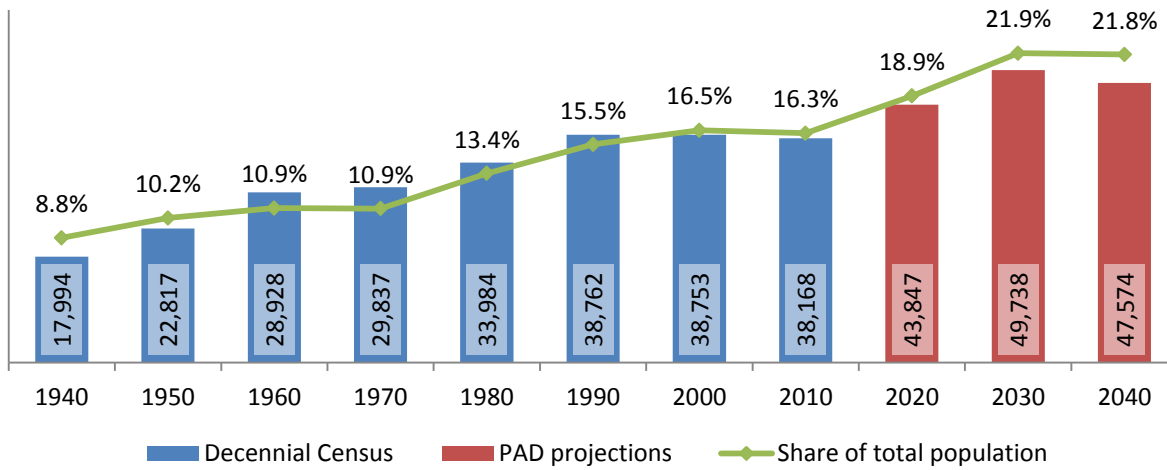
Source: 1940-2010 Decennial Census and projections by Cornell Program on Applied Demographics

Population age 25-64, Oneida County, 1940-2040



Source: 1940-2010 Decennial Census and projections by Cornell Program on Applied Demographics

Population age 65 and over, Oneida County, 1940-2040

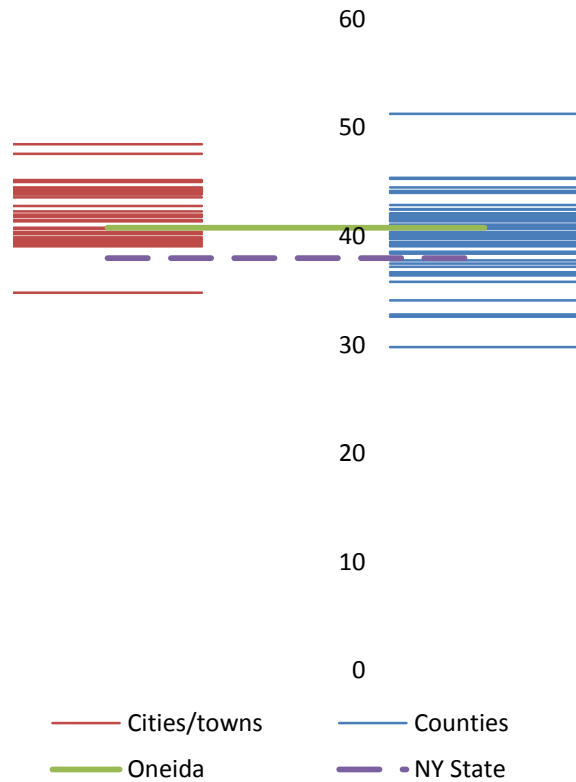


Source: 1940-2010 Decennial Census and projections by Cornell Program on Applied Demographics

4.3 Median age: comparison between areas

	Median Age
New York State	38.0
Oneida County	40.8
Cities	
Rome city	40.2
Sherrill city	45.0
Utica city	34.8
Towns	
Annsville town	39.3
Augusta town	39.7
Ava town	39.5
Boonville town	44.1
Bridgewater town	40.8
Camden town	41.4
Deerfield town	43.9
Florence town	40.7
Floyd town	42.0
Forestport town	48.5
Kirkland town	39.1
Lee town	44.4
Marcy town	39.9
Marshall town	41.5
New Hartford town	47.6
Paris town	43.6
Renssen town	40.4
Sangerfield town	41.9
Steuben town	45.2
Trenton town	44.5
Vernon town	42.8
Verona town	42.3
Vienna town	44.1
Western town	43.9
Westmoreland town	44.3
Whitestown town	41.8

Median age comparison within county (left) and between counties (right)



Source: 2010 Decennial Census

5 Race

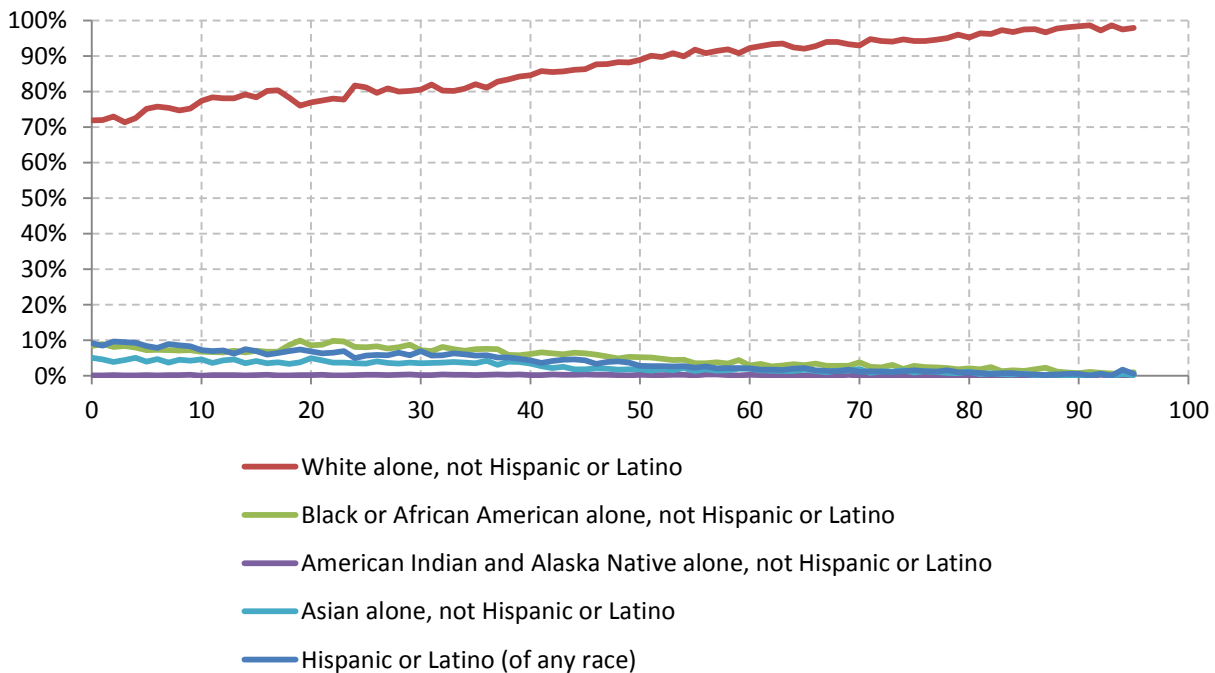
5.1 Total and household population by race

	Total		In households		In Group Quarters
	Count	Percentage	Count	Percentage	Count
Total population	234,878	100%	221,473	100%	13,405
Not Hispanic or Latino					
One race					
White	199,254	84.8%	190,858	86.2%	8,396
Black or African American	13,682	5.8%	10,566	4.8%	3,116
American Indian and Alaska Native	499	0.2%	439	0.2%	60
Asian	6,522	2.8%	6,280	2.8%	242
Native Hawaiian and Other Pacific Islander	49	0.0%	-	-	-
Some other race	244	0.1%	190	0.1%	54
Two or more races	3,809	1.6%	3,667	1.7%	142
Hispanic or Latino (of any race)	10,819	4.6%	9,427	4.3%	1,392

Source: 2010 Decennial Census

5.2 Race composition by age

Race composition by age, Oneida County



Source: 2010 Decennial Census

6 Housing units

6.1 Characteristics

HOUSING OCCUPANCY	COUNT		PERCENTAGE	
	Estimate	Margin of error	Estimate	Margin of error
Total housing units	104,186	± 472	100.0%	
Occupied housing units	91,568	± 807	87.9%	± 0.6
Vacant housing units	12,618	± 645	12.1%	± 0.6
YEAR STRUCTURE BUILT				
Total housing units	104,186	± 472	100.0%	
Built 2005 or later	2,019	± 261	1.9%	± 0.3
Built 2000 to 2004	2,685	± 333	2.6%	± 0.3
Built 1990 to 1999	7,852	± 487	7.5%	± 0.5
Built 1980 to 1989	8,565	± 623	8.2%	± 0.6
Built 1970 to 1979	9,981	± 634	9.6%	± 0.6
Built 1960 to 1969	10,712	± 486	10.3%	± 0.5
Built 1950 to 1959	17,033	± 684	16.3%	± 0.6
Built 1940 to 1949	8,037	± 538	7.7%	± 0.5
Built 1939 or earlier	37,302	± 848	35.8%	± 0.8
HOUSING TENURE				
Occupied housing units	91,568	± 807	100.0%	
Owner-occupied	62,288	± 880	68.0%	± 0.9
Renter-occupied	29,280	± 915	32.0%	± 0.9
HOUSE HEATING FUEL				
Occupied housing units	91,568	± 807	100.0%	
Utility gas	54,803	± 849	59.8%	± 0.8
Bottled, tank, or LP gas	3,977	± 396	4.3%	± 0.4
Electricity	9,114	± 495	10.0%	± 0.5
Fuel oil, kerosene, etc.	19,019	± 674	20.8%	± 0.7
Coal or coke	171	± 66	0.2%	± 0.1
Wood	3,325	± 291	3.6%	± 0.3
Solar energy	27	± 34	0.0%	± 0.1
Other fuel	714	± 140	0.8%	± 0.2
No fuel used	418	± 166	0.5%	± 0.2
VALUE				
Owner-occupied units	62,288	± 880	100.0%	
Less than \$50,000	6,776	± 429	10.9%	± 0.7
\$50,000 to \$99,999	22,189	± 716	35.6%	± 1.0
\$100,000 to \$149,999	14,861	± 623	23.9%	± 1.0
\$150,000 to \$199,999	8,749	± 503	14.0%	± 0.8
\$200,000 to \$299,999	5,789	± 391	9.3%	± 0.6
\$300,000 to \$499,999	2,645	± 295	4.2%	± 0.5
\$500,000 to \$999,999	989	± 194	1.6%	± 0.3
\$1,000,000 or more	290	± 102	0.5%	± 0.2
Median (dollars)	106,200	± 1,705		

Source: 2007-2011 American Community Survey

6.2 Historical data on number of housing units and occupancy status

Year	Number of Housing Units	Change since previous Census	Occupied	Occupancy rate	Vacant
1970	88,248		82,080	93.0%	6,168
1980	95,834	8.6%	88,000	91.8%	7,834
1990	101,251	5.7%	92,562	91.4%	8,689
2000	102,803	1.5%	90,496	88.0%	12,307
2010	104,180	1.3%	93,028	89.3%	11,152

Source: 1970-2010 Decennial Census

7 Education

7.1 Enrollment by level of school

	Estimate	Margin of error
Total enrolled in school	58,430	± 850
Nursery school, preschool	3,360	± 433
Kindergarten	2,806	± 347
Elementary: grade 1 to grade 4	11,227	± 526
Elementary: grade 5 to grade 8	11,541	± 547
High school: grade 9 to grade 12	13,616	± 373
College, undergraduate	13,860	± 654
Graduate, professional school	2,020	± 330

Source: 2007-2011 American Community Survey

7.2 Enrollment by age

	Estimate	Margin of error
3 and 4 years	46.6%	± 4.7
5 to 9 years	96.7%	± 1.0
10 to 14 years	98.4%	± 0.6
15 to 17 years	97.3%	± 0.9
18 and 19 years	77.4%	± 2.8
20 to 24 years	44.4%	± 3.0
25 to 34 years	9.5%	± 1.3
35 years and over	2.1%	± 0.3

Source: 2007-2011 American Community Survey

7.3 Percentage age 18-24 enrolled in college

	Estimate	Margin of error
Population 18 to 24 years	23,336	± 117
Enrolled in college or graduate school	46.5%	± 2.5
Males 18 to 24 years	12,322	± 114
Enrolled in college or graduate school	42.9%	± 3.1
Females 18 to 24 years	11,014	± 26
Enrolled in college or graduate school	50.6%	± 3.6

Source: 2007-2011 American Community Survey

7.4 Educational attainment

	COUNT		PERCENTAGE	
	Estimate	Margin of error	Estimate	Margin of error
Population 25 years and over	159,622	± 116	100%	
EDUCATIONAL ATTAINMENT				
Less than 9th grade	8,029	± 642	5.0%	± 0.4
9th to 12th grade, no diploma	13,602	± 640	8.5%	± 0.4
High school graduate (includes equivalency)	53,419	± 1,375	33.5%	± 0.9
Some college, no degree	31,418	± 1,025	19.7%	± 0.6
Associate's degree	18,230	± 788	11.4%	± 0.5
Bachelor's degree	20,982	± 899	13.1%	± 0.6
Graduate or professional degree	13,942	± 738	8.7%	± 0.5
Percent high school graduate or higher			86.4%	± 0.6
Percent bachelor's degree or higher			21.9%	± 0.7

Source: 2007-2011 American Community Survey

8 Language spoken at home

	COUNT		PERCENTAGE		SPEAK ENGLISH LESS THAN "VERY WELL"	
	Estimate	Margin of error	Estimate	Margin of error	Estimate	Margin of error
Population 5 years and over	221,415	± *****	100%			
LANGUAGE SPOKEN AT HOME						
English only	196,910	± 1,141	88.9%	± 0.5		
Language other than English	24,505	± 1,141	11.1%	± 0.5	10,303	± 726
Spanish	7,528	± 461	3.4%	± 0.2	2,477	± 310
Other Indo-European languages	11,275	± 1,045	5.1%	± 0.5	4,509	± 528
Asian and Pacific Islander languages	4,393	± 374	2.0%	± 0.2	2,665	± 388
Other languages	1,309	± 362	0.6%	± 0.2	652	± 298

Source: 2007-2011 American Community Survey

9 Labor Force Characteristics

9.1 Labor force, employment and unemployment

	TOTAL		IN LABOR FORCE		EMPLOYED		UNEMPLOYMENT RATE	
	Estimate	Margin of error	Estimate	Margin of error	Estimate	Margin of error	Estimate	Margin of error
Population 16 years and over	189,360	± 290	59.7%	± 0.7	55.3%	± 0.6	7.2%	± 0.5
AGE								
16 to 19 years	13,773	± 307	43.5%	± 3.0	32.5%	± 2.6	25.3%	± 4.0
20 to 24 years	15,965	± 152	69.1%	± 2.8	59.9%	± 2.5	13.0%	± 2.0
25 to 44 years	56,525	± 122	78.3%	± 1.2	72.6%	± 1.2	7.0%	± 0.9
45 to 54 years	35,698	± 59	79.0%	± 1.3	75.6%	± 1.4	4.1%	± 0.7
55 to 64 years	29,436	± 36	60.6%	± 1.6	58.2%	± 1.6	4.0%	± 0.8
65 to 74 years	18,159	± 88	25.5%	± 2.0	24.5%	± 2.0	4.1%	± 1.5
75 years and over	19,804	± 81	5.4%	± 0.9	5.3%	± 0.9	2.7%	± 2.4
RACE AND HISPANIC OR LATINO ORIGIN								
One race	186,517	± 441	59.9%	± 0.7	55.6%	± 0.6	7.0%	± 0.5
White	168,446	± 419	61.3%	± 0.6	57.3%	± 0.6	6.3%	± 0.5
Black or African American	10,381	± 263	42.6%	± 3.9	35.9%	± 3.7	15.6%	± 4.1
American Indian and Alaska Native	384	± 111	44.3%	± 11.6	28.9%	± 10.0	31.1%	± 21.7
Asian	4,469	± 122	63.6%	± 5.2	55.7%	± 4.6	12.2%	± 4.4
Pacific Islander	87	± 69	32.2%	± 39.2	32.2%	± 39.2	0.0%	± 56.0
Some other race	2,750	± 316	41.2%	± 6.1	30.3%	± 5.1	26.6%	± 10.4
Two or more races	2,843	± 301	45.0%	± 6.8	35.6%	± 6.2	21.0%	± 8.7
Hispanic or Latino origin (of any race)	7,111	± 55	44.1%	± 3.9	35.9%	± 3.7	18.4%	± 5.3
White alone, not Hispanic or Latino	165,335	± 271	61.4%	± 0.6	57.5%	± 0.7	6.2%	± 0.5
SEX								
Population 20 to 64 years	137,624	± 86	73.7%	± 0.8	68.8%	± 0.8	6.3%	± 0.5
Male	70,676	± 93	73.1%	± 1.2	67.7%	± 1.2	6.9%	± 0.7
Female	66,948	± 40	74.3%	± 1.1	70.0%	± 1.1	5.7%	± 0.7
With own children under 6 years	10,056	± 553	74.4%	± 2.8	66.0%	± 3.1	11.4%	± 2.7
EDUCATIONAL ATTAINMENT								
Population 25 to 64 years	121,659	± 121	74.3%	± 0.8	70.0%	± 0.8	5.5%	± 0.5
Less than high school graduate	13,197	± 667	47.8%	± 3.0	41.0%	± 2.9	14.2%	± 2.8
High school graduate (includes equivalency)	37,668	± 1,165	70.5%	± 1.4	66.0%	± 1.6	6.3%	± 1.1
Some college or associate's degree	41,578	± 1,147	78.3%	± 1.2	73.8%	± 1.2	5.3%	± 0.8
Bachelor's degree or higher	29,216	± 1,025	85.3%	± 1.3	82.9%	± 1.3	2.6%	± 0.6

Table formula: **LABOR FORCE** = # EMPLOYED + # UNEMPLOYED
 % IN LABOR FORCE = LABOR FORCE / TOTAL * 100%
 % EMPLOYED = # EMPLOYED / TOTAL * 100%
 UNEMPLOYMENT RATE = # UNEMPLOYED / LABOR FORCE * 100%

Source: 2007-2011 American Community Survey

9.2 Annual unemployment rate

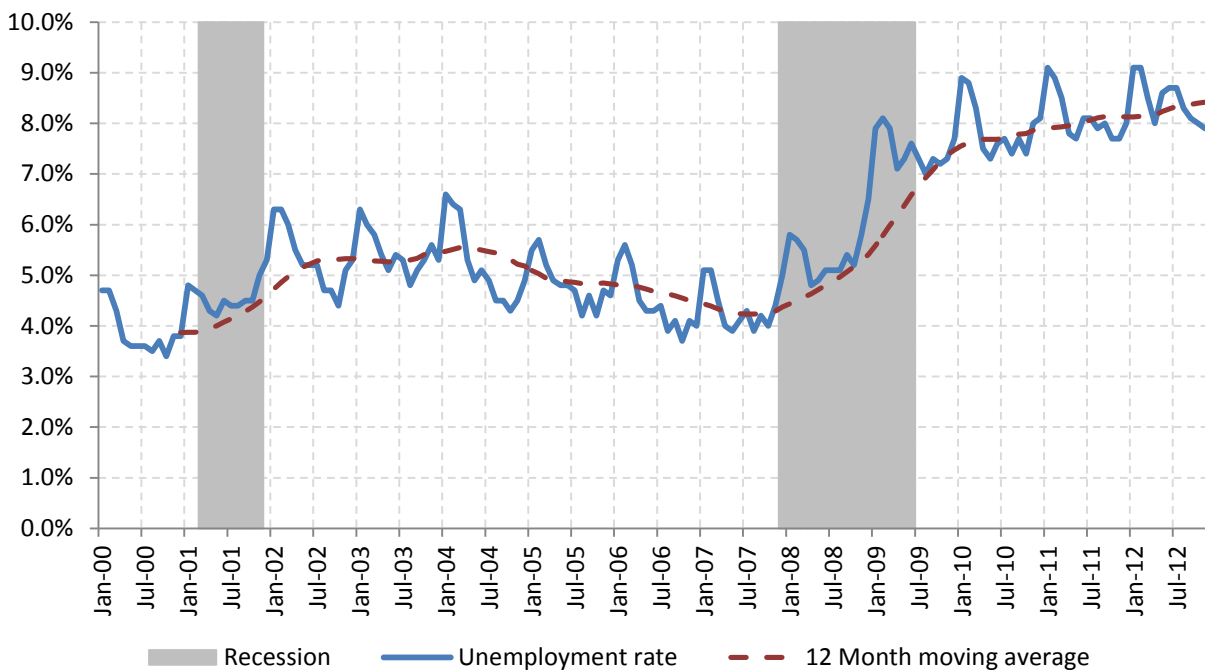
Annual unemployment rate, Oneida County and New York State



Source: Bureau Labor Statistics (BLS)

9.3 Monthly unemployment rate

Monthly unemployment rate, Oneida County



Source: Bureau Labor Statistics (BLS)

9.4 Employment and number of jobs

**Labor force, number of employed workers and number of jobs
Oneida County**



Source: Bureau Labor Statistics (BLS) and NY Department of Labor - Quarterly Census of Employment and Wages (QCEW) – annual averages

9.5 Class of worker

		Median earnings (\$)					
		Total	%Male	%Female	Total	Male	Female
Civilian employed population 16 years and over	Estimate	104,674	50.6%	49.4%	31,660	36,661	27,227
	Margin of error	± 1,173	± 0.5	± 0.5	± 461	± 862	± 465
Private for-profit wage and salary workers:	Estimate	64,569	54.0%	46.0%	29,315	33,921	24,882
	Margin of error	± 1,201	± 0.9	± 0.9	± 790	± 1,019	± 944
Employee of private company workers	Estimate	61,961	53.0%	47.0%	28,592	32,925	24,656
	Margin of error	± 1,160	± 1.0	± 1.0	± 800	± 1,061	± 1,032
Self-employed in own incorporated business workers	Estimate	2,608	77.9%	22.1%	50,170	52,500	38,478
	Margin of error	± 368	± 4.7	± 4.7	± 4,141	± 4,168	± 7,955
Private not-for-profit wage and salary workers	Estimate	12,574	30.9%	69.1%	30,241	30,954	29,964
	Margin of error	± 648	± 2.5	± 2.5	± 1,642	± 3,159	± 2,428
Local government workers	Estimate	10,302	43.2%	56.8%	38,462	43,772	30,217
	Margin of error	± 677	± 2.7	± 2.7	± 2,421	± 2,697	± 3,330
State government workers	Estimate	8,486	52.7%	47.3%	51,062	57,055	44,105
	Margin of error	± 640	± 2.9	± 2.9	± 1,567	± 2,035	± 1,882
Federal government workers	Estimate	3,009	52.9%	47.1%	51,509	57,123	39,426
	Margin of error	± 336	± 5.5	± 5.5	± 2,775	± 5,068	± 2,889
Self-employed in own not incorporated business workers and unpaid family workers	Estimate	5,734	64.0%	36.0%	20,462	22,419	14,404
	Margin of error	± 481	± 3.1	± 3.1	± 1,297	± 4,769	± 2,459

Source: 2007-2011 American Community Survey

9.6 Jobs by industry sector

	Oneida County			NY state
	2011	Change since 2006	% of total	% of total
All NAICS Sectors	100,785	-4.1%	100.0%	100.0%
Agriculture, Forestry, Fishing and Hunting	241	8.6%	0.2%	0.3%
Mining, Quarrying, and Oil and Gas Extraction	103	-38.7%	0.1%	0.1%
Utilities	422	-12.8%	0.4%	0.5%
Construction	2,582	-9.1%	2.6%	3.5%
Manufacturing	8,847	-19.6%	8.8%	5.5%
Wholesale Trade	2,761	-11.3%	2.7%	4.0%
Retail Trade	10,904	-7.6%	10.8%	10.5%
Transportation and Warehousing	4,310	-11.9%	4.3%	3.4%
Information	1,605	-25.2%	1.6%	3.3%
Finance and Insurance	6,661	-9.9%	6.6%	6.0%
Real Estate and Rental and Leasing	693	-20.9%	0.7%	2.3%
Professional, Scientific, and Technical Services	3,982	18.7%	4.0%	6.9%
Management of Companies and Enterprises	503	-46.4%	0.5%	1.6%
Administrative and Support and Waste Management and Remediation Services	3,926	-18.0%	3.9%	5.2%
Educational Services	10,747	8.8%	10.7%	10.8%
Health Care and Social Assistance	24,238	5.9%	24.0%	17.0%
Arts, Entertainment, and Recreation	1,238	14.4%	1.2%	1.9%
Accommodation and Food Services	6,525	6.6%	6.5%	7.3%
Other Services (except Public Administration)	2,759	-3.9%	2.7%	3.9%
Public Administration	7,740	-5.9%	7.7%	5.8%

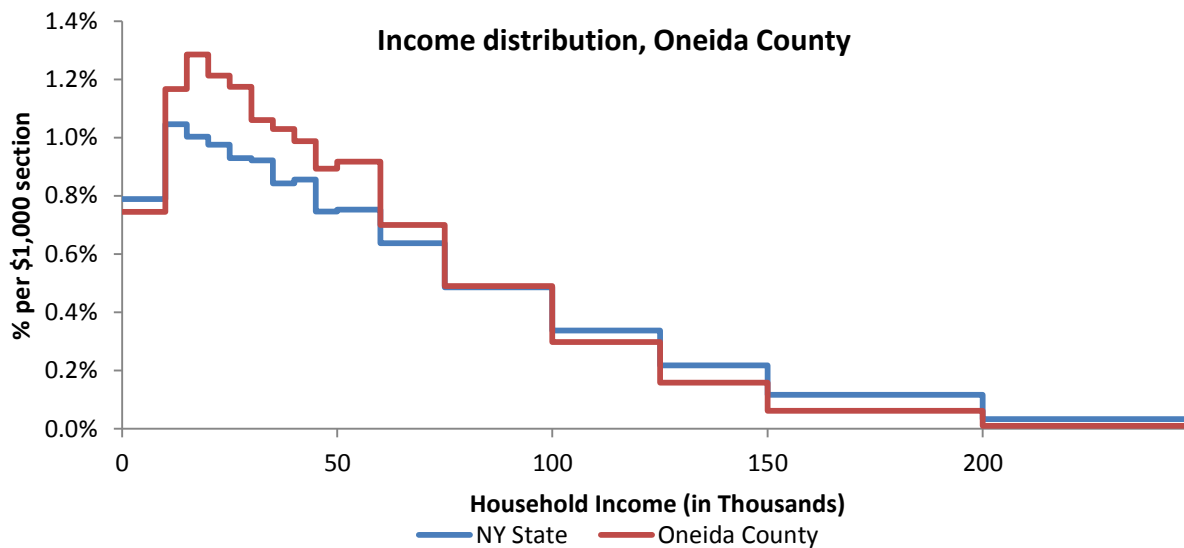
Source: U.S. Census Bureau - Public Use Quarterly Workforce Indicators (QWI) – annual averages

10 Household Income

10.1 Distribution

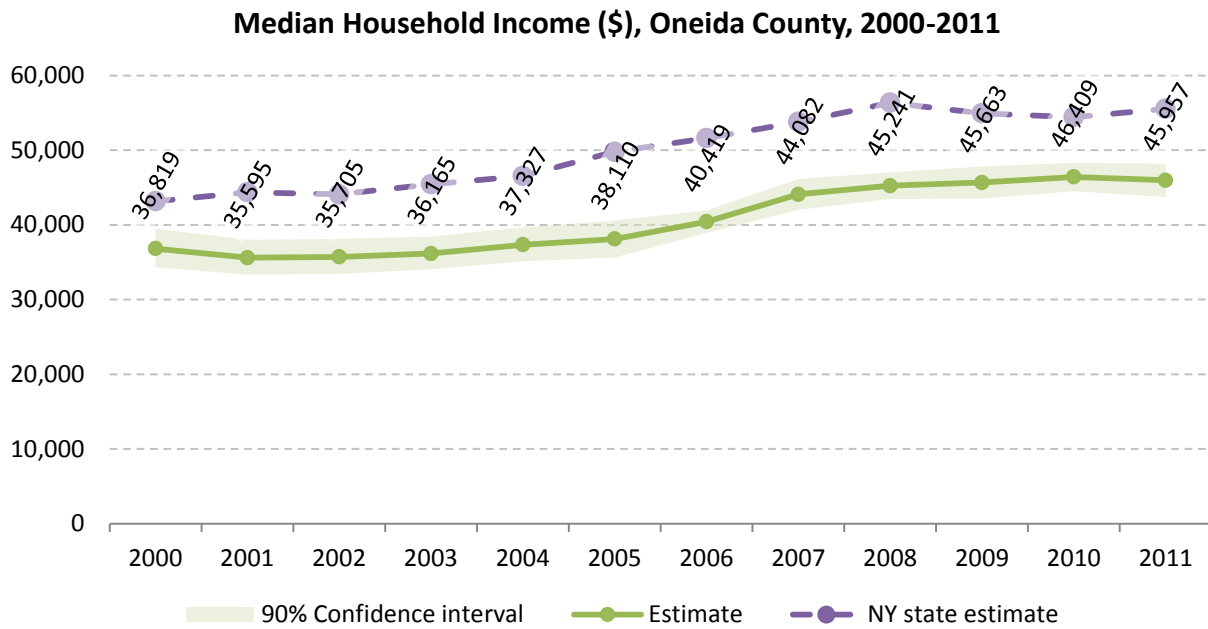
	Estimate	Margin of error	Interval width (in \$1,000)	Est. per \$1,000 section
Total:	91,568	± 807		
Less than \$10,000	6,818	± 478	10	681.8
\$10,000 to \$14,999	5,343	± 468	5	1,068.6
\$15,000 to \$19,999	5,883	± 452	5	1,176.6
\$20,000 to \$24,999	5,556	± 484	5	1,111.2
\$25,000 to \$29,999	5,380	± 499	5	1,076.0
\$30,000 to \$34,999	4,855	± 445	5	971.0
\$35,000 to \$39,999	4,715	± 373	5	943.0
\$40,000 to \$44,999	4,525	± 425	5	905.0
\$45,000 to \$49,999	4,088	± 388	5	817.6
\$50,000 to \$59,999	8,401	± 536	10	840.1
\$60,000 to \$74,999	9,621	± 587	15	641.4
\$75,000 to \$99,999	11,211	± 543	25	448.4
\$100,000 to \$124,999	6,810	± 452	25	272.4
\$125,000 to \$149,999	3,636	± 394	25	145.4
\$150,000 to \$199,999	2,848	± 282	50	57.0
\$200,000 or more	1,878	± 296	-	-

Source: 2007-2011 American Community Survey



Source: 2007-2011 American Community Survey

10.2 Median household income: Trends over time

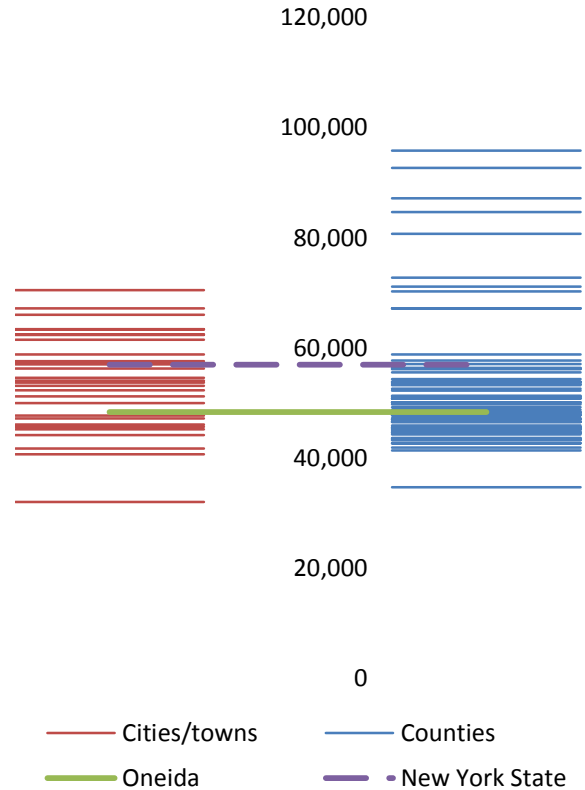


Source: Small Area Income and Poverty Estimates (SAIPE)

10.3 Median household income: Comparison between areas

	MEDIAN HOUSEHOLD INCOME (\$)	
	Estimate	Margin of error
New York State	56,951	± 190
Oneida County	48,382	± 912
Cities		
Rome	44,209	± 2,800
Sherrill	62,471	± 5,132
Utica	32,050	± 1,457
Towns		
Annsville	40,714	± 6,195
Augusta	45,720	± 5,449
Ava	52,344	± 9,678
Boonville	51,208	± 8,926
Bridgewater	41,750	± 4,159
Camden	50,020	± 6,524
Deerfield	61,520	± 9,621
Florence	47,750	± 11,415
Floyd	63,393	± 10,360
Forestport	46,118	± 4,335
Kirkland	62,401	± 6,869
Lee	63,445	± 5,992
Marcy	70,515	± 12,973
Marshall	57,604	± 14,939
New Hartford	57,183	± 4,074
Paris	57,045	± 8,505
Remsen	47,214	± 5,813
Sangerfield	45,231	± 9,432
Steuben	56,304	± 3,727
Trenton	67,206	± 5,800
Vernon	58,833	± 5,407
Verona	54,052	± 5,281
Vienna	54,611	± 2,608
Western	53,750	± 28,571
Westmoreland	66,028	± 8,882
White	53,113	± 2,478

Median household income comparison within county (left) and between counties (right)



Source: 2007-2011 American Community Survey

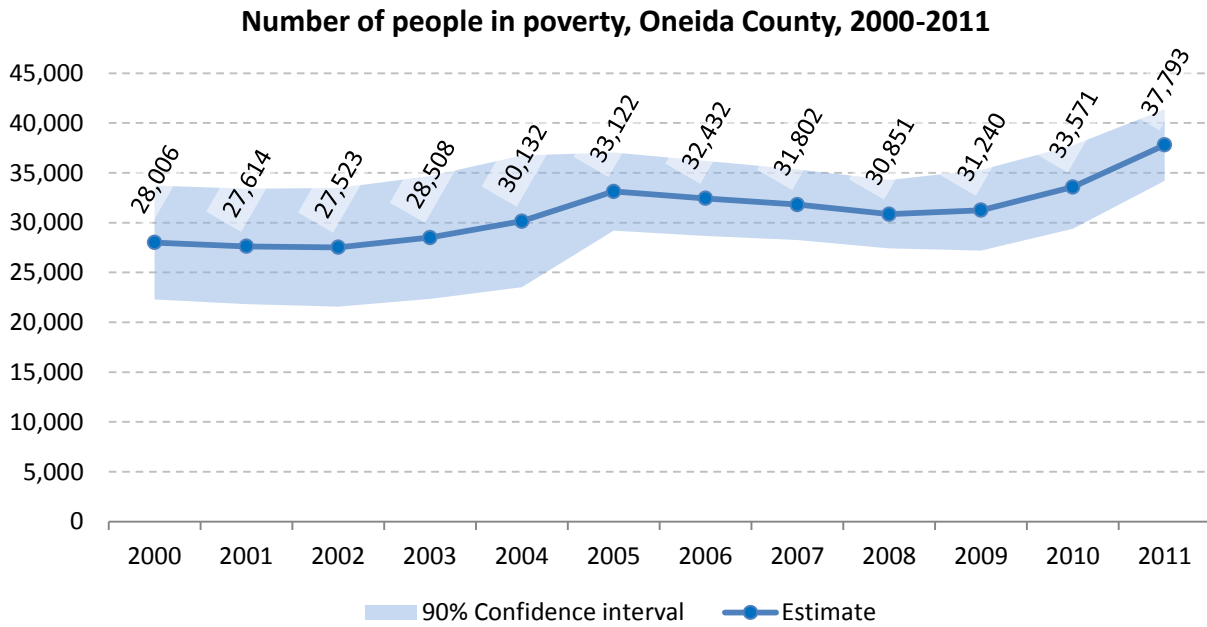
11 Poverty

11.1 Poverty characteristics

	TOTAL		BELOW POVERTY LEVEL		PERCENT BELOW POVERTY LEVEL	
	Estimate	Margin of error	Estimate	Margin of error	Estimate	Margin of error
Population for whom poverty status is determined	220,353	± 1,152	33,378	± 1,559	15.1%	± 0.7
AGE						
Under 18 years	50,493	± 304	12,647	± 811	25.0%	± 1.6
Related children under 18 years	50,333	± 305	12,516	± 808	24.9%	± 1.6
18 to 64 years	134,367	± 927	17,745	± 955	13.2%	± 0.7
65 years and over	35,493	± 483	2,986	± 323	8.4%	± 0.9
SEX						
Male	107,410	± 920	14,684	± 948	13.7%	± 0.8
Female	112,943	± 498	18,694	± 824	16.6%	± 0.7
RACE AND HISPANIC OR LATINO ORIGIN						
One race	215,773	± 1,177	31,424	± 1,480	14.6%	± 0.7
White	196,249	± 918	22,796	± 1,213	11.6%	± 0.6
Black or African American	10,204	± 641	4,755	± 637	46.6%	± 5.1
American Indian and Alaska Native	363	± 117	115	± 74	31.7%	± 17.9
Asian	6,174	± 180	2,265	± 456	36.7%	± 7.1
Hispanic or Latino origin (of any race)	8,197	± 302	3,797	± 505	46.3%	± 5.9
White alone, not Hispanic or Latino	192,059	± 849	21,193	± 1,090	11.0%	± 0.6
EDUCATIONAL ATTAINMENT						
Population 25 years and over	151,262	± 861	16,846	± 844	11.1%	± 0.6
Less than high school graduate	18,940	± 866	5,104	± 487	26.9%	± 2.2
High school graduate (includes equivalency)	49,940	± 1,372	6,589	± 630	13.2%	± 1.2
Some college, associate's degree	47,966	± 1,378	3,952	± 411	8.2%	± 0.8
Bachelor's degree or higher	34,416	± 1,078	1,201	± 266	3.5%	± 0.7
EMPLOYMENT STATUS						
Civilian labor force 16 years and over	111,548	± 1,290	8,733	± 672	7.8%	± 0.6
Employed	103,504	± 1,221	6,339	± 546	6.1%	± 0.5
Male	52,445	± 872	2,535	± 354	4.8%	± 0.7
Female	51,059	± 736	3,804	± 341	7.5%	± 0.6
Unemployed	8,044	± 613	2,394	± 361	29.8%	± 3.6
Male	4,440	± 408	1,162	± 232	26.2%	± 4.7
Female	3,604	± 397	1,232	± 257	34.2%	± 5.2
WORK EXPERIENCE IN THE PAST 12 MONTHS						
Population 16 years and over	176,081	± 1,050	21,824	± 1,055	12.4%	± 0.6
Worked full-time, year-round	70,464	± 1,299	1,513	± 233	2.1%	± 0.3
Worked part-time or part-year	45,547	± 1,244	7,336	± 667	16.1%	± 1.3
Did not work	60,070	± 1,153	12,975	± 827	21.6%	± 1.3

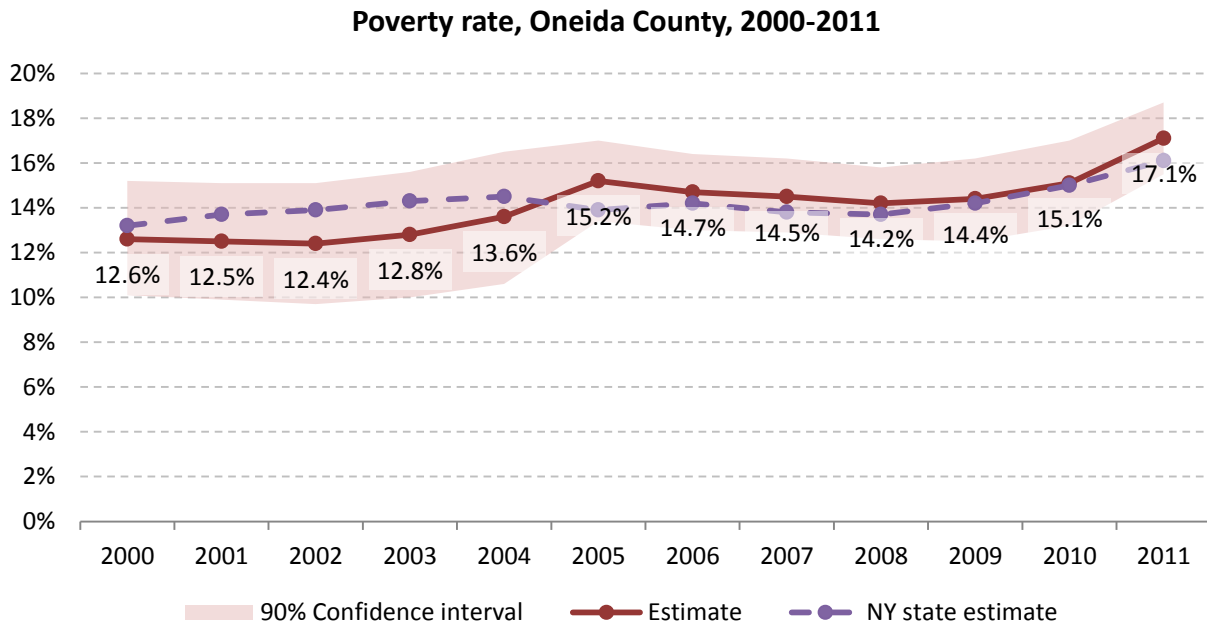
Source: 2007-2011 American Community Survey

11.2 Poverty: Trends over time: Count



Source: Small Area Income and Poverty Estimates (SAIPE)

11.3 Poverty: Trends over time: Rate

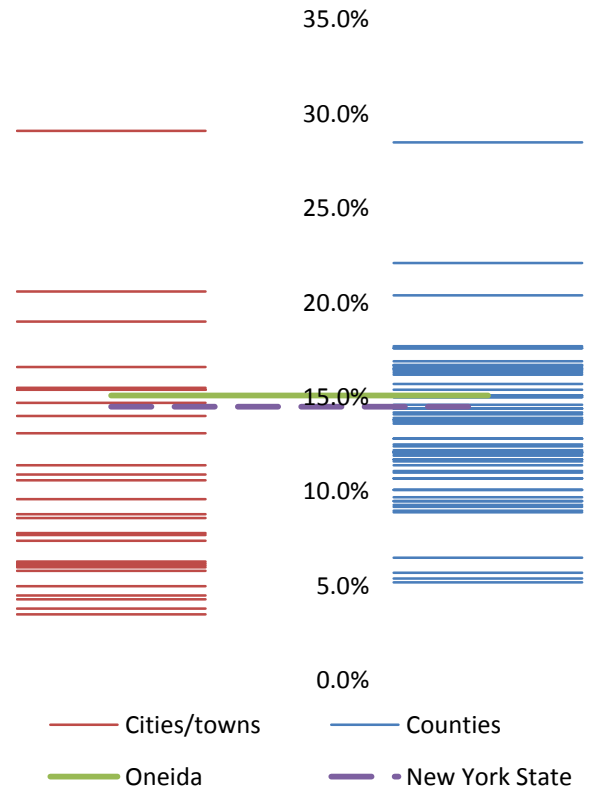


Source: Small Area Income and Poverty Estimates (SAIPE)

11.4 Poverty rate: comparison between areas

Poverty Rate - All people		
	Estimate	Margin of error
New York State	14.5%	± 0.1
Oneida County	15.1%	± 0.7
Cities		
Rome	15.5%	± 2.0
Sherrill	3.5%	± 2.4
Utica	29.1%	± 2.0
Towns		
Annsville	20.6%	± 9.1
Augusta	5.8%	± 3.1
Ava	6.3%	± 3.9
Boonville	13.1%	± 6.3
Bridgewater	19.0%	± 5.9
Camden	10.9%	± 4.1
Deerfield	4.3%	± 3.1
Florence	16.6%	± 8.9
Floyd	6.1%	± 3.6
Forestport	14.0%	± 6.2
Kirkland	6.2%	± 2.0
Lee	8.6%	± 4.0
Marcy	4.5%	± 3.7
Marshall	14.7%	± 8.0
New Hartford	7.4%	± 2.3
Paris	7.8%	± 3.6
Remsen	15.4%	± 5.0
Sangerfield	15.4%	± 5.5
Steuben	7.7%	± 3.2
Trenton	6.0%	± 3.4
Vernon	8.8%	± 4.6
Verona	11.4%	± 5.4
Vienna	5.0%	± 2.4
Western	9.6%	± 4.4
Westmoreland	3.8%	± 2.8
White	10.6%	± 2.4

Poverty rate comparison within county (left) and between counties (right)

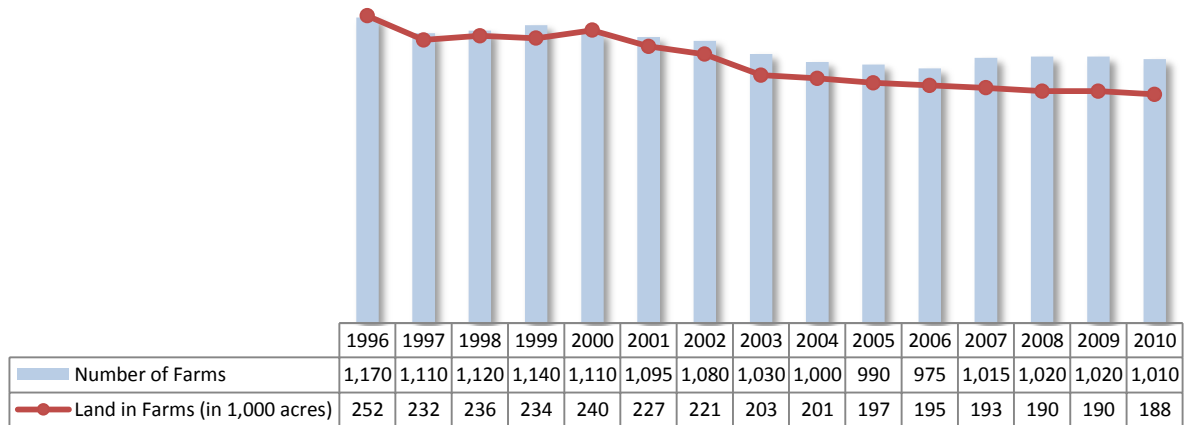


Source: 2007-2011 American Community Survey

12 Agriculture

12.1 Number of farms and land in farms

Oneida County, 1996-2010



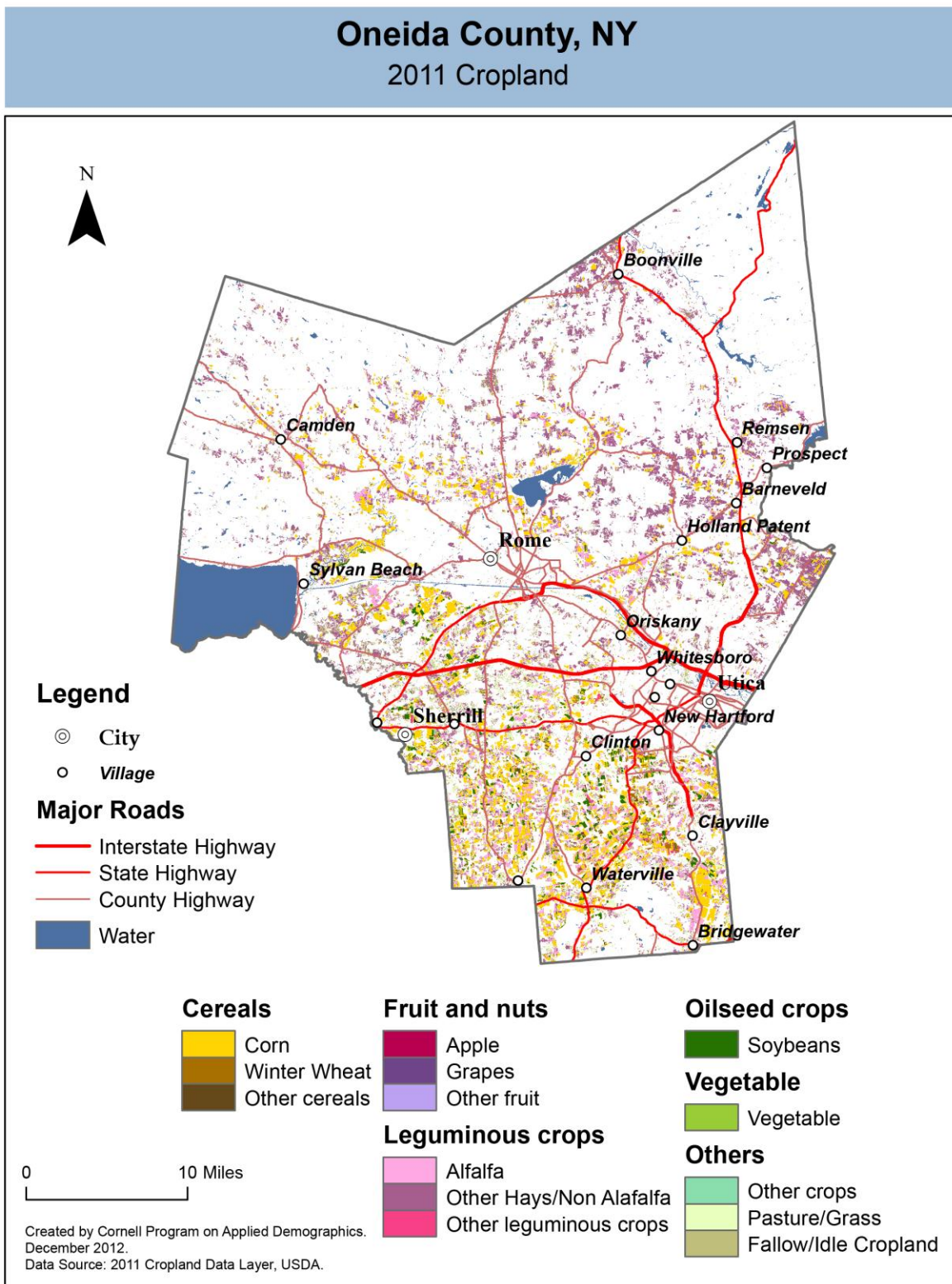
Source: National Agricultural Statistics Service – Annual Statistical bulletin

12.2 Farm Operator Characteristics

	Principal Operator		
	Total	Male	Female
Number of farms	1,013	848	165
Average size of farm (acres)	190	207	99
PRIMARY OCCUPATION			
Farming	564	482	82
Other	449	366	83
AGE			
Under 45	194	148	46
45 to 64 years	558	467	91
65 years and over	261	233	28
Average age (years)	56.2	56.9	53
YEARS ON PRESENT FARM			
Less than 3 years	28	17	11
3 to 4 years	62	43	19
5 to 9 years	135	109	26
10 years or more	788	679	109

Source: 2007 Agricultural Census

12.3 Map of type of crop

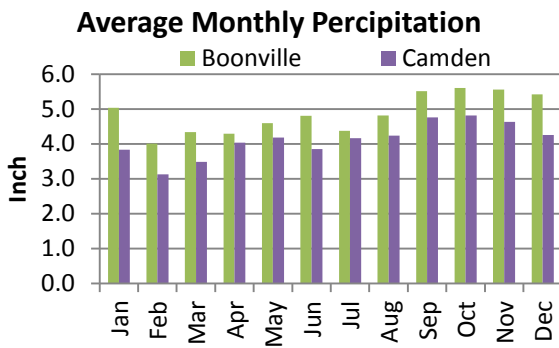
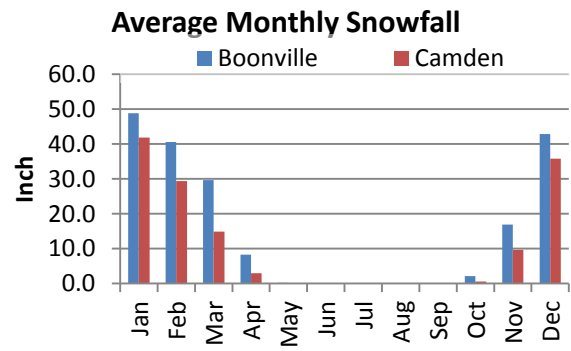
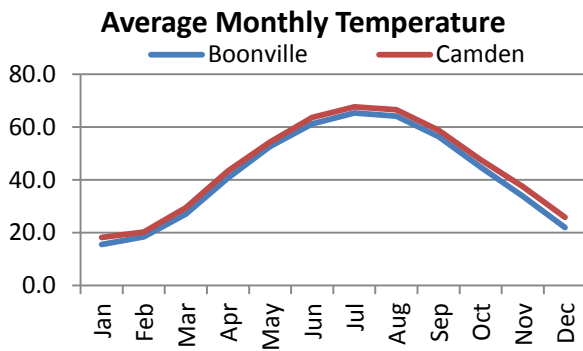
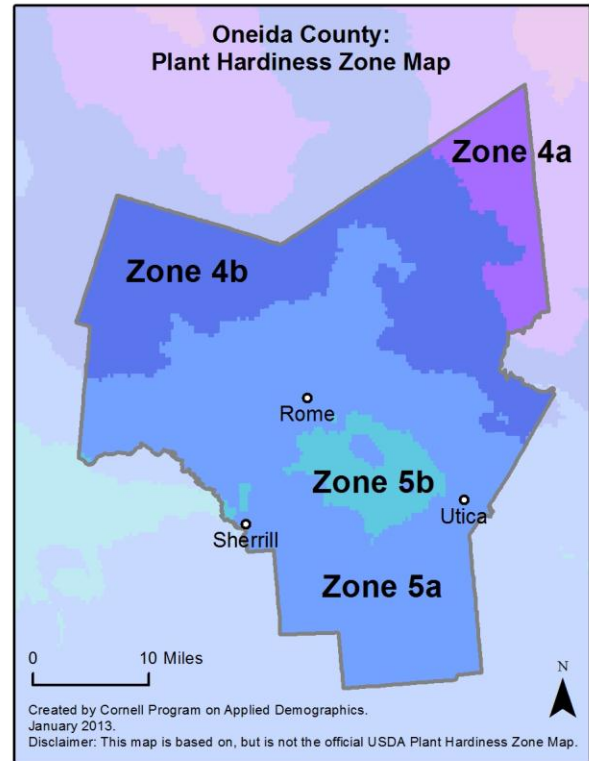
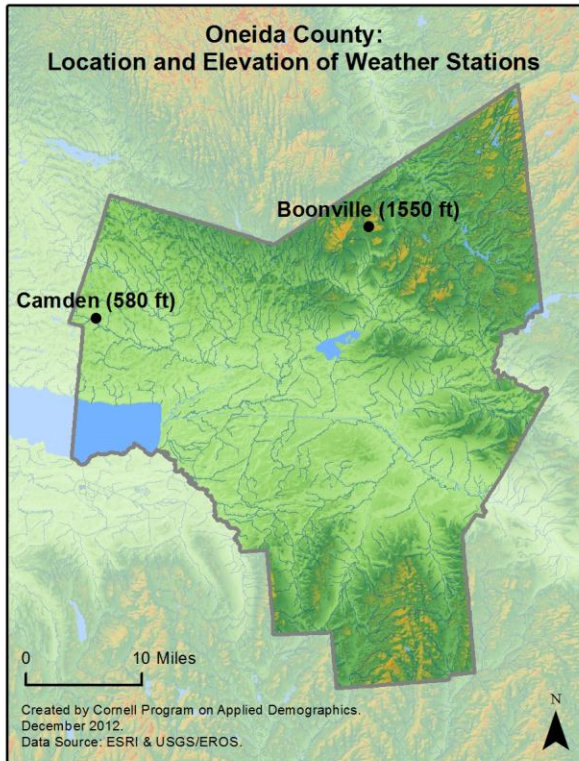


12.4 Estimated acreage by crop

	Acreage	%		Acreage	%
Cereals			Fruit and nuts		
Barley	146	0.1%	Apples	110	0.1%
Corn	44,324	26.6%	Apricots	0.9	0.0%
Millet	0.2	0.0%	Blueberries	0.2	0.0%
Oats	1,000	0.6%	Cherries	0.4	0.0%
Rye	115	0.1%	Cranberries	-	
Sorghum	4.4	0.0%	Grapes	67	0.0%
Speltz	6	0.0%	Nectarines	-	
Spring Wheat	4.0	0.0%	Peaches	-	
Sweet Corn	55	0.0%	Plums	0.2	0.0%
Triticale	13	0.0%	Prunes	-	
Winter Wheat	2,053	1.2%	Strawberries	3.3	0.0%
Dbl Crop WinWht/Corn	-		Walnuts	-	
Leguminous crops			Beverage and spice crops		
Alfalfa	21,559	12.9%	Herbs	-	
Other Hay/Non Alfalfa	58,773	35.2%	Peppers	-	
Dry Beans	1,526	0.9%	Trees		
Peas	-		Christmas Trees	3.8	0.0%
Vetch	-		Other Tree Crops	-	
Oilseed crops			Other crops		
Soybeans	6,717	4.0%	Tobacco	-	
Sunflower	2.2	0.0%	Misc Veggies & Fruits	1.1	0.0%
Sugar crops			Clover/Wildflowers	32	0.0%
Sugarbeets	-		Sod/Grass Seed	-	
Root/tuber crops with high starch or inulin content			Switchgrass	-	
Potatoes	30	0.0%	Dbl Crop Soybeans/Oats	-	
Vegetables and melons			Dbl Crop WinWht/Soybeans	-	
Asparagus	-		Other Crops	73	0.0%
Broccoli	-		Pasture/Grass		
Cabbage	6	0.0%	Fallow/Idle Cropland		
Carrots	-			18,167	10.9%
Eggplants	0.4	0.0%		11,960	7.2%
Onions	11	0.0%			
Pumpkins	8	0.0%			
Squash	0.7	0.0%			
Tomatoes	-				
Turnips	-				

Source: National Agricultural Statistics Service - Cropland Data Layer 2011

13 Climate



Average length of freeze-free season

	Last day of frost	First day of frost	Season length
Boonville	May 14	October 4	143
Camden	May 21	September 28	129

Source: NOAA, Northeast Regional Climate Center at Cornell University. Averages 1981-2010

14 Glossary

American Community Survey (ACS) - The American Community Survey is an ongoing survey of the population that provides data every year on a variety of social and economic characteristics—age, sex, race, family and relationships, income and benefits, health insurance, education, veteran status, disabilities, where you work and how you get there, where you live and how much you pay for some essentials. The ACS replaced the information previously gathered by what was known as the “long form” of the decennial censuses. The ACS provides communities, companies and other institutions with current information they need to plan investments and services. Information from the survey generates data that help determine how more than \$400 billion in federal and state funds are distributed each year. Every estimate presented in the American Community Survey, as in other surveys, has an uncertainty associated with it. Often the magnitude of that uncertainty is expressed as the Margin of Error.

Confidence Interval (CI) - indication of the degree of uncertainty about a sample estimates. Confidence intervals have been traditionally reported at the 90, 95 and 99 percent levels. A 90 percent confidence interval can be interpreted, for example, roughly as providing 90 percent certainty that the interval defined by the upper and lower bounds contain the true value of the characteristic. If a Margin of Error is given, the lower bound of the confidence interval is equal to the estimate minus the Margin of Error and the upper bound is equal to the estimate plus the Margin of Error. (See further, Margin of Error definition below.)

County subdivision or Minor Civil Division (MCD) - The Census Bureau geography for primary administrative units below the county level in New York is collectively referred to as county subdivisions or minor civil divisions. These include towns, cities and Indian Reservations.

Decennial Census - the Census of the population and housing taken every 10 years in the United States, at the start of each decade, since 1790.

Employed – either “at work” or “with a job, but not at work”.

Group Quarters Population - all U.S. residents who live in group living facilities including correctional institutions, juvenile facilities, skilled nursing facilities, college residence halls, military barracks, group homes, and workers' dormitories.

Household Population - all U.S. residents who live in housing units such as single family homes, townhouses, apartments, and mobile homes.

Intercensal Population Estimates - estimates produced for the years between two decennial censuses when both the beginning and ending populations are known. They are produced once a decade by adjusting the existing time series of postcensal estimates for the entire decade to smooth the transition from one decennial census count to the next. They differ from the postcensal estimates that are released annually because the difference between the April 1 postcensal estimate and April 1 census count for the end of the decade is redistributed across the estimates for that decade. For dates when both postcensal and intercensal estimates are available, intercensal estimates are preferred.

Labor Force - consists of people classified as employed or unemployed.

Margin of Error (MOE) - a measure of the precision of an estimate at a given level of confidence. The confidence level of a margin of error indicates the likelihood that the difference between the population value (which you

would get if you could measure the whole population instead of a sample) and the estimate is less than or equal to the margin of error. The range from the estimate minus the margin of error to the estimate plus the margin of error is called the confidence interval. All ACS estimates are published with their margins of error at the 90 percent confidence level. Margins of error are useful in assessing the reliability of estimates and whether differences between estimates are significant.

NAICS - The North American Industry Classification System or NAICS is used by business and government to classify business establishments according to type of economic activity (process of production).

Numeric Population Change - difference between the population of an area at the beginning and end of a time period. It is computed by taking the difference between the population at one point in time (t1) and some future time (t2).

Percent Population Change - difference between the population of an area at the beginning and end of a time period, expressed as a percentage of the beginning population. It is computed by dividing the population change (t2 - t1) by t1 and multiplying the result by 100.

Population Estimates - The calculated number of people living in an area as of a specified point in time, usually July 1st. The estimated population is calculated using a component of change model that incorporates information on natural increase (births, deaths) and net migration (net domestic migration, net international migration) that has occurred in an area since the latest decennial census. A procedure for estimating the current population using a procedure involving a "base population" value at time t -1, adding to that the births during the interval t-1 to t, subtracting the deaths during that interval t-1 to t, and then adding the net domestic and net international migration that occurred during that interval.

Population Density - Total number of people per areal unit like a square mile or square kilometer.

Population Pyramids - A graphical way of portraying a population's age and sex composition at a given slice in time. The first horizontal bar, constituting the base of the graph, is the youngest age group (typically 0-4) with the number of males in that age group on the left and the number of females in that age group on the right. On top of that age group is another horizontal bar for the next age group (e.g. 5-9) and so forth with the top bar typically for those aged 75 and over. In a population with lots of births and deaths, the shape typically forms a pyramid with a broad base and a narrow top. It is one of the most basic ways to understand population change over time as well as between different geographic units of a similar status (e.g. counties).

Postcensal Estimates - estimates produced for the years after a decennial census when only the beginning population is known. They are produced and revised each year, targeted to July 1 of that year.

Projection - estimated population at some future time based on assumptions about births, deaths, migration, and ages.

Race/Ethnicity - the Census Bureau collects racial data in accordance with guidelines provided by the U.S. Office of Management and Budget (OMB), and these data are based on self-identification. The racial categories included in the census questionnaire generally reflect a social definition of race recognized in this country and not an attempt to define race biologically, anthropologically, or genetically. In addition, it is recognized that the categories of the race item include racial and national origin or sociocultural groups. People may choose to report more than one race to indicate their racial mixture, such as "American Indian" and "White." People who identify their origin as Hispanic, Latino, or Spanish may be of any race. OMB requires five minimum categories: White, Black or African American, American Indian or Alaska Native, Asian, and Native Hawaiian or Other Pacific

Islander. Hispanics may be classified as white or black. So we generally separate them out as an ethnic group first.

Unemployed – Not employed, but actively looking for work and available to accept a job.

Unemployment rate – Fraction of the Labor Force that is unemployed.

Urban Area – A densely settled area with at least 2,500 people. If the total number of people is less than 50,000 the Census Bureau calls it an Urban Cluster, otherwise an Urbanized Area.

Vintage - each year, the U.S. Census Bureau produces and publishes estimates of the population for each state and county, as well as the nation as a whole. These are called “vintages.” In producing these vintages, the Bureau utilizes administrative data from a number of sources to estimate 1) the change in population since the most recent decennial census, and 2) the population for each year since the most recent decennial census. With each annual release of population estimates (vintage), the entire time series of estimates beginning on April 1, 2010 is revised and updated.

15 References

Oneida County homepage: <http://www.ocgov.net/>

At Cornell:

- Cornell Cooperative Extensions (CCE)
Home page: <http://www.cce.cornell.edu>
 - Oneida local office: <http://counties.cce.cornell.edu/oneida/>
- Program on Applied Demographics (PAD)
URL: <http://pad.human.cornell.edu/>
- Community and Regional Development Institute (CaRDI)
URL: <http://devsoc.cals.cornell.edu/cals/devsoc/outreach/cardi/index.cfm>

Data sources and background information:

- U.S. Census Bureau - general
 - QuickFacts: <http://quickfacts.census.gov/qfd/states/36/36065.html>
 - QuickLinks: <http://quickfacts.census.gov/qfd/states/36/36065lk.html>
 - American FactFinder: <http://factfinder2.census.gov>
- U.S. Census Bureau - population
 - Decennial Census
 - Background: <http://2010.census.gov/2010census/>
 - Demographic Profile: http://factfinder2.census.gov/bkmk/table/1.0/en/DEC/10_SF1/SF1DP1/0500000US36065
 - American Community Survey (ACS)
 - Background: <http://www.census.gov/acs/www/>
 - Social Data Profile: http://factfinder2.census.gov/bkmk/table/1.0/en/ACS/10_5YR/DP02/0500000US36065
 - Economic Data Profile: http://factfinder2.census.gov/bkmk/table/1.0/en/ACS/10_5YR/DP03/0500000US36065
 - Housing Data Profile: http://factfinder2.census.gov/bkmk/table/1.0/en/ACS/10_5YR/DP04/0500000US36065
 - Demographics Data Profile: http://factfinder2.census.gov/bkmk/table/1.0/en/ACS/10_5YR/DP05/0500000US36065
 - Population estimates: <http://www.census.gov/popest/estimates.html>
- U.S. Census Bureau – Small Area Income & Poverty Estimates (SAIPE)
 - <http://www.census.gov/did/www/saipe/>
- U.S. Census Bureau - Public Use Quarterly Workforce Indicators (QWI) – annual averages
 - <http://www2.vrdc.cornell.edu/news/data/qwi-public-use-data/>
- Bureau Labor Statistics (BLS) – Local Area Unemployment Statistics: <http://www.bls.gov/lau/>
- NY Department of Labor -
 - Labor statistics: <http://www.labor.ny.gov/stats/>
 - Quarterly Census of Employment and Wages (QCEW): <http://www.labor.ny.gov/stats/lsqcew.shtm>
- Bureau of Economic Analysis (BEA) – Local Area Personal Income and Employment: <http://bea.gov/iTable/iTable.cfm?ReqID=70&step=1>

- USDA Census of Agriculture
 - 2007
 - Home page: <http://www.agcensus.usda.gov/Publications/2007/index.php>
 - County profile: http://www.agcensus.usda.gov/Publications/2007/Online_Highlights/County_Profiles/New_York/cp36065.pdf
 - Race, Ethnicity and Gender Profiles: http://www.agcensus.usda.gov/Publications/2007/Online_Highlights/Race_Ethnicity_and_Gender_Profiles/New_York/cpd36065.pdf
- USDA National Agricultural Statistics Service (NASS)
 - Home page: <http://www.nass.usda.gov/index.asp>
 - New York Statistical Bulletins: http://www.nass.usda.gov/Statistics_by_State/New_York/Publications/Annual_Statistical_Bulletin/
 - Cropland Data Layer – CropScape: <http://nassgeodata.gmu.edu/CropScape/>
- USDA Agricultural Research Service – Plant Hardness Zone Map: <http://planthardiness.ars.usda.gov/PHZMWeb/>
- NOAA, Northeast Regional Climate Center at Cornell University
 - Home page: <http://www.nrcc.cornell.edu/index.html>

Alternative sites for data retrieval:

- The Nelson A. Rockefeller Institute of Government – New York State Statistical Yearbooks http://www.rockinst.org/nys_statistics/
- Headwaters Economics: Economic Profile System – Human Dimensions Toolkit <http://headwaterseconomics.org/tools/eps-hdt>
- National Historical Geographic Information System (NHGIS) <https://www.nhgis.org/>
- Social Explorer <http://www.socialexplorer.com/pub/home/home.aspx>
- Missouri Census Data Center <http://mcdc.missouri.edu/>
- DataFerret <http://dataferrett.census.gov/>
- Investigative Reporters and Editors (IRE) Census project <http://census.ire.org/>