

New York County Profile 2013

A collection of recent demographic, social, economic and agricultural data

Compiled by Jan Vink

Assisted by Joe Francis, Sutee Anantsuksomsri, Nij Tontisirin, Johannes Plambeck



Cornell University
Cooperative Extension



This profile is a part of a set of profiles generated for each county in New York State. The profiles were developed and generated by the Cornell Program on Applied Demographics. The work is sponsored by Cornell Cooperative Extension and promoted with webinars and workshops in coordination with the Community & Regional Development Institute.

Cornell Program on Applied Demographics:

The Program on Applied Demographics (PAD) brings skills in demographics, economics, statistics, data gathering and data analysis together to provide a variety of organizations with data, information and advice.

For more information: <http://pad.human.cornell.edu/>

Cornell Cooperative Extension:

Cornell Cooperative Extension (CCE) puts knowledge to work in pursuit of economic vitality, ecological sustainability and social well-being. We bring local experience and research based solutions together, helping New York State families and communities thrive in our rapidly changing world.

For more information: <http://cce.cornell.edu/>

Community & Regional Development Institute:

The Community & Regional Development Institute (CaRDI) supports informed decision making for residents and communities in New York State through applied research and education.

For more information: <http://cardi.cornell.edu/>

All profiles are freely downloadable as PDF documents on the PAD website:

<http://pad.human.cornell.edu/profiles/index.cfm>

Contents

Contents	2
1 Reference Maps	4
2 Population density and Urban Areas Map	6
3 Total Population	7
3.1 Historic and projected	7
3.2 Change since previous Census	7
3.3 Annual population estimates	8
3.4 Percentage sub county change 2000-2010	9
4 Population by age	11
4.1 Historic and projected population pyramids	11
4.2 Selected age groups	12
4.3 Median age: comparison between areas	14
5 Race	15
5.1 Total and household population by race	15
5.2 Race composition by age	15
6 Housing units	16
6.1 Characteristics	16
6.2 Historical data on number of housing units and occupancy status	17
7 Education	18
7.1 Enrollment by level of school	18
7.2 Enrollment by age	18
7.3 Percentage age 18-24 enrolled in college	18
7.4 Educational attainment	19
8 Language spoken at home	19
9 Labor Force Characteristics	20
9.1 Labor force, employment and unemployment	20
9.2 Annual unemployment rate	21
9.3 Monthly unemployment rate	21
9.4 Employment and number of jobs	22
9.5 Class of worker	22
9.6 Jobs by industry sector	23
10 Household Income	24
10.1 Distribution	24
10.2 Median household income: Trends over time	25
10.3 Median household income: Comparison between areas	26
11 Poverty	27
11.1 Poverty characteristics	27
11.2 Poverty: Trends over time: Count	28
11.3 Poverty: Trends over time: Rate	28
11.4 Poverty rate: comparison between areas	29
12 Agriculture	30
12.1 Number of farms and land in farms	30
12.2 Farm Operator Characteristics	30

12.3 Map of type of crop 30

12.4 Estimated acreage by crop 31

13 Climate 32

14 Glossary..... 33

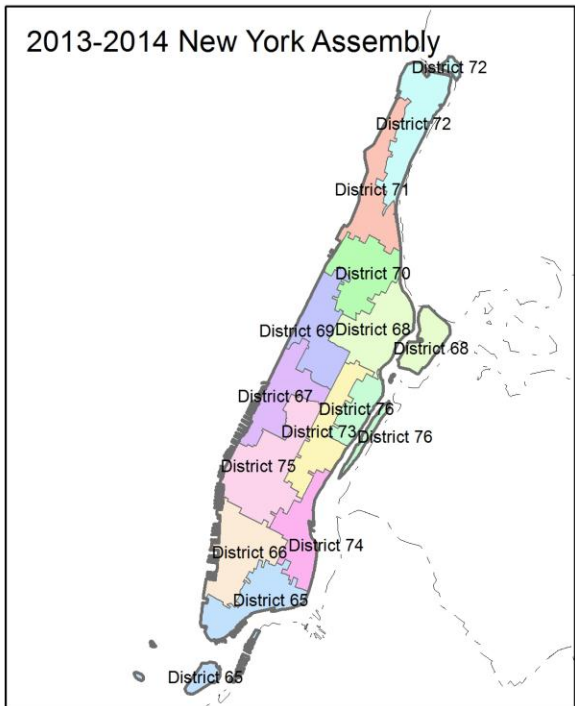
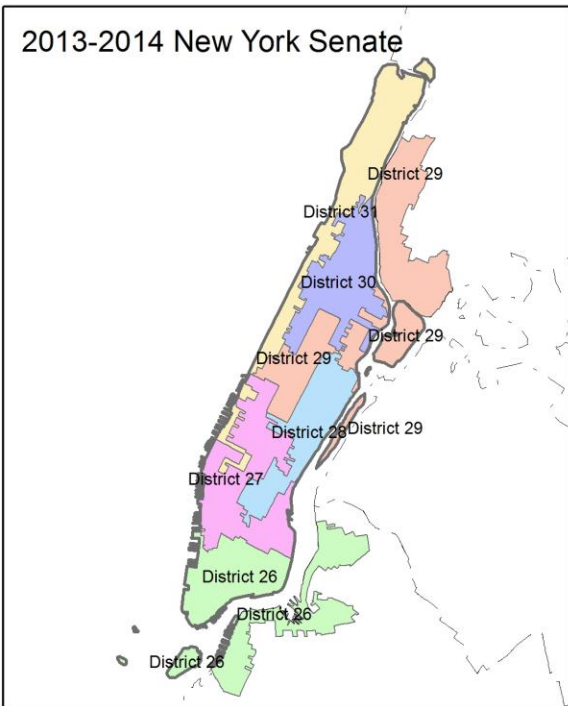
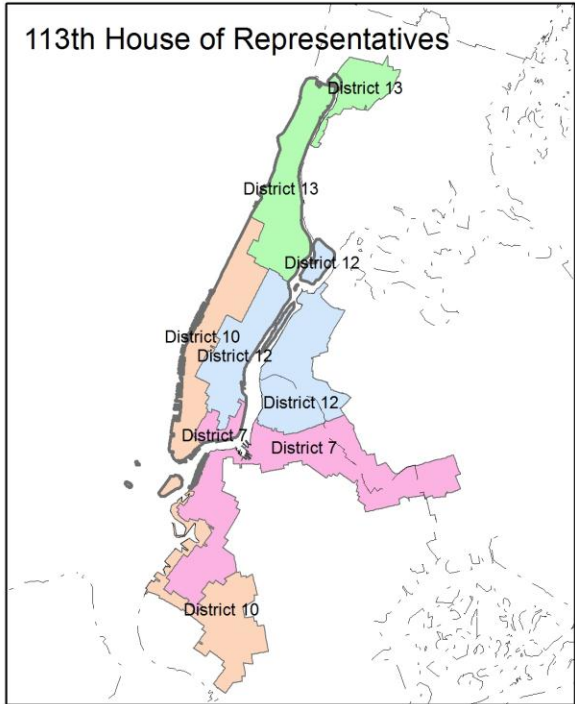
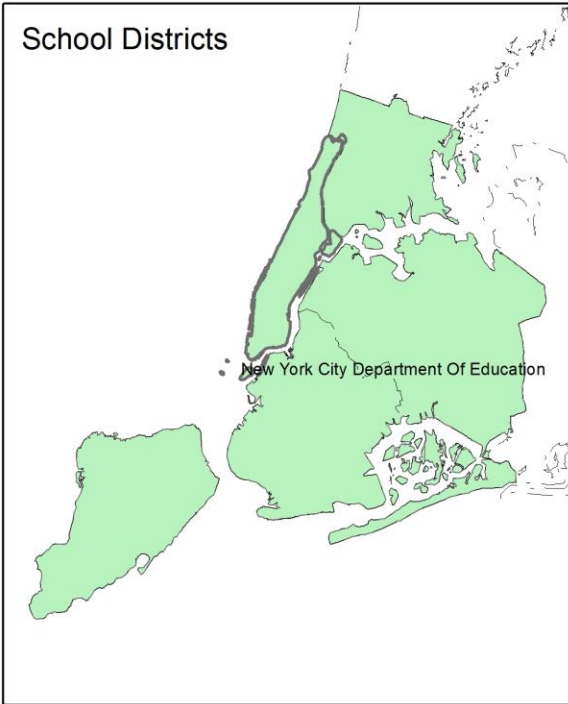
15 References 36

1 Reference Maps

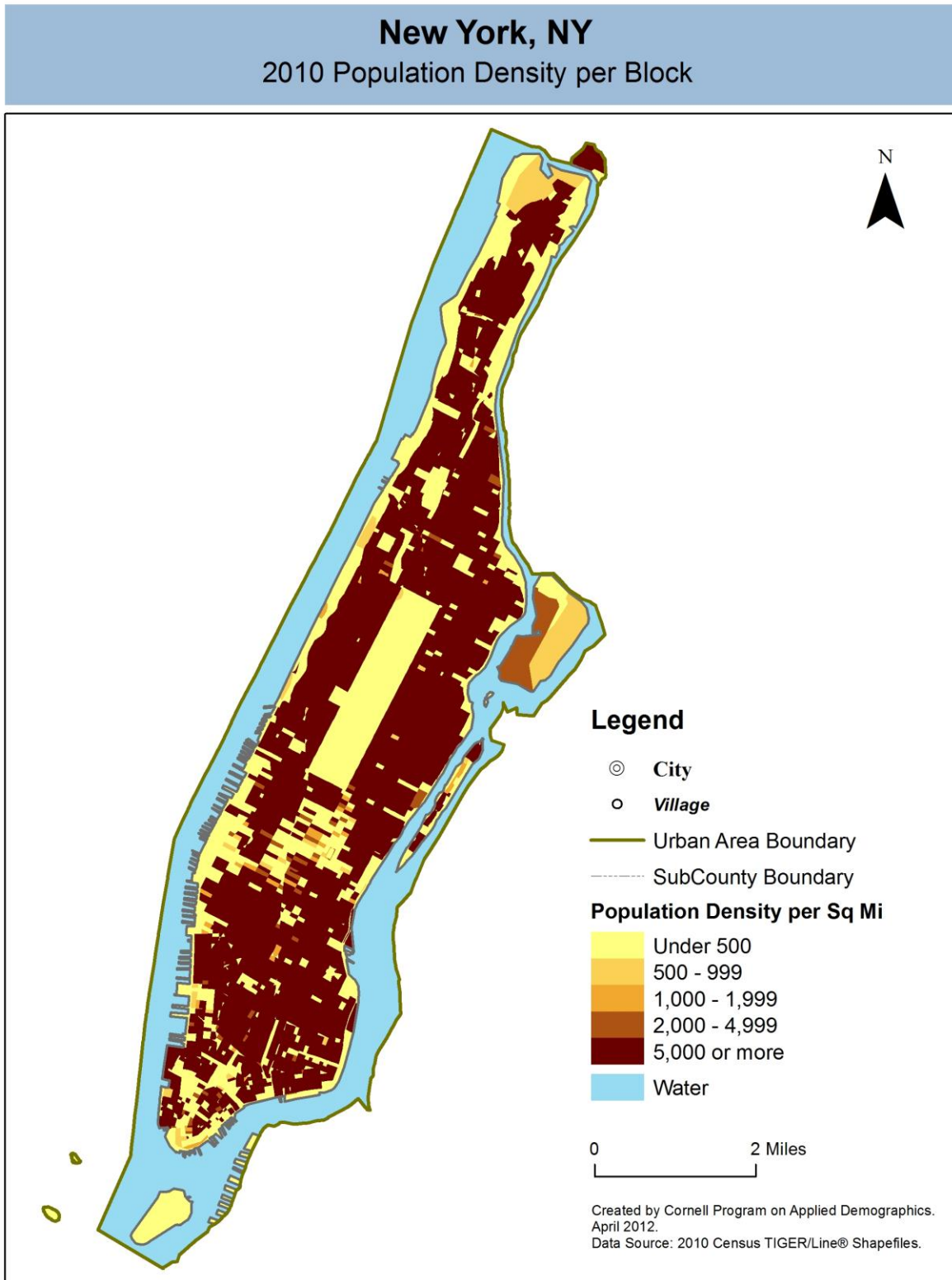


New York, NY

Overlap with School and Political Districts



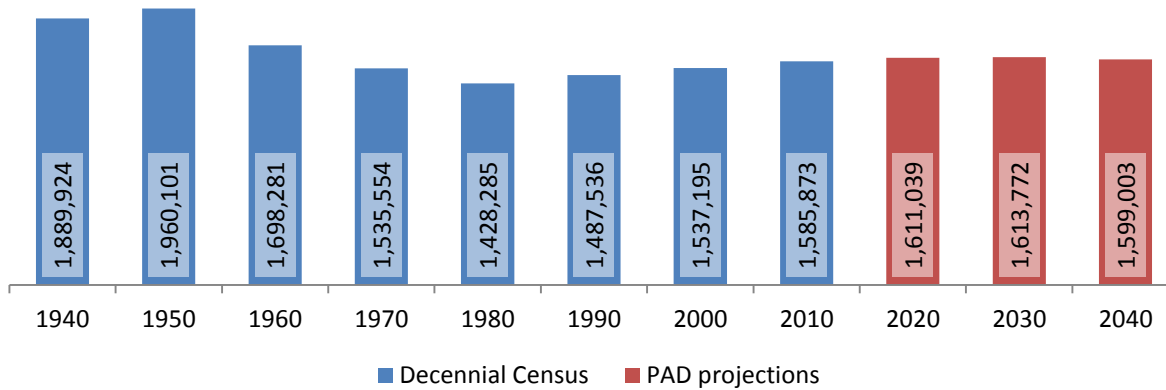
2 Population density and Urban Areas Map



3 Total Population

3.1 Historic and projected

Total population, New York County, 1940-2040



Source: 1940-2010 Decennial Census and projections by Cornell Program on Applied Demographics

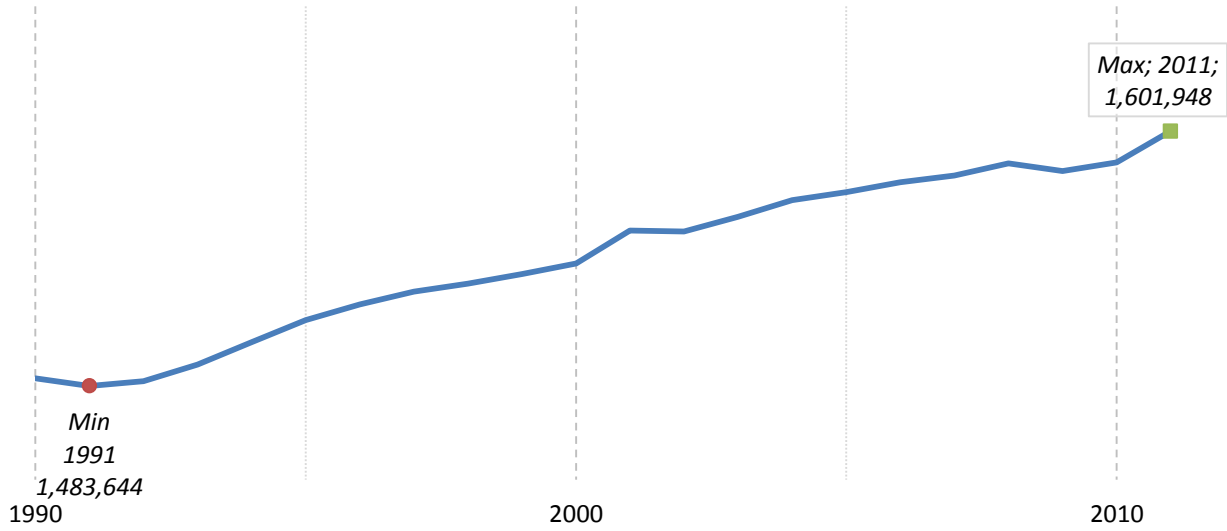
3.2 Change since previous Census

	Year	Total population	Change	
			Number	Percent
Decennial Census	1940	1,889,924		
	1950	1,960,101	70,177	3.7%
	1960	1,698,281	-261,820	-13.4%
	1970	1,535,554	-162,727	-9.6%
	1980	1,428,285	-107,269	-7.0%
	1990	1,487,536	59,251	4.1%
	2000	1,537,195	49,659	3.3%
	2010	1,585,873	48,678	3.2%
PAD projections	2020	1,611,039	25,166	1.6%
	2030	1,613,772	2,733	0.2%
	2040	1,599,003	-14,769	-0.9%

Source: 1940-2010 Decennial Census and projections by Cornell Program on Applied Demographics

3.3 Annual population estimates

**Annual population estimates
New York County, 1990-2011**



Source: U.S. Census Bureau population estimates (1990-1999 and 2000-2009 intercensal and vintage 2011 postcensal)

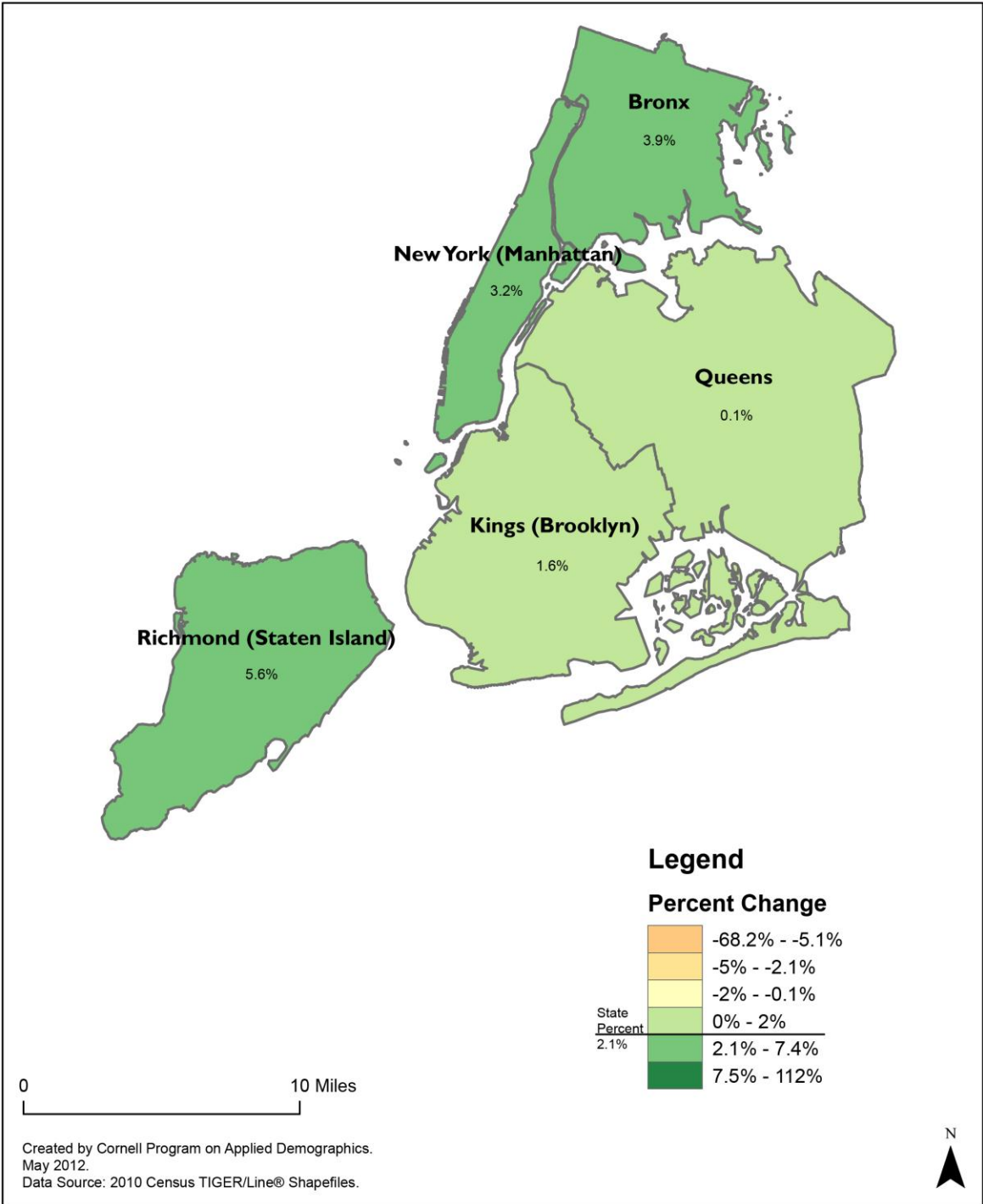
3.4 Percentage sub county change 2000-2010

	Total Population		Difference	
	2000	2010	Count	%
New York State	18,976,457 *	19,378,102	401,645	2.1%
New York City	8,008,278 *	8,175,133	166,855	2.1%
Counties (Boroughs)				
Bronx	1,332,650	1,385,108	52,458	3.9%
Kings (Brooklyn)	2,465,525 *	2,504,700	39,175	1.6%
New York (Manhattan)	1,537,372 *	1,585,873	48,501	3.2%
Queens	2,229,379	2,230,722	1,343	0.1%
Richmond (Staten Island)	443,728	468,730	25,002	5.6%

* Original counts revised through Count Question Resolution Program (CQR)

Source: U.S. Census Bureau intercensal population estimates 2000-2010

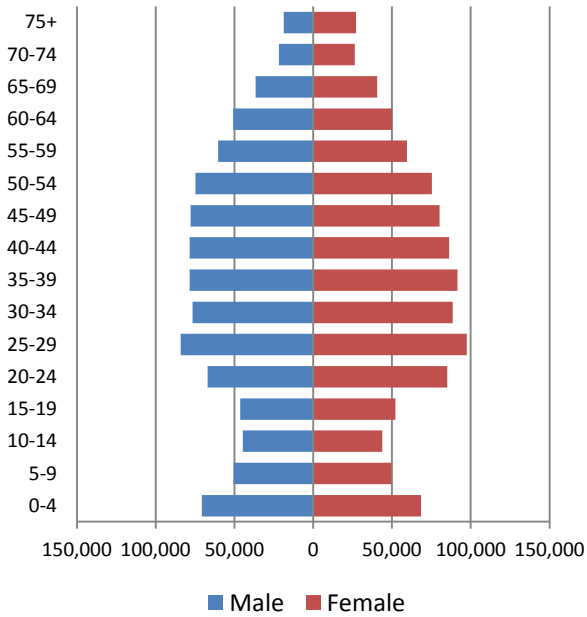
New York City Percent Change in Population 2000-2010



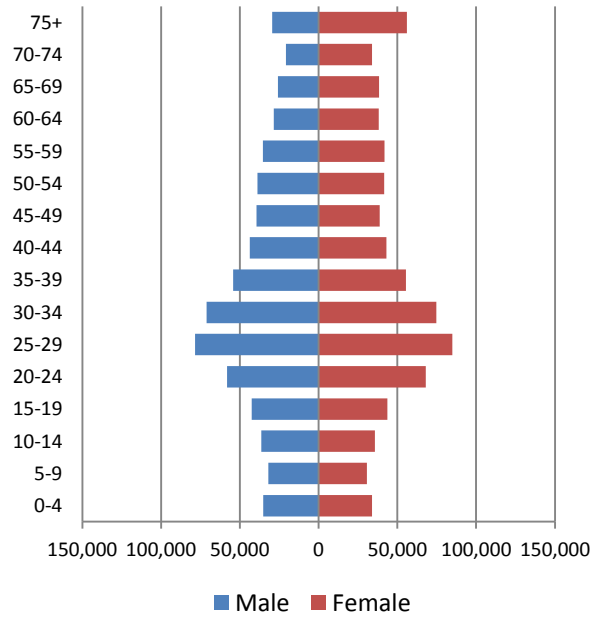
4 Population by age

4.1 Historic and projected population pyramids

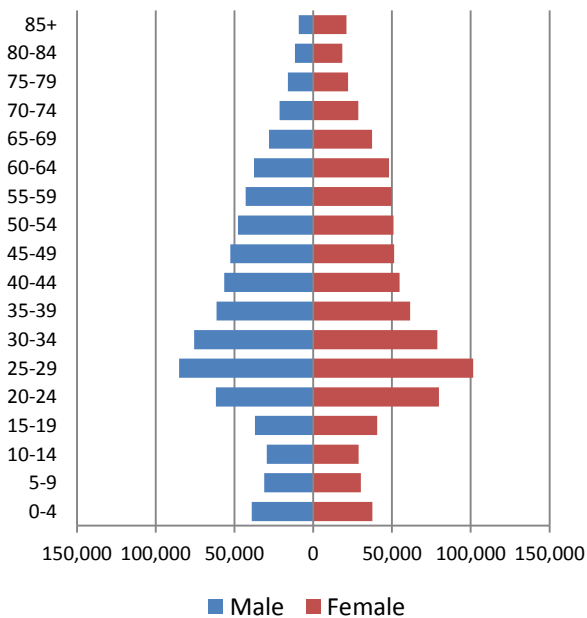
1950 Population Pyramid, New York County



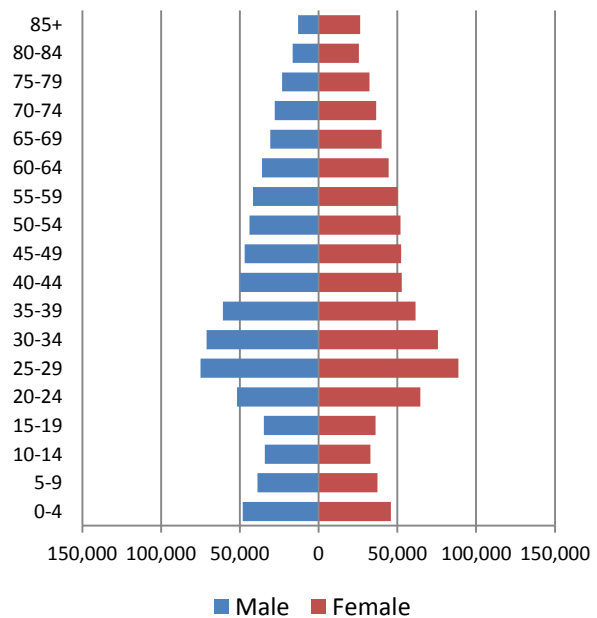
1980 Population Pyramid, New York County



2010 Population Pyramid, New York County



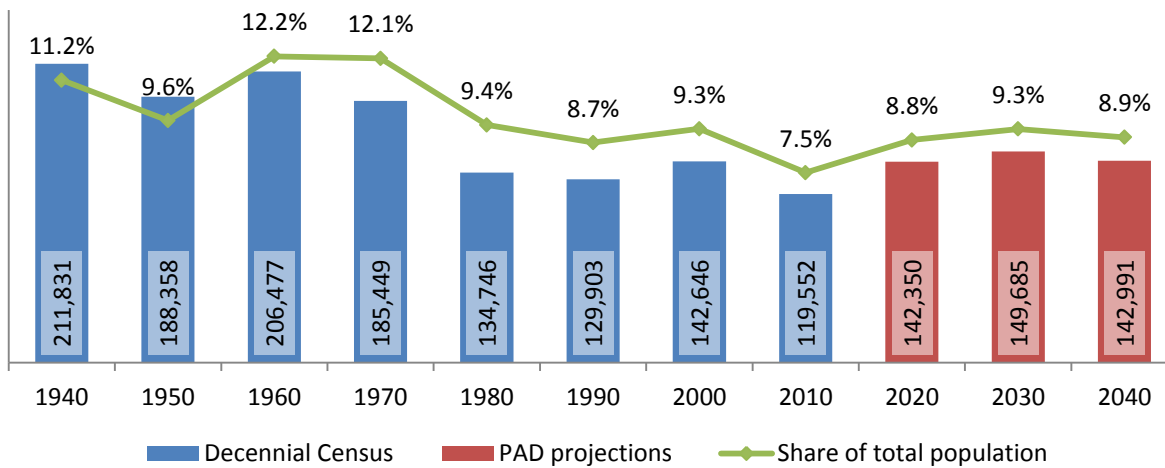
2040 Population Pyramid, New York County



Source: 1950, 1980, 2010 Decennial Census and projections by Cornell Program on Applied Demographics

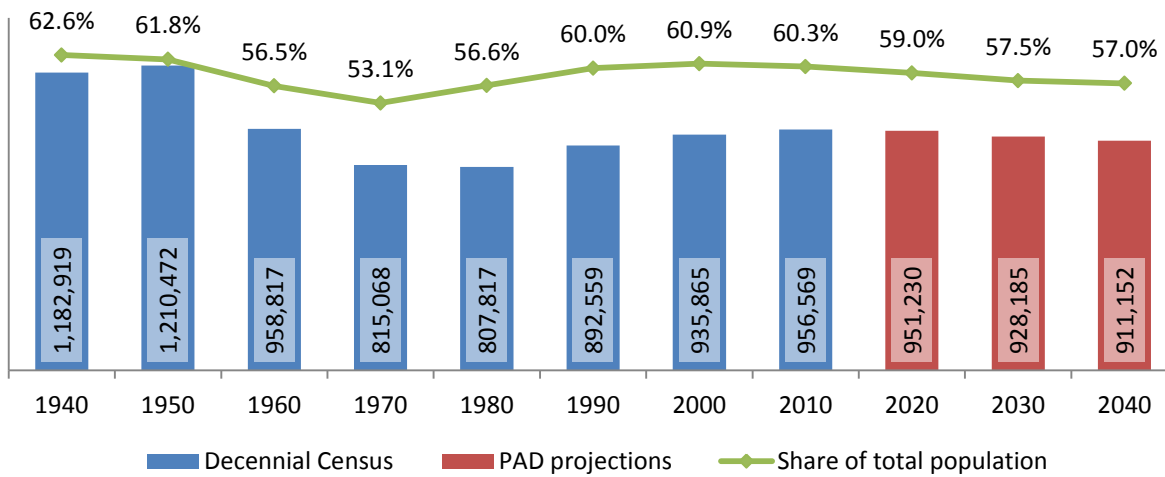
4.2 Selected age groups

Population age 5-14, New York County, 1940-2040



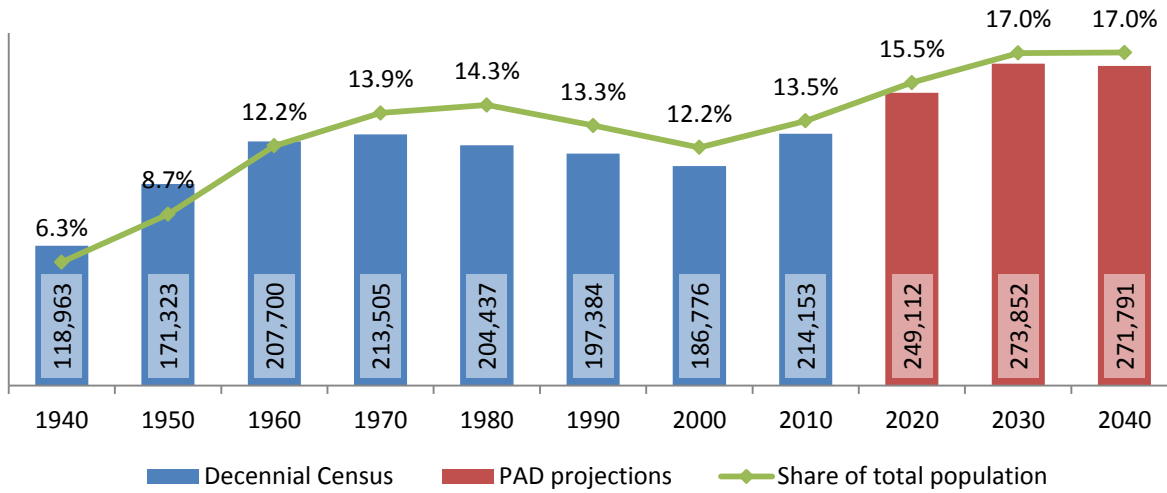
Source: 1940-2010 Decennial Census and projections by Cornell Program on Applied Demographics

Population age 25-64, New York County, 1940-2040



Source: 1940-2010 Decennial Census and projections by Cornell Program on Applied Demographics

Population age 65 and over, New York County, 1940-2040

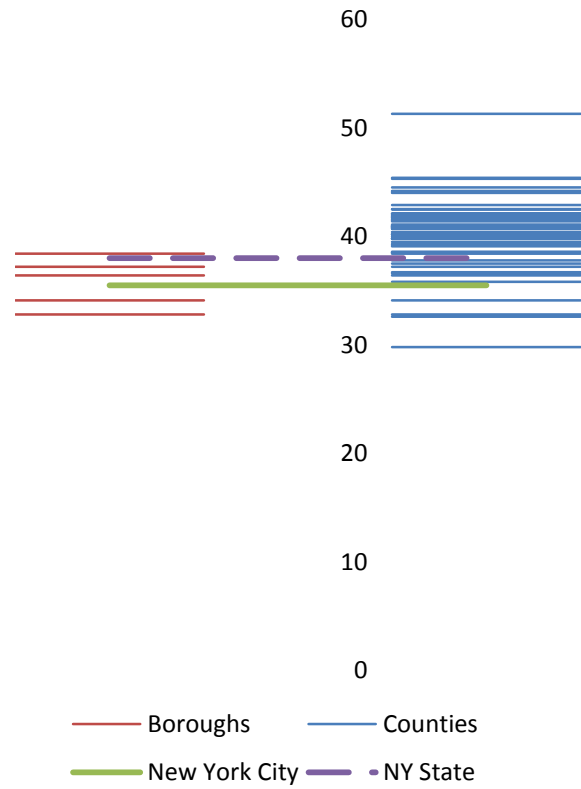


Source: 1940-2010 Decennial Census and projections by Cornell Program on Applied Demographics

4.3 Median age: comparison between areas

	Median Age
New York State	38.0
New York City	35.5
Counties (Boroughs)	
Bronx	32.8
Kings (Brooklyn)	34.1
New York (Manhattan)	36.4
Queens	37.2
Richmond (Staten Island)	38.4

Median age comparison within New York City boroughs (left) and all counties (right)



Source: 2010 Decennial Census

5 Race

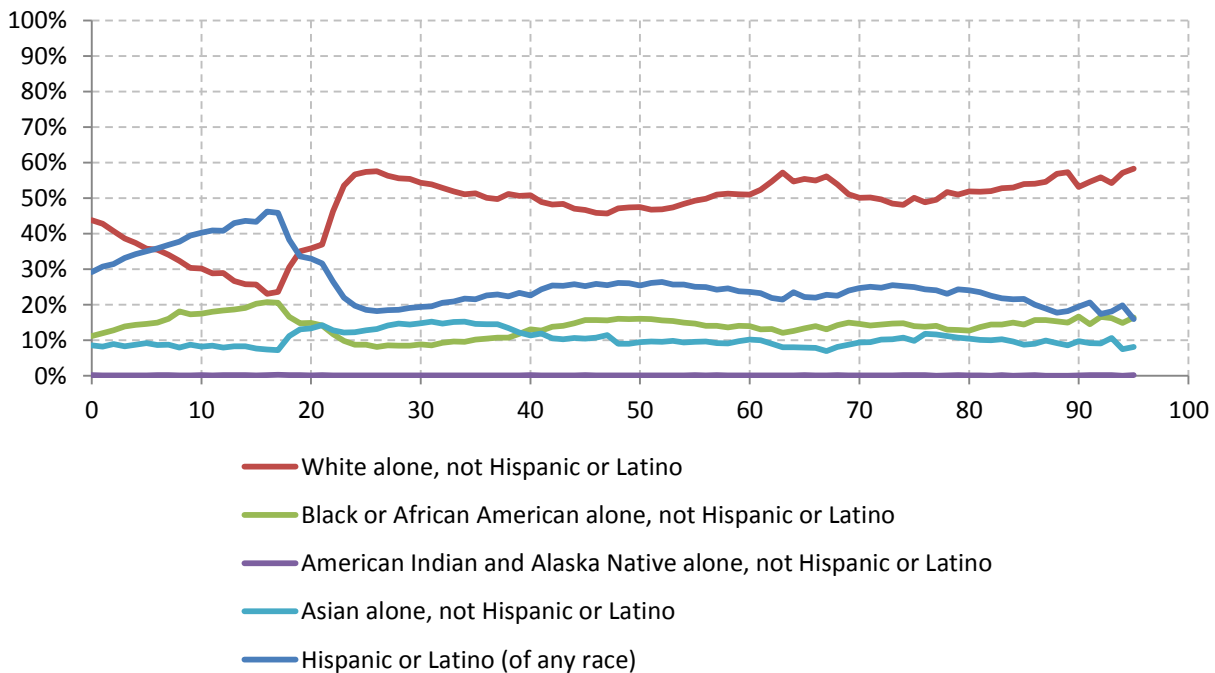
5.1 Total and household population by race

	Total		In households		In Group Quarters
	Count	Percentage	Count	Percentage	Count
Total population	1,585,873	100%	1,518,500	100%	67,373
Not Hispanic or Latino					
One race					
White	761,493	48.0%	733,743	48.3%	27,750
Black or African American	205,340	12.9%	189,848	12.5%	15,492
American Indian and Alaska Native	2,144	0.1%	1,981	0.1%	163
Asian	177,624	11.2%	168,859	11.1%	8,765
Native Hawaiian and Other Pacific Islander	533	0.0%	446	0.0%	87
Some other race	5,205	0.3%	4,929	0.3%	276
Two or more races	29,957	1.9%	28,145	1.9%	1,812
Hispanic or Latino (of any race)	403,577	25.4%	390,549	25.7%	13,028

Source: 2010 Decennial Census

5.2 Race composition by age

Race composition by age, New York County



Source: 2010 Decennial Census

6 Housing units

6.1 Characteristics

HOUSING OCCUPANCY	COUNT		PERCENTAGE	
	Estimate	Margin of error	Estimate	Margin of error
Total housing units	842,807	± 1,542	100.0%	
Occupied housing units	733,393	± 3,471	87.0%	± 0.4
Vacant housing units	109,414	± 3,171	13.0%	± 0.4
YEAR STRUCTURE BUILT				
Total housing units	842,807	± 1,542	100.0%	
Built 2005 or later	20,471	± 1,071	2.4%	± 0.1
Built 2000 to 2004	29,738	± 1,301	3.5%	± 0.2
Built 1990 to 1999	28,801	± 1,379	3.4%	± 0.2
Built 1980 to 1989	51,532	± 1,650	6.1%	± 0.2
Built 1970 to 1979	67,778	± 1,836	8.0%	± 0.2
Built 1960 to 1969	106,910	± 2,210	12.7%	± 0.3
Built 1950 to 1959	82,060	± 1,887	9.7%	± 0.2
Built 1940 to 1949	64,588	± 1,706	7.7%	± 0.2
Built 1939 or earlier	390,929	± 2,775	46.4%	± 0.3
HOUSING TENURE				
Occupied housing units	733,393	± 3,471	100.0%	
Owner-occupied	166,164	± 2,582	22.7%	± 0.3
Renter-occupied	567,229	± 3,705	77.3%	± 0.3
HOUSE HEATING FUEL				
Occupied housing units	733,393	± 3,471	100.0%	
Utility gas	248,735	± 3,740	33.9%	± 0.5
Bottled, tank, or LP gas	9,807	± 696	1.3%	± 0.1
Electricity	131,410	± 2,299	17.9%	± 0.3
Fuel oil, kerosene, etc.	308,684	± 3,463	42.1%	± 0.5
Coal or coke	781	± 217	0.1%	± 0.1
Wood	166	± 101	0.0%	± 0.1
Solar energy	291	± 133	0.0%	± 0.1
Other fuel	18,828	± 1,016	2.6%	± 0.1
No fuel used	14,691	± 789	2.0%	± 0.1
VALUE				
Owner-occupied units	166,164	± 2,582	100.0%	
Less than \$50,000	3,958	± 445	2.4%	± 0.3
\$50,000 to \$99,999	2,082	± 383	1.3%	± 0.2
\$100,000 to \$149,999	1,508	± 297	0.9%	± 0.2
\$150,000 to \$199,999	1,622	± 281	1.0%	± 0.2
\$200,000 to \$299,999	5,843	± 526	3.5%	± 0.3
\$300,000 to \$499,999	24,397	± 1,044	14.7%	± 0.6
\$500,000 to \$999,999	59,230	± 1,752	35.6%	± 0.8
\$1,000,000 or more	67,524	± 1,526	40.6%	± 0.8
Median (dollars)	842,300	± 12,942		

Source: 2007-2011 American Community Survey

6.2 Historical data on number of housing units and occupancy status

Year	Number of Housing Units	Change since previous Census	Occupied	Occupancy rate	Vacant
1970	714,593		687,283	96.2%	27,310
1980	754,796	5.6%	704,502	93.3%	50,294
1990	785,127	4.0%	716,422	91.2%	68,705
2000	798,144	1.7%	738,644	92.5%	59,500
2010	847,090	6.1%	763,846	90.2%	83,244

Source: 1970-2010 Decennial Census

7 Education

7.1 Enrollment by level of school

	Estimate	Margin of error
Total enrolled in school	339,755	± 3,554
Nursery school, preschool	21,798	± 913
Kindergarten	13,304	± 850
Elementary: grade 1 to grade 4	47,891	± 1,247
Elementary: grade 5 to grade 8	48,102	± 1,269
High school: grade 9 to grade 12	55,354	± 1,315
College, undergraduate	95,852	± 2,663
Graduate, professional school	57,454	± 2,440

Source: 2007-2011 American Community Survey

7.2 Enrollment by age

	Estimate	Margin of error
3 and 4 years	69.0%	± 2.3
5 to 9 years	96.4%	± 0.6
10 to 14 years	97.8%	± 0.6
15 to 17 years	95.6%	± 0.9
18 and 19 years	81.9%	± 1.7
20 to 24 years	45.5%	± 1.4
25 to 34 years	13.9%	± 0.6
35 years and over	2.7%	± 0.1

Source: 2007-2011 American Community Survey

7.3 Percentage age 18-24 enrolled in college

	Estimate	Margin of error
Population 18 to 24 years	175,739	± 80
Enrolled in college or graduate school	48.0%	± 1.2
Males 18 to 24 years	77,776	± 69
Enrolled in college or graduate school	43.0%	± 1.8
Females 18 to 24 years	97,963	± 54
Enrolled in college or graduate school	52.1%	± 1.5

Source: 2007-2011 American Community Survey

7.4 Educational attainment

	COUNT		PERCENTAGE	
	Estimate	Margin of error	Estimate	Margin of error
Population 25 years and over	1,173,112	± 82	100%	
EDUCATIONAL ATTAINMENT				
Less than 9th grade	98,711	± 2,784	8.4%	± 0.2
9th to 12th grade, no diploma	76,828	± 2,285	6.5%	± 0.2
High school graduate (includes equivalency)	151,336	± 3,466	12.9%	± 0.3
Some college, no degree	126,030	± 3,053	10.7%	± 0.3
Associate's degree	43,369	± 2,203	3.7%	± 0.2
Bachelor's degree	351,662	± 4,381	30.0%	± 0.4
Graduate or professional degree	325,176	± 4,018	27.7%	± 0.3
Percent high school graduate or higher			85.0%	± 0.3
Percent bachelor's degree or higher			57.7%	± 0.3

Source: 2007-2011 American Community Survey

8 Language spoken at home

	COUNT		PERCENTAGE		SPEAK ENGLISH LESS THAN "VERY WELL"	
	Estimate	Margin of error	Estimate	Margin of error	Estimate	Margin of error
Population 5 years and over	1,509,391	± 59	100%			
LANGUAGE SPOKEN AT HOME						
English only	902,766	± 5,506	59.8%	± 0.4		
Language other than English	606,625	± 5,495	40.2%	± 0.4	254,462	± 4,586
Spanish	347,299	± 2,988	23.0%	± 0.2	161,851	± 3,689
Other Indo-European languages	118,252	± 3,628	7.8%	± 0.2	24,622	± 1,867
Asian and Pacific Islander languages	116,423	± 2,522	7.7%	± 0.2	61,928	± 2,063
Other languages	24,651	± 1,834	1.6%	± 0.1	6,061	± 1,165

Source: 2007-2011 American Community Survey

9 Labor Force Characteristics

9.1 Labor force, employment and unemployment

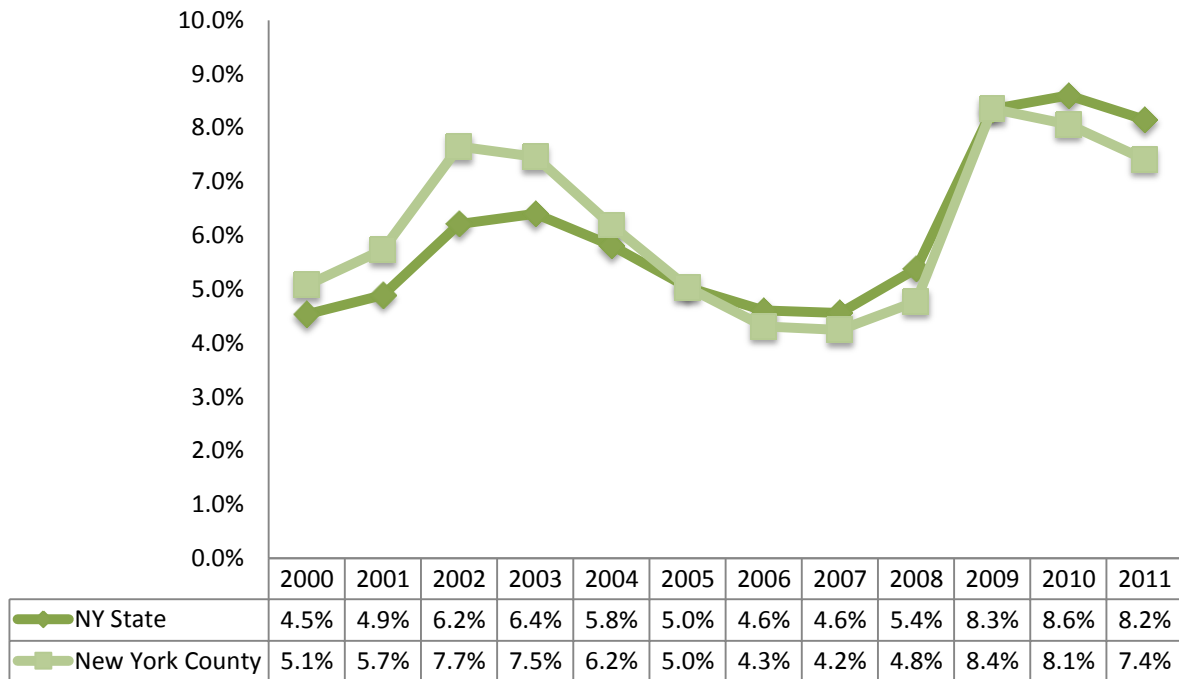
	TOTAL		IN LABOR FORCE		EMPLOYED		UNEMPLOYMENT RATE	
	Estimate	Margin of error	Estimate	Margin of error	Estimate	Margin of error	Estimate	Margin of error
Population 16 years and over	1,375,407	± 608	67.2%	± 0.3	61.5%	± 0.3	8.4%	± 0.2
AGE								
16 to 19 years	65,287	± 624	24.5%	± 1.4	16.3%	± 1.1	33.5%	± 3.0
20 to 24 years	137,008	± 116	67.0%	± 1.4	57.6%	± 1.4	13.9%	± 1.1
25 to 44 years	581,820	± 172	84.9%	± 0.4	78.8%	± 0.5	7.1%	± 0.3
45 to 54 years	203,331	± 153	78.9%	± 0.7	72.6%	± 0.8	8.0%	± 0.6
55 to 64 years	176,719	± 75	65.2%	± 0.9	60.5%	± 1.0	7.3%	± 0.6
65 to 74 years	112,650	± 96	32.3%	± 1.0	30.2%	± 1.0	6.6%	± 0.9
75 years and over	98,592	± 60	10.4%	± 0.8	9.9%	± 0.7	5.7%	± 1.6
RACE AND HISPANIC OR LATINO ORIGIN								
One race	1,332,169	± 2,078	67.3%	± 0.3	61.7%	± 0.3	8.3%	± 0.2
White	804,535	± 3,194	71.9%	± 0.4	67.4%	± 0.4	6.2%	± 0.3
Black or African American	203,241	± 2,423	56.9%	± 0.9	48.2%	± 0.9	15.4%	± 0.8
American Indian and Alaska Native	4,592	± 593	58.7%	± 6.1	51.2%	± 5.8	12.8%	± 4.6
Asian	159,870	± 901	64.8%	± 0.9	60.9%	± 0.9	6.0%	± 0.6
Pacific Islander	386	± 194	53.9%	± 18.9	33.4%	± 15.1	38.0%	± 19.4
Some other race	159,545	± 3,443	59.8%	± 1.0	51.2%	± 0.9	14.3%	± 1.0
Two or more races	43,238	± 2,012	64.1%	± 1.8	56.2%	± 2.0	12.2%	± 1.9
Hispanic or Latino origin (of any race)	327,672	± 448	59.0%	± 0.7	50.7%	± 0.7	13.9%	± 0.6
White alone, not Hispanic or Latino	687,864	± 824	74.2%	± 0.4	70.2%	± 0.4	5.4%	± 0.3
SEX								
Population 20 to 64 years	1,098,878	± 115	78.4%	± 0.4	72.1%	± 0.4	8.0%	± 0.3
Male	522,586	± 86	82.8%	± 0.5	76.1%	± 0.5	8.1%	± 0.4
Female	576,292	± 62	74.4%	± 0.5	68.4%	± 0.5	7.9%	± 0.4
With own children under 6 years	60,046	± 1,926	62.8%	± 1.6	56.8%	± 1.8	9.6%	± 1.3
EDUCATIONAL ATTAINMENT								
Population 25 to 64 years	961,870	± 110	80.0%	± 0.3	74.1%	± 0.4	7.3%	± 0.3
Less than high school graduate	114,887	± 2,869	57.4%	± 1.1	48.9%	± 1.2	14.7%	± 1.2
High school graduate (includes equivalency)	114,567	± 3,089	67.7%	± 1.2	60.5%	± 1.4	10.6%	± 1.0
Some college or associate's degree	140,020	± 3,156	77.8%	± 0.9	69.4%	± 1.0	10.8%	± 0.8
Bachelor's degree or higher	592,396	± 3,720	87.3%	± 0.3	82.8%	± 0.4	5.1%	± 0.3

Table formula: **LABOR FORCE** = # EMPLOYED + # UNEMPLOYED
 % IN LABOR FORCE = LABOR FORCE / TOTAL * 100%
 % EMPLOYED = # EMPLOYED / TOTAL * 100%
 UNEMPLOYMENT RATE = # UNEMPLOYED / LABOR FORCE * 100%

Source: 2007-2011 American Community Survey

9.2 Annual unemployment rate

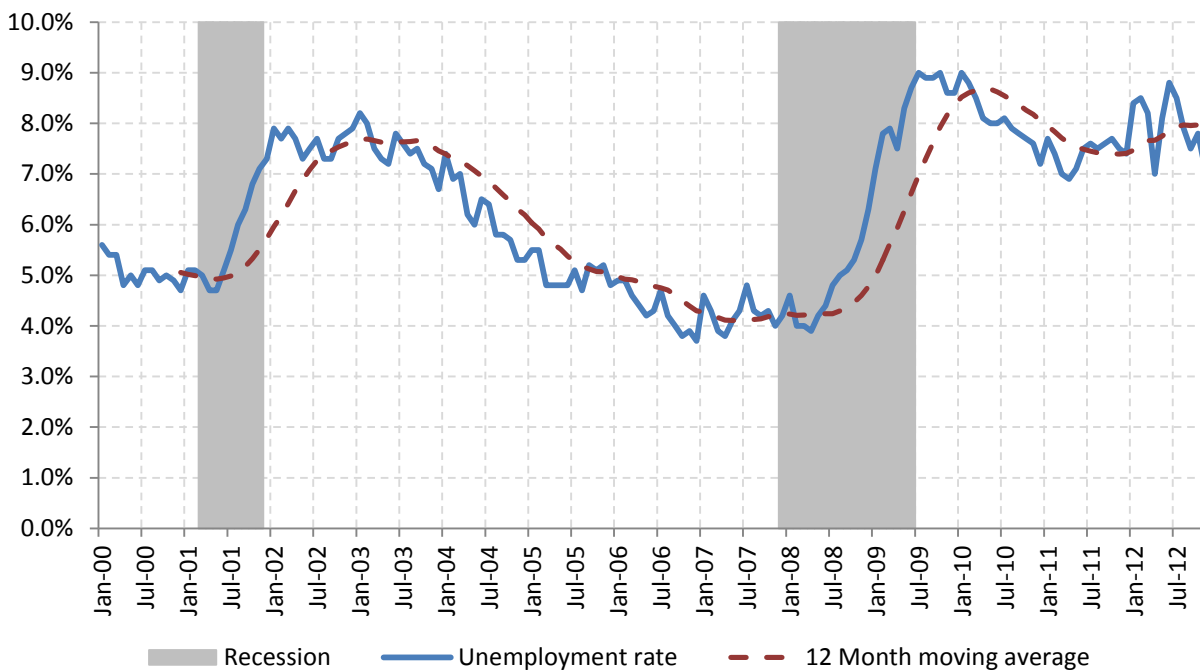
Annual unemployment rate, New York County and New York State



Source: Bureau Labor Statistics (BLS)

9.3 Monthly unemployment rate

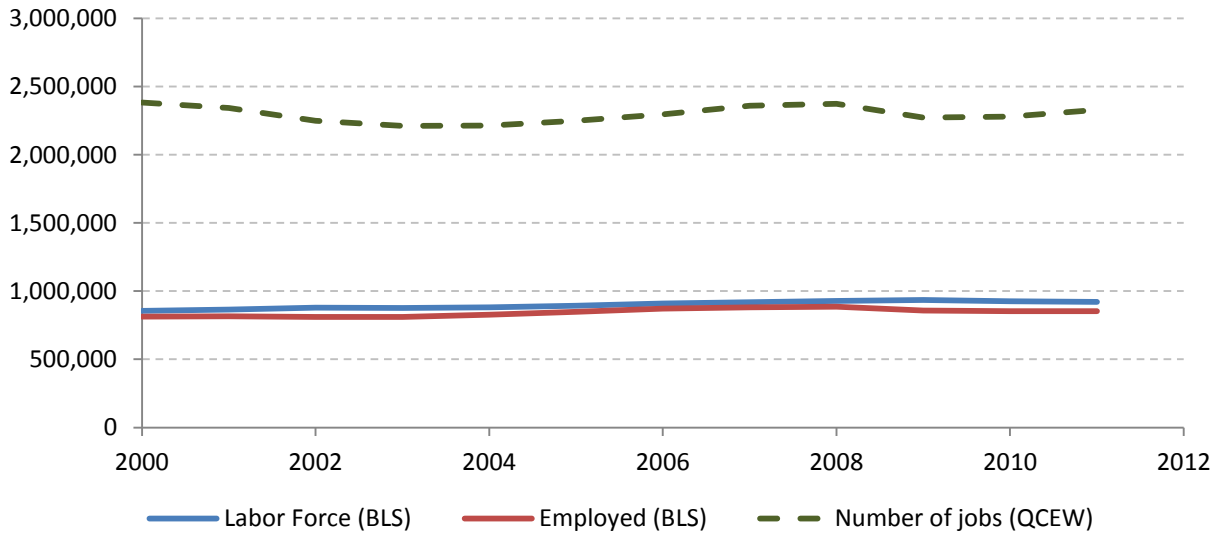
Monthly unemployment rate, New York County



Source: Bureau Labor Statistics (BLS)

9.4 Employment and number of jobs

**Labor force, number of employed workers and number of jobs
New York County**



Source: Bureau Labor Statistics (BLS) and NY Department of Labor - Quarterly Census of Employment and Wages (QCEW) – annual averages

9.5 Class of worker

					Median earnings (\$)		
		Total	%Male	%Female	Total	Male	Female
Civilian employed population 16 years and over	Estimate	846,255	50.3%	49.7%	52,564	60,607	47,895
	Margin of error	± 4,387	± 0.3	± 0.3	± 476	± 816	± 875
Private for-profit wage and salary workers:	Estimate	596,013	53.2%	46.8%	56,551	65,185	50,721
	Margin of error	± 3,895	± 0.4	± 0.4	± 955	± 1,476	± 518
Employee of private company workers	Estimate	555,863	52.3%	47.7%	55,281	63,507	50,403
	Margin of error	± 4,103	± 0.4	± 0.4	± 988	± 1,348	± 559
Self-employed in own incorporated business workers	Estimate	40,150	64.6%	35.4%	77,699	94,130	58,869
	Margin of error	± 1,621	± 1.7	± 1.7	± 3,973	± 6,625	± 4,928
Private not-for-profit wage and salary workers	Estimate	102,252	38.9%	61.1%	47,328	51,100	45,751
	Margin of error	± 2,490	± 1.2	± 1.2	± 1,183	± 1,796	± 1,308
Local government workers	Estimate	51,121	40.0%	60.0%	50,796	55,272	47,064
	Margin of error	± 1,772	± 1.6	± 1.6	± 1,031	± 1,875	± 1,724
State government workers	Estimate	14,704	42.1%	57.9%	58,028	65,658	51,901
	Margin of error	± 966	± 2.9	± 2.9	± 4,036	± 3,445	± 2,103
Federal government workers	Estimate	12,835	49.3%	50.7%	67,114	73,955	60,432
	Margin of error	± 936	± 3.8	± 3.8	± 5,055	± 6,175	± 6,920
Self-employed in own not incorporated business workers and unpaid family workers	Estimate	69,330	52.5%	47.5%	32,314	38,621	27,911
	Margin of error	± 2,145	± 1.6	± 1.6	± 1,323	± 2,967	± 1,711

Source: 2007-2011 American Community Survey

9.6 Jobs by industry sector

	New York County			NY state
	2011	Change since 2006	% of total	% of total
All NAICS Sectors	2,181,651	2.7%	100.0%	100.0%
Agriculture, Forestry, Fishing and Hunting	118	63.9%	0.0%	0.3%
Mining, Quarrying, and Oil and Gas Extraction	28	21.7%	0.0%	0.1%
Utilities	6,478	-0.7%	0.3%	0.5%
Construction	31,757	5.2%	1.5%	3.5%
Manufacturing	26,227	-33.8%	1.2%	5.5%
Wholesale Trade	82,485	-8.8%	3.8%	4.0%
Retail Trade	150,923	6.2%	6.9%	10.5%
Transportation and Warehousing	16,464	-18.8%	0.8%	3.4%
Information	151,021	6.5%	6.9%	3.3%
Finance and Insurance	288,562	-6.7%	13.2%	6.0%
Real Estate and Rental and Leasing	90,899	-2.1%	4.2%	2.3%
Professional, Scientific, and Technical Services	297,691	1.9%	13.6%	6.9%
Management of Companies and Enterprises	59,764	6.2%	2.7%	1.6%
Administrative and Support and Waste Management and Remediation Services	145,145	-1.5%	6.7%	5.2%
Educational Services	105,228	23.4%	4.8%	10.8%
Health Care and Social Assistance	235,988	7.5%	10.8%	17.0%
Arts, Entertainment, and Recreation	64,868	8.0%	3.0%	1.9%
Accommodation and Food Services	178,898	19.7%	8.2%	7.3%
Other Services (except Public Administration)	89,897	5.4%	4.1%	3.9%
Public Administration	159,213	2.4%	7.3%	5.8%

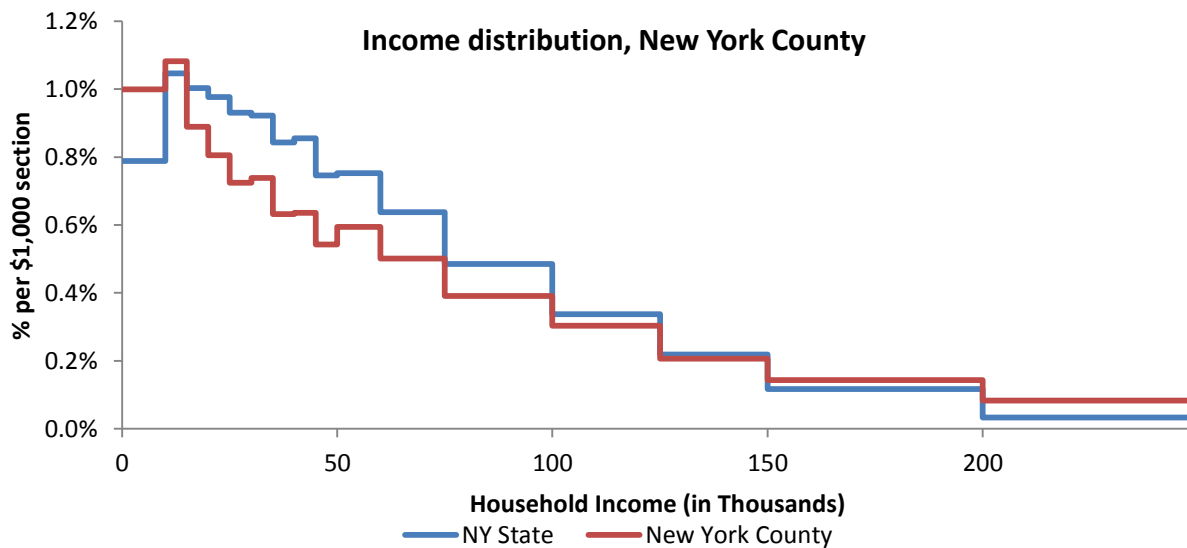
Source: U.S. Census Bureau - Public Use Quarterly Workforce Indicators (QWI) – annual averages

10 Household Income

10.1 Distribution

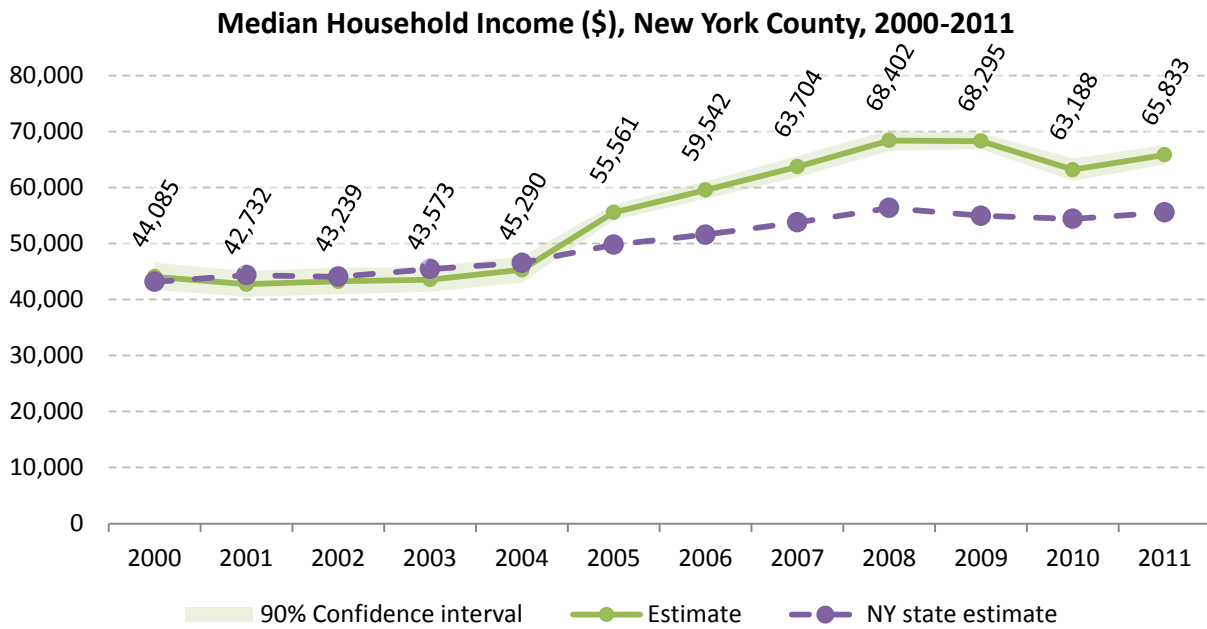
	Estimate	Margin of error	Interval width (in \$1,000)	Est. per \$1,000 section
Total:	733,393	± 3,471		
Less than \$10,000	73,248	± 1,946	10	7,324.8
\$10,000 to \$14,999	39,686	± 1,593	5	7,937.2
\$15,000 to \$19,999	32,612	± 1,425	5	6,522.4
\$20,000 to \$24,999	29,529	± 1,409	5	5,905.8
\$25,000 to \$29,999	26,542	± 1,273	5	5,308.4
\$30,000 to \$34,999	27,087	± 1,214	5	5,417.4
\$35,000 to \$39,999	23,175	± 1,243	5	4,635.0
\$40,000 to \$44,999	23,317	± 1,134	5	4,663.4
\$45,000 to \$49,999	19,893	± 1,075	5	3,978.6
\$50,000 to \$59,999	43,556	± 1,604	10	4,355.6
\$60,000 to \$74,999	55,094	± 1,768	15	3,672.9
\$75,000 to \$99,999	71,626	± 1,791	25	2,865.0
\$100,000 to \$124,999	55,635	± 1,877	25	2,225.4
\$125,000 to \$149,999	37,829	± 1,589	25	1,513.2
\$150,000 to \$199,999	52,483	± 1,671	50	1,049.7
\$200,000 or more	122,081	± 2,244	-	-

Source: 2007-2011 American Community Survey



Source: 2007-2011 American Community Survey

10.2 Median household income: Trends over time

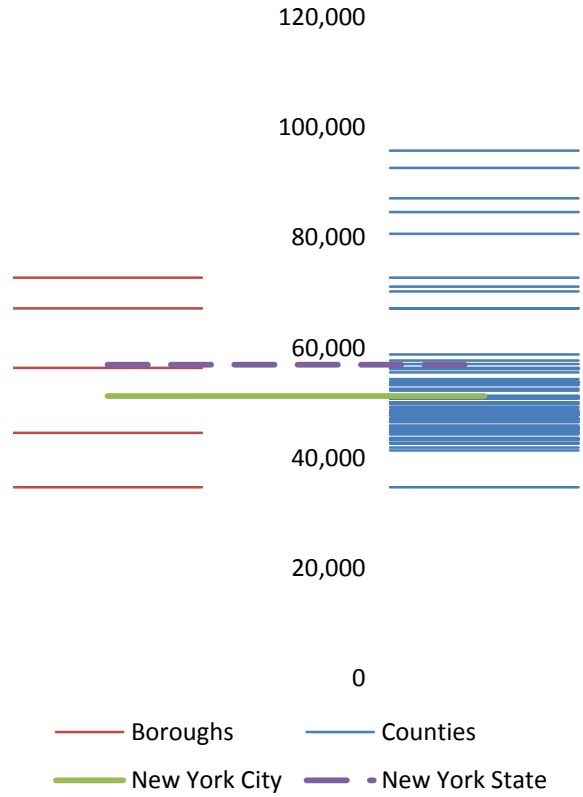


Source: Small Area Income and Poverty Estimates (SAIPE)

10.3 Median household income: Comparison between areas

	MEDIAN HOUSEHOLD INCOME (\$)	
	Estimate	Margin of error
New York State	56,951	± 190
New York City	51,270	± 225
Counties (Boroughs)		
Bronx	34,744	± 550
Kings (Brooklyn)	44,593	± 404
New York (Manhattan)	67,204	± 820
Queens	56,406	± 570
Richmond (Staten Island)	72,752	± 1,142

Median household income comparison within New York City boroughs (left) and all counties (right)



Source: 2007-2011 American Community Survey

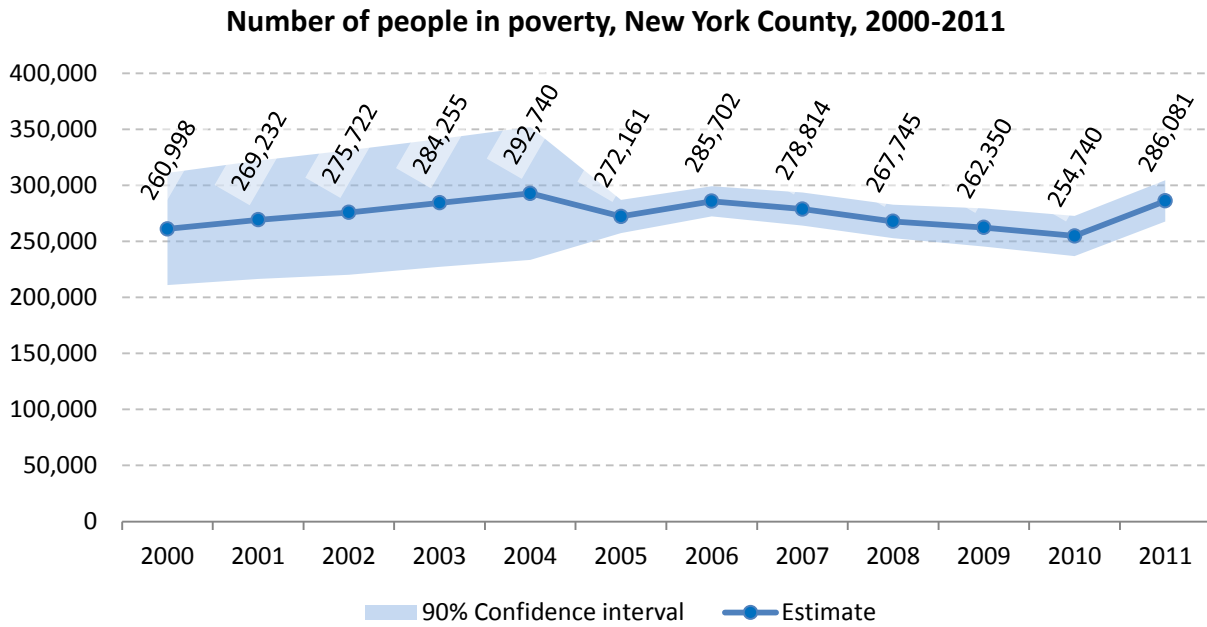
11 Poverty

11.1 Poverty characteristics

	TOTAL		BELOW POVERTY LEVEL		PERCENT BELOW POVERTY LEVEL	
	Estimate	Margin of error	Estimate	Margin of error	Estimate	Margin of error
Population for whom poverty status is determined	1,543,155	± 3,050	272,041	± 6,903	17.6%	± 0.4
AGE						
Under 18 years	236,023	± 535	59,907	± 2,520	25.4%	± 1.1
Related children under 18 years	235,078	± 585	59,087	± 2,496	25.1%	± 1.1
18 to 64 years	1,101,464	± 2,845	173,866	± 4,613	15.8%	± 0.4
65 years and over	205,668	± 808	38,268	± 1,475	18.6%	± 0.7
SEX						
Male	728,312	± 1,415	117,459	± 4,024	16.1%	± 0.5
Female	814,843	± 2,290	154,582	± 3,756	19.0%	± 0.5
RACE AND HISPANIC OR LATINO ORIGIN						
One race	1,486,156	± 3,754	259,537	± 6,732	17.5%	± 0.5
White	869,351	± 4,581	92,484	± 3,428	10.6%	± 0.4
Black or African American	239,574	± 2,852	67,374	± 3,120	28.1%	± 1.2
American Indian and Alaska Native	5,242	± 736	1,514	± 367	28.9%	± 5.9
Asian	169,585	± 1,617	35,632	± 1,900	21.0%	± 1.1
Hispanic or Latino origin (of any race)	400,291	± 800	118,478	± 4,383	29.6%	± 1.1
White alone, not Hispanic or Latino	735,252	± 2,213	57,614	± 2,541	7.8%	± 0.3
EDUCATIONAL ATTAINMENT						
Population 25 years and over	1,161,274	± 1,265	168,992	± 4,432	14.6%	± 0.4
Less than high school graduate	171,104	± 3,332	64,056	± 2,162	37.4%	± 1.1
High school graduate (includes equivalency)	148,526	± 3,418	37,338	± 1,830	25.1%	± 1.0
Some college, associate's degree	167,919	± 3,584	26,386	± 1,677	15.7%	± 0.9
Bachelor's degree or higher	673,725	± 4,190	41,212	± 1,882	6.1%	± 0.3
EMPLOYMENT STATUS						
Civilian labor force 16 years and over	913,130	± 4,464	78,230	± 2,781	8.6%	± 0.3
Employed	836,745	± 4,547	53,705	± 2,157	6.4%	± 0.3
Male	422,065	± 3,298	22,839	± 1,469	5.4%	± 0.3
Female	414,680	± 3,087	30,866	± 1,421	7.4%	± 0.3
Unemployed	76,385	± 2,357	24,525	± 1,433	32.1%	± 1.7
Male	38,894	± 1,520	11,745	± 973	30.2%	± 2.4
Female	37,491	± 1,880	12,780	± 1,151	34.1%	± 2.6
WORK EXPERIENCE IN THE PAST 12 MONTHS						
Population 16 years and over	1,333,210	± 3,117	219,569	± 5,359	16.5%	± 0.4
Worked full-time, year-round	608,868	± 4,917	14,730	± 945	2.4%	± 0.2
Worked part-time or part-year	324,876	± 4,487	62,327	± 2,248	19.2%	± 0.6
Did not work	399,466	± 3,501	142,512	± 4,008	35.7%	± 0.8

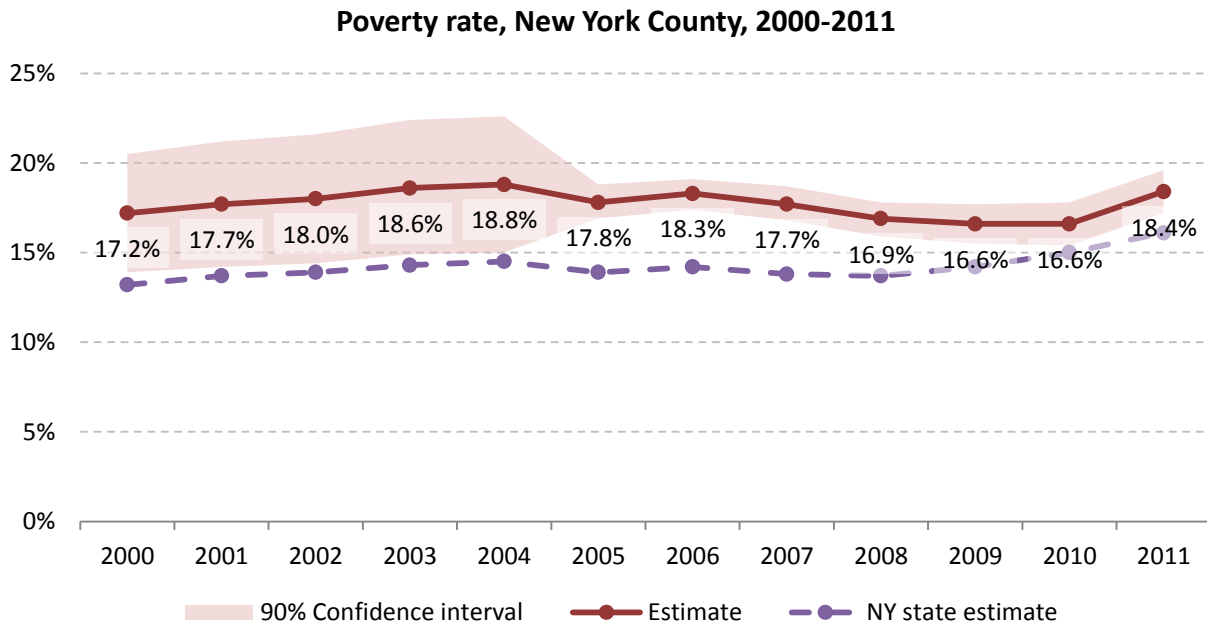
Source: 2007-2011 American Community Survey

11.2 Poverty: Trends over time: Count



Source: Small Area Income and Poverty Estimates (SAIPE)

11.3 Poverty: Trends over time: Rate

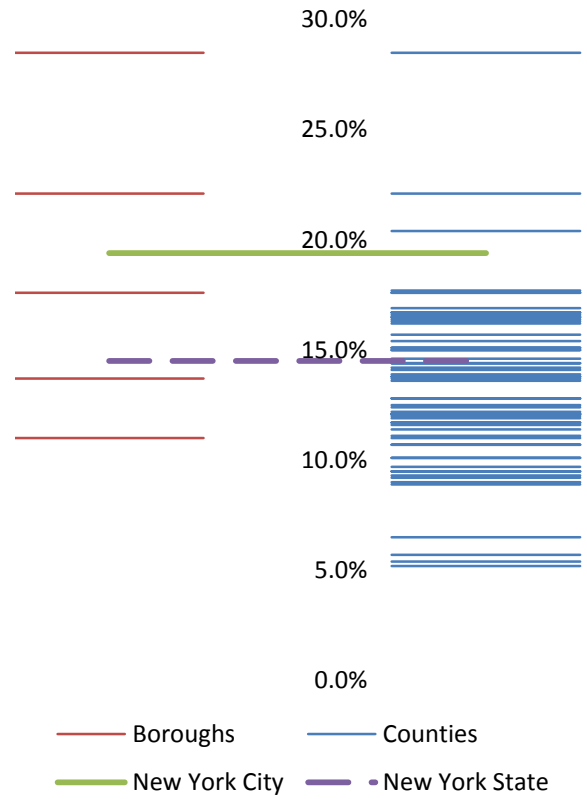


Source: Small Area Income and Poverty Estimates (SAIPE)

11.4 Poverty rate: comparison between areas

Poverty Rate - All people		
	Estimate	Margin of error
New York State	14.5%	± 0.1
New York City	19.4%	± 0.2
Counties (Boroughs)		
Bronx	28.5%	± 0.5
Kings (Brooklyn)	22.1%	± 0.3
New York (Manhattan)	17.6%	± 0.4
Queens	13.7%	± 0.3
Richmond (Staten Island)	11.0%	± 0.6

Poverty rate comparison within New York City boroughs (left) and all counties (right)



Source: 2007-2011 American Community Survey

12 Agriculture

12.1 Number of farms and land in farms

No farms reported for New York County

Source: National Agricultural Statistics Service – Annual Statistical bulletin

12.2 Farm Operator Characteristics

No data reported for New York County

Source: 2007 Agricultural Census

12.3 Map of type of crop

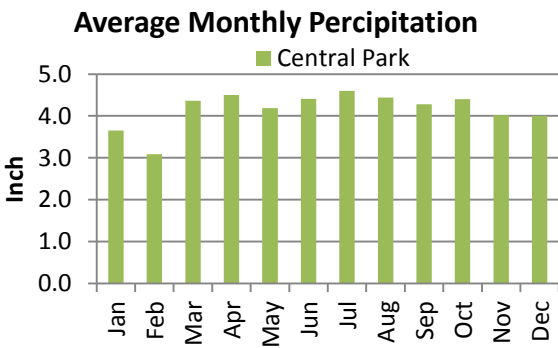
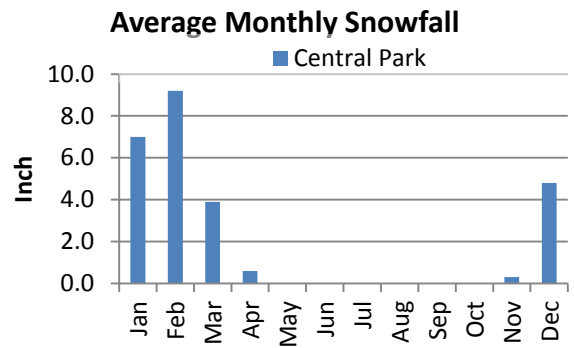
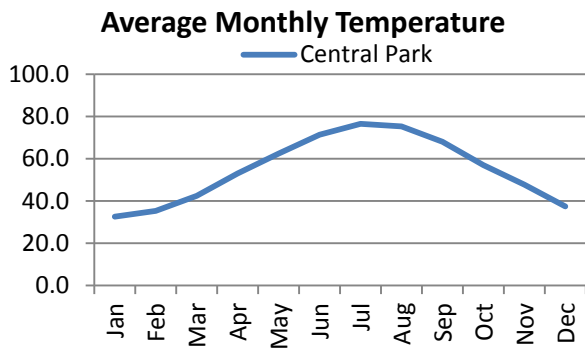
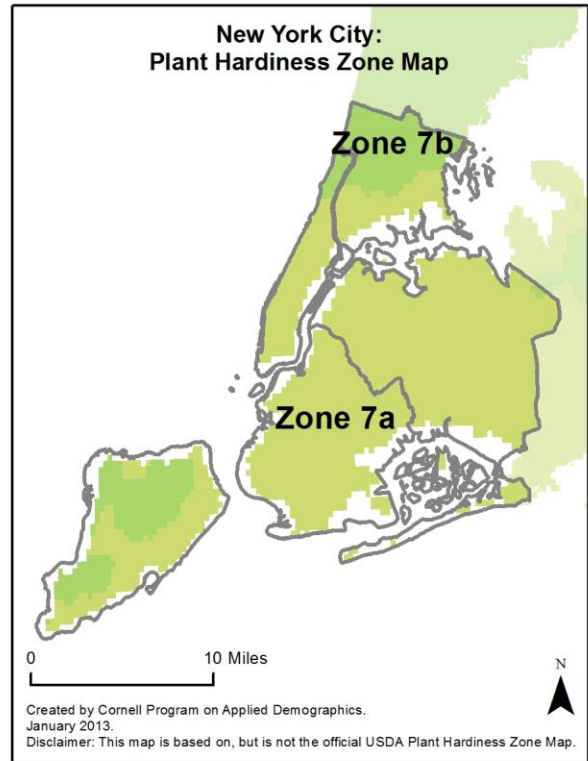
Not available due to very limited fields of crop

12.4 Estimated acreage by crop

	Acreage	%		Acreage	%
Cereals			Fruit and nuts		
Barley	-		Apples	-	
Corn	-		Apricots	-	
Millet	-		Blueberries	-	
Oats	-		Cherries	-	
Rye	-		Cranberries	-	
Sorghum	-		Grapes	-	
Speltz	-		Nectarines	-	
Spring Wheat	-		Peaches	-	
Sweet Corn	0.2	33.3%	Plums	-	
Triticale	-		Prunes	-	
Winter Wheat	-		Strawberries	-	
Dbl Crop WinWht/Corn	-		Walnuts	-	
Leguminous crops			Beverage and spice crops		
Alfalfa	0.2	33.3%	Herbs	-	
Other Hay/Non Alfalfa	0.2	33.3%	Peppers	-	
Dry Beans	-		Trees		
Peas	-		Christmas Trees	-	
Vetch	-		Other Tree Crops	-	
Oilseed crops			Other crops		
Soybeans	-		Tobacco	-	
Sunflower	-		Misc Veggies & Fruits	-	
Sugar crops			Clover/Wildflowers	-	
Sugarbeets	-		Sod/Grass Seed	-	
Root/tuber crops with high starch or inulin content			Switchgrass	-	
Potatoes	-		Dbl Crop Soybeans/Oats	-	
Vegetables and melons			Dbl Crop WinWht/Soybeans	-	
Asparagus	-		Other Crops	-	
Broccoli	-		Pasture/Grass	-	
Cabbage	-		Fallow/Idle Cropland	-	
Carrots	-				
Eggplants	-				
Onions	-				
Pumpkins	-				
Squash	-				
Tomatoes	-				
Turnips	-				

Source: National Agricultural Statistics Service - Cropland Data Layer 2011

13 Climate



Average length of freeze-free season

	Last day of frost	First day of frost	Season length
Central Park	March 29	November 20	235

Source: NOAA, Northeast Regional Climate Center at Cornell University. Averages 1981-2010

14 Glossary

American Community Survey (ACS) - The American Community Survey is an ongoing survey of the population that provides data every year on a variety of social and economic characteristics—age, sex, race, family and relationships, income and benefits, health insurance, education, veteran status, disabilities, where you work and how you get there, where you live and how much you pay for some essentials. The ACS replaced the information previously gathered by what was known as the “long form” of the decennial censuses. The ACS provides communities, companies and other institutions with current information they need to plan investments and services. Information from the survey generates data that help determine how more than \$400 billion in federal and state funds are distributed each year. Every estimate presented in the American Community Survey, as in other surveys, has an uncertainty associated with it. Often the magnitude of that uncertainty is expressed as the Margin of Error.

Confidence Interval (CI) - indication of the degree of uncertainty about a sample estimates. Confidence intervals have been traditionally reported at the 90, 95 and 99 percent levels. A 90 percent confidence interval can be interpreted, for example, roughly as providing 90 percent certainty that the interval defined by the upper and lower bounds contain the true value of the characteristic. If a Margin of Error is given, the lower bound of the confidence interval is equal to the estimate minus the Margin of Error and the upper bound is equal to the estimate plus the Margin of Error. (See further, Margin of Error definition below.)

County subdivision or Minor Civil Division (MCD) - The Census Bureau geography for primary administrative units below the county level in New York is collectively referred to as county subdivisions or minor civil divisions. These include towns, cities and Indian Reservations.

Decennial Census - the Census of the population and housing taken every 10 years in the United States, at the start of each decade, since 1790.

Employed – either “at work” or “with a job, but not at work”.

Group Quarters Population - all U.S. residents who live in group living facilities including correctional institutions, juvenile facilities, skilled nursing facilities, college residence halls, military barracks, group homes, and workers' dormitories.

Household Population - all U.S. residents who live in housing units such as single family homes, townhouses, apartments, and mobile homes.

Intercensal Population Estimates - estimates produced for the years between two decennial censuses when both the beginning and ending populations are known. They are produced once a decade by adjusting the existing time series of postcensal estimates for the entire decade to smooth the transition from one decennial census count to the next. They differ from the postcensal estimates that are released annually because the difference between the April 1 postcensal estimate and April 1 census count for the end of the decade is redistributed across the estimates for that decade. For dates when both postcensal and intercensal estimates are available, intercensal estimates are preferred.

Labor Force - consists of people classified as employed or unemployed.

Margin of Error (MOE) - a measure of the precision of an estimate at a given level of confidence. The confidence level of a margin of error indicates the likelihood that the difference between the population value (which you

would get if you could measure the whole population instead of a sample) and the estimate is less than or equal to the margin of error. The range from the estimate minus the margin of error to the estimate plus the margin of error is called the confidence interval. All ACS estimates are published with their margins of error at the 90 percent confidence level. Margins of error are useful in assessing the reliability of estimates and whether differences between estimates are significant.

NAICS - The North American Industry Classification System or NAICS is used by business and government to classify business establishments according to type of economic activity (process of production).

Numeric Population Change - difference between the population of an area at the beginning and end of a time period. It is computed by taking the difference between the population at one point in time (t1) and some future time (t2).

Percent Population Change - difference between the population of an area at the beginning and end of a time period, expressed as a percentage of the beginning population. It is computed by dividing the population change (t2 - t1) by t1 and multiplying the result by 100.

Population Estimates - The calculated number of people living in an area as of a specified point in time, usually July 1st. The estimated population is calculated using a component of change model that incorporates information on natural increase (births, deaths) and net migration (net domestic migration, net international migration) that has occurred in an area since the latest decennial census. A procedure for estimating the current population using a procedure involving a "base population" value at time t -1, adding to that the births during the interval t-1 to t, subtracting the deaths during that interval t-1 to t, and then adding the net domestic and net international migration that occurred during that interval.

Population Density - Total number of people per areal unit like a square mile or square kilometer.

Population Pyramids - A graphical way of portraying a population's age and sex composition at a given slice in time. The first horizontal bar, constituting the base of the graph, is the youngest age group (typically 0-4) with the number of males in that age group on the left and the number of females in that age group on the right. On top of that age group is another horizontal bar for the next age group (e.g. 5-9) and so forth with the top bar typically for those aged 75 and over. In a population with lots of births and deaths, the shape typically forms a pyramid with a broad base and a narrow top. It is one of the most basic ways to understand population change over time as well as between different geographic units of a similar status (e.g. counties).

Postcensal Estimates - estimates produced for the years after a decennial census when only the beginning population is known. They are produced and revised each year, targeted to July 1 of that year.

Projection - estimated population at some future time based on assumptions about births, deaths, migration, and ages.

Race/Ethnicity - the Census Bureau collects racial data in accordance with guidelines provided by the U.S. Office of Management and Budget (OMB), and these data are based on self-identification. The racial categories included in the census questionnaire generally reflect a social definition of race recognized in this country and not an attempt to define race biologically, anthropologically, or genetically. In addition, it is recognized that the categories of the race item include racial and national origin or sociocultural groups. People may choose to report more than one race to indicate their racial mixture, such as "American Indian" and "White." People who identify their origin as Hispanic, Latino, or Spanish may be of any race. OMB requires five minimum categories: White, Black or African American, American Indian or Alaska Native, Asian, and Native Hawaiian or Other Pacific

Islander. Hispanics may be classified as white or black. So we generally separate them out as an ethnic group first.

Unemployed – Not employed, but actively looking for work and available to accept a job.

Unemployment rate – Fraction of the Labor Force that is unemployed.

Urban Area – A densely settled area with at least 2,500 people. If the total number of people is less than 50,000 the Census Bureau calls it an Urban Cluster, otherwise an Urbanized Area.

Vintage - each year, the U.S. Census Bureau produces and publishes estimates of the population for each state and county, as well as the nation as a whole. These are called “vintages.” In producing these vintages, the Bureau utilizes administrative data from a number of sources to estimate 1) the change in population since the most recent decennial census, and 2) the population for each year since the most recent decennial census. With each annual release of population estimates (vintage), the entire time series of estimates beginning on April 1, 2010 is revised and updated.

15 References

New York County homepage: <http://www.nyc.gov/html/index.html>

At Cornell:

- Cornell Cooperative Extensions (CCE)
Home page: <http://www.cce.cornell.edu>
 - New York City local office: <http://nyc.cce.cornell.edu/Pages/home.aspx>
- Program on Applied Demographics (PAD)
URL: <http://pad.human.cornell.edu/>
- Community and Regional Development Institute (CaRDI)
URL: <http://devsoc.cals.cornell.edu/cals/devsoc/outreach/cardi/index.cfm>

Data sources and background information:

- U.S. Census Bureau - general
 - QuickFacts: <http://quickfacts.census.gov/qfd/states/36/36061.html>
 - QuickLinks: <http://quickfacts.census.gov/qfd/states/36/36061lk.html>
 - American FactFinder: <http://factfinder2.census.gov>
- U.S. Census Bureau - population
 - Decennial Census
 - Background: <http://2010.census.gov/2010census/>
 - Demographic Profile: http://factfinder2.census.gov/bkmk/table/1.0/en/DEC/10_SF1/SF1DP1/0500000US36061_1
 - American Community Survey (ACS)
 - Background: <http://www.census.gov/acs/www/>
 - Social Data Profile: http://factfinder2.census.gov/bkmk/table/1.0/en/ACS/10_5YR/DP02/0500000US36061
 - Economic Data Profile: http://factfinder2.census.gov/bkmk/table/1.0/en/ACS/10_5YR/DP03/0500000US36061
 - Housing Data Profile: http://factfinder2.census.gov/bkmk/table/1.0/en/ACS/10_5YR/DP04/0500000US36061
 - Demographics Data Profile: http://factfinder2.census.gov/bkmk/table/1.0/en/ACS/10_5YR/DP05/0500000US36061
 - Population estimates: <http://www.census.gov/popest/estimates.html>
- U.S. Census Bureau – Small Area Income & Poverty Estimates (SAIPE)
 - <http://www.census.gov/did/www/saipe/>
- U.S. Census Bureau - Public Use Quarterly Workforce Indicators (QWI) – annual averages
 - <http://www2.vrdc.cornell.edu/news/data/qwi-public-use-data/>
- Bureau Labor Statistics (BLS) – Local Area Unemployment Statistics: <http://www.bls.gov/lau/>
- NY Department of Labor -
 - Labor statistics: <http://www.labor.ny.gov/stats/>
 - Quarterly Census of Employment and Wages (QCEW): <http://www.labor.ny.gov/stats/lsqcew.shtm>
- Bureau of Economic Analysis (BEA) – Local Area Personal Income and Employment: <http://bea.gov/iTable/iTable.cfm?ReqID=70&step=1>

- USDA Census of Agriculture
 - 2007
 - Home page: <http://www.agcensus.usda.gov/Publications/2007/index.php>
 - County profile: http://www.agcensus.usda.gov/Publications/2007/Online_Highlights/County_Profiles/New_York/cp36061.pdf
 - Race, Ethnicity and Gender Profiles: http://www.agcensus.usda.gov/Publications/2007/Online_Highlights/Race_Ethnicity_and_Gender_Profiles/New_York/cpd36061.pdf
- USDA National Agricultural Statistics Service (NASS)
 - Home page: <http://www.nass.usda.gov/index.asp>
 - New York Statistical Bulletins: http://www.nass.usda.gov/Statistics_by_State/New_York/Publications/Annual_Statistical_Bulletin/
 - Cropland Data Layer – CropScape: <http://nassgeodata.gmu.edu/CropScape/>
- USDA Agricultural Research Service – Plant Hardness Zone Map: <http://planthardiness.ars.usda.gov/PHZMWeb/>
- NOAA, Northeast Regional Climate Center at Cornell University
 - Home page: <http://www.nrcc.cornell.edu/index.html>

Alternative sites for data retrieval:

- The Nelson A. Rockefeller Institute of Government – New York State Statistical Yearbooks http://www.rockinst.org/nys_statistics/
- Headwaters Economics: Economic Profile System – Human Dimensions Toolkit <http://headwaterseconomics.org/tools/eps-hdt>
- National Historical Geographic Information System (NHGIS) <https://www.nhgis.org/>
- Social Explorer <http://www.socialexplorer.com/pub/home/home.aspx>
- Missouri Census Data Center <http://mcdc.missouri.edu/>
- DataFerret <http://dataferrett.census.gov/>
- Investigative Reporters and Editors (IRE) Census project <http://census.ire.org/>