

Nassau County Profile 2013

A collection of recent demographic, social, economic and agricultural data

Compiled by Jan Vink

Assisted by Joe Francis, Sutee Anantsuksomsri, Nij Tontisirin, Johannes Plambeck



Cornell University
Cooperative Extension



This profile is a part of a set of profiles generated for each county in New York State. The profiles were developed and generated by the Cornell Program on Applied Demographics. The work is sponsored by Cornell Cooperative Extension and promoted with webinars and workshops in coordination with the Community & Regional Development Institute.

Cornell Program on Applied Demographics:

The Program on Applied Demographics (PAD) brings skills in demographics, economics, statistics, data gathering and data analysis together to provide a variety of organizations with data, information and advice.

For more information: <http://pad.human.cornell.edu/>

Cornell Cooperative Extension:

Cornell Cooperative Extension (CCE) puts knowledge to work in pursuit of economic vitality, ecological sustainability and social well-being. We bring local experience and research based solutions together, helping New York State families and communities thrive in our rapidly changing world.

For more information: <http://cce.cornell.edu/>

Community & Regional Development Institute:

The Community & Regional Development Institute (CaRDI) supports informed decision making for residents and communities in New York State through applied research and education.

For more information: <http://cardi.cornell.edu/>

All profiles are freely downloadable as PDF documents on the PAD website:

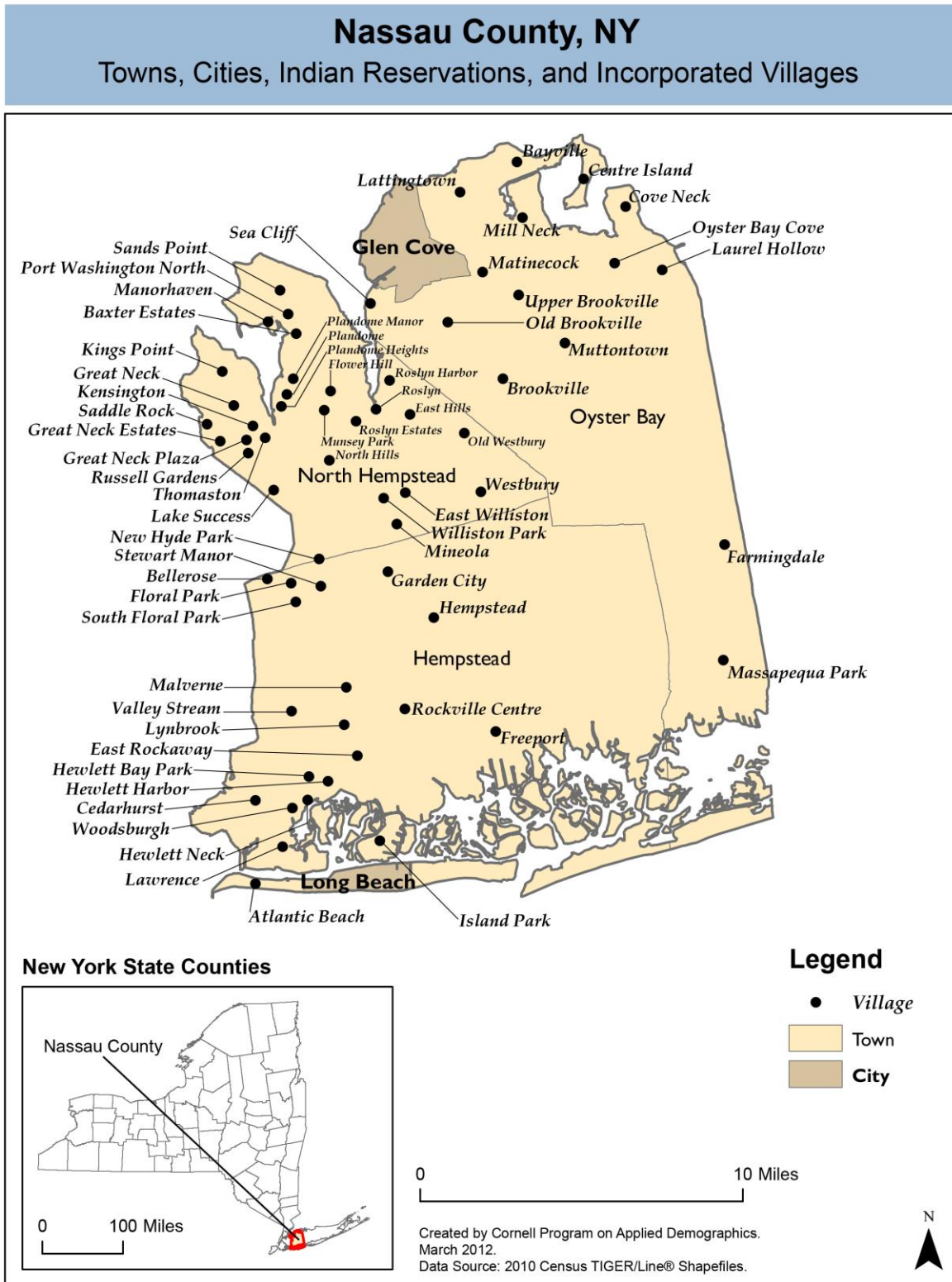
<http://pad.human.cornell.edu/profiles/index.cfm>

Contents

Contents	2
1 Reference Maps	4
2 Population density and Urban Areas Map	6
3 Total Population	7
3.1 Historic and projected	7
3.2 Change since previous Census	7
3.3 Annual population estimates	8
3.4 Percentage sub county change 2000-2010	9
4 Population by age	11
4.1 Historic and projected population pyramids	11
4.2 Selected age groups	12
4.3 Median age: comparison between areas	14
5 Race	15
5.1 Total and household population by race	15
5.2 Race composition by age	15
6 Housing units	16
6.1 Characteristics	16
6.2 Historical data on number of housing units and occupancy status	17
7 Education	18
7.1 Enrollment by level of school	18
7.2 Enrollment by age	18
7.3 Percentage age 18-24 enrolled in college	18
7.4 Educational attainment	19
8 Language spoken at home	19
9 Labor Force Characteristics	20
9.1 Labor force, employment and unemployment	20
9.2 Annual unemployment rate	21
9.3 Monthly unemployment rate	21
9.4 Employment and number of jobs	22
9.5 Class of worker	22
9.6 Jobs by industry sector	23
10 Household Income	24
10.1 Distribution	24
10.2 Median household income: Trends over time	25
10.3 Median household income: Comparison between areas	26
11 Poverty	27
11.1 Poverty characteristics	27
11.2 Poverty: Trends over time: Count	28
11.3 Poverty: Trends over time: Rate	28
11.4 Poverty rate: comparison between areas	29
12 Agriculture	30
12.1 Number of farms and land in farms	30
12.2 Farm Operator Characteristics	30

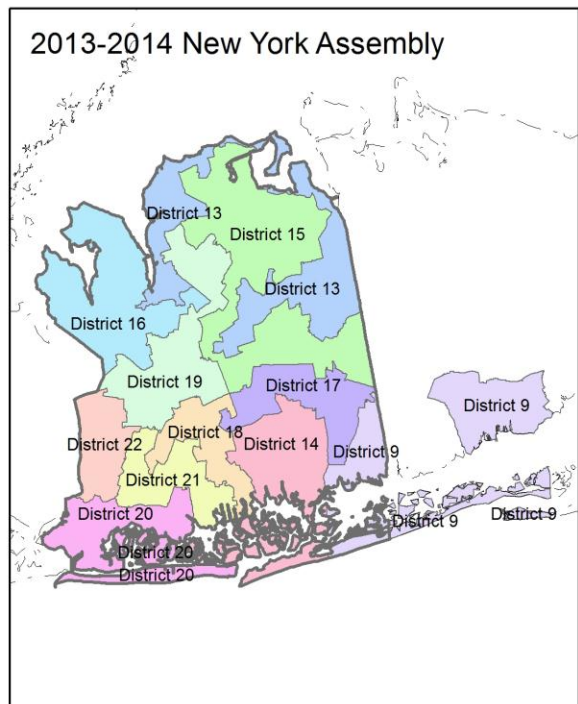
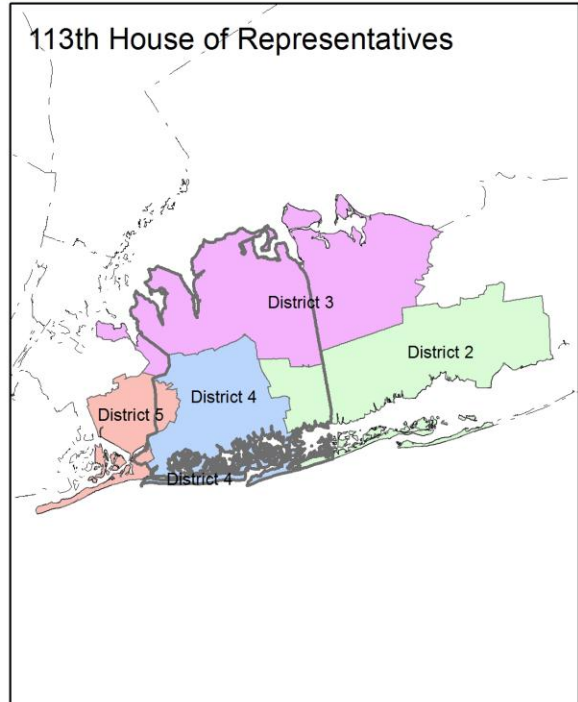
12.3 Map of type of crop 30
12.4 Estimated acreage by crop 31
13 Climate 32
14 Glossary..... 33
15 References 36

1 Reference Maps

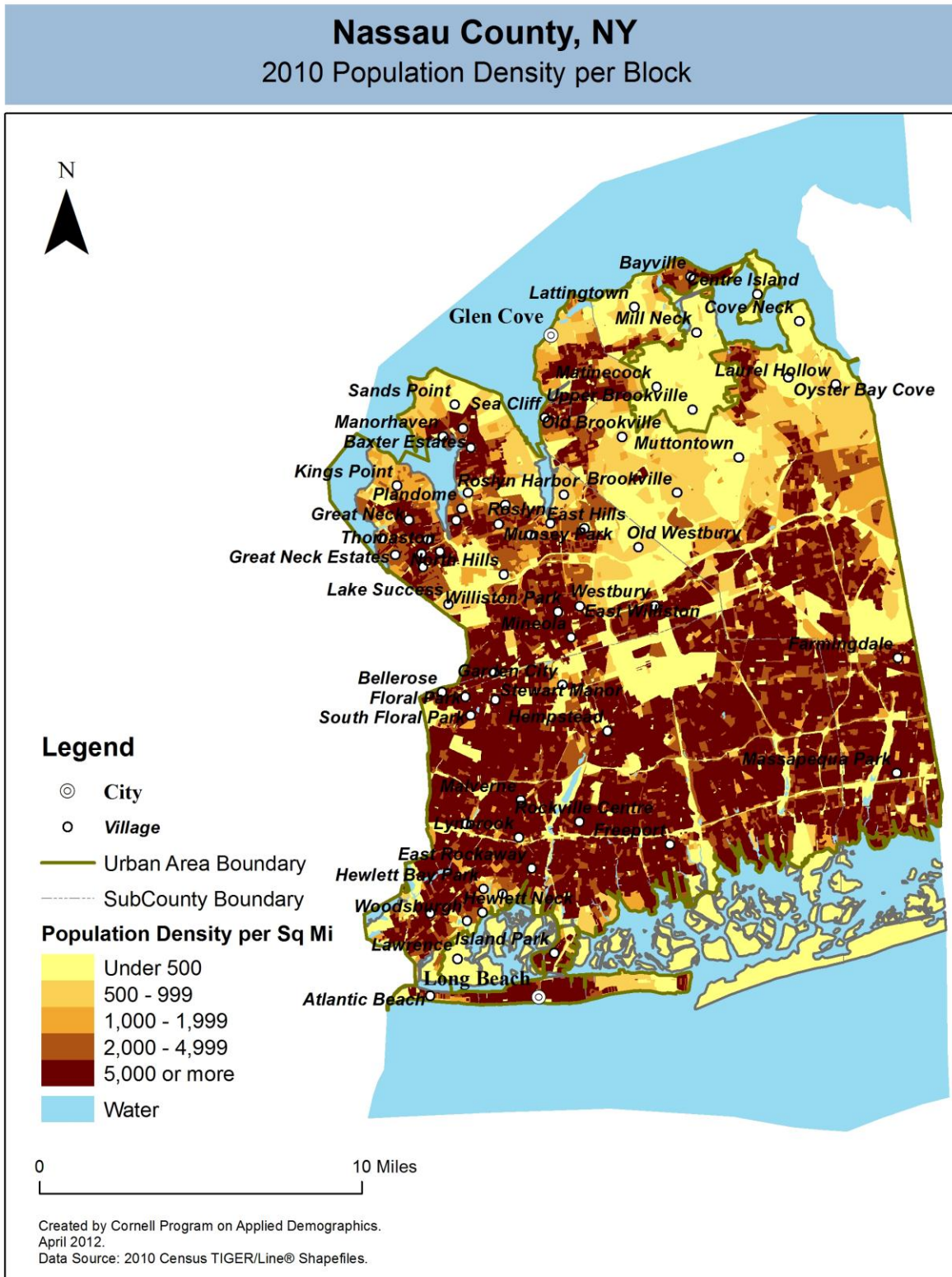


Nassau County, NY

Overlap with School and Political Districts



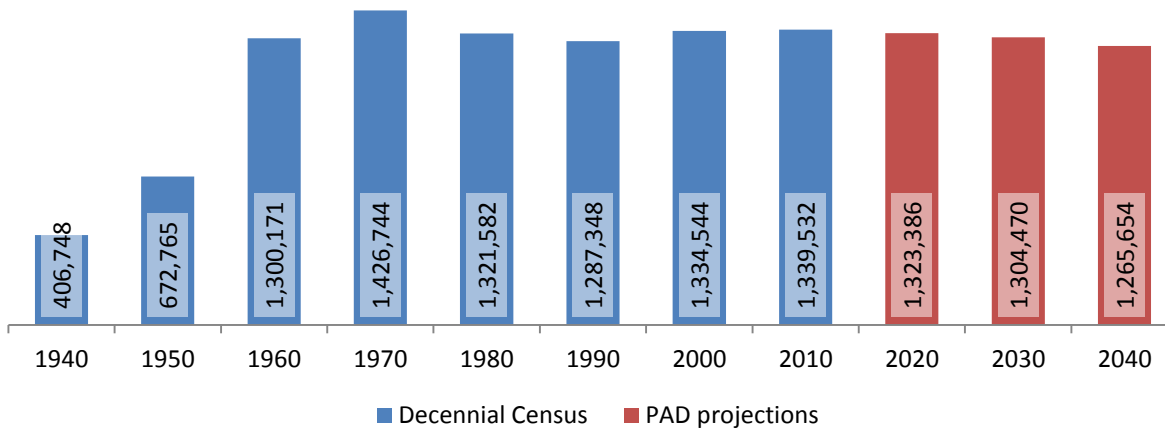
2 Population density and Urban Areas Map



3 Total Population

3.1 Historic and projected

Total population, Nassau County, 1940-2040



Source: 1940-2010 Decennial Census and projections by Cornell Program on Applied Demographics

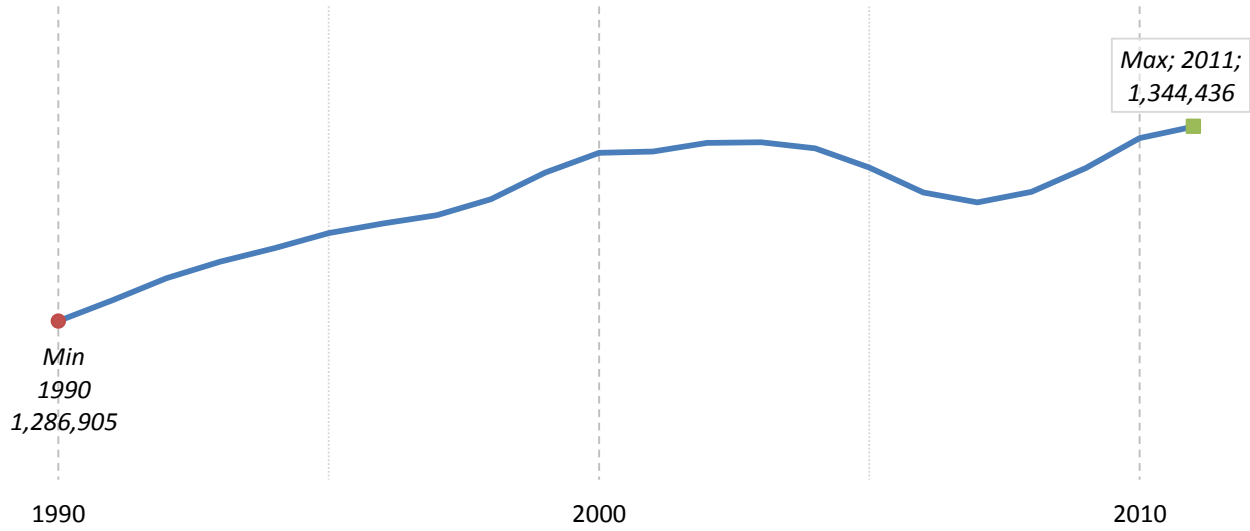
3.2 Change since previous Census

	Total population	Change	
		Number	Percent
Decennial Census	1940	406,748	
	1950	672,765	266,017 65.4%
	1960	1,300,171	627,406 93.3%
	1970	1,426,744	126,573 9.7%
	1980	1,321,582	-105,162 -7.4%
	1990	1,287,348	-34,234 -2.6%
	2000	1,334,544	47,196 3.7%
	2010	1,339,532	4,988 0.4%
PAD projections	2020	1,323,386	-16,146 -1.2%
	2030	1,304,470	-18,916 -1.4%
	2040	1,265,654	-38,816 -3.0%

Source: 1940-2010 Decennial Census and projections by Cornell Program on Applied Demographics

3.3 Annual population estimates

**Annual population estimates
Nassau County, 1990-2011**



Source: U.S. Census Bureau population estimates (1990-1999 and 2000-2009 intercensal and vintage 2011 postcensal)

3.4 Percentage sub county change 2000-2010

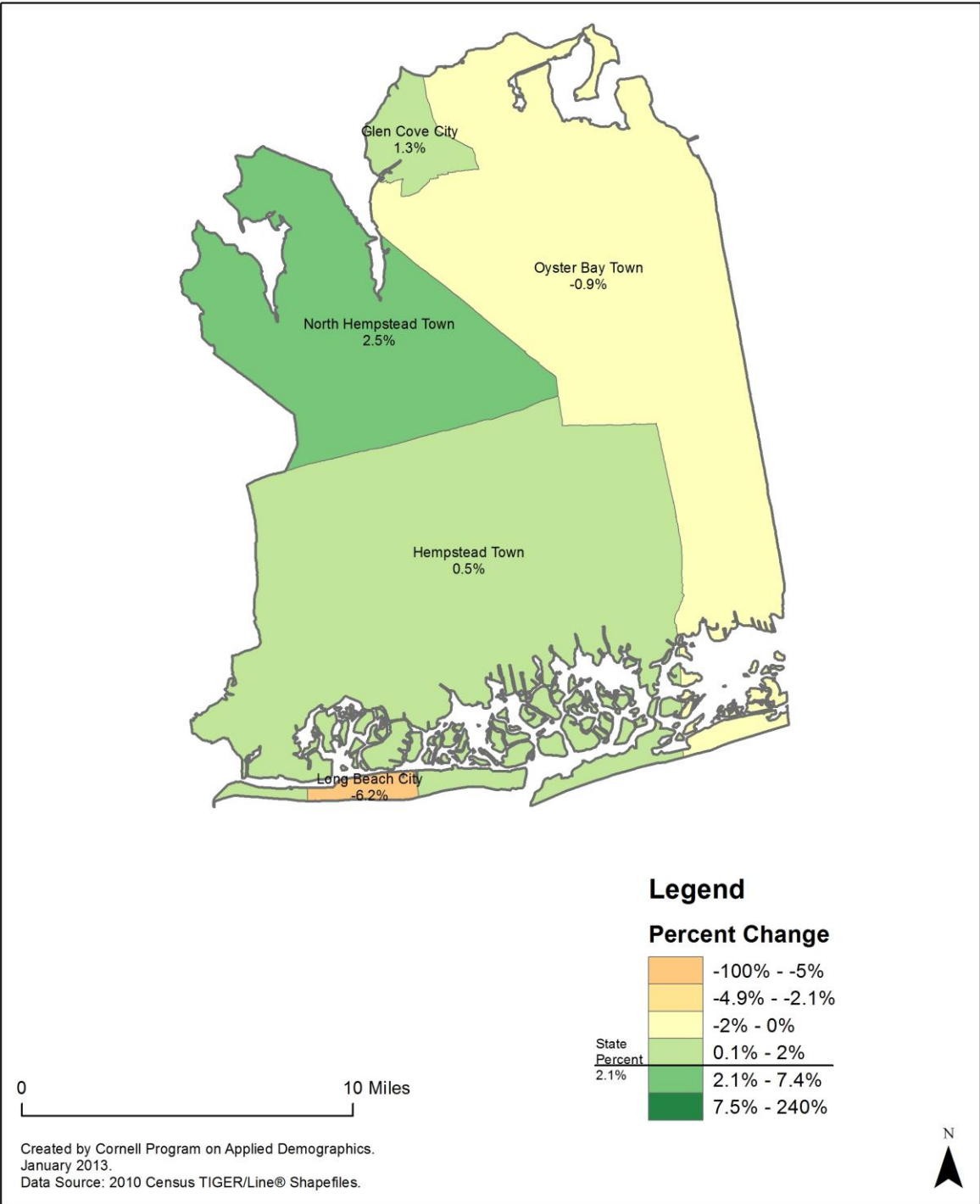
	Total Population		Difference	
	2000	2010	Count	%
New York State	18,976,821 *	19,378,102	401,281	2.1%
Nassau County	1,334,544	1,339,532	4,988	0.4%
Cities				
Glen Cove	26,622	26,964	342	1.3%
Long Beach	35,462	33,275	-2,187	-6.2%
Towns				
Hempstead	755,924	759,757	3,833	0.5%
North Hempstead	220,709 *	226,322	5,613	2.5%
Oyster Bay	295,827 *	293,214	-2,613	-0.9%

* Original counts revised through Count Question Resolution Program (CQR)

Source: U.S. Census Bureau intercensal population estimates 2000-2010

Nassau County, NY

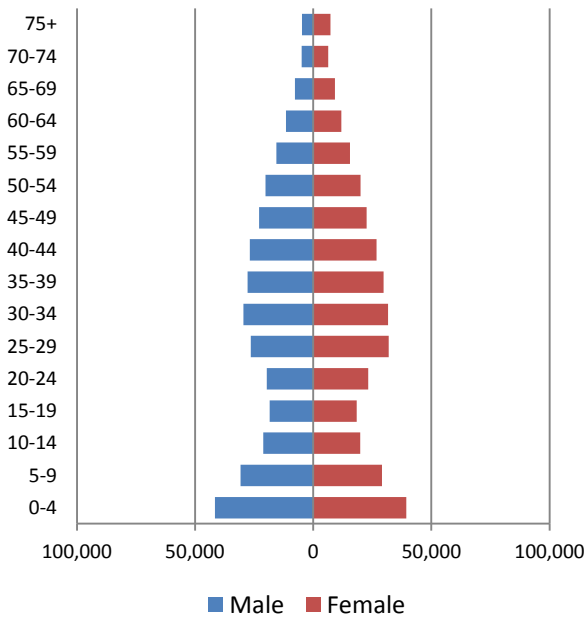
County Subdivision, Percent Change in Population 2000-2010



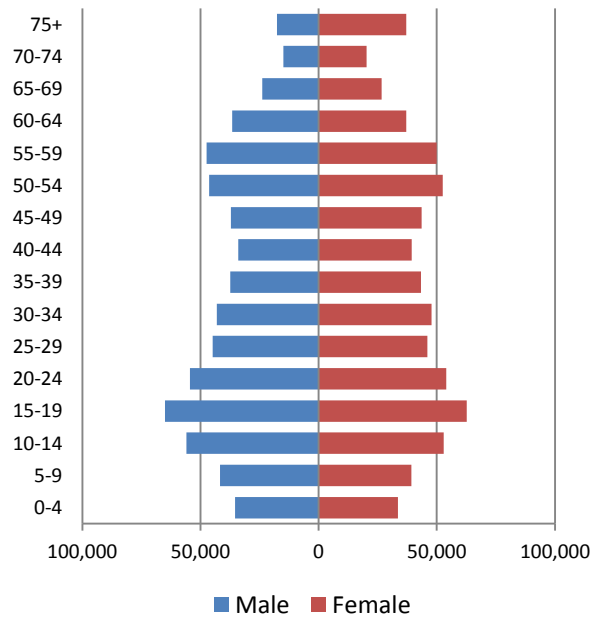
4 Population by age

4.1 Historic and projected population pyramids

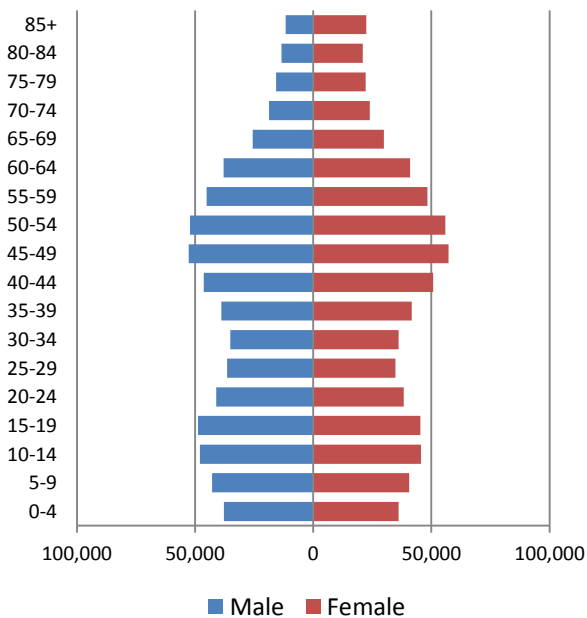
1950 Population Pyramid, Nassau County



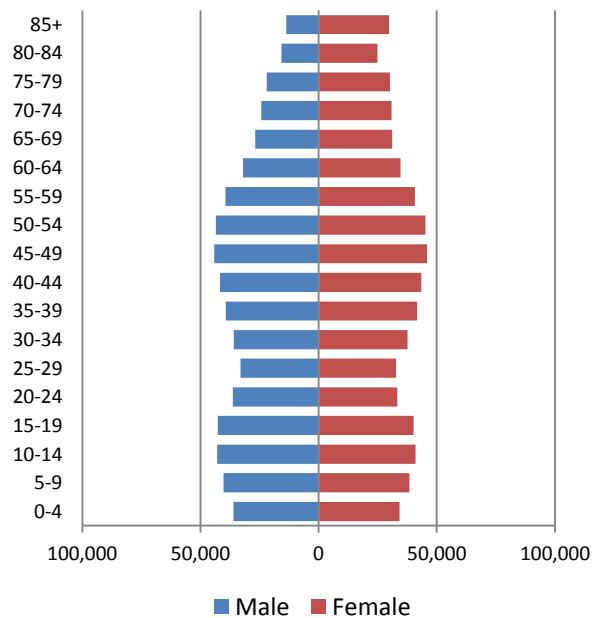
1980 Population Pyramid, Nassau County



2010 Population Pyramid, Nassau County



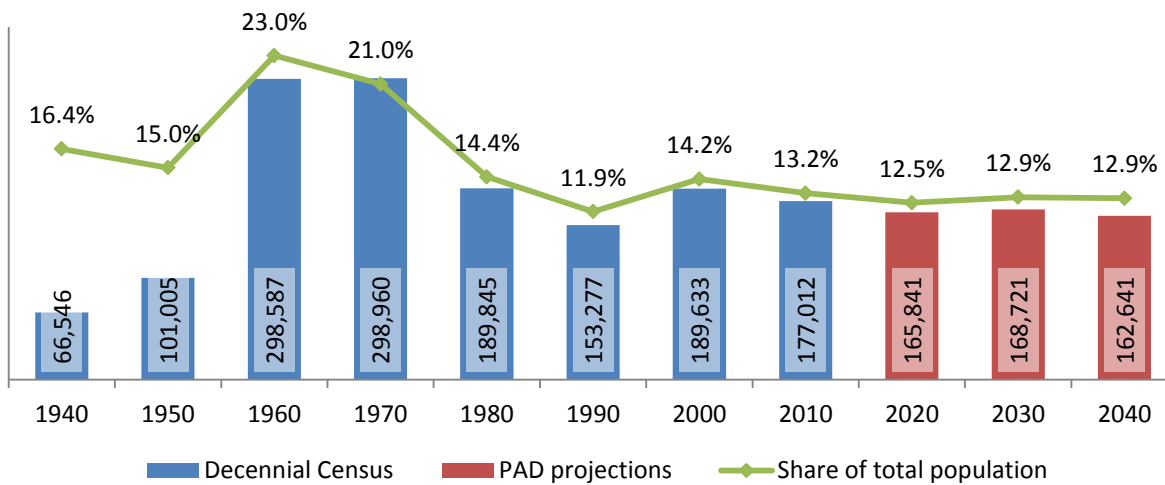
2040 Population Pyramid, Nassau County



Source: 1950, 1980, 2010 Decennial Census and projections by Cornell Program on Applied Demographics

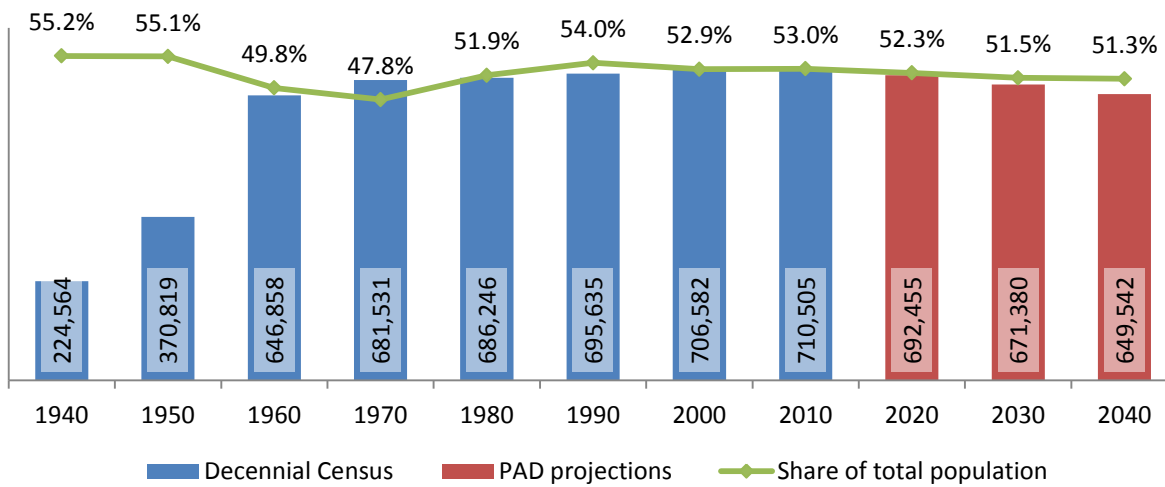
4.2 Selected age groups

Population age 5-14, Nassau County, 1940-2040



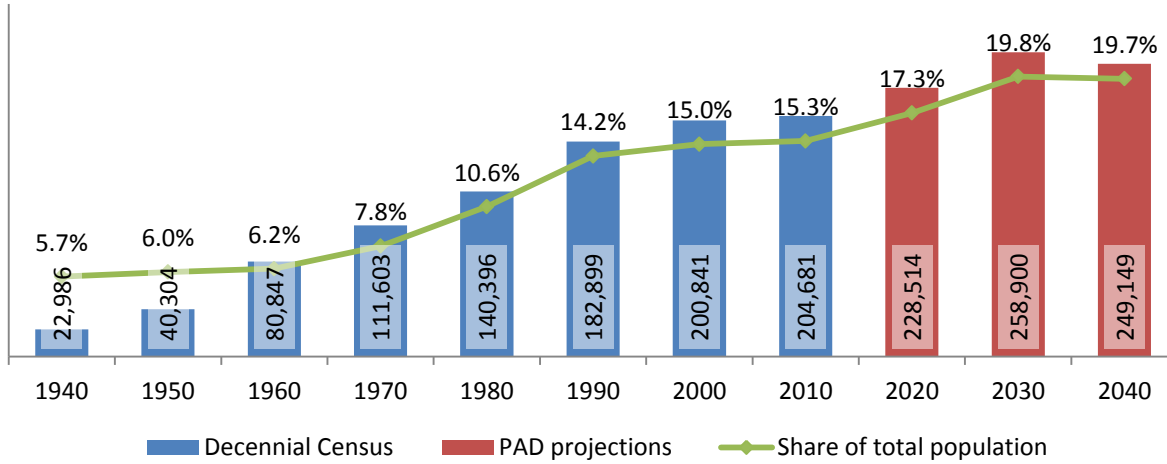
Source: 1940-2010 Decennial Census and projections by Cornell Program on Applied Demographics

Population age 25-64, Nassau County, 1940-2040



Source: 1940-2010 Decennial Census and projections by Cornell Program on Applied Demographics

Population age 65 and over, Nassau County, 1940-2040

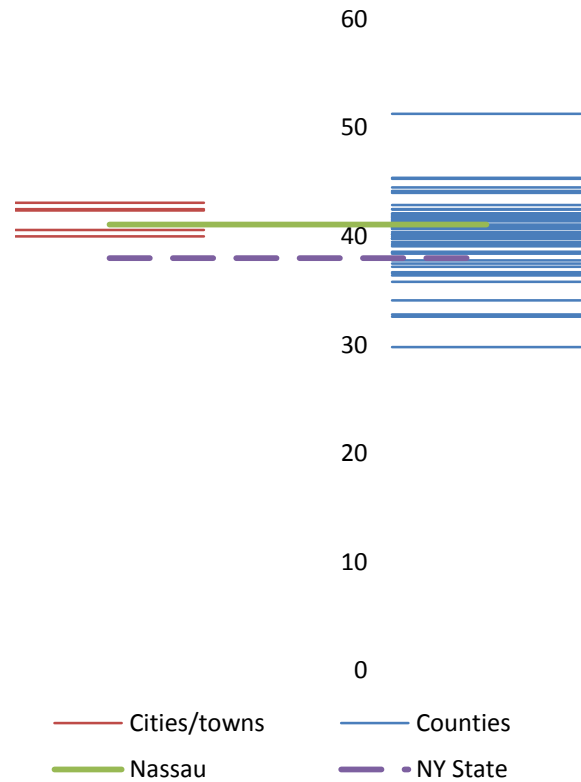


Source: 1940-2010 Decennial Census and projections by Cornell Program on Applied Demographics

4.3 Median age: comparison between areas

	Median Age
New York State	38.0
Nassau County	41.1
Cities	
Glen Cove city	40.6
Long Beach city	42.5
Towns	
Hempstead town	40.0
North Hempstead town	42.4
Oyster Bay town	43.1

Median age comparison within county (left) and between counties (right)



Source: 2010 Decennial Census

5 Race

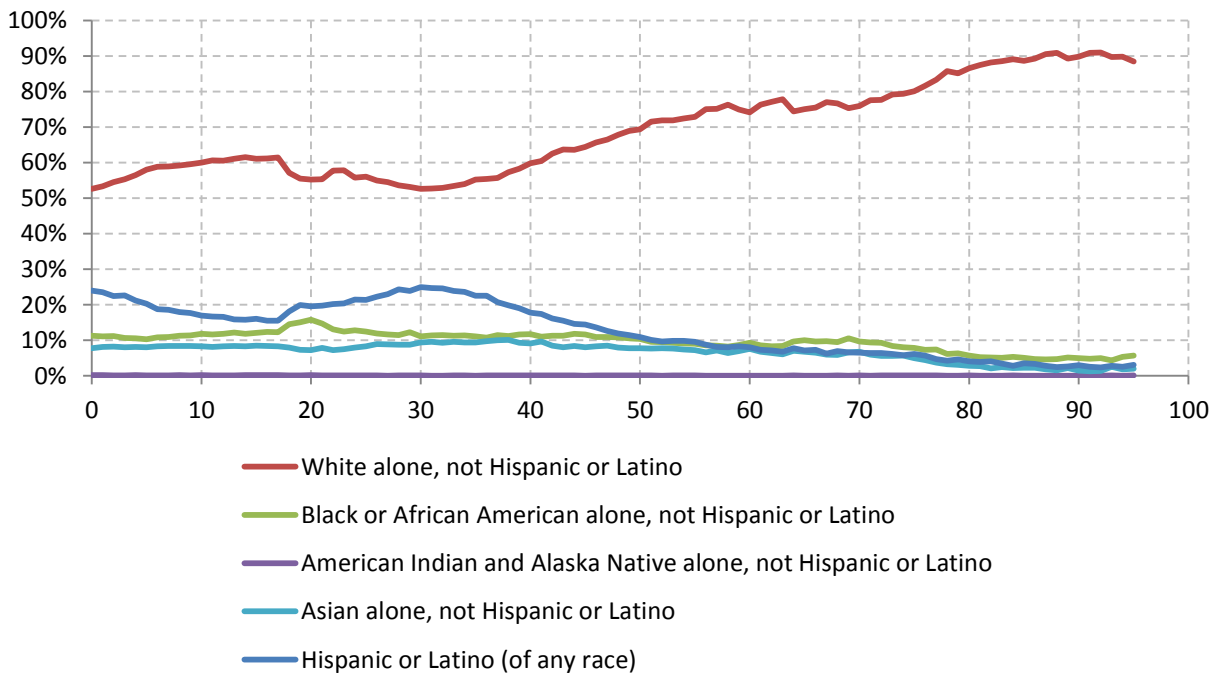
5.1 Total and household population by race

	Total		In households		In Group Quarters
	Count	Percentage	Count	Percentage	Count
Total population	1,339,532	100%	1,317,866	100%	21,666
Not Hispanic or Latino					
One race					
White	877,309	65.5%	863,036	65.5%	14,273
Black or African American	141,305	10.5%	137,054	10.4%	4,251
American Indian and Alaska Native	1,379	0.1%	1,348	0.1%	31
Asian	101,558	7.6%	100,868	7.7%	690
Native Hawaiian and Other Pacific Islander	197	0.0%	192	0.0%	5
Some other race	4,740	0.4%	4,701	0.4%	39
Two or more races	17,689	1.3%	17,431	1.3%	258
Hispanic or Latino (of any race)	195,355	14.6%	193,236	14.7%	2,119

Source: 2010 Decennial Census

5.2 Race composition by age

Race composition by age, Nassau County



Source: 2010 Decennial Census

6 Housing units

6.1 Characteristics

HOUSING OCCUPANCY	COUNT		PERCENTAGE	
	Estimate	Margin of error	Estimate	Margin of error
Total housing units	467,515	± 470	100.0%	
Occupied housing units	443,315	± 1,396	94.8%	± 0.3
Vacant housing units	24,200	± 1,309	5.2%	± 0.3
YEAR STRUCTURE BUILT				
Total housing units	467,515	± 470	100.0%	
Built 2005 or later	5,857	± 440	1.3%	± 0.1
Built 2000 to 2004	8,774	± 541	1.9%	± 0.1
Built 1990 to 1999	12,600	± 618	2.7%	± 0.1
Built 1980 to 1989	19,474	± 902	4.2%	± 0.2
Built 1970 to 1979	26,441	± 1,204	5.7%	± 0.3
Built 1960 to 1969	58,332	± 1,439	12.5%	± 0.3
Built 1950 to 1959	167,595	± 1,813	35.8%	± 0.4
Built 1940 to 1949	68,588	± 1,587	14.7%	± 0.3
Built 1939 or earlier	99,854	± 1,608	21.4%	± 0.3
HOUSING TENURE				
Occupied housing units	443,315	± 1,396	100.0%	
Owner-occupied	362,670	± 2,242	81.8%	± 0.4
Renter-occupied	80,645	± 1,933	18.2%	± 0.4
HOUSE HEATING FUEL				
Occupied housing units	443,315	± 1,396	100.0%	
Utility gas	210,650	± 1,775	47.5%	± 0.4
Bottled, tank, or LP gas	3,525	± 379	0.8%	± 0.1
Electricity	22,026	± 810	5.0%	± 0.2
Fuel oil, kerosene, etc.	204,938	± 1,667	46.2%	± 0.3
Coal or coke	140	± 80	0.0%	± 0.1
Wood	713	± 189	0.2%	± 0.1
Solar energy	17	± 20	0.0%	± 0.1
Other fuel	755	± 169	0.2%	± 0.1
No fuel used	551	± 171	0.1%	± 0.1
VALUE				
Owner-occupied units	362,670	± 2,242	100.0%	
Less than \$50,000	3,552	± 360	1.0%	± 0.1
\$50,000 to \$99,999	3,295	± 407	0.9%	± 0.1
\$100,000 to \$149,999	3,378	± 319	0.9%	± 0.1
\$150,000 to \$199,999	5,078	± 415	1.4%	± 0.1
\$200,000 to \$299,999	18,022	± 894	5.0%	± 0.2
\$300,000 to \$499,999	169,288	± 2,055	46.7%	± 0.5
\$500,000 to \$999,999	132,313	± 1,783	36.5%	± 0.5
\$1,000,000 or more	27,744	± 745	7.6%	± 0.2
Median (dollars)	478,600	± 1,550		

Source: 2007-2011 American Community Survey

6.2 Historical data on number of housing units and occupancy status

Year	Number of Housing Units	Change since previous Census	Occupied	Occupancy rate	Vacant
1970	410,190		401,056	97.8%	9,134
1980	434,045	5.8%	423,401	97.5%	10,644
1990	446,292	2.8%	431,515	96.7%	14,777
2000	458,151	2.7%	447,387	97.7%	10,764
2010	468,346	2.2%	448,528	95.8%	19,818

Source: 1970-2010 Decennial Census

7 Education

7.1 Enrollment by level of school

	Estimate	Margin of error
Total enrolled in school	359,519	± 2,049
Nursery school, preschool	24,211	± 789
Kindergarten	15,633	± 894
Elementary: grade 1 to grade 4	67,521	± 1,327
Elementary: grade 5 to grade 8	73,710	± 1,235
High school: grade 9 to grade 12	80,799	± 1,061
College, undergraduate	75,361	± 1,412
Graduate, professional school	22,284	± 923

Source: 2007-2011 American Community Survey

7.2 Enrollment by age

	Estimate	Margin of error
3 and 4 years	68.0%	± 1.8
5 to 9 years	97.4%	± 0.4
10 to 14 years	98.4%	± 0.3
15 to 17 years	98.2%	± 0.3
18 and 19 years	85.4%	± 1.3
20 to 24 years	55.0%	± 1.1
25 to 34 years	12.2%	± 0.7
35 years and over	2.1%	± 0.1

Source: 2007-2011 American Community Survey

7.3 Percentage age 18-24 enrolled in college

	Estimate	Margin of error
Population 18 to 24 years	111,826	± 72
Enrolled in college or graduate school	57.6%	± 1.0
Males 18 to 24 years	57,839	± 50
Enrolled in college or graduate school	53.5%	± 1.4
Females 18 to 24 years	53,987	± 55
Enrolled in college or graduate school	62.1%	± 1.5

Source: 2007-2011 American Community Survey

7.4 Educational attainment

	COUNT		PERCENTAGE	
	Estimate	Margin of error	Estimate	Margin of error
Population 25 years and over	909,176	± 71	100%	
EDUCATIONAL ATTAINMENT				
Less than 9th grade	44,685	± 1,562	4.9%	± 0.2
9th to 12th grade, no diploma	47,048	± 1,507	5.2%	± 0.2
High school graduate (includes equivalency)	227,837	± 3,288	25.1%	± 0.4
Some college, no degree	144,672	± 2,763	15.9%	± 0.3
Associate's degree	70,135	± 1,836	7.7%	± 0.2
Bachelor's degree	207,702	± 2,604	22.8%	± 0.3
Graduate or professional degree	167,097	± 2,786	18.4%	± 0.3
Percent high school graduate or higher			89.9%	± 0.2
Percent bachelor's degree or higher			41.2%	± 0.4

Source: 2007-2011 American Community Survey

8 Language spoken at home

	COUNT		PERCENTAGE		SPEAK ENGLISH LESS THAN "VERY WELL"	
	Estimate	Margin of error	Estimate	Margin of error	Estimate	Margin of error
Population 5 years and over	1,259,270	± 87	100%			
LANGUAGE SPOKEN AT HOME						
English only	912,763	± 4,406	72.5%	± 0.3		
Language other than English	346,507	± 4,397	27.5%	± 0.3	133,664	± 3,586
Spanish	147,597	± 1,999	11.7%	± 0.2	67,888	± 2,133
Other Indo-European languages	132,007	± 3,836	10.5%	± 0.3	40,731	± 2,185
Asian and Pacific Islander languages	50,959	± 1,803	4.0%	± 0.1	22,241	± 980
Other languages	15,944	± 1,186	1.3%	± 0.1	2,804	± 504

Source: 2007-2011 American Community Survey

9 Labor Force Characteristics

9.1 Labor force, employment and unemployment

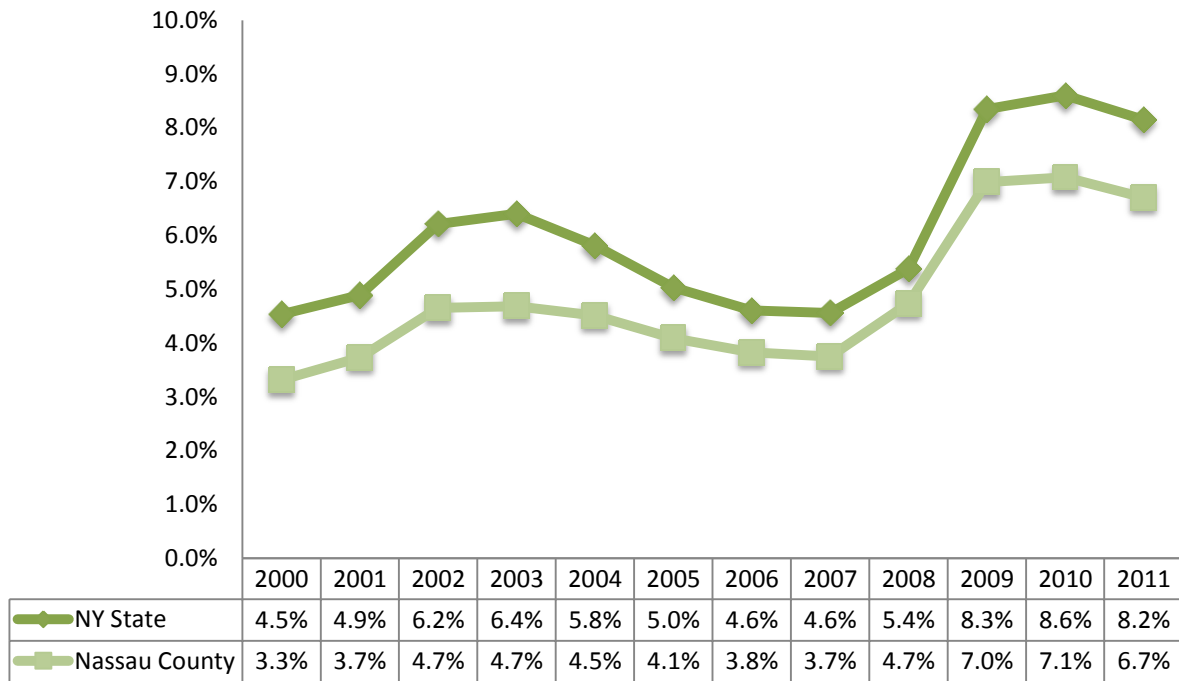
	TOTAL		IN LABOR FORCE		EMPLOYED		UNEMPLOYMENT RATE	
	Estimate	Margin of error	Estimate	Margin of error	Estimate	Margin of error	Estimate	Margin of error
Population 16 years and over	1,061,757	± 929	65.5%	± 0.2	61.2%	± 0.3	6.4%	± 0.2
AGE								
16 to 19 years	74,547	± 935	30.8%	± 1.1	23.8%	± 1.1	22.7%	± 2.1
20 to 24 years	78,034	± 64	70.4%	± 1.1	59.7%	± 1.3	15.1%	± 1.2
25 to 44 years	322,633	± 102	84.9%	± 0.4	80.2%	± 0.4	5.4%	± 0.3
45 to 54 years	215,855	± 80	85.2%	± 0.5	81.2%	± 0.6	4.8%	± 0.3
55 to 64 years	167,755	± 35	71.9%	± 0.8	68.5%	± 0.8	4.8%	± 0.4
65 to 74 years	96,610	± 46	31.4%	± 0.9	29.9%	± 0.9	4.9%	± 0.8
75 years and over	106,323	± 51	8.3%	± 0.5	7.8%	± 0.5	5.4%	± 1.3
RACE AND HISPANIC OR LATINO ORIGIN								
One race	1,046,482	± 1,727	65.5%	± 0.2	61.2%	± 0.3	6.4%	± 0.2
White	793,088	± 2,375	64.0%	± 0.3	60.3%	± 0.3	5.7%	± 0.2
Black or African American	113,464	± 1,126	69.7%	± 0.9	62.7%	± 1.0	10.0%	± 0.8
American Indian and Alaska Native	1,577	± 367	74.8%	± 6.7	67.2%	± 7.7	10.2%	± 7.3
Asian	79,080	± 552	66.0%	± 1.1	61.9%	± 1.1	6.2%	± 0.7
Pacific Islander	37	± 28	83.8%	± 30.4	83.8%	± 30.4	0.0%	± 53.3
Some other race	59,236	± 2,556	76.3%	± 1.3	70.4%	± 1.7	7.5%	± 1.4
Two or more races	15,275	± 1,478	70.0%	± 3.0	62.0%	± 3.9	11.4%	± 2.9
Hispanic or Latino origin (of any race)	139,251	± 346	74.4%	± 0.8	68.6%	± 1.0	7.6%	± 0.7
White alone, not Hispanic or Latino	721,139	± 815	63.1%	± 0.3	59.6%	± 0.3	5.5%	± 0.2
SEX								
Population 20 to 64 years	784,277	± 78	80.8%	± 0.3	75.9%	± 0.3	5.9%	± 0.2
Male	383,029	± 50	87.1%	± 0.4	81.6%	± 0.4	6.2%	± 0.3
Female	401,248	± 69	74.7%	± 0.5	70.5%	± 0.5	5.7%	± 0.3
With own children under 6 years	60,329	± 1,390	67.3%	± 1.3	63.7%	± 1.3	5.3%	± 0.8
EDUCATIONAL ATTAINMENT								
Population 25 to 64 years	706,243	± 77	81.9%	± 0.3	77.7%	± 0.3	5.1%	± 0.2
Less than high school graduate	55,629	± 1,818	71.9%	± 1.4	67.3%	± 1.6	6.4%	± 1.1
High school graduate (includes equivalency)	153,129	± 2,985	76.8%	± 0.7	71.7%	± 0.8	6.6%	± 0.5
Some college or associate's degree	178,891	± 2,726	83.2%	± 0.6	78.4%	± 0.6	5.7%	± 0.4
Bachelor's degree or higher	318,594	± 3,263	85.4%	± 0.4	82.0%	± 0.5	3.9%	± 0.3

Table formula: **LABOR FORCE** = # EMPLOYED + # UNEMPLOYED
 % IN LABOR FORCE = LABOR FORCE / TOTAL * 100%
 % EMPLOYED = # EMPLOYED / TOTAL * 100%
 UNEMPLOYMENT RATE = # UNEMPLOYED / LABOR FORCE * 100%

Source: 2007-2011 American Community Survey

9.2 Annual unemployment rate

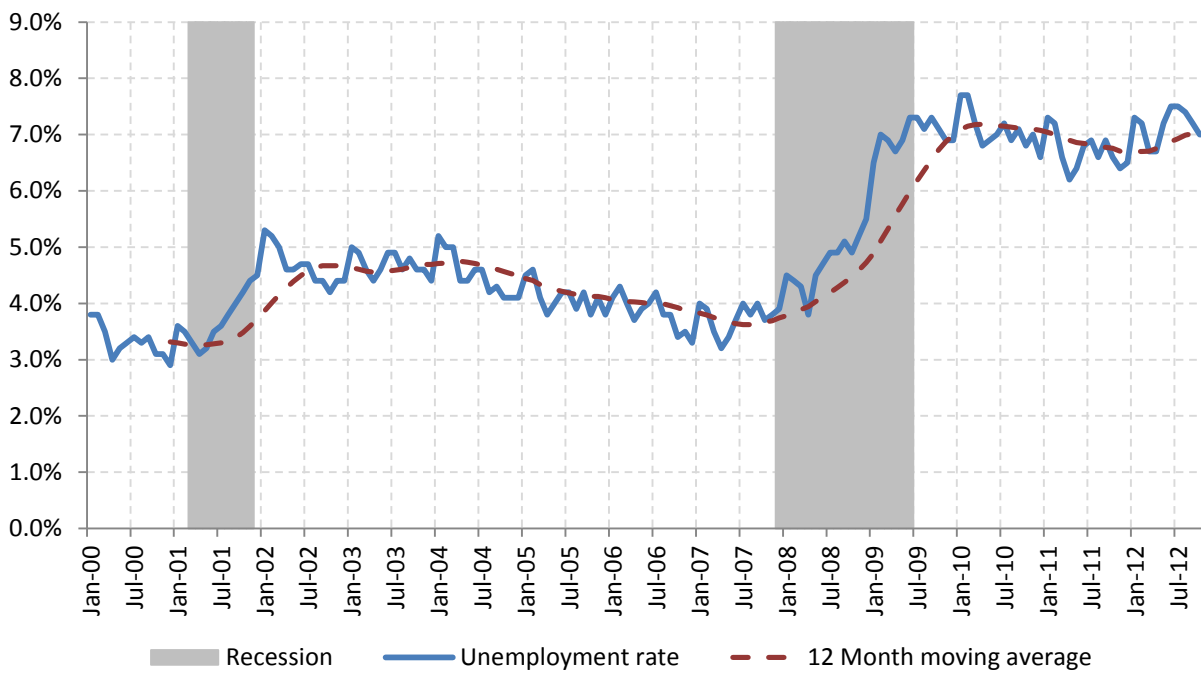
Annual unemployment rate, Nassau County and New York State



Source: Bureau Labor Statistics (BLS)

9.3 Monthly unemployment rate

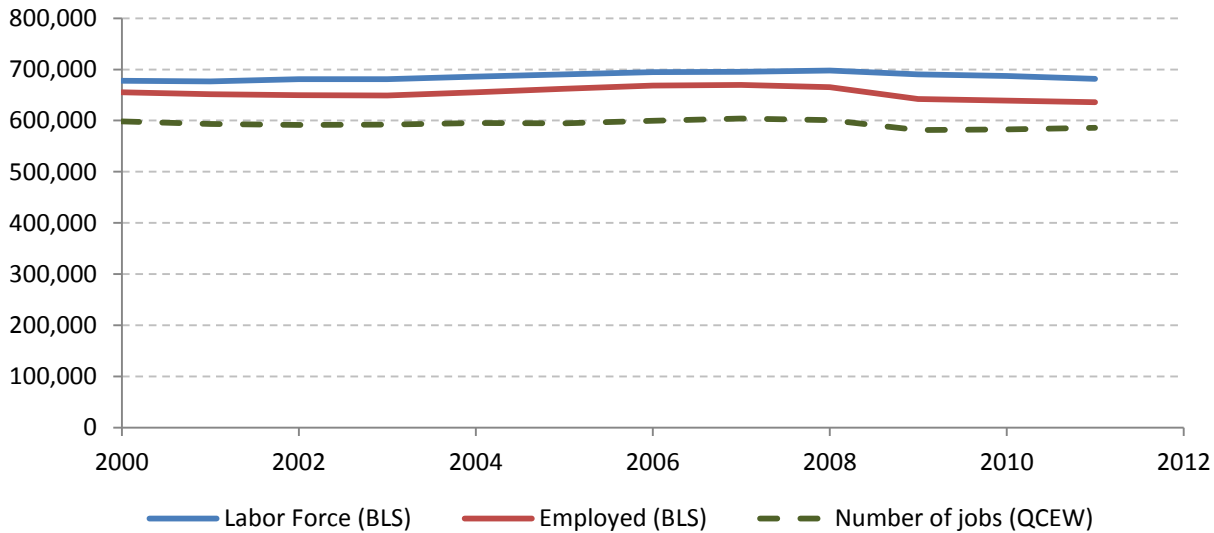
Monthly unemployment rate, Nassau County



Source: Bureau Labor Statistics (BLS)

9.4 Employment and number of jobs

**Labor force, number of employed workers and number of jobs
Nassau County**



Source: Bureau Labor Statistics (BLS) and NY Department of Labor - Quarterly Census of Employment and Wages (QCEW) – annual averages

9.5 Class of worker

					Median earnings (\$)		
		Total	%Male	%Female	Total	Male	Female
Civilian employed population 16 years and over	Estimate	650,324	52.6%	47.4%	48,726	59,098	39,808
	Margin of error	± 2,818	± 0.2	± 0.2	± 623	± 999	± 556
Private for-profit wage and salary workers:	Estimate	446,678	55.2%	44.8%	44,570	55,682	35,560
	Margin of error	± 3,435	± 0.4	± 0.4	± 572	± 1,014	± 613
Employee of private company workers	Estimate	405,545	52.8%	47.2%	42,702	53,583	35,257
	Margin of error	± 3,411	± 0.4	± 0.4	± 588	± 793	± 661
Self-employed in own incorporated business workers	Estimate	41,133	78.0%	22.0%	66,294	75,912	42,257
	Margin of error	± 1,264	± 1.4	± 1.4	± 3,793	± 2,574	± 3,004
Private not-for-profit wage and salary workers	Estimate	54,582	36.4%	63.6%	47,245	55,098	44,015
	Margin of error	± 1,699	± 1.5	± 1.5	± 1,337	± 2,920	± 1,542
Local government workers	Estimate	79,779	44.4%	55.6%	64,329	72,147	57,087
	Margin of error	± 2,160	± 1.2	± 1.2	± 1,078	± 1,677	± 1,823
State government workers	Estimate	21,197	48.0%	52.0%	67,087	73,361	59,198
	Margin of error	± 891	± 2.2	± 2.2	± 2,766	± 2,948	± 3,036
Federal government workers	Estimate	11,225	67.0%	33.0%	61,639	65,939	55,118
	Margin of error	± 747	± 2.9	± 2.9	± 1,625	± 3,886	± 2,236
Self-employed in own not incorporated business workers and unpaid family workers	Estimate	36,863	60.8%	39.2%	32,864	46,036	20,463
	Margin of error	± 1,189	± 1.7	± 1.7	± 2,148	± 3,498	± 1,189

Source: 2007-2011 American Community Survey

9.6 Jobs by industry sector

	Nassau County			NY state
	2011	Change since 2006	% of total	% of total
All NAICS Sectors	584,287	-1.2%	100.0%	100.0%
Agriculture, Forestry, Fishing and Hunting	216	-12.2%	0.0%	0.3%
Mining, Quarrying, and Oil and Gas Extraction	13	333.3%	0.0%	0.1%
Utilities	2,670	-10.0%	0.5%	0.5%
Construction	22,631	-14.7%	3.9%	3.5%
Manufacturing	18,019	-28.3%	3.1%	5.5%
Wholesale Trade	27,512	-8.2%	4.7%	4.0%
Retail Trade	79,850	0.5%	13.7%	10.5%
Transportation and Warehousing	15,624	-2.3%	2.7%	3.4%
Information	17,067	-1.1%	2.9%	3.3%
Finance and Insurance	30,687	-18.4%	5.3%	6.0%
Real Estate and Rental and Leasing	9,832	-9.7%	1.7%	2.3%
Professional, Scientific, and Technical Services	35,083	-8.7%	6.0%	6.9%
Management of Companies and Enterprises	6,496	-7.9%	1.1%	1.6%
Administrative and Support and Waste Management and Remediation Services	30,739	-8.1%	5.3%	5.2%
Educational Services	65,062	-1.1%	11.1%	10.8%
Health Care and Social Assistance	118,473	18.8%	20.3%	17.0%
Arts, Entertainment, and Recreation	11,559	-4.3%	2.0%	1.9%
Accommodation and Food Services	39,179	7.5%	6.7%	7.3%
Other Services (except Public Administration)	29,056	7.0%	5.0%	3.9%
Public Administration	24,521	-2.4%	4.2%	5.8%

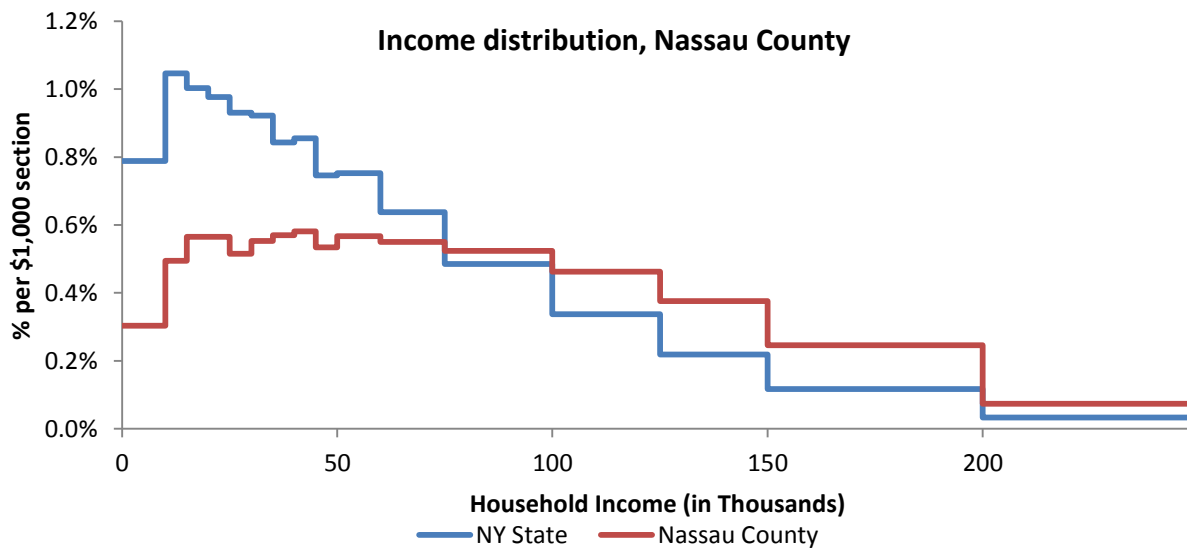
Source: U.S. Census Bureau - Public Use Quarterly Workforce Indicators (QWI) – annual averages

10 Household Income

10.1 Distribution

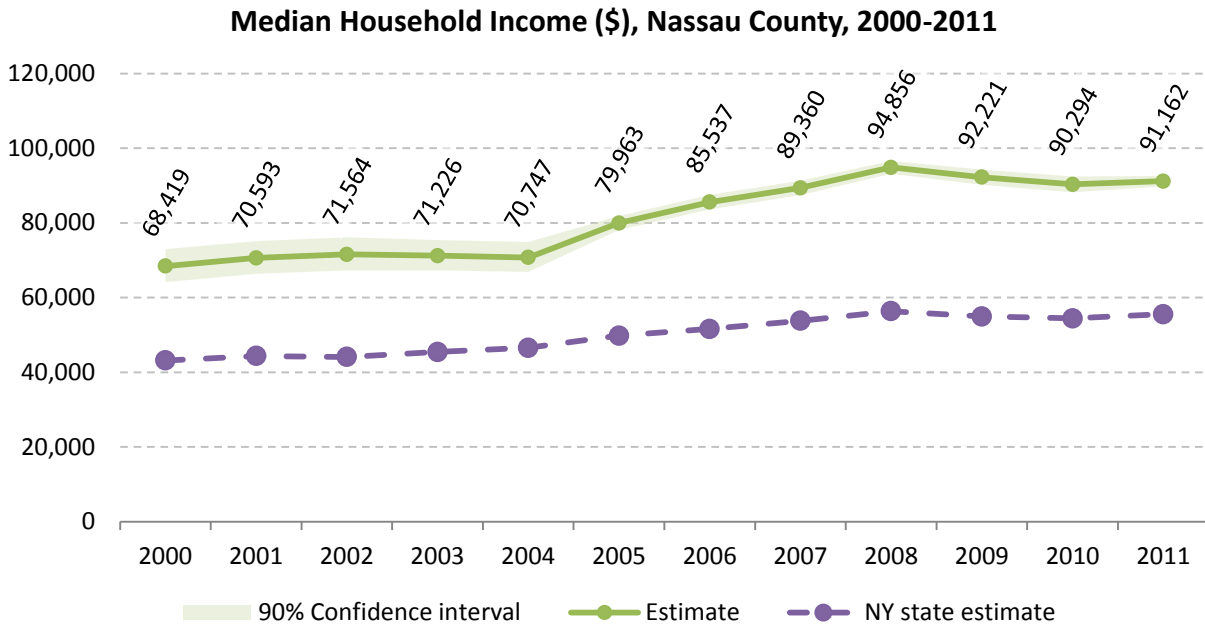
	Estimate	Margin of error	Interval width (in \$1,000)	Est. per \$1,000 section
Total:	443,315	± 1,396		
Less than \$10,000	13,443	± 820	10	1,344.3
\$10,000 to \$14,999	10,960	± 758	5	2,192.0
\$15,000 to \$19,999	12,533	± 680	5	2,506.6
\$20,000 to \$24,999	12,530	± 624	5	2,506.0
\$25,000 to \$29,999	11,430	± 714	5	2,286.0
\$30,000 to \$34,999	12,258	± 799	5	2,451.6
\$35,000 to \$39,999	12,628	± 773	5	2,525.6
\$40,000 to \$44,999	12,874	± 846	5	2,574.8
\$45,000 to \$49,999	11,840	± 737	5	2,368.0
\$50,000 to \$59,999	25,122	± 1,119	10	2,512.2
\$60,000 to \$74,999	36,587	± 1,334	15	2,439.1
\$75,000 to \$99,999	57,995	± 1,243	25	2,319.8
\$100,000 to \$124,999	51,254	± 1,628	25	2,050.2
\$125,000 to \$149,999	41,675	± 1,219	25	1,667.0
\$150,000 to \$199,999	54,578	± 1,394	50	1,091.6
\$200,000 or more	65,608	± 1,240	-	-

Source: 2007-2011 American Community Survey



Source: 2007-2011 American Community Survey

10.2 Median household income: Trends over time

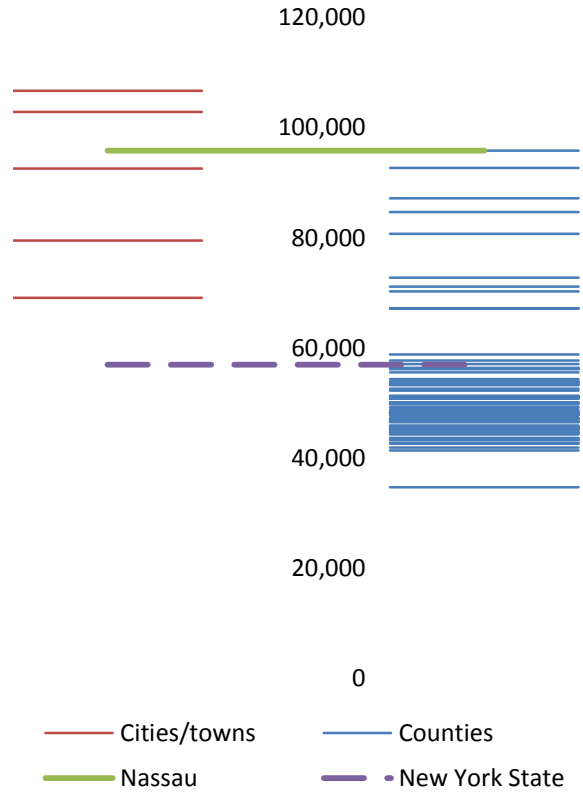


Source: Small Area Income and Poverty Estimates (SAIPE)

10.3 Median household income: Comparison between areas

	MEDIAN HOUSEHOLD INCOME (\$)	
	Estimate	Margin of error
New York State	56,951	± 190
Nassau County	95,823	± 1,196
Cities		
Glen Cove	69,093	± 5,943
Long Beach	79,546	± 3,691
Towns		
Hempstead	92,602	± 1,064
North Hempstead	102,893	± 2,151
Oyster Bay	106,697	± 2,061

Median household income comparison within county (left) and between counties (right)



Source: 2007-2011 American Community Survey

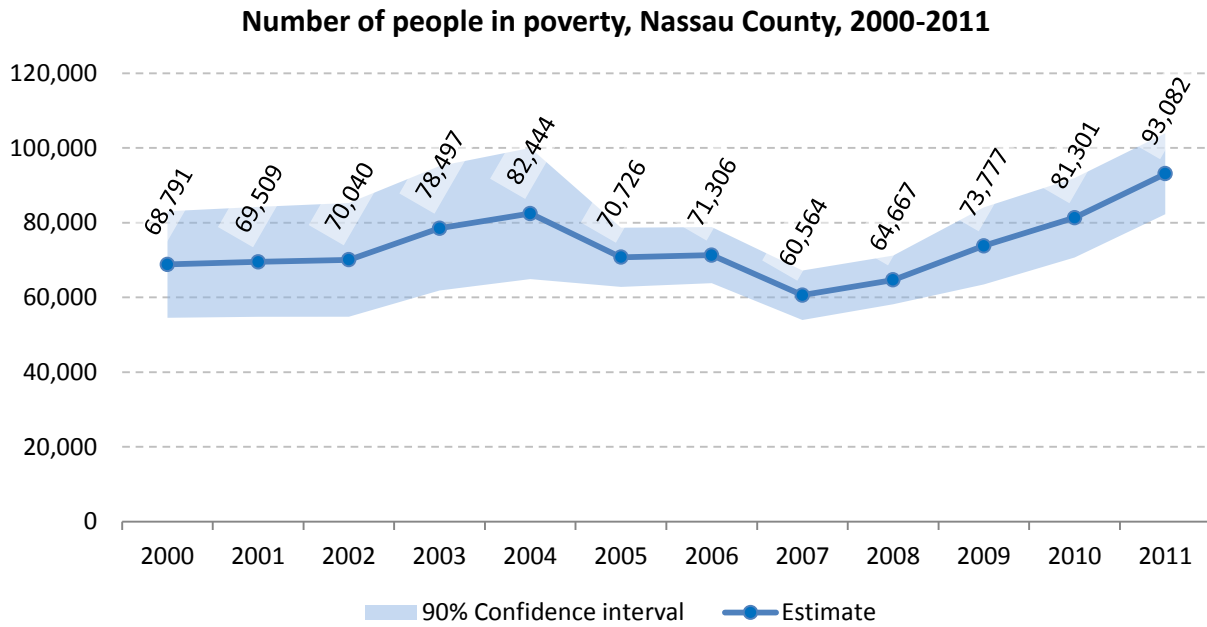
11 Poverty

11.1 Poverty characteristics

	TOTAL		BELOW POVERTY LEVEL		PERCENT BELOW POVERTY LEVEL	
	Estimate	Margin of error	Estimate	Margin of error	Estimate	Margin of error
Population for whom poverty status is determined	1,312,301	± 1,301	68,703	± 3,046	5.2%	± 0.2
AGE						
Under 18 years	309,924	± 425	20,066	± 1,472	6.5%	± 0.5
Related children under 18 years	309,278	± 461	19,427	± 1,506	6.3%	± 0.5
18 to 64 years	805,676	± 971	38,701	± 1,741	4.8%	± 0.2
65 years and over	196,701	± 807	9,936	± 689	5.1%	± 0.4
SEX						
Male	635,229	± 765	27,603	± 1,563	4.3%	± 0.2
Female	677,072	± 813	41,100	± 1,949	6.1%	± 0.3
RACE AND HISPANIC OR LATINO ORIGIN						
One race	1,287,213	± 2,089	65,295	± 2,911	5.1%	± 0.2
White	965,339	± 3,275	35,524	± 1,788	3.7%	± 0.2
Black or African American	142,007	± 1,601	14,025	± 1,445	9.9%	± 1.0
American Indian and Alaska Native	2,014	± 596	599	± 447	29.7%	± 17.5
Asian	100,216	± 797	4,668	± 880	4.7%	± 0.9
Hispanic or Latino origin (of any race)	186,081	± 496	21,602	± 1,848	11.6%	± 1.0
White alone, not Hispanic or Latino	870,459	± 1,260	27,615	± 1,463	3.2%	± 0.2
EDUCATIONAL ATTAINMENT						
Population 25 years and over	899,864	± 1,097	40,858	± 1,628	4.5%	± 0.2
Less than high school graduate	89,073	± 2,246	11,520	± 922	12.9%	± 1.0
High school graduate (includes equivalency)	223,633	± 3,271	13,725	± 905	6.1%	± 0.4
Some college, associate's degree	213,535	± 2,970	8,202	± 681	3.8%	± 0.3
Bachelor's degree or higher	373,623	± 3,648	7,411	± 614	2.0%	± 0.2
EMPLOYMENT STATUS						
Civilian labor force 16 years and over	691,080	± 2,518	19,589	± 1,139	2.8%	± 0.2
Employed	646,771	± 2,832	14,845	± 930	2.3%	± 0.1
Male	340,460	± 1,941	6,595	± 741	1.9%	± 0.2
Female	306,311	± 1,875	8,250	± 675	2.7%	± 0.2
Unemployed	44,309	± 1,570	4,744	± 551	10.7%	± 1.1
Male	24,642	± 1,200	2,133	± 343	8.7%	± 1.4
Female	19,667	± 851	2,611	± 433	13.3%	± 1.9
WORK EXPERIENCE IN THE PAST 12 MONTHS						
Population 16 years and over	1,042,856	± 1,741	50,913	± 2,069	4.9%	± 0.2
Worked full-time, year-round	462,816	± 2,913	4,949	± 546	1.1%	± 0.1
Worked part-time or part-year	244,976	± 3,118	13,406	± 862	5.5%	± 0.3
Did not work	335,064	± 3,194	32,558	± 1,574	9.7%	± 0.5

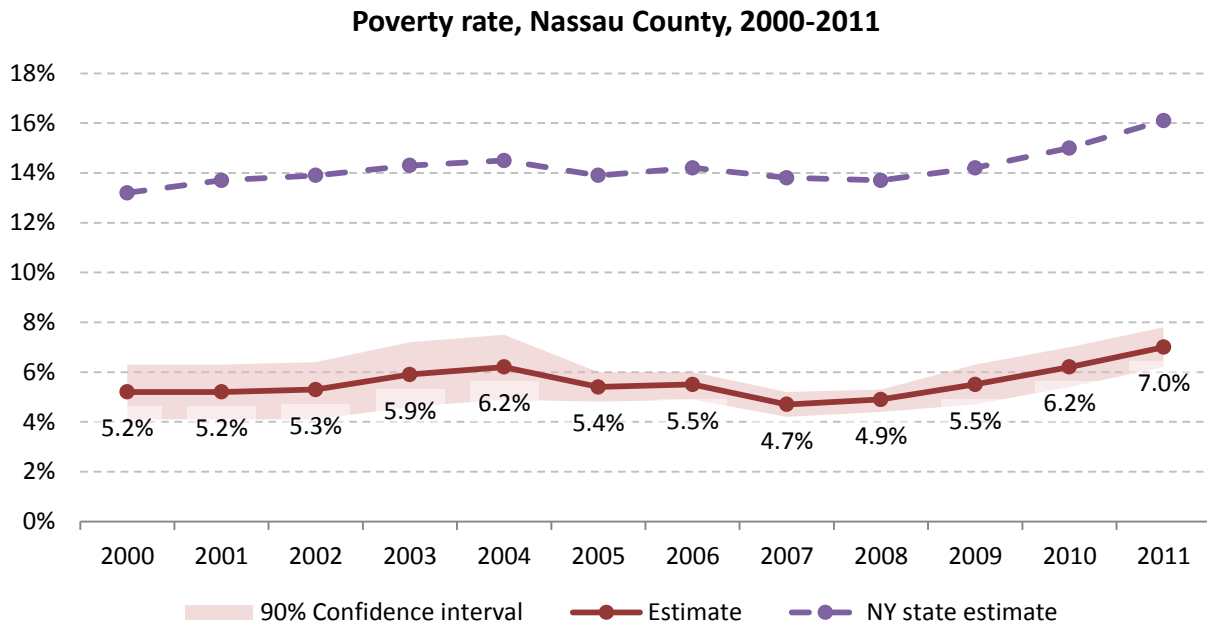
Source: 2007-2011 American Community Survey

11.2 Poverty: Trends over time: Count



Source: Small Area Income and Poverty Estimates (SAIPE)

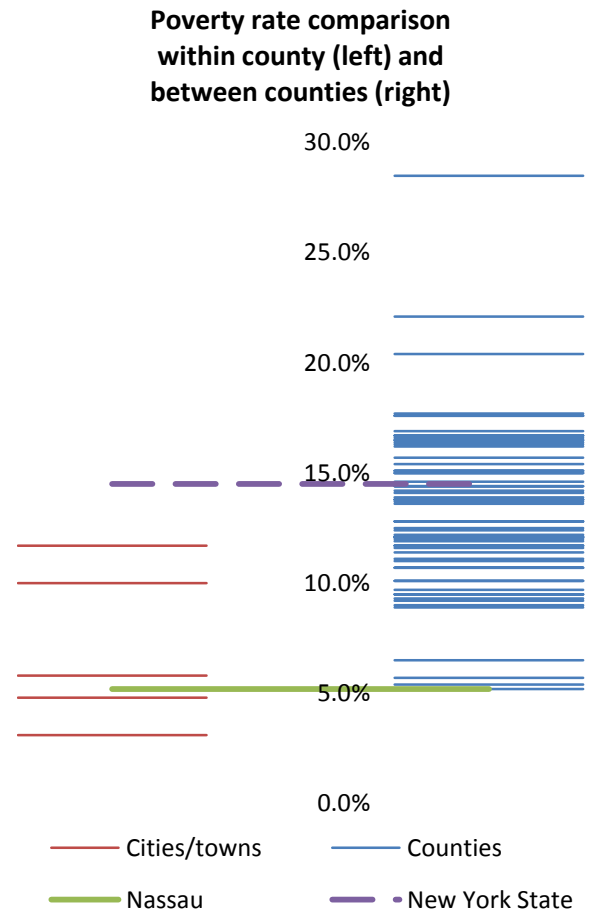
11.3 Poverty: Trends over time: Rate



Source: Small Area Income and Poverty Estimates (SAIPE)

11.4 Poverty rate: comparison between areas

Poverty Rate - All people		
	Estimate	Margin of error
New York State	14.5%	± 0.1
Nassau County	5.2%	± 0.2
Cities		
Glen Cove	11.7%	± 3.1
Long Beach	10.0%	± 2.0
Towns		
Hempstead	5.8%	± 0.3
North Hempstead	4.8%	± 0.6
Oyster Bay	3.1%	± 0.3

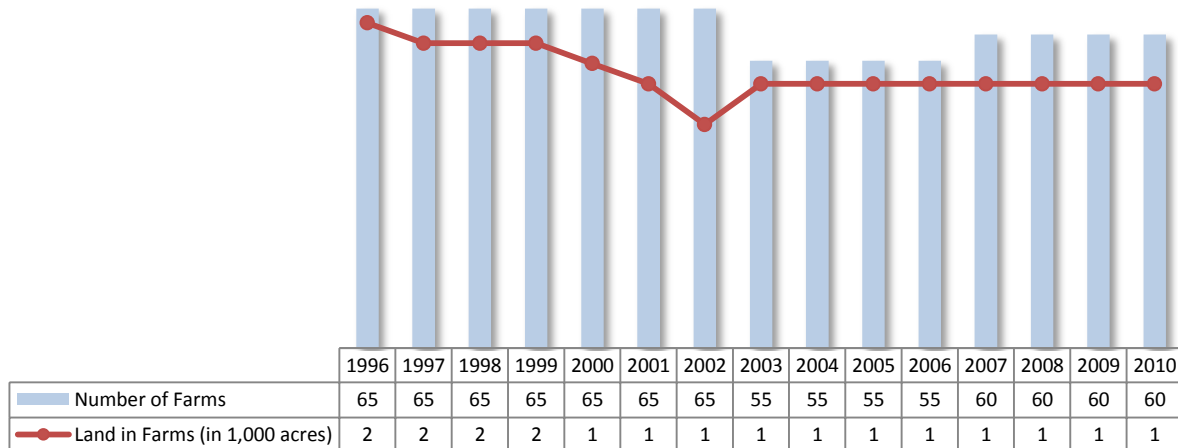


Source: 2007-2011 American Community Survey

12 Agriculture

12.1 Number of farms and land in farms

Nassau County, 1996-2010



Source: National Agricultural Statistics Service – Annual Statistical bulletin

12.2 Farm Operator Characteristics

	Principal Operator		
	Total	Male	Female
Number of farms	59	39	20
Average size of farm (acres)	22	27	12
PRIMARY OCCUPATION			
Farming	24	-	-
Other	35	-	-
AGE			
Under 45	6	-	-
45 to 64 years	41	-	-
65 years and over	12	-	-
Average age (years)	55.1	-	-
YEARS ON PRESENT FARM			
Less than 3 years	4	-	-
3 to 4 years	5	-	-
5 to 9 years	10	-	-
10 years or more	40	-	-

Source: 2007 Agricultural Census

12.3 Map of type of crop

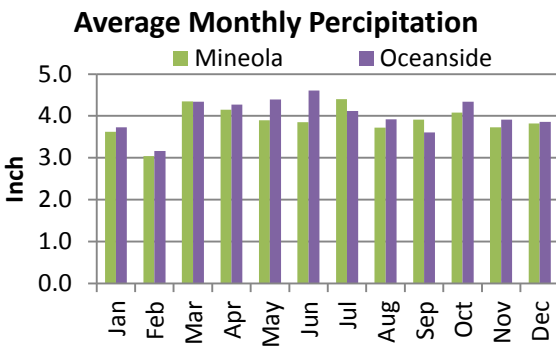
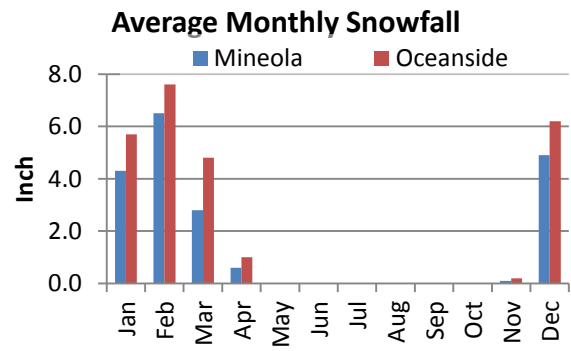
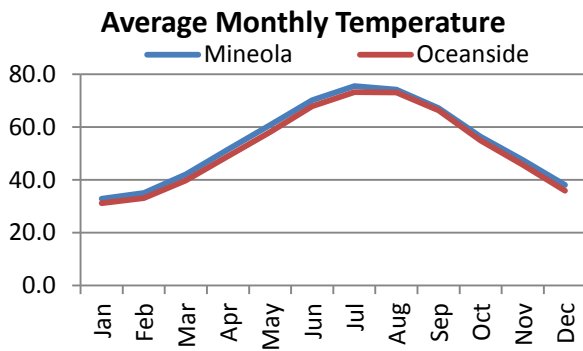
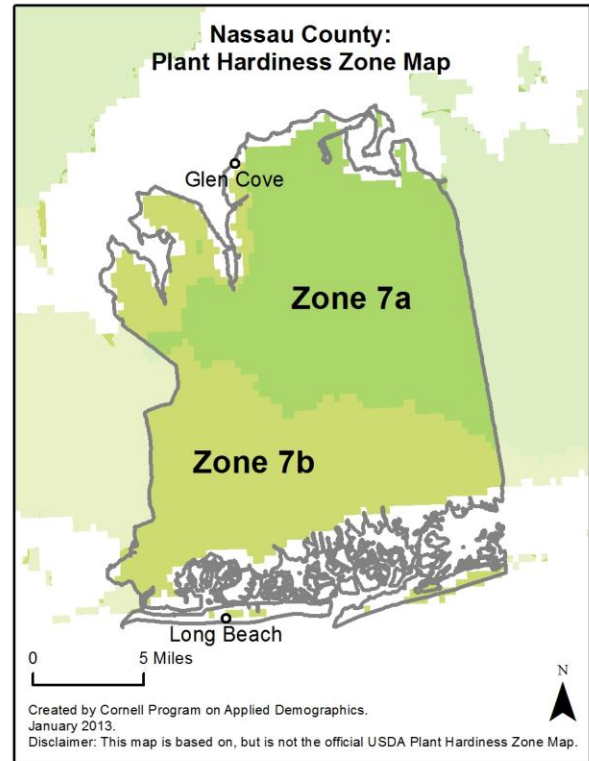
Not available due to very limited fields of crop

12.4 Estimated acreage by crop

	Acreage	%		Acreage	%
Cereals			Fruit and nuts		
Barley	-		Apples	7	4.0%
Corn	32	18.0%	Apricots	-	
Millet	-		Blueberries	-	
Oats	2.4	1.4%	Cherries	-	
Rye	0.4	0.2%	Cranberries	-	
Sorghum	-		Grapes	-	
Speltz	-		Nectarines	-	
Spring Wheat	-		Peaches	0.2	0.1%
Sweet Corn	4.7	2.7%	Plums	0.2	0.1%
Triticale	-		Prunes	-	
Winter Wheat	4.0	2.3%	Strawberries	-	
DbI Crop WinWht/Corn	-		Walnuts	-	
Leguminous crops			Beverage and spice crops		
Alfalfa	9	5.3%	Herbs	-	
Other Hay/Non Alfalfa	51	28.7%	Peppers	-	
Dry Beans	0.2	0.1%	Trees		
Peas	-		Christmas Trees	-	
Vetch	1.6	0.9%	Other Tree Crops	-	
Oilseed crops			Other crops		
Soybeans	3.6	2.0%	Tobacco	-	
Sunflower	0.4	0.2%	Misc Veggies & Fruits	-	
Sugar crops			Clover/Wildflowers	-	
Sugarbeets	-		Sod/Grass Seed	-	
Root/tuber crops with high starch or inulin content			Switchgrass	-	
Potatoes	4.7	2.7%	DbI Crop Soybeans/Oats	-	
Vegetables and melons			DbI Crop WinWht/Soybeans	-	
Asparagus	-		Other Crops	-	
Broccoli	-		Pasture/Grass	44	25.1%
Cabbage	-		Fallow/Idle Cropland	11	6.2%
Carrots	-				
Eggplants	-				
Onions	-				
Pumpkins	-				
Squash	-				
Tomatoes	-				
Turnips	-				

Source: National Agricultural Statistics Service - Cropland Data Layer 2011

13 Climate



Average length of freeze-free season

	Last day of frost	First day of frost	Season length
Mineola	April 4	November 8	218
Oceanside	Not available		

Source: NOAA, Northeast Regional Climate Center at Cornell University. Averages 1981-2010

14 Glossary

American Community Survey (ACS) - The American Community Survey is an ongoing survey of the population that provides data every year on a variety of social and economic characteristics—age, sex, race, family and relationships, income and benefits, health insurance, education, veteran status, disabilities, where you work and how you get there, where you live and how much you pay for some essentials. The ACS replaced the information previously gathered by what was known as the “long form” of the decennial censuses. The ACS provides communities, companies and other institutions with current information they need to plan investments and services. Information from the survey generates data that help determine how more than \$400 billion in federal and state funds are distributed each year. Every estimate presented in the American Community Survey, as in other surveys, has an uncertainty associated with it. Often the magnitude of that uncertainty is expressed as the Margin of Error.

Confidence Interval (CI) - indication of the degree of uncertainty about a sample estimates. Confidence intervals have been traditionally reported at the 90, 95 and 99 percent levels. A 90 percent confidence interval can be interpreted, for example, roughly as providing 90 percent certainty that the interval defined by the upper and lower bounds contain the true value of the characteristic. If a Margin of Error is given, the lower bound of the confidence interval is equal to the estimate minus the Margin of Error and the upper bound is equal to the estimate plus the Margin of Error. (See further, Margin of Error definition below.)

County subdivision or Minor Civil Division (MCD) - The Census Bureau geography for primary administrative units below the county level in New York is collectively referred to as county subdivisions or minor civil divisions. These include towns, cities and Indian Reservations.

Decennial Census - the Census of the population and housing taken every 10 years in the United States, at the start of each decade, since 1790.

Employed – either “at work” or “with a job, but not at work”.

Group Quarters Population - all U.S. residents who live in group living facilities including correctional institutions, juvenile facilities, skilled nursing facilities, college residence halls, military barracks, group homes, and workers' dormitories.

Household Population - all U.S. residents who live in housing units such as single family homes, townhouses, apartments, and mobile homes.

Intercensal Population Estimates - estimates produced for the years between two decennial censuses when both the beginning and ending populations are known. They are produced once a decade by adjusting the existing time series of postcensal estimates for the entire decade to smooth the transition from one decennial census count to the next. They differ from the postcensal estimates that are released annually because the difference between the April 1 postcensal estimate and April 1 census count for the end of the decade is redistributed across the estimates for that decade. For dates when both postcensal and intercensal estimates are available, intercensal estimates are preferred.

Labor Force - consists of people classified as employed or unemployed.

Margin of Error (MOE) - a measure of the precision of an estimate at a given level of confidence. The confidence level of a margin of error indicates the likelihood that the difference between the population value (which you

would get if you could measure the whole population instead of a sample) and the estimate is less than or equal to the margin of error. The range from the estimate minus the margin of error to the estimate plus the margin of error is called the confidence interval. All ACS estimates are published with their margins of error at the 90 percent confidence level. Margins of error are useful in assessing the reliability of estimates and whether differences between estimates are significant.

NAICS - The North American Industry Classification System or NAICS is used by business and government to classify business establishments according to type of economic activity (process of production).

Numeric Population Change - difference between the population of an area at the beginning and end of a time period. It is computed by taking the difference between the population at one point in time (t1) and some future time (t2).

Percent Population Change - difference between the population of an area at the beginning and end of a time period, expressed as a percentage of the beginning population. It is computed by dividing the population change (t2 - t1) by t1 and multiplying the result by 100.

Population Estimates - The calculated number of people living in an area as of a specified point in time, usually July 1st. The estimated population is calculated using a component of change model that incorporates information on natural increase (births, deaths) and net migration (net domestic migration, net international migration) that has occurred in an area since the latest decennial census. A procedure for estimating the current population using a procedure involving a "base population" value at time t -1, adding to that the births during the interval t-1 to t, subtracting the deaths during that interval t-1 to t, and then adding the net domestic and net international migration that occurred during that interval.

Population Density - Total number of people per areal unit like a square mile or square kilometer.

Population Pyramids - A graphical way of portraying a population's age and sex composition at a given slice in time. The first horizontal bar, constituting the base of the graph, is the youngest age group (typically 0-4) with the number of males in that age group on the left and the number of females in that age group on the right. On top of that age group is another horizontal bar for the next age group (e.g. 5-9) and so forth with the top bar typically for those aged 75 and over. In a population with lots of births and deaths, the shape typically forms a pyramid with a broad base and a narrow top. It is one of the most basic ways to understand population change over time as well as between different geographic units of a similar status (e.g. counties).

Postcensal Estimates - estimates produced for the years after a decennial census when only the beginning population is known. They are produced and revised each year, targeted to July 1 of that year.

Projection - estimated population at some future time based on assumptions about births, deaths, migration, and ages.

Race/Ethnicity - the Census Bureau collects racial data in accordance with guidelines provided by the U.S. Office of Management and Budget (OMB), and these data are based on self-identification. The racial categories included in the census questionnaire generally reflect a social definition of race recognized in this country and not an attempt to define race biologically, anthropologically, or genetically. In addition, it is recognized that the categories of the race item include racial and national origin or sociocultural groups. People may choose to report more than one race to indicate their racial mixture, such as "American Indian" and "White." People who identify their origin as Hispanic, Latino, or Spanish may be of any race. OMB requires five minimum categories: White, Black or African American, American Indian or Alaska Native, Asian, and Native Hawaiian or Other Pacific

Islander. Hispanics may be classified as white or black. So we generally separate them out as an ethnic group first.

Unemployed – Not employed, but actively looking for work and available to accept a job.

Unemployment rate – Fraction of the Labor Force that is unemployed.

Urban Area – A densely settled area with at least 2,500 people. If the total number of people is less than 50,000 the Census Bureau calls it an Urban Cluster, otherwise an Urbanized Area.

Vintage - each year, the U.S. Census Bureau produces and publishes estimates of the population for each state and county, as well as the nation as a whole. These are called “vintages.” In producing these vintages, the Bureau utilizes administrative data from a number of sources to estimate 1) the change in population since the most recent decennial census, and 2) the population for each year since the most recent decennial census. With each annual release of population estimates (vintage), the entire time series of estimates beginning on April 1, 2010 is revised and updated.

15 References

Nassau County homepage: <http://www.nassaucountyny.gov/>

At Cornell:

- Cornell Cooperative Extensions (CCE)
Home page: <http://www.cce.cornell.edu>
 - Nassau local office: <http://blogs.cce.cornell.edu/nassau/>
- Program on Applied Demographics (PAD)
URL: <http://pad.human.cornell.edu/>
- Community and Regional Development Institute (CaRDI)
URL: <http://devsoc.cals.cornell.edu/cals/devsoc/outreach/cardi/index.cfm>

Data sources and background information:

- U.S. Census Bureau - general
 - QuickFacts: <http://quickfacts.census.gov/qfd/states/36/36059.html>
 - QuickLinks: <http://quickfacts.census.gov/qfd/states/36/36059lk.html>
 - American FactFinder: <http://factfinder2.census.gov>
- U.S. Census Bureau - population
 - Decennial Census
 - Background: <http://2010.census.gov/2010census/>
 - Demographic Profile: http://factfinder2.census.gov/bkmk/table/1.0/en/DEC/10_SF1/SF1DP1/0500000US360599
 - American Community Survey (ACS)
 - Background: <http://www.census.gov/acs/www/>
 - Social Data Profile: http://factfinder2.census.gov/bkmk/table/1.0/en/ACS/10_5YR/DP02/0500000US36059
 - Economic Data Profile: http://factfinder2.census.gov/bkmk/table/1.0/en/ACS/10_5YR/DP03/0500000US36059
 - Housing Data Profile: http://factfinder2.census.gov/bkmk/table/1.0/en/ACS/10_5YR/DP04/0500000US36059
 - Demographics Data Profile: http://factfinder2.census.gov/bkmk/table/1.0/en/ACS/10_5YR/DP05/0500000US36059
 - Population estimates: <http://www.census.gov/popest/estimates.html>
- U.S. Census Bureau – Small Area Income & Poverty Estimates (SAIPE)
 - <http://www.census.gov/did/www/saipe/>
- U.S. Census Bureau - Public Use Quarterly Workforce Indicators (QWI) – annual averages
 - <http://www2.vrdc.cornell.edu/news/data/qwi-public-use-data/>
- Bureau Labor Statistics (BLS) – Local Area Unemployment Statistics: <http://www.bls.gov/lau/>
- NY Department of Labor -
 - Labor statistics: <http://www.labor.ny.gov/stats/>
 - Quarterly Census of Employment and Wages (QCEW): <http://www.labor.ny.gov/stats/lsqcew.shtm>
- Bureau of Economic Analysis (BEA) – Local Area Personal Income and Employment: <http://bea.gov/iTable/iTable.cfm?ReqID=70&step=1>

- USDA Census of Agriculture
 - 2007
 - Home page: <http://www.agcensus.usda.gov/Publications/2007/index.php>
 - County profile: http://www.agcensus.usda.gov/Publications/2007/Online_Highlights/County_Profiles/New_York/cp36059.pdf
 - Race, Ethnicity and Gender Profiles: http://www.agcensus.usda.gov/Publications/2007/Online_Highlights/Race_Ethnicity_and_Gender_Profiles/New_York/cpd36059.pdf
- USDA National Agricultural Statistics Service (NASS)
 - Home page: <http://www.nass.usda.gov/index.asp>
 - New York Statistical Bulletins: http://www.nass.usda.gov/Statistics_by_State/New_York/Publications/Annual_Statistical_Bulletin/
 - Cropland Data Layer – CropScape: <http://nassgeodata.gmu.edu/CropScape/>
- USDA Agricultural Research Service – Plant Hardness Zone Map: <http://planthardiness.ars.usda.gov/PHZMWeb/>
- NOAA, Northeast Regional Climate Center at Cornell University
 - Home page: <http://www.nrcc.cornell.edu/index.html>

Alternative sites for data retrieval:

- The Nelson A. Rockefeller Institute of Government – New York State Statistical Yearbooks http://www.rockinst.org/nys_statistics/
- Headwaters Economics: Economic Profile System – Human Dimensions Toolkit <http://headwaterseconomics.org/tools/eps-hdt>
- National Historical Geographic Information System (NHGIS) <https://www.nhgis.org/>
- Social Explorer <http://www.socialexplorer.com/pub/home/home.aspx>
- Missouri Census Data Center <http://mcdc.missouri.edu/>
- DataFerret <http://dataferrett.census.gov/>
- Investigative Reporters and Editors (IRE) Census project <http://census.ire.org/>