

Lewis

County Profile

2013

A collection of recent demographic, social, economic and agricultural data

Compiled by Jan Vink

Assisted by Joe Francis, Sutee Anantsuksomsri, Nij Tontisirin, Johannes Plambeck



Cornell University
Cooperative Extension



This profile is a part of a set of profiles generated for each county in New York State. The profiles were developed and generated by the Cornell Program on Applied Demographics. The work is sponsored by Cornell Cooperative Extension and promoted with webinars and workshops in coordination with the Community & Regional Development Institute.

Cornell Program on Applied Demographics:

The Program on Applied Demographics (PAD) brings skills in demographics, economics, statistics, data gathering and data analysis together to provide a variety of organizations with data, information and advice.

For more information: <http://pad.human.cornell.edu/>

Cornell Cooperative Extension:

Cornell Cooperative Extension (CCE) puts knowledge to work in pursuit of economic vitality, ecological sustainability and social well-being. We bring local experience and research based solutions together, helping New York State families and communities thrive in our rapidly changing world.

For more information: <http://cce.cornell.edu/>

Community & Regional Development Institute:

The Community & Regional Development Institute (CaRDI) supports informed decision making for residents and communities in New York State through applied research and education.

For more information: <http://cardi.cornell.edu/>

All profiles are freely downloadable as PDF documents on the PAD website:

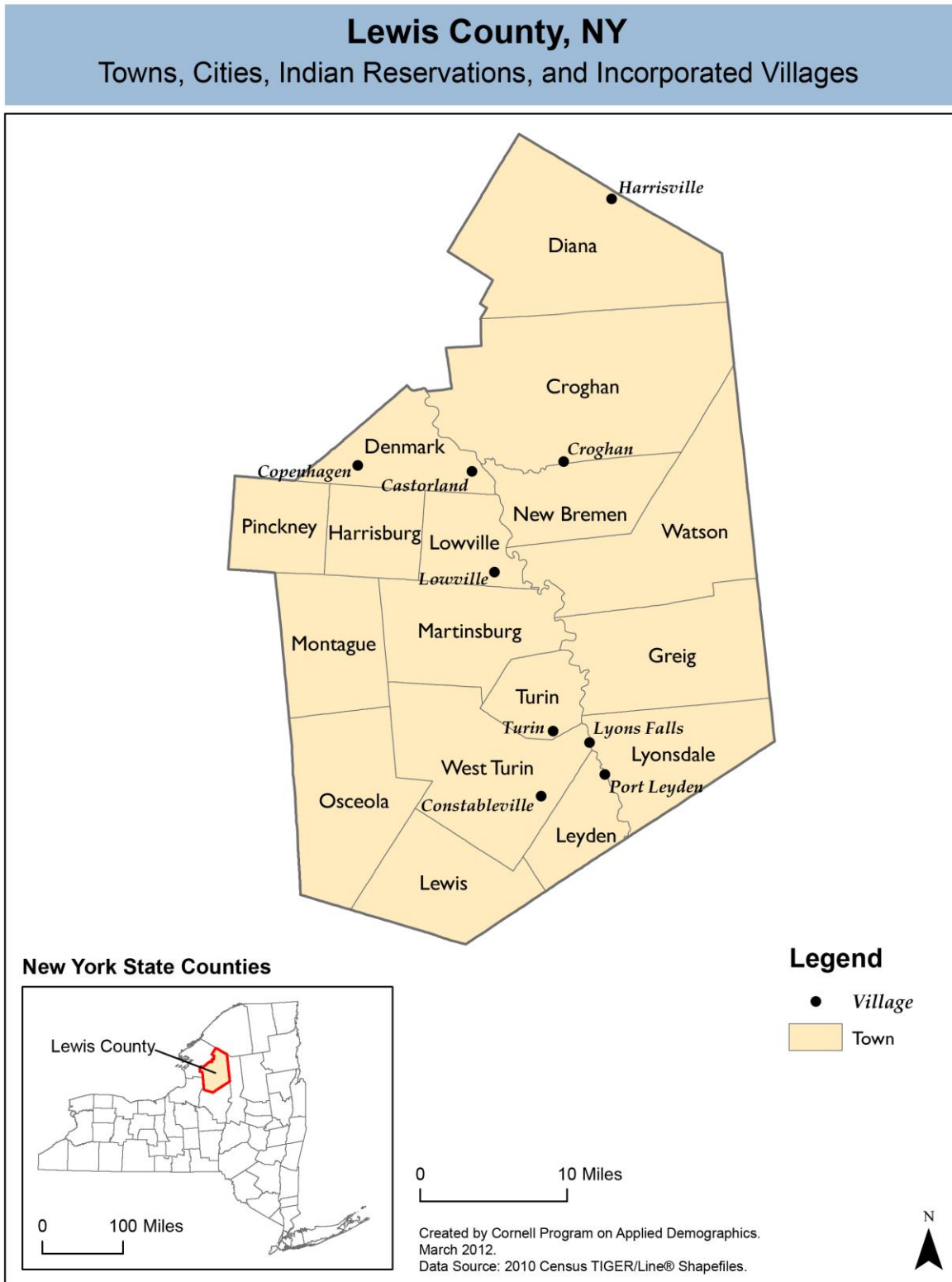
<http://pad.human.cornell.edu/profiles/index.cfm>

Contents

Contents	2
1 Reference Maps	4
2 Population density and Urban Areas Map	6
3 Total Population	7
3.1 Historic and projected	7
3.2 Change since previous Census	7
3.3 Annual population estimates	8
3.4 Percentage sub county change 2000-2010	9
4 Population by age	11
4.1 Historic and projected population pyramids	11
4.2 Selected age groups	12
4.3 Median age: comparison between areas	14
5 Race	15
5.1 Total and household population by race	15
5.2 Race composition by age	15
6 Housing units	16
6.1 Characteristics	16
6.2 Historical data on number of housing units and occupancy status	17
7 Education	18
7.1 Enrollment by level of school	18
7.2 Enrollment by age	18
7.3 Percentage age 18-24 enrolled in college	18
7.4 Educational attainment	19
8 Language spoken at home	19
9 Labor Force Characteristics	20
9.1 Labor force, employment and unemployment	20
9.2 Annual unemployment rate	21
9.3 Monthly unemployment rate	21
9.4 Employment and number of jobs	22
9.5 Class of worker	22
9.6 Jobs by industry sector	23
10 Household Income	24
10.1 Distribution	24
10.2 Median household income: Trends over time	25
10.3 Median household income: Comparison between areas	26
11 Poverty	27
11.1 Poverty characteristics	27
11.2 Poverty: Trends over time: Count	28
11.3 Poverty: Trends over time: Rate	28
11.4 Poverty rate: comparison between areas	29
12 Agriculture	30
12.1 Number of farms and land in farms	30
12.2 Farm Operator Characteristics	30

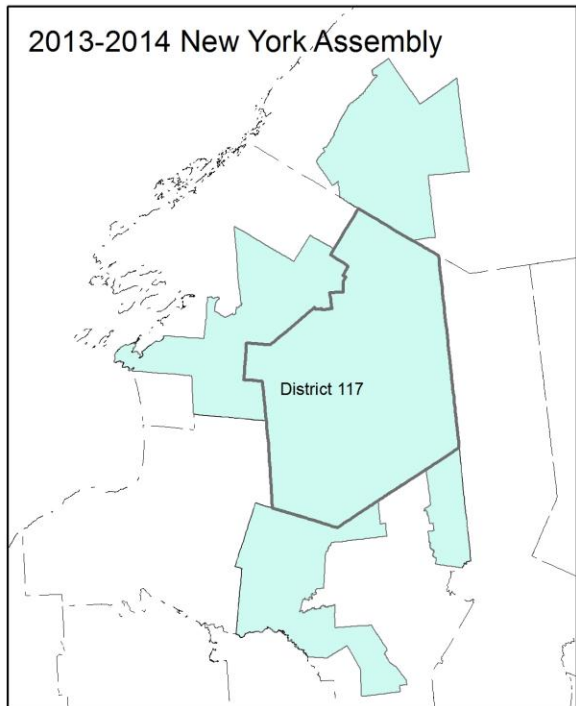
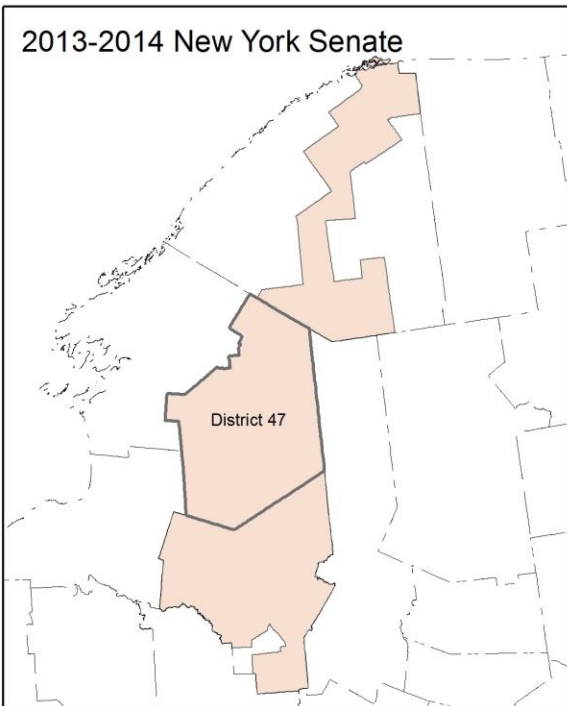
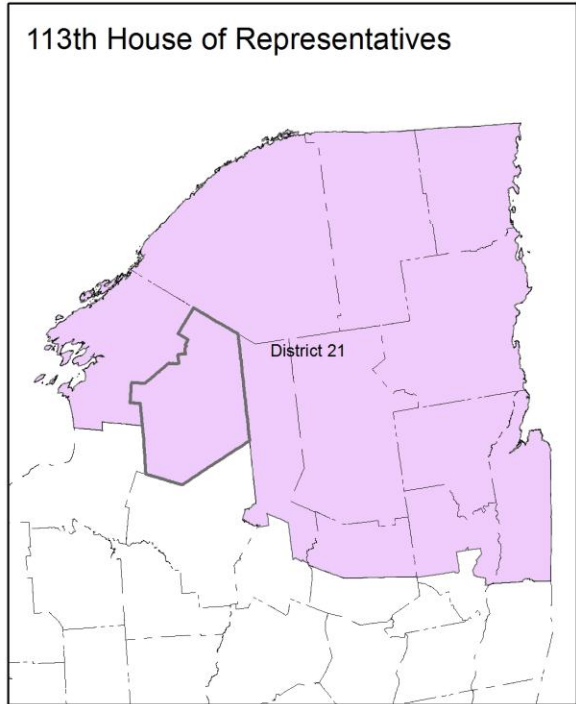
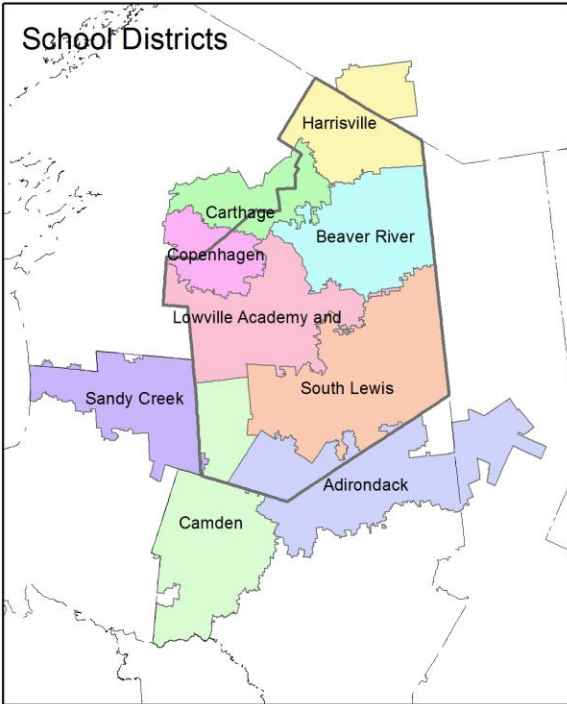
12.3 Map of type of crop 31
12.4 Estimated acreage by crop 32
13 Climate 33
14 Glossary..... 34
15 References 37

1 Reference Maps

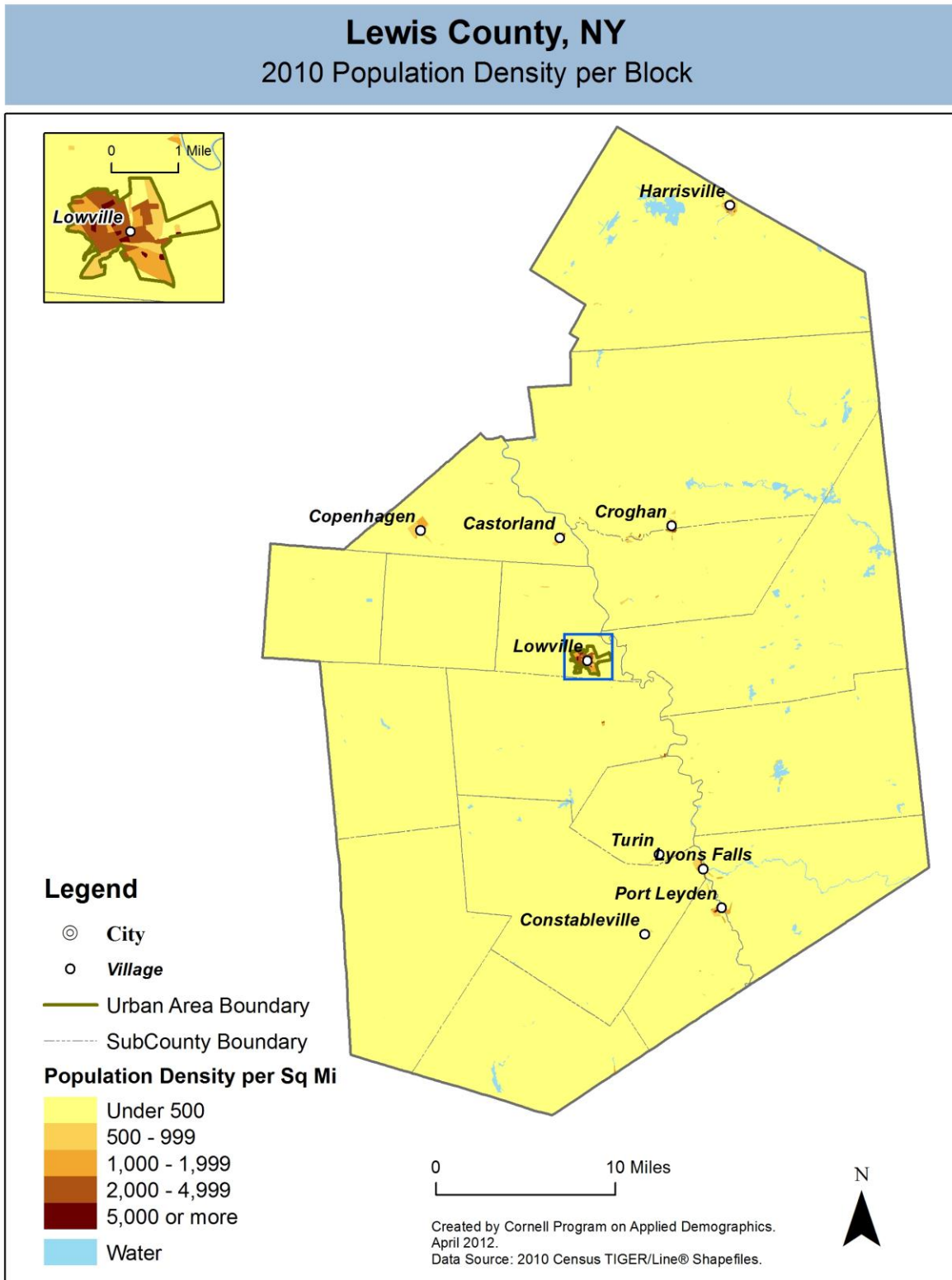


Lewis County, NY

Overlap with School and Political Districts



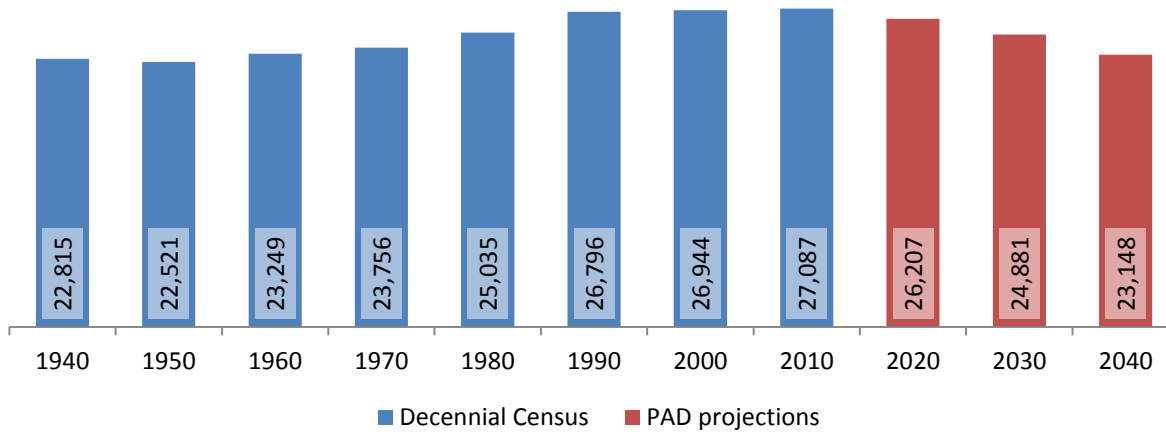
2 Population density and Urban Areas Map



3 Total Population

3.1 Historic and projected

Total population, Lewis County, 1940-2040



Source: 1940-2010 Decennial Census and projections by Cornell Program on Applied Demographics

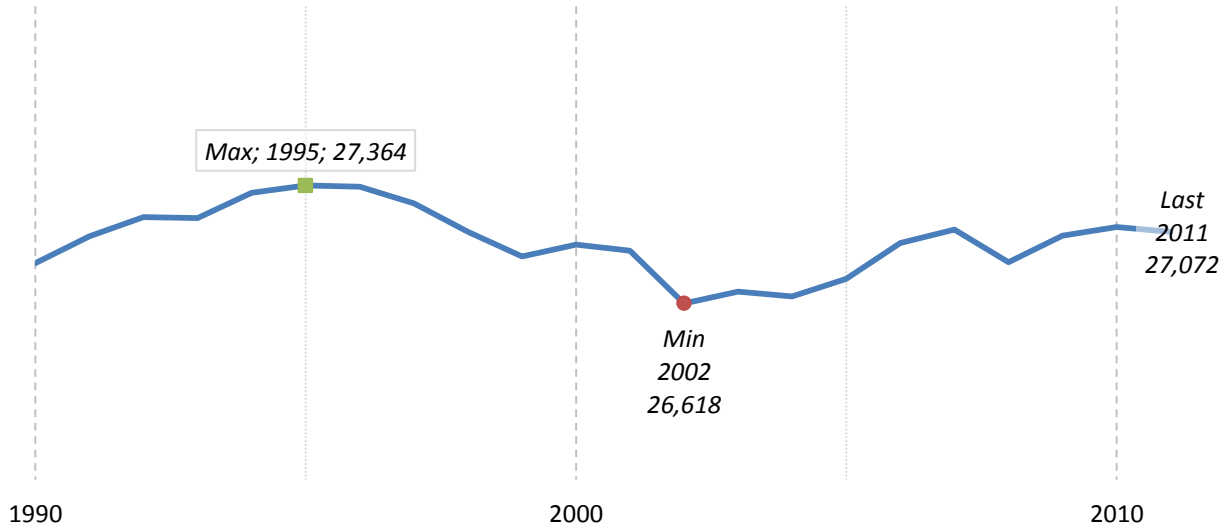
3.2 Change since previous Census

	Total population	Change	
		Number	Percent
Decennial Census	1940	22,815	
	1950	22,521	-294 -1.3%
	1960	23,249	728 3.2%
	1970	23,756	507 2.2%
	1980	25,035	1,279 5.4%
	1990	26,796	1,761 7.0%
	2000	26,944	148 0.6%
	2010	27,087	143 0.5%
PAD projections	2020	26,207	-880 -3.2%
	2030	24,881	-1,326 -5.1%
	2040	23,148	-1,733 -7.0%

Source: 1940-2010 Decennial Census and projections by Cornell Program on Applied Demographics

3.3 Annual population estimates

**Annual population estimates
Lewis County, 1990-2011**



Source: U.S. Census Bureau population estimates (1990-1999 and 2000-2009 intercensal and vintage 2011 postcensal)

3.4 Percentage sub county change 2000-2010

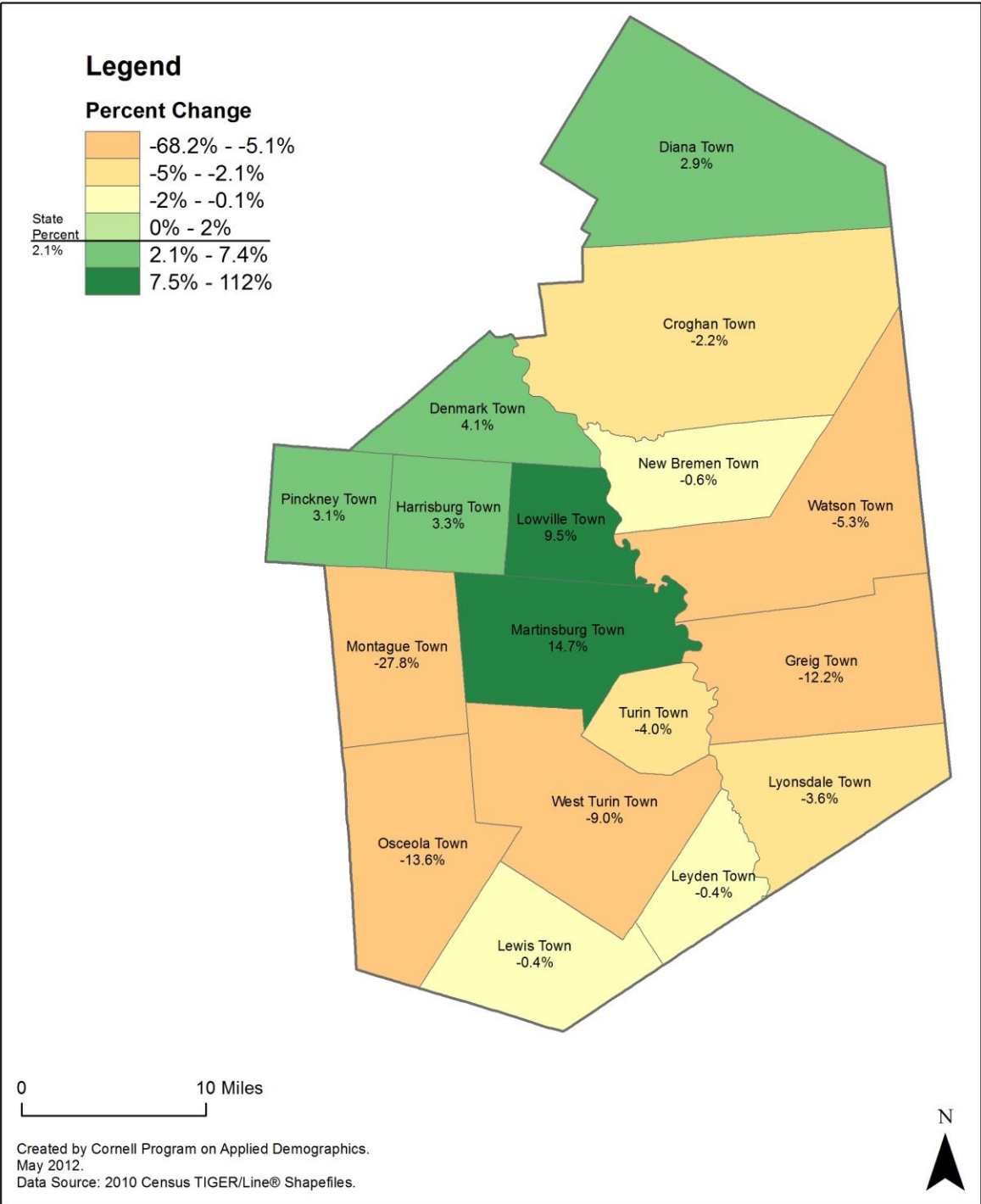
	Total Population		Difference	
	2000	2010	Count	%
New York State	18,976,821 *	19,378,102	401,281	2.1%
Lewis County	26,944	27,087	143	0.5%
Towns				
Croghan	3,161	3,093	-68	-2.2%
Denmark	2,747	2,860	113	4.1%
Diana	1,661	1,709	48	2.9%
Greig	1,365	1,199	-166	-12.2%
Harrisburg	423	437	14	3.3%
Lewis	857	854	-3	-0.4%
Leyden	1,792	1,785	-7	-0.4%
Lowville	4,548	4,982	434	9.5%
Lyonsdale	1,273	1,227	-46	-3.6%
Martinsburg	1,249	1,433	184	14.7%
Montague	108	78	-30	-27.8%
New Bremen	2,722	2,706	-16	-0.6%
Osceola	265	229	-36	-13.6%
Pinckney	319	329	10	3.1%
Turin	793	761	-32	-4.0%
Watson	1,987	1,881	-106	-5.3%
West Turin	1,674	1,524	-150	-9.0%

* Original counts revised through Count Question Resolution Program (CQR)

Source: U.S. Census Bureau intercensal population estimates 2000-2010

Lewis County, NY

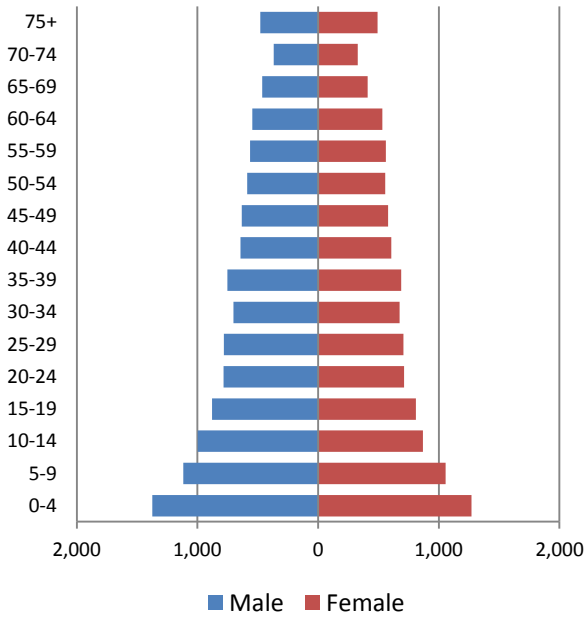
County Subdivision, Percent Change in Population 2000-2010



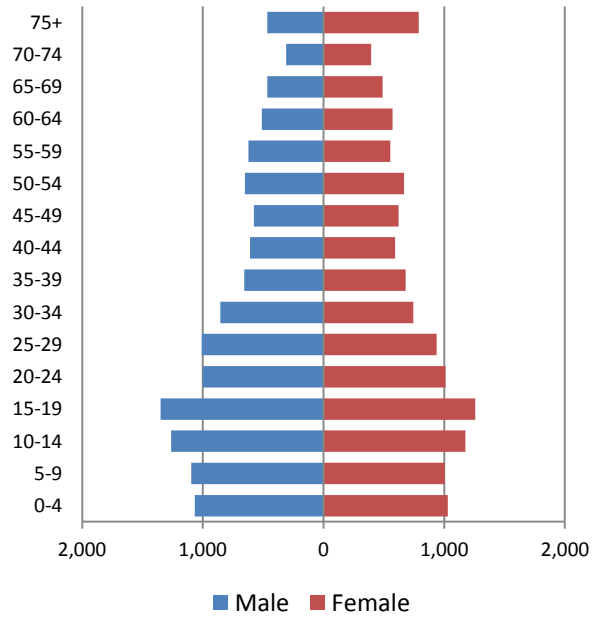
4 Population by age

4.1 Historic and projected population pyramids

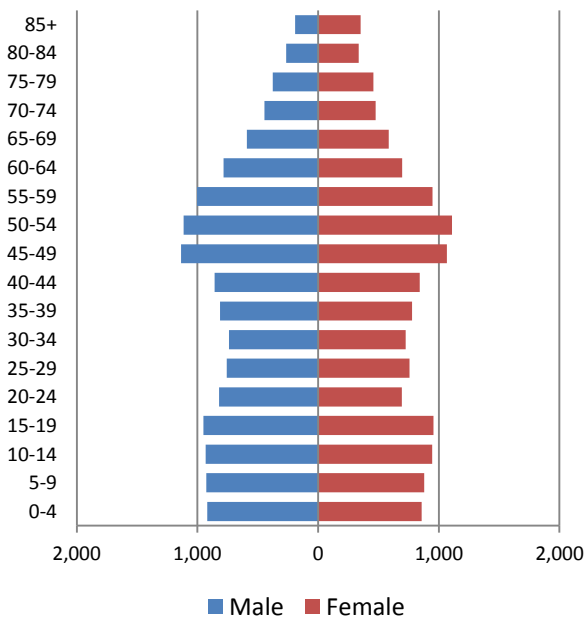
1950 Population Pyramid, Lewis County



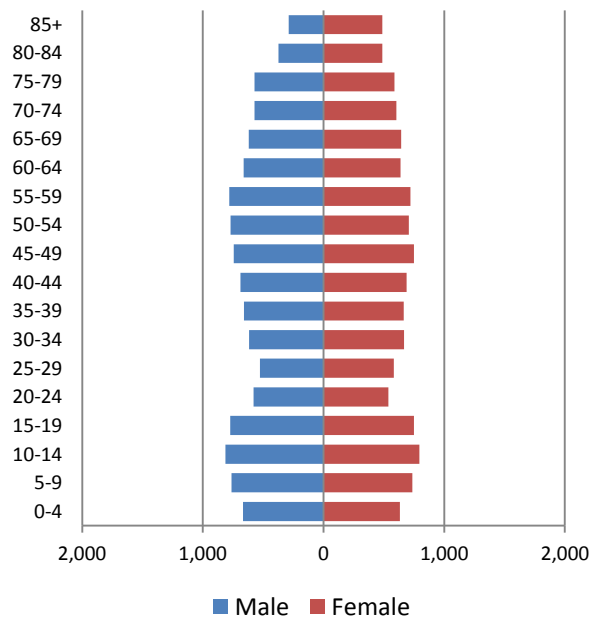
1980 Population Pyramid, Lewis County



2010 Population Pyramid, Lewis County



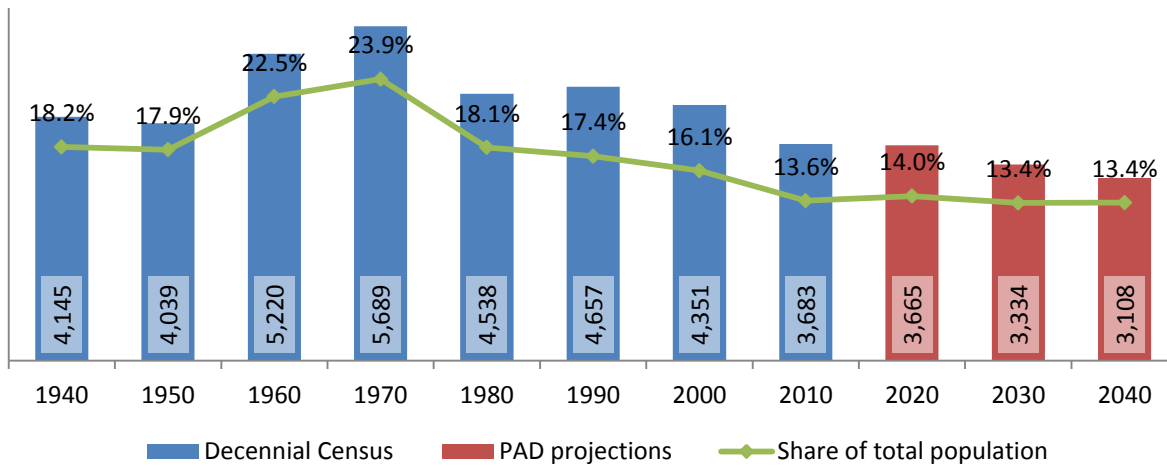
2040 Population Pyramid, Lewis County



Source: 1950, 1980, 2010 Decennial Census and projections by Cornell Program on Applied Demographics

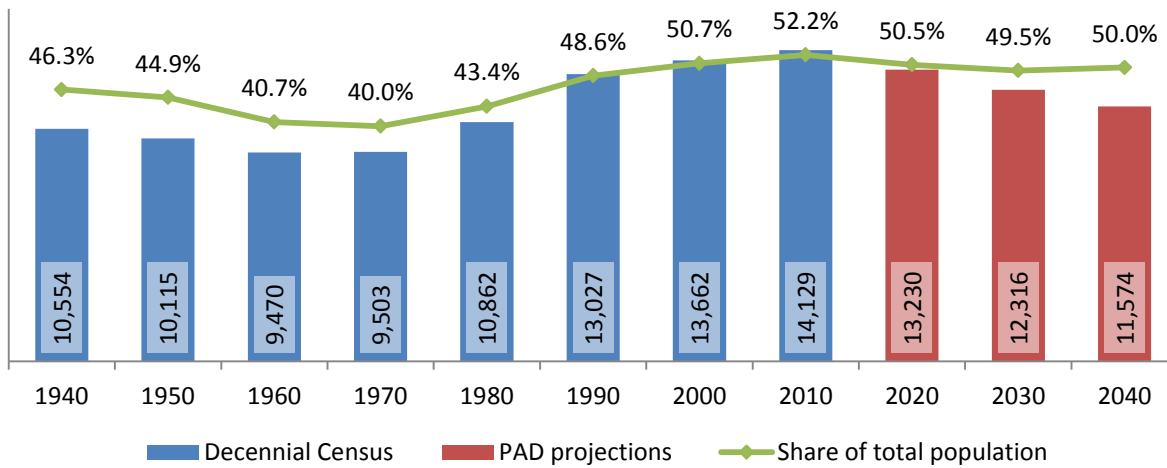
4.2 Selected age groups

Population age 5-14, Lewis County, 1940-2040



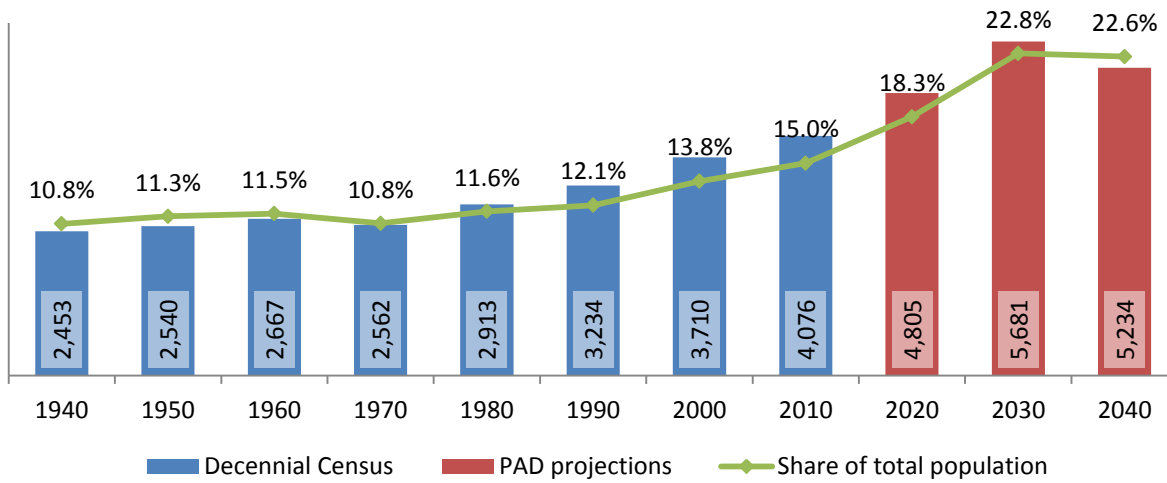
Source: 1940-2010 Decennial Census and projections by Cornell Program on Applied Demographics

Population age 25-64, Lewis County, 1940-2040



Source: 1940-2010 Decennial Census and projections by Cornell Program on Applied Demographics

Population age 65 and over, Lewis County, 1940-2040



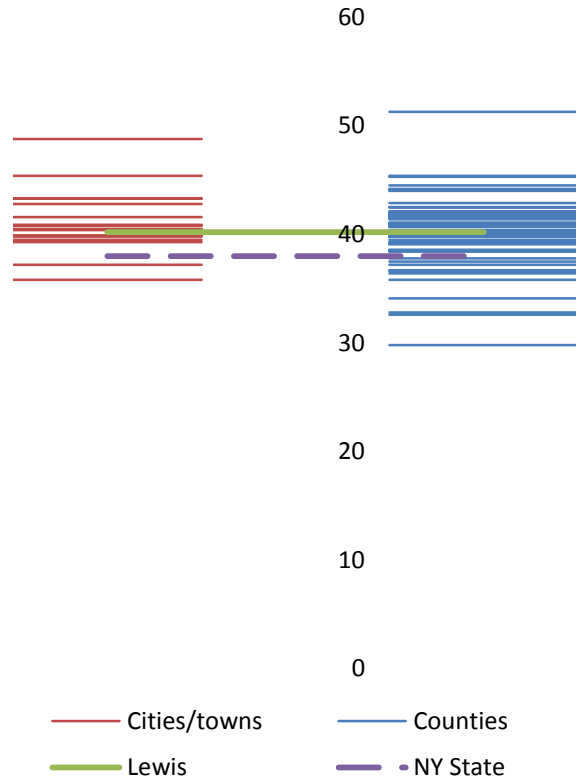
Source: 1940-2010 Decennial Census and projections by Cornell Program on Applied Demographics

4.3 Median age: comparison between areas

	Median Age
New York State	38.0
Lewis County	40.2

Towns	
Croghan town	39.3
Denmark town	35.8
Diana town	42.8
Greig town	45.4
Harrisburg town	43.3
Lewis town	39.9
Leyden town	39.8
Lowville town	40.8
Lyonsdale town	40.5
Martinsburg town	37.2
Montague town	39.5
New Bremen town	40.4
Osceola town	48.8
Pinckney town	43.3
Turin town	40.9
Watson town	40.4
West Turin town	41.6

Median age comparison within county (left) and between counties (right)



Source: 2010 Decennial Census

5 Race

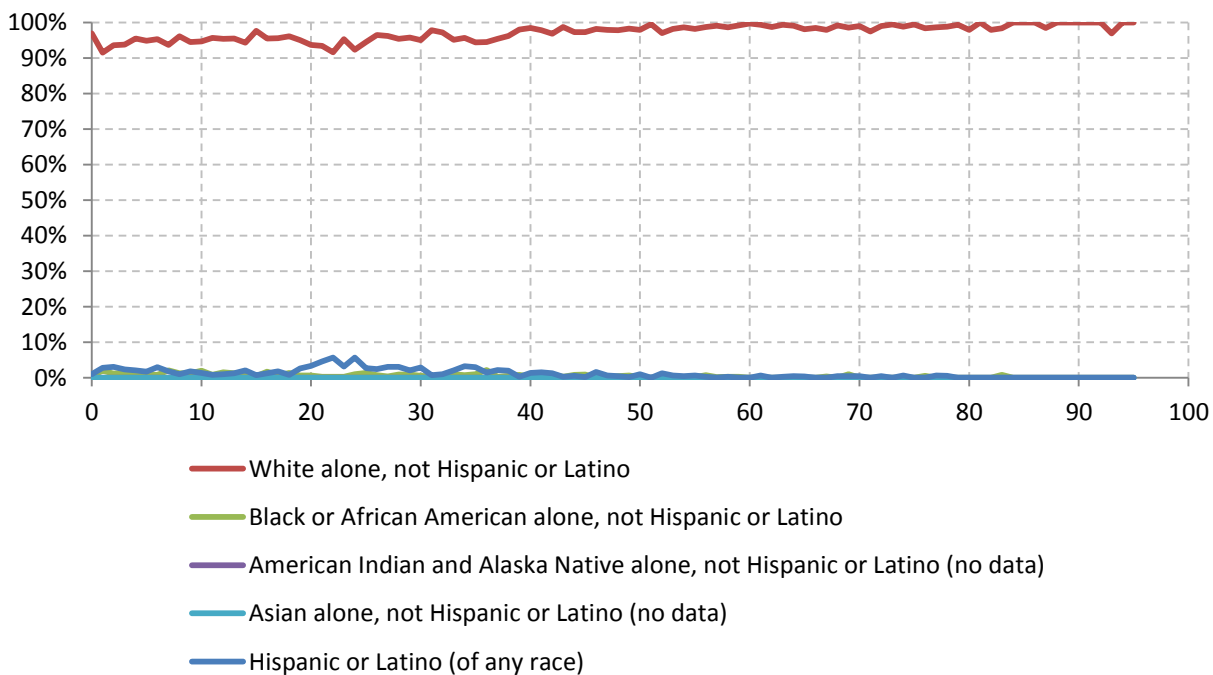
5.1 Total and household population by race

	Total		In households		In Group Quarters
	Count	Percentage	Count	Percentage	Count
Total population	27,087	100%	26,774	100%	313
Not Hispanic or Latino					
One race					
White	26,225	96.8%	25,973	97.0%	252
Black or African American	170	0.6%	167	0.6%	3
American Indian and Alaska Native	44	0.2%	-	-	-
Asian	72	0.3%	-	-	-
Native Hawaiian and Other Pacific Islander	16	0.1%	-	-	-
Some other race	4	0.0%	-	-	-
Two or more races	199	0.7%	199	0.7%	0
Hispanic or Latino (of any race)	357	1.3%	299	1.1%	58

Source: 2010 Decennial Census

5.2 Race composition by age

Race composition by age, Lewis County



Source: 2010 Decennial Census

6 Housing units

6.1 Characteristics

HOUSING OCCUPANCY	COUNT		PERCENTAGE	
	Estimate	Margin of error	Estimate	Margin of error
Total housing units	15,155	± 89	100.0%	
Occupied housing units	10,602	± 211	70.0%	± 1.3
Vacant housing units	4,553	± 193	30.0%	± 1.3
YEAR STRUCTURE BUILT				
Total housing units	15,155	± 89	100.0%	
Built 2005 or later	201	± 51	1.3%	± 0.3
Built 2000 to 2004	569	± 98	3.8%	± 0.6
Built 1990 to 1999	1,806	± 196	11.9%	± 1.3
Built 1980 to 1989	2,190	± 195	14.5%	± 1.3
Built 1970 to 1979	2,061	± 218	13.6%	± 1.5
Built 1960 to 1969	896	± 120	5.9%	± 0.8
Built 1950 to 1959	969	± 130	6.4%	± 0.9
Built 1940 to 1949	690	± 127	4.6%	± 0.8
Built 1939 or earlier	5,773	± 262	38.1%	± 1.7
HOUSING TENURE				
Occupied housing units	10,602	± 211	100.0%	
Owner-occupied	8,207	± 219	77.4%	± 2.0
Renter-occupied	2,395	± 227	22.6%	± 2.0
HOUSE HEATING FUEL				
Occupied housing units	10,602	± 211	100.0%	
Utility gas	1,031	± 166	9.7%	± 1.5
Bottled, tank, or LP gas	1,087	± 128	10.3%	± 1.2
Electricity	756	± 128	7.1%	± 1.2
Fuel oil, kerosene, etc.	4,556	± 274	43.0%	± 2.5
Coal or coke	18	± 11	0.2%	± 0.1
Wood	3,068	± 227	28.9%	± 2.2
Solar energy	2	± 3	0.0%	± 0.1
Other fuel	62	± 43	0.6%	± 0.4
No fuel used	22	± 26	0.2%	± 0.2
VALUE				
Owner-occupied units	8,207	± 219	100.0%	
Less than \$50,000	935	± 119	11.4%	± 1.4
\$50,000 to \$99,999	3,008	± 221	36.7%	± 2.4
\$100,000 to \$149,999	1,725	± 179	21.0%	± 2.0
\$150,000 to \$199,999	1,166	± 145	14.2%	± 1.7
\$200,000 to \$299,999	841	± 143	10.2%	± 1.7
\$300,000 to \$499,999	312	± 74	3.8%	± 0.9
\$500,000 to \$999,999	170	± 58	2.1%	± 0.7
\$1,000,000 or more	50	± 30	0.6%	± 0.4
Median (dollars)	103,900	± 4,388		

Source: 2007-2011 American Community Survey

6.2 Historical data on number of housing units and occupancy status

Year	Number of Housing Units	Change since previous Census	Occupied	Occupancy rate	Vacant
1970	8,965		6,635	74.0%	2,330
1980	11,604	29.4%	8,051	69.4%	3,553
1990	13,182	13.6%	9,253	70.2%	3,929
2000	15,134	14.8%	10,040	66.3%	5,094
2010	15,112	-0.1%	10,514	69.6%	4,598

Source: 1970-2010 Decennial Census

7 Education

7.1 Enrollment by level of school

	Estimate	Margin of error
Total enrolled in school	6,197	± 160
Nursery school, preschool	361	± 98
Kindergarten	365	± 72
Elementary: grade 1 to grade 4	1,394	± 115
Elementary: grade 5 to grade 8	1,433	± 130
High school: grade 9 to grade 12	1,821	± 140
College, undergraduate	681	± 122
Graduate, professional school	142	± 55

Source: 2007-2011 American Community Survey

7.2 Enrollment by age

	Estimate	Margin of error
3 and 4 years	36.8%	± 8.5
5 to 9 years	97.7%	± 1.8
10 to 14 years	98.3%	± 1.3
15 to 17 years	96.0%	± 3.2
18 and 19 years	71.2%	± 9.0
20 to 24 years	21.7%	± 4.9
25 to 34 years	3.9%	± 1.4
35 years and over	1.1%	± 0.4

Source: 2007-2011 American Community Survey

7.3 Percentage age 18-24 enrolled in college

	Estimate	Margin of error
Population 18 to 24 years	2,204	± 42
Enrolled in college or graduate school	24.5%	± 4.8
Males 18 to 24 years	1,184	± 37
Enrolled in college or graduate school	17.2%	± 5.3
Females 18 to 24 years	1,020	± 25
Enrolled in college or graduate school	32.9%	± 8.2

Source: 2007-2011 American Community Survey

7.4 Educational attainment

	COUNT		PERCENTAGE	
	Estimate	Margin of error	Estimate	Margin of error
Population 25 years and over	18,128	± 45	100%	
EDUCATIONAL ATTAINMENT				
Less than 9th grade	700	± 158	3.9%	± 0.9
9th to 12th grade, no diploma	1,672	± 188	9.2%	± 1.0
High school graduate (includes equivalency)	8,647	± 359	47.7%	± 2.0
Some college, no degree	2,800	± 259	15.4%	± 1.4
Associate's degree	1,832	± 220	10.1%	± 1.2
Bachelor's degree	1,497	± 179	8.3%	± 1.0
Graduate or professional degree	980	± 130	5.4%	± 0.7
Percent high school graduate or higher			86.9%	± 1.3
Percent bachelor's degree or higher			13.7%	± 1.2

Source: 2007-2011 American Community Survey

8 Language spoken at home

	COUNT		PERCENTAGE		SPEAK ENGLISH LESS THAN "VERY WELL"	
	Estimate	Margin of error	Estimate	Margin of error	Estimate	Margin of error
Population 5 years and over	25,260	± 34	100%			
LANGUAGE SPOKEN AT HOME						
English only	24,541	± 166	97.2%	± 0.6		
Language other than English	719	± 162	2.8%	± 0.6	334	± 118
Spanish	249	± 67	1.0%	± 0.3	163	± 74
Other Indo-European languages	402	± 149	1.6%	± 0.6	145	± 81
Asian and Pacific Islander languages	23	± 25	0.1%	± 0.1	13	± 15
Other languages	45	± 72	0.2%	± 0.3	13	± 24

Source: 2007-2011 American Community Survey

9 Labor Force Characteristics

9.1 Labor force, employment and unemployment

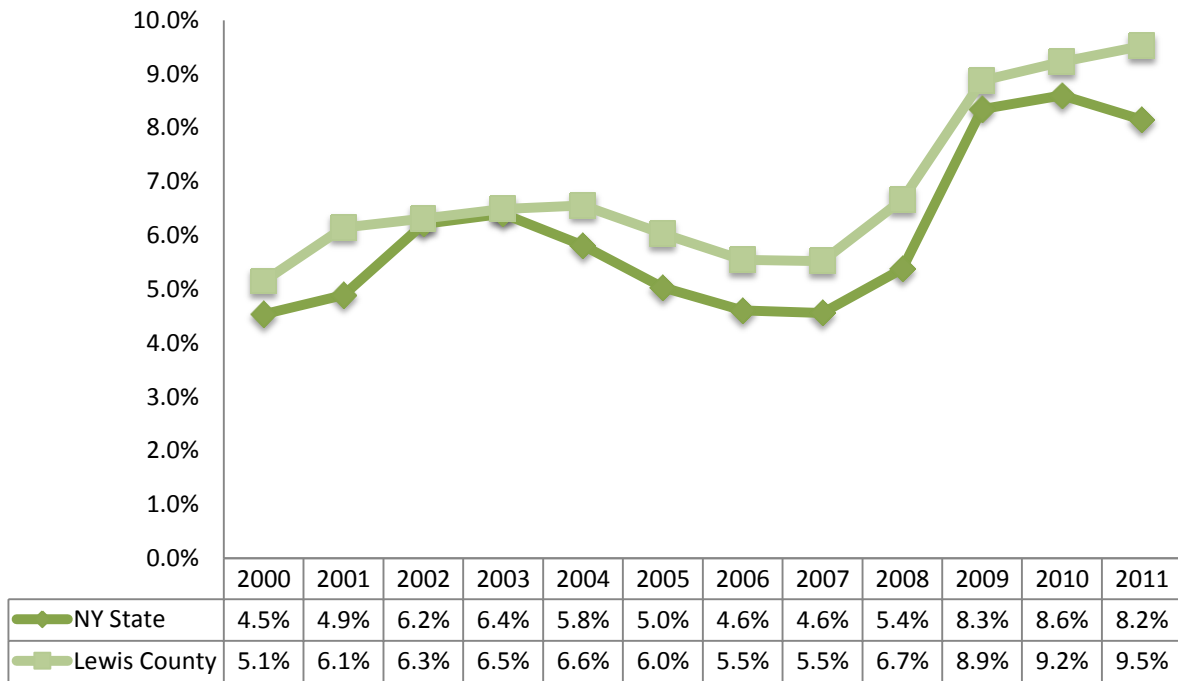
	TOTAL		IN LABOR FORCE		EMPLOYED		UNEMPLOYMENT RATE	
	Estimate	Margin of error	Estimate	Margin of error	Estimate	Margin of error	Estimate	Margin of error
Population 16 years and over	21,173	± 88	62.2%	± 1.3	57.3%	± 1.5	6.6%	± 1.2
AGE								
16 to 19 years	1,522	± 89	36.7%	± 5.9	32.0%	± 5.6	12.1%	± 4.9
20 to 24 years	1,523	± 43	83.4%	± 4.1	68.2%	± 5.3	15.9%	± 5.1
25 to 44 years	6,303	± 66	82.5%	± 2.7	75.5%	± 3.5	6.3%	± 2.4
45 to 54 years	4,388	± 36	85.0%	± 2.2	80.8%	± 2.5	4.9%	± 1.6
55 to 64 years	3,345	± 27	60.4%	± 3.4	58.7%	± 3.5	2.8%	± 1.5
65 to 74 years	2,105	± 42	13.6%	± 3.5	11.8%	± 3.4	13.2%	± 9.6
75 years and over	1,987	± 40	5.0%	± 2.1	5.0%	± 2.1	0.0%	± 27.4
RACE AND HISPANIC OR LATINO ORIGIN								
One race	21,078	± 89	62.3%	± 1.3	57.5%	± 1.5	6.6%	± 1.2
White	20,731	± 118	62.5%	± 1.3	57.8%	± 1.5	6.6%	± 1.2
Black or African American	144	± 36	47.9%	± 18.1	36.8%	± 17.8	1.9%	± 7.7
American Indian and Alaska Native	63	± 24	58.7%	± 30.0	25.4%	± 30.8	0.0%	± 74.1
Asian	43	± 32	46.5%	± 38.4	46.5%	± 38.4	0.0%	± 66.3
Pacific Islander	0	± 89	-	**	-	**	-	**
Some other race	97	± 98	50.5%	± 50.5	50.5%	± 50.5	0.0%	± 42.4
Two or more races	95	± 42	43.2%	± 21.4	32.6%	± 17.8	24.4%	± 24.2
Hispanic or Latino origin (of any race)	237	± 19	58.2%	± 22.1	42.6%	± 28.9	24.6%	± 39.7
White alone, not Hispanic or Latino	20,596	± 87	62.5%	± 1.3	57.9%	± 1.5	6.5%	± 1.1
SEX								
Population 20 to 64 years	15,559	± 65	78.5%	± 1.5	72.7%	± 1.8	6.3%	± 1.3
Male	7,988	± 44	86.4%	± 1.7	77.7%	± 2.5	8.2%	± 2.1
Female	7,571	± 54	70.2%	± 2.4	67.4%	± 2.5	3.8%	± 1.0
With own children under 6 years	1,269	± 141	59.6%	± 7.3	54.8%	± 7.4	6.8%	± 4.6
EDUCATIONAL ATTAINMENT								
Population 25 to 64 years	14,036	± 67	78.0%	± 1.7	73.2%	± 2.0	5.2%	± 1.1
Less than high school graduate	1,377	± 186	54.6%	± 7.1	49.6%	± 7.8	9.2%	± 7.4
High school graduate (includes equivalency)	6,728	± 301	80.1%	± 2.2	75.2%	± 2.4	5.8%	± 1.4
Some college or associate's degree	3,874	± 273	78.4%	± 3.1	72.6%	± 3.8	5.2%	± 3.1
Bachelor's degree or higher	2,057	± 203	86.1%	± 3.7	83.2%	± 4.4	1.4%	± 1.2

Table formula: **LABOR FORCE** = # EMPLOYED + # UNEMPLOYED
 % IN LABOR FORCE = LABOR FORCE / TOTAL * 100%
 % EMPLOYED = # EMPLOYED / TOTAL * 100%
 UNEMPLOYMENT RATE = # UNEMPLOYED / LABOR FORCE * 100%

Source: 2007-2011 American Community Survey

9.2 Annual unemployment rate

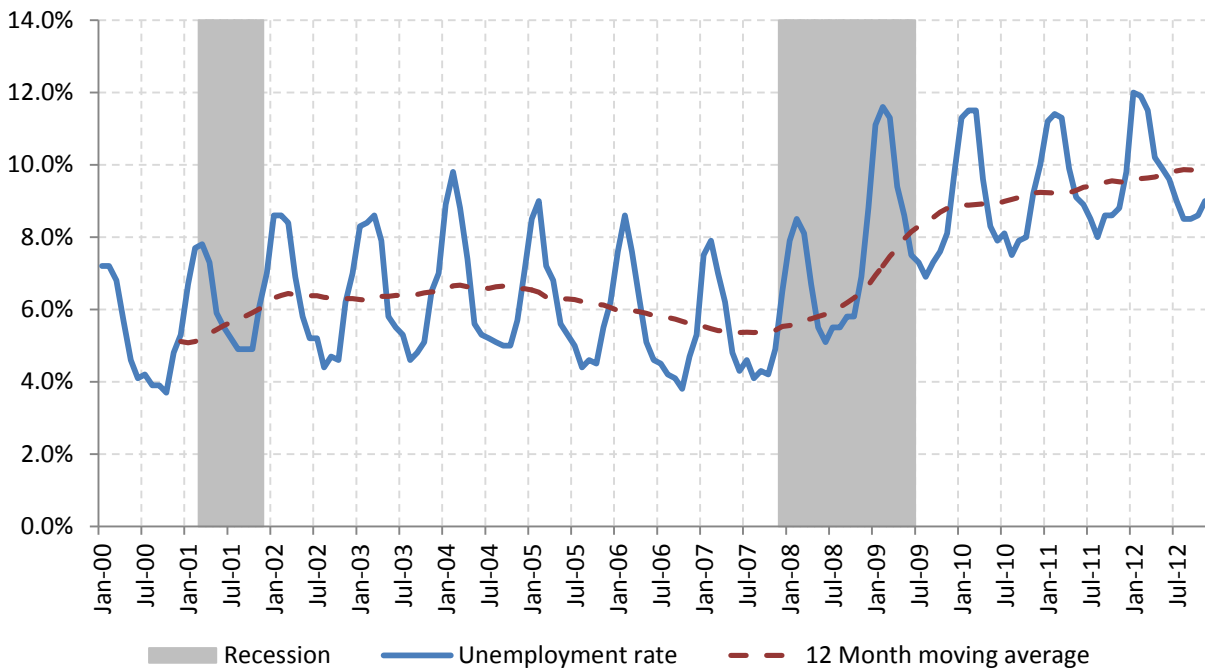
Annual unemployment rate, Lewis County and New York State



Source: Bureau Labor Statistics (BLS)

9.3 Monthly unemployment rate

Monthly unemployment rate, Lewis County



Source: Bureau Labor Statistics (BLS)

9.4 Employment and number of jobs

**Labor force, number of employed workers and number of jobs
Lewis County**



Source: Bureau Labor Statistics (BLS) and NY Department of Labor - Quarterly Census of Employment and Wages (QCEW) – annual averages

9.5 Class of worker

		Median earnings (\$)					
		Total	%Male	%Female	Total	Male	Female
Civilian employed population 16 years and over	Estimate	12,142	55.0%	45.0%	28,789	36,625	21,929
	Margin of error	± 309	± 1.2	± 1.2	± 1,625	± 1,692	± 1,354
Private for-profit wage and salary workers:	Estimate	6,805	61.2%	38.8%	29,195	36,102	20,769
	Margin of error	± 361	± 2.8	± 2.8	± 1,952	± 2,085	± 1,444
Employee of private company workers	Estimate	6,425	59.9%	40.1%	28,527	35,334	20,581
	Margin of error	± 369	± 3.0	± 3.0	± 1,937	± 2,003	± 1,566
Self-employed in own incorporated business workers	Estimate	380	83.2%	16.8%	46,087	47,065	27,000
	Margin of error	± 86	± 7.8	± 7.8	± 9,914	± 13,457	± 23,426
Private not-for-profit wage and salary workers	Estimate	873	25.1%	74.9%	22,865	31,010	20,064
	Margin of error	± 126	± 7.0	± 7.0	± 3,085	± 4,533	± 3,343
Local government workers	Estimate	1,863	33.7%	66.3%	31,632	40,076	26,982
	Margin of error	± 192	± 5.0	± 5.0	± 3,214	± 2,368	± 1,862
State government workers	Estimate	706	65.6%	34.4%	41,438	44,554	31,488
	Margin of error	± 113	± 6.1	± 6.1	± 1,815	± 7,254	± 5,746
Federal government workers	Estimate	343	52.2%	47.8%	36,836	60,417	25,395
	Margin of error	± 92	± 13.0	± 13.0	± 7,822	± 22,016	± 3,682
Self-employed in own not incorporated business workers and unpaid family workers	Estimate	1,552	66.4%	33.6%	20,377	24,525	9,315
	Margin of error	± 220	± 4.7	± 4.7	± 3,338	± 2,547	± 4,969

Source: 2007-2011 American Community Survey

9.6 Jobs by industry sector

	Lewis County			NY state
	2011	Change since 2006	% of total	% of total
All NAICS Sectors	6,108	2.1%	100.0%	100.0%
Agriculture, Forestry, Fishing and Hunting	255	30.8%	4.2%	0.3%
Mining, Quarrying, and Oil and Gas Extraction	0	NA	0.0%	0.1%
Utilities	49	75.0%	0.8%	0.5%
Construction	237	-6.7%	3.9%	3.5%
Manufacturing	1,363	-6.2%	22.3%	5.5%
Wholesale Trade	107	-18.3%	1.8%	4.0%
Retail Trade	561	-2.8%	9.2%	10.5%
Transportation and Warehousing	108	4.9%	1.8%	3.4%
Information	41	-32.8%	0.7%	3.3%
Finance and Insurance	66	-16.5%	1.1%	6.0%
Real Estate and Rental and Leasing	40	-11.1%	0.7%	2.3%
Professional, Scientific, and Technical Services	278	195.7%	4.6%	6.9%
Management of Companies and Enterprises	NA	NA	NA	1.6%
Administrative and Support and Waste Management and Remediation Services	44	-24.1%	0.7%	5.2%
Educational Services	600	6.2%	9.8%	10.8%
Health Care and Social Assistance	1,060	16.0%	17.4%	17.0%
Arts, Entertainment, and Recreation	41	0.0%	0.7%	1.9%
Accommodation and Food Services	454	-9.2%	7.4%	7.3%
Other Services (except Public Administration)	149	-25.1%	2.4%	3.9%
Public Administration	657	-1.5%	10.8%	5.8%

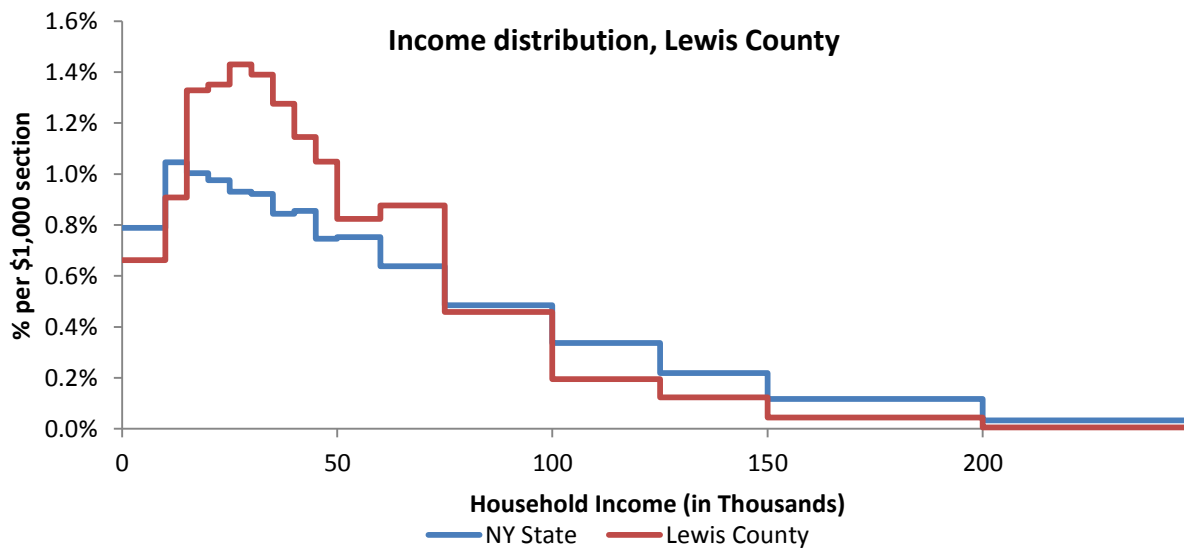
Source: U.S. Census Bureau - Public Use Quarterly Workforce Indicators (QWI) – annual averages

10 Household Income

10.1 Distribution

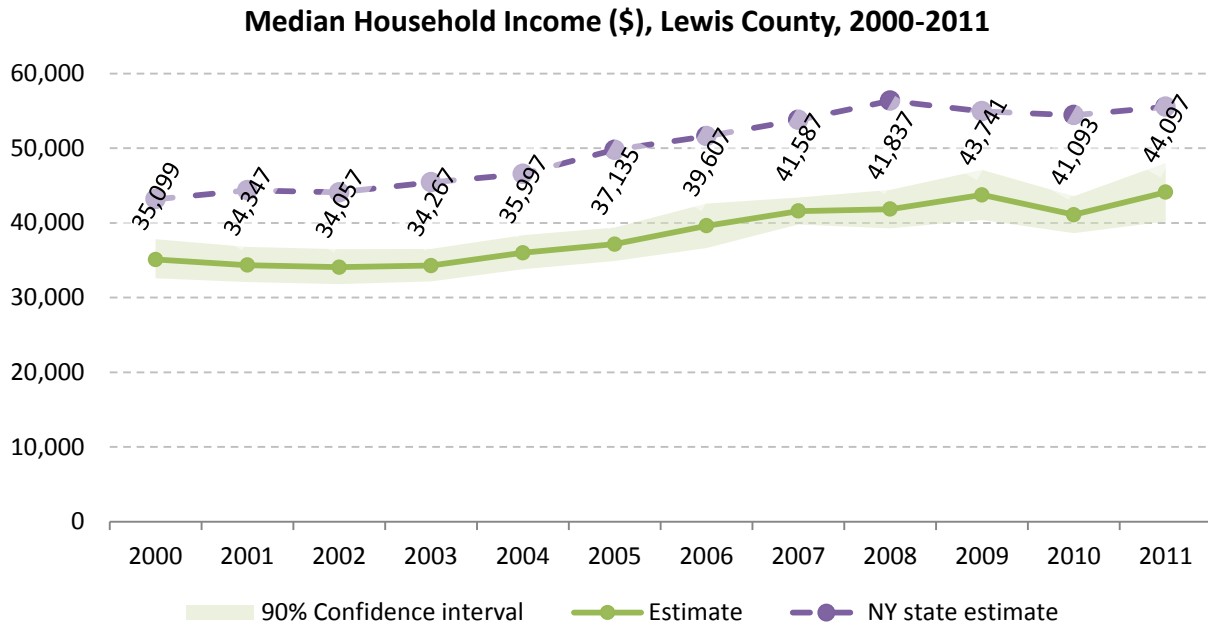
	Estimate	Margin of error	Interval width (in \$1,000)	Est. per \$1,000 section
Total:	10,602	± 211		
Less than \$10,000	702	± 122	10	70.2
\$10,000 to \$14,999	481	± 82	5	96.2
\$15,000 to \$19,999	704	± 129	5	140.8
\$20,000 to \$24,999	716	± 128	5	143.2
\$25,000 to \$29,999	758	± 118	5	151.6
\$30,000 to \$34,999	737	± 145	5	147.4
\$35,000 to \$39,999	676	± 132	5	135.2
\$40,000 to \$44,999	607	± 111	5	121.4
\$45,000 to \$49,999	556	± 124	5	111.2
\$50,000 to \$59,999	874	± 133	10	87.4
\$60,000 to \$74,999	1,395	± 195	15	93.0
\$75,000 to \$99,999	1,215	± 142	25	48.6
\$100,000 to \$124,999	515	± 90	25	20.6
\$125,000 to \$149,999	328	± 96	25	13.1
\$150,000 to \$199,999	233	± 71	50	4.7
\$200,000 or more	105	± 47	-	-

Source: 2007-2011 American Community Survey



Source: 2007-2011 American Community Survey

10.2 Median household income: Trends over time

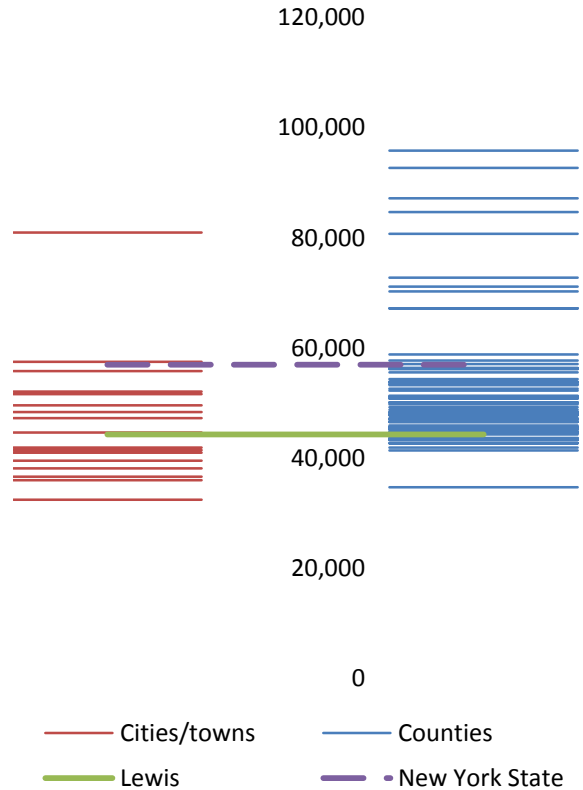


Source: Small Area Income and Poverty Estimates (SAIPE)

10.3 Median household income: Comparison between areas

	MEDIAN HOUSEHOLD INCOME (\$)	
	Estimate	Margin of error
New York State	56,951	± 190
Lewis County	44,281	± 2,312
Towns		
Croghan	44,677	± 3,990
Denmark	47,296	± 5,339
Diana	36,025	± 4,537
Greig	32,434	± 7,732
Harrisburg	57,500	± 7,026
Lewis	40,972	± 13,932
Leyden	39,519	± 10,000
Lowville	41,912	± 4,599
Lyonsdale	36,625	± 5,664
Martinsburg	51,607	± 11,980
Montague	81,000	± 30,928
New Bremen	52,083	± 7,756
Osceola	38,125	± 11,340
Pinckney	55,833	± 6,722
Turin	49,583	± 18,645
Watson	41,480	± 6,422
West Turin	48,375	± 4,479

Median household income comparison within county (left) and between counties (right)



Source: 2007-2011 American Community Survey

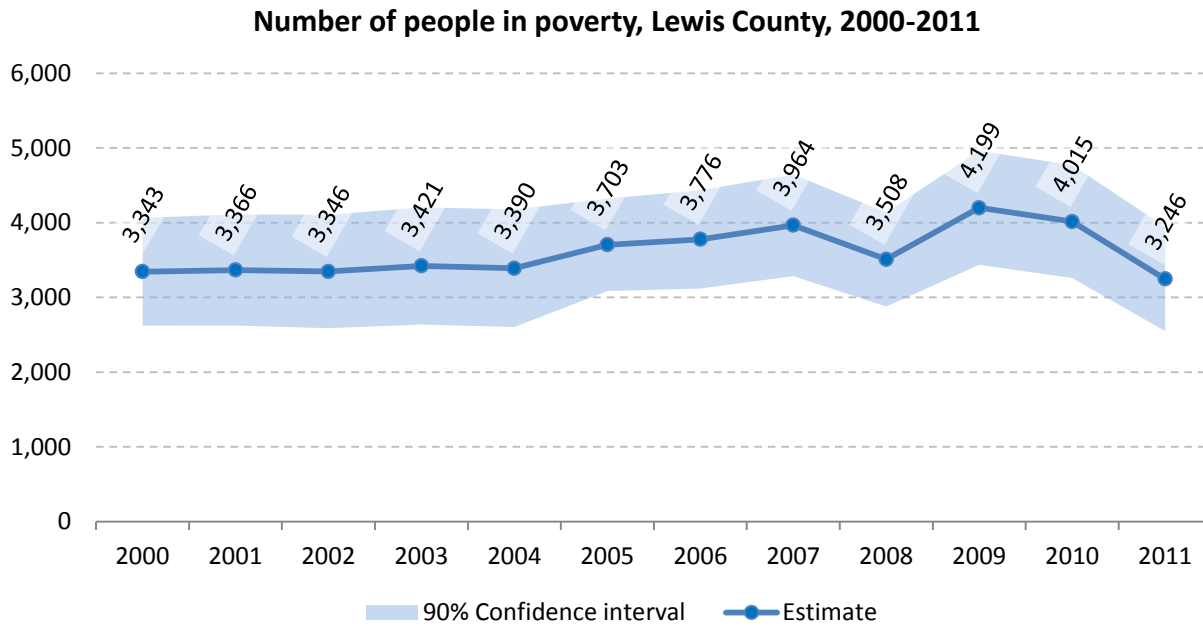
11 Poverty

11.1 Poverty characteristics

	TOTAL		BELOW POVERTY LEVEL		PERCENT BELOW POVERTY LEVEL	
	Estimate	Margin of error	Estimate	Margin of error	Estimate	Margin of error
Population for whom poverty status is determined	26,651	± 166	3,625	± 505	13.6%	± 1.9
AGE						
Under 18 years	6,499	± 76	1,416	± 308	21.8%	± 4.7
Related children under 18 years	6,418	± 96	1,335	± 310	20.8%	± 4.7
18 to 64 years	16,211	± 71	1,960	± 252	12.1%	± 1.5
65 years and over	3,941	± 99	249	± 62	6.3%	± 1.6
SEX						
Male	13,406	± 73	1,688	± 280	12.6%	± 2.1
Female	13,245	± 138	1,937	± 275	14.6%	± 2.0
RACE AND HISPANIC OR LATINO ORIGIN						
One race	26,470	± 179	3,585	± 503	13.5%	± 1.9
White	26,052	± 152	3,525	± 506	13.5%	± 1.9
Black or African American	200	± 55	31	± 27	15.5%	± 14.0
American Indian and Alaska Native	82	± 36	19	± 15	23.2%	± 21.1
Asian	43	± 35	0	± 89	0.0%	± 45.2
Hispanic or Latino origin (of any race)	278	± 46	58	± 55	20.9%	± 18.2
White alone, not Hispanic or Latino	25,851	± 115	3,484	± 491	13.5%	± 1.9
EDUCATIONAL ATTAINMENT						
Population 25 years and over	17,962	± 142	1,816	± 219	10.1%	± 1.2
Less than high school graduate	2,298	± 228	535	± 134	23.3%	± 5.0
High school graduate (includes equivalency)	8,588	± 359	916	± 139	10.7%	± 1.6
Some college, associate's degree	4,619	± 309	272	± 58	5.9%	± 1.3
Bachelor's degree or higher	2,457	± 218	93	± 43	3.8%	± 1.7
EMPLOYMENT STATUS						
Civilian labor force 16 years and over	13,002	± 276	977	± 189	7.5%	± 1.5
Employed	12,142	± 309	704	± 138	5.8%	± 1.1
Male	6,681	± 213	332	± 82	5.0%	± 1.2
Female	5,461	± 209	372	± 96	6.8%	± 1.8
Unemployed	860	± 160	273	± 103	31.7%	± 9.0
Male	611	± 143	198	± 96	32.4%	± 11.9
Female	249	± 59	75	± 33	30.1%	± 11.5
WORK EXPERIENCE IN THE PAST 12 MONTHS						
Population 16 years and over	20,989	± 175	2,360	± 278	11.2%	± 1.3
Worked full-time, year-round	8,496	± 319	328	± 101	3.9%	± 1.2
Worked part-time or part-year	5,208	± 291	600	± 128	11.5%	± 2.3
Did not work	7,285	± 331	1,432	± 210	19.7%	± 2.4

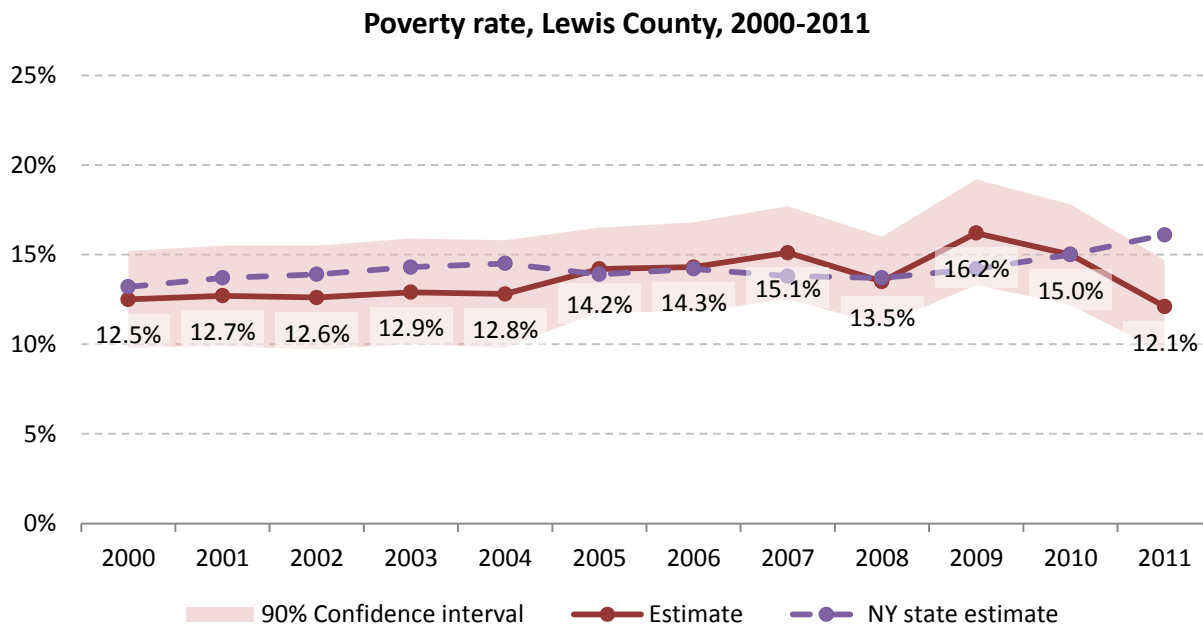
Source: 2007-2011 American Community Survey

11.2 Poverty: Trends over time: Count



Source: Small Area Income and Poverty Estimates (SAIPE)

11.3 Poverty: Trends over time: Rate



Source: Small Area Income and Poverty Estimates (SAIPE)

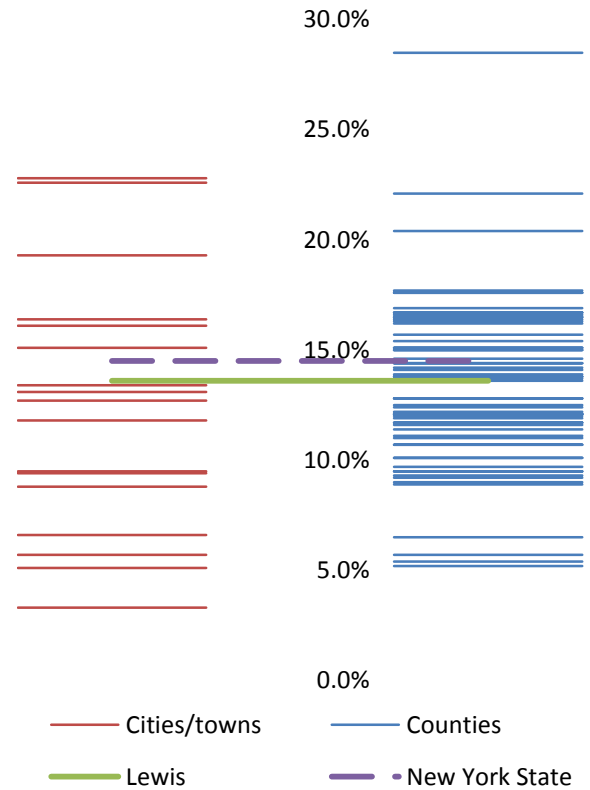
11.4 Poverty rate: comparison between areas

Poverty Rate - All people		
	Estimate	Margin of error
New York State	14.5%	± 0.1
Lewis County	13.6%	± 1.9

Towns

Croghan	13.1%	± 7.5
Denmark	12.7%	± 5.4
Diana	16.1%	± 5.9
Greig	22.6%	± 7.4
Harrisburg	5.1%	± 6.4
Lewis	9.5%	± 6.3
Leyden	22.8%	± 6.8
Lowville	15.1%	± 5.6
Lyonsdale	19.3%	± 6.7
Martinsburg	16.4%	± 9.0
Montague	13.4%	± 19.9
New Bremen	6.6%	± 3.5
Osceola	11.8%	± 9.0
Pinckney	5.7%	± 6.5
Turin	3.3%	± 2.9
Watson	9.4%	± 6.2
West Turin	8.8%	± 3.3

Poverty rate comparison within county (left) and between counties (right)

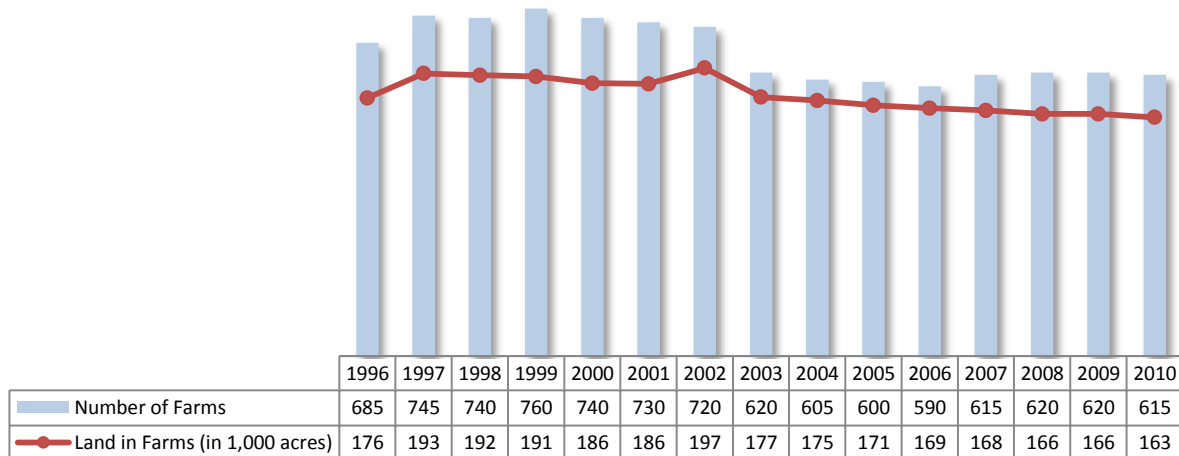


Source: 2007-2011 American Community Survey

12 Agriculture

12.1 Number of farms and land in farms

Lewis County, 1996-2010



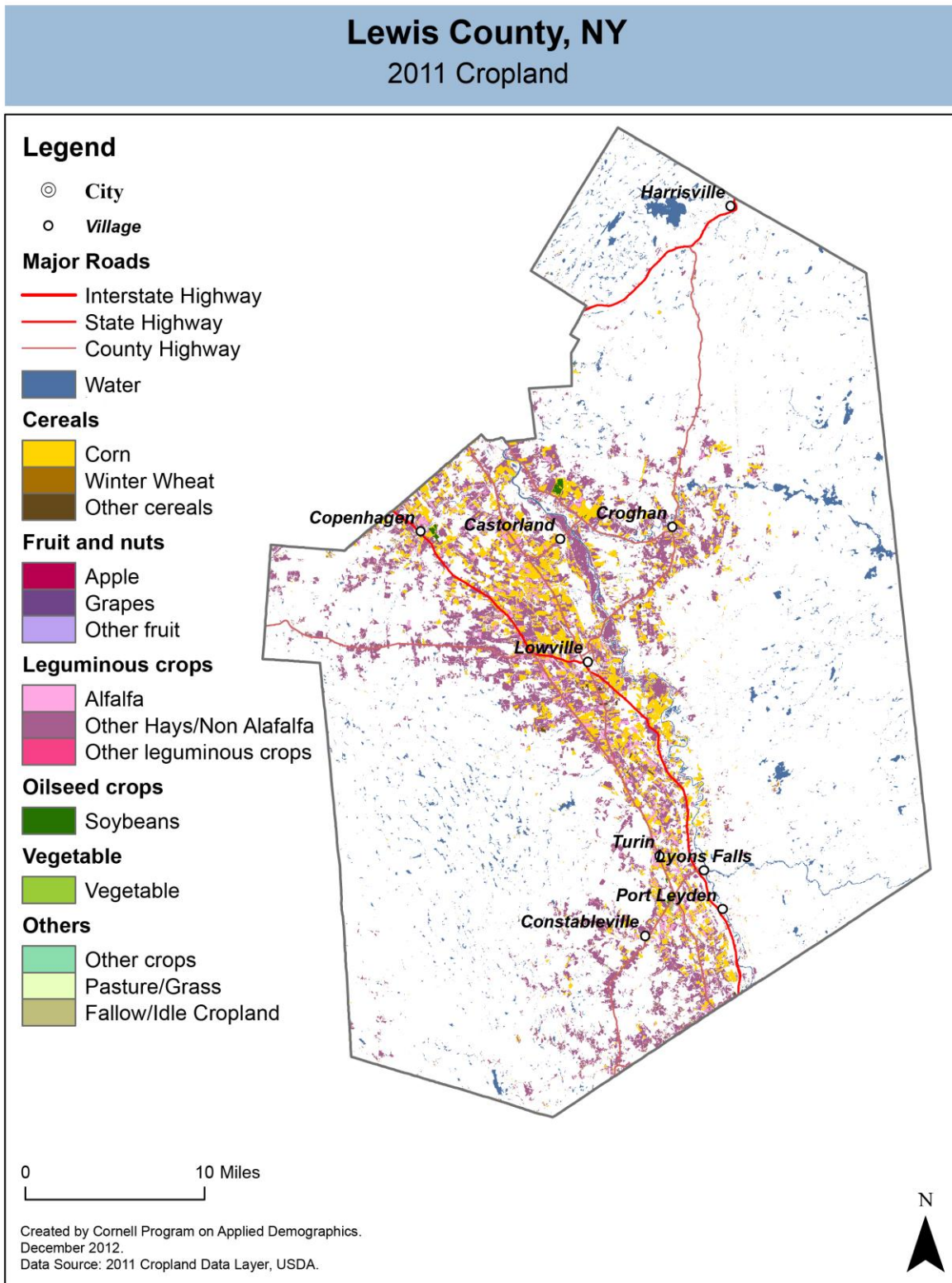
Source: National Agricultural Statistics Service – Annual Statistical bulletin

12.2 Farm Operator Characteristics

	Principal Operator		
	Total	Male	Female
Number of farms	616	562	54
Average size of farm (acres)	272	286	119
PRIMARY OCCUPATION			
Farming	393	361	32
Other	223	201	22
AGE			
Under 45	162	142	20
45 to 64 years	346	321	25
65 years and over	108	99	9
Average age (years)	52.5	52.7	51
YEARS ON PRESENT FARM			
Less than 3 years	8	5	3
3 to 4 years	41	32	9
5 to 9 years	93	83	10
10 years or more	474	442	32

Source: 2007 Agricultural Census

12.3 Map of type of crop

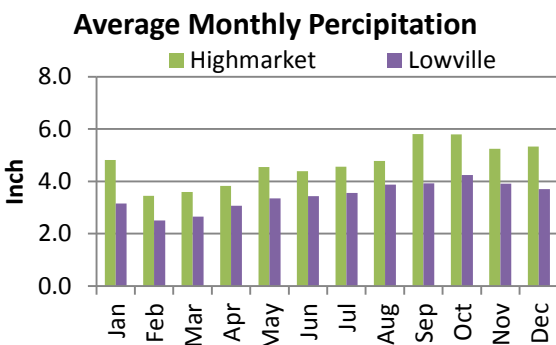
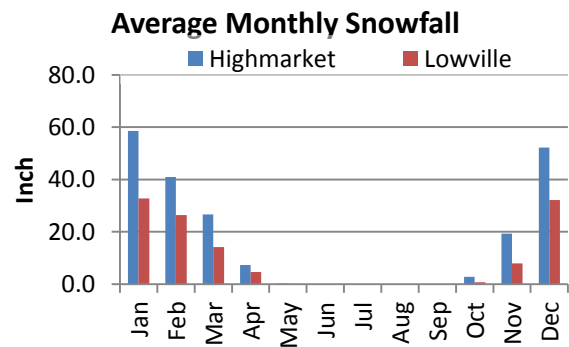
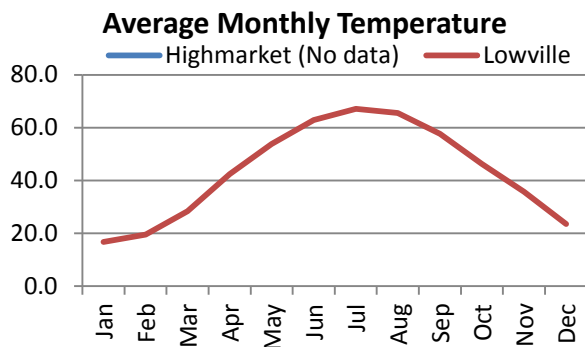
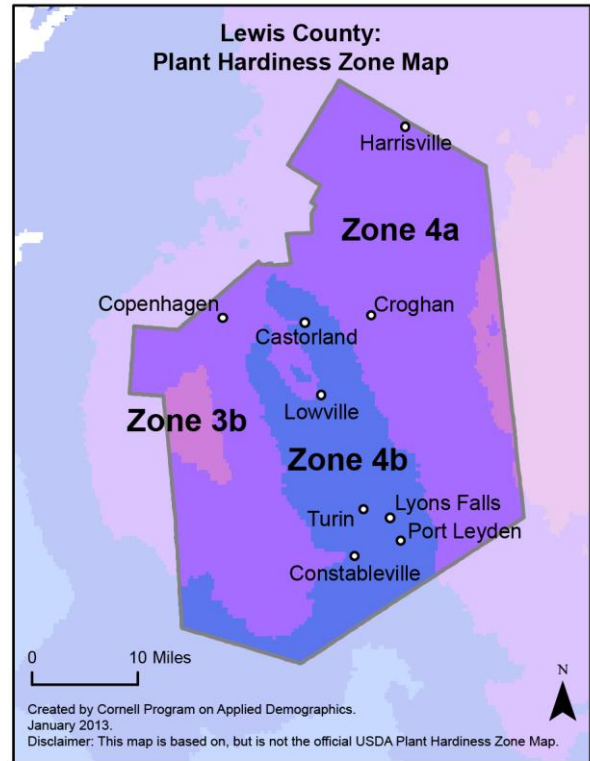
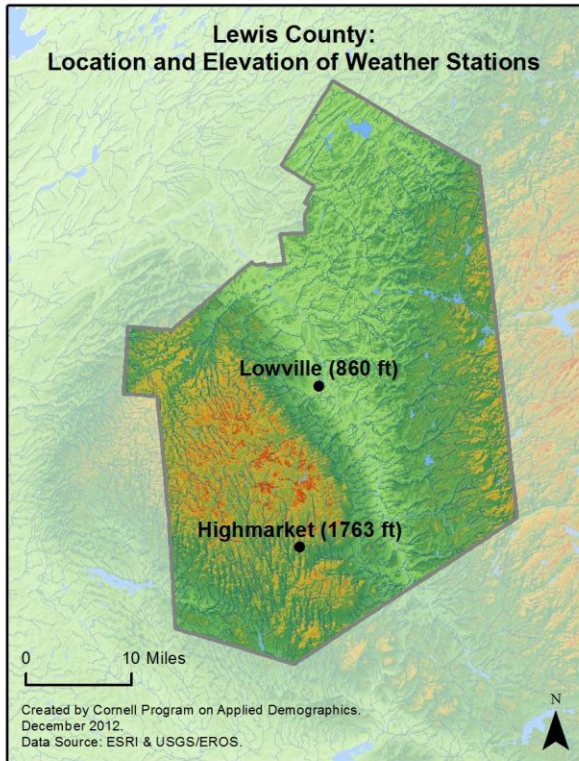


12.4 Estimated acreage by crop

	Acreage	%		Acreage	%
Cereals			Fruit and nuts		
Barley	252	0.2%	Apples	-	
Corn	31,391	27.7%	Apricots	-	
Millet	-		Blueberries	-	
Oats	99	0.1%	Cherries	-	
Rye	16	0.0%	Cranberries	-	
Sorghum	-		Grapes	-	
Speltz	-		Nectarines	-	
Spring Wheat	50	0.0%	Peaches	-	
Sweet Corn	2.2	0.0%	Plums	-	
Triticale	-		Prunes	-	
Winter Wheat	11	0.0%	Strawberries	0.4	0.0%
Dbl Crop WinWht/Corn	-		Walnuts	-	
Leguminous crops			Beverage and spice crops		
Alfalfa	8,560	7.6%	Herbs	-	
Other Hay/Non Alfalfa	69,332	61.2%	Peppers	-	
Dry Beans	6	0.0%	Trees		
Peas	-		Christmas Trees	0.7	0.0%
Vetch	-		Other Tree Crops	-	
Oilseed crops			Other crops		
Soybeans	578	0.5%	Tobacco	-	
Sunflower	-		Misc Veggies & Fruits	-	
Sugar crops			Clover/Wildflowers	1.6	0.0%
Sugarbeets	-		Sod/Grass Seed	-	
Root/tuber crops with high starch or inulin content			Switchgrass	-	
Potatoes	-		Dbl Crop Soybeans/Oats	-	
Vegetables and melons			Dbl Crop WinWht/Soybeans	-	
Asparagus	-		Other Crops	-	
Broccoli	-		Pasture/Grass	2,051	1.8%
Cabbage	-		Fallow/Idle Cropland	942	0.8%
Carrots	-				
Eggplants	-				
Onions	12	0.0%			
Pumpkins	-				
Squash	-				
Tomatoes	-				
Turnips	-				

Source: National Agricultural Statistics Service - Cropland Data Layer 2011

13 Climate



Average length of freeze-free season

	Last day of frost	First day of frost	Season length
Highmarket	Not available		
Lowville	May 15	September 28	135

Source: NOAA, Northeast Regional Climate Center at Cornell University. Averages 1981-2010

14 Glossary

American Community Survey (ACS) - The American Community Survey is an ongoing survey of the population that provides data every year on a variety of social and economic characteristics—age, sex, race, family and relationships, income and benefits, health insurance, education, veteran status, disabilities, where you work and how you get there, where you live and how much you pay for some essentials. The ACS replaced the information previously gathered by what was known as the “long form” of the decennial censuses. The ACS provides communities, companies and other institutions with current information they need to plan investments and services. Information from the survey generates data that help determine how more than \$400 billion in federal and state funds are distributed each year. Every estimate presented in the American Community Survey, as in other surveys, has an uncertainty associated with it. Often the magnitude of that uncertainty is expressed as the Margin of Error.

Confidence Interval (CI) - indication of the degree of uncertainty about a sample estimates. Confidence intervals have been traditionally reported at the 90, 95 and 99 percent levels. A 90 percent confidence interval can be interpreted, for example, roughly as providing 90 percent certainty that the interval defined by the upper and lower bounds contain the true value of the characteristic. If a Margin of Error is given, the lower bound of the confidence interval is equal to the estimate minus the Margin of Error and the upper bound is equal to the estimate plus the Margin of Error. (See further, Margin of Error definition below.)

County subdivision or Minor Civil Division (MCD) - The Census Bureau geography for primary administrative units below the county level in New York is collectively referred to as county subdivisions or minor civil divisions. These include towns, cities and Indian Reservations.

Decennial Census - the Census of the population and housing taken every 10 years in the United States, at the start of each decade, since 1790.

Employed – either “at work” or “with a job, but not at work”.

Group Quarters Population - all U.S. residents who live in group living facilities including correctional institutions, juvenile facilities, skilled nursing facilities, college residence halls, military barracks, group homes, and workers' dormitories.

Household Population - all U.S. residents who live in housing units such as single family homes, townhouses, apartments, and mobile homes.

Intercensal Population Estimates - estimates produced for the years between two decennial censuses when both the beginning and ending populations are known. They are produced once a decade by adjusting the existing time series of postcensal estimates for the entire decade to smooth the transition from one decennial census count to the next. They differ from the postcensal estimates that are released annually because the difference between the April 1 postcensal estimate and April 1 census count for the end of the decade is redistributed across the estimates for that decade. For dates when both postcensal and intercensal estimates are available, intercensal estimates are preferred.

Labor Force - consists of people classified as employed or unemployed.

Margin of Error (MOE) - a measure of the precision of an estimate at a given level of confidence. The confidence level of a margin of error indicates the likelihood that the difference between the population value (which you

would get if you could measure the whole population instead of a sample) and the estimate is less than or equal to the margin of error. The range from the estimate minus the margin of error to the estimate plus the margin of error is called the confidence interval. All ACS estimates are published with their margins of error at the 90 percent confidence level. Margins of error are useful in assessing the reliability of estimates and whether differences between estimates are significant.

NAICS - The North American Industry Classification System or NAICS is used by business and government to classify business establishments according to type of economic activity (process of production).

Numeric Population Change - difference between the population of an area at the beginning and end of a time period. It is computed by taking the difference between the population at one point in time (t1) and some future time (t2).

Percent Population Change - difference between the population of an area at the beginning and end of a time period, expressed as a percentage of the beginning population. It is computed by dividing the population change (t2 - t1) by t1 and multiplying the result by 100.

Population Estimates - The calculated number of people living in an area as of a specified point in time, usually July 1st. The estimated population is calculated using a component of change model that incorporates information on natural increase (births, deaths) and net migration (net domestic migration, net international migration) that has occurred in an area since the latest decennial census. A procedure for estimating the current population using a procedure involving a "base population" value at time t -1, adding to that the births during the interval t-1 to t, subtracting the deaths during that interval t-1 to t, and then adding the net domestic and net international migration that occurred during that interval.

Population Density - Total number of people per areal unit like a square mile or square kilometer.

Population Pyramids - A graphical way of portraying a population's age and sex composition at a given slice in time. The first horizontal bar, constituting the base of the graph, is the youngest age group (typically 0-4) with the number of males in that age group on the left and the number of females in that age group on the right. On top of that age group is another horizontal bar for the next age group (e.g. 5-9) and so forth with the top bar typically for those aged 75 and over. In a population with lots of births and deaths, the shape typically forms a pyramid with a broad base and a narrow top. It is one of the most basic ways to understand population change over time as well as between different geographic units of a similar status (e.g. counties).

Postcensal Estimates - estimates produced for the years after a decennial census when only the beginning population is known. They are produced and revised each year, targeted to July 1 of that year.

Projection - estimated population at some future time based on assumptions about births, deaths, migration, and ages.

Race/Ethnicity - the Census Bureau collects racial data in accordance with guidelines provided by the U.S. Office of Management and Budget (OMB), and these data are based on self-identification. The racial categories included in the census questionnaire generally reflect a social definition of race recognized in this country and not an attempt to define race biologically, anthropologically, or genetically. In addition, it is recognized that the categories of the race item include racial and national origin or sociocultural groups. People may choose to report more than one race to indicate their racial mixture, such as "American Indian" and "White." People who identify their origin as Hispanic, Latino, or Spanish may be of any race. OMB requires five minimum categories: White, Black or African American, American Indian or Alaska Native, Asian, and Native Hawaiian or Other Pacific

Islander. Hispanics may be classified as white or black. So we generally separate them out as an ethnic group first.

Unemployed – Not employed, but actively looking for work and available to accept a job.

Unemployment rate – Fraction of the Labor Force that is unemployed.

Urban Area – A densely settled area with at least 2,500 people. If the total number of people is less than 50,000 the Census Bureau calls it an Urban Cluster, otherwise an Urbanized Area.

Vintage - each year, the U.S. Census Bureau produces and publishes estimates of the population for each state and county, as well as the nation as a whole. These are called “vintages.” In producing these vintages, the Bureau utilizes administrative data from a number of sources to estimate 1) the change in population since the most recent decennial census, and 2) the population for each year since the most recent decennial census. With each annual release of population estimates (vintage), the entire time series of estimates beginning on April 1, 2010 is revised and updated.

15 References

Lewis County homepage: <http://lewiscountyny.org/content>

At Cornell:

- Cornell Cooperative Extensions (CCE)
Home page: <http://www.cce.cornell.edu>
 - Lewis local office: <http://counties.cce.cornell.edu/lewis/>
- Program on Applied Demographics (PAD)
URL: <http://pad.human.cornell.edu/>
- Community and Regional Development Institute (CaRDI)
URL: <http://devsoc.cals.cornell.edu/cals/devsoc/outreach/cardi/index.cfm>

Data sources and background information:

- U.S. Census Bureau - general
 - QuickFacts: <http://quickfacts.census.gov/qfd/states/36/36049.html>
 - QuickLinks: <http://quickfacts.census.gov/qfd/states/36/36049lk.html>
 - American FactFinder: <http://factfinder2.census.gov>
- U.S. Census Bureau - population
 - Decennial Census
 - Background: <http://2010.census.gov/2010census/>
 - Demographic Profile: http://factfinder2.census.gov/bkmk/table/1.0/en/DEC/10_SF1/SF1DP1/0500000US36049
 - American Community Survey (ACS)
 - Background: <http://www.census.gov/acs/www/>
 - Social Data Profile: http://factfinder2.census.gov/bkmk/table/1.0/en/ACS/10_5YR/DP02/0500000US36049
 - Economic Data Profile: http://factfinder2.census.gov/bkmk/table/1.0/en/ACS/10_5YR/DP03/0500000US36049
 - Housing Data Profile: http://factfinder2.census.gov/bkmk/table/1.0/en/ACS/10_5YR/DP04/0500000US36049
 - Demographics Data Profile: http://factfinder2.census.gov/bkmk/table/1.0/en/ACS/10_5YR/DP05/0500000US36049
 - Population estimates: <http://www.census.gov/popest/estimates.html>
- U.S. Census Bureau – Small Area Income & Poverty Estimates (SAIPE)
 - <http://www.census.gov/did/www/saipe/>
- U.S. Census Bureau - Public Use Quarterly Workforce Indicators (QWI) – annual averages
 - <http://www2.vrdc.cornell.edu/news/data/qwi-public-use-data/>
- Bureau Labor Statistics (BLS) – Local Area Unemployment Statistics: <http://www.bls.gov/lau/>
- NY Department of Labor -
 - Labor statistics: <http://www.labor.ny.gov/stats/>
 - Quarterly Census of Employment and Wages (QCEW): <http://www.labor.ny.gov/stats/lsqcew.shtm>
- Bureau of Economic Analysis (BEA) – Local Area Personal Income and Employment: <http://bea.gov/iTable/iTable.cfm?ReqID=70&step=1>

- USDA Census of Agriculture
 - 2007
 - Home page: <http://www.agcensus.usda.gov/Publications/2007/index.php>
 - County profile: http://www.agcensus.usda.gov/Publications/2007/Online_Highlights/County_Profiles/New_York/cp36049.pdf
 - Race, Ethnicity and Gender Profiles: http://www.agcensus.usda.gov/Publications/2007/Online_Highlights/Race_Ethnicity_and_Gender_Profiles/New_York/cpd36049.pdf
- USDA National Agricultural Statistics Service (NASS)
 - Home page: <http://www.nass.usda.gov/index.asp>
 - New York Statistical Bulletins: http://www.nass.usda.gov/Statistics_by_State/New_York/Publications/Annual_Statistical_Bulletin/
 - Cropland Data Layer – CropScape: <http://nassgeodata.gmu.edu/CropScape/>
- USDA Agricultural Research Service – Plant Hardness Zone Map: <http://planthardiness.ars.usda.gov/PHZMWeb/>
- NOAA, Northeast Regional Climate Center at Cornell University
 - Home page: <http://www.nrcc.cornell.edu/index.html>

Alternative sites for data retrieval:

- The Nelson A. Rockefeller Institute of Government – New York State Statistical Yearbooks http://www.rockinst.org/nys_statistics/
- Headwaters Economics: Economic Profile System – Human Dimensions Toolkit <http://headwaterseconomics.org/tools/eps-hdt>
- National Historical Geographic Information System (NHGIS) <https://www.nhgis.org/>
- Social Explorer <http://www.socialexplorer.com/pub/home/home.aspx>
- Missouri Census Data Center <http://mcdc.missouri.edu/>
- DataFerret <http://dataferrett.census.gov/>
- Investigative Reporters and Editors (IRE) Census project <http://census.ire.org/>