

Greene County Profile 2013

A collection of recent demographic, social, economic and agricultural data

Compiled by Jan Vink

Assisted by Joe Francis, Sutee Anantsuksomsri, Nij Tontisirin, Johannes Plambeck



Cornell University
Cooperative Extension



This profile is a part of a set of profiles generated for each county in New York State. The profiles were developed and generated by the Cornell Program on Applied Demographics. The work is sponsored by Cornell Cooperative Extension and promoted with webinars and workshops in coordination with the Community & Regional Development Institute.

Cornell Program on Applied Demographics:

The Program on Applied Demographics (PAD) brings skills in demographics, economics, statistics, data gathering and data analysis together to provide a variety of organizations with data, information and advice.

For more information: <http://pad.human.cornell.edu/>

Cornell Cooperative Extension:

Cornell Cooperative Extension (CCE) puts knowledge to work in pursuit of economic vitality, ecological sustainability and social well-being. We bring local experience and research based solutions together, helping New York State families and communities thrive in our rapidly changing world.

For more information: <http://cce.cornell.edu/>

Community & Regional Development Institute:

The Community & Regional Development Institute (CaRDI) supports informed decision making for residents and communities in New York State through applied research and education.

For more information: <http://cardi.cornell.edu/>

All profiles are freely downloadable as PDF documents on the PAD website:

<http://pad.human.cornell.edu/profiles/index.cfm>

Contents

Contents	2
1 Reference Maps	4
2 Population density and Urban Areas Map	6
3 Total Population	7
3.1 Historic and projected	7
3.2 Change since previous Census	7
3.3 Annual population estimates	8
3.4 Percentage sub county change 2000-2010	9
4 Population by age	11
4.1 Historic and projected population pyramids	11
4.2 Selected age groups	12
4.3 Median age: comparison between areas	14
5 Race	15
5.1 Total and household population by race	15
5.2 Race composition by age	15
6 Housing units	16
6.1 Characteristics	16
6.2 Historical data on number of housing units and occupancy status	17
7 Education	18
7.1 Enrollment by level of school	18
7.2 Enrollment by age	18
7.3 Percentage age 18-24 enrolled in college	18
7.4 Educational attainment	19
8 Language spoken at home	19
9 Labor Force Characteristics	20
9.1 Labor force, employment and unemployment	20
9.2 Annual unemployment rate	21
9.3 Monthly unemployment rate	21
9.4 Employment and number of jobs	22
9.5 Class of worker	22
9.6 Jobs by industry sector	23
10 Household Income	24
10.1 Distribution	24
10.2 Median household income: Trends over time	25
10.3 Median household income: Comparison between areas	26
11 Poverty	27
11.1 Poverty characteristics	27
11.2 Poverty: Trends over time: Count	28
11.3 Poverty: Trends over time: Rate	28
11.4 Poverty rate: comparison between areas	29
12 Agriculture	30
12.1 Number of farms and land in farms	30
12.2 Farm Operator Characteristics	30

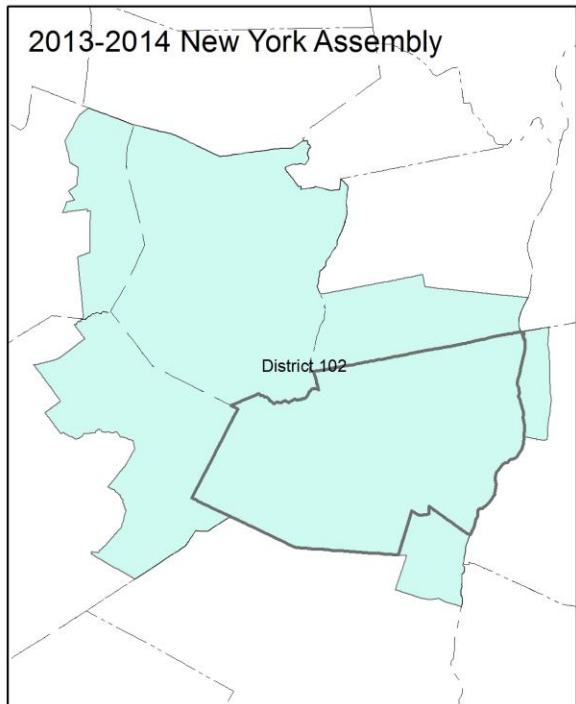
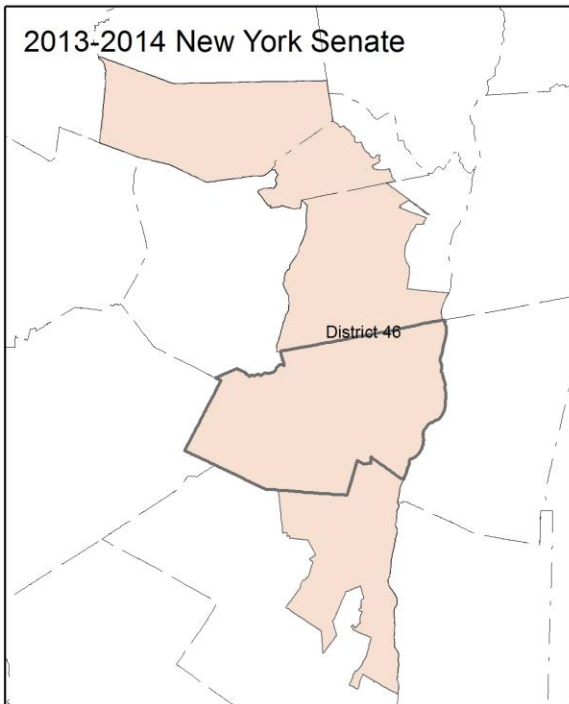
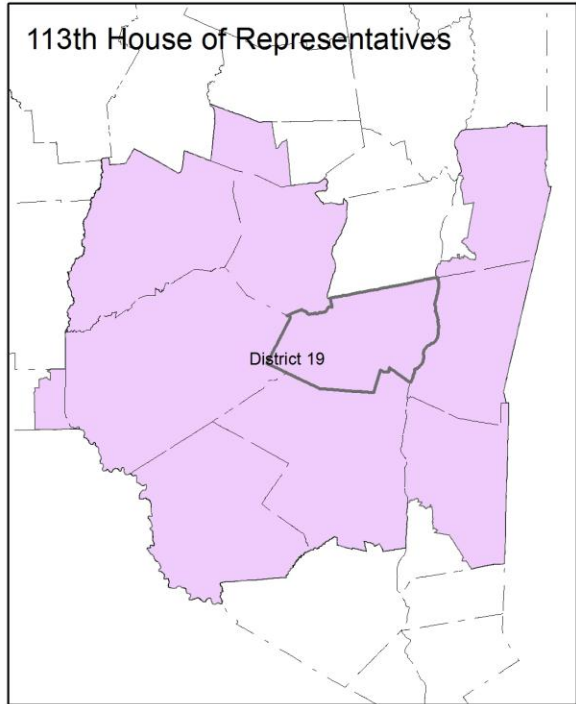
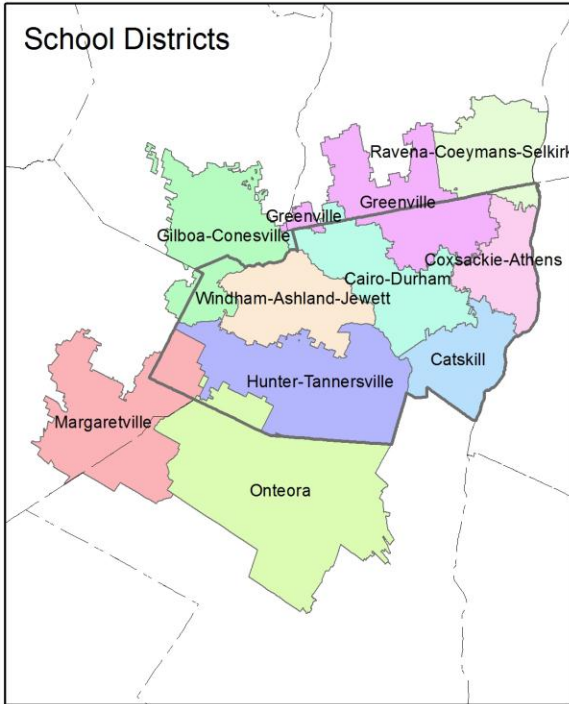
12.3 Map of type of crop 31
12.4 Estimated acreage by crop 32
13 Climate 33
14 Glossary..... 34
15 References 37

1 Reference Maps

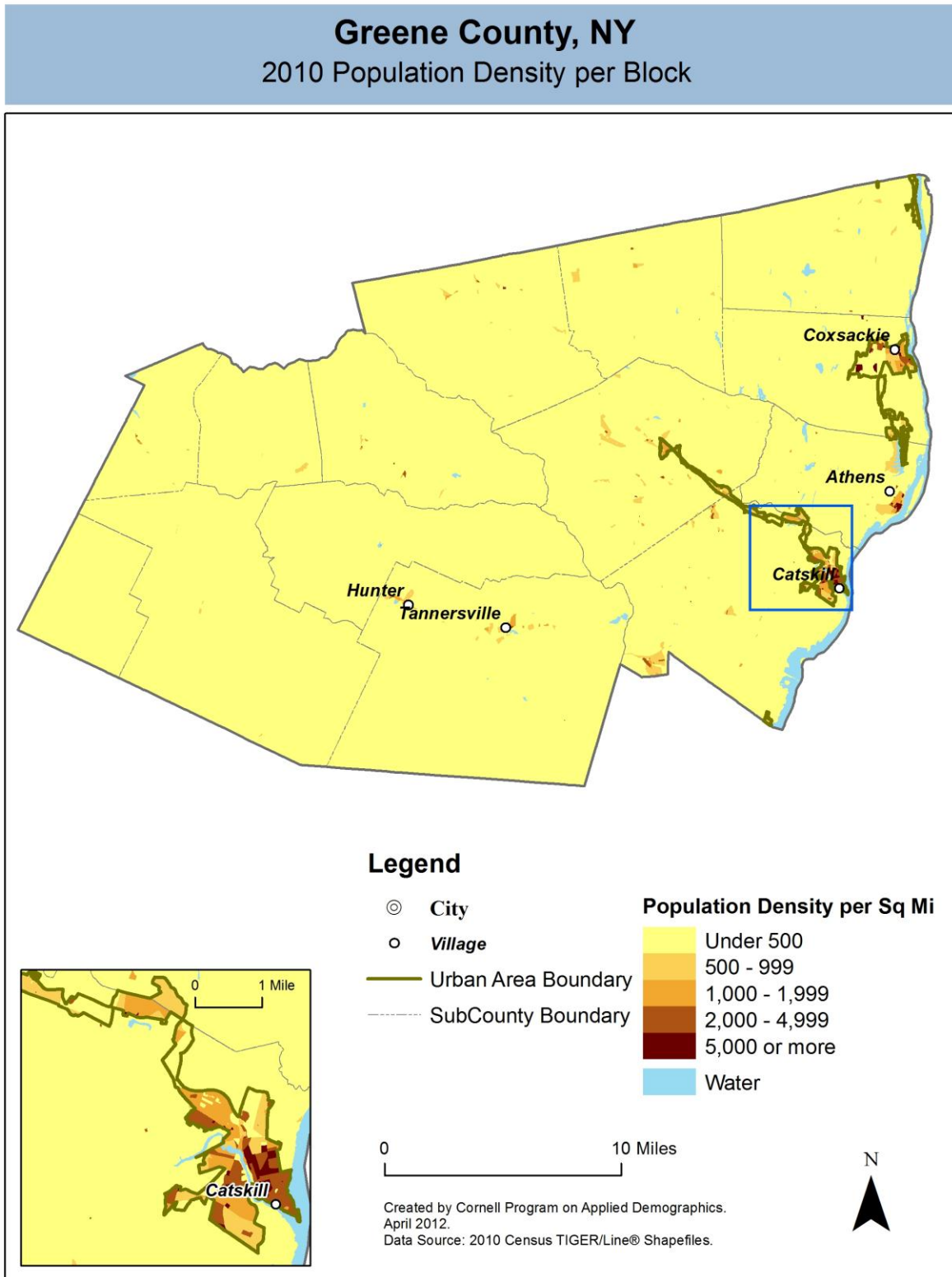


Greene County, NY

Overlap with School and Political Districts



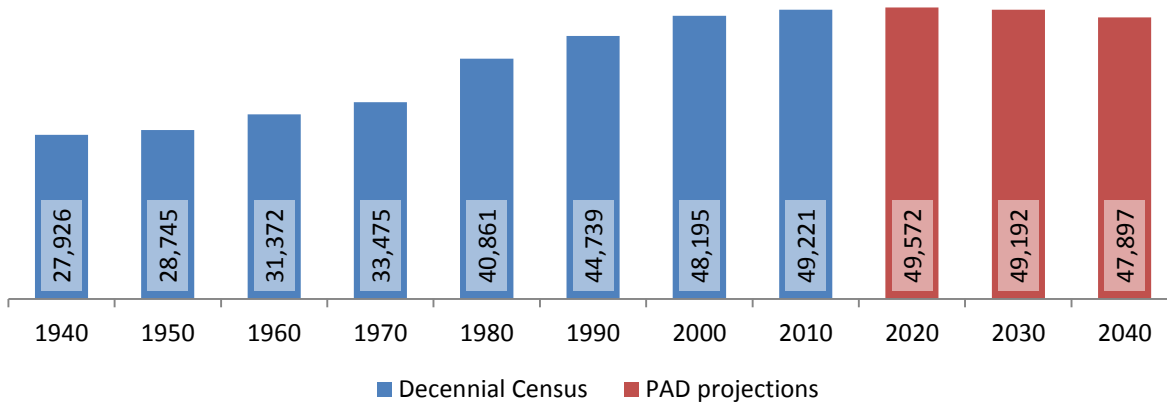
2 Population density and Urban Areas Map



3 Total Population

3.1 Historic and projected

Total population, Greene County, 1940-2040



Source: 1940-2010 Decennial Census and projections by Cornell Program on Applied Demographics

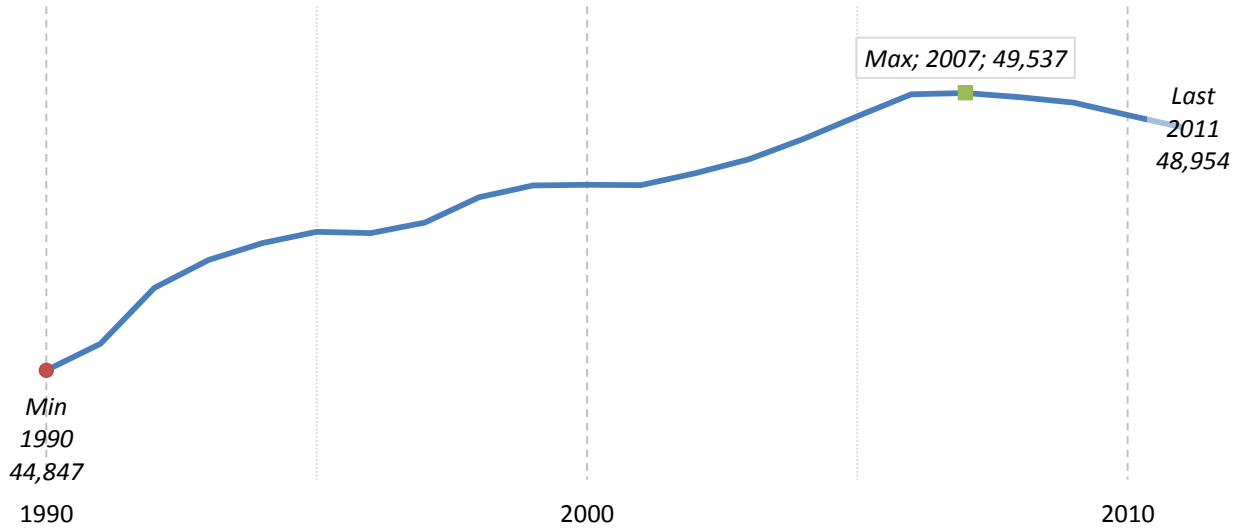
3.2 Change since previous Census

	Total population	Change	
		Number	Percent
Decennial Census	1940	27,926	
	1950	28,745	819 2.9%
	1960	31,372	2,627 9.1%
	1970	33,475	2,103 6.7%
	1980	40,861	7,386 22.1%
	1990	44,739	3,878 9.5%
	2000	48,195	3,456 7.7%
	2010	49,221	1,026 2.1%
PAD projections	2020	49,572	351 0.7%
	2030	49,192	-380 -0.8%
	2040	47,897	-1,295 -2.6%

Source: 1940-2010 Decennial Census and projections by Cornell Program on Applied Demographics

3.3 Annual population estimates

**Annual population estimates
Greene County, 1990-2011**



Source: U.S. Census Bureau population estimates (1990-1999 and 2000-2009 intercensal and vintage 2011 postcensal)

3.4 Percentage sub county change 2000-2010

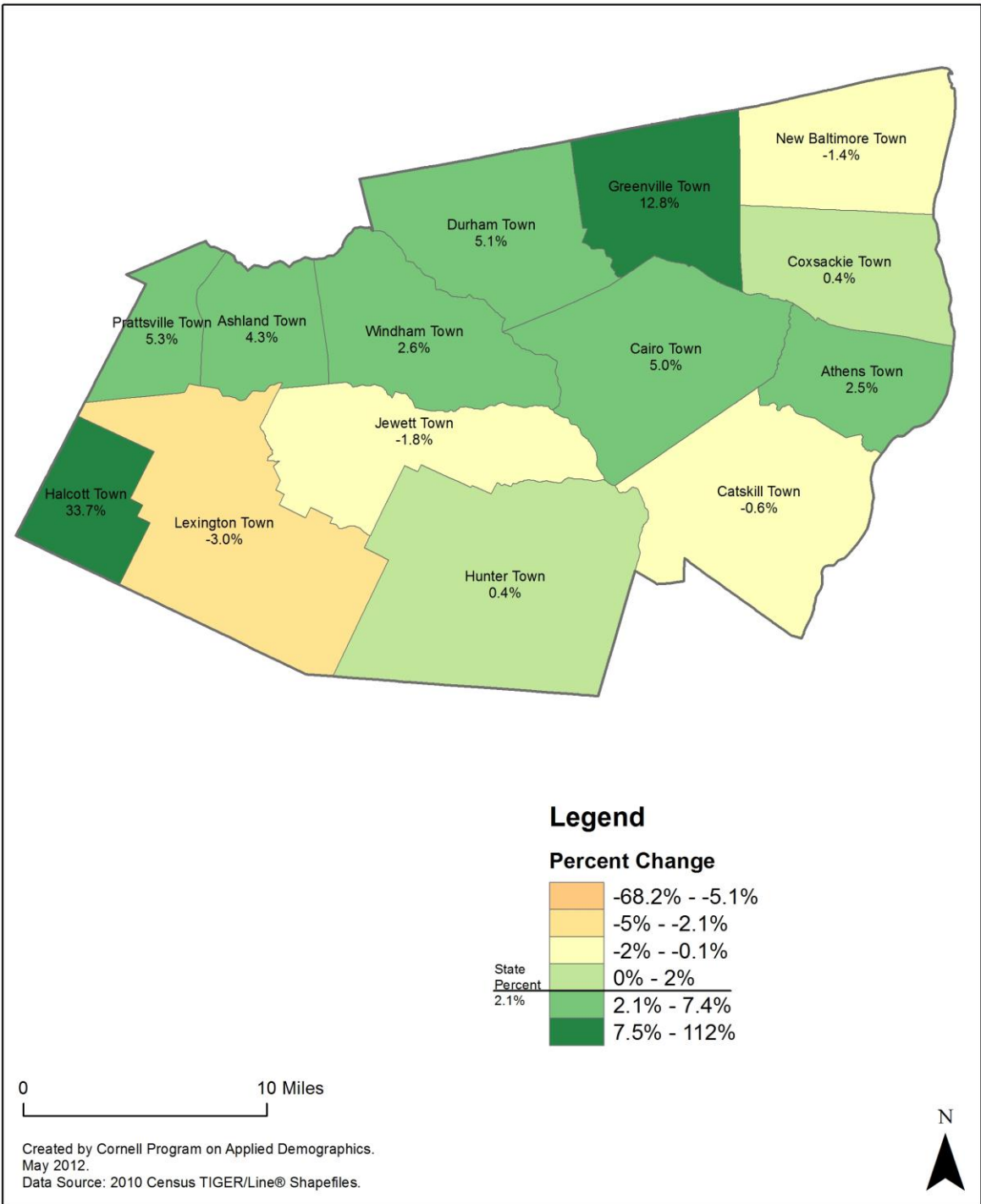
	Total Population		Difference	
	2000	2010	Count	%
New York State	18,976,821 *	19,378,102	401,281	2.1%
Greene County	48,195	49,221	1,026	2.1%
Towns				
Ashland	752	784	32	4.3%
Athens	3,991	4,089	98	2.5%
Cairo	6,355	6,670	315	5.0%
Catskill	11,849	11,775	-74	-0.6%
Coxsackie	8,884	8,918	34	0.4%
Durham	2,592	2,725	133	5.1%
Greenville	3,316	3,739	423	12.8%
Halcott	193	258	65	33.7%
Hunter	2,721	2,732	11	0.4%
Jewett	970	953	-17	-1.8%
Lexington	830	805	-25	-3.0%
New Baltimore	3,417	3,370	-47	-1.4%
Prattsville	665	700	35	5.3%
Windham	1,660	1,703	43	2.6%

* Original counts revised through Count Question Resolution Program (CQR)

Source: U.S. Census Bureau intercensal population estimates 2000-2010

Greene County, NY

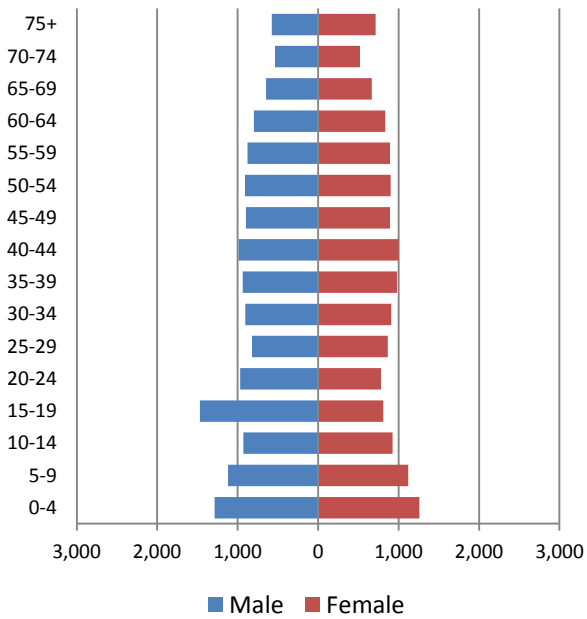
County Subdivision, Percent Change in Population 2000-2010



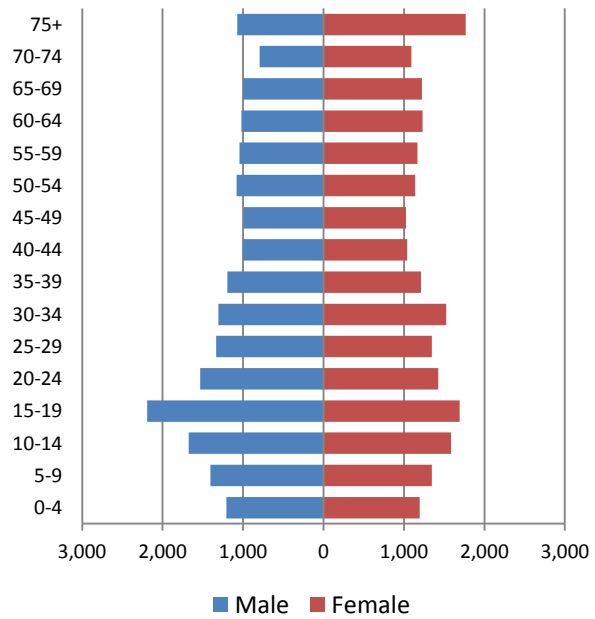
4 Population by age

4.1 Historic and projected population pyramids

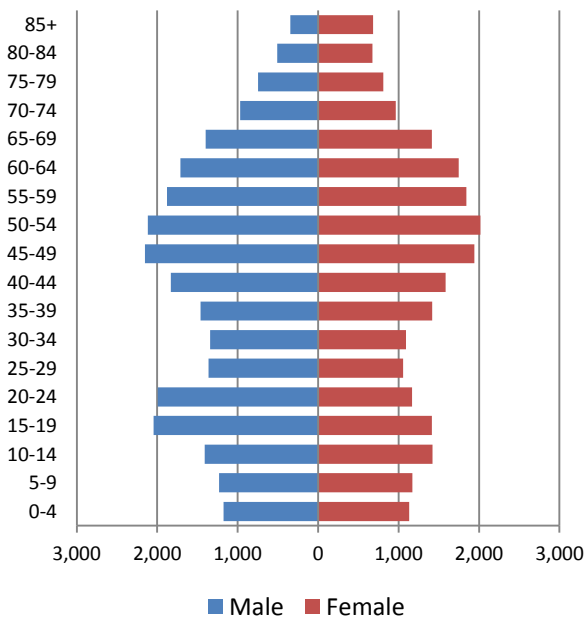
1950 Population Pyramid, Greene County



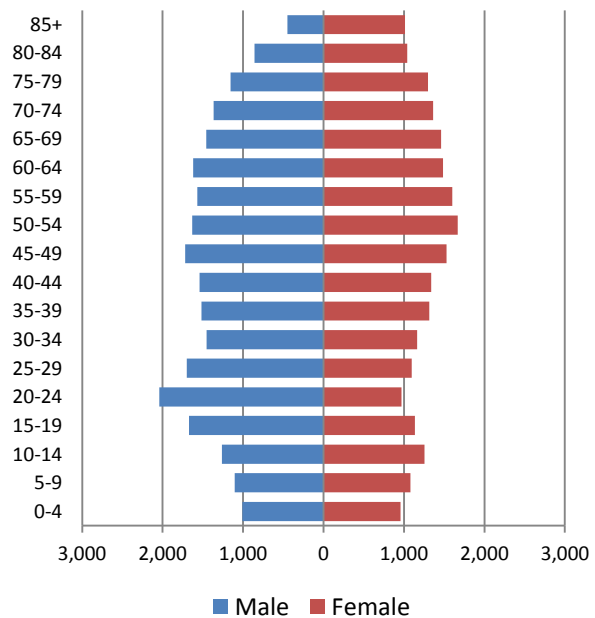
1980 Population Pyramid, Greene County



2010 Population Pyramid, Greene County



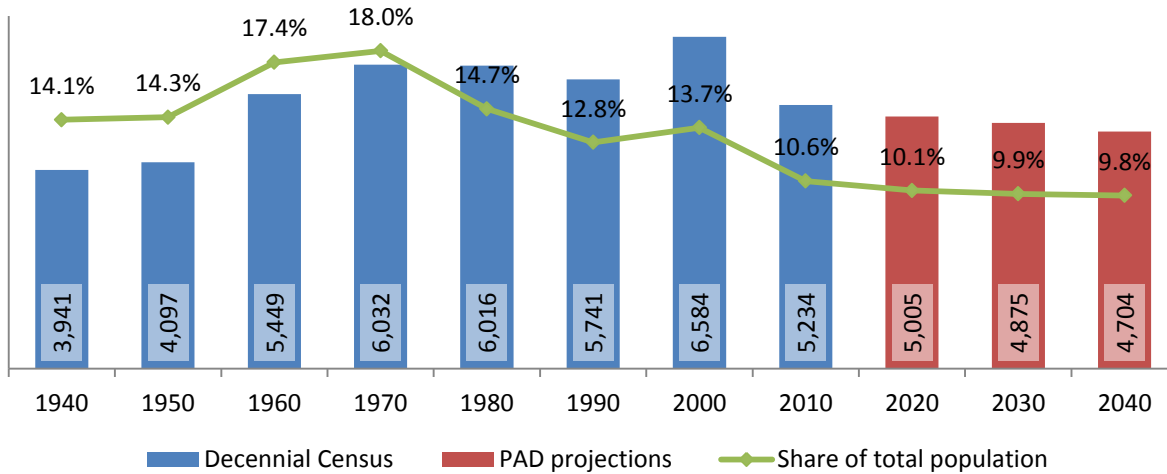
2040 Population Pyramid, Greene County



Source: 1950, 1980, 2010 Decennial Census and projections by Cornell Program on Applied Demographics

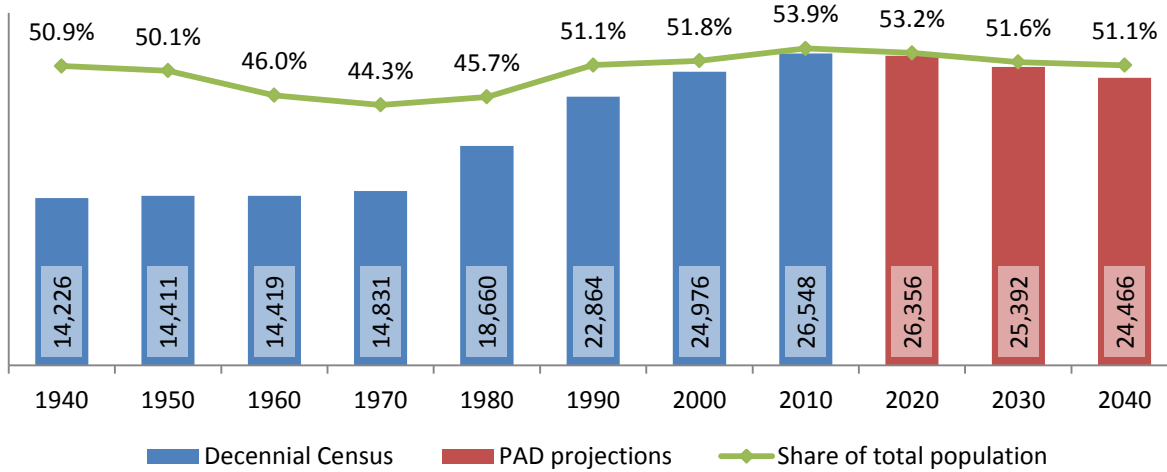
4.2 Selected age groups

Population age 5-14, Greene County, 1940-2040



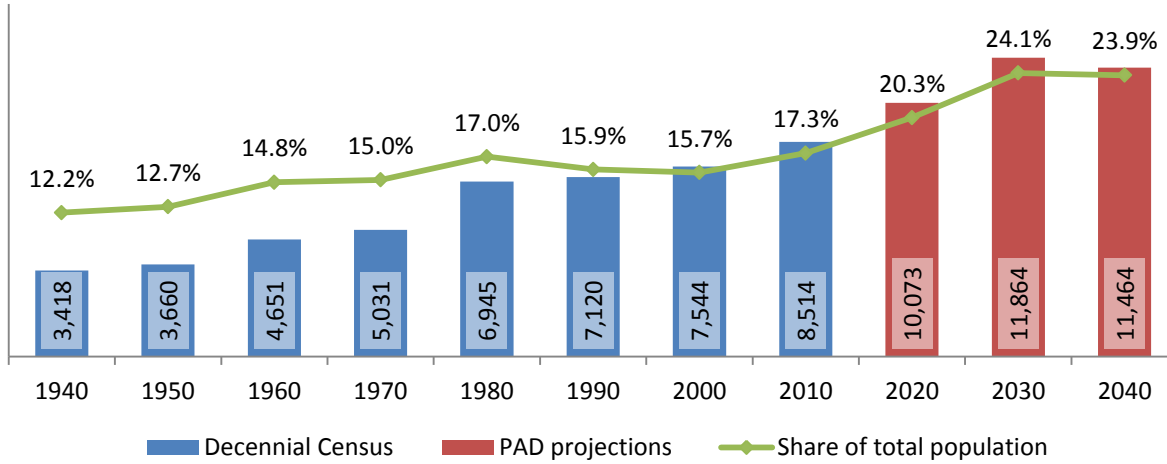
Source: 1940-2010 Decennial Census and projections by Cornell Program on Applied Demographics

Population age 25-64, Greene County, 1940-2040



Source: 1940-2010 Decennial Census and projections by Cornell Program on Applied Demographics

Population age 65 and over, Greene County, 1940-2040

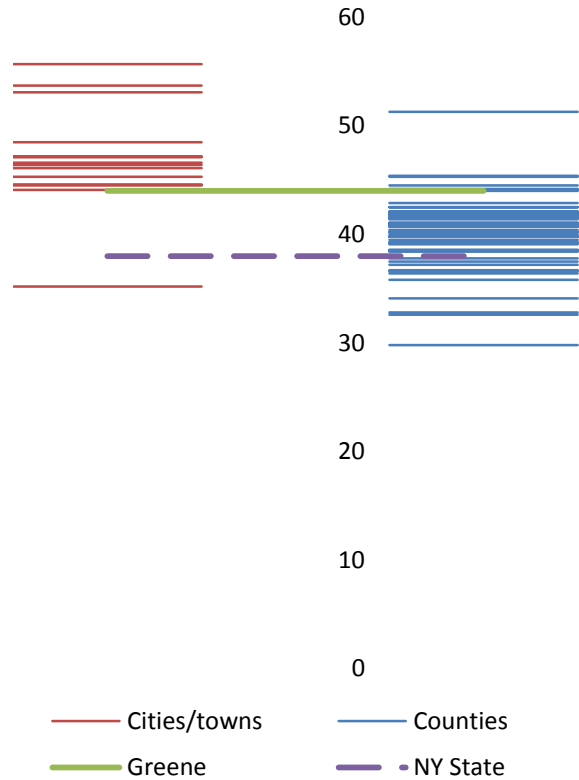


Source: 1940-2010 Decennial Census and projections by Cornell Program on Applied Demographics

4.3 Median age: comparison between areas

	Median Age
New York State	38.0
Greene County	44.0
Towns	
Ashland town	46.6
Athens town	46.4
Cairo town	44.6
Catskill town	44.1
Coxsackie town	35.2
Durham town	47.1
Greenville town	44.5
Halcott town	55.7
Hunter town	47.2
Jewett town	53.1
Lexington town	53.7
New Baltimore town	45.3
Prattsville town	46.1
Windham town	48.5

Median age comparison within county (left) and between counties (right)



Source: 2010 Decennial Census

5 Race

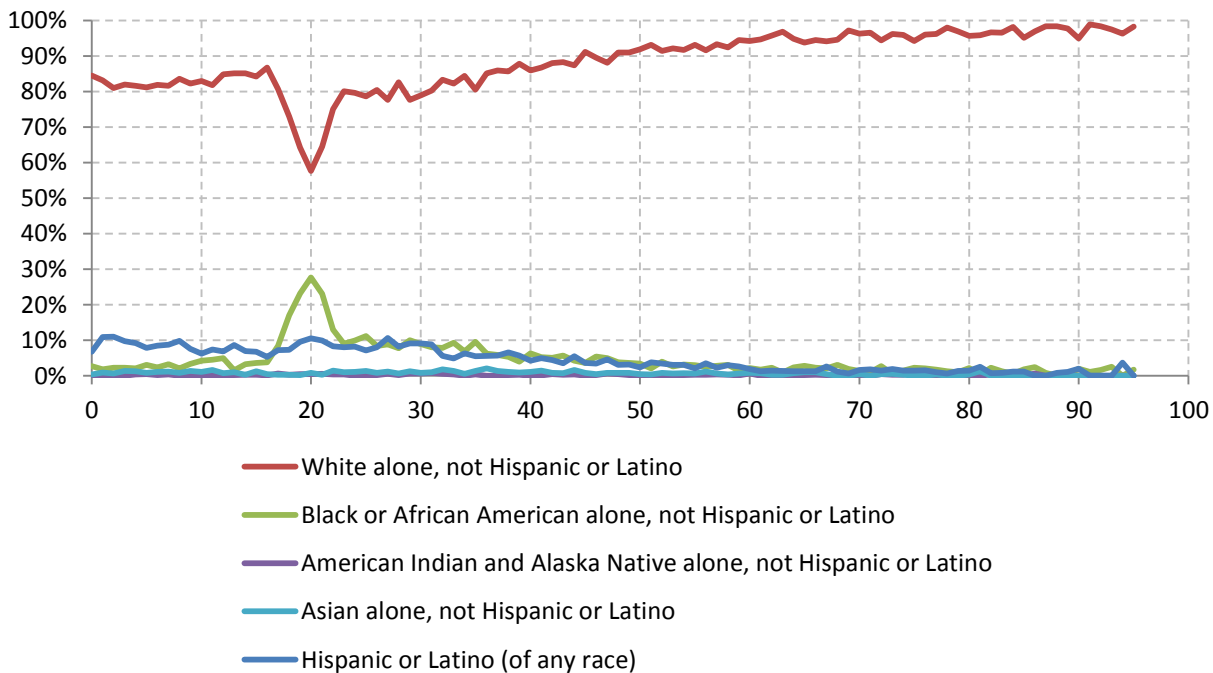
5.1 Total and household population by race

	Total		In households		In Group Quarters
	Count	Percentage	Count	Percentage	Count
Total population	49,221	100%	45,821	100%	3,400
Not Hispanic or Latino					
One race					
White	42,857	87.1%	41,735	91.1%	1,122
Black or African American	2,606	5.3%	993	2.2%	1,613
American Indian and Alaska Native	122	0.2%	97	0.2%	25
Asian	382	0.8%	340	0.7%	42
Native Hawaiian and Other Pacific Islander	15	0.0%	-	-	-
Some other race	103	0.2%	57	0.1%	46
Two or more races	717	1.5%	706	1.5%	11
Hispanic or Latino (of any race)	2,419	4.9%	1,880	4.1%	539

Source: 2010 Decennial Census

5.2 Race composition by age

Race composition by age, Greene County



Source: 2010 Decennial Census

6 Housing units

6.1 Characteristics

HOUSING OCCUPANCY	COUNT		PERCENTAGE	
	Estimate	Margin of error	Estimate	Margin of error
Total housing units	29,063	± 238	100.0%	
Occupied housing units	18,922	± 479	65.1%	± 1.5
Vacant housing units	10,141	± 441	34.9%	± 1.5
YEAR STRUCTURE BUILT				
Total housing units	29,063	± 238	100.0%	
Built 2005 or later	637	± 154	2.2%	± 0.5
Built 2000 to 2004	1,521	± 236	5.2%	± 0.8
Built 1990 to 1999	3,217	± 324	11.1%	± 1.1
Built 1980 to 1989	4,646	± 410	16.0%	± 1.4
Built 1970 to 1979	4,467	± 404	15.4%	± 1.4
Built 1960 to 1969	2,543	± 324	8.7%	± 1.1
Built 1950 to 1959	2,150	± 336	7.4%	± 1.1
Built 1940 to 1949	1,551	± 279	5.3%	± 1.0
Built 1939 or earlier	8,331	± 575	28.7%	± 2.0
HOUSING TENURE				
Occupied housing units	18,922	± 479	100.0%	
Owner-occupied	13,764	± 449	72.7%	± 1.8
Renter-occupied	5,158	± 387	27.3%	± 1.8
HOUSE HEATING FUEL				
Occupied housing units	18,922	± 479	100.0%	
Utility gas	1,129	± 241	6.0%	± 1.3
Bottled, tank, or LP gas	1,807	± 256	9.5%	± 1.4
Electricity	2,329	± 329	12.3%	± 1.7
Fuel oil, kerosene, etc.	11,795	± 526	62.3%	± 2.1
Coal or coke	67	± 57	0.4%	± 0.3
Wood	1,641	± 234	8.7%	± 1.2
Solar energy	0	± 89	0.0%	± 0.2
Other fuel	154	± 82	0.8%	± 0.4
No fuel used	0	± 89	0.0%	± 0.2
VALUE				
Owner-occupied units	13,764	± 449	100.0%	
Less than \$50,000	890	± 191	6.5%	± 1.3
\$50,000 to \$99,999	1,571	± 201	11.4%	± 1.4
\$100,000 to \$149,999	2,337	± 249	17.0%	± 1.7
\$150,000 to \$199,999	2,990	± 351	21.7%	± 2.4
\$200,000 to \$299,999	3,388	± 366	24.6%	± 2.5
\$300,000 to \$499,999	1,978	± 243	14.4%	± 1.8
\$500,000 to \$999,999	491	± 137	3.6%	± 1.0
\$1,000,000 or more	119	± 78	0.9%	± 0.6
Median (dollars)	181,300	± 7,243		

Source: 2007-2011 American Community Survey

6.2 Historical data on number of housing units and occupancy status

Year	Number of Housing Units	Change since previous Census	Occupied	Occupancy rate	Vacant
1970	15,317		10,750	70.2%	4,567
1980	21,350	39.4%	14,919	69.9%	6,431
1990	25,000	17.1%	16,596	66.4%	8,404
2000	26,544	6.2%	18,256	68.8%	8,288
2010	29,210	10.0%	19,823	67.9%	9,387

Source: 1970-2010 Decennial Census

7 Education

7.1 Enrollment by level of school

	Estimate	Margin of error
Total enrolled in school	9,133	± 436
Nursery school, preschool	530	± 133
Kindergarten	392	± 138
Elementary: grade 1 to grade 4	1,567	± 236
Elementary: grade 5 to grade 8	2,324	± 251
High school: grade 9 to grade 12	2,441	± 283
College, undergraduate	1,537	± 216
Graduate, professional school	342	± 131

Source: 2007-2011 American Community Survey

7.2 Enrollment by age

	Estimate	Margin of error
3 and 4 years	43.2%	± 11.1
5 to 9 years	88.7%	± 6.3
10 to 14 years	87.7%	± 5.1
15 to 17 years	83.2%	± 6.4
18 and 19 years	55.0%	± 8.0
20 to 24 years	23.4%	± 5.5
25 to 34 years	6.3%	± 3.2
35 years and over	1.3%	± 0.5

Source: 2007-2011 American Community Survey

7.3 Percentage age 18-24 enrolled in college

	Estimate	Margin of error
Population 18 to 24 years	4,643	± 188
Enrolled in college or graduate school	26.3%	± 3.8
Males 18 to 24 years	3,051	± 183
Enrolled in college or graduate school	18.8%	± 4.2
Females 18 to 24 years	1,592	± 57
Enrolled in college or graduate school	40.6%	± 7.8

Source: 2007-2011 American Community Survey

7.4 Educational attainment

	COUNT		PERCENTAGE	
	Estimate	Margin of error	Estimate	Margin of error
Population 25 years and over	34,976	± 179	100%	
EDUCATIONAL ATTAINMENT				
Less than 9th grade	1,846	± 350	5.3%	± 1.0
9th to 12th grade, no diploma	3,487	± 374	10.0%	± 1.1
High school graduate (includes equivalency)	13,715	± 765	39.2%	± 2.2
Some college, no degree	6,061	± 500	17.3%	± 1.4
Associate's degree	3,366	± 396	9.6%	± 1.1
Bachelor's degree	3,686	± 400	10.5%	± 1.1
Graduate or professional degree	2,815	± 371	8.0%	± 1.1
Percent high school graduate or higher			84.8%	± 1.4
Percent bachelor's degree or higher			18.6%	± 1.5

Source: 2007-2011 American Community Survey

8 Language spoken at home

	COUNT		PERCENTAGE		SPEAK ENGLISH LESS THAN "VERY WELL"	
	Estimate	Margin of error	Estimate	Margin of error	Estimate	Margin of error
Population 5 years and over	47,013	± 127	100%			
LANGUAGE SPOKEN AT HOME						
English only	43,665	± 375	92.9%	± 0.8		
Language other than English	3,348	± 399	7.1%	± 0.8	1,056	± 209
Spanish	1,463	± 299	3.1%	± 0.6	512	± 157
Other Indo-European languages	1,490	± 271	3.2%	± 0.6	427	± 134
Asian and Pacific Islander languages	266	± 109	0.6%	± 0.2	88	± 69
Other languages	129	± 84	0.3%	± 0.2	29	± 30

Source: 2007-2011 American Community Survey

9 Labor Force Characteristics

9.1 Labor force, employment and unemployment

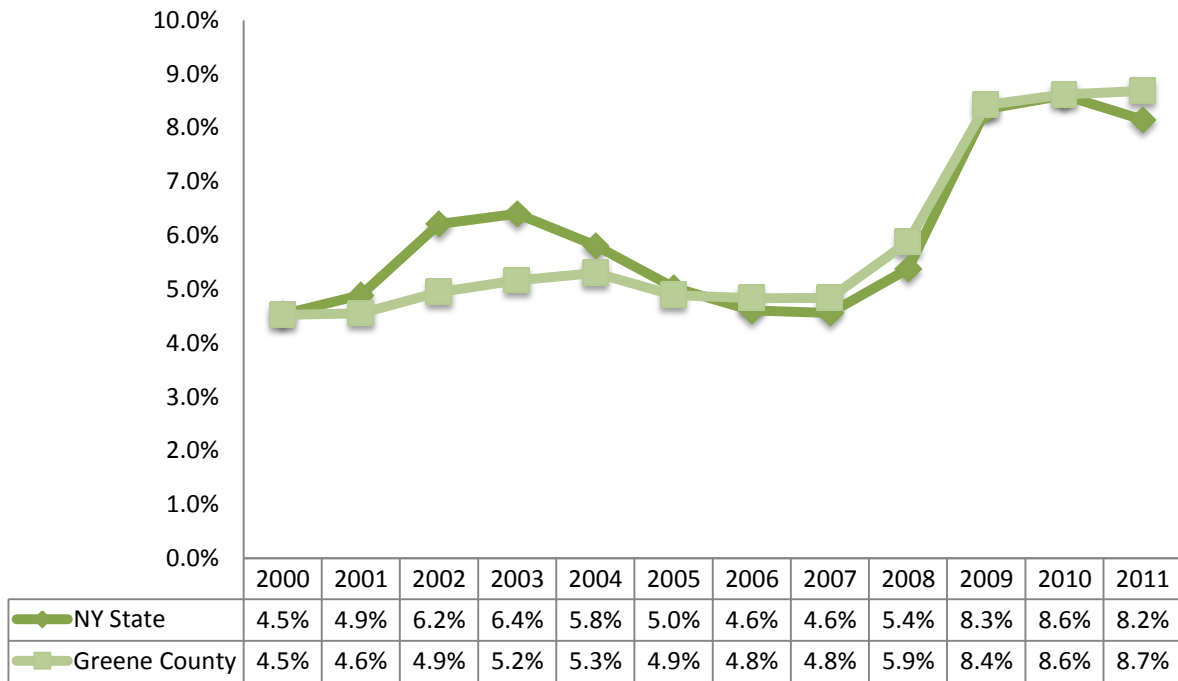
	TOTAL		IN LABOR FORCE		EMPLOYED		UNEMPLOYMENT RATE	
	Estimate	Margin of error	Estimate	Margin of error	Estimate	Margin of error	Estimate	Margin of error
Population 16 years and over	40,830	± 150	55.3%	± 1.5	50.5%	± 1.8	8.5%	± 1.6
AGE								
16 to 19 years	2,700	± 203	36.2%	± 5.5	29.3%	± 5.4	19.0%	± 6.7
20 to 24 years	3,154	± 185	54.0%	± 7.5	43.9%	± 8.0	18.1%	± 7.5
25 to 44 years	11,316	± 256	73.3%	± 3.0	67.0%	± 3.4	8.3%	± 2.5
45 to 54 years	8,143	± 179	79.8%	± 2.7	74.6%	± 3.4	6.5%	± 2.5
55 to 64 years	7,036	± 105	57.0%	± 5.1	53.8%	± 5.3	5.6%	± 2.9
65 to 74 years	4,729	± 94	19.7%	± 3.9	17.6%	± 3.4	10.8%	± 6.8
75 years and over	3,752	± 65	4.1%	± 1.8	4.1%	± 1.8	1.3%	± 2.1
RACE AND HISPANIC OR LATINO ORIGIN								
One race	40,429	± 222	55.1%	± 1.5	50.4%	± 1.7	8.4%	± 1.7
White	37,268	± 211	57.1%	± 1.4	52.1%	± 1.8	8.5%	± 1.7
Black or African American	2,583	± 220	24.0%	± 6.7	21.6%	± 6.4	9.7%	± 12.5
American Indian and Alaska Native	31	± 21	45.2%	± 41.1	45.2%	± 41.1	0.0%	± 79.3
Asian	290	± 39	75.2%	± 17.3	75.2%	± 17.3	0.0%	± 13.8
Pacific Islander	0	± 89	-	**	-	**	-	**
Some other race	257	± 139	65.0%	± 22.5	59.9%	± 23.8	7.8%	± 14.3
Two or more races	401	± 202	70.1%	± 17.0	58.1%	± 17.4	17.1%	± 18.4
Hispanic or Latino origin (of any race)	1,835	± 30	45.3%	± 9.4	40.2%	± 8.5	11.3%	± 9.2
White alone, not Hispanic or Latino	35,840	± 116	57.7%	± 1.5	52.7%	± 1.8	8.4%	± 1.7
SEX								
Population 20 to 64 years	29,649	± 163	69.2%	± 2.1	63.5%	± 2.5	8.0%	± 1.6
Male	15,752	± 150	67.1%	± 3.0	60.6%	± 3.0	9.3%	± 2.1
Female	13,897	± 95	71.5%	± 2.6	66.8%	± 3.2	6.6%	± 2.1
With own children under 6 years	1,483	± 198	75.2%	± 7.8	71.5%	± 8.4	4.8%	± 4.1
EDUCATIONAL ATTAINMENT								
Population 25 to 64 years	26,495	± 194	71.0%	± 2.2	65.9%	± 2.4	7.1%	± 1.6
Less than high school graduate	3,617	± 457	42.0%	± 7.2	34.4%	± 6.8	18.1%	± 8.0
High school graduate (includes equivalency)	9,824	± 700	71.1%	± 3.3	65.3%	± 3.9	8.1%	± 2.8
Some college or associate's degree	8,027	± 567	77.6%	± 3.2	72.8%	± 3.5	6.1%	± 2.2
Bachelor's degree or higher	5,027	± 481	81.0%	± 3.0	78.5%	± 3.2	2.8%	± 1.7

Table formula: **LABOR FORCE** = # EMPLOYED + # UNEMPLOYED
 % IN LABOR FORCE = LABOR FORCE / TOTAL * 100%
 % EMPLOYED = # EMPLOYED / TOTAL * 100%
 UNEMPLOYMENT RATE = # UNEMPLOYED / LABOR FORCE * 100%

Source: 2007-2011 American Community Survey

9.2 Annual unemployment rate

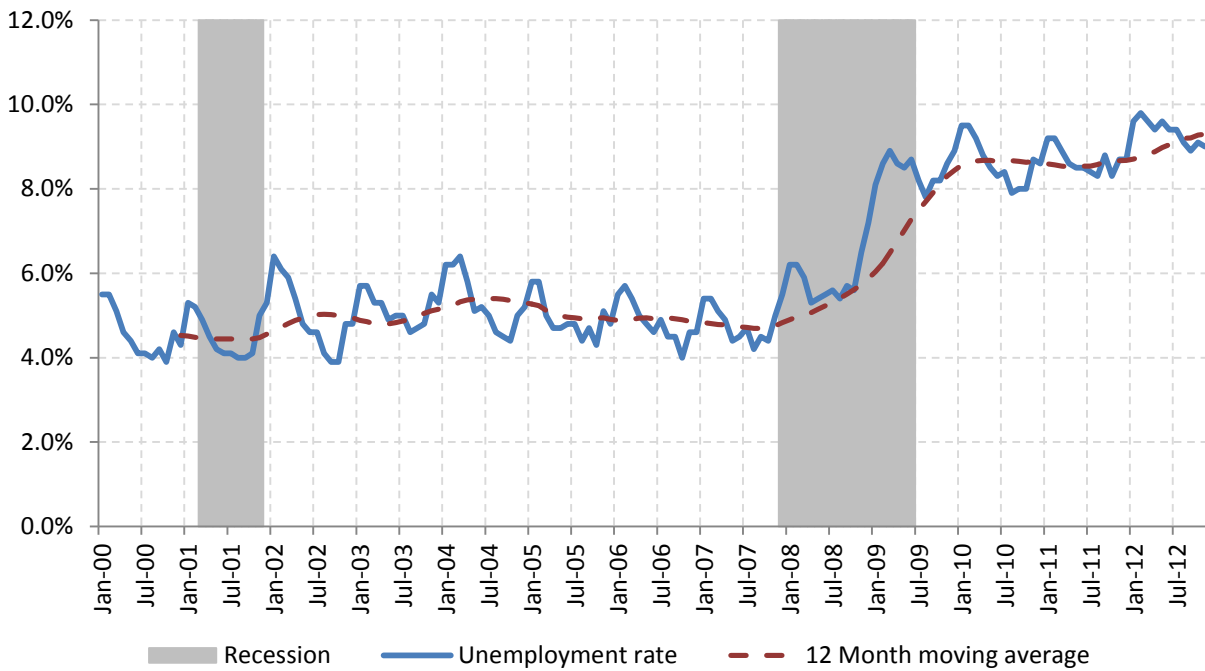
Annual unemployment rate, Greene County and New York State



Source: Bureau Labor Statistics (BLS)

9.3 Monthly unemployment rate

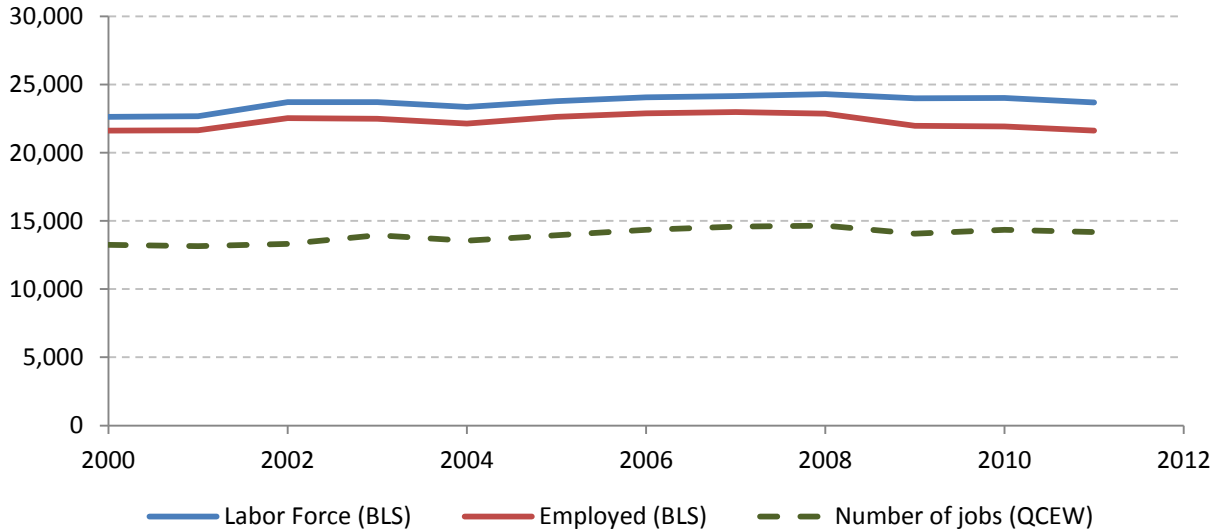
Monthly unemployment rate, Greene County



Source: Bureau Labor Statistics (BLS)

9.4 Employment and number of jobs

**Labor force, number of employed workers and number of jobs
Greene County**



Source: Bureau Labor Statistics (BLS) and NY Department of Labor - Quarterly Census of Employment and Wages (QCEW) – annual averages

9.5 Class of worker

		Median earnings (\$)					
		Total	%Male	%Female	Total	Male	Female
Civilian employed population 16 years and over	Estimate	20,606	50.6%	49.4%	30,991	36,545	26,337
	Margin of error	± 711	± 1.3	± 1.3	± 1,110	± 1,719	± 1,622
Private for-profit wage and salary workers:	Estimate	12,570	53.5%	46.5%	29,223	36,193	23,980
	Margin of error	± 652	± 2.2	± 2.2	± 1,919	± 2,710	± 1,945
Employee of private company workers	Estimate	11,884	52.1%	47.9%	28,684	35,590	23,677
	Margin of error	± 644	± 2.3	± 2.3	± 1,910	± 2,878	± 1,885
Self-employed in own incorporated business workers	Estimate	686	78.3%	21.7%	39,531	40,938	32,679
	Margin of error	± 175	± 9.2	± 9.2	± 10,554	± 15,905	± 19,126
Private not-for-profit wage and salary workers	Estimate	1,810	36.2%	63.8%	31,486	32,339	31,038
	Margin of error	± 336	± 7.0	± 7.0	± 2,093	± 9,974	± 3,846
Local government workers	Estimate	2,094	36.7%	63.3%	34,407	42,083	31,170
	Margin of error	± 293	± 6.4	± 6.4	± 5,124	± 7,408	± 2,121
State government workers	Estimate	1,846	50.4%	49.6%	46,385	52,896	41,823
	Margin of error	± 247	± 6.3	± 6.3	± 6,325	± 7,797	± 4,772
Federal government workers	Estimate	371	44.5%	55.5%	51,496	54,688	51,096
	Margin of error	± 140	± 18.6	± 18.6	± 4,402	± 8,215	± 8,981
Self-employed in own not incorporated business workers and unpaid family workers	Estimate	1,915	61.3%	38.7%	18,965	20,625	16,584
	Margin of error	± 315	± 6.5	± 6.5	± 3,854	± 3,507	± 1,950

Source: 2007-2011 American Community Survey

9.6 Jobs by industry sector

	Greene County			NY state
	2011	Change since 2006	% of total	% of total
All NAICS Sectors	13,858	-2.1%	100.0%	100.0%
Agriculture, Forestry, Fishing and Hunting	73	-9.9%	0.5%	0.3%
Mining, Quarrying, and Oil and Gas Extraction	NA	NA	NA	0.1%
Utilities	27	NA	0.2%	0.5%
Construction	525	-35.7%	3.8%	3.5%
Manufacturing	889	2.2%	6.4%	5.5%
Wholesale Trade	1,073	-20.6%	7.7%	4.0%
Retail Trade	1,847	4.1%	13.3%	10.5%
Transportation and Warehousing	360	-3.5%	2.6%	3.4%
Information	217	-12.5%	1.6%	3.3%
Finance and Insurance	313	27.2%	2.3%	6.0%
Real Estate and Rental and Leasing	123	-21.7%	0.9%	2.3%
Professional, Scientific, and Technical Services	296	-18.7%	2.1%	6.9%
Management of Companies and Enterprises	38	-40.6%	0.3%	1.6%
Administrative and Support and Waste Management and Remediation Services	164	-15.5%	1.2%	5.2%
Educational Services	1,439	17.4%	10.4%	10.8%
Health Care and Social Assistance	1,124	13.3%	8.1%	17.0%
Arts, Entertainment, and Recreation	976	8.6%	7.0%	1.9%
Accommodation and Food Services	1,447	-2.8%	10.4%	7.3%
Other Services (except Public Administration)	411	-10.1%	3.0%	3.9%
Public Administration	2,516	-0.3%	18.2%	5.8%

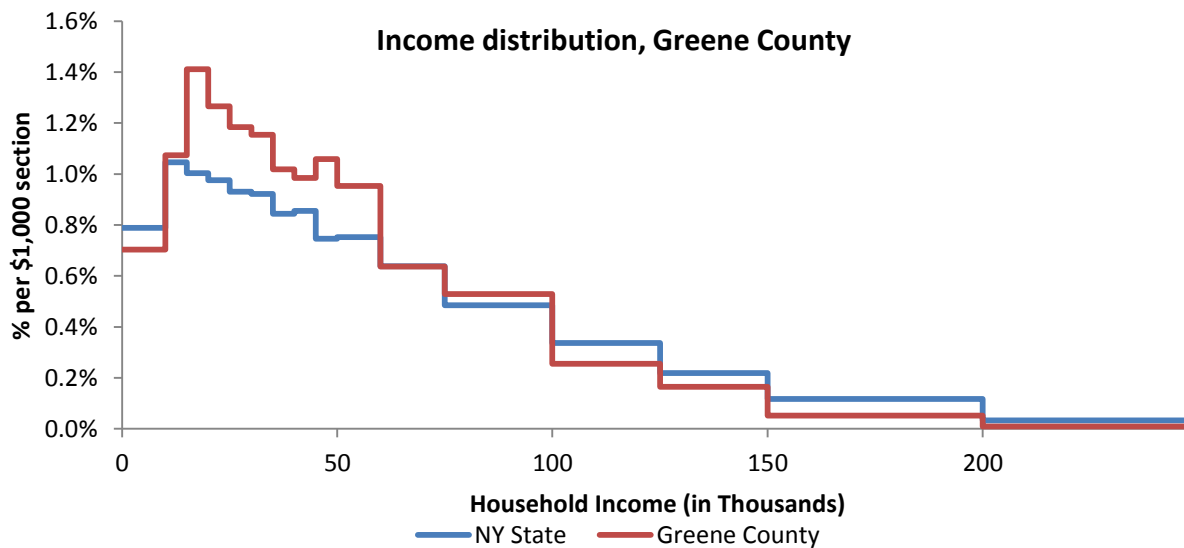
Source: U.S. Census Bureau - Public Use Quarterly Workforce Indicators (QWI) – annual averages

10 Household Income

10.1 Distribution

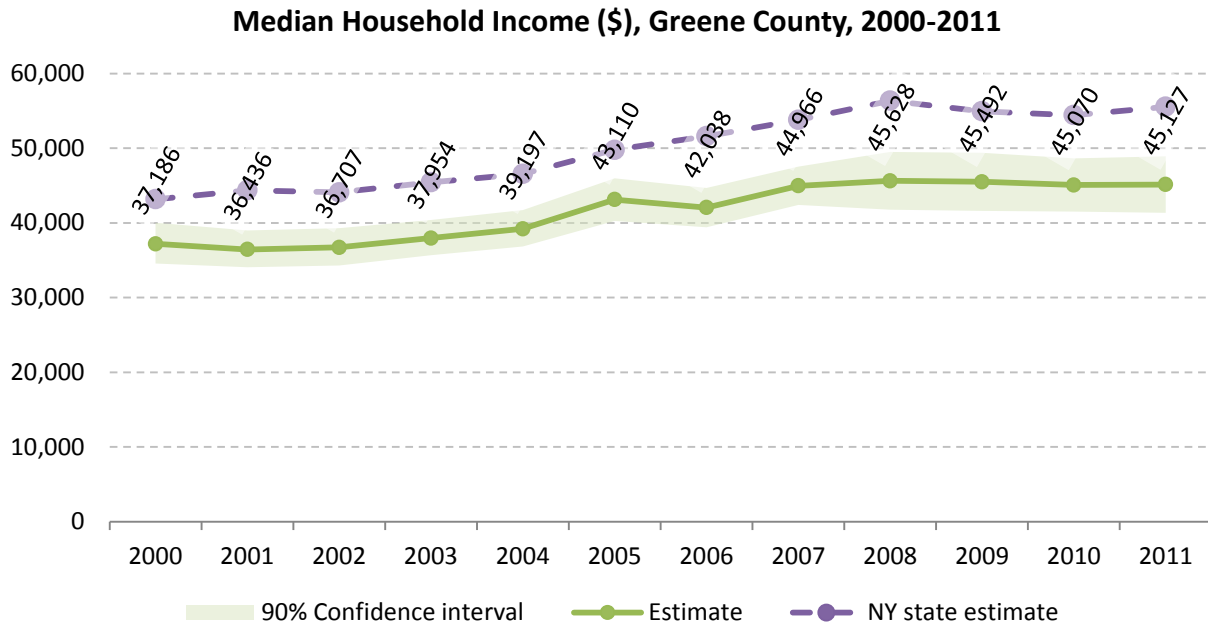
	Estimate	Margin of error	Interval width (in \$1,000)	Est. per \$1,000 section
Total:	18,922	± 479		
Less than \$10,000	1,332	± 262	10	133.2
\$10,000 to \$14,999	1,016	± 225	5	203.2
\$15,000 to \$19,999	1,335	± 267	5	267.0
\$20,000 to \$24,999	1,198	± 216	5	239.6
\$25,000 to \$29,999	1,120	± 216	5	224.0
\$30,000 to \$34,999	1,092	± 262	5	218.4
\$35,000 to \$39,999	963	± 205	5	192.6
\$40,000 to \$44,999	931	± 168	5	186.2
\$45,000 to \$49,999	1,002	± 195	5	200.4
\$50,000 to \$59,999	1,803	± 302	10	180.3
\$60,000 to \$74,999	1,808	± 255	15	120.5
\$75,000 to \$99,999	2,499	± 292	25	100.0
\$100,000 to \$124,999	1,207	± 203	25	48.3
\$125,000 to \$149,999	779	± 173	25	31.2
\$150,000 to \$199,999	486	± 122	50	9.7
\$200,000 or more	351	± 118	-	-

Source: 2007-2011 American Community Survey



Source: 2007-2011 American Community Survey

10.2 Median household income: Trends over time

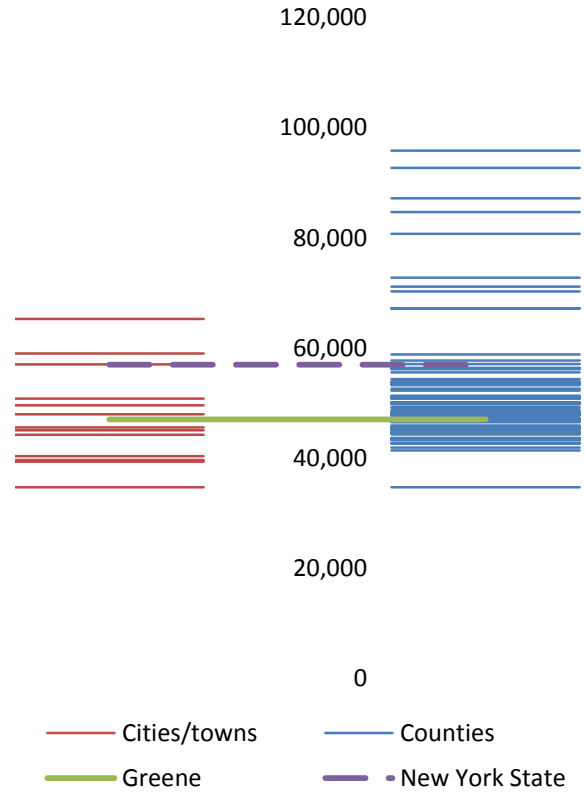


Source: Small Area Income and Poverty Estimates (SAIPE)

10.3 Median household income: Comparison between areas

	MEDIAN HOUSEHOLD INCOME (\$)	
	Estimate	Margin of error
New York State	56,951	± 190
Greene County	47,033	± 2,065
Towns		
Ashland	40,333	± 20,953
Athens	59,006	± 9,033
Cairo	45,573	± 10,288
Catskill	45,569	± 4,984
Coxsackie	50,789	± 6,344
Durham	47,969	± 14,293
Greenville	45,054	± 15,550
Halcott	49,583	± 30,408
Hunter	34,699	± 4,568
Jewett	39,688	± 9,023
Lexington	44,242	± 2,795
New Baltimore	65,298	± 8,856
Prattsville	39,375	± 12,989
Windham	57,024	± 5,751

Median household income comparison within county (left) and between counties (right)



Source: 2007-2011 American Community Survey

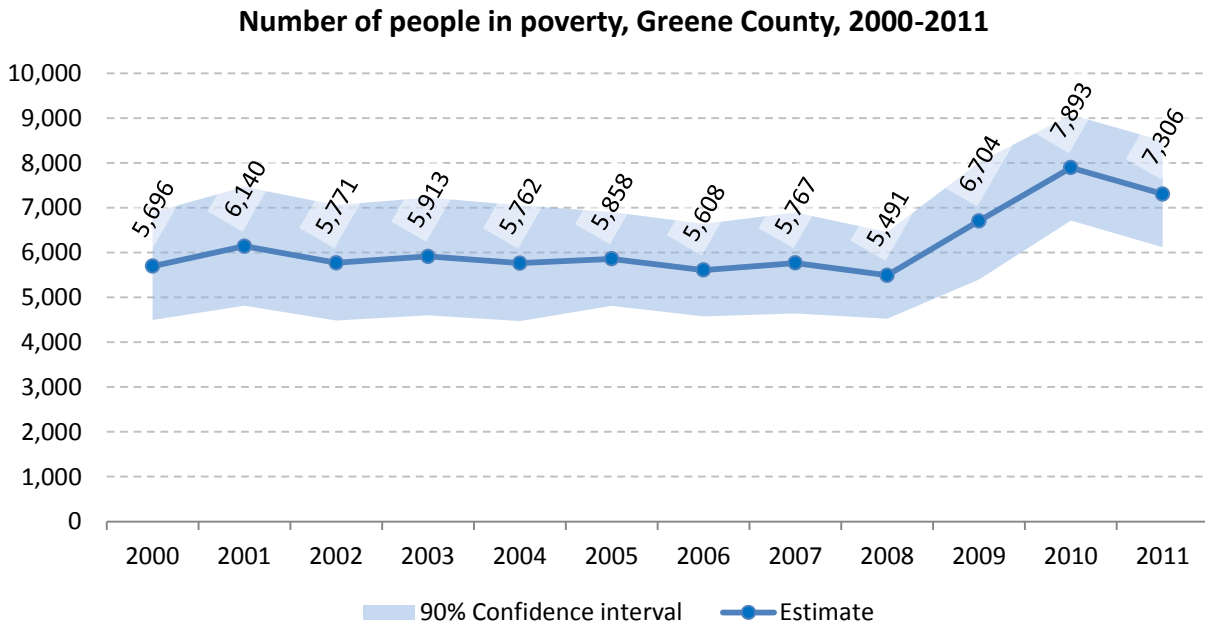
11 Poverty

11.1 Poverty characteristics

	TOTAL		BELOW POVERTY LEVEL		PERCENT BELOW POVERTY LEVEL	
	Estimate	Margin of error	Estimate	Margin of error	Estimate	Margin of error
Population for whom poverty status is determined	45,723	± 479	6,589	± 795	14.4%	± 1.7
AGE						
Under 18 years	9,320	± 209	1,869	± 401	20.1%	± 4.3
Related children under 18 years	9,195	± 225	1,744	± 399	19.0%	± 4.3
18 to 64 years	28,342	± 397	4,055	± 506	14.3%	± 1.8
65 years and over	8,061	± 209	665	± 180	8.2%	± 2.2
SEX						
Male	22,543	± 439	2,726	± 431	12.1%	± 1.9
Female	23,180	± 260	3,863	± 515	16.7%	± 2.2
RACE AND HISPANIC OR LATINO ORIGIN						
One race	44,926	± 480	6,358	± 749	14.2%	± 1.7
White	42,986	± 350	6,008	± 731	14.0%	± 1.7
Black or African American	1,253	± 268	231	± 136	18.4%	± 10.3
American Indian and Alaska Native	66	± 56	33	± 47	50.0%	± 50.0
Asian	372	± 114	16	± 23	4.3%	± 6.1
Hispanic or Latino origin (of any race)	1,922	± 170	454	± 224	23.6%	± 11.5
White alone, not Hispanic or Latino	41,548	± 279	5,668	± 687	13.6%	± 1.6
EDUCATIONAL ATTAINMENT						
Population 25 years and over	32,984	± 390	3,950	± 449	12.0%	± 1.3
Less than high school graduate	4,268	± 438	1,177	± 275	27.6%	± 5.3
High school graduate (includes equivalency)	13,074	± 775	1,683	± 327	12.9%	± 2.4
Some college, associate's degree	9,171	± 625	763	± 210	8.3%	± 2.2
Bachelor's degree or higher	6,471	± 528	327	± 96	5.1%	± 1.6
EMPLOYMENT STATUS						
Civilian labor force 16 years and over	22,532	± 623	1,842	± 355	8.2%	± 1.5
Employed	20,606	± 711	1,288	± 300	6.3%	± 1.4
Male	10,421	± 461	465	± 182	4.5%	± 1.7
Female	10,185	± 441	823	± 168	8.1%	± 1.6
Unemployed	1,926	± 371	554	± 202	28.8%	± 8.4
Male	1,066	± 244	258	± 147	24.2%	± 12.0
Female	860	± 226	296	± 118	34.4%	± 10.7
WORK EXPERIENCE IN THE PAST 12 MONTHS						
Population 16 years and over	37,560	± 462	4,975	± 556	13.2%	± 1.4
Worked full-time, year-round	13,634	± 631	223	± 122	1.6%	± 0.9
Worked part-time or part-year	9,302	± 522	1,449	± 328	15.6%	± 3.4
Did not work	14,624	± 663	3,303	± 458	22.6%	± 2.6

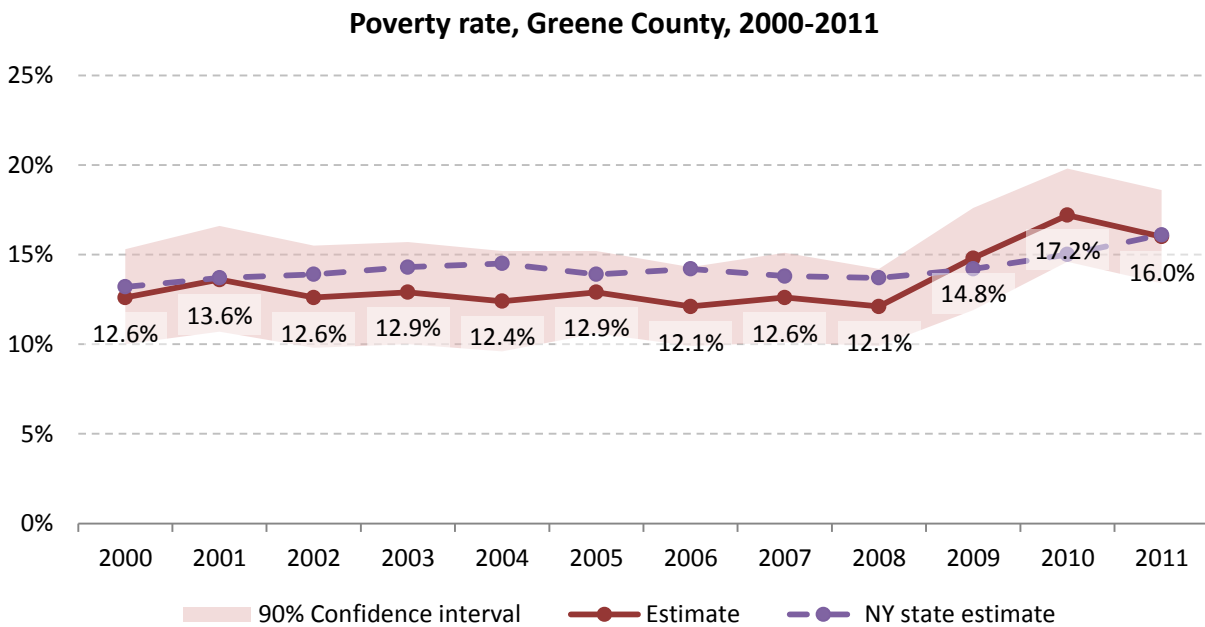
Source: 2007-2011 American Community Survey

11.2 Poverty: Trends over time: Count



Source: Small Area Income and Poverty Estimates (SAIPE)

11.3 Poverty: Trends over time: Rate



Source: Small Area Income and Poverty Estimates (SAIPE)

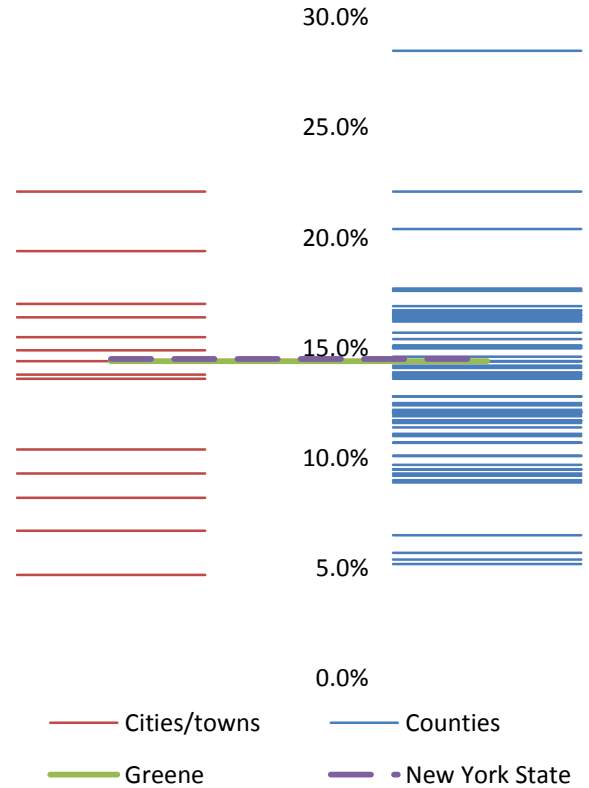
11.4 Poverty rate: comparison between areas

	Poverty Rate - All people	
	Estimate	Margin of error
New York State	14.5%	± 0.1
Greene County	14.4%	± 1.7

Towns

Ashland	13.8%	± 10.4
Athens	9.3%	± 4.6
Cairo	19.4%	± 7.3
Catskill	17.0%	± 4.1
Coxsackie	13.6%	± 4.5
Durham	14.4%	± 7.3
Greenville	10.4%	± 5.9
Halcott	6.7%	± 5.6
Hunter	22.1%	± 7.0
Jewett	16.4%	± 8.9
Lexington	14.9%	± 8.7
New Baltimore	4.7%	± 3.9
Prattsville	15.5%	± 12.4
Windham	8.2%	± 5.1

Poverty rate comparison within county (left) and between counties (right)

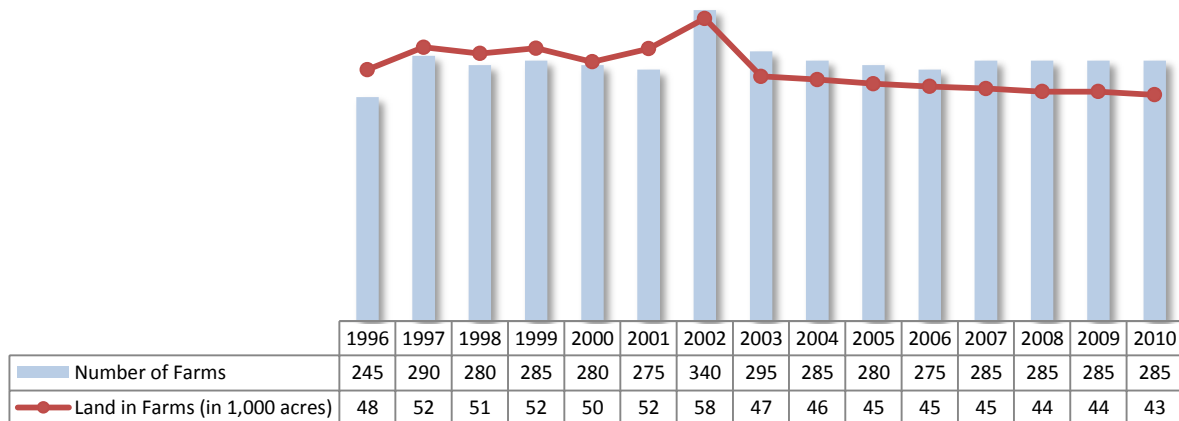


Source: 2007-2011 American Community Survey

12 Agriculture

12.1 Number of farms and land in farms

Greene County, 1996-2010



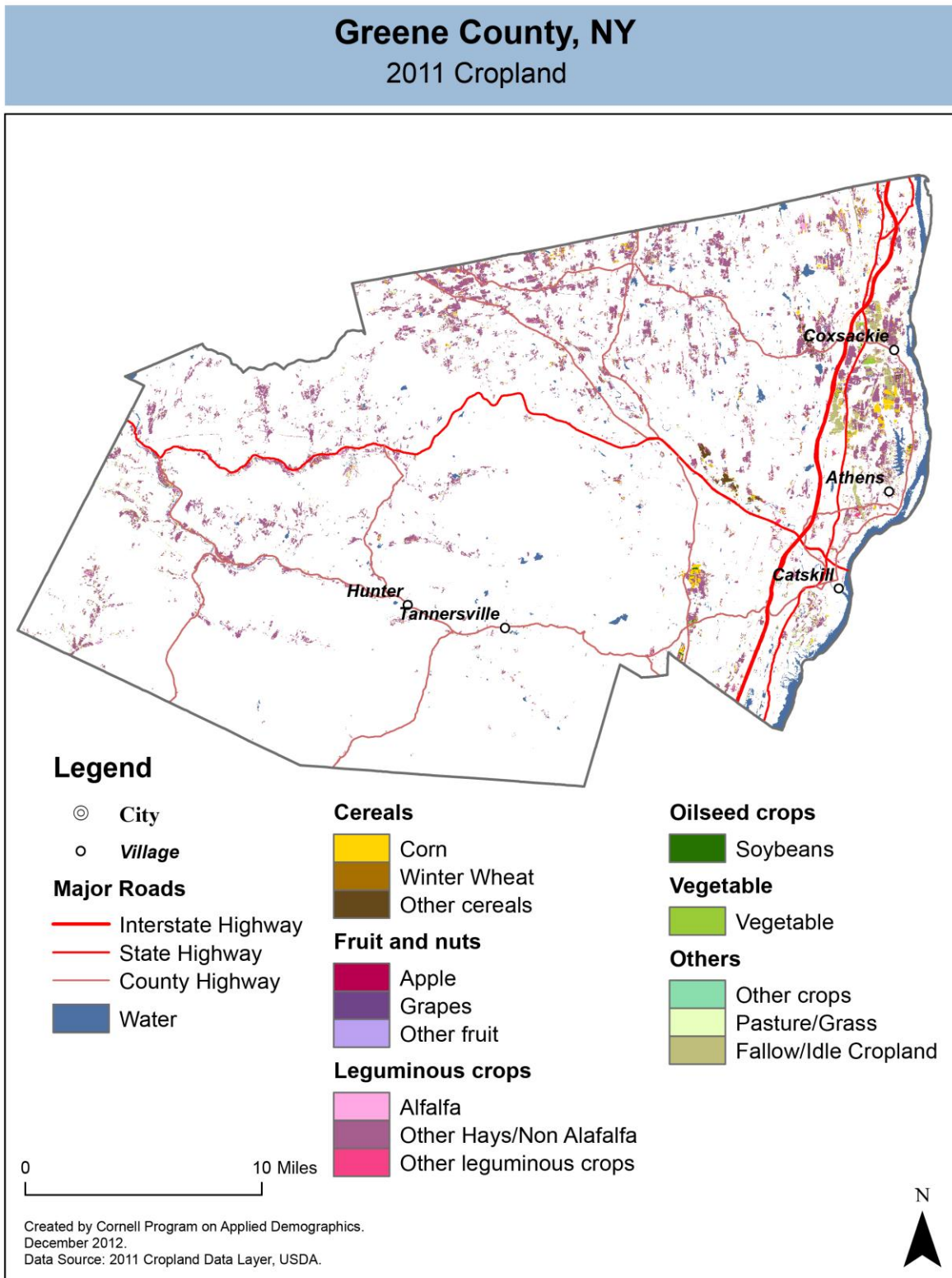
Source: National Agricultural Statistics Service – Annual Statistical bulletin

12.2 Farm Operator Characteristics

	Principal Operator		
	Total	Male	Female
Number of farms	286	218	68
Average size of farm (acres)	155	180	74
PRIMARY OCCUPATION			
Farming	145	123	22
Other	141	95	46
AGE			
Under 45	44	32	12
45 to 64 years	160	114	46
65 years and over	82	72	10
Average age (years)	57.8	59.1	54
YEARS ON PRESENT FARM			
Less than 3 years	3	0	3
3 to 4 years	12	3	9
5 to 9 years	44	29	15
10 years or more	227	186	41

Source: 2007 Agricultural Census

12.3 Map of type of crop

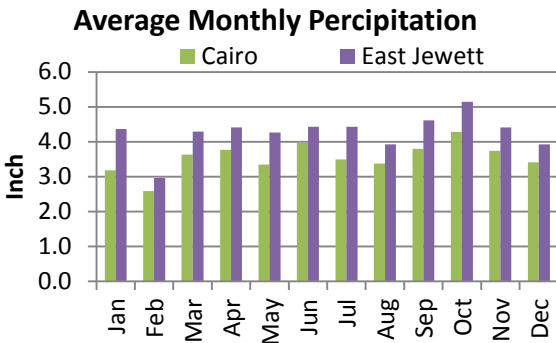
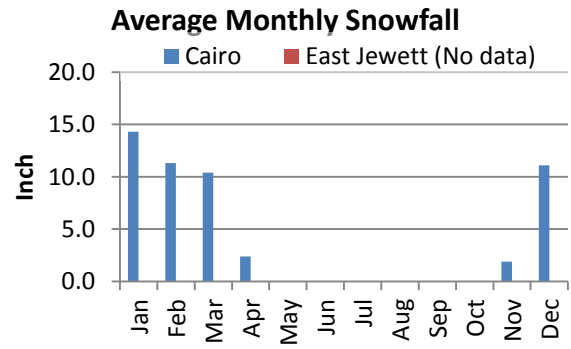
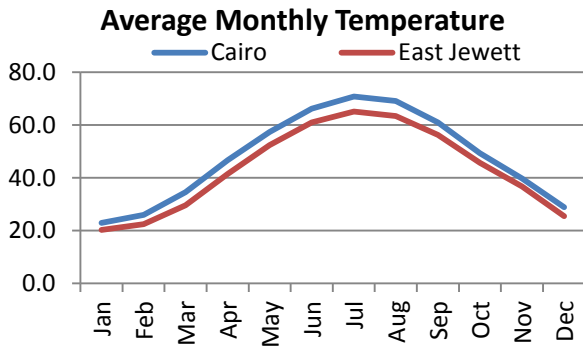
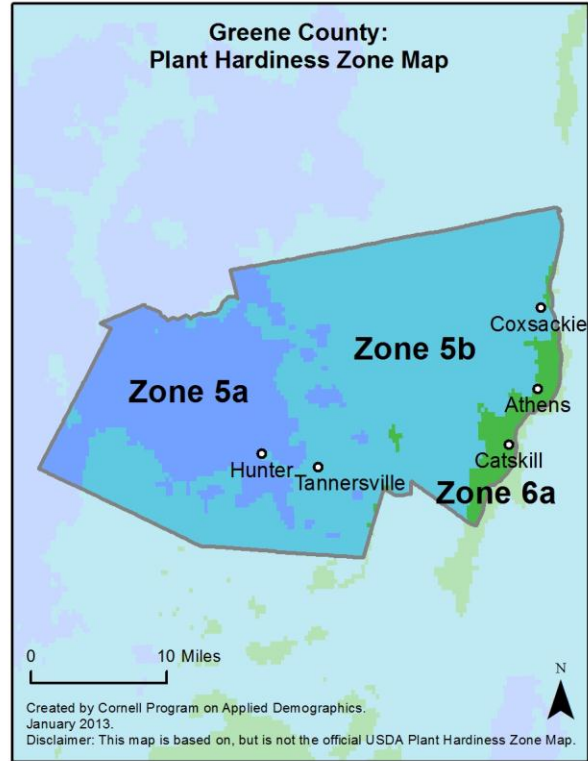
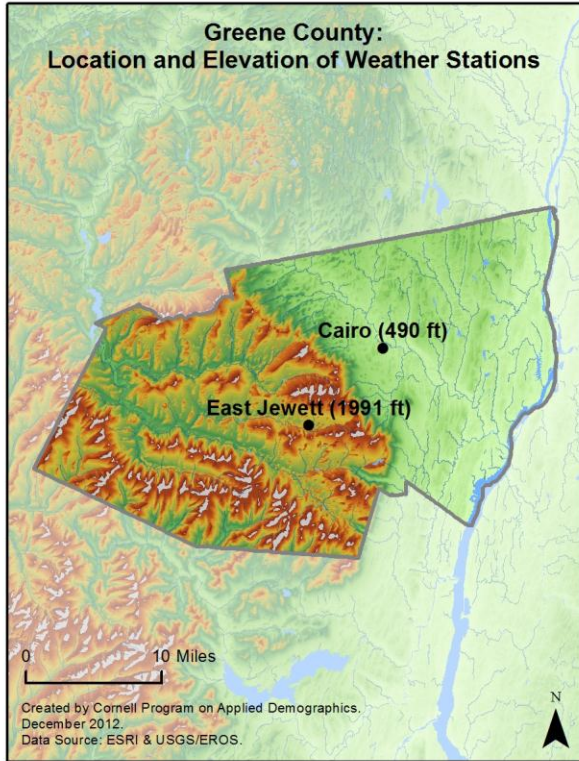


12.4 Estimated acreage by crop

	Acreage	%		Acreage	%
Cereals			Fruit and nuts		
Barley	17	0.1%	Apples	506	1.6%
Corn	2,356	7.4%	Apricots	-	
Millet	-		Blueberries	-	
Oats	204	0.6%	Cherries	-	
Rye	57	0.2%	Cranberries	-	
Sorghum	-		Grapes	0.7	0.0%
Speltz	-		Nectarines	-	
Spring Wheat	-		Peaches	-	
Sweet Corn	288	0.9%	Plums	0.4	0.0%
Triticale	4.4	0.0%	Prunes	-	
Winter Wheat	19	0.1%	Strawberries	-	
Dbl Crop WinWht/Corn	-		Walnuts	-	
Leguminous crops			Beverage and spice crops		
Alfalfa	1,110	3.5%	Herbs	0.2	0.0%
Other Hay/Non Alfalfa	22,036	69.4%	Peppers	-	
Dry Beans	5	0.0%	Trees		
Peas	-		Christmas Trees	0.7	0.0%
Vetch	103	0.3%	Other Tree Crops	1.6	0.0%
Oilseed crops			Other crops		
Soybeans	111	0.3%	Tobacco	-	
Sunflower	13	0.0%	Misc Veggies & Fruits	-	
Sugar crops			Clover/Wildflowers	0.9	0.0%
Sugarbeets	-		Sod/Grass Seed	0.4	0.0%
Root/tuber crops with high starch or inulin content			Switchgrass	-	
Potatoes	-		Dbl Crop Soybeans/Oats	-	
Vegetables and melons			Dbl Crop WinWht/Soybeans	-	
Asparagus	-		Other Crops	28	0.1%
Broccoli	-		Pasture/Grass		
Cabbage	-		Fallow/Idle Cropland		
Carrots	-			1,922	6.1%
Eggplants	-			2,846	9.0%
Onions	11	0.0%			
Pumpkins	-				
Squash	103	0.3%			
Tomatoes	0.2	0.0%			
Turnips	-				

Source: National Agricultural Statistics Service - Cropland Data Layer 2011

13 Climate



Average length of freeze-free season

	Last day of frost	First day of frost	Season length
Cairo	May 5	October 7	155
East Jewett	May 26	September 18	114

Source: NOAA, Northeast Regional Climate Center at Cornell University. Averages 1981-2010

14 Glossary

American Community Survey (ACS) - The American Community Survey is an ongoing survey of the population that provides data every year on a variety of social and economic characteristics—age, sex, race, family and relationships, income and benefits, health insurance, education, veteran status, disabilities, where you work and how you get there, where you live and how much you pay for some essentials. The ACS replaced the information previously gathered by what was known as the “long form” of the decennial censuses. The ACS provides communities, companies and other institutions with current information they need to plan investments and services. Information from the survey generates data that help determine how more than \$400 billion in federal and state funds are distributed each year. Every estimate presented in the American Community Survey, as in other surveys, has an uncertainty associated with it. Often the magnitude of that uncertainty is expressed as the Margin of Error.

Confidence Interval (CI) - indication of the degree of uncertainty about a sample estimates. Confidence intervals have been traditionally reported at the 90, 95 and 99 percent levels. A 90 percent confidence interval can be interpreted, for example, roughly as providing 90 percent certainty that the interval defined by the upper and lower bounds contain the true value of the characteristic. If a Margin of Error is given, the lower bound of the confidence interval is equal to the estimate minus the Margin of Error and the upper bound is equal to the estimate plus the Margin of Error. (See further, Margin of Error definition below.)

County subdivision or Minor Civil Division (MCD) - The Census Bureau geography for primary administrative units below the county level in New York is collectively referred to as county subdivisions or minor civil divisions. These include towns, cities and Indian Reservations.

Decennial Census - the Census of the population and housing taken every 10 years in the United States, at the start of each decade, since 1790.

Employed – either “at work” or “with a job, but not at work”.

Group Quarters Population - all U.S. residents who live in group living facilities including correctional institutions, juvenile facilities, skilled nursing facilities, college residence halls, military barracks, group homes, and workers' dormitories.

Household Population - all U.S. residents who live in housing units such as single family homes, townhouses, apartments, and mobile homes.

Intercensal Population Estimates - estimates produced for the years between two decennial censuses when both the beginning and ending populations are known. They are produced once a decade by adjusting the existing time series of postcensal estimates for the entire decade to smooth the transition from one decennial census count to the next. They differ from the postcensal estimates that are released annually because the difference between the April 1 postcensal estimate and April 1 census count for the end of the decade is redistributed across the estimates for that decade. For dates when both postcensal and intercensal estimates are available, intercensal estimates are preferred.

Labor Force - consists of people classified as employed or unemployed.

Margin of Error (MOE) - a measure of the precision of an estimate at a given level of confidence. The confidence level of a margin of error indicates the likelihood that the difference between the population value (which you

would get if you could measure the whole population instead of a sample) and the estimate is less than or equal to the margin of error. The range from the estimate minus the margin of error to the estimate plus the margin of error is called the confidence interval. All ACS estimates are published with their margins of error at the 90 percent confidence level. Margins of error are useful in assessing the reliability of estimates and whether differences between estimates are significant.

NAICS - The North American Industry Classification System or NAICS is used by business and government to classify business establishments according to type of economic activity (process of production).

Numeric Population Change - difference between the population of an area at the beginning and end of a time period. It is computed by taking the difference between the population at one point in time (t1) and some future time (t2).

Percent Population Change - difference between the population of an area at the beginning and end of a time period, expressed as a percentage of the beginning population. It is computed by dividing the population change (t2 - t1) by t1 and multiplying the result by 100.

Population Estimates - The calculated number of people living in an area as of a specified point in time, usually July 1st. The estimated population is calculated using a component of change model that incorporates information on natural increase (births, deaths) and net migration (net domestic migration, net international migration) that has occurred in an area since the latest decennial census. A procedure for estimating the current population using a procedure involving a "base population" value at time t -1, adding to that the births during the interval t-1 to t, subtracting the deaths during that interval t-1 to t, and then adding the net domestic and net international migration that occurred during that interval.

Population Density - Total number of people per areal unit like a square mile or square kilometer.

Population Pyramids - A graphical way of portraying a population's age and sex composition at a given slice in time. The first horizontal bar, constituting the base of the graph, is the youngest age group (typically 0-4) with the number of males in that age group on the left and the number of females in that age group on the right. On top of that age group is another horizontal bar for the next age group (e.g. 5-9) and so forth with the top bar typically for those aged 75 and over. In a population with lots of births and deaths, the shape typically forms a pyramid with a broad base and a narrow top. It is one of the most basic ways to understand population change over time as well as between different geographic units of a similar status (e.g. counties).

Postcensal Estimates - estimates produced for the years after a decennial census when only the beginning population is known. They are produced and revised each year, targeted to July 1 of that year.

Projection - estimated population at some future time based on assumptions about births, deaths, migration, and ages.

Race/Ethnicity - the Census Bureau collects racial data in accordance with guidelines provided by the U.S. Office of Management and Budget (OMB), and these data are based on self-identification. The racial categories included in the census questionnaire generally reflect a social definition of race recognized in this country and not an attempt to define race biologically, anthropologically, or genetically. In addition, it is recognized that the categories of the race item include racial and national origin or sociocultural groups. People may choose to report more than one race to indicate their racial mixture, such as "American Indian" and "White." People who identify their origin as Hispanic, Latino, or Spanish may be of any race. OMB requires five minimum categories: White, Black or African American, American Indian or Alaska Native, Asian, and Native Hawaiian or Other Pacific

Islander. Hispanics may be classified as white or black. So we generally separate them out as an ethnic group first.

Unemployed – Not employed, but actively looking for work and available to accept a job.

Unemployment rate – Fraction of the Labor Force that is unemployed.

Urban Area – A densely settled area with at least 2,500 people. If the total number of people is less than 50,000 the Census Bureau calls it an Urban Cluster, otherwise an Urbanized Area.

Vintage - each year, the U.S. Census Bureau produces and publishes estimates of the population for each state and county, as well as the nation as a whole. These are called “vintages.” In producing these vintages, the Bureau utilizes administrative data from a number of sources to estimate 1) the change in population since the most recent decennial census, and 2) the population for each year since the most recent decennial census. With each annual release of population estimates (vintage), the entire time series of estimates beginning on April 1, 2010 is revised and updated.

15 References

Greene County homepage: <http://www.greenegovernment.com/>

At Cornell:

- Cornell Cooperative Extensions (CCE)
Home page: <http://www.cce.cornell.edu>
 - Columbia/Greene local office: <http://www.ccecolumbiagreene.org/>
- Program on Applied Demographics (PAD)
URL: <http://pad.human.cornell.edu/>
- Community and Regional Development Institute (CaRDI)
URL: <http://devsoc.cals.cornell.edu/cals/devsoc/outreach/cardi/index.cfm>

Data sources and background information:

- U.S. Census Bureau - general
 - QuickFacts: <http://quickfacts.census.gov/qfd/states/36/36039.html>
 - QuickLinks: <http://quickfacts.census.gov/qfd/states/36/36039lk.html>
 - American FactFinder: <http://factfinder2.census.gov>
- U.S. Census Bureau - population
 - Decennial Census
 - Background: <http://2010.census.gov/2010census/>
 - Demographic Profile: http://factfinder2.census.gov/bkmk/table/1.0/en/DEC/10_SF1/SF1DP1/0500000US360399
 - American Community Survey (ACS)
 - Background: <http://www.census.gov/acs/www/>
 - Social Data Profile: http://factfinder2.census.gov/bkmk/table/1.0/en/ACS/10_5YR/DP02/0500000US36039
 - Economic Data Profile: http://factfinder2.census.gov/bkmk/table/1.0/en/ACS/10_5YR/DP03/0500000US36039
 - Housing Data Profile: http://factfinder2.census.gov/bkmk/table/1.0/en/ACS/10_5YR/DP04/0500000US36039
 - Demographics Data Profile: http://factfinder2.census.gov/bkmk/table/1.0/en/ACS/10_5YR/DP05/0500000US36039
 - Population estimates: <http://www.census.gov/popest/estimates.html>
- U.S. Census Bureau – Small Area Income & Poverty Estimates (SAIPE)
 - <http://www.census.gov/did/www/saipe/>
- U.S. Census Bureau - Public Use Quarterly Workforce Indicators (QWI) – annual averages
 - <http://www2.vrdc.cornell.edu/news/data/qwi-public-use-data/>
- Bureau Labor Statistics (BLS) – Local Area Unemployment Statistics: <http://www.bls.gov/lau/>
- NY Department of Labor -
 - Labor statistics: <http://www.labor.ny.gov/stats/>
 - Quarterly Census of Employment and Wages (QCEW): <http://www.labor.ny.gov/stats/lsqcew.shtm>
- Bureau of Economic Analysis (BEA) – Local Area Personal Income and Employment: <http://bea.gov/iTable/iTable.cfm?ReqID=70&step=1>

- USDA Census of Agriculture
 - 2007
 - Home page: <http://www.agcensus.usda.gov/Publications/2007/index.php>
 - County profile: http://www.agcensus.usda.gov/Publications/2007/Online_Highlights/County_Profiles/New_York/cp36039.pdf
 - Race, Ethnicity and Gender Profiles: http://www.agcensus.usda.gov/Publications/2007/Online_Highlights/Race_Ethnicity_and_Gender_Profiles/New_York/cpd36039.pdf
- USDA National Agricultural Statistics Service (NASS)
 - Home page: <http://www.nass.usda.gov/index.asp>
 - New York Statistical Bulletins: http://www.nass.usda.gov/Statistics_by_State/New_York/Publications/Annual_Statistical_Bulletin/
 - Cropland Data Layer – CropScape: <http://nassgeodata.gmu.edu/CropScape/>
- USDA Agricultural Research Service – Plant Hardness Zone Map: <http://planthardiness.ars.usda.gov/PHZMWeb/>
- NOAA, Northeast Regional Climate Center at Cornell University
 - Home page: <http://www.nrcc.cornell.edu/index.html>

Alternative sites for data retrieval:

- The Nelson A. Rockefeller Institute of Government – New York State Statistical Yearbooks http://www.rockinst.org/nys_statistics/
- Headwaters Economics: Economic Profile System – Human Dimensions Toolkit <http://headwaterseconomics.org/tools/eps-hdt>
- National Historical Geographic Information System (NHGIS) <https://www.nhgis.org/>
- Social Explorer <http://www.socialexplorer.com/pub/home/home.aspx>
- Missouri Census Data Center <http://mcdc.missouri.edu/>
- DataFerret <http://dataferrett.census.gov/>
- Investigative Reporters and Editors (IRE) Census project <http://census.ire.org/>