

# Essex

## County Profile

### 2013

*A collection of recent demographic, social, economic and agricultural data*

Compiled by Jan Vink

Assisted by Joe Francis, Sutee Anantsuksomsri, Nij Tontisirin, Johannes Plambeck



**Cornell University**  
Cooperative Extension



This profile is a part of a set of profiles generated for each county in New York State. The profiles were developed and generated by the Cornell Program on Applied Demographics. The work is sponsored by Cornell Cooperative Extension and promoted with webinars and workshops in coordination with the Community & Regional Development Institute.

Cornell Program on Applied Demographics:

The Program on Applied Demographics (PAD) brings skills in demographics, economics, statistics, data gathering and data analysis together to provide a variety of organizations with data, information and advice.

For more information: <http://pad.human.cornell.edu/>

Cornell Cooperative Extension:

Cornell Cooperative Extension (CCE) puts knowledge to work in pursuit of economic vitality, ecological sustainability and social well-being. We bring local experience and research based solutions together, helping New York State families and communities thrive in our rapidly changing world.

For more information: <http://cce.cornell.edu/>

Community & Regional Development Institute:

The Community & Regional Development Institute (CaRDI) supports informed decision making for residents and communities in New York State through applied research and education.

For more information: <http://cardi.cornell.edu/>

All profiles are freely downloadable as PDF documents on the PAD website:

<http://pad.human.cornell.edu/profiles/index.cfm>

## Contents

Contents .....	2
1 Reference Maps .....	4
2 Population density and Urban Areas Map .....	6
3 Total Population .....	7
3.1 Historic and projected .....	7
3.2 Change since previous Census .....	7
3.3 Annual population estimates .....	8
3.4 Percentage sub county change 2000-2010 .....	9
4 Population by age .....	11
4.1 Historic and projected population pyramids .....	11
4.2 Selected age groups .....	12
4.3 Median age: comparison between areas .....	14
5 Race .....	15
5.1 Total and household population by race .....	15
5.2 Race composition by age .....	15
6 Housing units .....	16
6.1 Characteristics .....	16
6.2 Historical data on number of housing units and occupancy status .....	17
7 Education .....	18
7.1 Enrollment by level of school .....	18
7.2 Enrollment by age .....	18
7.3 Percentage age 18-24 enrolled in college .....	18
7.4 Educational attainment .....	19
8 Language spoken at home .....	19
9 Labor Force Characteristics .....	20
9.1 Labor force, employment and unemployment .....	20
9.2 Annual unemployment rate .....	21
9.3 Monthly unemployment rate .....	21
9.4 Employment and number of jobs .....	22
9.5 Class of worker .....	22
9.6 Jobs by industry sector .....	23
10 Household Income .....	24
10.1 Distribution .....	24
10.2 Median household income: Trends over time .....	25
10.3 Median household income: Comparison between areas .....	26
11 Poverty .....	27
11.1 Poverty characteristics .....	27
11.2 Poverty: Trends over time: Count .....	28
11.3 Poverty: Trends over time: Rate .....	28
11.4 Poverty rate: comparison between areas .....	29
12 Agriculture .....	30
12.1 Number of farms and land in farms .....	30
12.2 Farm Operator Characteristics .....	30

12.3 Map of type of crop ..... 31

12.4 Estimated acreage by crop ..... 32

13 Climate ..... 33

14 Glossary..... 34

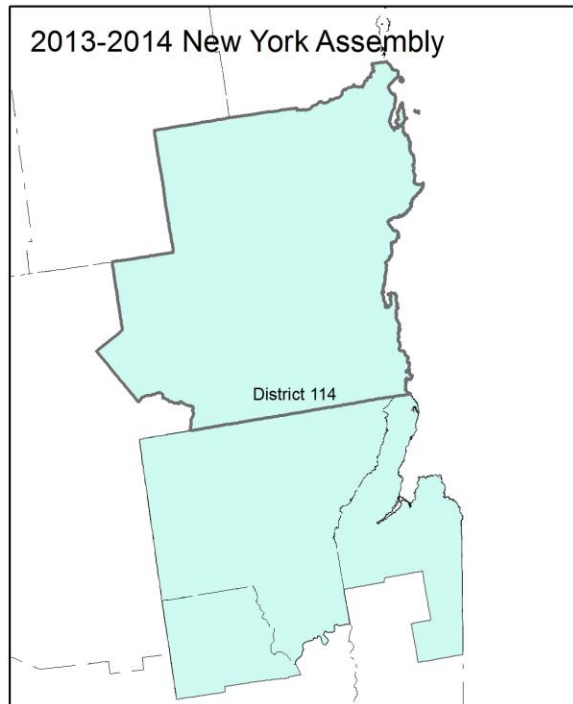
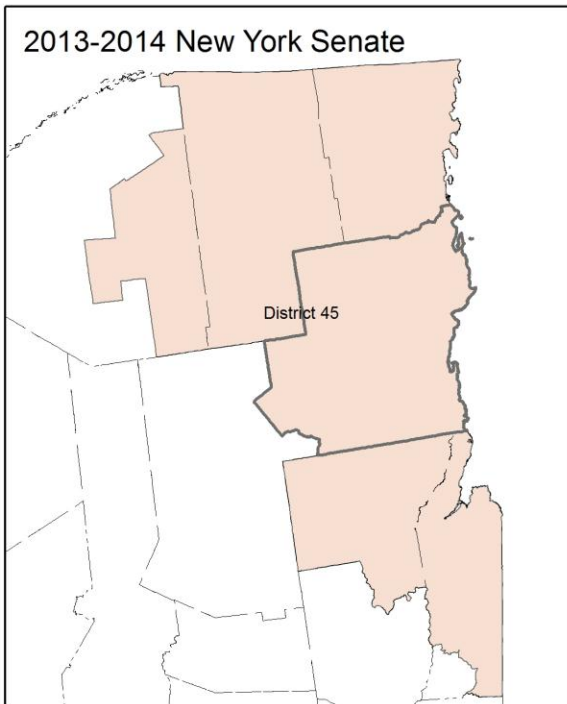
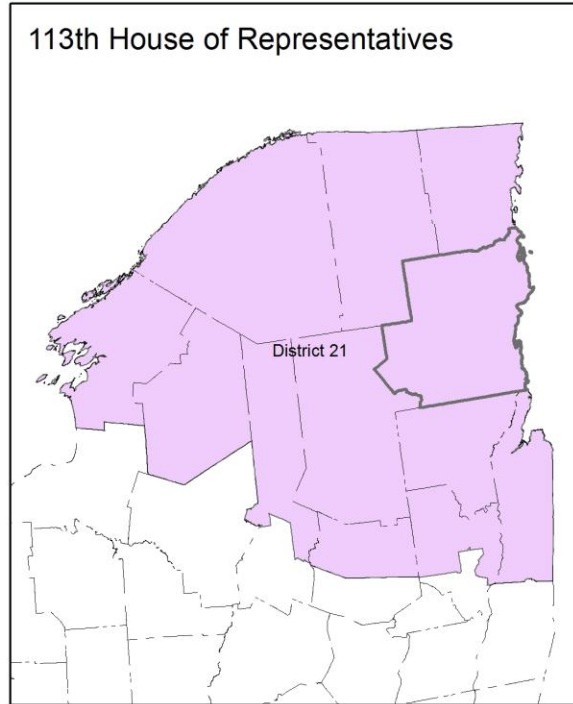
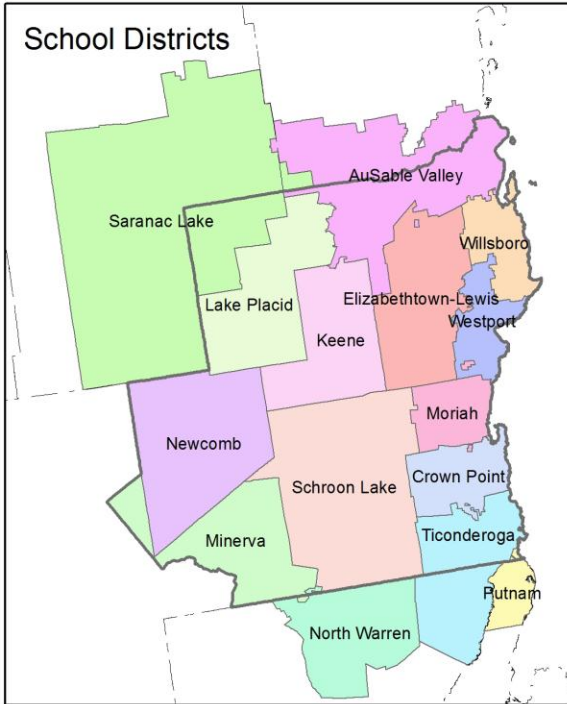
15 References ..... 37

1 Reference Maps

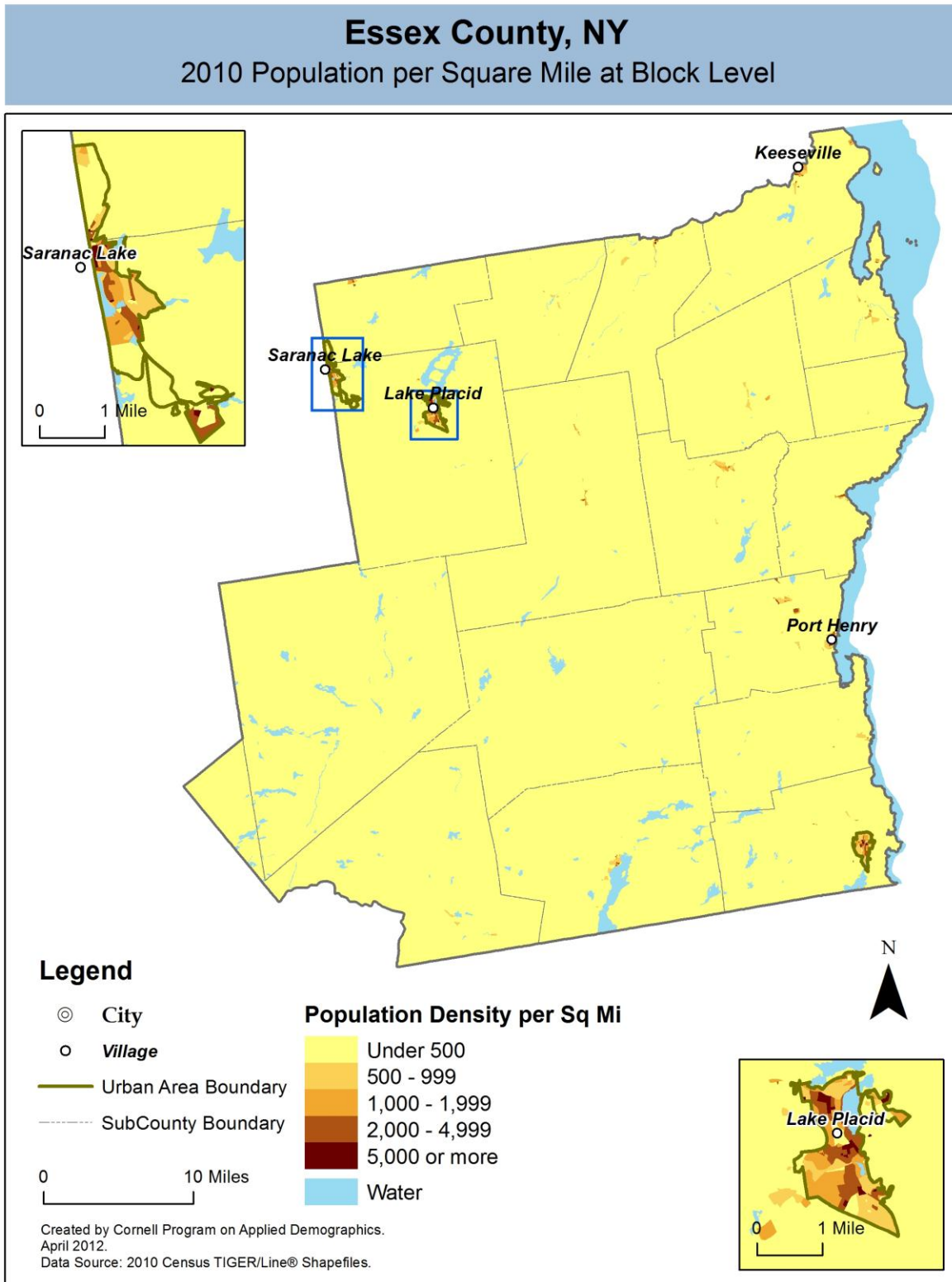


## Essex County, NY

### Overlap with School and Political Districts



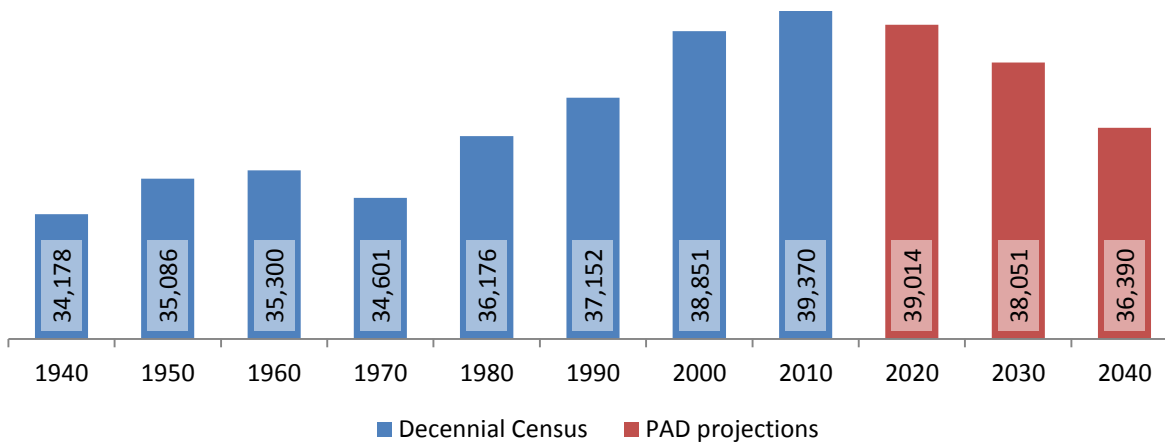
2 Population density and Urban Areas Map



### 3 Total Population

#### 3.1 Historic and projected

Total population, Essex County, 1940-2040



Source: 1940-2010 Decennial Census and projections by Cornell Program on Applied Demographics

#### 3.2 Change since previous Census

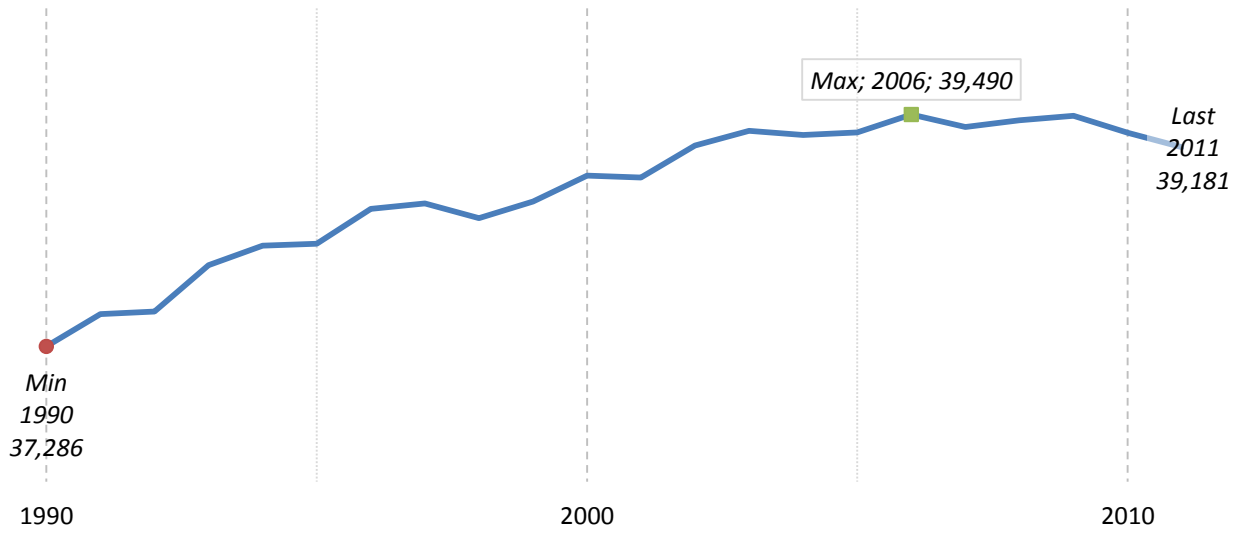
		Total population	Change	
			Number	Percent
Decennial Census	1940	34,178		
	1950	35,086	908	2.7%
	1960	35,300	214	0.6%
	1970	34,601	-699	-2.0%
	1980	36,176	1,575	4.6%
	1990	37,152	976	2.7%
	2000	38,851	1,699	4.6%
	2010	39,370	519	1.3%
PAD projections	2020	39,014	-356	-0.9%
	2030	38,051	-963	-2.5%
	2040	36,390	-1,661	-4.4%

Source: 1940-2010 Decennial Census and projections by Cornell Program on Applied Demographics



### 3.3 Annual population estimates

**Annual population estimates  
Essex County, 1990-2011**



Source: U.S. Census Bureau population estimates (1990-1999 and 2000-2009 intercensal and vintage 2011 postcensal)

### 3.4 Percentage sub county change 2000-2010

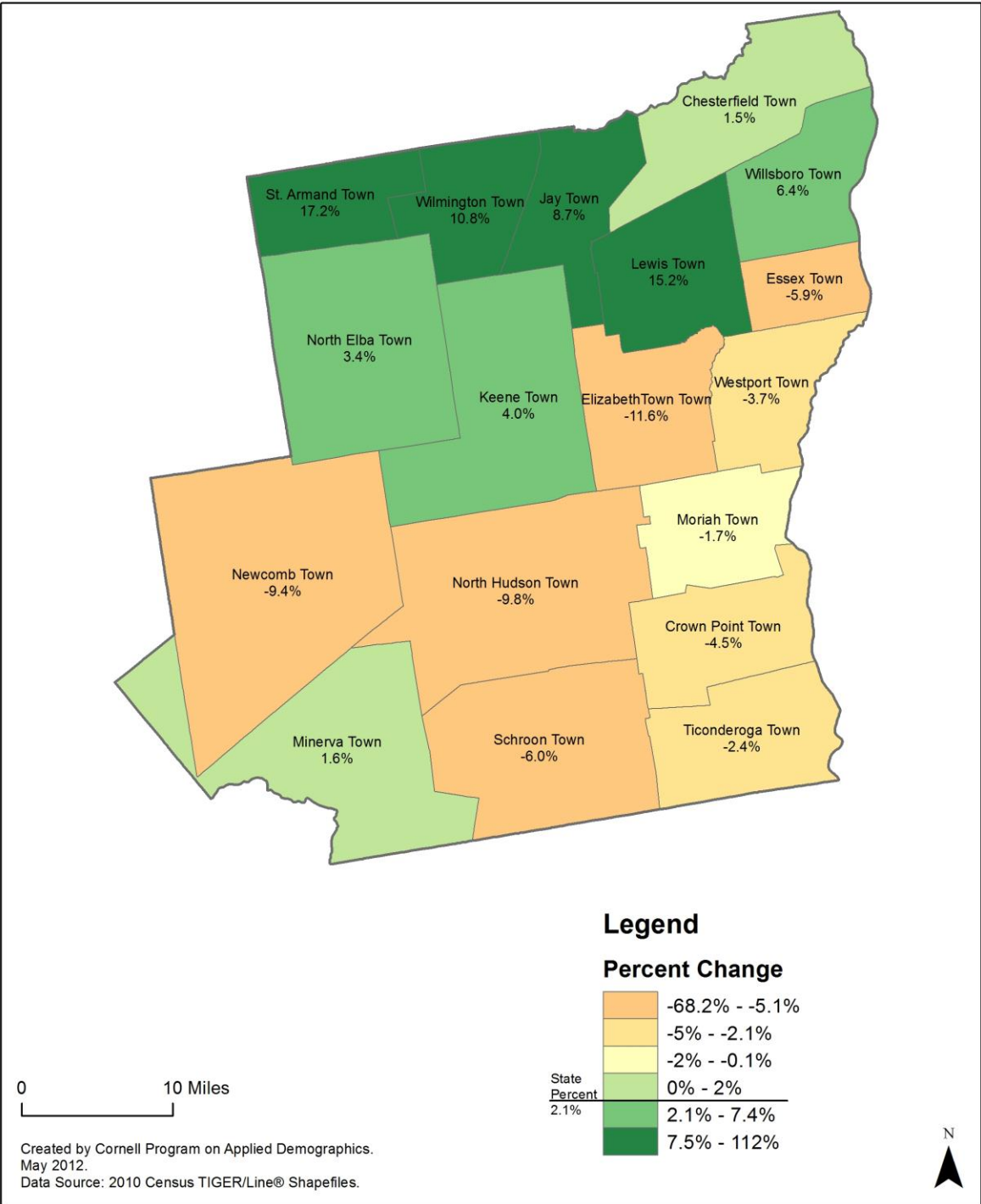
	Total Population		Difference	
	2000	2010	Count	%
New York State	18,976,821 *	19,378,102	401,281	2.1%
Essex County	38,851	39,370	519	1.3%
<b>Towns</b>				
Chesterfield	2,409	2,445	36	1.5%
Crown Point	2,119	2,024	-95	-4.5%
Elizabet	1,315	1,163	-152	-11.6%
Essex	713	671	-42	-5.9%
Jay	2,306	2,506	200	8.7%
Keene	1,063	1,105	42	4.0%
Lewis	1,200	1,382	182	15.2%
Minerva	796	809	13	1.6%
Moriah	4,879	4,798	-81	-1.7%
Newcomb	481	436	-45	-9.4%
North Elba	8,661	8,957	296	3.4%
North Hudson	266	240	-26	-9.8%
St. Armand	1,321	1,548	227	17.2%
Schroon	1,759	1,654	-105	-6.0%
Ticonderoga	5,167	5,042	-125	-2.4%
Westport	1,362	1,312	-50	-3.7%
Willsboro	1,903	2,025	122	6.4%
Wilmington	1,131	1,253	122	10.8%

\* Original counts revised through Count Question Resolution Program (CQR)

Source: U.S. Census Bureau intercensal population estimates 2000-2010

## Essex County, NY

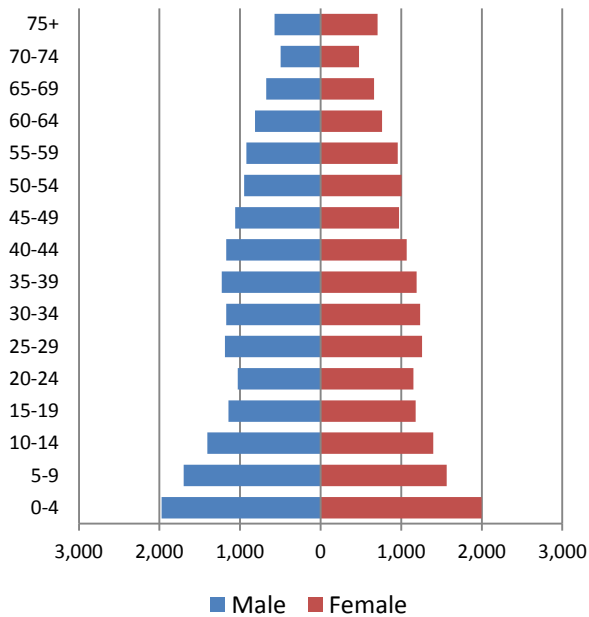
### County Subdivision, Percent Change in Population 2000-2010



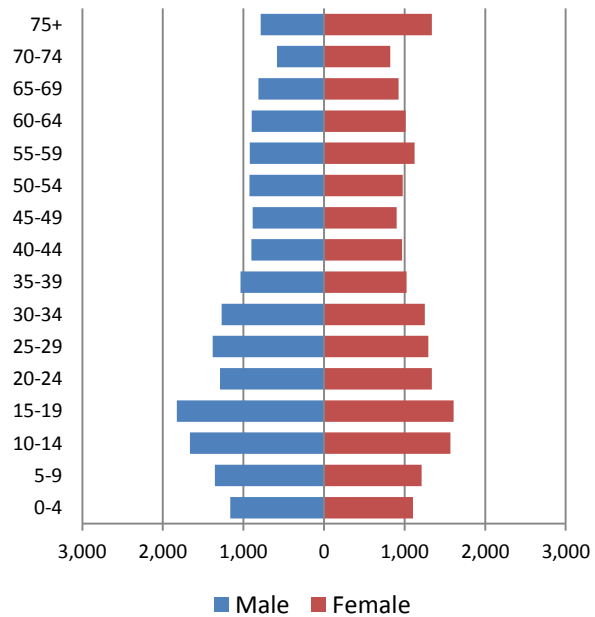
## 4 Population by age

### 4.1 Historic and projected population pyramids

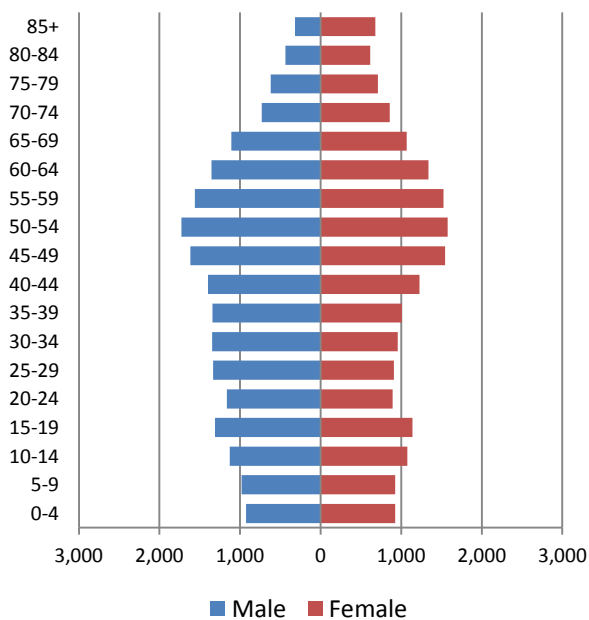
**1950 Population Pyramid, Essex County**



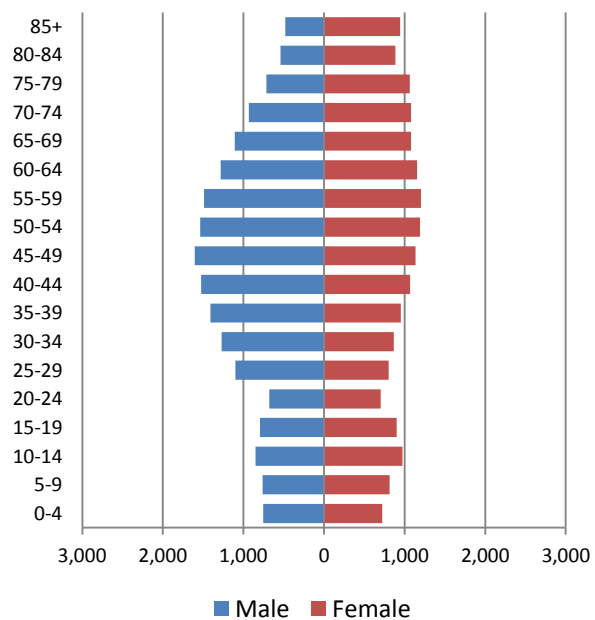
**1980 Population Pyramid, Essex County**



**2010 Population Pyramid, Essex County**



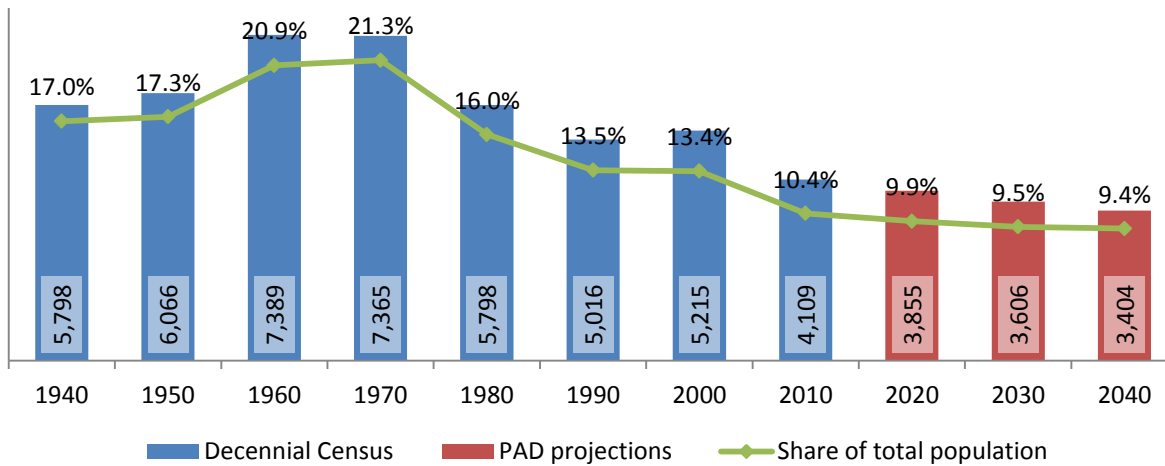
**2040 Population Pyramid, Essex County**



Source: 1950, 1980, 2010 Decennial Census and projections by Cornell Program on Applied Demographics

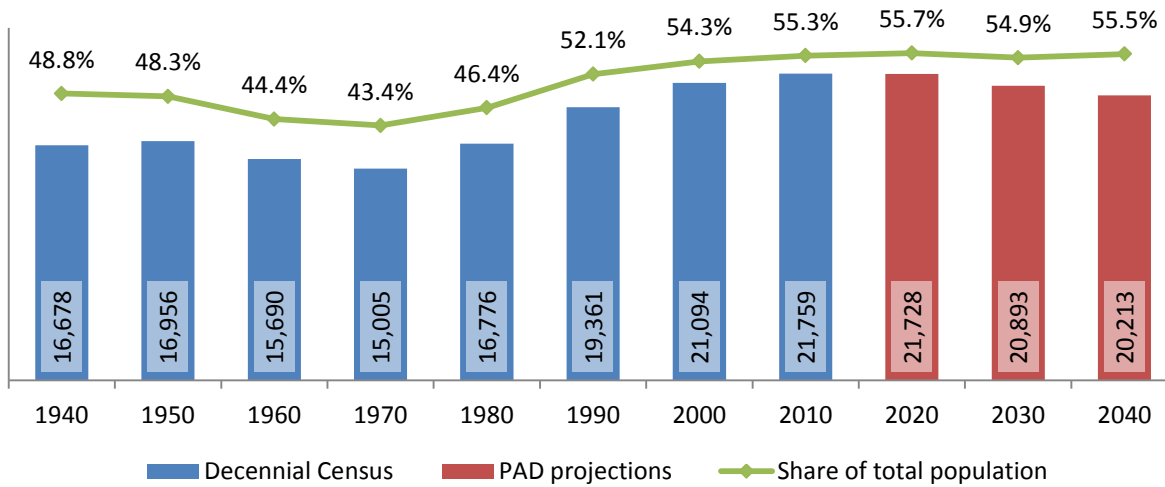
## 4.2 Selected age groups

### Population age 5-14, Essex County, 1940-2040



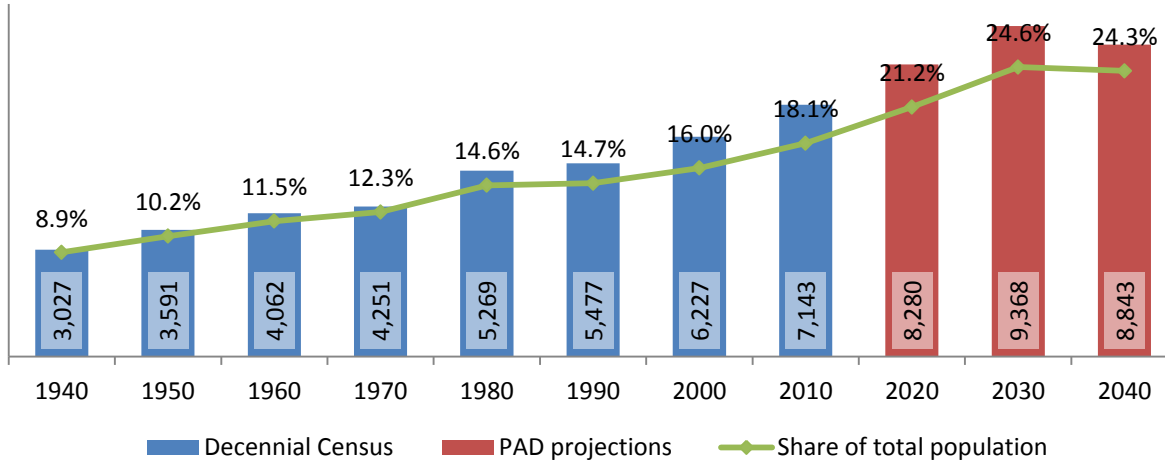
Source: 1940-2010 Decennial Census and projections by Cornell Program on Applied Demographics

### Population age 25-64, Essex County, 1940-2040



Source: 1940-2010 Decennial Census and projections by Cornell Program on Applied Demographics

**Population age 65 and over, Essex County, 1940-2040**



Source: 1940-2010 Decennial Census and projections by Cornell Program on Applied Demographics

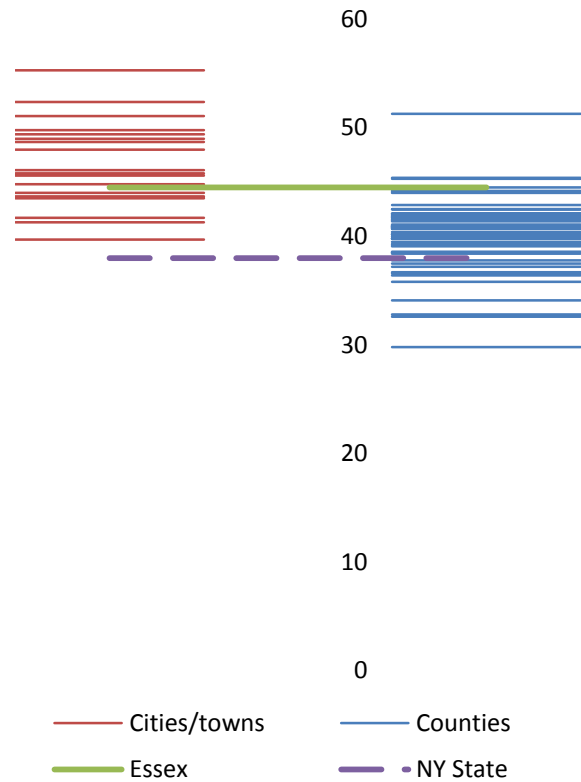
### 4.3 Median age: comparison between areas

	Median Age
New York State	38.0
Essex County	44.5

**Towns**

Chesterfield town	45.8
Crown Point town	43.5
Elizabethtown town	52.4
Essex town	49.8
Jay town	45.6
Keene town	51.1
Lewis town	44.0
Minerva town	46.1
Moriah town	41.7
Newcomb town	55.3
North Elba town	39.7
North Hudson town	48.7
St. Armand town	41.3
Schroon town	49.4
Ticonderoga town	44.8
Westport town	49.0
Willsboro town	48.0
Wilmington town	43.7

Median age comparison within county (left) and between counties (right)



Source: 2010 Decennial Census

## 5 Race

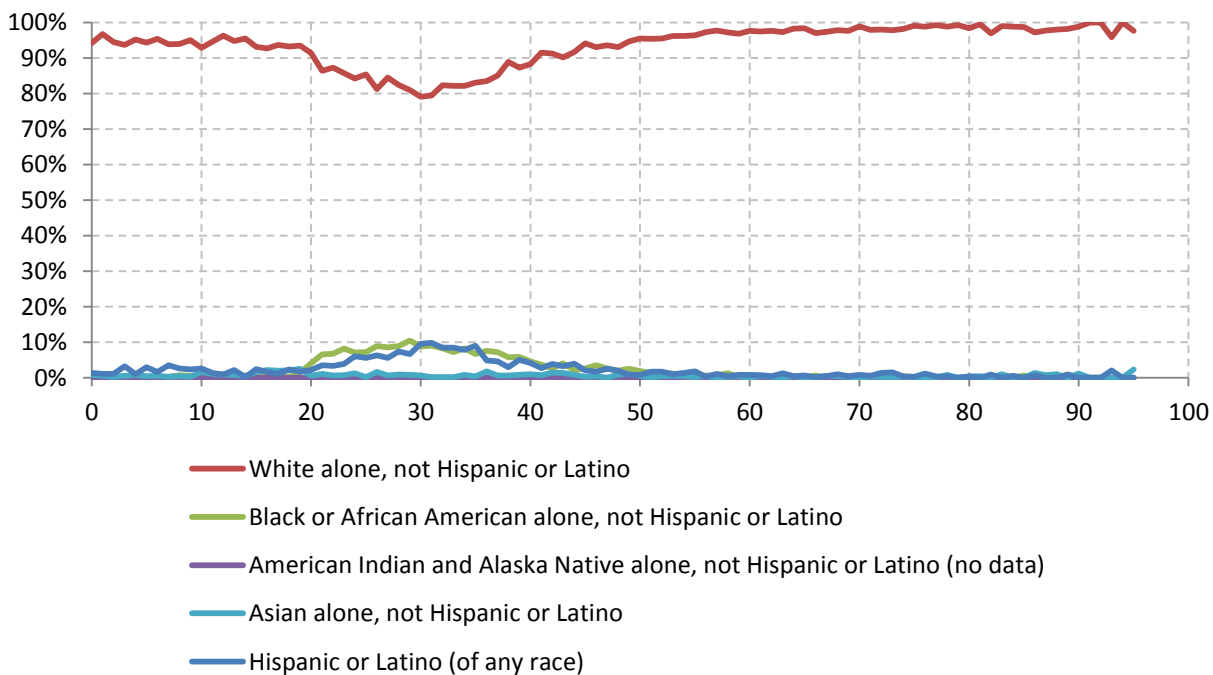
### 5.1 Total and household population by race

	Total		In households		In Group Quarters
	Count	Percentage	Count	Percentage	Count
<b>Total population</b>	39,370	100%	36,723	100%	2,647
Not Hispanic or Latino					
One race					
White	36,588	92.9%	35,513	96.7%	1,075
Black or African American	982	2.5%	134	0.4%	848
American Indian and Alaska Native	99	0.3%	-	-	-
Asian	260	0.7%	208	0.6%	52
Native Hawaiian and Other Pacific Islander	8	0.0%	-	-	-
Some other race	33	0.1%	-	-	-
Two or more races	407	1.0%	374	1.0%	33
Hispanic or Latino (of any race)	993	2.5%	380	1.0%	613

Source: 2010 Decennial Census

### 5.2 Race composition by age

Race composition by age, Essex County



Source: 2010 Decennial Census



## 6 Housing units

### 6.1 Characteristics

HOUSING OCCUPANCY	COUNT		PERCENTAGE	
	Estimate	Margin of error	Estimate	Margin of error
<b>Total housing units</b>	25,474	± 236	100.0%	
Occupied housing units	16,067	± 454	63.1%	± 1.6
Vacant housing units	9,407	± 420	36.9%	± 1.6
<b>YEAR STRUCTURE BUILT</b>				
<b>Total housing units</b>	25,474	± 236	100.0%	
Built 2005 or later	469	± 163	1.8%	± 0.6
Built 2000 to 2004	1,026	± 216	4.0%	± 0.9
Built 1990 to 1999	2,408	± 294	9.5%	± 1.2
Built 1980 to 1989	2,663	± 283	10.5%	± 1.1
Built 1970 to 1979	3,338	± 376	13.1%	± 1.4
Built 1960 to 1969	1,987	± 233	7.8%	± 0.9
Built 1950 to 1959	2,023	± 269	7.9%	± 1.1
Built 1940 to 1949	1,597	± 267	6.3%	± 1.0
Built 1939 or earlier	9,963	± 444	39.1%	± 1.7
<b>HOUSING TENURE</b>				
<b>Occupied housing units</b>	16,067	± 454	100.0%	
Owner-occupied	11,701	± 395	72.8%	± 1.9
Renter-occupied	4,366	± 355	27.2%	± 1.9
<b>HOUSE HEATING FUEL</b>				
<b>Occupied housing units</b>	16,067	± 454	100.0%	
Utility gas	1,018	± 215	6.3%	± 1.3
Bottled, tank, or LP gas	1,616	± 260	10.1%	± 1.6
Electricity	2,648	± 388	16.5%	± 2.2
Fuel oil, kerosene, etc.	8,421	± 363	52.4%	± 2.4
Coal or coke	33	± 23	0.2%	± 0.1
Wood	2,213	± 253	13.8%	± 1.5
Solar energy	9	± 14	0.1%	± 0.1
Other fuel	89	± 41	0.6%	± 0.3
No fuel used	20	± 28	0.1%	± 0.2
<b>VALUE</b>				
<b>Owner-occupied units</b>	11,701	± 395	100.0%	
Less than \$50,000	789	± 137	6.7%	± 1.1
\$50,000 to \$99,999	2,445	± 260	20.9%	± 2.1
\$100,000 to \$149,999	2,465	± 240	21.1%	± 2.1
\$150,000 to \$199,999	1,970	± 281	16.8%	± 2.2
\$200,000 to \$299,999	1,861	± 221	15.9%	± 1.8
\$300,000 to \$499,999	1,217	± 221	10.4%	± 1.9
\$500,000 to \$999,999	778	± 173	6.6%	± 1.4
\$1,000,000 or more	176	± 81	1.5%	± 0.7
Median (dollars)	153,200	± 6,654		

Source: 2007-2011 American Community Survey

## 6.2 Historical data on number of housing units and occupancy status

Year	Number of Housing Units	Change since previous Census	Occupied	Occupancy rate	Vacant
1970	14,474		10,660	73.6%	3,814
1980	19,124	32.1%	12,879	67.3%	6,245
1990	21,493	12.4%	13,721	63.8%	7,772
2000	23,115	7.5%	15,028	65.0%	8,087
2010	25,603	10.8%	16,262	63.5%	9,341

Source: 1970-2010 Decennial Census

## 7 Education

### 7.1 Enrollment by level of school

	Estimate	Margin of error
<b>Total enrolled in school</b>	8,068	± 293
Nursery school, preschool	375	± 126
Kindergarten	681	± 165
Elementary: grade 1 to grade 4	1,533	± 191
Elementary: grade 5 to grade 8	1,676	± 233
High school: grade 9 to grade 12	2,233	± 167
College, undergraduate	1,320	± 249
Graduate, professional school	250	± 87

Source: 2007-2011 American Community Survey

### 7.2 Enrollment by age

	Estimate	Margin of error
3 and 4 years	46.0%	± 13.0
5 to 9 years	96.4%	± 1.9
10 to 14 years	98.5%	± 1.8
15 to 17 years	99.2%	± 0.8
18 and 19 years	71.8%	± 10.8
20 to 24 years	28.2%	± 7.5
25 to 34 years	9.0%	± 2.9
35 years and over	1.7%	± 0.4

Source: 2007-2011 American Community Survey

### 7.3 Percentage age 18-24 enrolled in college

	Estimate	Margin of error
Population 18 to 24 years	3,058	± 115
Enrolled in college or graduate school	26.3%	± 5.5
Males 18 to 24 years	1,719	± 119
Enrolled in college or graduate school	23.1%	± 6.6
Females 18 to 24 years	1,339	± 42
Enrolled in college or graduate school	30.5%	± 7.6

Source: 2007-2011 American Community Survey

## 7.4 Educational attainment

	COUNT		PERCENTAGE	
	Estimate	Margin of error	Estimate	Margin of error
<b>Population 25 years and over</b>	28,725	± 102	100%	
<b>EDUCATIONAL ATTAINMENT</b>				
Less than 9th grade	1,029	± 174	3.6%	± 0.6
9th to 12th grade, no diploma	2,444	± 261	8.5%	± 0.9
High school graduate (includes equivalency)	9,803	± 526	34.1%	± 1.9
Some college, no degree	5,209	± 468	18.1%	± 1.6
Associate's degree	3,107	± 390	10.8%	± 1.3
Bachelor's degree	4,188	± 441	14.6%	± 1.5
Graduate or professional degree	2,945	± 365	10.3%	± 1.3
Percent high school graduate or higher			87.9%	± 1.2
Percent bachelor's degree or higher			24.8%	± 2.0

Source: 2007-2011 American Community Survey

## 8 Language spoken at home

	COUNT		PERCENTAGE		SPEAK ENGLISH LESS THAN "VERY WELL"	
	Estimate	Margin of error	Estimate	Margin of error	Estimate	Margin of error
<b>Population 5 years and over</b>	37,541	± 37	100%			
<b>LANGUAGE SPOKEN AT HOME</b>						
English only	35,123	± 343	93.6%	± 0.9		
Language other than English	2,418	± 352	6.4%	± 0.9	1,081	± 263
Spanish	962	± 191	2.6%	± 0.5	613	± 183
Other Indo-European languages	1,065	± 268	2.8%	± 0.7	326	± 183
Asian and Pacific Islander languages	206	± 107	0.5%	± 0.3	76	± 29
Other languages	185	± 111	0.5%	± 0.3	66	± 55

Source: 2007-2011 American Community Survey

## 9 Labor Force Characteristics

### 9.1 Labor force, employment and unemployment

	TOTAL		IN LABOR FORCE		EMPLOYED		UNEMPLOYMENT RATE	
	Estimate	Margin of error	Estimate	Margin of error	Estimate	Margin of error	Estimate	Margin of error
<b>Population 16 years and over</b>	32,866	± 175	58.6%	± 1.8	54.3%	± 1.7	7.2%	± 1.2
<b>AGE</b>								
16 to 19 years	1,951	± 148	39.8%	± 5.9	32.0%	± 6.0	19.5%	± 7.4
20 to 24 years	2,190	± 108	68.2%	± 6.8	52.7%	± 7.2	20.5%	± 8.6
25 to 44 years	9,654	± 111	73.5%	± 3.4	68.5%	± 3.6	6.8%	± 2.7
45 to 54 years	6,384	± 51	78.3%	± 3.6	74.8%	± 3.5	4.4%	± 1.8
55 to 64 years	5,677	± 62	66.8%	± 4.0	63.5%	± 4.2	4.9%	± 1.7
65 to 74 years	3,657	± 8	24.4%	± 4.8	23.2%	± 4.8	4.9%	± 4.6
75 years and over	3,353	± 21	6.3%	± 2.3	6.3%	± 2.3	0.0%	± 14.2
<b>RACE AND HISPANIC OR LATINO ORIGIN</b>								
One race	31,829	± 337	58.6%	± 1.9	54.4%	± 1.8	7.0%	± 1.2
White	29,630	± 400	61.4%	± 1.6	57.1%	± 1.6	6.8%	± 1.2
Black or African American	1,279	± 272	7.9%	± 6.0	7.9%	± 6.0	0.0%	± 26.9
American Indian and Alaska Native	77	± 46	35.1%	± 27.8	19.5%	± 25.3	44.4%	± 52.5
Asian	169	± 55	63.3%	± 24.0	55.6%	± 22.2	12.1%	± 13.6
Pacific Islander	64	± 85	90.6%	± 20.0	90.6%	± 20.0	0.0%	± 38.9
Some other race	610	± 195	27.0%	± 21.4	20.2%	± 20.3	25.5%	± 38.4
Two or more races	1,037	± 286	57.9%	± 17.7	50.8%	± 16.5	12.2%	± 7.2
Hispanic or Latino origin (of any race)	928	± 97	21.1%	± 14.3	20.3%	± 13.8	4.1%	± 7.1
White alone, not Hispanic or Latino	29,399	± 391	61.7%	± 1.6	57.4%	± 1.6	6.9%	± 1.2
<b>SEX</b>								
<b>Population 20 to 64 years</b>	23,905	± 127	72.7%	± 2.3	67.6%	± 2.2	6.8%	± 1.3
Male	12,992	± 176	69.2%	± 3.7	64.2%	± 3.4	6.9%	± 1.6
Female	10,913	± 78	76.8%	± 2.3	71.6%	± 2.3	6.8%	± 1.9
With own children under 6 years	1,401	± 216	79.1%	± 6.2	74.3%	± 6.5	6.0%	± 5.7
<b>EDUCATIONAL ATTAINMENT</b>								
<b>Population 25 to 64 years</b>	21,715	± 102	73.2%	± 2.4	69.1%	± 2.4	5.6%	± 1.4
Less than high school graduate	2,040	± 238	39.9%	± 6.1	36.8%	± 6.2	7.6%	± 4.8
High school graduate (includes equivalency)	7,357	± 437	68.7%	± 3.9	64.2%	± 3.7	6.5%	± 2.9
Some college or associate's degree	6,929	± 489	78.2%	± 3.1	73.4%	± 3.4	6.1%	± 2.5
Bachelor's degree or higher	5,389	± 519	85.4%	± 2.6	82.3%	± 3.0	3.6%	± 1.9

Table formula:           **LABOR FORCE** = # EMPLOYED + # UNEMPLOYED  
                              **% IN LABOR FORCE** = LABOR FORCE / TOTAL \* 100%  
                              **% EMPLOYED** = # EMPLOYED / TOTAL \* 100%  
                              **UNEMPLOYMENT RATE** = # UNEMPLOYED / LABOR FORCE \* 100%

Source: 2007-2011 American Community Survey

## 9.2 Annual unemployment rate

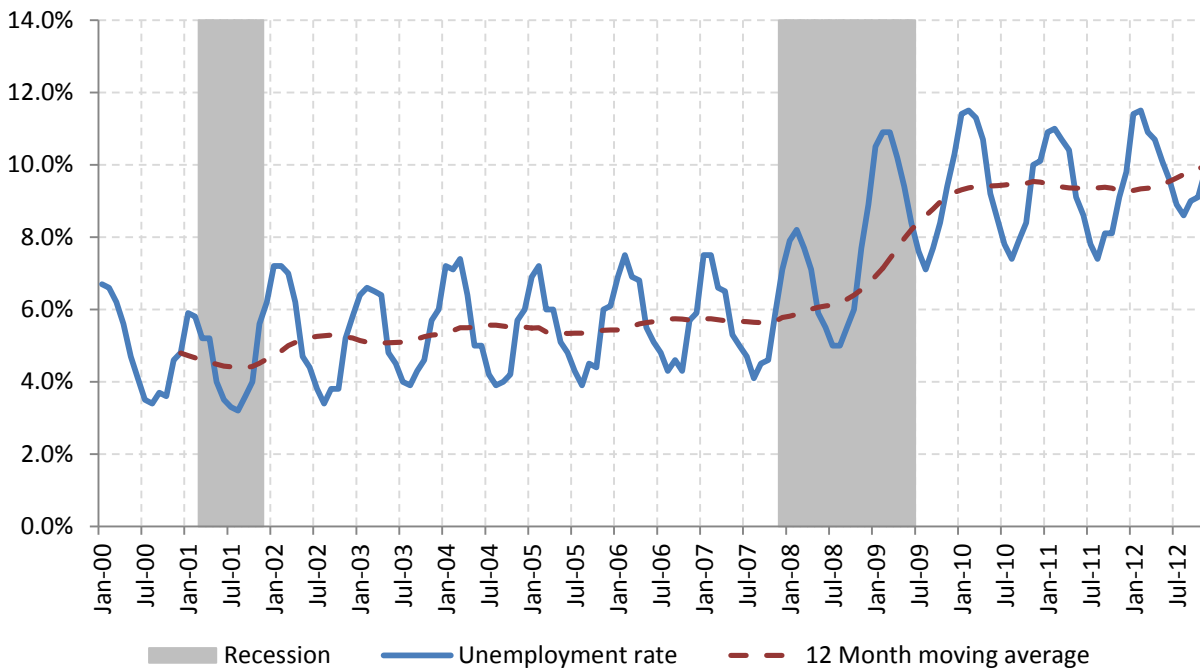
Annual unemployment rate, Essex County and New York State



Source: Bureau Labor Statistics (BLS)

## 9.3 Monthly unemployment rate

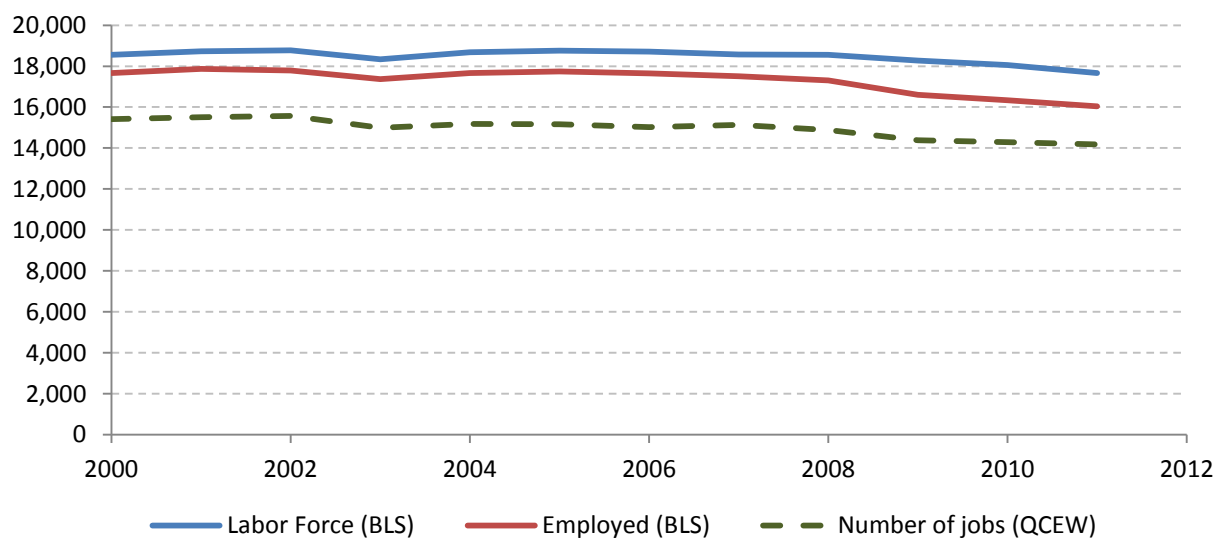
Monthly unemployment rate, Essex County



Source: Bureau Labor Statistics (BLS)

## 9.4 Employment and number of jobs

**Labor force, number of employed workers and number of jobs  
Essex County**



Source: Bureau Labor Statistics (BLS) and NY Department of Labor - Quarterly Census of Employment and Wages (QCEW) – annual averages

## 9.5 Class of worker

		Median earnings (\$)					
		Total	%Male	%Female	Total	Male	Female
Civilian employed population 16 years and over	Estimate	17,837	51.5%	48.5%	31,449	36,401	26,000
	Margin of error	± 571	± 1.3	± 1.3	± 1,363	± 2,476	± 917
Private for-profit wage and salary workers:	Estimate	9,309	56.0%	44.0%	30,102	34,648	24,975
	Margin of error	± 518	± 2.7	± 2.7	± 2,221	± 2,404	± 1,943
Employee of private company workers	Estimate	8,863	55.5%	44.5%	29,753	34,568	24,926
	Margin of error	± 507	± 2.8	± 2.8	± 2,443	± 2,631	± 2,030
Self-employed in own incorporated business workers	Estimate	446	65.7%	34.3%	34,104	34,976	25,563
	Margin of error	± 116	± 13.1	± 13.1	± 13,614	± 25,911	± 12,369
Private not-for-profit wage and salary workers	Estimate	2,217	32.8%	67.2%	33,086	43,241	28,705
	Margin of error	± 291	± 6.8	± 6.8	± 2,183	± 10,061	± 5,251
Local government workers	Estimate	2,715	38.9%	61.1%	33,471	34,937	30,284
	Margin of error	± 287	± 5.5	± 5.5	± 2,814	± 5,365	± 5,384
State government workers	Estimate	1,495	60.3%	39.7%	49,538	53,500	30,733
	Margin of error	± 201	± 8.1	± 8.1	± 4,144	± 3,152	± 13,431
Federal government workers	Estimate	267	44.2%	55.8%	48,958	58,750	18,250
	Margin of error	± 89	± 12.4	± 12.4	± 12,146	± 15,839	± 36,470
Self-employed in own not incorporated business workers and unpaid family workers	Estimate	1,834	64.0%	36.0%	21,425	29,259	13,099
	Margin of error	± 296	± 5.4	± 5.4	± 3,605	± 8,408	± 2,927

Source: 2007-2011 American Community Survey

## 9.6 Jobs by industry sector

	Essex County			NY state
	2011	Change since 2006	% of total	% of total
<b>All NAICS Sectors</b>	13,644	-5.7%	100.0%	100.0%
Agriculture, Forestry, Fishing and Hunting	125	-3.1%	0.9%	0.3%
Mining, Quarrying, and Oil and Gas Extraction	NA	NA	NA	0.1%
Utilities	14	16.7%	0.1%	0.5%
Construction	769	-12.3%	5.6%	3.5%
Manufacturing	966	-25.5%	7.1%	5.5%
Wholesale Trade	203	86.2%	1.5%	4.0%
Retail Trade	1,480	-0.4%	10.8%	10.5%
Transportation and Warehousing	182	9.0%	1.3%	3.4%
Information	167	-13.5%	1.2%	3.3%
Finance and Insurance	203	12.2%	1.5%	6.0%
Real Estate and Rental and Leasing	109	-19.9%	0.8%	2.3%
Professional, Scientific, and Technical Services	258	11.2%	1.9%	6.9%
Management of Companies and Enterprises	139	7.8%	1.0%	1.6%
Administrative and Support and Waste Management and Remediation Services	103	-60.1%	0.8%	5.2%
Educational Services	1,500	-2.8%	11.0%	10.8%
Health Care and Social Assistance	2,029	13.4%	14.9%	17.0%
Arts, Entertainment, and Recreation	726	-34.2%	5.3%	1.9%
Accommodation and Food Services	2,168	0.2%	15.9%	7.3%
Other Services (except Public Administration)	524	-18.3%	3.8%	3.9%
Public Administration	1,885	-2.5%	13.8%	5.8%

Source: U.S. Census Bureau - Public Use Quarterly Workforce Indicators (QWI) – annual averages

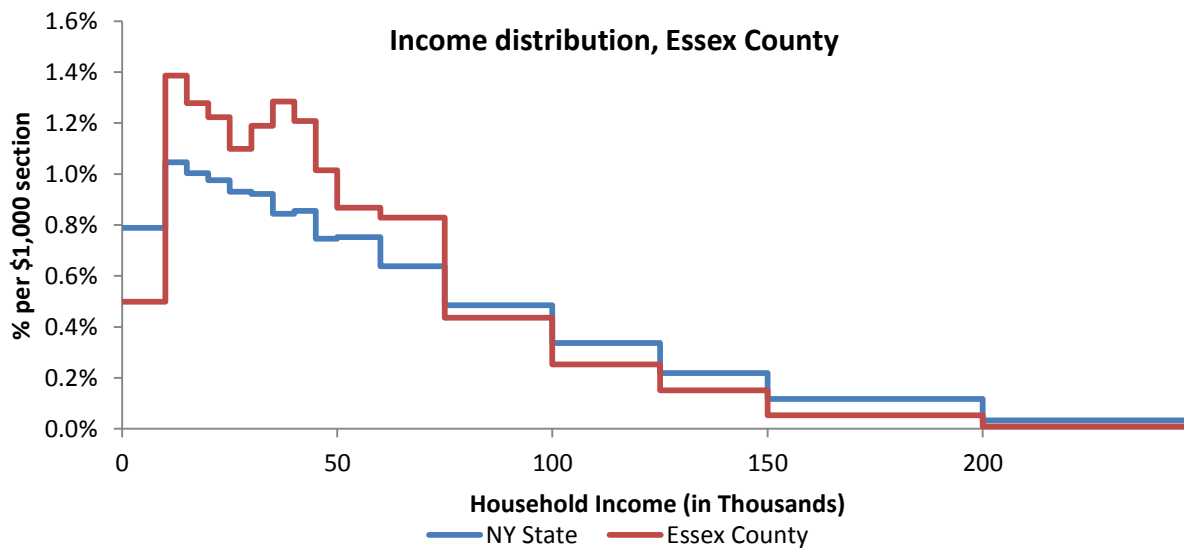


## 10 Household Income

### 10.1 Distribution

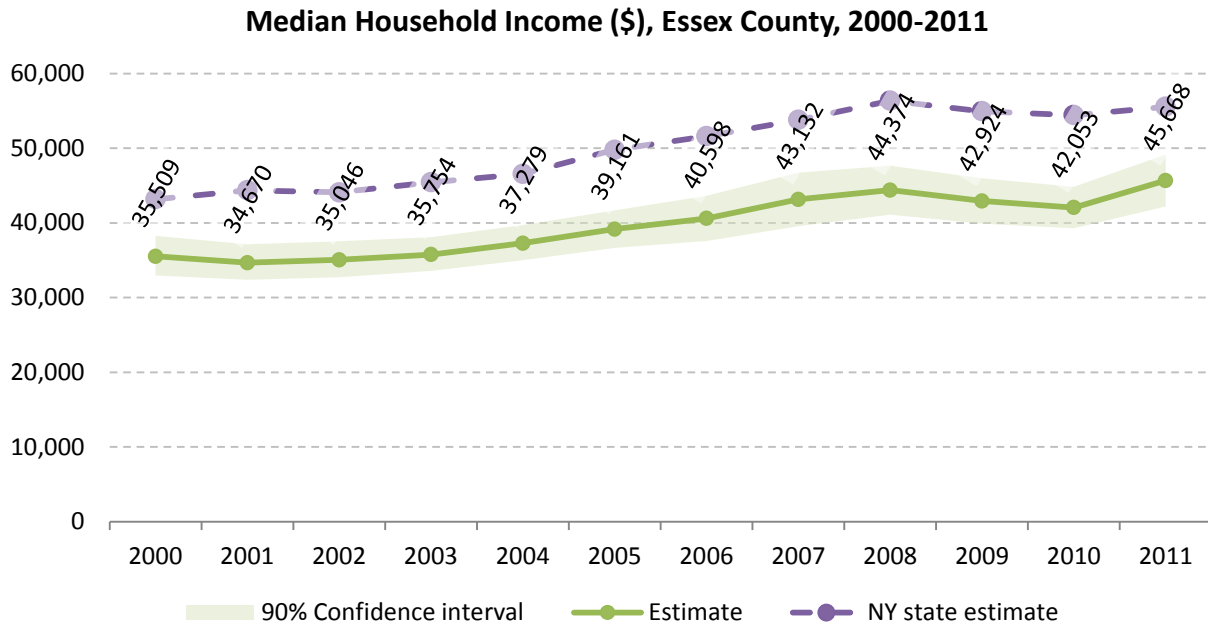
	Estimate	Margin of error	Interval width (in \$1,000)	Est. per \$1,000 section
<b>Total:</b>	16,067	± 454		
Less than \$10,000	801	± 184	10	80.1
\$10,000 to \$14,999	1,114	± 233	5	222.8
\$15,000 to \$19,999	1,027	± 207	5	205.4
\$20,000 to \$24,999	983	± 206	5	196.6
\$25,000 to \$29,999	883	± 183	5	176.6
\$30,000 to \$34,999	955	± 185	5	191.0
\$35,000 to \$39,999	1,032	± 215	5	206.4
\$40,000 to \$44,999	970	± 222	5	194.0
\$45,000 to \$49,999	815	± 177	5	163.0
\$50,000 to \$59,999	1,395	± 225	10	139.5
\$60,000 to \$74,999	1,997	± 306	15	133.1
\$75,000 to \$99,999	1,753	± 245	25	70.1
\$100,000 to \$124,999	1,013	± 198	25	40.5
\$125,000 to \$149,999	606	± 158	25	24.2
\$150,000 to \$199,999	421	± 131	50	8.4
\$200,000 or more	302	± 102	-	-

Source: 2007-2011 American Community Survey



Source: 2007-2011 American Community Survey

10.2 Median household income: Trends over time

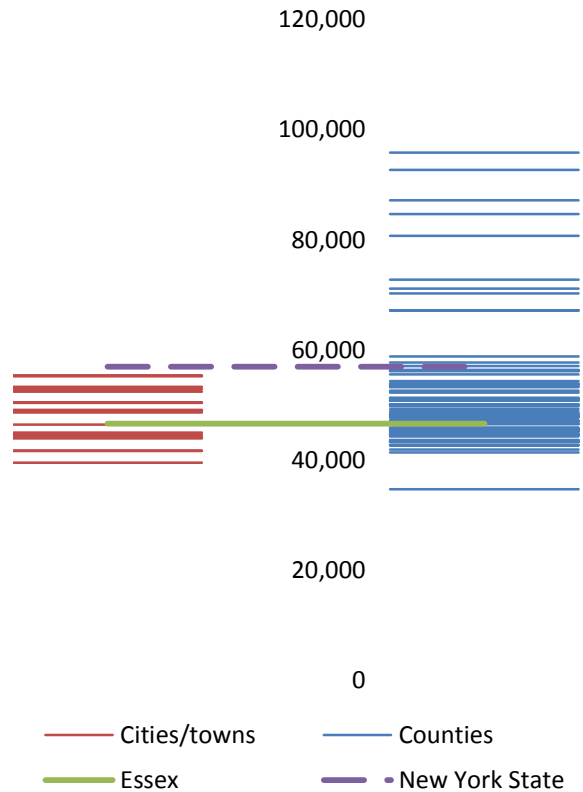


Source: Small Area Income and Poverty Estimates (SAIPE)

### 10.3 Median household income: Comparison between areas

	MEDIAN HOUSEHOLD INCOME (\$)	
	Estimate	Margin of error
New York State	56,951	± 190
Essex County	46,629	± 2,170
<b>Towns</b>		
Chesterfield	50,441	± 6,305
Crown Point	49,107	± 11,563
Elizabet	53,333	± 6,245
Essex	55,417	± 15,386
Jay	52,896	± 8,035
Keene	48,929	± 9,549
Lewis	41,667	± 5,962
Minerva	45,000	± 13,571
Moriah	44,609	± 5,357
Newcomb	50,417	± 15,896
North Elba	48,652	± 6,506
North Hudson	46,458	± 29,672
St. Armand	52,418	± 9,447
Schroon	44,205	± 10,452
Ticonderoga	41,688	± 3,826
Westport	39,531	± 5,932
Willsboro	43,972	± 4,828
Wilmington	55,250	± 11,809

Median household income comparison within county (left) and between counties (right)



Source: 2007-2011 American Community Survey

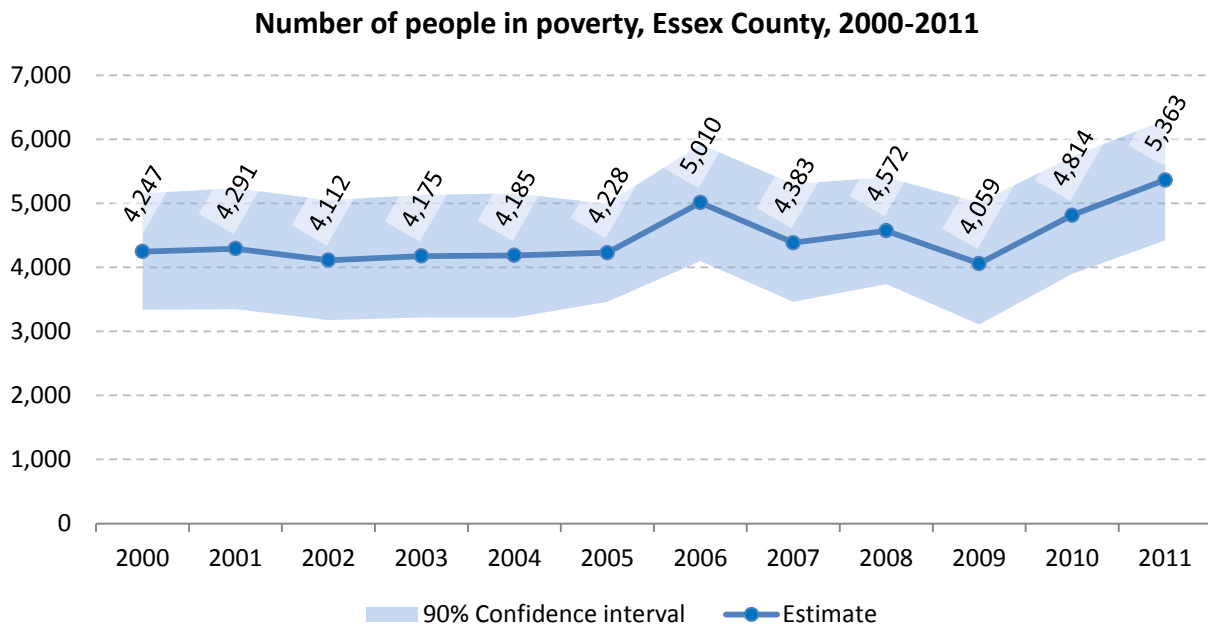
## 11 Poverty

### 11.1 Poverty characteristics

	TOTAL		BELOW POVERTY LEVEL		PERCENT BELOW POVERTY LEVEL	
	Estimate	Margin of error	Estimate	Margin of error	Estimate	Margin of error
<b>Population for whom poverty status is determined</b>	36,693	± 481	4,471	± 567	12.2%	± 1.5
<b>AGE</b>						
Under 18 years	7,513	± 115	1,340	± 283	17.8%	± 3.7
Related children under 18 years	7,419	± 128	1,246	± 279	16.8%	± 3.7
18 to 64 years	22,522	± 414	2,590	± 344	11.5%	± 1.5
65 years and over	6,658	± 106	541	± 144	8.1%	± 2.1
<b>SEX</b>						
Male	18,106	± 441	2,163	± 348	11.9%	± 1.8
Female	18,587	± 141	2,308	± 301	12.4%	± 1.6
<b>RACE AND HISPANIC OR LATINO ORIGIN</b>						
One race	35,453	± 518	4,259	± 527	12.0%	± 1.4
White	34,594	± 529	3,940	± 524	11.4%	± 1.5
Black or African American	293	± 139	119	± 84	40.6%	± 20.8
American Indian and Alaska Native	56	± 40	16	± 22	28.6%	± 37.2
Asian	236	± 63	43	± 43	18.2%	± 18.3
Hispanic or Latino origin (of any race)	312	± 184	97	± 69	31.1%	± 16.5
White alone, not Hispanic or Latino	34,497	± 489	3,922	± 520	11.4%	± 1.5
<b>EDUCATIONAL ATTAINMENT</b>						
<b>Population 25 years and over</b>	26,550	± 365	2,401	± 315	9.0%	± 1.2
Less than high school graduate	2,631	± 297	591	± 151	22.5%	± 5.4
High school graduate (includes equivalency)	9,021	± 454	831	± 154	9.2%	± 1.7
Some college, associate's degree	7,864	± 470	672	± 155	8.5%	± 1.9
Bachelor's degree or higher	7,034	± 559	307	± 109	4.4%	± 1.5
<b>EMPLOYMENT STATUS</b>						
<b>Civilian labor force 16 years and over</b>	19,158	± 601	1,458	± 252	7.6%	± 1.3
Employed	17,782	± 576	1,118	± 226	6.3%	± 1.3
Male	9,140	± 441	473	± 141	5.2%	± 1.5
Female	8,642	± 290	645	± 168	7.5%	± 1.9
Unemployed	1,376	± 247	340	± 147	24.7%	± 10.0
Male	779	± 161	254	± 127	32.6%	± 14.1
Female	597	± 175	86	± 49	14.4%	± 7.7
<b>WORK EXPERIENCE IN THE PAST 12 MONTHS</b>						
<b>Population 16 years and over</b>	30,252	± 455	3,294	± 382	10.9%	± 1.2
Worked full-time, year-round	11,397	± 580	217	± 75	1.9%	± 0.6
Worked part-time or part-year	8,754	± 509	1,372	± 250	15.7%	± 2.9
Did not work	10,101	± 439	1,705	± 247	16.9%	± 2.2

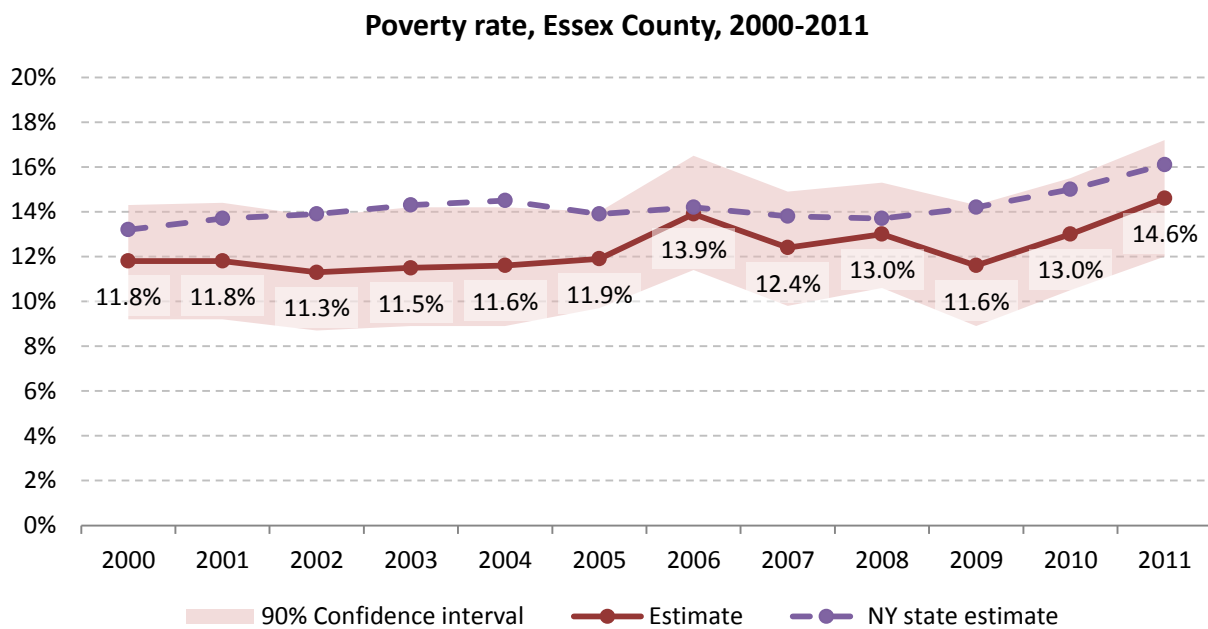
Source: 2007-2011 American Community Survey

### 11.2 Poverty: Trends over time: Count



Source: Small Area Income and Poverty Estimates (SAIPE)

### 11.3 Poverty: Trends over time: Rate

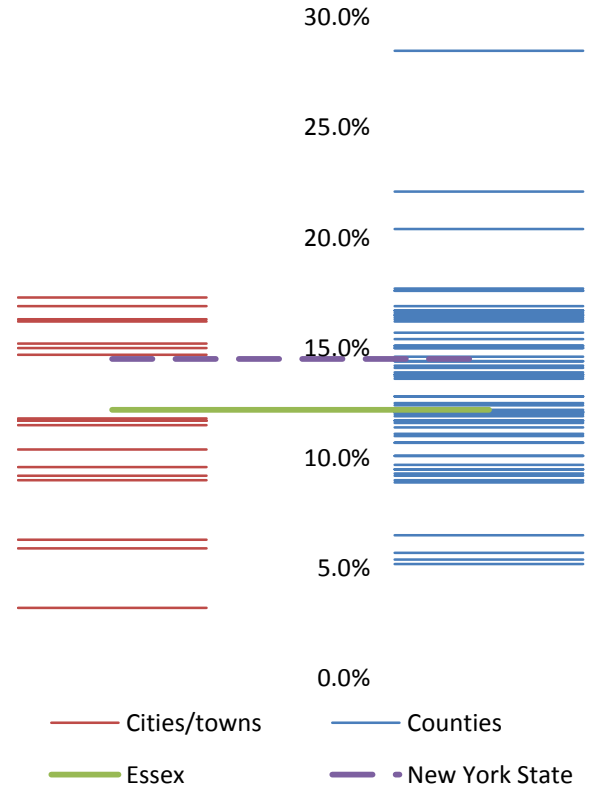


Source: Small Area Income and Poverty Estimates (SAIPE)

### 11.4 Poverty rate: comparison between areas

Poverty Rate - All people		
	Estimate	Margin of error
New York State	14.5%	± 0.1
Essex County	12.2%	± 1.5
<b>Towns</b>		
Chesterfield	11.5%	± 4.7
Crown Point	10.4%	± 5.9
Elizabeth	9.2%	± 5.3
Essex	5.9%	± 3.1
Jay	9.0%	± 4.9
Keene	11.7%	± 7.6
Lewis	15.0%	± 6.5
Minerva	11.8%	± 7.9
Moriah	15.2%	± 7.6
Newcomb	3.2%	± 2.8
North Elba	9.6%	± 2.9
North Hudson	16.3%	± 11.5
St. Armand	6.3%	± 4.0
Schroon	11.7%	± 7.6
Ticonderoga	14.7%	± 6.1
Westport	17.3%	± 7.6
Willsboro	16.9%	± 7.6
Wilmington	16.2%	± 7.3

Poverty rate comparison within county (left) and between counties (right)

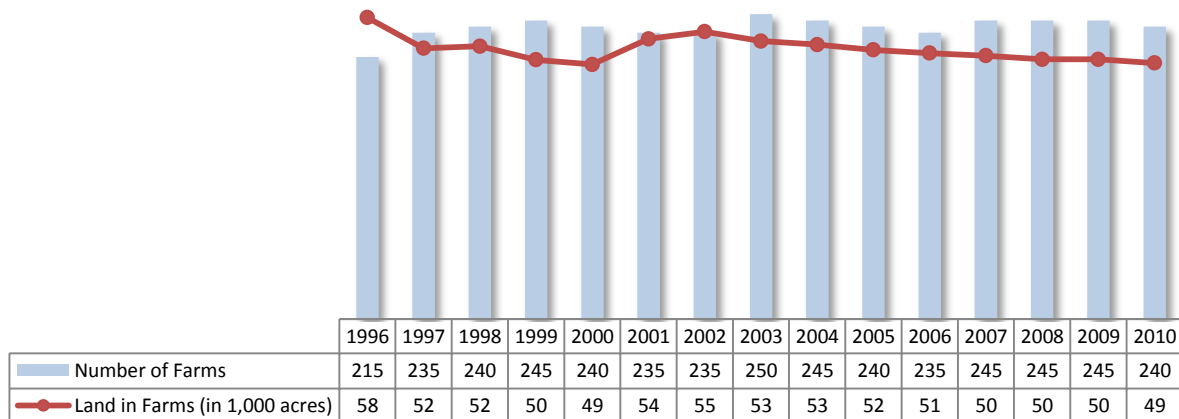


Source: 2007-2011 American Community Survey

## 12 Agriculture

### 12.1 Number of farms and land in farms

Essex County, 1996-2010



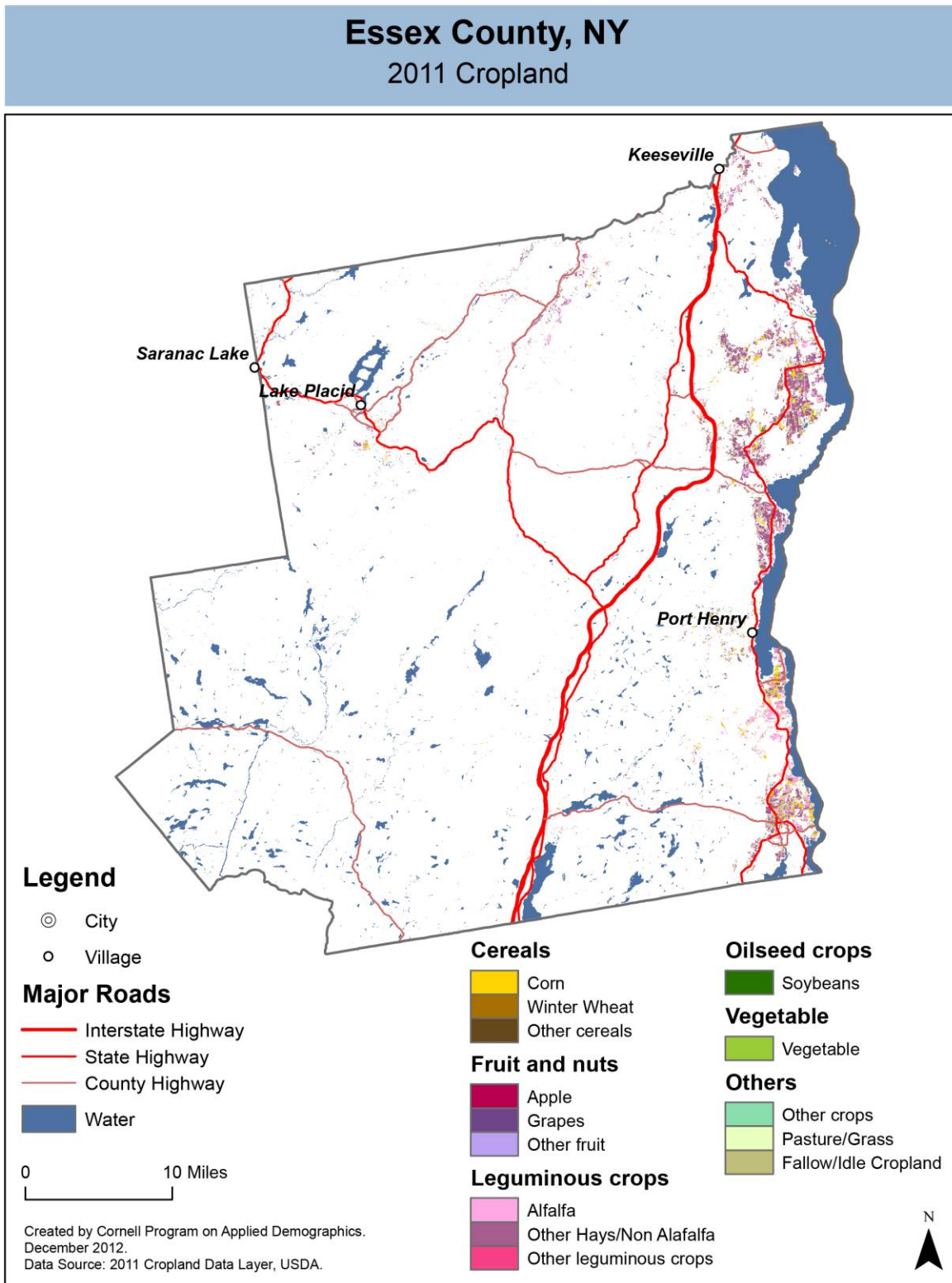
Source: National Agricultural Statistics Service – Annual Statistical bulletin

### 12.2 Farm Operator Characteristics

	Principal Operator		
	Total	Male	Female
<b>Number of farms</b>	243	182	61
Average size of farm (acres)	207	249	80
PRIMARY OCCUPATION			
Farming	111	84	27
Other	132	98	34
AGE			
Under 45	61	41	20
45 to 64 years	121	92	29
65 years and over	61	49	12
Average age (years)	54.4	55.4	51
YEARS ON PRESENT FARM			
Less than 3 years	9	8	1
3 to 4 years	25	23	2
5 to 9 years	62	34	28
10 years or more	147	117	30

Source: 2007 Agricultural Census

12.3 Map of type of crop



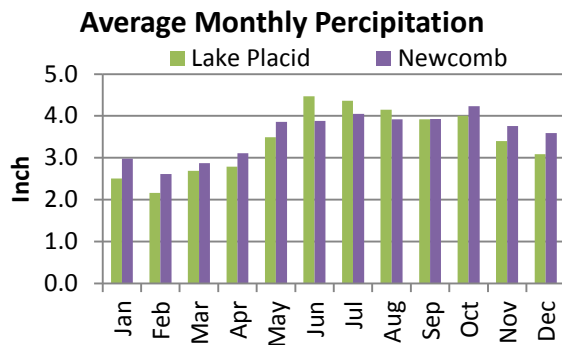
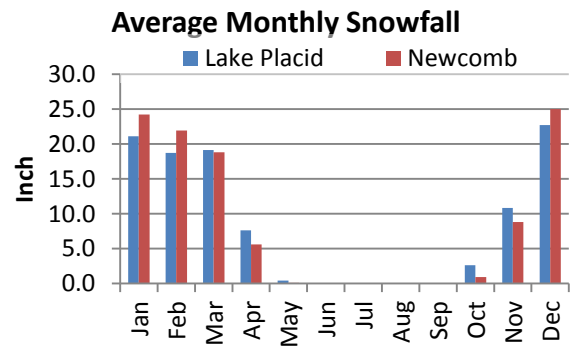
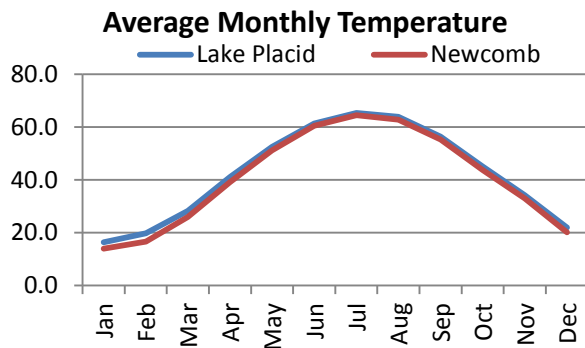
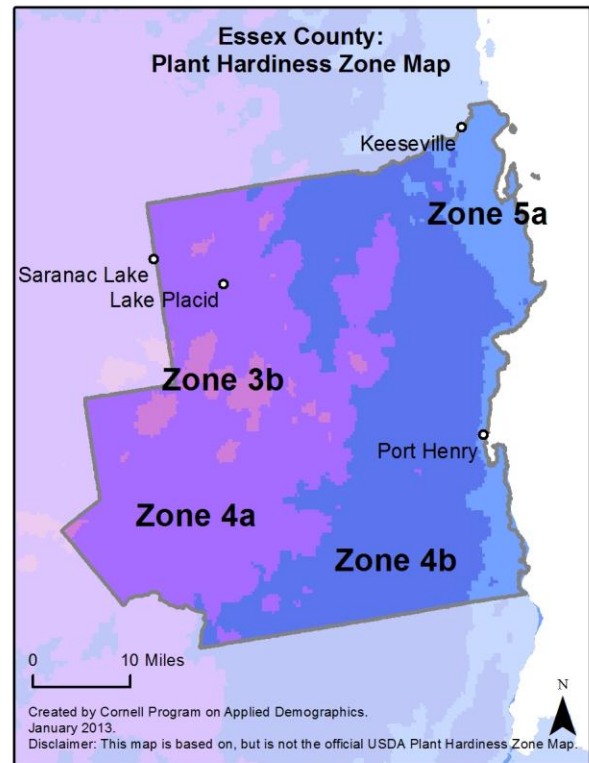
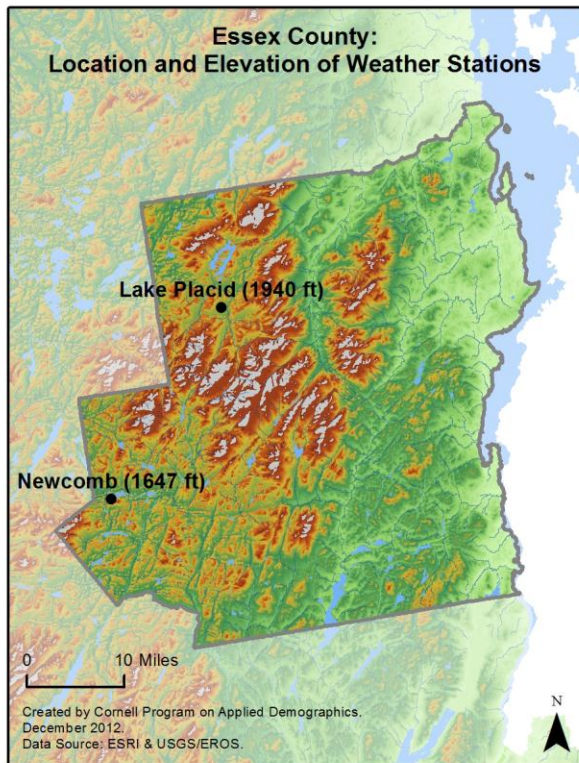


## 12.4 Estimated acreage by crop

	Acreage	%		Acreage	%
<b>Cereals</b>			<b>Fruit and nuts</b>		
Barley	-		Apples	7	0.0%
Corn	3,168	10.1%	Apricots	-	
Millet	-		Blueberries	-	
Oats	28	0.1%	Cherries	-	
Rye	58	0.2%	Cranberries	-	
Sorghum	-		Grapes	-	
Speltz	-		Nectarines	-	
Spring Wheat	-		Peaches	-	
Sweet Corn	6	0.0%	Plums	-	
Triticale	-		Prunes	-	
Winter Wheat	0.9	0.0%	Strawberries	0.2	0.0%
Dbl Crop WinWht/Corn	-		Walnuts	-	
<b>Leguminous crops</b>			<b>Beverage and spice crops</b>		
Alfalfa	6,420	20.4%	Herbs	-	
Other Hay/Non Alfalfa	15,867	50.5%	Peppers	-	
Dry Beans	-		<b>Trees</b>		
Peas	-		Christmas Trees	-	
Vetch	-		Other Tree Crops	-	
<b>Oilseed crops</b>			<b>Other crops</b>		
Soybeans	104	0.3%	Tobacco	-	
Sunflower	-		Misc Veggies & Fruits	-	
<b>Sugar crops</b>			Clover/Wildflowers	41	0.1%
Sugarbeets	-		Sod/Grass Seed	-	
<b>Root/tuber crops with high starch or inulin content</b>			Switchgrass	-	
Potatoes	-		Dbl Crop Soybeans/Oats	-	
<b>Vegetables and melons</b>			Dbl Crop WinWht/Soybeans	-	
Asparagus	-		Other Crops	0.7	0.0%
Broccoli	-		<b>Pasture/Grass</b>	2,449	7.8%
Cabbage	-		<b>Fallow/Idle Cropland</b>	3,270	10.4%
Carrots	-				
Eggplants	-				
Onions	-				
Pumpkins	-				
Squash	-				
Tomatoes	-				
Turnips	-				

Source: National Agricultural Statistics Service - Cropland Data Layer 2011

13 Climate



**Average length of freeze-free season**

	Last day of frost	First day of frost	Season length
Lake Placid	June 3	September 15	102
Newcomb	May 28	September 20	114

Source: NOAA, Northeast Regional Climate Center at Cornell University. Averages 1981-2010

## 14 Glossary

**American Community Survey (ACS)** - The American Community Survey is an ongoing survey of the population that provides data every year on a variety of social and economic characteristics—age, sex, race, family and relationships, income and benefits, health insurance, education, veteran status, disabilities, where you work and how you get there, where you live and how much you pay for some essentials. The ACS replaced the information previously gathered by what was known as the “long form” of the decennial censuses. The ACS provides communities, companies and other institutions with current information they need to plan investments and services. Information from the survey generates data that help determine how more than \$400 billion in federal and state funds are distributed each year. Every estimate presented in the American Community Survey, as in other surveys, has an uncertainty associated with it. Often the magnitude of that uncertainty is expressed as the Margin of Error.

**Confidence Interval (CI)** - indication of the degree of uncertainty about a sample estimates. Confidence intervals have been traditionally reported at the 90, 95 and 99 percent levels. A 90 percent confidence interval can be interpreted, for example, roughly as providing 90 percent certainty that the interval defined by the upper and lower bounds contain the true value of the characteristic. If a Margin of Error is given, the lower bound of the confidence interval is equal to the estimate minus the Margin of Error and the upper bound is equal to the estimate plus the Margin of Error. (See further, Margin of Error definition below.)

**County subdivision or Minor Civil Division (MCD)** - The Census Bureau geography for primary administrative units below the county level in New York is collectively referred to as county subdivisions or minor civil divisions. These include towns, cities and Indian Reservations.

**Decennial Census** - the Census of the population and housing taken every 10 years in the United States, at the start of each decade, since 1790.

**Employed** – either “at work” or “with a job, but not at work”.

**Group Quarters Population** - all U.S. residents who live in group living facilities including correctional institutions, juvenile facilities, skilled nursing facilities, college residence halls, military barracks, group homes, and workers' dormitories.

**Household Population** - all U.S. residents who live in housing units such as single family homes, townhouses, apartments, and mobile homes.

**Intercensal Population Estimates** - estimates produced for the years between two decennial censuses when both the beginning and ending populations are known. They are produced once a decade by adjusting the existing time series of postcensal estimates for the entire decade to smooth the transition from one decennial census count to the next. They differ from the postcensal estimates that are released annually because the difference between the April 1 postcensal estimate and April 1 census count for the end of the decade is redistributed across the estimates for that decade. For dates when both postcensal and intercensal estimates are available, intercensal estimates are preferred.

**Labor Force** - consists of people classified as employed or unemployed.

**Margin of Error (MOE)** - a measure of the precision of an estimate at a given level of confidence. The confidence level of a margin of error indicates the likelihood that the difference between the population value (which you

would get if you could measure the whole population instead of a sample) and the estimate is less than or equal to the margin of error. The range from the estimate minus the margin of error to the estimate plus the margin of error is called the confidence interval. All ACS estimates are published with their margins of error at the 90 percent confidence level. Margins of error are useful in assessing the reliability of estimates and whether differences between estimates are significant.

**NAICS** - The North American Industry Classification System or NAICS is used by business and government to classify business establishments according to type of economic activity (process of production).

**Numeric Population Change** - difference between the population of an area at the beginning and end of a time period. It is computed by taking the difference between the population at one point in time (t1) and some future time (t2).

**Percent Population Change** - difference between the population of an area at the beginning and end of a time period, expressed as a percentage of the beginning population. It is computed by dividing the population change (t2 - t1) by t1 and multiplying the result by 100.

**Population Estimates** - The calculated number of people living in an area as of a specified point in time, usually July 1st. The estimated population is calculated using a component of change model that incorporates information on natural increase (births, deaths) and net migration (net domestic migration, net international migration) that has occurred in an area since the latest decennial census. A procedure for estimating the current population using a procedure involving a "base population" value at time t -1, adding to that the births during the interval t-1 to t, subtracting the deaths during that interval t-1 to t, and then adding the net domestic and net international migration that occurred during that interval.

**Population Density** - Total number of people per areal unit like a square mile or square kilometer.

**Population Pyramids** - A graphical way of portraying a population's age and sex composition at a given slice in time. The first horizontal bar, constituting the base of the graph, is the youngest age group (typically 0-4) with the number of males in that age group on the left and the number of females in that age group on the right. On top of that age group is another horizontal bar for the next age group (e.g. 5-9) and so forth with the top bar typically for those aged 75 and over. In a population with lots of births and deaths, the shape typically forms a pyramid with a broad base and a narrow top. It is one of the most basic ways to understand population change over time as well as between different geographic units of a similar status (e.g. counties).

**Postcensal Estimates** - estimates produced for the years after a decennial census when only the beginning population is known. They are produced and revised each year, targeted to July 1 of that year.

**Projection** - estimated population at some future time based on assumptions about births, deaths, migration, and ages.

**Race/Ethnicity** - the Census Bureau collects racial data in accordance with guidelines provided by the U.S. Office of Management and Budget (OMB), and these data are based on self-identification. The racial categories included in the census questionnaire generally reflect a social definition of race recognized in this country and not an attempt to define race biologically, anthropologically, or genetically. In addition, it is recognized that the categories of the race item include racial and national origin or sociocultural groups. People may choose to report more than one race to indicate their racial mixture, such as "American Indian" and "White." People who identify their origin as Hispanic, Latino, or Spanish may be of any race. OMB requires five minimum categories: White, Black or African American, American Indian or Alaska Native, Asian, and Native Hawaiian or Other Pacific

Islander. Hispanics may be classified as white or black. So we generally separate them out as an ethnic group first.

**Unemployed** – Not employed, but actively looking for work and available to accept a job.

**Unemployment rate** – Fraction of the Labor Force that is unemployed.

**Urban Area** – A densely settled area with at least 2,500 people. If the total number of people is less than 50,000 the Census Bureau calls it an Urban Cluster, otherwise an Urbanized Area.

**Vintage** - each year, the U.S. Census Bureau produces and publishes estimates of the population for each state and county, as well as the nation as a whole. These are called “vintages.” In producing these vintages, the Bureau utilizes administrative data from a number of sources to estimate 1) the change in population since the most recent decennial census, and 2) the population for each year since the most recent decennial census. With each annual release of population estimates (vintage), the entire time series of estimates beginning on April 1, 2010 is revised and updated.

## 15 References

Essex County homepage: <http://www.co.essex.ny.us/>

At Cornell:

- Cornell Cooperative Extensions (CCE)  
Home page: <http://www.cce.cornell.edu>
  - Essex local office: <http://blogs.cornell.edu/essex/>
- Program on Applied Demographics (PAD)  
URL: <http://pad.human.cornell.edu/>
- Community and Regional Development Institute (CaRDI)  
URL: <http://devsoc.cals.cornell.edu/cals/devsoc/outreach/cardi/index.cfm>

Data sources and background information:

- U.S. Census Bureau - general
  - QuickFacts: <http://quickfacts.census.gov/qfd/states/36/36031.html>
  - QuickLinks: <http://quickfacts.census.gov/qfd/states/36/36031lk.html>
  - American FactFinder: <http://factfinder2.census.gov>
- U.S. Census Bureau - population
  - Decennial Census
    - Background: <http://2010.census.gov/2010census/>
    - Demographic Profile: [http://factfinder2.census.gov/bkmk/table/1.0/en/DEC/10\\_SF1/SF1DP1/0500000US36031\\_1](http://factfinder2.census.gov/bkmk/table/1.0/en/DEC/10_SF1/SF1DP1/0500000US36031_1)
  - American Community Survey (ACS)
    - Background: <http://www.census.gov/acs/www/>
    - Social Data Profile: [http://factfinder2.census.gov/bkmk/table/1.0/en/ACS/10\\_5YR/DP02/0500000US36031](http://factfinder2.census.gov/bkmk/table/1.0/en/ACS/10_5YR/DP02/0500000US36031)
    - Economic Data Profile: [http://factfinder2.census.gov/bkmk/table/1.0/en/ACS/10\\_5YR/DP03/0500000US36031](http://factfinder2.census.gov/bkmk/table/1.0/en/ACS/10_5YR/DP03/0500000US36031)
    - Housing Data Profile: [http://factfinder2.census.gov/bkmk/table/1.0/en/ACS/10\\_5YR/DP04/0500000US36031](http://factfinder2.census.gov/bkmk/table/1.0/en/ACS/10_5YR/DP04/0500000US36031)
    - Demographics Data Profile: [http://factfinder2.census.gov/bkmk/table/1.0/en/ACS/10\\_5YR/DP05/0500000US36031](http://factfinder2.census.gov/bkmk/table/1.0/en/ACS/10_5YR/DP05/0500000US36031)
  - Population estimates: <http://www.census.gov/popest/estimates.html>
- U.S. Census Bureau – Small Area Income & Poverty Estimates (SAIPE)
  - <http://www.census.gov/did/www/saipe/>
- U.S. Census Bureau - Public Use Quarterly Workforce Indicators (QWI) – annual averages
  - <http://www2.vrdc.cornell.edu/news/data/qwi-public-use-data/>
- Bureau Labor Statistics (BLS) – Local Area Unemployment Statistics: <http://www.bls.gov/lau/>
- NY Department of Labor -
  - Labor statistics: <http://www.labor.ny.gov/stats/>
  - Quarterly Census of Employment and Wages (QCEW): <http://www.labor.ny.gov/stats/lsqcew.shtm>
- Bureau of Economic Analysis (BEA) – Local Area Personal Income and Employment: <http://bea.gov/iTable/iTable.cfm?ReqID=70&step=1>

- USDA Census of Agriculture
  - 2007
    - Home page: <http://www.agcensus.usda.gov/Publications/2007/index.php>
    - County profile: [http://www.agcensus.usda.gov/Publications/2007/Online\\_Highlights/County\\_Profiles/New\\_York/cp36031.pdf](http://www.agcensus.usda.gov/Publications/2007/Online_Highlights/County_Profiles/New_York/cp36031.pdf)
    - Race, Ethnicity and Gender Profiles: [http://www.agcensus.usda.gov/Publications/2007/Online\\_Highlights/Race\\_Ethnicity\\_and\\_Gender\\_Profiles/New\\_York/cpd36031.pdf](http://www.agcensus.usda.gov/Publications/2007/Online_Highlights/Race_Ethnicity_and_Gender_Profiles/New_York/cpd36031.pdf)
- USDA National Agricultural Statistics Service (NASS)
  - Home page: <http://www.nass.usda.gov/index.asp>
  - New York Statistical Bulletins: [http://www.nass.usda.gov/Statistics\\_by\\_State/New\\_York/Publications/Annual\\_Statistical\\_Bulletin/](http://www.nass.usda.gov/Statistics_by_State/New_York/Publications/Annual_Statistical_Bulletin/)
  - Cropland Data Layer – CropScape: <http://nassgeodata.gmu.edu/CropScape/>
- USDA Agricultural Research Service – Plant Hardness Zone Map: <http://planthardiness.ars.usda.gov/PHZMWeb/>
- NOAA, Northeast Regional Climate Center at Cornell University
  - Home page: <http://www.nrcc.cornell.edu/index.html>

Alternative sites for data retrieval:

- The Nelson A. Rockefeller Institute of Government – New York State Statistical Yearbooks [http://www.rockinst.org/nys\\_statistics/](http://www.rockinst.org/nys_statistics/)
- Headwaters Economics: Economic Profile System – Human Dimensions Toolkit <http://headwaterseconomics.org/tools/eps-hdt>
- National Historical Geographic Information System (NHGIS) <https://www.nhgis.org/>
- Social Explorer <http://www.socialexplorer.com/pub/home/home.aspx>
- Missouri Census Data Center <http://mcdc.missouri.edu/>
- DataFerret <http://dataferrett.census.gov/>
- Investigative Reporters and Editors (IRE) Census project <http://census.ire.org/>