

Chenango County Profile 2013

A collection of recent demographic, social, economic and agricultural data

Compiled by Jan Vink

Assisted by Joe Francis, Sutee Anantsuksomsri, Nij Tontisirin, Johannes Plambeck



Cornell University
Cooperative Extension



This profile is a part of a set of profiles generated for each county in New York State. The profiles were developed and generated by the Cornell Program on Applied Demographics. The work is sponsored by Cornell Cooperative Extension and promoted with webinars and workshops in coordination with the Community & Regional Development Institute.

Cornell Program on Applied Demographics:

The Program on Applied Demographics (PAD) brings skills in demographics, economics, statistics, data gathering and data analysis together to provide a variety of organizations with data, information and advice.

For more information: <http://pad.human.cornell.edu/>

Cornell Cooperative Extension:

Cornell Cooperative Extension (CCE) puts knowledge to work in pursuit of economic vitality, ecological sustainability and social well-being. We bring local experience and research based solutions together, helping New York State families and communities thrive in our rapidly changing world.

For more information: <http://cce.cornell.edu/>

Community & Regional Development Institute:

The Community & Regional Development Institute (CaRDI) supports informed decision making for residents and communities in New York State through applied research and education.

For more information: <http://cardi.cornell.edu/>

All profiles are freely downloadable as PDF documents on the PAD website:

<http://pad.human.cornell.edu/profiles/index.cfm>

Contents

Contents	2
1 Reference Maps	4
2 Population density and Urban Areas Map	6
3 Total Population	7
3.1 Historic and projected	7
3.2 Change since previous Census	7
3.3 Annual population estimates	8
3.4 Percentage sub county change 2000-2010	9
4 Population by age	11
4.1 Historic and projected population pyramids	11
4.2 Selected age groups	12
4.3 Median age: comparison between areas	14
5 Race	15
5.1 Total and household population by race	15
5.2 Race composition by age	15
6 Housing units	16
6.1 Characteristics	16
6.2 Historical data on number of housing units and occupancy status	17
7 Education	18
7.1 Enrollment by level of school	18
7.2 Enrollment by age	18
7.3 Percentage age 18-24 enrolled in college	18
7.4 Educational attainment	19
8 Language spoken at home	19
9 Labor Force Characteristics	20
9.1 Labor force, employment and unemployment	20
9.2 Annual unemployment rate	21
9.3 Monthly unemployment rate	21
9.4 Employment and number of jobs	22
9.5 Class of worker	22
9.6 Jobs by industry sector	23
10 Household Income	24
10.1 Distribution	24
10.2 Median household income: Trends over time	25
10.3 Median household income: Comparison between areas	26
11 Poverty	27
11.1 Poverty characteristics	27
11.2 Poverty: Trends over time: Count	28
11.3 Poverty: Trends over time: Rate	28
11.4 Poverty rate: comparison between areas	29
12 Agriculture	30
12.1 Number of farms and land in farms	30
12.2 Farm Operator Characteristics	30

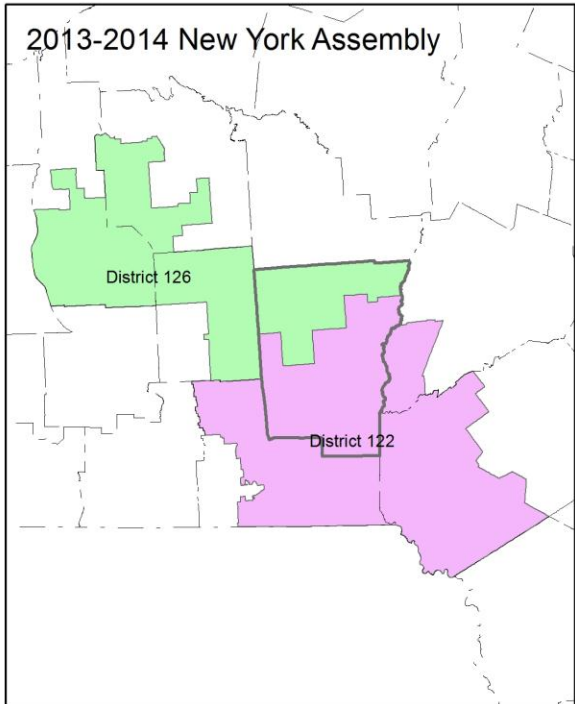
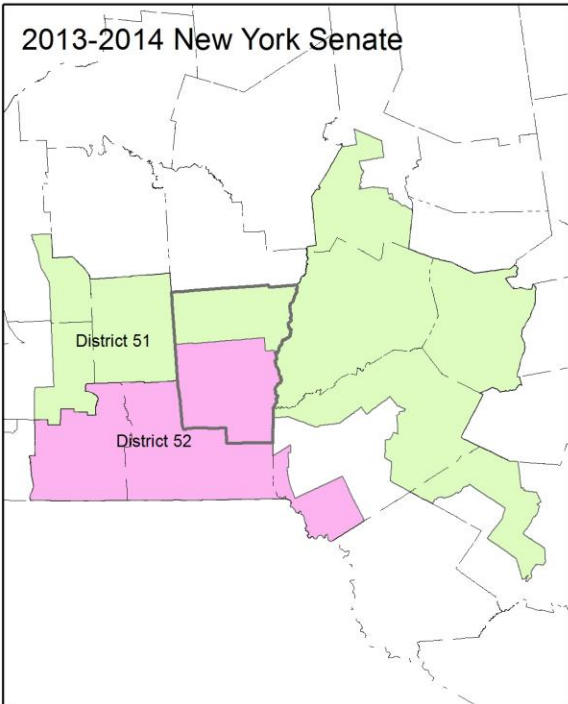
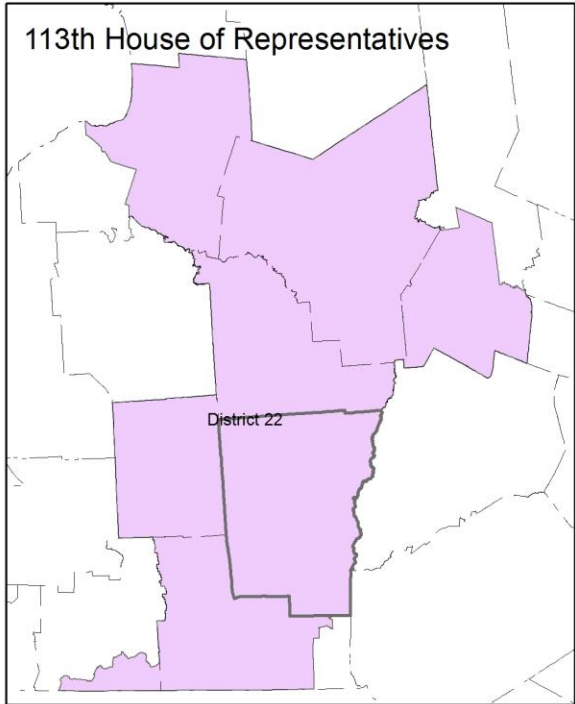
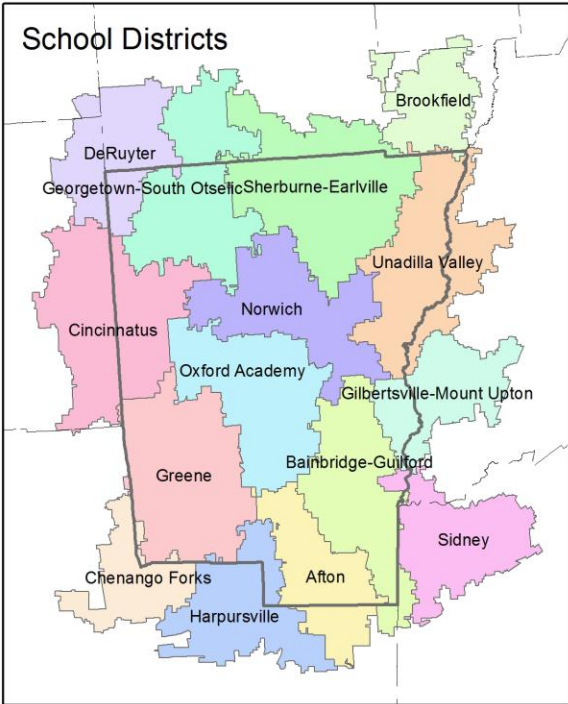
12.3 Map of type of crop 31
12.4 Estimated acreage by crop 32
13 Climate 33
14 Glossary..... 34
15 References 37

1 Reference Maps

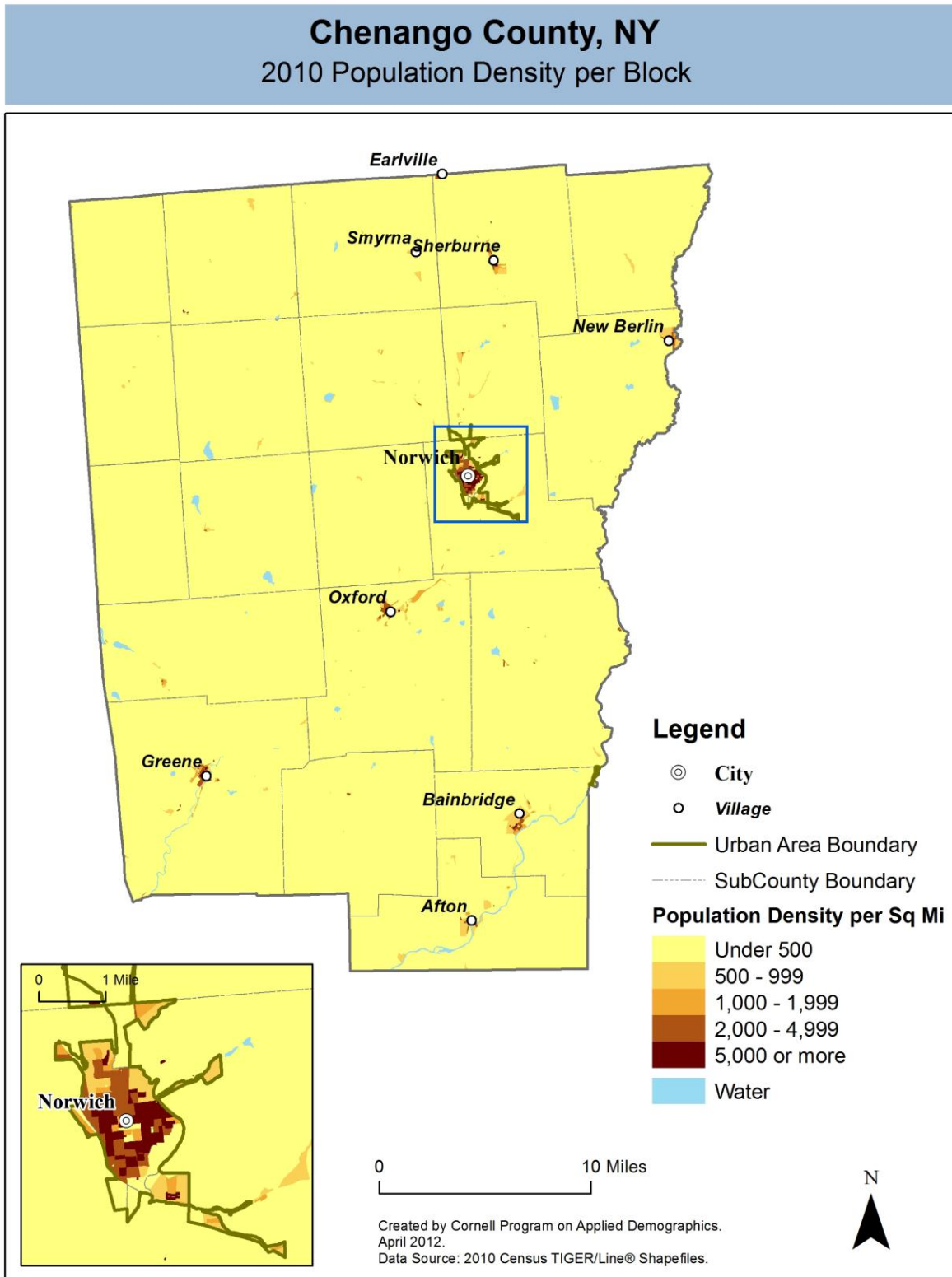


Chenango County, NY

Overlap with School and Political Districts



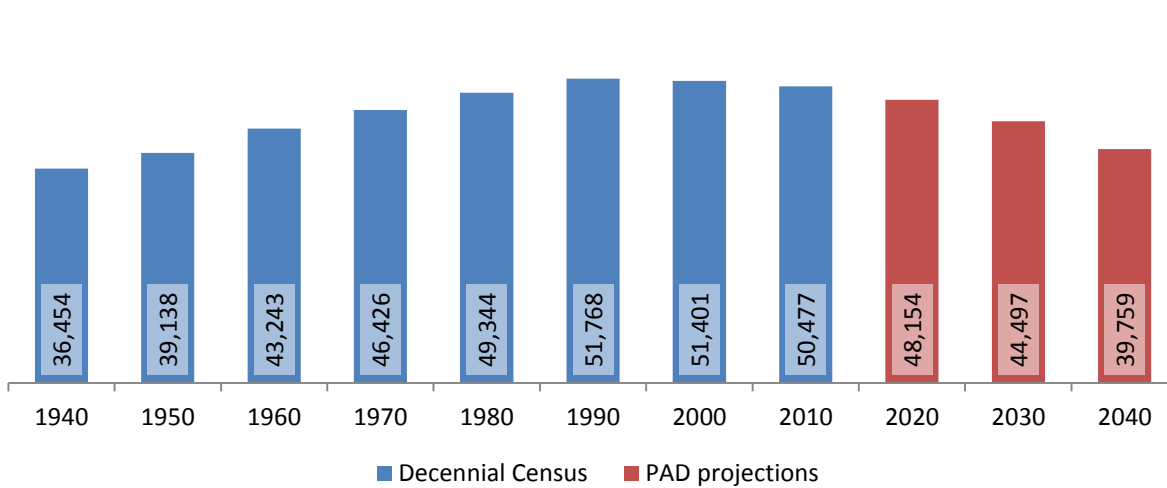
2 Population density and Urban Areas Map



3 Total Population

3.1 Historic and projected

Total population, Chenango County, 1940-2040



Source: 1940-2010 Decennial Census and projections by Cornell Program on Applied Demographics

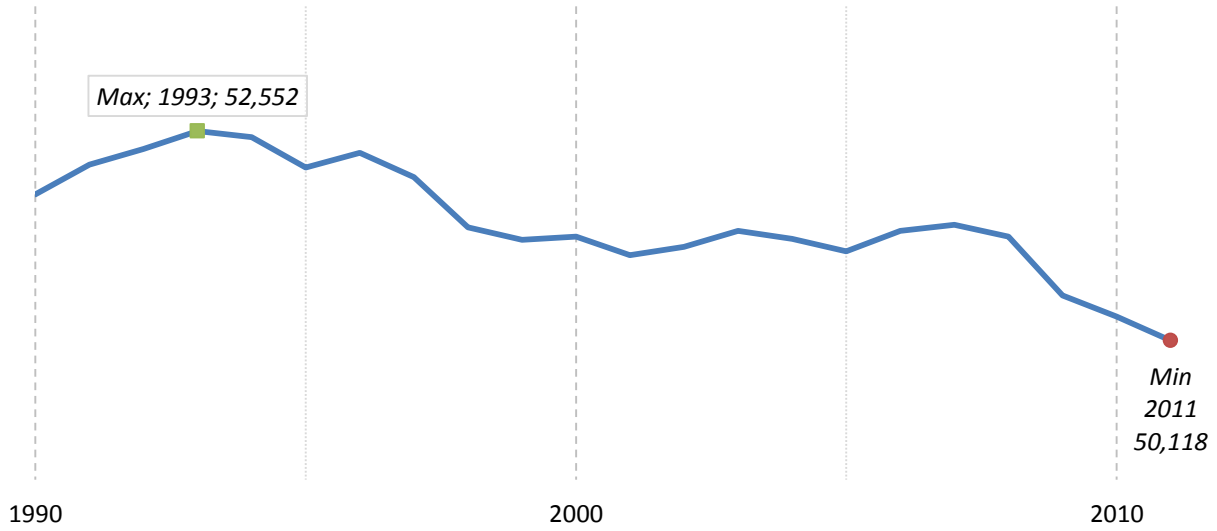
3.2 Change since previous Census

		Total population	Change	
			Number	Percent
Decennial Census	1940	36,454		
	1950	39,138	2,684	7.4%
	1960	43,243	4,105	10.5%
	1970	46,426	3,183	7.4%
	1980	49,344	2,918	6.3%
	1990	51,768	2,424	4.9%
	2000	51,401	-367	-0.7%
	2010	50,477	-924	-1.8%
PAD projections	2020	48,154	-2,323	-4.6%
	2030	44,497	-3,657	-7.6%
	2040	39,759	-4,738	-10.6%

Source: 1940-2010 Decennial Census and projections by Cornell Program on Applied Demographics

3.3 Annual population estimates

Annual population estimates
Chenango County, 1990-2011



Source: U.S. Census Bureau population estimates (1990-1999 and 2000-2009 intercensal and vintage 2011 postcensal)

3.4 Percentage sub county change 2000-2010

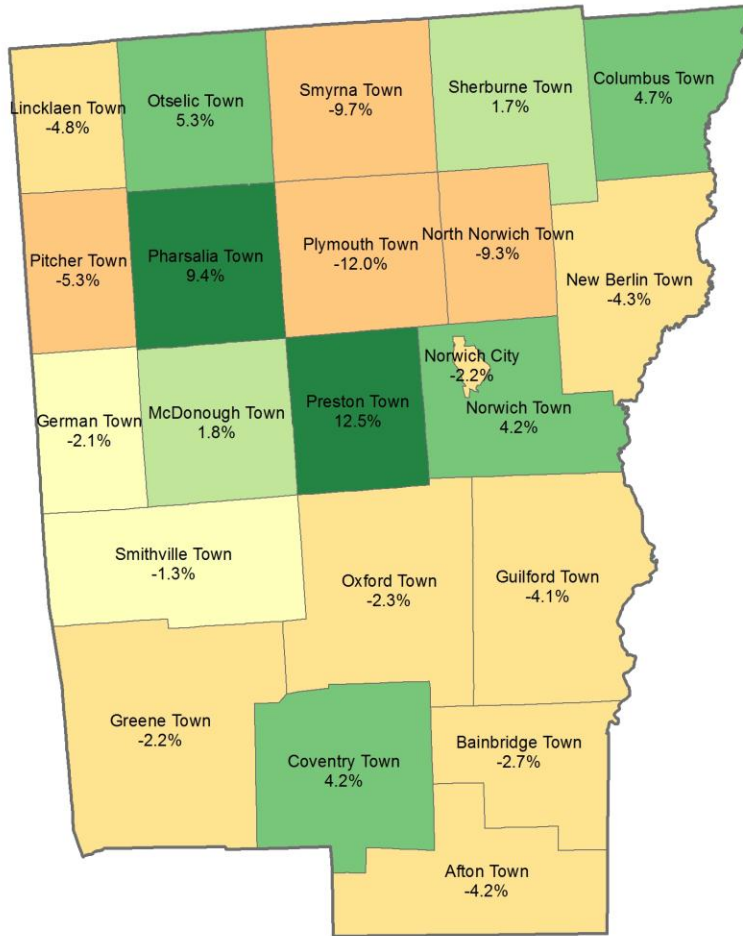
	Total Population		Difference	
	2000	2010	Count	%
New York State	18,976,821 *	19,378,102	401,281	2.1%
Chenango County	51,401	50,477	-924	-1.8%
Cities				
Norwich	7,355	7,190	-165	-2.2%
Towns				
Afton	2,977	2,851	-126	-4.2%
Bainbridge	3,401	3,308	-93	-2.7%
Columbus	931	975	44	4.7%
Coventry	1,589	1,655	66	4.2%
German	378	370	-8	-2.1%
Greene	5,729	5,604	-125	-2.2%
Guilford	3,046	2,922	-124	-4.1%
Lincklaen	416	396	-20	-4.8%
McDonough	870	886	16	1.8%
New Berlin	2,803	2,682	-121	-4.3%
North Norwich	1,966	1,783	-183	-9.3%
Norwich	3,836	3,998	162	4.2%
Otselic	1,001	1,054	53	5.3%
Oxford	3,992	3,901	-91	-2.3%
Pharsalia	542	593	51	9.4%
Pitcher	848	803	-45	-5.3%
Plymouth	2,049	1,804	-245	-12.0%
Preston	928	1,044	116	12.5%
Sherburne	3,979	4,048	69	1.7%
Smithville	1,347	1,330	-17	-1.3%
Smyrna	1,418	1,280	-138	-9.7%

* Original counts revised through Count Question Resolution Program (CQR)

Source: U.S. Census Bureau intercensal population estimates 2000-2010

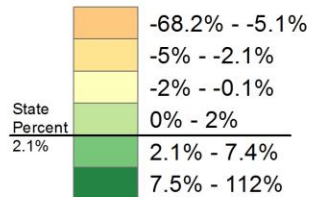
Chenango County, NY

County Subdivision, Percent Change in Population 2000-2010



Legend

Percent Change



0 10 Miles

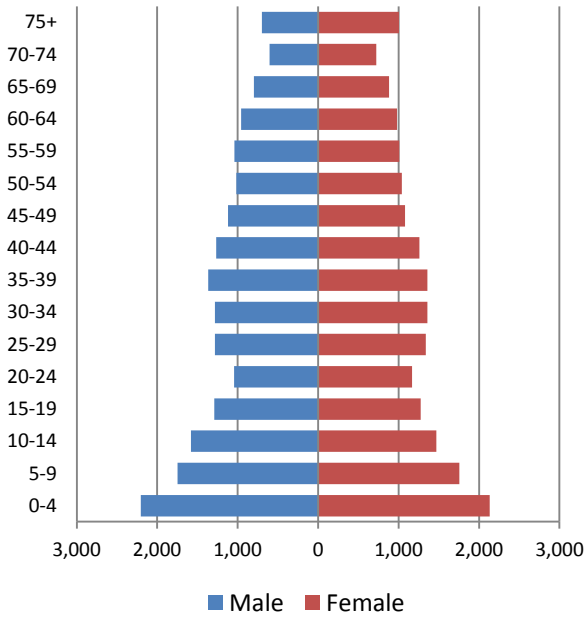
Created by Cornell Program on Applied Demographics.
 May 2012.
 Data Source: 2010 Census TIGER/Line® Shapefiles.



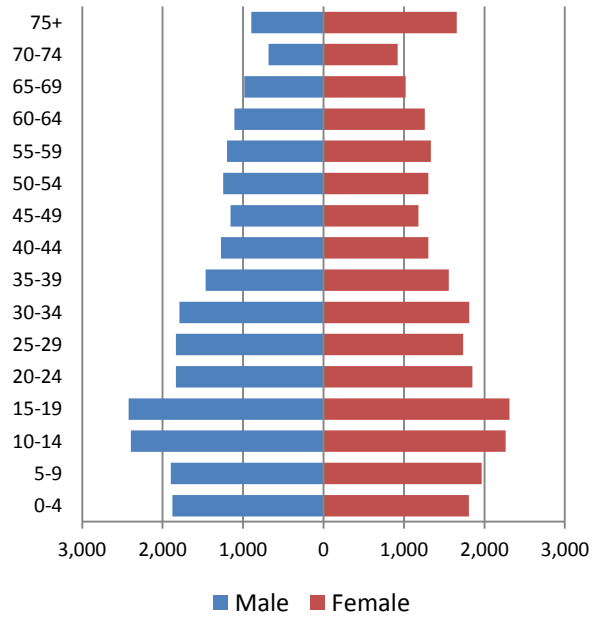
4 Population by age

4.1 Historic and projected population pyramids

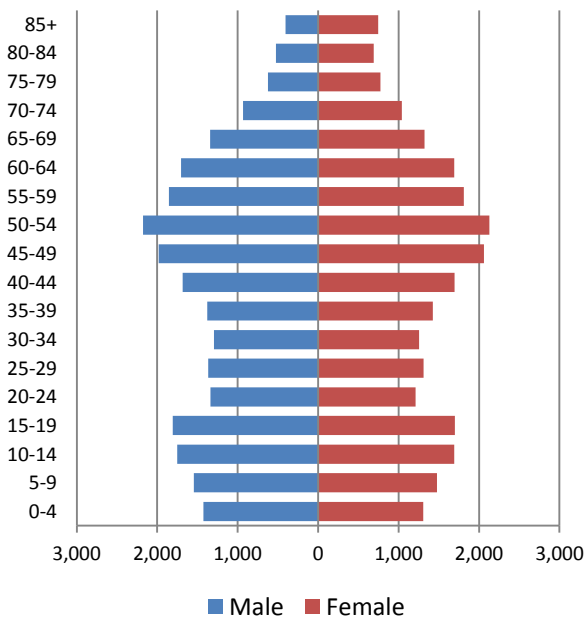
1950 Population Pyramid, Chenango County



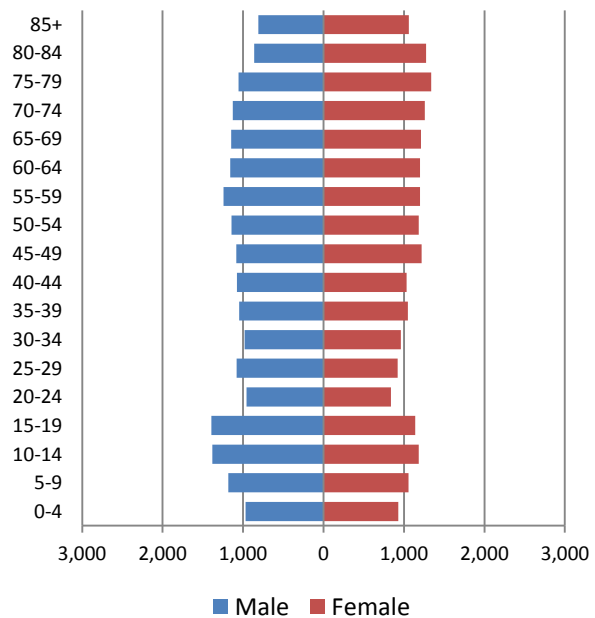
1980 Population Pyramid, Chenango County



2010 Population Pyramid, Chenango County



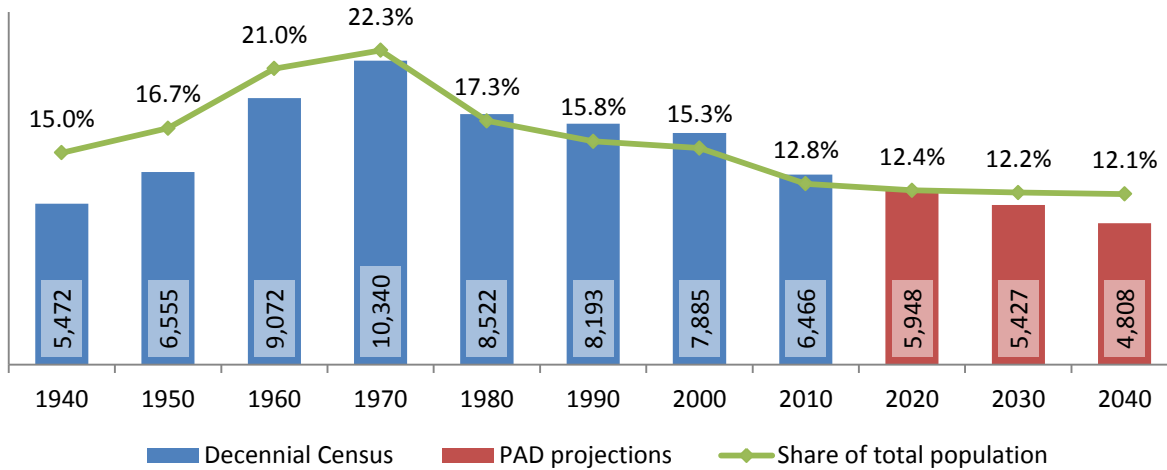
2040 Population Pyramid, Chenango County



Source: 1950, 1980, 2010 Decennial Census and projections by Cornell Program on Applied Demographics

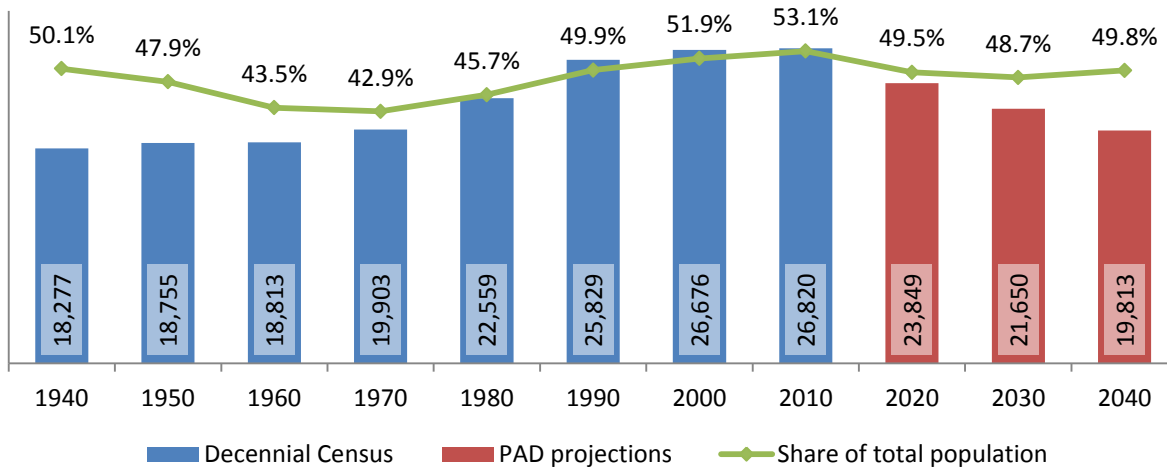
4.2 Selected age groups

Population age 5-14, Chenango County, 1940-2040



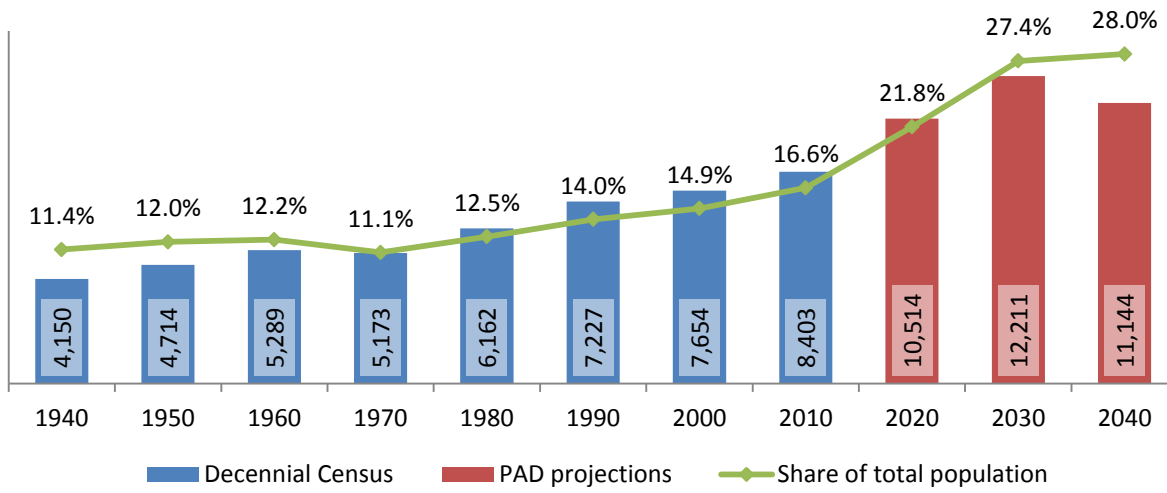
Source: 1940-2010 Decennial Census and projections by Cornell Program on Applied Demographics

Population age 25-64, Chenango County, 1940-2040



Source: 1940-2010 Decennial Census and projections by Cornell Program on Applied Demographics

Population age 65 and over, Chenango County, 1940-2040

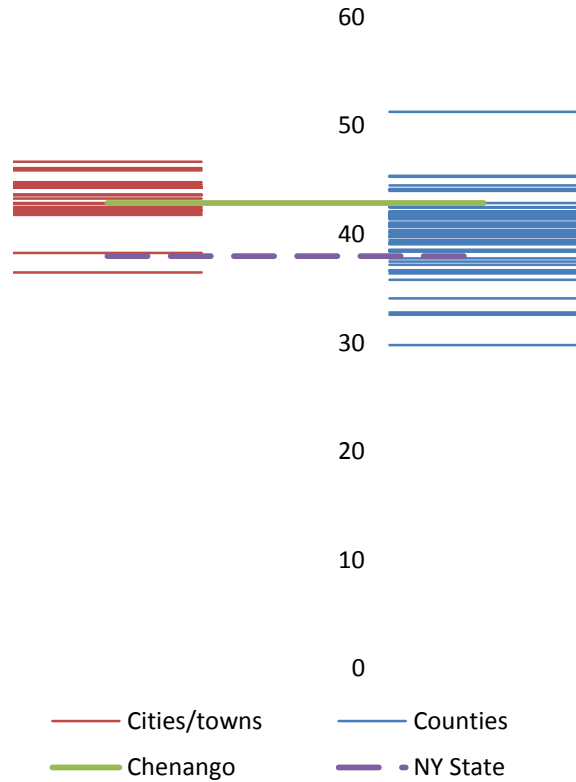


Source: 1940-2010 Decennial Census and projections by Cornell Program on Applied Demographics

4.3 Median age: comparison between areas

	Median Age
New York State	38.0
Chenango County	42.9
Cities	
Norwich city	38.3
Towns	
Afton town	44.3
Bainbridge town	43.7
Columbus town	42.8
Coventry town	43.3
German town	42.2
Greene town	43.6
Guilford town	44.8
Lincklaen town	42.5
McDonough town	46.7
New Berlin town	44.3
North Norwich town	42.9
Norwich town	42.2
Otselic town	36.5
Oxford town	46.1
Pharsalia town	45.9
Pitcher town	42.0
Plymouth town	44.4
Preston town	44.3
Sherburne town	42.3
Smithville town	44.6
Smyrna town	41.8

Median age comparison within county (left) and between counties (right)



Source: 2010 Decennial Census

5 Race

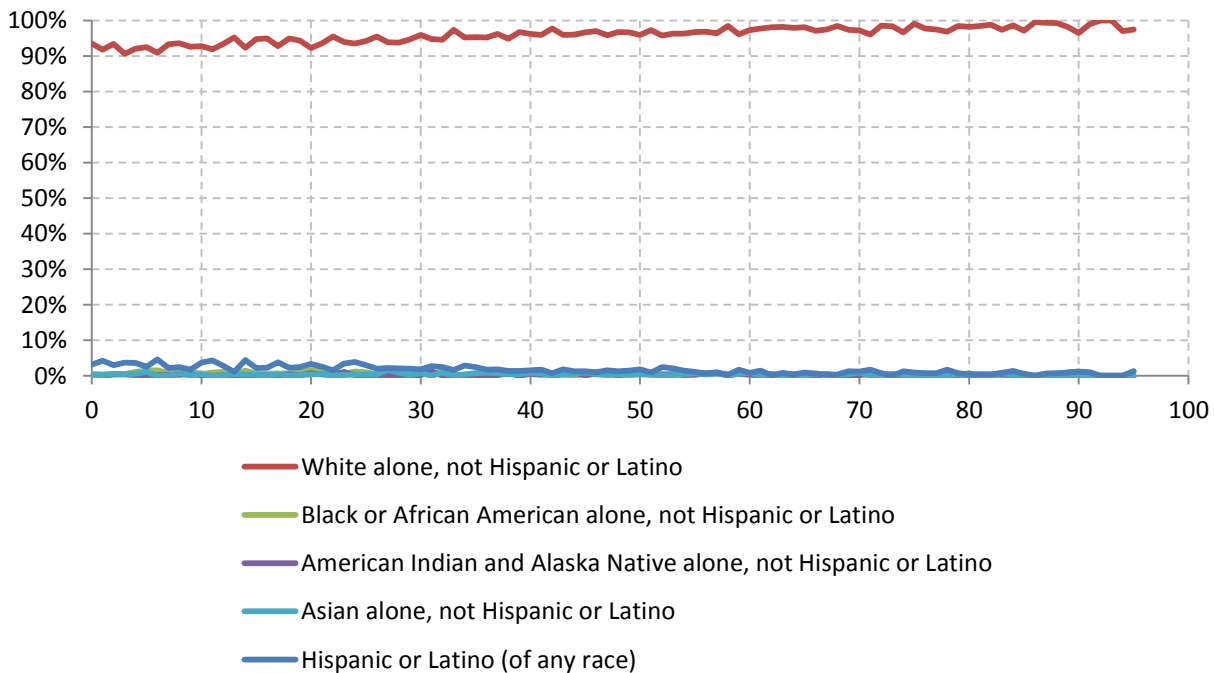
5.1 Total and household population by race

	Total		In households		In Group Quarters
	Count	Percentage	Count	Percentage	Count
Total population	50,477	100%	49,681	100%	796
Not Hispanic or Latino					
One race					
White	48,265	95.6%	47,534	95.7%	731
Black or African American	323	0.6%	275	0.6%	48
American Indian and Alaska Native	151	0.3%	150	0.3%	1
Asian	200	0.4%	194	0.4%	6
Native Hawaiian and Other Pacific Islander	4	0.0%	-	-	-
Some other race	30	0.1%	-	-	-
Two or more races	575	1.1%	573	1.2%	2
Hispanic or Latino (of any race)	929	1.8%	921	1.9%	8

Source: 2010 Decennial Census

5.2 Race composition by age

Race composition by age, Chenango County



Source: 2010 Decennial Census

6 Housing units

6.1 Characteristics

HOUSING OCCUPANCY	COUNT		PERCENTAGE	
	Estimate	Margin of error	Estimate	Margin of error
Total housing units	24,677	± 108	100.0%	
Occupied housing units	20,003	± 332	81.1%	± 1.3
Vacant housing units	4,674	± 319	18.9%	± 1.3
YEAR STRUCTURE BUILT				
Total housing units	24,677	± 108	100.0%	
Built 2005 or later	419	± 113	1.7%	± 0.5
Built 2000 to 2004	982	± 176	4.0%	± 0.7
Built 1990 to 1999	2,681	± 284	10.9%	± 1.2
Built 1980 to 1989	2,857	± 254	11.6%	± 1.0
Built 1970 to 1979	3,189	± 300	12.9%	± 1.2
Built 1960 to 1969	1,951	± 273	7.9%	± 1.1
Built 1950 to 1959	1,920	± 215	7.8%	± 0.9
Built 1940 to 1949	831	± 137	3.4%	± 0.6
Built 1939 or earlier	9,847	± 376	39.9%	± 1.5
HOUSING TENURE				
Occupied housing units	20,003	± 332	100.0%	
Owner-occupied	15,371	± 325	76.8%	± 1.8
Renter-occupied	4,632	± 392	23.2%	± 1.8
HOUSE HEATING FUEL				
Occupied housing units	20,003	± 332	100.0%	
Utility gas	2,993	± 269	15.0%	± 1.3
Bottled, tank, or LP gas	2,297	± 237	11.5%	± 1.2
Electricity	2,880	± 234	14.4%	± 1.2
Fuel oil, kerosene, etc.	8,173	± 376	40.9%	± 1.8
Coal or coke	255	± 75	1.3%	± 0.4
Wood	3,177	± 259	15.9%	± 1.3
Solar energy	15	± 20	0.1%	± 0.1
Other fuel	195	± 76	1.0%	± 0.4
No fuel used	18	± 15	0.1%	± 0.1
VALUE				
Owner-occupied units	15,371	± 325	100.0%	
Less than \$50,000	2,939	± 282	19.1%	± 1.7
\$50,000 to \$99,999	5,725	± 319	37.2%	± 1.9
\$100,000 to \$149,999	3,033	± 280	19.7%	± 1.7
\$150,000 to \$199,999	1,724	± 185	11.2%	± 1.2
\$200,000 to \$299,999	1,139	± 154	7.4%	± 1.0
\$300,000 to \$499,999	599	± 166	3.9%	± 1.1
\$500,000 to \$999,999	160	± 71	1.0%	± 0.5
\$1,000,000 or more	52	± 35	0.3%	± 0.2
Median (dollars)	89,700	± 2,955		

Source: 2007-2011 American Community Survey

6.2 Historical data on number of housing units and occupancy status

Year	Number of Housing Units	Change since previous Census	Occupied	Occupancy rate	Vacant
1970	15,427		13,839	89.7%	1,588
1980	18,864	22.3%	16,858	89.4%	2,006
1990	22,164	17.5%	19,141	86.4%	3,023
2000	23,890	7.8%	19,926	83.4%	3,964
2010	24,710	3.4%	20,436	82.7%	4,274

Source: 1970-2010 Decennial Census

7 Education

7.1 Enrollment by level of school

	Estimate	Margin of error
Total enrolled in school	11,931	± 299
Nursery school, preschool	587	± 135
Kindergarten	645	± 137
Elementary: grade 1 to grade 4	2,752	± 233
Elementary: grade 5 to grade 8	2,748	± 233
High school: grade 9 to grade 12	3,077	± 172
College, undergraduate	1,870	± 219
Graduate, professional school	252	± 76

Source: 2007-2011 American Community Survey

7.2 Enrollment by age

	Estimate	Margin of error
3 and 4 years	52.3%	± 8.9
5 to 9 years	94.3%	± 1.7
10 to 14 years	99.9%	± 0.2
15 to 17 years	94.5%	± 3.9
18 and 19 years	72.4%	± 7.2
20 to 24 years	30.6%	± 4.3
25 to 34 years	10.5%	± 2.7
35 years and over	1.5%	± 0.4

Source: 2007-2011 American Community Survey

7.3 Percentage age 18-24 enrolled in college

	Estimate	Margin of error
Population 18 to 24 years	3,839	± 65
Enrolled in college or graduate school	29.3%	± 3.7
Males 18 to 24 years	1,995	± 47
Enrolled in college or graduate school	22.5%	± 4.6
Females 18 to 24 years	1,844	± 44
Enrolled in college or graduate school	36.7%	± 6.5

Source: 2007-2011 American Community Survey

7.4 Educational attainment

	COUNT		PERCENTAGE	
	Estimate	Margin of error	Estimate	Margin of error
Population 25 years and over	35,116	± 72	100%	
EDUCATIONAL ATTAINMENT				
Less than 9th grade	1,237	± 173	3.5%	± 0.5
9th to 12th grade, no diploma	3,676	± 329	10.5%	± 0.9
High school graduate (includes equivalency)	14,042	± 462	40.0%	± 1.3
Some college, no degree	6,046	± 362	17.2%	± 1.0
Associate's degree	3,967	± 295	11.3%	± 0.8
Bachelor's degree	3,687	± 295	10.5%	± 0.8
Graduate or professional degree	2,461	± 262	7.0%	± 0.7
Percent high school graduate or higher			86.0%	± 1.0
Percent bachelor's degree or higher			17.5%	± 1.2

Source: 2007-2011 American Community Survey

8 Language spoken at home

	COUNT		PERCENTAGE		SPEAK ENGLISH LESS THAN "VERY WELL"	
	Estimate	Margin of error	Estimate	Margin of error	Estimate	Margin of error
Population 5 years and over	47,981	± 42	100%			
LANGUAGE SPOKEN AT HOME						
English only	46,305	± 271	96.5%	± 0.6		
Language other than English	1,676	± 269	3.5%	± 0.6	637	± 160
Spanish	721	± 146	1.5%	± 0.3	243	± 88
Other Indo-European languages	814	± 226	1.7%	± 0.5	358	± 131
Asian and Pacific Islander languages	63	± 31	0.1%	± 0.1	36	± 24
Other languages	78	± 46	0.2%	± 0.1	0	± 89

Source: 2007-2011 American Community Survey

9 Labor Force Characteristics

9.1 Labor force, employment and unemployment

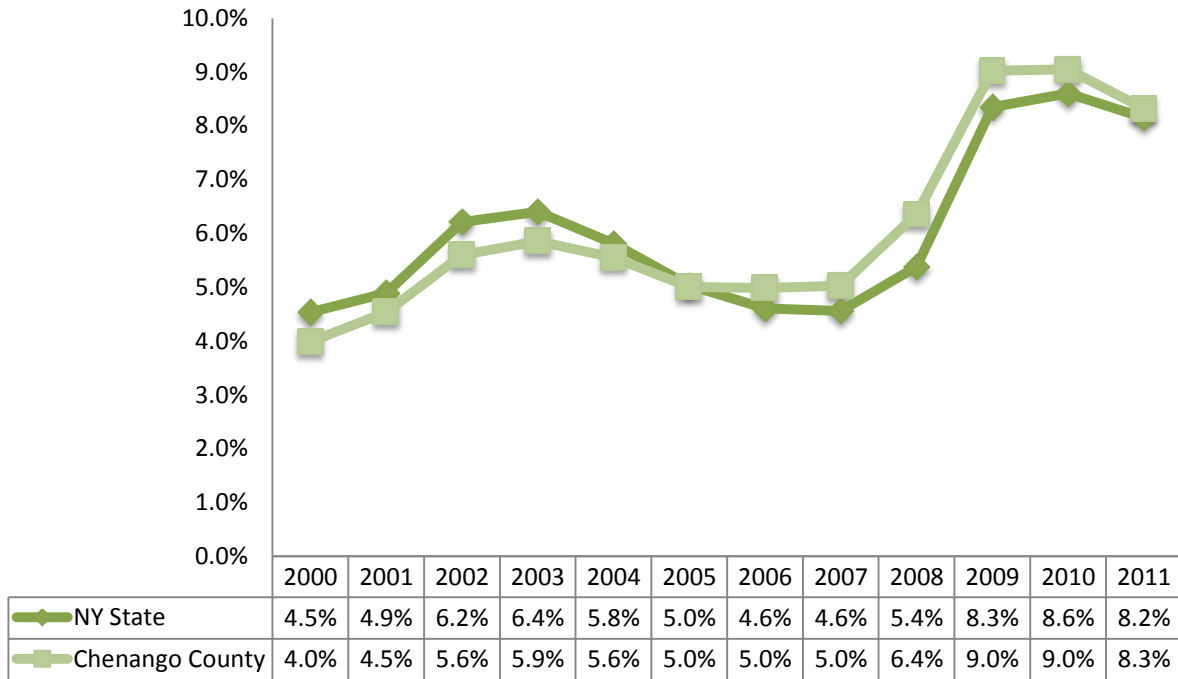
	TOTAL		IN LABOR FORCE		EMPLOYED		UNEMPLOYMENT RATE	
	Estimate	Margin of error	Estimate	Margin of error	Estimate	Margin of error	Estimate	Margin of error
Population 16 years and over	40,552	± 127	61.4%	± 1.1	56.1%	± 1.3	8.7%	± 1.1
AGE								
16 to 19 years	2,896	± 140	38.7%	± 4.7	23.7%	± 3.8	38.9%	± 8.4
20 to 24 years	2,540	± 41	77.6%	± 4.4	66.0%	± 4.4	14.9%	± 3.7
25 to 44 years	11,514	± 104	82.4%	± 1.8	75.4%	± 2.2	8.3%	± 1.7
45 to 54 years	8,306	± 49	83.3%	± 2.2	78.5%	± 2.5	5.7%	± 1.5
55 to 64 years	6,963	± 55	60.2%	± 2.8	58.3%	± 2.7	3.2%	± 1.4
65 to 74 years	4,483	± 32	23.9%	± 2.7	21.5%	± 2.9	9.9%	± 5.9
75 years and over	3,850	± 48	4.2%	± 1.4	3.9%	± 1.4	5.0%	± 5.7
RACE AND HISPANIC OR LATINO ORIGIN								
One race	40,109	± 134	61.6%	± 1.1	56.3%	± 1.3	8.6%	± 1.1
White	39,543	± 153	61.9%	± 1.1	56.6%	± 1.3	8.5%	± 1.1
Black or African American	256	± 52	24.2%	± 19.7	16.0%	± 14.4	33.9%	± 27.2
American Indian and Alaska Native	46	± 25	26.1%	± 24.4	21.7%	± 23.2	16.7%	± 33.4
Asian	128	± 28	67.2%	± 15.5	64.8%	± 16.2	3.5%	± 5.0
Pacific Islander	7	± 11	100.0%	± 100.0	0.0%	± 100.0	100.0%	± 100.0
Some other race	129	± 66	51.9%	± 22.9	48.8%	± 21.8	6.0%	± 8.8
Two or more races	443	± 82	49.7%	± 10.0	40.4%	± 11.0	18.6%	± 16.8
Hispanic or Latino origin (of any race)	632	± 12	63.0%	± 7.0	53.0%	± 9.2	15.8%	± 10.9
White alone, not Hispanic or Latino	39,155	± 127	61.8%	± 1.1	56.5%	± 1.3	8.5%	± 1.1
SEX								
Population 20 to 64 years	29,323	± 82	77.0%	± 1.4	71.4%	± 1.6	7.1%	± 1.0
Male	14,710	± 63	82.7%	± 1.4	76.0%	± 1.7	8.0%	± 1.2
Female	14,613	± 54	71.1%	± 2.2	66.8%	± 2.4	6.1%	± 1.4
With own children under 6 years	2,054	± 178	70.6%	± 6.2	62.0%	± 6.3	12.2%	± 5.6
EDUCATIONAL ATTAINMENT								
Population 25 to 64 years	26,783	± 93	76.9%	± 1.4	71.9%	± 1.6	6.4%	± 1.0
Less than high school graduate	3,038	± 293	57.1%	± 5.5	47.7%	± 5.3	16.5%	± 6.0
High school graduate (includes equivalency)	10,218	± 437	76.6%	± 2.3	71.0%	± 2.5	7.2%	± 1.7
Some college or associate's degree	8,521	± 377	79.5%	± 2.5	74.6%	± 2.5	5.8%	± 1.4
Bachelor's degree or higher	5,006	± 348	85.2%	± 2.3	83.9%	± 2.3	1.5%	± 0.7

Table formula: **LABOR FORCE** = # EMPLOYED + # UNEMPLOYED
 % IN LABOR FORCE = LABOR FORCE / TOTAL * 100%
 % EMPLOYED = # EMPLOYED / TOTAL * 100%
 UNEMPLOYMENT RATE = # UNEMPLOYED / LABOR FORCE * 100%

Source: 2007-2011 American Community Survey

9.2 Annual unemployment rate

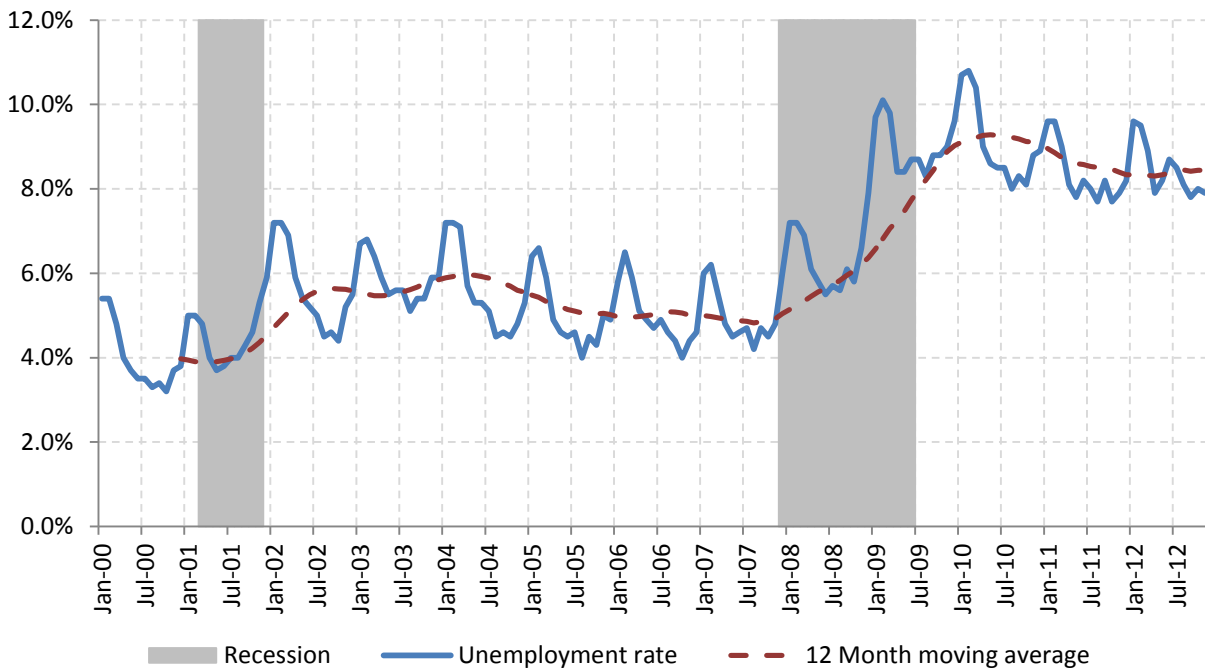
Annual unemployment rate, Chenango County and New York State



Source: Bureau Labor Statistics (BLS)

9.3 Monthly unemployment rate

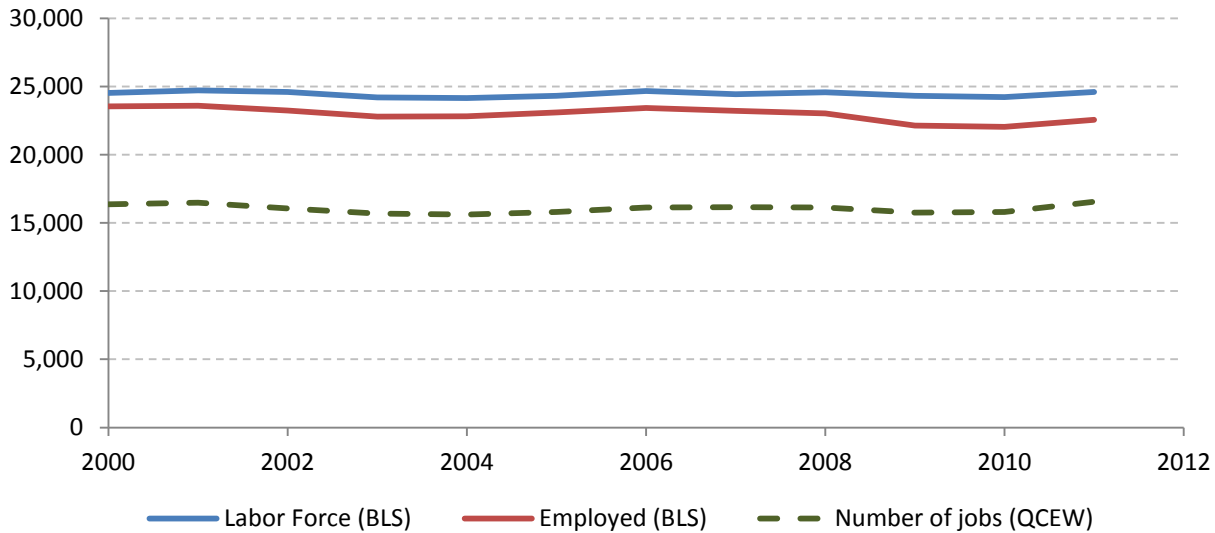
Monthly unemployment rate, Chenango County



Source: Bureau Labor Statistics (BLS)

9.4 Employment and number of jobs

**Labor force, number of employed workers and number of jobs
Chenango County**



Source: Bureau Labor Statistics (BLS) and NY Department of Labor - Quarterly Census of Employment and Wages (QCEW) – annual averages

9.5 Class of worker

		Median earnings (\$)					
		Total	%Male	%Female	Total	Male	Female
Civilian employed population 16 years and over	Estimate	22,742	53.4%	46.6%	30,039	35,488	24,689
	Margin of error	± 516	± 0.9	± 0.9	± 1,272	± 1,287	± 1,051
Private for-profit wage and salary workers:	Estimate	14,593	58.1%	41.9%	29,927	35,898	23,655
	Margin of error	± 544	± 1.6	± 1.6	± 1,562	± 1,235	± 1,085
Employee of private company workers	Estimate	13,854	57.2%	42.8%	29,717	35,680	23,716
	Margin of error	± 524	± 1.7	± 1.7	± 1,602	± 1,213	± 1,132
Self-employed in own incorporated business workers	Estimate	739	76.0%	24.0%	40,159	41,045	16,875
	Margin of error	± 214	± 8.1	± 8.1	± 14,040	± 10,911	± 29,860
Private not-for-profit wage and salary workers	Estimate	1,592	25.5%	74.5%	25,313	22,500	25,993
	Margin of error	± 196	± 5.8	± 5.8	± 2,977	± 8,685	± 3,270
Local government workers	Estimate	2,341	33.7%	66.3%	27,681	36,105	26,012
	Margin of error	± 236	± 4.9	± 4.9	± 4,090	± 4,861	± 2,759
State government workers	Estimate	1,705	41.6%	58.4%	39,375	41,306	36,113
	Margin of error	± 214	± 6.3	± 6.3	± 2,476	± 5,789	± 3,196
Federal government workers	Estimate	271	54.2%	45.8%	51,118	57,750	31,875
	Margin of error	± 95	± 12.4	± 12.4	± 14,900	± 5,493	± 18,667
Self-employed in own not incorporated business workers and unpaid family workers	Estimate	2,240	71.8%	28.2%	23,273	30,000	13,390
	Margin of error	± 206	± 3.9	± 3.9	± 4,800	± 6,518	± 1,983

Source: 2007-2011 American Community Survey

9.6 Jobs by industry sector

	Chenango County			NY state
	2011	Change since 2006	% of total	% of total
All NAICS Sectors	16,061	-1.6%	100.0%	100.0%
Agriculture, Forestry, Fishing and Hunting	67	13.6%	0.4%	0.3%
Mining, Quarrying, and Oil and Gas Extraction	12	-25.0%	0.1%	0.1%
Utilities	NA	NA	NA	0.5%
Construction	620	26.0%	3.9%	3.5%
Manufacturing	3,888	1.4%	24.2%	5.5%
Wholesale Trade	185	-19.6%	1.2%	4.0%
Retail Trade	1,868	-3.0%	11.6%	10.5%
Transportation and Warehousing	270	-28.9%	1.7%	3.4%
Information	428	-4.3%	2.7%	3.3%
Finance and Insurance	1,209	-2.3%	7.5%	6.0%
Real Estate and Rental and Leasing	92	-17.9%	0.6%	2.3%
Professional, Scientific, and Technical Services	316	-11.0%	2.0%	6.9%
Management of Companies and Enterprises	158	1.3%	1.0%	1.6%
Administrative and Support and Waste Management and Remediation Services	781	136.0%	4.9%	5.2%
Educational Services	1,978	-10.7%	12.3%	10.8%
Health Care and Social Assistance	2,236	15.5%	13.9%	17.0%
Arts, Entertainment, and Recreation	117	31.5%	0.7%	1.9%
Accommodation and Food Services	692	-4.7%	4.3%	7.3%
Other Services (except Public Administration)	368	-18.0%	2.3%	3.9%
Public Administration	774	-41.4%	4.8%	5.8%

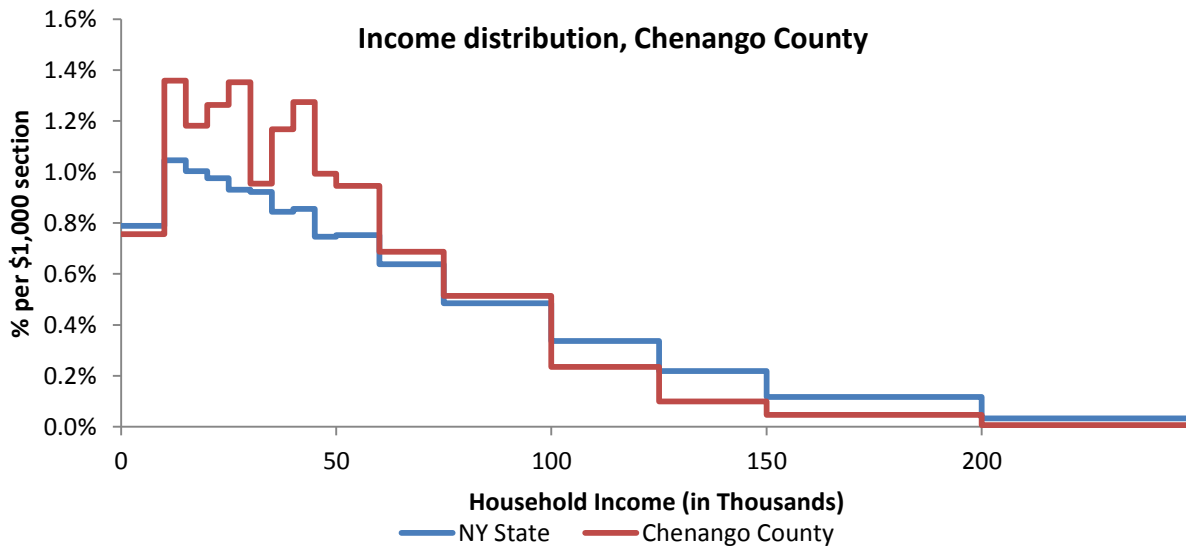
Source: U.S. Census Bureau - Public Use Quarterly Workforce Indicators (QWI) – annual averages

10 Household Income

10.1 Distribution

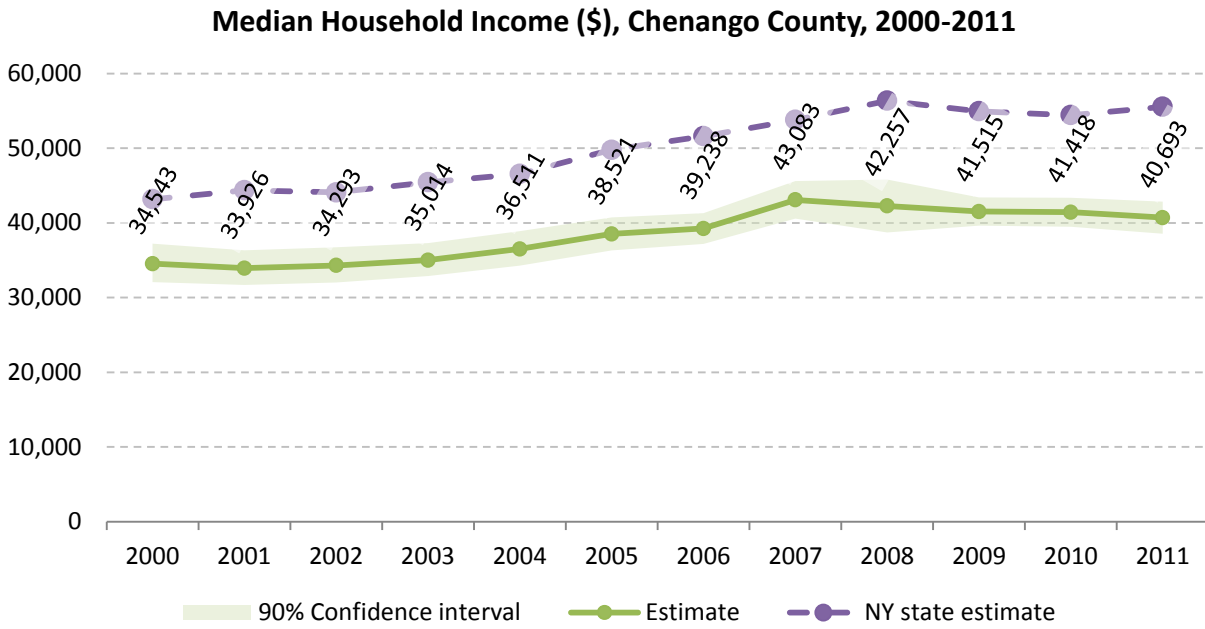
	Estimate	Margin of error	Interval width (in \$1,000)	Est. per \$1,000 section
Total:	20,003	± 332		
Less than \$10,000	1,513	± 230	10	151.3
\$10,000 to \$14,999	1,359	± 220	5	271.8
\$15,000 to \$19,999	1,182	± 181	5	236.4
\$20,000 to \$24,999	1,263	± 163	5	252.6
\$25,000 to \$29,999	1,353	± 214	5	270.6
\$30,000 to \$34,999	955	± 140	5	191.0
\$35,000 to \$39,999	1,168	± 168	5	233.6
\$40,000 to \$44,999	1,275	± 159	5	255.0
\$45,000 to \$49,999	994	± 164	5	198.8
\$50,000 to \$59,999	1,892	± 248	10	189.2
\$60,000 to \$74,999	2,060	± 214	15	137.3
\$75,000 to \$99,999	2,567	± 242	25	102.7
\$100,000 to \$124,999	1,173	± 177	25	46.9
\$125,000 to \$149,999	500	± 103	25	20.0
\$150,000 to \$199,999	469	± 94	50	9.4
\$200,000 or more	280	± 68	-	-

Source: 2007-2011 American Community Survey



Source: 2007-2011 American Community Survey

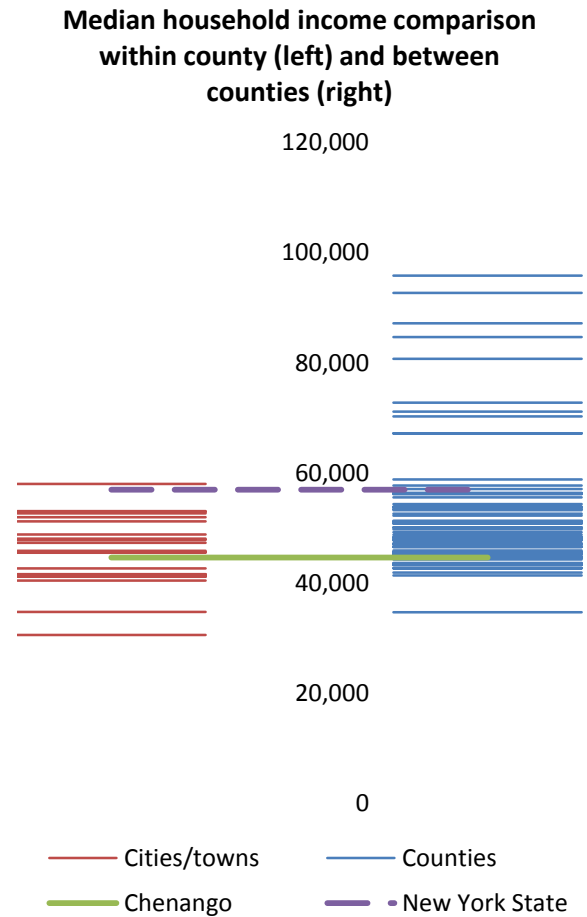
10.2 Median household income: Trends over time



Source: Small Area Income and Poverty Estimates (SAIPE)

10.3 Median household income: Comparison between areas

	MEDIAN HOUSEHOLD INCOME (\$)	
	Estimate	Margin of error
New York State	56,951	± 190
Chenango County	44,662	± 1,609
Cities		
Norwich	30,588	± 3,952
Towns		
Afton	41,297	± 4,699
Bainbridge	41,557	± 8,554
Columbus	41,167	± 11,484
Coventry	45,644	± 4,637
German	34,792	± 12,356
Greene	47,840	± 3,919
Guilford	48,080	± 9,722
Lincklaen	40,469	± 11,821
McDonough	41,625	± 7,347
New Berlin	47,332	± 5,255
North Norwich	58,043	± 4,720
Norwich	42,684	± 4,347
Otselic	41,250	± 4,700
Oxford	53,068	± 3,338
Pharsalia	52,656	± 4,356
Pitcher	48,846	± 15,010
Plymouth	51,953	± 11,335
Preston	51,250	± 14,220
Sherburne	52,986	± 8,650
Smithville	45,556	± 7,010
Smyrna	45,893	± 10,280



Source: 2007-2011 American Community Survey

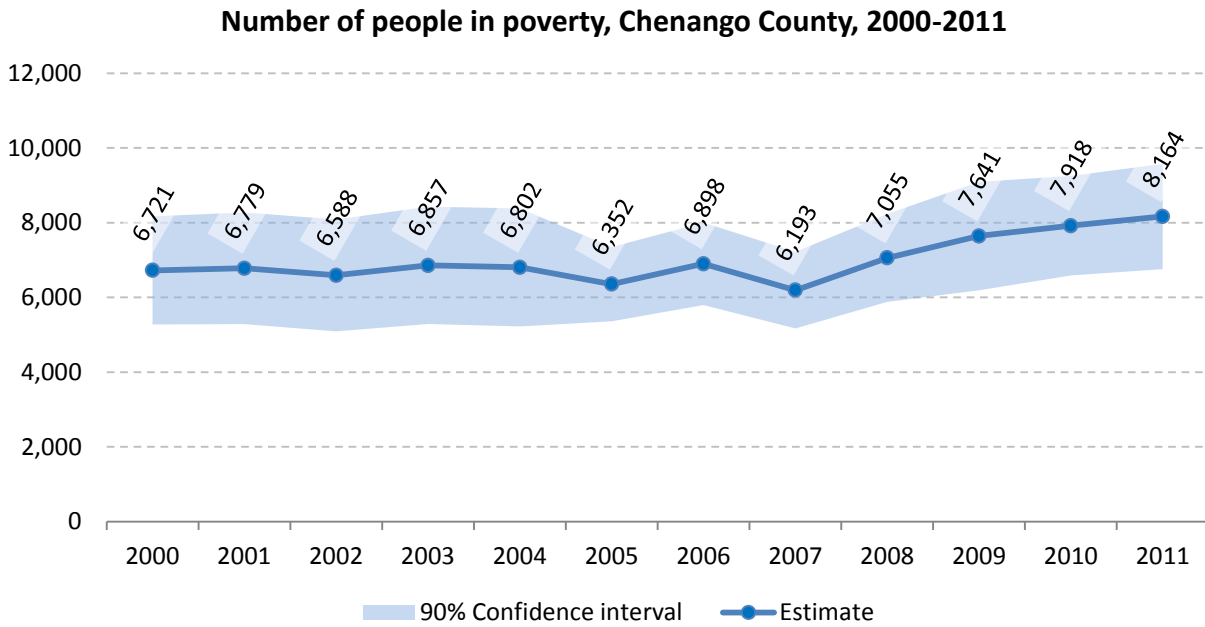
11 Poverty

11.1 Poverty characteristics

	TOTAL		BELOW POVERTY LEVEL		PERCENT BELOW POVERTY LEVEL	
	Estimate	Margin of error	Estimate	Margin of error	Estimate	Margin of error
Population for whom poverty status is determined	49,857	± 208	6,930	± 626	13.9%	± 1.3
AGE						
Under 18 years	11,572	± 132	2,254	± 277	19.5%	± 2.4
Related children under 18 years	11,514	± 180	2,196	± 285	19.1%	± 2.5
18 to 64 years	30,399	± 107	3,962	± 399	13.0%	± 1.3
65 years and over	7,886	± 158	714	± 152	9.1%	± 1.9
SEX						
Male	24,733	± 173	2,973	± 345	12.0%	± 1.4
Female	25,124	± 170	3,957	± 394	15.7%	± 1.5
RACE AND HISPANIC OR LATINO ORIGIN						
One race	48,916	± 236	6,544	± 606	13.4%	± 1.2
White	48,332	± 226	6,417	± 614	13.3%	± 1.3
Black or African American	166	± 74	8	± 11	4.8%	± 6.1
American Indian and Alaska Native	46	± 25	6	± 9	13.0%	± 18.7
Asian	143	± 41	34	± 25	23.8%	± 14.0
Hispanic or Latino origin (of any race)	933	± 28	215	± 86	23.0%	± 9.2
White alone, not Hispanic or Latino	47,834	± 200	6,372	± 618	13.3%	± 1.3
EDUCATIONAL ATTAINMENT						
Population 25 years and over	34,498	± 165	4,065	± 435	11.8%	± 1.3
Less than high school graduate	4,742	± 331	1,117	± 217	23.6%	± 4.0
High school graduate (includes equivalency)	13,686	± 487	1,724	± 279	12.6%	± 2.0
Some college, associate's degree	9,927	± 396	989	± 169	10.0%	± 1.7
Bachelor's degree or higher	6,143	± 427	235	± 83	3.8%	± 1.3
EMPLOYMENT STATUS						
Civilian labor force 16 years and over	24,898	± 461	1,943	± 266	7.8%	± 1.1
Employed	22,742	± 516	1,391	± 223	6.1%	± 1.0
Male	12,141	± 301	610	± 134	5.0%	± 1.1
Female	10,601	± 352	781	± 143	7.4%	± 1.3
Unemployed	2,156	± 274	552	± 131	25.6%	± 5.5
Male	1,356	± 209	283	± 87	20.9%	± 5.8
Female	800	± 168	269	± 100	33.6%	± 9.5
WORK EXPERIENCE IN THE PAST 12 MONTHS						
Population 16 years and over	39,877	± 224	4,963	± 460	12.4%	± 1.1
Worked full-time, year-round	15,463	± 510	288	± 86	1.9%	± 0.6
Worked part-time or part-year	10,548	± 447	1,653	± 235	15.7%	± 2.2
Did not work	13,866	± 516	3,022	± 340	21.8%	± 2.1

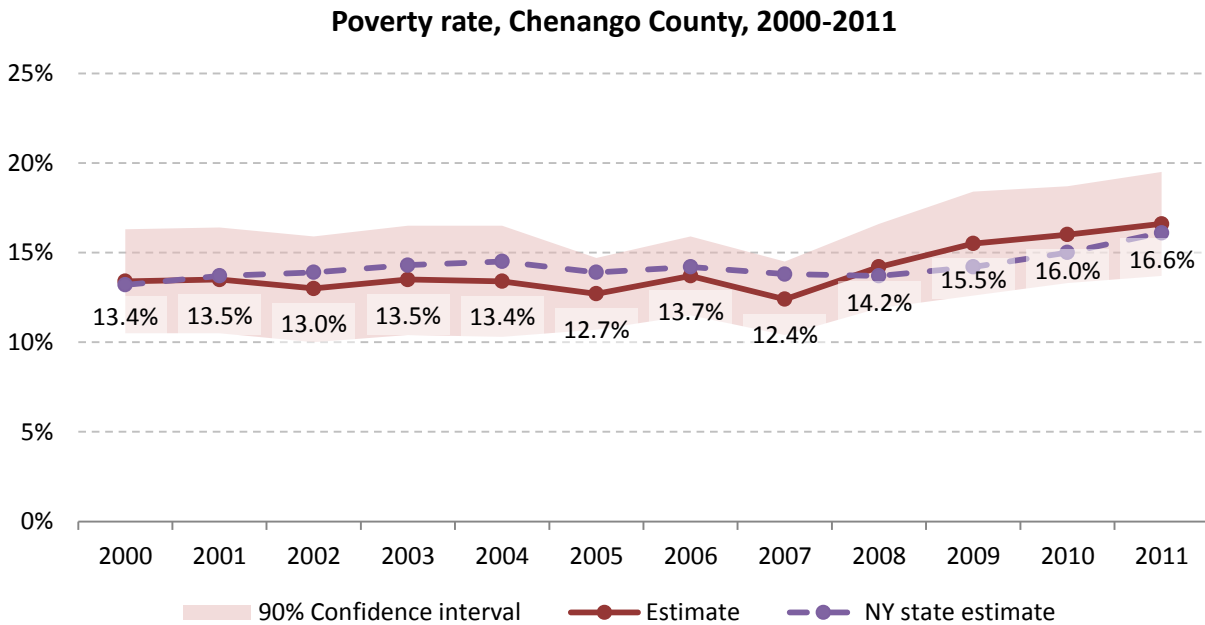
Source: 2007-2011 American Community Survey

11.2 Poverty: Trends over time: Count



Source: Small Area Income and Poverty Estimates (SAIPE)

11.3 Poverty: Trends over time: Rate

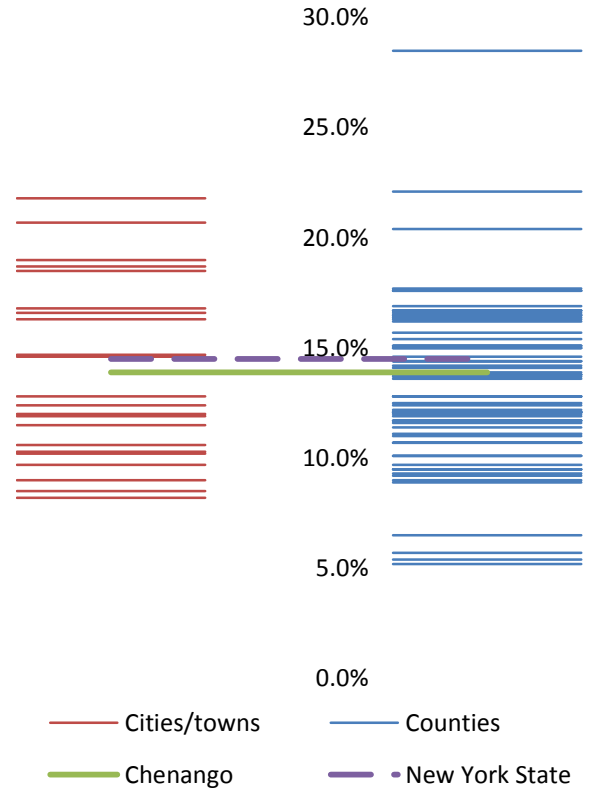


Source: Small Area Income and Poverty Estimates (SAIPE)

11.4 Poverty rate: comparison between areas

	Poverty Rate - All people	
	Estimate	Margin of error
New York State	14.5%	± 0.1
Chenango County	13.9%	± 1.3
Cities		
Norwich	21.8%	± 5.3
Towns		
Afton	14.7%	± 5.8
Bainbridge	11.5%	± 4.6
Columbus	10.2%	± 4.1
Coventry	12.0%	± 4.5
German	11.9%	± 10.8
Greene	10.6%	± 3.4
Guilford	12.4%	± 5.7
Lincklaen	16.3%	± 8.7
McDonough	8.2%	± 4.0
New Berlin	8.5%	± 3.7
North Norwich	12.8%	± 4.7
Norwich	9.7%	± 3.5
Otselic	16.8%	± 7.3
Oxford	20.7%	± 6.7
Pharsalia	14.6%	± 9.3
Pitcher	18.5%	± 10.5
Plymouth	10.3%	± 4.3
Preston	18.7%	± 9.0
Sherburne	9.0%	± 2.9
Smithville	16.6%	± 7.8
Smyrna	19.0%	± 8.8

Poverty rate comparison within county (left) and between counties (right)

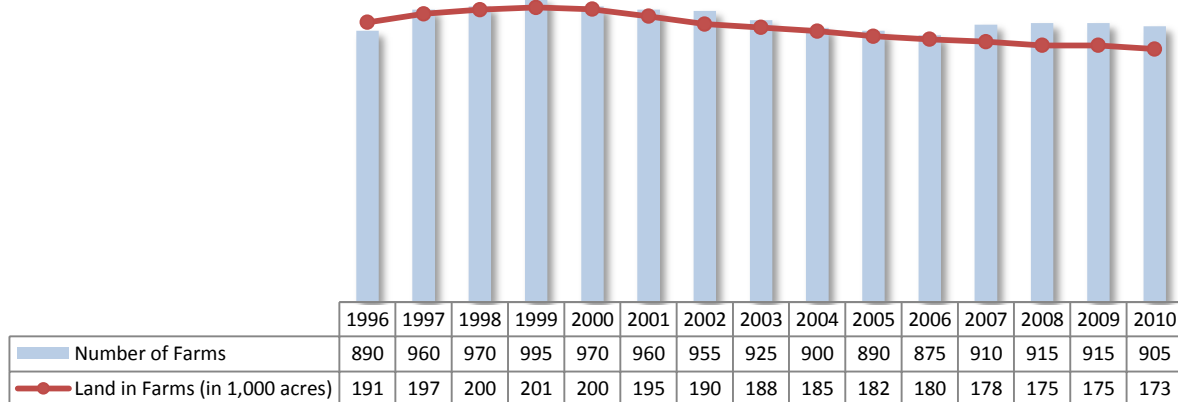


Source: 2007-2011 American Community Survey

12 Agriculture

12.1 Number of farms and land in farms

Chenango County, 1996-2010



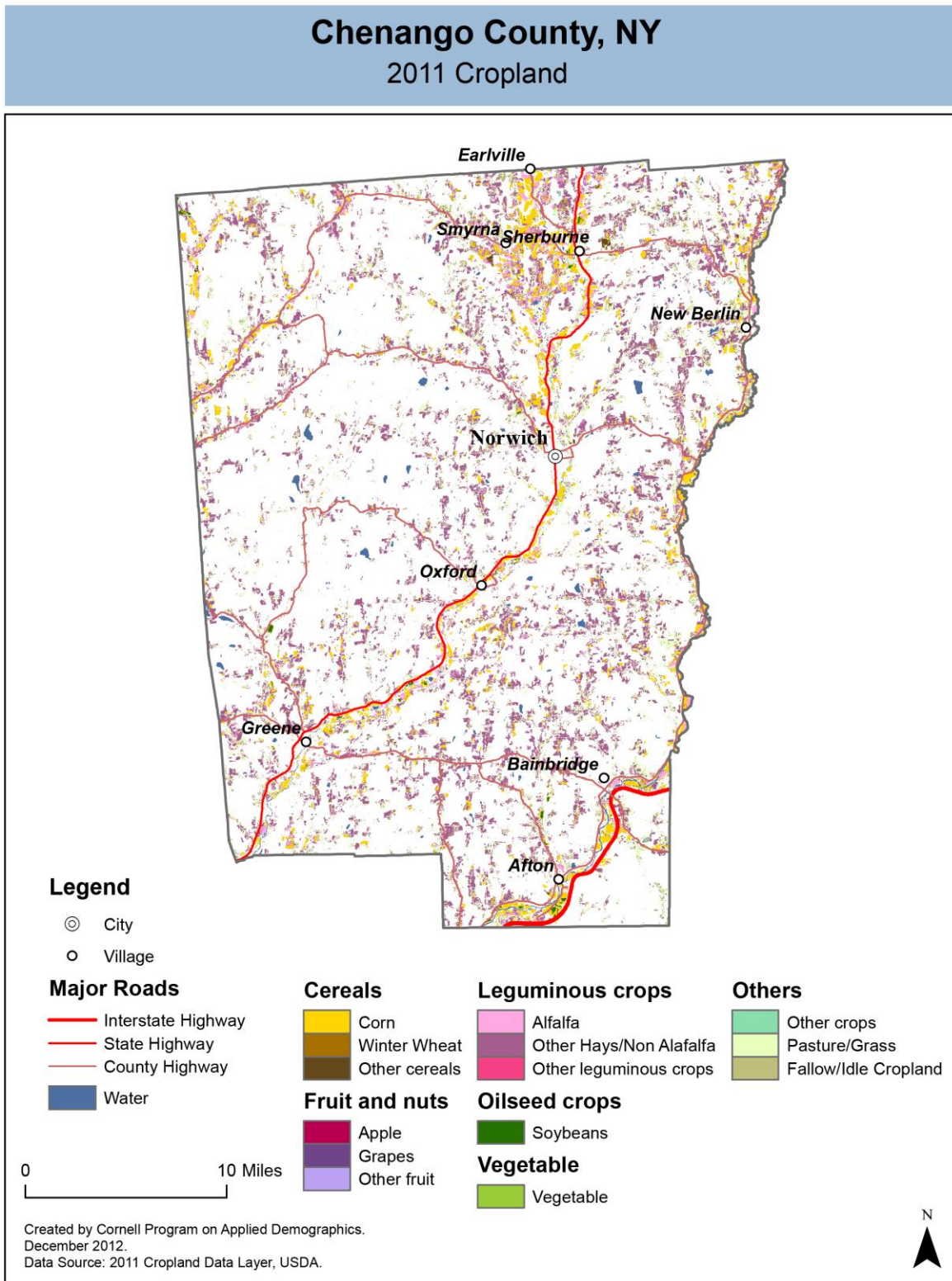
Source: National Agricultural Statistics Service – Annual Statistical bulletin

12.2 Farm Operator Characteristics

	Principal Operator		
	Total	Male	Female
Number of farms	908	740	168
Average size of farm (acres)	195	216	102
PRIMARY OCCUPATION			
Farming	496	415	81
Other	412	325	87
AGE			
Under 45	119	98	21
45 to 64 years	524	419	105
65 years and over	265	223	42
Average age (years)	58	58.2	57
YEARS ON PRESENT FARM			
Less than 3 years	23	21	2
3 to 4 years	43	32	11
5 to 9 years	124	96	28
10 years or more	718	591	127

Source: 2007 Agricultural Census

12.3 Map of type of crop

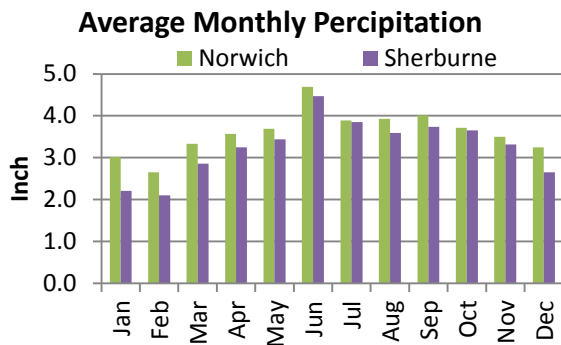
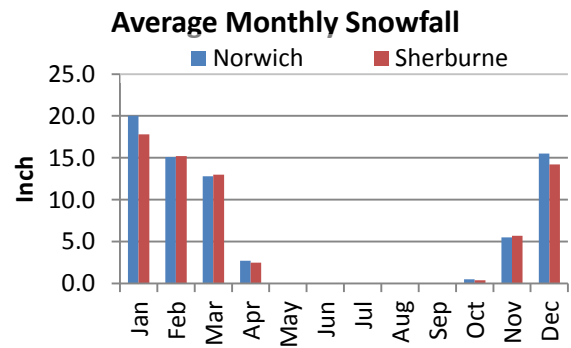
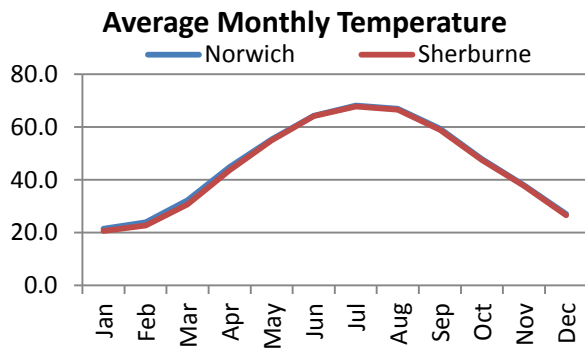
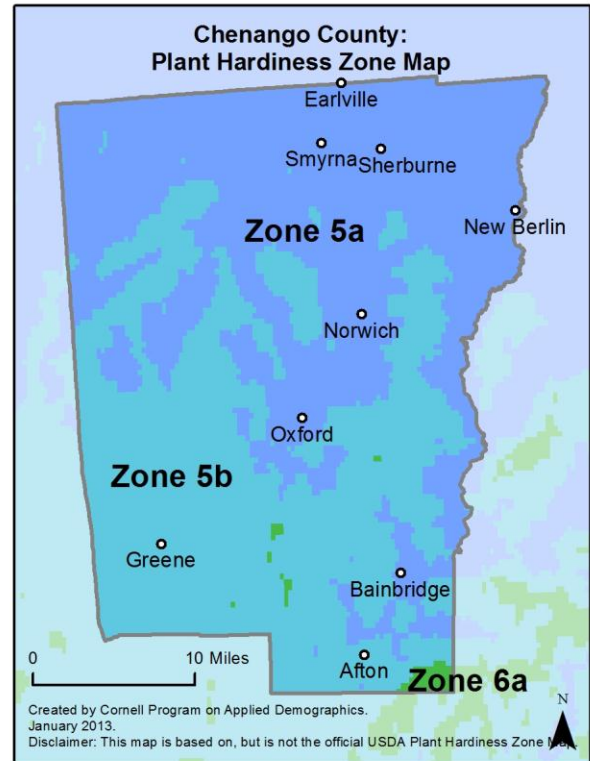
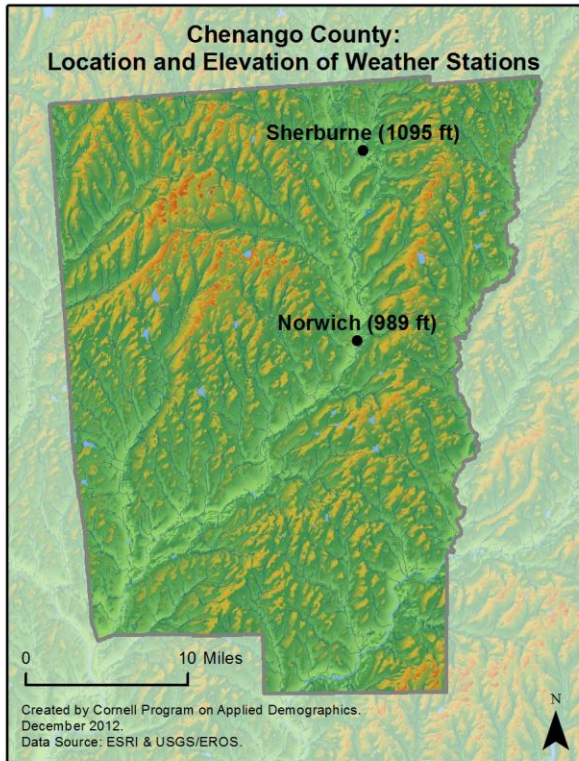


12.4 Estimated acreage by crop

	Acreage	%		Acreage	%
Cereals			Fruit and nuts		
Barley	29	0.0%	Apples	2.0	0.0%
Corn	17,237	13.3%	Apricots	-	
Millet	-		Blueberries	-	
Oats	511	0.4%	Cherries	-	
Rye	75	0.1%	Cranberries	-	
Sorghum	1.3	0.0%	Grapes	4.2	0.0%
Speltz	0.7	0.0%	Nectarines	-	
Spring Wheat	0.9	0.0%	Peaches	-	
Sweet Corn	22	0.0%	Plums	-	
Triticale	26	0.0%	Prunes	-	
Winter Wheat	65	0.0%	Strawberries	-	
Dbl Crop WinWht/Corn	-		Walnuts	-	
Leguminous crops			Beverage and spice crops		
Alfalfa	8,041	6.2%	Herbs	-	
Other Hay/Non Alfalfa	62,601	48.4%	Peppers	-	
Dry Beans	41	0.0%	Trees		
Peas	-		Christmas Trees	0.9	0.0%
Vetch	-		Other Tree Crops	-	
Oilseed crops			Other crops		
Soybeans	749	0.6%	Tobacco	-	
Sunflower	2.2	0.0%	Misc Veggies & Fruits	-	
Sugar crops			Clover/Wildflowers	118	0.1%
Sugarbeets	-		Sod/Grass Seed	0.2	0.0%
Root/tuber crops with high starch or inulin content			Switchgrass	-	
Potatoes	3.1	0.0%	Dbl Crop Soybeans/Oats	-	
Vegetables and melons			Dbl Crop WinWht/Soybeans	-	
Asparagus	-		Other Crops	3.1	0.0%
Broccoli	-		Pasture/Grass	36,029	27.8%
Cabbage	0.2	0.0%	Fallow/Idle Cropland	3,877	3.0%
Carrots	1.3	0.0%			
Eggplants	-				
Onions	2.7	0.0%			
Pumpkins	4.9	0.0%			
Squash	2.7	0.0%			
Tomatoes	-				
Turnips	-				

Source: National Agricultural Statistics Service - Cropland Data Layer 2011

13 Climate



Average length of freeze-free season

	Last day of frost	First day of frost	Season length
Norwich	May 20	September 30	132
Sherburne	May 20	October 4	136

Source: NOAA, Northeast Regional Climate Center at Cornell University. Averages 1981-2010

14 Glossary

American Community Survey (ACS) - The American Community Survey is an ongoing survey of the population that provides data every year on a variety of social and economic characteristics—age, sex, race, family and relationships, income and benefits, health insurance, education, veteran status, disabilities, where you work and how you get there, where you live and how much you pay for some essentials. The ACS replaced the information previously gathered by what was known as the “long form” of the decennial censuses. The ACS provides communities, companies and other institutions with current information they need to plan investments and services. Information from the survey generates data that help determine how more than \$400 billion in federal and state funds are distributed each year. Every estimate presented in the American Community Survey, as in other surveys, has an uncertainty associated with it. Often the magnitude of that uncertainty is expressed as the Margin of Error.

Confidence Interval (CI) - indication of the degree of uncertainty about a sample estimates. Confidence intervals have been traditionally reported at the 90, 95 and 99 percent levels. A 90 percent confidence interval can be interpreted, for example, roughly as providing 90 percent certainty that the interval defined by the upper and lower bounds contain the true value of the characteristic. If a Margin of Error is given, the lower bound of the confidence interval is equal to the estimate minus the Margin of Error and the upper bound is equal to the estimate plus the Margin of Error. (See further, Margin of Error definition below.)

County subdivision or Minor Civil Division (MCD) - The Census Bureau geography for primary administrative units below the county level in New York is collectively referred to as county subdivisions or minor civil divisions. These include towns, cities and Indian Reservations.

Decennial Census - the Census of the population and housing taken every 10 years in the United States, at the start of each decade, since 1790.

Employed – either “at work” or “with a job, but not at work”.

Group Quarters Population - all U.S. residents who live in group living facilities including correctional institutions, juvenile facilities, skilled nursing facilities, college residence halls, military barracks, group homes, and workers' dormitories.

Household Population - all U.S. residents who live in housing units such as single family homes, townhouses, apartments, and mobile homes.

Intercensal Population Estimates - estimates produced for the years between two decennial censuses when both the beginning and ending populations are known. They are produced once a decade by adjusting the existing time series of postcensal estimates for the entire decade to smooth the transition from one decennial census count to the next. They differ from the postcensal estimates that are released annually because the difference between the April 1 postcensal estimate and April 1 census count for the end of the decade is redistributed across the estimates for that decade. For dates when both postcensal and intercensal estimates are available, intercensal estimates are preferred.

Labor Force - consists of people classified as employed or unemployed.

Margin of Error (MOE) - a measure of the precision of an estimate at a given level of confidence. The confidence level of a margin of error indicates the likelihood that the difference between the population value (which you

would get if you could measure the whole population instead of a sample) and the estimate is less than or equal to the margin of error. The range from the estimate minus the margin of error to the estimate plus the margin of error is called the confidence interval. All ACS estimates are published with their margins of error at the 90 percent confidence level. Margins of error are useful in assessing the reliability of estimates and whether differences between estimates are significant.

NAICS - The North American Industry Classification System or NAICS is used by business and government to classify business establishments according to type of economic activity (process of production).

Numeric Population Change - difference between the population of an area at the beginning and end of a time period. It is computed by taking the difference between the population at one point in time (t1) and some future time (t2).

Percent Population Change - difference between the population of an area at the beginning and end of a time period, expressed as a percentage of the beginning population. It is computed by dividing the population change (t2 - t1) by t1 and multiplying the result by 100.

Population Estimates - The calculated number of people living in an area as of a specified point in time, usually July 1st. The estimated population is calculated using a component of change model that incorporates information on natural increase (births, deaths) and net migration (net domestic migration, net international migration) that has occurred in an area since the latest decennial census. A procedure for estimating the current population using a procedure involving a "base population" value at time t -1, adding to that the births during the interval t-1 to t, subtracting the deaths during that interval t-1 to t, and then adding the net domestic and net international migration that occurred during that interval.

Population Density - Total number of people per areal unit like a square mile or square kilometer.

Population Pyramids - A graphical way of portraying a population's age and sex composition at a given slice in time. The first horizontal bar, constituting the base of the graph, is the youngest age group (typically 0-4) with the number of males in that age group on the left and the number of females in that age group on the right. On top of that age group is another horizontal bar for the next age group (e.g. 5-9) and so forth with the top bar typically for those aged 75 and over. In a population with lots of births and deaths, the shape typically forms a pyramid with a broad base and a narrow top. It is one of the most basic ways to understand population change over time as well as between different geographic units of a similar status (e.g. counties).

Postcensal Estimates - estimates produced for the years after a decennial census when only the beginning population is known. They are produced and revised each year, targeted to July 1 of that year.

Projection - estimated population at some future time based on assumptions about births, deaths, migration, and ages.

Race/Ethnicity - the Census Bureau collects racial data in accordance with guidelines provided by the U.S. Office of Management and Budget (OMB), and these data are based on self-identification. The racial categories included in the census questionnaire generally reflect a social definition of race recognized in this country and not an attempt to define race biologically, anthropologically, or genetically. In addition, it is recognized that the categories of the race item include racial and national origin or sociocultural groups. People may choose to report more than one race to indicate their racial mixture, such as "American Indian" and "White." People who identify their origin as Hispanic, Latino, or Spanish may be of any race. OMB requires five minimum categories: White, Black or African American, American Indian or Alaska Native, Asian, and Native Hawaiian or Other Pacific

Islander. Hispanics may be classified as white or black. So we generally separate them out as an ethnic group first.

Unemployed – Not employed, but actively looking for work and available to accept a job.

Unemployment rate – Fraction of the Labor Force that is unemployed.

Urban Area – A densely settled area with at least 2,500 people. If the total number of people is less than 50,000 the Census Bureau calls it an Urban Cluster, otherwise an Urbanized Area.

Vintage - each year, the U.S. Census Bureau produces and publishes estimates of the population for each state and county, as well as the nation as a whole. These are called “vintages.” In producing these vintages, the Bureau utilizes administrative data from a number of sources to estimate 1) the change in population since the most recent decennial census, and 2) the population for each year since the most recent decennial census. With each annual release of population estimates (vintage), the entire time series of estimates beginning on April 1, 2010 is revised and updated.

15 References

Chenango County homepage: <http://www.co.chenango.ny.us/>

At Cornell:

- Cornell Cooperative Extensions (CCE)
Home page: <http://www.cce.cornell.edu>
 - Chenango local office: <http://ccechenango99.squarespace.com/>
- Program on Applied Demographics (PAD)
URL: <http://pad.human.cornell.edu/>
- Community and Regional Development Institute (CaRDI)
URL: <http://devsoc.cals.cornell.edu/cals/devsoc/outreach/cardi/index.cfm>

Data sources and background information:

- U.S. Census Bureau - general
 - QuickFacts: <http://quickfacts.census.gov/qfd/states/36/36017.html>
 - QuickLinks: <http://quickfacts.census.gov/qfd/states/36/36017lk.html>
 - American FactFinder: <http://factfinder2.census.gov>
- U.S. Census Bureau - population
 - Decennial Census
 - Background: <http://2010.census.gov/2010census/>
 - Demographic Profile: http://factfinder2.census.gov/bkmk/table/1.0/en/DEC/10_SF1/SF1DP1/0500000US36017
 - American Community Survey (ACS)
 - Background: <http://www.census.gov/acs/www/>
 - Social Data Profile: http://factfinder2.census.gov/bkmk/table/1.0/en/ACS/10_5YR/DP02/0500000US36017
 - Economic Data Profile: http://factfinder2.census.gov/bkmk/table/1.0/en/ACS/10_5YR/DP03/0500000US36017
 - Housing Data Profile: http://factfinder2.census.gov/bkmk/table/1.0/en/ACS/10_5YR/DP04/0500000US36017
 - Demographics Data Profile: http://factfinder2.census.gov/bkmk/table/1.0/en/ACS/10_5YR/DP05/0500000US36017
 - Population estimates: <http://www.census.gov/popest/estimates.html>
- U.S. Census Bureau – Small Area Income & Poverty Estimates (SAIPE)
 - <http://www.census.gov/did/www/saipe/>
- U.S. Census Bureau - Public Use Quarterly Workforce Indicators (QWI) – annual averages
 - <http://www2.vrdc.cornell.edu/news/data/qwi-public-use-data/>
- Bureau Labor Statistics (BLS) – Local Area Unemployment Statistics: <http://www.bls.gov/lau/>
- NY Department of Labor -
 - Labor statistics: <http://www.labor.ny.gov/stats/>
 - Quarterly Census of Employment and Wages (QCEW): <http://www.labor.ny.gov/stats/lsqcew.shtm>
- Bureau of Economic Analysis (BEA) – Local Area Personal Income and Employment: <http://bea.gov/iTable/iTable.cfm?ReqID=70&step=1>

- USDA Census of Agriculture
 - 2007
 - Home page: <http://www.agcensus.usda.gov/Publications/2007/index.php>
 - County profile: http://www.agcensus.usda.gov/Publications/2007/Online_Highlights/County_Profiles/New_York/cp36017.pdf
 - Race, Ethnicity and Gender Profiles: http://www.agcensus.usda.gov/Publications/2007/Online_Highlights/Race_Ethnicity_and_Gender_Profiles/New_York/cpd36017.pdf
- USDA National Agricultural Statistics Service (NASS)
 - Home page: <http://www.nass.usda.gov/index.asp>
 - New York Statistical Bulletins: http://www.nass.usda.gov/Statistics_by_State/New_York/Publications/Annual_Statistical_Bulletin/
 - Cropland Data Layer – CropScape: <http://nassgeodata.gmu.edu/CropScape/>
- USDA Agricultural Research Service – Plant Hardness Zone Map: <http://planthardiness.ars.usda.gov/PHZMWeb/>
- NOAA, Northeast Regional Climate Center at Cornell University
 - Home page: <http://www.nrcc.cornell.edu/index.html>

Alternative sites for data retrieval:

- The Nelson A. Rockefeller Institute of Government – New York State Statistical Yearbooks http://www.rockinst.org/nys_statistics/
- Headwaters Economics: Economic Profile System – Human Dimensions Toolkit <http://headwaterseconomics.org/tools/eps-hdt>
- National Historical Geographic Information System (NHGIS) <https://www.nhgis.org/>
- Social Explorer <http://www.socialexplorer.com/pub/home/home.aspx>
- Missouri Census Data Center <http://mcdc.missouri.edu/>
- DataFerret <http://dataferrett.census.gov/>
- Investigative Reporters and Editors (IRE) Census project <http://census.ire.org/>