

Chautauqua County Profile 2013

A collection of recent demographic, social, economic and agricultural data

Compiled by Jan Vink

Assisted by Joe Francis, Sutee Anantsuksomsri, Nij Tontisirin, Johannes Plambeck



Cornell University
Cooperative Extension



This profile is a part of a set of profiles generated for each county in New York State. The profiles were developed and generated by the Cornell Program on Applied Demographics. The work is sponsored by Cornell Cooperative Extension and promoted with webinars and workshops in coordination with the Community & Regional Development Institute.

Cornell Program on Applied Demographics:

The Program on Applied Demographics (PAD) brings skills in demographics, economics, statistics, data gathering and data analysis together to provide a variety of organizations with data, information and advice.

For more information: <http://pad.human.cornell.edu/>

Cornell Cooperative Extension:

Cornell Cooperative Extension (CCE) puts knowledge to work in pursuit of economic vitality, ecological sustainability and social well-being. We bring local experience and research based solutions together, helping New York State families and communities thrive in our rapidly changing world.

For more information: <http://cce.cornell.edu/>

Community & Regional Development Institute:

The Community & Regional Development Institute (CaRDI) supports informed decision making for residents and communities in New York State through applied research and education.

For more information: <http://cardi.cornell.edu/>

All profiles are freely downloadable as PDF documents on the PAD website:

<http://pad.human.cornell.edu/profiles/index.cfm>

Contents

Contents	2
1 Reference Maps	4
2 Population density and Urban Areas Map	6
3 Total Population	7
3.1 Historic and projected	7
3.2 Change since previous Census	7
3.3 Annual population estimates	8
3.4 Percentage sub county change 2000-2010	9
4 Population by age	11
4.1 Historic and projected population pyramids	11
4.2 Selected age groups	12
4.3 Median age: comparison between areas	14
5 Race	15
5.1 Total and household population by race	15
5.2 Race composition by age	15
6 Housing units	16
6.1 Characteristics	16
6.2 Historical data on number of housing units and occupancy status	17
7 Education	18
7.1 Enrollment by level of school	18
7.2 Enrollment by age	18
7.3 Percentage age 18-24 enrolled in college	18
7.4 Educational attainment	19
8 Language spoken at home	19
9 Labor Force Characteristics	20
9.1 Labor force, employment and unemployment	20
9.2 Annual unemployment rate	21
9.3 Monthly unemployment rate	21
9.4 Employment and number of jobs	22
9.5 Class of worker	22
9.6 Jobs by industry sector	23
10 Household Income	24
10.1 Distribution	24
10.2 Median household income: Trends over time	25
10.3 Median household income: Comparison between areas	26
11 Poverty	27
11.1 Poverty characteristics	27
11.2 Poverty: Trends over time: Count	28
11.3 Poverty: Trends over time: Rate	28
11.4 Poverty rate: comparison between areas	29
12 Agriculture	30
12.1 Number of farms and land in farms	30
12.2 Farm Operator Characteristics	30

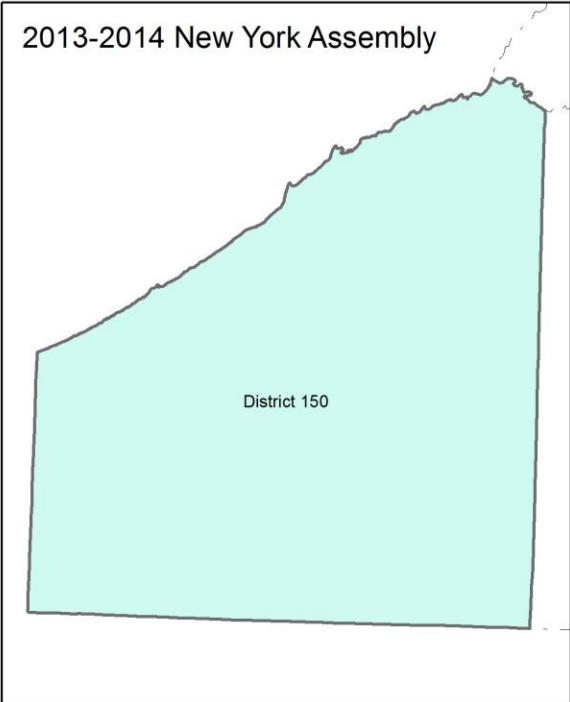
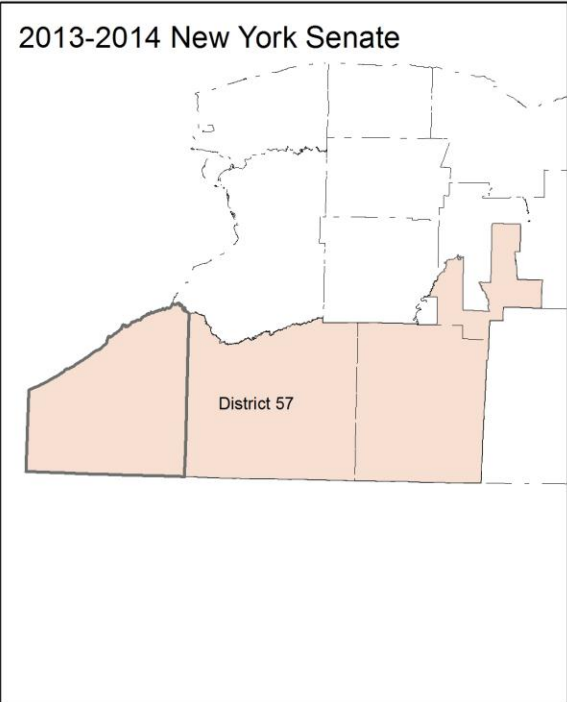
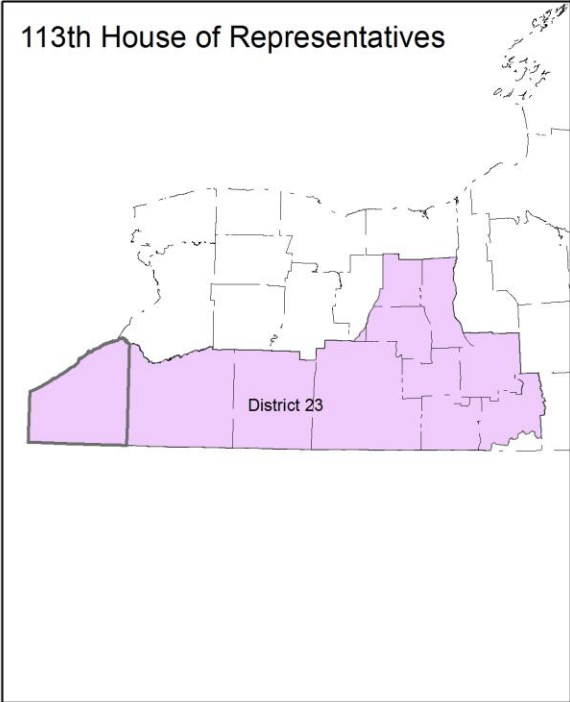
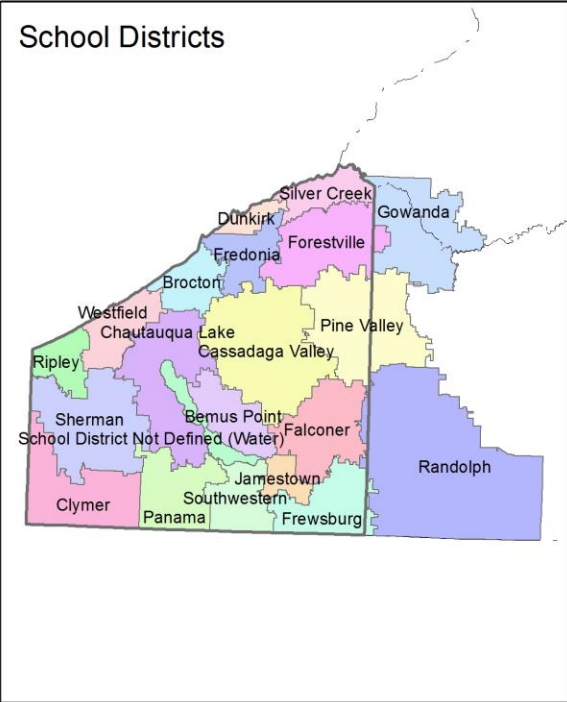
12.3 Map of type of crop 31
12.4 Estimated acreage by crop 32
13 Climate 33
14 Glossary..... 34
15 References 37

1 Reference Maps

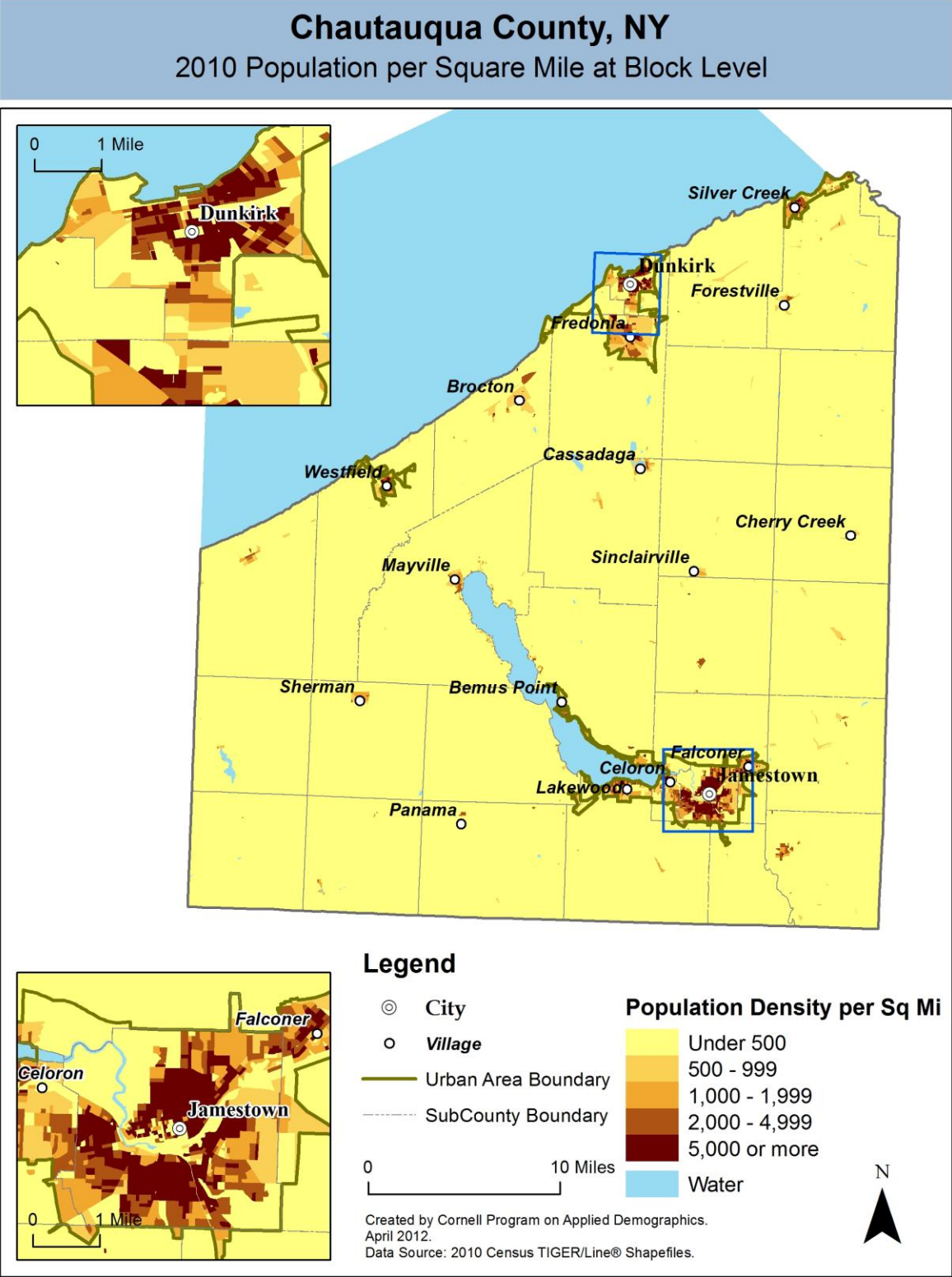


Chautauqua County, NY

Overlap with School and Political Districts



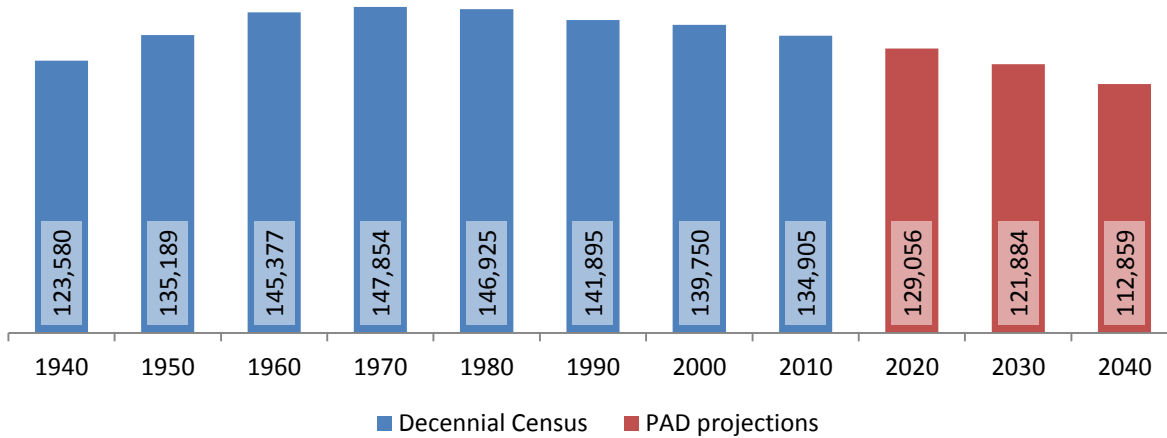
2 Population density and Urban Areas Map



3 Total Population

3.1 Historic and projected

Total population, Chautauqua County, 1940-2040



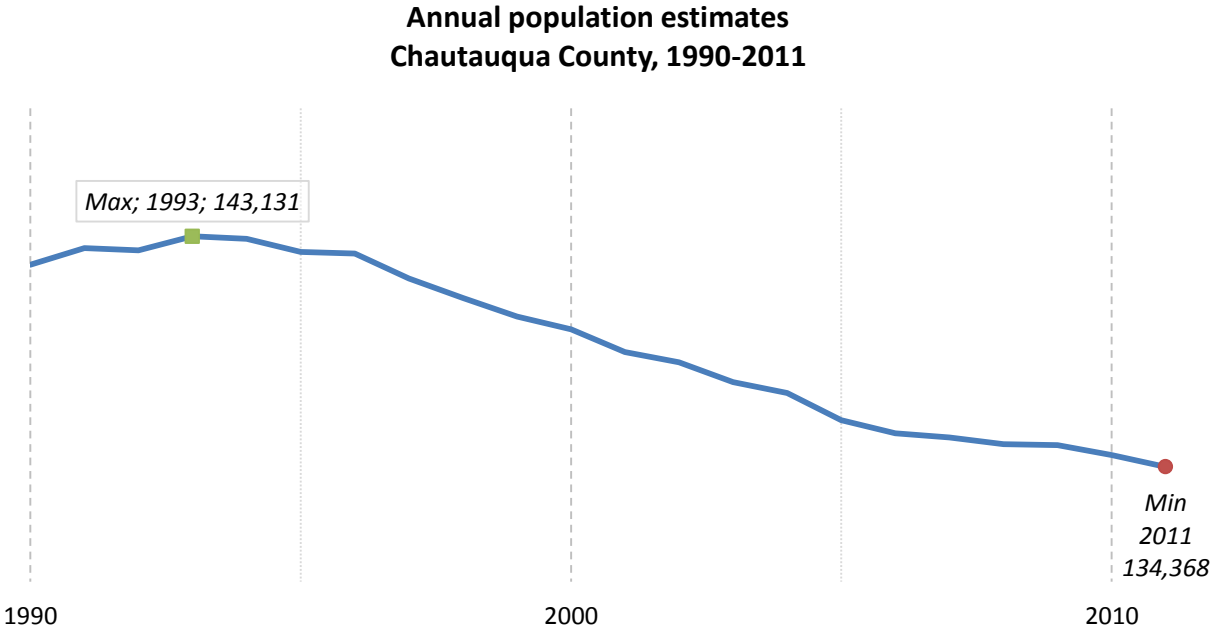
Source: 1940-2010 Decennial Census and projections by Cornell Program on Applied Demographics

3.2 Change since previous Census

	Total population	Change	
		Number	Percent
Decennial Census	1940	123,580	
	1950	135,189	11,609 9.4%
	1960	145,377	10,188 7.5%
	1970	147,854	2,477 1.7%
	1980	146,925	-929 -0.6%
	1990	141,895	-5,030 -3.4%
	2000	139,750	-2,145 -1.5%
	2010	134,905	-4,845 -3.5%
PAD projections	2020	129,056	-5,849 -4.3%
	2030	121,884	-7,172 -5.6%
	2040	112,859	-9,025 -7.4%

Source: 1940-2010 Decennial Census and projections by Cornell Program on Applied Demographics

3.3 Annual population estimates



Source: U.S. Census Bureau population estimates (1990-1999 and 2000-2009 intercensal and vintage 2011 postcensal)

3.4 Percentage sub county change 2000-2010

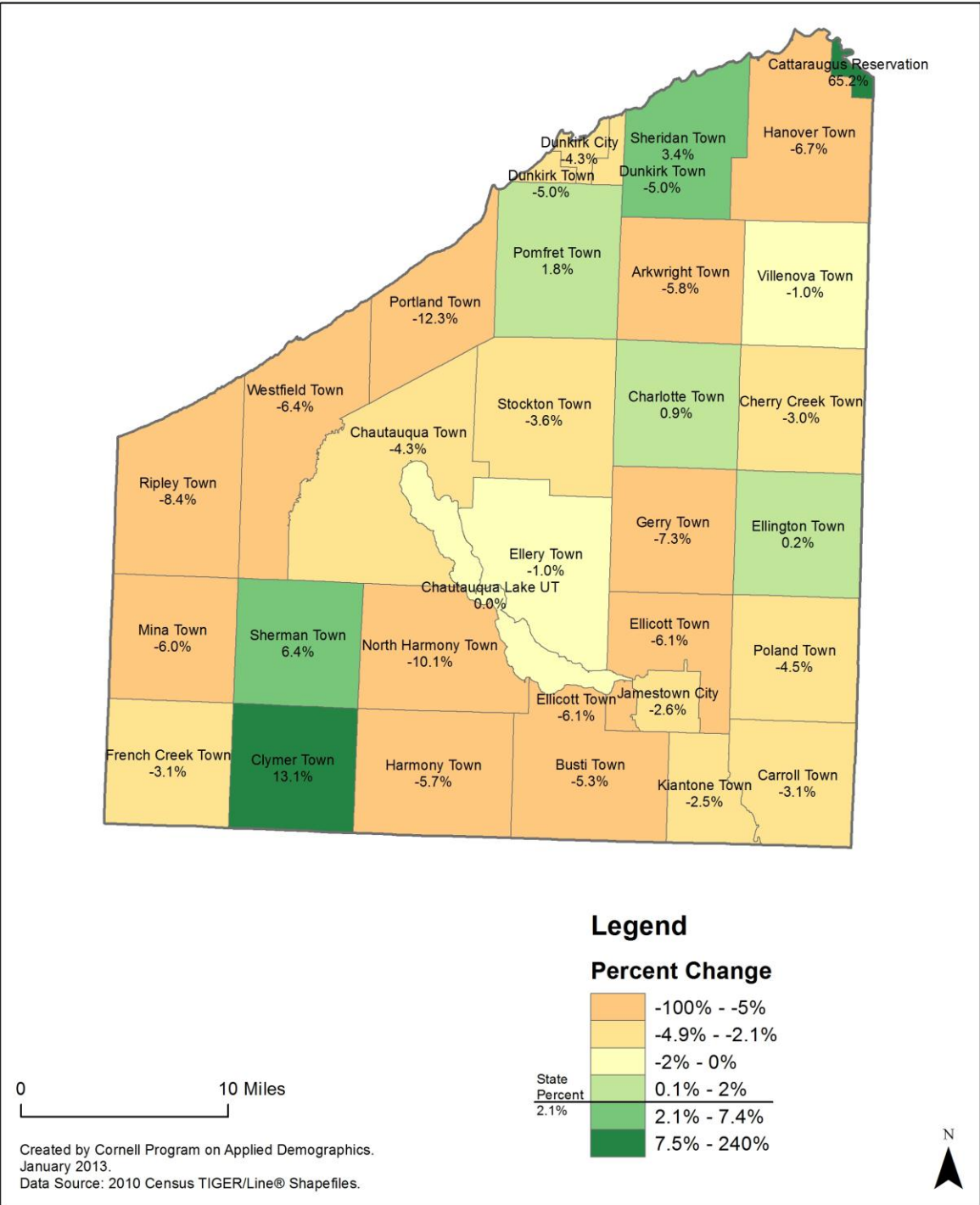
	Total Population		Difference	
	2000	2010	Count	%
New York State	18,976,821 *	19,378,102	401,281	2.1%
Chautauqua County	139,750	134,905	-4,845	-3.5%
Cities				
Dunkirk	13,131	12,563	-568	-4.3%
Jamestown	31,984 *	31,146	-838	-2.6%
Towns				
Arkwright	1,126	1,061	-65	-5.8%
Busti	7,760	7,351	-409	-5.3%
Carroll	3,635	3,524	-111	-3.1%
Charlotte	1,713	1,729	16	0.9%
Chautauqua	4,666	4,464	-202	-4.3%
Cherry Creek	1,152	1,118	-34	-3.0%
Clymer	1,501	1,698	197	13.1%
Dunkirk	1,387	1,318	-69	-5.0%
Ellery	4,576	4,528	-48	-1.0%
Ellicott	9,280	8,714	-566	-6.1%
Ellington	1,639	1,643	4	0.2%
French Creek	935	906	-29	-3.1%
Gerry	2,054	1,905	-149	-7.3%
Hanover	7,638	7,127	-511	-6.7%
Harmony	2,339	2,206	-133	-5.7%
Kiantone	1,385	1,350	-35	-2.5%
Mina	1,176	1,106	-70	-6.0%
North Harmony	2,521	2,267	-254	-10.1%
Poland	2,467	2,356	-111	-4.5%
Pomfret	14,703	14,965	262	1.8%
Portland	5,502	4,827	-675	-12.3%
Ripley	2,636	2,415	-221	-8.4%
Sheridan	2,584 *	2,673	89	3.4%
Sherman	1,553	1,653	100	6.4%
Stockton	2,331	2,248	-83	-3.6%
Villanova	1,121	1,110	-11	-1.0%
Westfield	5,232	4,896	-336	-6.4%
Reservations				
Cattaraugus	23	38	15	65.2%

* Original counts revised through Count Question Resolution Program (CQR)

Source: U.S. Census Bureau intercensal population estimates 2000-2010

Chautauqua County, NY

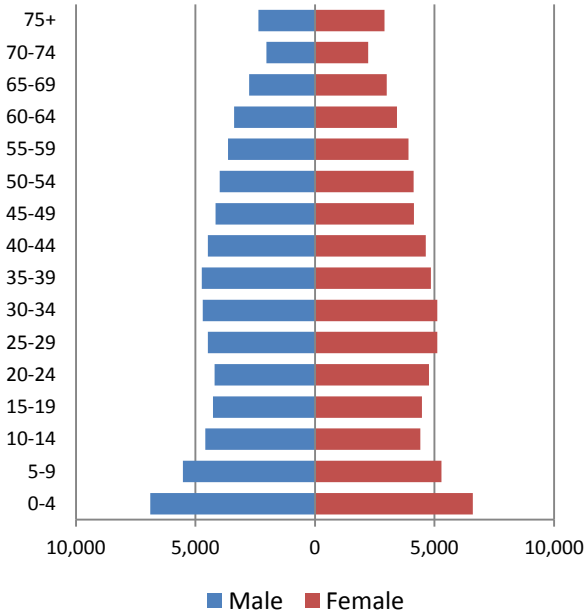
County Subdivision, Percent Change in Population 2000-2010



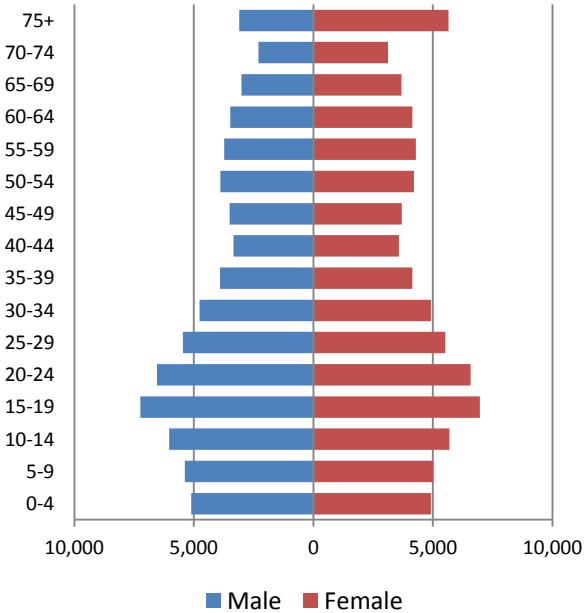
4 Population by age

4.1 Historic and projected population pyramids

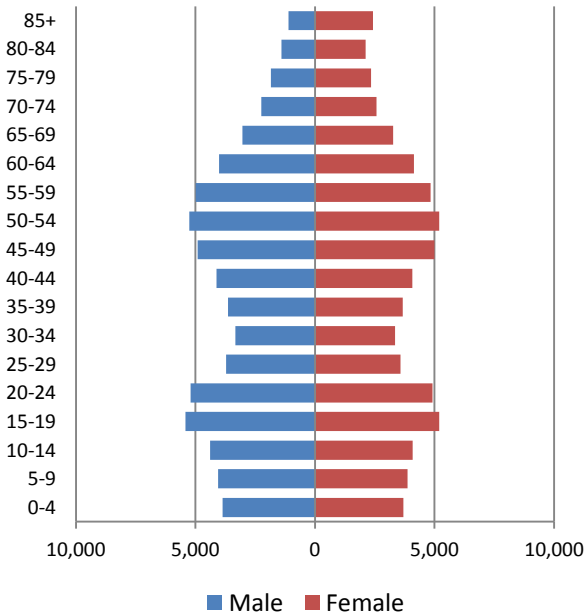
**1950 Population Pyramid,
Chautauqua County**



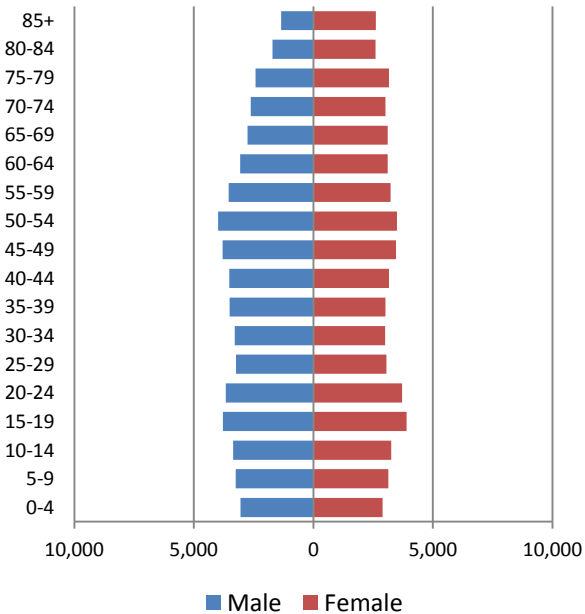
**1980 Population Pyramid,
Chautauqua County**



**2010 Population Pyramid,
Chautauqua County**



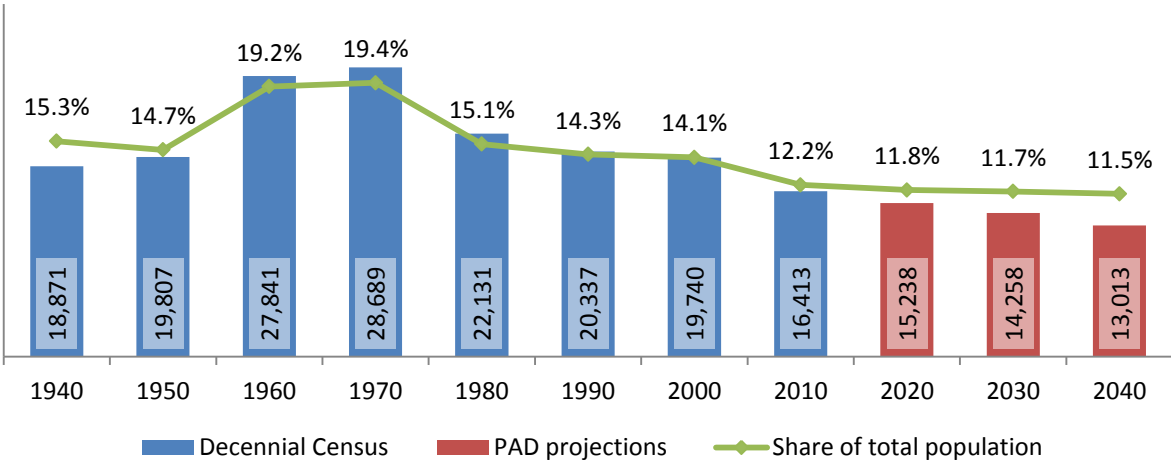
**2040 Population Pyramid,
Chautauqua County**



Source: 1950, 1980, 2010 Decennial Census and projections by Cornell Program on Applied Demographics

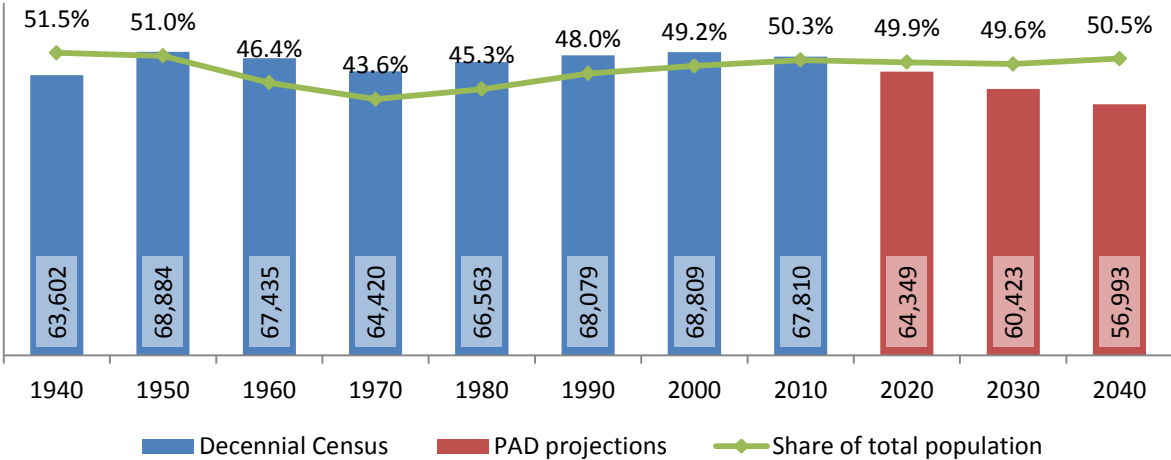
4.2 Selected age groups

Population age 5-14, Chautauqua County, 1940-2040



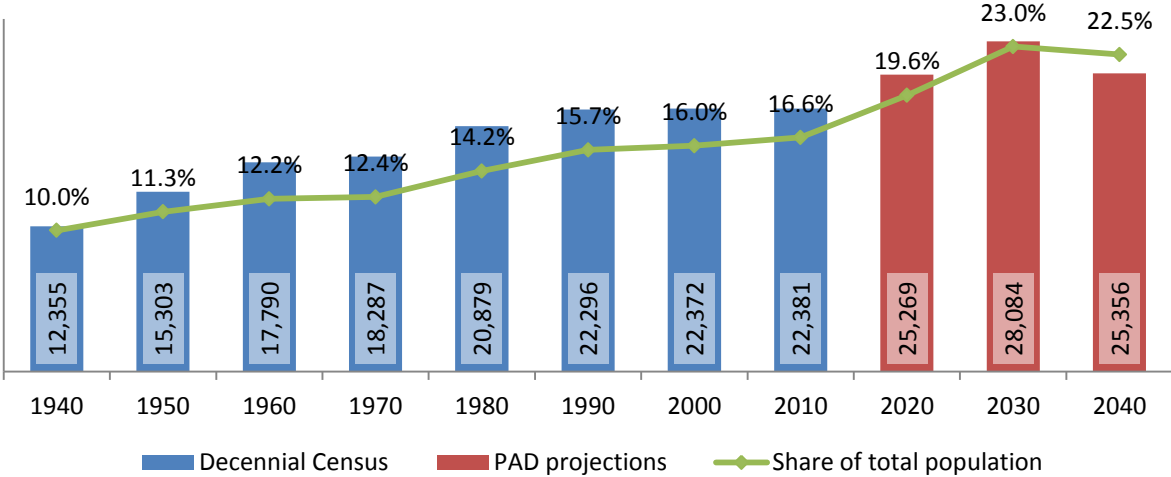
Source: 1940-2010 Decennial Census and projections by Cornell Program on Applied Demographics

Population age 25-64, Chautauqua County, 1940-2040



Source: 1940-2010 Decennial Census and projections by Cornell Program on Applied Demographics

Population age 65 and over, Chautauqua County, 1940-2040

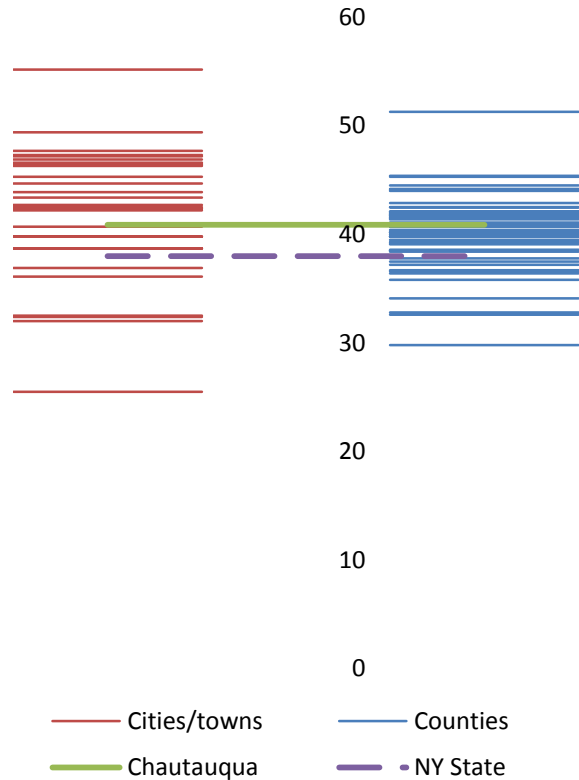


Source: 1940-2010 Decennial Census and projections by Cornell Program on Applied Demographics

4.3 Median age: comparison between areas

	Median Age
New York State	38.0
Chautauqua County	40.9
Cities	
Dunkirk city	38.7
Jamestown city	36.9
Towns	
Arkwright town	47.7
Busti town	47.3
Carroll town	45.3
Charlotte town	40.7
Chautauqua town	44.7
Cherry Creek town	39.8
Clymer town	32.5
Dunkirk town	55.2
Ellery town	49.4
Ellicott town	46.5
Ellington town	39.8
French Creek town	38.7
Gerry town	46.4
Hanover town	43.4
Harmony town	43.4
Kiantone town	46.9
Mina town	42.5
North Harmony town	46.3
Poland town	43.9
Pomfret town	25.5
Portland town	36.1
Ripley town	42.7
Sheridan town	47.2
Sherman town	32.4
Stockton town	42.2
Villanova town	42.4
Westfield town	46.6
Reservations	
Chautauqua Lake UT	-
Reservations	
Cattaraugus Reservation	32.0

Median age comparison within county (left) and between counties (right)



Source: 2010 Decennial Census

5 Race

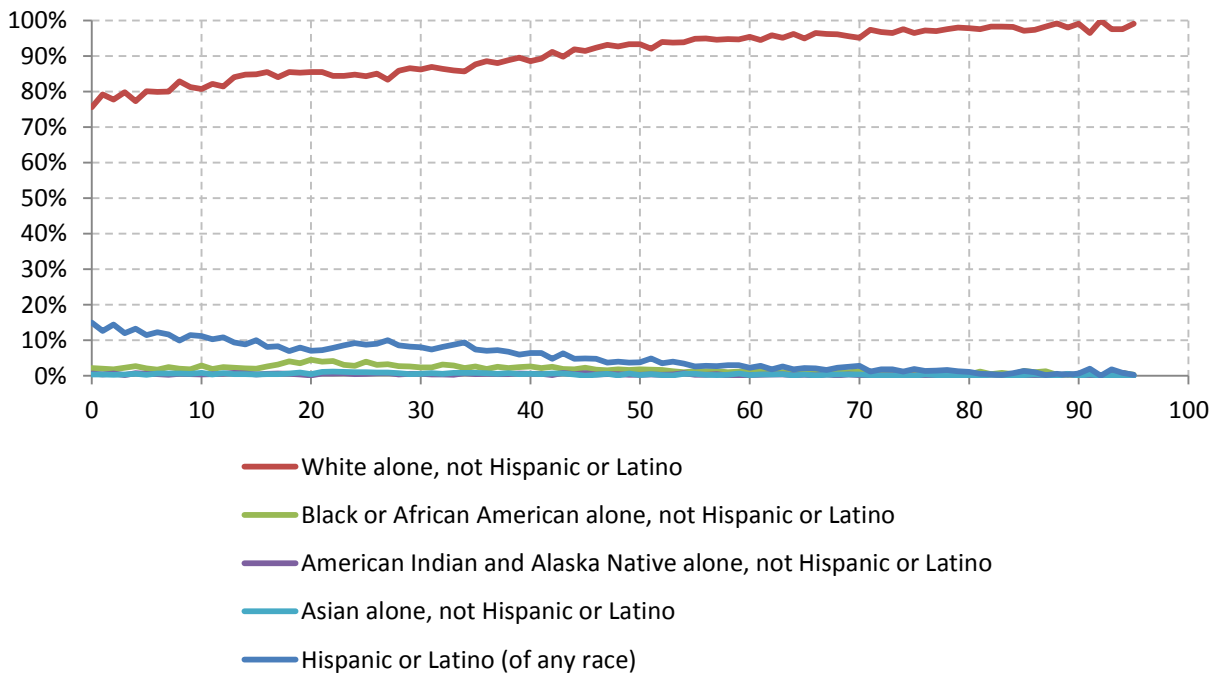
5.1 Total and household population by race

	Total		In households		In Group Quarters
	Count	Percentage	Count	Percentage	Count
Total population	134,905	100%	128,391	100%	6,514
Not Hispanic or Latino					
One race					
White	120,463	89.3%	115,354	89.8%	5,109
Black or African American	2,763	2.0%	2,068	1.6%	695
American Indian and Alaska Native	576	0.4%	546	0.4%	30
Asian	676	0.5%	613	0.5%	63
Native Hawaiian and Other Pacific Islander	31	0.0%	-	-	-
Some other race	90	0.1%	-	-	-
Two or more races	2,065	1.5%	1,993	1.6%	72
Hispanic or Latino (of any race)	8,241	6.1%	7,729	6.0%	512

Source: 2010 Decennial Census

5.2 Race composition by age

Race composition by age, Chautauqua County



Source: 2010 Decennial Census

6 Housing units

6.1 Characteristics

HOUSING OCCUPANCY	COUNT		PERCENTAGE	
	Estimate	Margin of error	Estimate	Margin of error
Total housing units	66,854	± 348	100.0%	
Occupied housing units	55,499	± 686	83.0%	± 0.9
Vacant housing units	11,355	± 562	17.0%	± 0.9
YEAR STRUCTURE BUILT				
Total housing units	66,854	± 348	100.0%	
Built 2005 or later	977	± 187	1.5%	± 0.3
Built 2000 to 2004	1,796	± 239	2.7%	± 0.4
Built 1990 to 1999	4,474	± 454	6.7%	± 0.7
Built 1980 to 1989	5,367	± 424	8.0%	± 0.6
Built 1970 to 1979	5,998	± 459	9.0%	± 0.7
Built 1960 to 1969	5,067	± 408	7.6%	± 0.6
Built 1950 to 1959	7,989	± 496	11.9%	± 0.7
Built 1940 to 1949	4,919	± 384	7.4%	± 0.6
Built 1939 or earlier	30,267	± 718	45.3%	± 1.1
HOUSING TENURE				
Occupied housing units	55,499	± 686	100.0%	
Owner-occupied	38,383	± 643	69.2%	± 1.0
Renter-occupied	17,116	± 607	30.8%	± 1.0
HOUSE HEATING FUEL				
Occupied housing units	55,499	± 686	100.0%	
Utility gas	38,852	± 750	70.0%	± 1.0
Bottled, tank, or LP gas	3,887	± 272	7.0%	± 0.5
Electricity	6,758	± 400	12.2%	± 0.7
Fuel oil, kerosene, etc.	1,687	± 228	3.0%	± 0.4
Coal or coke	104	± 58	0.2%	± 0.1
Wood	3,223	± 249	5.8%	± 0.4
Solar energy	8	± 13	0.0%	± 0.1
Other fuel	909	± 139	1.6%	± 0.3
No fuel used	71	± 44	0.1%	± 0.1
VALUE				
Owner-occupied units	38,383	± 643	100.0%	
Less than \$50,000	7,244	± 394	18.9%	± 1.0
\$50,000 to \$99,999	17,226	± 509	44.9%	± 1.2
\$100,000 to \$149,999	6,731	± 460	17.5%	± 1.1
\$150,000 to \$199,999	3,680	± 293	9.6%	± 0.7
\$200,000 to \$299,999	2,172	± 244	5.7%	± 0.6
\$300,000 to \$499,999	886	± 137	2.3%	± 0.4
\$500,000 to \$999,999	363	± 95	0.9%	± 0.2
\$1,000,000 or more	81	± 51	0.2%	± 0.1
Median (dollars)	80,900	± 1,534		

Source: 2007-2011 American Community Survey

6.2 Historical data on number of housing units and occupancy status

Year	Number of Housing Units	Change since previous Census	Occupied	Occupancy rate	Vacant
1970	54,572		47,685	87.4%	6,887
1980	60,905	11.6%	52,817	86.7%	8,088
1990	62,682	2.9%	53,696	85.7%	8,986
2000	64,900	3.5%	54,515	84.0%	10,385
2010	66,920	3.1%	54,244	81.1%	12,676

Source: 1970-2010 Decennial Census

7 Education

7.1 Enrollment by level of school

	Estimate	Margin of error
Total enrolled in school	33,390	± 696
Nursery school, preschool	1,647	± 266
Kindergarten	1,429	± 197
Elementary: grade 1 to grade 4	6,657	± 343
Elementary: grade 5 to grade 8	7,026	± 395
High school: grade 9 to grade 12	7,260	± 347
College, undergraduate	8,378	± 649
Graduate, professional school	993	± 177

Source: 2007-2011 American Community Survey

7.2 Enrollment by age

	Estimate	Margin of error
3 and 4 years	45.3%	± 7.0
5 to 9 years	95.9%	± 1.7
10 to 14 years	97.8%	± 0.8
15 to 17 years	93.1%	± 2.0
18 and 19 years	75.4%	± 5.2
20 to 24 years	42.0%	± 3.9
25 to 34 years	9.3%	± 1.7
35 years and over	1.5%	± 0.3

Source: 2007-2011 American Community Survey

7.3 Percentage age 18-24 enrolled in college

	Estimate	Margin of error
Population 18 to 24 years	15,310	± 144
Enrolled in college or graduate school	46.6%	± 3.5
Males 18 to 24 years	7,805	± 130
Enrolled in college or graduate school	43.5%	± 4.4
Females 18 to 24 years	7,505	± 69
Enrolled in college or graduate school	49.8%	± 4.9

Source: 2007-2011 American Community Survey

7.4 Educational attainment

	COUNT		PERCENTAGE	
	Estimate	Margin of error	Estimate	Margin of error
Population 25 years and over	89,914	± 144	100%	
EDUCATIONAL ATTAINMENT				
Less than 9th grade	3,263	± 329	3.6%	± 0.4
9th to 12th grade, no diploma	8,491	± 579	9.4%	± 0.6
High school graduate (includes equivalency)	32,626	± 952	36.3%	± 1.0
Some college, no degree	16,122	± 697	17.9%	± 0.8
Associate's degree	10,954	± 615	12.2%	± 0.7
Bachelor's degree	10,352	± 608	11.5%	± 0.7
Graduate or professional degree	8,106	± 488	9.0%	± 0.5
Percent high school graduate or higher			86.9%	± 0.7
Percent bachelor's degree or higher			20.5%	± 0.9

Source: 2007-2011 American Community Survey

8 Language spoken at home

	COUNT		PERCENTAGE		SPEAK ENGLISH LESS THAN "VERY WELL"	
	Estimate	Margin of error	Estimate	Margin of error	Estimate	Margin of error
Population 5 years and over	127,542	± 39	100%			
LANGUAGE SPOKEN AT HOME						
English only	118,330	± 564	92.8%	± 0.4		
Language other than English	9,212	± 567	7.2%	± 0.4	3,069	± 302
Spanish	5,271	± 393	4.1%	± 0.3	1,922	± 285
Other Indo-European languages	3,234	± 442	2.5%	± 0.3	730	± 162
Asian and Pacific Islander languages	571	± 167	0.4%	± 0.1	326	± 135
Other languages	136	± 88	0.1%	± 0.1	91	± 75

Source: 2007-2011 American Community Survey

9 Labor Force Characteristics

9.1 Labor force, employment and unemployment

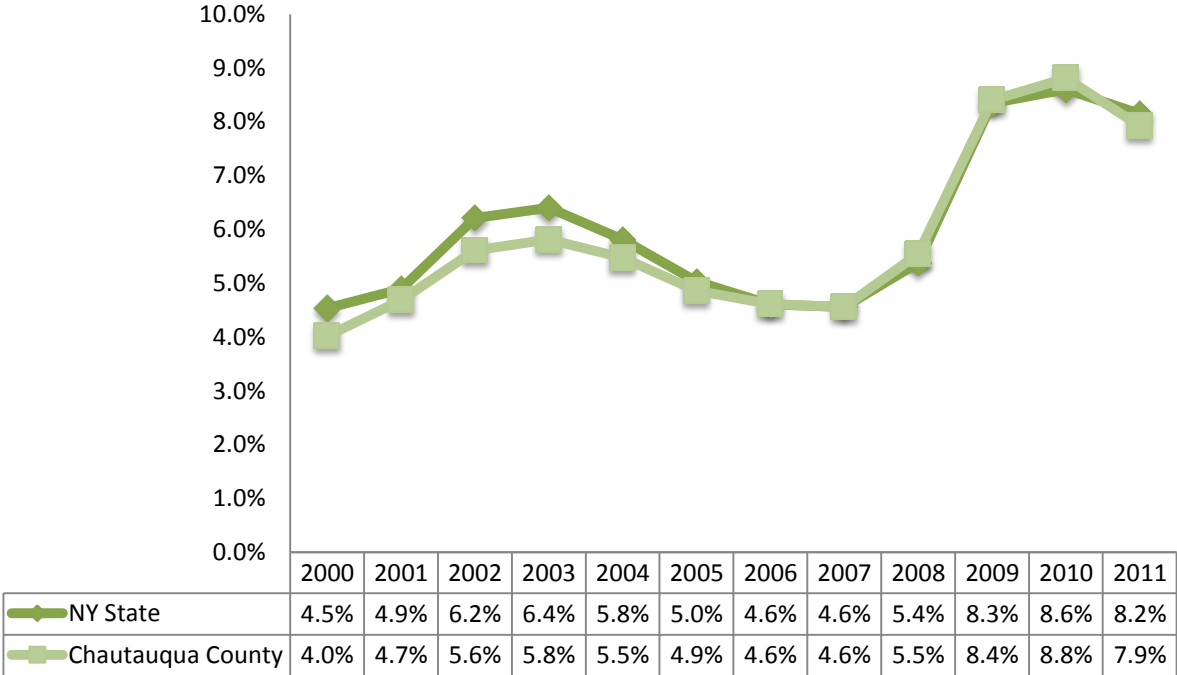
	TOTAL		IN LABOR FORCE		EMPLOYED		UNEMPLOYMENT RATE	
	Estimate	Margin of error	Estimate	Margin of error	Estimate	Margin of error	Estimate	Margin of error
Population 16 years and over	109,064	± 203	59.9%	± 0.8	54.9%	± 0.9	8.1%	± 0.7
AGE								
16 to 19 years	9,075	± 275	44.7%	± 3.5	36.6%	± 3.0	18.2%	± 3.6
20 to 24 years	10,075	± 184	72.5%	± 3.1	59.1%	± 3.7	18.1%	± 3.5
25 to 44 years	29,827	± 166	80.3%	± 1.5	73.5%	± 1.9	8.3%	± 1.1
45 to 54 years	20,368	± 103	79.2%	± 1.7	75.4%	± 1.8	4.8%	± 1.1
55 to 64 years	17,569	± 132	61.0%	± 1.9	59.0%	± 2.0	3.4%	± 1.0
65 to 74 years	10,883	± 118	22.5%	± 2.3	21.5%	± 2.4	4.2%	± 2.1
75 years and over	11,267	± 76	6.1%	± 1.2	5.9%	± 1.2	4.0%	± 3.9
RACE AND HISPANIC OR LATINO ORIGIN								
One race	107,840	± 305	60.0%	± 0.8	55.2%	± 0.9	8.0%	± 0.7
White	103,062	± 357	60.8%	± 0.7	56.1%	± 0.9	7.7%	± 0.7
Black or African American	2,374	± 170	33.3%	± 8.5	26.4%	± 6.9	20.9%	± 12.1
American Indian and Alaska Native	477	± 86	48.4%	± 14.3	29.6%	± 13.6	39.0%	± 24.9
Asian	638	± 44	51.7%	± 15.5	47.2%	± 17.0	8.8%	± 11.9
Pacific Islander	27	± 28	100.0%	± 57.1	100.0%	± 57.1	0.0%	± 57.1
Some other race	1,262	± 278	56.8%	± 6.7	51.1%	± 7.6	10.0%	± 6.2
Two or more races	1,224	± 192	46.2%	± 9.1	32.5%	± 8.7	29.7%	± 12.3
Hispanic or Latino origin (of any race)	5,130	± 73	51.7%	± 4.6	44.6%	± 5.1	13.8%	± 4.4
White alone, not Hispanic or Latino	99,733	± 177	61.1%	± 0.7	56.5%	± 0.8	7.5%	± 0.7
SEX								
Population 20 to 64 years	77,839	± 215	74.7%	± 0.9	68.9%	± 1.1	7.7%	± 0.7
Male	38,986	± 169	77.9%	± 1.1	71.7%	± 1.3	7.8%	± 0.9
Female	38,853	± 130	71.5%	± 1.5	66.0%	± 1.7	7.6%	± 1.0
With own children under 6 years	5,334	± 430	71.0%	± 4.3	57.5%	± 4.4	19.0%	± 3.9
EDUCATIONAL ATTAINMENT								
Population 25 to 64 years	67,764	± 197	75.0%	± 0.9	70.3%	± 1.1	6.2%	± 0.6
Less than high school graduate	7,263	± 509	45.9%	± 4.3	41.1%	± 4.1	10.5%	± 3.0
High school graduate (includes equivalency)	22,884	± 827	71.9%	± 1.7	66.1%	± 1.8	7.9%	± 1.1
Some college or associate's degree	22,426	± 674	80.6%	± 1.3	75.7%	± 1.7	5.9%	± 1.2
Bachelor's degree or higher	15,191	± 740	85.4%	± 1.6	82.6%	± 1.9	3.2%	± 1.1

Table formula: **LABOR FORCE** = # EMPLOYED + # UNEMPLOYED
 % IN LABOR FORCE = LABOR FORCE / TOTAL * 100%
 % EMPLOYED = # EMPLOYED / TOTAL * 100%
 UNEMPLOYMENT RATE = # UNEMPLOYED / LABOR FORCE * 100%

Source: 2007-2011 American Community Survey

9.2 Annual unemployment rate

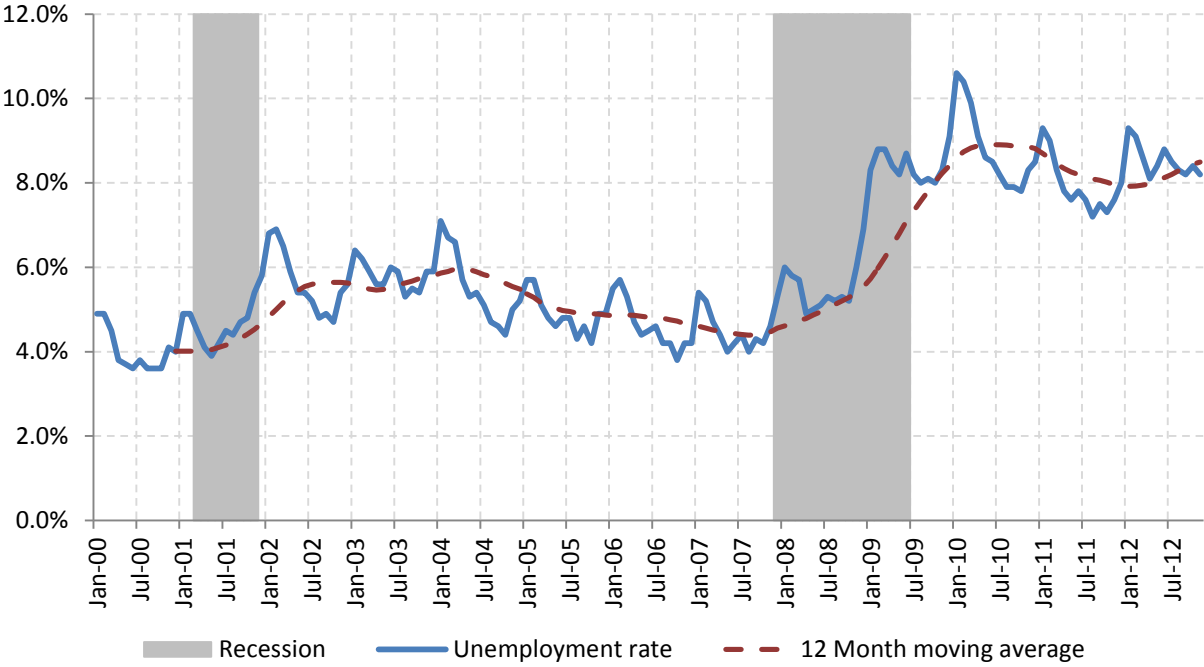
Annual unemployment rate, Chautauqua County and New York State



Source: Bureau Labor Statistics (BLS)

9.3 Monthly unemployment rate

Monthly unemployment rate, Chautauqua County



Source: Bureau Labor Statistics (BLS)

9.4 Employment and number of jobs

**Labor force, number of employed workers and number of jobs
Chautauqua County**



Source: Bureau Labor Statistics (BLS) and NY Department of Labor - Quarterly Census of Employment and Wages (QCEW) – annual averages

9.5 Class of worker

					Median earnings (\$)		
		Total	%Male	%Female	Total	Male	Female
Civilian employed population 16 years and over	Estimate	59,927	52.3%	47.7%	27,681	34,247	22,386
	Margin of error	± 964	± 0.7	± 0.7	± 810	± 1,020	± 791
Private for-profit wage and salary workers:	Estimate	37,182	56.0%	44.0%	26,110	33,286	19,409
	Margin of error	± 1,062	± 1.2	± 1.2	± 613	± 1,031	± 636
Employee of private company workers	Estimate	35,737	55.5%	44.5%	25,776	32,749	19,271
	Margin of error	± 1,087	± 1.2	± 1.2	± 606	± 1,041	± 618
Self-employed in own incorporated business workers	Estimate	1,445	69.0%	31.0%	42,302	47,860	26,563
	Margin of error	± 216	± 5.6	± 5.6	± 3,425	± 2,637	± 9,473
Private not-for-profit wage and salary workers	Estimate	7,019	31.8%	68.2%	26,306	26,699	26,149
	Margin of error	± 470	± 3.3	± 3.3	± 1,013	± 2,785	± 1,223
Local government workers	Estimate	7,107	44.3%	55.7%	40,638	47,078	35,930
	Margin of error	± 539	± 3.0	± 3.0	± 1,878	± 2,690	± 1,601
State government workers	Estimate	4,003	50.9%	49.1%	41,091	51,771	36,053
	Margin of error	± 351	± 5.0	± 5.0	± 3,021	± 5,401	± 3,719
Federal government workers	Estimate	502	46.2%	53.8%	51,009	51,488	47,000
	Margin of error	± 136	± 13.6	± 13.6	± 8,106	± 4,177	± 22,076
Self-employed in own not incorporated business workers and unpaid family workers	Estimate	4,114	68.8%	31.2%	18,009	21,428	12,778
	Margin of error	± 371	± 2.9	± 2.9	± 2,611	± 1,347	± 3,027

Source: 2007-2011 American Community Survey

9.6 Jobs by industry sector

	Chautauqua County			NY state
	2011	Change since 2006	% of total	% of total
All NAICS Sectors	48,752	-6.2%	100.0%	100.0%
Agriculture, Forestry, Fishing and Hunting	457	15.7%	0.9%	0.3%
Mining, Quarrying, and Oil and Gas Extraction	188	9.3%	0.4%	0.1%
Utilities	203	-4.7%	0.4%	0.5%
Construction	1,476	-8.0%	3.0%	3.5%
Manufacturing	9,958	-13.7%	20.4%	5.5%
Wholesale Trade	1,082	-21.6%	2.2%	4.0%
Retail Trade	5,508	-3.8%	11.3%	10.5%
Transportation and Warehousing	1,080	-19.9%	2.2%	3.4%
Information	489	-34.3%	1.0%	3.3%
Finance and Insurance	762	-11.3%	1.6%	6.0%
Real Estate and Rental and Leasing	557	31.1%	1.1%	2.3%
Professional, Scientific, and Technical Services	895	-9.4%	1.8%	6.9%
Management of Companies and Enterprises	100	-62.8%	0.2%	1.6%
Administrative and Support and Waste Management and Remediation Services	2,097	6.4%	4.3%	5.2%
Educational Services	5,112	-2.7%	10.5%	10.8%
Health Care and Social Assistance	7,900	1.6%	16.2%	17.0%
Arts, Entertainment, and Recreation	607	-35.6%	1.2%	1.9%
Accommodation and Food Services	4,652	-0.9%	9.5%	7.3%
Other Services (except Public Administration)	2,151	-11.1%	4.4%	3.9%
Public Administration	3,479	6.1%	7.1%	5.8%

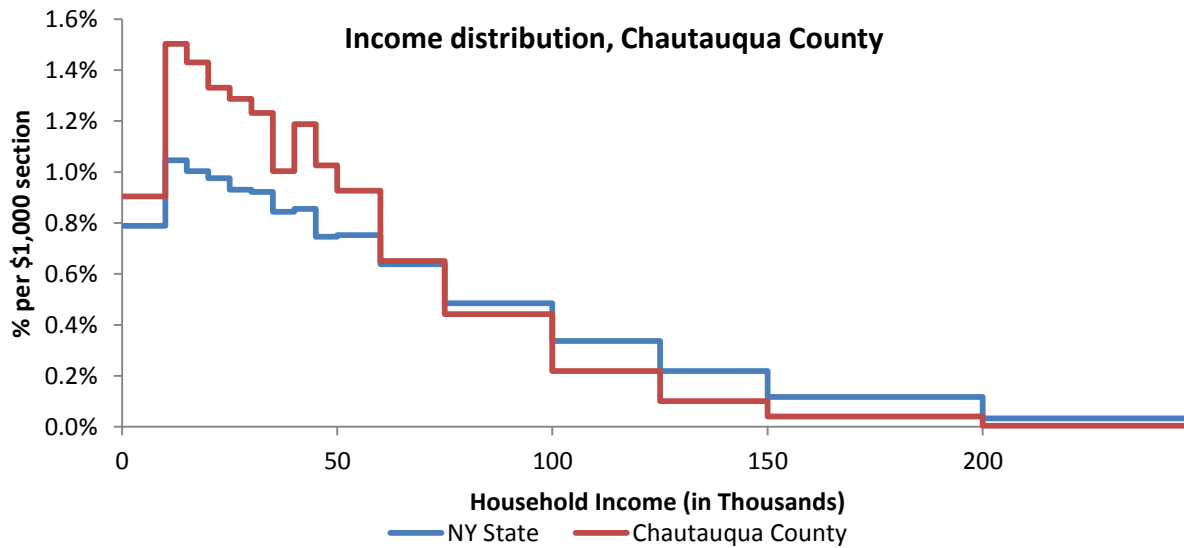
Source: U.S. Census Bureau - Public Use Quarterly Workforce Indicators (QWI) – annual averages

10 Household Income

10.1 Distribution

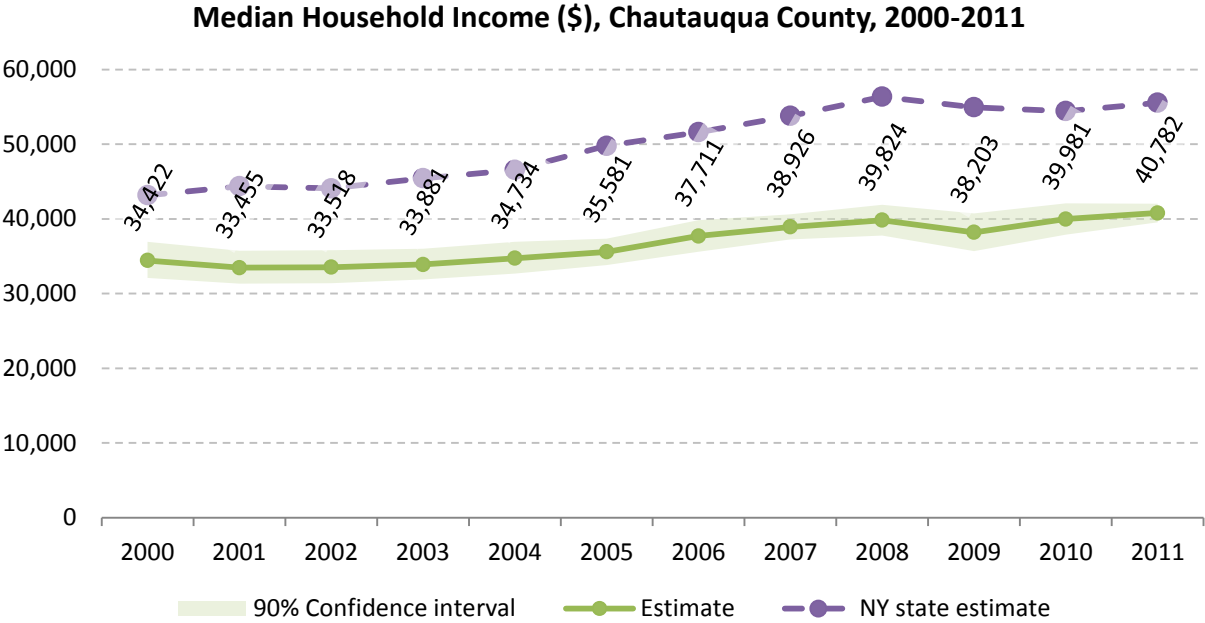
	Estimate	Margin of error	Interval width (in \$1,000)	Est. per \$1,000 section
Total:	55,499	± 686		
Less than \$10,000	5,017	± 484	10	501.7
\$10,000 to \$14,999	4,171	± 402	5	834.2
\$15,000 to \$19,999	3,968	± 358	5	793.6
\$20,000 to \$24,999	3,694	± 394	5	738.8
\$25,000 to \$29,999	3,570	± 334	5	714.0
\$30,000 to \$34,999	3,418	± 250	5	683.6
\$35,000 to \$39,999	2,786	± 338	5	557.2
\$40,000 to \$44,999	3,295	± 373	5	659.0
\$45,000 to \$49,999	2,846	± 369	5	569.2
\$50,000 to \$59,999	5,146	± 410	10	514.6
\$60,000 to \$74,999	5,419	± 393	15	361.3
\$75,000 to \$99,999	6,142	± 492	25	245.7
\$100,000 to \$124,999	3,034	± 289	25	121.4
\$125,000 to \$149,999	1,398	± 202	25	55.9
\$150,000 to \$199,999	1,138	± 164	50	22.8
\$200,000 or more	457	± 94	-	-

Source: 2007-2011 American Community Survey



Source: 2007-2011 American Community Survey

10.2 Median household income: Trends over time

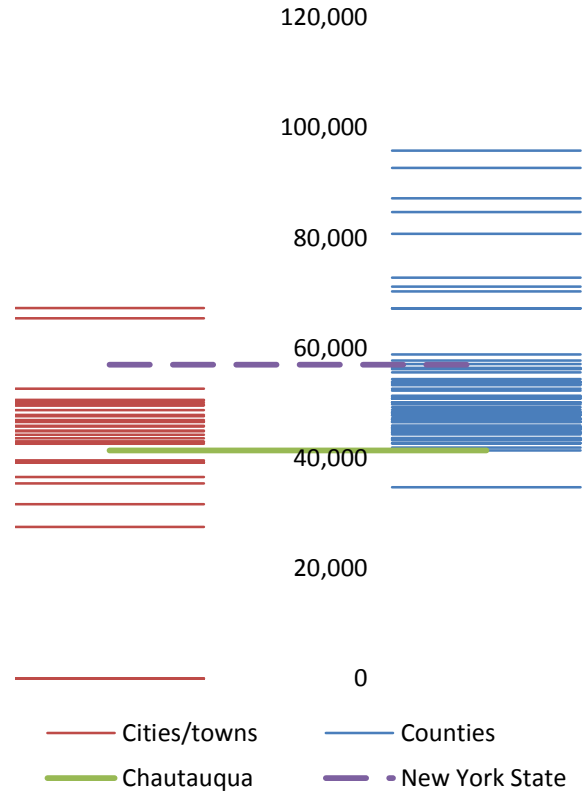


Source: Small Area Income and Poverty Estimates (SAIPE)

10.3 Median household income: Comparison between areas

	MEDIAN HOUSEHOLD INCOME (\$)	
	Estimate	Margin of error
New York State	56,951	± 190
Chautauqua County	41,432	± 889
Cities		
Dunkirk	36,573	± 2,195
Jamestown	31,657	± 1,934
Towns		
Arkwright	65,375	± 6,554
Busti	50,568	± 4,279
Carroll	50,446	± 4,768
Charlotte	47,632	± 5,140
Chautauqua	50,058	± 7,136
Cherry Creek	39,205	± 6,687
Clymer	46,591	± 10,758
Dunkirk	42,614	± 7,786
Ellery	45,884	± 8,764
Ellicott	46,935	± 4,002
Ellington	46,711	± 6,470
French Creek	44,265	± 4,717
Gerry	43,000	± 6,914
Hanover	45,000	± 3,245
Harmony	44,879	± 5,615
Kiantone	67,269	± 7,398
Mina	49,663	± 2,796
North Harmony	49,600	± 5,206
Poland	48,713	± 3,013
Pomfret	43,625	± 7,410
Portland	42,969	± 9,331
Ripley	35,403	± 4,387
Sheridan	52,596	± 10,868
Sherman	39,615	± 5,775
Stockton	45,769	± 10,690
Villanova	47,857	± 9,508
Westfield	39,172	± 5,301
Reservations		
Cattaraugus	27,500	± 54,943
	0	0.0
	0	0.0

Median household income comparison within county (left) and between counties (right)



Source: 2007-2011 American Community Survey

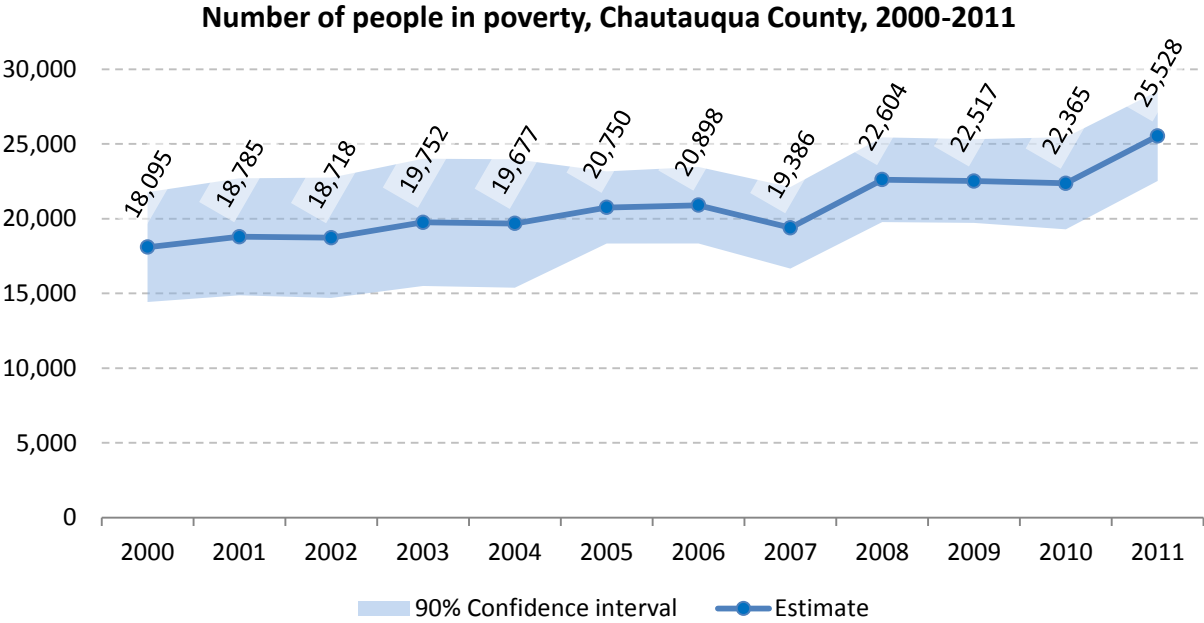
11 Poverty

11.1 Poverty characteristics

	TOTAL		BELOW POVERTY LEVEL		PERCENT BELOW POVERTY LEVEL	
	Estimate	Margin of error	Estimate	Margin of error	Estimate	Margin of error
Population for whom poverty status is determined	128,845	± 787	22,818	± 1,349	17.7%	± 1.0
AGE						
Under 18 years	28,983	± 208	7,784	± 708	26.9%	± 2.4
Related children under 18 years	28,746	± 233	7,580	± 693	26.4%	± 2.4
18 to 64 years	78,917	± 723	13,296	± 866	16.8%	± 1.1
65 years and over	20,945	± 261	1,738	± 207	8.3%	± 1.0
SEX						
Male	63,135	± 569	10,379	± 752	16.4%	± 1.2
Female	65,710	± 408	12,439	± 792	18.9%	± 1.2
RACE AND HISPANIC OR LATINO ORIGIN						
One race	126,522	± 774	21,456	± 1,302	17.0%	± 1.0
White	121,616	± 776	19,617	± 1,272	16.1%	± 1.0
Black or African American	2,155	± 312	756	± 266	35.1%	± 11.5
American Indian and Alaska Native	638	± 138	358	± 157	56.1%	± 17.7
Asian	707	± 102	69	± 81	9.8%	± 11.6
Hispanic or Latino origin (of any race)	7,389	± 179	3,664	± 512	49.6%	± 6.9
White alone, not Hispanic or Latino	116,566	± 581	17,368	± 1,095	14.9%	± 0.9
EDUCATIONAL ATTAINMENT						
Population 25 years and over	87,655	± 440	10,829	± 657	12.4%	± 0.7
Less than high school graduate	11,091	± 575	3,226	± 357	29.1%	± 2.8
High school graduate (includes equivalency)	31,690	± 978	4,244	± 372	13.4%	± 1.1
Some college, associate's degree	26,711	± 794	2,637	± 345	9.9%	± 1.3
Bachelor's degree or higher	18,163	± 818	722	± 134	4.0%	± 0.7
EMPLOYMENT STATUS						
Civilian labor force 16 years and over	63,952	± 952	6,346	± 627	9.9%	± 1.0
Employed	58,767	± 1,057	4,465	± 507	7.6%	± 0.9
Male	30,781	± 589	2,181	± 340	7.1%	± 1.1
Female	27,986	± 743	2,284	± 331	8.2%	± 1.2
Unemployed	5,185	± 420	1,881	± 308	36.3%	± 5.2
Male	2,792	± 288	801	± 156	28.7%	± 5.6
Female	2,393	± 291	1,080	± 241	45.1%	± 7.8
WORK EXPERIENCE IN THE PAST 12 MONTHS						
Population 16 years and over	103,553	± 787	15,934	± 979	15.4%	± 0.9
Worked full-time, year-round	38,536	± 927	1,070	± 195	2.8%	± 0.5
Worked part-time or part-year	28,214	± 917	5,350	± 602	19.0%	± 1.8
Did not work	36,803	± 901	9,514	± 672	25.9%	± 1.5

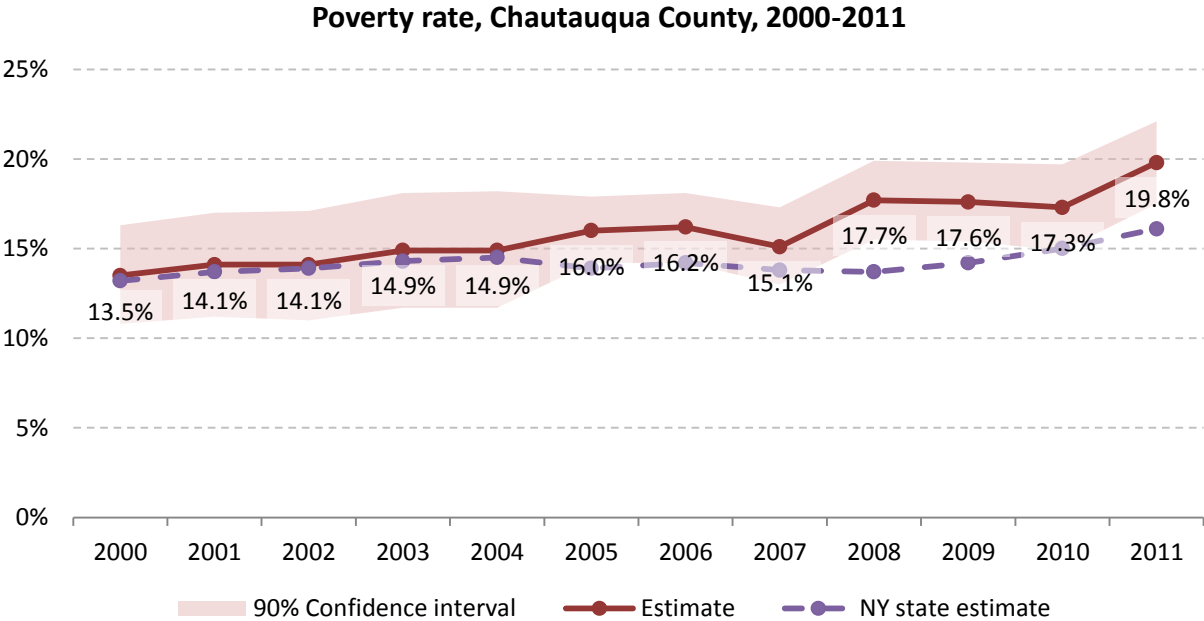
Source: 2007-2011 American Community Survey

11.2 Poverty: Trends over time: Count



Source: Small Area Income and Poverty Estimates (SAIPE)

11.3 Poverty: Trends over time: Rate



Source: Small Area Income and Poverty Estimates (SAIPE)

11.4 Poverty rate: comparison between areas

	Poverty Rate - All people	
	Estimate	Margin of error
New York State	14.5%	± 0.1
Chautauqua County	17.7%	± 1.0

Cities

Dunkirk	22.9%	± 3.7
Jamestown	25.6%	± 3.0

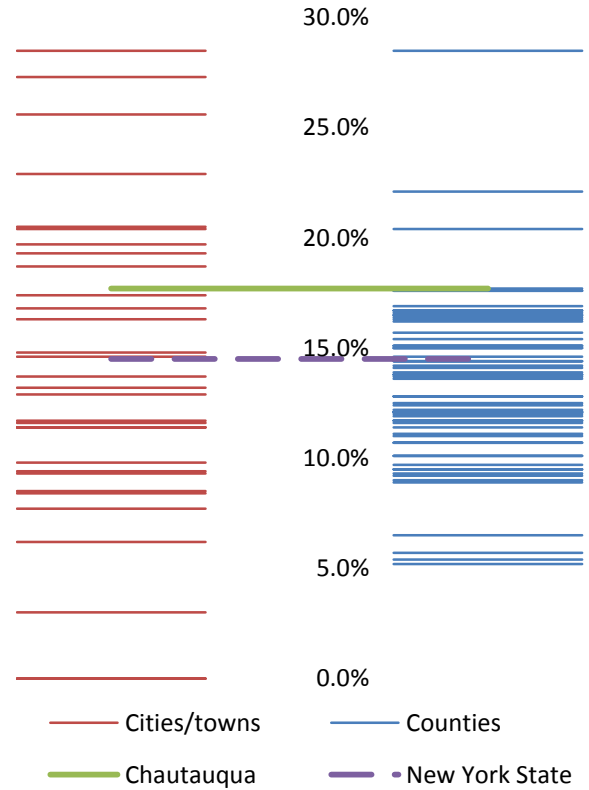
Towns

Arkwright	8.5%	± 4.3
Busti	9.4%	± 3.1
Carroll	6.2%	± 5.9
Charlotte	11.6%	± 6.0
Chautauqua	11.4%	± 5.4
Cherry Creek	17.4%	± 8.1
Clymer	28.5%	± 10.2
Dunkirk	18.7%	± 7.4
Ellery	7.7%	± 3.9
Ellicott	14.8%	± 3.7
Ellington	14.6%	± 5.8
French Creek	12.9%	± 6.0
Gerry	19.3%	± 7.4
Hanover	16.8%	± 5.6
Harmony	8.4%	± 4.0
Kiantone	3.0%	± 1.9
Mina	19.7%	± 8.5
North Harmony	9.3%	± 4.4
Poland	11.7%	± 6.1
Pomfret	20.5%	± 3.7
Portland	13.2%	± 3.6
Ripley	16.3%	± 6.4
Sheridan	13.7%	± 5.7
Sherman	20.4%	± 6.0
Stockton	20.4%	± 8.2
Villanova	9.8%	± 3.3
Westfield	11.4%	± 5.3

Reservations

Cattaraugus	27.3%	± 55.5
	0.0%	0.0
	0.0%	0.0

Poverty rate comparison within county (left) and between counties (right)

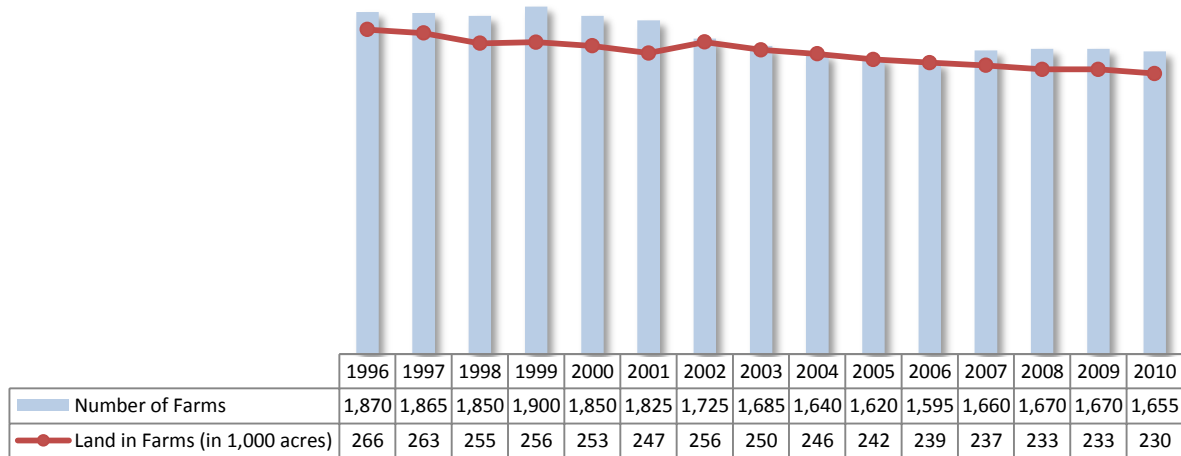


Source: 2007-2011 American Community Survey

12 Agriculture

12.1 Number of farms and land in farms

Chautauqua County, 1996-2010



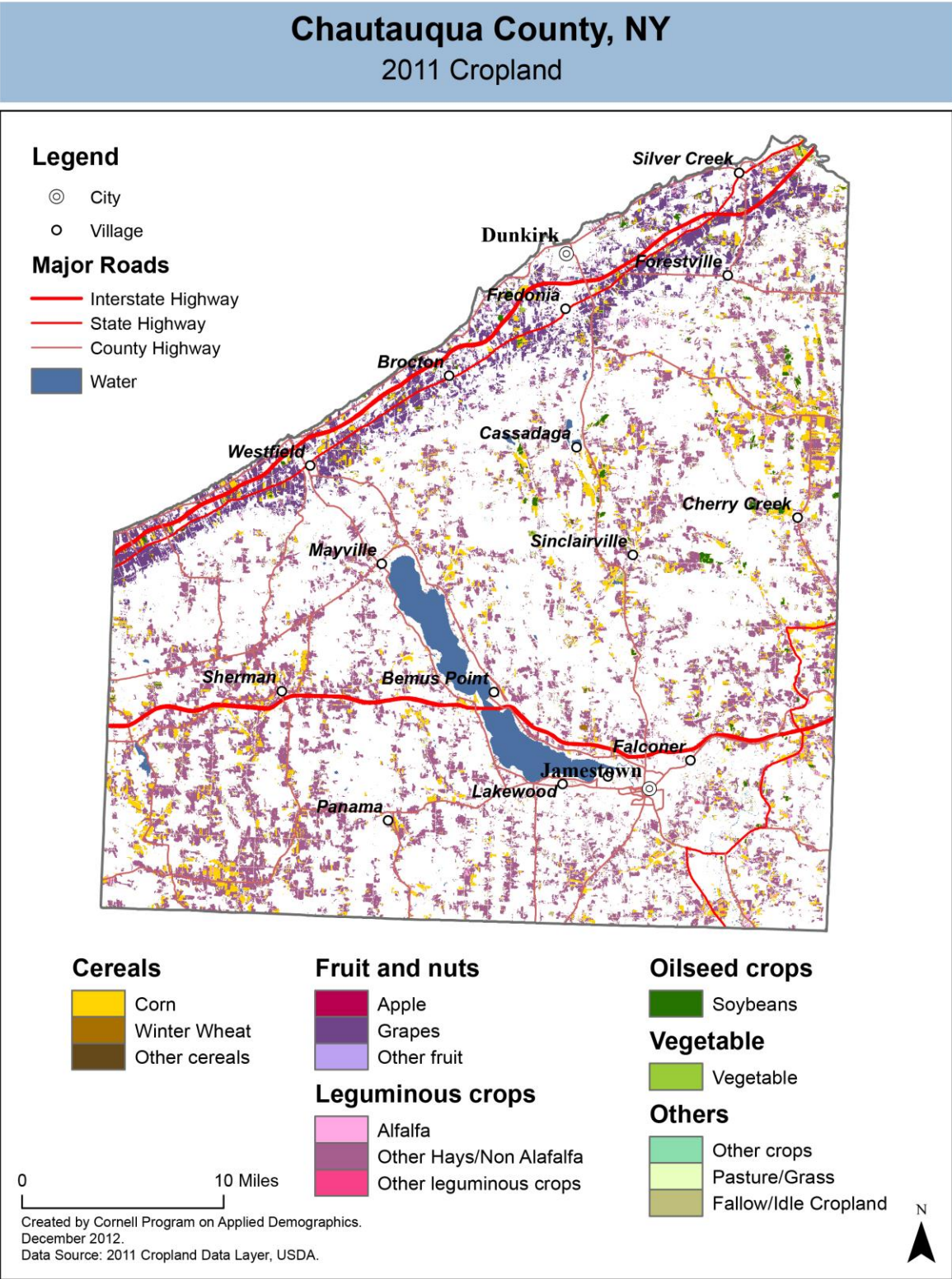
Source: National Agricultural Statistics Service – Annual Statistical bulletin

12.2 Farm Operator Characteristics

	Principal Operator		
	Total	Male	Female
Number of farms	1,658	1,430	228
Average size of farm (acres)	142	155	60
PRIMARY OCCUPATION			
Farming	887	778	109
Other	771	652	119
AGE			
Under 45	289	247	42
45 to 64 years	905	769	136
65 years and over	464	414	50
Average age (years)	56.6	56.7	56
YEARS ON PRESENT FARM			
Less than 3 years	33	24	9
3 to 4 years	81	64	17
5 to 9 years	209	171	38
10 years or more	1,335	1,171	164

Source: 2007 Agricultural Census

12.3 Map of type of crop

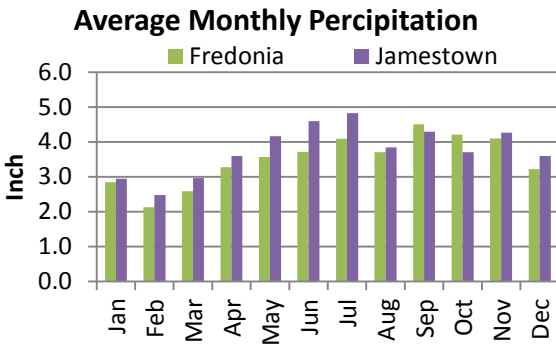
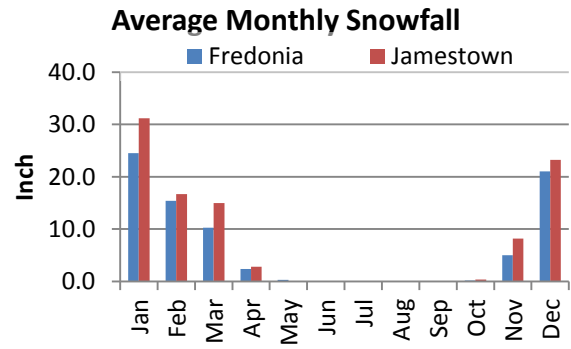
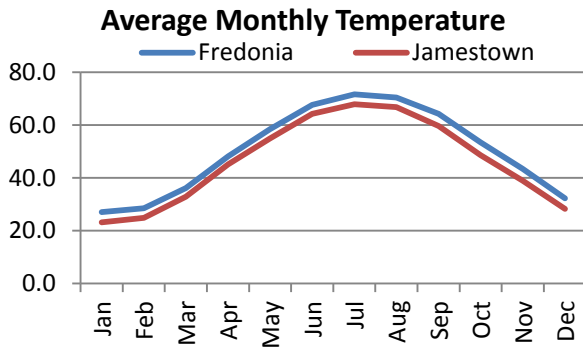
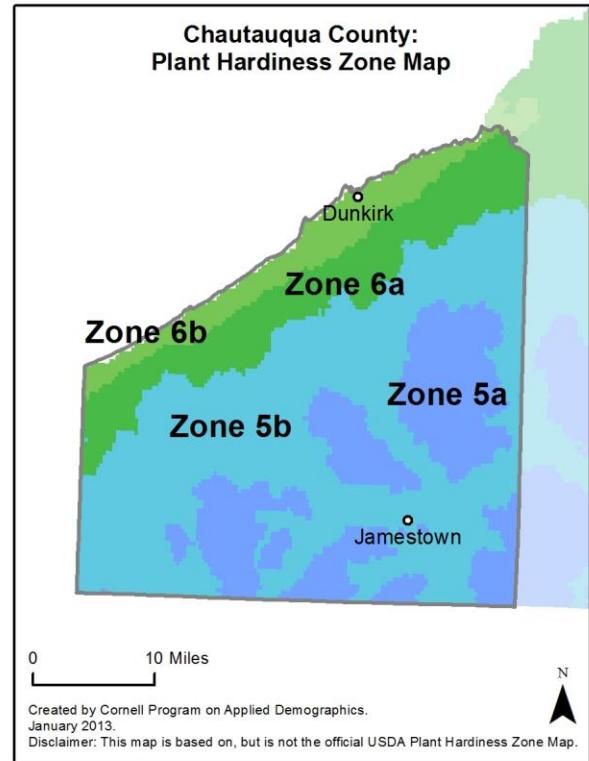
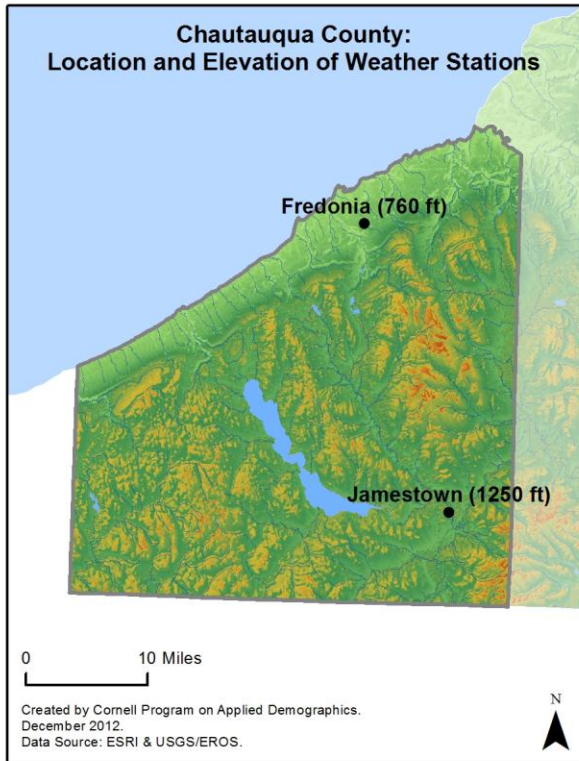


12.4 Estimated acreage by crop

	Acreage	%		Acreage	%
Cereals			Fruit and nuts		
Barley	5	0.0%	Apples	0.7	0.0%
Corn	25,922	14.8%	Apricots	-	
Millet	-		Blueberries	11	0.0%
Oats	156	0.1%	Cherries	-	
Rye	188	0.1%	Cranberries	-	
Sorghum	-		Grapes	29,559	16.8%
Speltz	-		Nectarines	-	
Spring Wheat	17	0.0%	Peaches	0.2	0.0%
Sweet Corn	1.8	0.0%	Plums	-	
Triticale	32	0.0%	Prunes	0.2	0.0%
Winter Wheat	494	0.3%	Strawberries	7	0.0%
Dbl Crop WinWht/Corn	-		Walnuts	20	0.0%
Leguminous crops			Beverage and spice crops		
Alfalfa	4,293	2.4%	Herbs	-	
Other Hay/Non Alfalfa	98,828	56.3%	Peppers	-	
Dry Beans	106	0.1%	Trees		
Peas	-		Christmas Trees	0.7	0.0%
Vetch	-		Other Tree Crops	-	
Oilseed crops			Other crops		
Soybeans	2,994	1.7%	Tobacco	-	
Sunflower	-		Misc Veggies & Fruits	-	
Sugar crops			Clover/Wildflowers	1.3	0.0%
Sugarbeets	-		Sod/Grass Seed	2.0	0.0%
Root/tuber crops with high starch or inulin content			Switchgrass	-	
Potatoes	35	0.0%	Dbl Crop Soybeans/Oats	-	
Vegetables and melons			Dbl Crop WinWht/Soybeans	-	
Asparagus	-		Other Crops	23	0.0%
Broccoli	-		Pasture/Grass		
Cabbage	312	0.2%	Fallow/Idle Cropland		
Carrots	-			9,364	5.3%
Eggplants	-			3,211	1.8%
Onions	0.9	0.0%			
Pumpkins	-				
Squash	1.3	0.0%			
Tomatoes	-				
Turnips	-				

Source: National Agricultural Statistics Service - Cropland Data Layer 2011

13 Climate



Average length of freeze-free season

	Last day of frost	First day of frost	Season length
Fredonia	May 3	October 26	174
Jamestown	May 17	October 1	139

Source: NOAA, Northeast Regional Climate Center at Cornell University. Averages 1981-2010

14 Glossary

American Community Survey (ACS) - The American Community Survey is an ongoing survey of the population that provides data every year on a variety of social and economic characteristics—age, sex, race, family and relationships, income and benefits, health insurance, education, veteran status, disabilities, where you work and how you get there, where you live and how much you pay for some essentials. The ACS replaced the information previously gathered by what was known as the “long form” of the decennial censuses. The ACS provides communities, companies and other institutions with current information they need to plan investments and services. Information from the survey generates data that help determine how more than \$400 billion in federal and state funds are distributed each year. Every estimate presented in the American Community Survey, as in other surveys, has an uncertainty associated with it. Often the magnitude of that uncertainty is expressed as the Margin of Error.

Confidence Interval (CI) - indication of the degree of uncertainty about a sample estimates. Confidence intervals have been traditionally reported at the 90, 95 and 99 percent levels. A 90 percent confidence interval can be interpreted, for example, roughly as providing 90 percent certainty that the interval defined by the upper and lower bounds contain the true value of the characteristic. If a Margin of Error is given, the lower bound of the confidence interval is equal to the estimate minus the Margin of Error and the upper bound is equal to the estimate plus the Margin of Error. (See further, Margin of Error definition below.)

County subdivision or Minor Civil Division (MCD) - The Census Bureau geography for primary administrative units below the county level in New York is collectively referred to as county subdivisions or minor civil divisions. These include towns, cities and Indian Reservations.

Decennial Census - the Census of the population and housing taken every 10 years in the United States, at the start of each decade, since 1790.

Employed – either “at work” or “with a job, but not at work”.

Group Quarters Population - all U.S. residents who live in group living facilities including correctional institutions, juvenile facilities, skilled nursing facilities, college residence halls, military barracks, group homes, and workers' dormitories.

Household Population - all U.S. residents who live in housing units such as single family homes, townhouses, apartments, and mobile homes.

Intercensal Population Estimates - estimates produced for the years between two decennial censuses when both the beginning and ending populations are known. They are produced once a decade by adjusting the existing time series of postcensal estimates for the entire decade to smooth the transition from one decennial census count to the next. They differ from the postcensal estimates that are released annually because the difference between the April 1 postcensal estimate and April 1 census count for the end of the decade is redistributed across the estimates for that decade. For dates when both postcensal and intercensal estimates are available, intercensal estimates are preferred.

Labor Force - consists of people classified as employed or unemployed.

Margin of Error (MOE) - a measure of the precision of an estimate at a given level of confidence. The confidence level of a margin of error indicates the likelihood that the difference between the population value (which you

would get if you could measure the whole population instead of a sample) and the estimate is less than or equal to the margin of error. The range from the estimate minus the margin of error to the estimate plus the margin of error is called the confidence interval. All ACS estimates are published with their margins of error at the 90 percent confidence level. Margins of error are useful in assessing the reliability of estimates and whether differences between estimates are significant.

NAICS - The North American Industry Classification System or NAICS is used by business and government to classify business establishments according to type of economic activity (process of production).

Numeric Population Change - difference between the population of an area at the beginning and end of a time period. It is computed by taking the difference between the population at one point in time (t1) and some future time (t2).

Percent Population Change - difference between the population of an area at the beginning and end of a time period, expressed as a percentage of the beginning population. It is computed by dividing the population change (t2 - t1) by t1 and multiplying the result by 100.

Population Estimates - The calculated number of people living in an area as of a specified point in time, usually July 1st. The estimated population is calculated using a component of change model that incorporates information on natural increase (births, deaths) and net migration (net domestic migration, net international migration) that has occurred in an area since the latest decennial census. A procedure for estimating the current population using a procedure involving a "base population" value at time t -1, adding to that the births during the interval t-1 to t, subtracting the deaths during that interval t-1 to t, and then adding the net domestic and net international migration that occurred during that interval.

Population Density - Total number of people per areal unit like a square mile or square kilometer.

Population Pyramids - A graphical way of portraying a population's age and sex composition at a given slice in time. The first horizontal bar, constituting the base of the graph, is the youngest age group (typically 0-4) with the number of males in that age group on the left and the number of females in that age group on the right. On top of that age group is another horizontal bar for the next age group (e.g. 5-9) and so forth with the top bar typically for those aged 75 and over. In a population with lots of births and deaths, the shape typically forms a pyramid with a broad base and a narrow top. It is one of the most basic ways to understand population change over time as well as between different geographic units of a similar status (e.g. counties).

Postcensal Estimates - estimates produced for the years after a decennial census when only the beginning population is known. They are produced and revised each year, targeted to July 1 of that year.

Projection - estimated population at some future time based on assumptions about births, deaths, migration, and ages.

Race/Ethnicity - the Census Bureau collects racial data in accordance with guidelines provided by the U.S. Office of Management and Budget (OMB), and these data are based on self-identification. The racial categories included in the census questionnaire generally reflect a social definition of race recognized in this country and not an attempt to define race biologically, anthropologically, or genetically. In addition, it is recognized that the categories of the race item include racial and national origin or sociocultural groups. People may choose to report more than one race to indicate their racial mixture, such as "American Indian" and "White." People who identify their origin as Hispanic, Latino, or Spanish may be of any race. OMB requires five minimum categories: White, Black or African American, American Indian or Alaska Native, Asian, and Native Hawaiian or Other Pacific

Islander. Hispanics may be classified as white or black. So we generally separate them out as an ethnic group first.

Unemployed – Not employed, but actively looking for work and available to accept a job.

Unemployment rate – Fraction of the Labor Force that is unemployed.

Urban Area – A densely settled area with at least 2,500 people. If the total number of people is less than 50,000 the Census Bureau calls it an Urban Cluster, otherwise an Urbanized Area.

Vintage - each year, the U.S. Census Bureau produces and publishes estimates of the population for each state and county, as well as the nation as a whole. These are called “vintages.” In producing these vintages, the Bureau utilizes administrative data from a number of sources to estimate 1) the change in population since the most recent decennial census, and 2) the population for each year since the most recent decennial census. With each annual release of population estimates (vintage), the entire time series of estimates beginning on April 1, 2010 is revised and updated.

15 References

Chautauqua County homepage: <http://www.chautauqua-ny.com/pages/default.aspx>

At Cornell:

- Cornell Cooperative Extensions (CCE)
Home page: <http://www.cce.cornell.edu>
 - Chautauqua local office: <http://chautauquacce.shutterfly.com/>
- Program on Applied Demographics (PAD)
URL: <http://pad.human.cornell.edu/>
- Community and Regional Development Institute (CaRDI)
URL: <http://devsoc.cals.cornell.edu/cals/devsoc/outreach/cardi/index.cfm>

Data sources and background information:

- U.S. Census Bureau - general
 - QuickFacts: <http://quickfacts.census.gov/qfd/states/36/36013.html>
 - QuickLinks: <http://quickfacts.census.gov/qfd/states/36/36013lk.html>
 - American FactFinder: <http://factfinder2.census.gov>
- U.S. Census Bureau - population
 - Decennial Census
 - Background: <http://2010.census.gov/2010census/>
 - Demographic Profile: http://factfinder2.census.gov/bkmk/table/1.0/en/DEC/10_SF1/SF1DP1/0500000US36013
 - American Community Survey (ACS)
 - Background: <http://www.census.gov/acs/www/>
 - Social Data Profile: http://factfinder2.census.gov/bkmk/table/1.0/en/ACS/10_5YR/DP02/0500000US36013
 - Economic Data Profile: http://factfinder2.census.gov/bkmk/table/1.0/en/ACS/10_5YR/DP03/0500000US36013
 - Housing Data Profile: http://factfinder2.census.gov/bkmk/table/1.0/en/ACS/10_5YR/DP04/0500000US36013
 - Demographics Data Profile: http://factfinder2.census.gov/bkmk/table/1.0/en/ACS/10_5YR/DP05/0500000US36013
 - Population estimates: <http://www.census.gov/popest/estimates.html>
- U.S. Census Bureau – Small Area Income & Poverty Estimates (SAIPE)
 - <http://www.census.gov/did/www/saipe/>
- U.S. Census Bureau - Public Use Quarterly Workforce Indicators (QWI) – annual averages
 - <http://www2.vrdc.cornell.edu/news/data/qwi-public-use-data/>
- Bureau Labor Statistics (BLS) – Local Area Unemployment Statistics: <http://www.bls.gov/lau/>
- NY Department of Labor -
 - Labor statistics: <http://www.labor.ny.gov/stats/>
 - Quarterly Census of Employment and Wages (QCEW): <http://www.labor.ny.gov/stats/lsqcew.shtm>
- Bureau of Economic Analysis (BEA) – Local Area Personal Income and Employment: <http://bea.gov/iTable/iTable.cfm?ReqID=70&step=1>

- USDA Census of Agriculture
 - 2007
 - Home page: <http://www.agcensus.usda.gov/Publications/2007/index.php>
 - County profile: http://www.agcensus.usda.gov/Publications/2007/Online_Highlights/County_Profiles/New_York/cp36013.pdf
 - Race, Ethnicity and Gender Profiles: http://www.agcensus.usda.gov/Publications/2007/Online_Highlights/Race_Ethnicity_and_Gender_Profiles/New_York/cpd36013.pdf
- USDA National Agricultural Statistics Service (NASS)
 - Home page: <http://www.nass.usda.gov/index.asp>
 - New York Statistical Bulletins: http://www.nass.usda.gov/Statistics_by_State/New_York/Publications/Annual_Statistical_Bulletin/
 - Cropland Data Layer – CropScape: <http://nassgeodata.gmu.edu/CropScape/>
- USDA Agricultural Research Service – Plant Hardness Zone Map: <http://planthardiness.ars.usda.gov/PHZMWeb/>
- NOAA, Northeast Regional Climate Center at Cornell University
 - Home page: <http://www.nrcc.cornell.edu/index.html>

Alternative sites for data retrieval:

- The Nelson A. Rockefeller Institute of Government – New York State Statistical Yearbooks http://www.rockinst.org/nys_statistics/
- Headwaters Economics: Economic Profile System – Human Dimensions Toolkit <http://headwaterseconomics.org/tools/eps-hdt>
- National Historical Geographic Information System (NHGIS) <https://www.nhgis.org/>
- Social Explorer <http://www.socialexplorer.com/pub/home/home.aspx>
- Missouri Census Data Center <http://mcdc.missouri.edu/>
- DataFerret <http://dataferrett.census.gov/>
- Investigative Reporters and Editors (IRE) Census project <http://census.ire.org/>