

Cayuga County Profile 2013

A collection of recent demographic, social, economic and agricultural data

Compiled by Jan Vink

Assisted by Joe Francis, Sutee Anantsuksomsri, Nij Tontisirin, Johannes Plambeck



Cornell University
Cooperative Extension



This profile is a part of a set of profiles generated for each county in New York State. The profiles were developed and generated by the Cornell Program on Applied Demographics. The work is sponsored by Cornell Cooperative Extension and promoted with webinars and workshops in coordination with the Community & Regional Development Institute.

Cornell Program on Applied Demographics:

The Program on Applied Demographics (PAD) brings skills in demographics, economics, statistics, data gathering and data analysis together to provide a variety of organizations with data, information and advice.

For more information: <http://pad.human.cornell.edu/>

Cornell Cooperative Extension:

Cornell Cooperative Extension (CCE) puts knowledge to work in pursuit of economic vitality, ecological sustainability and social well-being. We bring local experience and research based solutions together, helping New York State families and communities thrive in our rapidly changing world.

For more information: <http://cce.cornell.edu/>

Community & Regional Development Institute:

The Community & Regional Development Institute (CaRDI) supports informed decision making for residents and communities in New York State through applied research and education.

For more information: <http://cardi.cornell.edu/>

All profiles are freely downloadable as PDF documents on the PAD website:

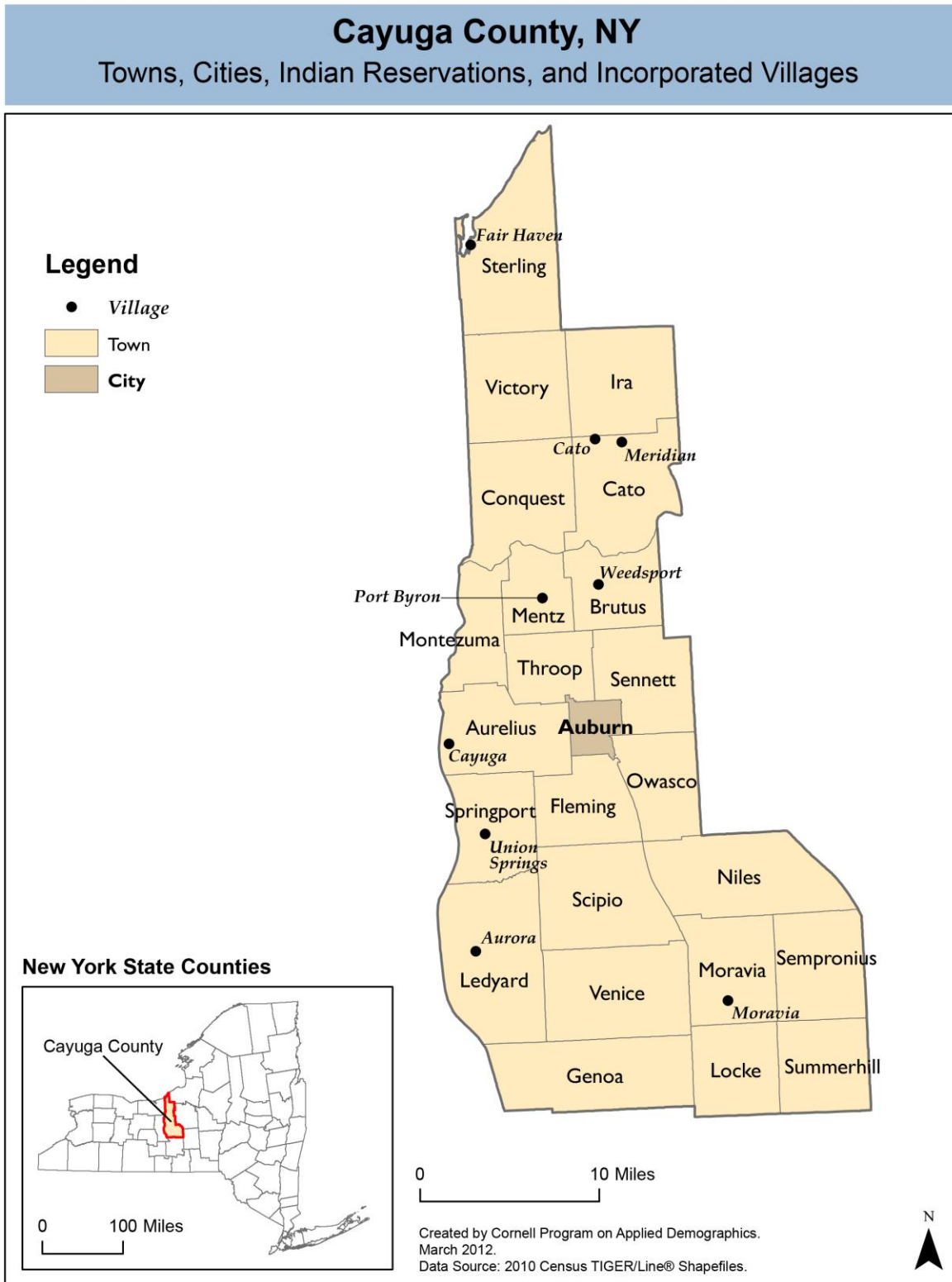
<http://pad.human.cornell.edu/profiles/index.cfm>

Contents

Contents	2
1 Reference Maps	4
2 Population density and Urban Areas Map	6
3 Total Population	7
3.1 Historic and projected	7
3.2 Change since previous Census	7
3.3 Annual population estimates	8
3.4 Percentage sub county change 2000-2010	9
4 Population by age	11
4.1 Historic and projected population pyramids	11
4.2 Selected age groups	12
4.3 Median age: comparison between areas	14
5 Race	15
5.1 Total and household population by race	15
5.2 Race composition by age	15
6 Housing units	16
6.1 Characteristics	16
6.2 Historical data on number of housing units and occupancy status	17
7 Education	18
7.1 Enrollment by level of school	18
7.2 Enrollment by age	18
7.3 Percentage age 18-24 enrolled in college	18
7.4 Educational attainment	19
8 Language spoken at home	19
9 Labor Force Characteristics	20
9.1 Labor force, employment and unemployment	20
9.2 Annual unemployment rate	21
9.3 Monthly unemployment rate	21
9.4 Employment and number of jobs	22
9.5 Class of worker	22
9.6 Jobs by industry sector	23
10 Household Income	24
10.1 Distribution	24
10.2 Median household income: Trends over time	25
10.3 Median household income: Comparison between areas	26
11 Poverty	27
11.1 Poverty characteristics	27
11.2 Poverty: Trends over time: Count	28
11.3 Poverty: Trends over time: Rate	28
11.4 Poverty rate: comparison between areas	29
12 Agriculture	30
12.1 Number of farms and land in farms	30
12.2 Farm Operator Characteristics	30

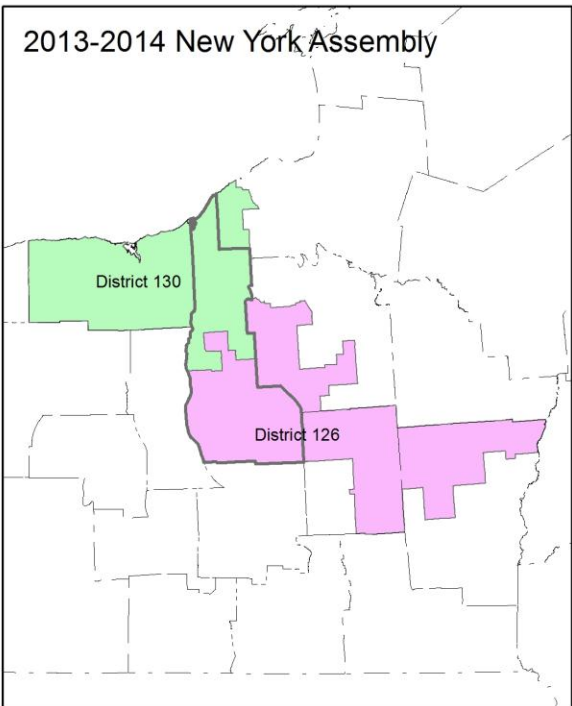
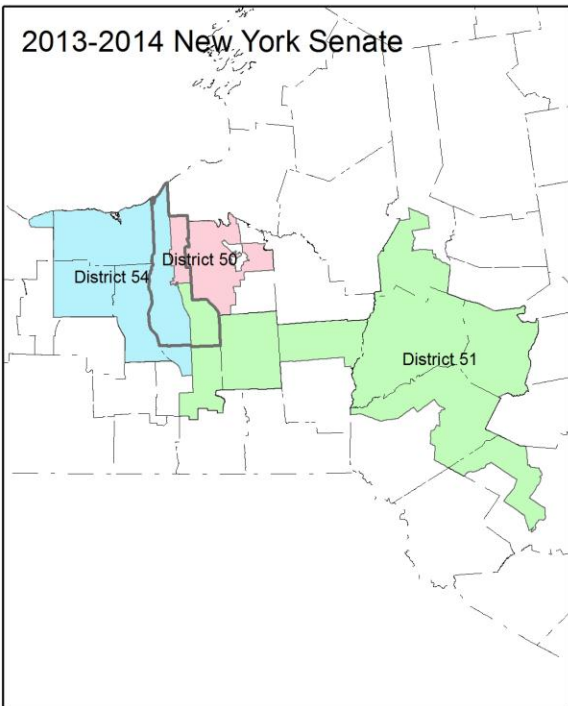
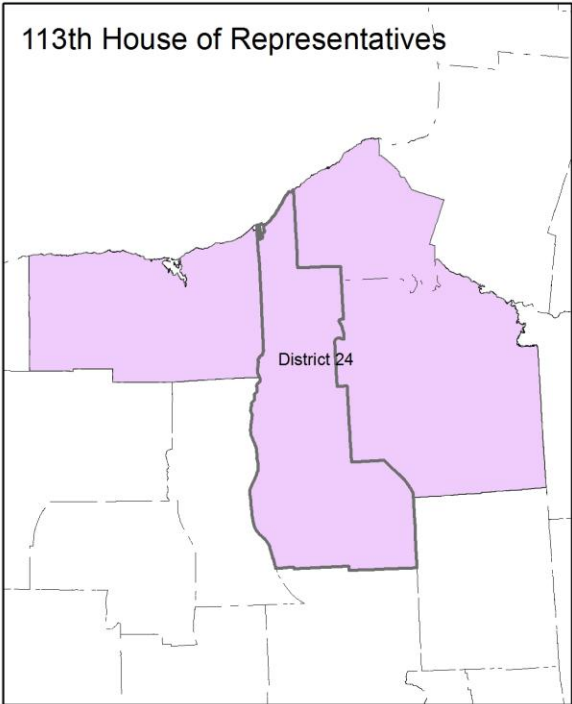
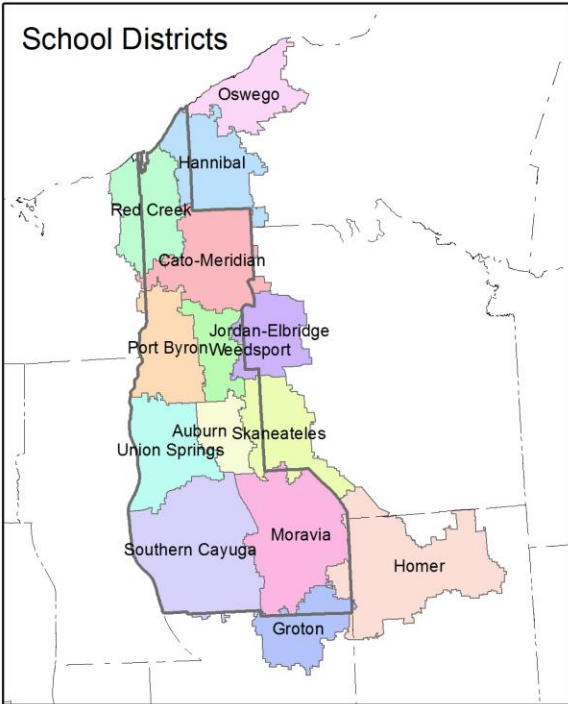
12.3 Map of type of crop 31
12.4 Estimated acreage by crop 32
13 Climate 33
14 Glossary..... 34
15 References 37

1 Reference Maps

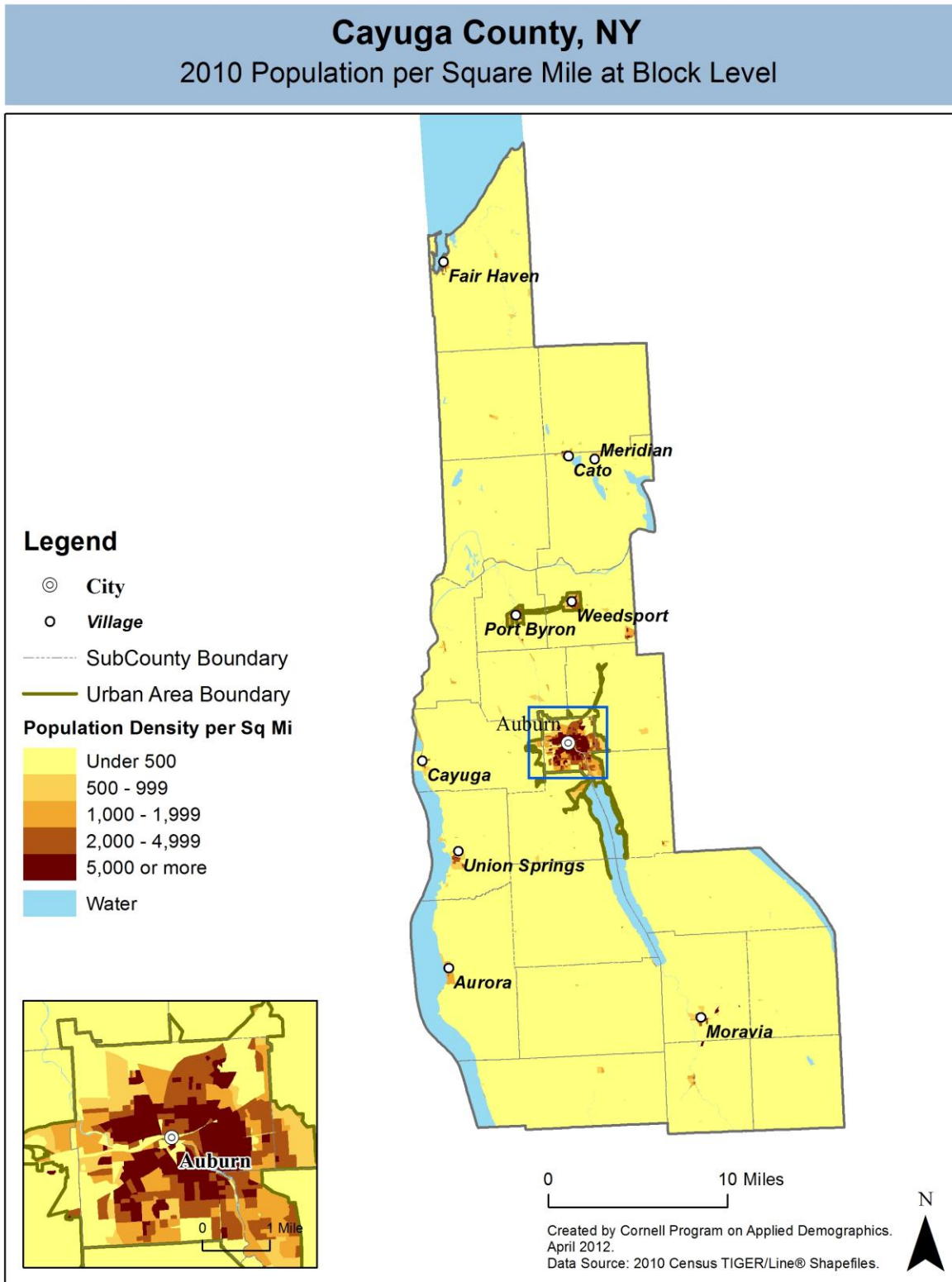


Cayuga County, NY

Overlap with School and Political Districts



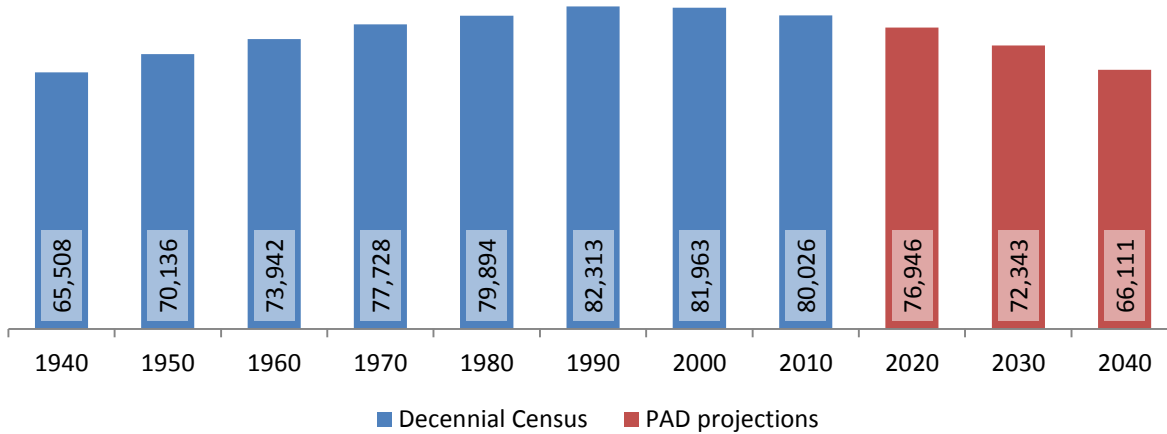
2 Population density and Urban Areas Map



3 Total Population

3.1 Historic and projected

Total population, Cayuga County, 1940-2040



Source: 1940-2010 Decennial Census and projections by Cornell Program on Applied Demographics

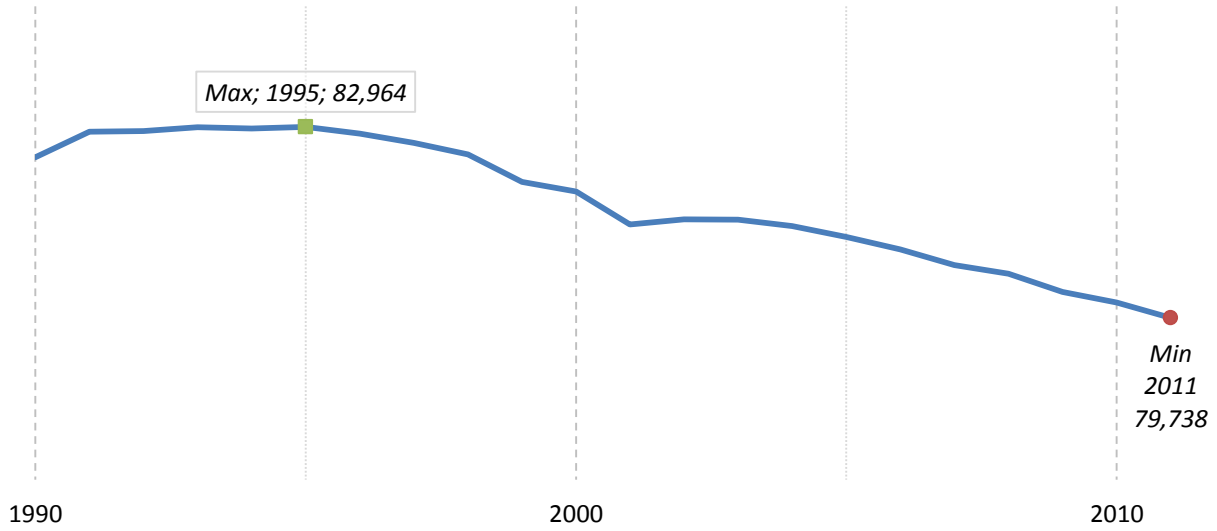
3.2 Change since previous Census

	Total population	Change	
		Number	Percent
Decennial Census	1940	65,508	
	1950	70,136	4,628 7.1%
	1960	73,942	3,806 5.4%
	1970	77,728	3,786 5.1%
	1980	79,894	2,166 2.8%
	1990	82,313	2,419 3.0%
	2000	81,963	-350 -0.4%
	2010	80,026	-1,937 -2.4%
PAD projections	2020	76,946	-3,080 -3.8%
	2030	72,343	-4,603 -6.0%
	2040	66,111	-6,232 -8.6%

Source: 1940-2010 Decennial Census and projections by Cornell Program on Applied Demographics

3.3 Annual population estimates

Annual population estimates
Cayuga County, 1990-2011



Source: U.S. Census Bureau population estimates (1990-1999 and 2000-2009 intercensal and vintage 2011 postcensal)

3.4 Percentage sub county change 2000-2010

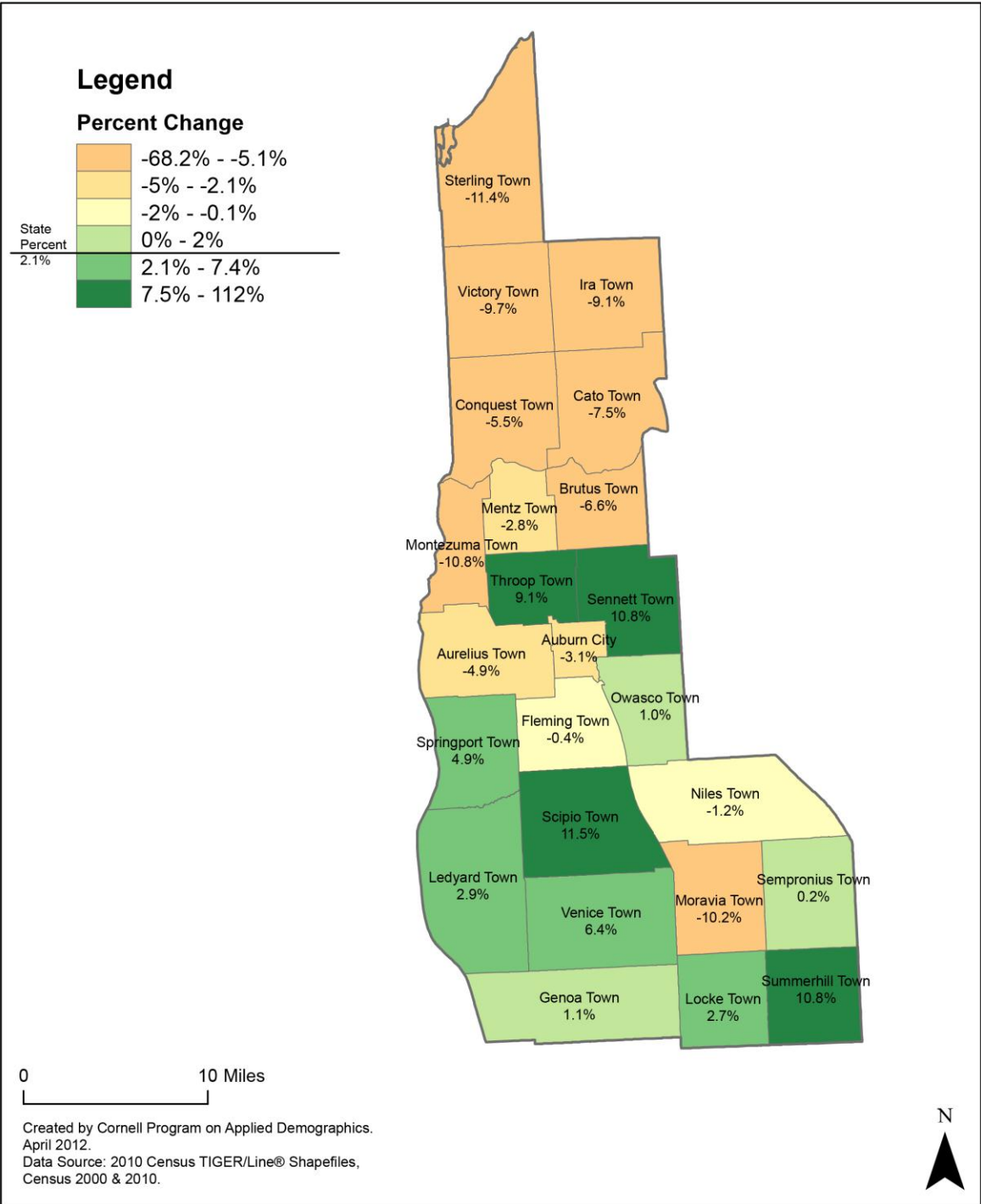
	Total Population		Difference	
	2000	2010	Count	%
New York State	18,976,821 *	19,378,102	401,281	2.1%
Cayuga County	81,963	80,026	-1,937	-2.4%
Cities				
Auburn	28,574	27,687	-887	-3.1%
Towns				
Aurelius	2,936	2,792	-144	-4.9%
Brutus	4,777	4,464	-313	-6.6%
Cato	2,744	2,537	-207	-7.5%
Conquest	1,925	1,819	-106	-5.5%
Fleming	2,647	2,636	-11	-0.4%
Genoa	1,914	1,935	21	1.1%
Ira	2,426	2,206	-220	-9.1%
Ledyard	1,832	1,886	54	2.9%
Locke	1,900	1,951	51	2.7%
Mentz	2,446	2,378	-68	-2.8%
Montezuma	1,431	1,277	-154	-10.8%
Moravia	4,040	3,626	-414	-10.2%
Niles	1,208	1,194	-14	-1.2%
Owasco	3,755	3,793	38	1.0%
Scipio	1,537	1,713	176	11.5%
Sempronius	893	895	2	0.2%
Sennett	3,244	3,595	351	10.8%
Springport	2,256	2,367	111	4.9%
Sterling	3,432	3,040	-392	-11.4%
Summerhill	1,098	1,217	119	10.8%
Throop	1,824	1,990	166	9.1%
Venice	1,286	1,368	82	6.4%
Victory	1,838	1,660	-178	-9.7%

* Original counts revised through Count Question Resolution Program (CQR)

Source: U.S. Census Bureau intercensal population estimates 2000-2010

Cayuga County, NY

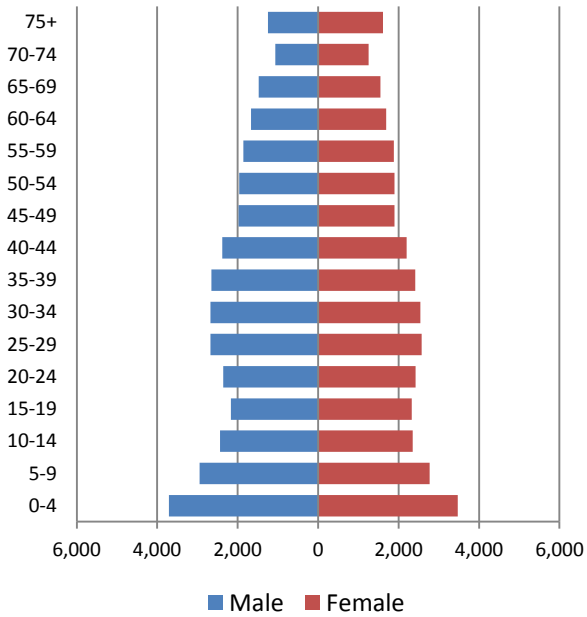
County Subdivision, Percent Change in Population 2000-2010



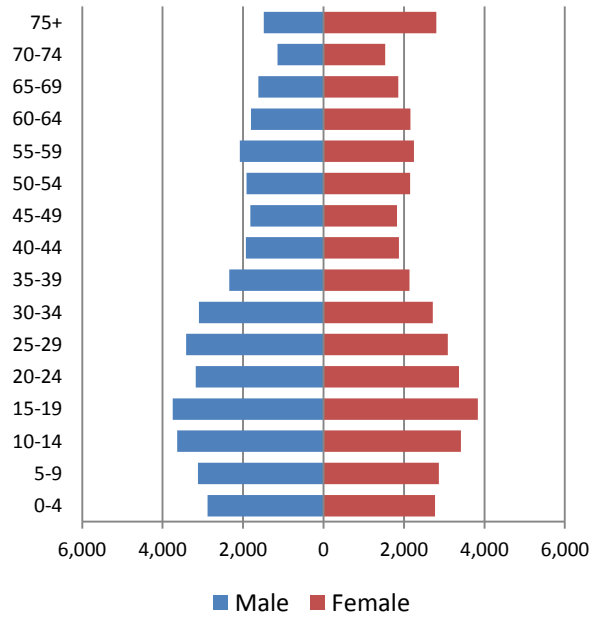
4 Population by age

4.1 Historic and projected population pyramids

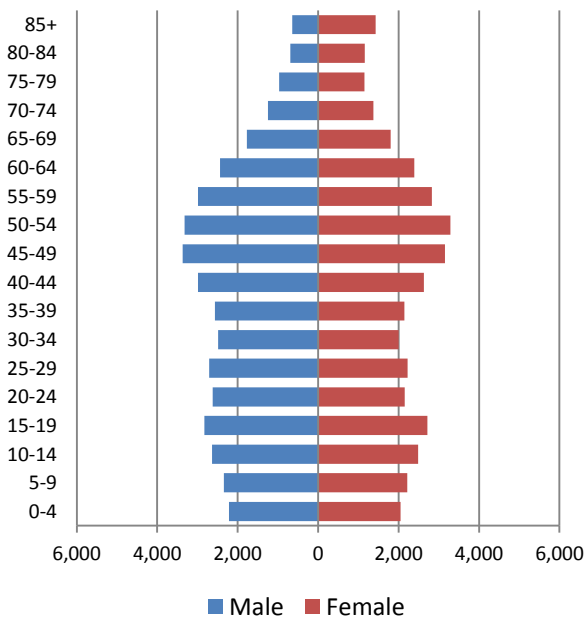
1950 Population Pyramid, Cayuga County



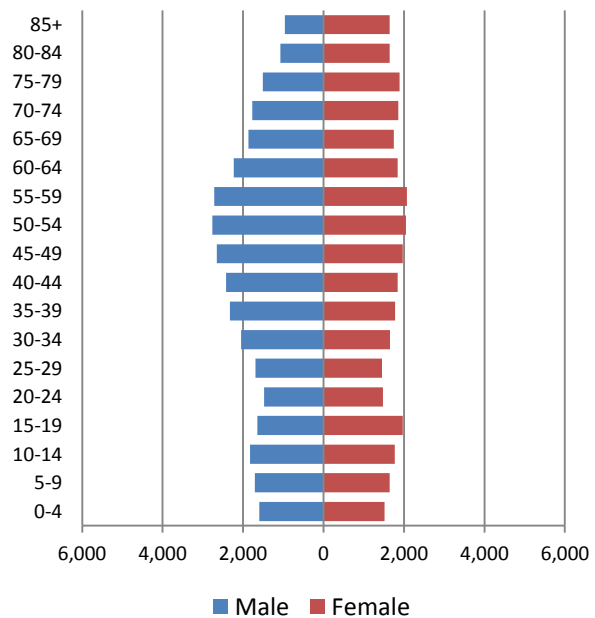
1980 Population Pyramid, Cayuga County



2010 Population Pyramid, Cayuga County



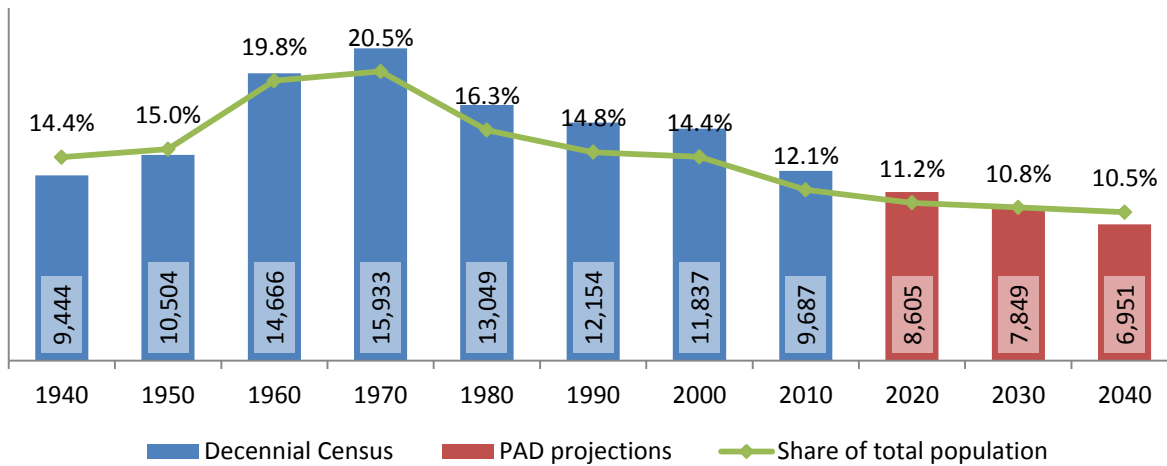
2040 Population Pyramid, Cayuga County



Source: 1950, 1980, 2010 Decennial Census and projections by Cornell Program on Applied Demographics

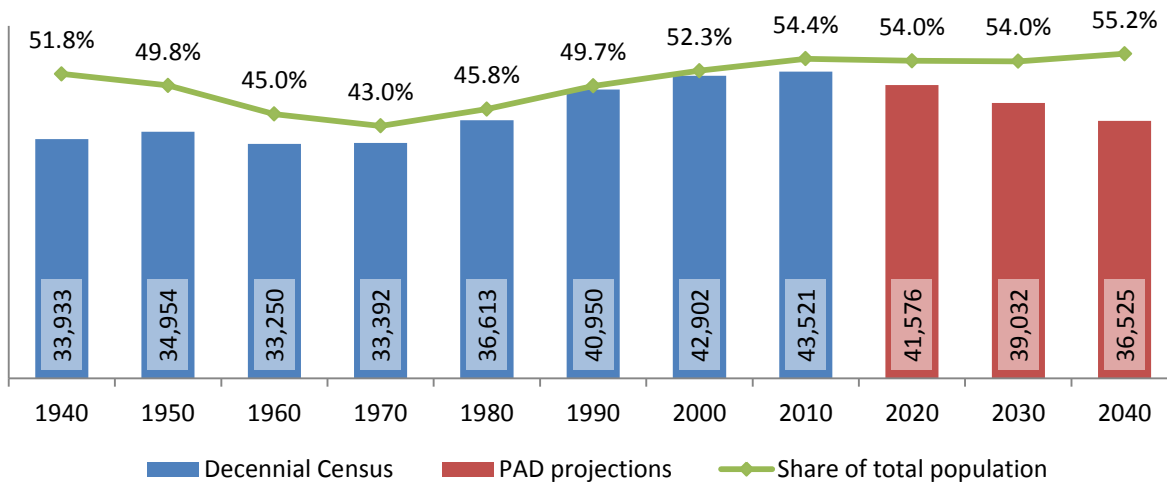
4.2 Selected age groups

Population age 5-14, Cayuga County, 1940-2040



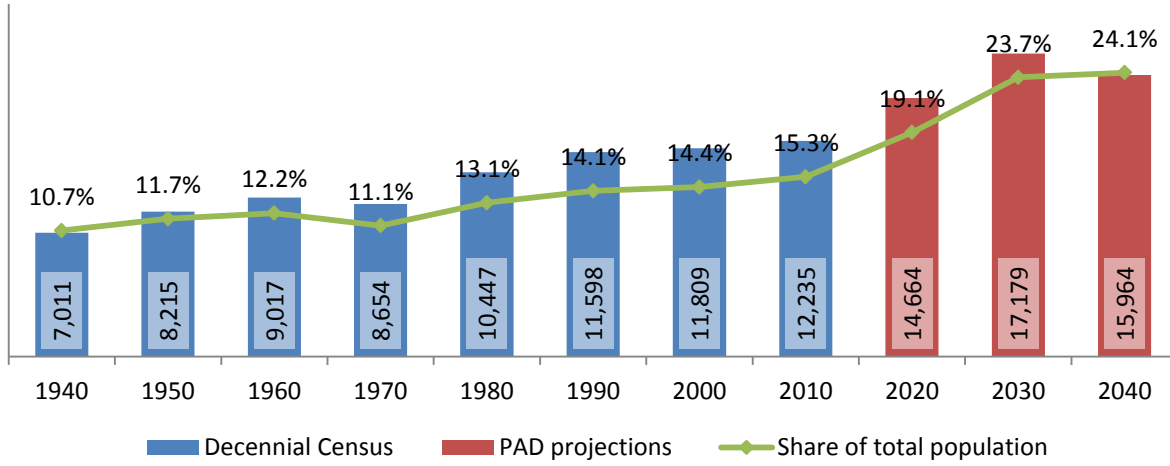
Source: 1940-2010 Decennial Census and projections by Cornell Program on Applied Demographics

Population age 25-64, Cayuga County, 1940-2040



Source: 1940-2010 Decennial Census and projections by Cornell Program on Applied Demographics

Population age 65 and over, Cayuga County, 1940-2040

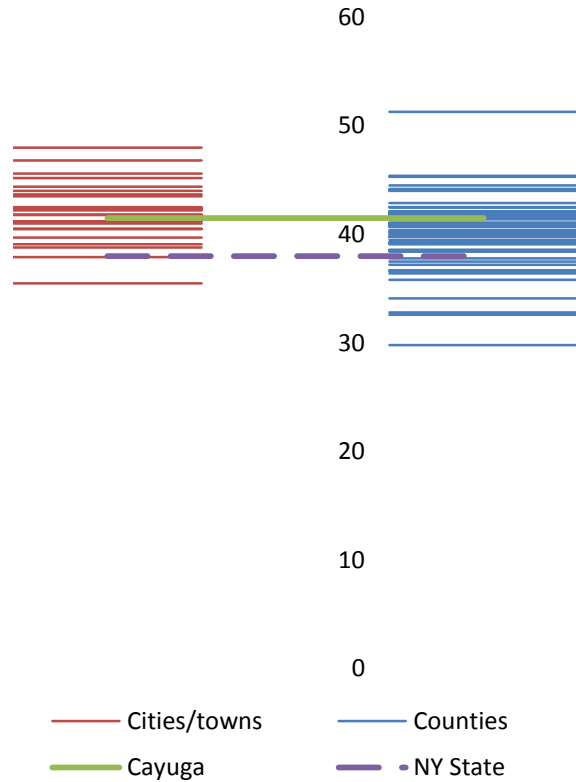


Source: 1940-2010 Decennial Census and projections by Cornell Program on Applied Demographics

4.3 Median age: comparison between areas

	Median Age
New York State	38.0
Cayuga County	41.5
Cities	
Auburn city	39.1
Towns	
Aurelius town	45.2
Brutus town	42.2
Cato town	42.4
Conquest town	41.8
Fleming town	48.0
Genoa town	42.5
Ira town	41.0
Ledyard town	35.5
Locke town	41.2
Mentz town	40.5
Montezuma town	42.3
Moravia town	37.9
Niles town	45.6
Owasco town	46.8
Scipio town	40.5
Sempronius town	39.7
Sennett town	43.7
Springport town	43.5
Sterling town	44.0
Summerhill town	38.8
Throop town	44.4
Venice town	41.2
Victory town	41.8

Median age comparison within county (left) and between counties (right)



Source: 2010 Decennial Census

5 Race

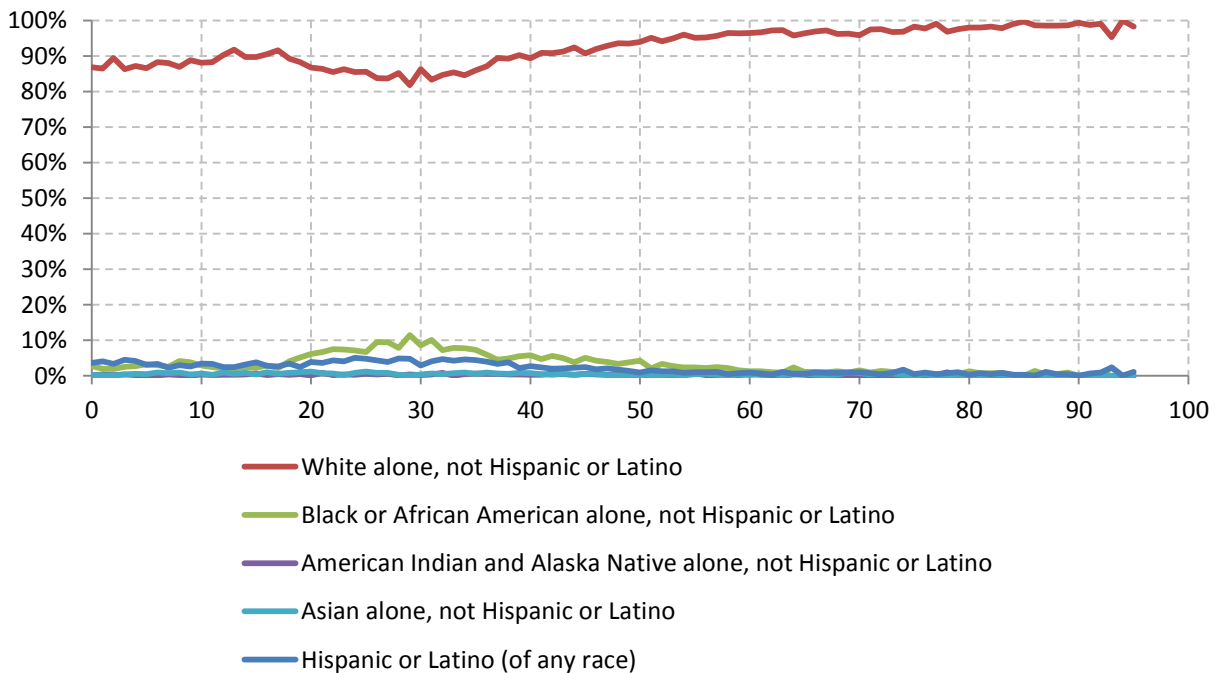
5.1 Total and household population by race

	Total		In households		In Group Quarters
	Count	Percentage	Count	Percentage	Count
Total population	80,026	100%	75,781	100%	4,245
Not Hispanic or Latino					
One race					
White	73,098	91.3%	71,202	94.0%	1,896
Black or African American	3,009	3.8%	1,367	1.8%	1,642
American Indian and Alaska Native	252	0.3%	223	0.3%	29
Asian	387	0.5%	357	0.5%	30
Native Hawaiian and Other Pacific Islander	26	0.0%	-	-	-
Some other race	112	0.1%	49	0.1%	63
Two or more races	1,246	1.6%	1,225	1.6%	21
Hispanic or Latino (of any race)	1,896	2.4%	1,333	1.8%	563

Source: 2010 Decennial Census

5.2 Race composition by age

Race composition by age, Cayuga County



Source: 2010 Decennial Census

6 Housing units

6.1 Characteristics

HOUSING OCCUPANCY	COUNT		PERCENTAGE	
	Estimate	Margin of error	Estimate	Margin of error
Total housing units	36,471	± 329	100.0%	
Occupied housing units	31,807	± 510	87.2%	± 1.1
Vacant housing units	4,664	± 390	12.8%	± 1.1
YEAR STRUCTURE BUILT				
Total housing units	36,471	± 329	100.0%	
Built 2005 or later	597	± 108	1.6%	± 0.3
Built 2000 to 2004	1,312	± 189	3.6%	± 0.5
Built 1990 to 1999	3,317	± 266	9.1%	± 0.7
Built 1980 to 1989	3,510	± 327	9.6%	± 0.9
Built 1970 to 1979	4,615	± 351	12.7%	± 1.0
Built 1960 to 1969	2,461	± 303	6.7%	± 0.8
Built 1950 to 1959	2,831	± 283	7.8%	± 0.8
Built 1940 to 1949	1,640	± 192	4.5%	± 0.5
Built 1939 or earlier	16,188	± 495	44.4%	± 1.4
HOUSING TENURE				
Occupied housing units	31,807	± 510	100.0%	
Owner-occupied	22,957	± 452	72.2%	± 1.3
Renter-occupied	8,850	± 475	27.8%	± 1.3
HOUSE HEATING FUEL				
Occupied housing units	31,807	± 510	100.0%	
Utility gas	15,713	± 510	49.4%	± 1.3
Bottled, tank, or LP gas	3,874	± 311	12.2%	± 1.0
Electricity	2,969	± 277	9.3%	± 0.8
Fuel oil, kerosene, etc.	5,756	± 359	18.1%	± 1.1
Coal or coke	443	± 91	1.4%	± 0.3
Wood	2,466	± 196	7.8%	± 0.6
Solar energy	0	± 89	0.0%	± 0.1
Other fuel	531	± 131	1.7%	± 0.4
No fuel used	55	± 34	0.2%	± 0.1
VALUE				
Owner-occupied units	22,957	± 452	100.0%	
Less than \$50,000	2,659	± 306	11.6%	± 1.3
\$50,000 to \$99,999	8,796	± 405	38.3%	± 1.7
\$100,000 to \$149,999	5,170	± 375	22.5%	± 1.5
\$150,000 to \$199,999	2,815	± 264	12.3%	± 1.1
\$200,000 to \$299,999	2,005	± 181	8.7%	± 0.8
\$300,000 to \$499,999	1,101	± 166	4.8%	± 0.7
\$500,000 to \$999,999	282	± 88	1.2%	± 0.4
\$1,000,000 or more	129	± 62	0.6%	± 0.3
Median (dollars)	100,200	± 2,660		

Source: 2007-2011 American Community Survey

6.2 Historical data on number of housing units and occupancy status

Year	Number of Housing Units	Change since previous Census	Occupied	Occupancy rate	Vacant
1970	26,348		22,987	87.2%	3,361
1980	30,955	17.5%	26,896	86.9%	4,059
1990	33,280	7.5%	29,075	87.4%	4,205
2000	35,477	6.6%	30,558	86.1%	4,919
2010	36,489	2.9%	31,445	86.2%	5,044

Source: 1970-2010 Decennial Census

7 Education

7.1 Enrollment by level of school

	Estimate	Margin of error
Total enrolled in school	18,264	± 412
Nursery school, preschool	998	± 163
Kindergarten	904	± 162
Elementary: grade 1 to grade 4	4,009	± 259
Elementary: grade 5 to grade 8	4,155	± 256
High school: grade 9 to grade 12	4,489	± 212
College, undergraduate	3,259	± 372
Graduate, professional school	450	± 115

Source: 2007-2011 American Community Survey

7.2 Enrollment by age

	Estimate	Margin of error
3 and 4 years	52.4%	± 6.8
5 to 9 years	95.6%	± 1.8
10 to 14 years	98.7%	± 1.1
15 to 17 years	93.8%	± 2.9
18 and 19 years	62.6%	± 6.7
20 to 24 years	30.6%	± 4.7
25 to 34 years	7.8%	± 1.9
35 years and over	2.0%	± 0.3

Source: 2007-2011 American Community Survey

7.3 Percentage age 18-24 enrolled in college

	Estimate	Margin of error
Population 18 to 24 years	6,919	± 146
Enrolled in college or graduate school	30.7%	± 4.3
Males 18 to 24 years	3,621	± 138
Enrolled in college or graduate school	22.7%	± 5.5
Females 18 to 24 years	3,298	± 112
Enrolled in college or graduate school	39.5%	± 6.1

Source: 2007-2011 American Community Survey

7.4 Educational attainment

	COUNT		PERCENTAGE	
	Estimate	Margin of error	Estimate	Margin of error
Population 25 years and over	55,686	± 146	100%	
EDUCATIONAL ATTAINMENT				
Less than 9th grade	2,102	± 230	3.8%	± 0.4
9th to 12th grade, no diploma	6,274	± 436	11.3%	± 0.8
High school graduate (includes equivalency)	20,057	± 682	36.0%	± 1.2
Some college, no degree	10,152	± 520	18.2%	± 0.9
Associate's degree	6,898	± 415	12.4%	± 0.7
Bachelor's degree	6,217	± 394	11.2%	± 0.7
Graduate or professional degree	3,986	± 334	7.2%	± 0.6
Percent high school graduate or higher			85.0%	± 0.9
Percent bachelor's degree or higher			18.3%	± 1.0

Source: 2007-2011 American Community Survey

8 Language spoken at home

	COUNT		PERCENTAGE		SPEAK ENGLISH LESS THAN "VERY WELL"	
	Estimate	Margin of error	Estimate	Margin of error	Estimate	Margin of error
Population 5 years and over	76,009	± 48	100%			
LANGUAGE SPOKEN AT HOME						
English only	72,872	± 307	95.9%	± 0.4		
Language other than English	3,137	± 293	4.1%	± 0.4	1,182	± 211
Spanish	1,454	± 230	1.9%	± 0.3	612	± 174
Other Indo-European languages	1,379	± 271	1.8%	± 0.4	429	± 139
Asian and Pacific Islander languages	172	± 91	0.2%	± 0.1	110	± 66
Other languages	132	± 81	0.2%	± 0.1	31	± 18

Source: 2007-2011 American Community Survey

9 Labor Force Characteristics

9.1 Labor force, employment and unemployment

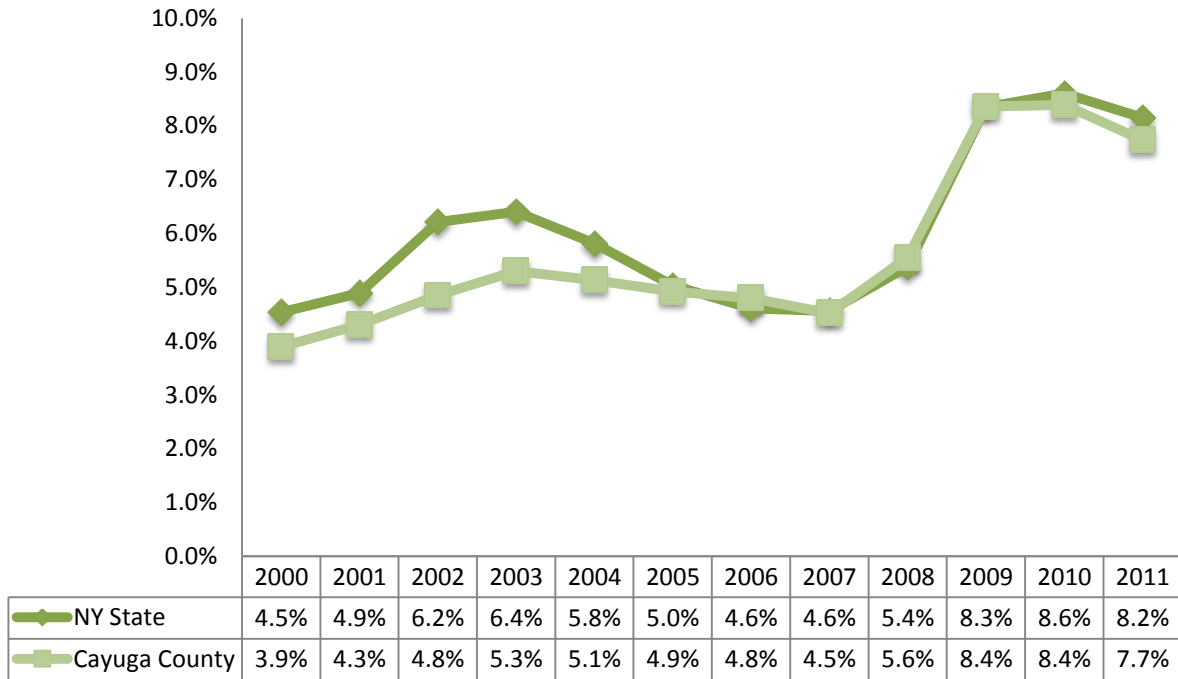
	TOTAL		IN LABOR FORCE		EMPLOYED		UNEMPLOYMENT RATE	
	Estimate	Margin of error	Estimate	Margin of error	Estimate	Margin of error	Estimate	Margin of error
Population 16 years and over	64,896	± 154	62.3%	± 1.3	57.9%	± 1.3	7.0%	± 0.8
AGE								
16 to 19 years	4,329	± 161	49.5%	± 4.3	39.7%	± 3.9	19.9%	± 4.3
20 to 24 years	4,881	± 131	75.1%	± 4.3	64.4%	± 4.7	14.2%	± 4.1
25 to 44 years	20,183	± 165	78.9%	± 2.3	74.0%	± 2.3	5.9%	± 1.0
45 to 54 years	13,045	± 109	80.6%	± 1.9	77.0%	± 1.9	4.3%	± 1.0
55 to 64 years	10,228	± 67	63.8%	± 3.0	59.8%	± 3.0	6.3%	± 1.7
65 to 74 years	6,204	± 67	21.2%	± 2.5	20.2%	± 2.5	4.7%	± 2.2
75 years and over	6,026	± 40	5.9%	± 1.7	5.5%	± 1.6	7.3%	± 6.6
RACE AND HISPANIC OR LATINO ORIGIN								
One race	64,277	± 213	62.4%	± 1.2	58.0%	± 1.2	6.9%	± 0.8
White	60,319	± 260	64.6%	± 1.0	60.1%	± 1.1	6.9%	± 0.8
Black or African American	2,972	± 167	21.4%	± 8.6	19.9%	± 7.8	7.1%	± 8.0
American Indian and Alaska Native	205	± 75	42.9%	± 28.7	25.4%	± 21.3	40.9%	± 28.3
Asian	310	± 39	85.8%	± 9.3	84.5%	± 9.3	1.5%	± 2.1
Pacific Islander	2	± 4	0.0%	± 100.0	0.0%	± 100.0	-	**
Some other race	469	± 133	33.7%	± 17.3	32.2%	± 17.7	4.4%	± 8.9
Two or more races	619	± 146	53.8%	± 15.7	42.8%	± 14.9	20.4%	± 11.1
Hispanic or Latino origin (of any race)	1,451	± 48	28.3%	± 16.4	27.6%	± 15.9	2.7%	± 3.5
White alone, not Hispanic or Latino	59,730	± 136	64.9%	± 1.0	60.3%	± 1.1	6.9%	± 0.8
SEX								
Population 20 to 64 years	48,337	± 85	75.8%	± 1.5	70.8%	± 1.5	6.4%	± 0.8
Male	25,584	± 140	75.3%	± 2.4	69.8%	± 2.5	7.1%	± 1.2
Female	22,753	± 103	76.3%	± 1.6	72.1%	± 1.6	5.6%	± 1.0
With own children under 6 years	3,213	± 315	71.4%	± 4.1	64.1%	± 4.5	10.0%	± 4.8
EDUCATIONAL ATTAINMENT								
Population 25 to 64 years	43,456	± 161	75.9%	± 1.5	71.6%	± 1.5	5.5%	± 0.7
Less than high school graduate	5,280	± 394	49.6%	± 4.4	44.3%	± 4.2	10.7%	± 2.5
High school graduate (includes equivalency)	15,152	± 569	74.8%	± 2.6	70.0%	± 2.7	6.4%	± 1.3
Some college or associate's degree	14,323	± 558	80.1%	± 1.9	75.3%	± 2.1	5.8%	± 1.4
Bachelor's degree or higher	8,701	± 474	86.7%	± 1.9	84.7%	± 2.1	1.9%	± 0.7

Table formula: **LABOR FORCE** = # EMPLOYED + # UNEMPLOYED
 % IN LABOR FORCE = LABOR FORCE / TOTAL * 100%
 % EMPLOYED = # EMPLOYED / TOTAL * 100%
 UNEMPLOYMENT RATE = # UNEMPLOYED / LABOR FORCE * 100%

Source: 2007-2011 American Community Survey

9.2 Annual unemployment rate

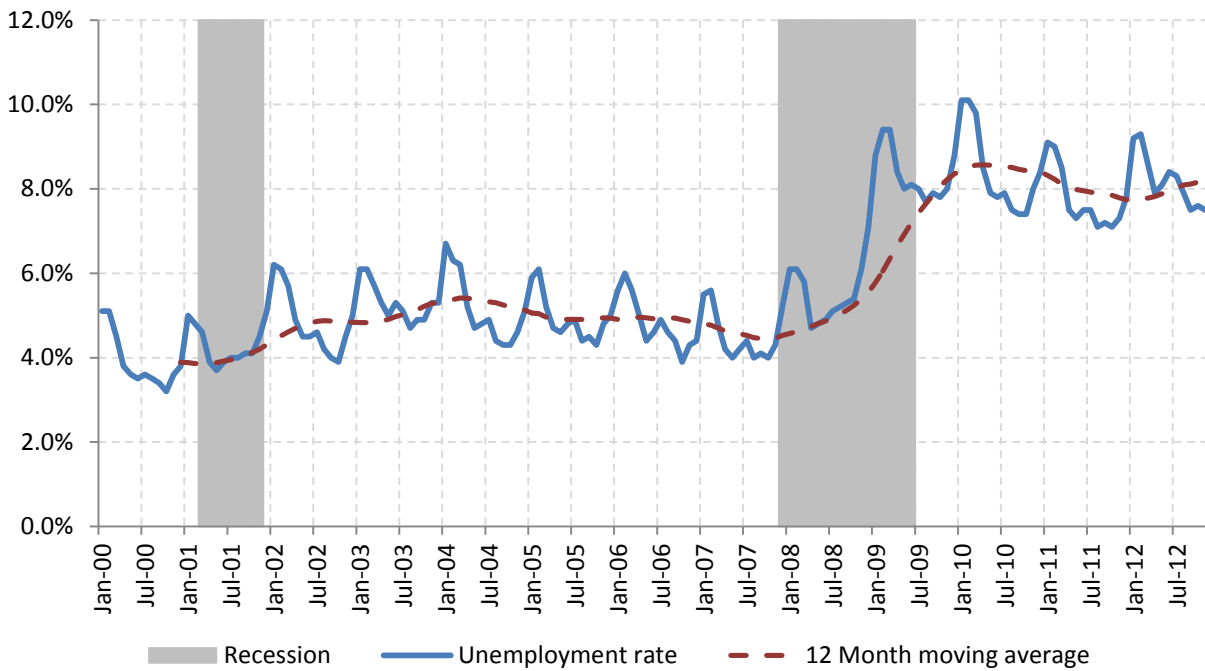
Annual unemployment rate, Cayuga County and New York State



Source: Bureau Labor Statistics (BLS)

9.3 Monthly unemployment rate

Monthly unemployment rate, Cayuga County



Source: Bureau Labor Statistics (BLS)

9.4 Employment and number of jobs

**Labor force, number of employed workers and number of jobs
Cayuga County**



Source: Bureau Labor Statistics (BLS) and NY Department of Labor - Quarterly Census of Employment and Wages (QCEW) – annual averages

9.5 Class of worker

		Median earnings (\$)					
		Total	%Male	%Female	Total	Male	Female
Civilian employed population 16 years and over	Estimate	37,547	52.1%	47.9%	31,533	38,194	25,633
	Margin of error	± 838	± 0.9	± 0.9	± 746	± 1,411	± 1,186
Private for-profit wage and salary workers:	Estimate	24,199	55.7%	44.3%	30,124	36,596	23,050
	Margin of error	± 760	± 1.4	± 1.4	± 981	± 1,711	± 1,536
Employee of private company workers	Estimate	23,393	54.9%	45.1%	29,817	36,046	23,186
	Margin of error	± 743	± 1.5	± 1.5	± 1,150	± 1,728	± 1,614
Self-employed in own incorporated business workers	Estimate	806	77.0%	23.0%	41,154	51,146	16,563
	Margin of error	± 160	± 7.6	± 7.6	± 9,773	± 15,884	± 8,633
Private not-for-profit wage and salary workers	Estimate	3,732	24.8%	75.2%	30,677	35,313	28,476
	Margin of error	± 368	± 3.8	± 3.8	± 1,342	± 6,433	± 5,031
Local government workers	Estimate	3,813	44.4%	55.6%	36,789	40,571	33,854
	Margin of error	± 371	± 4.5	± 4.5	± 1,825	± 3,491	± 4,499
State government workers	Estimate	2,527	59.9%	40.1%	50,798	54,770	42,436
	Margin of error	± 251	± 4.9	± 4.9	± 2,374	± 3,094	± 2,676
Federal government workers	Estimate	361	40.4%	59.6%	52,475	58,438	50,597
	Margin of error	± 106	± 10.5	± 10.5	± 5,307	± 4,015	± 6,126
Self-employed in own not incorporated business workers and unpaid family workers	Estimate	2,915	62.7%	37.3%	22,021	26,990	15,192
	Margin of error	± 321	± 4.8	± 4.8	± 2,094	± 2,937	± 5,458

Source: 2007-2011 American Community Survey

9.6 Jobs by industry sector

	Cayuga County			NY state
	2011	Change since 2006	% of total	% of total
All NAICS Sectors	26,282	-3.7%	100.0%	100.0%
Agriculture, Forestry, Fishing and Hunting	747	18.8%	2.8%	0.3%
Mining, Quarrying, and Oil and Gas Extraction	NA	NA	NA	0.1%
Utilities	NA	NA	NA	0.5%
Construction	1,066	1.7%	4.1%	3.5%
Manufacturing	3,401	-10.7%	12.9%	5.5%
Wholesale Trade	809	11.1%	3.1%	4.0%
Retail Trade	3,517	-14.1%	13.4%	10.5%
Transportation and Warehousing	753	-19.9%	2.9%	3.4%
Information	227	-19.8%	0.9%	3.3%
Finance and Insurance	307	1.3%	1.2%	6.0%
Real Estate and Rental and Leasing	172	-6.0%	0.7%	2.3%
Professional, Scientific, and Technical Services	693	-2.8%	2.6%	6.9%
Management of Companies and Enterprises	163	14.8%	0.6%	1.6%
Administrative and Support and Waste Management and Remediation Services	707	-12.8%	2.7%	5.2%
Educational Services	2,722	-12.4%	10.4%	10.8%
Health Care and Social Assistance	4,003	8.6%	15.2%	17.0%
Arts, Entertainment, and Recreation	465	20.2%	1.8%	1.9%
Accommodation and Food Services	1,980	10.6%	7.5%	7.3%
Other Services (except Public Administration)	994	7.7%	3.8%	3.9%
Public Administration	3,471	-3.9%	13.2%	5.8%

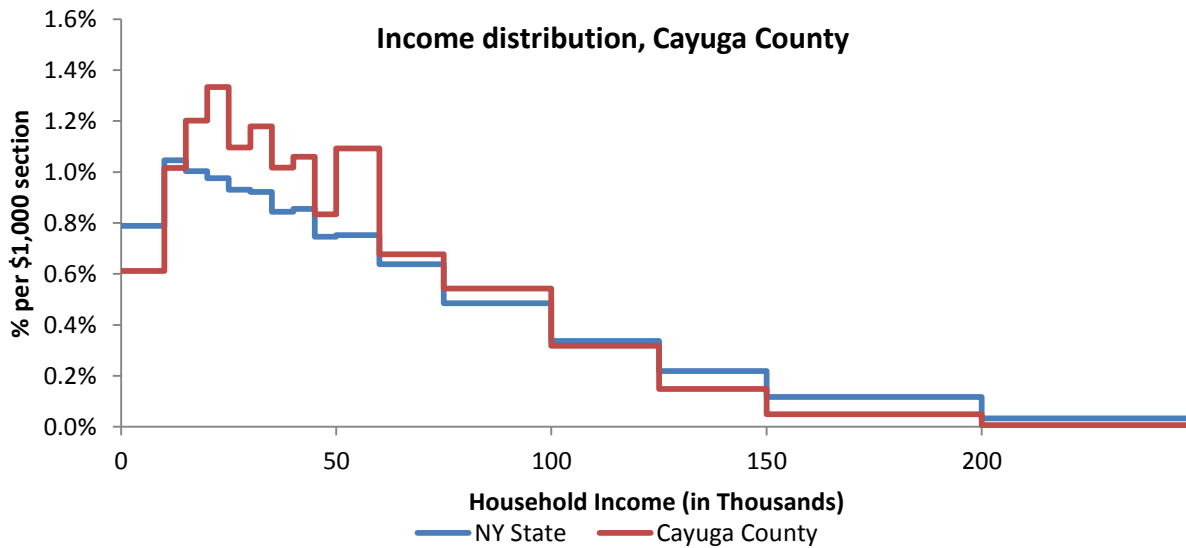
Source: U.S. Census Bureau - Public Use Quarterly Workforce Indicators (QWI) – annual averages

10 Household Income

10.1 Distribution

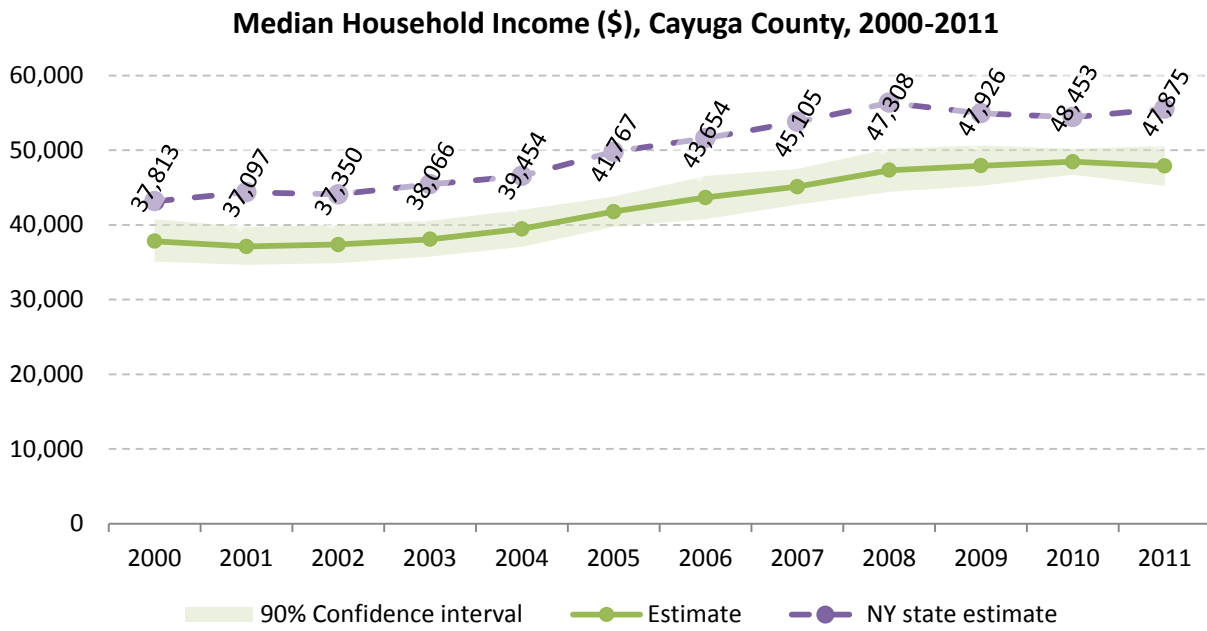
	Estimate	Margin of error	Interval width (in \$1,000)	Est. per \$1,000 section
Total:	31,807	± 510		
Less than \$10,000	1,947	± 322	10	194.7
\$10,000 to \$14,999	1,616	± 228	5	323.2
\$15,000 to \$19,999	1,911	± 285	5	382.2
\$20,000 to \$24,999	2,121	± 252	5	424.2
\$25,000 to \$29,999	1,743	± 205	5	348.6
\$30,000 to \$34,999	1,875	± 238	5	375.0
\$35,000 to \$39,999	1,617	± 246	5	323.4
\$40,000 to \$44,999	1,685	± 222	5	337.0
\$45,000 to \$49,999	1,326	± 179	5	265.2
\$50,000 to \$59,999	3,475	± 349	10	347.5
\$60,000 to \$74,999	3,232	± 296	15	215.5
\$75,000 to \$99,999	4,318	± 346	25	172.7
\$100,000 to \$124,999	2,529	± 280	25	101.2
\$125,000 to \$149,999	1,177	± 172	25	47.1
\$150,000 to \$199,999	787	± 117	50	15.7
\$200,000 or more	448	± 105	-	-

Source: 2007-2011 American Community Survey



Source: 2007-2011 American Community Survey

10.2 Median household income: Trends over time

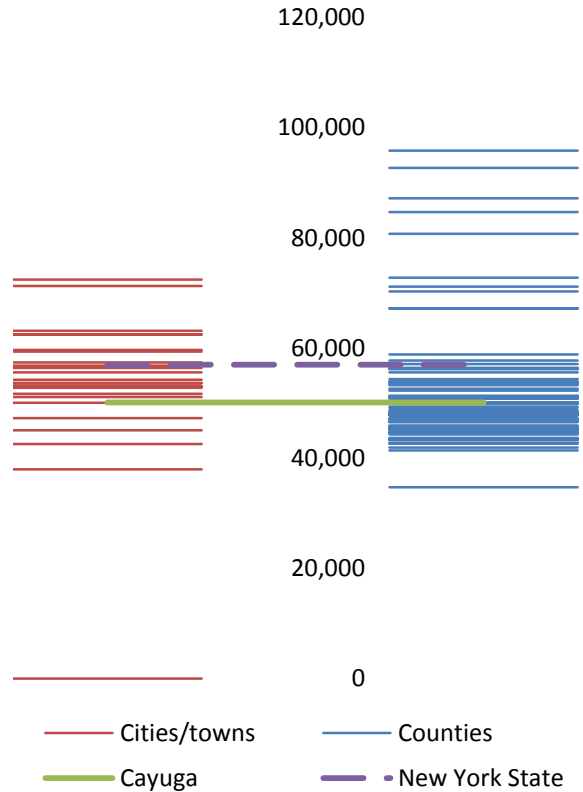


Source: Small Area Income and Poverty Estimates (SAIPE)

10.3 Median household income: Comparison between areas

	MEDIAN HOUSEHOLD INCOME (\$)	
	Estimate	Margin of error
New York State	56,951	± 190
Cayuga County	50,140	± 1,330
Cities		
Auburn	37,973	± 3,245
Towns		
Aurelius	53,651	± 6,024
Brutus	50,040	± 6,584
Cato	53,068	± 9,477
Conquest	47,269	± 6,538
Fleming	63,125	± 5,910
Genoa	56,818	± 9,306
Ira	53,611	± 10,084
Ledyard	54,236	± 6,454
Locke	51,667	± 7,498
Mentz	42,563	± 5,906
Montezuma	52,984	± 7,531
Moravia	55,587	± 7,594
Niles	57,361	± 10,915
Owasco	71,250	± 9,052
Scipio	72,422	± 9,336
Sempronius	52,813	± 6,576
Sennett	62,440	± 14,742
Springport	56,369	± 6,244
Sterling	45,071	± 5,614
Summerhill	59,375	± 5,934
Throop	59,671	± 5,902
Venice	62,500	± 10,203
Victory	51,086	± 4,373
Reservations		
	0	0.0

Median household income comparison within county (left) and between counties (right)



Source: 2007-2011 American Community Survey

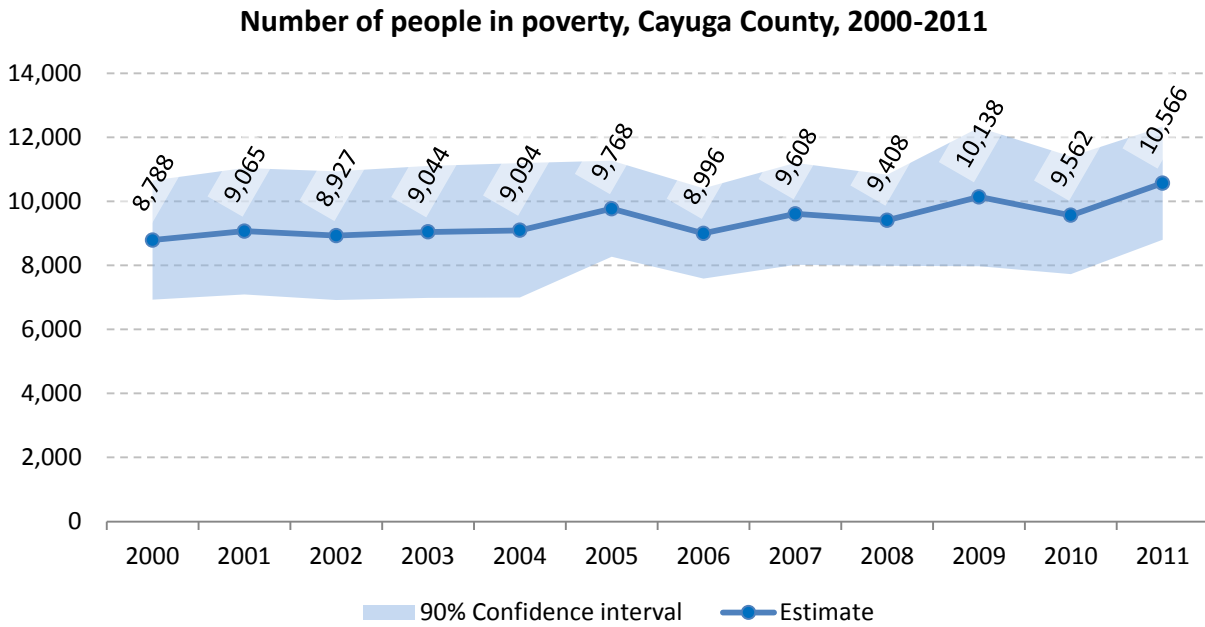
11 Poverty

11.1 Poverty characteristics

	TOTAL		BELOW POVERTY LEVEL		PERCENT BELOW POVERTY LEVEL	
	Estimate	Margin of error	Estimate	Margin of error	Estimate	Margin of error
Population for whom poverty status is determined	75,483	± 717	9,334	± 802	12.4%	± 1.1
AGE						
Under 18 years	17,127	± 181	3,316	± 482	19.4%	± 2.8
Related children under 18 years	16,994	± 192	3,183	± 475	18.7%	± 2.8
18 to 64 years	46,600	± 699	5,145	± 448	11.0%	± 0.9
65 years and over	11,756	± 201	873	± 171	7.4%	± 1.4
SEX						
Male	37,275	± 593	3,834	± 420	10.3%	± 1.1
Female	38,208	± 276	5,500	± 512	14.4%	± 1.3
RACE AND HISPANIC OR LATINO ORIGIN						
One race	74,373	± 692	8,960	± 791	12.0%	± 1.1
White	72,210	± 467	8,321	± 739	11.5%	± 1.0
Black or African American	1,388	± 378	503	± 209	36.2%	± 12.4
American Indian and Alaska Native	209	± 99	5	± 7	2.4%	± 3.6
Asian	396	± 64	76	± 80	19.2%	± 20.5
Hispanic or Latino origin (of any race)	1,026	± 301	278	± 129	27.1%	± 11.3
White alone, not Hispanic or Latino	71,515	± 384	8,173	± 753	11.4%	± 1.0
EDUCATIONAL ATTAINMENT						
Population 25 years and over	52,223	± 627	4,779	± 415	9.2%	± 0.8
Less than high school graduate	6,780	± 496	1,202	± 213	17.7%	± 3.0
High school graduate (includes equivalency)	18,997	± 601	1,911	± 246	10.1%	± 1.3
Some college, associate's degree	16,344	± 670	1,367	± 239	8.4%	± 1.4
Bachelor's degree or higher	10,102	± 523	299	± 117	3.0%	± 1.1
EMPLOYMENT STATUS						
Civilian labor force 16 years and over	40,089	± 816	2,951	± 346	7.4%	± 0.8
Employed	37,264	± 840	2,131	± 280	5.7%	± 0.7
Male	19,552	± 625	947	± 196	4.8%	± 1.0
Female	17,712	± 424	1,184	± 215	6.7%	± 1.2
Unemployed	2,825	± 324	820	± 179	29.0%	± 5.0
Male	1,650	± 264	378	± 126	22.9%	± 6.7
Female	1,175	± 202	442	± 139	37.6%	± 8.2
WORK EXPERIENCE IN THE PAST 12 MONTHS						
Population 16 years and over	60,538	± 702	6,322	± 481	10.4%	± 0.8
Worked full-time, year-round	25,113	± 690	640	± 156	2.5%	± 0.6
Worked part-time or part-year	16,333	± 603	2,194	± 303	13.4%	± 1.7
Did not work	19,092	± 585	3,488	± 364	18.3%	± 1.6

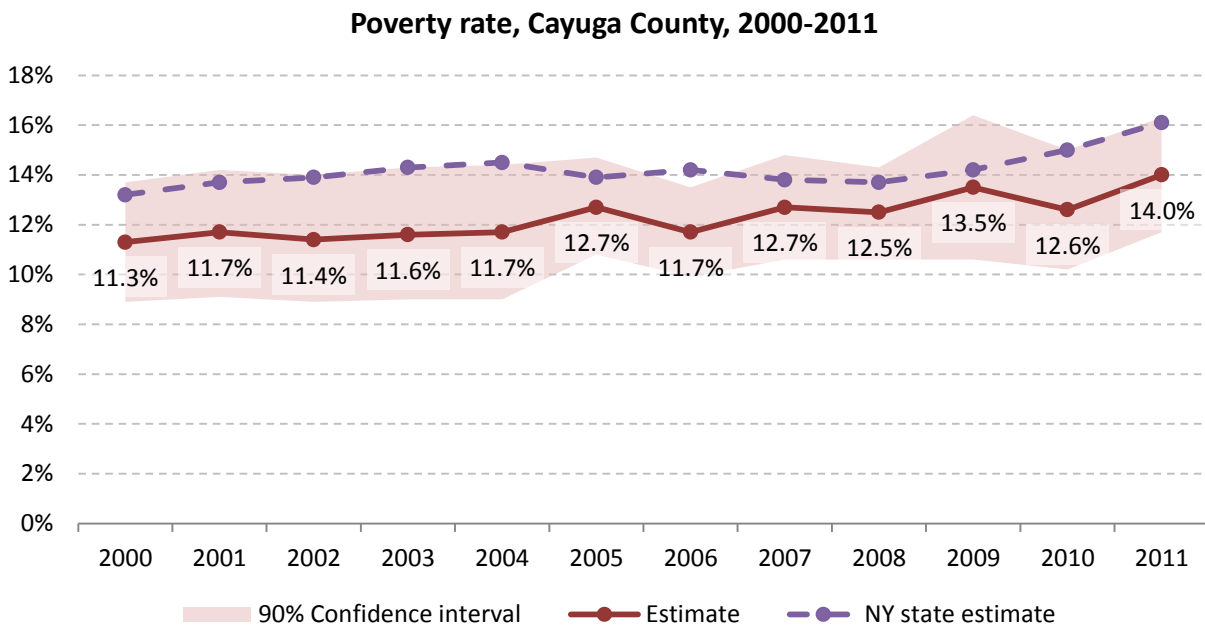
Source: 2007-2011 American Community Survey

11.2 Poverty: Trends over time: Count



Source: Small Area Income and Poverty Estimates (SAIPE)

11.3 Poverty: Trends over time: Rate

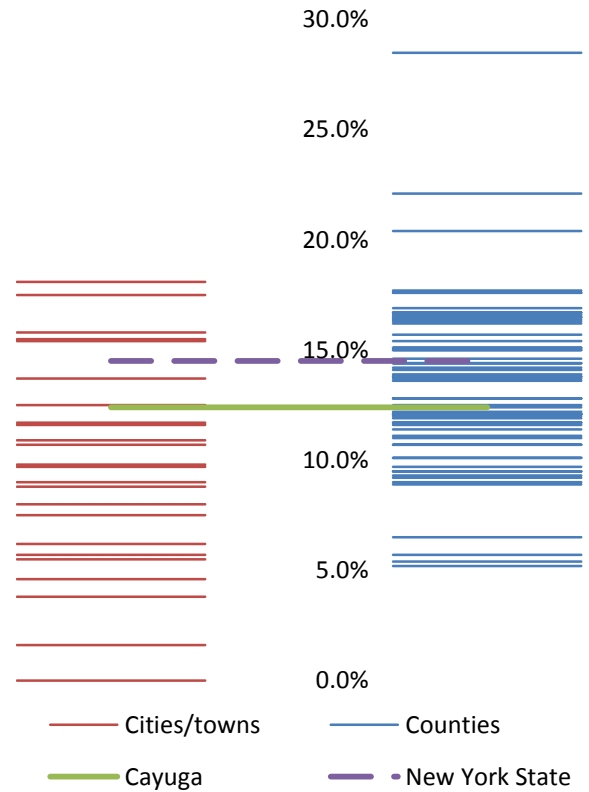


Source: Small Area Income and Poverty Estimates (SAIPE)

11.4 Poverty rate: comparison between areas

	Poverty Rate - All people	
	Estimate	Margin of error
New York State	14.5%	± 0.1
Cayuga County	12.4%	± 1.1
Cities		
Auburn	18.1%	± 2.3
Towns		
Aurelius	5.5%	± 3.9
Brutus	9.7%	± 3.0
Cato	9.7%	± 7.0
Conquest	13.7%	± 5.0
Fleming	3.8%	± 4.9
Genoa	15.5%	± 11.7
Ira	10.7%	± 5.0
Ledyard	6.2%	± 3.2
Locke	15.4%	± 5.6
Mentz	15.8%	± 6.2
Montezuma	9.0%	± 4.0
Moravia	4.6%	± 2.0
Niles	7.5%	± 3.5
Owasco	5.7%	± 4.4
Scipio	8.8%	± 4.2
Sempronius	12.5%	± 5.1
Sennett	1.6%	± 1.6
Springport	10.9%	± 4.3
Sterling	17.5%	± 12.1
Summerhill	11.7%	± 6.5
Throop	8.0%	± 4.3
Venice	9.8%	± 4.2
Victory	11.6%	± 6.3
Reservations		
	0.0%	0.0

Poverty rate comparison within county (left) and between counties (right)

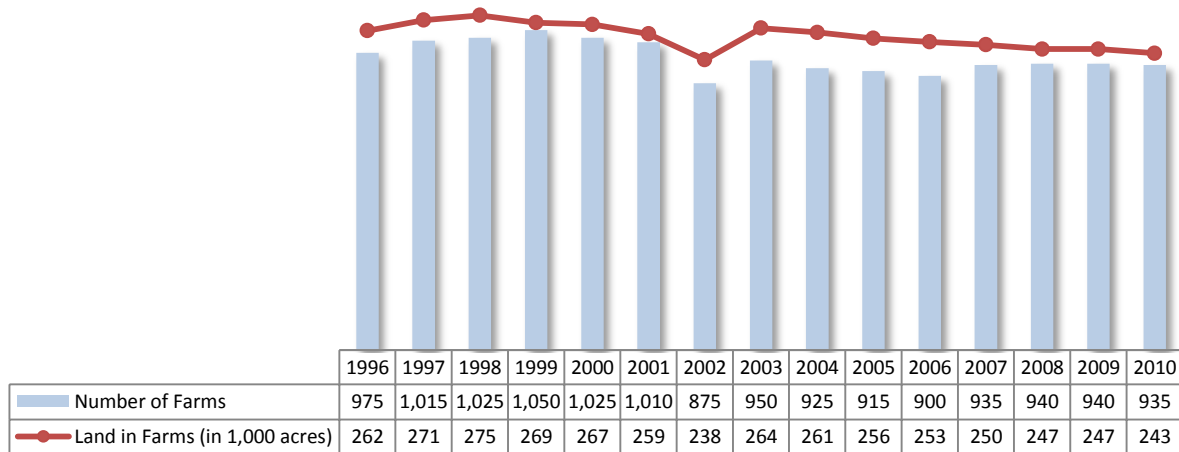


Source: 2007-2011 American Community Survey

12 Agriculture

12.1 Number of farms and land in farms

Cayuga County, 1996-2010



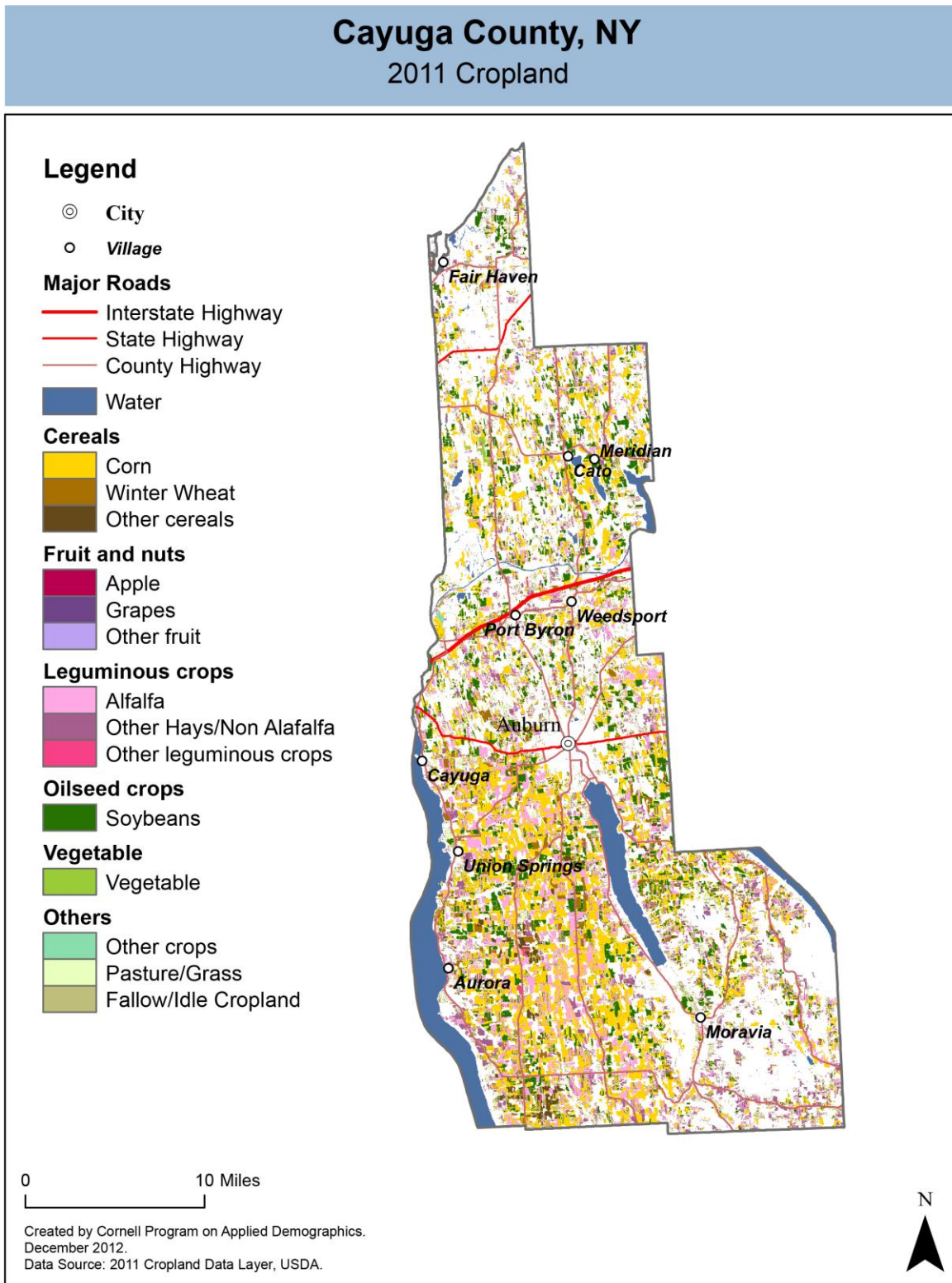
Source: National Agricultural Statistics Service – Annual Statistical bulletin

12.2 Farm Operator Characteristics

	Principal Operator		
	Total	Male	Female
Number of farms	936	813	123
Average size of farm (acres)	267	295	80
PRIMARY OCCUPATION			
Farming	513	459	54
Other	423	354	69
AGE			
Under 45	182	161	21
45 to 64 years	520	452	68
65 years and over	234	200	34
Average age (years)	55.9	55.7	57
YEARS ON PRESENT FARM			
Less than 3 years	29	27	2
3 to 4 years	43	37	6
5 to 9 years	121	92	29
10 years or more	743	657	86

Source: 2007 Agricultural Census

12.3 Map of type of crop

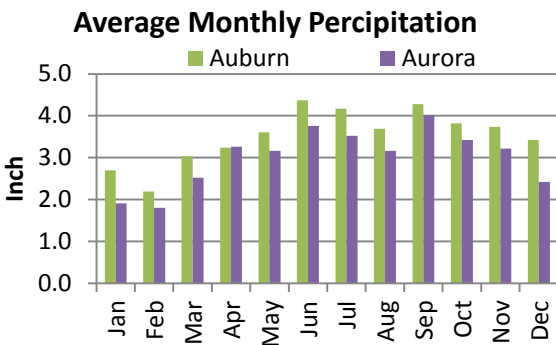
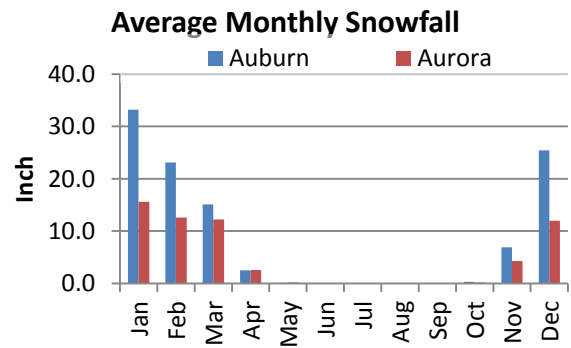
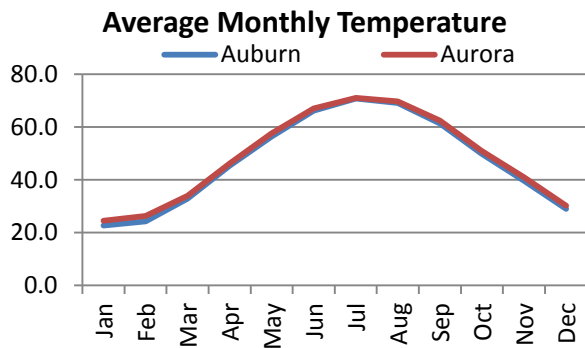
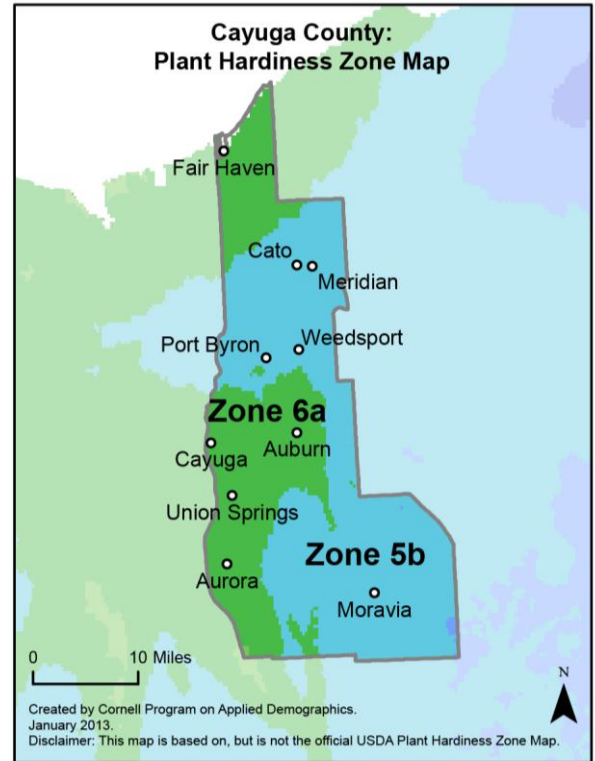


12.4 Estimated acreage by crop

	Acreage	%		Acreage	%
Cereals			Fruit and nuts		
Barley	293	0.1%	Apples	260	0.1%
Corn	77,675	36.4%	Apricots	1.6	0.0%
Millet	0.4	0.0%	Blueberries	4.7	0.0%
Oats	1,101	0.5%	Cherries	8	0.0%
Rye	164	0.1%	Cranberries	-	
Sorghum	27	0.0%	Grapes	213	0.1%
Speltz	29	0.0%	Nectarines	-	
Spring Wheat	3.1	0.0%	Peaches	-	
Sweet Corn	2,262	1.1%	Plums	0.2	0.0%
Triticale	59	0.0%	Prunes	-	
Winter Wheat	6,967	3.3%	Strawberries	2.0	0.0%
Dbl Crop WinWht/Corn	6	0.0%	Walnuts	-	
Leguminous crops			Beverage and spice crops		
Alfalfa	32,805	15.4%	Herbs	-	
Other Hay/Non Alfalfa	28,467	13.3%	Peppers	-	
Dry Beans	734	0.3%	Trees		
Peas	-		Christmas Trees	19	0.0%
Vetch	-		Other Tree Crops	-	
Oilseed crops			Other crops		
Soybeans	32,536	15.3%	Tobacco	-	
Sunflower	27	0.0%	Misc Veggies & Fruits	-	
Sugar crops			Clover/Wildflowers	67	0.0%
Sugarbeets	-		Sod/Grass Seed	-	
Root/tuber crops with high starch or inulin content			Switchgrass	-	
Potatoes	214	0.1%	Dbl Crop Soybeans/Oats	-	
Vegetables and melons			Dbl Crop WinWht/Soybeans	8	0.0%
Asparagus	-		Other Crops	59	0.0%
Broccoli	-		Pasture/Grass	19,047	8.9%
Cabbage	20	0.0%	Fallow/Idle Cropland	9,747	4.6%
Carrots	3.1	0.0%			
Eggplants	5	0.0%			
Onions	288	0.1%			
Pumpkins	136	0.1%			
Squash	79	0.0%			
Tomatoes	-				
Turnips	-				

Source: National Agricultural Statistics Service - Cropland Data Layer 2011

13 Climate



Average length of freeze-free season

	Last day of frost	First day of frost	Season length
Auburn	Not available		
Aurora	May 2	October 16	167

Source: NOAA, Northeast Regional Climate Center at Cornell University. Averages 1981-2010

14 Glossary

American Community Survey (ACS) - The American Community Survey is an ongoing survey of the population that provides data every year on a variety of social and economic characteristics—age, sex, race, family and relationships, income and benefits, health insurance, education, veteran status, disabilities, where you work and how you get there, where you live and how much you pay for some essentials. The ACS replaced the information previously gathered by what was known as the “long form” of the decennial censuses. The ACS provides communities, companies and other institutions with current information they need to plan investments and services. Information from the survey generates data that help determine how more than \$400 billion in federal and state funds are distributed each year. Every estimate presented in the American Community Survey, as in other surveys, has an uncertainty associated with it. Often the magnitude of that uncertainty is expressed as the Margin of Error.

Confidence Interval (CI) - indication of the degree of uncertainty about a sample estimates. Confidence intervals have been traditionally reported at the 90, 95 and 99 percent levels. A 90 percent confidence interval can be interpreted, for example, roughly as providing 90 percent certainty that the interval defined by the upper and lower bounds contain the true value of the characteristic. If a Margin of Error is given, the lower bound of the confidence interval is equal to the estimate minus the Margin of Error and the upper bound is equal to the estimate plus the Margin of Error. (See further, Margin of Error definition below.)

County subdivision or Minor Civil Division (MCD) - The Census Bureau geography for primary administrative units below the county level in New York is collectively referred to as county subdivisions or minor civil divisions. These include towns, cities and Indian Reservations.

Decennial Census - the Census of the population and housing taken every 10 years in the United States, at the start of each decade, since 1790.

Employed – either “at work” or “with a job, but not at work”.

Group Quarters Population - all U.S. residents who live in group living facilities including correctional institutions, juvenile facilities, skilled nursing facilities, college residence halls, military barracks, group homes, and workers' dormitories.

Household Population - all U.S. residents who live in housing units such as single family homes, townhouses, apartments, and mobile homes.

Intercensal Population Estimates - estimates produced for the years between two decennial censuses when both the beginning and ending populations are known. They are produced once a decade by adjusting the existing time series of postcensal estimates for the entire decade to smooth the transition from one decennial census count to the next. They differ from the postcensal estimates that are released annually because the difference between the April 1 postcensal estimate and April 1 census count for the end of the decade is redistributed across the estimates for that decade. For dates when both postcensal and intercensal estimates are available, intercensal estimates are preferred.

Labor Force - consists of people classified as employed or unemployed.

Margin of Error (MOE) - a measure of the precision of an estimate at a given level of confidence. The confidence level of a margin of error indicates the likelihood that the difference between the population value (which you

would get if you could measure the whole population instead of a sample) and the estimate is less than or equal to the margin of error. The range from the estimate minus the margin of error to the estimate plus the margin of error is called the confidence interval. All ACS estimates are published with their margins of error at the 90 percent confidence level. Margins of error are useful in assessing the reliability of estimates and whether differences between estimates are significant.

NAICS - The North American Industry Classification System or NAICS is used by business and government to classify business establishments according to type of economic activity (process of production).

Numeric Population Change - difference between the population of an area at the beginning and end of a time period. It is computed by taking the difference between the population at one point in time (t1) and some future time (t2).

Percent Population Change - difference between the population of an area at the beginning and end of a time period, expressed as a percentage of the beginning population. It is computed by dividing the population change (t2 - t1) by t1 and multiplying the result by 100.

Population Estimates - The calculated number of people living in an area as of a specified point in time, usually July 1st. The estimated population is calculated using a component of change model that incorporates information on natural increase (births, deaths) and net migration (net domestic migration, net international migration) that has occurred in an area since the latest decennial census. A procedure for estimating the current population using a procedure involving a "base population" value at time t -1, adding to that the births during the interval t-1 to t, subtracting the deaths during that interval t-1 to t, and then adding the net domestic and net international migration that occurred during that interval.

Population Density - Total number of people per areal unit like a square mile or square kilometer.

Population Pyramids - A graphical way of portraying a population's age and sex composition at a given slice in time. The first horizontal bar, constituting the base of the graph, is the youngest age group (typically 0-4) with the number of males in that age group on the left and the number of females in that age group on the right. On top of that age group is another horizontal bar for the next age group (e.g. 5-9) and so forth with the top bar typically for those aged 75 and over. In a population with lots of births and deaths, the shape typically forms a pyramid with a broad base and a narrow top. It is one of the most basic ways to understand population change over time as well as between different geographic units of a similar status (e.g. counties).

Postcensal Estimates - estimates produced for the years after a decennial census when only the beginning population is known. They are produced and revised each year, targeted to July 1 of that year.

Projection - estimated population at some future time based on assumptions about births, deaths, migration, and ages.

Race/Ethnicity - the Census Bureau collects racial data in accordance with guidelines provided by the U.S. Office of Management and Budget (OMB), and these data are based on self-identification. The racial categories included in the census questionnaire generally reflect a social definition of race recognized in this country and not an attempt to define race biologically, anthropologically, or genetically. In addition, it is recognized that the categories of the race item include racial and national origin or sociocultural groups. People may choose to report more than one race to indicate their racial mixture, such as "American Indian" and "White." People who identify their origin as Hispanic, Latino, or Spanish may be of any race. OMB requires five minimum categories: White, Black or African American, American Indian or Alaska Native, Asian, and Native Hawaiian or Other Pacific

Islander. Hispanics may be classified as white or black. So we generally separate them out as an ethnic group first.

Unemployed – Not employed, but actively looking for work and available to accept a job.

Unemployment rate – Fraction of the Labor Force that is unemployed.

Urban Area – A densely settled area with at least 2,500 people. If the total number of people is less than 50,000 the Census Bureau calls it an Urban Cluster, otherwise an Urbanized Area.

Vintage - each year, the U.S. Census Bureau produces and publishes estimates of the population for each state and county, as well as the nation as a whole. These are called “vintages.” In producing these vintages, the Bureau utilizes administrative data from a number of sources to estimate 1) the change in population since the most recent decennial census, and 2) the population for each year since the most recent decennial census. With each annual release of population estimates (vintage), the entire time series of estimates beginning on April 1, 2010 is revised and updated.

15 References

Cayuga County homepage: <http://www.co.cayuga.ny.us/>

At Cornell:

- Cornell Cooperative Extensions (CCE)
Home page: <http://www.cce.cornell.edu>
 - Cayuga local office: <http://counties.cce.cornell.edu/cayuga/>
- Program on Applied Demographics (PAD)
URL: <http://pad.human.cornell.edu/>
- Community and Regional Development Institute (CaRDI)
URL: <http://devsoc.cals.cornell.edu/cals/devsoc/outreach/cardi/index.cfm>

Data sources and background information:

- U.S. Census Bureau - general
 - QuickFacts: <http://quickfacts.census.gov/qfd/states/36/36011.html>
 - QuickLinks: <http://quickfacts.census.gov/qfd/states/36/36011lk.html>
 - American FactFinder: <http://factfinder2.census.gov>
- U.S. Census Bureau - population
 - Decennial Census
 - Background: <http://2010.census.gov/2010census/>
 - Demographic Profile: http://factfinder2.census.gov/bkmk/table/1.0/en/DEC/10_SF1/SF1DP1/0500000US36011_1
 - American Community Survey (ACS)
 - Background: <http://www.census.gov/acs/www/>
 - Social Data Profile: http://factfinder2.census.gov/bkmk/table/1.0/en/ACS/10_5YR/DP02/0500000US36011
 - Economic Data Profile: http://factfinder2.census.gov/bkmk/table/1.0/en/ACS/10_5YR/DP03/0500000US36011
 - Housing Data Profile: http://factfinder2.census.gov/bkmk/table/1.0/en/ACS/10_5YR/DP04/0500000US36011
 - Demographics Data Profile: http://factfinder2.census.gov/bkmk/table/1.0/en/ACS/10_5YR/DP05/0500000US36011
 - Population estimates: <http://www.census.gov/popest/estimates.html>
- U.S. Census Bureau – Small Area Income & Poverty Estimates (SAIPE)
 - <http://www.census.gov/did/www/saipe/>
- U.S. Census Bureau - Public Use Quarterly Workforce Indicators (QWI) – annual averages
 - <http://www2.vrdc.cornell.edu/news/data/qwi-public-use-data/>
- Bureau Labor Statistics (BLS) – Local Area Unemployment Statistics: <http://www.bls.gov/lau/>
- NY Department of Labor -
 - Labor statistics: <http://www.labor.ny.gov/stats/>
 - Quarterly Census of Employment and Wages (QCEW): <http://www.labor.ny.gov/stats/lsqcew.shtm>
- Bureau of Economic Analysis (BEA) – Local Area Personal Income and Employment: <http://bea.gov/iTable/iTable.cfm?ReqID=70&step=1>

- USDA Census of Agriculture
 - 2007
 - Home page: <http://www.agcensus.usda.gov/Publications/2007/index.php>
 - County profile: http://www.agcensus.usda.gov/Publications/2007/Online_Highlights/County_Profiles/New_York/cp36011.pdf
 - Race, Ethnicity and Gender Profiles: http://www.agcensus.usda.gov/Publications/2007/Online_Highlights/Race_Ethnicity_and_Gender_Profiles/New_York/cpd36011.pdf
- USDA National Agricultural Statistics Service (NASS)
 - Home page: <http://www.nass.usda.gov/index.asp>
 - New York Statistical Bulletins: http://www.nass.usda.gov/Statistics_by_State/New_York/Publications/Annual_Statistical_Bulletin/
 - Cropland Data Layer – CropScape: <http://nassgeodata.gmu.edu/CropScape/>
- USDA Agricultural Research Service – Plant Hardness Zone Map: <http://planthardiness.ars.usda.gov/PHZMWeb/>
- NOAA, Northeast Regional Climate Center at Cornell University
 - Home page: <http://www.nrcc.cornell.edu/index.html>

Alternative sites for data retrieval:

- The Nelson A. Rockefeller Institute of Government – New York State Statistical Yearbooks http://www.rockinst.org/nys_statistics/
- Headwaters Economics: Economic Profile System – Human Dimensions Toolkit <http://headwaterseconomics.org/tools/eps-hdt>
- National Historical Geographic Information System (NHGIS) <https://www.nhgis.org/>
- Social Explorer <http://www.socialexplorer.com/pub/home/home.aspx>
- Missouri Census Data Center <http://mcdc.missouri.edu/>
- DataFerret <http://dataferrett.census.gov/>
- Investigative Reporters and Editors (IRE) Census project <http://census.ire.org/>