



The U.S. Census Bureau's  
Premier Local Partner

# Plan to Plan for 2020

## Preparation Guide for Census Partners

It may seem that the 2020 Census is a long way away, but there are many preliminary programs that involve local government participation. The State Data Centers, Census Information Centers, and other Census partners have an important role to play in informing local communities about and supporting Census operations.

Census partners prepare for the Census in ways that best suit their areas, but all preparations involve budgeting time and resources. Census Bureau preparations change from Census to Census, but the programs below have been features of recent Censuses and are planned in some form for 2020. This is a general guide of planned Census programs that will involve working with local partners. While the Census Bureau will provide expert details of the programs as the programs approach, this guide can help you plan to meet the coming 2020 Census needs.

### **Boundary Annexation Survey (BAS)/Boundary Quality Assessment and Reconciliation Program(BQARP)**

BAS is an annual survey tracking legal boundaries of states, counties, cities and towns which may have changed through annexations, incorporations, or other events. Partners may be asked to contact non-responding local governments. BQARP is a one-time program that seeks to improve the quality of legal and administrative boundaries within the Census MAF/TIGER System. Partners may be asked for assistance in contacting local, boundary experts for BQARP.

### **Census Redistricting Program**

Not to be confused with local redistricting after decennial census apportionment takes place, the Census Redistricting program works with local partners to verify census block and voting district boundaries for which the decennial Census will report data. Partners may assist Census Redistricting Liaisons in verifying geographic boundaries through GIS tools.

### **Local Update of Census Addresses (LUCA)**

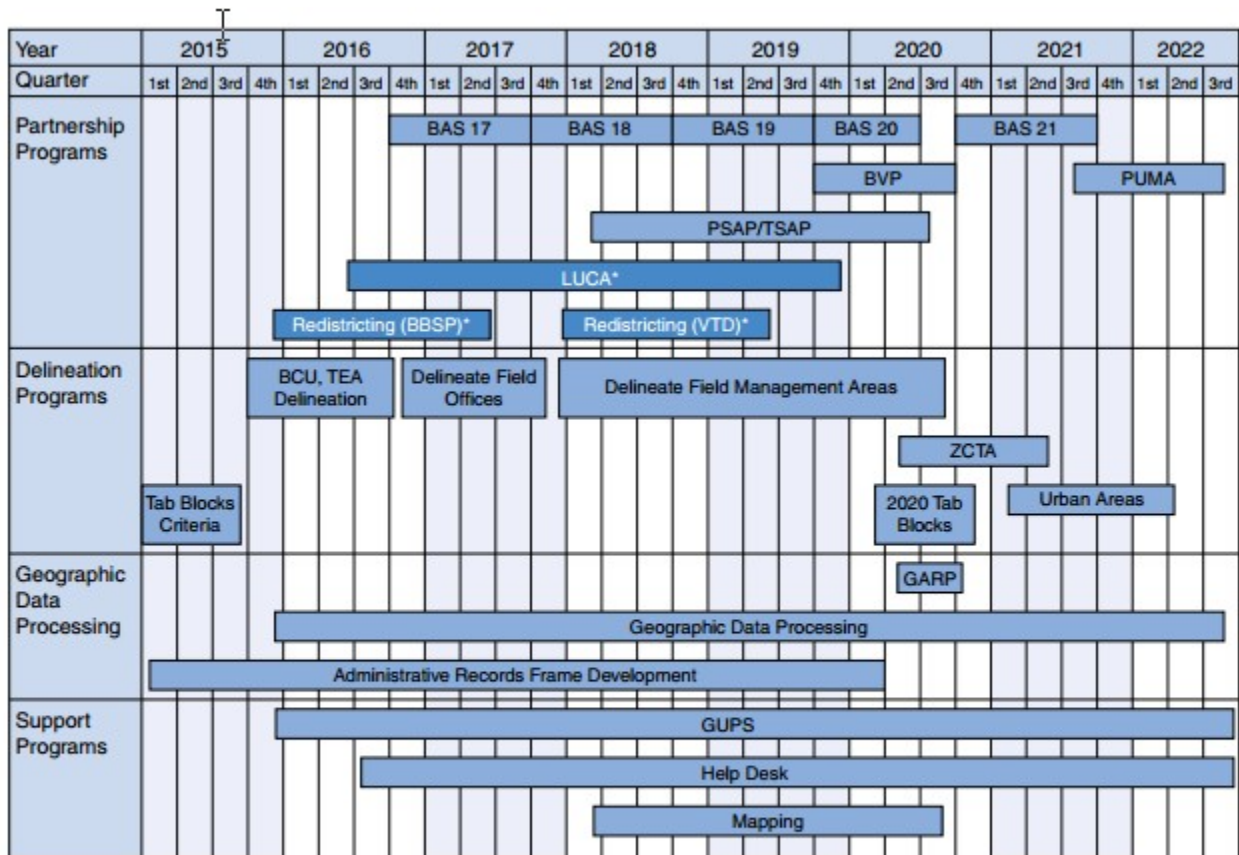
LUCA is a voluntary, time-limited, review by local governments of addresses in their jurisdiction. Participation is covered by Census confidentiality guidelines. Partners should consider review coordination and software training when planning.

### **Participant Statistical Areas Program (PSAP)**

PSAP allows local and tribal governments to recommend boundaries for statistical areas such as census tracts and block groups. Unincorporated communities may also be defined as "Census Designated Places." Statistical area boundaries are defined once every 10 years, and data will be reported for these areas from the 2020 Census and the American Community Survey.

## Complete Count Committees (CCC)

Local communities will be invited to promote 2020 Census participation. In past Censuses these community Census promotion groups have been called “Complete Count Committees,” but the term may be different for the 2020 Census. Promotional activities and associated costs will vary by community. Partners should consider message, time, and resource needs for these activities and be aware of local government budget cycles if planning for a budget request. Partners may also consider public/private partnering to share cost.



\*LUCA and Redistricting are Partnership Programs that are managed outside of the Geographic Programs Team.

**Figure 31: Geographic Programs Timeline**