

---

# Characteristics of Housing in New York State

## Mapping Key Indicators from the 2010 Census

Joe Francis, Sutee Anantsuksomsri, Nij Tontisirin, Xiaoling Li,  
and Jan Vink

State of Upstate New York Conference, Syracuse, NY, *June 8-9, 2011*

### Program on Applied Demographics



Web: <http://pad.human.cornell.edu>

Email: [PADinfo@cornell.edu](mailto:PADinfo@cornell.edu)

Joe Francis, Sutee Anantsuksomsri, Nij Tontisirin, Xiaoling Li, and Jan Vink

## Foreword

During this past decade America and New York underwent wild swings in housing. Following the collapse of the “dot com” bubble, investors along with young families and existing homeowners moved to a greater interest in housing as an asset class and household wealth creation vehicle. Consequently, the early part of the decade witnessed widespread construction of new houses along with ever rising values of homes. Lowered requirements for qualification for mortgages abetted this trend as did lowered mortgage rates from Fannie and Freddie along with quantitative easing by the Federal Reserve Board. This lasted until the middle part of the decade when the “housing bubble” burst and valuations on existing residential housing dropped dramatically.

The 2010 Census of Population and Housing was conducted during the later phase of this cycle. Information about various housing characteristics of the population became available for New York at the state, county, town, city and Indian Reservation level in mid-May 2011 with the release of what is known as the Demographic Profile. This booklet gives a detailed look at the total housing units, change in total housing units from 2000 to 2010, housing density, percent occupied, percent vacant, vacant for sale, vacant for rent and seasonal vacant units referenced to the Census date of April 1, 2010.

These variables have been maps at the county, town, city and Indian Reservation level. The goal of these maps is to give a comparative spatial perspective on the distribution of these key indicators of the housing stock among municipalities in New York.

In this booklet is a separate section portraying a more limited set of indicators, by Census tract, for the five major cities in New York, excluding New York City. Percent occupied, housing density and renter occupied units are the variables mapped at the city tract level.

As more data become available from the Census, we will add to the existing “atlas” of New York housing characteristics.

This booklet was produced by the excellent professionals at the Cornell Program on Applied Demographics. Special recognition goes to Jan Vink, Sutee Anantsuksomsri, Nij Tontisirin and Xiaoling Li. Thanks also to Mary Heller Smith and Jane Klinger for their support.

---

# Towns, Cities and Indian Reservations

Mapping Key Indicators  
from the 2010 Census

Program on Applied Demographics

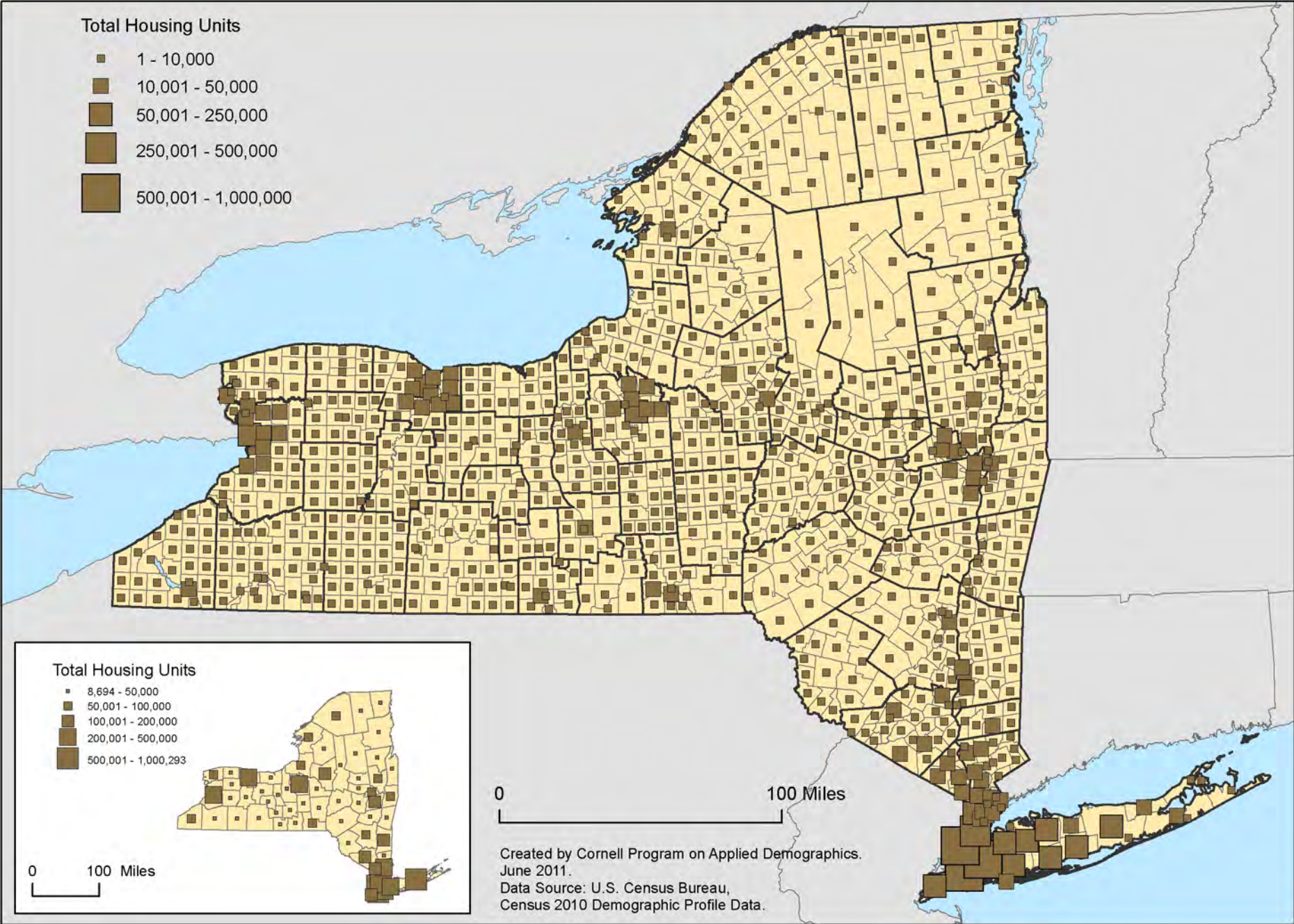


Web: <http://pad.human.cornell.edu>

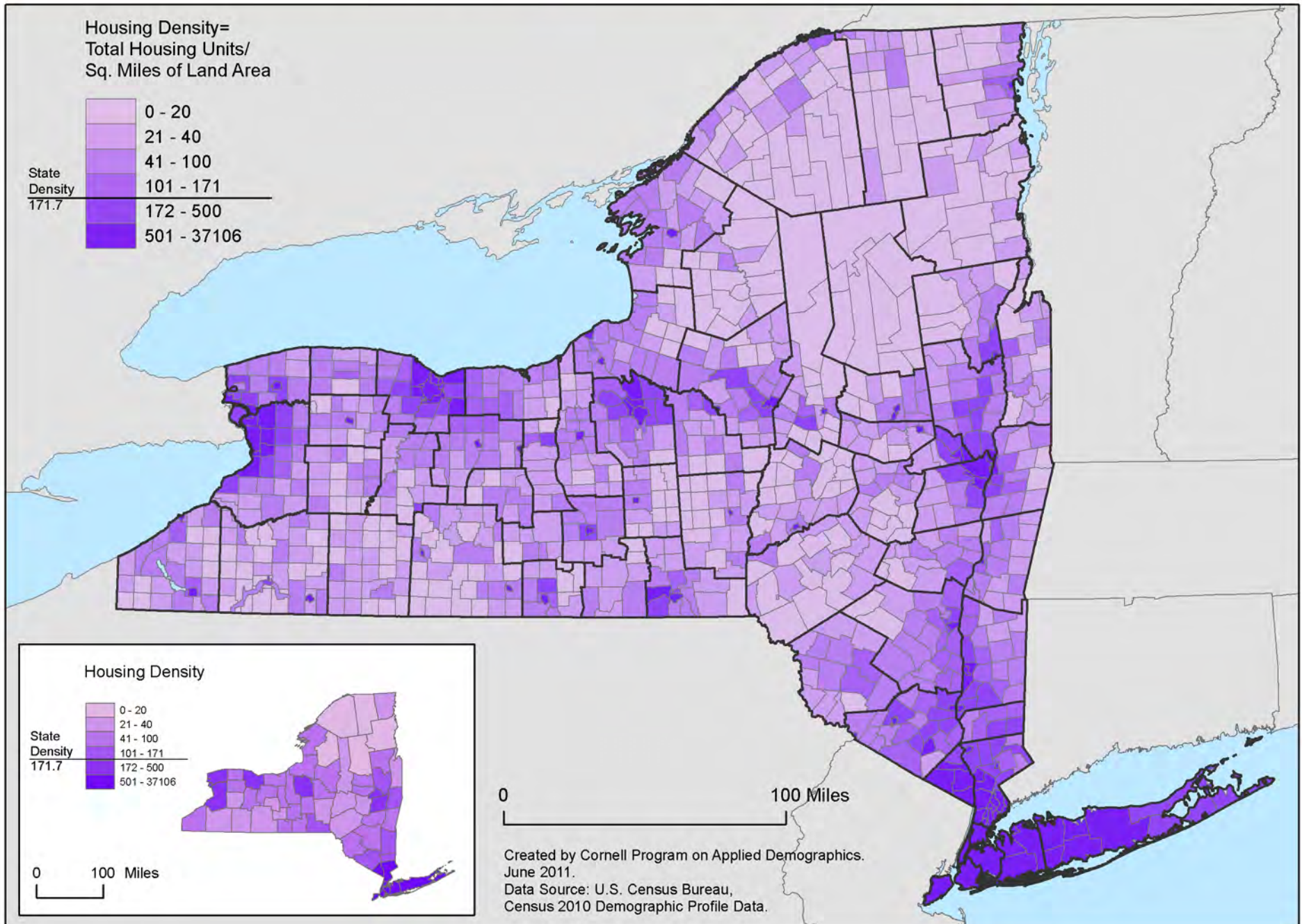
Email: [PADinfo@cornell.edu](mailto:PADinfo@cornell.edu)

Joe Francis, Sutee Anantsuksomsri, Nij Tontisirin, Xiaoling Li, and Jan Vink

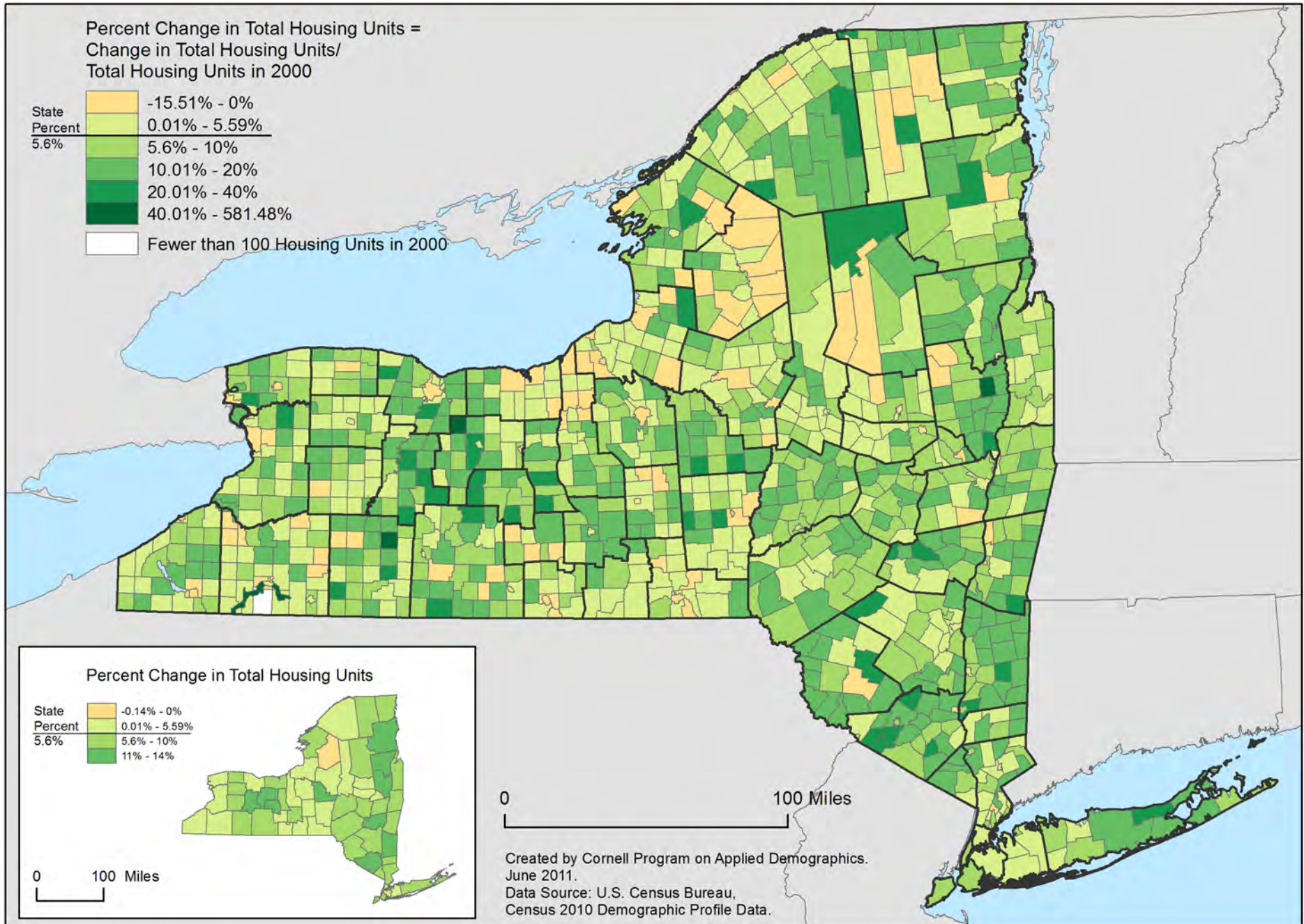
# Total Housing Units



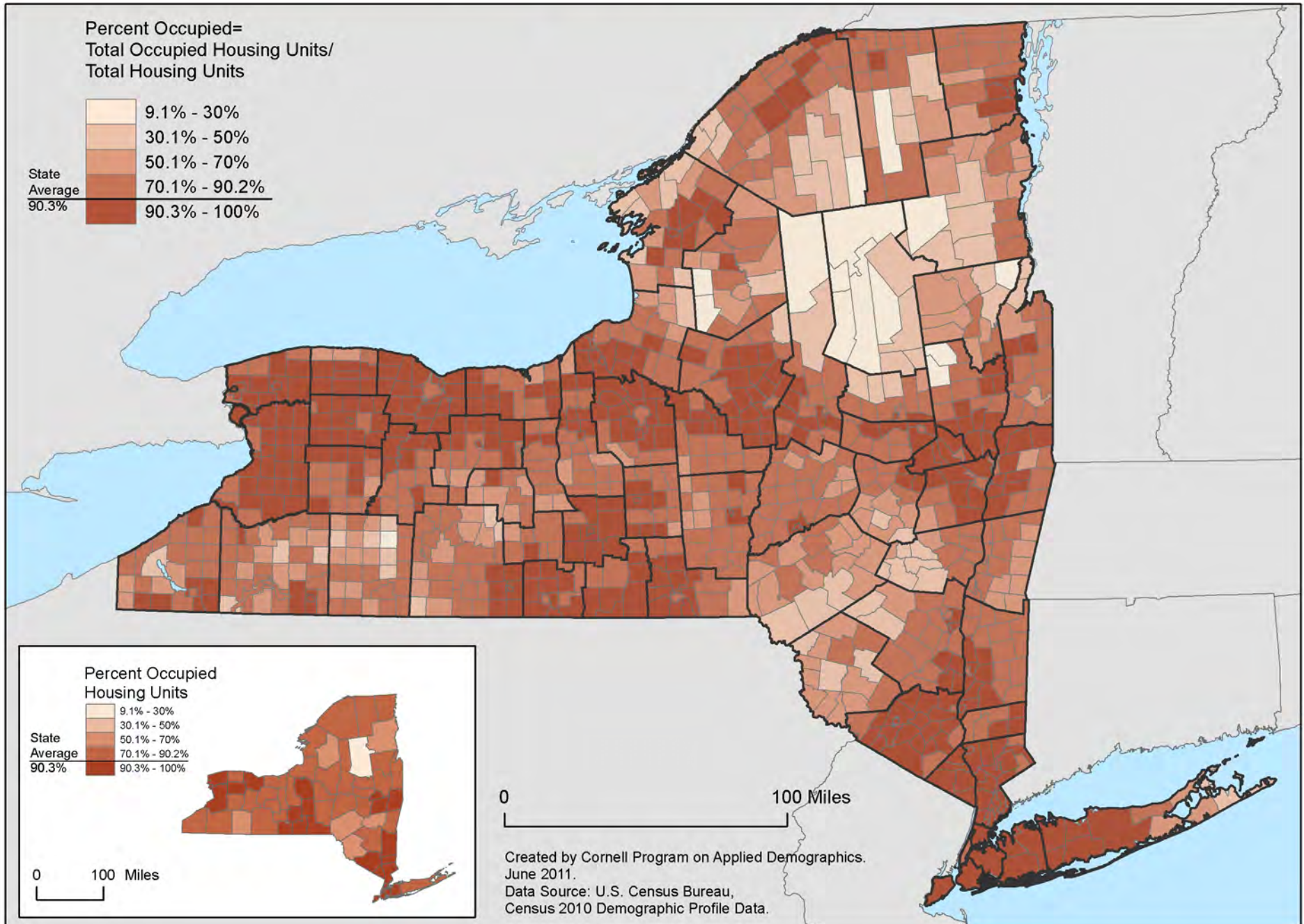
# Total Housing Units: Housing Density



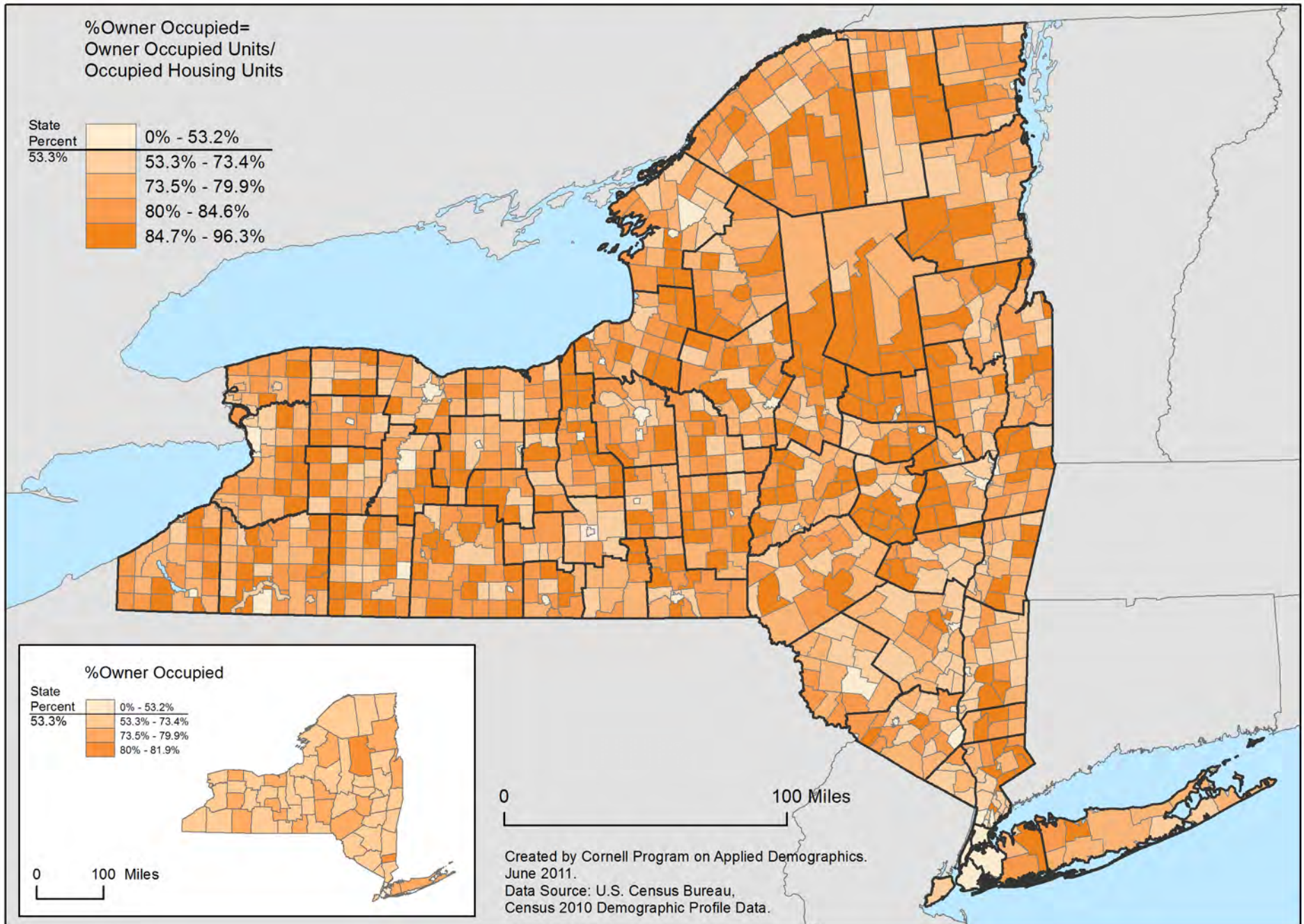
# Percent Change in Total Housing Units, 2000-2010



# Total Housing Units: Percent Occupied

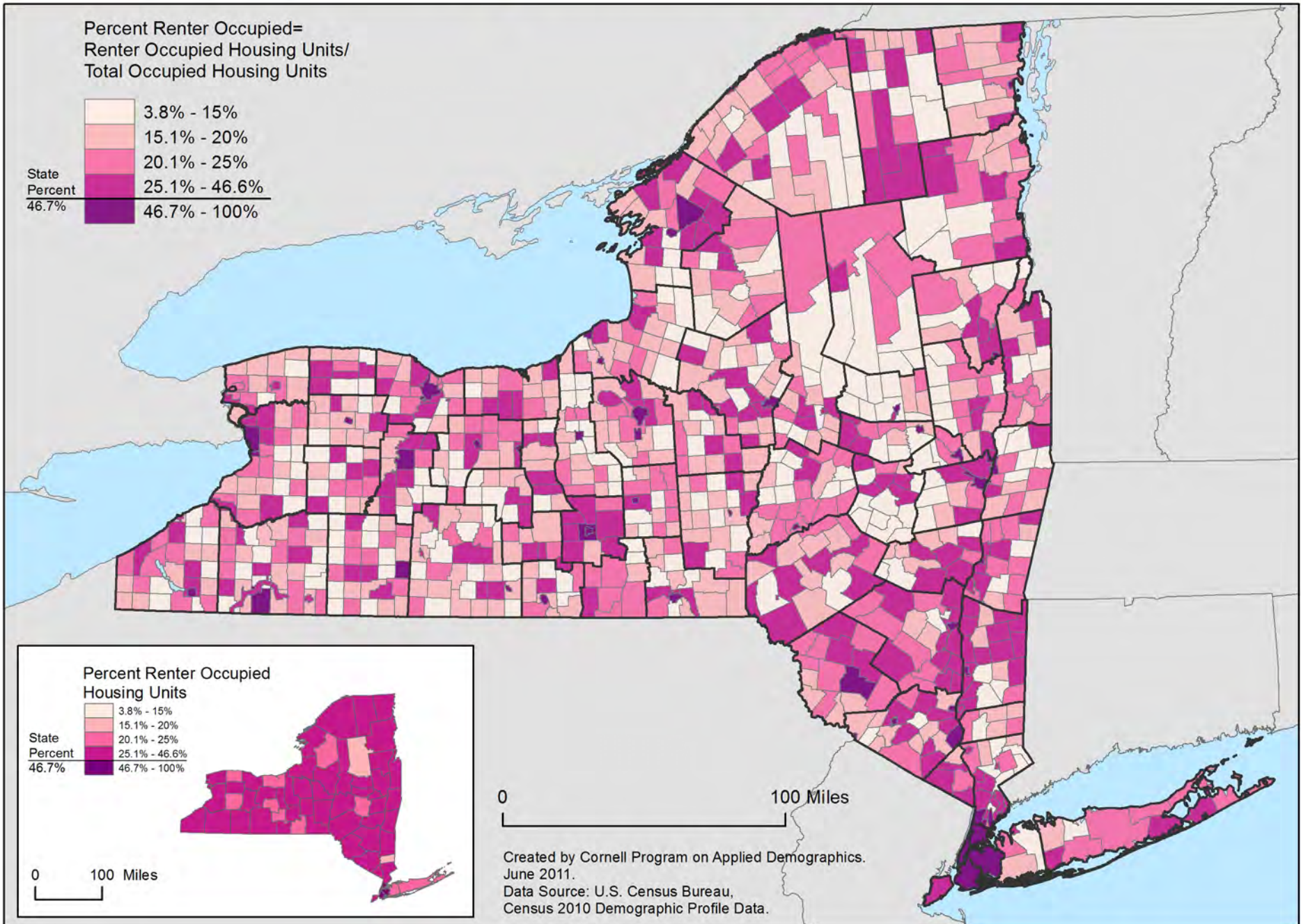


# Occupied Housing Units: Percent Owner Occupied

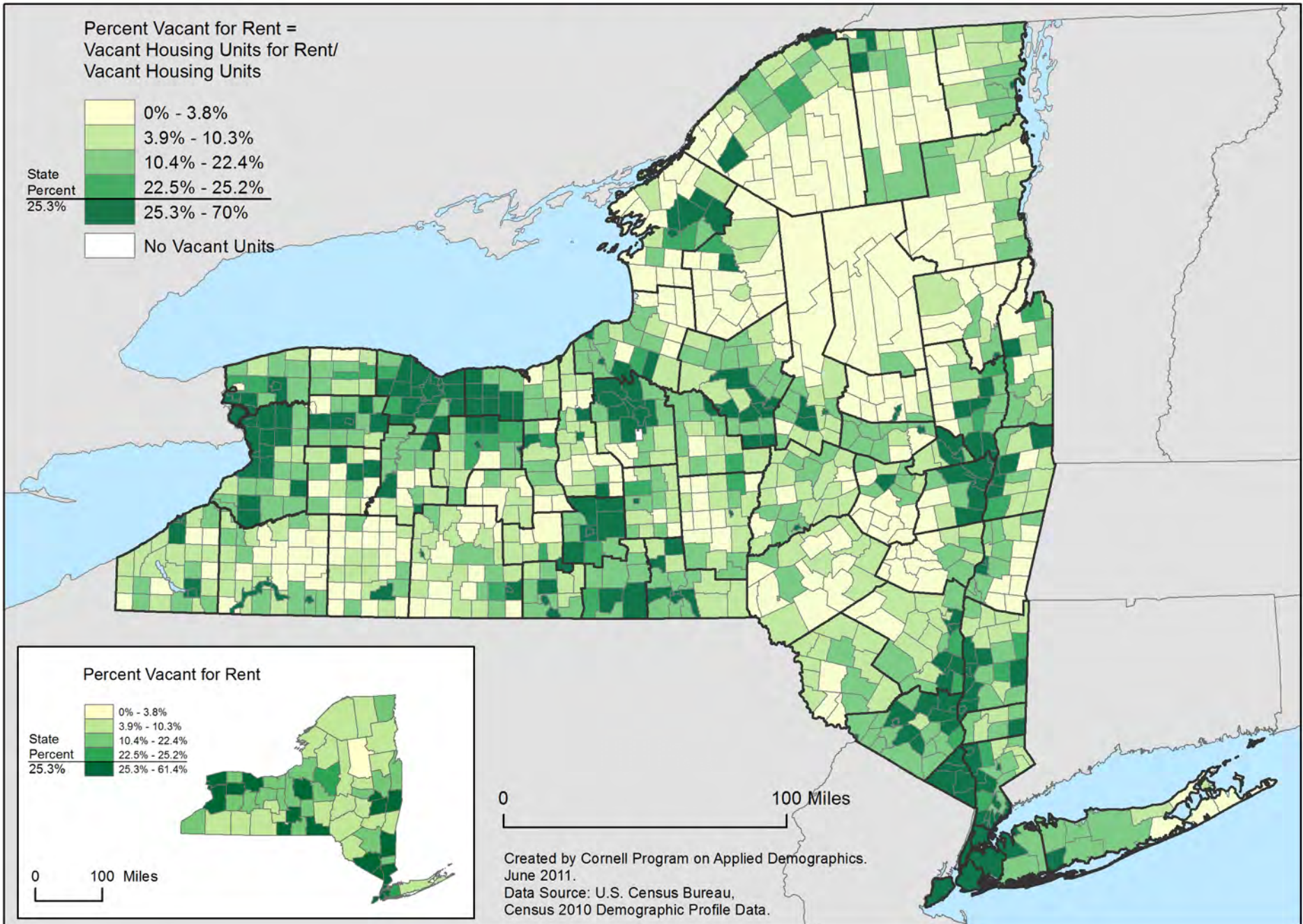




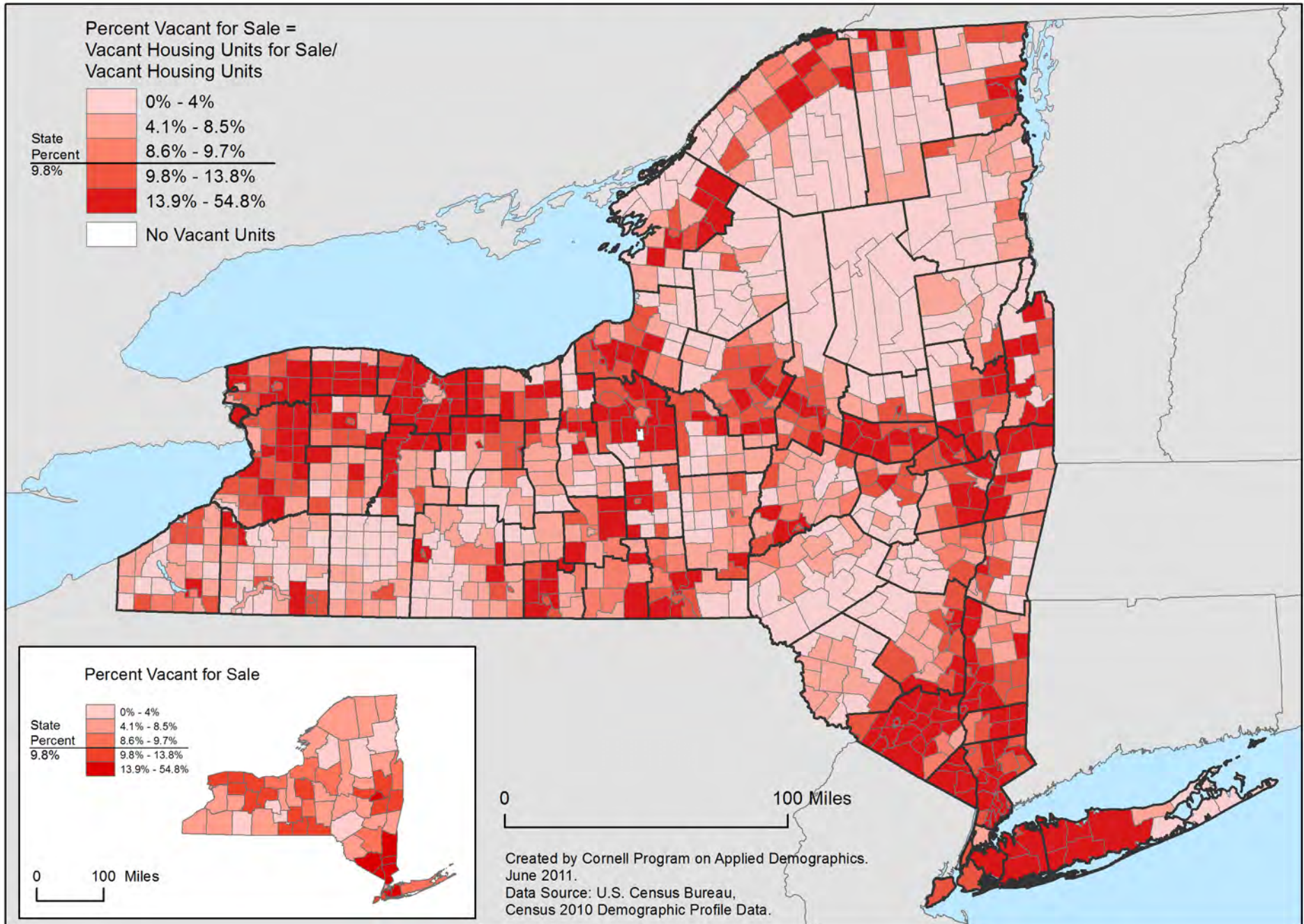
# Occupied Housing Units: Percent Renter Occupied



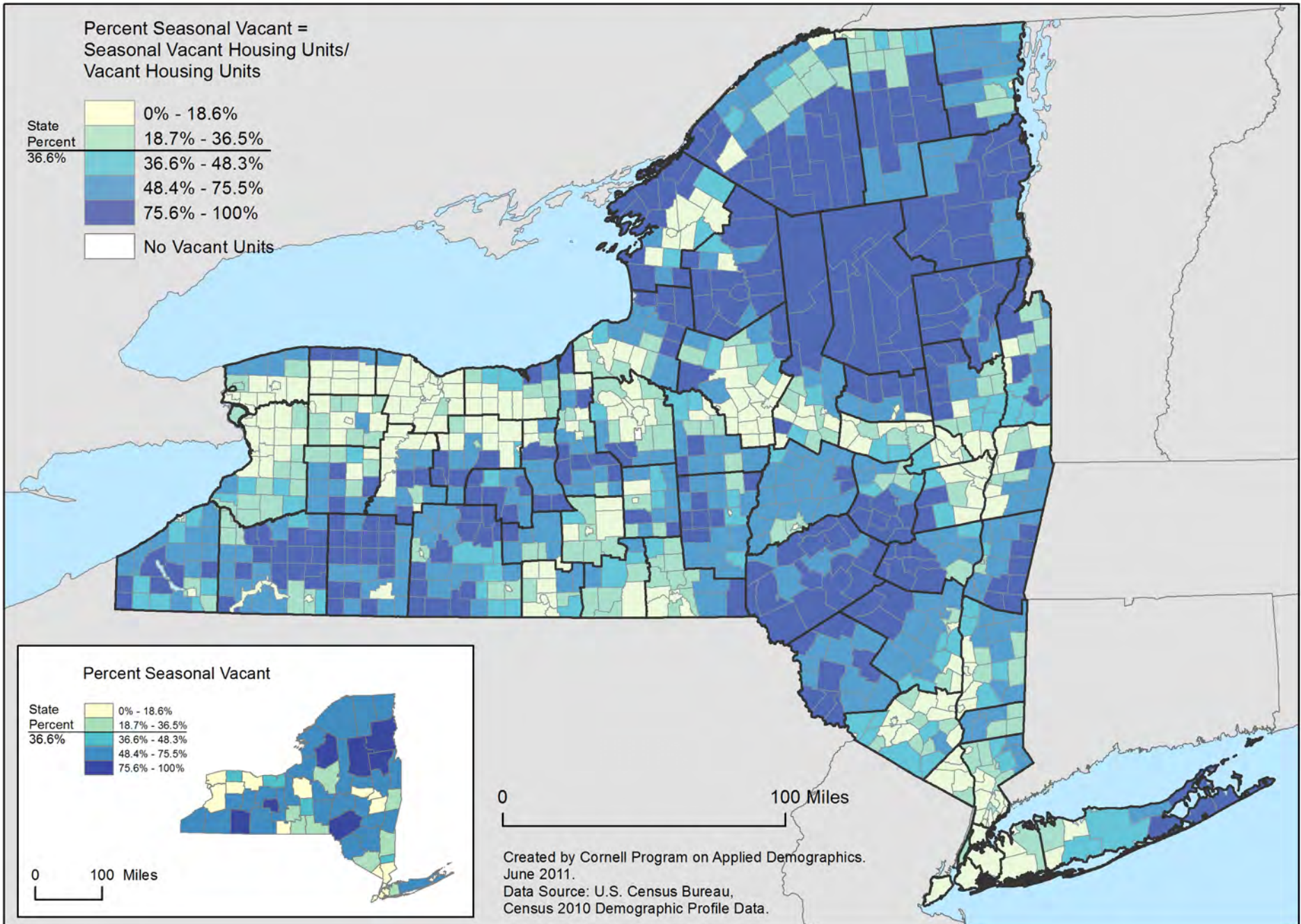
# Vacant Housing Units: Percent for Rent



# Vacant Housing Units: Percent for Sale



# Vacant Housing Units: Percent Seasonal Vacant



---

# Five Major Upstate Cities

Mapping Key Indicators  
from the 2010 Census

Program on Applied Demographics



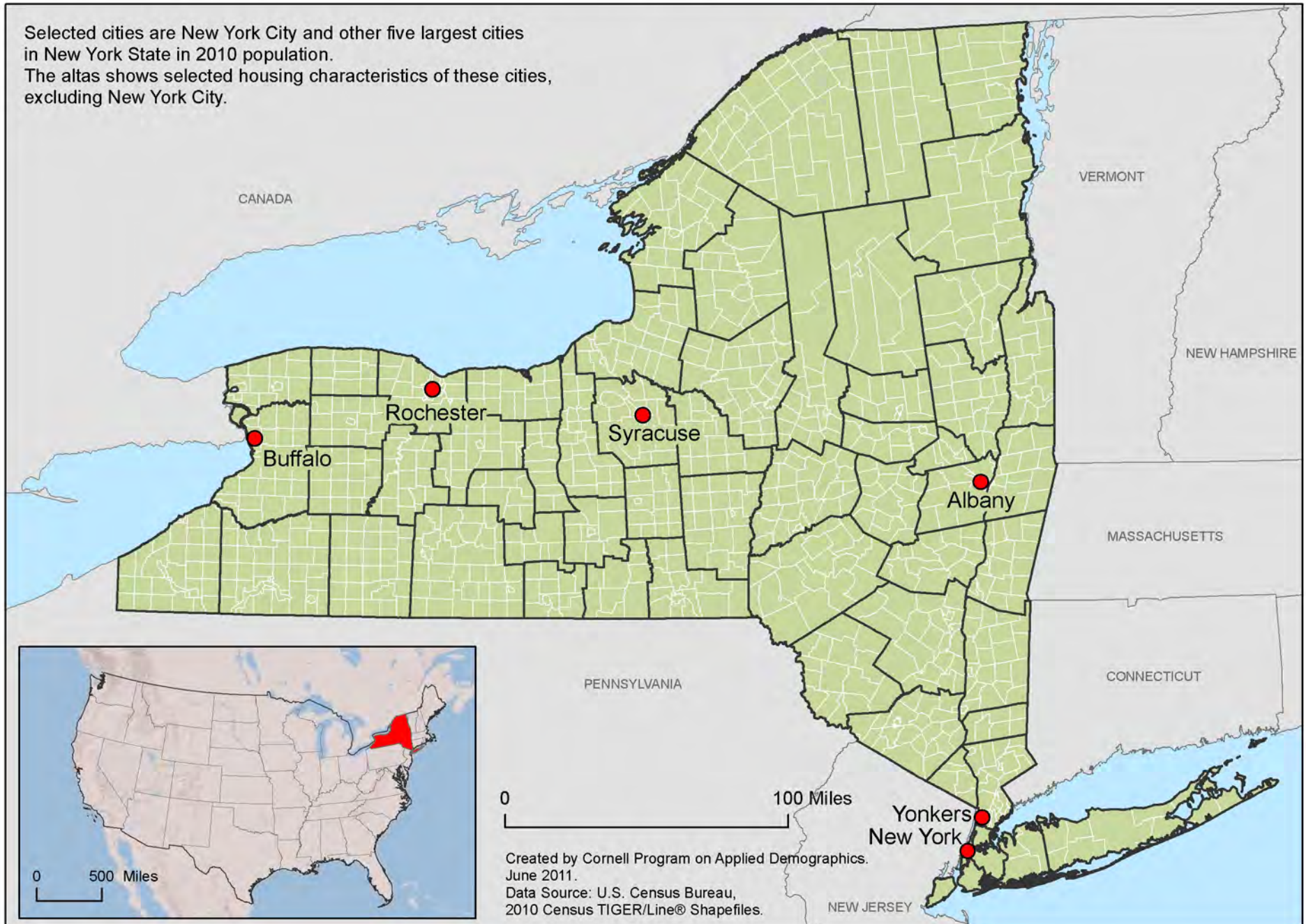
Web: <http://pad.human.cornell.edu>

Email: [PADinfo@cornell.edu](mailto:PADinfo@cornell.edu)

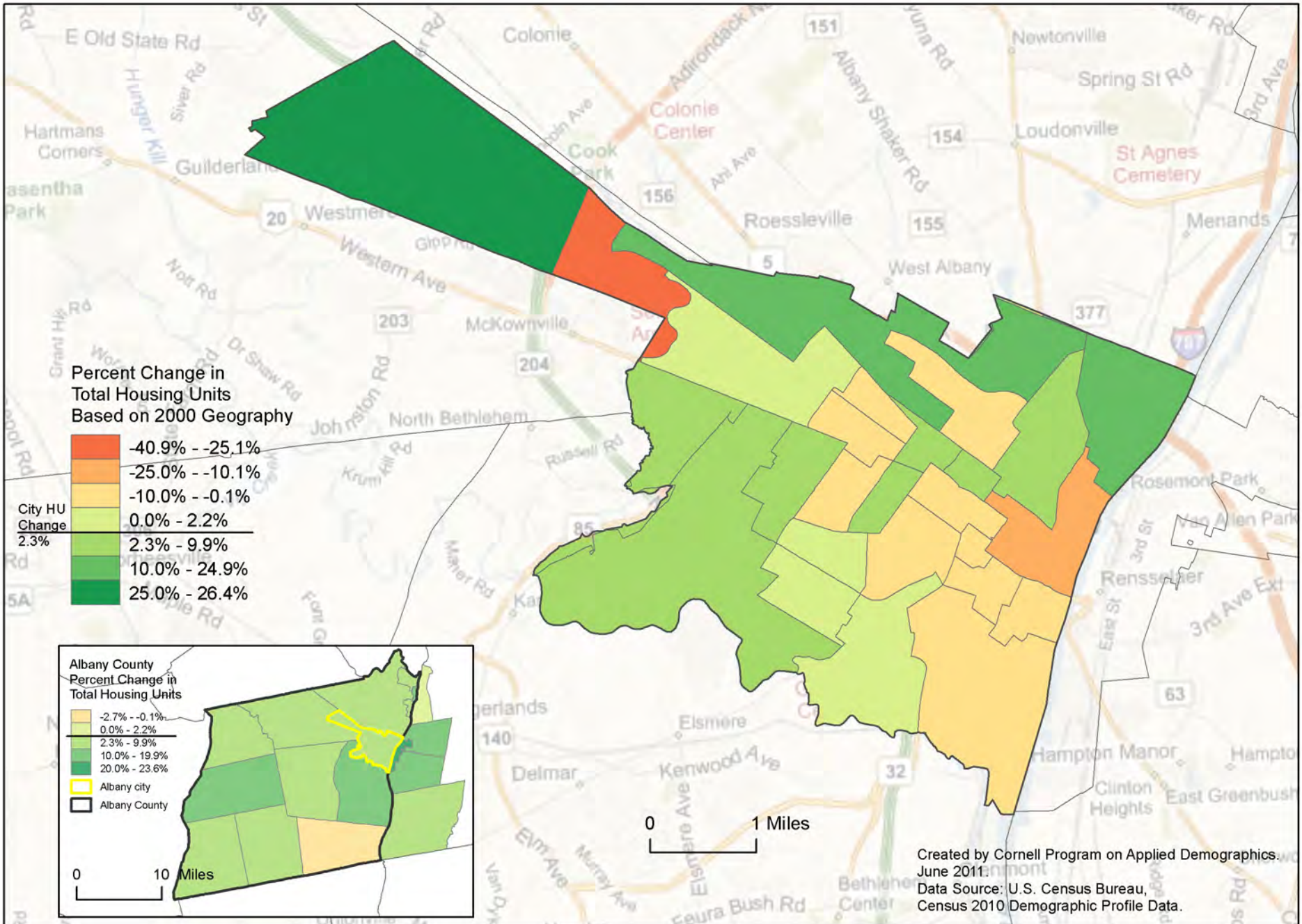
Joe Francis, Sutee Anantsuksomsri, Nij Tontisirin, Xiaoling Li, and Jan Vink

# Locations of Selected Major Cities in New York State

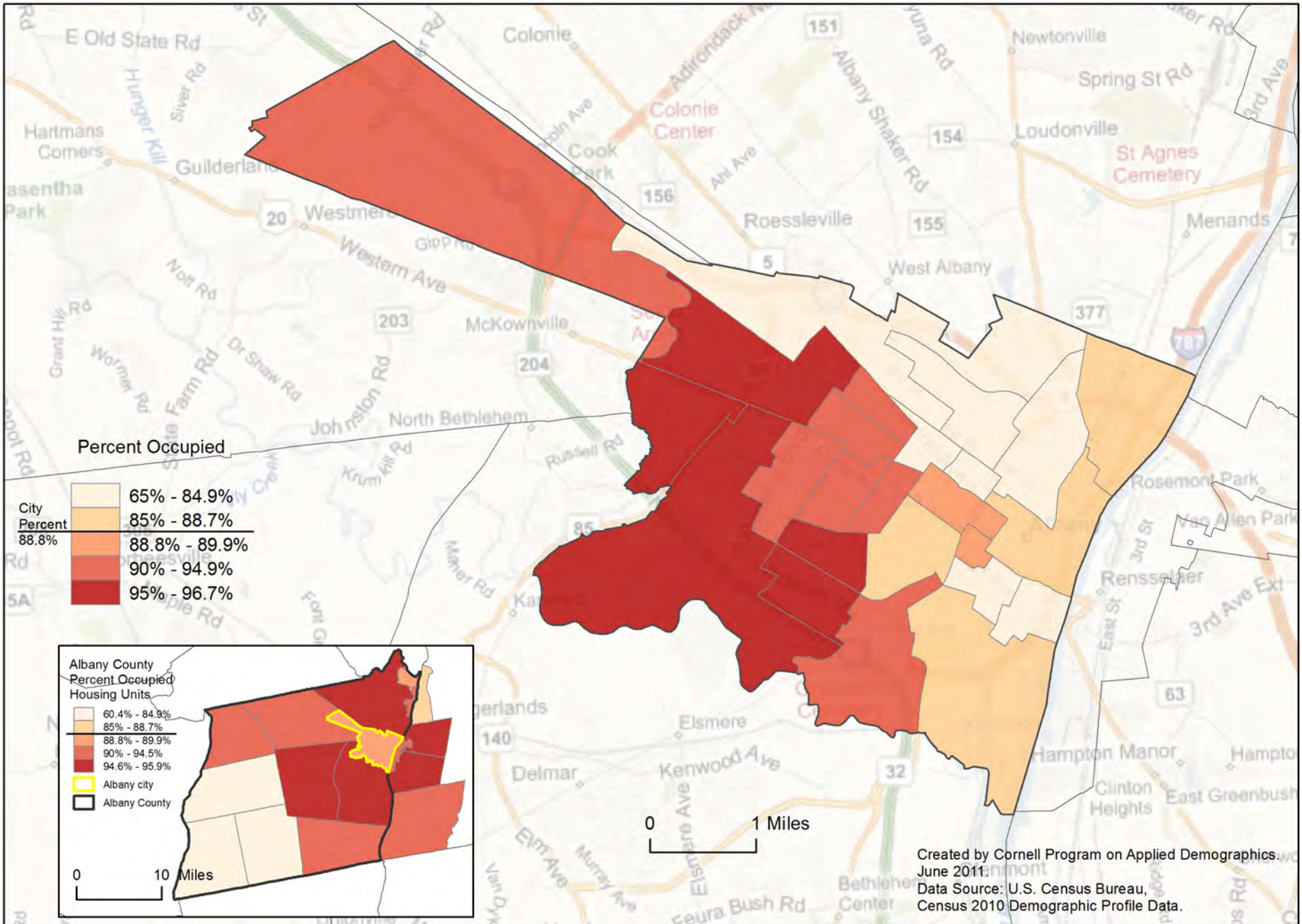
Selected cities are New York City and other five largest cities in New York State in 2010 population. The atlas shows selected housing characteristics of these cities, excluding New York City.



# Percent Change in Housing Units (2000-2010), Albany City

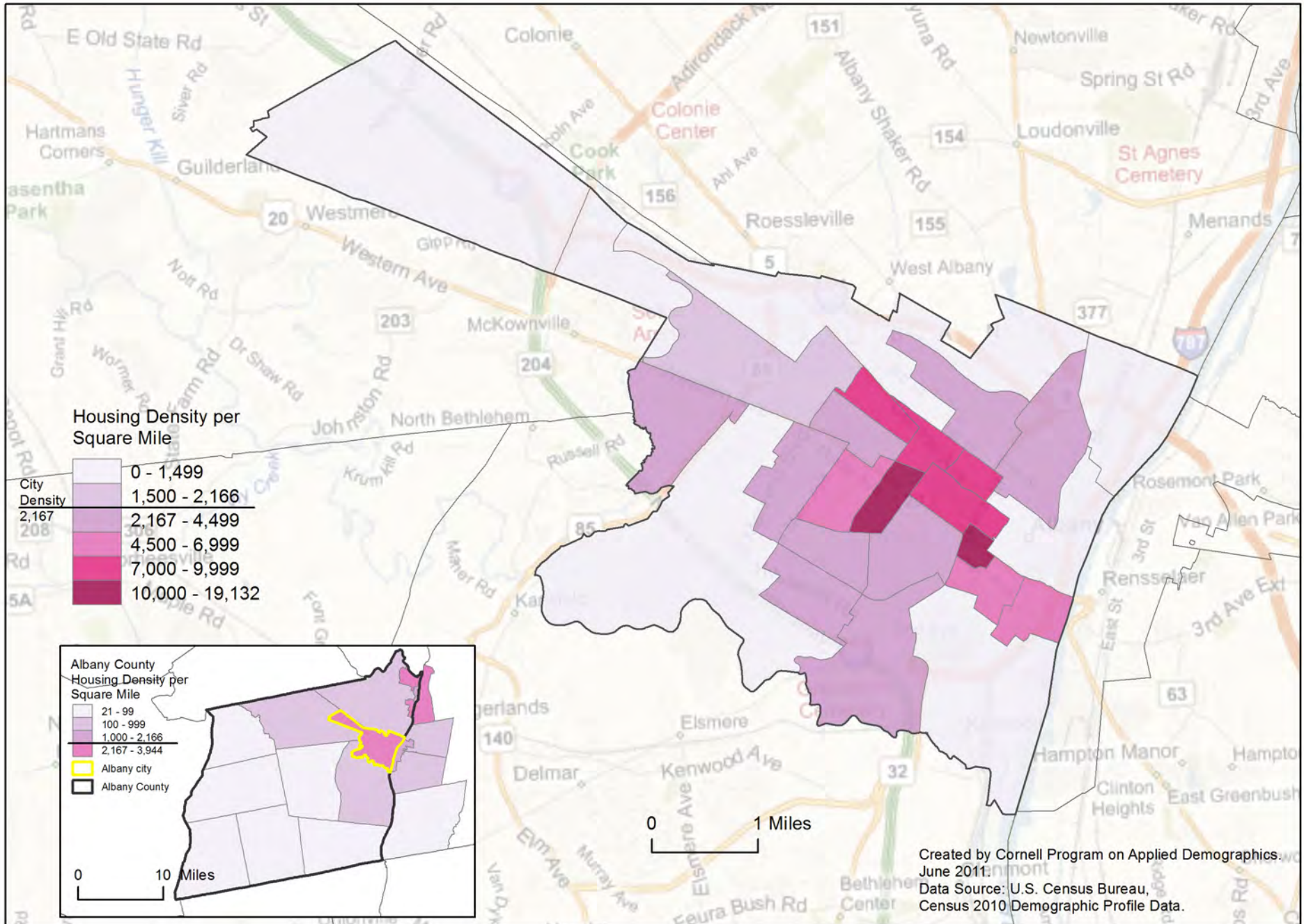


# Percent Occupied Housing Units, Albany City

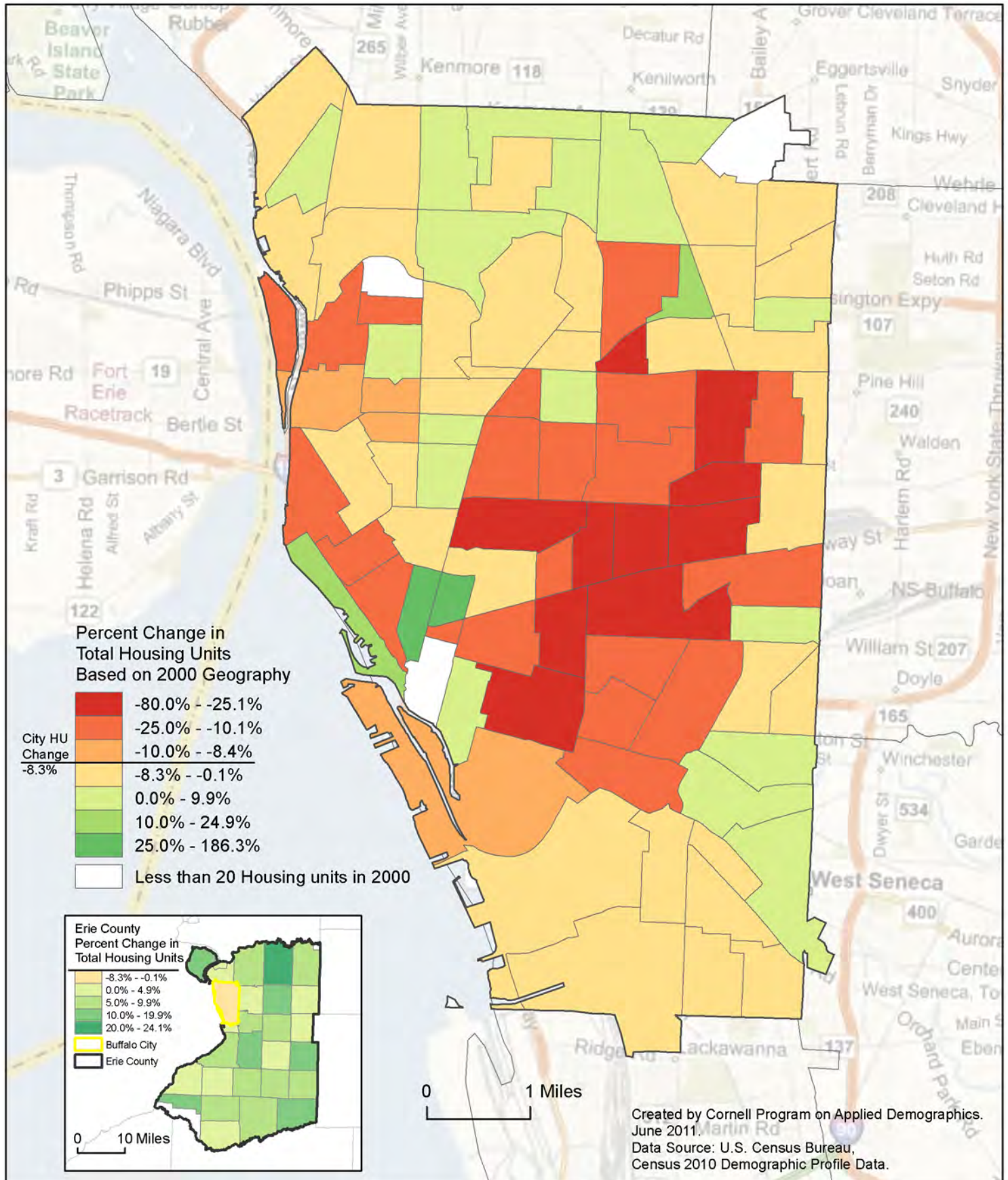




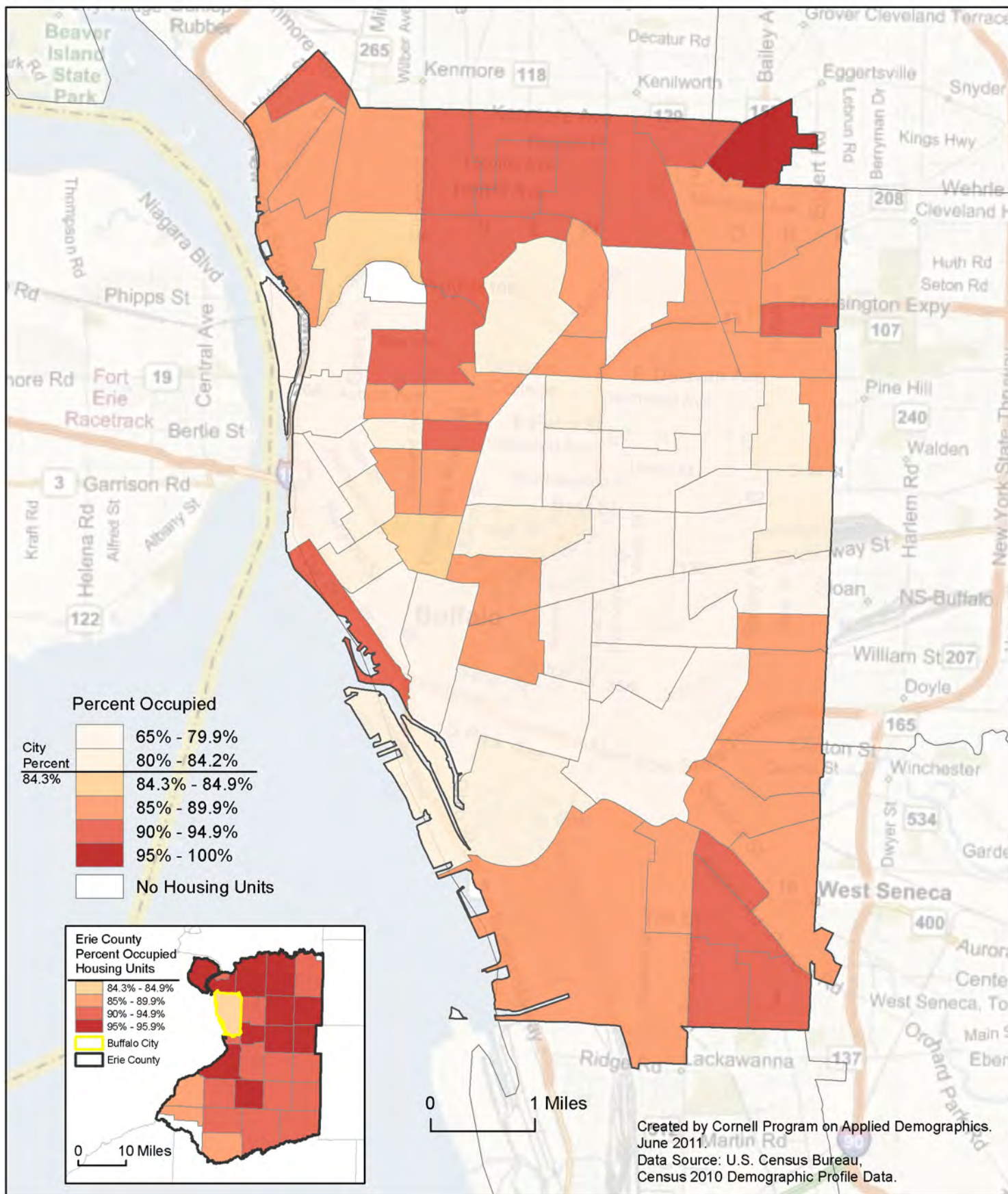
# Total Housing Units: Housing Density, Albany City



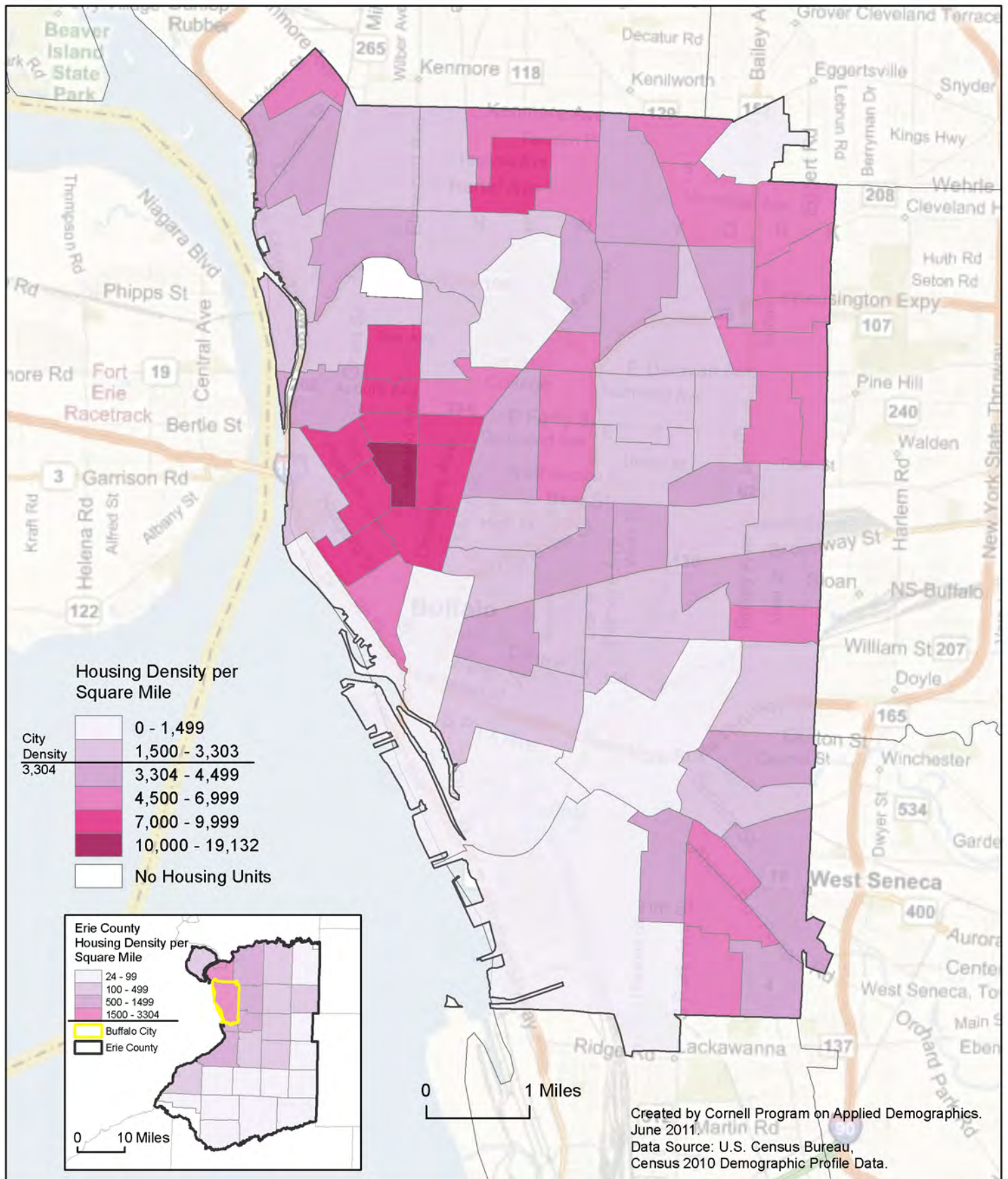
# Percent Change in Housing Units (2000-2010), Buffalo



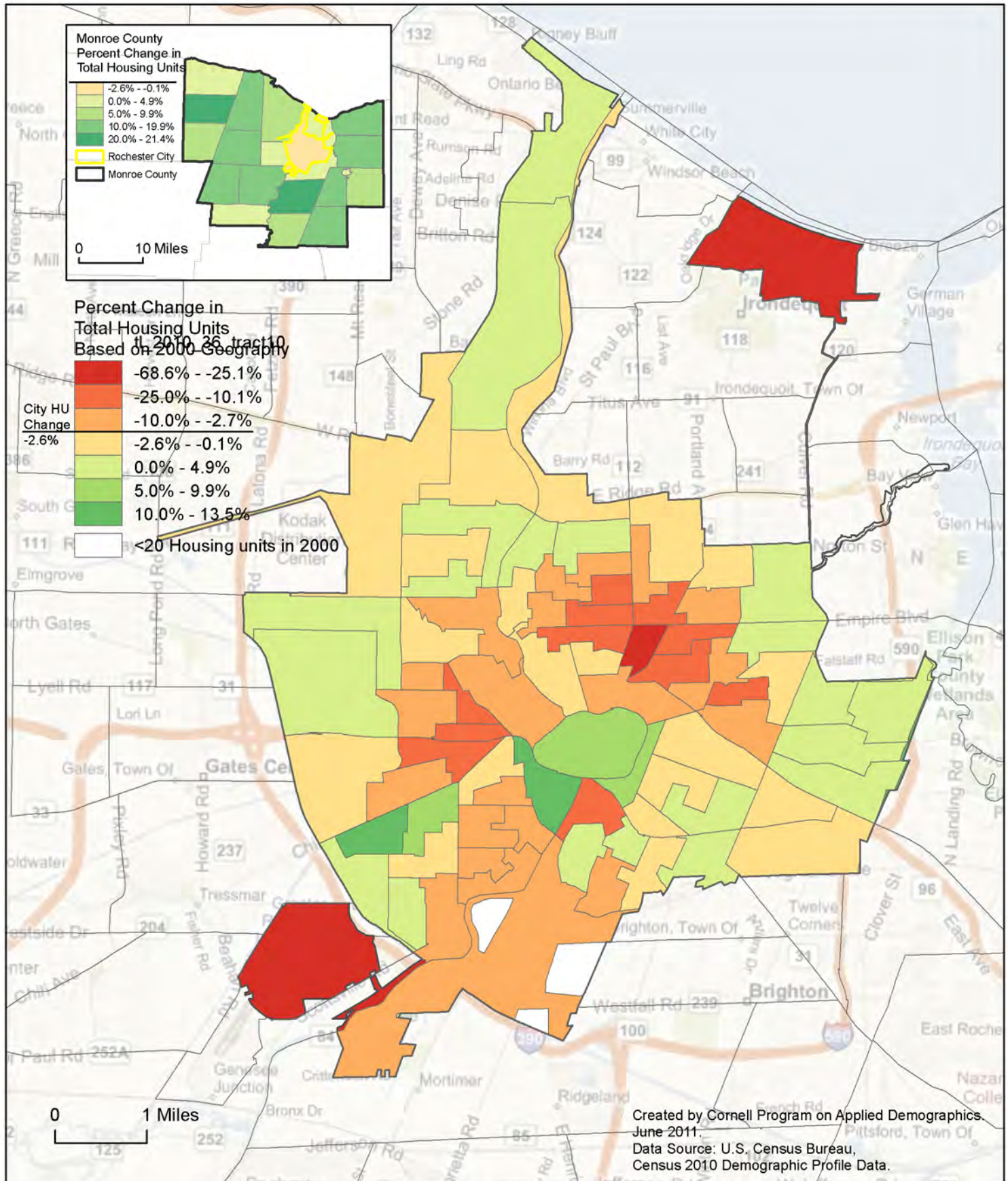
# Percent Occupied Housing Units, Buffalo City



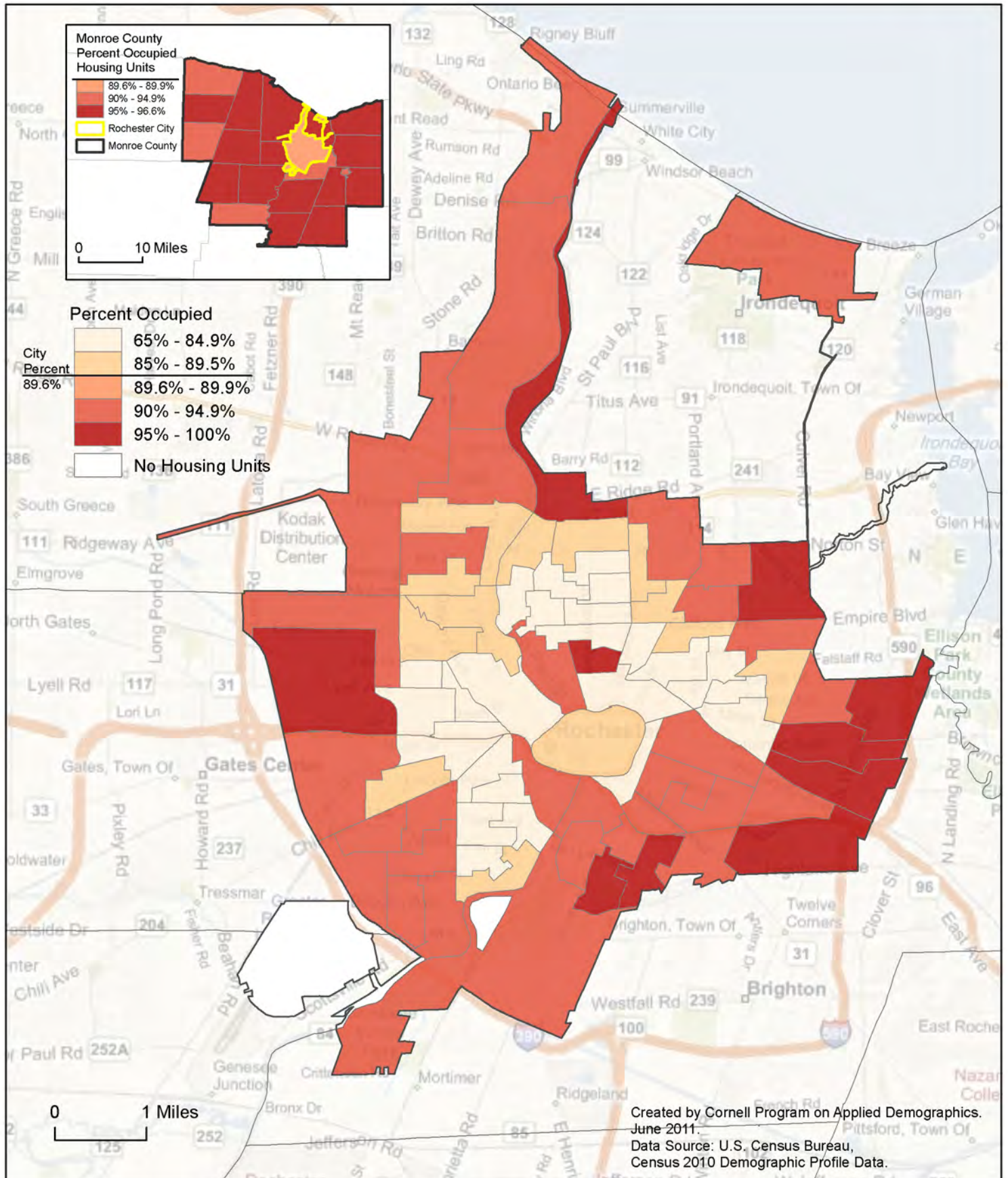
# Total Housing Units: Housing Density, Buffalo City



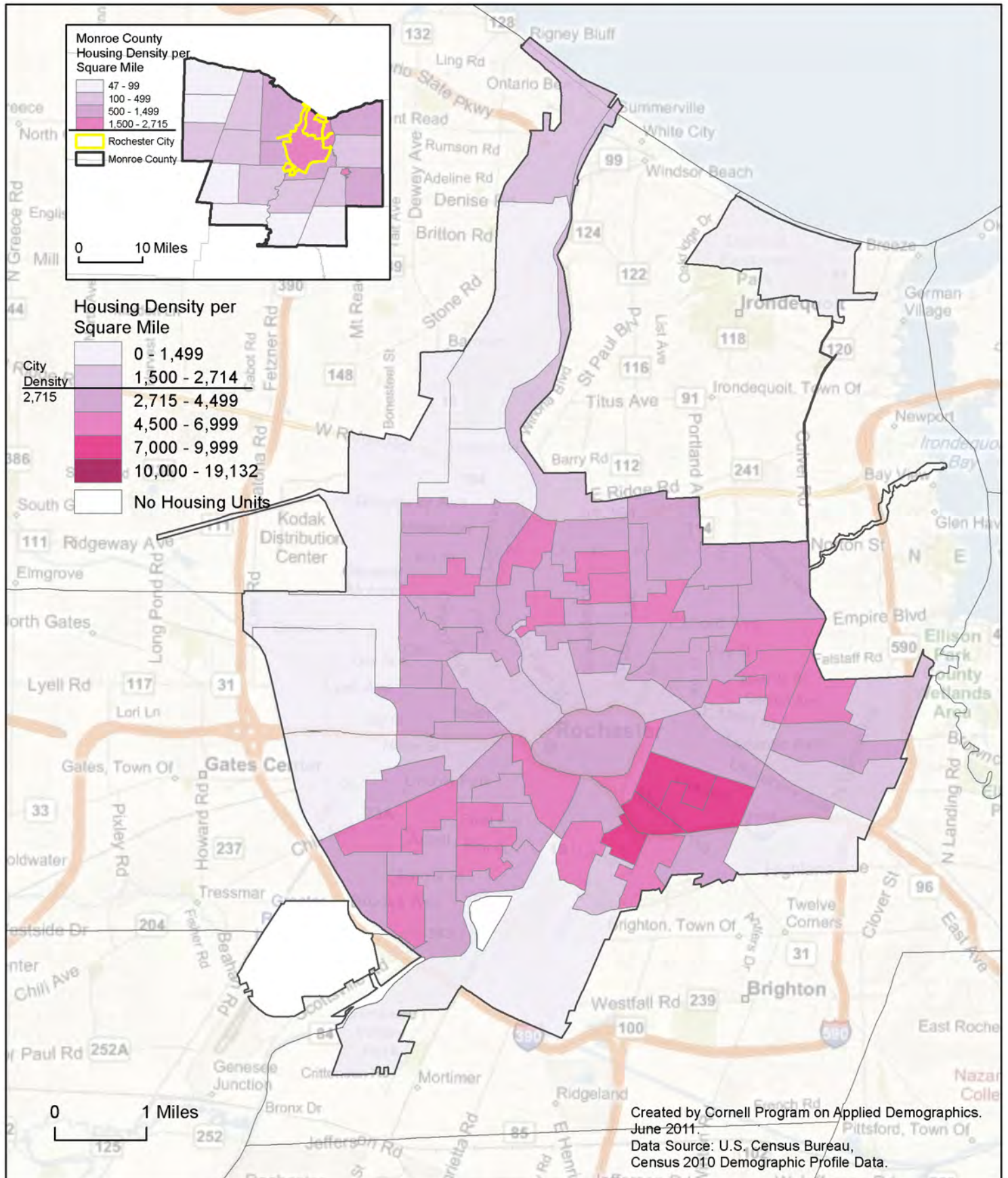
# Percent Change in Housing Units (2000-2010), Rochester



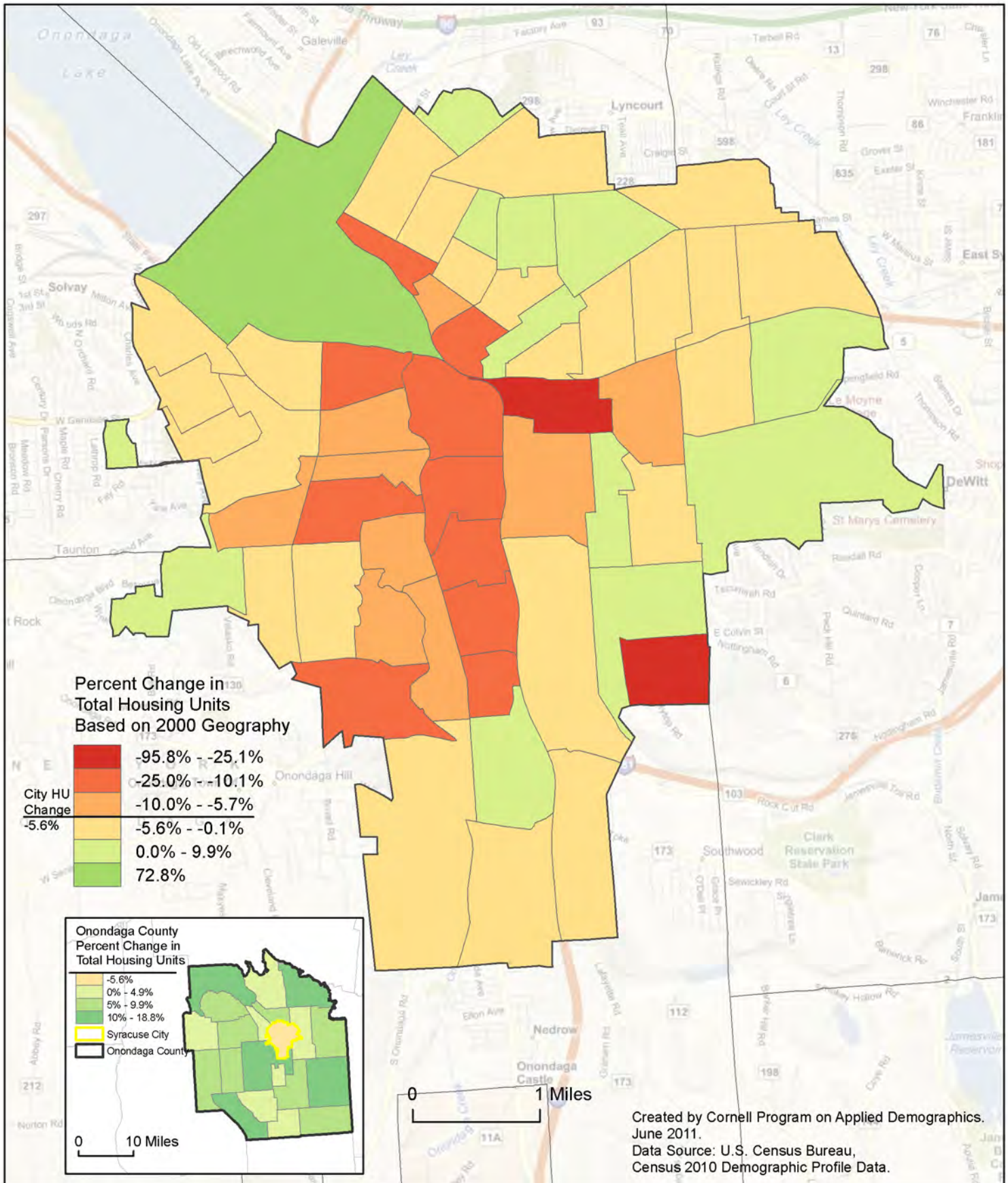
# Percent Occupied Housing Units, Rochester City



# Total Housing Units: Housing Density, Rochester City

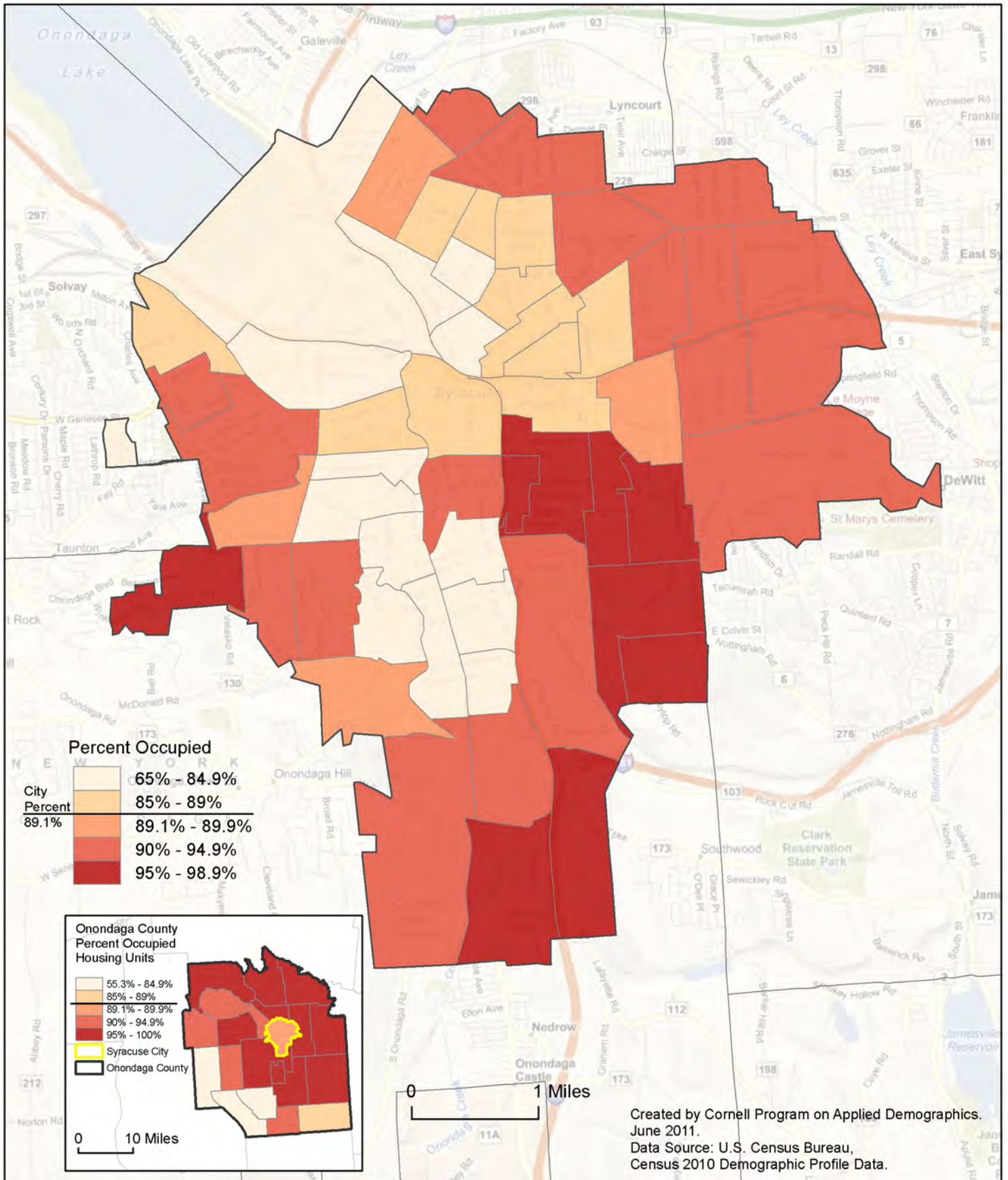


# Percent Change in Housing Units (2000-2010), Syracuse

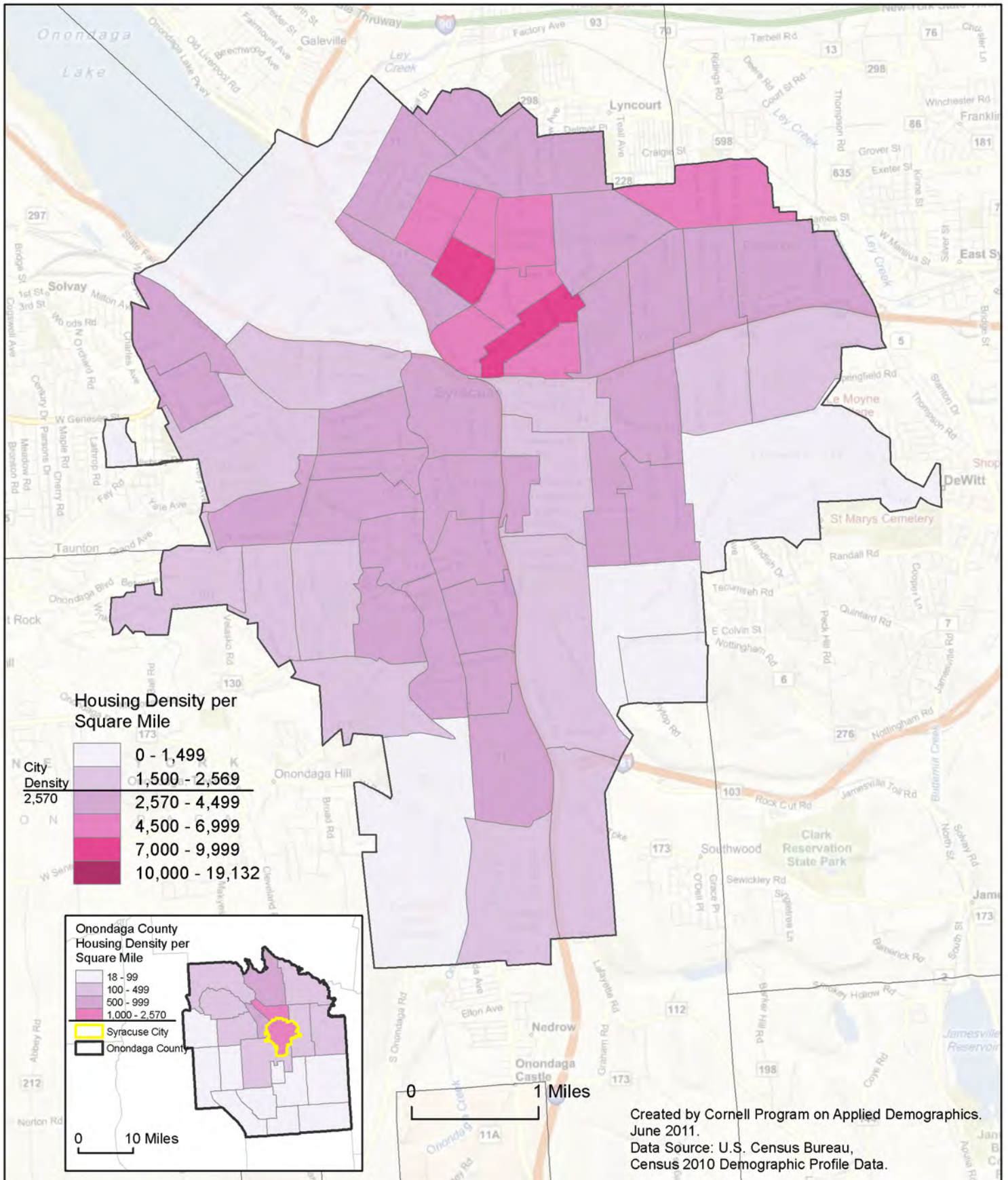




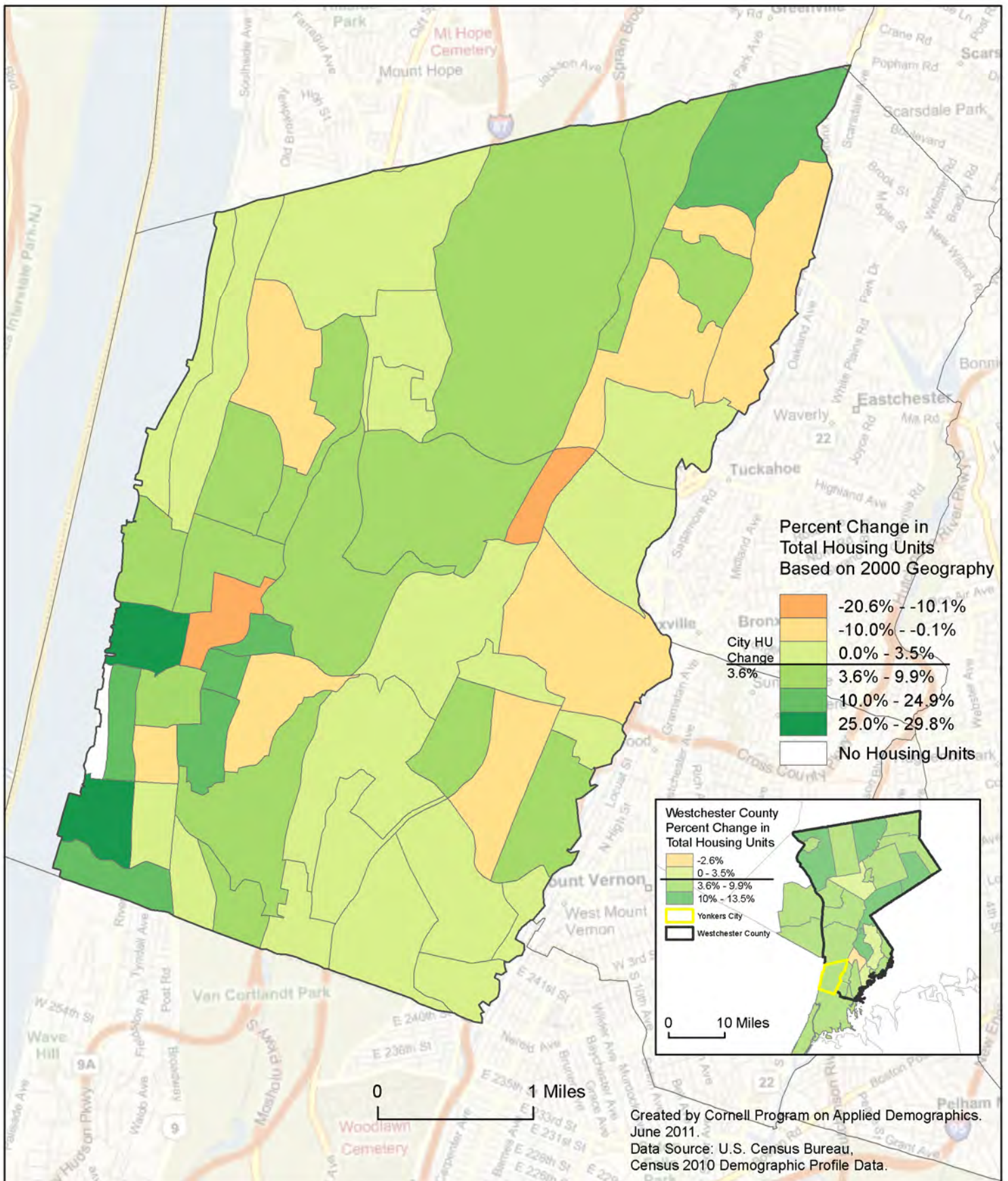
# Percent Occupied Housing Units, Syracuse City



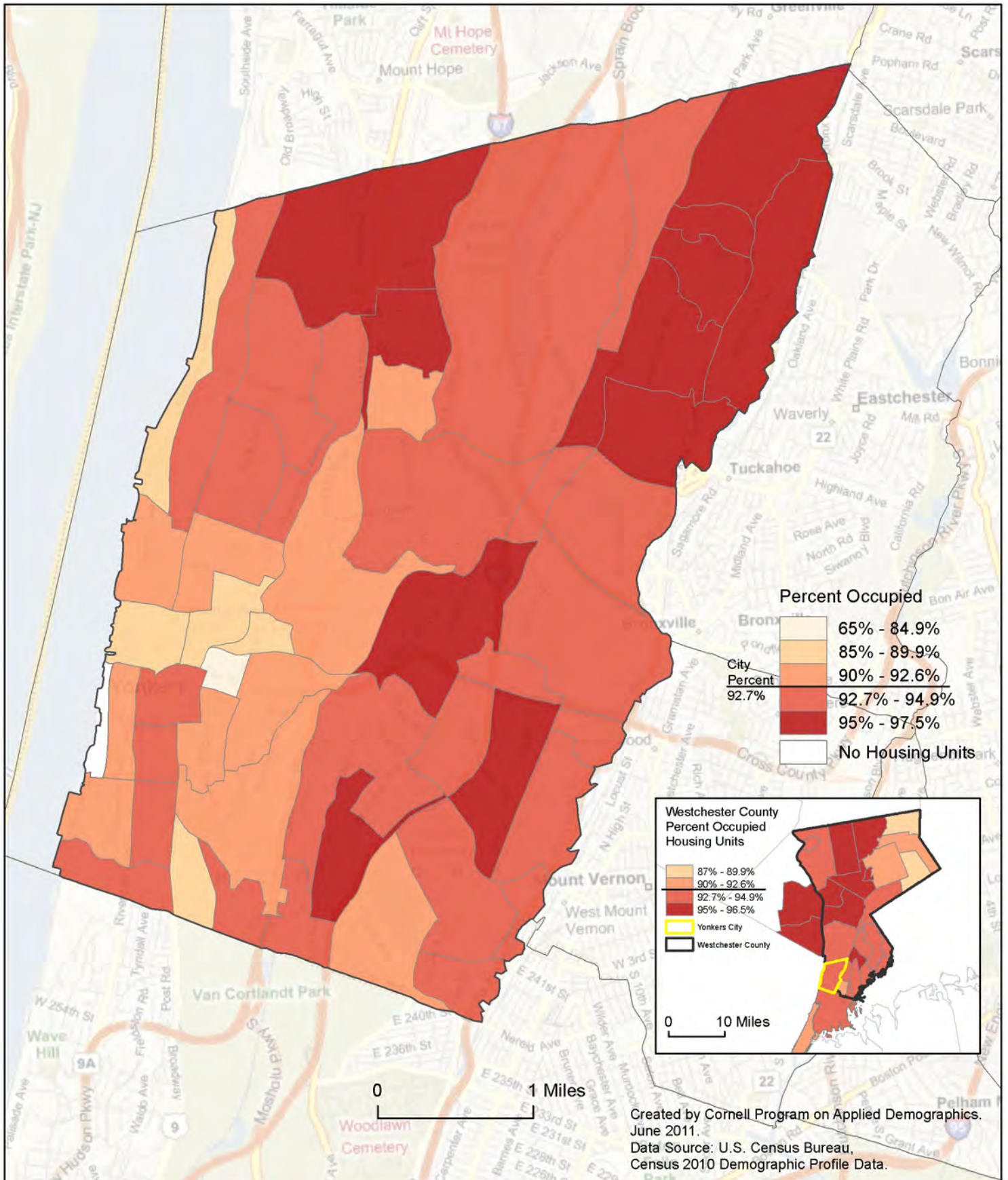
# Total Housing Units: Housing Density, Syracuse City



# Percent Change in Housing Units (2000-2010), Yonkers



# Percent Occupied Housing Units, Yonkers City



# Total Housing Units: Housing Density, Yonkers City

