

new york minute

ISSUE NUMBER 53/NOVEMBER 2012

New York State's Farmland

By **Robin M. Blakely-Armitage** and **Jan Vink**, Cornell University



According to the National Agriculture Statistics Service, there were 36,300 farms in New York State (NYS) in 2010 – the equivalent of 7 million acres of land - 23.2% of the total land area of NYS. The share of land area devoted to farming varies significantly between counties, ranging from essentially 0% in the New York City area to just over 60% in Seneca County in the upstate region. Many people may be surprised to learn that several upstate metropolitan counties also have a significant share of their land in farms, such as Monroe County (31%) and Niagara County (42%). While NYS as a whole witnessed a 9% decrease in farmland in the last decade, not all counties experienced declines, and some even posted gains. For data on all 62 NYS counties, please visit: <http://pad.human.cornell.edu/NYMinutes/NYMinute53stats.cfm>

Land in Farms*, by New York County, 2000-2010

(size of internal polygon proportionate to land area of county)

Legend

Color of the whole county:

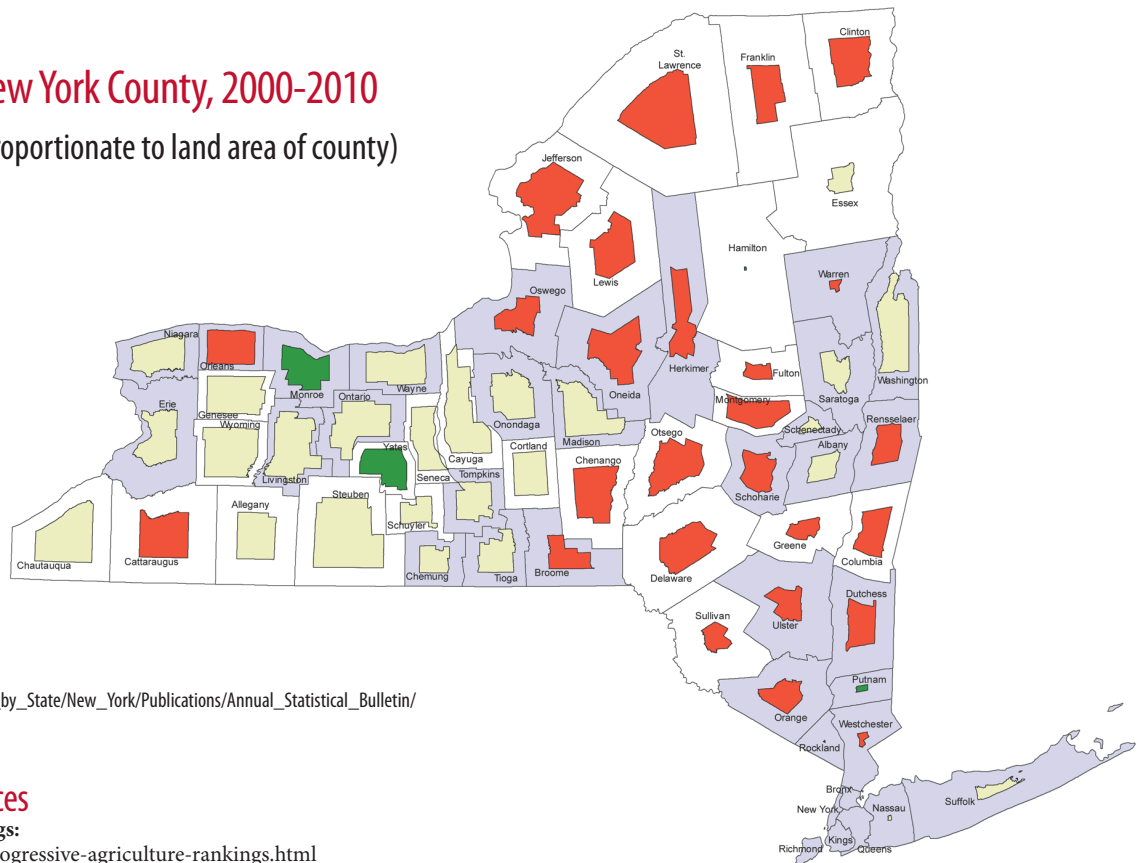
Metropolitan Areas
 Metropolitan
 Non Metropolitan

Size of the internal shape:

Equal to the acreage of the land in farms in the county

Color of the internal shape:

% Change in farmland from 2000 to 2010
 More than 10% decrease
 Between 10% decrease and 10% increase
 More than 10% increase



Source: http://www.nass.usda.gov/Statistics_by_State/New_York/Publications/Annual_Statistical_Bulletin/

Additional Data & Resources

Progressive Agricultural Rankings:

<http://www.agdevonline.com/progressive-agriculture-rankings.html>

USDA, National Agricultural Statistics Service, NYS Data:

http://www.nass.usda.gov/Statistics_by_State/New_York/index.asp

USDA Census of Agriculture: <http://www.agcensus.usda.gov/>

ERS Organic Production Data:

<http://www.ers.usda.gov/Data/Organic/>

Farmland Information Center:

http://www.farmlandinfo.org/agricultural_statistics/index.cfm?function=statistics_view&stateID=NY

American Farmland Trust publications:

<http://www.farmland.org/resources/publications/default2.asp>

* For a definition of "land in farms", see page 19 in:

http://usda01.library.cornell.edu/usda/nass/FarmLandIn//2010s/2010/FarmLandIn-02-12-2010_revision.pdf



Cornell University

The **New York Minute** is a publication of Cornell University's Community & Regional Development Institute (CaRDI), produced in collaboration with the Program on Applied Demographics (PAD). These publications are free for public reproduction with proper accreditation.

For more information on CaRDI, our program areas, and past publications, please visit: www.caridi.cornell.edu.

For more information on PAD, please visit: pad.human.cornell.edu.

Cornell University is an equal opportunity, affirmative action educator and employer.