

Schuyler County Profile 2017

A collection of recent demographic, social and economic data

Compiled by

Jan Vink

Cornell Program on Applied Demographics



Cornell University



Program
on Applied
Demographics

CORNELL POPULATION CENTER

This profile is a part of a set of profiles generated for each county in New York State. The profiles were developed and generated by the Cornell Program on Applied Demographics. The work is sponsored by the New York State Data Center in the New York State Department of Labor.

Cornell Program on Applied Demographics:

The Program on Applied Demographics (PAD) brings skills in demographics, economics, statistics, data gathering and data analysis together to provide a variety of organizations with data, information and advice. PAD is located in the Department of Policy Analysis and Management within the College of Human Ecology at Cornell University. PAD is also affiliated with the Cornell Institute for Social and Economic Research and the Cornell Population Center.

For more information: <http://pad.human.cornell.edu/>

New York State Data Center:

The New York State Data Center (NYSDC) is located in the Division of Research and Statistics within the New York State Department of Labor. The State Data Center operates as part of a nationwide effort to improve public access to data provided by the U.S. Census Bureau. The U.S. Census Bureau collects and tabulates data on a multitude of subjects such as population, social, economic and housing demographics, labor force data, health care, migration and transportation. These data play a critical role in understanding our local and larger surrounding communities. Census data also influence state and federal funding, aid decision making in the legislative process, and determine each state's number of congressional seats. As the lead agency in New York for the SDC program, the New York State Data Center helps users navigate through the multitude of surveys and products provided by the U.S. Census Bureau.

For more information: <https://labor.ny.gov/nys-data-center/>

All profiles are freely downloadable as PDF documents on the PAD website:

<http://pad.human.cornell.edu/profiles/index.cfm>

This profile is an update from the County Profile produced in 2013. The 2013 profile also contained information on agriculture related items and can be found at <https://pad.human.cornell.edu/profiles/2013/Schuyler.pdf>

Contents

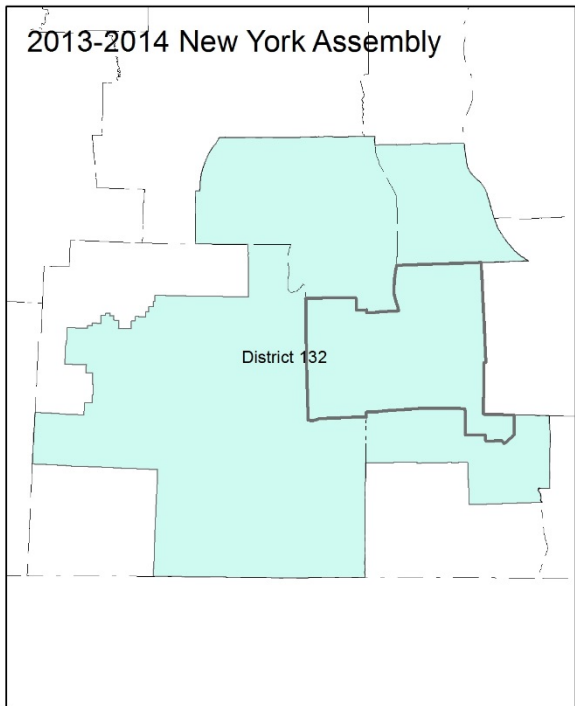
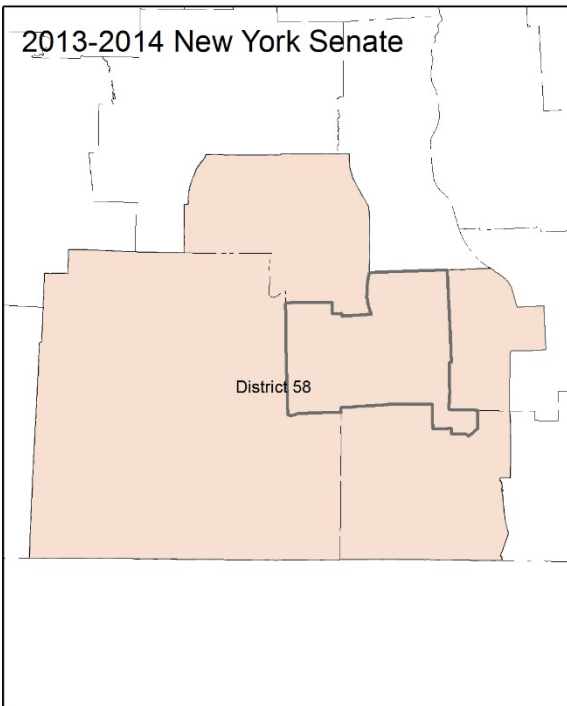
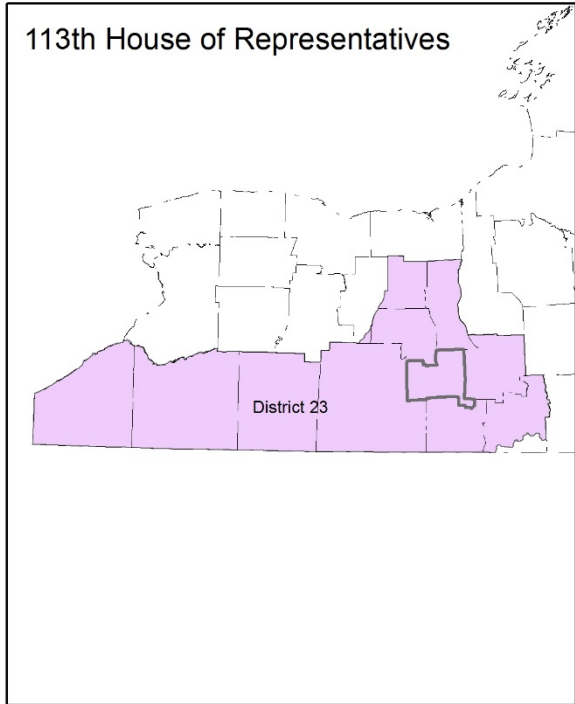
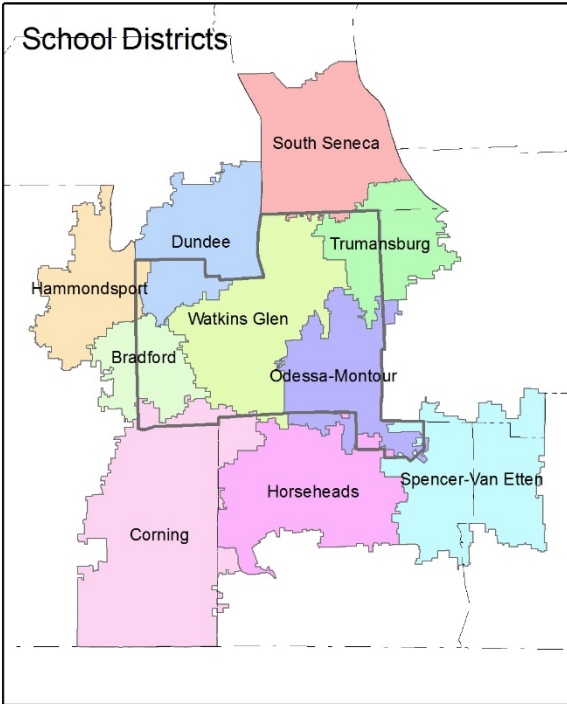
1	Reference Maps (towns and places as defined in 2010)	3
2	Population density and Urban Areas Map	5
3	Total Population	6
3.1	Historic and projected	6
3.2	Change since previous Census	6
3.3	Annual population estimates	7
3.4	Sub County population change 2010-2015	8
3.5	Sub County population change 2010-2015	8
4	Components of population change	9
4.1	Vital Statistics	9
4.2	Migration	10
5	Population by age	11
5.1	Historic and projected population pyramids	11
5.2	Selected age groups	12
5.3	Median age	13
6	Race	14
6.1	Total and household population by race	14
6.2	Race composition by age	14
7	Housing units	15
7.1	Characteristics	15
7.2	Historical data on number of housing units and occupancy status	16
7.3	Building Permits 2000-2015	16
8	Education	17
8.1	Enrollment by level of school	17
8.2	Enrollment by age	17
8.3	Percentage age 18-24 enrolled in college	17
8.4	Educational attainment	18
9	Language spoken at home	18
10	Labor Force Characteristics	19
10.1	Labor force, employment and unemployment	19
10.2	Annual unemployment rate	20
10.3	Employment and number of jobs	20
10.4	Class of worker	21
11	Household Income	22
11.1	Income Distribution	22
11.2	Median household income: Trends over time	23
12	Poverty	23
12.1	Family Income to Poverty Ratio	23
12.2	Poverty: Trends over time: Count	24
12.3	Poverty: Trends over time: Rate	24
12.4	Poverty characteristics	25
13	Glossary	26
14	References	29

1 Reference Maps (towns and places as defined in 2010)

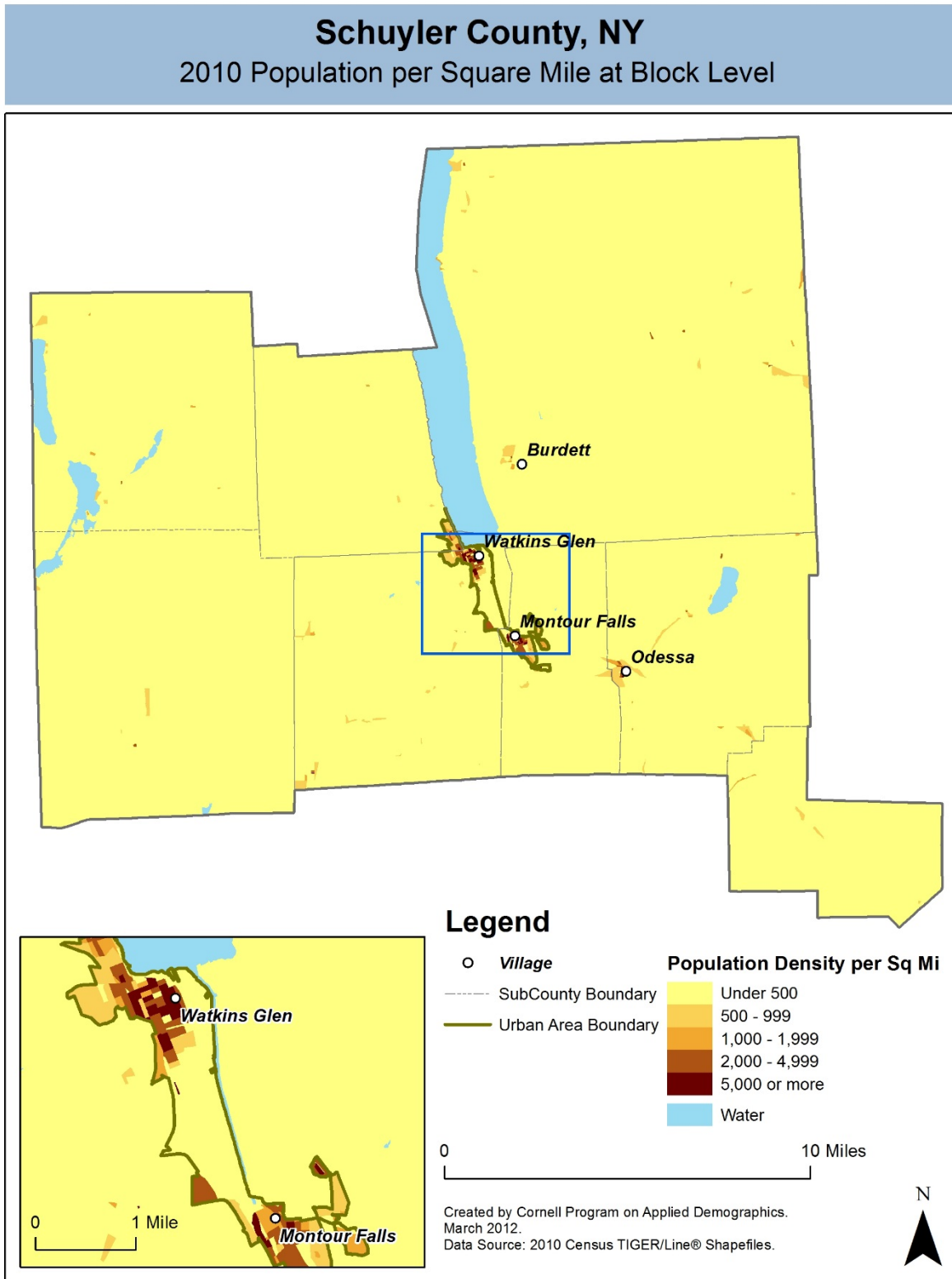


Schuyler County, NY

Overlap with School and Political Districts



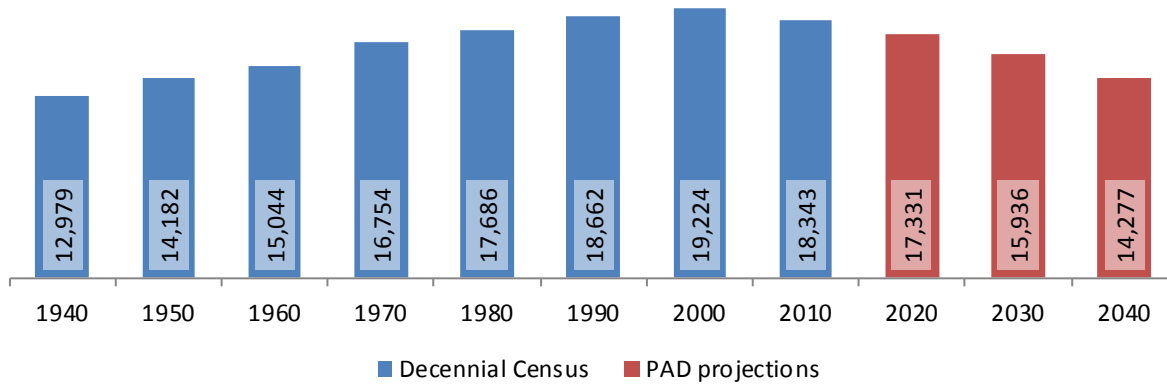
2 Population density and Urban Areas Map



3 Total Population

3.1 Historic and projected

Total population, Schuyler County, 1940-2040



Source: 1940-2010 Decennial Census and projections by Cornell Program on Applied Demographics

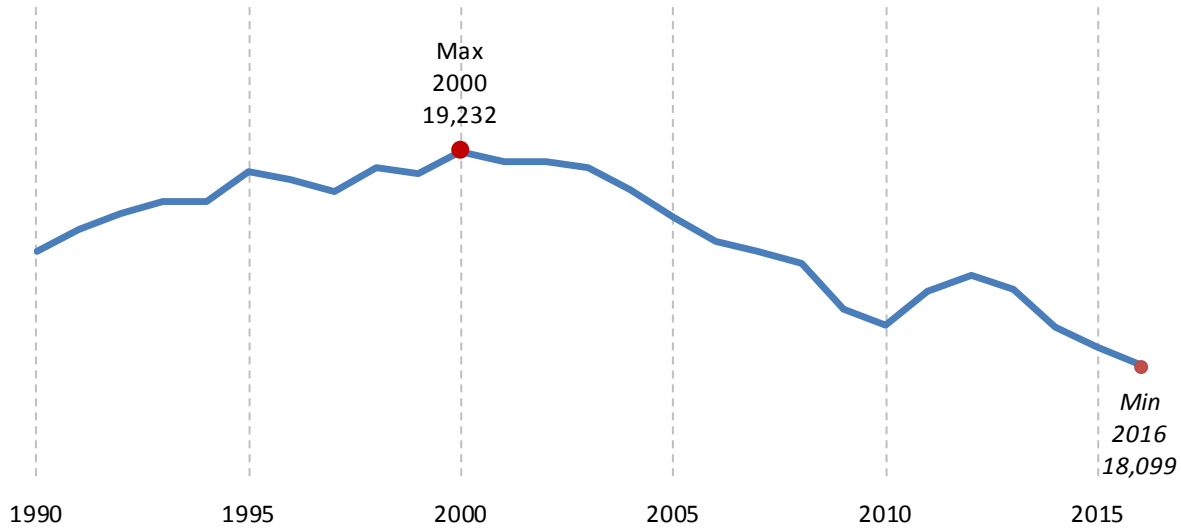
3.2 Change since previous Census

	Year	Total population	Change	
			Number	Percent
Decennial Census	1940	12,979		
	1950	14,182	1,203	9.3%
	1960	15,044	862	6.1%
	1970	16,754	1,710	11.4%
	1980	17,686	932	5.6%
	1990	18,662	976	5.5%
	2000	19,224	562	3.0%
	2010	18,343	-881	-4.6%
PAD projections	2020	17,331	-1,012	-5.5%
	2030	15,936	-1,395	-8.0%
	2040	14,277	-1,659	-10.4%

Source: 1940-2010 Decennial Census and projections by Cornell Program on Applied Demographics

3.3 Annual population estimates

**Annual population estimates
Schuyler County, 1990-2016**



Source: U.S. Census Bureau population estimates (1990-1999 and 2000-2009 intercensal and vintage 2016 postcensal)

3.4 Sub County population change 2010-2015

	Total Population		Difference	
	2000	2010	Count	%
New York State	18,976,821 *	19,378,102	401,281	2.1%
Schuyler County	19,224	18,343	-881	-4.6%
Towns				
Catharine	1,930	1,762	-168	-8.7%
Cayuta	545	556	11	2.0%
Dix	4,197	3,864	-333	-7.9%
Hector	4,854	4,940	86	1.8%
Montour	2,446	2,308	-138	-5.6%
Orange	1,752	1,609	-143	-8.2%
Reading	1,786	1,707	-79	-4.4%
Tyrone	1,714	1,597	-117	-6.8%

* Original counts revised through Count Question Resolution Program (CQR)

Source: U.S. Census Bureau intercensal population estimates 2000-2010

3.5 Sub County population change 2010-2015

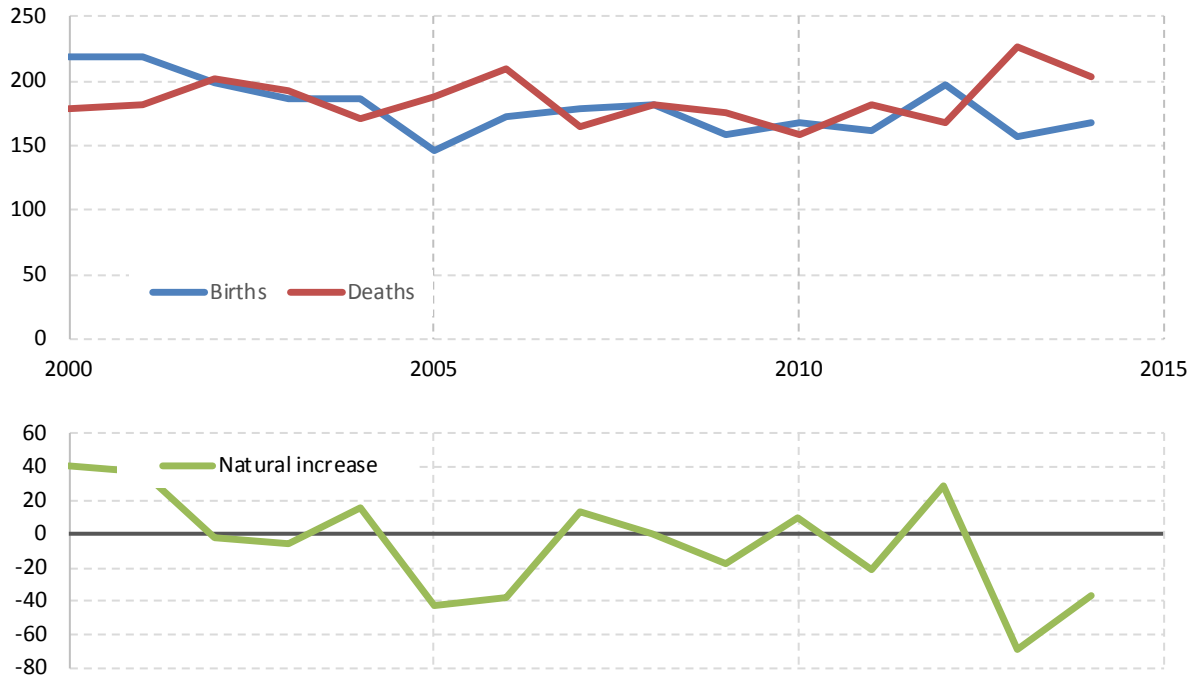
	Total Population		Difference	
	2010 base	2015	Count	%
New York State	19,378,087	19,795,791	417,704	2.2%
Schuyler County	18,339	18,186	-153	-0.8%
Towns				
Catharine	1,759	1,718	-41	-2.3%
Cayuta	556	540	-16	-2.9%
Dix	3,864	3,894	30	0.8%
Hector	4,938	4,993	55	1.1%
Montour	2,308	2,283	-25	-1.1%
Orange	1,609	1,455	-154	-9.6%
Reading	1,707	1,705	-2	-0.1%
Tyrone	1,598	1,598	0	0.0%

Source: U.S. Census Bureau population estimates 2010-2015

4 Components of population change

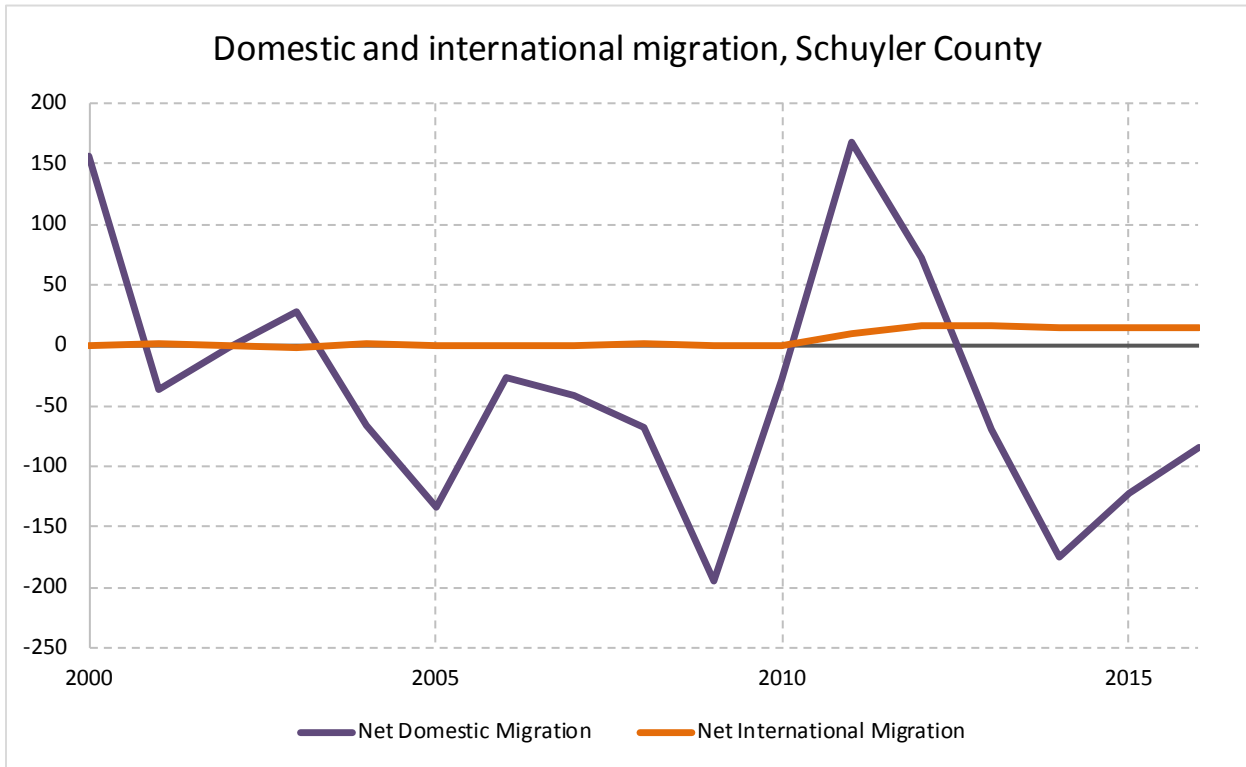
4.1 Vital Statistics

Vital Statistics, Schuyler County



Source: New York State Department of Health

4.2 Migration

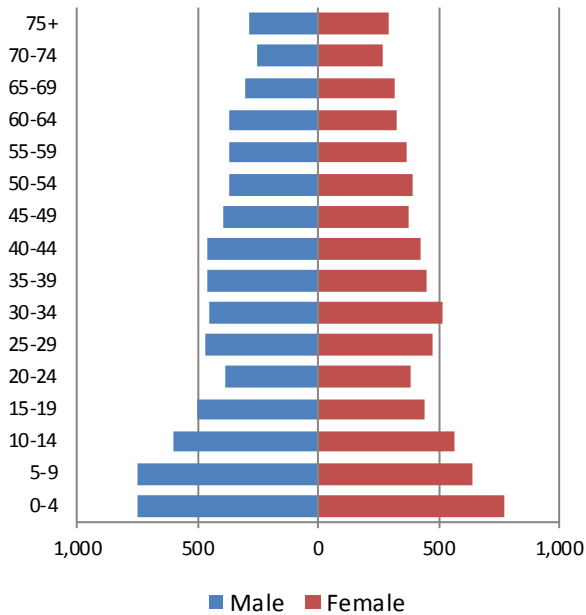


Source: Census Bureau population estimates (V2010 and V2016)

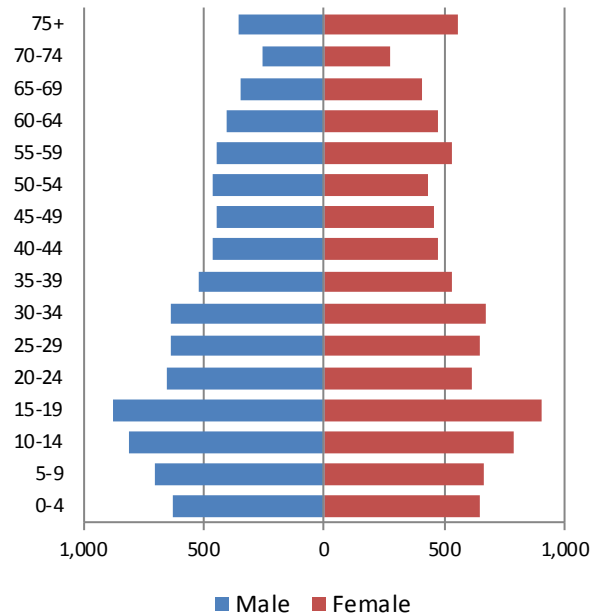
5 Population by age

5.1 Historic and projected population pyramids

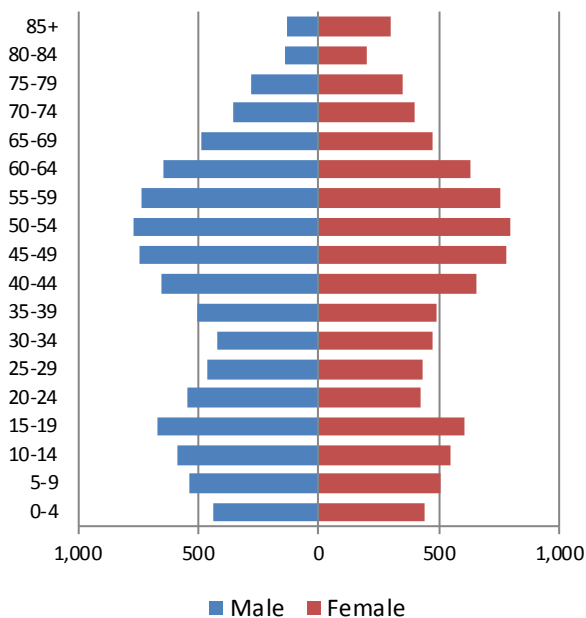
1950 Population Pyramid, Schuyler County



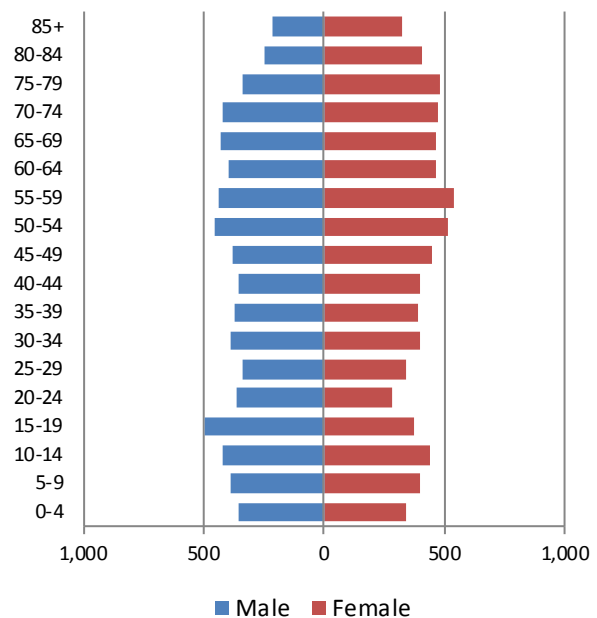
1980 Population Pyramid, Schuyler County



2010 Population Pyramid, Schuyler County



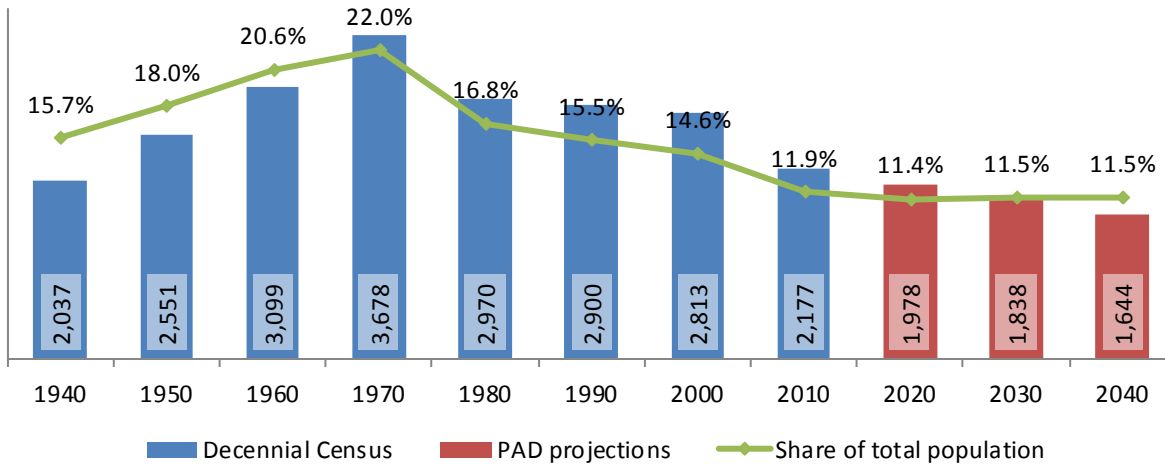
2040 Population Pyramid, Schuyler County



Source: 1950, 1980, 2010 Decennial Census and projections by Cornell Program on Applied Demographics

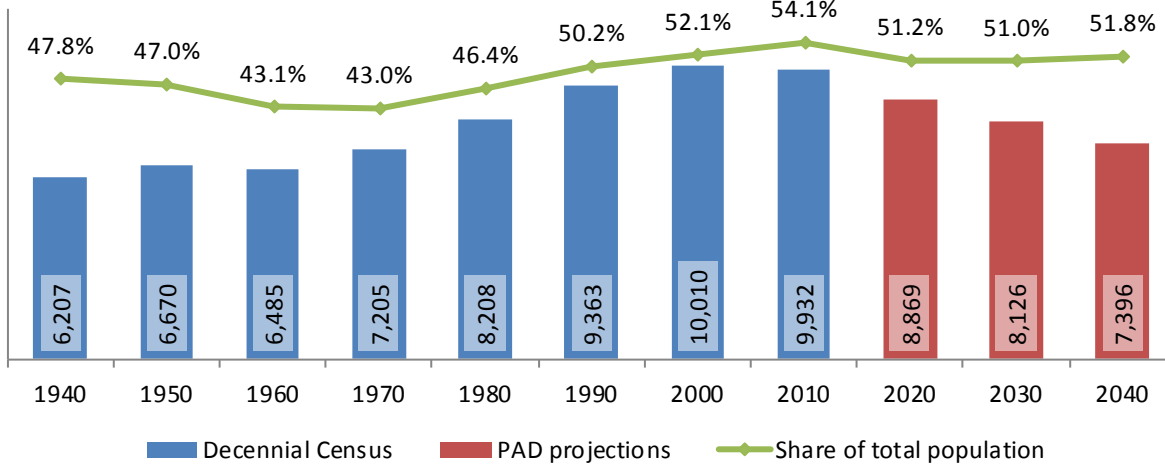
5.2 Selected age groups

Population age 5-14, Schuyler County, 1940-2040



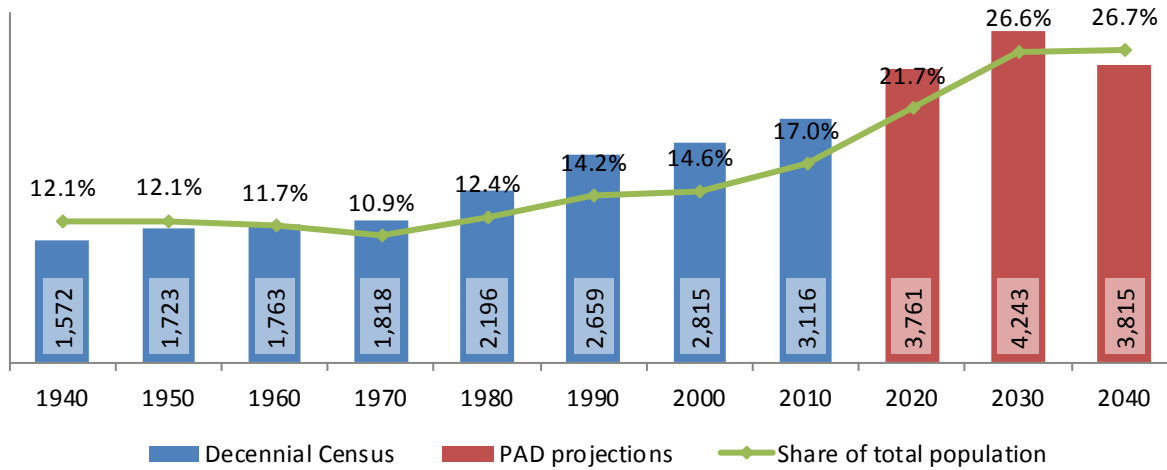
Source: 1940-2010 Decennial Census and projections by Cornell Program on Applied Demographics

Population age 25-64, Schuyler County, 1940-2040



Source: 1940-2010 Decennial Census and projections by Cornell Program on Applied Demographics

Population age 65 and over, Schuyler County, 1940-2040



Source: 1940-2010 Decennial Census and projections by Cornell Program on Applied Demographics

5.3 Median age

Schuyler County New York State

Median age

2000	38.8	35.9
2010	44.2	38.0
2015	46.1	38.3

Source: 2000, 2010 Decennial Census, 2015 Population Estimates

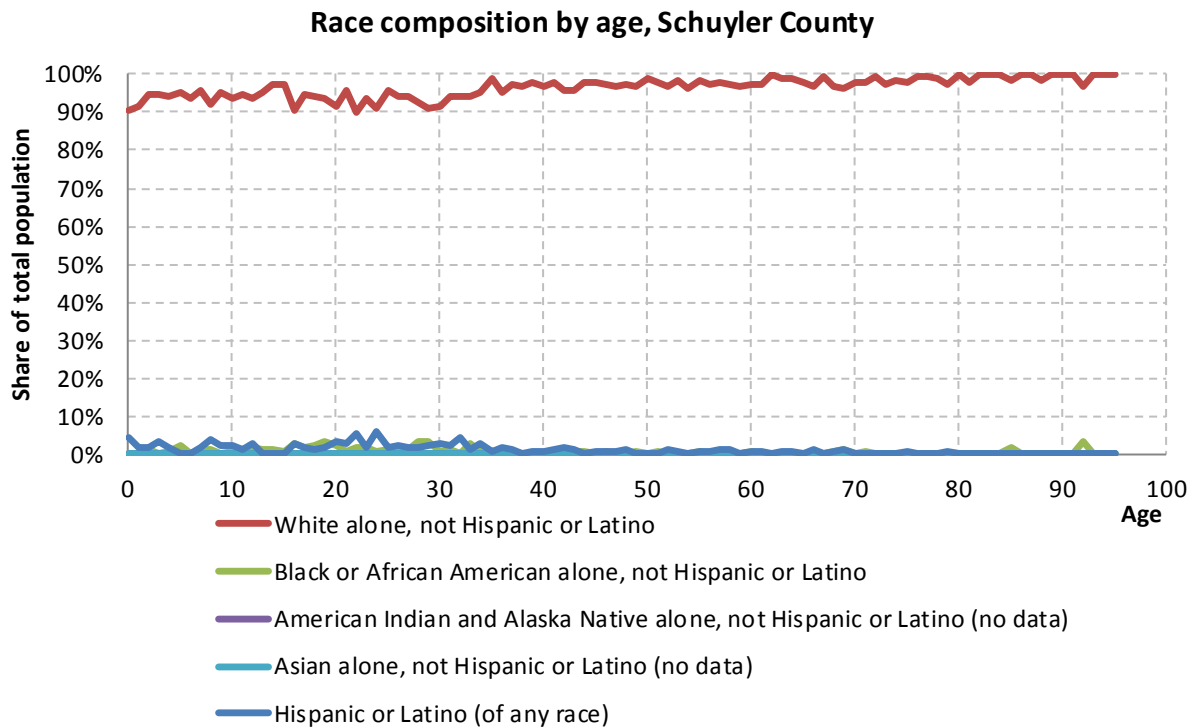
6 Race

6.1 Total and household population by race

	Total		In households		In Group Quarters
	Count	Percentage	Count	Percentage	Count
Total population	18,343	100%	17,989	100%	354
Not Hispanic or Latino					
One race					
White	17,646	96.2%	17,369	96.6%	277
Black or African American	143	0.8%	103	0.6%	40
American Indian and Alaska Native	44	0.2%	-	-	-
Asian	51	0.3%	-	-	-
Native Hawaiian and Other Pacific Islander	4	0.0%	-	-	-
Some other race	10	0.1%	-	-	-
Two or more races	211	1.2%	210	1.2%	1
Hispanic or Latino (of any race)	234	1.3%	201	1.1%	33

Source: 2010 Decennial Census

6.2 Race composition by age



Source: 2010 Decennial Census

7 Housing units

7.1 Characteristics

HOUSING OCCUPANCY	COUNT		PERCENTAGE	
	Estimate	Margin of error	Estimate	Margin of error
Total housing units	9,513	± 43	100.0%	
Occupied housing units	7,686	± 234	80.8%	± 2.4
Vacant housing units	1,827	± 228	19.2%	± 2.4
YEAR STRUCTURE BUILT				
Total housing units	9,513	± 43	100.0%	
Built 2014 or later	0	± 18	0.0%	± 0.3
Built 2010 to 2013	67	± 28	0.7%	± 0.3
Built 2000 to 2009	753	± 153	7.9%	± 1.6
Built 1990 to 1999	1,167	± 196	12.3%	± 2.1
Built 1980 to 1989	955	± 187	10.0%	± 2.0
Built 1970 to 1979	1,391	± 205	14.6%	± 2.2
Built 1960 to 1969	483	± 81	5.1%	± 0.8
Built 1950 to 1959	737	± 126	7.7%	± 1.3
Built 1940 to 1949	363	± 69	3.8%	± 0.7
Built 1939 or earlier	3,597	± 278	37.8%	± 2.9
HOUSING TENURE				
Occupied housing units	7,686	± 234	100.0%	
Owner-occupied	5,933	± 224	77.2%	± 2.7
Renter-occupied	1,753	± 232	22.8%	± 2.7
HOUSE HEATING FUEL				
Occupied housing units	7,686	± 234	100.0%	
Utility gas	1,484	± 154	19.3%	± 2.1
Bottled, tank, or LP gas	1,818	± 234	23.7%	± 2.8
Electricity	870	± 130	11.3%	± 1.7
Fuel oil, kerosene, etc.	1,625	± 219	21.1%	± 2.8
Coal or coke	601	± 153	7.8%	± 2.0
Wood	1,087	± 184	14.1%	± 2.4
Solar energy	11	± 10	0.1%	± 0.1
Other fuel	133	± 48	1.7%	± 0.6
No fuel used	57	± 50	0.7%	± 0.7
VALUE				
Owner-occupied units	5,933	± 224	100.0%	
Less than \$50,000	813	± 168	13.7%	± 2.6
\$50,000 to \$99,999	1,915	± 207	32.3%	± 3.4
\$100,000 to \$149,999	1,106	± 165	18.6%	± 2.7
\$150,000 to \$199,999	1,093	± 186	18.4%	± 3.0
\$200,000 to \$299,999	584	± 119	9.8%	± 2.1
\$300,000 to \$499,999	321	± 104	5.4%	± 1.8
\$500,000 to \$999,999	70	± 40	1.2%	± 0.7
\$1,000,000 or more	31	± 16	0.5%	± 0.3
Median (dollars)	108,500	± 8,138		

Source: 2011-2015 American Community Survey

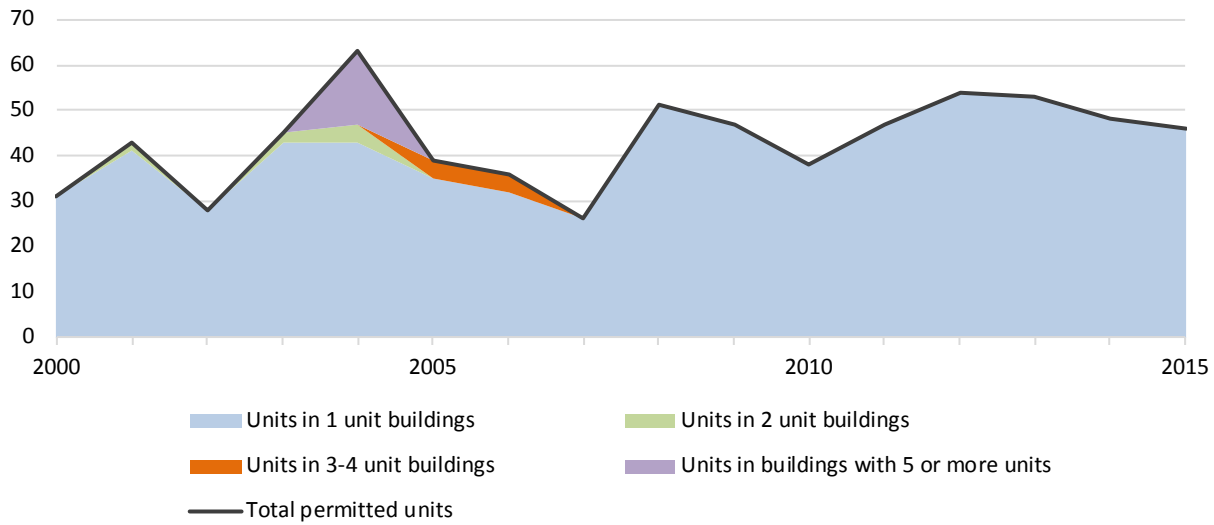
7.2 Historical data on number of housing units and occupancy status

Year	Number of Housing Units	Change since previous Census	Occupied	Occupancy rate	Vacant
1970	6,270		5,073	80.9%	1,197
1980	7,560	20.6%	6,038	79.9%	1,522
1990	8,472	12.1%	6,818	80.5%	1,654
2000	9,181	8.4%	7,374	80.3%	1,807
2010	9,455	3.0%	7,530	79.6%	1,925

Source: 1970-2010 Decennial Census

7.3 Building Permits 2000-2015

Building permits by number of permitted units in building, Schuyler County



Source: Census Bureau Building Permits Survey

8 Education

8.1 Enrollment by level of school

	Estimate	Margin of error
Total enrolled in school	3,660	± 188
Nursery school, preschool	301	± 90
Kindergarten to 12th grade	2,748	± 88
Kindergarten	198	± 63
Elementary: grade 1 to grade 4	659	± 92
Elementary: grade 5 to grade 8	875	± 114
High school: grade 9 to grade 12	1,016	± 123
College, undergraduate	490	± 121
Graduate, professional school	121	± 72

Source: 2011-2015 American Community Survey

8.2 Enrollment by age

	Estimate	Margin of error
3 and 4 years	60.8%	± 12.2
5 to 9 years	94.0%	± 4.4
10 to 14 years	96.9%	± 2.5
15 to 17 years	98.2%	± 2.2
18 and 19 years	55.9%	± 15.2
20 to 24 years	21.7%	± 8.2
25 to 34 years	6.5%	± 2.3
35 years and over	1.5%	± 0.7

Source: 2011-2015 American Community Survey

8.3 Percentage age 18-24 enrolled in college

	Estimate	Margin of error
Population 18 to 24 years	1,470	± 52
Enrolled in college or graduate school	22.8%	± 6.9
Males 18 to 24 years	830	± 45
Enrolled in college or graduate school	21.6%	± 9.9
Females 18 to 24 years	640	± 29
Enrolled in college or graduate school	24.4%	± 9.0

Source: 2011-2015 American Community Survey

8.4 Educational attainment

	COUNT		PERCENTAGE	
	Estimate	Margin of error	Estimate	Margin of error
Population 25 years and over	13,283	± 48	100%	
EDUCATIONAL ATTAINMENT				
Less than 9th grade	381	± 111	2.9%	± 0.8
9th to 12th grade, no diploma	963	± 157	7.2%	± 1.2
High school graduate (includes equivalency)	5,161	± 331	38.9%	± 2.5
Some college, no degree	2,579	± 273	19.4%	± 2.1
Associate's degree	1,614	± 246	12.2%	± 1.8
Bachelor's degree	1,340	± 182	10.1%	± 1.4
Graduate or professional degree	1,245	± 208	9.4%	± 1.6
Percent high school graduate or higher			89.9%	± 1.4
Percent bachelor's degree or higher			19.5%	± 2.0

Source: 2011-2015 American Community Survey

9 Language spoken at home

	COUNT		PERCENTAGE		SPEAK ENGLISH LESS THAN "VERY WELL"	
	Estimate	Margin of error	Estimate	Margin of error	Estimate	Margin of error
Population 5 years and over	17,511	± 46	100%			
LANGUAGE SPOKEN AT HOME						
English only	17,004	± 165	97.1%	± 0.8		
Language other than English	507	± 146	2.9%	± 0.8	138	± 57
Spanish	188	± 74	1.1%	± 0.4	61	± 37
Other Indo-European languages	296	± 112	1.7%	± 0.6	69	± 45
Asian and Pacific Islander languages	21	± 16	0.1%	± 0.1	8	± 10
Other languages	2	± 5	0.0%	± 0.1	0	± 18

Source: 2011-2015 American Community Survey

10 Labor Force Characteristics

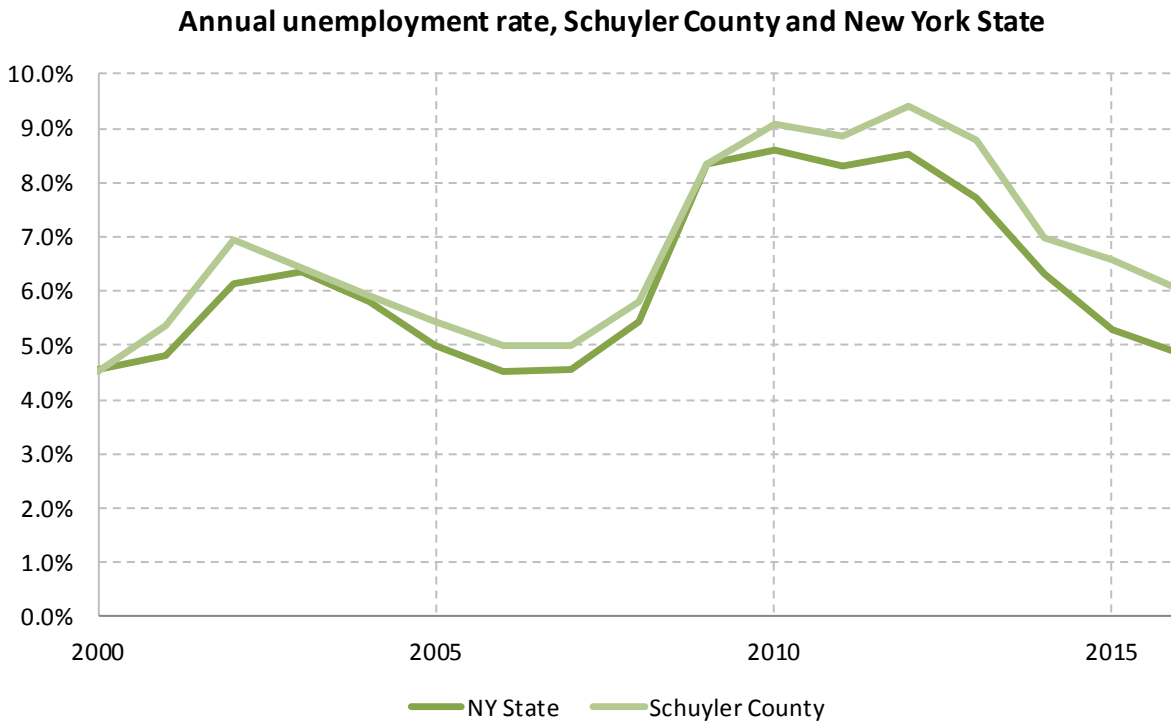
10.1 Labor force, employment and unemployment

	TOTAL		IN LABOR FORCE		EMPLOYED		UNEMPLOYMENT RATE	
	Estimate	Margin of error	Estimate	Margin of error	Estimate	Margin of error	Estimate	Margin of error
Population 16 years and over	15,265	± 93	56.9%	± 1.9	53.2%	± 2.0	6.4%	± 1.6
AGE								
16 to 19 years	920	± 75	33.9%	± 8.4	30.0%	± 7.9	11.5%	± 8.4
20 to 24 years	1,062	± 50	65.9%	± 8.9	61.9%	± 8.5	6.1%	± 3.7
25 to 29 years	957	± 32	82.3%	± 6.1	73.7%	± 6.8	10.5%	± 5.7
30 to 34 years	934	± 39	69.0%	± 9.2	63.2%	± 7.7	8.0%	± 4.5
35 to 44 years	2,117	± 49	78.2%	± 5.1	73.8%	± 5.1	5.4%	± 3.1
45 to 54 years	2,924	± 59	76.9%	± 4.0	72.0%	± 4.7	6.3%	± 4.2
55 to 59 years	1,588	± 152	71.2%	± 6.0	67.3%	± 5.9	5.6%	± 3.0
60 to 64 years	1,310	± 155	49.9%	± 7.6	48.0%	± 7.5	3.8%	± 2.1
65 to 74 years	1,935	± 25	23.6%	± 4.7	22.7%	± 4.7	3.9%	± 2.9
75 years and over	1,518	± 36	6.3%	± 3.1	6.1%	± 3.1	3.1%	± 4.7
RACE AND HISPANIC OR LATINO ORIGIN								
White alone	14,795	± 82	57.5%	± 1.9	53.8%	± 2.0	6.3%	± 1.6
Black or African American alone	194	± 46	21.1%	± 14.4	13.9%	± 14.3	34.1%	± 38.1
American Indian and Alaska Native alone	41	± 20	17.1%	± 15.2	14.6%	± 13.5	14.3%	± 38.7
Asian alone	82	± 27	53.7%	± 27.9	53.7%	± 27.9	0.0%	± 43.0
Two or more races	136	± 40	67.6%	± 17.4	67.6%	± 17.4	0.0%	± 27.2
Hispanic or Latino origin (of any race)	242	± 33	40.1%	± 24.1	38.8%	± 24.4	3.1%	± 6.9
White alone, not Hispanic or Latino	14,629	± 71	57.5%	± 1.9	53.8%	± 2.0	6.4%	± 1.6
SEX								
Population 20 to 64 years	10,892	± 66	71.8%	± 2.0	67.2%	± 2.2	6.3%	± 1.7
Male	5,497	± 51	76.4%	± 2.7	70.9%	± 3.6	7.1%	± 2.5
Female	5,395	± 46	67.1%	± 3.7	63.4%	± 3.6	5.4%	± 2.0
With own children under 18 years	1,510	± 171	67.1%	± 7.4	63.0%	± 7.5	6.0%	± 3.2
EDUCATIONAL ATTAINMENT								
Population 25 to 64 years	9,830	± 61	72.4%	± 2.2	67.8%	± 2.3	6.4%	± 2.0
Less than high school graduate	816	± 147	41.1%	± 8.3	36.6%	± 8.1	9.4%	± 6.4
High school graduate (includes equivalency)	3,584	± 281	73.6%	± 3.2	66.7%	± 4.0	9.3%	± 4.5
Some college or associate's degree	3,495	± 320	73.5%	± 4.1	70.2%	± 4.0	4.4%	± 1.5
Bachelor's degree or higher	1,935	± 251	81.6%	± 5.4	78.2%	± 5.5	3.9%	± 1.9

Table formula: **LABOR FORCE** = # EMPLOYED + # UNEMPLOYED
 % IN LABOR FORCE = LABOR FORCE / TOTAL * 100%
 % EMPLOYED = # EMPLOYED / TOTAL * 100%
 UNEMPLOYMENT RATE = # UNEMPLOYED / LABOR FORCE * 100%

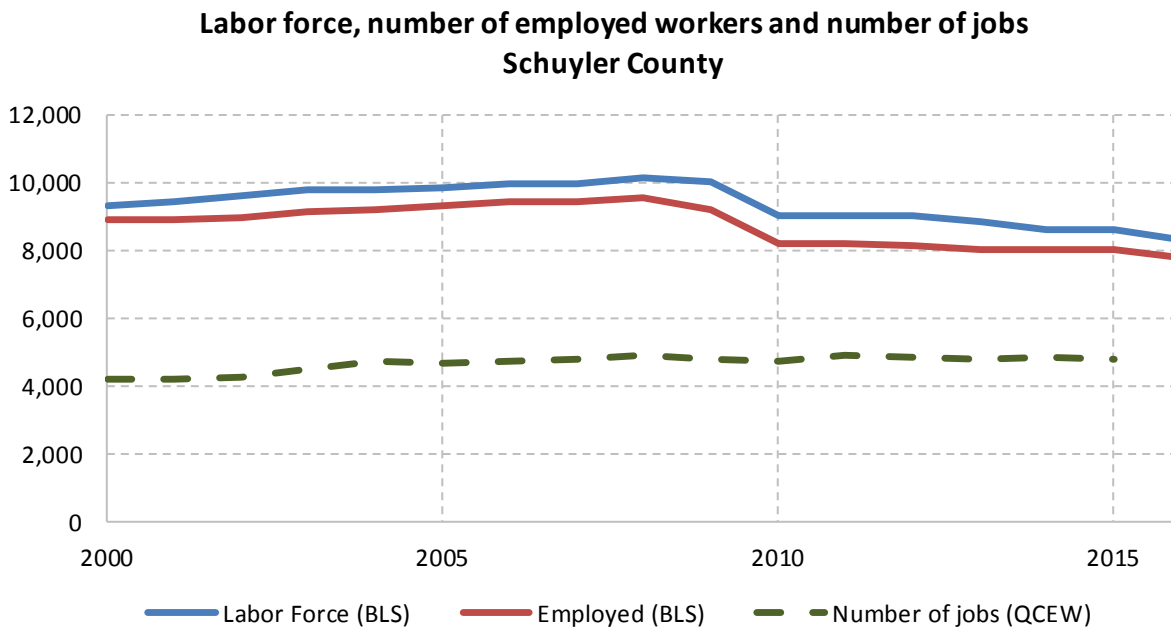
Source: 2011-2015 American Community Survey

10.2 Annual unemployment rate



Source: Bureau Labor Statistics (BLS)

10.3 Employment and number of jobs



Source: Bureau Labor Statistics (BLS) and NY Department of Labor - Quarterly Census of Employment and Wages (QCEW) – annual averages

10.4 Class of worker

		Total	%Male	%Female
Civilian employed population 16 years and over	Estimate	8,125	53.6%	46.4%
	<i>Margin of error</i>	± 300	± 2.1	± 2.1
Private for-profit wage and salary workers:	Estimate	4,796	56.9%	43.1%
	<i>Margin of error</i>	± 244	± 3.5	± 3.5
Employee of private company workers	Estimate	4,591	56.2%	43.8%
	<i>Margin of error</i>	± 229	± 3.6	± 3.6
Self-employed in own incorporated business workers	Estimate	205	73.7%	26.3%
	<i>Margin of error</i>	± 87	± 10.8	± 10.8
Private not-for-profit wage and salary workers	Estimate	1,276	35.7%	64.3%
	<i>Margin of error</i>	± 180	± 6.3	± 6.3
Local government workers	Estimate	544	36.6%	63.4%
	<i>Margin of error</i>	± 100	± 7.7	± 7.7
State government workers	Estimate	548	60.2%	39.8%
	<i>Margin of error</i>	± 136	± 10.8	± 10.8
Federal government workers	Estimate	148	52.0%	48.0%
	<i>Margin of error</i>	± 74	± 22.3	± 22.3
Self-employed in own not incorporated business workers and unpaid family workers	Estimate	813	69.9%	30.1%
	<i>Margin of error</i>	± 190	± 7.6	± 7.6

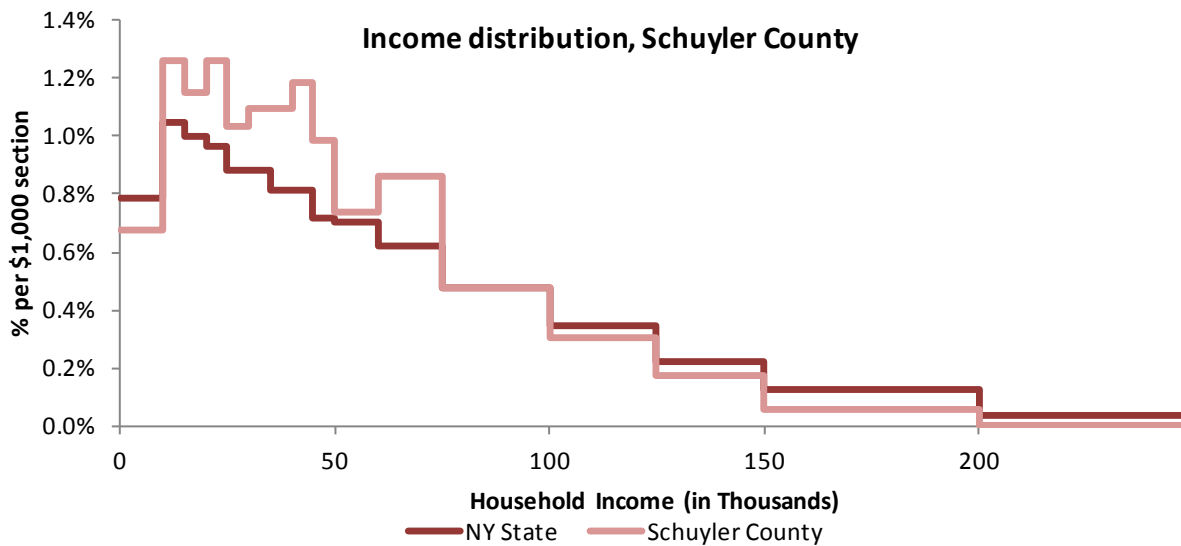
Source: 2011-2015 American Community Survey

11 Household Income

11.1 Income Distribution

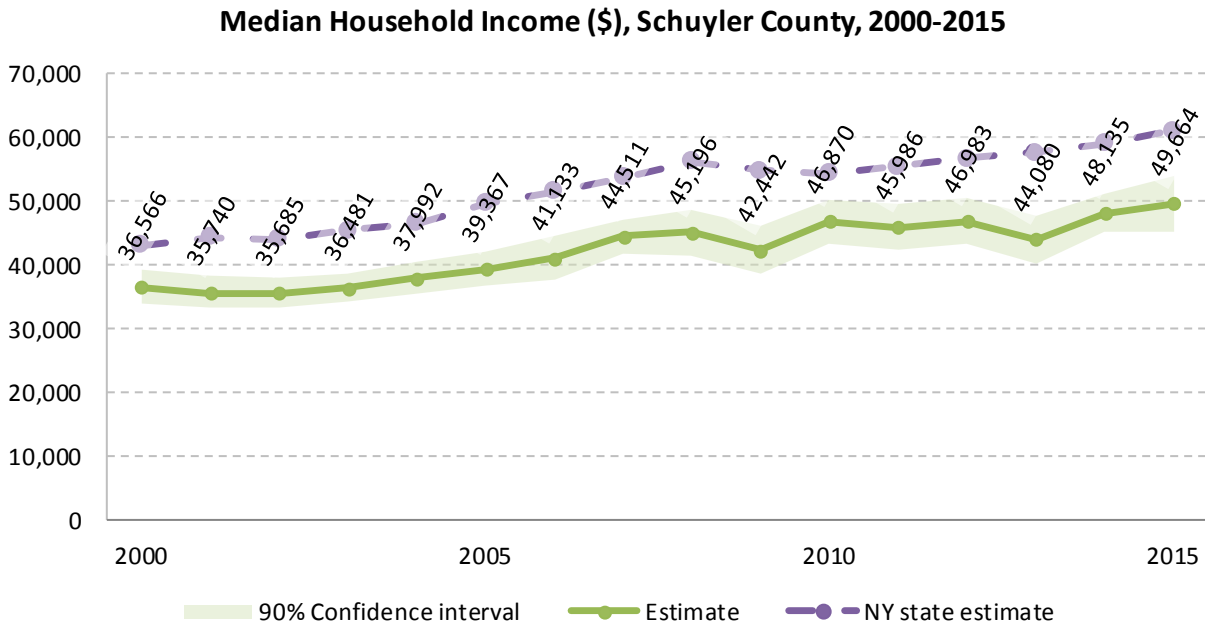
	Estimate	Margin of error	Interval width (in \$1,000)	Est. per \$1,000 section
Total:	7,686	± 234		
Less than \$10,000	518	± 155	10	51.8
\$10,000 to \$14,999	483	± 93	5	96.6
\$15,000 to \$19,999	442	± 85	5	88.4
\$20,000 to \$24,999	485	± 100	5	97.0
\$25,000 to \$29,999	396	± 135	5	79.2
\$30,000 to \$34,999	420	± 81	5	84.0
\$35,000 to \$39,999	420	± 138	5	84.0
\$40,000 to \$44,999	456	± 133	5	91.2
\$45,000 to \$49,999	378	± 88	5	75.6
\$50,000 to \$59,999	569	± 118	10	56.9
\$60,000 to \$74,999	990	± 182	15	66.0
\$75,000 to \$99,999	912	± 135	25	36.5
\$100,000 to \$124,999	584	± 116	25	23.4
\$125,000 to \$149,999	341	± 111	25	13.6
\$150,000 to \$199,999	228	± 87	50	4.6
\$200,000 or more	64	± 29	-	-

Source: 2011-2015 American Community Survey



Source: 2011-2015 American Community Survey

11.2 Median household income: Trends over time



Source: Small Area Income and Poverty Estimates (SAIPE)

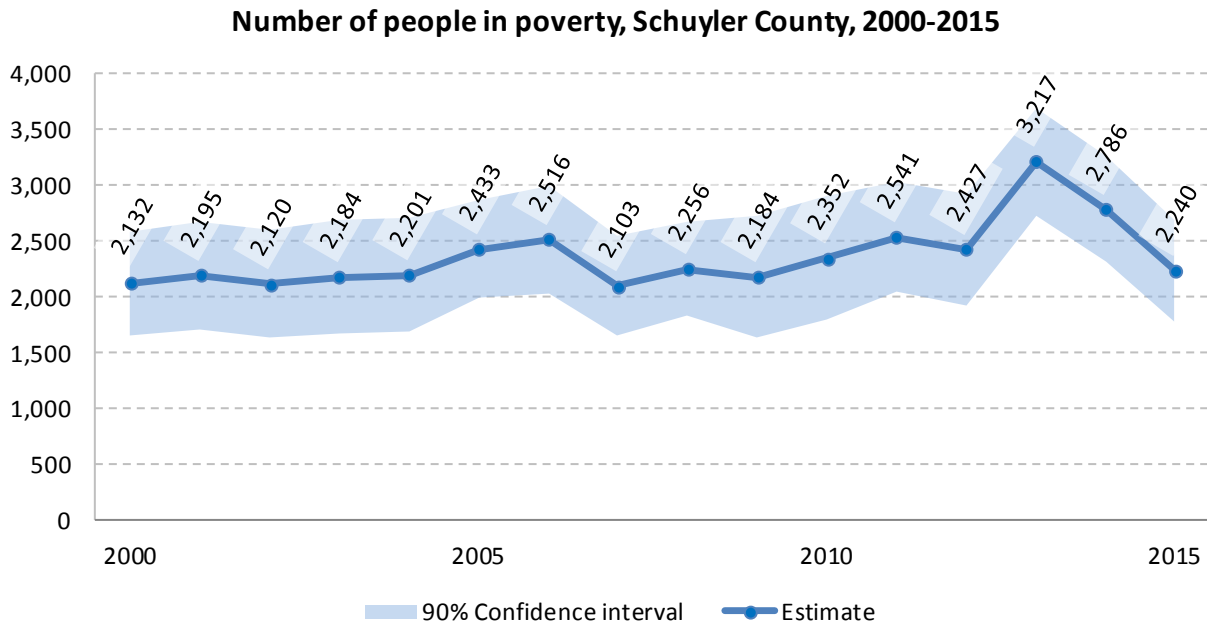
12 Poverty

12.1 Family Income to Poverty Ratio

	TOTAL		PERCENT OF ALL	
	Estimate	Margin of error	Estimate	Margin of error
All families	4,818	± 227		
ALL FAMILIES WITH INCOME:				
Below 50 percent of poverty level	195	± 62	4.0%	± 1.3
Below 100 percent of poverty level	513	± 139	10.6%	± 2.8
Below 125 percent of poverty level	673	± 147	14.0%	± 3.0
Below 150 percent of poverty level	856	± 164	17.8%	± 3.3
Below 185 percent of poverty level	1,131	± 157	23.5%	± 3.1
Below 200 percent of poverty level	1,209	± 158	25.1%	± 3.1
Below 300 percent of poverty level	2,028	± 191	42.1%	± 3.4
Below 400 percent of poverty level	2,970	± 226	61.6%	± 3.7
Below 500 percent of poverty level	3,566	± 217	74.0%	± 2.9

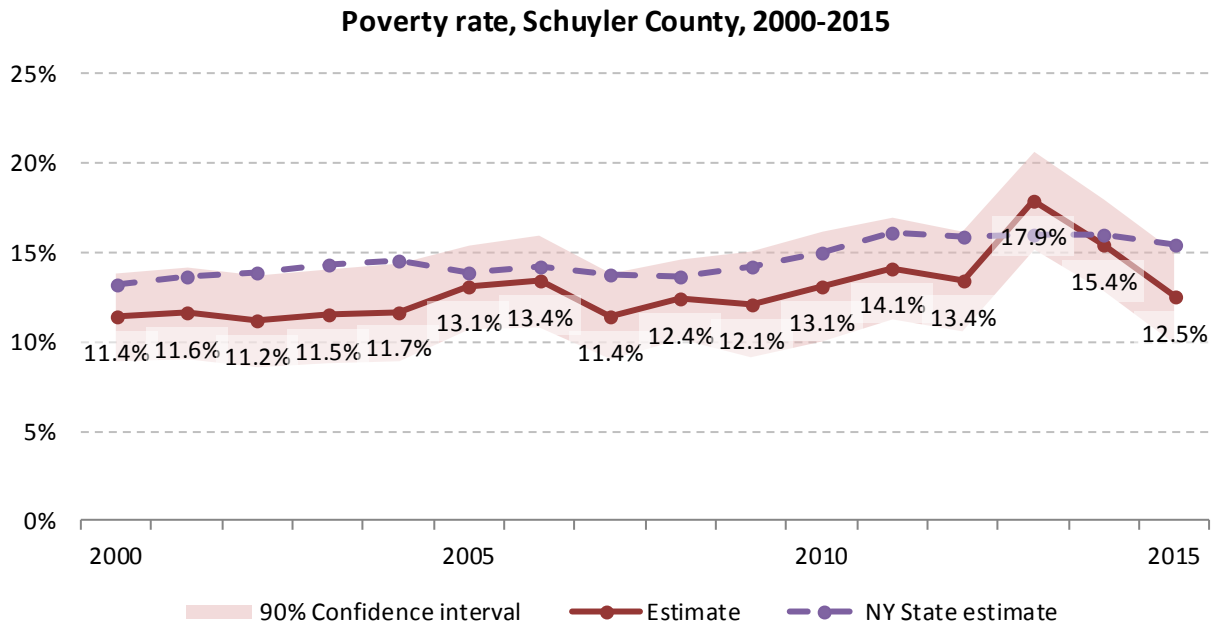
Source: 2011-2015 American Community Survey

12.2 Poverty: Trends over time: Count



Source: Small Area Income and Poverty Estimates (SAIPE)

12.3 Poverty: Trends over time: Rate



Source: Small Area Income and Poverty Estimates (SAIPE)

12.4 Poverty characteristics

	TOTAL		BELOW POVERTY LEVEL		PERCENT BELOW POVERTY LEVEL	
	Estimate	Margin of error	Estimate	Margin of error	Estimate	Margin of error
Population for whom poverty status is determined	17,918	± 112	2,595	± 373	14.5%	± 2.1
AGE						
Under 18 years	3,496	± 87	646	± 136	18.5%	± 3.9
Under 5 years	872	± 56	292	± 90	33.5%	± 9.5
5 to 17 years	2,624	± 96	354	± 101	13.5%	± 3.7
18 to 34 years	3,211	± 61	796	± 156	24.8%	± 4.9
35 to 64 years	7,884	± 56	930	± 186	11.8%	± 2.4
65 years and over	3,327	± 53	223	± 63	6.7%	± 1.9
SEX						
Male	8,931	± 105	1,062	± 232	11.9%	± 2.6
Female	8,987	± 92	1,533	± 242	17.1%	± 2.7
RACE AND HISPANIC OR LATINO ORIGIN						
White alone	17,431	± 110	2,478	± 377	14.2%	± 2.2
Black or African American alone	112	± 56	31	± 37	27.7%	± 28.7
American Indian and Alaska Native alone	41	± 20	9	± 13	22.0%	± 27.9
Asian alone	75	± 31	36	± 26	48.0%	± 29.6
Hispanic or Latino origin (of any race)	271	± 32	87	± 55	32.1%	± 19.7
White alone, not Hispanic or Latino	17,217	± 93	2,391	± 364	13.9%	± 2.1
EDUCATIONAL ATTAINMENT						
Population 25 years and over	13,035	± 70	1,597	± 243	12.3%	± 1.9
Less than high school graduate	1,256	± 170	300	± 90	23.9%	± 6.9
High school graduate (includes equivalency)	5,042	± 346	671	± 155	13.3%	± 2.9
Some college, associate's degree	4,161	± 337	499	± 168	12.0%	± 3.7
Bachelor's degree or higher	2,576	± 271	127	± 55	4.9%	± 2.0
EMPLOYMENT STATUS						
Civilian labor force 16 years and over	8,673	± 285	677	± 133	7.8%	± 1.5
Employed	8,120	± 301	483	± 101	5.9%	± 1.2
Male	4,358	± 237	215	± 66	4.9%	± 1.5
Female	3,762	± 222	268	± 72	7.1%	± 1.9
Unemployed	553	± 141	194	± 93	35.1%	± 12.6
Male	348	± 105	124	± 86	35.6%	± 18.9
Female	205	± 76	70	± 36	34.1%	± 12.1
WORK EXPERIENCE IN THE PAST 12 MONTHS						
Population 16 years and over	3,762	± 222	268	± 72	7.1%	± 1.9
Worked full-time, year-round	553	± 141	194	± 93	35.1%	± 12.6
Worked part-time or part-year	348	± 105	124	± 86	35.6%	± 18.9
Did not work	205	± 76	70	± 36	34.1%	± 12.1

Source: 2011-2015 American Community Survey

13 Glossary

American Community Survey (ACS) - The American Community Survey is an ongoing survey of the population that provides data every year on a variety of social and economic characteristics—age, sex, race, family and relationships, income and benefits, health insurance, education, veteran status, disabilities, where you work and how you get there, where you live and how much you pay for some essentials. The ACS replaced the information previously gathered by what was known as the “long form” of the decennial censuses. The ACS provides communities, companies and other institutions with current information they need to plan investments and services. Information from the survey generates data that help determine how more than \$400 billion in federal and state funds are distributed each year. Every estimate presented in the American Community Survey, as in other surveys, has an uncertainty associated with it. Often the magnitude of that uncertainty is expressed as the Margin of Error.

Confidence Interval (CI) - indication of the degree of uncertainty about a sample estimates. Confidence intervals have been traditionally reported at the 90, 95 and 99 percent levels. A 90 percent confidence interval can be interpreted, for example, roughly as providing 90 percent certainty that the interval defined by the upper and lower bounds contain the true value of the characteristic. If a Margin of Error is given, the lower bound of the confidence interval is equal to the estimate minus the Margin of Error and the upper bound is equal to the estimate plus the Margin of Error. (See further, Margin of Error definition below.)

County subdivision or Minor Civil Division (MCD) - The Census Bureau geography for primary administrative units below the county level in New York is collectively referred to as county subdivisions or minor civil divisions. These include towns, cities and Indian Reservations.

Decennial Census - the Census of the population and housing taken every 10 years in the United States, at the start of each decade, since 1790.

Employed – either “at work” or “with a job, but not at work”.

Group Quarters Population - all U.S. residents who live in group living facilities including correctional institutions, juvenile facilities, skilled nursing facilities, college residence halls, military barracks, group homes, and workers' dormitories.

Household Population - all U.S. residents who live in housing units such as single family homes, townhouses, apartments, and mobile homes.

Intercensal Population Estimates - estimates produced for the years between two decennial censuses when both the beginning and ending populations are known. They are produced once a decade by adjusting the existing time series of postcensal estimates for the entire decade to smooth the transition from one decennial census count to the next. They differ from the postcensal estimates that are released annually because the difference between the April 1 postcensal estimate and April 1 census count for the end of the decade is redistributed across the estimates for that decade. For dates when both postcensal and intercensal estimates are available, intercensal estimates are preferred.

Labor Force - consists of people classified as employed or unemployed.

Margin of Error (MOE) - a measure of the precision of an estimate at a given level of confidence. The confidence level of a margin of error indicates the likelihood that the difference between the population value (which you

would get if you could measure the whole population instead of a sample) and the estimate is less than or equal to the margin of error. The range from the estimate minus the margin of error to the estimate plus the margin of error is called the confidence interval. All ACS estimates are published with their margins of error at the 90 percent confidence level. Margins of error are useful in assessing the reliability of estimates and whether differences between estimates are significant.

Numeric Population Change - difference between the population of an area at the beginning and end of a time period. It is computed by taking the difference between the population at one point in time (t_1) and some future time (t_2).

Percent Population Change - difference between the population of an area at the beginning and end of a time period, expressed as a percentage of the beginning population. It is computed by dividing the population change ($t_2 - t_1$) by t_1 and multiplying the result by 100.

Population Estimates - The calculated number of people living in an area as of a specified point in time, usually July 1st. The estimated population is calculated using a component of change model that incorporates information on natural increase (births, deaths) and net migration (net domestic migration, net international migration) that has occurred in an area since the latest decennial census. A procedure for estimating the current population using a procedure involving a "base population" value at time $t - 1$, adding to that the births during the interval $t - 1$ to t , subtracting the deaths during that interval $t - 1$ to t , and then adding the net domestic and net international migration that occurred during that interval.

Population Density - Total number of people per areal unit like a square mile or square kilometer.

Population Pyramids - A graphical way of portraying a population's age and sex composition at a given slice in time. The first horizontal bar, constituting the base of the graph, is the youngest age group (typically 0-4) with the number of males in that age group on the left and the number of females in that age group on the right. On top of that age group is another horizontal bar for the next age group (e.g. 5-9) and so forth with the top bar typically for those aged 75 and over. In a population with lots of births and deaths, the shape typically forms a pyramid with a broad base and a narrow top. It is one of the most basic ways to understand population change over time as well as between different geographic units of a similar status (e.g. counties).

Postcensal Estimates - estimates produced for the years after a decennial census when only the beginning population is known. They are produced and revised each year, targeted to July 1 of that year.

Projection - estimated population at some future time based on assumptions about births, deaths, migration, and ages.

Race/Ethnicity - the Census Bureau collects racial data in accordance with guidelines provided by the U.S. Office of Management and Budget (OMB), and these data are based on self-identification. The racial categories included in the census questionnaire generally reflect a social definition of race recognized in this country and not an attempt to define race biologically, anthropologically, or genetically. In addition, it is recognized that the categories of the race item include racial and national origin or sociocultural groups. People may choose to report more than one race to indicate their racial mixture, such as "American Indian" and "White." People who identify their origin as Hispanic, Latino, or Spanish may be of any race. OMB requires five minimum categories: White, Black or African American, American Indian or Alaska Native, Asian, and Native Hawaiian or Other Pacific Islander. Hispanics may be classified as white or black. So we generally separate them out as an ethnic group first.

Unemployed – Not employed, but actively looking for work and available to accept a job.

Unemployment rate – Fraction of the Labor Force that is unemployed.

Urban Area – A densely settled area with at least 2,500 people. If the total number of people is less than 50,000 the Census Bureau calls it an Urban Cluster, otherwise an Urbanized Area.

Vintage - each year, the U.S. Census Bureau produces and publishes estimates of the population for each state and county, as well as the nation as a whole. These are called “vintages.” In producing these vintages, the Bureau utilizes administrative data from a number of sources to estimate 1) the change in population since the most recent decennial census, and 2) the population for each year since the most recent decennial census. With each annual release of population estimates (vintage), the entire time series of estimates beginning on April 1, 2010 is revised and updated.

Vital Statistics - quantitative data concerning a population, such as the number of births, marriages, and deaths.

14 References

Schuyler County homepage: <http://www.schuylercounty.us/>

At Cornell:

- Program on Applied Demographics (PAD)
URL: <http://pad.human.cornell.edu/>
 - More county trends: <https://pad.human.cornell.edu/counties/trends1geo.cfm?geo=97>
- Community and Regional Development Institute (CaRDI)
URL: <https://cardi.cals.cornell.edu/>
- Cornell Cooperative Extensions (CCE)
Home page: <http://www.cce.cornell.edu>
 - Schuyler local office: <http://cceschuyler.org/>

Data sources and background information:

- New York State Data Center
 - <https://labor.ny.gov/nys-data-center/index.shtm>
- U.S. Census Bureau - general
 - QuickFacts: <https://www.census.gov/quickfacts/table/PST045216/36,36097>
 - American FactFinder: <http://factfinder.census.gov/>
- U.S. Census Bureau - population
 - Decennial Census
 - Background: <https://www.census.gov/2010census/>
 - Demographic Profile: http://factfinder2.census.gov/bkmk/table/1.0/en/DEC/10_SF1/SF1DP1/0500000US36097
 - American Community Survey (ACS)
 - Background: <https://www.census.gov/programs-surveys/acs/>
 - Social Data Profile: http://factfinder2.census.gov/bkmk/table/1.0/en/ACS/15_5YR/DP02/0500000US36097
 - Economic Data Profile: http://factfinder2.census.gov/bkmk/table/1.0/en/ACS/15_5YR/DP03/0500000US36097
 - Housing Data Profile: http://factfinder2.census.gov/bkmk/table/1.0/en/ACS/15_5YR/DP04/0500000US36097
 - Demographics Data Profile: http://factfinder2.census.gov/bkmk/table/1.0/en/ACS/15_5YR/DP05/0500000US36097
 - Population estimates:
 - General: <https://www.census.gov/programs-surveys/popest.html>
 - Explorer: <https://www.census.gov/censusexplorer/censusexplorer-popest.html>
- U.S. Census Bureau – Small Area Income & Poverty Estimates (SAIPE)
 - <http://www.census.gov/did/www/saipe/>
- U.S. Census Bureau - Public Use Quarterly Workforce Indicators (QWI) – annual averages
 - <https://qwiexplorer.ces.census.gov/static/explore.html>
- U.S. Census Bureau – Building Permits Survey
 - <https://www.census.gov/construction/bps/>

- Bureau Labor Statistics (BLS)
 - Local Area Unemployment Statistics: <http://www.bls.gov/lau/>
 - Quarterly Census of Employment and Wages (QCEW): <https://www.bls.gov/cew/data.htm>
- NY Department of Labor -
 - Labor statistics: <https://labor.ny.gov/stats/index.shtm>
 - Quarterly Census of Employment and Wages (QCEW): <https://labor.ny.gov/stats/LSQCEW.shtm>
- NY State Department of Health
 - Vital Statistics: https://www.health.ny.gov/statistics/vital_statistics/
- Bureau of Economic Analysis (BEA) – Local Area Personal Income and Employment: <http://bea.gov/iTable/iTable.cfm?ReqID=70&step=1>

Alternative sites for data retrieval:

- The Nelson A. Rockefeller Institute of Government – New York State Statistical Yearbooks http://www.rockinst.org/nys_statistics/
- Headwaters Economics: Economic Profile System – Human Dimensions Toolkit <http://headwaterseconomics.org/tools/eps-hdt>
- National Historical Geographic Information System (NHGIS) <https://www.nhgis.org/>
- Social Explorer <http://www.socialexplorer.com/pub/home/home.aspx>
- Stats America <http://www.statsamerica.org/Default.aspx>
- Missouri Census Data Center <http://mcdc.missouri.edu/>
- DataFerret <http://dataferrett.census.gov/>
- Investigative Reporters and Editors (IRE) Census project <http://census.ire.org/>