

Saratoga County Profile 2017

A collection of recent demographic, social and economic data

Compiled by

Jan Vink

Cornell Program on Applied Demographics



Cornell University



Program
on Applied
Demographics

CORNELL POPULATION CENTER

This profile is a part of a set of profiles generated for each county in New York State. The profiles were developed and generated by the Cornell Program on Applied Demographics. The work is sponsored by the New York State Data Center in the New York State Department of Labor.

Cornell Program on Applied Demographics:

The Program on Applied Demographics (PAD) brings skills in demographics, economics, statistics, data gathering and data analysis together to provide a variety of organizations with data, information and advice. PAD is located in the Department of Policy Analysis and Management within the College of Human Ecology at Cornell University. PAD is also affiliated with the Cornell Institute for Social and Economic Research and the Cornell Population Center.

For more information: <http://pad.human.cornell.edu/>

New York State Data Center:

The New York State Data Center (NYSDC) is located in the Division of Research and Statistics within the New York State Department of Labor. The State Data Center operates as part of a nationwide effort to improve public access to data provided by the U.S. Census Bureau. The U.S. Census Bureau collects and tabulates data on a multitude of subjects such as population, social, economic and housing demographics, labor force data, health care, migration and transportation. These data play a critical role in understanding our local and larger surrounding communities. Census data also influence state and federal funding, aid decision making in the legislative process, and determine each state's number of congressional seats. As the lead agency in New York for the SDC program, the New York State Data Center helps users navigate through the multitude of surveys and products provided by the U.S. Census Bureau.

For more information: <https://labor.ny.gov/nys-data-center/>

All profiles are freely downloadable as PDF documents on the PAD website:

<http://pad.human.cornell.edu/profiles/index.cfm>

This profile is an update from the County Profile produced in 2013. The 2013 profile also contained information on agriculture related items and can be found at <https://pad.human.cornell.edu/profiles/2013/Saratoga.pdf>

Contents

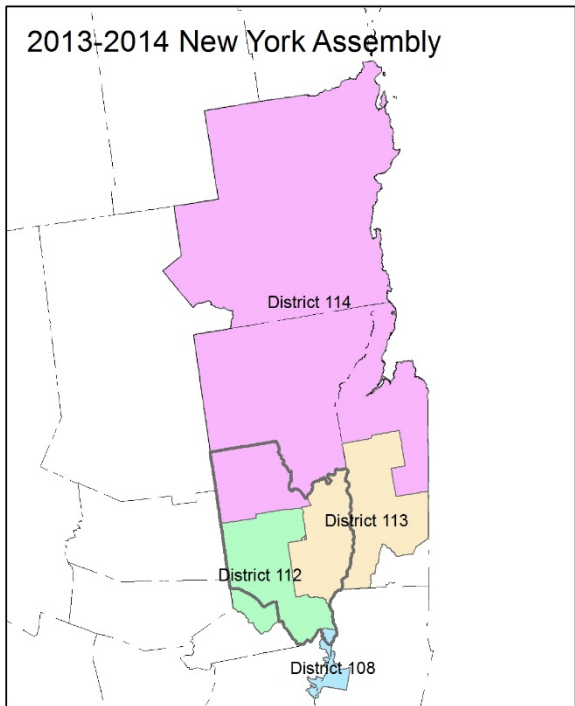
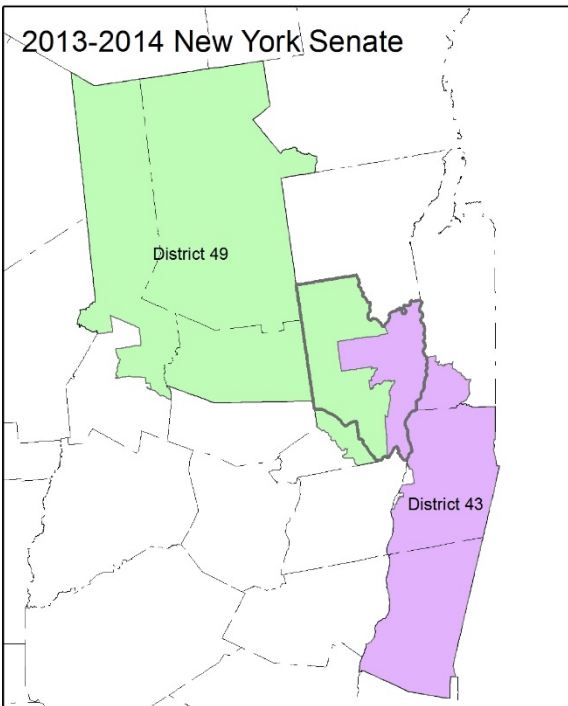
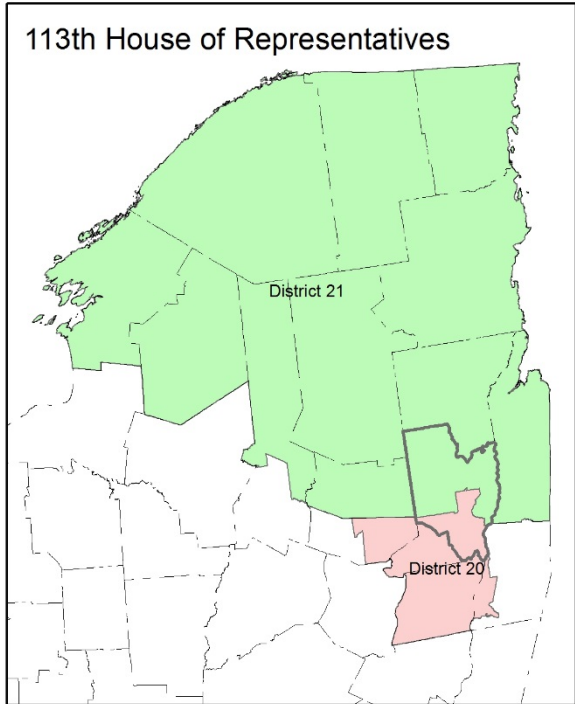
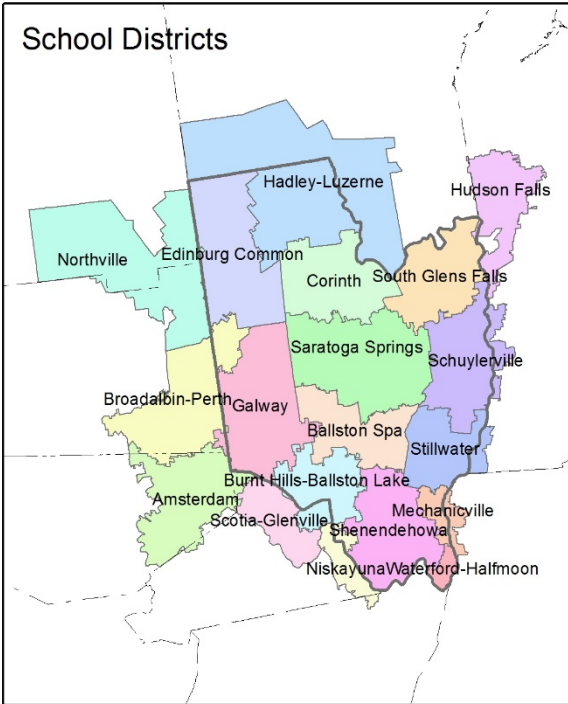
1	Reference Maps (towns and places as defined in 2010)	3
2	Population density and Urban Areas Map	5
3	Total Population	6
3.1	Historic and projected	6
3.2	Change since previous Census	6
3.3	Annual population estimates	7
3.4	Sub County population change 2010-2015	8
3.5	Sub County population change 2010-2015	9
4	Components of population change	10
4.1	Vital Statistics	10
4.2	Migration	11
5	Population by age	12
5.1	Historic and projected population pyramids	12
5.2	Selected age groups	13
5.3	Median age	14
6	Race	15
6.1	Total and household population by race	15
6.2	Race composition by age	15
7	Housing units	16
7.1	Characteristics	16
7.2	Historical data on number of housing units and occupancy status	17
7.3	Building Permits 2000-2015	17
8	Education	18
8.1	Enrollment by level of school	18
8.2	Enrollment by age	18
8.3	Percentage age 18-24 enrolled in college	18
8.4	Educational attainment	19
9	Language spoken at home	19
10	Labor Force Characteristics	20
10.1	Labor force, employment and unemployment	20
10.2	Annual unemployment rate	21
10.3	Employment and number of jobs	21
10.4	Class of worker	22
11	Household Income	23
11.1	Income Distribution	23
11.2	Median household income: Trends over time	24
12	Poverty	24
12.1	Family Income to Poverty Ratio	24
12.2	Poverty: Trends over time: Count	25
12.3	Poverty: Trends over time: Rate	25
12.4	Poverty characteristics	26
13	Glossary	27
14	References	30

1 Reference Maps (towns and places as defined in 2010)

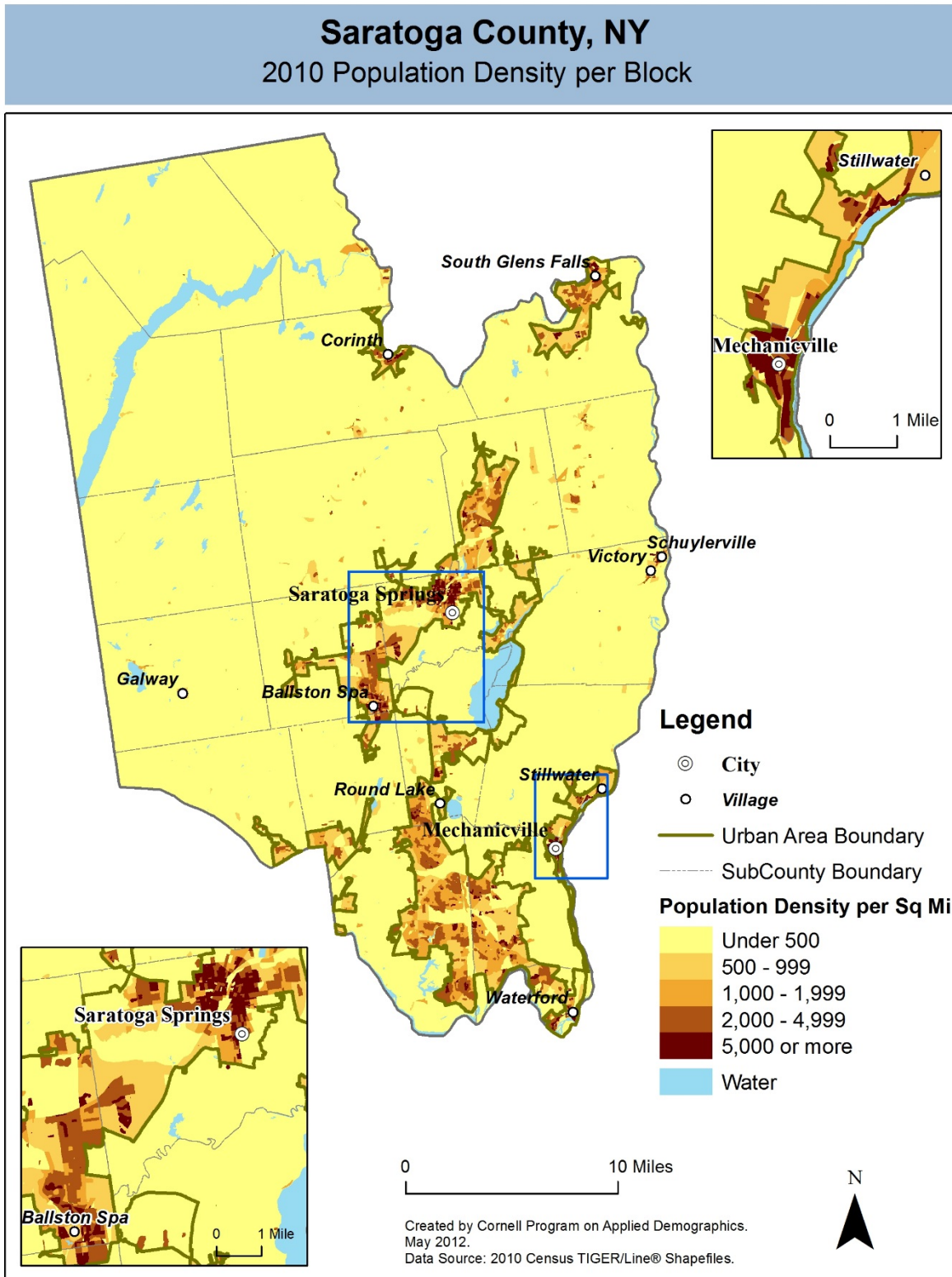


Saratoga County, NY

Overlap with School and Political Districts



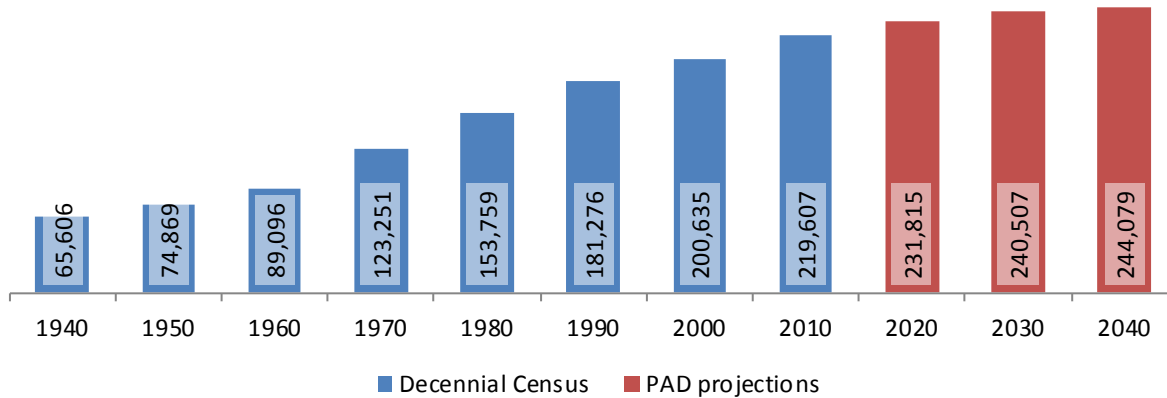
2 Population density and Urban Areas Map



3 Total Population

3.1 Historic and projected

Total population, Saratoga County, 1940-2040



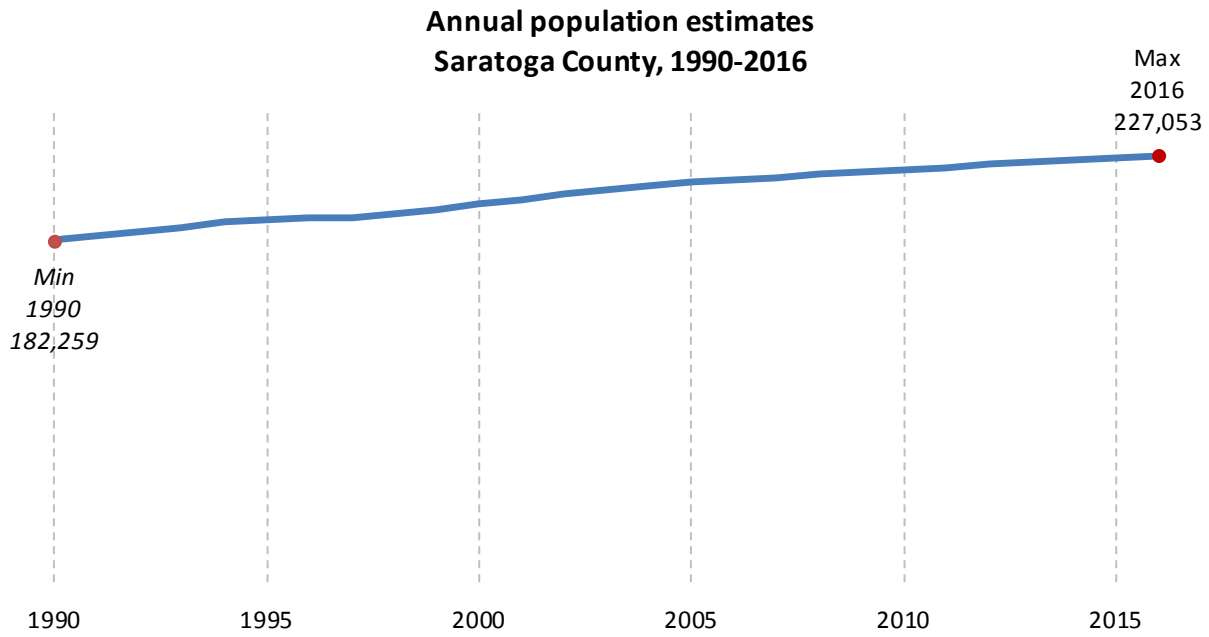
Source: 1940-2010 Decennial Census and projections by Cornell Program on Applied Demographics

3.2 Change since previous Census

	Year	Total population	Change	
			Number	Percent
Decennial Census	1940	65,606		
	1950	74,869	9,263	14.1%
	1960	89,096	14,227	19.0%
	1970	123,251	34,155	38.3%
	1980	153,759	30,508	24.8%
	1990	181,276	27,517	17.9%
	2000	200,635	19,359	10.7%
	2010	219,607	18,972	9.5%
PAD projections	2020	231,815	12,208	5.6%
	2030	240,507	8,692	3.7%
	2040	244,079	3,572	1.5%

Source: 1940-2010 Decennial Census and projections by Cornell Program on Applied Demographics

3.3 Annual population estimates



Source: U.S. Census Bureau population estimates (1990-1999 and 2000-2009 intercensal and vintage 2016 postcensal)

3.4 Sub County population change 2010-2015

	Total Population		Difference	
	2000	2010	Count	%
New York State	18,976,821 *	19,378,102	401,281	2.1%
Saratoga County	200,635	219,607	18,972	9.5%
Cities				
Mechanicville	5,019	5,196	177	3.5%
Saratoga Springs	26,186	26,586	400	1.5%
Towns				
Ballston	8,729	9,776	1,047	12.0%
Charlton	3,954	4,133	179	4.5%
Clifton Park	33,110 *	36,705	3,595	10.9%
Corinth	6,259 *	6,531	272	4.3%
Day	920	856	-64	-7.0%
Edinburg	1,384	1,214	-170	-12.3%
Galway	3,589	3,545	-44	-1.2%
Greenfield	7,362	7,775	413	5.6%
Hadley	1,971	2,048	77	3.9%
Halfmoon	18,359 *	21,535	3,176	17.3%
Malta	13,005	14,765	1,760	13.5%
Milton	17,103	18,575	1,472	8.6%
Moreau	13,549 *	14,728	1,179	8.7%
Northumberland	4,603	5,087	484	10.5%
Providence	1,841	1,995	154	8.4%
Saratoga	5,114 *	5,674	560	11.0%
Stillwater	7,522	8,287	765	10.2%
Waterford	8,515	8,423	-92	-1.1%
Wilton	12,541 *	16,173	3,632	29.0%

* Original counts revised through Count Question Resolution Program (CQR)

Source: U.S. Census Bureau intercensal population estimates 2000-2010

3.5 Sub County population change 2010-2015

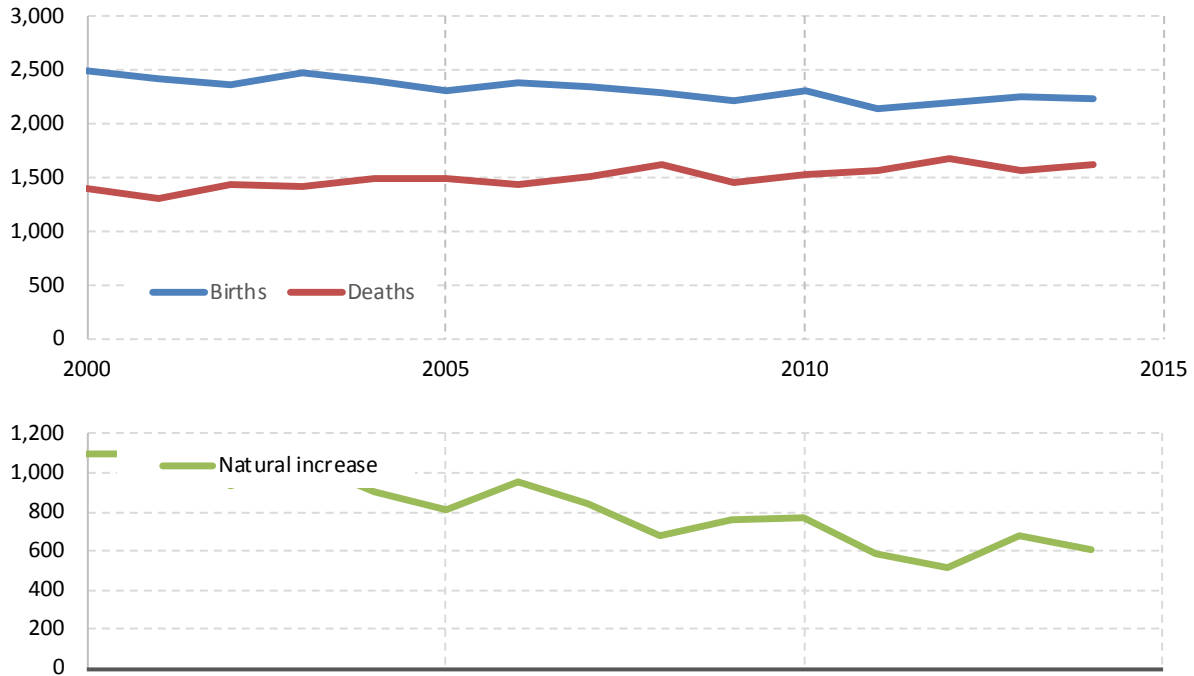
	Total Population		Difference	
	2010 base	2015	Count	%
New York State	19,378,087	19,795,791	417,704	2.2%
Saratoga County	219,613	226,249	6,636	3.0%
Cities				
Mechanicville	5,199	5,169	-30	-0.6%
Saratoga Springs	26,565	27,765	1,200	4.5%
Towns				
Ballston	9,765	10,644	879	9.0%
Charlton	4,142	4,196	54	1.3%
Clifton Park	36,734	37,135	401	1.1%
Corinth	6,531	6,472	-59	-0.9%
Day	856	854	-2	-0.2%
Edinburg	1,214	1,220	6	0.5%
Galway	3,545	3,542	-3	-0.1%
Greenfield	7,777	7,790	13	0.2%
Hadley	2,048	2,057	9	0.4%
Halfmoon	21,517	23,708	2,191	10.2%
Malta	14,765	15,070	305	2.1%
Milton	18,568	18,973	405	2.2%
Moreau	14,739	15,149	410	2.8%
Northumberland	5,103	5,159	56	1.1%
Providence	1,995	2,039	44	2.2%
Saratoga	5,668	5,694	26	0.5%
Stillwater	8,308	8,457	149	1.8%
Waterford	8,420	8,439	19	0.2%
Wilton	16,154	16,717	563	3.5%

Source: U.S. Census Bureau population estimates 2010-2015

4 Components of population change

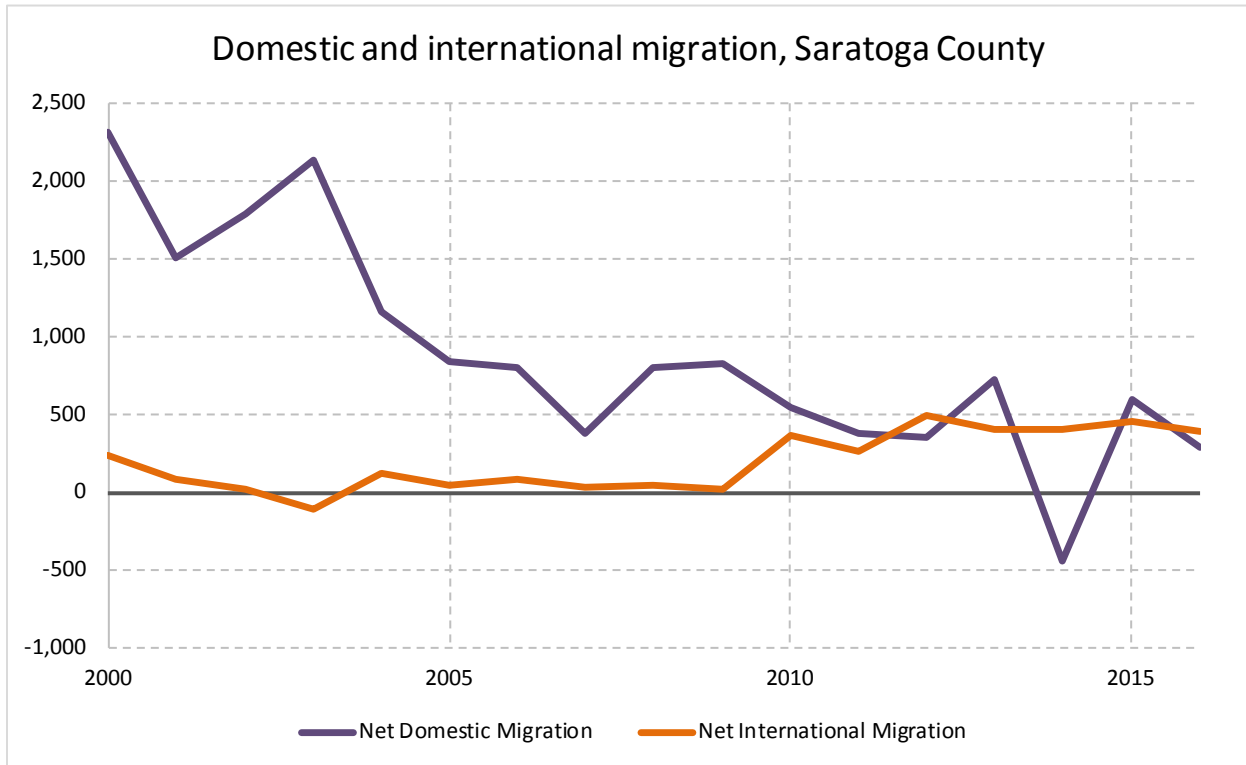
4.1 Vital Statistics

Vital Statistics, Saratoga County



Source: New York State Department of Health

4.2 Migration

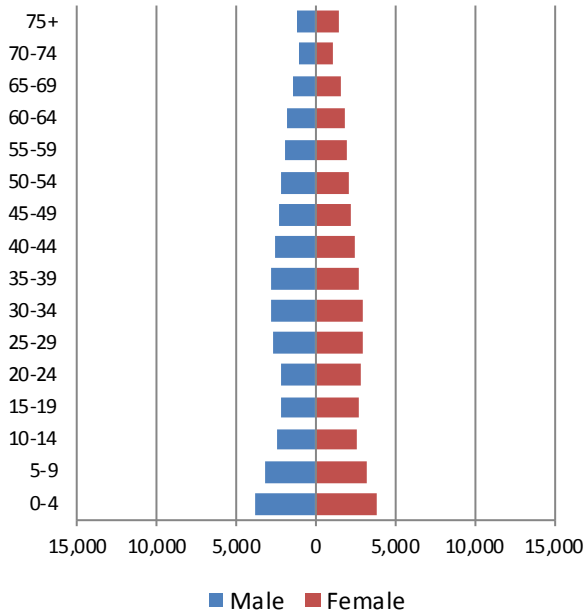


Source: Census Bureau population estimates (V2010 and V2016)

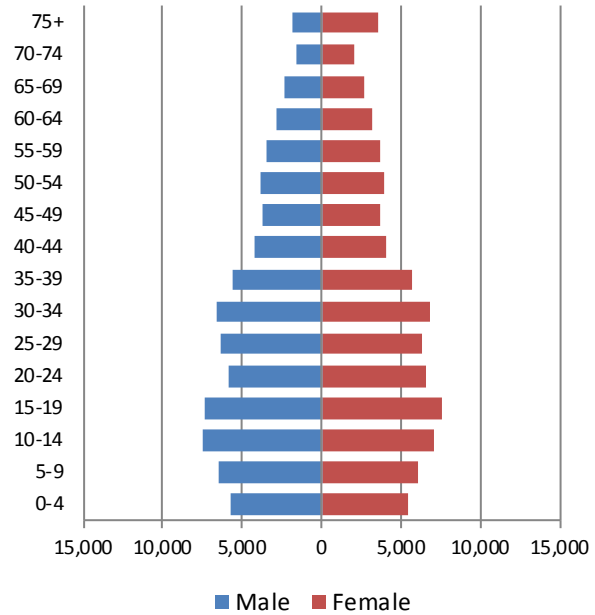
5 Population by age

5.1 Historic and projected population pyramids

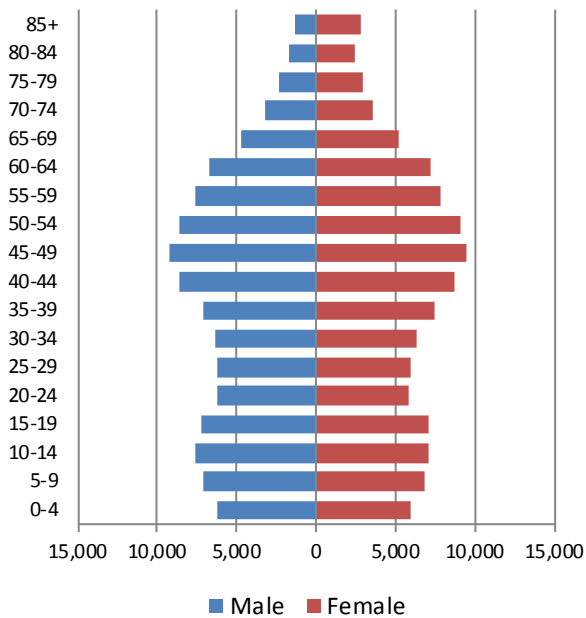
1950 Population Pyramid, Saratoga County



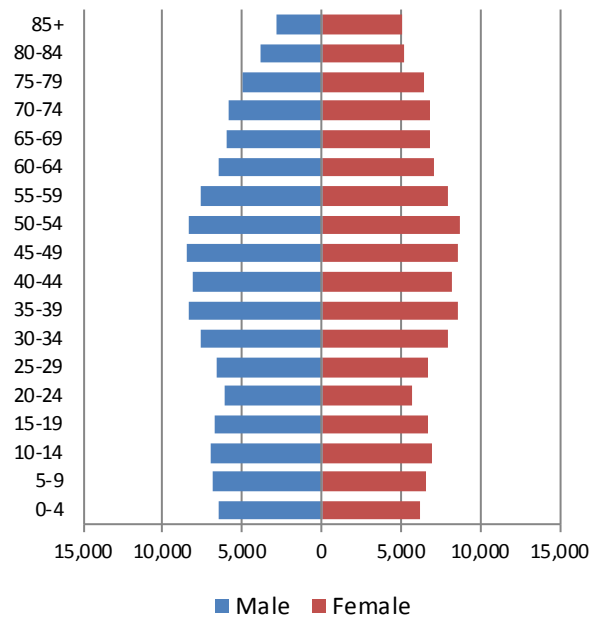
1980 Population Pyramid, Saratoga County



2010 Population Pyramid, Saratoga County



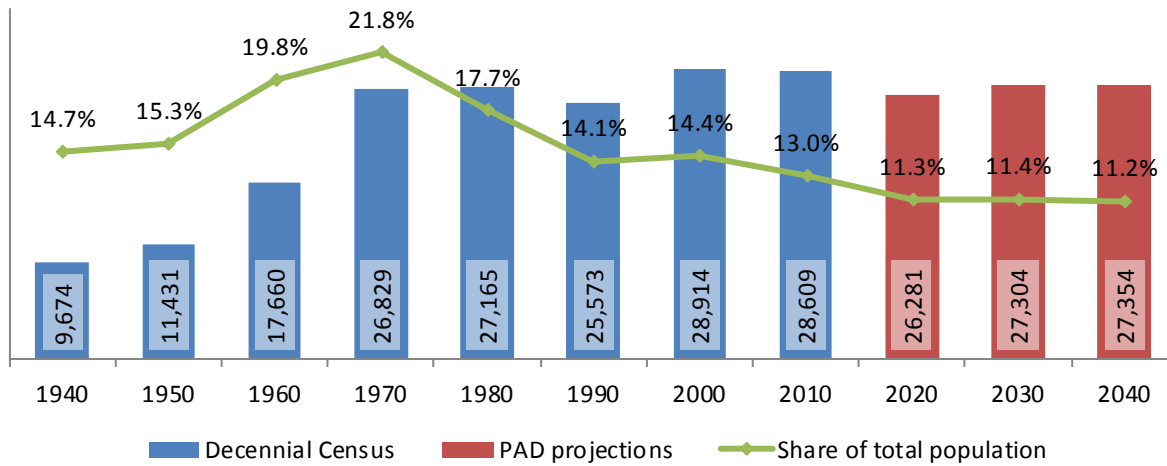
2040 Population Pyramid, Saratoga County



Source: 1950, 1980, 2010 Decennial Census and projections by Cornell Program on Applied Demographics

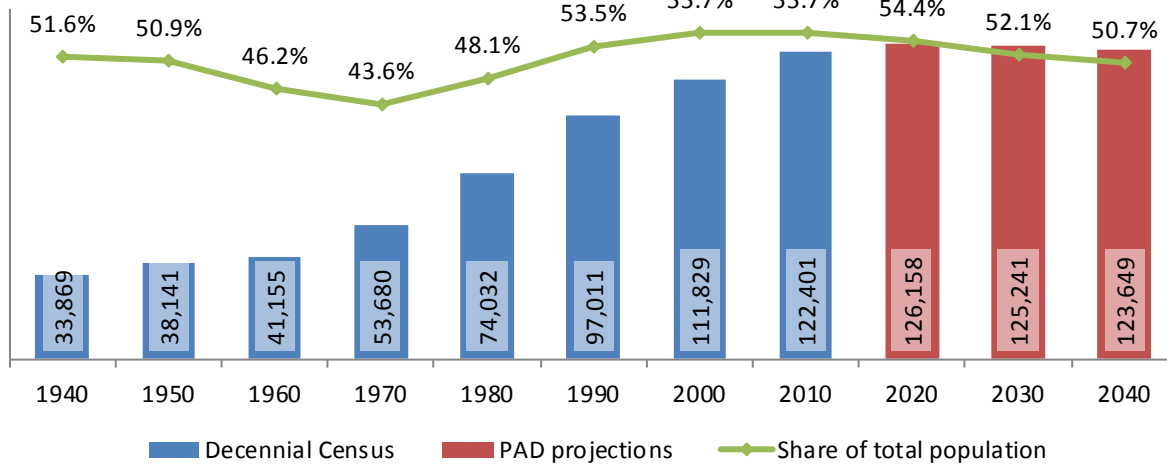
5.2 Selected age groups

Population age 5-14, Saratoga County, 1940-2040



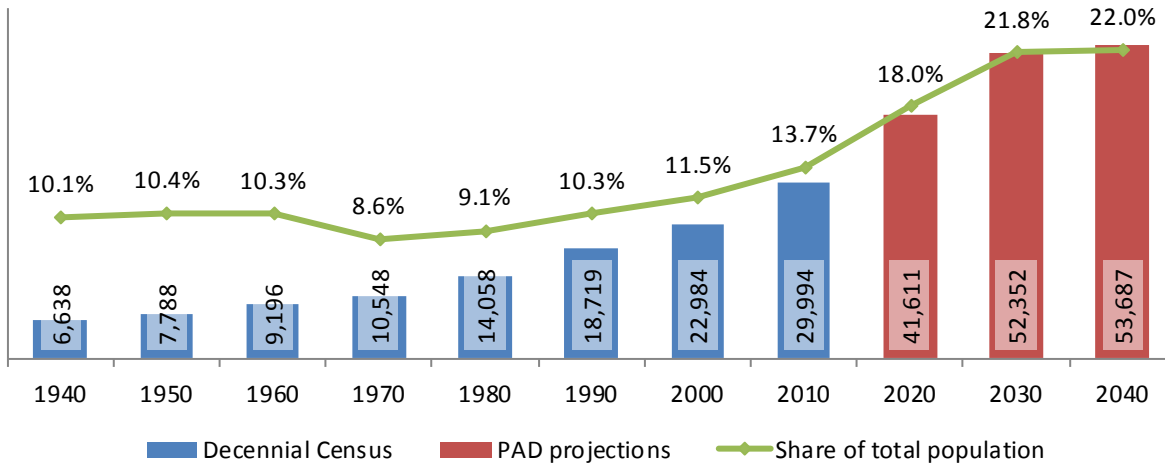
Source: 1940-2010 Decennial Census and projections by Cornell Program on Applied Demographics

Population age 25-64, Saratoga County, 1940-2040



Source: 1940-2010 Decennial Census and projections by Cornell Program on Applied Demographics

Population age 65 and over, Saratoga County, 1940-2040



Source: 1940-2010 Decennial Census and projections by Cornell Program on Applied Demographics

5.3 Median age

Saratoga County New York State

Median age

2000	36.9	35.9
2010	40.9	38.0
2015	42.2	38.3

Source: 2000, 2010 Decennial Census, 2015 Population Estimates

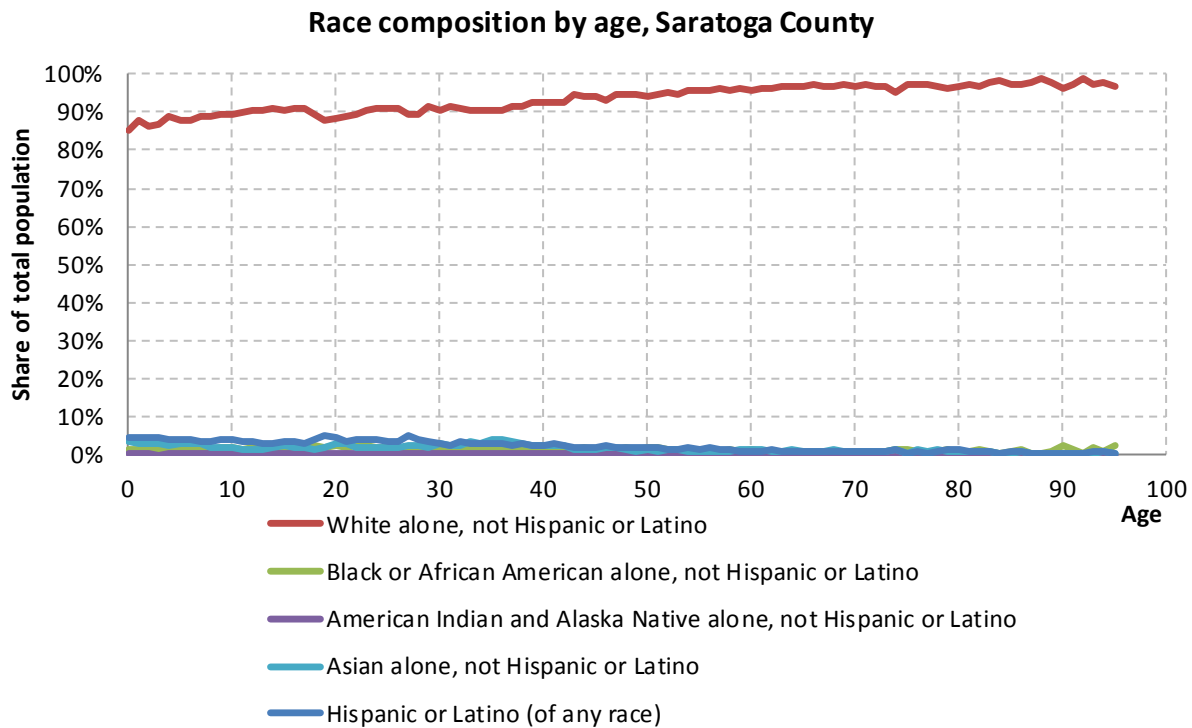
6 Race

6.1 Total and household population by race

	Total		In households		In Group Quarters
	Count	Percentage	Count	Percentage	Count
Total population	219,607	100%	215,657	100%	3,950
Not Hispanic or Latino					
One race					
White	203,647	92.7%	200,564	93.0%	3,083
Black or African American	3,053	1.4%	2,696	1.3%	357
American Indian and Alaska Native	325	0.1%	320	0.1%	5
Asian	3,880	1.8%	3,749	1.7%	131
Native Hawaiian and Other Pacific Islander	35	0.0%	-	-	-
Some other race	227	0.1%	217	0.1%	10
Two or more races	3,161	1.4%	3,054	1.4%	107
Hispanic or Latino (of any race)	5,279	2.4%	5,022	2.3%	257

Source: 2010 Decennial Census

6.2 Race composition by age



Source: 2010 Decennial Census

7 Housing units

7.1 Characteristics

HOUSING OCCUPANCY	COUNT		PERCENTAGE	
	Estimate	Margin of error	Estimate	Margin of error
Total housing units	100,953	± 182	100.0%	
Occupied housing units	89,921	± 693	89.1%	± 0.7
Vacant housing units	11,032	± 693	10.9%	± 0.7
YEAR STRUCTURE BUILT				
Total housing units	100,953	± 182	100.0%	
Built 2014 or later	148	± 78	0.1%	± 0.1
Built 2010 to 2013	2,436	± 328	2.4%	± 0.3
Built 2000 to 2009	15,138	± 684	15.0%	± 0.7
Built 1990 to 1999	15,622	± 791	15.5%	± 0.8
Built 1980 to 1989	16,556	± 676	16.4%	± 0.7
Built 1970 to 1979	15,293	± 710	15.1%	± 0.7
Built 1960 to 1969	8,976	± 478	8.9%	± 0.5
Built 1950 to 1959	6,721	± 532	6.7%	± 0.5
Built 1940 to 1949	2,874	± 320	2.8%	± 0.3
Built 1939 or earlier	17,189	± 698	17.0%	± 0.7
HOUSING TENURE				
Occupied housing units	89,921	± 693	100.0%	
Owner-occupied	64,423	± 857	71.6%	± 0.8
Renter-occupied	25,498	± 765	28.4%	± 0.8
HOUSE HEATING FUEL				
Occupied housing units	89,921	± 693	100.0%	
Utility gas	50,858	± 959	56.6%	± 0.9
Bottled, tank, or LP gas	8,702	± 494	9.7%	± 0.5
Electricity	11,206	± 657	12.5%	± 0.7
Fuel oil, kerosene, etc.	14,319	± 569	15.9%	± 0.6
Coal or coke	113	± 57	0.1%	± 0.1
Wood	3,816	± 340	4.2%	± 0.4
Solar energy	53	± 32	0.1%	± 0.1
Other fuel	703	± 153	0.8%	± 0.2
No fuel used	151	± 66	0.2%	± 0.1
VALUE				
Owner-occupied units	64,423	± 857	100.0%	
Less than \$50,000	5,182	± 413	8.0%	± 0.6
\$50,000 to \$99,999	3,104	± 336	4.8%	± 0.5
\$100,000 to \$149,999	5,098	± 384	7.9%	± 0.6
\$150,000 to \$199,999	11,628	± 606	18.0%	± 0.9
\$200,000 to \$299,999	20,603	± 784	32.0%	± 1.2
\$300,000 to \$499,999	15,039	± 705	23.3%	± 1.0
\$500,000 to \$999,999	3,381	± 320	5.2%	± 0.5
\$1,000,000 or more	388	± 145	0.6%	± 0.2
Median (dollars)	232,900	± 2,989		

Source: 2011-2015 American Community Survey

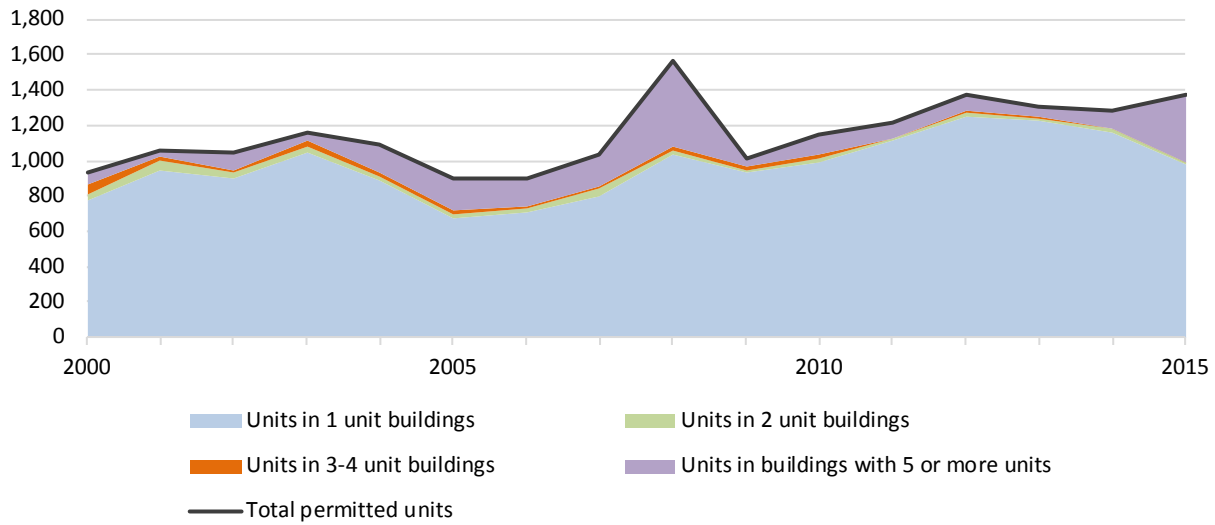
7.2 Historical data on number of housing units and occupancy status

Year	Number of Housing Units	Change since previous Census	Occupied	Occupancy rate	Vacant
1970	40,364		35,686	88.4%	4,678
1980	60,370	49.6%	51,935	86.0%	8,435
1990	75,105	24.4%	66,425	88.4%	8,680
2000	86,701	15.4%	78,165	90.2%	8,536
2010	98,656	13.8%	88,296	89.5%	10,360

Source: 1970-2010 Decennial Census

7.3 Building Permits 2000-2015

Building permits by number of permitted units in building, Saratoga County



Source: Census Bureau Building Permits Survey

8 Education

8.1 Enrollment by level of school

	Estimate	Margin of error
Total enrolled in school	53,395	± 786
Nursery school, preschool	3,448	± 335
Kindergarten to 12th grade	36,914	± 387
Kindergarten	2,756	± 335
Elementary: grade 1 to grade 4	10,211	± 534
Elementary: grade 5 to grade 8	11,900	± 547
High school: grade 9 to grade 12	12,047	± 448
College, undergraduate	10,845	± 748
Graduate, professional school	2,188	± 304

Source: 2011-2015 American Community Survey

8.2 Enrollment by age

	Estimate	Margin of error
3 and 4 years	62.4%	± 4.9
5 to 9 years	96.7%	± 0.9
10 to 14 years	98.8%	± 0.7
15 to 17 years	97.6%	± 1.2
18 and 19 years	78.8%	± 3.8
20 to 24 years	42.8%	± 4.1
25 to 34 years	10.3%	± 1.3
35 years and over	1.7%	± 0.2

Source: 2011-2015 American Community Survey

8.3 Percentage age 18-24 enrolled in college

	Estimate	Margin of error
Population 18 to 24 years	18,696	± 77
Enrolled in college or graduate school	43.7%	± 3.2
Males 18 to 24 years	9,621	± 40
Enrolled in college or graduate school	36.1%	± 3.9
Females 18 to 24 years	9,075	± 70
Enrolled in college or graduate school	51.7%	± 4.2

Source: 2011-2015 American Community Survey

8.4 Educational attainment

	COUNT		PERCENTAGE	
	Estimate	Margin of error	Estimate	Margin of error
Population 25 years and over	156,862	± 77	100%	
EDUCATIONAL ATTAINMENT				
Less than 9th grade	2,386	± 320	1.5%	± 0.2
9th to 12th grade, no diploma	6,838	± 578	4.4%	± 0.4
High school graduate (includes equivalency)	40,553	± 1,346	25.9%	± 0.9
Some college, no degree	27,709	± 1,057	17.7%	± 0.7
Associate's degree	18,174	± 1,027	11.6%	± 0.7
Bachelor's degree	36,040	± 1,230	23.0%	± 0.8
Graduate or professional degree	25,162	± 990	16.0%	± 0.6
Percent high school graduate or higher			94.1%	± 0.4
Percent bachelor's degree or higher			39.0%	± 0.9

Source: 2011-2015 American Community Survey

9 Language spoken at home

	COUNT		PERCENTAGE		SPEAK ENGLISH LESS THAN "VERY WELL"	
	Estimate	Margin of error	Estimate	Margin of error	Estimate	Margin of error
Population 5 years and over	212,040	± 17	100%			
LANGUAGE SPOKEN AT HOME						
English only	197,594	± 1,096	93.2%	± 0.5		
Language other than English	14,446	± 1,099	6.8%	± 0.5	3,600	± 579
Spanish	4,536	± 656	2.1%	± 0.3	1,062	± 338
Other Indo-European languages	6,217	± 814	2.9%	± 0.4	1,315	± 327
Asian and Pacific Islander languages	3,375	± 412	1.6%	± 0.2	1,088	± 274
Other languages	318	± 129	0.1%	± 0.1	135	± 68

Source: 2011-2015 American Community Survey

10 Labor Force Characteristics

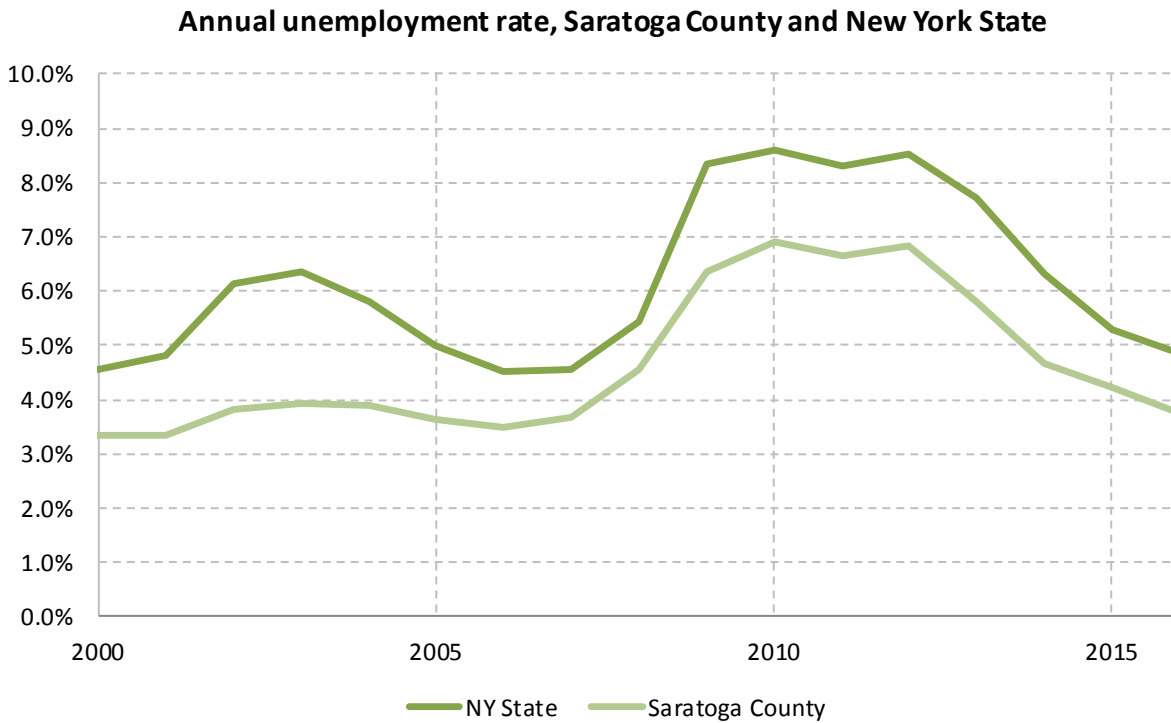
10.1 Labor force, employment and unemployment

	TOTAL		IN LABOR FORCE		EMPLOYED		UNEMPLOYMENT RATE	
	Estimate	Margin of error	Estimate	Margin of error	Estimate	Margin of error	Estimate	Margin of error
Population 16 years and over	181,406	± 312	67.6%	± 0.7	62.8%	± 0.7	6.0%	± 0.5
AGE								
16 to 19 years	11,285	± 328	48.3%	± 2.9	39.0%	± 2.6	19.3%	± 3.6
20 to 24 years	13,259	± 176	79.7%	± 2.8	64.1%	± 3.4	13.3%	± 2.4
25 to 29 years	12,700	± 65	89.5%	± 1.6	79.1%	± 2.4	7.9%	± 1.9
30 to 34 years	13,250	± 95	88.4%	± 1.8	82.2%	± 2.2	6.3%	± 1.6
35 to 44 years	29,742	± 167	85.1%	± 1.3	81.5%	± 1.5	3.6%	± 0.9
45 to 54 years	36,065	± 166	85.5%	± 1.3	82.1%	± 1.3	3.9%	± 0.7
55 to 59 years	17,086	± 676	79.7%	± 1.8	76.2%	± 2.0	4.4%	± 1.3
60 to 64 years	14,038	± 694	56.7%	± 2.7	54.7%	± 2.7	3.4%	± 1.1
65 to 74 years	19,991	± 117	25.6%	± 2.0	24.0%	± 1.9	6.1%	± 2.3
75 years and over	13,990	± 131	5.4%	± 1.1	5.2%	± 1.1	4.5%	± 3.9
RACE AND HISPANIC OR LATINO ORIGIN								
White alone	171,448	± 395	67.4%	± 0.7	62.7%	± 0.7	5.9%	± 0.5
Black or African American alone	3,051	± 208	73.2%	± 5.2	62.5%	± 5.6	14.6%	± 5.5
American Indian and Alaska Native alone	167	± 92	65.3%	± 18.5	49.1%	± 27.4	0.0%	± 29.7
Asian alone	4,031	± 176	70.4%	± 3.9	65.3%	± 4.0	6.3%	± 3.9
Two or more races	1,980	± 287	70.5%	± 6.1	66.3%	± 6.2	4.2%	± 2.7
Hispanic or Latino origin (of any race)	4,478	± 50	73.0%	± 4.1	67.9%	± 4.2	5.7%	± 3.1
White alone, not Hispanic or Latino	168,093	± 318	67.3%	± 0.7	62.6%	± 0.8	5.9%	± 0.5
SEX								
Population 20 to 64 years	136,140	± 200	81.8%	± 0.8	76.4%	± 0.9	5.3%	± 0.5
Male	67,895	± 164	87.1%	± 0.9	80.6%	± 1.1	5.3%	± 0.7
Female	68,245	± 155	76.5%	± 1.1	72.1%	± 1.3	5.4%	± 0.7
With own children under 18 years	23,885	± 703	76.9%	± 2.0	73.3%	± 2.1	4.6%	± 1.1
EDUCATIONAL ATTAINMENT								
Population 25 to 64 years	122,881	± 157	82.0%	± 0.8	77.7%	± 0.8	4.5%	± 0.4
Less than high school graduate	5,589	± 536	56.8%	± 4.4	47.5%	± 4.9	16.5%	± 4.8
High school graduate (includes equivalency)	28,106	± 1,152	75.4%	± 1.7	70.9%	± 1.7	5.6%	± 0.9
Some college or associate's degree	37,988	± 1,294	82.2%	± 1.3	76.8%	± 1.4	5.3%	± 1.0
Bachelor's degree or higher	51,198	± 1,335	88.3%	± 1.0	85.4%	± 1.1	2.7%	± 0.5

Table formula: **LABOR FORCE** = # EMPLOYED + # UNEMPLOYED
 % IN LABOR FORCE = LABOR FORCE / TOTAL * 100%
 % EMPLOYED = # EMPLOYED / TOTAL * 100%
 UNEMPLOYMENT RATE = # UNEMPLOYED / LABOR FORCE * 100%

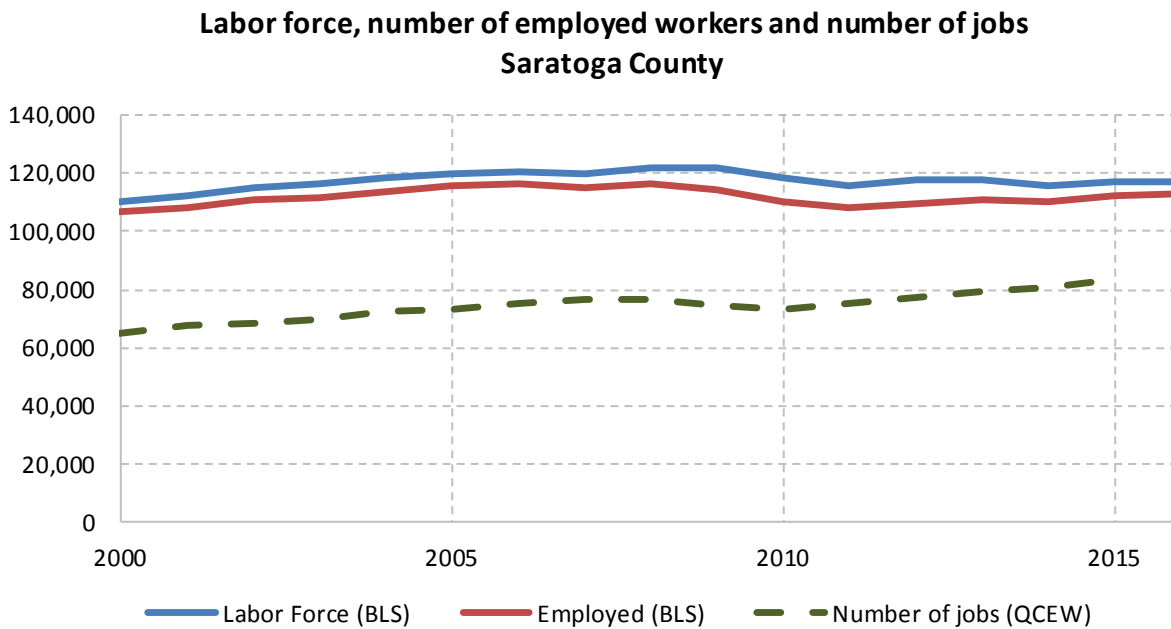
Source: 2011-2015 American Community Survey

10.2 Annual unemployment rate



Source: Bureau Labor Statistics (BLS)

10.3 Employment and number of jobs



Source: Bureau Labor Statistics (BLS) and NY Department of Labor - Quarterly Census of Employment and Wages (QCEW) – annual averages

10.4 Class of worker

		Total	%Male	%Female
Civilian employed population 16 years and over	Estimate	113,884	52.8%	47.2%
	<i>Margin of error</i>	$\pm 1,282$	± 0.6	± 0.6
Private for-profit wage and salary workers:	Estimate	74,431	56.7%	43.3%
	<i>Margin of error</i>	$\pm 1,431$	± 0.8	± 0.8
Employee of private company workers	Estimate	70,471	56.1%	43.9%
	<i>Margin of error</i>	$\pm 1,458$	± 0.9	± 0.9
Self-employed in own incorporated business workers	Estimate	3,960	67.0%	33.0%
	<i>Margin of error</i>	± 478	± 3.8	± 3.8
Private not-for-profit wage and salary workers	Estimate	12,311	37.1%	62.9%
	<i>Margin of error</i>	± 733	± 2.4	± 2.4
Local government workers	Estimate	9,050	38.4%	61.6%
	<i>Margin of error</i>	± 733	± 2.8	± 2.8
State government workers	Estimate	8,990	45.5%	54.5%
	<i>Margin of error</i>	± 684	± 2.7	± 2.7
Federal government workers	Estimate	2,562	74.9%	25.1%
	<i>Margin of error</i>	± 436	± 7.6	± 7.6
Self-employed in own not incorporated business workers and unpaid family workers	Estimate	6,540	59.7%	40.3%
	<i>Margin of error</i>	± 512	± 4.3	± 4.3

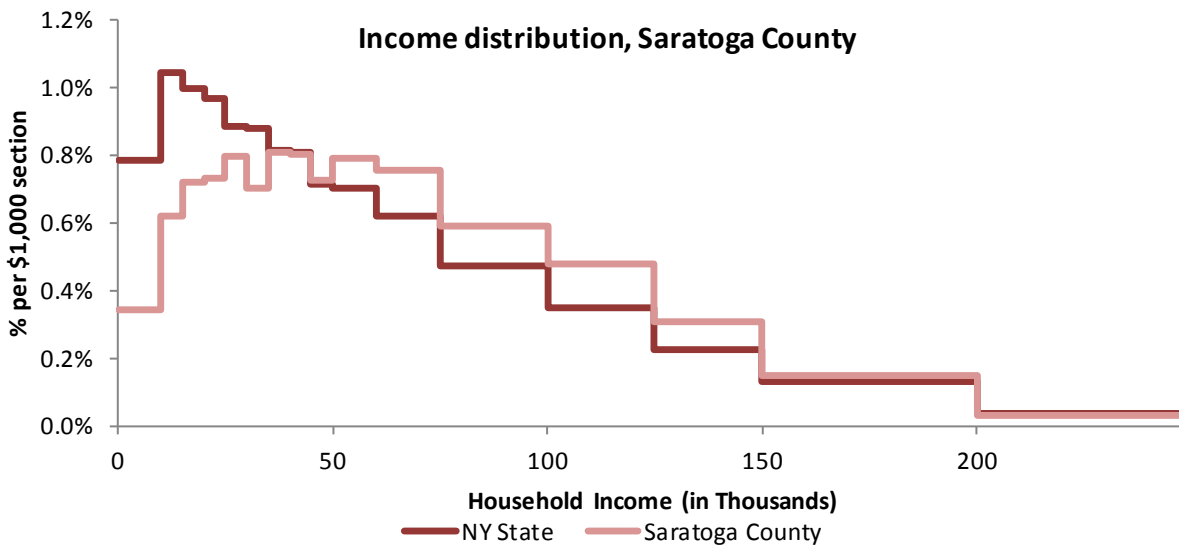
Source: 2011-2015 American Community Survey

11 Household Income

11.1 Income Distribution

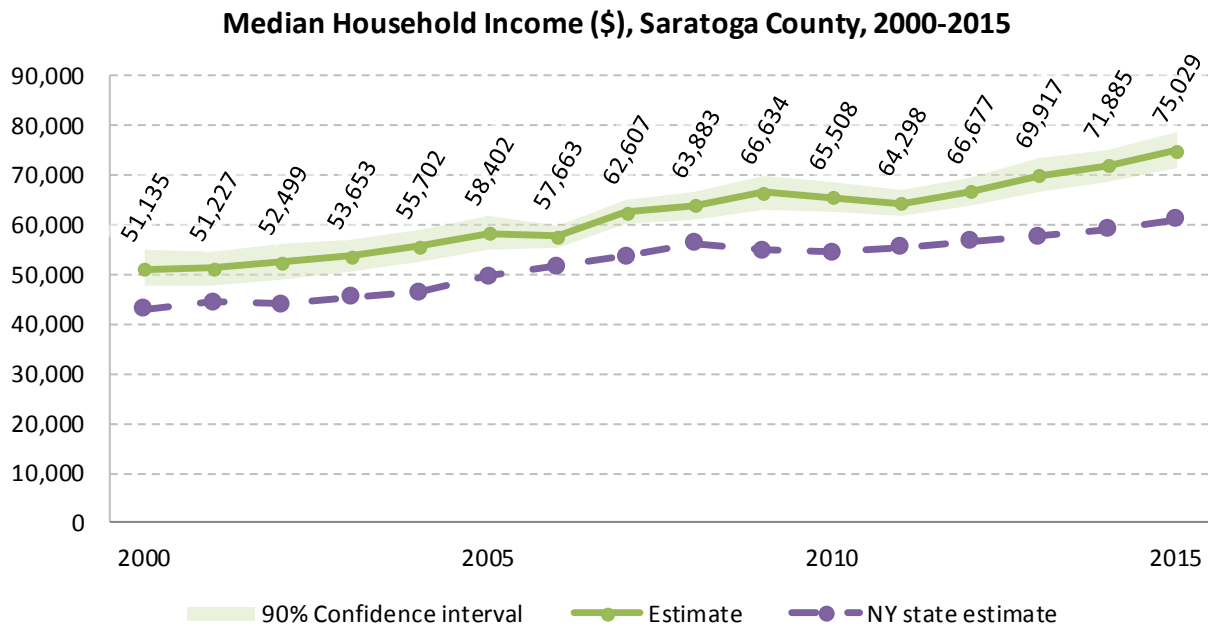
	Estimate	Margin of error	Interval width (in \$1,000)	Est. per \$1,000 section
Total:	89,921	± 693		
Less than \$10,000	3,111	± 353	10	311.1
\$10,000 to \$14,999	2,802	± 380	5	560.4
\$15,000 to \$19,999	3,239	± 432	5	647.8
\$20,000 to \$24,999	3,293	± 427	5	658.6
\$25,000 to \$29,999	3,583	± 460	5	716.6
\$30,000 to \$34,999	3,162	± 313	5	632.4
\$35,000 to \$39,999	3,630	± 374	5	726.0
\$40,000 to \$44,999	3,617	± 401	5	723.4
\$45,000 to \$49,999	3,277	± 388	5	655.4
\$50,000 to \$59,999	7,122	± 611	10	712.2
\$60,000 to \$74,999	10,211	± 650	15	680.7
\$75,000 to \$99,999	13,221	± 861	25	528.8
\$100,000 to \$124,999	10,743	± 608	25	429.7
\$125,000 to \$149,999	6,928	± 520	25	277.1
\$150,000 to \$199,999	6,776	± 477	50	135.5
\$200,000 or more	5,206	± 447	-	-

Source: 2011-2015 American Community Survey



Source: 2011-2015 American Community Survey

11.2 Median household income: Trends over time



Source: Small Area Income and Poverty Estimates (SAIPE)

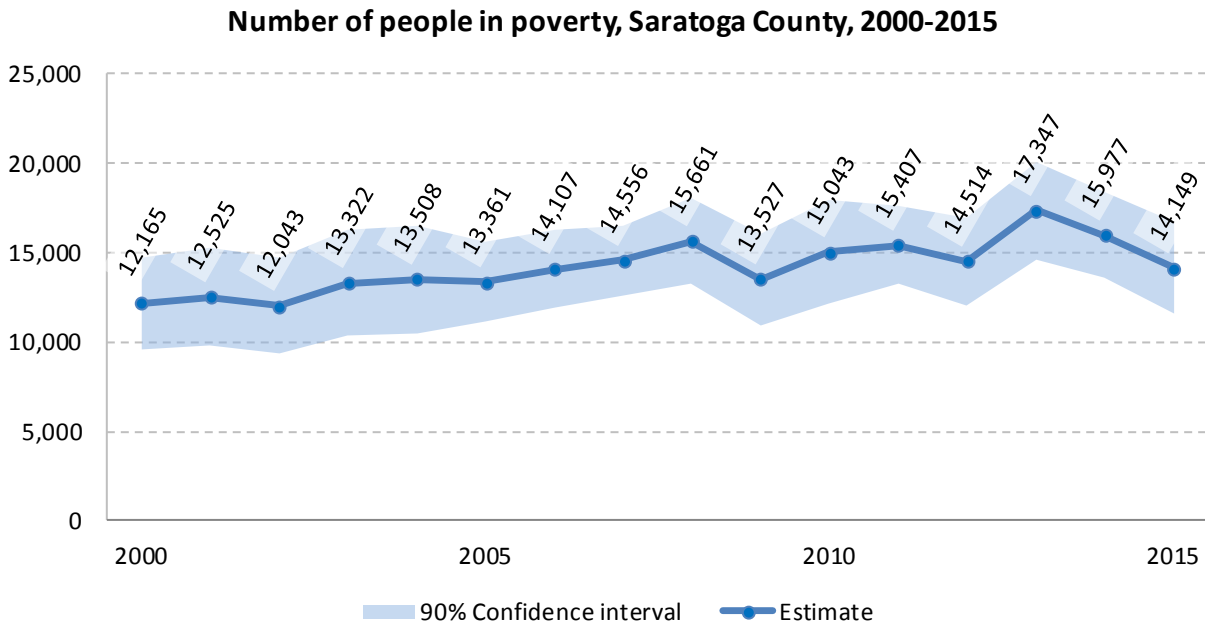
12 Poverty

12.1 Family Income to Poverty Ratio

	TOTAL		PERCENT OF ALL	
	Estimate	Margin of error	Estimate	Margin of error
All families	59,029	± 937		
ALL FAMILIES WITH INCOME:				
Below 50 percent of poverty level	949	± 222	1.6%	± 0.4
Below 100 percent of poverty level	2,578	± 332	4.4%	± 0.6
Below 125 percent of poverty level	3,643	± 383	6.2%	± 0.6
Below 150 percent of poverty level	4,804	± 446	8.1%	± 0.7
Below 185 percent of poverty level	6,616	± 506	11.2%	± 0.8
Below 200 percent of poverty level	7,717	± 551	13.1%	± 0.9
Below 300 percent of poverty level	15,362	± 760	26.0%	± 1.2
Below 400 percent of poverty level	24,431	± 880	41.4%	± 1.3
Below 500 percent of poverty level	32,599	± 1,018	55.2%	± 1.5

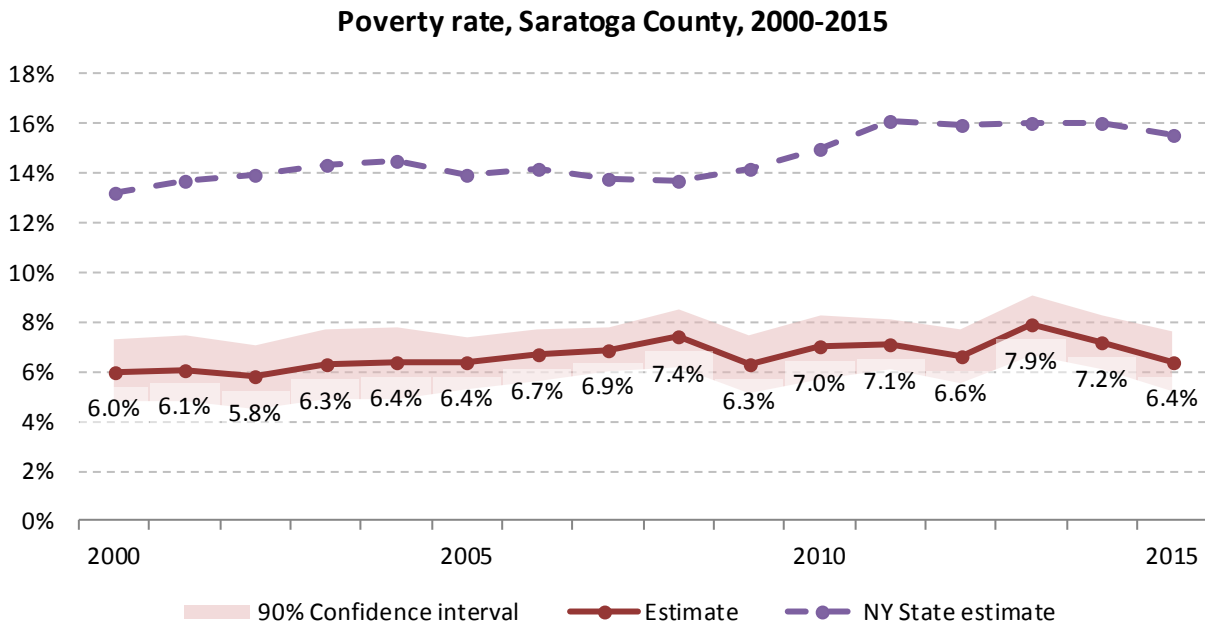
Source: 2011-2015 American Community Survey

12.2 Poverty: Trends over time: Count



Source: Small Area Income and Poverty Estimates (SAIPE)

12.3 Poverty: Trends over time: Rate



Source: Small Area Income and Poverty Estimates (SAIPE)

12.4 Poverty characteristics

	TOTAL		BELOW POVERTY LEVEL		PERCENT BELOW POVERTY LEVEL	
	Estimate	Margin of error	Estimate	Margin of error	Estimate	Margin of error
Population for whom poverty status is determined	219,431	± 456	14,583	± 1,008	6.6%	± 0.5
AGE						
Under 18 years	47,563	± 264	3,804	± 509	8.0%	± 1.1
Under 5 years	11,637	± 63	929	± 211	8.0%	± 1.8
5 to 17 years	35,926	± 252	2,875	± 441	8.0%	± 1.2
18 to 34 years	42,282	± 266	3,544	± 381	8.4%	± 0.9
35 to 64 years	96,514	± 217	5,337	± 587	5.5%	± 0.6
65 years and over	33,072	± 196	1,898	± 284	5.7%	± 0.9
SEX						
Male	108,296	± 283	6,435	± 651	5.9%	± 0.6
Female	111,135	± 321	8,148	± 634	7.3%	± 0.6
RACE AND HISPANIC OR LATINO ORIGIN						
White alone	206,437	± 536	13,135	± 952	6.4%	± 0.5
Black or African American alone	3,342	± 291	622	± 210	18.6%	± 6.2
American Indian and Alaska Native alone	277	± 162	31	± 40	11.2%	± 14.5
Asian alone	5,042	± 284	282	± 173	5.6%	± 3.4
Hispanic or Latino origin (of any race)	5,975	± 113	712	± 424	11.9%	± 7.1
White alone, not Hispanic or Latino	201,763	± 387	12,504	± 911	6.2%	± 0.5
EDUCATIONAL ATTAINMENT						
Population 25 years and over	155,264	± 231	8,940	± 642	5.8%	± 0.4
Less than high school graduate	8,912	± 625	2,066	± 374	23.2%	± 3.4
High school graduate (includes equivalency)	39,806	± 1,342	3,260	± 356	8.2%	± 0.9
Some college, associate's degree	45,526	± 1,423	2,330	± 361	5.1%	± 0.8
Bachelor's degree or higher	61,020	± 1,368	1,284	± 224	2.1%	± 0.4
EMPLOYMENT STATUS						
Civilian labor force 16 years and over	120,270	± 1,273	4,529	± 475	3.8%	± 0.4
Employed	113,126	± 1,283	2,979	± 352	2.6%	± 0.3
Male	59,794	± 846	1,357	± 276	2.3%	± 0.5
Female	53,332	± 953	1,622	± 258	3.0%	± 0.5
Unemployed	7,144	± 556	1,550	± 283	21.7%	± 3.9
Male	3,741	± 436	729	± 191	19.5%	± 5.1
Female	3,403	± 380	821	± 211	24.1%	± 5.4
WORK EXPERIENCE IN THE PAST 12 MONTHS						
Population 16 years and over	53,332	± 953	1,622	± 258	3.0%	± 0.5
Worked full-time, year-round	7,144	± 556	1,550	± 283	21.7%	± 3.9
Worked part-time or part-year	3,741	± 436	729	± 191	19.5%	± 5.1
Did not work	3,403	± 380	821	± 211	24.1%	± 5.4

Source: 2011-2015 American Community Survey

13 Glossary

American Community Survey (ACS) - The American Community Survey is an ongoing survey of the population that provides data every year on a variety of social and economic characteristics—age, sex, race, family and relationships, income and benefits, health insurance, education, veteran status, disabilities, where you work and how you get there, where you live and how much you pay for some essentials. The ACS replaced the information previously gathered by what was known as the “long form” of the decennial censuses. The ACS provides communities, companies and other institutions with current information they need to plan investments and services. Information from the survey generates data that help determine how more than \$400 billion in federal and state funds are distributed each year. Every estimate presented in the American Community Survey, as in other surveys, has an uncertainty associated with it. Often the magnitude of that uncertainty is expressed as the Margin of Error.

Confidence Interval (CI) - indication of the degree of uncertainty about a sample estimates. Confidence intervals have been traditionally reported at the 90, 95 and 99 percent levels. A 90 percent confidence interval can be interpreted, for example, roughly as providing 90 percent certainty that the interval defined by the upper and lower bounds contain the true value of the characteristic. If a Margin of Error is given, the lower bound of the confidence interval is equal to the estimate minus the Margin of Error and the upper bound is equal to the estimate plus the Margin of Error. (See further, Margin of Error definition below.)

County subdivision or Minor Civil Division (MCD) - The Census Bureau geography for primary administrative units below the county level in New York is collectively referred to as county subdivisions or minor civil divisions. These include towns, cities and Indian Reservations.

Decennial Census - the Census of the population and housing taken every 10 years in the United States, at the start of each decade, since 1790.

Employed – either “at work” or “with a job, but not at work”.

Group Quarters Population - all U.S. residents who live in group living facilities including correctional institutions, juvenile facilities, skilled nursing facilities, college residence halls, military barracks, group homes, and workers' dormitories.

Household Population - all U.S. residents who live in housing units such as single family homes, townhouses, apartments, and mobile homes.

Intercensal Population Estimates - estimates produced for the years between two decennial censuses when both the beginning and ending populations are known. They are produced once a decade by adjusting the existing time series of postcensal estimates for the entire decade to smooth the transition from one decennial census count to the next. They differ from the postcensal estimates that are released annually because the difference between the April 1 postcensal estimate and April 1 census count for the end of the decade is redistributed across the estimates for that decade. For dates when both postcensal and intercensal estimates are available, intercensal estimates are preferred.

Labor Force - consists of people classified as employed or unemployed.

Margin of Error (MOE) - a measure of the precision of an estimate at a given level of confidence. The confidence level of a margin of error indicates the likelihood that the difference between the population value (which you

would get if you could measure the whole population instead of a sample) and the estimate is less than or equal to the margin of error. The range from the estimate minus the margin of error to the estimate plus the margin of error is called the confidence interval. All ACS estimates are published with their margins of error at the 90 percent confidence level. Margins of error are useful in assessing the reliability of estimates and whether differences between estimates are significant.

Numeric Population Change - difference between the population of an area at the beginning and end of a time period. It is computed by taking the difference between the population at one point in time (t_1) and some future time (t_2).

Percent Population Change - difference between the population of an area at the beginning and end of a time period, expressed as a percentage of the beginning population. It is computed by dividing the population change ($t_2 - t_1$) by t_1 and multiplying the result by 100.

Population Estimates - The calculated number of people living in an area as of a specified point in time, usually July 1st. The estimated population is calculated using a component of change model that incorporates information on natural increase (births, deaths) and net migration (net domestic migration, net international migration) that has occurred in an area since the latest decennial census. A procedure for estimating the current population using a procedure involving a "base population" value at time $t - 1$, adding to that the births during the interval $t - 1$ to t , subtracting the deaths during that interval $t - 1$ to t , and then adding the net domestic and net international migration that occurred during that interval.

Population Density - Total number of people per areal unit like a square mile or square kilometer.

Population Pyramids - A graphical way of portraying a population's age and sex composition at a given slice in time. The first horizontal bar, constituting the base of the graph, is the youngest age group (typically 0-4) with the number of males in that age group on the left and the number of females in that age group on the right. On top of that age group is another horizontal bar for the next age group (e.g. 5-9) and so forth with the top bar typically for those aged 75 and over. In a population with lots of births and deaths, the shape typically forms a pyramid with a broad base and a narrow top. It is one of the most basic ways to understand population change over time as well as between different geographic units of a similar status (e.g. counties).

Postcensal Estimates - estimates produced for the years after a decennial census when only the beginning population is known. They are produced and revised each year, targeted to July 1 of that year.

Projection - estimated population at some future time based on assumptions about births, deaths, migration, and ages.

Race/Ethnicity - the Census Bureau collects racial data in accordance with guidelines provided by the U.S. Office of Management and Budget (OMB), and these data are based on self-identification. The racial categories included in the census questionnaire generally reflect a social definition of race recognized in this country and not an attempt to define race biologically, anthropologically, or genetically. In addition, it is recognized that the categories of the race item include racial and national origin or sociocultural groups. People may choose to report more than one race to indicate their racial mixture, such as "American Indian" and "White." People who identify their origin as Hispanic, Latino, or Spanish may be of any race. OMB requires five minimum categories: White, Black or African American, American Indian or Alaska Native, Asian, and Native Hawaiian or Other Pacific Islander. Hispanics may be classified as white or black. So we generally separate them out as an ethnic group first.

Unemployed – Not employed, but actively looking for work and available to accept a job.

Unemployment rate – Fraction of the Labor Force that is unemployed.

Urban Area – A densely settled area with at least 2,500 people. If the total number of people is less than 50,000 the Census Bureau calls it an Urban Cluster, otherwise an Urbanized Area.

Vintage - each year, the U.S. Census Bureau produces and publishes estimates of the population for each state and county, as well as the nation as a whole. These are called “vintages.” In producing these vintages, the Bureau utilizes administrative data from a number of sources to estimate 1) the change in population since the most recent decennial census, and 2) the population for each year since the most recent decennial census. With each annual release of population estimates (vintage), the entire time series of estimates beginning on April 1, 2010 is revised and updated.

Vital Statistics - quantitative data concerning a population, such as the number of births, marriages, and deaths.

14 References

Saratoga County homepage: <http://www.saratogacountyny.gov/>

At Cornell:

- Program on Applied Demographics (PAD)
URL: <http://pad.human.cornell.edu/>
 - More county trends: <https://pad.human.cornell.edu/counties/trends1geo.cfm?geo=91>
- Community and Regional Development Institute (CaRDI)
URL: <https://cardi.cals.cornell.edu/>
- Cornell Cooperative Extensions (CCE)
Home page: <http://www.cce.cornell.edu>
 - Saratoga local office: <http://ccesaratoga.org/>

Data sources and background information:

- New York State Data Center
 - <https://labor.ny.gov/nys-data-center/index.shtm>
- U.S. Census Bureau - general
 - QuickFacts: <https://www.census.gov/quickfacts/table/PST045216/36,36091>
 - American FactFinder: <http://factfinder.census.gov/>
- U.S. Census Bureau - population
 - Decennial Census
 - Background: <https://www.census.gov/2010census/>
 - Demographic Profile: http://factfinder2.census.gov/bkmk/table/1.0/en/DEC/10_SF1/SF1DP1/0500000US36091
 - American Community Survey (ACS)
 - Background: <https://www.census.gov/programs-surveys/acs/>
 - Social Data Profile: http://factfinder2.census.gov/bkmk/table/1.0/en/ACS/15_5YR/DP02/0500000US36091
 - Economic Data Profile: http://factfinder2.census.gov/bkmk/table/1.0/en/ACS/15_5YR/DP03/0500000US36091
 - Housing Data Profile: http://factfinder2.census.gov/bkmk/table/1.0/en/ACS/15_5YR/DP04/0500000US36091
 - Demographics Data Profile: http://factfinder2.census.gov/bkmk/table/1.0/en/ACS/15_5YR/DP05/0500000US36091
 - Population estimates:
 - General: <https://www.census.gov/programs-surveys/popest.html>
 - Explorer: <https://www.census.gov/censusexplorer/censusexplorer-popest.html>
- U.S. Census Bureau – Small Area Income & Poverty Estimates (SAIPE)
 - <http://www.census.gov/did/www/saipe/>
- U.S. Census Bureau - Public Use Quarterly Workforce Indicators (QWI) – annual averages
 - <https://qwiexplorer.ces.census.gov/static/explore.html>
- U.S. Census Bureau – Building Permits Survey
 - <https://www.census.gov/construction/bps/>

- Bureau Labor Statistics (BLS)
 - Local Area Unemployment Statistics: <http://www.bls.gov/lau/>
 - Quarterly Census of Employment and Wages (QCEW): <https://www.bls.gov/cew/data.htm>
- NY Department of Labor -
 - Labor statistics: <https://labor.ny.gov/stats/index.shtm>
 - Quarterly Census of Employment and Wages (QCEW): <https://labor.ny.gov/stats/LSQCEW.shtm>
- NY State Department of Health
 - Vital Statistics: https://www.health.ny.gov/statistics/vital_statistics/
- Bureau of Economic Analysis (BEA) – Local Area Personal Income and Employment: <http://bea.gov/iTable/iTable.cfm?ReqID=70&step=1>

Alternative sites for data retrieval:

- The Nelson A. Rockefeller Institute of Government – New York State Statistical Yearbooks http://www.rockinst.org/nys_statistics/
- Headwaters Economics: Economic Profile System – Human Dimensions Toolkit <http://headwaterseconomics.org/tools/eps-hdt>
- National Historical Geographic Information System (NHGIS) <https://www.nhgis.org/>
- Social Explorer <http://www.socialexplorer.com/pub/home/home.aspx>
- Stats America <http://www.statsamerica.org/Default.aspx>
- Missouri Census Data Center <http://mcdc.missouri.edu/>
- DataFerret <http://dataferrett.census.gov/>
- Investigative Reporters and Editors (IRE) Census project <http://census.ire.org/>