

Orleans County Profile 2017

A collection of recent demographic, social and economic data

Compiled by

Jan Vink

Cornell Program on Applied Demographics



Cornell University



Program
on Applied
Demographics

CORNELL POPULATION CENTER

This profile is a part of a set of profiles generated for each county in New York State. The profiles were developed and generated by the Cornell Program on Applied Demographics. The work is sponsored by the New York State Data Center in the New York State Department of Labor.

Cornell Program on Applied Demographics:

The Program on Applied Demographics (PAD) brings skills in demographics, economics, statistics, data gathering and data analysis together to provide a variety of organizations with data, information and advice. PAD is located in the Department of Policy Analysis and Management within the College of Human Ecology at Cornell University. PAD is also affiliated with the Cornell Institute for Social and Economic Research and the Cornell Population Center.

For more information: <http://pad.human.cornell.edu/>

New York State Data Center:

The New York State Data Center (NYSDC) is located in the Division of Research and Statistics within the New York State Department of Labor. The State Data Center operates as part of a nationwide effort to improve public access to data provided by the U.S. Census Bureau. The U.S. Census Bureau collects and tabulates data on a multitude of subjects such as population, social, economic and housing demographics, labor force data, health care, migration and transportation. These data play a critical role in understanding our local and larger surrounding communities. Census data also influence state and federal funding, aid decision making in the legislative process, and determine each state's number of congressional seats. As the lead agency in New York for the SDC program, the New York State Data Center helps users navigate through the multitude of surveys and products provided by the U.S. Census Bureau.

For more information: <https://labor.ny.gov/nys-data-center/>

All profiles are freely downloadable as PDF documents on the PAD website:

<http://pad.human.cornell.edu/profiles/index.cfm>

This profile is an update from the County Profile produced in 2013. The 2013 profile also contained information on agriculture related items and can be found at <https://pad.human.cornell.edu/profiles/2013/Orleans.pdf>

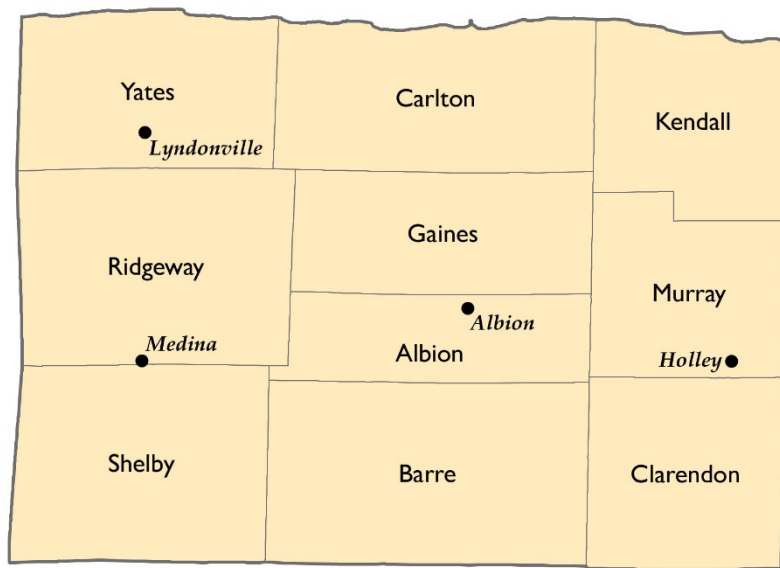
Contents

1	Reference Maps (towns and places as defined in 2010)	3
2	Population density and Urban Areas Map	5
3	Total Population	6
3.1	Historic and projected	6
3.2	Change since previous Census	6
3.3	Annual population estimates	7
3.4	Sub County population change 2010-2015	8
3.5	Sub County population change 2010-2015	8
4	Components of population change	9
4.1	Vital Statistics	9
4.2	Migration	10
5	Population by age	11
5.1	Historic and projected population pyramids	11
5.2	Selected age groups	12
5.3	Median age	13
6	Race	14
6.1	Total and household population by race	14
6.2	Race composition by age	14
7	Housing units	15
7.1	Characteristics	15
7.2	Historical data on number of housing units and occupancy status	16
7.3	Building Permits 2000-2015	16
8	Education	17
8.1	Enrollment by level of school	17
8.2	Enrollment by age	17
8.3	Percentage age 18-24 enrolled in college	17
8.4	Educational attainment	18
9	Language spoken at home	18
10	Labor Force Characteristics	19
10.1	Labor force, employment and unemployment	19
10.2	Annual unemployment rate	20
10.3	Employment and number of jobs	20
10.4	Class of worker	21
11	Household Income	22
11.1	Income Distribution	22
11.2	Median household income: Trends over time	23
12	Poverty	23
12.1	Family Income to Poverty Ratio	23
12.2	Poverty: Trends over time: Count	24
12.3	Poverty: Trends over time: Rate	24
12.4	Poverty characteristics	25
13	Glossary	26
14	References	29

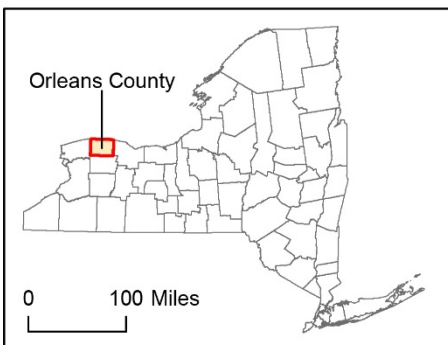
1 Reference Maps (towns and places as defined in 2010)

Orleans County, NY

Towns, Cities, Indian Reservations, and Incorporated Villages



New York State Counties



Legend

- Village
- Town

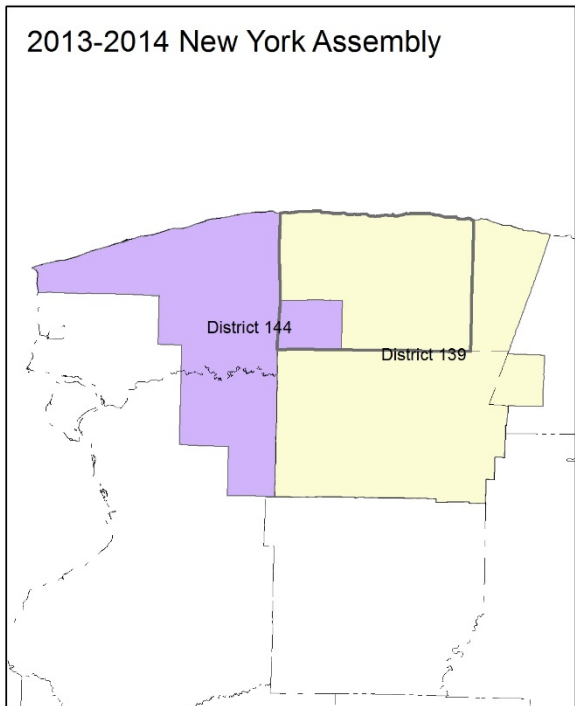
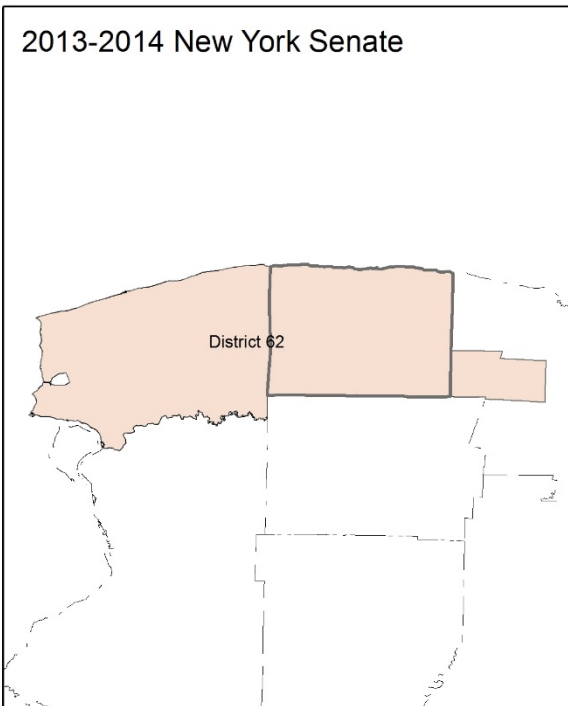
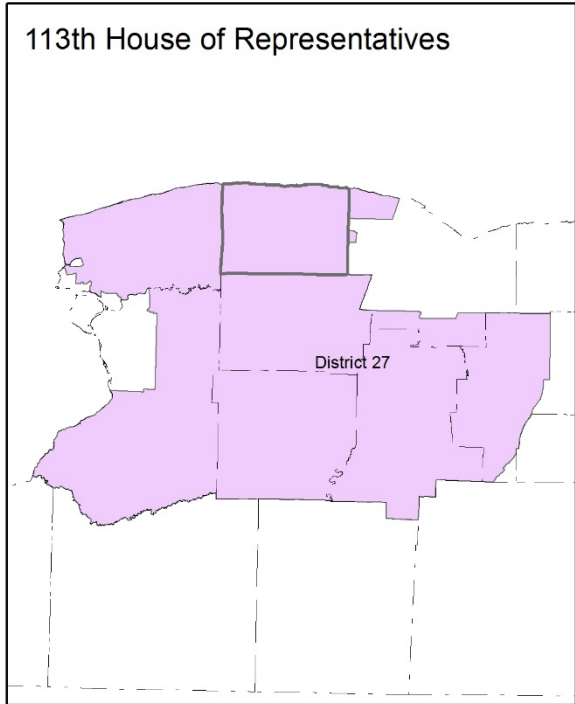
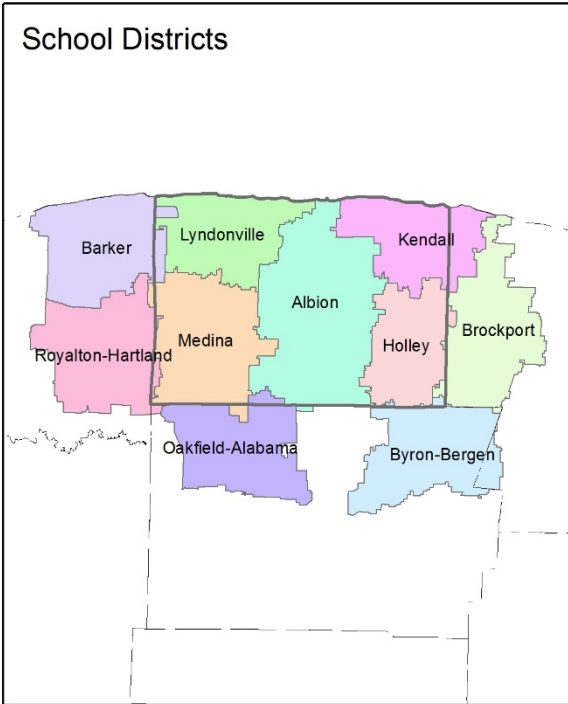


Created by Cornell Program on Applied Demographics.
March 2012.
Data Source: 2010 Census TIGER/Line® Shapefiles.

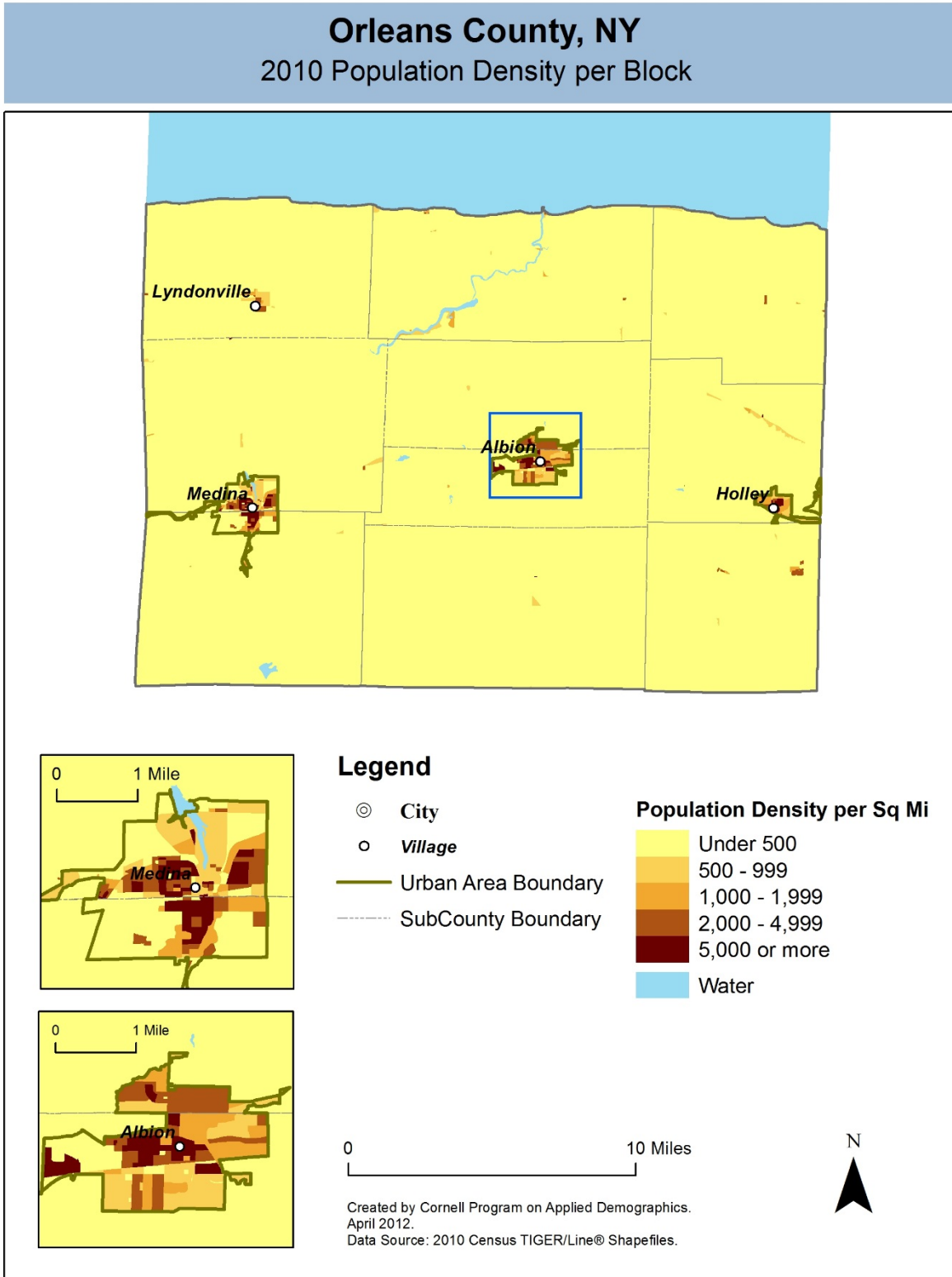


Orleans County, NY

Overlap with School and Political Districts



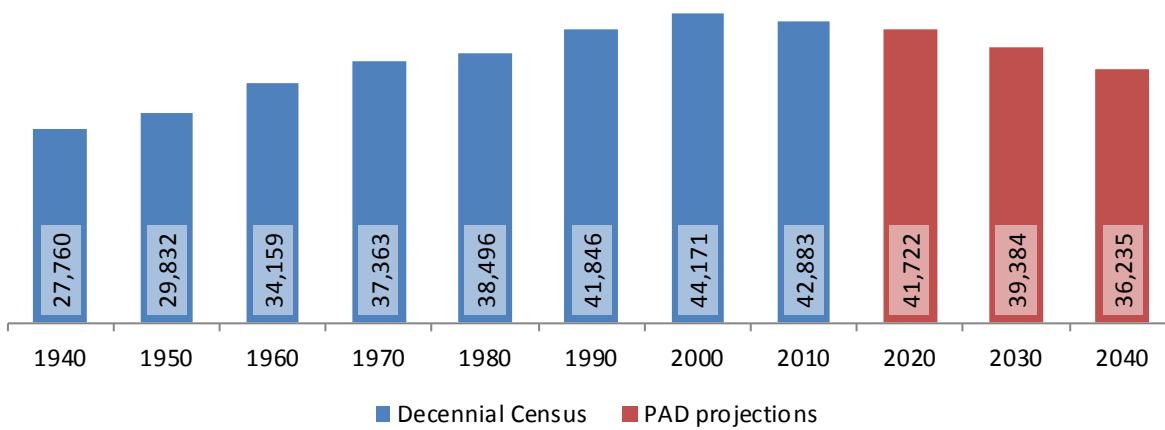
2 Population density and Urban Areas Map



3 Total Population

3.1 Historic and projected

Total population, Orleans County, 1940-2040



Source: 1940-2010 Decennial Census and projections by Cornell Program on Applied Demographics

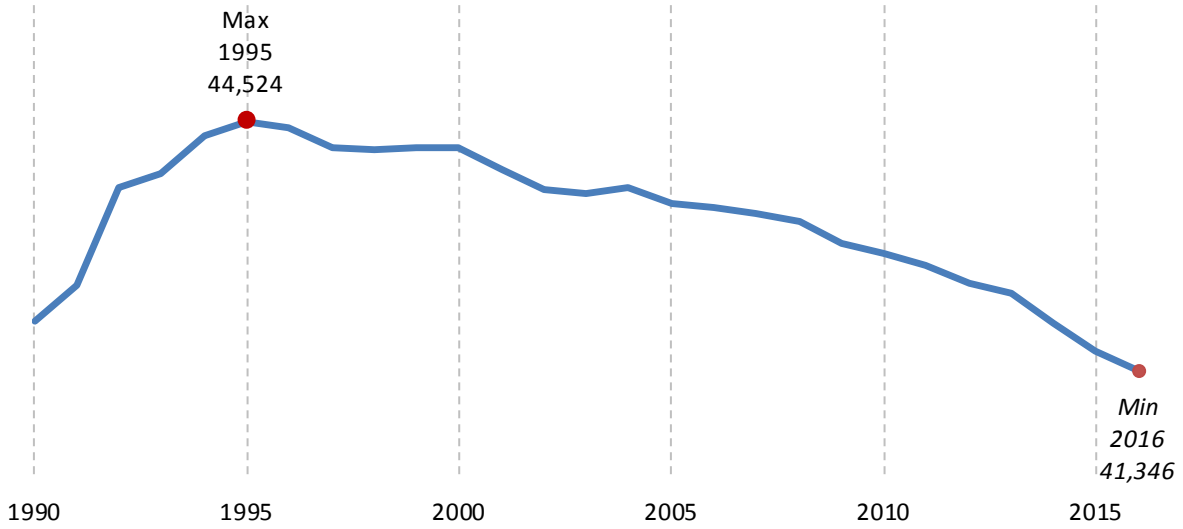
3.2 Change since previous Census

	Total population	Change	
		Number	Percent
Decennial Census	1940	27,760	
	1950	29,832	2,072 7.5%
	1960	34,159	4,327 14.5%
	1970	37,363	3,204 9.4%
	1980	38,496	1,133 3.0%
	1990	41,846	3,350 8.7%
	2000	44,171	2,325 5.6%
	2010	42,883	-1,288 -2.9%
PAD projections	2020	41,722	-1,161 -2.7%
	2030	39,384	-2,338 -5.6%
	2040	36,235	-3,149 -8.0%

Source: 1940-2010 Decennial Census and projections by Cornell Program on Applied Demographics

3.3 Annual population estimates

**Annual population estimates
Orleans County, 1990-2016**



Source: U.S. Census Bureau population estimates (1990-1999 and 2000-2009 intercensal and vintage 2016 postcensal)

3.4 Sub County population change 2010-2015

	Total Population		Difference	
	2000	2010	Count	%
New York State	18,976,821 *	19,378,102	401,281	2.1%
Orleans County	44,171	42,883	-1,288	-2.9%
Towns				
Albion	9,409 *	8,468	-941	-10.0%
Barre	2,124	2,025	-99	-4.7%
Carlton	2,960	2,994	34	1.1%
Clarendon	3,392	3,648	256	7.5%
Gaines	3,740	3,378	-362	-9.7%
Kendall	2,838	2,724	-114	-4.0%
Murray	4,892 *	4,988	96	2.0%
Ridgeway	6,886	6,780	-106	-1.5%
Shelby	5,420	5,319	-101	-1.9%
Yates	2,510	2,559	49	2.0%

* Original counts revised through Count Question Resolution Program (CQR)

Source: U.S. Census Bureau intercensal population estimates 2000-2010

3.5 Sub County population change 2010-2015

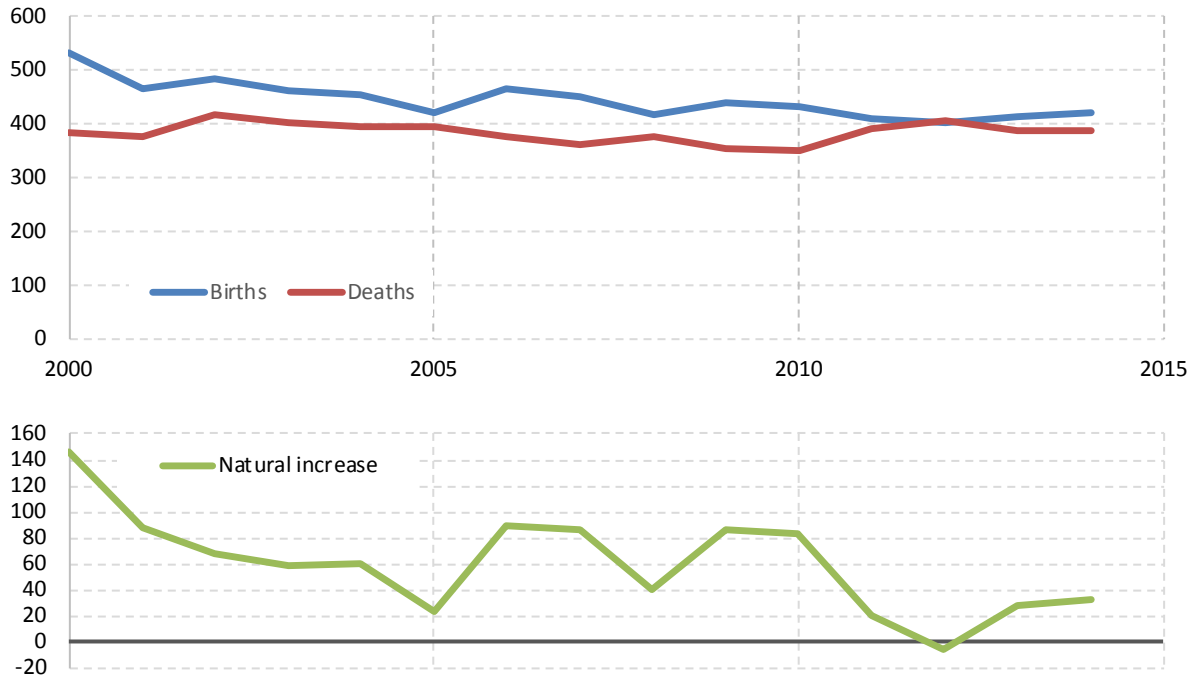
	Total Population		Difference	
	2010 base	2015	Count	%
New York State	19,378,087	19,795,791	417,704	2.2%
Orleans County	42,876	41,582	-1,294	-3.0%
Towns				
Albion	8,468	8,338	-130	-1.5%
Barre	2,012	1,930	-82	-4.1%
Carlton	2,994	2,917	-77	-2.6%
Clarendon	3,645	3,551	-94	-2.6%
Gaines	3,378	3,250	-128	-3.8%
Kendall	2,724	2,651	-73	-2.7%
Murray	4,988	4,786	-202	-4.0%
Ridgeway	6,780	6,531	-249	-3.7%
Shelby	5,328	5,154	-174	-3.3%
Yates	2,559	2,474	-85	-3.3%

Source: U.S. Census Bureau population estimates 2010-2015

4 Components of population change

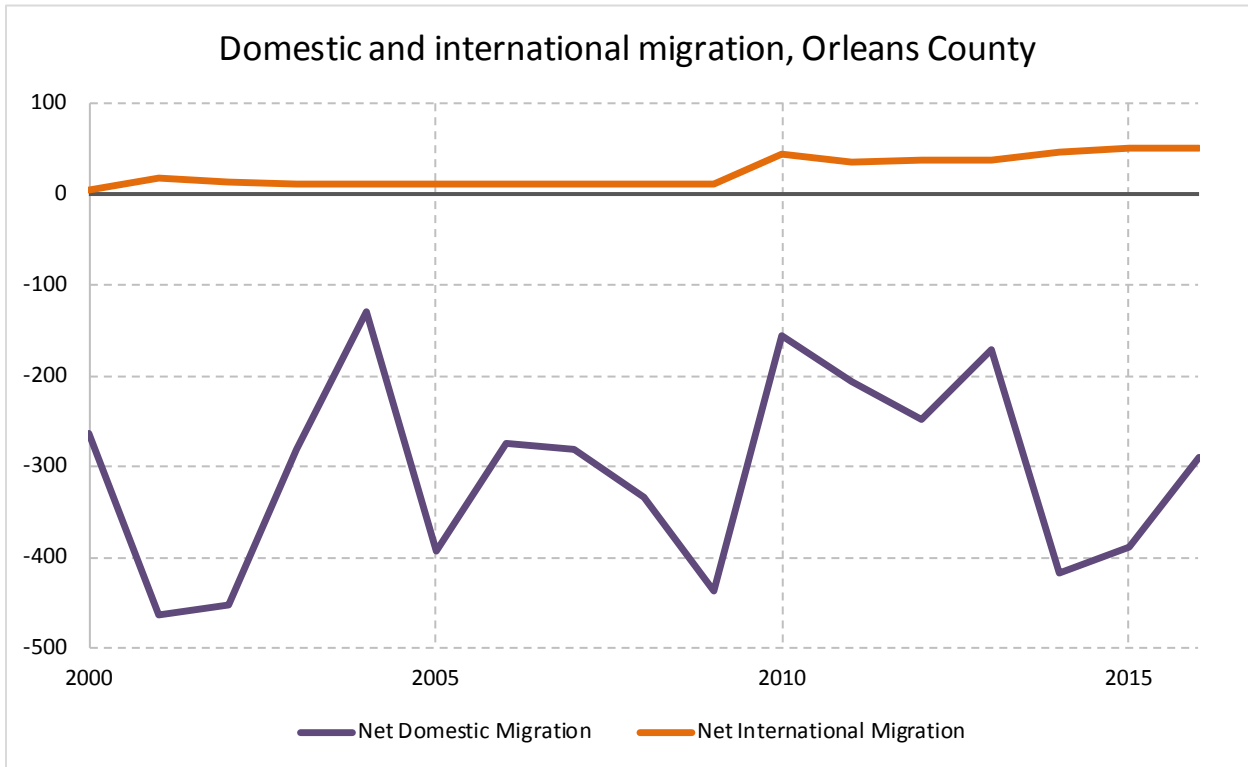
4.1 Vital Statistics

Vital Statistics, Orleans County



Source: New York State Department of Health

4.2 Migration

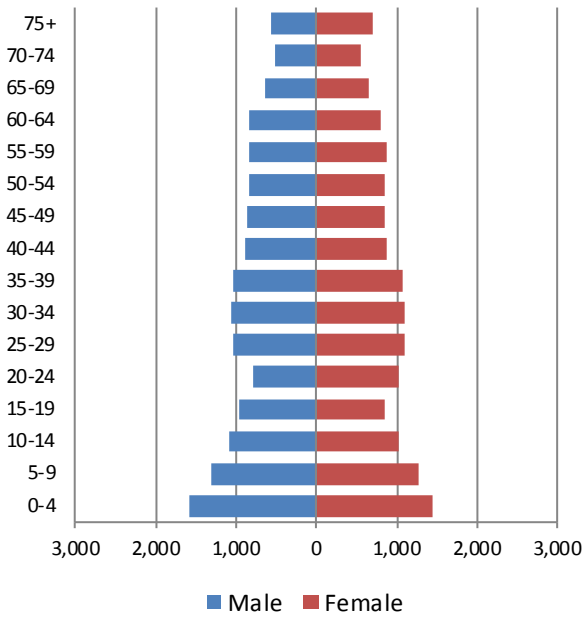


Source: Census Bureau population estimates (V2010 and V2016)

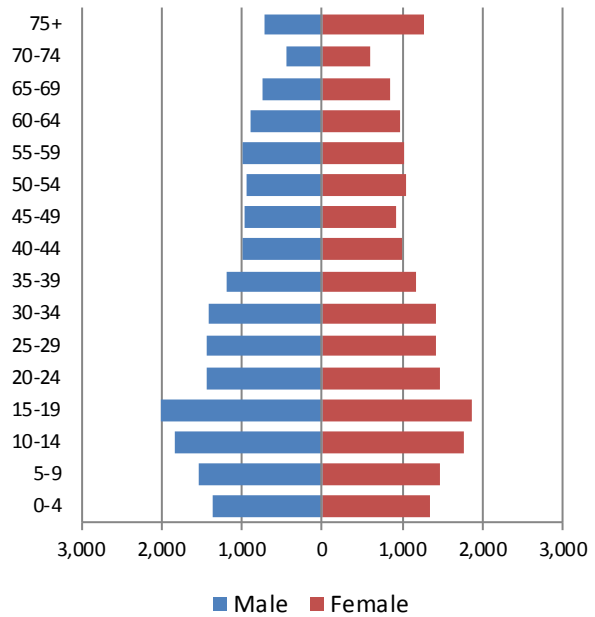
5 Population by age

5.1 Historic and projected population pyramids

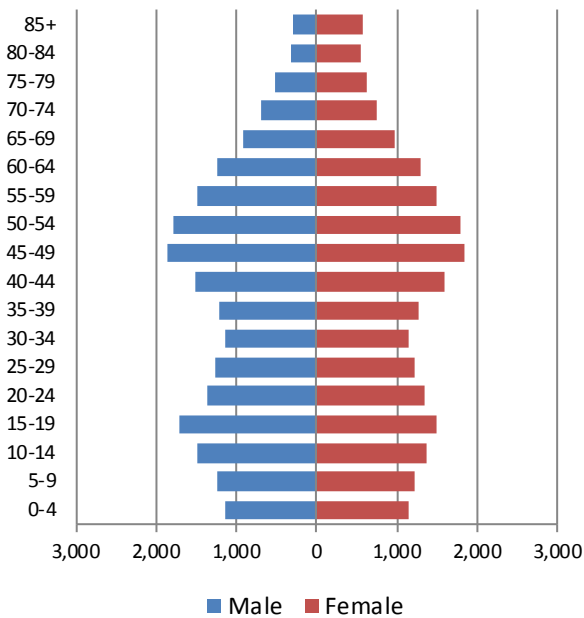
1950 Population Pyramid, Orleans County



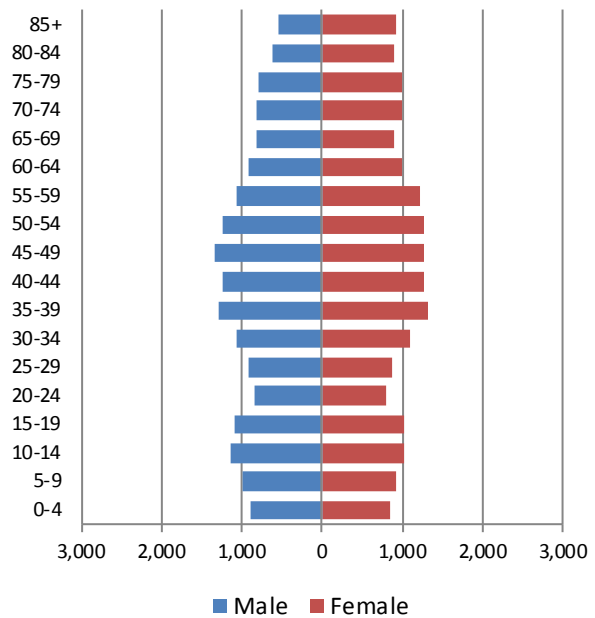
1980 Population Pyramid, Orleans County



2010 Population Pyramid, Orleans County



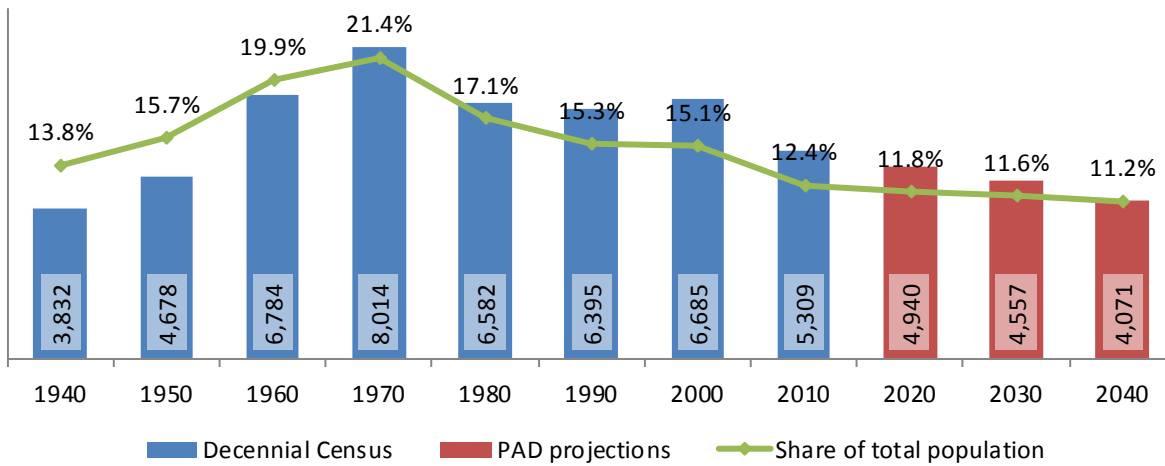
2040 Population Pyramid, Orleans County



Source: 1950, 1980, 2010 Decennial Census and projections by Cornell Program on Applied Demographics

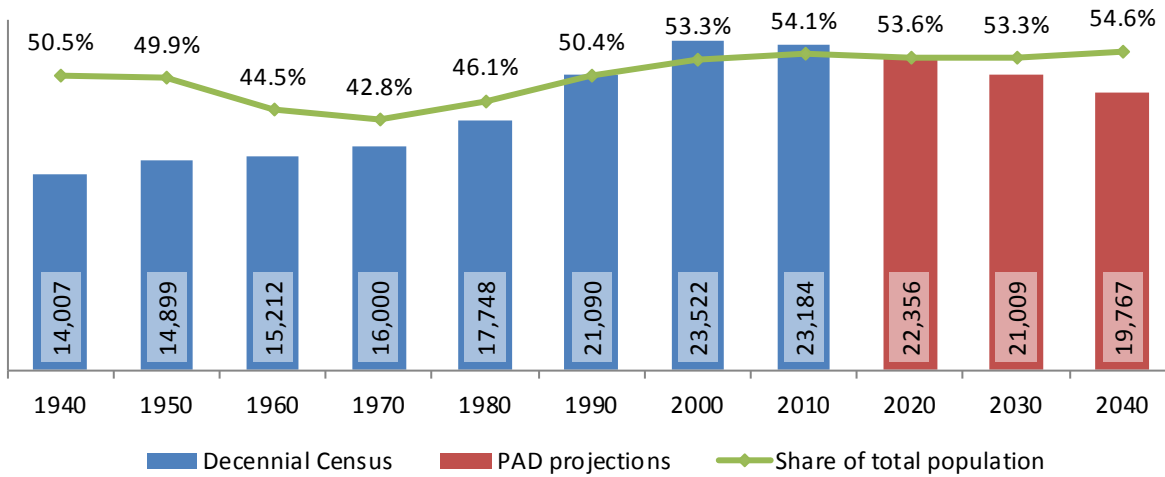
5.2 Selected age groups

Population age 5-14, Orleans County, 1940-2040



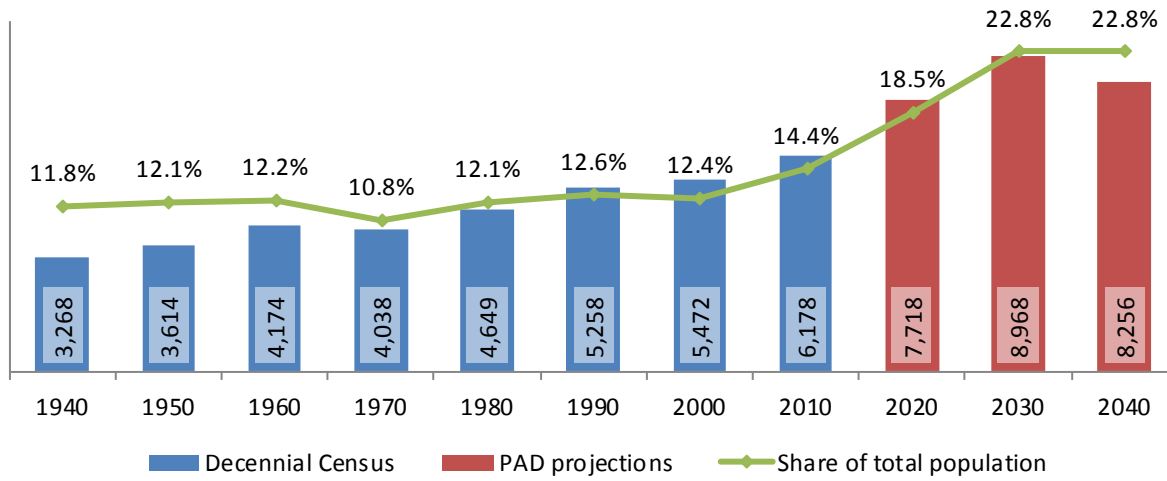
Source: 1940-2010 Decennial Census and projections by Cornell Program on Applied Demographics

Population age 25-64, Orleans County, 1940-2040



Source: 1940-2010 Decennial Census and projections by Cornell Program on Applied Demographics

Population age 65 and over, Orleans County, 1940-2040



Source: 1940-2010 Decennial Census and projections by Cornell Program on Applied Demographics

5.3 Median age

	Orleans County	New York State
Median age		
2000	36.2	35.9
2010	41.0	38.0
2015	42.6	38.3

Source: 2000, 2010 Decennial Census, 2015 Population Estimates

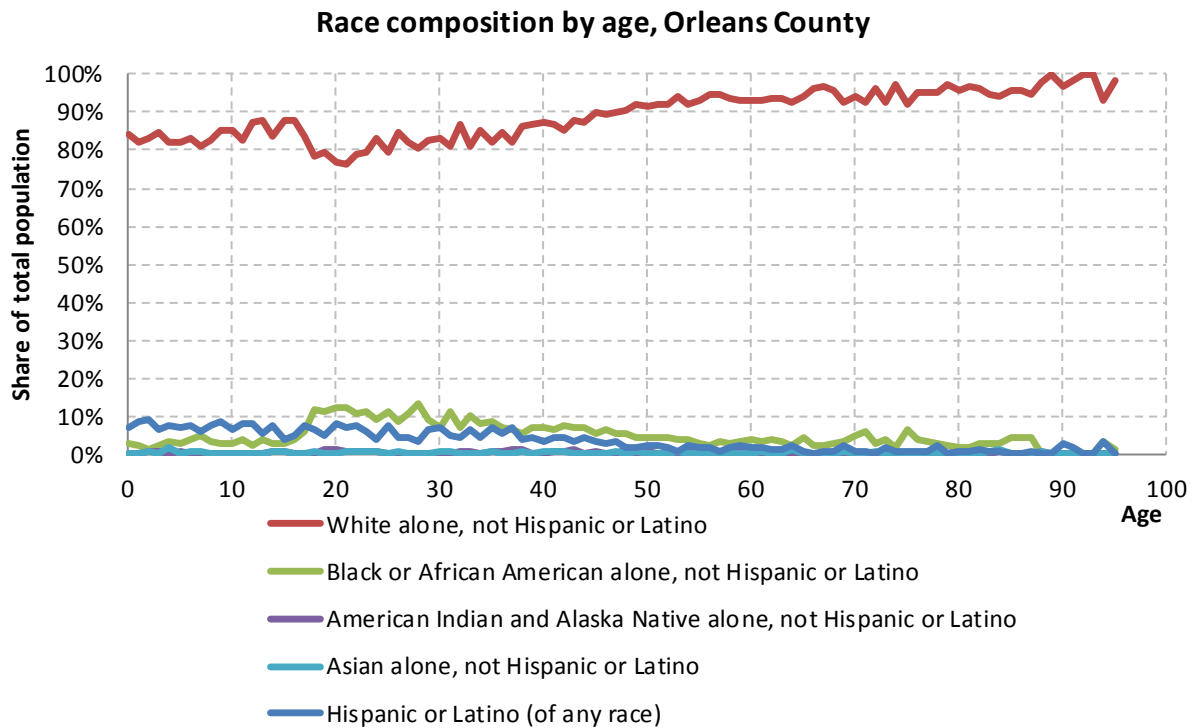
6 Race

6.1 Total and household population by race

	Total		In households		In Group Quarters
	Count	Percentage	Count	Percentage	Count
Total population	42,883	100%	40,297	100%	2,586
Not Hispanic or Latino					
One race					
White	37,658	87.8%	36,574	90.8%	1,084
Black or African American	2,368	5.5%	1,238	3.1%	1,130
American Indian and Alaska Native	199	0.5%	185	0.5%	14
Asian	173	0.4%	152	0.4%	21
Native Hawaiian and Other Pacific Islander	7	0.0%	-	-	-
Some other race	32	0.1%	-	-	-
Two or more races	689	1.6%	679	1.7%	10
Hispanic or Latino (of any race)	1,757	4.1%	1,445	3.6%	312

Source: 2010 Decennial Census

6.2 Race composition by age



Source: 2010 Decennial Census

7 Housing units

7.1 Characteristics

HOUSING OCCUPANCY	COUNT		PERCENTAGE	
	Estimate	Margin of error	Estimate	Margin of error
Total housing units	18,498	± 160	100.0%	
Occupied housing units	16,016	± 329	86.6%	± 1.8
Vacant housing units	2,482	± 329	13.4%	± 1.8
YEAR STRUCTURE BUILT				
Total housing units	18,498	± 160	100.0%	
Built 2014 or later	18	± 21	0.1%	± 0.1
Built 2010 to 2013	76	± 44	0.4%	± 0.2
Built 2000 to 2009	584	± 100	3.2%	± 0.5
Built 1990 to 1999	1,714	± 284	9.3%	± 1.5
Built 1980 to 1989	1,937	± 245	10.5%	± 1.3
Built 1970 to 1979	1,832	± 191	9.9%	± 1.0
Built 1960 to 1969	1,162	± 221	6.3%	± 1.2
Built 1950 to 1959	1,634	± 212	8.8%	± 1.1
Built 1940 to 1949	783	± 185	4.2%	± 1.0
Built 1939 or earlier	8,758	± 463	47.3%	± 2.5
HOUSING TENURE				
Occupied housing units	16,016	± 329	100.0%	
Owner-occupied	12,112	± 400	75.6%	± 1.9
Renter-occupied	3,904	± 305	24.4%	± 1.9
HOUSE HEATING FUEL				
Occupied housing units	16,016	± 329	100.0%	
Utility gas	6,782	± 334	42.3%	± 2.0
Bottled, tank, or LP gas	2,860	± 264	17.9%	± 1.6
Electricity	1,782	± 252	11.1%	± 1.5
Fuel oil, kerosene, etc.	2,713	± 256	16.9%	± 1.6
Coal or coke	68	± 37	0.4%	± 0.2
Wood	1,381	± 230	8.6%	± 1.4
Solar energy	8	± 14	0.0%	± 0.1
Other fuel	327	± 98	2.0%	± 0.6
No fuel used	95	± 123	0.6%	± 0.8
VALUE				
Owner-occupied units	12,112	± 400	100.0%	
Less than \$50,000	1,620	± 250	13.4%	± 1.9
\$50,000 to \$99,999	5,313	± 411	43.9%	± 3.0
\$100,000 to \$149,999	2,566	± 239	21.2%	± 1.9
\$150,000 to \$199,999	1,662	± 214	13.7%	± 1.7
\$200,000 to \$299,999	653	± 141	5.4%	± 1.2
\$300,000 to \$499,999	186	± 67	1.5%	± 0.6
\$500,000 to \$999,999	103	± 69	0.9%	± 0.6
\$1,000,000 or more	9	± 13	0.1%	± 0.1
Median (dollars)	91,300	± 3,016		

Source: 2011-2015 American Community Survey

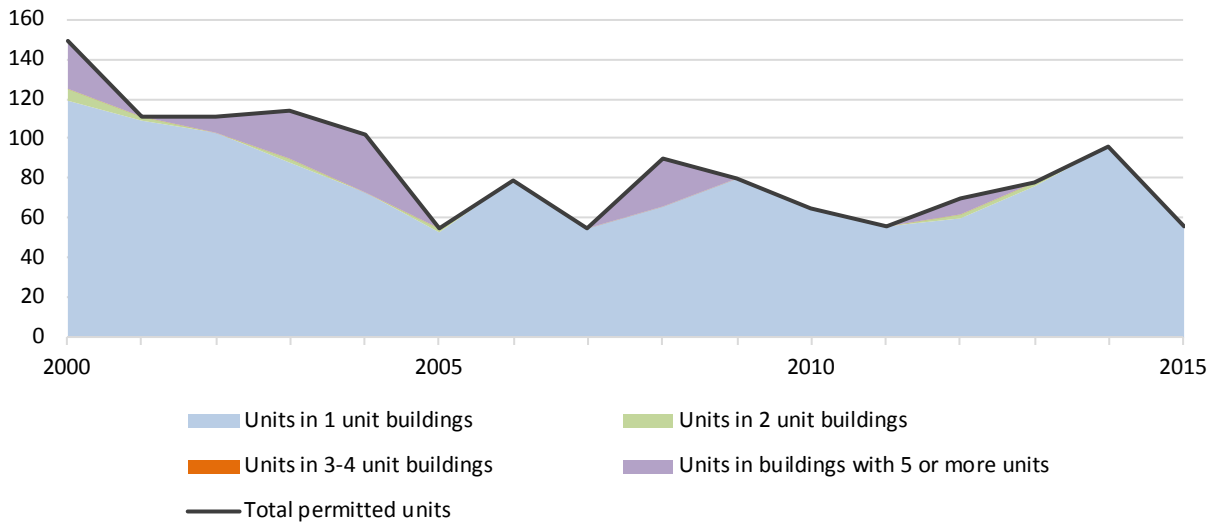
7.2 Historical data on number of housing units and occupancy status

Year	Number of Housing Units	Change since previous Census	Occupied	Occupancy rate	Vacant
1970	12,901		11,320	87.7%	1,581
1980	15,030	16.5%	12,976	86.3%	2,054
1990	16,345	8.7%	14,428	88.3%	1,917
2000	17,347	6.1%	15,363	88.6%	1,984
2010	18,431	6.2%	16,119	87.5%	2,312

Source: 1970-2010 Decennial Census

7.3 Building Permits 2000-2015

Building permits by number of permitted units in building, Orleans County



Source: Census Bureau Building Permits Survey

8 Education

8.1 Enrollment by level of school

	Estimate	Margin of error
Total enrolled in school	8,880	± 344
Nursery school, preschool	566	± 143
Kindergarten to 12th grade	6,589	± 223
Kindergarten	385	± 108
Elementary: grade 1 to grade 4	1,819	± 225
Elementary: grade 5 to grade 8	1,974	± 226
High school: grade 9 to grade 12	2,411	± 184
College, undergraduate	1,543	± 207
Graduate, professional school	182	± 81

Source: 2011-2015 American Community Survey

8.2 Enrollment by age

	Estimate	Margin of error
3 and 4 years	49.7%	± 9.4
5 to 9 years	94.0%	± 3.5
10 to 14 years	98.3%	± 1.2
15 to 17 years	94.1%	± 3.6
18 and 19 years	53.4%	± 9.9
20 to 24 years	27.9%	± 4.8
25 to 34 years	7.8%	± 2.7
35 years and over	1.6%	± 0.5

Source: 2011-2015 American Community Survey

8.3 Percentage age 18-24 enrolled in college

	Estimate	Margin of error
Population 18 to 24 years	3,940	± 122
Enrolled in college or graduate school	26.2%	± 3.9
Males 18 to 24 years	2,115	± 80
Enrolled in college or graduate school	19.5%	± 5.1
Females 18 to 24 years	1,825	± 96
Enrolled in college or graduate school	33.9%	± 6.4

Source: 2011-2015 American Community Survey

8.4 Educational attainment

	COUNT		PERCENTAGE	
	Estimate	Margin of error	Estimate	Margin of error
Population 25 years and over	29,584	± 123	100%	
EDUCATIONAL ATTAINMENT				
Less than 9th grade	1,306	± 224	4.4%	± 0.8
9th to 12th grade, no diploma	3,010	± 330	10.2%	± 1.1
High school graduate (includes equivalency)	11,769	± 458	39.8%	± 1.6
Some college, no degree	6,004	± 363	20.3%	± 1.2
Associate's degree	2,928	± 290	9.9%	± 1.0
Bachelor's degree	2,839	± 242	9.6%	± 0.8
Graduate or professional degree	1,728	± 229	5.8%	± 0.8
Percent high school graduate or higher			85.4%	± 1.2
Percent bachelor's degree or higher			15.4%	± 1.1

Source: 2011-2015 American Community Survey

9 Language spoken at home

	COUNT		PERCENTAGE		SPEAK ENGLISH LESS THAN "VERY WELL"	
	Estimate	Margin of error	Estimate	Margin of error	Estimate	Margin of error
Population 5 years and over	40,118	± 21	100%			
LANGUAGE SPOKEN AT HOME						
English only	37,629	± 385	93.8%	± 0.9		
Language other than English	2,489	± 380	6.2%	± 0.9	614	± 163
Spanish	1,210	± 232	3.0%	± 0.6	287	± 108
Other Indo-European languages	1,031	± 276	2.6%	± 0.7	258	± 103
Asian and Pacific Islander languages	136	± 80	0.3%	± 0.2	60	± 46
Other languages	112	± 81	0.3%	± 0.2	9	± 13

Source: 2011-2015 American Community Survey

10 Labor Force Characteristics

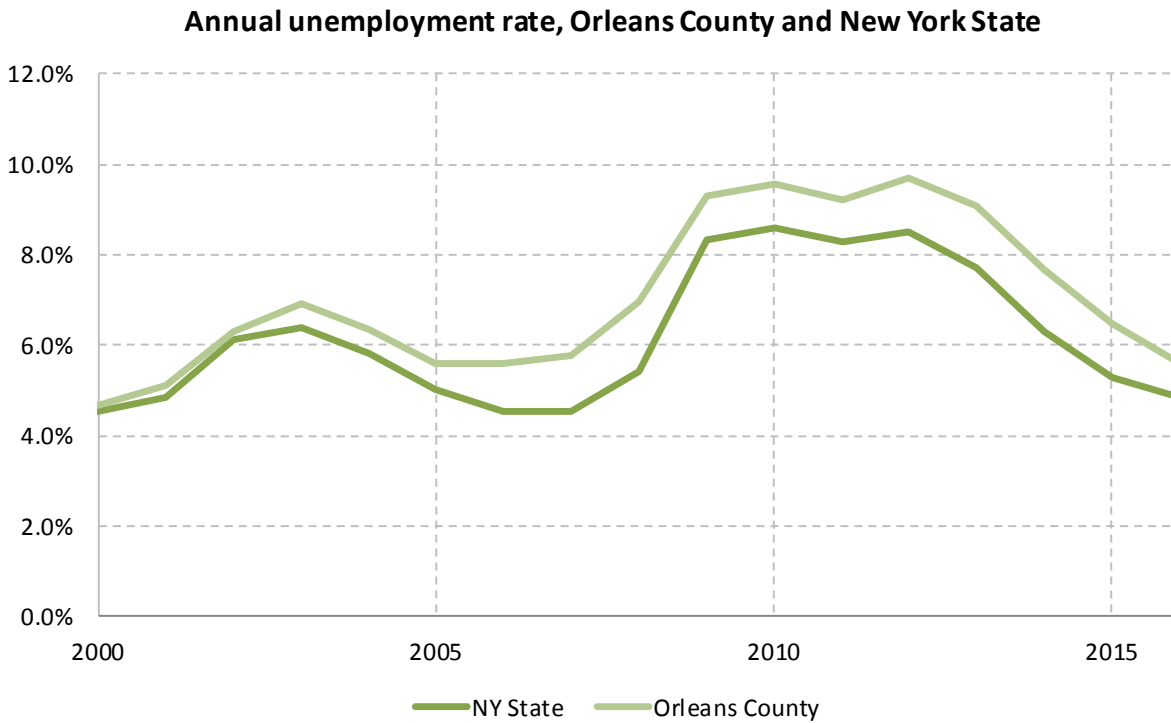
10.1 Labor force, employment and unemployment

	TOTAL		IN LABOR FORCE		EMPLOYED		UNEMPLOYMENT RATE	
	Estimate	Margin of error	Estimate	Margin of error	Estimate	Margin of error	Estimate	Margin of error
Population 16 years and over	34,614	± 120	54.9%	± 1.7	49.9%	± 1.7	9.0%	± 1.3
AGE								
16 to 19 years	2,254	± 152	38.9%	± 5.0	28.4%	± 4.9	27.0%	± 8.3
20 to 24 years	2,776	± 82	67.3%	± 6.2	56.4%	± 6.2	16.2%	± 5.9
25 to 29 years	2,606	± 93	65.0%	± 7.3	57.4%	± 7.1	11.6%	± 3.8
30 to 34 years	2,507	± 134	69.9%	± 6.1	63.4%	± 6.2	9.3%	± 4.0
35 to 44 years	5,006	± 110	74.0%	± 4.4	67.6%	± 4.4	8.3%	± 3.0
45 to 54 years	6,869	± 135	71.5%	± 3.7	67.5%	± 3.6	5.7%	± 1.7
55 to 59 years	3,467	± 195	61.0%	± 5.4	58.8%	± 5.7	3.5%	± 2.1
60 to 64 years	2,521	± 205	48.4%	± 5.0	45.3%	± 5.2	6.4%	± 3.3
65 to 74 years	3,742	± 61	17.6%	± 3.0	16.6%	± 3.1	5.5%	± 4.2
75 years and over	2,866	± 54	7.6%	± 2.5	6.0%	± 2.1	21.5%	± 16.9
RACE AND HISPANIC OR LATINO ORIGIN								
White alone	31,069	± 192	57.1%	± 1.8	51.8%	± 1.7	9.2%	± 1.4
Black or African American alone	2,330	± 60	29.0%	± 6.5	26.1%	± 5.9	10.1%	± 7.3
American Indian and Alaska Native alone	242	± 63	62.8%	± 18.0	57.4%	± 19.0	8.6%	± 12.3
Asian alone	201	± 35	61.2%	± 17.9	61.2%	± 17.9	0.0%	± 21.4
Two or more races	314	± 86	40.8%	± 15.7	36.3%	± 15.7	10.9%	± 11.1
Hispanic or Latino origin (of any race)	1,254	± 52	49.5%	± 9.2	47.7%	± 9.0	3.7%	± 3.5
White alone, not Hispanic or Latino	30,380	± 103	57.0%	± 1.9	51.7%	± 1.8	9.3%	± 1.4
SEX								
Population 20 to 64 years	25,752	± 122	67.0%	± 2.3	61.6%	± 2.2	8.1%	± 1.2
Male	13,023	± 94	70.2%	± 2.5	64.1%	± 2.3	8.5%	± 1.6
Female	12,729	± 97	63.9%	± 3.1	59.0%	± 3.1	7.7%	± 1.8
With own children under 18 years	3,878	± 293	73.0%	± 4.1	67.4%	± 4.2	7.7%	± 3.1
EDUCATIONAL ATTAINMENT								
Population 25 to 64 years	22,976	± 141	67.0%	± 2.3	62.2%	± 2.2	7.1%	± 1.2
Less than high school graduate	3,025	± 313	43.9%	± 5.2	38.3%	± 4.8	12.7%	± 5.3
High school graduate (includes equivalency)	8,835	± 420	65.1%	± 3.7	59.3%	± 3.6	8.9%	± 2.1
Some college or associate's degree	7,666	± 392	70.3%	± 3.6	66.1%	± 3.9	5.9%	± 2.0
Bachelor's degree or higher	3,450	± 281	84.8%	± 3.4	81.8%	± 3.6	3.6%	± 1.4

Table formula: **LABOR FORCE** = # EMPLOYED + # UNEMPLOYED
 % IN LABOR FORCE = LABOR FORCE / TOTAL * 100%
 % EMPLOYED = # EMPLOYED / TOTAL * 100%
 UNEMPLOYMENT RATE = # UNEMPLOYED / LABOR FORCE * 100%

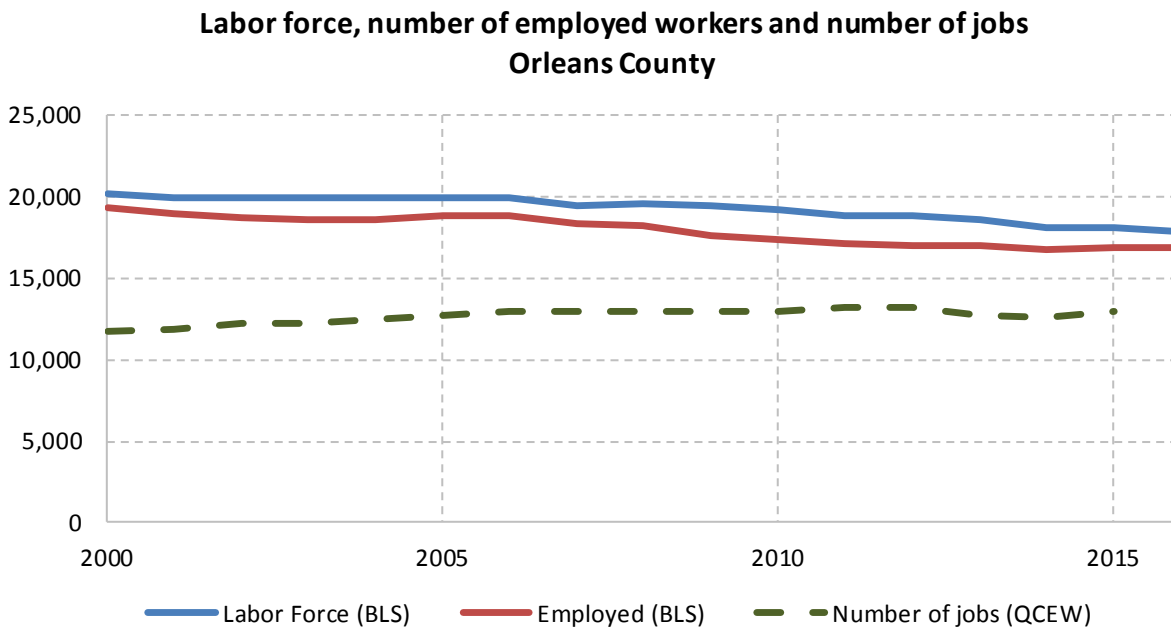
Source: 2011-2015 American Community Survey

10.2 Annual unemployment rate



Source: Bureau Labor Statistics (BLS)

10.3 Employment and number of jobs



Source: Bureau Labor Statistics (BLS) and NY Department of Labor - Quarterly Census of Employment and Wages (QCEW) – annual averages

10.4 Class of worker

		Total	%Male	%Female
Civilian employed population 16 years and over	Estimate	17,285	52.3%	47.7%
	<i>Margin of error</i>	± 573	± 1.4	± 1.4
Private for-profit wage and salary workers:	Estimate	12,029	55.7%	44.3%
	<i>Margin of error</i>	± 513	± 1.9	± 1.9
Employee of private company workers	Estimate	11,619	55.4%	44.6%
	<i>Margin of error</i>	± 514	± 2.0	± 2.0
Self-employed in own incorporated business workers	Estimate	410	62.4%	37.6%
	<i>Margin of error</i>	± 107	± 12.5	± 12.5
Private not-for-profit wage and salary workers	Estimate	1,418	33.2%	66.8%
	<i>Margin of error</i>	± 198	± 7.2	± 7.2
Local government workers	Estimate	1,359	37.7%	62.3%
	<i>Margin of error</i>	± 200	± 5.8	± 5.8
State government workers	Estimate	1,389	52.4%	47.6%
	<i>Margin of error</i>	± 230	± 7.1	± 7.1
Federal government workers	Estimate	184	59.2%	40.8%
	<i>Margin of error</i>	± 52	± 15.9	± 15.9
Self-employed in own not incorporated business workers and unpaid family workers	Estimate	906	58.6%	41.4%
	<i>Margin of error</i>	± 173	± 8.1	± 8.1

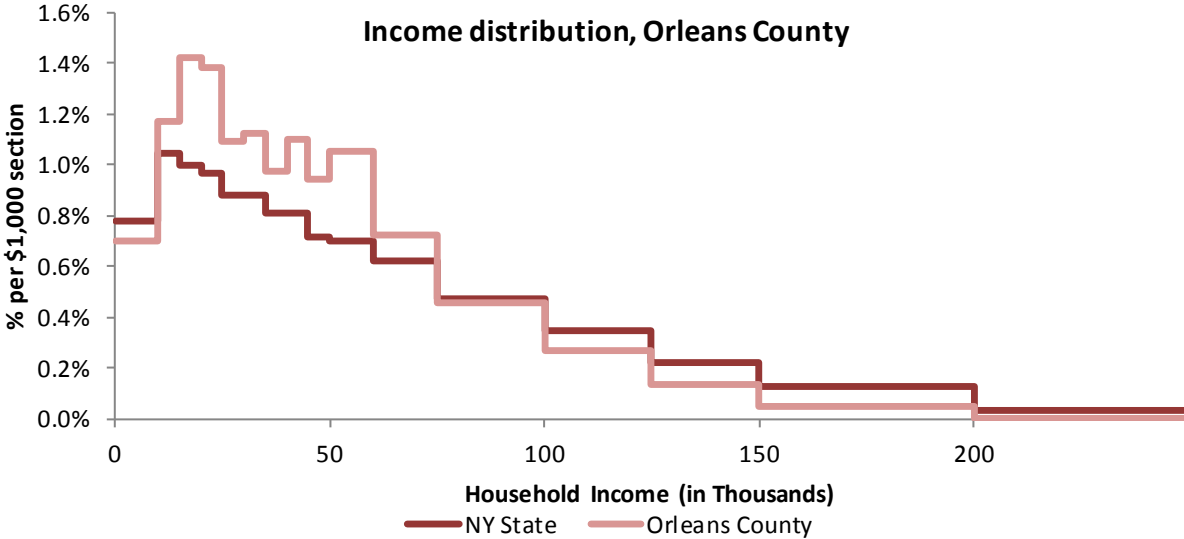
Source: 2011-2015 American Community Survey

11 Household Income

11.1 Income Distribution

	Estimate	Margin of error	Interval width (in \$1,000)	Est. per \$1,000 section
Total:	16,016	± 329		
Less than \$10,000	1,126	± 251	10	112.6
\$10,000 to \$14,999	937	± 238	5	187.4
\$15,000 to \$19,999	1,139	± 204	5	227.8
\$20,000 to \$24,999	1,109	± 215	5	221.8
\$25,000 to \$29,999	879	± 180	5	175.8
\$30,000 to \$34,999	903	± 156	5	180.6
\$35,000 to \$39,999	781	± 143	5	156.2
\$40,000 to \$44,999	885	± 163	5	177.0
\$45,000 to \$49,999	757	± 118	5	151.4
\$50,000 to \$59,999	1,695	± 250	10	169.5
\$60,000 to \$74,999	1,741	± 215	15	116.1
\$75,000 to \$99,999	1,833	± 220	25	73.3
\$100,000 to \$124,999	1,066	± 202	25	42.6
\$125,000 to \$149,999	551	± 138	25	22.0
\$150,000 to \$199,999	418	± 103	50	8.4
\$200,000 or more	196	± 77	-	-

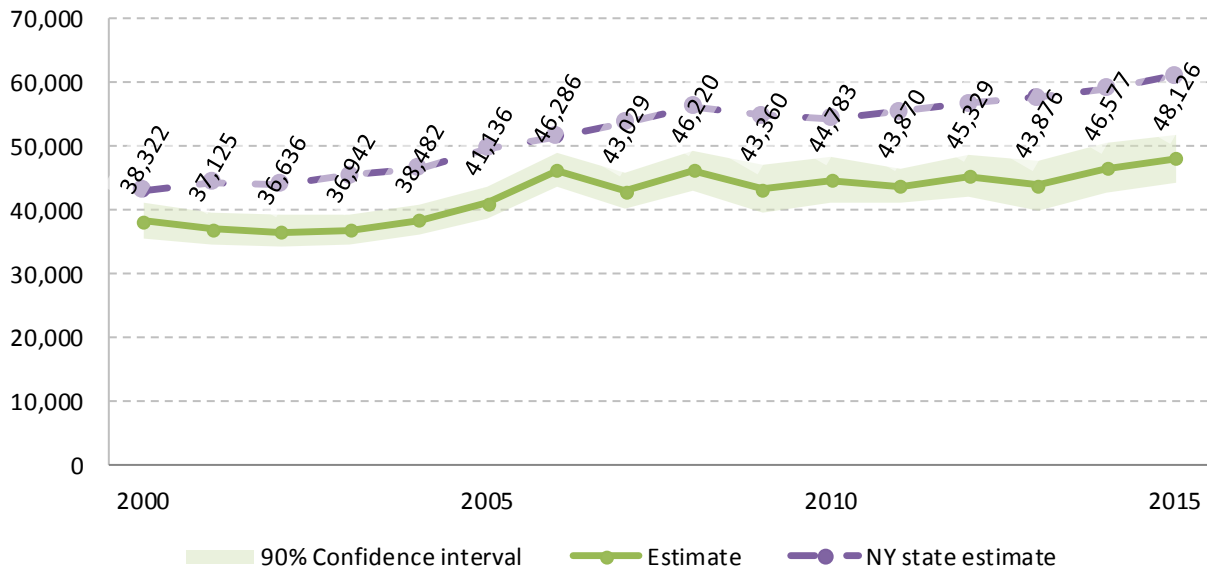
Source: 2011-2015 American Community Survey



Source: 2011-2015 American Community Survey

11.2 Median household income: Trends over time

Median Household Income (\$), Orleans County, 2000-2015



Source: Small Area Income and Poverty Estimates (SAIPE)

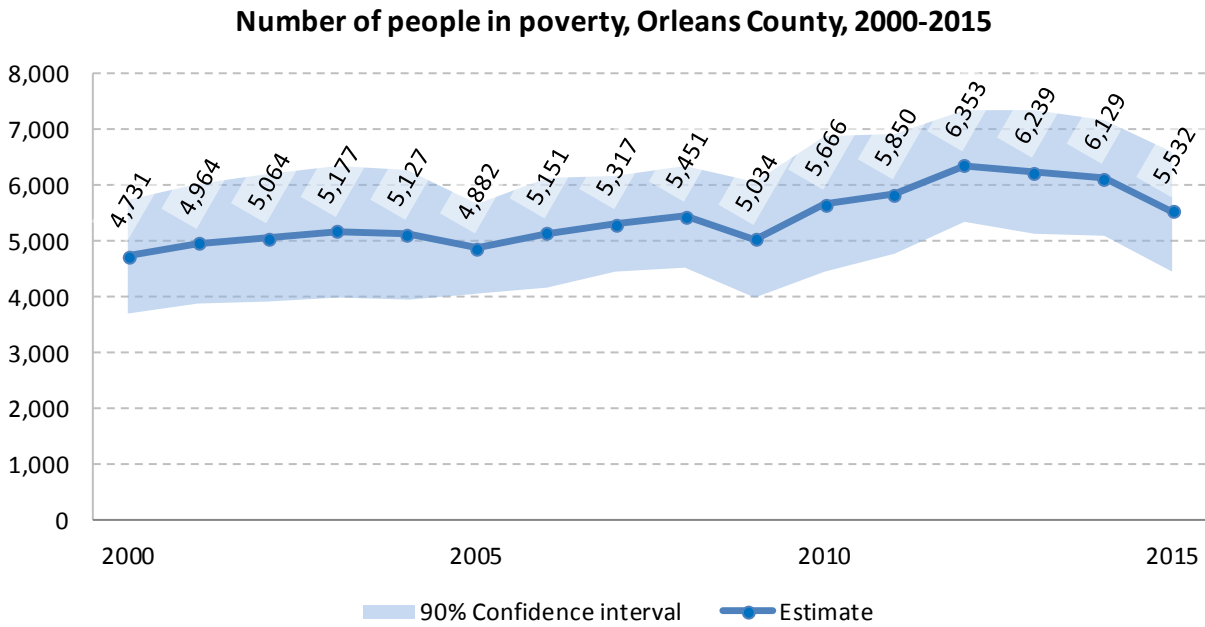
12 Poverty

12.1 Family Income to Poverty Ratio

	TOTAL		PERCENT OF ALL	
	Estimate	Margin of error	Estimate	Margin of error
All families	10,701	± 357		
ALL FAMILIES WITH INCOME:				
Below 50 percent of poverty level	477	± 138	4.5%	± 1.3
Below 100 percent of poverty level	1,356	± 227	12.7%	± 2.1
Below 125 percent of poverty level	1,789	± 241	16.7%	± 2.2
Below 150 percent of poverty level	2,409	± 279	22.5%	± 2.5
Below 185 percent of poverty level	2,991	± 314	28.0%	± 2.8
Below 200 percent of poverty level	3,298	± 328	30.8%	± 2.9
Below 300 percent of poverty level	5,490	± 358	51.3%	± 2.9
Below 400 percent of poverty level	7,179	± 345	67.1%	± 2.3
Below 500 percent of poverty level	8,295	± 357	77.5%	± 2.1

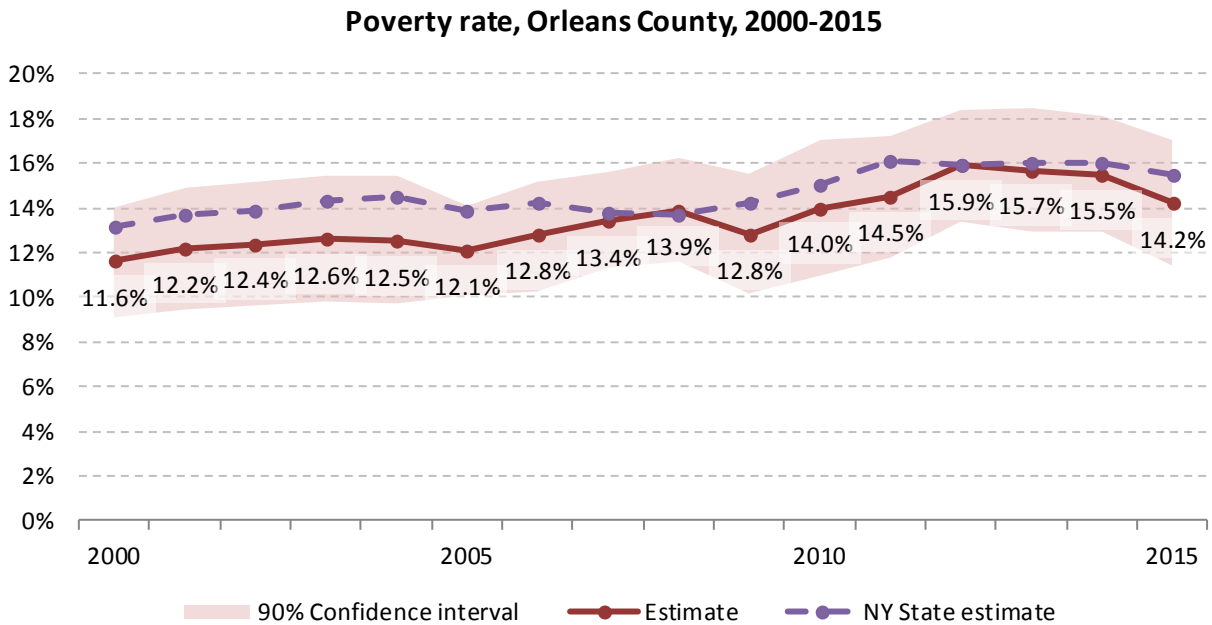
Source: 2011-2015 American Community Survey

12.2 Poverty: Trends over time: Count



Source: Small Area Income and Poverty Estimates (SAIPE)

12.3 Poverty: Trends over time: Rate



Source: Small Area Income and Poverty Estimates (SAIPE)

12.4 Poverty characteristics

	TOTAL		BELOW POVERTY LEVEL		PERCENT BELOW POVERTY LEVEL	
	Estimate	Margin of error	Estimate	Margin of error	Estimate	Margin of error
Population for whom poverty status is determined	39,289	± 359	6,173	± 754	15.7%	± 1.9
AGE						
Under 18 years	8,568	± 83	1,876	± 313	21.9%	± 3.6
Under 5 years	2,058	± 31	605	± 123	29.4%	± 5.9
5 to 17 years	6,510	± 85	1,271	± 257	19.5%	± 3.9
18 to 34 years	7,887	± 215	1,711	± 300	21.7%	± 3.7
35 to 64 years	16,535	± 253	2,125	± 332	12.9%	± 2.0
65 years and over	6,299	± 131	461	± 132	7.3%	± 2.1
SEX						
Male	19,688	± 184	2,836	± 429	14.4%	± 2.2
Female	19,601	± 317	3,337	± 400	17.0%	± 2.0
RACE AND HISPANIC OR LATINO ORIGIN						
White alone	36,313	± 318	5,368	± 724	14.8%	± 2.0
Black or African American alone	1,409	± 227	299	± 102	21.2%	± 7.3
American Indian and Alaska Native alone	207	± 61	18	± 20	8.7%	± 9.6
Asian alone	224	± 31	73	± 67	32.6%	± 28.6
Hispanic or Latino origin (of any race)	1,531	± 95	593	± 238	38.7%	± 15.3
White alone, not Hispanic or Latino	35,315	± 235	5,103	± 697	14.4%	± 2.0
EDUCATIONAL ATTAINMENT						
Population 25 years and over	27,207	± 315	3,482	± 463	12.8%	± 1.7
Less than high school graduate	3,581	± 324	889	± 237	24.8%	± 5.8
High school graduate (includes equivalency)	10,885	± 468	1,520	± 270	14.0%	± 2.5
Some college, associate's degree	8,332	± 430	874	± 190	10.5%	± 2.2
Bachelor's degree or higher	4,409	± 319	199	± 82	4.5%	± 1.8
EMPLOYMENT STATUS						
Civilian labor force 16 years and over	19,004	± 605	1,636	± 287	8.6%	± 1.5
Employed	17,285	± 573	1,206	± 242	7.0%	± 1.4
Male	9,048	± 338	505	± 165	5.6%	± 1.8
Female	8,237	± 402	701	± 153	8.5%	± 1.9
Unemployed	1,719	± 266	430	± 116	25.0%	± 5.7
Male	984	± 187	240	± 82	24.4%	± 7.2
Female	735	± 154	190	± 77	25.9%	± 9.4
WORK EXPERIENCE IN THE PAST 12 MONTHS						
Population 16 years and over	8,237	± 402	701	± 153	8.5%	± 1.9
Worked full-time, year-round	1,719	± 266	430	± 116	25.0%	± 5.7
Worked part-time or part-year	984	± 187	240	± 82	24.4%	± 7.2
Did not work	735	± 154	190	± 77	25.9%	± 9.4

Source: 2011-2015 American Community Survey

13 Glossary

American Community Survey (ACS) - The American Community Survey is an ongoing survey of the population that provides data every year on a variety of social and economic characteristics—age, sex, race, family and relationships, income and benefits, health insurance, education, veteran status, disabilities, where you work and how you get there, where you live and how much you pay for some essentials. The ACS replaced the information previously gathered by what was known as the “long form” of the decennial censuses. The ACS provides communities, companies and other institutions with current information they need to plan investments and services. Information from the survey generates data that help determine how more than \$400 billion in federal and state funds are distributed each year. Every estimate presented in the American Community Survey, as in other surveys, has an uncertainty associated with it. Often the magnitude of that uncertainty is expressed as the Margin of Error.

Confidence Interval (CI) - indication of the degree of uncertainty about a sample estimates. Confidence intervals have been traditionally reported at the 90, 95 and 99 percent levels. A 90 percent confidence interval can be interpreted, for example, roughly as providing 90 percent certainty that the interval defined by the upper and lower bounds contain the true value of the characteristic. If a Margin of Error is given, the lower bound of the confidence interval is equal to the estimate minus the Margin of Error and the upper bound is equal to the estimate plus the Margin of Error. (See further, Margin of Error definition below.)

County subdivision or Minor Civil Division (MCD) - The Census Bureau geography for primary administrative units below the county level in New York is collectively referred to as county subdivisions or minor civil divisions. These include towns, cities and Indian Reservations.

Decennial Census - the Census of the population and housing taken every 10 years in the United States, at the start of each decade, since 1790.

Employed – either “at work” or “with a job, but not at work”.

Group Quarters Population - all U.S. residents who live in group living facilities including correctional institutions, juvenile facilities, skilled nursing facilities, college residence halls, military barracks, group homes, and workers' dormitories.

Household Population - all U.S. residents who live in housing units such as single family homes, townhouses, apartments, and mobile homes.

Intercensal Population Estimates - estimates produced for the years between two decennial censuses when both the beginning and ending populations are known. They are produced once a decade by adjusting the existing time series of postcensal estimates for the entire decade to smooth the transition from one decennial census count to the next. They differ from the postcensal estimates that are released annually because the difference between the April 1 postcensal estimate and April 1 census count for the end of the decade is redistributed across the estimates for that decade. For dates when both postcensal and intercensal estimates are available, intercensal estimates are preferred.

Labor Force - consists of people classified as employed or unemployed.

Margin of Error (MOE) - a measure of the precision of an estimate at a given level of confidence. The confidence level of a margin of error indicates the likelihood that the difference between the population value (which you

would get if you could measure the whole population instead of a sample) and the estimate is less than or equal to the margin of error. The range from the estimate minus the margin of error to the estimate plus the margin of error is called the confidence interval. All ACS estimates are published with their margins of error at the 90 percent confidence level. Margins of error are useful in assessing the reliability of estimates and whether differences between estimates are significant.

Numeric Population Change - difference between the population of an area at the beginning and end of a time period. It is computed by taking the difference between the population at one point in time (t_1) and some future time (t_2).

Percent Population Change - difference between the population of an area at the beginning and end of a time period, expressed as a percentage of the beginning population. It is computed by dividing the population change ($t_2 - t_1$) by t_1 and multiplying the result by 100.

Population Estimates - The calculated number of people living in an area as of a specified point in time, usually July 1st. The estimated population is calculated using a component of change model that incorporates information on natural increase (births, deaths) and net migration (net domestic migration, net international migration) that has occurred in an area since the latest decennial census. A procedure for estimating the current population using a procedure involving a "base population" value at time $t - 1$, adding to that the births during the interval $t - 1$ to t , subtracting the deaths during that interval $t - 1$ to t , and then adding the net domestic and net international migration that occurred during that interval.

Population Density - Total number of people per areal unit like a square mile or square kilometer.

Population Pyramids - A graphical way of portraying a population's age and sex composition at a given slice in time. The first horizontal bar, constituting the base of the graph, is the youngest age group (typically 0-4) with the number of males in that age group on the left and the number of females in that age group on the right. On top of that age group is another horizontal bar for the next age group (e.g. 5-9) and so forth with the top bar typically for those aged 75 and over. In a population with lots of births and deaths, the shape typically forms a pyramid with a broad base and a narrow top. It is one of the most basic ways to understand population change over time as well as between different geographic units of a similar status (e.g. counties).

Postcensal Estimates - estimates produced for the years after a decennial census when only the beginning population is known. They are produced and revised each year, targeted to July 1 of that year.

Projection - estimated population at some future time based on assumptions about births, deaths, migration, and ages.

Race/Ethnicity - the Census Bureau collects racial data in accordance with guidelines provided by the U.S. Office of Management and Budget (OMB), and these data are based on self-identification. The racial categories included in the census questionnaire generally reflect a social definition of race recognized in this country and not an attempt to define race biologically, anthropologically, or genetically. In addition, it is recognized that the categories of the race item include racial and national origin or sociocultural groups. People may choose to report more than one race to indicate their racial mixture, such as "American Indian" and "White." People who identify their origin as Hispanic, Latino, or Spanish may be of any race. OMB requires five minimum categories: White, Black or African American, American Indian or Alaska Native, Asian, and Native Hawaiian or Other Pacific Islander. Hispanics may be classified as white or black. So we generally separate them out as an ethnic group first.

Unemployed – Not employed, but actively looking for work and available to accept a job.

Unemployment rate – Fraction of the Labor Force that is unemployed.

Urban Area – A densely settled area with at least 2,500 people. If the total number of people is less than 50,000 the Census Bureau calls it an Urban Cluster, otherwise an Urbanized Area.

Vintage - each year, the U.S. Census Bureau produces and publishes estimates of the population for each state and county, as well as the nation as a whole. These are called “vintages.” In producing these vintages, the Bureau utilizes administrative data from a number of sources to estimate 1) the change in population since the most recent decennial census, and 2) the population for each year since the most recent decennial census. With each annual release of population estimates (vintage), the entire time series of estimates beginning on April 1, 2010 is revised and updated.

Vital Statistics - quantitative data concerning a population, such as the number of births, marriages, and deaths.

14 References

Orleans County homepage: <http://orleansny.com/>

At Cornell:

- Program on Applied Demographics (PAD)
URL: <http://pad.human.cornell.edu/>
 - More county trends: <https://pad.human.cornell.edu/counties/trends1geo.cfm?geo=73>
- Community and Regional Development Institute (CaRDI)
URL: <https://cardi.cals.cornell.edu/>
- Cornell Cooperative Extensions (CCE)
Home page: <http://www.cce.cornell.edu>
 - Orleans local office: <http://orleans.cce.cornell.edu/>

Data sources and background information:

- New York State Data Center
 - <https://labor.ny.gov/nys-data-center/index.shtm>
- U.S. Census Bureau - general
 - QuickFacts: <https://www.census.gov/quickfacts/table/PST045216/36,36073>
 - American FactFinder: <http://factfinder.census.gov/>
- U.S. Census Bureau - population
 - Decennial Census
 - Background: <https://www.census.gov/2010census/>
 - Demographic Profile: http://factfinder2.census.gov/bkmk/table/1.0/en/DEC/10_SF1/SF1DP1/0500000US360733
 - American Community Survey (ACS)
 - Background: <https://www.census.gov/programs-surveys/acs/>
 - Social Data Profile: http://factfinder2.census.gov/bkmk/table/1.0/en/ACS/15_5YR/DP02/0500000US36073
 - Economic Data Profile: http://factfinder2.census.gov/bkmk/table/1.0/en/ACS/15_5YR/DP03/0500000US36073
 - Housing Data Profile: http://factfinder2.census.gov/bkmk/table/1.0/en/ACS/15_5YR/DP04/0500000US36073
 - Demographics Data Profile: http://factfinder2.census.gov/bkmk/table/1.0/en/ACS/15_5YR/DP05/0500000US36073
 - Population estimates:
 - General: <https://www.census.gov/programs-surveys/popest.html>
 - Explorer: <https://www.census.gov/censusexplorer/censusexplorer-popest.html>
- U.S. Census Bureau – Small Area Income & Poverty Estimates (SAIPE)
 - <http://www.census.gov/did/www/saipe/>
- U.S. Census Bureau - Public Use Quarterly Workforce Indicators (QWI) – annual averages
 - <https://qwiexplorer.ces.census.gov/static/explore.html>
- U.S. Census Bureau – Building Permits Survey
 - <https://www.census.gov/construction/bps/>

- Bureau Labor Statistics (BLS)
 - Local Area Unemployment Statistics: <http://www.bls.gov/lau/>
 - Quarterly Census of Employment and Wages (QCEW): <https://www.bls.gov/cew/data.htm>
- NY Department of Labor -
 - Labor statistics: <https://labor.ny.gov/stats/index.shtm>
 - Quarterly Census of Employment and Wages (QCEW): <https://labor.ny.gov/stats/LSQCEW.shtm>
- NY State Department of Health
 - Vital Statistics: https://www.health.ny.gov/statistics/vital_statistics/
- Bureau of Economic Analysis (BEA) – Local Area Personal Income and Employment: <http://bea.gov/iTable/iTable.cfm?ReqID=70&step=1>

Alternative sites for data retrieval:

- The Nelson A. Rockefeller Institute of Government – New York State Statistical Yearbooks http://www.rockinst.org/nys_statistics/
- Headwaters Economics: Economic Profile System – Human Dimensions Toolkit <http://headwaterseconomics.org/tools/eps-hdt>
- National Historical Geographic Information System (NHGIS) <https://www.nhgis.org/>
- Social Explorer <http://www.socialexplorer.com/pub/home/home.aspx>
- Stats America <http://www.statsamerica.org/Default.aspx>
- Missouri Census Data Center <http://mcdc.missouri.edu/>
- DataFerret <http://dataferrett.census.gov/>
- Investigative Reporters and Editors (IRE) Census project <http://census.ire.org/>