

Oneida County Profile 2017

A collection of recent demographic, social and economic data

Compiled by

Jan Vink

Cornell Program on Applied Demographics



Cornell University



Program
on Applied
Demographics

CORNELL POPULATION CENTER

This profile is a part of a set of profiles generated for each county in New York State. The profiles were developed and generated by the Cornell Program on Applied Demographics. The work is sponsored by the New York State Data Center in the New York State Department of Labor.

Cornell Program on Applied Demographics:

The Program on Applied Demographics (PAD) brings skills in demographics, economics, statistics, data gathering and data analysis together to provide a variety of organizations with data, information and advice. PAD is located in the Department of Policy Analysis and Management within the College of Human Ecology at Cornell University. PAD is also affiliated with the Cornell Institute for Social and Economic Research and the Cornell Population Center.

For more information: <http://pad.human.cornell.edu/>

New York State Data Center:

The New York State Data Center (NYSDC) is located in the Division of Research and Statistics within the New York State Department of Labor. The State Data Center operates as part of a nationwide effort to improve public access to data provided by the U.S. Census Bureau. The U.S. Census Bureau collects and tabulates data on a multitude of subjects such as population, social, economic and housing demographics, labor force data, health care, migration and transportation. These data play a critical role in understanding our local and larger surrounding communities. Census data also influence state and federal funding, aid decision making in the legislative process, and determine each state's number of congressional seats. As the lead agency in New York for the SDC program, the New York State Data Center helps users navigate through the multitude of surveys and products provided by the U.S. Census Bureau.

For more information: <https://labor.ny.gov/nys-data-center/>

All profiles are freely downloadable as PDF documents on the PAD website:

<http://pad.human.cornell.edu/profiles/index.cfm>

This profile is an update from the County Profile produced in 2013. The 2013 profile also contained information on agriculture related items and can be found at <https://pad.human.cornell.edu/profiles/2013/Oneida.pdf>

Contents

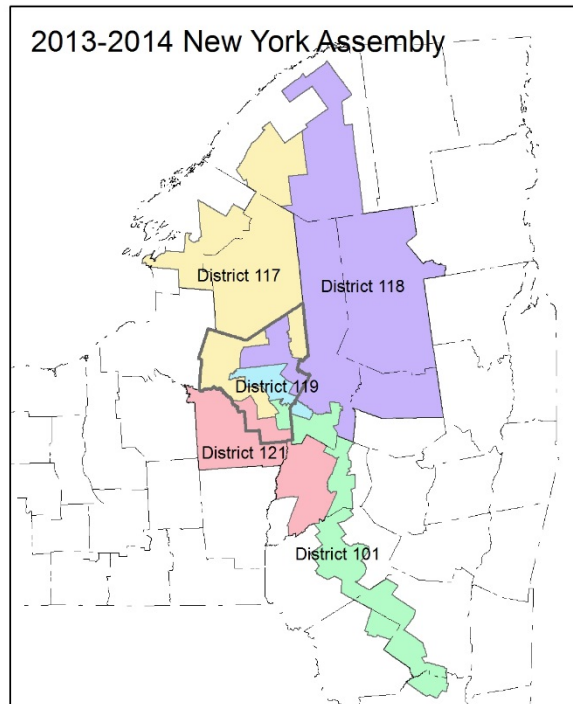
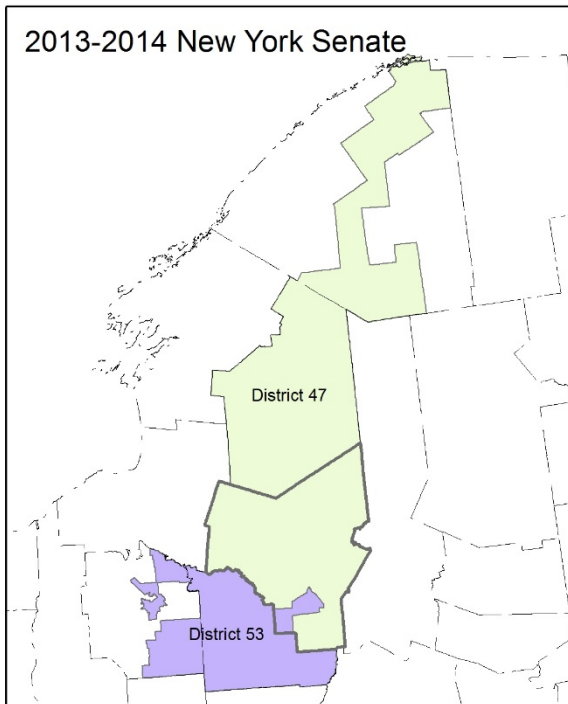
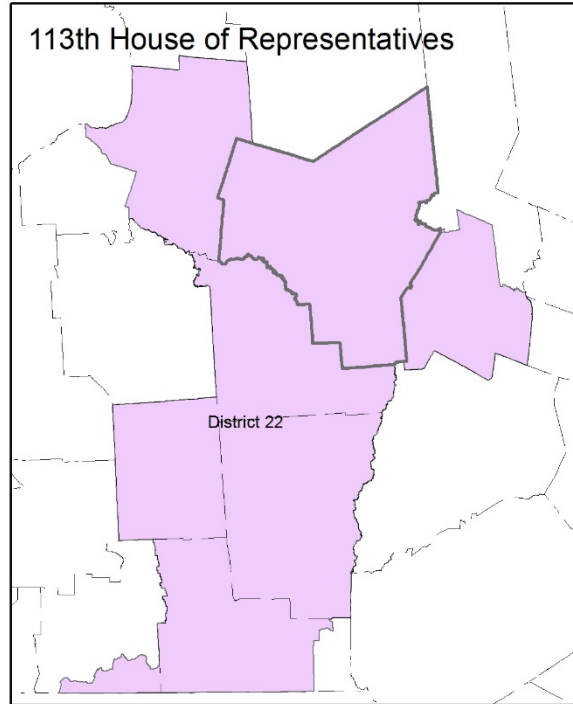
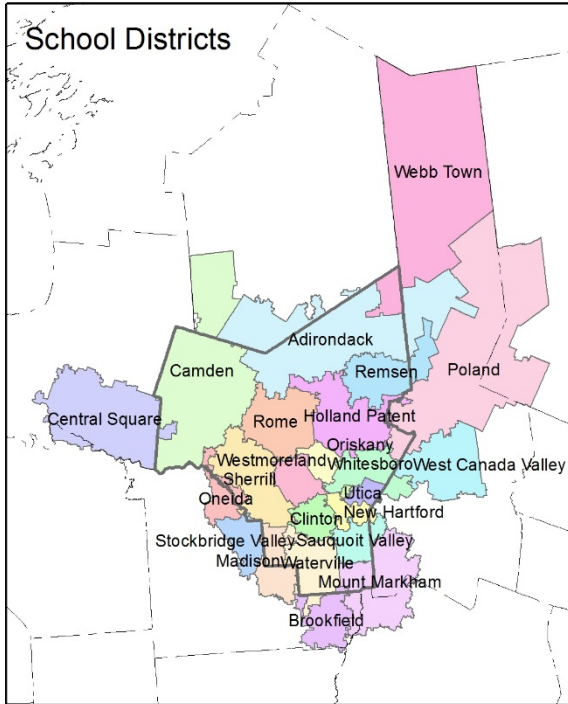
1	Reference Maps (towns and places as defined in 2010)	3
2	Population density and Urban Areas Map	5
3	Total Population	6
3.1	Historic and projected	6
3.2	Change since previous Census	6
3.3	Annual population estimates	7
3.4	Sub County population change 2010-2015	8
3.5	Sub County population change 2010-2015	9
4	Components of population change	10
4.1	Vital Statistics	10
4.2	Migration	11
5	Population by age	12
5.1	Historic and projected population pyramids	12
5.2	Selected age groups	13
5.3	Median age	14
6	Race	15
6.1	Total and household population by race	15
6.2	Race composition by age	15
7	Housing units	16
7.1	Characteristics	16
7.2	Historical data on number of housing units and occupancy status	17
7.3	Building Permits 2000-2015	17
8	Education	18
8.1	Enrollment by level of school	18
8.2	Enrollment by age	18
8.3	Percentage age 18-24 enrolled in college	18
8.4	Educational attainment	19
9	Language spoken at home	19
10	Labor Force Characteristics	20
10.1	Labor force, employment and unemployment	20
10.2	Annual unemployment rate	21
10.3	Employment and number of jobs	21
10.4	Class of worker	22
11	Household Income	23
11.1	Income Distribution	23
11.2	Median household income: Trends over time	24
12	Poverty	24
12.1	Family Income to Poverty Ratio	24
12.2	Poverty: Trends over time: Count	25
12.3	Poverty: Trends over time: Rate	25
12.4	Poverty characteristics	26
13	Glossary	27
14	References	30

1 Reference Maps (towns and places as defined in 2010)

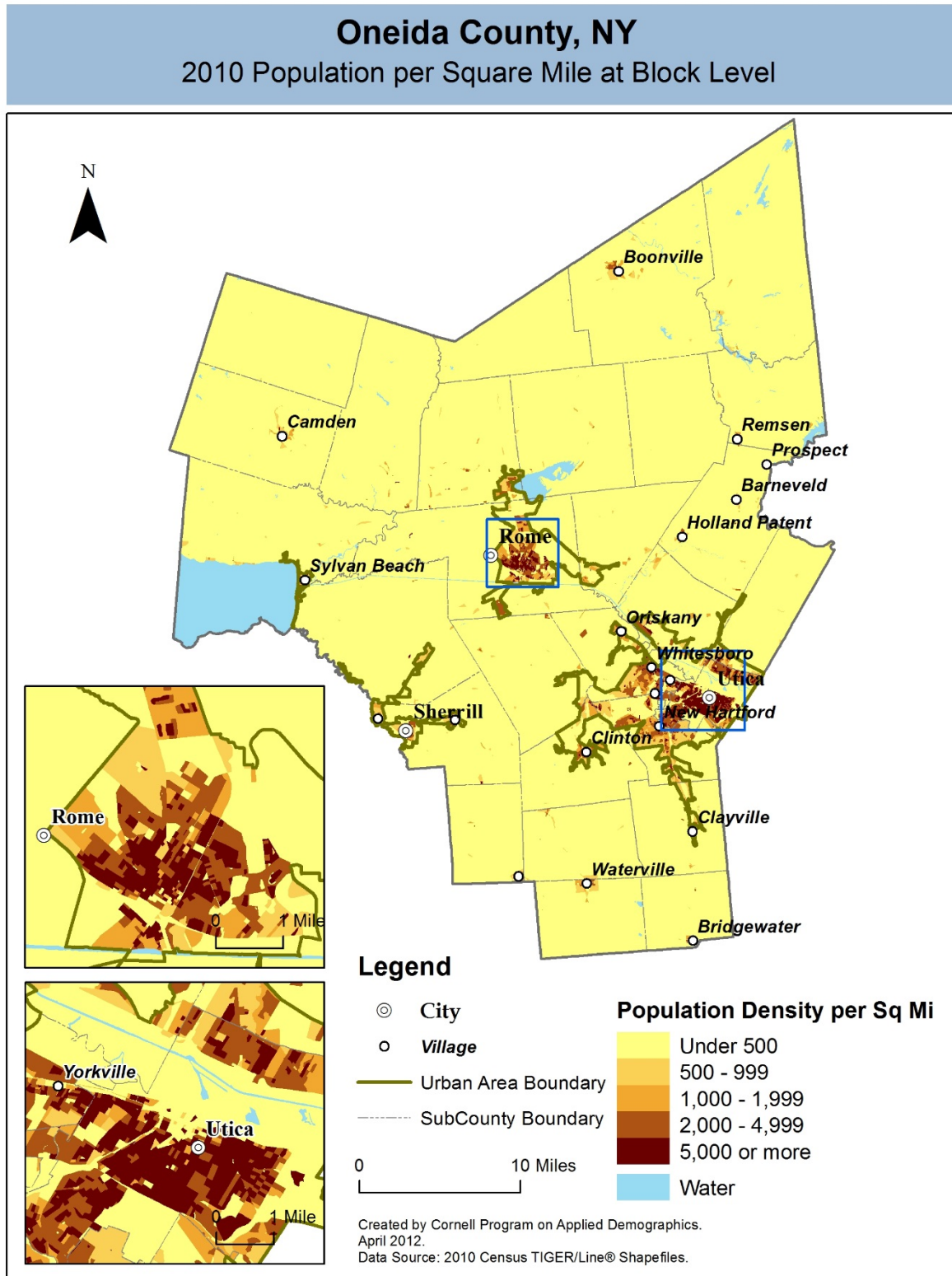


Oneida County, NY

Overlap with School and Political Districts



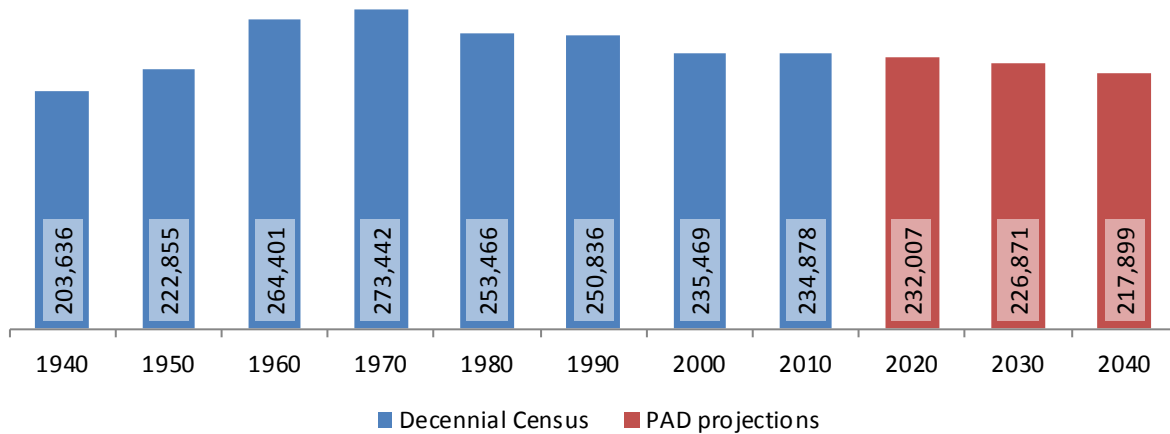
2 Population density and Urban Areas Map



3 Total Population

3.1 Historic and projected

Total population, Oneida County, 1940-2040



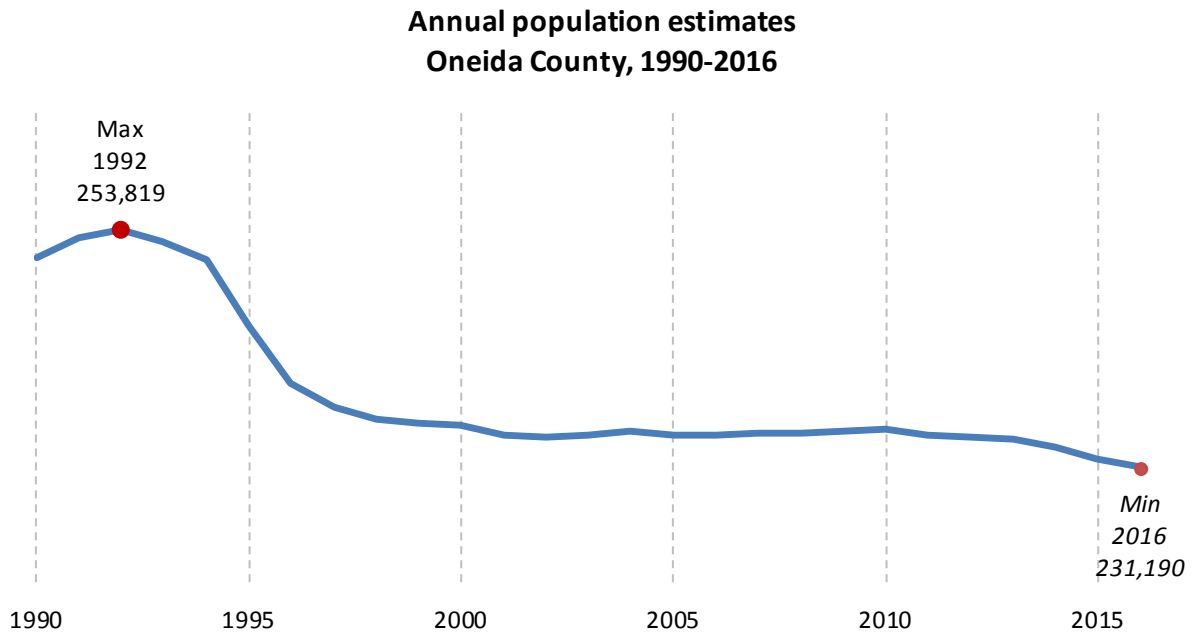
Source: 1940-2010 Decennial Census and projections by Cornell Program on Applied Demographics

3.2 Change since previous Census

		Total population	Change	
			Number	Percent
Decennial Census	1940	203,636		
	1950	222,855	19,219	9.4%
	1960	264,401	41,546	18.6%
	1970	273,442	9,041	3.4%
	1980	253,466	-19,976	-7.3%
	1990	250,836	-2,630	-1.0%
	2000	235,469	-15,367	-6.1%
	2010	234,878	-591	-0.3%
PAD projec- tions	2020	232,007	-2,871	-1.2%
	2030	226,871	-5,136	-2.2%
	2040	217,899	-8,972	-4.0%

Source: 1940-2010 Decennial Census and projections by Cornell Program on Applied Demographics

3.3 Annual population estimates



Source: U.S. Census Bureau population estimates (1990-1999 and 2000-2009 intercensal and vintage 2016 postcensal)

3.4 Sub County population change 2010-2015

	Total Population		Difference	
	2000	2010	Count	%
New York State	18,976,821 *	19,378,102	401,281	2.1%
Oneida County	235,459 *	234,878	-581	-0.2%
Cities				
Rome	34,950	33,725	-1,225	-3.5%
Sherrill	3,147	3,071	-76	-2.4%
Utica	60,523 *	62,235	1,712	2.8%
Towns				
Annsville	2,956	3,012	56	1.9%
Augusta	1,966	2,020	54	2.7%
Ava	725	676	-49	-6.8%
Boonville	4,572	4,555	-17	-0.4%
Bridgewater	1,671	1,522	-149	-8.9%
Camden	5,018 *	4,934	-84	-1.7%
Deerfield	3,909 *	4,273	364	9.3%
Florence	1,086	1,025	-61	-5.6%
Floyd	3,869	3,819	-50	-1.3%
Forestport	1,692	1,535	-157	-9.3%
Kirkland	10,138	10,315	177	1.7%
Lee	6,875	6,486	-389	-5.7%
Marcy	9,481 *	8,982	-499	-5.3%
Marshall	2,127	2,131	4	0.2%
New Hartford	21,285 *	22,166	881	4.1%
Paris	4,609	4,411	-198	-4.3%
Remsen	1,958	1,929	-29	-1.5%
Sangerfield	2,610	2,561	-49	-1.9%
Steuben	1,172	1,100	-72	-6.1%
Trenton	4,670	4,498	-172	-3.7%
Vernon	5,335	5,408	73	1.4%
Verona	6,425	6,293	-132	-2.1%
Vienna	5,819	5,440	-379	-6.5%
Western	2,029	1,951	-78	-3.8%
Westmoreland	6,207	6,138	-69	-1.1%
White	18,635	18,667	32	0.2%

* Original counts revised through Count Question Resolution Program (CQR)

Source: U.S. Census Bureau intercensal population estimates 2000-2010

3.5 Sub County population change 2010-2015

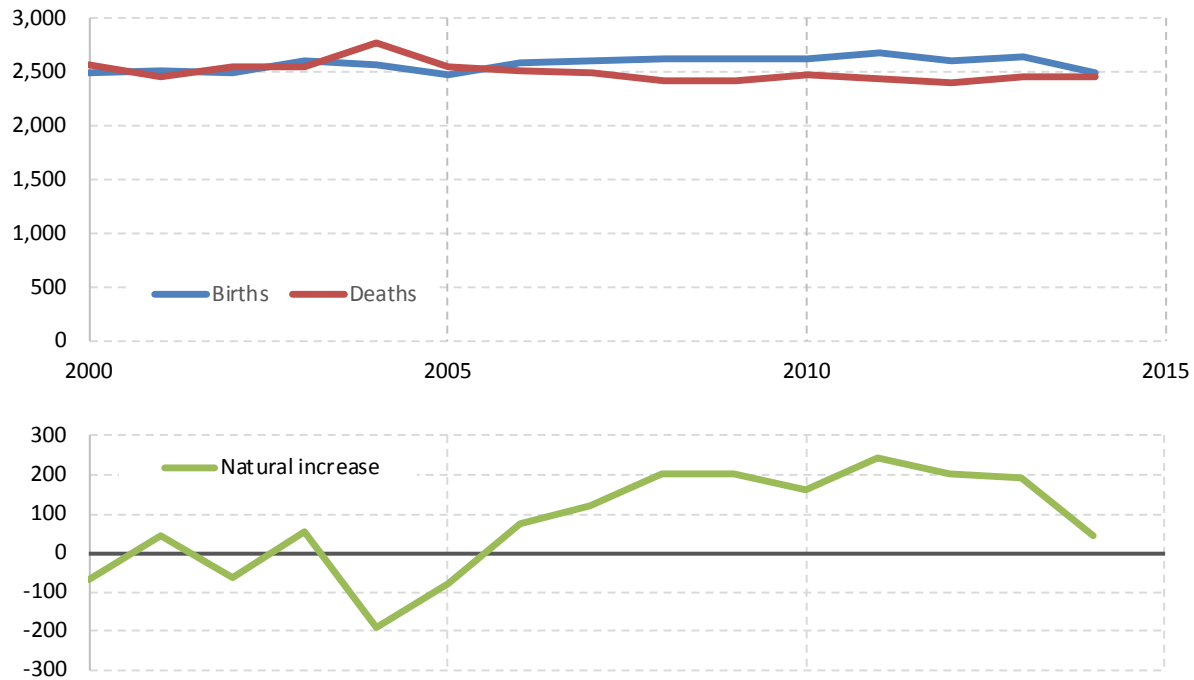
	Total Population		Difference	
	2010 base	2015	Count	%
New York State	19,378,087	19,795,791	417,704	2.2%
Oneida County	234,890	232,500	-2,390	-1.0%
Cities				
Rome	33,718	32,573	-1,145	-3.4%
Sherrill	3,071	3,066	-5	-0.2%
Utica	62,238	61,100	-1,138	-1.8%
Towns				
Annsville	3,018	2,979	-39	-1.3%
Augusta	2,008	2,041	33	1.6%
Ava	676	706	30	4.4%
Boonville	4,568	4,556	-12	-0.3%
Bridgewater	1,522	1,499	-23	-1.5%
Camden	4,934	4,918	-16	-0.3%
Deerfield	4,274	4,266	-8	-0.2%
Florence	1,025	1,030	5	0.5%
Floyd	3,816	3,789	-27	-0.7%
Forestport	1,535	1,548	13	0.8%
Kirkland	10,302	10,184	-118	-1.1%
Lee	6,492	6,459	-33	-0.5%
Marcy	8,989	9,420	431	4.8%
Marshall	2,129	2,127	-2	-0.1%
New Hartford	22,170	22,114	-56	-0.3%
Paris	4,423	4,342	-81	-1.8%
Remsen	1,924	1,913	-11	-0.6%
Sangerfield	2,561	2,512	-49	-1.9%
Steuben	1,103	1,124	21	1.9%
Trenton	4,487	4,447	-40	-0.9%
Vernon	5,408	5,397	-11	-0.2%
Verona	6,299	6,279	-20	-0.3%
Vienna	5,439	5,457	18	0.3%
Western	1,954	1,949	-5	-0.3%
Westmoreland	6,140	6,107	-33	-0.5%
White	18,667	18,598	-69	-0.4%

Source: U.S. Census Bureau population estimates 2010-2015

4 Components of population change

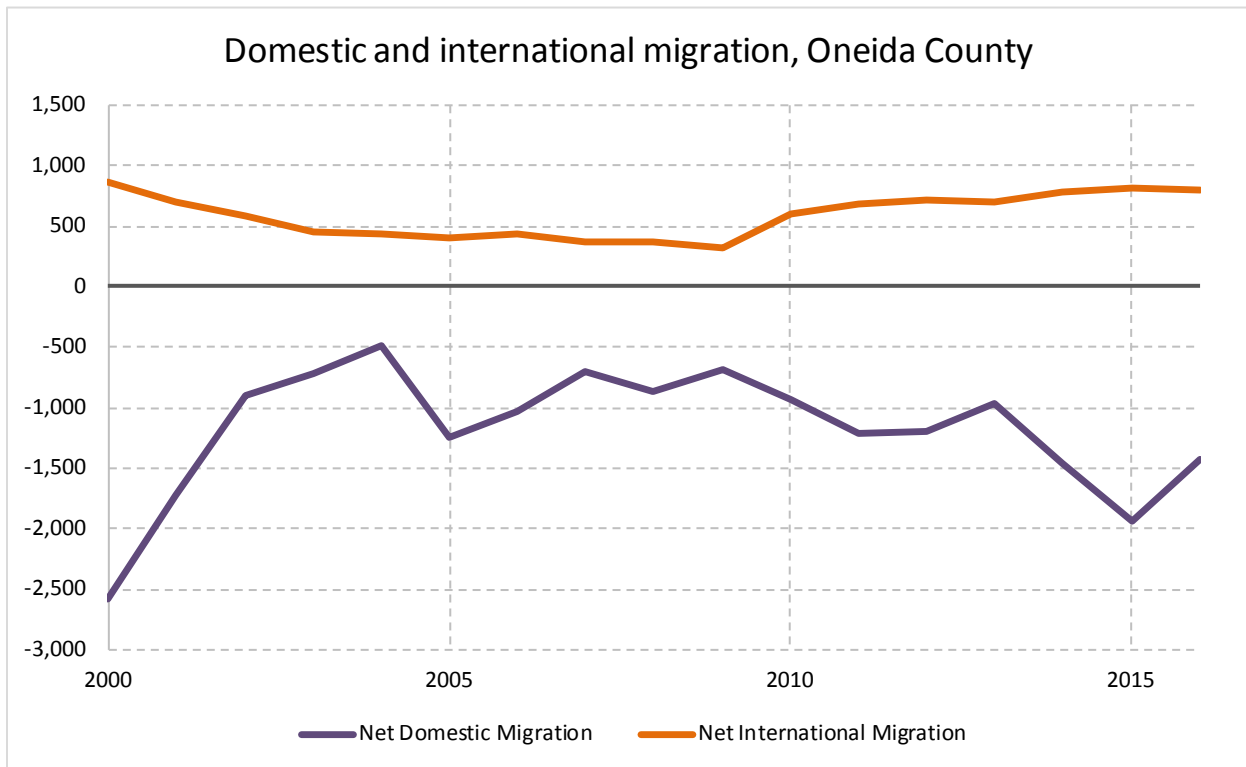
4.1 Vital Statistics

Vital Statistics, Oneida County



Source: New York State Department of Health

4.2 Migration

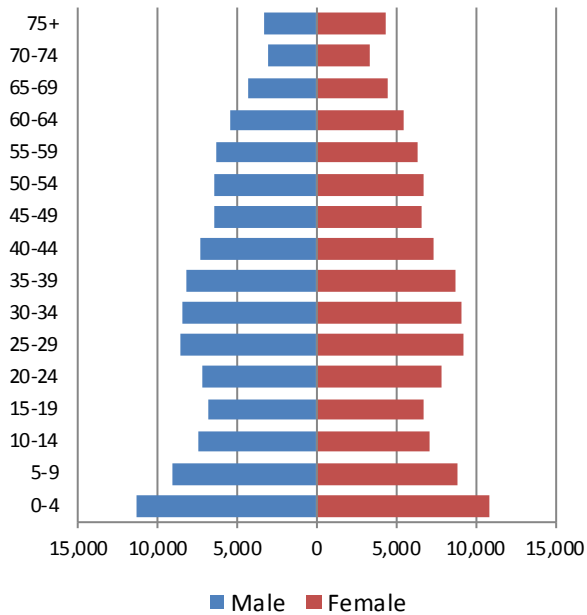


Source: Census Bureau population estimates (V2010 and V2016)

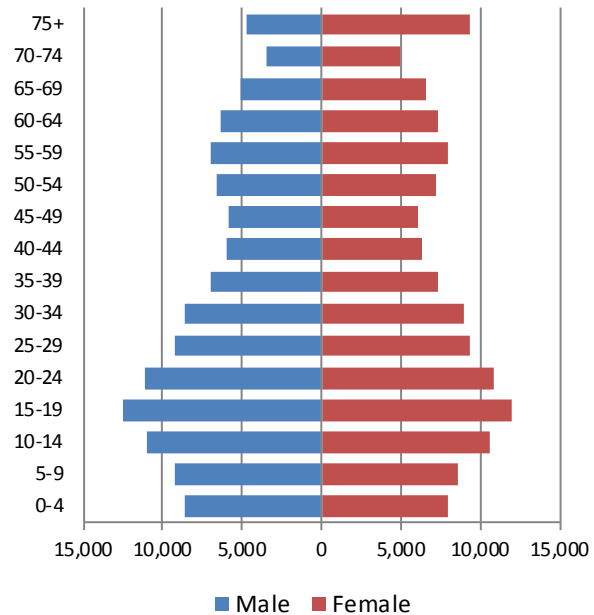
5 Population by age

5.1 Historic and projected population pyramids

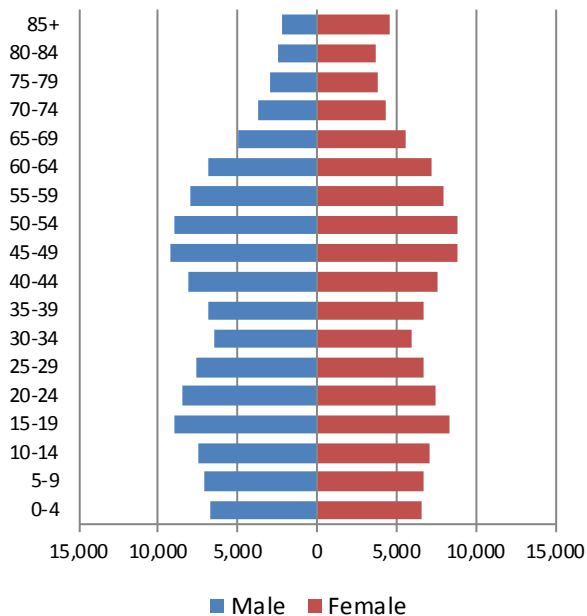
1950 Population Pyramid, Oneida County



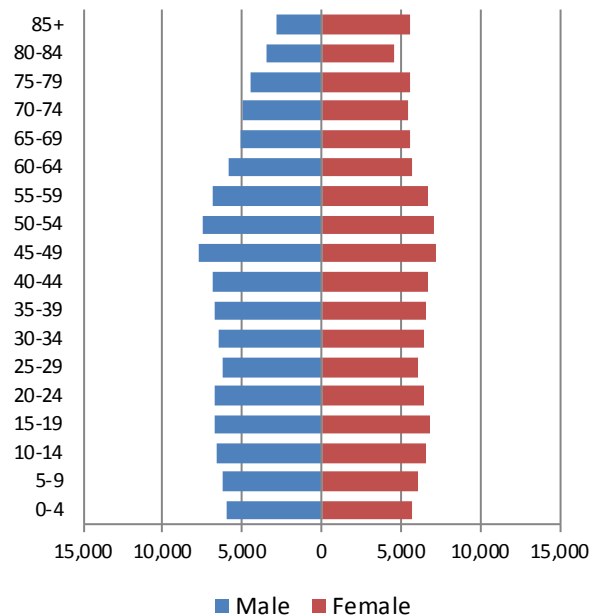
1980 Population Pyramid, Oneida County



2010 Population Pyramid, Oneida County



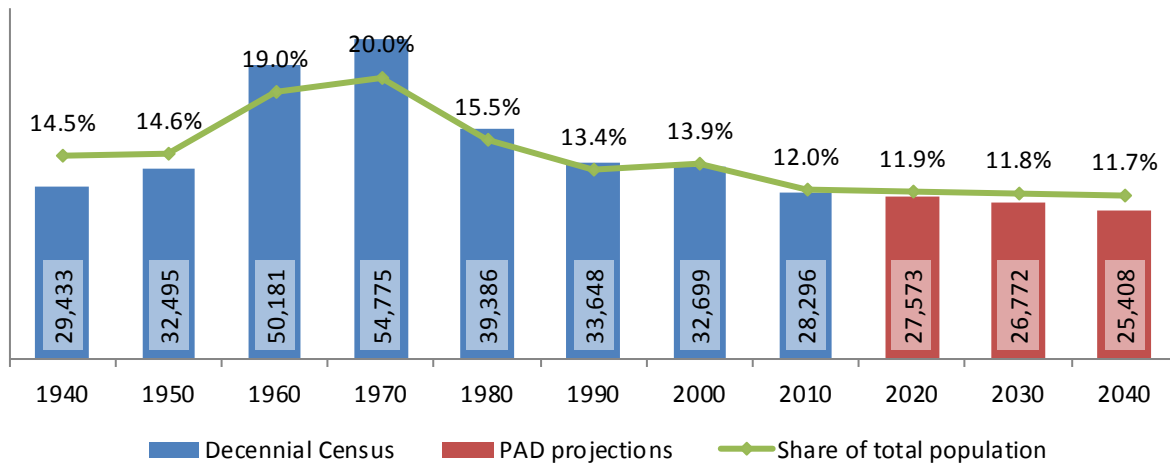
2040 Population Pyramid, Oneida County



Source: 1950, 1980, 2010 Decennial Census and projections by Cornell Program on Applied Demographics

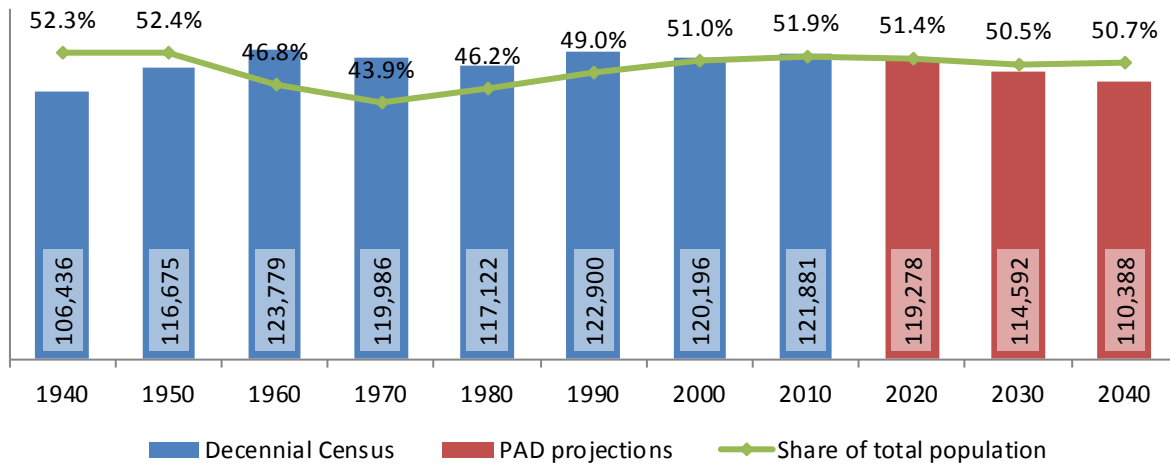
5.2 Selected age groups

Population age 5-14, Oneida County, 1940-2040



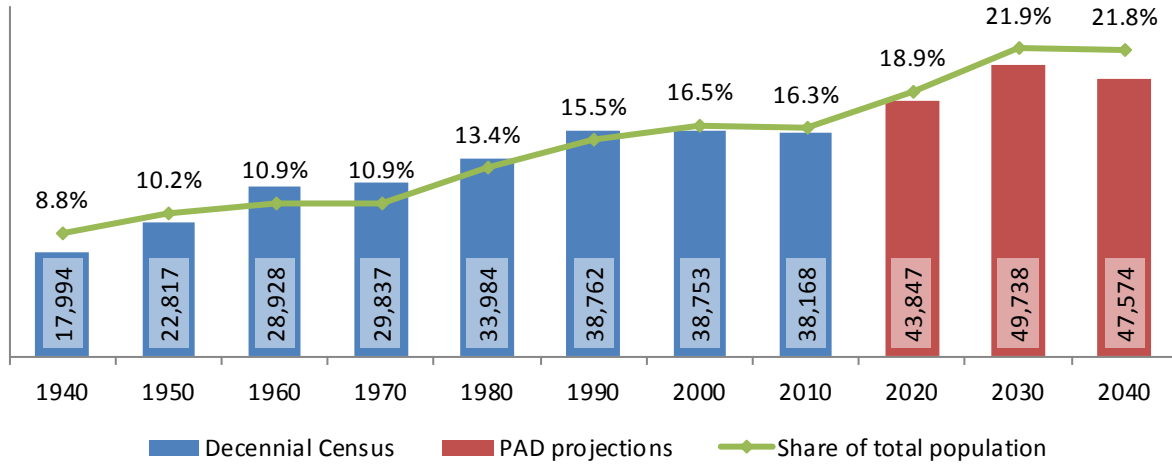
Source: 1940-2010 Decennial Census and projections by Cornell Program on Applied Demographics

Population age 25-64, Oneida County, 1940-2040



Source: 1940-2010 Decennial Census and projections by Cornell Program on Applied Demographics

Population age 65 and over, Oneida County, 1940-2040



Source: 1940-2010 Decennial Census and projections by Cornell Program on Applied Demographics

5.3 Median age

	Oneida County	New York State
Median age		
2000	38.2	35.9
2010	40.8	38.0
2015	41.2	38.3

Source: 2000, 2010 Decennial Census, 2015 Population Estimates

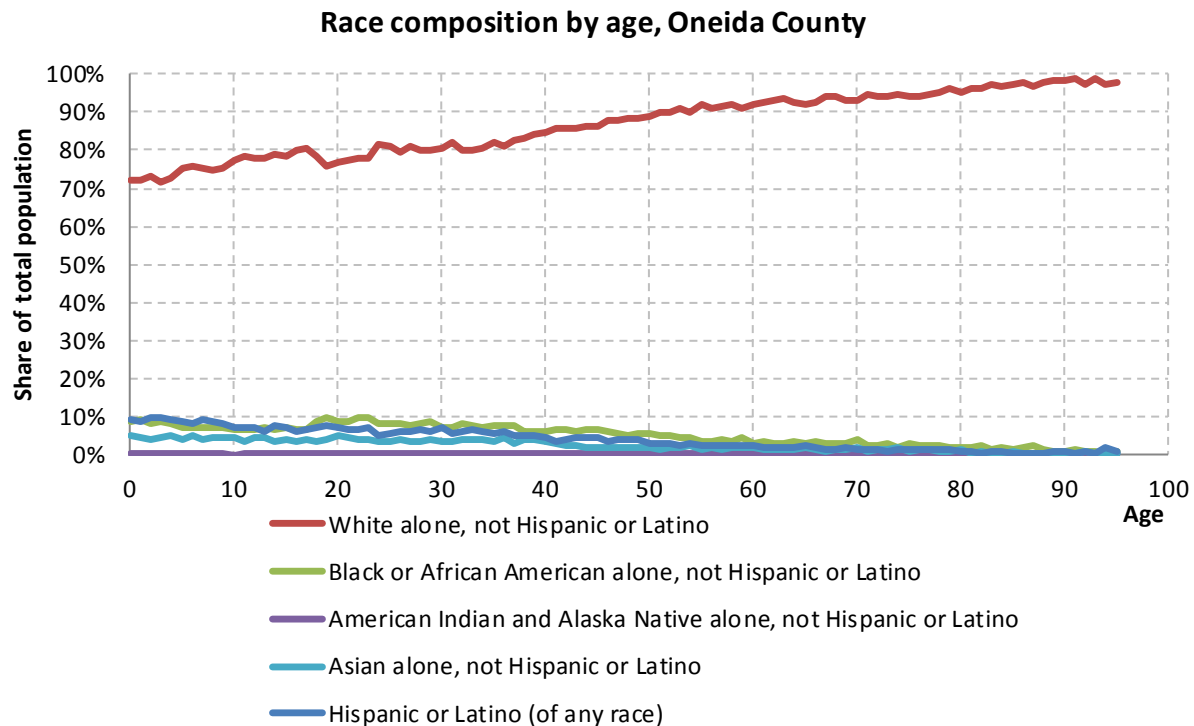
6 Race

6.1 Total and household population by race

	Total		In households		In Group Quarters
	Count	Percentage	Count	Percentage	Count
Total population	234,878	100%	221,473	100%	13,405
Not Hispanic or Latino					
One race					
White	199,254	84.8%	190,858	86.2%	8,396
Black or African American	13,682	5.8%	10,566	4.8%	3,116
American Indian and Alaska Native	499	0.2%	439	0.2%	60
Asian	6,522	2.8%	6,280	2.8%	242
Native Hawaiian and Other Pacific Islander	49	0.0%	-	-	-
Some other race	244	0.1%	190	0.1%	54
Two or more races	3,809	1.6%	3,667	1.7%	142
Hispanic or Latino (of any race)	10,819	4.6%	9,427	4.3%	1,392

Source: 2010 Decennial Census

6.2 Race composition by age



Source: 2010 Decennial Census

7 Housing units

7.1 Characteristics

	COUNT		PERCENTAGE	
	Estimate	Margin of error	Estimate	Margin of error
HOUSING OCCUPANCY				
Total housing units	104,006	± 356	100.0%	
Occupied housing units	90,844	± 836	87.3%	± 0.7
Vacant housing units	13,162	± 688	12.7%	± 0.7
YEAR STRUCTURE BUILT				
Total housing units	104,006	± 356	100.0%	
Built 2014 or later	40	± 42	0.0%	± 0.1
Built 2010 to 2013	609	± 130	0.6%	± 0.1
Built 2000 to 2009	5,439	± 415	5.2%	± 0.4
Built 1990 to 1999	7,162	± 451	6.9%	± 0.4
Built 1980 to 1989	9,383	± 576	9.0%	± 0.6
Built 1970 to 1979	10,011	± 627	9.6%	± 0.6
Built 1960 to 1969	10,863	± 591	10.4%	± 0.6
Built 1950 to 1959	15,860	± 664	15.2%	± 0.6
Built 1940 to 1949	7,870	± 509	7.6%	± 0.5
Built 1939 or earlier	36,769	± 844	35.4%	± 0.8
HOUSING TENURE				
Occupied housing units	90,844	± 836	100.0%	
Owner-occupied	59,675	± 810	65.7%	± 0.8
Renter-occupied	31,169	± 865	34.3%	± 0.8
HOUSE HEATING FUEL				
Occupied housing units	90,844	± 836	100.0%	
Utility gas	54,015	± 809	59.5%	± 0.7
Bottled, tank, or LP gas	4,417	± 320	4.9%	± 0.4
Electricity	10,062	± 528	11.1%	± 0.6
Fuel oil, kerosene, etc.	16,060	± 597	17.7%	± 0.6
Coal or coke	300	± 106	0.3%	± 0.1
Wood	4,676	± 421	5.1%	± 0.5
Solar energy	59	± 50	0.1%	± 0.1
Other fuel	937	± 169	1.0%	± 0.2
No fuel used	318	± 102	0.4%	± 0.1
VALUE				
Owner-occupied units	59,675	± 810	100.0%	
Less than \$50,000	6,561	± 430	11.0%	± 0.7
\$50,000 to \$99,999	18,530	± 702	31.1%	± 1.1
\$100,000 to \$149,999	14,947	± 639	25.0%	± 1.0
\$150,000 to \$199,999	8,842	± 448	14.8%	± 0.7
\$200,000 to \$299,999	6,995	± 470	11.7%	± 0.8
\$300,000 to \$499,999	2,659	± 338	4.5%	± 0.6
\$500,000 to \$999,999	878	± 161	1.5%	± 0.3
\$1,000,000 or more	263	± 90	0.4%	± 0.1
Median (dollars)	114,000	± 1,919		

Source: 2011-2015 American Community Survey

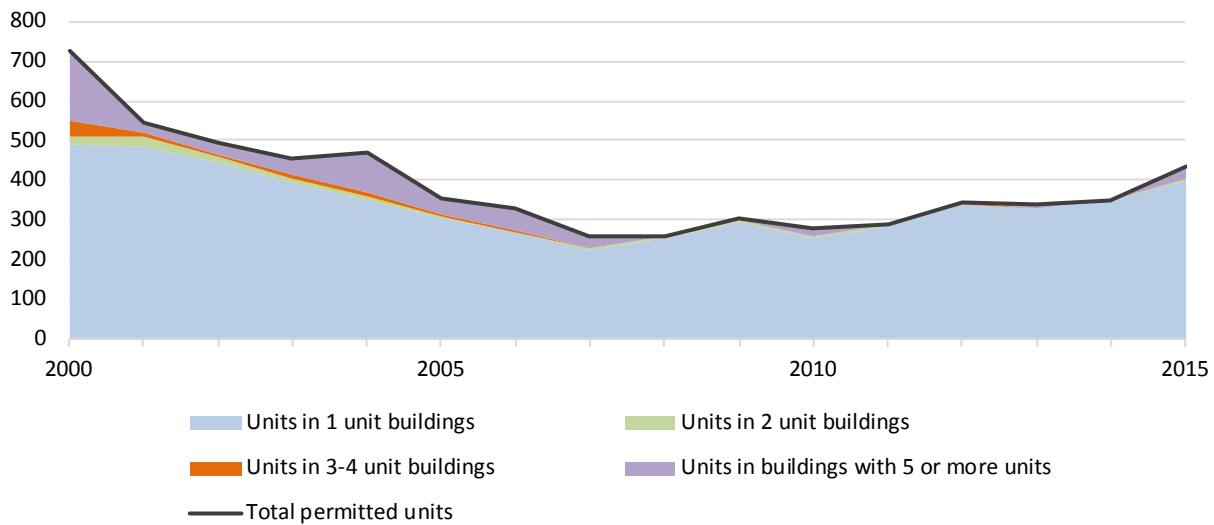
7.2 Historical data on number of housing units and occupancy status

Year	Number of Housing Units	Change since previous Census	Occupied	Occupancy rate	Vacant
1970	88,248		82,080	93.0%	6,168
1980	95,834	8.6%	88,000	91.8%	7,834
1990	101,251	5.7%	92,562	91.4%	8,689
2000	102,803	1.5%	90,496	88.0%	12,307
2010	104,180	1.3%	93,028	89.3%	11,152

Source: 1970-2010 Decennial Census

7.3 Building Permits 2000-2015

Building permits by number of permitted units in building,
Oneida County



Source: Census Bureau Building Permits Survey

8 Education

8.1 Enrollment by level of school

	Estimate	Margin of error
Total enrolled in school	55,374	± 812
Nursery school, preschool	2,958	± 297
Kindergarten to 12th grade	37,121	± 371
Kindergarten	2,675	± 341
Elementary: grade 1 to grade 4	11,104	± 505
Elementary: grade 5 to grade 8	11,442	± 448
High school: grade 9 to grade 12	11,900	± 340
College, undergraduate	13,232	± 689
Graduate, professional school	2,063	± 317

Source: 2011-2015 American Community Survey

8.2 Enrollment by age

	Estimate	Margin of error
3 and 4 years	44.4%	± 4.6
5 to 9 years	97.3%	± 1.0
10 to 14 years	97.4%	± 1.1
15 to 17 years	97.4%	± 0.9
18 and 19 years	79.8%	± 3.1
20 to 24 years	38.7%	± 2.9
25 to 34 years	10.1%	± 1.1
35 years and over	1.8%	± 0.2

Source: 2011-2015 American Community Survey

8.3 Percentage age 18-24 enrolled in college

	Estimate	Margin of error
Population 18 to 24 years	23,311	± 46
Enrolled in college or graduate school	44.2%	± 2.3
Males 18 to 24 years	12,258	± 30
Enrolled in college or graduate school	38.0%	± 2.9
Females 18 to 24 years	11,053	± 33
Enrolled in college or graduate school	51.1%	± 3.2

Source: 2011-2015 American Community Survey

8.4 Educational attainment

	COUNT		PERCENTAGE	
	Estimate	Margin of error	Estimate	Margin of error
Population 25 years and over	160,092	± 40	100%	
EDUCATIONAL ATTAINMENT				
Less than 9th grade	7,513	± 584	4.7%	± 0.4
9th to 12th grade, no diploma	11,978	± 700	7.5%	± 0.4
High school graduate (includes equivalency)	53,425	± 1,311	33.4%	± 0.8
Some college, no degree	31,584	± 1,006	19.7%	± 0.6
Associate's degree	18,419	± 728	11.5%	± 0.5
Bachelor's degree	22,187	± 733	13.9%	± 0.5
Graduate or professional degree	14,986	± 734	9.4%	± 0.5
Percent high school graduate or higher			87.8%	± 0.6
Percent bachelor's degree or higher			23.2%	± 0.6

Source: 2011-2015 American Community Survey

9 Language spoken at home

	COUNT		PERCENTAGE		SPEAK ENGLISH LESS THAN "VERY WELL"	
	Estimate	Margin of error	Estimate	Margin of error	Estimate	Margin of error
Population 5 years and over	220,162	± 59	100%			
LANGUAGE SPOKEN AT HOME						
English only	193,875	± 1,185	88.1%	± 0.5		
Language other than English	26,287	± 1,181	11.9%	± 0.5	11,449	± 712
Spanish	7,580	± 490	3.4%	± 0.2	2,338	± 294
Other Indo-European languages	11,615	± 961	5.3%	± 0.4	4,591	± 482
Asian and Pacific Islander languages	5,571	± 482	2.5%	± 0.2	3,881	± 545
Other languages	1,521	± 377	0.7%	± 0.2	639	± 245

Source: 2011-2015 American Community Survey

10 Labor Force Characteristics

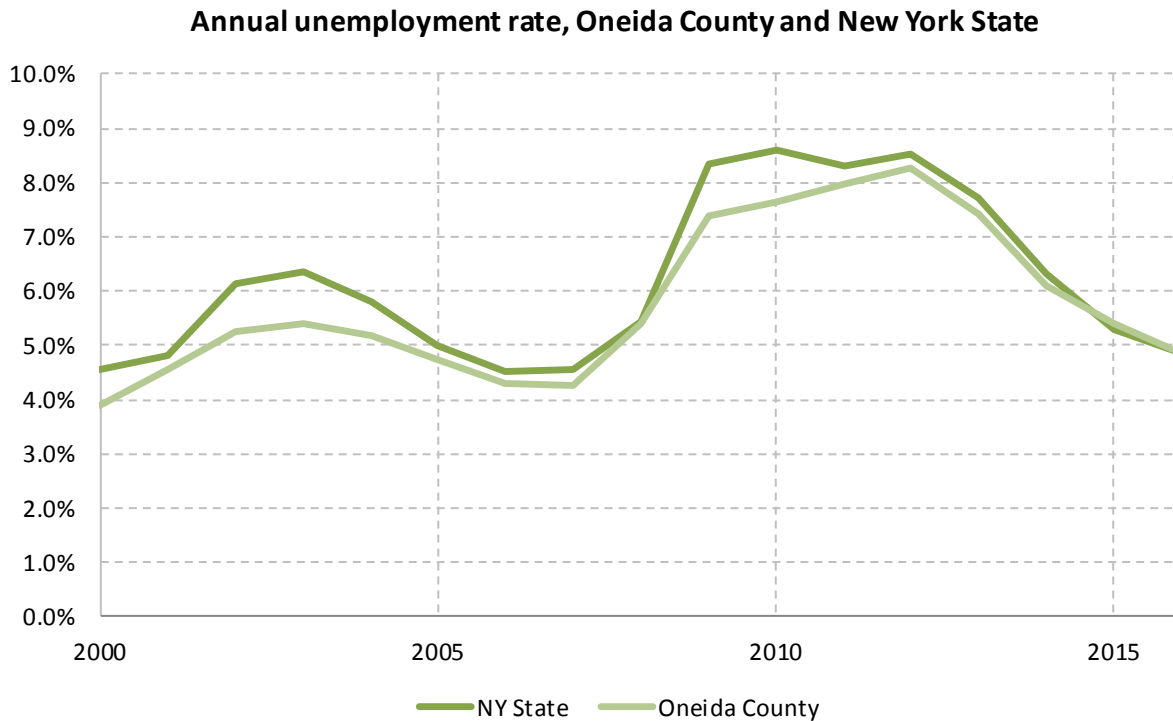
10.1 Labor force, employment and unemployment

	TOTAL		IN LABOR FORCE		EMPLOYED		UNEMPLOYMENT RATE	
	Estimate	Margin of error	Estimate	Margin of error	Estimate	Margin of error	Estimate	Margin of error
Population 16 years and over	189,310	± 244	59.4%	± 0.7	54.9%	± 0.6	7.4%	± 0.5
AGE								
16 to 19 years	12,787	± 251	39.0%	± 2.7	30.2%	± 2.2	22.6%	± 3.2
20 to 24 years	16,431	± 73	72.5%	± 2.6	63.1%	± 2.3	12.6%	± 2.1
25 to 29 years	14,516	± 35	80.4%	± 2.0	71.2%	± 2.3	10.5%	± 2.1
30 to 34 years	13,469	± 34	80.2%	± 2.2	74.0%	± 2.2	7.5%	± 1.6
35 to 44 years	26,782	± 41	79.0%	± 1.5	74.0%	± 1.4	6.1%	± 0.9
45 to 54 years	34,122	± 48	76.3%	± 1.6	73.0%	± 1.6	4.3%	± 0.7
55 to 59 years	15,878	± 508	71.7%	± 1.8	68.1%	± 1.6	5.0%	± 1.0
60 to 64 years	15,502	± 509	53.9%	± 2.5	50.9%	± 2.7	5.6%	± 1.8
65 to 74 years	20,726	± 82	24.6%	± 1.7	23.6%	± 1.7	4.2%	± 1.4
75 years and over	19,097	± 66	5.8%	± 1.0	5.7%	± 1.0	2.6%	± 2.2
RACE AND HISPANIC OR LATINO ORIGIN								
White alone	166,517	± 452	60.3%	± 0.6	56.3%	± 0.6	6.4%	± 0.5
Black or African American alone	10,709	± 290	49.7%	± 3.3	40.4%	± 3.0	18.7%	± 3.0
American Indian and Alaska Native alone	468	± 112	55.3%	± 11.3	38.2%	± 9.6	27.2%	± 13.7
Asian alone	5,858	± 164	58.8%	± 3.4	53.9%	± 3.6	8.1%	± 3.2
Two or more races	2,909	± 377	57.8%	± 5.9	47.3%	± 6.1	18.1%	± 5.7
Hispanic or Latino origin (of any race)	8,019	± 57	47.7%	± 3.4	38.4%	± 3.1	19.6%	± 3.9
White alone, not Hispanic or Latino	162,481	± 255	60.6%	± 0.7	56.7%	± 0.7	6.1%	± 0.5
SEX								
Population 20 to 64 years	136,700	± 90	74.1%	± 0.8	68.8%	± 0.8	6.9%	± 0.5
Male	69,907	± 68	74.5%	± 1.2	68.5%	± 1.1	7.7%	± 0.8
Female	66,793	± 54	73.7%	± 1.0	69.2%	± 0.9	6.1%	± 0.7
With own children under 18 years	22,935	± 596	78.5%	± 1.3	72.4%	± 1.5	7.8%	± 1.2
EDUCATIONAL ATTAINMENT								
Population 25 to 64 years	120,269	± 58	74.3%	± 0.8	69.6%	± 0.8	6.1%	± 0.5
Less than high school graduate	12,382	± 763	45.9%	± 3.4	39.4%	± 2.9	14.2%	± 3.2
High school graduate (includes equivalency)	37,484	± 1,232	69.7%	± 1.5	64.5%	± 1.7	7.2%	± 1.0
Some college or associate's degree	40,637	± 987	78.7%	± 1.2	73.5%	± 1.3	6.3%	± 0.9
Bachelor's degree or higher	29,766	± 900	86.1%	± 1.1	83.3%	± 1.2	3.0%	± 0.6

Table formula: **LABOR FORCE** = # EMPLOYED + # UNEMPLOYED
% IN LABOR FORCE = LABOR FORCE / TOTAL * 100%
% EMPLOYED = # EMPLOYED / TOTAL * 100%
UNEMPLOYMENT RATE = # UNEMPLOYED / LABOR FORCE * 100%

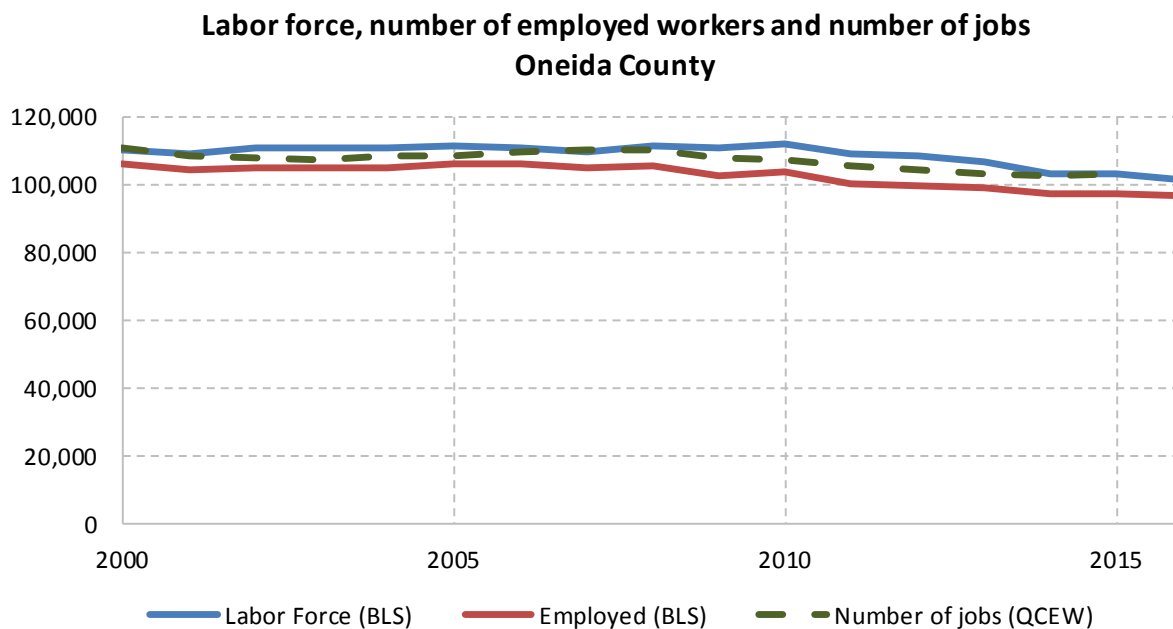
Source: 2011-2015 American Community Survey

10.2 Annual unemployment rate



Source: Bureau Labor Statistics (BLS)

10.3 Employment and number of jobs



Source: Bureau Labor Statistics (BLS) and NY Department of Labor - Quarterly Census of Employment and Wages (QCEW) – annual averages

10.4 Class of worker

		Total	%Male	%Female
Civilian employed population 16 years and over	Estimate	103,944	51.0%	49.0%
	<i>Margin of error</i>	$\pm 1,192$	± 0.5	± 0.5
Private for-profit wage and salary workers:	Estimate	64,520	54.6%	45.4%
	<i>Margin of error</i>	$\pm 1,365$	± 0.9	± 0.9
Employee of private company workers	Estimate	61,741	53.8%	46.2%
	<i>Margin of error</i>	$\pm 1,367$	± 0.9	± 0.9
Self-employed in own incorporated business workers	Estimate	2,779	72.0%	28.0%
	<i>Margin of error</i>	± 408	± 4.6	± 4.6
Private not-for-profit wage and salary workers	Estimate	13,011	33.2%	66.8%
	<i>Margin of error</i>	± 819	± 2.3	± 2.3
Local government workers	Estimate	10,223	46.0%	54.0%
	<i>Margin of error</i>	± 599	± 2.7	± 2.7
State government workers	Estimate	7,950	49.8%	50.2%
	<i>Margin of error</i>	± 548	± 2.9	± 2.9
Federal government workers	Estimate	2,511	47.7%	52.3%
	<i>Margin of error</i>	± 303	± 6.0	± 6.0
Self-employed in own not incorporated business workers and unpaid family workers	Estimate	5,729	62.5%	37.5%
	<i>Margin of error</i>	± 423	± 3.4	± 3.4

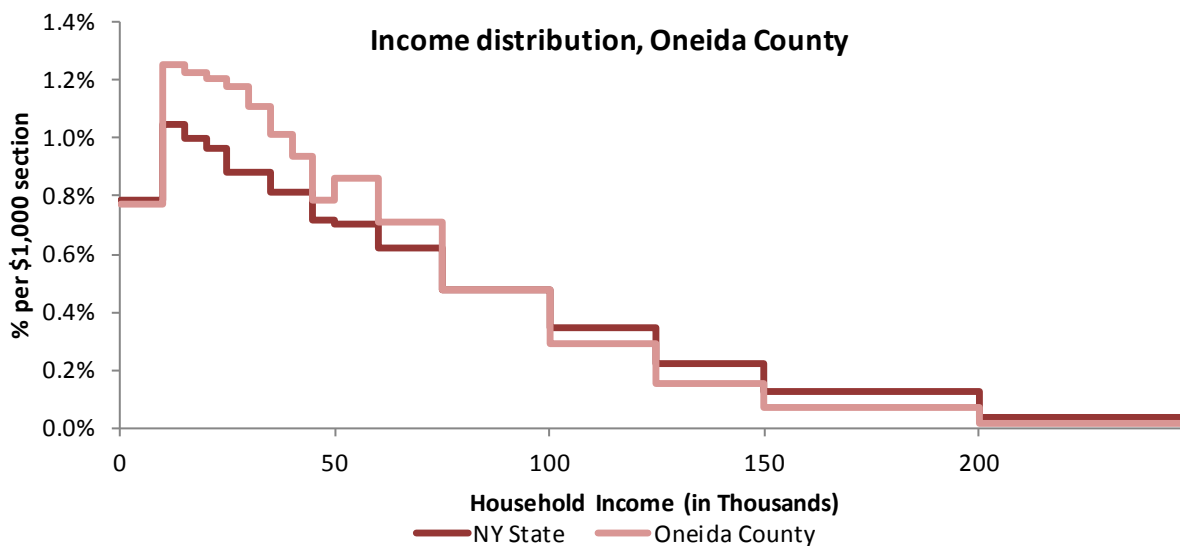
Source: 2011-2015 American Community Survey

11 Household Income

11.1 Income Distribution

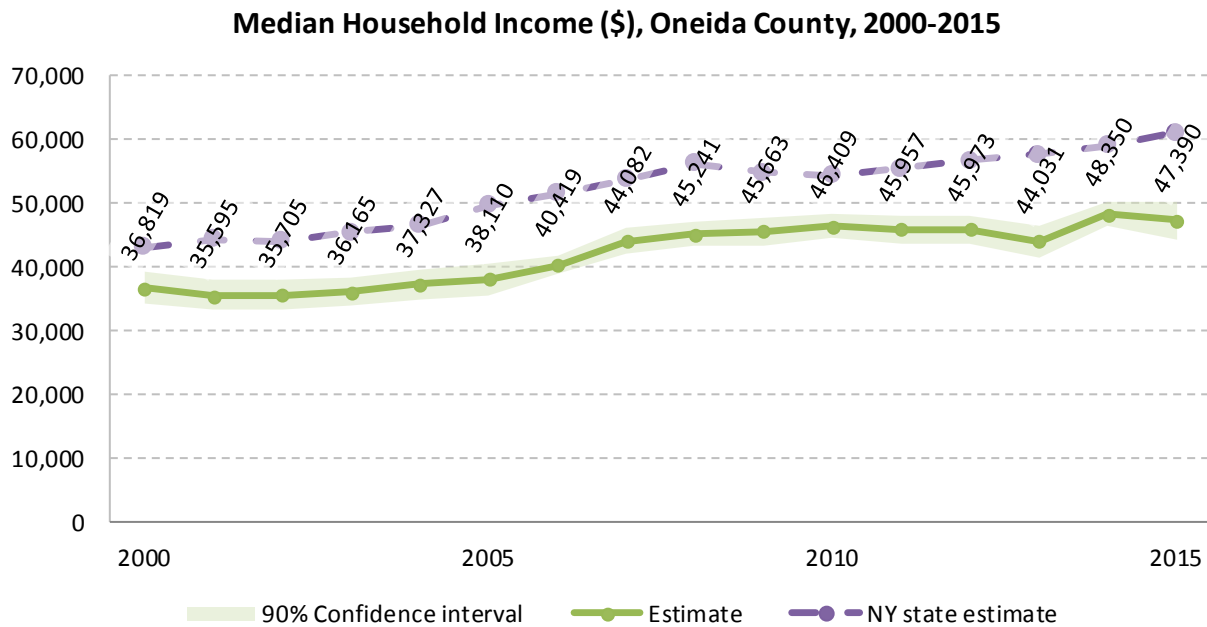
	Estimate	Margin of error	Interval width (in \$1,000)	Est. per \$1,000 section
Total:	90,844	± 836		
Less than \$10,000	7,034	± 539	10	703.4
\$10,000 to \$14,999	5,702	± 420	5	1,140.4
\$15,000 to \$19,999	5,573	± 381	5	1,114.6
\$20,000 to \$24,999	5,485	± 433	5	1,097.0
\$25,000 to \$29,999	5,356	± 497	5	1,071.2
\$30,000 to \$34,999	5,032	± 466	5	1,006.4
\$35,000 to \$39,999	4,602	± 373	5	920.4
\$40,000 to \$44,999	4,252	± 359	5	850.4
\$45,000 to \$49,999	3,575	± 316	5	715.0
\$50,000 to \$59,999	7,848	± 489	10	784.8
\$60,000 to \$74,999	9,641	± 509	15	642.7
\$75,000 to \$99,999	10,865	± 549	25	434.6
\$100,000 to \$124,999	6,676	± 496	25	267.0
\$125,000 to \$149,999	3,538	± 337	25	141.5
\$150,000 to \$199,999	3,179	± 278	50	63.6
\$200,000 or more	2,486	± 334	-	-

Source: 2011-2015 American Community Survey



Source: 2011-2015 American Community Survey

11.2 Median household income: Trends over time



Source: Small Area Income and Poverty Estimates (SAIPE)

12 Poverty

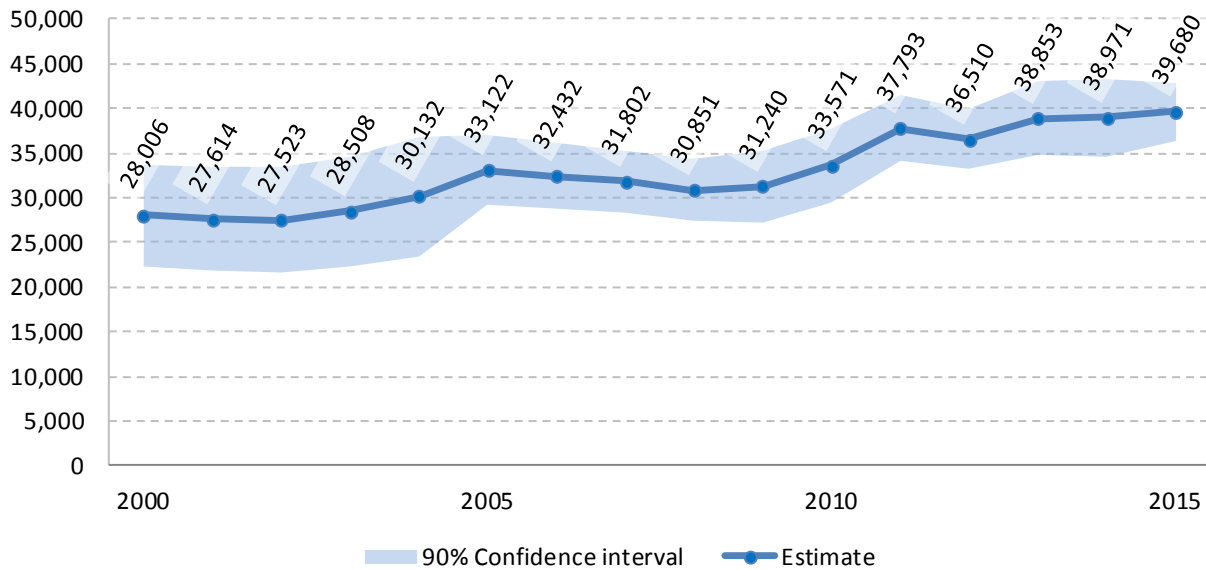
12.1 Family Income to Poverty Ratio

	TOTAL		PERCENT OF ALL	
	Estimate	Margin of error	Estimate	Margin of error
All families	56,216	± 880		
ALL FAMILIES WITH INCOME:				
Below 50 percent of poverty level	2,877	± 315	5.1%	± 0.6
Below 100 percent of poverty level	6,867	± 452	12.2%	± 0.8
Below 125 percent of poverty level	9,110	± 504	16.2%	± 0.9
Below 150 percent of poverty level	11,135	± 489	19.8%	± 0.8
Below 185 percent of poverty level	14,374	± 550	25.6%	± 0.9
Below 200 percent of poverty level	15,643	± 568	27.8%	± 0.9
Below 300 percent of poverty level	24,812	± 750	44.1%	± 1.1
Below 400 percent of poverty level	34,021	± 906	60.5%	± 1.3
Below 500 percent of poverty level	40,983	± 997	72.9%	± 1.4

Source: 2011-2015 American Community Survey

12.2 Poverty: Trends over time: Count

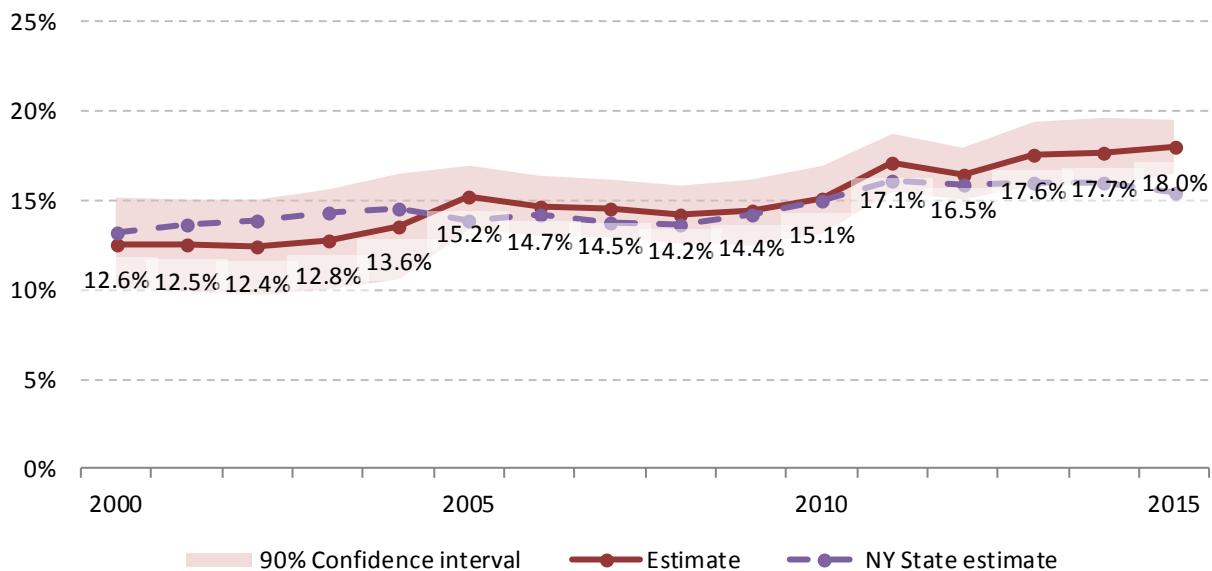
Number of people in poverty, Oneida County, 2000-2015



Source: Small Area Income and Poverty Estimates (SAIPE)

12.3 Poverty: Trends over time: Rate

Poverty rate, Oneida County, 2000-2015



Source: Small Area Income and Poverty Estimates (SAIPE)

12.4 Poverty characteristics

	TOTAL		BELOW POVERTY LEVEL		PERCENT BELOW POVERTY LEVEL	
	Estimate	Margin of error	Estimate	Margin of error	Estimate	Margin of error
Population for whom poverty status is determined	221,341	± 842	37,760	± 1,765	17.1%	± 0.8
AGE						
Under 18 years	49,018	± 216	13,412	± 985	27.4%	± 2.0
Under 5 years	13,153	± 97	4,517	± 462	34.3%	± 3.5
5 to 17 years	35,865	± 195	8,895	± 712	24.8%	± 2.0
18 to 34 years	45,419	± 458	9,453	± 708	20.8%	± 1.6
35 to 64 years	89,556	± 430	11,664	± 605	13.0%	± 0.7
65 years and over	37,348	± 244	3,231	± 336	8.7%	± 0.9
SEX						
Male	108,510	± 744	17,386	± 1,013	16.0%	± 0.9
Female	112,831	± 357	20,374	± 1,112	18.1%	± 1.0
RACE AND HISPANIC OR LATINO ORIGIN						
White alone	192,635	± 755	26,296	± 1,540	13.7%	± 0.8
Black or African American alone	11,541	± 584	4,908	± 630	42.5%	± 4.7
American Indian and Alaska Native alone	535	± 137	224	± 90	41.9%	± 12.8
Asian alone	8,094	± 299	2,909	± 647	35.9%	± 7.9
Hispanic or Latino origin (of any race)	10,101	± 248	4,529	± 470	44.8%	± 4.7
White alone, not Hispanic or Latino	187,206	± 462	23,921	± 1,460	12.8%	± 0.8
EDUCATIONAL ATTAINMENT						
Population 25 years and over	153,547	± 591	20,098	± 942	13.1%	± 0.6
Less than high school graduate	17,711	± 839	5,951	± 545	33.6%	± 2.5
High school graduate (includes equivalency)	50,339	± 1,303	7,620	± 629	15.1%	± 1.1
Some college, associate's degree	48,852	± 1,021	5,320	± 485	10.9%	± 1.0
Bachelor's degree or higher	36,645	± 979	1,207	± 237	3.3%	± 0.6
EMPLOYMENT STATUS						
Civilian labor force 16 years and over	111,088	± 1,304	9,745	± 591	8.8%	± 0.5
Employed	102,782	± 1,186	6,960	± 544	6.8%	± 0.5
Male	52,461	± 891	2,971	± 383	5.7%	± 0.7
Female	50,321	± 715	3,989	± 357	7.9%	± 0.7
Unemployed	8,306	± 601	2,785	± 310	33.5%	± 3.2
Male	4,550	± 431	1,463	± 237	32.2%	± 4.3
Female	3,756	± 392	1,322	± 207	35.2%	± 4.6
WORK EXPERIENCE IN THE PAST 12 MONTHS						
Population 16 years and over	50,321	± 715	3,989	± 357	7.9%	± 0.7
Worked full-time, year-round	8,306	± 601	2,785	± 310	33.5%	± 3.2
Worked part-time or part-year	4,550	± 431	1,463	± 237	32.2%	± 4.3
Did not work	3,756	± 392	1,322	± 207	35.2%	± 4.6

Source: 2011-2015 American Community Survey

13 Glossary

American Community Survey (ACS) - The American Community Survey is an ongoing survey of the population that provides data every year on a variety of social and economic characteristics—age, sex, race, family and relationships, income and benefits, health insurance, education, veteran status, disabilities, where you work and how you get there, where you live and how much you pay for some essentials. The ACS replaced the information previously gathered by what was known as the “long form” of the decennial censuses. The ACS provides communities, companies and other institutions with current information they need to plan investments and services. Information from the survey generates data that help determine how more than \$400 billion in federal and state funds are distributed each year. Every estimate presented in the American Community Survey, as in other surveys, has an uncertainty associated with it. Often the magnitude of that uncertainty is expressed as the Margin of Error.

Confidence Interval (CI) - indication of the degree of uncertainty about a sample estimates. Confidence intervals have been traditionally reported at the 90, 95 and 99 percent levels. A 90 percent confidence interval can be interpreted, for example, roughly as providing 90 percent certainty that the interval defined by the upper and lower bounds contain the true value of the characteristic. If a Margin of Error is given, the lower bound of the confidence interval is equal to the estimate minus the Margin of Error and the upper bound is equal to the estimate plus the Margin of Error. (See further, Margin of Error definition below.)

County subdivision or Minor Civil Division (MCD) - The Census Bureau geography for primary administrative units below the county level in New York is collectively referred to as county subdivisions or minor civil divisions. These include towns, cities and Indian Reservations.

Decennial Census - the Census of the population and housing taken every 10 years in the United States, at the start of each decade, since 1790.

Employed – either “at work” or “with a job, but not at work”.

Group Quarters Population - all U.S. residents who live in group living facilities including correctional institutions, juvenile facilities, skilled nursing facilities, college residence halls, military barracks, group homes, and workers' dormitories.

Household Population - all U.S. residents who live in housing units such as single family homes, townhouses, apartments, and mobile homes.

Intercensal Population Estimates - estimates produced for the years between two decennial censuses when both the beginning and ending populations are known. They are produced once a decade by adjusting the existing time series of postcensal estimates for the entire decade to smooth the transition from one decennial census count to the next. They differ from the postcensal estimates that are released annually because the difference between the April 1 postcensal estimate and April 1 census count for the end of the decade is redistributed across the estimates for that decade. For dates when both postcensal and intercensal estimates are available, intercensal estimates are preferred.

Labor Force - consists of people classified as employed or unemployed.

Margin of Error (MOE) - a measure of the precision of an estimate at a given level of confidence. The confidence level of a margin of error indicates the likelihood that the difference between the population value (which you

would get if you could measure the whole population instead of a sample) and the estimate is less than or equal to the margin of error. The range from the estimate minus the margin of error to the estimate plus the margin of error is called the confidence interval. All ACS estimates are published with their margins of error at the 90 percent confidence level. Margins of error are useful in assessing the reliability of estimates and whether differences between estimates are significant.

Numeric Population Change - difference between the population of an area at the beginning and end of a time period. It is computed by taking the difference between the population at one point in time (t_1) and some future time (t_2).

Percent Population Change - difference between the population of an area at the beginning and end of a time period, expressed as a percentage of the beginning population. It is computed by dividing the population change ($t_2 - t_1$) by t_1 and multiplying the result by 100.

Population Estimates - The calculated number of people living in an area as of a specified point in time, usually July 1st. The estimated population is calculated using a component of change model that incorporates information on natural increase (births, deaths) and net migration (net domestic migration, net international migration) that has occurred in an area since the latest decennial census. A procedure for estimating the current population using a procedure involving a "base population" value at time $t - 1$, adding to that the births during the interval $t - 1$ to t , subtracting the deaths during that interval $t - 1$ to t , and then adding the net domestic and net international migration that occurred during that interval.

Population Density - Total number of people per areal unit like a square mile or square kilometer.

Population Pyramids - A graphical way of portraying a population's age and sex composition at a given slice in time. The first horizontal bar, constituting the base of the graph, is the youngest age group (typically 0-4) with the number of males in that age group on the left and the number of females in that age group on the right. On top of that age group is another horizontal bar for the next age group (e.g. 5-9) and so forth with the top bar typically for those aged 75 and over. In a population with lots of births and deaths, the shape typically forms a pyramid with a broad base and a narrow top. It is one of the most basic ways to understand population change over time as well as between different geographic units of a similar status (e.g. counties).

Postcensal Estimates - estimates produced for the years after a decennial census when only the beginning population is known. They are produced and revised each year, targeted to July 1 of that year.

Projection - estimated population at some future time based on assumptions about births, deaths, migration, and ages.

Race/Ethnicity - the Census Bureau collects racial data in accordance with guidelines provided by the U.S. Office of Management and Budget (OMB), and these data are based on self-identification. The racial categories included in the census questionnaire generally reflect a social definition of race recognized in this country and not an attempt to define race biologically, anthropologically, or genetically. In addition, it is recognized that the categories of the race item include racial and national origin or sociocultural groups. People may choose to report more than one race to indicate their racial mixture, such as "American Indian" and "White." People who identify their origin as Hispanic, Latino, or Spanish may be of any race. OMB requires five minimum categories: White, Black or African American, American Indian or Alaska Native, Asian, and Native Hawaiian or Other Pacific Islander. Hispanics may be classified as white or black. So we generally separate them out as an ethnic group first.

Unemployed – Not employed, but actively looking for work and available to accept a job.

Unemployment rate – Fraction of the Labor Force that is unemployed.

Urban Area – A densely settled area with at least 2,500 people. If the total number of people is less than 50,000 the Census Bureau calls it an Urban Cluster, otherwise an Urbanized Area.

Vintage - each year, the U.S. Census Bureau produces and publishes estimates of the population for each state and county, as well as the nation as a whole. These are called “vintages.” In producing these vintages, the Bureau utilizes administrative data from a number of sources to estimate 1) the change in population since the most recent decennial census, and 2) the population for each year since the most recent decennial census. With each annual release of population estimates (vintage), the entire time series of estimates beginning on April 1, 2010 is revised and updated.

Vital Statistics - quantitative data concerning a population, such as the number of births, marriages, and deaths.

14 References

Oneida County homepage: <http://www.ocgov.net/>

At Cornell:

- Program on Applied Demographics (PAD)
URL: <http://pad.human.cornell.edu/>
 - More county trends: <https://pad.human.cornell.edu/counties/trends1geo.cfm?geo=65>
- Community and Regional Development Institute (CaRDI)
URL: <https://cardi.cals.cornell.edu/>
- Cornell Cooperative Extensions (CCE)
Home page: <http://www.cce.cornell.edu>
 - Oneida local office: <http://www.cceoneida.com/>

Data sources and background information:

- New York State Data Center
 - <https://labor.ny.gov/nys-data-center/index.shtm>
- U.S. Census Bureau - general
 - QuickFacts: <https://www.census.gov/quickfacts/table/PST045216/36,36065>
 - American FactFinder: <http://factfinder.census.gov/>
- U.S. Census Bureau - population
 - Decennial Census
 - Background: <https://www.census.gov/2010census/>
 - Demographic Profile: http://factfinder2.census.gov/bkmk/table/1.0/en/DEC/10_SF1/SF1DP1/0500000US360655
 - American Community Survey (ACS)
 - Background: <https://www.census.gov/programs-surveys/acs/>
 - Social Data Profile: http://factfinder2.census.gov/bkmk/table/1.0/en/ACS/15_5YR/DP02/0500000US36065
 - Economic Data Profile: http://factfinder2.census.gov/bkmk/table/1.0/en/ACS/15_5YR/DP03/0500000US36065
 - Housing Data Profile: http://factfinder2.census.gov/bkmk/table/1.0/en/ACS/15_5YR/DP04/0500000US36065
 - Demographics Data Profile: http://factfinder2.census.gov/bkmk/table/1.0/en/ACS/15_5YR/DP05/0500000US36065
 - Population estimates:
 - General: <https://www.census.gov/programs-surveys/popest.html>
 - Explorer: <https://www.census.gov/censusexplorer/censusexplorer-popest.html>
- U.S. Census Bureau – Small Area Income & Poverty Estimates (SAIPE)
 - <http://www.census.gov/did/www/saipe/>
- U.S. Census Bureau - Public Use Quarterly Workforce Indicators (QWI) – annual averages
 - <https://qwiexplorer.ces.census.gov/static/explore.html>
- U.S. Census Bureau – Building Permits Survey
 - <https://www.census.gov/construction/bps/>

- Bureau Labor Statistics (BLS)
 - Local Area Unemployment Statistics: <http://www.bls.gov/lau/>
 - Quarterly Census of Employment and Wages (QCEW): <https://www.bls.gov/cew/data.htm>
- NY Department of Labor -
 - Labor statistics: <https://labor.ny.gov/stats/index.shtm>
 - Quarterly Census of Employment and Wages (QCEW): <https://labor.ny.gov/stats/LSQCEW.shtm>
- NY State Department of Health
 - Vital Statistics: https://www.health.ny.gov/statistics/vital_statistics/
- Bureau of Economic Analysis (BEA) – Local Area Personal Income and Employment: <http://bea.gov/iTable/iTable.cfm?ReqID=70&step=1>

Alternative sites for data retrieval:

- The Nelson A. Rockefeller Institute of Government – New York State Statistical Yearbooks http://www.rockinst.org/nys_statistics/
- Headwaters Economics: Economic Profile System – Human Dimensions Toolkit <http://headwaterseconomics.org/tools/eps-hdt>
- National Historical Geographic Information System (NHGIS) <https://www.nhgis.org/>
- Social Explorer <http://www.socialexplorer.com/pub/home/home.aspx>
- Stats America <http://www.statsamerica.org/Default.aspx>
- Missouri Census Data Center <http://mcdc.missouri.edu/>
- DataFerret <http://dataferrett.census.gov/>
- Investigative Reporters and Editors (IRE) Census project <http://census.ire.org/>