

Jefferson County Profile 2017

A collection of recent demographic, social and economic data

Compiled by

Jan Vink

Cornell Program on Applied Demographics



Cornell University



Program
on Applied
Demographics

CORNELL POPULATION CENTER

This profile is a part of a set of profiles generated for each county in New York State. The profiles were developed and generated by the Cornell Program on Applied Demographics. The work is sponsored by the New York State Data Center in the New York State Department of Labor.

Cornell Program on Applied Demographics:

The Program on Applied Demographics (PAD) brings skills in demographics, economics, statistics, data gathering and data analysis together to provide a variety of organizations with data, information and advice. PAD is located in the Department of Policy Analysis and Management within the College of Human Ecology at Cornell University. PAD is also affiliated with the Cornell Institute for Social and Economic Research and the Cornell Population Center.

For more information: <http://pad.human.cornell.edu/>

New York State Data Center:

The New York State Data Center (NYSDC) is located in the Division of Research and Statistics within the New York State Department of Labor. The State Data Center operates as part of a nationwide effort to improve public access to data provided by the U.S. Census Bureau. The U.S. Census Bureau collects and tabulates data on a multitude of subjects such as population, social, economic and housing demographics, labor force data, health care, migration and transportation. These data play a critical role in understanding our local and larger surrounding communities. Census data also influence state and federal funding, aid decision making in the legislative process, and determine each state's number of congressional seats. As the lead agency in New York for the SDC program, the New York State Data Center helps users navigate through the multitude of surveys and products provided by the U.S. Census Bureau.

For more information: <https://labor.ny.gov/nys-data-center/>

All profiles are freely downloadable as PDF documents on the PAD website:

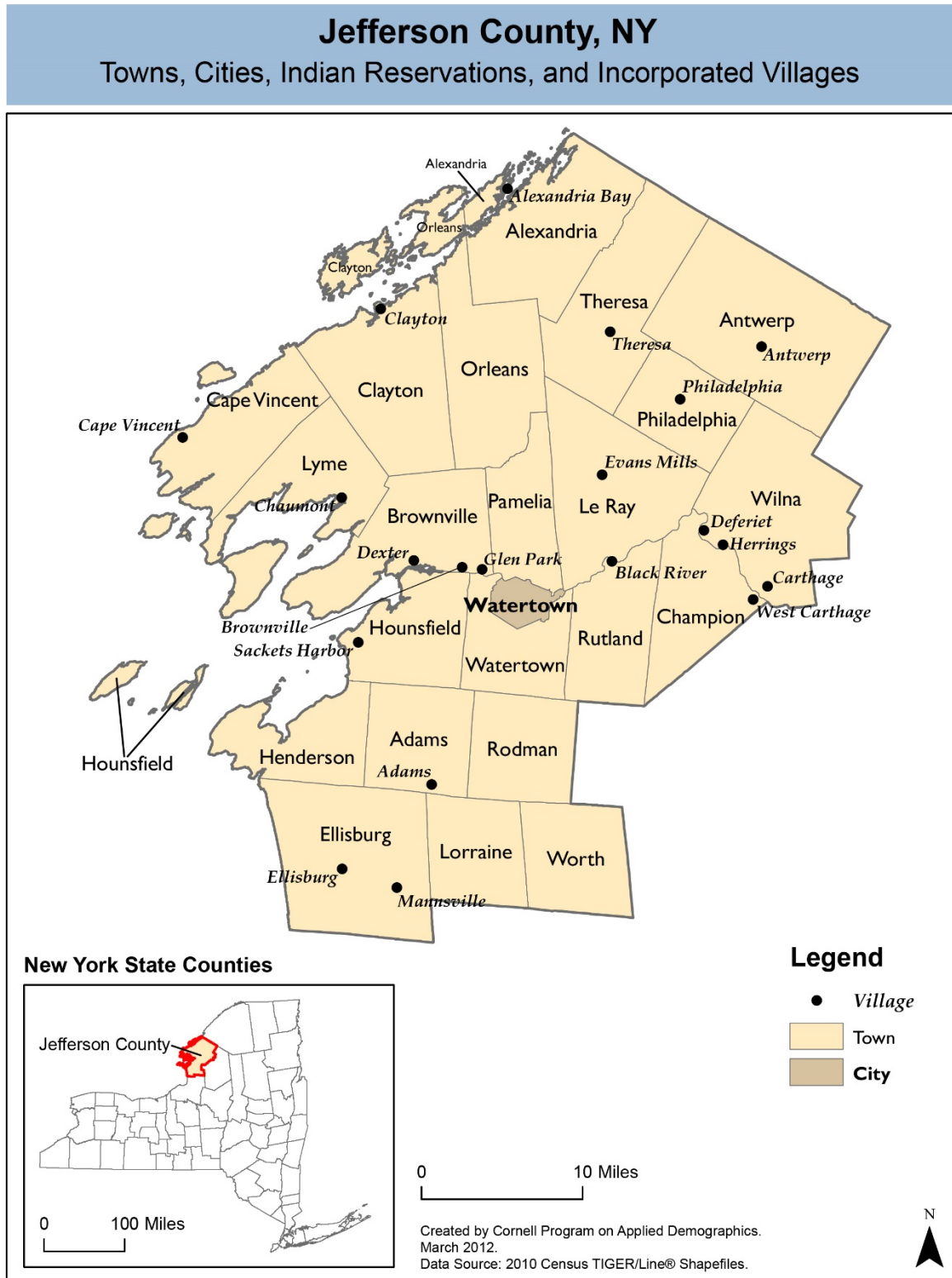
<http://pad.human.cornell.edu/profiles/index.cfm>

This profile is an update from the County Profile produced in 2013. The 2013 profile also contained information on agriculture related items and can be found at <https://pad.human.cornell.edu/profiles/2013/Jefferson.pdf>

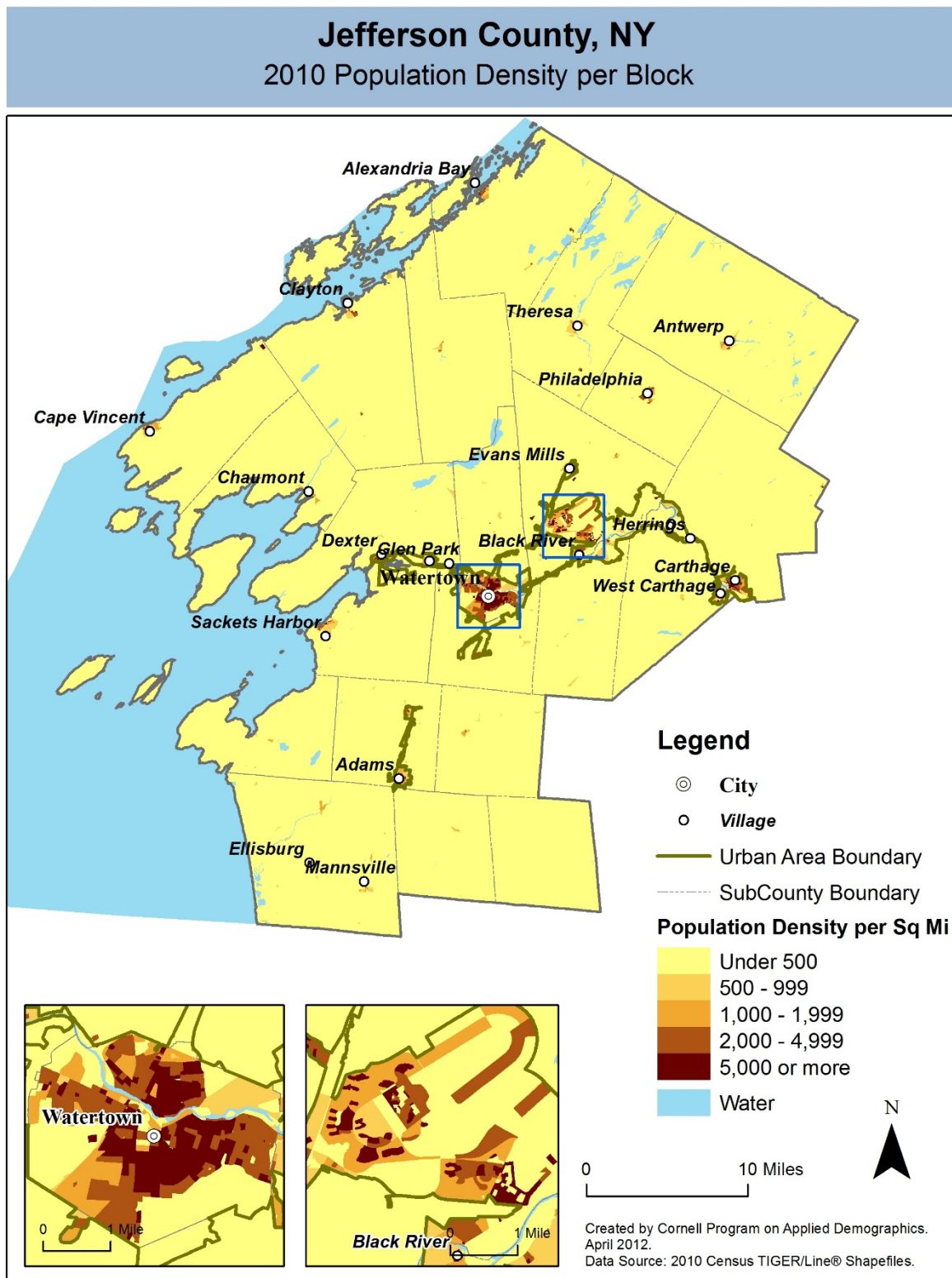
Contents

1	Reference Maps (towns and places as defined in 2010)	3
2	Population density and Urban Areas Map	5
3	Total Population	6
3.1	Historic and projected	6
3.2	Change since previous Census	6
3.3	Annual population estimates	7
3.4	Sub County population change 2010-2015	8
3.5	Sub County population change 2010-2015	9
4	Components of population change	10
4.1	Vital Statistics	10
4.2	Migration	11
5	Population by age	12
5.1	Historic and projected population pyramids	12
5.2	Selected age groups	13
5.3	Median age	14
6	Race	15
6.1	Total and household population by race	15
6.2	Race composition by age	15
7	Housing units	16
7.1	Characteristics	16
7.2	Historical data on number of housing units and occupancy status	17
7.3	Building Permits 2000-2015	17
8	Education	18
8.1	Enrollment by level of school	18
8.2	Enrollment by age	18
8.3	Percentage age 18-24 enrolled in college	18
8.4	Educational attainment	19
9	Language spoken at home	19
10	Labor Force Characteristics	20
10.1	Labor force, employment and unemployment	20
10.2	Annual unemployment rate	21
10.3	Employment and number of jobs	21
10.4	Class of worker	22
11	Household Income	23
11.1	Income Distribution	23
11.2	Median household income: Trends over time	24
12	Poverty	24
12.1	Family Income to Poverty Ratio	24
12.2	Poverty: Trends over time: Count	25
12.3	Poverty: Trends over time: Rate	25
12.4	Poverty characteristics	26
13	Glossary	27
14	References	30

1 Reference Maps (towns and places as defined in 2010)



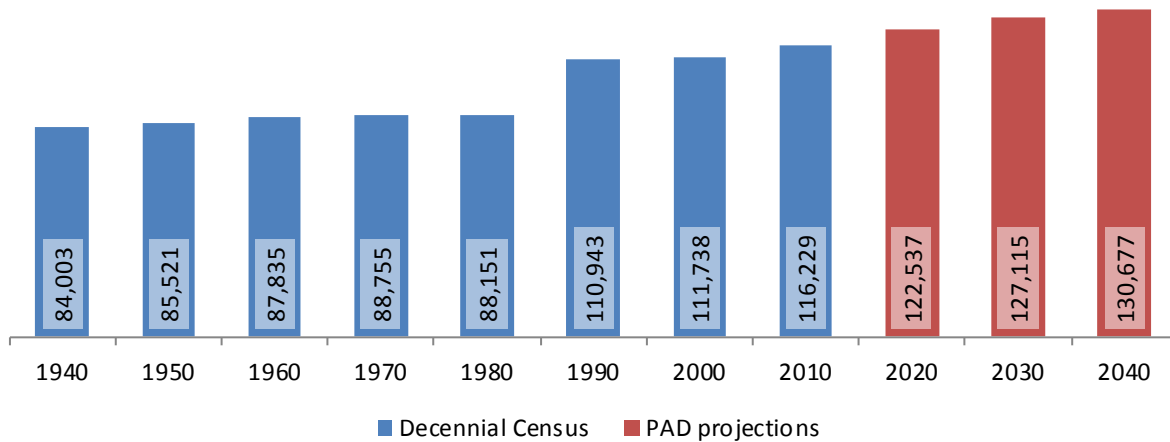
2 Population density and Urban Areas Map



3 Total Population

3.1 Historic and projected

Total population, Jefferson County, 1940-2040



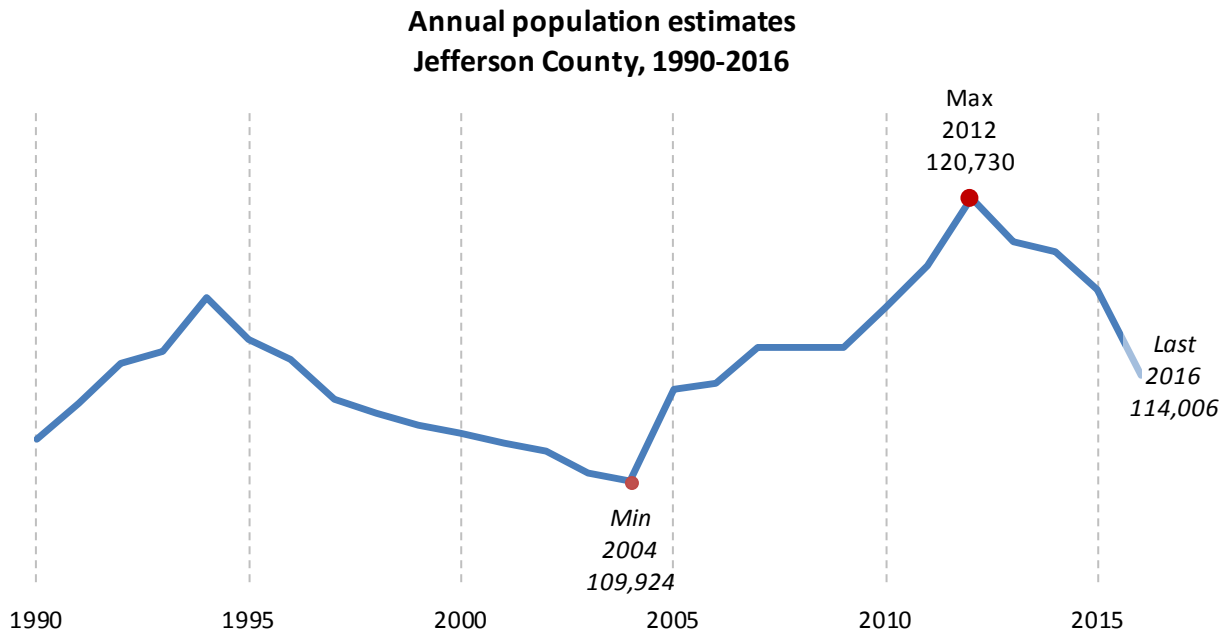
Source: 1940-2010 Decennial Census and projections by Cornell Program on Applied Demographics

3.2 Change since previous Census

		Total population	Change	
			Number	Percent
Decennial Census	1940	84,003		
	1950	85,521	1,518	1.8%
	1960	87,835	2,314	2.7%
	1970	88,755	920	1.0%
	1980	88,151	-604	-0.7%
	1990	110,943	22,792	25.9%
	2000	111,738	795	0.7%
	2010	116,229	4,491	4.0%
PAD projec- tions	2020	122,537	6,308	5.4%
	2030	127,115	4,578	3.7%
	2040	130,677	3,562	2.8%

Source: 1940-2010 Decennial Census and projections by Cornell Program on Applied Demographics

3.3 Annual population estimates



Source: U.S. Census Bureau population estimates (1990-1999 and 2000-2009 intercensal and vintage 2016 postcensal)

3.4 Sub County population change 2010-2015

	Total Population		Difference	
	2000	2010	Count	%
New York State	18,976,821 *	19,378,102	401,281	2.1%
Jefferson County	111,738	116,229	4,491	4.0%
Cities				
Watertown	26,705	27,023	318	1.2%
Towns				
Adams	4,782	5,143	361	7.5%
Alexandria	4,097	4,061	-36	-0.9%
Antwerp	1,793	1,846	53	3.0%
Brownville	5,843	6,263	420	7.2%
Cape Vincent	3,345	2,777	-568	-17.0%
Champion	4,361	4,494	133	3.0%
Clayton	4,817	5,153	336	7.0%
Ellisburg	3,541	3,474	-67	-1.9%
Henderson	1,377	1,360	-17	-1.2%
Hounsfield	3,323	3,466	143	4.3%
Le Ray	19,836	21,782	1,946	9.8%
Lorraine	930	1,037	107	11.5%
Lyme	2,015	2,185	170	8.4%
Orleans	2,465	2,789	324	13.1%
Pamelia	2,897	3,160	263	9.1%
Philadelphia	2,140	1,947	-193	-9.0%
Rodman	1,147	1,176	29	2.5%
Rutland	2,959	3,060	101	3.4%
Theresa	2,414	2,905	491	20.3%
Wate	4,482	4,470	-12	-0.3%
Wilna	6,235	6,427	192	3.1%
Worth	234	231	-3	-1.3%

* Original counts revised through Count Question Resolution Program (CQR)

Source: U.S. Census Bureau intercensal population estimates 2000-2010

3.5 Sub County population change 2010-2015

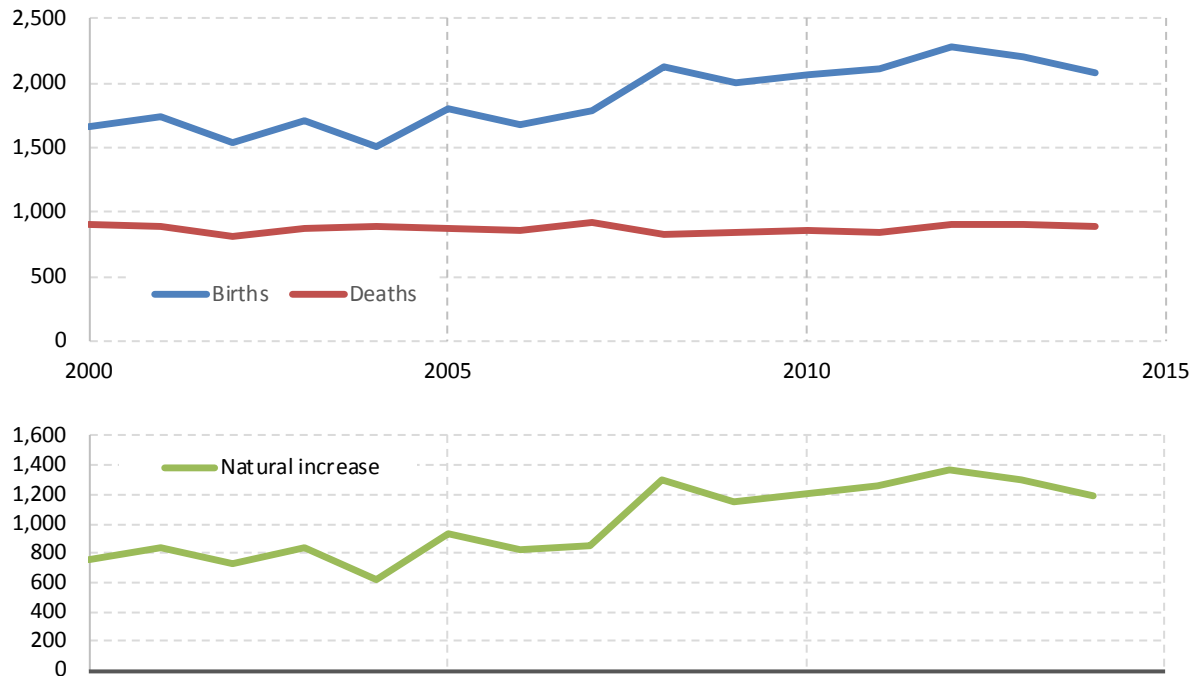
	Total Population		Difference	
	2010 base	2015	Count	%
New York State	19,378,087	19,795,791	417,704	2.2%
Jefferson County	116,232	117,635	1,403	1.2%
Cities				
Watertown	26,816	26,780	-36	-0.1%
Towns				
Adams	5,145	5,266	121	2.4%
Alexandria	4,063	4,150	87	2.1%
Antwerp	1,836	1,873	37	2.0%
Brownville	6,245	6,420	175	2.8%
Cape Vincent	2,777	2,871	94	3.4%
Champion	4,494	4,608	114	2.5%
Clayton	5,159	5,094	-65	-1.3%
Ellisburg	3,473	3,554	81	2.3%
Henderson	1,361	1,396	35	2.6%
Hounsfield	3,470	3,558	88	2.5%
Le Ray	21,777	22,284	507	2.3%
Lorraine	1,036	1,058	22	2.1%
Lyme	2,192	2,222	30	1.4%
Orleans	2,795	2,860	65	2.3%
Pamelia	3,163	3,113	-50	-1.6%
Philadelphia	1,948	1,948	0	0.0%
Rodman	1,176	1,207	31	2.6%
Rutland	3,066	3,116	50	1.6%
Theresa	2,914	2,925	11	0.4%
Wate	4,668	4,772	104	2.2%
Wilna	6,427	6,322	-105	-1.6%
Worth	231	238	7	3.0%

Source: U.S. Census Bureau population estimates 2010-2015

4 Components of population change

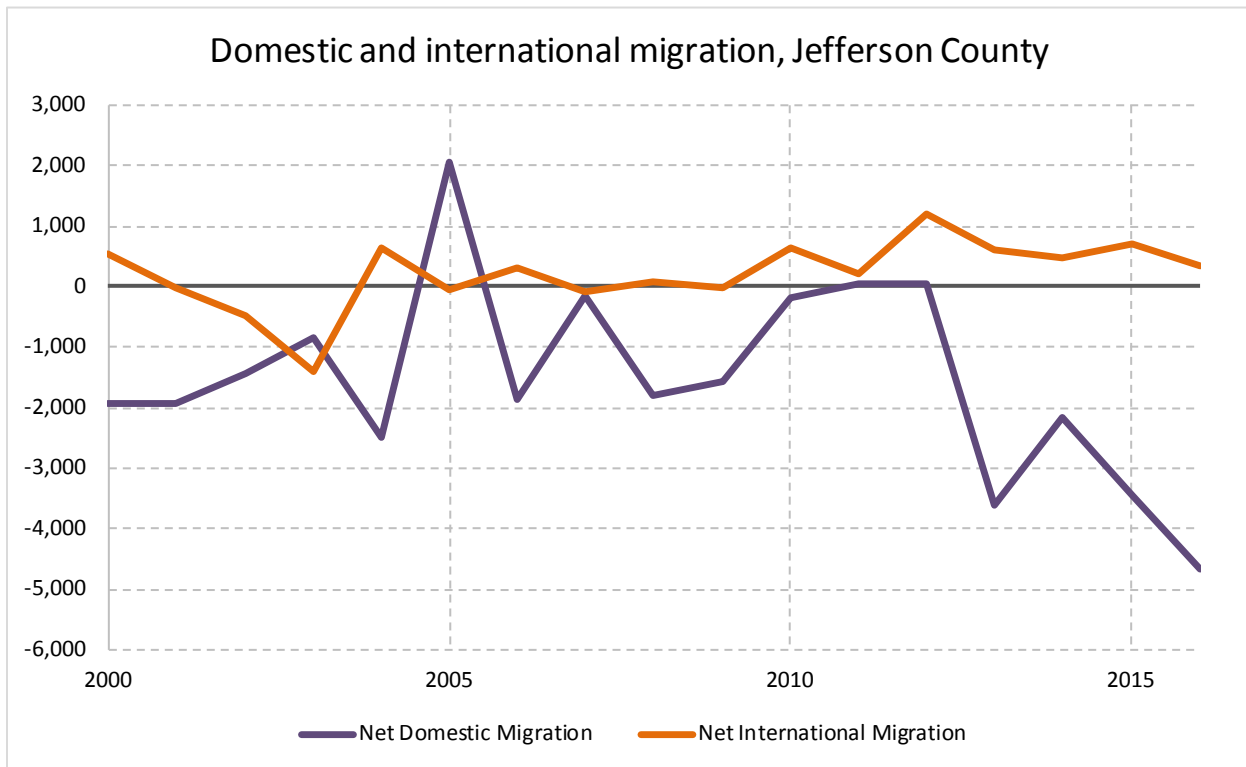
4.1 Vital Statistics

Vital Statistics, Jefferson County



Source: New York State Department of Health

4.2 Migration

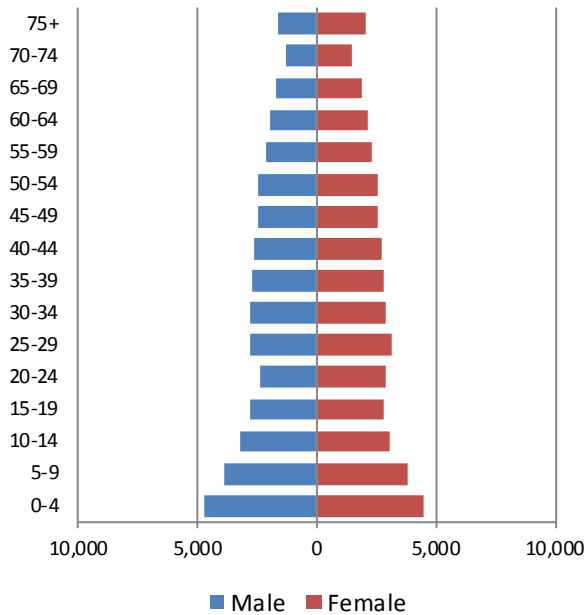


Source: Census Bureau population estimates (V2010 and V2016)

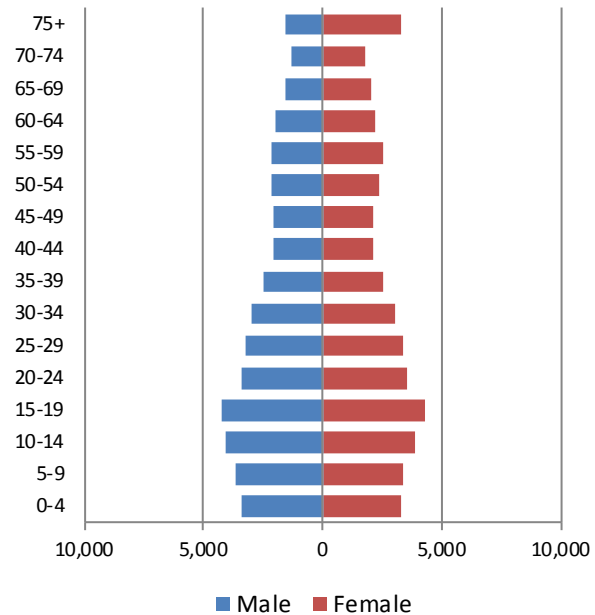
5 Population by age

5.1 Historic and projected population pyramids

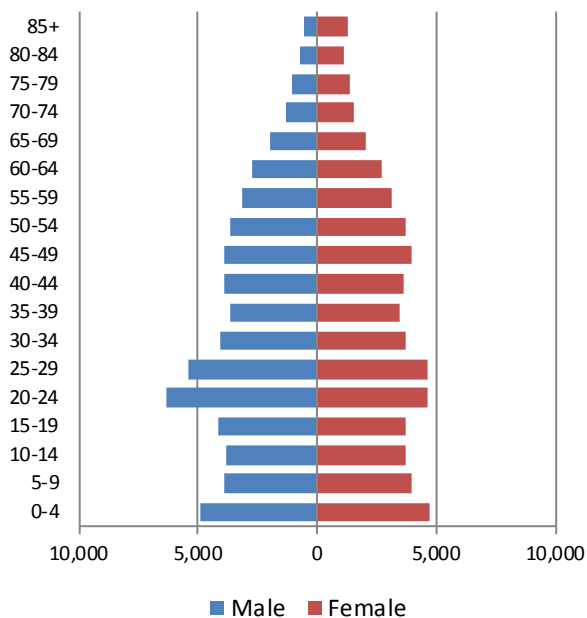
1950 Population Pyramid, Jefferson County



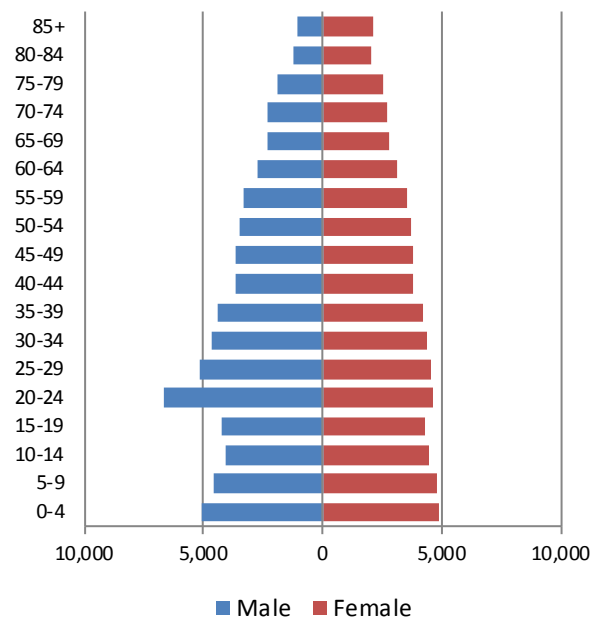
1980 Population Pyramid, Jefferson County



2010 Population Pyramid, Jefferson County



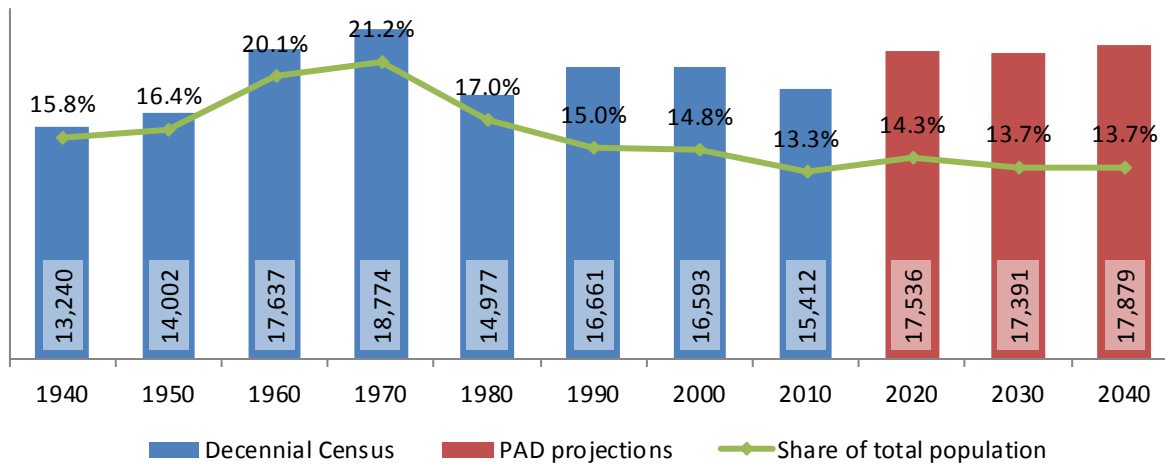
2040 Population Pyramid, Jefferson County



Source: 1950, 1980, 2010 Decennial Census and projections by Cornell Program on Applied Demographics

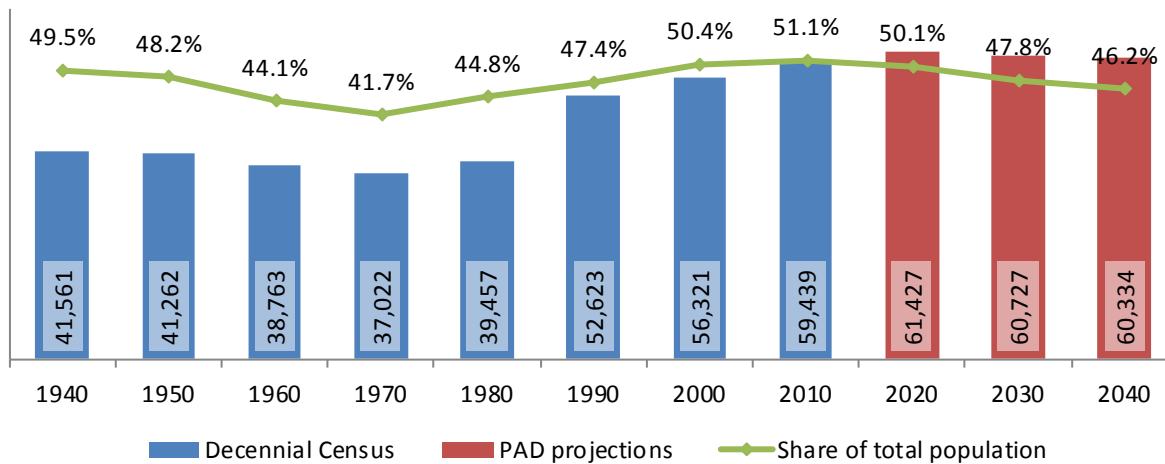
5.2 Selected age groups

Population age 5-14, Jefferson County, 1940-2040



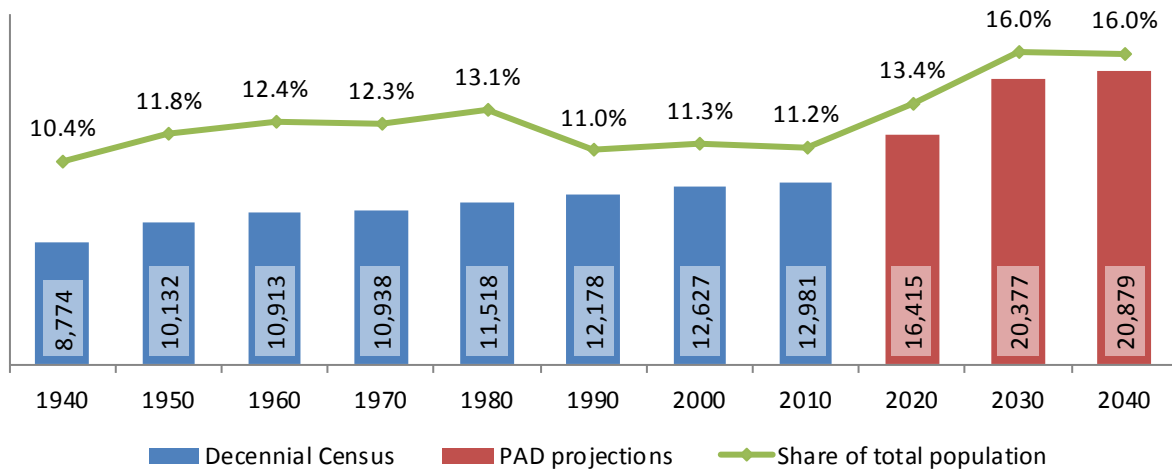
Source: 1940-2010 Decennial Census and projections by Cornell Program on Applied Demographics

Population age 25-64, Jefferson County, 1940-2040



Source: 1940-2010 Decennial Census and projections by Cornell Program on Applied Demographics

Population age 65 and over, Jefferson County, 1940-2040



Source: 1940-2010 Decennial Census and projections by Cornell Program on Applied Demographics

5.3 Median age

Jefferson County New York State

Median age

2000	32.5	35.9
2010	32.6	38.0
2015	32.0	38.3

Source: 2000, 2010 Decennial Census, 2015 Population Estimates

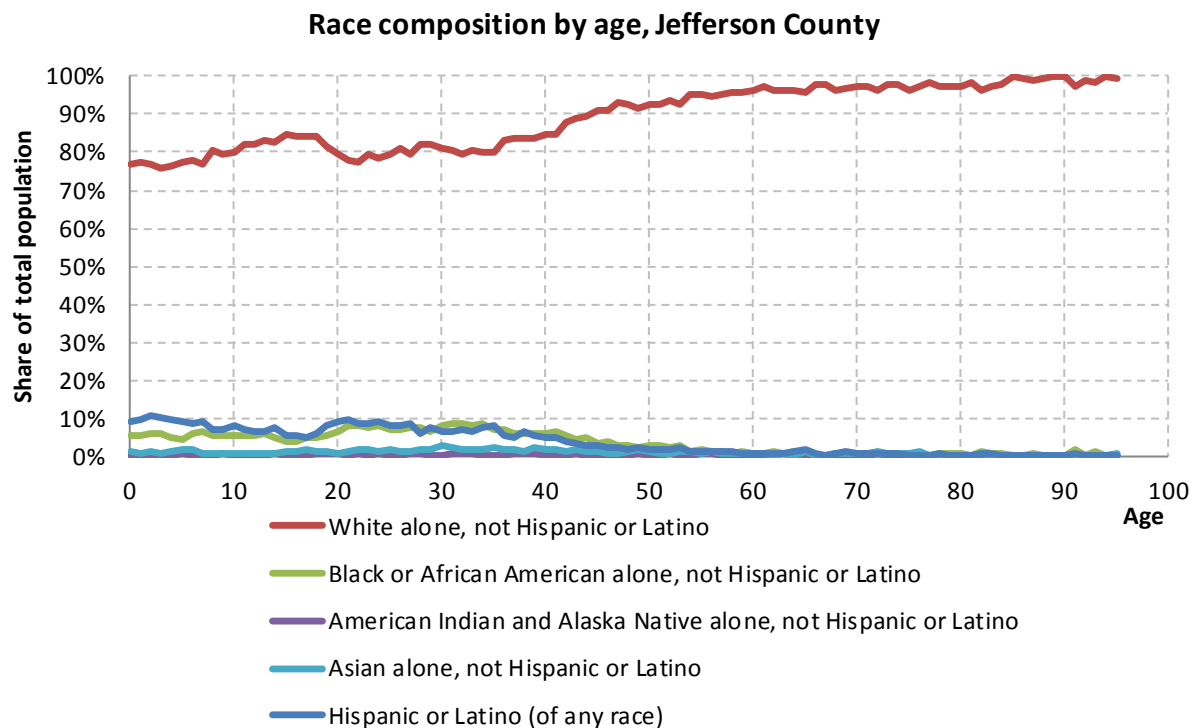
6 Race

6.1 Total and household population by race

	Total		In households		In Group Quarters
	Count	Percentage	Count	Percentage	Count
Total population	116,229	100%	110,059	100%	6,170
Not Hispanic or Latino					
One race					
White	99,682	85.8%	95,941	87.2%	3,741
Black or African American	5,475	4.7%	4,208	3.8%	1,267
American Indian and Alaska Native	500	0.4%	458	0.4%	42
Asian	1,464	1.3%	1,339	1.2%	125
Native Hawaiian and Other Pacific Islander	273	0.2%	237	0.2%	36
Some other race	121	0.1%	94	0.1%	27
Two or more races	2,571	2.2%	2,494	2.3%	77
Hispanic or Latino (of any race)	6,143	5.3%	5,288	4.8%	855

Source: 2010 Decennial Census

6.2 Race composition by age



Source: 2010 Decennial Census

7 Housing units

7.1 Characteristics

	COUNT		PERCENTAGE	
	Estimate	Margin of error	Estimate	Margin of error
HOUSING OCCUPANCY				
Total housing units	58,536	± 249	100.0%	
Occupied housing units	44,306	± 547	75.7%	± 0.9
Vacant housing units	14,230	± 508	24.3%	± 0.9
YEAR STRUCTURE BUILT				
Total housing units	58,536	± 249	100.0%	
Built 2014 or later	54	± 38	0.1%	± 0.1
Built 2010 to 2013	1,373	± 262	2.3%	± 0.4
Built 2000 to 2009	6,889	± 560	11.8%	± 0.9
Built 1990 to 1999	5,981	± 443	10.2%	± 0.8
Built 1980 to 1989	7,595	± 491	13.0%	± 0.8
Built 1970 to 1979	5,735	± 440	9.8%	± 0.8
Built 1960 to 1969	3,776	± 385	6.5%	± 0.7
Built 1950 to 1959	3,751	± 295	6.4%	± 0.5
Built 1940 to 1949	2,529	± 306	4.3%	± 0.5
Built 1939 or earlier	20,853	± 621	35.6%	± 1.1
HOUSING TENURE				
Occupied housing units	44,306	± 547	100.0%	
Owner-occupied	24,610	± 582	55.5%	± 1.2
Renter-occupied	19,696	± 600	44.5%	± 1.2
HOUSE HEATING FUEL				
Occupied housing units	44,306	± 547	100.0%	
Utility gas	18,850	± 746	42.5%	± 1.5
Bottled, tank, or LP gas	5,201	± 394	11.7%	± 0.9
Electricity	7,936	± 493	17.9%	± 1.1
Fuel oil, kerosene, etc.	7,811	± 402	17.6%	± 1.0
Coal or coke	41	± 28	0.1%	± 0.1
Wood	3,872	± 292	8.7%	± 0.6
Solar energy	6	± 6	0.0%	± 0.1
Other fuel	428	± 96	1.0%	± 0.2
No fuel used	161	± 71	0.4%	± 0.2
VALUE				
Owner-occupied units	24,610	± 582	100.0%	
Less than \$50,000	2,519	± 288	10.2%	± 1.2
\$50,000 to \$99,999	4,847	± 360	19.7%	± 1.4
\$100,000 to \$149,999	5,843	± 383	23.7%	± 1.5
\$150,000 to \$199,999	4,939	± 383	20.1%	± 1.4
\$200,000 to \$299,999	4,102	± 329	16.7%	± 1.3
\$300,000 to \$499,999	1,523	± 212	6.2%	± 0.9
\$500,000 to \$999,999	638	± 156	2.6%	± 0.6
\$1,000,000 or more	199	± 78	0.8%	± 0.3
Median (dollars)	141,000	± 3,821		

Source: 2011-2015 American Community Survey

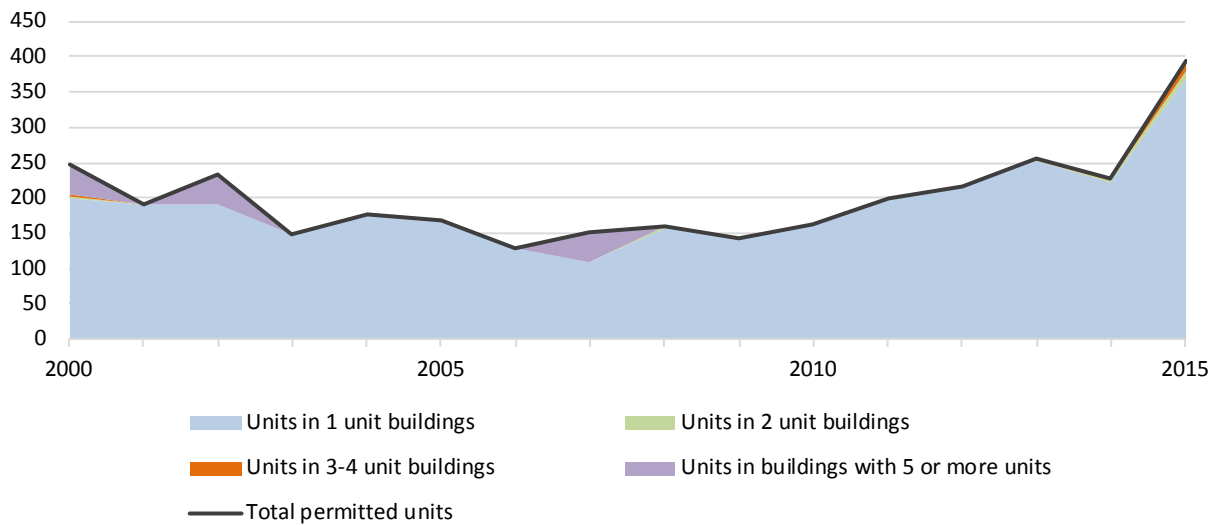
7.2 Historical data on number of housing units and occupancy status

Year	Number of Housing Units	Change since previous Census	Occupied	Occupancy rate	Vacant
1970	34,698		27,435	79.1%	7,263
1980	42,012	21.1%	30,792	73.3%	11,220
1990	50,519	20.2%	37,851	74.9%	12,668
2000	54,070	7.0%	40,068	74.1%	14,002
2010	57,966	7.2%	43,451	75.0%	14,515

Source: 1970-2010 Decennial Census

7.3 Building Permits 2000-2015

Building permits by number of permitted units in building,
Jefferson County



Source: Census Bureau Building Permits Survey

8 Education

8.1 Enrollment by level of school

	Estimate	Margin of error
Total enrolled in school	29,180	± 856
Nursery school, preschool	1,995	± 281
Kindergarten to 12th grade	19,695	± 256
Kindergarten	1,840	± 234
Elementary: grade 1 to grade 4	6,618	± 388
Elementary: grade 5 to grade 8	5,601	± 363
High school: grade 9 to grade 12	5,636	± 251
College, undergraduate	6,467	± 602
Graduate, professional school	1,023	± 198

Source: 2011-2015 American Community Survey

8.2 Enrollment by age

	Estimate	Margin of error
3 and 4 years	44.9%	± 5.5
5 to 9 years	95.0%	± 1.6
10 to 14 years	99.2%	± 0.6
15 to 17 years	96.8%	± 1.8
18 and 19 years	50.7%	± 5.4
20 to 24 years	17.2%	± 2.4
25 to 34 years	13.7%	± 2.0
35 years and over	3.8%	± 0.5

Source: 2011-2015 American Community Survey

8.3 Percentage age 18-24 enrolled in college

	Estimate	Margin of error
Population 18 to 24 years	15,299	± 143
Enrolled in college or graduate school	19.5%	± 2.4
Males 18 to 24 years	9,269	± 119
Enrolled in college or graduate school	11.7%	± 2.4
Females 18 to 24 years	6,030	± 88
Enrolled in college or graduate school	31.6%	± 4.4

Source: 2011-2015 American Community Survey

8.4 Educational attainment

	COUNT		PERCENTAGE	
	Estimate	Margin of error	Estimate	Margin of error
Population 25 years and over	73,898	± 142	100%	
EDUCATIONAL ATTAINMENT				
Less than 9th grade	1,845	± 259	2.5%	± 0.4
9th to 12th grade, no diploma	5,985	± 493	8.1%	± 0.7
High school graduate (includes equivalency)	24,726	± 704	33.5%	± 0.9
Some college, no degree	16,888	± 681	22.9%	± 0.9
Associate's degree	9,122	± 510	12.3%	± 0.7
Bachelor's degree	8,709	± 487	11.8%	± 0.7
Graduate or professional degree	6,623	± 554	9.0%	± 0.7
Percent high school graduate or higher			89.4%	± 0.8
Percent bachelor's degree or higher			20.7%	± 1.0

Source: 2011-2015 American Community Survey

9 Language spoken at home

	COUNT		PERCENTAGE		SPEAK ENGLISH LESS THAN "VERY WELL"	
	Estimate	Margin of error	Estimate	Margin of error	Estimate	Margin of error
Population 5 years and over	108,683	± 60	100%			
LANGUAGE SPOKEN AT HOME						
English only	100,824	± 593	92.8%	± 0.5		
Language other than English	7,859	± 591	7.2%	± 0.5	1,680	± 315
Spanish	3,937	± 434	3.6%	± 0.4	894	± 235
Other Indo-European languages	2,428	± 480	2.2%	± 0.4	464	± 210
Asian and Pacific Islander languages	1,184	± 221	1.1%	± 0.2	302	± 84
Other languages	310	± 145	0.3%	± 0.1	20	± 23

Source: 2011-2015 American Community Survey

10 Labor Force Characteristics

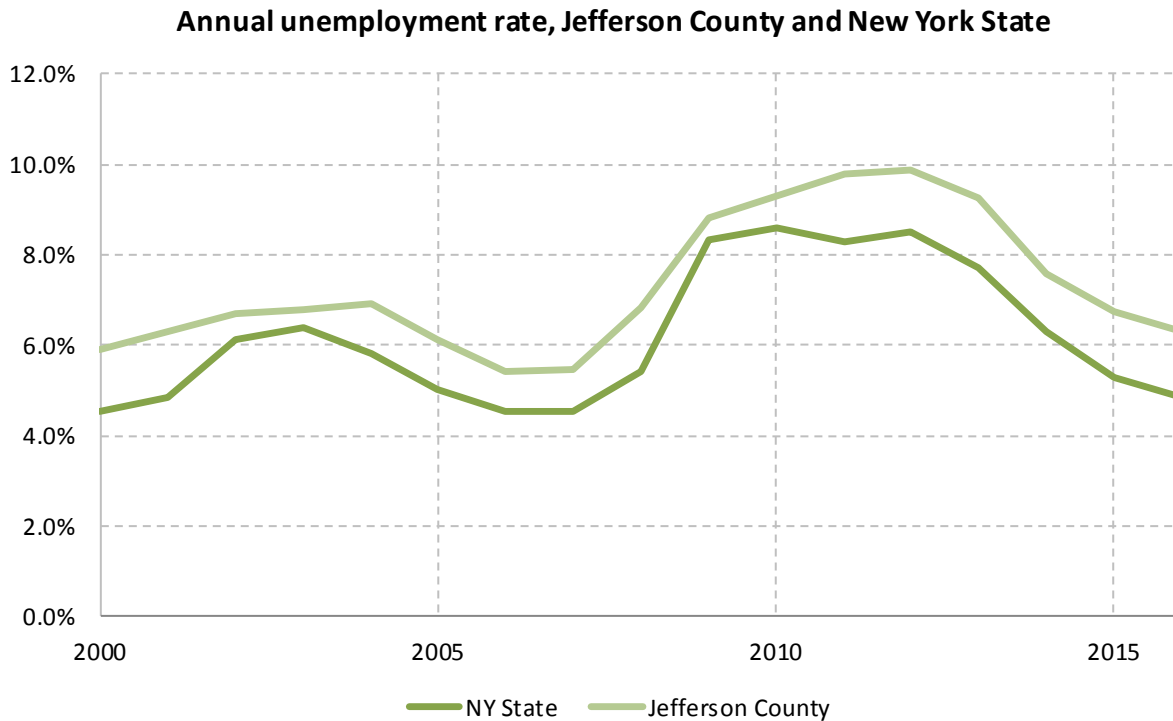
10.1 Labor force, employment and unemployment

	TOTAL		IN LABOR FORCE		EMPLOYED		UNEMPLOYMENT RATE	
	Estimate	Margin of error	Estimate	Margin of error	Estimate	Margin of error	Estimate	Margin of error
Population 16 years and over	92,091	± 153	65.6%	± 0.8	48.6%	± 1.0	10.6%	± 0.8
AGE								
16 to 19 years	5,867	± 229	49.8%	± 4.5	29.2%	± 4.0	27.7%	± 6.5
20 to 24 years	12,326	± 180	80.3%	± 2.5	38.3%	± 3.2	16.2%	± 2.7
25 to 29 years	10,969	± 129	81.8%	± 2.2	51.9%	± 3.5	13.8%	± 3.1
30 to 34 years	8,928	± 150	78.0%	± 3.4	55.6%	± 4.6	11.3%	± 3.3
35 to 44 years	13,961	± 91	81.3%	± 2.1	65.2%	± 2.8	7.2%	± 1.3
45 to 54 years	14,024	± 91	78.8%	± 2.1	70.6%	± 2.3	8.4%	± 1.6
55 to 59 years	6,437	± 294	66.8%	± 3.3	62.8%	± 3.2	5.8%	± 1.6
60 to 64 years	5,600	± 299	50.8%	± 3.5	48.1%	± 3.3	5.2%	± 1.9
65 to 74 years	7,889	± 84	21.2%	± 2.6	19.4%	± 2.6	8.7%	± 4.1
75 years and over	6,090	± 45	6.4%	± 1.7	6.1%	± 1.7	4.8%	± 5.3
RACE AND HISPANIC OR LATINO ORIGIN								
White alone	80,757	± 396	65.4%	± 0.8	50.5%	± 1.0	10.1%	± 0.8
Black or African American alone	5,156	± 291	65.3%	± 3.5	30.7%	± 5.2	17.2%	± 6.3
American Indian and Alaska Native alone	423	± 174	88.2%	± 8.0	67.4%	± 17.1	10.4%	± 9.4
Asian alone	1,243	± 161	68.2%	± 7.2	57.4%	± 9.0	1.7%	± 2.0
Two or more races	2,607	± 352	64.2%	± 6.6	30.6%	± 5.6	22.2%	± 8.3
Hispanic or Latino origin (of any race)	5,598	± 48	75.5%	± 3.1	34.5%	± 4.9	14.7%	± 4.8
White alone, not Hispanic or Latino	77,897	± 222	64.9%	± 0.8	50.9%	± 1.0	10.0%	± 0.9
SEX								
Population 20 to 64 years	72,245	± 190	76.7%	± 1.0	56.9%	± 1.3	9.8%	± 0.9
Male	38,856	± 167	82.4%	± 1.2	53.5%	± 1.6	9.7%	± 1.4
Female	33,389	± 121	70.0%	± 1.8	60.9%	± 1.9	9.8%	± 1.3
With own children under 18 years	13,885	± 505	68.2%	± 2.9	59.0%	± 3.0	10.9%	± 2.4
EDUCATIONAL ATTAINMENT								
Population 25 to 64 years	59,919	± 167	75.9%	± 1.0	60.7%	± 1.5	8.9%	± 0.9
Less than high school graduate	5,270	± 456	50.3%	± 4.3	38.4%	± 4.5	23.4%	± 5.9
High school graduate (includes equivalency)	18,890	± 648	71.3%	± 1.8	57.6%	± 2.2	11.7%	± 1.9
Some college or associate's degree	22,677	± 760	80.3%	± 1.5	63.0%	± 2.0	7.4%	± 1.3
Bachelor's degree or higher	13,082	± 653	85.3%	± 2.1	70.4%	± 2.7	3.8%	± 1.2

Table formula: **LABOR FORCE** = # EMPLOYED + # UNEMPLOYED
% IN LABOR FORCE = LABOR FORCE / TOTAL * 100%
% EMPLOYED = # EMPLOYED / TOTAL * 100%
UNEMPLOYMENT RATE = # UNEMPLOYED / LABOR FORCE * 100%

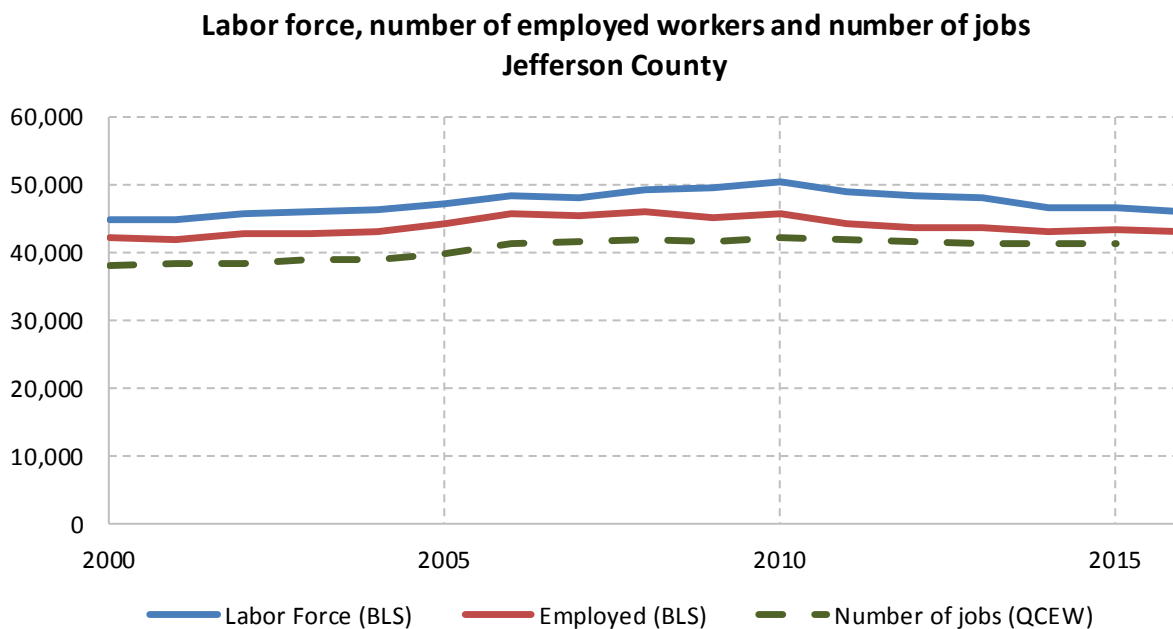
Source: 2011-2015 American Community Survey

10.2 Annual unemployment rate



Source: Bureau Labor Statistics (BLS)

10.3 Employment and number of jobs



Source: Bureau Labor Statistics (BLS) and NY Department of Labor - Quarterly Census of Employment and Wages (QCEW) – annual averages

10.4 Class of worker

		Total	%Male	%Female
Civilian employed population 16 years and over	Estimate	44,732	50.3%	49.7%
	<i>Margin of error</i>	± 972	± 0.9	± 0.9
Private for-profit wage and salary workers:	Estimate	25,508	52.0%	48.0%
	<i>Margin of error</i>	± 850	± 1.4	± 1.4
Employee of private company workers	Estimate	24,551	51.2%	48.8%
	<i>Margin of error</i>	± 841	± 1.5	± 1.5
Self-employed in own incorporated business workers	Estimate	957	72.3%	27.7%
	<i>Margin of error</i>	± 157	± 6.7	± 6.7
Private not-for-profit wage and salary workers	Estimate	4,458	25.8%	74.2%
	<i>Margin of error</i>	± 384	± 4.1	± 4.1
Local government workers	Estimate	4,570	45.9%	54.1%
	<i>Margin of error</i>	± 433	± 4.4	± 4.4
State government workers	Estimate	2,852	56.8%	43.2%
	<i>Margin of error</i>	± 297	± 5.0	± 5.0
Federal government workers	Estimate	4,315	67.5%	32.5%
	<i>Margin of error</i>	± 497	± 4.9	± 4.9
Self-employed in own not incorporated business workers and unpaid family workers	Estimate	3,029	48.0%	52.0%
	<i>Margin of error</i>	± 330	± 5.2	± 5.2

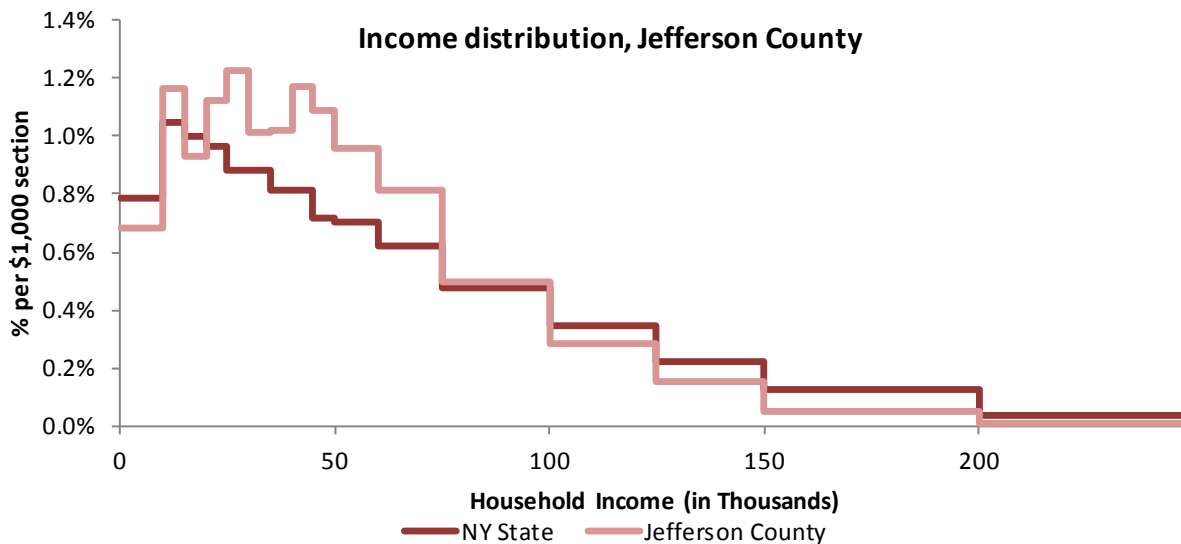
Source: 2011-2015 American Community Survey

11 Household Income

11.1 Income Distribution

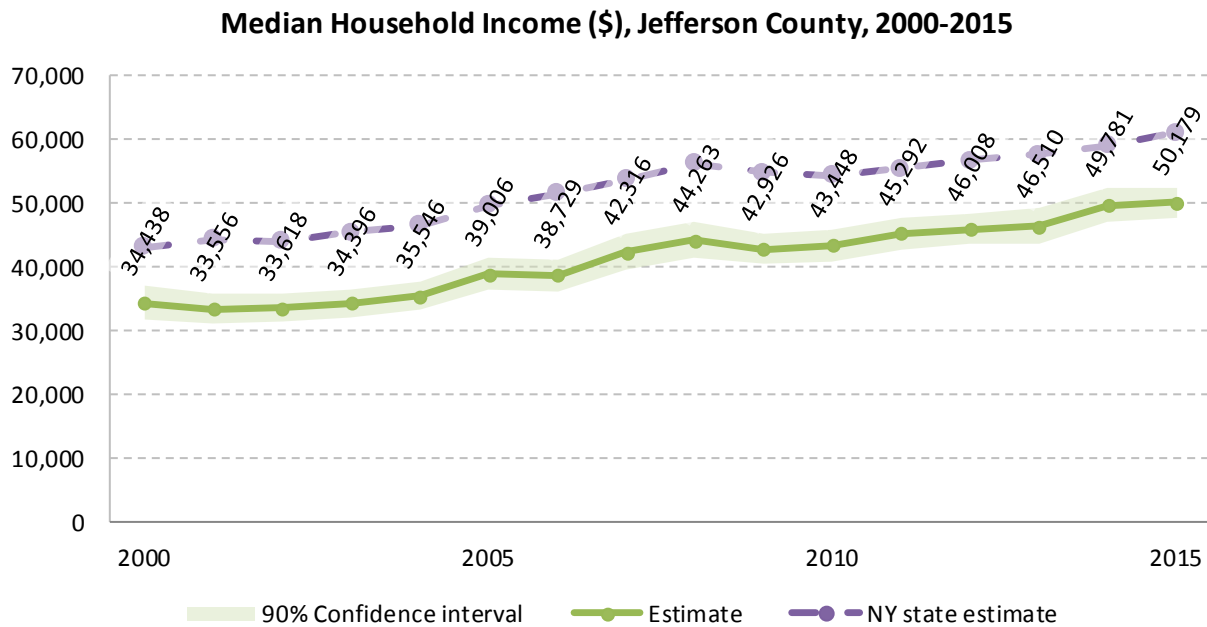
	Estimate	Margin of error	Interval width (in \$1,000)	Est. per \$1,000 section
Total:	44,306	± 547		
Less than \$10,000	3,026	± 319	10	302.6
\$10,000 to \$14,999	2,577	± 330	5	515.4
\$15,000 to \$19,999	2,060	± 217	5	412.0
\$20,000 to \$24,999	2,478	± 270	5	495.6
\$25,000 to \$29,999	2,717	± 288	5	543.4
\$30,000 to \$34,999	2,238	± 321	5	447.6
\$35,000 to \$39,999	2,262	± 277	5	452.4
\$40,000 to \$44,999	2,599	± 305	5	519.8
\$45,000 to \$49,999	2,413	± 357	5	482.6
\$50,000 to \$59,999	4,254	± 366	10	425.4
\$60,000 to \$74,999	5,425	± 454	15	361.7
\$75,000 to \$99,999	5,514	± 410	25	220.6
\$100,000 to \$124,999	3,167	± 320	25	126.7
\$125,000 to \$149,999	1,681	± 196	25	67.2
\$150,000 to \$199,999	1,116	± 193	50	22.3
\$200,000 or more	779	± 144	-	-

Source: 2011-2015 American Community Survey



Source: 2011-2015 American Community Survey

11.2 Median household income: Trends over time



Source: Small Area Income and Poverty Estimates (SAIPE)

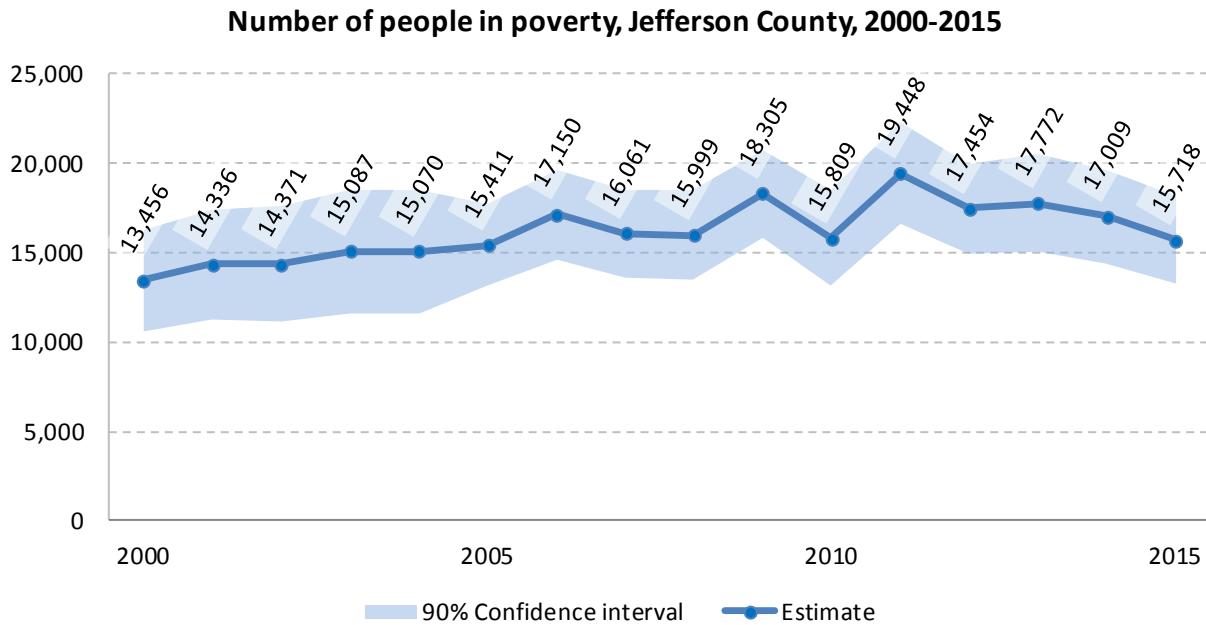
12 Poverty

12.1 Family Income to Poverty Ratio

	TOTAL		PERCENT OF ALL	
	Estimate	Margin of error	Estimate	Margin of error
All families	30,116	± 765		
ALL FAMILIES WITH INCOME:				
Below 50 percent of poverty level	1,363	± 196	4.5%	± 0.6
Below 100 percent of poverty level	3,294	± 303	10.9%	± 1.0
Below 125 percent of poverty level	4,393	± 385	14.6%	± 1.2
Below 150 percent of poverty level	6,195	± 458	20.6%	± 1.4
Below 185 percent of poverty level	8,261	± 539	27.4%	± 1.6
Below 200 percent of poverty level	9,154	± 568	30.4%	± 1.7
Below 300 percent of poverty level	15,210	± 608	50.5%	± 1.6
Below 400 percent of poverty level	19,875	± 611	66.0%	± 1.1
Below 500 percent of poverty level	23,899	± 740	79.4%	± 1.4

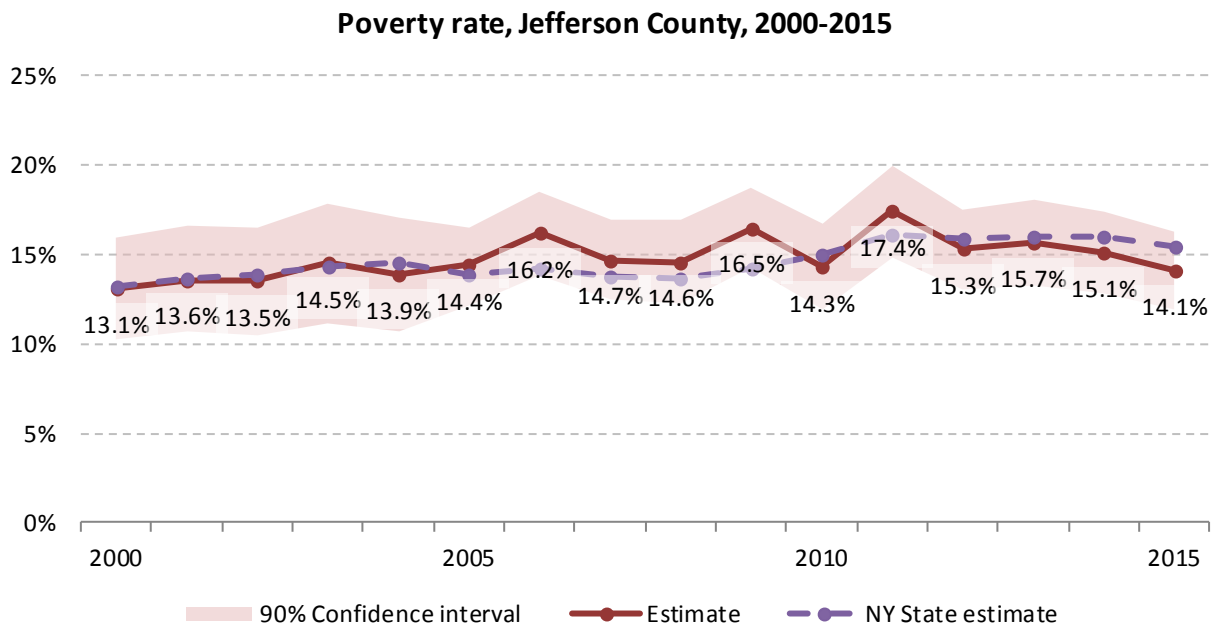
Source: 2011-2015 American Community Survey

12.2 Poverty: Trends over time: Count



Source: Small Area Income and Poverty Estimates (SAIPE)

12.3 Poverty: Trends over time: Rate



Source: Small Area Income and Poverty Estimates (SAIPE)

12.4 Poverty characteristics

	TOTAL		BELOW POVERTY LEVEL		PERCENT BELOW POVERTY LEVEL	
	Estimate	Margin of error	Estimate	Margin of error	Estimate	Margin of error
Population for whom poverty status is determined	112,484	± 604	16,938	± 1,355	15.1%	± 1.2
AGE						
Under 18 years	29,082	± 232	6,474	± 833	22.3%	± 2.9
Under 5 years	10,062	± 120	2,342	± 389	23.3%	± 3.8
5 to 17 years	19,020	± 180	4,132	± 610	21.7%	± 3.3
18 to 34 years	30,777	± 565	4,955	± 536	16.1%	± 1.7
35 to 64 years	39,113	± 189	4,707	± 433	12.0%	± 1.1
65 years and over	13,512	± 115	802	± 146	5.9%	± 1.1
SEX						
Male	56,248	± 608	7,850	± 710	14.0%	± 1.2
Female	56,236	± 178	9,088	± 822	16.2%	± 1.5
RACE AND HISPANIC OR LATINO ORIGIN						
White alone	98,756	± 721	14,668	± 1,257	14.9%	± 1.2
Black or African American alone	5,270	± 503	664	± 204	12.6%	± 3.8
American Indian and Alaska Native alone	536	± 296	11	± 15	2.1%	± 3.2
Asian alone	1,667	± 206	246	± 193	14.8%	± 11.5
Hispanic or Latino origin (of any race)	7,099	± 191	1,292	± 326	18.2%	± 4.7
White alone, not Hispanic or Latino	94,810	± 490	13,924	± 1,253	14.7%	± 1.3
EDUCATIONAL ATTAINMENT						
Population 25 years and over	71,119	± 355	8,254	± 586	11.6%	± 0.8
Less than high school graduate	7,179	± 569	2,090	± 320	29.1%	± 3.4
High school graduate (includes equivalency)	23,543	± 692	3,063	± 311	13.0%	± 1.2
Some college, associate's degree	25,223	± 775	2,477	± 297	9.8%	± 1.1
Bachelor's degree or higher	15,174	± 751	624	± 176	4.1%	± 1.1
EMPLOYMENT STATUS						
Civilian labor force 16 years and over	50,018	± 970	5,079	± 514	10.2%	± 1.0
Employed	44,732	± 972	3,324	± 418	7.4%	± 0.9
Male	22,492	± 620	1,281	± 225	5.7%	± 1.0
Female	22,240	± 635	2,043	± 297	9.2%	± 1.3
Unemployed	5,286	± 428	1,755	± 315	33.2%	± 4.8
Male	2,734	± 354	985	± 243	36.0%	± 6.9
Female	2,552	± 320	770	± 184	30.2%	± 6.4
WORK EXPERIENCE IN THE PAST 12 MONTHS						
Population 16 years and over	22,240	± 635	2,043	± 297	9.2%	± 1.3
Worked full-time, year-round	5,286	± 428	1,755	± 315	33.2%	± 4.8
Worked part-time or part-year	2,734	± 354	985	± 243	36.0%	± 6.9
Did not work	2,552	± 320	770	± 184	30.2%	± 6.4

Source: 2011-2015 American Community Survey

13 Glossary

American Community Survey (ACS) - The American Community Survey is an ongoing survey of the population that provides data every year on a variety of social and economic characteristics—age, sex, race, family and relationships, income and benefits, health insurance, education, veteran status, disabilities, where you work and how you get there, where you live and how much you pay for some essentials. The ACS replaced the information previously gathered by what was known as the “long form” of the decennial censuses. The ACS provides communities, companies and other institutions with current information they need to plan investments and services. Information from the survey generates data that help determine how more than \$400 billion in federal and state funds are distributed each year. Every estimate presented in the American Community Survey, as in other surveys, has an uncertainty associated with it. Often the magnitude of that uncertainty is expressed as the Margin of Error.

Confidence Interval (CI) - indication of the degree of uncertainty about a sample estimates. Confidence intervals have been traditionally reported at the 90, 95 and 99 percent levels. A 90 percent confidence interval can be interpreted, for example, roughly as providing 90 percent certainty that the interval defined by the upper and lower bounds contain the true value of the characteristic. If a Margin of Error is given, the lower bound of the confidence interval is equal to the estimate minus the Margin of Error and the upper bound is equal to the estimate plus the Margin of Error. (See further, Margin of Error definition below.)

County subdivision or Minor Civil Division (MCD) - The Census Bureau geography for primary administrative units below the county level in New York is collectively referred to as county subdivisions or minor civil divisions. These include towns, cities and Indian Reservations.

Decennial Census - the Census of the population and housing taken every 10 years in the United States, at the start of each decade, since 1790.

Employed – either “at work” or “with a job, but not at work”.

Group Quarters Population - all U.S. residents who live in group living facilities including correctional institutions, juvenile facilities, skilled nursing facilities, college residence halls, military barracks, group homes, and workers' dormitories.

Household Population - all U.S. residents who live in housing units such as single family homes, townhouses, apartments, and mobile homes.

Intercensal Population Estimates - estimates produced for the years between two decennial censuses when both the beginning and ending populations are known. They are produced once a decade by adjusting the existing time series of postcensal estimates for the entire decade to smooth the transition from one decennial census count to the next. They differ from the postcensal estimates that are released annually because the difference between the April 1 postcensal estimate and April 1 census count for the end of the decade is redistributed across the estimates for that decade. For dates when both postcensal and intercensal estimates are available, intercensal estimates are preferred.

Labor Force - consists of people classified as employed or unemployed.

Margin of Error (MOE) - a measure of the precision of an estimate at a given level of confidence. The confidence level of a margin of error indicates the likelihood that the difference between the population value (which you

would get if you could measure the whole population instead of a sample) and the estimate is less than or equal to the margin of error. The range from the estimate minus the margin of error to the estimate plus the margin of error is called the confidence interval. All ACS estimates are published with their margins of error at the 90 percent confidence level. Margins of error are useful in assessing the reliability of estimates and whether differences between estimates are significant.

Numeric Population Change - difference between the population of an area at the beginning and end of a time period. It is computed by taking the difference between the population at one point in time (t_1) and some future time (t_2).

Percent Population Change - difference between the population of an area at the beginning and end of a time period, expressed as a percentage of the beginning population. It is computed by dividing the population change ($t_2 - t_1$) by t_1 and multiplying the result by 100.

Population Estimates - The calculated number of people living in an area as of a specified point in time, usually July 1st. The estimated population is calculated using a component of change model that incorporates information on natural increase (births, deaths) and net migration (net domestic migration, net international migration) that has occurred in an area since the latest decennial census. A procedure for estimating the current population using a procedure involving a "base population" value at time $t - 1$, adding to that the births during the interval $t - 1$ to t , subtracting the deaths during that interval $t - 1$ to t , and then adding the net domestic and net international migration that occurred during that interval.

Population Density - Total number of people per areal unit like a square mile or square kilometer.

Population Pyramids - A graphical way of portraying a population's age and sex composition at a given slice in time. The first horizontal bar, constituting the base of the graph, is the youngest age group (typically 0-4) with the number of males in that age group on the left and the number of females in that age group on the right. On top of that age group is another horizontal bar for the next age group (e.g. 5-9) and so forth with the top bar typically for those aged 75 and over. In a population with lots of births and deaths, the shape typically forms a pyramid with a broad base and a narrow top. It is one of the most basic ways to understand population change over time as well as between different geographic units of a similar status (e.g. counties).

Postcensal Estimates - estimates produced for the years after a decennial census when only the beginning population is known. They are produced and revised each year, targeted to July 1 of that year.

Projection - estimated population at some future time based on assumptions about births, deaths, migration, and ages.

Race/Ethnicity - the Census Bureau collects racial data in accordance with guidelines provided by the U.S. Office of Management and Budget (OMB), and these data are based on self-identification. The racial categories included in the census questionnaire generally reflect a social definition of race recognized in this country and not an attempt to define race biologically, anthropologically, or genetically. In addition, it is recognized that the categories of the race item include racial and national origin or sociocultural groups. People may choose to report more than one race to indicate their racial mixture, such as "American Indian" and "White." People who identify their origin as Hispanic, Latino, or Spanish may be of any race. OMB requires five minimum categories: White, Black or African American, American Indian or Alaska Native, Asian, and Native Hawaiian or Other Pacific Islander. Hispanics may be classified as white or black. So we generally separate them out as an ethnic group first.

Unemployed – Not employed, but actively looking for work and available to accept a job.

Unemployment rate – Fraction of the Labor Force that is unemployed.

Urban Area – A densely settled area with at least 2,500 people. If the total number of people is less than 50,000 the Census Bureau calls it an Urban Cluster, otherwise an Urbanized Area.

Vintage - each year, the U.S. Census Bureau produces and publishes estimates of the population for each state and county, as well as the nation as a whole. These are called “vintages.” In producing these vintages, the Bureau utilizes administrative data from a number of sources to estimate 1) the change in population since the most recent decennial census, and 2) the population for each year since the most recent decennial census. With each annual release of population estimates (vintage), the entire time series of estimates beginning on April 1, 2010 is revised and updated.

Vital Statistics - quantitative data concerning a population, such as the number of births, marriages, and deaths.

14 References

Jefferson County homepage: <http://www.co.jefferson.ny.us/>

At Cornell:

- Program on Applied Demographics (PAD)
URL: <http://pad.human.cornell.edu/>
 - More county trends: <https://pad.human.cornell.edu/counties/trends1geo.cfm?geo=45>
- Community and Regional Development Institute (CaRDI)
URL: <https://cardi.cals.cornell.edu/>
- Cornell Cooperative Extensions (CCE)
Home page: <http://www.cce.cornell.edu>
 - Jefferson local office: <http://ccejefferson.org/>

Data sources and background information:

- New York State Data Center
 - <https://labor.ny.gov/nys-data-center/index.shtm>
- U.S. Census Bureau - general
 - QuickFacts: <https://www.census.gov/quickfacts/table/PST045216/36,36045>
 - American FactFinder: <http://factfinder.census.gov/>
- U.S. Census Bureau - population
 - Decennial Census
 - Background: <https://www.census.gov/2010census/>
 - Demographic Profile: http://factfinder2.census.gov/bkmk/table/1.0/en/DEC/10_SF1/SF1DP1/0500000US360455
 - American Community Survey (ACS)
 - Background: <https://www.census.gov/programs-surveys/acs/>
 - Social Data Profile: http://factfinder2.census.gov/bkmk/table/1.0/en/ACS/15_5YR/DP02/0500000US36045
 - Economic Data Profile: http://factfinder2.census.gov/bkmk/table/1.0/en/ACS/15_5YR/DP03/0500000US36045
 - Housing Data Profile: http://factfinder2.census.gov/bkmk/table/1.0/en/ACS/15_5YR/DP04/0500000US36045
 - Demographics Data Profile: http://factfinder2.census.gov/bkmk/table/1.0/en/ACS/15_5YR/DP05/0500000US36045
 - Population estimates:
 - General: <https://www.census.gov/programs-surveys/popest.html>
 - Explorer: <https://www.census.gov/censusexplorer/censusexplorer-popest.html>
- U.S. Census Bureau – Small Area Income & Poverty Estimates (SAIPE)
 - <http://www.census.gov/did/www/saipe/>
- U.S. Census Bureau - Public Use Quarterly Workforce Indicators (QWI) – annual averages
 - <https://qwiexplorer.ces.census.gov/static/explore.html>
- U.S. Census Bureau – Building Permits Survey
 - <https://www.census.gov/construction/bps/>

- Bureau Labor Statistics (BLS)
 - Local Area Unemployment Statistics: <http://www.bls.gov/lau/>
 - Quarterly Census of Employment and Wages (QCEW): <https://www.bls.gov/cew/data.htm>
- NY Department of Labor -
 - Labor statistics: <https://labor.ny.gov/stats/index.shtm>
 - Quarterly Census of Employment and Wages (QCEW): <https://labor.ny.gov/stats/LSQCEW.shtm>
- NY State Department of Health
 - Vital Statistics: https://www.health.ny.gov/statistics/vital_statistics/
- Bureau of Economic Analysis (BEA) – Local Area Personal Income and Employment: <http://bea.gov/iTable/iTable.cfm?ReqID=70&step=1>

Alternative sites for data retrieval:

- The Nelson A. Rockefeller Institute of Government – New York State Statistical Yearbooks http://www.rockinst.org/nys_statistics/
- Headwaters Economics: Economic Profile System – Human Dimensions Toolkit <http://headwaterseconomics.org/tools/eps-hdt>
- National Historical Geographic Information System (NHGIS) <https://www.nhgis.org/>
- Social Explorer <http://www.socialexplorer.com/pub/home/home.aspx>
- Stats America <http://www.statsamerica.org/Default.aspx>
- Missouri Census Data Center <http://mcdc.missouri.edu/>
- DataFerret <http://dataferrett.census.gov/>
- Investigative Reporters and Editors (IRE) Census project <http://census.ire.org/>