

# Delaware County Profile 2017

*A collection of recent demographic, social and economic data*

Compiled by

Jan Vink

Cornell Program on Applied Demographics



Cornell University



Program  
on Applied  
Demographics

CORNELL POPULATION CENTER

This profile is a part of a set of profiles generated for each county in New York State. The profiles were developed and generated by the Cornell Program on Applied Demographics. The work is sponsored by the New York State Data Center in the New York State Department of Labor.

Cornell Program on Applied Demographics:

The Program on Applied Demographics (PAD) brings skills in demographics, economics, statistics, data gathering and data analysis together to provide a variety of organizations with data, information and advice. PAD is located in the Department of Policy Analysis and Management within the College of Human Ecology at Cornell University. PAD is also affiliated with the Cornell Institute for Social and Economic Research and the Cornell Population Center.

For more information: <http://pad.human.cornell.edu/>

New York State Data Center:

The New York State Data Center (NYSDC) is located in the Division of Research and Statistics within the New York State Department of Labor. The State Data Center operates as part of a nationwide effort to improve public access to data provided by the U.S. Census Bureau. The U.S. Census Bureau collects and tabulates data on a multitude of subjects such as population, social, economic and housing demographics, labor force data, health care, migration and transportation. These data play a critical role in understanding our local and larger surrounding communities. Census data also influence state and federal funding, aid decision making in the legislative process, and determine each state's number of congressional seats. As the lead agency in New York for the SDC program, the New York State Data Center helps users navigate through the multitude of surveys and products provided by the U.S. Census Bureau.

For more information: <https://labor.ny.gov/nys-data-center/>

All profiles are freely downloadable as PDF documents on the PAD website:

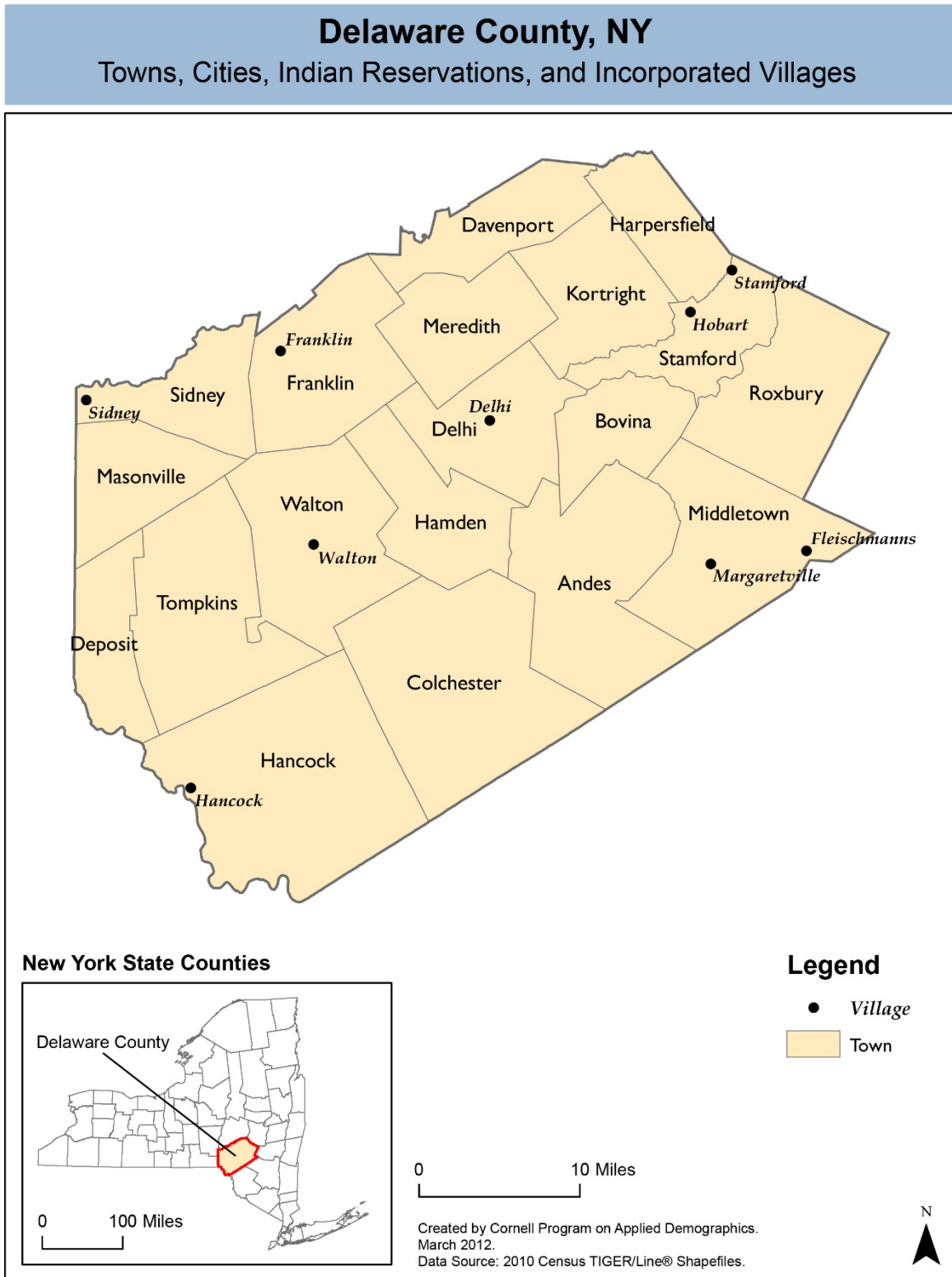
<http://pad.human.cornell.edu/profiles/index.cfm>

This profile is an update from the County Profile produced in 2013. The 2013 profile also contained information on agriculture related items and can be found at <https://pad.human.cornell.edu/profiles/2013/Delaware.pdf>

## Contents

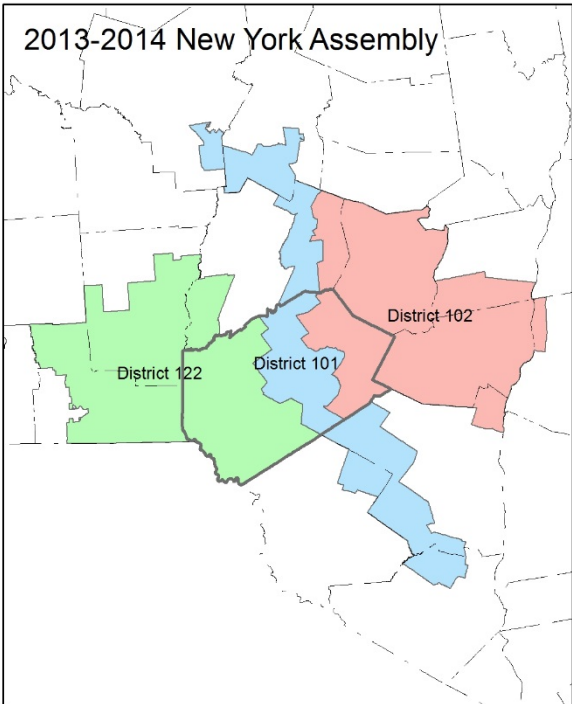
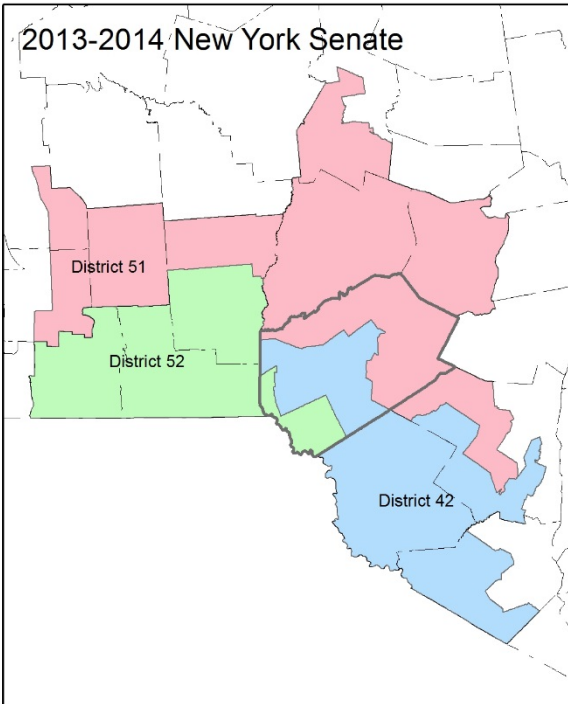
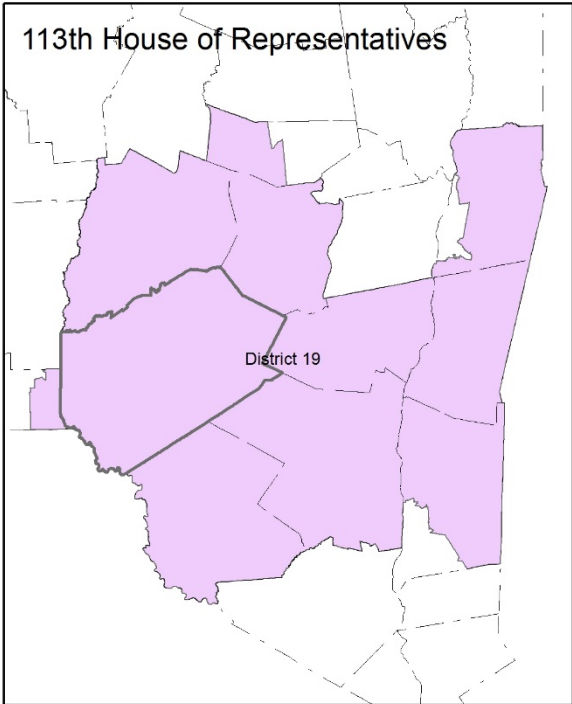
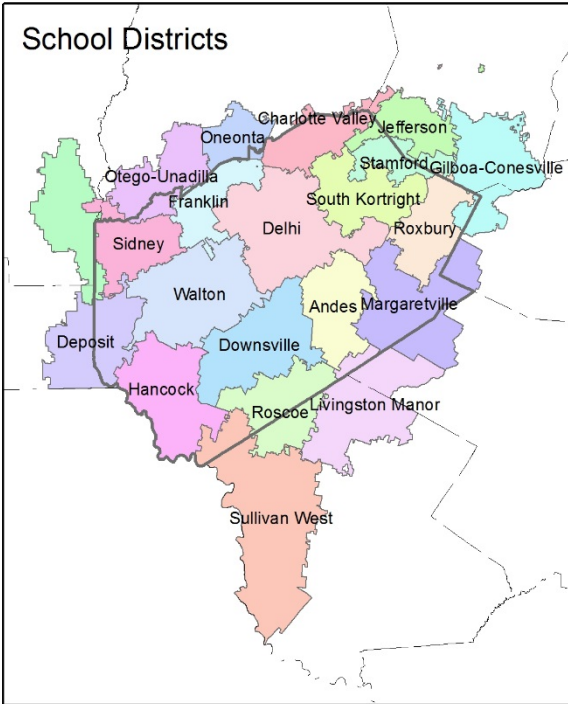
1	Reference Maps (towns and places as defined in 2010)	3
2	Population density and Urban Areas Map	5
3	Total Population	6
3.1	Historic and projected	6
3.2	Change since previous Census	6
3.3	Annual population estimates	7
3.4	Sub County population change 2010-2015	8
3.5	Sub County population change 2010-2015	9
4	Components of population change	10
4.1	Vital Statistics	10
4.2	Migration	11
5	Population by age	12
5.1	Historic and projected population pyramids	12
5.2	Selected age groups	13
5.3	Median age	14
6	Race	15
6.1	Total and household population by race	15
6.2	Race composition by age	15
7	Housing units	16
7.1	Characteristics	16
7.2	Historical data on number of housing units and occupancy status	17
7.3	Building Permits 2000-2015	17
8	Education	18
8.1	Enrollment by level of school	18
8.2	Enrollment by age	18
8.3	Percentage age 18-24 enrolled in college	18
8.4	Educational attainment	19
9	Language spoken at home	19
10	Labor Force Characteristics	20
10.1	Labor force, employment and unemployment	20
10.2	Annual unemployment rate	21
10.3	Employment and number of jobs	21
10.4	Class of worker	22
11	Household Income	23
11.1	Income Distribution	23
11.2	Median household income: Trends over time	24
12	Poverty	24
12.1	Family Income to Poverty Ratio	24
12.2	Poverty: Trends over time: Count	25
12.3	Poverty: Trends over time: Rate	25
12.4	Poverty characteristics	26
13	Glossary	27
14	References	30

1 Reference Maps (towns and places as defined in 2010)

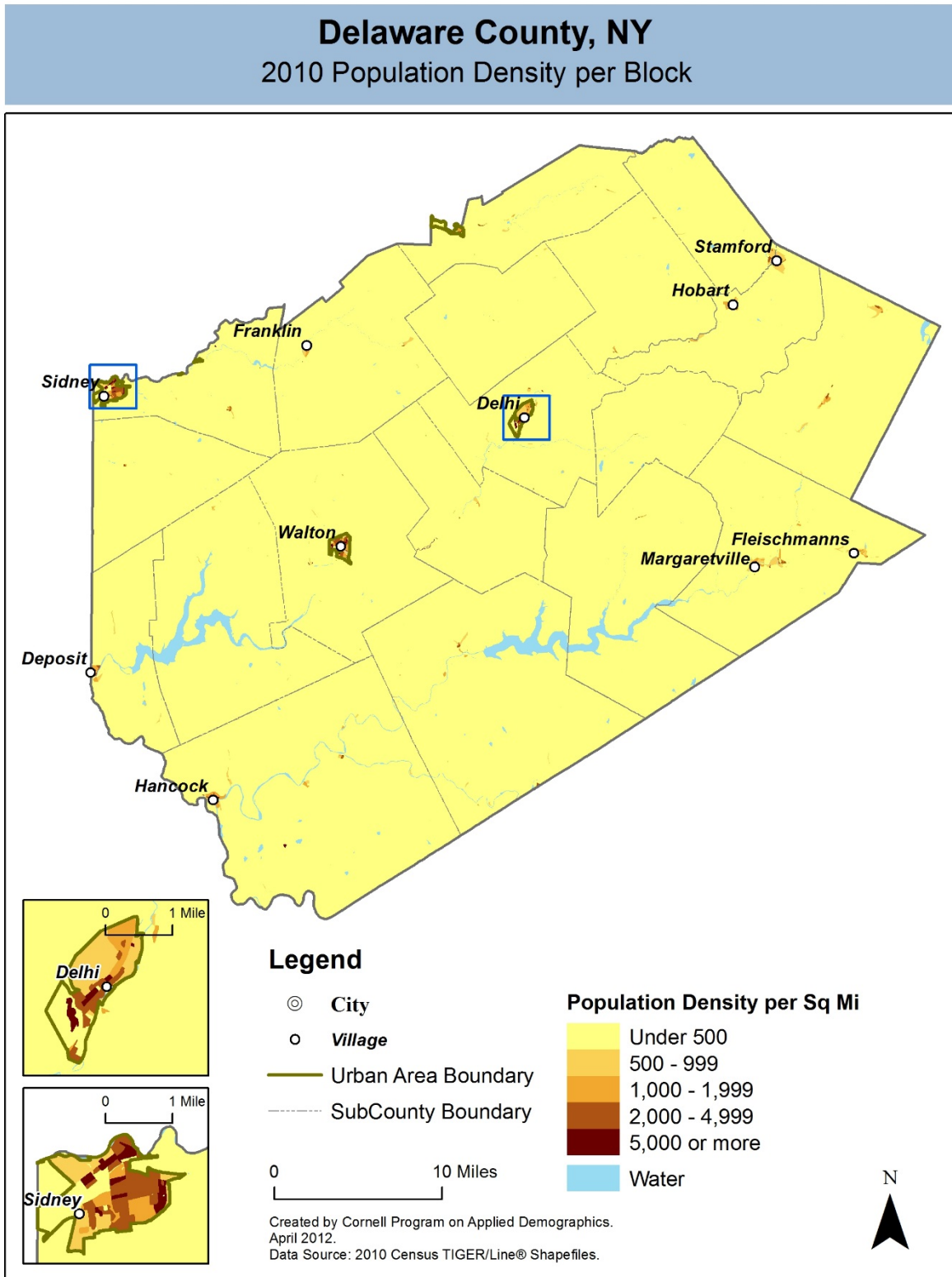


## Delaware County, NY

### Overlap with School and Political Districts



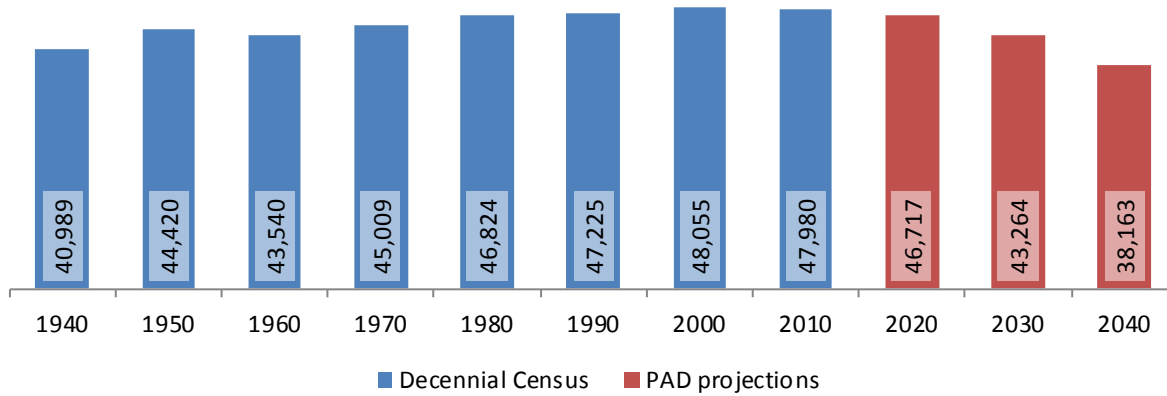
2 Population density and Urban Areas Map



### 3 Total Population

#### 3.1 Historic and projected

Total population, Delaware County, 1940-2040



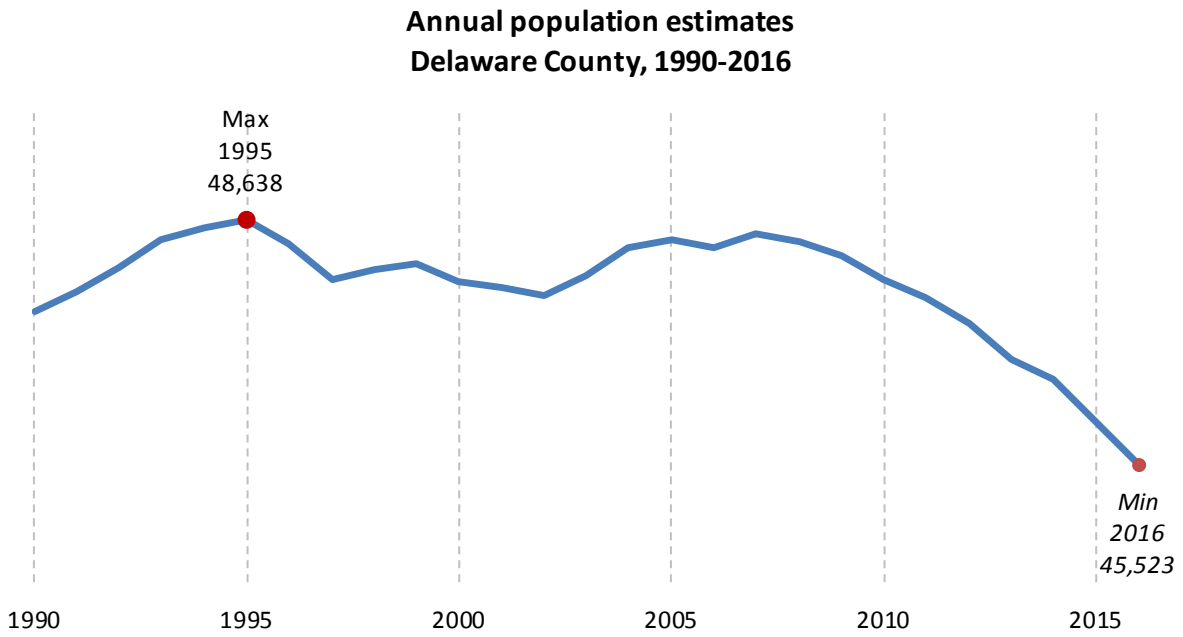
Source: 1940-2010 Decennial Census and projections by Cornell Program on Applied Demographics

#### 3.2 Change since previous Census

	Year	Total population	Change	
			Number	Percent
Decennial Census	1940	40,989		
	1950	44,420	3,431	8.4%
	1960	43,540	-880	-2.0%
	1970	45,009	1,469	3.4%
	1980	46,824	1,815	4.0%
	1990	47,225	401	0.9%
	2000	48,055	830	1.8%
	2010	47,980	-75	-0.2%
PAD projections	2020	46,717	-1,263	-2.6%
	2030	43,264	-3,453	-7.4%
	2040	38,163	-5,101	-11.8%

Source: 1940-2010 Decennial Census and projections by Cornell Program on Applied Demographics

### 3.3 Annual population estimates



Source: U.S. Census Bureau population estimates (1990-1999 and 2000-2009 intercensal and vintage 2016 postcensal)

### 3.4 Sub County population change 2010-2015

	Total Population		Difference	
	2000	2010	Count	%
New York State	18,976,821 *	19,378,102	401,281	2.1%
Delaware County	48,055	47,980	-75	-0.2%
<b>Towns</b>				
Andes	1,356	1,301	-55	-4.1%
Bovina	664	633	-31	-4.7%
Colchester	2,042	2,077	35	1.7%
Davenport	2,774	2,965	191	6.9%
Delhi	4,629	5,117	488	10.5%
Deposit	1,687	1,712	25	1.5%
Franklin	2,621	2,411	-210	-8.0%
Hamden	1,280	1,323	43	3.4%
Hancock	3,449	3,224	-225	-6.5%
Harpersfield	1,603	1,577	-26	-1.6%
Kortright	1,633	1,675	42	2.6%
Masonville	1,405	1,320	-85	-6.0%
Meredith	1,588	1,529	-59	-3.7%
Middl	4,051	3,750	-301	-7.4%
Roxbury	2,509	2,502	-7	-0.3%
Sidney	6,109	5,774	-335	-5.5%
Stamford	1,943	2,267	324	16.7%
Tompkins	1,105	1,247	142	12.9%
Walton	5,607	5,576	-31	-0.6%

\* Original counts revised through Count Question Resolution Program (CQR)

Source: U.S. Census Bureau intercensal population estimates 2000-2010

### 3.5 Sub County population change 2010-2015

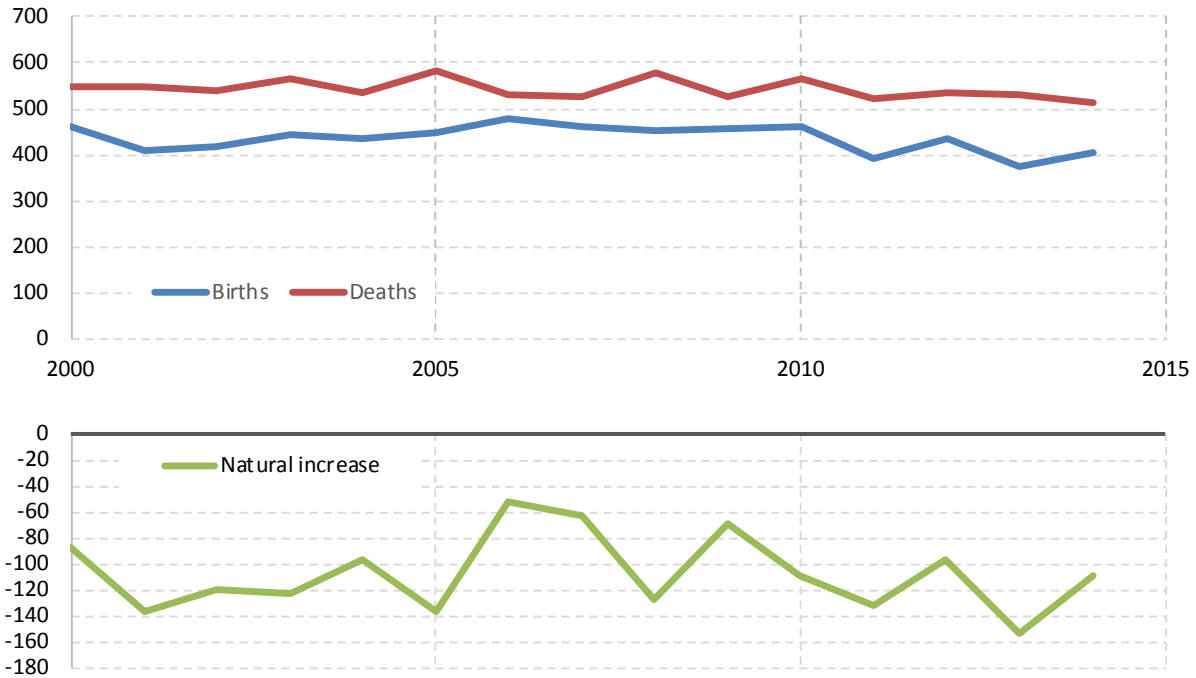
	Total Population		Difference	
	2010 base	2015	Count	%
New York State	19,378,087	19,795,791	417,704	2.2%
Delaware County	47,989	46,053	-1,936	-4.0%
<b>Towns</b>				
Andes	1,301	1,251	-50	-3.8%
Bovina	633	602	-31	-4.9%
Colchester	2,077	2,025	-52	-2.5%
Davenport	2,971	2,826	-145	-4.9%
Delhi	5,117	4,956	-161	-3.1%
Deposit	1,712	1,635	-77	-4.5%
Franklin	2,411	2,323	-88	-3.6%
Hamden	1,325	1,267	-58	-4.4%
Hancock	3,224	3,087	-137	-4.2%
Harpersfield	1,577	1,510	-67	-4.2%
Kortright	1,675	1,605	-70	-4.2%
Masonville	1,317	1,276	-41	-3.1%
Meredith	1,529	1,479	-50	-3.3%
Middl	3,751	3,601	-150	-4.0%
Roxbury	2,504	2,394	-110	-4.4%
Sidney	5,777	5,560	-217	-3.8%
Stamford	2,267	2,167	-100	-4.4%
Tompkins	1,245	1,179	-66	-5.3%
Walton	5,576	5,310	-266	-4.8%

Source: U.S. Census Bureau population estimates 2010-2015

## 4 Components of population change

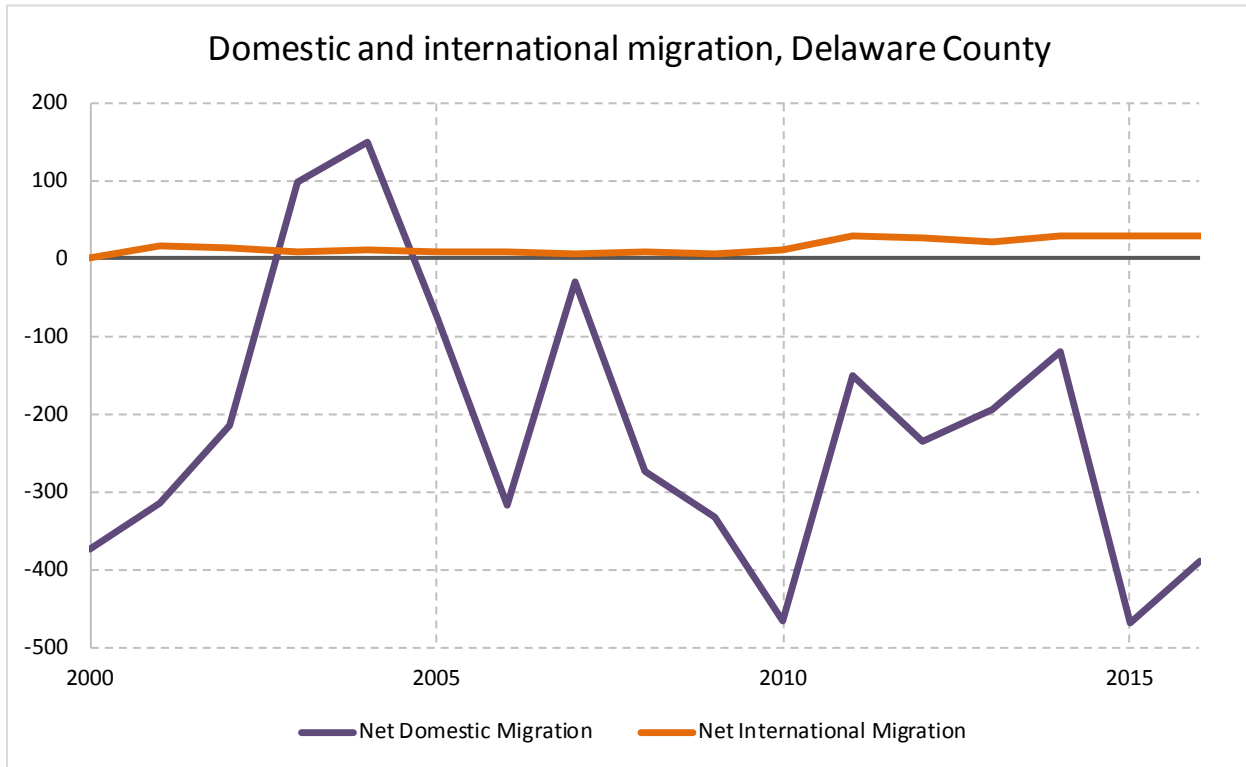
### 4.1 Vital Statistics

Vital Statistics, Delaware County



Source: New York State Department of Health

## 4.2 Migration

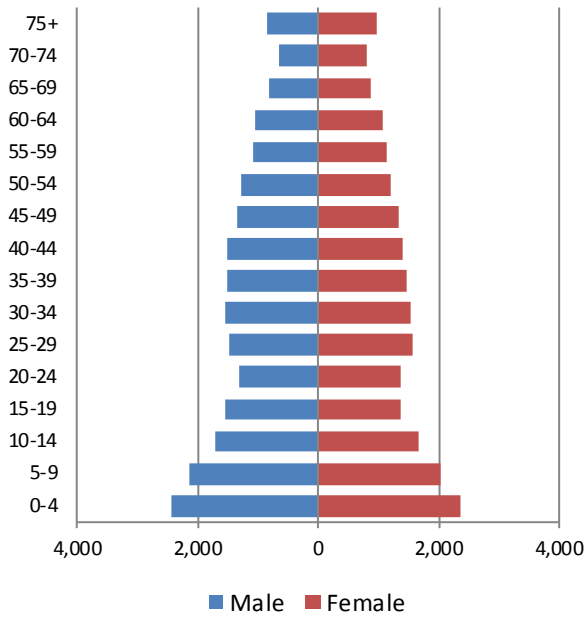


Source: Census Bureau population estimates (V2010 and V2016)

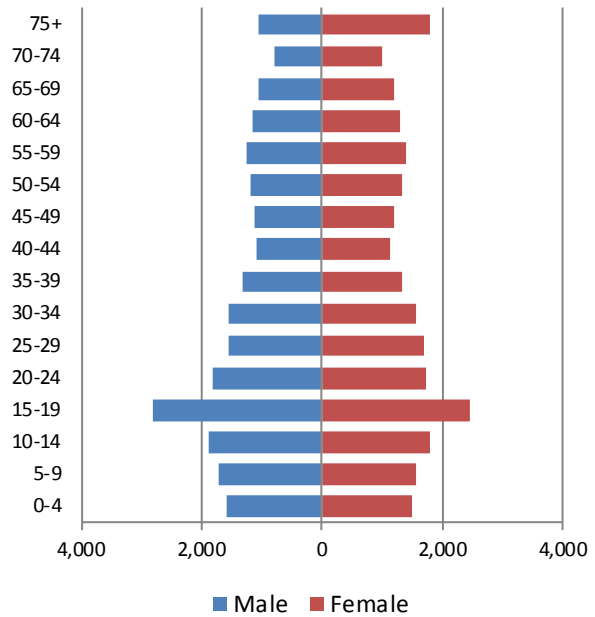
## 5 Population by age

### 5.1 Historic and projected population pyramids

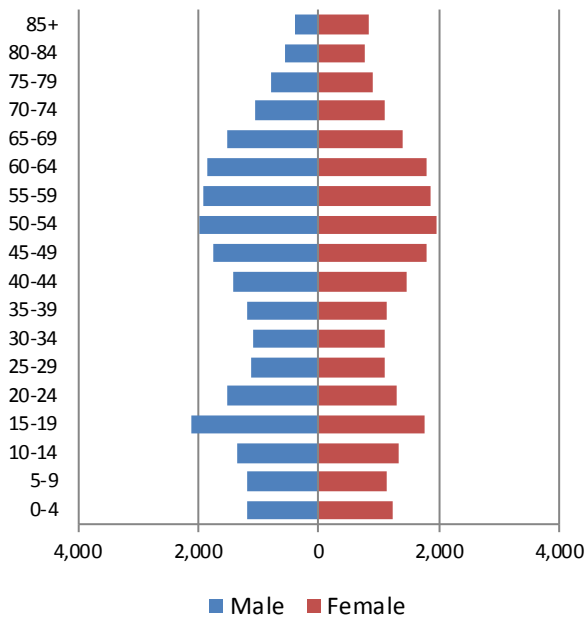
1950 Population Pyramid, Delaware County



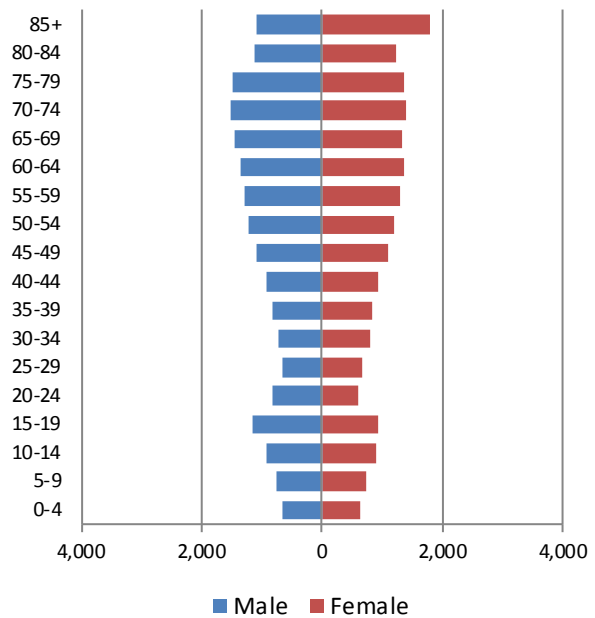
1980 Population Pyramid, Delaware County



2010 Population Pyramid, Delaware County



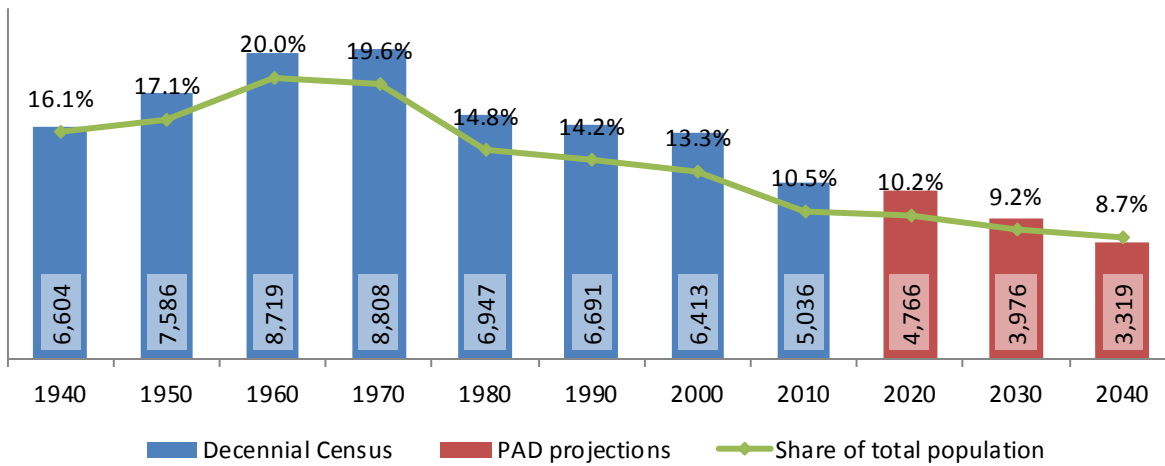
2040 Population Pyramid, Delaware County



Source: 1950, 1980, 2010 Decennial Census and projections by Cornell Program on Applied Demographics

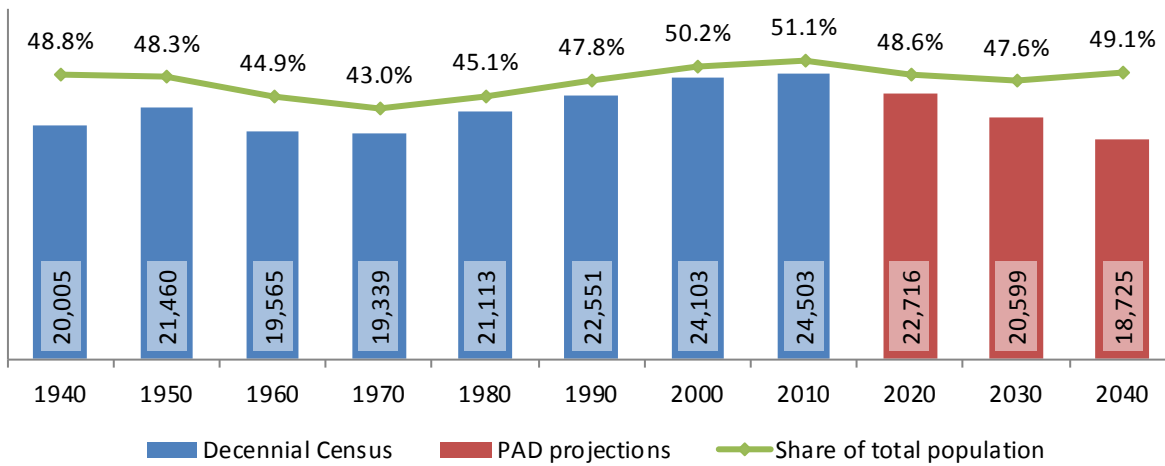
## 5.2 Selected age groups

### Population age 5-14, Delaware County, 1940-2040



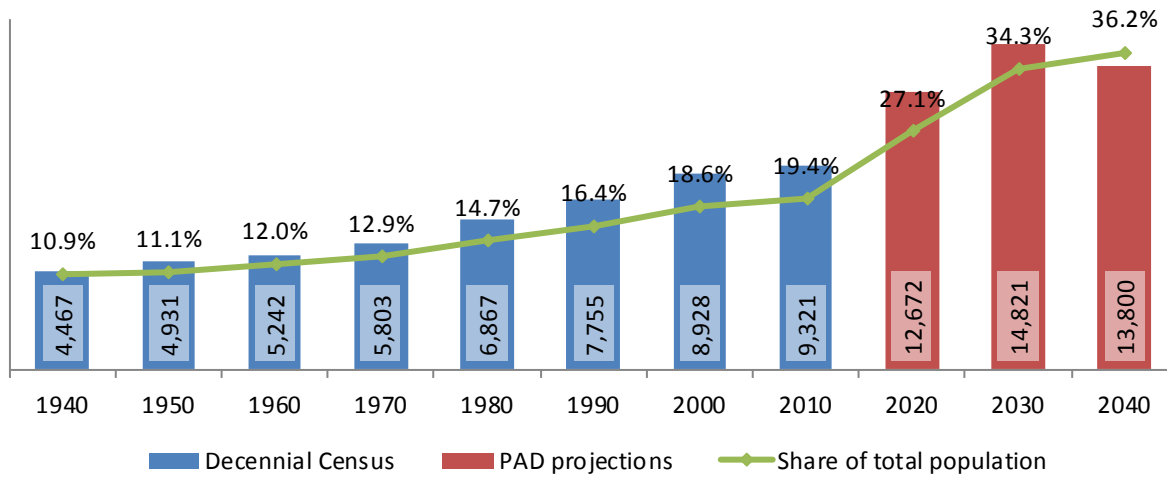
Source: 1940-2010 Decennial Census and projections by Cornell Program on Applied Demographics

### Population age 25-64, Delaware County, 1940-2040



Source: 1940-2010 Decennial Census and projections by Cornell Program on Applied Demographics

**Population age 65 and over, Delaware County, 1940-2040**



Source: 1940-2010 Decennial Census and projections by Cornell Program on Applied Demographics

**5.3 Median age**

	Delaware County	New York State
<b>Median age</b>		
2000	41.4	35.9
2010	45.4	38.0
2015	47.3	38.3

Source: 2000, 2010 Decennial Census, 2015 Population Estimates

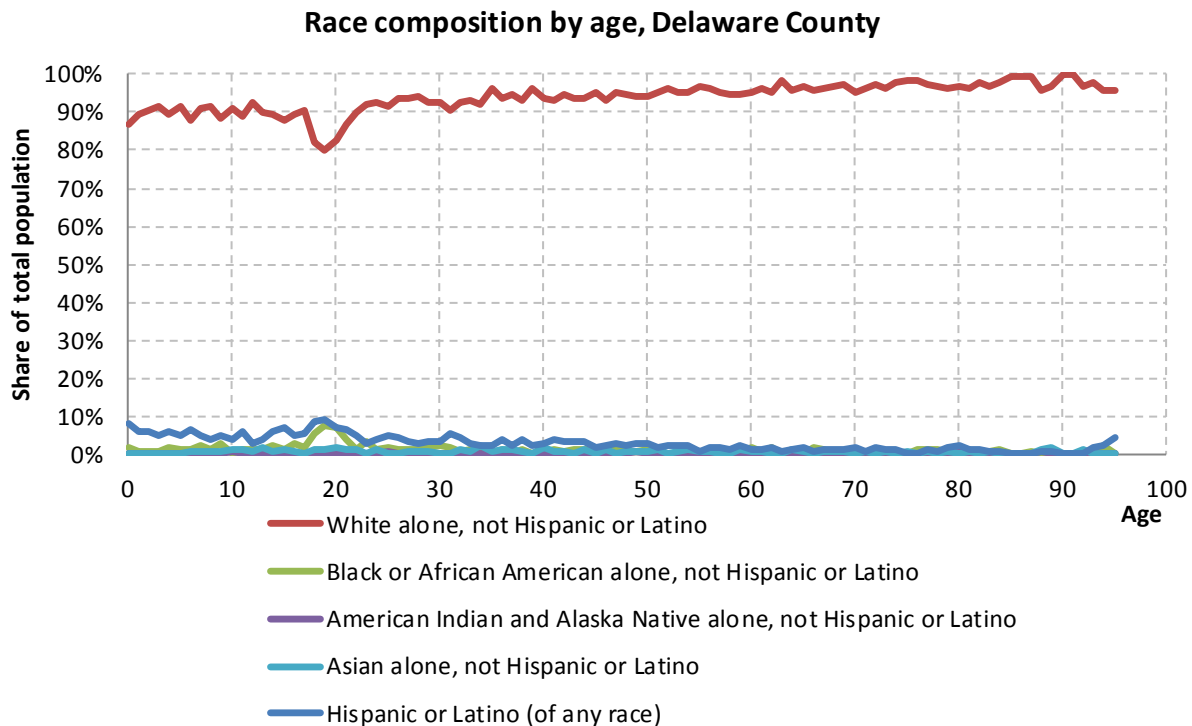
## 6 Race

### 6.1 Total and household population by race

	Total		In households		In Group Quarters
	Count	Percentage	Count	Percentage	Count
<b>Total population</b>	47,980	100%	45,545	100%	2,435
Not Hispanic or Latino					
One race					
White	44,706	93.2%	42,913	94.2%	1,793
Black or African American	691	1.4%	416	0.9%	275
American Indian and Alaska Native	102	0.2%	96	0.2%	6
Asian	363	0.8%	314	0.7%	49
Native Hawaiian and Other Pacific Islander	6	0.0%	-	-	-
Some other race	31	0.1%	-	-	-
Two or more races	521	1.1%	473	1.0%	48
Hispanic or Latino (of any race)	1,560	3.3%	1,300	2.9%	260

Source: 2010 Decennial Census

### 6.2 Race composition by age



Source: 2010 Decennial Census

## 7 Housing units

### 7.1 Characteristics

HOUSING OCCUPANCY	COUNT		PERCENTAGE	
	Estimate	Margin of error	Estimate	Margin of error
<b>Total housing units</b>	31,202	± 201	100.0%	
Occupied housing units	19,262	± 520	61.7%	± 1.5
Vacant housing units	11,940	± 441	38.3%	± 1.5
<b>YEAR STRUCTURE BUILT</b>				
<b>Total housing units</b>	31,202	± 201	100.0%	
Built 2014 or later	0	± 24	0.0%	± 0.1
Built 2010 to 2013	167	± 95	0.5%	± 0.3
Built 2000 to 2009	3,001	± 332	9.6%	± 1.1
Built 1990 to 1999	3,351	± 257	10.7%	± 0.8
Built 1980 to 1989	5,069	± 358	16.2%	± 1.1
Built 1970 to 1979	4,590	± 315	14.7%	± 1.0
Built 1960 to 1969	2,326	± 234	7.5%	± 0.7
Built 1950 to 1959	1,999	± 253	6.4%	± 0.8
Built 1940 to 1949	1,255	± 192	4.0%	± 0.6
Built 1939 or earlier	9,444	± 432	30.3%	± 1.4
<b>HOUSING TENURE</b>				
<b>Occupied housing units</b>	19,262	± 520	100.0%	
Owner-occupied	14,000	± 490	72.7%	± 2.2
Renter-occupied	5,262	± 484	27.3%	± 2.2
<b>HOUSE HEATING FUEL</b>				
<b>Occupied housing units</b>	19,262	± 520	100.0%	
Utility gas	2,218	± 254	11.5%	± 1.3
Bottled, tank, or LP gas	2,160	± 222	11.2%	± 1.1
Electricity	2,438	± 304	12.7%	± 1.5
Fuel oil, kerosene, etc.	8,114	± 383	42.1%	± 1.6
Coal or coke	178	± 67	0.9%	± 0.3
Wood	3,817	± 309	19.8%	± 1.5
Solar energy	1	± 3	0.0%	± 0.1
Other fuel	323	± 91	1.7%	± 0.5
No fuel used	13	± 13	0.1%	± 0.1
<b>VALUE</b>				
<b>Owner-occupied units</b>	14,000	± 490	100.0%	
Less than \$50,000	1,609	± 237	11.5%	± 1.6
\$50,000 to \$99,999	3,268	± 268	23.3%	± 1.7
\$100,000 to \$149,999	2,922	± 256	20.9%	± 1.6
\$150,000 to \$199,999	2,316	± 221	16.5%	± 1.5
\$200,000 to \$299,999	2,389	± 225	17.1%	± 1.5
\$300,000 to \$499,999	1,041	± 146	7.4%	± 1.0
\$500,000 to \$999,999	309	± 67	2.2%	± 0.5
\$1,000,000 or more	146	± 54	1.0%	± 0.4
Median (dollars)	132,400	± 5,686		

Source: 2011-2015 American Community Survey

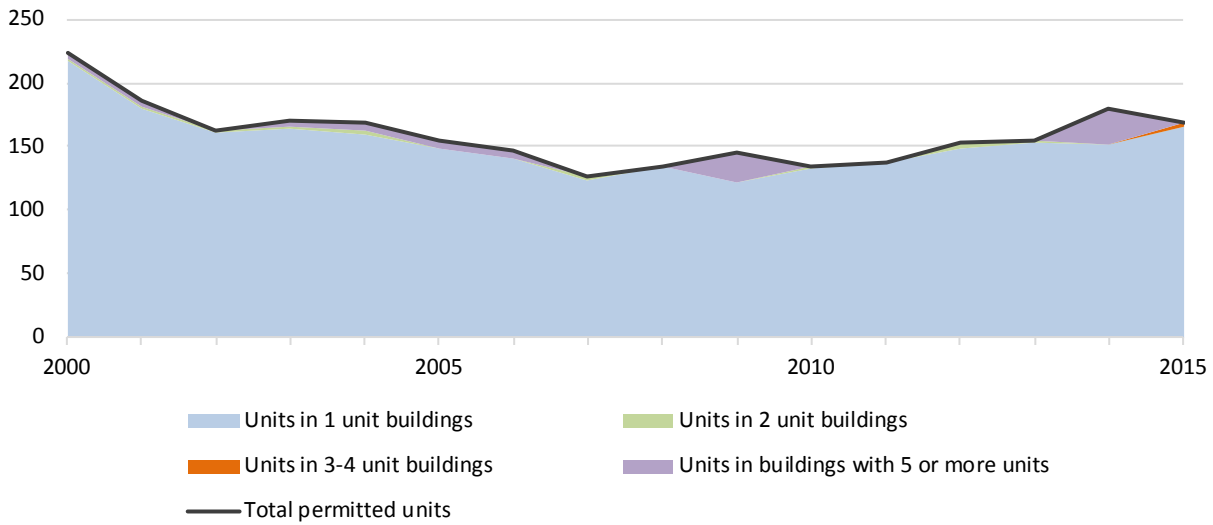
### 7.2 Historical data on number of housing units and occupancy status

Year	Number of Housing Units	Change since previous Census	Occupied	Occupancy rate	Vacant
1970	17,734		13,910	78.4%	3,824
1980	22,746	28.3%	16,483	72.5%	6,263
1990	27,361	20.3%	17,646	64.5%	9,715
2000	28,952	5.8%	19,270	66.6%	9,682
2010	31,222	7.8%	19,898	63.7%	11,324

Source: 1970-2010 Decennial Census

### 7.3 Building Permits 2000-2015

Building permits by number of permitted units in building, Delaware County



Source: Census Bureau Building Permits Survey

## 8 Education

### 8.1 Enrollment by level of school

	Estimate	Margin of error
<b>Total enrolled in school</b>	9,923	± 312
Nursery school, preschool	449	± 112
Kindergarten to 12th grade	6,424	± 149
Kindergarten	224	± 60
Elementary: grade 1 to grade 4	2,120	± 194
Elementary: grade 5 to grade 8	1,768	± 223
High school: grade 9 to grade 12	2,312	± 153
College, undergraduate	2,837	± 360
Graduate, professional school	213	± 63

Source: 2011-2015 American Community Survey

### 8.2 Enrollment by age

	Estimate	Margin of error
3 and 4 years	40.3%	± 9.1
5 to 9 years	95.3%	± 2.5
10 to 14 years	97.7%	± 1.4
15 to 17 years	99.3%	± 0.7
18 and 19 years	81.8%	± 6.2
20 to 24 years	37.0%	± 5.3
25 to 34 years	6.9%	± 1.7
35 years and over	0.9%	± 0.2

Source: 2011-2015 American Community Survey

### 8.3 Percentage age 18-24 enrolled in college

	Estimate	Margin of error
Population 18 to 24 years	5,009	± 87
Enrolled in college or graduate school	48.2%	± 5.9
Males 18 to 24 years	2,646	± 79
Enrolled in college or graduate school	44.0%	± 6.8
Females 18 to 24 years	2,363	± 83
Enrolled in college or graduate school	52.9%	± 6.9

Source: 2011-2015 American Community Survey

## 8.4 Educational attainment

	COUNT		PERCENTAGE	
	Estimate	Margin of error	Estimate	Margin of error
<b>Population 25 years and over</b>	33,253	± 87	100%	
<b>EDUCATIONAL ATTAINMENT</b>				
Less than 9th grade	1,191	± 193	3.6%	± 0.6
9th to 12th grade, no diploma	3,144	± 341	9.5%	± 1.0
High school graduate (includes equivalency)	12,856	± 508	38.7%	± 1.5
Some college, no degree	5,605	± 352	16.9%	± 1.1
Associate's degree	3,751	± 339	11.3%	± 1.0
Bachelor's degree	3,811	± 315	11.5%	± 0.9
Graduate or professional degree	2,895	± 280	8.7%	± 0.8
Percent high school graduate or higher			87.0%	± 1.1
Percent bachelor's degree or higher			20.2%	± 1.1

Source: 2011-2015 American Community Survey

## 9 Language spoken at home

	COUNT		PERCENTAGE		SPEAK ENGLISH LESS THAN "VERY WELL"	
	Estimate	Margin of error	Estimate	Margin of error	Estimate	Margin of error
<b>Population 5 years and over</b>	44,702	± 12	100%			
<b>LANGUAGE SPOKEN AT HOME</b>						
English only	42,233	± 315	94.5%	± 0.7		
Language other than English	2,469	± 315	5.5%	± 0.7	661	± 127
Spanish	902	± 136	2.0%	± 0.3	268	± 63
Other Indo-European languages	1,242	± 237	2.8%	± 0.5	286	± 92
Asian and Pacific Islander languages	192	± 69	0.4%	± 0.2	60	± 38
Other languages	133	± 74	0.3%	± 0.2	47	± 46

Source: 2011-2015 American Community Survey

## 10 Labor Force Characteristics

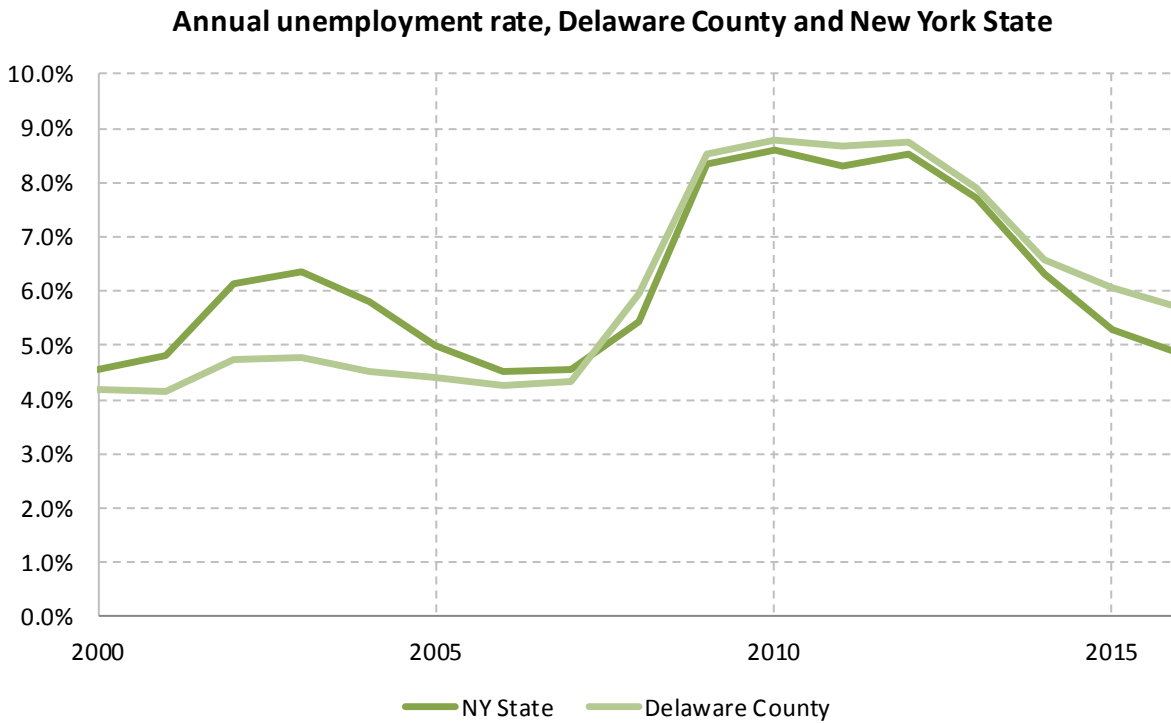
### 10.1 Labor force, employment and unemployment

	TOTAL		IN LABOR FORCE		EMPLOYED		UNEMPLOYMENT RATE	
	Estimate	Margin of error	Estimate	Margin of error	Estimate	Margin of error	Estimate	Margin of error
<b>Population 16 years and over</b>	39,500	± 103	55.5%	± 1.3	50.3%	± 1.5	9.5%	± 1.3
<b>AGE</b>								
16 to 19 years	3,222	± 133	41.1%	± 4.9	32.7%	± 5.0	20.5%	± 5.1
20 to 24 years	3,025	± 86	68.7%	± 4.3	52.3%	± 5.4	23.8%	± 6.1
25 to 29 years	2,183	± 52	76.1%	± 6.7	64.9%	± 7.0	14.7%	± 6.2
30 to 34 years	2,162	± 60	79.0%	± 5.4	71.1%	± 5.2	9.9%	± 3.2
35 to 44 years	4,621	± 55	82.5%	± 3.4	78.4%	± 3.5	4.8%	± 1.7
45 to 54 years	6,814	± 86	80.5%	± 2.9	74.9%	± 3.5	6.9%	± 2.3
55 to 59 years	3,940	± 260	68.1%	± 4.0	64.0%	± 4.5	6.0%	± 2.8
60 to 64 years	3,559	± 263	49.4%	± 4.8	47.7%	± 4.7	3.5%	± 1.9
65 to 74 years	5,717	± 51	20.2%	± 2.7	18.3%	± 2.5	9.5%	± 4.3
75 years and over	4,257	± 48	6.3%	± 1.7	6.2%	± 1.7	0.7%	± 1.3
<b>RACE AND HISPANIC OR LATINO ORIGIN</b>								
White alone	37,544	± 144	56.1%	± 1.3	50.9%	± 1.5	9.3%	± 1.3
Black or African American alone	807	± 90	29.4%	± 8.8	23.4%	± 9.2	20.3%	± 16.1
American Indian and Alaska Native alone	79	± 45	86.1%	± 13.5	83.5%	± 14.9	2.9%	± 5.4
Asian alone	272	± 69	52.9%	± 17.5	48.9%	± 17.7	7.6%	± 9.0
Two or more races	539	± 124	55.1%	± 13.0	48.4%	± 12.7	12.1%	± 11.5
Hispanic or Latino origin (of any race)	1,261	± 11	51.3%	± 8.3	45.4%	± 8.7	11.4%	± 7.0
White alone, not Hispanic or Latino	36,736	± 86	56.2%	± 1.3	50.9%	± 1.6	9.3%	± 1.4
<b>SEX</b>								
<b>Population 20 to 64 years</b>	26,304	± 109	72.9%	± 1.6	66.5%	± 1.9	8.8%	± 1.5
Male	13,330	± 91	76.7%	± 2.2	68.9%	± 2.7	10.2%	± 2.3
Female	12,974	± 95	69.0%	± 2.4	64.0%	± 2.5	7.2%	± 1.6
With own children under 18 years	3,853	± 270	75.1%	± 4.6	69.6%	± 4.9	7.3%	± 2.9
<b>EDUCATIONAL ATTAINMENT</b>								
<b>Population 25 to 64 years</b>	23,279	± 98	73.5%	± 1.7	68.3%	± 1.8	7.0%	± 1.2
Less than high school graduate	2,373	± 245	45.2%	± 5.9	39.9%	± 5.7	11.7%	± 5.2
High school graduate (includes equivalency)	8,775	± 428	71.5%	± 3.0	66.2%	± 3.4	7.3%	± 2.2
Some college or associate's degree	7,234	± 402	79.9%	± 2.2	73.5%	± 2.9	8.0%	± 2.5
Bachelor's degree or higher	4,897	± 330	81.4%	± 2.8	78.2%	± 2.9	3.8%	± 1.5

Table formula:      **LABOR FORCE** = # EMPLOYED + # UNEMPLOYED  
                           **% IN LABOR FORCE** = LABOR FORCE / TOTAL \* 100%  
                           **% EMPLOYED** = # EMPLOYED / TOTAL \* 100%  
                           **UNEMPLOYMENT RATE** = # UNEMPLOYED / LABOR FORCE \* 100%

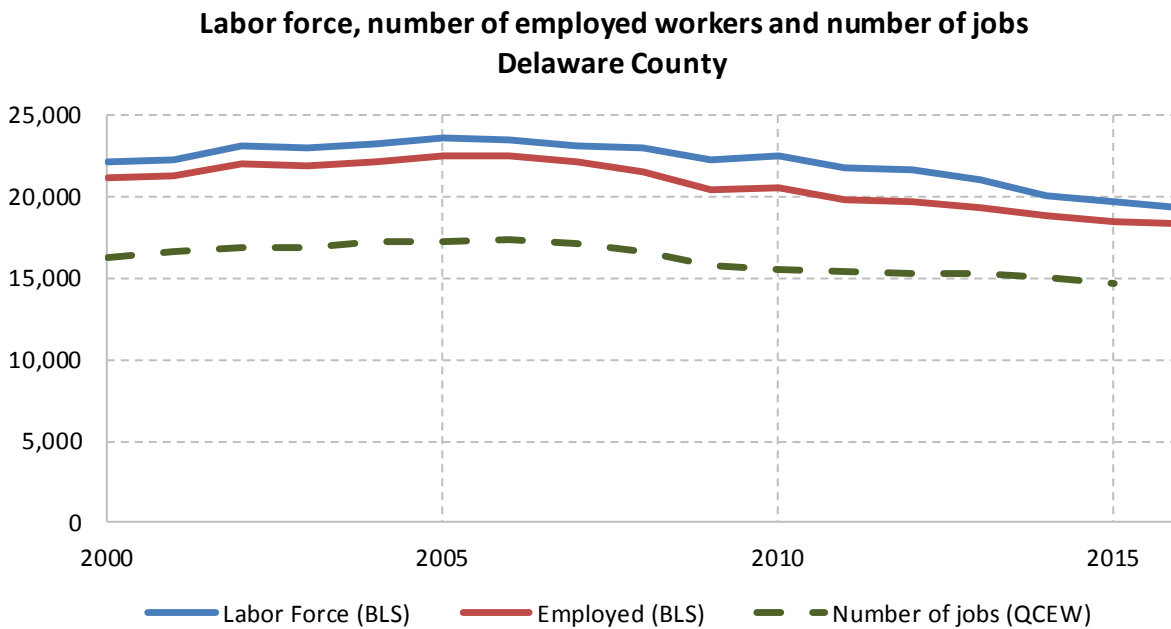
Source: 2011-2015 American Community Survey

## 10.2 Annual unemployment rate



Source: Bureau Labor Statistics (BLS)

## 10.3 Employment and number of jobs



Source: Bureau Labor Statistics (BLS) and NY Department of Labor - Quarterly Census of Employment and Wages (QCEW) – annual averages

## 10.4 Class of worker

		<b>Total</b>	<b>%Male</b>	<b>%Female</b>
Civilian employed population 16 years and over	Estimate	19,850	53.0%	47.0%
	<i>Margin of error</i>	$\pm 588$	$\pm 1.5$	$\pm 1.5$
Private for-profit wage and salary workers:	Estimate	11,298	56.9%	43.1%
	<i>Margin of error</i>	$\pm 458$	$\pm 2.5$	$\pm 2.5$
Employee of private company workers	Estimate	10,497	55.4%	44.6%
	<i>Margin of error</i>	$\pm 442$	$\pm 2.5$	$\pm 2.5$
Self-employed in own incorporated business workers	Estimate	801	76.4%	23.6%
	<i>Margin of error</i>	$\pm 192$	$\pm 9.1$	$\pm 9.1$
Private not-for-profit wage and salary workers	Estimate	1,744	30.6%	69.4%
	<i>Margin of error</i>	$\pm 207$	$\pm 5.7$	$\pm 5.7$
Local government workers	Estimate	2,573	44.3%	55.7%
	<i>Margin of error</i>	$\pm 267$	$\pm 5.2$	$\pm 5.2$
State government workers	Estimate	1,767	47.3%	52.7%
	<i>Margin of error</i>	$\pm 222$	$\pm 6.2$	$\pm 6.2$
Federal government workers	Estimate	195	56.9%	43.1%
	<i>Margin of error</i>	$\pm 67$	$\pm 17.3$	$\pm 17.3$
Self-employed in own not incorporated business workers and unpaid family workers	Estimate	2,273	65.0%	35.0%
	<i>Margin of error</i>	$\pm 285$	$\pm 4.5$	$\pm 4.5$

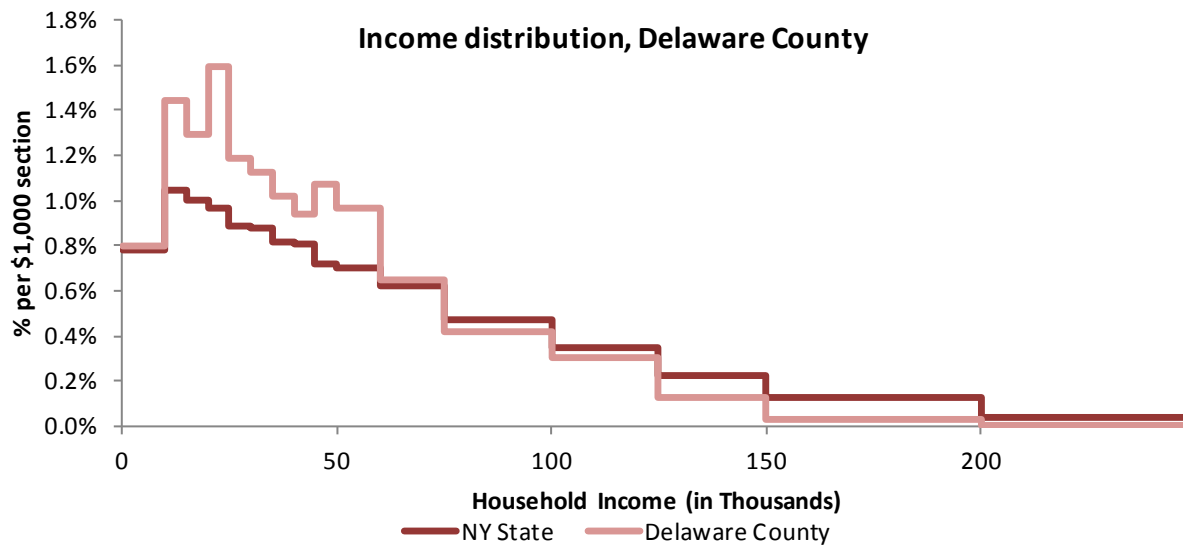
Source: 2011-2015 American Community Survey

## 11 Household Income

### 11.1 Income Distribution

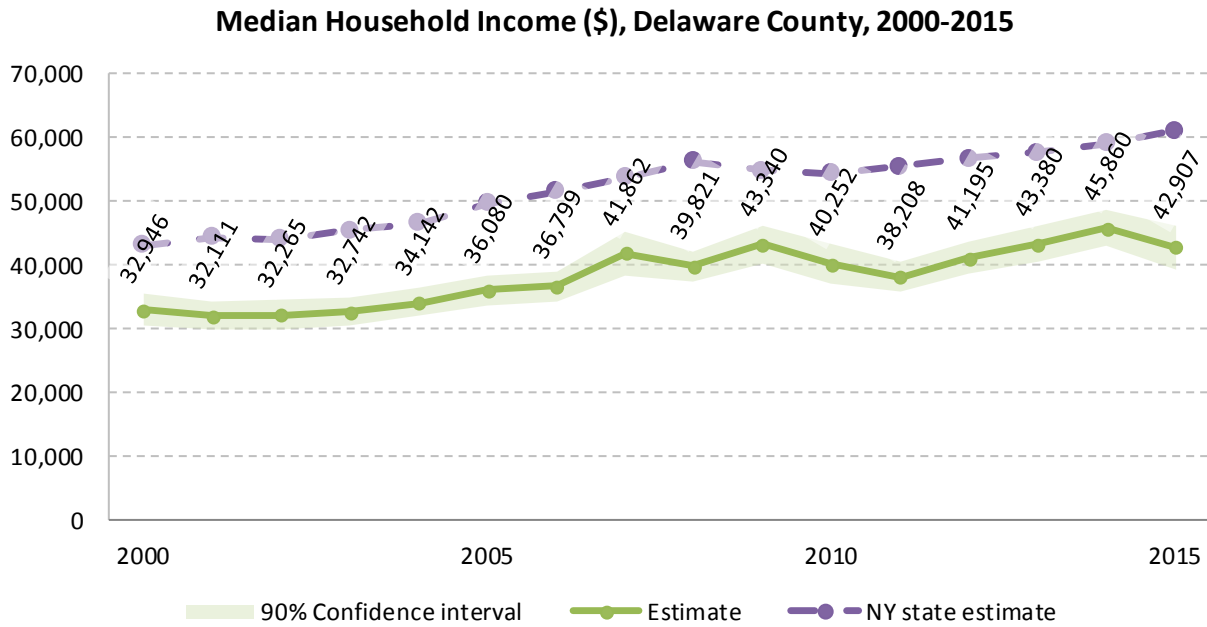
	Estimate	Margin of error	Interval width (in \$1,000)	Est. per \$1,000 section
<b>Total:</b>	19,262	± 520		
Less than \$10,000	1,544	± 226	10	154.4
\$10,000 to \$14,999	1,393	± 230	5	278.6
\$15,000 to \$19,999	1,245	± 212	5	249.0
\$20,000 to \$24,999	1,532	± 207	5	306.4
\$25,000 to \$29,999	1,143	± 194	5	228.6
\$30,000 to \$34,999	1,079	± 161	5	215.8
\$35,000 to \$39,999	983	± 166	5	196.6
\$40,000 to \$44,999	901	± 145	5	180.2
\$45,000 to \$49,999	1,032	± 171	5	206.4
\$50,000 to \$59,999	1,867	± 224	10	186.7
\$60,000 to \$74,999	1,866	± 250	15	124.4
\$75,000 to \$99,999	2,006	± 219	25	80.2
\$100,000 to \$124,999	1,443	± 212	25	57.7
\$125,000 to \$149,999	619	± 106	25	24.8
\$150,000 to \$199,999	308	± 70	50	6.2
\$200,000 or more	301	± 87	-	-

Source: 2011-2015 American Community Survey



Source: 2011-2015 American Community Survey

## 11.2 Median household income: Trends over time



Source: Small Area Income and Poverty Estimates (SAIPE)

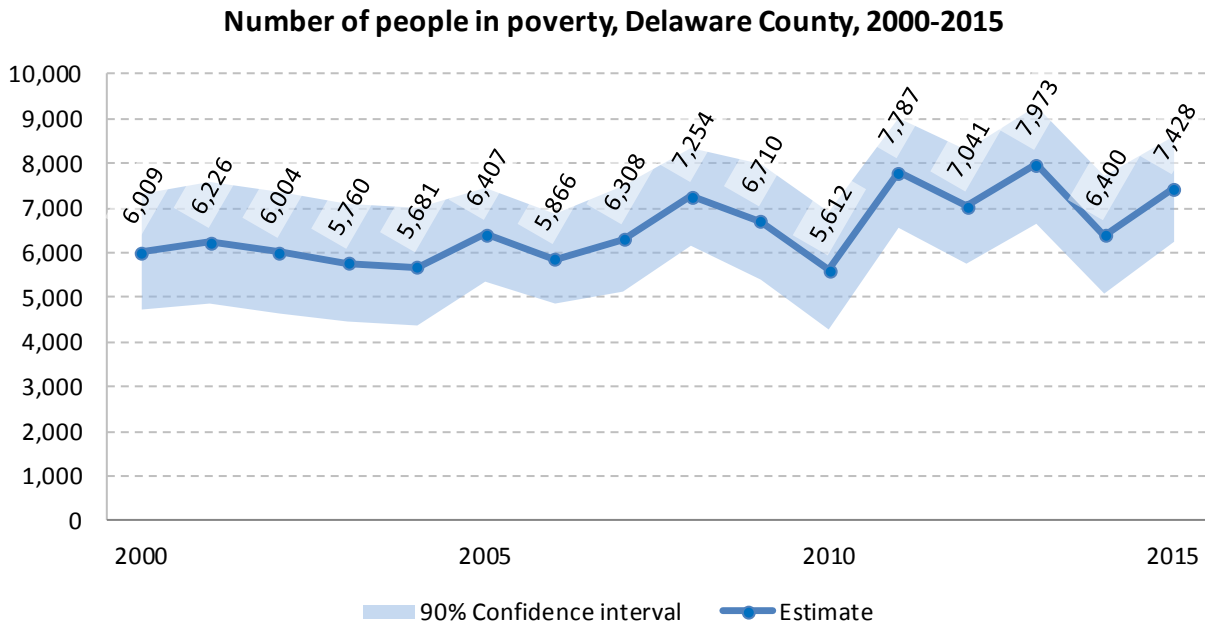
## 12 Poverty

### 12.1 Family Income to Poverty Ratio

	TOTAL		PERCENT OF ALL	
	Estimate	Margin of error	Estimate	Margin of error
<b>All families</b>	11,731	± 461		
<b>ALL FAMILIES WITH INCOME:</b>				
Below 50 percent of poverty level	468	± 125	4.0%	± 1.1
<b>Below 100 percent of poverty level</b>	1,281	± 194	<b>10.9%</b>	<b>± 1.6</b>
Below 125 percent of poverty level	1,717	± 216	14.6%	± 1.7
Below 150 percent of poverty level	2,230	± 234	19.0%	± 1.8
Below 185 percent of poverty level	2,988	± 261	25.5%	± 2.0
Below 200 percent of poverty level	3,261	± 280	27.8%	± 2.1
Below 300 percent of poverty level	5,598	± 402	47.7%	± 2.9
Below 400 percent of poverty level	7,372	± 430	62.8%	± 2.7
Below 500 percent of poverty level	9,090	± 436	77.5%	± 2.1

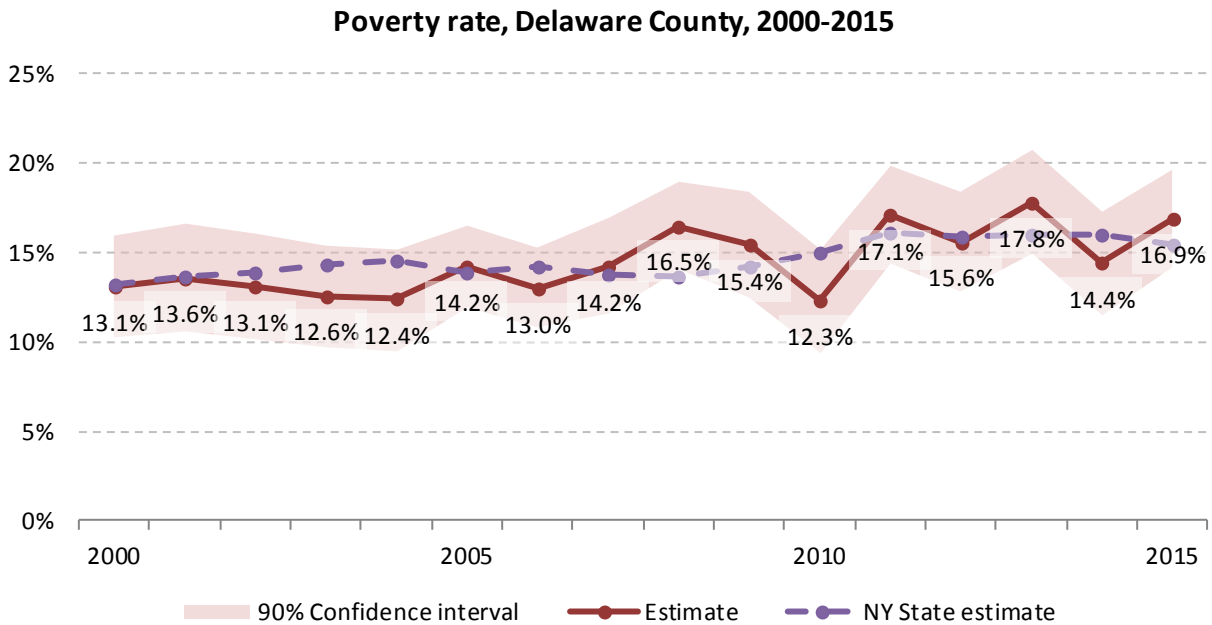
Source: 2011-2015 American Community Survey

### 12.2 Poverty: Trends over time: Count



Source: Small Area Income and Poverty Estimates (SAIPE)

### 12.3 Poverty: Trends over time: Rate



Source: Small Area Income and Poverty Estimates (SAIPE)

## 12.4 Poverty characteristics

	TOTAL		BELOW POVERTY LEVEL		PERCENT BELOW POVERTY LEVEL	
	Estimate	Margin of error	Estimate	Margin of error	Estimate	Margin of error
<b>Population for whom poverty status is determined</b>	44,514	± 467	6,799	± 740	15.3%	± 1.7
<b>AGE</b>						
Under 18 years	8,283	± 157	2,188	± 418	26.4%	± 5.2
Under 5 years	2,160	± 28	673	± 161	31.2%	± 7.5
5 to 17 years	6,123	± 151	1,515	± 323	24.7%	± 5.4
18 to 34 years	7,707	± 435	1,554	± 304	20.2%	± 3.5
35 to 64 years	18,877	± 105	2,446	± 299	13.0%	± 1.6
65 years and over	9,647	± 107	611	± 115	6.3%	± 1.2
<b>SEX</b>						
Male	22,363	± 258	3,306	± 469	14.8%	± 2.1
Female	22,151	± 278	3,493	± 368	15.8%	± 1.7
<b>RACE AND HISPANIC OR LATINO ORIGIN</b>						
White alone	42,860	± 440	6,395	± 708	14.9%	± 1.7
Black or African American alone	514	± 99	222	± 88	43.2%	± 15.2
American Indian and Alaska Native alone	94	± 53	6	± 6	6.4%	± 6.2
Asian alone	286	± 84	29	± 26	10.1%	± 9.2
Hispanic or Latino origin (of any race)	1,290	± 86	266	± 116	20.6%	± 9.1
White alone, not Hispanic or Latino	41,835	± 413	6,192	± 692	14.8%	± 1.7
<b>EDUCATIONAL ATTAINMENT</b>						
<b>Population 25 years and over</b>	32,819	± 114	3,986	± 374	12.1%	± 1.1
Less than high school graduate	4,239	± 366	1,061	± 185	25.0%	± 3.7
High school graduate (includes equivalency)	12,628	± 492	1,639	± 244	13.0%	± 1.8
Some college, associate's degree	9,306	± 465	891	± 156	9.6%	± 1.6
Bachelor's degree or higher	6,646	± 378	395	± 95	5.9%	± 1.5
<b>EMPLOYMENT STATUS</b>						
<b>Civilian labor force 16 years and over</b>	21,502	± 607	1,868	± 265	8.7%	± 1.2
Employed	19,533	± 638	1,476	± 246	7.6%	± 1.2
Male	10,399	± 461	708	± 150	6.8%	± 1.4
Female	9,134	± 385	768	± 154	8.4%	± 1.7
Unemployed	1,969	± 276	392	± 93	19.9%	± 4.6
Male	1,228	± 239	212	± 68	17.3%	± 5.7
Female	741	± 143	180	± 64	24.3%	± 7.7
<b>WORK EXPERIENCE IN THE PAST 12 MONTHS</b>						
<b>Population 16 years and over</b>	9,134	± 385	768	± 154	8.4%	± 1.7
Worked full-time, year-round	1,969	± 276	392	± 93	19.9%	± 4.6
Worked part-time or part-year	1,228	± 239	212	± 68	17.3%	± 5.7
Did not work	741	± 143	180	± 64	24.3%	± 7.7

Source: 2011-2015 American Community Survey

## 13 Glossary

**American Community Survey (ACS)** - The American Community Survey is an ongoing survey of the population that provides data every year on a variety of social and economic characteristics—age, sex, race, family and relationships, income and benefits, health insurance, education, veteran status, disabilities, where you work and how you get there, where you live and how much you pay for some essentials. The ACS replaced the information previously gathered by what was known as the “long form” of the decennial censuses. The ACS provides communities, companies and other institutions with current information they need to plan investments and services. Information from the survey generates data that help determine how more than \$400 billion in federal and state funds are distributed each year. Every estimate presented in the American Community Survey, as in other surveys, has an uncertainty associated with it. Often the magnitude of that uncertainty is expressed as the Margin of Error.

**Confidence Interval (CI)** - indication of the degree of uncertainty about a sample estimates. Confidence intervals have been traditionally reported at the 90, 95 and 99 percent levels. A 90 percent confidence interval can be interpreted, for example, roughly as providing 90 percent certainty that the interval defined by the upper and lower bounds contain the true value of the characteristic. If a Margin of Error is given, the lower bound of the confidence interval is equal to the estimate minus the Margin of Error and the upper bound is equal to the estimate plus the Margin of Error. (See further, Margin of Error definition below.)

**County subdivision or Minor Civil Division (MCD)** - The Census Bureau geography for primary administrative units below the county level in New York is collectively referred to as county subdivisions or minor civil divisions. These include towns, cities and Indian Reservations.

**Decennial Census** - the Census of the population and housing taken every 10 years in the United States, at the start of each decade, since 1790.

**Employed** – either “at work” or “with a job, but not at work”.

**Group Quarters Population** - all U.S. residents who live in group living facilities including correctional institutions, juvenile facilities, skilled nursing facilities, college residence halls, military barracks, group homes, and workers' dormitories.

**Household Population** - all U.S. residents who live in housing units such as single family homes, townhouses, apartments, and mobile homes.

**Intercensal Population Estimates** - estimates produced for the years between two decennial censuses when both the beginning and ending populations are known. They are produced once a decade by adjusting the existing time series of postcensal estimates for the entire decade to smooth the transition from one decennial census count to the next. They differ from the postcensal estimates that are released annually because the difference between the April 1 postcensal estimate and April 1 census count for the end of the decade is redistributed across the estimates for that decade. For dates when both postcensal and intercensal estimates are available, intercensal estimates are preferred.

**Labor Force** - consists of people classified as employed or unemployed.

**Margin of Error (MOE)** - a measure of the precision of an estimate at a given level of confidence. The confidence level of a margin of error indicates the likelihood that the difference between the population value (which you

would get if you could measure the whole population instead of a sample) and the estimate is less than or equal to the margin of error. The range from the estimate minus the margin of error to the estimate plus the margin of error is called the confidence interval. All ACS estimates are published with their margins of error at the 90 percent confidence level. Margins of error are useful in assessing the reliability of estimates and whether differences between estimates are significant.

**Numeric Population Change** - difference between the population of an area at the beginning and end of a time period. It is computed by taking the difference between the population at one point in time ( $t_1$ ) and some future time ( $t_2$ ).

**Percent Population Change** - difference between the population of an area at the beginning and end of a time period, expressed as a percentage of the beginning population. It is computed by dividing the population change ( $t_2 - t_1$ ) by  $t_1$  and multiplying the result by 100.

**Population Estimates** - The calculated number of people living in an area as of a specified point in time, usually July 1st. The estimated population is calculated using a component of change model that incorporates information on natural increase (births, deaths) and net migration (net domestic migration, net international migration) that has occurred in an area since the latest decennial census. A procedure for estimating the current population using a procedure involving a "base population" value at time  $t - 1$ , adding to that the births during the interval  $t - 1$  to  $t$ , subtracting the deaths during that interval  $t - 1$  to  $t$ , and then adding the net domestic and net international migration that occurred during that interval.

**Population Density** - Total number of people per areal unit like a square mile or square kilometer.

**Population Pyramids** - A graphical way of portraying a population's age and sex composition at a given slice in time. The first horizontal bar, constituting the base of the graph, is the youngest age group (typically 0-4) with the number of males in that age group on the left and the number of females in that age group on the right. On top of that age group is another horizontal bar for the next age group (e.g. 5-9) and so forth with the top bar typically for those aged 75 and over. In a population with lots of births and deaths, the shape typically forms a pyramid with a broad base and a narrow top. It is one of the most basic ways to understand population change over time as well as between different geographic units of a similar status (e.g. counties).

**Postcensal Estimates** - estimates produced for the years after a decennial census when only the beginning population is known. They are produced and revised each year, targeted to July 1 of that year.

**Projection** - estimated population at some future time based on assumptions about births, deaths, migration, and ages.

**Race/Ethnicity** - the Census Bureau collects racial data in accordance with guidelines provided by the U.S. Office of Management and Budget (OMB), and these data are based on self-identification. The racial categories included in the census questionnaire generally reflect a social definition of race recognized in this country and not an attempt to define race biologically, anthropologically, or genetically. In addition, it is recognized that the categories of the race item include racial and national origin or sociocultural groups. People may choose to report more than one race to indicate their racial mixture, such as "American Indian" and "White." People who identify their origin as Hispanic, Latino, or Spanish may be of any race. OMB requires five minimum categories: White, Black or African American, American Indian or Alaska Native, Asian, and Native Hawaiian or Other Pacific Islander. Hispanics may be classified as white or black. So we generally separate them out as an ethnic group first.

**Unemployed** – Not employed, but actively looking for work and available to accept a job.

**Unemployment rate** – Fraction of the Labor Force that is unemployed.

**Urban Area** – A densely settled area with at least 2,500 people. If the total number of people is less than 50,000 the Census Bureau calls it an Urban Cluster, otherwise an Urbanized Area.

**Vintage** - each year, the U.S. Census Bureau produces and publishes estimates of the population for each state and county, as well as the nation as a whole. These are called “vintages.” In producing these vintages, the Bureau utilizes administrative data from a number of sources to estimate 1) the change in population since the most recent decennial census, and 2) the population for each year since the most recent decennial census. With each annual release of population estimates (vintage), the entire time series of estimates beginning on April 1, 2010 is revised and updated.

**Vital Statistics** - quantitative data concerning a population, such as the number of births, marriages, and deaths.

## 14 References

Delaware County homepage: <http://www.co.delaware.ny.us/>

At Cornell:

- Program on Applied Demographics (PAD)  
URL: <http://pad.human.cornell.edu/>
  - More county trends: <https://pad.human.cornell.edu/counties/trends1geo.cfm?geo=25>
- Community and Regional Development Institute (CaRDI)  
URL: <https://cardi.cals.cornell.edu/>
- Cornell Cooperative Extensions (CCE)  
Home page: <http://www.cce.cornell.edu>
  - Delaware local office: <https://ccedelaware.org/>

Data sources and background information:

- New York State Data Center
  - <https://labor.ny.gov/nys-data-center/index.shtm>
- U.S. Census Bureau - general
  - QuickFacts: <https://www.census.gov/quickfacts/table/PST045216/36,36025>
  - American FactFinder: <http://factfinder.census.gov/>
- U.S. Census Bureau - population
  - Decennial Census
    - Background: <https://www.census.gov/2010census/>
    - Demographic Profile: [http://factfinder2.census.gov/bkmk/table/1.0/en/DEC/10\\_SF1/SF1DP1/0500000US36025](http://factfinder2.census.gov/bkmk/table/1.0/en/DEC/10_SF1/SF1DP1/0500000US36025)
  - American Community Survey (ACS)
    - Background: <https://www.census.gov/programs-surveys/acs/>
    - Social Data Profile: [http://factfinder2.census.gov/bkmk/table/1.0/en/ACS/15\\_5YR/DP02/0500000US36025](http://factfinder2.census.gov/bkmk/table/1.0/en/ACS/15_5YR/DP02/0500000US36025)
    - Economic Data Profile: [http://factfinder2.census.gov/bkmk/table/1.0/en/ACS/15\\_5YR/DP03/0500000US36025](http://factfinder2.census.gov/bkmk/table/1.0/en/ACS/15_5YR/DP03/0500000US36025)
    - Housing Data Profile: [http://factfinder2.census.gov/bkmk/table/1.0/en/ACS/15\\_5YR/DP04/0500000US36025](http://factfinder2.census.gov/bkmk/table/1.0/en/ACS/15_5YR/DP04/0500000US36025)
    - Demographics Data Profile: [http://factfinder2.census.gov/bkmk/table/1.0/en/ACS/15\\_5YR/DP05/0500000US36025](http://factfinder2.census.gov/bkmk/table/1.0/en/ACS/15_5YR/DP05/0500000US36025)
  - Population estimates:
    - General: <https://www.census.gov/programs-surveys/popest.html>
    - Explorer: <https://www.census.gov/censusexplorer/censusexplorer-popest.html>
- U.S. Census Bureau – Small Area Income & Poverty Estimates (SAIPE)
  - <http://www.census.gov/did/www/saipe/>
- U.S. Census Bureau - Public Use Quarterly Workforce Indicators (QWI) – annual averages
  - <https://qwiexplorer.ces.census.gov/static/explore.html>
- U.S. Census Bureau – Building Permits Survey
  - <https://www.census.gov/construction/bps/>

- Bureau Labor Statistics (BLS)
  - Local Area Unemployment Statistics: <http://www.bls.gov/lau/>
  - Quarterly Census of Employment and Wages (QCEW): <https://www.bls.gov/cew/data.htm>
- NY Department of Labor -
  - Labor statistics: <https://labor.ny.gov/stats/index.shtm>
  - Quarterly Census of Employment and Wages (QCEW): <https://labor.ny.gov/stats/LSQCEW.shtm>
- NY State Department of Health
  - Vital Statistics: [https://www.health.ny.gov/statistics/vital\\_statistics/](https://www.health.ny.gov/statistics/vital_statistics/)
- Bureau of Economic Analysis (BEA) – Local Area Personal Income and Employment: <http://bea.gov/iTable/iTable.cfm?ReqID=70&step=1>

Alternative sites for data retrieval:

- The Nelson A. Rockefeller Institute of Government – New York State Statistical Yearbooks [http://www.rockinst.org/nys\\_statistics/](http://www.rockinst.org/nys_statistics/)
- Headwaters Economics: Economic Profile System – Human Dimensions Toolkit <http://headwaterseconomics.org/tools/eps-hdt>
- National Historical Geographic Information System (NHGIS) <https://www.nhgis.org/>
- Social Explorer <http://www.socialexplorer.com/pub/home/home.aspx>
- Stats America <http://www.statsamerica.org/Default.aspx>
- Missouri Census Data Center <http://mcdc.missouri.edu/>
- DataFerret <http://dataferrett.census.gov/>
- Investigative Reporters and Editors (IRE) Census project <http://census.ire.org/>