

Estimates and Projections

SDC affiliates meeting
May 2009

Program on Applied Demographics



Web: <http://pad.human.cornell.edu>

Email: PADInfo@Cornell.edu

Estimates

- Review of early releases
 - County - Population
 - Sub county – Housing units
- Analysis of Census Bureau Estimates
- Looking at trends
 - ONE YEAR DOES NOT MAKE A TREND
- State and County estimates
- Papers with analyses are being written

Program on Applied
Demographics



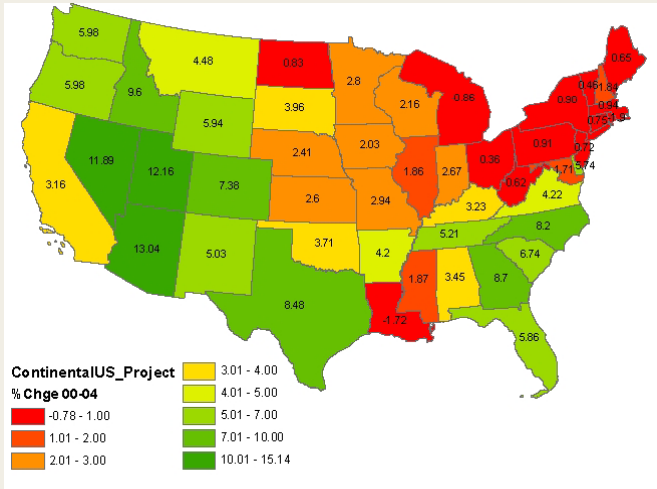
State Estimates

- Comparing change from 2000-2004 with change 2004-2008

Program on Applied Demographics



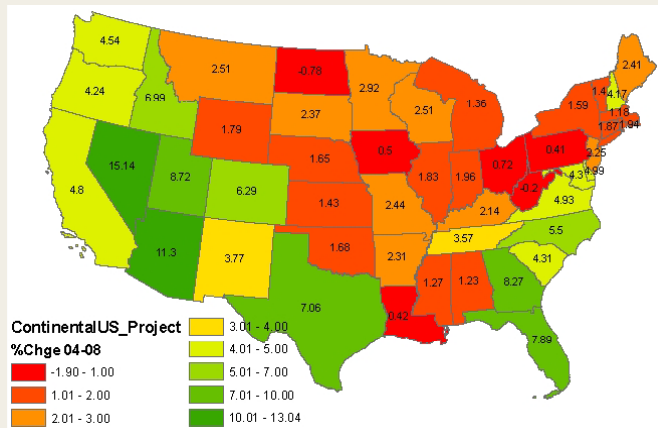
Population change 2000-2004



Program on Applied Demographics



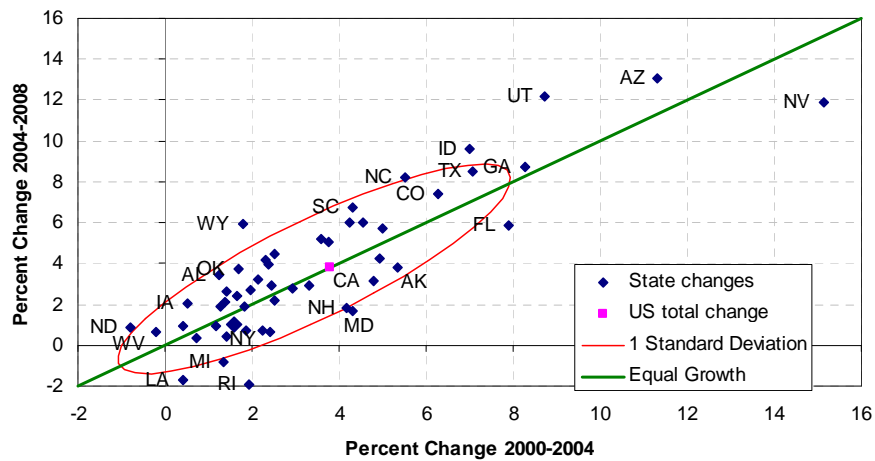
Population change 2004-2008



Program on Applied Demographics

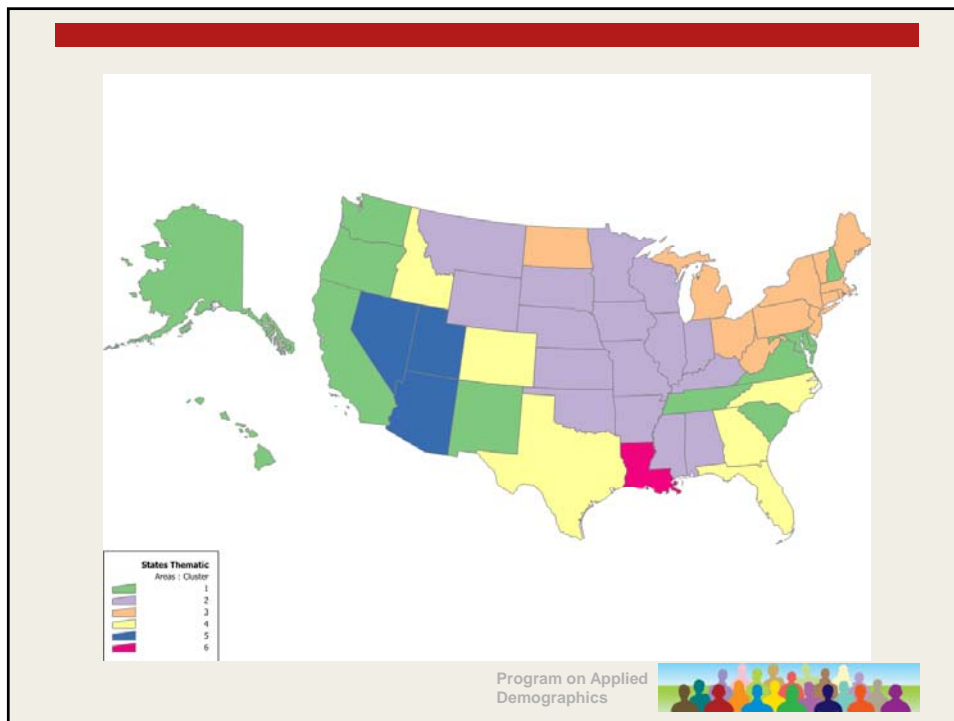
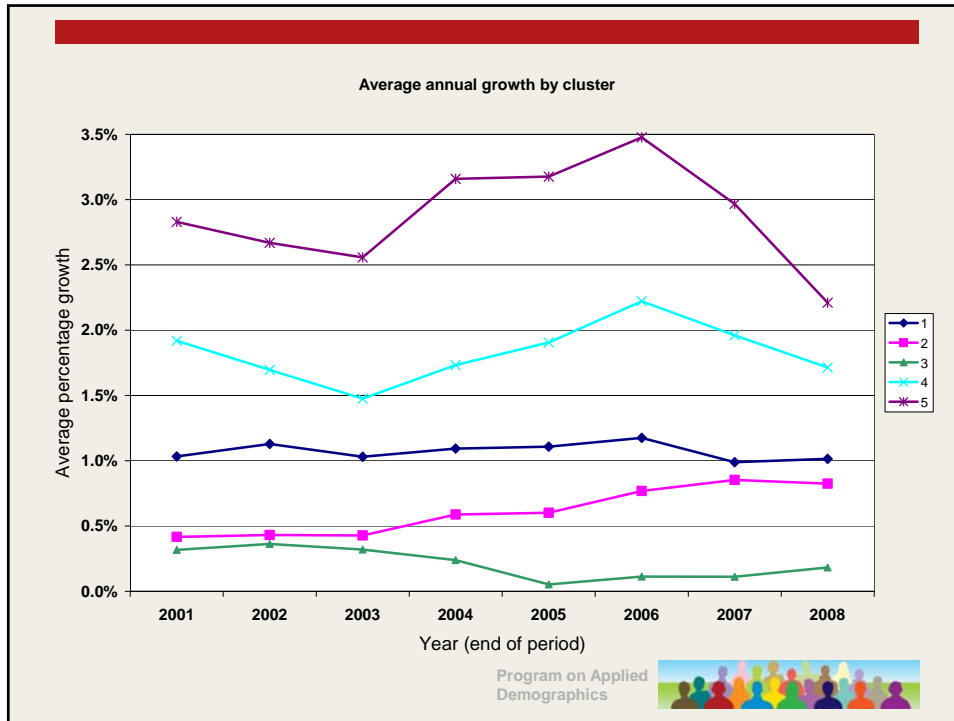


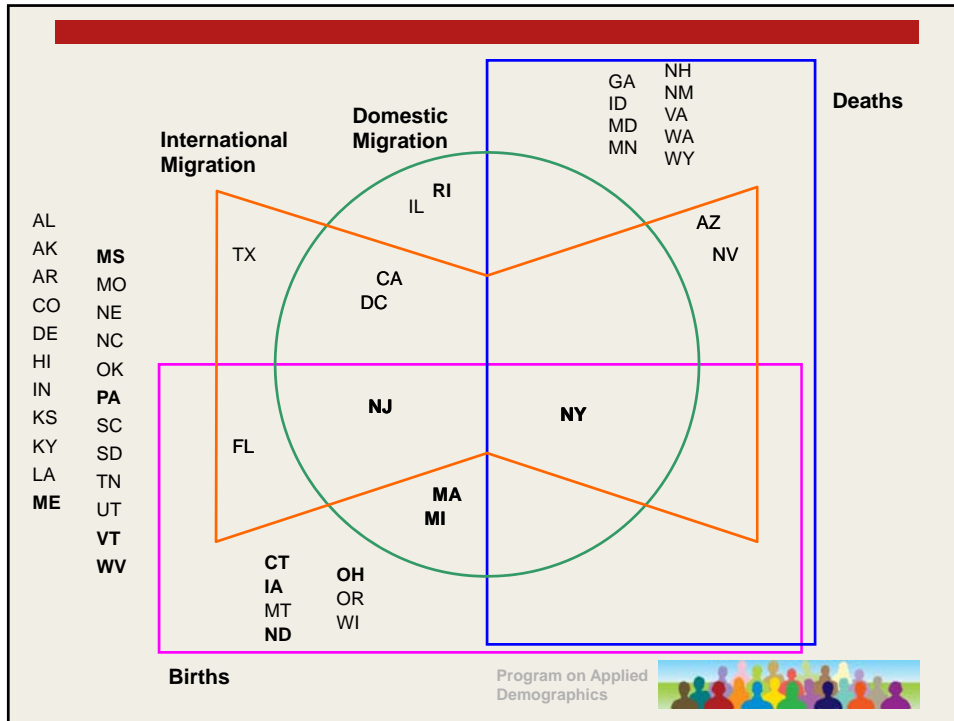
Percent Change in State Population



Program on Applied Demographics





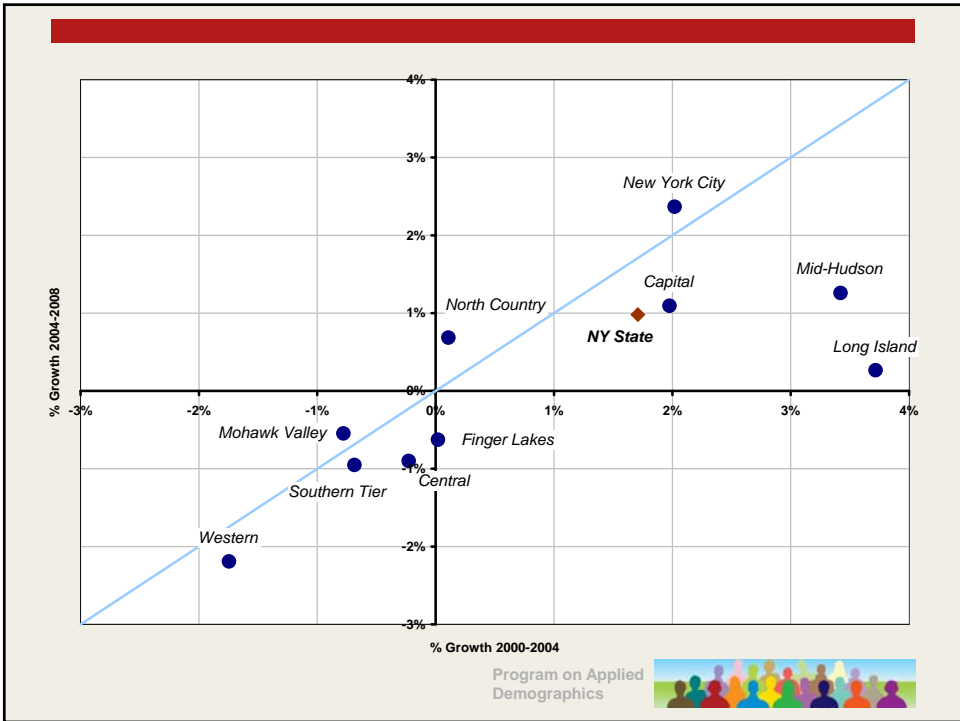
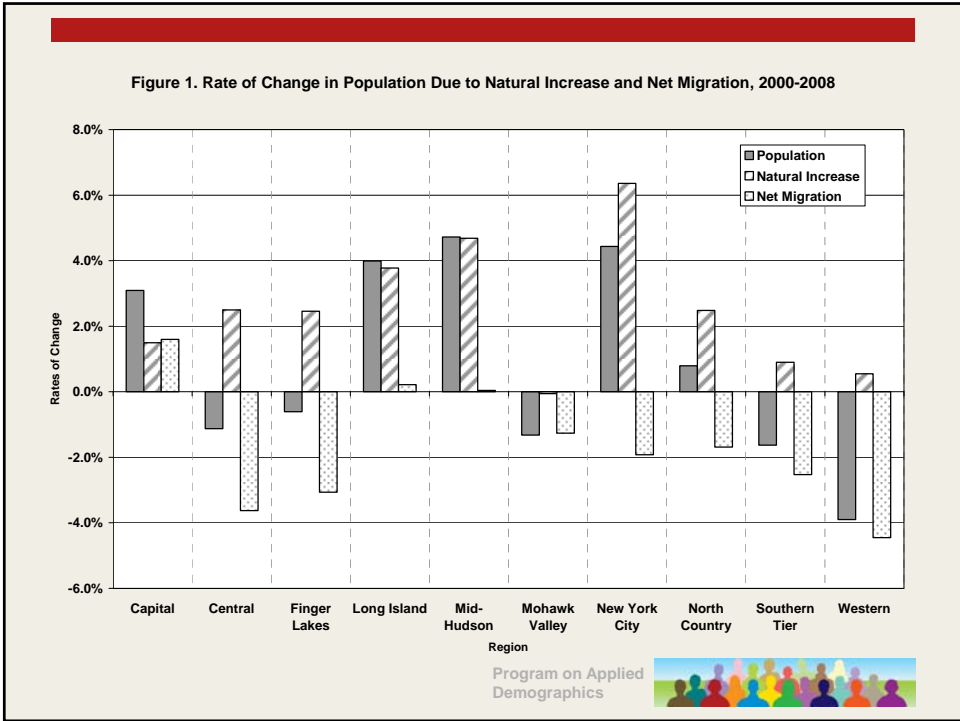


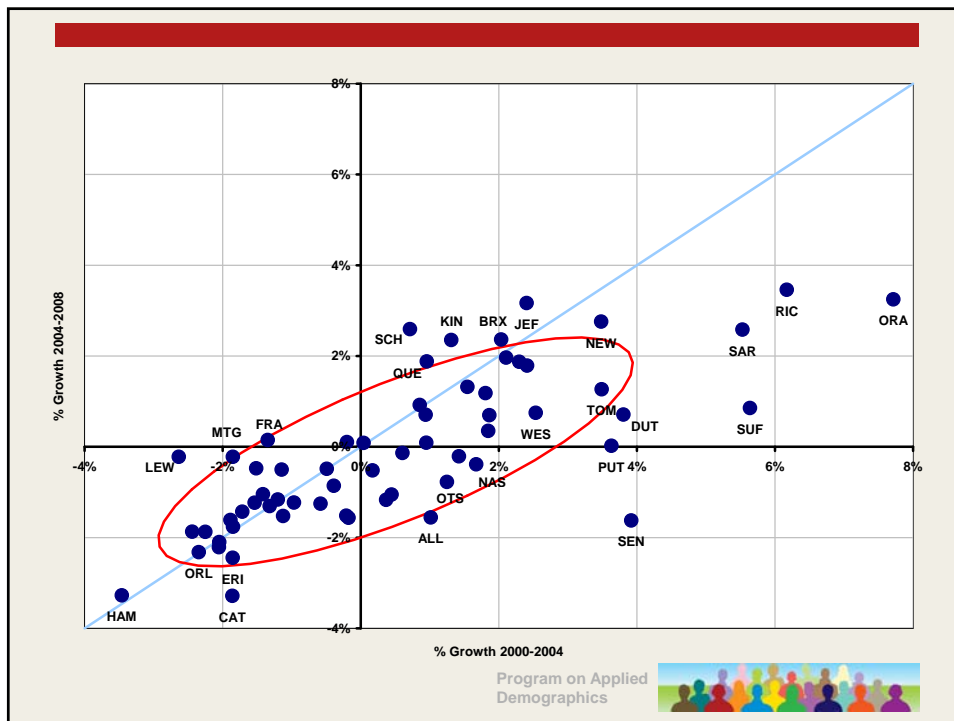
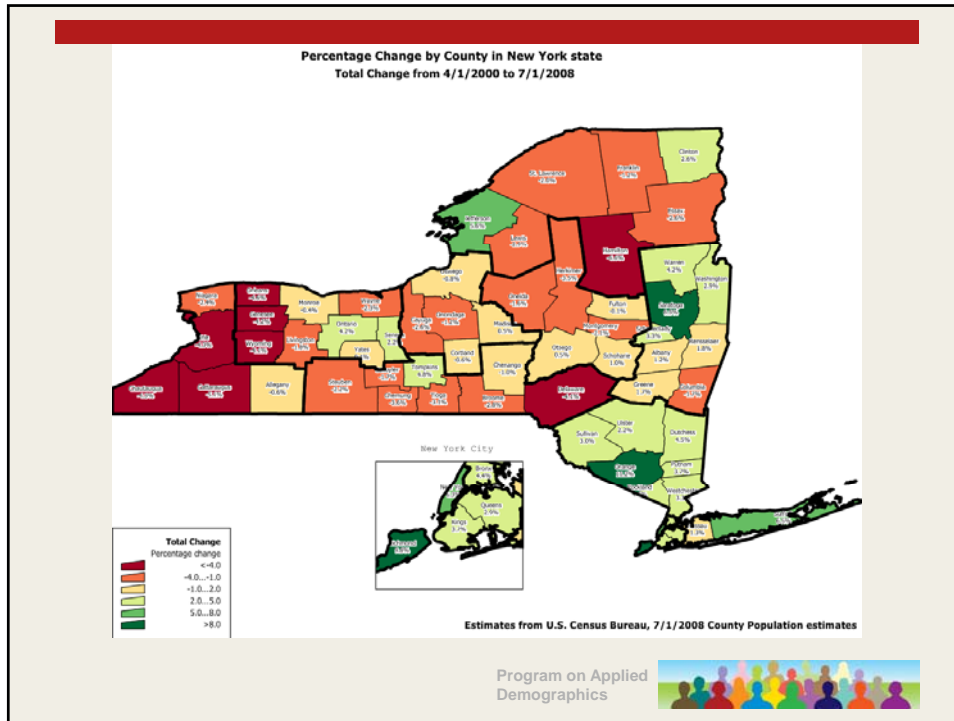
Region/County Estimates

- Look at components of change
- Comparing change from 2000-2004 with change 2004-2008

Program on Applied Demographics







Projections

- Small adjustments with release of new Census Bureau County estimates
- Web site redesigned
 - New user interface
- Documentation and Assumptions now online

Program on Applied
Demographics

