

Group Quarters Locations and Counts

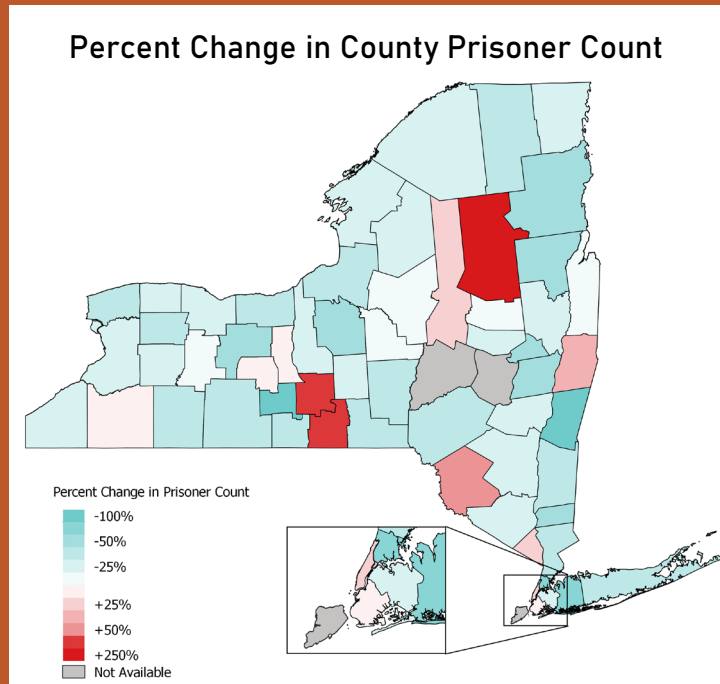
RUSSELL KWONG

CORNELL UNIVERSITY, PROGRAM ON APPLIED DEMOGRAPHICS

Outline

- NYS Correctional Populations 2010 – 2020
- NYS Nursing Home Populations 2020
- NYS Dormitory Populations 2020 (in progress)

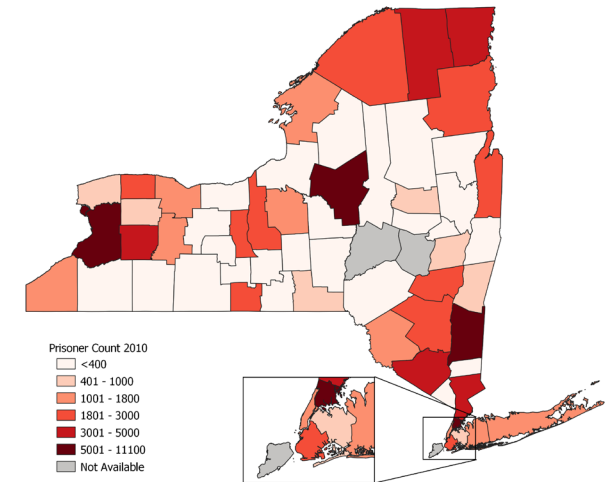
2010 – 2020 Prisoner Counts Overview



Highlights:

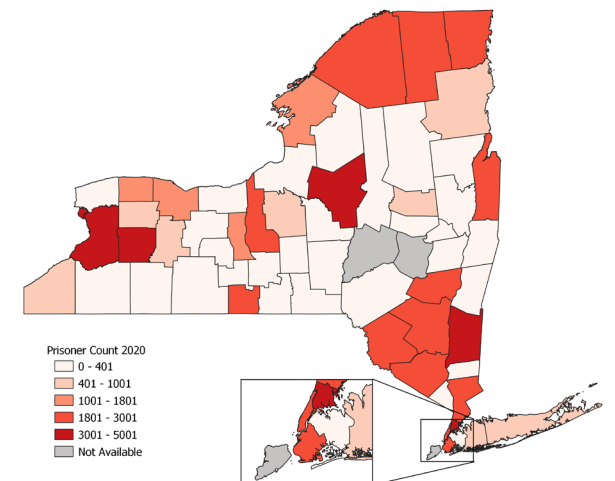
- Correctional population counts decreased by ~27,000
- 12 counties reported increases in correctional populations
- As of 2020, Oneida County had the highest prison population (followed by Bronx, Dutchess, Erie Counties)
- The Bronx experienced the largest decrease in prison population
- Percent of incarcerated individuals in New York remains lower than national average

2010 Prisoner Count by County



State Count: 89694

2020 Prisoner Count by County



State Count: 62007

Declining Prison Populations

Between 2010 – 2020: correctional population decreased by 27,000 (30%)

Reflects national decrease (-24.7%) in federal and state facilities 2010 – 2020

Reflects closure of 17 prisons (mostly min and max security) 2011 – 2019

Percent change (2019 – 2020) is -15.0%

Census, State, PAD Counts

2020 Counts of Selected Facilities:

- Census Count: 47,883
- SCOC Count: 47,769
- PAD Count: 37,591

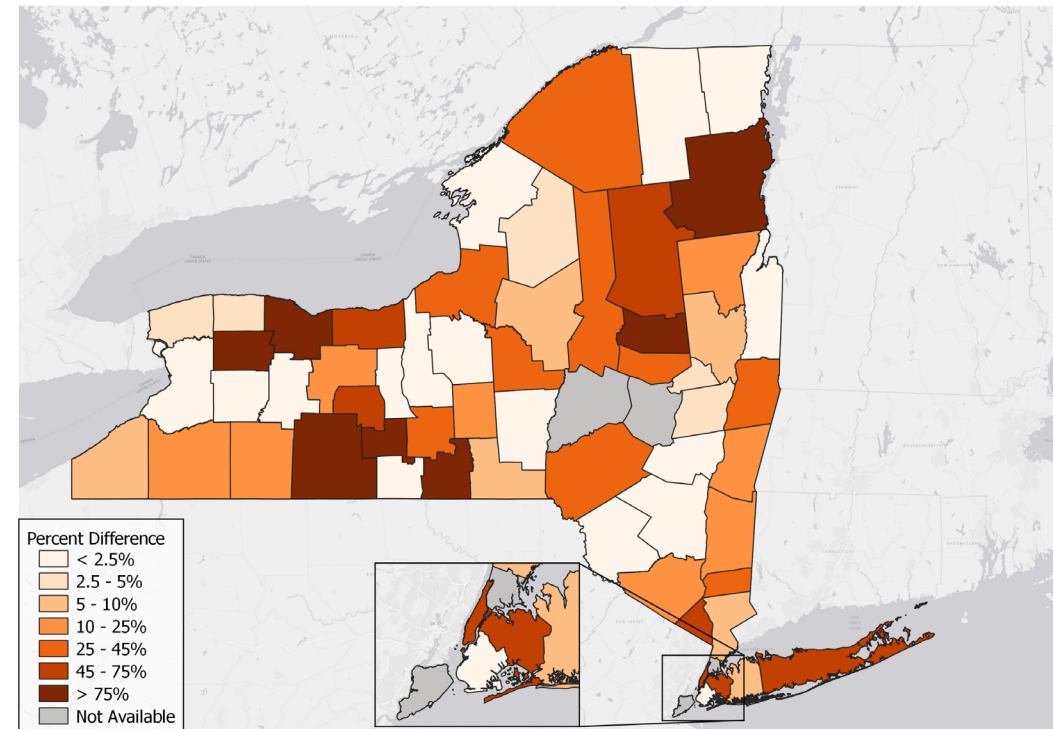
Total 2020 Counts:

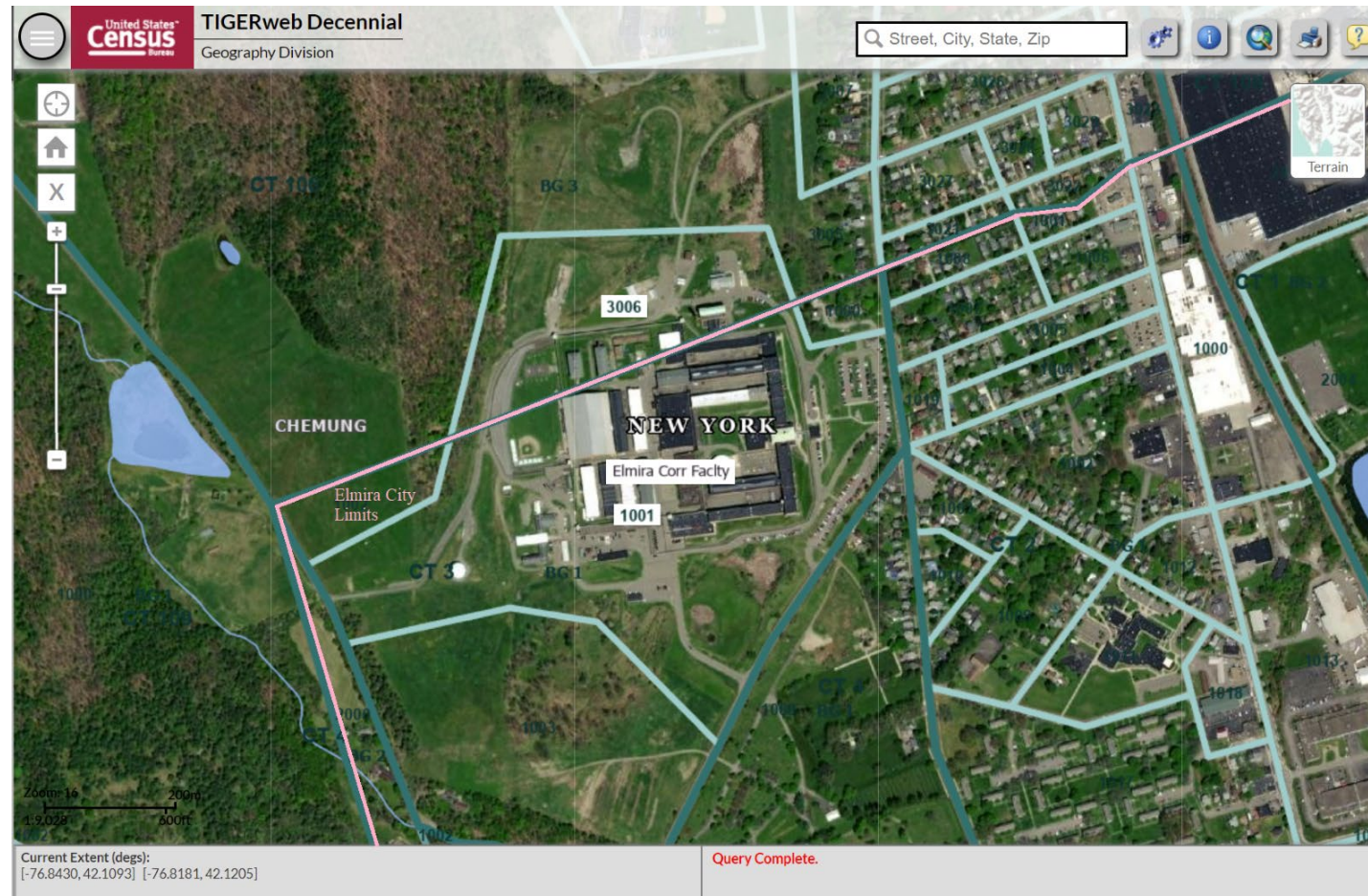
- Census Count: 62,007
- SCOC Count: 52,973

Total 2010 Counts:

- Census Count: 89,694
- PAD Counts: 86,345

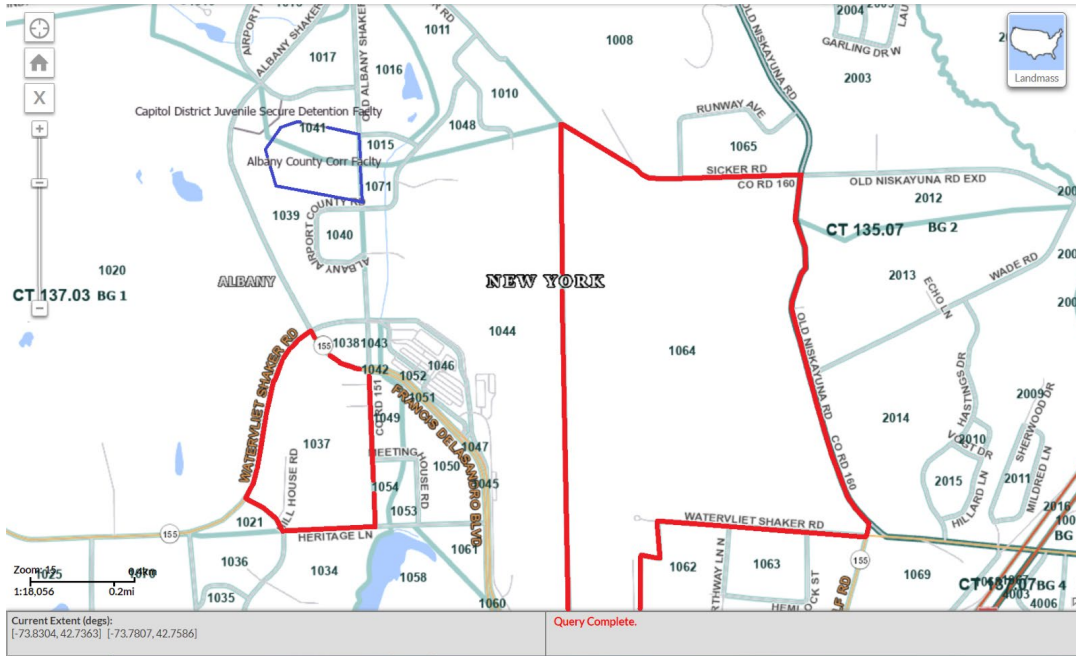
Percent Difference Between Census and State Counts 2020





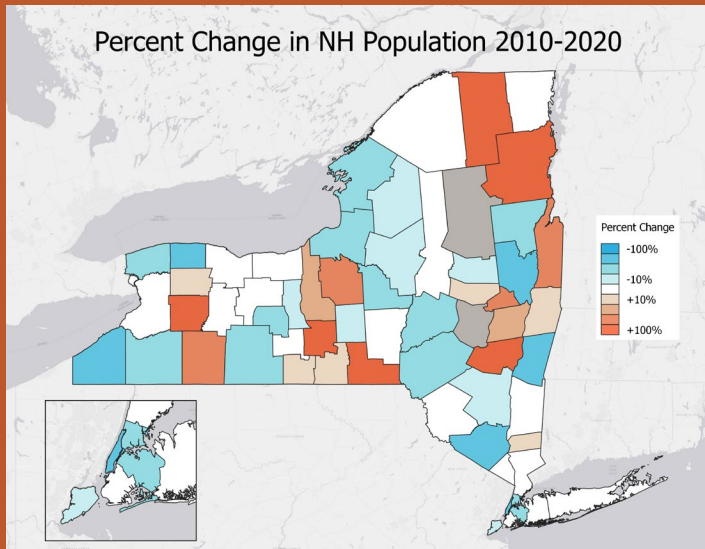
Elmira Correctional Facility

Facility split into multiple blocks



Albany County Correctional Facility
Incorrectly reported GQ Type

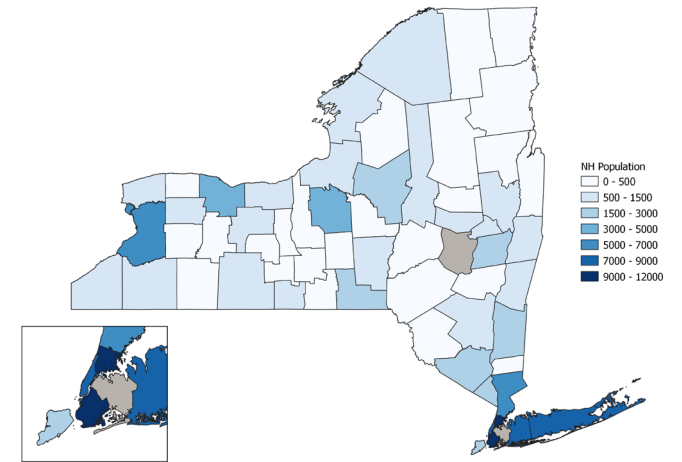
Nursing Home Population Overview



Highlights:

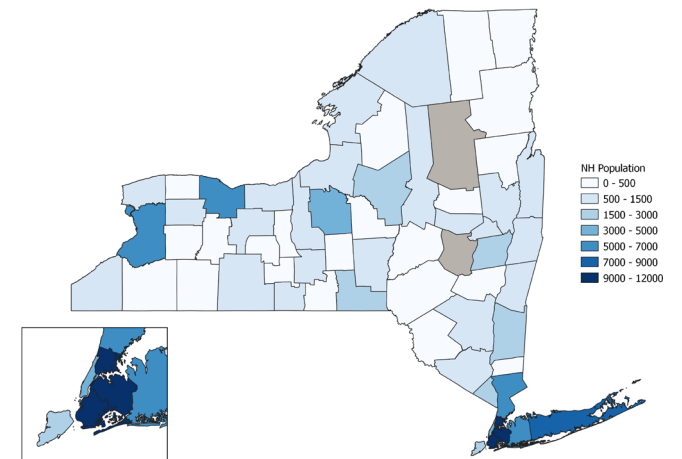
- Nursing home population counts decreased by ~5000
- 27 counties reported decreased nursing home populations
- As of 2020, Queens County had the highest NH population (followed by Bronx, Kings, and Suffolk Counties)
- New York County experienced the largest decrease in NH population

2010 Nursing Home Population in New York State



Population: 116,558

2020 Nursing Home Population in New York State

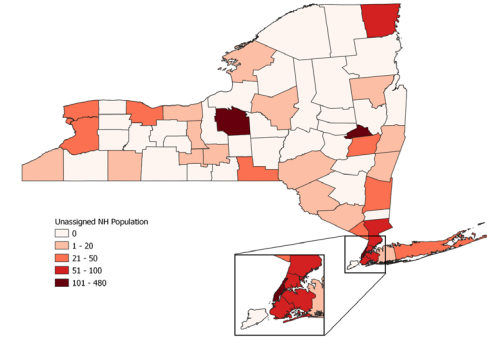


Population: 111,115

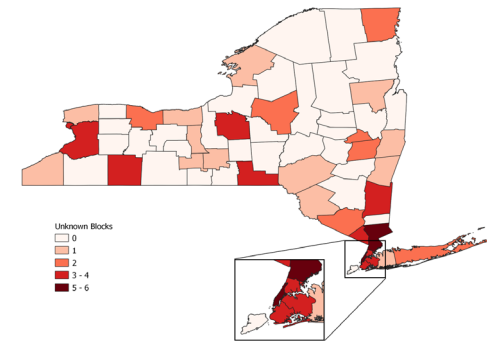
Nursing Home Populations

- In 2020, there were 111,680 people were reported as living in nursing homes.
- PAD has database of 661 nursing homes, 200 were added
- 66 blocks remain unaccounted for (1854 people)

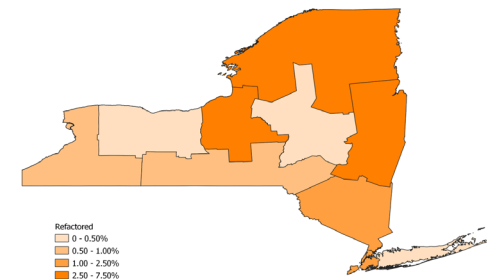
NH Population with no Facility



Blocks with Unassigned NH Pop

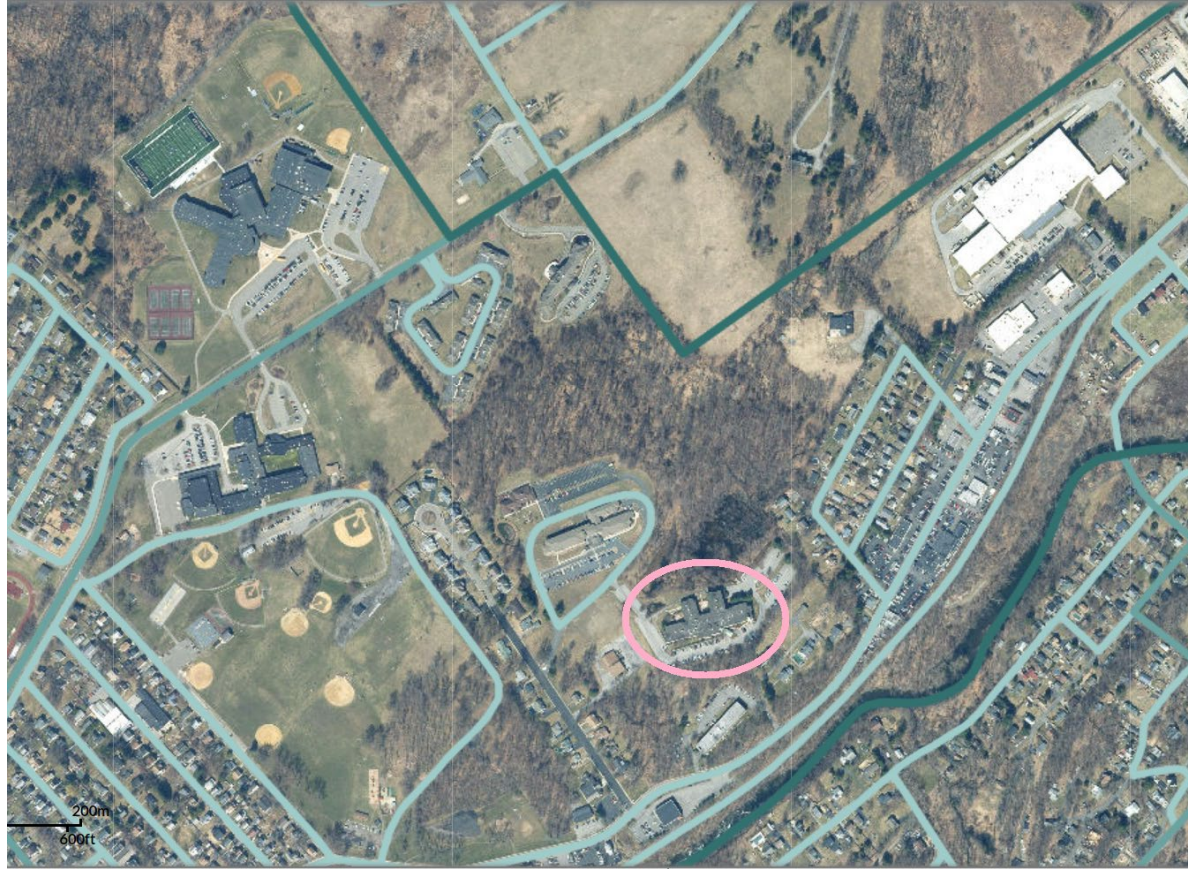


NYS Regions with Percent Unassigned





A. Holly Patterson Ext Care Fac / Rutland Nursing Home
Incorrectly reported count location

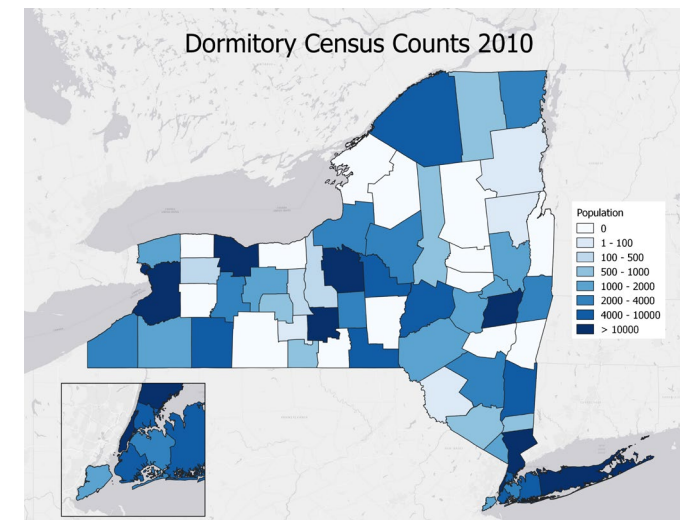
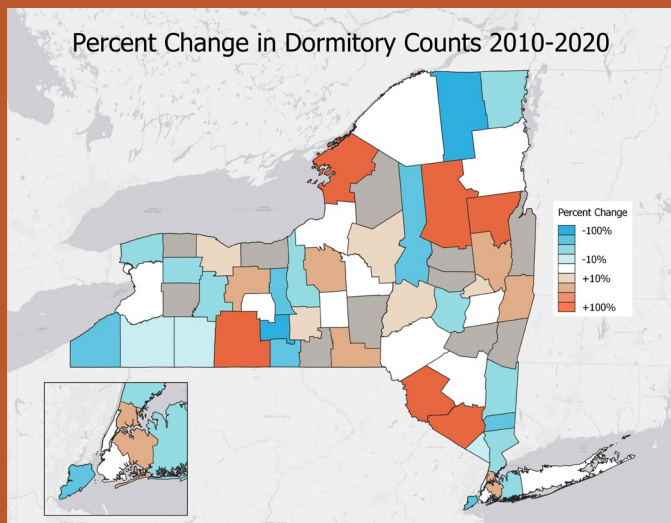


Wingate at Beacon / The Villages of Orleans
Incorrectly reported GQ Population Type

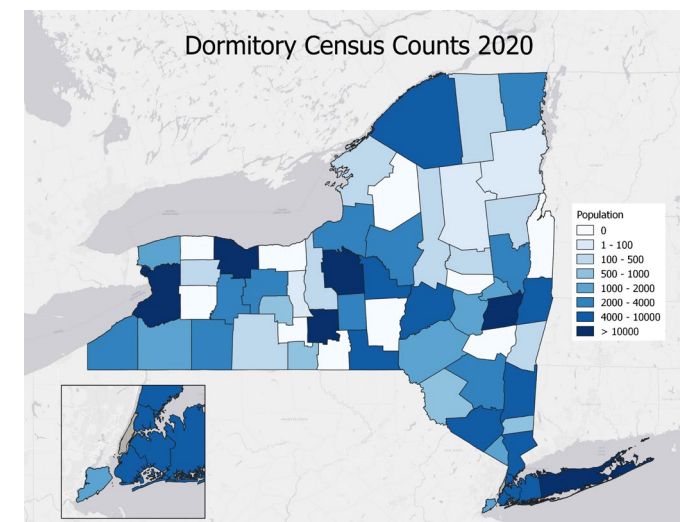
2020 Dormitory Counts Overview

Highlights:

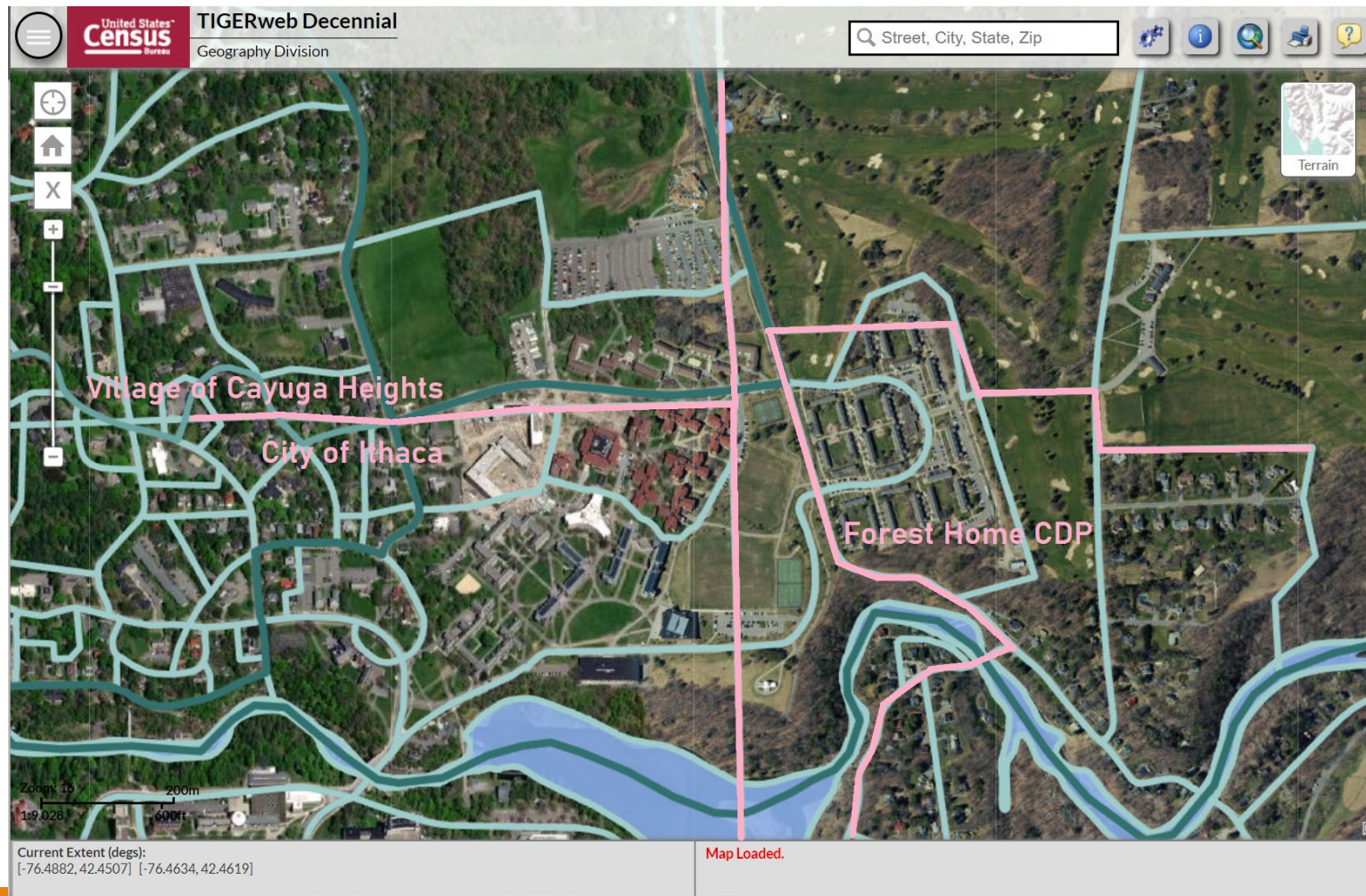
- Dormitory population counts increased by ~7,000
- 25 counties reported increases in dormitory populations
- As of 2020, New York County had the highest dormitory population (followed by Monroe, Tompkins, and Erie Counties)
- Franklin County experienced the largest decrease in dorm population
- ~28% university students living in dormitory facilities



Population: 218,960



Population: 226,149



Dormitory Populations at Cornell
Split across multiple blocks and Census designated areas

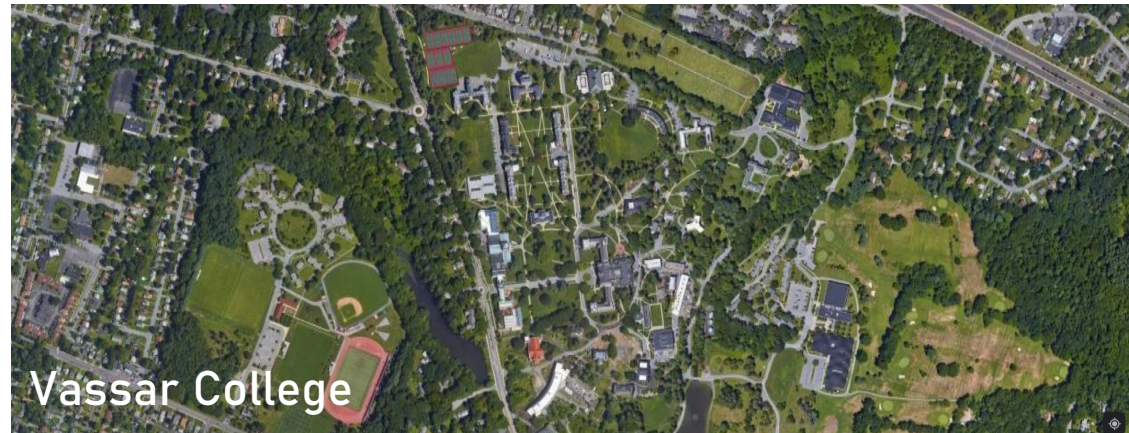
Dutchess County PCGQR

Three colleges in Dutchess
County under reported student
dormitory populations on
Census Day

*Vassar College reported 1863 students
in dormitories, Spring 2020 should be
2373 students in dormitories*

*Bard College reported 272 students in
dormitories. Spring 2020 should be
1100 – 1200 students in dormitories*

*Marist College reported 2654 students
in dormitories, Spring 2020 should be
3459 students in dormitories*



Thank you!

Email: rk584@cornell.edu

Phone: (917) 293-0385

Russell Kwong
Cornell University CRP '25