

# Group Quarters Count Review

Jan Vink

SDC meeting, October 2010

Program on Applied Demographics



Web: <http://pad.human.cornell.edu>

Email: [PADInfo@Cornell.edu](mailto:PADInfo@Cornell.edu)

# GQ Count Review

- Who: Federal State Cooperative Population Estimates (FSCPE)
- When: August 9-13, 2010
  - After the Census
  - Counts as of July 23'th were attached
- U.S. Census Bureau

Program on Applied  
Demographics



## Census Bureau Geographic Data Collection

- During canvassing and GQ validation
  - lat/long
- Sometimes during GQ enumeration
  - Only tabulation block id, no lat/long
  - Not clear in what cases geo data assigned in enumeration
  - In these cases: Often facility name in GQ name field

Program on Applied  
Demographics



## Scope

- Types in scope
  - Correctional facilities for adults
  - Nursing homes
  - Student dormitories
  - Military barracks
  - Worker dorms
- Counts and Group Quarters type were OUT of scope

Program on Applied  
Demographics



## State geographic data collection

- Many people helped matching Campus maps, addresses and direction descriptions, etc. to aerial maps and lat/longs

Program on Applied  
Demographics



## Review tools

- Census tool
  - Table based, eliminating matching rows until all State records were matched
- Cornell tool
  - Map based, eliminating matching markers

Program on Applied  
Demographics



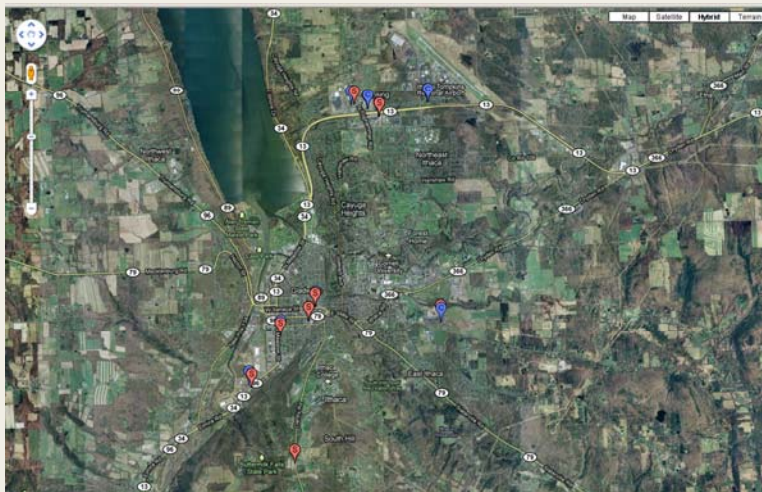
## Table example

Source	Name	Geo
S	Best Western University Inn Hotel	42.43798,-76.46157
C	Comfort Inn	42.423711,-76.516286
S	Comfort Inn Ithaca Hotel	42.42315,-76.51576
S	Country Inn & Suites Ithaca	42.40719,-76.50337
S	Courtyard By Marriott Ithaca Lansing Hotel	42.48348,-76.46544
C	Courtyard Hotel	42.483413,-76.465276
S	Econo Lodge Ithaca Hotel	42.48202,-76.4825
C	Econolodge	42.482013,-76.482421
C	Hilton	42.440736,-76.497334
S	Hilton Garden Inn Ithaca Hotel	42.44054,-76.49754
S	Holiday Inn Ithaca Hotel	42.43757,-76.49943
C	Homewood Suites	42.480478,-76.479331
S	Homewood Suites Ithaca Hotel	42.48044,-76.47905
C	Ithaca Holiday Inn	42.437593,-76.499297
C	Meadow Court Hotel	42.434726,-76.507271
S	Meadow Court Inn Hotel	42.43423,-76.50745
C	Ramada Inn	42.482962,-76.48727
S	Ramada Ithaca Executive Conference Center Hotel	42.4829,-76.48634
C	University Inn	42.437347,-76.461521

Program on Applied  
Demographics

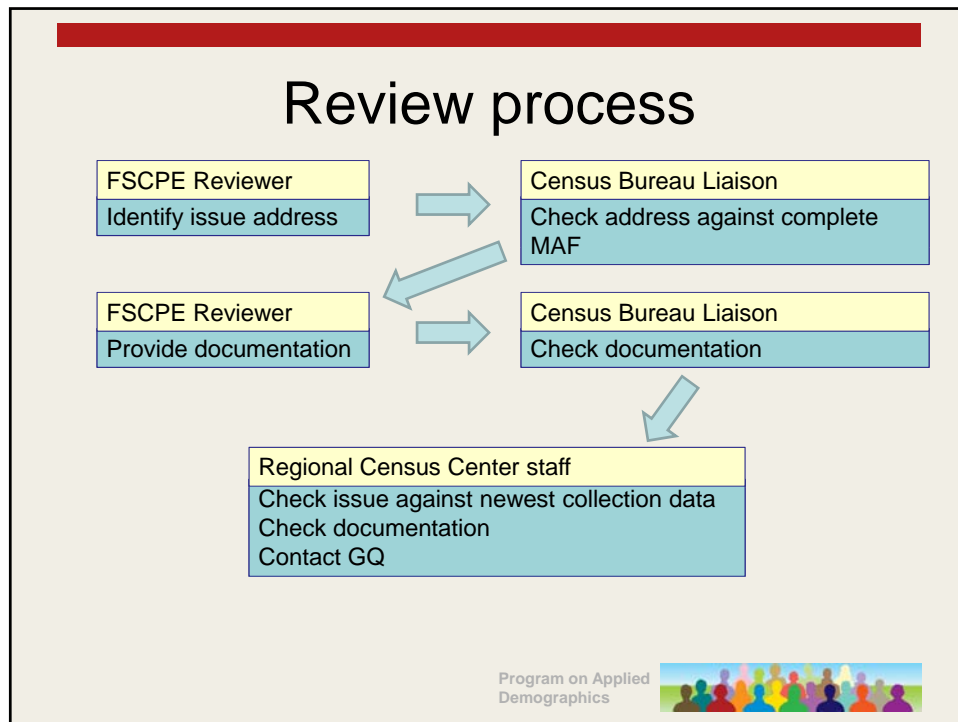


## Map example



Program on Applied  
Demographics





## Missing Process (Reviewer)

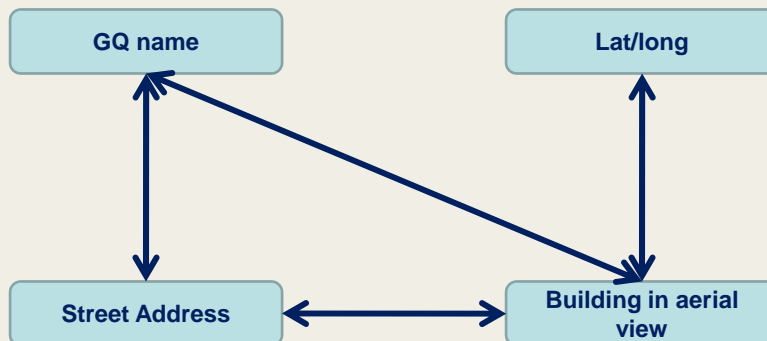
- Start with a state GQ not in the MAF
- Am I sure about my own record?
  - Was the GQ open on 4/1/2010?
  - What proof do I have?

Program on Applied  
Demographics



## Documentation

- Provide documentation for following:



Program on Applied  
Demographics



## Misallocation Process

- Similar to missing
  - No check on HU's or other GQ's at this address
  - Regular Census Bureau staff (without local knowledge) making the final decision

Program on Applied  
Demographics



## Personal Experience

- Luckily I came well prepared
- Found some missing
- Noticed some misallocations
  - Mostly to neighboring block
  - Filed a few issues to correct municipality
  - Left most misallocations alone (out of time)
  - Hope GQs are at least counted within block we looked at

Program on Applied  
Demographics



## Impressions

- Quality MAF + lat/long
  - Seemed to be very complete
  - Geographic accuracy varies
    - Lots of records with only block information
  - Group Quarters names sometimes messy
  - Inconsistent and missing facility names
  - Many duplicate records
    - E.g. One address with over 100 records in this GQ-extract

Program on Applied  
Demographics



## Frustrations

- Documentation requirements
- We had to split up clearly related issues
- Our records were held to a higher standard than the Census records
  - Block ID was not sufficient
  - Dorms do not have individual addresses (see MAF)
- If Google says so, it must be true

Program on Applied  
Demographics





## Frustrations

- State records were deleted from the Census tool for missing Zip codes
- Inconsistent GQ classification
  - Dorms classified as housing units
  - Nursing homes/Group homes for adults/Residential

Program on Applied  
Demographics



- Questions

Program on Applied  
Demographics

