



# Demographic trends in the Catskills

Jan Vink

Cornell Program on Applied Demographics



# About Cornell Program on Applied Demographics

- Part of Brooke's School of Public Policy
- Affiliated with Cornell Population Center

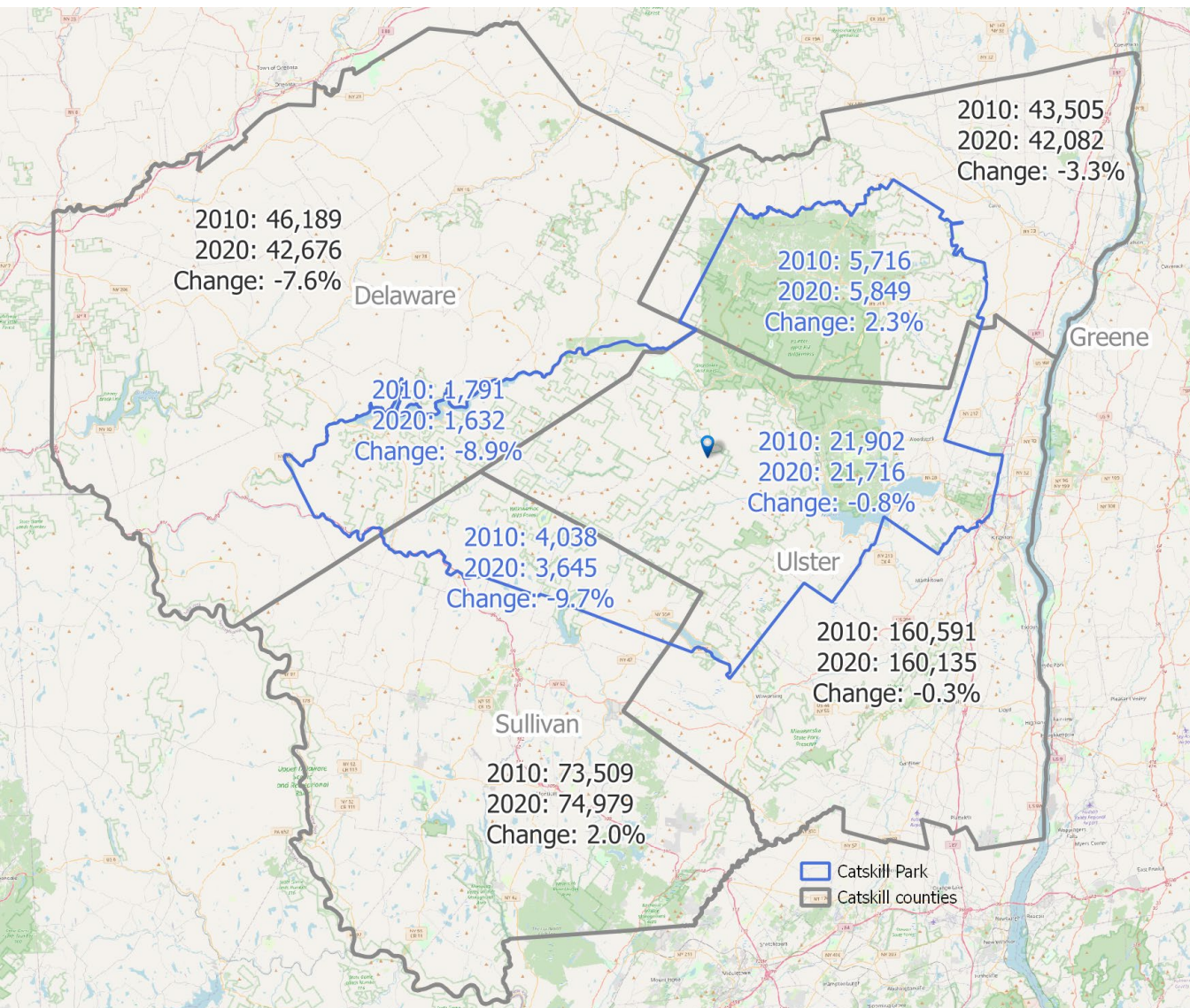
## Funded by New York State to:

- Represent New York State in Federal State Cooperative on Population Estimates (FSCPE)
- Function as Coordinating Agency with New York State Data Center
- Perform demographic analyses focused on New York State

# Overview

- Population and population change
- Housing units and occupancy
- Economics
  - Labor Force participation
  - Poverty
  - Job location

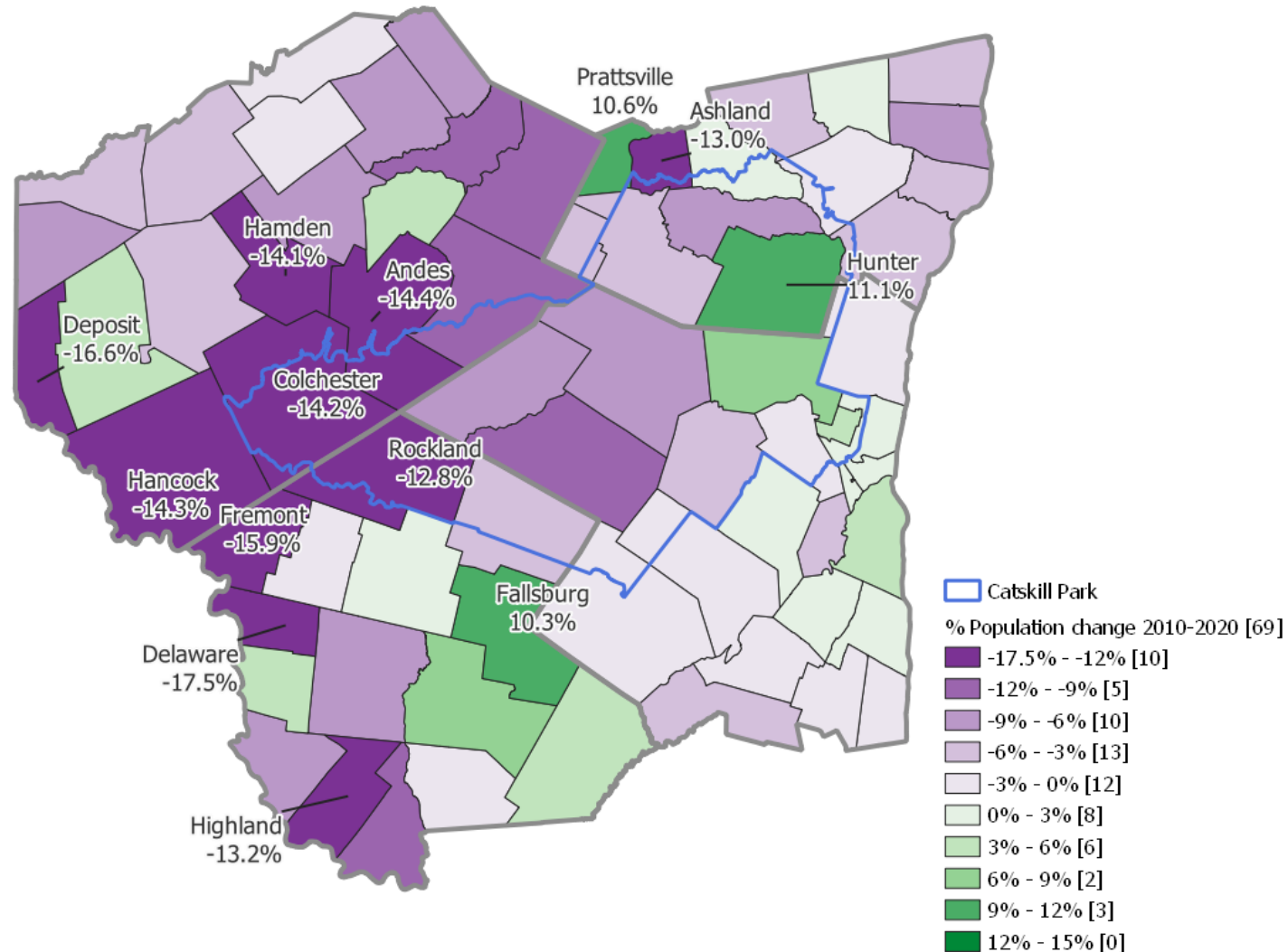
# Population within Catskill Park Blue Line



	Catskill Park	4 County area
2000	34,346	347,526
2010	33,447	357,241
Change	-899	+9,715
% Change	-2.6%	+2.8%
2020	32,842	352,714
Change	-605	-4,527
% Change	-1.8%	-1.3%

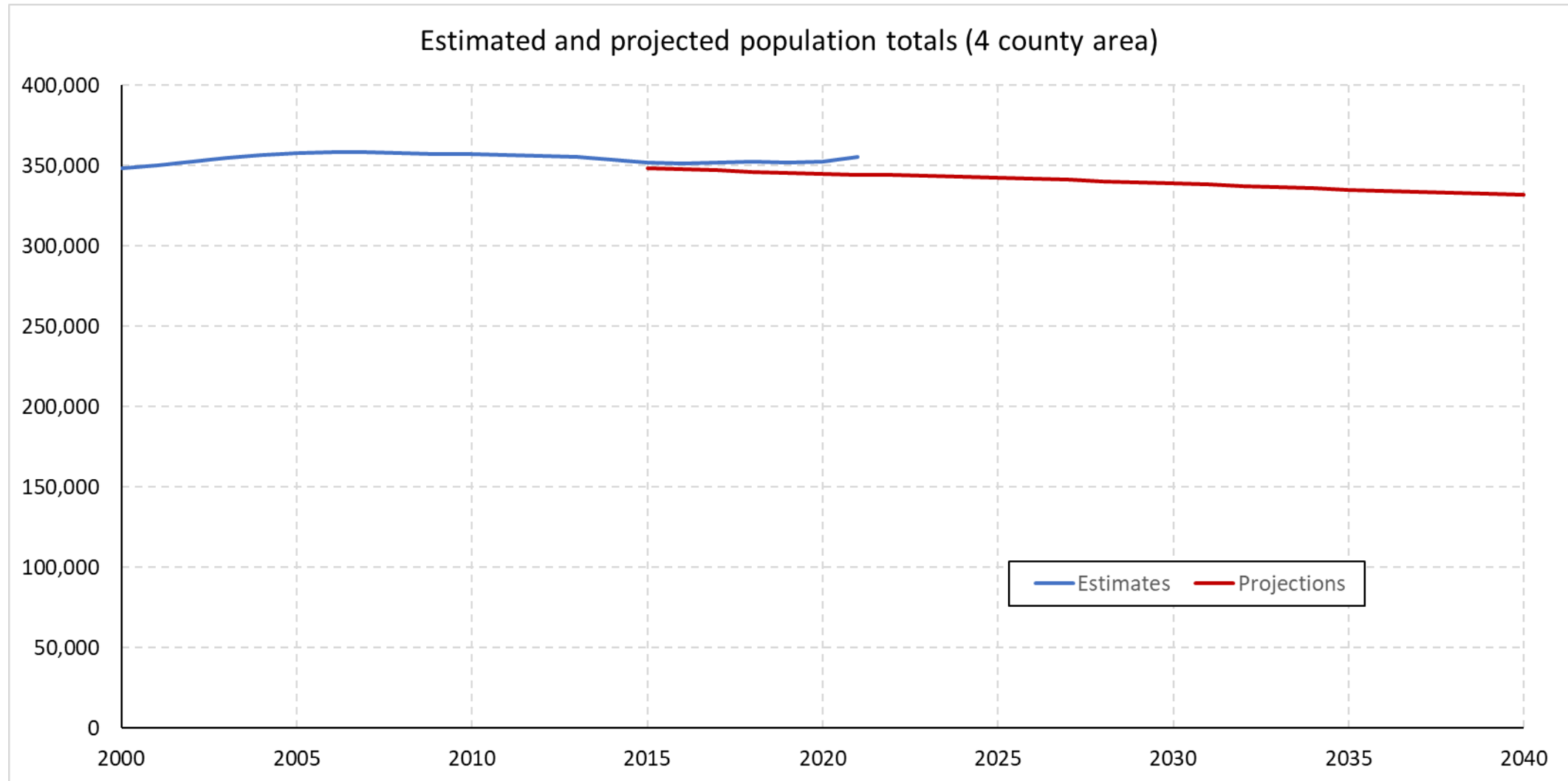
Source: PAD analyses based on Census 2000, 2010 and 2020

# Percent change in population 2010-2020

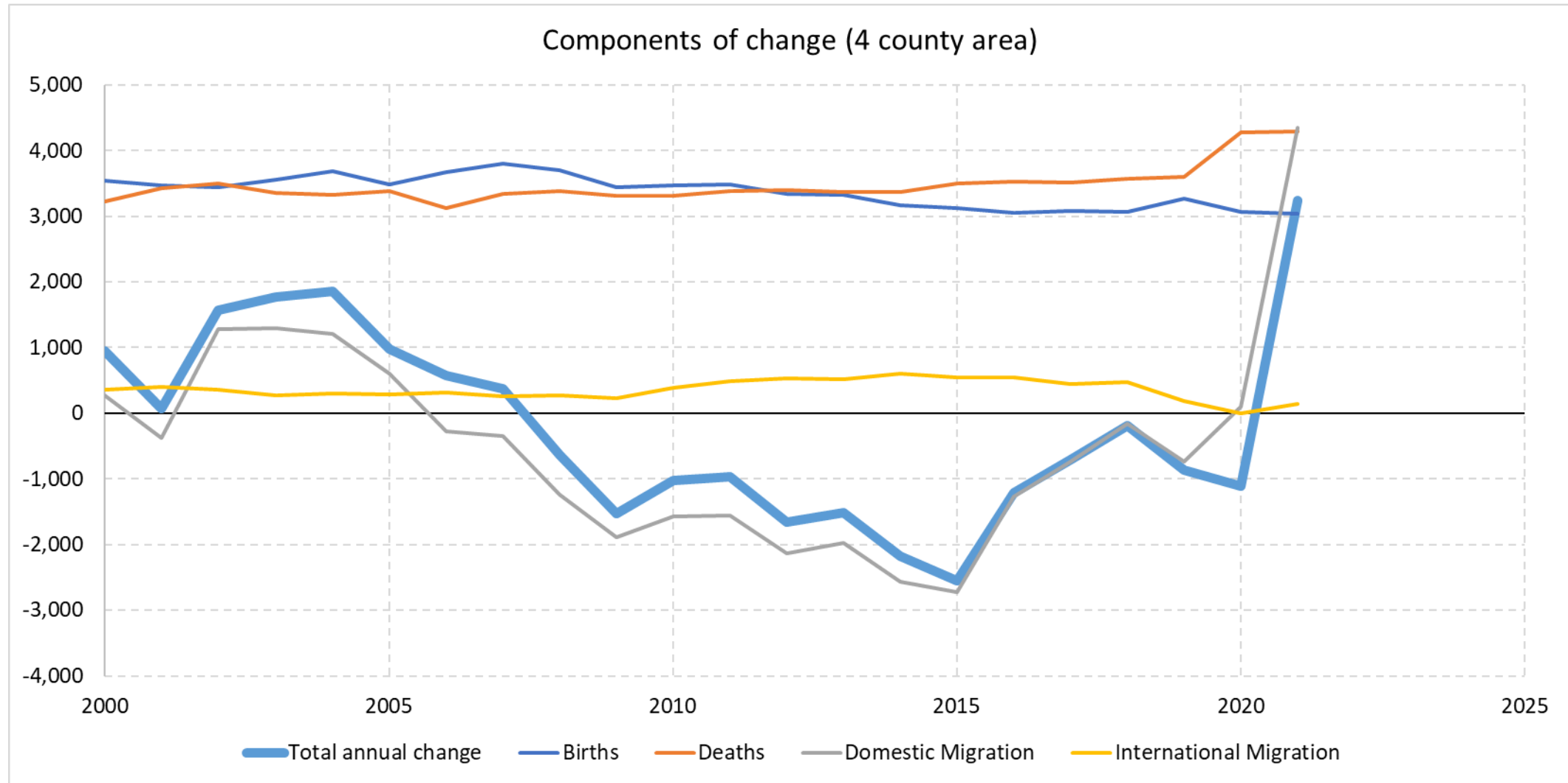


Source: Census 2010 and 2020

# Estimated and projected total population



# Components of change

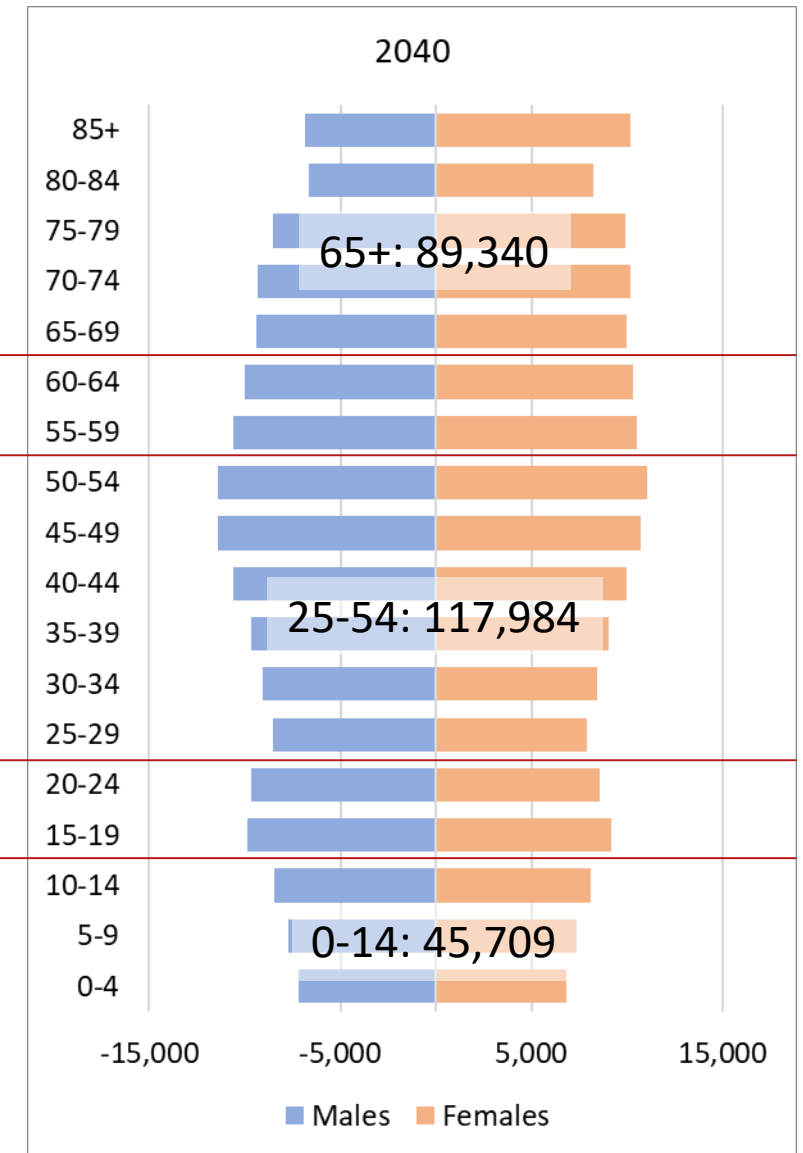
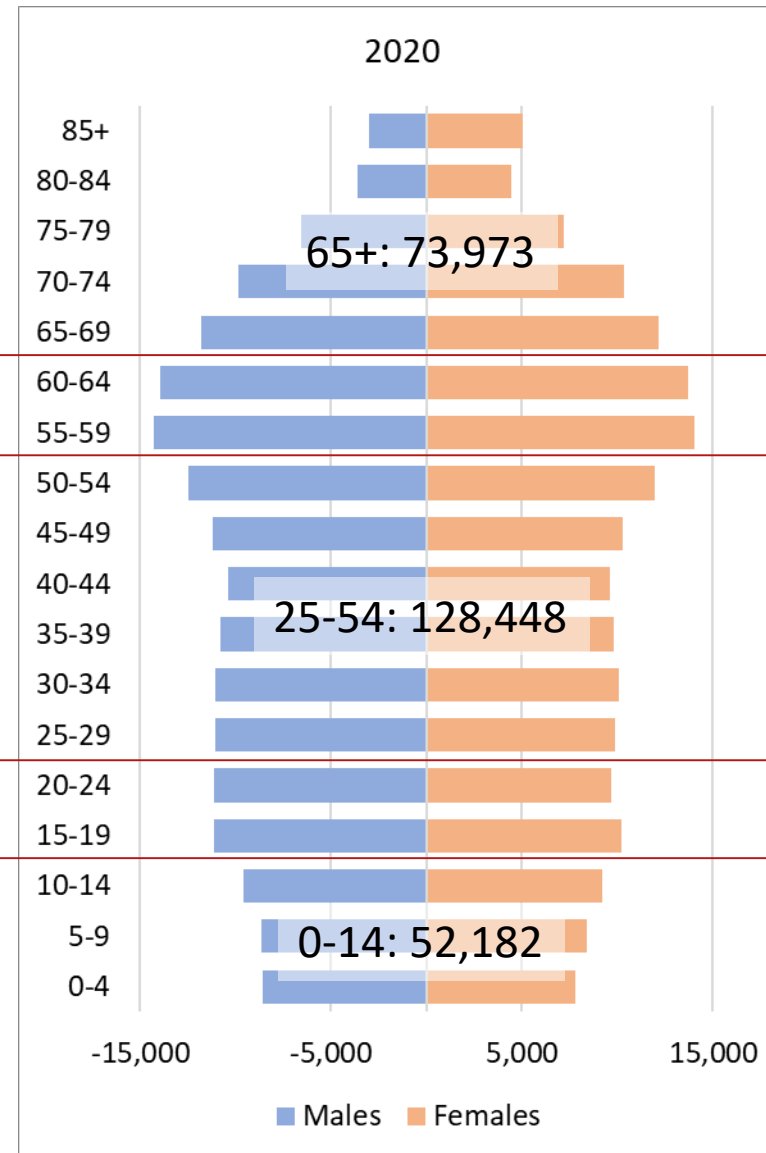
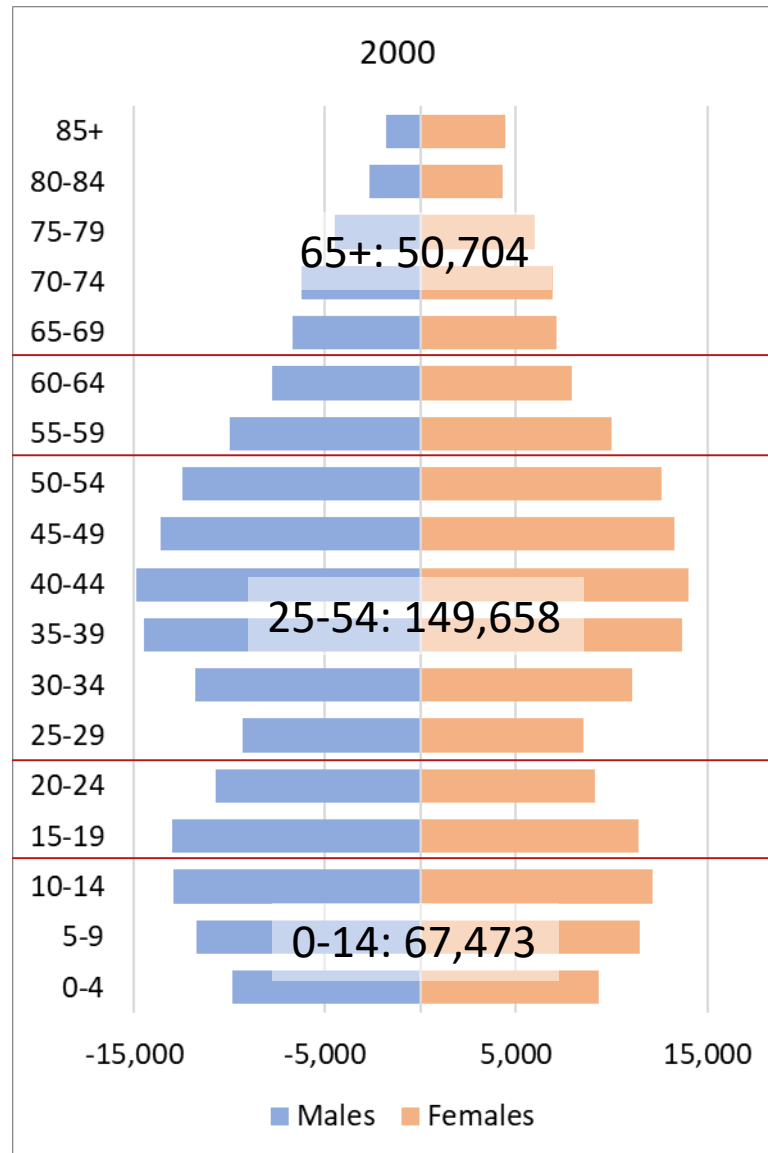


Source: Census Bureau population estimates



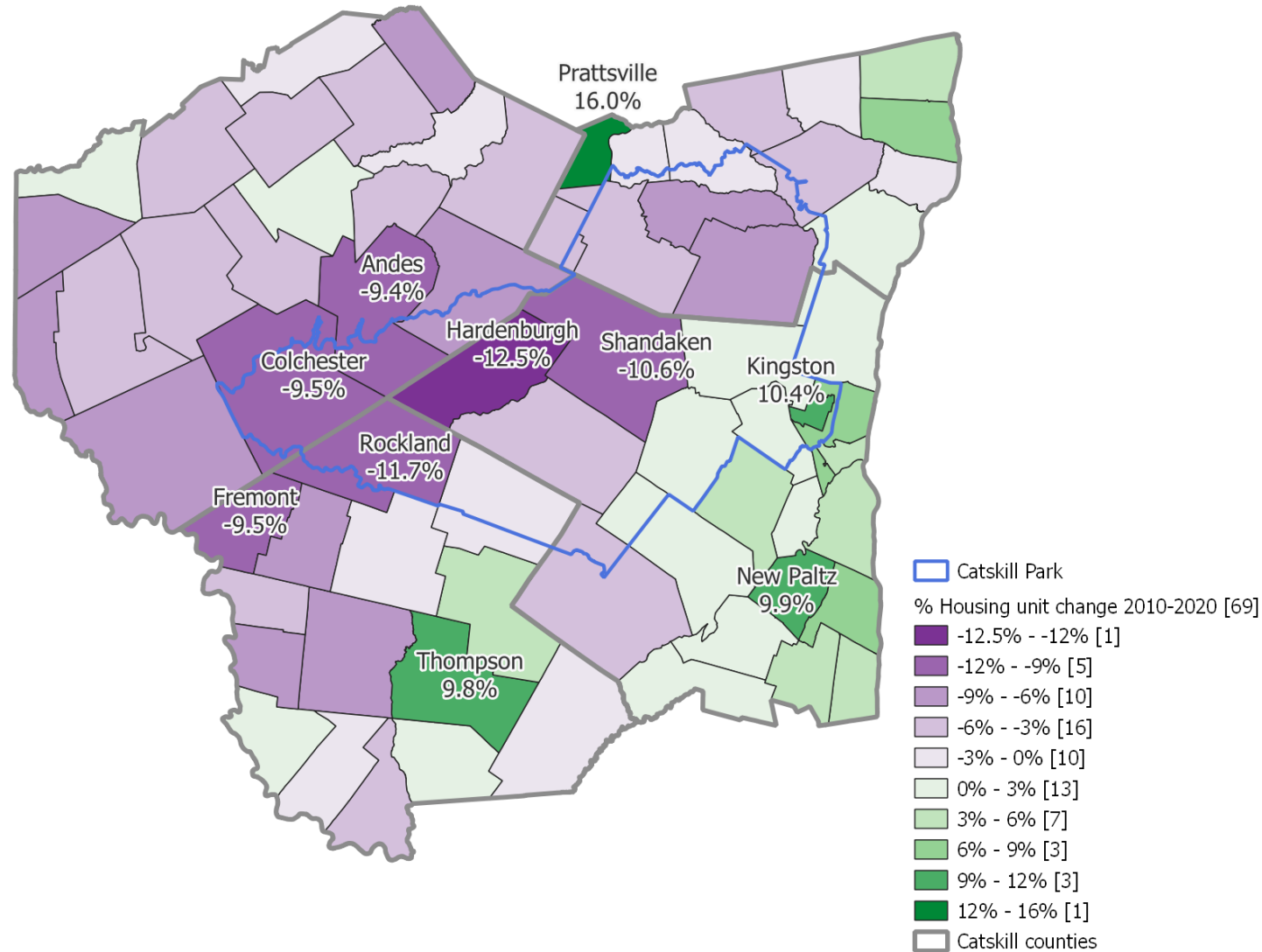
# Age distribution

Source: Census Bureau Population estimates & PAD projections





# Percent change in Housing Units 2010-2020



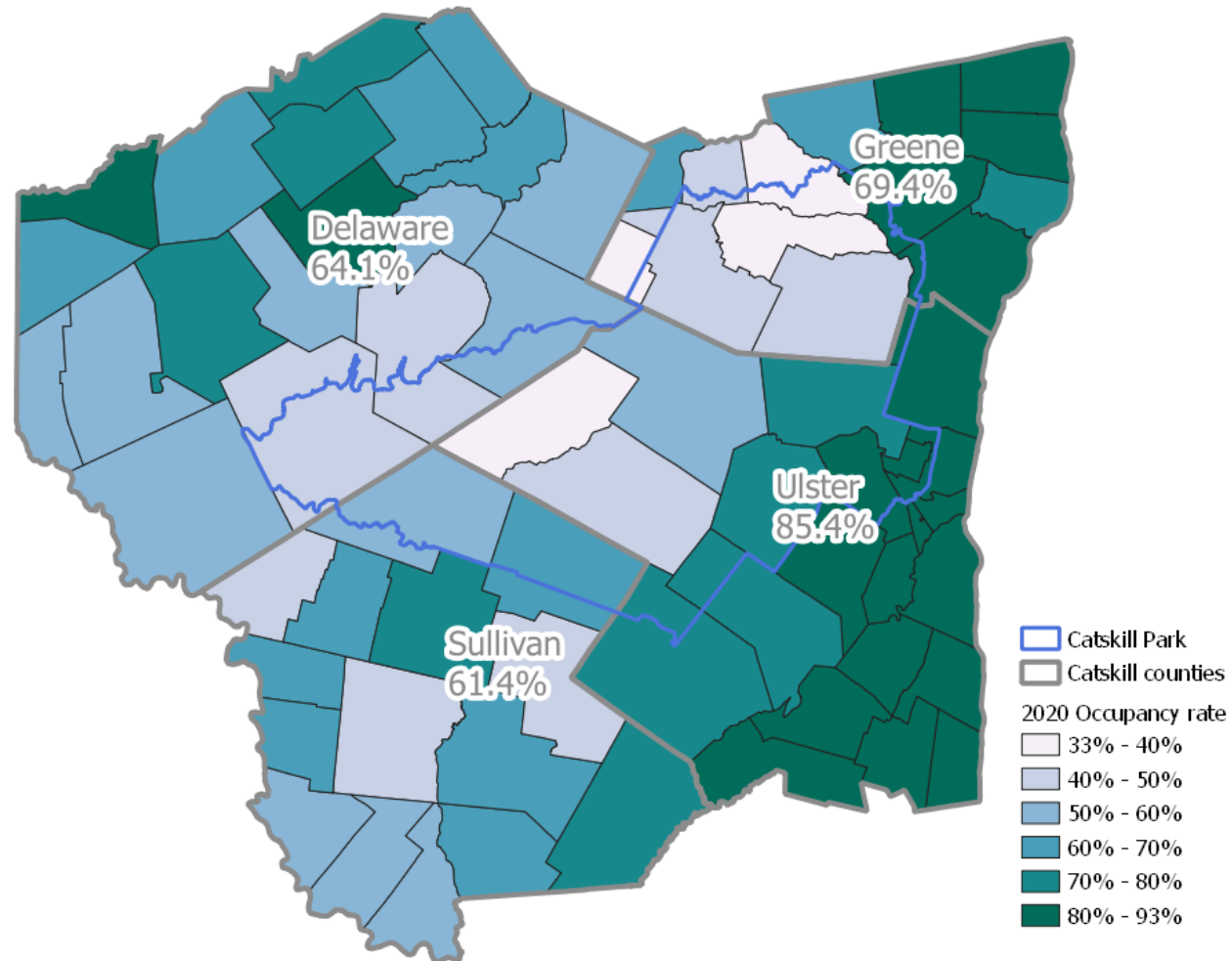
Source: Census 2010 and 2020

Population

Housing

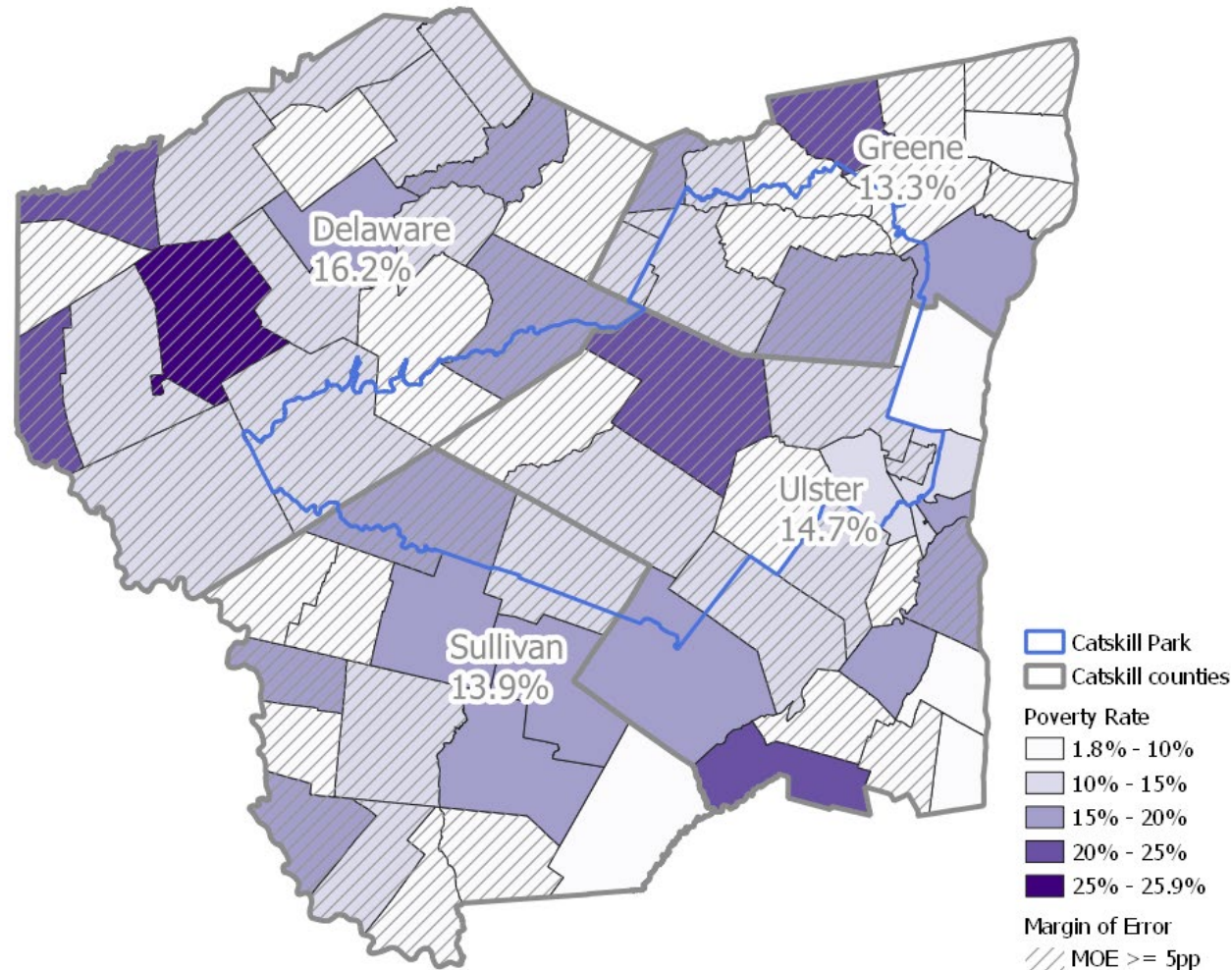
Economic

# Occupancy rate



Source: Census 2020

$$\text{Poverty rate} = \frac{\# \text{ people with incomes below poverty threshold}}{\text{Size universe}}$$

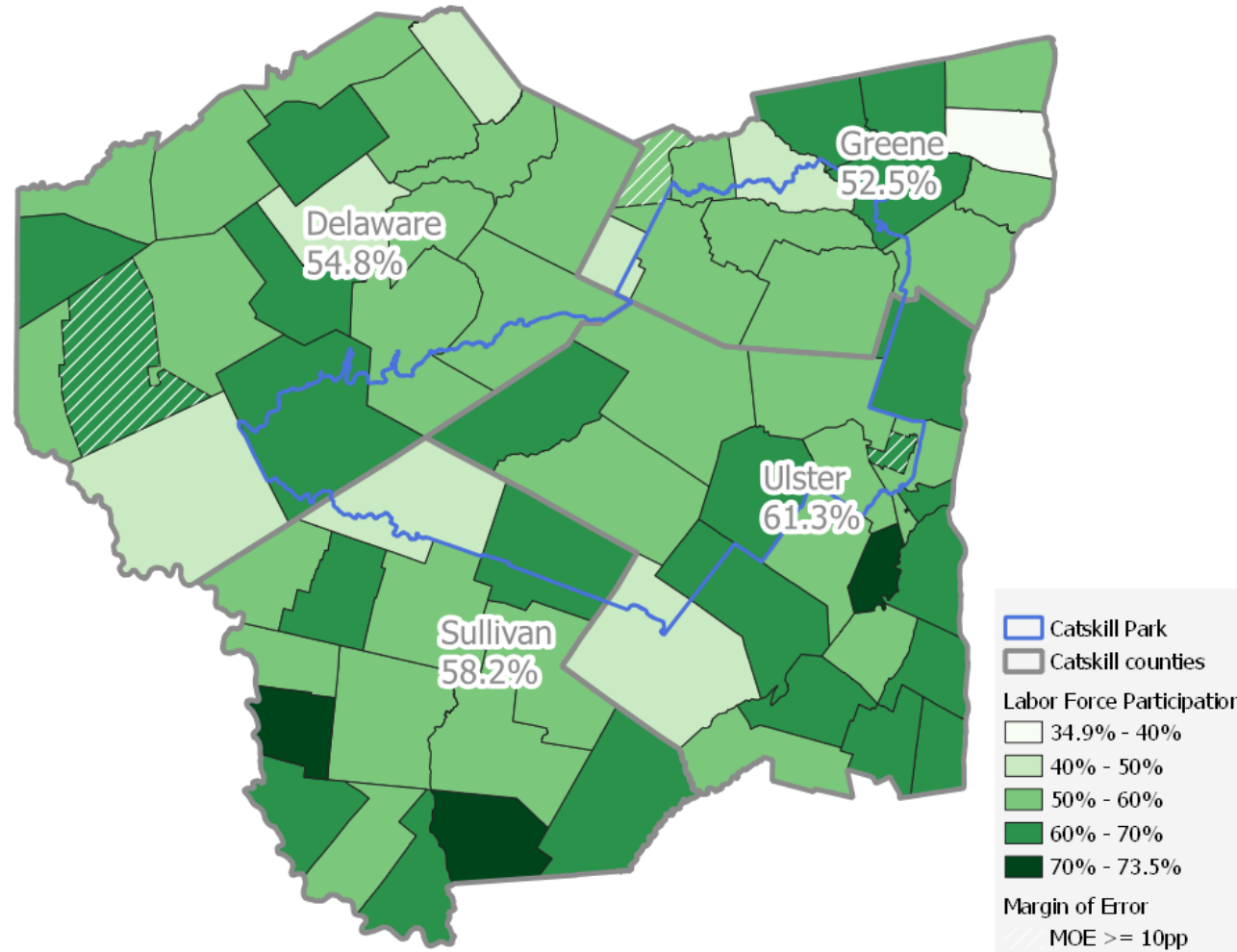


Source: ACS 2016-2020



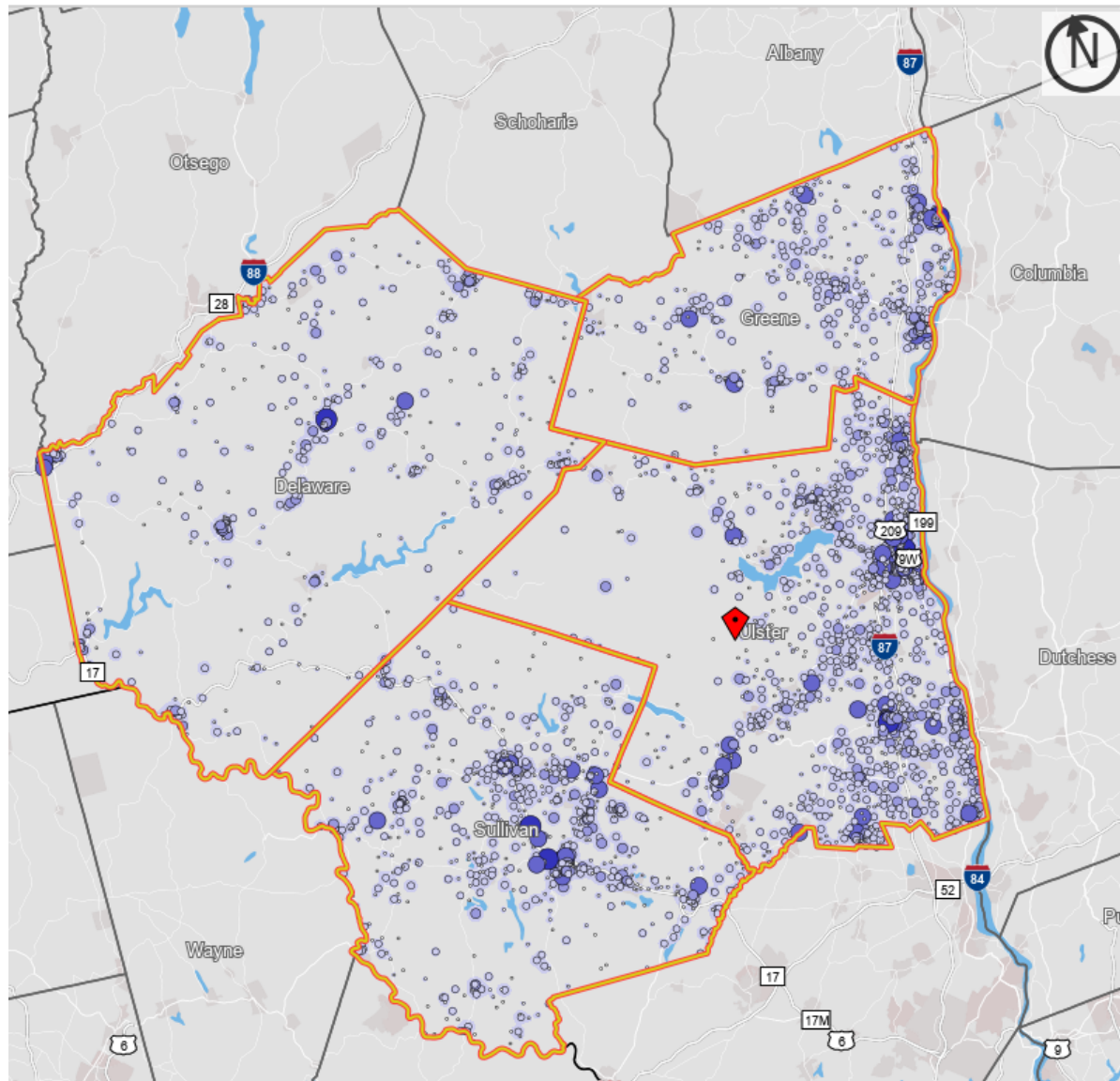
# Labor Force Participation

$$= \frac{\text{Employed} + \text{Unemployed}}{\text{Population 16 and over}}$$



Source: ACS 2016-2020

# Job locations and industry sector



Job Counts by NAICS Industry Sector

	2019	
	Count	Share
<b>Total All Jobs</b>	<b>116,643</b>	<b>100.0%</b>
Agriculture, Forestry, Fishing and Hunting	1,353	1.2%
Mining, Quarrying, and Oil and Gas Extraction	319	0.3%
Utilities	412	0.4%
Construction	5,121	4.4%
Manufacturing	8,537	7.3%
Wholesale Trade	3,310	2.8%
Retail Trade	13,326	11.4%
Transportation and Warehousing	3,633	3.1%
Information	1,458	1.2%
Finance and Insurance	2,359	2.0%
Real Estate and Rental and Leasing	1,480	1.3%
Professional, Scientific, and Technical Services	2,489	2.1%
Management of Companies and Enterprises	830	0.7%
Administration & Support, Waste Management and Remediation	4,040	3.5%
Educational Services	15,489	13.3%
Health Care and Social Assistance	18,188	15.6%
Arts, Entertainment, and Recreation	2,384	2.0%
Accommodation and Food Services	13,798	11.8%
Other Services (excluding Public Administration)	4,356	3.7%
Public Administration	13,761	11.8%

[Reset Table](#)

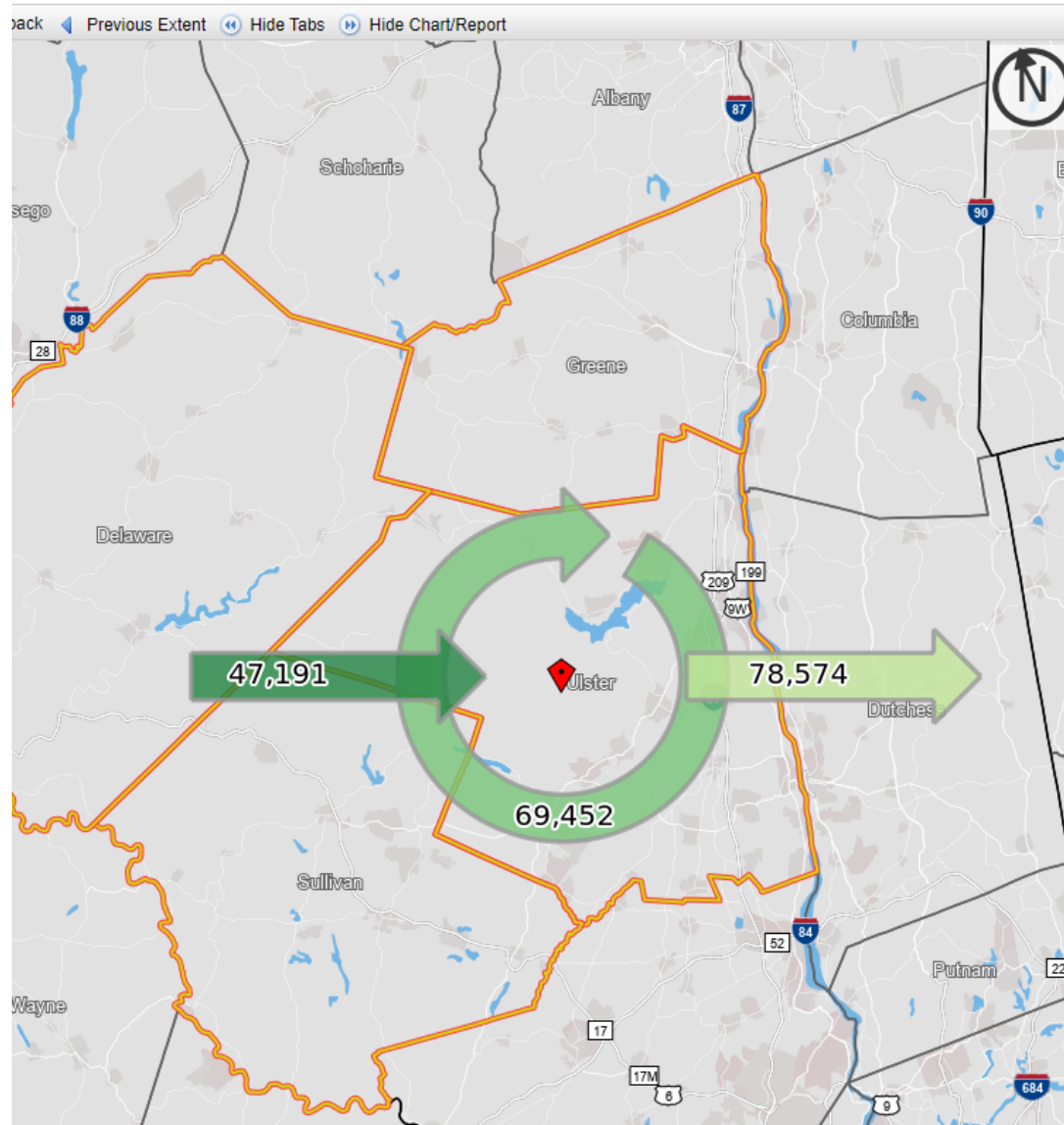
Population

Housing

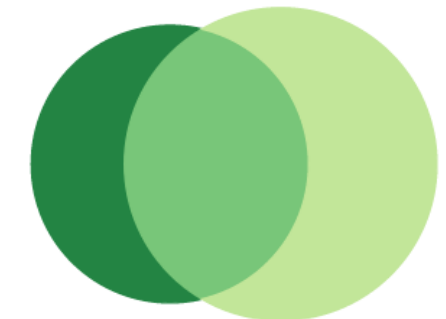
Economic

Source: OnTheMap 2019

# Residence and job location



Inflow/Outflow Job Counts in 2019



47,191 - Employed in Selection Area, Live Outside  
 78,574 - Live in Selection Area, Employed Outside  
 69,452 - Employed and Live in Selection Area

Inflow/Outflow Job Counts (All Jobs)

	2019	
	Count	Share
<a href="#">Employed in the Selection Area</a>	116,643	100.0%
<a href="#">Employed in the Selection Area but Living Outside</a>	47,191	40.5%
<a href="#">Employed and Living in the Selection Area</a>	69,452	59.5%
<a href="#">Living in the Selection Area</a>	148,026	100.0%
<a href="#">Living in the Selection Area but Employed Outside</a>	78,574	53.1%
<a href="#">Living and Employed in the Selection Area</a>	69,452	46.9%

[Reset Highlighting](#)

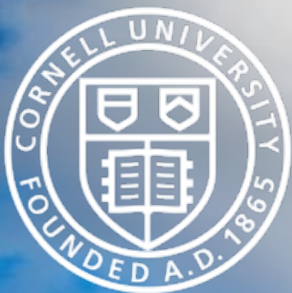
Source: OnTheMap 2019



# Commuting and working from home

	ACS 2015-2019	ACS supplemental 2021
By car, van or truck	85.7%	75.3%
Other transportation	7.6%	6.6%
Worked from home	6.7%	18.1%

Universe: workers 16 and over



Questions?

Email: [jkv3@cornell.edu](mailto:jkv3@cornell.edu)

Web: [pad.human.cornell.edu](http://pad.human.cornell.edu)