
County Population Projections Review and Update

Presented by Warren A. Brown

New York State Data Center Affiliate Meeting

May 16, 2008, West Point, New York

*Warren A. Brown and Jan K. Vink
Program on Applied Demographics
Cornell University*

Program on Applied Demographics



Web: <http://pad.human.cornell.edu>

Email: PADinfo@cornell.edu



Cornell University

County Population Projections Review and Update

Warren A. Brown, Ph.D.
Program on Applied Demographics
Cornell University

Reference

Smith, Stanley K., Jeff Tayman, and David A. Swanson, *State and Local Population Projections: Methodology and Analysis*. Plenum Publishers. 2001.

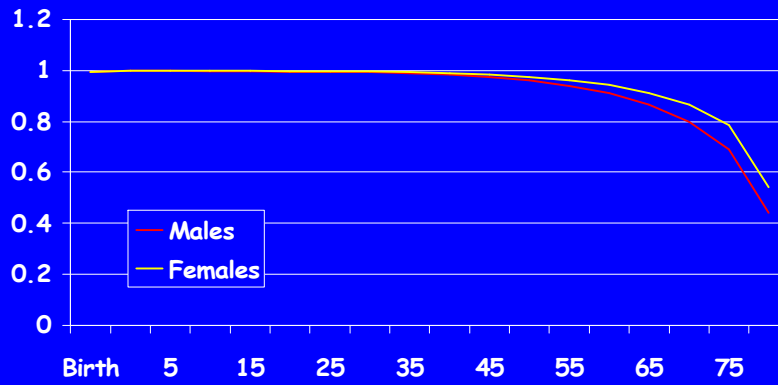
Outline

- Model
- Assumptions
- Access
- Review

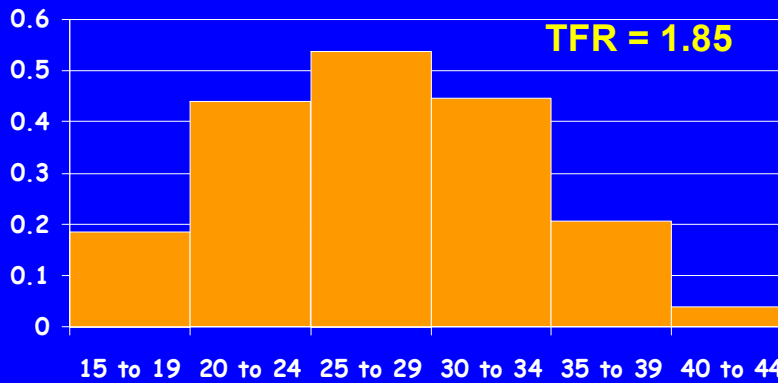
Cohort-Component Model

- Components of Population Change
 - Deaths
 - Net (In - Out) Migrants
 - Births
- Cohorts
 - Age (0-4, 5-9, ..., 85+)
 - Sex (Male, Female)

Survival Rates, 2000

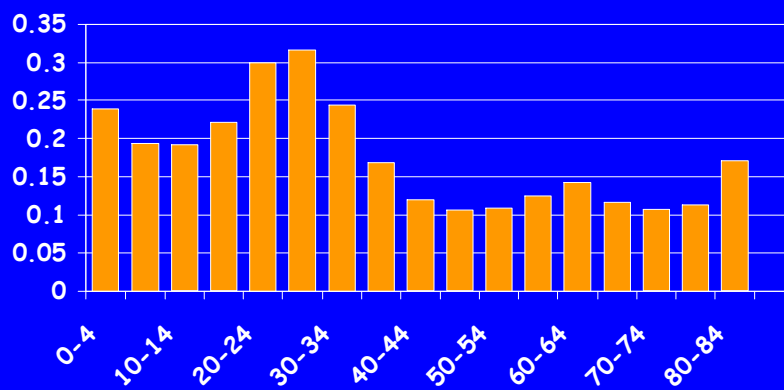


Fertility Rates, 2000

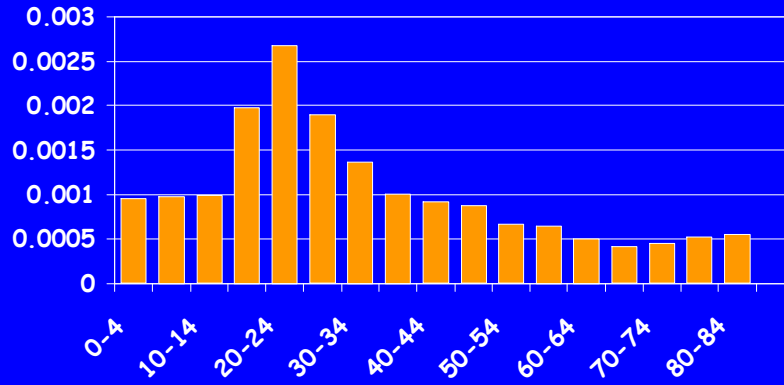


$$\begin{aligned} \text{Net Migrants} &= \\ &\text{In-Migrants} \\ &- \\ &\text{Out-Migrants} \end{aligned}$$

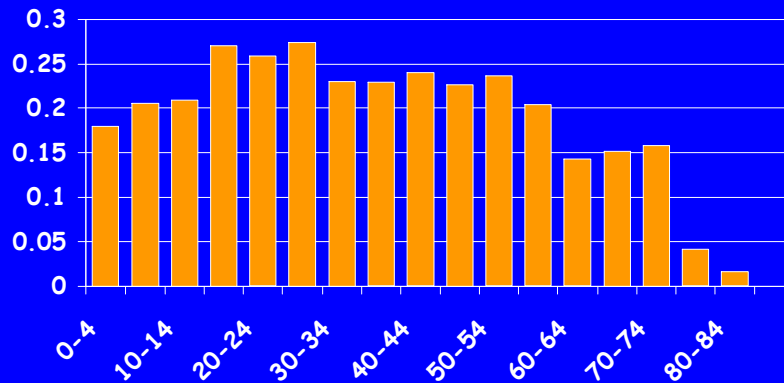
Domestic Out-Migration Rate



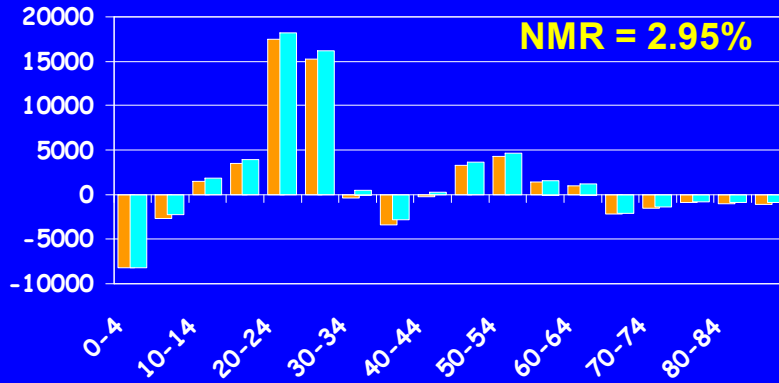
Domestic In-Migration Share



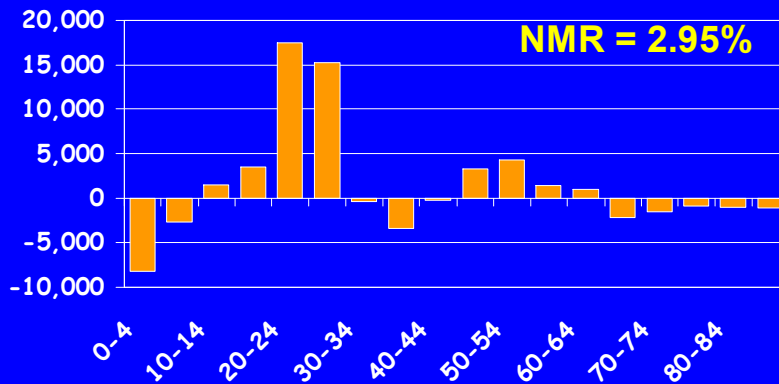
Abroad In-Migration Share



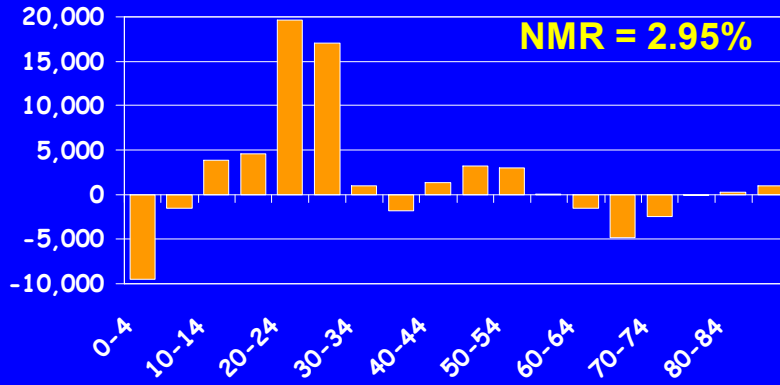
Net Migrants, 2005-2010



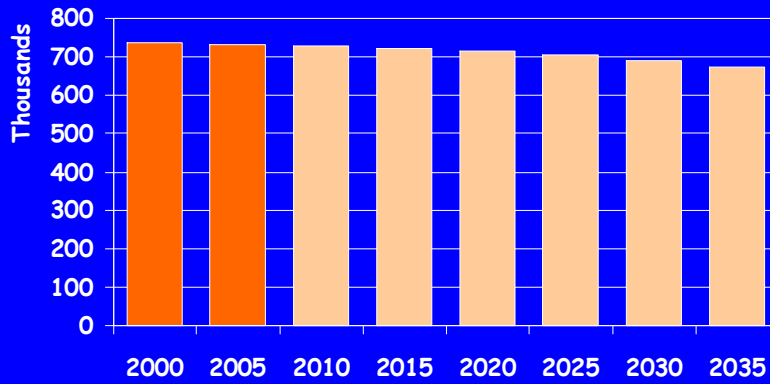
Net Migrants, 2005-2010

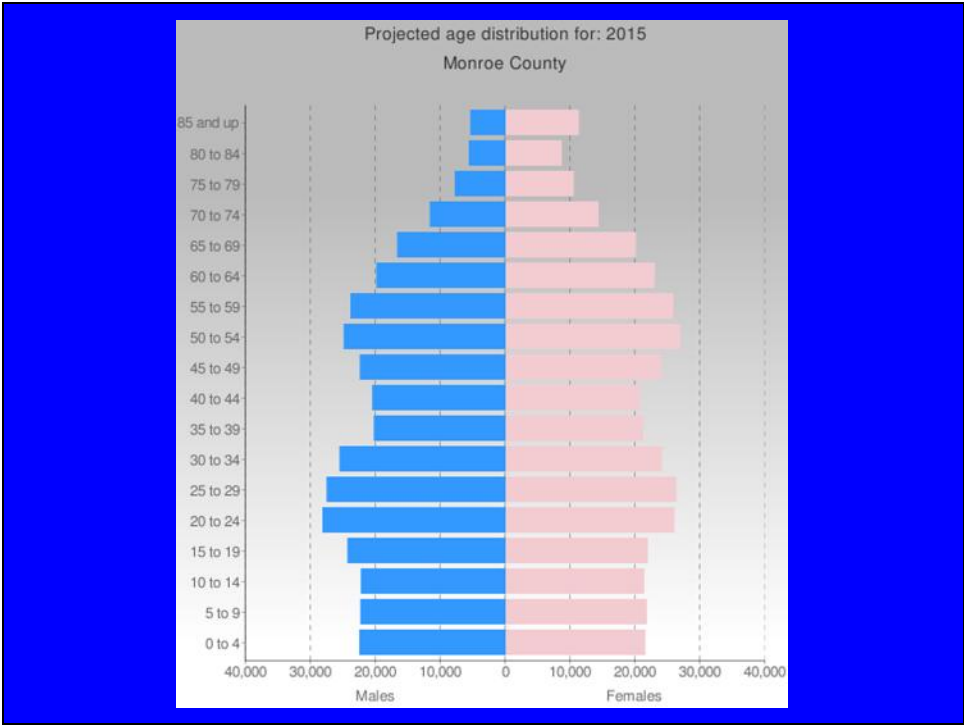
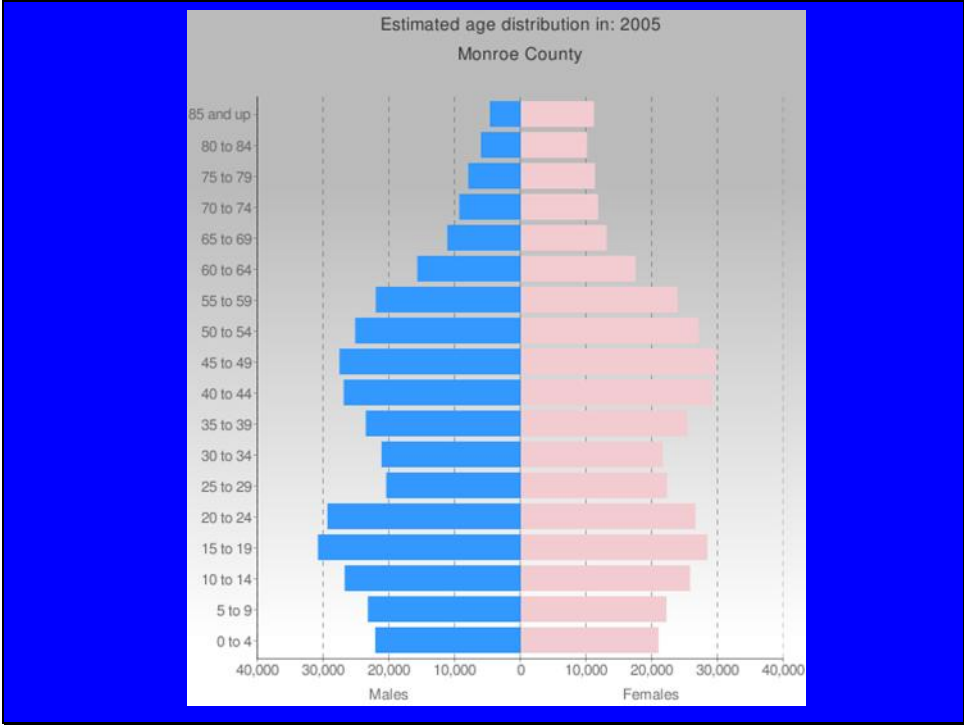


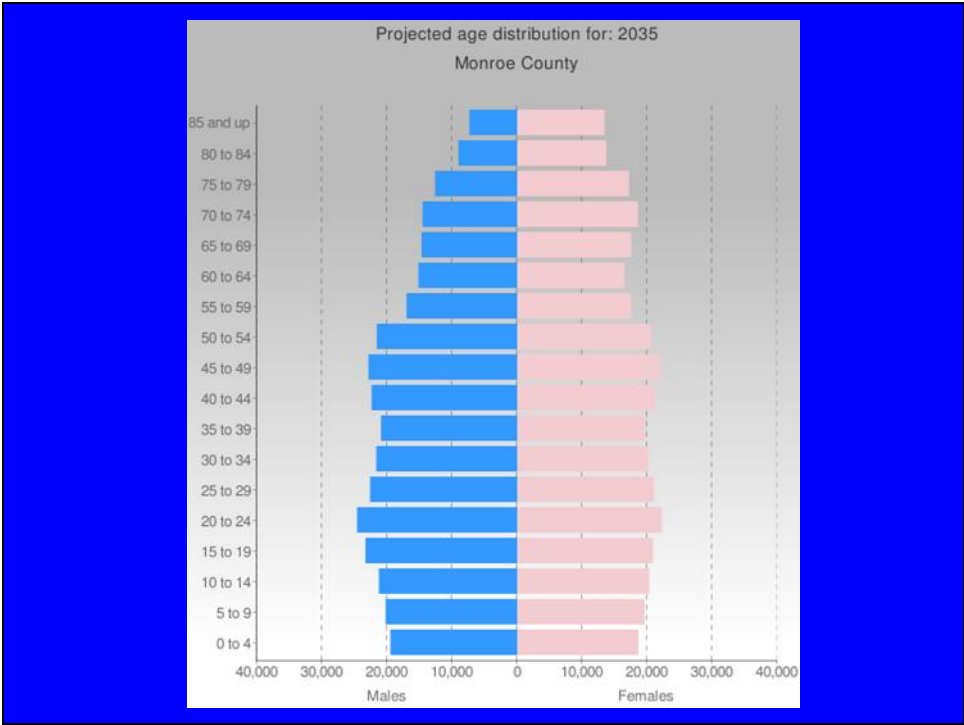
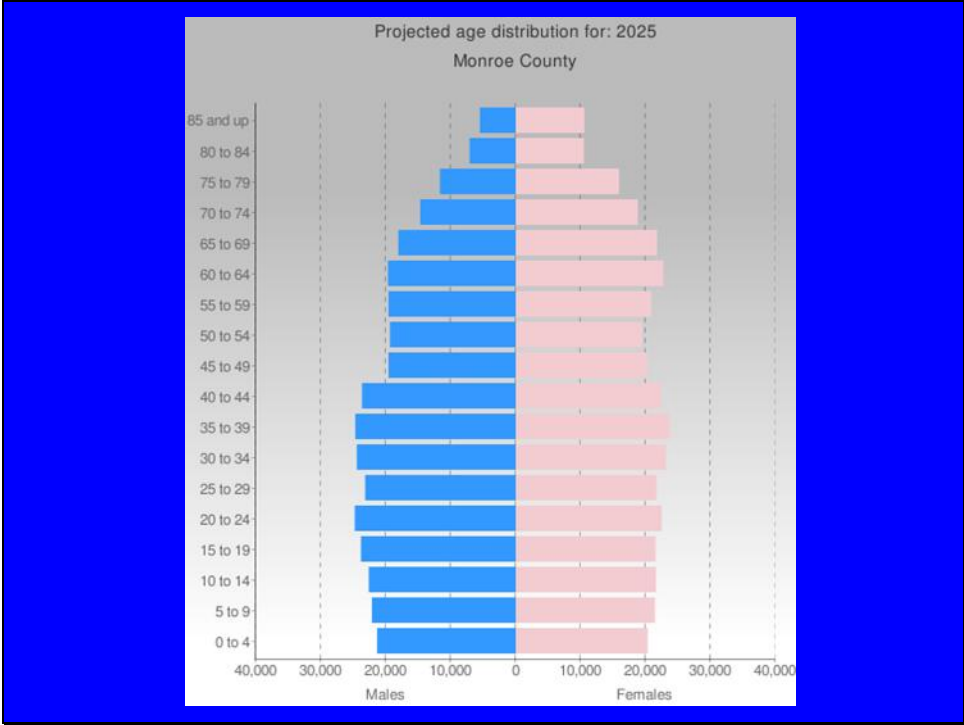
Net Migrants, 2030-35



Monroe County, NY







Population =

Regular Persons in:

- Households
- Jails
- Nursing Homes

Special Persons in:

- State and Federal Correctional
- College Students (On and Off Campus)
- Military Population
- Mental Hospitals

Wyoming County, NY Age and Sex, 2005

